

OUR
HEART-
SHAPED
HISTORY

DULUX
Colour of the Year 2019
REVEALED

TORVILL AND DEAN

The story behind the skating sensations

Olivia
COLLMAN

A look at the actress' glittering success



FREE

Photo credit: Michael Eluckner/Variety/FEX/Shutterstock

We are your local providers of shutters and blinds in Aldeburgh, Southwold, Saxmundham, Leiston, Woodbridge, Ipswich and surrounding areas.

Transform your space

Shuttercraft Suffolk fits premium window shutters from the UK's leading supplier. Whether you prefer classic or contemporary styles, with Shuttercraft you're guaranteed to find something to fall in love with.



Shuttercraft®

Making light work



A recent installation by Shuttercraft Suffolk in the Crown at Ufford

- No hard sell promise
- Free home visit and survey
- Trusted local specialist

Call **Lyndsay and Niall** at **Shuttercraft Suffolk** today on **01728 469195** or visit www.shuttercraft-suffolk.co.uk

S
CRAFT
PROUD
TO FIT
S:CRAFT
PRODUCTS

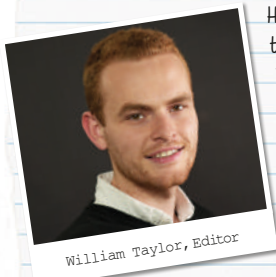


February 2019

CONTENTS

- 6 TORVILL AND DEAN
- 8 HISTORY
- 11 LOCAL NEWS
- 23 HOME & DIY
- 26 OLIVIA COLMAN
- 29 GARDENING
- 31 FOOD & DRINK
- 32 HEALTH & FITNESS
- 37 BEAUTY
- 38 PETS
- 40 BUSINESS & FINANCE
- 44 WHAT'S ON
- 46 THE **VISION** LISTINGS
- 50 PUZZLES
- 51 LOCAL TRADES & SERVICES

Editor's notes...



William Taylor, Editor

Hello and welcome to this month's edition of **VISION**Woodbridge. Love is all around us at this time of year, with Valentine's Day coming around once again. Being an old romantic, I consider myself very fortunate not only

to have a fiancé I adore, but also a beautiful daughter and a wider family I care greatly for. By the time you read this, Valentine's will have come and gone for another year, but I expect the feeling of love to go on.

Talking of love, I absolutely love the support I continue to get for **VISION**Woodbridge. Every month I take great joy in going out and hand delivering copies to all the lovely local businesses in the town, of which many are featured in these coming pages.

With the weather still cold, it's all too tempting to shop online and forget about the businesses that are doing such a fantastic job on our own doorstep.

Remember, by supporting a local business you're helping a young lad get his favourite team's shirt, or a little girl get her first ballet lessons. Wherever possible support our local businesses.

In local news this month, a singer appears on *The Voice UK*, a canoeist is set to take on a 125-mile non-stop race and hundreds of pounds are raised in memory of a theatre group president.

Will



MASTERWOOD JOINERY

GERMAN CRAFTSMANSHIP

Building and Fitting Your Bespoke Design in Real Wood

CABINET MAKING · WARDROBES KITCHENS · BOOKCASES · FLOORING

Call Mario: 0757 0303 475

www.masterwoodjoinery.com

mario@masterwoodjoinery.com

CONTACT US

www.visionmag.co.uk/woodbridge

woodbridge@visionmag.co.uk

01728 723305 | 07940 834629

[@WoodbridgeVMag](https://twitter.com/WoodbridgeVMag) [@WoodbridgeVMag](https://facebook.com/WoodbridgeVMag)

FOUNDER | Nik Allen | CREATIVE DIRECTOR | Misha Mistry

CO-ORDINATORS | Rebecka Fryer, Amy Pollard, Kim Plater

CONTRIBUTORS | TFS Photo Woodbridge, Tabatha Fabray



DOWN: 1. FORGETFULNESS, 2. DELVE, 4. MEDIAN, 5. INTERSECTION, 6. OCULIST, 7. EXPANSIVENESS, 8. EXPERIMENTAL, 14. CONSIST, 16. NOTION, 18. OBAMA

ACROSS: FADE, 3. OMNIVORE, 9. RELAXED, 10. TRUMP, 11. EVE, 12. REIGN, 13. RENTS, 15. MANIC, 17. LANCE, 18. OWE, 19. EVICT, 20. ISOLATE, 21. SETTling, 22. LASS

Breaking THE Ice



To the children of the 1980s, spectacular ice skating duo 1984 Sarajevo Olympics. But are still inspiring today's youth... On Ice. It is a love affair with the

Jayne Torvill and Christopher Dean will always be the who glided and pirouetted their way to gold glory at the 35 years on from their incredible win, the inseparable skaters every Sunday night in fact, as head judges on ITV's *Dancing on Ice* the duo just can't break.

The 11th series of *Dancing on Ice* may have attracted illustrious stars such as Westlife's Bryan McFadden and *Neighbours* icon Mark Little, but few among them can match the achievements of the show's head judges, Jayne Torvill and Christopher Dean, who wowed the world with their stunning Bolero back in 1984.

In an age where it is not uncommon for sports stars to break out from their chosen field and embark on a televised adventure into the ballroom, ice rink or jungle, it may be hard to comprehend just how innovative Torvill and Dean have always been. Indeed, their announcement following the Sarajevo Olympics that they would be turning professional – to remain eligible for the Olympics they were not allowed to earn money from the skating – was seen as a shocking move, and even professional suicide. But as Torvill reveals, the pair had always planned to take their partnership in a more creative direction.

"We always had the idea that we wanted to produce our own shows and tour," says Torvill. "That's what we did initially – we took a year after the Olympics to get that all going together with a really good, strong group of skaters and formed our own company."

Few could have predicted how popular their shows would prove to be – the duo toured the globe tirelessly with their spectacular ice extravaganzas. They even made a return to the amateur arena for the 1994 Olympics in Lillehammer, Norway (following a change in eligibility rules), an exercise that would prove controversial when one of their lifts was deemed to be against the rules, eventually landing the skating heroes in third place.

That Scandinavian adventure would prove to be their final competitive outing, and in 1998 they would hang up their skates professionally, only to be lured back as coaches for the first series of *Dancing on Ice*, in 2006. "Initially we signed up just to coach the celebrities and choreograph," says Torvill, "but then we were asked if we'd like to demonstrate the moves and we said yes, and then they said 'well, can you demonstrate to music?' To that we said 'ah, so that means we're performing.'

"Although we were nervous we actually really enjoyed it. We realised performing is what we enjoy most, so the performances got longer and more intense as the show progressed."

After all this time, it is clear Torvill feels honoured to be so respected by the British public, and this was backed up by a tremendously well-received biopic screened on Christmas Day. And as icons go, the duo have excelled – successful in their day and inspirational to a whole new generation now. "It's never not been a pleasure doing this, and we are as grateful today as any time before," she adds.





HISTORY

HAPPY Valentines DAY

A HEART-SHAPED HISTORY

February 14 is traditionally the day that flowers and chocolates will be winging their way to loved ones. But how did this annual expression of affection come to occupying a permanent spot on our calendars, and just who was this Valentine in whose name we send cards and presents?

It's a day on the calendar that elicits high emotion. Although not a global phenomenon, in the UK, Valentine's Day is an annual event celebrated via the exchanging of gifts and cards between loved ones.

There are multiple stories about the origins of the mysterious saint to whom the 14th February owes its name. The Catholic Church currently recognises three different saints by the name of Valentine, or Valentinus – all of whom were martyred.

Could Valentine's Day be named after the man who defied the Roman Emperor Claudius' decree that marriage be outlawed for young men and continued to perform marriages in secret? Or could it be the Valentine who allegedly helped capture Christians escape from the Romans, and may have sent handwritten notes signed 'From Your Valentine' to his love interest while he himself was imprisoned? Whatever the truth of the matter, all sources agree that Valentine was a sympathetic and romantic hero.

It was in the Middle Ages, however, when the figure of Valentine became one of the most popular patron saints. The oldest concrete appearance of the relationship between Valentine's Day and romantic love was in Geoffrey Chaucer's 1382 poem Parlement of Foules.

Modern Valentine's Day is less about Chaucer and more about cards, with the Greetings Card Association estimating that one billion cards are sent each year, making Valentine's Day the second-largest holiday of the year.

Despite such a patterned history of romantic reverence, just remember, the real question isn't whether you dare send something on Valentine's Day... it's whether you dare not!



**LOOKING TO BUILD,
EXTEND OR IMPROVE
YOUR HOME?**

WHAT KIND OF WORK WE DO:

- New build (Domestic & Commercial)
- Extensions, Annexes
- Renovations
- Garages and Outbuildings
- Barn Conversions
- Swimming Pool Enclosures
- Conservatories
- Kitchens
- Bathrooms and Wet Rooms

AGA Building Services are a local of projects from new build domestic and commercial, through to Bathroom and kitchen design and installation.

EAST ANGLIA'S PREMIER BUILDING SERVICES COMPANY

AGA Building Services are a family run business with over 30 years experience in building, extending and creating beautiful homes for our clients.

Contact us today about your home improvement needs!

www.agabuildingservices.co.uk
enquiries@agabuildingservices.co.uk

01449 720809

AGA Building Services
Unit 2B, Williamsport Way, Lion Barn Industrial Estate,
Needham Market, IP6 8RW



Connells
Kitchens Bathrooms & Bedrooms Ltd

Family
Business with
over 40 years
experience



COME AND VISIT OUR SHOWROOM!

45 Woodbridge Road East, Ipswich, Suffolk, IP4 5QN
01473 715566
info@connellsipswich.com

Wade Windows

~ est. 1988 ~



Make Your House A Home!

01473 832835
www.wadewindows.co.uk
sales@wadewindows.co.uk
 The Barn | Barham | IP6 0NU

CALL YOUR LOCAL ELECTRICIAN

A.S.E.M.S

ALAN SMART ELECTRICAL & MAINTENANCE SERVICES

- ELECTRICAL CONTRACTING, DOMESTIC, LIGHT COMMERCIAL, MAINTENANCE, FAULT FINDING.
- BESPOKE PROJECTS
- ALL WORK GUARANTEED FROM WORKMANSHIP AND DEFECTS
- BENEFIT FROM A RELIABLE LOCAL SOLE TRADER WITH LOW OVERHEADS
 - FREE ESTIMATES WITH VERY COMPETITIVE RATES
 - NO JOB TOO SMALL



01728 748292
 07795 053932
alan1smart@btinternet.com

John Cowling

Carpenters & Builders



Kitchens | Extensions | Renovations

07970 259723

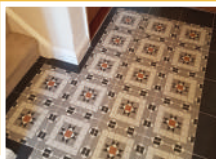
j.cowling10@hotmail.co.uk
www.builderipswich.com

LEADING EDGE TILING

Professional, reliable and friendly service

Kitchens, bathrooms & conservatories... no job too large or small

Contact Mark today for a free quote



Call, text or WhatsApp:

07954 383859

Email: leadingedgetiling@outlook.com

LOCAL NEWS

from your neighbourhood



LOCAL NEWS



Singing sensation appears on The Voice UK

A singer from Woodbridge has got through to the second round of a popular talent show.

Connie Lamb, who has been singing since she was seven years old, impressed coaches Will.i.am, Jennifer Hudson, Sir Tom Jones and Olly Murs when she appeared on *The Voice UK* recently.

Singing *Skyscraper* by Demi Lovato, she managed to get Olly and Sir Tom to turn their chairs, securing herself a place on the show.

Speaking to **VISION**Woodbridge, she said: "I have always wanted to audition for *The Voice* because it's such a great show.

"I thought that nothing bad can come out of it so I thought I might as well do it.

"I was so nervous."

After receiving two turns, the 18-year-old eventually chose to join Team Olly.

She explained: "Before I went on I was hoping for Jennifer Hudson because I'm a theatre student and she was in *Dreamgirls*.

"I think I chose Olly because he's younger and more relatable.

"He was on *The X Factor* so he's been through a competition like this. He knows how hard it is. He's also more current in the music industry today."

Viewers will next see Connie during the Battle Rounds, where she will go up against another member of Team Olly and sing to stay in the competition.

Connie said: "I'm really excited for it. I'm in rehearsals with the person I'm battling.

"Olly is really helpful and he has really good advice.

"Before I auditioned I couldn't really see myself with Olly, but now I've done it, I feel part of his team. He's really great."

Connie is hoping to progress through the competition as far as she can.

She explained: "I think I'm taking it a step at a time. "However far you get is a massive achievement because there's so many people. It's all exposure."

Photo credit: ITV/PC



Duo to take on longest non-stop canoe race in the world



A pair of canoeists will be taking part in a 125-mile non-stop canoe race to raise money for charity.

Neil Boast, from Woodbridge, and Jeff Cribb, from Sproughton, will be kayaking from Devizes in Wiltshire to Westminster Bridge in London on Easter Saturday.

Neil and Jeff are aiming to complete the race in under 24 hours – a goal that both have missed out on previously.

Neil said: "It's a real kudos among marathon canoeists to complete it in under 24 hours. It's become an obsession with both of us now."

The pair are training hard to be able to complete the challenge in their goal time.

Neil explained: "We are training in the gym and on the water."

"We did sink in the River Deben recently as it was

choppy and our kayak filled with water."

The pair will have two support teams who will provide them with food and drink, as they will burn around 1,000 calories per hour.

Neil continued: "The race is a brutal test both physically and mentally."

"After 50 miles it just becomes a battle with yourself. Your body wants to quit as you are in pain, but you mentally have to force yourself to keep going."

"The emotion and elation at the end of the race is incredible."

The canoeists will be raising money for OUCH UK, an organisation for the understanding of cluster headaches, and hope to raise £3,500.

If you would like to donate, visit uk.virginmoneygiving.com/NeilBoast2

Theatre group raises hundreds for charity



president Don Spall.

The money was raised by holding an audience bucket collection during their Christmas production of *A Christmas Tale* in December 2018.

The gathering was also joined by Don's wife, Lyn, who has raised well over £6,500 for the charity since Don's sad passing.

Oliver Fosker, director and writer of the Christmas production, who presented the cheque, said: "I am overwhelmed by the very kind response by our audiences and thank them enormously for their very wonderful donation to such a well worthy cause."

In May half term, the theatre group will be performing *Half a Sixpence* at Seckford Theatre.

You can register for auditions, which are being held in March, by visiting cof4.co.uk/half-a-sixpence

Performances will be held from Wednesday, May 29 to Saturday, June 1.

The Company of Four musical theatre group from Woodbridge was pleased to welcome the chairman of the Ipswich and East Suffolk branch of Parkinson's UK, Marion Brown, to a rehearsal for its *Beauty and the Beast* pantomime recently.

They presented her a cheque for £633.75 which was raised in honour and memory of the Cof4 life



T: 01359 270736
M: 07860 352739
E: hgtanks@outlook.com

Suppliers and Installers of Domestic, Industrial and Agricultural Tanks

- Oil Tanks
- Water Tanks
- Fuel Stations
- Rainwater Harvesting
- Plastic Tanks
- Steel Tanks
- Chemical Tanks
- Sewage Treatment
- Ad-Blue Tanks
- ...and more



The Street, Hesselst, Bury St Edmunds, Suffolk IP30 9AZ | www.hgtanks.co.uk

He doesn't have a Scale Problem...

A. D. Veale Water Softeners

— Est 1981 —



Do you?

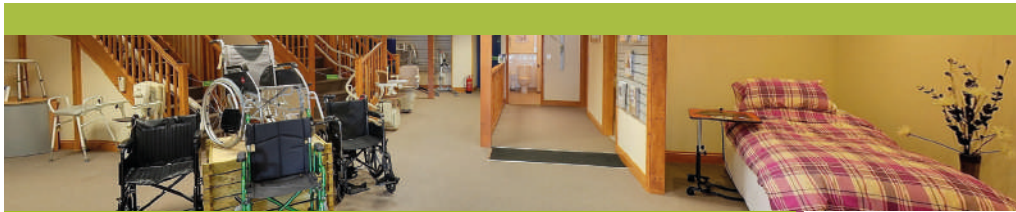
Call us today
01394 794401
www.adveale.com

Water Softener Sales & Installations
Service, Maintenance & Repairs
Salt Deliveries
Drinking Water Systems
Filter Cartridges & Taps

We are a locally based, family run Company, established for over 35 years offering a fully independent and professional service dealing with the regions hard water problems.



Checkatrade.com
Where reputation matters



One of the largest mobility shops in Suffolk...



Our Mobility Showroom:

- Wheelchairs
- Stair Lifts
- Profiling Beds
- Rise & Recline Chairs
- Specialised Seating
- Specialised Bathing & Wet Rooms
- Sling, Hoisting Equipment & Pressure Care

...a full and extensive range of mobility equipment available from our showroom!

Come and visit our showroom in Needham Market and talk to our friendly, knowledgeable and helpful team. We are a family run business and can advise on how to improve the accessibility in your home.

www.agamobilitysystems.co.uk (Mobility Shop)
www.agamobility.co.uk (Mobility Services)
info@agamobilitysystems.co.uk

01449 720809

AGA Mobility
Unit 2B, Williamsport Way
Lion Barn Industrial Estate
Needham Market
IP6 8RW



We take C.A.R.E. seriously! Care, Attitude, Respect & Effectiveness

IPSWICH CARPET AND FLOORING

- ❖ CARPETS ❖
- ❖ WOOD FLOORS ❖
- ❖ SISAL & SEA GRASS ❖
- ❖ RUGS ❖



- ❖ VINYLs ❖
- ❖ FLOOR SANDING ❖
- ❖ LAMINATE ❖
- ❖ LVTs ❖

Taking flooring to another level



10% OFF
when presenting
this advert*

*terms apply

UNIT 2, DEBEN WAY, MELTON, SUFFOLK, IP12 1RS
TEL: **01394 385155** or **01473 550470**
www.ipswichcarpetandflooring.co.uk

Rotary Club helps fund building project



Woodbridge Rotary Club has donated thousands of pounds to a project overseas. President Sally Hamilton, together with Simon Holloway and Ashley Meyer of the Rotary Club, presented the cheque to Sue and Peter Baker of the Banyan Tree Project.

The Rotary Club has been supporting the project for 13 years and marvels at the work done. The project is based in Kerala, South Western India.

The money donated this time is for the Centre for Dalit Studies and Action (CDSA) based in Indinjar.

A spokesperson from the Rotary Club said: "Dalit is a term used for the castes of India that have been subjected to untouchability and are the lowest social group.

"The local director of the project is Chandra Babu whose idea it was, and we have helped them to move to a purpose built building in 2013.

"The building consists of a medical centre with dispensary, tuition classes for 75 scholars, a vacation programme for 115 students and a tailoring unit to provide employment and to raise revenue to run the building."

To raise more funds for running costs the centre now provides a place for weddings and other village functions.

The spokesperson continued: "To kick start the project we donated £800. Our international chairman Simon Holloway then made a presentation to the District Grant Fair and we were awarded £1,200. During the summer we continued fundraising and recently were able to give a further £2,400 which you see being presented in the photo."

Parking boost as new spaces open

The first phase of work to create much-needed extra car parking spaces in Woodbridge has been completed.

Work at The Avenue car park started in November 2018 to create an extra 13 spaces and a new bike rack. The area has also been tarmacked, relined and swept to improve the appearance.

In the second phase of the project, improvements will be made to Station Road car park in Woodbridge to create an extra 50 parking spaces and add speed humps, electrical car chargers for two cars and new bike racks.

Councillor Carol Poulter, Suffolk Coastal's cabinet member with responsibility for the green environment, said: "Woodbridge is becoming increasingly popular with visitors and the town centre is thriving, so we had repeated calls to provide extra parking for shoppers and visitors alike.

"I'd like to thank the public for their cooperation during the works. We hope that the changes will help make parking in the town easier for everyone."

Woodpeckers beat pre-season favourites

The Woodpeckers' fine form this season continues with the club sitting in fourth spot in the Thurlow Nunn Premier League at the time of writing.

Most recently, they beat pre-season favourites Histon 2-1 at Notcutts Park.

Upcoming home fixtures include:

- > March 2 – FC Clacton
- > March 16 – Gorleston
- > April 6 – Ely City

Please see the leaflet inside **VISION** Woodbridge for our 2-for-1 ticket offer for these matches.

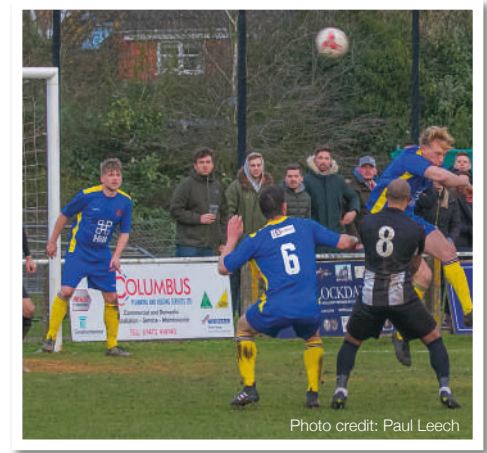


Photo credit: Paul Leech



News from

Councillor Geoff Holdcroft

District & Town Councillor for Woodbridge

The preparations for the creation of the new East Suffolk Council on April 1 are now nearing the final stages with the shadow council holding its budget setting meeting on February 21.

All the other processes needed are now firmly in place to ensure a smooth handover from both Suffolk Coastal and Waveney District Councils to the new authority.

Suffolk Coastal will cease to exist on March 31 and we are looking to mark its 45-year history of providing services to local people by appealing to the public, its current and past staff and councillors to give us any tales and pictures of good memories involving the council, particularly from the early days of the 1970s and 1980s.

Selected memories will be collated as part of the Suffolk Coastal history, to be published online and locally, and will form part of a celebration event to be held at Snape in mid-March.

Here in Woodbridge, local people are being invited to choose their favourite design for the expansion of Woodbridge's skatepark following the refurbishment of the neighbouring Deben Leisure Centre.

On February 16 between 2pm and 4pm at Woodbridge Community Hall two skate construction companies presented their proposed design at a special event and local people and users of the



skatepark were invited to come along to vote for their favourite design.

There were light refreshments as well as a graffiti wall, photo booth and ballnado grabbing machine.

The Woodbridge Skatepark was built in 2008, in a partnership between the local community, Woodbridge Town Council, Just 42 Youth Club and Suffolk Coastal District Council.



01473 240087



NEW!
Access Karting & 2-Seater Kart

Grand Prix Formats • Team Endurance
Group Private Hire • Arrive & Drive
Kubz Circuit For Children • Cadet Club
Kids Activity Days • Birthday Parties

sales@angliakarting.com
www.angliakarting.com


Buying or Selling Property?


We can help with a range of professional services, including the following:

- Residential & Commercial Surveys
- Tenant & Landlord Dilapidations
- Schedules of Condition
- Project Monitoring
- Defect Diagnosis
- Health & Safety Design Work

If you'd like to discuss your requirements, contact Steve Platten on:

07704 351669
or info@pimys.com





Swim and raise money for a good cause

Places Leisure is inviting members of the public to take part in a Swimathon.

This year, it will be held at Deben Leisure Centre in Woodbridge on March 29 from 2.30pm to 5.30pm and March 30 from 4.30pm to 8.30pm.

All funds raised will go to Cancer Research UK and Marie Curie.

A spokesperson from Places Leisure said: "Now is the perfect time to set yourself a challenge and it's a brilliant excuse to raise money for a fantastic cause."

To book your place or to enter as a team, visit swimathon.org





FIRE & SECURITY

HOW SECURE IS YOUR HOME OR BUSINESS?

Why not come and see us at our offices in Martlesham Heath to see how we can help?

Our Services Include:

- Domestic & Commercial Security
- Intruder Alarms (some systems can be monitored by APP or Police)
- Fire Systems • Fire Extinguishers
- Emergency Lighting / Signage
- Access Control • CCTV Systems

Call us or visit our website to discuss your requirements

01473 621641
www.tasecurity.co.uk
info@tasecurity.co.uk







Experts in Period Property

They are experts in their field. Owning a listed period property, it was important for me to find someone who knew what they were doing and would be able to advise me on the best course of action. I would highly recommend them.

Sally, via TrustATrader.com



PAINTING | WALLPAPERING
SASH WINDOW REPAIR | PLASTERING
DECORATING | CARPENTRY

B&G DECORATORS
PERIOD PROPERTY MAINTENANCE



07889 258880

bgdecorators@googlemail.com



Why book
with us...

Booking a holiday should be **exciting**, not stressful. When you book with us we will do all the **hard work for you**.



www.tracymottershead.notjusttravel.com

Tracy & Ian at Not Just Travel

07944 365 067

tracy.mottershead@notjusttravel.com



News from

Councillor Caroline Page

The County Councillor for Woodbridge

February brings another New Year – Chinese New Year started February 5. This year is the Year of the Pig. Reassuringly we are told it's going to be a lot better than last year.

The Chinese celebrate New Year's in style. Houses are cleaned thoroughly, sweeping out bad luck from last year to make way for good luck. There are presents, decorations, food, new clothes and narrow strips of red paper with spring poems put up on the door. Although in cities these may be removed at the end of New Year, in remote or rural areas, people still won't remove the old scrolls until next New Year.

Celebrations start on New Year's Eve when the family gathers for a huge homemade meal including steamed fish. Children are excited; they know they will get 'hong bao' (red envelopes of money). There follows a whole fortnight of feasting, and fun, finishing with the Lantern Festival. All over China, and even

from overseas, family members make their way back home to join in. These days, this means there are traffic jams and crowded trains such as the West would not believe.

The Spring Festival Travel Rush, the largest annual migration on earth, begins 15 days ahead of the New Year. Last year 98.8 million people travelled across China by train just at the start of the festival. And this doesn't count the many millions preferring to travel by car.

Since climate change is predicted to cause sea levels to raise above industrial China's landmass, it's lucky China is improving rail networks and turning to electric cars fuelled by renewably sourced power.

In Suffolk Coastal, so much smaller, we have similar problems of overcrowded trains, and roads and problems with encroaching sea. Should we not be looking at doing the same?

Become a Friend of Longshed

Having taken possession of the new Longshed on the old Whisstocks boatyard site in Woodbridge in April 2018, the charity, Woodbridge Riverside Trust, that is run by volunteers has secured funding for the fitting out of offices, stores, toilets and galley.

In the workshop, volunteers are working on a St Ayles Skiff while youngsters from Just 42 are building a Cajun Pirogue canoe under the guidance of one of our associates. To provide this involves monthly running costs in the order of £1,200 and so we are seeking people and businesses who are happy to become Friends of the Longshed by donating a small amount monthly or annually and/or organising fundraising events that can help us to meet these overheads for these community events.

Soon, activities will start that are associated with the building of the replica Sutton Hoo Burial Ship. Drawings that were produced at the time of the excavation have been copied and adjusted.

Due to the historical and archaeological importance of this construction and the allied refurbishment of the Sutton Hoo site, it is envisaged that increasing numbers of enthusiastic visitors will be coming to



visit the Longshed. Not only will there be a great deal of interest in the ship, but visitors may want to buy gifts, souvenirs and other goods from the excellent shops that we have here.

This construction is probably the most notable and important event that has occurred in the town for a very long time. Once complete, the ship will be launched onto the River Deben to undergo trials.

Why not join us in becoming a Friend? To learn more, visit www.woodbridgeriversidetrust.org or call 07551 726150 directly.



LOCAL NEWS



LOCAL NEWS

Indoor karting company announces access karting sessions



An indoor karting company has announced the addition of a weekly access karting session.

Anglia Indoor Karting Ipswich believes all individuals should have the opportunity to experience the thrill of karting for themselves.

Those with limited mobility, learning difficulties, and other special requirements can enjoy a superb and safe experience whether that is through driving themselves, or riding with an instructor in our new state-of-the-art 270cc two-seater kart.

A spokesperson from the company said: "Participants who wish to drive 'solo' must be physically capable of firmly pushing their feet on the pedals and using their arms for steering, which can initially feel quite heavy.

"All drivers will go through a comprehensive safety briefing and the instructor will demonstrate and give

simple verbal instructions to teach the kart controls which will need to be understood by the drivers.

"The speed of the karts can be reduced whilst the participants get to grips with the controls.

"Drivers who are not able or keen to drive themselves have the opportunity to experience hot laps as a passenger in our instructor-driven two-seater kart.

"Participants who wish to experience a hot lap ride in our two seater kart as a passenger must be able to sit upright in the seat."

Access Karting sessions will be running on a Wednesday morning from 10am to noon, from February 27.

Drivers must be a minimum of eight years old and a minimum height of 127cm.

For more information, visit www.angliakarting.com

Basepoint Ipswich celebrates 10th anniversary



Basepoint Business Centre is celebrating the 10th anniversary of its opening on Ransomes Europark, Ipswich.

The centre was built in 2009 after recognising a need for small to medium offices suitable for start-ups, entrepreneurs and medium-sized established businesses. Raising occupancy steadily over the first five years the centre has remained at over 96 per cent full for the past five years.

In 2016 a major refurbishment of the reception and break-out area added a more colourful layout, making it the perfect place for the licensees to hold an informal meeting with clients or visitors.

Centre manager Alison Morrissey commented: "Basepoint really feels like a community and has a friendly vibe running through it, this is very evident when we hold our regular charity events that are extremely well supported.

"Over the 10 years we have raised in excess of £100,000 for local causes including AGE UK Suffolk, Cancer Campaign in Suffolk and Solving Kids Cancer. This year we have registered with St Elizabeth Hospice to raise £3000 in 12 months."

Basepoint is looking forward to a bright future for the next 10 years and beyond. If you would like more information or to visit the centre please call 01473 722700 or email ipswich@Basepoint.co.uk

make 2019 your year to move home



16 Church Street, Woodbridge, IP12 1DH
T 01394 380280 E woodbridge@sequencehome.co.uk
williamhbrown.co.uk



- ✓ Domestic, Commercial, Industrial
- ✓ Portable Appliance Testing (PAT)
- ✓ Agricultural & Horticultural
- ✓ Church Installs/Periodic Inspections
- ✓ Periodic Testing & Inspection
- ✓ Temporary Power for Events
- ✓ Electric Vehicle Charging Points
- ✓ Solar Photo Voltaic Installations



01728 688444
info@curle.co.uk
www.curle.co.uk

Wadd Lane
Snape
Suffolk
IP17 1ON



- EXTENSIONS • CONVERSIONS
- BATHROOMS • KITCHENS

All Construction
Projects Undertaken
No Job Too Big or Small

CALL US TODAY ON:

01473 511693

or 07554 278578

josh@jlwconstructionltd.co.uk

M & R CARS WOODBIDGE



- Local Taxis • Fixed Price Fares
- 24hr Airport & Long Distance Specialists
- Sporting Events • Nightclubs
- Corporate Accounts Welcomed
- 6 seater people carriers • 8 seater minibuses
- Wedding Car Service • Courier Service

01394 386661

info@mandrcars.co.uk

For you, your family and
your business...

Call us on...

01473 211121

www.gotelee.co.uk

With offices in...

Ipswich | Hadleigh | Felixstowe | Woodbridge

gotelee
SOLICITORS

honey YOUR HOME



HOME & DIY



The Dulux Colour of the Year 2019 has been revealed as Spiced Honey. This gorgeously rich and warm tone has been chosen to reflect a mood of positivity and optimism for the year ahead.

WHY WE LOVE THIS SHADE

Spiced Honey is a warm amber tone that has been created to express the beauty and richness of natural honey. It is an incredibly versatile colour that can be used to create different ambiances depending on the other colours that you team it with. It is the perfect colour to banish any lingering negativity and start afresh.

WHAT SHADES DOES THIS COLOUR COMPLEMENT?

Pair with soft pastels such as pale pink or muted grey to create feelings of calm and tranquillity; perfect for the bedroom or conservatory. Alternatively, team with bold colours such as rich reds and oranges for a luxurious and vibrant vibe.

HOW TO USE THIS COLOUR IN YOUR HOME DÉCOR

A statement wall feature is a quick and affordable way to add this colour into any room, or if you prefer patterned designs, pick up some Spiced Honey wallpaper. Don't shy away from bold designs as this flexible colour can cope with them.

WHY YOU SHOULD EMBRACE UPHOLSTERY

If you like to keep the colour of your walls neutral, there are more subtle ways to introduce this colour into your home. Why not invest in a Spiced Honey sofa which can act as the focal point of your living room? Crisp white walls work perfectly with this and create an almost Scandinavian feel. Ideal for those wanting a chilled-out vibe. Alternatively, try smaller home accessories such as a Spiced Honey lampshade or rug.

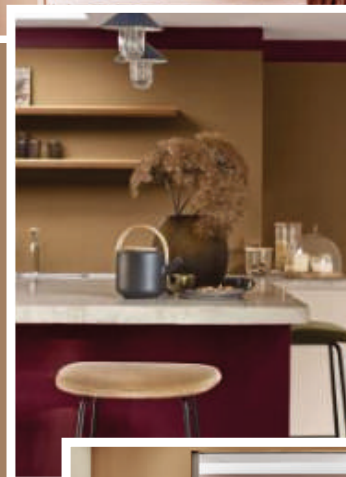


Photo credit: www.dulux.co.uk



Clean Bandits

We all crave a clean home, but employing a cleaner brings about the uncertainty of inviting in strangers. Here are a few tips to ensuring your home remains clean, not cleaned out.

Word of mouth

Like so many aspects of life, the best recommendations often come from those who have actually sampled products or, in this case, services. When sourcing a cleaner it makes sense to want to use the same ones as friends or family who can vouch for a job well done, but even online groups and communities – where you may not know the homeowners – are better than going in cold.

Your own online research

You can't just rely on the word of others – you need to do your own checks. Review sites can offer useful feedback, but when checking these, consider their date, and judge the tone of each to ensure the reviews left are genuine. If you're happy, ask for references.

Don't favour businesses over individuals

The process of sourcing a good cleaner occupies a category where, for many, there seems to be no preferred option between using a business – which has a number of individual cleaners under its watch – or a sole proprietor who simply works for themselves. Some clients like the reliability of a bigger business and the ability to report a problem to a manager rather than the individual themselves, while others prefer a more personal touch.

Lay a trap

In a move that some regard as controversial, some homeowners might leave a small amount of money on the floor (say, a £5 note). If the note has been picked up and left behind post-clean, you have someone you can trust.

Be clear and inspect work

For many, a satisfactory job will come about when instructions are clear and a post-clean check is done. And being upfront on feedback will mean your relationship flourishes just as much as your home.

CRAFTED CARPENTRY
Bespoke Carpentry, Joinery and Building Services



- ✓ Carpentry & Joinery
- ✓ Kitchens/Bathrooms
- ✓ General Building
- ✓ Wardrobes/Cabinets
- ✓ Extensions
- ✓ Flooring

Tel. 01473 484 003 Mob. 07500 044757
www.facebook.com/craftedcarpentryuk
Email: craftedcarpentry@live.com
Web: www.craftedcarpentry.co.uk

CLEAR-VIEW REMOVALS
- FELIXSTOWE -



- ✓ Est. in 1988
- ✓ Fully Insured
- ✓ FREE Quotes
- ✓ FREE Advice
- ✓ Domestic
- ✓ Commercial
- ✓ Reliable
- ✓ Family Run

CALL US TODAY FOR A FREE QUOTE!

01394 276958
07808 043127
info@clear-viewremovals.co.uk
www.clear-viewremovals.co.uk

CN Plumbing & Heating

- All domestic plumbing & heating
- Bathrooms • Leaks & Repairs
- Central Heating Systems
- Gas Appliances Fitted & Serviced
- Renewables • Landlord Certificates

Call us for a FREE quote today!
01728 748446
info@cnplumbingandheating.com



Unit 2A, Clopton Business Park, Woodbridge, IP13 6QT

Haxley and Ruffles
Roofing Contractors

CHIMNEY REPAIRS
NEW ROOFING
ROOF REPAIRS
LEAD WORKS



10 YEAR GUARANTEE

0800 025 7367
07850 230234
haxleyandruffles@gmail.com



Queen Colman

Playing the monarch would be a daunting task for most, but surely not BAFTA-winning actress Olivia Colman? As she prepares to succeed Claire Foy in *The Crown*, the talented star reveals how she copes with the pressure of being the nation's latest dynamic doyenne.

Helen Mirren, Julie Walters, Dame Judi Dench... British female actresses who have elevated themselves well beyond the pages of a film or TV script. Their impact in purely dramatic terms is there for all to see, and yet they are so much more than that... warm, funny, down-to-earth and, very often, self-deprecating. Perhaps that's why we have taken them into our hearts... we feel they are 'one of us'.

"I've never taken myself seriously," begins Colman, who is about to return to our screens in series three of *The Crown*. Netflix have kept the release date a closely guarded secret, but while fans will have waited well over a year since the last instalment, season four is expected to follow on closely behind.

Colman, as Queen Elizabeth II is, in many ways, the perfect choice. With her very British face, cool but entirely likeable demeanour and measured clipped accent, there is certainly something very regal about the Cambridge-educated star. "They gave me a great voice coach who made sure I spoke like the Queen," she reveals. "It was just a case of learning the lines and trying to copy exactly what they did. And Claire Foy let me know I could call if I needed to."

Assuming the role of a living icon is never going to be easy, particularly when you are also taking over from an actress who won a Golden Globe for her interpretation of the character. "It's a challenge but that is what this game is about. It's a case of putting you up there with the prospect that you might fail... but I've been taking chances ever since I became an actress, and I'm fine with that. Nervous, but fine," she laughs.

Of course, *The Crown* barely scratches the surface of the Norwich-born actress's achievements. Her prime-time TV mastery includes award-winning shows *Broadchurch* and *The Night Manager*, while current period drama *The Favourite* landed Colman the Golden Globe award for Best Actress in a Motion Picture Comedy or Musical, for her portrayal of Queen Anne.

"I am certainly ticking off as many members of the Royal Family as possible," she jokes. "It's lovely to get the accolades and to hear an appreciation of your work, but really it is the acting first and foremost that gives me the thrill. Everything beyond that is wonderful, but I always want to focus on the product itself."

Colman admits to also spending time focusing on keeping her emotions in check. "I have a sneaking suspicion that audiences have seen me crying a little bit too often in the past couple of years," she admits.

"If something touches me, I cry. That's it. I'm a bit raw, a bit rubbish really," she explains. "Often a director will say to me, 'I don't think this is a scene where your character cries'. And all I can say is, good luck with that."



Tree Care & Forestry Services

Tree Surgery
Dismantling & Felling
Crown Reduction & Thinning
Precision Felling
Stump Grinding
Fully Insured
Land Clearance

Call for
**FREE
QUOTE**

01728 666027
www.1stcut.net



20% OFF
with this ad

DISCOUNT PEST CONTROL

Rural | Urban | Suburban

Experts in Traps & Trapping
Traditional Rat & Mole Catcher



All Pests Controlled



No Call Out Fees - No VAT
Doing Great Since 1988!

www.discountpestcontrol.org 
01473 735168 | 07765 64 34 84

R&M PONDS 07811 175533 www.rmponds.co.uk

WINTER
MAINTENANCE
CONTRACTS
AVAILABLE

10%
off with
this ad

• PONDS • MOATS • LAKES • RIVERS • DITCHES

Want a new pond? Or just need help with your existing one?

We are Suffolk's leading pond construction & maintenance specialist, helping you to create your dream garden water feature.



GARDENING



Gifting a bunch of flowers is a gesture in itself. But next time you send a bouquet, tell them how you really feel using this comprehensive guide to their traditional meanings.

Lavender: Not just for tucking into your knicker drawer, the fragrant lavender actually represents devotion.

Anthurium: The ideal flower someone who has been a wonderful host, these brilliant red, exotic beauties symbolise hospitality, happiness and abundance.

Lilac: Think you might be falling for someone? Lilacs symbolise the first emotions of love.

Carnation: These cute and ruffled blooms actually represent pride and beauty, while their different colours have a host of other meanings: white – innocence and pure love; red – admiration, pink – motherly love; yellow – disdain.

Lily: Often thought of as a funeral flower, the fragrant, majestic and ethereal lily actually represents purity of heart, and when displayed at a funeral means that the departed's soul has been restored to innocence.

Chrysanthemum: A bouquet staple, these impressive flowers have a simple meaning – honesty.

Lily-of-the-valley: These buoyant little bells are an ideal token for a recent birth as they symbolise sweetness.

Daffodil: Want to tell someone you love them but don't know how? Daffodils are the flower of unrequited love.

Peony: The ultimate passive-aggressive statement, charming and oft included in a bouquet, Peony actually represents anger.

Forget-Me-Nots: As the name of these delicate blue buds would suggest, forget-me-nots represent true love, longing and memory.

Roses: Red: love, Light Pink: grace, Coral: desire, Dark pink: gratitude, Peach: modesty, Cream: charm and thoughtfulness, White: a heart touched by love, Burgundy: beauty, Purple: enchantment, Yellow: infidelity.

WHY NOT TREAT THE **ONE YOU LOVE?**

From Jewellers to Car Servicing find what you need in...



THE VISION LISTINGS

Your
Monthly
Lifestyle
Magazine



CONTACT US TO FIND OUT MORE

t: 01728 723305 m: 07940 834629 e: woodbridge@VISIONmag.co.uk



FOOD & DRINK



PANCAKES WITH

Panache

Bored with traditional pancakes served simply with sugar and lemon? Fancy stretching out your culinary muscles and impressing your family with something a bit different this year?

Beer & Bacon Pancakes

YOU WILL NEED:

- > 1 cup all-purpose flour
- > 2 teaspoons baking powder
- > 2 tablespoons sugar
- > 1 egg
- > 2 tablespoons melted butter
- > 3 rashers cooked bacon
- > ½ beer or ale

HOW TO MAKE:

- > Whisk sugar, salt, flour & baking powder together
- > Separately, beat egg with beer and butter
- > Add a small amount of batter to a buttered griddle pan
- > Add a few pieces of bacon
- > Flip after 2-3 minutes and repeat on other side
- > Serve with maple syrup

Vegan Pancakes

YOU WILL NEED:

- > 150g plain flour
- > 2 tablespoons caster sugar
- > ½ teaspoon salt
- > 2 teaspoons baking powder
- > 300ml water
- > 1 tablespoon oil
- > Handful of raisins
- > ¼ teaspoon cinnamon & mixed spice

HOW TO MAKE:

- > Combine flour, sugar, baking powder, salt and spices
- > Whisk water and oil together
- > Make a well in the dry mixture and pour in liquid
- > Mix together
- > Add dried fruit
- > Add a small amount of the mixture to an oiled pan
- > Flip after 2-3 minutes
- > Repeat on the other side

Peanut Butter Pancakes

YOU WILL NEED:

- > 60g flour
- > ½ teaspoon salt
- > 1 egg
- > 175ml milk
- > 2 tablespoons peanut butter
- > 1 teaspoon caster sugar
- > Chocolate or nut toppings

HOW TO MAKE:

- > Mix flour and salt in a bowl
- > Separately beat egg and add milk
- > Gradually add the liquid to the dry mixture and whisk
- > Add a small amount of mixture to a greased griddle pan
- > Cook for 2-3 minutes on each side
- > Combine peanut butter with a drizzle of oil and the sugar
- > Blend into a smooth paste and spread liberally on the pancake
- > Finish with chocolate or nut toppings





Do you suffer from PORTION DISTORTION?

A study by the Diet Plate, a portion-controlled weight management system, has shown that a portion-controlled diet can make you six times more likely to lose weight than a standard weight loss diet.

As a nation we are eating portions far bigger than the recommended amount, so it is no wonder that we are suffering from an obesity and diabetes crisis.

So, do you know how much you should be eating?

Breakfast

One serving of cereal should be 30g, which is about half a cup. The average adult eats nearly 50 per cent more than that, serving themselves 44g per bowl.

Lunch

A cheese sandwich is a quick and easy lunch but with a healthy portion size of bread being one slice and the recommended serving of cheese being around 30g which is the size of a matchbox, most shop-bought



varieties contain far too much saturated fat and too many calories.

Dinner

One piece of pizza contains on average 300-400 calories, so a maximum of two pieces should be consumed in one setting.

Fill the rest of your plate up with salad and you can enjoy this treat without piling on the pounds.

Snacks

Unsalted nuts are a healthy and nutritious snack, and a great alternative to crisps, but they are high in fat and calories so only one tablespoon is recommended per portion.

The average chocolate bar is 45g, yet the serving recommendation is only 25g.

Drinks

A healthy portion of wine is 125ml, but most pubs and restaurants now only serve 175ml or 250ml as standard measures. A 125ml is actually less than one fifth of a bottle.

For more information on the Diet Plate visit www.thedietplate.com



“Committing to fitness.”

Enjoy 12 months of membership for the price of 9!

Plus 3 free introductory sessions to get you started.

Deben Leisure Centre - 01394 388991
Felixstowe Leisure Centre - 01394 694600



Places for People Leisure Ltd. working in partnership with Suffolk Coastal District Council.

Visit website for full terms and conditions.

CARDIO RETRO

Have FUN reaching your fitness goals!

with **Julie Foster**
Cardio & Strength coach

- Super easy choreography
- Options for all levels – including absolute beginners
- Great music (including some retro)
Just £4.50/session – & no need to book!

Wed 9.30am
Thurs 7.00pm
Fri 9.30am & Fri 10.35am

Martlesham Community Centre
(behind the big Tesco)

For more info, call **07484 311491**
or e-mail julie.e.foster@outlook.co.uk

ZUMBA
Qualified Zumba & Zumba Gold instructor

NHS
GP Exercise Referral Professional



NLP4Kids
Specialists in mental health for children.

<input checked="" type="checkbox"/> ADHD	<input checked="" type="checkbox"/> Fears/Phobias
<input checked="" type="checkbox"/> Stress/Anxiety	<input checked="" type="checkbox"/> Behaviour
<input checked="" type="checkbox"/> Confidence	<input checked="" type="checkbox"/> Family Upsets
<input checked="" type="checkbox"/> Depression	<input checked="" type="checkbox"/> Relationships
<input checked="" type="checkbox"/> Anger Issues	<input checked="" type="checkbox"/> Self-Esteem

Contact:
Moira Green
07752982979
moira@nlp4kids.org



Why Exercise?

It's important to ensure we include exercise in our weekly routine, even if just a moderate amount, writes fitness coach **Julie Foster**

Exercising can reduce your risk of major illnesses, such as heart disease, stroke, type two diabetes and cancer by up to 50% and lower your risk of early death by up to 30%.

To stay healthy, adults aged 19 to 64 should try to be active daily and should do at least 150 minutes of moderate aerobic activity such as cycling or brisk walking every week.

It is also important to do strength exercises on two or more days a week that work all the major muscles. A good rule is that one minute of vigorous activity provides the same health benefits as two minutes of moderate activity.

Examples of activities that require moderate effort for most people include brisk walking, water aerobics, cycling on even ground or with few hills, pushing a lawn mower and much, much more.

There's good evidence that vigorous activity can bring health benefits over and above that of moderate activity. Examples of activities that require vigorous effort for most people include jogging and running, fast swimming, cycling fast or on hills, football and rugby.

Try the aerobic workout videos in the NHS Fitness Studio.



Julie Foster



MARTLESHAM LEISURE
FITNESS • HEALTH • WELLBEING

At **Martlesham Leisure** we take a family approach to fitness, health and well-being, helping members to achieve their goals.

10% OFF ANNUAL MEMBERSHIP WITH THIS AD
*Offer does not apply to pay monthly memberships

Call us on **01473 624707**
or drop in for a free tour of the club at a time that suits you.

FITNESS
HEALTH
WELLBEING

www.martleshamleisure.co.uk
mark.baggott@martleshamleisure.co.uk

Send your fitness questions to julie.e.foster@outlook.co.uk, and you could be featured in **VISION**

Martin Dobson
COUTURE



Exquisite. Bespoke. Unique.

07939 080 515

info@martindobsoncouture.com

Jacqui Frost
Personal Coach



“
Close your eyes
and imagine the
best version of
you possible.
That's who you
really are. Let
go of any part of
you that doesn't
believe it.”

”

C. Assad

Mob: 07879491093

Web: www.jfpersonalcoach.com

be daring!
with
Slimming World

TUESDAYS

Woodbridge

Woodbridge Football
Club, Notcutts Park,
Fynn Road
5:30pm & 7:30pm
Tel: Lisa
07752 006399

THURSDAYS

Woodbridge

Woodbridge Football
Club, Notcutts Park,
Fynn Road
9:30am & 11:30am
Tel: Lisa
07752 006399

THURSDAYS

Woodbridge

Woodbridge Quay
Church,
Quay Street
7:30pm
Tel: Lisa
07752 006399

SATURDAYS

Martlesham

Community Hall &
Richards Room,
Felixstowe Road
8:30am & 10:30am
Tel: Lisa
07752 006399

slimmingworld.co.uk

0344 897 8000   



BEAUTY

Get
kissable
lips

The winter months can play havoc with the condition of your lips, leaving them dry and chapped.

Our DIY lip care treatments are all natural and guaranteed to get your parched pout ready to pucker up.

Passionfruit & Coconut lip Balm

Your significant other will go wild for this passionfruit-infused lip balm which tastes good enough to eat.

Grate 2 tablespoons of beeswax into a glass jug. Add in 2 tablespoons of coconut oil and olive oil. Heat a few centimetres of water in a large pot and place the jug inside to gently melt the wax. Remove and leave to cool and then add 2 tablespoons of passionfruit juice. Pour into pots and leave for 12 hours before applying.

Chocolate & Walnut lip Scrub

A lip scrub is a great way to remove any dry or dead skin from your lips, leaving them feeling soft and smooth. This DIY recipe includes shea butter for moisturising, brown sugar which acts as a natural abrasive and cocoa powder for an instant chocolate hit.

Mix 1 tablespoon of brown sugar with ½ tablespoon of shea butter and then add ½ tablespoon of walnut oil. Finally add 1 teaspoon of cocoa powder and apply to your lips.

Cinnamon & Cayenne Pepper lip Plumper

Spice up your love life this Valentine's Day with this DIY lip plumper that uses these two rich spices to produce a pout to rival Kylie Jenner's.

Simply mix 1 teaspoon of cinnamon oil and a small pinch of cayenne pepper with ½ teaspoon of Vaseline. Gently massage this mixture onto your lips, leave for a few minutes and wipe off.





Pet Sounds

Dogs and cats? It's all so 1990s. We're in a new era of cool home companions, so grab that cockroach and come along for the ride.

SUGAR GLIDER
Apparently, hamsters are so passé these days. Instead, people have switched their attentions to sugar gliders, for their incredible affection, curiosity and ability to win over everyone in the family, from adults and children to other pets. This marsupial even has a cool name, a reference to their preference for sweet tastes (such as sap and nectar) and their ability to glide through the air. What's not to like?!

HEDGEHOG
Having an outdoor pet such as a hedgehog is a great idea. You are keeping it in its natural habitat, and this marvellous, charming creature is friendly, inquisitive and often in need of protection, as his prickly exterior will tell you.

SCORPION
For the more adventurous, a pet scorpion can be fascinating to have around, but remember, watch and don't touch... ever. And for goodness sake, make sure that tank lid is firmly closed.

PYGMY GOAT
Got a spare bit of land and in need of a lawnmower? A pygmy goat is what you're after. Low maintenance, self-exercising and impossibly cute, they'll bound about to their hearts' content leaving you to sit back and make 'aaah' noises.

BEARDED DRAGON
This friendly reptile (real name Pogona) is a lizard whose marvellous livery will amaze and inspire younger mind; but be warned, he'll go missing for months on end without even a goodbye (and no noisy anti-hibernation protests will stop him).

CAPYBARA
A much bigger, slightly uglier guinea pig, who is friendly, harmless and full of life, but these animals require a lot of space to move around in... oh, and a swimming pool.

CHINCHILLA
Cute, clean, timid, small and completely odourless, the chinchilla takes a fair bit of maintenance, but is surely the most adorable of the rodent family.



DOGGO DAY CARE **RURAL HOLIDAYS**

FUN AGILITY **PUPPY SOCIALISATION**

GROOMING **HYDROTHERAPY**

happi days
DOG DAY CARE

Contact us:
Rendlesham: 01394 420468 Martlesham: 01473 623661
happidayscentre.co.uk

RYDER-DAVIES & PARTNERS
Veterinary Practice

- 24 hour care provided by our own vets and nurses
- Pay monthly Health Care Plans available for all animals

Woodbridge 01394 380083
Ipswich 01473 274040

Rendlesham 01394 420964
Felixstowe 01394 284554

www.ryder-daviesvets.co.uk
info@ryder-daviesvets.co.uk

Smart. Bespoke. Personal.

Finance Events Legal Administration

FELA Group

FREE Consultation This February!

- Worried About Making Tax Digital?
- Struggling with Accountancy and Records?
- Need Help Writing T&C's and Contracts?

Let our team take the stress out of your day-to-day!

FELA Group provides a smart, problem solving service to support the development and growth of your business.

Come and visit our offices at Basepoint Ipswich!
01473 722719
www.felagroup.com



A TOP-NOTCH CV

A stand-out-from-the-crowd and well-written CV offers a great opportunity for an interviewee to open up, paint a picture of themselves and ensure they're invited through the door for an interview, but getting your curriculum vitae spot-on requires more than just documenting your life story. Here are a few things to consider:

KEY INFO – WHO ARE YOU AND WHAT CAN YOU DO
Wow your potential employer straight away by spelling out who you are and your personal details, skills and achievements. Use the first 50 words to sell yourself before going into a bit more detail later on.

THE DIFFERENCE BETWEEN EXPERIENCE AND LIFE HISTORY
Focus most on recent achievements, and outline briefly the key points. After all, an employer isn't interested in the C you got for GCSE home economics. Remember, your CV is an introduction to who you are, so keep it to two pages and no more than that. The real 'you' will get a chance to impress face-to-face.

PERSONALITY
The design and tone of your CV is important.

When you consider how many bland black and white applications an employer will get, if yours uses colour, perhaps with sprinkles of style, professionalism, humour and honesty, you could find yourself fast-tracked straight onto the shortlist.

INTERESTS
Giving someone a job is about the work they'll do but also their ability to fit in socially, so ensure you list interests, passions and any pursuits you like to undertake away from the office.

REFEREES AND A GOOD PROOFREAD
List appropriate names for references, but check with them first that they're happy to be listed. And always ensure your CV is proofread – a misspelt word or sloppy grammatical error alone may lose you the opportunity to impress face-to-face

Make it eye-catching. Different from the rest so employers can remember you...be creative.



Commercial Fit Out Specialists

If you are looking for a commercial fit out in East Anglia, London and the surrounding counties then Colnesett is the right company for you.

We are specialists in commercial fit outs and have many years' experience making commercial buildings suitable for occupation and work and cater to the needs of those who will occupy them.

Colnesett manage the whole commercial fit out project on your behalf and work to an agreed of schedule of works and programme to ensure the smooth running of the project.

To find out more about the type of commercial fit out we can offer you, contact us today.

- ✓ COMMERCIAL DESIGN & BUILD PROJECTS
- ✓ OFFICE FIT OUT AND REFURBISHMENT
- ✓ INDUSTRIAL UNITS
- ✓ CARE HOMES
- ✓ HOTELS
- ✓ CAT A & CAT B FIT OUTS
- ✓ COMMERCIAL DESIGN & BUILD

01473 810230 • WWW.COLNESETT.CO.UK
INFO@COLNESETT.CO.UK  

Chartered Certified
**ACCOUNTANTS
& TAX ADVISORS**

Arrange your initial consultation
without any formal commitment

- Accountancy
- Taxation
- Business Advice
- ADR
- Training



David King
FCCAATII

01473 552852

david@guymer-king.co.uk



The complete personal and
commercial legal service

- Wills, tax and inheritance advice
- House sales and purchases
- Family law
- Company and business law
- Litigation
- Employment

IPSWICH
01473 213311
32 Lloyds Avenue, Ipswich,
Suffolk, IP1 3HD

COLCHESTER
01206 584584
844 The Crescent,
Colchester Business Park
by appointment only.

www.kerseys.co.uk

Three great reasons to move your business to Basepoint Centre Ipswich...



Find out more and contact us today

01473 722700

✉ ipswich@basepoint.co.uk [Basepoint_Ipswi](https://www.basepoint.co.uk)

Offices | Flexi-Space | Virtual Office | Meeting Rooms
Unique workspaces for your business



basepoint.co.uk

KEEP YOUR £ LOCAL

**SUPPORT
YOUR LOCAL
BUSINESSES...**



Your
Monthly
Lifestyle
Magazine



Please let your local businesses know
that you saw them first in... **VISION**



WHAT'S ON

in your area

Woodbridge Flea Market

Woodbridge Community Hall,
Station Road Woodbridge, IP12 4AU
February 24, 10am – 4pm

Action Medical Research's popular Flea Market returns to Woodbridge Community Hall on Sunday, February 24, from 10am until 4pm, and hopes to raise over £1,000 for sick babies and children.

The market, which costs just £1 for adults, and is free for children, showcases a range of antique and collectable items, sold by local individuals, and also includes a fully functioning kitchen where you collect that always desired bacon butty and cup of tea on a Sunday morning.

Action Medical Research is also actively seeking all kinds of volunteers in this area. For further information on how to get involved, please visit action.org.uk/volunteering

Marmalade Competition 2019

Woodbridge Kitchen Company,
7 Thoroughfare, Woodbridge, IP12 1AA
March 2, 9am – 5pm



stock image

Woodbridge Kitchen Company are searching for the Best Marmalade from in and around Woodbridge.

If just having the honour of winning the Best Marmalade in Town competition isn't enough to tempt you into entering, the winner will receive a certificate and a £50 cookware voucher to be spent in our fabulous shop.

Pop in and grab an entry form and get jarring. When you've made your marmalade, drop it in-store before the end of February.

For more information, visit www.facebook.com/events/663563087375242

The Amazing Mr Handel

Snape Maltings Concert Hall
March 16, 7.30pm

Aldeburgh Music Club Choir's spring concert will celebrate the glories of the ceremonial, sacred and orchestral music of The Amazing Mr Handel.

Tickets priced £18, £22 and £25 (students half price) are available from Snape Maltings Box Office on 01728 687110 or via the choir's website www.aldeburghmusic.club

Growing Old Disgracefully with Virginia Ironside

Peter Pears Recital Room, Snape Maltings, Snape, IP17 1SP March 23, 7pm – 8.30pm

When an agony aunt reaches her sixties and seventies she can lie like a trooper, jump off a bridge – or take to the stage.

Growing Old Disgracefully, written and performed by Virginia Ironside, is a joyful evening of her personal musings and observations, directed by the *Young Ones* Nigel Planer.

She voices the unspoken thoughts that many people share about the dilemmas of aging gracefully, disgracefully, even outrageously.

The performance is in aid of the Lettering Arts Trust, of which Virginia Ironside is a patron.

Tickets are £20 to include a glass of wine.

To book your tickets, call 01728 688393, email finance@letteringartstrust.org.uk or visit www.letteringartstrust.org.uk/events/



Photo credit: Steve Ullathorne

ALDEBURGH MUSIC CLUB CHOIR

THE AMAZING MR HANDEL

CONDUCTOR EDMOND FIVET

FOUR CORONATION ANTHEMS
INCLUDING ZADOK THE PRIEST
SUITE IN G 'THE WATER MUSIC'
CHANDOS ANTHEM NO.7
CHANDOS ANTHEM NO.4
CONCERTO GROSSO OPUS 6 NO.9

SUFFOLK BAROQUE PLAYERS

7.30PM SATURDAY
16TH MARCH 2019
Snape Maltings Concert Hall

Tickets, from £9 - £25
from Snape Maltings
Box Office on **01728 687110**
and www.aldeburghmusic.club

Aldeburgh Music Club
founded by Benjamin Britten in 1952
Aldeburgh Music Club is a Registered Charity No. 1000990

JACOB BAILEY™

ACCOUNTANTS

GUYMER KING CHARTERED ACCOUNTANTS

Accountancy, taxation, ADR, business advice & training. Call David King to arrange a no-commitment initial consultation. 01473 552852 | david@guymer-king.co.uk

AUTO SERVICES

HURREN & GARROD AUTO SERVICES

Car servicing, MOTs, tyres, air con service and repairs. Unit 1, Martlesham Creek Ind Est, Sandy Lane, IP12 4SD. Find us on Facebook. 01394 446041 | hurrengarrod@yahoo.co.uk

BATHROOMS/KITCHENS

AHM INSTALLATIONS

Bathing a problem? Simple, affordable solutions for all your bathing needs: wet rooms, walk in showers and much more. 01473 206918 | info@ahminstallations.co.uk

CONNELLS KITCHENS, BEDROOMS & BATHROOMS

Family business with over 40 years' experience in helping you create your dream kitchen. Visit our showroom or contact us on 01473 715566 | info@connellsipswich.com

JOIN THE LISTINGS... for just **£180 +VAT per yr**

BUILDERS

PRO ME BUILD

Comprehensive construction services from concept through to completion. Extensions, new builds and conversions. 01473 276133 | info@prom-build.co.uk | www.prom-build.co.uk

G. CULF BUILDING & ROOFING

Offering the full range of building services, including roofing and groundworks. Over 40 years' experience. Call for free quote. 07778 650147 or 01986 875550

CHARLES CLARKE & SON

A leading Suffolk building company, undertaking property refurbishment and restoration, new builds, conversions, extensions etc. Call us on 01473 735317.

JOHN COWLING CARPENTERS & BUILDERS

Experienced and reliable builder, offering extensions, renovations, kitchens and more. Period property restoration specialists. 07970 259723 | j.cowling10@hotmail.co.uk

JLW CONSTRUCTION

All construction projects undertaken, no job too big or small. Extensions, conversions, bathrooms, kitchens, etc. 07554 278578 | josh@jwlconstructionltd.co.uk

BUILDING SURVEYORS

PIMYS LTD

Residential and commercial building surveys, independent schedules of condition, project monitoring and more. 07704 351669 | info@pimys.com

BUTCHERS

E.W. REVETT & SONS

Family butchers based in Wickham Market, locally sourced meats, stir-frys, ready meals, deli, vegetables, fresh bread and cakes. Pop in or call for more information on 01728 746263.

CARPENTERS/JOINERS

CRAFTED CARPENTRY

Bespoke carpentry, joinery and building services, including kitchens, bathrooms, wardrobes, roofing & garden buildings craftedcarpentry@live.com | 01473 484003

MASTERWOOD JOINERY

German craftsmanship in real wood. Cabinet making, wardrobes, kitchens, bookcases, flooring. Call Mario. mario@masterwoodjoinery.co.uk | 07570 303475

CARPETS/FLOORING

IPSWICH CARPET & FLOORING

Taking Flooring To Another Level. Carpets, Wood Floors, Vinyl, Laminate and much, much more. Showroom in Melton. Tel: 01394 385155 or 01473 550470.

PETER HALL FLOORING

A name you can trust. Come and visit us for a wide range of carpets, vinyls and more to suit every taste and budget. 01728 746416 | www.peterhallflooring.com

PAYNE & SON CARPET CLEANING

Free quotes, stain removal, scotch guard, 25 years' experience. 01473 622519 | payneluke27@yahoo.co.uk | Facebook: @PayneandSonSuffolk

CHIMNEY CLEANERS

TL CHIMNEYS

Chimney sweep covering Suffolk, Essex and Norfolk. Also supply solid fuel burners, stoves & heaters. Email marcus@tlchimneys.co.uk or call 07733 420611 | 01473 712703

CLEANERS

MAID2CLEAN (SUFFOLK) LTD

Regular weekly/fortnightly domestic help with your housework and ironing, from £12.25ph all inclusive. One off cleans also available. 0800 878 6388 | suffolk@maid2clean.co.uk

COMMERCIAL SERVICES

BASEPOINT BUSINESS CENTRE

Unique workspaces for your business. Flexible workspace, meeting rooms and great facilities. Call for more information. Tel: 01473 722700, Email: ipswich@basepoint.co.uk.

SONDER ADMIN SOLUTIONS

Providing businesses with solutions to make life easier – one business with the power of many. Everything from admin to contracts. 07804 579306 | riaw@sonderas.co.uk

FELA GROUP

We offer a range of admin services at reasonable prices, including accounting, legal advice and event planning. www.felagroup.com | 01473 722719

COUNSELLING/PERSONAL COACHING

NLP4KIDS – MOI GREEN

Helping children, teens and young adults overcome anxiety, confidence issues, eating disorders, self harm and learning difficulties. Moigreen.nlp4kids@gmail.com | 07752 982979

DOG CARE

HAPPI DAYS DOG DAY CARE

Modern facilities offering a home-from-home environment for your dog to run around freely while you're away. 01394 420468 | info@happidayscentre.co.uk

DRAINAGE

BUDGEIT DRAINS

Reliable and professional – blocked drains cleared; jetting & CCTV; domestic & commercial work undertaken; drain surveys; free call outs. 01502 574553 | 07849 312004.

ELECTRICIANS

BARRETT'S ELECTRICAL

NICEICE registered electrician with over 15 years' experience. Domestic, industrial, commercial. Based in Woodbridge. 07931 986601

R.W. CURLLE ELECTRICAL ENGINEERS

NIC-EIC registered electrical engineers and contractors, serving all of Suffolk since 1959. Domestic, commercial and industrial. info@curlle.co.uk | 01728 688444

ALAN SMART ELECTRICAL SERVICES

Domestic and light commercial electrical contracting, reliable and independent. NICEIC and Elecsa registered. 07795 053 932 | alan1smart@btinternet.com

ESTATE AGENTS

WILLIAM H. BROWN

Call us for a free valuation, or pop into our shop on Church Street to view the range of properties we have on the market. Sharon.edevane@williambrown.co.uk | 01394 380280

FITNESS CLASSES

DANCE FIT SUFFOLK

Local dance fitness classes. Have fun reaching your goals with easy choreography and options for all levels. Just £4.50 per session. 07484 311491 | julie.e.foster@outlook.com

FUNERALS

E.B. BUTTON & SONS

Independent, family run funeral directors since 1875, providing the highest standards of service and care to families in times of grief. info@ebbutton.co.uk | 01394 382160

FURNITURE MAKERS

TOUCHWOOD UK

Designers/manufacturers of handmade furniture, kitchens, bedrooms and interiors. Visit our showroom on Woodbridge Road. 01473 716100 | touchwooduk@btinternet.com

GARDENS

R&M PONDS

One-off and contract maintenance services. Specialists in ponds, lakes, moats, ditches and rivers. Construction also available. Call Richard on 07811 175533.

SIBTON COUNTRY SUPPLIES

Lawn mowers, garden tractors, chainsaws, brush cutters, etc... Garden machinery expert specialising in sales, repairs & maintenance. 01728 660349 | sibtoncsLtd@btconnect.com

D. SHARP LANDSCAPING

Transform your garden, services include landscaping, driveways, patios, turfing, lawn care, hedge cutting and more. derrick.sharp@btinternet.com | 07788 722144

RIVERVIEW GARDENING

All aspects of commercial/domestic garden/grounds maintenance, one-off or regular work. Experience, qualified, insured. riverviewgardening@gmail.com | 07779 152936

GENERAL/DOMESTIC MAINTENANCE

MARKS MAINTENANCE

All types of house and garden property maintenance undertaken. Contact Mark: 01728621341 | 07887925507 | marksmaintenance@hotmail.co.uk

JEWELLERS

SILVER SUN JEWELLERY

Retailers of sterling silver, as well as precious and semi-precious gem stone jewellery. Located in the centre of Woodbridge. 01394 382114 | silversunjewellery@gmail.com

MATERIALS HANDLING

ARMILL LIFT TRUCKS LIMITED

Sales and servicing of new and used fork trucks. Visit www.armill.co.uk or call 01376 552135 today to find out more

MOBILITY/DISABILITY SOLUTIONS

AGA MOBILITY SYSTEMS

Specialist solutions for every individual who has mobility/disability requirements. Wheelchairs, stairlifts, home adaptations, wet rooms. 01449 720809 | info@agamobilitysystems.co.uk

PAINTERS/DECORATORS

PAYNE & SON

Interior and exterior painting and decorating. Free quotes, over 25 years' experience. 01473 622519 | payneluke27@yahoo.co.uk | Facebook: @PayneandSonSuffolk

B&G DECORATORS

Experts in period property and high specification work. Also offering plastering and carpentry. 07889 258880 | bgdecorators@googlemail.com

PERSONAL COACHES

JACQUI FROST

Comprehensive personal coaching services, helping to manage a range of issues from exam stress through to anxiety. 07879 491093 | jacqfrost247@gmail.com

PEST CONTROL

DISCOUNT PEST CONTROL

Traditional rat & mole catcher - experts in traps & trapping. All pests controlled. 01473 735168 | 07765 643484

COMMAND PEST CONTROL

Commercial, agricultural, domestic pest control throughout the eastern counties and beyond. Service you can depend on. 01787 248049 | sales@commandpestcontrol.co.uk

PLUMBING/HEATING

CN PLUMBING & HEATING

All domestic plumbing & heating, bathrooms, central heating systems, gas appliances, renewables, etc. 01728 748446 | cnplumbing@outlook.com

REMOVALS/STORAGE

CLEAR VIEW REMOVALS

Family-run removals company since 1998. Fully insured, free quotes/advice, domestic & commercial. 01394 276958 | 07808 043127 | info@clear-viewremovals.co.uk

T. HUMPHREY REMOVALS

Checkatrade registered. Removals, clearance and storage over Suffolk/UK. www.thumphrey-removals.co.uk. 01473 239057 | 07887 776268 | humphreyremovals@hotmail.co.uk

ROOFING

HAXLEY & RUFFLES ROOFING CONTRACTORS

New roofing, roof repairs, lead works, chimney repairs. All work carried out with 10-year guarantee (terms apply). Call 0800 025 7367 | 07850 230234 | haxleyandruffles@gmail.com

SECURITY/FIRE

TA SECURITY

Intruder alarms, CCTV, fire systems, fire extinguishers, etc. FSA and BAFE accredited. Domestic and commercial work undertaken. 01473 621641 | info@tasecurity.co.uk

SHUTTERS/BLINDS

COUNTRY BLINDS & SHUTTERCRAFT

Locally based specialists in high quality window shutters and blinds. Call us to arrange a free site visit on 01728 633129

SOLICITORS

GOTELEE SOLICITORS

For you, your family and your business. Local solicitors with offices in Woodbridge, Ipswich, Felixstowe and Hadleigh. Tel: 01473 211121

KERSEYS SOLICITORS

Complete Personal & Professional Legal Service: Wills, tax, & inheritance; house sales & purchases; family law, business law, litigation, and more. 01473 213311 | www.kerseys.co.uk

SPORTS/LEISURE

DEBEN LEISURE CENTRE

Try something new. Ask us for one of our five day free passes at our brand new leisure centre on Station Road. 01394 388991

MARTLESHAM LEISURE

Luxury health and fitness club offering flexible membership options. Gym, swim and well-being. 01473 624707 | mark.baggott@martleshamleisure.co.uk

TANKS/FUEL STORAGE

HG TANKS

Oil/water tanks, fuel stations, rainwater harvesting, plastic/steel tanks, chemical tanks, Ad-Blue tanks. All delivered and installed. 07860 352739 | hgtanks@outlook.com

TAXIS

M&R CARS

Local taxis, fixed price fares, 24hr airport & long distance specialists, 6 seater and 8 seater cars available. 01394 386661 | info@mandrcars.co.uk

TILING/PLASTERING

LEADING EDGE TILING & PLASTERING

Professional, reliable and friendly service – no job too big or small. Kitchens, bedrooms, bathrooms, conservatories and more. 07954 383859 | leadingedgetiling@outlook.com

TIMBER MERCHANTS

J. BRADNAM & SONS

East Anglia's premier timber merchants, supplying quality hardwoods and softwoods. Precision cutting, joinery, timber and interiors. Tel: 01440 702110

TRAVEL

NOT JUST TRAVEL

Get £100 off any Sandals or Beaches holiday taken in 2019! Contact Tracy and take the stress out of planning your holiday. Tracy.mottershead@notjusttravel.com | 07944 365067

TREE CARE

TERRESTRIAL ARBORICULTURE

Glynn Davies FdSc (ARB). Insured, experienced and qualified arborists. Fencing available. 01728 561529 | 07722 588713 | www.terrestrialarboriculture.co.uk

FIRST CUT TREE SERVICES

Full insured, specialising in: tree surgery, dismantling, felling, crown reduction, thinning, stump grinding, land clearance and more. 01728 666027 | www.1stcut.net

VETS

RYDER DAVIES

24hr care provided, pay monthly health care plans available. Practices in Woodbridge, Rendlesham, Ipswich & Felixstowe. 01394 380083 | info@ryder-daviesvets.co.uk

WATER SOFTENERS

A.D. VEALE WATER TREATMENTS LTD

Water softener sales and installations; service, maintenance and repairs; salt deliveries; drinking water systems; filter cartridges and taps. 01394 794401 | www.adveale.com

WEDDINGS

THE SAVVY WEDDING PLANNER

Helping you plan your special day in any way – visit www.savvyweddingplanner.co.uk | 07453 571541 | savvyweddingplanner@outlook.com

WEIGHTLOSS CLASSES

SLIMMING WORLD

Be Daring! Classes in Woodbridge and Martlesham – Tuesdays, Thursdays & Saturdays. Call Lisa for more information. Tel: 07752 006399.

JOIN THE LISTINGS...
for just **£180** +VAT per year

WINDOW CLEANERS

J. HAZELWOOD WINDOW CLEANING

Commercial/Domestic: interior/exterior, conservatory roofs, solar panels, cladding, gutters, fascias. FB: @jhzazelwoodwindowcleaning | 07906 644823 | hazelwood7@yahoo.co.uk

WINDOWS/DOORS

ANGLIAN HOME IMPROVEMENTS

Save additional 10% when booking directly with local sales rep (terms apply – CAN be used with other Anglian promotions) - 07969 125555 | semira.vince@angliansalesinfo.co.uk

WADE WINDOWS

Make Your House A Home! Arrange appointment to visit our showroom and view our full range of windows. Call us on 01473 832835 or email sales@wadewindows.co.uk.

SUFFOLK GLAZING REPAIRS LTD

All types of double glazing serviced and repaired. Sealed unit replacements, handles, locks, hinges, etc. 01449 726090 | suffolkglazingrepairs@btconnect.com

DISCLAIMER: VISION does not represent or endorse the accuracy or reliability of any of the advertisements, nor the quality of any products, information or other materials displayed, purchased or obtained by any customer as a result of an advertisement or any other information or offer in connection with the service or products. The opinions expressed in articles, reviews and stories are strictly those of the individual authors and do not necessarily reflect the views of **VISION**.



PUZZLES & TRIVIA

PUZZLES

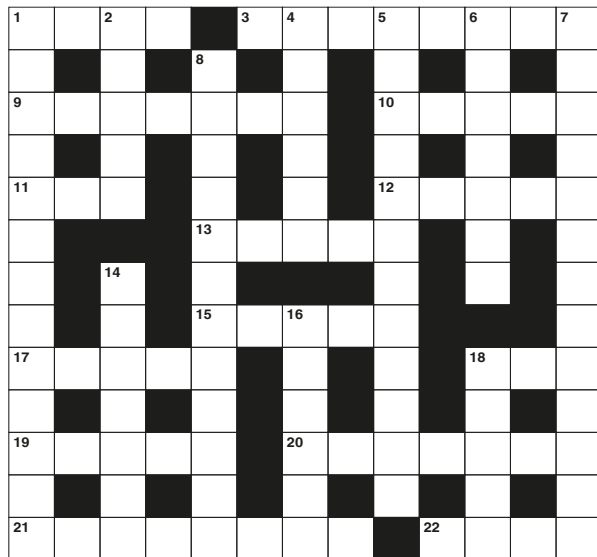
Answers can be found on the Contents Page 4

ACROSS

- Become dim (4)
- Creature that eats both meat and plants (8)
- Not tense (7)
- Outdo (5)
- First woman (3)
- Rule (5)
- Leases (5)
- Frenzied (5)
- Type of spear (5)
- Be in debt (3)
- Kick out (5)
- Set apart (7)
- Paying a debt (8)
- Young woman (4)

DOWN

- Absent-mindedness (13)
- Research deeply (5)
- Maiden (anag) (6)
- Junction (12)
- Type of optician (7)
- Ebullience (13)
- Based on untested ideas (12)



- Be made of (7)
- Concept (6)
- Barack ___ : 44th US President (5)

DID YOU KNOW?

- Without saliva, food tastes very different to what you would expect, or in some cases, you might not be able to taste it at all.
- A lemon contains more sugar than a strawberry. It's estimated a strawberry contains 40 per cent sugar, compared to 70 per cent in a lemon.
- You can tell if an egg is hard boiled or raw by spinning it. A hard-boiled egg will spin and stop quickly, but a raw one will not due to the liquid inside the egg.
- It is thought that the pea is the oldest vegetable, dating back to the Stone Age.
- A cucumber is approximately 95 per cent water.
- Rice paper isn't actually made using rice.

SUDOKU

			7				1	
7	3			6			8	5
								9
				9	3	8		
8				1				2
		2	4	7				
4								
3	8			4			7	1
	9				6			

WRITE YOUR WILL SCHEME

February 2019

Two thirds of people in the UK do not have a will. If this could be you, there is no better time to get your affairs in order.

Knowing that your wishes are being carried out can be reassuring to your loved ones at a difficult time.

For every will written throughout February with any of our partner solicitors, your will writing set donation will be donated to Age UK Suffolk to support older people in the county.

For further information, call 01473 298683 or visit www.ageuksuffolk.org
Registered charity: 1085900

Sonder AS Limited

One Company with the Power of Many

Providing Businesses with Solutions to Make Life Easier

07804 579306
riaw@sonderas.co.uk

AHM Installations

SPECIALISTS IN BATHROOM ADAPTATIONS

FREE Georgia toilet & basin with every bathroom order ONLY WITH THIS ADVERT

Bathing a Problem? We Can Help.

Simple affordable solutions for bathing needs

- Wet rooms • Walk in showers and baths • Waterproof wall panelling
- Slip resistant safety flooring • Grab rails, shower seats & raised toilets
- Established family business • Zero VAT on disabled bathrooms
- Discounts for over 60s SSAFA and Ex-Service Personnel

Call now to arrange a **FREE** survey & quote
01473 206918
info@ahminstallations.co.uk

PRO BUILD



NEW BUILDS | CONVERSIONS | EXTENSIONS

info@prome-build.co.uk

01473 276133 | 07876 024060

www.prome-build.co.uk