



2020
V

HOW TO
UPCYCLE
your lampshade

HAS YOUR
HOROSCOPE
CHANGED?

MARKING 80 YEARS SINCE
the Battle of Britain

=====
S
=====
O
Z
=====

FREE

Andi
PETERS

Celebrating decades on the small screen as he turns 50

Photo credit: Ken McKay/ITV/Shutterstock



www.küchenhaus.co.uk
The German Kitchen



Why choose Küchenhaus?

As the largest retailer of quality German engineered kitchens in the UK, we deliver rigid pre-built luxury kitchens manufactured in Germany at direct from the factory prices. View your dream kitchen in the luxurious surroundings of the largest kitchen showrooms in the UK.

- Full installation service or supply only
- 12 months 'buy now' and 'pay later' option
- Kitchens designed and built to order
- Free in-showroom design consultation
- Trade enquiries welcome

**BUY NOW
PAY 2021**

10% Deposit Only

*Terms & Conditions apply

nobilid

Miele



SIEMENS

BOSCH

AEG

smeg

CORIAN

SILESTONE

DEKTON

Visit our website or showroom

6, The Baytree Shopping Centre, Brentwood, Essex CM14 4BX

01277 204447

www.küchenhaus.co.uk



- 6 THE KINGS OF TV
- 8 HORROR-SCOPE
- 11 HOME & DIY
- 23 LOCAL NEWS BILLERICAY
- 32 LOCAL NEWS SHENFIELD
- 39 GARDENING
- 45 PETS
- 46 ANDI PETERS
- 50 HEALTH & FITNESS
- 60 BEAUTY
- 65 FASHION
- 67 KIDS
- 68 FOOD & DRINK
- 70 TECHNOLOGY
- 73 BUSINESS & PROPERTY
- 78 HISTORY
- 81 PUZZLES
- 82 MOTORING
- 84 SPORT
- 87 TRAVEL
- 89 THE **VISION** LISTINGS

CONTACT US

www.visionmagessex.com
 billericay@visionmag.co.uk | 01277 554045
 @visionmagessex @visionmagessex
 Vision Magazine Essex

FOUNDER | Nik Allen CREATIVE DIRECTOR | Misha Mistry
 CO-ORDINATORS | Rebecka Fryer, Amy Pollard
 CONTRIBUTORS | Tabatha Fabray, Dean Shaw, Tim Green

At the time of print all content in VISION was relevant and up to date according to COVID-19 government guidelines

Editor's notes...



Nik Allen, Editor

Hello and welcome to this month's edition of **VISION** BillericayShenfield. It's fair to say we've all undergone a significant process of self-reflection over the past few months - we've probably altered our views a little

on ourselves and those around us - hopefully, overall, for the better.

Personally, during lockdown, I found it was a great time to hit the reset button and look at what I loved about my life and what I was grateful for, but also what I would like to change. Some of us fell back in love with fitness during lockdown, albeit running or our daily walks, some watched nostalgic TV and films from our childhood or younger years, others connected with hobbies or interests we may have let life get in the way of doing more frequently, such as drawing, writing or some other skill.

Human beings are reflective, sentimental, sometimes even soppy creatures; but through all the challenges we face - and we have confronted many this year - our true purpose, for our friends, family, for society and, mostly, for ourselves, is to keep looking forward, keep building, keep growing. That's how life works.

By all means, gaze over that postcard from a wet week in Brighton in 1998 - good, happy, probably simpler times. But remember, truly respecting the past means focusing on building your future, and right now that's something we all need to do.

Until next month, take care of yourself and each other.

Nik

To advertise call Nik on 01277 554045

WORDLADDER: PREP, PEEP, PERK, PEAK, PORK, WORK

WE REPAIR BETTER THAN ANYONE OUT THERE

'Mr Misty'

The WINDOW DOCTOR

"WE SPECIALISE IN DOUBLE GLAZING REPAIRS. CALL FOR YOUR FREE CHECK UP"

Mr Misty 'The Window Doctor' is a family run business that prides itself in exceptional customer care. We promise easy service from start to finish.

Does your double glazing steam up?
 We replace **JUST** the glass **NOT** the frames, at a fraction of the cost for new windows.

FAQs

+ **Symptom:** I have gaps in or around my windows and it's causing a draught.
Diagnosis & Solution: This could be the hinges which can be replaced or the frame has a gap around the edge which can be re-sealed.

+ **Symptom:** I find it hard to close my door or window.
Diagnosis & Solution: This could be a number of problems and could be as simple as a small adjustment to your hinges.

Common Summer time problem

Lawn mower stone chips & broken glass

We can fix it!

Freephone:
0800 25 45 111
mrmisty.co.uk

FREE checkup!

PROBLEMS WE SOLVE

- Eliminate Window Condensation
- Broken Window Parts
- Broken Glass
- Secondary Glazing To Block Out Noise
- Mechanisms
- Faulty Hinges
- Draughty Windows

Proud members of **Checkatrade.com**
Where reputation matters

Scores based on 495 reviews

- Reliability & timeliness 9.74
- Tidiness 9.85
- Courtesy 9.95
- Workmanship 9.87

Average score **9.85**
436 reviews



THE KINGS of the castle

Celebrating 30 years together, Ant and Dec remain at the top table of British entertainment... which may come in handy for this year's *I'm A Celebrity... Get Me Out Of Here*.

From spotty lads in Ellesse jumpers, baggy jeans and Fila trainers skulking their way round the streets of Newcastle, Ant and Dec's rise to becoming the modern-day majesties of light entertainment has been unparalleled.

Now, 30 years after Anthony McPartlin and Declan Donnelly first met on the set of kids' BBC drama *Byker Grove* – a series based around a tatty youth club and the life events of its members – the duo are celebrating the three-decade milestone by swapping the Australian jungle for a couple of weeks bolted up in a haunted castle.

The coronavirus outbreak has made even the most basic travel arrangements complicated, and as for transporting a film crew and a selection of celebrities halfway around the world... forget it. So rather than give up entirely on a television experience that is one of the keystones of ITV's autumn output, the show's producers have kept things much closer to home, with Gwrych Castle in Wales providing the base for what will be a unique spin on the *I'm A Celebrity... Get Me Out Of Here* format.

With an experience that will be less bugs and more bumps in the night, the 200-year-old Conwy residence has a chequered history, one that its presenters are certain to work to their advantage in their own inimitable style.

The ghost of Countess of the Dundonald is said to prowl the castle ruins, with reports detailing the outline of an angry woman dressed in white. And during the Second World War, the castle housed 200 Jewish refugee children who had made it to Wales having fled the Nazis.

The much anticipated Bushtucker Trials will find themselves transformed this year, with the as yet unrevealed celebrities undertaking ghastly gothic, mind-bendingly medieval and ruggedly ruined challenges.

For Gwrych Castle, which has regularly been threatened with closure and was saved by the campaigning efforts of a 12-year-old boy back in 1997 when he wrote to then-Prime Minister Tony Blair, it is an incredible rebirth, and one that is hoped will protect its future.

As for what is to come for Britain's favourite presenting duo, anything is possible. Ant and Dec have ridden the waves of success for so long, the spotlight has become second nature. That means when controversy does arrive – notably the playing out of Ant's personal troubles over the past couple of years – the duo have stuck together in much the same way as they did when PJ and Duncan first buddied up way back in 1990.

"I think it's clear now we are going to be side by side until the day we die, like it or not," Declan commented recently. "People look at the shows and the awards, but what we have is friendship, respect and an affection that only comes between two best mates. We both feel very lucky."



HORROR-scope

IF YOU'RE A SCORPIO, BAD NEWS COULD BE ON THE WAY, WITH A 13TH SIGN OF THE ZODIAC COMING INTO PLAY.

NASA's apparent 'discovery' of a 13th star sign has created furore in the astrology world... if you'll excuse the pun. From way back, 3,000 years ago, when the Babylonians created the zodiac chart, we have always recognised 12 star signs or constellations, representing the 12 months of the calendar.

In recent times – aided by the Twitterati wind-up merchants – a 13th sign has come to the fore: Ophiuchus, the serpent-bearer. Recognising this, with a proposed window of between November 29 and December 17, has meant true Scorpios now have a timeframe of just seven days, beginning on November 23.

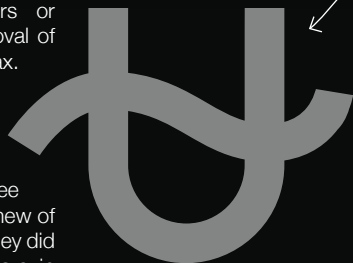
Worse news is to follow, with the revelation that because constellations have shifted so much in the time since the Ancient Greeks first threw together a chart of the skies, the dates of all the other star signs have changed too, as follows:

- CAPRICORN:** January 20 – February 16
- AQUARIUS:** February 16 – March 11
- PISCES:** March 11 – April 18
- ARIES:** April 18 – May 13
- TAURUS:** May 13 – June 21
- GEMINI:** June 21 – July 20
- CANCER:** July 20 – August 10
- LEO:** August 10 – September 16

- VIRGO:** September 16 – October 30
- LIBRA:** October 30 – November 23
- SCORPIO:** November 23 – November 29
- OPHIUCHUS:** November 29 – December 17
- SAGITTARIUS:** December 17 – January 20

Yet before you rip up your posters or begin laser removal of that tattoo, relax. NASA's 'new discovery' is anything but – even Ancient Greeks from three millennia back knew of Ophiuchus, as they did another eight stars in the sky that could legitimately have been included on the zodiac. Simply, some appear much less prominently in the sky, so only the largest 12 were chosen.

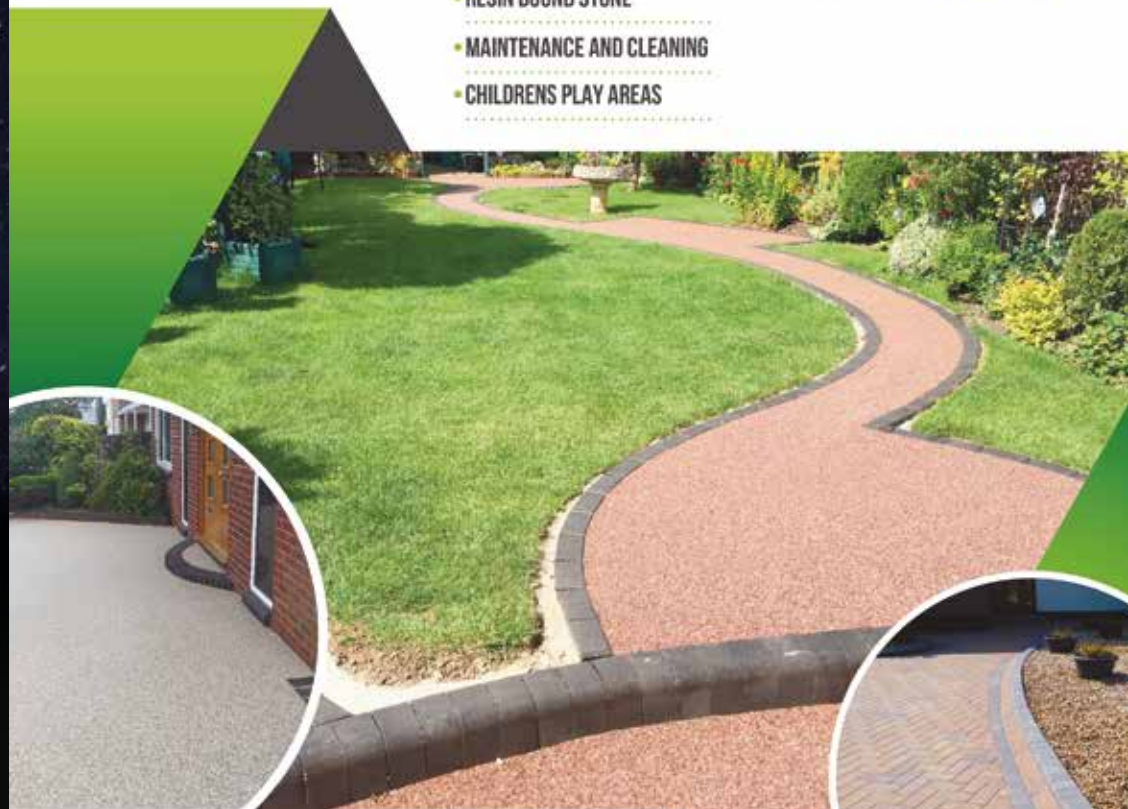
And the shifting of dates? Well, astrology is a very personal thing, and whether we follow a star sign of what we once were or what we are now, it makes little difference – we are all invested in this existence, and no matter what star sign we are, none of us is getting out of here alive!



Bespoke Surfaces
Basin | Paving | Stone

- DRIVEWAYS AND PATIO AREAS
- FOOTPATHS BLOCK PAVING
- NATURAL STONE
- RESIN BOUND STONE
- MAINTENANCE AND CLEANING
- CHILDRENS PLAY AREAS

FREE ESTIMATES
PROFESSIONAL SERVICE



WE SPECIALISE IN ALL TYPES OF OUTSIDE SURFACES

OUR TEAM OF SKILLED PROFESSIONALS CARRY OUT ALL ASPECTS OF LANDSCAPING SERVICES

CALL OR EMAIL US TODAY

01702 541 514

INFO@BESPOKE-SURFACES.COM

WWW.BESPOKE-SURFACES.COM





LOCKDOWN LESSON.

DO NOT PUT UP WITH A POOR BATHROOM ANY LONGER !

Many consider the bathroom the most important room in the house. So why not enjoy a new invigorating shower or a long peaceful soak in a luxury spa bath.

Bodywash Bathrooms should be your number one choice for quality bathrooms, so bring along your room sizes and let us help you create the bathroom of your dreams.

A12 Eastern Avenue, Romford, Essex. RM5 3AL

Tele: 01708 736700 email: sales@bodywash.uk www.bodywash.uk



SHOWTIME
for your DIY

Gone are the days of cheap interior design shows produced on a shoestring budget – TV DIY these days is big business and even bigger impact.

INTERIOR DESIGN MASTERS

Fearne Cotton is the perfect foil for a show that delves into the personal stories of the amateur designers featured, even if the end assessments can be brutal. The aim is to win a major design contract, and because of that the tasks are on the edgier side, from minimalism to brutalism to over-the-top floweriness.

ABSTRACT: THE ART OF DESIGN

An intense watch that really delves into the elements of design and form, this Netflix series tours a number of salubrious destinations (from Soho House to Michelin-starred restaurants) in search of not just the art of design, but also how structure and form works to create something that fulfils a purpose, both in provision and comfort.

AMAZING INTERIORS

From indoor roller coasters to secret bedrooms and cinemas in the basement, *Amazing Interiors* looks behind the door of supposedly ordinary homes to find inspiring spaces lurking.

GRAND DESIGNS

Arguably the most popular design programme of the past decade, host Kevin McCloud MBE is the perfect master of ceremonies in overseeing renovations across a lengthy time period that often – though not always – go to plan.

THE GREAT INTERIOR DESIGN CHALLENGE

While the producers of this show may have been short of a catchy title, they more than make up for it with a vast array of brilliant platforms on which contestant designers work their magic – from 17th-century cottages to seaside villas and Victorian terraces.

TIDYING UP WITH MARIE KONDO

No matter what style guide you apply to your living space, without tidiness and a desire to remove the clutter, you'll quickly have something resembling chaos. Step in Marie Kondo, the queen of declutter, and a show that offers a bevy of brilliant tips for keeping your home in great shape.

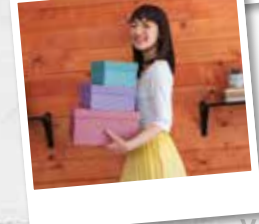
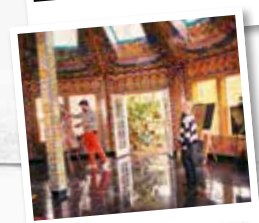


Photo credit: BBC/DSP/Tom Scott, indio.com, Netflix.com, litesyle.com.au, idealhome.co.uk, embracinghomenakingret



SHRED IT or FILE IT?

Documents: what to keep and what to shred

While moving so much of our lives online means the amount of paper we have to deal with is perhaps not as great as it once was, it's still very easy to get swamped by documents, forms, booklets and more.

Here's a simple guide to what you should be keeping and what can be satisfyingly put through the shredder:

- > **Home documents:** This includes everything from your car logbook (V5C) to building and contents insurance printouts, house deeds, mortgage statements, vehicle records and any rental agreements. These should be kept for as long as they are valid. Utility bills should be kept for a year.
- > **Personal documents:** Birth and marriage documents obviously sit high up on this list and should be kept forever; but consider as well life insurance, Disclosure and Barring Service (DBS) certificates, medical records, driver's licence and pension details. These should be kept for as long as they are valid.
- > **Financial documents:** These include National Insurance cards, which should always be kept, to tax affairs and recent bank and credit card statements, even if you access these online. Financial documents should be accessible for seven years, but taking this online means your provider can store them rather than you.

For the most part you should now be able to shred anything else, but if you've something you're uncertain of, by all means hold on to it until your next sort-out.

The important thing is to keep hold of what's still relevant and rid yourself of what isn't. On that note, it's a good idea to keep some documents for a year after you dispose of the thing it relates to – for instance, a rented car – in case you need to check back for the purpose of a tax return, or similar.

And it's a good idea too to go back over all paperwork every now and again. Some personal effects that were important then may now be outdated, and keeping your documents organised and up to date is vital.



A Rated Windows (as standard)

Established over 12 years ago as a family business, with 50 years experience in the fenestration industry.

For us it's about quality. Over 95% of our work comes from recommendations and existing customers. *That's why people come to us!*



FREE Quotes & Expert Friendly Advice
Call today on: 0800 211 8124

M: 07958 903 275 E: info@totalfix.it www.totalfix.it





SHAPE UP

HOW TO ADD GEOMETRIC SHAPES TO YOUR HOME

When German astronomer Johannes Kepler said, "Geometry is the archetype of the beauty of the world," the chances are he wasn't referring to that pink lampshade on your bedside table. And yet, where our inspiration from shapes in architecture and interiors is concerned, he might well have been.

That's because scientists believe that not only do shapes influence matter around them, but when humans look at a circle, a square, an octagon, a hexagon, a rhombus, a crescent or any other geometric form for that matter, they instantly receive energy from the brain.

Here are some classic geometric forms that can inspire not only your home, but your mind as well.



TILES – Perhaps the most obvious form, tiles provide lines, patterns and perspectives that the brain understands and loves, be they on the floor or on walls, highly decorated or plain.

WALLPAPER – While heavily patterned wallpaper designs had their heyday in the 1970s, there is still a range of subtle patterns that can really inspire a wall. These days, the most popular technique is to be brave and bold on a feature wall.



WALL FRAMES – The shape and form of the modern wall frame is almost as important as what's hung inside it, with a cluster of wooden or metal surrounds offering a feature that is as engaging, inspiring and unique as any wall.

THROWS – The shabby chic era really brought throws into their own, but a simple geometric pattern across a plain sofa or chair can offer a contrast in style that heightens the senses without complicating things.



LAMPSHADES – And finally back to Kepler's lampshade, where the poise and perfection of geometric lighting will complement a variety of living spaces, including kitchen and dining areas. During the day, the contemporary nature of a hanging or grounded lampshade can inspire, while at night when lit up, it takes on a whole new aura.



THE WINDOW MAN

WINDOWS | DOORS | INSTALLATION | REPAIRS

"Your Friend in the Trade"

Proudly Providing the Complete Service

FAMILY-RUN BUSINESS SERVING THE LOCAL COMMUNITY FOR OVER 25 YEARS

- SUPPLY, REPAIR & REPLACEMENT
- DOUBLE GLAZING | TRIPLE GLAZING
- UPVC | ALUMINIUM WINDOWS
- HARD WOOD WINDOWS
- FRENCH & PATIO DOORS
- PORCHES & CONSERVATORIES
- BI-FOLD DOORS

- REPAIR SERVICES AVAILABLE 8AM - 8PM
- CAT FLAPS | KNOCKERS | LETTER BOXES
- SPYHOLES | CYLINDERS | HANDLES
- HINGES & LOCKS FOR WINDOWS & DOORS
- TRICKLE VENTS | SEALED GLASS UNITS
- LEADED & GEORGIAN GLASS
- CONSERVATORY ROOF REPAIRS | PANELS

EVERYTHING WE DO IS FULLY GUARANTEED & WE PRIDE OURSELVES IN OUR ABSOLUTE ATTENTION TO CUSTOMER CARE



CONTACT US TODAY FOR YOUR FREE OF CHARGE, NO OBLIGATION QUOTE

01277 554 075

www.thewindowmanessex.net [@thewindowmanessex](https://www.facebook.com/thewindowmanessex) [@thewindowmanessex](https://www.instagram.com/thewindowmanessex)



Kitchens • Bedrooms • AV • Home Office



GEORGE BARNETT

Call us on 01277 217972

www.georgebarnettkitchens.co.uk o sales@georgebarnettkitchens.co.uk

Visit our showroom: 68 Woodland Avenue, Hutton, Brentwood, Essex CM13 1HH



FRIENDLY SERVICE FROM RELIABLE, PROFESSIONAL ELECTRICIANS

Storm Group is a successful Essex based construction company looking to boost our electrical division.

Domestic services

Rewiring
New consumer units
Landlord Certificates
Electrical Installation
Condition Report

All Storm electricians are fully insured & vetted including DBS.

Commercial services include

Complete package with design & installation
Dado trunking
Floor boxes & all power
Lighting design & installation
Distribution board installation
All aspects of Electrical testing



IF YOU ARE LOOKING FOR A LOCAL BUSINESS WITH VAST EXPERIENCE IN ALL DOMESTIC INSTALLATIONS & COMMERCIAL CONTRACTS, PLEASE CONTACT US:

01277 374411 www.stormds.com



HOME & DIY



HOW CLEAN

is your kitchen?

Hand-washing and social distancing have been the buzzwords for 2020 so far, but forget about the enemy outside; it's the humble kitchen that apparently poses one of the greatest everyday threats in our fight against bugs, according to recent research.

Sponges

The sponge is by far the go-to item for nuisance nasties. It draws in bugs and baddies like no other, and in the study commissioned by Currys PC World and undertaken at the University of Lincoln, scientists found that 35 per cent of kitchen sponges included faecal streptococci (FS) colonies. And if you think that sounds like something you may want to keep strictly in the lavatory... you'd be right. Found in the intestines of humans and animals, contamination can lead to symptoms of food poisoning, such as vomiting, diarrhoea and nausea.

That sinking feeling

The study revealed that the pathogen *P. aeruginosa* was present in 100 per cent of sinks. Found in soil and vegetation, it sounds harmless enough, but can cause skin irritation, abscesses and wounds.

This will floor you

And as for our trusty, lovingly maintained wooden, tiled, laminated or concreted flooring, our attention should perhaps be directed a little closer to some decent antiseptic mopping, with both *aeruginosa* and FS found in significant quantities on the floor.

Meanwhile, it appears it's time to debunk the five-second rule, because any contact with a surface will contaminate food. And as for our ovens, only 37 per cent of us clean our oven handles. But it's not all bad news: lead researcher Dr Hughes admitted that our kitchens are not as dirty as they might be. "The good news is surface levels of bacteria are usually well below the levels required for infection of healthy individuals, so are unlikely to lead to illness – unless coupled with a pre-existing health complaint, or if the person infected is immunocompromised."

Even so... who's for a takeaway?





Manufacturing Windows and Doors for over 32 Years



| DESIGN | | SURVEY | | SUPPLY | | INSTALLATION |

UPVC / ALUMINIUM WINDOWS | DOORS | BI-FOLDS | COMPOSITE DOORS
 CONSERVATORIES | LANTERN ROOFS | FULLY GUARANTEED FOR 10 YEARS
 OUR OWN INSTALLATION TEAMS | LOCAL FAMILY RUN BUSINESS

Contact us for your free no obligation quotation:

Unit 4
 Kingsview Court
 Hodgson Way
 Wickford, Essex
 SS11 8YF
 01268 561717



90 High Street
 Billericay
 Essex
 CM12 9BT
 01277 655511

www.thermasealwindowsystems.uk



HOME & DIY

Love YOUR LAMP SHADES

If lockdown has unleashed your inner craft fiend, you won't be able to wait to get stuck into the following ideas for transforming any uninspiring and unimaginative lampshades you have lying around the house. Be prepared to be amazed.

FABULOUS FABRIC

One of the simplest ways to change a lampshade so that it matches the rest of a room's décor is by covering it with fabric. All you need to do is purchase enough fabric in your chosen colour or pattern or, if you are feeling particularly thrifty, you can use a selection of different scrap fabrics that you already have, and then glue it around your shade using an adhesive spray.



WONDEROUS WALLPAPER

If you have recently decorated one of the rooms in your home or added a feature wall and you have some wallpaper left over, instead of throwing it away, why not use it to upcycle a lampshade? In the same way that you can attach fabric, simply use adhesive spray or craft glue to stick the wallpaper around your shade.

STUNNING STENCILS

For those who are feeling a bit more ambitious, you can transform a dull lampshade into a thing of beauty using just a stencil and a little paint. Simply purchase a stencil design from your local craft shop or make your own using plastic or vinyl and gently dab on your choice of paint.

GORGEOUS GOLDEN LEAF

Looking for a decadent design? By applying gold leaf, either in a particular pattern using painter's tape or all over, you can create a luxurious and expensive-looking lampshade at a fraction of the cost.

NB: Make sure you let all of the above designs dry fully before reattaching your shade to the lamp.





HOME & DIY



Peaceful PASTELS



HOW USING PEACEFUL PASTELS CAN BE SO GOOD FOR THE MIND

We're all looking for elements of peace in our life – this year more than ever – but forget yoga, hypnosis and pan pipes; it turns out you can attain a heightened sense of calm simply by adding some sympathetic pastel shades to your home.

BEAUTIFUL BLUE: Blue offers us echoes of seascaped bliss and sumptuous skies, and provides a haven of calm and escape. Drop a shade of blue in with oranges and yellows to offer a perfect offset, or better still, mingle with whites and greys in throws, across patterns and on floors. There is no colour a pastel blue won't complement.

GENEROUSLY GREEN: Green represents freedom, the outdoors and natural harmony, and is the best colour to return your home to a peaceful, relieved, relaxed state of mind. Combined with white it can blow a gentle breeze through even the darkest of spaces.

PERFECT PINK: We've come a long way from lazily associating pinks and purples with girls' bedrooms – now pink is regarded as a versatile, seductive shade, and in pastel form limits the sometimes harsh undertones of reds and browns. Pastel pink offers tranquillity and feelings of flowery goodness.

GRATEFUL GREY: Contrary to what you might imagine about grey, this is a detailed, intelligent pastel shade that stimulates energy and ideas. For a work room or creative studio, grey can focus and free the mind without bogging it down with darker tones that subconsciously bring on thoughts of sleep and rest.

MELLOW YELLOW And finally to yellow – perhaps the least pastel-like of the selection, but a tone that offers warmth, safety, depth and a flourishing of life. For freshness and homeliness wrapped in one, yellow can work with almost any other colour in complement or contrast.

YOUR LOCAL RELIABLE MINI SKIPS COMPANY

2 YARD SKIP: £90	WAIT & LOAD SERVICES
3 YARD SKIP: £120	DOMESTIC & COMMERCIAL
4 YARD SKIP: £150	SAME DAY SERVICE
5 YARD SKIP: £200	LONG OR SHORT TERM
FOR 6 YARD SKIPS PLEASE CALL	FULLY LICENSED WASTE CARRIER
	AFFORDABLE PRICES

BULLDOG MINI SKIPS

TELEPHONE: 01277 412 358
MOBILE: 07548 192 380
EMAIL: BULLDOG-MINI-SKIPS@HOTMAIL.COM
YARD 1, SOUTHEND ARTERIAL ROAD,
WEST HORNDON, BRENTWOOD, ESSEX, CM13 3TB

Checkatrade.com
Where reputation matters

Find us on Facebook

KH PLASTERING
Professional quality workmanship

NO JOB TOO SMALL

- Expert attention to detail
- Over 25 years experience
- Plastering • Covings & Cornices
- Restoration • Dry Lining

01277 627277
07939 229215

145 Perry Street, Billericay, CM12 0NS

ian's curtains & blinds

Curtains | Tracks & Poles | Roman Blinds | Roller Blinds
Vertical Blinds | Venetian Blinds | Wooden Blinds
Pattern books also available

FREE QUOTE – Call today on 01268 976779 | Mobile: 07743 562384

• ian.dipple@yahoo.com | www.ianscurtainsandblinds.co.uk



LOCAL NEWS

from your neighbourhood



Town centre parking charges scrapped for the rest of the year

Shoppers are being encouraged back to Billericay town centre after car parking charges were scrapped until the end of the year.

Basildon Borough Council made the decision on July 21, just weeks after charges were reintroduced following the initial scrapping of charges when the pandemic first hit.

It means all council car parks are free until the end of the year, and in Billericay that includes High Street, Radford Crescent and Lake Meadows.

The move is designed to lend support to high streets as part of the Shop Local, Shop Safe campaign, which aims to encourage shoppers to support their local high street and to support shopkeepers in reopening in a safe manner.

The move is expected to result in a loss of income to

the council of £225,000.

Visitors to car parks may be required to collect tickets for the duration of their stay without cost, in order to avoid car parks being filled up by people not moving their cars for long periods.

The council will also monitor the car parks to see how they are used. If there is heavy use by commuters rather than shoppers, then a daily fee will be introduced between 12pm and 6pm.

Councillor David Harrison, chairman of the neighbourhoods and public spaces committee, said: "This will have big value to high streets, especially in Billericay and Wickford.

"While there is a financial cost to the council, it will provide a real boost to high street traders in a time of real need."

From the smallest job to the largest high profile project



FREE ESTIMATES WITH NO OBLIGATION



Locally based company in Brentwood, with over 25 years experience. Our range of services include:

PLUMBING

- Boiler servicing & landlord reports
- New boilers / repairs
- Bathrooms & kitchens
- Drainage works
- Powerflushing

ELECTRICAL

- All aspects of domestic, commercial and light industrial electrical works
- Security systems and alarms
- Replacement consumer units
- Periodic inspections and testing
- Full rewires, PAT testing and fault finding

ROOFING

- All aspects of roofing / flat roof works / lead works
- Gutter repairs / replacements / cleaning
- Valley and chimney re-pointing / repairs
- Replacement roof tiles

BUILDING

- Decorating / Painting
- Plastering / Rendering
- Wall re-pointing / repairs



Gas Safe Registered
NICEIC Approved Contractor & Domestic Installer



Please contact us for further information on all our services

www.timminspsl.co.uk

Tel: 01277 810005 | Email: office@timminspsl.co.uk

Unit 15, Cockridden Farm Estate Brentwood Road Herongate Brentwood CM13 3LH



LKG Daughters
Plumbing and Heating Engineers Ltd

From a tap to a full bathroom installation

- Boiler Renewals & Repairs
- Central Heating & Repairs
- Bathroom Suite Installations
- Pumps & Port Valves
- Taps, Ball Valves, etc
- Female & Male Engineers
- All Work Guaranteed

24hr emergency service

01245 478111 | 07710 358347

Local family business established 1997

City & Guilds

www.lkgdaughtersplumbing.co.uk

SEALING TECHNIQUE

NO MORE WEEDS

WORK GUARANTEED

Matt Finish

“Avoid Cowboy Trades & Services”

Checkatrade Before you use them

Simply Business Public Liability: £1m View our policy details

RESIBLOCKY REGISTERED INSTALLER

WWW.SEALINGTECHNIQUE.COM

for only £9 per sq metre

Call Lionel

01268 449771 / 07834 897654

19 St Davids Way, Wickford, Essex SS11 8EX

10% OFF with this advert

Keep me, you never know when you might need me?

CONTRACT CLEANING & SUPPLIES

NO JOB TOO BIG OR TOO SMALL

Clean & Fresh Cleaning Services LTD

WE OFFER A RANGE OF CLEANING SERVICES INCLUDING DEEP CLEANS FOGGING • WINDOW CLEANING

WE SUPPLY CLEANING PRODUCTS INCLUDING FLOOR CLEANERS DISINFECTANTS • TOILET ROLL MOP HEADS • GLOVES • MASKS HAND SANITISER & MUCH MORE

CALL US TODAY FOR CLEANING SERVICES & SUPPLIES AT A GOOD PRICE

01268 962677 • info@cleanandfresh.co • Find us on

Plans to expand High Street pub welcomed



Pubgoers in Billericay have welcomed plans by JD Wetherspoon to expand The Blue Boar in the High Street.

The pub chain wants to spend £2.5million, which it feels will help to “reboot” Billericay High Street.

It has submitted a planning application which, if successful, would see a new beer garden created as well as a new larger dining and drinking area inside the pub.

In its application, Wetherspoon said it would expect new jobs if the expansion were approved, with ten new members of staff earmarked.

with this upcoming budget one of the most crucial in the town’s history following the pandemic.

It is estimated that, to keep balancing its budget, it is likely that the council will have to increase its income and reduce its spending.

On current forecasts, if the council takes no action, it expects to have a shortfall in its budget of £1.6million by 2021/22, rising to £3.8million in 2023/24.

A Basildon Council spokesperson said: “The information gathered through this survey will be taken into consideration by councillors when deciding the council’s financial budget and council tax charges for 2021/22.

“The COVID-19 pandemic has had a significant impact on the residents and businesses of the borough. It has also created additional financial pressures for the council to manage.

“However, the council is committed to supporting the borough through the recovery phase and will also continue to develop and deliver its transformative plans.”

To have your say visit www.basildon.gov.uk/budgetsurvey

Free bike-marking kits to be available

Free bike-marking kits are now available at Billericay Library and various venues across Basildon in response to a series of recent thefts.

As well as these venues, youth workers and police officers on patrol in our parks and open spaces will distribute the kits.

Deputy Leader of Basildon Council Councillor Kerry Smith said: “I am pleased we have been able to work with our partners to respond to this issue and ensure these kits are available to our communities.

“Every resident should mark their bike in UV pen with their door number and postcode, making it traceable should it be stolen and recovered.”

Have your say on the council’s 2020/21 budget

Residents in Billericay are being urged to have their say on how the council should best spend its money on local services.

The plea comes from Basildon Council, which wants people in Billericay to help identify how money should be spent.

People have until September 7 to have their say,





Restaurant apologises after soirée gets out of control

A Billericay restaurant has apologised after hundreds of people turned up at an event which "got out of hand".

Beauvoir Arms, on Downham Road, hosted an event on August 2, but hundreds more guests turned up than expected, leading to complaints and police having to step in.

Concerns were raised as the increased numbers made socially distancing difficult, with a huge number of vehicles also making the roads extremely busy.

Following the incident, Beauvoir Arms issued a heartfelt apology. It said: "To all our loyal customers and friends please accept our sincere apologies.

"The event was planned as a soirée style evening and we thought it would be a garden party – socially distanced tables, people staying within their groups, basically a classy event utilising our large outside areas too, to aid safe social distancing.

"We said no more than 200 people as the marquee was big enough for about 500, plus there is lots of space in the garden, and we set it out to keep things socially distanced. Sadly, many more guests arrived than we agreed.

"We would like to apologise again for any upset caused and we understand residents' concerns. We are going to donate to a local NHS charity as a goodwill gesture and hope that our local friends and loyal customers will understand the predicament we were in."

A spokesperson from Essex Police, said: "We were called to reports of a large gathering at a licensed premises in Downham Road, Downham, on the evening of August 2.

"We liaised with the event organisers and negotiated its end. Licensing officers will carry out a review of the incident."

Man due to appear in court for manslaughter

A man has been set a court date after a body was found outside a Billericay bar last year.

Dennie Griffiths, 26, from Basildon, has been summoned to appear at Basildon Magistrates' Court on October 22, to answer a charge of manslaughter after Matthew Bion, 31, from Wickford was found dead on August 27 last year.

Matthew was found following a disturbance outside Reids at around 1.15am on the day of the incident.

A post-mortem examination recorded that he had

died as a result of head injuries.

Meanwhile, Jade Chambers, 23, of Laindon, has also been summoned to the same court to answer a charge of assisting an offender.

Speaking after Matthew's death, his family said: "Matthew, a father of two young children, was a kind and generous young man who was loved by everyone.

"He was a real people person who enjoyed helping and caring for others and a room would light up when he entered."

Carpets Direct

Guaranteed Lowest Prices

- ✓ **FREE FITTING** Established 25 years
- ✓ **FREE home visits**
- ✓ **80% wool twist pile specialists**

Carpets • Vinyls • Laminates • Wood Flooring
We come to you in the comfort of your own home

WHY PAY MORE?

WE WILL MOVE YOUR FURNITURE & FREE UPLIFT/REMOVAL OF YOUR OLD CARPET

CALL YOUR LOCAL AREA SPECIALIST
01277 554 163

www.carpets-direct.co.uk

NEED A LOCAL ELECTRICIAN?

Contact Capital Electrical

Capital Electrical
Design • Install • Maintain

Domestic & Commercial | Repairs & Installation
Vehicle Charging Points | Portable Appliance Testing
Fire Alarm Systems | Emergency Lighting Systems
Installation Condition Reports

CONTACT US 01277 554079
www.cap-elec.co.uk

I ♥ BLINDS

WHY SETTLE FOR SECOND BEST?

WHY SETTLE FOR MDF WHEN YOU CAN HAVE SOLID WOOD SHUTTERS FOR THE SAME PRICE?

INSTALL CUSTOM MADE TO MEASURE SHUTTERS AND YOUR WINDOWS WILL LOOK AMAZING

- ♥ Shutters ♥ Made to Measure Blinds ♥ Perfect Fit Blinds
- ♥ Wooden Venetian Blinds ♥ Conservatory Roof Blinds

CALL US TODAY ON 01702 470 594 TO ARRANGE A FREE, NO-OBLIGATION CONSULTATION

01702 470 594 ♥ claire@iloveblinds.co.uk ♥ www.iloveblinds.com
1061 London Rd, Leigh-on-Sea, Essex SS9 3JP



APPLIANCE REPAIRS AND SALES

We repair all makes and models

Washing Machines • Tumble Dryers
Dishwashers • Ovens • Hobs • Cookers
Fridge/Freezers • Extractor Hoods

New appliances in stock for
same day delivery & installation

Prices listed on our website

Call 01279 310793

Or Book Online

www.spindoctoruk.co.uk

ANY little
THING Ltd
Providing reliable & trustworthy support

A Personal Home Help Service

Providing trustworthy and reliable support to the elderly and vulnerable

Including, but not limited to
Companionship 🍷 Household Chores
Pet Services 🍷 Meal Preparation
Basic Gardening 🍷 Ironing

01268 928878

www.anylittlething.co.uk

Popular town bar becomes latest victim of pandemic



Plans to reopen a bar in Billericay have been abandoned, it was revealed late last month.

The owners of Reids broke the news on its website and social media channels.

The announcement read: "After careful consideration and deepest regret we must announce that REIDS will not be reopening as previously planned. Unfortunately the impact of the COVID-19 pandemic is something we cannot overcome going forward with our normal business concept.

"We would like to thank the Billericay community and beyond for all of your custom and support over the last three decades."

As **VISION**BillericayShenfield went to press, nearly 400 messages of support had flooded in.

One customer wrote: "Nearly 30 years of memories from Quilters, Ivory Rooms then Reids both socially and then working there. Very sad it's closing. Given me loads of memories. Wishing everyone all the best."

Another regular commented: "That's very sad you have been brilliant to the Breast Cancer Charity I work for. Always so helpful and so kind in your donations to us. Where will we have our Christmas shopping and ladies lunch now? Thank you to all the staff and management you've been awesome."

No pleas were entered. The man and woman were remanded in custody to appear at Basildon Crown Court on September 10.

It follows reports of burglaries in Billericay, Wickford, Basildon, Rayleigh, Hullbridge and Chelmsford between 16 July and 3 August.



Photo credit: Jimj0will/Shutterstock.com

LOCAL NEWS BILLERICAY

The Flooring Store that Comes to Your Door

A. Clarke

Carpets & Flooring

Supply and Fit: Carpets ■ Vinyl ■ Laminate

- 1000's of samples to choose from to suit all budgets brought to you at your home or office
- Highly experienced fitters, guaranteed to beat any written quotation on like for like products by at least 10%
- Large selection of quality remnants available at our warehouse.

07718 063942 ■ 01621 928770

www.aclarkecarpets.com

SHOWROOM AT: Unit 1, Red Lion Business Centre, Latchingdon, CM3 6JH

EMAIL: clarky319@hotmail.com



Pair charged with burglary and fraud

A man and a woman have been charged in connection with a series of burglaries across south Essex, including incidents in Billericay.

William Smith, 24, of Cherry Hill Farm, Chelmsford, appeared at Southend Magistrates' Court on Thursday, August 13, charged with ten counts of burglary and four counts of fraud.

Kiera Baugh, 38, of Stevenson Way, Wickford, appeared at the same court charged with nine counts of burglary and four counts of fraud.

Town branch of Pizza Express set to close

Pizza lovers in Billericay will be disappointed after it was confirmed the town's Pizza Express restaurant will be one of 73 restaurants to close across the UK.

The closure has been blamed on spiralling rent costs, the impact of COVID-19 and declining profits.

Zoe Bowley, Pizza Express's managing director for the UK and Ireland, said: "Unfortunately, the impact of the global pandemic has meant that we have had to make some incredibly tough decisions to safeguard Pizza Express for the long term."



Photo credit: Willy Barton/Shutterstock.com

IRONING SERVICE

IRONING ■ DRY CLEANING
Est. 2007

- SAME DAY SERVICE IF REQUIRED
- SAME DAY DELIVERY IF REQUESTED
- FULL LIABILITY INSURANCE
- COLLECTION & DELIVERY
- COMPETITIVE PRICES



01277 554182
07983 676212

FINE IRONING, CABIN 9, ORCHARD VIEW ESTATE,
HARDING ELMS RD, CRAYSHILL,
BILLERICAY CM11 2UH

ATCL LOCKSMITHS
FOR ALL YOUR HOME & BUSINESS SECURITY NEEDS
YOUR LOCAL MOBILE LOCKSMITHS

- FREE CALL OUT
- OAP DISCOUNT - 10%
- FIXED PRICING
- NO HIDDEN CHARGES
- 12 MONTH WARRANTY ON ALL WORK

01277 554 043
07515 519 971

NEWS FROM YOUR LOCAL POLICE TEAM

LOCAL NEWS BILLERICAY

It has been a busy month for Billericay Community Policing Team Officers and PCSOs. The night-time economy has reopened, all be it with new ways of working, and the Eat Out to Help Out Scheme has certainly increased activity in the High Street during the beginning of the week. We have also continued our Op Oxygen patrols and have been successful in reducing anti-social behaviour across the town; we will maintain this activity throughout the summer.

We have continued to receive information from members of the community and have been developing this, leading to successful operations with positive outcomes. Summer traditionally sees an increase in door-to-door sellers, some of which may be scams. Most door-to-door scams involve selling goods or services that are either not delivered or are very poor quality. You won't get value for money and you may

get billed for work you didn't want.

Some scammers conduct surveys just to get your personal details or as a cover to sell you goods or services you don't want or need, such as roofing work or a patio replacement. If someone knocks at your front door claiming to be from a company, first check their ID. If you're not happy, don't let them in.

Never call the phone number on their ID card to check them out. Ask the salesperson to wait outside, shut the door and find the company's phone number on the internet. If they're genuine, they'll understand. Please take time to help keep elderly or vulnerable neighbours and relatives safe by sharing this message with them.

Call us when your home needs that new coat of paint

HOME MAINTENANCE AND REPAIRS

- Interior Decorating ● Exterior Decorating
- Wallpaper Hanging ● Plastering / Over artex
- Dustless Sanding ● Fully Insured

Former employees of Tony Baxter for over 13 years

For high quality work call
07824 664591

www.TJMdecorating.co.uk
TJMdecorating1@gmail.com
@tjmpainting

TJM
PAINTING & DECORATING

CALL US TODAY FOR YOUR FREE QUOTE

Konchesky returns to Billericay

Former England defender Paul Konchesky said he is delighted to be back at Billericay Town FC as assistant manager.

Konchesky, who lists Liverpool, Spurs, Leicester City and West Ham among his former clubs, is no stranger to Billericay, having played for the club in the 2016/17 season.

Now the 39-year-old has teamed up with Ricay boss, Jamie O'Hara, as they look ahead to the forthcoming National League South campaign.

Speaking about his return to the club and the challenge ahead, Konchesky said: "It's great to be back.

"When I was here before the club was going places, but now, with the manager, chairman and the new pitch, it is clear that it's been taken to the next level.

"I am here to assist Jamie and use all of the knowledge and experience I have gained throughout my career. With that I will hopefully bounce off Jamie and onto the boys.

"It has changed since I was last here, the pitch is unbelievable and at least we know week in and week out we're going to play games. The facilities are fantastic, and the club is only going in one direction.

"I've been involved with West Ham, with the younger and loan players, so hopefully I can use that to bring something here and to add to their experience and help the team out.

"We are now chomping at the bit for the new season. It's going to be an exciting one for everyone at the club."

Photo credit: Nicky Hayes Photography



LOCAL NEWS

from your neighbourhood



Promoter turns garden into pay-per-view boxing venue

Shenfield promoter Eddie Hearn has turned a local garden into one of the most watched sporting locations in the world after he built a boxing ring for pay-per-view bouts.

He built the boxing ring and venue in the garden of his Matchroom headquarters in Brentwood so fights could safely go ahead.

Known as Fight Camp, the venue is being used as a bubble so that fighters can compete safely amid health and safety concerns regarding the pandemic.

All boxers stay at a hotel nearby and travel back and forth between the Fight Camp and accommodation.

Hearn and Matchroom have taken the steps of building their own boxing camp as many venues across the world are closed because of the pandemic.

In the garden, flooring has been laid out on the lawn to provide stable grounding for those behind the scenes and television crews, a canopy has been put up for when it rains and the pristine gardens provide a unique backdrop.

Hearn explained more about Fight Camp on TalkSPORT.

He said: "You've heard of Madison Square Garden and this is the new Garden.

"I just feel like when you are talking about a gladiatorial sport, like boxing, you need to create that moment, that energy, not just for the viewer at home but for the fighter as well."

For more information on Matchroom visit www.matchroomboxing.com

Richard Ward

Richard@warddecorators.co.uk

Painter - Decorator

Domestic - Commercial

Interior - Exterior

Fully Insured | 35 years experience

Tel: 01277 821 454

Mobile: 07961 943840



HAMMOND & SONS

GAS ♦ PLUMBING ♦ HEATING

- ♦ All boilers serviced & repaired
- ♦ Condensing boilers & warm-air units
- ♦ All work undertaken including leaks, upgrades & installations
- ♦ No call-out charge
- ♦ OAP discounts available
- ♦ Full public liability insurance
- ♦ Fully qualified engineers



**A PROFESSIONAL FAMILY-RUN BUSINESS
HONEST & RELIABLE
OVER 20 YEARS' EXPERIENCE**

From a tap washer to a full heating system, call

01277 261 888

email: hammondandsons@hotmail.co.uk
www.hammondandsons.co.uk



A COMPANY YOU CAN TRUST



WE CARRY OUT ALL TYPES OF WORK

- KITCHENS | BATHROOMS | ELECTRICAL | FLOOR SANDING
- PLASTERING | BRICKWORK | SCAFFOLDING | ROOF REPAIRS
- GUTTERING | WINDOWS & DOORS | UPVC FASCIAS | SOFFITS
- DRAIN WORKS | CHIMNEY STACKS | LINTELS | ALL LOCAL STAFF
- FULLY INSURED COMPANY | ALL WORKS GUARANTEED
- ENDORSED BY WHICH | RECOMMENDED BY CHECK A TRADE

Call us on 01277 887210

email: balanceandco@aol.com

www.balanceandcoessexltd.com

NO JOBS TOO SMALL | MONDAY TO SATURDAY 7AM TO 8PM





Chirewa gains academy scholarship

LOCAL NEWS SHENFIELD



A Shenfield teenager has earned a scholarship with League One side Ipswich Town.

Tawanda Chirewa, 16, is one of seven young players the former UEFA cup winners have decided to offer scholarships to ahead of the new campaign.

However, the young stars will have to wait for their scholarships to begin, as the start date has been put back to an unknown date following the pandemic.

The young midfielder from Shenfield already had a taste of first-team football with Ipswich as he came on as a late substitute in Town's 1-0 EFL Trophy defeat by Colchester United last November.

That appearance made Chirewa the second youngest player in Ipswich's history, behind Connor Wickham.

Since his debut, a bright future has been predicted for Chirewa, who has reportedly also caught the attention of clubs higher up the football pyramid, including Fulham.

However, he has decided Ipswich is the best place for his development and he will hope to be knocking on the door of the first team during the upcoming season.

Pandemic puts Crossrail opening date in doubt

Shenfield commuters face an even longer wait before they can benefit from Crossrail, as the project has been hit with another delay.

The railway project, which is Europe's largest infrastructure project, connects Shenfield in the east with Reading in the west.

It will provide a direct rail link from Shenfield through central London, dramatically reducing journey times to the heart of the capital.

The route, known as the Elizabeth Line, was

originally due to open in December 2018, but a series of issues have pushed that back several times – with the pandemic being cited as the latest reason.

Earlier this year the opening of the whole line was pushed back to summer 2021, but now Crossrail's chief executive, Mark Wild, admitted on July 23 that that seems unlikely.

He said: "Everyone working on the Crossrail project knows London needs the Elizabeth Line more than ever and we are doing everything possible to deliver the railway as safely and as quickly as we can.

"Our focus right now is on completing the remaining infrastructure works so that we can fully test the railway."

In August, Crossrail started intensive 24-hour work on tunnels, portals and shafts to make up time lost to the virus.

Worrying footage captures family risking their lives

Network Rail is warning everyone to use the Hutton Level Crossing safely after a family of four were seen taking photographs on the tracks between Shenfield and Billericay on the Southend Victoria branch line.

Instead of crossing over quickly, the family of four, which included two young children, stopped to take photographs on the tracks at Knights Level Crossing in Hutton. A train was less than three minutes away.

Trains travel at up to 80mph on this line and the number of train services has increased over the last few weeks.

Network Rail's community safety manager, Becky Crocker, said: "Level crossings are dangerous, and just as you wouldn't stand in the middle of a busy road to take photographs, nor should you on a level crossing. Trains travel at high speeds and can't swerve out of the way or stop quickly, and you don't always hear them until it's too late.

"The consequences are devastating, and those who live to tell the tale are likely to have serious and often life-changing injuries. It's really not worth it."



fireplace

& DESIGN LTD



Tel / Fax: 01702 426067

www.fireplaceanddesign.co.uk

132 Kiln Road, Benfleet, Essex, SS7 1TE





**THE ONLY WASTE IS ESSEX
SKIP HIRE**



**LICENSED WASTE CARRIER
MIDI & MINI SKIPS**

2 Yard Skips • 4 Yard Skips • 6 Yard Skips
Family run • Friendly Efficient Service
Covering South Essex

**SAME DAY DELIVERY
07902 567890**

MOBILE UPHOLSTERY

REPAIRS AND LEATHER CLEANING



**FABRIC AND LEATHER FURNITURE
REPAIRS CARRIED OUT IN YOUR HOME**

Leather Repairs and Colour Restoration
Leather Cleaning and Conditioning
Cushion Padding Refurbished or Replaced
Open Seams Re-Sewn | Pet Damage | Repairs
Springs | Frames | Recliners



Tel: 07889 368706



www.mobileupholstery.co.uk
enquiries@mobileupholstery.co.uk

BURGHART for BRENTWOOD



Alex Burghart MP for Brentwood and Ongar



LOCAL NEWS SHENFIELD



Photo credit: Ian Davidson

As this month's edition of **VISION** Billericay Shenfield magazine is delivered, there will be a hint of autumn in the air and our children will be returning to school, many of them for the first time since schools were closed in March for the coronavirus lockdown.

As the start of term approaches, now is the time for families to think about the practicalities of returning to school in September – safe in the knowledge that schools are prepared for their children's return.

Some children were in school during the lockdown – mostly those whose parents are key workers, plus Reception, Year 1 and Year 6 once lockdown was lifted a little. For the others, this is the first time they have entered the school buildings in almost six months.

I wrote to every headteacher at every school in Brentwood and Ongar during the lockdown to offer my support as they coped with the huge responsibilities and demands of setting up online teaching, checking in with their pupils and making sure vulnerable children were being supported effectively. I can tell they have done an amazing job – and are certainly even more appreciated by the parents who have had to homeschool their own children for the duration.

There is no doubt all these children, be they the youngest infants or next year's GCSE and A Level students, have missed a huge part of their education

and, indeed, childhood. So many milestones and key events have been missed, from last days at school and proms to school plays, sports and playing with friends.

There is some concern from parents, teachers and young people alike, but the government has a #backtoschoolsafely campaign to reassure parents and students that schools and colleges are safe and ready for their return in September. This aims to help reassure parents that school is the best place for their child to be, that schools and colleges are ready and waiting to get back to teaching, and that they have the right protective measures in place. The campaign will also help parents plan the school run to avoid public transport where possible.

I am all too aware we will be seeing the effects of this six-month period of missed education for many years to come, but it is time for the children to return. All children deserve to be back in school as it is the best place for both their education and their well-being. Having played their part to help combat this virus by staying at home, now is the time they should get back to the education they deserve. I have no doubt the teachers and support staff are ready to meet this challenge, and I am here to support them in whatever they need.

www.alexburghart.org.uk



WS Spray Finishings

ALL ASPECTS OF WET SPRAYING & POWDER COATING FOR DOMESTIC & INDUSTRIAL MARKETS
ITEMS FOR POWDER COATING UP TO 5m x 2m

Hello to all our customers past and present, we are now back at work
We hope the support we have been shown in the past will return
We can get through this together, local companies employing local people



Are you tired of the look of your kitchen?
Don't despair instead of paying a fortune for new units and doors why not have your existing doors, drawer fronts cornice, light pelmets, cooker hoods, shelf displays and plinths re-sprayed in any colour & sheen of your choice?
Removal & installation of most work available.
We can spray any type of door solid wood, vinyl/plastic or MDF old or new. All work is fully cleaned and de-greased, repaired if necessary and rubbed down prior to painting. We use a highly tough and durable finish 2 pack polyurethane paint in any colour and sheen to create that new showroom look and feel for fitted bedroom drawers and cabinets, internal room doors and all types of household furniture including brown furniture.
This is a very good economic and environmental way of recycling your worn out kitchen, bedroom cabinets & old furniture, we strive to be as eco friendly as possible.




01268 812414 • 07434 704673 • 07434 704681

www.wssprayfinishings.co.uk • wssprayfinishings@gmail.com



Unit 4 Totman Close, Brook Road Ind, Est. Rayleigh SS6 7UZ



BRIGHT & BEAUTIFUL



**THE TIME IS NOW TO
DEEP CLEAN YOUR
HOME OR BUSINESS**

**WE CAN CLEAN AND SANITISE ALL TOUCH POINTS SUCH AS HANDRAILS,
BANNISTERS, SWITCHES AND SOCKETS. PEACE OF MIND WHEN YOU NEED IT MOST.**

Cleaning ● House Cleaning Service ● End of Tenancy ● Commercial Care Homes
Office Cleaning ● Sanitizer ● Professional Services ● Pure Eco-friendly & Non-toxic Products

01277 287 503 ● www.brightandbeautiful.com/brentwood  

PROFESSIONAL CARPET, RUGS & SOFA CLEANING

**USING AN INDUSTRIAL
CLEANING MACHINE**

(including a pre-spray and agitation)

CALL GRIME BUSTERS

**Carpets | Rugs | Tiled Floors | Stone | Sofas
Mattresses | End of Tenancy | Fully Insured
Domestic & Commercial Properties**

Lounge £40 | Dining Room £30 | Stairs £30 | Hallway £10 | Landing £10

Double Bedrooms £25 | All other Bedrooms £20

Prices based on a standard 3-bedroomed house/flat | T&Cs apply

Contact Daren Cook 01277 554171 | 07831 428974

grime.busters@yahoo.com |  [grime busters](https://www.facebook.com/grimebusters) |  [grime.busters](https://www.instagram.com/grimebusters)



GARDENING



SEPTEMBER BIRTH FLOWER
OF THE MONTH

If you were born in September, your birth flower is one of the most colourful flowers of autumn: the aster. Part of the daisy family, this wild flower is known for its tiny flowerheads and long petals. Loved by pollinators, asters are ideal for growing in mixed borders around your garden.

WHAT DO ASTERS SYMBOLISE?

Asters come in a variety of vibrant colours and each one carries a different meaning:

- Purple asters, the most popular colour, symbolise wisdom and royalty.
- White asters represent purity and innocence, as well as new beginnings.
- Red asters can be used to convey undying devotion.
- Pink asters symbolise sensitivity and love.

WHAT DOES THIS BIRTH FLOWER SAY ABOUT YOU?

If your birth flower is the aster, you feel most at home on the stage and will embrace any opportunity to entertain others. You are an

optimist and are devoted to living life to the full. You are also predisposed to good luck.

HOW DO YOU GROW ASTERS IN YOUR GARDEN?

Asters offer great beauty with little work and are therefore ideal for less-experienced growers. You can either choose to plant them from seed in spring or purchase a potted plant later in the year.

Plant in full to partial sun in loamy, well-drained soil and keep new plants moist until they stop blooming.

WHAT ARE THE MOST COMMON ASTER PESTS AND DISEASES?

Asters attract aphids, spider mites, whiteflies and leafhoppers, all of which can be kept under control with the use of pesticides. They are also prone to stem rot, a fungus that can begin at the start of the germination process. Prevent this by not overwatering and ensuring the soil is well drained.





The battle between gardener and slugs has never been so ferocious, but getting things back in your favour may not be as difficult as you think if you follow these handy tips.

Objects of desire
Slugs love to slither under pots, planks and other objects left lying around. If those bricks serve no purpose, remove them from your garden, otherwise all you're providing is a perfect hiding spot for this gastropod mollusc who will nibble away at your finest crops, herbs and flowers.

Grass borders
Slugs love to conceal themselves in grass. The moisture keeps them happy and the protection of long blades means they can keep themselves hidden until darkness falls, when they'll venture out and demolish your prized produce. Keep your grass short and you take away their hiding place.

Bramble ramblers
A good way to keep slugs away is to build up

bramble borders to your garden. Spiky canes will also work as a barrier to keep these slimy invaders away – they'll take one look at those sharp thorns and unwelcoming lengths of wood and head straight for next door's garden.

If slugs are already in your garden
These tips will be a bit late in the day. In that case, here are a couple of handy tricks to rid yourself of guests who have already taken up residence.

Back to those objects of desire
Use those planks and pots to your benefit by propping them up so slugs crawl underneath – you've created your very own slug trap. Now, regularly, scrape the slugs from the underside and deposit them well away from your garden.

Night-time nasties
For three or four nights in a row, venture out into your garden with a torch, a shovel and a bucket and remove as many unwelcome guests as you can find. You'll find your slug population quickly diminishes.



bringing lawns to life

20% OFF YOUR FIRST TREATMENT**

Our wonderful customers like our service so much, that over 40% of new customers joined us through their recommendation which, if you think about it, is a recommendation in itself.

So, if you've been thinking about enjoying a great lawn this year – green, lush and weed-free, why not contact us today and let us bring your lawn to life.

We provide four seasonal treatments, as well as beneficial treatments to keep your lawn in tip-top condition - prices start from just £15*.

Ask us about our annual plans, which allow you to both spread the cost and save up to 25%.

Simply call: 01277 352 236 or visit: greenthumb.co.uk

PRICES FROM **£15*** PER TREATMENT

GreenThumb
LAWN TREATMENT SERVICE

*Based on a lawn size up to 40m² **New Customers Only



TOMCO
LANDSCAPES

**TRANSFORMING
OUTDOOR AREAS
ACROSS ESSEX**

DRIVEWAYS * PATIOS * FENCING
DECKING * PERGOLAS * TURFING
ARTIFICIAL LAWNS * OUTDOOR ROOMS

WE COVER IT ALL

07850 332406
01245 281999

info@tomcolandscapes.co.uk
www.tomcolandscapes.co.uk

G.G.S.
GARDEN MAINTENANCE

Est. 35 years

Grass cutting
Weeding * Planting
One off clearance
Regular maintenance
Shaping & trimming of
hedges & shrubs

Kaz: 07999 504480
Gary: 07909 932539
ggs1990@hotmail.co.uk

**CALL FOR A
NO-OBLIGATION QUOTE**



STONECRAFT
A TOUCH OF CLASS
Landscaping & Building Specialists

Established since 1988

Residential Properties

Driveways ■ Patios ■ Walls ■ Lawns ■ Fencing
Complete Garden Renovations

Telephone: 01277 841728 ■ Mobile: 07802 780 333
https://stonecraftuk.co.uk ■ stonecraftuk@btinternet.com



WASTE NOT.
WATER BUTT

GARDENING

If you are looking for something useful to do in the garden this month then look no further than the installation of your very own water butt. Did you know that almost 100,000 litres of rainwater falls on our roofs each year in the UK and literally just goes down the drain?

WHY INSTALL A WATER BUTT?

If every home were to install a water butt in their garden, the UK would save an estimated 30,000 million litres of water each summer. That's enough to fill 12 Olympic swimming pools. Therefore, if a hosepipe ban were to come into effect next year, you would have more than enough clean water to care for your plants and fill a paddling pool or two. Plus, you could save on your water bills.

HOW TO CHOOSE A WATER BUTT FOR YOUR GARDEN

Simply head to your nearest garden centre or local DIY store for a wide range of water butts, with options to suit all budgets. If you have a small garden, choose a slim, square-edged design that can sit flush against a wall. For those with more space, the bigger the better. You should also purchase a diverter kit.

HOW TO INSTALL YOUR WATER BUTT

- Choose a suitable location next to a drainpipe.
- Always install a water butt on a firm and flat surface that is strong enough to hold its weight when full.
- Consider investing in a stand so that you can fill your watering can from the tap at the bottom of the butt with ease.
- Follow the instructions on the diverter kit – this will involve cutting through your chosen drainpipe with a hacksaw.
- Cover your water butt with a lid to prevent insects from flying in and to stop children falling in.
- Wait for the rain to fall.

SPECIALIST IN PRE-CAST BUILDINGS

SINGLE GARAGES ■ DOUBLE GARAGES ■ CONSERVATORIES
GARDEN ROOMS ■ SHEDS/WORKSHOPS & MORE



- FAMILY RUN BUSINESS ■ 50 YEARS EXPERIENCE
- 5 YEARS GUARANTEE ■ DESIGNS TAILORED FOR YOU
- HIGH QUALITY, LOW MAINTENANCE CONSTRUCTION



R
PAGE
CONCRETE
BUILDINGS LTD

CONTACT US ON 020 8590 3701

www.rpageconcretebuildings.com

f [rpageconcretebuildings](https://www.facebook.com/rpageconcretebuildings)

951-953 High Road, Chadwell Heath, Romford, Essex RM6 4HB

ALL TREE WORK UNDERTAKEN



CALL TODAY
FOR YOUR
NO OBLIGATION
QUOTE WITH NO
HIDDEN EXTRAS

- FAMILY RUN BUSINESS
- OVER 35 YEARS EXPERIENCE
- PRUNING ○ THINNING ○ REDUCTIONS
- FELLING AND REMOVAL ○ DEAD WOOD REMOVAL
- SITE CLEARANCE ○ HEDGE MAINTENANCE
- FIREWOOD SALES FULLY INSURED

ESSEX TOP RATED TREE SURGERY COMPANY 2017/2018 ON

★★★★★ [Checkatrade.com](https://www.checkatrade.com)
Where reputation matters



City & Guilds
NPTC
Qualified workforce

f 01277 284638

ig www.essex-tree-care-ltd.co.uk



PETS

Captain SLOW



Low maintenance, cute, curious and asleep for half the year, a pet tortoise is both intriguing and easy to cater for, which is why this crafty crawler is coming back into fashion.

For those of us of a certain age, tortoises were once all the rage. Right up there with rabbits, guinea pigs and hamsters, these sluggish, shelled reptiles were extremely popular in gardens all across the UK.

Their popularity waned around the turn of the millennium when regulations surrounding their arrival in the UK started to kick in. Too many weren't surviving our frosty winters and their importation – at its peak, 150,000 of them each year – was said to be cruel.

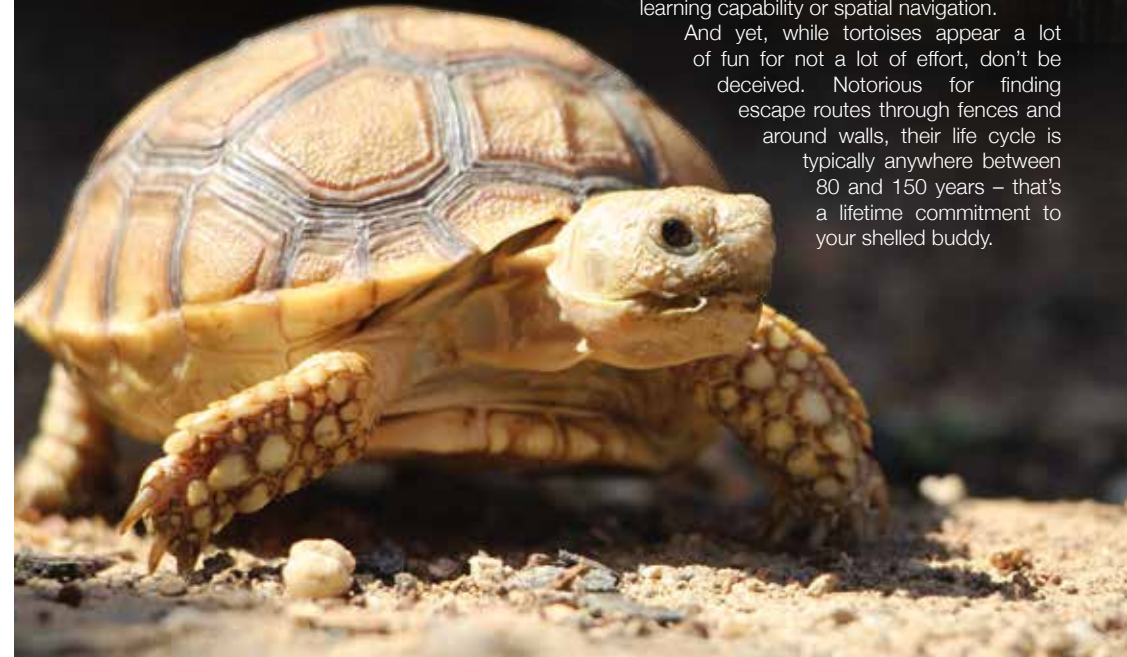
And yet, owning a tortoise bred in captivity in the UK is still perfectly legal. While you may need to 'shell out' (sorry) anything between £50 and £500

for one of these incredible creatures who originate from the Americas and Africa, people find their laid-back, plodding attitude to life as inspiring as it is humorous.

They will generally eat from your garden, with their diet also featuring the likes of cucumber, carrots, lettuce, fruit and flowers; and can be safely tucked up in a hutch overnight, content by themselves or alongside a life partner.

Resilient and tough, curious and playful, cats soon get bored of them, though some breeds of dog are known to pester them and can damage their shells. And you'll struggle to get too much emotion from these garden dwellers – their lack of a hippocampus means tortoises have little emotion, memory, learning capability or spatial navigation.

And yet, while tortoises appear a lot of fun for not a lot of effort, don't be deceived. Notorious for finding escape routes through fences and around walls, their life cycle is typically anywhere between 80 and 150 years – that's a lifetime commitment to your shelled buddy.



HANDY ANDI

The Peter Pan of daytime TV and a career both in and out of the spotlight

If you're of a certain demographic, you've undoubtedly seen the Twitter posts, Facebook pictures and Instagram uploads detailing the so-called 'golden era' of kids' TV, when terrestrial television was a metaphorical playground for some of the biggest stars of our time.

From the basics of *Blue Peter* and *Grange Hill* in the 1970s through to big-budget kid-themed quiz shows and youth soaps, the presenters were our link between a mind-boggling array of British brilliance that has since gone by the wayside in favour of American imports.

To consider that Andi Peters was at the centre of such an era is remarkable, for two reasons. First, he's still on our screens today, most recently covering for Lorraine Kelly on her eponymous weekday morning chat show. Second, there's the small point that Andi barely looks any older than the bunch of Generation X youngsters currently at the forefront of youth entertainment.

Chelsea-born presenter, journalist and actor is 50. That makes him less Andi Peters and more Peter Pan, though securing both longevity and relevance is no pantomime in the current era where TV producers are even more cut-throat than Captain Hook.

Peters' ability to survive and, indeed, flourish has as much to do with his proficiency behind the camera as in front of it. He started out in the famous CBBC broom cupboard (where he succeeded the likes of Andy Crane and Philip Schofield), and despite retaining presenting duties alongside Emma Forbes in the hugely successful *Live & Kicking*, his skill as commissioning editor, producer and versatile creative is ultimately what has kept him in such high demand.

Always affable and famously clean-living, from continued BBC work with *The O-Zone* and *Top of the Pops* to *The Noise* (ITV), *T4* and *Shipwrecked* (Channel 4), diversity and desire to keep adapting have always been at the forefront for Peters.

And discovering Dermot O'Leary, who introduced him to the world of adult programming (*Dancing on Ice*, *Ant & Dec's Saturday Night Takeaway*), proved a joint enterprise that has garnered more success.

"At the heart of it I am just someone in love with TV," he says. "To bring so much joy, entertainment and fun into people's front rooms has always been a pleasure, and to this day I still get the same thrill at being broadcast live on air that I did all those years ago.

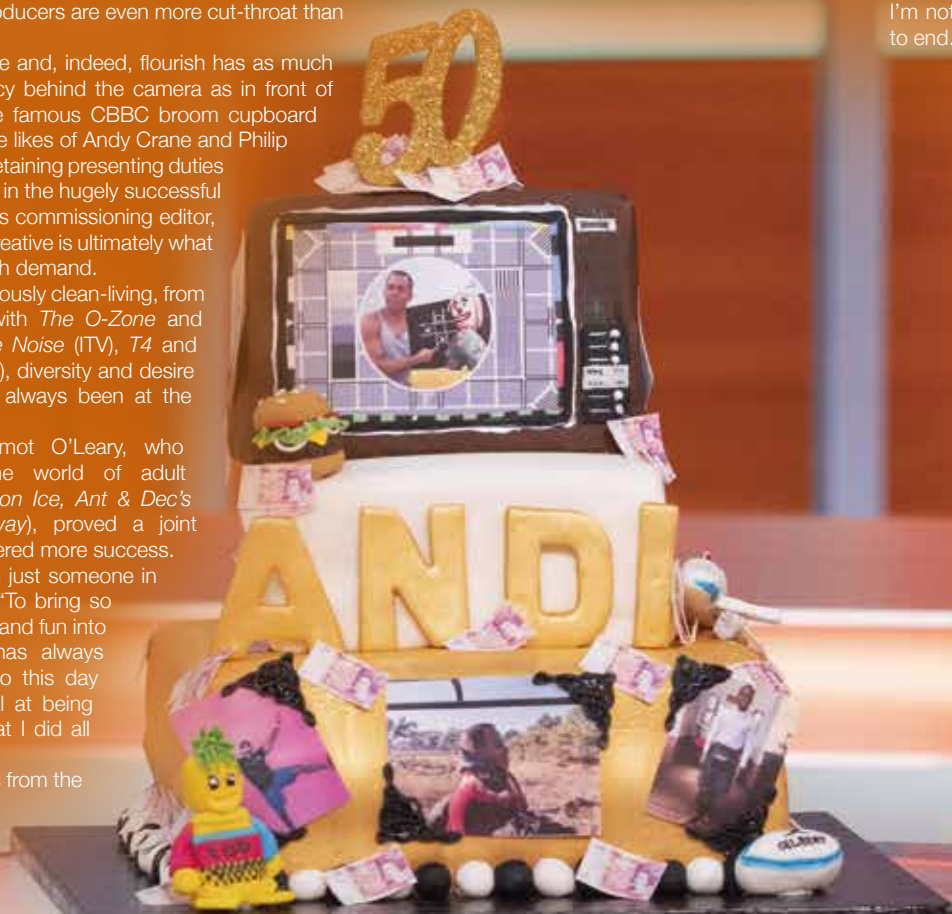
"I have had odd breaks from the cut and thrust of it,

but it is always something I know I will come back to, and of course I count myself very lucky to have been able to sample this from so many different sides."

Being the first man to stand in for Lorraine for more than a decade proves Peters' relevance and ability is still as strong at 50 as it was when he started out on radio way back in the 1980s, on the advice of Schofield.

"If the work keeps coming, I'll keep doing it," he says.

"It's a dream come true, and even at 50 I'm not ready for it to end."



All Your Fencing, Decking and Shed Requirements Met Here



Decking & Fencing Centre Ltd

DECKING AND FENCING INSTALLATIONS, REPAIRS AND UPGRADES

Decking built to your specification in softwood, hardwood or composite materials.

Sheds built to suit the area you wish.

Over 35 Years Experience, Small Family Run Business



Free Quotes and All Work Guaranteed

Ring Steve on **07974 753543** for a fast professional friendly service

find us at Decking and Fencing Centre on facebook
 **Checkatrade.com**
Where reputation matters

DON'T JUST TAKE OUR WORD FOR IT...

“ Having advertised in the magazine for over a year I have had several new enquiries that have been very lucrative for my business.

I would recommend **VISION** to any business looking for more customers in their local area.

Thank you for all your help.

Yours sincerely,

Neal Brezina
Coversure Insurance Services
01277 295504



Do you need help with your weight loss?



Try the 4 week "reTHINK" plan



Helping you take care of your weight loss forever

email Sarah Measday at info@thinkthinner.co.uk
www.thinkthinner.co.uk

- Daily support and motivation
- Individual food plan
- Daily food journal review
- Weekly coaching call
- Learn the tools and strategies you need to lose weight and keep it off **FOREVER**



Your Monthly Lifestyle Magazine



To advertise call now on

01277 554045

or email billericay@visionmag.co.uk



ARE YOU AN *emotional eater?*

Many people have understandably struggled with healthy eating during lockdown, with stress, boredom and increased feelings of wanting to treat ourselves all being contributing factors.

However, now that we have started to return to normality, are you still eating for reasons other than hunger?

MINDLESS EATING

Do you often find yourself eating for no particular reason? Do you simply take mouthful after mouthful without even registering what the food tastes like or whether or not your appetite has been sated? If yes, you need to stop eating in front of the TV and start appreciating your food more. Ensure you chew your food as many times as you can and listen to your stomach when it tells you that it's full.

BOREDOM EATING

If you find that you reach for the snacks when you

have nothing else to do, then you are eating out of boredom rather than because your body needs sustenance. Try to find yourself something else to do, such as read a book, phone a friend or go for a walk: any activity that will take your mind off eating.

STRESS EATING

We've all been there. Perhaps you have an important meeting at work, you are struggling to make ends meet or maybe your relationship is going through a rough patch. Whatever the reason, eating when you are stressed can help to alleviate anxiety, even if only momentarily. The key to avoid stress eating is to know your triggers and to actively try to avoid them.

EATING TO MASK YOUR FEELINGS

Whether you feel sad, depressed or lonely, eating to try to push down your feelings is never the answer. Instead, try to identify why you are feeling this way and talk to someone if you need to.



Spire

Hartswood Hospital

See a private GP at a time to suit you

We provide quick and easy access to private GP services – when you need it. There are a range of appointment times available Monday to Saturday at Spire Hartswood Hospital.

At Spire GP we offer:

- Advice and support for your healthcare needs
- Appointment times to suit you
- Easy access to Spire Healthcare's network of specialists with no waiting time
- Modern, private healthcare settings
- Private prescriptions and referrals for further investigations if needed
- 30 minutes to discuss your concerns with an experienced GP

Spire GP is part of Spire Hartswood Hospital, which means we will help provide you with continuity of care if you need further tests or treatment.

Book to see an expert today

Search 'Spire Hartswood Hospital'

Call 01277 266 766



Looking after you.



BOXGYMFITNESS

Boxing HIIT circuit classes with a TWIST!

This brand NEW boutique fitness studio will be running classes of high intensity boxing and circuit training focusing on a full body complete workout.

Following the grand opening, BoxGymFitness will be open 7 days a week with the highest quality trainers bringing their own unique style of training, you're sure to find the perfect training partner.

Each 45 minute session is focused on the basic fundamentals of boxing, combining easy to follow combinations along with body weight and light weight workouts on our functional wall stations.

Get ready to train hard, feel the burn... But most of all have FUN!!

As well as our state-of-the-art training studio, we are fully air conditioned throughout and offer high standard shower facilities.

Think LA/New York fitness scene... Boutique and unique...

Here to build bodies, help minds and GOOD vibes!

For bookings please download our Box Gym Fitness APP



#boxgymfitness

BRENTWOOD STUDIO

BoxGymFitness

17-19 Kings Rd, Brentwood, Essex CM14 4DJ

01277 211140

hello@boxgymfitness.co.uk

www.boxgymfitness.co.uk





Pay as you go treatment built around you

Whether you're ready to see a Consultant or are simply searching for prices, we can help.

Pay for the treatment you need – and feel better faster.
Some of our services include:

- Breast Care
- Cataracts / Eyes
- Cosmetic Surgery
- Endoscopy
- Hernia Repair
- Varicose Veins
- Cardiology
- Children's Services
- Ear, Nose & Throat
- Gastroenterology
- Orthopaedics/Sports Injuries
- Women's & Men's Health

Visit nuffieldhealth.com/hospitals
Or call 01277 554 181

Nuffield Health Brentwood Hospital
Shenfield Road, Brentwood,
Essex CM15 8EH

THE WORLD OF

Mr Smith



In the age of Instagram personal trainers, it takes quite something to stand out from the crowd, though British muscleman and health heavyweight James Smith seems to have achieved just that.

James Smith, a personal trainer (PT), body coach, diet expert, life guide and educator, is the perfect foil to all the impossibly toned, happy, talented, loaded influencers that saturate our Instagram feeds.

Sure, the 31-year-old Bondi-based trainer has a physique most of us will never get anywhere near, and if you look at the simply seductive backgrounds on his photo shoots you will get the impression his is a life to be craved. Yet as soon as James begins speaking on health, fitness, well-being and our ability to be better people both physically and mentally, you discover that this is someone not dressed up in the fake realities of so many PTs.

He is self-deprecating, funny and, while a slight upper middle-class twang may tell us more about his background than he would like to give away, his expletive-decorated videos and posts paint someone fully appreciating the fact that inspiring people to be better means being down to earth.

His Instagram feed (@jamesmithpt) has more than 640,000 followers; and in November, his book *Not a Life Coach* hits the shelves, following on from the hugely successful *Not a Diet Book* which, somewhat fortuitously, was released just a month before lockdown.

Whether focusing on diet or self-help, his mode is as the maverick, and someone bringing enjoyment into personal improvement.

"For me, real help must come in the form of true honesty. If you start from a point of wanting to achieve something unrealistic, you will never get there," he says. "Start low, hit your target, then restart at a higher level. By trying not to change your life so much, you may inadvertently do just that!"

Photo credit: www.jamesmithacademy.com



ORGAN DONATION

awareness



Did you know that there are currently 3,108 people in the UK waiting for a transplant at this exact moment?

Organ Donation Week is designed to encourage people to make a decision about organ donation and to share their choice with their family and friends.

WHAT IS THE CURRENT LAW REGARDING ORGAN DONATION?

You may not know this, but the English organ donation law has changed to a 'opt out' system rather than an 'opt in' one.

What exactly does this mean? In a nutshell, if you are not in an excluded group and you have not confirmed whether you want to be an organ donor or not, it will be considered that you agree to donate your organs when you die.

CAN ANYONE REGISTER TO BE AN ORGAN DONOR?

There is no age limit for organ donor registration, and anyone can decide to become an organ donor after death. However, if you

want to add your name to the NHS Organ Donor Register, you will need to live in the UK, Channel Islands or Isle of Man.

WHAT YOU SHOULD KNOW ABOUT THE ORGAN DONATION PROCESS

- All donors are treated with dignity and respect.
- There are strict regulations in place to help care for the dying, and organs will not be removed until a patient's death has been confirmed in line with these criteria.
- Organs cannot be sold or bought.
- Your body will be returned to your family after donation.
- Families are always consulted before organ donation goes ahead.

WHAT CAN I DONATE?

If you decide to register as an organ donor, you have the choice to donate organs such as your heart, lungs, kidneys, liver, pancreas and small bowel. You can also choose to donate your tissues, including your bone and corneas.



*Residents can't wait to move in.
Come and see why.*

**Show Suites Now Open
Monday – Friday
9am – 5pm**

Come and see for yourself how industry-leading residential and dementia care are just the beginning at Hutton View.

Our care is supported by award-winning facilities that mean residents can carry on doing the things that make their lives theirs - from gardening and baking, to just enjoying a cup of coffee in the café.

There's such excitement about Hutton View - and this is your chance to see why. Get in touch today to make an appointment or for more information.

Call us on **01277 575319** or email huttonview@hallmarkcarehomes.co.uk.

Our show suites are now open Monday to Friday, 9am to 5pm, by appointment only.

Hutton View Care Home, 3 Rayleigh Road, Hutton, Brentwood, CM13 1AR
www.hallmarkcarehomes.co.uk

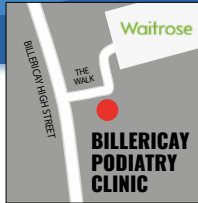


Problems with your foot health?

**AT BILLERICAY PODIATRY CLINIC
WE CAN HELP YOU**

Come and see us for effective treatment of tendonitis, plantar fasciitis or muscular issues. We use Extracorporeal Shockwave Therapy to deliver effective pain management treatment to the affected area, reigniting the healing process with a view to resolving the issue.

CHIROPODY, PODIATRY & FOOTWEAR CENTRE



01277 659200
www.essexfootcare.com
2 The Walk, Billericay, Essex CM12 9YB

Make-up studio & body sculpting clinic



Amy-Lucy

Hello Vision readers

I am Amy-Lucy, I own Amy-Lucy Studio which is a home based make-up & body sculpting clinic for women and men based in Brentwood.

Make-up

I decided to become a make-up artist due to my love for make-up and always receiving compliments on my own make-up looks.

With some kind words from my friend, I was encouraged to train at a professional level.

From the moment I attended my first course I knew I had made the right decision. I furthered my education in make-up and went on to do a Plouise Make-up Academy course, learning all the latest techniques and using all the latest products on the market. I was in my element.

I'm equipped and knowledgeable for all styles of make-up looks for any occasion.

Body Sculpting

I decided to train after having a Brazilian bum lift myself. I fell in love with the treatment and decided I wanted to offer it. I am fully equipped and knowledgeable in all body sculpting procedures. I perform them using a combination of cavitation and radio-frequency to achieve a sculptured effect with no pain and no downtime. This procedure is non-surgical and non-invasive and takes 40 minutes per session (recommended course of six). I perform my revolutionary procedures using Loulabells advanced aesthetic's technology.



Men's skin toning & tightening after one treatment



Men's stomach after one treatment

I am passionate and a perfectionist in everything I do and I believe if you look good on the outside, you feel good on the inside.

THE CONFIDENCE THAT I GIVE TO MY CLIENTS IS PRICELESS.

Amy-Lucy

SherwoodHealthcare

Independent Specialist Healthcare Advisers

Your local independent healthcare insurance broker

"Your protection under one roof"

- Private Medical Insurance ● Life Insurance ● Income Protection
- Health Cash Plans ● International Medical Insurance
- Travel Insurance ● Dental Insurance ● Health Screening
- Business Insurance ● Employee Assistance Programme



Contact us today for a free no obligation quote
01277 822922

Enquiries@sherwoodhealthcare.co.uk



Sherwood Healthcare is a trading style of DJ Healthcare Limited which is authorised and regulated by the Financial Conduct Authority. Firm Reference number 627643

Look good – feel good

with professional make-up & body sculpting

- ✦ Radio Frequency/Cavitation Benefits ✦ Fat Reduction
- ✦ Cellulite Removal ✦ Boosts Collagen & Elastin Process
- ✦ Skin Tightening & Toning ✦ Skin Rejuvenation
- ✦ Improves Skin Texture ✦ Smooths Fine Lines & Wrinkles



Brazilian Bum Lift after three treatments

AREAS TREATED Buttocks ✦ Stomach ✦ Legs ✦ Arms ✦ Face ✦ Hands ✦ Décolletage

BOOK YOUR FREE 15 MINUTE CONSULTATION AND RECEIVE A FREE HAND DEMO WHILST WE DISCUSS YOUR OPTIONS

07930 506123 ✦ 01277 230171 ✦ amylucystudio@mail.com

@amylucymua ✦ [amylucystudio](https://www.facebook.com/amylucystudio) ✦ [amylucystudio](https://www.instagram.com/amylucystudio)

Brentwood Based Clinic (Just off Hanging Hill Lane)



BEAUTY



Discover the beauty of NON-COMEDOGENIC Skincare

The latest buzzword in beauty, non-comedogenic, refers to any skincare product that is formulated to not cause blocked pores. It's ideal for those who suffer with acne, blackheads and oily skin. Let's take a closer look at non-comedogenic make-up and skincare products and how they work.

What are blocked pores?

Comedogenic originates from the word 'comedones', which are the imperfections commonly found in those who experience acne, otherwise known as blocked pores. There are two types of blocked pores:

- > Open comedones, or blackheads, which are caused when sebum reaches the skin's surface, opens and turns black.
- > Closed comedones, whiteheads, where sebum grows beneath the skin surface.

What causes blocked pores?

There are many factors that contribute to blocked pores, including:

- Heavy make-up use | Excessive oil production | Hormones | Not having a good skincare routine | Sweating | Sun exposure | Genetics

Does non-comedogenic make-up work?

Although non-comedogenic make-up and skincare products will not prevent breakouts, what they will do, unlike other beauty products, is not contribute to

any more acne. Not the ideal solution to your stubborn spots, but a helping hand, nonetheless.

What is the difference between non-comedogenic products and oil-free products?

Those with oily, blemish-prone skin will be all too familiar with oil-free skincare and make-up products that promise to reduce spots and balance out your skin. Oil-free products are free from petrolatum but can contain other oils. However, non-comedogenic products differ in their approach as they are completely free of pore-clogging ingredients.

Here are a few non-comedogenic skincare products that you can try:

- > Estée Lauder Double Wear Stay-in-Place Make-up Foundation
- > NARS Radiant Creamy Concealer
- > Maybelline New York Shine Free Oil Control Loose Powder
- > Neutrogena Oil-Free Acne Moisturiser
- > Cetaphil Cleansing Lotion for Sensitive Skin
- > Neutrogena Ultra Sheer Dry Touch Sunscreen



Regrow HAIR CENTRE



Hi Visioners

It's been a while since we last caught up, as I am sure you can imagine COVID-19 has played its part with keeping us quiet for a few months, but we are back now and raring to go. Our patients are coming back in force and keeping them safe and well is our paramount focus.

We regularly send people to our sister centre in Turkey for hair transplants and wanted to lift the lid on the stigma attached to cosmetic surgery abroad. As the results we yield speak for themselves.

Sure, you have read in the paper/seen on TV/heard on the radio of some horror stories about botched transplants/cosmetic surgery from abroad, but let's be honest; this can happen anywhere in the world— it happens in our country all the time but is not reported anywhere near as prominently as cases abroad. If I can use a rather crass analogy: you are always on time at work, often early but your dedication to the job you love never gets mentioned – paradoxically, the minute you are late the boss gives you a good telling off and it's hard to defend.

The main point here is understanding and working with a reputable company who can guarantee your safety, your results and your trust – without this you are more likely to be unhappy with your results.

This is where we come in.

At the Regrow Hair Centre, we have carefully selected and invested in one of the best Turkish hair centres based in Istanbul, which has carried out over 40,000 transplants and also where we regularly send our

patients – I can testify for this company as I have had my own hair transplant there with them (you have to try before you buy, right?)

We take care of everything for you – we pick you up from the airport, check you in to your hotel, get you to the clinic, ensure your safety, have an English speaking translator stay with you for the whole day taking care of your needs and managing your expectations of your transplant and then, upon your arrival back to the UK, we take care of you here in Shenfield until the job is done.

The whole process is so easy – we guarantee with all of our work that, if it doesn't work, we will give you



your money back or do another transplant absolutely free (we haven't had one customer do this yet). The results are spectacular – come and see for yourself!

If you have thought of a transplant and been

bombarded on social media about a Turkish clinic offering you a transplant for silly money – be very careful – working with a reputable English company who takes care of everything and knows who is working on your hair should count for a lot. Come and have a chat with us to find out what is possible in reforming and regrowing your hair – we have you covered.

As a special treat, give the code VISION10 when you come in to receive 10% off your transplant – be quick; this offer will definitely not last for long.

For all your hair loss needs, call us on 0800 246 1606.

Regards,
Lawrence

0800 246 1606 | www.regrowhaircentre.com | info@regrowhaircentre.com

27 Hutton Road, Brentwood, Essex CM15 8JU



DENTAL HYGIENIST APPOINTMENTS AVAILABLE

Weekdays and Saturdays

NEED A NEW LOCAL FAMILY DENTIST?

WE CAN COVER ALL YOUR TREATMENT NEEDS

- General family dentistry
- Cosmetic dentistry
- Functional orthopaedic & orthodontics
- Conscious sedation
- Implants & reconstruction
- Mini-implants
- Oral hygienist
- Sport gum-shields & night guards



**SPECIAL OFFER FOR STUDENTS*
HYGIENIST FEES REDUCED TO £40.00**
*Current student card required

Email: info@dentalpracticeshenfield.com

Web: dentalpracticeshenfield.com

40 Hutton Road, Shenfield, CM15 8LB

FREE parking for patients.

Shenfield station is just 5min walk from the practice.

Find us on /shenfielddentist

@shenfieldteeth



INDEPENDENT CARE PLAN £20 PER MONTH

1 x Dental Check-ups ○ 3 x Dental Hygienist Visits

10% OFF TREATMENTS INCLUDING X-RAYS

NEW PATIENTS WELCOME SPECIAL OFFER

BOOK YOUR CONSULTATION TODAY - CALL 01277 233912

FREE scale and polish worth £57.00 once you register and visit us for your first consultation

Terms & conditions apply



Bangs

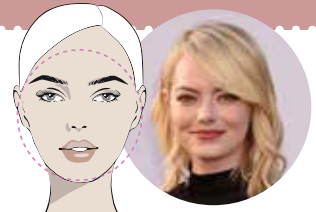
ON TREND



BEAUTY

The flexible and fabulous fringe rarely goes out of fashion. Instead, it adapts to the season at hand and offers a simple yet stylish way to update your look.

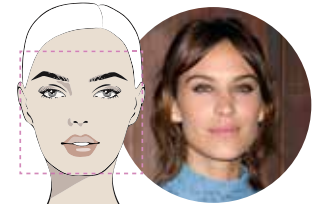
However, to get it right and avoid the common pitfalls of bad bangs, you need to choose the right fringe for your face shape.



THE SIDE FRINGE

Best for round face shapes

Popular with the likes of Mila Kunis, Emma Stone and Renée Zellweger, the side fringe is incredibly flattering for those with more round faces. Opt for a feathered fringe to give your face a more slender look and to draw attention to your eyes and mouth.



THE A-SHAPED FRINGE

Best for square and oblong faces

This face shape tends to be wider at the cheeks and more angular around the jawline. A soft A-shaped fringe can help soften your features and switch the focus to your eyes.



THE CURTAIN FRINGE

Best for heart-shaped faces

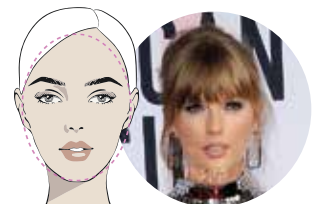
A long side fringe, aka the curtain fringe, is ideal for those with a heart face shape as this style will help widen out a narrow chin and highlight both your cheekbones and jawline. Ask for a feathered look to perfectly balance softness and structure.



THE FULL BLUNT FRINGE

Best for those with a small forehead

You may think that having a small forehead means you cannot pull off a fringe, but this is simply not true. A full and blunt fringe will instantly add length to your face and broaden your forehead. This style suits those with poker-straight hair better than those with waves.



THE FULL CHOPPY FRINGE

Best for oval face shapes

With this face shape you want a full fringe that will cover your forehead but not one that will overpower your delicate features. Adding choppyness at the ends will create a softer and more textured feel.

Photo credit: Featureflash Photo Agency/Shutterstock.com, Kathy Hutchins/Shutterstock.com, Tinseltown/Shutterstock.com

We support people to change their lives by putting their health first

For virtual one-to-one support and FREE doorstep delivery



Contact
The Billericay Team
07733 230848

THE 1:1 DIET

by Cambridge Weight Plan®

Tutor

Economics
A-Level
GCSE

Experienced
Teacher

Please contact me on
07760 477 442

Email
pmrees52@outlook.com

Get the Right Look

Affordable designer & non designer frames, sunglasses & contact lenses

- ◆ Aquila Optometrists are an independent practice
- ◆ We are experts in eye care with the latest technological advancements
- ◆ We specialise in fashionable & exclusive eyewear



AQUILA
OPTOMETRIST

01277 624916

✉ aquilagroup@live.com

📍 aquilaoptometrist1

72 High Street Billericay, Essex CM12 9BS



Dr. Martens

we love you



FASHION

Our long-lasting love affair with Dr. Martens has spanned seven decades and shows no signs of slowing down. They are worn by men, women and kids alike, so let's take a look at what makes this iconic footwear brand so special.

THEY OFFER UNRIVALLED COMFORT: Although you will need to break them in a bit, Dr. Martens will undoubtedly be the most comfortable boots you ever own. The hard leather has the unique ability to be

able to mould perfectly with the shape of your foot, resulting in a feeling of walking on air.

THEY LAST FOREVER: Dr. Martens might not be the cheapest boots you have ever bought, but they will offer the best value for money. Unlike other leather that may split or crack, Dr. Martens will last you a lifetime.

THEY TRANSCEND TRENDS: As all other footwear trends come and go, and then come again, Dr. Martens have stuck resolutely to their fundamental USPs, and fashion followers love them for it.

THEY ARE INCREDIBLY VERSATILE: There are so many different looks that you can go for with a pair of Dr. Martens:

- > Sophisticated with chinos and chunky knitwear.
- > Street style with cut-offs and a slogan tee.
- > Casual with a simple pair of black trousers and matching jumper.
- > Modern with jeans and a leather jacket.

CELEBRITIES OF ALL AGES LOVE THEM: Miley Cyrus, Diane Keaton, Susan Sarandon, Jared Leto and Robert Pattinson have all been papped rocking these vintage and stylish boots.

THEY COME IN A WIDE VARIETY OF COLOURS AND

DESIGNS: You can pretty much find a pair of Dr. Martens in every colour you can think of, plus they do some truly unique designs, including one with renaissance art printed all over them. Need a bit of extra height? Yes, Dr. Martens come in heeled versions too.



Photo credit: Wozzie/Shutterstock.com, kudryavtsev dmitriy/Shutterstock.com



RAZZAMATAZ
THEATRE SCHOOLS

REOPENING!

THE PERFECT PLACE TO
DANCE - SING - ACT
Whilst Safely Having Fun

SATURDAY OR
WEDNESDAY SESSIONS
AGES 3-18

RAZZAMATAZ STUDIOS,
BRENTWOOD, CM13 3PZ

SMALL CLASS SIZES
IN LINE WITH
GOVERNMENT GUIDELINES

FREE TRIALS FOR LAST FEW AVAILABLE PLACES
9TH OR 16TH, 12TH OR 19TH OF SEPTEMBER

BOOKING ESSENTIAL - Call Jessica on 07955 29 33 29
Email brentwood@razzamataz.co.uk Web: brentwoodandhornchurch.razzamataz.co.uk



**Professional Tuition
Online & In Centre**

Kip McGrath
EDUCATION CENTRES

Find out how your child
**IS REALLY PERFORMING
IN ENGLISH & MATHS**

Book a free assessment

Ofsted
Registered

Childcare vouchers and HMRC tax credits accepted

Shenfield 01277 554020
www.tutoringbrentwood.co.uk

Billericay 01277 621515
www.kipmcgrath.co.uk

- ✔ Qualified Teachers
- ✔ Personalised Success Plan
- ✔ Reception-A Level and 11+
- ✔ 11+, GCSE, SATS & Dyslexia



NIGHT SQUATTERS

How to keep children in their own rooms – and out of your bed – at night

When your darling daughter or darling son is able to sleep in something that doesn't come with the design feature of prison-like bars as would a cot, it's a monumental moment – your little one's ascent into childhood now means they have their own bed.

Sadly, as many parents have discovered, the lack of those confines means it's effortlessly easy for your young one to embark on night-time expeditions into your bed, something that benefits the sleep patterns of no one.

Here are some tips for ensuring your sneaky non-sleeper stays put:

Routine

As ever, a solid, settled night-time routine is essential. A set schedule and timing (dinner followed by bath followed by story, etc) will enhance and prolong sleep, as will avoiding 'over-napping' during the day.

Light and dark

In these brighter, lighter mornings, it's imperative to

have a good blackout blind – there's nothing that lures a child out of bed more than the early rising of the sun... even if that's at 5am!

On the flipside, keep a subtle nightlight nearby. Fear of the dark will always get little ones heading for reassurance and comfort... and big ones too.

Sound planning

Consider as well soundproofing and ensuring others in the home keep their nocturnal manoeuvres to a minimum, from loud late-night games to simple stuff like not flushing noisy toilets.

Encouragement

At the age your youngster gets his or her first proper bed, you'll already be working on the greatest sleep stimulator of them all – words. Reaffirming that 'big kids' sleep in their own beds, and stay there, and perhaps a gentle reminder that sleeping in one means not having to go back into a cot, can get your precious cargo journeying off on to a dreamy voyage... speaking of which, you may want to grab a few hours yourself.



Sensational SLOW COOKER AUTUMN COCKTAILS



Photo credit: realhousewomens.com, amrindulimom.com

Although traditionally used for stews and soups, slow cookers are now being tested out on a wide variety of dishes, including cooked breakfasts, lasagne and even steaming hot cocktails. What more could you want on a blustery autumn day?

BUTTERBEER RUM (YES, JUST LIKE IN HARRY POTTER BUT WITH A BOOZY HIT)

You will need: 6 cups water | 2 cans cream soda | 1 cup brown sugar | ½ cup unsalted butter | ½ cup butterscotch syrup | 3 cinnamon sticks | 1 tsp vanilla essence | 1½ tsp salt | 2 cups spiced rum | Whipped cream and golden sparkling sugar crystals for decoration

How to make: Put in the water, cream soda, sugar, butter, ¼ cup of butterscotch, cinnamon sticks, vanilla and salt | Cover and cook for 3–3½ hours | Stir in the rum | Use the remaining butterscotch to coat the rims of your glasses | Pour, top with whipped cream and sprinkle with sugar crystals

INDULGENT HOT CHOCOLATE

You will need: 1 litre milk | 300ml double cream | 200g chopped dark chocolate | 100g chopped milk chocolate | Whipped cream, marshmallows and chocolate shavings to serve | Optional: liqueur or schnapps – coffee, peppermint or cinnamon

How to make: Pour the milk and double cream into your slow cooker | Add the chocolate | Cover and cook on low for 2 hours | Remove the lid, give it a good stir, then replace the lid and cook for a further 20 mins | Add 4 shots of your chosen liqueur | Spoon into mugs and top with marshmallows, cream and chocolate shavings

CARAMEL APPLE CIDER

You will need: 2 cups vodka | 8 cups apple cider | 1 cup caramel syrup | 2 tsp ground cloves | 2 tbs cinnamon | ¼ cup brown sugar | Apples to garnish

How to make: Add all the ingredients to your slow cooker | Cook on low for 3 hours | Serve in mulled cups or glasses with sliced apples and cinnamon sticks

YOU CAN NOW ENJOY THE FULL PIE & MASH EXPERIENCE WITH

ROBINS Vegan Pie and Mash



Firstly, this is not about changing the Great Pie and Mash we have been serving for Five Generations.

At Robins we wanted to make a pie that is as delicious as our original pies with a savoury meat free mince (soya) and rich savoury gravy encased in our hot flaky pastry, also our mash and liquor is already suitable for vegans and vegetarians.



**BASILDON BRANCH AT 65-67 MARKET SQUARE, BASILDON SS14 1DE
CALL TO ORDER ON 01268 271713**

WANSTEAD • CHINGFORD • BASILDON • ROMFORD • SOUTHEND

Gastropub



Under New Ownership

Award winning chef • Sunday Roasts • Large garden
Outside bar with terrace & booths

Call 01277 840201 • Stock Road, Chelmsford, Essex CM2 8LB



TESCO In the Club



...a piece of technology that changed our shopping habits forever

In 1995, a former Tesco shelf-stacker came up with the idea of rewarding customers' loyalty by giving them points that could be redeemed against future purchases. The concept itself wasn't revolutionary, but in a rapidly evolving digital age, the knowledge, insight and trend-tracking the Clubcard scheme offered meant the retailer's understanding of consumer habits had never been so great.

The man behind the idea was Sir Terry Leahy. A Liverpoolian who started on the shop floor, literally, he had risen to CEO level and was already well on the way to rejuvenating Tesco's fortunes; but his adoption of the Clubcard took the supermarket chain from a top three UK retailer (in terms of profit) to a top three global entity.

The introduction of the Clubcard drove both him and the supermarket on to unparalleled heights – the most efficient method ever for analysing consumer spending behaviour. It also sparked ferocious loyalty, and enabled Tesco to

extend into sectors it had never before touched – from tech to travel to insurance – with a certainty of success brought about from truly knowing who their customers were and how they would respond to products and offers.

These days, 17 million of us have a Tesco Clubcard – that's more than one-third of the adult population in the UK. Relunched in 2009 and again last year with Clubcard Plus – which promised to save the average large family £400 a year on their shopping bill – our adoption of the technology has now become part of our daily routine.

Numerous other brands have followed suit and enjoyed the rewards over the past quarter of a century, yet none can boast a loyalty scheme that has had such a profound effect on an already successful business.



ANTENNA ERECTING **SIZE MATTERS?**

AERIALBASE.COM
FREEPHONE: 0800 193 0017
OR CALL US ON 01277 833 047

Checkatrade.com **9.96/10**
Where reputation matters

BOOK ONLINE: AERIALBASE.COM

Freesat Freesat HD digital BT Vision sky FOREIGN SATELLITES

SERVICE TV AERIAL SATELLITE INSTALLATION
REPAIRS TV WALL MOUNT FIXED

VISA CASH or CHEQUE **GET YOUR FREE QUOTE TODAY!**
FREE ADVICE/FREE CALLOUT/FREE QUOTE

Complying with **Government Covid 19** Guidelines

COMPUTER SERVICES

Don't struggle with IT, call the experts!

- Friendly support direct to your door
- For all your computer needs
- Low rates (no VAT), no call out charge
- Homes and small businesses covered

01277 523127
www.dhcomputing.co.uk
help@dhcomputing.co.uk

EMERSON
 LIFTING SAFETY STANDARDS

CRANE HIRE | CONTRACT LIFT
 TRAINING | TRANSPORT

0203 637 0242
info@emersoncranes.co.uk
www.emersoncranes.co.uk



Andys Aerials

Essex CM4 **Your local aerial installer**

- **New aerial & satellite installations**
- **Aerial & satellite repairs**
- **Extra TV points**
- **TV wall mounting**
- **System design & install**
- **Freesat & YouView installations**
- **Sky installations – repairs & upgrades**

Family-run business with over 20 years of experience.

Trading Standards Approved Aerial Installer.

Quality Workmanship At Sensible Prices.



digital 
Approved Member

Freephone: **0800 77 97 047**

Mobile: **07916 305 977**

Mobile Local Rate: **0 333 900 333 2**

www.andysaerials.com

BILLERICAY CLEARANCE

FULL WASTE CARRIERS LICENSE

CHEAPER THAN A SKIP!

FROM SINGLE ITEMS TO FULL LOAD

Shed • House • Loft • Shops • Garden • Site • Garage • Office

WE ALSO PROVIDE A RIP OUT SERVICE

Kitchens • Bathrooms • Full Houses

WE LOAD!

CALL CHRIS FOR A FREE ESTIMATE

DAYTIME: 07966 155 112 • EVENING: 01277 417384

ALL AREAS COVERED

SAVE

yourself the effort?



It's fair to say savings accounts have probably never seemed less appealing. From buoyant interest rates well into double digits back in the mid-1990s, the Bank of England base rate has plummeted in recent years, dropping to a historic low of 0.1 per cent in March.

The recent lockdown means government initiatives to stimulate spending are additionally affecting the appeal of savings accounts, to the point where the consideration of a negative base rate has come into view... and with it the possibility that savers will actually have to pay to 'store' their money.

But it's not all bad news for savers:

> One-year fixed rates for savings accounts are still tracking considerably above the Bank of England base rate, with rates of around 1 per cent still possible... although in relation to a similar level of inflation, there isn't any real 'gain' to be had; in fact, with most 'everyday' savings accounts you're losing money.

> For those still looking to gain a return on their savings, it could be that switching from a traditional savings account to a Lifetime, Fixed Rate or Easy Access cash ISA is the sensible way forward. The former will give you a 25 per cent return (up to £4,000 only), while a Fixed Rate ISA can still net you up to 1.3 per cent.

> Finally, remember savings aren't all about profit – many people save for security, to have a feelgood 'project', and to put money away for a rainy day. Unlike investments, savings accounts are protected to the hilt, so when you want your money it is protected and will be there.



BUSINESS & PROPERTY

KNOW YOUR NUMBERS THIS TAX YEAR

It is well worth being aware of the tax allowances and exemptions available in 2020–21 to be able to maximise them for your own individual financial planning. In this first of a two-part article we look at some of the figures that are worth knowing regarding personal taxation and pensions.

PERSONAL TAXATION

The National Insurance threshold is now £9,500. The Personal Allowance remains at £12,500, while the £50,000 higher-rate threshold remains unchanged in parts of the UK where Income Tax is not devolved.

PENSIONS

A major attraction of paying into a pension is the tax relief available: 20 per cent for basic rate taxpayers, 40 per cent for higher rate and 45 per cent for additional rate taxpayers.

The Annual Allowance for pensions remains at £40,000. It will begin to taper for those who have an income above £240,000 (the £200,000 allowance plus the £40,000 you can save into a pension).

This means that for every £2 of adjusted income above £240,000, the Annual Allowance for that year reduces by £1. The minimum Annual Allowance has reduced from £10,000 to £4,000.

The Lifetime Allowance – the maximum amount you can have in a pension over a lifetime – has increased to £1,073,100.

Since April 6, the new single-tier State Pension has risen to £175.20 per week and the older basic State Pension increased to £134.25 per week.

In our next article we will look at savings and inheritance tax.

At HCR we can advise you on the sensible steps to reduce the amount of tax you pay, safeguarding your wealth for the future. We take the time to understand our client's unique planning needs and circumstances, so that we can provide you with the most suitable solutions in the most cost-effective way. For a free review of your current financial situation, please contact Karyn Vogel on 01277 654153.



THE MOTHER NATURE OF ALL JOBS IS ON YOUR DOOR STEP!



Recruiting now for careers in Account Management, Business Development, IT, Finance, Marketing and HR.

www.ground-control.co.uk/careers

Join An Award Winning Company



- ✓ SAVINGS AND INVESTMENTS
- ✓ INHERITANCE TAX PLANNING
- ✓ PENSIONS ✓ PROTECTION

Tel 01277 654153 • www.hcrifa.co.uk • Fax 01277 658383
Suite 5, First Floor, Foremost House, Radford Way, Billericay CM12 0BT





Construction & Industrial Recruitment Specialists

Established since 2008

- We are a local business and we are looking to work with other local businesses
 - We can supply staff all over Essex & London
- We offer Temporary, Fixed Fee Perm & Temp to Perm (£0 End Fee) options
 - Our core beliefs are Honesty and Transparency

**So if you are looking for staff – look no further
Get in touch with Bluebaring today!**

“We recruit so you don’t have to”

info@bluebaring.com ● 01708 524332 ● www.bluebaring.com ● Follow us on

We are looking for consultants to join our team. If you are looking for a new role in recruitment, email our Director Scott Hart on scott@bluebaring.com



**IF IT MATTERS TO YOU,
IT MATTERS TO US.**

What are you looking to insure?



Fleet



Liability



Landlord



Shop

Contact Coversure
Brentwood today

01277 295504

www.coversure.co.uk/brentwood | brentwood@coversure.co.uk



ENSURE *you* INSURE

Your home insurance checklist

Insurance is about protecting ourselves and those around us, so here's a handy checklist outlining what you definitely need, and what might be worth considering.

CONTENTS INSURANCE

In the event of an accident or theft from within your home, it's vital your possessions are covered. Many see paying out for contents insurance as a waste of money, but we will all claim for something at some point. Knowing you're covered can bring a huge sense of relief in the midst of what is likely to be a disappointing event or episode.

You can also extend your contents insurance to items you take outside the home – consider bikes, watches, phones and more; but read the small print to ensure you're covering what you think you are.

BUILDINGS INSURANCE

Also known as house insurance, this covers your bricks and mortar, and whilst not a legal stipulation, most mortgage lenders will insist on you taking it out if you are embarking on home ownership.

LIFE INSURANCE

Purely for the protection of those around you; should the day come when you're not around, you will want to ensure your dependants have enough to get by. For what is often a small amount each month, life insurance can at least mean you are not adding financial loss to the emotional loss experienced by loved ones.

INCOME PROTECTION

Particularly good for those who are self-employed, income protection means that in the event of illness, bills can still be paid. If 2020 has taught us anything where health is concerned, it's to expect the unexpected!

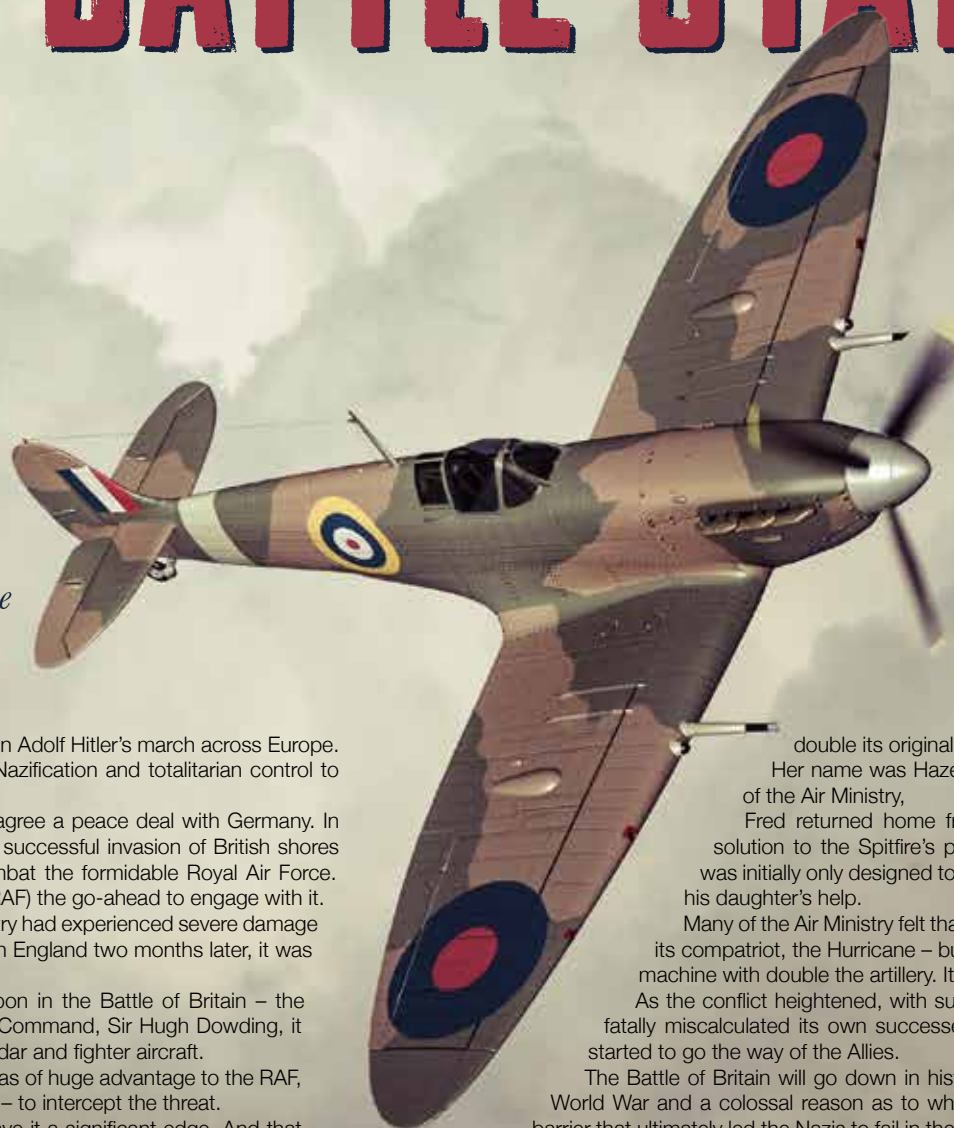
CRITICAL COVER

Different from life insurance, critical cover will pay out a lump sum if you are diagnosed with a critical illness during the life of your policy. That means you'll be provided for by the policy to restore some sense of comfort and peace.





BATTLE STATIONS



This year marks eight decades since one of the most important British victories during the Second World War: the Battle of Britain.

It's June 1940 and France has been quickly defeated by Germany in Adolf Hitler's march across Europe. His aim: to bring Gleichschaltung (coordination), the process of Nazification and totalitarian control to the continent.

Hitler was expecting the British to also fall into line and to try to agree a peace deal with Germany. In the first instance, he knew that to have any chance of setting up a successful invasion of British shores (which was codenamed Operation Sealion), he would need to combat the formidable Royal Air Force. Subsequently, he gave the Luftwaffe (the German equivalent of the RAF) the go-ahead to engage with it.

Even though the German occupation of France was rapid, the country had experienced severe damage to its air fleet; yet when asked to go to battle in the skies of Southern England two months later, it was ready.

However, the Luftwaffe hadn't reckoned on Britain's secret weapon in the Battle of Britain – the Dowding System. Named after Commander in Chief of the Fighter Command, Sir Hugh Dowding, it was a remarkable network that brought together ground defence, radar and fighter aircraft.

Knowing where and when the Luftwaffe was on its way to Britain was of huge advantage to the RAF, whereby it could then scramble fighters quickly – notably the Spitfire – to intercept the threat.

However, in truth, it was in the way the Spitfire was armed that gave it a significant edge. And that was thanks to a young mathematician, whose brilliant calculations meant it could leave the ground with

double its original gun capacity.

Her name was Hazel Hill, and she was the daughter of Fred, who was part of the Air Ministry,

Fred returned home from work one day and asked for help in providing a solution to the Spitfire's perceived lack of firepower. The iconic British warplane was initially only designed to have four guns on it; he felt it could be more but needed his daughter's help.

Many of the Air Ministry felt that eight guns would be too heavy for the Spitfire – and for its compatriot, the Hurricane – but Fred and his daughter Hazel found a way to equip the machine with double the artillery. It was a significant advancement, and it worked.

As the conflict heightened, with support from Commonwealth pilots, and as the Luftwaffe fatally miscalculated its own successes, a three-month-long skirmish in the skies eventually started to go the way of the Allies.

The Battle of Britain will go down in history as one of the most important parts of the Second World War and a colossal reason as to why Germany was unable to seize Great Britain. It was a barrier that ultimately led the Nazis to fail in their attempt to take control of Europe, and it preserved the freedom that we acknowledge with gratitude and humility today.



PUZZLES & TRIVIA

PUZZLES

Answers can be found on the Contents Page 4



Briony May Richardson ARTIST & INTERIOR STYLIST

Bespoke artwork for your interior space
Interior styling & colour schemes

www.brionymayrichardson.co.uk

@brionymayrichardson
richardsonbriony@gmail.com

07542 273 964

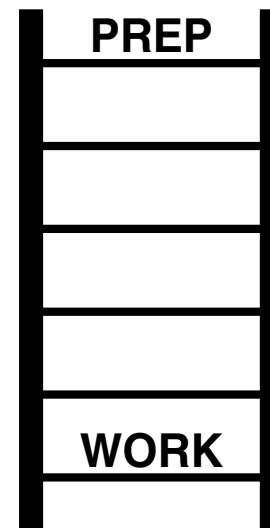
- ▶ ANTLIA
- ▶ AQUILA
- ▶ BOOTES
- ▶ CARINA
- ▶ CASSIOPEIA
- ▶ CENTAURUS
- ▶ COLUMBA
- ▶ CORVUS
- ▶ DELPHINUS
- ▶ ERIDANUS
- ▶ HERCULES
- ▶ HYDRUS
- ▶ LEO MINOR
- ▶ MENSA
- ▶ PEGASUS
- ▶ PHOENIX
- ▶ SAGITTA
- ▶ SCULPTOR
- ▶ SERPENS
- ▶ TUCANA

Y	T	R	S	B	S	U	N	A	D	I	R	E	A	O
X	E	U	A	U	S	S	U	S	A	G	E	P	I	W
S	T	S	A	B	N	C	O	L	U	M	B	A	E	S
N	Q	E	G	I	C	I	U	A	Z	E	I	L	P	B
R	H	R	R	S	E	S	H	L	M	P	U	U	O	V
A	U	P	E	S	N	S	Q	P	P	E	Z	C	I	C
N	J	E	Y	R	T	E	P	D	L	T	N	R	S	O
A	I	N	B	S	A	L	A	X	A	E	O	S	S	R
C	O	S	O	I	U	H	Q	I	I	D	R	A	V	
U	K	A	O	V	R	C	T	Y	U	N	L	T	C	U
T	S	N	T	R	U	R	I	S	D	I	E	T	A	S
R	P	I	E	K	S	E	R	K	H	R	L	O	N	T
A	F	R	S	J	U	H	R	A	V	E	U	A	H	A
O	A	A	K	R	O	N	I	M	O	E	L	S	R	P
R	H	C	A	T	T	I	G	A	S	E	L	A	Z	H

DID YOU KNOW?

- ▶ Wall-E was named after Walter Elias Disney
- ▶ Disney animators often hide classic characters in scenes of their films
- ▶ There is a tunnel system in Disney World so characters aren't seen in the 'wrong' lands
- ▶ Dumbo is the only lead character in a film who doesn't speak – he only makes a few noises
- ▶ Disney World in Orlando is around the same size as San Francisco
- ▶ The original *The Jungle Book* was the last film to be overseen by Walt Disney before his death in 1966
- ▶ The first animated character to receive a star on the Walk of Fame was Mickey Mouse
- ▶ Mickey Mouse ears are one of the most popular souvenirs bought from Disneyland

WORD LADDER



THE AIM: Change the word at the top of the ladder one letter at a time to make the word at the bottom.

HOW TO: Change one letter on each step to make a new word. By the time you reach the end, you should have created the new word.

DO NOT rearrange the order of the letters.

TIP: There is usually more than one way to solve this puzzle.



SOLD



Motoring Madness

AVOIDING THE PITFALLS OF SELLING YOUR CAR PRIVATELY

Selling your motor privately can be good for a number of reasons. It's the best way to get a high price for your old set of wheels, if organised you may be able to secure a sale quickly, and in most instances you won't even need to leave the comfort of your own home... well, the driveway, at least.

However, if you are keen to strip out the middleman, beware some of the pitfalls that may lie in wait:

Telephone time-wasters

You may get countless people phoning up asking endless questions – remember, buyers will be as wary about the process as sellers. The best way to avoid this is to make your listing as detailed as possible, adding lots of photos.

Go-slow no-showers

Ever waited in for a delivery that never arrives? Welcome to the world of private car-selling.

Part-ex stress

You may find your motor is attracting the interest of

traders who would rather negotiate a part-exchange than an offer of straight cash.

Larry Hagglers

A huge worry for many vendors is agreeing a price over the phone, only to find someone at your door pressuring you for a discount.

Comeback Kings

In the event of something going wrong with the car soon after it's bought, you won't have anyone to sort this out but yourself. The buyer will also have your home address so is likely to come knocking if anything seems wrong in those weeks post purchase.

Not-so-smooth criminals

And of course, the biggest fear for those who sell privately is that someone will run off with your motor. Ensure all monies have been transferred before handing over documentation, be wary over PayPal transactions (which can be refunded) and, if accepting cash, check notes carefully.



IMPERIALS
ESSEX
Celebrating over 35 years in prestige car retail
www.imperials.co.uk

WE WANT TO BUY YOUR CARS

WHILST OTHERS CHEQUE BOOKS ARE CLOSED, OURS ARE OPEN
ROLLS ROYCE | BENTLEY | MCLAREN, AMG | M, ETC...

RELEASE SOME EQUITY TODAY

For more information contact
email: mason@imperials.co.uk | Tel/WhatsApp: 0208 548 7830



GAROLLA
ROLLER SHUTTER DOORS

THERMALLY INSULATED ELECTRIC GARAGE DOORS

Great For:
Space Saving
Kerb Appeal
Ease of Use
0800 468 1982

CE Approved

- Acoustic & Thermal Insulation
- Brush Sealed Rails
- Pay on Completion
- Two Remote Controls
- 18 Colours Available

Free Disposal of your Old Door!

Garolla saves you space inside your garage as the Garage Door rolls vertically into a box. This design requires just 8 inches of headroom and allows you to park closer to the door. Remotely control the Door from the comfort of your car with a hold to run remote.

LIMITED OFFER - was £1354
NOW ONLY £895
INC. VAT & FULL FITTING

MADE TO MEASURE, CALL US TODAY

Save £459

01277 800 142
Phone Lines Open 7 Days a Week
07537 149 128

- Offer valid for openings up to 2.6m wide & inc: 2 Remote Keys, 55mm White slats, Internal manual Override -

RED alert

AFTER 30 YEARS OF HURT, LIVERPOOL FINALLY GOT THEIR HANDS ON THE BIG PRIZE

It's somewhat ironic that for a club who have struggled, grasped and flailed desperately for three decades in their attempts to restore themselves as the best club in English football, their unassailable lead at the top of the Premier League in March almost counted for nothing as a global pandemic swept in. For a couple of months, Jürgen Klopp's side looked

as if they might be denied the prize they have striven for so long to win – through near misses, bad luck and a long duration of underachievement, the Reds have found the likes of Manchester United, Arsenal, Chelsea, Manchester City, Blackburn Rovers and even Leicester City in their way when it came to securing the biggest prize in domestic football.

Yet after Premier League chiefs, fan groups, police forces and local councils approved measures to get the competition restarted on June 17, Liverpool's history-makers were back on track. Predictably, after all the speculation, the hype and a 100-day gap in action – the longest since Second World War – the Merseyside Derby was something of a damp squib as Liverpool and arch rivals Everton played out a goalless draw.

Ultimately, Manchester City's improved form post lockdown saw Liverpool's significant gap at the top narrowed, but when the Merseysiders crushed Crystal Palace 4-0 at home on June 24, they knew that if Chelsea could beat Pep Guardiola's Citizens side 24 hours later, the title would be theirs... and that's just what happened.

True, it may have been seen as a disappointing climax for Liverpool to have had such a season of domestic dominance ended in empty stadiums and without even so much as an open-top bus ride around their famous city to savour. It's a lack of the true adulation deserving of any Premier League

champions, let alone a side who ended the campaign with 99 points and only three league defeats all term.

Yet, the record books will always point to the efforts of captain Jordan Henderson, top scorer Mohamed Salah, the rest of the first-team heavyweights and even the young starlets – Curtis Jones, Harvey Elliott and Neco Williams – who are gradually making their mark in the best club side in world football.

Two seasons ago the Reds finished 25 points behind champions Manchester City. Their winning margin this term confirms a 43-point shift in dominance that will impress Klopp as much as it worries Guardiola and the rest of the chasing pack.

The Anfield club's achievements are monumental – Champions League winners, World Club Championship holders and Premier League victors all at the same time. And yet, as manager Klopp states, defending their title crown is not the Liverpool way – attacking it is, and that's undoubtedly what they'll do.



Photo credit: Paul Ellis/AP/Shutterstock

HAYES COUNTRY PARK ESSEX



**PARK
HOMES
FROM
£195,000**

Turn your dreams into reality

Telephone: 01733 736037

sales@hayescountrypark.co

www.hayescountrypark.co

Hayes Country Park, Burnham Road, Wickford, Essex SS11 7QT

- Pet Friendly
- Clubhouse Facilities
- On Site Hair Salon
- Over 50's Retired Community
- Parking Spaces



TRAVEL

We've all arrived at a getaway destination to be confronted with that sickening feeling of having left the crumpers at home, and it's not a pleasant one.

Well, with the hope and expectation of the travel industry restarting as the weeks go by, it seems pertinent to get some early planning in, so here's our all-encompassing rundown of the travel essentials you really can't leave home without:

1. Currency and cards, ensuring you have enough for both holiday treats and emergencies
2. Documents – printed is still best, from hotel information to outbound and return flights
3. Passport, if travelling abroad
4. Driver's licence – essential for car hire, but good for additional ID
5. Mobile phone and tablet, plus chargers
6. Plug adaptor
7. Daily toiletries, such as toothpaste, toothbrush, travel-size shower items, shaver, hairbrush
8. Paracetamol, ibuprofen and any prescription drugs – better to take from your home country rather than trying new drugs in a foreign country
9. List of emergency contacts to keep about your person
10. Flip-flops, for any shared bathroom space where avoiding contact with icky floors is probably smart
11. Practical essentials, depending on destination – e.g. somewhere warm, sun cream and swimming gear (including goggles); somewhere rugged, walking boots and fleece
12. Spare underwear and socks will always come in handy and weigh very little
13. Deodorant and aftershave/perfume, for basic hygiene and those special nights out
14. Microfibre towel, which takes up less space than its fluffy cousin
15. Mini first aid kit
16. Earplugs – whether for the flight or noisy guests around the hotel, these are essential
17. Glasses, sunglasses, and a protective case
18. Spare shoes, to switch things up and give your feet a break
19. Padlock, for extra security
20. Rain cover, should the heavens open



24/7 Airport Transfer ✈ Any Destination in UK ✈ European Holiday Destinations
Cruise Terminals ✈ Any Sort of Leisure or Business Travel

Airports

2000



01268 46-2000

07943 472 998

✉ airports2000booking@gmail.com

🌐 www.airports2000.co.uk

DAVID LEPINE

PAINTER – DECORATOR REPAIRS AND MORE

I've been a part of the **Tony Baxter Team** for the last 15 years. As Tony has now retired I will be carrying on with my own smaller team producing high quality work, fully insured, delivering a clean reliable service with better competitive prices.

Kind regards,

Office: 01277 549277 ■ Mobile: 07960 741973

Website: www.davidlepinedecorating.co.uk

Email: d-lep@msn.com



THE VISION LISTINGS

BATHROOMS & KITCHENS

GEORGE BARNETT KITCHENS

Kitchens, Bedrooms, AV, Home Office. 01277 217972 | sales@georgebarnettkitchens.co.uk | www.georgebarnettkitchens.co.uk | showroom 68 Woodland Ave, Brentwood, CM13 1HH

BODYWASH BATHROOMS

Expert advice, long lasting quality. Amazing offers in store. Showroom A12 Eastern Avenue, Romford, Essex | 01708 736700 | sales@bodywash.uk | www.bodywash.uk

VANITY BY DESIGN

Stunning showroom in Hutton. Free quotation service and artcad drawings at no extra cost. Family run business. All our work is fully guaranteed. Call on 01277 200017/018

BILLERICAY BATHROOM DESIGN LTD

Installation and Supply. Visit our showroom at Whitesbridge Farm Ind. Est, Crays Hill, CM11 2UL or contact us on 01268 531235 or info@billericaybathroomdesign.co.uk

BUILDING SERVICES

TIMMINS PROPERTY SERVICES

From the smallest job to the largest high profile project, FREE estimates with no obligation. Emergency 24hr service. Call us on 01277 810005 or email t-p-s-l@btconnect.com

CLEANER

BRIGHT & BEAUTIFUL

Domestic/commercial cleaners, DBS checked, fully insured. Regular cleans, one offs, end of tenancy, care homes, offices. Pure, eco-friendly, non-toxic products used. 01277 287503

COMPUTER REPAIRS

DH COMPUTING

Friendly support direct to your door, all your computer needs, low rates (no vat), no call out charge, homes/small businesses covered. 01277 523127 | help@dhcomputing.co.uk

DENTIST

THE DENTAL PRACTICE SHENFIELD

General family dentistry, cosmetic dentistry, functional orthopaedic & orthodontics, oral hygienist and many more services. Call us on 01277 233912

DRY CLEANERS

PRESTIGE DRY CLEANERS

Garment Cleaning, Household Laundry, Repair/Alterations, FREE collection/delivery on orders £15+ within Billericay. 01277 626274 | 4 Western Road, Billericay, CM12 9DZ

EDUCATION & TUTORING

KEVIN BRAZIER

English, Maths, V.R, Non-V.R, SATS Exams, Entrance Exams, Assessments, 11+, ages 6-16 years old, in your own home. 07507 015549 | kevinbrazier180@gmail.com

ELECTRICIAN

CAPITAL ELECTRICAL SERVICES LTD

Domestic/Commercial, Repairs/Installation, Vehicle Charging Points, Portable Appliance Testing, Fire Alarms, Emergency Lighting, Installation Condition Reports. Call 01277 554079

FINANCIAL SERVICES

COVERSURE INSURANCE BRENTWOOD

Property insurance for Landlords & Commercial Insurance specialists contact us today on 01277 295504 or email brentwood@coversure.co.uk

HCR

Independent Financial Advisers. Can help with advice on: Savings and Investments | Inheritance Tax Planning | Pensions | Protection. Call us on 01277 654153

FLOORING

CARPETS DIRECT

Carpets, vinyls, laminates, wood flooring. Free fitting, free home visits, 80% wool twist pile specialists. Call us on 01277 554163

GARAGE DOORS

GAROLLA ROLLER SHUTTER DOORS

Thermally insulated electric garage doors, Great for space saving, Kerb appeal & easy to use, No deposit, Pay on completion, 18 Colours available. Call today 01277 800142.

GARDEN BUILDINGS

R PAGE CONCRETE BUILDINGS LTD

Specialists in pre-cast buildings, single/double Garages, conservatories, garden rooms, sheds/workshops & more. Family business, 50yrs exp. 5yrs Guarantee. 0208 590 3701

GARDEN SERVICES

EXPERIENCED GARDENER/LANDSCAPER

One offs or regular visits. Excellent rates, free visits to price, CRB Checked. Call Andrew on 07868 243111 or email weedcontrolservices@outlook.com

GREEN THUMB

Lawn Treatment service, if you have been thinking about enjoying a great lawn this year - Simply call 01277 352236 or visit greenthumb.co.uk

PUT YOUR BUSINESS IN THE VISION LISTINGS...CALL 01277 554045 TODAY

THE VISION LISTINGS

HANDYMAN

PAUL THRUSSELL

Plastering, patios, painting and all small building projects. Call me on 07936 026110

HEALTH & WELLBEING

CHIROPODY, PODIATRY & FOOTCARE CENTRE

2 The Walk, Billericay, CM12 9YB. Foot health clinic, diabetic foot, nail problems/reconstruction, sports injuries, fungal nail treatment, digital foot scanning. 01277 659200

NUFFIELD HEALTH BRENTWOOD HOSPITAL

Come and join us at our free hospital events please check our page in the Health section of this edition for more information. Spaces are limited call us on 01277 554181

SHERWOOD HEALTHCARE

Your local independent healthcare insurance broker. Contact us today for a free no obligation quote 01277 822 922 / enquiries@sherwoodhealthcare.co.uk

HOME HELP SERVICE

ANY LITTLE THING

Trustworthy, reliable support to the elderly & vulnerable. Companionship, Household Chores, Pet Services, Meal Preparation, Basic Gardening and Ironing. 01268 928878

IRONING

FINE IRONING

Ironing & Dry Cleaning, Same Day Service if requested, Collection and Delivery, Competitive Prices, Full liability insurance. Please call on 01277 554182

LANDSCAPING

BESPOKE SERVICES

Driveways/patio areas, footpaths block paving, natural stone, resin bound stone, maintenance/cleaning, children's play areas. Free estimates, professional service. 01702 541514

TOMCO

Driveways, Patios, Fencing, Decking, Pergolas, Turfing, Artificial Lawns, Outdoor Rooms. Call us on 01245 281999 / 07850 332406 / email info@tomcolandscapes.co.uk

LOCKSMITH & SECURITY

ATCL LOCKSMITHS

Your local Mobile Locksmiths. All locks changed and all locks opened and replaced. Free Call out and OAP discount contact us on 01277 554043 or 07968 940678

MOBILE PHONE REPAIRS

BILLERICAY PHONE & GADGETS

Buy,Sell,Trade - Repairs, Unlocking, Windows Installation. No Fix, No Fee. Same Day Repair Service. Call us on 01277 636363 or visit us at 10 The Walk, Billericay, CM12 9YB

OPTICIANS

AQUILA OPTOMETRIST

Affordable designer/non designer frames, sunglasses, contact lenses. Experts in eye care with latest technology. 73 High Street, Billericay, CM12 9BS | 01277 624916

PAINTING & DECORATING

TJM PAINTING & DECORATING

Home Maintenance & Repairs, Interior & Exterior Decorating, Wallpaper Hanging, Plastering, Carpentry Work, Plumbing, Electrical & Much More. Call 07824 664591 | 07908 170777

DAVID LEPINE PAINTING & DECORATING

Painter, Decorator, Repairs & More. Over 15 years experience, high quality work, fully insured, a clean reliable service with competitive prices & NO VAT. Call 07960 741973

RICHARD WARD

Domestic & Commercial, Interior & Exterior, Fully insured, 35 years experience. Tel: 01277 821454 | Mob: 07961 943840 | Email richard@warddecorators.co.uk

PLUMBING & HEATING

HAMMOND & SONS

Family run for 20+ yrs. Boilers serviced/repaired, condensing boiler, warm-air units, all work undertaken inc leaks, upgrades, installs, no call out charges, OAPS discounts. 01277 261888

ROOFING

JIM BARR ROOFING

Exterior cleaning & maintenance. Gutters, Paving & UPVC; cleaned, repaired & renewed. 01708 874816 | 07833 572459

SCAFFOLDING

BROTHERS UK SCAFFOLDING

The highest quality scaffolding at competitive prices. HS&E tested, Fully insured, All scaffolders are CISRS trained. Call us on 01268 987870

SPRAYING & POWDER COATING

WS SPRAY FINISHINGS

All aspects of wet spraying & powder coating for domestic & industrial markets. 01268 812414 | 07434 704673

THEATRE SCHOOL

RAZZAMATAZ

Perfect place to dance, sing & act. Booking essential, contact Jessica on 07955 293329 or brentwood@razzamataz.co.uk. Razzamataz Studios, Brentwood, CM13 3PZ

TUTOR

KIP MCGRATH

Tuition online/in centre, qualified teachers, personalised plan, Reception to A-Level, dyslexia. Book a free assessment. Shenfield 01277 554020 | Billericay 01277 621515

TV AERIAL & SATELLITE SERVICES

ANDYS AERIALS

Trading standards approved. Aerial/satellite repairs, tv points, Tv wall mounting. 07916 305977 | andys@andysaerials.com

WINDOWS & DOORS

TOTAL FIX HOME IMPROVEMENTS

Windows, doors, cladding, conservatory roof upgrades, lanterns, conservatories, bi-folds. Est. over 12yrs, family business. 50yrs exp in fenestration business. 0800 211 8124

THERMASEAL WINDOW SYSTEMS

Design, survey, supply, installation. Manufacturing windows & doors for over 32 years. Contact us for your free no obligation quotation Tel: 01277 655511 | 01268 561717

WINDOW MAN

Family run over 25 years. Windows, doors, installation, repairs. Call us today on 01277 554075

JOIN THE LISTINGS... for just **£180** +VAT per year

WANT TO APPEAR IN NEXT MONTH'S VISION LISTINGS?

SIMPLY FILL OUT THE FORM BELOW AND RETURN IT TO BOOK YOUR SPACE:

Company name:

Description (180 characters max including spaces):.....

Telephone:..... Email:.....

Payment option: Card    Direct Debit

Please return to:

Lifestyle Magazine Group Ltd, 55 Crown Street, Brentwood, Essex, CM14 4BD or email billericay@visionmag.co.uk

*£180 +VAT for a 12 months plus agreement. Payments can be made monthly or upfront

DISCLAIMER: VISION does not represent or endorse the accuracy or reliability of any of the advertisements, nor the quality of any products, information or other materials displayed, purchased or obtained by any customer as a result of an advertisement or any other information or offer in connection with the service or products. The opinions expressed in articles, reviews and stories are strictly those of the individual authors and do not necessarily reflect the views of VISION.

PUT YOUR BUSINESS IN THE **VISION LISTINGS...CALL 01277 554045** TODAY

PUT YOUR BUSINESS IN THE **VISION LISTINGS...CALL 01277 554045** TODAY

Vanity By Design Ltd

ELEGANCE & BESPOKE FURNITURE



We are a family run business and we have an exceptional team. Let us take the stress out of designing your home with our free no obligation quotation and Artical drawings at no extra cost. All our work is fully guaranteed



bcdesigns



Warmup

claygate ■ ■



crosswater^x

Vanguard Dealer

Burlington

DRENCH

FREE QUOTATION SERVICE AND STUNNING SHOWROOM IN HUTTON

T: 01277 200017 / 200018 | E: vanitybydesign@gmail.com
72 Woodland Avenue, Hutton, Brentwood, Essex CM13 1HH

📍 www.vanitybydesignltd.co.uk 📱