

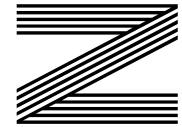
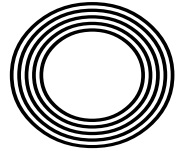
**FORD  
SIERRA  
TURNS  
FORTY**

*Natural*  
limescale  
removal

**LIVE LONG & PROSPER**  
this Star Trek Day

# IDRIS ELBA OBE

The actor's rise to the big screen as he turns 50



**FREE**

Photo credit: Denis Makarenko/  
Shutterstock.com

# Aspen

Home Improvements

FOR MORE INFORMATION ABOUT OUR PRODUCTS CALL US ON 01277 888 055



**Create**  
the **perfect** home

Where quality & peace of mind are assured

**50 YEARS**  
EXPERIENCE

01277 888 055 [www.aspenhi.co.uk](http://www.aspenhi.co.uk)

Whitesbridge Farm Retail Park, Crays Hill, Billericay, Essex, CM11 2UL



Please ask about our **Postcode Offer**



- Bi-Fold Doors
- Luxury composite doors
- Engineered Timber Front Doors
- Conservatories
- Windows
- Luxury Door Collection
- French Doors

**Never paint again!**

High Quality PVC  
Roofline & Weatherboard  
products



# Aspen

Home Improvements



BI-FOLD DOORS - STABLE DOORS - CONSERVATORIES - FRENCH DOORS - ROOFLINE

01277 888 055 [www.aspenhi.co.uk](http://www.aspenhi.co.uk)  
Whitesbridge Farm Retail Park, Billericay, CM11 2UL

# Editor's notes...

SEPTEMBER 2022



Nik Allen, Editor

Hello and welcome to this month's edition of **VISION** BillericayShenfield. As they say, time really does fly. Often in our publishing world, it feels like the months just whizz by, largely owing to the fact we are always planning months ahead when it comes to content, advertisers' campaigns and editorial. My son is going into pre-school in September and my daughter is going into the big kid part of the nursery - this blows my mind. My wife and I are always in awe of how quickly the kids develop, how they communicate with one another and, of course, their ever-improving tantrums. I remember those wise words: "Enjoy the younger years; they won't last forever." And they really don't. It's all about savouring those little moments as they do go quicker than I ever could have imagined.

The moral of the story is to enjoy the present, be present and enjoy the sleepless nights. It's hard sometimes, but just remember that you will miss these days one day.

I heard a quote recently that summed it up perfectly when they are this age: "The days are long, but the years are short." This really hit home for me.

Until next month, take care of yourselves and each other.

*Nik Allen*

This is your town's hyperlocal magazine, delivering to homes and businesses every month.

HOME & DIY | GARDENING | PETS | HEALTH & FITNESS | BEAUTY | FASHION | HISTORY | LOCAL NEWS | FOOD & DRINK | TRAVEL | BUSINESS & PROPERTY | SPORT | PUZZLES | MOTORING | KIDS | WHAT'S ON | TECHNOLOGY | THE LISTINGS

**CONTACT US:** [www.visionmagessex.com](http://www.visionmagessex.com) | [billericay@visionmag.co.uk](mailto:billericay@visionmag.co.uk) | 01277 554045

[@visionmagessex](https://twitter.com/visionmagessex) | [@visionmagessex](https://www.instagram.com/visionmagessex) | [Vision Magazine Essex](https://www.facebook.com/VisionMagazineEssex)

CONTRIBUTORS | Tabatha Fabray, Darius Morgan, Dean Shaw, Reuben Rosso-Powell, Bryn Holmes

At the time of print all content in **VISION** was relevant and up to date according to COVID-19 government guidelines All pages are recyclable

## DO YOU WANT TO EARN EXTRA £?

**VISION** NEEDS LOCAL DISTRIBUTORS!

EMAIL [BILLERICAY@VISIONMAG.CO.UK](mailto:BILLERICAY@VISIONMAG.CO.UK) TO FIND OUT MORE



WE REPAIR BETTER THAN ANYONE OUT THERE

**'Mr Misty'**

**The WINDOW DOCTOR**

"WE SPECIALISE IN DOUBLE GLAZING REPAIRS. CALL FOR YOUR **FREE** CHECK UP"

Mr Misty 'The Window Doctor' is a family run business that prides itself in exceptional customer care. We promise easy service from start to finish.

Does your double glazing steam up?  
We replace **JUST** the glass **NOT** the frames, at a fraction of the cost for new windows.

FAQs

**+** **Symptom:** I have gaps in or around my windows and it's causing a draught.  
**Diagnosis & Solution:** This could be the hinges which can be replaced or the frame has a gap around the edge which can be re-sealed.

**+** **Symptom:** I find it hard to close my door or window.  
**Diagnosis & Solution:** This could be a number of problems and could be as simple as a small adjustment to your hinges.

Common Summer time problem

**Lawn mower stone chips & broken glass**  
**We can fix it!**

Freephone:  
**0800 25 45 111**  
**mrmisty.co.uk**

**FREE** checkup!

Proud members of **Checkatrade.com**  
Where reputation matters

Scores based on 496 reviews

Reliability & timekeeping	9.74
Tidiness	9.86
Courtesy	9.95
Workmanship	9.87
<b>Average score</b>	<b>9.85</b>

496 reviews

PROBLEMS WE SOLVE

- Eliminate Window Condensation
- Broken Window Parts
- Broken Glass
- Secondary Glazing To Block Out Noise
- Mechanisms
- Faulty Hinges
- Draughty Windows

# STAR QUALITY

One of the most enduring television programmes in broadcast history has certainly lived up to its famous quote – “Live long and prosper”.

And if the legacy of the iconic sci-fi series wasn't reason enough to don the Starfleet uniform, the so-called Star Trek Day – September 8 to you and me – surely is.

Legendary actor Leonard Nimoy committed almost 50 years of his life to playing the Vulcan character Spock, dating right the way back to the first *Star Trek* pilot episode in 1964. And until his death in 2015, the actor presided over a franchise that never lost its edge or appeal.

In fact, it's because the series is as admired today as it was on its original run back in 1966 that director J.J. Abrams has been tempted back for a third reimagination, expected to air sometime in 2023.

Before then, Trekkies have a special date in the calendar upon which they can hang their USS Enterprise hat. That's thanks to the growing popularity of September 8 on the sci-fi calendar, a date affectionately known as Star Trek Day.

The date mirrors when Trekkies got their first glimpse of the crew in 1966 – the result of Gene Roddenberry's vision of a drama inspired by *Forbidden Planet*, *Horatio Hornblower*, and *Gulliver's Travels*.

To say that *Star Trek* has blown apart pop culture over the course of its existence is something of an understatement – with revenue approaching £10 billion, it's certainly one of the highest-grossing media productions on record.

The 2009 *Star Trek* reboot movie by Abrams saw a new alternate timeline so as to continue with the original characters, albeit portrayed by a new cast. Indeed, the franchise has so far managed to swerve some of the prequel/sequel criticism levelled at its distant sci-fi relation, *Star Wars*.

Perhaps the reason for that is because *Star Trek* has always succeeded in showing a strong regard for humanity because it's the universe – our own shared universe – they're all fighting for. Maybe that's why it has stood the test of time for seven decades. It's certainly what fans the world over will embrace on September 8, with thousands of meet-ups celebrating characters, friendships, memories and just a bit of old-fashioned sci-fi sorcery.

Strangely, it's possible Roddenberry, the show's creator, had the Second World War to thank for his vision of space warfare; he was a brave bomber pilot for the US Army Air Force, during the conflict, and was awarded the Air Medal and the Distinguished Flying Cross, before becoming a police officer in Los Angeles.

He got his big television break soon afterwards, and so too did the likes of James T. Kirk, Dr Leonard McCoy, Montgomery Scott and others.



# STAR TREK



Photo credit: Anthony Harvey/Shutterstock

# OLD SPICE?

IT'S 26 YEARS SINCE THE RELEASE OF THE SPICE GIRLS' DEBUT SINGLE, *WANNABE*, BUT MEL C IS STILL GOING STRONG

Melanie Chisholm has stuck close to her roots – following the phenomenal success of her stint as Sporty Spice with the Spice Girls, her solo career has sparked eight albums and produced three number-one singles, and will see embarking on a UK-wide book tour.

For those of us old enough to remember it, the summer of 1996 was a golden one. Britpop had given the country a unique swagger, the Euros were here, the sun was out and beer was cheap. And riding on the coat-tails was a new thing called 'girl power', pushed by a spectacular PR machine and fronted by the Spice Girls.

The legacy of the band that followed, both musically and in inspiring a generation of girls to stand tall and be heard, is well known; though perhaps the greatest accolade you can give to Simon Fuller's creation was that each member went on to achieve great things – and Mel C is no exception.

Visually, she's a world away from the tracksuit-clad kung-fu kicking star who pirouetted around stages and *Top of the Pops* studios – these days

the singer, at 48, is stylish and motherly; yet can still mix romantic anthems with dancefloor anthems.

"For me, music has always been about evolving with the things around you," she says. "You need to follow trends, while still keeping your own sense of originality and creativity over the music you make."

Away from the bright lights, Mel C has encountered her own fair share of challenges. She's battled depression, eating disorders, and admits that up until the birth of her only child, Scarlett, in 2009, she never fully had a sense of responsibility to herself.

2022 is an exciting year for the singer, as not only has she got a number of upcoming performances, but she is also publishing her first-ever autobiography, which promises to tell all about her time with the Spice Girls as well as the years that followed. It will take readers behind the scenes of her showbiz lifestyle, as well as revealing the darker side of fame, and finally gives Mel C the chance to tell her story in her own words.

*Who I Am: My Story* is available to purchase from September 15.

## THE HARVARD INN ARE LOOKING FOR EXPERIENCED FRONT OF HOUSE STAFF



The Harvard Inn is a busy hotel, restaurant and wine bar situated in the centre of Stock, specialising in freshly prepared and cooked food with excellent accommodation and well stocked wine bar.

If you are experienced in front of house duties and would like to further your position to a supervisory and management role, confident in being able to manage people, have good organisational skills, happy to meet and greet guests, be involved in all aspects of the hotel, restaurant and wine bar, then this could be the opportunity for you.

If you would like to join our friendly team then send your CV to:  
[reception@theharvardinn.co.uk](mailto:reception@theharvardinn.co.uk)

THE HARVARD  
INN

The Harvard Inn, High Street, Stock, Essex CM4 9BJ | T: 01277 840008

# Bodywash Bathrooms



## NOBODY DOES IT BETTER THAN BODYWASH

Visit our showroom which is open Monday to Friday 9am to 5:30pm and Saturday 9am to 5pm. We close on Sunday's.

Bring along your room dimensions and let us help you plan your new luxurious bathroom.

01708 736700

[www.bodywash.uk](http://www.bodywash.uk)

[sales@bodywash.uk](mailto:sales@bodywash.uk)

A12 Eastern Avenue, Romford, RM5 3AL



HOME & DIY

# SUBSTANCE TO THE style

Through a heritage that includes a maternal family descending from a nomadic Rajasthani clan that migrated across Arabia and Persia over centuries, a passion for global art and the experiences of travel have permeated Bethan Gray's appreciation for a design look that crosses from India to the Middle East, North Africa to South America.

How this translates itself back to the somewhat more structured surrounds of lounges, bedrooms and workspaces in the UK is the challenge that was taken on when Bethan Gray Design was established in 2008. The agency, based in London, is run by Bethan and CEO husband Massimo, and follows a decade she spent as Habitat's design director – a role that connected her with craftspeople all around the world.

Now, using a combination of client stories and experiences, plus the expertise of master craftspeople – with styling partnerships that are based on mutual trust and respect – she has created contemporary design and home accessories. The result has been four ELLE Decoration British Design Awards for her statement pieces. From contemporary deco-like chests of drawers that echo Arabic shimmers and desert landscapes to elegant cabinets, bold coffee tables and velvet sofas, the translation of stories and heritage into stunning furniture is complete.

While the price tags in stores such as Harrods and Liberty's may push some away, Bethan focuses on styling that can be replicated by anyone.

"My modus operandi is elegant lines, both in the edging of furniture and the detail within it. Set against browns, greens, creams and statement shades, it's possible to create a palette that transports the mind to far-off places and a desire to travel.

"For me, it's about the practicality of a room or a piece of furniture, combined with the journey that piece can take you on, and that combination feels very special."

Bethan Gray



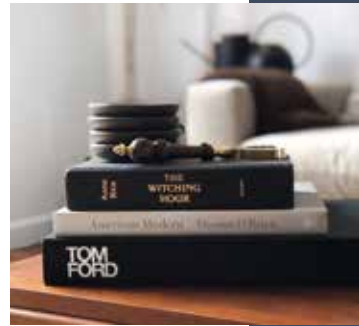
Photo credit: Bethangray.com





There aren't many decorative pieces that have the bonus of being informative and entertaining, but that's exactly what you get with the coffee table book. So how did coffee table books become so popular?

**THE RISE OF THE 'NON-BOOK'**  
References to books being used as decorative pieces date back centuries, but it was Michel de Montaigne who made one of the earliest references to the practice. In his essay *Upon Some Verses of Virgil*, he wrote: "I am vexed that my essays only serve the ladies for a common movable, a book to lay in the parlor window."



Books became a popular gift in the 18th century. Large volumes like encyclopedias and almanacs were popular to have on display owing to their lavish bindings and engravings.



In the 1920s, attitudes to books started changing. It was common for people to display books they had never read, intended to create an impression of their interests or education to visitors. Books with seemingly unattractive covers were often rebound to look more fitting in the owner's home.

**CENTRAL HEATING AND THE 60S**  
The term 'coffee table book' had been in use for a long time, but it didn't really take off until the 1960s. With the arrival of central heating, there was less need to sit near a fireplace, creating space for the coffee table and a less formal sitting environment.



Books were published containing images and art, providing the perfect item to adorn the coffee table and perhaps leaf through to learn something new.

**AN INSIGHT INTO YOUR STYLE**  
Today, coffee table books cover all kinds of genres and styles. Some are used for purely decorative purposes, others give a glimpse into someone's interests and tastes. Not only do they make for stylish décor, but they also provide a topic of conversation, making them a popular feature in most homes.



**COFFEE TABLE BOOK SUGGESTIONS**  
For animal lovers – *The Photo Ark: One Man's Quest to Document the World's Animals* | For the interiors-obsessed – *Architectural Digest at 100: A Century of Style* | For the fashionista – *Tom Ford* | For the film buff – *Accidentally Wes Anderson*

A stylish love affair

# COFFEE TABLE BOOKS:

## Carpets Direct

**Guaranteed Lowest Prices**

- ✓ **FREE FITTING** Established 26 years
- ✓ **FREE home visits**
- ✓ **SPECIALISES in twist pile**

Carpets • Vinyls • Laminates • Wood Flooring  
We come to you in the comfort of your own home

### WHY PAY MORE?

**WE WILL MOVE YOUR FURNITURE & FREE UPLIFT/REMOVAL OF YOUR OLD CARPET**

**CALL YOUR LOCAL AREA SPECIALIST**  
**01277 554 163**

mastercard VISA

[www.carpets-direct.co.uk](http://www.carpets-direct.co.uk)

## KH PLASTERING

Professional quality workmanship

**NO JOB TOO SMALL**

- Expert attention to detail
- Over 25 years experience
- Plastering • Covings & Cornice
- Restoration • Dry Lining

**01277 627277**  
**07939 229215**

www.facebook.com/khplastering  
khplastering@yahoo.com

145 Perry Street, Billericay, CM12 0NS

## JRS PAINTING SERVICES

**10% OFF**

QUOTE 'VISION22'

**ALL ASPECTS OF PAINTING WORK COVERED INCLUDING:**

- DOMESTIC, BOTH INTERIOR AND EXTERIOR
- COMMERCIAL
- BEACH HUTS

**FOR ALL ENQUIRIES, PLEASE CONTACT JAMIE ON:**  
07712 524 407  
JAMIESANDERS273@YAHOO.COM

Instagram Facebook

Photo credit: 136home.com, Unsplash, afabulouslife.com, Lux Deco

# Bookers Bathrooms

bathroom | heating | plumbing | trade | quality products

FREE estimates  
FREE parking  
FULL installation  
available

Visit our showroom

287 - 291, London Road, Wickford SS12 0LF

Open: 9am - 5.30pm Monday to Friday, 9am - 4pm Saturday

Trade Counter: 7.30am - 5.30pm Monday to Friday, 8am - 4pm Saturday

**Tel: 01268 732057**

See our extensive range of plumbing, heating and bathroom products at

**www.terrybookers.co.uk**

# pretty pumpkin



HOME & DIY

Who says pumpkins are only for Halloween? And they're not just for eating, either. Find out how to make a pumpkin spice candle at home.

## MAKE A PUMPKIN SPICE CANDLE YOU WILL NEED:

- > A wide-necked 370g jar with lid (a Mason jar or old jam jar is perfect)
- > 370g soy wax pellets
- > A candle wick (15cm)
- > A candle wick holder
- > Glue dot (heat resistant)
- > 1 tsp (5ml) pumpkin spice essential oil
- > Pumpkin spice (ground) plus a few whole spices, such as cinnamon, star anise, cardamom, clove or allspice, for decoration (optional)

## HOW TO MAKE:

- > Thread the wick through the holder and apply the wick tab to the inside bottom of the jar.
- > Warm the jar in the oven at 30°C.
- > Gently melt the wax in a microwave or double boiler.
- > Cool for a few minutes then stir in the essential oil, mixing thoroughly.
- > Fill the jar to 1cm below the rim and make sure the wick is still in the centre.
- > When the wax gets cloudy, sprinkle a pinch of pumpkin spice on the top and scatter the whole spices.
- > Cool at room temperature then trim the wick.

Add a homemade label or check out Etsy for something really stylish. Remember to remove the whole spices before lighting your candle.

There are loads of other ways to decorate your home with pumpkins this autumn. Why not try one of the below ideas?

> Arrange a group of pumpkins and decorate them by painting, drawing or spraying them in metallic colours – and add a few chunky faux candles. Remember, odd numbers of items work best.

> Hollow out a pumpkin, fill with water and add seasonal flowers – or pop in a pot filled with small succulents.

> Fill a hollowed-out pumpkin with a glass jar. Twist a small bendy branch with berries around the top and add a candle (a faux candle is safest).



Photo credit: countryhillcottage.com,

Sanctuary Home Decor - thedecalandfree.com





# LIMESCALE *elimination!*

## NATURAL REMEDIES FOR LIMESCALE THAT YOU CAN FIND IN YOUR KITCHEN CUPBOARD

Over the past year, one in three Brits claims that hard water in their home has worsened, with limescale becoming an increasingly common problem in many UK households.

If you are looking to eliminate limescale without the use of harsh chemicals, the below home remedies are just what you need.

### VINEGAR

Have you noticed a build-up of limescale on your taps and showerheads? If so then you need to act fast as this can cause dullness, chipping and peeling. One of the most effective methods for removing this is to fill a plastic bag with white vinegar and then attach it to the affected area. Leave for 15 minutes to soak, or overnight for stubborn limescale build-up.

### BAKING SODA

Limescale on the glass of your shower can be tricky to shift, especially if it has been allowed to build up. To remedy this, create a cleaning spray using 1 tsp baking powder, 1 tbsp white vinegar and 1/2 cup warm water. Spray onto the glass, leave for 3-4 minutes and then wipe with a clean cloth. You do not need to rinse the glass.

### LEMON JUICE

Lemon juice is one the most versatile natural cleaning remedies available, having the ability to dissolve dirt, remove grease, deodorise and tackle limescale. Simply pour pure lemon juice into a spray bottle, spritz on the affected area, leave for 30 minutes and then clean off with water and a soft cloth.

### CITRIC ACID

If you do not like the strong smell of vinegar, then citric acid is a good choice for descaling your kettle. Simply boil a half-full kettle, turn it off and unplug it. Next, add 2 tbsp of citric acid and leave for 20 minutes. Pour out the water and rinse twice before using.



*Kitchens • Bedrooms • AV • Home Office*



GEORGE BARNETT

Call us on 01277 217972

[www.georgebarnettkitchens.co.uk](http://www.georgebarnettkitchens.co.uk) o [sales@georgebarnettkitchens.co.uk](mailto:sales@georgebarnettkitchens.co.uk)

Visit our showroom: 68 Woodland Avenue, Hutton, Brentwood, Essex CM13 1HH



# BUILDING FOR YOUR FUTURE

## Masterbuild & Maintenance

### SPECIALISTS IN

- ◆ New Builds ◆ Extensions ◆ Loft Conversions
- ◆ Refurbishments & Landscaping
- ◆ Family Owned ◆ Covering all areas of Essex



CONTACT US FOR A QUOTE OR ADVICE

**07894 744122**

[WWW.MASTER-BUILD.CO.UK](http://WWW.MASTER-BUILD.CO.UK) ◆ [DANIEL@MASTER-BUILD.CO.UK](mailto:DANIEL@MASTER-BUILD.CO.UK)

[f @MASTERBUILDDANDMAINTENANCE](https://www.facebook.com/MASTERBUILDDANDMAINTENANCE) [i MASTERBUILDDANDMAINTENANCE](https://www.instagram.com/MASTERBUILDDANDMAINTENANCE)



## BRIGHT&BEAUTIFUL

Cleaning | Tidying | Laundry | Ironing

Our team at Bright & Beautiful knows how difficult it can be to keep the outdoors from getting in whatever the time of year. Rain or shine, mud, grime and dust can take their toll.

Make the most of the season and leave the CLEANING and HOUSEKEEPING to us...

CALL TODAY FOR A FREE CONSULTATION

**01277 287 503**

[www.brightandbeautiful.com/brentwood](http://www.brightandbeautiful.com/brentwood)

PLEASE QUOTE CODE: VISION

**ONE OFF DEEP CLEAN  
SLOTS AVAILABLE**

## BLACK AND MOULDY SILICONE AROUND YOUR BATH OR SHOWER?



**HAD A NEW  
BATHROOM,  
KITCHEN  
OR EXTENSION  
YOU NEED  
PROFESSIONALLY  
SEALED?**

**ALL DOMESTIC AND COMMERCIAL  
WORKS UNDERTAKEN**

**CALL FOR A PROFESSIONAL  
SEALANT SERVICE**



**01277 525 020**  
info@gtsealants.co.uk  
www.gtsealants.co.uk  
@gtsealants

**5% DISCOUNT WITH THIS ADVERT**

**You've popped the cork,  
now light the wick!**



Treat yourself to one of our candles, upcycled from champagne and liquor bottles to add a bit of luxury to your happy place



Scan the QR code & visit our website  
or go to [www.wickinc.co.uk](http://www.wickinc.co.uk)

Make sure you use our special  
VISION discount code for  
10% off your first order!

WICKVISION22



## Lady Painter & Decorator The Paint Pot



- Honest & Reliable Lady Painter with 25 Years Experience & Friendly Team
- All Aspects of Painting, Decorating, Carpentry & Maintenance
- Interior & Exterior
- All Work Finished to Perfection

**CALL TODAY FOR A FREE QUOTE**

**07770 514955**

ThePaintPot31@outlook.com



HOME & DIY

A tale

# UNMASKED

THE HISTORY OF TAPE – AN ESSENTIAL ITEM IN EVERY HOUSEHOLD

Adhesive tape. Where would we be without it? It's hard to imagine not having it as part of our daily lives. From wrapping gifts to decorating and undertaking craft projects, tape is a must-have in every home.

But have you ever given much thought to how tape was invented? Let us give you a short history lesson on the history of tape – more specifically, Scotch Tape.

### RICHARD GURLEY DREW: THE BRAINS BEHIND SCOTCH TAPE

Scotch Tape is the invention of American Richard Gurley Drew (1899-1980). Drew was a student at the University of Minnesota who dropped out and went to work for 3M as a lab technician. While we might associate 3M with Post-its and office supplies, back in the 1920s it was a leading sandpaper manufacturer. The history of Scotch Tape, however, actually begins with masking tape.

On realising car manufacturers were having difficulty marking car parts without stripping the paint, Drew invented a tape made of cabinetmaker's glue and treated crepe paper. It was a hit with carmakers and in 1925 was sold under the name Scotch Masking Tape.

In the 1930s, Drew developed the transparent tape that became known as Scotch cellophane tape. And the rest, as they say, is history, with Drew's invention paving the way for many more products to be developed over the years.

### TAPE TODAY: A HOUSEHOLD STAPLE

Tape and masking tape are essential items for most decorating and craft projects. Masking tape is a decorator's staple, creating smooth lines in paintwork as well as helping to create patterns and shapes. Clear tape, meanwhile, is handy for crafting, DIY and repairing broken items.

Where would we be without these household essentials? It's safe to say that Drew thoroughly deserves his place in the National Inventors Hall of Fame.



Richard Gurley Drew

**RLS Plumbing & Heating Services**  
Turning your dream bathroom into a reality.



- ✓ Full bathroom refurbishment ✓ Wet rooms
- ✓ Disabled bathrooms/shower rooms ✓ Wall cladding
- ✓ Manufacturer backed guarantees up to 25 years
- ✓ Over 15 years experience ✓ Rated 5 stars on all review platforms

**CUSTOMER TESTIMONIALS**

We used RLS for our bathroom fit recently and couldn't have been happier. Such a friendly, tidy, helpful bunch of guys. From our first meeting where Ryan came to quote, all the way through to the completion we have been so impressed and are absolutely blown away with our new bathroom. Thanks guys  
Location: CM15 - Reviewed in: November 2021

So we thought we would use a local company to install a new bathroom for us. I must say I'm so glad we did - all work carried out to a professional standard, we asked for some extra work and nothing was a problem. The standard on completion was excellent and we are over the moon with it. I would totally recommend this local company for all your plumbing/bathroom needs. Keep up the great work boys  
Location: SS17 Southend Road - Reviewed in: October 2021

**Tel: 01375 675 557 | Mob: 07931 787 563**

Visit our Shop: 7 Lampits Hill, Corringham, SS17 9DD  
Email: ryan@rlsplumbing.co.uk | www.rlsplumbing.co.uk



GET  
**creative** WITH  
**WALLPAPER**

**ALTERNATIVE WAYS TO DECORATE WITH WALLPAPER**

**W**allpaper is one of the easiest ways to decorate your home. It adds colour and style, helping to bring your spaces to life.

But why should wallpaper stop at the wall? There are lots of home projects you can do with wallpaper to bring a unique twist to your interiors.

Bring some colour to your next DIY project with these creative wallpaper ideas.

**ADD PATTERN TO A CHEST OF DRAWERS**

Wallpaper is an easy way to brighten up the plainest chest of drawers. It's an easy hack that is perfect for upcycling a dated piece of furniture. Why not invest in new decorative knobs or handles to complete the transformation?

**BRING COLOUR TO YOUR WALL PANNELLING**

Wall panelling has been a huge trend in recent years, but if you want to do something different with yours, wallpaper could be just the trick. Cut wallpaper to size and place it inside the panels to create a striking feature wall.

**FRESHEN UP KITCHEN CABINETS**

Wallpaper can transform your basic kitchen cabinets and give them a new lease of life. Add a simple pattern to create some interest that could make a nice contrast against the items on display.

**FRAME IT**

Art can be expensive, so why not turn your wallpaper into a work of art instead? Framing pieces of wallpaper can help you create feature walls and add decorative touches to coffee tables, sideboards and more. You can do this affordable DIY using wallpaper samples from stores, making it a quick and affordable way to update your decor.

Getting creative with your wallpaper is a great way to embrace the trend, without committing to covering your walls. Try using different colours and textures to create an impression in your home.



Photo credit: big.com, designersguild.com, CHANGE & CO via mydomaine.com, oscartravohome.com



# LOCAL NEWS

*from your neighbourhood*



Photo credit: Avnish and Anita Goyal/Facebook

## Inspiring couple pledge £1m to aid children

An inspirational Billericay couple have pledged £1million to help disabled and autistic children.

Avnish Goyal (pictured right), who was recently awarded a Commander of the British Empire (CBE), and his wife Anita Goyal MBE (pictured centre) have been unveiled as the latest couple to join John Caudwell's renowned Life-Changers Circle.

The Life-Changers Circle, established by John Caudwell (pictured left), is a growing international network of humanitarians who have committed £1million to support children living with disabilities and autism.

Shortly after receiving his CBE earlier this summer, Avnish, alongside Anita, met with Mr Caudwell in

London to discuss becoming part of the Life-Changers Circle and furthering their already important legacy of philanthropy through the Hemraj Goyal Foundation.

Membership of the network requires a commitment to donate £1million to the charity, Caudwell Children, with eight inductees already signed up to the generous pledge.

Mr Caudwell said: "Avnish and Anita have already done so much through their foundations and their work in the care sector. It is a real honour to welcome them to the group."

Avnish said: "Together we are stronger and can do more to improve life for every child and family, now and in the future."



Trinity Living deliver a competitive and professional service, installing luxury wetrooms, bathrooms, en-suites and kitchens to suit your budget

[www.trinityliving.co.uk](http://www.trinityliving.co.uk)  
01277 822600  
[enquiries@trinityliving.co.uk](mailto:enquiries@trinityliving.co.uk)



Celebrating 30 years in business in 2022



Based in Essex with professionally trained fitters working in Billericay, call our team today and book a free, no-obligation consultation, survey and quotation

# THE WINDOW MAN

WINDOWS | DOORS | INSTALLATION | REPAIRS

*"Your Friend in the Trade"*

**Proudly Providing the Complete Service**

FAMILY-RUN BUSINESS SERVING THE LOCAL COMMUNITY FOR OVER 25 YEARS

**SUPPLY, REPAIR & REPLACEMENT**  
DOUBLE GLAZING | TRIPLE GLAZING  
UPVC | ALUMINIUM WINDOWS  
HARD WOOD WINDOWS  
FRENCH & PATIO DOORS  
PORCHES & CONSERVATORIES  
BI-FOLD DOORS

**REPAIR SERVICES AVAILABLE 8AM - 8PM**  
CAT FLAPS | KNOCKERS | LETTER BOXES  
SPYHOLES | CYLINDERS | HANDLES  
HINGES & LOCKS FOR WINDOWS & DOORS  
TRICKLE VENTS | SEALED GLASS UNITS  
LEADED & GEORGIAN GLASS  
CONSERVATORY ROOF REPAIRS | PANELS  
  
EVERYTHING WE DO IS FULLY  
GUARANTEED & WE PRIDE OURSELVES  
IN OUR ABSOLUTE ATTENTION  
TO CUSTOMER CARE



CONTACT US TODAY FOR YOUR FREE OF CHARGE, NO OBLIGATION QUOTE

**01277 554 075**

W www.thewindowmanessex.net F @thewindowmanessex I



## Dad to cycle across the USA in memory of son

A dad from Billericay who originally wanted to do a one-off bike ride to raise money for Cancer Research UK has now set off on his fifth major cycling challenge – and so far has raised £281,000.

James Van Cleef, 55 (pictured second from left), and brother-in-law Mark Bayliss, 62 (pictured left), are cycling across the USA in memory of James' son, Adam (pictured right), who passed away from cancer in June 2018.

As reported in the June 2022 edition of **VISION** BillericayShenfield, this is not the first challenge James and Mark have completed, having cycled 973 miles across England in May this year.

On August 21, the pair headed out of Battery Park, New York City, towards Philadelphia, then across to Chicago from where they started historic Route 66 all the way to Santa Monica, California.

This plan has been years in the making, before the COVID-19 pandemic put the challenge on hold.

James, who moved from the USA to the UK in 1988 to marry his wife, Penny, said: "I would love to live in a world where fathers don't unnaturally outlive their sons. That's the drive, that's the main thing."

"I think what we like about our bike rides is every now and again there are bits when we can 'hear' Adam speaking to us. He had a quick wit and would mock Mark and me in a light-hearted way, and sometimes his memorable sayings come to mind: 'You two are going to wear Lycra? In public?' But we also know he'd be proud of what has been accomplished in his memory."

To donate to James and Mark's fundraising page, please visit [www.ridingforadam.com](http://www.ridingforadam.com)

## Garden centre gets into the festive spirit early

A garden centre in Billericay is already in the festive spirit after its Christmas display was launched over the August bank holiday.

Summerhill Garden Centre, which lies just off the A127, announced during the recent heatwave that its festive display would launch on August 29.

The garden centre shared teaser videos on social media throughout August to give customers a glimpse of what this year's display will look like.

Speaking before the opening, a spokesperson for Summerhill Garden Centre said: "We have had many customers already contacting us asking when it will be open as we seem to have become quite well known for opening our Christmas department early."

"Christmas lovers have been buying from our teaser display already over the past month."



LOCAL NEWS BILLERICAY

Photo credit: Summerhill Garden Centre



## Plans for footgolf course at popular farm



Photo credit: Barleylands Farm

A new footgolf course could be coming to Billericay after a planning application was submitted to Basildon Council.

Barleylands Farm wants to change some of its land into a 36-hole footgolf course with a kiosk.

Footgolf is a sport which combines golf and football, where players kick a football into a hole in as few shots as possible.

The 12-acre course at Barleylands will feature 18 holes over short distances designed for younger players and a second 18-hole course which will be more challenging for adults.

If approved, it would be adjacent to the recently approved adventure golf at Barleylands.

It is anticipated that the footgolf course would attract between 100 and 150 extra visitors a day to the venue.

The planning application states: "The land is currently laid to grass and is cut regularly as it is used as part of the showground at Barleylands.

"It is proposed to change the use of the land to a footgolf course with an ancillary kiosk.

"This proposal will create a high-end specially designed course of 36 holes."

The application can be viewed by searching 22/01047/FULL at [www.basildon.gov.uk/article/4433/e-Planning-Search-and-comment-on-applications](http://www.basildon.gov.uk/article/4433/e-Planning-Search-and-comment-on-applications)

## Cyclist dies after collision with pedestrian

Essex Police are appealing for witnesses following a collision in Billericay on Tuesday, August 2.

Officers were called to Mountnessing Road near the Pleasant Drive junction at around 7.20pm following the report of a collision involving a cyclist and a pedestrian.

The road was temporarily shut and reopened at around 10.30pm.

The cyclist was taken to hospital with serious injuries and was reported to be in critical condition.

In a separate statement on August 9, it was revealed

that the cyclist, a man in his 60s, had sadly died.

Police are appealing to anyone who may have witnessed the collision or have any further information which could assist with their investigation.

You can contact the investigative team directly on [collisionappeal@essex.police.uk](mailto:collisionappeal@essex.police.uk)

You can also submit a report by using the online live chat service available Monday to Friday (excluding public holidays) between 10am and 9pm.

Alternatively, call the non-emergency number 101.

Please quote incident 1174 of August 2 when providing any information to make sure it gets to the right person as quickly as possible.

## Planning application to turn bar into 35 flats

A former bar in Billericay that was recently the victim of a fire could be replaced with a three-storey apartment building.

A planning application has been put forward by developers Old School House (Chelmsford) Ltd for the new development, which would see Reids, on Laindon Road, demolished and replaced with 35 flats, with accompanied parking, access points and waste areas. Reids closed in July after the blaze, as reported in **VISION** Billericay Shenfield August 2022 edition.

The plans were put forward on July 26, only six days after a fire at the venue that lasted more than two hours and took eight units of firefighters to put out. The cause of the fire remains unclear at the time of writing.

There would be 11 one-bedroom apartments in the three-storey complex, along with 24 two-bedroom flats. It would create two full-time jobs and three part-time jobs. There would be 39 parking spaces, a reduction from the bar's current number of 70.

Agents of the developers, Savills, have been contacted for the comment.

To view the plans, visit [www.basildon.gov.uk/article/4433/e-Planning-Search-and-comment-on-applications](http://www.basildon.gov.uk/article/4433/e-Planning-Search-and-comment-on-applications) and search reference 22/01097/FULL. A date for the council to make a decision is as yet unknown.



# WS Spray Finishings

ALL ASPECTS OF WET SPRAYING & POWDER COATING FOR DOMESTIC & INDUSTRIAL MARKETS  
ITEMS FOR POWDER COATING UP TO 5m x 2m

**Hello to all our customers past and present, we are now back at work**  
**We hope the support we have been shown in the past will return**  
**We can get through this together, local companies employing local people**

**Are you tired of the look of your kitchen?**  
Don't despair instead of paying a fortune for new units and doors why not have your existing doors, drawer fronts cornice, light pelmets, cooker hoods, shelf displays and plinths re-sprayed in any colour & sheen of your choice?  
Removal & installation of most work available.  
We can spray any type of door solid wood, vinyl/plastic or MDF old or new. All work is fully cleaned and de-greased, repaired if necessary and rubbed down prior to painting. We use a highly tough and durable finish 2 pack polyurethane paint in any colour and sheen to create that new showroom look and feel for fitted bedroom drawers and cabinets, internal room doors and all types of household furniture including brown furniture.  
This is a very good economic and environmental way of recycling your worn out kitchen, bedroom cabinets & old furniture, we strive to be as eco friendly as possible.

**01268 812414 • 07434 704673 • 07434 704681**  
**www.wssprayfinishings.co.uk • wssprayfinishings@gmail.com**

**Yell.com** Unit 4 Totman Close, Brook Road Ind, Est. Rayleigh SS6 7UZ

**GOVERNMENT GUIDELINES COMPLIANT**

# Electric Vehicle Chargepoint Supply and Installation Specialists

## CHARGING SYSTEMS

- Compliant with current regulations
- Local family firm
- City & Guilds Qualified Electricians & EV Chargepoint Installers
- Fully OZEV & Manufacturer Approved
- OZEV grants are still available subject to eligibility

**Tel: 01268 710459**  
**Email: [info@evchargingsystems.co.uk](mailto:info@evchargingsystems.co.uk)**  
**Web: [www.evchargingsystems.co.uk](http://www.evchargingsystems.co.uk)**  
**@evchargingsystems**

**Trustpilot**  
EV Charging Systems  
Excellent  
★★★★★  
VERIFIED COMPANY

**EIC** DOMESTIC INSTALLER  
**ECA** EV CHARGING MEMBER



Traditional fitted bedrooms

## Designer Bedrooms

7, Robert Way  
Wickford, SS11 8DD

01268 571799

[sales@designerbedrooms.co.uk](mailto:sales@designerbedrooms.co.uk)

(See website or call us for opening hours)

Fully installed  
by our own  
professional  
fitters.



sliding doors

Whether your taste is traditional or contemporary, with either hinged or sliding doors, we have just the bedroom for you...  
...all made to measure in our own factory and installed by our own professional fitters.

Need some inspiration?... then take a look at the many photos of completed work on our website at:

[www.designerbedrooms.co.uk](http://www.designerbedrooms.co.uk)

Need a professional design...? then call us to arrange for a free no obligation home visit.

Want a quick quote...? then pop in to see us with your plans or room dimensions.

10 Year  
Guarantee!



We are a local, family owned business and have been creating & installing bespoke furniture since 1992...

We have a large showroom at our factory in Wickford with easy parking.

No Salesmen - No Gimmicks  
Guaranteed...



Odd shaped rooms  
are our speciality!



Home Office/Studies



Photo credit: Nicky Hayes Photography  
Billericay Town FC, Michael Chambers



LOCAL NEWS BILLERICAY

# Ricky head into hopeful new campaign

Billericay Town FC went into the new season full of optimism after the signing of key players.

Ricky ended the pre-season with confidence-boosting wins against Brentwood Town, VCD Athletic and Biggleswade.

They then took that into the opening day of the Isthmian League Premier Division on August 13 as they beat Cray Wanderers 2-1.

That success was built on the arrival of key players such as Marvel Ekipiteta (pictured inset left) and Michael Chambers (pictured inset right).

Ekipiteta remains at the club after he said he "likes the project being built" and openly admits he is aiming for promotion.

He said: "The main influence in me renewing my contract was probably the new gaffer.

"I have a really good relationship with him; I like the way he works. He's really professional and he knows how to get the best out of players, which everyone saw in his short space of time last season.

"I'm hoping to achieve promotion. I think that must be the target going forward so it's up to us as players to achieve it."

Meanwhile Chambers, who previously played for Wrexham and Crystal Palace, will remain at the club.

He states his excitement at the young Town team. He said: "I think this season we have a young, energetic, exciting team who are very hungry to be successful.

"One of the key influencers in me staying was the gaffer. You rarely find someone who is open, honest and holds you accountable and he is exactly that."

## Firefighters issue advice following incidents

Firefighters are urging people who smoke to dispose of their cigarettes properly following two fires at a Billericay nature reserve.

Crews were called to Mill Meadows on August 12 at 11.30am and at around 7pm on August 14 following reports of small fires.

On August 12, a quick-thinking local resident used a bucket of water and a dog walker used drinking water to stop the fires from spreading. The fires could have been caused either accidentally or deliberately.

Firefighters want to encourage people not to discard any smoking materials in the area. Watch manager Mark Blakebrough said: "The landscape is still extremely dry and if a fire was to develop, it would be hard to contain owing to the difficult access. It could endanger both the wildlife within the reserve and the properties backing on to it."



Photo credit: Essex County Fire & Rescue Services



Stock Image

# Consultation on residents' bin collections

A consultation has been launched by Basildon Council to get Billericay residents' views of their recycling, black sack and bulky waste collection.

environment and carbon reduction, said: "At present on average, a staggering 988kg of waste is produced per household. That's the weight of a car.

"If we are to meet our carbon net-zero objectives, we must start to act now, and we will need the support of every resident of the borough to get there.

"We will listen to our residents to help us shape a service that is fit for a carbon net-zero future – please take part in our consultation and make sure your voice is heard."

The consultation is set to run until Friday, September 30. To give your feedback, please visit [www.basildon.gov.uk/wasteconsultation](http://www.basildon.gov.uk/wasteconsultation)

The council is currently looking at improving its services, primarily with the aim of meeting the borough's targets concerning recycling and climate change.

Improvements are already set to be made in food and garden waste services come October, with a consultation last year resulting in the introduction of a separate weekly food waste collection.

Councillor Kevin Blake, cabinet member for

## Teenager robbed at knifepoint outside station

Police are continuing to appeal for information after a teenager was robbed at knifepoint in Billericay.

The boy was approached by a gang as he waited for a bus outside Billericay Train Station, in Radford Way, at approximately 8.30pm on July 23.

Reportedly armed with a knife, the thief took £65 from the victim before leaving the area.

The incident, which has caused concern for several residents in Billericay, sparked an appeal for information by Essex Police.

Police confirmed to **VISION** BillericayShenfield on August 23 that the appeal is ongoing.

A spokesperson for Essex Police said: "A 15-year-old boy, was approached by three men and threatened with a knife before being robbed. The suspects then walked away towards Sainsbury's. The victim was unharmed."

Anyone with information is urged to call 101.



Photo credit: Shutterstock Creators/Shutterstock.com



# FIFTY FOUR DEGREES CELSIUS

The perfect medium rare New York Strip is cooked at fifty four degrees Celsius.

A single millimetre is all that is needed for a flawless slice of Jamón Ibérico.

Sixty four degree water gives the most rich, velvety poached eggs you've ever imagined.

When you're in the kitchen, perfection and joy come from precision. And it's the same when we're in the kitchen too — because we love what we do.

**This is German Enjoyneering.**

**Kutchenhaus Brentwood**  
6, The Baytree Shopping Centre  
Brentwood, Essex  
CM14 4BX

Tel : 01277 204447

**küchenhaus**  
The German Kitchen






## VISIT OUR SHOWROOM

WE OFFER 4D VIRTUAL REALITY DESIGN SO YOU CAN SEE EXACTLY HOW YOUR NEW BATHROOM WILL LOOK

01277 626129

Like us on 

info@beautifulbathroomsessex.co.uk

3 Alma Link, Billericay CM12 9GF



# LOCAL NEWS

*from your neighbourhood*



LOCAL NEWS SHENFIELD



## Sustainable travel plans face opposition

Essex County Council's (ECC) active travel plans, which would affect Shenfield residents, have faced criticism from Brentwood Borough Council.

Brentwood councillor Chris Hossack acknowledged the efforts to promote active travel in the plans, which include the installation of cycle parking near Wilsons Corner and Shenfield Rail Station, a segregated on-road cycleway between Crescent Drive and Wilsons Corner, and a 20mph speed limit reduction to promote a Liveable Neighbourhood.

However, he argued that efforts to reduce pollution

through the introduction of cycle lanes are expected to increase town-centre congestion.

Cllr Hossack said: "Let's be plain about this. It is to make car journeys so unpleasant they think car drivers in Brentwood and Shenfield will abandon their cars. It is a high-risk theory.

"Do I like the utopian idea of getting everyone out of cars and onto bikes? Of course. But it is not as straightforward as County is making out and that is why we need to discuss it."

ECC has been contacted for comment.



# BURGHART for BRENTWOOD



Alex Burghart MP for Brentwood and Ongar

After a summer of record-breaking temperatures and lack of rain, which has led to us all being asked to limit our water use and see our gardens, playing fields and parks shrivel to a mass of scorched prickles, this edition is published as the children head back to school, and MPs head back to Parliament with a new Prime Minister leading the government.

As I write, the leadership vote has not closed, but whether Liz Truss MP or Rishi Sunak MP take up the role, one of their first jobs will be to look at what can be done to tackle the concerns of many about the impact of the rise in the cost of living.

In the face of global inflationary pressures, ministers have been active throughout the summer, discussing the rising energy costs with energy

producers and helping households in the UK with rising costs. So far, all households will get £400 off energy bills, households receiving means-tested benefits will get £650 towards their costs, with additional payments of £300 for pensioners and £150 for people receiving disability payments, and there's a £150 council tax rebate for households in council tax bands A-D.

We're still looking at other ways to help, and details of what the government will do will be released in the coming weeks. However, if you're worried about the cost of your energy bills, please talk to your energy provider to arrange a payment plan you can afford. Citizens Advice has excellent advice which you can find at [www.citizensadvice.org.uk/consumer/energy/energy-supply](http://www.citizensadvice.org.uk/consumer/energy/energy-supply)



## Carpets & Upholstery Cleaning Specialist

20+ years experience

Competitive prices

We include a sanitising & deodorising treatment

Fully insured and DBS certified



BEFORE



AFTER

Contact Carl on **07951 235195**

Email: [cpickering1976@outlook.com](mailto:cpickering1976@outlook.com)

# HAMMOND & SONS

## GAS ♦ PLUMBING ♦ HEATING

- ♦ All boilers serviced & repaired
- ♦ Condensing boilers & warm-air units
- ♦ All work undertaken including leaks, upgrades & installations
- ♦ No call-out charge
- ♦ OAP discounts available
- ♦ Full public liability insurance
- ♦ Fully qualified engineers



**A PROFESSIONAL FAMILY-RUN BUSINESS  
HONEST & RELIABLE  
OVER 20 YEARS' EXPERIENCE**

From a tap washer to a full heating system, call

**01277 261 888**

email: [hammondandsons@hotmail.co.uk](mailto:hammondandsons@hotmail.co.uk)  
[www.hammondandsons.co.uk](http://www.hammondandsons.co.uk)



Photo credit: Barchester Leonard Lodge Facebook

# Tropical birds visit care home

Residents of Leonard Lodge, a care home in Hutton, were visited by a flock of tropical birds last month.

The animals, including budgies and a parakeet, were introduced to residents to help lift their spirits.

A spokesperson for Leonard Lodge said: "Residents enjoyed another visit from Performing Pets. They were thrilled with the beautiful birds and to have the chance to hold them."

The animals were brought in to meet residents in the communal area and were also taken to the rooms of those who would rather see the animals in their own personal space. The birds are thought to help provide sensory activities to the residents.

The animals were provided by Performing Pets, a company which supplies animals for film, theatre, education and special events.

# DAVID LEPINE

## PAINTER – DECORATOR REPAIRS AND MORE

I've been a part of the **Tony Baxter Team** for the last 15 years. As Tony has now retired I will be carrying on with my own smaller team producing high quality work, fully insured, delivering a clean reliable service with better competitive prices.

Kind regards,

Office: **01277 549277** ■ Mobile: **07960 741973**

Website: [www.davidlepinedecorating.co.uk](http://www.davidlepinedecorating.co.uk)

Email: [d-lep@msn.com](mailto:d-lep@msn.com)



# Richard Ward

Richard@warddecorators.co.uk

Painter - Decorator

Domestic - Commercial

Interior - Exterior

Fully Insured | 35 years experience

Tel: 01277 821 454

Mobile: 07961 943840



## Get Your Oven's Sparkle Back

AS SEEN ON TV



- Ovens
- Filters
- Hobs
- Grills
- BBQs
- Ranges
- Extractors
- Microwaves
- AGAs

“I'm simply delighted at how sparkly clean my oven and hob look now! It really does look like the cooker is brand new again!”



Call Marc or go online for your FREE quote

07706 289426  
ovenclean.com



Photo credit: Essex County Fire & Rescue Service



LOCAL NEWS SHENFIELD

# Firefighter Tom tackles peaks for charity

A Shenfield Masonic Centre has supported a local firefighter who climbed Mount Snowdon and raised thousands of pounds for charity.

Tom Kendle raised £3,500 for the Fire Fighters Charity by climbing the Welsh peak on Saturday, August 6.

The firefighter, who is a Freemason with Orsett Masonic Lodge, reached his fundraising target with the help of Shenfield Masonic Centre, where a raffle and auction took place.

Tom chose the charity to promote awareness of

its work and said: “The charity gives personalised support to the whole of the fire service community and is always invaluable.

“By supporting the mental, physical and emotional health of not only serving firefighters, control and support staff, but also their families, they have a huge impact and are vitally important.”

Hutton-based Freemason Lodge, Sibelius, also contributed £500 to the cause.

If anyone wishes to find out more or donate, visit [www.justgiving.com/fundraising/tom-kendle](http://www.justgiving.com/fundraising/tom-kendle)



Electrical, Energy & Security Specialists



Security Installations | Renewables | Solar Energy  
EV Charging Systems | Domestic & Commercial

Contact us: T 01277 212217 W [smart-firm.com](http://smart-firm.com) E [info@smart-firm.com](mailto:info@smart-firm.com)



APPROVED CONTRACTOR



## Five stand trial for conspiracy to supply drugs

Two men from Shenfield will stand trial for conspiracy to supply class A (cocaine) and class B drugs.

Four men and one woman from the Essex area were arrested on Thursday, July 21, as part of a series of drug warrants by the South Disruptor Team.

Drugs with an estimated value of more than £112,000 and £10,000 cash were seized and all five people were charged with the offences dating between September 1, 2021, and July 21, 2022.

They appeared at Southend-on-Sea Magistrates' Court on Friday, July 22, each to answer charges of

conspiracy to supply class A (cocaine) and class B drugs.

Mirel Zenelli, 33, of Hutton Road, Shenfield, and Ben Chadwick, 23, of Stock Road, Billericay, were both remanded in custody to appear at Basildon Crown Court on Thursday, September 1.

Three further defendants were bailed until the same trial date: Perparim Zenelli, 33, of Hutton Road, Shenfield; Laurie Landman, 24, of The Foxgloves, Billericay; and Justine Hudson, 24, of Stock Road, Billericay.



# IN A HEARTBEAT

WHY DOCTORS ARE ADVISING CAUTION WHERE HEARTBEAT-TRACKING DEVICES ARE CONCERNED

Technology has put us more in touch with our bodies than ever before. It all began with the advent of the internet, whereby we could quickly and effectively research ailments by typing symptoms into Google.

Of course, seeing as we've all wrongly self-diagnosed a worst-case scenario, it might be said that the technology lets us down, and that concept is at the core of why a growing number of doctors are expressing fear at the breadth of heartrate monitors that now follow our every move.

From the simple Fitbit to the Apple Watch, right through to medical-grade vests measuring every throb and pulse, the data we accumulate can often be used in real-time to warn us of a possible problem, because when someone's heart skips a beat, tech companies want to let that person know about it.

Yet cardiologists say the information these devices produce isn't always useful. After all, notifications from the devices aren't definitive diagnoses, and in our pursuit of health we are now more likely to respond in a manner that leans on the healthcare system, when what we are receiving is often a false alarm.

"The technology has outpaced us," says Rod Passman, a cardiologist at Northwestern University who's assisting with a study examining the Apple Watch's ability to screen for heart rhythm conditions. "Industry came out with these things because they could. Now we're playing catch-up and trying to figure out what to do with this information."

So while some products will call for help if the wearer has been in a car crash or had a bad fall, others are fully making patients the protagonists in maintaining their health, and that's dangerous.

Rod adds: "The fact is that these devices are lifestyle, not healthcare, devices, and the hundreds of millions of users need to enjoy their exercise without the anxiety of the unknown."




## COMPUTER SERVICES

*Don't struggle with IT, call the experts!*

- Friendly support direct to your door
- For all your computer needs
- Low rates (no VAT), no call out charge
- Homes and small businesses covered

**01277 523127**  
[www.dhcomputing.co.uk](http://www.dhcomputing.co.uk)  
[help@dhcomputing.co.uk](mailto:help@dhcomputing.co.uk)



## WORK SPACES TO LET

### SUITABLE OFFICE/ WORKROOM

ONGAR AREA  
 FROM £65 PER WEEK  
 INCLUSIVE OF BUSINESS RATES  
 AND GIGACLEAR WIFI  
 OWN ELECTRIC METER  
 FULLY FURNISHED  
 PARKING FOR ONE CAR  
 NO CAR DEALERS

**07984 656775**  
[jackyjoanhiggins@aol.com](mailto:jackyjoanhiggins@aol.com)



# Whatever you need to print, just head to **getitprinted.com**

You can call in, chat with us online or call us. We're in **Hutton** and we get it printed for you!

We print everything from brochures to posters, jigsaws to signage and paper, plastic and even glass...

So for your next project, just **get it printed**

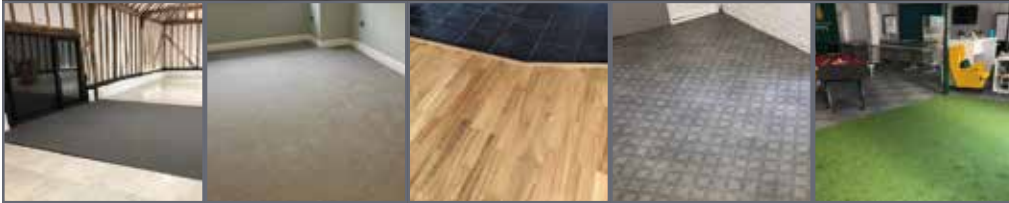
[hello@getitprinted.com](mailto:hello@getitprinted.com)  
 Unit 2 Brentwood Trade Park, 14a Tallon Road,  
 Hutton, Brentwood, Essex, CM13 1TF

**01277 288 321**  
**getitprinted.com**



**CONNECT FLOORS LTD**  
Flooring the Future

SUPPLIERS & INSTALLERS OF  
**AMTICO ♦ KARNDEAN**  
**CARPETS ♦ VINYL**  
**HARDWOOD**



**CUSTOMER SERVICE IS OUR #1 PRIORITY**

www.connectfloors.com

01268 527754 info@connectfloors.com



**SPECIALISTS IN**  
**ELECTRICAL**  
**VEHICLE CHARGER**  
**INSTALLATIONS**

Approved installers for the Government Grant

Testing for Landlord Safety Certificates ♦ Domestic & commercial electrical work



**CUSTOMER SERVICE IS OUR #1 PRIORITY**

www.evconnectelectrical.com

01268 520504 info@evconnectelectrical.com



HISTORY



If you know your lickwisy from your snozzberry, chances are you're a fan of author Roald Dahl. September 13 – the author's birthday – marks Roald Dahl Day, and schools around the world will be celebrating the occasion with a host of fun activities.

Dahl was born in Wales in 1916 to Norwegian parents. He was just four years old when his father died. His mother decided against moving the family back to Norway, as she knew her husband wanted their children to have a British education, which he regarded as the best in the world.

Dahl's schooldays inspired many of his children's books. For instance, at his boarding school, children were asked to taste test Cadbury's chocolate bars, which inspired *Charlie and the Chocolate Factory*. But there were more sinister influences too, such as scary adults. In his books at least, the children always got their revenge.

After leaving school, Dahl worked in East Africa and was a spy and an ace fighter pilot during the Second World War.

In 1953, Dahl married American actress Patricia Neal and together they had five children. The couple divorced after 30 years and Dahl later married film producer Felicity Crosland.

From 1953 until his death in 1990, Dahl lived in Great Missenden, Buckinghamshire, in a house with a specially built writing hut in the garden. This was where he wrote all 20 of his famous children's books, from *James and the Giant Peach* in 1961 to *The Minpins*, published after his death.

In 2012, the interior of the hut was carefully removed and installed in its new home, the Roald Dahl Museum and Story Centre, also in Great Missenden.

He is buried at St Peter's Church, Great Missenden, along with his snooker cues, some good burgundy, chocolates, HB pencils and a power saw.

For more information, visit [roalddahl.com/create-and-learn/join-in/roald-dahl-day](http://roalddahl.com/create-and-learn/join-in/roald-dahl-day)

Photo credit: roalddahl.com



# LONDON CALLING

OPEN HOUSE FESTIVAL LONDON – SEPTEMBER 8 TO 21



Are you itching to nose around London buildings usually closed to the public? If so, the Open House London Festival is a must. It's a two-week celebration of the city's architecture, homes and outside spaces that runs from September 8-21. And it's back this year, after a two-year break, to celebrate its 30th birthday.

There's something going on in every borough. This includes not just open buildings but also special events, guided tours, walks and family activities. The great news is that all visits and events are free – but book early to avoid disappointment. You'll need tickets for most visits and some get snapped up very quickly.

The organisers stress that the festival is not just about grand buildings; it's about celebrating every aspect of London's urban landscape in all its shapes and sizes. As well as award-winning modern offices and historical buildings, you could have the chance to step inside a

suburban semi, a studio flat or even a houseboat.

In past years, around 800 buildings have flung their doors open for the event. They include 10 Downing Street, the Foreign & Commonwealth Office, the Gherkin and several private clubs. There have also been windmills, train stations, tunnels and even cabbies' shelters. So there really is something to suit all tastes.

Each year, around 250,000 visitors attend an Open House event in London, making it the biggest festival of its kind in the world. The festival is organised by a charity called Open House, and the aim is to encourage people to learn more about their environment and each other, to help make their city a better place for everyone who lives or works there.

As we go to press, the full list of 2022 events isn't yet available, so please check the festival website at [openhouselondon.org.uk/2022](http://openhouselondon.org.uk/2022) for the latest information.

Photo credit: open-oh.org.uk



Ian's curtains & blinds



Curtains | Tracks & Poles | Roman Blinds | Roller Blinds  
Vertical Blinds | Venetian Blinds | Wooden Blinds  
Pattern books also available

FREE QUOTE – Call today on 01268 976779 | Mobile: 07743 562384

ian.dipple@yahoo.com | [www.ianscurtainsandblinds.co.uk](http://www.ianscurtainsandblinds.co.uk)

## Cleaner, Healthier Home for Longer!

Using special solutions specific to your carpet, we eliminate bacteria and no sticky shampoo residue for new dirt to cling to.



## Carpet & Upholstery Cleaning

Contact our South Essex team for a free no obligation quotation.

**enviroclean**  
Professional Carpet Cleaning

Local Carpet Cleaning Service

01375 350150 | [envirocleansouthessex](https://www.facebook.com/envirocleansouthessex)

**IDRIS ELBA**

# OFF SCRIPT?

**WHEN YOU'RE A DJ SUPERSTAR, A FASHION DESIGNER, MOVIE DIRECTOR, HOLLYWOOD A-LISTER, AND ALL-ROUND LOVEABLE MOGUL, ATTENTION TO DETAIL IS EVERYTHING – JUST ASK IDRIS ELBA**

“I’m probably a perfectionist,” admits Idris Elba, who turns 50 this month. “With what I do, I need to be, whether it comes from film, music, whatever. You’re putting a piece of art out there, and you need to be confident with it because once it’s out there, it’s out.”

For a perfectionist, however, Elba is chilled and agreeable in conversation. He offers cool, considered responses with ease.

The man radiates so much energy and intensity that you can’t escape it, and that permeates through an increasingly diverse slew of roles, embodying the likes of DCI John Luther, Heimdall in the Marvel Cinematic Universe, *The Wire*’s Stringer Bell and Charlie Jaffey in *Molly’s Game*.

And yet those iconic characters only represent half of what the Londoner is all about.

His style, swagger, gruff exterior and devastating charm mean he is a man who can flit between so many different worlds; and yet he pulls off the look with respect and humility.

“I think a lot of that comes from the fact I had to struggle to get to this point,” he says. “For many years, I was a nobody who couldn’t catch a break and just blended into the crowd.”

“There were very few directors who wanted to take a chance on me, and as time went on, so too did I begin thinking that I should just focus on my music, or my art, or perhaps just get a real job.”

The relief is that Elba didn’t. In 2022, he has George Miller’s epic fantasy adventure *Three Thousand Years of Longing* opposite Tilda Swinton, and *Thor: Love and Thunder*, plus the film version of *Luther*, which will screen on Netflix.

“*Luther* returning as a film is a really big new thing, and I think for it to work it needed to be different.

“You are elongating what you have to play with, yet at the same time shortening the whole story into two hours, so the very fabric is altered.

“I think for that reason you can regard it as original and very exciting.”

Asked whether he actually affords himself the ability to stop and take stock, the father-of-two notes: “I don’t have much time to rest, and I don’t really like long sleeps. They don’t put me in a place of urgency and that’s where I want to be, certainly in terms of work and productivity and happiness. That’s not to say I don’t try to get as many hours of good sleep as I can – I’m just not very good at it,” he laughs.

“It’s a real balancing act and it’s safe to say I’m not there yet.”

Elba’s laid-back approach is a factor that will win him a bounty of script offers moving forward. He is someone who, in these troubled times of panic, indecision and hysteria, emits an effortless sense of cool. “I think it’s easy to confuse being laid-back with being laissez-faire about things,” he says. “I think you can be calm and charged at the same time.

“Your actions don’t always reflect your emotions – hey, I’m an actor, after all.”

And one of our finest...



From the smallest job to the largest high profile project



FREE ESTIMATES WITH NO OBLIGATION

**TPSL**  
Timmins Property Services Ltd

Locally based company in Brentwood, with over 25 years experience. Our range of services include:

**PLUMBING**

- Boiler servicing & landlord reports
- New boilers / repairs
- Bathrooms & kitchens
- Drainage works
- Powerflushing

**ELECTRICAL**

- All aspects of domestic, commercial and light industrial electrical works
- Security systems and alarms
- Replacement consumer units
- Periodic inspections and testing
- Full rewires, PAT testing and fault finding

**ROOFING**

- All aspects of roofing / flat roof works / lead works
- Gutter repairs / replacements / cleaning
- Valley and chimney re-pointing / repairs
- Replacement roof tiles

**BUILDING**

- Decorating / Painting
- Plastering / Rendering
- Wall re-pointing / repairs



Gas Safe Registered  
NICEIC Approved Contractor & Domestic Installer



**WE CARRY OUT ELECTRICAL CERTIFICATES FOR LANDLORDS**

Please contact us for further information on all our services

[www.timminspsl.co.uk](http://www.timminspsl.co.uk)

Tel: 01277 810005 | Email: [office@timminspsl.co.uk](mailto:office@timminspsl.co.uk)

Unit 15, Cockridgen Farm Estate Brentwood Road Herongate Brentwood CM13 3LH

**ON THE MONEY**

Financial advice from our financial adviser Karyn Vogel  
Contact 01277 654153



**YOUR RETIREMENT TODAY**

The class of 2022 retirement report<sup>1</sup> provides a riveting insight into the plans and thoughts of those either planning to retire this year or recent retirees, really highlighting the changing face of retirement in the UK.

The last couple of years have impacted people's plans, with many people reassessing what retirement looks like to them. Fewer people are giving up work entirely, choosing to adopt a more staggered approach to retirement. Two-thirds (66 per cent) plan to continue working in some capacity during retirement; of this number, some plan to move to part-time hours, others intend to continue working for their own business, start their own new business or volunteer. Therefore, a third of retirees' plan to give up work altogether, down from 44 per cent of 2021 retirees.

**FINANCIAL READINESS**

Confidence in financial readiness to retire has fallen, with only 25 per cent feeling financially ready to retire, versus 30 per cent in 2021. A key factor in this fall is the rising cost of living, with 28 per cent of respondents unsure how to mitigate the impact of rising inflation on their retirement income – a prime concern for those with large cash holdings.

**PASS IT ON**

With more than half (56 per cent) of retirees planning to pass on wealth to their loved ones, just 23 per cent feel confident about how they will pass on any leftover assets to loved ones. Only nine per cent have started gifting wealth to reduce their Inheritance Tax liability. Interestingly, just 30 per cent have had conversations with their partner about passing on their estate, while just 26 per cent have spoken to their children about it.

**NO TWO RETIREMENTS ARE THE SAME**

Retirement is a thriving new beginning to plan for. Whether you're thinking about a gradual retirement or full retirement, how do you visualise your retirement years? Have you thought about your income requirements or tax implications? Have you started a conversation with family about how you want to use your wealth to help them? Advice can help you seek clarity and provide focus and direction.

**At HCR, we take the time to understand our clients' unique planning needs and circumstances, so that we can provide you with the most suitable solutions in the most cost-effective way. For a free review of your current financial situation, please contact Karyn Vogel on 01277 654153.**

<sup>1</sup>abrdn, 2022

**When it comes to Financial Planning**

**We're here to help you**



- ✓ SAVINGS AND INVESTMENTS
- ✓ INHERITANCE TAX PLANNING
- ✓ PENSIONS ✓ PROTECTION

Tel 01277 654153 • [www.hcrifa.co.uk](http://www.hcrifa.co.uk) • Fax 01277 658383  
Suite 5, First Floor, Foremost House, Radford Way, Billericay CM12 0BT





**Family disputes and conflicts can be a difficult and emotionally charged time. You will receive expert, cost-effective guidance which delivers the best possible solution to the issues in your case, if you work with us.**

**With over 75 years of cumulative experience we can offer advice on all legal aspects of relationship breakdown.**

**You can seek help on:**

- Child Arrangement Orders
- Child Maintenance
- Representation at Injunction Proceedings
- Financial Claims on Divorce
- Financial Provision for Children on Separation or Divorce
- Parental Responsibility Agreements
- Pensions On Divorce
- Divorce
- Family Mediation
- Prenuptial Agreements

**If your case is suitable we can offer a 40-minute free consultation with one of the team.**



**Sally Ward**  
Head of Family Team  
[sallyward@mplaw.co.uk](mailto:sallyward@mplaw.co.uk)



**Roisin McCorry**  
Consultant  
[roisinmccorry@mplaw.co.uk](mailto:roisinmccorry@mplaw.co.uk)



**Jessica Thrower**  
Associate Solicitor & Mediator  
[jessicathrower@mplaw.co.uk](mailto:jessicathrower@mplaw.co.uk)

**Romford Office:** 8-10 Eastern Road, Romford, Essex RM1 3PJ | **T: 01708 784000**  
**Shenfield Office:** 194 Hutton Road, Shenfield, Essex CM15 8NR | **T: 01277 245015**  
**Email:** [office@mplaw.co.uk](mailto:office@mplaw.co.uk)



*Take a look inside the world's most*  
**EXCLUSIVE ADDRESS**

**W**here do you think the world's most exclusive address is? Beverly Hills? Mayfair? It turns out the answer isn't on dry land.

That's right, the world's most exclusive property is actually on the water – the superyacht Somnio. Due to launch in 2024, Somnio has 39 on-board apartments, which are fully tailored to the owner's wishes.

What makes these apartments so special? Let's take a closer look.

**THE LARGEST YACHT IN THE WORLD**

Somnio is set to become the largest superyacht in the world, measuring 33,500 gross register tonnage and almost 222 metres long. Replacing cabins with luxury apartments, it will bring a whole new meaning to the phrase 'travel in style'.

A collaboration between three design firms, Tillberg Design of Sweden, Winch Design and Luttenberger Design, the superyacht is being built by Norwegian shipbuilders VARD.

**REINVENTING THE LUXURY LINER**

Each apartment will feature a bespoke design, with owners able to choose everything from the number of bedrooms to additional features such as gyms and private kitchens. Each apartment will also have its own outdoor area, the perfect space for seeing some of the most incredible sights the world has to offer.

On board, guests will be able to enjoy a spacious deck area, spas, two restaurants, a cinema, 10,000-bottle wine cellar and much more.

Co-founder and captain Erik Bredhe, who oversaw the €500million project, says: "Beauty may be found as much on the inside of Somnio as on the outside. As the only residential superyacht in the world, we are delighted to work with designers that complement our exacting standards. Our owners will experience only the best, as befits a yacht of this nature."

With prices starting at €15million, Somnio's actual route is a closely guarded secret, making the superyacht not only exclusive, but elusive too.

Photo credit: VARD, WINCH DESIGN, LUTTENBERGER DESIGNS, TILLBERG DESIGN OF SWEDEN



# HOW TO HACK-PROOF YOUR PASSWORD

There is a hacker attack every 39 seconds, with 300,000 new malware created every day.

One of the easiest ways to protect your data is by using strong passwords.

## 1. USE EIGHT CHARACTERS MINIMUM

Each character you add to your password makes it harder to crack. Your passwords should contain a minimum of eight characters and up to 20 if you can remember them.

social media profiles.

## 4. INCLUDE SPECIAL CHARACTERS

A good trick is to replace certain letters in your passwords with special characters. For example, rather than using the password 'Edward1', you could use '3dw4rd!'. By replacing letters with characters that look similar, you are also less likely to forget your password.

## 5. USE PASSPHRASES, NOT PASSWORDS

A phrase such as the title of a book or a line in a film is much more difficult to crack than just a word. Plus, once you start replacing some of the letters with special characters, you are even closer to creating an unhackable password.

## 6. TRY A PASSWORD GENERATOR

There are many free apps that you can download which will generate passwords for you. These passwords are designed to be completely random, which does make them harder to remember, but means they are nearly impossible to hack.

## 2. AVOID WORDS IN THE DICTIONARY

Using words that are correctly spelt from the dictionary is not a good idea as these are much easier to hack. This is particularly true if you use a word that is related to either your personal life or your business.

## 3. DO NOT USE FAMILY NAMES

This may seem obvious, but you will be surprised at how many people use the names of their children, spouse or pets in their passwords. This information is easy to guess and can be readily found on your



# HAVE YOU MADE YOUR WILL?

**Do you and your family have the peace of mind of an up-to date Will, or a Power of Attorney for yourself or your parents, or Legal Guardians for your children under 18?**

My professional services for arranging personally-tailored Wills, Powers of Attorney, Probate and expert guidance on Inheritance Tax and Care Home Fees, are offered to applicants on a fixed fee basis, regardless of consultation time and number of visits.



**MARTIN ENGLEMAN AIPW AFPC**  
Qualified Member of the Institute of Professional Will Writers ~ Certificate in Mortgage Practice & Equity Release, Chartered Insurance Institute ~ Diploma, Personal Finance Society

Please visit [www.businessadvisoressex.co.uk](http://www.businessadvisoressex.co.uk) for more detailed information, then call me for a fixed fee quotation and free advice

**Please note that weekend meetings are offered at no extra cost**

Office: 01268 761022  
Mobile: 07901 948745  
1 Nesbit Close, Wickford,  
Essex SS12 0PT

**ENGLEMAN WILLS**  
+ POWERS OF ATTORNEY + PROBATE



**It's time to make an LPA.** There is a common misconception that Lasting Powers of Attorney only need to be put in place when an individual gets older. In fact, it is always wise to put LPAs in place earlier in life. By doing so, you will gain peace of mind that your affairs – both financial and health – can be looked after if you are ever unable to do so. You will also be ensuring that your loved ones are not left in an impossible position, unable to deal with your affairs, if the worst should happen.

**Contact us today to protect yourself and your loved ones.**  
**Legal advice with a conscience.**



Fisher Jones Greenwood LLP,  
102 High Street, Billericay, CM12 9BY  
Offices across Essex and London

**01277 424080**  
[www.fjg.co.uk](http://www.fjg.co.uk)  
[enquiry@fjg.co.uk](mailto:enquiry@fjg.co.uk)

# Get Packing with Instant Breaks!

When it comes to booking a holiday there's no need to look any further, travel is what we do best! Instant Breaks offers unmissable holiday experiences, along with custom-made packages to suit your requirements.

We are an Independent Travel Company based in Essex with a dedicated team of travel experts who will advise you honestly and expertly fulfilling all your travel requirements every step of the way. We will take care of even the smallest of details that can make the world of difference and combined with our passion for travel, we can craft you a truly personal and tailor-made holiday.

We will do all the hard work for you, by narrowing down the massive choice of holidays around the World to find that something special. Our extensive Instant Breaks portfolio includes a wide range of holiday experiences from budget to bespoke tailormade luxury.

Whether you are looking for a trip of a lifetime, a family getaway in the school holidays or a weekend city break, we can source some fantastic



options with our trusted industry partners. You can then simply relax and let us take care of the rest.

So, if you need holiday inspiration or, just want some friendly advice when deciding on your next adventure, give us a try. Our travel experts can start tailoring your escape today.

Discover a world of exciting travel opportunities. All holidays booked with us are both ABTA & ATOL protected.

  
www.instantbreaks.com

## We also help grant wishes...

We have partnered with local charity The MCA Trust, a volunteer-run organisation, which grants children with brain-related cancers a "Special Wish" or donates equipment to make their lives that much easier. Instant Breaks help with The MCA Trust's travel requirements by booking their 'Special Wish' holidays - such as magical Disney getaways but we also run a friends and family initiative. If any friends or family book a holiday with Instant Breaks and mention the MCA Code, we give a contribution back to The MCA Trust to help more children and to grant those very special wishes.

  
instantbreaks  
Look no further for your Holiday!



www.instantbreaks.com  
sales@instantbreaks.com  
0800 808 6660



InstantBreaksLTD  
Instant\_breaks



# We could fill Wembley Stadium MORE THAN TWO TIMES with our monthly readership

OVER 207,500 PEOPLE IN ESSEX  
READ VISION MAGAZINE'S MONTHLY

Photo courtesy of PA Images

CONTACT US TODAY TO GET YOUR  
BUSINESS SEEN BY OUR READERS

Your  
Monthly  
Lifestyle  
Magazine



See all our magazines at [www.visionmagessex.com](http://www.visionmagessex.com)

BillericayShenfieldBishop'sStortfordBrentwoodOngarChelmsfordBeaulieuEppingTheydonFrinton-on-Sea  
HalsteadBraintreeHertfordHornchurchLeighThorpeBayLoughtonMaldonBurnhamManningtreeMistley  
RayleighWickfordSouthWoodfordWoodbridge



TRAVEL

## Super savings on SPENDING ABROAD

**M**ake the most of your holiday spending money with the best accounts for overseas spending.

Enjoy free cash withdrawals, no hidden fees, contactless spending and so much more.

**STARLING BANK:** A mobile-only bank that offers both personal and business banking, Starling is perfect for people who want uncapped ATM withdrawals when abroad. As well as being able to spend with no fees, you can also earn interest on the funds in your account.

**MONZO:** If you want low ATM fees and capped overdraft charges, then Monzo is the bank account for you. With the ability to convert your money into your chosen currency and back with no foreign-sterling transaction fee, you are also able to drop into your overdraft.

**WISE:** Formerly known as TransferWise, Wise offers £200 worth of free cash withdrawals per month before you are charged. It also allows you to convert your cash into 40 different currencies and offers free international transfers, and you can use the app to find out real-time currency exchange information.

**MONESE:** If you travel or work between the UK and Europe, Monese is a great choice. Specialising in multi-currency accounts, this digital bank does not carry out any credit checks and you don't even need proof of address. With the Simple Monese plan, you are allowed to withdraw £200 free, with a two per cent charge for any withdrawals beyond this.

**REVOLUT:** Revolut is a prepaid card and app that allows you to hold and exchange 30 different currencies up to £1,000 per month. You can withdraw up to £200 free of charge and there are no fees for card payments, including contactless ones. Choose from a standard account (free), plus account (£2.99), premium account (£6.99) or metal account (£12.99 per month).

**CHASE:** Chase is one of the largest banks in the United States and has recently come over to the UK, offering both current and savings accounts. Not only can you withdraw up to £500 per day from cash machines when abroad with no fees, but you can also earn one per cent cashback when you book your flights and on your everyday spending abroad.





# 5 PET PARENTING mistakes

We are a nation of animal lovers, with 59 per cent of UK households owning a pet. However, that doesn't mean that we always get everything right with their care. Read our list of the most common pet parenting mistakes below to see if you're guilty.

### X NOT TRAINING YOUR PET

Did you forgo puppy training? If yes, then you are putting your pooch at a distinct disadvantage. When done correctly, training can help to provide guidance, support and structure, all of which your puppy needs in the early stages of their development.

### X OVERFEEDING YOUR PET

Overfeeding is an extremely common pet parenting mistake which can lead to a whole host of health problems. Whether you don't know the correct portion sizes or you are guilty of handing out too many treats, it is vital that you help your pet maintain a healthy weight.

### X AVOIDING THE VET

Vet bills can be extortionate, which can lead to pet parents avoiding essential check-ups. That being said, it is actually more cost-effective to take your pet to the vet regularly rather than wait until they require treatment. Remember, prevention is always better than cure.

### X FORGETTING DENTAL HEALTH

Oral health problems such as sore gums, tooth decay and bad breath can all affect pets in the same way that they do humans. Therefore, it is essential that you care for your dog's or cat's teeth. Daily brushing is the most effective way to prevent periodontal disease and only takes a few minutes of your day.

### X NOT GIVING ENOUGH ATTENTION

While you may have showered your new puppy or kitten with love, it can become all too easy to fall into the habit of not paying your pet enough attention. However, the more you observe your pet, the more likely you are to spot any behavioural changes or health issues.



## Wave goodbye to

# SUGAR

Are you struggling to find snacks for your kids that aren't loaded with sugar? Check out these sugar-free snacks that are easy to prepare, cost-effective to make and help to support healthy teeth and gums.

### Roasted chickpeas

Although chickpeas are most commonly associated with houmous, they can also be roasted to create a healthy sugar-free snack. Simply place on a baking tray, drizzle with olive oil and then add whatever spices your children like.

### Vegetable pikelets

Perfect for little ones who are averse to eating vegetables when they can see them, vegetable pikelets are a great savoury after-school snack. Make a batter by mixing 2 cups wholemeal flour, 3 tsp baking powder, 2 eggs and 1.5 cups of milk. Add 2 cups of your chosen vegetables and 1 cup cheese. Mix and then fry like little pancakes.

### Peanut butter dip

Although some peanut butters contain sugar, you can get natural ones that are sugar-free at most supermarkets. To make a delicious kid-friendly dip, whip together equal parts cream cheese and peanut butter until light and creamy. Serve with apples or celery.

### Boiled eggs

Super-simple, filling and nutritious, boiled eggs are a great snack for kids who come home from school starving. You can hard boil eggs in advance, peel and store in the fridge. Serve just as they are, sprinkle with spices or make some devilled eggs.

### Guacamole

Avocado is full of healthy fats and makes a great snack for babies, toddlers and older children alike. To make a delicious guacamole, smash up or blend a ripe avocado and then squeeze in some lime juice. Stir in a little Greek yogurt until you get the desired consistency. Serve with veggie sticks or pitta.





GARDENING

# Gorgeous GARDEN GREENS

**D**oes your garden boast beautiful blooms during spring and summer but look a little bleak and bare the rest of the year? If yes, then check out these flowering evergreen plants that promise to provide colour all year round.

**Heather:** Heathers are compact, evergreen shrubs that boast tiny bell-shaped flowers in an array of stunning shades including white, pink, red and mauve. You can find varieties that flower in summer and autumn, and even ones that bloom during the coldest months of the year.

**Creeping myrtle:** Creeping myrtle, aka Vinca minor, is a blue-flowering vine that boasts shiny evergreen leaves on long, arching stems. With the ability to provide ground cover for shade, creeping myrtle can grow up to six inches tall, with a spread of 18 inches. Ideal for those who want an attractive and hardy evergreen plant in their garden.

**Azaleas:** If you have a shady spot in your garden that needs brightening up, then azaleas are the ideal choice. A small evergreen shrub that showcases bright flowers in spring and vibrant greenery all year round, plant azaleas in the ground or opt for dwarf varieties in pots if you are short on space.

**Camellias:** Camellia sinensis is a welcome sight in late winter and early spring, offering an abundance of colour when most other plants are not in bloom. With glossy evergreen leaves that promise to look good throughout the year, camellias thrive in shady spots and acidic soil.

**Choisya:** Choisya, also known as Mexican orange blossom, is a low-maintenance evergreen shrub that proudly displays white star-shaped flowers and glossy green leaves. Plant in a sunny and sheltered spot and enjoy the delicious smell of orange blossom in late spring/early summer.



Our wonderful customers like our service so much, that over 40% of new customers joined us through their recommendation which, if you think about it, is a recommendation in itself.

So, if you've been thinking about enjoying a great lawn this year – green, lush and weed-free, why not contact us today and let us bring your lawn to life.

We provide four seasonal treatments, as well as beneficial treatments to keep your lawn in tip-top condition - prices start from just £15\*.

Ask us about our annual plans, which allow you to both spread the cost and save up to 25%.

Simply call: 01277 352 236 or visit: [greenthumb.co.uk](http://greenthumb.co.uk)    

PRICES FROM  
**£15\***  
PER TREATMENT

# GreenThumb

LAWN TREATMENT SERVICE

\*Based on a lawn size up to 40m² \*\*New Customers Only



**APPLIANCE REPAIRS  
AND SALES**

*We repair all makes and models*

Washing Machines • Tumble Dryers  
Dishwashers • Ovens • Hobs • Cookers  
Fridge/Freezers • Extractor Hoods

New appliances in stock for  
same day delivery & installation

Prices listed on our website

**Call 01279 310793**

**Or Book Online**

**www.spindoctoruk.co.uk**



**Optimum**  
Tree services

## **YOUR LOCAL, RELIABLE TREE SURGEONS**

Our company offers a range of services to  
complete your project to the highest standard

- TREE SURGERY
- TREE FELLING
- STUMP REMOVAL
- HEDGE TRIMMING
- Fully Qualified & Insured Staff
- Quality Firewood available



**CALL NOW  
FOR A  
FREE  
QUOTE**

**01277 821655**

**07979 935505**

[info@treesurgeonhelmsford.co.uk](mailto:info@treesurgeonhelmsford.co.uk)

[www.optimum-tree-services.com](http://www.optimum-tree-services.com)

YOU'RE NOT

# ALONE



OVER 207,500 OTHER PEOPLE IN ESSEX  
READ **VISION** MAGAZINE'S MONTHLY

Your  
Monthly  
Lifestyle  
Magazine



**CONTACT US TO GET YOUR BUSINESS SEEN BY OUR READERS**

See all our magazines at [www.visionmagessex.com](http://www.visionmagessex.com)

BillericaYShenfieldBishop'sStortfordBrentwoodOngarChelmsfordBeaulieuEppingTheydonFrinton-on-Sea  
HalsteadBraintreeHertfordHornchurchLeighThorpeBayLoughtonMaldonBurnhamManningtreeMistley  
RayleighWickfordSouthWoodfordWoodbridge



GARDENING

# Happy hibernation time

**M**ost animals go into hibernation in autumn as it is the most efficient way to survive the cold winter months. Find out how to recognise hibernating wildlife in your garden and how to help them survive until spring.

### *Signs of hibernating wildlife*

#### **Leaf pile**

A pile of leaves in a corner of the garden, in the compost bin or behind the shed can mean you have a hibernating hedgehog or two. Hedgehogs can also hibernate in bonfire piles, so be sure to check before you light.

#### **Movement in a pond**

If you have a pond in your garden and you notice movement or shadows at the bottom, this could mean that frogs are hibernating there. These are typically male frogs as they favour hibernating in water rather than in mud or under leaves.

#### **Mounds of soil**

Small mounds of soil can indicate that mining bees are nesting in your lawn or in your borders. If this is the case, it is likely that their offspring will be hibernating there until spring.

#### **Long grass**

Although long grass is not a sign of hibernation, it is highly likely that wildlife will be seeking shelter there. In particular, caterpillars and moths hibernate in long grass, as well as beetles and other grubs.

#### **Leaves on a wall**

If you notice leaves on a wall in your garden, these may not actually be leaves but clusters of butterflies who often hibernate in groups.

### *How to protect hibernating wildlife*

- ★ Create leaf and log piles
- ★ Have plants that offer winter nectar, such as mahonia and hellebores
- ★ Move any bug houses to a sheltered spot
- ★ Put up a nest box for birds
- ★ Avoid late tidying of any potential hibernation spots
- ★ Leave out a supply of nuts to support squirrels as they collect food.

# Beautiful BULBS

**S**eptember is the perfect month for planting spring bulbs, and these can be placed directly into borders or in pots for patios and smaller gardens. Discover our top picks for a blooming beautiful spring garden below.

easy to grow. They are well suited to both borders and pots; place them in a sunny spot for best results.

**Tulips:** Tulips come in almost every colour, from pastels to rich shades. They are perfect for adding vibrancy to spring borders in April and May but can also be grown in pots. Tulips favour full or afternoon sun and the soil must be well drained.

**Hyacinths:** Highly fragrant and available in a wide range of colours, hyacinths look amazing in borders in the front garden or in pots for a splash of colour. Hyacinths thrive in most soils as long as they are not too wet. Plant in full sun or partial shade.

**Daffodils:** Daffodils are synonymous with spring and there are many different varieties for you to choose from. Ranging in height from 10cm to 45cm, daffodils can be yellow, white, cream or lemon-coloured. They grow very well in pots but also make a great addition to borders.

**Snowdrops:** Snowdrops are the first bulbs to flower, usually in February, and are often hailed as the first sign of spring. With the ability to flower whatever the weather, even in snow, these delicate flowers thrive in moist, well-drained soil and in partial shade. Grow in borders or pots.

**Irises:** Iris reticulata is ideal for small pots, window boxes and raised beds. Bringing some much-needed colour to your garden as early as February, irises like the sun and free-draining spots.

**Crocuses:** Crocuses provide a carpet of colour in the garden from late winter onwards and are very



## A standard above

LawnRooms are a provider of bespoke garden buildings that are built to a high standard.

Lawnrooms buildings are designed to be used all year round as an office, social space, or hobby room.



They offer an energy efficient, turn key solution and come with top of the range materials as standard, such as energy efficient heating. They are designed and built more like a house than a typical garden room"

**Classic**  
This classic design has clean lines and gives you the perfect combination of functionality and space without taking over your garden.

**Classic Plus**  
Similar to the Classic, but with an additional veranda at the front to create a seamless threshold between the inside and the outside.

**Wraparound**  
Building on the same basic principles as other designs but with extended

**Canopy**  
The extended canopy on this design offers an additional decking area to one side. This extra space provides a fantastic place to relax or socialise - perfect for a hot tub or barbecue.

**Annex**  
An annex is a garden room with additional features for example, separate rooms such as a bathroom or kitchen. Planning permission may be needed.

**Bespoke**  
The standard designs should give you a good idea about what it is you think you might want from a garden room. If your needs are not perfectly catered for with the standard designs then why not create your own bespoke design.



Classic



Classic Plus



Wraparound



Canopy



Annex



### STYLISH GARDEN BUILDINGS - DESIGNED TO ENRICH YOUR LIFE

- Classic
- Classic Plus
- Wraparound
- Canopy
- Annex
- Bespoke

Our designs provide a starting point for your ideal garden room. Once you have selected your base design, you can configure it however you like.

- ◆ All year round use ◆ Life expectancy of 30 years+
- ◆ Great build quality ◆ Top of the range materials
- ◆ Energy efficient heating & cooling
- ◆ Designed around UK Permitted Development



07989 446768  
www.lawnrooms.com  
contact@lawnrooms.co.uk  
Billericay, UK





# SPECIALIST IN PRE-CAST BUILDINGS

SINGLE GARAGES ■ DOUBLE GARAGES ■ CONSERVATORIES  
GARDEN ROOMS ■ SHEDS/WORKSHOPS & MORE



- FAMILY RUN BUSINESS ■ 50 YEARS EXPERIENCE
- 5 YEARS GUARANTEE ■ DESIGNS TAILORED FOR YOU
- HIGH QUALITY, LOW MAINTENANCE CONSTRUCTION

CONTACT US ON 020 8590 3701

[www.rpageconcretebuildings.com](http://www.rpageconcretebuildings.com)

[f rpageconcretebuildings](https://www.facebook.com/rpageconcretebuildings)

951-953 High Road, Chadwell Heath, Romford, Essex RM6 4HB



**R**  
**PAGE**  
**CONCRETE**  
**BUILDINGS LTD**

# Basildon Timber

Celebrating 30 Years

TRADE • PROFESSIONAL • DIY

- LARGE RANGE OF DECKING
- PREPARED TIMBER & MOULDINGS
- EXTENSIVE HARDWARE SHOP
- SHEET MATERIAL CUT TO SIZE



COMPETITIVE PRICES • FRIENDLY STAFF • PROMPT DELIVERY SERVICE AVAILABLE

Honywood House, Honyard Road, Basildon, Essex, SS14 3DT

[sales@basildontimber.com](mailto:sales@basildontimber.com) • [www.basildontimber.com](http://www.basildontimber.com)

Opening hours: Monday - Friday 7.30am-5pm • Saturday 8am -1pm



SPORT



Photo credit: Christophe Era/AP/Shutterstock

## BRITAIN'S GREATEST SPORTING MOMENTS... VICTORIA PENDLETON CBE *cycling to gold*

By the time she retired in 2012, Victoria Pendleton CBE had risen to become

Britain's most successful female Olympian of all time. Her list of accolades includes two Olympic gold medals, a record nine World Championships, two European Championships and a Commonwealth gold.

It's incredible to think this approachable star of cycling has now been away from competitive action for almost a decade. Going out in style, she won Keirin gold at the London Olympics in 2012.

The Keirin event is one of the more peculiar, with five-and-a-half laps behind a motorised bike – the speed of which increases from 30km/hr to 50km/hr – followed by a two-and-a-half lap sprint finish.

Pendleton progressed comfortably through both heats to make it to the final. There, Australia's Anna Meares attempted to edge in front once the pacemaker had moved aside, but Pendleton's extraordinary burst of pace put her back in first place at the bell.

Around the back straight it was China's Guo Shuang who looked the biggest threat, and despite taking a wider line on the final corner, she was closing in.

With all the drama befitting an Olympic final, Pendleton crossed the line with an advantage no more than half a wheel's width, and the gold medal was hers.

The London Games came at the start of a golden period for British cycling. Bedfordshire-born Pendleton, meanwhile, continued her legacy on two wheels with the launch of a range of ladies' bikes, matching a surge in popularity in cycling – for both sport and leisure – that continues today.

# PLOUGH'S ABOUT THAT?

UNUSUAL SPORTS: NATIONAL PLOUGHING CHAMPIONSHIPS

If you suspected you were alone in feeling as if there were few things in life as satisfying as watching a tractor or harvester carve a path across a field, leaving in its wake a pattern that would help calm the nerves of even the most intense OCD sufferer, then, with regret, the news is you are just one of many millions.

That level of contentment is played out every year in Ireland, keeping up a long tradition that began way back in 1931, when horses and ploughs were the order of the day, rather than the bustling, ultra-precise, often satellite-guided machinery that we see scoring neat lines across our country's fields nowadays.

Of course, Ireland's National Ploughing Championships, which take place in September each year, rely very much on the skill of the farmer, as they did way back when an argument between two lifelong friends – Denis Allen of Gorey, County Wexford, and JJ Bergin of Athy, County Kildare – created this curious event in 1931.

From simple beginnings – a small field of just

26 acres – the annual contest now requires more than 700 acres of land, so great is the interest from machinery operators who travel from all around to compete in the spectacle.

And the National Ploughing Championships have become much more than just an annual inter-county competition; it's an intrinsic part of rural Irish life, having expanded to include trade show stalls, a food fair, craft village, and cookery demonstrations, plus education, fashion and lifestyle elements.

In total, the championships attract 1,700 exhibitors and more than 300,000 visitors, and after lockdown interruptions, the 2022 event – which is to be held in Ratheniska, County Laois, between September 20 and 22 this year – is set to be one of the biggest ever. The winner is judged on the neatest ploughing arrangement.

As for who won that first ploughing showdown between Allen and Bergin, in true Irish fashion, the result was disputed, so it was agreed they would try again the following year.

Find out more about the event at [www.npa.ie](http://www.npa.ie)



**FIRST LOOK**  
Ground works

## BUILDING DREAMS

We pride ourselves on the quality of our building services from ground work to a full renovation we cover all building services.

- Bathrooms ■ Kitchens ■ Windows
- Doors ■ Extensions ■ Garages
- Ground Works ■ Patios ■ Decking
- Roofing ■ Plastering ■ Rendering
- Block Paving



**CONTACT US – 07900 012625**

[firstlookgroundworks@hotmail.com](mailto:firstlookgroundworks@hotmail.com)

[firstlookgroundworks](https://www.facebook.com/firstlookgroundworks)

# F. Davis

**Landscapes,  
Tree & Garden  
Services**

PLEASE CALL  
QUOTING VISION  
TO RECEIVE A  
**15% DISCOUNT**

Your local friendly  
company offering you  
exceptional services  
with regard to trees, shrubs & hedges  
and all kinds of landscaping

FREE ESTIMATES & ADVICE  
14 DAY COOLING OFF PERIOD  
NO DEPOSIT REQUIRED  
ALL WORK GUARANTEED  
FULL PUBLIC LIABILITY INSURANCE

**CALL US TODAY ON**  
**07909 702657 or 07366 996007**

[fdavislandscapestreecare@gmail.com](mailto:fdavislandscapestreecare@gmail.com)

**FREE QUOTES  
NO JOB TOO SMALL**

**SHENFIELD FENCING**

**ALL ASPECTS OF FENCING • SUPPLY & FITTING  
MADE TO MEASURE • REPAIRS • PATIOS & PAVING  
EST 1978 • QUALITY & AFFORDABLE • FULLY INSURED**

**Tel: 01277 373 115 • Mob: 07939051705  
email: [jamiemellish@icloud.com](mailto:jamiemellish@icloud.com)**



## Award-winning care, in the heart of your community

At Hutton View Care Home, we don't just provide residential and dementia care of award-winning quality – we help our residents carry on enjoying the everyday routines we all cherish.

To see for yourself what makes Hutton View an award-winning care home, go to [hallmarkcarehomes.co.uk/huttonview](http://hallmarkcarehomes.co.uk/huttonview), call our Customer Relationship Manager, Sommer, on **01277 575 319**, or drop by for a visit at **3 Rayleigh Close, Hutton, Essex, CM13 1AR**.



HEALTH & FITNESS

# FITNESS FOR ALL

TO CELEBRATE NATIONAL FITNESS DAY, WHICH TAKES PLACE ON SEPTEMBER 21 THIS YEAR, WE HAVE ROUNDED UP A SELECTION OF WORKOUTS, WITH OPTIONS TO SUIT ALL AGES AND ABILITIES

### EXERCISES FOR ALL AGES AND ABILITIES

#### 20s

Focus on incorporating cardio, weight training, balance work and stretching. Aim for 30-60 minutes of cardio two or three days a week, such as running, swimming or cycling, and one or two weight training sessions to challenge all muscle groups.

#### 30s

It can take longer to recover from workouts in your 30s, so you should add 30 minutes of resistance training at least twice a week to your normal workout routine, incorporating exercises such as squats, push-ups and planks. This is especially important for women as it can help to offset issues such as osteoporosis and arthritis.

#### 40s

With age, your bone density decreases, as does your strength and muscle mass. Counteract this by combining strength training exercises such as lifting weights or using resistance bands with moderate-

intensity cardio three times a week.

#### 50s

Resistance training is vital in your 50s, especially for your hips and shoulders. Schedule 30 minutes of walking five days a week and two sessions of resistance training.

#### 60s

During your 60s, fitness is more important than ever before, helping you to keep your independence for longer. Opt for low-impact exercises such as swimming, rowing or stationary core moves.

#### Wheelchair users

Regular aerobic exercise and muscle-strengthening exercises are crucial for wheelchair users. Aim to get at least 150 minutes of the former per week and set aside two sessions for building strength. Arm raises, side twists and sitting bicycle crunches are all good choices, as are wheelchair sports such as basketball, badminton and netball.





It's all about

# Balance



**B**alance Awareness Week takes place from September 18-24 and aims to broaden the understanding of inner ear disorders and how they can affect someone's daily life.

Most people take balance for granted, yet without it, you can suffer a whole host of health problems.

### Why is balance important?

Balance is needed to perform everyday activities, including walking, going up and down the stairs, and even just standing upright. It is particularly important in older adults, as good balance can help to prevent falls. Some of the main benefits of improving your balance include:

- > Preventing injuries
- > Improving posture
- > Strengthening muscles
- > Improving coordination
- > Improving cognitive function

### How to improve your balance

There are several exercises you can do at home to improve your balance, and you don't need a single piece of equipment to do them.

### Single leg lift

Stand upright with your feet close together. Keep your head straight, take a deep breath and slowly lift your right leg off the floor. As you gain confidence, bring your leg higher so that your knee is as close to your chest as you can comfortably manage. Repeat with your left leg.



### Single leg lift side version

Stand upright with your feet close together. Keep your head straight and your eyes forward, then slowly lift your right leg to the side. Make sure you keep your body upright as you do this. Do not lean to the side. Repeat with your left leg.



### Balance walk

Find a straight line or place a piece of tape on the floor. Extend both arms to your side, keep your feet straight and place your right heel at the tip of your left toes. Next, place your left heel at the tip of your right toes. Continue placing one foot in front of the other without straying from the line.



# Take a second to put your health first

## Book your mammogram appointment today

At Nuffield Health Brentwood Hospital you don't have to worry or delay if you want the peace of mind of breast screening.

If you're over 40-years-old, registered with a GP, and haven't experienced any symptoms or not had screening within the last 12 months, you can refer yourself for a self-pay mammogram today.



To make an appointment please call the Nuffield Health Breast Screening Centre on **0345 230 2040**



**Nuffield Health Brentwood Hospital**  
Shenfield Road, Brentwood, Essex CM15 8EH



We are proud to support  
**Breast Cancer  
Awareness Month**

# Know your NAILS

**DISCOVER THE SIX MOST COMMON NAIL PROBLEMS AND HOW TO RECOGNISE THEM**

**C**hances are you don't pay that much attention to the condition of your nails. However, did you know that a change in their appearance can indicate an underlying health condition?

**BEAU'S LINES:** Beau's lines are deep grooved lines that run from side to side on the fingernail or toenail. They often look like ridges or indentations on the nail plate. Beau's lines can indicate uncontrolled diabetes, a zinc deficiency or peripheral vascular disease.

**YELLOW NAIL SYNDROME:** If you have yellow nail syndrome, your nails will thicken and nail growth slows down. This results in a yellowish discolouration of the nails. Yellow nail syndrome is often a sign of respiratory disease or lymphedema.

**TERRY'S NAILS:** Terry's nails is a condition that makes the nails appear white apart from a narrow pink band at the tip. This nail condition can occur because of ageing, but it can also be a sign of a more serious health concern such as liver disease, kidney failure or diabetes.

**SPOON NAILS:** As the name suggests, spoon nails are soft nails that look as if they have been scooped out. Spoon nails are often a sign of an iron deficiency or a liver condition known as hemochromatosis. They are also associated with heart disease and hypothyroidism.

**NAIL CLUBBING:** Nail clubbing occurs when the tips of the fingernails become enlarged and the nail curves around the fingertips. Nail clubbing can be a sign of inflammatory bowel disease, cardiovascular disease or liver disease. It is also sometimes the result of low oxygen in the blood.

**NAIL PITTING:** Ice-pick-like depressions in the nail are known as nail pitting. This nail condition is common in people with psoriasis. Nail pitting can also be related to connective disorders such as Reiter's syndrome and alopecia areata.



## Rapid Diagnosis Breast Clinic

Springfield Hospital's clinic is available to anyone with breast symptoms. If you are paying for yourself, just call the number below to make an appointment. If you are using your private medical insurance, please call your insurance company to get an authorisation number. Then call our appointments line who will make an appointment for you.

**01245 234 000**

Lawn Lane , Chelmsford, CM1 7GU

[www.springfieldhospital.co.uk](http://www.springfieldhospital.co.uk)

/SpringfieldHospital



**Springfield  
Hospital**

Part of Ramsay Health Care



FASHION

# FRINGE FASHION

*is back in town!*

Fringe is back with a vengeance this autumn and has already been spotted on stars such as Charlize Theron and Olivia Palermo. From tasseled denim jackets to fringed mini-dresses, there are so many stylish ways you can embrace this trend in 2022.

### WHAT IS FRINGE FASHION?

Fringe first came into fashion in the 1920s as part of the flapper look, with dresses that were typically cut from luxurious materials and ornamented with fringed trim. Over the decades, fringe has gone in and out of fashion, but is now back bigger and bolder than ever before. It can be found in many different styles on garments made out of a variety of fabrics, from leather and suede to denim and silk.

### HOW TO ROCK FRINGE THIS AUTUMN

#### 1. Fringed midi leather skirt

Why rock only one autumn 2022 fashion trend when you could embrace two? Leather is a great material for fringing and, when showcased on a midi skirt, guarantees you will look super stylish.

#### 2. Fringed denim jacket

The denim jacket is the perfect wardrobe staple to take you from summer to autumn, and adding a little (or a lot) of fringe detailing can inject a touch of fun to any outfit. Look for an oversized and boxy shoulder with plenty of fringe for maximum effect.

#### 3. Fringed wrap dress

Ideal for taking you from shopping to a hot date, a fringed wrap dress promises to make you look sophisticated and stylish. Pair with some strappy shoes and minimal accessories for an effortlessly glam vibe.

#### 4. Fringed accessories

If fringed clothing is a little bit too far outside your fashion comfort zone, then why not try adding a few fringed accessories? For your first foray, fringed earrings are a great choice, or why not pick up a tasseled handbag?



Photo credit: debentham.com, ASOS.com



# Eve Belle Care Home

# NOW OPEN

HOME-FROM-HOME LIVING

WELLBEING-FOCUSED CARE

COMPASSIONATE EXPERT TEAM

MAKE NEW FRIENDS, BE PART OF A COMMUNITY AND LIVE MEANINGFULLY AT EVE BELLE.



Book Your Personalised Tour Today:  
01268 435389  
Eve Belle, Nevendon Road, Wickford, SS12 0QH



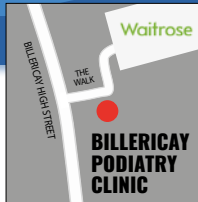
## Are you suffering from painful nails?

Ingrowing nails, thickened nails and damaged nails can stop you from doing the things you love but can also affect your day to day lives and limit what you can wear. You do not need to suffer the pain in silence!

We are a Podiatry clinic and we are experts in treating nail issues especially painful ones. In many cases they are very sensitive as toes have a very high concentration of nerve endings. We can make the treatment painless by providing a local anaesthetic. Treatment will therefore be more effective and lasting. You also have the option of resolving the issue with a surgical procedure which will ensure a permanent solution and will leave you pain free.

We will be there from the surgery through to healing to ensure you have the best possible result and are pain free.

**CHIROPODY, PODIATRY & FOOTWEAR CENTRE**



**01277 659200**

**www.essexfootcare.com**

**2 The Walk, Billericay, Essex CM12 9YB**



## FAST, EFFECTIVE & PROVEN

### ESSEX BASED LEAFLET, PRINTING & DISTRIBUTION SERVICE

Flyer Distribution Essex covers a majority of the CM, SS & CO postcode areas

- One off drops OR regular monthly drops
- Targeted Demographics - delivered direct to homes
- Cost effective Printing service available
- Direct Pick up service available from your Essex based address

### CONTACT US

**01277 554045 ● www.flyerdistributionessex.co.uk**



FOOD & DRINK

# The Blackberry *Way*

**T**hey look good, they taste good, and they do you good too. What more could you ask of a fruit you can gather for free?

Blackberries have been eaten in Britain since Neolithic times. And there are plenty of places to pick them throughout most of September. You'll find them in straggly clumps, in woods, hedges, heaths, roadside verges, and perhaps in your own garden.

Blackberries are a great source of vitamin C, potassium, manganese and antioxidants. Research indicates they may help prevent heart disease, certain cancers and inflammatory conditions such as arthritis.

You'll need to pick the berries when they're ripe – when their colour changes from red to purplish black. Once you're home, wash them in cold water. Add a little salt and leave them to soak for 5-10 minutes. This will get rid of any bugs, which should float to the surface.

Remember, fresh blackberries don't last long. So make sure to use them within a day or two or freeze them for later.

There are loads of delicious blackberry recipes – both sweet and savoury. This one's a twist on an old favourite.

### Blackberry fruit crumble squares

#### INGREDIENTS:

250g sugar | 375g plain flour | 1 tsp baking powder | 200g butter (soft) | 1 egg | 450g blackberries (washed) | 1 tbsp cornflour

#### HOW TO MAKE:

- > Preheat the oven to 190°C/170°C fan/gas mark 5 and grease a 20x30cm tin.
- > Stir together 200g sugar, flour and baking powder. Using a fork, blend in the butter and egg. The dough will be crumbly.
- > Pat half the dough mixture into the tin.
- > Mix together the fruit, the remaining 50g sugar and cornflour. Mix gently (it doesn't matter if the mixture is a bit squishy).
- > Spread the blackberry mixture evenly over the dough.
- > Crumble the remaining dough mixture on top.
- > Bake for 35-40 minutes, till the top is golden.
- > Cool, then cut into squares. Enjoy!



# SLOE & STEADY *wins the race*

There's something magical about turning a humble hedgerow berry into something to tease the tastebuds, like sloe gin. And better still, it's really simple to make.

Sloes grow on blackthorn bushes, which are found all over the UK. The bushes blossom in early spring with clouds of pretty white flowers, and the deep purple berries start forming in August.

For sloe gin, people often recommend that you don't pick them until after the first frost. Apparently, this makes the berries sweeter and softer. The only problem is that birds love sloes, too, and they might get there before you do.

So the Woodland Trust recommends that you pick sloes from late September. After washing and drying them, just pop them in the freezer. This creates an artificial frost – and the berries will keep in the freezer for several months.

When you're out picking sloes, it's a good idea to wear gloves and a long-sleeved top as their branches are prickly and covered with thorns. And remember, sloes don't taste good raw. And while eating them in this state won't harm adults, never give them to children.

### How to make sloe gin

#### Ingredients:

500g sloes (rinsed and dried) | 250g caster sugar | 1 litre gin

#### Method:

- Prick the sloes with a cocktail stick and tip into a 2-litre glass jar.
- Add the sugar and gin, seal the jar and shake well.
- Once a day for a week, give the jar a good shake.
- Store the jar in a cool, dark place and leave for 2-3 months.
- Line a plastic sieve with a square of muslin, strain the liquid into a bowl and decant it into clean, dry bottles.
- Your sloe gin is now ready to drink.
- Drink it neat or top it up with prosecco for a sparkling aperitif.



SOUTH ESSEX GOLF EVENTS



## BOOK YOUR CHRISTMAS Party

A WELCOME DRINK OF PROSECCO  
THREE-COURSE MEAL  
MINCE PIES  
CHRISTMAS CRACKERS  
DJ

FOR MORE DETAILS PLEASE CALL  
01277 811289

[WWW.SOUTHESSEXGOLF.CO.UK](http://WWW.SOUTHESSEXGOLF.CO.UK)

SOUTHESSEXGOLFEVENTS

**SOUL SPIRIT & WELLBEING FESTIVAL**

**ALL YOU NEED FOR SPIRITUAL HEALTH WELLBEING & HAPPINESS!**

\* **NUTRITION** \* **YOGA**  
\* **DANCE CLASSES** \* **CRYSTALS**  
\* **TAROT READERS** \* **BEAUTY**  
\* **FASHION** \* **VEGAN FOOD & FIZZ**  
**PLUS MORE**

**RAFFLE SUPPORTING REAN ANIMAL RESCUE**

**£250.00 WORTH OF WELL-BEING GOODIES!**

Ramsden Bellhouse Community Village Hall,  
Church Road, Ramsden Bellhouse, CM11 1RN  
SAT 10th SEPT 2022 \* £5.00 \* Entry 11-4:30pm

[soulspiritandwellbeingfestival](https://www.facebook.com/soulspiritandwellbeingfestival)  
 [soulspiritandwellbeingfestival](https://www.instagram.com/soulspiritandwellbeingfestival)

FREE GIFT FOR THE FIRST 50 PEOPLE THROUGH THE DOOR





# PUZZLES & TRIVIA

**ANY little THING** Ltd  
Providing reliable & trustworthy support

*A Personal Home Help Service*

Providing trustworthy and reliable support to the elderly and vulnerable

Including, but not limited to  
Companionship 🐾 Household Chores  
Pet Services 🐾 Meal Preparation  
Basic Gardening 🐾 Ironing

**01268 928878**  
[www.anylittlething.co.uk](http://www.anylittlething.co.uk)

**BILLERICAY WINDOWS LTD**

Installers of UPVC • Aluminium  
Timber Windows & Doors • Composite Doors  
Bi-fold Doors • Conservatories • Roof Lanterns  
Repairs • Softs, Facias & Guttering



**T. 07872 306 236**  
E: [stuart.byhurst@billericaywindows.com](mailto:stuart.byhurst@billericaywindows.com)

Billericay-Windows-Ltd Where reputation matters

- ▶ ARABIAN
- ▶ ATACAMA
- ▶ CHIHUAHUAN
- ▶ GIBSON
- ▶ GOBI
- ▶ GREAT BASIN
- ▶ GREAT SANDY
- ▶ GREAT VICTORIA
- ▶ KALAHARI
- ▶ KAVIR
- ▶ KYZYLKUM
- ▶ MOJAVE
- ▶ NAMIB
- ▶ ORDOS
- ▶ PATAGONIAN
- ▶ SAHARA
- ▶ SIMPSON
- ▶ SONORAN
- ▶ SYRIAN
- ▶ TAKLAMAKAN

R	G	R	E	A	T	S	A	N	D	Y	B	K	E	H
G	F	D	T	A	K	L	A	M	A	K	A	N	S	O
R	O	R	A	M	A	C	A	T	A	S	I	A	K	M
I	I	B	E	O	N	P	X	T	O	I	R	M	F	S
R	S	V	I	V	A	E	T	N	T	A	O	O	R	P
A	P	T	A	S	U	O	O	O	B	J	T	D	N	N
H	P	R	U	K	H	R	G	I	A	Y	C	A	A	I
A	X	S	U	M	A	O	A	V	T	S	I	G	Q	S
L	G	E	Y	N	U	N	E	A	Z	N	V	I	E	A
A	T	S	R	R	H	K	R	Q	O	A	T	B	A	B
K	R	O	N	N	I	A	L	G	L	R	A	S	L	T
F	D	D	L	W	H	A	A	Y	R	W	E	O	A	A
T	B	R	C	A	C	T	N	N	Z	F	R	N	R	E
L	P	O	S	N	A	M	I	B	O	Y	G	O	T	R
Q	N	O	S	P	M	I	S	X	G	M	K	K	V	G

Come home to a clean house

**MOLLY MAID**

Our professionally trained team of maids will make your home sparkle with each visit. We know it's not a one-size fits all service, that's why we work to tailor our cleans to your individual needs, schedule and budget.

Call us today to arrange your no obligation in home quote

Emma Brooks  
**01277 424985**  
[emma.brooks@mollymaid.co.uk](mailto:emma.brooks@mollymaid.co.uk)  
[www.mollymaid.co.uk/brentwood](http://www.mollymaid.co.uk/brentwood)




See what our customers have to say at [uk.trustpilot.com](http://uk.trustpilot.com)

## DID YOU KNOW?

- ▶ Trees contain quite a lot of water. When lightning strikes, most of the water reaches boiling point, turning it to steam and increasing pressure. This can cause the tree to explode.
- ▶ The average blue whale has a heart approximately the size of a car.
- ▶ Around 90 per cent of humans live in the Northern Hemisphere.
- ▶ Blue whales are able to hear each other from around 500 miles away.
- ▶ Platypuses can produce their own venom which is injected through barbs on the male's back legs.
- ▶ When threatened, ostriches run, although their powerful kick is capable of killing a human or even a lion.

## WORD LADDER

**STAR**

\_\_\_\_\_

\_\_\_\_\_

\_\_\_\_\_

\_\_\_\_\_

\_\_\_\_\_

**PICK**

THE AIM: Change the word at the top of the ladder one letter at a time to make the word at the bottom.

HOW TO: Change one letter on each step to make a new word. By the time you reach the end, you should have created the new word.

DO NOT rearrange the order of the letters.

TIP: There is usually more than one way to solve this puzzle.



# TOUR DE FORCE



Photo credit: Magic Car Pics/Shutterstock

A streamlined dream straight out of the future, the Ford Sierra was first unveiled in 1982, and the world sat up to take note.

When Ford revealed its Sierra model at the British International Motor Show at the NEC in Birmingham near the end of September 1982, it knew the reaction would be huge.

The company was in the throes of investing more than \$1.2billion into the design, production and manufacture of this sleek, slick piece of automotive engineering, and the industry immediately knew it had something big on its hands.

For Ford, the reaction was just what the doctor ordered. The pressure had been on to find a successor to the Cortina, a stylish car that was, nonetheless, constructed around convenience and practicality.

Industry experts guessed that the manufacturer's next move would be to push those ideals further forward, but instead Ford went into overdrive with a design that rivalled the comfort of Audi, the

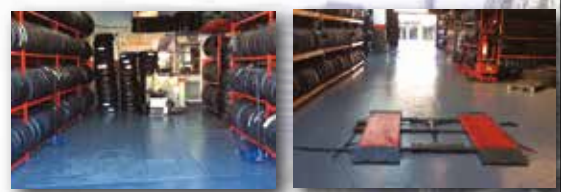
sleekness of Citroën and Porsche (indeed, the inspiration for Sierra's quarter glass came from the Porsche 928), and as for dashboard technology, the manufacturer had taken the very best elements from the likes of Saab and BMW.

Sure enough, after a slow initial take-up (mostly because of a punchy purchase price and an excess of Cortinas still sat on forecourts, now with much-reduced process), drivers gradually fell in love with the Sierra.

The Sapphire and, of course, sporty Cosworth models nicely tweaked the Sierra proposition, and it wasn't until the Mondeo arrived in 1993 that sales began to fall.

Looking at the Ford Sierra now, some may label it cumbersome and clumsy by today's aerodynamic standards, but in the 1980s, it was the very height of motor chic, and its legacy lives on today.

## GUARANTEED PART WORN & NEW TYRES



PART WORN TYRES

NEW TYRES

TRACKING

CAR TYRES

CROSSOVER TYRES

4x4 TYRES

VAN TYRES

### PUNCTURE AND DAMAGE TYRES REPAIR SPECIALIST

For details of our **LIFETIME GUARANTEE** on part-worn tyres visit: [www.tyresaversukltd.co.uk](http://www.tyresaversukltd.co.uk)

Unit 4 Navigation Road, Chelmsford CM2 6HE  
Call: 01245 252 626

143 London Rd, Stanford Rivers, Ongar CM5 9PP  
Call: 01277 365 420

Visit us on Facebook



From **£895\*** for a fully fitted electric garage door.

Gotta get a Garolla.

Garolla garage doors are expertly made to measure in our own UK factories, they're strong and solidly built. The electric Garolla door rolls up vertically, taking up only 8 inches inside your garage, maximising valuable space. Our expert local installers will fit your new door and they'll take away the old one too, so there's no mess.

Give us a call today and we'll come and measure up **FREE** of charge.

[www.garolla.co.uk](http://www.garolla.co.uk)

CALL US TODAY ON:

**01277 801 081**

MOBILE:

**07537 149 128**

LINES OPEN 7 DAYS A WEEK

\*Offer valid for openings up to 2.4m wide & including 2 remote controls, 55mm white slats, internal manual override.

## BATHROOMS & KITCHENS

### GEORGE BARNETT KITCHENS

Kitchens, Bedrooms, AV, Home Office. 01277 217972 | sales@georgebarnettkitchens.co.uk | www.georgebarnettkitchens.co.uk | showroom 68 Woodland Ave, Brentwood, CM13 1HH

### BODYWASH BATHROOMS

Expert advice, long lasting quality. Amazing offers in store. Showroom A12 Eastern Avenue, Romford, Essex | 01708 736700 | sales@bodywash.uk | www.bodywash.uk

### BEAUTIFUL BATHROOMS ESSEX

Supply & Installations. Visit our showroom - 3 Alma Link, CM12 9GF. We offer 4D Virtual Reality design. 01277 626129 | info@beautifulbathroomsessex.co.uk

## BLINDS

### WORTH & CO BLINDS

Essex's leading blind, awning, & interior shutter specialists for over 100 years. Call us on 01277 809045

## BUILDING SERVICES

### TIMMINS PROPERTY SERVICES

From the smallest job to the largest high profile project, FREE estimates with no obligation. Emergency 24hr service. Call us on 01277 810005 or email t-p-s-l@btconnect.com

### MASTERBUILD & MAINTENANCE LTD

Specialist in new builds, extensions, loft conversions, refurbishments & landscaping. Contact us for a quote or advice 07894 744122

## CARPET & UPHOLSTERY CLEANER

### CP CARPET CLEANING

Carpet & Upholstery Cleaning specialist. 20+ yrs exp, competitive prices. Includes sanitising and deodorising treatment. Call Carl on 07951 235195

### ENVIROCLEAN

Carpet & Upholstery Cleaning. Contact our southeast team for a no obligation quote. Call 01375 350150

## CLEANER

### BRIGHT & BEAUTIFUL

Domestic/commercial cleaners, DBS checked, fully insured. Regular cleans, one offs, end of tenancy, care homes, offices. Pure, eco-friendly, non-toxic products used. 01277 287503

### MOLLY MAID

Our professionally trained team will make your home sparkle. We tailor our cleans to your individual needs, schedule and budget. 01277 424985 | emma.brooks@mollymaid.co.uk

## COMPUTER REPAIRS

### DH COMPUTING

Friendly help direct to your door, all your computer needs, low rates (no VAT), no call out charge, homes/small businesses covered. 01277 523127 | help@dhcomputing.co.uk

JOIN THE LISTINGS

For just **£180** +VAT per year

## CONSERVATORIES

### ROOTHWAY BUILDERS LTD

Is your conservatory too hot in summer and too cold in winter? If Yes, we have a solution. Contact a Local Family Business 01702 200062 | 07770 793389 | 07900 398201

## ELECTRICAL & SECURITY

### SMART FIRM

Electrical, Energy & Security Specialists. Security Installations, Renewables, Solar Energy, EV Charging Systems, Domestic & Commercial. Call 01277 212217 | www.smart-firm.com

## EXTERIOR CLEANING

### CASTLE EXTERIOR CLEANING

Low pressure non-abrasive steam cleaning, restore your driveway, patio, brickwork, roof, render, UPVC or decking, local pure water window cleaner. Call Adam 07921 514415

## FINANCIAL SERVICES

### HCR

Independent Financial Advisers. Can help with advice on: Savings and Investments | Inheritance Tax Planning | Pensions | Protection. Call us on 01277 654153

### ENGLEMAN WILLS

Personally tailored wills, powers of attorney, probate, guidance on inheritance tax & care home fees. 01268 761022 | Mobile: 07901 948745 | www.businessadvisoressex.co.uk

## FLOORING

### CARPETS DIRECT

Carpets, vinyls, laminates, wood flooring. Free fitting, free home visits, 80% wool twist pile specialists. Call us on 01277 554163

## GARDEN BUILDINGS

### R PAGE CONCRETE BUILDINGS LTD

Specialists in pre-cast buildings, single/double Garages, conservatories, garden rooms, sheds/workshops & more. Family business, 50yrs exp. 5yrs Guarantee. 0208 590 3701

## GARDEN SERVICES

### GREEN THUMB

Lawn Treatment service, if you have been thinking about enjoying a great lawn this year - Simply call 01277 352236 or visit www.greenthumb.co.uk

### SHENFIELD FENCING

All aspects of fencing, Supply & Fitting, Made to measure, Est 1978. 01277 373115 | 07939 051705

## GATES & RAILINGS

### STEEL BOUTIQUE ESSEX

Made to measure gates, railings, handrails & more, designing, manufacturing & installing high quality, hand crafted, metal-work. 07967 208875 | info@steelboutiquessex.com

## HANDYMAN

### B DIRECT HANDYMAN SERVICES

For all your projects, repairs and improvements. Call our friendly helpful team or visit our website for a full list of services. Tel 01277 583939 | www.bdirect.co.uk

### MOWBREY PROPERTY SERVICES (MPS)

Fully Insured, 25+ yrs experience, General Maintenance, locksmith, door hanging, interior painting, carpentry, mastic sealant/waterproofing, gardening. Call 07832 253154

## HEALTH & WELLBEING

### CHIROPODY, PODIATRY & FOOTCARE CENTRE

2 The Walk, Billericay, CM12 9YB. Foot health clinic, diabetic foot, nail problems/reconstruction, sports injuries, fungal nail treatment, digital foot scanning. 01277 659200

### NUFFIELD HEALTH BRENTWOOD HOSPITAL

Come and join us at our free hospital events please check our page in the Health section of this edition for more information. Spaces are limited call us on 01277 554181

CONTACT BILLERICAY@VISIONMAG.CO.UK TO BOOK

## HOME HELP SERVICE

### ANY LITTLE THING

Trustworthy, reliable support to the elderly & vulnerable. Companionship, Household Chores, Pet Services, Meal Preparation, Basic Gardening and Ironing. 01268 928878

## LEAFLET DISTRIBUTION

### FLYER DISTRIBUTION ESSEX

Leaflet, printing & distribution service. Cover a majority of CM, SS, CO postcodes. One off drops or regular monthly drops. Call us on 01277 554045 | www.flyerdistributionessex.co.uk

## MOBILE PHONE REPAIRS

### BILLERICAY PHONE & GADGETS

Buy, Sell, Trade - Repairs, Unlocking, Windows Installation. No Fix, No Fee. Same Day Repair Service. 01277 636363 | 10 The Walk, side of Olive Branch (not in high st.), CM12 9YB

## OVEN CLEANER

### OVENCLEAN

Ovens, Filters, Hobs, Grills, BBQs, Ranges, Extractors, Microwaves, AGAs. Call Marc or go online for your FREE quote. 07706 289 426 | OVENCLEAN.COM

JOIN THE LISTINGS

For just **£15** +VAT per month

## PAINTING & DECORATING

### DAVID LEPINE PAINTING & DECORATING

Painter, Decorator, Repairs & More. Over 15 years experience, high quality work, fully insured, a clean reliable service with competitive prices & NO VAT. Call 07960 741973

### RICHARD WARD

Domestic & Commercial, Interior & Exterior, Fully insured, 35 years experience. Tel: 01277 821454 | Mob: 07961 943840 | Email richard@warddecorators.co.uk

### JRS PAINTING SERVICES

All aspects of painting work covered: Domestic, interior & exterior. Commercial. Please contact Jamie on 07712 524407 | jamiesanders273@yahoo.com | 10% off quote VISION22

## PLASTERING

### KH PLASTERING

Professional quality workmanship. No job too small. Over 25 years experience. Plastering - Coving & Cornice - Restoration - Dry Lining. 01277 627277 | 07939 229215

# THE VISION LISTINGS

## PLUMBING & HEATING

### HAMMOND & SONS

Family run for 20+ yrs. Boilers serviced/repaired, condensing boiler, warm-air units, all work undertaken inc leaks, upgrades, installs, no call out charges, OAPS discounts. 01277 261888

### RLS PLUMBING & HEATING

Full Bathroom refurbishment, Wet Rooms, Disabled bathrooms/shower rooms, Wall Cladding, Over 15yrs exp. T: 01375 675557 | M: 07931 787563

## ROOFING

### JIM BARR ROOFING

Exterior Cleaning & Maintenance. Gutters, Paving & UPVC. Cleaned, Repaired & Renewed. 01708 874816 | 07833 572459

### A & J ROOF & PROPERTY SERVICES

All types of new roofs, repairs, cleaning & coatings. Chimney Stacks Repointed, lowered or removed. UPVC Facias, soffits, gutters, cladding. FREE quotation & advice 0800 292 7510

## SPRAYING & POWDER COATING

### WS SPRAY FINISHINGS

All aspects of wet spraying & powder coating for domestic & industrial markets. 01268 812414 | 07434 704673

**JOIN THE LISTINGS... for just £180** +VAT per year

## TV AERIAL & SATELLITE SERVICES

### ANDYS AERIALS

Trading standards approved. Aerial/satellite repairs, TV points, TV wall mounting. 07916 305977 | andy@andysaerials.com

## WINDOWS & DOORS

### WINDOW MAN

Family run over 25 years. Windows, doors, installation, repairs. Call us today on 01277 554075

# WANT TO APPEAR IN NEXT MONTH'S VISION LISTINGS?

SIMPLY FILL OUT THE FORM BELOW AND RETURN IT TO BOOK YOUR SPACE:

Company name: .....

Description (180 characters max including spaces):.....

.....

Telephone:..... Email:.....

Payment option:  Card     Direct Debit

Please return to:

Lifestyle Magazine Group Ltd, 55 Crown Street, Brentwood, Essex, CM14 4BD or email billericay@visionmag.co.uk

\*£180 +VAT for a 12 months plus agreement. Payments can be made monthly or upfront

**DISCLAIMER:** VISION does not represent or endorse the accuracy or reliability of any of the advertisements, nor the quality of any products, information or other materials displayed, purchased or obtained by any customer as a result of an advertisement or any other information or offer in connection with the service or products. The opinions expressed in articles, reviews and stories are strictly those of the individual authors and do not necessarily reflect the views of VISION.

**To advertise call Nik on 01277 554045**

WORDLADDER: STAR, SOAR, SOAK, SOCK, PICK

**Essex's Leading Blind,  
Awning & Interior  
Shutter Specialists  
for over 100 Years**

**Worth & Co  
Blinds**  
Established Since 1889

Call us today on 01277 809045 or 01702 467581



- Factory Showroom with Free Parking
- Large Luxaflex Inspiration Display
- Patio Awning Showroom
- All types of Interior Window Blinds
- Custom-Made Window Shutters
- Motorised Internal Blinds
- Roller Garage Doors
- Home & Commercial



**As a local company we offer a wide choice of Blinds, Shutters, Patio Awnings & Roller Garage Doors & with competitive prices all year plus FREE NO OBLIGATION QUOTATIONS**

[www.worthblinds.com](http://www.worthblinds.com) [sales@worthblinds.com](mailto:sales@worthblinds.com)

Unit 13 Parkside Centre, Potters Way, Temple Farm Industrial Est, Southend SS2 5SJ



# CHASE HATTAN WATCHES

MENS WATCHES WOMENS WATCHES VINTAGE



★ Five Star Service ★ Unbeatable Prices ★ Same Day Payment ★  
★ Free Postage ★ Hassle-Free Process ★

## BUYING A WATCH

We stock not just the popular modern watches but vintage, collectable and everything in between. This includes watches from the 1960s to the modern day, and professional models from brands including Rolex, Cartier, Omega, Tag Heuer, Breitling and many more.

If we don't have it in stock, let us try and source it for you!

All of our watches pass through our in-house workshop and are presented with a 12 month guarantee, free delivery and 30 day returns.



## SELLING A WATCH

We have been buying watches from the public for almost 10 years and always provide a fair price and a smooth, hassle-free selling process for our customers.

Send us over the details of the watch you're looking to sell either via email, WhatsApp or


scan the below QR code for a link to our website and we will come back with a price.

We offer same-day bank transfer payment (ID required) and regular pick-ups in person across London and Essex or send to our Canary Wharf offices.



 [www.chase-hattan.com](http://www.chase-hattan.com)

 [info@chase-hattan.com](mailto:info@chase-hattan.com)

 0203 059 7942

 07719717980

Rated Excellent on  Trustpilot  
**Chase Hattan**

 ChaseHattanLondon

 ChaseHattanWatches



SCAN THE QR CODE  
TO SEE OUR STOCK!

40 Bank Street, 18th Floor, Canary Wharf, E14 5NR