

**GET
THOSE
TEETH
FLOTTED**

MIND MATTERS

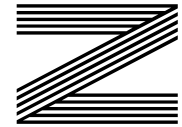
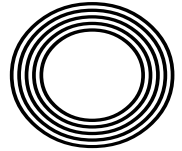
*Dr Alex George named Youth
Mental Health Ambassador*

TORVILL AND DEAN

Their greatest sporting moments

**ANT
MIDDLETON**

From Army and Royal Marines veteran to TV hardman



FREE

Photo credit: David Fisher/Shutterstock

**PRIME ADVERTISING
SPACE AVAILABLE
RIGHT HERE RIGHT NOW**

Why waste a perfect opportunity?

Your
Monthly
Lifestyle
Magazine

VISION

CONTACT US TO FIND OUT MORE

Call 01279 939134 | E mail bishopsstortford@visionmag.co.uk



Editor's notes...

MARCH 2021



Brett Shohet, Editor

Hello and welcome to this month's edition of **VISION** Bishop's Stortford. I know we've all said it to ourselves before, but it really does feel like we are coming out the other side of this pandemic now. The Prime Minister has given us a rough plan, the COVID-19 figures are looking better and, vitally, the vaccine continues to be rolled out at a rapid pace.

Everything's starting to look more positive. Another small component to that, for me, is the weather. It hasn't helped that our darkest time as a nation came during winter - literally during short, drab, rainy days. Here we are, with light at the end of the coronavirus tunnel and our days are getting longer, brighter and warmer - it's a welcome change.

As you'll see in this edition, our news team have massively stepped up to the challenge of having no face-to-face contact with residents. They've embraced social media and Zoom interviewing to ensure that our magazines are as in-depth and localised as ever. Their attitude is one I encourage everyone to try to adopt - lockdown has created new challenges, but I assure you, business can still be done. Opportunities are still rife - we just have to be creative and driven enough to find them.

I hope you enjoy our latest edition. As always, stay safe.

Brett Shohet

This is your town's hyper-local magazine, delivering to homes and businesses every month.

HOME & DIY | GARDENING | PETS | HEALTH & FITNESS | BEAUTY | FASHION | HISTORY | LOCAL NEWS | FOOD & DRINK | TRAVEL | BUSINESS & PROPERTY | SPORT | PUZZLES | MOTORING | KIDS | WHAT'S ON | TECHNOLOGY | THE LISTINGS

CONTACT US: www.visionmagessex.com | bishopsstortford@visionmag.co.uk | 01279 939134

[@visionmagessex](https://twitter.com/visionmagessex) | [@visionmagessex](https://www.instagram.com/visionmagessex) | [Vision Magazine Essex](https://www.facebook.com/visionmagazineessex)

CONTRIBUTORS | Tabatha Fabray, Tim Green, Holly Bullen

At the time of print all content in **VISION** was relevant and up to date according to COVID-19 government guidelines Inside pages recyclable

BOOK THIS SPACE

CALL 01279 939134 TO GET YOUR BUSINESS SEEN BY MORE THAN 13,000 READERS MONTHLY

Checkatrade.com



City & Guilds Qualified

EMPIRE UPVC & ROOFING SPECIALISTS LTD

We guarantee our customers a friendly, reliable & professional service



The UPVC and Roofing Experts in Hertfordshire

Empire UPVC and Roofing Specialists are an independent business trading throughout Hertfordshire and a surrounding 40-mile radius from our office in Nazeing.

- ✓ Felt, Tile & Slate Roofing
- ✓ Liquid Rubber Roofing
- ✓ ALL Roofing Repairs
- ✓ Roofing Maintenance
- ✓ Roofing Leadwork
- ✓ Gutter Cleaning & Unblocking
- ✓ UPVC Fascias, Soffits & Guttering
- ✓ Roof Moss Removal
- ✓ 15 - 20 Year Guarantee
- ✓ Highest Quality Materials Used

COME AND VISIT OUR SHOWROOM AT HILLGROVE BUSINESS PARK



CALL OUR FRIENDLY TEAM TODAY FOR YOUR FREE QUOTATION

Office: 01279 939103

FULLY INSURED

Email: chris@empireupvcandroofing.co.uk • Web: www.empireupvcandroofing.co.uk



MORNING GLORY

Good Morning Britain

HOW PIERS MORGAN AND SUSANNA REID ARE PUTTING THE 'GET UP AND GO' BACK INTO BREAKFAST TV

In many ways, the Piers Morgan/Susanna Reid combo shouldn't work. The former is an ex-red-top editor decorated in a history of salacious headlines, controversial tabloid practices and a puffed-up sense of self-importance that flits between entertaining and aggravating.

The latter is a vastly experienced journalist who, while she possesses a chipper, jagged edge, is a calming weekday morning influencer, a sympathiser and an empathiser whose delivery is effortlessly measured and reassuringly sensible.

Put mildly, Piers Morgan and Susanna Reid are poles apart.

Yet as far as breakfast television goes, there is a chaotic chemistry that links the two and, in the process, knits together perfectly two and a half

hours of early-morning chat, debate and news delivery. Perhaps not since the days of Anne Diamond and Nick Owen has there been a duo who seem so comfortable, calm and considered as our breakfast companions; and their ability to spar, speak up and fire off each other is completely borne out in viewing figures which show *Good Morning Britain (GMB)* to be making impressive moves in the breakfast TV battle.

In the latest round of figures, the ITV show has been narrowing the gap on *BBC Breakfast*, although still remains about a million viewers behind its rival.

Piers and Susanna first worked together back in 2014. It was a strange time for Morgan, the former editor of the *News of the World* and *Daily Mirror*, who was looking to revitalise a career that had

enjoyed a surprising leg-up through reality TV shows and his partnership with Simon Cowell. The 55-year-old has perhaps never looked the epitome of cutting edge, but his breathless honesty – be that in front of a Whitney wannabe on *Britain's Got Talent* or a politician crumbling under his indomitable journalistic scrutiny – wicked turn of humour and fearlessness to voice an opinion – both on TV and across social media – have earned our respect. Certainly, it all provided the perfect tonic to Reid's punchy, spiky, slightly girl-next-door approach to topical news.

Fifty-year-old Reid first came to our attention in the early Noughties when she worked for Radio 5 Live, before moving to *BBC News 24* and, latterly, *BBC Breakfast News*. The broadcaster made a controversial switch to ITV in February 2014 as *GMB*

replaced the outgoing *Daybreak*.

As a combination, you sense there is a 'good cop, bad cop' approach to getting sunrise answers the news headlines demand. There's little of the stuffy formality that decorates the styles of Dan Walker, Louise Minchin and others over on the Beeb; instead, issues are tackled using a tried and tested approach which delivers debates without holding back.

Perhaps what's best about the pair is they know how to push each other's buttons. *GMB* feels like a news programme, a lifestyle show and an episode of *Coronation Street* rolled into one. If the dynamic duo can get anywhere near to the longevity of Jack and Vera, they'll have done well, and we'll have been treated to perhaps the best wake-up call of a generation.



Photo credit: 10 Downing Street

DOCTOR'S ORDERS

THE *LOVE ISLAND* DOC HELPING US FIND A HAPPIER REALITY

Doctor Alex George is the *Love Island* contestant who wowed viewers with an altogether different take on what constitutes 'national health'. For an army of admirers, his great looks, impeccable shape, well-spoken manner and charm added up to a dream combination. He's also rumoured to be particularly good with a stethoscope. Moving away from the reality show, the doc has carved for himself an impressive career in the spotlight. And yet, unlike so many other names who have built their brand through reality TV, there is real substance behind the style.

The 30-year-old was announced Youth Mental Health Ambassador by Prime Minister Boris Johnson in February and is a passionate advocate of well-being initiatives, not least because he sees a nation struggling to come to terms with the various effects of the COVID-19 pandemic.

Indeed, the death of his brother, Llyr, who took his own life having suffered with depression, only reinforces a desire in the popular doc to open up channels of communication and encourage people to talk.

Alex's five top tips to boost mental health and well-being:

- > **ONE:** Get outside
"Getting natural light and filling our lungs with air is crucial for well-being. It's uplifting and can instantly make us feel better."
- > **TWO:** Exercise
"We've all had those times when we just can't be bothered to get out and exercise, but be it a run, a walk or a bike ride, just 20 minutes per day will boost blood flow and increase endorphins."
- > **THREE:** Call a friend
"Lockdown has been very frustrating and a lonely experience, but staying in touch with friends is essential."
- > **FOUR:** Eat well
"What we consume affects the way we feel, so fuel and replenish your system, and eat as much green stuff as possible."
- > **FIVE:** Sleep routine
"Sleep is very important, but so is resting at regular times, so monitor your sleep habits and ensure you're getting what you need."



YOUR VISION IS OUR VISION

NOW OPEN ON EPPING HIGH STREET



Home Hub Group is now open on Epping High Street. We supply and install windows, doors, bifold doors, sliding doors and rooflights.

137-139 High St
Epping CM16 4BD
essex@homehubgroup.co.uk
homehubgroup.co.uk

01992 276 046



CALL US FOR A VIRTUAL TOUR OF OUR EPPING SHOWROOM



@HomeHubGroup



EMBRACE YOUR

SHAPE



HOW TO DRESS FOR SPRING FOR ALL BODY SHAPES AND SIZES

Spring is on the way, so it's goodbye to oversized jumpers, and hello to skin-exposing, spring-ready pieces.

This might sound scary if you have a certain part of your body that you don't like drawing attention to, but it doesn't mean you should spend the spring/summer season covered up. Instead of focusing on a part you're conscious of, accentuate what you love with some easy styling hacks. Here are a few examples...

I'M CONSCIOUS OF MY SMALL CHEST... Adding things that draw attention to your chest is not counterintuitive, so bulk the area out with some accessories such as chokers, necklaces, and tops with intricate collar detailing | Doing all of the above will steal the show, so no one will focus on your chest if you don't want them to.

I DON'T LIKE SHOWING MY ARMS... It seems obvious, but keep the area you are conscious of covered | In warmer temperatures, avoid strapless pieces and choose three-quarter-length sleeves in a light, breathable fabric instead | If you want to brave a shorter length in the height of summer or at a formal event, don't let your insecurities stop you, but carry a bolero or jacket in case you change your mind.

HOW CAN I HIDE MY BELLY? Many dresses now come with ruched detailing around the stomach area for this very reason, so stock up on a few staples | Stick to darker colours and patterns | Prints are also another great distraction | Stay away from baggy, shapeless silhouettes, and opt for high-waisted trousers and loose-fitting blouses to pull focus from your stomach | Wear leggings or skinny jeans with longer tops that sit on or bellow your hips | Curvier shapes look great in A-line dresses | Add a belt to nip in the waist, and say goodbye to added shapewear.

HOW DO I GIVE THE ILLUSION OF CURVES? To break up the straight silhouette, try a belt on the waist or hip area | Alternatively, tuck your top inside your trousers to add some definition | Go one step further and try the French tuck, whereby the front is tucked in and the back is loose | Peplum tops and dresses add volume and drama, perfect for less-curve shapes.

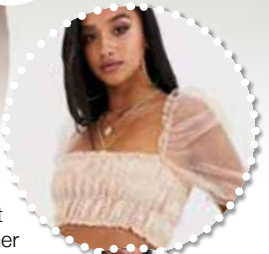
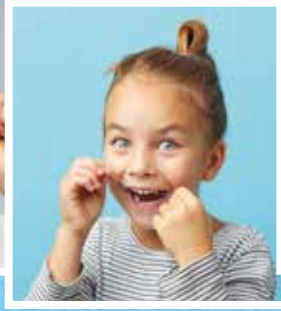


Photo credit: asos.com



to floss or not to floss?



No, we are not talking about the dance craze that swept the nation in 2018, but the act of cleaning in between your teeth using dental floss.

Sadly, only an estimated 31 per cent of people clean between their teeth on a daily basis. This is despite the fact that the NHS recommends that from the age of 12 people should include flossing in their daily oral health routine.

HOW TO FLOSS: A STEP-BY-STEP GUIDE

1. Break off between 18 and 25 inches of dental floss
2. Wind the floss around both of your middle fingers, leaving between one and two inches for your teeth
3. Hold the floss taut with your thumbs and index fingers
4. Place the dental floss between two teeth
5. Gently glide the floss up and down, making sure to rub against both sides of each tooth
6. When the floss reaches your gum, curve the floss

at the base of your tooth, creating a C shape

7. Be careful not to scratch or bruise your gums
8. Repeat as you move from tooth to tooth
9. Always use a clean piece of floss for each tooth section
10. Do not recycle or reuse dental floss as this can redistribute bacteria around your mouth, even if you wash it first

WHEN SHOULD YOU FLOSS?

For optimal oral health, you should always floss first and brush your teeth afterwards. It is recommended that you brush your teeth twice a day and floss once, preferably in the evening.

WHY SHOULD YOU FLOSS?

Flossing helps to remove food and plaque from in between your teeth. Brushing alone cannot do this as the bristles are not able to reach deep enough. Regular flossing can result in less dental plaque in your mouth and therefore a lower risk of developing gum disease.

Barringtons Funeral Directors

— Our family, here for your family —



— Female led Funeral Directors —
 Providing the highest standards,
 genuine compassion, honesty
 and exceptional value.



Telephone (24 hour service): 01279 860055

50 Hockerill Street, Bishop's Stortford, Hertfordshire CM23 2DW

Bishop's Stortford and all surrounding towns and villages

www.barringtonsfuneraldirectors.co.uk

Home
 Instead
 SENIOR CARE®
to us, it's personal.



96%*

OF CLIENTS*
 RECOMMEND

The best home to
 be in is your own

Tailor made to your individual requirements

- ✓ Award winning care
- ✓ Companionship services
- ✓ Home help services
- ✓ Personal care services
- ✓ Highly trained CAREGivers

East Herts & Uttlesford, G1 Allen House, The Maltings,
 Station Road, Sawbridgeworth, Hertfordshire, CM21 9JX
 01279 721443 or 01920 897355 | www.homeinstead.co.uk/eastherts

Each Home Instead Senior Care® franchise office is independently owned and operated.
 Copyright © Home Instead 2020. *Smith & Henderson 2020 PEAQ survey



HEALTH & FITNESS

Beat Eating disorders

Recognise the signs

Concerned that someone you know and love is suffering with an eating disorder such as anorexia nervosa or bulimia? Eating disorders can affect anyone regardless of age, gender or background, but early intervention can be life-saving.

What are the signs?

There are many symptoms to look out for that may indicate a loved one is struggling with an eating disorder. However, it is worth noting that each individual case will be different.

- > A distorted body image
- > Using stimulants or laxatives
- > Frequent weighing
- > Extreme weight change
- > Mood swings
- > Loss of hair
- > Brittle nails
- > Depression
- > Skipping meals
- > Purging
- > Anxiety
- > Insomnia
- > Skin rash or dry skin
- > Erosion of tooth enamel
- > High interest in exercise
- > Withdrawal from friends



How can I support someone?

As well as seeking treatment, your loved one will need your love and support in order to overcome their eating disorder. Ways in which you can help them include:

- > Learn about their eating disorder
- > Be honest about your feelings
- > Be a role model by eating a nutritious diet
- > Help to build up their confidence
- > Suggest activities to do together than don't involve food

Where can I get help for someone?

If you suspect that someone in your family or a close friend has an eating disorder, your first course of action should be to sit down and talk to them in a non-confrontational way. It can also be a good idea to suggest they schedule a check-up with their doctor, who can determine any unusual changes in body mass index or weight percentile.

If diagnosed with an eating disorder, they are likely to be prescribed a treatment plan, which may include talking therapies and medication if they are also suffering with depression.

Charities and organisations

- > Beat: www.beateatingdisorders.org.uk
- > Anorexia & Bulimia Care: www.anorexiabulimiacare.org.uk



BESPOKE HOME CARE WITH PROFESSIONAL & FRIENDLY STAFF

Kindherts Care Ltd provides a professional care service that is tailored to suit your lifestyle, needs, choices and preferences in the comfort of your own home.

Our range of services are planned through meetings with yourself, family and friends and our care planning team.

We offer -

- A visiting day care service (at variable times to suit)
- Personal care, dressing & medication
- Night care (sleeping or waking nights)
- Live in care
- Assistance with shopping or domestic duties
- Companionship & more.

PHONE 01279 654 999 TODAY FOR A CHAT ABOUT YOUR REQUIREMENTS, OR FOR MORE INFORMATION



Unit 3, Twyford Business Centre, London Road,
Bishops Stortford, Hertfordshire CM23 3YT
Email: john.marsden@kindhertscare.co.uk



KEEP YOUR £ LOCAL

**SUPPORT
YOUR LOCAL
BUSINESSES...**



Your Monthly Lifestyle Magazine

Please let your local businesses know that you saw them first in... **VISION**



FOOD & DRINK

Kohlrabi

This month we will be starting a new regular feature: we will be introducing you to a lesser-known fruit or vegetable, allowing you to expand your palate and widen your repertoire of recipes. This month we bring you kohlrabi, an undeniably odd-looking vegetable that packs a real punch in terms of flavour.

WHAT IS KOHLRABI?

Kohlrabi is also known as a cabbage turnip and is very popular in northern and eastern European countries. Part of the broccoli and cabbage family, it can be green, white or purple in colour and is available all year round. When buying kohlrabi whole, look for crisp-looking and vibrant leaves, which indicate freshness.

WHAT DOES KOHLRABI TASTE LIKE?

It has a similar flavour to cabbage but with the spicy kick of a radish; the smaller the bulb, the milder the taste. Crunchy when eaten raw, the stems and leaves can also be cooked and eaten; they resemble a mild-tasting Swiss chard.

HOW TO COOK KOHLRABI

All edible elements of kohlrabi need to be peeled before cooking to avoid a bitter taste. Once peeled, trim the brown end and separate the leaves from the bulb.

Choose to steam, sauté or roast kohlrabi, or you could even hollow out the bulbs and stuff with other vegetables or grains. Alternatively, serve raw in thin slices on a salad or added to coleslaw. You can also steam or sauté the leaves in the same way that you would fresh kale or spinach.

HOW TO STORE KOHLRABI

A kohlrabi bulb can be kept uncovered in the fridge for up to one month. The stems and leaves should be cooked as soon as possible as they wilt within a day or two.

WHAT ARE THE NUTRITIONAL BENEFITS OF KOHLRABI?

Low in fat | High in fibre | High in calcium
| Low in calories | Contains anti-cancer and anti-ageing properties





**SERVING HAND MADE
12" & 20" SOURDOUGH PIZZAS**

COCKTAILS ★ SHAKES ★ SIDES ★ DESSERTS

ORDER ONLINE

www.lockdown-pizza.co.uk

DELIVERY & COLLECTION

7 days a week

gimme@lockdown-pizza.co.uk

01279 657000

4 Market Square, Bishop's Stortford CM23 3UU

Gluten free and allergies catered

SMALL-BATCH
LAVA SPIRITS Co
HANDCRAFTED

*Savour a moment
and make a memory...*

*Decidedly decadent and
definitely different...*

Discover our award-winning Coffee Gins...

Visit our website: www.lavaspirits.co.uk Get in touch: info@lavaspirits.co.uk

Tel: 01279 939 098



a cut ABOVE the rest



FOOD & DRINK

Are you guilty of buying the same cuts of meat week in and week out? If yes, surely it's time to try something different?

To celebrate National Butchers' Week, we have found the tastiest, not to mention most cost-effective, meat cuts which we guarantee you and your family will love.

Beef Onglet

Also known as hanger steak, this forgotten choice is a flat cut from the diaphragm or lower belly of the cow. Great value and with an intense flavour, this meat cut is best served medium rare.

HOW TO COOK: Fry in a hot pan for 3-4 minutes on each side and then leave on a warm plate to rest for 10 minutes.

Pork Cheeks

Incredibly cheap, pork cheeks offer a leaner alternative to pork belly, plus they are mouth-wateringly moist.

HOW TO COOK: Brine in sugar and water before braising until tender. Once cooked, cut into small pieces, breadcrumb and fry.

Lamb Sweetbreads

Classified as offal, lamb sweetbreads are the pancreas and thymus glands and considered to be a delicacy in the culinary world. Providing all the B vitamins, lamb sweetbreads are creamy and tender with a delicate flavour.

HOW TO COOK: Soak in cold water for a few hours before simmering quickly. Allow to cool before trimming away any sinew or gristle. Sauté as they are or lightly breadcrumb first.

Venison Ribs

Low in fat, relatively cheap and full of flavour, venison ribs make a great alternative to pork ones. Like all wild game, deer ribs are very lean so need to be prepared with moist methods of cooking.

HOW TO COOK: Trim the ribs of fat and cut into strips. Cover the venison in brine or your chosen marinade. Bake, grill or slow cook for optimum tenderness.



**MTJ
NATIONAL
BUTCHERS'
WEEK**

8-14th MARCH
2021



NOW OPEN

PASTICCERIA —

by ALESSANDRO DI LEO

REAL AUTHENTIC ITALIAN PASTRIES & SWEETS

Pasticceria DiLeo - from the simplest and most traditional to the most modern and refined



- Professional Pastry Chef ● 10 Years Experience
- All Fresh Italian Ingredients

01279 939212

www.pasticceriadileo.co.uk | pasticceriaDiLeo@outlook.com
8 Florence Walk, Bishops Stortford, CM23 2NZ



RUBYS

INDIAN TAKEAWAY & DELIVERY

TAKEAWAY NOW EAT IN SOON!

ORDER YOUR TAKEAWAY ANYTIME AT
WWW.RUBYS.ORG.UK FOR FREE DELIVERY
WITHIN 6 MILES OF BISHOPS STORTFORD OR
10% DISCOUNT FOR CONTACT FREE COLLECTION!



ONCE WE ARE OPEN TO EAT IN CUSTOMERS
WE ARE HAPPY TO OFFER VISION MAGAZINE
READERS 25% OFF FOOD SUN-THURS!
(Ts & Cs apply)

Call us on 01279 912929 Website www.rubys.org.uk Email events@rubys.org.uk



FOOD & DRINK

Icing on the Cake

HOW TO SUCCESSFULLY ICE A BIRTHDAY CAKE (no matter your skill level!)

Step One: Fake it or bake it

If you aren't much of a baker, there really is no harm in buying a pre-made sponge. The benefit of this is that the layers will be perfectly proportioned, making icing easier. On the other hand, a homemade cake is hard to beat, though you will need to trim the top of your cake with a bread knife if it has domed so the surface is perfectly flat and even.

Step Two: Filling fun

Everyone loves the first peek inside a birthday cake, which is why you need to get the filling as even as possible. If you're using jam, spread that first (heat gently in a bowl sat in boiling water to make it more spreadable), before piling your buttercream in the centre of your bottom layer. Now, add your top layer and gently twist with a little pressure to spread the filling across your cakes, removing any excess icing that spills out with a palette knife.

Step Three: Oh, crumbs

Ever wondered how professional bakers achieve that flawless finish? The answer is the crumb layer – a light layer of icing to catch stray crumbs before the second layer is applied. Place a third of your remaining icing in a separate bowl and move your cake onto a turntable or cake stand. Put a large dollop of buttercream in the centre of the cake and smooth it across the top, repeating the process until it looks even. Then, do the same with the side of the cake, turning it gently to distribute the icing and using your palette knife to flatten. Place your cake in the fridge for two hours to set.

Step Four: Final touches

Repeat the icing process for your final layer, being sure to fully cover the crumb layer beneath, and finish your masterpiece with some decorations. And a final top tip: hundreds and thousands look very impressive when applied liberally.





**APPLIANCE REPAIRS
AND SALES**

We repair all makes and models

Washing Machines • Tumble Dryers
Dishwashers • Ovens • Hobs • Cookers
Fridge/Freezers • Extractor Hoods

New appliances in stock for
same day delivery & installation

Prices listed on our website

Call 01279 310793

Or Book Online

www.spindoctoruk.co.uk

WANT MORE BUSINESS?

CALL 01279 939134
TODAY TO ADVERTISE



J Rose Carpentry Ltd

Bespoke Carpentry – we design and build especially for you

All 1st & 2nd fix Carpentry ● Kitchen Design & Fitting ● Home Refurbishment

Bespoke Wardrobes ● Media walls ● Loft Conversions



01279 939 087 ● jrosecarpentry@gmail.com



HOME & DIY

INTERIOR traveller

Embrace the global influence trend to cure your wanderlust

Have you tried catching a flight out to Zambia recently in order to sample the breathtaking, unique wonder of an African safari? Let's just say, your luck is out.

Of course, so much of interior design is about taking ideas and influences from around the world and incorporating those into our living spaces. With that in mind, and ignoring the fact all our planes are grounded, the trend of 'global influence' aims to embrace the charm and beauty of the world, while we remain resolutely stationed at 29 Acacia Avenue.

While 'global influence', as a term, suggests embracing interior design influences from all corners of the globe, in reality its focus is on the colours, textures and ideas you might commonly associate with African savanna safari expeditions – nature's most expansive showcase of wildlife.

Global influence takes on board woven fabrics; it focuses on earthy colour palettes, shows off cooling stone patterns and embraces natural textiles and all manner of woods, rattan and bamboo. The styles are uncomplicated, uncluttered and unpretentious.

Furniture and objects are wholesome, earthy and rugged. In matched a leather sofa, linen and perhaps some animal-themed art prints, you can truly bring the breathless elegance and simplicity of nature into your living space.

Of course, the individuality of interior design ultimately means global influence can represent whatever you may want it to. So if tropical flavours and flourishes are more your thing, why not embrace bright colours, wicker items, a beach vibe and miniature palm trees? Similarly, a Scandinavian vibe is easily put together with hardwoods, light colours and a style vision that's stripped back and simplistic.

Ultimately, whatever your individual taste, global influence is there to compensate for the fact that while we may not be able to visit these enchanting places, we can at least still sample their uniqueness.

Photo credit: nordroom.tumblr.com, mjanazighings.com, Simon Whitmore via Idealhome.co.uk, Jake Curtis via Idealhome.co.uk, Maria Viale via apartmenttherapy.com



CUTLERY

care guide

Whether you use stainless steel, silver-plated or silver cutlery, or a combination of all three, if you want your silverware to last and looks its best for longer, you need to take care of it.

STAINLESS STEEL CUTLERY: The most popular material choice for cutlery, stainless steel is both durable and versatile, but that doesn't mean it is completely stain-resistant.

- HOW TO CLEAN:
- > Rinse before placing in dishwasher
 - > Never leave to soak or in damp conditions as this can lead to corrosion
 - > Remove stubborn stains using stainless steel polish and a soft cloth

- HOW TO STORE:
- > Store in its original canteen to prevent pieces rubbing together
 - > Can be stored in kitchen drawer but may reduce lifespan

SILVER-PLATED CUTLERY: A more decadent choice, silver-plated cutlery is relatively easy to care for but does require some special care.

- HOW TO CLEAN:
- > Keep away from stainless steel cutlery, as contact can cause corrosion
 - > Place in dishwasher, but turn off the drying cycle and dry each piece by hand to avoid staining
 - > Polish to maintain shine

- HOW TO STORE:
- > Store in a tarnish-proof cutlery roll and then in an airtight container

SILVER CUTLERY: Ideal for use at dinner parties and other special occasions, silver cutlery is both lavish and luxurious.

- HOW TO CLEAN:
- > Clean as soon as possible after use
 - > Wash separately from stainless steel and silver-plated cutlery to avoid corrosion
 - > Do not put in dishwasher; instead, clean by hand
 - > Do not polish too often as this can wear down the finish

- HOW TO STORE:
- > When not in use, roll each piece of silver cutlery in acid-free tissue paper or unbleached cotton muslin and then place in a resealable plastic bag.
 - > Add a piece of chalk wrapped in cheesecloth to the bag to absorb moisture and prevent tarnishing.



Specialists in High Quality & Cost Effective Flat Roofing Installations



SINGLE PLY MEMBRANES • TORCH ON FELT • LIQUID APPLIED WATERPROOFING • ASPHALT BESPOKE METAL CAPPINGS • SLATING • TILING • LEAD WORK • PITCHED ROOF REPAIRS

- WIDE VARIETY OF ROOFING PRODUCTS AVAILABLE
- HIGHLY SKILLED & PROFESSIONALLY TRAINED ROOFERS
- 10 YEAR INSURANCE GUARANTEE ON ALL FLAT ROOF SYSTEMS



Contact us at 01279 939 082 • 07850 009 518
www.cardinalflatroofing.co.uk • info@cardinalflatroofing.co.uk





01279 939091
EMERGENCY SERVICES & ENQUIRIES



TROUBLE WITH DRAINAGE, HEATING OR PLUMBING?

WE OFFER THE COMBINED SERVICES OF DRAINAGE CONSULTANTS & PLUMBERS TO DEAL WITH UNEXPECTED LEAKS, BURST PIPES AND BLOCKED DRAINS



DRAINAGE SERVICES ✓ PLUMBING & HEATING SERVICES ✓ TANKER SERVICES ✓ INSURANCE CLAIMS



Contact us: 01279 939 091
www.fcdrainagesolutions.co.uk
operations@fcdrainagesolutions.co.uk





DIY reed diffuser



If you want to enjoy an aromatherapy experience at home, then a scented reed diffuser is the ideal choice. However, you don't need to spend your hard-earned cash on shop-bought varieties when you can make them at home with a few simple ingredients and supplies.

WHAT YOU NEED: Small bottle or vase | 20–25 drops of your preferred essential oil | ¼ cup of baby oil | 3 tbsp of vodka or rubbing alcohol | Bamboo skewers or ideally diffuser reeds | Zest peels and herbs are optional

HOW TO MAKE: Pour the baby oil into a bowl | Add the rubbing alcohol or vodka | Carefully add the drops of essential oil and zest peels and herbs if preferred | Pour the mixture into your vase or glass bottle using a funnel until it is ¾ filled | Place five skewers into the vase | Cut the skewers to size if necessary so that they stick out roughly 4–6 inches

- Top tips for your DIY diffuser**
1. Check the liquid quantity monthly and top up if needed
 2. Rotate the diffuser reeds once a month
 3. Replace diffuser reeds after 4–6 months
 4. Recycle a perfume bottle if you don't have a suitable vase
 5. Cut your skewers carefully to avoid splinters

How to choose essential oils for each season

Spring: Choose fresh floral notes, such as a mix of citrus, lavender, geranium and jasmine.

Summer: Uplift your home with magnolia, bergamot and lemon.

Autumn: Embrace the cooler weather with a combination of juniper berry, cedarwood, cardamom and cinnamon.

Winter: Cosy up with a warming blend of spruce, patchouli and Douglas fir.

An alternative to reed diffusers

You can purchase an electronic oil diffuser, but make sure to do your research first as they come in different sizes. These diffusers produce a more concentrated fragrance and add moisture to the air, albeit in quite small amounts.



O, Easter tree!

Who says that decorative trees are just for Christmas? We think everyone could do with a bit of extra cheer this year, so why not have a go at creating your own Easter centrepiece tree, complete with ornamental eggs?

How to create your Easter tree:

For the tree itself, simply gather a selection of branches and place in a vase. The best tree branches to look out for include:

Cherry blossom | Magnolia | Willow | Forsythia | Dogwood

How to hollow out your eggs:

Poke a small hole in the pointier side of an egg and then another, slightly larger, hole on the opposite side. Place your mouth over the smaller hole and blow out the egg. Wash the shell and leave to dry.

Marbled eggs:

Mix 1 cup of hot water with 10 drops of liquid food colouring and 1 tsp of vinegar. Submerge the eggshell in the water for two minutes and leave to cool. This is your base colour.

Next, fill a bowl with fresh hot water and add a darker food colouring and 1 tbsp of olive oil. Roll your egg around to allow it to absorb the second colour.

Egg nests:

If you favour a more natural look, these miniature nests, complete with tiny Easter egg treats, are the perfect decoration for your tree. Gently break away some of the egg shell on the front of your egg, fill with straw and then add a single mini egg to each one.

Glitter eggs:

Create a pattern across your egg using tape, apply PVA glue to the rest of the egg and sprinkle generously with glitter. Leave to dry and remove tape. Choose to paint your eggs first for more a more vibrant end result.

How to hang your eggs:

To finish, simply thread a ribbon or piece of cotton through the top hole of each egg, wiggle it until it pokes out the other side and tie a knot to secure.



Photo credit: designimprovise.com, Pinterest, hobbycraft.co.uk

Positivity of the MIDDLE MAN

ANT MIDDLETON'S CLIMB TO PHYSICAL AND MENTAL MAGNIFICENCE

Anyone who has watched his SAS series knows Ant Middleton isn't a guy to be messed with. Grit, steel, determination, power and a large dose of bloody-mindedness have propelled the former military man into the mainstream; and while a new career in the lens suits the 40-year-old Army and Royal Marines veteran nicely, the impact he is having on everyday folk is profound.

For a long time the various fitness, health, strength and well-being trends that have taken up countless column inches and patterned our social media feeds have needed a confident, high-energy figure to take them forward. Yes, we have various reality stars putting out fitness tutorials, and Joe Wicks is always there to advise on the best way to pull off the perfect burpee, but can they do it on a cold Tuesday night in Stoke? The answer, undoubtedly, is no.

Ant Middleton, however... let's just say he makes The Potteries look like a beach holiday in the Maldives.

So much of what this inspirational tour de force has done up to now has been about physical determination. His Channel 4 SAS: *Who Dares Wins* series, which he fronted for five years before announcing recently he will no longer be part of the show due to differences with the production company, is a military training show of brutal extremes, with an adventure/reality crossover that pushes participants to the absolute limits of body endurance.

While this type of programming has seen the Portsmouth-born hardman make his mark, in truth it represents only one half of what it takes to truly ascend to the next level. Thus, squaring the circle in his new project, which centres on a series of talks on the subject of positive mindset, seems the natural progression.

"We all know that physical toughness can only take you so far," says the author of the best-selling book *Zero Negativity*. "You need to have the mental strength to keep pushing on when the body says no."

"The brain can outlast and outpace anything the body can do, so training our minds to interpret, recycle, repair and renew the messages flowing through us means we can achieve things way beyond what our muscles tell us is possible."

Middleton's emergence as a mainstream player is no better exemplified than in the fact he was joined on a recent project by terrestrial TV poster boy Ben Shephard. "Ben's a good guy who has absolute determination in his career. He's a great example of someone who is a winner – we all come in different shapes and sizes."

In a streamed live event that took place at the start of February, Middleton's *Be Prepared for 2021* did exactly what the title suggested, with an unscripted, unrehearsed and unfiltered conversation designed to unpick the various roadblocks that 2020 had put in the way of so many of us.

"The past year felt like such a crushing low for a lot of people, but rather than dwell on the negativity, as a nation we need to look at the things we learned, and appreciate the positives we took out of the year," he says.

"We need to appreciate how we grew and developed strengths many of us never knew we had."

"This is the road to ensuring 2021 is a better year. We cannot change the world around us, but we can alter the way we decide to tackle its challenges."



YO _ R ADVERT HE _ E

Q: WHAT'S MISSING HERE?

A: YOU ARE

CONTACT US NOW TO ADVERTISE

Your
Monthly
Lifestyle
Magazine

t: 01279 939134 m: 07967 079101
e: bishopsstortford@VISIONmag.co.uk
w: www.VISIONmagessex.com

ALL HANDYMAN SERVICES

INCLUDING:

- BATHROOMS & KITCHENS
- WINDOW REPLACEMENT
- BRICKWORK & PLASTERING
- PLUMBING & ELECTRICAL
- NO JOB TOO SMALL
- WORK UNDERTAKEN BY QUALIFIED TRADESMEN

Tel: 07703 441201

www.buildinginstortford.co.uk

Email: info@buildinginstortford.co.uk



Essex

Roofing

ROOFING SPECIALISTS
VELUX INSTALLERS
FLAT ROOFING
PITCHED ROOFING
LEAD WORK
UPVC WORK

NEED MORE LIGHT IN YOUR LIFE?
WE SPECIALISE IN VELUX WINDOWS • BALCONIES • LANTERNS
• BLINDS • SERVICING, REPAIRS & REPLACEMENTS

CONTACT US TODAY
01279 939131 Mobile: 07557 952390
www.essexroofing.co.uk info@essexroofing.co.uk

Certified
Installer

LOCAL NEWS

from your neighbourhood



LOCAL NEWS



Mothers spread the love to the NHS with care packages

A group of mothers from Bishop's Stortford made sure local NHS staff felt the love on Valentine's Day last month.

Celestine Faiers, Marie Vasey and Julie Dommert put together care packages for staff at the Princess Alexandra Hospital in Harlow and appealed to local people for support to reach their target of £2,500. As VISION Bishop's Stortford went to press, they had raised £2,525.

The packages included items such as hot and cold food and drinks, hand cream, foot balm and many

other items to ease the mental and physical trauma staff face on a daily basis.

The first delivery was made shortly after Valentine's Day. On the group's JustGiving page, Celestine revealed staff were delighted.

She commented: "They were a little overwhelmed by the three carloads of gifts but could not thank you all enough for your kindness. It was a real pleasure to put a smile on their faces. We also managed to give some chocolates to the ambulance team. Thanks for all your kind donations."

Record Oxbridge offers for high school students

Staff at The Bishop's Stortford High School (BSHS) paid tribute to a group of seven students who received conditional offers for places at Oxford and Cambridge Universities.

Subject to successful exam results, Jenna Buller will read Psychology and Behavioural Sciences at Emmanuel College, Cambridge, Nathaniel Carn will study Law at St Catharine's, Cambridge, and Jamie Dunne will read Modern and Medieval Languages at Trinity Hall, Cambridge.

Abigail Grant hopes to go to Downing College, Cambridge, to read Psychology and Behavioural Sciences, Amy Raymond hopes to go to Keble College, Oxford, to read Law and Sam Williams has

an offer from Girton College, Cambridge, to read Computer Science. Finally, Amelie Wilson is heading to Emmanuel College, Cambridge, to read Geography.

Fiona Price, BSHS Oxbridge coordinator, said the school was proud of its students' achievements.

She added: "Despite extensive school closures, remote learning and contending with virtual interviews, they have managed to impress admissions tutors with their potential.

"They have made full use of all the support offered by our staff and also exploited numerous enrichment opportunities to develop their academic ability.

"We know they will continue to work hard to achieve the grades that they need to confirm their places."

Police investigate after runners bitten by dog

Officers are investigating two separate incidents which left runners in Bishop's Stortford injured after being bitten by a dog.

The two incidents took place on Wednesday, February 3 and Friday, February 19 in the Oriole Way area.

Both a man and woman reported being bitten by a white/cream coloured Staffordshire-type dog.

The dog was on a lead on both occasions, but it has been reported that the owner, described as a middle

aged white woman with blonde hair, was struggling to keep the dog under control.

PCSO Edyta Szrajber, from the local Safer Neighbourhood Team, said: "We have carried out several enquiries to try and trace the owner of the dog, but have so far been unable to identify her. We are now turning to the public for their help."

Anyone with information is asked to contact PCSO Szrajber at edyta.szrajber@herts.pnn.police.uk

MP proud of volunteers' vaccination effort



The MP for Bishop's Stortford praised the work of volunteers at the town's vaccination centres as well as those working at other community vaccination hubs and on mobile units.

Last month, Julie Marson MP did a five-hour volunteering shift at Bishop's Stortford Football Club and also visited the site at Avanti Meadows Primary School run by the Hertfordshire Community NHS Trust.

Commenting after her visit to the primary school, Mrs Marson MP said: "As demonstrated so brilliantly here at Avanti Meadows, the effort we have seen in Hertford and Stortford to vaccinate people has been outstanding. I am so proud of what I've seen today, and after helping out at the football club last week, I know just how huge the task is for the team.

"Jab by jab, we are getting ourselves out of the pandemic. When it is your turn, please do go and get it done as soon as possible."

County council increases council tax

People in Bishop's Stortford and across Hertfordshire will be paying an extra £1.08 for county council services after the budget was set last month.

The budget included an increase of 2 per cent for the adult social care precept and an additional 1.99 per cent for general council tax, meaning a total increase to council tax of 3.99 per cent.

This includes funding for additional numbers of people needing support and increases in the national living wage, in addition to providing the voluntary sector with an enhanced package to support COVID-19 recovery.

This budget also includes £10million investment as part of the climate change response. There will be an additional £7million investment to fund the roll-out of 20mph speed limits, £3million investment in active travel schemes and extra funding for winter

maintenance.

Ralph Sangster, cabinet member for resources and performance, said: "Despite facing unprecedented pressures as a result of the pandemic, we are a financially well-managed authority and we are therefore able to approve an investment-led budget today, which allows us to invest in key areas and continue to deliver front-line services which matter dearly to our residents."

Police continuing to investigate incident

Police are continuing their efforts to establish the cause of a series of damages to windscreens on the border of Hertfordshire and Essex.

Regular patrols of the A120 are continuing and the two forces are consistently linking in, to discuss the circumstances around reported incidents.

Last month **VISION**Bishop's Stortford spoke to a driver whose windscreen was damaged (pictured).

East Herts Neighbourhood Inspector Chris Hunt said: "We are continuing to do absolutely everything we can to establish how this damage is being caused.

"Alongside the usual patrols of the carriageway and woodland – both overt and covert – we've been utilising thermal imaging to seek out anyone who may be involved. So far, there is still no evidence to identify any suspects.

"Both forces are also continuing to liaise with respective highways colleagues to ensure the carriageway is cleared of debris more regularly."

Insp Hunt continued: "Sadly, we are aware of posts on social media suggesting that people take matters into their own hands. While I can fully appreciate people's frustrations, we would strongly advise against this, as you could end up putting yourself in danger."





Council wants you to have your say on development

People in Bishop's Stortford are being urged to have their say on the future development of the area by the town council.

Councillors want local views on two neighbourhood plans which contain policies against which all planning applications are assessed.

Volunteers are working on a revision of the two plans to bring them up to date. The changes include new sections on climate change and the town centre and revisions to the sections on green infrastructure and

transport. The plans can be read at www.bishopsstortfordtc.gov.uk/neighbourhood-plan where you can also leave your comments. All comments must be received by March 22.

James Parker, chief officer at Bishop's Stortford Town Council, said local views are vital.

He added: "By commenting you help us make the plan better and it means you have an opportunity to shape the future of your town."

Partnership to boost independent traders



Independent traders in Bishop's Stortford town centre got a boost last month when a virtual high street was launched.

From February 16, through Click It Local, customers can purchase everything they need from one local marketplace, with one payment and one same-day delivery.

The idea comes from Bishop's Stortford Business Improvement District (BID) and it hopes the scheme will enable town retailers to compete with companies such as Amazon.

Steve Koch, founder of Click It Local, said: "I love shopping locally so wanted to find a way to help small shops offer the same level of speed and convenience that today's online customers have come to expect. Our aim is to ensure we can all continue to shop local, support independent shops and provide for the local community."

Gina Thomas, Bishop's Stortford BID manager, said: "As part of the BID's commitment to support businesses we are delighted to enable retailers to be part of a virtual high street through Click It Local for Bishop's Stortford. With same-day delivery available for customers, this is a great way for everyone to shop local in a safe way."

For more information, go to clickitlocal.co.uk/bishops-stortford



01992 276190
office@ibbco.co.uk
www.ibbco.co.uk



Resin Bound Natural Aggregate

Based just outside Epping, IBBco have been providing surfacing solutions to Essex and Hertfordshire for the past 24 years. Resin Bound natural aggregate allows us to create beautiful designs for your drive, patio, paths or even swimming pool surrounds! Please call us to discuss all the options or to request a free survey.

- 46 Bespoke Colours
- Fully Permeable
- No Drainage Required
- Total Flexibility of Design
- Long Lasting Results
- Easy to Maintain
- Tested to BS EN 13892
- UV Colour Stable

Unit 11, Esgors Business Centre, High Road, Thornwood Common, Epping, CM16 6LY



KEEP COOL DURING THE SUMMER AND TOASTY ON COLD WINTER NIGHTS

COME TO THE PREMIER AIR CONDITIONING EXPERTS IN HERTFORDSHIRE FOR AIR CONDITIONING & INSTALLATION SERVICE & MAINTENANCE



Contact 01279 939096 | sales@hertsaircon.co.uk | www.hertsaircon.co.uk



Your Garden

If you can dream it, we can design and build it!

**Landscape Design
Plant & Tree Solutions
Landscape Management
Landscape Enhancements**

Pathways & Patios • Construction • Maintenance • Ponds & Water Features
Planting • Artificial Grass • Block Paving • Bespoke Garden Buildings



Contact us for your free quote
01371 871551
www.phippslandscapes.co.uk
phipps@mail.com



MARCH BIRTH FLOWER OF THE MONTH:

Daffodil



If you were born in the month of March, your birth flower is narcissus, also known as the daffodil. The quintessential flower of spring, the daffodil is instantly recognisable by its bright yellow petals. Perfect placed in beds and borders, daffodils will brighten up your garden every year.

WHAT DOES THE DAFFODIL REPRESENT?

Named after Narcissus, a character from Greek mythology who was so in love with himself he drowned in a pool of water while admiring his own reflection, this flower is said to be a symbol of vanity. It is also known to represent new beginnings, rebirth and rejuvenation. The daffodil is also:

- > The national flower of Wales
- > The official 10th wedding anniversary flower
- > The official emblem of cancer charities
- > A symbol of luck and prosperity during Chinese New Year

WHAT DOES THIS BIRTH FLOWER SAY ABOUT YOUR PERSONALITY?

If your birth flower is the daffodil, you are said to be extremely creative. You are also known for being kind and welcoming to everyone you meet and dedicated to living a life of peace and happiness.

ARE DAFFODILS EASY TO GROW?

Anyone can grow daffodils in their garden and you can choose to plant your bulbs in beds, borders, grass verges, lawn edges, hedgerows and banks. Plant your bulbs between September and November in well-drained soil and aim to keep your bulbs 4-8 inches apart, as overcrowding can cause daffodil blindness – when daffodils shoot up with foliage but no flower.

HOW TO LOOK AFTER DAFFODIL BULBS FOR ANNUAL GROWTH

- > Allow the leaves to die back naturally before cutting off
- > You can lift bulbs between June and August and store in a cool, dry place ready for replanting
- > Apply a rich fertiliser to the soil once you have removed bulbs

GARDEN OF LIFE

TREES AND SOIL *socialism*

In the second of a four-part series that shows how even the most urban garden can be a haven for the wonders of wildlife and the nurturing of nature, we look at the role of trees and fungi below the surface.

We view our trees with respect and admiration – a fluttering, swaying mass of potency and life that evolves with every passing season, presenting a haven for all manner of wildlife, from insects to birds, plant-life to rodents, as well as being a valuable source of oxygen for all living things.

And yet, the true strength of a tree is not what we see above ground, but its rooted, tangled masses beneath it. At the heart of this are microbes called mycorrhizal fungi.

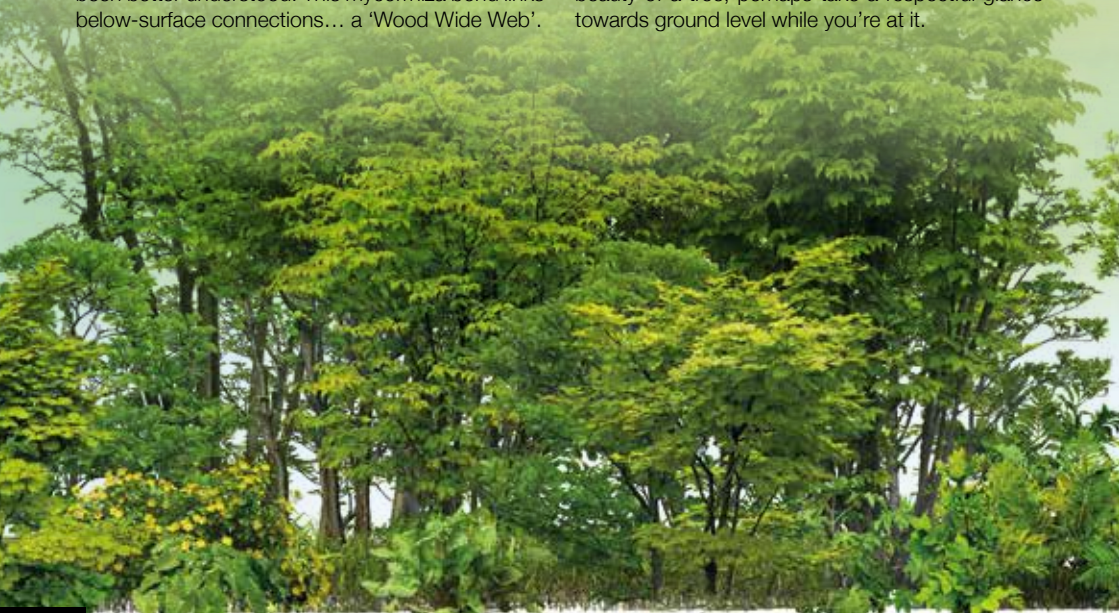
Once considered an enemy to plant life, in recent decades the fungi – which release hyphae, tying together tree and fungus at cellular level – have been better understood. This mycorrhiza bond links below-surface connections... a 'Wood Wide Web'.

It leads to the creation of one superorganism that looks after, supports and talks to each tree, be that a small crab apple just a few yards away, or a thundering oak several hundred metres down a ravine.

The creation of this network is for mass sustainability – the fungi have minerals that the tree needs; the tree has carbon that the fungi need – but the result is a kind of soil socialism that looks after its own.

For so long it was believed that trees and fungi were at war, both looking to snatch what they could from the ground. Now, it's believed that without the mycorrhizal fungi, trees would be toy-sized, and in the case of the 400 species of mycoheterotrophic plants that cannot photosynthesise, they would die out altogether.

So the next time you stand back and admire the beauty of a tree, perhaps take a respectful glance towards ground level while you're at it.



We.Recruit HR

We.Outsource HR

We.Consult HR

KINGSWOOD GROUP
HR SOLUTIONS
RECRUIT • OUTSOURCE • CONSULT

Providing expert, fully tailored HR Solutions to businesses across Essex

For a confidential discussion, please email us at: enquiries@kingswoodgroup.org, alternatively call us on:

Bishops Stortford 01279 939094
London 0203 984 6677

www.kingswoodgroup.org

NAOMI HAYNES
FINANCIAL PLANNING

*You can't predict the future, but you **can** prepare for it*

My aim is to provide every client with the very best financial advice and support to help meet their individual needs.

I work holistically with clients in a wide variety of areas, incl:

- Pension Planning ● Protection ● Investment Planning
- Estate & Tax Planning ● Business Financial Planning ● Mortgages

Your home may be repossessed if you do not keep up repayments on your mortgage.

WANT TO SEE IF WE ARE A GREAT FIT TO WORK TOGETHER, HELPING TO SECURE YOUR FINANCIAL WELLBEING? GET IN TOUCH TODAY

www.naomihaynes.co.uk | Naomi.Haynes@sjpp.co.uk
01279 939 127 | 07785 530 555 [naomihaynesfinancialplanning](https://www.facebook.com/naomihaynesfinancialplanning)

Associate Partner Practice of St. James's Place Wealth Management

The Partner Practice is an Appointed Representative of and represents only St. James's Place Wealth Management Plc (which is authorised and regulated by the Financial Conduct Authority) for the purpose of advising solely on the Group's wealth management products and services, more details of which are set out on the Group's website at www.sjp.co.uk/products. The 'St. James's Place Partnership' and the titles 'Partner' and 'Partner Practice' are marketing terms used to describe St. James's Place representatives.



Home *from* Home

WHAT TO CONSIDER WHEN BUYING A HOLIDAY HOME IN EUROPE POST-BREXIT

It's a piece of escapism almost all of us love and crave – even just the thought of having a holiday home we might slip away to is enough to keep us going through those long, cold, monotonous months of work.

Of course, for those of us who will at some point be lucky enough to own an overseas abode, the question of how accessible and affordable that place in the sun will be has arisen recently in light of the UK departing the European Union.

Within that, perhaps the most profound impact of Brexit will be that UK

residents are only permitted to stay in the EU for a total of 90 days in every 180-day period.

As far as purchasing a home goes, British nationals will now need to undertake the same procedures as non-European residents, and while this doesn't prohibit us from investing in a holiday hideaway, it does mean an extra layer of paperwork, and in future may require applicants to apply for a visa in order to claim residency.

In time to come it may also be seen that Brexit leads to an increase in stamp duty for British buyers, while changes in the currency markets could mean that mortgage availability becomes more limited.

As it stands, though, the subsequent transition period – and with it, a large amount of uncertainty – hasn't led to any profound changes. Indeed, people who already own property in an EU country are protected by the United Nations Universal Declaration of Human Rights and the European Convention on Human Rights – the longwinded premise being a simple one, namely that whether a member of the European Union or not, individual property rights must be respected.

So if you do move forward in retaining or investing in property abroad, your little piece of homely heaven is assured.

DOES YOUR WORK-LIFE NEED INSPIRATION-ENERGY-BALANCE?

We have the solution!

- BRAND NEW COWORKING SPACE • CUSTOM BUILT CONTEMPORARY BARN
- WITHIN THE BEAUTIFUL GROUNDS OF WICKHAM HALL, BISHOPS STORTFORD



A Perfect Community & Business Space for Innovators, Influencers, Remote Corporate Workers & Ambitious Business People

OPENING MAY 21
create the working life you deserve



THE SPACE WILL INCLUDE:

- SINGLE PERMANENT DESKS • HOT DESKS
- PRIVATE OFFICES FOR 2-11 PEOPLE
- MEETING ROOMS • COMMUNAL HUB
- COUNTRYSIDE VIEWS • FREE PARKING

CALL 01279 939145 OR REGISTER @ WWW.SUBSCRIBEPAGE.COM/LAUNCHBISHOPSTORTFORD TO RECEIVE FURTHER INFORMATION OR EXPRESS YOUR INTEREST IN A HARD-HAT TOUR!

Natalie Caroline Coaching



Hi, I'm Natalie and I'm a local Business Coach. My role is all about supporting business owners to create meaningful changes within their ventures! I work across a wide variety of principles from social media management, Business planning, digital marketing and more. My service provides bespoke coaching packages tailored to your needs.

To discover more please visit:
nataliecarolinecoaching.com
or call: 01279 939123

Find me on social media







teachnow

**Are you looking for work in Education?
Are you struggling to find the right role for you?**

We are seeking passionate and dedicated education professionals for full, part time, long term, permanent and daily supply positions in Primary and Secondary schools in Hertfordshire and surrounding areas.

We are looking for individuals who:

- Are passionate about helping children develop and reach their potential
- Understand how pupils learn
- Are dedicated and hardworking
- Have a sound knowledge of the principles of good teaching and supporting learning
- Are reflective and strive to be the best teacher/teaching assistant they can be

Successful candidates will benefit from:

- Competitive rates
- CPD training
- Working alongside a supportive team
- A designated and committed consultant to support you in your role
- An excellent referral bonus scheme

How to apply: Please contact Leah on 01279 939129 or leah@teach-now.co.uk to register your interest or please visit our website teach-now.co.uk to find out more.




Your dedicated Marketing agency.

JJD MEDIA

Don't just survive the new normal, adapt and flourish! We will be with you every step of the way.

☎ - 01279 939126
✉ - JJD.socialmedia@gmail.com
@ - JJD.socialmedia



SOLVE A PUZZLE

If you are struggling to keep your kids occupied indoors, then look no further than a good old-fashioned jigsaw puzzle. With the ability to not only provide educational benefits, this calming activity also helps to promote good mental health...

DECREASED STRESS LEVELS

If you have been worried about your child's mental health during this challenging year, you will be pleased to hear that jigsaw puzzles are a great stress-buster. In fact, when your child is doing a puzzle, there is a distinct shift in their consciousness, with their brains changing from a state of 'Beta' to 'Alpha'. The 'Alpha' state is similar to when they are dreaming and can lead to an improvement in mood, relief of stress and a lower heart rate.

ENHANCED COGNITIVE FUNCTION

When you are doing a jigsaw puzzle, you use both the left and right sides of your brain. The right is in charge of creativity and your emotions, whereas the left is the logical and methodical side. Using both sides helps to increase cognitive function, a crucial part of your child's development.

IMPROVED PROBLEM-SOLVING ABILITIES

At its simplest level, a jigsaw puzzle is an activity of trial and error. Your child is required to try out different pieces in different places in order to find the right fit. This helps to improve their problem-solving abilities and helps them to see things from varying perspectives.

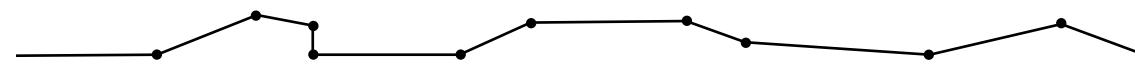
INCREASED IQ

Certain studies have shown that just 25 minutes a day spent doing a puzzle can raise a person's IQ by four points. Furthermore, this activity will help improve your child's memory, concentration and reasoning skills.

OTHER BRAIN-BOOSTING PUZZLES FOR KIDS:

Word searches | Rubik's cube | Mazes | Riddles | Connect the dots

Photo credit: gd_project/Shutterstock.com





BE INSURANCE *sure!*



THE COVER YOU'LL NEED IN PLACE WHEN TRAVELLING TO EUROPE POST-BREXIT

The very notion of overseas travel seems slightly optimistic at the moment, but as 2021 rolls on there is hope we may be able to stretch our legs on foreign shores before long. And if that's the case, it pays to know how to insure against travel pitfalls as we prepare for jaunts and journeys to EU countries in this post-Brexit world.

The first thing to ensure is that you have six months left on your passport, or you may not be going anywhere, with travel restrictions having tightened post-Brexit.

Next, there's the relinquishing of the European Health Insurance Card (EHIC). You cannot replace this – we're no longer in the EU – but it is still effective until the expiry date listed. If yours has timed out, you will need to apply for a Global Health Insurance Card (GHIC). This, like the EHIC, will cover you for pre-existing conditions, maternity and emergency care. Go without one and you run the

risk of incurring expensive healthcare treatment. Remember, though, the GHIC is not an alternative to purchasing travel insurance, as it doesn't cover any private medical healthcare, such as being flown back to the UK in the event of serious injury.

And as part of your own private insurance, you should still take out cover for unexpected events, such as cancellations or lost luggage, just as you would have done previously.

As for other matters, you are permitted to stay in the EU for 90 days in any 180-day period (see slightly differing rules for Croatia, Bulgaria, Cyprus and Romania), with a visa required if you're hanging about for longer. Mostly, though, EU countries are keen to make the transition period as smooth as possible. It doesn't suit nationals travelling in either direction to find themselves held up or, worse still, turned away at customs; but it does pay to double-check on everything in these uncertain times.



BRITAIN'S GREATEST SPORTING MOMENTS...



Torvill & Dean

Each month we look at significant events in British sporting history. This month, it's 40 years since ice skaters Torvill and Dean were awarded MBEs, but their greatest moment was yet to come.

To an entire generation of terrestrial TV watchers, the mere sound of Ravel's *Bolero* will instantly bring about memories of Jayne Torvill OBE and Christopher Dean OBE's incredible gold-medal-winning routines at both the Olympics and the World Championships in 1984.

At both events, the duo performed a modern artistic masterpiece that captivated a generation of fans. The routine had emotion, precision and drama packed into four and a half minutes of twists, turns, lifts and pirouettes.

At the World Championships, in Ottawa, the couple received a standing ovation from the entire crowd as flowers rained down onto the ice. It was the last amateur performance of the greatest ice dancers the world had ever known, performed with such ease that it belied the incredible technicality of a routine coached by Betty Callaway.

Their score of 13 perfect 6.0s was the most ever

scored by any skaters in competition, as the couple, who had been performing together since 1975, truly went out on top of the world, having taken 11 6.0s at the Olympics two months previously.

While 1984 was ultimately the pinnacle, it's easy to forget how respected and regarded they were before then. Already prolific World and European champions, they had been awarded MBEs previously, with the 40th anniversary of their trip to Buckingham Palace being marked this year.

That these iconic skaters could still push for perfection as amateurs was the ultimate endorsement of their decision to turn professional and begin to earn a living for their art beyond grants and sponsorship. And that has been borne out in the fact that their dedication to ice skating in all its forms rolls on even today, with the pair regulars on our television screens, notably in ITV's *Dancing on Ice*.

Photo credit: Colorsport/Shutterstock



SPORT

CRISTIANO RONALDO

CRISTIANO RONALDO AND THE COMPLETION OF A UNIQUE GOAL FEAT

When Cristiano Ronaldo signed for Manchester United at the age of just 19, football knew it had a real talent in its midst. Yet it's still unfathomable that the Portuguese striker would go on to create a new goalscoring world record – something the 36-year-old achieved in January when he notched up his 760th senior goal (even if his strike for Juventus versus Napoli was from just a yard out).

The feat was celebrated all over the world, and rightly so, even if there's still some conjecture regarding exactly how many goals some of his net-busting rivals have clocked up over the years.

The problem is not with CR7's total, more the tally of his contemporaries. Brazilians Pelé and Romário, for instance, both claim to have scored more than 1,000 goals, yet these totals appear to include amateur and reserve games.

Even the man whose total Ron bettered, Austrian-Czech footballer Josef Bican, who clocked up 759 strikes across a career surpassing two decades, has a claim for more goals, with the Rec.Sport.Soccer Statistics Foundation (RSSSF) claiming more than 800, in part because of missing records from the Czech second division in 1952.

Ronaldo's total is unquestionable, though – five goals for Sporting Lisbon, 118 for Manchester United, 450 for Real Madrid, 92 for Juventus (at the time of going to print), and an incredible 102 for Portugal.

Knowing Ron, the status of being the world's most successful goalscorer of all time will mean a lot to him. Though while he won't be able to completely silence the doubters who may quote other players and their respective tallies, what we can all agree on is that, over the years, he's been a handy little striker who, more often than not, has chipped in with a useful goal or two.

Photo credit: Action Press/Shutterstock



Goal-den great

GIANT



AT GIANT LOUGHTON
WE'RE JUST LIKE YOU -
WE'RE RIDERS. WE LOVE
CYCLING AND WE WANT
YOU TO ENJOY IT JUST
AS MUCH AS WE DO.

NEW STOCK ARRIVING WEEKLY

- 5 YEARS FREE SERVICING FOR ANY BIKE PURCHASED IN 2021 (EXCLUDING MY21 RANGE)
- FREE PUNCTURE REPAIRS FOR LIFE RANGE (T&Cs APPLY ORIGINAL OWNER ONLY)
- FREE SAFETY CHECKS FOR LIFE ON ALL NEW ARX AND ATX BIKES
- PRICE MATCH PROMISE - FIND IT CHEAPER ANYWHERE ELSE & WE WILL MATCH THE PRICE
- FREE UK DELIVERY ON ANY IN-STORE PURCHASE (CALL US FOR MORE DETAILS)

GIANT LOUGHTON, 235 High Road, IG10 1AD

T: 0208 508 1384 W: giant-loughton.co.uk E: info@giant-loughton.co.uk



Fan belt failure

HOW TO DIAGNOSE ONE OF THE MOST COMMON MOTORING ISSUES

The serpentine belt, alternator belt, or fan belt as it is better known, is a peculiar piece of rather essential kit as far as your car engine goes. We all know our car has one, a few of us can locate it, yet very few know what it does.

What's important is that when it does malfunction – usually through being worn out – we can get it fixed cheaply and easily.

THE SIGNS

Most people become aware of fan belt failure when they begin to hear a loud screeching or squealing sound coming from the engine. You may also discover the power steering or air conditioning isn't working, and in really bad cases the engine may overheat.

All of these effects result from the fan belt's faulty function, and that function is working with the idler, tensioner and pulleys inside the accessory drive

belt system – essentially, it provides power to key components in the engine.

A dodgy fan belt is bad news, and although the car may be driveable, you're risking a breakdown.

THE DIAGNOSIS

Fan belts can become cracked, split, grazed, misaligned or might fall off completely. Unless your amateur mechanic skills are really up to Henry Ford levels, it's probably best to take your motor to the nearest garage.

THE COST

Thankfully, a faulty fan belt won't see you off the road for too long; nor should it set you back any significant amount. Typically, a new one will cost somewhere in the region of £100–£200. It's a relatively quick job and your garage should be able to turn it around in a couple of hours.

FULLY FITTED ROLLER GARAGE DOORS
 FROM **£895** * WAS **£1,354** INC VAT

* Offer Valid For Openings Up To 2.4m Wide & 8' tall
 2 Remote Controls, 5 Year White Guarantee, Internal Manual Override

WHATS INCLUDED:
 ACOUSTIC & THERMAL INSULATION
 TWO REMOTE CONTROLS
 EXPERT MEASURING & FITTING
 24 COLOURS AVAILABLE

GAROLLA ROLLER SHUTTER DOORS
www.garolla.co.uk

Made To Measure...
ROLLER GARAGE DOORS

Garolla can save a lot of space inside your garage. Rolls up vertically into a box. Takes only 8 inches of head-room! Opens vertically so you can park up close to the door. Remotely open/close the garage even from inside your car.

CALL US TODAY
 Phone: **01279 510 063**
 Mobile: **07537 149 128**

CE Approved

Palmer & Martin Hire

FREE LOCAL COLLECTION AND DELIVERY

CAR HIRE VAN HIRE

PROVIDING A ONE-STOP-SHOP FOR ALL OF YOUR HIRE REQUIREMENTS

FAMILY RUN COMPANY ■ CLOSE TO STANSTED AIRPORT

120+ FLEET OF NEW VEHICLES ■ CARS ■ PANEL VANS
 LUTON VANS ■ 7 SEATER MPVS ■ 9 SEATERS MPVS

Call us on **01279 505072**
 or book online at www.palmerandmartin.co.uk

Unit 14 Twyford Business Centre, London Road Bishop's Stortford CM23 3YT

ACCOUNTANT & TAX ADVISORS

ALL THINGS ACCOUNTING

Accounting & tax services, we help with self-assessment tax return, corporation tax return, payroll, VAT return, CIS return & bookkeeping. Call 07539 035537 for free initial consultation.

AIRPORT TRANSFERS

PRIMROSE AIRPORT CARS

Competitively priced efficient, clean & reliable service using satellite navigation and tracking of all return flights for Business or Leisure - 01992 364000 | 07966 180531

AUDIO & VISUAL

ULTIMATE AV

We create bespoke systems designed and built especially for you. Small projects to complete home cinema environments. Based in Essex call us on 07531 214339

BEAUTY & NAILS

BEAUTY BY NATASHA KATIE

A local, mobile LVL Technician. Fully qualified level 2 and 3 beauty therapist Babtac insured and approved. 07961 462672

SPECIAL NAILS

Dedicated to provide the best quality nail care for Men & Women. Walk-ins welcome, appointment bookings & gift vouchers available. 01708 442248

THE NAIL STUDIO

Nail Studio lets you switch off and pamper with highly skilled technicians providing top treatments and nail products to meet your every need. 07572 526519

BUSINESS CENTRE

THE TOWNHOUSE HERTFORD

Modern business centre in the heart of hertford offering a variety of office space, meeting rooms and hot desking facilities. 01992 350132.

CARPET & UPHOLSTERY

ARWIN CLEANING SERVICES

Over 30 yrs of exp, we can offer a professional, efficient and cost-effective solution for carpet and upholstery, cleaning and maintenance. 07973 417764

CAR & VAN HIRE

SCENIC SELF DRIVE

Your self drive hire specialists. Whether you require modern cars, motorhomes, vans or minibuses. Rest assured we will provide you a professional service 01708 753461

CLEARANCE & WASTE

THE CLEARANCE TEAM

From clearing a room, house or garden to clearing an entire office block. Fast, reliable and affordable. Working 24/7 so you can book us at your convenience 0207 101 3387

COMPUTER REPAIR & I.T.

MAPTEC IT

Your local residential & commercial IT specialists. We can fix your computers, configure email accounts & printers. Setup your Wi-Fi, Internet router & network. 0203 865 7174

ELECTRICAL & WHOLESALE

CH ELECTRICAL WHOLESALE

Essex & East London's leading electrical wholesalers providing the trade & public a professional service with access to all leading brands. 01708 730591

ELECTRICIAN

CAPITAL ELECTRICAL SERVICES LTD

Domestic/Commercial, Repairs/Installation, Vehicle Charging Points, Portable Appliance Testing, Fire Alarms, Emergency Lighting, Installation Condition Reports. Call 0208 088 2916

TACK ELECTRICAL

Reliable, affordable, fully qualified and insured. We guarantee we'll deliver unrivalled service and workmanship every time. No job too small. 01992 276128

FRENCH POLISHING

DC POLISHING

20 Years experience in wood restoration i.e. Furniture, doors, staircases, worktops, minor repairs & FLOOR RESTORATION. 07949 204969 | dcpolishing.church@gmail.com

FURNITURE ASSEMBLY

FLAT PAC KING

Assembly of all flat pack items. London and Essex areas covered Collection and delivery service is available call Jo on 0208 088 2976

FURNITURE RESTORATION

ABBEEY GROUP

Abbeey Group are specialist in creating, repairing & restoring quality furniture & wood surfaces to the highest standard. 01708 741135

KINGS UPHOLSTERY

Handmade sofas & chairs designed especially for you to your required specifications. Also providing in re-upholstery & repair work. 01708 444125

GARDEN DESIGN

ARBELLUS

Arbellus solutions for your outside space. Design, planting plans and consultancy. Private and commercial. Contact 01992 236043 | www.arbellus.co.uk

GARDEN SERVICES

JOHN HEARNE

We take care of it all Lawn Mowing, Weeding, Planting, General Tidying, Fence/Shed Painting, Driveway/Patio Pressure Washing and more. Call for details 07908 523101

THE ORIGINAL TREE SURGEONS LTD

Taking care of all your tree care needs and providing a personal first-class service to both domestic and commercial clients. 01708 715440

JOIN THE LISTINGS... for just **£180** +VAT per yr

HEALTH & WELLBEING

IMPROVE YOUR SMILE DENTAL PRACTICE

Est. in 1986. Encompassing all needs from basic oral health to advanced dental procedures and high-end cosmetic treatments. New patients welcome. 020 8504 2704

LAUNDRY & DRY CLEANING

THE LAUNDRY MAN

From everyday washing, drying & ironing. We can pretty much launder anything & everything. Self service launderette available. 01708 447710

LOFT CONVERSIONS

HIGH END LOFTS LTD

Beautiful Lofts, Expertly Built. Our "Hand-Holding" service takes you from ideas, through Plans & Building Control, to make your [home alteration] vision a reality 0208 088 2805

MASTICS AND SEALANTS

QUALITY MASTICS LTD

Bathroom and shower mastic joint sealing. Kitchens, windows, floors, external seals around windows. For information call 01245 520981

MOBILE PHONES & ACCESSORIES

HORNCHURCH MOBILE PHONES & ACCESSORIES

Support with the latest models of phones & tablets. Screen Repair. Competitive pricing, fast turnaround & satisfaction guaranteed. 01708 469103

PAINTING & DECORATING

PGA DECORATING SPECIALIST

Interior - exterior - paper hanging specialists in Window repair care. 07769 646357 | www.pgadecoratingspecialists.co.uk | pgadecorators@yahoo.co.uk

TRADITIONAL DECORATIONS

We are a family run business specialising in turning your house into a home. Giving advice on current decorating trends. 07737 562406

PLUMBING & HEATING

CMS PLUMBING HEATING & BATHROOMS

Corgi registered, 20+ years' experience, public liability insurance, offering free quotes. No job too small. Based in Gidea Park. Call Craig 07855 589185

PROPERTY MAINTENANCE

LILLYWHITE PROPERTY SERVICES

For all building works, full refurbishments & property maintenance inc heating, plumbing, electrical, decorating, flooring, tiling & plastering etc. Call today on 07949 394403

STUART GREEN PROPERTY SOLUTIONS

Property maintenance specialist. Carpentry, painting/ decorating, laminate flooring, bath/shower re-siliconing, gutters cleared/repared, insurance work, PLI. 07917 870879

ROOFING

JIM BARR ROOFING

Exterior cleaning & maintenance. Gutters, Paving & UPVC; cleaned, repaired & renewed. 01708 874816 | 07833 572459

WHITE GOODS & APPLIANCES

T.E.J. DOMESTIC APPLIANCES

Stockists of all major brands. Installation available, FREE local delivery. Free standing & Built In Appliances. Extensive stock. 01708 447752

DISCLAIMER: VISION does not represent or endorse the accuracy or reliability of any of the advertisements, nor the quality of any products, information or other materials displayed, purchased or obtained by any customer as a result of an advertisement or any other information or offer in connection with the service or products. The opinions expressed in articles, reviews and stories are strictly those of the individual authors and do not necessarily reflect the views of **VISION**.

To advertise call **VISION** on **01279 939134**

PUT YOUR BUSINESS IN THE **VISION** LISTINGS...CALL **01279 939134** TODAY

WORDLADDER: SNOW 'SLOW 'MOW 'SLOT, 'PLOT, 'PLOT, 'PLOT, 'PLAY



PUZZLES & TRIVIA

PUZZLES

Answers: see end of The VISION Listings

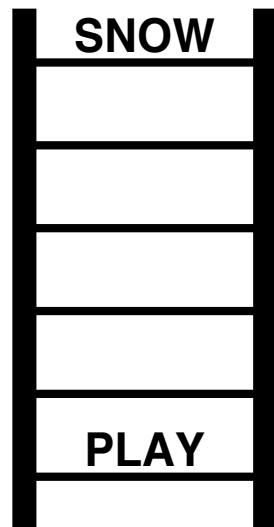
- ▶ AEROPLANE
- ▶ AIRLINE
- ▶ ALTITUDE
- ▶ BAG DROP
- ▶ CHECK-IN
- ▶ DELAY
- ▶ DUTY-FREE
- ▶ FILMS
- ▶ HAND LUGGAGE
- ▶ JET LAG
- ▶ LANDING
- ▶ REFRESHMENTS
- ▶ RUNWAY
- ▶ SEAT BELT
- ▶ SECURITY
- ▶ SHOPS
- ▶ SLEEP
- ▶ SUITCASE
- ▶ TAKE OFF
- ▶ TURBULENCE



DID YOU KNOW?

- ▶ Central Park in New York is one of the world's largest urban parks, covering 843 acres
- ▶ Paris has few skyscraper buildings compared to other cities owing to building height restrictions
- ▶ The Flavian Amphitheatre in Rome became known as the Colosseum because of a colossal statue that is situated nearby
- ▶ Istanbul lies in two continents – part in Europe and part in Asia
- ▶ The world's first electric traffic signal was put into place in Cleveland, Ohio, in 1914
- ▶ It's thought that Amsterdam has more bikes than people
- ▶ More chocolate is bought at Brussels Airport than anywhere else in the world

WORD LADDER



THE AIM: Change the word at the top of the ladder one letter at a time to make the word at the bottom.

HOW TO: Change one letter on each step to make a new word. By the time you reach the end, you should have created the new word.

DO NOT rearrange the order of the letters.

TIP: There is usually more than one way to solve this puzzle.



“My partner was looked after by excellent staff. I cannot thank them enough for going out of their way to make me feel comfortable and giving me much needed reassurance.”

Partner of resident, October 2020
Source: carehome.co.uk

Premier Court Care Home Here for you

We're welcoming new residents for short and long term stays. Whether you need to find a local care home now, or are just starting to look into options, you can consider Premier Court in Thorley, Bishop Stortford for a range of care needs including nursing and residential. Residents are welcome to join us for as long as they need – a week, month or a more permanent stay.



Call us for advice on care today
01279 882 130

Lines are open 8am to 6.30pm Monday to Friday, 9am to 12.30pm Saturday. Closed Sunday and bank holidays. We may record or monitor our calls.



carehome.co.uk
Review Score
72 reviews†

Safety comes first, so we make sure our team always have PPE, regular testing takes place, we participate in available vaccine programmes and that we follow strict UK infection control standards.

- All types of funding welcome
- No health insurance needed

†The Review Score is based on the quality and number of independent reviews this home has received on carehome.co.uk in the last two years, at the time of going to print.

FEB21 CS 02116

Loft Conversion Specialists

Beautiful Lofts, Expertly Built

Extensions ■ Home Improvements ■ Kitchens ■ Bathrooms



- Over 15 years experience
- Team of highly qualified experts
- Project handling from ideas to completion
- Fully compliant with Building Controls

www.newlevelloftconversions.co.uk



Call us on:
01279 939128
Chingford London E4

