

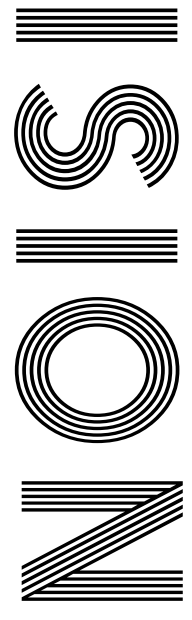


**IT'S
BROAD
BEAN
SEASON**

TOP TIPS
For cleaning Converse

10,000 STEPS
How to reach that magic number

COLOUR DRENCHING
The latest interiors trend



FREE

Photo credit: David Fisher/Shutterstock


JODIE COMER

One-woman winning machine celebrates her latest award


THE **B7** MEDIA GROUP

PRINTING • BUSINESS CARDS • LEAFLETS
DISTRIBUTION • SIGNAGE • MENUS & BROCHURES
EXHIBITION BOARDS & BANNERS
RETAIL PACKAGING • WINDOW VINYLs
LOGO DESIGN • BRAND ALIGNMENT
VEHICLE WRAPPING • CARBON PADS • WORKWEAR
WEBSITES • SOCIAL MEDIA • I.T. SOLUTIONS

 ENQUIRIES@B7MEDIAGROUP.COM

 01279 939134

 ENQUIRIES@B7MEDIAGROUP.COM

 01279 939134



Editor's notes...

JULY 2023



Brett Shohet, Editor

Hello and welcome to this month's edition of **VISION** Bishop's Stortford. There's no denying that the world is rapidly changing, but whether those changes are for the better remains up for debate. I recently looked into buying a new vehicle ahead of the expansion of the Ultra Low Emission Zone in August. I went to a local dealership and, when I struggled to find it, gave them a call. They told me they hold their vehicles in a warehouse; you choose the car online and they deliver it to you.

While the convenience of this is undeniable, I'd much rather see the car in person, have the chance to play with the gadgets and take it for a test drive. After all, it's one of people's top purchases, so attention to detail is important.

Sometimes change is necessary, but that doesn't mean we have to completely reinvent the market. There's still space to do things the old-fashioned way. Consider print, for example. While many say digital is the way forward, that doesn't mean print doesn't still have its place.

With prices continuing to rise, we are all looking to cut back on unnecessary spending. Many businesses will reduce their advertising, but I'd argue that now is the time to continue investing to make sure you stand out from the crowd. Get in touch today to find out more about our current advertising deals.

Brett Shohet

This is your town's hyperlocal magazine, delivering to homes and businesses every month.

HOME & DIY | GARDENING | PETS | HEALTH & FITNESS | BEAUTY | FASHION | HISTORY | LOCAL NEWS | FOOD & DRINK | TRAVEL | BUSINESS & PROPERTY | SPORT | PUZZLES | MOTORING | KIDS | WHAT'S ON | TECHNOLOGY | THE LISTINGS



CONTACT US:

bishopsstortford@visionmag.co.uk | 01279 939134 | www.visionmagherts.com

@visionherts @visionmageastherts Vision Magazine East Herts

CONTRIBUTORS | Tabatha Fabray, Fiona Goble, Holly Bullen

All pages are recyclable

THE B7 MEDIA GROUP

PRINTING • BUSINESS CARDS • LEAFLETS • DISTRIBUTION
SIGNAGE • MENUS & BROCHURES • RETAIL PACKAGING
EXHIBITION BOARDS & BANNERS
WINDOW VINYLs • LOGO DESIGN
BRAND ALIGNMENT • VEHICLE WRAPPING
CARBON PADS • WORKWEAR • WEBSITES
SOCIAL MEDIA • I.T. SOLUTIONS

ENQUIRIES@B7MEDIAGROUP.COM

01279 939134



EMPIRE UPVC & ROOFING SPECIALISTS

**WE GUARANTEE OUR CUSTOMERS
A FRIENDLY, RELIABLE AND
PROFESSIONAL SERVICE**



Empire UPVC and Roofing Specialists independently trade throughout Hertfordshire and a 40 mile radius from our office in Nazeing.

- ✓ Felt, Tile & Slate Roofing
- ✓ Liquid Rubber Roofing
- ✓ Fibreglass Roofing
- ✓ Roofing Leadwork
- ✓ All Roof Windows
- ✓ All Roofing Repairs & Maintenance
- ✓ Moss Removal
- ✓ Gutter Cleaning & Unblocking
- ✓ UPVC Fascias, Soffits & Guttering
- ✓ UPVC & Hardie Plank Cladding

Office: 01279 939 103

office@empireupvcandroofing.co.uk
www.empireupvcandroofing.co.uk

Visit Our Showroom at:

Unit 50 Hillgrove Business Park
Nazeing New Road, EN9 2HB



Checkatrade.com

FULLY INSURED



MARTIN TYLER'S fantastic finish

Celebrating both the career and the caressing tones of Martin Tyler, one of the most revered and celebrated football commentators of the modern era, who has left Sky Sports after 33 years of service.

"Manchester City are still alive here... Balotelli... AGUERROOOOO! I swear you'll never see anything like this again. So, watch it. Drink it in."

Martin Tyler's almost indelible words that accompanied Manchester City's first Premier League title in 2011/12 came more than two decades into his service as lead commentator for Sky Sports, the leading UK broadcaster of the English top-flight since its inception in 1992.

To link the Chester-born wordsmith with the pioneering, game-changing nature of Rupert Murdoch's pay TV revolution is an appropriate fit. Both supported each other in the growth of a football product that, rightfully, was to present our domestic league as the very best in the world.

That piece of iconic commentary came on a day when the blue half of Manchester scored two injury-time goals against QPR to wrestle the title away from their city rivals United. Many regard it as being right up there with the sport's other legendary narratives – from Kenneth Wolstenholme's "They think it's all over... it is now" in the 1966 World Cup Final, to Brian Moore's "It's up for grabs now" as Arsenal won the league title with virtually the last kick of the 1988/89 season at Anfield.

Indeed, that spine-tingling commentary is held so dear by the club's fans that many have it painted on walls, or inscribed on body parts – a goal and a string of words that kicked off a football revolution that now sees Manchester City as truly the dominant side in this country.

Tyler has always seen his vocal variations matched with awards – included in these are multiple gongs for Football Supporters' Federation Commentator of the Year Award, plus the much-cherished Premier League Commentator of the Decade.

Away from the satellite giant, he has voiced for Fox SBS (Australia), was the default commentator on the FIFA video game franchise between 2005 and 2022, and has also worked at the Euros and World Cup, having started out at ITV.

While the broadcaster is associated with the very top rung of the professional game, his inherent football passion comes much further down the ladder, given he is a supporter of National League side Woking.

Upon hanging up his microphone, Tyler said: "It's been a privilege to play a small part in the broadcasting history of the greatest league in the world.

"Working alongside wonderful professionals, I thank them for their support and expertise. It's been an honour as a member of a very gifted team."

Tyler, with his mannerisms, his turn of phrase and his presence that could fill the emptiest of front rooms on a Sunday afternoon, will be a hard act to follow, yet Sky Sports commentary is in good hands as Peter Drury takes the hot seat for the new season, starting in August 2023.



Photo credit: Mike Hewitt

Weird and Wonderful

festivals around the world

Summer is the time when crowds flock to music festivals, but did you know there are also a host of weird and wonderful festivals and events that take place throughout the year?

INTERNATIONAL HAIR FREEZING CONTEST: In the cold province of Yukon, Canada, the International Hair Freezing Contest takes place every February at the Takhini Hot Springs. With temperatures that reach below -30 degrees Celsius, participants dunk their heads in the hot water of the pools and then create frosty hairdos by shaping their locks as they freeze in the cold air.

BABY JUMPING FESTIVAL: Known to the locals as El Colacho, this unusual event takes place in Spain 60 days after Easter during the feast of Corpus Christi. It involves men dressing in traditional 'devilish' clothing to scare the crowd before running down the street and jumping over carefully placed babies.

WIFE CARRYING WORLD CHAMPIONSHIP: Fancy carrying your wife around a 253.5-metre track that is riddled with obstacles? Then you need to head to the two-day Wife Carrying World Championship in Finland. A hugely popular annual event that takes place in late June/early July, the winning team is awarded a prize of their wife's weight in beer.

LA TOMATINA: You may have heard of this popular Spanish festival that involves A LOT of tomatoes being thrown about the streets of Valencia. Essentially an hour-long tomato fight for the chosen 20,000 participants, this event is held on the last Wednesday in August each year.

MONKEY BUFFET FESTIVAL: The Monkey Buffet Festival in Lopburi, Thailand, is, as the name suggests, a buffet for monkeys that takes place annually among the ruins of a temple on the last Sunday of November. The local monkey population in Lopburi is around 2,000-3,000, and all are welcome to the annual feast of fruits, cakes, vegetables and candies.

Photo credit: alissascuria.com, nationalgeographic.com, wife-carrying.org, dnmvictoria/Shutterstock



Luxury care in the heart of Harlow

Now open to viewings

We are delighted to announce the grand opening of The Jubilee Suite - our new luxury care suite situated within Abbot Care Home in Harlow, Essex.

Our new Jubilee Suite has been expertly designed with kindness, and dignity at its heart, providing person-centred nursing, residential and dementia care. With a variety of excellent facilities and spaces to enjoy, we welcome the people who live here to play an active part in everyday life – as we ensure activities, events and mealtimes are carefully tailored to the personal preferences of each individual.

Abbot Care Home is situated amongst peaceful open parkland and features beautiful, landscaped gardens. The people who live here enjoy a comfortable environment and benefit from the home-from-home atmosphere.

It is important to our team that we work as part of your family, as we plan in partnership whilst providing the same caring support that we would wish for our own loved ones to receive, whilst enjoying a life well-lived, each and every day.

Excelcare
Belong with us



We welcome you to visit us to meet with our friendly team who will be happy to work around your schedule.

To find out more about Abbot Care Home and book in to view our newly opened Jubilee Suite, please get in touch

01279 594 610
info@excelcareholdings.com



CONVERSE *cleaning*

If your Converse trainers are looking more grimy than gleaming, then you will be pleased to hear that this type of footwear is relatively easy to clean.

All you need is a few simple ingredients and a little bit of elbow grease.

WHAT YOU WILL NEED:

Baking soda | Toothpaste | Washing-up liquid | Stain remover | Water | A sponge | A nail brush and toothbrush | Cloths | Newspaper

HOW TO CLEAN:

STEP 1: Cleaning the laces

Remove the laces from your Converse and then create a cleaning solution using 50ml of washing-up liquid, 1 tbsp toothpaste, 1tbsp baking soda and 200ml of warm water. Soak the laces for two to three hours and then hang to dry.

STEP 2: Cleaning the shoe

Stuff each shoe with newspaper and generously apply toothpaste to the shoe using a toothbrush. Leave for 15 minutes. Wash off all the toothpaste using a nail brush and warm water, then leave to dry

in a warm place. Never apply direct heat to your Converse trainers.

STEP 3: Removing tough stains

For any stubborn stains, apply stain remover directly to the affected area. Leave for five to 10 minutes and then wash off using a nail brush. Leave in a warm place to dry. It can be a good idea to test your stain remover on a section of the shoe that is not visible first, such as the outer edge of the tongue.

NB: You should never machine wash or dry Converse trainers as this can damage the shoes.

How to keep white Converse white

If you have recently purchased a pair of white Converse trainers, spray them with a water and stain repellent spray before you wear them. When a stain occurs, spot clean immediately with an equal mix of warm water and washing-up liquid.



Never-ending NAIL POLISH



TOP TIPS TO STOP YOUR NAIL POLISH CHIPPING AND TO MAKE IT LAST LONGER

Do you wish your nails would stay chip-free for longer? Or maybe your favourite nail polishes start to become tacky before you've even used half the bottle? Either way, these tips are just what you need.

HOW TO MAKE YOUR NAIL POLISH LAST LONGER

Keep your nails short: Although you may covet long nails, the sad truth is that these are much more likely to break, chip and peel.

Buff your nails: Before applying nail polish, buff your nails using a glass or crystal file. Avoid harsh emery files which can damage the nails.

Choose the right top coat: Look for a top coat nail polish that boasts chip-resistance, protection and strengthening properties.

Always apply a base coat: The base coat is equally as important as the top coat, although this is a step that many skip. Use a strong base coat for best results.

Reapply the top coat: A top coat is not a set-and-forget type of application and needs to be reapplied once every two to three days to ensure the preservation of your manicure.

Wear gloves: Always wear gloves to protect your hands from water, chemical cleaners and any heavy-duty work.

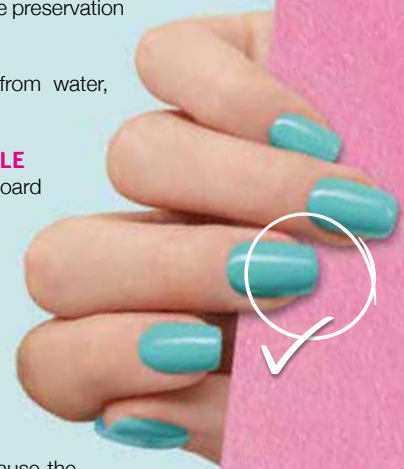
HOW TO MAKE NAIL POLISH LAST LONGER IN THE BOTTLE

Store it in a cool place: Store your nail polishes in a dark cupboard or drawer. You can even keep them in the fridge.

Invest in nail thinning lacquer: A good-quality nail thinning lacquer can be added to nail polish that has started to thicken in consistency or dry out.

Keep the cap on tight: Every time you use a nail polish, make sure you screw the cap back on tightly as this will ensure that no air gets in and dries it out.

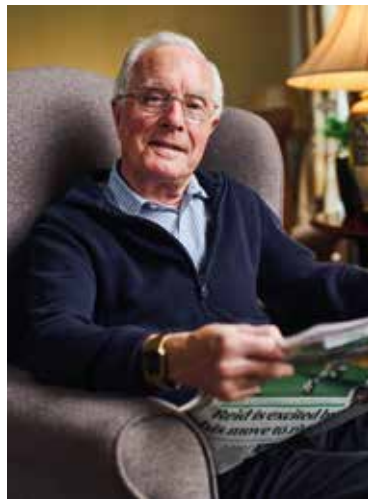
Keep out of direct sunlight: Extreme warmth on the bottle can cause the polish to thicken or dry out, as well as lead to discolouration.



“The staff and management are excellent. They dealt with his challenging behaviour and had a brilliant understanding of his needs.”

Brother of resident, October 2022
Source: carehome.co.uk

Bupa



Premier Court Care Home, welcoming new residents

Whether you need a find a local care home now, or are just starting to look into options, we can help. We're welcoming new residents to join us for as long as they need - a few weeks, a month or a permanent stay.

Residential | Nursing | Short stay

We're here to support loved ones with a range of needs. Talk to us about how we can help.



Call for advice on care today
01279 882 130

Lines are open 8am to 6.30pm Monday to Friday, 9am to 12.30pm Saturday. Closed Sundays and bank holidays. Calls are charged at no more than local rate and count towards any inclusive minutes from mobiles. We may record or monitor our calls.

9.7

carehome.co.uk
Review Score
79 reviews*

Premier Court Care Home, Thorley Lane East, Thorley, Bishop's Stortford CM23 4BH

All types of funding welcome No health insurance needed

*The Review Score is based on the quality and number of independent reviews this home has received on carehome.co.uk in the last two years, at the time of going to print.

APR23 CS 02898

The
GOODLIFE
LODGE CO
ESTD 1982

**BIG COUNTRY
Views**

GREAT HADHAM
COUNTRY CLUB

Don't just take our word
for it.....

Having always been a bit of a golfer and having reached a point where it was time to downsize, Great Hadham Country Club was perfect.

We were moving from our family home in Hertford and looking to downsize and for an escape.

We met with Dani at Great Hadham who showed us round several homes before we eventually plumped for a Prestige Plantation House

Once the sale of our home went through the actual purchasing was quick and easy, mainly due to the updates we had from the sales team.

We have now lived at Great Hadham for almost 7 months and really couldn't be happier. The wife has even bought some clubs now.

Mr and Mrs S



SCAN ME



SHOW HOMES



NOW OPEN



www.goodlifelodge.com



info@goodlifelodge.com



01279 939082



HEALTH & FITNESS

10,000
a day!



No, not 10k in money but 10k in steps! According to a 2017 study, completing 10,000 steps a day is just as effective as doing five 30-minute workouts a week.

Here are a few more reasons why you should be clocking up some serious mileage.

♥ To strengthen your heart

If you walk 10,000 steps per day, you will have a larger stroke volume than someone who only walks 1,000 steps a day. Your stroke volume refers to how much blood the heart beats per minute, with a larger stroke volume being a sign of greater aerobic capacity and better heart health.

🏃 To lose weight

Walking is a great form of aerobic exercise, especially if you walk briskly. This can help you to lose weight when combined with a healthy and balanced diet. Furthermore, you will store less fat than an inactive person and be better able to handle periods of excess, such as Christmas, without gaining too much weight.

📊 To stabilise your blood sugar

People who walk 10,000 steps per day will have a much lower glucose and insulin response in their blood after eating a meal than someone who is inactive. This means that you are less likely to develop type 2 diabetes in the future.

🧠 To improve cognitive function

Daily moderate exercise such as walking has been shown to improve one's ability to learn new tasks, grow new brain cells and stave off cognitive decline. Aerobic exercise may also be able to stimulate new cell growth in the hippocampus, which is the part of the brain responsible for emotion and memory.

📱 To reinforce healthy habits

It takes time to develop new habits, but sometimes all it takes is one small commitment to act as a catalyst for change. Start with small increases to your overall step count, before gradually increasing to 10,000 steps per day.



FEEL THE FOAM



If you are into fitness, then you need to know about foam rollers and how to use them. Predominantly designed to help with the recovery of injured muscles, they can also be used as part of your warm-up and cool-down routines to great effect.

WHY USE A FOAM ROLLER?

- To alleviate muscle soreness
- To reduce inflammation
- To aid muscle repair and recovery
- To help prevent injuries
- To increase blood flow
- To improve mobility
- To smooth the appearance of the skin
- To promote relaxation

WHERE ON THE BODY CAN YOU USE A FOAM ROLLER?

You can use a foam roller on your quads, hip flexors,

calves, lats, hamstrings, IT band (the connective tissues that run along your outer thigh from the hip to the knee), the upper back and shoulders, as well as the neck area.

WHEN SHOULD YOU USE A FOAM ROLLER?

You can use a foam roller either before or after a workout. Using a foam roller before working out can help to loosen up your muscles and allow for more efficient movement. Applying a foam roller after a workout can help to reduce muscle soreness and reduce recovery time.

HOW SHOULD YOU USE A FOAM ROLLER?

If you are new to using a foam roller, then be warned that foam rolling can be slightly painful. This is particularly true if you are using it on an area where the muscle or tissue is tight and in need of some TLC.

To use a foam roller for the first time:

- Pinpoint the sore or tight area of your muscle.
- Control your body as you slowly lower the targeted area, so it is centred above the roller.
- Lower your body onto the roller until you reach a point of discomfort.
 - Hold it there for 20-30 seconds.
 - You can roll the foam roller slowly back and forth to further stimulate the area.



MANOR OF GROVES

GOLF MEMBERSHIP PACKAGES AVAILABLE

CALL NOW 01279 603 539

GOLF@MANOROFGROVES.CO.UK

Isabel Hospice
Together we care
Registered charity no: 1046826

BUBBLE RUSH

HERTFORD

SUN 10 SEP 2023
Woodhall Estate, Hertford
isabelhospice.org.uk/bubblerrush

5K OF FOAMY FUN!

BOOK NOW!

SCAN TO BOOK!

FR Registered with FUNDRAISING REGULATOR

WHEN YOU BUY FROM A SMALL BUSINESS



YOU'RE **NOT** HELPING A CEO
BUY A THIRD HOLIDAY HOME

YOU'RE HELPING TO PAY FOR...

a little girls
dance classes

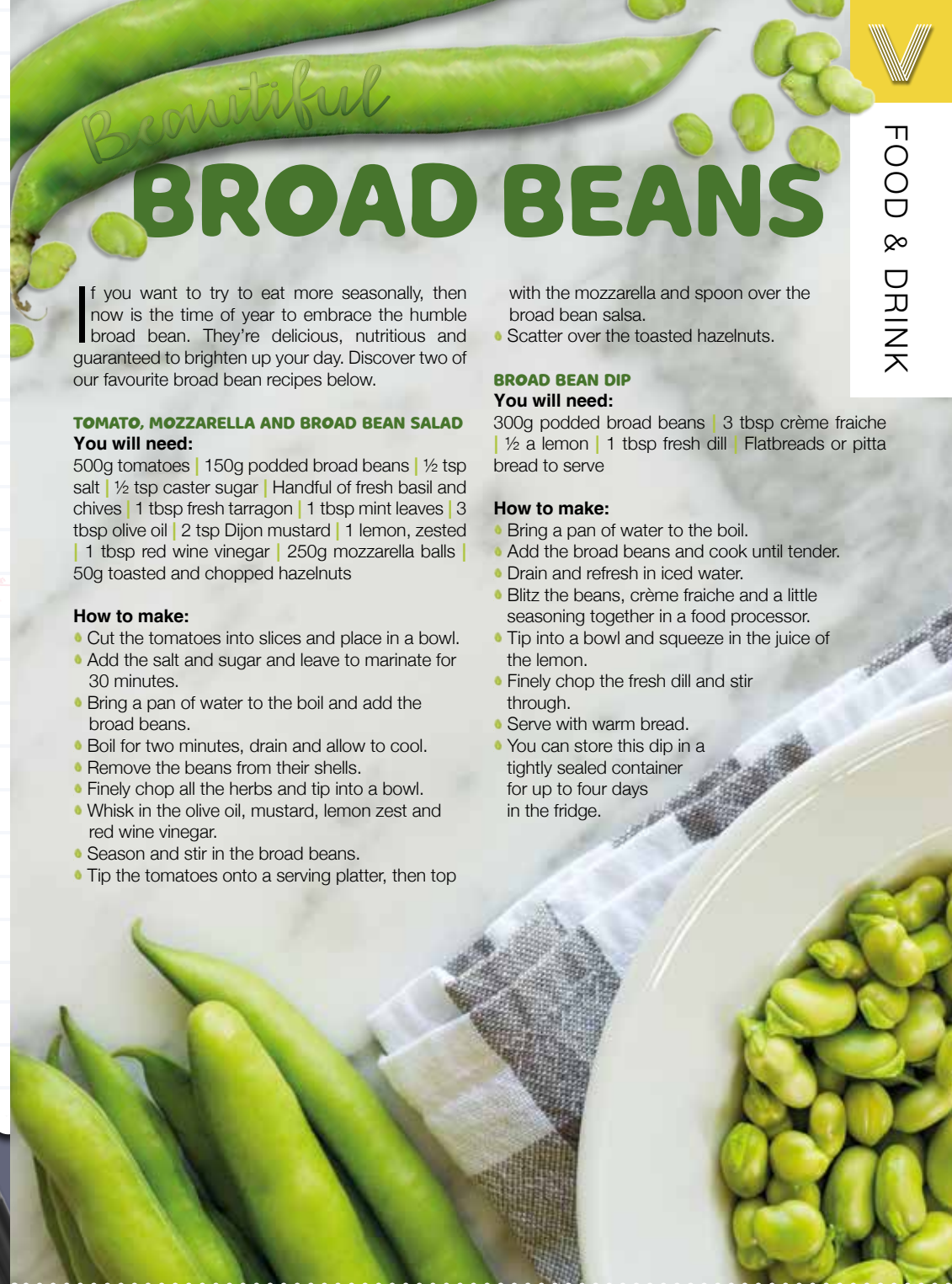


A YOUNG BOY'S
TEAM JERSEY

**MUM AND DAD TO PUT
FOOD ON THE TABLE**



SUPPORT YOUR LOCAL BUSINESSES
AND LET THEM KNOW YOU SAW THEM FIRST IN... **VISION**



Beautiful **BROAD BEANS**



FOOD & DRINK

If you want to try to eat more seasonally, then now is the time of year to embrace the humble broad bean. They're delicious, nutritious and guaranteed to brighten up your day. Discover two of our favourite broad bean recipes below.

with the mozzarella and spoon over the broad bean salsa.
• Scatter over the toasted hazelnuts.

BROAD BEAN DIP

You will need:

300g podded broad beans | 3 tbsp crème fraiche | ½ a lemon | 1 tbsp fresh dill | Flatbreads or pitta bread to serve

How to make:

- Bring a pan of water to the boil.
- Add the broad beans and cook until tender.
- Drain and refresh in iced water.
- Blitz the beans, crème fraiche and a little seasoning together in a food processor.
- Tip into a bowl and squeeze in the juice of the lemon.
- Finely chop the fresh dill and stir through.
- Serve with warm bread.
- You can store this dip in a tightly sealed container for up to four days in the fridge.

TOMATO, MOZZARELLA AND BROAD BEAN SALAD

You will need:

500g tomatoes | 150g podded broad beans | ½ tsp salt | ½ tsp caster sugar | Handful of fresh basil and chives | 1 tbsp fresh tarragon | 1 tsp mint leaves | 3 tbsp olive oil | 2 tsp Dijon mustard | 1 lemon, zested | 1 tbsp red wine vinegar | 250g mozzarella balls | 50g toasted and chopped hazelnuts

How to make:

- Cut the tomatoes into slices and place in a bowl.
- Add the salt and sugar and leave to marinate for 30 minutes.
- Bring a pan of water to the boil and add the broad beans.
- Boil for two minutes, drain and allow to cool.
- Remove the beans from their shells.
- Finely chop all the herbs and tip into a bowl.
- Whisk in the olive oil, mustard, lemon zest and red wine vinegar.
- Season and stir in the broad beans.
- Tip the tomatoes onto a serving platter, then top



SECURE your canine!

If your pooch loves lolling their head out of a car window, you could be breaking the law.

It's common knowledge that dogs love to hang their furry heads outside car windows in order to absorb all the fragrant wonders of the world passing by, yet did you know that this could actually be breaking the law?

It is a legal requirement as part of the Highway Code to secure a dog – or any other small animal – in a car when driving to prevent them from causing an accident. This is because they could block your vision, jump in the footwell and stop you braking, or generally distract you with their fluffy cuteness.

In the event that an animal is believed to have caused an accident, the driver of the vehicle can face a fine of up to £5,000 and could receive points on their licence. Worse still, it could also invalidate both your car AND pet insurance – meaning no financial help for Fido should they get hurt.

Mark Tongue, of Select Car Leasing, said: "We'd recommend you don't let your dog

stick its head out of the window. "Not only does that potentially illustrate that the animal is not restrained properly, but there's also the obvious risk of its head coming into contact with something, like a bush or a tree, resulting in a bad injury. And make no mistake – if you don't have your dog properly restrained, and it's causing distraction, you could be prosecuted by the law.

"Don't take the risk. Make sure both you and your pooch are buckled up properly."

In other words, next time your four-legged friend feels like catching the breeze, make sure you've invested in a dog-friendly harness, or risk finding yourself in the doghouse.



GREAT BRITISH INTERIOR DESIGNER

LOUISE BRADLEY

Interior designer Louise Bradley has impeccable taste, and it's no wonder she's sought after all over the world to create stunning designs in properties that range from country houses to overseas villas. Louise started her business in 1991, and is a self-confessed perfectionist with an eye for detail.

CLASSIC, CONTEMPORARY BEAUTY
While her styles are striking and timeless, Louise's spaces are designed to be functional too.

Her designs typically feature neutral colours enhanced with darker tones and blacks, with plush fabrics, statement lights and carefully chosen accessories completing the look. Louise's spaces represent a new modern classic style that works in different types of homes, including more traditional homes where the property's original features become elevated with Louise's designs.

RECREATING LOUISE BRADLEY'S LOOK

Some useful tips for recreating this look in your own home include:

- > Keep your layout simple, deciding carefully where furniture should go to help you make the most of the space you have.
- > Choose a muted colour palette that can be enhanced with darker shades to add depth.
- > Dress up the space with cushions and textiles in luxury fabrics. A rug can be a simple way to give a new look to an existing space.
- > Ornate mirrors and statement light fixtures add elegance, and can be an affordable way to dress up your interior if you're willing to shop around.

With looks that are simple yet timeless, Louise Bradley is the ultimate inspiration for contemporary décor that can work in any home.



Photo credit: louisebradley.co.uk



Drenched IN COLOUR

YOUR GUIDE TO THE DRENCHING TREND

If you love a little colour, then you're going to love colour drenching. This latest interior craze is helping people utilise their favourite shades and transform spaces to give them a coordinated, striking finish. Check out our simple guide to colour drenching and how to nail the look in your home.

WHAT IS COLOUR DRENCHING?

Colour drenching means taking one colour and using it in various shades throughout a space. From your walls to ceilings and even your woodwork, using the same colour in a room can be super stylish. It's a bold look – one that can make a big impression.

HOW TO ACHIEVE THE LOOK

To achieve a colour-drenched look in your home, choose a colour that can be applied to your walls, ceiling, doors and window frames. You can then play around with accessories in the same or similar shades to help you fill out the space.

This is a fantastic way to make the most of any statement furniture items you have. A contrasting piece or artwork can really shine in a colour-drenched room, with the space creating the perfect backdrop.

WHICH ROOMS WORK BEST?

Colour drenching looks great in spaces like living rooms or dining areas. The less clutter you have, the more effective colour drenching can be. If you have a small space to work with, this can be a good way to create the illusion of a bigger room.

You can opt for light, dark or bold colours with colour drenching, helping to create a range of different effects within your home.

CHOOSING THE RIGHT COLOURS

When it comes to colour drenching, choosing the right colour is important – you're going to be seeing a lot of it, after all.

Some of the colours that work well for colour drenching include rich shades of navy and green, pink and burgundy. White and neutral shades can also work well, especially when paired with wooden details.

You may want to avoid using pastels like yellow, green and pale blue – the room may look too light without any contrasting features.

AN EXTRA TIP

Start with a feature wall in your chosen colour to see how it feels. If you like it and like the way the light hits the space, you can start adding to it until your room is sufficiently drenched.



Home Counties Loft Ladders, Quality You Can Trust!

These days most homeowners suffer from a lack of storage space. So many precious items that need to be kept – but where to store it all? That's where Home Counties Loft Ladders come in.

The company, based locally, offers homeowners the opportunity to maximise their storage space with a loft ladder, 50sqft of boarding and a light – all fully fitted in less than a day from just £444! But it's not just the affordability of the package that makes Home Counties Loft Ladders stand out, as manager Jamie Oakley explains: 'Our

watchwords are Quality, Integrity and Value. Quality in the materials that we use for all our installations and the fact that all our loft packages are fitted by time served tradesmen, so our customers are assured of the best job.

Integrity in that we will turn up at the time we say and make sure the house is spotless when we leave, and value in that we offer our services at a price people can afford.

Our business relies on referrals and we get a huge amount of our calls from people who have been referred to us by our existing customers

- that simply wouldn't happen if we didn't adhere to our overriding principles.

At the end of the day the old adage that happy customers lead to more happy customers is true and we work hard to make that happen for

every installation we carry out!

So, if you want to make use of your loft space, call Jamie free on 0808 301 9551 and he'll be happy to pop round and give you a no obligation quote so you too can make use of your loft!



Need more storage space? INSTALL A LOFT LADDER AND USE YOUR LOFT!

STARTER PACKAGE: Aluminium loft ladder, light plus 50 sqft boarding, fully fitted in less than a day from £444

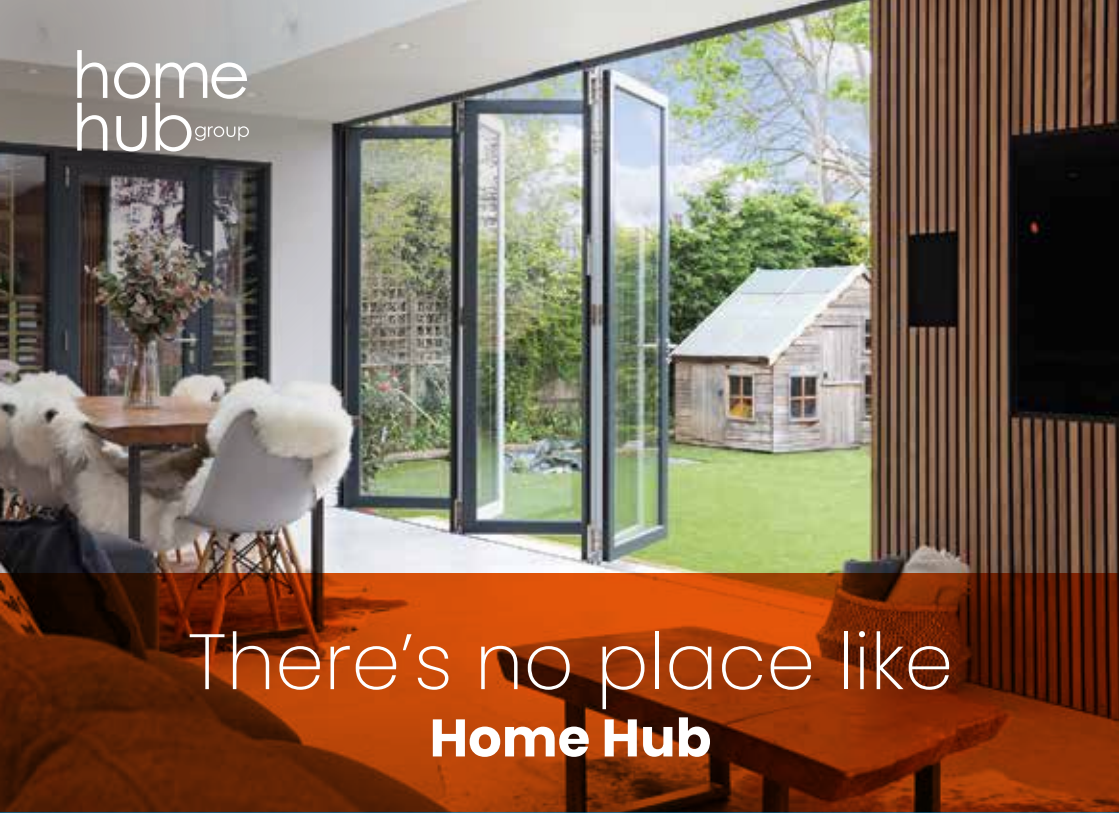
- Loft Ladders • Hatches
- Boarding • Insulation
- Lights • Fully Guaranteed



CALL FREE: 0808 301 9551

homecountiesloftladders.co.uk





There's no place like
Home Hub



01992 948 980
essex@homehubgroup.co.uk
137-139 Epping High Street

@HomeHubGroup

With no pressure sales, transparent pricing and exceptional service levels you'll feel right at home with Home Hub. Come and see us at our beautiful lifestyle showroom in Epping - call 01992 948989 to book an appointment.

homehubgroup.co.uk

Windows • Sliding Doors • Bifold Doors • Roof Lights



ALTERNATIVE USES FOR

TOILET PAPER ROLLS



Did you know that the average person uses 100 toilet rolls per year? That's more than 20,000 sheets of paper!

Rather than just throw away the empty rolls, why not put them to better use?

TO STORE CORDS

Most households have a whole host of unused cords that are taking up too much space, either in a drawer or, worse, on the floor. Create a simple storage solution by folding a phone charger or other type of cord into a neat stack and then placing it inside a toilet roll tube.

TO STORE IMPORTANT DOCUMENTS

Are you always misplacing your birth certificate or car

insurance documents? Keep important documents safe and crease-free by rolling them up and placing them inside a toilet paper tube. You can also store your child's artwork.

TO MAKE A FIRE STARTER

Whether you have a wood-burning fire in your home, love to go camping, or like to throw impromptu barbecues, a toilet paper roll makes the process of lighting a fire much easier. Simply stuff a tube with dryer lint, wrap in newspaper and twist at the ends.

TO MAKE A DIY PHONE SPEAKER

Like your music loud but don't want to have to buy an expensive speaker? Why not make your own with just a toilet roll? Start by cutting a long, rectangular hole in the tube which is big enough to slip your phone into. Then use drawing pins as feet to stabilise the speaker.

TO PREVENT CREASES

If your trousers tend to crease where the fabric folds over the hanger, then you can easily remedy this by cutting a slit lengthwise into two toilet rolls and then sliding them onto a hanger.



Photo credit: wickhow.com



Why is my ORCHID dying?



Growing orchids can be a daunting prospect, even for the most experienced gardener. That being said, when cared for correctly, this beautiful bloom can last between 15 and 20 years.

Six signs that your orchid is dying

1 The leaves turn yellow and drop
While the shedding of leaves is a natural process for almost all plants, if new leaves start to turn yellow or drop off, this indicates that your orchid is getting too much light or water.

2 The leaves have brown tips
When the leaves on an orchid turn brown, this means that they are not getting enough moisture and you need to adjust your watering schedule to water your plant more frequently.

3 The leaves become wrinkled
Wrinkled leaves are a sure sign of underwatering and, in some cases, the leaves may start to fold in on themselves.

4 The aerial roots dry up
If your orchid is not getting enough humidity, its aerial roots may shrivel, become dry and turn brown. If the root is dead, you will need to remove it with a sterilised cutting tool.

5 The leaves have black or brown spots
Black or brown spots on leaves are usually caused by sunburn from too much bright light. If this occurs, move your orchid to a more shaded spot.

6 Your orchid does not bloom
If your orchid is not blooming, then this is almost definitely owing to poor growing conditions or conditions that are not suited to your particular orchid.

How to make your orchid live longer

- > Position your orchid in bright but indirect light
- > Water your orchid once a week with room temperature water
- > Keep them in a room where the temperature is between 18 and 29°C
- > Cut away any blooms that have died
- > When not in bloom, give your orchid a 20-20-20 fertiliser which contains 20 per cent nitrogen, 20 per cent phosphorous and 20 per cent potassium.



Produce Green Energy & Make Real Cost Savings

We can beat any like for like quote



A professional, personal approach to all our solar installations



Solar Panel Design & Installation

Our tailor made Solar PV systems are made up of several panels, with each panel generating energy during daylight hours.



Battery Storage

When your solar panels generate electricity, batteries can store excess electricity from your system.



EV Car Charging

Own or thinking about buying an electric vehicle? Charge your car for free using solar power.

- ☀ Competitive Pricing
- ☀ Bespoke Solar Installations
- ☀ Strong Focus on Customer Service & Aftercare
- ☀ Enjoy Warranty Protection

Contact Us 01279 594554

hello@bsolarenergy.co.uk
www.bsolarenergy.co.uk



SCAN ME FOR A QUOTE

FULLY ACCREDITED & INSURED



COMER CHAMELEON



The changing mode of Jodie Comer, and why, in the face of her recent Tony Award win, the British actress's career will surely only continue to ascend.

In the pantheon of British acting royalty, Jodie Comer's journey has been gradual, yet dramatic. The 30-year-old actress has worked her way up through the slightly clichéd ranks, with the usual spread of appearances in TV staples such as *Holby City*, *Waterloo Road* and *Doctors*. Lead-character presence in *Thirteen* and *The White Princess* saw the Liverpoolian build on her early success, with widespread attention on both sides of the Atlantic finally arriving as a result of her portrayal of assassin Villanelle in the BBC drama *Killing Eve*.

Comer's appeal is obvious; she possesses distinctive flair and undeniable talent, with an ability to switch between comedy and drama, romantic segments and thriller sequences.

And nowhere better has that versatility been shown than in her recent triumph at the 2023 Tony Awards, where she garnered the Best Leading Actress accolade for her tour-de-force performance in the Broadway show *Prima Facie*.

"I've never been one to pin everything I do on the idea of winning awards," she begins, "as I believe there is so much good stuff that goes unnoticed. And really, the success or failure of a project is something that only really I can decide upon.

"That said, when recognition comes along, especially with something this big, and in an environment on stage that is a diversion from what I have been doing, it does mean so much to me and I am so grateful."

Comer wouldn't be able to achieve what she has without the eclectic blend of strength, charm and emotional vulnerability that she brings to every role. She is visually striking and phonetically exacting, and with these tools, she manages to engage an audience in a way that few actresses of her age can.

"Drama is about sharing an emotion," she says. "It's not a one-way street – the task is to envelop everyone around you in a character and a feeling."

Comer's journey to the top, while impressive, has been linear. That's what makes the Tony Award her biggest achievement yet – for the fact she stepped out, alone, looking to impress not just those at home, but the fiercely demanding New York Broadway crowd too.

The show, a one-woman play, tells the story of a lawyer who defends men in sexual assault cases, though finds the script flipped when she herself becomes the victim of a sexual assault. The play was also a hit in the West End, with a successful run at the Harold Pinter Theatre.

Beyond the stage, Comer's cinematic work is equally noteworthy. Her role in the upcoming survival film *The End We Start From*, co-starring Benedict Cumberbatch CBE, is eagerly anticipated.

"For me, it's about continuing to move forward – to try new things and to work with new people. I am flattered when I get cast alongside some real heavyweights of the industry, and it is a struggle to feel worthy, at times."

Perhaps that's what makes Comer so popular – a sense of humility and down-to-earth persona. Despite her fame, she remains a humble Liverpoolian who loves her craft and respects her audience.

Photo credit: Jon Sugg



FROM YOUR AREA

LOCAL NEWS

Student signs with Premier League club



A Bishop's Stortford College student has signed a deal with a Premier League football club.

Emi Ballard-Matthews (pictured above), who is currently in the Lower Fifth and has been playing football since the age of four, was scouted while playing for Watford FC.

He was bought out of his contract with Watford for a long-term deal at Wolverhampton Wanderers.

Emi, who is a sports scholar, has access to tailored gym sessions and receives guidance from college staff to support him with balancing his academic workload with his sporting commitments.

His training with Wolves begins this month.

He said: "I'm most looking forward to being nurtured in an elite environment and the opportunities that will come with time."

Charity receives £50,000 donation

Bishop's Stortford-based charity Grove Cottage is set to benefit from a £50,000 donation from the London Stansted Airport Community Fund.

Grove Cottage, which helps people of all ages with learning disabilities, will use the £50,000 to purchase and install solar panels to generate electricity and a heat pump to provide heating and hot water.

At a ceremony on June 16 attended by Julie Marson, MP for Hertford and Stortford, and Community Fund representatives, the airport's managing director Gareth Powell presented a cheque to the centre.

Gareth said: "We are very proud to be part of the

local community and delighted that the Community Fund is another way our neighbours can share in our success."

Kevin Davis, chair of trustees at Grove Cottage, said: "We are embarking upon an ambitious plan to build a new bespoke centre here in London Road which will allow us to increase both the quantity and quality of provision hopefully for another 60 years.

"We are enormously grateful for the grant."

Inquest hears how swimmer drowned in reservoir

A swimmer drowned in a reservoir near Bishop's Stortford, an inquest heard last month.

Lewis Sagers (pictured below), 24, from Aldbury, had taken alcohol, ketamine and cocaine when he went into the water at Hadham Hall reservoir.

An inquest at County Hall in Hertford heard that Lewis was being treated for depression and had taken overdoses in the past.

But in a narrative conclusion, the assistant coroner for Hertfordshire, Jonathan Stevens, said he could not find that Lewis had committed suicide.

The inquest heard Lewis had gone to the reservoir on July 19, 2022, with his boss Will Nobbs.

Mr Nobbs said they both went into the water and he saw Lewis get out after about five minutes.

He told the hearing Lewis disappeared and, when he did not return, he left and contacted Lewis's girlfriend.

Following a search by divers and the use of a sonar device, Lewis's body was recovered on July 21.

The coroner said: "The most likely sequence of events is that he did just go for a swim but, under the influence of alcohol and, indirectly, drugs, it caused him to get into trouble and that resulted in him drowning."



ENDLESS POSSIBILITIES



01279 939123 info@infiniteglass.co.uk
Unit 2 The Links, Raynham Road, Bishops Stortford CM23 5NZ

BUILDING TRUST WITH QUALITY WORK



BOILR offers comprehensive service plans to homes throughout Essex, Hertfordshire & London.

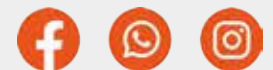
★	★★	★★★	★★★★
£7.50 / MONTH	£15.50 / MONTH	£19.50 / MONTH	£23.50 / MONTH
Annual boiler service ✓	Annual boiler service ✓	Annual boiler service ✓	Annual boiler service ✓
Landlord safety record ✓	Landlord safety record ✓	Landlord safety record ✓	Landlord safety record ✓
Heating/Gas/Plumbing ✓	Heating/Gas ✓	Heating/Gas/Plumbing ✓	Heating/Gas/Plumbing ✓
Electrical Faults & Emergencies ✓	Electrical Faults & Emergencies ✓	Electrical Faults & Emergencies ✓	Electrical Faults & Emergencies ✓

Servicing | Installation | Plans

CALL OUR TEAM TODAY FOR MORE INFORMATION

01279 927074

hello@boilrltd.co.uk boilrltd.co.uk



T&C's Apply

keytek LOCKSMITHS **Ref: 15632**

LOCAL LOCKSMITH

CALL: 01279 216 360

Bishops Stortford & Surrounding Areas

Emergency Locksmith

- No Call Out Charge! • 1/2 Hour Service!*
- Free Home Security Check!*

uPVC Door & Windows Specialists.

Fully Assessed & Accredited Locksmiths.

All Locks Supplied and Fitted.

*where possible
*once a job has been completed



Trustpilot
TrustScore 4.7 out of 5, 4,465 Reviews
June 2023

Checkatrade.com
ACCREDITED ENGINEERS

APPLIANCE PROBLEM?

WE'LL FIX IT!

Any make Any model

LOCAL ENGINEERS IN YOUR AREA!

If we can't fix it, we can supply and install new appliances same day

SAME DAY CALL OUT AVAILABLE

MEMBER OF **Checkatrade.com**

View our sales page for list of machines ready to install today!

ALL MAKES ALL MODELS REPAIRS SALES

WASHING MACHINES DISH WASHERS WASHING DRYERS FREEZE DRYERS
ELECTRIC OVEN ELECTRIC HOOD FRIDGE FREEZER EXTRACTOR HOOD

CALL OR BOOK ONLINE **SPIN DOCTOR**

01279 310793
www.spindoctoruk.co.uk

Improve, Don't Move!

Maximise the value of your home.

- SPACE-SAVING - MAXIMISE YOUR GARAGE HEADROOM
- SECURITY-ENABLED AUTO-LOCKING SYSTEM
- CHOICE OF 21 COLOURS TO MATCH YOUR HOME
- REMOVAL AND RECYCLING OF YOUR OLD DOOR
- DEDICATED AFTER-CARE TEAM

GAROLLA **01279 510 063**

ROLLER SHUTTER DOORS **LINES OPEN 7 DAYS A WEEK**

www.garolla.co.uk

Trustpilot 4.8 out of 5, 4,700 reviews
Yell 4.8 out of 5
Checkatrade 9.8 out of 10
CE APPROVED

BESPOKE ELECTRIC DOORS MANUFACTURED IN THE UK



FREE FITTING PAYMENT ON INSTALLATION

PRICED EXAMPLE £895
COMPACT • UP TO 2.4M

GAROLLA ★ PREMIUM
Increased Security • Double Insulation
One-Touch Close

PRICED EXAMPLE £1,990
PREMIUM • 3.4M • ANTHRACITE

JULIE MARSON MP

Conservative MP for Hertford and Stortford



LOCAL NEWS



I am absolutely thrilled to get a new Princess Alexandra Hospital! This is huge news for people in Bishop's Stortford who rely on its care and something I have campaigned for passionately in Westminster with my brilliant colleagues, Robert Halfon MP and Dame Eleanor Laing MP. Hundreds of millions of pounds in government funding will ensure its state-of-the-art rebuild in 2025. Alongside the new Community Diagnostic Centre in Bishop's Stortford at Herts & Essex Hospital, this really will transform healthcare services and outcomes for our community.

Bishop's Stortford is a commuter town, meaning problems with trains are especially frustrating. There have been some teething issues with Greater Anglia's new timetable, so I met with Jonathan Denby, Greater Anglia's head of corporate affairs (pictured left, middle) to raise concerns. Greater Anglia assured me they are monitoring travel patterns in response, including passenger numbers and train capacity, and will react quickly when needed. The timetable changes are part of their plan to improve services and efficiency following the pandemic. The Stansted Express, for example, now mostly operates with 12-carriage trains rather than eight – that means hundreds of extra seats per train. On Bishop's Stortford's branches such as Cambridge/Cambridge North and Stansted Airport, we have 22 trains that run during the morning peak alone. Though this is great progress, there is more to do and I am on the case. If problems continue to affect you, please do get in touch.

Grove Cottage in Bishop's Stortford is an amazing charity, providing support to people with learning disabilities and their families. I was delighted to visit and present them with a £50,000 cheque from the London Stansted Airport Community Fund. The money will go towards revamping the organisation's premises. It is an exciting project and I am eager to see the finished result!



WWW.JULIEMARSON.ORG.UK



A masterpiece lost for more than half a century

Covered over for 500 years, the Piccotts End paintings provide a fascinating insight into the religious and cultural history of the UK.

While our appetite for discovery has gathered pace in the modern era, it should be remembered that so much of what we uncover isn't new at all; in fact, many things have lain dormant from the efforts of those who went before us.

The Piccotts End paintings are a great example of this. Discovered in 1953, they are a captivating collection of medieval artistic creations that date back to the 15th century.

Named after the village in which they reside, the paintings were found in a row of medieval cottages. It is believed they were created to decorate a small chapel, which was once part of the complex.

The paintings were hidden from view for centuries, covered by layers of plaster and wallpaper, until they were accidentally uncovered during renovations.

They refer to various religious themes and artistic styles that were prevalent in the 15th century, with one of the most striking pieces being the portrayal of the Virgin Mary holding the Christ Child, with St Anne standing beside her. Other notable scenes include the crucifixion of Christ, the Adoration of the Magi, and the depiction of St Catherine with her wheel, a symbol of her martyrdom.

The artistic style of the Piccotts End paintings is characteristic of the late medieval period. The use of bold colours, such as red, blue and gold, along with the intricate detailing and expressive facial features of the subjects, demonstrates the influence of the Gothic style, which was prevalent in Europe at the time. However, the paintings also display elements of the earlier Romanesque style, with its emphasis on symmetry and balance.

Providing valuable insights into the role of art in religious practices during the medieval period, the paintings are a remarkable testament to the artistic and religious sensibilities of the time.



PHOTOGRAPHS BY THE PICCOTTSENDPAINTINGS.CO.UK

YOUR LOCAL EVENTS



MID-WEEK MUSIC: CHRIS LORD & HER BLUES EXPRESS

South Mill Arts Centre, 1-3 South Road, Bishop's Stortford, CM23 3JG
Wednesday, July 19, 7.30pm



Photo credit: chrislord.org.uk

Chris Lord & Her Blues Express are a powerful and raunchy rhythm and blues five-piece band producing classic blues with a hint of jazz, a touch of 'sauce' and lots of nostalgia. The band is driven by the superb voice of Chris Lord and supported by a heady mix of tenor sax and guitar, all built upon a first-class rhythm section.

Alongside Chris, the band comprises Rick Booth on guitar and vocals, Donald Lang on tenor sax, Rick Philpott on drums, and Geoff Burroughs on bass.

Tickets can be purchased from www.southmillarts.ticketsolve.com/ticketbooth/shows/873643233

THE GALLERY COMEDY CLUB

The Gallery, Unit K, The Maltings, Station Road, Sawbridgeworth, CM21 9JX
Friday, July 28, 6.30pm

Hooma Comedy Club presents another evening full of laughter with some of the best talent out there. This time, John Mann (MC), Martin Westgate, Peter Jones, Steve Whitaker and Fiona Allen will be performing.

Doors open from 6.30pm. Comedy starts at 8pm; however, it is advised to arrive early as no drinks will be served during acts.

Tickets cost £14.50 each and are available from www.bitly.ws/KrbH

STORT PRIDE FESTIVAL 2023

South Mill Arts Centre, 1-3 South Road, Bishop's Stortford, CM23 3JG
Saturday, July 29, 10am - 4pm

Stort Pride is an annual Pride event celebrating the LGBTQ+ community.

The festival will start at Sworder's Field, where the community will walk in solidarity through the town and down the river to South Mill Arts Centre.

At the centre, there will be live music and performers. Food vans and a bar will be available, along with children's activities, community stalls and workshops.

To get tickets, head to www.eventbrite.co.uk/e/stort-pride-festival-2023-tickets-641341027277

THE BAND FROM COUNTY HELL

The Gallery, Unit K, The Maltings, Station Road, Sawbridgeworth, CM21 9JX
Saturday, July 29, 7.45pm

The Band From County Hell are an original Celtic folk band with seven critically acclaimed albums, published works with Cherry Red Records, and more than 2,000 live performances as part of their history.

Doors open at 6.30pm. Tickets cost £5. To purchase tickets, head to www.bitly.ws/JXkt

JO AT THE ACOUSTIC CLUB

The Horn at the Half Moon, 31 North Street, Bishop's Stortford, CM23 2LD
Thursday, August 3, 8pm

Enjoy an evening with some amazing artists at this wonderful venue in the heart of Bishop's Stortford.

Jo will close the evening with her set of original music, songs and stories. With special guest Mike Wheatley. Entry is £5 on the door (cash only).





LOVE PARKS Week

Love Parks Week is an annual event that gives people across the country the chance to shout about their favourite green spaces. It takes place between July 28 and August 4 this year. Here are some of the best national parks the UK has to offer.

NEW FOREST: Best for nature lovers

One of the largest areas of woodlands in southern England, the New Forest is a great park to visit all year round. In spring, head to Clayhill Heath to stroll through a sea of bluebells, and in summer, look out for forest pony foals outside Beaulieu and Brockenhurst. Later in the year, don't miss the free-roaming pigs that are let loose to scavenge acorns.

SOUTH DOWNS: Best for long-distance walks

The newest UK national park, South Downs boasts rolling hills and stunning views down to the Weald and out to the Channel. The impressive 100-mile South Downs Way covers the entire park from Winchester Cathedral to the beach at Eastbourne, making it a must-do experience for hiking enthusiasts.

EXMOOR: Best for isolation

One of the least visited national parks in the UK, Exmoor is the perfect place for those who want to seek solace. Offering wild moorlands, rocky ravines and breath-taking coastal cliffs, Exmoor is also home to a population of wild ponies who wander around its expansive landscape.

DARTMOOR: Best for camping

If you fancy experiencing the freedom of wild camping, then this is the national park for you. You can just pitch up and explore Devon's wondrous moorlands – the only national park in the UK where this is permitted. Ideal for families, some of the most popular spots are Haytor and Hound Tor or, for adventure seekers, head out to the remote Fur Tor.



YOUR LOCAL EV CHARGE POINT, SOLAR PV AND BATTERY INSTALLERS

PROFESSIONAL AND EFFICIENT SERVICE IN ESSEX

CONTACT US FOR A **FREE QUOTE** AND ADVICE ON WHICH CHARGER SUITS YOU BEST

☎ 01371 532487 ✉ info@ev-electrical.com 🌐 www.ev-electrical.com 📱 f in
Unit 4 Zone D, Chelmsford Road Industrial Estate, Great Dunmow CM6 1XC

Update your kitchen doors by Harrisons

Refurb your kitchen for a fraction of the cost of a new one

A wide range of doors available from contemporary to traditional styles, all sizes available

- A wide range of worktops available
- Appliances available to order
- Professional fitting service
- Free design service
- Local family run business

SUMMER SALE
UP TO **30% OFF***
*Offer valid until 31st Aug 2023



Telephone: 01992 760 500 ● info@harrisonskitchens.co.uk
www.harrisonskitchens.co.uk 📱 HarrisonsKitchensandBedrooms

YOU'RE NOT ALONE



OVER 207,500 OTHER PEOPLE IN ESSEX
READ **VISION** MAGAZINE'S MONTHLY

**CONTACT US TODAY TO GET YOUR
BUSINESS SEEN BY OUR READERS**

Your
Monthly
Lifestyle
Magazine



See all our magazines at www.visionmagessex.com

Billericay Shenfield Bishop's Stortford Brentwood Ongar Chelmsford Epping Theydon
Halstead Braintree Hertford Hornchurch Leigh Thorpe Bay Loughton Maldon Burnham
Rayleigh Wickford South Woodford Tendring



GET SEATING *savvy*



GARDENING

With the right seating, you can transform your outdoor space into a comfortable and stylish retreat, whether you've got a simple balcony or something much grander.

GO SCANDI: One popular style for outdoor seating is the Scandinavian look, which often features slim wooden frames. This style embraces simplicity and minimalist designs, and is perfect if you're after something timeless and understated. Pair your Scandi seating with outdoor rugs for a relaxed and laid-back vibe.

EMBRACE INDUSTRIAL CHIC: If you prefer a more edgy vibe, consider industrial-inspired furniture. Look for dark metal frames and sleek designs, and choose metal planters and modern outdoor lighting to complete the look. Industrial seating is ideal for those who appreciate a modern and urban atmosphere.

OPT FOR COUNTRY HOUSE CHARM: If you're after a touch of elegance with a country house feel, look out for rattan lounge sets or daybeds. This furniture blends into the natural landscape beautifully – particularly if you add some terracotta pots and troughs – and evokes a timeless country scene. If you want to go green, choose eco-rattan, a weather-proof rattan lookalike made from recycled plastics.

CREATE A BEACHY PARADISE: For a relaxing holiday resort atmosphere, choose wooden suites you can relax into. With some mood-enhancing lighting and a solar lantern, you'll be transported to a beachy paradise, wherever you are. And if you want to complete the look, why not add a fringed parasol?

CHOOSE CAFÉ-STYLE CHIC: Indulge in the enchanting ambiance of an outdoor café with a budget-friendly bistro set. Ideal for small spaces, these sets are available in various materials, including metal, plastic and wood. Enhance the charm by adding a couple of plants, and voila! Your space becomes the perfect spot for dining al fresco.

Photo credit: gardenstrading.co.uk, Future Plc/Joanna Henderson via idealhome.co.uk, homebase.co.uk



PETAL PERFECTION

Are you planning to throw confetti at your wedding? Then you need to know about petal confetti, also known as biodegradable confetti, and how it can help make your big day both stylish and sustainable.

WHY IS CONFETTI THROWN AT WEDDINGS?

The tradition of throwing confetti at weddings dates back to the Middle Ages, and is used to say congratulations to the happy couple and wish them a lifetime of luck and happiness.

WHAT IS PETAL CONFETTI?

Petal confetti, as the name suggests, is confetti that is made out of real flowers rather than plastic, metal or paper. It is 100 per cent biodegradable, affordable and makes a stunning addition to any style of wedding. You can create bespoke petal confetti mixes or you can order pre-mixed bags online from companies such as Shropshire Petals

and Pretty Petals. There is also a confetti field in Pershore, Worcestershire, where you can carry out pre-wedding photoshoots and purchase petals.

WHAT ARE THE BEST FLOWERS FOR PETAL CONFETTI?

There are many different flowers to choose from for your eco-friendly wedding confetti, with some of the most popular options including delphiniums, wildflowers, roses and hydrangeas. In particular, delphinium petals make wonderful confetti as they are small and delicate. It is worth noting that delphiniums and hydrangeas are harmful to dogs, so if you have any four-legged friends attending your wedding, then rose petals and lavender make a fragrant alternative.

OTHER WAYS TO USE PETAL CONFETTI

As well as being used for beautiful confetti, there are other ways in which you can use petals to make your big day just that bit more special:

- > Create a petal aisle for the bride to walk down
- > Flower girls and boys can scatter petals down the aisle
- > Place piles of petals around other decorations
- > Decorate your wedding tables.



KNOW YOUR CHORES

Would you like your children to start helping out around the house, but are unsure of what they should be doing? Use this guide to age-appropriate chores and create the ultimate chore calendar for your family.

AGES 2 AND 3: Most toddlers love to help their parents with chores, although their help may not actually be that helpful! Although you will be needed every step of the way, the below chores are a good place to start with this age group:

- Making their bed | Picking up their toys | Helping to feed pets | Helping to wipe up spills

AGES 4 AND 5: Preschool-aged children should still be fairly motivated to help and love one-on-one time with adults. Suitable chores include:

- Clearing and setting the table | Dusting | Making

their beds independently | Helping to tidy their room

AGES 6 TO 8: School-aged children are more independent and can keep track of their responsibilities. Chores you may want to entrust to them include:

- Washing small plates and bowls | Helping to care for pets | Taking out the rubbish | Sweeping or mopping | Making their own breakfast or snacks | Tidying their room

AGES 9 TO 12: At this age, you can set a schedule and expectations when it comes to help in the home. Chores they are able to take on include:

- Helping to wash the car | Learning to load and unload the dishwasher | Cleaning the bathroom | Operating the washing machine | Helping to prepare simple meals

AGES 13 TO 18: Most teenagers are capable of handling any household chore as long as they have been taught how to do it properly. Depending on their school commitments and schedule, tasks you may like to delegate include:

- Vacuuming | Doing their own laundry | Cleaning out the fridge | Preparing family meals | Ironing clothes | Mowing the lawn | Caring for pets.





**We could fill
Wembley Stadium
MORE THAN TWO TIMES
with our monthly
readership...**

**...OVER 207,500 PEOPLE IN ESSEX
READ VISION MAGAZINE'S MONTHLY**

Photo courtesy of PA Images

CONTACT US TODAY TO GET YOUR BUSINESS SEEN BY OUR READERS

Your
Monthly
Lifestyle
Magazine



See all our magazines online
at www.visionmagessex.com

Did you know this isn't the only **VISION** magazine in Essex?

Billericay Shenfield Bishop's Cleeve Stortford Brentwood Ongar Chelmsford Epping Theydon Harlow Halstead Braintree Hertford
Hornchurch Leigh Thorpe Bay Loughton Maldon Burnham Rayleigh Wickford South Woodford Tendring



BEEWISE

High end solutions for less than you think

At Beewise we use our massive purchasing power and market expertise to get you the best deals on all of your retail merchant services.

Try risk free for **1 month**

50% off the cost of the terminal*

£100 Amazon voucher for the first 200 new customers

Scan the code or call us and we will save you time and money on your business utilities and services

01279 939128

*Offer expires 31st July 2023



SCAN ME



Palmer & Martin Hire

FREE LOCAL COLLECTION AND DELIVERY

CAR HIRE VAN HIRE

PROVIDING A ONE-STOP-SHOP FOR ALL OF YOUR HIRE REQUIREMENTS

FAMILY RUN COMPANY ■ CLOSE TO STANSTED AIRPORT
120+ FLEET OF NEW VEHICLES ■ CARS ■ PANEL VANS
LUTON VANS ■ 7 SEATER MPVS ■ 9 SEATERS MPVS



Call us on **01279 505072**

or book online at www.palmerandmartin.co.uk

Unit 14 Twyford Business Centre, London Road Bishop's Stortford CM23 3YT



BUSINESS & PROPERTY



What is a **RESIDENT LANDLORD?**

Have you ever thought about renting out a room in your home to bring in some extra income? Find out everything there is to know about becoming a resident landlord below.

WHAT IS A RESIDENT LANDLORD?

A resident landlord, sometimes referred to as a live-in landlord, is someone who rents out a room or a proportion of their accommodation in a property that they also live in. You are not a resident landlord if the property is split into purpose-built flats, with yourself in a separate flat, or if you are not considered by law to be a resident at the property.

WHAT ARE THE BENEFITS OF BECOMING A RESIDENT LANDLORD?

The main reason that people choose to rent out a room in their home is to earn some extra money which can be used to help pay the mortgage, pay

off other debts, or be put aside for retirement.

ARE THERE ANY TAX BENEFITS TO RENTING OUT A ROOM IN YOUR HOME?

Yes, the government's Rent a Room Scheme allows you to earn up to £7,500 per year tax-free from letting out furnished accommodation in your home. If you earn less than £7,500, then your tax exemption will kick in immediately, otherwise you will need to complete a tax return or opt into the scheme.

CAN I RENT TO MORE THAN ONE LODGER?

Yes, you can. If you have more than one spare room in your home, then you can rent to more than one lodger. However, if you rent to three or more tenants who are not from the same family, this becomes a house in multiple occupation, which has very strict licensing rules.

DO I NEED TO TELL MY MORTGAGE LENDER?

Most mortgage agreements allow you to take in a lodger as long as you live in the property. However, it is worth checking with them first to make sure.



MOTORING

DROP IT

like it's hot

THE PERILS OF BIRD DROPPINGS ON OUR CAR EXTERIORS, AND WHY YOU NEED TO REMOVE THEM QUICKLY

When a bird decides to lighten its load your head, it's said to be a sign of good luck.

Well, tell that to motor aficionados and they may well disagree, because unequivocally, bird poo is bad for your car's paintwork and should be removed immediately.

The acid in bird poo begins to corrode the shiny coat that sits atop your cherished four wheels within 48 hours. This acid kicks off a rusting process, which can be difficult and expensive to fix.

The fact that birds consume a large amount of gravel in their diet means that not only do you need to be quick in removing deposits, but careful as well, or you'll find that despite being prompt in ridding your paintwork of the mess, it's left behind a horror show of scratch marks too.

Preventing the deposit of bird poo on your car is a near-impossible task, though ensuring you don't park under trees or roofed overhangs will reduce the chance of your car resembling a painter and decorator's radio.

The best and easiest method to get rid of

the mess is simply to spray it with WD-40. This will serve to loosen the droppings. You should then use a sponge or microfibre cloth to pinch them up from the surface of the car.

Baking soda mixed with dish soap and dispensed from a spray bottle can be just as good, while pre-prepared over-the-counter formulas are expensive, but equally effective.

The real trick to ensuring no long-lasting marks on your vehicle where bird poo is concerned is rapid detection, so keep your eyes peeled and leap into action at the first sign of air attack.



ADVERTISE

your company here call
01279 939134

ask for Brett



TYRO PLATES

Designer Number Plates

CALL US TODAY FOR YOUR BESPOKE PLATE
01279 939212

- 2D Printed, 3D Gel, 4D Acrylic Plates
- All Sizes! Shaped, Short, Hex, oversized Plates
- Tinted, Chameleon, Coloured Show Plates
- Exclusive - Vintage Style Number Plates
 - Keychains & Accessories
- 1 of the UK's Largest Wholesale & Trade Supplier
 - Custom Cut Fit Plates
 - Local Same Day & Free Fitting Service
 - Nationwide next day shipping
- Over 500 Different Designs to choose from



THE UK'S MOST TRUSTED AND REVIEWED
AUTO LOCKSMITH & EMERGENCY RESPONSE

HOW SAFE IS YOUR CAR?

Car & Van Security Specialists

- VAN SECURITY LOCKS | ALARM SYSTEMS
- VEHICLE TRACKING | THEFT PROTECTION
- IMMOBILISERS | CAR KEYS



from
**ONLY
£450**



GHOST CAR IMMOBILISER

A SMART WAY TO PROTECT YOUR CAR

Secure your peace of mind and your vehicle with the next generation of vehicle security



www.carkeyssolutions.co.uk
Call us on 01279 939129
Email: contact@carkeyssolutions.co.uk

We cover Greater London & surrounding M25 areas
**Open 7 days a week
from 8am to 10pm**



Camilla

THE QUEEN UNVEILED

Fifty years ago this month, Camilla Shand married Andrew Parker Bowles OBE and embarked on what seemed like a conventional life. However, fate had different plans in store.

Her Majesty Queen Camilla first met His Majesty King Charles III in the early 1970s. After a period of dating, they separated. Charles joined the Royal Navy. Camilla married Andrew – her on-off boyfriend of several years – and in 1981, Charles married Lady Diana Spencer.

It's believed that Charles and Camilla rekindled their romance in the late 1980s, though the exact timeline isn't certain. There were rumours, of course, but their affair only became public in 1993, when the press leaked transcripts of the couple's intimate phone conversations. Now more than ever, people blamed Camilla for the breakdown of Charles' marriage.

In the aftermath of the revelations, Camilla shut herself away to avoid the press. Charles admitted their affair on television, and Camilla's husband asked for a divorce.

But despite the challenges, Charles was already paving the way for a future with the woman he loved. In 1996, he and Diana divorced. But a year later, tragedy struck with Diana's untimely death in a car accident. For months afterwards, Camilla kept a low profile. But gradually, Charles introduced her to the public. Despite ongoing criticism, Camilla's positive impact on Charles soon became evident, and more people began to accept their relationship.

The pivotal moment happened in June 2000 when Camilla had a private lunch with Her late Majesty Queen Elizabeth II. In 2003, Camilla moved into Charles' home. In 2005, they announced their engagement and they married later that year. Camilla immersed herself in charity work, gaining admiration from various sources, including the Queen.

Last September, shortly before her passing, the late HM Queen Elizabeth II endorsed Camilla as Queen Consort rather than Princess Consort. And in May this year, King Charles III and Queen Camilla were officially crowned, side by side at Westminster Abbey.

Photo credit: Hugo Barrand/Royal Household/Shutterstock



BRITAIN'S GREATEST SPORTING MOMENTS...



BOTHAM'S ASHES



This month, we look back at one of the most significant events in British sporting history, when Lord Ian Botham OBE single-handedly derailed the Australian Ashes machine.

It's rare to find a sporting event named after one person, let alone a whole series, yet July sees the celebration of more than four decades of the term Botham's Ashes – a tribute to a one-man masterclass that turned a dramatic series of matches on its head.

Australia came to England in the summer of 1981 keen to win back the urn, and in a low-scoring first Test at Trent Bridge, they bowled the hosts out for 185 and 125 to seize the initiative.

The second Test was drawn, and the Aussies looked to be coasting to success in the third, at Headingley, as they clocked up 401/9, before skittling England out for just 174. Lord Botham's half-century appeared little more than a consolation, and while a follow-on total of 356 (with the talismanic former footballer 149 not out) had the hosts ahead, it

seemed inevitable that Australia would put away the chase target of 129 very easily.

Only once previously in Test history had a team won after following on, yet the Aussies reckoned without Bob Willis MBE's devastating eight wickets for just 43 runs with the ball, and collapsed to 111 all out, allowing England to level the series.

Past that point, it was a Lord Botham masterclass – he took five wickets in the second innings in the fourth Test at Edgbaston with the Aussies requiring just 150 to win; then bagged a century at Old Trafford as England went 2-1 up. It was his third successive Man of the Match performance.

And in a sixth Test at The Oval, another century from 'Beefy' wrapped up a 3-1 Ashes victory.

From a position of apparent hopelessness, Lord Botham's courage, bullshness, power and fortitude guided England to a sensational series win.

Photo credit: Calosport/Shutterstock

ACCOUNTANT & TAX ADVISORS

ALL THINGS ACCOUNTING

Accounting & tax services, we help with self-assessment tax return, corporation tax return, payroll, VAT return, CIS return & bookkeeping. Call 07539 035537 for free initial consultation

AIRPORT TRANSFERS

PRIMROSE AIRPORT CARS

Competitively priced efficient, clean & reliable service using satellite navigation and tracking of all return flights for Business or Leisure. 01992 364000 | 07966 180531

AUDIO & VISUAL

ULTIMATE AV

We create bespoke systems designed and built especially for you. Small projects to complete home cinema environments. Based in Essex call us on 07531 214339

BEAUTY & NAILS

BEAUTY BY NATASHA KATIE

A local, mobile LVL Technician. Fully qualified level 2 and 3 beauty therapist Babtac insured and approved. 07961 462672

SPECIAL NAILS

Dedicated to provide the best quality nail care for Men & Women. Walk-ins welcome, appointment bookings & gift vouchers available. 01708 442248

THE NAIL STUDIO

Nail Studio lets you switch off and pamper with highly skilled technicians providing top treatments and nail products to meet your every need. 07572 526519

BUSINESS CENTRE

THE TOWNHOUSE HERTFORD

Modern business centre in the heart of hertford offering a variety of office space, meeting rooms and hot desking facilities. 01992 350132

CARPET & UPHOLSTERY

ARWIN CLEANING SERVICES

Over 30 yrs of exp, we can offer a professional, efficient and cost-effective solution for carpet and upholstery, cleaning and maintenance. 07973 417764

CAR & VAN HIRE

SCENIC SELF DRIVE

Your self drive hire specialists. Whether you require modern cars, motorhomes, vans or minibuses. Rest assured we will provide you a professional service. 01708 753461

CLEANING SERVICES

GLOWWHITE CLEANING

Serving Hertford and surrounding areas. We specialise in end of tenancy cleaning for tenants, landlords and property managers. Fully insured. Contact: 07561 138855

CLEARANCE & WASTE

THE CLEARANCE TEAM

From clearing a room, house or garden to clearing an entire office block. Fast, reliable and affordable. Working 24/7 so you can book us at your convenience. 0207 101 3387

COMPUTER REPAIR & I.T.

MAPTEC IT

Your local residential & commercial IT specialists. We can fix your computers, configure email accounts & printers. Setup your Wi-Fi, Internet router & network. 0203 865 7174

ELECTRICAL & WHOLESALERS

CH ELECTRICAL WHOLESALERS

Essex & East London's leading electrical wholesalers providing the trade & public a professional service with access to all leading brands. 01708 730591

ELECTRICIAN

CAPITAL ELECTRICAL SERVICES LTD

Domestic/Commercial, Repairs/Installation, Vehicle Charging Points, Portable Appliance Testing, Fire Alarms, Emergency Lighting, Installation Condition Reports. Call 0208 088 2916

TACK ELECTRICAL

Reliable, affordable, fully qualified and insured. We guarantee we'll deliver unrivalled service and workmanship every time. No job too small. 01992 276128

JOIN THE LISTINGS... for just £180 +VAT per yr

FLEXIBLE WORK SPACE

MANTLE SPACE LTD

We offer flexible offices, co-working spaces and meeting rooms. With 24/7 access, enhanced cleaning, beautifully designed interiors. mantlespace.co.uk | 03330 066330

FRENCH POLISHING

DC POLISHING

20 Years experience in wood restoration i.e. Furniture, doors, staircases, worktops, minor repairs & FLOOR RESTORATION. 07949 204969 | dcpolishing.church@gmail.com

FURNITURE RESTORATION

ABBEEY GROUP

Abbey Group are specialist in creating, repairing & restoring quality furniture & wood surfaces to the highest standard. 01708 741135

GARDEN SERVICES

JOHN HEARNE

We take care of it all Lawn Mowing, Weeding, Planting, General Tidying, Fence/Shed Painting, Driveway/Patio Pressure Washing and more. Call for details 07908 523101

THE ORIGINAL TREE SURGEONS LTD

Taking care of all your tree care needs and providing a personal first-class service to both domestic and commercial clients. 01708 715440

HEALTH & WELLBEING

IMPROVE YOUR SMILE DENTAL PRACTICE

Est. in 1986. Encompassing all needs from basic oral health to advanced dental procedures and high-end cosmetic treatments. New patients welcome. 020 8504 2704

LOCKSMITHS

KEYTEK LOCKSMITHS

From Lock outs to security upgrades, our fully trained DBS checked Locksmiths are the experts | Call 01279 216349 | Quote: 15075

MASTICS AND SEALANTS

QUALITY MASTICS LTD

Bathroom and shower mastic joint sealing. Kitchens, windows, floors, external seals around windows. For information call 01245 520981

PAINTING & DECORATING

PGA DECORATING SPECIALIST

Interior - exterior - paper hanging specialists in Window repair care. 07769 646357 | www.pgadecoratingspecialists.co.uk | pgadecorators@yahoo.co.uk

TRADITIONAL DECORATIONS

We are a family run business specialising in turning your house into a home. Giving advice on current decorating trends. 07737 562406

PLASTERERS

TF PLASTERING LTD

Professional quality workmanship, over 25 years' experience. Public liability insured. Skimming, coving, dry lining, rendering. Free quotes 07738 278036 | 01279 416311

PLUMBING & HEATING

BOILR

BOILR offer servicing, installations, repairs and plans. Local Gas Safe engineers for all your needs. 7000 Homes EVERY MONTH. Call 01279 927074

CMS PLUMBING HEATING & BATHROOMS

Corgi registered, 20+ years' experience, public liability insurance, offering free quotes. No job too small. Based in Gidea Park. Call Craig 07855 589185

JOIN THE LISTINGS...
for just **£15** +VAT per month

PROPERTY MAINTENANCE

LILLYWHITE PROPERTY GROUP

For all building works, full refurbishments & property maintenance inc heating, plumbing, electrical, decorating, flooring, tiling & plastering etc. Call today on 07949 394403

STUART GREEN PROPERTY SOLUTIONS

Property maintenance specialist. Carpentry, painting/ decorating, laminate flooring, bath/shower re-siliconing, gutters cleared/repared, insurance work, PLI. 07917 870879

ROOFING

JIM BARR ROOFING

Exterior cleaning & maintenance. Gutters, Paving & UPVC; cleaned, repaired & renewed. 01708 874816 | 07833 572459

WHITE GOODS & APPLIANCES

T.E.J. DOMESTIC APPLIANCES

Stockists of all major brands. Installation available, FREE local delivery. Free standing & Built In Appliances. Extensive stock. 01708 447752

DISCLAIMER: VISION does not represent or endorse the accuracy or reliability of any of the advertisements, nor the quality of any products, information or other materials displayed, purchased or obtained by any customer as a result of an advertisement or any other information or offer in connection with the service or products. The opinions expressed in articles, reviews and stories are strictly those of the individual authors and do not necessarily reflect the views of **VISION**.



PUZZLES & TRIVIA

PUZZLES

Answers: see end of The VISION Listings

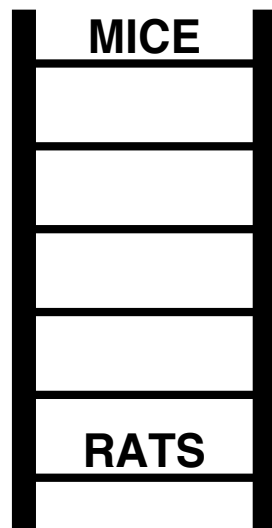
- ▶ AEGEAN
- ▶ BALINESE
- ▶ BENGAL
- ▶ BIRMAN
- ▶ BOMBAY
- ▶ BURMESE
- ▶ CORNISH REX
- ▶ EGYPTIAN MAU
- ▶ HAVANA
- ▶ JAVANESE
- ▶ KORAT
- ▶ OCICAT
- ▶ PERSIAN
- ▶ RAGDOLL
- ▶ RUSSIAN BLUE
- ▶ SIAMESE
- ▶ SIBERIAN
- ▶ SOMALI
- ▶ SPOTTED
- ▶ TURKISH

A	N	S	N	U	W	K	A	L	H	A	V	A	N	A
P	S	R	A	D	A	Q	W	T	L	F	F	A	A	R
B	G	O	E	Z	E	M	E	S	P	O	T	T	E	D
S	M	U	G	P	U	A	N	C	N	P	D	P	G	S
T	I	J	E	F	L	R	W	A	E	A	R	G	S	F
S	U	B	A	S	B	S	O	S	I	Z	M	V	A	F
Y	L	R	E	V	N	P	E	N	B	T	E	R	O	R
B	A	L	K	R	A	N	B	O	A	Z	P	W	I	O
T	G	L	A	I	I	N	B	O	M	B	A	Y	N	B
A	N	R	T	L	S	A	E	T	V	R	O	W	G	L
C	E	T	A	U	S	H	N	S	O	M	A	L	I	E
I	B	B	P	W	U	A	A	A	E	T	A	R	O	K
C	G	G	P	E	R	S	I	A	N	H	A	A	B	K
O	X	E	X	E	C	O	R	N	I	S	H	R	E	X
S	I	A	M	E	S	E	C	B	U	R	M	E	S	E

DID YOU KNOW?

- ▶ Earth isn't actually perfectly round. Earth's rotation causes the planet to bulge at the equator and flatten at the poles.
- ▶ Coral reefs are Planet Earth's largest living structure. These underwater ecosystems are made up of colonies of tiny animals called coral polyps, which build calcium carbonate skeletons that accumulate over time and form the complex structures we know as coral reefs.
- ▶ The Earth's interior is not solid, but rather has a semi-solid or 'squishy' consistency owing to the extremely high temperatures and pressures.
- ▶ The Earth's diameter (the distance straight through the middle) measures a massive 12,800 kilometres, which makes it the fifth largest planet in the solar system.

WORD LADDER



THE AIM: Change the word at the top of the ladder one letter at a time to make the word at the bottom.

HOW TO: Change one letter on each step to make a new word. By the time you reach the end, you should have created the new word.

DO NOT rearrange the order of the letters.

TIP: There is usually more than one way to solve this puzzle.



Can you give a child in Hertfordshire a brighter future?

We **urgently need foster carers** for children of all ages, **especially teenagers and sibling groups**



Make a difference today. **Call us on 0800 917 0925**

FOSTERWITHUS

www.hertfordshire.gov.uk/fostervision

[f](#) @hertfordshirefostering [t](#) @HCCFosterAdopt

In partnership with





Opening Times

Bishops Stortford

Monday to Friday: 7am - 5pm | Saturday 8am - 12pm

Harlow

Monday to Friday: 7am - 6pm | Saturday 8am - 5pm | Sunday 10am - 4pm

With countless years of experience within the painting, decorating, maintenance and refurbishment market, our team at JDC Paints are on hand to offer you help, advice and to help work out the best options possible on your next project.



**EXCLUSIVE FOR
INSIGHT MAGAZINE
READERS:**

**BRING THIS AD ALONG FOR
10% OFF YOUR ORDER**

-and-

**FREE ROLLER KIT WITH
ANY ORDER OVER £30**



P FREE PARKING



FARROW & BALL



6 Raynham Close, Bishops Stortford, CM23 5PJ
(T) 01279 213 877 (E) Stortford@jdcpaints.com

www.jdcpaints.com | Follow us! @jdcpaints