

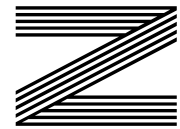
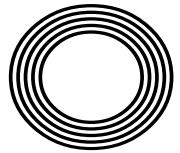
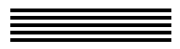


**TIPS TO
MANAGE
SCREEN
TIME**

**SPRING
BLUEBELL
BEAUTY
SPOTS**

ROCKET RECIPES
Make your own rocket pesto

Dancing Queen
50 years of ABBA world domination



FREE

Photo credit: John Angelillo/UPI/
Shutterstock

Kate
WINSLET CBE

Award-winning actress returns to the small screen



THE DIFFERENCE IS CLEAR

WINDOWS
DOORS • PORCHES
SOFFITS • GUTTERING
CONSERVATORIES • FSG

* Solar Batteries now available *

TAKE ADVANTAGE OF OUR
UP TO **50%** OFF
SALE

Uncompromising when it comes to quality

At EE Glazing, we have over 70 years of combined glazing industry experience behind us. During this time, we've learned what sets a top product apart from merely a good one. We have also centred our company ethos around quality, and every product we install is evidence of that commitment.

Take the Kommerling 70mm uPVC window system that we use, for example; it is hands down one of the best uPVC window systems on the market. It's highly durable, very efficient, secure, easy to maintain, and ultra-versatile, making it the perfect window option for every homeowner.



Contact us now for a no-obligation quote

01279 939152



www.eeglazing.co.uk



“ The whole experience from initial order to installation and completion was carried out with efficiency, good humour and professionalism ”

Mr & Mrs Lambert



Editor's notes...

APRIL 2024



Brett Shohet, Editor

Hello and welcome to this month's edition of **VISION** Bishop's Stortford. Preparations are progressing for our upcoming business exhibition in the autumn. The inaugural event last year was a great success, showcasing a variety of businesses and welcoming hundreds of visitors. We're eagerly anticipating this year's show, which is once again sponsored by London Stansted Airport. To find out more, visit bsmb.co.uk

As I write this, I'm looking forward to my first holiday of the year. It's going to be such a joy to take my young nephew on his first overseas holiday to Spain - even if sorting out the paperwork has been a bit of a nightmare! I hope we can create some fantastic lasting memories during our time away.

I've also had some sad family news recently, as my nan is currently in hospital following a fall. It's during such difficult times that families really come together, and often start asking questions they might not have been brave enough to ask before. It's never too late to ask those questions, and find out more about your heritage and where you come from - but more on that in next month's edition!

We can now look forward to lighter evenings and warmer weather, hopefully in time for the upcoming bank holiday weekends!

Brett Shohet

This is your town's hyperlocal magazine, delivering to homes and businesses every month.

HOME & DIY | GARDENING | PETS | HEALTH & FITNESS | BEAUTY | FASHION | HISTORY | LOCAL FEATURES | FOOD & DRINK | TRAVEL | BUSINESS & PROPERTY | SPORT | PUZZLES | MOTORING | KIDS | WHAT'S ON | TECHNOLOGY | THE LISTINGS



CONTACT US:

bishopsstortford@visionmag.co.uk | 01279 939134 | www.visionmagherts.com

[X](#)@visionherts [@visionmageastherts](#) [f](#) Vision Magazine East Herts

CONTRIBUTORS | Tabatha Fabray, Fiona Goble, Bryn Holmes

All pages are recyclable

THE B7 MEDIA GROUP

PRINTING • BUSINESS CARDS • LEAFLETS • DISTRIBUTION
SIGNAGE • MENUS & BROCHURES • RETAIL PACKAGING
EXHIBITION BOARDS & BANNERS
WINDOW VINYLs • LOGO DESIGN
BRAND ALIGNMENT • VEHICLE WRAPPING
CARBON PADS • WORKWEAR • WEBSITES
SOCIAL MEDIA • I.T. SOLUTIONS

ENQUIRIES@B7MEDIAGROUP.COM

01279 939134

Excelcare

Belong with us

Luxury care in the heart of Harlow

Now open to viewings

We are delighted to announce the grand opening of The Jubilee Suite - our new luxury care suite situated within Abbot Care Home in Harlow, Essex.

Our new Jubilee Suite has been expertly designed with kindness, and dignity at its heart, providing person-centred nursing, residential and dementia care. With a variety of excellent facilities and spaces to enjoy, we welcome the people who live here to play an active part in everyday life - as we ensure activities, events and mealtimes are carefully tailored to the personal preferences of each individual.

Abbot Care Home is situated amongst peaceful open parkland and features beautiful, landscaped gardens. The people who live here enjoy a comfortable environment and benefit from the home-from-home atmosphere.

It is important to our team that we work as part of your family, as we plan in partnership whilst providing the same caring support that we would wish for our own loved ones to receive, whilst enjoying a life well-lived, each and every day.



We welcome you to visit us to meet with our friendly team who will be happy to work around your schedule.

To find out more about Abbot Care Home and book in to view our newly opened Jubilee Suite, please get in touch

01279 594 610

info@excelcareholdings.com

GIMME!GIMME!GIMME!

THE RESURGENCE OF POP ICONS ABBA – 50 YEARS SINCE THEIR EUROVISION WIN

Fifty years ago this month, a Swedish pop group called ABBA wowed the Eurovision stage with their catchy hit, *Waterloo* – even though the UK gave them precisely ‘nul points’. This victory launched the band into legendary status in the world of pop music. But what have they been up to since then?

WHO WAS IN ABBA?

ABBA was made up of two couples: Agnetha Fältskog and Björn Ulvaeus, and Benny Andersson and Anni-Frid Lyngstad. The group enjoyed worldwide success throughout the 1970s and into the 1980s with pop classics like *Dancing Queen*, *The Winner Takes it All*, and *Gimme! Gimme! Gimme! (A Man After Midnight)*. They had nine UK chart-toppers and sold up to 385 million records worldwide.

THE BIG SPLIT

In 1982, the pop world was shocked when the group announced they were breaking up. Around the same time, each couple within the group also parted ways. But the band members kept busy. Agnetha and Anni-Frid both released solo albums, and Anni-Frid devoted herself to charitable work. Björn and Benny forged individual careers, but also continued working together on shows like the award-winning musical *Chess* and the *Mamma Mia!* stage show.

BACK TOGETHER AGAIN

Fast forward to 2016, and the group shocked the world once again with the announcement of their reunion. They were going to appear as virtual avatars in a groundbreaking entertainment experience called *ABBA Voyage*.

In a joint statement, the members expressed their joy at reuniting after more than three decades apart, saying: “We all four felt that, after some 35 years, it could be fun to join forces again and go into the recording studio. So we did. And it was like time had stood still and that we only had been away on a short holiday.”

A RESOUNDING TRIUMPH

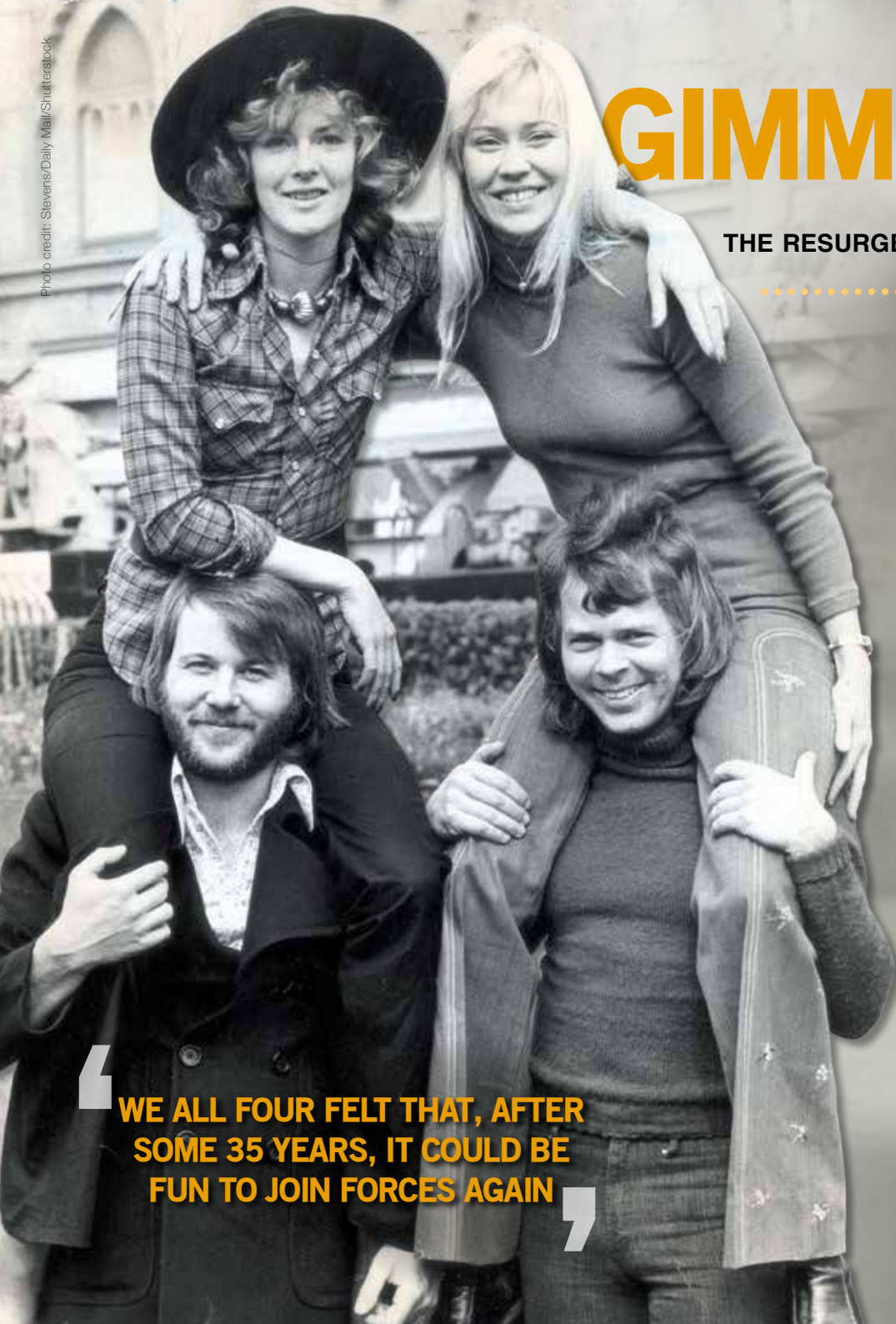
The show featured super-realistic avatars of the band, looking just like they did in the late 1970s. They played a mix of new and old hits, and the show was a massive hit. In May 2022, all four members attended the premiere in London and the newspapers had a field day.

In November 2021, ABBA released their ninth and final studio album, *Voyage* – their first release in 40 years. The reviews might have been mixed, but fans loved it. It soared to the top position in the UK charts, earned four Grammy nominations, and brought the group’s music to a new generation of fans. And, of course, it will help to make sure the *Money, Money, Money* continues to roll in!

50 YEARS ON

This May, BBC One is showing a special documentary called *ABBA: Against The Odds*, commemorating the 50th anniversary of ABBA’s Eurovision triumph. The programme will coincide with the 68th Eurovision Song Contest, where Years & Years singer Olly Alexander will be representing the UK. Coincidentally, this year’s show is being held in ABBA’s own country – in Malmö, Sweden, on Saturday, May 11. The documentary promises to unveil the untold story of the iconic supergroup, showcasing their remarkable journey to global fame.

“WE ALL FOUR FELT THAT, AFTER SOME 35 YEARS, IT COULD BE FUN TO JOIN FORCES AGAIN”





a new morning

WITH TV PRESENTERS BEN AND CAT TAKING OVER AS THE NEW HOSTS

Following a challenging few months for the show, ITV bosses have pinned their hopes on Ben Shephard and Cat Deeley to take forward the continued renaissance of *This Morning*.

Having stepped in during a turbulent interim period, the charismatic pair are now the permanent hosts for the Monday to Thursday slots, succeeding Phillip Schofield and Holly Willoughby, who departed the show in May and October respectively.

Both new presenters are veterans of British TV. Deeley rose to prominence as the host of *SMTV* alongside Ant and Dec. She also gained recognition by earning an Emmy Award nomination for her role as the host of *So You Think You Can Dance?* in the United States.

As well as previously hosting ITV's *Good Morning Britain*, Shephard, who started his career on Channel 4's *The Bigger Breakfast*, has also held presenting gigs for *T4*, *The Xtra Factor* and *Ninja Warrior UK*. He also previously stood in for Schofield on *This Morning* several times, and currently fronts the

game show *Tipping Point*.

The 49 year old said: "I get a bit longer in bed, so I am grateful for the opportunity!

"*This Morning* is such a prestigious show and it's a real honour to be taking my place on the sofa."

With such experience and long-time popularity with UK viewers, it is not surprising that the photogenic pair have been trusted to reinvigorate what is considered to be a British institution.

Also, given the show's failure to win at the audience-voted National Television Awards in September 2023 (for the first time in 13 years), Deeley and Shephard will have their eyes on a very specific prize in 2024!

In recent months, *This Morning* has featured an ever-rotating line-up of presenters, including Andi Peters, Sian Welby, Mollie King, Josie Gibson, Craig Doyle, Emma Willis, Christine Lampard and Rylan Clark. Alison Hammond and Dermot O'Leary, who have previously presented the show throughout the week, will continue to co-host the show on Fridays.

Photo credit: Ken McKay/ITV



YOUR LOCAL EV CHARGE POINT SOLAR PV AND BATTERY INSTALLERS

PROFESSIONAL AND EFFICIENT SERVICE IN ESSEX

CONTACT US FOR A **FREE QUOTE** AND ADVICE

ON WHICH CHARGER SUITS YOU BEST

☎ 01371 532487

✉ info@ev-electrical.com

🌐 www.ev-electrical.com



📱 SCAN ME

Unit 4 Zone D, Chelmsford Road Industrial Estate, Great Dunmow CM6 1XC



Balayage VS HIGHLIGHTS



Want to lighten your hair in time for summer? Find out the difference between balayage and highlights, plus how to choose the right lightening method for your hair.

What is balayage?

Balayage is a French word that means 'to sweep'. In the world of hairstyling, this phrase refers to a hair colouring technique in which highlights are hand-painted or swept onto the surface of random sections of the hair without the need for aluminium foil. Balayage offers a natural, sun-kissed glow to your hair.

Why choose balayage?

- Ask your hairdresser for balayage if you want:
 - Colour that blends seamlessly into your natural hair colour
 - A sun-kissed glow
 - A new colour that is just a few shades lighter than your natural colour
 - Hair that gets lighter towards the ends

How long does balayage last?

Balayage lasts longer than regular highlights because of the seamless application. You can go many months without the need for a top-up if your hair is already naturally light.

What are highlights?

Traditional highlighting offers a more conventional way of lightening your hair colour and involves using aluminium foil to help saturate individual strands of hair from root to tip. This results in a more pronounced contrast between your base colour and the lightened hair.

Why choose highlights?

- Ask your hairdresser for highlights if you want:
 - A stark contrast between your lighter highlights and darker, natural hair
 - A more structured pattern of lightened hair
 - Evenly coloured hair from root to tip

How long do highlights last?

Highlights tend to last between one and two months before your root colour will start to show through. The greater the contrast in colour from your natural hair, the more frequently maintenance will be needed.



Photo credit: natulique.com, mykacooltop.com



PEPLUM perfection

A fashion must-have in the 1980s, peplum is set to make a huge comeback in 2024 and we couldn't be any more excited! Although it can be hard to get this look right, when you do, the results are remarkably flattering and super stylish.

WHAT IS A PEPLUM PIECE?

To the uninitiated, peplum is a style piece where the garment in question is taken in at the waist and flares out at the hips. Perfect for creating the illusion of an hourglass figure – even if you are not blessed with curves – peplum can be worn for both casual days out and more formal events.

HOW TO WEAR PEPLUM IN 2024

Pair a peplum top with wide-leg jeans or trousers

For a relaxed vibe, opt for a casual peplum top and pair it with wide-leg jeans or trousers. Creating a long and elegant silhouette and clearly defined waist, this look is great for fuller figures.

Ease in with a mini peplum

If you're unsure about this bold trend, why not ease yourself in with a mini peplum? With lots of variations to choose from, a top with a little kick hem offers the perfect way to dip your toes in. This style is best for a straight body shape.

Try a monochrome fit

Make a statement at the office or your next big occasion with a monochrome peplum outfit such as a peplum dress or peplum top and skirt. For spring 2024, fiery red or hot pink are both great options. A good choice for all body types.

Fake it with a belt

Not ready to invest in peplum? Fake this fabulous look by cinching a belt over a loose shirt, dress, top or jacket. Just make sure it has some flow to it so that the fabric below the belt drapes nicely over your hips. Perfect for pear shapes.

DO NOT pair peplum with skinny jeans à la 2010 – this is one style that belongs firmly in the past!



Photo credit: ASOS.com



Help your local hospice care for local people

Isabel Hospice is a local charity and each year we care for hundreds of people across eastern Hertfordshire. All our care is free and can be provided in your home, at our community hubs or our In-Patient Unit. Most of the people we care for have cancer, however, we are also increasingly caring for people with other life-limiting conditions.

- Donate money
- Donate pre-loved goods
- Donate your time as a volunteer

www.isabelhospice.org.uk • 01707 382500

Registered Charity Number: 045829

Isabel Hospice
Together we care

ONE SMALL STEP FOR YOU, ONE GIANT LEAP FOR YOUR BUSINESS



Photo credit: Granger/Shutterstock

Your Monthly Lifestyle Magazine **VISION**

t: 01279 939134 w: www.visionmagessex.com
e: bishopsstortford@visionmag.co.uk



NATIONAL STRESS AWARENESS MONTH



APRIL IS ALL ABOUT LEARNING TO REDUCE STRESS

Do you suffer with stress? If yes, then you are far from alone, with one in 14 adults admitting to feeling stressed every single day and more than one-third feeling stressed at least once a week.

WHAT CAUSES STRESS?

Sometimes stress is caused by one big event or situation in your life, or it might be an accumulation of lots of smaller things. People often feel stressed if they are under a lot of pressure, are facing big changes in their life or are worried about something. You may also feel stressed if you feel like you don't have control over a certain aspect of your life or you have responsibilities that you find overwhelming.

HOW DOES STRESS MAKE YOU FEEL?

Stress can affect your emotions, your body and how you behave in many different ways. Some of the ways stress can make you feel include: Feeling irritable, angry or impatient | Feeling overwhelmed | Feeling anxious or depressed | Not being able to enjoy yourself | Not having a sense of humour | Feeling uninterested in life | Feeling neglected or lonely | Existing mental health problems getting worse

In severe cases of stress, some people may also experience suicidal thoughts.

WHAT ARE THE MOST COMMON PHYSICAL SYMPTOMS OF STRESS?

Difficulty breathing | Panic attacks | Trouble sleeping | Muscle aches and headaches | Fatigue | Chest pains and high blood pressure | Sweating | Changes to your menstrual cycle | Existing physical conditions getting worse

HOW TO REDUCE STRESS

There are many techniques that you can try to reduce stress, including: Being more active | Eating a healthy diet | Avoiding unhealthy habits such as drinking alcohol and smoking | Practising meditation | Laughing more | Connecting with loved ones | Getting sufficient sleep | Seeking counselling | Limiting your time on social media | Working smarter, not harder.





All THE RAGE

COULD SCREAM THERAPY BE THE

Us Brits pride ourselves on having a stiff upper lip, but could this mindset be doing more harm than good? Practisers of scream therapy think so.

Doing what it says on the tin, scream therapy involves the participant letting rip. Not only that, but there are now several dedicated 'rage rooms' across the UK in which you can smash, thrash and crash to your heart's content.

In one of these destinations of controlled chaos, you are equipped with safety clothing (including steel-capped boots) and invited to take out your rage on items such as crockery, old TVs, DVD players and any other useless but irrecoverably destroyable stuff the organisers can get their hands on. You are even invited to bring your own items to obliterate – which may bring an extra dose of therapy to proceedings if perhaps you are still

KEY TO DEALING WITH YOUR ANGER?

hanging on to your ex's television.

While rage rooms may be a new concept, scream therapy is not. Both John Lennon and Yoko Ono were fans and patients of psychotherapist Dr Arthur Janov, who popularised the practice in the 1970s.

Dr Janov contended that screaming taps into a primal instinct, transporting us back to our childhood, where we may be harbouring repressed traumas. Through what he termed Primal Scream Therapy, individuals could revisit and liberate these suppressed emotions by vocalising them.

The jury is still out on whether scream therapy is actually useful, but what cannot be denied is that anger is a helpful emotion that ought not to be suppressed. So, whether you're screaming into your pillow or shelling out on a rage room, the main thing is that you're not yelling at other people.



7 STATION ROAD.
PHONE: 01279 704070
WEBSITE: WWW.WOODGRILLRESTAURANT.CO.UK/

WOOD GRILL

STORTFORD'S NEW TRENDY, FRIENDLY RESTAURANT.

A PLACE FOR EVERYONE



STEAKS, PIZZAS,
BURGERS AND £7.95
CHILDREN'S MENU!

**GORGEOUS VENUE
AND FAMILY
FRIENDLY.**

SEAFOOD, CHICKEN
WINGS,
SALADS AND MORE



THANK YOU ARTA 2023

for an amazing Gala Event and Dinner!

We Hope To Capture The Big One Next Year, Cheers!

mint leaf
THE ART OF INDIAN COOKING

10% OFF
WHEN YOU
DINE IN
FOR 2 PEOPLE
£50 MINIMUM
SPEND

SUNDAY SPECIAL BUFFET

EAT AS MUCH AS YOU CAN!

12pm to 2.30pm & 5pm to 10pm

Adults
£16.95

Child
£9.95

WE HAVE WIDE VARIETY OF DISHES TO CHOOSE FROM

New dishes added every week
You can choose your own

BANQUET NIGHT

EVERY MONDAY TO THURSDAY
ENJOY A FIVE COURSE MEAL
ONLY £19.95



PRIVATE HIRE

MINT LEAF IS A GREAT PLACE FOR ANY CELEBRATION, FROM AN INTIMATE FAMILY DINNER, AN OFFICE PARTY, OR A GRAND CELEBRATION, WE CAN PROVIDE YOU WITH THE PERFECT VENUE.

BRING YOUR OWN BOOZE



ALL FOOD IS SERVED | TERMS, CONDITIONS AND EXCLUSIONS APPLY

ORDER ONLINE: WWW.MINTLEAFONLINE.COM

CALL TO BOOK: 01279 939151

[mintleafrestaurant](https://www.facebook.com/mintleafrestaurant) [Mint Leaf Bishop's Stortford](https://www.instagram.com/mintleafrestaurant)



SCAN ME

Nice to MEAT YOU



FOOD & DRINK

Italian cured meats are the flagship of Italian traditional cuisine and can be enjoyed in a number of different dishes, both hot and cold.

Find out all about our favourite varieties below and how to pair them with other foods for some unbelievable taste sensations.



SALAMI: Salami is one of the oldest Italian cured meats and is made from ground pork and seasoned with garlic, salt and spices. It is stuffed into casings and then hung to cure, ferment and dry. Do not cook with salami but instead add it to a sandwich or charcuterie board with cheeses such as pecorino or provolone.



PROSCIUTTO: Prosciutto is made from the whole hind leg of a pig and is one of the most popular Italian-style cured meats. Slice very thinly and add to salads or wrap around freshly sliced cantaloupe melon for a tasty snack or delicious canapé.



SPECK: Speck is a cured meat that is produced from the pork leg and is first smoked and then cured. It is typically flavoured with spices such as nutmeg, juniper berries and bay leaves. This Italian cured meat is delicious in a risotto, as a cold appetiser or roasted on skewers with apple.



BRESAOLA: Bresaola is a type of cured beef that is made from the leg of the cow and infused with spices such as garlic, pepper and juniper during the drying process. It is rich in protein and low in fat, making it ideal for those watching their weight. Drizzle with olive oil and fresh lemon on an antipasto platter or enjoy with salty cheeses like parmesan.



MORTADELLA: Mortadella is instantly recognisable by its strong scent and pink colour. Mortadella is composed of cured pork and pistachios, and spiced with black pepper and myrtle berries. This cold cut works well with other meats, cheeses, bread and condiments such as mustard. Alternatively, add to cheese-based pasta dishes or stuff in ravioli.



YOU rock(et) MY WORLD

A GUIDE TO GROWING, STORING AND COOKING WITH THIS CLASSIC SALAD GREEN

Used in salads since Elizabethan times, rocket has a distinct peppery flavour that people tend to either love or hate. Easy to grow and prepare, find out everything there is to know about this leafy salad green right here.

How to grow rocket

Rocket can be sown either indoors in containers filled with multi-purpose compost or directly into the soil. A sunny spot is best for spring sowings, whereas mid-summer sowings are best in a cooler spot in light shade. There are two main types of rocket you can grow:

1. WILD ROCKET

This is a perennial plant that is robust and easy to grow even in poor soil. It produces long, deeply divided leaves that have a strong peppery flavour.

2. SALAD ROCKET

This is an annual plant that has a shorter life span and produces dark, delicate leaves that offer a milder taste.

How to store rocket

Rocket should be stored in the bottom part of your fridge, known as the salad drawer, in either a brown paper or perforated bag. Consume within two days for optimum freshness. If you would like to freeze rocket, make sure you chop up the leaves first and then place them in an airtight container as whole leaves do not thaw well.

How to use rocket in cooking

Rocket can be mixed with other salad leaves to add a hint of spice, scattered on a pizza or used to garnish pasta dishes. It can also be wilted directly into pasta or eggs; just make sure you add it at the last minute to retain its flavour.

Some of our favourite rocket recipes include:

- Rocket pesto (see recipe below)
- Prawn, fennel and rocket risotto
- Ricotta and rocket lasagne rolls
- Slow-roasted tomatoes and rocket

How to make rocket pesto

- Combine 50g pine nuts, 100g rocket, 50g parmesan or vegan alternative, 150ml olive oil and 1 garlic glove in a blender.
- Season with salt and pepper and blend to a paste.
- Store in an airtight container in the fridge for up to five days.

SUPPORT LOCAL BUSINESSES



Please let your local businesses know that you saw them first in... **VISION**



Nigerian Authentic & Caribbean Cuisine
Vegan / Meat Eaters / Pescatarian

Would you like *Flavour Full* Afrocaribbean Cuisine at your next private or social event?

Such as, weddings, corporate events, birthday parties and much more...

We also provide "Party Packs" variety meals for children's parties

Contact us today

01279 939154

www.delicasil.co.uk

support@delicasil.co.uk

info@delicasil.co.uk

597 Hertford Road,

Enfield EN3 6UP



ORDER NOW FOR

50% OFF



50% OFF PIZZA ONLY, ONLINE ONLY.

Use code **Vis50** at checkout
www.thepizzaguysonline.com



For full Ts&Cs please visit The PizzaGuys UK



SCAN ME 

Hummingbird
CANCER SUPPORT

Monday's 10:30 - 1:30
@South Mill Arts

Bishop's Stortford

07510 178200

www.hummingbirdcancersupport.org
enquiries@hummingbirdcancersupport.org
Registered charity 1199955

APPLIANCE PROBLEM?
WE'LL FIX IT!
Any make
Any model

LOCAL ENGINEERS IN YOUR AREA!

If we can't fix it, we can supply and install new appliances same day

WASHING MACHINE DISHWASHER WASHER DRYER TUMBLE DRYER

ELECTRIC OVEN ELECTRIC HOB FRIDGE FREEZER EXTRACTOR HOOD

ALL MAKES
ALL MODELS
REPAIRS
SALES

CALL OR BOOK ONLINE 

01279 310793
www.spindotoruk.co.uk

SAME DAY CALL OUT AVAILABLE

MEMBER OF **Checka trade.com**
View our sales page for list of machines ready to install today!

 **Pitkin & Ruddock** Ltd
Refrigeration & Air Conditioning

Complete temperature control solutions

Our success for delivering complete temperature controlled solutions, service and planned maintenance, is built on 70 years of experience and ongoing excellence. Everything we do starts with people; our success is built on long-term working relationships with our customers, employees and suppliers. We are a large, local family company that pride ourselves on delivering excellence through service.

Bishop's Stortford office: 01279 939094
Email: sales@pitkin-ruddock.co.uk
www.pitkin-ruddock.co.uk

SCAN CODE TO WHATSAPP US 



SPEAK UP

New figures show that 20 per cent of toddlers are not meeting their expected development levels because they were prevented from learning communication and play during the pandemic. If you are worried about your child's speech, then these talking tips are just what you need.



TALK TO THEM

If you are guilty of scrolling through your phone or leaving your toddler to play alone for long periods of time, then this can affect their speech development. Instead, make an effort to talk to your toddler throughout the day; tell them what you are doing and point out objects in the home.

READ TOGETHER

One of the most important things that you can do for your child is to read to them every day. In fact, reading just one book per day to your toddler can mean that, by the time they reach pre-school age, they are exposed to 1.4 million more words than children whose parents don't read to them.



USE SIGN LANGUAGE

While you don't have to become an expert in sign language, just teaching your baby or toddler a few signs such as 'more' and 'milk' can help them learn how to express themselves at a much younger age. It can also boost their confidence levels, which can in turn create a better environment for learning to speak.

AVOID BABY TALK

It is much better to talk to your baby using proper words than with baby talk, however adorable it may be. If your baby or toddler gets a word slightly wrong, do not point out their mistake but simply repeat it back to them correctly.

LIMIT SCREEN TIME

The less time your toddler spends on a screen, the better, as it is interactions with others that help with language development. Even programs that are designed for babies and toddlers are no substitute for human communication.





GOING THE DISTANCE

A brief history of the London Marathon, in advance of this year's event on April 21

While we have the Ancient Greeks to thank for the world's most recognised long-distance running event (it's named after the 25-mile route from Marathon to Athens, embarked on by a Greek messenger who announced victory over invading Persians in 490BC, then promptly collapsed and died), the modern incarnation of the challenge is a very British creation.

Indeed, from a standardised 25-mile distance, the challenge was extended by a mile and 385 yards ahead of the 1908 Olympic Games in London, with Queen Alexandra requesting the race start on the Windsor Castle lawns and finish in front of the royal box at the Olympic Stadium.

The random boost in mileage stuck, and the marathon has evolved to become one of the toughest (yet at the same time perfectly achievable) endurance challenges.

Globally, there are thousands of official marathons that take place every year, yet of them all, no one has ever run one quicker than Kelvin Kiptum, who

was tragically killed in a car crash in his native Kenya on February 11 of this year. His time of two hours and 35 seconds (and a barely believable mile pace of four minutes and 36 seconds) at the 2023 Chicago Marathon is an incredible legacy to leave.

The London Marathon is arguably the world's favourite. Conceived by Chris Brasher and John Disley in 1981, it has men's, women's and wheelchair variants. At the first event, there were 6,255 finishers, with Dick Beardsley and Inge Simonsen crossing the finish line first hand-in-hand.

Kiptum holds the current London Marathon record (2:01:25), the fastest of more than one million entrants across the past four decades. More than £1 billion pounds of sponsorship has been raised for good causes during that time.

With nearly 580,000 applicants in 2024 – an almost fourfold increase compared to a decade ago – the London Marathon has never been more popular. Beginning in Greenwich Park, it finishes on The Mall, and almost 99 per cent of runners who start will finish.

If you feel inspired, entries will soon open for the 2025 event. And even if you decide not to run, it's still a great event to witness as a spectator, with a lively atmosphere and community spirit as crowds come together to cheer on the runners.



Photo credit: Ted Blackmore/Daily Mail/Sliverslook



How to CLEAN PAINT ROLLERS



A step-by-step guide to cleaning your paint rollers

Paint rollers are a must-have tool for painting your home, but they can be a nightmare to clean. If you are guilty of throwing away paint rollers after each use, then this guide is just what you need.

HOW TO CLEAN A PAINT ROLLER (WATER OR LATEX-BASED PAINT)

YOU WILL NEED:

- A bucket | A putty knife | A stiff-bristled brush or old rag | A pair of rubber gloves | Washing-up liquid

WHAT TO DO:

Step 1: Remove any excess paint

Paint rollers are highly absorbent, so you first need to remove any excess paint. Use a putty knife to gently scrape off any excess paint back into the paint can.

Step 2: Remove the roller from the frame

Put on a pair of rubber gloves and then slide the roller off the frame. Place some warm water and a few squirts of washing-up liquid into a bucket. Submerge the frame in the bucket and clean using a stiff-bristled brush or an old rag. Leave to air dry.

Step 3: Wash the roller

Submerge the roller in the bucket and use your hands to massage the paint out of it. Make sure you clean every surface of the roller. If the paint has already dried, leave the roller in the water to soak for 30 minutes before cleaning.

Step 4: Rinse the roller

Fill the bucket with fresh water and then rinse the roller. It may take several minutes of rinsing before it is completely clean. Shake off any excess water.

Step 5: Dry the roller

Never place a roller on its side to dry as this will flatten the fibres. Instead, place it upright on its end or slip it over a trouser hanger.

NB: If you have used oil-based paint, follow the same steps but replace the washing-up liquid and warm water with mineral spirits. You will also need to wash the roller for 5-10 minutes in the solution rather than 1-2 minutes.

Photo credit: thespruce.com

a little BIT OF LUCK



Are you looking for a new indoor plant for your home? Lucky bamboo is easy to take care of, provides great visual appeal, and is said to bring luck, wealth and good health to its owners.

HOW TO CARE FOR LUCKY BAMBOO

Lucky bamboo is known for being virtually indestructible, making it a great indoor plant for beginners and those who don't have a lot of spare time.

1 LIGHT

Lucky bamboo thrives in bright but filtered sunlight. Avoid placing it in direct sunlight as this may scorch the leaves. It can also tolerate light shade but will grow larger when kept in a bright room.

2 SOIL

Plant in well-drained, rich potting soil for best results. Also, lucky bamboo does well when housed in pebbles or a vase filled with water, as long as it has an inch of standing water at all times.

3 WATER

Lucky bamboo is sensitive to chlorine and other chemicals found in tap water. Therefore, it is better to use bottled or distilled water or tap water that has been allowed to sit for 24 hours to allow the chlorine to evaporate.

4 TEMPERATURE AND HUMIDITY

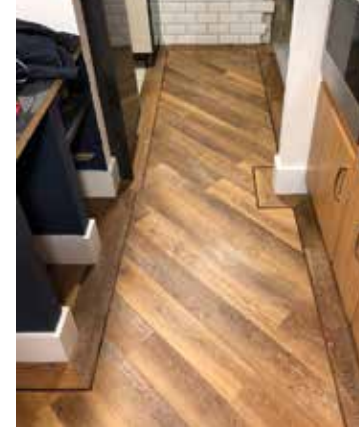
Lucky bamboo prefers warmer temperatures, so avoid placing your plant near any drafts or in front of an air conditioning unit. The average humidity in your home should be fine so you do not need to worry about this.

5 FERTILISER

Add a single drop of liquid fertiliser to your lucky bamboo once a month to keep it looking its best. You can also buy special fertilisers for lucky bamboo.

6 PRUNING

Over time, lucky bamboo can become top-heavy or lose its shape, so it can be a good idea to carry out trimming when this starts to occur. Do not cut the main stalk but instead focus on the offshoots.



YOUR DREAM FLOORS AWAIT

Book a consultation and bring your vision to life

Whether you are looking to create your dream space at home or work, LKJ Flooring can help. With over 20 years experience in the flooring sector, we specialise in supplying and fitting a wide range of carpets, Amtico, Karndean, LVT, laminate and many other floor coverings.

At LKJ we offer a friendly and knowledgeable service as we believe everyone deserves a beautiful floor, that's why our passion for first class customer service and expert advice is at the heart of everything we do.

We provide a free estimate service - this entails a room measure, professional advice and assistance on deciding which would be the most suitable flooring options for you. With a vast array of samples for you to view in the comfort of your home or work place. Plus we will go through any preparation work required to give you the most professional finish whilst also finding the most cost-effective option for you.



☎ 01279 939103

🌐 www.lkjflooring.com

✉ info@lkjflooring.com



LKJ Flooring Services Ltd



HAINAULT
TRADE WINDOWS
TRADE WINDOWS FOR TRADE PEOPLE

At Hainault Trade Windows we are built upon reputation, trust, High-quality items at cost-effective prices and a clear understanding of supply and demand for the trades.

Are you a tradesman in Essex and the surrounding areas? Are you looking for trade products including any the following, then we can help :-

- ✓ FSG
- ✓ Doors
- ✓ Windows
- ✓ Aluminium
- ✓ Conservatories
- ✓ Roof Lights/Lanterns

Get a quote now
0208 088 4153
www.hainaulttradewindows.co.uk



SCAN ME



**CLEAR INSPIRATION –
ENDLESS POSSIBILITIES**



**Infinite
Glass**

**BUILDING TRUST
WITH QUALITY
WORK**



01279 939123 info@infiniteglass.co.uk

Unit 2 The Links, Raynham Road, Bishops Stortford CM23 5NZ



HOME & DIY

INTERIOR DESIGN PROFILE

STUDIO IRO

THE INTERIOR DESIGN STUDIO TEACHING US
TO EMBRACE IMPERFECTION...



Studio Iro is the design studio of founder Lucy Carrell, whose work is inspired by the Japanese practice of Wabi, where beauty is found in imperfection. Studio Iro's portfolio contains understated designs that have subtle details to create warm spaces that leave a lasting impression.

A CLOSER LOOK AT STUDIO IRO

Studio Iro creates styles that are eclectic and beautiful, bringing together a range of influences to create looks that are always unique. From antique furniture to colour blocks that add interest and style, you should expect the unexpected and watch it all come together perfectly.

Studio Iro uses textures and original features of properties to create looks that are unique to each space. Colour pops through art, textiles and accessories add fun elements to looks that are

easy to recreate in your own home.

CREATING THE LOOK IN YOUR HOME

Lucy describes her designs as “soulful and warm”, and this is a theme you can easily recreate in your own space. Some Studio Iro-inspired tips include:

- > Imperfections should be embraced, such as bricked walls, adding their own beautiful touch to your project. Not everything needs to be flawless.
- > Keep an eye out for antique furniture, like a sideboard and armchair that can add some character to a more contemporary home.
- > Use abstract or fine art and decorative wallpaper to lift your spaces and bring in some patterns and textures.
- > Embrace florals and greenery to add further detail to your space and make it look more homely.



Photo credit: studioiro.co

Kate WINSLET

Photo credit: David Fisher/Shutterstock



She was the prim beauty who won our hearts on the doomed deck of the *Titanic*. Wind forward almost three decades and Kate Winslet CBE wows again as a ferocious female leader who makes grown men quake in their boots.

Once upon a time in Hollywood, there were two unspoken rules: first, glamorous film stars generally played the roles of glamorous women; and second, a jump to television often meant your career was in terminal decline!

Thankfully, like most things in Tinseltown, neither of these caveats remains true.

Take Kate Winslet in HBO's *Mare of Easttown*, for example a critically acclaimed 2021 miniseries in which her character Mare Sheehan – a detective sergeant and lifelong resident of Easttown – is tasked with investigating a local murder while also dealing with personal and professional challenges. The show was lauded for its gritty realism, encapsulated by Winslet's Mare, a downtrodden, frumpy and dishevelled woman who is a far cry from the actress's usual splendour.

"It's always been good to step outside who I really am," the *Titanic*, *Eternal Sunshine of the Spotless Mind*, *Hamlet* and *Avatar: The Way of Water* actress begins. "Some actors like the security of a certain type of characterisation, but for me that feels boring. My contentment actually comes in taking risks; and of course, some work, and some don't!"

Most for Winslet have worked, thankfully; so much so that rather than push her daughter away from the emotional perils of the entertainment industry, as so many parents do, she has encouraged her to carve out a niche. In 2022, the Reading-born beauty starred in *I Am Ruth*, a deeply moving film for Channel 4 which explores the ruptured relationship between Ruth (Winslet) and her teenage daughter, Freya, played by Winslet's own first-born child Mia Threapleton, whose mental health is becoming increasingly compromised by her mobile phone.

"I've always kept my children away from the media and that part of the industry. And in the case of Mia, not only has this protected her, but I think also kept the idea of acting and performing pure and wholesome, and that's really important."

Indeed, with her lookalike daughter embarking on her own acting career, 48-year-old Winslet could consider early retirement, especially considering she's already won an Oscar, two Emmy Awards and numerous BAFTAs, as well as being awarded a CBE by Her late Majesty Queen Elizabeth II in 2012 for services to drama.

Instead, she has delivered one of her finest performances yet in six-part satire, *The Regime*.

Created by *Succession* alum and *The Menu* cowriter Will Tracy, the Sky Max series features Winslet as the manicured and manic dictator of an imagined European state.

Primarily filmed at the picturesque Schönbrunn Palace in Vienna, Austria, with additional scenes shot in the baroque rooms of Wentworth Woodhouse, near Rotherham, *The Regime* is a fever dream that simultaneously terrifies, baffles and entertains viewers.

"You've got to keep pushing in this industry. As they say, standing still is going backwards!"

Push she does, something aided by a happy private life and marriage with Edward Abel Smith. The couple contentedly exist in the rural confines of West Wittering on the Sussex coast, turning away from the red carpets and flashbulbs. "Of course I will do what I can when promoting projects, but outside that, I've never been too fussed about the scene.

"I've never missed it, and I don't think it's ever missed me!"



Home is where the Herts is for Alesha Dixon



Photo credit: Rebecca Burman
Photo credit: Gary Fitzmaurice

She's considered a modern-day national treasure, but Alesha Dixon remains faithful to her humble Hertfordshire upbringing.

Born to a Scottish mother and Jamaican father in Welwyn Garden City, the young Dixon had her eyes set on stardom from an early age. She was a pupil at the local Monk's Walk School, but it was while attending dance classes at Dance Attic in Fulham that she met her future bandmate, Sabrina Washington.

Along with Su-Elise Nash, the talented trio became Mis-Teeq, releasing their debut single, *Why?*, in 2001. Over the next few years, they established themselves as one of the leading girl groups on the UK music scene.

However, it was after Mis-Teeq disbanded in 2005 that Dixon came into her own. She released her debut solo album, *Fired Up*, in 2006, which spawned the hit single *Lipstick*. She followed up with subsequent albums, including *The Alesha Show* (2008) and *The Entertainer* (2010).

In addition to her music career, Dixon has established herself as a television personality. A contestant on *Strictly Come Dancing* in 2007, she sashayed and foxtrotted to victory and ultimately won the competition. Having also won the hearts of *Strictly* viewers watching at home, Dixon then transitioned into a role as a judge, serving on the panel from 2009 to 2012.

Her television career further expanded when she joined the judging panel of *Britain's Got Talent* in 2012, replacing Michael McIntyre. She has remained a fixture on the show, earning praise for her insightful critiques and warm rapport with contestants and fellow judges.

When tasked with where to raise her own family, it seems there was only one place for the 45 year old. With her husband Azuka Ononye and their daughters, Azura and Anaya, she currently resides in a breathtaking mansion located in Hertfordshire. It seems that home is where the Herts is.

CELEBRATING A CENTURY! WOOD BROS FURNITURE CELEBRATES ITS 100TH ANNIVERSARY

Wood Bros was started in a Bethnal Green stable in the East End of London by a small team of furniture makers. Through the Roaring 20s, with its flappers, jazz, Charleston, the general strike, and the Wall Street Crash, with the boom and bust affecting everyone. Wood Bros moved down the River Lea to the current factory in Marsh Lane, Ware and it was here that the founder HW Wood created the well known 'Old Charm' oak range of traditional cabinet furniture. Inspired by history and tradition, Wood Bros continues to be a thriving family business today, blending heritage, design and fine craftsmanship. Some of its classic designs have remained unchanged from the originals of more than fifty years ago.

Wood Bros has also evolved beyond its cabinet roots with the creation of a large upholstery collection. The sofa range continues to develop stylistically to include a variety of contemporary and traditional designs, with an emphasis on tailoring, comfort, and style. They have collaborated with Abraham Moon and Harris Tweed among other UK fabric manufacturers, and are proud to offer designs and styles for all interiors.

Wood Bros offers a wide range of home accessories from cushions and throws to lampshades and fabric-by-metre "Our workshops of skilled craftsmen are on hand for refurbishment projects and are experienced in re-upholstering and restoring sofas



and cabinets alike", explains MD James Sheffield. "Come and visit us in our extensive Ware showrooms and meet the friendly and knowledgeable team!"



Come Visit us!
Online woodbros.co.uk
Showroom in Ware



FACTORY SALE
30th May to 1st June

UPHOLSTERY | CABINET | FABRIC | REFURBISHMENT

* T&C's see instore



**DO YOU WANT TO SAVE ENERGY?
DO YOU WANT TO RETAIN HEAT?
DO YOU WANT TO SAVE MONEY?
DO YOU WANT TO PROLONG THE
LIFE OF YOUR EXTERIOR PROPERTY?**



As Properla Approved Installers we offer a range of exterior super hydrophobic waterproof and 100% breathable coatings for your roof or walls, designed to reduce energy costs and protect the exterior of your property and save you money.

CLEANING & COATING SERVICES

**PROPERLA & RENOTEC WALL & ROOF COATINGS
APPROVED INSTALLERS**

**ENERGY SAVING TRUST APPROVED PRODUCTS IN THE RANGE
ALL PRODUCTS COME WITH A 10-20 YEAR
MANUFACTURERS GUARANTEE**

- Roof & Wall Coating
- Driveway Cleaning & Coating
- Wood impregnator
- Damp & Mould Prevention
- Insulation Removals
- Solar Panel Cleaning

Call us: 07810 562 506 or visit: www.ecocoats.co.uk



PUT THE SPARKLE BACK INTO YOUR KITCHEN



Domestic Oven Cleaning Specialists

Est. since 2007

Prices

- Single oven incl. shelves & grill pan..... £48.00
- Double oven incl. shelves & grill pan..... £59.00
- Range incl. shelves & grill pan..... From £68.00
- AGAs..... From £100.00
- Hobs..... From £17.00
- Extractors..... From £18.00
- Microwaves..... From £20.00

No VAT to pay



PLEASE CALL FOR A FREE QUOTATION

01279 432444 * www.ovenbright.co.uk



A building steeped in history and tradition

Discover the story of the Hertford Corn Exchange where, in the times before some of the most legendary music acts played there, it served a very different purpose.

The Corn Exchange in Hertford stands as a testament to architectural revival, having been transformed from a dormant trading hub into a bustling live music venue. This revolution exemplifies the rebirth of a historic plot, breathing new life into an old structure.

A building is steeped in history and tradition. Initially serving as a trading centre for corn, as its name suggests, this structure was once the heartbeat of the town's agricultural commerce.

Today, the Corn Exchange thrives as a world-

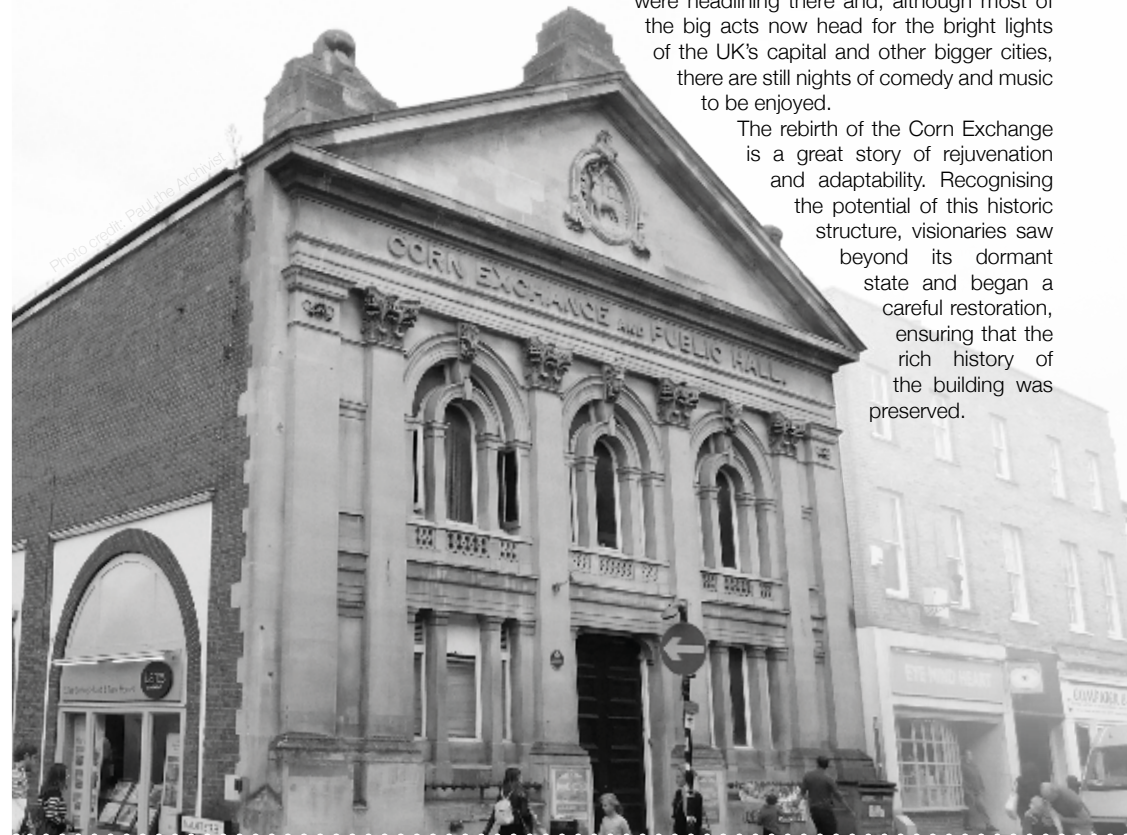
class venue, attracting a range of artists and audiences. Its walls, imbued with history, now resonate with music and life.

The current building was constructed in 1859, designed by the Leeds architect William Hill on a site that had previously been a butcher's market in the 1700s, then a gaol. The repeal of the Corn Laws in 1846 brought a boom, but the bust was on the horizon with the great depression of British agriculture in the latter part of the 19th century.

By the start of the First World War, it was being used as a billet for recruits. The first play, *Of Mice and Men*, was staged there in 1919.

By the mid-1960s, The Who and The Kinks were headlining there and, although most of the big acts now head for the bright lights of the UK's capital and other bigger cities, there are still nights of comedy and music to be enjoyed.

The rebirth of the Corn Exchange is a great story of rejuvenation and adaptability. Recognising the potential of this historic structure, visionaries saw beyond its dormant state and began a careful restoration, ensuring that the rich history of the building was preserved.



LOCAL FEATURE



YOUR LOCAL EVENTS

WHAT'S ON

FLASHDANCE 80S BAND

Bishop's Stortford Social Club,
104 South Street,
Bishop's Stortford, CM23 3BG
Saturday, April 27, 8.30pm – 11.30pm

STORTFORD DUB CLUB

The Half Moon, 31 North Street,
Bishop's Stortford, CM23 2LD
Saturday, May 11, 2pm

Having recently launched their own radio station, the Stortford Dub Club will now be bringing their premier collection of reggae, ska and dub to live audiences. Expect heavyweight bass and high energy.

Tickets are not needed. To find out more about the club, visit www.facebook.com/StortfordDubClub

BISHOP'S STORTFORD ACOUSTIC CLUB

South Mill Arts Centre, 1-3 South Road,
Bishop's Stortford, CM23 3JG
Thursday, May 16, 7.30pm

The acoustic club is organising another month of fantastic guitar musicians, including the double headliners of indie/rock/folk collective Westward Ho! and folk duo Clark and Johnson. There will also be performances from Jon Kendall, Jess Brett and promoting his new album, Tom Dulieu.

Tickets cost £7. To book, visit www.t.ly/UMN9C

2024 GENTLEMAN'S RIDE

Throughout Bishop's Stortford
Sunday, May 19, 9am – 10am

As part of a global fundraising event, get your motorbike out and ride through town at the same time as thousands of others across the world. All the proceeds go towards charities supporting men's mental health and sufferers of prostate cancer.

Participants must be aged 18 or over. Further details about where the event begins will be sent to registered participants.

To sign up, visit www.gentlemansride.com/register



Photo credit: Google Maps

This free, fun night of 80s classics performed live is for all those who remember the decade of perms, shoulder pads and leg warmers.

To find out more, visit www.bit.ly/3vpVfbT

SUNSHINE & RAINBOWS PLAYGROUP

The Charis Centre, 31B Water Lane,
Bishop's Stortford, CM23 2JZ
Friday, May 3, 10am – 10.30am

This playgroup is especially for bereaved parents and children, providing a safe and friendly environment for those dealing with the death of a baby or a child. Plenty of toys are provided, as well as a listening ear.

This playgroup is free of charge and children of all ages are welcome. To find out more, join the dedicated Facebook group at www.t.ly/5Lvbl

SPRING BEER FESTIVAL

Cammas Hall Farm, Needham Green, Hatfield
Broad Oak, Bishop's Stortford, CM22 7JT
Sunday, May 5, 11am – 6pm

A special festival of beer and fun being held over the early May bank holiday weekend. There will be an amazing selection of tasty beers and local ales, alongside wines, ciders, Pimm's and cocktails.

Tickets cost £7.25, and under-16s go free. To book online, visit www.shorturl.at/puvzF



Photo credit: The Distinguished Gentleman's Ride

Home Counties Loft Ladders, Quality You Can Trust!

These days most homeowners suffer from a lack of storage space. So many precious items that need to be kept - but where to store it all? That's where Home Counties Loft Ladders come in.

The company, based locally, offers homeowners the opportunity to maximise their storage space with a loft ladder. 50sqft of boarding and a light - all fully fitted in less than a day from just £444! But it's not just the affordability of the package that makes Home Counties Loft Ladders stand out, as manager Jamie Oakley explains: 'Our

watchwords are Quality, Integrity and Value. Quality in the materials that we use for all our installations and the fact that all our loft packages are fitted by time served tradesmen, so our customers are assured of the best job.

Integrity in that we will turn up at the time we say and make sure the house is spotless when we leave, and value in that we offer our services at a price people can afford.

Our business relies on referrals and we get a huge amount of our calls from people who have been referred to us by our existing customers

- that simply wouldn't happen if we didn't adhere to our overriding principles.

At the end of the day the old adage that happy customers lead to more happy customers is true and we work hard to make that happen for

every installation we carry out!

So, if you want to make use of your loft space, call Jamie free on 0808 301 9551 and he'll be happy to pop round and give you a no obligation quote so you too can make use of your loft!



Need more storage space?

INSTALL A LOFT LADDER AND USE YOUR LOFT!

STARTER PACKAGE: Aluminium loft ladder, light plus 50 sqft boarding, fully fitted in less than a day from £444

- Loft Ladders • Hatches
- Boarding • Insulation
- Lights • Fully Guaranteed



Home Counties LOFT LADDERS

CALL FREE: 0808 301 9551

homecountiesloftladders.co.uk



Black and White
Darkroom

For Hire
In Ware

Make Silver Gelatine Prints up to 20"x 24"

**Process, Contact and Scan Film
 35mm to 4X5**

Colour Epson Inkjet Printing

For all experience levels

Tuition Available

Please Call 07964 006 521



www.hertspartographichub.co.uk

**YOUR ADVERT
 RIGHT HERE**

CONTACT US TODAY TO
 PLACE YOUR ADVERT
 IN THE MAGAZINE

CALL BRETT ON 01279 939134



The GOODLIFE LODGE CO

BIG COUNTRY VIEWS

GREAT HADHAM COUNTRY CLUB

Don't just take our word for it.....

Having always been a bit of a golfer and having reached a point where it was time to downsize, Great Hadham Country Club was perfect.

We were moving from our family home in Hertford and looking to downsize and for an escape.

We met with Dani at Great Hadham who showed us round several homes before we eventually plumped for a Prestige Plantation House

Once the sale of our home went through the actual purchasing was quick and easy, mainly due to the updates we had from the sales team.

We have now lived at Great Hadham for almost 7 months and really couldn't be happier. The wife has even bought some clubs now.

Mr and Mrs S

SCAN ME

www.goodlifelodge.com

info@goodlifelodge.com

01279 939082

SHOW HOMES

NOW OPEN

Bluebells

The Sweetest Flower

As April arrives, bluebells emerge in woodlands, parks and gardens across the country, reminding us that spring is most definitely here. For centuries, these delicate blue flowers have captured the hearts of poets, artists and nature lovers. But sadly, they're not in bloom for long – usually from mid-April to early May. So get out and enjoy their beauty before it starts to fade. These are some of the best places to see dramatic displays of bluebells this spring.

Leigh Woods, Bristol: Admire a sea of bluebells against the dramatic backdrop of the Clifton Suspension Bridge.

Bodnant Garden, Conwy: Spanning more than 80 acres, Bodnant Garden is especially beautiful when the bluebells take over the Old Park.

Blickling Estate, Norfolk: Visit the Great Wood and Temple Walk at the birthplace of Anne Boleyn to see one of the country's best bluebell displays.

Mount Stuart, Bute: Visit this Victorian gothic mansion to see bluebells take over the stunning woodland below thousands of mature trees.

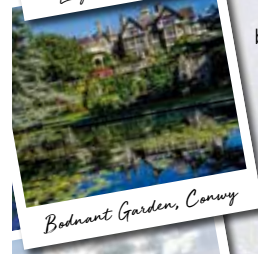
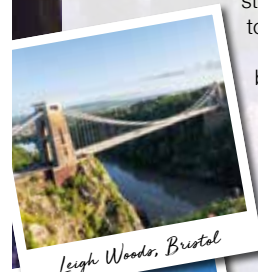
There are also dazzling bluebell displays at:

- > Hatfield Park and Garden, Hatfield, Hertfordshire
- > Whippendell Wood, Watford, Hertfordshire
- > Norsey Wood, Billericay, Essex
- > Blake's Wood, near Danbury, Essex

Fun Bluebell Facts

- > The UK is home to more than half of the world's bluebells.
- > The UK has two types of bluebells: the scented native English bluebell and the unscented, more upright Spanish bluebell. The Spanish bluebell was originally an ornamental plant and many see it as a threat to our cherished native species.
- > It's a criminal offence to uproot wild bluebells.
- > Other names for bluebells include cuckoo's boots, wood hyacinth, lady's nightcap and witches' thimbles.

Remember to tread gently when visiting bluebell woods so we can all help to preserve their beauty for future generations.



TRAVEL



PUPPY play!

One of the best things about getting a new puppy is being able to teach them tricks. Once you have mastered the basics of puppy training – sit, down, come, and stay – you can move on to more fun ones!

Give a kiss

Who doesn't want to be on the receiving end of a big, wet kiss from their new best friend? A great trick for kids to teach, all you need to do is place a little treat on your cheek and then add the command "kiss". Repeat until mastered. This is also good for preventing unwanted licking.

Roll over

To get your puppy to roll over, they first need to be able to lie down and stay. Once they are lying down, hold a treat between your first two fingers, a few inches above their nose. Bring the treat over to their side, luring your puppy to roll over. When they are lying on their side, reward them with the treat and verbal praise. Repeat until mastered.

Spin around

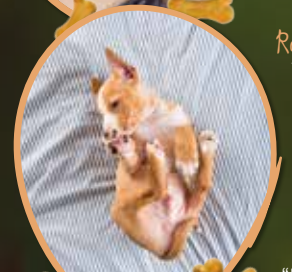
A trick your puppy will love. To get them to spin around in a circle, say "spin" or "twirl" as you move your hand (with a treat in it) in a complete circle.

Reward your puppy as soon as they complete a spin. Make this trick more difficult by issuing different commands for spinning clockwise and anti-clockwise.

Shake paws

Would you like your dog to greet your friends more formally when they arrive? An easy trick to teach, first tell your puppy to sit. Next, keep a treat in your closed hand and wait for them to sniff or paw at it. Reward them, and repeat. Eventually, your puppy will paw at your hand every time and this can then be turned into a paw shake.

NB: Once each trick is mastered, you no longer need to provide them with a treat every time they complete a task.



AERIALBASE.COM

TV • AERIAL • SATELLITE
INSTALL • SERVICE • REPAIR

**AERIALS
FULL FITTED
from £59.97**

**AERIALS
SET UP/ REPAIR / TUNING
ONLY £29.97**

digital freesat
sky youview

**FREE CALLOUTS
SAME DAY SERVICE** (where possible)

**01279 939212 / 01375 460964
FREEPHONE 0800 193 0017
BOOK ONLINE @AERIALBASE.COM**



Services we provide

- Dog walking £14 per hour (discount for 2nd pet) £10
- Doggy day care £30
- Overnight care £35

Contact Charlie [we are insured](#)
 facebook: Charlies pawsome adventures
 info@charliespawsomeadventures.com
 number: 07359 750327



PET THERAPY ROOMS

CANINE HYDROTHERAPY AND PHYSIOTHERAPY

**WE WILL MAKE SURE
YOUR PET ENJOYS
THEIR LIFE TO THE FULL**

- Post op and injury rehabilitation
- Osteoarthritis and senior dog support
- Fitness conditioning
- Puppy development
- Gait correction

BLOCK BOOKING SAVINGS



UNIT 4, LITTLE HYDE HALL, HATFIELD HEATH ROAD, SAWBRIDGEWORTH, CM21 9HX
 07977 548395 • info@pettherapyrooms.co.uk • www.pettherapyrooms.co.uk

LINTELS
 ROOFING
 ELECTRICAL
 INSULATION
 AGGREGATES
 BRICKS & BLOCKS
 TOOLS & WORKWEAR
 ABOVEGROUND DRAINAGE
 UNDERGROUND DRAINAGE
 DRY LINING & PLASTERING
 LANDSCAPING & GARDENING

01279656600


HANCOCKS
 DRAINAGE & BUILDING SUPPLIES

FULFILLING ALL YOUR BUILDING MATERIAL REQUIREMENTS
 WITH THE HIGHEST SERVICE & COMPETITIVE PRICES!

**OPEN UP A TRADE CASH ACCOUNT
 TO UNLOCK EXTRA DISCOUNTS!**

NEXT DAY DELIVERY
OPEN TO TRADE & DIY

VISIT US ON OUR WEBSITE!
 

FOLLOW US ON SOCIAL MEDIA

 @HANCOCKSSTORE

FIRST 4 PAVING
 DRIVEWAYS | PAVING | LANDSCAPING | FENCING



25% Discount
 while we are in your area

Visit our website to see over 70 reviews from our Member Associations below

Call us today for all your property needs...

Call us today for all your property needs...
 Office: 01920 455645 ■ 0203 953 5878
 Mob: 07413 090333 0 ON SITE
 first4paving@gmail.co.uk ■ www.first4paving.co.uk



BEGINNER'S GUIDE TO Pineapple lily

Eucomis, aka pineapple lily, makes an impressive addition to any garden with its exotic-looking blooms and tufts of vibrant leaves. However, despite their show-stopping appearance, they are relatively easy to grow, making them perfect for beginners.

What are the different varieties of pineapple lily?

- 1 Eucomis comosa:** A tall variety that grows up to 75cm, with large leaves that boast a slightly wavy edge.
- 2 Eucomis autumnalis:** Produces a long, thin flower spike that is topped with a small rosette of leaves.
- 3 Eucomis bicolor:** A two-tone variety that has pale green flowers with maroon edging.
- 4 Eucomis pallidiflora:** Known as the giant pineapple lily, this variety can reach up to 2m when in flower.

Where to plant pineapple lilies

Pineapple lilies are tender plants that need plenty of sun to thrive. Choose the warmest and brightest spot in your garden and make sure the soil is well drained. You can plant pineapple lilies in either borders or containers.

How to plant pineapple lilies

If growing pineapple lilies in your garden, plant bulbs 15cm deep in fertile, well-drained soil. Keep the plants well watered during growing season (April to early October).

If growing in containers, plant bulbs in a wide, shallow pan, if possible, but a normal flower pot will do. Use a loam-based compost (a mixture of clay, sand and silt) with added sharp sand to improve drainage. Allow at least 7.5cm between bulbs and make sure the top of the bulb is just below the soil's surface. Just like plants in the garden, water well during growing season.

How to care for pineapple lilies

Keep pineapple lilies well watered during the summer but dry in the winter by either digging up the bulbs or moving pots indoors in autumn. Remove any dead leaves and spent flowers at the end of each growing season.





REACH FOR THE sky

Climbing vines are great for all-sized gardens, adding visual interest and acting as a highly effective disguise for any eyesores without taking up too much room. Discover the best climbing plants for your garden.

BEST CLIMBING VINES FOR STUNNING SCENTS

JAPANESE WISTERIA: Boasting fragrant flowers in shades of purple-blue and white, Japanese wisteria needs a lot of space and support, as well as twice-yearly pruning. Allow this plant to grow up an established tree or a house wall.

ROSE CLIMBERS: Roses are beautiful to look at and stunning to smell, making them the perfect climbing vine for creating a scent-filled garden. These can be grown up a trellis or up and around arbors to create an intimate area in your garden.

BEST CLIMBING VINES FOR EARLY BLOOMS

WINTER JASMINE: Winter jasmine produces fragrant yellow flowers in the depths of winter before its dark green leaves appear in spring. Its stems do not like to twine so they need support from a trellis secured to either a wall or fence.

JAPANESE QUINCE: One of the first shrubs to flower each year, the Japanese quince bears red, pink or white blossoms along its bare branches. This vine can be trained to grow up against a wall or a fence.

BEST CLIMBING VINES FOR SHADY SPOTS

SAUSAGE VINE: Sausage vine is a frost-hardy evergreen climber that grows to around 6m high. With pale pink blooms in April and May, this climbing vine will grow in the shade, making it ideal for a dreary corner. Grow in a wall-side border for the best results.

CHINESE VIRGINIA CREEPER: A deciduous climber that attaches itself to walls and fences with little sucker disks, the Chinese Virginia creeper produces masses of growth each season and is one of the few climbers that actively thrive in shady areas.



Photo credit: treesandshrubsline.org, longfordgardencentre.com



DOM'S HEATING & PLUMBING Friendly Reliable Service
Free Estimates & Advice
T 01279 871 818 M 07981 982 864
E info@domsheating.co.uk

Installations • Breakdowns • Servicing
Boilers • Gas Fires • Unvented Systems
Complete Bathroom Design • Bathroom Installation



www.domsheatingandplumbing.co.uk



BEEWISE

£1 ONLY

- CARD MACHINE OFFER**
- Free next day settlement
- Low rates
- £1 terminal rental
- 24/7 Helpdesk

MERCHANT SERVICES

Beewise with what your business needs.

Join the Beewise Family

01279 939128
www.beewiseltd.co.uk



SCAN ME



**LOOKING FOR
SOME EXTRA
CASH?**

NO CREDIT CHECK REQUIRED ✓

**RAISE CASH
QUICKLY USING
THE BUYBACK
SCHEME**

**WE ALSO BUY
LUXURY ITEMS**



**CASH CONCEPTS
HERTFORDSHIRE**

WE BUY AND SELL VALUABLE ITEMS

**GET INSTANT CASH TODAY FOR
YOUR GOODS WITH THE OPTION
TO BUYBACK LATER**

01279 641535  

**DREAM
DIGITAL**

Your friendly,
local digital
marketing team

Accelerating business growth with powerful websites
and effective digital marketing campaigns

Our digital marketing
services include:

- Web design
- SEO
- Paid advertising
- Graphic design
- Marketing strategy
- Social media management

We offer a **FREE** consultation
to discuss a customer's
existing online presence
enquiries@dreamdigital.agency
0800 0438 894
www.dreamdigital.agency



SCREEN SHOCKER



TECHNOLOGY

Do you know how many hours a day you spend glued to your mobile phone? How about your kids? Are they more likely to be seen staring at a screen than playing with their toys?

- > How are your eating habits?
- > Are you sleeping okay?
- > Do you get any physical exercise?

If you are not happy with your answers, then it may be time to look at reducing your daily screen time.

How much time are people spending on screens?
The average screen time for people aged 16-64, across different platforms and devices, is an estimated six hours and 37 minutes per day. Mobile devices account for most of this, with users spending an average of three hours and 46 minutes on their smartphones, with desktop computers not far behind at two hours and 51 minutes.

How screen time adds up over one year

1 hour	→	15 DAYS	a year
2 hours	→	30 DAYS	a year
3 hours	→	45 DAYS	a year
4 hours	→	61 DAYS	a year
5 hours	→	76 DAYS	a year
6 hours	→	91 DAYS	a year
7 hours	→	106 DAYS	a year

What problems are associated with too much screen time?

Too much screen time can cause a whole host of problems for adults and children alike, including: Obesity | Sleep disturbance | Depression | Anxiety | Hyperactivity | Poor language development | Inferior social development | Low moods | Headaches/eye strain | Light sensitivity | Shorter attention span | Frustration and less impulse control

How to know if you are spending too much time in front of a screen

If you are unsure whether or not you are spending an unhealthy amount of time in front of a screen, ask yourself the below questions:

- > How often do you leave your house and socialise?

How to manage and reduce screen time

- > Create tech-free zones, such as mealtimes and bedtime
- > Set and enforce daily/weekly screen time limits
- > Consider using an app that controls the length of time your child can use a device
- > Eliminate background TV from your home
- > Try to spend more time outdoors as a family
- > Set clear work boundaries.



How to MANAGE your EMAIL INBOX!

TOP TIPS TO KEEP YOUR EMAIL INBOX UNDER CONTROL AND MORE ORGANISED

Do you struggle to keep on top of your emails? If yes, then you are far from alone, with the average professional spending a whopping 4.1 hours each day responding to work messages. Furthermore, more than one-third of office workers state that 'email fatigue' has made them want to quit their jobs.

1. ONLY KEEP EMAILS THAT REQUIRE IMMEDIATE ATTENTION IN YOUR INBOX

Although this may seem a little extreme, keeping only emails that require your immediate attention in your inbox can make this tedious task feel a lot more manageable. Move all non-urgent emails to relevant subfolders. Aim to have 25 emails or fewer in your inbox at the end of each day.

2. CREATE A WAITING FOLDER FOR ACTION-PENDING EMAILS

For any emails that require an action from someone else before you can respond, a waiting folder is a great idea. This way, they are not taking

up space in your inbox and you can simply take a look at the end of each day or once a week to remind yourself of any projects that are still pending.

3. MAKE SUBFOLDERS OR USE A LABEL SYSTEM

If you receive hundreds of emails a day, then subfolders are a must. These can be used to group together important email chains so that you can easily reference something when you need to.

4. USE YOUR CALENDAR TO TRACK EMAILS

For emails that require more than just a simple reply, we recommend that you add them to your email calendar with a reminder of when a follow-up email is required. You can also use an appropriately coloured follow-up flag to easily identify emails that require further attention.

5. CREATE TEMPLATES FOR GO-TO RESPONSES

Tailoring a reply for every email is time-prohibitive, so stock responses, can be a real life saver. Save a few different generic responses and tweak accordingly.



**DOES YOUR WORK LIFE NEED
- FLEXIBILITY - INSPIRATION - BALANCE? -**

**FIRST DAY
ALWAYS
FREE**

We have the solution!

Join us at The Residence - a collaborative space for people to work, connect and grow in a community-led environment.

Hot Desks | Permanent Desks | Private Offices | Meeting Rooms



CALL 01279 597497 OR EMAIL [KAREN@THERESIDENCECOWORKING.CO.UK](mailto:karen@theresidencecoworking.co.uk)
WWW.THERESIDENCECOWORKING.CO.UK

FULLY FITTED
PRICES FROM
£995

**UNBEATABLE
VALUE ELECTRIC
GARAGE DOORS**

- ✓ FREE installation
- ✓ FREE 5 year warranty
- ✓ Manufactured in the UK
- ✓ Fitted by a local Garolla engineer
- ✓ The UK's No.1 recommended

GAROLLA
ELECTRIC GARAGE DOORS



BOOK A FREE SURVEY TODAY
01279 510 063
GAROLLA.CO.UK

**Palmer
Martin &
Hire**

FREE LOCAL COLLECTION
AND DELIVERY



CAR HIRE VAN HIRE

PROVIDING A ONE-STOP-SHOP FOR ALL
OF YOUR HIRE REQUIREMENTS

FAMILY RUN COMPANY ■ CLOSE TO STANSTED AIRPORT
120+ FLEET OF NEW VEHICLES ■ CARS ■ PANEL VANS
LUTON VANS ■ 7 SEATER MPVS ■ 9 SEATERS MPVS

Call us on 01279 505072

or book online at www.palmerandmartin.co.uk

Unit 14 Twyford Business Centre, London Road Bishop's Stortford CM23 3YT

IS YOUR CAR TRULY SAFE?

CAR & VAN SECURITY SPECIALISTS



SMART CAR PROTECTION WITH GHOST IMMOBILISER

Greater London
& surrounding
M25 areas

7 days a week
8am to 10pm

01279 939129

• carkeyssolutions.co.uk • 01279 939129
• contact@carkeyssolutions.co.uk

UK'S MOST TRUSTED AND REVIEWED AUTO
LOCKSMITH WITH EMERGENCY RESPONSE



FROM ONLY
£450

I CAR-NT BELIEVE IT

THE WEIRDEST THINGS BIG CAR COMPANIES MAKE...
THAT AREN'T CARS

Automakers are talented, skilled and enterprising across different types of technology, so it follows that, on occasion, their creations may go beyond simply four wheels.

LEXUS HOVERBOARD: Branded as Slide, Lexus's hoverboard embodies futuristic dreams with its spindle grille design and bamboo material. It's a functional hoverboard, representing a blend of imagination and Lexus's automotive style.

NISSAN PROPILOT CHAIR: This autonomous chair, following Nissan's Intelligent Parking Chair, offers a solution for those weary of standing in lines. It follows a pre-set path, mirroring semi-autonomous vehicle technology, and has been tested in Japanese restaurants for customer convenience.

HONDA UNI-CUB: The UNI-CUB, a personal mobility device, features a unique omni-directional driving wheel system and balance control technology.

AUDI R18 CHAIR: A collaboration with Clemens Weisshaar and Reed Kram, this stylish chair combines carbon composites and high-strength aluminium, and weighs just 4.9lb.

BMW BOBSLED: BMW's carbon fibre bobsled, developed for Team USA, contributed to an Olympic bronze in Sochi. It showcased BMW's expertise in weight distribution and sleek design, mirroring its automotive approach.

LAMBORGHINI IXOOST ESAVOX: This speaker boasts authentic Lamborghini parts, including an exhaust, and stands out in the realm of lifestyle products. It features high-quality audio components and the brand's signature design elements – a fusion of luxury automotive style and sound.

TOYOTA KIROBO MINI-ROBOT: Priced around \$400, this robot offers portable companionship and conversation, reflecting Toyota's strides in AI, at the same time as catering to Japan's social needs.

ASTON MARTIN RESIDENCES: The manufacturer has ventured into real estate with its showpiece 66-storey building in Miami, a collaboration with Argentine developers, which features bespoke lobbies, fitness centres and a spa.



MOTORING

Photo credit: media.lexus.co.uk, global.nissannews.com, Tom Vaek via r18@r18.com, bmwusa.com, lamborghiniusa.com, mag.toyota.co.uk

5 REASONS TO ADVERTISE

Why do businesses benefit from hyperlocal advertising?

1. Targeted advertising

Hyperlocal advertising allows companies to target customers who are within a specific geographic area, making it easier to reach the right audience and increase the chances of converting them into paying customers.



2. Cost-effective

Hyperlocal advertising can be cost-effective because it is focused on a specific local area, meaning that businesses can reach their target audience without wasting money on broader marketing campaigns that may not be as effective.



3. Increased engagement

Hyperlocal advertising can lead to increased engagement with customers because it is focused on the local community and the interests of the people living in that area. By targeting customers with ads that are relevant to their interests and needs, companies can build a stronger relationship and increase their chances of repeat business.



4. Improved search engine optimisation

Hyperlocal advertising can improve a business' search engine optimisation because it targets customers who are likely to be searching for businesses and services in their local area. By optimising their website and other online presence for local search terms, businesses can improve their visibility and attract more customers.



5. Better return on investment (ROI)

Hyperlocal advertising can lead to a better ROI because it is focused on a specific area and customer base. Targeting customers who are likely to be interested in their products or services, can increase conversion rates and revenue.



IS YOUR BUSINESS READY TO BENEFIT FROM HYPERLOCAL ADVERTISING? CONTACT **V**ISION TO FIND OUT MORE



SPORT



WHY IT'S IMPORTANT TO AVOID LOOKING LIKE A TURKEY AT THE UPCOMING WORLD GRAVY WRESTLING CHAMPIONSHIPS

We all know the popularity of gravy up north, but for nearly two decades, a group of Lancashire locals have been intent on taking things a step further by hosting the World Gravy Wrestling Championships.

First held in 2007 in the small Lancashire village of Stacksteads, Rossendale, the championships take the form of two-minute bouts. Competitors, adorned in fancy dress, wade into a pool of the aromatic stuff, grappling and grabbing their opponent. They are scored on wrestling ability, fancy dress and the level of entertainment provided. Firefighters are in attendance ready to hose down competitors in between bouts.

Held on August bank holiday at the Rose 'N' Bowl pub, the event attracts large crowds and a bevy of soon-to-be drenched competitors. While the competitive wrestling features adults, younger

gravy aficionados can have a go after the main event, and there's never a shortage of applicants, with numbers increasing each year.

In the early days, the key constituent was bona fide Lancashire Gravy. Yet after the event became besieged by wasps who found the unique recipe rather too irresistible, an alternative mixture of caramel and cornflour was devised.

The World Gravy Wrestling Championships also raises significant funds for local charities.

Having taken a short hiatus during COVID-19, the championships roared back to popularity after the lockdowns with the most successful contests yet. And while meat stock is very much the order of the day, the fact that the event is held at a pub means competitors can always knock back something afterwards that offers slightly more punch than a watery beef or chicken accompaniment!

Photo credit: MCPX/Shutterstock

ACCOUNTANT & TAX ADVISORS

ALL THINGS ACCOUNTING

Accounting & tax services, we help with self-assessment tax return, corporation tax return, payroll, VAT return, CIS return & bookkeeping. Call 07539 035537 for free initial consultation

AIRPORT TRANSFERS

PRIMROSE AIRPORT CARS

Competitively priced efficient, clean & reliable service using satellite navigation and tracking of all return flights for Business or Leisure. 01992 364000 | 07966 180531

GREEN SKY EXECUTIVE

Demand a higher class of travel for business or leisure. Competitively priced executive vehicles for the more discerning traveller. 0800 066 9979.

AUDIO & VISUAL

ULTIMATE AV

We create bespoke systems designed and built especially for you. Small projects to complete home cinema environments. Based in Essex call us on 07531 214339

BUSINESS CENTRE

THE TOWNHOUSE HERTFORD

Modern business centre in the heart of Hertford offering a variety of office space, meeting rooms and hot desking facilities. 01992 350132

CANCER SUPPORT

HUMMINGBIRD CANCER SUPPORT GROUP

We are a friendly group based in Bishops Stortford. We meet Mondays 10:30 - 1:30 at South Mill Arts - 07510 178200 | www.hummingbirdcancersupport.org

JOIN THE LISTINGS... for just **£15** +VAT per month

CARPET & UPHOLSTERY

ARWIN CLEANING SERVICES

Over 30 yrs of exp, we can offer a professional, efficient and cost-effective solution for carpet and upholstery, cleaning and maintenance. 07973 417764

CAR & VAN HIRE

SCENIC SELF DRIVE

Your self drive hire specialists. Whether you require modern cars, motorhomes, vans or minibuses. Rest assured we will provide you a professional service. 01708 753461

CLEANING SERVICES

GLOWWHITE CLEANING

Serving Hertford and surrounding areas. We specialise in end of tenancy cleaning for tenants, landlords and property managers. Fully insured. Contact: 07561 138855

CLEARANCE & WASTE

THE CLEARANCE TEAM

From clearing a room, house or garden to clearing an entire office block. Fast, reliable and affordable. Working 24/7 so you can book us at your convenience. 0207 101 3387

BOOK VIA BISHOPSTORTFORD@VISIONMAG.CO.UK

COMPUTER REPAIR & I.T.

MAPTEC IT

Your local residential & commercial IT specialists. We can fix your computers, configure email accounts & printers. Setup your Wi-Fi, Internet router & network. 0203 865 7174

ELECTRICAL & WHOLESALE

CH ELECTRICAL WHOLESALE

Essex & East London's leading electrical wholesalers providing the trade & public a professional service with access to all leading brands. 01708 730591

ELECTRICIAN

ARCH ELECTRICAL SERVICES LTD

Domestic and Commercial Electrical contracting company covering Essex. Design, installation, maintenance. Contact us on 07986 663793 | @APElectricalEssex

FLEXIBLE WORK SPACE

MANTLE SPACE LTD

We offer flexible offices, co-working spaces and meeting rooms. With 24/7 access, enhanced cleaning, beautifully designed interiors. mantlespace.co.uk | 03330 066330

FRENCH POLISHING

DC POLISHING

20 Years experience in wood restoration i.e. Furniture, doors, staircases, worktops, minor repairs & FLOOR RESTORATION. 07949 204969 | dcpolishing.church@gmail.com

FURNITURE RESTORATION

ABBEY GROUP

Abbey Group are specialist in creating, repairing & restoring quality furniture & wood surfaces to the highest standard. 01708 741135

GARDEN SERVICES

JOHN HEARNE

We take care of it all Lawn Mowing, Weeding, Planting, General Tidying, Fence/Shed Painting, Driveway/Patio Pressure Washing and more. Call for details 07908 523101

THE ORIGINAL TREE SURGEONS LTD

Taking care of all your tree care needs and providing a personal first-class service to both domestic and commercial clients. 01708 715440

HEALTH & WELLBEING

IMPROVE YOUR SMILE DENTAL PRACTICE

Est. in 1986. Encompassing all needs from basic oral health to advanced dental procedures and high-end cosmetic treatments. New patients welcome. 020 8504 2704

LOCAL MARKETS

LITTLE CANFIELD LOCAL SUNDAY MARKET

Join our Family friendly market, every 2nd Sunday of the month with something for everyone. Contact llocalsundaymarket@gmail.com for more information.

LOCKSMITHS

KEYTEK LOCKSMITHS

From Lock outs to security upgrades, our fully trained DBS checked Locksmiths are the experts | Call 01279 216349 | Quote: 15075

MASTICS AND SEALANTS

QUALITY MASTICS LTD

Bathroom and shower mastic joint sealing. Kitchens, windows, floors, external seals around windows. For information call 01245 520981

PAINTING & DECORATING

PGA DECORATING SPECIALIST

Interior - exterior - paper hanging specialists in Window repair care. 07769 646357 | www.pgadecoratingspecialists.co.uk | pgadecorators@yahoo.co.uk

TRADITIONAL DECORATIONS

We are a family run business specialising in turning your house into a home. Giving advice on current decorating trends. 07737 562406

PLASTERERS

TF PLASTERING LTD

Professional quality workmanship, over 25 years' experience. Public liability insured. Skimming, coving, dry lining, rendering. Free quotes 07738 278036 | 01279 416311

PLUMBING & HEATING

BOILER

BOILER offer servicing, installations, repairs and plans. Local Gas Safe engineers for all your needs. 7000 Homes EVERY MONTH. Call 01279 927074

CMS PLUMBING HEATING & BATHROOMS

Corgi registered, 20+ years' experience, public liability insurance, offering free quotes. No job too small. Based in Gidea Park. Call Craig 07855 589185

JOIN THE LISTINGS...
for just **£180** +VAT per year

PROPERTY MAINTENANCE

LILLYWHITE PROPERTY GROUP

For all building works, full refurbishments & property maintenance inc heating, plumbing, electrical, decorating, flooring, tiling & plastering etc. Call today on 07949 394403

STUART GREEN PROPERTY SOLUTIONS

Property maintenance specialist. Carpentry, painting/ decorating, laminate flooring, bath/shower re-siliconing, gutters cleared/repared, insurance work, PLI. 07917 870879

ROOFING

JIM BARR ROOFING

Exterior cleaning & maintenance. Gutters, Paving & UPVC; cleaned, repaired & renewed. Contact 01708 874816 | 07833 572459

WHITE GOODS & APPLIANCES

T.E.J. DOMESTIC APPLIANCES

Stockists of all major brands. Installation available, FREE local delivery. Free standing & Built In Appliances. Extensive stock. 01708 447752

DISCLAIMER: VISION does not represent or endorse the accuracy or reliability of any of the advertisements, nor the quality of any products, information or other materials displayed, purchased or obtained by any customer as a result of an advertisement or any other information or offer in connection with the service or products. The opinions expressed in articles, reviews and stories are strictly those of the individual authors and do not necessarily reflect the views of **VISION**.



PUZZLES & TRIVIA

PUZZLES

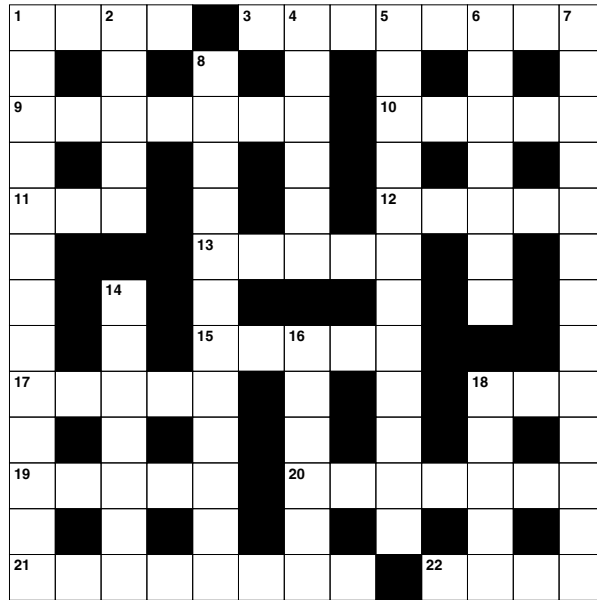
Answers: see end of The VISION Listings

ACROSS

- 1. Spur on (4)
- 3. Came into possession of (8)
- 9. Income (7)
- 10. Sprites (5)
- 11. Four-wheeled road vehicle (3)
- 12. Card game (5)
- 13. Insurgent or revolutionary (5)
- 15. Where one finds Rome (5)
- 17. Cook meat in the oven (5)
- 18. Not on (3)
- 19. Brought forth (5)
- 20. Respectable; refined (7)
- 21. Expulsion (8)
- 22. Solely (4)

DOWN

- 1. Irretrievable (13)
- 2. Donor (5)
- 4. Winged child (6)
- 5. Joblessness (12)
- 6. Officially cancels (7)
- 7. Shamefully (13)
- 8. Sporadic (12)
- 14. Open area of grassland (7)



- 16. In slow tempo (of music) (6)
- 18. Large body of water (5)

DID YOU KNOW?

- ▶ Feng shui, meaning 'wind and water', is an ancient Chinese art of arranging spaces to achieve harmony and balance.
- ▶ The aim of feng shui is to balance the life force of chi. In the Taoist belief, chi is said to inhabit everything.
- ▶ To protect against negative chi, feng shui practices include making sure to always keep the bathroom door closed and to throw away wilted flowers immediately.
- ▶ In feng shui, every colour has a meaning. For example, black signifies contemplation and wisdom, while purple is connected to power and prosperity.
- ▶ Feng shui has influenced the design of a number of landmarks around the world, including the glass pyramid at the Louvre Museum in Paris and the Sydney Opera House in Australia.

SUDOKU

						9	5	
	7							
	8	5	4	3	1			
				4				3
3	5			9			8	6
7				5				
			6	7	8	4	3	
						2		
	9	6						



Come home to a clean house

Our professionally trained team of maids will make your home sparkle. We tailor our cleans to your individual needs, schedule and budget.

- Uniformed and professionally trained staff
- 100% guaranteed and fully insured
- Regular and occasional cleans
- Free in home estimate
- All materials supplied
- No contracts



Arrange your no obligation in home quote today



Please call: **01279 944 688**

or email: **bishops-stortford@mollymaid.co.uk**

www.mollymaid.co.uk MOLLYMAIDinUK



NEED A DECORATOR? CALL US FOR RECOMMENDATIONS

YOUR GO-TO DESTINATION FOR PAINT SUPPLIES



PAINTS

more than paint

Unleash your Creativity, Unleash our Colours
JDC Paints – the Best Choice for Paint



**PAINT MIXING
SERVICE AVAILABLE**

- In store colour matching
- Any colour in any finish
- Local express delivery service
- Harlow & Bishops Stortford
- Harlow open 7 days a week



BISHOPS STORTFORD



HARLOW

Enjoy a
free coffee
while you wait



**ORDER ONLINE: www.jdcpaints.com
OR CALL 01279 213 877**

BISHOPS STORTFORD

6 Raynham Close,
Raynham Road
Bishops Stortford
CM23 5PJ

(T) 01279 213 877

HARLOW

Unit A, St James Centre
Temple Fields
Harlow
CM20 2SX

(T) 01279 444 213

www.jdcpaints.com



SCAN ME