

THE
JOY OF
HOLI
FESTIVAL

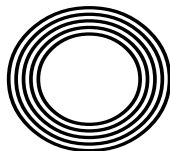
TOP 5
tech-free
holidays

Why we celebrate
ST PATRICK'S DAY

VIVA MAGENTA:
Pantone Colour of the Year

PETER JONES CBE

How this dragon proved he's impossible to slay



FREE

Photo credit: BBC/Graeme Hunter/
Caroline McDonald



THE WINDOW MAN

WINDOWS | DOORS | INSTALLATION | REPAIRS

"Your Friend in the Trade"

Proudly Providing the Complete Service

FAMILY-RUN BUSINESS SERVING THE LOCAL COMMUNITY FOR OVER 25 YEARS

SUPPLY, REPAIR & REPLACEMENT

DOUBLE GLAZING | TRIPLE GLAZING | UPVC | ALUMINIUM WINDOWS | HARD WOOD WINDOWS
FRENCH & PATIO DOORS | PORCHES & CONSERVATORIES | BI-FOLD DOORS

REPAIR SERVICES AVAILABLE 8AM - 8PM

CAT FLAPS | KNOCKERS | LETTER BOXES | SPYHOLES | CYLINDERS | HANDLES
HINGES & LOCKS FOR WINDOWS & DOORS | TRICKLE VENTS | SEALED GLASS UNITS
LEADED & GEORGIAN GLASS | CONSERVATORY ROOF REPAIRS | PANELS

**EVERYTHING WE DO IS FULLY GUARANTEED & WE PRIDE OURSELVES
IN OUR ABSOLUTE ATTENTION TO CUSTOMER CARE**

CONTACT US TODAY FOR YOUR FREE OF CHARGE, NO OBLIGATION QUOTE

01245 527073

 www.thewindowmanessex.net  [@thewindowmanessex](https://www.facebook.com/thewindowmanessex) 

CHELMSFORD DOUBLE GLAZING REPAIRS AND REPLACEMENTS

WE FREQUENTLY CARRY OUT WINDOW AND DOOR
INSTALLATIONS AND REPAIRS IN CHELMSFORD
AND THE SURROUNDING AREAS



BEFORE



AFTER



AFTER



AFTER



BEFORE



AFTER





MARCH 2023

Editor's notes...



Nik Allen, Editor

Hello and welcome to this month's edition of **VISION** Chelmsford Beaulieu.

I recently saw a picture of basketball player LeBron James making a shot that would break the all-time scoring record in the NBA. Although this was an iconic moment, it was the crowd that caught my eye.

Out of around 200 people in the shot behind him, in the crowd you could count on one hand how many of them did not have their smartphones out videoing this moment. In a world where you can see every sporting moment on video nowadays, it made me realise how important it is to remember to live in the moment and enjoy it with our own eyes, rather than through a

camera lens.

I have been more conscious of this now, even when I'm at home, to spend less time on my phone and more time in the moment. Having a daily cut-off point when my phone gets locked away for the evening and also on weekends has helped me spend less time staring at a screen.

So how about setting yourself the challenge of stepping away from your phone this month? You'll be amazed at how your quality time with family and friends improves when you no longer have this distraction to hand.

Nik Allen

This is your city's hyperlocal magazine, delivering to homes and businesses every month.

HOME & DIY | GARDENING | PETS | HEALTH & FITNESS | BEAUTY | FASHION | HISTORY | LOCAL NEWS | FOOD & DRINK | TRAVEL | BUSINESS & PROPERTY | SPORT | PUZZLES | MOTORING | KIDS | WHAT'S ON | TECHNOLOGY | THE LISTINGS

CONTACT US: www.visionmagessex.com | chelmsford@visionmag.co.uk | 01245 527071

[@visionmagessex](https://twitter.com/visionmagessex) [@visionmagessex](https://www.instagram.com/visionmagessex) [Vision Magazine Essex](https://www.facebook.com/VisionMagazineEssex)

CONTRIBUTORS | Tabatha Fabray, Fiona Goble, Jacob Collick

At the time of print all content in **VISION** was relevant and up to date according to COVID-19 government guidelines

All pages are recyclable

A-Rated
Windows
(as standard)



BIFOLDS • CONSERVATORIES • LANTERNS • CLADDING • DOORS • CONSERVATORY ROOF UPGRADES

FOR US IT'S ALL ABOUT QUALITY

FREE Quotes & Expert Friendly Advice **CALL TODAY ON: 0800 211 8124**

M: 07958 903 275 **E:** info@totalfix.it www.totalfix.it



PHOENIX HOSPITAL CHELMSFORD

Independent private healthcare

Women's Health

Professional gynaecological advice
at Phoenix Hospital Chelmsford

We treat a wide variety of gynaecological conditions. We offer care from diagnosis, evaluation, management of conditions and treatment for women of all ages. All our tests and diagnostic assessments are carried out by highly qualified and skilled consultant gynaecologists.

- Endotest: early detection of all forms of endometriosis, with a reliability close to 100%
- Early pregnancy bleeding ● Bleeding after menopause
- Endometriosis ● Polyps ● Fibroids ● Ovarian cysts
- Abnormal smear test ● Heavy periods
- Prolapse and pelvic floor problems
- PCOS ● Vulva pain ● Pelvic pain
- Recurrent miscarriages

**VISIT OUR WEBSITE FOR MORE
INFORMATION ON OUR
GYNAECOLOGICAL SERVICES**



☎ 01245 801234

🌐 www.phoenixhospitalgroup.com/our-services/gynaecology-and-obstetrics/

✉ enquiries@phoenixhospitalchelmsford.com

📱 [phoenixhospitalchelmsford](https://www.facebook.com/phoenixhospitalchelmsford)

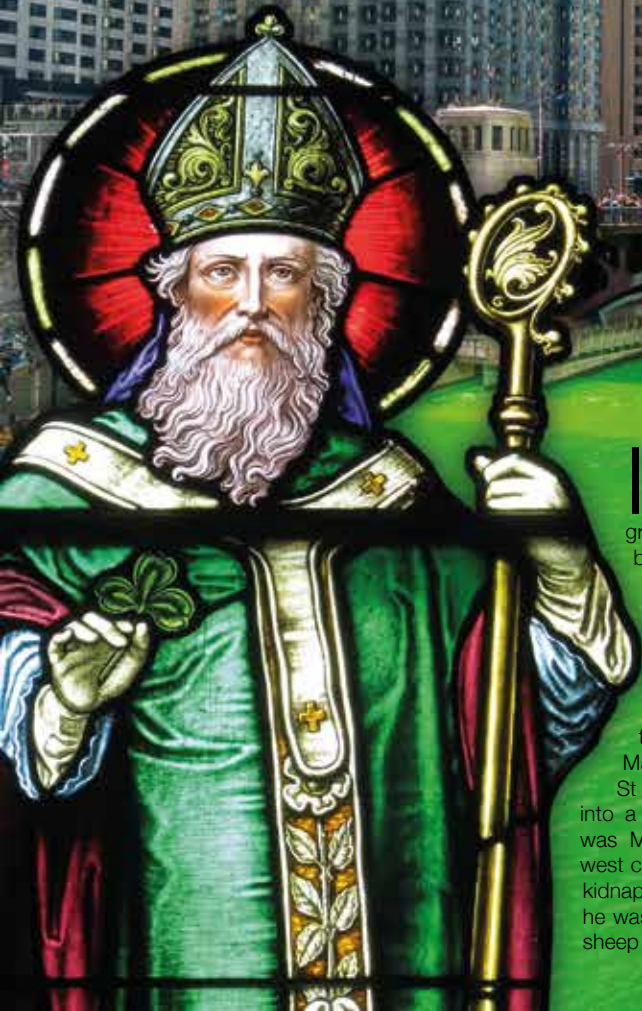
Essex Healthcare Park, West Hanningfield Rd,
Great Baddow, Chelmsford, CM2 8HN

Ample free parking on site



PHOENIX HOSPITAL GROUP

The story of ST PATRICK



In the USA, some people celebrate St Patrick's Day not just by wearing green clothes, but also by drinking green beer or milkshakes and eating green bagels and grits. Chicago even dyes its river bright green. If you think all this sounds more American than Irish, you're spot on. People join in the parades and celebrations whatever their heritage, but about one in every 10 citizens in the USA claims to have Irish ancestors. So what's the real story behind St Patrick's Day on March 17?

St Patrick was born in Britain around 386 AD into a well-to-do Roman family. His birth name was Maewyn Succat, and he grew up on the west coast, probably in Wales. At age 16, he was kidnapped by pirates and taken to Ireland, where he was sold as a slave. His job was to look after sheep for his master, a Druid high priest.

During his time as a slave, Maewyn devoted himself to Christianity, his parents' faith, and became determined to convert pagan Ireland.

After six years in captivity, Maewyn persuaded some local sailors to let him board their ship. After landing in France, he made his way back to his family in Britain. And from there, he travelled back to France to train as a priest in Auxerre.

When he was ordained, Maewyn changed his name to Patricius – or Patrick – which comes from the Latin for 'father figure'. Then, Pope St Celestine sent him to Ireland to spread the Christian message.

At first, the Irish people weren't keen. Patrick was threatened, robbed and beaten. But his strategy of persuading the most influential people first, including his former slavemaster, eventually paid off. He also had the good sense to incorporate pagan rituals into church practices to make them more appealing. Over the years, Patrick and his fellow missionaries spread their teachings across the country and set

up churches, monasteries and schools.

It's believed that Patrick died on or around March 17, 461 AD, when he would have been in his mid-70s. He died in Saul in County Down, Northern Ireland, and he's said to be buried in Downpatrick.

The Catholic church never formally declared him a saint, because the system for creating saints didn't start until the 12th century. But the Irish people and their leaders recognised him as one because of the decades he'd spent spreading the gospel.

The Irish have celebrated St Patrick's Day for more than 1,000 years. Traditionally, it involved donning a shamrock, going to church and tucking into a traditional meal of cabbage and bacon. But over the years, some St Patrick's Day fun from the USA has caught on back home. You won't find green beer – and certainly not green rivers. But there are plenty of lively parades, particularly in Dublin, with traditional singing, dancing and colourful floats.

Photo credit: TZIDO SUN/Shutterstock.com

Holi

THE FESTIVAL OF COLOURS

If you're lucky enough to experience the Hindu festival of Holi in India, it's an experience you'll never forget. People put aside their differences and come together to celebrate the end of winter and the beginning of spring, based on the Hindu lunar calendar.

This year's festival takes place on March 7 and 8 in India and among Hindu communities across the world. But what really happens at Holi, and how did it come about?

On Holi day itself, people take to the streets, singing and dancing and throwing powdered dyes and coloured water at each other – so it's no surprise that everyone ends up drenched in a rainbow of colours.

The colours of the dyes are significant. Red is associated with purity, green with vitality, blue with calm, and yellow with piety.

In the evening, when everyone's had a chance to freshen up and put on clean clothes, people visit their friends and exchange sweets.

In some places, people start celebrating the evening before Holi by lighting a bonfire. As a token of gratitude for the harvest, people throw coconuts, wheat sheaves and green chickpeas into the flames.

The bonfire tradition is based on the tale of a witch called Holika. She was burned to death in a fire by the Hindu god Lord Vishnu for trying to kill her devout nephew. To this day, some people burn an effigy of her on their bonfire.

The origin of the coloured dyes may lie with another Hindu deity, Lord Krishna. When he was a boy, he loved practical jokes, including throwing coloured water over his playmates.

But others say the custom comes down to Holi falling at a time of year when people are most at risk of catching diseases. Before the tradition of flinging around colourful dyes started, people threw herbs to keep ailments at bay.

Whatever the reason, Holi is definitely a time to celebrate life – and long may it last.

Photo credit: BearFoto/Shutterstock.com

J.L. TREE SERVICES

All Types of Tree Work & Garden Services Undertaken



**All Trees Lopped
Topped & Shaped**

City & Guilds
NPTC

Hedge Cutting

Pruning - Trees, Bushes & Overgrown Hedges

Tree Felling & Sectional Dismantling

Crown Reduction, Lifting, Thinning & Cleaning

Tree Stump Removal & Stump Grinding

Dangerous Tree Monitoring

Wood Chips & Firewood Supplied

Tel: 01621 810695

Tel: 07847 888002



www.jl-tree-services.co.uk

Email: jlreeservices01@gmail.com

0%
INTEREST FREE
CREDIT
AVAILABLE*

IT HAS TO BE
SLIDEROBES®

LIVING BEDROOM HOME OFFICE UNUSUAL SPACES

Experts in bespoke fitted furniture.

Book a free, no obligation design appointment at [sliderobes.co.uk](https://www.sliderobes.co.uk)
or call our free phone number 0800 454 465

*Credit is subject to status and affordability. Terms & Conditions apply. Reddington Jordan Ltd T/A Sliderobes Unit 3C Deacon Trading Estate, Forstal Road, Aylesford, Maidstone, Kent, ME20 7SP. Register No. 728723 is a credit broker not a lender and is authorised and regulated by the Financial Conduct Authority. Credit provided by Novuna Personal Finance, a trading style of Mitsubishi HC Capital UK PLC, authorised and regulated by the Financial Conduct Authority (Register no. FRN 311518).



HOME & DIY

Viva MAGENTA

Pantone Colour of the Year 2023:

A bold and brave shade, Pantone's Colour of the Year for 2023 is Viva Magenta. Perfect for anyone who wants to start the spring feeling empowered and unstoppable, there are lots of ways that you can incorporate this colour into your home.

What is Viva Magenta?

According to the colour experts at Pantone, Viva Magenta is "a pulsating colour whose exuberance promotes a joyous and optimistic celebration, writing a new narrative". A hybrid shade of red, pink and purple that provides the perfect balance between warm and cool tones, Viva Magenta is an inclusive colour that is easy to add to your home.

What does Viva Magenta represent?

The story behind Viva Magenta is all about the balance between our digital and physical lives. In recent years, people have become drawn to nature in their homes and Viva Magenta has been chosen to reflect our pull towards natural colours. Furthermore, it reflects the movement surrounding climate change, sustainability and land protection.

How can you use Viva Magenta in your home?

Incorporating Viva Magenta is an easy way to add a touch of fun to your home. Some of the best ways to incorporate this shade into your existing interior design include:

- Paint a magenta feature wall in your bedroom or living room
- Invest in an eye-catching magenta sofa
- Add pops of colour through rugs, curtains, pillows and other soft furnishings
- Paint your kitchen cabinets a rich pink or invest in a magenta splashback
- Try magenta dinnerware to create a sense of opulence in your dining room

What colours go well with Viva Magenta?

Viva Magenta pairs well with both yellow and turquoise, as well as being a good match for most dominant colour categories.

Photo credit: zen-living.ca, snugsofa.com





TILE- *tastic!*



If you're looking for an affordable and highly effective way to update your kitchen, then installing new kitchen tiles is the way to go.

With so many different styles and designs to choose from, you are guaranteed to find something you love from our list below.

TONAL SHADES: Neutrals, greys and creamy whites remain a safe but sophisticated choice for your kitchen and promise to make this pivotal space look both fresh and clean. However, rather than sticking to just one colour, why not combine several

tonal shades? Choose tiles with a naturalistic finish for a warm and welcoming atmosphere.

COLOUR BLOCKING: If you're not a fan of patterned tiles but you still want to make an impact, colour blocking is a great solution. Put a spin on your standard brick tiles by arranging them in horizontal, vertical or even diagonal stripes of colour. Alternatively, play around with different widths of coloured tiles on the floor to see what looks best.

EXPOSED BRICK: Add character to your kitchen with exposed brick-style tiles that are perfect for both feature walls and splashbacks. Much more affordable than using actual bricks, brick slips, which are tiles that are made to look like bricks, allow you to achieve the same look without breaking the bank.

HEXAGON TILES: If bright colours in your kitchen aren't your thing, then why not add an extra dimension by filling the space with different shapes? For example, white hexagon tiles can be used to create a sleek and contemporary look in a modern kitchen.

3D TILES: 3D tiles have seen a surge in popularity in recent years owing to their ability to add the wow factor to any style of kitchen. Choose from sharp geometric shapes, undulating wave patterns or more subtle textured tiles.



Photo credit: fireclaytile.com, Future PLC/Mark Scott via idealhome.co.uk, tiles360.co.uk, loveproperty.com



REFRESH | RECOLOUR | RESTORE

NO MESS, NO STRESS, SO AFFORDABLE



ONLY GROUTGLEAM CAN DO THIS IN A MATTER OF HOURS

**GROUT REFRESH/RECOLOUR
SHOWER GLASS RESTORATION
SEALANT/SILICONE REPLACEMENT
HYDROPHOBIC & OLEOPHOBIC
PROTECTIVE COATINGS**

10% DISCOUNT WHEN YOU QUOTE VISION

CONTACT 07572 129 625
chelmsford@groutgleam.co.uk
www.groutgleam.co.uk/chelmsford

**We will write
YOUR WILL
FOR ONLY £49.99^{+VAT}**
Subject to T&C's (£59.99 inclusive)



PARAGON LEGAL SERVICES LTD

**Affordable Excellence Endorsed by
Over 20,000 Satisfied Clients**

Let one of our local professionals offer expert advice and create your Will in the privacy of your home or over the telephone, day or evenings at no extra charge.

**Call Free 0800 0747 642
or 01206 544919**

8am - 10pm weekdays, 9am - 5pm weekends

Call us for a free home appointment and request your free information pack on Wills, Lasting Powers of Attorney, Trusts, Probate, Care Fees and Funeral Plans.

**Regulated by the Society of Will Writers
and Estate Planning Practitioners**

www.paragonlegal.co.uk



Joe's Carpets

FAMILY RUN BUSINESS ♦ ESTABLISHED SINCE 1999

The Mobile Carpet Shop Home Selection Service

- ♦ Supply & Fit
- ♦ Repairs & Refits
- ♦ Free Estimates & Advice
- ♦ Free Gripper Rods

A Friendly & Tidy Service



**Will Move
Furniture &
Uplift Old
Carpets**

**CONTACT US ON 01245 527 096
OR 07748 808094**

Faux Flowers Galore

At this time of year, there aren't too many flowers in parks and gardens. Shop-bought faux versions can be just as beautiful as the real thing, but why not impress your friends and family by creating your own?

These stunning tissue-paper flowers are simple to make and an ideal family craft – though young children will need a bit of help from an adult.

You can make each flower from a single colour of paper – or choose two or more. Alternate the colours or stack batches of colours on top of each other. Making your tissue-paper florals is all about trying different things and deciding what you like best.

When you're done, display your flowers as they are or string them into a garland. If you make them with stems, simply arrange them in a vase.

YOU WILL NEED:

- > Coloured tissue paper: 8 pieces of 8 x 13cm paper for a medium flower | 10 sheets of 10 x 15cm paper for a large flower
- > Wire twist ties (if you don't need stems)
- > 50cm chenille sticks/pipe cleaners in green or brown (for the stems)
- > A pair of scissors

HOW TO MAKE:

1. Stack the pieces of tissue paper into a neat pile.
2. Pleat the stack of paper into a concertina shape, starting at one of the long sides.
3. Use the twist tie or end of the chenille stick to tightly tie the middle of the paper strip.
4. Using the scissors, cut each end of the strip into a point or curve – or gently round them.
5. Carefully separate each layer of tissue paper.

TOP TIPS:

- > It's easier to cut the tissue paper rectangles as a stack rather than individually
- > When separating the layers, do one side first then the other
- > A mix of medium and large blooms works best if you're making a bunch of flowers.



Photo credit: thehappyhomemaker

WE REPAIR BETTER THAN ANYONE OUT THERE

Does your Double Glazing steam up? We replace just the glass and not the frames at a fraction of the cost for new windows

WE SPECIALISE IN DOUBLE GLAZING REPAIRS AND NEW

WINDOW & DOOR INSTALLATIONS

Proud member of **Checkatrade.com**
Where reputation matters

Scores based on 1104 reviews

Reliability & timeliness	9.86
Value	9.86
Courtesy	9.91
Workmanship	9.86
Average score	9.87

1104 reviews

- Upgrade to energy efficient double glazing
- Install secondary glazing to save on energy costs this winter

PROBLEMS WE SOLVE

- ELIMINATE WINDOW CONDENSATION
- BROKEN WINDOW PARTS
- BROKEN GLASS
- SECONDARY GLAZING TO BLOCK OUT NOISE
- FAULTY HINGES
- LOCKSMITHS**

INSULATE YOUR HOME

Mr Misty 'The Window Doctor' is a family run business that prides itself in exceptional customer care. We promise easy service from start to finish.

FREE PHONE: 0800 25 45 111
FOR YOUR **FREE** CHECKUP
WWW.MRMISTY.CO.UK



LKG DAUGHTERS
PLUMBING & HEATING LTD

**Local Plumbing & Heating Engineers,
Supporting Local People (and Pets)**

**Call 01245 478111
07710 358347**
Visit lkgdaughters.co.uk

**West Hanningfield Road, Great Baddow,
Chelmsford CM2 7SY**

safe



**NEXT LEVEL
CLEARANCES**

• Professional • Quick • Domestic • Commercial

COMMERCIAL & DOMESTIC
House Clearance
Garden Clearance
Garage Clearance
...and more

**RECYCLED RESPONSIBLY
GREEN SERVICE**

BEFORE AFTER BEFORE AFTER

**FOR YOUR FREE QUOTE CALL
07713 689127**
contact@nextlevelclearances.co.uk

**VISIT:
NEXTLEVELCLEARANCES.CO.UK**

FREE QUOTES

JRS PAINTING SERVICES

ALL ASPECTS OF PAINTING WORK COVERED INCLUDING:
DOMESTIC, BOTH INTERIOR AND EXTERIOR
COMMERCIAL
BEACH HUTS

FOR ALL ENQUIRIES, PLEASE CONTACT JAMIE ON:
07712 524 407
JAMIESANDERS273@YAHOO.COM

**BACK TO THE
eighties**

HOME & DIY

If you're planning to paint your walls white and buy a sleek grey sofa, it's time to rethink. After years of Scandinavian minimalism, things in the world of interior decorating are changing. So it's time to ditch those clean lines and cool colours – and plump for something warmer and more inviting instead.

Interior experts predict that brown-based colours, like caramel, coral and terracotta, are set to make a big comeback this year. Pastels are proving popular, too – especially dusky pink and soft greens.

If you're after new wallpaper or soft furnishings, there's an eighties vibe here, too. Think ditsy country florals, colourful gingham and tropical prints. Choose cushions with frilly edges. And instead of the hard lines of a minimalist sofa, opt for something chunkier, curvier and squishier instead. It's all so much cosier. While you're at it, don't forget to buy a rattan chair or two – and treat yourself to a glass-topped table.

If you want to put up some shelves, opt for brass ones, preferably with curved edges. To adorn the shelves, choose rounded vases and bowls. And if you can get hold of some eighties-style candlesticks, show them off by adding some twisted candles – they're easy to find and cost just a couple of pounds.

For those decorative touches, add a touch of macramé. This could be a wall hanging, lampshade or plant hanger. And talking of plants, check out the Maidenhair and Boston ferns in your local garden centre. You won't find many plants more reminiscent of the eighties than these.

Like any style revival, of course, there are some things you'll need to leave firmly back in the eighties. So don't revive anything that's yellow pine, think carefully before you decide to reinstate those frilly roman blinds, and whatever you do, don't lay carpet on your bathroom floor.






Photo credit: thegoodpainter.com, wreckitjens.com, lited.com

How to use LEFTOVER paint

Anyone who's decorated their home will know the dilemma of what to do with leftover paint. You'll often find tins left over after painting projects, which normally end up gathering dust (or rust) in your shed or garage.

So what should you do with all that leftover paint? Here are five ideas for some simple projects for your unused paint.

ADD A COLOURFUL ACCENT

While you might not have enough paint left over for a whole wall, you can use it to paint part of a wall. An accent behind some shelving, around a photo frame or simply to break up a block of colour can add a nice contrast to your walls.

UPCYCLE SOME FURNITURE

Leftover paint can be used to upcycle old furniture. From a pop of colour to a more neutral hue, your unused paint can bring a new lease of life to a piece in need of a facelift.

PAINT A PATTERN ON THE WALL

Patterned walls don't just have to come from wallpaper. From polka dots to lines and animal-style splodges, you can use your paint to create a cool contrasting pattern that will add some interest to your space.

GIVE PLANT POTS A MAKEOVER

Want to brighten up your plant pots? Use your leftover paint to give them a new look and instantly brighten up your garden and windowsill.

PAINT PHOTO FRAMES

Adding a little colour to photo frames can make them stand out and is an ideal way to upcycle them, saving you some money and helping the environment too.

Finding ways to use up your leftover paint will help you prevent waste and help you do some interesting and colourful DIY projects around the home.

Photo credit: grillo-designs.com, mixandmatchdesigns.com, framebridge.com

Let's make your conservatory SPARKLE AGAIN!



- Exterior deep clean & polish
- Complete internal & external valet
- Decorative mouldings cleaned
- Solar panel cleaning



Please call: **01277 790 173** or **07726 323 800**
E: enquiries@ukccc.co.uk www.ukccc.co.uk

BRIGHT&BEAUTIFUL

Cleaning | Tidying | Laundry | Ironing

Professional Housekeeping and Ironing Services



A Clean Home is a Happy Home

01245 676 301
07539 320017

CALL TODAY FOR A FREE CONSULTATION

Christina.grima@brightandbeautifulhome.com
Bright & Beautiful Chelmsford

ECO FRIENDLY PRODUCTS
DBS CHECKED | FULLY INSURED

1 HOUR FREE IRONING OR FRIDGE CLEAN
when you sign up for a regular service

CHELMSFORD HIGH STREET MARKET

The High Street Market takes place in Chelmsford High Street every Tuesday, Friday and Saturday. The market has been running since 2005 and offers quality fresh produce, flowers and a variety of home cooked street foods.

There's fresh bread, cakes and pastries from Brown Bread. Freshly caught fish, lobster and jellied eels supplied by Young's Fish. Cheese & Pie, a family run business sells many varieties of cheese from brie to black bombers. Another family run business is our greengrocer offering fresh quality seasonal fruit & vegetables.

No high street market is complete without its street food, of which we have plenty!! You will find Caribbean dishes from Jerk Station, authentic German bratwurst sausages, burgers, authentic vegan and vegetarian falafels cooked before your eyes. We have fresh chimney cakes, churros, authentic Biryani dishes, oak smoked beef brisket, and homemade Romanian foods including rolled sausages and stroganoff. If you are feeling thirsty Coffee Stop sells over 50 different coffee flavours, and cool shakes in the summer.

Away from food, GSE Flowers boast unique flowers from Holland, which are hard to find in local supermarkets, ideal for a beautiful bouquet for that special occasion.



CHELMSFORD INDOOR MARKET

Chelmsford's Indoor market dates to the 11th century and takes place every Tuesday to Saturday. We have easy parking in High Chelmer car park situated right above the market and if you travel by bus, the bus interchange brings you conveniently right to the heart of the market.

The Indoor market has something for everyone, all under one roof. Many of our unique family run businesses have been handed down through generations and include haberdashery, wool, picture framing, watch batteries and repairs, card stalls, hardware's, bags, hats and luggage. If you are looking to recover an old chair, the foam stall will cut foam to size and if you need your bicycle repaired, this is the place to come. We have fresh foods, including a greengrocer, butcher and a stall selling one of the widest varieties of cheese in the area.

If you are looking to buy for children, then our baby and children's clothing stall offers a wide range of outfits for all seasons and occasions. We have a huge selection of action figures and toys to keep the children occupied for hours.

If you are looking for something special for the garden, we have Blue Lagoon Furniture that have a wide range of both indoor and outdoor furniture. We have two plant stalls and a stall selling garden ornaments, lights and accessories.

Thursday is our vintage market day. Traders here will be delighted to show you their collectable items for sale including war memorabilia, vintage jewellery, ornaments, books, china, glass, vinyl records and toys.

Once you have finished all your shopping, we have plenty of places to enjoy a cup of coffee, grab a burger or taste some fine street foods including Thai and Italian cuisine.

Historically Chelmsford has held a market Charter for over 800 years. Supporting our small, family run businesses help ensure that Chelmsford's market continues to thrive well into the 21st century.



CHELMSFORD MARKETS

*Enjoy our
unique shopping
experience*

**SUPPORT SMALL, LOCAL,
FAMILY-RUN BUSINESSES**

www.chelmsford.gov.uk/market

Tel: 01245 605716





LOCAL NEWS

from your neighbourhood

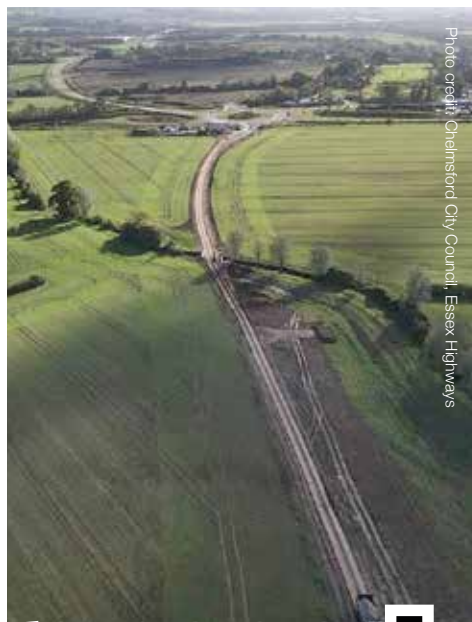


Photo credit: Chelmsford City Council, Essex Highways

New road proposed from Garden Community

Plans have been submitted for a new road to support traffic from the Chelmsford Garden Community.

The proposed Northern Radial Distributor Road would run through north Chelmsford, according to plans submitted to Chelmsford City Council, and would be part of the Chelmsford Garden Community, which includes 5,500 new homes.

This is a part of a wider long-term plan for as many as 14,000 homes between Braintree and Chelmsford, supported by the new Beaulieu Park train station and a new bypass which is currently under construction (pictured right).

A statement as part of the planning application said: "The proposed scheme has been identified as

a much-needed route between the new Chelmsford North East Bypass and Wheelers Hill/Essex Regiment Way to assist in providing the necessary transport infrastructure for the Chelmsford Garden Community.

"The proposed scheme will provide effective relief of traffic on the existing road network (East Regiment Way and Boreham Road) and would reduce the volume of traffic passing through existing residential communities, including down Domsey Lane.

"The proposed scheme will ensure the necessary transport infrastructure is available in advance of the delivery of the future Chelmsford Garden Community."

To keep updated with the development, you can visit chelmsfordgardencommunity.co.uk



Be who you've always been... a star baker

At Manor Lodge care home being a star baker doesn't stop when you make the journey into care. Our dementia specialists support each resident to live life as independently as possible. Bring your life with you to a place you can call home.

Award winning, person-centred care for over 40 years.

If you're considering care for yourself or a loved one call **01245 960766**.



Trusted to care.

Manor Lodge care home
Chelmsford
careuk.com/manor-lodge



Reduce your energy costs with a solar PV system

QUOTE REF:
SOLAR1
WHEN REPLYING

FOUR EASY STEPS TO FREE ELECTRICITY

We've simplified our process, so generating clean, renewable energy with a solar PV system is now easier & more affordable.

1 

CONTACT

2 

DESIGN

3 

SURVEY

4 

INSTALLATION

Request your FREE solar PV design proposal
Call 01473 276688 to find out more

Or scan the QR code to visit our website



CJ Solar is a fully accredited renewable energy company, specialising in solar PV, battery storage and electric vehicle (EV) charging points.

With over 25 years' experience in clean energy solutions and 4,000 solar PV installations, you can be sure your investment is in safe hands.

*Warranty periods may vary, refer to manufacturer for exact details. 2-year parts & labour guarantee as standard.

CUSTOMER PROTECTION

- ✓ HIES accredited installer
- ✓ Up to 10-year product warranty*
- ✓ NICEIC Platinum Promise & an independent warranty guarantee
- ✓ Approved by the Consumer Protection Association (CPA)



Call us today
01473 276688

design@cjsolar.co.uk
www.cjsolar.co.uk



Edison House, Edison Close, Ransomes Europark, Ipswich, Suffolk, IP3 9GU
CJ Solar is a trading division of CJ Electrical Contracting Services Ltd. Registered in England and Wales.
Company No: 09961203.

'Horrific' amount of rubbish retrieved from rivers



Photo credit: Chelmsford City Council

Council cleaning crews pulled more than 100 shopping trolleys from rivers in Chelmsford city centre in February, alongside bicycles and hundreds of other pieces of rubbish.

Chelmsford City Council's team used a boat to remove surface debris and litter. The following week, they slightly lowered the water level to retrieve objects embedded further down.

As well as 104 abandoned shopping trolleys, the team removed 21 bicycles, two Christmas trees, 17 traffic cones, four tents, 26 reusable life belts and a wheelie bin from the rivers.

Councillor Rose Moore, cabinet member for greener and safer Chelmsford, said: "The huge haul that we've recently seen come out of our river channels in the city centre is both horrifying and a wonderful thing.

"It's always shocking to see the accumulated gubbins that comes out of our rivers and our waterways. It's heartbreaking to know that people really are so mindless that they will just cast large items aside."

If you want to get involved and lend a hand cleaning the rivers, the council's Love Your Chelmsford team runs a litter picking programme. Search 'Love Your Chelmsford' on Facebook for updates.

Luxury travel company scoops award

The owner of local luxury travel company Never A Wasted Journey has scooped the accolade of National Luxury Travel Designer of the Year at the TTG Luxury Travel Awards 2023, organised by TTG Media.

The company, run by Daniel Salmon, has previously won the same award in 2022, 2020 and 2019. The winners are decided by a panel of industry experts and judges.

Daniel said: "It means so much to have won such a fantastic accolade and I thank all of you for your much-loved and continued support."

April Hutchinson, TTG's luxury editor, said: "The TTG Luxury Travel Awards shine a light on travel companies

and individuals across our sector who go above and beyond for their customers.

"They constantly rise to challenges and continue to innovate, wowing their guests and industry partners. We also place emphasis on recognising those who make a positive contribution in the area of sustainability and community engagement, as well as taking care of their team.

"These were the most well-entered awards we have ever operated, a wonderful reminder of how amazingly the luxury travel sector continues to thrive and bounce back. Huge congratulations to all our winners – they truly deserve it."

Teenager charged over murder of 16 year old

A teenager has been charged with murder following the death of a 16 year old in Chelmsford.

Elijah Clark, 18, of Gloucester Avenue, Chelmsford, has been charged with murder, actual bodily harm and possession of a pointed article. A 17-year-old boy was also arrested on suspicion of assisting an offender in connection with the investigation.

Police attended a green space off Waterson Vale at around 11.30am on Sunday, February 12, following reports of a serious assault. The victim, Andy Wood (pictured below), was taken to hospital, where he sadly died.

Clark appeared at Colchester Magistrates' Court on Thursday, February 16. No pleas were entered and a date for a preliminary trial hearing has been set for April 17.

In a statement, Andy's family said: "Andy was a kind and loving young man. He touched the lives of countless people. His loss has left a massive hole in the lives of his family and friends."

Andy's former school, Honywood School, released a statement, saying: "We are shocked by the news of the tragic circumstances that led to Andy's death.

"Andy was a beacon of positivity who radiated kindness."



Photo credit: Essex Police





Tributes paid to passionate councillor



Photo credit: Chelmsford City Council

Tributes have been paid to councillor Tom Willis (pictured above), Chelmsford's climate ambassador, who passed away last month aged 78. Cllr Willis was first elected as a city councillor 30 years ago, and colleagues remember him as being an exceptionally kind and thoughtful man with a lifelong passion for the environment.

He was elected as Mayor of Chelmsford in 2008, and carried out his mayoral duties with enthusiasm and dedication. In 2020, he was appointed as the city's first climate ambassador, a role in which he relished making a difference.

Inspired by the fundraising efforts of Captain Sir Tom Moore, cllr Willis created his own version of a marathon. He challenged himself to collect 26 wheelbarrow loads of manure from a local stable and bring it home on foot – a round trip of a mile.

Councillor Stephen Robinson, Leader of Chelmsford City Council, said cllr Willis was a much-loved man who was ahead of his time with climate activism.

Cllr Robinson said: "Most of us want to make the world a better place, but Tom Willis was one of those rare individuals who spend a lifetime turning their ideas and hopes into action.

"His environmentalism wasn't something lofty or remote – it was rooted in a deep sense of place, present in everything around him."

Police investigate alleged drink-spiking incident

Police are investigating an alleged incident of drink spiking which was reported in Chelmsford last month.

The incident is understood to have taken place at a Chelmsford venue during the evening of Friday, February 17.

A spokesperson for Essex Police said: "Our enquiries are ongoing. These include an extensive review of CCTV from the venue and taking accounts

from staff in the venue as well as others who were with the victim.

"Samples from the woman will be sent for forensic examination. In addition, we are making enquiries to establish whether there was any contact between the victim and police officers on that evening and, if there was, the nature of those interactions.

"We will be meeting with the woman to outline our findings to date. We understand how alarming these reports can be, and we can assure the public that we are carrying out a thorough investigation."

Anyone with information should contact Chelmsford CID by calling 101 and cite incident 875 of 18 February.

Museum displays knighted artist's work

Two works of art by renowned local artist Sir Grayson Perry CBE have gone on display at Chelmsford Museum.

Untitled and *England as Seen From Lockdown in Islington* are on display in the ceramics gallery, which features several other works by the famous artist.

Perry grew up in Chelmsford and now lives in London. The Turner Prize-winning artist was bestowed a knighthood in His Majesty the King's New Year Honours List 2023 for services to the arts.

Mark Curteis, assistant museum manager, said: "Many local residents feel a great fondness for and connection to Grayson Perry, who was born and grew up in Chelmsford and often creates works reflecting on his childhood and his memories of the area.

"These pieces are a great addition to our ever-growing Grayson Perry collection and will give Chelmsford residents a fresh understanding of the work of the artist and national treasure."

Councillor Marie Goldman, deputy leader of Chelmsford City Council, said: "Chelmsford is incredibly proud of its rich and varied cultural history.

"We know how fortunate we are to be able to share at Chelmsford Museum a rich collection of objects that tell the ongoing story of the city's cultural development, including these new pieces by one of the UK's best-loved artistic pioneers."



Photo credit: Chelmsford City Council

GATFire

HETAS and OFTEC Registered Installers

SHOWROOM
1731 London Road.
Leigh-on-Sea, Essex SS9 2SW
01702 715161

Stoves • Fireplaces • Chimneys

Our Estimates are FREE, Our Advice is FREE IT MUST BE WORTH A CALL!



PACKAGE 1
The Lakes Derwent
5kw multifuel
ECO Design
£999 plus VAT FITTED

THESE PRICES INCLUDE:- flue pipe, closure plate, flexible stainless steel liner, caps, clamps, connectors etc., and fitting by a HETAS and OFTC Registered Engineer.

PACKAGE 12
Dean Stoves Dartmoor 5 Wide
5kw woodburner - multifuel option
ECO Design
£2099 plus VAT FITTED



We believe in value for money, we can supply and fit any make and any model of stove at prices that make our competitors complain... and yes, they have!!

OPENING TIMES: MONDAY - SATURDAY 9.15am - 5pm. SUNDAY Closed.

www.gatfire.co.uk

Come home to a clean house



Our professionally trained team of maids will make your home sparkle with each visit. We know it's not a one-size fits all service, that's why we work to tailor our cleans to your individual needs, schedule and budget.

Call us today to arrange your no obligation in home quote

Emma Brooks
01245 494003

emma.brooks@mollymaid.co.uk
www.mollymaid.co.uk/locations/chelmsford/

See what our customers have to say at uk.trustpilot.com Trustpilot



VICKY FORD MP

Member of Parliament for Chelmsford

LOCAL NEWS



It is great news that construction is now starting on Beaulieu Park Railway Station. At a meeting of the Great Eastern Mainline Taskforce last month, I am delighted to report that I was told there has been "significant progress" on procurement, timetable changes and fulfilling contract obligations. The project remains on programme and on budget, with the station set to be operational by December 2025. Infrastructure is vital for our growing city and delivering growth. In Westminster, I have been busy lobbying ministers about the Army and Navy Sustainable Transport Package, as the decision on whether to approve a £68million investment from the government is now working its way through Whitehall.

Tenders have now been received for Beaulieu Medical Centre, with the anticipation that construction will commence in the first half of this year. This is a

complex project, with most of the components of the building being constructed offsite and assembled here in Chelmsford at the site. The design has been revamped to make this a state-of-the-art net-zero building. I am continuing to push for this to be completed as soon as possible.

I recently opened the new Construction Centre and Institute of Technology at Chelmsford College. I was extremely impressed by the new Construction Centre, which is teaching state-of-the-art construction skills. This exciting Institute of Technology is a new suite containing the latest technology to focus on supporting higher-level learning in construction and engineering for students from all across Chelmsford and wider Essex.

Finally, if you have a problem you need help with, then please email me at vicky.ford.mp@parliament.uk

Store reopens with new owners

A popular sustainable grocery store in Chelmsford has reopened under new ownership after the business came close to shutting down.

Refill Chelmsford opened in August 2020 and offers unpackaged foods and toiletries which can be collected in refillable containers to reduce waste.

At the beginning of the year, founders Pete and Jan announced their intention to close the store. They did not disclose a reason for doing so, but did offer the opportunity for someone to step in and take over.

On Wednesday, February 15, new owners Russell, Danielle and Andy (pictured right) introduced themselves on the store's Facebook page. They thanked Jan and Pete for their "bravery in starting something so different and important in Chelmsford". The store reopened on Friday, February 24.

Couple Danielle and Andy work at a law firm and at a cloud technology company respectively, while Russell is a resident DJ and plays at festivals with Andy.



Photo credit: Refill Chelmsford

Cloudy2Clear, A Local Service, Saving You Money.

As a leading domestic glass replacement company for more than 16 years, Cloudy2Clear windows are the leading name in the industry. There is no need for you to risk your windows by using the dreaded double glazing cowboy down the street. You can join over 336,000 happy customers and replace your glass ethically and affordably. If you have a failed glass unit, it may not provide you with the protection you need or be as energy-efficient as it once was. Take a minute to check your home to see if any double glazing has failed? Taking action now can prevent future financial problems.

When talking to the Manager of Cloudy2Clear windows Chris Miller it became clear that these

values have been held dear for a number of years. Since starting the business some years ago Cloudy2Clear have remained true to their core values of supporting the local community by providing a service that saves the public money.

The Cloudy2Clear service only requires the glass to be replaced and not the whole window once the unit has failed. Chris commented "Cloudy2Clear were able to assist our community through the last financial crisis in 2008 due to the savings that can be made in using our service. Unfortunately we might be going through something similar again soon and the public can rest assured that we will be there to help once again".

For a free quotation please call 0800 61 21 118 or visit www.cloudy2clear.co.uk.

"Ask me about our fantastic Energy Saving Glass."



Have Your Windows Steamed Up?

Replace the pane, not the frame!

All glazing backed by our

25 YEAR
GUARANTEE

"I really liked the fact that they were a local community run business"

Janet Beard



We are a Checkatrade Member



Get a FREE Quote

Social distancing in operation

Faulty locks, handles or hinges?



Priority freephone
0800 61 21 118

www.cloudy2clear.co.uk

Love Your Home - Protect Your Windows - Save Money





**We could fill
Wembley Stadium
MORE THAN TWO TIMES
with our monthly
readership...**

**...OVER 207,500 PEOPLE IN ESSEX
READ VISION MAGAZINE'S MONTHLY**

Photo courtesy of PA Images

CONTACT US TODAY TO GET YOUR BUSINESS SEEN BY OUR READERS

Your
Monthly
Lifestyle
Magazine **VISION**

See all our magazines online
at www.visionmagessex.com

Did you know this isn't the only **VISION** magazine in Essex?

Billericay Shenfield Bishop's Cleeve Brentwood Ongar Chelmsford Beaulieu Epping Theydon Harlow Halstead Braintree Hertford
Hornchurch Leigh Thorpe Bay Loughton Maldon Burnham Rayleigh Wickford South Woodford Tending

East Anglian Traction Engine Society - Registered Charity No. 296027

SAFFRON WALDEN CRANK - UP

STEAM AND VINTAGE VEHICLE SHOW

Steam Engines * Tractors * Vintage Cars
Trade and Crafts * Bar & Food * Fairground



Carver Barracks, Wimbish, Saffron Walden CB10 2YA

ADULTS £7 each, CHILDREN FREE - GATES OPEN 10.00

Tickets available to pre-book now at reduced rates! Visit our website.

www.swcrankup.co.uk - 07882 175438

22nd & 23rd APRIL 2023

SALSA D'LITE Party Night 18 March 2023

8pm - Cha Cha Cha With Paul & Alex

9pm - Midnight Social Dancing

Danbury Sports and Social Centre

Doors Open 7:30pm

Non Members Entrance £12 all night



Learn to Salsa

We offer lessons from absolute beginner to advanced level to ensure you look good on the dance floor. We offer lessons in Beaulieu, Springfield and Danbury



Email: salsadlite@aol.com

Tel: 07831 650618

www.salsadlite.co.uk



THE HOT DRINKS hero

HISTORY

MEET THE MAN BEHIND THE INVENTION FOR HOT (AND COLD) DRINK LOVERS EVERYWHERE

The next time you unscrew your flask to pour a coffee, spare a thought for Scottish scientist Sir James Dewar. He was the man who made it happen – even though keeping your drinks hot wasn't what he had in mind.

Dewar, who died 100 years ago this month, was best known for his work on the liquefaction of gases. It's not the right place for a chemistry lesson, but when gases are in liquid form, they're much easier to store, so it was important work.

The problem was that Dewar couldn't keep the liquid gases cold enough for long enough to study them. And when they got too hot, they turned into gas again.

To solve the problem, he put his glass flask of liquid gas into a bigger flask. Then he created a vacuum between them and mirrored their outside walls. So the inside flask was almost perfectly insulated, and heat couldn't reach the liquid inside.

Dewar exhibited his creation at London's Royal Institution on Christmas Day 1892. The principle behind his flask is the same one behind the vacuum flasks manufactured today.

Dewar's invention could have made him a wealthy man. The problem was he didn't take out a patent. But the German glassblower who made Dewar's flask had an idea: he realised that the flask could keep liquids warm as well as cold and spotted a gap in the market. He created a flask in a protective metal casing and set up a company called Thermos – Greek for 'hot'. He successfully applied for a patent in 1904 – and the Thermos flask was born.

Dewar sued Thermos for using his invention. Sadly for Dewar, he lost the case. But, refusing to retire, he carried on working as a professor at the Royal Institution until his death at the age of 80 in 1923.



HISTORY

PETER JONES

AND A HOST OF TALL TALES

At 6ft 6", formidable *Dragons' Den* mainstay Peter Jones CBE has a lofty view over more than just his business landscape.

His is a stature that has evolved over four decades of being at the cut and thrust of business, on the way amassing a personal fortune of more than £1.2billion.

The idea of standing up to one of the formidable commercial minds in *Dragons' Den* is, ultimately, a thing few entrepreneurs relish. The hit BBC reality business show puts pitchers through their paces en route to a prospective investment offer, yet few who duel with telecoms wizard Peter Jones ever emerge victorious.

The 56 year old has been the only Dragon to appear in every season of the hit show, the 20th series of which is currently airing on BBC One.

He has mastered the art of pulling off a devastating look of utter incredulity, although the element of surprise is part of what makes the show so entertaining.

"Over so many years in business, there should

be few things that surprise me," he begins, "and by now I thought I might have exhausted the ability to be surprised or shocked by some of the ideas or investment valuations that come my way.

"In truth, though, people will always surprise you, and that's what makes the show so entertaining. You can expect the unexpected, because it will always arrive."

That line perfectly encapsulates Jones's climb to becoming one of the country's most successful and best recognised entrepreneurs. Growing up in Langley, Berkshire, before moving to Maidenhead at the age of seven, his first business was in the production of personal computers, a venture he began at the age of just 16.

While the business excelled at first, the evolution of home computing in the 90s saw Jones lose ground. A series of bad decisions led to the collapse of his enterprise, and with it went his millionaire status. At 28, he was forced to sell the remnants of the company to IBM and start again.

Subsequently joining Siemens, he was soon branching out again by himself, launching Phones International Group in 1998, a business that garnered more than £14million in sales in its first year alone.

Further personal ventures in TV, retail and lifestyle projects have been supplemented with more than 60 investments via *Dragons' Den* – where Jones is regarded as the most plain-speaking and shrewdest on the panel.

"I think when it comes to business, it's important to be polite and engaging, but ultimately you can't hang about," he says. "If something needs to be said, it needs to be said, and tiptoeing around the issue has been the death of many a good idea."

As well as gaining a CBE in 2009, he runs The Peter Jones Enterprise Academy and The Peter Jones Foundation – both committed to driving and promoting the next generation of business minds, no matter what barriers exist in someone's life.

As for the most salient business lesson of them all – Jones insists there is nothing more defining than starting again from scratch. "Failure is arguably the best route to success," he says. "Most entrepreneurs have been at the point where the hopelessness seems profound. I've been there myself, and to be that low, only to rise back up, is one of the most fulfilling things you can do. Ultimately, never give up."

Photo credit: BBC Studios



A GARDEN IN WINTER

If you're visiting Sheffield this year, the multi-award-winning Winter Garden offers the chance to take a step away from the bustle of Britain's fourth-biggest city. It's wheelchair and buggy friendly, open every day except Christmas Day, and entry is free.

WHAT EXACTLY IS IT?

It's an exotic landscaped garden housed in a vast greenhouse with soaring arches and a glass roof. It houses around 2,500 plants, all originating from temperate climates in the Southern Hemisphere. There are also bedding plants, which are changed five times a year – so there's always something new to admire.

The Winter Garden is 75m long, 23m wide and 21m high – that's big enough to house 5,000 average domestic greenhouses.

And it's not just about plants – there's also an art gallery, a café and shops at the garden. So allow plenty of time for your visit.

The greenhouse was opened in May 2003 by the late Queen Elizabeth II, and was designed by London

architects Pringle Richards Sharratt and Bath-based construction consultants Buro Happold.

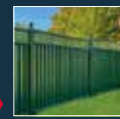
WHAT TYPES OF EXOTIC PLANTS ARE THERE?

As well as a stunning bamboo curtain, lush tree ferns and elegant grasses, you can also feast your eyes on some of these:

- > Thorny acacia trees, which in their native habitat are an important food source for animals, including giraffes and elephants
- > Pines from the araucaria family, including monkey puzzle trees
- > Palm-like cordylines, often grown as houseplants in the UK
- > Desert plants like cacti, agave and aloe vera
- > Eucalyptus trees, mostly found in Australia and prized for their timber, the oil in their leaves and providing food for koalas
- > Low-growing phormiums, which are native to New Zealand and have elegant, sword-like leaves
- > Trachycarpus palm trees, known for their chunky trunks.

Photo credit: travellight/Shutterstock.com

12 Months Interest Free Available



ColourFence



ColourRail



ColourGate



ColourShed

Over 100,000 Fences Installed and Still Standing.
Over 40 Branches Nationwide.



ColourFence

ColourRail

25 year
guarantee

Withstands gusts of
up to
130 mph

Virtually
maintenance
free!

No pressure
promise

The only fence that won't warp, crack, shrink, rot, peel, break or blow over...
well, for 25 years at least!

NO RISK PROFESSIONAL INSTALLATION

SUPPLY ONLY

SAVE £s FIT IT YOURSELF

TRADE ENQUIRIES WELCOME

Create your look with a choice of
designs and sizes in four colours



We also have a wide range of ColourRail in various
designs and colours, please ask for details.

"Brilliant product and excellent staff. My
whole garden is now beautifully furnished
with this garden fencing! No more
painting for me and no more worries
about windy weather. So pleased!"

- Anne Brown, Cornwall

12 months Interest Free
or
Interest Bearing up to 60 Months
Example: Total amount of credit £2250,
agreement duration 5 years, the payments
will be around £50.27 per month subject
to lender's discretion.

FOR A FREE, NO OBLIGATION QUOTE TODAY, FIND OUT MORE VIA:

07961 774 718 colourfenceeastessex.co.uk

*Hose down several times a year – Essex & East Coast Fencing Ltd is an introducer appointed representative of Ideal Sales Solutions Ltd t/a Ideal4Finance. Ideal Sales Solutions is a credit broker and not a lender (FRN 703401). Finance available subject to status. The rate offered is always provisional and will depend upon your personal circumstances, the loan amount and term.



FENCES

RAILS

GATES

SHEDS

DOMESTIC

COMMERCIAL

TRADE

SUPPLY ONLY

LOSS OF PRIVACY?

24 Hr Delivery



BEFORE



AFTER

Gain instant privacy with our mature Tree and Hedging plants



Browse plants & buy online: kingco.co.uk
or **VISIT OUR NURSERY** near Braintree t: 01376 340 469

King & Co
The Tree Nursery

King & Co The Tree Nursery, Dunmow Rd, Rayne, Nr Braintree CM77 6WF

Open Monday and Friday 10.00am - 4.00pm



**COMPLETE CARE
FOR ALL YOUR
OUTDOOR SPACES**

**PATIOS & PATIO CLEANING
DECKING ♦ FENCING
ARTIFICIAL GRASS ♦ DRIVEWAYS
BESPOKE GATES ♦ DIGGER HIRE**



**CALL US NOW FOR A FREE
NO OBLIGATION QUOTE**

- ♦ Professional landscaping and trade services throughout Essex and the surrounding areas
- ♦ Domestic and Commercial Projects
- ♦ ATS Landscapes provide a year's workmanship guarantee with all work completed by us.

on **01245 763978** or **07927 559250**

www.atsslanscapes.co.uk

info@atsslanscapes.co.uk



Checkatrade.com
Where reputation matters



Our gardens start to bloom in earnest this month – but March can be a surprisingly tricky time for wildlife. That includes humble but helpful insects and worms, as well as bees, birds, amphibians and hedgehogs. So what can you do to help?

LEAVE FOOD FOR HEDGEHOGS

Leave out water and meat-based cat or dog food – ideally chicken in jelly. Do this when it's getting dark, and remember to throw away any uneaten food the next morning. If you have hedgehogs in your garden, you could also buy a hedgehog house or even build one.

FEED THE BIRDS

Birds need calorie-rich food at this time of year to get ready for breeding. Choose sunflower hearts (seeds without the husk), fat balls or suet pellets. Steer clear of peanuts just in case adult birds feed them to their young and cause them to choke.

BEE KIND

If you're adding new garden plants, choose ones with open flowers that are rich in pollen and nectar. Good choices include aconites, evergreen clematis, primroses, and winter-flowering heather and honeysuckle.

BUG LOVE

Helpful insects and even earthworms find it hard to flourish in March as food sources can be scarce. To help them, create a log pile in a shady spot. You might also want to start a compost heap. And, while you don't have to turn your garden into a jungle, insects will love it if you let a corner of your garden grow wild.

POND LIFE

March is the main breeding month for frogs, toads and newts. To make your pond amphibian-friendly, select the plants they like to breed around, such as marsh marigold, water forget-me-knot and brooklime. You could add plants such as hornwort and curled pondweed to keep the water oxygenated and help shelter tadpoles from predators.



Allegro music

The Piano and Keyboard Specialists

Allegro Music have been selling Pianos, Keyboards and a huge range of other instruments for over 40 years, with branches in Chelmsford, Southend and a brand new Piano & Keyboard Centre due to open in February in Great Baddow.

When it comes to instruments with Keys on, we can offer a fantastic range of New and Used Acoustic Pianos, Digital Pianos and Digital Keyboards.

What can you find in store?

Our store at 95 High Street, Chelmsford is a Yamaha premium main dealer, and one of only a few locations where you can compare the incredible Clavinova CLP, CSP and CVP ranges of digital piano. Of course, if you prefer a more traditional instrument, we also stock one of the biggest ranges of new, used and factory refurbished acoustic pianos you will find, from the likes of Yamaha, Kawai, Steinhoven and many more. Taking those first steps towards playing the piano always requires the choice to be made about what instrument to purchase, and we can help with our experts in store to help advise on the perfect instrument. We stock a great range of beginners instruments, whether digital or acoustic, new or used, and one thing they all have in common, is great value for money, and the reassurance you are buying an instrument that is suitable for your needs.

Even more Pianos!

February '23 will see our brand new Great Baddow Used Piano and Keyboard Centre open its doors. Situated on the popular Great Baddow Antiques Centre site. This completely refurbished store will offer some incredible instruments at fantastic prices as every month we take in top quality used instruments as part exchanges against new models, and up to now they have remained in storage until we have room in one of our stores. Now, all those lovely instruments eager to find a new home, will be available under one roof and with free parking right outside the door and an onsite coffee shop, a trip to Great Baddow will be well worthwhile, call us on 01245 690560 for more information.

We look forward to seeing you in store soon and helping you choose your new piano or keyboard

Chelmsford High Street Store - 01245 283527 Great Baddow Store - 01245 690560

www.allegromusic.co.uk

Part Exchange and 0% Finance

We offer top part exchange prices on almost any instrument against our new and used models, and many also come with 0% Finance options up to 24 months, with a low cost deposit to help make buying a piano or keyboard even easier.

Piano and keyboard Lessons

All of our locations feature on site piano and keyboard lessons, courtesy of the Allegro Music Academy. For over 40 years we have taught thousands of people across Essex how to play, from complete beginners to professional players. With lessons taking place seven days a week, from early till late and all day Saturday and Sunday, our team of CRB checked teachers have been chosen not just because of their musical ability, but also our key objective, to "Make Music Fun". We work with some great teachers and they are waiting to help you, whatever your playing standard, and as a new student, you can enjoy our introductory offer of four lessons for the price of two. Go to www.allegromusicacademy.co.uk for full details, including tuition on other instruments such as guitar, ukulele, drums, wind, brass, violin, vocals and theory.

Make It Musical Event

This Winter, both our Chelmsford and Great Baddow stores will be running our "Make It Musical" event. You choose the best deal for you when buying or upgrading to a Piano or Keyboard:

- 1: Up to 20% off outright buy
- 2: Up to 24 months 0% finance
- 3: An extra 10% on any part exchange value

Turn this year's Winter Blues into the Real Blues

Make it a Musical one with a piano from Allegro Music

Upright Pianos – Grand Pianos – Digital Pianos
Portable Pianos – Digital Keyboards – New & Used Instruments



Piano & Keyboard Lessons 7 Days A Week

Complete Beginners Very Welcome
Children's & Adult's Lessons
Lesson Gift Vouchers Available

New Students Special Offer

Four Lessons For The Price Of Two

Make It Musical Event

Choose Your Perfect Deal:

- 1: Up To 20% Off Outright Buy
- 2: Up To 24 Months 0% Finance*
- 3: An Extra 10% P/X Value

Pianos From Under £500 to Over £15,000



Free iPad Worth £300 With Yamaha CSP170*
*While Stocks Last – Ends 31st March 2023

All Inclusive Premium Packages Include:

Delivery (Now or Christmas) - Stool - Headphones - Tuning (Acoustics) - Stand (Portables)

YAMAHA

Clavinova

KAWAI

STEINHOVEN

Allegro music

High Street Store Open 7 Days A Week

www.allegromusic.co.uk - * Finance STC

95 High Street, Chelmsford, CM1 1DX - Tel 01245 283527

Unit 2, Baddow Antiques Centre, Great Baddow, CM2 7JW - Tel 01245 690560



CELEBRATE BRITISH PIE WEEK, STARTING MARCH 6, WITH SOME TASTY TREATS

INGREDIENTS: 1 onion, thickly sliced | 50g small broccoli florets | 2 red peppers, cut into chunks | 350g courgettes (2 medium), thickly sliced | 2 tsp cumin seeds | 1 tbsp avocado oil | 200g low-fat houmous | 50g coriander (chopped) | Zest of one lemon | A pinch of chilli flakes | 375g packet of ready-rolled puff pastry (dairy free) | 225g sweet potato, peeled and thinly sliced | Non-dairy milk

HOW TO MAKE:

- > Heat the oven to 220°C/fan 200°C/gas 7.
- > In a roasting tin, mix all the vegetables (except

the sweet potato) with the oil and cumin. Roast for 25 minutes then mix in the houmous, coriander, lemon zest and chilli flakes.

- > Turn the oven down to 200°C/fan 180°C/gas 6.
- > Cut the pastry into two rectangles and lay one on a baking tray. Layer the sweet potatoes on top, leaving a 2cm border, then top with the vegetable mixture.
- > Drape the remaining pastry over the filling and press the edges to seal.
- > Brush with milk and bake for 25-30 minutes till golden brown.

INGREDIENTS: 150g granulated sugar | 4½ tsp cornflour | 225g rhubarb, cut into 1.5cm slices | 1 orange (juice and zest) | A pinch of cinnamon | 4 sheets of filo pastry (each approx. 48cm x 25.5cm) | 2 tbsp melted butter | 2 tsp icing sugar

HOW TO MAKE:

- > In a medium saucepan, mix the sugar and cornflour together, then add the rhubarb, 4 tbsp of orange juice and a teaspoon of zest. Cook gently till it's thickened. Add the cinnamon and cook for 10 minutes, then leave to cool.
- > Heat the oven to 200°C/fan 180°C/gas 6.
- > Lay the filo sheets on top of each other, brushing with melted butter between layers.
- > Spread the filling along one of the longer sides and roll it up, folding in the ends as you go.
- > Make a few cuts in the top, then bake for 15-20 minutes till golden.
- > Cool, then sprinkle with icing sugar.



JERK STATION PROVIDES CARIBBEAN & AFRICAN STREET FOOD, AND CATERES FOR PARTIES & EVENTS

Thank you Mothers!

As it is mothering Sunday this month, I want to salute all mothers for their sacrificial love for their families. You are unsung heroes and play an unquantifiable role in nurturing and building our society. **Thank you** for all you do! If your mum is still alive, take a moment and appreciate her. If she has 'gone' take a moment to be grateful for what she did, and live your life knowing that she is rooting for you. If you are unhappy and perhaps feel let down by your mum, cut her some slack. There are no dress rehearsals in parenting. It is 'live' 24/7. You get one chance. Your mum did the best she could at the time. It may not have been perfect, but she did it to her best ability. Recognise that, and show her some love. If you currently have an estranged relationship, let it go, reach out and start the process.



Life is too short to bear grudges.

Austine – founder, Jerk Station



FOR MORE TIPS, FOLLOW THEM ON @jerkstationChelmsford @JerkstationUK

www.jerk-station.co.uk 51 Duke Street, Chelmsford CM1 1JA 01245 348950



Award-winning farm shop & produce, supporting local, trusted farmers & small businesses



www.blackwellsfarmproduce.co.uk



Hérons Farm, Colne Road, Coggeshall, Colchester, Essex CO6 1TQ



Mon – Fri: 8:00 AM – 5:30 PM
Sat: 8:00 AM – 4:00 PM
Sun: 10:00 AM – 3:00 PM





A pop-up with tradition

VISION had the pleasure of dining at Amie's Parlour Club, hosted by The Hive Café at Chelmsford Museum, for the Valentine's Supper Club. Parlour Club are a traditional Indian

Thali Kitchen with everything cooked by Amie herself, and they did not disappoint.

If you love Indian food and are looking for an authentic Indian dining experience, then Parlour Club is for you! The meat and vegetable dishes served were absolutely delicious, with a perfect blend of spices that left us wanting for more. With a welcome drink, poppadom's and the main dishes including baked chicken, smoky aubergines, pakora and so much more followed by a palate cleanser and dessert (The Parlour Club teamed up with The Hungry Tribe for the delicious dessert @the.hungry.tribe), we weren't left hungry!

The thali style of serving was an experience in itself, allowing us to indulge in a variety of flavours and textures all together on one plate. The ambience of the setting was delightful, with soft music playing in the background it felt exclusive and intimate for Valentine's day.

The service was great, with the staff being extremely friendly and always ready to help. The quality of ingredients used was top-notch and we could taste the freshness of every single dish.

Overall, it was an unforgettable culinary journey that we would highly recommend to anyone who loves Indian cuisine or is looking for something new and exciting to try. Do yourself a favour and visit Parlour Club's next pop up as soon as possible! You can find Parlour Club on Instagram @parlour.homecooking for more information on future events.



@parlour.homecooking
@the.hungry.tribe
@hivecafechelmsford

Website: www.parlour-catering.co.uk for up & coming dates

Photograph courtesy of @georgina_louise_photography

TECH-*free* TRIPS



Do you and your family need a break from technology? Are screens taking over your lives? Then these phone-free holiday destinations are just the antidote you need.

QUIRPON ISLAND, NEWFOUNDLAND, CANADA

If you can think of nothing better than spending your next getaway marvelling at the wonders of Arctic life such as polar bears, puffins and icebergs, then this is the holiday destination for you. Located in the far reaches of the North Atlantic, there is virtually no phone service and definitely no wi-fi.

PARRANO, ITALY

If you're looking for a remote destination in Europe, then the Eremito retreat in Parrano, Italy, is just what the doctor ordered. Boasting 21 rooms and only a 90-minute drive from Rome, there is no internet, wi-fi or television, so you're guaranteed a tranquil and restorative stay.

DENALI NATIONAL PARK & PRESERVE, ALASKA

Denali National Park is home to the Sheldon Chalet, a luxury five-bedroom lodge that is only accessible by plane or helicopter. Perfect for those who want to experience nature in the extreme, the panoramic views of snow stretch for miles. Plus, with no mobile phone coverage or internet, you can enjoy the peaceful silence with zero distractions.

BADEN-BADEN, GERMANY

If you love a spa break, the Villa Stéphanie mansion and spa is just the digital detox destination for you. Located in the famous spa town of Baden-Baden, this decadent five-star hotel boasts a sauna, plunge pool, thermal suite and private gym. And, of course, no technology in sight.

TOP END, NORTHERN TERRITORY, AUSTRALIA

As you would expect, there is no wi-fi deep in bush country, so you can kick back and relax or enjoy the local wildlife, including blue-winged kookaburras, magpie geese, wallabies and crocodiles. Book into the Bamurru Plains safari lodge for a restful night's sleep and five-star dining.



TRAVEL

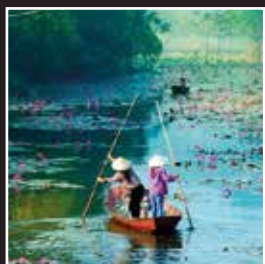
Photo credit: wehralains.com, theluxurycorridor.com, theluxuryspa.co.uk, theluxurytravel.com, theluxurytravel.com, theluxurytravel.com, theluxurytravel.com



Never A Wasted Journey Beyond the normal



Family ● Adventure ● Cruise ● Honeymoon ● Celebration ● Occassions



Spa ● Relaxation ● Wellness ● Sports ● Food & Wine ● Rail ● Sailing



NEVER A WASTED JOURNEY

Contact Dan for expert advice
and to book on: 01245 984 549
www.neverawastedjourney.com



Behind the scenes with the Luxury Travel Designer of the Year...

Have you ever wondered what it is like working in the travel industry and how a travel advisor can help you create memories that last a lifetime on your next holiday? Multi-award-winning agent Dan Salmon (owner of luxury travel company Never A Wasted Journey) is sharing all in his new book *Never A Wasted Life*.

Salmon takes readers on a journey from his original days backpacking to being named Luxury Travel Designer of the Year by TTTG Luxury, the inspirational locations he has visited along the way, and the once-in-a-lifetime experiences he's created for his clients, from chartering an underwater submersible in Antarctica to arranging a skiing trip with an Olympic team in Canada.

He has travelled halfway around the world, seen wonders such as the Great Wall of China and Machu Pichu, and gone off the beaten track on safari trips in South Africa, beach stays in the Indian Ocean, and many more. He's immersed himself in numerous cultures, making him who he is today - the go-to luxury travel expert for thousands of clients worldwide.

Use his time to save yours and let him introduce you to experiences and people that will enhance your life. Charter a yacht around the Sea of Cortez, dubbed the "world's aquarium" by Jacques Cousteau, or enjoy a helicopter flight over Robben Island, followed by a private dinner with Nelson Mandela's former prison guard turned good friend.

Salmon prides himself on taking his time to listen to your desires and understand your goals, then brings them to life using his knowledge and the finest network of contacts in the industry. His itineraries are tailor-made for you, and you won't find them anywhere else, with all journeys completely customised around you and your needs. Enjoy a service that is highly personalised, attentive and which comes with the utmost discretion.



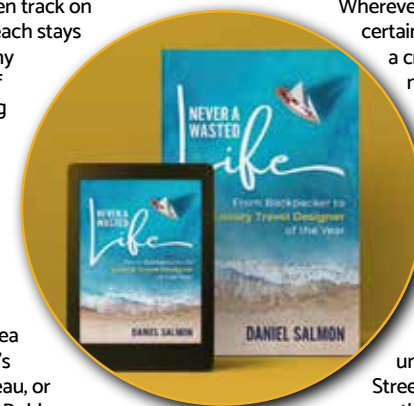
Dan Salmon, Owner

Wherever you travel there will almost certainly be a special event, such as a cricket match or a concert you may wish to attend. Perhaps you'd like to pre-book a table at the latest exclusive restaurant, or experience sunrise yoga at the top of the Empire State Building in New York? He can help with it all.

Salmon's daughter was born with a heart condition (Tetralogy of Fallot) and was under the care of Great Ormond

Street Hospital from any early age, so as a thank you he is donating

a percentage from every book sold to the GOSH charity.



AS SEEN OR FEATURED IN

aspire
AWARDS

INDEPENDENT

EssexLive

REUTERS

OK!

BUSINESS
INSIDER

Beresfords



NEVER A WASTED JOURNEY

Contact Dan for expert advice
and to book on: 01245 984 549
www.neverawastedjourney.com



Pet DIET



Are you worried about your pet's weight? Perhaps you've allowed them to over-indulge during the winter months? With as many as half the nation's dogs and cats being overweight, it has never been more important for pet owners to take control of their pet's health and help them to lead a happy and healthy life.

Calculate calories: If you don't know how many calories your pet needs each day, then now is the time to find out. While you may think that you can simply refer to the recommended amount on their preferred pet food, this does not take into account metabolism, age and other factors such as activity levels. Ask your vet for a bespoke calorie allowance.

Measure meals: Many pet owners simply guess how much they are feeding their pet, or they offer an all-you-can-eat buffet and fill their bowls readily throughout the day. However, it is a much better idea to use a pet measuring cup so that you can make sure you give them the correct amount at each meal.

Tactical treating: If you are guilty of giving your pet a few too many treats, then tactical treating offers the perfect solution. This involves choosing low-calorie, no-sugar treats that are beneficial to their health. Carrots and apple slices are a good choice for dogs, and cats enjoy broccoli florets, green beans and catnip. Don't forget that you need to factor these extra calories into their total daily intake.

Experiment with exercise: When it comes to keeping your pet healthy and at their ideal weight, daily exercise is key. As well as daily walks for dogs and allowing your cat to explore in the garden, there are lots of other fun exercises you can enjoy with your pets, such as playing fetch, interacting with toys, tug of war and obstacle courses.

Signs your pet is overweight: Visual signs such as excess body fat around the stomach, spine and waist | Lack of grooming | Reduced mobility | Difficulty breathing.



AN ICON departed

CELEBRATING THE LIFE OF FASHION FIGURE HILARY ALEXANDER OBE

In an era where there's so much that's nonsensical about fashion, Hilary Alexander OBE brought ingenuity and intelligence to the runway.

The former *The Daily Telegraph* fashion director passed away on her birthday – February 5 – aged 77, leaving behind a legacy of fashion that saw her decorate the industry with colour, charisma and humility.

Perhaps now more than ever before, we rely on commentators, journalists and designers who can knit the whole crazy operation together, and Hilary was undoubtedly one such person.

From working with the British Fashion Council, to the Council of Fashion Designers of America; from being heaped with praise by the likes of Michael Kors, Claudia Schiffer and Sir Philip Green; right through to appearances on TV, across *Style*

Challenge, *The Weakest Link* and *Britain's Next Top Model*, there was nothing either beneath or above Hilary Alexander.

Born in New Zealand, Hilary moved to the UK as an adult and soon ascended to the role of fashion editor with *The Daily Telegraph* in 1985. As visiting professor at the University of the Arts London, she offered great influence over Central Saint Martins and the London College of Fashion at the turn of the millennium.

While malleable and respectful, Hilary was also someone willing to speak out. Her praising of Margaret Thatcher in 2013 as a "global style icon" was an expression of her desire to be honest and topical, more than it was a salutary piece of prose designed to create conjecture in the wake of the former Prime Minister's death.

Hilary's infectious influence reached every style, design and demographic – someone the industry truly celebrated and admired. And she will continue to do so, even after her passing.





LET THERE BE LIGHT!

Do you want younger-looking skin? Then you need to know about LED light therapy. Originally used to treat wounds, LED – which stands for light-emitting diode – is now used by aestheticians to help regenerate ageing skin and treat other skin problems.

WHAT IS LED LIGHT THERAPY?

LED light therapy is a skincare technique that uses varying LED wavelengths to help treat a whole host of different skin complaints, including acne, inflammation and ageing skin. Unlike other types of light therapy, LEDs do not contain ultraviolet rays, which means they are safe for regular use.

HOW DOES LED LIGHT THERAPY WORK?

You can choose to have LED light therapy carried out by a trained professional or you can buy LED devices that you can use at home. There are two main types of light frequencies: red and blue. The former is used primarily for ageing and the latter to treat acne. Typically, each LED light therapy session lasts around 20 minutes, and, for best results, you need up to 10 treatments.

ARE THERE ANY DRAWBACKS TO LED LIGHT THERAPY?

Some of the potential downsides to LED light therapy include:

- > It can be expensive
- > The results are not guaranteed
- > It is not safe if you have an active skin disorder or take certain medications
- > Side effects are rare but may include redness, rashes and inflammation of the skin

BEST LED FACE MASKS

If you want to try LED light therapy at home, check out the below top-rated LED face masks:

- > CurrentBody Skin LED Light Therapy Mask – Best for all skin types
- > No7 Laboratories Age-Defying LED Mask – Best for budget buy
- > Project E Beauty Skin Rejuvenation Photon Mask – Best for acne-prone skin
- > Dr Dennis Gross Skincare DRX Spectralite Faceware Pro – Best for ageing skin.



YOU'RE NOT ALONE



OVER 207,500 OTHER PEOPLE IN ESSEX
READ **VISION** MAGAZINE'S MONTHLY

CONTACT US TODAY TO GET YOUR BUSINESS SEEN BY OUR READERS

Your
Monthly
Lifestyle
Magazine



See all our magazines at www.visionmagessex.com

Billericay Shenfield Bishop's Cleeve Brentwood Ongar Chelmsford Beaulieu Epping Theydon
Halstead Braintree Hertford Hornchurch Leigh Thorpe Bay Loughton Maldon Burnham
Rayleigh Wickford South Woodford Tending



**You've popped the cork,
now light the wick!**

Treat yourself to one of our candles,
upcycled from champagne and liquor bottles
to add a bit of luxury to your happy place



Scan the QR code and visit our website or go to
www.wickinc.co.uk

Make sure you use our special **VISION**
discount code for 10% off your first order!

WICKVISION22



KIDS

DIY Mother's Day BEAUTY GIFTS

Do you want to help your child make a handmade gift for their mum, grandmother or mother figure this Mother's Day? Beauty gifts are always welcomed and provide the perfect opportunity for mums to enjoy a little me-time.

Microdermabrasion scrub

Combat the signs of ageing with this super simple microdermabrasion scrub.

How to make:

Mix 6 tbsp of sugar with 3 tbsp extra virgin olive oil | Add 3-5 drops of lemon juice | Add ½ tbsp baking soda and 3 drops of lavender oil | Mix thoroughly | Spoon into a small pot and add a handwritten label

Rose whipped body butter

Give the gift of super-soft skin with this luxurious body butter.

How to make:

Melt 1 cup of coconut oil and 1 cup of shea butter in a small bowl | Leave the oils to cool slightly | Mix the oils using a whisk or standing mixer until you have

a whipped cream-like consistency | Add 8 drops of rose absolute and whip for a further 1-2 minutes | Spoon into a mason jar and add a pretty bow

Lemon peppermint bath salts

Add an element of fizz to bath time with this aromatic bath salt.

How to make:

Mix ½ cup of fine sea salt and 1 cup of Epsom salt in a medium-sized bowl | Stir in 15 drops of lemon essential oil and 5 drops of peppermint oil | Scoop the bath salts into a mason jar and tie on a small measuring spoon with some ribbon

Honey facial mask

Soothe sensitive skin with this natural facial mask.

How to make:

Mix together 1 cup of honey, 1 tbsp of cinnamon and ½ tbsp nutmeg | Stir until the spices are fully incorporated with the honey | Pour into a bottle that has been sterilised with boiling water | Cover the bottle with some pretty parchment paper or fabric.

Getting older means continuing to do the things we love...

Sometimes our loved ones need a little extra help.

Established in 2001, Calvern Care offers flexible, bespoke care. As well as tasks in the home and personal care, we are able to take our clients out to enjoy what the community has to offer.

Get in touch to find out more about our services:

☎ 01245 356755 🌐 www.calverncare.co.uk
✉ info@calverncare.co.uk

Interested in joining our **fabulous care team**?
Contact us about the **full and part-time opportunities** available. Please quote **CVIS-2/23**.



↓
It's never too early...

...but one day it may be too late.

It's time to make an LPA. There is a common misconception that Lasting Powers of Attorney only need to be put in place when an individual gets older. In fact, it is always wise to put LPAs in place earlier in life. By doing so, you will gain peace of mind that your affairs – both financial and health – can be looked after if you are ever unable to do so. You will also be ensuring that your loved ones are not left in an impossible position, unable to deal with your affairs, if the worst should happen.

Contact us today to protect yourself and your loved ones.
Legal advice with a conscience.



Fisher Jones Greenwood LLP,
16 Baddow Road, Chelmsford, CM2 0DG
Offices across Essex and London

01245 673741
www.fjg.co.uk
enquiry@fjg.co.uk

PACK IT IN

IN HONOUR OF NATIONAL NO SMOKING DAY ON MARCH 8, HERE ARE SEVEN TIPS ON HOW TO QUIT SMOKING FOR GOOD

BE PREPARED

It's unlikely you'll simply wake up one morning and decide to never smoke again. Smoking is an addiction, so take time to come up with a plan that gives you the best chance of quitting for good.

SEEK ALTERNATIVES

Though they may be tempting, e-cigarettes are not the ideal way to quit, as they still contain nicotine. However, they are less harmful than tobacco cigarettes.

Nicotine replacement therapy, on the other hand – in the form of gum, lozenges and patches – can help with withdrawal side effects.

BE TRIGGER AWARE

If you crave a cigarette every time you have a few drinks at the pub, it may be best to stay home or, even better, hit the gym. Knowing what makes you want to smoke and then doing the opposite is a useful technique to help you avoid temptation.

TELL YOUR FRIENDS

Not only is it reassuring to have some enthusiastic cheerleaders on your side, but your buddies can also help you on your way.

KNOW YOUR REASONS

Whether you want to run a marathon or are motivated to quit for the sake of your young children, having a clear purpose – from health to finance to

the feeling of having achieved something important – will help you stop smoking.

DON'T GIVE UP

Quitting is hard. Know that and give yourself a break should you fail. Each day is a new day, and it is never too late to stop.

REWARD YOURSELF

Put away those pounds you would have spent on cigarettes and you'll soon see the benefits. Treating yourself to something special is the least you deserve for persevering with such a difficult task.



HEALTH & FITNESS



How to get A PATENT

Thinking about applying for a patent to stop others from copying or selling your invention without your permission? Find out everything you need to know about how to get a patent in the UK below.

WHAT CAN YOU PATENT IN THE UK?

To patent an invention in the UK, it must be:

- ✓ New – it must not have been made publicly available anywhere in the world
- ✓ Inventive – it cannot be an obvious change to something that already exists
- ✓ Something that can be made and used, a technical process or a method of doing something

WHAT CAN YOU NOT PATENT?

There are some things that you are not allowed to patent, including:

- ✗ Literary, dramatic, musical or artistic works
- ✗ A way of doing business, playing a game or thinking
- ✗ A method of medical treatment or diagnosis
- ✗ A discovery, scientific theory or mathematical method
- ✗ The way information is presented

- ✗ Essentially biological processes such as crossbreeding animals or plants
- ✗ Software that has a non-technical purpose

HOW MUCH DOES A PATENT COST?

When you apply for a patent, you must pay fees to the Intellectual Property Office (IPO) when you file your application and also for processing your application after you file. This costs at least £310 if you complete the process. You may also want to hire a patent attorney for help and advice.

HOW TO APPLY FOR A PATENT IN THE UK

Getting a patent in the UK is a fairly complicated process and it can take several years, even with professional help. Therefore, you should only start the application process if you are confident that your invention is new and that a patent meets your needs. If you decide to go ahead, then you need to:

- Prepare detailed documents that describe your invention
- File these documents with the IPO

Typically, around 18 months after you apply, the IPO will publish your application in full. You may then have to amend your application based on its recommendations.

A WILL WRITER'S WORDS OF WISDOM

WORRYING PROBLEMS

If a married couple dies together, and where there is no Will, the eldest is deemed to have died first, so only the family members of the surviving spouse will inherit

A beneficiary or their spouse should not be a witness to a Will, or they will disinherit themselves

Unless it has a Contemplation of Marriage clause, marriage or re-marriage invalidates a Will, requiring a new arrangement. Without a Will, spouses and civil partners are NOT automatically entitled to all of the estate assets on death, and the Government could inherit your estate if you die with no surviving traceable relatives

If a couple dies simultaneously, the elder is deemed to have died first - s184 Law of Property Act 1925, leaving only the

younger spouse's family to inherit

Without a Will, even grandparents have NO automatic Legal Guardianship of their orphaned grandchildren

Without a Will, the Rules of Intestacy, ie 'The Government Will', could land the children with an IHT liability

A beneficiary or their spouse should not be a witness to a Will, or they will disinherit themselves

Although divorce does not invalidate a Will, marriage will indeed invalidate a Will, unless a marriage clause has been embedded

If you have no surviving parents, siblings, grandparents, uncles or aunts, then under the Intestacy Rules, the whole estate goes to the Crown or the Duchy of Lancaster or the Duke of Cornwall

PEACE OF MIND SOLUTIONS

Always appoint charities as your final beneficiaries, to avoid your estate being claimed by the Government

By the use of a Property Protection Trust, you can ensure that if you pre-decease and your spouse re-marries and has more children, your own children benefit from your share of your home, and not the new spouse. BUT if Probate is not completed, the Trust Deed will not be set up and notified at the Land Registry

If children have special care needs, an appropriate Discretionary Trust could avoid loss of State benefits on them inheriting your estate

A Grant of Probate confirms to Executors that they have the authority to act and carry out the wishes of the deceased

Provide in your Will for continuity of your business on your death

If you own property abroad, you should arrange a Will for your assets in that country, to avoid costly fees and much Probate delay

If a Named Beneficiary, Executor, Trustee or Legal Guardian changes their name, e.g., on marriage or by Deed Poll, it is not necessary to amend the Will: documentary evidence, eg Decree Absolute, is sufficient

The estates of current or retired members of the Armed Forces, fire police and ambulance services, and most rescue organisations are entitled to exemption from Inheritance Tax if they die on active service, or if their later death was caused by an injury or disease that was received or aggravated while they were on active service

A properly worded Will could ensure that half the value of your home is potentially protected against Local Authority care home fees

There is no Inheritance Tax liability if the deceased spouse has left their entire estate to their surviving spouse or civil marriage partner

HAVE YOU MADE YOUR WILL?

Do you and your family have the peace of mind of an up-to date Will, or a Power of Attorney for yourself or your parents, or Legal Guardians for your children under 18?

My professional services for arranging personally-tailored Wills, Powers of Attorney, Probate and expert guidance on Inheritance Tax and Care Home Fees, are offered to applicants on a fixed fee basis, regardless of consultation time and number of meetings.

Please note that weekend meetings are offered at no extra cost



MARTIN ENGLEMAN AIPW AFPC
Qualified Member of the Institute of Professional Will Writers ~ Certificate in Mortgage Practice & Equity Release, Chartered Insurance Institute ~ Diploma, Personal Finance Society

Please visit www.businessadvisoressex.co.uk for more detailed information, then call me for a fixed fee quotation and free advice

Office: 01268 761022
Mobile: 07901 948745
1 Nesbit Close, Wickford,
Essex SS12 0PT

ENGLEMAN WILLS
+ POWERS OF ATTORNEY + PROBATE



FAST, EFFECTIVE & PROVEN

ESSEX BASED LEAFLET, PRINTING & DISTRIBUTION SERVICE

Flyer Distribution Essex covers a majority of the
CM, SS & CO postcode areas

- One off drops OR regular monthly drops
- Targeted Demographics - delivered direct to homes
- Cost effective Printing service available
- Direct Pick up service available from your Essex based address

CONTACT US

0800 086 2836

www.flyerdistributionessex.co.uk

CAMERA JARGON

Explained!

Want to improve your photography skills? Then spending time with a camera is a good place to start. While mobile phones are great for point-and-shoot, for the best photos a camera is required. At first glance, a camera can seem confusing with all its buttons and settings. Fortunately, we've got you covered with our simple guide to some basic camera terms.

Exposure: One of the most important terms to learn in photography. Getting the exposure right will help you take great photos with all of the elements in balance. Put simply, exposure is the amount of light that reaches your camera. Too much or too little exposure can affect the quality of your photo. The 'exposure triangle' is the combination of aperture, shutter speed and ISO that will help you capture the perfect photo.

Aperture: The hole that allows light into the lens, represented by the f-number. The lower the f-number, the more light is allowed into the lens. It's the aperture that helps you determine which elements of the shot are in focus, allowing you to play with your depth of field.

Depth of field: The distance between the closest and furthest subjects in a photo. A shallow depth of field will put your main subject in focus, creating a blurred backdrop for your subject to sit against. A deep depth of field helps to put the backdrop or landscape in focus, blurring the nearest object.

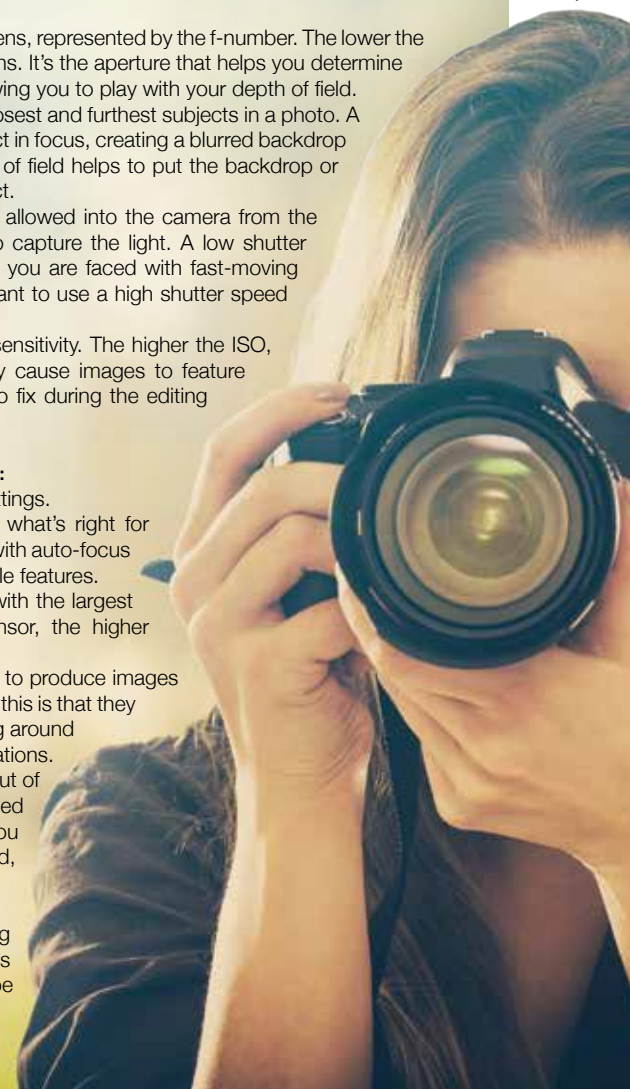
Shutter speed: Controls how much light is allowed into the camera from the lens. It signals how long the lens is open to capture the light. A low shutter speed is ideal for most situations, but when you are faced with fast-moving subjects (such as animals or sports) you'll want to use a high shutter speed to prevent blurring.

ISO: The ISO settings determine the light sensitivity. The higher the ISO, the brighter your images. A higher ISO may cause images to feature noise or grain, which can be more difficult to fix during the editing process than an underexposed shot.

Points to consider when purchasing a camera:

- Rent or borrow a camera first to trial the settings.
- Consider the size and weight to discover what's right for you. Mirrorless cameras are more portable with auto-focus features, while a DSLR has more changeable features.
- For high-quality photos, look for cameras with the largest sensor size. Generally, the larger the sensor, the higher quality your photos will be.
- A high number of megapixels (MP) will help to produce images that are highly detailed, but the downside to this is that they don't perform as well in low light. Something around the 20MP mark performs well for most situations.
- Invest in a range of lenses to get the most out of your camera. A macro lens is ideal for detailed close-up shots, while a long lens will help you capture high-quality shots from further afield, such as landscapes or wildlife.

Capturing the perfect shot means finding the balance between the three key settings (aperture, shutter speed and ISO). Don't be afraid to experiment and get creative.





DOUBLE YELLOW LINES

DOUBLES, SINGLES AND MORE... ROAD MARKINGS AND HOW TO WORK THEM IN YOUR FAVOUR

We're all familiar with the sight of single and double yellow lines – yet where many of us have fallen foul of road markings, it's because we may not understand what they mean.

This guide to road markings may not make it any easier to find a parking space in your local area, but at least you'll know the risk you're taking when you apply the handbrake.

SINGLE LINES

Single yellow lines are an indication that waiting restrictions are in place, albeit only at certain times of the day. The intention is to eliminate congestion at busy times.

Always look for the accompanying signs, which will state the times when parking is prohibited. However, you may stop there.

If you see a single red line, stopping is also prohibited at certain times.

DOUBLE LINES

Parking on double yellow lines is prohibited at all times, unless there is accompanying signage which may indicate an ability to park there on rare or seasonal occasions.

With both single and double yellows, the good news is you get five minutes' grace, and a traffic warden must observe your car for the full duration of those five minutes before writing out a ticket.

If you see a double red line, the message is simple – no stopping (or parking) at any time.

ZIGZAG LINES

White or yellow zigzag lines offer the same instruction as double red lines, except they are placed near places of high public footfall, such as on level crossings or outside schools and places where emergency services may operate, such as hospitals.

LOADING OR UNLOADING

To confuse matters, loading and unloading is permitted on double and single yellow lines, but only if it's continuous. You'll get between 20 and 40 minutes, depending on your vehicle.

However, if two yellow stripes are seen emerging from the road and up the curb, even loading and unloading is prohibited. For one yellow stripe, stopping is permitted based on the times shown.



W www.rallytec.co.uk
☎ 01245 362288

- Servicing & Maintenance
- MOTs arranged
- Electric vehicle servicing
- Classic car servicing
- Carburettor setup & balancing
- Mechanical repairs
- Fault finding & diagnostics
- Air conditioning servicing
- Suspension & brakes
- Cam belts fitted
- Performance parts fitted
- ASNU injector service centre
- Free local collection & delivery
- Good Garage Scheme member

Electric Vehicle Servicing ✓



MODERN CARS • CLASSIC CARS • SPORTS CARS • KIT CARS
 Unit 4, Drakes Lane Industrial Estate, Drakes Lane, Boreham, Chelmsford, Essex, CM3 3BE

SUPPORT LOCAL BUSINESSES



Let your local businesses know that you saw them first in... **VISION**

Improve, Don't Move!

Maximise the value of your home.

- SPACE-SAVING - MAXIMISE YOUR GARAGE HEADROOM
- SECURITY-ENABLED AUTO-LOCKING SYSTEM
- CHOICE OF 21 COLOURS TO MATCH YOUR HOME
- REMOVAL AND RECYCLING OF YOUR OLD DOOR
- DEDICATED AFTER-CARE TEAM

GAROLLA 01245 830 047

**ROLLER
SHUTTER
DOORS**



LINES OPEN 7 DAYS A WEEK

www.garolla.co.uk



BESPOKE ELECTRIC DOORS MANUFACTURED IN THE UK

**FREE
FITTING**
PAYMENT ON
INSTALLATION

PRICED
EXAMPLE **£895**
COMPACT • UP TO 2.4M

GAROLLA ★ PREMIUM
Increased Security • Double Insulation
One-Touch Close

PRICED
EXAMPLE **£1,990**
PREMIUM • 3.4M • ANTHRACITE

HOUGHTONS BUILDING CONTRACTORS LTD

- Blocking Paving ■ Tarmacadam ■ Resin Surfacing
- Graveling ■ Patio Slabs ■ Natural Stone
- Brickwork ■ Fencing ■ Turfing
- Artificial Grass ■ Pressure Cleaning
- All Types of Hard Landscaping Undertaken
- New Roofs ■ Roof Repairs ■ Flat Roofs
- UPVC Fascias, Soffits & Guttering
- UPVC Windows, Doors & Conservatories
- All Aspects of Home Improvements Undertaken

- ALL WORK GUARANTEED ■ NO DEPOSITS
- FREE ESTIMATES ■ FULL PUBLIC LIABILITY INSURANCE

FREEPHONE: 0800 292 7185 ■ Office: 01621 834 464
Mobile: 07568 971 279

houghtonsbuildingltd@icloud.com ■ www.houghtonsbuildingcontractorsltd.co.uk

1 Office Lane, Little Totham, Maldon

Company Reg No. 12122545



SPORT



UNUSUAL SPORT... CHEESE ROLLING

A lump of dairy, a hill, an ambulance on standby – it's the Cooper's Hill Cheese Rolling Championship

We've all heard of cheese rolling. Indeed, many of us have seen the frankly terrifying sight of grown men and women hurtling down Cooper's Hill in Gloucestershire on a balmy spring bank holiday in pursuit not just of a 9lb lump of Double Gloucester cheese, but also of the respect of the local community.

The annual event, which takes place on a slightly terrifying 200-yard slope in the town of Brockworth, has become iconic as the go-to cheese rolling event in the UK, yet it attracts competitors from all corners of the world.

While the perception is that anyone who catches the cheese takes the title, in truth this is a 'race to the bottom', with the first person across the finish line claiming the delightful dairy.

Now classed as an extreme sport, there is a series of individual races for have-a-go heroes to compete and contort in, with local legend Chris Anderson the most successful participant in the event's near 200-year history, having won a record 23 races. Ironically, the ex-1st Battalion light infantryman doesn't even like the cheese on offer, insisting on a passion for cheddar instead.

Injuries are commonplace – not just to participants, either. On many occasions, spectators have been struck by the tumbling cheese, which can reach speeds of up to 70mph as it tumbles downhill.

While COVID-19 halted the 2020 and 2021 events, the festival returned in 2022, complete with all manner of sprains, bashes, aches and breaks. Perennial champ Anderson has since announced his retirement, clearing the decks for a new era of southwestern sadist when the event returns this year on Monday, May 29.

While Brockworth hosts the country's most famous competition, there are other cheese rolling events across the UK with their own take on the concept, albeit none quite as flavoursome.

Photo credit: Simon Chapman/Lump/Shutterstock, visitgloucester.co.uk

THE VISION LISTINGS

ACCOUNTANTS

WIS ACCOUNTANCY

Your chartered accountant can reduce your tax bill, help your business growth, and keep you compliant with HMRC. Call us 020 3011 1898 or visit us www.wisaccountancy.co.uk

AIR CONDITIONING

P K REFRIGERATION LTD

Domestic/Commercial Air Conditioning & Cool Room Specialists. Installation, Service & Repairs. Call 01268 774623 | sales@pkrefrigeration.co.uk | www.pkairconditioning.co.uk

JOIN THE LISTINGS... for just **£15** +VAT per month

BEDROOMS & FURNITURE

SLIDE ROBES

Living, Bedroom, Home Office, Unusual Spaces. Experts in bespoke fitted furniture. Book a free no obligation design appointment at sliderobes.co.uk or call free on 0800 454465

BUILDING SERVICES

HOUGHTONS BUILDING CONTRACTORS LTD

All work guaranteed, no deposits, free estimates, Public liability insurance. FREEPHONE 0800 292 7185 | 01621 834464 | 07568 971279 | www.houghtonsbuildingcontractorsltd.co.uk

CAR GARAGE

RALLYTEC

est. 1981. Performance Tuning & Carburation Specialists. Modern, Classic, Sports, Kit Cars. Unit 4, Drakes Lane Ind. Estate, CM3 3BE. 01245 362288 | www.rallytec.co.uk

CLEANER

MOLLY MAID

Our professionally trained team will make your home sparkle. We tailor our cleans to your individual needs, schedule and budget. 01245 494003 | emma.brooks@mollymaid.co.uk

THE UK CONSERVATORY CLEANING CO

Exterior deep clean & polish. Complete internal & external valet. Decorative mouldings cleared. Solar panel cleaning. Call 01277 790173 | 07726 323800

FARM SHOP

BLACKWELLS FARM SHOP

Award Winning Farm Shop & Produce, supporting local, trusted farmers & small businesses. Herons Farm, Colne Road, Essex, CO6 1TQ | www.blackwellsfarmproduce.co.uk

FINANCIAL SERVICES

FISHER JONES GREENWOOD SOLICITORS

Offices across Essex and London. Chelmsford Office – 16 Baddow Road, Chelmsford, CM2 0DG 01245 673741 | www.fjg.co.uk | enquiry@fjg.co.uk

ENGLEMAN WILLS

Personally tailored wills, powers of attorney, probate, guidance on inheritance tax & care home fees. 01268 761022 | Mobile: 07901 948745 | www.businessadvisoressex.co.uk

PARAGON LEGAL SERVICES LTD

Affordable Excellence endorsed by over 20,000 clients. We will write your will for only £49.99+Vat *Subject to T&Cs (£59.99 inclusive) Call free 0800 0747642 or 01206 544919

FIREPLACES & STOVES

GATFIRE

Stoves, Fireplaces, Chimneys. FREE estimates & advice. 01702 715161 | www.gatfire.co.uk | Showroom: 1731 London Road, Leigh-on-Sea, SS9 2SW

GARAGE DOORS

GAROLLA ROLLER SHUTTER DOORS

Thermally insulated electric garage doors, great for space saving, kerb appeal & easy to use, No deposit, Pay on completion, 18 Colours available, Call today 01245 830211

GARDEN DESIGN

KING & CO TREE NURSERY

Gain instant privacy with our mature tree and hedging plants. 01376 340 469 | www.kingandco.co.uk | Dunmow Road, Rayne, Braintree, CM77 6WF

GARDENING

ATS LANDSCAPES

Patios & Patio cleaning. Decking. Fencing. Artificial Grass. Driveways. Bespoke Gates. Digger Hire. Call 01245 763978 | 07927 559250 | info@atslandscapes.co.uk

PAINTING & DECORATING

JRS PAINTING SERVICES

All aspects of painting work covered: Domestic, interior & exterior. Commercial. Please contact Jamie on 07712 524407 | jamesanders273@yahoo.com | 10% off quote VISION22

PLUMBING & HEATING

LKG DAUGHTERS

All your plumbing & heating problems. Resolved. Gas Safe Registered. Call 01245 478111 | 07710 358347 | lkgdaughters.co.uk

PRIVATE HOSPITAL

PHOENIX HOSPITAL CHELMSFORD

Independent Private Healthcare. Call 01245 801234 | enquiries@phoenixhospitalchelmsford.com | www.phoenixhospitalgroup.com | Essex Healthcare Park, CM2 8HN

ROOFING

JIM BARR ROOFING

Exterior Cleaning & Maintenance. Gutters, Paving & UPVC. Cleaned, Repaired & Renewed. 01708 874816 | 07833 572459

SCRAP GOLD/SILVER

SCRAP GOLD/SILVER

Wanted, Your scrap Gold/Silver etc. Price of the day paid for all unwanted gold items, coins, jewellery. Also all Silver items, old coins, banknotes, medals etc.. Call 07510 779395

TRAVEL AGENT

NEVER A WASTED JOURNEY

Your local award winning Chelmsford based Travel Agent. For friendly, expert advice call Dan Salmon on 01245 469771 or visit www.neverawastedjourney.com

TREE SERVICES

J.L TREE SERVICES

All trees Lopped, Topped and Shaped. Experienced and Friendly Tree Surgeons. Tel: 01621 810695 | 07847 888002 | www.jl-tree-services.co.uk | JLtreeservices01@gmail.com

WINDOWS & DOORS

WINDOW MAN

Family run over 25 years. Windows, doors, installation, repairs. Call us today on 01245 527073

CLOUDY 2 CLEAR

Broken or Damaged Windows, Faulty locks, handles, hinges repaired and replaced. Which? Trusted Trader call us today on 0800 6121 118

TOTAL FIX

Windows, Doors, BiFolds, Conservatories, Lantern Roofs, Design & Build Service, Conservatory Roof, Cladding, Fascias, Soffits & Guttering. Call 0800 211 8124 | 07958 903275

MR MISTY

We specialise in Double Glazing Repairs and new window & door installations. Free phone 0800 2545111 for your free check up. www.mrmisty.co.uk

WANT TO APPEAR IN NEXT MONTH'S VISION LISTINGS?

SIMPLY FILL OUT THE FORM BELOW AND RETURN IT TO BOOK YOUR SPACE:

Company name:

Description (180 characters max including spaces):.....

.....

Telephone:..... Email:.....

Payment option: ☐ Card    ☐ Direct Debit

Please return to:

Lifestyle Magazine Group Ltd, 55 Crown Street, Brentwood, Essex, CM14 4BD or email chelmsford@visionmag.co.uk

*£180 +VAT for a 12 months plus agreement. Payments can be made monthly or upfront

DISCLAIMER: **VISION** does not represent or endorse the accuracy or reliability of any of the advertisements, nor the quality of any products, information or other materials displayed, purchased or obtained by any customer as a result of an advertisement or any other information or offer in connection with the service or products. The opinions expressed in articles, reviews and stories are strictly those of the individual authors and do not necessarily reflect the views of **VISION**.

To advertise call Nik on 01245 527071

PUT YOUR BUSINESS IN THE **VISION** LISTINGS...CALL 01245 527071 TODAY

WORDLADDER: DEER, BEER, BEAR, SEAR, STAR, STAG



PUZZLES & TRIVIA

PUZZLES

Answers: see end of The VISION Listings

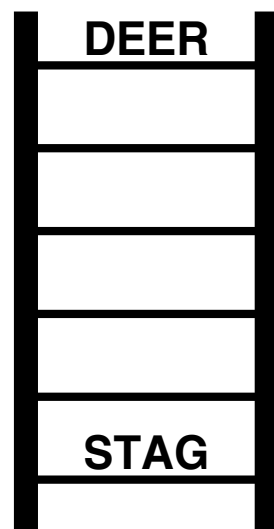
- ▶ BUFFALO
- ▶ CAMEL
- ▶ CHEETAH
- ▶ CROCODILE
- ▶ DONKEY
- ▶ ELEPHANT
- ▶ HEDGEHOG
- ▶ HIPPOPOTAMUS
- ▶ LION
- ▶ LIZARD
- ▶ PANDA
- ▶ REINDEER
- ▶ RHINOCEROS
- ▶ SALAMANDER
- ▶ SNAKE
- ▶ SPRINGBOK
- ▶ TIGER
- ▶ TURTLE
- ▶ WARTHOG
- ▶ WOMBAT

R	H	I	P	P	O	P	O	T	A	M	U	S	D	M
H	E	S	R	R	E	L	I	D	O	C	O	R	C	U
A	O	I	U	Q	E	L	T	R	U	T	T	L	Y	D
M	S	O	N	P	R	E	G	I	T	G	E	E	R	G
D	P	O	R	D	Z	A	E	V	O	M	K	A	Z	O
H	R	C	R	D	E	U	S	H	A	N	Z	E	S	H
A	I	L	E	E	T	E	T	C	O	I	O	L	E	E
B	N	I	D	W	C	R	R	D	L	C	S	E	I	G
U	G	O	N	B	A	O	E	K	A	N	S	P	I	D
F	B	N	A	W	N	U	N	S	D	Z	S	H	D	E
F	O	L	M	A	P	Y	T	I	S	T	L	A	A	H
A	K	E	A	S	F	E	O	N	H	X	C	N	T	T
L	O	A	L	J	K	S	G	B	E	R	M	T	I	J
O	R	L	A	A	D	N	A	P	T	A	B	M	O	W
A	P	T	S	U	T	R	S	H	A	T	E	E	H	C

DID YOU KNOW?

- ▶ There are 63 million pairs of chopsticks manufactured in China every year – that's 126 million single sticks.
- ▶ In Pakistan, a small city called Sialkot is where 40 per cent of the world's footballs are produced.
- ▶ Covering 2,653 miles, Chile is the world's longest country from north to south.
- ▶ There are more than 2,100 castles stand in Germany.
- ▶ Canada has more lakes than every other country in the world put together.
- ▶ Iceland has no army and is recognised as the world's most peaceful country.
- ▶ Disneyland Paris is the most visited place in Europe.

WORD LADDER



THE AIM: Change the word at the top of the ladder one letter at a time to make the word at the bottom.

HOW TO: Change one letter on each step to make a new word. By the time you reach the end, you should have created the new word.

DO NOT rearrange the order of the letters.

TIP: There is usually more than one way to solve this puzzle.

ONE SMALL STEP FOR YOU, ONE GIANT LEAP FOR YOUR BUSINESS



Photo credit: Genger/Shutterstock

IT'S NOT ROCKET SCIENCE!

CALL NOW FOR AN OUT OF THIS WORLD DEAL

Your
Monthly
Lifestyle
Magazine



t: 01245 527071 m: 07860 683239
e: chelmsford@VISIONmag.co.uk
w: www.VISIONmagessex.com



TOTAL FIX



Our customers receive the highest standard of workmanship and professionalism.
That's why people come to us!

Too hot in the summer,
freezing in the winter...
Upgrade your conservatory NOW

- Windows, doors, bi-folding doors
- Installers of Apeer composite doors
- Conservatories and contemporary extensions
- Installers of Cedral cement board cladding
- Specialist installers of fascia, soffits and guttering
- Free quotations, no sales people
- Established family business

Checkatrade.com
Where reputation matters



Guardian
Roofs

Approved Installers of
Guardian Warm Roofs

FREE Quotes & Expert Friendly Advice
01245 830370 or 07958 903 275

E: info@totalfix.it www.totalfix.it

