

FREE

Photo credit: Keystone Press Agency/
ZUMA Press Wire/Shutterstock

Her Majesty
THE QUEEN

The first British monarch to celebrate 70 years of service

YOUR LOCAL COMMUNITY PHARMACY

FOR YOU &
YOUR FAMILY

NHS & PRIVATE PRESCRIPTIONS



At **Rosewood Pharmacy & Beauty** we offer a variety of premium skincare, haircare & fragrances.

We are keen to provide new and unique services to our customers and offer premium brands to your local pharmacy.

We thrive on the local support and hope that every Individual has a wonderful experience when shopping at **Rosewood Pharmacy & Beauty.**



10% off your first purchase when you show this brochure in store. **

- FREE COLLECTION & DELIVERY SERVICE
- FREE WEEKLY DOSSETTE BOX
- FREE HOLIDAY HEALTH ADVICE
- FREE BLOOD PRESSURE CHECK
- FREE NHS FLU VACCINATION*
- FREE NEW MEDICINE SERVICE
- EMERGENCY CONTRACEPTION
- VETERINARY PRESCRIPTIONS

* If criteria is met
**Excluding Chanel & Dior



HUGE VARIETIES OF HIGH END BEAUTY PRODUCTS AND FRAGRANCES

DIOR VICHY CAUDALÍE OLAPLEX.
LABORATOIRES

LA ROCHE-POSAY
LABORATOIRE DERMATOLOGIQUE

LANCÔME
PARIS

YVES SAINT LAURENT
SAINT LAURENT
PARIS

L'OCCITANE
EN PROVENCE

ROSEWOOD PHARMACY HEALTH & BEAUTY

283-284 High Street,
Epping, Essex, CM16 4BX

T: 01992 572010 or 01992 577511





Editor's notes...

JUNE 2022



Brett Shohet, Editor

Hello and welcome to this month's edition of **VISION** Epping Theydon. I finally managed to get away on holiday recently and had a wonderful time in the Italian sun. We chose a less popular destination and found it made for a much more authentic experience, proving that sometimes it's good to veer off the beaten track and walk the roads less travelled.

I'd like to take this opportunity to once again encourage our readers to support local businesses. Before making your next purchase, consider if you could buy it from a small business rather than a multinational corporation.

I know local business owners would highly appreciate it, and you can rest safe in the knowledge that your money is making a positive difference in your community.

As well as distributing magazines to thousands of homes and businesses, **VISION** is available at various pick-up points throughout the local area. If any companies would like to be considered as a pick-up point, please don't hesitate to get in touch.

Lastly, I hope everyone enjoyed the celebrations for the Queen's Platinum Jubilee. It is truly a momentous occasion, as the Queen is the first British monarch ever to have reached this impressive milestone. It offered a fantastic opportunity for families, friends and neighbours to get together. After all we've been through over the last two years, we certainly deserved it.

Brett Shohet

This is your town's hyperlocal magazine, delivering to homes and businesses every month.

HOME & DIY | GARDENING | PETS | HEALTH & FITNESS | BEAUTY | FASHION | HISTORY | LOCAL NEWS | FOOD & DRINK | TRAVEL | BUSINESS & PROPERTY | SPORT | PUZZLES | MOTORING | KIDS | WHAT'S ON | TECHNOLOGY | THE LISTINGS

CONTACT US: www.visionmagessex.com | epping@visionmag.co.uk | 01992 276101

[@visionmagessex](https://twitter.com/visionmagessex) | [@visionmagessex](https://www.instagram.com/visionmagessex) | [Vision Magazine Essex](https://www.facebook.com/VisionMagazineEssex)

CONTRIBUTORS | Tabatha Fabray, Dean Shaw

At the time of print all content in **VISION** was relevant and up to date according to COVID-19 government guidelines All pages are recyclable

home hub group

NOW OPEN ON
EPPING HIGH STREET



We supply and install windows and doors.

01992 276 046
essex@homehubgroup.co.uk

homehubgroup.co.uk
 @HomeHubGroup

VICTORIA JEWELLERS

Epping



Family Jewellers & Pawnbrokers



- ◆ Vast selection of Diamond, Gem-Set, Gold and Silver Jewellery
- ◆ Engagement and Wedding Ring Specialists
- ◆ Large selection of Pre-Owned Jewellery including Rolex & Cartier Wristwatches
- ◆ Pawnbroking – Instant Cash Loans against your Jewellery or Prestige Watch
- ◆ Old Gold, Diamond and Silver Jewellery purchased for Cash – even broken items!
- ◆ Jewellery repairs carried out on the premises by our expert Jeweller
- ◆ Watch Repairs & Battery replacement
- ◆ Valuations for Insurance

Tel: 01992 560 209

231, High Street, Epping, Essex. CM16 4BP (next to M&S)



◆ Victoria Jewellers is a trading name of Claybrook Group Limited who are authorised and regulated by the Financial Conduct Authority. Reference Number: 687567





Photo credit: Kristin Callahan/Shutterstock

SPECULATE TO ACCUMULATE

FROM FLAMETHROWERS TO SPACE ADVENTURE TO TWITTER, ELON MUSK CONTINUES TO REWRITE THE RULE BOOK

He is a tech entrepreneur, an eco exemplar and an ambassador for how we might, as people, forge a future that combines function with fun.

Despite all his innovation – with Tesla and SpaceX particularly, but also across other projects – Elon’s is a name to which we have really only become accustomed in the last decade or so.

Tesla, the brand, was incorporated in 2003, yet even after seven years only 5,000 of its vehicles were on the road. The total is now 200 times that, with the two-millionth car set to roll out of the factory this summer.

While Musk – who dropped out of Stanford University after just two days – is most renowned for the electric car revolution that promises to define us as motorists across the next generation, his exploration of space through SpaceX, the space vehicle, rocket and communications business, is just as big an achievement.

However, in April, as if yielding the power over the way we explore the world geographically wasn’t enough, Musk made perhaps his biggest move yet, reinforcing his icy grip on the digital world with a buyout of Twitter that now sees the 50 year old as an overarching power of social media. Not only is he putting his and investors’ money – some \$44billion – behind the acquisition, he also intends to run it himself, which spells trouble for the current incumbents who have frequently been criticised for sidelining those whose political and social values don’t fit.

His move to take over the controversial platform is a shot in the arm for free speech, in an era where the entrepreneur admits he has become tired of cancel culture.

While Twitter is arguably his biggest project yet, the South Africa-born entrepreneur has sought out countless other initiatives – from creating and selling his own computer game at age 12, to launching SolarCity, which grew to become the second-biggest provider of solar power systems in the US. Then there was Neuralink, his move into integrating the human brain with artificial intelligence; plus The Boring Company, which digs tunnel systems, and through which he manufactured and sold 2,000 novelty flamethrowers, as inspired by Mel Brooks in the 1987 movie *Spaceballs*. He has even released music in the rap and dance genres.

The fact that Musk is rapidly ascending to a personal fortune topping \$300billion is by virtue of an intense entrepreneurial mind that spreads opportunity and investment across a range of projects.

His commitment to Tesla and SpaceX only came about because he’d sold previous start-up Zip2 to HP, and merged his X.com business with PayPal (which led to a payout of \$180million when the money operator was bought by eBay).

As a phrase, ‘speculate to accumulate’ has never seemed more apt than when applied to the journey taken by Elon Musk, and those supposing his dynamic sideways step into social media is the last piece of the jigsaw would probably do well to think again.

HAVE YOU BEEN

SP KED?

1



HOW TO RECOGNISE IF YOUR DRINK HAS BEEN SPIKED AND HOW TO PREVENT IT FROM HAPPENING

When you go out, can you honestly say that you watch your drink at all times? Spiking is currently at high levels in the UK and can happen to anyone.

Find out how to recognise the signs of spiking and what to do if you think your drink has been spiked below.

WHAT ARE THE MOST COMMONLY USED ILLEGAL DRUGS TO SPIKE DRINKS?
The most common illegal drugs to spike drinks are GHB, ketamine and benzodiazepines such as valium and rohypnol.

HOW TO RECOGNISE IF A DRINK HAS BEEN SPIKED

1. It has a foggy appearance
2. It has excessive bubbles
3. The ice sinks to the bottom
4. A change in colour

It is important to know that some of the most regularly used drugs to spike drinks do not produce a smell or taste, meaning it can be difficult to know if your drink has been spiked until it is too late.

THE MOST COMMON SYMPTOMS OF SOMEONE WHO HAS HAD THEIR DRINK SPIKED ARE...

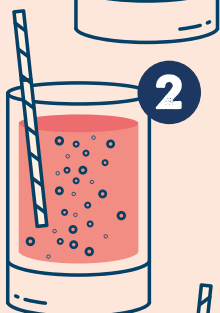
Dizziness | Difficulty walking | Confusion the next day | Nausea or vomiting | Hallucinations | Tiredness | Blurred vision | Paranoia | Amnesia

WHAT TO DO IF YOU THINK YOU'VE BEEN SPIKED

If you think your drink has been spiked, stop drinking it. Tell someone you trust as soon as possible as spiking substances can take effect very quickly. Be wary of asking strangers for help and instead, if you are alone, seek out security or venue staff. If you need urgent help, call 999 and tell them you think you may have been drugged.

HOW TO PREVENT YOUR DRINK BEING SPIKED

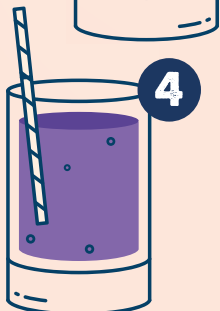
- > Do not leave your drink unattended
- > Invest in anti-spiking lids from StopTopps, available from stoptopps.com
- > Do not accept drinks from strangers
- > Be vigilant of changes to your drink
- > Don't drink anyone else's drink.



2



3



4



**WE GUARANTEE OUR CUSTOMERS
A FRIENDLY, RELIABLE AND
PROFESSIONAL SERVICE**



Empire UPVC and Roofing Specialists independently trade throughout Hertfordshire and a 40 mile radius from our office in Nazeing.

- ✓ Felt, Tile & Slate Roofing
- ✓ Liquid Rubber Roofing
- ✓ Fibreglass Roofing
- ✓ Roofing Leadwork
- ✓ All Roof Windows
- ✓ All Roofing Repairs & Maintenance
- ✓ Moss Removal
- ✓ Gutter Cleaning & Unblocking
- ✓ UPVC Fascias, Soffits & Guttering
- ✓ UPVC & Hardie Plank Cladding

Office: 01992 276 028
office@empireupvcandroofing.co.uk
www.empireupvcandroofing.co.uk

Visit Our Showroom at:
Unit 50 Hillgrove Business Park
Nazeing New Road, EN9 2HB



Checkatrade.com

FULLY INSURED



YOUR PERSONAL AESTHETICS PRACTITIONER

Nikki is a fully qualified and insured Aesthetics Practitioner. She offers a range of treatments including anti-wrinkle injections and B12 vitamin deficiency shots. She welcomes any questions you may have about any of her treatments.

Nikki has her own well-appointed treatment room in Epping, Essex or she can visit you in the comfort of your own home.

You can contact Nikki through her Instagram page or make an online booking via nhaesthetics.booksy.com where you can view the full range of treatments and prices.



Refresh yourself



NH Aesthetics can be found on Social Media Instagram, under aesthetics_nh



or call Nichola on 01992 276023

5
NATURAL
ALTERNATIVES TO
deodorant



If you are looking for a more natural way to banish body odour, then we can help you. Check out these five deodorant alternatives that are completely chemical-free and promise to keep you feeling and smelling fresh for longer.

Witch hazel

Not just great at soothing sunburn and stopping spots, witch hazel is also a natural astringent and an anti-inflammatory, meaning it can soak up excess moisture and kill unwanted bacteria. Plus, it gets rid of odour fast.

Simply place a dab of witch hazel onto a cotton cloth and rub it on your underarm area. Reapply as and when needed.

Baking soda

Baking soda makes a great natural personal hygiene product and can be highly effective in banishing underarm smells. Mix 1/8 tsp with a little water and rub under your arms. Or to combat perspiration, mix one part baking soda with six parts cornflour and dust the affected area. Avoid if you have sensitive skin.

Lemon juice

Lemon juice contains citric acid, which has the ability to naturally get rid of odour-causing bacteria. All you need to do is squeeze 1 tsp of lemon juice onto a cotton ball and apply to your underarms. Do not do this directly after shaving.

Apple cider vinegar

This clever ingredient is antibacterial and is able to both absorb and neutralise unpleasant odours. Simply mix 1 tbsp with 1 tbsp of water and apply under your arms using a clean cloth.

Coconut oil

Coconut oil is antiviral and antibacterial, so is the perfect ingredient for eliminating odours caused by bacteria. Take 1/4 tsp of coconut oil and rub it directly under your arms using a cotton cloth. Allow to dry completely before dressing as it can stain clothes.





BRA 101: *style guide*



Did you know that the average woman owns between nine and 12 bras? However, the majority purchase the same type of bra time and time again. If this sounds familiar, maybe it's time to branch out and try a different style?

Balconette bra
A popular shape that provides a rounded look and great support, this type of bra offers less coverage than a full cup style. With wider straps, a balconette bra is not the best choice for women with narrow shoulders. However, it is perfect for any occasion where you want to achieve great cleavage.

Plunge bra
Offering less coverage but plenty of support, a plunge bra is best worn with low-cut outfits. A good choice for women with a fuller chest who are looking for a comfy yet sexy bra.

Full cup bra
As the name suggests, a full cup bra provides all-over coverage and support. The straps tend to be closer-set, making them ideal for women who have narrow shoulders.

T-shirt bra
Available with padded or non-padded cups, every woman should own at least one t-shirt bra. Offering a seamlessly smooth silhouette, this style of bra is designed to be worn under tight-fitting tops but can be worn with almost anything.

Strapless bra
Having come a long way in their design, strapless bras are now a feasible option for small- and large-chested women alike. Created to prevent slipping, strapless bras give you the freedom to wear whatever you want without any straps on show.

Sports bra
Providing maximum hold and minimum movement, sports bras are usually made of non-stretch fabric designed to beat the bounce.



Balconette



Plunge



Full cup



T-shirt



Strapless



Sports



NAYA

ROBELL

MOS MOSH

PLUS MANY MORE INTERNATIONAL DESIGNER BRANDS

ROCK@Theydon | 01992 926 495 | 18 Forest Drive, Theyon Bois, CM16 7EY



Rosewood Pharmacy & Beauty
presents you with a wide range of premium beauty



CAUDALIE VICHY BIODERMA dermalogica CeraVe OLAPLEX. LA ROCHE-POSAY CLARINS

ROSEWOOD PHARMACY HEALTH & BEAUTY
283-284 High Street, Epping, Essex, CM16 4BX
T: 01992 572010 or 01992 577511



BEWARE THE *booze!*



Struggling to lose weight? It may not be your choice of food that is holding you back from dropping the pounds but, instead, your favourite tippie that is sabotaging your weight loss efforts.

LONG ISLAND ICED TEA

A summer cocktail that definitely packs a punch, a Long Island Iced Tea contains a whopping 424 calories. With an impressive ingredient list that includes vodka, gin, rum, tequila, triple sec and Coca-Cola, it's no wonder this boozy beverage will see you packing on the pounds.

LOW-CALORIE SWAP: Cosmopolitan = 100 calories

PIÑA COLADA

Creamy and delicious, who doesn't love a Piña Colada or three when relaxing by the pool? Sadly, this summery cocktail contains a hefty 300 calories.

LOW-CALORIE SWAP: Fuzzy Navel = 120 calories

ALCOPOP

Although convenient, most alcopops contain a lot of added sugar, which makes them bad for your waistline. Plus, as they tend to taste sweet rather than strong, you may find yourself knocking back more than you intended, which is bad news seeing as these contain 250 calories per bottle on average.

LOW-CALORIE SWAP: Rum and Diet Coke = 115 calories

SWEET WHITE WINE

Any wine or fizz with the word sweet attached to it is going to contain more sugar, which means more calories. In fact, a medium glass of sweet white wine has around 160 calories.

LOW-CALORIE SWAP: Champagne = 89 calories

CIDER AND BEER

Two of the most popular drinks in the summertime, some ciders contain as much as 210 calories per bottle and beer up to 208 calories per pint. This is the equivalent of a glazed donut or a slice of pizza.

LOW-CALORIE SWAP: Light beer = 144 calories

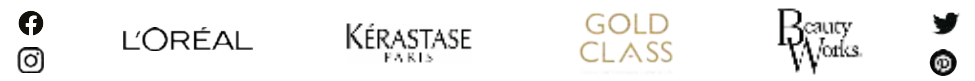
GARY PELLICCI

HAIRDRESSING



01277 229835 / 01277 848687
Brentwood: 2a High Street,
Brentwood, Essex,
CM14 4AB
www.garypellicci.com

01277 364118 / 01277 365987
Ongar: 179 - 181 High Street,
Ongar, Essex,
CM5 9JG
garypellicci@icloud.com



20% off for all NHS staff See our website for our other promotions

THE B7 MEDIA GROUP

- PRINTING • BUSINESS CARDS • LEAFLETS • DISTRIBUTION
- SIGNAGE • MENUS & BROCHURES • EXHIBITION BOARDS & BANNERS
- RETAIL PACKAGING • WINDOW VINYLs • LOGO DESIGN
- BRAND ALIGNMENT • VEHICLE WRAPPING • CARBON PADS
- WORKWEAR • WEBSITES • SOCIAL MEDIA • I.T. SOLUTIONS

ENQUIRIES@B7MEDIAGROUP.COM 01992 276101





Stuart Poulton Ltd

"We're there because we care"

FOURTH GENERATION FAMILY FUNERAL DIRECTORS

Stuart Poulton House

High Rd, North Weald Bassett Epping CM16 6BU

stuart@poultonfunerals.com ■ www.poultonfunerals.com

01992 522607 ■ 01922 572607

24 HOUR SERVICE DAY OR NIGHT



FUNERALS ■ MEMORIALS ■ PRE-PAID FUNERAL PLANS



The Lane

Fine Indian Cuisine

Discover the depths of Indian flavours.

New generation masterchefs distill the purest methods of preparing traditional, fine Indian cuisine and fuse with contemporary innovation. Steeped with only the freshest spices, chilli peppers and subtlest of flavourings, favourite menus and classic dishes are redefined to mouth-watering, modern stylish tastes.

EXCLUSIVE
DINING IN VOUCHER **£10 OFF**
*Excludes drinks and desserts. Not to be used in conjunction with any other offer.
Excluding special days and events. One voucher per table. Expires 30th November 2022.

TEL: 020 8989 1500 www.thelanebanstead.co.uk
82 Nightingale Lane London E11 2EZ

5 DISTURBING FACTS ABOUT *drowning*

To raise awareness of Drowning Prevention Week, which takes place between June 18 and 25 this year, we have collated five disturbing facts about drowning that you should be aware of.

1. YOU CAN DROWN IN AS LITTLE AS 30ML OF LIQUID

Although most people associate drowning with large bodies of water such as swimming pools and the sea, you can drown in as little as 30ml of liquid. There are reported cases of people, particularly children, drowning in buckets, toilets and even puddles.

2. PEOPLE WHO ARE DROWNING WON'T SHOUT AND WAVE THEIR ARMS

When people are drowning in films, they tend to be shouting for help and waving their arms in the air to attract attention. Sadly, when someone is drowning, this is not physically possible. The body goes into survival mode and prioritises breathing over all other actions.

3. MOST DROWNING DEATHS OCCUR WHEN SOMEONE IS INTOXICATED

As many as 70 per cent of deaths caused by drowning in adults and adolescents involve the use of alcohol. When you are intoxicated, your judgement, balance and motor skills all become impaired, which puts you at much greater risk of drowning.

4. YOU DROWN DIFFERENTLY IN FRESHWATER AND SEAWATER

While you may think that drowning in the sea would be more common, as many as 90 per cent of drowning cases occur in freshwater. Owing to the composition of freshwater, which is more similar to our own blood than seawater, you can drown in freshwater in as little as two or three minutes. However, drowning in seawater can take up to 10 minutes.

5. DELAYED DROWNING CAN OCCUR AFTER YOU GET OUT OF THE WATER

There are two types of delayed drowning: dry drowning and secondary drowning. Dry drowning occurs when you inhale water through the nose or mouth, causing a spasm in the airway and preventing air from entering the lungs. Secondary drowning results from a swelling of the air sacs in the lungs.





Rivers Hospital People Caring for People



Bone & Joint Pain



Eye Care



Cosmetic Surgery



General Medical Conditions



Men's Health



Ear, Nose & Throat Conditions



Physiotherapy



Women's Health



Weight Loss Surgery



Diagnostics



Paediatrics



Gastroenterology



Services for children and young people
- **OUTSTANDING**

01279 602 675

rivershospital.co.uk

High Wych Road, Sawbridgeworth, Hertfordshire, CM21 0HH



Rivers
Hospital

Part of Ramsay Health Care

Robust Rosemary



FOOD & DRINK

A hardy herb that will grow with abandon once established, rosemary has a long history of culinary, aromatic and medicinal uses.

WHAT ARE THE HEALTH BENEFITS OF ROSEMARY?

- > A rich source of antioxidants and anti-inflammatory compounds
- > Improves digestion and helps to treat indigestion
- > Enhances memory and concentration
- > Relieves stress and anxiety
- > Protects against cancer
- > Contains carnosic acid which can protect the brain
- > May be able to help prevent Alzheimer's.

HOW TO USE ROSEMARY IN THE KITCHEN

Rosemary salt

To create a rosemary-infused salt, fill a cup with rosemary leaves pulled from the stem and place in a bowl with 3 cups of salt. Stir together, cover and leave to sit for 2-3 weeks.

Rosemary oil

To make rosemary-infused oil, pour 2 cups of olive oil into a small pan and allow to simmer. Remove from the heat and add 3-4 dry sprigs of rosemary. Pour into a sterilised jar and cover with a lid.

Rosemary sugar syrup

Rosemary sugar syrup can be drizzled over cakes, yogurt or fresh fruit for a sweet and fragrant twist. Bring 1 cup of water to the boil and add 2 cups of sugar and 3-4 sprigs of rosemary. Once the sugar has dissolved, remove from the heat and take out the rosemary. Pour into a sterilised jar.

Rosemary lemonade

To make refreshing rosemary lemonade, simply bring 2½ cups of sugar to a boil, remove from the heat and add 9 sprigs of rosemary. Leave to steep for 30 minutes and strain. Add ½ cup of fresh lemon juice and 4 cups of cold water. Chill and serve over ice on its own or with your favourite gin.

Rosemary butter

Soften a stick of butter (but don't melt it) and blend with rosemary leaves that have been removed from the stem and diced into small pieces. Slather on crackers, bread, meat or fish.





Sustainable Salad

Are you fed up with finding soggy, slimy and generally sorry-looking salad in your fridge? Keep your leaves looking (and tasting) lovely for longer with our top tips for how to keep salad fresh.

GIVE IT SOME TLC: If you fling your salad in your shopping bag with heavier food and drink items such as tins and bottles, then your leaves are highly likely to become bruised and battered. Instead, handle your salad with care and it will be less likely to spoil.

DRY YOUR SALAD: Pre-packaged salads are usually ready to eat and do not require washing. However, sometimes the leaves can look a little damp. If this is the case, give them a quick spin in a salad spinner to remove any excess moisture. Alternatively, gently pat them with a dry cloth or tea towel.

REMOVE ANY SPOILT LEAVES: When you get

your salad home from the supermarket, open it up and remove any spoilt or squishy leaves that could potentially cause fresher leaves to wilt. It can also be a good idea to fluff up your salad before storing.

PLACE IN AN AIRTIGHT CONTAINER: Store your salad leaves in an airtight plastic container that has been lined with a paper towel. This will help to absorb any moisture and keep your leaves fresher for longer.

STORE IN THE FRIDGE: Salad leaves should be kept in the crisper drawer of your fridge as this provides the optimal temperature for fresh fruits and vegetables. This should also help to ensure that your salad does not become partially frozen.

FOLLOW THE SEVEN-DAY RULE: Even if you follow the above tips, bagged salad leaves are not designed to last longer than a week. After this time, it is usually a case of use it or lose it.



Spring Bottomless Brunch On the terrace

Every Saturday
Sittings anytime between 12pm - 2pm

- £29.95 2 courses (starter & main)
- £39.95 90 mins bottomless Prosecco
- £44.95 90 mins Bottomless Cocktails
- DJ playing from (12-4pm)



EDEN

Cocktail Bar & Lounge

Open until 11pm serving cocktails, beer, wine & nibbles
Private hire available Sundays

Live Entertainment

Grace Louise sings & Bottomless Prosecco Brunch with DJ & Saxophonist
Bottomless Prosecco or Aperol Spritz
Message us for dates & info

Find out more @edeneppling on Instagram & Facebook or call

01992 571 476
88 High Street, Epping



Drone services

Home Owners ■ Estate Agents
Insurance Companies ■ Commercial

Call now
01992 276059



ALL ABOARD FOR 5G

THE BRITISH GOVERNMENT IS ACCELERATING THE ROLL-OUT OF 5G TECHNOLOGY... COMING TO A BUS SHELTER NEAR YOU

Take a look at your mobile phone and, if you're in one of the UK's bigger towns or cities at the time, you may see the 5G symbol in the top-right corner (providing you have an up-to-date 5G-enabled phone, that is). This form of telecommunication technology that, at its peak, is 100 times faster than 4G, its rapidly ageing brother, has the capability to completely transform our interconnectivity.

The issue with 5G is that while speeds are seriously impressive, range is not. This is down to the use of millimetre waves, which are a lot shorter than the wavelengths 4G uses.

As a result, the government has been rapidly releasing licences whereby buildings and facilities can be equipped with kit that will boost 5G connectivity.

The good news is that these 'cell sites' can be put up easily and, in most cases, you won't even

know they're there. From streetlights to signposts, bus shelters to CCTV poles, the government has slashed the red tape associated with the roll-out of the project. This is good news for us all – meaning easier installation, quicker connecting of new areas and faster speeds.

In simple usage terms – messaging, checking football scores and so on – you may not notice much difference, but for tasks that used to take hours, such as downloading a HD movie to your phone, the difference is astonishing. A recent survey by Uswitch found that Haul Fryn, a road in Swansea, South Wales, had the fastest download speed of anywhere in the country – 882Mbps, meaning a two-hour HD movie could be downloaded in just 47 seconds.

For years, the internet has meant the world is at our fingertips. With accelerated roll-out of 5G technology, it now feels even closer than that.



TECHNOLOGY



MOVE OVER Midas!

Who doesn't love an Ikea hack? Enabling you to incorporate the latest designer trends into your home at a fraction of the price, we have fallen head over heels with gold leaf furniture.

WHAT YOU NEED:

Imitation gold leaf | Sandpaper | Furniture primer | Water-based gilding size | A soft brush | A clear gloss spray sealer or permanent solvent-based varnish

HOW TO APPLY GOLD LEAF TO FURNITURE:

Step 1: Prepare your furniture

For wooden furniture, sand down or fill in any bumps or holes so that you have a smooth surface to work with. Then apply your chosen primer to ensure it is not porous. If you are upcycling metal furniture, give the item a dust or clean it with soap and water.

Step 2: Apply water-based size to the area

Decide where you want to apply the gold leaf and section off this area with masking tape. Then apply a thin and even layer of water-based gilding size. This is the adhesive that will bond the gold leaf to your furniture. Leave this adhesive until it is nearly but not completely dry.

Step 3: Start adding your gold leaf

Your gold leaf should be backed by tissue so lay it tissue-side up and then gently rub the gold onto your furniture. Keep going until the area is completely covered. To avoid any gaps, you can overlap the squares of gold leaf slightly. Leave until fully dry. This can take up to six hours.

Step 4: Remove any excess gold leaf

Once the area is dry, take your soft brush and gently remove any excess gold leaf. You then need to leave your item for a further 24 hours so that the gold leaf can cure.

Step 5: Cover with a sealant

The final step is to cover the area with a sealant so that it is protected from chips and scratches. Leave this to dry for 24 hours, and then your gold leaf furniture project is complete.



Photos: iStockphoto.com/Steve Delaney, iStockphoto.com/Steve Delaney, iStockphoto.com/Steve Delaney, iStockphoto.com/Steve Delaney, iStockphoto.com/Steve Delaney, iStockphoto.com/Steve Delaney, iStockphoto.com/Steve Delaney, iStockphoto.com/Steve Delaney, iStockphoto.com/Steve Delaney, iStockphoto.com/Steve Delaney



5 ALTERNATIVE USES FOR DENTURE TABLETS

Denture tablets can be used to clean so much more than just your dentures. Discover five surprising uses for denture tablets below and you may be tempted to buy some – even if you have all your teeth.

1. TO CLEAN YOUR KETTLE: Mineral deposits can quickly build up in your kettle, which can cause your hot beverages to taste less than their best. To combat this, fill your kettle with water, drop in a denture tablet and allow to soak for a few hours. Follow with a good scrub and a thorough rinse.

2. TO REMOVE HARD WATER STAINS: If you are struggling to remove the hard water stains from your toilet bowl, then denture tablets offer the perfect solution. Simply drop in a few tablets, wait for the fizzing to stop and then scrub the bowl using your toilet brush.

3. TO ELIMINATE BURNT FOOD FROM PANS: For times when soaking just isn't enough, add a denture tablet to your sink or a bowl of warm water, drop in your pan and leave to soak for 15-20 minutes. Give the pan a gentle scrub and the burnt food should slide right off. Do not use denture tablets on cast-iron pans.

4. TO RESTORE SHINE TO GLASSWARE: If you find that your glasses often look cloudy after washing, then a denture tablet is all you need to restore them to their original glory. Fill the glass with water, drop in a denture tablet, wait for the fizzing to stop, and rinse.

5. TO BANISH TOMATO STAINS: If you batch cook or take leftovers for lunch, you will know how hard it is to remove tomato stains from plastic containers. Banish these stubborn stains for good by filling the container with water, dropping in a denture tablet and leaving to soak overnight. Come morning, all you need to do is rinse.



CHINTZ

is making a comeback

If you're a millennial or younger, you'll be forgiven for not knowing the word chintz. Often regarded as a dated decor trend, you'll be more likely to see it in your grandmother's house than on Instagram or Pinterest. But could chintz be making a comeback?

WHAT IS CHINTZ?

Chintz has a very long and fascinating history. It's a cotton textile dating to 4,000 years ago, originating in the Indus Valley between India and Pakistan. Made using a specialist dye method, chintz fabrics typically feature colourful floral designs. As the fabrics were traded around the world, they soon found their way into home textiles, made popular in more recent times by designers such as William Morris.

WHERE DID IT GO?

In more recent times, chintz was seen as a dated fabric, and it has been declining in popularity since the 1980s. IKEA caused a stir in the 1990s by encouraging people to "chuck out your chintz" in favour of its own interior products, based around simple details and block colours.

For a long time, neutrals have reigned supreme, but now chintz is starting to reappear. This time around, colours are bolder and brighter and patterns are even more lavish.

BRINGING CHINTZ INTO YOUR HOME

There are a lot of great ways to bring chintz into your home, including:

- > Chintz sofas and upholstery add a contrasting detail to neutrals and solid colours
- > Curtains in floral patterns add a little romance to your space
- > Patterned chintz-inspired wallpaper can add some colour and character to a room, bringing fantasy and fun to a child's bedroom or creating a feature in a cloakroom or dining room
- > Invest in cushions, table linens and other accessories to add a subtle hint of chintz to any interior style.

Incorporating some chintz into your home brings a modern take on a classic style. Keep an eye out for chintz-inspired décor making its way to a homeware section near you.



home hub group



Bifold doors, sliding doors and roof-lights available for next day delivery.



01992 948 980
essex@homehubgroup.co.uk
137-139 Epping High Street
f @HomeHubGroup

There's no place like Home Hub

With no pressure sales, transparent pricing and exceptional service levels you'll feel right at home with Home Hub. Our elegant lifestyle showroom is now open in Epping, call us to book an appointment.

homehubgroup.co.uk

Windows • Sliding Doors • Bifold Doors • Roof Lights



Are you interested in a Free Roof Survey?

Our roofing contractors offer a comprehensive range of services including:

- New Roofs/Re-roofs ● Green/Blue/Sedum Roofs
- Roof Repairs & Maintenance (Slate & Tiles)
- Windows & Doors ● Garage & Extension Roofs
- Fibreglass Roofs ● Rendering Chimney Work
- Damp Work ● Lead Work ● Leak Detection
- Moss Removal & Roof Cleaning ● Weather Pointing
- UPVC Fascias, Soffits & Gutters
- Single-Ply Roofing ● Waterproofing Anti-Slip systems
- Torch On Felt Roofs ● Cold Applied Roofs
- Modified Bitumen Roofing ● EPDM Rubber Roofs
- Independent Electronic Roof Testing & Survey Reports
- Covering Domestic/Commercial/Industrial/Roofing



01992 276082
www.horizonflatroofing.uk
info@horizonflatroofing.com



GUIDE TO CLEANING PAINTED WALLS



There is nothing worse than noticing a dirty mark or stain on a freshly painted wall. Keep your painted walls looking fresh and fabulous for longer with our handy guide.

HOW TO CLEAN PAINTED WALLS

1. Dust off any excess dirt using a lint-free cloth or a soft broom for hard-to-reach areas.
2. Fill a bucket with warm water and a gentle detergent.
3. Apply to the walls using a sponge mop or soft sponge.
4. Do not oversoak your sponge or mop as this can result in water stains.
5. Leave the solution for 10-15 minutes.
6. Rinse with clean water and a sponge or mop.
7. Dry by placing a microfibre cloth onto a flat-headed mop and gently rubbing over the wall.

HOW TO CLEAN PAINTED KITCHEN WALLS

Painted walls in the kitchen are prone to grease. To combat this, apply a gentle degreaser to any affected areas before following the same steps as above.

HOW TO SPOT CLEAN PAINTED WALLS

To get rid of small stains or marks on your painted walls, apply a mixture of water and baking soda or bicarbonate of soda to the affected area using a soft cloth or towel. Half a cup of baking soda or bicarb in a bucket of warm water will do the trick.

HOW TO REMOVE OIL STAINS FROM PAINTED WALLS

1. Mix one cup of white wine vinegar into a bucket of warm water.
2. Soak a soft sponge and apply to the stain.
3. Rub gently until the stain has disappeared.
4. You do not need to rinse the area.

WHAT NOT TO USE

You should not clean your painted walls with any cleaning products that contain alcohol or harsh chemicals, as these ingredients can break down your paint surfaces and leave your walls looking a mess.





OUT OF MANCHESTER

STYLE AND A SMILE, WITH DESIGNER MATTHEW WILLIAMSON



Matthew Williamson, by his own admission, doesn't perhaps have a name that screams 'style, exuberance and panache', and considering this is someone who grew up in the murky confines of 1970s Manchester, there was no indication of the creative elevation that was to come.

And yet, in art just as in physics, equal and opposite reactions can provoke explosions of inspiration from very simple ripples of provenance. That is certainly the case with Williamson, who for more than two decades now has specialised in the wonder of colour.

He is an interior designer of great originality and acclaim, as his recent work with John Lewis determines. He is someone whose passion for colour, aesthetics and design was catalysed by his mother, but who has taken those principles to another level of optimism.

"If you're going to use colour, you have to be an optimist," he says. "You have to look at the beauty

of contrast and the potency of the shades and tones you put together.

"There is no point being afraid of trying things, and you should never enter a project imagining something isn't going to work. Only by trying will you know, and only through knowledge can you grow.

"Of course, it's about mixing up tones, but also enabling a background to act as a template for the colour detail you want to layer on top."

Replicating Williamson's colour-driven style of interior design is no easy task. It has, after all, taken the designer the best part of half a century to refine an interior design ethos that even he admits is still a work in progress. But the Central Saint Martins graduate insists the way to use colour is to follow your smile.

"If it makes you happy, it's working. If it paints pictures and provokes memories and inspires in you ideas to move forward, then you probably have what is right."

Photo credit: BBC/Darlow Smithson Productions and matthewwilliamson.com



NO vacuuming ALLOWED



A GUIDE TO HELP YOU DECIDE WHEN YOU SHOULDN'T USE YOUR VACUUM WHEN CLEANING

Some people love vacuuming; others can't stand it. Either way, there is no denying how quickly it can clean up your home.

However, did you know that there are some items that you should never Hoover up?

PIECES OF GLASS

If you have smashed a glass, then you may reach for your vacuum cleaner to quickly clear the area. However, large pieces of glass can puncture the bag, get stuck in the hose and damage the interior. Instead, use a dustpan and brush for the large pieces and a damp cloth to pick up small shards. Be sure to wear gloves to protect your hands.



FINE DUST

Have you recently renovated your home? If yes, then your furniture is probably covered in dust particles. Sadly, you should not Hoover these up as sanding residue and other tiny particles will clog the filters and cause your Hoover to spit dust back into the air.



WET FOOD

Wet food, or anything wet or moist, should not be cleaned up with a vacuum cleaner. This includes soggy cereal, dog food and even small spills. Instead, use some kitchen towels or a tea towel.



SMALL METAL ITEMS

Small metal items such as paper clips and coins can easily become stuck in the rotating part of your vacuum cleaner and stop it from working properly. They can also sometimes break off plastic pieces from the interior of your appliance.



MAKE-UP

Dropped an eyeshadow palette on the carpet? Or some foundation? Although you may be tempted to use your Hoover, this is not a good idea. Firstly, the vacuum brush could smear the make-up further into the carpet, and secondly, if you do manage to successfully clean it up, it is highly likely to melt once inside the appliance.

Essex
Roofing

ROOFING SPECIALISTS
VELUX INSTALLERS
FLAT ROOFING
PITCHED ROOFING
LEAD WORK
UPVC WORK



NEED MORE LIGHT IN YOUR LIFE?

WE SPECIALISE IN VELUX WINDOWS • BALCONIES • LANTERNS
• BLINDS • SERVICING, REPAIRS & REPLACEMENTS

Certified
Installer



CONTACT US TODAY

☎ 01992 276045 📱 Mobile: 07557 952390



🌐 www.essexroofing.co.uk ✉ info@essexroofing.co.uk

YOU'RE NOT

ALONE



OVER 207,500 OTHER PEOPLE IN ESSEX
READ **VISION** MAGAZINE'S MONTHLY

Your
Monthly
Lifestyle
Magazine

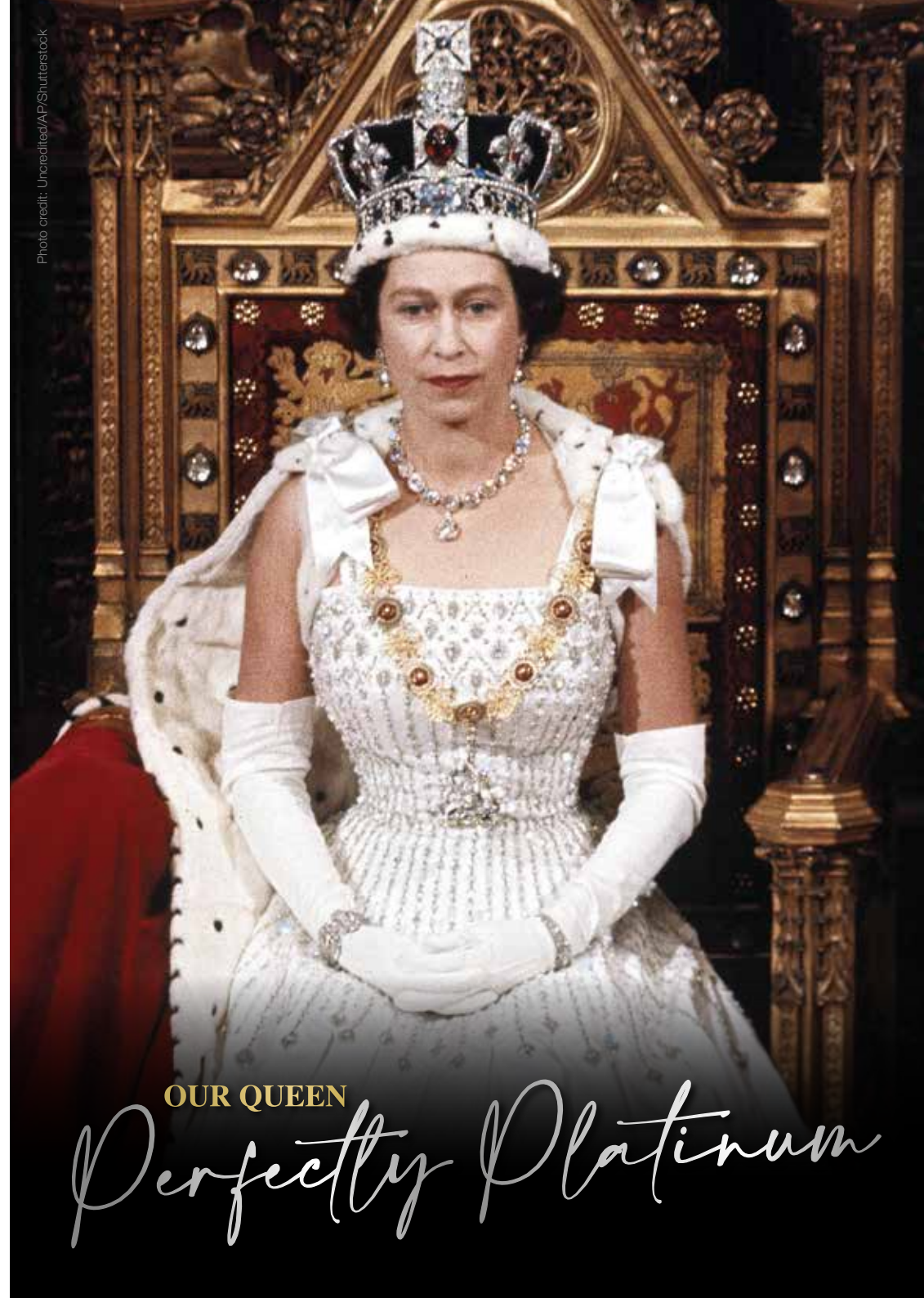


CONTACT US TO GET YOUR BUSINESS SEEN BY OUR READERS

See all our magazines at www.visionmagessex.com

Billericay Shenfield Bishop's Cleeve Brentwood Ongar Chelmsford Beaulieu Epping Theydon Frinton-on-Sea
Halstead Hertford Hornchurch Leigh Thorpe Bay Loughton Maldon Burnham Manningtree Mistley Rayleigh Wickford
South Woodford Woodbridge

Photo credit: Uncredited/AP/Shutterstock



OUR QUEEN

Perfectly Platinum

CELEBRATING THE QUEEN'S PLATINUM JUBILEE

Few would dispute the notion that Queen Elizabeth II is our most impressive monarch ever. She has presided not just over seven decades of exemplary rule, but also across a social and cultural timeframe in which so much has changed and evolved. This summer's Platinum Jubilee is not only a celebration of Her Majesty's time at the top table of British society, but also recognition of a job that's been done impeccably.

Even in the last year, in the wake of the passing of her husband Prince Philip, the scandal involving son Prince Andrew, and the turning of public opinion against her grandson Prince Harry, Queen Elizabeth, now aged 96, has presided over her nation with faultless grace and dignity.

And while the Queen still values her privacy, she respects too the need to be visible and approachable, and perhaps this relatability is what makes her so endearing, so popular and so special.

It was way back in February 1952 that the death of Elizabeth's father, King George VI, triggered her accession to the throne. The Platinum Jubilee marks the 70 years she has served the United Kingdom, and 70 years from when, upon her coronation, she declared herself fully at the service of the nation she served.

She said, in that characteristic crisp and measured voice: "I declare before you all that my whole life, whether it be long or short, shall be devoted to your service and the service of our great imperial family to which we all belong."

“ I declare before you all that my whole life, whether it be long or short, shall be devoted to your service and the service of our great imperial family to which we all belong ”

Taking strength from those around her, the Queen has never professed to have all the answers. She has admitted that trial and error has often been the way forward, and that sense of humility permeates right up to the present day. "I know of no single formula for success," she said, "but over the years I have observed that some attributes of leadership are universal and are often about finding ways of encouraging people to combine their efforts, their talents, their insights, their enthusiasm and their inspiration to work together."

Certainly she has excelled in that, with the Platinum Jubilee, beginning on Thursday, June 2, stretching across a weekend of celebrations. Queen Elizabeth II, family, friends and the nation will look back over seven decades of exemplary rule, and forward to the future.

From Trooping the Colour, which marks the Queen's birthday celebrations with more than 1,400 parading soldiers, 200 horses and 400 musicians, to the traditional RAF fly-past, the 1,500 Platinum Jubilee beacons that have been distributed across the UK in a tradition that dates right the way back to 1897, to a thanksgiving service on Friday, June 3, at St Paul's Cathedral, to The Derby at Epsom Downs, the events over Elizabeth's special weekend are as memorable as the thousands of others held during her years on the throne.

And yet the Platinum Jubilee is about much more than just Queen Elizabeth II. It is an opportunity for people across the UK to share in what it means to have a strong, proud, resilient monarch, particularly in an era where so much around us feels restricted or under threat.

With communities encouraged to head into their streets to mark celebrations of the seven-decade reign in their own special way, the Platinum Jubilee is a universal event that celebrates not just the Queen, not just royalty, but also the people of this country.





LOCAL NEWS

from your neighbourhood



Town mayor elected by council for the second time

Epping Town Council has elected councillor Barbara Scruton (pictured left) as mayor for the second time.

Cllr Scruton, who was previously town mayor in 2014/15, was nominated by outgoing mayor councillor Michael Wright (pictured right), who spoke about some of his highlights as he handed over the chain of office at the annual council meeting on Tuesday, May 10.

Cllr Wright said: "All good things must come to an end – and mine just did."

"It has been a very interesting and rewarding year and a privilege to have served Epping and the town council as mayor for a second time."

He thanked his wife Lorna, cllr Scruton, Planning and General Purposes Committee chairman councillor Nigel Avey, and all other councillors for their support. He also gave a special thank you to town clerk Beverley Rumsey and all town council staff for the "colossal amount of work" they put in.

Cllr Scruton paid tribute to cllr Wright for the way he had carried out his mayoral responsibilities and said she was looking forward to working with the Deputy Town Mayor, councillor Christine Burgess.

Cllr Burgess, who was not at the annual council meeting, had written to the council stating she would be "very honoured" to hold the position and would "work hard to fulfil your [the council's] expectations".

WANT MORE BUSINESS?

CALL 01992 276101 TODAY TO ADVERTISE



APPLIANCE REPAIRS AND SALES

We repair all makes and models

Washing Machines • Tumble Dryers
Dishwashers • Ovens • Hobs • Cookers
Fridge/Freezers • Extractor Hoods

New appliances in stock for same day delivery & installation

Prices listed on our website

Call 01279 310793

Or Book Online

www.spindoctoruk.co.uk



CONSTRUCTION

We are a well established Epping based family contractor providing design to completion for both residential & commercial

Please do not hesitate to contact us:

Telephone: **01992 276 032**

Email: info@scconstruction.co.uk

www.scconstruction.co.uk

Accreditations

Salmon Construction Ltd



Residential Extensions

Refurbishment & Remodelling



Police Commissioner visits ahead of meeting



Photo credit: Epping Forest District Council

The Police, Fire and Crime Commissioner (PFCC) for Essex paid a visit to the new community hub in Epping last month.

PFCC Roger Hirst (pictured centre) visited the refurbished Epping Community Hub offices before hosting a public meeting on May 12.

The hub, which opened last September, is a one-stop shop where the public can access Epping Forest District Council and other local services, including police, for help and advice.

It also enables agencies to work more closely together and share information.

Mr Hirst was joined at the meeting by other dignitaries to tell those in attendance about the latest initiatives being put in place to help make communities safer.

Mr Hirst said: "This is the first time I have been able to visit the newly refurbished community safety hub here in Epping Forest.

"Community safety hubs are a great initiative and a key objective in my Police and Crime Plan.

"They provide key agencies with a collocated workspace enabling an efficient and responsive approach that focuses on prevention and early intervention, helping to make our communities safer."

Trio set to take on gruelling cycling challenge

An Epping cyclist is preparing to take on a challenge that is well known for testing even elite athletes in the Tour de France.

Neil Turner, from Epping, will be joined by Dave Birch and Dan Bryant as he aims to scale Mont Ventoux, climbing almost 29,000 feet and 85 vertical miles – all within a 24-hour time limit.

The challenge itself takes place on July 2 and will raise money for six charities: Help for Heroes, Care of Police Survivors, NHS Charities Together, The Firefighters Charity, The Coastguard Association and

Pancreatic Cancer UK.

The trio of cyclists are members of the Blue Light Cycling Club, which is a club for staff from the police, fire service, NHS, Coastguard, Royal National Lifeboat Institution, prison service and Armed Forces.

Neil said: "Help for Heroes ensures those facing life-changing injuries have the best support and care they deserve.

"We're not the best cyclists you'll ever meet, but we'll be in a world of pain for just one day. Those who require the support of Help for Heroes face pain and the need to push through barriers every single day."

To donate, visit www.justgiving.com/crowdfunding/mtventouxchallenge

Work starts to turn former school into apartments

Developers who are turning a former Epping primary school into apartments have started to strip the site days after revised plans were approved.

Qualis Commercial Ltd says it has started "initial soft strip work on site" as it begins the task of turning the former site of Epping Junior School, the council depot and the Centrepont building in St Johns Road into apartments.

The original plans were approved in February, but changes to the application meant Epping Forest District Council had to approve them again on May 6.

Work started on site just days later, with the plans including creating new apartment buildings, and refurbishing and extending the semi-detached caretaker cottages for residential use, as well as revised vehicle and pedestrian access.

A spokesperson for Qualis Commercial Ltd said: "We have started initial soft strip works on site at the former Epping Junior School to make safe access to the locally listed buildings in preparation for bat surveys and to record historic features.

"The internal works should involve minimal disruption and are a precursor to the demolition of other buildings expected in early summer."



Photo credit: Qualis Commercial Ltd

floors-2u.co.uk

Bringing the best to you

SPECIALISTS IN

- CARPETS ● LAMINATE ● VINYL
- LUXURY VINYL ● REAL WOOD

Karndean

moduleo^{ivc}



amtico



FLOORS-2U ARE A LOCAL FAMILY BUSINESS SPECIALISING IN FLOOR COVERINGS

CONTACT US OR BOOK AN APPOINTMENT TO VISIT OUR SHOWROOM

1 MAWNEY ROAD, ROMFORD, RM7 7HH
01708 702494 ● www.floors-2u.co.uk

PUT THE SPARKLE BACK INTO YOUR KITCHEN



Domestic Oven Cleaning Specialists

Est. since 2007

Prices

Single oven incl. shelves & grill pan.....	£43.00
Double oven incl. shelves & grill pan.....	£54.00
Range incl. shelves & grill pan.....	From £54.00
AGAs.....	From £90.00
Hobs.....	From £14.00
Extractors.....	From £15.00
Microwaves.....	From £20.00

No VAT to pay



PLEASE CALL FOR A FREE QUOTATION

01279 432444 * www.ovenbright.co.uk



BEFORE

AFTER



J.K SECURITY DOORS

- Bespoke high security doors
- Victorian style security doors
- Insulated garage doors
- Roller Shutters • Internal Doors

We have extensive experience in the front and garage doors industry, and our experts are always glad to find the product that fits you the best.

P: 02033024011 M: 07440395260
E: info@jkdoors.co.uk W: www.jkdoors.co.uk

@JKDoorsLondon @jkdoors

ARE YOU ARE LOOKING FOR AN ULTIMATE CUSTOM SOLUTION FOR YOUR FRONT OR GARAGE DOOR?

J.K SECURITY DOORS TEAM IS ALWAYS AT YOUR SERVICE



HORMANN



LOCAL NEWS

from your neighbourhood



LOCAL NEWS THEYDON



Photo credit: Jim Blake

Transport bazaar returns with great success

The Theydon Bois Transport Bazaar returned for the first time since the beginning of the COVID-19 pandemic – and it was a huge success.

The twice annual event, which first started in 2005, took place on May 14, with huge crowds flocking to the Village Hall.

The bazaar featured a variety of stalls with all sorts of bus and railway memorabilia. It also included supporting preservation projects such as the Epping Ongar Railway and the National Trolleybus Association.

The event was co-organised by Jim Blake (pictured), who is an author of dozens of historical and photographic books on buses and railways, having

taken several thousand photos of them since 1961.

Speaking to **VISION**EppingTheydon, Jim said: "I'm pleased to say the event went very well and it was a great relief to have most of our regular stallholders and customers back in attendance.

"As well as my books, I sell other transport memorabilia on my stall at the events.

"Other stallholders had on offer such things as model buses and model railway equipment, as well as larger memorabilia such as station signs, ticket machines and also parts for preserved buses."

The next Transport Bazaar will be held on Saturday, October 1, 2022. Further details will be announced closer to the event.



Photo credit: Clive Amos



Elected councillor honoured to act for town

Theydon Bois' newly elected district councillor says he will "preserve the [village's] nature and character".

Liberal Democrat councillor Clive Amos (pictured) was elected to the Theydon seat on Epping Forest District Council on May 5 when he earned 14 votes more than the previous district councillor for Theydon, Conservative Sue Jones (pictured inset).

It was a close-run race, with cllr Amos earning 51 per cent of the vote compared to Sue with 49 per cent.

Cllr Amos told **VISION**EppingTheydon: "I feel a great sense of responsibility to ensure that concerns of the residents in Theydon Bois in particular are heard and action taken, as well as the overall responsibilities that councillors have for all matters across Epping

Forest District Council.

"I will seek to preserve the nature and character of Theydon Bois. As a Community Speed Watch volunteer, I am keen to see action taken to improve road safety in the village with measures to reduce speeding vehicles. This and the poor state of repair of the roads and pavements is the responsibility of Essex County Council, but I will continue to take this up.

"The need to reduce energy costs has never been more pressing. To this end, the council needs to ensure, as far as possible, that the houses that it owns have the insulation improved where necessary.

"I would like to thank everyone for the support that I received during the election campaign and I pledge that I will serve to the best of my ability."

Traders deny crime after making £570m in a day

A group of traders, including several men from Theydon Bois, who made up to £570million in just one day, say none of them "did anything wrong" as an investigation is launched.

The group earned the huge sum on April 20, 2020, as the price of oil was collapsing in tandem with the pandemic's impact on the global economy. They were trading in West Texas Intermediate futures on the New

York Mercantile Exchange.

Following the group's huge windfall, the US Commodity Futures Trading Commission asked the UK's Financial Conduct Authority to investigate.

Evan Flowers, a lawyer for Dechert LLP representing the group, told **VISION**EppingTheydon: "None of our clients did anything wrong and they remain confident the US regulator will come to that conclusion."



ASHLYNS GARDEN CENTRE

Come & visit us

Tel: 01992 276 034 • www.ukwholesaleplants.co.uk @Ashlyns farm garden centre
Ashlyns Farm, North Weald, CM16 6RZ

Your local plant specialists

BEDDING PLANTS • SHRUBS • TREES

- SEASONAL BEDDING PLANTS
- HANGING BASKETS
- READY-MADE PLANTERS • & MORE...



From **£895*** for a fully fitted electric garage door.
WAS £1,354 INCLUDING VAT.

Gotta get a Garolla.

- WHAT'S INCLUDED WITH EVERY DOOR:
- EXPERT MEASURING & FITTING
 - 2 REMOTE CONTROLS
 - ACOUSTIC & THERMAL INSULATION
 - FREE DISPOSAL OF YOUR OLD DOOR
 - AVAILABLE IN 21 COLOURS



*Offer valid for openings up to 2.4m wide & including 2 remote controls, 55mm white slats, internal manual override.

Garolla garage doors are expertly made to measure in our own UK factories, they're strong and solidly built. The electric Garolla door rolls up vertically, taking up only 8 inches inside your garage, maximising valuable space. Our expert local installers will fit your new door and they'll take away the old one too, so there's no mess.

Give us a call today and we'll come and measure up completely **FREE** of charge.

GAROLLA ROLLER SHUTTER DOORS

www.garolla.co.uk

CALL US TODAY ON:
01992 830 024
MOBILE:
07537 149 128

LINES OPEN 7 DAYS A WEEK

Great products. Great prices.

Enjoy our range of top brand appliances at low prices

Price Match Guarantee | Super Service | Expert Knowledge | Contact-Free Delivery

Great products. Great prices.

Enjoy our range of top brand appliances at low prices

Price Match Guarantee | Super Service | Expert Knowledge | Contact-Free Delivery

AEG Induction Hob
IKB64301XB



- Induction Technology
 - Adjustable Timer
 - Power Boost Button (boils water in 90 seconds)
 - Dimensions: H4.6xW57.6xD51.6cm
- 2 Year Warranty

Now Only
£359.⁹⁹
Was £379.99

**£20
Save**

AEG Built In Single Oven
BP555IE20M



- Fan Oven with 11 Programmes
 - Programmable Timer
 - Pyrolytic Cleaning Function
 - Dimensions: H59xW56xD55cm
- 2 Year Warranty
A+ Energy Rating

Only
£689.⁹⁹



Broadway Music and Vision

8 The Broadway,
Woodford Green, IG8 0HL
0208 504 7500
broadwaymandv@aol.com



Broadway Music and Vision

8 The Broadway,
Woodford Green, IG8 0HL
0208 504 7500
broadwaymandv@aol.com





If you are a dog lover, who enjoys learning something new, then this volunteer role could be a perfect fit for you.

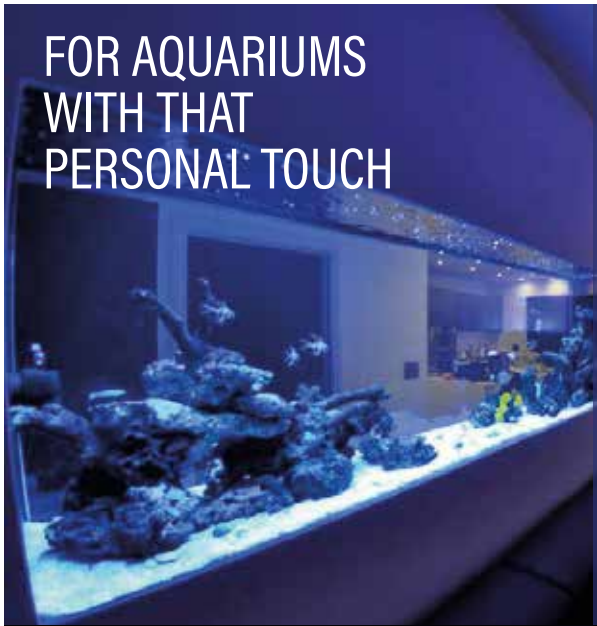
Start your puppy raising journey today at guidedogs.org.uk/puppyraiser

ADVERTISE
your company here call
01992 276101

ask for Brett



FOR AQUARIUMS WITH THAT PERSONAL TOUCH



ND Aquatics Ltd are manufacturers of custom aquariums, focusing on the highest of quality and customer satisfaction.

If you are looking for a quality aquarium then we at ND Aquatics will take all the time necessary to listen to your needs, to answer your questions and to give advice and recommendations.

For more information & advice: 01992 535916 ☐ 01992 538266
info@ndaquatics.co.uk ☐ www.ndaquatics.co.uk @ndaquatics
2 Mimram Rd, Hertford, SG14 1NN

HOW TO SET UP A FRESHWATER FISH TANK



PETS

Thinking about adding an aquarium to your home? Bringing beautiful colours and life to your surroundings, as well as a whole host of health benefits, discover how to set up a freshwater fish tank for maximum wow factor.

1. CHOOSE AN AQUARIUM

Think about the amount of space you have, the type of fish you want to get and your budget. Large aquariums are more stable and require less work to maintain, whereas smaller ones need more attention. Wide aquariums are ideal for active fish such as danios, and narrow ones are better suited to less active fish such as angelfish and gouramis.

2. PICK THE RIGHT SPOT

When it comes to where to place your new aquarium, you need a spot where you spend a lot of time so that you can get as much enjoyment from it as possible. Avoid windows that receive direct sunlight and areas near exterior doors which can be too cold.

3. ADD DECORATIONS

Obviously, gravel and water are essential for your freshwater tank, but there are lots of other decorative features that you can add. Some of the most popular additions include live and artificial plants, rockwork, sunken ships, castles and figures. Taller plants and décor items should be placed at the back to hide filter tubes and cords, with smaller items at the front. You can also add background material to hide hoses and add visual depth to your display.

4. USE A TEST KIT

Test kits are recommended for new aquariums as nitrite and ammonia levels can rise and become hazardous. You can buy these online or at most aquatic centres.

BEST FISH FOR BEGINNERS:

Danio | Guppy | Platy | Tetra
Avoid mollies as these fish are prone to disease and hard to keep alive for beginners.



Create your own outdoor CINEMA

There's no better way to spend a warm summer evening than watching a film under the stars. Outdoor cinemas have become very popular in recent years, and with just a few simple steps, you could build one in your own garden.

Get ready to make those summer nights even better with your own outdoor cinema.

CHOOSE THE RIGHT SPOT

First, you'll need to find the perfect spot for your cinema. You'll want somewhere that's dry, preferably flat, and where you can easily set up your screen.

BUY A PROJECTOR, SCREEN AND OTHER ESSENTIALS

Find a projector that fits your budget. Anything over 3,000 lumens is ideal for being able to see a film in bright conditions. There are a lot of budget projectors that produce a high-quality image that's ideal for home theatre use. You may also need to invest in a screen (or a white bedsheet) and some speakers or headphones.

GET YOUR KIT SET UP

Get everything connected and ready. You'll need to choose how you're connecting your projector, whether that be wireless, Bluetooth or via a game console/DVD player.

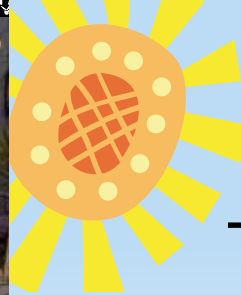
CREATE A COMFY SETUP

Make your setup nice and cosy with plenty of cushions and blankets. Use your garden furniture, deckchairs or even outdoor beanbags. Cushions from your garden furniture also make excellent seating if you fancy perching on the ground. You might want hot water bottles to hand to keep you warm if things get a little chilly.

GET YOUR SNACKS READY

Finally, get your snacks ready. Popcorn and sweets are a classic, or you could opt for nachos, burgers, hot dogs or pizza for something a little more filling.

An outdoor cinema is the perfect addition to any garden, providing night after night of entertainment in the comfort of your own home.



AS THE WEATHER HEATS UP, MAKE SURE YOU DO YOUR BIT FOR LOCAL WILDLIFE

The temperature is hotting up, and while most of us welcome these sunnier days, the same isn't always true for our community critters. The good news is that there are a lot of things you can do for wildlife in the hot weather to help keep them safe from the sun.

Provide fresh water: Spells without rain can mean that a lot of natural water sources have dried up for your garden visitors. Putting out some fresh water will help thirsty animals and insects. Keep it shallow and put some rocks in there to help insects get out if they fall in.

Put in a bird bath: A bird bath is a great way for birds to keep clean and cool. You can buy them at garden centres and other retailers, or you could make your own as a fun DIY project.

Fill up your feeder: Birds can find it tough to find food when the ground is dry and worms are scarce. Keep your bird feeder topped up and put out some fruit, such as apples and soaked raisins, for animals on the ground.

Create shaded spots: Animals may struggle to find shade on a hot day, but you can help by putting logs, large rocks or wooden planks around your garden to help create shade.

Keep your pond topped up: Remember to keep an eye on your pond and top it up if needed. This will help any fish that you have, as well as other visitors who use your pond as a water source.

These simple steps will make a big difference to your local wildlife.





Patio Heater
Fire Pit

Even during the warmest months of the year in the UK, the evenings can get a little chilly. Fortunately, you can still enjoy your outdoor space after sunset with an outdoor heating source.

WHAT IS A PATIO HEATER?
In its simplest form, a patio heater is a device that allows you to heat the patio area of your home. Some patio heaters run on electricity, whereas others burn wood, gas or butane. Patio heaters are designed for outdoor use, and you can find many different types to suit your space.

WHAT IS A FIRE PIT?
Fire pits, just like patio heaters, are designed to keep you warm in your outdoor space. Some fire pits use wood, coal or propane as their heat source, whereas others have an electronic ignition to light the fire. There are many different shapes, sizes and styles of fire pits available.

PROS OF PATIO HEATERS
Versatile – can be used for home or commercial use | Good temperature control | Safe for children

and pets | No embers or sparks | Low maintenance | Easy to move | Some approved for tent/garage use

CONS OF PATIO HEATERS
Limited design choices | Require fuel or a power source | Cords can create a trip hazard | Propane is expensive | Not a significant light source

PROS OF FIRE PITS
Lots of design options | Provide both warmth and light | Have roasting capabilities | Easy to move | Less messy than a campfire

CONS OF FIRE PITS
Danger of sparks or embers | Limited heat range and temperature control | Open flames | Cannot be used indoors

WHICH IS BETTER?
Both patio heaters and fire pits offer a great way to heat your garden. The former is a good option for those who can't have an open fire for safety reasons or if you don't like cleaning. The latter can be more economical and can also double up as a barbecue.

PUZZLES & TRIVIA



- ACROSS**
- 1. Eurasian crow (4)
 - 3. Excessively emotional (6,2)
 - 9. Time off (7)
 - 10. Sudden movement (5)
 - 11. Steer (anag) (5)
 - 12. Wicked look that causes harm (4,3)
 - 13. Possessing (6)
 - 15. Wind instrument (6)
 - 17. More sugary (7)
 - 18. Freight (5)
 - 20. Deduce or conclude (5)
 - 21. Currents of air (7)
 - 22. Disregarding oneself (8)
 - 23. Depend on (4)

- DOWN**
- 1. Connections or associations (13)
 - 2. Willow twig (5)
 - 4. Complied with a command (6)
 - 5. Children's toy (12)
 - 6. Medieval cell (7)
 - 7. Affectedly (13)
 - 8. Occult (12)

1		2		3	4		5		6		7
			8								
9							10				
11						12					
13		14					15				
					16						
17								18		19	
20						21					
22									23		

- 14. Necessary (7)
- 15. Verse (5)
- 16. Eats grass (6)

DID YOU KNOW?

- ▶ There are more than 500 species of shark, with around 143 of them listed from vulnerable to critically endangered by the International Union for Conservation of Nature.
- ▶ Great white sharks are partially warm-blooded, meaning they can move faster when hunting prey.
- ▶ Less than 10 per cent of whale sharks are thought to survive to adulthood, but those who do can live up to 150 years old.
- ▶ The Antarctic blue whale is the largest animal on the planet.
- ▶ Humpback whales in the Southern Hemisphere don't eat for much of the year. They live off fat reserves for around five-and-a-half to seven-and-a-half months each year as they migrate.

Facts courtesy of WWF-UK

SUDOKU

7	5							2	
		6		5					
					4			8	1
6			9						
1		8					9		4
					3				8
2	4		7						
				3			4		
	6							9	3

A star in the making



THE BEST WAY TO START OFF – AND STICK TO – A REWARDS CHART WITH YOUR KIDS

Most parents have tried to use rewards charts – you know, that large piece of card or app-based drive towards making your children nicer to be around... and your home a tidier place.

The reason many charts fail is because, while the concept is great, the complications, complexities and conversations surrounding what tasks have or haven't been done, and to what standard, make managing charts more of a chore than the jobs listed on them.

While rewards charts are available in plentiful supply from shops and online, it's sometimes more fun to make one up yourself – you can then tailor it to your own family, working in hobbies, treats and experiences unique to you.

Six ways to ensure you can make a rewards chart stick!



KEEP TASKS SIMPLE

Ensuring jobs are straightforward and achievable will mean kids maintain focus when they need to.



UPDATE AFTER EVERY TASK

If possible, apply stars every time your little ones complete a challenge. This direct and very visual reward mechanism will keep them striving for more.



KEEP REWARDS REGULAR AND TANGIBLE

Using quick-fire rewards – rather than offering to contribute small additions to a bigger project – means kids will remain engaged and interested.



RESTART EVERY WEEK

Make every week a clean slate, where both completed and unfulfilled tasks are wiped away, meaning a new set of challenges – and rewards – awaits.



ENCOURAGE TEAMWORK

If you have more than one child, pool tasks so that they become responsible for and beneficiaries of each other's successes.



MOVE ON EVENTUALLY

While the rewards chart is a great way to motivate kids, it may lose its appeal over time, so progress the ideas behind it to tasks that offer greater responsibility and bigger rewards for your youngsters.



A PLACE TO

Childcare Choices

WE NOW OFFER TAX-FREE CHILDCARE!

MAKE NEW FRIENDS

Helping children believe they can do anything

Stagecoach Loughton

Singing, dancing and acting classes for 4 - 6 year-olds

stagecoach.co.uk/loughton
 01908 087 515
 Debden Park High School, IG10 2BQ

Creative Courage For Life®

TRAFALGAR ENTERTAINMENT COMPANY

Specialist family lawyers.

RAYDENSOLICITORS



There might be challenging times in your life when a family law solicitor can help:

- Have you decided your marriage or relationship is over, are you unsure about your family's future?
- Do you need to protect your children, or understand the options to resolve arrangements for your children?
- Do you need a pre nuptial or post nuptial agreement to protect assets?
- Are you moving in with your partner and need a cohabitation agreement?

Choosing the right family lawyer for your circumstances is crucial. Rayden Solicitors are family law specialists with many years' experience; we provide tailored and practical solutions in all areas of family law - divorce, relationship breakdown, child arrangements and financial settlements.

Bespoke advice from Rayden Solicitors in Loughton.

Contact us, enquiries@raydensolicitors.co.uk

Loughton
127 High Road
Loughton
IG10 4LT
Tel: 0203 773 3919

RAYDENSOLICITORS
www.raydensolicitors.co.uk

We are available on





New workspaces in Epping.

Our new centre at Epping Civic Building is the latest addition to our unparalleled network of Offices, Coworking, Meeting Rooms, Virtual Office & Memberships.

Drop in to see us today

01992 924800

epping.civicbuilding@regus.com
2nd Floor, The Civic Building
323 High Street, Epping CM16 4BZ

www.regus.com



About Epping Civic Building.

Our workspaces.



A new way of working.

Work at the centre of the action in Epping. Work where decisions are made when you take professional office space on vibrant Epping High Street. The Civic Building also houses Epping Forest District Council and is surrounded by commerce, with great transport links to easily access London and beyond. Get straight down to business in the strikingly curved Grade II listed building which blends historic features with bright modern workspaces. Take in countryside views from the second floor and when you take a break, there are green spaces nearby.

- High Street Location
- Passenger lifts
- 24 hour CCTV monitoring
- Car parking
- Centre support staff
- 24/7 access

Whether you live locally, have clients nearby or colleagues you need to connect with, you can use our workspace whenever you need. Our network starts right here in Epping Civic Building, Epping, with other locations close by, many more across United Kingdom, and thousands around the world. So wherever business takes you, we'll be there too.

Offices, Coworking, Meeting Rooms,
Virtual Office & Memberships



40 years since the FALKLANDS WAR

A LOOK BACK ON THE FALKLANDS WAR, WHICH ENDED IN JUNE 1982

The commencement of the Falklands War, when Argentina landed on the small island situated 500 miles from its lower-east coast, represented more than simply a country looking to reclaim what it thought it rightfully owned.

On the face of it, that was Argentina's ploy. The Falklands, a modest 4,700 square miles, comprising little more than rocky terrain, cliffs, birdlife and cattle, had been appropriated by the British back in 1765.

Within five years, a Spanish commander from Buenos Aires landed with five ships and 1,400 troops to claim possession of the land. And that remained the case until 1883, when the British returned.

The constant power struggle has raged on, though when Argentina relit the blue and white striped touchpaper in 1982 with severe territorial aggression, it surprised many.

A deeper explanation, away from the geographical claims and disputes, lay in the political situation in Argentina, and the economic

struggles that besieged South America in the 1980s.

The three-man military junta that had assumed power in Argentina in 1976 had evolved over the years, and as it looked to build support and legitimacy by claiming a territory that still held considerable emotional ties to the Argentine people, seizing the Falklands was a clever political move.

On April 2, Argentina invaded, kicking off just over two months of conflict, where the British, led by Margaret Thatcher, responded with air, sea and land attacks. A series of bloody battles raged, with the Battle of Goose Green perhaps the most famous.

Finally, on June 14, Argentina surrendered after British troops yomped across punishing terrain, arriving at East Falkland to find their enemy waving white flags.

While conflict ceased, the ongoing antagonisation between Argentina and the UK (and England in particular) has continued, mostly in sporting rivalries.



Photo credit: Olive Limpkin/Daily Mail/Shutterstock



WHAT YOU NEED TO KNOW ABOUT HIRING A PROPERTY MANAGEMENT COMPANY

Renting out a property and being a landlord is not an easy job. If you have a property to let, hiring a property management company could be one way of making the job a little easier.

Should you hire a property management company to take care of your rental? Take a look at the pros and cons to help you make the right choice for you.

Pros of hiring a property management company:

- > Ease the responsibility of property management. From collecting rent to maintenance, they'll take care of everything on your behalf.
- > Property management companies will source and vet tenants, taking the responsibility off you.
- > Management companies with their own vendors and contractors could save you money on maintenance costs compared to sorting the work yourself.

Cons of hiring a property management company:

- > You'll pay a fee to use a property management company, which will affect how much money you take home from rental fees.
- > As property management companies manage multiple properties, tenants might not get the same attention a hands-on landlord would provide.
- > Using a property management company could

make you less aware of what's going on with your property.

Why hire a property management company?

Ultimately, hiring a property management company saves time, helping you benefit from a rental income without the hassle of dealing with tenants or maintenance. It's not a choice for everyone, but it could be the ideal solution if you don't have much time on your hands. Make some enquiries and find a company you can trust.



BESPOKE LUXURY HOLIDAYS

Affordable & Hassle Free



"We approached Steve about booking a trip to Dubai for the recent Easter half term. Steve did a great job of organising every thing for us in a very efficient manner. We had to make several alterations to our flights, and Steve was on hand to make the required amendments quickly and seamlessly. I would absolutely recommend Love2Travel to anyone looking to book a luxury holiday expecting exceptional service".

Iain McDonald, Non-Executive Director, BooHoo Group Plc & THG Plc

LOVE2TRAVEL

0333 4040 828 • love2travel.co.uk

@love2travel.co.uk



**SPORTS
AMBASSADORS**
Jay Bothroyd &
Kevin Stewart



Luxury Lodges, great fun and a great return on investment!

Visit our four fantastic locations today....

Tallington Lakes

TANNER FARM PARK

Thorney GC



www.goodlifelodge.com • info@goodlifelodge.com • 0800 564 2266



TRAVEL



Your guide to the best SMALL TOWNS IN ENGLAND

When it comes to exploring England, you probably think of taking in the big cities like London, Manchester and Liverpool. But the truth is, there are a lot of great towns in England that are worth your time.

Here's your guide to the best small towns in England.



Windsor Castle

Windsor, Berkshire

It may be home to The Queen, but Windsor is still considered a small town. You can explore the beautiful streets in the main part of the town, or travel a little further to enjoy Legoland.

Windsor Castle should be at the top of your must-visit list, as well as St George's Chapel.



Castle Combe

Castle Combe, Wiltshire

The Cotswolds is full of many gems, but not all have the honour of being dubbed 'the prettiest town in England'. Castle Combe offers plenty to do, including some beautiful walks where you can spot familiar settings from movies such as *War Horse*, *Downton Abbey* and *Stardust*. Many of the homes put out fresh produce in honesty boxes, which are worth visiting to collect goods for a picnic in the countryside.



St Nectan's Glen

Tintagel, Cornwall

Tintagel is found on Cornwall's Atlantic coast, an incredible town with a lot to offer. A hike to St Nectan's Glen – which has been voted an area of outstanding natural beauty – will take you to the stunning 60-foot waterfall.

Explore different tea rooms, pasty shops, cafés and more to soak up everything Tintagel has to offer.



Chatsworth House

Bakewell, Derbyshire

Bakewell is a charming town that is famous for the Bakewell tart, but it's the scenery that will really resonate with you. It has some beautiful locations, as well as plenty of pubs to dine in and have a quiet and relaxing drink.

While you're in Bakewell, be sure to visit Chatsworth House, the filming location for many period dramas, including *Pride and Prejudice* and *The Duchess*.

Next time you're looking to plan a day out, consider one of these fabulous small towns. There are so many great spots to explore in England, so be sure to find out what's out there and make the most of this incredible country.





CLEAN YOUR CAR *like a pro*

THERE IS NOTHING LIKE THE LOOK OF A CLEAN CAR. HOWEVER, IT TAKES MORE THAN JUST A BUCKET OF WATER AND AN OLD RAG TO ACHIEVE A SHOWROOM FINISH

Always carry out a pre-wash

This is one of the most important tricks of the trade – any professional car washer worth their salt will remove as much dirt as possible using a hose or jet wash before they start to use their hands to clean a vehicle. This is because both dirt and grime can drag along the exterior and damage the paintwork.



Use multiple buckets

You should always have two buckets to hand, one that contains your washing solution (ideally you should use car shampoo) and one filled with water for rinsing. It is also advisable to use a grit guard to catch the dirt.



Invest in a wash mitt

Although you can use a large sponge and still achieve a good finish, if you want optimum results,

you need to invest in a wash mitt. Typically made from lamb's wool or microfibre, these are much less likely to leave surface scratches as the deep and fluffy fabric absorbs the dirt better than a sponge.

Do not leave to dry naturally

Never leave your car to dry naturally. Instead, use a purpose-built blower, or even a leaf blower, or a triple-layered microfibre cloth to dry your car.



Avoid extreme heat and direct sunlight

Although you may think that the ideal time to wash your car is when the sun is shining, this is actually not the case. Not only will you have to work harder and faster as your car will dry quicker than normal, but extreme heat can affect the strength of the chemicals in the products you are using. Instead, wash early in the morning or after 5pm.



HAND OF WAD

DIEGO MARADONA'S ICONIC HAND OF GOD SHIRT SELLS AT AUCTION

When England midfielder Steve Hodge swapped shirts with Argentina double-goalscorer Diego Maradona at the end of the World Cup quarter-final at the Estadio Azteca in Mexico in 1986, he was derided by fans, sections of the press and even his own teammates.

The Argentine wizard had just knocked the Three Lions out of the World Cup with a Jekyll and Hyde display of sporting brilliance and brazen opportunism – one of the best goals ever scored at a World Cup, coming minutes after the Hand of God goal that we've all seen replayed hundreds of times.

In swapping shirts, to some, Hodge crossed the line. Wind forward three-and-a-half decades, and Hodge has the last laugh, after that prized number 10 shirt recently sold at auction for more than £7.1million.

Perhaps one of the most iconic items of sporting memorabilia – the value of which soared after Maradona's death in November 2020 – the shirt made almost twice its guide price, and was sold to someone from Abu Dhabi with links to Manchester City.

The Sotheby's auction process had all the usual twists and turns befitting of Maradona's life. In the lead-up to its sale, the infamous star's family insisted that the shirt was a fake, supposing that the striker swapped shirts at half-time during the game on June 22, 1986, and that Hodge was in fact in possession of the shirt worn in the first half.

In addition, a late plea materialised from an Argentinian delegation for the shirt to be returned to South America. The group failed with its own bid as the auction price rocketed, though the request remains to display the shirt in Buenos Aires in October, for what would have been Maradona's 62nd birthday.

The sale price mirrors the previous record for any sports memorabilia – the original autographed manuscript of the Olympic Manifesto from 1892, sold by Sotheby's in December 2019.



Photo credit: Shutterstock, Amer Ghazzal/Shutterstock



SPORT



Photo credit: Charles Knight/Shutterstock

BRITAIN'S GREATEST SPORTING MOMENTS...

BORG AND MCENROE

Each month we look at one of the most significant events in British sporting history. This month, it's the epic encounter between Björn Borg and John McEnroe at Wimbledon on July 5, 1980.

The Championships at Wimbledon have provided countless dramatic sporting memories over the years, and none more special than when British heroes of the ilk of Ann Jones and Andy Murray have lifted the coveted trophy.

Yet perhaps the most remarkable encounter – certainly for sheer blood, guts, aggression and an unrelenting desire for victory – came in 1980 when a Swede faced an American.

Björn Borg had long been painted as the iceman, a Scandinavian purveyor of perfect tennis who was clinical and elegant in his despatching of opponents. John McEnroe, meanwhile, was the sweaty, unkempt brat of the game, with a confrontational,

aggressive game and a temperament to match.

That they collided so spectacularly on that sunny Saturday afternoon on July 5 will go down in SW19 folklore. McEnroe gained the upper hand by winning the opening exchange 6-1, before Borg fought back with 7-5 and 6-3 sets, giving him a 2-1 lead.

Looking to close out the match in the fourth set, Borg had five Championship points in an epic that went well past any reasonably expected distance. Finally, in the 34th game of the set, McEnroe broke the reigning champion – who was looking to win a fifth successive title – and took it 18-16.

Even in the deciding set, the duelling athletes made it to 6-6, though this time Borg broke McEnroe's steely serve, and his resolve, to take the set 8-6, and with it the Wimbledon title.

The epic was recently relived in a 2017 biopic, *Borg vs McEnroe*, starring Shia LaBeouf and Sverrir Gudnason.

Lifestyle & Mobility

lifestyleandmobility.co.uk

ESSEX LARGEST SHOWROOM



Motability offers you the ability to enjoy worry-free mobility

Available through weekly lease payments

A new product every 3 years

To find out how Motability can help you, talk to our Specialist today



HARLOW 01279 420600
67-68 HARVEY CENTRE, CM20 1XP

BASILDON 01268 520233
45/49 MARKET SQUARE, SS14 1DE

WELWYN GARDEN CITY 01707 247200
3 MUNDELLS COURT, AL7 1EN

SOUTHEND-ON-SEA 01702 417088
THE VICTORIA SHOPPING CENTRE, SS2 5SP



Checkatrade.com
Where reputation matters

ACCOUNTANT & TAX ADVISORS

ALL THINGS ACCOUNTING

Accounting & tax services, we help with self-assessment tax return, corporation tax return, payroll, VAT return, CIS return & bookkeeping. Call 07539 035537 for free initial consultation

ACUPUNCTURE

HONG WEI CHINESE MEDICAL

Fully qualified & experienced, specialising in women's health & Fertility. Help with pain relief, emotional disorders, male/female conditions. 01708 454888 | hongweichinesemedicine.co.uk

ARTS, DANCE & FITNESS

STUDIO 1 UK

"Creative space simplified" - Performing arts | Dance | Fitness | Wellbeing | Hire | Adults and kids classes based in loughton Essex. 07914 667909

AUDIO & VISUAL

ULTIMATE AV

We create bespoke systems designed and built especially for you. Small projects to complete home cinema environments. Based in Essex call us on 07531 214339

BEAUTY & NAILS

BEAUTY BY NATASHA KATIE

A local, mobile LVL Technician. Fully qualified level 2 and 3 beauty therapist Babcac insured and approved. 07961 462672

SPECIAL NAILS

Dedicated to provide the best quality nail care for Men & Women. Walk-ins welcome, appointment bookings & gift vouchers available. 01708 442248

THE NAIL STUDIO

Nail Studio lets you switch off and pamper with highly skilled technicians providing top treatments and nail products to meet your every need. 07572 526519

WICKED WAXING LTD

Male and female specialist waxing using hot and strip wax. 20 years' experience. Based in Epping with free parking. epping@wickedwaxing.com. 07368 684377

BUILDING

ADDSpace LONDON LTD

We provide a high quality Building service. Extensions, lofts and internal renovations. Members of Federation Master Builders. Call 01992 276035

BOOK VIA EPPING@VISIONMAG.CO.UK

CARPET & UPHOLSTERY

ARWIN CLEANING SERVICES

Over 30 yrs of exp, we can offer a professional, efficient and cost-effective solution for carpet and upholstery, cleaning and maintenance. 07973 417764

CAR & VAN HIRE

SCENIC SELF DRIVE

Your self drive hire specialists. Whether you require modern cars, motorhomes, vans or minibuses. Rest assured we will provide you a professional service. 01708 753461

CLEANING SERVICES

GLOWWHITE CLEANING

Serving Hertford and surrounding areas. We specialise in end of tenancy cleaning for tenants, landlords and property managers. Fully insured. Contact: 07561 138855

CLEARANCE & WASTE

THE CLEARANCE TEAM

From clearing a room, house or garden to clearing an entire office block. Fast, reliable and affordable. Working 24/7 so you can book us at your convenience. 0207 101 3387

COMPUTER REPAIR & I.T.

MAPTEC IT

Your local residential & commercial IT specialists. We can fix your computers, configure email accounts & printers. Setup your Wi-Fi, Internet router & network. 0203 865 7174

JOIN THE LISTINGS... for just £180 +VAT per yr

ELECTRICAL & WHOLESALE

CH ELECTRICAL WHOLESALE

Essex & East London's leading electrical wholesalers providing the trade & public a professional service with access to all leading brands. 01708 730591

ELECTRICIAN

CAPITAL ELECTRICAL SERVICES LTD

Domestic/Commercial, Repairs/Installation, Vehicle Charging Points, Portable Appliance Testing, Fire Alarms, Emergency Lighting, Installation Condition Reports. Call 0208 088 2916

TACK ELECTRICAL

Reliable, affordable, fully qualified and insured. We guarantee we'll deliver unrivalled service and workmanship every time. No job too small. 01992 276128

FRENCH POLISHING

DC POLISHING

20 Years experience in wood restoration i.e. Furniture, doors, staircases, worktops, minor repairs & FLOOR RESTORATION. 07949 204969 | dcpolishing.church@gmail.com

FURNITURE RESTORATION

ABBEEY GROUP

Abbey Group are specialist in creating, repairing & restoring quality furniture & wood surfaces to the highest standard. 01708 741135

KINGS UPHOLSTERY

Handmade sofas & chairs designed especially for you to your required specifications. Also providing in re-upholstery & repair work. 01708 444125

GARDEN SERVICES

JOHN HEARNE

We take care of it all Lawn Mowing, Weeding, Planting, General Tidying, Fence/Shed Painting, Driveway/Patio Pressure Washing and more. Call for details 07908 523101

THE ORIGINAL TREE SURGEONS LTD

Taking care of all your tree care needs and providing a personal first-class service to both domestic and commercial clients. 01708 715440

LAUNDRY & DRY CLEANING

THE LAUNDRY MAN

From everyday washing, drying & ironing. We can pretty much launder anything & everything. Self service launderette available. 01708 447710

MASTICS AND SEALANTS

QUALITY MASTICS LTD

Bathroom and shower mastic joint sealing. Kitchens, windows, floors, external seals around windows. For information call 01245 520981

MOTORING

BMS CAR PARTS

For all your motoring requirements inc. Car parts, number plates, key cutting, engine oil, tools, car accessories & servicing. 01708 474187

PAINTING & DECORATING

TRADITIONAL DECORATIONS

We are a family run business specialising in turning your house into a home. Giving advice on current decorating trends. 07737 562406

PLASTERERS

TF PLASTERING LTD

Professional quality workmanship, over 25 years' experience. Public liability insured. Skimming, coving, dry lining, rendering. Free quotes 07738 278036 | 01279 416311

PLUMBING & HEATING

CMS PLUMBING HEATING & BATHROOMS

Corgi registered, 20+ years' experience, public liability insurance, offering free quotes. No job too small. Based in Gidea Park. Call Craig 07855 589185

KINGS PLUMBING & HEATING

All work undertaken: All bathrooms, boiler servicing & gas safe. 07956 343275 | www.kingsplumbingandheating.co.uk

PROPERTY MAINTENANCE

LILLYWHITE PROPERTY SERVICES

For all building works, full refurbishments & property maintenance inc heating, plumbing, electrical, decorating, flooring, tiling & plastering etc. Call today on 07949 394403

STUART GREEN PROPERTY SOLUTIONS

Property maintenance specialist. Carpentry, painting/ decorating, laminate flooring, bath/shower re-siliconing, gutters cleared/repared, insurance work, PLI. 07917 870879

ROOFING

JIM BARR ROOFING

Exterior cleaning & maintenance. Gutters, Paving & UPVC; cleaned, repaired & renewed. 01708 874816 | 07833 572459

WEB DESIGN & PRINTING

SWIVEL CREATIONS

25+ years experience, specialists in Web, Print, Clothing & Embroidery. Professional, affordable, reliable. 01992 570383 | 07736 879233 | www.swivuk.co.uk | info@swivuk.co.uk

DISCLAIMER: VISION does not represent or endorse the accuracy or reliability of any of the advertisements, nor the quality of any products, information or other materials displayed, purchased or obtained by any customer as a result of an advertisement or any other information or offer in connection with the service or products. The opinions expressed in articles, reviews and stories are strictly those of the individual authors and do not necessarily reflect the views of **VISION**.

OVER 30 YEARS OF EXCELLENCE



Life is Beautiful

At City Bathrooms we believe everyone deserves a beautiful bathroom, that's why our passion for luxury products, first-class customer service and expert bathroom advice is at the heart of everything we do.

City Bathrooms

11 Raven Road, South Woodford E18 1HB

3-5 Hermon Hill, Wanstead E11 2 AW

Telephone: 020 8504 5152

citybathrooms.com



BRICKS.
ESTATE AGENTS

Would You
like to Know
How Much
**YOUR
PROPERTY
IS WORTH?**



CALL US TODAY:



0203 634 9998

LET | SALE | LAND



0.50% SALE FEE (£2500 Minimum Fee)

7% FULL MANAGEMENT LETTINGS FEE

rightmove 

ZOOPLA

OnTheMarket 



0203 634 9998



hello@bricksestateagents.co.uk
bricksestateagents.co.uk



Bricks Estate Agents
Create 29
Oakwood Hill Industrial
Loughton Essex, IG103TZ

