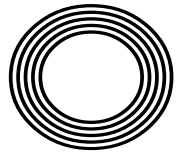
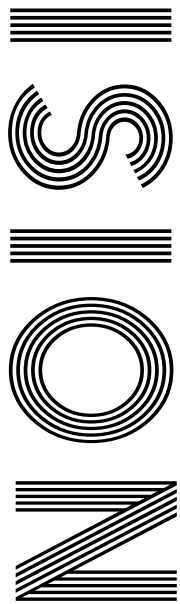




QUIRKY  
COURSES  
TO STUDY  
AT UNI

BACK TO SCHOOL  
*Top tips for reluctant kids*

POISON PLANTS  
Explore nature's deadly side



FREE

Photo credit: Warner Bros.

# Barbie aka MARGOT ROBBIE

Creating a record-breaking blockbuster with British roots

# THE **B7** MEDIA GROUP

PRINTING • BUSINESS CARDS • LEAFLETS  
DISTRIBUTION • SIGNAGE • MENUS & BROCHURES  
EXHIBITION BOARDS & BANNERS  
RETAIL PACKAGING • WINDOW VINYL  
LOGO DESIGN • BRAND ALIGNMENT  
VEHICLE WRAPPING • CARBON PADS • WORKWEAR  
WEBSITES • SOCIAL MEDIA • I.T. SOLUTIONS



ENQUIRIES@B7MEDIAGROUP.COM



01992 276101



ENQUIRIES@B7MEDIAGROUP.COM



01992 276101







SEPTEMBER 2023

# Editor's notes...



Brett Shohet, Editor

Hello and welcome to this month's edition of **VISION**EppingTheydon. Summer has been a very mixed bag so far. In the morning we'll have bright blue skies and sunshine, and by lunchtime it'll be black clouds and torrential rain. I feel sorry for students being off school - as well as the families trying to entertain them! Hopefully our What's On section in the magazine has helped. It features a selection of local events every month to keep the whole family entertained.

Like many people, I have enjoyed watching the Women's World Cup. It's been amazing seeing what our Lionesses can do. Although we couldn't replicate our success in the Euros last year, they still did us proud and are an inspiration to young women in sport.

Recently, I rewatched the film *Field of Dreams*. Kevin Costner's character says the iconic quote: "If you build it, they will come." However, this isn't necessarily true for businesses. Many people think that if their premises look amazing, people will turn up. But if you don't advertise, people won't know about it. **VISION** gives local businesses the chance to let the community know who they are and to spread the word about their products and services. Please don't hesitate to contact me to find out more about how to advertise your business and our current deals.

*Brett Shohet*

This is your town's hyperlocal magazine, delivering to homes and businesses every month.

HOME & DIY | GARDENING | PETS | HEALTH & FITNESS | BEAUTY | FASHION | HISTORY | LOCAL NEWS | FOOD & DRINK | TRAVEL | BUSINESS & PROPERTY | SPORT | PUZZLES | MOTORING | KIDS | WHAT'S ON | TECHNOLOGY | THE LISTINGS

CONTACT US:



epping@visionmag.co.uk | 01992 276101  
 www.visionmagessex.com | www.visionmagherts.com  
 @visionmagessex | @visionherts | @visionmagessex | @visionmageastherts  
 Vision Magazine Essex | Vision Magazine East Herts  
 CONTRIBUTORS | Tabatha Fabray, Fiona Goble, Darius Morgan

grab this **PRIME ADVERT SPACE** before it goes

CALL NOW 01992 276101 TO GET YOUR BUSINESS SEEN BY OVER 13,000 READERS MONTHLY



EXPERIENCE GOLFING EXCELLENCE  
ALL YEAR ROUND



LADIES MEMBERSHIP

7 DAY FULL - £ 1,200

5 DAY FULL - £ 900

01708 688396  
WWW.ABRIDGEGOLF.COM



SUPERB COURSE - LOVELY PEOPLE - A PROPER GOLF CLUB





# THE WORLD

## AT THEIR FEET



Football may not be coming home after England's women lost to Spain in an eventful World Cup Final, but the fact that they made it to the final stage of the tournament signifies another huge advancement for Sarina Wiegman CBE's team, and the sport as a whole in this country.

As the final whistle sounded in Sydney on Sunday, August 20, and the Lionesses collapsed to the floor, many in tears, their big chance to clinch the Women's World Cup had slipped away... for now, at least.

Before the match, England had

been riding a wave of hope. Euro champs from 2021, and under the guidance of Dutch coach Wiegman – recognised as the world's leading female football coach – they had suffered just one defeat in 38 games, a friendly reverse to one of the co-hosts of this tournament, Australia.

Their journey to the final saw them navigate a mass of injuries, temporary loss of form, a penalty shoot-out, and a two-game ban for Lauren James, who was sent off in the quarter-final. Yet even when not playing at their best, they found ways to win – ultimately the sign of a team who have the strength and resilience to overcome challenges.

However, on this occasion, the project fell one result short. Wiegman's expertise was pushed to its maximum. After the game, the players were quick to admit the better side won on the day, as Spain's Olga Carmona fired in the winning goal in the 29th minute.

With their line-up comprising seven members of Barcelona's Champions League-winning side, the Spaniards' skills were evident from the get-go. Indeed, despite

having Ballon d'Or winner Alexia Putellas on the bench owing to ailing fitness, and a wider rift existing within the Spanish squad pre-tournament, Jorge Vilda's side proved to be a formidable opponent.

Perhaps it was England's victory against them in the quarter-finals during Euro 2021 that gave the Spaniards extra impetus, but they were stronger and more clinical when it mattered.

England, who had won their group phase with victories over Haiti, Denmark and China, had then beaten Colombia and Australia en route to the World Cup. They will likely see the defeat as a missed opportunity, particularly with defending champions USA and European powerhouses Germany both eliminated early.

Wiegman, ever the strategist, made changes at the break and shifted formations, yet while England's play improved, ultimately it was Spain who should have extended the lead after Jennifer Hermoso's penalty was brilliantly saved by Mary Earps.

Even 13 minutes of injury time couldn't save the Lionesses, yet there are positives to take.

First, Mary Earps was named FIFA Best Goalkeeper for the tournament – otherwise known as the Golden Glove Award winner. She conceded just three goals in six matches, keeping three clean sheets. The honour was a tremendous comeback for the 30 year old, who has had to battle for her spot as England number one.

Next, we have a nation that continues to embrace the onward trajectory of women's football in England.

The Lionesses remain a team who have rewritten the script, broken records, confronted societal norms, and continue to advocate for more investment and exposure in women's football.

Consider those elements, and the stylish way in which the team continue to galvanise a nation of girls growing up in the game, and in many ways they are true champions.

## FIFA WOMEN'S WORLD CUP 2023™



Photo credit: James Gourley/Shutterstock, Morgan Hancock/Shutterstock

## FIFA WOMEN'S WORLD CUP 2023™

# THE FINAL



# QuIRKY STUDIES

Are you looking to pursue further education but don't want to choose the same course as everyone else? In that case, these quirky university programmes may grab your attention.

## VITICULTURE AND OENOLOGY

Do you love a tippie or two, or want to know more about the science of winemaking? Discover the wonderful world of viticulture and oenology. These courses provide all the skills and knowledge needed to become a vineyard manager, winemaker or winetaster.

## HOROLOGY

If you are fascinated by time, then horology could be the course for you. Focusing on the art and science of time management, this is the perfect course for budding entrepreneurs who understand that time is money!

## ETHICAL HACKING

Offering a surprisingly high graduate employment rate, ethical hacking focuses on the study of cybersecurity in order to protect businesses from computer hacking. Ideal for computer whizzes.

## ETHNOBOTANY

If you have embraced the recent trend for greenery in your home, then you may be interested in a course that looks at how humans respond to and benefit from plants. A great choice for those who want to pursue a career in the field of botany.

## CIRCUS PERFORMANCE

Yes, you read that correctly, you can pursue a university degree in circus performance. One of the most exciting courses we found, you can learn a whole host of skills and receive top physical training. Because who didn't dream of running away to join the circus at some point?

## SURF SCIENCE

Another degree course that sounds like great fun, surf science, as you may have already guessed, involves the study of surfing. Whether you want to set up your own business or work for one of the big names in surfing, this is one degree course that promises not to be boring!



## Luxury care in the heart of Harlow

*Now open to viewings*

**We are delighted to announce the grand opening of The Jubilee Suite - our new luxury care suite situated within Abbot Care Home in Harlow, Essex.**

Our new Jubilee Suite has been expertly designed with kindness, and dignity at its heart, providing person-centred nursing, residential and dementia care. With a variety of excellent facilities and spaces to enjoy, we welcome the people who live here to play an active part in everyday life – as we ensure activities, events and mealtimes are carefully tailored to the personal preferences of each individual.

Abbot Care Home is situated amongst peaceful open parkland and features beautiful, landscaped gardens. The people who live here enjoy a comfortable environment and benefit from the home-from-home atmosphere.

It is important to our team that we work as part of your family, as we plan in partnership whilst providing the same caring support that we would wish for our own loved ones to receive, whilst enjoying a life well-lived, each and every day.

**Excelcare**  
*Belong with us*



We welcome you to visit us to meet with our friendly team who will be happy to work around your schedule.

To find out more about Abbot Care Home and book in to view our newly opened Jubilee Suite, please get in touch

**01279 594 610**  
**info@excelcareholdings.com**





FASHION

# They're no Plain Jane

## THE HISTORY OF MARY JANE SHOES

As shoe design goes, the Mary Jane has been through more revisions and incarnations than most. In 2023, we know it as a style that's bold, impactful, fashionable and durable – characterised by either a flat sole or block heel, a leather top, a rounded toe and a buckle across the top of the foot. Often coloured black, this is a design that has been enabling women and girls to walk the walk for years, whether off for a night out, to work or even to school.

Its evolution as a footwear style couldn't be further removed from the high street, however. One of the first to rock the Mary Jane look was in fact King Henry VIII – indeed, the shoe was worn mostly by men in the Renaissance era when it first came into fashion.

The buckle strap wasn't added until the early 19th century but now makes it iconic. Women truly embraced the shoe's simple, flat, round-toed relevance and sophistication in the aftermath of the First World War, and the style continued to decorate pavements into the 1950s.

Even through the Swinging Sixties, where heels and excess dominated the fashion world, the Mary Jane held on, though its most recent surge came in the late 90s when thick soles, chunky heels and edgier straps came to the fore. Dr Martens, in particular, embraced the simplicity of the Mary Jane to give it a look that has survived to the present day, with undertones of punk and goth taking the look to a whole new level.

From Dame Mary Quant DBE to Dame Lesley Lawson DBE, most commonly known as 'Twiggy', embraced by Courrèges and Yves Saint Laurent, Dior and Jimmy Choo, the shoe has crossed continents and fashion boundaries with every passing decade.

These days, it's a flat shoe favourite that both embraces sustainability and veganism, yet its familiar, easily recognisable shape will always link this design classic back to its Renaissance beginnings.



epr  
services  
Ltd  
committed to care

## HOME SUPPORT & DOMICILARY CARE

### TYPES OF CARE

#### DOMICILIARY CARE SERVICES

Personal care, Medication, Appointments, Domestic support, help with meal preparation & shopping.

#### LIVE-IN-CARE

Short & Long term live-in-care, respite care, couples care & post operations care.

#### SPECIAL AREAS

Dementia Care, Palliative/End of life, Physical & Learning Disabilities, Progressive conditions & Post operations

You can book your free appointment by calling us on

**01992 276 073**

[www.eprservices.co.uk](http://www.eprservices.co.uk) • [info@eprbusiness.co.uk](mailto:info@eprbusiness.co.uk)



## WE VISIT YOU AT HOME

Our carers can provide daily visits to help you with your daily needs



SCAN ME

# YOU'RE NOT ALONE



OVER 207,500 OTHER PEOPLE IN ESSEX  
READ **VISION** MAGAZINE'S MONTHLY

Your  
Monthly  
Lifestyle  
Magazine



CONTACT US TO GET YOUR BUSINESS SEEN BY OUR READERS

See all our magazines at [www.visionmagessex.com](http://www.visionmagessex.com)

BillericaYShenfieldBishop'sStortfordBrentwoodOngarChelmsfordEppingTheydonHalsteadBraintree  
HertfordHornchurchLeighThorpeBayLoughtonMaldonBurnhamRayleighWickfordSouthWoodfordTendring





# Live well *your* way

Your home is where you feel the most *comfortable* and the happiest.

Home is the place you know the best. If you want to stay living comfortably at home, Home Instead® can help make that possible.

For more information call: 01992 666 777  
Email: [victoria.rigby@homeinstead.co.uk](mailto:victoria.rigby@homeinstead.co.uk)  
Or visit our website: [homeinstead.co.uk/epping-forest](http://homeinstead.co.uk/epping-forest)



## Our Care

- ♥ Home Help
- ♥ Companionship
- Personal Care
- ♦ Dementia Care
- ♦ Live-in Care

Each Home Instead franchise is independently owned and operated. Copyright © Home Instead® 2023.



*"We're there because we care"*

## FOURTH GENERATION FAMILY FUNERAL DIRECTORS

### Stuart Poulton House

High Rd, North Weald Bassett Epping CM16 6BU

[stuart@poultonfunerals.com](mailto:stuart@poultonfunerals.com) ■ [www.poultonfunerals.com](http://www.poultonfunerals.com)

**01992 522607 ■ 01922 572607**

**24 HOUR SERVICE DAY OR NIGHT**



**FUNERALS ■ MEMORIALS ■ PRE-PAID FUNERAL PLANS**



# 7

## MOST COMMONLY ASKED gynaecological QUESTIONS

When it comes to your vagina, it is normal to have a lot of questions, but you may feel embarrassed about asking your GP about your sexual health. Find out the answers to the most commonly asked gynaecological questions below.

### 1. Will the contraceptive pill make me gain weight?

There are multiple studies that show that the contraceptive pill does not cause weight gain. However, there are some that may increase your appetite.

### 2. Can I catch an STD from a toilet seat?

While a toilet seat carries a lot of bacteria which can be passed on, you cannot catch a sexually transmitted disease from sitting on one.

### 3. Is douching the best way to clean my vagina?

No! Douching is not recommended as a way to clean the vagina as it can disrupt its delicate balance of good and bad bacteria and lead to infections such as thrush. The vagina is self-cleaning, which means that internal cleaning is not necessary. Instead, wash externally with warm water or a specially formulated intimate wash.

### 4. What is the best way to treat period cramps?

Over-the-counter pain relief such as ibuprofen offers one of the most effective ways to treat period cramps. A warm bath and a hot water bottle can also work wonders.

### 5. Can I get pregnant on my period?

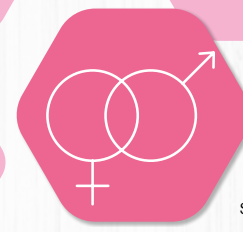
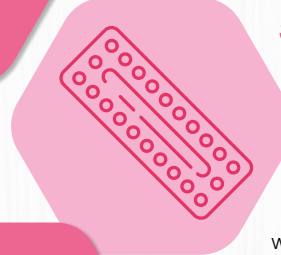
Although unlikely, it is possible to get pregnant on your period. If you have a short interval between each period, meaning you ovulate early in your cycle, you can fall pregnant.

### 6. Can I have sex on my period?

Yes, you can. Although some couples prefer not to have sex at this time, it is perfectly safe to have sex when you are on your period.

### 7. Why does my vagina smell?

Everyone's vagina has its own unique scent, and it is important to know your own so that you can easily notice any changes. A healthy vagina should have a mild, musky scent that is not unpleasant. If you notice an unpleasant odour, this may be a sign of an infection, and you should see your GP or visit your local sexual health clinic.



# Surprising foods THAT CAN BE COOKED IN A PIZZA OVEN

**P**izza ovens are all the rage, with more and more people embracing this simple and versatile method of outdoor cooking. However, you can cook much more than just pizza in one of these bad boys!

**FRESHLY BAKED BREAD:** If you love everything about delicious dough, then you will be pleased to hear that you can bake bread in wood-fired pizza ovens. To create the perfect loaf, make sure you regularly turn the bread to ensure even baking. Don't forget that you still need to leave your dough to rise before cooking.

**SLOW-COOKED MEATS:** For meat lovers, a large pizza oven that features a door will allow you to slow cook meat to perfection. Place your chosen cut in a casserole dish and cover tightly with foil. Then cook for around four hours until the meat is tender and juicy.

**FISH DISHES:** Whether you love a fish stew or you prefer a piece of lightly grilled fish, a pizza oven is a great alternative to a traditional oven. Simply pop your chosen fish in a roasting tray with herbs and spices or place on a skillet or cast-iron pan to grill.

**VEGAN CURRIES:** If you have a vegetarian or vegan in the family, then a pizza oven can be used to create a whole host of vegan-friendly dishes such as curries, chilli and stews. Be sure to gently fry your chosen spices first to release their flavour, add your selected liquid and veggies, and then cook in the pizza oven until soft.

**DECADENT DESSERTS:** Think that a pizza oven is only suitable for preparing savoury dishes? Think again. You can also bake desserts such as pies and pastries in this outdoor cooking device.








**DRINK DINE DANCE**

**AN EXCEPTIONAL EXPERIENCE EVERY DAY**

**A family run contemporary dining experience, serving up the best in British cuisine with a European twist – a place you can come for a casual bite, or a special occasion.**

**TO BOOK A TABLE 020 3062 4197**

**Email: [bookings@e-eighteen.co.uk](mailto:bookings@e-eighteen.co.uk)**  
**Online: [www.e-eighteen.co.uk](http://www.e-eighteen.co.uk)**  
**159 - 161, High Road, South Woodford, E18 2PA**









**FILIKA**

Filika restaurant is a smart, comfortable and cosy restaurant with a relaxing Mediterranean atmosphere.

Welcoming and friendly, we serves modern and the best traditional Turkish cuisine.

We offer a good choice of freshly prepared seasonal food – mezzes, a generous selection of marinated steaks, chicken, vegetarian dishes and lots of fish & seafood dishes.

Opening hours  
Monday-Saturday: 12pm - 10pm  
Sunday: 12pm - 9pm

**FILIKA RESTAURANT THEYDON BOIS**  
13 Forest Drive, Theydon Bois, CM16 7EX  
[www.filikarestaurant.co.uk](http://www.filikarestaurant.co.uk)  
[theydonbois@filikarestaurant.co.uk](mailto:theydonbois@filikarestaurant.co.uk)  
Tel: 01992 812000

**FILIKA RESTAURANT WANSTEAD**  
62 High Street Wanstead, E11 2RJ  
[www.filikarestaurant.co.uk](http://www.filikarestaurant.co.uk)  
[info@filikarestaurant.co.uk](mailto:info@filikarestaurant.co.uk)  
Tel: 020 8530 1333





# MODERN INDIAN DINING EXPERIENCE NOW OPEN IN ONGAR

**FINE DINING**  
**MICHELIN STAR EXPERIENCED CHEF**  
**EXPERIENCE MODERN INDIAN CUISINE**

Contact us  
**01277 362666**

Visit us  
**School Road, Toothill,  
Ongar, CM5 9PU**

Visit our website  
**[www.tanishqs.co.uk](http://www.tanishqs.co.uk)**



FOOD & DRINK

# NUTS FOR FREE

...A FORAGER'S TREAT

When the warmth of summer begins to fade, September provides a delightful free gift in the form of tasty nuts. Here are some you're sure to find in the countryside near you.

**NUTS, WHOLE HAZELNUTS** - Shake the branch of a hazel tree whose leaves are turning yellow, and the nuts should fall to the ground. Eat them raw and enjoy their slightly buttery flavour or use them to make your favourite chocolate spread.

**CHESTNUTS ROASTING ON AN OPEN FIRE** - Our next nutty star is the sweet chestnut - not to be confused with conkers, their inedible cousins. Conkers are round and shiny and come in husks sparsely covered with thorn-like spines. Sweet chestnuts are pointed at one end and flat on one side, with husks densely covered with needle-like spines.

Chestnuts are ripe when they fall to the ground. Pierce the skins first before roasting for 15-20 minutes at 200°C/Fan 180°C/Gas 6. Eat them as they are, or use them in sweet or savoury recipes.

**FROM MIGHTY OAKS** - Yes, you really can eat acorns. They're ripe when you can pick them easily. First, crack them open with a nutcracker. Then soak them in warm water for a day or two, changing the water frequently, to get rid of the bitter-tasting tannins. Once dry, roast them for 15-20 minutes at 180°C/Fan 160°C/Gas 4 - and enjoy.

**BEECH BABY** - Beech nuts are ready when they fall to the ground. It's best to roast them before eating because they contain saponin, which can be poisonous if consumed in large amounts. Cook for about 20 minutes at 180°C/Fan 160°C/Gas 4. And to be safe, don't eat more than a handful at once - and don't give them to children or pets.

Nut foraging can be rewarding but remember to respect the environment. Only take what you need, and leave plenty for local wildlife.



**The GOODLIFE LODGE CO**  
ESTD 1982

# BIG COUNTRY Views

**GREAT HADHAM COUNTRY CLUB**

Don't just take our word for it.....

Having always been a bit of a golfer and having reached a point where it was time to downsize, Great Hadham Country Club was perfect.

We were moving from our family home in Hertford and looking to downsize and for an escape.

We met with Dani at Great Hadham who showed us round several homes before we eventually plumped for a Prestige Plantation House

Once the sale of our home went through the actual purchasing was quick and easy, mainly due to the updates we had from the sales team.

We have now lived at Great Hadham for almost 7 months and really couldn't be happier. The wife has even bought some clubs now.

Mr and Mrs S

[www.goodlifelodge.com](http://www.goodlifelodge.com)  
[info@goodlifelodge.com](mailto:info@goodlifelodge.com)  
01279 939082

SCAN ME

SHOW HOMES

NOW OPEN

**SG UK**

**Sovereign Guards UK**

From home to business security, here at Sovereign we offer a variety of Security Services from CCTV and Intruder Alarms

**CONTACT US FOR MORE DETAILS:**  
Call: 01992 276081  
Email: [info@sovereignguards.co.uk](mailto:info@sovereignguards.co.uk)  
[www.sovereignguards.co.uk](http://www.sovereignguards.co.uk)

SCAN ME

PROVIDING YOU WITH 24 HOUR SECURITY

Select from a package that suits your needs: budget, location and what level of protection you are after

Specialising in fogging systems for high risk asset protection

With remote connectivity this allows you to monitor your home from your phone.

**TRAVEL**

# THE Famous...

**A LOOK AT THE PRESTIGE AND THE HISTORY OF FIVE OF THE WORLD'S MOST ICONIC HOTELS**

**Chateau Marmont**

**The Plaza**

**Belmond Copacabana Palace**

**Raffles**

**The Savoy, London:** Located in the Strand and opened in 1889, The Savoy was the UK's first luxury hotel, and it has lost none of its charm or opulence in attracting the world's richest and most powerful guests. Hollywood power couple Sir Laurence Olivier and Vivien Leigh met there, while guests have included The Beatles, John Wayne and Marilyn Monroe.

**Chateau Marmont, Los Angeles:** Los Angeles began to acquire its celebrity popularity in the 60s when the *LA Times* felt obliged to tell its readers that the Chateau Marmont was for those in show business. Its appeal was its combination of 63 rooms, suites, cottages and bungalows, not to mention the fact that it overlooks Sunset Boulevard.

When John Belushi died at the hotel of a drug overdose in 1982, its fame only escalated. Beyoncé, Jay-Z, Britney Spears, Lindsey Lohan are all regular guests.

**The Plaza, New York:** If you've seen *Home Alone 2* or *The Great Gatsby* (the author of which, F. Scott Fitzgerald, lived at this famous hotel), you've seen The Plaza. Overlooking the vast greenery of Central Park and located on the corner of Fifth Avenue, this hotel is iconic and instantly recognisable.

Royalty and state leaders have all stayed at the legendary Manhattan hotel.

**Belmond Copacabana Palace, Rio de Janeiro:** Located as the crown jewel of the most famous beach in the world, the Belmond is a masterpiece of art deco architecture and has welcomed everyone from Walt Disney to Princess Diana.

Built over a period of four years at the turn of the 1920s and designed by French architect Joseph Gire, it remains a staple place to visit for the affluent.

**Raffles, Singapore:** This Singapore hotel has been around since 1887, when it was established by a pair of Armenian brothers, the Sarkies. Its colonial style of architecture has led it to become a national monument for the country, as well as being the birthplace of the Singapore sling cocktail!

Photo credit: William Barton, Gerry Matthews, MiSHELLA, Linya Chinwan all via Shutterstock.com, en.wikipedia.org

5



# track lighting

Track lighting is one of the most versatile lighting solutions and is currently experiencing a surge in popularity.

Here's our advice on how to use it in your home for maximum impact.

## What is track lighting?

When you think about track lighting, you are likely to imagine a series of individual lamps, known as heads, that slide along a metal track. While this is the case for some track lighting systems, there are now many other styles to choose from. Typically, track lighting is hardwired and connected to a wall switch. The heads can be focused spotlights, radiant spotlights or pendants.

## What are the benefits of track lighting?

There are many benefits to track lighting, including: It is easy to install | It is customisable and can be

altered to suit the layout and length of a room | It is energy efficient | It is cost-effective | It is simple to reconfigure

## How to use track lighting in your home:

As track lighting is so customisable, it can be used in nearly every area of your home, but it is particularly useful in the kitchen, hallway, living room and in a home office.

Some of our top ideas for where to place track lighting in your home are:

1. Run a track along your hallway ceiling and aim fixtures at any artwork or directly at the wall.
2. Customise a track to fit your kitchen space such as over an island or onto the countertops.
3. Install a track system in a dark wardrobe and position several heads where you need light.
4. Use in rooms with high ceilings and opt for white fixture heads which will blend in more effectively.



## SUPPORT LOCAL BUSINESSES

Please let your local businesses know that you saw them first in... **VISION**

**DID YOU KNOW**  
**100,000**  
**PEOPLE DIE EACH YEAR**  
**IN THE UK FROM**  
**SUDDEN CARDIAC ARREST?**

**YOU CAN LEARN KEY LIFE-SAVING SKILLS FROM JUST £99**

**JOIN OUR 1-DAY EMERGENCY FIRST AID COURSE OR 3-DAY FIRST AID AT WORK COURSE**

**CONTACT US FOR COURSE DATES & MORE INFORMATION ON 07508 204656**  
enquiries@bbirisksolutions.com

**BBI Risk Solutions**  
www.bbirisksolutions.com



BOILR offers comprehensive service plans to homes throughout Essex, Hertfordshire & London.

★	★★	★★★	★★★★★
£7.50 / MONTH	£15.50 / MONTH	£19.50 / MONTH	£23.50 / MONTH
Annual boiler service ✓	Annual boiler service ✓	Annual boiler service ✓	Annual boiler service ✓
Landlord safety record ✓	Landlord safety record ✓	Landlord safety record ✓	Landlord safety record ✓
Heating/Gas/Plumbing ✓	Heating/Gas ✓	Heating/Gas/Plumbing ✓	Heating/Gas/Plumbing ✓
Electrical Faults & Emergencies ✓	Electrical Faults & Emergencies ✓	Electrical Faults & Emergencies ✓	Electrical Faults & Emergencies ✓

**Servicing | Installation | Plans**

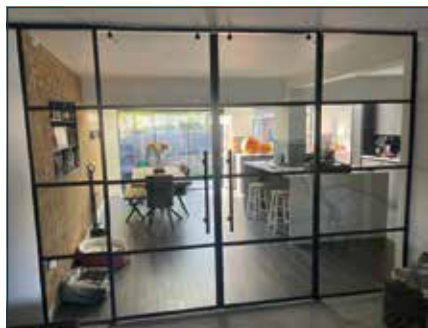
**CALL OUR TEAM TODAY FOR MORE INFORMATION**

**01992 236063**

**hello@boilrltd.co.uk** **boilrltd.co.uk**



T&C's Apply



BUILDING TRUST  
WITH QUALITY  
WORK



## ENDLESS POSSIBILITIES



01992 276058 info@infiniteglass.co.uk



INTERIOR DESIGN PROFILE

# ELICYON

HOME & DIY

Ellicyon was founded by designer Charu Gandhi, whose love of crafting has served as the inspiration for many of her designs.

The studio was founded in 2014 and has gone on to transform interiors all over the world. Gandhi claims her main influences come from "art deco, mid-century and Biedermeier", although other global influences serve as inspiration from time to time.

### ABOUT ELICYON

Ellicyon's style is distinctive, pairing neutral shades with darker brown accents to create a rich contrast that adds an elegant touch to the space. Designs are kept simple, working with the space to make the most of different features, while adding detail through furnishings, artwork and accessories.

Each project is carefully considered, creating a space that is practical and well orientated, while still providing a beautiful and pleasing aesthetic.

### TOP TIPS FOR EMULATING THE ELICYON STYLE

With some simple touches, you too can emulate the Ellicyon style, creating a look that works across different home types. Some top tips include:

- Keep spaces light and airy by using shades of white and light brown in your home. This can make spaces feel larger, while also helping to keep them serene.
- Ellicyon uses darker accents across furniture, shelving and accessories to add some contrast. Think rich browns such as walnut to create a luxury space.
- Add shelving with carefully selected and placed accessories to add detail and bring personality into the room.
- A subtle pop of colour through greenery or a colourful vase can add interest and help break up some of the neutral colours.

Ellicyon's style is subtle but warm, and can help transform a neutral space in your home to add depth and personality.



Photo credit: Ellicyon.com

**euronics** Floorcare appliances  
the home of electricals from your local independent electrical retailer

Price Match Guarantee | Super Service | Expert Knowledge | Contact-Free Delivery



- 4.5 Hour Charge Time, 60 Minute Run Time
- 2 Power Levels, 14 Cyclones
- Multi-Filtration, Combination Tool
- Service Tool, Wall Dock Charger
- 2 Year Warranty

Only  
£349.99



- 11 Litre Bagless Dust Collection
- Pet Hair Cleaning, Anti-Hair Wrap Technology
- 3.5 Litre Dust Capacity
- HEPA Filter
- Onboard Tools
- 5 Year Warranty

Only  
£299.00



- 5.5 Metre Cord with automatic rewind
- 6 Power Levels
- 3.5 Litre Dust Capacity
- 80db Noise Level
- 2 Year Warranty

Only  
£179.99



- Anti-Hair Wrap
- Duo-Clean Technology
- 3 x Power Levels
- HEPA Filter
- Wall Dock Charger
- 2 Year Warranty

Only  
£239.00



- 5 Hour Charge Time, 40 Minute Run Time
- 2 Power Levels, 15 Cyclones
- Multi-Filtration, Combination Tool
- Wall Dock Charger
- 2 Year Warranty

Only  
£249.99



**Broadway Music and Vision**

8 The Broadway,  
Woodford Green, IG8 0HL  
0208 504 7500  
broadwaymandv@aol.com



\*Terms and Conditions apply. Sold as an agent of Euronics Limited. All rights reserved. All offers are subject to availability while stocks last. Delivery & Installation charges may apply Exclusions and Radius Apply. See in store for full details. Images for illustration purposes only. Copyright Euronics 2023. EBOE 2023.





# Winter HEALTH CHECK

## THE FIVE THINGS YOU NEED TO DO NOW TO ENSURE YOUR HOME DOESN'T LET YOU DOWN THIS WINTER

**W**inter is nearly upon us, and it's the time of year when the prospect of something going awry in our homes can spell disaster. It might be more than just the cold shower resulting from a broken boiler that leaves you shuddering – wait until you see the call-out fee to get it fixed!

That's why giving some essential parts of your home a health check now may save you from some wintry wails of terror.

### BRILLIANT BOILER

Ensuring that your boiler is serviced by a registered gas engineer should be a must ahead of the cold season. The good news is a full service is usually affordable and can cost as little as £60, and it's something you should be performing annually.

### REMARKABLE RADIATORS

Bleeding radiators is essential to efficient central heating. Not only will it save you money, but it'll help to keep your house warmer too.

The process of bleeding is simple and doesn't require specialist help. By easing out air trapped in the system, you'll return your radiators to their natural efficiency.

### PERFECT PIPES

It can also be a good idea to insulate exposed pipes before the winter months. This will reduce heating loss and also help prevent them from freezing and bursting during cold spells.

### EXTERIOR EXCELLENCE

Debris such as leaves and twigs can accumulate in gutters, pipes and drains throughout the autumn. It pays to check and clear out these areas if necessary to ensure you don't have any lingering blockages that are going to

cause problems when the rainy season really hits.

### WICKED WINDOWS AND DOORS

Be sure to go round the house, checking all windows and doors close properly. Now is the time to make small repairs to gaps and draughty grooves where cold air will whistle through.



## Home Counties Loft Ladders, Quality You Can Trust!

These days most homeowners suffer from a lack of storage space. So many precious items that need to be kept – but where to store it all? That's where Home Counties Loft Ladders come in.

The company, based locally, offers homeowners the opportunity to maximise their storage space with a loft ladder. 50sqft of boarding and a light – all fully fitted in less than a day from just £444! But it's not just the affordability of the package that makes Home Counties Loft Ladders stand out, as manager Jamie Oakley explains: 'Our

watchwords are Quality, Integrity and Value. Quality in the materials that we use for all our installations and the fact that all our loft packages are fitted by time served tradesmen, so our customers are assured of the best job.

Integrity in that we will turn up at the time we say and make sure the house is spotless when we leave, and value in that we offer our services at a price people can afford.

Our business relies on referrals and we get a huge amount of our calls from people who have been referred to us by our existing customers

– that simply wouldn't happen if we didn't adhere to our overriding principles.

At the end of the day the old adage that happy customers lead to more happy customers is true and we work hard to make that happen for

every installation we carry out!

So, if you want to make use of your loft space, call Jamie free on 0808 301 9551 and he'll be happy to pop round and give you a no obligation quote so you too can make use of your loft!



## Need more storage space?

## INSTALL A LOFT LADDER AND USE YOUR LOFT!

**STARTER PACKAGE:** Aluminium loft ladder, light plus 50 sqft boarding, fully fitted in less than a day from £444

- Loft Ladders • Hatches
- Boarding • Insulation
- Lights • Fully Guaranteed



— Home Counties —  
**LOFT LADDERS**

**CALL FREE: 0808 301 9551**  
[homecountiesloftladders.co.uk](http://homecountiesloftladders.co.uk)





# Peaceful plants

Did you know that at least one-third of the adult population suffers from some form of insomnia? Furthermore, an estimated 20 per cent of teenagers get less than five hours of sleep a night. Not getting enough sleep can cause a whole host of physical and mental health problems, but there are ways to help you drift off naturally.

## How can plants help you to sleep?

If you suffer from insomnia but you don't want to start taking prescribed medications, then indoor plants offer a more natural way to aid sleep. Fragrant plants have been shown to calm nerves and reduce anxiety, whereas other types of plants act as air purifiers and absorb toxins.

## The best indoor plants for insomnia

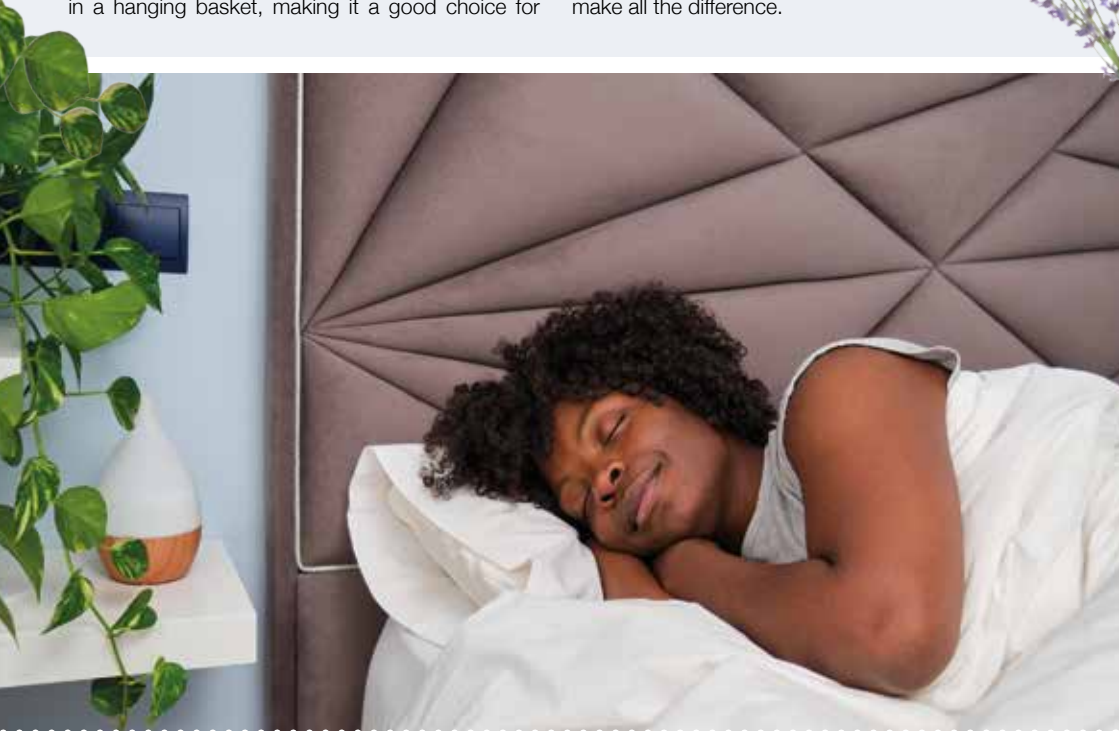
**GOLDEN POTHOS:** Golden pothos, also known as devil's ivy, is great for purifying the air, which can help to aid sleep. This plant looks best when placed in a hanging basket, making it a good choice for

homes with children or pets.

**JASMINE:** If you struggle to switch off and relax at the end of the day, then jasmine is the perfect plant for your bedroom. Studies show that the sweet scent produced by jasmine can help to reduce anxiety and improve your overall quality of sleep.

**VALERIAN:** Boasting small pink and white flowers, a valerian plant is as pretty as it is practical. Used for centuries to cure sleep problems, valerian can help you to drift off more easily and enjoy better-quality sleep.

**LAVENDER:** Lavender is known for its sleep-inducing qualities, with the ability to lower your heart rate, blood pressure and stress levels. If you have a baby or young child who struggles to get to sleep, the scent of lavender in their bedroom can make all the difference.



Produce  
Green Energy  
& Make Real  
Cost Savings

We can beat  
any like for  
like quote



**B Solar**  
Energy Installations

A professional, personal approach  
to all our solar installations

- ☀ Competitive Pricing
- ☀ Bespoke Solar Installations
- ☀ Strong Focus on Customer Service & Aftercare
- ☀ Enjoy Warranty Protection

Contact Us 01992 276078

hello@bsolarenergy.co.uk  
www.bsolarenergy.co.uk



GET A QUOTE



Solar Panel Design  
& Installation



Battery Storage



EV Car Charging



SCAN ME  
FOR A  
QUOTE

FULLY ACCREDITED & INSURED



NAPIT

MCS



TRUSTMARK



HIES



Google



Trustpilot



Dry Carpets, Upholstery & Hard Floor Cleaners

Why REPLACE  
when you can  
RESTORE?

Already got a cosy sofa with life still in it?

- Save thousands in replacement costs
- Repair minor damage before it gets costly
- Leather looks fresh and revitalised
- Full leather colour match service available

Have your leather sofa or  
furniture cleaned & restored  
for a fraction of the price  
of new items

Contact us today for a  
FREE no-obligation quote

zerodrytime.com

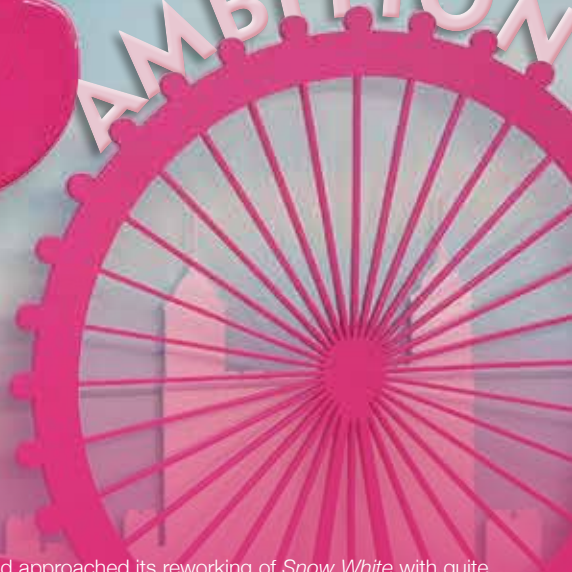
07756 942859

sean.drury@zerodrytime.com





AMBITION



## WHY MARGOT ROBBIE HAS THE FORMULA RIGHT

**M**argot Robbie's elevation to Hollywood heavyweight is one of Tinseltown's true success stories.

The skill of the Aussie, who once lived in Clapham and recently revealed she still has her old Oyster card, is in her groundedness. Sure, she is a stunning multimillionaire, a pioneer for women in film and even a successful businesswoman, as the co-founder of LuckyChap Entertainment with British husband Tom Ackerley. Yet a decade in the spotlight has taught her an important lesson.

"I think humility is so important in this industry," she begins. "It's been a big part of who I am since I was a child, so I have grown up with respect for others as well as the need to present myself in the right way.

"I know very well how stardom can change you, and if you lose sight of that sense of humility, you will be exposed for it because as much as this industry is rewarding, the media spotlight can be extremely unforgiving too."

A case in point is Robbie's courageousness to back away from the powerful, punchy, script-perfect roles that have characterised so much of her success. Few actresses would have the bravery to strip their creativity back to a long blonde wig, a wardrobe of pink and white outfits, and the kooky babe appeal that comes with portraying Barbie, a character that has been entwined in the childhoods of girls for decades.

More than that, though, as executive producer, her commitment to the LuckyChap project – large parts of which were filmed at Warner Bros. Studios Leavesden – has meant she has stayed true to a story that has

inspired so many. Perhaps if Disney had approached its reworking of *Snow White* with quite the same level of respect, it wouldn't be looking at another catastrophic woke failure.

Instead, aided by the brilliant Greta Gerwig, Robbie stuck to a storyline true to Barbie, and had no intention of betraying that narrative. "Greta and I knew just how vital it was that we got this just right," she says. "We're thrilled with the outcome and hope that the audiences are too.

"I think it's every girl's dream to be Barbie, and every adult's dream to make a girl's dream come true, so this always did feel like a very special project."

It is. The movie took more than \$1 billion at the box office in its opening fortnight – an almost unprecedented footfall endorsement that clearly paves the way for the *Bombshell*, *Babylon*, *Suicide Squad*, *The Wolf of Wall Street* and *I, Tonya*, star to reach further into the creative locker for her next storyline.

*Queen of the Air* is up next – a period drama based on a true story that takes place on the dizzy heights of the trapeze, utilising the script from the 2013 book by Dean Jensen.

Before that, Robbie can delight in her current project setting off a Barbie-core fashion trend that is adding bright colour, innocence and no small amount of fun to the high street, at a time when we need it most.

She adds: "It's a delight when things work out. There's pressure to do everything justice, all the while conquering the self-doubt inside. It's always a battle, but fear has played a big part in where I've got to today, and hopefully I'll always thrive off it."





# FROM YOUR AREA

## Teens threatened with knife during burglary



Photo credit: Google Maps

Two teenagers were robbed at knifepoint in Epping last month.

Police officers were called at around 4.45pm on Wednesday, August 9, following a report of a robbery in Lower Swaines. Two victims were threatened and robbed of their phones, and one victim had their backpack stolen.

A police spokesperson said: "The suspects were both described as black males, wearing all black tracksuits and hoodies, with hoods up and masks only showing their eyes. One suspect was about 5ft 8in and the other was 5ft 6in.

"We are appealing for any witnesses in the area at the time who may have witnessed the robbery, or may have dashcam or doorbell footage."

You can report information online at [www.essex.police.uk](http://www.essex.police.uk) or call 101, quoting incident 881 of Wednesday August 9.

BVP Insure.

See the What's On page (page 37) for more information on Link-WorkSpace's next event.

## Students achieve excellent exam results

Epping teenagers who missed out on sitting traditional exams for their GCSEs owing to the pandemic have now picked up their A level results.

After navigating considerable disruption during their education, students from Epping St John's School collected their A level results on August 17.

Deputy headteacher Flora Christofi said: "We are delighted with our students. Despite another challenging two years, our students are still securing places at top universities, such as University College London, King's College London and the University of York, and competitive apprenticeships with Barclays, JP Morgan, Hill construction and Ryanair.

"Our students have again shown resilience and determination. Despite exam boards reverting back to 'normal' grade boundaries, our students have had a far from 'normal' experience. They were met with the Omicron variant of COVID-19 in their first term, where they had a half-term of disruption in the run-up to Christmas, and a loss of teaching time with seven national strike days and three regional strike days, as well as the King's coronation and the Queen's funeral."

Samaya Kaleel (pictured below left), who secured an A\* and three A grades, said: "It was weird to sit in exams and realise that was absolutely it. Everything we had done came down to those exam papers.

"I am really, really happy with my results. It was a massive relief to see that the hard work had paid off."



Photo credit: St John's School

## Businesses come together for networking event

Local businesses came together at a networking event in Epping High Street last month.

Organised by Link-WorkSpace, the event brought together a diverse group of local business owners, professionals and entrepreneurs for connection and collaboration.

Attendees were treated to speeches from a number of special guest speakers, including councillor Holly Whitbread, Deputy Town Mayor Cherry McCredie, Sarada Chaudhuri from The Conversion Machine, Biviana Bholanath from VA.City and Bijal Pattani from

### APPLIANCE PROBLEM?

## WE'LL FIX IT!

Any make Any model

**LOCAL ENGINEERS IN YOUR AREA!**

If we can't fix it, we can supply and install new appliances same day

View our sales page for list of machines ready to install today!

**ALL MAKES ALL MODELS REPAIRS SALES**

**CALL OR BOOK ONLINE**

**01279 310793**

[www.spindoctoruk.co.uk](http://www.spindoctoruk.co.uk)

**SPIN DOCTOR**

DOMESTIC APPLIANCES

**SAME DAY CALL OUT AVAILABLE**

PROVIDED BY Checka trade.com

## WANT MORE BUSINESS?

CALL 01992 276101 TODAY TO ADVERTISE

### BOILER INSTALLATION SPECIALISTS

- Bathroom Installation
- Underfloor Heating
- Boiler Supply & Fit
- Power Flushing
- Plumbing Repair
- Boiler Repair & Service
- Landlord certificate CP12

**CONTACT US FOR A FREE QUOTE**

**0800 107 7119 • 01992 276082**

[info@bsplumbing.co.uk](mailto:info@bsplumbing.co.uk) • [www.bsplumbing.co.uk](http://www.bsplumbing.co.uk)

**£100 OFF BOILERS**

**QUOTE BSP100**

**12-24 MONTHS FINANCE - 0% APR**

**UP TO 10 YEARS AT 9.9% APR**

**NO DEPOSIT**



## DAME ELEANOR LAING MP

Conservative MP for Epping Forest



Photo credit: Epping Forest Heritage Trust



Epping Forest itself is steeped in history. Most of us drive through it regularly and many local people – and visitors from further afield – come out to walk its paths and to enjoy the area.

Sunday, September 17, is the date for this year's Epping Forest Big Walk, organised by Epping Forest Heritage Trust – an event that I am delighted to be supporting.

Last year, more than 200 walkers took part, walking the 14.1-mile route from Manor Park in Newham (setting off between 8.30am and 9am), through Redbridge and Waltham Forest to Bell Common in Epping (to arrive at about 4.45pm), to celebrate the ancient forest.

Previously known as the Centenary Walk, the annual walk was established in 1978, the 100th anniversary of the passing of the Epping Forest Act 1878.

The route was devised by Fred Matthews, from the West Essex Ramblers, and Harry Bitten, from the Friends of Epping Forest.

En route, walkers will call at Queen Elizabeth's Hunting Lodge (Chingford Visitor Centre) for a lunch break, and also High Beach Visitor Centre.

It's vital that the history of our forest is remembered. It provides a buffer between our district and London and must continue as a place for leisure and recreation for centuries to come.

This can only be achieved through the continued efforts of the Epping Forest Heritage Trust, the Friends of Epping Forest and the City of London Corporation, and I would like to thank them, on behalf of our local community, for all that they do.

To sign up, visit [www.efht.org.uk/discover-epping-forest/epping-forest-big-walk](http://www.efht.org.uk/discover-epping-forest/epping-forest-big-walk)

## LET US ADD SPACE & STYLE TO YOUR HOME

Loft Care was created by two professional directors. One from a corporate background, the other with construction and design experience. These two different backgrounds have forged a great partnership which we pride ourselves on.

Evident from our wide client base, providing a valued tailored service. Our clients choose us because of our professional, committed, and reliable manner, supplying advice and delivering high quality of work is what we strive ourselves upon.

Conversions are the ideal way to add space, value and unlock your potential in your home. We fully understand the impact building work can

have. We guarantee to treat your property with respect and create minimum disruption. From the outset, we work closely with you, perform in-depth inspections, and identify your personal needs, whilst involving you in every step of the journey.

Our design team can introduce a wide variety of professional services to include, interior designers, fabric and upholstery consultants, furniture manufacturers, kitchen and bathroom suppliers, therefore benefitting from our commercially discounted prices.

Behind the scenes our directors conduct regular meetings to ensure high standards are achieved and your expectations exceeded. Regular site visits are also conducted by a dedicated contracts manager.

Each job is documented from start to finish, therefore providing the client with a tailored

process for their project leaving no room for ambiguity. All work is undertaken with Building Regulation Approval and Certificate of Completion from your local authority and all works covered by a 10-year Loft Care guarantee.



## LOFT CONVERSION AND REMODELLING SPECIALISTS

### PROVIDING BESPOKE CONVERSION SOLUTIONS

DORMER • HIP TO GABLE • MANSARD • ROOF LIGHT  
HOME REMODELLING AND INTERIOR DESIGN

### LET US DELIVER YOUR DREAM

VISIT OUR WEBSITE: [WWW.LOFTCARE.CO.UK](http://WWW.LOFTCARE.CO.UK)  
or call 01992 276 052 • 0800 002 9411



SCAN ME

[WWW.ELEANORLAING.COM](http://WWW.ELEANORLAING.COM)



# Iconic annual carnival brings community together

The Burnham-on-Crouch Carnival is many things to many different people. Undoubtedly perfectly picturesque, and most certainly brimming with Britishness, it welcomes in thousands of tourists to this attractive part of Essex.

The carnival, which takes place on the last weekend in September, is the culmination of a number of events that decorate the rich community vibe of this special town.

In the preceding month, Quay Day, which takes place on the bank holiday Monday in August, sees the waterfront feature an eclectic mix of music, art, demonstrations and water-based activities, with the successful food and drink festival having appeared earlier in the year.

As for the carnival itself, it is a festival of community life whose origins go back to the early 20th century. Founded as a modest gathering of local musicians and artists, it aimed to showcase the unique blend of

talent that flourished in this part of the UK.

The first editions saw poets reciting against the backdrop of the estuary's waters, with streets lined with performers who drew inspiration from Burnham's idyllic ambience.

These days, the carnival is the centrepiece of a four-day explosion of energy, with the town's age-old High Street transformed into a magical place of discovery, with stalls, rides, music, history and art.

What makes this such an ideal location is its placement – far enough away from the nearest major conurbation (Chelmsford) to have its own personality and style, it's inland from the bluster of the Essex coast, yet served by the River Crouch. The town itself dates back more than 1,000 years and is mentioned in the Domesday Book.

And when darkness descends, the charm of Burnham-on-Crouch's charm only increases, as one of the largest night-time processions in the land is lit up in all its glory.

Photo credit: Daniel Reed Photography



## SUPPLIER OF QUALITY CONCRETE



**MOST TRUSTED READY-MIX CONCRETE SUPPLIER IN LONDON**

- Collection also available ■ 24/7 service
- Competitive pricing

Let's get in touch 01992 276190

info@LondonQualityConcrete.co.uk  
www.londonqualityconcrete.co.uk



## Improve, Don't Move!

Maximise the value of your home.

- SPACE-SAVING - MAXIMISE YOUR GARAGE HEADROOM
- SECURITY-ENABLED AUTO-LOCKING SYSTEM
- CHOICE OF 21 COLOURS TO MATCH YOUR HOME
- REMOVAL AND RECYCLING OF YOUR OLD DOOR
- DEDICATED AFTER-CARE TEAM

**GAROLLA**  
ROLLER SHUTTER DOORS

01992 830 024

LINES OPEN 7 DAYS A WEEK

www.garolla.co.uk



BESPOKE ELECTRIC DOORS MANUFACTURED IN THE UK

**FREE FITTING**  
PAYMENT ON INSTALLATION

PRICED EXAMPLE **£895**  
COMPACT • UP TO 2.4M

**GAROLLA ★ PREMIUM**  
Increased Security • Double Insulation  
One-Touch Close

PRICED EXAMPLE **£1,990**  
PREMIUM • 3.4M • ANTHRACITE







**COMPLETE CARPET CARE**

- Pet Odour Removal
- Stain Removal
- Deep Cleaning

**WE OFFER :**

- Stain Removal
- Odour Elimination
- Mattress Cleaning
- Upholstery Cleaning
- Residential & Commercial Cleaning
- Deep Carpet Cleaning
- Hard Floor Cleaning
- Patio & Artificial Grass Cleaning
- And much much more

**ENQUIRE NOW**

01277 549119  
Info@the3c.co.uk  
www.the3c.co.uk

**COMPLETE CARPET CARE**  
Saint Francis Hospice  
Partner for you

Complete Carpet Care are delighted to be a supporter of the St Francis Hospice. A donation is made to this amazing charity from every job.

**ncca**  
National Carpet Cleaning Association

*Cleaning the Corners, Not Cutting Them*



**HOUSE2HOME**

- **HARDWARE** ▪ **TOOLS**
- **ELECTRICALS** ▪ **PLUMBING**
- **KITCHENWARE** ▪ **GARDENING**
- **PARTY SUPPLIES**

**Tel: 01992 577 643**  
295 High St, Epping, Essex, CM16 4DA

# YOUR LOCAL EVENTS

## THEYDON BOIS LTC LADIES CHARITY TENNIS TOURNAMENT

Theydon Bois Tennis Club, Sidney Road,  
Theydon Bois, CM16 7DT

Monday, September 11, 9am – 4pm



Theydon Bois Tennis Club is hosting a ladies charity day in aid of Refuge and Diabetes UK.

The entry fee is £45 per pair and this includes tea/coffee and biscuits on arrival and lunch.

Lunch will be served after the round robin matches are finished. The quarter-finals, semi-finals and final will be completed during the afternoon. Non-players are welcome to watch the tennis and enjoy refreshments and lunch for £15.

Purchase your tickets via [www.eventbrite.co.uk/e/theydon-bois-ltc-ladies-charity-tennis-tournament-tickets-639301617347](http://www.eventbrite.co.uk/e/theydon-bois-ltc-ladies-charity-tennis-tournament-tickets-639301617347)

## WOMEN'S INSTITUTE: BOUDICCA AND HER REBELLION

Waltham Abbey Town Hall, Highbridge Street,  
Waltham Abbey, EN9 1BZ

Wednesday, September 13, 7pm – 9pm

Join Andrew Summers, publisher and public speaker, and the Icen Sisters for a talk on Boudicca and her rebellion. Learn about the fantastic history of the Boudican revolt and the uprising of native Celtic Britons against the Roman Empire during the Roman conquest of Britain. Then, enjoy some cake for the Icen Sisters' birthday!

To find out more, head to [www.shorturl.at/CKPZ0](http://www.shorturl.at/CKPZ0)

## SACRED SOUND INSPIRATIONS

2 St Johns Road, Epping, CM16 5DN

Thursday, September 21, 8pm – 9pm

Residents are invited to celebrate the powerful time of the autumn equinox.

Participants lie on a blanket or yoga mat and are bathed in the powerful and transformative sounds of the gong. A variety of gongs are used, as well as Himalayan singing bowls and other instruments.

## AUTUMN DIESEL GALA

Epping Ongar Railway, Station Approach,  
Epping, CM5 9BN

Friday, September 22, to Sunday, September 24,  
9.30am – 4.30pm

Epping Ongar Railway's Autumn Diesel Gala is a spectacular three-day event featuring its home fleet, alongside some incredible visiting locomotives which will be put through their paces over some of the most challenging gradients in preservation!

A three-train intensive service will be running throughout the weekend, with late-running Real Ale trains on Saturday. All trains will be running in conjunction with a fleet of Heritage buses.

Tickets can be purchased on the door.

## BUSINESS NETWORKING

Link-WorkSpace, 116 High Street,  
Epping, CM16 4AF

Friday, September 22, 3pm – 5pm

Come along to this highly anticipated business networking event and discover valuable opportunities to connect with industry leaders and professionals.

Engage in meaningful conversations, exchange ideas and forge partnerships that will drive your business forward.

Email [info@linkworkspace.co.uk](mailto:info@linkworkspace.co.uk) or call 020 8629 3040 to find out more.




**Alf Onnie**

## Curtains, blinds and plantation shutters

- ✓ Bespoke made to measure curtains
- ✓ Sheers & Voiles
- ✓ Window blinds – manually operated or motorised
- ✓ Plantation shutters
- ✓ Pole and track fitting service
- No obligation quote
- Friendly & enthusiastic family business Est 1920
- Experienced consultation & installation team
- Commercial projects also undertaken

01992 276123 07956 818477  
AlfOnnie.co.uk @AlfOnnie1920  
Alf Onnie Curtains and Blinds

**On enquiry mention Vision for a special offer**





Photo credit: alnwickgarden.com

Home to more than 100 toxic, intoxicating and narcotic plants, the Poison Garden at The Alnwick Garden in Northumberland is not for the faint-hearted. With a sign on the black iron gate emblazoned with the message, 'These plants can kill', do you dare to enter?

See some of the deadliest plants in the garden...



**THE GYMPIE-GYMPIE**  
A fairly new addition to the Poison Garden, gympie-gympie is known as the world's most venomous plant and is said to deliver a sting similar to being burnt with hot acid and electrocuted simultaneously.



**LABURNUM TREE**  
The second most poisonous tree in the UK, the laburnum tree contains a poison called cytisine. In fact, this tree is so poisonous that if one of its branches fell to the floor, lay for several months and then was picked up by your dog, it is unlikely your dog would survive the hour.



**HELLEBORES**  
The root of this deadly plant contains a cardiotoxin that will stop your heart in an instant. Its sap can also irritate the skin, so this plant should only be handled when wearing gloves.

**CHERRY LAUREL**  
Cherry laurel, also known as English laurel, can kill you even if all you're doing is trimming its leaves. This plant contains cyanogenic glycosides and cyanide ions; when these two components are combined, they create cyanide gas which can be deadly in a confined space.



**DEADLY NIGHTSHADE**  
As the name suggests, deadly nightshade is a poisonous plant that can cause a whole host of nasty symptoms including blurred vision, a skin rash, headaches, slurred speech, hallucinations and eventually death. In fact, eating just two to four berries can kill a child.



Other deadly plants on show include:

- ☠️ **THE KHAT PLANT** – contains a carcinogen that causes mouth cancer.
- ☠️ **YEW TREE** – eating a small number of its leaves can be fatal for livestock and humans.
- ☠️ **HOGWEED** – contains toxins that are activated by light, causing pain and skin lesions.

If you dare to enter...  
The Poison Garden is open to the general public and entrance is included with a day ticket to The Alnwick Garden. Remember to follow all the guidelines to stay safe.

**TYRO PLATES**  
Designer Number Plates

**CALL US TODAY FOR YOUR BESPOKE PLATE  
01992 276102**

- 2D Printed, 3D Gel, 4D Acrylic Plates
- All Sizes! Shaped, Short, Hex, oversized Plates
- Tinted, Chameleon, Coloured Show Plates
- Exclusive - Vintage Style Number Plates
- Keychains & Accessories
- 1 of the UK's Largest Wholesale & Trade Supplier
- Custom Cut Fit Plates
- Local Same Day & Free Fitting Service
- Nationwide next day shipping
- Over 500 Different Designs to choose from

SCAN ME

*Specialist*  
GARDEN COMPANY  
MAINTENANCE • TREES  
LANDSCAPING

- Garden Maintenance
- Paving • Turfing
- Pressure Washing • Driveways
- Weed Control • Irrigation
- Decking & Fencing
- Ponds & Water features
- Tree & Hedge Care
- Garden Clearing
- Large Area Mowing

**01992 276039**  
enquiries@specialistgarden.co.uk  
SpecialistGardenCompany  
www.specialistgarden.co.uk

**PUT THE SPARKLE BACK INTO YOUR KITCHEN**

**Domestic Oven Cleaning Specialists**  
Est. since 2007

**Prices**

Single oven incl. shelves & grill pan.....	£43.00
Double oven incl. shelves & grill pan.....	£54.00
Range incl. shelves & grill pan.....	From £54.00
AGAs.....	From £90.00
Hobs.....	From £14.00
Extractors.....	From £15.00
Microwaves.....	From £20.00

**No VAT to pay**

**PLEASE CALL FOR A FREE QUOTATION  
01279 432444 \* www.ovenbright.co.uk**





# GET TO KNOW ANIMALS

Indoor Petting Zoo & Animal Experience Centre



**OPEN TUESDAY-SUNDAY 10AM-6PM - LAST ENTRY 4:30PM**

**ADULTS: £10 (UNDER 2'S FREE) UNDER 11 / OVER 65 / DISABLED: £8.50**  
**CARERS FREE WITH PROOF OF DISABILITY FAMILY TICKETS AVAILABLE**

**MIDWEEK TERM-TIME:**

**1 ADULT & 1 UNDER 5: £10 (10AM - 3PM) AFTER 3PM: £5 P/P**

**ANIMAL HANDLING EXPERIENCES FROM £3.50**



**WWW.GTKA.CO.UK ~ FOREST LODGE COMMERCIAL COMPLEX, EPPING RD, EPPING, CM16 5HW**



PETS

## HOW TO STORE

# PET FOOD

**D**id you know that the way you store your pet food can make a big difference in both its quality and its freshness? Discover the best practices for pet food storage below and keep your pet happy and healthy.

### HOW TO STORE UNOPENED PET FOOD

If you buy your pet food in bulk, then you need to make sure you store any food you are not using in the right way. As a general rule, both unopened dry and wet pet food should be kept in a dark and moisture-free place such as a kitchen cupboard or pantry. It is not a good idea to store pet food in your garage as humidity and temperatures can fluctuate.

### HOW TO STORE OPENED DRY PET FOOD

Once opened, dry pet food should be kept in its original packaging where possible, as these are typically designed to keep the contents fresher for longer. If you do not have its original packaging,

store it in an airtight container to avoid contamination. All opened dry pet food should be kept in a dark and cool place.

### HOW TO STORE OPENED WET PET FOOD

Once opened, wet pet food should be consumed right away or any leftovers kept in the fridge, where they will stay fresh for two to three days. Always make sure you cover any unconsumed wet pet food so that it does not dry out. Allow any refrigerated wet pet food to return to room temperature before giving it to your pet, especially for cats who prefer their food slightly warmer.

### HOW TO STORE RAW PET FOOD

Store-bought raw pet food usually comes frozen so you will naturally choose to store these in your freezer until you are ready to thaw for eating. If not frozen, raw pet food can be stored in the fridge for up to four days. Ideally, raw pet food should be consumed in a single sitting.





# Back to school SHOWDOWN

Is getting your child to go to school a constant battle? While a little reluctance to return to school after the summer holidays is to be expected, if your child is becoming severely distressed at the prospect of going to school, then you need to take action.

## TALK TO YOUR CHILD

There are many reasons why your child may be refusing to go to school, such as bullying, anxiety, learning differences or emotional issues, so it is important that you try to get to the root of the problem. Sit down with your child and try to find out what it is that is making them not want to go to school and then take appropriate action.

## HAVE A GOOD MORNING ROUTINE

If you do not have a calm and consistent morning routine, then this can make the process of getting ready for school a lot more stressful for you and your child. Make sure they get up at the same time

every day and that they know what they need to do and by what times, i.e. get dressed, brush their teeth, etc. Remember to provide plenty of praise.

## INVOLVE THE SCHOOL

If your child is flat-out refusing to go to school, then the sooner you talk to the school about this problem, the better. Arrange a meeting to talk to their teacher or headteacher and see what advice they have. For example, they may suggest a buddy system or bringing in your child slightly earlier to avoid the crowds in the playground.

## STAY CALM BUT BE FIRM

Although this can be hard, try to stay as calm as possible when trying to get your child to go to school, as getting angry or upset will only make the situation worse. That being said, you do need to be firm and don't give them the chance to say no. For example, say "Put on your uniform" rather than "Are you going to put on your uniform?"



## ARE YOU LOOKING FOR SPACE FOR YOUR SMALL BUSINESS?

**(250 & 500 SQ FT) UNITS AVAILABLE FOR SMALL OFFICES WITH STORAGE & LIGHT INDUSTRIAL USE LOCATED WITHIN EASY REACH OF M11/M25.**

- Licence Agreement (only two months' notice)
- On-site parking
- Broadband
- Reception with call-handling facilities
- Deliveries taken in on your behalf
- Mailbox facility
- Telephone answering service.

**WE ARE A FRIENDLY PLACE & HERE TO HELP YOU SO COME AND JOIN US**

**SAVE ON TRAVELLING AND TAKE YOUR BUSINESS AWAY FROM HOME.**

**POP IN FOR A CHAT/VIEWING**

Monday-Friday 9.00am-5.00pm  
Hurricane Way, North Weald, Epping, CM16 6AA  
Phone: 01992 524111  
Email: [bbu@bassettbusinessunits.co.uk](mailto:bbu@bassettbusinessunits.co.uk)  
[www.bassettbusinessunits.co.uk](http://www.bassettbusinessunits.co.uk)



## BASSETT BUSINESS UNITS

## Specialist family lawyers.

**RAYDEN**SOLICITORS



**There might be challenging times in your life when a family law solicitor can help:**

- Have you decided your marriage or relationship is over, are you unsure about your family's future?
- Do you need to protect your children, or understand the options to resolve arrangements for your children?
- Do you need a pre nuptial or post nuptial agreement to protect assets?
- Are you moving in with your partner and need a cohabitation agreement?



Choosing the right family lawyer for you and your circumstances is crucial. Rayden Solicitors are family law specialists with many years' experience; we will give tailored and practical solutions in all areas of family law - divorce, relationship breakdown, child arrangements and financial settlements.

Bespoke advice from Rayden Solicitors Epping  
Contact us, [enquiries@raydensolicitors.co.uk](mailto:enquiries@raydensolicitors.co.uk)  
Epping Office  
The Civic Centre, 323 High Street, Epping, Essex, CM16 4BZ. Tel: 0203 7733919.

**RAYDEN**SOLICITORS  
[www.raydensolicitors.co.uk](http://www.raydensolicitors.co.uk)

We are available on 



# Thinking Of Moving?

With decades of experience behind us, our team of property experts are on hand to help with any questions you may have, whether that be in relation to selling or letting your property.

Covering Highams Park, Chingford, Woodford Green, Loughton, and the surrounding areas, give us a call to arrange your **FREE** valuation and start your property journey today!

wjmeade.co.uk | 020 8531 5454 | 2-3 Broadway Parade, E4 9LG

Follow Us!



**wj meade**  
Estate Agents, Property Management & Lettings

# CHEAPEST CITIES

Are you looking to get on the property ladder but are struggling to find anything within your budget? Discover the top five most affordable cities for first-time buyers in the UK – as well as the most expensive cities! The average monthly mortgage payments listed below are based on a 10 per cent deposit.

**1 BRADFORD:** Bradford in West Yorkshire is officially the cheapest city for first-time buyers to purchase a home. Named as the upcoming City of Culture in 2025, the current average asking price for a two-bedroom property in Bradford is £104,643.  
**Average monthly mortgage payment: £521**

**2 CARLISLE:** If you don't mind moving a bit further north, then the city of Carlisle is the second cheapest city for first-time buyers. With an average asking price of £104,784 for a two-bedroom house, there are some beautiful semi-detached properties on offer in this part of the UK.  
**Average monthly mortgage payment: £522**

**3 ABERDEEN:** The third most populated city in Scotland, Aberdeen is known for its stunning architecture and closeness to Cairngorms National Park. The average asking price for a two-bed property currently sits at £106,088.  
**Average monthly mortgage payment: £528**

**4 HULL:** Although this city does not have the best reputation, you can get a lot more for your money if you relocate to Hull. The average asking price for a two-bedroom property currently stands at £106,939.  
**Average monthly mortgage payment: £532**

**5 DUNDEE:** A vibrant, modern and affordable city, the average asking price for a property with two bedrooms or fewer in Dundee is £111,415.  
**Average monthly mortgage payment: £532**

And, on the other end of the scale, the five most expensive cities for first-time buyers in the UK are:

**LONDON • ST ALBANS • BATH • CAMBRIDGE • OXFORD**

To put this all into perspective, the average house price for a first-time buyer in the UK is £245,958. This is £55,500 higher than five years ago. According to the Financial Conduct Authority, two-thirds of first-time buyer mortgages have terms that go beyond 25 years.

...across the UK





# PUZZLES & TRIVIA

PUZZLES

Answers: see end of The VISION Listings

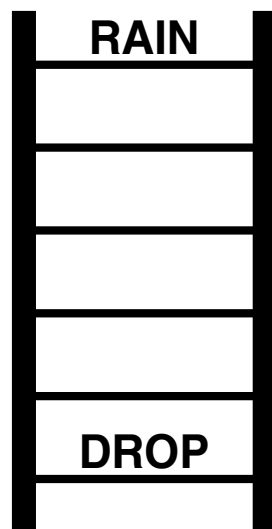
- ▶ BASIL
- ▶ BORAGE
- ▶ CARAWAY
- ▶ CATNIP
- ▶ CHERVIL
- ▶ CINNAMON
- ▶ DILL
- ▶ FENNEL
- ▶ FENUGREEK
- ▶ GINGER
- ▶ MACE
- ▶ MARJORAM
- ▶ MINT
- ▶ NUTMEG
- ▶ OREGANO
- ▶ PARSLEY
- ▶ ROSEMARY
- ▶ SAFFRON
- ▶ TARRAGON
- ▶ THYME



## DID YOU KNOW?

- ▶ In 1921, women were banned by the FA from playing in Football League grounds. The ban would not be lifted for 50 years.
- ▶ The first women's FA Cup final took place in 1971 and saw Southampton win 4-1 to Stewarton Thistle (now Kilmarnock FC).
- ▶ The England women's team is fourth in the FIFA world rankings. Sweden is in third place, Germany in second place and the USA in first place.
- ▶ Jamaica's women's team was able to compete in the 2019 Women's World Cup thanks to a fundraising initiative spearheaded by Cedella Marley, daughter of Bob Marley.
- ▶ Chelsea FC player Sam Kerr is reportedly the highest-paid women's football player, earning just under £400,000 a year.

## WORD LADDER



THE AIM: Change the word at the top of the ladder one letter at a time to make the word at the bottom.

HOW TO: Change one letter on each step to make a new word. By the time you reach the end, you should have created the new word.

DO NOT rearrange the order of the letters.

TIP: There is usually more than one way to solve this puzzle.

@link\_workspace @linkworkspace Link Workspace Link Workspace



Link-WorkSpace

## OUR SERVICES



Hot Desks



Conference Rooms



Flexible Serviced Offices



Events Venue



Exhibitions



Workshops



Networking Events



Hosting your Charity Fundraising



## CALL US NOW

For more information contact us at:

info@linkworkspace.co.uk  
020 8629 3040

www.linkworkspace.co.uk



WORKING IN PARTNERSHIP WITH





# BEEWISE

## High end solutions for less than you think

At Beewise we use our massive purchasing power and market expertise to get you the best deals on all of your retail merchant services.

Try risk free for **1 month**  
**50% off** the cost of the terminal\*  
**£100** Amazon voucher for the first 200 new customers

Scan the code or call us and we will save you time and money on your business utilities and services

**01992 276075**

\*Offer expires 30th September 2023



SCAN ME

worldpay



**THE UK'S MOST TRUSTED AND REVIEWED  
AUTO LOCKSMITH & EMERGENCY RESPONSE**

## HOW SAFE IS YOUR CAR?

### Car & Van Security Specialists

VAN SECURITY LOCKS | ALARM SYSTEMS

VEHICLE TRACKING | THEFT PROTECTION

IMMOBILISERS | CAR KEYS



from  
**ONLY  
£450**



## GHOST CAR IMMOBILISER

**A SMART WAY TO PROTECT YOUR CAR**

Secure your peace of mind and your vehicle with the next generation of vehicle security



SCAN ME

**www.carkeyssolutions.co.uk**

**Call us on 01992 276093**

**Email: contact@carkeyssolutions.co.uk**

We cover Greater London & surrounding M25 areas

**Open 7 days a week  
from 8am to 10pm**



MOTORING

# Famous MOVIE cars

They say the car is the star, and with these cherished vehicles from the big screen, that's certainly the case.

**ASTON MARTIN DB5:** Four units of the DB5 were used for the 1964 James Bond classic *Goldfinger* – two during filming and a further two promotional vehicles. The now iconic car was modified by special effects expert John Stears to include a number of spy-worthy gadgets. Although stolen in 1997 from Boca Raton Airport in Florida, the car has since been spotted in a 'private setting' in the Middle East.

**DELOREAN DMC-12:** The DeLorean is one of the most recognisable cars in the world owing to Steven Spielberg's *Back to the Future* trilogy, yet what should have been a marketer's dream turned out to be anything but.

Despite futuristic 'gull wing' doors and stainless steel body panels, the DMC-12 didn't sell well owing to its impracticability and lack of balance, being a rear-engine car.

**BATMOBILE:** Batman/Bruce Wayne was known to high-powdered supercars since he first appeared in comics in 1939, but it wasn't until 1941 that the title 'Batmobile' was first used.

The first on-screen Batmobile appeared in the 1943 serial *Batman* movies and was a 1939 Cadillac Series 75. Since then, the Batmobile has gone through several iterations – from the first completely black version in the 1989 Tim Burton film, to the Christopher Nolan version which was described as a cross between a Lamborghini and a tank.

**ECTOMOBILE:** Ecto-1 from the *Ghostbusters* movies was an original 1959 Cadillac Miller Meteor, and the two models converted for screen use are still owned by Sony Pictures. The film provoked a number of copycat models, one of which sold in 2021 for more than £200,000.

**FERRARI MODENA GT:** While three Modena GTs were used in the iconic 1980s film *Ferris Bueller's Day Off* starring Matthew Broderick, all were replicas. The one that flies out the window in the movie didn't even run properly – it was a fibreglass shell version built specially for that scene. Though one of the replicas was seriously damaged in the jump scene, it was successfully repaired and sold for £122,000 at auction.



Photo credit: Abdul N. Quraishi - Aps/Shutterstock.com, Alarcom/Shutterstock.com, Drivenyar/Shutterstock.com, silidrome.com



# WILLKOMMEN KANE

**W**hat will England captain Harry Kane MBE's departure for Germany mean for Spurs, for England, and for the man himself?

It was the most drawn-out transfer saga of the summer, with neutral football fans across the country breathing a collective sigh of relief when Spurs and England forward Harry Kane finally pulled the plug on his Premier League time – for now – by signing for German giants Bayern Munich at the start of August.

While the banal 'will he/won't he' rhetoric from our sports broadcasters is at an end, attention now switches to whether the brilliant frontman can make a success of his time in the Bundesliga.

On the face of it, he should. The German league has the same physical, tactical and technical prowess of the Premier League.

And despite Bayern dominating domestic affairs, it's fiercely competitive, which the 30-year-old will thrive on. Even outside those elements, Kane's ability to affect play from everywhere around the attacking third will surely mean he will shine.

What's more, his exposure to new players, new challenges and new ideas may enhance his already stellar contributions to the England national team.

Currently just 47 goals shy of Alan Shearer CBE's record, Kane, as the second-highest all-time goalscorer in the Premier League, will likely want to return to home shores if he hopes to take the top spot.

Kane made his Bayern debut in a 3-0 defeat to RB Leipzig in the German Super Cup, though things will surely improve.

As for Spurs, chairman Daniel Levy is noted as a shrewd and tough negotiator, yet he was ultimately backed into a corner by the fact Kane only had a year left on his contract at Tottenham. To cash in now, at £86million, is common-sense bean-counting, rather than enduring the financial and emotional pain of losing that same player for nothing in 10 months' time.

Meanwhile, in Richarlison, Kulusevski and Son the Lilywhites have enough firepower to compensate for their talisman's loss.

Photo credit: Xinhua/Shutterstock



WOOLSTON MANOR

## GOLF CLUB

**Celebrate at  
Woolston Manor Clubhouse**

**The Special Venue for all your  
Weddings & Parties**

You can celebrate in style in one of our stunning event spaces. The Clubhouse, set in 200 acres of beautiful grounds and lakes, boast a sweeping driveway, high ceilings and elegance.

**Enjoy the benefits of  
Woolston Manor Golf Club**

**With our Individual, Joint &  
Corporate Membership options**

Woolston Manor Golf Club membership provides you with access to the superb championship golf course, modern clubhouse, fixtures, competitions, social calendar and top class catering.



Woolston Manor Golf Club, Abridge Road, Chigwell, IG7 6BX

☎ 0208 500 2549 ✉ [info@woolstonmanor.co.uk](mailto:info@woolstonmanor.co.uk) 🌐 [woolstonmanor.co.uk](http://woolstonmanor.co.uk)



# THE VISION LISTINGS

## ACCOUNTANT & TAX ADVISORS

### ALL THINGS ACCOUNTING

Accounting & tax services, we help with self-assessment tax return, corporation tax return, payroll, VAT return, CIS return & bookkeeping. Call 07539 035537 for free initial consultation

## ARTS, DANCE & FITNESS

### STUDIO 1 UK

"Creative space simplified" - Performing arts | Dance | Fitness | Wellbeing | Hire | Adults and kids classes based in Loughton Essex. 07914 667909

## AUDIO & VISUAL

### ULTIMATE AV

We create bespoke systems designed and built especially for you. Small projects to complete home cinema environments. Based in Essex call us on 07531 214339

**BOOK VIA [EPPING@VISIONMAG.CO.UK](mailto:EPPING@VISIONMAG.CO.UK)**

## BEAUTY & NAILS

### BEAUTY BY NATASHA KATIE

A local, mobile LVL Technician. Fully qualified level 2 and 3 beauty therapist Babcac insured and approved. 07961 462672

### SPECIAL NAILS

Dedicated to provide the best quality nail care for Men & Women. Walk-ins welcome, appointment bookings & gift vouchers available. 01708 442248

### THE NAIL STUDIO

Nail Studio lets you switch off and pamper with highly skilled technicians providing top treatments and nail products to meet your every need. 07572 526519

### WICKED WAXING LTD

Male and female specialist waxing using hot and strip wax. 20 years' experience. Based in Epping with free parking. [epping@wickedwaxing.com](mailto:epping@wickedwaxing.com). 07368 684377

## BUILDING

### ADDSpace LONDON LTD

We provide a high quality Building service. Extensions, loft and internal renovations. Members of Federation Master Builders. Call 01992 276035

## CARPET & UPHOLSTERY

### ARWIN CLEANING SERVICES

Over 30 yrs of exp, we can offer a professional, efficient and cost-effective solution for carpet and upholstery, cleaning and maintenance. 07973 417764

## CAR & VAN HIRE

### SCENIC SELF DRIVE

Your self drive hire specialists. Whether you require modern cars, motorhomes, vans or minibuses. Rest assured we will provide you a professional service. 01708 753461

## CLEANING SERVICES

### GLOWWHITE CLEANING

Serving Hertford and surrounding areas. We specialise in end of tenancy cleaning for tenants, landlords and property managers. Fully insured. Contact: 07561 138855

## CLEARANCE & WASTE

### THE CLEARANCE TEAM

From clearing a room, house or garden to clearing an entire office block. Fast, reliable and affordable. Working 24/7 so you can book us at your convenience. 0207 101 3387

## COMPUTER REPAIR & I.T.

### MAPTEC IT

Your local residential & commercial IT specialists. We can fix your computers, configure email accounts & printers. Setup your Wi-Fi, Internet router & network. 0203 865 7174

## EDUCATION

### TUTOR DOCTOR

All primary secondary subjects, 1:1 lessons, online or F2F in-home. Best tutor matched to every child's unique personality, weekly reports. 0203 856 4466

## ELECTRICAL & WHOLESALE

### CH ELECTRICAL WHOLESALE

Essex & East London's leading electrical wholesalers providing the trade & public a professional service with access to all leading brands. 01708 730591

## ELECTRICIAN

### CAPITAL ELECTRICAL SERVICES LTD

Domestic/Commercial, Repairs/Installation, Vehicle Charging Points, Portable Appliance Testing, Fire Alarms, Emergency Lighting, Installation Condition Reports. Call 0208 088 2916

### TACK ELECTRICAL

Reliable, affordable, fully qualified and insured. We guarantee we'll deliver unrivalled service and workmanship every time. No job too small. 01992 276128

### GLADE ENERGY SERVICES LTD

We cover all types of electrical work in your home. LED lighting, Fusebox upgrades, CCTV and Home automation. Please call 020 3906 2863

## FURNITURE RESTORATION

### ABBEE GROUP

Abbey Group are specialist in creating, repairing & restoring quality furniture & wood surfaces to the highest standard. 01708 741135

### KINGS UPHOLSTERY

Handmade sofas & chairs designed especially for you to your required specifications. Also providing in re-upholstery & repair work. 01708 444125

## GARDEN SERVICES

### JOHN HEARNE

We take care of it all Lawn Mowing, Weeding, Planting, General Tidying, Fence/Shed Painting, Driveway/Patio Pressure Washing and more. Call for details 07908 523101

## HEALTH & WELLBEING

### REIKI VITALITY

Qualified Practitioner, promoting Emotional/Physical Well-Being for Adults/Children. Relieving, Stress, Anxiety, Depression, pain. 0203 7247385 | 07935 129241 | [reikivitality@yahoo.com](mailto:reikivitality@yahoo.com)

### ALI ALOE – FOREVER LIVING

Look and feel your best with quality Aloe Vera: skincare, collagen, sports, and everyday products. 60-day money-back guarantee. 07932 717496 | [ali@alialoe.co.uk](http://ali@alialoe.co.uk)

## LOCKSMITHS

### KEYTEK LOCKSMITHS

From Lock outs to security upgrades, our fully trained DBS checked Locksmiths are the experts | Call 01992 666 121 | Quote: 15076

## MASTICS AND SEALANTS

### QUALITY MASTICS LTD

Bathroom and shower mastic joint sealing. Kitchens, windows, floors, external seals around windows. For information call 01245 520981

## MOTORING

### BMS CAR PARTS

For all your motoring requirements inc. Car parts, number plates, key cutting, engine oil, tools, car accessories & servicing. 01708 474187

## PAINTING & DECORATING

### TRADITIONAL DECORATIONS

We are a family run business specialising in turning your house into a home. Giving advice on current decorating trends. 07737 562406

## PLUMBING & HEATING

### BOILER

BOILER offer servicing, installations, repairs and plans. Local Gas Safe engineers for all your needs. 6000 Homes EVERY MONTH. Call 01992 236063

### CMS PLUMBING HEATING & BATHROOMS

Corgi registered, 20+ years' experience, public liability insurance, offering free quotes. No job too small. Based in Gidea Park. Call Craig 07855 589185

## PROPERTY MAINTENANCE

### LILLYWHITE PROPERTY GROUP

For all building works, full refurbishments & property maintenance inc heating, plumbing, electrical, decorating, flooring, tiling & plastering etc. Call today on 07949 394403

### STUART GREEN PROPERTY SOLUTIONS

Property maintenance specialist. Carpentry, painting/ decorating, laminate flooring, bath/shower re-siliconing, gutters cleared/repared, insurance work, PLI. 07917 870879

## ROOFING

### JIM BARR ROOFING

Exterior cleaning & maintenance. Gutters, Paving & UPVC; cleaned, repaired & renewed. 01708 874816 | 07833 572459

## WEB DESIGN & PRINTING

### SWIVEL CREATIONS

25+ years experience, specialists in Web, Print, Clothing & Embroidery. Professional, affordable, reliable. 01992 570383 | 07736 879233 | [www.swivuk.co.uk](http://www.swivuk.co.uk) | [info@swivuk.co.uk](mailto:info@swivuk.co.uk)

### PHOENIX ROAD CREATIVE

25+ years Web Design & Marketing to reach your audience. Let's get digital! [hello@phoenixroadcreative.com](mailto:hello@phoenixroadcreative.com) | [www.phoenixroadcreative.com](http://www.phoenixroadcreative.com) | 07462 528494

**DISCLAIMER:** **VISION** does not represent or endorse the accuracy or reliability of any of the advertisements, nor the quality of any products, information or other materials displayed, purchased or obtained by any customer as a result of an advertisement or any other information or offer in connection with the service or products. The opinions expressed in articles, reviews and stories are strictly those of the individual authors and do not necessarily reflect the views of **VISION**.

**To advertise call VISION on 01992 276101**

PUT YOUR BUSINESS IN THE **VISION** LISTINGS...CALL **01992 276101** TODAY

WORDLADDER: RAIN, GAIN, GRIN, GRIP, DRIP, DROP



OVER 30 YEARS OF EXCELLENCE



# Life is Beautiful

At City Bathrooms we believe everyone deserves a beautiful bathroom, that's why our passion for luxury products, first-class customer service and expert bathroom advice is at the heart of everything we do.

**City Bathrooms**

11 Raven Road, South Woodford E18 1HB

Telephone: 020 8504 5152

Email: [sales@citybathrooms.com](mailto:sales@citybathrooms.com)

[citybathrooms.com](http://citybathrooms.com)







# Chestnut Manor

WANSTEAD CARE HOME

Chestnut Manor provides superb quality residential, nursing and dementia care, promoting independence and choice within a warm, welcoming family community.



To enquire about care or to visit the home  
**contact Rosie, Home Manager on 0203 871 6070**  
or email [rosie.monger@westgatehc.co.uk](mailto:rosie.monger@westgatehc.co.uk)

