

**GARDEN  
TO-DO  
LIST  
2024**

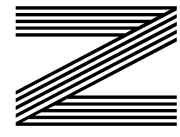
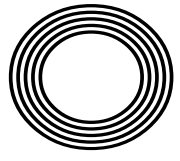
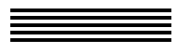
**CREATE  
MELTING  
SNOWMEN  
BISCUITS**

**SWEET EMBRACE**  
Dulux Colour of the Year 2024

**TOP DESTINATIONS**  
for adrenaline junkies in the New Year

# MERLIN GRIFFITHS

Master mixologist and First Dates star opens new pub



**FREE**

Photo credit: Channel 4/Dave King

# THE **B7** MEDIA GROUP

PRINTING • BUSINESS CARDS • LEAFLETS  
DISTRIBUTION • SIGNAGE • MENUS & BROCHURES  
EXHIBITION BOARDS & BANNERS  
RETAIL PACKAGING • WINDOW VINYLs  
LOGO DESIGN • BRAND ALIGNMENT  
VEHICLE WRAPPING • CARBON PADS • WORKWEAR  
WEBSITES • SOCIAL MEDIA • I.T. SOLUTIONS



ENQUIRIES@B7MEDIAGROUP.COM



01992 276101



ENQUIRIES@B7MEDIAGROUP.COM



01992 276101





DECEMBER 2023

# Editor's notes...



Brett Shohet, Editor

Hello and welcome to this month's edition of **VISION**EppingTheydon. We are rapidly approaching Christmas and, while the super organised among you might have already ticked off your shopping list, if you're anything like me, you'll still have a way to go!

While ordering online might be considered to be easier, supporting your local businesses comes with a whole host of benefits. Not only will you be helping to keep your local high street alive, but you'll also be making a huge difference to the staff and owner. A purchase from you could make their week or even their month. Money spent with local businesses will also circulate in your community, spreading the joy even further.

I hope you take advantage of the festive period to spend plenty of quality time with family and friends. While Christmas is a time for celebration, it can also be stressful for a variety of reasons, whether that's because of remembering lost loved ones or the financial burden. Please check in on those around you; simply reaching out can make all the difference.

Finally, I'd like to thank all those who have supported **VISION** this year. It's been a difficult time for businesses, so to have such a loyal and generous network behind us has helped us continue to thrive. I hope you have a very merry Christmas and a happy New Year.

*Brett Shohet*

This is your town's hyperlocal magazine, delivering to homes and businesses every month.

HOME & DIY | GARDENING | PETS | HEALTH & FITNESS | BEAUTY | FASHION | HISTORY | LOCAL NEWS | FOOD & DRINK | TRAVEL | BUSINESS & PROPERTY | SPORT | PUZZLES | MOTORING | KIDS | WHAT'S ON | TECHNOLOGY | THE LISTINGS

CONTACT US:



epping@visionmag.co.uk | 01992 276101  
www.visionmagessex.com | www.visionmagherts.com  
@visionmagessex | @visionherts | @visionmagessex | @visionmageastherts  
Vision Magazine Essex | Vision Magazine East Herts  
CONTRIBUTORS | Tabatha Fabray, Fiona Goble, Panayiota Demosthenous

THE **B7** MEDIA GROUP

PRINTING • BUSINESS CARDS • LEAFLETS • DISTRIBUTION  
SIGNAGE • MENUS & BROCHURES • RETAIL PACKAGING  
EXHIBITION BOARDS & BANNERS  
WINDOW VINYLs • LOGO DESIGN  
BRAND ALIGNMENT • VEHICLE WRAPPING  
CARBON PADS • WORKWEAR • WEBSITES  
SOCIAL MEDIA • I.T. SOLUTIONS

ENQUIRIES@B7MEDIAGROUP.COM

01992 276101



EXPERIENCE GOLFING EXCELLENCE  
ALL YEAR ROUND



LADIES MEMBERSHIP

7 DAY FULL - £ 1,200

5 DAY FULL - £ 900

01708 688396  
WWW.ABRIDGEGOLF.COM



SUPERB COURSE - LOVELY PEOPLE - A PROPER GOLF CLUB







# The harmonic voice of ALED JONES

From the almost impossibly angelic beginnings of teenaged Aled Jones MBE's first steps into the limelight, the Welshman has forged a career well beyond *Walking in the Air* and the limitations of chorister melodies.

Now 52, the presenter and actor has presence and popularity... and retains the ability to knock out a chorus or two!

Aled Jones was the 15 year old with the pitch-perfect voice whose icy vocal tones enchanted the public when Raymond Briggs' *The Snowman* was released back in 1982.

*Walking in the Air* was a track that became a festive anthem every bit as perfect and poignant as *White Christmas* or *Jingle Bells*, sitting as a symbol of childhood enchantment for an entire generation.

While others have confronted fame early, only for it to fade away, this was just the start for Jones. In adulthood, he gained acclaim hosting programmes such as *Songs of Praise*, where his likeable persona and warm, engaging demeanour endeared him to audiences.

In radio, Jones found a different but equally impactful avenue for his talents. As a presenter on Classic FM, he has brought the genre to a broader audience, with a tone that's knowledgeable yet approachable.

The star, who is married to Claire Fossett with whom he has two children, Emilia and Lucas, has also presented *Cash in the Attic*, *The One Show*, *Daybreak* and *Weekend* on terrestrial television.

Despite such a prolific and diverse array of work, Jones still strives to capture new audiences – as well as satisfying his loyal fans – and his latest musical endeavour is arguably his most innovative yet.

The Welsh singer recently released an album, *One Voice – Full Circle*, that transcends mere songs; indeed, it harmonises both his past and the present in that he duets with his younger soprano self.

The result is a hauntingly beautiful collection of tracks that showcases the evolution of an artist, proving beyond doubt that the singer has lost none of his talent along the way. From *Bright Eyes* to *Ave Maria* and *Scarborough Fair*, the mix of innovation and imagination is real.

"This project was like a journey through my own life – revisiting the voice that introduced me to the world, but with the perspective I have now," he explains. "It's a celebration of how far I've come and the enduring love I have for music."

Looking ahead, Jones, who appeared on *The Masked Singer* in 2022, is set to embark on a tour next year to promote the new project.

"Music is a very personal thing to a lot of people, and most of us listen to music by ourselves, and that is a lovely thing because it feeds our own interpretation and imagination in what we hear.

"Ultimately, though," he continues, "when the time comes to share songs and immerse ourselves in the collective celebration of music, we reach much further into our understanding, and from that can draw out very special memories.

"That's the thing that keeps me coming back!"

Photo credit: Ken McKay/TV/Shutterstock



# THE ULTIMATE FESTIVE FLICKS

TAKING A LOOK AT THE TOP FIVE HIGHEST-GROSSING CHRISTMAS FILMS OF ALL TIME

**C**hristmas movies have long been a staple of holiday cheer, embodying the spirit of warmth, family and festive joy. Many films have graced the silver screen, but a select few have transcended typical holiday fare to become phenomenal box office successes.

(All figures adjusted for inflation)

## ONE: HOME ALONE (1990)

Box office takings: £1.1billion

Kevin McCallister, a mischievous and resourceful eight-year-old, is accidentally left behind by his family during Christmas vacation and turns his home into a fortress to fend off bumbling burglars.

This family comedy, starring Macaulay Culkin, blends slapstick humour and holiday warmth, becoming a perennial favourite and the highest-grossing Christmas film ever.

## TWO: HOME ALONE 2: LOST IN NEW YORK (1992)

Box office takings: £915.95million

The sequel to the original hit follows Kevin as he mistakenly boards a flight to New York while his family heads to Florida. In the Big Apple, he again encounters his previous assailants and must outwit them in this hilarious, uplifting adventure.

## THREE: DR SEUSS' HOW THE GRINCH STOLE CHRISTMAS (2000)

Box office takings: £587million

This live-action adaptation brings the whimsical world of Dr. Seuss to life. Jim Carrey's portrayal of the Grinch offers a perfect blend of comedy and emotion, exploring the true meaning of Christmas beyond the commercial frenzy.

## FOUR: A CHRISTMAS CAROL (2009)

Box office takings: £552million

This animated rendition of Charles Dickens' timeless classic uses state-of-the-art motion capture technology. It narrates the tale of Ebenezer Scrooge's transformation from a miser to a kind-hearted man after being visited by three supernatural beings on Christmas Eve.

## FIVE: THE GRINCH (2018)

Box office takings: £544million

Illumination's 2018 adaptation of Dr Seuss' classic tale reimagines the iconic green recluse with a heart two sizes too small. Voiced by Benedict Cumberbatch, the Grinch's journey from a Christmas-hating hermit to a holiday hero has charmed audiences worldwide.

## Luxury care in the heart of Harlow

Now open to viewings

We are delighted to announce the grand opening of The Jubilee Suite - our new luxury care suite situated within Abbot Care Home in Harlow, Essex.

Our new Jubilee Suite has been expertly designed with kindness, and dignity at its heart, providing person-centred nursing, residential and dementia care. With a variety of excellent facilities and spaces to enjoy, we welcome the people who live here to play an active part in everyday life - as we ensure activities, events and mealtimes are carefully tailored to the personal preferences of each individual.

Abbot Care Home is situated amongst peaceful open parkland and features beautiful, landscaped gardens. The people who live here enjoy a comfortable environment and benefit from the home-from-home atmosphere.

It is important to our team that we work as part of your family, as we plan in partnership whilst providing the same caring support that we would wish for our own loved ones to receive, whilst enjoying a life well-lived, each and every day.

**Excelcare**  
Belong with us



We welcome you to visit us to meet with our friendly team who will be happy to work around your schedule.

To find out more about Abbot Care Home and book in to view our newly opened Jubilee Suite, please get in touch

**01279 594 610**  
[info@excelcareholdings.com](mailto:info@excelcareholdings.com)





# TORN *tights*

**T**ights are a winter staple, keeping your legs warm and protected from the elements. However, they are arguably one of the most frustrating garments to keep in good condition.

## HOW TO PREVENT RIPPED TIGHTS

### *Clip and file your toenails*

To prevent holes or rips in the toe section of your tights, make sure that you keep your toenails clipped and filed. Also, consider buying tights with reinforced toes.

### *Remove any snags*

If you notice any thread sticking out from snagged areas on your tights, then these need to be removed as they can easily turn into holes. While wearing your tights, simply pinch the area around the loose thread and use scissors to cut it off as close to the base as possible.

### *Wash your tights in a mesh bag*

Always put your tights in a mesh bag before placing them in the washing machine. Alternatively, handwash your tights and then allow them to air dry. Never wash tights with underwired bras as they can easily become snagged.

### *Put them on gently*

Before putting on tights, remove any jewellery such as rings or bracelets. Then sit down and, holding your tights at the waist, gently gather each leg with your thumbs until you are at the toe of your tights. Next, gently slide your feet in, one at a time, and pull your tights up, keeping your thumbs inside to avoid snagging.

## HOW TO STOP A RIP/RUN FROM GETTING WORSE

### *Nail polish*

One of the most popular ways to stop a run from getting any bigger is by applying nail polish. Clear nail polish is best as it won't show as much, but any colour will work.

### *Hairspray*

Hairspray works by temporarily stiffening the fibres of your tights and is a great method if you are in a rush as it dries almost instantly.

# START YOUR NEW YEAR WITH A BANG!



**ASK US  
ABOUT OUR  
NEW YEAR  
DEALS!**

IS YOUR NEW YEAR'S RESOLUTION  
TO GROW YOUR BUSINESS?

START ADVERTISING IN **VISION** TODAY!

Your  
Monthly  
Lifestyle  
Magazine



See all our magazines at [www.visionmagessex.com](http://www.visionmagessex.com)

Billericay Shenfield Bishop's Cleeve Brentwood Ongar Chelmsford Epping Theydon  
Halstead Braintree Hertford Hornchurch Leigh Thorpe Bay Loughton Maldon Burnham  
Rayleigh Wickford South Woodford Tendring





# Stuart Poulton Ltd

*"We're there because we care"*

FOURTH GENERATION FAMILY FUNERAL DIRECTORS

Stuart Poulton House

High Rd, North Weald Bassett Epping CM16 6BU

stuart@poultonfunerals.com ■ www.poultonfunerals.com

**01992 522607 ■ 01922 572607**

**24 HOUR SERVICE DAY OR NIGHT**



FUNERALS ■ MEMORIALS ■ PRE-PAID FUNERAL PLANS



## HOME SUPPORT & DOMICILARY CARE

### TYPES OF CARE

#### DOMICILIARY CARE SERVICES

Personal care, Medication, Appointments, Domestic support, help with meal preparation & shopping.

#### LIVE-IN-CARE

Short & Long term live-in-care, respite care, couples care & post operations care.

#### SPECIAL AREAS

Dementia Care, Palliative/End of life, Physical & Learning Disabilities, Progressive conditions & Post operations

**You can book your free appointment by calling us on 01992 276 073**

**www.eprservices.co.uk • info@eprbusiness.co.uk**



## WE VISIT YOU AT HOME

Our carers can provide daily visits to help you with your daily needs



# PROTECT your locks

NINE TOP TIPS TO WINTERPROOF YOUR HAIR THROUGH THIS COLD SEASON

Winter can challenge your haircare routine before you know it, with cold temperatures and harsh conditions transforming your silky tresses into a dry, tangled mess. But it doesn't have to be like that. Follow these tips to keep your hair looking healthy and vibrant all season long.

- 1. Wear a hat:** Cold weather can damage your hair, so when it's chilly, wear a hat with a soft lining.
- 2. Cut back on shampooing:** Daily shampooing removes natural oils, so aim to shampoo your hair no more than two or three times a week.
- 3. Dry your hair before going out:** Wet hair can freeze and break in cold weather, so always make sure your hair is dry before stepping outside.
- 4. Eat a balanced diet:** Foods rich in vitamin C (e.g. citrus and berries) and omega-3 fatty acids (e.g. salmon and walnuts) will help keep your hair healthy.
- 5. Limit heat styling:** Tools like curling tongs and

straighteners can dry out your hair. In winter, try embracing the natural look or, if you've got long hair, experiment with braids and buns. You might be pleasantly surprised by your styling skills!

- 6. Tame the frizz:** Use a laundry dryer sheet to smooth pesky static flyaways.
- 7. Use nourishing products:** Winter is the time to indulge in good-quality moisturising conditioners, hair masks and oils.
- 8. Avoid bleach:** Many hair dyes, particularly blonde shades, can seriously dry out your hair. So think about going natural for the winter – or choose a darker shade.
- 9. Stay hydrated:** Drinking plenty of water will keep your hair hydrated, making it shinier and less prone to breakage.

Winter doesn't have to mean bad hair days. With these straightforward tips, you can keep your hair healthy and glowing all season, whatever the weather.





A gentle form of massage that is remove toxins from your body and circulation and blood flow, lymphatic drainage massage is becoming increasingly popular among people looking to reverse the effects of a poor lifestyle.

WHAT IS LYMPHATIC DRAINAGE MASSAGE USED FOR?

Lymphatic drainage massage is used to relieve painful swelling in the arms and legs that is caused by lymphoedema. This type of massage is often used to relieve lymphoedema after breast cancer surgery, but it can be beneficial for other conditions, including: Rheumatoid arthritis | Fibromyalgia | Chronic venous insufficiency | Lipoedema | Deep vein thrombosis

More recently, lymphatic drainage massage has become popular as a cellulite-busting treatment owing to its ability to boost the stimulation of lymph circulation. It can also be used to improve digestion, aid sleep, and support faster muscle recovery after exercise.

HOW DO YOU PERFORM LYMPHATIC DRAINAGE MASSAGE?

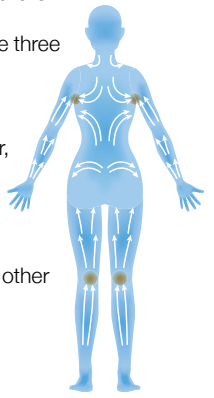
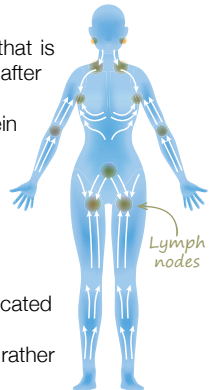
- 1. Use a light touch: Be careful not to press too hard as the lymphatic vessels are located right under the skin.
2. Stretch the skin: Unlike most other types of massage, you should stretch the skin rather than move along it.
3. Massage with the normal lymph flow: To stimulate natural flow, make sure you are massaging towards your trunk and heart.
4. Go slow: As you massage the lymph vessels, make sure you do so slowly. Ideally, take three seconds to perform each stretch.

WHERE ON THE BODY CAN YOU DO LYMPHATIC DRAINAGE MASSAGE?

Most commonly, this type of massage is carried out on the legs or the arms. However, it can be performed all over the body, including on the neck, shoulders, chest and stomach area.

ARE THERE ANY ASSOCIATED RISKS?

In most cases, lymphatic drainage massage is a safe treatment for lymphoedema and other health concerns. However, you should not undergo this treatment if you have: A heart condition | Blood clots | Kidney failure | An infection
If you are pregnant, speak to your doctor before undergoing this treatment.



Age UK Hertfordshire, a name you can trust.
Cleaning for 1000's of clients across Hertfordshire, now in West Essex.

Need some help in the home?

Now in West Essex

Our team of home helpers can assist you with cleaning, shopping, laundry, bed change and much more...

All our Home Helpers have passed a thorough screening and training program including:

- Enhanced Criminal Record Check (DBS Check)
Provided three excellent references
Training in Safeguarding & First Aid Awareness

This is a paid for service with a minimum visit of 1.5 hours per week or 2 hours every fortnight.

For more information call: 01462 420911



Live well your way



Your home is where you feel the most comfortable and the happiest.

It is the place you know the best. If you want to stay living comfortably at home, Home Instead® can help make that possible.

We can offer you the option to continue living a happy and fulfilled life in your own home. We do this with tailored, personal and adaptable home support based on what you need.

Our Care

- Home Help
Companionship
Personal Care
Dementia Care
Live-in Care

For more information call 01992 666 777
Email victoria.rigby@homeinstead.co.uk
Visit our website homeinstead.co.uk/epping-forest

"Our carers are wonderful, they put a positive spin on the day and give us a bit of a boost."

"Truly outstanding quality of care which has enabled me to continue living independently in my own home. The care has been flexible and tailored to my changing needs. The continuity of care gives has been marvellous and I enjoy seeing the carers that I know well. Top Marks!"

Each Home Instead franchise is independently owned and operated. Copyright © Home Instead® 2023.





# Say yes to Yerba mate

Are you looking for a healthier way to get your daily caffeine fix? Yerba mate provides the energy kick of coffee with the healing properties of herbal tea. Plus, it can even help you to lose weight!

## WHAT IS YERBA MATE?

Yerba mate is a type of herbal tea that originates from South America and is made by steeping dried leaves from the yerba mate plant in hot water. It can be served hot or cold and, like black and green tea, it contains caffeine which can help you to feel more alert and focused. Yerba mate has a very distinctive taste that can be strong, bitter and slightly vegetal. In terms of aroma, it has been described as having a eucalyptus smell.

## HOW MUCH CAFFEINE IS IN YERBA MATE?

Depending on how you brew it, the average cup of yerba mate contains 70mg of caffeine. In comparison, the average cup of coffee contains 120mg of caffeine and a cup of green tea contains around 25mg.

## WHAT ARE THE HEALTH BENEFITS?

There are so many associated benefits of drinking yerba mate, including:

- > Improved mental focus
- > Enhanced physical performance
- > Protection against infections
- > Weight loss and reduced belly fat
- > Reduced risk of heart disease
- > Lowered blood sugar levels

## ARE THERE ANY SIDE EFFECTS?

If you are sensitive to caffeine, you may experience some side effects such as an upset stomach, trouble sleeping, feeling nervous or restless or a faster heartbeat if you consume too much yerba mate. However, studies show that most people can safely drink up to 1.5 litres of yerba mate a day.

## HOW TO PREPARE YERBA MATE

1. Add one or two yerba mate teabags to a mug – these can be bought online and at most health food shops.
2. Moisten the teabags with cool water.
3. Fill the mug with hot water.
4. Steep for five minutes and then remove the teabags.
5. Flavour to taste with honey, sugar or sweetener.
6. You can also add mint, ginger or orange peel if desired.

IT'S ALL ABOUT

# VISION

LOCAL LIFESTYLE MAGAZINE

## 227,500 READERS

KEY DEMOGRAPHICS ARE **EARLY 30s AND 60+**  
and around 61% of our readers are female

# 91,000

MAGAZINES DELIVERED MONTHLY  
TO HOMES AND BUSINESSES IN...

# 14 AREAS

across Essex and  
East Herts

## AFFORDABLE ADVERTISING PACKAGES

*to suit every budget*



# 76%

CLIENT  
RETENTION  
RATE

VISION COMBINES...

## CURRENT editorial CONTENT

## LOCAL FEATURES AND EVENTS

## ADVERTISING SPACE IN A VARIETY OF SIZES



HOME & DIY | GARDENING | PETS | HEALTH & FITNESS | BEAUTY | FASHION |  
HISTORY | LOCAL FEATURES | FOOD & DRINK | TRAVEL | BUSINESS & PROPERTY |  
SPORT | PUZZLES | MOTORING | KIDS | WHAT'S ON | TECHNOLOGY | THE LISTINGS

OUR MAGAZINES ARE

# 100% RECYCLABLE

We're passionate about  
**SUPPORTING LOCAL BUSINESS**



GET IN TOUCH TODAY TO ADVERTISE YOUR BUSINESS



# A CULINARY JOURNEY BEYOND BOUNDARIES AT TANISHQ

Nestled in the heart of the prestigious Toot Hill neighbourhood in Ongar, Essex, Tanishq stands out as a beacon of modern Indian fine dining excellence. From the moment you step through its doors, the restaurant offers an experience that transcends the ordinary, inviting you on a culinary journey like no other.

## CULINARY DELIGHTS ★★★★★

Tanishq boasts a Michelin Star Experienced Chef, whose culinary expertise is evident in every dish served. The menu is a masterpiece of flavours, a fusion of traditional Indian recipes with a modern twist. Each dish is a work of art, meticulously crafted to tantalize your taste buds and challenge your palate. The chef's commitment to using fresh, high-quality ingredients is apparent in every bite.

## EXPLORATION OF FLAVORS ★★★★★

What sets Tanishq apart is its bold commitment to exploring new flavours. The menu is a testament to the chef's creativity, showcasing a range of dishes that bid farewell to the ordinary and embrace the extraordinary. From innovative appetizers to sumptuous main courses and delightful desserts, each element is carefully designed to surprise and delight diners.

## PARTY PERFECTION ★★★★★

Tanishq is not just a restaurant; it's a venue for celebration. With the ability to cater for parties and group bookings, this culinary gem is the perfect choice for those special occasions. Whether you're hosting an intimate gathering or a grand celebration, Tanishq's impeccable service and exquisite cuisine ensure an unforgettable experience for you and your guests.

## STUNNING AND CLASSY DECOR ★★★★★

The ambiance at Tanishq is a harmonious blend of modern elegance and traditional charm. The

**TANISHQ**  
RESTAURANT & BAR



stunning and classy decor creates an inviting atmosphere, setting the stage for an exceptional dining experience. The attention to detail in the interior design reflects the restaurant's dedication to providing a feast for the senses, not just through taste but also through sight and ambiance.

## CONCLUSION

In the world of fine dining, Tanishq shines brightly as a beacon of culinary excellence. With a Michelin Star Experienced Chef at the helm, an adventurous exploration of flavours, and an ambiance that exudes sophistication, this restaurant is a must-visit for anyone seeking a dining experience that goes beyond the ordinary. Tanishq has truly redefined modern Indian fine dining in Essex, leaving patrons with memories of exquisite flavours and a desire to return for more.

Contact us  
01277 362666

Visit us  
School Road, Toothill, Ongar, CM5 9PU

Visit our website  
[www.tanishqs.co.uk](http://www.tanishqs.co.uk)



**TANISHQ**  
RESTAURANT & BAR

## MODERN INDIAN DINING EXPERIENCE

## CELEBRATE CHRISTMAS WITH TANISHQ

### FINE DINING ❄️ MICHELIN STAR EXPERIENCED CHEF EXPERIENCE MODERN INDIAN CUISINE

### PRIVATE DINING AVAILABLE

### RESERVATIONS FOR GROUPS & BUSINESS GUESTS

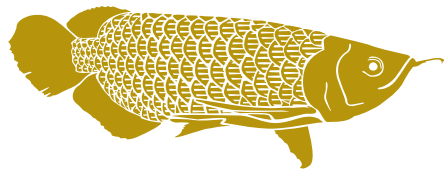
Visit us  
School Road, Toothill, Ongar, CM5 9PU

Contact us  
01277 362666

Visit our website  
[www.tanishqs.co.uk](http://www.tanishqs.co.uk)

## NOW OPEN IN ONGAR





## FUNKY MONK EPPING RESTAURANT & ROOMS



GET IN TOUCH FOR MORE INFORMATION & TO BOOK

01992 276063

[www.funkymonkhotel.com](http://www.funkymonkhotel.com)

236 High Street, Epping, CM16 4AP



funkymonkhotel



SCAN ME

# MINCE PIE *Mania*

In the 13th century, Crusaders returned to Britain from the Middle East with a novel pie idea: minced meat, dried fruits, spices and wine. By Victorian times, the meat had vanished, and the modern mince pie emerged. To create your own version of these timeless treats, follow the recipe below. Remember, as well as the ingredients, you'll need a standard 12-hole muffin tin and two round pastry cutters – one measuring 9cm in diameter for the pie bases and one measuring 7.5cm for the lids.

### MINCEMEAT

**YOU WILL NEED:** 225g mixed dried fruits (raisins, currants and sultanas) | 110g Bramley apple (peeled, cored and finely chopped) | 110g shredded vegetable suet | 150g demerara sugar | Zest and juice of 1 orange and 1 lemon | ½ tsp ground cinnamon | ¼ tsp ground nutmeg | ¼ tsp ground cloves | 2 tbsp brandy or rum (optional)

1. Mix dried fruit, apple, suet, sugar and citrus zest in a bowl.
2. Add citrus juice, spices and alcohol (if using) and mix well.
3. Cover and let it sit in a cool place for a day or two to enhance the flavours.

### PASTRY

**YOU WILL NEED:** 175g plain flour | 85g unsalted butter, cold and diced | 2-3 tbsp cold water | A pinch of salt | A little extra flour for rolling

1. Combine the flour and salt in a large bowl.
2. Rub in the butter until the mixture looks like fine breadcrumbs.
3. Gradually add the water, mixing until the dough forms.

### ASSEMBLING AND BAKING

1. Preheat your oven to 190°C/180°C fan/ gas mark 5.
2. Roll the pastry out until it is about 3mm thick.
3. Using the cutters, cut out 12 bases and 12 lids.
4. Press the bases into the muffin tin and fill almost to the top with mincemeat – no need to grease the tin as the pastry's high fat content will stop it from sticking.
5. Brush the top edges of the pastry bases with a bit of cold water, cover with the lids and press the edges to seal.
6. Bake for 20-25 minutes until golden.



FOOD & DRINK



# Dulux Colour of the Year 2024 Sweet Embrace



This is one of the most greatly anticipated announcements in the world of interior design: Dulux Colour of the Year 2024 has been revealed as Sweet Embrace.

## What colour is Sweet Embrace?

Sweet Embrace is a delicate pale pink that is both soft and comforting. A metamer colour, meaning it changes tone with the light, in the early morning it appears crisper before turning into a more blush pink as the day goes on. Referred to as a 'modern neutral', Sweet Embrace can help to unite the different elements in a room and create an uplifting atmosphere.

## Why was Sweet Embrace chosen?

This colour was chosen by the experts at Dulux as a shade that represents the global mood and a universal need for clarity and joy. Marianne Shillingford, colour expert and creative director at Dulux, said: "While being a beautiful stand-alone colour, it's a hue that matches perfectly with so many other shades, so that decorators can use it as

a backdrop to build a totally individual space upon."

## Ways to use Sweet Embrace in your home

### 1 Paint your window frames

As a metamer colour, Sweet Embrace is a perfect colour choice for painting your window frames, enabling you to capture its light-changing qualities throughout the day.

### 2 Colour-drench a room

Colour-drenching involves drenching a whole room in one shade to create a sense of calm cohesion. This means painting all the surfaces rather than just the walls, and it can make a room appear more spacious and contemporary.

### 3 Update your woodwork

This versatile shade is ideal for use as an alternative to white to update the woodwork in a room, such as the skirting boards and door frames.

### 4 Embrace the ombre paint technique

Ombre is making a big comeback in 2024 and, as a neutral colour, Sweet Embrace has the ability to seamlessly blend into other soft shades to create a stunning sunset effect.

Photo credit: duluxdecoratorcentre.co.uk, AlizonNobel



*Merry Christmas from all at*

**GRACIOUS LIVING**

Bathrooms Tiles Fires Fireplaces  
Plaster Mouldings

Showroom: 440-448 Larkshall Road, Chingford, London E4 9HH  
Tel: 020 8523 3103 | Email: [showroom@ncscountersales.co.uk](mailto:showroom@ncscountersales.co.uk)  
Web: [www.graciousliving.co.uk](http://www.graciousliving.co.uk)



## PERFECT COATS

### PAINTER & DECORATOR



**CALL DAVID TO ARRANGE  
A FREE QUOTE**

07881 025732  
dcoats838@gmail.com

## APPLIANCE PROBLEM?

# WE'LL FIX IT!

**Any make  
Any model**

### LOCAL ENGINEERS IN YOUR AREA!

**If we can't fix it, we can  
supply and install new  
appliances same day**

**SAME DAY  
CALL OUT  
AVAILABLE**

**PROUD MEMBERS OF  
Checka  
trade.com**

View our sales page for list of  
machines ready to install today!

**ALL MAKES  
ALL MODELS  
REPAIRS  
SALES**

**CALL OR BOOK ONLINE** **SPIN  
DOCTOR**

**01279 310793**  
**www.spindoctork.co.uk**

Washing Machine, Dishwasher, Washing Dryer, Electric Oven, Electric Hob, Fridge Freezer, Extraction Hood

## euronics

the home of electricals

### Floorcare appliances

from your local independent  
electrical retailer

**Price Match Guarantee | Super Service | Expert Knowledge | Contact-Free Delivery**

<b>dyson</b>   Cordless Bagless Vacuum Cleaner <ul style="list-style-type: none"> <li>4.5 Hour Charge Time, 60 Minute Run Time</li> <li>2 Power Levels, 14 Cyclones</li> <li>Multi-Filtration, Combination Tool</li> <li>Service Tool, Wall Dock Charger</li> <li>2 Year Warranty</li> </ul> <p><b>Only £349.99</b></p>	<b>Shark</b>   Upright Vacuum Cleaner <ul style="list-style-type: none"> <li>11 Litre Bagless Dust Collection</li> <li>Pet Hair Cleaning, Anti-Hair Wrap Technology</li> <li>HEPA Filters</li> <li>Onboard Tools</li> <li>5 Year Warranty</li> </ul> <p><b>Only £299.00</b></p>	<b>Miele</b>   Cylinder Vacuum Cleaner <ul style="list-style-type: none"> <li>5.5 Metre Cord with automatic rewind</li> <li>6 Power Levels</li> <li>3.5 Litre Dust Capacity</li> <li>80db Noise Level</li> <li>2 Year Warranty</li> </ul> <p><b>Only £179.99</b></p>	<b>Shark</b>   Cordless Stick Vacuum Cleaner <ul style="list-style-type: none"> <li>Anti Hair Wrap</li> <li>Duo Clean Technology</li> <li>3 x Power Levels</li> <li>Hepa Filter</li> <li>2 Year Warranty</li> </ul> <p><b>Only £239.00</b></p>	<b>dyson</b>   Cordless Bagless Vacuum Cleaner <ul style="list-style-type: none"> <li>5 Hour Charge Time, 40 Minute Run Time</li> <li>2 Power Levels, 15 Cyclones</li> <li>Multi-Filtration, Combination Tool</li> <li>Service Tool, Wall Dock Charger</li> <li>2 Year Warranty</li> </ul> <p><b>Only £249.99</b></p>
--	--	---	---	--

**Broadway Music and Vision**  
 8 The Broadway,  
 Woodford Green, IG8 0HL  
 0208 504 7500  
 broadwaymandv@aol.com

\*Terms and Conditions apply. Sold as an agent of Euronics Limited. All rights reserved. All offers are subject to availability while stocks last. Delivery & Installation charges may apply Exclusions and Radius Apply. See in store for full details. Images for illustration purposes only. Copyright Euronics 2023. EBOE 2023.

## INTERIOR DESIGN PROFILE

# MADDUX CREATIVE

**HOME & DIY**

Sophisticated, playful, beautiful. That's how Maddux Creative describes its decorative style. Full of life and colour, each space it creates is unique, with designs that have won acclaim all over the world.

If you love bold colours, patterns and textures, then Maddux Creative will serve as the perfect inspiration to bring your interior aspirations to life.

### THE STORY BEHIND MADDUX CREATIVE

Maddux Creative is run by Scott Maddux, originally from Tennessee, and Jo Le Gleud from the UK. They met on a dancefloor in the 1990s, and brought their shared creative experience together in 2011 when they founded their Peckham-based studio.

The pair describe their work as "an alchemy of design: an intricate tapestry of form and texture. A celebration of colour." Throughout their designs it's clear that these elements are central, using the features of the room to create spaces that are striking and unique. They take inspiration from a range of influences, which keeps things wonderfully refreshing.

### RECREATING MADDUX CREATIVE'S STYLE

What's great about Maddux Creative's aesthetic is that there are no set rules, allowing you to recreate

their style in your own home. Some tips to give you a dash of inspiration include:

- > Be brave with colours and textures. Mixing and matching styles can add a quirky touch that keeps spaces fun and unique, so choose the pieces that you're drawn to and which reflect your personal style. Popular colour combinations include pinks and greens, blues and yellows, and reds with greys or gold.
- > Tonal looks can make a striking impression. Choose a solid base colour such as blue or green and add lighter/darker accents in the same shade – using furniture and accessories in different shades to create a multilayered look.
- > Plants and flowers add life and can make your space feel more lived-in – an affordable way to transform your decor.
- > Floral patterns add a classic touch that still feels modern in the right setting. From patterned lampshades to tapestries and cushions, you can use florals or stripes to add some individual touches that will bring the different styles in your space together.

Wonderfully unique and making colour popular again, Maddux Creative provides the perfect inspiration to go bold and have fun with your interior design.





## CLEAR INSPIRATION – ENDLESS POSSIBILITIES



01992 276058

info@infiniteglass.co.uk



BUILDING TRUST  
WITH QUALITY  
WORK



Sovereign  
Guards UK

From home to business security, here at  
Sovereign we offer a variety of Security  
Services from CCTV and Intruder Alarms

CONTACT US FOR MORE DETAILS:

Call: 01992 276081

Email: info@sovereignguards.co.uk

www.sovereignguards.co.uk



PROVIDING YOU WITH 24 HOUR SECURITY



Select from a package that suits  
your needs: budget, location and  
what level of protection you are after



Specialising in fogging systems  
for high risk asset protection



With remote connectivity this  
allows you to monitor your  
home from your phone.

# CARE *for your* SPARE



**H**aving a spare room is a luxury. If you're lucky enough to have one, but it needs some TLC, see our tips below for how you can revive it before your next guests arrive.

**A COMFY BED:** Sleep for a night on your existing spare room bed to check if it's okay for your guests. If it isn't, but you can't afford a replacement, get a new mattress or mattress topper.



**SOMEWHERE TO WRITE:** Every guest room needs a work surface of some kind to use as a dressing table or desk. If space is tight, think about a drop-down version or even a thigh-level wide shelf.

**THE PERFECT CHAIR:** A big armchair is a lovely idea if you've got the space. If you haven't, choose a compact version and add some inviting cushions.



**HANG IT UP:** Hanging space is more useful than a chest of drawers. If there's no space for a wardrobe, get some coat hooks or a clothes rail. A rail with a shelf is ideal.

**SOFT, WARM LIGHTING:** A good bedside lamp is essential. A slim, unobtrusive floor lamp is also a great addition.



**MIRROR, MIRROR, ON THE WALL:** A good-sized mirror, preferably full-length, is a fundamental element for a spare room.

**SAVVY SUITCASE STORAGE:** Your guests will want somewhere to easily access their bags. Foldable luggage racks are great and can be hidden away when not in use.



**FINAL TOUCHES:** A rubbish bin is always practical for any guest room – but choose something pretty. And don't forget a carafe of water. Add seasonal decorations such as fairy lights at Christmas; Easter eggs for spring; low-maintenance green plants like snake plants, succulents and orchids in summer; and pumpkins for Halloween.



HOME & DIY





# Midas Touch

## ADDING A TOUCH OF GOLDEN GLAMOUR TO YOUR HOME THE AFFORDABLE WAY

Looking to add a touch of contemporary sparkle and charm to your Christmas decor? You're in for a treat! In this DIY project, we'll show you how to transform plain glass vases, jars and votives into dazzling gold masterpieces. The best part? You don't need any special skills, though a steady hand is useful! And it's an ideal project to do with older children.

### Get ready

#### YOU WILL NEED:

Gold foil sheets | Gold foil adhesive | Adhesive brush | A large brush (like a powder brush) for removing excess gold foil | Small glasses or votives (make sure they're clean and dry – washing-up liquid and a piece of dry kitchen towel should do the trick).

All these items are available online or in most arts and crafts shops.

### Apply the adhesive

Carefully apply the gold foil adhesive to the areas on your glasses where you want the gold foil to stick. The adhesive will need some time to become tacky.

The time can vary with different makes, so follow the instructions on the packaging carefully.

### Apply the foil

Once the adhesive is tacky, apply the foil directly from the paper it comes on. Press the sheet onto the glass where you've applied the adhesive. Then, carefully remove the paper backing, leaving the gold foil attached to the glass. If necessary, use your fingers to smooth it out.

### Brush away excess and leave to dry

Using the large brush, remove any excess gold foil and let your decorated objects dry for a few hours. For extra protection, you can seal them with a suitable clear sealant or varnish specially made for glass and delicate surfaces – following the manufacturer's instructions.

Once complete, fill your glass items with a candle, fairy lights, flowers, winter twigs or pine cones. Sit back, admire your creations, or consider giving them as gifts to help spread the festive feeling.

# Home Counties Loft Ladders, Quality You Can Trust!

These days most homeowners suffer from a lack of storage space. So many precious items that need to be kept – but where to store it all? That's where Home Counties Loft Ladders come in.

The company, based locally, offers homeowners the opportunity to maximise their storage space with a loft ladder. 50sqft of boarding and a light – all fully fitted in less than a day from just £444! But it's not just the affordability of the package that makes Home Counties Loft Ladders stand out, as manager Jamie Oakley explains: 'Our

watchwords are Quality, Integrity and Value. Quality in the materials that we use for all our installations and the fact that all our loft packages are fitted by time served tradesmen, so our customers are assured of the best job.

Integrity in that we will turn up at the time we say and make sure the house is spotless when we leave, and value in that we offer our services at a price people can afford.

Our business relies on referrals and we get a huge amount of our calls from people who have been referred to us by our existing customers

– that simply wouldn't happen if we didn't adhere to our overriding principles.

At the end of the day the old adage that happy customers lead to more happy customers is true and we work hard to make that happen for

every installation we carry out!

So, if you want to make use of your loft space, call Jamie free on 0808 301 9551 and he'll be happy to pop round and give you a no obligation quote so you too can make use of your loft!



## Need more storage space?

## INSTALL A LOFT LADDER AND USE YOUR LOFT!

**STARTER PACKAGE:** Aluminium loft ladder, light plus 50 sqft boarding, fully fitted in less than a day from £444

- Loft Ladders • Hatches
- Boarding • Insulation
- Lights • Fully Guaranteed



— Home Counties —  
**LOFT LADDERS**

**CALL FREE: 0808 301 9551**  
[homecountiesloftladders.co.uk](http://homecountiesloftladders.co.uk)





UL DRINKI AR

HARROGATE  
SPRING WATER

# The magic of MERLIN

FIRST DATES BARMAN MERLIN GRIFFITHS HAS A RENEWED TASTE FOR LIFE

It's perhaps slightly crass to state that many a romantic liaison has been made comfortable with the aid of an alcoholic loosener, but the evidence is there in pubs, bars and restaurants the length and breadth of the country, every day of every week.

One dining space in particular – that of the *First Dates* restaurant – has used the expertise of a master mixologist to great effect. This responsibility fell to Merlin Griffiths, who this year celebrated a decade on our screens.

"The time has flown by in a haze of romantic resplendence," jokes the 48 year old. "I've seen thousands of people pass through, and it's a thrill to witness a happy ending."

And many there have been – a recent study found that three per cent of first dates ended in marriage, with the Channel 4 show boasting numerous weddings and even the patter of tiny footsteps.

As the trusty barman charged with easing the nerves of hopeful romantics, Griffiths – who has a wife, Lucile, and young child – knows his role is significant; though as a pub owner himself, he is used to the responsibility bestowed on a good host.

"It's an underrated occupation, I think. It's a job that requires you to be present, engaging, interesting, knowledgeable on a wide range of subjects and, on occasion, firm with how punters are behaving! There are also extreme antisocial hours and it's a physical job where you're always on your feet, but I love it."

Griffiths' sense of perseverance was put to the test in 2021 when the *First Dates* barman was diagnosed with bowel cancer. He underwent surgery and recently celebrated the milestone of a year 'all clear'.

"It has been a tough road, but one I am now emerging from. While there have been some very sombre moments in there, what the experience has done is to reinforce in me a desire to appreciate everything around me, to fight, and to achieve."

Treatment has meant Griffiths has been unable to engage in one of his favourite hobbies. A keen cyclist, he previously completed the John O'Groats to Land's End cycle ride in nine days. Many years ago, before his big break, he was a cycle courier in London.

"I love cycling, but if there's one job I'd rather not have back, it's that one," he laughs. "It was a great way to stay fit, but you were taking your life in your hands on a daily basis."

"Dealing with a rowdy pub customer or a feuding couple of *First Dates* seems tame in comparison!"

Griffiths' taste for innovation was played out at Royal Ascot last year when, in conjunction with Harrogate Spring Water, he launched the first no-alcohol bar.

He's also set his ambitious sights on opening a new pub, The Dog & Gun in Walton, which is expected to open soon.

He says: "It seems to be a time when opportunities are coming along, and for the first time in a couple of years I can fully commit to them."

"I am lucky that I work in an industry that will always be here. We are social creatures – certainly in this country! – and there's nothing better than watching people converse and interact."



# 'Essex has always been a part of who I am'



Photo credit: BBC Jack Barnes/Kieron McCarron

While Adam Woodyatt owes much to his long-standing role as Ian Beale in the BBC soap opera *EastEnders*, we reveal why the actor likes to heap equal praise on the influences of his childhood, and in particular, his time spent in Essex.

Adam Woodyatt was born in Walthamstow in 1968. Although the Victoria Line suburb had renounced its ties with Essex three years previously, the outgoing schoolboy would soak up the influences of Chingford and South Woodford in his early life.

Perhaps it is an appreciation for that simple 1970s suburban upbringing – Woodyatt attended Forest School in Epping Forest, before the family relocated to Wales – that permeated so perfectly into his authentic portrayal of the rugged, pessimistic businessman Ian Beale.

“Essex has always been a part of who I am,” he begins. “It’s in my blood and has significantly shaped my approach to life and acting. I love its honesty!”

The actor, who is half Welsh, frequently travelled to London for castings as an aspiring young actor, and was working as a butcher when the call to join *EastEnders* came. Since 1985, his portrayal of Beale has captivated viewers, and his return to Albert Square this year excited fans.

“Ian is hapless in many ways, though ultimately always trying to do the right thing, and I think there’s a fair amount of that in me too,” says the actor, who recently volunteered to work in a fish and chip shop in Southend-on-Sea to pass the time.

Beyond the confines of Albert Square (and serving up cod), Woodyatt’s versatile talent has illuminated stage and television screen alike. And recently, his stint away from full-time acting has offered the star the chance to tour his native Essex... in a camper van, no less!

He said: “Feeling free, getting on the road, and hunting out all those childhood places of old, has been a magical ride for me, and one I want to continue taking.”



## BOILER INSTALLATION SPECIALISTS

- Bathroom Installation
- Underfloor Heating
- Boiler Supply & Fit
- Power Flushing
- Plumbing Repair
- Boiler Repair & Service
- Landlord certificate CP12

FOR ALL INFORMATION CONTACT US

0800 107 7119 • 01992 276082

info@bsplumbing.co.uk • www.bsplumbing.co.uk



SPECIAL OFFERS

£100 OFF BOILERS  
QUOTE BSP100

WORCHESTER  
BOSCH 1000  
Supply & Fit  
£1,995.00  
INC VAT

12-24 MONTHS  
FINANCE - 0% APR  
UP TO 10 YEARS  
AT 9.9% APR  
NO DEPOSIT

ATAG BOILERS  
18 yr Warranty Parts & Labour



At Hainault Trade Windows we are built upon reputation, trust, High-quality items at cost-effective prices and a clear understanding of supply and demand for the trades.

Are you a tradesman in Essex and the surrounding areas? Are you looking for trade products including any the following, then we can help :-

- ✓ FSG
- ✓ Doors
- ✓ Windows
- ✓ Aluminium
- ✓ Conservatories
- ✓ Roof Lights/Lanterns

Get a quote now  
0208 088 4153  
www.hainaulttradewindows.co.uk



SCAN ME





# JMH PLUMBING & HEATING

The trusted choice for both homes & businesses

- Expert Installations ■ Prompt Repairs
- Regular Maintenance
- Bathroom Installations & Repairs ■ Power Flashes
- System Efficiency Enhancement
- All Boilers & Vaillant Installations Repairs & Maintenance
- Gas Line Installations & Repairs ■ Gas Safety Checks
- Boiler Installations, Repairs & Maintenance:
- Smart Home & Smart Thermostat Installations
- Smart Water Heater Controls

CONTACT US ON  
07903 879513



10 YEAR WARRANTY

www.jmhplumbingsex.com ■ Email: Jmhplumbingsex@outlook.com

24-HOUR  
EMERGENCY  
CALL-OUT

# An ancient structure of remarkable history

Discover Greensted Church in Ongar, a unique hidden gem with a story that spans more than 1,000 years.

Celebrated as the world's oldest wooden church, its walls have stood for more than a millennium, offering a glimpse into the early periods of English Christian heritage.

Tracing its origins to the ninth century, the church's earliest timbers, dating to around 1060, mark it as a distinguished survivor from before the Norman Conquest. These timbers, visible even today, underscore the church's enduring presence and historical significance.

Originally a modest structure, perhaps built for a Saxon nobleman, Greensted Church has evolved through the centuries. It bears the marks of various architectural styles and religious practices that have influenced its design over time.

The church's walls, crafted from vertically set split oak trunks in a 'stave construction', are particularly

noteworthy. This method is complemented by the 19th-century brick chancel and Victorian restorations, together presenting a harmonious blend of various historical periods.

Greensted Church's connection to St Edmund, the martyred king of East Anglia, further elevates its historical importance. As the site where his body reputedly rested in 1013 en route to burial, the church has long been a focal point for pilgrimage and reflection.

More than a religious site, Greensted Church stands as a cultural beacon, embodying the continuity of faith and community. It serves as a serene witness to the evolving landscape and societal changes surrounding it.

Venturing into this sacred space, visitors are transported beyond the confines of the present. Each step within its walls is a journey through time, connecting the present to a past that remains vibrantly alive. Greensted Church is not just an architectural marvel; it's a living narrative of faith's resilience and the understated elegance of history.



ALL CONTRUCTION  
WORK UNDERTAKEN

NO JOB TOO BIG OR  
TOO SMALL

CONTACT US 07948 523891 ■ Email rywelconstruction@gmail.com



Rywel construction

CONSTRUCTION ● ROOFING ● BATHROOMS  
KITCHENS ● MEDIA WALLS & CARPENTRY  
TILING ● FLOORING & MORE...



LOCAL FEATURE



# OLYMPUS BATHROOMS



## Specialising in Innovative Bathroom Design

Olympus Bathrooms is a one stop location for all of your bathroom needs. Whether you're struggling to design your new bathroom? Need help with the layout of the room or you've already got bathroom plans and need help choosing the products. Visit our showroom and talk to one of our design experts. Share your ideas and look at any displays or pieces within the showroom that you might like. Discuss and schedule a site visit with a member of the team.



- ▶ Please feel free to contact us: **01277 330 151**
- ▶ Email: [info@olympusbathrooms.co.uk](mailto:info@olympusbathrooms.co.uk)
- ▶ OLYMPUS BATHROOMS, 13 High St, Chipping Ongar, Ongar, Essex CM5 9DS

Visit our  
**SHOWROOM**  
in **ESSEX**  
**TODAY**

# YOUR LOCAL EVENTS



WHAT'S ON

### ZOË SCHWARZ BLUE COMMOTION

The Music Den, 50 Hemnall Street,  
Epping, CM16 4LS  
Tuesday, December 12, 7.30pm



Photo credit: Zoë Schwarz

Hear Zoë Schwarz Blue Commotion refresh the blues genre with eclectic arrangements, virtuosic playing and vocal prowess. Expect an exciting live set based around rootsy original songs, strong catchy riffs and exciting grooves. They mix old-school tradition with contemporary verve and sophistication.

Tickets cost between £10 and £15 and will be available on the door. For more information, head to [www.facebook.com/events/660275376239004](http://www.facebook.com/events/660275376239004)

### THEYDON BOIS SINGERS CHRISTMAS CONCERT

Theydon Bois Village Hall, Coppice Row,  
Theydon Bois, CM16 7ER  
Tuesday, December 12, 7.30pm

Join the Theydon Bois Singers for their annual Christmas concert and get into the festive spirit with some popular Christmas carols. A bar and light refreshments will be available.

Tickets cost £15 and can be purchased by calling 01992 574892. Find out more at [www.facebook.com/events/1008964420407691/?ref=newsfeed](http://www.facebook.com/events/1008964420407691/?ref=newsfeed)

### CHRISTMAS REFLECTIONS CONCERT

St John's Church, St John's Road,  
Epping, CM16 5DN  
Friday, December 15, 7.30pm

Join the Epping Chorus Choir for a free concert with some of your favourite carols and other seasonal items at the church to get you in the Christmas spirit.

No booking is required, but donations to the church are welcome.

### FOLK AND BESPOKE ARTISAN CRAFT FAIR

Epping Catholic Church Hall,  
11 Church Hill, Epping, CM16 4RA  
Saturday, December 16, 10am – 3pm

For a shopping experience like no other and a chance to meet the creatives behind the designs, head to this craft fair. Buying handmade means love has gone into your purchase from an artist who feels passionate about their products.

Entrance is free. For more information, please visit [www.folkandbespoke.com/calendar/epping-catholic-church-hall-artisan-craft-fair-3](http://www.folkandbespoke.com/calendar/epping-catholic-church-hall-artisan-craft-fair-3)

### THEYDON BOIS GOLF CLUB – NEW YEAR'S EVE PARTY

Theydon Bois Golf Club, Theydon Road,  
Theydon Bois, CM16 4EH  
Sunday, December 31, 9pm

DJ Jay will be playing a good mix of chart and dance music, including club classics and floor-fillers. At midnight, welcome in the New Year with Big Ben chimes, *Auld Lang Syne*, *Hokey Cokey*, and the conga.

Tickets cost £29 from [www.dance-parties.co.uk/new-years-eve-2023](http://www.dance-parties.co.uk/new-years-eve-2023)

### ICONIC – ROCK LEGENDS VARIETY SHOW

Theydon Bois Village Hall, Coppice Row,  
Theydon Bois, CM16 7ER  
Thursday, January 11, to Saturday, January 13,  
various times

This show is a celebration of the greatest artists from the second half of the 20th century – their music, their stories and the people who got them where they needed to be to become stars, as told to someone from the future, where live music is no more.

Tickets cost £13. To find out more and book, visit [www.shorturl.at/eirtL](http://www.shorturl.at/eirtL)



Photo credit: Theydon Bois Drama Society





# how to make MELTING SNOWMEN BISCUITS

If you're after a tempting but simple festive cookie to make this Christmas, look no further than these cute melting snowmen biscuits. They taste delicious and are a great way to involve kids in the kitchen – but be prepared to get sticky! The below recipe makes 10 biscuits.

## YOU WILL NEED:

**For the biscuits:** 100g butter | 100g caster sugar | ½ tsp vanilla extract | ½ a beaten egg (about 2 tbsp) | 200g plain flour (and a bit extra)

**For decorating:** 10 standard white marshmallows (not the mini ones) | 100g icing sugar | A tube of black writing icing | Some ready-to-roll orange fondant icing | Chocolate beans

## HOW TO MAKE THE BISCUITS:

- Heat the oven to 200°C/180°C fan/gas mark 6 and line a baking tray with parchment paper.
- In a large bowl, beat the butter and sugar together till smooth using a wooden spoon. Then beat in the vanilla extract, egg and finally the flour to make a dough. Chill in the fridge for 15 minutes.
- On a floured surface, roll out the dough with a rolling pin to roughly 5mm in thickness.
- Using a 9cm biscuit cutter or the rim of a 9cm glass, cut out 10 shapes.
- Bake for 8-10 minutes till golden, then cool.

## HOW TO DECORATE:

- Put the icing sugar in a bowl. Add cold water, a teaspoon at a time, till the icing is just runny.
- Spread the icing on the biscuits and pop a marshmallow near the edge of each one.
- Use the black icing pen to draw the arms and eyes.
- Use the orange fondant to create a carrot nose.
- Then add the chocolate beans for the snowmen's buttons.

Photo credit: recipesfromapantry.com



## RECYCLING AND REFUSE HOLIDAY COLLECTION DATES



CHRISTMAS AND NEW YEAR  
CATCH UP COLLECTIONS 2023/2024

### SCHEDULED COLLECTION DATES

Tuesday 26th December 2023  
Wednesday 27th December 2023  
Thursday 28th December 2023  
Friday 29th December 2023

### REVISED COLLECTION DATES

Wednesday 27th December 2023  
Thursday 28th December 2023  
Friday 29th December 2023  
Saturday 30th December 2023

Normal collections resume  
Tuesday 2nd January 2024

See our website for further information on  
refuse and recycling collections in your area

[www.eppingforestdc.gov.uk](http://www.eppingforestdc.gov.uk)





HOW TO MAKE A DIY PET

# CHRISTMAS CRACKER

**D**o you like to involve your pet in the excitement of Christmas Day? If yes, then you are going to love making them their very own Christmas cracker complete with edible treats and festive toys.

**WHAT YOU WILL NEED:**

A toilet paper roll or kitchen towel roll | Tissue paper, wrapping paper or newspaper | String or ribbon | A selection of edible treats and small toys

**HOW TO MAKE:**

> Take an empty toilet or kitchen towel roll, depending on how big your pet is and how many treats you want to include. For medium-sized and large dogs, a kitchen towel roll is best as you can fit more in.

- > Stuff your chosen treats/toys into the toilet or kitchen roll. Don't worry about overstuffing!
- > Cut your tissue paper, wrapping paper or newspaper so that you have enough to wrap your roll, leaving 5cm of paper at each end.
- > Twist off the ends and loosely secure with string or ribbon.
- > You could also make a personalised name tag using a small piece of card and a felt tip pen or by writing directly onto the paper.

**NB:** Do not stick on any embellishments such as bells or plastic decorations as these are potential choking hazards. Make sure you remove the tissue/wrapping paper once they have got to the treats so that they do not try to eat it. Always monitor your pet when they are opening their Christmas cracker, and do not include a "bang" element as this may scare them.

**What to put in your DIY pet Christmas cracker**

- > Edible treats such as chew sticks, meaty bites and biscuits
  - > Small festive toys such as a felt bauble with catnip or a candy cane plush
  - > A small paper hat or festive bow and a pet-themed joke.



# new year monthly GARDENING CALENDAR

**January**

- ☐ Plan and prepare for the year ahead.
- ☐ Take stock of inventory (seeds, pots, etc) and assess your garden layout.
- ☐ Put out water and seeds for the birds.

**February**

- ☐ Start sowing seeds indoors, such as tomatoes, peppers and aubergines.
- ☐ Add compost or organic matter to your garden soil.

**March**

- ☐ Sow cool-season crops such as lettuce, spinach, carrots and beetroots directly in your garden.
- ☐ Protect tender plants from late frosts.
- ☐ Clean and tidy your greenhouse.

**April**

- ☐ Transplant seedlings that require a longer growing season, such as tomatoes, peppers and herbs.
- ☐ Plant perennial flowers and pot-grown fruits, such as strawberries.
- ☐ Turn over the soil in your garden to loosen compaction.

**May**

- ☐ Regularly water your garden and apply mulch around your plants to conserve water and stop weeds.
- ☐ Use bedding plants to fill your garden with colour.

**June**

- ☐ Monitor your garden for weeds and remove them.
- ☐ Regularly fertilise your plants with organic fertiliser.
- ☐ Water and mow your lawn frequently.

**July**

- ☐ Water your plants deeply and less frequently.
- ☐ Monitor plants for aphids and spider mites.
- ☐ De-head bedding plants.

**August**

- ☐ Harvest your summer crops, preserving excess produce through canning, freezing or drying.
- ☐ Start planning your autumn garden by removing spent plants and amending the soil.

**September**

- ☐ Directly sow seeds of salad greens, rocket and Swiss chard.
- ☐ Harvest mature summer crops.

**October**

- ☐ Prepare your garden for winter by harvesting the remaining autumn crops, removing any debris and dead plants and adding compost or organic matter to replenish nutrients.
- ☐ Trim and shape your hedges.

**November**

- ☐ Clear up fallen leaves, especially from lawns, ponds and beds.
- ☐ Plant tulip bulbs for a spring display next year.
- ☐ Wrap young plants and trees to protect them from frost.

**December**

- ☐ Reflect on your year's gardening journey and plan for the year ahead.
- ☐ Order seeds and supplies for the year to ensure you have everything you need.



**DID YOU KNOW**  
**100,000**  
**PEOPLE DIE EACH YEAR**  
**IN THE UK FROM**  
**SUDDEN CARDIAC ARREST?**

**YOU CAN LEARN KEY LIFE-SAVING**  
**SKILLS FROM JUST £99**

**JOIN OUR 1-DAY EMERGENCY FIRST AID COURSE**  
**OR 3-DAY FIRST AID AT WORK COURSE**

**CONTACT US FOR COURSE DATES &**  
**MORE INFORMATION ON 07508 204656**  
 enquiries@bbirisksolutions.com

**BBi Risk Solutions**  
 www.bbirisksolutions.com

## Specialist

GARDEN COMPANY  
 MAINTENANCE • TREES  
 LANDSCAPING

- Garden Maintenance
- Paving • Turfing
- Pressure Washing • Driveways
- Weed Control • Irrigation
- Decking & Fencing
- Ponds & Water features
- Tree & Hedge Care
- Garden Clearing
- Large Area Mowing

01992 276039

enquiries@specialistgarden.co.uk  
 SpecialistGardenCompany  
 www.specialistgarden.co.uk

WE CAN TAKE CARE OF YOUR TREE  
 PRESERVATION ORDERS & ANY PLANNING  
 APPLICATIONS FOR TREE WORK



GARDENING

# DRAIN ME!

Is your garden flailing rather than flourishing? If yes, this could be because you have not implemented a good drainage system. Essential for preventing waterlogged soil, erosion and unhealthy plant growth, here's how to improve the drainage in your garden.



### SPIKE YOUR LAWN

If the soil in your lawn becomes compacted, then this can cause winter waterlogging. To prevent this from happening, spike or aerate the soil so that rainwater can flow down into the ground more easily. This can be carried out with either a garden fork or a lawn aerator tool.



### GROW MORE PLANTS

One of the simplest ways to improve the drainage in your garden is by growing more plants. For best results, plant vegetation that is compatible with your soil type. For example, some hydrangea species are great for regulating wet soils, while clay soil benefits from species such as geranium.



### BUILD RAISED BEDS

Raised beds that are made from either bricks or timber provide a great solution to poor garden drainage and offer a much better environment than the boggy earth below. Make sure you fill them with lots of quality, free-draining topsoil to help your plants thrive.



### CREATE YOUR OWN COMPOST

Soil that has high organic matter content is better for drainage as it allows excess water to easily drain through it. By creating your own compost, you can have unlimited access to organic matter that is perfectly suited to your garden and its soil.



### INCORPORATE SLOPING SURFACES

Surface water is a problem in many gardens but can be easily managed with the use of sloping surfaces. For example, you could combine steps and raised beds, create depth with tiered planters, or arrange large slabs of rocks to help direct water.

HEAT PUMPS  
 GOVERNMENT  
 BUS GRANTS  
**£7,500**  
 CONTACT US  
 FOR ADVICE



eco  
**greenenergy**  
 solutions

12 PANELS  
 5.1 KILOWATTS  
 BATTERY STORAGE  
**20%  
 REDUCTION**

**Be ready for the green energy revolution**

**with Eco Green Energy**

a zero carbon technology company

We're here to ensure that your path to a zero carbon lifestyle is a positive one

To get a quote and for more information

0300 373 0757

www.egesolutionsltd.co.uk

0800 1114 805

info@egesolutionsltd.co.uk

Google

★★★★★

f Instagram

Excellent

★★★★★

Trustpilot





# youbet!

MEET ONE OF THE UK'S WEALTHIEST BUSINESSWOMEN

The online betting industry has radically changed not just our lifestyle habits, but the way we view competitive sport too.

From an era where betting was only ever the domain of somewhat scruffy men in high street bookmakers, often with the smell of beer and cigarettes lingering in the air, to a modern reworking where the option of placing money on a sporting event can be done from the comfort of one's armchair.

The online betting market is always a topic of much debate and conjecture. Whether or not you believe there is a moral issue at play, the success of those who pioneered the industry is undisputed. When Denise

Coates – who was awarded a CBE in 2012 for her services to community and business – registered the bet365 domain name in the year 2000, neither she nor co-founder John, her brother, could have foreseen the incredible changes to the industry that were to follow.

In fairness, Denise did have some previous knowledge of the industry – her father, Peter Coates, known for his chairmanship of Stoke City Football Club, had run a successful bookmaker firm, Provincial Racing, which she joined after graduating from university with a first-class degree in ergonomics.

Using a £15million loan secured against the company's betting shop estate, bet365 was one of the first to try out the untested online market, at a time when the internet was awash with uncertainty and suspicion over online transactions.

Wind forward 20 years, and bet365 is one of the leading players in the market with annual revenues of more than £2billion, thanks to more than £36billion in betting transactions each year.

Coates rewards herself tidily – her wage in 2020 was said to be £421million, which is higher than all FTSE 100 Index CEOs combined.

It is an amount that reflects perhaps not her workload, but certainly the game-changing element brought about by one of the UK's most powerful female entrepreneurs.




## BEEWISE

**£1 ONLY**

**CARD MACHINE OFFER**

- Free next day settlement
- Low rates
- £1 terminal rental
- 24/7 Helpdesk

**MERCHANT SERVICES**

Beewise with what your business needs.

Join the Beewise Family

01992 276075  
www.beewiseltd.co.uk

SCAN ME



## Specialist family lawyers.

RAYDEN SOLICITORS



There might be challenging times in your life when a family law solicitor can help:

- Have you decided your marriage or relationship is over, are you unsure about your family's future?
- Do you need to protect your children, or understand the options to resolve arrangements for your children?
- Do you need a pre nuptial or post nuptial agreement to protect assets?
- Are you moving in with your partner and need a cohabitation agreement?



Choosing the right family lawyer for you and your circumstances is crucial. Rayden Solicitors are family law specialists with many years' experience; we will give tailored and practical solutions in all areas of family law - divorce, relationship breakdown, child arrangements and financial settlements.

Bespoke advice from Rayden Solicitors Epping  
Contact us, [enquiries@raydensolicitors.co.uk](mailto:enquiries@raydensolicitors.co.uk)  
Epping Office  
The Civic Centre, 323 High Street, Epping, Essex,  
CM16 4BZ. Tel: 0203 7733919.

RAYDEN SOLICITORS  
www.raydensolicitors.co.uk

We are available on





# Link-WorkSpace

## Bringing the community and businesses together

Apart from being a co-working space, service offices, events areas and conference rooms, Link-WorkSpace is also all about bringing people, the community and professionals from all walks of life together at Link-Business Networking events. We are also about promoting and supporting charitable causes and community projects. In May 2023 Link-WorkSpace Joined forces with Kayston Solicitors and raised £30,000 for Haven House Children's Hospice.

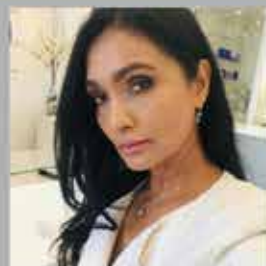
Link-WorkSpace has volunteered its building to another community project 'Safer Epping' lead by Councilor Cherry McCredie, where all future safer Epping meetings will be held from November 20<sup>th</sup>, 2023. We look forward to welcoming all residents and businesses and the Safer Epping members and volunteers to Link-WorkSpace. Complimentary teas and coffees etc are also provided.

**Private Offices:** A quiet and personalised and professional environment for uninterrupted concentration.

**Conference Rooms:** Perfect for meetings and presentations, with the latest technology and equipment they provide the ideal setting for business discussions.

**Hot Desks:** Our hot desks are designed for professionals on the move.

**Podcast Studio:** Equipped with state-of-the-art audio and video recording equipment.



Sharmila Bholanath, Director of Epping-based Link-WorkSpace, introduces the benefits to businesses of utilising co-working space – and so much more besides.

This professional studio environment offers the perfect setting to bring your podcasting ideas to life.

**Link-Business Networking Event:** We understand the importance of networking and collaboration, and to that end, we regularly host business networking events. These events are an opportunity for everyone, and professionals from diverse backgrounds to connect, share ideas, and forge valuable connections.

**Link-Creative Event** which will take place on Saturday 16<sup>th</sup> December from 5pm to 9pm is organised by Biviana Bholanath of VA. City Executives and Sponsored by ASB-MCM UK Construction LTD and Epping Beauty Clinic Ltd.

The aim of the event is to launch Link-Podcast Studio, bringing together existing podcast hosts, talents/artists of all genre fostering the creativity of underground musicians, performers, exhibitions of paintings/arts, showcasing the work of talented artists, designers, sports personalities local and surrounding areas, once again bringing the local community together.



**Professional and Relaxing Work Environment:** Whether it's hot desking, service offices or conference rooms, Link-WorkSpace provides a very productive work environment.

**Amenities:** As a cultural hub, Epping has great links to London via the Central Line and motorways nearby, making it easy to work and socialise in the local area. Link-WorkSpace is truly one of a kind with its state-of-the-art décor and standout features of this versatile co-working space boasting a commanding position on the High Street at the top of Station Road. Epping is a historic market town this the ideal for local users and for users commuting looking for convenience and an affordable professional workspace.

**Feedback:** Hybrid workers, professionals and other users of Link-WorkSpace find that they perform better and are more focus on their projects etc, delivering faster growth in their businesses as they have low costs overheads in term of rental contracts and utilities, and the flexibility agreement enables them to grow their teams and projects.


### Contact us:


0208 629 3040

[www.linkworkspace.co.uk](http://www.linkworkspace.co.uk)

[info@linkworkspace.co.uk](mailto:info@linkworkspace.co.uk)

116 High Street Epping, Essex CM16 4AF

 LinkWorkspace

 link\_workspace

 LinkWorkspace



**Link-WorkSpace**  
Co-Working Space Epping Essex

- ✦ Workshops
- ✦ Networking Events
- ✦ Events Venue
- ✦ Charity Fundraising
- ✦ Hot Desks
- ✦ Conference Rooms
- ✦ Private Offices
- ✦ Exhibitions
- ✦ Podcast Studio



Sponsored By:

**ASB** **MCM**

UK CONSTRUCTION

**EPPING BEAUTY CLINIC**





**Don't just take our word for it.....**

*Having always been a bit of a golfer and having reached a point where it was time to downsize, Great Hadham Country Club was perfect.*

*We were moving from our family home in Hertford and looking to downsize and for an escape.*

*We met with Dani at Great Hadham who showed us round several homes before we eventually plumped for a Prestige Plantation House*

*Once the sale of our home went through the actual purchasing was quick and easy, mainly due to the updates we had from the sales team.*

*We have now lived at Great Hadham for almost 7 months and really couldn't be happier. The wife has even bought some clubs now.*

Mr and Mrs S



**BIG COUNTRY Views**



SCAN ME



SHOW HOMES



NOW OPEN

[www.goodlifelodge.com](http://www.goodlifelodge.com)

[info@goodlifelodge.com](mailto:info@goodlifelodge.com)

01279 939082

**PUT THE SPARKLE BACK INTO YOUR KITCHEN**



**Domestic Oven Cleaning Specialists**

Est. since 2007

**Prices**

Single oven incl. shelves & grill pan.....	£43.00
Double oven incl. shelves & grill pan.....	£54.00
Range incl. shelves & grill pan.....	From £54.00
AGAs.....	From £90.00
Hobs.....	From £14.00
Extractors.....	From £15.00
Microwaves.....	From £20.00

**No VAT to pay**



**BEFORE**



**AFTER**



**PLEASE CALL FOR A FREE QUOTATION**

**01279 432444 \* [www.ovenbright.co.uk](http://www.ovenbright.co.uk)**

# DANGEROUS

## LIAISONS

### TRAVEL

For many, the thrill of going on holiday is enough. For a proportion of others, though, it's only half the attraction, and venturing away from home to push levels of bravery and bravado is much more the ticket. With that in mind, then, here are four all-adventure destinations for dynamic daredevils to tick off their bucket list.

**ONE: Patagonia.** Split between Argentina and Chile, Patagonia is a huge area that surrounds the Andes mountain range, showcasing everything from National Parks to glaciers, hikes, caves and volcanoes.

Combining staggering natural beauty with all the risk and reward of different landscapes and a very different culture, going off-piste in Patagonia could just be the most daredevil thing you can do.

**TWO: Iceland.** A country of extremes, Iceland is as beautiful as it is challenging, and many adventurers cannot resist the urge to hike and climb around glaciers, waterfalls, geysers and volcanoes.

While dealing with the ice or diving deep into the Silfra fissure is a thrill a minute, it's also rewarding to hire a car and venture off on the Iceland Ring Road (also known as Route 1) – an 800-mile highway that circles the country.

**THREE: The Dolomites.** We associate Italy with relaxing, restorative experiences around great food and passionate people, yet the Dolomites – and a vast array of climbing, mountain-biking and hiking options – will take you off the beaten track, inviting you to test your mettle against some punishing terrain.

The rewards for adventure seekers are stunning views and crisp-clean air.

**FOUR: South Africa.** We know Cape Town as a beautiful, cultural city, but it also has a reputation as an adventure junkie hotspot, with surfing, abseiling (off Table Mountain, no less), diving with great white sharks and a prevalence of gyrocopter aircraft flights that can be taken as a way of enjoying the area's stunning coastline.



Patagonia



Iceland



The Dolomites





# Newton's Apple Tree

WOOLSTHORPE MANOR THE BIRTHPLACE OF BRIGHT IDEAS



**S**ir Isaac Newton, one of history's greatest scientists, was born on January 4, 1643 (Christmas Day 1642 Old Style) in Woolsthorpe Manor, an old farmhouse near Grantham in Lincolnshire.

Newton lived at the manor until he left to attend the University of Cambridge in 1661. When the Great Plague of London erupted in 1665, Newton returned home. And it was here that he embarked on some incredible work, developing new ideas about light, optics, calculus, motion and gravity.

## AN APPLE A DAY

The most famous story about Newton and Woolsthorpe involves an apple. The story goes that when Newton saw an apple drop from a tree in the orchard, he started to think about the forces that make objects fall. This led him to develop his Law of Universal Gravitation. The law explains why things fall to the ground. And it explains why objects in the universe move towards each other.

The law is usually written as: 
$$F = G \frac{(m^1 \times m^2)}{r^2}$$

F – force, or the pull between two objects

**G** – gravitational constant, which is a special number used to figure out the strength of gravity

**m** – mass, or the size of the two objects

**r** – the distance between the centres of the two objects

## DYNAMIC DISCOVERIES

As well as his work on gravity, Newton developed three laws of motion that helped us understand how things move and interact with each other, and laid the groundwork for much of modern physics and engineering.

## WHAT CAN I SEE AT WOOLSTHORPE?

You can see the tree that inspired Newton's work, although it's probably a more recent tree that regrew from its original roots.

You can also visit the manor itself, including a recreation of Newton's workroom. In addition, there's a hands-on science centre.

For more information, visit [www.nationaltrust.org.uk/visit/nottinghamshire-lincolnshire/woolsthorpe-manor](http://www.nationaltrust.org.uk/visit/nottinghamshire-lincolnshire/woolsthorpe-manor) or call the National Trust on 01476 860338.



Photo credit: National Trust Images/James Dobson

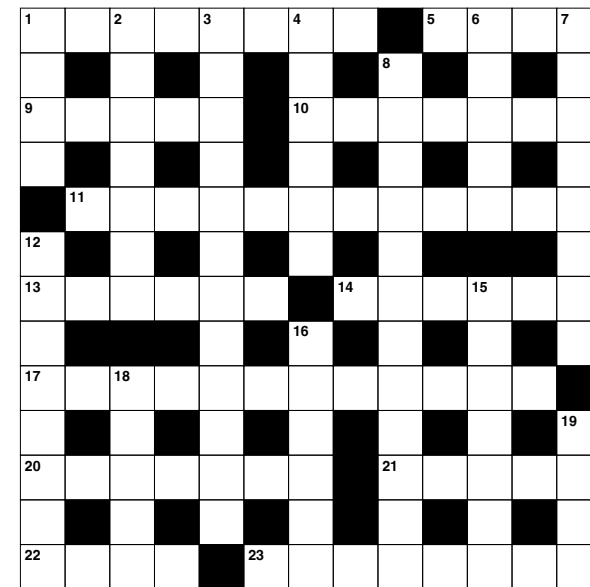
# PUZZLES & TRIVIA

## ACROSS

1. Object that gives out heat (8)
5. Capital of Norway (4)
9. One side of a gem (5)
10. Guilty person (7)
11. Unfriendly (12)
13. In a careless manner (6)
14. Requesting (6)
17. Importance (12)
20. Flexible athlete (7)
21. Show triumphant joy (5)
22. Obstacle (4)
23. Formal curse by a pope (8)

## DOWN

1. Crack (4)
2. Propriety and modesty (7)
3. Relating to horoscopes (12)
4. Hold a position or job (6)
6. Small woody plant (5)
7. Be heavier than (8)
8. First part of the Bible (3,9)
12. Corridors (8)
15. Have as a part (7)
16. Heed (6)



18. Third Greek letter (5)

19. Volcano in Sicily (4)

## DID YOU KNOW?

- Reindeer hooves are specifically adapted for their environment. The cloven shape spreads their weight more evenly, helping them to walk across snow and soft ground, while their sharp edges provide traction in icy conditions.
- Some types of reindeer do actually have red noses as a result of densely packed blood vessels, which help to regulate their body temperature.
- In spring, reindeer sometimes form super-herds of 50,000 to 500,000.
- Reindeer fur is hollow, helping to trap air and providing insulation to stay warm. This also makes them excellent swimmers.
- Reindeer migrate an average of 12 to 34 miles per day, travelling as much as 3,100 miles each year in their search for food.

## SUDOKU

	3			9				7
1		9	2					4
					6		8	
						4		
9		6		1		2		5
		1						
	7		6					
6					4	8		1
4				5			7	



## UNUSUAL SPORT:

## DODGEBOW®

The classic 2004 box office comedy film *Dodgeball* involved what most people thought was a new sport, yet its roots actually go right the way back to the turn of the 20th century.

And yet, there is now a new take on the idea that has emerged in recent years. Utilising foam-tipped arrows that are fired from low-poundage bows, competitors created something of a hybrid between dodgeball and archery – dodgebow.

The sport was invented by three friends from Montreal, Canada. The trio had played combat archery and wanted to develop the idea further. Subsequently, the company Dodgebow was created. The sport sees two teams of up to 12 members battle for 45 minutes in a weapon-laden arena filled with inflatables which can be used as obstacles or objects to hide behind.

The aim is for the teams to gather weapons from the centre of the arena, position themselves strategically, and then eliminate each of the

opposing team's players by shooting them. A player can bring back an eliminated teammate by catching an arrow.

Dodgebow, also known as archery tag, is a rapidly growing sport and is already played in more than 30 countries around the world.

There are also extensions to the game, including Bullseye (all opposing team targets can be hit instead of striking out players), No Loyalty (a 'Blue on Blue' hit means the receiving player must change teams), and Capture the Flag (one of three opposing team flags must be taken back to your own base).

Using safe equipment means dodgebow is fun and exciting to play, with emphasis on both working as a team and individual brilliance.



Photo credit: dodgebow.com



## GOLF CLUB

Celebrate at  
Woolston Manor Clubhouse

**The Special Venue for all your  
Weddings & Parties**

You can celebrate in style in one of our stunning event spaces. The Clubhouse, set in 200 acres of beautiful grounds and lakes, boast a sweeping driveway, high ceilings and elegance.

Enjoy the benefits of  
Woolston Manor Golf Club

**With our Individual, Joint &  
Corporate Membership options**

Woolston Manor Golf Club membership provides you with access to the superb championship golf course, modern clubhouse, fixtures, competitions, social calendar and top class catering.



Woolston Manor Golf Club, Abridge Road, Chigwell, IG7 6BX

☎ 0208 500 2549 ✉ info@woolstonmanor.co.uk 🌐 woolstonmanor.co.uk



# HOUSE2HOME



- **HARDWARE ■ TOOLS**
- **ELECTRICALS ■ PLUMBING**
- **KITCHENWARE ■ GARDENING**
- **PARTY SUPPLIES**

**Tel: 01992 577 643**

295 High St, Epping, Essex, CM16 4DA

## TYRO PLATES

Designer Number Plates

**CALL US TODAY FOR YOUR BESPOKE PLATE**  
**01992 276102**

- 2D Printed, 3D Gel, 4D Acrylic Plates
- All Sizes! Shaped, Short, Hex, oversized Plates
- Tinted, Chameleon, Coloured Show Plates
- Exclusive - Vintage Style Number Plates
- Keychains & Accessories
- 1 of the UK's Largest Wholesale & Trade Supplier
- Custom Cut Fit Plates
- Local Same Day & Free Fitting Service
- Nationwide next day shipping
- Over 500 Different Designs to choose from

**ORDER YOUR BESPOKE PLATE DIRECT**  
**WWW.TYROPLATES.COM**



**20% OFF ALL PLATES**  
WITH CODE 'VISION20'

## IS YOUR CAR TRULY SAFE?

**CAR & VAN SECURITY SPECIALISTS**



**SMART CAR PROTECTION WITH GHOST IMMOBILISER**

📍 **Greater London & surrounding M25 areas**

🕒 **7 days a week**  
**8am to 10pm**

☎ **01992 276093**

• carkeyssolutions.co.uk • 01992 276093  
• contact@carkeyssolutions.co.uk

**UK'S MOST TRUSTED AND REVIEWED AUTO LOCKSMITH WITH EMERGENCY RESPONSE**



**FROM ONLY**  
**£450**

# Winter SURVIVAL KIT

**YOUR WINTER CHECKLIST TO ENSURE YOU'RE PREPARED FOR THE ROAD AHEAD**

If your car broke down or you got stuck in a really bad traffic situation during the winter months, would you be able to keep yourself and your family warm and safe until help arrived or you were able to be on your way again?

**What to keep in your car during winter:**

- ✓ A torch and batteries – do not think that you can rely on the torchlight on your smartphone
- ✓ Warm clothes such as a coat, hat and gloves, and blankets
- ✓ Ice scraper and de-icer to keep your front and rear windscreen clear
- ✓ In-car phone charger
- ✓ High-visibility clothing
- ✓ Jump leads or jump-start cables
- ✓ An empty fuel can
- ✓ Food and drink, including a hot drink in a flask
- ✓ Shovel in case of a snowstorm or blizzard
- ✓ Two warning triangles
- ✓ A pair of sunglasses to minimise glare from the winter sun

**POWDERY checklist**

Before each journey during the colder and darker months of the year, it can be a good idea to go through the POWDERY checklist.

**P is for petrol (or diesel).** Do you have enough petrol/diesel? Do you know where you can fill up?

**O is for oil.** Check your oil levels before you leave.

**W is for water.** Check both your radiator and your screen washer.

**D is for damage.** Check your wipers and lights for signs of wear and tear. Make sure your windscreen and windows are free from snow and ice.

**E is for electrics.** Check that your lights, indicators and controls are working as they should.

**R is for rubber tyres.** Make sure that your tyres are well inflated and free from damage.

**Y is for you.** Are you fit to drive? Have you slept well? Are you taking any medication that could affect your ability to drive safely?



MOTORING



# THE VISION LISTINGS

## ACCOUNTANT & TAX ADVISORS

### ALL THINGS ACCOUNTING

Accounting & tax services, we help with self-assessment tax return, corporation tax return, payroll, VAT return, CIS return & bookkeeping. Call 07539 035537 for free initial consultation

## ARTS, DANCE & FITNESS

### STUDIO 1 UK

"Creative space simplified" - Performing arts | Dance | Fitness | Wellbeing | Hire | Adults and kids classes based in Loughton Essex. 07914 667909

## AUDIO & VISUAL

### ULTIMATE AV

We create bespoke systems designed and built especially for you. Small projects to complete home cinema environments. Based in Essex call us on 07531 214339

**BOOK VIA [EPPING@VISIONMAG.CO.UK](mailto:EPPING@VISIONMAG.CO.UK)**

## BEAUTY & NAILS

### BEAUTY BY NATASHA KATIE

A local, mobile LVL Technician. Fully qualified level 2 and 3 beauty therapist Babcac insured and approved. 07961 462672

### SPECIAL NAILS

Dedicated to provide the best quality nail care for Men & Women. Walk-ins welcome, appointment bookings & gift vouchers available. 01708 442248

### THE NAIL STUDIO

Nail Studio lets you switch off and pamper with highly skilled technicians providing top treatments and nail products to meet your every need. 07572 526519

### WICKED WAXING LTD

Male and female specialist waxing using hot and strip wax. 20 years' experience. Based in Epping with free parking. [epping@wickedwaxing.com](mailto:epping@wickedwaxing.com). 07368 684377

## BUILDING

### ADDSpace LONDON LTD

We provide a high quality Building service. Extensions, loft and internal renovations. Members of Federation Master Builders. Call 01992 276035

## CARPET & UPHOLSTERY

### ARWIN CLEANING SERVICES

Over 30 yrs of exp, we can offer a professional, efficient and cost-effective solution for carpet and upholstery, cleaning and maintenance. 07973 417764

## CAR & VAN HIRE

### SCENIC SELF DRIVE

Your self drive hire specialists. Whether you require modern cars, motorhomes, vans or minibuses. Rest assured we will provide you a professional service. 01708 753461

## CLEANING SERVICES

### GLOWWHITE CLEANING

Serving Hertford and surrounding areas. We specialise in end of tenancy cleaning for tenants, landlords and property managers. Fully insured. Contact: 07561 138855

## CLEARANCE & WASTE

### THE CLEARANCE TEAM

From clearing a room, house or garden to clearing an entire office block. Fast, reliable and affordable. Working 24/7 so you can book us at your convenience. 0207 101 3387

## COMPUTER REPAIR & I.T.

### MAPTEC IT

Your local residential & commercial IT specialists. We can fix your computers, configure email accounts & printers. Setup your Wi-Fi, Internet router & network. 0203 865 7174

## EDUCATION

### TUTOR DOCTOR

All primary secondary subjects, 1:1 lessons, online or F2F in-home. Best tutor matched to every child's unique personality, weekly reports. 0203 856 4466

## ELECTRICAL & WHOLESALE

### CH ELECTRICAL WHOLESALE

Essex & East London's leading electrical wholesalers providing the trade & public a professional service with access to all leading brands. 01708 730591

## ELECTRICIAN

### CAPITAL ELECTRICAL SERVICES LTD

Domestic/Commercial, Repairs/Installation, Vehicle Charging Points, Portable Appliance Testing, Fire Alarms, Emergency Lighting, Installation Condition Reports. Call 0208 088 2916

### TACK ELECTRICAL

Reliable, affordable, fully qualified and insured. We guarantee we'll deliver unrivalled service and workmanship every time. No job too small. 01992 276128

### GLADE ENERGY SERVICES LTD

We cover all types of electrical work in your home. LED lighting, Fusebox upgrades, CCTV and Home automation. Please call 020 3906 2863

## FURNITURE RESTORATION

### ABBEE GROUP

Abbey Group are specialist in creating, repairing & restoring quality furniture & wood surfaces to the highest standard. 01708 741135

### KINGS UPHOLSTERY

Handmade sofas & chairs designed especially for you to your required specifications. Also providing in re-upholstery & repair work. 01708 444125

## GARDEN SERVICES

### JOHN HEARNE

We take care of it all Lawn Mowing, Weeding, Planting, General Tidying, Fence/Shed Painting, Driveway/Patio Pressure Washing and more. Call for details 07908 523101

## HEALTH & WELLBEING

### REIKI VITALITY

Qualified Practitioner, promoting Emotional/Physical Well-Being for Adults/Children. Relieving, Stress, Anxiety, Depression, pain. 0203 7247385 | 07935 129241 | [reikivitality@yahoo.com](mailto:reikivitality@yahoo.com)

### ALI ALOE

Health & wellness company requires help! Flexible hours, work from home, suits busy people, full/part-time. Text or call Alison 07932 717496

## LOCKSMITHS

### KEYTEK LOCKSMITHS

From Lock outs to security upgrades, our fully trained DBS checked Locksmiths are the experts | Call 01992 666 121 | Quote: 15076

## MASTICS AND SEALANTS

### QUALITY MASTICS LTD

Bathroom and shower mastic joint sealing. Kitchens, windows, floors, external seals around windows. For information call 01245 520981

## MOTORING

### BMS CAR PARTS

For all your motoring requirements inc. Car parts, number plates, key cutting, engine oil, tools, car accessories & servicing. 01708 474187

## PAINTING & DECORATING

### TRADITIONAL DECORATIONS

We are a family run business specialising in turning your house into a home. Giving advice on current decorating trends. 07737 562406

## PLUMBING & HEATING

### BOILER

BOILER offer servicing, installations, repairs and plans. Local Gas Safe engineers for all your needs. 6000 Homes EVERY MONTH. Call 01992 236063

### CMS PLUMBING HEATING & BATHROOMS

Corgi registered, 20+ years' experience, public liability insurance, offering free quotes. No job too small. Based in Gidea Park. Call Craig 07855 589185

## PROPERTY MAINTENANCE

### LILLYWHITE PROPERTY GROUP

For all building works, full refurbishments & property maintenance inc heating, plumbing, electrical, decorating, flooring, tiling & plastering etc. Call today on 07949 394403

### STUART GREEN PROPERTY SOLUTIONS

Property maintenance specialist. Carpentry, painting/ decorating, laminate flooring, bath/shower re-siliconing, gutters cleared/repared, insurance work, PLI. 07917 870879

## ROOFING

### JIM BARR ROOFING

Exterior cleaning & maintenance. Gutters, Paving & UPVC; cleaned, repaired & renewed. 01708 874816 | 07833 572459

## WEB DESIGN & PRINTING

### SWIVEL CREATIONS

25+ years experience, specialists in Web, Print, Clothing & Embroidery. Professional, affordable, reliable. 01992 570383 | 07736 879233 | [www.swivuk.co.uk](http://www.swivuk.co.uk) | [info@swivuk.co.uk](mailto:info@swivuk.co.uk)

### PHOENIX ROAD CREATIVE

25+ years Web Design & Marketing to reach your audience. Let's get digital! [hello@phoenixroadcreative.com](mailto:hello@phoenixroadcreative.com) | [www.phoenixroadcreative.com](http://www.phoenixroadcreative.com) | 07462 528494

**DISCLAIMER:** **VISION** does not represent or endorse the accuracy or reliability of any of the advertisements, nor the quality of any products, information or other materials displayed, purchased or obtained by any customer as a result of an advertisement or any other information or offer in connection with the service or products. The opinions expressed in articles, reviews and stories are strictly those of the individual authors and do not necessarily reflect the views of **VISION**.



OVER 30 YEARS OF EXCELLENCE



Life is Beautiful

At City Bathrooms we believe everyone deserves a beautiful bathroom, that's why our passion for luxury products, first-class customer service and expert bathroom advice is at the heart of everything we do.

City Bathrooms

11 Raven Road, South Woodford E18 1HB

Telephone: 020 8504 5152

Email: [sales@citybathrooms.com](mailto:sales@citybathrooms.com)

[citybathrooms.com](http://citybathrooms.com)





# Exciting changes to your local care homes

We believe every person should be treated as an individual,  
with tailored care provided in the very best surroundings.  
That's why our home's recent refurbishment has been designed  
with residents' comfort, well-being and happiness in mind.

**New homes to be proud of, with the same dedication to those we care for.**



Our stylish new cafés are the perfect place to welcome family  
and friends, with delicious home-made treats to enjoy.

New hair salons provide for all pamper sessions and beauty routines.

New spa bathrooms offer luxurious bath time experiences.

Our sociable dining rooms serve residents' favourite dishes.

And our beautiful lounges are spaces to relax and feel at home in.

**Call to arrange a visit, we hope you'll love the changes.**

**Ashlar House, The Plain, CM16 6TY • 01992 726 295**

**Paternoster House, Paternoster Hill, EN9 3JY • 01992 726 298**