



FREE

Photo credit: Hugo Burnand/Royal Household/Shutterstock

HM King **CHARLES III**

Monarch ascends the throne in historic ceremony

THE **B7** MEDIA GROUP

PRINTING • BUSINESS CARDS • LEAFLETS
DISTRIBUTION • SIGNAGE • MENUS & BROCHURES
EXHIBITION BOARDS & BANNERS
RETAIL PACKAGING • WINDOW VINYL
LOGO DESIGN • BRAND ALIGNMENT
VEHICLE WRAPPING • CARBON PADS • WORKWEAR
WEBSITES • SOCIAL MEDIA • I.T. SOLUTIONS



ENQUIRIES@B7MEDIAGROUP.COM



01992 276101



ENQUIRIES@B7MEDIAGROUP.COM



01992 276101





JUNE 2023

Editor's notes...



Brett Shohet, Editor

Hello and welcome to this month's edition of **VISION**Hertford.

Last month, we celebrated an occasion most of us will never have experienced before - the coronation of a monarch. I visited London the week before King Charles III's coronation and the atmosphere was electric.

During my visit, I went to Carnaby Street, where my dad used to own a shop. I stood in the same shop doorway I would have stood in at age seven, and took in all the changes that have taken place in the intervening years.

While it can feel as though we live in a world of constant change, the coronation reminded us that we are all united in a country steeped in long-standing tradition and history.

I recently had an interesting conversation about DFS. It's become a running joke that the furniture retailer always has a sale on. For most of us, the adverts have become background noise, so frequently do we hear about the DFS sale. But when people are ready to buy a sofa, guess who they think of first? All this is to say how important it is to put your name out there and ensure as many people as possible are aware of your brand. This way, when the customer is ready, they'll know how to find you.

If you are interested to see how we can do this for your business locally, then please get in touch.

Brett Shohet

This is your town's hyperlocal magazine, delivering to homes and businesses every month.

HOME & DIY | GARDENING | PETS | HEALTH & FITNESS | BEAUTY | FASHION | HISTORY | LOCAL NEWS | FOOD & DRINK | TRAVEL | BUSINESS & PROPERTY | SPORT | PUZZLES | MOTORING | KIDS | WHAT'S ON | TECHNOLOGY | THE LISTINGS



CONTACT US:
 hertford@visionmag.co.uk | 01992 276101 | www.visionmagherts.com
 @visionherts @visionmageastherts Vision Magazine East Herts

CONTRIBUTORS | Tabatha Fabray, Fiona Goble, Holly Bullen

All pages are recyclable

THE B7 MEDIA GROUP

PRINTING • BUSINESS CARDS • LEAFLETS • DISTRIBUTION
 SIGNAGE • MENUS & BROCHURES • RETAIL PACKAGING
 EXHIBITION BOARDS & BANNERS
 WINDOW VINYLs • LOGO DESIGN
 BRAND ALIGNMENT • VEHICLE WRAPPING
 CARBON PADS • WORKWEAR • WEBSITES
 SOCIAL MEDIA • I.T. SOLUTIONS

ENQUIRIES@B7MEDIAGROUP.COM

01992 276101



**WE GUARANTEE OUR CUSTOMERS
 A FRIENDLY, RELIABLE AND
 PROFESSIONAL SERVICE**



Empire UPVC and Roofing Specialists independently trade throughout Hertfordshire and a 40 mile radius from our office in Nazeing.

- | | |
|------------------------------|-------------------------------------|
| ✓ Felt, Tile & Slate Roofing | ✓ All Roofing Repairs & Maintenance |
| ✓ Liquid Rubber Roofing | ✓ Moss Removal |
| ✓ Fibreglass Roofing | ✓ Gutter Cleaning & Unblocking |
| ✓ Roofing Leadwork | ✓ UPVC Fascias, Soffits & Guttering |
| ✓ All Roof Windows | ✓ UPVC & Hardie Plank Cladding |

Office: 01992 276 028
 office@empireupvcandroofing.co.uk
 www.empireupvcandroofing.co.uk

Visit Our Showroom at:
 Unit 50 Hillgrove Business Park
 Nazeing New Road, EN9 2HB



Checkatrade.com

FULLY INSURED



King Charles' Vision



They claim that patience is rewarded with the finest treasures, and His Majesty King Charles III's lengthy 70-year wait as the heir apparent undoubtedly demonstrates his worthiness for the throne.

Now, after being confirmed in the eyes of God during his coronation in May, His Majesty will finally implement his grand vision, aiming to propel the Windsors into the modern era.

So, what will this mean for the King, those closest to him, and us, his loyal subjects?

A key principle of King Charles III's plan is to streamline the royal family. In recent years, this process has unfolded somewhat naturally, with Prince Harry voluntarily stepping back from his official duties and Prince Andrew being removed from his responsibilities.

However, under the provisions of the Regency Act 1937, in the event of the monarch's incapacity, their spouse and the four eligible adults next in line to the throne can act as substitutes. This means that the Duke of Sussex, Duke of York and Princess Beatrice are authorised to fulfil these roles – yet there is a problem, in that they are not working royals.

King Charles III has already amended this law in Parliament to allow his siblings Prince Edward and the Princess Royal Anne to act as additional councillors, but perhaps he will go further and make it so that such duties and privileges are only fulfilled by working royals.

Having experienced numerous turbulent periods in the monarchy's history, King Charles III possesses a keen awareness of the Republican sentiment prevailing among certain sections of the British population. While the late Her Majesty Queen Elizabeth II enjoyed immense

popularity, there are those who firmly believe that the time has come to dissolve the monarchy and forge ahead into a fully modern and democratic Britain. However, when we consider the substantial contributions of the monarchy to our economy and the profound cultural value of our traditions and illustrious history, it becomes evident that the potential losses outweigh the gains.

According to Forbes, the House of Windsor is estimated to hold a value of £19billion. Moreover, although the annual cost of royal upkeep for UK taxpayers amounts to approximately £500million, Brand Finance estimates that the monarchy's brand contributes £2.5billion to the British economy over the same period.

In essence, His Majesty understands his significance, but he also recognises the importance of connecting more deeply with the everyday people in his kingdom. Addressing challenges such as the recent cost-of-living crisis, and its prevalence in people's minds over the King's own passions, such as the environment, are essential for him to ensure a peaceful reign.

An additional challenge that His Majesty may encounter is the requirement to refrain from taking a stance on partisan matters, including the pressing issue of climate change. He has long been an advocate for a greener planet, having converted his cherished Aston Martin DB6 so that it can run on cheese waste and surplus wine, adopted biomass boilers for heating Birkhall estate, and installed solar panels at Clarence House. Laura Tobin recently stated on *Good Morning Britain* that changes have also been implemented at Buckingham Palace, where the lights have been turned off at night as an energy-saving measure.

As a man who has skirted both sides of the popularity divide over the decades, the opportunity to cement himself as an exemplar for a modern royal family is surely one he won't pass up.



A FINAL FAREWELL TO

SOCCER AM

SOCCER AM'S SATURDAY FUN IS OVER, BUT THE LEGACY REMAINS

While the popularity of football is seemingly unending, not all survive the sport's continued evolution, with *Soccer AM* becoming the latest entity to be consigned to glorious retirement.

For a long while, the Saturday morning Sky show was a ground-breaking, perfectly unrefined piece of footballing irreverence. It set up the weekend's action with a laddish, lager-tinged layabout appeal that original presenters Tim Lovejoy and Helen Chamberlain lapped up.

A show that bolstered the careers of the likes of Andy Goldstein, Max Rushden, John Fendley, Tubes, Rocket and countless 'Soccerettes', its comedic approach saw many of its features permeate modern culture. From 'tekkers' to the Crossbar Challenge, Taxi! to the Save Chip campaign, not to mention the 'easy' chant and associated arm action, and getting the word 'bouncebackability' entered into the Oxford English Dictionary, *Soccer AM* finished up just a year shy of the 30-year mark, with the final show broadcast on May 27, 2023.

The death knell had sounded loudly in the past, though glorious reinvention saved *Soccer AM* from its demise. Yet with ratings continuing to fall, the final whistle has now been blown.

Despite a stellar cast of guests over the years, including Noel Gallagher, Tyson Fury, James Dean Bradfield, Richard E. Grant and Gordon Ramsay OBE, critics have, in the past, pointed to the show's politically incorrect content. Former producer Rocket recently said: "I don't know if that show can exist now because if there's a reason to complain about something, generally someone will."

While the show was always destined to ride the thin line between entertainment and controversy, its cessation became as much to do with the fact that even the biggest and best become tired and staid.

Regardless, *Soccer AM* ran a course longer than a generation of footballers, and for that reason, it will be remembered as one of the sport's greatest cultural success stories.



12 YEARS
EST. 2011



**WOODTHORPE
JOINERY**

Your local supplier of wooden shutters

Hertford 01992 800 505 • London 0203 589 4879
E: info@wjoinery.co.uk • www.wjoinery.co.uk



MOBILITY SALES • MOBILITY HIRE REPAIR & MAINTENANCE

Classic Mobility is a family run business
with over 20 years experience in sales
and care of your mobility equipment

- ✓ Short and long term hire
- ✓ Quality equipment & service
- ✓ Delivery within 24 hours
- ✓ Home visits available
- ✓ Delivered & installed by
our own trained technicians



Wheelchairs • Mobility Scooters • Power Chairs

Walking Aids • Bathing • Seating • Walking Frames

Stair Lifts • Care Beds • Daily Living Aids

15 Church Street, Hertford,
Herts SG14 1EJ
shop@classicmobility.org.uk

BUBBLE RUSH

Isabel Hospice
Together we care
Registered charity no: 1046826

5K OF FOAMY FUN!

BOOK NOW!

HERTFORD

SUN 10 SEP 2023
Woodhall Estate, Hertford
isabelhospice.org.uk/bubblerush

Registered with
FUNDRAISING
REGULATOR

SCAN TO BOOK!



flower POWER

Spotted at Dior, Dries Van Noten, Prada and Lela Rose, florals have dominated the catwalk and are set to be everywhere this summer. Perfect for anyone who loves stand-out fashion, this is one trend that promises to lift your mood and make you smile.

HOW TO WEAR FLORALS THIS SUMMER

Wear with a plain solid colour

Mixing floral prints is very hard to do, so if you are new to wearing florals, it can be a good idea to wear your chosen print with a plain solid colour, preferably in a complementary or matching tone.

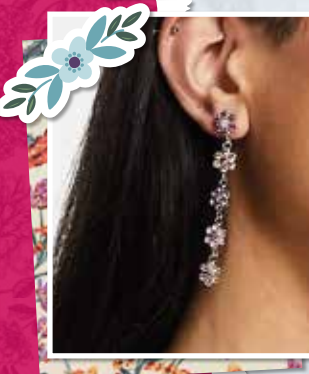


Add an edgy twist

If you find florals a bit too girly, then you might want to toughen up your look with something edgy such as a leather jacket or a pair of biker boots. Alternatively, you could add a masculine element with a tailored jacket or boyfriend jeans.

Experiment with accessories

For those who don't want to go full on with the floral trend, why not invest in a few floral accessories, such as a floral handbag, jewellery, scarf or hat?



Rock a floral shirt

A floral shirt is the way to go for style as appropriate for the office as it is for time with friends. Team with a pair of smart jeans for a casual day look, or wear a floral t-shirt with a tailored suit for a more playful take on your standard office attire. Or to test the water, why not invest in a floral tie?

HOW TO PICK THE RIGHT FLORALS FOR YOUR BODY SHAPE

- * If you have a fuller figure, avoid oversized prints as these can make you appear wider than you actually are
- * If you have a slim build, then a medium floral print works best
- * Smaller prints work for most body shapes, including pear-shaped and hourglass
- * Use a large floral print on any areas of your body that you want to make look larger
- * Use a small floral print on any areas of your body that you want to make look smaller
- * Play with different proportions to see what works best for you.



The UK's leading provider of
affordable electric wheelchairs.

Premium Electric Wheelchairs That Support Independent Living

Includes **FREE** next day delivery



MobilityPlus+ Ultra-Light
Instant Folding Electric
Wheelchair
24KG, 4MPH, 2 LITHIUM BATTERIES

Only **£879.99**



MobilityPlus+
Deluxe
Ultra-Light

FOLDING
ROLLATOR
WITH SEAT

Only
£114.99



MobilityPlus+
Upright
Rollator

WITH FOREARM
SUPPORT

Only
£154.99



MobilityPlus+
Quick-Split
Electric

LIGHTWEIGHT,
COMPACT,
4MPH

Only
£599.99



MobilityPlus+
Featherlite

18.7KG, 4MPH,
LITHIUM
BATTERY

Only
£899.99

Customer Support Team

01992 610 434 | www.mobilitypluswheelchairs.co.uk

OUR SHOWROOM: UNIT 5 VELOCITY, HARLOW BUSINESS PARK, HARLOW, CM19 5QF (APPOINTMENT ONLY)



Goodbye GREASE

If you struggle with greasy hair, then these hairstyles are just what you need to skip a hair wash and still look and feel great.

BABY BRAIDS: If the front of your hair is prone to oil, then baby braids offer the perfect way to conceal this. Start by working a little bit of dry shampoo through your hair and then section out the front strands. Braid them as tightly or loosely as you like and secure with a clear hair band.

A SNATCHED PONY: Delivering a super sleek look, a snapped pony is bang on trend and perfect for days when you don't have time to wash your hair. Separate your hair into two sections (top and bottom half) and apply a smoothing serum. Then brush from roots to ends, making sure that the front is smooth and tight. Join the sections at the crown and secure with a hair band.

WET-LOOK WAVES: Rather than try to hide the natural oils in your hair, embrace them with wet-look waves. To start, dampen your hair and add a liberal amount of heat protectant spray. Then gently blow dry your hair and add waves using a curling iron. Apply hair oil to complete the look.

A ZIGZAG PARTING: Add a playful touch to a low ponytail with a zigzag parting. Perfect for distracting from greasy roots, you need to invest in a tail comb to get a zigzag parting right. Start at the centre of your parting and then use the comb to form a zigzag along the parting line. For best results, keep all the zigzags within the same one-inch margin.

A SILK SCARF: If your curls are looking a little oily, then pile them high on your head and add a silky scarf for added visual interest and to conceal grease at the roots.



Photo credit: Instagram @justinemarjan, capellistyle.it,
Pinterest/goldfishkiss.com, terrifictresses, Etsy



Stroll YOURSELF SLIM

Finding the time, not to mention the inclination, to exercise after having a baby can be hard. However, what if you could combine taking your baby for a walk with getting fit? Welcome to the world of stroller fitness.

WHAT IS STROLLER FITNESS?

As the name suggests, stroller fitness is a workout where you use your baby's buggy or stroller to get fit. Perfect for parents of all fitness abilities, a stroller workout can be as intense or as gentle as you make it. Plus, no babysitter is needed, as your baby will be with you every step of the way.

WHAT ARE THE BENEFITS OF STROLLER FITNESS?

One of the best things about stroller fitness is that it allows you to get back into exercise without having to leave your baby. Depending on the exercises that you choose to carry out, stroller fitness can provide a full body workout, or it can be used to target specific muscle groups or problem areas.

FOUR STROLLER EXERCISES TO GET YOU STARTED

Walking lunges: If you want to tone and strengthen your lower body, then walking lunges are a great choice. Take long strides as you push your buggy and lower your body until your front thigh is almost parallel to the ground. Continue for one minute, rest for 30 seconds, and repeat.

Jump squats: These burn more calories than standard squats. Use your buggy for balance, engage your core, push up through your heels as you jump up, focusing on soft knees as you land. Continue for 30 seconds, rest for 30 seconds, and repeat.

Pram chest press: Work your chest, arms and core with the pram chest press. Push through your shoulders, tensing your core as you push your buggy away from you and then pull it back towards you. Do 15 reps, rest, and do a further 15.

Pram chest press with lunge: To increase the intensity of your workout and up your heart rate even more, alternate walking lunges with the pram chest press. This exercise will work your whole body. Continue for 30 seconds, rest for 30 seconds, and repeat.



Luxury care in the heart of Harlow

Now open to viewings

We are delighted to announce the grand opening of The Jubilee Suite - our new luxury care suite situated within Abbot Care Home in Harlow, Essex.

Our new Jubilee Suite has been expertly designed with kindness, and dignity at its heart, providing person-centred nursing, residential and dementia care. With a variety of excellent facilities and spaces to enjoy, we welcome the people who live here to play an active part in everyday life – as we ensure activities, events and mealtimes are carefully tailored to the personal preferences of each individual.

Abbot Care Home is situated amongst peaceful open parkland and features beautiful, landscaped gardens. The people who live here enjoy a comfortable environment and benefit from the home-from-home atmosphere.

It is important to our team that we work as part of your family, as we plan in partnership whilst providing the same caring support that we would wish for our own loved ones to receive, whilst enjoying a life well-lived, each and every day.

Excelcare
Belong with us



We welcome you to visit us to meet with our friendly team who will be happy to work around your schedule.

To find out more about Abbot Care Home and book in to view our newly opened Jubilee Suite, please get in touch

01279 594 610
info@excelcareholdings.com



Prescriptions

ALL ABOUT

How much does a prescription cost in England?

The prescription charge in England is £9.65 per item. However, you can get an NHS prescription prepayment certificate (PPC), which can help you save money if you need more than three items in three months or 11 items in 12 months.

A PPC costs:

- ✚ £31.25 for three months
- ✚ £111.60 for 12 months

You can purchase a PPC either online or with any registered pharmacy.

Who is eligible for free prescriptions?

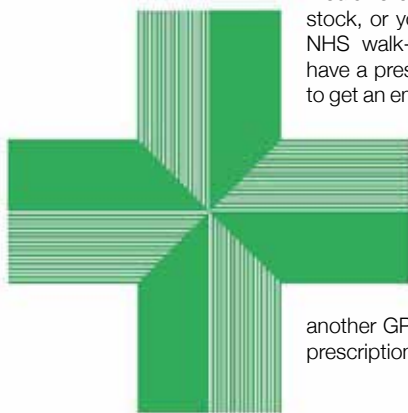
You are eligible for free prescriptions if you are:

- ✓ Aged 60 or over
- ✓ Under 16
- ✓ Aged 16-18 and in full-time education
- ✓ Pregnant or have had a baby in the last 12 months and have a valid maternity exemption certificate
- ✓ Have a specified medical condition and a valid medical exemption certificate
- ✓ Have a continuing disability that prevents you from going out and have a valid medical exemption certificate
- ✓ Hold a valid war pension exemption certificate and the prescription is for your accepted disability
- ✓ An NHS inpatient

You are also entitled to free prescriptions if you or your partner receive certain benefits, or if you are under 20 and the dependent of someone receiving certain benefits, such as income support and income-based Jobseeker's Allowance. Contraception is free for everyone in England.

Is it possible to get an emergency prescription?

If you have a prescription, you can visit any pharmacy to get your medicine as long as they have it in stock, or you may be able to use an NHS walk-in centre. If you do not have a prescription, you may be able to get an emergency supply from your



local pharmacy. Take your old prescription or the medicine's packaging with you if you have it. If you are away from home, you can register as a temporary patient with

another GP and ask them to do your prescription for you.

Can you get your prescription delivered to your door?

If you are unable to leave your home, your local pharmacy may be able to deliver it to your door free of charge. Alternatively, some retailers such as Boots will deliver your prescriptions for a small fee.



King Charles' CORONATION QUICHE

With the coronation still fresh in everyone's minds, why not have a go at making your very own King Charles coronation quiche? This dish was chosen to celebrate British seasonal produce – and also because the King loves eggs and cheese.

YOU WILL NEED: (serves 6)

FOR THE PASTRY: 125g plain flour | 25g cold butter, diced | 25g lard | 2 tbsp milk | Pinch of salt

Or 250g block of readymade shortcrust pastry

FOR THE FILLING: 125ml milk | 175ml double cream | 2 medium eggs | 1 tbsp chopped fresh tarragon | 100g cheese | 180g cooked spinach, lightly chopped | 60g cooked broad beans | Salt and pepper | Pine nuts for garnish, if desired | You will also need a 20cm flat tin and baking beans

HOW TO MAKE:

1. To make the pastry, sieve the flour and salt into a bowl. Add the butter and lard and rub the mixture together using your fingertips until you have a breadcrumb-like texture.
2. Add the milk a little at a time and bring the ingredients together to form a dough.
3. Cover and leave to rest in the fridge for 30-45 minutes.
4. Lightly flour your work surface and roll out the dough into a circle approximately 5mm thick.
5. Lightly grease the tin with butter and line with the pastry, being careful not to

make any holes. Cover and rest for a further 30 minutes in the fridge.

6. Preheat your oven to 190°C/170°C fan/gas mark 5.
7. Line the pastry case with greaseproof paper, add baking beans and bake for 15 minutes.
8. Take the case out of the oven, remove the paper and beans, and leave the pastry case to one side.
9. Reduce the oven temperature to 160°C/140°C fan/gas mark 3.
10. To make the filling, beat together the milk, cream and eggs.
11. Scatter half of the cheese into the blind-baked base and then top with spinach, broad beans, tarragon and seasoning.
12. Season and pour over your liquid mixture of milk, eggs and cream.
13. Sprinkle over the remaining cheese.
14. Place in the oven and bake for 20-25 minutes until set and lightly golden.
15. Garnish with pine nuts if desired.

Photo credit: Daniel Leal/AP/Shutterstock



WHEN YOU BUY FROM A SMALL BUSINESS



YOU'RE **NOT** HELPING A CEO
BUY A THIRD HOLIDAY HOME

YOU'RE HELPING TO PAY FOR...

a little girls
dance classes



A YOUNG BOY'S
TEAM JERSEY

MUM AND DAD TO PUT
FOOD ON THE TABLE



SUPPORT YOUR LOCAL BUSINESSES
AND LET THEM KNOW YOU SAW THEM FIRST IN... **VISION**

Enchanting ELDERFLOWER

Elder trees are very common in the UK and, come late May, start to develop masses of tiny white flowers which eventually turn into purple elderberries. The elderflower is known for its light and floral taste and makes a great addition to cordials, cakes and more.

ELDERFLOWER CORDIAL

YOU WILL NEED: 2 ½kg granulated or caster sugar | The zest of 2 unwaxed lemons | 20 fresh elderflower heads | 85g citric acid – you can buy this online or at your local pharmacist

HOW TO MAKE:

- > Gently heat the sugar and 2 ¾ pints of water in a pan until the sugar has dissolved.
- > Bring to the boil and turn off the heat.
- > Add the elderflower heads, the lemon zest and the citric acid to the pan and stir well.
- > Cover the pan and leave to infuse for 24 hours.
- > Line a colander with a clean tea towel and set it over a large pan.
- > Ladle in the syrup and let it slowly drip through.
- > Pour the leftover liquid into a sterilised jar. You can sterilise a glass jar either on a hot rinse cycle in the dishwasher or in the oven for 15 minutes at 160°C/140°C fan/gas mark 3.

> The cordial is ready to drink and can be kept in the fridge for up to six weeks.

ELDERFLOWER DRIZZLE CAKE

YOU WILL NEED: 175g softened butter | 175g golden caster sugar | 3 eggs | 140g self-raising flour | 85g ground almonds | ½ tsp baking powder | 100ml milk | 4 tbsp elderflower cordial | 4 tbsp white or golden granulated sugar

HOW TO MAKE:

- > Heat the oven to 160°C/140°C fan/gas mark 3.
- > Grease and line a 900g cake tin.
- > Beat the butter and 175g sugar until light and fluffy.
- > Add the eggs, flour, almonds, baking powder and milk, then whisk until smooth.
- > Pour into the tin and bake for 45-50 minutes until risen and golden.
- > Prick the cake all over with a skewer.
- > Mix the cordial and extra sugar and pour all over the cake.
- > Leave to cool in the tin and drizzle with icing if you wish.



INTERIOR DESIGN PROFILE



Echlin is a contemporary interior design house that bases its work on the principles of “wellbeing and craftsmanship”, creating looks that are light and spacious – an oasis of calm that is wonderful to observe.

The designs are understated and beautiful, and are excellent examples of how to blend creative design with modern living to create timeless interiors.

ABOUT ECHLIN

Echlin was founded by Mark O'Callaghan (top left) and Sam McNally (top right) in 2011. Both bring a wealth of design experience to the table, and the result is a design house that creates elegant looks with a clear 20th-century elegance. Using different textures such as wood, stone and metal, Echlin designs are made to stand the test of time.

Their designs are stylish but practical and use neutral canvasses brought to life with different materials, including leather and soft velvets, as well as the occasional pop of colour.

LOVING THE ECHLIN LOOK AND LOOKING FOR INSPIRATION?

Recreate this incredible design style in your home using the following tips:

- ⌚ Keep spaces **LIGHT** to make them feel open and airy. Choose lighter neutral shades for walls and floors, like creams and greys, and add darker contrasts through furniture and accessories.
- ⌚ Look for **UNIQUE** items that will stand out as a focal point for the space. A statement headboard or large piece of art can draw the eye, without taking away from the rest of the room.
- ⌚ Add a refreshing touch with pops of **COLOUR** using cushions, curtains and occasional chairs.
- ⌚ Keep your interior **UNCLUTTERED** and make the most of available storage for a clean space that will promote serenity.



Home Counties Loft Ladders, Quality You Can Trust!

These days most homeowners suffer from a lack of storage space. So many precious items that need to be kept – but where to store it all? That's where Home Counties Loft Ladders come in.

The company, based locally, offers homeowners the opportunity to maximise their storage space with a loft ladder. 50sqft of boarding and a light – all fully fitted in less than a day from just £444! But it's not just the affordability of the package that makes Home Counties Loft Ladders stand out, as manager Jamie Oakley explains: 'Our

watchwords are Quality, Integrity and Value. Quality in the materials that we use for all our installations and the fact that all our loft packages are fitted by time served tradesmen, so our customers are assured of the best job.

Integrity in that we will turn up at the time we say and make sure the house is spotless when we leave, and value in that we offer our services at a price people can afford.

Our business relies on referrals and we get a huge amount of our calls from people who have been referred to us by our existing customers

– that simply wouldn't happen if we didn't adhere to our overriding principles.

At the end of the day the old adage that happy customers lead to more happy customers is true and we work hard to make that happen for

every installation we carry out!

So, if you want to make use of your loft space, call Jamie free on 0808 301 9551 and he'll be happy to pop round and give you a no obligation quote so you too can make use of your loft!



Need more storage space? INSTALL A LOFT LADDER AND USE YOUR LOFT!

STARTER PACKAGE: Aluminium loft ladder, light plus 50 sqft boarding, fully fitted in less than a day from £444

- Loft Ladders • Hatches
- Boarding • Insulation
- Lights • Fully Guaranteed



— Home Counties —
LOFT LADDERS

CALL FREE: 0808 301 9551
homecountiesloftladders.co.uk





There's no place like
Home Hub



01992 948 980

essex@homehubgroup.co.uk

137-139 Epping High Street



@HomeHubGroup

With no pressure sales, transparent pricing and exceptional service levels you'll feel right at home with Home Hub. Come and see us at our beautiful lifestyle showroom in Epping - call 01992 948989 to book an appointment.

homehubgroup.co.uk

Windows • Sliding Doors • Bifold Doors • Roof Lights



Photo credit: Pinterest @samseite

CREATE A

VERTICAL

GARDEN
INDOORS

Indoor plants will improve the air quality in your home, and could also help reduce stress and increase concentration. Also, if you grow herbs, you can harvest them all year round to perk up your culinary creations. One of the biggest home trends of 2023 is the vertical indoor garden – simply a group of plants arranged on a single wall to save precious floor space. Read on to find out how to get started.

YOU WILL NEED:

- > A selection of shelves, containers and hanging baskets. Although you can buy specially designed containers for your plants, recycled items usually look more interesting and are also kinder to the environment. Wooden boxes, wire baskets, tins and even cut-down plastic drinks bottles all work well. Just remember to add drainage holes to containers if necessary.
- > A selection of plants and herbs. Rubber plants, dragon trees and the good old spider plant are excellent choices – they help remove formaldehyde, one of the main toxins in indoor air. Tarragon, thyme, rosemary, basil and mint all grow well indoors. If you're feeling adventurous, try growing cherry or plum tomatoes. But remember, they'll need somewhere warm and sunny.
- > Suitable compost.
- > DIY tools and materials to fix your containers firmly in place, and a sturdy stepladder.

HOW TO MAKE:

STEP 1: Work out how you're going to arrange your plants and containers. You could make a sketch, or lay out the items on the floor. You don't need to be exact and can change things as you go, but a plan is always handy.

STEP 2: Fix all the containers and shelves in place, ensuring they're secure.

STEP 3: Fill all your containers with compost, then add the plants.

STEP 4: Water your plants and work out a routine to take care of them.

STEP 5: Sit back and watch your garden grow.

YOUR LOCAL EVENTS

JAM NIGHT

Corn Exchange, 39 Fore Street,
Hertford, SG14 1AL
Tuesday, June 20, 7.30pm



Sinnerman presents an all-new jam night where musicians from all different backgrounds and abilities are encouraged to play together. Solo performers and full bands of any kind are welcome.

Entry is free and under-18s must be accompanied by a parent or guardian.

CHORAL FANFARE!

All Saints' Church, Queen's Road,
Hertford, SG13 8AY

Saturday, June 24, 7.30pm – 9.45pm

An evening of music for choir, brass, percussion and organ, with a brass ensemble and Charlie Penn (organ). The musical director and conductor is Manvinder Rattan.

For all ticket enquiries, please send an email to tickets@hertfordchoral.org.uk or to find out more, visit www.hertfordchoral.org.uk

STRICTLY UB40 – THE ULTIMATE UB40 TRIBUTE BAND

Corn Exchange, 39 Fore Street,
Hertford, SG14 1AL

Saturday, June 24, 7.30pm – 11.30pm

Strictly UB40 were founded in late 2013 with one purpose: to get you grooving from the start. Choice cuts from *Signing Off* through to *Promises and Lies* are interspersed with masterful interpretations of the internationally renowned *Labour of Love* cover series.

A multicultural blend of reggae, ska and rocksteady, a ticket to Strictly UB40 is a guarantee for a night of soulful sounds and dancing beats. The band has even received high acclaim from UB40 themselves for its

impressive stagecraft.

Tickets cost £13 in advance or £15 on the door. Under-18s must be accompanied by a parent/guardian. Purchase tickets at www.ticketweb.uk/event/strictly-ub40-hertford-corn-exchange-tickets/12486445

HERTFORD CASTLE BEER & WORLD FOOD FESTIVAL

Hertford Castle, The Castle, Hertford, SG14 1HR

Sunday, July 9, 12pm – 6pm

As part of the Hertford Food and Drink Festival weekend, Hertford Town Council presents the Hertford Castle Beer and World Food Festival. An afternoon filled with worldly tastes and live music to get all your senses singing.

With a large beer tent offering a variety of local and national beers, ales and ciders, a dedicated gin and Prosecco area and more than 15 world food stalls, there is something for everyone to sample and enjoy.

The event is free to attend.

HERTFORD MUSEUM WALKS PROGRAMME – JEAN RIDDELL

Port Vale, Hertford, SG14

Sunday, July 16, 11am

Join Jean Riddell as she explores Port Vale, a country lane turned vibrant residential road.

The walk, which is part of the Hertford Museum Walks Programme 2023, starts at 11am and lasts for around an hour.

Advance booking is essential. Tickets cost £5 per person and can be purchased from www.ticketsource.co.uk/whats-on?q=hertford%20museum%20walks%20programme



Photo credit: Google Maps

Photo credit: Anthony Haney/Shutterstock



The coronation of
KING CHARLES III
and his wife Queen Camilla

SATURDAY 6 MAY, 2023

GOD SAVE THE KING

Princes, princesses, presidents and pop stars alike crowded into Westminster Abbey to witness the historic coronation of His Majesty King Charles III, and what a marvellous day it turned out to be.

On Saturday, May 6, 2023, the world's gaze turned to Westminster Abbey in London. More than seven months had passed since we said a final farewell to our beloved Her late Majesty Queen Elizabeth II, and what bittersweet joy it was to witness King Charles III's official ascent to the throne.

Naturally, comparisons were not drawn between this event and the Queen's funeral, but instead to her coronation 70 years previously. This was the first televised coronation, broadcast on radio and television around the world. Both ceremonies were watched by millions, though the King's was the first British coronation to be televised in glorious, high-definition technicolour.

Regardless of your feelings about the monarchy, it can't be denied that when it comes to pomp, ceremony and splendour, no one does it like Great Britain.

The journey from Buckingham Palace to Westminster Abbey alone was a thing of wonder, with joyous fans lining the streets as more than 4,000 members of the Army, RAF, Royal Navy and Commonwealth forces in immaculate dress uniforms accompanied the Diamond Jubilee State Coach.

One BBC commentator remarked how the coach – drawn by eight Windsor Grey horses – looked like something from a fairy tale, before admitting that so ancient are ceremonies such as these, that the fairy tales are more likely based on them.

Inside the abbey, proceedings took on an even more timeless quality, with the two-hour ceremony effortlessly fusing the old and the new. One poignant example of this was during the presentation of the orb, sceptre and other regalia – pieces from the Crown Jewels that hold “incalculable cultural, historical, and symbolic value” and date back to the 17th century – by various faith leaders, and the carrying of the Sword of State by a resplendent Penny Mordaunt MP.

Another poignant moment was when the King was screened from the public as he was anointed with holy oils by the Archbishop of Canterbury, because this is an event historically regarded as taking place between the sovereign and God. The anointing was carried out using an ampulla and coronation spoon, which is believed to date back to the 12th century.

Finally came the moment all had been waiting for as His Majesty sat resplendent in the Robe Royal – made for King George IV's coronation in 1821 and one of four robes worn during the service – and was adorned with St Edward's crown. After crowning Charles, the Archbishop boomed, “God Save the King”, a sentiment that was then echoed by all in attendance.

Shortly after, Her Majesty Queen Camilla was also crowned, with Queen Mary's Crown placed on her head. Interestingly, she was granted the title of Queen on the late Queen Elizabeth II's request.

The late His Majesty Prince Philip, on the other hand, was never given the title of king. This is because a ruling queen's husband is called a Prince Consort, as the title of king is only given to a monarch who inherits the throne. If King Charles passes away before Queen Camilla, Prince William, who is the heir to the throne, will become king. Queen Camilla will not become a reigning queen; her title will change to queen dowager, the official term for the widow of a king.

Following the ceremony, the King and Queen were joined by the other senior royals and their children on the balcony at Buckingham Palace for the traditional Royal Air Force flypast which, despite the rain and subsequent need to simplify the air show, drew to a close to a most historic and memorable day for all.

A new King, a new set of values, and a new era for all.



FROM YOUR AREA

Green councillor appointed as Leader



For the first time, the Leader of East Herts Council is a Green Party councillor.

Following the local elections last month, the Greens emerged as the largest party, with 19 councillors. They will form a joint administration with the Liberal Democrats, who now hold 10 seats, to run the council over the next four years. This marks the end of 28 years of Conservative control.

On May 19, Hertford Bengoe Ward councillor Ben Crystall (pictured above left) was elected as Leader of the council at the Annual Council Meeting.

Cllr Crystall said: "I am confident that the Greens and the Liberal Democrats, working together in this joint administration, will provide strong and effective leadership for our communities. Our combined efforts will navigate the challenges ahead, deliver on residents' priorities and strive towards a better, more sustainable future for all in East Herts."

Lib Dem councillor Mione Goldspink (pictured above right) was appointed as Deputy Leader and executive member for neighbourhoods.

Plans for three-day beer festival approved

A German beer festival is set to go ahead in Hertford this October after the plans were approved by East Herts Council (EHC).

At a meeting of EHC's Licensing Sub-committee on May 22, councillors approved plans for the three-day Oktoberfest despite receiving some objections.

During the 28-day statutory public consultation

period, six representations were received against the application; four from local residents, one from Hertford Town Council and one from a Hertford town councillor who is also a local resident.

One resident commented that they feared the "anti-social behaviour and litter nuisance that will occur as a result of this inappropriate event", and noted that police may struggle to respond to the influx of visitors.

However, EHC granted permission for the licence. The event, which in the past has typically been hosted in Harpenden, will now take place on Hartham Common between October 13 and 15.

To get tickets, head to hertsoktoberfest.com. EHC has been contacted for comment.

Mayor's fund raises more than £14,000 for charity

Two local charities have benefited from donations of more than £7,000 each thanks to the Mayor of Hertford's Appeal Fund.

FUTUREhope and Hertford Dramatic and Operatic Society (HDOS), the Mayor's chosen charities, both received a share of £14,126.30 raised during Susan Barber's term in the role.

The money was raised through a series of community events, including the Mayor's quiz, board game night, talks from local residents and a civic dinner.

Susan (pictured below left) said: "I have had an amazing year as Mayor of Hertford and I am delighted to be able to present to my two chosen charities, HDOS and FUTUREhope, substantial cheques for them to be able to put to good use."

Both charities expressed their gratitude to the Mayor and everyone who helped with the fundraising.

The new Mayor of Hertford for 2023/24 is councillor Vicky Smith.



E Shevlane Groundworks

**1.5 TON
MINI DIGGER & DRIVER**

**CONCRETE BREAKER
AVAILABLE**

**£280
PER DAY**

30 YEARS EXPERIENCE

Tel 07951 831530

PLATINUM DECORATING

**FOR DECORATION AS
UNIQUE AS YOU ARE**

- PAINTING & DECORATING
- KITCHEN SPRAYING
- WALLPAPERING
- FREE QUOTATIONS

01992 276057
info@platinumdecorating.co.uk
 @platinumdecorating
 @platinum.decorating

BOILR

BOILR offers comprehensive service plans to homes throughout Essex, Hertfordshire & London.

★	★★	★★★	★★★★
£7.50 / MONTH	£15.50 / MONTH	£19.50 / MONTH	£23.50 / MONTH
Annual boiler service ✓	Annual boiler service ✓	Annual boiler service ✓	Annual boiler service ✓
Landlord safety record ✓	Landlord safety record ✓	Landlord safety record ✓	Landlord safety record ✓
Heating/Gas/Plumbing ✓	Heating/Gas ✓	Heating/Gas/Plumbing ✓	Heating/Gas/Plumbing ✓
Electrical Faults & Emergencies ✓	Electrical Faults & Emergencies ✓	Electrical Faults & Emergencies ✓	Electrical Faults & Emergencies ✓

Servicing | Installation | Plans

CALL OUR TEAM TODAY FOR MORE INFORMATION

01992 236063

hello@boilrltd.co.uk boilrltd.co.uk

T&C's Apply

JULIE MARSON MP

Conservative MP for Hertford and Stortford



I held a productive meeting at the Rush Green roundabout with McDonald's. We discussed the urgent need to build an extra lane there to improve traffic flow. McDonald's and BP submitted their final proposals to Hertfordshire County Council as a result and I appreciate their efforts to work together on a long-term solution.

I also sat down with the new chief executive officer at Citizens Advice East Herts, Maxine Bromyard. We discussed my support for its incredible work in Hertford and Stortford and how we can best continue to work together. I wish her every success.

Herts-based charity Helping Herts completed its 180-mile Coronation Walk around the county. It was great to get out and support walkers myself during a quick rest break. The charity raised lots of money for some fantastic causes – 12 local charities that help children and young people in our area. Take a look at its website at www.helpingherts.com to find out more information.

Hertford is experiencing an unfortunate new trend – the closure of high street banks. Both the HSBC and NatWest branches in town are due to permanently shut this summer. The trajectory seems clear and I am concerned Hertford's other banks will follow the same course. I raised this with the Economic Secretary to the Treasury and contacted LINK, the operator of the UK's largest ATM network, to explore the potential for new access to cash services in town. Exactly what this might look like depends on its expert assessment of what people in Hertford need, but it is an important first step in the right direction.

Over £29,000 in funding is secured for local sports facilities across Hertford and Stortford! Bishop's Stortford Swifts FC, The Bishop's Stortford High School Playing Fields and Hertingfordbury Park will all benefit from new improvement works. These spaces are important community assets and help look after people's physical and mental wellbeing. I look forward to seeing them go from strength to strength.

If you have any ideas you would like to share with me on this or anything else, please get in touch at julie.marson.mp@parliament.uk



WWW.JULIEMARSON.ORG.UK



www.gsplastering.co.uk

COVERING ALL OF EAST HERTS

- All Aspects of Internal Domestic Plastering
- Finished to a very high standard
- Trusted in the local community
- Clean and Reliable
- Fully Insured

CALL GEORGE ON
01992 276089
07966 202460

or email: georgerout1993@gmail.com



YO _ R ADVERT HE _ E...

Q: WHAT'S MISSING HERE?

A: YOU ARE

CONTACT US NOW TO START ADVERTISING

Your
Monthly
Lifestyle
Magazine



t: 01992 276101 m: 07967 079101
e: hertford@VISIONmag.co.uk



A place of solitude in the heart of Ware

In this hectic, unrelenting, intense world, there can sometimes seem scarce opportunity to sit back, reflect, relax and immerse ourselves in calm surroundings.

While we see the need for such meditative practices as a modern-day requirement, deep thinkers through the ages have sought out ways to shield themselves from the noise of civilisation.

A great example of this can be found at Scott's Grotto in Ware, which was created by the 18th century cultural icon John Scott.

A man well respected for his poetry and dedication to helping those less fortunate, Scott built Amwell House, his family residence, and began work on an accompanying grotto in the 1760s. The idea was to create a tranquil haven where he could find solace and inspiration, and escape from the hustle and bustle of daily life.

Sure enough, over the years that followed, he transformed the grotto into a beautiful and mysterious space that attracted the attention of the local community and, eventually, visitors from all over the country.

Extending more than 67 feet into the chalk hillside, the grotto is composed of six interconnected chambers, each with its own unique design and purpose. The central Council Chamber features an impressive domed ceiling, and is where Scott, a Quaker and philanthropist, would entertain guests and hold meetings. Another space, the Dome Chamber, is adorned with stalactites made from shells, while the other chambers are decorated with a fascinating array of minerals, flints and fossils.

It is estimated that more than 20,000 shells from around the world were used to create the array of elaborate patterns that depict various scenes from nature, mythology and religious iconography, in a reflection of its creator's fascination with the natural world.

Visitors can explore the grotto's enchanting chambers and marvel at the intricate shellwork, which offer a glimpse not just into the life and passions of John Scott, but also into the artistic and cultural values of the 18th century.



STAYING ALIVE!

Unless you have someone looking after your garden while you are on holiday, you may be wondering how you are going to keep your plants alive and well until you return. Discover our top tips below.

WATER BEFORE YOU GO:

Before you leave for your holiday, make sure you give all the plants in your garden a thorough watering. Soak any pots, containers and hanging baskets at the plant base until the water rises above the soil. Allow this water to soak in and then repeat.

MOVE POTTED PLANTS:

Move potted plants into shady areas of your garden to slow the rate at which they dry out and to help them stay hydrated. Avoid using shade cast by the eaves of your home as this can prevent any natural rainwater from reaching them.

MAKE SOME MULCH:

A thick mulch can help to reduce the evaporation of water and lock moisture into the ground. You can

make mulch from woodchips, gravel and decorative stones or even with just a few handfuls of good quality compost. Place around the base of your plants in a doughnut shape.

INVEST IN AN IRRIGATION SYSTEM:

If your budget allows it, an irrigation system will deliver a controlled amount of water to reach your plants at set times during the day. This is a good choice if you are away for a longer period of time, or you go away frequently.

TOP TIPS FOR HOUSEPLANTS:

- > Move any houseplants away from direct sunlight to cooler, darker areas of your home
- > Give them a good, deep soak for around 10 seconds but make sure to drain any excess water
- > Place one end of a damp cloth into a glass of water and the other end in the soil. When the plant becomes thirsty, it will absorb moisture from the cloth
- > Gather your houseplants together to create a humid microclimate.



Belladonna is one plant that you do not want growing in your garden. Belladonna, sometimes referred to as deadly nightshade, is extremely toxic to humans, dogs and cats, and needs to be quickly identified and removed.

WHICH PARTS ARE TOXIC?

All parts of the belladonna plant are toxic to humans and domesticated animals, including the leaves, flowers, fruits and roots. It is not toxic to birds and wildlife, although when honeybees feed on belladonna, the honey they produce can also be toxic.

HOW TO IDENTIFY BELLADONNA

Belladonna is a tall and bushy perennial that grows three to four feet high and wide. It boasts dark green leaves that are oval and unevenly sized. On the bottom part of the plant, the leaves are solitary but on the upper parts, they grow in pairs. Belladonna blooms from June through to early September, with dull purple or lavender flowers that are slightly scented.

The fruit ripens between late August and September and is black and shiny like a cherry.

HOW DOES BELLADONNA SPREAD?

Belladonna spreads very quickly, just like a weed. This plant dies back in winter and then regrows in spring from its thick, fleshy roots. Birds that eat the seeds can spread the plant to other areas via their droppings.

HOW TO REMOVE BELLADONNA FROM YOUR GARDEN

You must protect your skin when handling belladonna, so make sure you wear long sleeves, long trousers, boots and gloves. If the plant is particularly tall and there is a risk of it coming into contact with your face, then you should wear goggles.

- > Dig out the plant with all its roots
- > Dispose of the plant in your garden waste bin
- > Disinfect any tools you have used
- > Wash your work clothes immediately and separately from your other clothing.

THE **B7** MEDIA GROUP

PRINTING • BUSINESS CARDS • LEAFLETS • DISTRIBUTION
SIGNAGE • MENUS & BROCHURES • EXHIBITION BOARDS & BANNERS
RETAIL PACKAGING • WINDOW VINYLs • LOGO DESIGN
BRAND ALIGNMENT • VEHICLE WRAPPING • CARBON PADS
WORKWEAR • WEBSITES • SOCIAL MEDIA • I.T. SOLUTIONS



ENQUIRIES@B7MEDIAGROUP.COM



01992 276101



Platinum Pooches

Friendly, Professional
Dog Grooming Salon



For appointments call
07711 180 461

Foxholes Farm, London Road, Hertford, SG13 7NT
Discounts for registered assistance dogs
Fully insured salon & City & Guilds qualified to L3 standard

THIS MAGAZINE IS MISSING YOUR ADVERT

CALL 01992 276101
TODAY TO BOOK
YOUR SPACE



STONELINK
Driveways & Landscapes



FREE ESTIMATES & ADVICE - LOCAL JOBS TO VIEW

- **BLOCK PAVING**
- **TARMACADAM**
- **BRICKWORK**
- **TURFING**
- **PATIO SLABS**
- **RESIN BOUND**
- **FENCING**
- **LANDSCAPING**

- ✓ All Work Fully Guaranteed
- ✓ No Deposit Required
- ✓ 14 Day Cooling Off Period
- ✓ Public Liability Insured



www.stonelinkdriveways.co.uk

Essex: 01279 881 749 • Herts: 01992 870 513

London: 0208 485 6447 • Mobile: 07385 922 004

info@stonelinkdriveways.co.uk

Little Meadows, Weald Hall Lane, Thornwood, Epping, Essex CM16 6ND

Google

thomsonlocal.com



Yell

mybuilder.com

BEACH SAFETY TIPS FOR DOGS



PETS

Most dogs love the beach. They can run around, play in the sand and cool their paws in the sea. However, if you are planning to take your four-legged friend to the seaside this summer, you need to make sure you know how to keep them safe.

CHECK LOCAL RULES

There are lots of dog-friendly beaches all over the UK, so be sure to check the local rules of your chosen spot before you head out to avoid disappointment. You can find this information at www.thebeachguide.co.uk/dog-friendly

TEACH YOUR DOG TO SWIM

Most dogs are not natural-born swimmers, so it can be a good idea to teach them how to swim before you take them to the beach. There are many guides online on how to teach your dog to swim, such as this one: www.purina.co.uk/articles/dogs/behaviour/training/teach-dog-to-swim

PROVIDE FRESH WATER AND SHADE

If you are planning to spend a long time at the beach with your dog, then you will need to provide fresh water and shade to prevent overheating and dehydration. Also, watch your dog to ensure they don't drink too much seawater.

APPLY SUN CREAM FOR DOGS

Dogs can get sunburn in the same way that you can, so you need to make sure you apply

sun cream that is specially formulated for pets. This is especially important for dogs with light skin and short fur.

BE VIGILANT OF DANGEROUS ITEMS

Dangerous items such as broken glass and rocks can easily become buried in the sand and, if trodden on, can injure your dog's paws.

RINSE YOUR DOG

Once you have finished your day at the beach, be sure to rinse off your dog's coat to remove any sand, salt and germs before you head home.





PLANE *sailing*

Love family holidays but dread flying with young children? Discover five ways to keep your kids occupied on a plane, with options for all ages.

BOOK A WINDOW SEAT

If your budget allows for it, booking a window seat is a great way to keep your children entertained during take-off and landing. Whether they just gaze at the views below or look for animals in the cloud shapes, children of all ages can enjoy looking out of the window during a flight.

ACTIVITIES TO KEEP THEM OCCUPIED

Remember to pack colouring and puzzle books in your hand luggage to help keep boredom at bay. Alternatively, bring blank paper and pens and ask your children to draw what they can see out of the window, or what they imagine your destination will look like.

You can also bring travel games or even a pack of playing cards; simple games like snap are perfect for little ones, while older children can enjoy more advanced games like solitaire.

DOWNLOAD AN AUDIO BOOK

If you want a bit of peace and quiet but you don't want your kids glued to a screen the entire time, then an audio book is a great alternative. There are so many books to choose from – just make sure you remember to pack headphones.

PACK PLENTY OF SNACKS

Do not underestimate how distracting snacks can be for kids during a flight, especially younger ones. Rather than buying them on the plane, bring a selection of your children's favourite snacks with you in your hand luggage and then give them out sporadically throughout the flight.

TALK ABOUT YOUR TRIP

Chatting about what you are planning to do when you get to your destination and what you are excited about, can be a great way to pass the time and engage with your children. You can also take the opportunity to teach them about the different places you are flying over.



RESERVING OFF-PLAN NOW



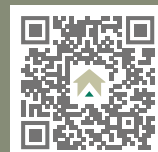
GRANARY & CHAPEL

A CONTEMPORARY COLLECTION OF HIGH
QUALITY NEW HOMES IN HERTFORD



A boutique development of modern three and four bedroom homes. Granary & Chapel is both bold and original, yet reflective of the local community and the site's former industrial heritage.

Now taking reservations on our first release of homes, with prices from £755,000.



Please contact:
01992 660720
granaryandchapel@ashtons.co.uk
www.ashtons.co.uk/granaryandchapel

DURKAN
HOMES

ashtons
land & new homes

1 & 2 bedroom
apartments also
available from £317,500





YOU CAN COUNT ON US EVERY STEP OF THE WAY

**AREAS OF LAW COMMERCIAL PROPERTY | COMPANY & COMMERCIAL
DISPUTE RESOLUTION | EMPLOYMENT LAW | FAMILY LAW
LASTING POWERS OF ATTORNEY | LITIGATION | NEW HOMES
PERSONAL INJURY | RESIDENTIAL CONVEYANCING
TOWN & COUNTRY PLANNING**

**THISTLE HOUSE, 32A ST ANDREW STREET,
HERTFORD, HERTFORDSHIRE, SG14 1JA**

www.duffieldharrison.co.uk

HODDESDON 01992 442 911 | HERTFORD 01992 587 065 | ENFIELD 020 8804 5271



BEEWISE

**High end solutions for
less than you think**

At Beewise we use our massive purchasing power
and market expertise to get you the best deals
on all of your retail merchant services.

Try risk free for 1 month
50% off the cost of the terminal*
£100 Amazon voucher for
the first 200 new customers

Scan the code or call us and we will
save you time and money on your
business utilities and services

01992 276075

*Offer expires 30th June 2023



SCAN ME



easy Does it

THE SUCCESS OF CHARISMATIC EASYJET FOUNDER, SIR STELIOS HAJI-IOANNOU

When launching a brand, it pays to make sure you have people rooting for you. And easyJet founder Sir Stelios Haji-Ioannou has one big thing on his side – charisma.

The now 55 year old, whose success as the founder of a revolutionary airline concept soon led to him being instantly recognisable by first name only, caused a major stir in the airline business in the mid-1990s when he started running a cheap shuttle air service between Luton and Scotland.

At the time, the concept of cheap air travel was one that had never taken off – literally. However, by putting on a ‘no frills’ service that did away with complementary food, refreshments and even seat reservations, Stelios found a gap in the market that short-haul travellers loved.

Soon, the airline was servicing destinations across Europe. With fares starting at just £1, the marketing took care of itself.

It wasn't Stelios's first venture into transport.

He had previously owned a shipping business, Stelmar Shipping, and had learned the ropes from his father, who was hugely successful in the same space.

Yet nothing quite rivals the serial entrepreneur's achievements with easyJet. He and his family still own one-third of the business, which values his stake at more than £4billion. This is despite the fact that, as a group floated on the stock exchange, he has repeatedly fallen out with the company's senior managers, declaring that shareholders have had no notable return in more than a decade.

Stelios's battles with Ryanair founder Michael O'Leary are also legendary – Stelios was once portrayed as Pinocchio on a Ryanair advert.

He now lives in Monaco, and received a knighthood from Her Late Majesty Queen Elizabeth II for services to entrepreneurship in 2006.

BUSINESS & PROPERTY



Photo credit: Stuart Clarke/Shutterstock

SLEEP

like a baby?

Are you thinking of co-sleeping but not sure if this is the right choice for you and your baby? Discover five benefits of co-sleeping below. Plus, five factors that mean you should NOT co-sleep.

1 You can meet your baby's immediate needs

Most babies require feeding, changing and soothing throughout the night. If you are close to your baby, then you can meet their needs without having to get out of bed. You can also do this with minimal disruption, which means your baby is more likely to fall quickly back to sleep.

2 You can build up your milk supply

For breastfeeding mums, co-sleeping can help you to maintain a good milk supply for your baby. As breastmilk production works on a supply-and-demand basis, if you are sleeping with your baby, you are in the ideal position for frequent night-time feeds.

3 Your baby can practise self-rousing

Although sending your baby into a deep sleep may sound appealing, babies are not actually meant to sleep in this way. Babies who co-sleep are frequently roused when close to their mothers, which can help them to learn how to use their self-preservation instinct to rouse when there is any danger.

4 Your baby can develop stronger bonds

Research suggests that infants who co-sleep develop stronger emotional relationships both with their parents and with other people. It may also help children to grow up with higher self-esteem and less anxiety, and to become more independent.

When you should NOT co-sleep:

- > You have been drinking alcohol
- > You are a smoker or use e-cigarettes
- > You have taken any drugs that may cause drowsiness
- > Your baby was premature (born earlier than 37 weeks)
- > Your baby had a low birth rate (less than 2.5kg or 5.5lbs).



WORKING WITH EARLY YEARS CHILDREN

TUMBLE TOTS
Skills for Life

Scan me:

Franchise Opportunities

Help shape children's lives for the future...

- Be Your Own Boss
- Work Flexible Hours
- Full Training Provided
- Ongoing Support

Being a Tumble Tots franchisee is a rewarding career working with early years children and a great opportunity to run your own business. No experience is required as full training and ongoing support are provided to help you on the road to success and you can work flexible hours to fit around family life.

0121 585 7003 • franchise@tumbletots.com
www.tumbletots.com/franchising

forestreet
recruitment & training

Supporting local people & local businesses with all their recruitment needs

Urgently recruiting for:

- Customer Service Advisors
- Administrators • Warehouse Operatives
- MHE Trainer • Assistant Accountant

Corporate Member

**IF YOU ARE LOOKING FOR A JOB OR
LOOKING TO RECRUIT PLEASE GET IN TOUCH!**

01992 583256

www.fore-street.co.uk

@ForeStreetLtd @forestreetrecruitment

info@fore-street.co.uk

FROM ACCOUNTANTS TO ZUMBA TEACHERS

You'll find them and everything inbetween in...

ADVERTISE NOW
For just
£180
+VAT per year
AND BE SEEN BY OVER 12,500 READERS MONTHLY...

THE VISION LISTINGS

CONTACT US TO FIND OUT MORE

Your Monthly Lifestyle Magazine

Improve, Don't Move!

Maximise the value of your home.

- SPACE-SAVING - MAXIMISE YOUR GARAGE HEADROOM
- SECURITY-ENABLED AUTO-LOCKING SYSTEM
- CHOICE OF 21 COLOURS TO MATCH YOUR HOME
- REMOVAL AND RECYCLING OF YOUR OLD DOOR
- DEDICATED AFTER-CARE TEAM

GAROLLA 01992 830 024

**ROLLER
SHUTTER
DOORS**



LINES OPEN 7 DAYS A WEEK

www.garolla.co.uk



BESPOKE ELECTRIC DOORS MANUFACTURED IN THE UK



PRICED
EXAMPLE
£895
COMPACT • UP TO 2.4M

GAROLLA ★ PREMIUM
Increased Security • Double Insulation
One-Touch Close



PRICED
EXAMPLE
£1,990
PREMIUM • 3.4M • ANTHRACITE



**THE UK'S MOST TRUSTED AND REVIEWED
AUTO LOCKSMITH & EMERGENCY RESPONSE**

HOW SAFE IS YOUR CAR?

Car & Van Security Specialists

VAN SECURITY LOCKS | ALARM SYSTEMS

VEHICLE TRACKING | THEFT PROTECTION

IMMOBILISERS | CAR KEYS



from
**ONLY
£450**



GHOST CAR IMMOBILISER

A SMART WAY TO PROTECT YOUR CAR

Secure your peace of mind and your vehicle
with the next generation of vehicle security



www.carkeyssolutions.co.uk
Call us on 01992 276093
Email: contact@carkeyssolutions.co.uk

We cover Greater London &
surrounding M25 areas
**Open 7 days a week
from 8am to 10pm**

HOW TO PROTECT YOUR CAR IN HOT WEATHER



MOTORING

When temperatures soar, your vehicle requires a little bit of additional TLC. Unless, of course, you don't mind having to fork out for expensive repairs.

PARK IN THE SHADE: Although this may seem obvious, it is really important that you try to park your car in the shade when the sun is at its hottest. This will help to prevent your dashboard from drying out and cracking.

USE A WINDSHIELD PROTECTOR: A windshield protector can help to keep your car cool and prevent sun damage. These are low-cost and easy to use; simply unfold and slide into place on your dashboard.

WAX YOUR CAR: If a heatwave is on its way, it can be a good idea to wax your car as this provides a layer of protection between your car and the sun's powerful ultraviolet rays.

CHECK THE TYRE PRESSURE: Hot pavements and low tyre pressure are a dangerous combination and can lead to a blowout. Therefore, you should make sure that you regularly test your tyre pressure when the warm weather hits.

USE SEAT COVERS: As well as protecting both leather and fabric seats from spillages and stains, seat covers can also help to keep them cool and prevent sun damage.

CHECK YOUR COOLING SYSTEM: To prevent your engine from overheating, you need to make sure that the cooling system is in good working order. Have the belts checked and the antifreeze drained. Also, make sure that you change the belts and fluids on a regular basis.

WASH AND DRY OFTEN: Both sun and heat can cause your car's exterior to crack and fade. However, frequent washing and hand drying can help to remove dirt and dust particles that can cause scratches and dull your car's finish.



Photo credit: Anton Ukolov/Shutterstock.com, motor1.com

A Very BRITISH RACKET

Nothing conjures up a British summer better than Wimbledon, the oldest tennis championship in the world. In true British fashion, it's not all about who wins – or even the lovely sound as the racket whacks the ball. Think strawberries and cream, bizarre tennis outfits, celebrity spotting, and an endless obsession with the weather.

To mark this year's contest, which takes place from July 3 to 16, let's look at a few fun facts.

- The first Wimbledon took place in 1877, but only involved men's singles. Ladies weren't allowed to compete until 1884.
- Wimbledon attracts around 500,000 spectators, and millions more from around the globe catch up on TV.
- During an average tournament, players go through around 55,000 balls.
- The grass on the Wimbledon lawns has to be precisely 8mm high.
- There's a strict rule that Wimbledon players must wear white clothes – though a small dash of colour is now allowed. The tradition started in the 1800s to avoid sweaty patches showing up on dark clothing.

• Yellow tennis balls were introduced in 1986 because they were more visible on TV than the white ones.

• At the last Wimbledon tournament, spectators consumed almost 2,000 servings of strawberries and cream, along with a staggering 250,000 glasses of Pimm's.

• The tournament employs around 250 ball boys and girls, selected from 27 nearby schools, who must pass a test to ensure they can stand still for at least three minutes.

• The longest tennis match in history was held at Wimbledon in 2010. It lasted for 11 hours and five minutes over three days between Frenchman Nicolas Mahut and the eventual winner of that year's championship, American John Isner.

• This year's tournament marks Rufus the Harris's Hawk's 16th year as chief pigeon scarer, making sure matches aren't interrupted by unwanted avian guests. Follow him on Twitter or Instagram.

So whether you're lucky enough to attend in person or will be watching the competition from the comfort of your own home, sit back, relax and enjoy this prestigious display of sporting prowess – Pimm's optional.

Ride ELECTRIC

We see these casual speedsters effortlessly and gracefully gliding their way along the roads, and the realisation is that the days of pumping pedals may be on its way out.

It appears the electric bike revolution is here to stay; yet with the price of these magnificent machines is considerably more than their manual counterparts, handlebar aficionados are instead exploring ways to convert their existing rides into battery-powered versions.

It turns out it's not actually that difficult. Conversion devices can suddenly transform our humble bikes into rapid, resplendent electric vehicles.

These devices work by replacing a normal bike's rear disc-brake rotor with its own drive, which looks and works just like a traditional disc-brake rotor.

A weighty unit housing the battery and a 250-watt-hour motor clips onto the bike frame, with the rotor slotting into the clip-on unit and engaging with the gearing inside. Internal gearing turns the

special brake rotor, spinning the rear wheel and, hey presto, you're away.

You should be able to achieve almost 40 miles of assisted cycling, and be able to propel the vehicle at speeds of almost 20mph.

Recharging takes around two-and-a-half hours, and the unit can be easily unclipped and charged inside.

Pedal bikes have long been an incredibly green way to travel – it's the reason there are 20 million on Britain's roads. While those who use them as part of their job – think food delivery driver or parcel courier – may like the added speed and energy conservation of an e-bike, the stronger target market for this product is those keen to ditch the car for short trips, but who need some kind of propulsion when it comes to embarking on two-wheeled adventures.

Whatever the reason, users choosing an e-bike look certain to light the path... or road!

THE VISION LISTINGS

ACCOUNTANT & TAX ADVISORS

ALL THINGS ACCOUNTING

Accounting & tax services, we help with self-assessment tax return, corporation tax return, payroll, VAT return, CIS return & bookkeeping. Call 07539 035537 for free initial consultation.

AIRPORT TRANSFERS

PRIMROSE AIRPORT CARS

Competitively priced efficient, clean & reliable service using satellite navigation and tracking of all return flights for Business or Leisure - 01992 364000 | 07966 180531

AUDIO & VISUAL

ULTIMATE AV

We create bespoke systems designed and built especially for you. Small projects to complete home cinema environments. Based in Essex call us on 07531 214339

BEAUTY & NAILS

BEAUTY BY NATASHA KATIE

A local, mobile LVL Technician. Fully qualified level 2 and 3 beauty therapist Babtac insured and approved. 07961 462672

SPECIAL NAILS

Dedicated to provide the best quality nail care for Men & Women. Walk-ins welcome, appointment bookings & gift vouchers available. 01708 442248

THE NAIL STUDIO

Nail Studio lets you switch off and pamper with highly skilled technicians providing top treatments and nail products to meet your every need. 07572 526519

BUILDER

ALIGN BUILDING SERVICES

Based in Hertford, we specialise in: Home extensions, Kitchen Fitting, Structural Alterations and more. For enquiries call 07850 051788

BUSINESS CENTRE

THE TOWNHOUSE HERTFORD

Modern business centre in the heart of hertford offering a variety of office space, meeting rooms and hot desking facilities. 01992 350132

CARPET & UPHOLSTERY

ARWIN CLEANING SERVICES

Over 30 yrs of exp, we can offer a professional, efficient and cost-effective solution for carpet and upholstery, cleaning and maintenance. 07973 417764

CAR & VAN HIRE

SCENIC SELF DRIVE

Your self drive hire specialists. Whether you require modern cars, motorhomes, vans or minibuses. Rest assured we will provide you a professional service 01708 753461

CLEANING SERVICES

GLOWWHITE CLEANING

Serving Hertford and surrounding areas. We specialise in end of tenancy cleaning for tenants, landlords and property managers. Fully insured. Contact: 07561 138855

BOOK VIA HERTFORD@VISIONMAG.CO.UK

CLEARANCE & WASTE

HERTS CLEARANCE

Clearance, house, garden, garage, shed, no job too small, 75% waste recycled, call for a friendly quote, Tel 07951 831530

COMPUTER REPAIR & I.T.

MAPTEC IT

Your local residential & commercial IT specialists. We can fix your computers, configure email accounts & printers. Setup your Wi-Fi, Internet router & network. 0203 865 7174

ELECTRICAL & WHOLESALE

CH ELECTRICAL WHOLESALE

Essex & East London's leading electrical wholesalers providing the trade & public a professional service with access to all leading brands. 01708 730591

ELECTRICIAN

CAPITAL ELECTRICAL SERVICES LTD

Domestic/Commercial, Repairs/Installation, Vehicle Charging Points, Portable Appliance Testing, Fire Alarms, Emergency Lighting, Installation Condition Reports. Call 0208 088 2916

FINANCIAL SERVICES

GAETON FINANCIAL PLANNING

Backed by the strength and security of St. James's Place Wealth Management. Visit www.gaetonfp.co.uk | 07484273097

FRENCH POLISHING

DC POLISHING

20 Years experience in wood restoration i.e. Furniture, doors, staircases, worktops, minor repairs & FLOOR RESTORATION. 07949 204969 | dcpolishing.church@gmail.com

FURNITURE RESTORATION

ABBEEY GROUP

Abbey Group are specialist in creating, repairing & restoring quality furniture & wood surfaces to the highest standard. 01708 741135

KINGS UPHOLSTERY

Handmade sofas & chairs designed especially for you to your required specifications. Also providing in re-upholstery & repair work. 01708 444125

GARDEN SERVICES

JOHN HEARNE

We take care of it all Lawn Mowing, Weeding, Planting, General Tidying, Fence/Shed Painting, Driveway/Patio Pressure Washing and more. Call for details 07908 523101

THE ORIGINAL TREE SURGEONS LTD

Taking care of all your tree care needs and providing a personal first-class service to both domestic and commercial clients. 01708 715440

LOCKSMITHS

KEYTEK LOCKSMITHS

From Lock outs to security upgrades, our fully trained DBS checked Locksmiths are the experts | Call 01992 666 121 | Quote: 15077

MASTICS AND SEALANTS

QUALITY MASTICS LTD

Bathroom and shower mastic joint sealing. Kitchens, windows, floors, external seals around windows. For information. Call 01245 520981

PAINTING & DECORATING

PGA DECORATING SPECIALIST

Interior - exterior - paper hanging specialists in Window repair care. 07769 646357 | www.pgadecoratingspecialists.co.uk | pgadecorators@yahoo.co.uk

TRADITIONAL DECORATIONS

We are a family run business specialising in turning your house into a home. Giving advice on current decorating trends. 07737 562406

PLASTERERS

TF PLASTERING LTD

Professional quality workmanship, over 25 years' experience. Public liability insured. Skimming, coving, dry lining, rendering. Free quotes 07738 278036 | 01279 416311

PLUMBING & HEATING

BOILER

BOILER offer servicing, installations, repairs and plans. Local Gas Safe engineers for all your needs. 6000 Homes EVERY MONTH. Call 01992 236063

CMS PLUMBING HEATING & BATHROOMS

Corgi registered, 20+ years' experience, public liability insurance, offering free quotes. No job too small. Based in Gidea Park. Call Craig 07855 589185

JOIN THE LISTINGS... for just £180 +VAT per yr

PROPERTY MAINTENANCE

LILLYWHITE PROPERTY GROUP

For all building works, full refurbishments & property maintenance inc heating, plumbing, electrical, decorating, flooring, tiling & plastering etc. Call today on 07949 394403

STUART GREEN PROPERTY SOLUTIONS

Property maintenance specialist. Carpentry, painting/ decorating, laminate flooring, bath/shower re-siliconing, gutters cleared/repared, insurance work, PLI. 07917 870879

ROOFING

JIM BARR ROOFING

Exterior cleaning & maintenance. Gutters, Paving & UPVC; cleaned, repaired & renewed. 01708 874816 | 07833 572459

WEB DESIGN & PRINTING

SWIVEL CREATIONS

25+ years experience, specialists in Web, Print, Clothing & Embroidery. Professional, affordable, reliable. 01992 570383 | 07736 879233 | www.swivuk.co.uk | info@swivuk.co.uk

DISCLAIMER: **VISION** does not represent or endorse the accuracy or reliability of any of the advertisements, nor the quality of any products, information or other materials displayed, purchased or obtained by any customer as a result of an advertisement or any other information or offer in connection with the service or products. The opinions expressed in articles, reviews and stories are strictly those of the individual authors and do not necessarily reflect the views of **VISION**.

PUT YOUR BUSINESS IN THE **VISION** LISTINGS...CALL **01992 276101** TODAY

ACROSS: 1. DEAR, 3. FRACTURE, 9. REGALLY, 10. NECKS, 11. STRAIGHTENED, 13. VIRAGO, 15. STEREO, 17. DISASTROUSLY, 20. BASIC, 21. PLACEBO, 22. THEORIST, 23. TREK
DOWN: 1. DENISE, 2. ANGER, 4. RHATHM, 5. CONVENTIONAL, 6. UNCLEAR, 7. ELSE, 8. FLYING SAUCER, 12. BODYWORK, 14. REISSUE, 16. STAPES, 18. SWEAR, 19. ABOUT



PUZZLES & TRIVIA

PUZZLES

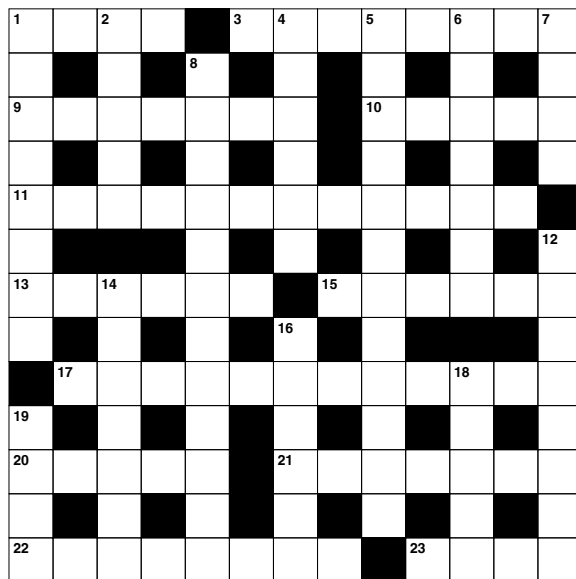
Answers: see end of The VISION Listings

ACROSS

1. Beloved; expensive (4)
3. Break (8)
9. Majestically (7)
10. Giraffes have long ones (5)
11. Uncurled (12)
13. Fierce or domineering woman (6)
15. Dual audio (6)
17. Ruinously (12)
20. Simple (5)
21. Inactive pill (7)
22. Conceptual thinker (8)
23. Arduous journey (4)

DOWN

1. Mocking (8)
2. Ire (5)
4. Sense of musical time (6)
5. In accordance with general custom (12)
6. Uncertain (7)
7. Otherwise (4)
8. UFO (6,6)
12. Exterior of a motor vehicle (8)
14. Print anew (7)
16. Ear bone (6)
18. Give a solemn oath (5)
19. Tuba (anag) (4)



DID YOU KNOW?

- ▶ Your eyes blink an average of 20 times a minute. That's more than 10 million times a year.
- ▶ The entire surface of your skin is replaced every month, which means you have about 1,000 different skins in your life.
- ▶ If you live to age 70, your heart will have beaten around 2.5 billion times.
- ▶ Laid end to end, an adult's blood vessels could circle the Earth's equator four times.
- ▶ Bodies give off a tiny amount of light that's too weak for the eye to see.
- ▶ Your left lung is approximately 20 per cent smaller than your right one.
- ▶ You produce about 40,000 litres of spit in your lifetime. Or to put it another way, enough spit to fill around 500 bathtubs.

SUDOKU

		5				3		
	9						1	6
	6		2					
2			8	7				
3		6				7		1
				9	6			2
					8		6	
1	2						7	
		4				2		



Dementia
advice from
experts

One step at a time

A video guide to navigating dementia

Our new video guide offers expert advice to help you navigate dementia, from initial diagnosis, to living well with the condition and self-care tips for carers.

Download the guide at
careuk.com/one-step-at-a-time
or scan the QR code.



Trusted to care

Knebworth, Woolmer Green
Snowdrop House, Ware
careuk.com/hertfordshire

care UK



In-Ex Design

Kitchens - Bedrooms & Bathrooms

Welcome To In-Ex Design



*For a free design
consultation call*

**01992 80 9000
or 0800 9800538**



Established since 1991
Delivering Quality & Excellence

Finance Available

@ IN-EX DESIGN

- Fast decisions
- Flexible payments
- Quality support



To apply visit:

ideal4finance.com/apply/in-ex/loan

Or call us on

01707 878785



15 The Precinct, High Road, Broxbourne Herts EN10 7HZ

Phone: 01707 878785 | E-mail sales@in-exdesign.co.uk | www.in-exdesign.co.uk