



**WHISKY
VERSUS
BOURBON**

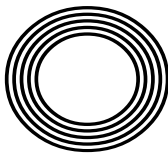
**GET FIT
WITH
FUNCTIONAL
FITNESS**

Glam up your eyes
with crystals this Christmas

MAKE YOUR OWN
cutlery holder for the festive season

Kylie
MINOGUE AO OBE

The singing actress we just can't get out of our heads



FREE

Photo credit: BBC/Guido Mandozzi



THE DIFFERENCE IS CLEAR

WINDOWS
DOORS • PORCHES
SOFFITS • GUTTERING
CONSERVATORIES • FSG
* Solar Batteries now available *

TAKE ADVANTAGE OF OUR
UP TO **50%** OFF
SALE

Uncompromising when it comes to quality

At EE Glazing, we have over 70 years of combined glazing industry experience behind us. During this time, we've learned what sets a top product apart from merely a good one. We have also centred our company ethos around quality, and every product we install is evidence of that commitment.

Take the Kommerling 70mm uPVC window system that we use, for example; it is hands down one of the best uPVC window systems on the market. It's highly durable, very efficient, secure, easy to maintain, and ultra-versatile, making it the perfect window option for every homeowner.



Contact us now for a no-obligation quote

01992 276084



www.eeglazing.co.uk



" The whole experience from initial order to installation and completion was carried out with efficiency, good humour and professionalism "

Mr & Mrs Lambert

CERTASS
Registered Installer





NOVEMBER 2023

Editor's notes...



Brett Shohet, Editor

Hello and welcome to this month's edition of **VISION**Hertford. Recently, I helped to organise a business exhibition in Bishop's Stortford, and it brought to my attention how success is all about strengths - both your own and other people's. An efficient business owner will focus on what they do best, while delegating tasks to the other people on their team according to their skills.

The vibrant energy and rich variety of products and services on display at the exhibition created an environment ripe for networking, forging new relationships and generating business opportunities. It was a testament to the power of community and collaboration. Together, we proved that when East Herts businesses come together, great things happen.

The exhibition might have concluded for this year, but the journey continues. We're thrilled to announce that we've already secured a date for next year's event, scheduled for Wednesday, October 23, 2024. Stand bookings are now open, so please contact me if you're interested in getting involved.

With Christmas Fast approaching, I'd like to encourage readers to shop local this festive season. Many people have lamented their quiet high streets, but how many of them are actually getting out there and supporting their local businesses? Remember, if you don't use it, you'll lose it.

Brett Shohet

This is your town's hyperlocal magazine, delivering to homes and businesses every month.

HOME & DIY | GARDENING | PETS | HEALTH & FITNESS | BEAUTY | FASHION | HISTORY | LOCAL NEWS | FOOD & DRINK | TRAVEL | BUSINESS & PROPERTY | SPORT | PUZZLES | MOTORING | KIDS | WHAT'S ON | TECHNOLOGY | THE LISTINGS



CONTACT US:
hertford@visionmag.co.uk | 01992 276101 | www.visionmagherts.com
@visionherts @visionmageastherts Vision Magazine East Herts

CONTRIBUTORS | Tabatha Fabray, Fiona Goble, Sophia Sheera All pages are recyclable

PRINTING • BUSINESS CARDS • LEAFLETS • DISTRIBUTION
SIGNAGE • MENUS & BROCHURES • RETAIL PACKAGING
EXHIBITION BOARDS & BANNERS
WINDOW VINYLs • LOGO DESIGN
BRAND ALIGNMENT • VEHICLE WRAPPING
CARBON PADS • WORKWEAR • WEBSITES
SOCIAL MEDIA • I.T. SOLUTIONS

ENQUIRIES@B7MEDIAGROUP.COM 01992 276101

The UK's leading provider of affordable electric wheelchairs.

Premium Electric Wheelchairs That Support Independent Living

Includes FREE next day delivery

| | |
|---|---|
| <p>MobilityPlus+ Deluxe Ultra-Light FOLDING ROLLATOR WITH SEAT Only £114.99</p> | <p>MobilityPlus+ Upright Rollator WITH FOREARM SUPPORT Only £154.99</p> |
| <p>MobilityPlus+ Ultra-Light Instant Folding Electric Wheelchair 24KG, 4MPH, 2 LITHIUM BATTERIES Only £879.99</p> | <p>MobilityPlus+ Quick-Split Electric LIGHTWEIGHT, COMPACT, 4MPH Only £599.99</p> |
| | <p>MobilityPlus+ Featherlite 18.7KG, 4MPH, LITHIUM BATTERY Only £899.99</p> |

Customer Support Team
01992 610 434 | www.mobilitypluswheelchairs.co.uk
OUR SHOWROOM: UNIT 5 VELOCITY, HARLOW BUSINESS PARK, HARLOW, CM19 5QF (APPOINTMENT ONLY)



MARKING THE 60TH ANNIVERSARY OF DOCTOR WHO – THE MAN, THE WOMAN, THE SHOW, THE MOVEMENT

Asking celebrities how they remain so youthful has become par for the course, but none has achieved as much ongoing success and vigorous relevance as the great Doctor, who at 60 is looking pretty fresh.

On Christmas Day, the Doctor's latest regeneration will be revealed, but not before some highly anticipated TV specials for the show's anniversary in November.

Making his grand return as the fourteenth Doctor, fan favourite David Tennant is set to wow once more for three anniversary episodes. The Scottish actor originally starred as the tenth Doctor from 2005 until his final episode aired on New Year's Day in 2010. Catherine Tate will also reprise her role as the Doctor's companion Donna Noble, with Neil Patrick Harris also joining the cast.

Though Patrick Harris is a newcomer to the *Doctor Who* fold, his character, The Toymaker, is not. First appearing in a now classic episode titled *The Celestial Toymaker*, from the show's third season in 1966, he was originally portrayed by actor Michael Gough.

The Toymaker is a memorable antagonist owing



to his whimsical yet sinister demeanour and his ability to create intricate and deadly challenges for the Doctor and his companions. The character's distinctive appearance and personality have made him a notable figure in the show's lore, one that aligns perfectly with Patrick Harris' dramatic and theatrical flair.

One of the greatest success stories for the BBC, *Doctor Who* began in 1963 when Sydney Newman OC, the corporation's head of drama, tasked producer Verity Lambert OBE and writer Anthony Coburn with creating a TV science fiction series. Their vision gave birth to *Doctor Who*, a show that would combine history, adventure and futuristic concepts in a unique way.

William Hartnell portrayed the original incarnation of the Doctor, a mysterious Time Lord with the ability to regenerate. The Doctor, along with his granddaughter Susan and two teachers, Ian and Barbara, travelled in the TARDIS, a time machine that looked like a 1960s British police box on the outside.

The series is listed in the Guinness World Records as the longest-running science fiction television series in the world, with Tom Baker holding the title for starring in the highest number of episodes – a whopping 178.

Despite its popularity, *Doctor Who* faced a significant hurdle in 1989 when it went on an extended hiatus. Aside from a TV film in 1996, the Doctor would not be fully regenerated until 2005.

This was the beginning of the show's modern era, helmed by writer and showrunner Russell T. Davies OBE and starring Christopher Eccleston as the ninth Doctor.

The most recent revamp of the series sees Davies return as the showrunner, taking over from Chris Chibnall who

introduced Jodie Whittaker as the 13th Doctor. Hot on the heels of his 2021 success *It's a Sin*, and with *Sex Education* star Ncuti Gatwa playing the 14th Doctor, Davies is in a fine position to return the show to its noughties glory.

The King's NEW COINS UNVEILED



SHOWCASING HIS PASSION FOR CONSERVATION AND EQUALITY

When His Majesty King Charles III was crowned, he thanked the public for their kindness and encouragement, and vowed that he and Her Majesty Queen Camilla would rededicate their lives "to serving the people of the United Kingdom, the Realms and Commonwealth". Putting his money where his mouth is, quite literally, the edge inscription of the new £2 coin reads 'In servitio omnium', which means 'In the service of all'. It was taken from the King's inaugural speech on September 9, 2022, and chosen by him personally.

The coin is one of eight that have been unveiled by The Royal Mint, ranging from 1p to £2. Determined to distinguish his reign from that of his beloved mother, the King has also embossed them with another of his great passions: nature.

Featuring endangered species from across the British Isles, such as the puffin, the red squirrel and the bee, along with flowers and the oak tree leaf, the coins reflect His Majesty's devotion to conservation and equality.

Here is the full list:

- **1p coin:** Hazel dormouse... which has seen its population halve since 2007
- **2p coin:** Red squirrel... expected to blend into the colour of the copper coin
- **5p coin:** Oak tree leaf... a rich habitat for biodiversity in woodland areas with a long monarchic association
- **10p coin:** Capercaillie... found in a small part of Scotland and threatened with extinction
- **20p coin:** Puffin... 10 per cent of the world population is on the UK's coastline
- **50p coin:** Atlantic salmon... at threat from river pollution and habitat loss
- **£1 coin:** Bees... 250 species found in the UK
- **£2 coin:** National flowers – a rose (England), a daffodil (Wales), a thistle (Scotland), a shamrock (Northern Ireland)

The coins will replace those designed by Her late Majesty Queen Elizabeth II in 2008 and may be in use by the end of 2023, but The Mint has confirmed that all existing currency remains legal tender.

Photo credit: royalmint.com

WHEN YOU BUY FROM A **SMALL BUSINESS**



YOU'RE **NOT** HELPING A CEO
BUY A THIRD HOLIDAY HOME

YOU'RE HELPING TO PAY FOR...

a little girls
dance classes



A YOUNG BOY'S
TEAM JERSEY

**MUM AND DAD TO PUT
FOOD ON THE TABLE**



SUPPORT YOUR LOCAL BUSINESSES
AND LET THEM KNOW YOU SAW THEM FIRST IN... **VISION**





CHRISTMAS TREE COLLECTION AND RECYCLING

FRIDAY 5th JANUARY - WEDNESDAY 10th JANUARY

1. Book online or by calling 01707 954850 – for a suggested donation of £15.
2. Leave your tree outside by 9.00am on 5th January 2024.
3. Sit back and feel really good about supporting Isabel Hospice while responsibly recycling your Christmas tree.

Visit isabelhospice.org.uk/treecycle
or Scan the QR code for more information

Registered Charity Number 1046826

Provide Care Comfort & Companionship

- Up to £13.50 per hour
 - Variety Hours
 - Rewarding Work
 - Fully Supported
 - Training Provided

Become a
Care Professional
East Hertfordshire
01279 721443
www.homeinstead.co.uk/eastherts
@hisceastherts





Tackle that TARNISH



FASHION

If your bling is looking more dull than dazzling, then these tried and tested DIY cleaning techniques are just what you need.

HOW TO CLEAN STERLING SILVER

1. Try baking soda

For severe tarnish, mix three parts baking soda with one part water. Wet the silver and then apply the paste with a soft, lint-free cloth. Work into the crevices, rinse well and buff.

2. Apply toothpaste

Toothpaste is a mild abrasive and therefore ideal for cleaning silver. Simply apply a dab to your silver jewellery and rub gently with your finger or a soft cloth. Rinse and buff.

HOW TO CLEAN GOLD (WHITE, YELLOW AND ROSE)

1. Use ammonia

Ammonia is a powerful cleaner so is best used for occasional deep cleaning rather than frequent use. Add one part ammonia to six parts water, soak your gold jewellery for one minute, rinse and gently pat dry with a polishing cloth.

2. Soak in warm, soapy water

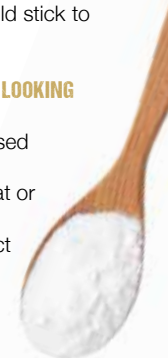
Fill a bowl with warm water, add a few drops of washing-up liquid and leave to soak for 10-15 minutes. Use a soft-bristle toothbrush to dislodge dirt, rinse and dry.

JEWELLERY TO BE CLEANED PROFESSIONALLY

Gold and sterling silver can be safely cleaned at home. However, more delicate metals, such as platinum, should be cleaned by a professional. If your jewellery contains precious stones such as diamonds, sapphires or rubies, you should stick to mild soap and water.

HOW TO KEEP SILVER AND GOLD JEWELLERY LOOKING ITS BEST FOR LONGER

- > Store your jewellery in an acid-free, closed container.
- > Do not leave your jewellery in direct heat or sunlight.
- > Avoid your jewellery coming into contact with chemicals.
- > Remove your jewellery before bathing, swimming and exercising.



Crystal Craze

According to Pinterest, there has been a 110 per cent increase in searches for crystal eye make-up over the last year, with this beauty trend showing no sign of slowing down. Versatile, flattering, and oh-so-pretty, find out how to rock this statement look below.

What tools do you need to do crystal eye make-up?

To master this trend, you will need a pair of tweezers, lash adhesive, and your chosen crystals. For complete beginners, you can also buy jewels that already have adhesive on them. It is worth noting that the smaller the crystals, the harder they will be to apply.

Where to place your crystals

There is no hard and fast rule when it comes to where to apply crystals around your eyes; you can basically be as creative as you want. However, it can be a good idea to place your crystals in places that you want to draw people's attention to. For example, the inner corner of the eyes, the upper lash line and the lower lash line. Be careful when using adhesive near your eyes.

Crystal eye make-up looks to try

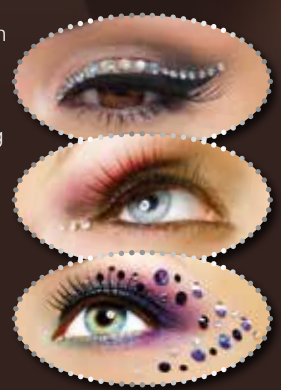
Crystal cat eyes: Create your usual cat eyes using black liquid eyeliner, and then apply gems to the upper lash line along the eyeliner for a mega-bling finish.

Silver gem-encrusted wing liner: Instead of the basic black winged liner, apply five or six tiny silver crystals from the outer corners of your eyes, extending upwards towards your temples.

Colour combinations: Crystals and eyeliner come in a wide variety of colours so don't be afraid to mix it up a bit. We love combining blue and silver, gold and metallic shades, and a full rainbow of crystals with any liner of your choosing.

How to remove crystal eye make-up:

Not a beauty trend for the office, you can easily remove any crystals using a cream or oil-based make-up remover. This will lift the jewels off the face without causing any irritation to the skin.



WHAT IS FUNCTIONAL FITNESS?

As the name suggests, functional fitness is a type of physical training that is designed to make your body function better in everyday life. More specifically, functional fitness exercises help to make daily motions such as picking up your children, carrying your shopping and walking around easier and safer.

WHAT ARE THE BENEFITS OF FUNCTIONAL FITNESS?

There are many benefits to practising functional fitness, including: Enhanced strength | More flexibility | Better balance and agility | Better range of motion

THE BEST FUNCTIONAL FITNESS EXERCISES

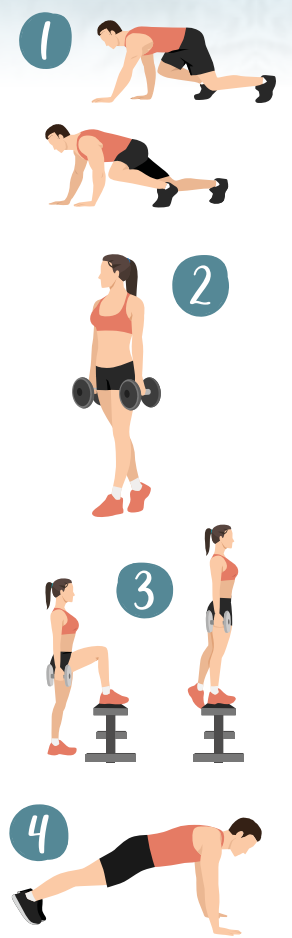
Functional fitness exercises prioritise natural movements over exercises that are carried out on a machine. For example, squats and pull-ups over leg presses and lateral pull-downs or going for a hike rather than using an elliptical trainer. Some of the most effective functional fitness exercises are:

1 BEAR CRAWL: Begin in the tabletop position on the floor | Bring up your knees so they hover above the ground | Using opposing arms and legs, take a small step forward with each limb | Return to the starting position, then repeat on each side for one minute, rest and repeat three times

2 FARMER'S WALK: Pick up a couple of weights (kgs that you feel comfortable walking with) | Keep a tight posture with your shoulders back | Take small, manageable steps back and forth across the room | Rest and repeat for two minutes

3 STEP-UPS: Step up and down from a bench | Continue for one minute, rest and repeat three times | Add weights if you want to challenge yourself | Upgrade to a box jump where you jump up and down with two feet rather than alternate feet

4 PLANK: Adopt the push-up position | Push through your hands and squeeze your body, engaging your abs | Hold for one minute, rest and repeat three times.





The *Sunshine* VITAMIN

Vitamin D makes sure our bones, teeth, and muscles stay healthy. It also helps our immune system. And some studies suggest it might even help fight low mood and fatigue.

From early spring to the end of summer, most of us get all the vitamin D we need from our skin reacting to sunlight. And you only need to be outside for around nine minutes a day if you're light-skinned and 25 minutes or so if your skin's darker.*

But what happens when you're stuck inside and summer sunshine is a distant memory?

SHOULD I TAKE A SUPPLEMENT?

The government recommends that we all take a daily vitamin D supplement in autumn and winter. There's not enough sun around, and you can't get all the vitamin D you need from food.

Some groups are advised to take a supplement all year round. This includes children aged four and under, people who can't get outside, and people who wear clothes that cover most of their skin when they're outdoors.

HOW MUCH SHOULD I TAKE?

The recommended dose for adults and children over one year is 10 micrograms daily. This is equivalent to 400 IU (International Units). Supplements vary, so choose one that contains at least this amount. For babies, ask your health visitor or pharmacist.

WHERE CAN I BUY IT?

You can buy vitamin D in pharmacies and most supermarkets. If you're part of the government's Healthy Start initiative, you can get vitamin D supplements for free.

CAN YOU OVERDOSE ON VITAMIN D?

Adults shouldn't take more than 100 micrograms (4,000 IU) of vitamin D daily, and children aged one to 10 shouldn't have more than 50 micrograms (2,000 IU). However, for some people, vitamin D could still be harmful even when taking less than the maximum recommended dose. Always check with your doctor if you are worried.

*Cancer Research Campaign UK

Luxury care in the heart of Harlow

Now open to viewings

We are delighted to announce the grand opening of The Jubilee Suite - our new luxury care suite situated within Abbot Care Home in Harlow, Essex.

Our new Jubilee Suite has been expertly designed with kindness, and dignity at its heart, providing person-centred nursing, residential and dementia care. With a variety of excellent facilities and spaces to enjoy, we welcome the people who live here to play an active part in everyday life – as we ensure activities, events and mealtimes are carefully tailored to the personal preferences of each individual.

Abbot Care Home is situated amongst peaceful open parkland and features beautiful, landscaped gardens. The people who live here enjoy a comfortable environment and benefit from the home-from-home atmosphere.

It is important to our team that we work as part of your family, as we plan in partnership whilst providing the same caring support that we would wish for our own loved ones to receive, whilst enjoying a life well-lived, each and every day.

Excelcare
Belong with us



We welcome you to visit us to meet with our friendly team who will be happy to work around your schedule.

To find out more about Abbot Care Home and book in to view our newly opened Jubilee Suite, please get in touch

01279 594 610
info@excelcareholdings.com



The perfect ROAST CHICKEN

From how to create a classic roast dinner to carving it up to get the most meat out of it, the below will guide you through each step.

TO ROAST THE CHICKEN

You will need:

1 whole chicken | Half a lemon | Butter | Salt and pepper

Method:

- > Pre-heat the oven to 200°C/180°C fan/gas mark 6.
- > Take the chicken and remove any giblets that may be in the cavity. You can, of course, buy whole chickens with the giblets already removed.
- > Put the half lemon into the chicken cavity and smear butter over the whole bird.
- > Season with salt and pepper.
- > Cook the chicken uncovered for 20 minutes per half a kilo, with an extra 30 minutes for good measure.
- > To make sure the chicken is thoroughly cooked, give the legs a prod to see if the juices run clear,

or cut into the breast to see if the meat is white.

TO CARVE THE CHICKEN

You will need:

A very sharp carving knife | Carving fork | Chopping board (preferably with a well to catch any juices)

Method:

- > **Remove the legs:** Use the carving fork to hold the chicken in place and cut across the skin between the breast and the leg. Pull the leg away from the breast and use your knife to cut through the joint. Repeat on the other side.
- > **Remove the wings:** Repeat the process above – pull the wing away from the breast and cut through the joint. Repeat on the other side.
- > **Remove the breast meat:** Carefully run the knife down the centre of the breastbone to cut through the skin. Run the knife down the breastbone, cutting the meat from the bone.
- > **The rest:** Pick off any remaining meat to use in a pie or soup or freeze in a container for another day.



What's the difference between... Whisky & bourbon

Do you like whisky but say you can't stand bourbon? If yes, you may be surprised to hear that bourbon is actually a type of whisky.

Discover the main differences between bourbon and other whiskies below. Plus, some delicious whisky and bourbon cocktails.

WHAT IS WHISKY?

Whisky is a family of distilled liquor that is made by fermenting wheat, rye, barley or corn. It is then aged in wooden barrels that are typically made of oak. This is what gives whisky its distinct brown colour and taste.

There are many different types of whisky, including Scotch (Scottish whisky), Irish Whisky, Rye whisky and Japanese whisky.

WHAT IS BOURBON?

Bourbon is a specific type of American whisky that is made from at least 51 per cent corn and aged in new charred oak barrels rather than reused ones. The name bourbon comes from Bourbon County in Kentucky, which is where this popular spirit originates from. Straight bourbon whisky has to have been aged for at least two years.

WHAT IS THE DIFFERENCE IN FLAVOUR?

Bourbon has a sweeter flavour than other types of whisky, boasting notes of vanilla, oak, and caramel. This is owing to the high concentration of corn. Rye whisky tastes grassy and peppery with a spicy finish, Scottish whisky is malty and buttery, Irish whisky is known for being light and fruity and Japanese whisky has floral notes with hints of oak.

POPULAR WHISKY COCKTAILS:

- > *Whisky Sour* – 50ml whisky, 35ml lemon juice and 12ml simple syrup
- > *Old Fashioned* – 50ml rye whisky, 1 sugar cube, a few dashes of water and angostura bitters
- > *Whisky Highball* – 50ml whisky and 100ml soda water or ginger ale
- > *Whisky Smash* – 50ml whisky, 25ml simple syrup, ¼ lemon wedge and 1 sprig mint

POPULAR BOURBON COCKTAILS:

- > *Bourbon Sour* – 50ml bourbon, 35ml lemon juice and 12ml simple syrup
- > *Kentucky Mule* – 50ml bourbon, 15ml lime juice and ginger beer to top
- > *Bourbon Manhattan* – 50ml bourbon, 25ml sweet red vermouth and 2-3 dashes angostura bitters.



CORPORATE PARTNERSHIP NETWORK

JOIN TODAY AND MAKE A DIFFERENCE

- Create new connections
- Raise your profile
- Care for St Clare

From limited companies to individual sole traders, we've got a bespoke package of benefits that will help you raise your reputation and support your local hospice

From as little as £30 a month you could:

Pay for two days' worth of home-cooked meals for a patient

Pay for an hour of support on our new GriefLine

Cover the cost of petrol to visit a family in need

Scan here for information
OR CALL
01279 773 753



stclarehospice.org.uk/
support-us-at-work



**ARE YOUR WINDOWS DRAUGHTY?
DIFFICULT TO OPEN AND CLOSE?
IN NEED OF REPAIR?
LET IN UNACCEPTABLE NOISE LEVELS?
RATTLE IN THE WIND?**

**SLIDING SASH
SOLUTIONS.**

*Repairing, servicing & upgrading
traditional sliding sash windows*

SASH WINDOW AND DOOR SPECIALIST

- Service, repair & upgrading of existing windows & doors
- Replica, replacement double glazed windows & doors
- Accoya™ timber as standard
- Listed building & conservation area specialists
- FREE surveys, consultations & quotations
- Design registered products
- Local company with over 20 years experience
- The best Trustpilot reviews in the industry
- Full inhouse decorating service available



CONTACT SAM FOR ADVICE OR A FREE SURVEY ON

T - 0800 731 5905 M - 07983 721445

E - info@slidingsashsolutions.co.uk

W - www.slidingsashsolutions.co.uk



HOW TO USE DARK PAINT WHEN DECORATING THIS AUTUMN/WINTER

As we step into autumn, interior design is turning towards the snug and inviting. One of the biggest trends making waves in the world of home décor is the use of paints in all sorts of moody hues. So if you're fed up with all those whites and pale greys, read on and discover how dark paint colours have so many advantages.

1 CREATE A COSY HAVEN

Dramatic colour doesn't have to mean stark charcoals and deep navy blues. For something more alluring, think about using warm, earthy tones like dark beige, deep terracotta or green. These nature-inspired tones will help transform your space into a cocoon-like sanctuary.

2 SEAMLESS EDGES

If you're using dark paints, why not go all in? A dark feature wall won't change the look of your room much or make it look bigger. But if you paint all your walls, woodwork and ceiling the same colour, it can look fabulous. The uniform colour blurs the room's edges, making it appear more spacious. So it's a great idea for small spaces.

3 SOFT AND INVITING

Matt paint and natural pigments will soften the overall look of your walls, making moody colours less imposing and more welcoming. For woodwork, opt for an eggshell finish to blend into your matt walls.

4 AS DEEP AS YOU DARE

Blacks can look great on walls, but many have blue undertones, which will look cool. That's perfect if that's what you're after. But for something warmer, choose a black with brown undertones.

As autumn takes hold, it's time for a paint adventure. Remember, paint can be changed if you don't like it. So unleash your inner decorator, invest in some sample paint pots, and get ready to welcome colourful warmth into your living space.



HOME & DIY

Photo credit: farrowball.com



How to make a Christmas CUTLERY POUCH

COVER your cutlery with Christmas cheer with this simple and stylish craft. All you need are a few materials and some basic sewing skills and you are good to go!

YOU WILL NEED:

A sewing machine or needle and thread | A rotary cutter or pair of sharp scissors | A ruler | Cotton fabric fat quarters in your preferred Christmas colours or patterns | 2 x pieces of festive ribbon or trim (optional)

HOW TO MAKE:

Step 1: Cut your fabric

To create your pouch, you will need two pieces of fabric in contrasting colours or patterns. These need to be cut to 38cm x 12cm.

Step 2: Decide on your layout

One piece of fabric will be used to make the inside of your pouch and the other will be used as the flap. Your cutlery will lie on the inside fabric and be covered by the outside one.

Step 3: Place your fabrics face to face

Next, place your two fabrics face to face. If the flap fabric has a pattern, this needs to be placed upside down. Using a 10mm seam allowance, stitch around the two pieces of fabric using a sewing machine or by hand. Leave a 4cm gap at the bottom for turning.

Step 4: Clip the corners

Clip the corners of the fabrics, making sure not to cut the stitches, then turn the pouch the right way in. Pop out the corners using a pencil and then iron gently to smooth out the fabrics. Sew up the gap.

Step 5: Add ribbon or trim

If you want to add ribbon or a trim, lay out your pouch and sew the pieces of ribbon or trim to the edge that will turn up to make the flap.

Step 6: Complete the pouch

Fold the flap over with a 13cm measurement and iron it in place. Carefully tuck the ends of the trim inside and pin it in place. Sew all the way around the pouch as close to the edge as you can to create a top stitch.



Home Counties Loft Ladders, Quality You Can Trust!

These days most homeowners suffer from a lack of storage space. So many precious items that need to be kept - but where to store it all? That's where Home Counties Loft Ladders come in.

The company, based locally, offers homeowners the opportunity to maximise their storage space with a loft ladder, 50sqft of boarding and a light - all fully fitted in less than a day from just £444! But it's not just the affordability of the package that makes Home Counties Loft Ladders stand out, as manager Jamie Oakley explains: 'Our

watchwords are Quality, Integrity and Value. Quality in the materials that we use for all our installations and the fact that all our loft packages are fitted by time served tradesmen, so our customers are assured of the best job.

Integrity in that we will turn up at the time we say and make sure the house is spotless when we leave, and value in that we offer our services at a price people can afford.

Our business relies on referrals and we get a huge amount of our calls from people who have been referred to us by our existing customers

- that simply wouldn't happen if we didn't adhere to our overriding principles.

At the end of the day the old adage that happy customers lead to more happy customers is true and we work hard to make that happen for

every installation we carry out!

So, if you want to make use of your loft space, call Jamie free on 0808 301 9551 and he'll be happy to pop round and give you a no obligation quote so you too can make use of your loft!



Need more storage space? INSTALL A LOFT LADDER AND USE YOUR LOFT!

STARTER PACKAGE: Aluminium loft ladder, light plus 50 sqft boarding, fully fitted in less than a day from £444

- Loft Ladders • Hatches
- Boarding • Insulation
- Lights • Fully Guaranteed



— Home Counties —
LOFT LADDERS

CALL FREE: 0808 301 9551
homecountiesloftladders.co.uk



ONE SMALL STEP FOR YOU, ONE GIANT LEAP FOR YOUR BUSINESS

Photo credit: Ganger/Shutterstock

IT'S NOT ROCKET SCIENCE!

CALL NOW FOR AN OUT OF THIS WORLD DEAL

Your
Monthly
Lifestyle
Magazine

VISION

t: 01992 276101 m: 07967 079101
e: hertford@VISIONmag.co.uk



INTERIOR DESIGN PROFILE

NICOLA
HARDING
& Co.

HOME & DIY



After five years of working with landscape designer Arne Maynard, Nicola Harding decided to launch her own studio in 2008, a move that has seen her become one of the UK's most respected designers.

Her work has a classic touch, made timeless with the right pieces and colours creating looks that are unique, but work perfectly for the spaces they're in. If you love flashes of colour and quirky features, then Nicola Harding could serve as your perfect designer inspiration.

ABOUT NICOLA HARDING

According to Harding: "Our aim is to create places rich in atmosphere, places people feel enchanted by and connected to, places people quickly feel at home in."

This comes from Harding's background of living on military bases that had a standard design, where the smallest personal touches could make a space feel more like home.

Harding's designs are full of personality, using the history of the property to create designs that work with the features, bringing them to life through the pieces and textures that then make the space feel loved and warm. From antique furniture to bespoke pieces, the result is effortlessly charming, a look that people fall in love with.

BRINGING NICOLA'S STYLE INTO YOUR HOME

What's fantastic about Nicola Harding's portfolio is that every space is unique. This makes it easy to create similar looks in your home, but with your own personality shining through. Some tips for emulating some of Harding's wonderful style include:

- > Use colour in unexpected ways. From doorways to ceilings, you can use colour in different places to add quirky accents. A dusky or pale pink on the walls keeps the space light, while vibrant blue or green furniture will add some interest. Choose a neutral shade to paint skirtings and coving to break things up and bring your colour scheme together.
- > Enhance your home's existing features. If you have archways or beautiful fireplace settings, why not paint them to make them more of a feature?
- > Consider adding furniture that's of the property's time, with antique finds providing a sustainable way to decorate your home. Keep an eye out for dressers, sideboards and lamps that have hand-carved details, as well as metallic hardware to make the look more high-end.
- > Use tonal elements to bring together different colour palettes. Using different shades of a single colour (pink and grey are popular choices), as well as patterned looks for your furniture, such as sofas and accent chairs and textiles (rugs, cushions, curtains), adds layers to the room and can quickly add interest and personality.

Photo credit: nicolaharding.com





CLASH of the FABRICS

TOP TIPS FOR COMBINING CONFLICTING FABRICS TO CREATE HARMONIOUS HOME DÉCOR

We're conditioned to think about our home interiors in ways that mean they match, complement and merge in the most perfect of ways.

Yet true innovation often brings about conflicting elements, so why not try these juicy style juxtapositions en route to awesome in-home ambience?

LEATHER AND WOOD

Sumptuous soft leather against solid wood is about as luxurious as you can get in a modern home. From leather cushions on a wooden bench or a walnut wood bedframe with leather panelling, the contrast between hard and soft is impossible to resist.

SUEDE AND COTTON

Both are beautifully soft, and yet the rugged texture of suede almost feuds violently with the plush softness of cotton. Ideal for brightening up bland bedding, suede cushions are the perfect foil to give your bedroom a hotel feel before removing for a restful night of sleep.

WOOL AND SILK

Wool and silk may be the oddest of bedfellows, but together they conspire to make something rather beautiful. From luxurious rugs to coveted curtains and upholstery for almost anything, the colour, quality and sheer beauty combined make this a dream duo.

TWEED AND CORD

Tweed is a very harsh material that has bundles of presence, which is why you should match it with something softer, like cord. Both have a vintage and almost classic feel, which works perfectly for a formal sitting room.

CHROME AND GLASS

Creating an almost retro/futuristic feel, the stunning mirror shine with the transparency of glass transforms an ordinary coffee table into a futuristic centrepiece.



CLEAR INSPIRATION – ENDLESS POSSIBILITIES



01992 276058

info@infiniteglass.co.uk

**Infinite
Glass**

BUILDING TRUST
WITH QUALITY
WORK



UPDATE YOUR KITCHEN DOORS *by Harrison's*

REFURB YOUR KITCHEN FOR A FRACTION OF THE COST OF A NEW ONE

- CHOOSE FROM OUR WIDE RANGE OF DOORS
- AVAILABLE IN CONTEMPORARY TO TRADITIONAL STYLES
- ALL SIZES AVAILABLE

- Wide range of worktops available
- Appliances available to order
- Professional fitting service
- Free design service
- Local family run business

Telephone: 01992 760 500

info@harrisonskitchens.co.uk

www.harrisonskitchens.co.uk HarrisonsKitchensandBedrooms



A full-page photograph of Kylie Minogue performing on stage. She is wearing a shiny, bright blue jacket over a black outfit. She has long blonde hair and is singing into a black microphone held in her right hand, with her mouth wide open. Her left arm is raised in the air. The background is dark with colorful stage lights, including a prominent rainbow light on the left.

Kylie

MINOGUE

After a huge year, Kylie Minogue AO OBE

is rewinding up for the grand finale with an ITV extravaganza, *An Audience with Kylie*.

Few of us can boast of a career of more than three decades; even fewer can achieve such a feat in the cut-throat music industry, and one in a billion can do it with the grace, style and panache of Kylie.

An undisputed queen of reinvention, the 55-year-old Aussie delighted her fans earlier this year with the sizzling floor-filler *Padam Padam*. It was a track that not only launched her back into the charts (the song peaked at number eight, becoming her 52nd Top 40 single in the UK), but also flaunted her spectacular and seemingly ageless appearance in the accompanying music video.

For Kylie – who returned to where it all started this year in the well-received *Neighbours* finale – such moments have become second nature. Bursting onto the music scene in the late 1980s with her debut single, *I Should Be So Lucky*, her angelic voice, combined with a girl-next-door charm, made her an instant sensation.

Kylie continued to release chart-topping hits that solidified her status as a pop sensation. Songs like *Got to Be Certain*, *Je Ne Sais Pas Pourquoi* and *Especially for You*, a duet with

Jason Donovan, became anthems of the era. Her catchy tunes and memorable music videos created a pop culture phenomenon.

By the time the 90s rolled around, however, saccharine pop was on the wane. Rather than fade away,

Kylie retreated into her cocoon and reappeared as an indie princess, even collaborating with the master of melancholy, Nick Cave, on *Where the Wild Roses Grow*.

Another defining moment of Kylie's career came in the early 2000s with the release of *Fever*. The album's lead single, *Can't Get You Out of My Head*, became a global phenomenon. Its hypnotic beat and unforgettable hook catapulted Kylie back to the top of the charts worldwide and solidified her status as an international pop icon.

Though she is adored across the globe, her status here in the UK is one of particular reverence. So much so that Kylie, who was awarded an OBE in 2007, has spent much of the last few decades living in London and now owns an apartment in the highly coveted Hyde Park One building, alongside a house in her home town of Melbourne.

Fortuitously, her abode in Britain's capital is a short walk from the location of her ITV special, the iconic Royal Albert Hall. *An Audience with Kylie* promises to dazzle with an array of floor fillers from both her recent album, *Tension*, and her award-winning back catalogue. She will also field a bevy of questions from the floor posed by specially invited VIP guests, including celebrity Kylie superfans.

Kylie said of the event on December 1: "I'm so excited to announce that I am teaming up with ITV for *An Audience with...* at London's iconic Royal Albert Hall. I'll be performing some of my favourite tracks from throughout my career and no doubt answering some surprising questions from the audience."

The one query she's sure to bat away is talk of retirement. An icon of modern music, the industry – in all its inconsistency and fragility – is indebted to this marvellous mainstay, and her star will surely never be allowed to wane.



FROM YOUR AREA

GP relocates to purpose-built centre



Photo credit: Chase New Homes

Wallace House Surgery in Hertford is moving to a new and bigger site as part of a bid to improve services and cut waiting times.

Currently based on St Andrew Street, the surgery will relocate to a new building at Lea Wharf, Bircherley Green. All services at Calton Court are unaffected.

The new site at Lea Wharf is on the ground floor and offers an estimated 188 pay-and-display car parking spaces.

Staff at Wallace House hope to have completed the move by the start of the new year.

Rachael Hunt, practice manager at Wallace House Surgery, said: "This new treatment centre represents a significant investment into improving healthcare services for the local community in Hertford."

"By relocating to a larger practice, offering more services and being able to help more patients, we will be able to improve standards and cut waiting times."

"We are keen to reassure patients as we make this transition, and we look forward to welcoming them to Lea Wharf in the near future."

Proposed industrial action threatens bin collections

Hertford residents could be affected by a proposed upcoming strike.

Members of the GMB Union at Urbaser, the council contractor that provides street cleaning and refuse services across North and East Herts, are planning to undertake a strike ballot later this month.

If industrial action is confirmed, Hertford residents' bins could be left uncollected and litter could be left on the town's streets. This could pose a number of

issues for residents, who are likely to have more waste to dispose of around the festive season.

Urbaser employees are currently embroiled in a dispute over wages, particularly sick pay.

Michael Dooley, from the GMB, said: "Our members keep the local environment clean. They are undertaking heavy, dirty work in all weathers, 52 weeks of the year."

"Urbaser are refusing to give one single penny of company sick pay to workers who fall ill, leaving sick people to rely on paltry statutory sick pay. We say that it is only reasonable that Urbaser should introduce a company sick pay scheme."

Urbaser has been contacted for comment.

Safety prioritised as funding and police officer welcomed

Hertfordshire Police have allocated £1.27million to projects aimed at making streets safer in three locations, including Hertford.

On November 5, Police and Crime Commissioner David Lloyd announced that the funding would go towards improving the safety of women and girls in Hertford, Stevenage and Hatfield, while also addressing serious violence, vehicle crime and anti-social behaviour in each area.

In Hertford, a total of £309,140 will go towards new mobile CCTV cameras, brighter street lighting, police patrols, and monitoring mechanisms at the Gascoyne Way car park.

In addition, Hertford has welcomed a new officer to the local force after 15 candidates successfully joined Herts Police last month.

The new officers, who joined the force via the Initial Police Learning and Development Programme, were welcomed to the force during a special ceremony at Welwyn Garden City on Monday, October 16.



Photo credit: Hertfordshire Constabulary

JULIE MARSON MP

Conservative MP for Hertford and Stortford



I'm delighted that Ware will soon have a much-needed banking hub. I've campaigned for a shared infrastructure bank following the unfortunate loss of all six High Street banks in Ware.

This will make a significant difference to our community in Ware. I've asked LINK to also look at both Hertford and Sawbridgeworth for similar solutions, given their recent bank closures.

I would love to hear your views on this. Please have your say by taking part in my survey at www.juliemarson.org.uk/form/ware-banking-survey

I was so pleased that the government is investing a further £80million to protect essential bus services that will enable local authorities to make travel improvements in their communities. Hertfordshire County Council will receive nearly £1.5million in funding.

Across east Hertfordshire, our bus services are vital for many residents who are unable to drive, including



many of our older or disabled residents. I am delighted to see the government supporting our residents to get where they need to go with public transport they can rely on.

I was at the Conservative Party Conference last month, where I had the opportunity to speak to the Alzheimer's Society about the incredibly valuable work they do on behalf of patients. Alzheimer's is one of the six major conditions in the government's new Major Conditions Strategy, with funding for Alzheimer's research set to reach £160million next year.

I also dropped in to see the National Farmers' Union. We talked about the importance of food security and sustainable farming and how beloved our farmers are, with the public now ranking farming as one of the most favourable occupations, second only to nursing. I am always happy to show my support for British farmers and growers and the high-quality, environmentally friendly and nutritious food they produce.

WWW.JULIEMARSON.ORG.UK



Bathe in Roman history in the rural quiet of Welwyn

Think of the many locations that house incredible Roman architecture in the UK and your mind is led to the elegance of Bath, the sprawl of Verulamium in St Albans, or perhaps even the mindboggling expanses of Hadrian's Wall.

Examining a rather more run-of-the-mill location – specifically the A1 motorway in Welwyn – may not hold quite the same connection to these courageous invaders who settled in Britain nearly 2,000 years ago; yet the evidence of their presence is no less evident or startling.

For while the aforementioned Bath is even named after its Roman leisure pools of bubbling, steaming hot water – a place where the important and wealthy would socialise and relax – Welwyn has its own Roman Baths, offering a unique glimpse into the daily life of these people.

Welwyn's sleepy village status perhaps belies the notion of such an age-old building, where so many would gather socially.

The baths were discovered in the 1960s by a local

archaeologist named Tony Rook. In the decade that followed, the full extent of the discovery was revealed; though no sooner was the excavation completed than the Ministry of Transport announced the route of a new motorway, the A1, directly over the top.

These days, planners would need to devise a new route around such an important site, yet in the new era of the motorcar, the decision was made to encase the baths in a steel vault, not dissimilar to the tunnels you see on the London Underground.

The structure does at least protect the baths from the vibrations of the motorway above, with visitors able to walk along a viewing gallery and look down at the well-preserved remains of the bathing suite.

The cold, warm and hot rooms (frigidarium, tepidarium, and caldarium) are all well preserved; while additional archaeological material from the site is stored at Mill Green Museum, in Hatfield.



Photo credit: roman-britain.co.uk

Opening Times
Bishops Stortford
Monday to Friday: 7am - 5pm | Saturday 8am - 12pm

Harlow
Monday to Friday: 7am - 6pm | Saturday 8am - 5pm | Sunday 10am - 4pm

With countless years of experience within the painting, decorating, maintenance and refurbishment market, our team at JDC Paints are on hand to offer you help, advice and to help work out the best options possible on your next project.

**EXCLUSIVE FOR
VISION MAGAZINE
READERS**

**BRING THIS AD ALONG FOR
10% OFF YOUR ORDER
-and-
FREE ROLLER KIT WITH
ANY ORDER OVER £30**

P FREE PARKING

6 Raynham Close, Bishops Stortford, CM23 5PJ
(T) 01279 213 877 (E) Stortford@jdcpaints.com

www.jdcpaints.com | Follow us! @jdcpaints

YOUR LOCAL EVENTS

HERTFORD CASTLE CHRISTMAS MARKET

Hertford Castle, Hertford, SG14 1HR
Friday, November 24, 3.30pm – 8pm;
Saturday, November 25, 11am – 6pm;
and Sunday, November 26, 11am – 5pm



Photo credit: Hertford Town Council

Set within the beautiful castle grounds, the market boasts a range of Christmas stalls selling homeware, crafts, jewellery and much more. There will also be fairground rides, live entertainment, food and drink stands providing seasonal treats, and so much more.

Entry is free. To find out more, visit www.hertford.gov.uk/events-listings/hertford-castle-christmas-market-2

WREATH-MAKING WORKSHOPS

Hertford Castle, Hertford, SG14 1HR
Thursday, November 30, 7pm, and Sunday,
December 3, 10am and 2pm

The Mayor is hosting a luxury wreath-making workshop with local florist Sioned. Tickets cost £50 and include a complimentary glass of prosecco, soft drinks and mince pies. Materials for making the wreaths will be provided. All proceeds will go towards local charities Mudlarks and the Herts and Middlesex Wildlife Trust.

Tickets are available at www.hertford.gov.uk/events-listings/wreath-making-workshop

HERTFORD HEATH CHRISTMAS FAYRE

The Goat and The Village Green,
Vicarage Causeway, Hertford Heath, SG13 7RT
Saturday, December 2, 1pm – 5pm

Hertford Heath will host a Santa's grotto, gift shop, ice skating, delicious treats, hot drinks and a range of other activities and games thanks to a collaboration with local pub The Goat and The Village Green.

Find out more information at www.facebook.com/hhsummerfayre/?locale=en_GB

SPACE

Hertford Corn Exchange, 39 Fore Street,
SG14 1AL
Saturday, December 2, 7.30pm – 11.30pm

As part of their 25th anniversary tour, Space will be performing some of their greatest hits, such as *Neighbourhood*, *Me and You vs the World*, *Dark Clouds* and more.

Tickets are available from www.ticketweb.uk/event/space-hertford-corn-exchange-tickets/13094215 and cost £20. All are welcome but under-18s must be accompanied by a guardian.

HERTFORD COMEDY CLUB

Hertford Corn Exchange, 39 Fore Street,
SG14 1AL

Thursday, December 14, 7.15pm – 11pm

Hertford Comedy Club returns to the Corn Exchange with a brilliant line-up featuring Marcus Brigstocke, Red Richardson, Naomi Cooper and Masud Milas.

Tickets cost £16.50 and are available to purchase from www.ticketweb.uk/event/hertford-comedy-club-hertford-corn-exchange-tickets/13768208

THIS JOYOUS NIGHT: AN EVENING OF CHRISTMAS MUSIC AND CAROLS

All Saints' Church, Queen's Road,
Hertford, SG13 8AY

Saturday, December 16, 7.30pm

Everyone is welcome to this sparkling and festive Christmas concert, featuring a selection of favourite carols.

Tickets cost £16 for a reserved seat, £12 for an unreserved seat and £4 for students. They can be bought from www.ticketsource.co.uk/hertford-choral-society/t-xmyegov or in person from the Hertford Town & Tourist Information Centre.



Photo credit: All Saints Church Hertford



At Hainault Trade Windows we are built upon reputation, trust, High-quality items at cost-effective prices and a clear understanding of supply and demand for the trades.

Are you a tradesman in Essex and the surrounding areas? Are you looking for trade products including any the following, then we can help :-

- ✓ FSG
- ✓ Doors
- ✓ Windows
- ✓ Aluminium
- ✓ Conservatories
- ✓ Roof Lights/Lanterns



Get a quote now
0208 088 4153
www.hainaulttradewindows.co.uk



Don't just take our word for it.....

Having always been a bit of a golfer and having reached a point where it was time to downsize, Great Hadham Country Club was perfect.

We were moving from our family home in Hertford and looking to downsize and for an escape.

We met with Dani at Great Hadham who showed us round several homes before we eventually plumped for a Prestige Plantation House

Once the sale of our home went through the actual purchasing was quick and easy, mainly due to the updates we had from the sales team.

We have now lived at Great Hadham for almost 7 months and really couldn't be happier. The wife has even bought some clubs now.

Mr and Mrs S

SHOW HOMES

NOW OPEN

www.goodlifelodge.com

info@goodlifelodge.com

01279 939082

SEAL PUP SAFARI

Have you ever yearned to see fluffy white seal pups in their natural habitat? If so, a trip to Blakeney Point in north Norfolk could be up your street.

Blakeney Point is home to England's largest grey seal colony – and winter's a great time to visit. From the end of October to mid-January, around 4,000 pups are born – and you can't fail to spot some.

What is Blakeney Point?

Blakeney Point is a four-mile stretch of pebbly beach with a backdrop of dunes, salt marshes and mudflats. It's one of England's 220 National Nature Reserves and is looked after by the National Trust.

Can I walk there?

You can walk to the point from the car park at Cley beach. But it's not for the fainthearted. It's a four-mile walk, mostly on shingle. But if you're fit and love nature, you're in for a treat!

What's the best way to get there?

The most exciting way to get a closer view of the

seals is by boat. Several companies offer seal-watching trips from nearby Morston Quay. You can travel there by car or on the Norfolk CoastHopper bus service from places like Sheringham and Cromer.

The boat trip will take around about an hour. Just remember the boat trip is for viewing only; you can't land there.

Planning ahead

Remember to book your seal trip in advance and get there early. Places on the boats fill up quickly, and the car park can be a challenge. Even on a warm day, the sea can be chilly and might splash you. So pack some warm clothes and some rain gear. And remember your camera and binoculars!

Let's talk seals

- > Grey seals are marine mammals
- > Adult Grey seals can weigh up to a whopping 300kg
- > Grey seals can live for 30-40 years
- > Britain has more than 120,000 grey seals – 40 per cent of the world's total.

Photo credit: Piusana Krasteva/Shutterstock.com



Don't ask the price, IT'S A PENNY

In 1884, a Polish immigrant opened a stall in Kirkgate Market in Leeds, selling household goods, haberdashery and toys for a penny a pop. Back then, who could have guessed the stall would blossom into retail giant Marks & Spencer?

SO HOW DID IT HAPPEN?

Michael Marks was born into a poor Polish Jewish family in what is now Belarus. He emigrated to England when he was 23 years old to escape persecution. He settled in Leeds and got work at John Barran & Sons' garment factory.

Marks soon branched out. He started buying goods from a local wholesaler and selling them door to door. With the profits, he opened his first market stall, known as 'Marks' Penny Bazaar', and branded it with his then-famous slogan, 'Don't ask the price, it's a penny'.

In 1894, Marks teamed up with Thomas Spencer, his wholesaler's bookkeeper. The company continued to grow. But sadly, it soon lost its two founders. Spencer died in 1905 at the age of 53, and Marks died in 1907 at just 48.

By then, the company had 145 stalls

and shops nationwide and a turnover of £400,000 – which is worth more than £61million today.

MARKS' SON SIMON TRANSFORMED THE BUSINESS...

In 1926, the company was floated on the stock market and moved into clothing and food. It made its reputation by selling only British-made products. And it offered cash refunds for items, however long you'd had them, so long as you had the receipt.

Simon Marks launched the St Michael brand name in honour of his father in 1927. The name was a symbol of quality and appeared on items from ready meals to overcoats till the company rebranded in 2000.

Since the late 1990s, the company's had a rocky ride. Be that as it may, it still has around 1,500 stores and turned over £6.6billion last year.

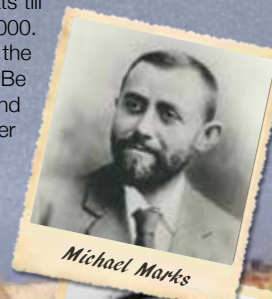
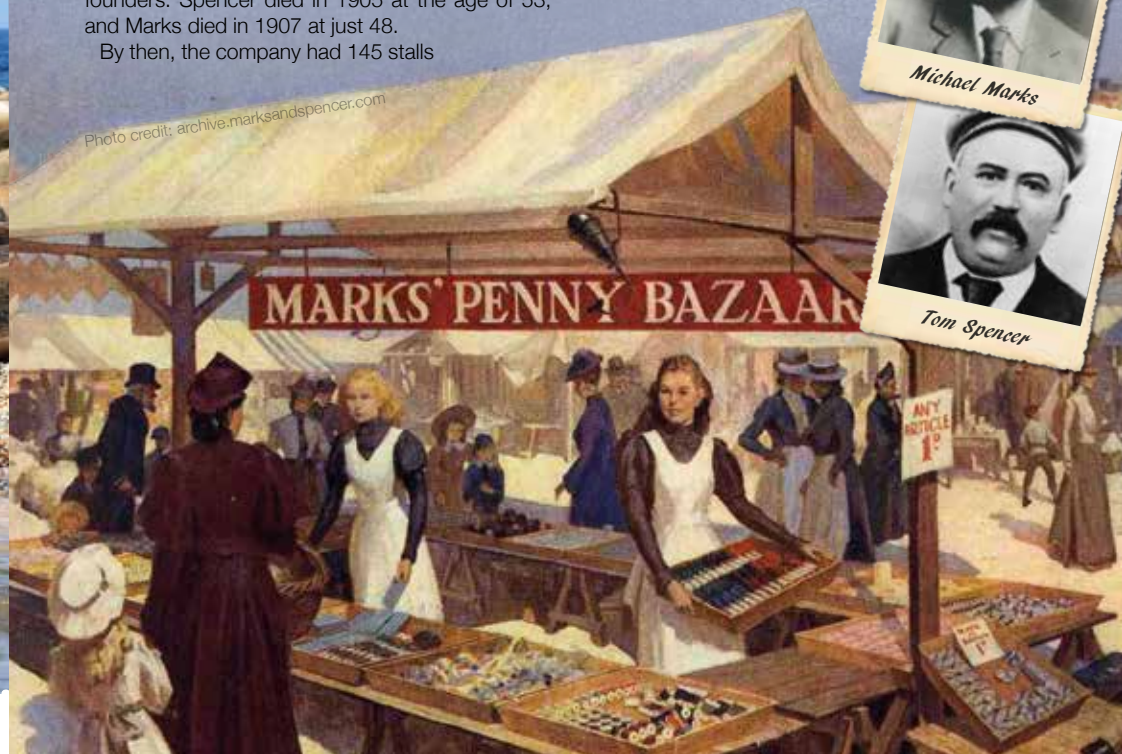


Photo credit: archive.marksandspencer.com



APPLIANCE PROBLEM?
WE'LL FIX IT!
Any make
Any model

LOCAL ENGINEERS IN YOUR AREA!

If we can't fix it, we can supply and install new appliances same day

SAME DAY CALL OUT AVAILABLE

View our sales page for list of machines ready to install today!

ALL MAKES ALL MODELS REPAIRS SALES

CALL OR BOOK ONLINE
01279 310793
www.spindoctoruk.co.uk

SPIN DOCTOR
DOMESTIC APPLIANCES

Washing Machine, Dish Washer, Washer Dryer, Tumble Dryer, Electric Oven, Electric Hob, Fridge Freezer, Range Extractor Hood

PREVIOUS MEMBER OF **Checka trade.com**

PHOTO BY NICKY BROWN

Platinum Pooches
Friendly, Professional
Dog Grooming Salon

For appointments call
07711 180 461

Foxholes Farm, London Road, Hertford, SG13 7NT

Discounts for registered assistance dogs
Fully insured salon & City & Guilds qualified to L3 standard

f

YO _ R ADVERT
HE _ E...

Q: WHAT'S MISSING HERE?
A: YOU ARE

CONTACT US NOW TO START ADVERTISING

Your Monthly Lifestyle Magazine **VISION**

t: 01992 276101 m: 07967 079101
e: hertford@VISIONmag.co.uk

V
PETS

Homemade CHRISTMAS GIFTS
for your pet

If your pet is just like another member of your family, then you will want to treat them on Christmas day too. Discover three homemade Christmas gifts for your furry friend that they are guaranteed to love.

A sock and ball toy
One of the easiest and most affordable DIY pet gifts, a sock and ball toy will provide hours of fun for your dog on a shoestring budget. Simply place an old tennis ball or two into a sock and tie in a tight knot. For a festive twist, use a Christmas-themed sock. Once unwrapped, swing the sock around, play tug-of-war or launch it down the garden for a quick game of fetch.

A cat scratcher
If your cat loves to scratch your furniture, then they are long overdue their own scratcher. All you need to do is attach a piece of rope around a piece of wood using a hot glue gun and then hang the wood on the wall within reach of your cat or glue/screw to a wooden base. Rub some catnip on the rope to make this gift even more enticing for your feline companion.

A no-sew pet bed
Stop your pet from sleeping on your bed by making them their own place to sleep with just a few basic supplies, including some anti-pill fleece fabric, a small bag of polyester fibrefill material and a pair of sharp scissors. Simply decide what size bed you want to make and then cut an extra eight inches all the way around two pieces of fleece fabric so that you have enough to cut four-inch strips to tie the bed together. Fill with the polyester fibre material until plump, and tie to finish.

Photo credit: petguide.com, thecottagearket.com, instructables.com



AUTUMN arrivals

While many might scoff at the idea of the UK being a warm winter getaway with gourmet food, it's a top holiday spot in the bird world! That's right – as temperatures drop elsewhere, large numbers of our feathery friends flock to Britain.

MAJESTIC GEESE AND SWANS

Leading the parade of bird visitors is the fabulous pink-footed goose. When the temperatures dip in Iceland, and food gets scarce, the geese fly to the Faroe Islands, rest a bit, and then head to the UK. Similarly, Bewick swans head over from Siberia, while whooper swans make their way from Iceland.

VIBRANT COASTAL LIFE

Every autumn, the UK's beaches and wetlands burst into life with a big mix of wading birds from northern Europe, the Arctic, Russia and northern Canada. These include lapwings, dunlin, oystercatchers, bar-tailed godwits, redshanks, and grey plovers from the Arctic.

INLAND VISITORS

Moving inland, colourful Bohemian waxwings, with their distinctive crests, black eyeliner, and peach-tinged plumage, fly in from Scandinavia. You can sometimes spot them in large flocks in berry-laden bushes in towns, car parks and gardens. And it's not uncommon to see large numbers of dainty goldcrests with a radiant yellow stripe along the top of their heads. Despite weighing no more than a ten-pence piece, this remarkable bird journeys across the North Sea to spend its colder months with us.

Other northern European visitors you might spot in your garden include redwing and fieldfare – both types of thrush.

When spring comes, the birds fly back to their homelands to breed. Given the warming world and milder climates in their nesting territories, these winter visitors might one day no longer grace our shores. So let's all appreciate them a bit more – while we still have the opportunity.



ROCK ON

How to create a rock garden

In recent years there has been something of a rock revival going in Britain's gardens, front and back.

A trend that came to the fore in the nineties has seen something of a revival, with an increase in sales of rocks and alpine plants. Add in pebble mulches and gravel, and it's clear we are refreshing our garden spaces to add height, texture and, dare we say it, perhaps the odd splash of cascading water.

As for how to style your perfect rock garden, a slope obviously helps. If you don't have one, fear not – you can create a display by banking rocks closely together, filling in gaps with brick, stone or rubble to create a defined ridge.

It's a good idea to look for local stone – this will add character and provenance to the garden; and while many varieties may be expensive to buy, searching locally online may well bring about cheap or even free sources of stone.

Let rocks develop a patina of age – don't clean them or they won't look authentic – and bury them about a third of the way into the ground, tilting backwards, allowing space for grass and plants to flourish around them.

Now all you need to do is pattern surroundings with what you choose – an evergreen, such as miniature conifers will create vertical interest, while smaller shrubs will keep layers of interest even through the cold winter months.

Drought-tolerant plants such as sedums and sempervivums are also a good idea, while trailers, such as creeping rosemary, creeping thyme or aubretia, will guide the eye across the structure.

Finally, for texture, add some contrasting shapes – spikes, slants, velvety leaves – plus smaller bulbs, such as wild tulips, daffodils, snowdrops and crocus.

With your work done, sit back and admire!



Photo credit: Zia Allaway via gardeningetc.com



NUISANCE NITS

Nits are the bane of every parent's life and can be a nightmare to get rid of. While over-the-counter treatments are effective, they can also dry out your child's scalp and hair. Discover four natural alternatives below.

ESSENTIAL OILS

With the ability to eliminate nits and nourish the hair, there are several essential oils that you can try, including tea tree oil, lavender oil, neem oil, clove oil and eucalyptus oil. For best results, mix 15-20 drops of your chosen oil with 60ml of olive oil, apply to the scalp and comb through with a nit comb.

RAW GARLIC

Raw garlic has antibacterial properties and can be used to suffocate nits. To use garlic on nits, crush a peeled bulb of garlic into a paste and then mix with either olive oil or lime juice. Apply to the head, leave for 30 minutes and then wash the hair as normal. No combing needed.

CONDITIONER

If you are worried about drying out your child's hair, then you may want to try applying a thick conditioner to suffocate the nits before using a fine nit comb to remove them. This also helps to make the combing process less painful for your child.

VINEGAR

Both normal vinegar and apple cider vinegar can be used to effectively kill and get rid of nits. All you need to do is mix one cup of vinegar with one cup of warm water. Distribute the mixture evenly onto the scalp and cover with a hair cap. Leave for 30 minutes and then wash with their usual shampoo. No combing needed.

MORE TOP TIPS FOR NIT REMOVAL:

- Wash all bedding and any recently worn clothing in hot water.
- Vacuum upholstered furniture, rugs, soft toys and car seats.
- Recheck the scalp every day for two weeks.



Property Photo Services

Alan Kingsley
Phone: 07861 227845
Email: alan@propertyphotoservices.co.uk
Web: www.propertyphotoservices.co.uk

Enhancing your property marketing needs with the following services :

- Digital Professional Property Photos
- Digital Floor Plans
- 360 Virtual Tours
- Energy Performance Certificates (EPCs)
- Legionella Risk Assessment
- Digital Product Photos

We provide these services for:

- Service Accommodation - Air BnB
- Estate & Rental Agents
- Homes with multi occupancy HMOs
- Property Management
- Private Landlords
- and many more



SCAN ME

For more information please get in touch

forestreet

recruitment & training

Supporting local people & local businesses with all their recruitment needs

Urgently recruiting for:

- Customer Service Advisors
- Administrators • Warehouse Operatives
- MHE Trainer • Assistant Accountant



Corporate Member

**IF YOU ARE LOOKING FOR A JOB OR
LOOKING TO RECRUIT PLEASE GET IN TOUCH!**

01992 583256

www.fore-street.co.uk

@ForeStreetLtd @forestreetrecruitment

info@fore-street.co.uk



BEEWISE

CARD MACHINE OFFER

- Free next day settlement
- Low rates
- £1 terminal rental
- 24/7 Helpdesk

£1 ONLY

MERCHANT SERVICES

Beewise with what your business needs.

Join the Beewise Family

01992 276075
www.beewiseld.co.uk



SCAN ME





A landlord's guide to improving your EPC RATING

Want to attract more tenants, help the environment, and potentially increase the value of your property? Here are some top tips to boost your EPC rating.

can help you to achieve a higher EPC rating. Water-based underfloor heating systems are the most effective.

What is an EPC rating?

An EPC rating is a standardised indication of a property's energy efficiency. The minimum EPC rating for landlords of private domestic rented properties is E. However, the government has proposed that all rental properties will need a rating of C or above by 2028.

How to achieve a higher EPC rating

Smart lighting

Your choice of lighting contributes to your property's EPC rating, with energy-efficient light bulbs, aka LEDs, generating less heat and lasting longer. Smart LED lighting can also be automated, which means that there is no need for light switches as all the lighting is controlled via an app.

Underfloor heating

Underfloor heating systems use less energy because they operate at a lower temperature. If your property has effective insulation, underfloor heating

Triple glazing

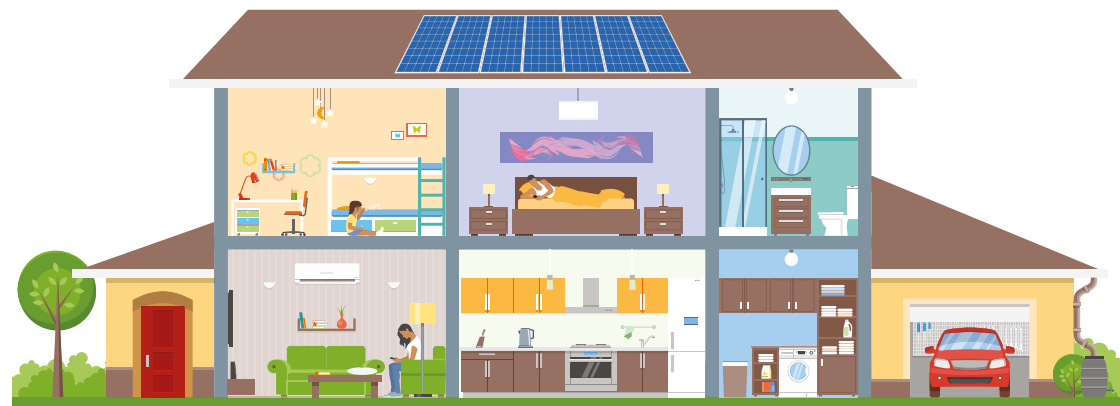
Buildings lose most of their heat through their windows, which means that the better your glazing, the less energy your property will waste. Triple glazing is estimated to be around 40 per cent more thermally efficient than double glazing.

Solar panels

The cost of installing solar panels has dropped considerably in recent years, by as much as 82 per cent since 2010. However, they are still just as effective at making homes more efficient and raising your EPC rating.

Help from your energy supplier

If your tenants are receiving benefits such as universal credit, working tax credit or child tax credit, you may be able to get help with the cost of insulation and replacing or repairing the boiler. Your property must have a rating of E, F or G to be eligible.



YOU CAN COUNT ON US EVERY STEP OF THE WAY

AREAS OF LAW COMMERCIAL PROPERTY | COMPANY & COMMERCIAL DISPUTE RESOLUTION | EMPLOYMENT LAW | FAMILY LAW LASTING POWERS OF ATTORNEY | LITIGATION | NEW HOMES PERSONAL INJURY | RESIDENTIAL CONVEYANCING TOWN & COUNTRY PLANNING

THISTLE HOUSE, 32A ST ANDREW STREET, HERTFORD, HERTFORDSHIRE, SG14 1JA

www.duffieldharrison.co.uk

HODDESDON 01992 442 911 | HERTFORD 01992 587 065 | ENFIELD 020 8804 5271



FREE LOCAL COLLECTION AND DELIVERY



CAR HIRE VAN HIRE

PROVIDING A ONE-STOP-SHOP FOR ALL OF YOUR HIRE REQUIREMENTS

FAMILY RUN COMPANY ■ CLOSE TO STANSTED AIRPORT 120+ FLEET OF NEW VEHICLES ■ CARS ■ PANEL VANS LUTON VANS ■ 7 SEATER MPVS ■ 9 SEATERS MPVS

Call us on 01279 505072 or book online at www.palmerandmartin.co.uk

Unit 14 Twyford Business Centre, London Road Bishop's Stortford CM23 3YT

THE **B7** MEDIA GROUP

PRINTING • BUSINESS CARDS • LEAFLETS
DISTRIBUTION • SIGNAGE • MENUS & BROCHURES
EXHIBITION BOARDS & BANNERS
RETAIL PACKAGING • WINDOW VINYLs
LOGO DESIGN • BRAND ALIGNMENT
VEHICLE WRAPPING • CARBON PADS • WORKWEAR
WEBSITES • SOCIAL MEDIA • I.T. SOLUTIONS



ENQUIRIES@B7MEDIAGROUP.COM



01992 276101



ENQUIRIES@B7MEDIAGROUP.COM



01992 276101



PETROLHEAD PODS

Searching for a motoring podcast that suits your taste? Whether you're into humorous stories, daring adventures or the latest car news, there's something for everyone.

Podcasts are all the rage nowadays, yet navigating a route through the thousands available to download can be exhausting.

Here are six of the best that will further fuel your love of the fast lane.

CAR CHAT: British photographer and fervent car aficionado Sam Moores hosts, with a primary focus on high-performance vehicles and racing.

The podcast features diverse guests, from prominent Instagram personalities to experts from within the automotive industry, and broaches all the trending topics from within the motoring universe.

FULLY CHARGED: Robert Llewellyn presents his renowned Fully Charged brand, which comes in the form of a YouTube series, news platform and live event. The podcast also features exclusive conversations with experts deeply knowledgeable about the complex realm of EVs, renewable energy and sustainability.

GARETH JONES ON SPEED: Gareth collaborates with Richard Porter (known for Sniff Petrol, BBC *Top Gear* and *The Grand Tour*) and his tech-savvy buddy Zog as they deep-dive everything car-related, from daily commuter routes to high-end supercars, vintage vehicles to motorsport.

SPIKE'S CAR RADIO: Spike Feresten, comedy scribe and TV host, unites celebrities, automobiles and comedians in this captivating podcast that's bound to spark car envy.

Engaging with top-tier car enthusiasts, he delves into their most memorable car tales, the prized vehicles in their collections and their all-time favourite rides.

THE COLLECTING CARS PODCAST: *Top Gear's* Chris Harris invites guests to discuss all facets of the automotive world. With a special emphasis on racing narratives, this podcast is a perfect fit for F1 enthusiasts, tackling the hot topics with colour and humour.

THE SMOKING TIRE: With a sunny Californian edge, car enthusiast and YouTuber Matt Farah treats listeners to interviews spanning the motoring spectrum, showcasing everyone from film stars to industry experts. So plug in and ride the soundwaves!



BAD SPORTSMANSHIP:

BUTT & WARNE

on the spot

Cricket undoubtedly has universal popularity. Combine this with its intricacies, its longevity as a game, the ease of online betting and the variety of bookmaker markets, and you have the potential for foul play, on an international scale.

Take Pakistan's 2010 tour of England, for example; a series that became the centre of a sting by the *News of the World* (NoTW) where its reporters secretly filmed Mazhar Majeed, a British bookmaker and agent, giving bribes to visiting players ahead of the Lord's Test.

Money was offered on the proviso that two Pakistan fast-bowlers, Mohammad Asif and Mohammad Amir, would deliberately send no-balls at agreed times – known as spot-fixing. Even the team's captain, Salman Butt, was in on the scam.

The NoTW exposé ended with jail sentences meted out to all four, with the three players also receiving lengthy bans.

While the idea was brazen and reflective of the global gambling market, it was not the first time it had happened. Between 1994 and 1995, an Indian man referred to as 'John the Bookmaker' handed over cash to Australian stars Mark Waugh and Shane Warne in exchange for pre-match weather and pitch information.

'John' soon upped the ante, requesting team selections and tactics, but the duo refused. The Australian Cricket Board became aware of the allegations and the action taken was to fine each player privately.

In the aftermath, the Aussies claimed that Pakistan captain Salim Malik had approached them with bribes in exchange for losing matches. While their own credibility as witnesses had evaporated, the story was pursued, and former captain Malik received a life ban in 2000.

In 2023, cricket's abundant riches implies spot-fixing should be less appealing to players, yet the lure of a payday is always there.



THE VISION LISTINGS

ACCOUNTANT & TAX ADVISORS

ALL THINGS ACCOUNTING

Accounting & tax services, we help with self-assessment tax return, corporation tax return, payroll, VAT return, CIS return & bookkeeping. Call 07539 035537 for free initial consultation.

AIRPORT TRANSFERS

PRIMROSE AIRPORT CARS

Competitively priced efficient, clean & reliable service using satellite navigation and tracking of all return flights for Business or Leisure - 01992 364000 | 07966 180531

AUDIO & VISUAL

ULTIMATE AV

We create bespoke systems designed and built especially for you. Small projects to complete home cinema environments. Based in Essex call us on 07531 214339

BEAUTY & NAILS

BEAUTY BY NATASHA KATIE

A local, mobile LVL Technician. Fully qualified level 2 and 3 beauty therapist Babtac insured and approved. 07961 462672

SPECIAL NAILS

Dedicated to provide the best quality nail care for Men & Women. Walk-ins welcome, appointment bookings & gift vouchers available. 01708 442248

THE NAIL STUDIO

Nail Studio lets you switch off and pamper with highly skilled technicians providing top treatments and nail products to meet your every need. 07572 526519

BUILDER

ALIGN BUILDING SERVICES

Based in Hertford, we specialise in: Home extensions, Kitchen Fitting, Structural Alterations and more. For enquiries call 07850 051788

BUSINESS CENTRE

THE TOWNHOUSE HERTFORD

Modern business centre in the heart of hertford offering a variety of office space, meeting rooms and hot desking facilities. 01992 350132

CANCER SUPPORT

HUMMINGBIRD CANCER SUPPORT GROUP

We are a friendly group based in Bishops Stortford. We meet Mondays 10:30 - 1:30 at South Mill Arts - 07510 178200 | www.hummingbirdcancersupport.org

CARPET & UPHOLSTERY

ARWIN CLEANING SERVICES

Over 30 yrs of exp, we can offer a professional, efficient and cost-effective solution for carpet and upholstery, cleaning and maintenance. 07973 417764

BOOK VIA HERTFORD@VISIONMAG.CO.UK

CAR & VAN HIRE

SCENIC SELF DRIVE

Your self drive hire specialists. Whether you require modern cars, motorhomes, vans or minibuses. Rest assured we will provide you a professional service 01708 753461

CLEANING SERVICES

GLOWWHITE CLEANING

Serving Hertford and surrounding areas. We specialise in end of tenancy cleaning for tenants, landlords and property managers. Fully insured. Contact: 07561 138855

CLEARANCE & WASTE

HERTS CLEARANCE

Clearance, house, garden, garage, shed, no job too small, 75% waste recycled, call for a friendly quote, Tel 07951 831530

COMPUTER REPAIR & I.T.

MAPTEC IT

Your local residential & commercial IT specialists. We can fix your computers, configure email accounts & printers. Setup your Wi-Fi, Internet router & network. 0203 865 7174

ELECTRICAL & WHOLESALE

CH ELECTRICAL WHOLESALE

Essex & East London's leading electrical wholesalers providing the trade & public a professional service with access to all leading brands. 01708 730591

ELECTRICIAN

CAPITAL ELECTRICAL SERVICES LTD

Domestic/Commercial, Repairs/Installation, Vehicle Charging Points, Portable Appliance Testing, Fire Alarms, Emergency Lighting, Installation Condition Reports. Call 0208 088 2916

FINANCIAL SERVICES

GAETON FINANCIAL PLANNING

Backed by the strength and security of St. James's Place Wealth Management. Visit www.gaetonfp.co.uk | 07484273097

FURNITURE RESTORATION

ABBEEY GROUP

Abbey Group are specialist in creating, repairing & restoring quality furniture & wood surfaces to the highest standard. 01708 741135

KINGS UPHOLSTERY

Handmade sofas & chairs designed especially for you to your required specifications. Also providing in re-upholstery & repair work. 01708 444125

GARDEN SERVICES

JOHN HEARNE

We take care of it all Lawn Mowing, Weeding, Planting, General Tidying, Fence/Shed Painting, Driveway/Patio Pressure Washing and more. Call for details 07908 523101

THE ORIGINAL TREE SURGEONS LTD

Taking care of all your tree care needs and providing a personal first-class service to both domestic and commercial clients. 01708 715440

LOCKSMITHS

KEYTEK LOCKSMITHS

From Lock outs to security upgrades, our fully trained DBS checked Locksmiths are the experts | Call 01992 666 121 | Quote: 15077

MASTICS AND SEALANTS

QUALITY MASTICS LTD

Bathroom and shower mastic joint sealing. Kitchens, windows, floors, external seals around windows. For information. Call 01245 520981

PAINTING & DECORATING

PGA DECORATING SPECIALIST

Interior - exterior - paper hanging specialists in Window repair care. 07769 646357 | www.pgadecoratingspecialists.co.uk | pgadecorators@yahoo.co.uk

TRADITIONAL DECORATIONS

We are a family run business specialising in turning your house into a home. Giving advice on current decorating trends. 07737 562406

PLASTERERS

TF PLASTERING LTD

Professional quality workmanship, over 25 years' experience. Public liability insured. Skimming, coving, dry lining, rendering. Free quotes 07738 278036 | 01279 416311

PLUMBING & HEATING

BOILR

BOILR offer servicing, installations, repairs and plans. Local Gas Safe engineers for all your needs. 6000 Homes EVERY MONTH. Call 01992 236063

CMS PLUMBING HEATING & BATHROOMS

Corgi registered, 20+ years' experience, public liability insurance, offering free quotes. No job too small. Based in Gidea Park. Call Craig 07855 589185

PROPERTY MAINTENANCE

LILLYWHITE PROPERTY GROUP

For all building works, full refurbishments & property maintenance inc heating, plumbing, electrical, decorating, flooring, tiling & plastering etc. Call today on 07949 394403

STUART GREEN PROPERTY SOLUTIONS

Property maintenance specialist. Carpentry, painting/ decorating, laminate flooring, bath/shower re-siliconing, gutters cleared/repared, insurance work, PLI. 07917 870879

JOIN THE LISTINGS... for just **£180** +VAT per yr

ROOFING

JIM BARR ROOFING

Exterior cleaning & maintenance. Gutters, Paving & UPVC; cleaned, repaired & renewed. 01708 874816 | 07833 572459

WEB DESIGN & PRINTING

SWIVEL CREATIONS

25+ years experience, specialists in Web, Print, Clothing & Embroidery. Professional, affordable, reliable. 01992 570383 | 07736 879233 | www.swivuk.co.uk | info@swivuk.co.uk

DISCLAIMER: **VISION** does not represent or endorse the accuracy or reliability of any of the advertisements, nor the quality of any products, information or other materials displayed, purchased or obtained by any customer as a result of an advertisement or any other information or offer in connection with the service or products. The opinions expressed in articles, reviews and stories are strictly those of the individual authors and do not necessarily reflect the views of **VISION**.

To advertise call VISION on 01992 276101

PUT YOUR BUSINESS IN THE **VISION** LISTINGS...CALL **01992 276101** TODAY

WORDLADDER: BEAR, BOAR, BOAS, BOBS, COBS, CUBS



PUZZLES & TRIVIA

PUZZLES

Answers: see end of The Vision Listings

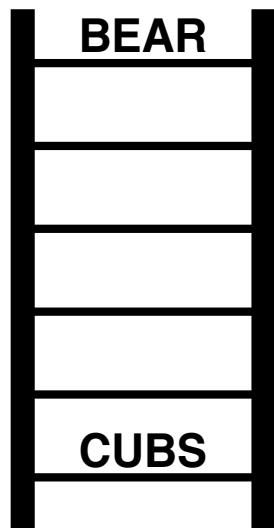
- ▶ ACTING
- ▶ ASTRONOMY
- ▶ BLOGGING
- ▶ BRIDGE
- ▶ CALLIGRAPHY
- ▶ CHESS
- ▶ COOKING
- ▶ DANCING
- ▶ GAMING
- ▶ JUGGLING
- ▶ KARAOKE
- ▶ KNITTING
- ▶ PAINTING
- ▶ PHILATELY
- ▶ PHOTOGRAPHY
- ▶ POETRY
- ▶ POTTERY
- ▶ READING
- ▶ SEWING
- ▶ WRITING



DID YOU KNOW?

- ▶ The earliest version of Monopoly was invented by Elizabeth Magie in 1903 and was originally called the Landlord's Game.
- ▶ The longest game of Monopoly lasted for 70 days.
- ▶ There are more than 300 varieties of Monopoly, including *Pokémon*, *Game of Thrones* and *Harry Potter* versions.
- ▶ The Monopoly Man's real name is Rich Uncle Pennybags, and he is said to be based on American investment banker J P Morgan.
- ▶ Monopoly is available in 47 languages and sold in 114 countries.
- ▶ American jeweller Sidney Mobell created a Monopoly set made of 23 carat gold, rubies and sapphires, worth £1.4million.

WORD LADDER



THE AIM: Change the word at the top of the ladder one letter at a time to make the word at the bottom.

HOW TO: Change one letter on each step to make a new word. By the time you reach the end, you should have created the new word.

DO NOT rearrange the order of the letters.

TIP: There is usually more than one way to solve this puzzle.

UK'S MOST TRUSTED AND REVIEWED AUTO
LOCKSMITH WITH EMERGENCY RESPONSE



IS YOUR CAR TRULY SAFE?

Car & Van Security Specialists

VAN SECURITY LOCKS

ALARM SYSTEMS

VEHICLE TRACKING

THEFT PROTECTION

IMMOBILISERS

CAR KEYS

FROM ONLY

£495



SMART CAR PROTECTION
WITH GHOST IMMOBILISER

Protect your peace of mind and your vehicle
with state-of-the-art security.



We cover Greater London
& surrounding M25 areas



Open 7 days a week
from 8am to 10pm



www.carkeyssolutions.co.uk

Call us on 01992 276093

Email: contact@carkeyssolutions.co.uk



In-Ex Design

Kitchens - Bedrooms & Bathrooms

Welcome To In-Ex Design



*For a free design
consultation call*

**01992 80 9000
or 0800 9800538**



Established since 1991

Delivering Quality & Excellence

Finance Available

@ IN-EX DESIGN

- Fast decisions
- Flexible payments
- Quality support



To apply visit:

ideal4finance.com/apply/in-ex/loan

Or call us on

01707 878785



15 The Precinct, High Road, Broxbourne Herts EN10 7HZ

Phone: 01707 878785 | E-mail sales@in-exdesign.co.uk | www.in-exdesign.co.uk