

FREE

Photo credit: Everett/Shutterstock

HRH  
**PRINCE PHILIP**

Celebrating the life of the Duke of Edinburgh, June 1921 – April 2021



**Your Partner in  
Home Improvements**

# Loft Conversion Specialists

◆ Extensions ◆ Home Improvements

◆ Kitchens ◆ Bathrooms

◆ Combined experience of over 30 years ◆ Team of highly qualified experts

◆ Project handling from ideas to completion

◆ Fully compliant with Building Controls & Covid-19 Government Guidelines

Contact us on 01708 578162

[www.TheAscensionPartnership.co.uk](http://www.TheAscensionPartnership.co.uk)

[Chris@TheAscensionPartnership.co.uk](mailto:Chris@TheAscensionPartnership.co.uk)



rated people





# Editor's notes...

MAY 2021



Brett Shohet, Editor

Hello and welcome to this month's edition of **VISION** Hornchurch.

It's been great to see people face to face again as we venture out of lockdown. I've had proper conversations with readers and clients again, many of whom have said they were very pleased to see us still up and running during the pandemic.

What's more, I'm seeing so many local businesses that have been in the community for as long as I can remember continuing to move forward despite the pandemic - it truly is uplifting.

I'm expecting there will be enough local events lined up that we'll soon be able to reintroduce our 'What's On' page, which is hopefully as exciting for our readers

as it is for us.

With the weather improving, I've been able to enjoy my garden a lot more, which is exciting both because it's encouraged me to finally cut the grass and because it's provided me with the opportunity to buy gardening goods from local businesses.

I wanted to say a quick "happy birthday" to my girlfriend, Kirstie, who recently turned 30. It's the support of people like Kirstie around me that helps make **VISION** the success that it is.

*Brett Shohet*

This is your town's hyper-local magazine, delivering to homes and businesses every month.

HOME & DIY | GARDENING | PETS | HEALTH & FITNESS | BEAUTY | FASHION | HISTORY | LOCAL NEWS | FOOD & DRINK | TRAVEL | BUSINESS & PROPERTY | SPORT | PUZZLES | MOTORING | KIDS | WHAT'S ON | TECHNOLOGY | THE LISTINGS

**CONTACT US:** [www.visionmagessex.com](http://www.visionmagessex.com) | [hornchurch@visionmag.co.uk](mailto:hornchurch@visionmag.co.uk) | 01708 578049

[@visionmagessex](https://twitter.com/visionmagessex)

[@visionmagessex](https://www.instagram.com/visionmagessex)

[Vision Magazine Essex](https://www.facebook.com/VisionMagazineEssex)

CONTRIBUTORS | Tabatha Fabray, Tim Green, Geraint Roberts

At the time of print all content in **VISION** was relevant and up to date according to COVID-19 government guidelines

Inside pages recyclable

home hub group

NOW OPEN ON  
EPPING HIGH STREET



We supply and install windows and doors.

01992 276 046  
[essex@homehubgroup.co.uk](mailto:essex@homehubgroup.co.uk)

[homehubgroup.co.uk](http://homehubgroup.co.uk)

[f](https://www.facebook.com/HomeHubGroup) [@HomeHubGroup](https://www.instagram.com/HomeHubGroup)

Windows | Doors | Porches | Conservatories | Fascias & Guttering



[www.conceptwindows.co.uk](http://www.conceptwindows.co.uk)  
Trading Standards Approved



HIGH SECURITY WINDOWS



HIGH SECURITY DOORS

COMPOSITE DOORS

BI-FOLD DOORS



WHETHER YOU'RE LOOKING FOR A NEW CONSERVATORY OR TO REFURBISH YOUR EXISTING ONE...

FROM START TO FINISH WE TAKE CARE OF EVERYTHING

Concept House,  
Billet Lane, (Opposite Sainsbury's)  
Hornchurch, Essex RM11 1XP

FREE CUSTOMER  
PARKING

EVERYTHING ON DISPLAY AT YOUR LOCAL SHOWROOM

96%  
of customers  
would  
RECOMMEND

CONCEPT  
to friends

For Your FREE QUOTE Call 01708 463526



# WILLIAM & KATE: *Ten years on*

Looking back to celebrate William and Kate as they reach the milestone of their 10<sup>th</sup> wedding anniversary.

When asked, Prince William and Kate Middleton, the Duke and Duchess of Cambridge, would doubtless suggest their first decade together as husband and wife has been wonderfully happy, uplifting and rewarding... albeit not without its challenges.

To most couples in the early throes of wedded bliss, the faint cry of babies and the bringing on of previously untapped levels of tiredness is a challenge enough. Yet it is to the couple's unending credit that they have never swayed away from their other royal duties, while having the ambition to pursue new challenges and initiatives. They are every bit the exemplars of people wanting the best for themselves, their family and those around them.

In isolation, those challenges of early parenthood – when we saw the arrival of Prince George in 2013, Princess Charlotte two years later and, most recently, Prince Louis in 2018 – are considerable, yet in recent years family events have compounded further the complications of life. The Prince Harry and Meghan Markle spat, notably, has left a devastating scar across how we perceive the Royal Family; then there's been the controversy of Prince Andrew and his links to Jeffrey Epstein; while the recent passing of William's grandfather, Prince Philip, Duke of Edinburgh, has further shrouded the institution at a time when the rest of the nation is finally managing to pull away from the darkness.

Regardless, the April 29, 2021, anniversary reaffirms the couple as a modern inspiration. The ceremony, 10 years ago, was a typically lavish affair, albeit laced with the style and individuality that William and Kate have wanted to imprint in the way they go about their duties.

Former Archbishop of Canterbury Rowan Williams conducted the ceremony, as 26 million UK viewers watched it live. The Royal Family and the Middletons picked up the bill for almost 2,000 guests, with 300 special invitees going on to an evening dinner hosted by Prince Charles.

Naturally, the day went off without issue, and their work as a couple was only just beginning. Few would disagree now that, during an era when criticism of the royals has been fervent, William and Kate uphold the value and purpose of the Royal Family, even if others in the clan are less proactive.

Over the past decade, the prince has committed huge amounts of time to mental health issues, as well as opening up to a more mainstream audience with his love of sport; while the Duchess of Cambridge's elegant embracing of the mum role model is notable for the familiarity it has with Princess Diana and her boys.

More than anything else, William and Kate speak to the world with the shutters up. Rarely have a royal couple been so close to the people, with honesty, humility and even the ability to laugh at themselves.

It gives all of us hope that not only will the Windsors overcome this recent spate of negative events but, more than that, with William and Kate excellent exemplars, the institution of marriage – itself in decline – once again has those to uphold its values.

"We have always loved being married," says William. "I think we are more in love now than before, and we both truly feel we have found a soulmate who will be there forever."

# BETTER THAN *Just O-kay*

## *Vernon Kay and 25 years on camera*

There's something unmistakable about people from Bolton – think Peter Kay, Paddy McGuinness, Amir Khan. Perhaps it's the accent, perhaps the exuding of confidence, or maybe it's just an ability to look on life with uplifted energy.

Whatever the mechanics are, Vernon Kay, like so many of his Greater Manchester contemporaries, has them in abundance.

The husband of Tess Daly, Kay has just celebrated 25 years on screen – no mean feat for someone once described in the Nineties by Mark Lamarr as “a lanky indie kid with bad taste in clothes”.

That's ironic, given that Kay was actually first spotted at Clothes Show Live when he agreed to strut some clothes in return for free drinks. He went on to model for several years before using the catwalk as a platform to launch a TV career.

One of the many to emerge through the T4 stable, he has gone on to present *All Star Family Fortunes*, *Beat the Star* and *Splash!*, among others. Yet it was his appearance in *I'm a Celebrity... Get Me Out of Here* last year that truly reacquainted the watching public with someone who has also spread his talent across radio DJing (notably on Radio 1) and even movie cameos (in *Shaun of the Dead* and *Keith Lemon: The Film*).

A father of two, Kay famously talks down his talents, but has become one of terrestrial TV's go-to faces. Most recently, his *Game of Talents* show has allowed him to rediscover some of the spontaneity so associated with those T4 days.

“A lot of entertainment is very sanitised these days and I want to bring energy and unpredictability back to it,” says Kay, who said recently he blames the sterility of autocue for ruining so much live programming.

“Having fun is difficult when you're reading words off a script, so I'd love us to get back to really immersive TV that throws off the shackles.”

The shackles are off, Vernon.

Photo credit: Kieron McCarron/ITV/Shutterstock

home  
hub group

# YOUR VISION IS OUR VISION

NOW OPEN ON EPPING HIGH STREET



Home Hub Group is now open on Epping High Street. We supply and install windows, doors, bifold doors, sliding doors and rooflights.



CALL US TO BOOK AN APPOINTMENT AT OUR STUNNING NEW LIFESTYLE SHOWROOM.

137-139 High St  
Epping CM16 4BD  
essex@homehubgroup.co.uk  
homehubgroup.co.uk

01992 276 046



@HomeHubGroup

# BROKEN WASHER OR DRYER? WHO YA GONNA CALL?

**WE CAN WASH, DRY & IRON  
FOR YOU WHILE YOUR  
MACHINE IS FIXED**

*Or pop in & do your own laundry*

**SERVICE WASH/DRY/IRON • SELF SERVICE  
EST NEARLY 30 YEARS • FRIENDLY STAFF**

**Call 01708 447710**

or text Steve on 07983 580325

**THE LAUNDRY MAN  
wet cleaners**

**OPEN 7  
DAYS A  
WEEK**

**Any size  
duvet for  
£12**

*Offer excludes feather duvets  
£6 extra for feather  
duvets*

**Servicing HORNCHURCH HAVERING & surrounding areas**



**SKIN LAB MEDICAL**  
AESTHETIC SUPPLIES

**OPEN FOR ALL OF YOUR  
AESTHETIC SUPPLIES**

Fillers • Aesthetic Lasers • Skincare  
Small Devices • & Much More

LIVE CHAT



+44 17083 61649

@skin\_lab\_medical

www.skinlabmedical.com



FASHION

# REACH FOR *Retro*

**F**orget spending a fortune on a new wardrobe this season – simply dig into your cupboards and pull out some pieces that are back in fashion.

## SUPER-STATEMENT TROUSERS

Ditch your skinny jeans and leggings, because this season it is all about the high-waisted, wide-legged trousers. A huge trend in the Eighties, this is the perfect style for anyone who likes to feel comfy in their clothes while also being fashion-forward.



## ALL THAT GLITTERS

If you were a huge fan of disco, then you will be thrilled to know that glitter is back! From Louis Vuitton's stunning silver suits to Balmain's super slinky sparkle dresses, the catwalk will be lit up with glitzy, glittery glam.

## TOP OF THE CROPS

Not for the faint-hearted, crop tops are making a huge comeback. Best matched with a loose blazer and high-waisted skirt or jeans – ideal if you love your tum, but not your hips! – this is the ultimate throwback look for when the heat rises.



## POWER PUFF SLEEVES

You may have to reach right back into your wardrobe to find this look; the ultimate symbol of Eighties glam. That's right – puffy sleeves are back, and this time they mean business. Whether summery and voluminous or structured to create that classic silhouette, this is a big, bold trend that's here to stay.

## SHEER LUCK

Incredibly versatile, this is a fantastic trend for almost every body shape. Whether you want to emulate Seventies beach chic with patterned maxi-dresses and a bikini peeking through, Nineties grunge with a see-through loose layer over a tight minidress and chunky boots, or simply a semi-sheer camisole under a blazer, this is a great way to reveal a little extra flesh while still remaining modest.



Photo credit: ASOS.com



BEAUTY

# RICE, RICE baby

When you rinse rice before cooking, chances are you let the water simply run down the drain. However, you may think twice about wasting this leftover liquid when you discover its many beauty benefits below.

### WHAT MAKES RICE WATER BENEFICIAL?

Rice water is packed with vitamins, minerals and amino acids which are all needed for maintaining healthy skin, hair and nails. It contains ferulic acid, an antioxidant that helps to nourish skin and nails, as well as allantoin that has healing properties. For your hair, rice water contains inositol, which strengthens your follicles and reduces surface friction.

### BEAUTY USES FOR RICE WATER

**Facial cleanser:** Give your skin a boost of goodness by pouring rice water onto a cotton pad and massaging over your face, both in the morning and before bed.

**Acne treatment:** Apply to spots to help reduce redness to act as an astringent and to prevent future breakouts.

**Age spot treatment:** If you suffer with age spots or skin discolouration, mix 1 tsp of rice water with

two drops of fractionated coconut oil and massage into your face and neck.

**Hair conditioner:** For those with dry or brittle hair, apply rice water and a few drops of lavender essential oil after shampooing, leave for 10 minutes and rinse with cold water.

**Nail treatment:** To help your nails grow faster, soak them in a bowl of rice water for five minutes once a day. This can also help to reduce the signs of ageing on your hands.

### HOW TO MAKE YOUR OWN RICE WATER

- > Rinse ½ cup of uncooked rice to remove any dirt or impurities
- > Place the rinsed rice in a bowl and cover it with two cups of water
- > Swirl and leave to soak for 30 minutes
- > Strain the rice and set aside the water
- > Store the rice water in an airtight container. It will keep for one week in the fridge.



Beauty Box SKIN CLINIC by Maggie

We offer a full range of services & treatments including: Aesthetics, Fillers, Fat Reduction and Tattoo Removal.

“ YOUR ONE STOP SHOP FOR WOMAN'S & MAN'S BEAUTY ”



Phone: 01708 567 200

Address: 14 North Street, RM11 1QX

Web: www.beautyboxskinclinic.co.uk



WALK-INS AVAILABLE

## SUPPORT LOCAL BUSINESSES



Let your local businesses know that you saw them first in... VISION

# With life reopening...

Come & see us  
for all your hair &  
beauty needs

LAURA YOUNG AESTHETICS  
SKIN HAIR BEAUTY

- Advanced Filler Specialist
- Diploma Of Excellence Semi Permanent Make Up
- Anti Wrinkle Injections ● PDO Threads
- Plasma Fibroblast & many more...

**10% OFF  
FIRST TREATMENT  
QUOTE VISION**

**WALK IN SERVICE AVAILABLE**

Contact us on: 01708 451015 ● Address: 206 Hornchurch Road, RM11 1QJ  
● [www.laurayoungaesthetics.com](http://www.laurayoungaesthetics.com)  
● @laurayoungaesthetics ● laurayoungaesthetics



## 1-2-1 COACHING

with Jay Wollaston aka HerbaMum  
Your friendly local Herbalife Coach



**Zoe, Essex**



**Kellie, Essex**

Making healthier choices and improving your eating habits isn't easy. It's a process that takes time and motivation.

And this is where your Herbalife Nutrition coach can make a real difference.

With personalised guidance, advice and support, Jay will work with you so you can turn your goals into reality.

**Get started for just £10!**

**TO START YOUR 21 DAY CHALLENGE**  
Call 01708 578067 | Go to [www.21-daychallenge.co.uk](http://www.21-daychallenge.co.uk)... and feel good!

**CHALLENGES RUN: 31st June - 20th June**  
**28th June - 18th July | 26th Jul - 15th Aug**



# Hello hay, FAREWELL FEVER

As the weather gets warmer and the pollen count grows, hay fever sufferers across the nation lament. If you are already in the throes of a hay fever attack, you don't have to turn to over-the-counter medications. Instead, try one of the below natural remedies.

## VITAMIN C

A natural antihistamine, vitamin C can be found in oranges, lemons and grapefruits, as well as red bell peppers. As vitamin C cannot be stored in the body, you need to offer consistent and low doses to support your nasal lining and minimise the effects of hay fever.

## HONEY

If you know anyone who sells local honey, then this is the perfect hay fever remedy for you. With the ability to desensitise your body to other pollens, the bee pollen found in honey can help to significantly reduce the most common hay fever symptoms, including a runny nose and persistent sneezing.

## GARLIC

Known for boosting your immune system, garlic can also act as a decongestant which can help to alleviate minor hay fever symptoms. This potent plant is also an anti-inflammatory and a good source of quercetin, a natural antihistamine.

## PETROLEUM JELLY

Not just a lip saviour when the weather turns cold, petroleum jelly has been praised by hay fever sufferers for its ability to trap pollen before it enters the nose. Simply apply a thin layer inside your lower nostrils to prevent your symptoms from becoming any worse.

## CHAMOMILE TEA

High in antioxidants, as well as being a natural antihistamine, chamomile tea can be drunk to act as an anti-inflammatory agent. Alternatively, choose to place cooled teabags on swollen, red eyes for an instant calming effect.

## CHILLI PEPPERS

Chilli peppers contain capsaicin which, when eaten, opens up the nasal passages, helping to reduce congestion caused by hay fever.



HEALTH & FITNESS



# REBUND REGRET

*how to move on properly after a failed relationship*

When a relationship comes to an end it can be a traumatic and sad experience, with statistics showing that most of us will experience the feeling at some point in our lives.

While time is undoubtedly the greatest healer, there are a few useful techniques and ideas that can let light come through on even the very darkest days of a relationship break-up:

the bad and the good aspects of the relationship.

**2. Sever ties:** The temptation when a relationship goes bad is to attempt to stay in touch in the hope of repairing or, worse still, staying friends. Both can be tricky – things happen for a reason – and you may find yourself not just prolonging that yearning for your ex, but also holding back on meeting someone new.

**3. Stay busy:** Keeping the brain active and distracted is an important route towards moving forward. Look for new challenges or embark on a fresh project as a way of distracting the mind away from painful thoughts.

**4. Focus on your own health:** The dopamine buzz we receive from exercise is a great antidote to feelings of despondency that might arise out of a split. Exercise and other steps towards building health and strength will aid recovery as well as serving to focus on 'the you', which after a painful split is important and, undoubtedly, what you deserve.

**1. Draw a line:** It's easier said than done, but the thing that makes failed relationships so painful is the brain's desire to relive happier times. While assessing what went wrong is something you will probably need to do at some point, if you feel the relationship is beyond repair you should save the soul-searching for further down the track, instead looking to draw a line in the sand.

When you can tackle the ins and outs, avoid viewing history with rose-tinted glasses by writing a list of both



# Getting a Glint smile is as easy as ABC



## Align

Using invisible braces to straighten teeth



## Brightening

Whitens teeth using blue light technology



## Composite bonding

Change shape, form or shade of anterior teeth to enhance your smile with non-invasive techniques



Call 01708 578087 to find out more

email: [marais.associates.limited@gmail.com](mailto:marais.associates.limited@gmail.com)

or visit: [www.maraisassociates.com](http://www.maraisassociates.com)

Scottish Mutual House, 27-29 North St, Hornchurch, RM11 1RS

glint  
smiles better



# HAVE A brew-tiful DAY

Coffee lovers rejoice, your morning cuppa can not only help kickstart your day but it can also help your health in more ways than you can imagine.

### ENHANCED LONGEVITY

Recent studies have found that coffee drinkers are less likely to die from some of the most leading causes of death, including heart disease, stroke, diabetes and kidney disease.

### REDUCED RISK OF ALZHEIMER'S AND PARKINSON'S

Drinking two or three cups of coffee a day can reduce your risk of developing dementia and Parkinson's disease. Plus, for the latter, it can help you control your movements.

### INCREASED FAT-BURNING ABILITIES

There is a reason why caffeine is found in nearly every fat-burning supplement, and this is because it has the ability to boost your metabolic rate by between three and 11 per cent and potentially increase fat-burning by up to 29 per cent.

### IMPROVED PHYSICAL ABILITIES

Caffeine increases epinephrine, also known as adrenaline, in your body, which can help to improve physical performance by between 11 and 12 per cent.

### DECREASED RISK OF DEPRESSION

The drinking of coffee is linked to positive emotions such as pleasure, satisfaction, calmness and happiness. In fact, a study by

Harvard found that the risk of depression in women decreased as their caffeinated coffee consumption increased.

### WHAT IS THE COFFEE DIET?

Popularised by the book *The Coffee Lover's Diet* by Dr Bob Arnot, the coffee diet is based around the idea that health and longevity is enhanced by a high intake of antioxidant-rich coffee. The diet is said to help boost your metabolism, burn fat, block calorie absorption and decrease your appetite.

### HOW IT WORKS

- Drink a minimum of three cups of light-roast coffee per day
- Avoid adding milk or sugar
- Replace one meal with a home-made, high-fibre, green smoothie
- Stick to 1,500 calories per day
- Avoid highly processed foods



## SKN··ESTI *By Parveen*

Parveen has over 11 years experience as a medical aesthetician and working in high-end medical clinics. During her years of practice, Parveen has developed her expertise in helping clients to improve their skin health, including ex-cancer patients and clients who suffer from conditions such as pigmentation and Polycystic Ovary Syndrome.



The skin is the largest organ of the human body. Our skin is constantly exposed daily to many free radicals that can damage our skins overall health. So, it is imperative we take care of skin concerns such as: Acne, Pigmentation, Ageing, Post cancer care, psoriasis, excema, or general skin health

Getting a specialised, tailor made skin management programme will ensure that what you are using to gain your goals are right for you.

The range of medical grade skincare at Peauperfect Skin and Laser Clinic is the highest and most effective in the aesthetics industry.

BOOK IN FOR A VIRTUAL SKIN CONSULTATION WITH SKN ESTI BY PARVEEN AT PEAU PERFECT SKIN AND LASER CLINIC AND GET STARTED ON YOUR SKIN CARE JOURNEY.

[peauperfect\\_clinic](#) [www.peauperfect.co.uk](#) Contact: 01708 578156



## B. F. MULLEY & SON

*incorporating Horace Fry*

### 3rd Generation Family Owned Funeral Home

- Chapel Of Rest • Home Arrangements
- All Areas Covered • Distance No Object
- Memorials • Ample Client Parking



Golden Charter Funeral Plans

**24 HOUR SERVICE**

254 St. Mary's Lane, Upminster, Essex RM14 3DH  
**Telephone: 01708 220330**

28 High Street, Hornchurch, Essex RM12 4UN  
**Telephone: 01708 442145**

**Email: [upminster@bfmulleyson.com](mailto:upminster@bfmulleyson.com) • Web: [www.bfmulleyson.com](http://www.bfmulleyson.com)**

# Essex Stairlifts Ltd

Your local stairlift specialist

- Straight Stairlifts
- Curved Stairlifts
- Rental Stairlifts
- New & Used
- Servicing & Repairs
- Home Lifts



For friendly, personal service telephone:

**01708 369062**

**01268 550173**

**01206 231568**



Email: [sales@essexstairlifts.co.uk](mailto:sales@essexstairlifts.co.uk)

[www.essexstairlifts.co.uk](http://www.essexstairlifts.co.uk)

Home Instead  
SENIOR CARE  
*to us, it's personal.*



Live well,  
**your way**

with care at home

Your home is where you feel the most comfortable and the happiest. It's the place you know the best.



- ✓ Home help
- ✓ Personal care
- ✓ Companionship
- ✓ Dementia care

Contact us on: **01708 989974**  
[homeinstead.co.uk/romford](http://homeinstead.co.uk/romford)

Each Home Instead Senior Care franchise office is independently owned and operated

# Authentic Thai Therapy in Far East London



If you have visited Thailand, one of the things you are unlikely to have missed, is getting a massage.

By coming to see us, here in far east London, we are confident that your experience will be the same as if you were on holiday in the 'Land of Smiles'. We provide the best relaxing massage treatment with hygiene being our number one priority.

Visit [www.lavenderthaitherapy.co.uk](http://www.lavenderthaitherapy.co.uk) or call **01708 477505** to book an appointment.



**Lavender**

16 Station Parade, Elm Park, RM12 5AB.



# Jicama

The jicama, also known as a Mexican yam bean, is a starchy root vegetable that is recognisable by its thick, brown skin and turnip shape. Low in calories and sweet in taste, this veg makes a great alternative to the humble potato.

Jicama plant is safe to eat, as the rest, including the beans and flowers, contain rotenone, a natural insecticide that can be toxic to humans in high doses. You should also remove the brown skin before consuming.

## HOW TO USE JICAMA

- > Slice thinly and add raw to a vegetable salad or Mexican fruit salad for added crunch
- > Sauté with other veg such as broccoli and carrots
- > Use as a substitute for water chestnuts in a stir-fry
- > Bake in the oven or place in an air fryer for healthy chips

## WHAT DOES JICAMA TASTE LIKE?

The jicama has been described as a cross between a potato and a pear owing to its distinctive flavour which is both nutty and sweet. Its flesh is juicy and crunchy and, because it has a fairly mild taste, it blends well with other flavours.

## WHAT ARE THE HEALTH BENEFITS OF JICAMA?

The perfect vegetable for people with diabetes, the jicama is naturally low in sugar but still sweet to taste. It is also high in fibre, a great source of vitamin C and low in fat and calories.

## HOW TO STORE JICAMA

The most important thing to remember when storing jicama is that you must keep it dry, as any moisture can cause rot and mould. Store unwrapped at room temperature if still whole or, once cut, wrap tightly in cling film and store in the fridge for up to one week. Alternatively, wrap a whole jicama in foil and freeze for up to one year.

## IS JICAMA SAFE TO EAT?

It is worth noting that only the root vegetable of the



FOOD & DRINK

# Shish Meze

RESTAURANT & COCKTAIL BAR

WE WELCOME YOU ALL TO AN EXQUISITE MEDITERRANEAN  
DINING EXPERIENCE AT HORNCHURCH

**WE ARE BACK  
OPEN AS USUAL**

YOU CAN ALSO ENJOY SHISH MEZE AT HOME

**FREE DELIVERY**  
WITHIN A 5 MILE RADIUS OR

**10% OFF CALL & COLLECT**  
**01708 47 58 58**

Shish Meze service and opening times are subject to current social distancing and local lockdown measures.

Full menu online: [www.shishmeze.com](http://www.shishmeze.com) - @ [shishmeze](https://www.facebook.com/shishmeze)



**HORNCHURCH**

2 BERTHER ROAD, HORNCHURCH RM11 3HS  
01708 47 58 58

## FOOD ALLERGY

**AWARENESS WEEK: May 9 - 16, 2021**

An annual event, Food Allergy Awareness Week aims to raise awareness of different food allergies and to improve public understanding of what can sometimes be a life-threatening condition. From cow's milk to peanuts, eggs to shellfish, discover the most common food allergies in the UK below.

### Peanuts

Peanut allergy affects around one in 50 children and has seen a significant increase in cases in recent decades. Typically developed in early childhood, symptoms of a peanut allergy usually occur within minutes of contact and can include nausea, shortness of breath and skin reactions such as hives, redness and swelling.

### Cow's milk

Affecting mostly babies and young children, a cow's milk (protein) allergy is usually outgrown by the age of five. Common symptoms include swelling of the lips or tongue and breathing difficulties, and these can occur within minutes or many hours after ingesting.

### Eggs

Another allergy that is much more common in young children than adults, an egg allergy can mean being allergic to all forms of egg, or only to loosely cooked and raw egg. Egg allergy symptoms include skin inflammation, sneezing, runny nose and shortness of breath and/or chest tightness.

### Shellfish

The most common allergy in adults, around 60 per cent of people experience their first allergic reaction to shellfish once they have reached adulthood. Shrimp is the most prevalent shellfish allergen for both children and adults. Allergic reactions to shellfish can be unpredictable, with common symptoms including swelling of the lips, mouth, tongue, throat and face.

### What is an anaphylactic shock?

Anaphylaxis is a severe and potentially life-threatening reaction to a trigger, such as an allergy. Symptoms include:

- > Feeling faint
- > Wheezing
- > Clammy skin
- > Collapsing or losing consciousness
- > Difficulty breathing
- > A fast heartbeat
- > Confusion and/or anxiety

If someone has symptoms of anaphylaxis, you should use an adrenaline auto-injector if they have one and call 999 immediately.



FOOD & DRINK



# BBOQ IQ

## THE DOS AND DON'TS OF GRILLING OUTSIDE

**DO expand your repertoire beyond sausages and burgers.** From slow-roasted delectable cuts of beef to a delicately grilled entire sea bass, there really is no limit to what can be cooked on the barbecue provided you get your temperature and technique right.

**DON'T only barbecue in the summer.** It is almost criminal that we limit our grilling to just one season when so many other meals could benefit from being barbecued. Whether slow-roasting pork belly for a sumptuous Sunday lunch or smoking ribs for a night in front of the footie, your barbecue is waiting to bring that added wallop of flavour, whatever the season.

**DO let the flavour linger.** Another plus of the outdoor grill is that it requires little maintenance. During periods of regular use, you can simply heat it up and brush off any food debris with a steel brush – this will also help preserve your non-stick seasoning.

**DON'T leave it to the elements.** Barbecues may be hardy, but they aren't invincible, so cover them up when not in use.

**DO your research.** Just as you wouldn't blast every cut of meat with heat in the oven, the key to successful grilling is to adapt your barbecue accordingly by having areas with and without coal underneath. For example, steaks benefit from a few minutes over really high heat before being taken off to rest, whereas chicken thighs need a few minutes over a direct heat and then a longer period with indirect heat to cook properly.

**DON'T go full caveman.** Grilling may seem like a primitive cooking method, but using the right tools will really enhance your experience and the food you produce. Whether using chimney fire starters to expertly preheat coals, or heatproof gloves for effortless handling of utensils, or a meat thermometer for supreme cooking accuracy, these nifty gadgets are more than just a gimmick... although the "kiss the cook" apron remains optional.



## ARTISAN MADE COLD PRESSED FRUIT & VEGETABLE JUICES DETOX & CLEANSE PROGRAMMES

Delivered to your Doorstep in Reusable Glass Bottles & Cooler Bags Fully Sustainable – No Waste Designed to Boost the Immune System



Head over to [www.juicehq.co.uk](http://www.juicehq.co.uk) to see how we could help you or follow our journey down at the farm via

Juice HQ @\_juicehq

T: 01708 578039 • E: [hello@juicehq.co.uk](mailto:hello@juicehq.co.uk)

**10% OFF**  
WITH THIS ADVERT



MAXOS  
MOBILE SHISHA

## DOOR TO DOOR MOBILE SHISHA SERVICE

The ultimate quarantine therapy

- Complete shisha set for 24 hours ○
- Flexible convenient pick up times ○
- Card and Cash payments accepted ○
- COVID-19 Compliant ○

Contact us to order:

Maxos\_shisha 01708 578063

[Info@maxosshisha.com](mailto:Info@maxosshisha.com)

*We deliver to Essex & London & offer free delivery throughout*



## MOTHER INDIA

The Hallmark of Fine Indian Cuisine



WINNER OF THE NATIONAL NEWCOMER OF THE YEAR – ASIAN RESTAURANT & TAKEAWAY AWARDS (ARTA)



INDIAN RESTAURANT | TAKEAWAY SERVICE CATERING FOR PARTIES & EVENTS

OPEN 7 DAYS A WEEK | 5pm-11pm

Allergens & Intolerances: Please speak to our staff for advice when placing you order.

**FREE HOME DELIVERY**  
on order over £10 (4ml radius)  
TAKEAWAY: 10% Discount on Collection



**FOR RESTAURANT BOOKINGS & TAKEAWAY CALL**  
**01708 470 218 | 07960 734 409**  
118 North Street, Hornchurch, Essex RM11 1SU



Small Groups: in person and online  
Supported by a dedicated online platform

# Eleven Plus Registration Open

Closes: 12<sup>th</sup> July



[www.superthinkers.co.uk](http://www.superthinkers.co.uk)  
01708 878 338  
[enquiry@superthinkers.co.uk](mailto:enquiry@superthinkers.co.uk)

## THE B7 MEDIA GROUP

- PRINTING • BUSINESS CARDS • LEAFLETS • DISTRIBUTION
- SIGNAGE • MENUS & BROCHURES • EXHIBITION BOARDS & BANNERS
- RETAIL PACKAGING • WINDOW VINYLs • LOGO DESIGN
- BRAND ALIGNMENT • VEHICLE WRAPPING • CARBON PADS
- WORKWEAR • WEBSITES • SOCIAL MEDIA • I.T. SOLUTIONS



[ENQUIRIES@B7MEDIAGROUP.COM](mailto:ENQUIRIES@B7MEDIAGROUP.COM)



01708 578049



KIDS



# CHECKING IN

WHY PROTECTING THE YOUNG PEOPLE AROUND YOU MEANS INSISTING ON THE RELEVANT CHECKS

In the past decade or so, Criminal Record Checks (CRCs) have become commonplace in situations where organisations need to safeguard the welfare of children, young people and vulnerable adults. And this can be the case in everything from 9–5 employers ensuring their staff have been honest in job applications, to volunteers working for charities, right through to local sports teams safeguarding the welfare of young players.

The checks are done by the Disclosure and Barring Service (DBS) and take the form of a simple and relatively cheap process that takes a couple of weeks. The application can be submitted by the individual or an employee (but only after an offer of employment has been made – in other words, for a successful applicant, not for an interview candidate).

The request goes to the DBS, where a criminal background check will be made. A certificate is subsequently issued that lists any convictions.

The process has become an essential part of

verifying people who are in positions of responsibility where young and vulnerable people are concerned, and replaces what was previously a somewhat more convoluted process between the Criminal Records Bureau and the Independent Safeguarding Authority. By merging these two organisations into one entity, the DBS, in 2012, the government was able to streamline welfare checks, which meant not only a safer and more comprehensive system, but also one where people could begin helping and assisting youngsters without having to go through swarms of red tape.

Of course, while a DBS check will list noted convictions, organisations can and do undertake additional protection, welfare and safeguarding training. And as ever, as parents, the most effective reference to those helping our children comes through our own communication with both our loved ones and the organisation – it always pays to be vigilant.

Photo credit: Ascarnio/Shutterstock.com



TRAVEL



*Brexit, travel and your*

# PASSPORT

## ENSURING YOUR PASSPORT IS FIT FOR OVERSEAS TRAVEL IN 2021

We've become used to the uncertainty suffered from the drawn-out Brexit process and what our departure from the EU ultimately means for the UK; yet gradually the intricacies of us operating as an independent nation are becoming clear.

A hot topic has been the use of our passports when going abroad, although the intensity of this discussion has been held back by COVID-19 and a general inability to travel anywhere in the world.

In essence, there are two main points to take into consideration: from January 1, 2021, anyone leaving the UK needs to have six months left on their passport in order to be able to travel throughout Europe. Not only that, but your passport will need to be less than 10 years old.

The one exception here is when travelling to Ireland. Although this is still part of the EU, you

are able to use your passport any time up until its expiry date.

While these are the immediate changes when it comes to travelling to Europe, throughout 2021 we will continue to be issued with new blue passports. These are a throwback to the old-style British passports which were in use until 1988, before the burgundy EU passport came into play.

As far as visiting EU countries goes, no visas are required when travelling to mainland Europe, and stays are permitted for 90 days in any 180-day period. Again, there are some exceptions – when travelling to Bulgaria, Croatia, Cyprus and Romania, for instance – so it's best to check the finer details on the Foreign Office portal of the gov.uk website to ensure your deserved holiday doesn't come unstuck before you've even made it to the aircraft.



www.kitchenhaus.co.uk  
The German Kitchen

## Why choose Kütchenhaus luxury German kitchens?

- Beautiful kitchen showrooms across the UK
- Direct from the factory prices
- Full installation service or supply only
- Kitchens designed and built to order
- Free in-showroom design consultation
- Finance options available

- SIEMENS
- nobilid
- NEFF
- AEG
- SILESTONE
- BOSCH
- Miele
- smeg
- DEKTON
- CORIAN

VISIT OUR WEBSITE OR SHOWROOM  
6, The Baytree Shopping Centre,  
Brentwood, Essex CM14 4BX

01277 204447  
www.kitchenhaus.co.uk

Credit is subject to status and affordability. Terms and Conditions apply. German Kitchens Limited trading as Kütchenhaus, 1007 London Road, Leigh-on-Sea, Essex SS9 3JY (Register no. 811494) is a credit broker and is authorised and regulated by the Financial Conduct Authority. Credit provided by Hitachi Personal Finance, a trading style of Hitachi Capital (UK) PLC, authorised and regulated by the Financial Conduct Authority (Register no. 704348)



TECHNOLOGY

# SMART savings

As well as offering convenience, did you know that smart technology can actively help you to save money?

Check out the best budget-busting smart gadgets for your home below.

### BLINK – The Mortgage Magnet

Launched this spring, Blink is a free fridge magnet that flashes to let you know about better mortgage deals. Simply sign up to Dashly, a mortgage comparison site with a difference, and your new magnet will alert you when a better deal becomes available.

Possible savings: £2,620 per year

### LEAKBOT – The Leak Detector

Did you know that one in three households experiences a leak each year? Avoid this costly occurrence by investing in a LeakBot, a handy device that clips to your mains water supply pipe and detects leaks. If you have insurance with Neos, Aviva or Legal & General, you can get a LeakBot for free. Retail price of £149.

Potential savings: £633 per detected leak

### HYDRAO – The Water-Saving Shower Head

If you love a long shower but don't like the high water bills that come with one, the Hydrao shower head is the smart gadget for you. Using water more economically than a standard shower head and with a light that changes from green to red when you've used 50 litres of water, this device costs £62.

Potential savings: £135 per person per year

### DRY:SOON – The Heated Aired

For those who rely heavily on their tumble dryer, this money-saving smart device is exactly what you need. Costing just 6p per hour to run, compared to 36p per hour for a tumble dryer, the Dry:Soon heated aired has the ability to slash your drying costs. Retail price of £149.99.

Potential savings: £51 per year based on twice weekly usage

### TAPO – The Smart Plug

Only £8.99 to buy, the Tapo plug allows you to remotely turn on and off appliances such as fans, electric heaters and dehumidifiers, saving you money and helping the environment.

Potential savings: £128 per year





**APPLIANCE REPAIRS AND SALES**


*We repair all makes and models*

Washing Machines • Tumble Dryers  
Dishwashers • Ovens • Hobs • Cookers  
Fridge/Freezers • Extractor Hoods

New appliances in stock for same day delivery & installation

Prices listed on our website

**Call 01279 310793**  
Or Book Online  
[www.spindoctoruk.co.uk](http://www.spindoctoruk.co.uk)





**KEEP COOL AND CARRY ON**

**DESIGN, INSTALL, SERVICE & MAINTAIN ALL ASPECTS OF AIR CONDITIONING & HEATING**

We can supply any air conditioning & heating system to suit your budget

We offer built-in residential & commercial purification systems for 99% inhibition of COVID, viruses, bacteria, odours & pollen.

See our work at [f stow air conditioning services](https://www.facebook.com/stowairconditioningservices)  
Read our testimonials [www.trustatrader.com](http://www.trustatrader.com)

 **07446 884330**  
[jimmy@stowacs.co.uk](mailto:jimmy@stowacs.co.uk) 

**GET COVID-SECURE! WITH:**




- Viruses are **continually eliminated** on contact with treated surfaces for up to 28 days\*
- Electrostatically charged disinfectant particles stick around objects, making them safe to use within **just 5 minutes**
- Quick & effective removal of bacteria and viruses including **CORONAVIRUSES**
- Safe for use everywhere, including **schools, nurseries, care homes, offices, gyms, workplaces and vehicle interiors**

**NOW AVAILABLE:** Purchase a handheld unit for **£999+VAT** or a backpack unit for **£1,999+VAT**

\*Under laboratory conditions.



**To book a disinfectant clean or purchase a unit call 01708 578051 or visit: [envirostatic.co.uk](http://envirostatic.co.uk)**

[f](https://www.facebook.com/envirostatic) [in](https://www.linkedin.com/company/envirostatic) [i](https://www.instagram.com/envirostatic) /envirostatic

**NOW AVAILABLE TO RENT – CALL FOR A QUOTE**



# Maximise your natural light with a beautiful skylight



- ✓ Free survey for roof and room design
- ✓ A wide range of lanterns and skylights available
- ✓ All roof lanterns have an aluminium finish
- ✓ All our skylights are compliant with Building Regulations
- ✓ Pilkington self-clean temperature glass as standard
- ✓ All structural works undertaken by High-Tech
- ✓ All internal works inclusive of new electrics and lighting
- ✓ A complete extension or conservatory thermally efficient transformation
- ✓ All waterproofing products will have our LIFETIME guarantee as standard



Roof lanterns look great inside and out

High-Tech Roofing have installed over 10,000 flat roofs along with 1500 plus skylights and roof lanterns. Every roof installed comes with a LIFETIME guarantee. Let us, a company you can trust, transform your extension or conservatory into a stunning orangery style room.



The Problem



The Solution



Brochure and free sample available on request  
**For a Free Quotation**  
**Call: 01708 871489 www.flatroofs.net**

Are you retired?  
 Possible savings  
 now available

\*T&Cs apply. Please see our website for details on discounts.  
 Head Office: Linden House, 30 Linden Road, Benfleet, Essex SS7 4BA

# 5 alternative uses for nail polish remover

Did you know that nail polish remover is not just for nails? Oh no, it can be used for a whole myriad of other purposes around the home.

**1. To shine your shoes**  
 Although you may be wary about using acetone on your prized shoe collection, as long as you only use it on patent shoes, you are completely safe. Simply dip a piece of kitchen towel in nail polish remover and gently buff to remove unsightly scuff marks.

**2. To clean your china**  
 If you are an avid tea drinker, your china may be prone to the odd mark or two. Remedy this by scrubbing these stubborn stains with a cotton bud soaked in nail polish remover. Wash as normal before using.

**3. To remove paint from your windows**  
 Painting your windows can inject a new lease of life into the interior and exterior of your home. However, flicks of paint on your glass are a hazard of the job. Remove any wayward paint by applying acetone, letting it settle for five minutes and then rubbing away with a damp cloth.

**4. To dissolve superglue**  
 Got a bit overenthusiastic with the superglue? Don't stress. Nail polish remover will quickly and easily unglue your hands or unclog the cap of your glue. Just apply to the affected area for instant results.

**5. To get rid of ink stains**  
 Whether you have spilt ink on your fabric sofa or your child has come home from school with their shirt covered in pen marks, acetone will save the day. Mix one part nail polish remover with two parts water and dab at the stain with a soft cloth.

**Other uses:**  
 > To sanitise your beauty tools.  
 > To clean blades – dip a cotton bud in the remover, apply and rinse with soap and water.  
 > To smooth minor watch scratches – drop a tiny amount onto a cloth and gently buff affected area.





# HOW TO CLEAN YOUR *Curtains*

**D**id you know that you should be cleaning your curtains at least once a year and preferably once every three to six months? Although this may not sound like a lot, can you honestly remember the last time you gave yours a good wash? If not, don't worry. Discover below how to clean your curtains in five simple steps.

**STEP ONE:** Remove all the hooks and curtain weights and loosen the heading tape. If you are worried about the fabric shrinking, you may want to let down the hem. Take outside and shake well to remove any dust.

**STEP TWO:** Check the washing label of your curtains to see if they are machine washable. If they are made using a lightweight fabric such as cotton, they probably are. However, if they are large and heavy you may want to have them dry cleaned or wash them by hand. This is also the case for curtains made from velvet, wool, silk or chenille.

**STEP THREE:** If machine washable, place your curtains in your washing machine and add your usual detergent. Set the machine to either a "delicates" cycle or a cool wash with a slow spin to avoid damage.

**STEP FOUR:** If you want to iron your curtains, you should do this while they are still damp. Work lengthways, on the wrong side, stretching the fabric gently to prevent seams from puckering. If not, simply hang to dry either outside if the weather permits or inside until they are at least 95 per cent dry. Do not rub or wring out your curtains.

**STEP FIVE:** Thoroughly dust and clean your curtain tracks, windows and sills before hanging your clean curtains back up. You should also try to incorporate a weekly curtain vacuum into your cleaning schedule to keep them in tip-top condition for longer.

**NEXT MONTH WE'LL TELL YOU HOW TO CLEAN YOUR BLINDS**

## PUT THE SPARKLE BACK INTO YOUR KITCHEN



### Domestic Oven Cleaning Specialists

Est. since 2007

#### Prices

Single oven incl. shelves & grill pan.....	£43.00
Double oven incl. shelves & grill pan.....	£54.00
Range incl. shelves & grill pan.....	From £54.00
AGAs.....	From £90.00
Hobs.....	From £14.00
Extractors.....	From £15.00
Microwaves.....	From £20.00

No VAT to pay



BEFORE



AFTER

**PLEASE CALL FOR A FREE QUOTATION**  
**01279 432444** \* [www.ovenbright.co.uk](http://www.ovenbright.co.uk)



Abbey Group are specialists in creating, repairing and restoring quality furniture and wood surfaces to the highest standard.



From antique to modern we can repair, strip, re-spray, polish, wax, upholster and bring woodwork back to life.

We take great pride in our work and clients appreciate our care and attention to detail.

We think you will too.

**01708 741135**

Free quotations and no carriage charges with this advert.

[abbey-group.net](http://abbey-group.net)



# INVINCIBLE houseplants

If you are looking for a hassle-free houseplant, either for yourself or as a gift for a friend, we have got you covered. Discover the below five houseplants that are virtually indestructible, even for those with a history of plant abuse.

### 1. DEVIL'S IVY

Incredibly popular, this hardy houseplant is stunning to look at with its unmistakable marbled leaves, and it has the added advantage of not needing much water or light. A great choice for popping on a bookshelf to brighten up your next Zoom meeting, but make sure you keep it away from children and pets as all parts are toxic.

### 2. SNAKE PLANT

Also known as mother-in-law's tongue, this houseplant is incredibly forgiving and therefore ideal for beginners. In the wild, snake plants can go a long time without seeing rain so they do not need frequent watering. Available in a range of different sizes, choose to place one on your home office desk or in a more impactful position in the hallway.

### 3. CAST IRON PLANT

This aptly named houseplant thrives on neglect and can even be grown in the dark, making it an excellent choice for rooms that do not provide much natural light. Recognisable by its deep-green glossy leaves, unfortunately, when grown indoors, you are unlikely to see its creamy purple flowers.

### 4. ZZ PLANT

The ZZ plant, or zamioculcas, is used to putting up with long periods of drought and can therefore survive if given to a frequent forgetful waterer. A graceful and elegant plant, place in a white-walled room for maximum impact.

### 5. CORN PLANT

If you are after a commanding but undemanding houseplant, then look no further. The corn plant, aka dracaena fragrans, grows tall and strong, even without your help, and may even deliver small, white flowers.




**Domestic Services**  
Fuse Board Up Grades | Re-wires | Garden Lighting Design  
Mains Smoke Alarms | Landlord Reports | LED Lighting

**Commercial Services**  
Emergency Lighting | Shop Fits | School Electrical Works  
Office Electrical Works | Lock Down Services | Fire Alarms

**Testing Services**  
Emergency Condition Reports | Landlord Reports  
Emergency Lighting | Planned Maintenance | Electrical Surveys

✉ [jason@jgelectricalforce.co.uk](mailto:jason@jgelectricalforce.co.uk)  
 @ [www.jgelectricalforce.co.uk](http://www.jgelectricalforce.co.uk)  
 ☎ 01708 578 057





## LOOKING FOR A NEW COMMERCIAL CLEANING CONTRACTOR?

We help businesses deliver high standards of sustainability and effective cleaning

**OUR SERVICE INCLUDE CLEANING:**

- ★ Floors ★ Office Furniture ★ Stairs
- ★ Low Level Windows ★ Kitchens ★ Washrooms
- ★ We use EU Eco label certified plant-based products
- ★ Guaranteed 100% bio degradable product packaging

Please contact us for more information  
**01708 578 073**  
[www.knbcleaning.com](http://www.knbcleaning.com) ★ [info@knbcleaning.co.uk](mailto:info@knbcleaning.co.uk)  
 6 Amersham Road, Romford, Essex, RM3 9JJ

Your satisfaction is always our priority







**WE OFFER VERY COMPETITIVE PRICES & WILL BEAT ANY GENUINE WRITTEN ESTIMATE**

**CELEBRATING OVER 46 YEARS OF TRADING WITH THE ORIGINAL COMPANY NAME & PHONE NUMBER!**

- Roof Repair Specialists, All Leaks Cured
- New Tiled Roofs & Velux Windows
- High Performance Felt Flat Roofs
- EPDM Firestone Rubber Flat Roofs
- uPVC Guttering, Fascias & Roofline
- Storm Damage & Insurance Work
- Chimney Stacks Repaired & Removed
- Leadwork, Pointing & Rendering
- Replacement Roof Valleys & Bays
- Roof Overhauls & Maintenance
- Asbestos Removal & Garage Roofs
- Pigeon / solar panel guards
- The Best Quality Materials Used
- 24 Hour Emergency Repairs, 7 Days



**A UNIQUE FAMILY RUN BUSINESS BUILT ON REPUTATION, HONESTY & KNOWLEDGE!  
OVER 500 GENUINE REVIEWS ON 'TRUSTist' & OVER 20,000 HAPPY LOCAL CUSTOMERS!  
ALL WORK GUARANTEED - FREE ESTIMATES - NO DEPOSITS TAKEN - NO SUB CONTRACTORS USED!**

**01708 551714 | 07743 406418**

www.sr-roofers.co.uk | rosseldridge84@hotmail.co.uk

41a Sunningdale Road, Rainham, Essex, RM13 7BD



We are still open for business and practising safe distancing according to government guidelines.



## Total Eclipse Security

more than a security firm

**We offer fully customisable security to fit your needs**



- Commercial Security | Residential Security
- Mobile Patrol Security | Building Management
- Residential Street Security Team
- CCTV Operator | Key Holding & Alarm Response
- Concierge Service Security | Static Guarding Security



Value for money Veteran owned, veteran and civilian operated  
Staff fully trained All security staff are SIA qualified and first aid trained.  
At Total Eclipse we pay above the living wage £10M Insurance Policy

**Contact 01708 578170 www.totaleclipsesecurity.com**

# Cloudy2Clear, A Local Service With A Smile.

I think we can all agree that the sooner we see the back of 2020 and this dreadful corona virus the better. That said, there are also some heart warming positives that we can take out of this situation. It has often been said that we can only really get to know one another and realise what is truly important in times of crisis. I think few would argue that in this case what has proven to be important is local community spirit.

When talking to the Manager of Cloudy2Clear windows Chris Miller it became clear that these values have been held dear for a number of years. Since starting the business some years ago Cloudy2Clear have remained true to their core values of

supporting the local community by providing a service that saves the public money.

The Cloudy2Clear service only requires the glass to be replaced and not the whole window once the unit has failed. Chris commented "Cloudy2Clear were able to assist our community through the last financial crisis in 2008 due to the savings that can be made in using our service. Unfortunately we might be going through something similar again soon and the public can rest assured that we will be there to help again".

For a free quotation please call **0800 61 21 118** or visit **cloudy2clear.co.uk**.

*All C2C employees operate a strict social distancing policy.*



## Have Your Windows Steamed Up?

**Replace the pane, not the frame!**

All glazing backed by our  
**25 YEAR**  
GUARANTEE

*"I really liked the fact that they were a local community run business"*

Janet Beard



We are a Which? Trusted Trader

**Social distancing in operation**

**Faulty locks, handles or hinges?**



Priority freephone  
**0800 61 21 118**

www.cloudy2clear.co.uk

**Love Your Home - Protect Your Windows - Save Money**



Tel / Fax: 01702 426067

[www.fireplaceanddesign.co.uk](http://www.fireplaceanddesign.co.uk)

132 Kiln Road, Benfleet, Essex, SS7 1TE



Reed & BAMBOO interiors

HOW TO INCORPORATE REEDS AND BAMBOO INTO YOUR LIVING SPACES

We're more accustomed to seeing reeds and bamboo in outdoor settings, be they Mediterranean beachscapes, rustic country idylls or even Amazonian environments. And yet, the intensity of the recent trend that celebrates bringing the outdoors indoors has, inevitably, reached these attractive, affordable, hardwearing and versatile materials.

Bamboo, in particular, is en vogue. As a room divider it's smart and flexible; as stair rails it offers definition, detail and strength; while for picture frames and wall panels there is a smoothness and shapeliness that invites other items.

There's even been a move towards bamboo ceiling panels, harking back to thoughts of Asia and the Orient.

The real stepping stone to using bamboo comes in being able to alter our perception of what this evergreen perennial actually looks like. In its raw form it's long, light and stubborn, but breaking

down the base material to narrower, or slimmer and shorter strands means embracing devastatingly beautiful decorations, particularly when it comes to lampshades, with bamboo offering excellent delivery of light.

And going back to that idea of strength, consider chairs, headboards and storage furniture, with each piece offering a brightness that pulls into focus echoes of northern territories such as Scandinavia and Canada.

What's more, because bamboo is a sustainable material, it's a green option. And with that comes easy maintenance – cleaning is simple, quick and stress-free.

Reeds are often regarded as more economical than the trusty bamboo. They don't come from the same plant, but can mimic colour, strength and style by being weaved together – often reinforced by wire. The look is great and, if anything, can allow ambitious interior designers to intensify the detail on show.

ADVERTISEMENT FEATURE

# ELLIE'S FINISHING TOUCHES

## FIND EVERYTHING YOU COULD WANT IN OUR BRAND NEW SHOWROOM

We now have far much more space inside which means a huge variety of products available, including stunning furniture pieces, lighting, accessories, faux florals and much more...

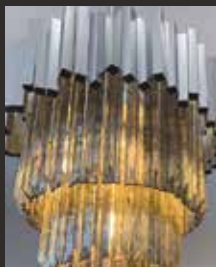
If you are looking for something bespoke then we've got it covered! We have beautiful bespoke sofas on display alongside this showstopping bed and headboard, which is available in any design, size and colour.



Swoon over our soft furnishings with a lovely selection of our best selling bespoke cushions, filled with plump duck feather inserts, and a combination of curtains, blinds and pelmets on display. We have hundreds of stunning fabric choices to choose from and are always happy to help advise if you are stuck on what to pick!



We now have a variety of gorgeous chandeliers and pendants on display, with a design to suit all kinds of rooms. As well as a lamp in every direction you look, perfect for those last few finishing touches needed to complete your home.



With most of the showroom designed with neutral tones and classic pieces, we have also designed a 'fun' corner, boasting with faux florals and a huge serving of pink! If you are looking for an artificial flower arrangement we can guarantee we have something for you, with a huge variety on display in all shapes, sizes and colours with lots ready to take away the same day!



If you are looking for some help with designing your home, or just finishing off certain areas, we provide an interior design service to local customers! If this is something you feel would suit you please feel free to get in touch by popping in or contacting us via email- [elliesfinishingtouches@gmail.com](mailto:elliesfinishingtouches@gmail.com) or phone- 01708737578



We are so happy to once again welcome customers back into EFT and this time with a brand new showroom and look forward to hopefully seeing you soon! To get 10% off in store simply quote the word 'Newbie' and we can apply your discount straight away!

**...AND WE NOW HAVE FREE  
PARKING AVAILABLE AT THE FRONT!**



OUR BRAND NEW SHOWROOM IS ONLY A STONE'S  
THROW AWAY FROM THE PREVIOUS ONE,  
JUST DOWN THE ROAD AT:  
212 Main Road, Romford, Essex, RM2 5HA

TO KEEP UP WITH ALL THE LATEST UPDATES  
YOU CAN FOLLOW US ON SOCIAL MEDIA!

 @ellies\_finishing\_touches or  Ellie's Finishing Touches Ltd



# WHY BUY A beanbag?

If you are wanting to update the furniture in your home without breaking the bank, you may want to consider investing in bean bag furniture. Synonymous with comfort and cosiness, the benefits of bean bags are numerous.

## 1. LOOKS STYLISH

Furniture for your home needs to look the part as well as feel it. Luckily, bean bags come in a wide variety of colours and designs, meaning you are guaranteed to be able to find one that complements your home's interior. Plus, you can accessorise your bag with cushions and throws in the same way you would a sofa.

## 2. OFFERS PORTABILITY

If you have a small home or limited space in your living room, a bean bag is a great option as it can be moved from one room to another with ease, owing to its lightweight nature. It can also be stored away when not in use.

## 3. EASY TO MAINTAIN

Bean bags come in a wide variety of different fabrics, meaning you can pick the perfect one for

your needs. Choose from faux leather that is super-easy to clean, cotton that is long-lasting, and even waterproof and UV resistant material for outdoor use.

## 4. SAVES YOU MONEY

Even with the seemingly never-ending furniture shop sales, it is still expensive to buy a new three-piece suite for your home, with prices potentially running into the thousands. Fortunately, bean bag furniture is extremely cost efficient and you can choose from single chairs, loungers, three-seaters and more.

## 5. IMPROVES YOUR HEALTH

If you suffer with either muscle or joint pain, then bean bag chairs can help you by moulding to your individual shape and offering optimal support. They can also help to relieve tension headaches and correct poor posture.



# A PRINCE *among men*

## CELEBRATING THE LIFE OF HRH PRINCE PHILIP, DUKE OF EDINBURGH

Meticulous, measured, majestic and more than a little eccentric... and that was just the funeral procession – HRH Prince Philip departed these strange shores just two months short of his 100th birthday, leaving behind a partner so hopelessly and publicly bereaved, and a nation of admirers wondering who could live up to the Duke of Edinburgh's lofty lovability.

Rarely is someone's passing met with almost universal solemnity and respect. It appears we all admired Prince Philip for different reasons – his faithful devotion to Queen Elizabeth II; his stolid determination to affect positive change; his humorous tendency to stray over the boundary of political correctness; or perhaps simply because he embodied so wholly that 'grandad' figure. Whatever it is, whatever it was, he had it, and in the stuffy silliness of modern media, he was exactly the antidote so many of us needed.

On Saturday, April 17, Prince Philip was laid to rest. In a ceremony he planned and choreographed himself, his coffin was lifted onto the back of a modified Land Rover Defender. Decorated in a stunning matt

Photo credit: Tim Graham/Shutterstock



Photo credit: Tim Rooke/Shutterstock

bottle green, the hearse was Philip's own creation, while various other touches clearly bore the mark of a man who wanted to slip away with energetic, original reflections of life, not the formal bleakness of most ceremonies.

There was the empty seat on the carriage, decorated with his blanket, flat cap, whip, brown gloves and pot containing a sugar cube for the ponies; then his military cap and sword on a coffin adorned with the most beautiful personal standard flag which referenced his overseas roots, family name and Edinburgh Castle. Meanwhile, various other marine references were present during the ceremony, each a nod to his cherished naval career, which came to an end in 1951.

In truth, there was so much of this special life to be celebrated. He was born on June 10, 1921 in Corfu, his family holding both Greek and Danish royal heritage. Banished from their homeland, he spent parts of his early life in France and Germany before settling in Britain.

It wasn't an easy childhood – his mother was admitted to a psychiatric institution, and he was separated from his family after landing in the UK. He studied at Cheam School before relocating to Scotland. He served in the British Navy during the Second World War, despite members of his family effectively fighting for the opposition as part of the Axis.

He denounced his Greek and Danish titles and adopted the surname Mountbatten – from his mother's side – so he could marry Princess Elizabeth in 1947 at Westminster Abbey, eight years after they had first met.

He was doted on by his four children – Prince Charles, Princess Anne, Prince Andrew and Prince Edward (Prince Edward will now take his title) – and never wavered from his role as the Queen's consort... in fact, the longest in royal history. A passionate supporter of everything she did, he also undertook his own projects, notably the Duke of Edinburgh's Award which, to this day, continues to promote youth achievement across many different disciplines.

He enjoyed polo, boat racing, piloting aeroplanes, painting and antiques, and while deteriorating health in recent years proved concerning, it was supposed he had recovered from a recent stay at St Bartholomew's Hospital; yet he slipped away peacefully on April 9, 2021 at Windsor Castle.

In total, almost 14 million of us watched the Duke of Edinburgh's funeral, and even the staunchest anti-royal must have pitted the senior Windsors being forced to display their grief in public. Such are the realities of a state funeral, and so it is conditioned that the only follow-on from a life played out in the public eye is a memorial on the same terms.

Prince Philip was born of a different time and a different generation of royalty, yet he fit so wonderfully into modern-day society and brought joy to many.

His unique, charismatic, eccentric take on the world is something we just don't see very often these days, with most public figures keeping their cards close to their chests for fear of repercussions.

His truly one-of-a-kind presence will be sorely missed by the Royal Family, the nation and the world.





Tutum Home has all the solutions to help you monitor, protect and automate your home, with our smart-home security systems.

Save money on your home insurance premium and energy bills by securing your home from unwanted intruders and simplify your life with smart devices.

Trusted by over 6 million people to protect their homes and businesses!

Our aim is to keep your home **safe, smart** and **secure**.



**01708 578090**

**[www.tutumhome.store](http://www.tutumhome.store)**



Exclusive 20% off our packages for Vision readers with code

**VISION20**

**+ FREE VIDEO DOORBELL**



# LOCAL NEWS

*from your neighbourhood*

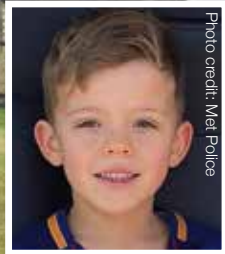


Photo credit: Met Police

## Pub landlord jailed for nine years following boy's death

A pub landlord from Hornchurch has been handed a nine-year prison sentence for his role in the death of seven-year-old Harvey Tyrrell (pictured inset).

David Bearman, 73, who moved to Chelmsford during the trial, was sentenced at Snaresbrook Crown Court after pleading guilty to gross negligence manslaughter and abstracting electricity.

Colin Naylor, 74, of Rayleigh, was also sentenced to 12 months in prison for failing to discharge a duty under the Health and Safety at Work Act.

The London Ambulance Service called police to The King Harold pub in Romford in September 2018.

During the subsequent police investigation, it was discovered that Harvey had been playing with a friend in the pub garden when he touched one of the poorly installed outdoor lights and suffered a fatal electric shock.

Officers found that Bearman had bought the pub 12 years previously and had often worked on the electrics in the premises himself. His friends and family also carried out work on the pub, including his brother-in-law, Colin Naylor.

An examination of the venue after Harvey's death found 12 defects at the pub that posed a risk of injury, including electric shock, and 32 potentially dangerous defects.

It was discovered that the pub had its last full health and safety check in 2009.

Despite warnings from inspectors, Bearman failed to resolve any of the issues.

Detective Sergeant Andy McAlister said: "I hope the sentencing begins to bring [Harvey's] family some peace; they have remained dignified throughout this long and undoubtedly heart-breaking court process."

# BRIDGE BEDDING

## Over 70 beds on Display

Largest independent bed specialist in Essex

ESTABLISHED FOR OVER 40 YEARS



UPTO **25%** CHEAPER THAN THE BIG RETAIL STORES

**0%** INTEREST FREE CREDIT BUY WITH CONFIDENCE

FREE DELIVERY ON ALL ITEMS



### The biggest Bed Brands at low low prices...



Divan Sets

Mattresses

Ottomans

Adjustable beds

**105 - 107 UPMINSTER RD, HORNCHURCH RM11 3XB**  
Tel: 01708 443058 [WWW.BRIDGEBEDDING.COM](http://www.bridgebedding.com)



Photo credit: Ritchie Jumper

# The Urchins await biggest match in history

Hornchurch FC shocked football fans at the end of March by seeing off National League side Notts County in the FA Trophy semi-final.

As a result, they will be heading to Wembley Stadium on May 22 for the biggest game in their history, against National League North side Hereford.

The Urchins faced a seemingly impossible task after going down three separate times in the game against Notts County, but fought back each time and eventually won the tie in a dramatic penalty shoot-out.

A brace from Liam Nash and an opening goal from Lewis Spence ensured the tie went to penalties, before Clark, Nash, Muldoon, Hayles and Dickson scored in the shoot-out to make history for the club.

Following the semi-final victory, Hornchurch boss Mark Stimson said: "This achievement is right up there. The scenes have been amazing, and the performance [against Notts County] was unbelievable. To have gone behind three times in the game and to show the character that we did makes me so proud.

"This team has got heart and a never-say-die attitude. I've got a group of real men and I'd say at least eight of them were in tears because of how much it's taken out of them. It's great to see and we look forward now to an amazing day, where hopefully supporters will be allowed in to make it even more special."

Hornchurch's opponents Hereford beat Aldershot Town, another National League side, to reach the final.

## Well-being hub will modernise healthcare services



Plans for a new health and well-being hub on the site of the former St George's Hospital in Hornchurch are moving forward.

The new facility will provide GP services for residents living within a two-mile radius, mental health and community services for the south of Havering, and specialist services for the whole of Havering.

The hub is part of the latest stage in NHS plans to modernise health services in Havering. North East London NHS Foundation Trust (NELFT) is leading on the development and working in partnership with primary care and acute care partners.

NELFT chief executive, Professor Oliver Shanley OBE, said: "We are very excited to be able to move forward with the next stage of plans that will modernise local health and care services for the benefit of people in Havering and surrounding areas."

Consultation on the plans closed on April 20. Residents were asked if they supported the new health and well-being hub on the St George's site, their views on the design of the new building, and whether they supported the amount of development in the green belt that is necessary to accommodate the new facilities.

Transport for London, who increased the number of buses in the area.

The CCTV tower has now been removed and more traditional cameras have been installed. A review to determine whether they are still needed will be carried out in six months.

Councillor Damian White, leader of Havering Council, said he was pleased at what had been achieved so far.

He added: "We're continuing to work closely with the police and college to ensure that residents and students remain safe. We'd encourage residents and businesses to report any incidents that occur so that action can be taken quickly."

## Student joins prestigious dance company

A student from Hornchurch has seen off competition from more than 200 auditionees to join the country's flagship youth dance company.

Kian Crowley, who is studying performing and production arts at New City College on Ardleigh Green Road, was one of just eight male and 13 female dancers chosen to join the National Youth Dance Company of England.

Kian, who lives in Hornchurch, said: "I love performing for audiences, as well as teaching dance, so to get this opportunity was amazing. It is a passion of mine and I hope in the future to become a dance teacher and share my love for dance."

Jo Leahy, dance lecturer at New City College, commented: "We're extremely proud of Kian getting a place in the National Youth Dance Company. It's a massive achievement as competition is really tough and he is one of only eight boys selected nationally."

Once Kian has completed his intensive training, he will take part in a national tour across the UK this summer.



## New album aims to showcase UK bands

A man from Hornchurch has just released his second album showcasing the UK's best indie bands and solo artists.

Marc Rossiter, 41, received rave reviews when he released *Brits & Pieces Volume 1*, inspired by compilation albums of the 1990s.

He revealed: "Music-wise, I always stuck to my comfort zone – the major indie/Britpop bands of the Nineties and the bands that influenced them. But not long after starting my account on Twitter, I was introduced to new bands.

"I was overwhelmed by the response the first CD received. It sold out, received amazing reviews and resulted in some of the artists receiving their first ever radio play."

Marc explained why he was so keen to release a second volume.

He said: "At a time when independent artists are unable to play live and streaming revenues are minimal, this album is intentionally being sold as a physical CD to increase the chances of chart success, and therefore provide these artists with valuable exposure. All profits from the CD will be distributed to those featured."

You can order your copy from [www.roughtrade.com](http://www.roughtrade.com)



# INTERIORS PAINT & PAPER EMPORIUM

BESPOKE CURTAINS & BLINDS INTERIOR STYLING UPHOLSTERY

ARTE

Cole & Son

DESIGNERS GUILD

FARROW & BALL

Little Greene

OSBORNE & LITTLE

MYLANDS

PAINT & PAPER LIBRARY

Ti  
TODAY INTERIORS



PAINT WALLPAPER FABRIC

117 CORBETS TEY ROAD UPMINSTER RM14 2AA

Telephone 01708 224075

hello@paintandpaperemporium.co.uk

www.paintandpaperemporium.co.uk

# JULIA LOPEZ MP



Hornchurch and Upminster



LOCAL NEWS



Photo credit: Gary Summers, SMD Photography Ltd

I received fantastic news over Easter from Health Secretary Matt Hancock, that Havering South PCN has one of the best performing vaccination teams in the country. I am delighted that the Moderna vaccine is now available for use in the UK, further boosting our vaccine supply. Vaccines are the most important tool available in returning to normal life, and they have allowed us to push ahead with the next stage of the roadmap out of lockdown.

With non-essential shops and services now open again, my team and I have been working to support local businesses. We have arranged an event for constituents with Small Business Minister Paul Scully, who has been listening to firms across the country about the support they need.

We have also hosted a training session with Google Digital Garage for small businesses, charities and other organisations in the constituency. Many have had to adapt swiftly and go online during the pandemic, and I wanted to host a session with digital trainers to

share some tips on how organisations can improve their digital marketing and reach new audiences as the virtual world becomes ever more important.

The next important date is May 17 when the rule of six extends to meeting indoors, with indoor hospitality and remaining outdoor entertainment venues allowed to reopen. The government will also be looking to publish its review on international travel, which will be particularly welcome for those who have family members living abroad.

For those organisations not able to open until the fourth and final stage of the roadmap on June 21, we have been trying to secure extra support.

The Culture Secretary confirmed over Easter that the trust behind the Queen's Theatre in Hornchurch will receive a further £148,500 to prepare for reopening and recovery. I am looking forward to visiting the Hornchurch Stadium soon to hear how I can support local athletes now that they can get back to the sports they love most.

## www.julialopez.co.uk



# ANDREW ROSINDELL



MP for ROMFORD



LOCAL NEWS

On April 17, I shared a poignant moment with the traders of Romford Market. It was a beautiful, sunny day and the first Saturday of full trading for our great, historic market for many, many months.

Alongside the genuine joy of seeing life returning to normal, there was a moment of sombre reflection, as at 3pm all stopped for a minute's silence to pay tribute to His Royal Highness The Duke of Edinburgh, who passed away on April 9 at the age of 99.

Watching the funeral on television, who could not be overwhelmed with emotion as the brass band played *I Vow to Thee, My Country* as his custom-made Range Rover carried his body through Windsor Castle and into St George's Chapel? Written in 1921, the year of the Duke of Edinburgh's birth, the hymn talks of "the love that asks no questions, the love that

stands the test".

Prince Philip dedicated his life to the service of our Queen, country and Commonwealth and will forever be remembered by our grateful nation and people. His love asked no questions and certainly stood the test.

The United Kingdom was simply a better place for his presence as consort to our sovereign.

I am honoured to have had the privilege of meeting His Royal Highness on many occasions over the past 20 years and will always cherish his kind words and sense of humour.

In March 2003, I was proud to greet Her Majesty The Queen and His Royal Highness in Romford, upon their arrival at Romford Market. It was a day that I and the people of Romford will always remember with great fondness.

May he rest in peace. Thank you, Prince Philip. God Save the Queen.

## Manager named Hero of the Year

A leisure centre manager who set up a support hub at Hornchurch Sports Centre to help the community during the pandemic has been named Havering's Hero of the Year.

Tom Fletcher, area contract manager for Everyone Active leisure centres in Havering, worked with Havering Council and furloughed colleagues to create a socially distanced and COVID-secure warehouse to provide food and PPE packages for residents in need.

Together, they delivered more than 3,000 food packages and more than 500 PPE parcels to shielding residents, local food banks, care homes and key workers.

The Hero of the Year award, hosted by the BBC, asked London councils to nominate a lockdown hero in their borough.

Tom said he was humbled to have won and paid tribute to all the workers who set up the hub.

He commented: "Although it was a particularly challenging period, it was an honour to be able to support the local community and make a difference. I am so proud of the teams who worked so well together. It was fantastic to be able to utilise the centre during its closure and help the local community through such a difficult time for everyone."



## CurtainWorld Direct

Full Fitting Service  
Tailor Made To  
Your Requirements.

Net Curtains • Heavy Curtains • Swag & Tails • Roman Blinds • Shutter Blinds

*If the fabric you like you see elsewhere we can order it for you.*

*Curtain Track & Fitting Service*

**BEAUTIFUL CURTAINS**



**UNBEATABLE PRICES**



*We do sell pleated net curtains that don't need hooks wires or rods.*

**If you can find a cheaper quote than us we will give you an extra 20% off our price**

Call into our factory / showroom: Unit 8 Vicarage Road (rear) 177 Hornchurch RD RM12 4TE

# 01708 473 810

[www.curtainworlddirect.co.uk](http://www.curtainworlddirect.co.uk)

NORMAL OPENING TIMES: 10-5 PM MONDAY - FRIDAY - 11-4 PM SATURDAY - CLOSED THURSDAY

Net Curtains • Heavy Curtains • Swag & Tails • Roman Blinds • Shutter Blinds




## Working from home never looked *so good*

We make working from home easy with our wide range of **luxury furniture.**

info@arena.uk.com | www.arena.uk.com  
01708 865 848



- ◆ Large selection of wall & floor tiles
- ◆ Fitting service
- ◆ Porcelain, Ceramic, Glass & Natural stone
- ◆ Underfloor heating
- ◆ External porcelain slabs 20mm



Showroom opening times:  
Mon - Fri 8am - 5pm Sat 9am - 5pm

The Barn ◆ Church Road ◆ Noak Hill ◆ Romford ◆ RM4 1LD  
t: 01708 381349 ◆ e: sales@drbettstiling.co.uk ◆ www.drbettstiling.co.uk

# YOU'RE NOT ALONE



OVER 135,600 OTHER PEOPLE IN ESSEX  
READ **VISION** MAGAZINE'S MONTHLY

Your Monthly Lifestyle Magazine **VISION**

**CONTACT US TO GET YOUR BUSINESS SEEN BY OUR READERS**

See all our magazines at [www.visionmagessex.com](http://www.visionmagessex.com)  
Billericay Shenfield Brentwood Ongar Chelmsford Beaulieu Epping Theydon Frinton-on-Sea  
Hornchurch Leigh Thorpe Bay Loughton Rayleigh Wickford South Woodford



# Debra puts her best foot forward for charity

An NHS supporter walked 1,000 miles in 57 days, raising more than £2,500, as part of the Health Way Foundation Spring To Mind Challenge, raising money to support local community and mental health services across North East London NHS Foundation Trust (NELFT).

Debra Launder, who has lived in Hornchurch for more than 25 years, said: "I started walking during lockdown for my mental health and well-being. I have seen how difficult it is for our children and young adults not being able to see their friends, the lack of social stimulation and being stuck indoors, which may have mental health implications. Poor mental health is taking its toll on our next generation, and by walking

for the Health Way Foundation I hope to support the wonderful work that is being done across the Trust."

Stacey English, charity fundraising officer, said: "We are very lucky to have Debra support the Health Way Foundation. We focus on supporting NELFT to provide exceptional community and mental health care for patients across Barnet, Waltham Forest, Redbridge, Barking and Dagenham, Havering, Kent and Medway, Thurrock and Essex."

If you would like to hear more about the Health Way Foundation, become a volunteer, donate, support by running your own event, hear about events and Ambassador meetings, email [Charity@nelft.nhs.uk](mailto:Charity@nelft.nhs.uk) or call 0300 555 1201, ext 51279.

# Osteopath guilty of inappropriate remarks

An osteopath from Hornchurch has been struck off after he was found guilty of unacceptable professional conduct.

Salah Said practised from the Body at Ease clinic and also provided NHS treatment from a GP's surgery in the town one day a week.

Two of his patients complained to the General Osteopathic Council, the body that regulates osteopaths in the UK.

Said was accused of inappropriately touching and making verbally inappropriate remarks to both patients. In both cases, the council alleged his conduct was not clinically justified, a breach of professional and sexual boundaries, and sexually motivated.

Publishing its decision after the hearing had taken place, the committee determined that Said's conduct was "abhorrent and fell far below the standards expected of a registered osteopath".

The Professional Conduct Committee was "driven to the inevitable conclusion" that Mr Said's "conduct and behaviour, his attitudinal deficiencies, lack of insight and remorse, and the absence of remediation giving rise to a risk of repetition were fundamentally incompatible with continued registration".

After the decision was published recently, Said's name was removed from the register of osteopaths and he is now unable to practise. Said had the right to appeal within 28 days but no appeal was lodged.

# JA HUCKINS Ltd

the home of quality bathrooms

BATHROOMS & WET ROOMS | SHOWERS & SCREENS | BATHROOM ACCESSORIES



## ELEGANT MODERN BATHROOMS

We can help to make your bathroom warm, comfortable and stylish.

PROVIDING HIGH QUALITY BATHS, TAPS, SINKS, SHOWERS, HEATING & PLUMBING EQUIPMENT SINCE 1976

## CALL US TODAY FOR YOUR FREE ESTIMATE

Our team will work to create the bathroom, cloakroom or wet room that best suits your home, your requirements and your budget

**SHOWROOM: 01708 578089**

[www.huckins.co.uk](http://www.huckins.co.uk) | [sales@huckins.co.uk](mailto:sales@huckins.co.uk)

124 - 128 Dagenham Road, Romford, Essex, RM7 0TJ



News from

## Councillor Paul Middleton

St Andrews Ward, Hornchurch Residents' Association

### Free parking

Although this may be late news, the council decided to give free parking in the council-owned car parks and on-street parking bays for four weeks from April 12. I walked around the various car parks in Hornchurch – they were very well used. It is obvious to me that people want to use the car parks but are not happy to pay £1.50 for the first hour. I have been campaigning for a free hour in the car parks for some time. Perhaps the current administration will listen now.

### Recycling bins in Sainsbury's car park

The recycling bins disappeared from Sainsbury's car park. I asked what was happening and was informed that the bins were due to be replaced in the next couple of weeks. Two weeks passed and there were still no bins. I asked again and received a fuller explanation that Sainsbury's had moved the contract to a new group. This new group was finding it difficult to fulfil the demand. It is expected that the bins will be replaced by the end of April. This is affecting Sainsbury's across the country and is not just a Hornchurch issue.

### Please shop local

The local shops have all been through an extremely tough time. I urge you to shop local and support your local shops and businesses. I know it is easy and convenient to order online and have something delivered, but think of the shops in the local high street. If they go, what is likely to replace them?

### KFC Hornchurch

I get a lot of complaints about this store and the parking in front of the store. Parking is allowed in front



of the shop; it is not allowed on the pavement.

Please do not block the pavement when you park, even if it is only for a few minutes.

If you are caught parking on the pavement, you can be issued a ticket immediately, with no observation period. I have requested the CEO team to pay attention to this area.

### Havering Residents' Associations

I am an independent councillor working for the Hornchurch Residents' Association. I am also part of a much larger group of associated independent residents' associations called the Havering Residents' Associations. Please check out the website at [www.haveringra.org](http://www.haveringra.org). We intend to be the next administration from May 2022.

## Officer not guilty of misconduct

A misconduct allegation against a serving officer after an incident in Hornchurch has returned a verdict of not proven.

PC Charlie Raeside was accused of using excessive force while detaining a teenager who fled from officers after he was stopped on Roneo Corner in August 2019.

In September 2019, the matter was referred to

the Independent Office for Police Conduct, who recommended that the case go to a misconduct hearing.

PC Raeside attended the hearing at the end of March to answer allegations that his conduct amounted to a breach of the Standards of Professional Behaviour in respect of use of force. The allegations against the officer were not proven.





# Charity's Easter raffle raises more than £3,000

A Hornchurch charity that provides educational development for preschool children with special needs and/or disabilities has raised nearly £3,500 in its Easter raffle.

First Step currently works with more than 100 preschool children and their families, offering education services, support and encouragement.

Mark Halls, CEO of First Step, said: "We are so very grateful for the support given by all those who entered

the raffle or who donated in lieu of purchasing tickets. We have also been very appreciative of all those who kindly donated Easter eggs and gifts to enable us to produce 30 super prizes.

"The wonderful generosity shown by all those who entered and donated to this event has helped enable First Step to continue providing support to families of babies and children with special needs and/or disabilities."

# Firefighters warn of barbecue safety

Residents in Hornchurch are being warned to take care with barbecues after one is thought to have caused a house fire.

Four fire engines and around 25 firefighters were called to a house fire on Rochester Road in Hornchurch on March 28.

Part of the ground floor and part of the fascia of the house was damaged. A conservatory was also destroyed. Four people left the building before the

emergency services arrived.

The fire is believed to have been caused by wind blowing flames from a barbecue into the house.

A London Fire Brigade spokesperson said: "If you're having a barbecue, it's vital that you place it on level ground, far away from anything that could catch fire and out of the reach of children or pets.

"Make sure you keep it outdoors and never barbecue on a balcony."

**THE SOUTH EAST'S  
FINEST INDEPENDENT  
ELECTRICAL SUPPLIER**

**Discounted Electrical Supplies  
to all Customers**

- Huge stocks available - If we don't have it, we will try and get it for next day delivery
- Deliveries available from 7.30am to 5pm
- Members of a National Buying Group
- Trade accounts available (subject to credit check)

Call us 01708 730591 ■ [www.ch-electrical.co.uk](http://www.ch-electrical.co.uk) ■ Email: [sales@ch-electrical.co.uk](mailto:sales@ch-electrical.co.uk)  
Find us at 134 Park Lane, Hornchurch, Essex RM11 1BE  
Give us a like ■ @chelectricalwholesalers

**Residential and Commercial  
*Decorating Services***

For all your painting and decorating requirements, contact us today for a free, no obligation quote.

[info@arena.uk.com](mailto:info@arena.uk.com) | [www.arena.uk.com](http://www.arena.uk.com)  
01708 865 848





# SOUTH EAST HEATING

DOMESTIC AND COMMERCIAL HEATING • PLUMBING

Family Run Experienced Service • Est. in 1998

- Boiler repairs & replacements
- Gas installation
- Central heating installation & maintenance
- Gas servicing
- Landlord safety certificates
- Bathroom installation
- Chemical cleaning
- Solar panel installation
- Domestic & commercial plumbing & heating
- General plumbing work
- Gas appliances
- Gas leaks/safety checks

Mobile: 07956 481 819  
07539 444413

Office: 01708 221500  
southeastheating@btconnect.com

**FREE ESTIMATES**

# SID'S LANDSCAPING

GARDEN LANDSCAPING  
BLOCK PAVING • DRIVEWAYS  
PATHS • INDIAN STONE PATIOS  
TURFING & ARTIFICIAL LAWNS  
PLUS MUCH MUCH MORE

**20% DISCOUNT FOR ALL EMERGENCY WORKERS**

Checkatrade.com  
Where reputation matters



07782 550 684  
0800 959 6792

sidlandscaper@icloud.com  
sidslandscaping.co.uk

THIS MAGAZINE IS

# MISSING YOUR ADVERT

CALL 01708 578049  
TODAY TO BOOK YOUR SPACE




# TREE & GARDEN SERVICES

**ALL TYPES OF TREES**

Topped • Shaped • Trimmed  
Fruit Trees Pruned & Sprayed  
Shrub Pruning  
Hedges Trimmed & Reduced  
Unwanted Trees, Hedges & Stumps Removed

**ALL GARDEN WORK UNDERTAKEN**

Mowing & Strimming  
Borders, Weeding & Cultivated  
All Year Round Tidy Ups  
Overgrown Gardens Cleared  
New Fencing & Repairs  
Driveway & Patio Cleaning

**No job too small – Free Quotes & advice**

01708 578052 – 07519 430361  
Email: hstreeandgarden@gmail.com



MAY BIRTH FLOWER OF THE MONTH:

# Lily

**GARDENING**

The May birth flower is the delicate and sweetly scented lily. Available in a wide range of vibrant colours, each shade conveys a different meaning. Planted as bulbs, lilies are perfect for containers and flower borders, making them a great choice for small and large gardens alike.

*What does the lily symbolise*

As mentioned above, the lily holds many different meanings which are dependent upon its colour:

- > Pink lilies symbolise femininity and admiration
- > Red lilies represent love and passion
- > Orange lilies convey confidence and energy
- > Yellow lilies are used to say thank you
- > White lilies portray purity and rebirth

*What does this birth flower say about you*

If your birth flower is the lily, you are said to be practical, with the ability to tackle even the most challenging situations. Contrary to the toxic lily flower, you are sweet, tender and with a huge capacity to love, meaning that others always feel safe in your company.

*How to grow lilies*

Lilies are planted as bulbs and are ideal for placing in containers or in sunny borders. There are two main types of lily that you can choose from: Oriental lilies and Asiatic lilies. The former give off an intense aroma and are large in stature, whereas the latter are available in a wide variety of vibrant colours but are sadly unscented. Lily bulbs thrive in moist, acid soils, so if placed in a container, be sure to add ericaceous compost.

*Do lilies come back every year*

Lilies are perennial flowers which mean that they will return year after year. Requiring minimal care if planted correctly, make sure you do not overcrowd your bulbs and place in full sun where possible.



## GARDEN OF LIFE

# MOISTURE *in the air*

In the final part of our series that shows how even the most urban garden can be a haven for the wonders of wildlife and the nurturing of nature, we look at the role of moisture in this wondrous ecosystem.

While we may bemoan the washing getting wet when we forget to bring it indoors, the cycle of moisture in our gardens is perhaps nature's greatest wonder of them all. Consider it – we've all gazed out across our lawns or poked around a plant on a window ledge and known that when nature either dries out or floods, the end is nigh.

On a local level, moisture in our plant soil is the difference between a flowering plant and a wilting one; or perhaps a ripe, juicy tomato and one that fails to develop.

On a national, mass-market scale then, getting the moisture content right means looking after the production of every variety of crop, for both human

and animal consumption.

And yet, controlling moisture goes far beyond even that, because the density of water in the soil is vital in regulating the exchange of water and heat energy between plants and the atmosphere, via evaporation. This leads to the production of weather patterns all across the world, and especially determines levels of precipitation.

Even on its way into the atmosphere, moisture is stabilising our climate, plus helping animal life that's dependent on perspiration to regulate internal body temperature – something that's key to survival.

It all adds up to the fact that the humble bit of soil around your petunias is, in the most minute of ways, contributing towards the maintenance and welfare of the flora and fauna and of people's lives in towns, villages and cities all across the world, whether their fear is flash floods, droughts or even potential starvation.



### The first step to a beautiful lawn is to call GreenThumb

Our wonderful customers like our service so much, that over 40% of new customers joined us through their recommendation which, if you think about it, is a recommendation in itself.

So, if you've been thinking about enjoying a great lawn this year – green, lush and weed-free, why not contact us today and let us bring your lawn to life.

We provide four seasonal treatments, as well as beneficial treatments to keep your lawn in tip-top condition - prices start from just £15\*.

Ask us about our annual plans, which allow you to both spread the cost and save up to 25%.

Simply call: 01277 227 988 or visit: [greenthumb.co.uk](http://greenthumb.co.uk)   



PRICES FROM  
**£15\***  
PER TREATMENT

# GreenThumb

## LAWN TREATMENT SERVICE

\*Based on a lawn size up to 40m<sup>2</sup>

# GUIDE TO GARDEN GAZEBOS



Thinking about putting up a gazebo in your garden? Before you rush to your nearest DIY store to buy one, there are several factors that you first need to consider.

### 1. SURFACE AREA

The surface area of a gazebo is determined by its length and width and needs to be calculated before you make a purchase. As well as working out how much space you have in your garden, you need to consider what equipment and furniture you intend to place under it. Typically, gazebos tend to be at least two metres wide, although you can find smaller ones for more compact gardens.

### 2. FRAME MATERIAL

There are several options to choose from for the main frame of your gazebo. These include:

- > Powder-coated steel. Fairly heavy and inexpensive.
- > Aluminium. Resistant to rust and lightweight.
- > Wrought iron. Strong and durable.
- > Resin. Very lightweight and good value for money.
- > Wood. Attractive and fairly long-lasting.

### 3. CANOPY MATERIAL

Gazebo canopies are typically made out of either polyethylene or polyester, with the former being the most commonly used material for budget gazebos. Polyester, on the other hand, is more expensive but offers superior quality and is less permeable. You may also wish to purchase gazebo curtains for even more protection against the elements, and these are available in the same materials as the canopy itself.

### 4. TYPES OF GAZEBO

There are several different types of gazebos that you can choose from, including:

- > Freestanding gazebo. These typically have a metal framework that is topped with a fabric canopy.
- > Lean-to gazebo. These require a wall to lean against for support and are popular on decking.
- > Pop-up gazebo. Ideal for temporary use, pop-ups tend to be more cost-effective and basic in their design.

## SPECIALIST IN PRE-CAST BUILDINGS

SINGLE GARAGES ■ DOUBLE GARAGES ■ CONSERVATORIES  
GARDEN ROOMS ■ SHEDS/WORKSHOPS & MORE



- FAMILY RUN BUSINESS ■ 50 YEARS EXPERIENCE
- 5 YEARS GUARANTEE ■ DESIGNS TAILORED FOR YOU
- HIGH QUALITY, LOW MAINTENANCE CONSTRUCTION



R  
PAGE  
CONCRETE  
BUILDINGS LTD

CONTACT US ON 020 8590 3701

[www.rpageconcretebuildings.com](http://www.rpageconcretebuildings.com)

[rpageconcretebuildings](https://www.facebook.com/rpageconcretebuildings)

951-953 High Road, Chadwell Heath, Romford, Essex RM6 4HB



## BUILDING & LANDSCAPE

EXTENSIONS | DRIVEWAYS | PATIOS | FENCING

We carry out all domestic building and landscaping projects.  
Anything from small repairs to complete renovations



Contact Paul Martin on  
**01708 578106**  
[www.pbmartin.co.uk](http://www.pbmartin.co.uk)

**FREE NO  
OBLIGATION  
QUOTATIONS**

# ABC SKIP HIRE

2, 4, 6, 8, 10, 12 yrd Skips

**SAME DAY SERVICE**

**01708 474 940**  
**07831 309 711**

## PROFESSIONAL TREE SURGEON SERVICES

TREE PRUNING • TREE REMOVAL • TREE REPORTS  
HEDGE TRIMMING • SITE CLEARANCE  
STUMP GRINDING • EMERGENCIES  
SEASONED HARDWOOD DELIVERY AVAILABLE

WE SERVE ALL OF HAVERING & THROUGHOUT ESSEX

CONCERNED ABOUT YOUR  
TREES AFTER HIGH WINDS?  
FREE GROUND TREE CHECK  
& QUOTATION WITH  
THIS ADVERT

We offer  
FREE Quotations  
& Expert Advice  
on ALL aspects of  
Tree Work &  
Arboriculture



**Kings Cuts**  
Tree Services

We provide a huge range of tree services & offer expert arboricultural advice, ensuring your trees are looked after responsibly

ALL OPERATIVES ARE COVID AWARE AND WILL BE TAKING STEPS TO KEEP SOCIAL DISTANCING AT ALL TIMES AND TRAVELLING TO SITE IN SEPARATE VEHICLES TO SITE. PLEASE DON'T BE OFFENDED BUT WE WILL NOT BE ACCEPTING DRINKS FROM CUSTOMERS AT THIS CURRENT TIME

Call us: 01708 578030 Mobile: 07467 944671

www.kingscutstreeservices.co.uk • info@kingscutstreeservices.co.uk



# DON'T JUST TAKE OUR WORD FOR IT...

Dear Brett,

**VISION** magazine has been brilliant for us.

They've helped us increase brand awareness across the whole region and gained us a good few happy customers in the short time we've been with them.

Putting together some brilliant artwork for us. Brett has helped us continue the professional image we're looking for and established us as something of a force locally.

Fulfilling our mission to bring competitively priced home improvements to the local area, realising people's ideal home and helping them achieve their dreams, has been much easier with **VISION** magazine. I foresee our partnership continuing for long into the future.

Many thanks,

Tom & Chris  
New Level Loft Conversions  
01708 578162



Your  
Monthly  
Lifestyle  
Magazine



To advertise call now on

**01708 578049**

or email [hornchurch@visionmag.co.uk](mailto:hornchurch@visionmag.co.uk)



# Home Groomer

One in one out policy, making sure every dog is comfortable and made to feel happy!

I specialise in all dogs – there's not one too small or too large I can't do!

**25% OFF**  
First Groom with me



We abide by all COVID rules and regulations



01708 578042 ♦ 07713 974602  
diamond.in.the.ruff@hotmail.com  
f diamond.in.the.ruff\_groom  
i Diamond.in.the.ruffGroom

## CRAFT PRODUCTS

Cutter & heat press bundles available



We offer a range of Silhouette Cutters for cutting out self-adhesive vinyl, cardstock, t-shirt vinyl and lots more!

Our cutters link up to a PC or a Mac. Software supplied. Heat Presses also available for printing onto t-shirts etc.

## PERSONALISATION MACHINES



Request a **FREE** info pack by email

Now you can hot foil stamp initials onto quality leather goods. Everyone loves personalisation!

We supply table-top machines, leather goods, letters, dies for logos etc.

**CREATIVE PRINTERS OF LONDON** (Since 1986)  
Tel: 01708-731294 [www.creativeprintersoflondon.co.uk](http://www.creativeprintersoflondon.co.uk)

email:  
cplsales@print1.co.uk  
Quoting ref: VM

Due to COVID 19 - No visitors please. We ship for next day on some items.



PETS

# FIRST AID for pets

Knowing what to do in an emergency can be the difference between life and death when it comes to your beloved pets. From what to put in your pet first aid kit to the benefits of undertaking a pet first aid course, keep reading to ensure you are equipped to help your pet when they need it most.

### PET FIRST AID CHECKLIST

All pet owners should have a pet first aid kit, for use both at home and when out and about. You should also keep your vet's number stored in your phone in case of an emergency. Your kit should contain:

- + Bandages
- + Blunt-ended scissors
- + Wound wash and dressing
- + Cotton wool
- + Tweezers (standard and tick)
- + Self-adhesive tape
- + Vinyl gloves
- + Foil blanket
- + Antiseptic wipes
- + A blanket (to be used as a stretcher)

emergency should it arise.

During a pet first aid course, you can expect to learn:

- + Overall pet health
- + Tips on examining your pet
- + Pet digestion
- + Signs of dehydration
- + How to treat burns
- + How to treat a choking pet
- + Basic CPR for pets
- + Signs of frostbite
- + What to do if your pet goes into shock
- + Drowning first aid
- + How to approach an injured animal
- + How to check vital signs

The exact course material may differ from one course to another.

### WHERE CAN I GET FREE PET FIRST AID INFORMATION?

The People's Dispensary for Sick Animals offers a free downloadable pet first aid guide on its website [www.pdsa.org.uk/get-involved/our-campaigns/free-first-aid-guide](http://www.pdsa.org.uk/get-involved/our-campaigns/free-first-aid-guide)

It also offers local pet first aid courses, although you will need to check if these are up and running again after a temporary suspension of service owing to the COVID-19 pandemic.

### WHAT CAN I EXPECT TO LEARN ON A PET FIRST AID COURSE?

Although not intended as a replacement for professional veterinary care, a pet first aid course can give you the skills needed to deal with an



**FIRST AID**

★ THE STORY OF ★

# BONNIE & CLYDE

Two destructive lives combine to fuel a potent love story



The glamorisation of Bonnie and Clyde in modern culture is certainly at odds with the murder and robbery spree that led to the FBI pursuing them and, ultimately, effecting their fatal end in 1934.

Having first met four years earlier, Bonnie Parker and Clyde Champion Barrow had both already been on the wrong side of the law, and the signs were there of the peril they could cause to the unsuspecting, not least when Bonnie helped Clyde smuggle a gun into prison in 1930, when he was locked up for a robbery charge. He escaped but was recaptured, yet remarkably was released just 18 months later.

Their crime spree began in earnest in 1932. Joined by three other criminals, they undertook a number of robberies, escaping capture by any means possible. Indeed, by the time their criminal lives were brought to a halt, it's said they had murdered at least 13 people.

As well as seeking financial gains, the couple sought to break convicts out of jail, notably cohort Raymond Hamilton from Eastham State Prison Farm at Waldo, Texas, who was serving sentences totalling in excess of 200 years.

By the middle of April 1934, the FBI had traced the pair to a remote part of Louisiana following the couple's theft of a motor vehicle. Posters were distributed to police staff throughout various states and the hunt was on.

Intelligence suggested they were due to return to the location of a party that was held near Sailes in Louisiana two days previously. On May 23, 1934, officers from the county and neighbouring Texas converged to create an ambush on the side of a highway, concealing themselves in bushes. Bonnie and Clyde appeared in a motor car and, unable to turn and flee, were killed instantly as more than 100 shots rained through the front windscreen of the vehicle.

Photo credit: Everett/Shutterstock

## MAKING AN INSURANCE CLAIM?

Oakleafe  
CLAIMS

Having to make an Insurance Claim can often be a complicated and time consuming process. Once a claim is lodged with an Insurer they will appoint a **LOSS ADJUSTER** to represent them. But did you know you can also appoint your very own Loss Adjuster, known as a **LOSS ASSESSOR**.

Oakleafe Claims **Loss Assessors** are local professionals who specialise in Insurance Claims Management and only represent you-the policyholder. We have extensive experience in all types of claims and values covering the entire U.K. As **Loss Assessors** our mandate is to ensure the policyholder receives their full entitlement after we settle their Insurance Claim.



Storm



Fire & Smoke



Leaks & Floods



Impact



Theft



Business Interruption

Oakleafe Claims **Loss Assessors** are the proud award winning recipients of **Loss Assessor** of the year at the U.K British Claims awards and have been helping people and businesses with Insurance Claims since the Second World War. We operate 24/7 throughout the UK with our head office in Gidea Park and supporting offices in London, Brighton, Manchester, Cardiff & Glasgow.



Email: [Office@Oakleafe.com](mailto:Office@Oakleafe.com) Web: [www.oakleafe.claims](http://www.oakleafe.claims)

# QUIDS IN

*How to make money back on your online purchases*

While the three lockdowns we've endured since March 2020 may not have done much for our mental health, they have at least, as very small consolation, given new energy to consumerism. From shops and online retailers needing to find new ways to connect with a marketplace unable to act in the same way as before, to huge quantities of dormant pre-lockdown stock needing to be shifted, it's a good time to be on the lookout for deals.

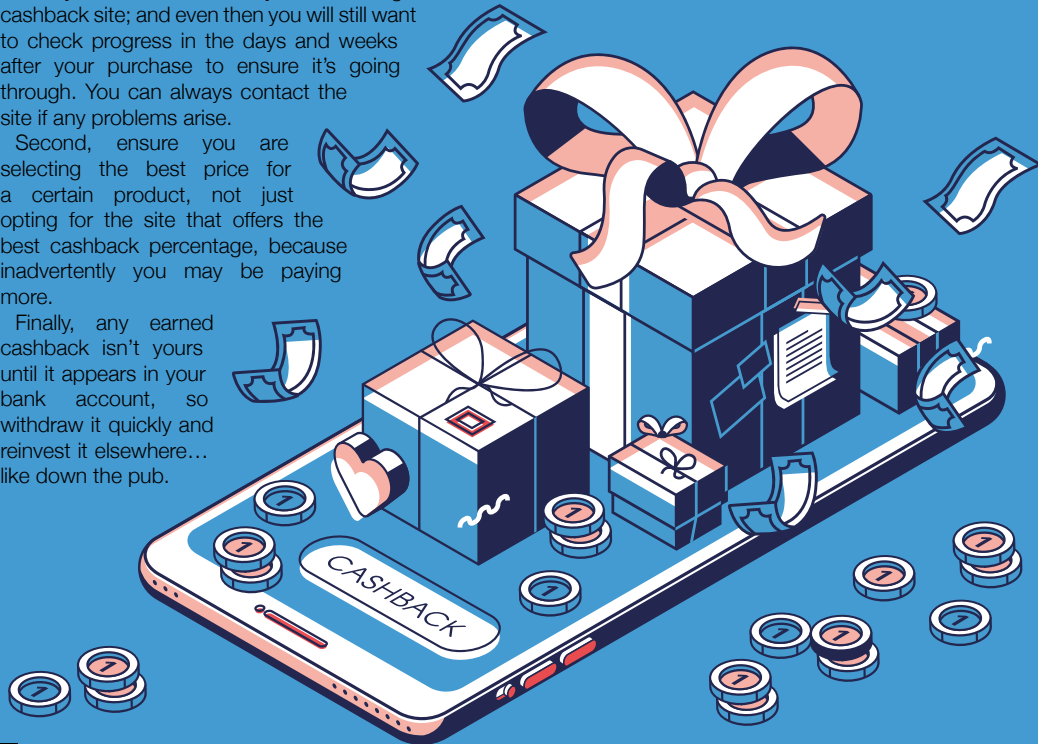
Sure enough, in a world that is more driven than ever towards consumerism, online tracking of purchases through cashback sites can provide an additional useful bonus to purchases – they might even determine which retailer you buy from in the first place.

Sites such as Quidco and TopCashBack advertise cashback offers from thousands of retailers. Simply follow the link to Nike, Next, New Look or whoever has a product you desire, and make a purchase, which will be tracked using cookies. You will have been given a percentage cashback level – usually between one and 10 per cent. A few weeks later, that cashback will appear on the platform, ready to be withdrawn into your bank account or converted into a gift card.

There are a couple of operational points worth noting. First, the tracking process isn't 100 per cent fail-safe – you must make sure you link through the cashback site; and even then you will still want to check progress in the days and weeks after your purchase to ensure it's going through. You can always contact the site if any problems arise.

Second, ensure you are selecting the best price for a certain product, not just opting for the site that offers the best cashback percentage, because inadvertently you may be paying more.

Finally, any earned cashback isn't yours until it appears in your bank account, so withdraw it quickly and reinvest it elsewhere... like down the pub.



Plan your finances with precision

We provide a comprehensive wealth management service, offering specialist face-to-face advice tailored to you. Our services include:

- Investment Planning
- Retirement Planning
- Protection Planning
- Inheritance Tax Planning
- Intergenerational Planning
- Mortgage Planning

Your home may be repossessed if you do not keep up repayments on your mortgage.

For further details please contact:

**DB** | DAVID BEAN  
WEALTH MANAGEMENT

Tel: 01708 578047  
Email: david.bean@sjpp.co.uk  
www.davidbeanwealth.co.uk

**We.Recruit** **We.Outsource** **We.Consult**

**KINGSWOOD GROUP**  
HR SOLUTIONS  
RECRUIT • OUTSOURCE • CONSULT

Providing expert, fully tailored HR Solutions to businesses across Essex

For a confidential discussion, please email us at: [enquiries@kingswoodgroup.org](mailto:enquiries@kingswoodgroup.org), alternatively call us on:  
**Hornchurch 01708 578126 | London 0203 984 6677**

[www.kingswoodgroup.org](http://www.kingswoodgroup.org)

**bluebaring**  
RECRUITMENT LTD

**SCAN QR CODE TO VISIT OUR WEBSITE**

**Construction & Industrial Recruitment Specialists**  
Established since 2008

- We are a local business and we are looking to work with other local businesses
  - We can supply staff all over Essex & London
- We offer Temporary, Fixed Fee Perm & Temp to Perm (£0 End Fee) options
  - Our core beliefs are Honesty and Transparency

**So if you are looking for staff – look no further  
Get in touch with Bluebaring today!**

**KICKSTART SCHEME** We are proud to announce that we have been approved by the DWP to work as a Kickstart Gateway meaning you can now take full advantage of the scheme with our full support.

[info@bluebaring.com](mailto:info@bluebaring.com) ● 01708 524332 ● [www.bluebaring.com](http://www.bluebaring.com) ● Follow us on

**We are looking for consultants to join our team. If you are looking for a new role in recruitment, email our Director Scott Hart on [scott@bluebaring.com](mailto:scott@bluebaring.com)**

# COASTAL HOTSPOTS

for home buyers

With summer staycations being on the cards for many families this year, homes by the sea are attracting more interest than ever before. But if you are thinking of making a more permanent move to a coastal location, check out the below hotspots that are proving to be popular with home buyers across the UK.

**SWANAGE, DORSET** – average asking price £394,762

Only six miles from Bournemouth, Swanage was recently named as one of the best places to live in the South West by *The Sunday Times*. Offering an old-fashioned seaside charm, this town is your best bet for affordable family homes with sea views.

Choose from Victorian terrace houses, bungalows and modern sea-view apartments.

**ROTTINGDEAN, EAST SUSSEX** – average asking price £596,699

Another highly popular spot for home buyers, Rottingdean combines a picturesque village with a beautiful beachfront and boasts a lively community. Explore a mix of Georgian town houses, Edwardian family homes and character cottages.

**ST MAWES, CORNWALL** – average asking price £963,398

For those with a larger budget, the small fishing village of St Mawes, near Falmouth, is the perfect coastal location. With more than five million searches on Rightmove in February, Cornwall has now overtaken London as the most searched for place for home buyers.

Popular for boating and yachting, if you want to do a bit of daydreaming, check out its selection of stunning sea-view mansions.

**THORNHAM, NORFOLK** – average asking price £223,898

A small coastal village situated in the Norfolk Coast Area of Outstanding Natural Beauty, Thornham's attractive and traditionally styled properties make it a highly sought-after location for home buyers. Ideal for those looking for a more remote place to live; if you work from home, you won't find a more idyllic setting.





# Hoskin Mortgages

Your Pathway to a Secure Future

## Should I have some mortgage protection insurance?

Yes says Ian Smith, a mortgage and protection advisor at Hoskin Mortgages Hornchurch.



"A young couple recently enquired about an income protection policy to run alongside their new mortgage. They were amazed that the monthly payment on a plan providing up to £1500 per month could be purchased for less than the cost of a take-away meal. It is often a lot cheaper than people think it will be."

"I am always surprised at how many people don't see the need to cover themselves for unknowns that may be around the corner" said Ian. "Tablets, televisions and mobile phones are insured, but when it comes to the most important item, and that's yourself, many people are falling short. If you are unable to work due to illness or injury it can be catastrophic to find you are suddenly unable to pay your mortgage".

We are here to help anyone considering the purchase of life assurance, critical illness cover or income protection.

Please contact us for quality and professional advice on any of the following products: Mortgages, secured loans, bridging and development finance, buy to let and commercial loans.

**For quality, professional advice please contact our Hornchurch office**

07802 262674 ■ 01708 973377

ian.smith@hoskinfinancial.co.uk ■ www.hoskinmortgageshornchurch.co.uk

Hoskin Financial Planning Limited is authorised and regulated by the Financial Conduct Authority No. 613005.

Your home may be repossessed if you do not keep up repayments on your mortgage.

**FIXED FEES AVAILABLE**

## THE FAMILY SOLICITORS

118 YEARS IN ROMFORD

### HELP WITH

- Family Breakdown
- Contact with Children
- Wills & Lasting Powers of Attorney
- Buying & Selling your home
- Lease Extensions
- Commercial Property
- Legal Help following the death of a loved one

**SGL** Symons, Gay & Leland LLP Solicitors

**Tel: 01708 744211**

[www.symonsgayandleland.co.uk](http://www.symonsgayandleland.co.uk)

[office@symonsgayandleland.co.uk](mailto:office@symonsgayandleland.co.uk)

91a South Street, Romford, Essex RMI IPA

**LH**  
LUX HOMES  
ESTATE AGENTS

120 North Street, Hornchurch, RM11 1SU  
[www.luxhomesgroup.co.uk](http://www.luxhomesgroup.co.uk)  
01708 208807

HAVERING'S PREMIUM ESTATE AGENT



**SCAN HERE**  
for instant valuation

## How focused is your agent on helping you sell or let your property?

**Kingsmarq Real Estate** has launched in the Essex area to provide a fresh approach to property sales, lettings and management. Offering boutique levels of service throughout the process, Kingsmarq focusses on helping a small portfolio of clients achieve the best outcome quickly, efficiently and with personal, relevant guidance.

With excellent customer service at the heart of Kingsmarq Real Estate's ethos, you can be assured of a warm welcome from the very first call to discuss your property needs.

kingsmarq.co.uk | 01708 578029 | info@kingsmarq.co.uk  Powered by KELLERWILLIAMS



rightmove 

Zoopla

 PrimeLocation.com

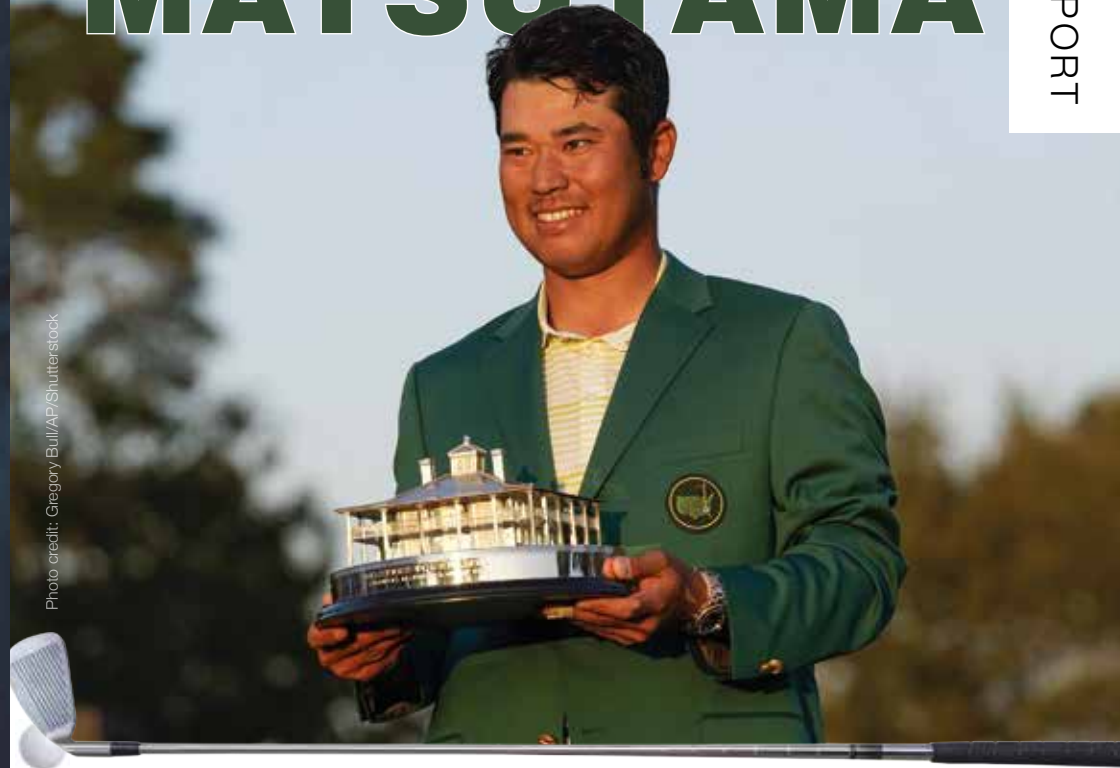
 TheMarket

# Masterful MATSUYAMA



SPORT

Photo credit: Gregory Bull/AP/Shutterstock



## HOW A SHY JAPANESE GOLFER MADE HISTORY AT THE MASTERS

In all honesty, golfer Hideki Matsuyama probably isn't cut out for a life in the spotlight of the sporting world. The 2021 Masters champion, who originates from the place in Japan that gave him his name – Matsuyama is a city in the Ehime region on the island of Shikoku – claimed victory at the iconic Augusta course in April, finishing a shot clear of American youngster Will Zalatoris.

"I am relieved," he said afterwards. "It looked good coming into the final day – the course was playing well for me and I knew I just had to hold my nerve.

"It is the proudest moment of my sporting life."

Success hasn't come quickly or easily. Indeed, Matsuyama has had to wait four painful years to make amends for a catastrophic loss of confidence on the back nine of the 2017 PGA Championship when he seemed set to take the title.

Recovering from hitting five bogeys in the final

trappings that cost him that victory has taken the 29-year-old time, and although he again wobbled on his way to finally setting the record straight as he posted an overall 10 under par, this time he held on to the clamours of delight emanating from his homeland.

Japan is a golf-mad country and finally it has a golfing champion to call its own; not just that but a man who values respect and humility. He bowed to the 18th fairway at Augusta as a mark of respect and, despite pocketing the \$2million first prize, still flew back to his homeland alone, on a standard flight. Indeed, perhaps the most iconic image of the whole weekend was Matsuyama sitting at Augusta airport on the Monday, dressed down, checking messages, and that famous green blazer casually draped over a neighbouring seat.

Japan has a champion to be proud of, as does the sport of golf.



THE NUMBER ONE BOXING  
ACADEMY FOR ALL ABILITIES

- 👍 BOXING ACADEMY
- 👍 1-ON-1 SESSIONS
- 👍 KIDS LESSONS
- 👍 LADIES GROUP SESSIONS



### Dennis & Dyer Boxing Academy

The Landmark, 30 Barrington Green, Loughton, Essex, IG10 2BA  
[www.dennisanddyerboxingacademy.co.uk](http://www.dennisanddyerboxingacademy.co.uk) | 0208 088 3491  
[info@dennisanddyerboxingacademy.co.uk](mailto:info@dennisanddyerboxingacademy.co.uk)

Follow us on Instagram @dennisanddyerba to stay up to date!



# THERE'S NO BEATING BLACKMORE

*How modest but magnificent jockey Rachael Blackmore made history*

On April 10, Rachael Blackmore stood aloft Minella Times, triumphant in becoming the first female jockey to have ridden a horse to victory at the Grand National.

In 182 years of the world's most famous horse race, never before has a member of the fairer sex come home victorious, though in Blackmore, who hails from Killenaule in County Tipperary, there is a jockey of prolific character, determination and future potential.

Already 10 years on the circuit, having ridden her first winner as an amateur back in February 2011, she truly announced herself at Cheltenham in 2019 when she came home first on A Plus Tard in the Close Brothers Novices' Handicap Chase.

That year she also had her second taste of riding at Aintree and, with each passing iteration, enhanced a game plan that would help her take home the big prize.

"I think as a jockey you are always learning; and although the courses and the horses are different, every race for me has felt like a rehearsal for a big victory."

Cheltenham success this year on favourite Honeysuckle reaffirmed the jockey's status to perform when the pressure was on, though starting out at 11/1 at Aintree in the Grand National left plenty of room for doubt. Those who bet on her to bring home the greatest victory of her career needn't have worried – Blackmore rode an impeccable race as the eight-year-old horse came through in style, winning by six and a half lengths.

"It fell right for me on the day, and that's all you can ask as a jockey," she said with immaculate modesty. "I never at any point thought I had a divine right to win, and nor will I in future – I've always regarded myself as being in the right place at the right time; and I'll hopefully continue to be."

Photo credit: Steven Cargill/racingphotos.com/Shutterstock



# Buy or Lease?

The ins and outs of buying versus leasing, and which one you should choose

The trend in modern motoring, certainly where new cars are concerned, is to lease rather than buy. The advantages of leasing speak for themselves – you'll need to put down only a small amount of money upfront, your monthly payments can be configured according to the budget you set out at the start, and you have the option of upgrading the car every few years so you're always rocking about town in the latest model.

There's also the reassurance of knowing that if something goes wrong with the vehicle, you'll be covered by the manufacturer's warranty; and that fear of the unexpected, when you hear that horrible, grinding sound... well, it's someone else's problem!

You'll also find that road tax can be covered, and you may even get the vehicle delivered to your door.

The appeal of what is, in effect, borrowing a vehicle is at odds with the way we view other things in life. Home ownership, for instance, is taken as preferable over renting, yet owning a car outright is fraught with perils.

If you can afford the entire cost of a vehicle upfront you're immediately into the realms of depreciation

the moment you turn the key in the ignition – and of course any repair bills fall to you and you only.

That said, you won't have to subscribe to any mileage limitations, nor will you be dealing with broker fees. And while many pay for new cars through PCP (personal contract purchase) or HP (hire purchase) finance, you do have a potentially substantial asset ready to be cashed in when you decide you want to switch to another vehicle.

Buying over leasing very much comes down to personal circumstances – what's right for you will be wrong for someone else. As ever, do the maths and, more than anything else, drive safely!



## YO \_ R ADVERT HE \_ E

**Q: WHAT'S MISSING HERE?**  
**A: YOU ARE**

**CONTACT US NOW TO ADVERTISE**

Your **VISION** Monthly Lifestyle Magazine

t: 01708 578049 m:07967 079101  
e: hornchurch@VISIONmag.co.uk  
w: www.VISIONmagsex.com

### WANT TO ENHANCE YOUR VEHICLE?

- ★ Window tinting
- ★ Vehicle wrapping/styling
- ★ Wheel refurbishment /colour change
- ★ Calliper respray
- ★ Detailing/valeting mobile

**Please contact 01708 578051**  
**info@tommytintsltd.co.uk**  
**to book or for a quote**

### FULLY FITTED ROLLER GARAGE DOORS

FROM **£895** \* WAS £1,054 INC VAT

\* Offer valid for openings up to 2.4m wide & inc. 2 Remote Controls, 55mm White Slats, Internal Manual Override

**WHATS INCLUDED:**

- ACOUSTIC & THERMAL INSULATION
- TWO REMOTE CONTROLS
- EXPERT MEASURING & FITTING
- 24 COLOURS AVAILABLE

**GAROLLA** ROLLER SHUTTER DOORS  
www.garolla.co.uk

Made To Measure... **ROLLER GARAGE DOORS**

Garolla can save a lot of space inside your garage. Rolls up vertically into a box. Takes only 8 inches of headroom! Opens vertically so you can park up close to the door. Remotely open/close the garage even from inside your car.

**CALL US TODAY**  
Phone: **01708 545 099**  
Mobile: **07537 149 128**

CE Approved

## ACCOUNTANT & TAX ADVISORS

### ALL THINGS ACCOUNTING

Accounting & tax services, we help with self-assessment tax return, corporation tax return, payroll, VAT return, CIS return & bookkeeping. Call 07539 035537 for free initial consultation

## ACUPUNCTURE

### HONG WEI CHINESE MEDICAL

Fully qualified & experienced, specialising in women's health & Fertility. Help with pain relief, emotional disorders, male/female conditions. 01708 454888 | hongweichinesemedicine.co.uk

## AUTO BODY REPAIRS

### SQUIRRELS HEATH AUTOS

Est. Over 30 years taking care of major & minor bumper scuffs, dents, scratches etc. Call for details 01708 437721 | 07745 629957

## BALLOON DECOR

### THE BALLOON SQUAD EVENTS

I offer bespoke decorations for any family celebration or occasion at home or venue. For a no obligation quote contact 07958 586501

## BEAUTY & NAILS

### BEAUTY BY NATASHA KATIE

A local, mobile LVL Technician. Fully qualified level 2 and 3 beauty therapist Babcac insured and approved. 07961 462672

### SPECIAL NAILS

Dedicated to provide the best quality nail care for Men & Women. Walk-ins welcome, appointment bookings & gift vouchers available. 01708 442248

### THE NAIL STUDIO

Nail Studio lets you switch off and pamper with highly skilled technicians providing top treatments and nail products to meet your every need. 07572 526519

## CAR & VAN HIRE

### SCENIC SELF DRIVE

Your self drive hire specialists. Whether you require modern cars, motorhomes, vans or minibuses. Rest assured we will provide you a professional service 01708 753461

## CLEANING SERVICES

### SPOTCLEAN LTD

Commercial & Domestic Services Specialising in Office, Shop, New build, Refurbished & Residential Cleaning. We ensure a Clean & hygienic environment 07940 213394

## CLEARANCE & WASTE

### THE CLEARANCE TEAM

From clearing a room, house or garden to clearing an entire office block. Fast, reliable and affordable. Working 24/7 so you can book us at your convenience 0207 101 3387

## COMPUTER REPAIR & I.T.

### MAPTEC IT

Your local residential & commercial IT specialists. We can fix your computers, configure email accounts & printers. Setup your Wi-Fi, Internet router & network. 0203 865 7174

## ELECTRICAL & WHOLESALERS

### CH ELECTRICAL WHOLESALERS

Essex & East London's leading electrical wholesalers providing the trade & public a professional service with access to all leading brands. 01708 730591

## ELECTRICIAN

### CAPITAL ELECTRICAL SERVICES LTD

Domestic/Commercial, Repairs/Installation, Vehicle Charging Points, Portable Appliance Testing, Fire Alarms, Emergency Lighting, Installation Condition Reports. Call 01708 578038

## FINANCIAL SERVICES

### PARAGON LEGAL SERVICES LTD

We will write your will for only £49.99+Vat subject to T&Cs. Call FREE on 0800 0747 642 or 01206 544 919 Call us for a FREE home appointment. www.paragonlegal.co.uk

## FLOORING & RESTORATION

### PARNELL FLOORS

We can provide you with the perfect service from the supply, fitting and finishing of new and reclaimed wooden floors including the restoration of existing floors. 07780 671512

## FLOWERS & FLORISTRY

### THE PLANTIQUE

Our dedicated team of professional florists are able to assist you with floral gifts for any occasion. We offer good quality floral gifts at competitive prices. 01708 477255

## FRENCH POLISHING

### DC POLISHING

20 Years experience in wood restoration i.e. Furniture, doors, staircases, worktops, minor repairs & FLOOR RESTORATION. 07949 204969 | dcpolishing.church@gmail.com

JOIN THE LISTINGS... for just **£15** +VAT per month

## FURNITURE RESTORATION

### ABBEY GROUP

Abbey Group are specialist in creating, repairing & restoring quality furniture & wood surfaces to the highest standard. 01708 741135

### KINGS UPHOLSTERY

Handmade sofas & chairs designed especially for you to your required specifications. Also providing in re-upholstery & repair work. 01708 444125

## GARDEN SERVICES

### JOHN HEARNE

We take care of it all Lawn Mowing, Weeding, Planting, General Tidying, Fence/Shed Painting, Driveway/Patio Pressure Washing and more. Call for details 07908 523101

### KINGS CUTS TREE SERVICES

A Huge range of tree services available & offer expert arboricultural advice, ensuring your trees are looked after responsibly. 01708 578030 | 07467 944671

## GIFTS, BALLOONS & ACCESSORIES

### CLASSIC CARDS

Established for 24 years. Specialising in hand made cards, personalised frames, large variations of gifts, jewellery & balloon displays. Gift wrapping available. 01708 620460

## LAUNDRY & DRY CLEANING

### THE LAUNDRY MAN

From everyday washing, drying & ironing. We can pretty much launder anything & everything. Self service launderette available. 01708 447710

## LOFT CONVERSIONS

### HIGH END LOFTS LTD

Beautiful Lofts, Expertly Built. Our "Hand-Holding" service takes you from ideas, through Plans & Building Control, to make your [home alteration] vision a reality 01708 578162

## MASTICS AND SEALANTS

### QUALITY MASTICS LTD

Bathroom and shower mastic joint sealing. Kitchens, windows, floors, external seals around windows. For information. Call 01245 520981

## PAINTING & DECORATING

### TRADITIONAL DECORATIONS

We are a family run business specialising in turning your house into a home. Giving advice on current decorating trends. 07737 562406

## PLUMBING & HEATING

### CMS PLUMBING HEATING & BATHROOMS

Corgi registered, 20+ years' experience, public liability insurance, offering free quotes. No job too small. Based in Gidea Park. Call Craig 07855 589185

## PROPERTY MAINTENANCE

### D.J. HOME IMPROVEMENT SERVICES

Painting & Decorating & all Home Maintenance & Repairs est. 1986. Cheap Rates for OAPs, Small Jobs Welcome 01708 444611

## ROOFING

### JIM BARR ROOFING

Exterior cleaning & maintenance. Gutters, Paving & UPVC; cleaned, repaired & renewed. 01708 874816 | 07833 572459

## TILING

### DR BETTS TILING

Large selection of floor & wall tiles, fitting service, porcelain, ceramic, glass & natural stone. Specialist in underfloor heating. 01708 381349

## WHITE GOODS & APPLIANCES

### T.E.J. DOMESTIC APPLIANCES

Stockists of all major brands. Installation available, FREE local delivery. Free standing & Built In Appliances. Extensive stock. 01708 447752

## WINDOWS & GLAZING

### MAJOR GLASS & GLAZING

Specialising in all aspects of glass & glazing for both domestic & commercial. UPVC, Conservatories, Bi-Fold Doors, Double Glazing Repairs, Mirrors. 01708 525996

BOOK VIA [HORNCHURCH@VISIONMAG.CO.UK](mailto:HORNCHURCH@VISIONMAG.CO.UK)

**DISCLAIMER:** VISION does not represent or endorse the accuracy or reliability of any of the advertisements, nor the quality of any products, information or other materials displayed, purchased or obtained by any customer as a result of an advertisement or any other information or offer in connection with the service or products. The opinions expressed in articles, reviews and stories are strictly those of the individual authors and do not necessarily reflect the views of VISION.

To advertise call VISION on 01708 578049



# PUZZLES & TRIVIA

PUZZLES

Answers: see end of The VISION Listings

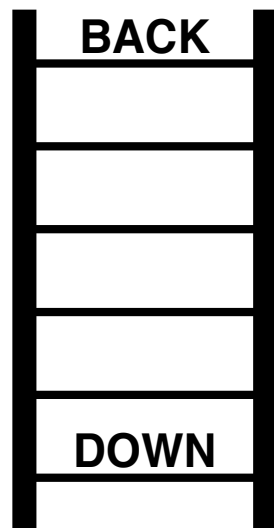
- ▶ QUACK
- ▶ QUALIFY
- ▶ QUALITY
- ▶ QUARREL
- ▶ QUARTER
- ▶ QUASH
- ▶ QUEEN
- ▶ QUEUE
- ▶ QUICHE
- ▶ QUICK
- ▶ QUIET
- ▶ QUINTUPLE
- ▶ QUIRK
- ▶ QUITE
- ▶ QUITTER
- ▶ QUIVER
- ▶ QUIZ
- ▶ QUORUM
- ▶ QUOTE
- ▶ QUOTIENT

T	T	L	Q	O	A	T	D	Q	M	R	E	I	S	A
A	N	E	E	U	Q	Y	Y	S	U	I	H	F	C	F
Q	U	E	U	E	I	O	T	A	T	A	L	W	P	P
L	J	Z	I	T	A	N	Q	E	E	T	R	L	O	L
Q	G	U	Q	N	Q	T	T	U	I	T	P	T	E	A
H	Q	Y	U	E	P	H	Q	U	O	U	B	V	E	F
E	O	R	I	I	H	G	S	U	P	R	Q	Z	V	R
T	Q	E	Z	T	A	C	K	A	I	L	U	A	T	R
I	U	V	S	O	W	G	I	C	U	T	E	M	R	U
U	A	I	Z	U	K	C	I	U	Q	Q	T	F	R	U
Q	L	U	P	Q	K	C	A	U	Q	K	A	E	R	A
R	I	Q	G	R	L	E	R	R	A	U	Q	I	R	P
P	F	K	Y	I	U	I	Y	T	I	L	A	U	Q	A
N	Y	I	W	F	S	S	P	S	O	Q	U	I	R	K
J	B	T	P	U	T	E	T	O	U	Q	C	J	W	S

## DID YOU KNOW?

- ▶ Lots of plants are used as dyes. For example, teabags and stewed onion skins
- ▶ According to Guinness World Records, the tallest planted tree was a Eucalyptus regnans planted in Dunedin, New Zealand. It measured 82.25 metres on November 15, 2018
- ▶ Pollen from trees provides essential food for bees in the early spring
- ▶ Orange carrots were created by crossing various other colours of the vegetable
- ▶ Seeds can be dispersed in several ways. Some of the most common are the wind, water and animals
- ▶ The stem of a plant is used to transport water and nutrients to different areas
- ▶ Mushrooms have their own immune system

## WORD LADDER



THE AIM: Change the word at the top of the ladder one letter at a time to make the word at the bottom.

HOW TO: Change one letter on each step to make a new word. By the time you reach the end, you should have created the new word.

DO NOT rearrange the order of the letters.

TIP: There is usually more than one way to solve this puzzle.

# MAJOR GLASS AND GLAZING

As a family company, Major Glass and Glazing specialises in all aspects of glass and glazing, both residential and commercial, and prides itself on its ability to deliver quality installations

### Our specialist glazing services include:

- Upvc, Aluminum and Timber Windows & Doors
- Conservatories, Orangeries and Roof Lanterns
- Bi-fold Doors
- Double Glazing Repairs
- Fascia & Soffits
- Architectural Glazing
- Table Tops
- Mirrors
- ...and more



We are based in Hornchurch, Essex, and are dedicated to providing a cost effective service with unrivalled customer satisfaction.

**01708 578056**  
**www.majorglass.co.uk**  
info@majorglass.co.uk



## A selection of properties currently available for sale



**Bridgefields Close, Hornchurch**  
6 Bedroom Detached  
£3000 PCM



**Chester Avenue, Upminster**  
5 Bedroom Semi-Detached  
£2000 PCM



**Bancroft Chase, Hornchurch**  
3 Bedroom Town House  
Guide Price £425,000 - £450,000



**Grey Towers Gardens, Hornchurch**  
2 Bedroom Maisonette  
£290,000



**Briarleas Gardens, Upminster**  
2 Bedroom Apartment  
Guide Price £270,000 - £280,000



**Merritt House, Romford**  
1 Bedroom Retirement Apartment  
Offers in Excess of £125,000

**Noble Residential**, we focus on helping our customers Move Home, not just selling houses.

168-170 Hornchurch Road,  
Hornchurch, Essex,  
RM11 1QH

Find us on:   

Sales • Lettings • New Homes • Mortgages

**rightmove**  
find your happy

**Zoopla**  
Smarter about property

**onTheMarket**