

FREE

Photo credit: Shutterstock

*HM Queen*  
**ELIZABETH II**

1926 – 2022

Thank you, Ma'am, for dedicating 70 years to your people



# LANDMARK

PRIVATE FINANCE



At Landmark Private Finance we provide mortgage, property finance and insurance solutions for all our clients, from first time buyers through portfolio landlords to complex high net worth individuals.



0203 773 7299  
[landmarkprivatefinance.com](http://landmarkprivatefinance.com)



# LANDMARK

RESIDENTIAL



WE ARE ESTATE AGENTS BASED IN ESSEX & CANARY WHARF, WE OFFER A PROFESSIONAL SERVICE TO ALL OUR BUYERS, SELLERS, LANDLORDS AND TENANTS, WE PRIDE OURSELVES WITH A 5 STAR RATED CUSTOMER SERVICE.

WE WILL MAKE SURE WE CONNECT YOUR PROPERTY WITH THE RIGHT PEOPLE. OUR BEST SOURCE OF CLIENTS ARE OUR REFERRALS AS WE CONTINUE TO BUILD LONG TERM RELATIONSHIPS.

[landmarkresidential.co.uk](http://landmarkresidential.co.uk)  
0203 773 7299





# Editor's notes...

OCTOBER 2022



Brett Shohet, Editor

Hello and welcome to this month's edition of **VISION** Hornchurch.

I'm sure there's only one thing on everyone's minds at the moment, and that's the sad passing of Her Majesty Queen Elizabeth II. While people all over the world loved the Queen, when I lived in America, citizens there were always especially eager to hear about the Royal Family. The British monarchy has always added a sense of glamour to our country; they are a beacon of heritage and history, and it is part of the Queen's legacy that it will continue even when she is no longer with us.

For my entire life, the Queen has been there as a reassuring presence in the background. It's a lesson to us all not to take those things we think of as constants for granted, to look around us and appreciate the fact that even familiar things are special.

This extends to our local businesses. Walking past the same shopfronts every time you go to your local high street, it's easy not to see what's right in front of you, but these businesses and the people running them are an important part of what makes our local areas special. It's up to all of us to make the effort to support our high streets by keeping our pound local.

And, as always, if any local businesses need a hand, get in touch with us and we can help get the phone ringing.

*Brett Shohet*

This is your town's hyperlocal magazine, delivering to homes and businesses every month.

HOME & DIY | GARDENING | PETS | HEALTH & FITNESS | BEAUTY | FASHION | HISTORY | LOCAL NEWS | FOOD & DRINK | TRAVEL | BUSINESS & PROPERTY | SPORT | PUZZLES | MOTORING | KIDS | WHAT'S ON | TECHNOLOGY | THE LISTINGS

**CONTACT US:** [www.visionmagessex.com](http://www.visionmagessex.com) | [hornchurch@visionmag.co.uk](mailto:hornchurch@visionmag.co.uk) | 01708 578049

[@visionmagessex](https://twitter.com/visionmagessex) [@visionmagessex](https://www.instagram.com/visionmagessex) [f Vision Magazine Essex](https://www.facebook.com/VisionMagazineEssex)

CONTRIBUTORS | Tabatha Fabray, Tim Green, Dean Shaw, Jacob Collick

At the time of print all content in **VISION** was relevant and up to date according to COVID-19 government guidelines All pages are recyclable

home  
hub group

NOW OPEN ON  
EPPING HIGH STREET

We supply and  
install windows  
and doors.

**01992 276 046**  
[essex@homehubgroup.co.uk](mailto:essex@homehubgroup.co.uk)

[homehubgroup.co.uk](http://homehubgroup.co.uk)  
[f](https://www.facebook.com/HomeHubGroup) [@HomeHubGroup](https://www.instagram.com/HomeHubGroup)



## Flooring Centre

- ◆ CARPET ◆ UNDERLAY
- ◆ VINYL ◆ LAMINATE WOOD



- ◆ DOMESTIC & RESIDENTIAL SERVICES
- ◆ ALL FLOORING SUPPLIED & FITTED

**Call or visit us – 01708 472331**

[info@rm2flooringcentre.co.uk](mailto:info@rm2flooringcentre.co.uk)

302 Brentwood Road, Hornchurch,  
Romford, Essex RM2 5TA





HM QUEEN ELIZABETH II

# Farewell

While the death of Her Majesty Queen Elizabeth II (London Bridge is down) was unexpected, it was of course true that a plan of action for this sad event had been in place for decades. As such, a strict code of practice and protocol kicked into place as soon as Her Majesty left us – this was called Operation Unicorn as she passed away in Scotland.

**September 8:** Prime Minister Liz Truss was informed of the Queen's passing at Balmoral Estate at 4.30pm, and the news was announced publicly at 6.30pm. All official flags were set to half-mast. Her Majesty's coffin was laid to rest in the drawing room at Balmoral Castle.

**September 10:** King Charles III was formally proclaimed as the new Monarch and 21-gun salutes were fired around the country.

**September 11:** Her Majesty's coffin was draped in the Royal Standard of Scotland and a wreath of flowers from the Balmoral Estate was placed on top. The coffin was then driven from Balmoral Castle to the Palace of Holyroodhouse in Edinburgh, the monarch's official residence in Scotland.

**September 12:** A procession took Her Majesty's coffin from Holyroodhouse down the Royal Mile to St Giles' Cathedral. Members of the Royal Family attended a service followed by the chance for the public to pay their respects as the coffin Lay in State for 24 hours. Her Majesty's children held a vigil at 7.20pm.

**September 13:** The Queen's coffin, accompanied by Princess Anne, was flown from Edinburgh at 6pm, arriving at RAF Northolt at 6.55pm. During this journey, the Royal Standard of Scotland was changed to the Royal Standard. Her Majesty was then driven to Buckingham Palace in a customised state hearse which she helped design. It was beautifully lit with a glass roof, so the public had a clear view of Her Majesty's coffin. The Royal Family paid their respects in private.

**September 14:** The Imperial State Crown was placed on the coffin before it was taken on the Gun Carriage of The King's Troop Royal Horse Artillery from Buckingham Palace to Westminster Hall via Queen's Gardens, The Mall, Horse Guards and Horse Guards Arch, Whitehall, Parliament Street, Parliament Square and New Palace Yard to Lie in State for four days.

**September 16:** Her Majesty's four children held a vigil at Westminster Hall at 7.30pm.

**September 17:** Her Majesty's eight grandchildren held a vigil at Westminster Hall at 6pm.

**September 19:** The Lying-in-State ended at 6.30am. This day was confirmed as a bank holiday in the form of a Day of National Mourning by King Charles III.

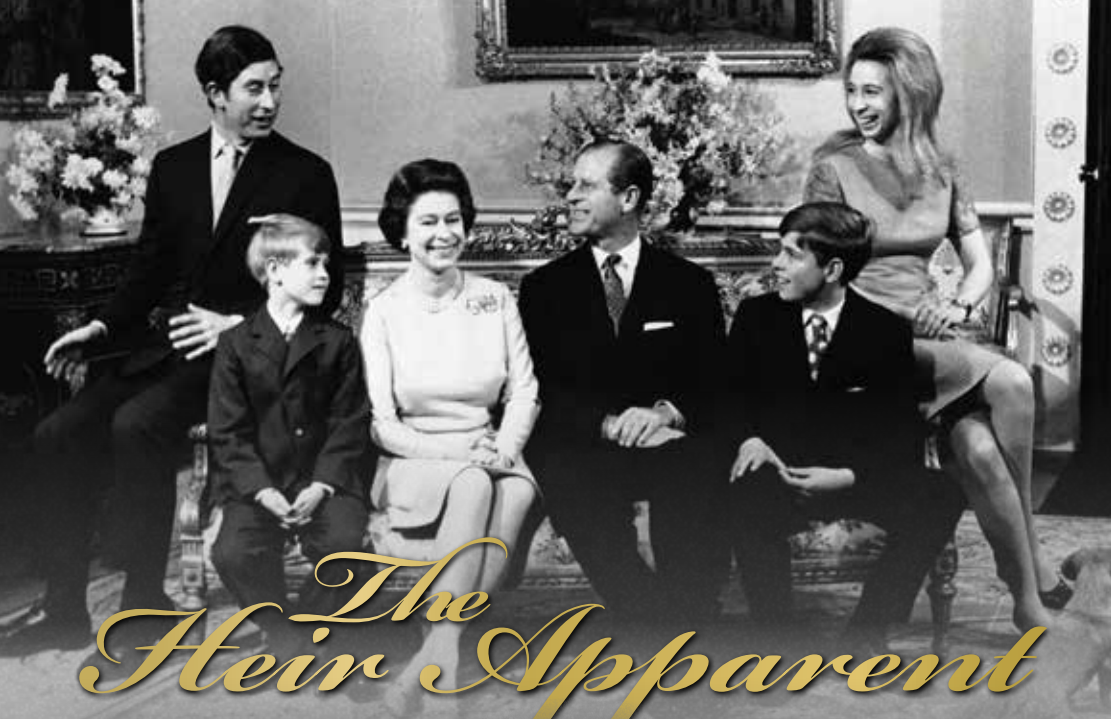
**10.44am:** Her Majesty's coffin was placed on a 123-year-old, 5,600-pound Royal Navy State Funeral Gun Carriage, followed by the King and members of the Royal Family, which travelled from Westminster Hall to Westminster Abbey for the State Funeral. The Gun Carriage was drawn by 142 Royal Navy service personnel.

**11am:** The State funeral began, and ended with a two-minute silence. A procession then took place where Her Majesty's coffin was taken to Wellington Arch and transferred to the state hearse, which was then driven to Windsor.

**4pm:** The committal service took place where the Imperial State Crown, the Orb and the Sceptre were removed from Her Majesty's coffin and placed on the altar. King Charles III placed the Queen's Company Camp Colour of the Grenadier Guards, and The Lord Chamberlain 'broke' his Wand of Office and also placed it on the coffin. The Queen's coffin then descended into the Royal Vault, and the congregation sang 'God Save the King'.

**7.30pm:** The King and members of the Royal Family attended a private burial service. Her Majesty's final resting place is in the King George VI Memorial Chapel, where her mother and father are buried, along with her sisters' ashes. The coffin of her late husband, Prince Philip, has been moved from the Royal Vault to the Memorial Chapel to join her.





# The Heir Apparent

**BRILLIANT AND BEAUTIFUL, HER MAJESTY QUEEN ELIZABETH II MAY HAVE BECOME A MONARCH SOONER THAN EXPECTED, BUT IT WAS THE ROLE SHE WAS BORN TO PLAY**

When Princess Elizabeth Alexandra Mary Windsor was born on April 21, 1926, she was third in line to the British throne.

Her Uncle Edward, Prince of Wales, was the eldest son of King George V, but with no children of his own it was expected that on his death the crown would be passed either to his younger brother Albert, Duke of York, or, should he no longer be with us, Albert's eldest daughter, Elizabeth.

In other words, Elizabeth was always expected to become Queen at some point in her life, but in 1936, after the death of King George V, the process was accelerated when her uncle's love for American divorcee Wallis Simpson proved stronger than his love for the crown.

With her father now the reluctant King, the young princess fully embraced her new role as heir apparent. She joined the Auxiliary Territorial Service during the war – where she learnt to fix engines and drive military vehicles – and on her first overseas visit to South Africa in 1947, gave a speech dedicating herself to the Commonwealth. It turned out to be a promise Her Majesty kept to the very end.

In these early years before she became Queen, Elizabeth was also busy cultivating her private life. On November 20, 1947, she wed her sweetheart, Lt Philip Mountbatten (also her third cousin), in a lavish ceremony at Westminster Abbey. The following year, Prince Charles was born, followed

by Anne in 1950, with the young family settling into a quiet life in Malta where Philip was stationed as a naval commander. But the plans to put her husband's career first until her inevitable accession to the throne were thwarted by the King's faltering health and his untimely death in 1952.

She may have been a young Queen, aged just 25, but she was devoted from the start and wasted no time in winning over the hearts and minds of everyone she encountered. Her coronation at Westminster Abbey was the first to be televised, and on her gruelling first tour of the Commonwealth, alongside Prince Philip, Her Majesty's warm spirit and ceaseless enthusiasm made even the most reluctant among her audiences fall helplessly in love with her. She also became the first reigning monarch to visit Australia on her maiden tour as Queen.

Despite her tender age, Queen Elizabeth II was natural in her role as Head of State. No task was too formidable as she effortlessly won over her fiercest critics, including Prime Minister at the time, Winston Churchill, who declared her to be "only a child". However, the pair soon became fast friends, and remained so until Churchill's death in 1965.

Now, 70 years after those early days of her reign, the legacy of HM Queen Elizabeth II seems even more extraordinary. So devoted, so beloved and so effortlessly full of grace and kindness; Her Majesty was truly one of a kind.

Photo credit AP/Shutterstock

UR / SOCIAL

# URSOCIAL

MARKETING SOLUTIONS

**UR Social has never been more important.  
Our bespoke marketing packages are  
tailored to suit your business need...**

**Social Marketing  
Influencer Marketing  
Email Marketing  
Content Creation  
Videography  
Photography  
Overall Marketing strategy  
Paid Social Advertising**

**Contact the UR Social team today**

**+44 (0) 7368 292854**

**www.ursocial.uk**

**@URSsocial.uk**



*'Be seen  
everywhere'*



# Essex Stairlifts Ltd

Your local stairlift specialist

- Straight Stairlifts
- Curved Stairlifts
- Rental Stairlifts
- New & Used
- Servicing & Repairs
- Home Lifts



For friendly, personal service telephone:

**01708 369062**

**01268 550173**

**01206 231568**



Email: [sales@essexstairlifts.co.uk](mailto:sales@essexstairlifts.co.uk)

[www.essexstairlifts.co.uk](http://www.essexstairlifts.co.uk)

# WANT YOUR ADVERT HERE?

CALL TODAY ON  
01708 578049  
TO BOOK



# Award winning, personalised care in your own home



- Wellbeing
- Personal care
- Dementia care
- Household tasks
- Outings & activities
- Medication support

Talk to our team today

**01708 609 364**

[www.radfieldhomecare.co.uk](http://www.radfieldhomecare.co.uk)



Radfield Home Care Havering & Brentwood,  
Suite C7, The Old Brick Works  
Church Road, Harold Wood  
Romford  
RM3 0JA



# HOW TO MATCH TRAINERS WITH jeans



FASHION

You may think that you can't put a foot wrong when it comes to pairing jeans and trainers, but sadly this is not the case. If you want to rock your favourite denims and your much-loved trainers, you need to make sure you are getting your combos right.

**HIGH-TOPS:** From Adidas to Nike, Converse to Reebok, all your favourite trainer brands have their own high-top offerings. A timeless trend that provides both comfort and an edge of cool, pair with wide-leg ecru jeans and a simple tee for a laid-back look. Alternatively, wear with a cropped flare jean for casual daytime chic or with a sleek pair of skinny jeans for a more glam vibe.

**WHITE PLIMSOLLS:** Classic and understated in their design, everyone should have a pair of white plimsolls in their wardrobe. Wear with your much-loved skinny jeans, slightly rolled up if you wish, or with wide-leg white jeans for an instant nautical vibe. Avoid pairing with bootcut varieties.

**DAD TRAINERS:** One of the most versatile styles of trainers and enjoying a resurgence at the moment in the fashion world, dad trainers work well with mom jeans, straight-leg jeans and wide-leg jeans alike. Opt for stonewashed jeans for the very epitome of daddy cool.

**CHUNKY TRAINERS:** Unlike dad trainers, which are more vintage in their design, chunky trainers tend to reflect current trends in footwear. Ideal for rocking with super baggy boyfriend jeans, ripped jeans and straight-leg varieties, throw on a graphic tee and an oversized card and you are good to go. Chunky trainers should never be seen with skinny jeans as this can result in the dreaded clown feet look.

Photo credit: ASOS.com







**spine  
plus**.co.uk

- Expert Hands-On Treatment From Head to Toe
- Latest Therapy Equipment

**Emerson Park Clinic**  
128 North Street  
RM11 1SU  
**Call: 01708 578072**  
**www.spineplus.co.uk**

## SUPPORT LOCAL BUSINESSES



Let your local businesses know that you saw them first in... **VISION**



BEAUTY

# High volume hairstyles

## SIX HAIRSTYLES TO BRING MORE VOLUME TO YOUR HAIR

**D**o you suffer with fine, limp or thin hair? Then these volume-boosting hairstyles are just what you need to add a little oomph to your locks.

### Asymmetrical bob

If you are looking for a shorter style that promises to add volume, then the asymmetrical bob is the hairstyle for you. Adding both volume to your hair and definition to your face, this ultra-sleek style suits women of all ages.

### Messy lob

For those with shoulder-length fine hair, a messy lob is a great choice. Ask your hairdresser to add choppy layers to your locks and you will instantly see more movement and volume.

### Tousled loose waves

Long hair can be prone to looking flat, so why not add some tousled waves to give the appearance of more volume? Simply wash your hair with a volumising shampoo, put in braids and leave overnight. Let your hair down in the morning for gorgeous waves.

### Textured pixie

For those who dare to go super-short, the textured pixie is the ideal cut for people with thin hair. This versatile style works with any texture of hair, from curly to straight. To style this look, use a water-based pomade or a matte wax.

### Heavy fringe

A full fringe can make your entire head of hair appear thicker and more voluminous. Adding both density and fullness to your locks, this hairstyle works best with no parting. Opt for either a blunt or textured style but be sure to keep it heavy.

### Vintage pompadour

The pompadour is making a huge comeback this year and is another short style that is perfect for adding volume and height. Pair short, edgy sides with a curly texture on top for a modern look that demands to be noticed.



**OCTOBER IS BREAST CANCER AWARENESS MONTH, AND WITH 55,000 WOMEN DIAGNOSED WITH THE DISEASE EACH YEAR, IT'S NEVER BEEN MORE IMPORTANT TO BE BREAST AWARE**

### *What is normal?*

Every woman's breasts are different, in terms of size, shape and consistency. It is also not uncommon for one breast to be larger than the other. It is a good idea to get used to how your breasts feel at different times of the month so that you can notice any changes.

### *How to be breast aware:*

The NHS Breast Screening Programme has produced a five-point plan for how to be breast aware:

1. Know what's normal
2. Look at your breasts and feel them
3. Know what changes to look for
4. Report any changes to your GP immediately
5. Attend routine screening if you are aged between 50 and 71.

### *How to check your breasts:*

Look at your breasts and feel each one and your armpit, including up to your collarbone. Many women

find this easiest to do in the shower or bath. You can also look at your breasts in the mirror, both with your arms by your side and with them raised.

### *Breast changes to look out for:*

- > A change in size, outline or shape
- > A change in the look or feel of the skin, such as puckering, a rash or redness
- > A new lump, swelling, thickening or bumpy area on the breast or armpit
- > A discharge from the nipples
- > Change in the position of the nipples
- > A rash or crusty or scaly skin around the nipple
- > Any discomfort or pain in the breast.

### *When is the best time to check your breasts?*

You should check your breasts once a month on the same day, ideally a few days after your period. This is because many women notice changes to their breasts during their menstrual cycle and they may become swollen, tender and even lumpy.



**'Big enough to cope, small enough to care'**

Prior Care Limited is a successful family run business that provides a range of professional, reliable and quality services to adults living in their own homes within Havering and Barking and Dagenham.



### **Services that we are able to support you with:**

- Long term care ■ Short term care - reablement
- 24 hour care ■ Dementia care ■ Personal care and hygiene
- Medication ■ Nutrition and hydration ■ Shopping services
- House work ■ Deep cleans/Blitz cleans/House clearances
- Sitting service



**Tel: 01708 446690**

priorcare@priorcare.co.uk ■ www.priorcare.co.uk

75 Park Lane, Hornchurch, RM11 1BH

## **Work Opportunities with Prior Care**

We are a family run care company who provide care to adults located within the London Borough of Havering. We are currently looking for compassionate people to help us deliver quality care services within our clients' own homes.

### **We required people who:**

- Are a good communicator
- Have a kind & compassionate nature
- Enjoy helping people
- Respect people's rights & differences & ensure they are treated in a dignified manner
- Can be flexible

### **We can offer you:**

- Good rates of pay (Enhanced rate on Bank Holidays)
- Free uniform & PPE
- Refer a friend scheme (subject to conditions)
- Up to 28 days holiday
- Full support 24/7
- Induction course leading into The Care Certificate
- Ongoing development with additional training courses including QCF Diplomas

### **You NEED to be able to work in the following areas:**

**UPMINSTER ● CRANHAM ● HORNCHURCH ● HAROLD HILL ● ELM PARK**

Being a car driver is preferred; but if willing to walk or use public transport, candidates can also be considered. We have all shifts available: Early mornings & lunches - tea & bed calls - weekends. Morning shift starts at around 6am.

**Call Karen on 01708 446690 to apply or email your CV to recruitment@priorcare.co.uk**

**Job Type: Part-Time/ Full Time - zero hour contract**  
**Salary: £9.80 - £10.80 /hour**







# Control your CHOLESTEROL

Although it gets a bad rap, cholesterol is actually an essential molecule in the body that produces vital hormones such as progesterone, testosterone and cortisol.

However, around 40 per cent of people in the UK have high or borderline high levels of bad cholesterol, which can have a detrimental effect on health.

## WHAT CAUSES HIGH CHOLESTEROL?

There are several factors that increase your risk of having unhealthy cholesterol levels, including: A poor diet which is high in saturated and trans fats | A high body mass index | Lack of exercise | Being a smoker | Drinking too much alcohol | Being over 40

Certain medical conditions such as chronic kidney disease, diabetes, lupus and hypothyroidism can also lead to high cholesterol. If you are aged 40-74, you can get your cholesterol checked as part of an NHS Health Check.

## WHAT HEALTH COMPLICATIONS CAN OCCUR FROM HIGH CHOLESTEROL?

High cholesterol can lead to a dangerous accumulation of cholesterol on

the walls of your arteries. This is known as atherosclerosis and can cause complications such as chest pain, heart attacks and strokes.

## HOW TO PREVENT HIGH CHOLESTEROL THROUGH DIET

**Foods to eat:** Oats | Wholegrains | Beans | Nuts | Soy | Oily fish

**Foods to avoid:** Fatty and processed meats | Animal fats such as butter, ghee and margarine | Full-fat dairy products

## HOW TO FIND OUT YOUR CHOLESTEROL LEVELS

As high cholesterol does not cause symptoms, you can only find out if you have it by requesting a blood test from your GP.

A cholesterol test can measure your total cholesterol levels, both good and bad, including low-density lipoprotein (LDL) and high-density lipoprotein (HDL), and your level of triglycerides.

Healthy cholesterol levels for each are as follows:

- Total cholesterol = 5 or below
- Good cholesterol = 1 or above
- Bad cholesterol (LDL) = 3 or below
- Bad cholesterol (non-HDL) = 4 or below
- Triglycerides = 2.3 or below



# MobilityPlus

★ Trustpilot  
★★★★★  
Excellent 4.9

The UK's leading provider of affordable electric wheelchairs.

## Premium Electric Wheelchairs That Support Independent Living



Includes FREE next day delivery



MobilityPlus+ Ultra-Light Instant Folding Electric Wheelchair  
24KG, 4MPH, 2 LITHIUM BATTERIES

Only £879.99



MobilityPlus+ Deluxe Ultra-Light  
FOLDING ROLLATOR WITH SEAT

Only £114.99



MobilityPlus+ Upright Rollator  
WITH FOREARM SUPPORT

Only £154.99



MobilityPlus+ Quick-Split Electric  
LIGHTWEIGHT, COMPACT, 4MPH

Only £599.99



MobilityPlus+ Featherlite  
18.7KG, 4MPH, LITHIUM BATTERY

Only £899.99

## Customer Support Team

01992 610 434 | [www.mobilitypluswheelchairs.co.uk](http://www.mobilitypluswheelchairs.co.uk)

OUR SHOWROOM: 26-27 WOODSIDE TRADING ESTATE, EPPING, ESSEX, CM16 6LJ (APPOINTMENT ONLY)



# KORAT

THAI CUISINE



DELICIOUS THAI FOOD,  
FRESHLY COOKED FOR YOU

AUTHENTIC THAI DINING,  
TAKEAWAY & DELIVERY

- ✳ Classic dishes cooked by experience Thai chefs
- ✳ Fresh, healthy locally sourced ingredients
- ✳ Good selection of vegetarian & vegan dishes
- ✳ Most dietary requirements catered for

## TO BOOK OR ORDER

**Telephone:** 01708 251109

**Web:** [www.korat-thai.co.uk](http://www.korat-thai.co.uk)

**Email:** [eat@korat-thai.co.uk](mailto:eat@korat-thai.co.uk)

**Visit:** 32 Corbets Tey Road, Upminster, RM14 2AD

**MONDAY – THURSDAY:** Lunch: 12 – 3pm Dinner: 5 – 10pm

**FRIDAY – SATURDAY** 12 – 11pm **SUNDAY** 12 – 10pm



Photo credit: Joe Giddens/WPA Pool/Shutterstock



FOOD & DRINK

## A dish fit for our Queen's coronation

There are a multitude of food dishes that carry with them a certain historical significance that's evident in the name – from beef wellington to eggs benedict. Some point to the person we expect; others are a little more misleading (the Caesar salad is named after an American restaurateur, not the Roman emperor).

In the case of the subtly curried coronation chicken, it's satisfying that the dish was indeed invented in order to mark the Queen's coronation in 1953, even if its origins actually point to a similar chicken recipe conceived for George V's Silver Jubilee in 1935.

The recipe was published as the nation prepared for street parties, although in those post-war years, some ingredients may have been deemed extravagant as it was previously more complex, and

only recently has it evolved into something more sultana-heavy.

The recipe took more than four weeks to create, and was perfected by Angela Wood, now 88, a student at Winkfield Place College, which was preparing the menu for a banquet at nearby Westminster School for more than 350 dignitaries after the coronation.

She said in an interview: "The brief was 'something that had a bit of flavour, but not too much', to appeal to the banquet guests. For a month or more, I was cooking a chicken a day and we had to alter the balance of the spices in the sauce to get it right."

The dish has now gone down in national folklore, used in sandwiches, salads and jacket potatoes.

## Coronation chicken recipe

**INGREDIENTS:** 6 tbsp mayonnaise | 2-3 tsp mild curry powder, to taste | ½ tsp ground cinnamon | 500g shredded cooked chicken | Black pepper | Optionals which can be added are 2 tbsp mango chutney and 1-3 tbsp sultanas, or to taste

**STEP ONE:** Mix the mayo, curry powder and cinnamon (add the chutney and sultanas if using) together and season with black pepper.

**STEP TWO:** Add the shredded chicken and stir to coat in the sauce. Stir in 2 tbsp water to loosen if needed, then season and serve as desired.







# AN apple A day

In the UK, you could eat a different variety of apple every day for more than six years. Well, that's the theory, at least – because more than 2,500 types of apples are grown here.

Apple Day, which falls on October 21 every year, celebrates the eponymous fruit and all the ways we use them to create desserts, drinks and even savoury foods. But more than that, the day helps people appreciate where food comes from and live better with nature.

There are hundreds of Apple Day activities taking place throughout the country. To find out what's happening in your neck of the woods, type 'Apple Day events near me' into a search engine.

## BEST EVER APPLE CRUMBLE: Serves 4-6

### INGREDIENTS:

**For the filling:** 575g cooking apples, peeled, cored and sliced | 2 tbsp caster sugar

**For the crumble:** 175g plain flour | 110g caster sugar | 110g cold butter | Pinch of salt

### HOW TO MAKE:

Heat the oven to 190°C/170°C fan/gas 5 | Toss the apple slices in 2 tbsp sugar and press into a 23cm round baking dish | Mix the flour with the sugar and salt | Grate the butter into the mixture and rub it in till the mixture looks like fine breadcrumbs | Spread the mixture over the apples and press it down slightly | Bake for 35-40 minutes till golden.

## HOT SPICED APPLE CIDER: Serves 8

### INGREDIENTS:

6 apples | 2 oranges | 2 cinnamon sticks | 10 cloves | A nutmeg | 2 star anise | 50g brown sugar | 2.5 litres cold water

### HOW TO MAKE:

Wash and chop the fruit into 2cm pieces (don't remove seeds or skin) and put in a large saucepan | Add the whole spices, sugar and water | Bring to the boil, cover, then simmer gently for 45 minutes | Remove the whole spices | Mash the mixture with a potato masher | Strain the cider through a fine sieve | Serve warm.

WILTSHIRE

EST. FARM 1991

FOODS

AUTUMN 2022

BRINGING  
*Sunshine*  
to your door

Over  
**330**  
tasty dishes

FREE DELIVERY

OVER 330 DISHES

NO CONTRACT

Easy Ordering by phone, online or direct with your driver  
Call Basildon on 01268 288 887 or [www.wiltshirefarmfoods.co.uk](http://www.wiltshirefarmfoods.co.uk)






**The GOODLIFE**  
LODGE CO

*invest in the good life...*

**Luxury Lodges, great fun and a great return on investment!**

Visit our four fantastic locations today....






[www.goodlifelodge.com](http://www.goodlifelodge.com) • [info@goodlifelodge.com](mailto:info@goodlifelodge.com) • 0800 564 2266




*Golf and Hainault Forest Hike*

*London Masque Mystery Tour*

*Explore the Best of England from London's Doorstep!*

**CHIGWELL TOURS**  
*and Visits*

**IN THE UK AND LOOKING TO CREATE LASTING MEMORIES?**

Experience the Platinum Jubilee celebration first hand with our selection of tours. Walk on the path of royals at Windsor Castle and experience its full majesty with our steam train guided tour.

**We offer:**

- Tours in London, Essex, Bristol and Dignified Windsor
- Every 2 years we offer a Winter Escape Tour to Sunny Ghana that will be running in 2022!
- Corporate incentive packages
- Customisable tours

So, join us in seeing the sights of London, visiting the quaint Essex Countryside or taking in the grandeur of the Jubilee celebrations in Windsor.




*Royal Windsor Steam Train and Sunset Walk with Dinner*

*Cruises on the Malden Black Water Estuary*

**BOOK NOW!**

**To book your experience visit [www.chigwelltours.co.uk](http://www.chigwelltours.co.uk) or SCAN the QR Code**

**Get in touch!**  
T: 0208 500 9912  
E: [bookings@chigwelltours.co.uk](mailto:bookings@chigwelltours.co.uk)

**Unique Experiences... Unique Memories.**

 @chigwell\_Tours
  @chigwell\_tours
  @chigwelltours







**YOUR GUIDE TO**  
*visiting Antarctica*

**TRAVEL**

Looking for your next travel destination? Why not make it Antarctica? Here's what you need to know about visiting the world's southernmost continent.

**WHY VISIT?**  
Antarctica is one of the world's last untouched destinations. With its beautiful wilderness, it's a place unlike any other, a real trip of a lifetime. Away from the tourist traps, busy cities and constant connectivity, it's the perfect getaway from reality.

**WHEN TO VISIT**  
The best time to visit Antarctica is from November to March – the Antarctic summer. You'll get to enjoy 24-hour sunshine, giving you the best chance of seeing the continent's incredible wildlife.

**WHAT YOU WILL SEE**  
Besides the stunning landscapes, Antarctica is home to some of the world's most fascinating creatures. See penguins, albatrosses, whales and more in their natural habitat – a truly spectacular experience.

**WHAT TO PACK**  
Brace yourself for some cold temperatures on your adventure. Take plenty of thermals and layer up your clothing to help you stay warm. Remember to take your camera. You won't want to miss out on those amazing photo opportunities.

**WHAT TO DO**  
A trip to Antarctica will give you the chance to discover the history of famous explorers, including Robert Falcon Scott and Sir Edmund Hillary. While these explorers might have had to survive in difficult conditions, you could enjoy your Antarctic adventure on board a luxury cruise, with all of their modern comforts.

Could a visit to Antarctica be on the cards for you in 2022 or 2023?

Photo credit: [aurorapexpeditions.co.uk](http://aurorapexpeditions.co.uk) | [redseamantah.com](http://redseamantah.com)



# DEAD gorgeous

Remember *Coco*, the award-winning Disney Pixar film? It featured cute skeletons and was inspired by Mexico's Day of the Dead, a festival that is all about honouring the lives of dead relatives and reminding yourself that death is just part of life.

In the lead-up to the day, skull and skeleton decorations can be seen almost everywhere, and streets are festooned with colourful bunting. Marigolds are popular too – their sweet smell is believed to entice the dead back to life.

The day is celebrated on November 2. So get busy now with these Day of the Dead crafts and you'll also be ready in time for Halloween.

## SKULL STONES

**You will need:** A smooth, flat, oval stone (8cm-10cm long) | White acrylic paint | A paintbrush | A set of acrylic marker pens (including black) | PVA glue | Glitter | stick-on gems

**How to make:** Paint a simple white skull shape on the stone and leave to dry | With the black marker, outline the shape and draw on the features | Decorate with the coloured markers, and stick on the glitter and gems.

## TISSUE PAPER MARIGOLDS

**For two flowers you will need:** A sheet of orange tissue paper (approx. 51cm x 66cm) | 2 x 30cm green chenille stems (pipe cleaners) | Scissors

**How to make:** Cut the tissue paper sheet into quarters | Then cut each quarter into half so you have eight small sheets | Stack four sheets together | Fold in concertina pleats, starting at the short end | Cut each end into a point | Twist the end of a chenille stem round the middle of the paper | Fan out and gently separate the layers.

## BUNTING

**You will need:** 12-15 round paper doilies (approx. 16cm diameter) | Acrylic paints in red, pink, purple and orange | A paintbrush | Jute string | PVA glue

**How to make:** Paint each doily with diluted paint | Dry thoroughly | Fold the doilies in half | Run the string inside the half-circles and glue the sides together.

Photo credit: ailsaburke.blogspot.com, lagriffith.com, kitchenatbedclassroom.com

## HANDCRAFTED WEDDING FLOWERS



The Romford Flower Shop are the local specialists in handcrafted wedding flowers. We can help plan, design and create truly breath-taking arrangements for your wedding day using either fresh, silk or dried flowers. We are also an award-winning business.

For a FREE no obligation quotation please call 01708 912102 or email [shop@romfordflowershop.com](mailto:shop@romfordflowershop.com)

- Wedding Flowers
- Funeral Flowers
- Birthday Flowers
- Anniversary Flowers
- Fresh Flower Delivery
- Day to Day Flowers

Romford Flower Shop, The Hubb, 351 Rainham Road South, Dagenham, Essex, RM10 8QR

[www.romfordflowershop.com/wedding-flowers](http://www.romfordflowershop.com/wedding-flowers)

# YO \_ R ADVERT HE \_ E...

**Q: WHAT'S MISSING HERE?**

**A: YOU ARE**

CONTACT US NOW TO START ADVERTISING

Your  
Monthly  
Lifestyle  
Magazine

VISION

t: 01708 578049 m: 07967 079101  
e: [hornchurch@visionmag.co.uk](mailto:hornchurch@visionmag.co.uk)  
w: [www.visionmagessex.com](http://www.visionmagessex.com)





# Spruce up YOUR HOME

If you're after some wallet-friendly home decoration this autumn, get out to your local park or woodland and gather some pine cones.

All conifers produce cones to protect their seeds. But the best ones for autumn decorations are standard pine cones – the ones with thick, woody scales.

Collect your pine cones on a dry day, while they're still fresh. If the scales are closed, don't worry. They'll open in a couple of days.

When you get home, give the cones a quick soak in warm water with a splash of washing-up liquid. Leave them to dry naturally or pop them in an oven at 180°C/gas 4 for half an hour.

Cones look great piled into a bowl, or add some mini fairy lights for a festive look. For scented cones, leave them in a sealed polythene bag for a few days with 10-20 drops each of cinnamon and orange essential oil. You can also make a simple wreath.

## YOU WILL NEED

- > Pine cones
- > A glue gun and glue sticks
- > A packet of brown pony beads
- > 1m of thick wire – 12 gauge/2mm diameter aluminium wire is ideal (a wire coat hanger will do but is harder to work with)
- > Jute string or ribbon for hanging
- > Wire cutters
- > Decorations (optional)
- > All extra materials you need can be found at craft stores or online.

## INSTRUCTIONS

- > Trim off any stalks at the base of the cones
- > Glue the side of a pony bead to the base of each cone to form an eyelet
- > Thread the wire through the eyelets till you can form a circle the size you want. You may need to jiggle the cones to make sure they're tightly packed and stay in place. To secure, twist the wire ends together
- > Tie on your string or ribbon to form a hanging loop
- > If you like, add a few decorations.

Photo credit: www.wikihow.com

home  
hubgroup



Bifold doors, sliding doors and roof-lights available for next day delivery.



01992 948 980  
essex@homehubgroup.co.uk  
137-139 Epping High Street  
f @HomeHubGroup

## There's no place like Home Hub

With no pressure sales, transparent pricing and exceptional service levels you'll feel right at home with Home Hub. Our elegant lifestyle showroom is now open in Epping, call us to book an appointment.

**homehubgroup.co.uk**

Windows • Sliding Doors • Bifold Doors • Roof Lights





## NOBODY DOES IT BETTER THAN BODYWASH

Visit our showroom which is open Monday to Friday 9am to 5:30pm and Saturday 9am to 5pm. We close on Sunday's.

Bring along your room dimensions and let us help you plan your new luxurious bathroom.

01708 736700

[www.bodywash.uk](http://www.bodywash.uk)

[sales@bodywash.uk](mailto:sales@bodywash.uk)

A12 Eastern Avenue, Romford, RM5 3AL

# FADE TO *grey*

In a modern era where we're so attached to the political, sporting and social trends of the moment, the ongoing debate over whether grey is pulling its weight as an interior design colour rages on.

Sure enough, at the start of each year many noble names in home renovation declare grey's day is done, while just as many applaud it for its innovative ability to ignite the imagination.

Yet once again this Marmite tone looks likely to win us over. Here's why:

**NEUTRALITY:** Grey is neither white nor black, and for that reason it holds a split personality when being matched with other shades and tones. It can lift up a darker tone, or darken a lighter one, and this versatility gives it endless potential.

**A PASTEL PAL:** Most of us love pastel shades, though in abundance they can often come across as child-like or boring. By layering pastels with grey, however, they are given a rebellious edge.

**WOOD WORKS:** The ubiquity of Scandi style and use of wood textures and tones is something many of us stand by, and greys certainly lift the light browns and blues of wintry warmth to provide rooms with a traditional yet modern aesthetic.

**A TOUCH OF CLASS:** Grey has long been a colour associated with style and substance. Mixing tones of grey will also provide a space with a set of artificial textures that lead the mind into greater spatial awareness and visual satisfaction.

**MAKING A STATEMENT:** Grey also acts as a stunning backdrop to a statement piece. It's not as blasé as white, so will shape a piece of furniture, an antique or a painting in a way that guides the eye rather than forcing it to fix on something.



PUT THE SPARKLE BACK INTO YOUR KITCHEN



Domestic Oven Cleaning Specialists

Est. since 2007

#### Prices

Single oven incl. shelves & grill pan.....	£43.00
Double oven incl. shelves & grill pan.....	£54.00
Range incl. shelves & grill pan.....	From £54.00
AGAs.....	From £90.00
Hobs.....	From £14.00
Extractors.....	From £15.00
Microwaves.....	From £20.00

No VAT to pay



PLEASE CALL FOR A FREE QUOTATION

01279 432444 \* [www.ovenbright.co.uk](http://www.ovenbright.co.uk)



# Cloudy2Clear, A Local Service With A Smile.

Established for over 16 years, Cloudy2Clear windows have become the UK's leading company for domestic glass replacement. Customers are no longer needing to risk their windows by using the dreaded double glazing cowboy down the road, instead, now they can join over 320,000 happy customers and have their glass replaced in an affordable and ethical manner. Remember, a failed glass unit may no longer provide you with the protection you need or be energy efficient. Why not spend a few minutes checking your home to see if you have any failed double glazing? If you act now you can avoid any future costly problems.

values have been held dear for a number of years. Since starting the business some years ago Cloudy2Clear have remained true to their core values of supporting the local community by providing a service that saves the public money.

The Cloudy2Clear service only requires the glass to be replaced and not the whole window once the unit has failed. Chris commented "Cloudy2Clear were able to assist our community through the last financial crisis in 2008 due to the savings that can be made in using our service. Unfortunately we might be going through something similar again soon and the public can rest assured that we will be there to help once again".

“All C2C employees operate a strict social distancing policy.”



When talking to the Manager of Cloudy2Clear windows Chris Miller it became clear that these

For a free quotation please call 0800 61 21 118 or visit [www.cloudy2clear.com](http://www.cloudy2clear.com).

**FREE\***  
Mirrored cabinet or high raised toilet with any full bathroom installation

**ahm installations**

**Bathing a problem? We can help**

- Wet rooms
- Walk in showers and baths
- Waterproof wall panelling
- Slip resistant safety flooring
- Grab rails, shower seats & raised toilets
- Disabled Facilities Grants
- Discounts for over 60s, and EX Service personnel
- Charity work and grants

Call for our friendly advice, free survey and quote **01708 288012**

[info@ahminstallations.co.uk](http://info@ahminstallations.co.uk) [www.ahminstallations.co.uk](http://www.ahminstallations.co.uk)

\*Terms and conditions apply, visit our website for more details.

Checkatrade.com

APPROVED CODE TECHNICIAN

safe

BHTA

Alzheimer's Society

## Have Your Windows Steamed Up?

Replace the pane, not the frame!

All glazing backed by our  
**25 YEAR**  
GUARANTEE

**“I really liked the fact that they were a local community run business”**

Janet Beard



We are a  
**Which?**  
Trusted Trader

Social distancing in operation

Faulty locks, handles or hinges?



Priority freephone  
**0800 61 21 118**

[www.cloudy2clear.co.uk](http://www.cloudy2clear.co.uk)

Love Your Home - Protect Your Windows - Save Money





# GUY OLIVER'S OBJECTS OF DESIRE

WHY MATERIAL POSSESSIONS ARE SO IMPORTANT TO DESIGNER GUY OLIVER



In his twenties, designer Guy Oliver spent a large amount of time in Soviet Russia with the British Navy. His perception of the country was enforced as one of suspicion and mistrust, but when the whole state opened up at the end of the Cold War, the now Kensington-based designer discovered a style and beauty in the possessions and memorabilia he picked up.

It was that initial investment in objects and items that had real provenance in a specific era, and with personality attached, that has led Oliver into building a landscape that focuses completely on the items we use to make our houses feel like homes.

Across a background tone of whites, beiges and occasional blues, Oliver incorporates cherished possessions, statement antiques and "familiar things" into his living space.

"I believe we can only really be comfortable when we're living and existing around things that give us

place and purpose," he says. "We fill our homes with items that represent places we have loved, people we have admired, time we have spent."

On this point, Oliver zooms in on what truly makes a living space feel perfect and the importance of how the things that fill our homes make us feel. In the designer's case, that's everything from a portrait of an 18th-century Levantine merchant, a Japanese temple model purchased from Harajuku market in Tokyo, or even a set of sketch caricatures dating back 100 years that sit perfectly within the windowpanes of a door.

He adds: "My parents taught me to appreciate antiques and fine craftsmanship – the importance of the provenance of an object and if it can be authenticated.

"We can't take anything with us when we go, so let's surround ourselves with life memories while we're here. The seemingly commonplace can have enormous value in our own minds."



Photo credit: Guy Oliver



the  
**FLOORINGcentre**  
59 Crow Lane  
Romford RM7 0EP  
**01708 578063**



Independent Flooring  
Specialists



- Carpet ● Laminate ● Design Floors
- Vinyl ● Engineered Wood



lifestyle  
FLOORS



CORMAR  
CARPET C9



XYLOFLOORING  
hardwood / laminate / vinyl



ABINGDON  
FLOORING



Free Estimates ● Family Run Business

www.**THEFLOORINGCENTRE**.net ● info@theflooringcentre.net

FIND US ON FACEBOOK, TWITTER & INSTAGRAM





Abbey  
group

Abbey Group are specialists in creating, repairing and restoring quality furniture and wood surfaces to the highest standard.



From antique to modern we can repair, strip, re-spray, polish, wax, upholster and bring woodwork back to life.

We take great pride in our work and clients appreciate our care and attention to detail.

We think you will too.

**01708 741135**

Free quotations and no carriage charges with this advert.

[abbey-group.net](http://abbey-group.net)

YOU'RE NOT  
**ALONE**



OVER 207,500 OTHER PEOPLE IN ESSEX  
READ **VISION** MAGAZINE'S MONTHLY

Your  
Monthly  
Lifestyle  
Magazine

**VISION**

**CONTACT US TO GET YOUR BUSINESS SEEN BY OUR READERS**

See all our magazines at [www.visionmagesssex.com](http://www.visionmagesssex.com)

Billericay Shenfield Bishop's Cleeve Brentwood Ongar Chelmsford Beaulieu Epping Theydon Harlow Braintree  
Hertford Hornchurch Leigh Thorpe Bay Loughton Maldon Burnham Rayleigh Wickford South Woodford Tending  
Woodbridge



HOME & DIY

**POINT  
BLANK**

### WHY REPOINTING YOUR BRICKWORK COULD SAVE YOU THOUSANDS

Is there a more misunderstood home renovation term than 'repointing'? Cue the *Fawlty Towers* clip where John Cleese exclaims: "Repoint my chimney? It looks pretty straight to me."

While Cleese had (for want of a better phrase) a point, in reality all brick masonry will require repointing over time. The literal building blocks of our homes endure all manner of abuse, in all weathers, and a brick's insulation qualities mean it is constantly heating up and cooling down during the day, something that also weakens it over time.

The repointing of a wall essentially refers to the repair of breaks, splits and holes in the brick or cement matter. It is through these gaps that water ingresses can form, and once a leak has found its way through into the home, the fault will only accelerate, compromising not just the external wall, but also plaster, wood and decorative elements inside the house.

The actual process of repointing is relatively straightforward for an experienced bricklayer, and it centres on repacking mortar sitting between individual bricks or stone blocks.

Many home DIYers have taken on the task of repointing, achieving adequate results. The risk is that poor craftsmanship will not only look bad, but may also fail to solve the problem of a leaky ingress.

A good repointing job should preserve the integrity of a wall for many decades, adding a small amount of value to a property while protecting its contents from the elements.

A bricklayer will also have the knowledge and expertise to point out other developing issues, as well as being able to safely work at heights, hence it's recommended that the work is outsourced to a professional.



# mood-boosting

## HOUSE PLANTS

**D**o you suffer with low mood in the winter months? Then a few well-placed plants could be just what you need to lift your spirits and put a smile back on your face.

**PEACE LILY:** As the name suggests, the peace lily brings an aura of calm and tranquillity to your home. It is also highly effective at improving air quality, which can make you feel better both physically and mentally. Place in a warm room but away from direct sunlight.

**LAVENDER:** Lavender is known for its soothing properties and is the perfect plant for relieving stress. Place in your bedroom or in a home office and see all your worries wash away. Lavender loves the light and requires regular watering.

**SNAKE PLANT:** Not only does this plant look great, but it can also help to boost your mood owing to its ability to pump oxygen into your home. Easy to care for, the snake plant is ideal for people who suffer with allergies as it can help to lessen the impact of airborne allergens like dust and dander. Place on a sunny windowsill.

**ENGLISH IVY:** If you struggle to fall asleep at night, then this is the house plant for you. English ivy contains properties that can help to prevent restlessness and help you drift off to sleep more easily. It also absorbs mould in the air. Place in a sunny spot in your home and make sure its soil remains slightly dry.

**ALOE VERA:** Aloe vera has multiple health benefits, including the ability to treat acne, soothe inflammation and hydrate dry skin. On a spiritual level, this plant is known to ward off negative energy and cleanse space. Position in bright but indirect sunlight for best results.



Photo credit: interior style via Pinterest

### OUR SERVICES

Fuse Board Upgrades	Fire Alarms
Emergency Lighting	Shop Fits
School Electrical Works	Landlord Reports
LED Lighting	Mains Smoke Alarms
Electrical Surveys	Re-wires
Lock Down Services	Garden Lighting Design

### CONTACT US

[jason@jgelectricalforce.co.uk](mailto:jason@jgelectricalforce.co.uk)  
[www.jgelectricalforce.co.uk](http://www.jgelectricalforce.co.uk)  
 01708 965500

## PROPERTY EXTENSIONS

### ADDSPACE LONDON LTD.

## WE COVER ALL ASPECTS OF BUILDING WORKS

- Property extensions & refurbishments
- Kitchen extensions ■ Loft extensions
- Garage Conversions
- Building contracts & new builds
- Construction services

# 01708 732 323

[www.propertyextensionsessex.co.uk](http://www.propertyextensionsessex.co.uk)  
 email: [info@addspacelondon.co.uk](mailto:info@addspacelondon.co.uk)

EXPERIENCED TRADESMEN TO CARRY OUT WORKS WITH NO DELAYS OR PROBLEMS





As far as home and DIY hacks go, this has to be one of our favourites, saving a lot of money compared to a real bedside table. Give it a try and enjoy your revamped bedroom interior.



# THE **B7** MEDIA GROUP

PRINTING • BUSINESS CARDS • LEAFLETS  
DISTRIBUTION • SIGNAGE • MENUS & BROCHURES  
EXHIBITION BOARDS & BANNERS  
RETAIL PACKAGING • WINDOW VINYLs  
LOGO DESIGN • BRAND ALIGNMENT  
VEHICLE WRAPPING • CARBON PADS • WORKWEAR  
WEBSITES • SOCIAL MEDIA • I.T. SOLUTIONS



ENQUIRIES@B7MEDIAGROUP.COM



01708 578049



ENQUIRIES@B7MEDIAGROUP.COM



01708 578049





# A Lady TO THE LAST

## REFLECTING ON HER MAJESTY QUEEN ELIZABETH II IN HER LATER YEARS AS A SERVANT TO THE PEOPLE

“This is our country's saddest day. In the hearts of every one of us, there is an ache at the passing of our Queen, a deep and personal sense of loss – far more intense, perhaps, than we expected,” began former Prime Minister Boris Johnson in his moving tribute to Her Majesty Queen Elizabeth II. And while he may not have quite lived up to his expectations as Prime Minister – Her Majesty made sure to ‘see him off’ two days before her passing – his ability to transpose feelings into words remains second to none.

For many of us in Great Britain, life without our Queen is something we have never known, and it is only in her passing that we truly appreciate how extraordinary her feat of 70 years on the throne was. Even her twilight years were spent cementing her legacy through continued work and devotion, and over seven decades she travelled to 117 countries and hosted countless high-profile guests and heads of state, including Robert Mugabe, Nelson Mandela and Donald Trump.

Upholding to the very last one of the cornerstones of the British Constitution – that the monarch ought to always stay out of politics – Her Majesty saw 15 Prime Ministers come and go. No matter how turbulent the political seas became, she always stood steady and calm; a constant port in the storm for the British people to depend on.

As is to be expected, Her Majesty saw her fair share of good and bad times. The year 1992 was particularly dire, with revelations of lusty phone calls between Camilla and Charles, the separation of Andrew and Fergie, and the blaze that almost destroyed Windsor Castle. Her ability to play out such tragedies in the public space was forced upon her, in many ways, yet she took the hits and moved forward.

While she later admitted to being desperately sad at the demise of so many great things around her that she believed were so strong, the humanity displayed during that period – and more recently with the scandal involving Prince Andrew and the Harry/Meghan storm – has served to align the Royal Family with our own families.

Rather than their being regarded as a group of people immune to the disturbances and disappointments that come to us all, the Queen has readily admitted the Windsors’ fallibility.

And while the passing of Prince Philip, just 17 months before her own, may have struck another blow to a lady we believed would always be with us, at least her own departure means the two can be reunited again, wherever that place is.

Certainly, it's fair to say the truest echoes that remain from Queen Elizabeth's life are the laughs, the pleasure, the playfulness, and the reinvention of how we view our monarchy.

*A job well done, Ma'am.*







# LOCAL NEWS

*from your neighbourhood*



Photo credit: Ossy Ostadimma

## Delight as cricket club crowned national champions

**H**ornchurch Cricket Club celebrated winning the ECB Vitality Club T20 Cup Final last month. The Essex Premier League team saw off Birmingham league side Barnt Green at Wormsley Cricket Club, clinching victory by just 10 runs. With Hornchurch wobbling at 49-3 after 10 overs, George Hankins laid the foundations for victory, making 84 from 63 balls, with Adeel Malik adding a useful 31 runs. In reply, Barnt Green started positively and were 96-1 after 14 overs. Impressive bowling from Hornchurch, with Marc Whitlock a particular stand-out, meant the West Midlands side needed 20 from the final over,

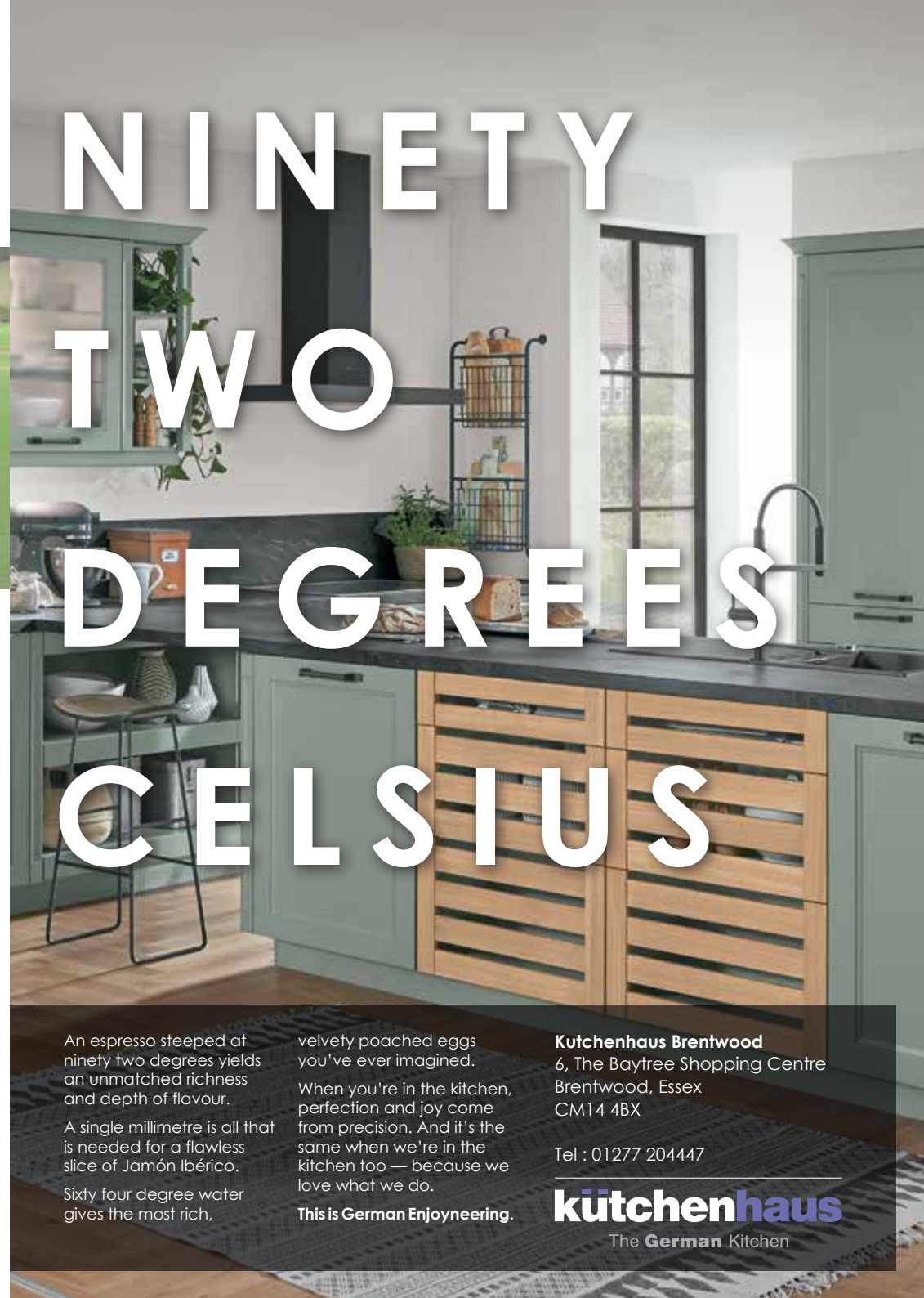
which proved to be too much. Posting on social media after the game, Mark Ede, who played for Hornchurch for 40 years, said how proud he was of the team. He wrote: "It's interesting to note that Hornchurch achieved their remarkable journey to become national T20 champions without either an overseas signing or a contracted professional in their midst. "I've never been prouder of the club and all the guys are the type you would trust to have your back in every situation. They are a gang who treat everyone as a valued equal."

## Pub's licence revoked after serious violence

**A** pub in Hornchurch had its licence revoked for eight weeks after a number of serious incidents. On September 12, members of Havering Council's Licensing Sub-Committee announced their decision on The Rising Sun pub and VLT, a nightclub at the same premises, after a request from the Metropolitan Police on the grounds of the prevention of crime and disorder and public safety.

Choice Management Ltd, which owns the premises, disputed allegations that there had been a 20-man brawl and denied claims a customer had been pushed down the stairs by a bouncer. However, the committee found that, between August 2021 and May 2022, there had been extremely serious violence at the venue every two months. The Rising Sun has been contacted for comment.

# NINETY TWO DEGREES CELSIUS



An espresso steeped at ninety two degrees yields an unmatched richness and depth of flavour. A single millimetre is all that is needed for a flawless slice of Jamón Ibérico. Sixty four degree water gives the most rich,

velvety poached eggs you've ever imagined. When you're in the kitchen, perfection and joy come from precision. And it's the same when we're in the kitchen too — because we love what we do. **This is German Enjoyneering.**

**Kutchenhaus Brentwood**  
6, The Baytree Shopping Centre  
Brentwood, Essex  
CM14 4BX

Tel : 01277 204447

**küchenhaus**  
The **German** Kitchen





**SPIN DOCTOR**  
CURSING APPLIANCE REPAIRS

**APPLIANCE REPAIRS AND SALES**

*We repair all makes and models*

Washing Machines • Tumble Dryers  
Dishwashers • Ovens • Hobs • Cookers  
Fridge/Freezers • Extractor Hoods

New appliances in stock for  
same day delivery & installation

Prices listed on our website

**Call 01279 310793**  
Or Book Online  
[www.spinddoctoruk.co.uk](http://www.spinddoctoruk.co.uk)

**DISCOUNT DIY & HARDWARE SUPPLIES**  
*Your Local Independent Hardware & DIY Store*

**THE PRODUCTS WE SELL INCLUDE**

- Calor Gas for BBQs & Heaters
- Hand Tools
- Electrical Supplies
- Plumbing Supplies
- Decorating Supplies
- Ladders
- Pest Control
- Gardening Tools & Accessories

**COME & SEE US AT**  
**49, Butts Green Road, Emerson Park RM11 2JS**  
**CALL 01708 440151**

**FREE LOCAL DELIVERY**

**FULL RANGE OF CALOR GAS BOTTLES AVAILABLE**

**S.R. Roofers** Est. 1975

**WE OFFER VERY COMPETITIVE PRICES & WILL BEAT ANY GENUINE WRITTEN ESTIMATE**

**CELEBRATING OVER 46 YEARS OF TRADING WITH THE ORIGINAL COMPANY NAME & PHONE NUMBER!**

- Roof Repair Specialists, All Leaks Cured
- New Tiled Roofs & Velux Windows
- High Performance Felt Flat Roofs
- EPDM Firestone Rubber Flat Roofs
- uPVC Guttering, Fascias & Roofline
- Storm Damage & Insurance Work
- Chimney Stacks Repaired & Removed
- Leadwork, Pointing & Rendering
- Replacement Roof Valleys & Bays
- Roof Overhauls & Maintenance
- Asbestos Removal & Garage Roofs
- Pigeon / solar panel guards
- The Best Quality Materials Used
- 24 Hour Emergency Repairs, 7 Days

**A UNIQUE FAMILY RUN BUSINESS BUILT ON REPUTATION, HONESTY & KNOWLEDGE!  
OVER 500 GENUINE REVIEWS ON 'TRUSTIST' & OVER 20,000 HAPPY LOCAL CUSTOMERS!  
ALL WORK GUARANTEED - FREE ESTIMATES - NO DEPOSITS TAKEN - NO SUB CONTRACTORS USED!**

**01708 551714 | 07743 406418**  
[www.sr-roofers.co.uk](http://www.sr-roofers.co.uk) | [rosseldridge84@hotmail.co.uk](mailto:rosseldridge84@hotmail.co.uk)  
41a Sunningdale Road, Rainham, Essex, RM13 7BD

**Rated** **People.com**

We are still open for business and practising safe distancing according to government guidelines.

## Cup windfall as new players arrive at football club



Photo credit: Hornchurch FC

Hornchurch FC have enjoyed an FA Cup windfall after making progress in the competition and have recently welcomed new players to the squad.

The Urchins have already claimed £5,625 in prize money from the world's oldest cup competition thanks to away wins against Ipswich Wanderers and Maldon & Tiptree.

At the time of writing, they are now at the top end of the Isthmian Premier League and just two games away from the First Round proper where Football League sides enter the competition.

Their chances of success this season have also been handed a boost by the arrival of Wyman Reid and Jack Munns.

Reid, who is a defender, joins on dual registration from Cheshunt. He has also played for Aveley, Concord Rangers, Brightlingsea Regent and Brentwood Town.

Meanwhile, Munns joins from Billericay Town. He played at youth level for Leyton Orient and Tottenham Hotspur, before spending two seasons at Charlton Athletic.

He played in the Football League for Cheltenham Town and for Hartlepool Utd, Dagenham & Redbridge, Dover Athletic and Boreham Wood in the National League. He also had a brief loan spell at Aldershot while at Tottenham.

## Headteacher praises school's progress after Ofsted report

Hornchurch school retained its Good Ofsted rating this year, though there is still room to improve regarding student absences, teaching methods and curriculum implementation.

The report, which said Emerson Park Academy has high expectations for students and awarded the school a Good grade in all categories, was published last month after an inspection in June.

While the report was largely positive, it noted that there were high rates of persistent absence from school, and governors failed to hold leaders to account

sufficiently owing to a lack of oversight.

Headteacher Scott McGuinness said: "I am incredibly proud of the achievements of our pupils. 2022 has been a 'Good' year for us in every sense. The GCSE results have risen once again this summer and place us above national averages by every key measure.

"The Good Ofsted report recognises the rewards of our hard work and we look forward to improving even further. I must praise the efforts of our staff, pupils, parents and carers in this process."

## Luxury shopping event to promote retailers

A luxury shopping event will take place in Hornchurch next month to celebrate local businesses.

More than 20 local independent brands will showcase their goods at North Street Halls from 11.30am to 4.30pm on Saturday, November 12.

The event has been set up by Leann Burns (pictured below), owner of online sustainable fashion platform Mystic Wardrobe, as she wants more local people to be aware of the "amazing" independent retailers in and around Hornchurch.

Leann said: "It'll showcase designs from up-and-coming independent designers, handmade fashion, accessories and more.

"Independent brands often struggle at the start, and I thought we can help promote the amazing offerings they have.

"I currently have 21 brands confirmed but I'm hoping for a few more. They include a huge range of independent labels and even a carpenter who specialises in doll's houses.

"I've been to other pop-up events but they had profit in mind rather than promoting the quality.

"This will be different and I'm hoping it helps people realise the quality these businesses offer and know they can trust them."

For more information on Leann's business, please visit [www.mysticwardrobe.co.uk](http://www.mysticwardrobe.co.uk)



Photo credit: Leann Burns





# JULIA LOPEZ MP

Hornchurch and Upminster



My five years in Parliament have been some of the most politically eventful in living memory, including the contentious Brexit vote, a global pandemic and the war in Ukraine. But the first days of September heralded change in our nation of the rarest kind as we marked the arrival not just of a new Prime Minister in Liz Truss, but a new monarch in King Charles III, all while mourning the loss of our beloved HM Queen Elizabeth II.

The death of a Monarch and the accession of a new King to the throne is a moment of great constitutional importance as well as national sorrow, and Parliament was therefore the stage for a number of key events. I was fortunate to return that same week to government, where my ministry, the Department of Digital, Culture, Media & Sport (DCMS), had responsibility for the management of the Lying-in-State. I hope those who wanted to attend from Hornchurch were able to. I was privileged also to sit at the Despatch Box for King Charles' first televised address to the nation and attend his arrival in Westminster Hall where he was formally received by both the House of Lords and the House of Commons.

This new Carolean era opens in a time of economic difficulty as soaring energy prices drive inflation, and while Parliament adjourned for the period of national mourning, work has continued apace to support people. One of the Prime Minister's first acts was to intervene to reassure families and businesses of the help they will get with energy bills, while appointing

a new health team tasked with driving down waiting times and COVID-19 backlogs – something I continue to press locally with primary care providers and Queen's Hospital.

I mentioned in my last column the Jobs Fair we were intending to host at Queen's Theatre to help Havering employers and jobseekers. I am pleased to report that the event was a great success and within a couple of days, more than 24 job offers had been made, with more in the pipeline.

I have also received confirmation from Mayor of London Sadiq Khan that he still intends to sell Hornchurch Police Station – an issue I raised with the Home Secretary in Parliament in September given the progress made on police recruitment (we now have 1,560 in our police unit, up from 1,210 in 2018) and the need for those officers to have a base for community operations.

I met Havering's Borough Fire Commander to discuss how best to prevent the grass fires that we saw over the summer, and also spoke to home and business owners most affected. I shall be writing to the new Environment Secretary about how farmers can be incentivised to create fire breaks on their land.

It will take many years for the nation to come to terms with the loss of HM Queen Elizabeth II, but thanks to the Platinum Jubilee, which saw the listing of Hornchurch's Queen's Theatre by DCMS, I am very glad that we shall always have a lasting, living memorial to her service in our constituency.

## www.julialopez.co.uk

# SPECIALIST IN PRE-CAST BUILDINGS

**SINGLE GARAGES ■ DOUBLE GARAGES ■ CONSERVATORIES**  
**GARDEN ROOMS ■ SHEDS/WORKSHOPS & MORE**



- **FAMILY RUN BUSINESS** ■ **50 YEARS EXPERIENCE**
- **5 YEARS GUARANTEE** ■ **DESIGNS TAILORED FOR YOU**
- **HIGH QUALITY, LOW MAINTENANCE CONSTRUCTION**



**CONTACT US ON 020 8590 3701**

[www.rpageconcretebuildings.com](http://www.rpageconcretebuildings.com)

[rpageconcretebuildings](https://www.facebook.com/rpageconcretebuildings)

**951-953 High Road, Chadwell Heath, Romford, Essex RM6 4HB**

**R**  
**PAGE**  
**CONCRETE**  
**BUILDINGS LTD**



**LUX HOMES**  
 ESTATE AGENTS

**120 North Street, Hornchurch, RM11 1SU**

[www.luxhomesgroup.co.uk](http://www.luxhomesgroup.co.uk)

**01708 208807**

**HAVERING'S PREMIUM ESTATE AGENT**





LOCAL NEWS

# ANDREW ROSINDELL



MP for ROMFORD



Over the past weeks, our nation has been united in grief. The woman who defined and embodied what it meant to be British for so long was interned alongside her beloved husband and parents.

Only months after the Platinum Jubilee, the people of these islands have come together as family, this time in sadness, yet still in celebration of a life of grace and commitment. We recall with great fondness Her Late Majesty's visit to Romford Market in 2003 and the crowds that appeared to catch just a glimpse of such a remarkable person. How proud I was as Romford's MP to welcome the Queen to our town and to sit with her over lunch in the Wykeham Hall of St Edward's Church. We gathered there again before the funeral for a Civic Service of Thanksgiving.

HM Queen Elizabeth II meant so much to so many. We often forget just how wide her influence spanned. Her Majesty's loss was deeply felt and her life celebrated. The State Funeral at Westminster Abbey was brought to a close to the sound of Scottish pipers. Her procession was led by the Royal



Canadian Mounted Police, followed by the Nepalese Gurkhas, as well as servicemen and women from across the other Commonwealth realms. I was there in Parliament Square, watching this historic moment. I would not have missed it for the world.

To His Majesty the King, I speak for us all in wishing him the same guiding principles that carried his late mother to greatness, and I am resolute in my certainties that King Charles III will make a fine Monarch of whom we can all sing with heart and voice, 'God Save the King.'

## Thousands raised for charity

A man from Hornchurch who ran five kilometres 365 times over the last year in memory of his father has raised more than £7,500 for Brain Tumour Research.

Glen Wooding's dad Terry died in 2003 when Glen (pictured left) was just 17. He started his epic challenge on September 12, 2021 – Terry's birthday.

Over the last 12 months, Glen has had to deal with several challenges, including getting COVID-19, and has also welcomed a newborn son.

He completed his last challenge alongside friends and family, which he said made the day especially memorable.

After completing his epic challenge, Glen thanked everybody who supported him.

He said: "As the dust settles on the conclusion of my 365 5km challenge, I would just like to say one last massive thank you to everyone for their generosity, support and donations over the past year. If this money can go just a little way to avoid another wife or son from losing their husband or father too soon because of brain cancer, then it was all worth it."

Charlie Allsebrook, community development manager for Brain Tumour Research, said: "Glen's had to overcome illness, bad weather and juggling a newborn baby to achieve this, but his determination to prevent other families from enduring the same heartbreak he experienced has kept him going."

To donate, go to [justgiving.com/fundraising/glen-wooding365](https://justgiving.com/fundraising/glen-wooding365)



## Serco Commercial Waste & Recycling Services

### Our services

Whatever the size of your business, we have a solution that is right for you. We work with hospitals, leisure centres, small businesses and complex blue chip companies, delivering waste and recycling services across the UK.

Service provision will vary dependant on location and weight restrictions will apply.

We provide a range of containers and flexible services to ensure your waste is collected promptly with no disruption to your business. Our dedicated team will be able to advise you on your best and most financially efficient collection option.

General waste



Mixed dry recycling



Food waste



Containers



# 0800 496 1153

[enquiries.commercial@serco.com](mailto:enquiries.commercial@serco.com)

[www.sercowaste.com](https://www.sercowaste.com)







WARDROBES ■ BUILT IN WARDROBES ■ FITTED KITCHENS ■ SLIDING WARDROBES

## LUXURY BESPOKE WARDROBES & KITCHENS

Made to order in the UK ■ 10 Year Product Guarantee

Soft Close Doors As Standard ■ We fit wardrobes in less than 2-3 weeks

### CONTACT US

01708 578073 ■ 07961 070327

[www.bestfittedwardrobe.co.uk](http://www.bestfittedwardrobe.co.uk)

[info@bestfittedwardrobe.co.uk](mailto:info@bestfittedwardrobe.co.uk)



- ◆ Large selection of wall & floor tiles
- ◆ Fitting service
- ◆ Porcelain, Ceramic, Glass & Natural stone
- ◆ Underfloor heating
- ◆ External porcelain slabs 20mm



Showroom opening times:  
Mon - Fri 8am - 5pm Sat 10am - 4pm

The Barn ◆ Church Road ◆ Noak Hill ◆ Romford ◆ RM4 1LD  
t: 01708 381349 ◆ e: [sales@drbettstiling.co.uk](mailto:sales@drbettstiling.co.uk) ◆ [www.drbettstiling.co.uk](http://www.drbettstiling.co.uk)

## Founders of residents' organisation win award



Photo credit: Jan and Mike Davis

The founders of a residents' organisation which manages housing on a Hornchurch estate on behalf of Havering Council have won a national award.

Former councillors Jan (pictured right) and Mike Davis (pictured left) set up Parkhill Estate Tenants' and Residents' Association (PETRA) in 2003 after residents said they were unhappy with council services.

Jan and Mike were recently given the National Federation of Tenant Management Organisations lifetime achievement award.

Jan said: "PETRA has named the rooms where we used to hold meetings The Davis Suite. We are volunteers so it is gratifying to receive the acknowledgement of this."

Jan said they set up PETRA because she and Mike felt an independent organisation could make a difference to the lives of residents.

She added: "We felt that we could manage the estate more efficiently by employing our own staff and having an on-site presence."

Jan added that she has a number of special memories from her time working with PETRA.

She said: "We set up a greenhouse and garden to encourage the elderly residents to mix more with our younger residents. We set up a social committee and ran functions and every five years held a garden party to celebrate our success."

## Scheme aims to improve air quality around schools

Ten schools in the borough, including Emerson Park Academy and The R J Mitchell Primary School in Hornchurch, will see surrounding roads closed to vehicles during drop-off and pick-up hours.

The scheme, funded by Transport for London and first introduced in 2020, closes off roads immediately surrounding certain schools to non-residential traffic to increase road safety and reduce air pollution, with rulebreakers risking penalties.

Councillor Ray Morgon, Leader of Havering Council,

said: "A School Street Scheme offers an opportunity to help improve the quality of air around a school and its surrounding community, help towards better road safety and the chance to encourage more active ways of going to and from school."

"The general wellbeing of everyone in the community, with less congestion and traffic in these areas during the school run, will be highly beneficial."

According to IQAir, London air pollution levels are frequently found to break both UK legal and World Health Organization limits for nitrogen dioxide.

They also suggest that children and the elderly are particularly vulnerable to the health impacts of air pollution.

## RSPCA and police investigate air rifle cat shootings

The RSPCA is appealing for information after a cat was critically injured when she was shot in Plumpton Avenue, Hornchurch, on August 24.

The tabby cat, called Milo (pictured below), was hit in the leg and a 4.5mm steel bullet penetrated her stomach. She has since made a full recovery.

Milo is one of three cats that appear to have been shot by air rifles in the same area of the town.

A second cat, Fleur, was shot in the face in the same location several days before, while another cat is believed to have been shot with an air rifle on the same road earlier in the year.

RSPCA inspector Chris McGreal said: "These are disturbing incidents and we are concerned they are going to continue unless something is done."

"There is someone shooting cats in this area and we would appeal to anyone with information to come forward and contact the RSPCA."

Contact the RSPCA online at [www.rspca.org.uk](http://www.rspca.org.uk) or by calling 0300 1234 999.

The Metropolitan Police are also investigating. If you have any information, call 101 quoting reference number 5415248/22.



Photo credit: RSPCA





News from

# Councillor Paul Middleton

St Andrews Ward, Hornchurch Residents' Association

What a change in the weather – from the driest months for a long time to some huge downpours. Although this is good for the land, it has caused difficulties elsewhere.

## Harrow Lodge Lake

I received several emails and calls about dead fish in Harrow Lodge Lake. I met with fellow councillors, officers from the parks department, the project management team dealing with the de-silting of the lake, park rangers and more.

The lake is fed by the River Ravensbourne. During the summer, toxins built up on the riverbanks. When we get a downpour, these toxins flow into the lake.

The park rangers were quick to react and removed as many of the fish as possible. The good news is the ecology experts have said the fish population is recovering. Will it happen again? If we have a similar

situation, yes it will repeat as we have no practical way of stopping the toxins from reaching the lake. Please note that this also occurred in several lakes around the UK; it was not unique to Hornchurch.

## Sainsbury's recycling bank

The thrice-stolen glass recycling bank has finally been replaced. I am amazed that residents appear to have little concern for keeping the place tidy, though.

Please show respect for our borough and keep it tidy. Residents caught fly-tipping can face a fine.

## Halloween

By the time you read this, we will be approaching Halloween. If you wish to be part of the celebrations, I encourage you to put something outside your home to indicate that you are participating – a pumpkin, some decorations, etc – and make sure your path is well lit.



# Golf day raises £23k for charity

Keen golfers helped raise more than £23,000 for a Hornchurch charity, which supports children with special needs and their families, at an annual golf day last month.

Participants in the event, which was organised in aid of First Step, gathered at Langdon Hills Golf Course on September 16.

Janet Hutchinson, First Step office manager, said the day started with a cooked breakfast, followed by 18 holes of golf, and finished with a carvery meal.

She added that everyone at the charity is very grateful to all those who supported the event and also

those supporters who donated raffle prizes and items for the auction.

Janet said: "Despite the last few weeks of changeable weather, we were fortunate to enjoy a cool but sunny day. We had many exciting competitions including longest drive, nearest the pin and beat the pro, and the opportunity to win some wonderful prizes for anyone fortunate enough to get a hole in one."

Entry is already open for next year's golf day. Reserve your place by calling 01708 556355.

To find out more about First Step and the work that they do, visit [www.firststep.org.uk](http://www.firststep.org.uk)



# GIVE US A

# twirl

Or what about a Crunchie, Flake or Curly Wurly? The average Brit puts away a staggering 11kg of chocolate a year – that's three bars a week. And the bar that topped a poll of this year's favourites was Cadbury's Dairy Milk, the firm's best-selling bar since 1914.

So how did it all begin?

George Cadbury, who died 100 years ago this month, was just 21 when he and his brother took over their father's Birmingham-based cocoa business. The family were Quakers and believed hot cocoa drinks were a great alternative to alcohol. But George's father was ill and business was going from bad to worse.

However, the brothers quickly turned things around.

In 1878, they moved to the countryside outside Birmingham and built the Bournville factory.

George wasn't just a good businessman; he strongly believed that all working people had the right to a decent home and a good education, whatever job they did. So on land near the factory and at his own expense, George built Bournville village, which had shops, churches, 300 homes, a Quaker meeting hall, and plenty of open space.

It was at the new factory that George developed the original Dairy Milk bar in 1905. It had the distinctive purple wrapper, even back then. And, of course, it was Bournville village that gave its name to Cadbury's dark chocolate bar, first sold in 1908.

The Cadbury company is now owned by Mondelez International and its chocolate is manufactured in more than 180 countries. But Bournville is still at the centre of its operations and produces almost all its Dairy Milk bars.



Photo credit: Universal History Archive/UIG/Shutterstock.com, cadbury.co.uk, chrisdorney/Shutterstock.com, urbanbuzz/Shutterstock.com, DenisyMrt/Shutterstock.com



# Whipping up a STORM

## THE NAME GAME BEHIND OUR TURBULENT WEATHER SYSTEMS

The naming of storms in the United Kingdom is a relatively new phenomenon, with the first, Abigail, being credited on November 10, 2015.

New names have recently been announced for 2022/23. As usual, a cross section is being chosen to reflect the country's diversity, although many of the names never actually get used – the Met Office resets in autumn, meaning the chances of a late-alphabet letter being used are slim.

In addition, Q, U, X, Y and Z are not assigned in the international storm-naming conventions. However, those that are used are assigned by the Dutch weather forecasting service KNMI, the Irish forecaster Met Éireann and the UK Met Office.

The reason for naming storms is so that the public are aware of the possibility of severe weather conditions. The individual process of naming also prevents confusion over other inclement weather systems in different parts of the country or even on the continent.

However, personifying a storm, in a psychological sense, makes it a more real incident to prepare for.

The system clearly works – 98 per cent of people inside a red warning area were aware of the intense Storm Eunice, which hit Europe in February 2022, with 91 per cent of that figure making sure to protect their business, property or themselves.

As for 2023, Met Éireann has picked out the names Cillian, Fleur, Ide and Nelly as its selections; with KNMI choosing Antoni, Hendrika, Johanna and Loes (named after famous scientists in the Netherlands).

Met Office names put forward were Betty, Daisy, Elliott, Glen, Khalid, Mark, Owain, Priya, Ruadhan, Sam, Tobias, Val and Wouter. Of those, Daisy, Glen, Khalid and Owain were suggestions by the public, submitted via email. Betty won out during a public vote on Twitter.

The 2022/23 storm names alphabetically are Antoni, Betty, Cillian, Daisy, Elliot, Fleur, Glen, Hendrika, Ide, Johanna, Khalid, Loes, Mark, Nelly, Owain, Priya, Ruadhan, Sam, Tobias, Val and Wouter.

id interior design

WINDOW DRESSING & DESIGN ■ UPHOLSTERY ■ FURNITURE  
WALLPAPER ■ ACCESSORIES



## WITH ONE OF THE LARGEST WALLPAPER AND FABRIC LIBRARIES IN ESSEX

Visit our showroom for inspiration  
and meet the team who will help you  
with all aspects of interior design

01708 458256

143 Heath Park Road, Romford, Essex RM2 5XJ

[f @iddesignlondon](#) [@iddesignessex](#)



# To cut or NOT TO CUT?

There are several jobs that need doing in the garden ahead of the colder months, and one of them is trimming back your perennials. However, it is important that you know which ones to cut back and which ones to leave alone.

## Cut back

**Irises** – Irises are vulnerable to infestations of iris borers, which tunnel into the base of the rhizome and lay eggs. To avoid this, trim the fan of their sword-shaped leaves at an angle so that they slope upward into a peak no higher than eight inches.

**Chrysanthemums** – These autumn-flowering plants should be cut back after they have bloomed or if they have been hit by a hard frost. Trim the plant down to between six and eight inches from the soil.

**Lilies** – Once their greenery has disappeared and they turn yellow or red, lilies should be cut back for the winter. All it takes is one quick snip of the stalk near the soil line.

**Peonies** – Peonies are vulnerable to mildew so should be cut back when the first frost hits. Grab the leaves and then cut back the stems to just a few inches above the soil.

**Hollyhocks** – Growing up to six feet high, hollyhocks can get gangly in autumn. Cut back their sturdy stems to about six inches from the soil to avoid diseases such as leaf rust.

## Let be

**Hibiscus** – As a late-emerging plant, hibiscus does not need trimming back as otherwise it can take too long to show growth in the spring.

**Coneflowers** – Not only do coneflowers look pretty when covered in frost or snow, but they also offer important sustenance for winter birds.

**Russian sage** – Russian sage can survive the colder weather and can also add texture and shelter to your winter garden, so leave this ornamental grass alone.



# CHASE HATTAN WATCHES

MENS WATCHES WOMENS WATCHES VINTAGE



## BUYING A WATCH

We stock not just the popular modern watches but vintage, collectable and everything in between. This includes watches from the 1960s to the modern day, and professional models from brands including Rolex, Cartier, Omega, Tag Heuer, Breitling and many more.



If we don't have it in stock, let us try and source it for you!

All of our watches pass through our in-house workshop and are presented with a 12 month guarantee, free delivery and 30 day returns.

## SELLING A WATCH

We have been buying watches from the public for almost 10 years and always provide a fair price and a smooth, hassle-free selling process for our customers.



Send us over the details of the watch you're looking to sell either via email, WhatsApp or scan the below QR code for a link to our website and we will come back with a price.

We offer same-day bank transfer payment (ID required) and regular pick-ups in person across London and Essex or send to our Canary Wharf offices.

[www.chase-hattan.com](http://www.chase-hattan.com)  
[info@chase-hattan.com](mailto:info@chase-hattan.com)  
 0203 059 7942  
 07719717980

40 Bank Street, 18th Floor,  
 Canary Wharf, E14 5NR

Rated Excellent on **Chase Hattan**

ChaseHattanLondon  
 ChaseHattanWatches

SCAN THE QR CODE TO  
 SEE OUR STOCK!





# PROFESSIONAL TREE SURGEON SERVICES

TREE PRUNING • TREE REMOVAL • TREE REPORTS  
HEDGE TRIMMING • SITE CLEARANCE  
STUMP GRINDING • EMERGENCIES  
SEASONED HARDWOOD DELIVERY AVAILABLE

CONCERNED ABOUT YOUR TREES AFTER HIGH WINDS?  
FREE GROUND TREE CHECK & QUOTATION WITH THIS ADVERT

We offer  
FREE Quotations  
& Expert Advice  
on ALL aspects of  
Tree Work & Arboriculture

WE SERVE ALL OF HAVERING & THROUGHOUT ESSEX



**Kings Cuts**  
Tree Services

We provide a huge range of tree services & offer expert arboricultural advice, ensuring your trees are looked after responsibly

ALL OPERATIVES ARE COVID AWARE AND WILL BE TAKING STEPS TO KEEP SOCIAL DISTANCING AT ALL TIMES AND TRAVELLING TO SITE IN SEPARATE VEHICLES TO SITE. PLEASE DON'T BE OFFENDED BUT WE WILL NOT BE ACCEPTING DRINKS FROM CUSTOMERS AT THIS CURRENT TIME

Call us: 01708 578030 Mobile: 07467 944671

www.kingscutstreeservices.co.uk • info@kingscutstreeservices.co.uk



From  
**£895\***  
for a fully  
fitted electric  
garage door.

Gotta get a Garolla.



Garolla garage doors are expertly made to measure in our own UK factories, they're strong and solidly built. The electric Garolla door rolls up vertically, taking up only 8 inches inside your garage, maximising valuable space. Our expert local installers will fit your new door and they'll take away the old one too, so there's no mess.

Give us a call today and we'll come and measure up FREE of charge.

**GAROLLA**  
ROLLER  
SHUTTER  
DOORS

www.garolla.co.uk

CALL US TODAY ON:

**01708 545 657**

MOBILE:

**07537 149 128**

LINES OPEN 7 DAYS A WEEK

\*Offer valid for openings up to 2.4m wide & including 2 remote controls, 55mm white slats, internal manual override.



GARDENING

Photo credit: wislaimmagazine.co.uk

## GOING POTTY

**P**erk up your garden, porch or patio with a unique display of flowers and foliage. Read on to find out how to create a stunning container for late autumn and winter.

### WHICH PLANTS WORK WELL?

- > Hardy autumn-flowering cyclamen
- > Pansies and violas
- > Hebes
- > Heathers
- > Evergreen ornamental grasses
- > Trailing ivy
- > Heucheras
- > Ornamental cabbage or kale
- > Hardy ferns (e.g. hart's-tongue, polypodium)
- > Evergreen shrubs (e.g. skimmia, sarcococca)
- > Evergreen euphorbias
- > Perennial herbs (e.g. rosemary, sage)

### WHICH COMBINATIONS WORK BEST?

Choose an eye-catching 'hero plant' that's relatively tall. Ornamental cabbages, spiky grasses or hebes all work well. If your pots are round, put your hero plant off-centre, not right in the middle.

Now choose at least one bushy plant and one trailing plant, like ivy. Then fill the gaps with

complementary plants. Try to include a variety of shapes, textures and shades of green.

Remember, plants don't grow much in late autumn and winter, so fill your pots generously – you don't want to see bare earth.

Finally, cast a critical eye over your selection to make sure you're happy.

### WHICH COLOURS LOOK GOOD TOGETHER?

We think harmonious colours work best. These are the ones next to each other on the colour wheel, not opposite – so mauve and pink rather than orange and blue. But of course, it's a matter of personal taste.

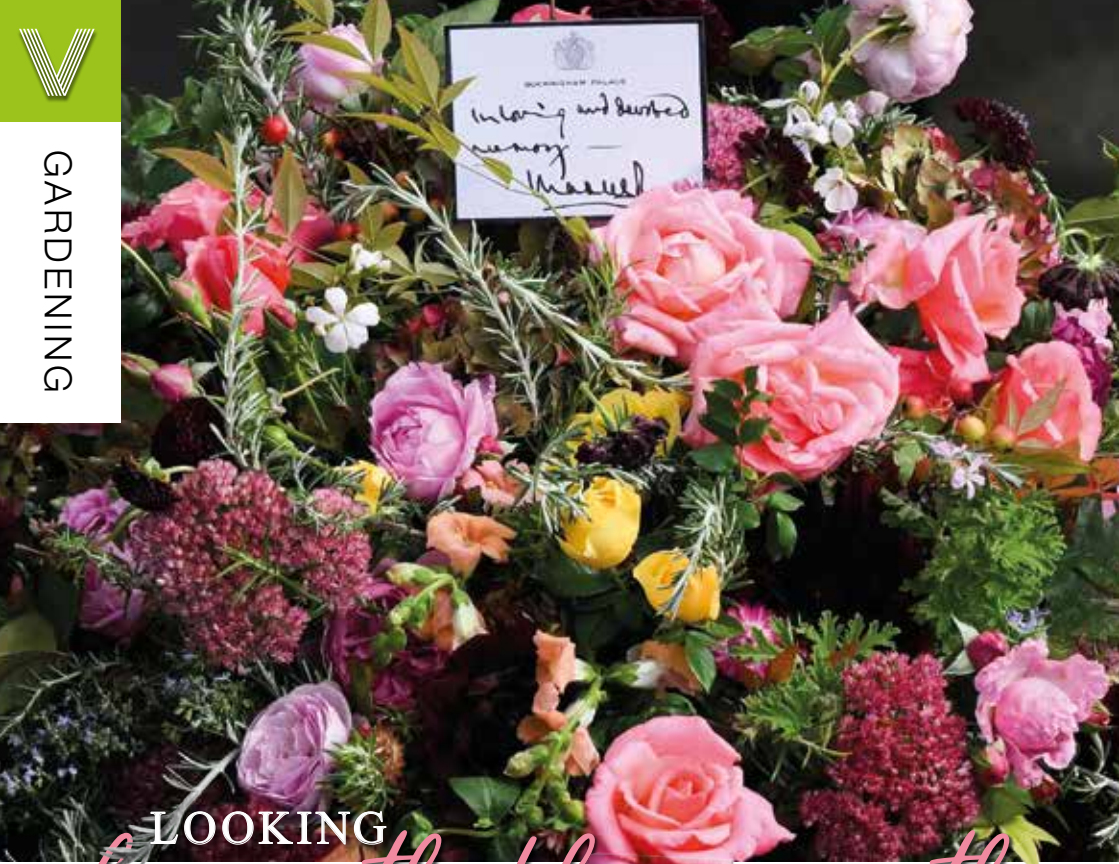
### WHAT ARE THE BEST CONTAINERS?

Choose containers made from plastic, stone or frost-proof terracotta, with a wide top. For something different, why not repurpose an old tin bucket or watering can? But remember to drill drainage holes.

Raise your container off the ground using special pot feet or bricks. This will help drainage and help prevent the pot from freezing.

Always use new, good-quality multipurpose compost – don't be tempted to use soil or reuse last year's compost.





## LOOKING *beneath the wreath*

Flowers are perennially at the heart of the way we offer our tributes to the departed, and few presentations have been as beautiful, perfect or significant as the floral wreath that adorned the Queen's coffin as she made her final journey on September 19.

The choice of flowers on the wreath is not done by luck – it represents a carefully selected process that uses beautiful sprays of colour to celebrate and commemorate so many of the things that enlightened, amazed and enchanted Queen Elizabeth II during her life.

First, the provenance of the flowers is important – they were picked from the gardens of Buckingham Palace, Clarence House and Highgrove House. It was touching to see the use of the myrtle flower, grown from a sprig of the Queen's wedding bouquet when she married her late husband, Prince Philip, in November 1947.

Also present was English oak, a foliage that represents the strength of love, plus pelargoniums, garden roses, autumnal hydrangea, sedum, dahlias

and scabious. All flowers were sustainable, on King Charles' request.

This was a different wreath from the one that accompanied Her Majesty Queen Elizabeth II on her journey south from Scotland. Using flowers picked from her Balmoral Estate, the wreath featured sweet peas – one of her favourites – dahlias, phlox, white heather and pine fir.

While the wreath flowers have garnered much attention, the large quantity left at Green Park and by the gates at Buckingham Palace represented a huge challenge for the authorities.

There is a set process for the disposal of these flowers, which began seven days after the funeral. Gradually, those flowers wilting first would be removed and taken to Hyde Park nursery for composting. This compost will be used on the flowerbeds at Kensington Gardens.

Cards and labels are put into boxes – some will make it into museums; most will remain stored away forever and are unlikely to see daylight again for decades.

Photo credit: Daniel Leal/AP/Shutterstock

## The first step to a beautiful lawn is to call GreenThumb



Our wonderful customers like our service so much, that over 40% of new customers joined us through their recommendation which, if you think about it, is a recommendation in itself.

So, if you've been thinking about enjoying a great lawn this year – green, lush and weed-free, why not contact us today and let us bring your lawn to life.

We provide four seasonal treatments, as well as beneficial treatments to keep your lawn in tip-top condition - prices start from just £15\*.

Ask us about our annual plans, which allow you to both spread the cost and save up to 25%.

Simply call: 01277 227 988 or  
visit: [greenthumb.co.uk](https://www.greenthumb.co.uk)



PRICES FROM  
**£15\***  
PER TREATMENT

# GreenThumb

## LAWN TREATMENT SERVICE

\*Based on a lawn size up to 40m²





## SOUTH EAST HEATING

DOMESTIC AND COMMERCIAL  
HEATING • PLUMBING

Family Run Experienced Service • Est. in 1998

- Boiler repairs & replacements
- Gas installation
- Central heating installation & maintenance
- Gas servicing
- Landlord safety certificates
- Bathroom installation
- Chemical cleaning
- Solar panel installation
- Domestic & commercial plumbing & heating
- General plumbing work
- Gas appliances
- Gas leaks/safety checks

**Mobile:** 07956 481 819  
07539 444413  
**Office:** 01708 221500  
[southeastheating@btconnect.com](mailto:southeastheating@btconnect.com)

## THIS MAGAZINE IS MISSING YOUR ADVERT

CALL 01708 578049  
TODAY TO BOOK  
YOUR SPACE



## BUILDING & LANDSCAPE

EXTENSIONS | DRIVEWAYS | PATIOS | FENCING

We carry out all domestic building and landscaping projects.  
Anything from small repairs to complete renovations



Contact Paul Martin on  
**01708 578106**  
[www.pbmartin.co.uk](http://www.pbmartin.co.uk)

**FREE NO  
OBLIGATION  
QUOTATIONS**



PETS



## Purrfect PETS

LOOKING BACK AT THE HISTORY OF DOMESTICATED  
CATS TO CELEBRATE NATIONAL CAT DAY

Around one in four UK households owns at least one cat. If you're one of them, you'll no doubt want to mark National Cat Day on Saturday, October 29.

The day's mostly about celebrating all things feline. But it also helps raise awareness about all those cats that need a new home. But where did cats come from?

The most popular theory is that domestic cats are the distant offspring of Middle Eastern wildcats. Some 12,000 years ago, farmers started working the land in an area known as the Fertile Crescent. This is a boomerang-shaped area that runs from north-east Egypt, along the Mediterranean coast and down to the Persian Gulf.

The soil was good here and the crops grew well. But when it came to storing grain, the farmers were plagued with mice. So it was only natural for farmers to invite in the local wildcats. The animals were thrilled with all the tasty morsels on offer. And

the farmers were delighted with their easy pest control system.

Gradually, as people came to prefer those cats with milder temperaments, the animals adapted to their new environment. And they eventually evolved into the hundred or so cat breeds we're familiar with today.

Cats probably didn't arrive in Britain until the Romans invaded, bringing their mice-gobbling moggies with them. But when the Romans were driven out of the country a few hundred years later, their cats' descendants remained behind.

Somehow, during the Middle Ages in Europe, cats became linked to witchcraft, and hundreds of thousands of cats were killed. Some scholars believe that this led to an explosion in the rat population which helped spread the plague.

Thankfully, by the 17th century, the reputation of cats improved. And they're now the most popular pet in the world.





# SPORT TECH:

## CHANGING PERCEPTIONS OF SPORT

As a sport-watching nation, we have become much more accepting of the role of technology. The early days of video assistant referees (VAR) were awkward and unsatisfying, and many football fans felt a sense that they were losing the raw wholeness of the sport amidst a blur of replays, lines on screens and toenail-width decisions.

While the calm that's followed has proved that, conducted in the right way, the technology does work, it has altered our investment in key moments.

### WE HOLD BACK ON SUCCESSES

When a goal is scored, a wicket is taken or a forearm smash tickles the baseline, sports fans have acquired a unique hesitation. We fear a decision review, and only when action restarts can we fully relax.

### IT AIN'T OVER TILL IT'S OVER

Sports tech reviewing has added extra hope and drama into the equation; even bad news comes with the hope of a reprieve.

### WE OBSESS OVER TECH

In days gone by, the precision of sport was a fingertip save or a catch in the slips. Nowadays, we over-scrutinise computer graphics and millions of pixels on a screen with all the same elegance of a Usain Bolt dip over the finish line.

### SPORTING CONTESTS LAST LONGER

Delays brought about by review decisions have extended the duration of sport. Ultimately, this gives fans more 'live game' time, but also extends the length of televised sport, with greater post-match analysis and therefore more opportunities for advertisers to pepper us with their messages.

### OUR KNOWLEDGE INCREASES

One big advantage of VAR, Decision Review System, Hawkeye and all manner of other innovations is that they enhance our understanding of the legalities and rules of sport, which can be no bad thing.



**Family disputes and conflicts can be a difficult and emotionally charged time. You will receive expert, cost-effective guidance which delivers the best possible solution to the issues in your case, if you work with us.**

**With over 75 years of cumulative experience we can offer advice on all legal aspects of relationship breakdown.**

#### You can seek help on:

- Child Arrangement Orders
- Child Maintenance
- Representation at Injunction Proceedings
- Financial Claims on Divorce
- Financial Provision for Children on Separation or Divorce
- Parental Responsibility Agreements
- Pensions On Divorce
- Divorce
- Family Mediation
- Prenuptial Agreements

**If your case is suitable we can offer a 40-minute free consultation with one of the team.**



**Sally Ward**  
Head of Family Team  
[sallyward@mplaw.co.uk](mailto:sallyward@mplaw.co.uk)



**Roisin McCorry**  
Consultant  
[roisinmccorry@mplaw.co.uk](mailto:roisinmccorry@mplaw.co.uk)



**Jessica Thrower**  
Associate Solicitor & Mediator  
[jessicathrower@mplaw.co.uk](mailto:jessicathrower@mplaw.co.uk)

**Romford Office:** 8-10 Eastern Road, Romford, Essex RM1 3PJ | **T: 01708 784000**  
**Shenfield Office:** 194 Hutton Road, Shenfield, Essex CM15 8NR | **T: 01277 245015**  
**Email:** [office@mplaw.co.uk](mailto:office@mplaw.co.uk)



# MAKING AN INSURANCE CLAIM?

Oakleafe  
CLAIMS

Having to make an Insurance Claim can often be a complicated and time consuming process. Once a claim is lodged with an Insurer they will appoint a **LOSS ADJUSTER** to represent them. But did you know you can also appoint your very own Loss Adjuster, known as a **LOSS ASSESSOR**.

Oakleafe Claims **Loss Assessors** are local professionals who specialise in Insurance Claims Management and only represent you-the policyholder. We have extensive experience in all types of claims and values covering the entire U.K. As **Loss Assessors** our mandate is to ensure the policyholder receives their full entitlement after we settle their Insurance Claim.



Storm



Fire & Smoke



Leaks & Floods



Impact



Theft



Business Interruption

Oakleafe Claims **Loss Assessors** are the proud award winning recipients of **Loss Assessor** of the year at the U.K British Claims awards and have been helping people and businesses with Insurance Claims since the Second World War. We operate 24/7 throughout the UK with our head office in Gidea Park and supporting offices in London, Brighton, Manchester, Cardiff & Glasgow.



Email: [Office@Oakleafe.com](mailto:Office@Oakleafe.com) Web: [www.oakleafe.claims](http://www.oakleafe.claims)



BUSINESS & PROPERTY

## HOW BREWDOG FOUNDER JAMES WATT KICKSTARTED THE CRAFT BEER REVOLUTION

The BBC recently broadcast an exposé on BrewDog founder James Watt, which attempted to highlight a darker side to the craft beer visionary's persona, including working practices at the brewery's Aberdeenshire HQ.

While it dressed up the drama of wrongdoing, the response from the beer-buying public was decidedly lukewarm. The reason? People love IPA more than they love scandal and salacious gossip.

In fairness, BrewDog has always been built on an image that begins and ends in the can or bottle. 'Equity for punks' is a phrase that the brand has long carried around with it – a linking of a drinks revolution with social cohesion and sustainability, fuelled by the momentum of the hipster movement.

It all began in 2007 when twenty-somethings James Watt and Martin Dickie found themselves in Fraserburgh, the foggy, windy, cold Scottish outpost. While frustrated at the lack of real choice in a drinks market populated by imported lagers, they remained sentimental about the role of traditional

alcoholic staples that had fuelled generations of factory workers, miners and engineers.

Sure enough, by feeding new life into old flavours, progressing from their bedrooms and kitchens to their first brewery, they fused creativity with credibility. Punk IPA was born.

"I think a lot of people felt there was a disconnect at the time between a certain demographic and the drinks they were consuming," says Watt. "Lager and fizzy beer had gone the way of the young lads, with football and nightclubs piggybacking and then driving the trend. Ciders and fruit-based drinks had a very summer existence, while spirits, shorts and wines were mostly for women. The market needed something different."

BrewDog's ability to provide that, initially through signature brew Punk IPA, then a raft of variations, expanding into a pub empire that now totals more than 80 locations worldwide, has taken Watt's personal fortune to more than £250million – a self-made punk now living life in the fast lane.

Photo credit: Shutterstock





# ON THE MOVE



## HERE'S A CHECKLIST OF QUESTIONS YOU NEED TO ASK WHEN VIEWING A HOUSE

**B**uying a house is one of the biggest purchases you'll ever make. And, as with any big purchase, you'll want to do a lot of research before you make an offer.

As you view different properties, be prepared to be nosy. A house may seem perfect on the outside, but asking the right questions will help you decide if it's the right house for you. Keep this checklist of questions in mind when going to viewings.

### ✓ HOW LONG HAS IT BEEN ON THE MARKET?

If a house has been on the market for a while, there could be a reason why buyers haven't snapped it up. It could also be a sign that the house is overpriced, putting you in a good position to come in with a lower offer.

### ✓ WHY ARE THE SELLERS SELLING?

There are a lot of reasons why someone might sell their house. If someone has only lived in the property for a short while, it could be a red flag that something isn't right with the home or the area.

On the other hand, someone who's been in the house for many years might be more interested in selling to a family or someone who will enjoy the house, rather than someone who's looking for an investment or development opportunity.

### ✓ IS THE PROPERTY FREEHOLD OR A LEASEHOLD?

Buying a freehold property means buying the property and the land it is built on. When you buy a leasehold property, you own the property but

not the land – which is retained by the freeholder. Understanding which one applies to the property could impact your decision to buy.

### ✓ IS THERE A CHAIN?

Being stuck in a chain could mean you have to wait a long time before you can move into your house. Find out what the buyer's situation is to help you decide whether to go for the property or to keep searching.

### ✓ WHAT IS THE AREA LIKE?

It's important to research the area you're buying in. Feel free to ask about the neighbourhood, shops, pubs, schools and so on.

### ✓ WHAT DO THE UTILITIES COST?

With living costs on the rise, it's wise to ask about the property's running costs. Find out what the utilities and council tax are and don't forget to ask for the property's Energy Performance Certificate.

### ✓ WHAT'S INCLUDED IN THE SALE?

Some sellers include items like furniture and white goods as part of the sale. Ask what is included – there may be room for some negotiation to keep some of the property's existing items and save yourself some money.

When you're checking out a property, feel free to ask as many questions as you want to help you feel confident in your decision. You'll be glad you thought of everything when you sign on the dotted line.

# LET



**ACE INVESTMENT PROPERTIES**  
Investment Management

**Hello Landlords and Investors**

# Would You Like Guaranteed Rent For Your Blocks?



## We Are Ace Investment Properties

At Ace we are dedicated to the highest quality client service and property management you can think of. We know the pains of dealing with inadequate or subpar agents who are not honest or cause more problems than they fix. We believe every Landlord & Investor should receive the treatment they invested in property for in the first place; security and peace of mind. We have a dedicated team, who's main priority is to serve you & make your Properties Ace Investments.

## For Guaranteed Rent Call Us

📞 0208 0506 589

✉️ Q@aceinvestmentproperties.com

🌐 www.aceinvestmentproperties.com





## SPECIAL MOMENTS PHOTOGRAPHY



WEDDINGS - PORTRAITS - EVENTS & PARTIES - FAMILY - DRONE SERVICES

TEL: 01708 578061 | IG:@SPECIALMOMENTSPHOTOGRAPHY01277

**TTS**  
SOLICITORS



**YOUR PERSONAL  
CONVEYANCING  
SOLICITORS**

**RESIDENTIAL &  
COMMERCIAL  
CONVEYANCING  
CORPORATE  
ACQUISITIONS  
GENERAL LITIGATION  
FAMILY  
WILLS &  
PROBATE**

**We are on 60 lender panels including most high  
street banks, building societies and first tier lenders**

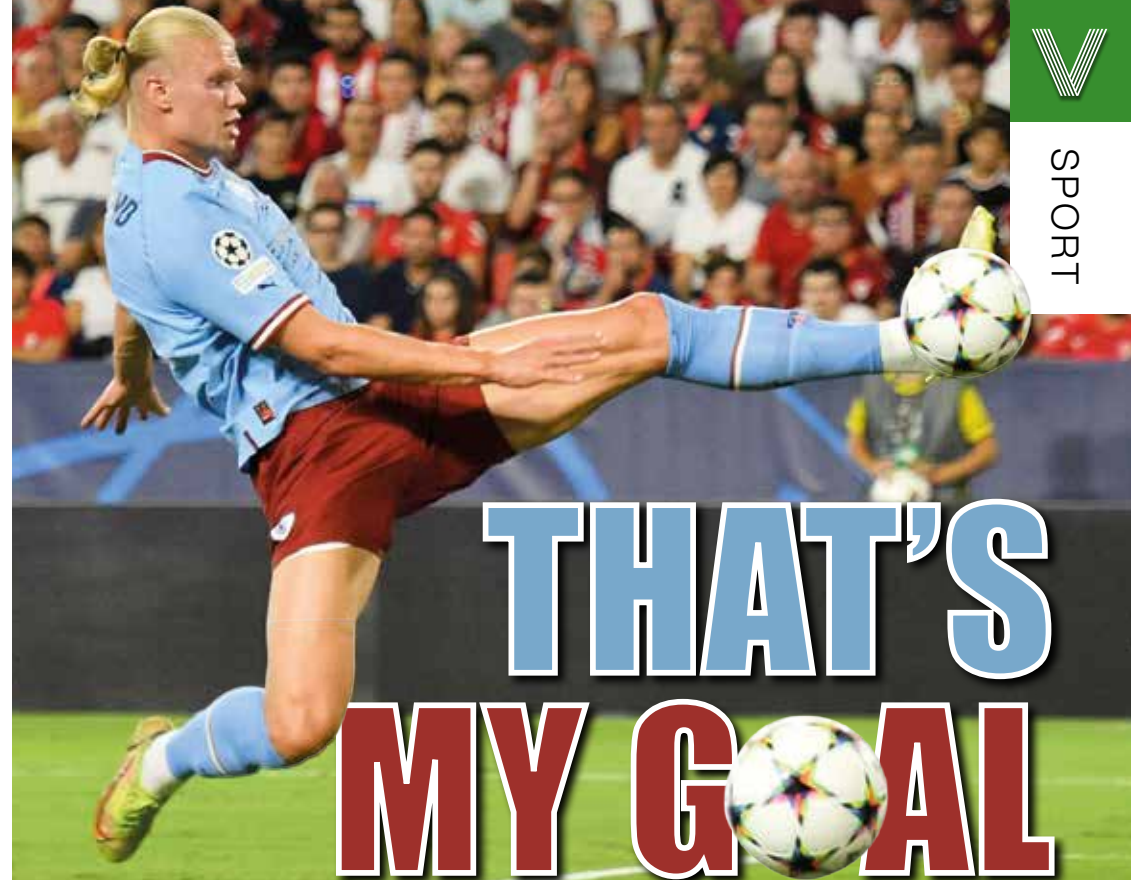
**We are CQS accredited and offer outstanding  
one-on-one service for**

- Sales and Purchases – both leasehold & freehold
- Shared Ownership Right to Buys
- Affordable Housing
- Remortgages & Transfer of Equity
- Auction Sales and Purchases
- Lease extensions

01708 578052 | [www.ttslegal.com](http://www.ttslegal.com) | [info@ttslegal.com](mailto:info@ttslegal.com)

1-4 The Parade, Monarch Way, Ilford, Essex IG2 7HT

CITY OFFICE: 2nd Floor, Mezzanine, 53 New Oxford Street, London, WC1A 1BL



SPORT

# THAT'S MY GOAL

THERE'S A NEW GUNSLINGER IN TOWN, AND WHEN HE SHOOTS, HE RARELY MISSES

When Manchester City became aware of a release clause in the contract of one of the most highly sought-after goalscorers in world football, they just had to act. Their efficiency and persuasiveness in getting a deal over the line for the former Borussia Dortmund man has secured for them a star who has all the armoury to emulate generational greats such as Ronaldo and Messi.

The future has arrived, and he's a sharp shooter. Erling Braut Haaland was born on July 21, 2000, in Leeds, England; yet instead of representing the country of his birth, he chose Norway, the nation of his parents, both of whom were world-class athletes in their own right.

Alfie, Erling's father, is a former Premier League player, while his mother is Gry Marita Braut, a national heptathlon champion in her homeland.

It sounds impossible that Erling could set the bar higher, yet he has.

His goalscoring exploits have been well documented and, in 2019, he became the first

teenager to score in five consecutive Champions League games, for Austrian club Red Bull Salzburg. It earned him a move to German giants Dortmund.

In between, he scored nine goals in a FIFA Under-19 World Cup group match against Honduras, subsequently securing the Golden Boot.

Haaland went straight into the full Norway side and is still averaging a goal a game for The Lions.

Yet his club exploits have been just as impressive. At the beginning of October, he became the first player in Premier League history to score hat-tricks in three successive home games, and also now holds the record of being the quickest player to have scored three hat-tricks in the Premier League.

Hitting the ground running for City in the Premier League and Champions League, he appears on course to break yet more records.

What City boss Pep Guardiola ultimately recruited him for, though, was to give the club's Abu Dhabi owners what they crave – the Champions League trophy. Watch this space.

Photo credit: Julio Munoz/EPA-EFE/Shutterstock



BRITAIN'S GREATEST SPORTING MOMENTS:

# DROP-KICK JONNY

Each month, we look at one of the most significant events in British sporting history. This month, it's England's dramatic Rugby World Cup win against Australia in 2003.

The fact that England came into the 2003 World Cup as tournament favourites didn't for one second lead to any sensible suggestion that the Three Lions might actually take the Webb Ellis Cup back to Blighty with them.

Never had a Northern Hemisphere team won the ultimate prize in rugby, and with the formidable force of co-hosts New Zealand and Australia ready to greet them – the latter as defending champions – only the staunchest England fan imagined Clive Woodward OBE's side could emerge victorious.

Yet in captain Martin Johnson CBE, fly-half Jonny Wilkinson CBE, speedster Jason Robinson OBE (fresh from switching codes having grown up playing rugby league) and a batch of other stars coming into their prime, such as Matt Dawson MBE, Mike Tindall MBE, Ben Cohen MBE, Will Greenwood MBE and Steve Thompson MBE, the feeling that we might be witnessing something special heightened as England sauntered through the group stages.

They accumulated more than 250 points in their opening four matches, seeing off Georgia, South Africa, Samoa and Uruguay with little fuss.

In the quarter-final, Wales scored two tries to England's one, but the kicking of Jonny Wilkinson saw the team home 28-17.

And eight three-pointers in the semi-final against France paved the way for a showdown final with Australia.

In a match screened live in the UK as rugby fans were tucking into a liquid breakfast, Lote Tuqiri scored the opening try for the hosts at Stadium Australia in Sydney, before three Wilkinson kicks and a try gave England a 14-5 lead. Gradually pegged back in the second half, Elton Flatley's last-gasp penalty brought Australia level.

In extra time, Flatley again restored parity at 17-17 with only three minutes to spare, but just as sudden death loomed, Wilkinson received Dawson's pull-back and drilled over the winning drop goal that won the trophy and changed English rugby forever.



Photo credit: David Gibson/Fotosport/Shutterstock



Who'd have thought?  
Tax returns, made simple.

Individual tax returns  
from as little as £199

- ✓ Simple, fast, and stress-free
- ✓ Overseen by certified accountants
- ✓ Trusted and reliable service

[www.taxtribe.co.uk](http://www.taxtribe.co.uk)



Your Local Estate Agent

Sell your  
property for  
**0.5%**

New office open  
in Hornchurch



Residential Sales, Lettings and Property Management • Market Appraisals & Valuation  
Property Search bespoke for you • No Sale No Fee • Free no Obligation Valuations  
Advertised on Rightmove, Zoopla & Prime Location

#### Office address

100 Key Properties  
129a High Street,  
Hornchurch, RM11 1TX

#### Contact details

0203 583 1311 • 07956 996 925  
info@100keyproperties.co.uk  
www.100keyproperties.co.uk

#### Office hours

Mon-Thurs: 9:00-18:30  
Fri: 9:00-18:00  
Sat: 9:00-16:00 • Sun: Closed





*A cash flow review  
is vital to help your  
business grow.*

Get in touch for a  
no-obligation chat  
to see how we can help  
your business improve  
its cash flow.



Download your FREE copy of our e-book,  
*How to make money and keep it.*  
Visit: [bit.ly/3BEOwdk](https://bit.ly/3BEOwdk)



Call us on 020 3026 1251 | 07791 260 443  
Or email [sharon@argus-accounting.co.uk](mailto:sharon@argus-accounting.co.uk)  
Visit our website [www.argus-accounting.co.uk](http://www.argus-accounting.co.uk)  
Find us on social media    

# DON'T JUST TAKE OUR WORD FOR IT...

“ Dear Brett,  
We would like to take this opportunity to thank you and  
your team at **VISION** for the expert way you have promoted our  
business over the past two years.

When Major Glass was started in 2008 our main aim was to give a  
fantastic service to our local community whether it be a pane of glass to  
replace or an entire new conservatory. We have achieved that target and  
with the help of **VISION** have been able to expand our business within the  
local community.

The advert in **VISION** magazine circulates to 30,000 readers in  
Hornchurch, Loughton and the surrounding area. The results of this  
advertising are extremely encouraging and we are now receiving  
enquiries and business from many new customers.

We would have no hesitation in recommending **VISION** Magazine  
to any person or company wishing to expand their  
business by reaching that local community.

Many thanks,

Barry  
Major Glass  
01708 525996



Your  
Monthly  
Lifestyle  
Magazine



To advertise call now on

**01708 578049**

or email [hornchurch@visionmag.co.uk](mailto:hornchurch@visionmag.co.uk)





Celebrating over 35 years in prestige car retail

[www.imperials.co.uk](http://www.imperials.co.uk)

## WE WANT TO BUY YOUR CARS



**WE ARE CURRENTLY LOOKING FOR STOCK TO BUY OR S.O.R.**

**ROLLS ROYCE | BENTLEY | MERCEDES | BMW**

**ASTON MARTIN | PORSCHE | MCLAREN**

**TOP PRICES PAID DURING THIS  
CURRENT CLIMATE FOR THE RIGHT CAR**

**IF YOU ARE LOOKING TO RELEASE  
SOME EQUITY PLEASE CONTACT US**

For more information contact

email: [mason@imperials.co.uk](mailto:mason@imperials.co.uk) | Tel/WhatsApp: 0208 548 7830

[f /imperials.co.uk](https://www.facebook.com/imperials.co.uk) [@ImperialsLtd](https://www.instagram.com/ImperialsLtd)



**CELEBRATING 50 YEARS OF THE FIAT 126, WHICH WAS INTRODUCED AT THE  
TURIN AUTO SHOW IN 1972**

Fiat has never rushed things. Perhaps it's the Italian confidence and sense of candour that means when the car manufacturer commits to something, it sticks to it.

How else can you explain the fact that the Fiat 126, which is 50 years old this year, was the first new model Italian manufacturer Fiat launched onto the market in almost two decades.

With that in mind, the 126 had quite a reputation to live up to, given that it followed the iconic Fiat 500.

Sure enough, it came with its own personality – for a car hitting the market in 1972, it was a rear-engine city runaround. It was cute, small – just a smidgeon over three metres long – boxy and bold, and almost exactly the same dimensions as the Mini.

What became notable about the Fiat 126 was that the Italians never really took it to heart, yet over in Poland its success was prolific – so

much so that within 18 months of launch, most manufacturing was shifted to the Bielsko-Biala factory, and the car was renamed the Polski Fiat.

In fairness, in Italy more than 1.4 million were produced, though no models ever made it beyond a basic 700cc engine. A total of 4.6 million were produced, most in the Eastern Bloc.

While the 126 wasn't perhaps the natural successor to the 500 that Fiat had imagined, what made the car iconic was the belief it gave other manufacturers in the pursuit of the classic urban runaround.

In an era when cars were getting bigger, bulkier and more expensive, Fiat was steadfast in its belief that not everyone desired the cost or clumsiness of a large vehicle. While the 126 wouldn't win kudos points in the same way that the 500 might, it did at least unite a new generation with comfort and convenience – motoring morals we all still stand behind today.



# THE VISION LISTINGS

## ACCOUNTANT & TAX ADVISORS

### ALL THINGS ACCOUNTING

Accounting & tax services, we help with self-assessment tax return, corporation tax return, payroll, VAT return, CIS return & bookkeeping. Call 07539 035537 for free initial consultation

## ACUPUNCTURE

### HONG WEI CHINESE MEDICAL

Fully qualified & experienced, specialising in women's health & Fertility. Help with pain relief, emotional disorders, male/female conditions. 01708 454888 | hongweichinesemedicine.co.uk

## AUTO BODY REPAIRS

### SQUIRRELS HEATH AUTOS

Est. Over 30 years taking care of major & minor bumper scuffs, dents, scratches etc. Call for details 01708 437721 | 07745 629957

## BALLOON DECOR

### THE BALLOON SQUAD EVENTS

I offer bespoke decorations for any family celebration or occasion at home or venue. For a no obligation quote contact 07958 586501

## BEAUTY & NAILS

### BEAUTY BY NATASHA KATIE

A local, mobile LVL Technician. Fully qualified level 2 and 3 beauty therapist Babcac insured and approved. 07961 462672

### SPECIAL NAILS

Dedicated to provide the best quality nail care for Men & Women. Walk-ins welcome, appointment bookings & gift vouchers available. 01708 442248

### THE NAIL STUDIO

Nail Studio lets you switch off and pamper with highly skilled technicians providing top treatments and nail products to meet your every need. 07572 526519

## CAR & VAN HIRE

### SCENIC SELF DRIVE

Your self drive hire specialists. Whether you require modern cars, motorhomes, vans or minibuses. Rest assured we will provide you a professional service 01708 753461

## CLEANING SERVICES

### SPOTCLEAN LTD

Commercial & Domestic Services Specialising in Office, Shop, New build, Refurbished & Residential Cleaning. We ensure a Clean & hygienic environment 07940 213394

## CLEARANCE & WASTE

### THE CLEARANCE TEAM

From clearing a room, house or garden to clearing an entire office block. Fast, reliable and affordable. Working 24/7 so you can book us at your convenience 0207 101 3387

## COMPUTER REPAIR & I.T.

### MAPTEC IT

Your local residential & commercial IT specialists. We can fix your computers, configure email accounts & printers. Setup your Wi-Fi, Internet router & network. 0203 865 7174

## DRIVING LESSONS - AUTOMATIC

### NV DRIVE

Lady instructor. Discount available on prepaid courses. Brand new vehicle June 21 - NV Drive school of motoring: call 07554 634183

## ELECTRICAL & WHOLESALE

### CH ELECTRICAL WHOLESALE

Essex & East London's leading electrical wholesalers providing the trade & public a professional service with access to all leading brands. 01708 730591

## ELECTRICIAN

### CAPITAL ELECTRICAL SERVICES LTD

Domestic/Commercial, Repairs/Installation, Vehicle Charging Points, Portable Appliance Testing, Fire Alarms, Emergency Lighting, Installation Condition Reports. Call 01708 578038

## FINANCIAL SERVICES

### PARAGON LEGAL SERVICES LTD

We will write your will for only £49.99+Vat subject to T&Cs. Call FREE on 0800 0747 642 or 01206 544919 Call us for a FREE home appointment. www.paragonlegal.co.uk

## FLOORING & RESTORATION

### PARNELL FLOORS

We can provide you with the perfect service from the supply, fitting and finishing of new and reclaimed wooden floors including the restoration of existing floors. 07780 671512

## FLOWERS & FLORISTRY

### THE PLANTIQUE

Our dedicated team of professional florists are able to assist you with floral gifts for any occasion. We offer good quality floral gifts at competitive prices. 01708 477255

BOOK VIA [HORNCHURCH@VISIONMAG.CO.UK](mailto:HORNCHURCH@VISIONMAG.CO.UK)

# THE VISION LISTINGS

## FRENCH POLISHING

### DC POLISHING

20 Years experience in wood restoration i.e. Furniture, doors, staircases, worktops, minor repairs & FLOOR RESTORATION. 07949 204969 | dcpolishing.church@gmail.com

## FURNITURE RESTORATION

### ABBEEY GROUP

Abbey Group are specialist in creating, repairing & restoring quality furniture & wood surfaces to the highest standard. 01708 741135

### KINGS UPHOLSTERY

Handmade sofas & chairs designed especially for you to your required specifications. Also providing in re-upholstery & repair work. 01708 444125

## GARDEN SERVICES

### JOHN HEARNE

We take care of it all Lawn Mowing, Weeding, Planting, General Tidying, Fence/Shed Painting, Driveway/Patio Pressure Washing and more. Call for details 07908 523101

### KINGS CUTS TREE SERVICES

A Huge range of tree services available & offer expert arboricultural advice, ensuring your trees are looked after responsibly. 01708 578030 | 07467 944671

## GIFTS, BALLOONS & ACCESSORIES

### CLASSIC CARDS

Established for 24 years. Specialising in hand made cards, personalised frames, large variations of gifts, jewellery & balloon displays. Gift wrapping available. 01708 620460

## HARDWARE & DIY SUPPLIES

### DISCOUNT DIY & HARDWARE

General Store & Hardware. Full Range Color Gas Bottles Available. 49, Butts Green Road, Emerson Park RM1 2JS. 01708 440151. Open 7 Days

## LAUNDRY & DRY CLEANING

### THE LAUNDRY MAN

From everyday washing, drying & ironing. We can pretty much launder anything & everything. Self service launderette available. 01708 447710

## LOCKSMITHS

### KEYTEK LOCKSMITHS

From Lock outs to security upgrades, our fully trained DBS checked Locksmiths are the experts | Call 01708 202 269 | Quote: 15078

## PLUMBING & HEATING

### CMS PLUMBING HEATING & BATHROOMS

Corgi registered, 20+ years' experience, public liability insurance, offering free quotes. No job too small. Based in Gidea Park. Call Craig 07855 589185

## ROOFING

### JIM BARR ROOFING

Exterior cleaning & maintenance. Gutters, Paving & UPVC; cleaned, repaired & renewed. 01708 874816 | 07833 572459

### SR ROOFERS

Est 1975. Roofing experts with original company name/number. Family run, built on reputation & honesty. Confederation of Roofing Contractors approved member. 01708 551714

## TILING

### DR BETTS TILING

Large selection of floor & wall tiles, fitting service, porcelain, ceramic, glass & natural stone. Specialist in underfloor heating. 01708 381349

## WINDOWS & GLAZING

### MAJOR GLASS & GLAZING

Specialising in all aspects of glass & glazing for both domestic & commercial. UPVC, Conservatories, Bi-Fold Doors, Double Glazing Repairs, Mirrors. 01708 525996

JOIN THE LISTINGS... for just **£15** +VAT per month

DISCLAIMER: **VISION** does not represent or endorse the accuracy or reliability of any of the advertisements, nor the quality of any products, information or other materials displayed, purchased or obtained by any customer as a result of an advertisement or any other information or offer in connection with the service or products. The opinions expressed in articles, reviews and stories are strictly those of the individual authors and do not necessarily reflect the views of **VISION**.

PUT YOUR BUSINESS IN THE **VISION** LISTINGS...CALL **01708 578049** TODAY

ACROSS: 1. SEWING, 7. REPAIRED, 8. PEA, 9. MANIAC, 10. EMIT, 11. BUYER, 13. STETSON, 15. STALELY, 17. FROTH, 21. DEER, 22. SVELTE, 23. NOR, 24. STAND-OFF, 25. SWAYED  
DOWN: 1. SUPERB, 2. WHAMMY, 3. GRAIN, 4. OPAITY, 5. DIRECTOR, 6. MERINO, 12. ENTERING, 14. ELISION, 16. TREATS, 18. OPENLY, 19. HATRED, 20. REEFS





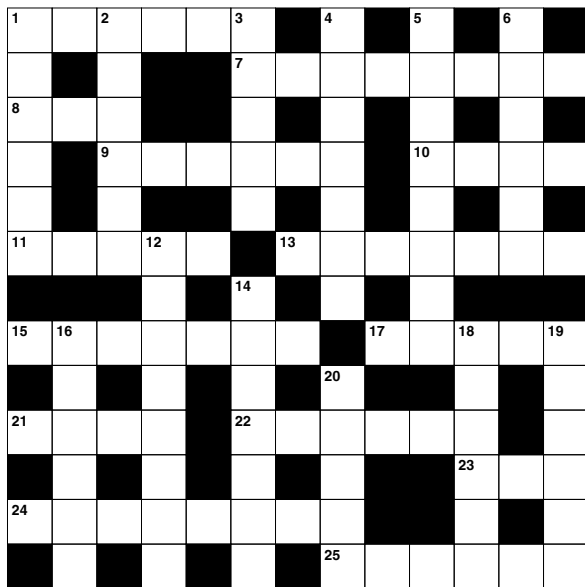
# PUZZLES & TRIVIA

## ACROSS

1. Stitching (6)
7. Restored (8)
8. Legume (3)
9. Lunatic (6)
10. Release; give out (4)
11. Purchaser (5)
13. Cowboy hat (7)
15. Majestic (7)
17. Foam (5)
21. Ruminant mammal (4)
22. Slender (6)
23. And not (3)
24. Stalemate (5-3)
25. Moved back and forth (6)

## DOWN

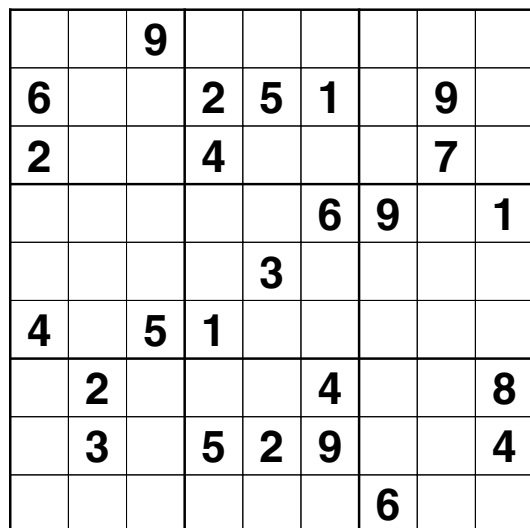
1. Majestic; wonderful (6)
2. Devastating blow (6)
3. Small particle (5)
4. Cloudiness (7)
5. E.g. Steven Spielberg (8)
6. Sheep known for its wool (6)
12. Going inside (8)
14. Omission of a sound when speaking (7)
16. Special rewards (6)
18. Frankly (6)
19. Intense dislike (6)
20. Submerged ridges of rock (5)



## DID YOU KNOW?

- ▶ Bananas contain high levels of tryptophan, which converts to serotonin, helping to improve our moods.
- ▶ Frank Epperson is believed to have discovered ice lollies by accidentally leaving a glass of soda water with a mixing stick in it outside during a cold night.
- ▶ Chilli peppers contain capsaicin. This tricks your sensory nerves into feeling like your mouth is being burnt.
- ▶ If you put lemons and limes in water, the lemons would float and the limes would sink. Lemons have around the same density as water, whereas limes are denser than water.
- ▶ In 1974, at a supermarket in Ohio, Wrigleys chewing gum became the first-ever product to have its bar code scanned.

## SUDOKU



## MAJOR GLASS AND GLAZING

As a family company, Major Glass and Glazing specialises in all aspects of glass and glazing, both residential and commercial, and prides itself on its ability to deliver quality installations

### Our specialist glazing services include:

- Upvc, Aluminum and Timber Windows & Doors
- Conservatories, Orangeries and Roof Lanterns
- Bi-fold Doors
- Double Glazing Repairs
- Fascia & Soffits
- Architectural Glazing
- Table Tops
- Mirrors
- ...and more



WINNERS OF REHAU  
INSTALLATION OF  
THE YEAR

We are based in Hornchurch, Essex, and are dedicated to providing a cost effective service with unrivalled customer satisfaction.

**01708 578056**

**www.majorglass.co.uk**

**info@majorglass.co.uk**



AUTHORISED  
PARTNER





# CHARLES STRATTON

## ESTATE AGENTS

### *Our Premium Package includes:*

- Specialist local staff with 40 years worth of experience
- Drone Videography ● 360° Virtual Tour ● A3 laminate brochures
- Rightmove premium listing ● Social media promotion
- Viewings conducted by a senior member of staff

“ A highly professional and friendly company to deal with, they provided constant updates and advice, really happy with the service they provided. ”

*Ian Ploughman*



For further information please contact  
01708 726817 | [sales@charlesstratton.co.uk](mailto:sales@charlesstratton.co.uk)  
[www.charlesstratton.co.uk](http://www.charlesstratton.co.uk)

Members of NAEA, ARLA and PROPERTYMARK

