

THE  
JOY OF  
HOLI  
FESTIVAL

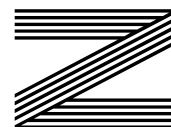
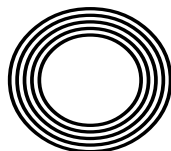
TOP 5  
tech-free  
holidays

*Why we celebrate*  
ST PATRICK'S DAY

VIVA MAGENTA:  
Pantone Colour of the Year

# PETER JONES CBE

How this dragon proved he's impossible to slay




FREE

Photo credit: BBC/Graeme Hunter/  
Caroline McDonald


# THE **B7** MEDIA GROUP

PRINTING • BUSINESS CARDS • LEAFLETS  
DISTRIBUTION • SIGNAGE • MENUS & BROCHURES  
EXHIBITION BOARDS & BANNERS  
RETAIL PACKAGING • WINDOW VINYL  
LOGO DESIGN • BRAND ALIGNMENT  
VEHICLE WRAPPING • CARBON PADS • WORKWEAR  
WEBSITES • SOCIAL MEDIA • I.T. SOLUTIONS

 ENQUIRIES@B7MEDIAGROUP.COM

 01708 578049

 ENQUIRIES@B7MEDIAGROUP.COM

 01708 578049





MARCH 2023

# Editor's notes...



Brett Shohet, Editor

Hello and welcome to this month's edition of **VISION** Hornchurch. I've always stressed the importance in business of going out and meeting new people. It's vital to make connections and be seen, because in this fast-paced world, if you're not putting yourself out there, you run the risk of being left behind.

Recently, my visits to local businesses have taken on a different tone. Our county is a mixed community of cultures and many of the people here are from or have connections in Turkey. Following the devastating earthquakes, some of them are having to continue with their daily lives and run their businesses, while fearing for the safety of family and friends overseas.

We are very resilient people here in Essex, and it's been wonderful to see how people have been pulling together to donate to charities and offer help in whatever way they can. My message to you is to be kind and caring, and to remember to be compassionate to what others might be going through.

With Mother's Day coming up on Sunday, March 19, it's a good opportunity to support our local businesses. Whether it's booking lunch at a local restaurant or buying flowers from a local florist, they are sure to appreciate your support.

*Brett Shohet*

This is your town's hyperlocal magazine, delivering to homes and businesses every month.

HOME & DIY | GARDENING | PETS | HEALTH & FITNESS | BEAUTY | FASHION | HISTORY | LOCAL NEWS | FOOD & DRINK | TRAVEL | BUSINESS & PROPERTY | SPORT | PUZZLES | MOTORING | KIDS | WHAT'S ON | TECHNOLOGY | THE LISTINGS

**CONTACT US:** [www.visionmagessex.com](http://www.visionmagessex.com) | [hornchurch@visionmag.co.uk](mailto:hornchurch@visionmag.co.uk) | 01708 578049

[@visionmagessex](https://twitter.com/visionmagessex) | [@visionmagessex](https://www.instagram.com/visionmagessex) | [f Vision Magazine Essex](https://www.facebook.com/VisionMagazineEssex)

CONTRIBUTORS | Tabatha Fabray, Fiona Goble, Jacob Collick, Darius Morgan

At the time of print all content in **VISION** was relevant and up to date according to COVID-19 government guidelines

All pages are recyclable

home  
hub group

NOW OPEN ON  
EPPING HIGH STREET

We supply and  
install windows  
and doors.

**01992 276 046**  
[essex@homehubgroup.co.uk](mailto:essex@homehubgroup.co.uk)

[homehubgroup.co.uk](http://homehubgroup.co.uk)  
[f](https://www.facebook.com/HomeHubGroup) [@HomeHubGroup](https://www.instagram.com/HomeHubGroup)



Windows | Doors | Porches | Conservatories | Fascias & Guttering

**CONCEPT**  
Windows and  
Conservatories

[www.conceptwindows.co.uk](http://www.conceptwindows.co.uk)  
Trading Standards Approved



**96%**  
of customers  
would  
**RECOMMEND**  
**CONCEPT**  
to friends



HIGH SECURITY WINDOWS



HIGH SECURITY DOORS

COMPOSITE DOORS

BI-FOLD DOORS



WHETHER YOU'RE LOOKING FOR A NEW CONSERVATORY OR  
TO REFURBISH YOUR EXISTING ONE...  
FROM START TO FINISH WE TAKE CARE OF EVERYTHING

Concept House,  
Billet Lane, (Opposite Sainsbury's)  
Hornchurch, Essex RM11 1XP

FREE CUSTOMER  
PARKING

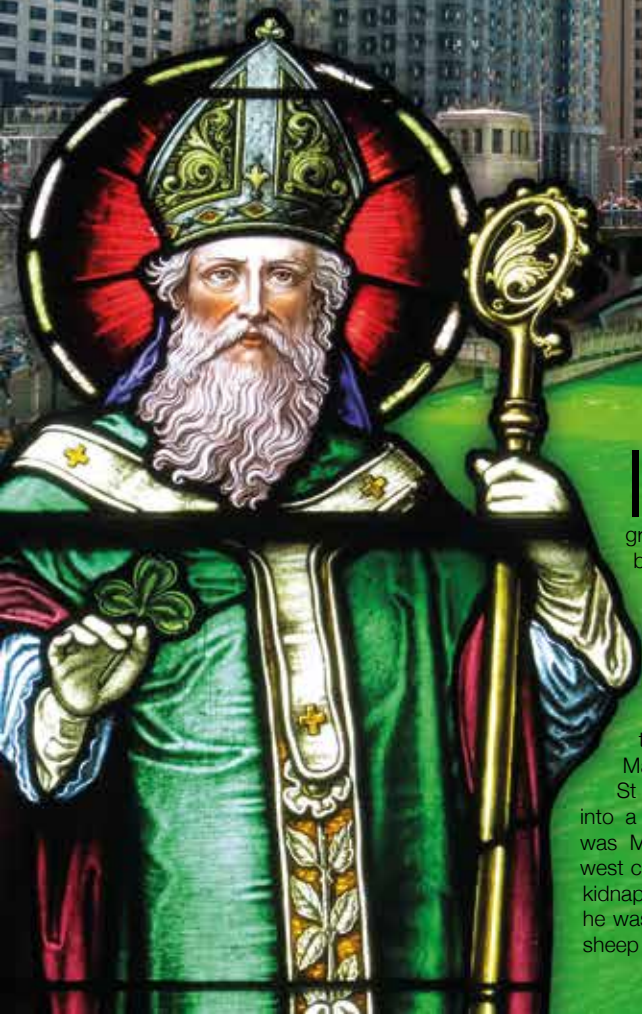
EVERYTHING ON DISPLAY AT YOUR LOCAL SHOWROOM

For Your **FREE QUOTE** Call **01708 463526**





# The story of ST PATRICK



In the USA, some people celebrate St Patrick's Day not just by wearing green clothes, but also by drinking green beer or milkshakes and eating green bagels and grits. Chicago even dyes its river bright green. If you think all this sounds more American than Irish, you're spot on. People join in the parades and celebrations whatever their heritage, but about one in every 10 citizens in the USA claims to have Irish ancestors. So what's the real story behind St Patrick's Day on March 17?

St Patrick was born in Britain around 386 AD into a well-to-do Roman family. His birth name was Maewyn Succat, and he grew up on the west coast, probably in Wales. At age 16, he was kidnapped by pirates and taken to Ireland, where he was sold as a slave. His job was to look after sheep for his master, a Druid high priest.

During his time as a slave, Maewyn devoted himself to Christianity, his parents' faith, and became determined to convert pagan Ireland.

After six years in captivity, Maewyn persuaded some local sailors to let him board their ship. After landing in France, he made his way back to his family in Britain. And from there, he travelled back to France to train as a priest in Auxerre.

When he was ordained, Maewyn changed his name to Patricius – or Patrick – which comes from the Latin for 'father figure'. Then, Pope St Celestine sent him to Ireland to spread the Christian message.

At first, the Irish people weren't keen. Patrick was threatened, robbed and beaten. But his strategy of persuading the most influential people first, including his former slavemaster, eventually paid off. He also had the good sense to incorporate pagan rituals into church practices to make them more appealing. Over the years, Patrick and his fellow missionaries spread their teachings across the country and set

up churches, monasteries and schools.

It's believed that Patrick died on or around March 17, 461 AD, when he would have been in his mid-70s. He died in Saul in County Down, Northern Ireland, and he's said to be buried in Downpatrick.

The Catholic church never formally declared him a saint, because the system for creating saints didn't start until the 12th century. But the Irish people and their leaders recognised him as one because of the decades he'd spent spreading the gospel.

The Irish have celebrated St Patrick's Day for more than 1,000 years. Traditionally, it involved donning a shamrock, going to church and tucking into a traditional meal of cabbage and bacon. But over the years, some St Patrick's Day fun from the USA has caught on back home. You won't find green beer – and certainly not green rivers. But there are plenty of lively parades, particularly in Dublin, with traditional singing, dancing and colourful floats.

Photo credit: TZIDO SUN/Shutterstock.com

# Holi

## THE FESTIVAL OF COLOURS

If you're lucky enough to experience the Hindu festival of Holi in India, it's an experience you'll never forget. People put aside their differences and come together to celebrate the end of winter and the beginning of spring, based on the Hindu lunar calendar.

This year's festival takes place on March 7 and 8 in India and among Hindu communities across the world. But what really happens at Holi, and how did it come about?

On Holi day itself, people take to the streets, singing and dancing and throwing powdered dyes and coloured water at each other – so it's no surprise that everyone ends up drenched in a rainbow of colours.

The colours of the dyes are significant. Red is associated with purity, green with vitality, blue with calm, and yellow with piety.

In the evening, when everyone's had a chance to freshen up and put on clean clothes, people visit their friends and exchange sweets.

In some places, people start celebrating the evening before Holi by lighting a bonfire. As a token of gratitude for the harvest, people throw coconuts, wheat sheaves and green chickpeas into the flames.

The bonfire tradition is based on the tale of a witch called Holika. She was burned to death in a fire by the Hindu god Lord Vishnu for trying to kill her devout nephew. To this day, some people burn an effigy of her on their bonfire.

The origin of the coloured dyes may lie with another Hindu deity, Lord Krishna. When he was a boy, he loved practical jokes, including throwing coloured water over his playmates.

But others say the custom comes down to Holi falling at a time of year when people are most at risk of catching diseases. Before the tradition of flinging around colourful dyes started, people threw herbs to keep ailments at bay.

Whatever the reason, Holi is definitely a time to celebrate life – and long may it last.

Photo credit: BearFoto/Shutterstock.com



ONYX  
RESTAURANT & BAR

*New*  
**SET LUNCH MENU**  
1 MAIN COURSE + SOFT DRINK £10.99  
2 COURSES + SOFT DRINK £13.99  
TUESDAY TO THURSDAY  
12PM TO 4PM  
RESERVE YOUR TABLE TODAY  
01708 443 560 | [ONYXRESTAURANTANDBAR.COM](http://ONYXRESTAURANTANDBAR.COM)

# Essex Stairlifts Ltd

Your local stairlift specialist

- Straight Stairlifts
- Curved Stairlifts
- Rental Stairlifts
- New & Used
- Servicing & Repairs
- Home Lifts



For friendly, personal service telephone:

**01708 369062**

**01268 550173**

**01206 231568**



Email: [sales@essexstairlifts.co.uk](mailto:sales@essexstairlifts.co.uk)

[www.essexstairlifts.co.uk](http://www.essexstairlifts.co.uk)

## WANT YOUR ADVERT HERE?

CALL TODAY ON  
01708 578049  
TO BOOK



## Award winning, personalised care in your own home



- Wellbeing
- Personal care
- Dementia care
- Household tasks
- Outings & activities
- Medication support

Talk to our team today

**01708 609 364**

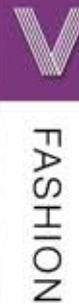
[www.radfieldhomecare.co.uk](http://www.radfieldhomecare.co.uk)



Radfield Home Care Havering & Brentwood,  
Suite C7, The Old Brick Works  
Church Road, Harold Wood  
Romford  
RM3 0JA



## AN ICON departed



### CELEBRATING THE LIFE OF FASHION FIGURE HILARY ALEXANDER OBE

In an era where there's so much that's nonsensical about fashion, Hilary Alexander OBE brought ingenuity and intelligence to the runway.

The former *The Daily Telegraph* fashion director passed away on her birthday – February 5 – aged 77, leaving behind a legacy of fashion that saw her decorate the industry with colour, charisma and humility.

Perhaps now more than ever before, we rely on commentators, journalists and designers who can knit the whole crazy operation together, and Hilary was undoubtedly one such person.

From working with the British Fashion Council, to the Council of Fashion Designers of America; from being heaped with praise by the likes of Michael Kors, Claudia Schiffer and Sir Philip Green; right through to appearances on TV, across *Style*

*Challenge*, *The Weakest Link* and *Britain's Next Top Model*, there was nothing either beneath or above Hilary Alexander.

Born in New Zealand, Hilary moved to the UK as an adult and soon ascended to the role of fashion editor with *The Daily Telegraph* in 1985. As visiting professor at the University of the Arts London, she offered great influence over Central Saint Martins and the London College of Fashion at the turn of the millennium.

While malleable and respectful, Hilary was also someone willing to speak out. Her praising of Margaret Thatcher in 2013 as a "global style icon" was an expression of her desire to be honest and topical, more than it was a salutary piece of prose designed to create conjecture in the wake of the former Prime Minister's death.

Hilary's infectious influence reached every style, design and demographic – someone the industry truly celebrated and admired. And she will continue to do so, even after her passing.



# LET THERE BE LIGHT!

Do you want younger-looking skin? Then you need to know about LED light therapy. Originally used to treat wounds, LED – which stands for light-emitting diode – is now used by aestheticians to help regenerate ageing skin and treat other skin problems.

## WHAT IS LED LIGHT THERAPY?

LED light therapy is a skincare technique that uses varying LED wavelengths to help treat a whole host of different skin complaints, including acne, inflammation and ageing skin. Unlike other types of light therapy, LEDs do not contain ultraviolet rays, which means they are safe for regular use.

## HOW DOES LED LIGHT THERAPY WORK?

You can choose to have LED light therapy carried out by a trained professional or you can buy LED devices that you can use at home. There are two main types of light frequencies: red and blue. The former is used primarily for ageing and the latter to treat acne. Typically, each LED light therapy session lasts around 20 minutes, and, for best results, you need up to 10 treatments.

## ARE THERE ANY DRAWBACKS TO LED LIGHT THERAPY?

Some of the potential downsides to LED light therapy include:

- > It can be expensive
- > The results are not guaranteed
- > It is not safe if you have an active skin disorder or take certain medications
- > Side effects are rare but may include redness, rashes and inflammation of the skin

## BEST LED FACE MASKS

If you want to try LED light therapy at home, check out the below top-rated LED face masks:

- > CurrentBody Skin LED Light Therapy Mask – Best for all skin types
- > No7 Laboratories Age-Defying LED Mask – Best for budget buy
- > Project E Beauty Skin Rejuvenation Photon Mask – Best for acne-prone skin
- > Dr Dennis Gross Skincare DRX Spectralite Faceware Pro – Best for ageing skin.



Mr J S Chawla

Mr J S Chawla is available for private consultations in the eye Clinic at Westland Medical Centre.

This Care Quality Commission approved medical facility is equipped with state of the art diagnostic equipment, minor operation room and lasers.



Eye Clinic, Westland Medical Centre,  
Westland Avenue, Hornchurch,  
Essex, RM11 3SD

[www.facebook.com/ClearvisionMedicare](https://www.facebook.com/ClearvisionMedicare)

## Services Offered

- Cataract surgery with multifocal lens implants for reduced dependence on spectacles
- Lens replacement surgery for removal of glasses
- Glaucoma management
- Minor operations for lumps and bumps around eyes
- Correction of droopy and baggy eyelids
- Watering eyes and blocked tear ducts
- Dry eyes and blepharitis
- YAG and Argon laser treatments of eye conditions
- Botox treatments
- Major surgery undertaken at local private hospitals

For appointments, please contact Phillipa Chambers on 07757 605008

# PACK IT IN

IN HONOUR OF NATIONAL NO SMOKING DAY ON MARCH 8, HERE ARE SEVEN TIPS ON HOW TO QUIT SMOKING FOR GOOD

## BE PREPARED

It's unlikely you'll simply wake up one morning and decide to never smoke again.

Smoking is an addiction, so take time to come up with a plan that gives you the best chance of quitting for good.

## SEEK ALTERNATIVES

Though they may be tempting, e-cigarettes are not the ideal way to quit, as they still contain nicotine. However, they are less harmful than tobacco cigarettes.

Nicotine replacement therapy, on the other hand – in the form of gum, lozenges and patches – can help with withdrawal side effects.

## BE TRIGGER AWARE

If you crave a cigarette every time you have a few drinks at the pub, it may be best to stay home or, even better, hit the gym. Knowing what makes you want to smoke and then doing the opposite is a useful technique to help you avoid temptation.

## TELL YOUR FRIENDS

Not only is it reassuring to have some enthusiastic cheerleaders on your side, but your buddies can also help you on your way.

## KNOW YOUR REASONS

Whether you want to run a marathon or are motivated to quit for the sake of your young children, having a clear purpose – from

health to finance to the feeling of having achieved something important – will help you stop smoking.

## DON'T GIVE UP

Quitting is hard. Know that and give yourself a break should you fail. Each day is a new day, and it is never too late to stop.

## REWARD YOURSELF

Put away those pounds you would have spent on cigarettes and you'll soon see the benefits. Treating yourself to something special is the least you deserve for persevering with such a difficult task.



**spine  
plus**.co.uk

- Expert Hands-On Treatment From Head to Toe
- Latest Therapy Equipment

**Emerson Park Clinic**

128 North Street

RM11 1SU

Call: 01708 578072

[www.spineplus.co.uk](http://www.spineplus.co.uk)

## Work Opportunities with Prior Care

We are a family run care company who provide care to adults located within the London Borough of Havering. We are currently looking for compassionate people to help us deliver quality care services within our clients' own homes.

### We required people who:

- Are a good communicator
- Have a kind & compassionate nature
- Enjoy helping people
- Respect people's rights & differences & ensure they are treated in a dignified manner
- Can be flexible

### We can offer you:

- Good rates of pay (Enhanced rate on Bank Holidays)
- Free uniform & PPE
- Refer a friend scheme (subject to conditions)
- Up to 28 days holiday
- Full support 24/7
- Induction course leading into The Care Certificate
- Ongoing development with additional training courses including QCF Diplomas

### You NEED to be able to work in the following areas:

UPMINSTER • CRANHAM • HORNCHURCH • HAROLD HILL • ELM PARK

Being a car driver is preferred; but if willing to walk or use public transport, candidates can also be considered.

We have all shifts available: Early mornings & lunches - tea & bed calls - weekends. Morning shift starts at around 6am.

**Call Karen on 01708 446690 to apply or email your CV to [recruitment@priorcare.co.uk](mailto:recruitment@priorcare.co.uk)**

**Job Type: Part-Time/ Full Time - zero hour contract**

**Salary: £9.80 - £10.80 /hour**



The UK's leading provider of  
affordable electric wheelchairs.

## Premium Electric Wheelchairs That Support Independent Living

Includes **FREE** next day delivery



MobilityPlus+ Ultra-Light  
Instant Folding Electric  
Wheelchair  
24KG, 4MPH, 2 LITHIUM BATTERIES

Only **£879.99**



MobilityPlus+  
Deluxe  
Ultra-Light

FOLDING  
ROLLATOR  
WITH SEAT

Only  
**£114.99**



MobilityPlus+  
Upright  
Rollator

WITH FOREARM  
SUPPORT

Only  
**£154.99**



MobilityPlus+  
Quick-Split  
Electric

LIGHTWEIGHT,  
COMPACT,  
4MPH

Only  
**£599.99**



MobilityPlus+  
Featherlite

18.7KG, 4MPH,  
LITHIUM  
BATTERY

Only  
**£899.99**

### Customer Support Team

01992 610 434 | [www.mobilitypluswheelchairs.co.uk](http://www.mobilitypluswheelchairs.co.uk)

OUR SHOWROOM: UNIT 5 VELOCITY, HARLOW BUSINESS PARK, HARLOW, CM19 5QF (APPOINTMENT ONLY)

# Hula! Hula! Hula!



HEALTH & FITNESS

**D**id you have a hula hoop as a child? Fun, wasn't it? Offering a whole host of health benefits, the joy of hula hooping doesn't have to end when you reach a certain age.

### WHAT ARE THE BENEFITS OF HULA HOOPING?

**Burn calories:** Hula hooping can burn anywhere between three and seven calories per minute, depending on your body weight and the type of hoop you use. This equates to up to 210 calories per half-hour session, which is on a par with kickboxing.

**Build core strength:** Hula hooping requires strong movement of the hips to keep the hoop from falling, which means that you have to work your core muscles hard.

**Maintain good posture:** If you spend most of the day sitting at a desk, then hula hooping offers a great way to improve your posture. When keeping the hoop moving, your body form is stabilised and engaged throughout, which can help your form with other exercises.

**Boost cardiovascular system:** It is recommended that you get 150 minutes of moderate exercise a week, and hula hooping can help you to reach this goal. A fun form of cardio, it can also help to boost your heart and lung health and lower your cholesterol.

### HOW TO HULA HOOP

1. Start by swinging the hoop clockwise for as long as you can.
2. To keep the hoop around your waist, move your hips forwards and backwards as opposed to in a circular movement.
3. Then change direction to a counter-clockwise movement.
4. Repeat a few times and try to increase the duration of each set as you get stronger.
5. To further isolate your abs, concentrate on keeping your lower body steady.
6. Try a weighted hoop for enhanced fat burning.

### OTHER WAYS TO USE A HULA HOOP

- Skipping through the hoop is fun for kids to try
- Circle a hoop around each arm
- Do crunches with the hoop between your legs
- Do squats or lunges with the hoop held over your head.



# NAILS OR WALLS?

Find everyone from Beauticians to Decorators...



ADVERTISE NOW  
For just  
**£180**  
+VAT per year  
AND BE SEEN BY OVER 16,250 READERS MONTHLY...

## THE VISION LISTINGS

Your  
Monthly  
Lifestyle  
Magazine



CONTACT US TO FIND OUT MORE

t: 01708 578049 e: hornchurch@VISIONmag.co.uk



FOOD & DRINK



CELEBRATE BRITISH PIE WEEK, STARTING MARCH 6, WITH SOME TASTY TREATS

### Spicy Vegan Pie

**INGREDIENTS:** 1 onion, thickly sliced | 50g small broccoli florets | 2 red peppers, cut into chunks | 350g courgettes (2 medium), thickly sliced | 2 tsp cumin seeds | 1 tbsp avocado oil | 200g low-fat houmous | 50g coriander (chopped) | Zest of one lemon | A pinch of chilli flakes | 375g packet of ready-rolled puff pastry (dairy free) | 225g sweet potato, peeled and thinly sliced | Non-dairy milk

#### HOW TO MAKE:

- > Heat the oven to 220°C/fan 200°C/gas 7.
- > In a roasting tin, mix all the vegetables (except

the sweet potato) with the oil and cumin. Roast for 25 minutes then mix in the houmous, coriander, lemon zest and chilli flakes.

- > Turn the oven down to 200°C/fan 180°C/gas 6.
- > Cut the pastry into two rectangles and lay one on a baking tray. Layer the sweet potatoes on top, leaving a 2cm border, then top with the vegetable mixture.
- > Drape the remaining pastry over the filling and press the edges to seal.
- > Brush with milk and bake for 25-30 minutes till golden brown.

**INGREDIENTS:** 150g granulated sugar | 4½ tsp cornflour | 225g rhubarb, cut into 1.5cm slices | 1 orange (juice and zest) | A pinch of cinnamon | 4 sheets of filo pastry (each approx. 48cm x 25.5cm) | 2 tbsp melted butter | 2 tsp icing sugar

#### HOW TO MAKE:

- > In a medium saucepan, mix the sugar and cornflour together, then add the rhubarb, 4 tbsp of orange juice and a teaspoon of zest. Cook gently till it's thickened. Add the cinnamon and cook for 10 minutes, then leave to cool.
- > Heat the oven to 200°C/fan 180°C/gas 6.
- > Lay the filo sheets on top of each other, brushing with melted butter between layers.
- > Spread the filling along one of the longer sides and roll it up, folding in the ends as you go.
- > Make a few cuts in the top, then bake for 15-20 minutes till golden.
- > Cool, then sprinkle with icing sugar.

### Rhubarb Strudel



# TECH-free TRIPS



**D**o you and your family need a break from technology? Are screens taking over your lives? Then these phone-free holiday destinations are just the antidote you need.

## QUIRPON ISLAND, NEWFOUNDLAND, CANADA

If you can think of nothing better than spending your next getaway marvelling at the wonders of Arctic life such as polar bears, puffins and icebergs, then this is the holiday destination for you. Located in the far reaches of the North Atlantic, there is virtually no phone service and definitely no wi-fi.

## PARRANO, ITALY

If you're looking for a remote destination in Europe, then the Eremito retreat in Parrano, Italy, is just what the doctor ordered. Boasting 21 rooms and only a 90-minute drive from Rome, there is no internet, wi-fi or television, so you're guaranteed a tranquil and restorative stay.

## DENALI NATIONAL PARK & PRESERVE, ALASKA

Denali National Park is home to the Sheldon Chalet, a luxury five-bedroom lodge that is only accessible by plane or helicopter. Perfect for those who want to experience nature in the extreme, the panoramic views of snow stretch for miles. Plus, with no mobile phone coverage or internet, you can enjoy the peaceful silence with zero distractions.

## BADEN-BADEN, GERMANY

If you love a spa break, the Villa Stéphanie mansion and spa is just the digital detox destination for you. Located in the famous spa town of Baden-Baden, this decadent five-star hotel boasts a sauna, plunge pool, thermal suite and private gym. And, of course, no technology in sight.

## TOP END, NORTHERN TERRITORY, AUSTRALIA

As you would expect, there is no wi-fi deep in bush country, so you can kick back and relax or enjoy the local wildlife, including blue-winged kookaburras, magpie geese, wallabies and crocodiles. Book into the Bamurru Plains safari lodge for a restful night's sleep and five-star dining.

Photo credit: wehrlatians.com, theluxuryarchitecturalcompany.com, theluxuryspedi.com, kuoni.co.uk



## Da Vinci's

ITALIAN RESTAURANT

Taste the Mediterranean through our quality Italian dishes

Antipasti | Starters | Pasta | Pizza | Grills | Wines | Beers | Spirits



**LIVE ENTERTAINMENT**

Every Friday

[www.davincishornchurch.co.uk](http://www.davincishornchurch.co.uk) | 01708 474 054 | [enquiries@davincishornchurch.co.uk](mailto:enquiries@davincishornchurch.co.uk)

13-15 Station Lane, Hornchurch, RM12 6JL



*invest in the good life...*



**Luxury Lodges, great fun and a great return on investment!**

Visit our four fantastic locations today....

TallingtonLakes

TANNER FARM  
PARK

Thorney GC



[www.goodlifelodge.com](http://www.goodlifelodge.com) • [info@goodlifelodge.com](mailto:info@goodlifelodge.com) • 0800 564 2266



**We could fill  
Wembley Stadium  
MORE THAN TWO TIMES  
with our monthly  
readership...**

**...OVER 207,500 PEOPLE IN ESSEX  
READ VISION MAGAZINE'S MONTHLY**

Photo courtesy of PA Images

**CONTACT US TODAY TO GET YOUR BUSINESS SEEN BY OUR READERS**

Your  
Monthly  
Lifestyle  
Magazine **VISION**

See all our magazines online  
at [www.visionmagessex.com](http://www.visionmagessex.com)

Did you know this isn't the only **VISION** magazine in Essex?

Billericay Shenfield Bishop's Cleeve Brentwood Ongar Chelmsford Beaulieu Epping Theydon Halstead Braintree Hertford  
Hornchurch Leigh Thorpe Bay Loughton Maldon Burnham Rayleigh Wickford South Woodford Tending



- ◆ CARPET ◆ UNDERLAY
- ◆ VINYL ◆ LAMINATE WOOD



- ◆ DOMESTIC & RESIDENTIAL SERVICES
- ◆ ALL FLOORING SUPPLIED & FITTED

**Call or visit us – 01708 472331**

[info@rm2flooringcentre.co.uk](mailto:info@rm2flooringcentre.co.uk)

302 Brentwood Road, Hornchurch,  
Romford, Essex RM2 5TA



HOME & DIY

# How to use LEFTOVER paint

Anyone who's decorated their home will know the dilemma of what to do with leftover paint. You'll often find tins left over after painting projects, which normally end up gathering dust (or rust) in your shed or garage.

So what should you do with all that leftover paint? Here are five ideas for some simple projects for your unused paint.

## ADD A COLOURFUL ACCENT

While you might not have enough paint left over for a whole wall, you can use it to paint part of a wall. An accent behind some shelving, around a photo frame or simply to break up a block of colour can add a nice contrast to your walls.

## UPCYCLE SOME FURNITURE

Leftover paint can be used to upcycle old furniture. From a pop of colour to a more neutral hue, your unused paint can bring a new lease of life to a piece in need of a facelift.

## PAINT A PATTERN ON THE WALL

Patterned walls don't just have to come from wallpaper. From polka dots to lines and animal-style splodges, you can use your paint to create a cool contrasting pattern that will add some interest to your space.

## GIVE PLANT POTS A MAKEOVER

Want to brighten up your plant pots? Use your leftover paint to give them a new look and instantly brighten up your garden and windowsill.

## PAINT PHOTO FRAMES

Adding a little colour to photo frames can make them stand out and is an ideal way to upcycle them, saving you some money and helping the environment too.

Finding ways to use up your leftover paint will help you prevent waste and help you do some interesting and colourful DIY projects around the home.

Photo credit: gillio-designs.com, mixandmatchdesigns.com, framebridge.com

PUT THE SPARKLE BACK INTO YOUR KITCHEN



Domestic Oven Cleaning Specialists

Est. since 2007

#### Prices

Single oven incl. shelves & grill pan.....	£43.00
Double oven incl. shelves & grill pan.....	£54.00
Range incl. shelves & grill pan.....	From £54.00
AGAs.....	From £90.00
Hobs.....	From £14.00
Extractors.....	From £15.00
Microwaves.....	From £20.00

No VAT to pay



BEFORE



AFTER

PLEASE CALL FOR A FREE QUOTATION

01279 432444 \* [www.ovenbright.co.uk](http://www.ovenbright.co.uk)



**PROPERTY  
EXTENSIONS**  
ADDSPACE LONDON LTD.



WE COVER ALL ASPECTS  
OF BUILDING WORKS

- Property extensions & refurbishments
- Kitchen extensions ■ Loft extensions
- Garage Conversions
- Building contracts & new builds
- Construction services

**01708 732 323**

[www.propertyextensionsessex.co.uk](http://www.propertyextensionsessex.co.uk)

email: [info@addspacelondon.co.uk](mailto:info@addspacelondon.co.uk)

EXPERIENCED TRADESMEN TO CARRY OUT  
WORKS WITH NO DELAYS OR PROBLEMS



TILE-

*Tastic!*



HOME & DIY



If you're looking for an affordable and highly effective way to update your kitchen, then installing new kitchen tiles is the way to go.

With so many different styles and designs to choose from, you are guaranteed to find something you love from our list below.

**TONAL SHADES:** Neutrals, greys and creamy whites remain a safe but sophisticated choice for your kitchen and promise to make this pivotal space look both fresh and clean. However, rather than sticking to just one colour, why not combine several tonal shades? Choose tiles with a naturalistic finish for a warm and welcoming atmosphere.

**COLOUR BLOCKING:** If you're not a fan of patterned tiles but you still want to make an impact, colour blocking is a great solution. Put a spin on your standard brick tiles by arranging them in horizontal, vertical or even diagonal stripes of colour. Alternatively, play around with different widths of coloured tiles on the floor to see what looks best.

**EXPOSED BRICK:** Add character to your kitchen with exposed brick-style tiles that are perfect for both feature walls and splashbacks. Much more affordable than using actual bricks, brick slips, which are tiles that are made to look like bricks, allow you to achieve the same look without breaking the bank.

**HEXAGON TILES:** If bright colours in your kitchen aren't your thing, then why not add an extra dimension by filling the space with different shapes? For example, white hexagon tiles can be used to create a sleek and contemporary look in a modern kitchen.

**3D TILES:** 3D tiles have seen a surge in popularity in recent years owing to their ability to add the wow factor to any style of kitchen. Choose from sharp geometric shapes, undulating wave patterns or more subtle textured tiles.



Photo credit: fireclaytile.com, Future PLC/Mark Scott via idealhome.co.uk, tiles360.co.uk, loveproperty.com

Pantone Colour of the Year 2023:

# Viva MAGENTA

**A** bold and brave shade, Pantone's Colour of the Year for 2023 is Viva Magenta. Perfect for anyone who wants to start the spring feeling empowered and unstoppable, there are lots of ways that you can incorporate this colour into your home.

## What is Viva Magenta?

According to the colour experts at Pantone, Viva Magenta is "a pulsating colour whose exuberance promotes a joyous and optimistic celebration, writing a new narrative". A hybrid shade of red, pink and purple that provides the perfect balance between warm and cool tones, Viva Magenta is an inclusive colour that is easy to add to your home.

## What does Viva Magenta represent?

The story behind Viva Magenta is all about the balance between our digital and physical lives. In recent years, people have become drawn to nature in their homes and Viva Magenta has been chosen to reflect our pull towards natural colours. Furthermore, it reflects the movement surrounding climate change, sustainability and land protection.

## How can you use Viva Magenta in your home?

Incorporating Viva Magenta is an easy way to add a touch of fun to your home. Some of the best ways to incorporate this shade into your existing interior design include:

- Paint a magenta feature wall in your bedroom or living room
- Invest in an eye-catching magenta sofa
- Add pops of colour through rugs, curtains, pillows and other soft furnishings
- Paint your kitchen cabinets a rich pink or invest in a magenta splashback
- Try magenta dinnerware to create a sense of opulence in your dining room

## What colours go well with Viva Magenta?

Viva Magenta pairs well with both yellow and turquoise, as well as being a good match for most dominant colour categories.

Photo credit: zen-living.ca, snugsofa.com



## TRANSFORM YOUR HOME



## QUALITY DESIGN

Manufacturer & Installer  
for UPVC & Aluminum  
Windows & Doors  
Conservatories & Porches  
Bi-fold  
& Much More...

Tel: 01702969997

Mobile: 07830355172

Email: [info@siddhglazing.co.uk](mailto:info@siddhglazing.co.uk)

Web: [www.siddhglazing.co.uk](http://www.siddhglazing.co.uk)

## HIGH QUALITY INSTALLATIONS

KITCHENS BEDROOMS LOFTS EXTENSIONS

## A CONTRACTOR YOU CAN RELY ON

- OVER 15 YEARS EXPERIENCE IN DESIGN & INSTALLATION
- WE OFFER A WIDE VARIETY OF PRODUCTS & SERVICES
- ALL TRADESMEN USED ARE FULLY INSURED & QUALIFIED

## WE SPECIALISE IN THE FOLLOWING

- Home Renovations
- Extensions
- Loft Conversions
- Kitchen Supplies
- Kitchen Installations
- Bathrooms
- Carpentry
- Electrical
- Plumbing
- Flooring



**Mob: 07846 120 568**

[highqualityinstallations](https://www.instagram.com/highqualityinstallations) [KitchenInstallers](https://www.facebook.com/KitchenInstallers)



## Alf Onnie

### Curtains, blinds and plantation shutters

- ✓ Bespoke made to measure curtains
  - ✓ Sheers & Voiles
- ✓ Window blinds – manually operated or motorised
  - ✓ Plantation shutters
- ✓ Pole and track fitting service
  - No obligation quote
- Friendly & enthusiastic family business **Est 1920**
- Experienced consultation & installation team
- Commercial projects also undertaken



📍 Showroom based in Essex/London  
 ☎ 020 8472 4658 📞 07956 818477  
 🌐 AlfOnnie.co.uk 🐦 @AlfOnnie1920  
 📱 Alf Onnie Curtains and Blinds

On enquiry  
 mention  
**Vision**  
 for a special  
 offer

## Abbey

group

Abbey Group are specialists in creating, repairing and restoring quality furniture and wood surfaces to the highest standard.



From antique to modern we can repair, strip, re-spray, polish, wax, upholster and bring woodwork back to life.

We take great pride in our work and clients appreciate our care and attention to detail.

We think you will too.

**01708 741135**

Free quotations and no carriage charges with this advert.

**abbey-group.net**

# BACK TO THE

## eighties



If you're planning to paint your walls white and buy a sleek grey sofa, it's time to rethink. After years of Scandinavian minimalism, things in the world of interior decorating are changing. So it's time to ditch those clean lines and cool colours – and plump for something warmer and more inviting instead.

Interior experts predict that brown-based colours, like caramel, coral and terracotta, are set to make a big comeback this year. Pastels are proving popular, too – especially dusky pink and soft greens.

If you're after new wallpaper or soft furnishings, there's an eighties vibe here, too. Think ditsy country florals, colourful gingham and tropical prints. Choose cushions with frilly edges. And instead of the hard lines of a minimalist sofa, opt for something chunkier, curvier and squishier instead. It's all so much cosier. While you're at it, don't forget to buy a rattan chair or two – and treat yourself to a glass-topped table.

If you want to put up some shelves, opt for brass ones, preferably with curved edges. To adorn the shelves, choose rounded vases and bowls. And if you can get hold of some eighties-style candlesticks, show them off by adding some twisted candles – they're easy to find and cost just a couple of pounds.

For those decorative touches, add a touch of macramé. This could be a wall hanging, lampshade or plant hanger. And talking of plants, check out the Maidenhair and Boston ferns in your local garden centre. You won't find many plants more reminiscent of the eighties than these.

Like any style revival, of course, there are some things you'll need to leave firmly back in the eighties. So don't revive anything that's yellow pine, think carefully before you decide to reinstate those frilly roman blinds, and whatever you do, don't lay carpet on your bathroom floor.



HOME & DIY

Photo credit: thegoodpainter.com, wreckitjens.com, lifrad.com

# Faux Flowers Galore

At this time of year, there aren't too many flowers in parks and gardens. Shop-bought faux versions can be just as beautiful as the real thing, but why not impress your friends and family by creating your own?

These stunning tissue-paper flowers are simple to make and an ideal family craft – though young children will need a bit of help from an adult.

You can make each flower from a single colour of paper – or choose two or more. Alternate the colours or stack batches of colours on top of each other. Making your tissue-paper florals is all about trying different things and deciding what you like best.

When you're done, display your flowers as they are or string them into a garland. If you make them with stems, simply arrange them in a vase.

## YOU WILL NEED:

- > Coloured tissue paper: 8 pieces of 8 x 13cm paper for a medium flower | 10 sheets of 10 x 15cm paper for a large flower
- > Wire twist ties (if you don't need stems)
- > 50cm chenille sticks/pipe cleaners in green or brown (for the stems)
- > A pair of scissors

## HOW TO MAKE:

1. Stack the pieces of tissue paper into a neat pile.
2. Pleat the stack of paper into a concertina shape, starting at one of the long sides.
3. Use the twist tie or end of the chenille stick to tightly tie the middle of the paper strip.
4. Using the scissors, cut each end of the strip into a point or curve – or gently round them.
5. Carefully separate each layer of tissue paper.

## TOP TIPS:

- > It's easier to cut the tissue paper rectangles as a stack rather than individually
- > When separating the layers, do one side first then the other
- > A mix of medium and large blooms works best if you're making a bunch of flowers.



Photo credit: thehappyhomemaker

**DISCOUNT DIY & HARDWARE SUPPLIES**  
*Your Local Independent Hardware & DIY Store*

**FREE LOCAL DELIVERY**

**THE PRODUCTS WE SELL INCLUDE**

- Calor Gas for BBQs & Heaters
- Hand Tools
- Electrical Supplies
- Plumbing Supplies
- Decorating Supplies
- Ladders
- Pest Control
- Gardening Tools & Accessories

**FULL RANGE OF CALOR GAS BOTTLES AVAILABLE**

**COME & SEE US AT**  
**49, Butts Green Road,**  
**Emerson Park RM11 2JS**  
**CALL 01708 440151**

**SOUTH EAST HEATING**  
 DOMESTIC AND COMMERCIAL  
 HEATING • PLUMBING

**Family Run Experienced Service • Est. in 1998**

- Boiler repairs & replacements
- Gas installation
- Central heating installation & maintenance
- Gas servicing
- Landlord safety certificates
- Bathroom installation
- Chemical cleaning
- Solar panel installation
- Domestic & commercial plumbing & heating
- General plumbing work
- Gas appliances
- Gas leaks/safety checks

**Mobile:** 07956 481 819  
 07539 444413  
**Office:** 01708 221500  
[southeastheating@btconnect.com](mailto:southeastheating@btconnect.com)

**KITCHENS RENEWED ESSEX LTD**

**DOES YOUR KITCHEN NEED AN UPDATE?**

**20% OFF QUARTZ WORKTOPS**  
 Jobs fitted before end March 2023 with any makeover

**SAVE MONEY WITH A MAKEOVER**

**CHOOSE FROM OUR EXTENSIVE RANGE OF OVER 500 DESIGN AND COLOUR OPTIONS**  
 Doors • Drawers • Panels  
 Plinths • Trims • Handles • Worktops

**MOBILE SHOWROOM – WE COME TO YOU**  
**FREE NO-OBLIGATION CONSULTATION & DESIGN**  
**PROFESSIONAL FITTING SERVICE**  
**FULLY QUALIFIED FITTERS**

**CONTACT US TODAY**  
**01268 977950**  
[info@kitchensrenewedessex.co.uk](mailto:info@kitchensrenewedessex.co.uk)  
[www.kitchensrenewedessex.co.uk](http://www.kitchensrenewedessex.co.uk)

# PETER JONES

## AND A HOST OF TALL TALES

At 6ft 6", formidable *Dragons' Den* mainstay Peter Jones CBE has a lofty view over more than just his business landscape.

His is a stature that has evolved over four decades of being at the cut and thrust of business, on the way amassing a personal fortune of more than £1.2billion.

The idea of standing up to one of the formidable commercial minds in *Dragons' Den* is, ultimately, a thing few entrepreneurs relish. The hit BBC reality business show puts pitchers through their paces en route to a prospective investment offer, yet few who duel with telecoms wizard Peter Jones ever emerge victorious.

The 56 year old has been the only Dragon to appear in every season of the hit show, the 20th series of which is currently airing on BBC One.

He has mastered the art of pulling off a devastating look of utter incredulity, although the element of surprise is part of what makes the show so entertaining.

"Over so many years in business, there should

be few things that surprise me," he begins, "and by now I thought I might have exhausted the ability to be surprised or shocked by some of the ideas or investment valuations that come my way.

"In truth, though, people will always surprise you, and that's what makes the show so entertaining. You can expect the unexpected, because it will always arrive."

That line perfectly encapsulates Jones's climb to becoming one of the country's most successful and best recognised entrepreneurs. Growing up in Langley, Berkshire, before moving to Maidenhead at the age of seven, his first business was in the production of personal computers, a venture he began at the age of just 16.

While the business excelled at first, the evolution of home computing in the 90s saw Jones lose ground. A series of bad decisions led to the collapse of his enterprise, and with it went his millionaire status. At 28, he was forced to sell the remnants of the company to IBM and start again.

Subsequently joining Siemens, he was soon branching out again by himself, launching Phones International Group in 1998, a business that garnered more than £14million in sales in its first year alone.

Further personal ventures in TV, retail and lifestyle projects have been supplemented with more than 60 investments via *Dragons' Den* – where Jones is regarded as the most plain-speaking and shrewdest on the panel.

"I think when it comes to business, it's important to be polite and engaging, but ultimately you can't hang about," he says. "If something needs to be said, it needs to be said, and tiptoeing around the issue has been the death of many a good idea."

As well as gaining a CBE in 2009, he runs The Peter Jones Enterprise Academy and The Peter Jones Foundation – both committed to driving and promoting the next generation of business minds, no matter what barriers exist in someone's life.

As for the most salient business lesson of them all – Jones insists there is nothing more defining than starting again from scratch. "Failure is arguably the best route to success," he says. "Most entrepreneurs have been at the point where the hopelessness seems profound. I've been there myself, and to be that low, only to rise back up, is one of the most fulfilling things you can do. Ultimately, never give up."

Photo credit: BBC Studios

# YOU'RE NOT ALONE



OVER 207,500 OTHER PEOPLE IN ESSEX  
READ **VISION** MAGAZINE'S MONTHLY

**CONTACT US TODAY TO GET YOUR  
BUSINESS SEEN BY OUR READERS**

Your  
Monthly  
Lifestyle  
Magazine



See all our magazines at [www.visionmagessex.com](http://www.visionmagessex.com)

Billericay Shenfield Bishop's Cleeve Brentwood Ongar Chelmsford Beaulieu Epping Theydon  
Halstead Braintree Hertford Hornchurch Leigh Thorpe Bay Loughton Maldon Burnham  
Rayleigh Wickford South Woodford Tending

## LOCAL NEWS

*from your neighbourhood*

LOCAL NEWS



Photo credit: Google Maps

### Council rejects plans

A planning application to add more bedrooms to a Hornchurch care home has been rejected.

Ashling House on Elmhurst Drive, which has seen demand increase in recent years, submitted the application to add 12 bedrooms, two bathrooms and a communal living room.

Documents submitted by EC Romford Holdings stated that demand for care home spaces had increased of late.

However, the officer's report provided to Havering London Borough Council recommended the application be refused owing to concerns over the extension being "visually intrusive".

The officer's report stated: "The proposed rear

extensions would project considerably into the rear garden environment of the application site.

"Despite the separation distances between them and no. 117 Elmhurst Drive, it is considered that the depth of the extensions would unacceptably overbear and dominate the outlook of these neighbours."

Following the refusal, general manager of Ashling House Nir Shamir said it was in discussions with the planning officer regarding a future resubmission.

He added: "Adding rooms to the building will reduce the acute shortage in such facilities and help to reduce pressure from local hospitals, which are struggling to release beds from long-term patients that the care home can be the solution for."

### Dad shares disgust at woman urinating in street

A local dad has shared his disgust at walking past a woman urinating in a shop entryway on Hornchurch High Street.

In a Facebook post, he wrote: "I cannot believe what I have seen walking past with my nine year old; a woman crouching down having a p\*\*\* in the doorway of Peacocks in Hornchurch."

The post was widely commented on, with one person saying: "I must admit toilet facilities anywhere are disappointing. Men can pee behind a bush, but it's a bit more difficult for a woman."

This follows a petition launched by the Hornchurch and Upminster Conservatives which seeks to urge the local council to explain why public toilets in Upminster that were temporarily closed during the COVID-19 pandemic have remained shut.

They said: "As the toilets are in a central location in Upminster, providing an important use to many residents, we believe that the toilets should go back to pre-pandemic opening times."

Havering London Borough Council has been contacted for comment.



# JULIA LOPEZ MP



Hornchurch and Upminster



I was delighted to host another successful Apprenticeships and Skills Fair last month at Queen's Theatre Hornchurch to celebrate National Apprenticeships Week. This event was held once again in partnership with the Romford Jobcentre and gave local people of all ages the chance to find new work opportunities.

I am seeking residents' support in my campaign to stop the sale of Hornchurch Police Station by Mayor of London Sadiq Khan and have launched a petition with Hornchurch and Upminster Conservative Association to demonstrate the strength of local feeling. The new Metropolitan Police Commissioner, Sir Mark Rowley QPM, is conducting a Neighbourhood Policing Review that will include looking at the Met's estate and whether station sell-offs should be stopped. To view the petition, head to [www.hornchurchandupminsterconservatives.com/news/stop-mayor-khans-hornchurch-police-station-sale](http://www.hornchurchandupminsterconservatives.com/news/stop-mayor-khans-hornchurch-police-station-sale)

I also continue to work with councillor Keith Prince as our Greater London Authority member, along with residents and MPs across outer London, to oppose the Mayor of London's plan to extend the Ultra Low Emission Zone (ULEZ), charging certain vehicles £12.50 a day to drive in and around Havering and other boroughs. I am particularly concerned that once the Mayor has the charging infrastructure in place, he will look to change the goalposts and charge different types of vehicles over time.

We have been pressing Havering Council to join



Bexley, Hillingdon, Bromley and Harrow in resisting the ULEZ expansion. I met the Leader and chief executive of Havering Council, who confirmed that Havering had not signed Section 8 Agreements with Transport for London to permit the installation of the cameras required to implement the scheme. I have also met the Roads Minister with other London Conservative MPs as we work together to increase public pressure on the Mayor to change course. Most recently, we have been building a coalition of Home Counties councils who are also vigorously opposing the ULEZ expansion. I am pleased to say that Essex County Council has confirmed that it will not permit ULEZ infrastructure on county land.

I have carried out some really positive school visits recently, and will shortly be hosting a group of students in Parliament to discuss our democratic system.

## Man hospitalised after stabbing

A 19-year-old man was taken to hospital after he was stabbed on Hornchurch High Street on Saturday, February 18.

Police officers attended the scene after they were called at around 1.45am by the London Ambulance Service.

The victim was taken to hospital with a stab injury that is not believed to be life-threatening. Another 19-year-old man was treated for facial injuries.

Police officers have confirmed that no arrests have been made at this time and enquiries will continue. Anyone with information is asked to call police via 101 quoting reference CAD 617/18Feb. You can also report information to Crimestoppers anonymously at [crimestoppers-uk.org](http://crimestoppers-uk.org)

The Met Police have said that local officers will be in and around the area to provide reassurance to the community.



## WE CARRY OUT ALL HOME RENOVATIONS

Garage Conversions | Bathrooms | Kitchens | Full Decorating  
New Flooring | Plumbing & Heating | Electrical | Glazing  
Roofing | Tiling | Handyman & Locksmith Services  
Cleaning | Extensions & Loft Conversions | Clearances  
*Plus much more...*

DOMESTIC & COMMERCIAL | NO JOB IS TOO BIG OR TOO SMALL

CHECK OUT OUR GOOGLE REVIEWS

t: 01708 578053 | m: 0794 939 4403

e: [info@lillywhitepropertygroup.com](mailto:info@lillywhitepropertygroup.com)

[www.lillywhitehomerenovations.com](http://www.lillywhitehomerenovations.com)

f LillywhitePropertyGroup i LillywhitePropertyGroup @LWMaintenance



WE OFFER  
FREE ESTIMATES

WE NOW OFFER FINANCE  
ON ALL REFURBISHMENT  
PROJECTS



Est. 1975

WE OFFER VERY  
COMPETITIVE PRICES  
& WILL BEAT ANY  
GENUINE WRITTEN  
ESTIMATE

CELEBRATING OVER 46 YEARS OF TRADING WITH  
THE ORIGINAL COMPANY NAME & PHONE NUMBER!

- Roof Repair Specialists, All Leaks Cured
- New Tiled Roofs & Velux Windows
- High Performance Felt Flat Roofs
- EPDM Firestone Rubber Flat Roofs
- uPVC Guttering, Fascias & Roofline
- Storm Damage & Insurance Work
- Chimney Stacks Repaired & Removed
- Leadwork, Pointing & Rendering
- Replacement Roof Valleys & Bays
- Roof Overhauls & Maintenance
- Asbestos Removal & Garage Roofs
- Pigeon / solar panel guards
- The Best Quality Materials Used
- 24 Hour Emergency Repairs, 7 Days

A UNIQUE FAMILY RUN BUSINESS BUILT ON REPUTATION, HONESTY & KNOWLEDGE!  
OVER 500 GENUINE REVIEWS ON 'TRUSTIST' & OVER 20,000 HAPPY LOCAL CUSTOMERS!  
ALL WORK GUARANTEED - FREE ESTIMATES - NO DEPOSITS TAKEN - NO SUB CONTRACTORS USED!

01708 551714 | 07743 406418

[www.sr-roofers.co.uk](http://www.sr-roofers.co.uk) | [rosseldridge84@hotmail.co.uk](mailto:rosseldridge84@hotmail.co.uk)

41a Sunningdale Road, Rainham, Essex, RM13 7BD



We are still open for business and practising safe distancing according to government guidelines.



# ANDREW ROSINDELL



MP for ROMFORD



an eye-watering £12.50 a day just to travel. With no underground station, tradespeople, teachers, doctors, nurses, firemen, shopworkers, businesspeople and prison officers – to name a few – could face up to £3,000 a year just to commute.

Havering's Residents Association and Labour-run council, though, have failed to condemn Mayor Khan's crushing car tax. Regrettably, the Leader of Havering Council failed to join four other Conservative-led boroughs in refusing to cooperate with Mayor Khan's cash-grabbing scheme. However, ULEZ is more than simply about money – as important though that is; it goes to the heart of our culture, heritage and history.

Mayor Khan's scheme is a perfect demonstration of why lumping together inner London with town and country boroughs like Havering doesn't work.

Unlike the inner city, Hornchurch and Romford are traditional market towns that share a far greater affinity and shared values with Essex. ULEZ is therefore the product of failing to recognise the individualities of areas like ours. I will always be on the side of local people in opposing Mayor Khan's damaging ULEZ policy – and will campaign for greater autonomy for town and country boroughs like Havering to free themselves from Mayor Khan's clutches.

Back in November, Mayor of London Sadiq Khan ignored his own public consultation by announcing that the Ultra Low Emission Zone (ULEZ) would be expanded to the whole of Greater London by August 2023 – including all of Havering.

One of my top priorities this year will be to lead the fight against this devastating move, which would mean that residents with petrol cars older than January 2005 and diesel cars older than September 2014, which do not meet emissions criteria, would have to pay

## Club celebrated after cup win

The Mayor of Havering councillor Trevor McKeever (pictured front row, fourth from left) joined councillor Ray Morgon, the Leader of Havering Council (pictured fourth from right), and Hornchurch Cricket Club players and officials for a civic reception to commemorate the club's historic cup triumph.

The reception took place at Harrow Lodge Leisure Centre, Hornchurch, on Thursday, February 16.

Last September, Hornchurch Cricket Club won the ECB National Club T20 South Regional Final, on a never-to-be forgotten day at Wormsley, Stokenchurch.

It capped a 10-match unbeaten run that led to the team producing the performance of their lives, beating Banbury Cricket Club by 87 runs to win the cup.

Mayor McKeever said: "Hornchurch Cricket Club did the borough really proud by winning the ECB National Club T20 last year.



"It's an honour to pay tribute to the club's success on behalf of residents and thank them for their enormous effort. This is why we wanted to make sure a civic reception was held to celebrate this amazing season.

"It's such a momentous achievement, and the biggest trophy in club cricket."

ACB DECORATING SERVICES

Painting & Decorating

All interior & exterior works undertaken

Over 25 years' experience

Free Estimates

Call Andy on 01708 578042

acbdecorating@gmail.com

BRENTWOOD SOLAR

Plumbing & Heating  
Repairs & Installation



Bathroom Suites

Boilers Air Conditioning

Air Source Heat Pumps

Safety Certificates



CONTACT US

01708 732 323

info@brentwoodsolar.co.uk

## SPECIALIST IN PRE-CAST BUILDINGS

SINGLE GARAGES ■ DOUBLE GARAGES ■ CONSERVATORIES  
GARDEN ROOMS ■ SHEDS/WORKSHOPS & MORE



- FAMILY RUN BUSINESS ■ 50 YEARS EXPERIENCE
- 5 YEARS GUARANTEE ■ DESIGNS TAILORED FOR YOU
- HIGH QUALITY, LOW MAINTENANCE CONSTRUCTION

CONTACT US ON 020 8590 3701

www.rpageconcretebuildings.com

f rpageconcretebuildings

951-953 High Road, Chadwell Heath, Romford, Essex RM6 4HB



R  
PAGE  
CONCRETE  
BUILDINGS LTD



WARDROBES ■ BUILT IN WARDROBES ■ FITTED KITCHENS ■ SLIDING WARDROBES

## LUXURY BESPOKE WARDROBES & KITCHENS

Made to order in the UK ■ 10 Year Product Guarantee

Soft Close Doors As Standard ■ We fit wardrobes in less than 2-3 weeks

### CONTACT US

01708 578073 ■ 07961 070327

[www.bestfittedwardrobe.co.uk](http://www.bestfittedwardrobe.co.uk)

[info@bestfittedwardrobe.co.uk](mailto:info@bestfittedwardrobe.co.uk)  



- ◆ Large selection of wall & floor tiles
- ◆ Fitting service
- ◆ Porcelain, Ceramic, Glass & Natural stone
- ◆ Underfloor heating
- ◆ External porcelain slabs 20mm

Showroom opening times:  
Mon - Fri 8am - 5pm Sat 10am - 4pm



The Barn ◆ Church Road ◆ Noak Hill ◆ Romford ◆ RM4 1LD  
t: 01708 381349 ◆ e: [sales@drbettstiling.co.uk](mailto:sales@drbettstiling.co.uk) ◆ [www.drbettstiling.co.uk](http://www.drbettstiling.co.uk)



News from

## Councillor Paul Middleton

*St Andrews Ward, Hornchurch Residents' Association*



### March already. Where is the year going?

A few updates for you. The War Memorial outside St Andrew's Church is in need of repair. The Memorial was (potentially) attacked last year, leaving the wreaths and other memorial items strewn across the street. The stone Memorial itself had also been damaged.

At that time, the local councillors (councillors Bryan Vincent and Gerry O'Sullivan and I) met with members of the Royal British Legion, St Andrew's Church and the council in order to arrange a repair.

Of course, things are not as easy as just arranging a repair. This War Memorial has some special protection and can only be repaired using specialist teams.

To add insult to injury, as we were unable to arrange a repair quickly, we have gone through a wet and cold winter, and the damage to the Memorial has only increased, along with the cost to repair.

Bryan, Gerry and I started to look at the opportunity to 'crowdfund' a repair. We ran into red tape and roadblocks that held us back.

Fortunately, the council has been able to find external funding to help repair the Memorial. I hope we will see the repairs start in the next few months. I want to thank cllr Vincent for taking the lead on this.

### Enforcing Moving Traffic Contraventions (MTCs)

Some six years ago, the then administration had decided to purchase and install cameras around the borough to help enforce MTCs. In recent months, some cameras have been installed to cover yellow box junctions, no-entry areas and no-right-turn areas.

This is carried out to help meet the Mayor of London's approach to reducing the number of accidents and deaths on the road.

This will inevitably end up costing the motorist more in fines. The local councillors for St Andrews Ward have met with the council to question where and why certain locations were selected. We questioned why it has taken so long for these to be installed and we also questioned if these were installed to make money or to reduce the already low number of accidents.

The following locations either have or will have MTC cameras installed. Please watch out for them.

- Abbs Cross Lane where it meets Hornchurch High Street – yellow box junction.
- North Street, Hornchurch, outside the petrol station – no right turn when leaving the garage.
- Hacton Lane, where it meets Granton Avenue – no entry.

## Club push for promotion

Hornchurch FC maintained their Isthmian Premier promotion push throughout February. With two new players in the starting line-up, the Urchins took time to get into their stride during the game against Potters Bar on Saturday, February 11, heading into half-time without either side scoring.

The second half saw a flurry of goals scored by five different goal scorers, including Urchins legend Chris Dickson and a brace by Tom Wraight, and the game ended with a 5-0 victory. They followed this up with a 5-1 thrashing over Herne Bay on Saturday, February 18, with Sam Higgins scoring a hat-trick and the Urchins being unable to field a full bench, naming only three substitutes.

Hornchurch will play Canvey Island on Tuesday, February 28, as **VISION** Hornchurch goes to print, with the hope of progressing to the final of the BBC Essex Senior Cup.

Keep up to date with the latest news from the club at [www.hornchurchfc.com](http://www.hornchurchfc.com)



Photo credit: Hornchurch FC

# DIY Mother's Day BEAUTY GIFTS

**D**o you want to help your child make a handmade gift for their mum, grandmother or mother figure this Mother's Day? Beauty gifts are always welcomed and provide the perfect opportunity for mums to enjoy a little me-time.

## Microdermabrasion scrub

Combat the signs of ageing with this super simple microdermabrasion scrub.

### How to make:

Mix 6 tbsp of sugar with 3 tbsp extra virgin olive oil | Add 3-5 drops of lemon juice | Add ½ tbsp baking soda and 3 drops of lavender oil | Mix thoroughly | Spoon into a small pot and add a handwritten label

## Rose whipped body butter

Give the gift of super-soft skin with this luxurious body butter.

### How to make:

Melt 1 cup of coconut oil and 1 cup of shea butter in a small bowl | Leave the oils to cool slightly | Mix the oils using a whisk or standing mixer until you have

a whipped cream-like consistency | Add 8 drops of rose absolute and whip for a further 1-2 minutes | Spoon into a mason jar and add a pretty bow

## Lemon peppermint bath salts

Add an element of fizz to bath time with this aromatic bath salt.

### How to make:

Mix ½ cup of fine sea salt and 1 cup of Epsom salt in a medium-sized bowl | Stir in 15 drops of lemon essential oil and 5 drops of peppermint oil | Scoop the bath salts into a mason jar and tie on a small measuring spoon with some ribbon

## Honey facial mask

Soothe sensitive skin with this natural facial mask.

### How to make:

Mix together 1 cup of honey, 1 tbsp of cinnamon and ½ tbsp nutmeg | Stir until the spices are fully incorporated with the honey | Pour into a bottle that has been sterilised with boiling water | Cover the bottle with some pretty parchment paper or fabric.

# Cloudy2Clear, A Local Service With A Smile.

Established for over 16 years, Cloudy2Clear windows have become the UK's leading company for domestic glass replacement. Customers are no longer needing to risk their windows by using the dreaded double glazing cowboy down the road, instead, now they can join over 320,000 happy customers and have their glass replaced in an affordable and ethical manner. Remember, a failed glass unit may no longer provide you with the protection you need or be energy efficient. Why not spend a few minutes checking your home to see if you have any failed double glazing? If you act now you can avoid any future costly problems.

When talking to the Manager of Cloudy2Clear windows Chris Miller it became clear that these

values have been held dear for a number of years. Since starting the business some years ago Cloudy2Clear have remained true to their core values of supporting the local community by providing a service that saves the public money.

The Cloudy2Clear service only requires the glass to be replaced and not the whole window once the unit has failed. Chris commented "Cloudy2Clear were able to assist our community through the last financial crisis in 2008 due to the savings that can be made in using our service. Unfortunately we might be going through something similar again soon and the public can rest assured that we will be there to help once again".

For a free quotation please call 0800 61 21 118 or visit [www.cloudy2clear.com](http://www.cloudy2clear.com).

“All C2C employees operate a strict social distancing policy.”



# Have Your Windows Steamed Up?

Replace the pane, not the frame!

All glazing backed by our

**25  
YEAR  
GUARANTEE**

**“I really liked the fact that they were a local community run business”**

Janet Beard



We are a  
**Which?  
Trusted Trader**

Social distancing in operation

Faulty locks, handles or hinges?



Priority freephone

**0800 61 21 118**

[www.cloudy2clear.co.uk](http://www.cloudy2clear.co.uk)

Love Your Home - Protect Your Windows - Save Money



# Pet DIET



Are you worried about your pet's weight? Perhaps you've allowed them to over-indulge during the winter months? With as many as half the nation's dogs and cats being overweight, it has never been more important for pet owners to take control of their pet's health and help them to lead a happy and healthy life.

**Calculate calories:** If you don't know how many calories your pet needs each day, then now is the time to find out. While you may think that you can simply refer to the recommended amount on their preferred pet food, this does not take into account metabolism, age and other factors such as activity levels. Ask your vet for a bespoke calorie allowance.

**Measure meals:** Many pet owners simply guess how much they are feeding their pet, or they offer an all-you-can-eat buffet and fill their bowls readily throughout the day. However, it is a much better idea to use a pet measuring cup so that you can make sure you give them the correct amount at each meal.

**Tactical treating:** If you are guilty of giving your pet a few too many treats, then tactical treating offers the perfect solution. This involves choosing low-calorie, no-sugar treats that are beneficial to their health. Carrots and apple slices are a good choice for dogs, and cats enjoy broccoli florets, green beans and catnip. Don't forget that you need to factor these extra calories into their total daily intake.

**Experiment with exercise:** When it comes to keeping your pet healthy and at their ideal weight, daily exercise is key. As well as daily walks for dogs and allowing your cat to explore in the garden, there are lots of other fun exercises you can enjoy with your pets, such as playing fetch, interacting with toys, tug of war and obstacle courses.

**Signs your pet is overweight:** Visual signs such as excess body fat around the stomach, spine and waist | Lack of grooming | Reduced mobility | Difficulty breathing.



**Paws HQ Ltd**  
Dog Grooming & Supplies

**We stock:** 🐾 Beds 🐾 Bowls 🐾 Leads  
🐾 Collars 🐾 Harness 🐾 Hygiene wellbeing  
🐾 Raw food 🐾 Dry food 🐾 Natural deli bar  
🐾 Toys 🐾 Treats *and more!*

## 1:1 Dog Grooming Services:

🐾 Full Pamper Groom 🐾 Wash & Tidy  
🐾 Puppy Package  
🐾 Ultrasonic Teeth Cleaning *...and much more!*

To book call us on **01708 534 022**  
or visit us at **288 Brentwood Road,**  
**Hornchurch RM2 5TA**



Full Service  
for your Dog



**LUX HOMES**  
ESTATE AGENTS

120 North Street, Hornchurch, RM11 1SU  
[www.luxhomesgroup.co.uk](http://www.luxhomesgroup.co.uk)

01708 208807

HAVERING'S PREMIUM ESTATE AGENT



There's no place like  
**Home Hub**



01992 948 980  
essex@homehubgroup.co.uk  
137-139 Epping High Street

f @HomeHubGroup

With no pressure sales, transparent pricing and exceptional service levels you'll feel right at home with Home Hub. Come and see us at our beautiful lifestyle showroom in Epping – call 01992 948989 to book an appointment.

**homehubgroup.co.uk**

Windows • Sliding Doors • Bifold Doors • Roof Lights



**O**ur gardens start to bloom in earnest this month – but March can be a surprisingly tricky time for wildlife. That includes humble but helpful insects and worms, as well as bees, birds, amphibians and hedgehogs. So what can you do to help?

#### LEAVE FOOD FOR HEDGEHOGS

Leave out water and meat-based cat or dog food – ideally chicken in jelly. Do this when it's getting dark, and remember to throw away any uneaten food the next morning. If you have hedgehogs in your garden, you could also buy a hedgehog house or even build one.

#### FEED THE BIRDS

Birds need calorie-rich food at this time of year to get ready for breeding. Choose sunflower hearts (seeds without the husk), fat balls or suet pellets. Steer clear of peanuts just in case adult birds feed them to their young and cause them to choke.

#### BEE KIND

If you're adding new garden plants, choose ones with open flowers that are rich in pollen and nectar. Good choices include aconites, evergreen clematis, primroses, and winter-flowering heather and honeysuckle.

#### BUG LOVE

Helpful insects and even earthworms find it hard to flourish in March as food sources can be scarce. To help them, create a log pile in a shady spot. You might also want to start a compost heap. And, while you don't have to turn your garden into a jungle, insects will love it if you let a corner of your garden grow wild.

#### POND LIFE

March is the main breeding month for frogs, toads and newts. To make your pond amphibian-friendly, select the plants they like to breed around, such as marsh marigold, water forget-me-knot and brooklime. You could add plants such as hornwort and curled pondweed to keep the water oxygenated and help shelter tadpoles from predators.





If you're visiting Sheffield this year, the multi-award-winning Winter Garden offers the chance to take a step away from the bustle of Britain's fourth-biggest city. It's wheelchair and buggy friendly, open every day except Christmas Day, and entry is free.

#### WHAT EXACTLY IS IT?

It's an exotic landscaped garden housed in a vast greenhouse with soaring arches and a glass roof. It houses around 2,500 plants, all originating from temperate climates in the Southern Hemisphere. There are also bedding plants, which are changed five times a year – so there's always something new to admire.

The Winter Garden is 75m long, 23m wide and 21m high – that's big enough to house 5,000 average domestic greenhouses.

And it's not just about plants – there's also an art gallery, a café and shops at the garden. So allow plenty of time for your visit.

The greenhouse was opened in May 2003 by the late Queen Elizabeth II, and was designed by London

architects Pringle Richards Sharratt and Bath-based construction consultants Buro Happold.

#### WHAT TYPES OF EXOTIC PLANTS ARE THERE?

As well as a stunning bamboo curtain, lush tree ferns and elegant grasses, you can also feast your eyes on some of these:

- > Thorny acacia trees, which in their native habitat are an important food source for animals, including giraffes and elephants
- > Pines from the araucaria family, including monkey puzzle trees
- > Palm-like cordylines, often grown as houseplants in the UK
- > Desert plants like cacti, agave and aloe vera
- > Eucalyptus trees, mostly found in Australia and prized for their timber, the oil in their leaves and providing food for koalas
- > Low-growing phormiums, which are native to New Zealand and have elegant, sword-like leaves
- > Trachycarpus palm trees, known for their chunky trunks.

Photo credit: travellight/Shutterstock.com



## The first step to a beautiful lawn is to call GreenThumb

Our wonderful customers like our service so much, that over 40% of new customers joined us through their recommendation which, if you think about it, is a recommendation in itself.

So, if you've been thinking about enjoying a great lawn this year – green, lush and weed-free, why not contact us today and let us bring your lawn to life.

We provide four seasonal treatments, as well as beneficial treatments to keep your lawn in tip-top condition - prices start from just £15\*.

Ask us about our annual plans, which allow you to both spread the cost and save up to 25%.

Simply call: 01277 227 988 or

visit: [greenthumb.co.uk](https://www.greenthumb.co.uk)

f t i

PRICES FROM

£15\*

PER TREATMENT

# GreenThumb

## LAWN TREATMENT SERVICE

\*Based on a lawn size up to 40m²

# UPMINSTER FENCING LIMITED

Family Run Business

Trading Since 1994

SUPPLY & FIT  
PRESSURE TREATED PANELS • FREE ADVICE & QUOTATIONS



OPENING HOURS: WEEKDAYS 8AM TO 3PM  
SHUT WEEKENDS AND BANK HOLIDAYS

01708 225599 – 07831 281 590

[www.upminsterfencing.co.uk](http://www.upminsterfencing.co.uk) • [admin@upminsterfencing.co.uk](mailto:admin@upminsterfencing.co.uk)

Upminster Fencing, Mardkye Works, St Mary's Lane, Upminster, Essex, RM14 3PA



## BEEWISE High end solutions for less than you think

At Beewise we use our massive purchasing power and market expertise to get you the best deals on all of your retail merchant services.

Try risk free for **1 month**  
**50% off the cost of the terminal\***  
**£100 Amazon voucher for the first 200 new customers**

Scan the code or call us and we will save you time and money on your business utilities and services

01708 578086

\*Offer expires 31st March 2023



# CAMERA JARGON Explained!

**W**ant to improve your photography skills? Then spending time with a camera is a good place to start. While mobile phones are great for point-and-shoot, for the best photos a camera is required. At first glance, a camera can seem confusing with all its buttons and settings. Fortunately, we've got you covered with our simple guide to some basic camera terms.

**Exposure:** One of the most important terms to learn in photography. Getting the exposure right will help you take great photos with all of the elements in balance. Put simply, exposure is the amount of light that reaches your camera. Too much or too little exposure can affect the quality of your photo. The 'exposure triangle' is the combination of aperture, shutter speed and ISO that will help you capture the perfect photo.

**Aperture:** The hole that allows light into the lens, represented by the f-number. The lower the f-number, the more light is allowed into the lens. It's the aperture that helps you determine which elements of the shot are in focus, allowing you to play with your depth of field.

**Depth of field:** The distance between the closest and furthest subjects in a photo. A shallow depth of field will put your main subject in focus, creating a blurred backdrop for your subject to sit against. A deep depth of field helps to put the backdrop or landscape in focus, blurring the nearest object.

**Shutter speed:** Controls how much light is allowed into the camera from the lens. It signals how long the lens is open to capture the light. A low shutter speed is ideal for most situations, but when you are faced with fast-moving subjects (such as animals or sports) you'll want to use a high shutter speed to prevent blurring.

**ISO:** The ISO settings determine the light sensitivity. The higher the ISO, the brighter your images. A higher ISO may cause images to feature noise or grain, which can be more difficult to fix during the editing process than an underexposed shot.

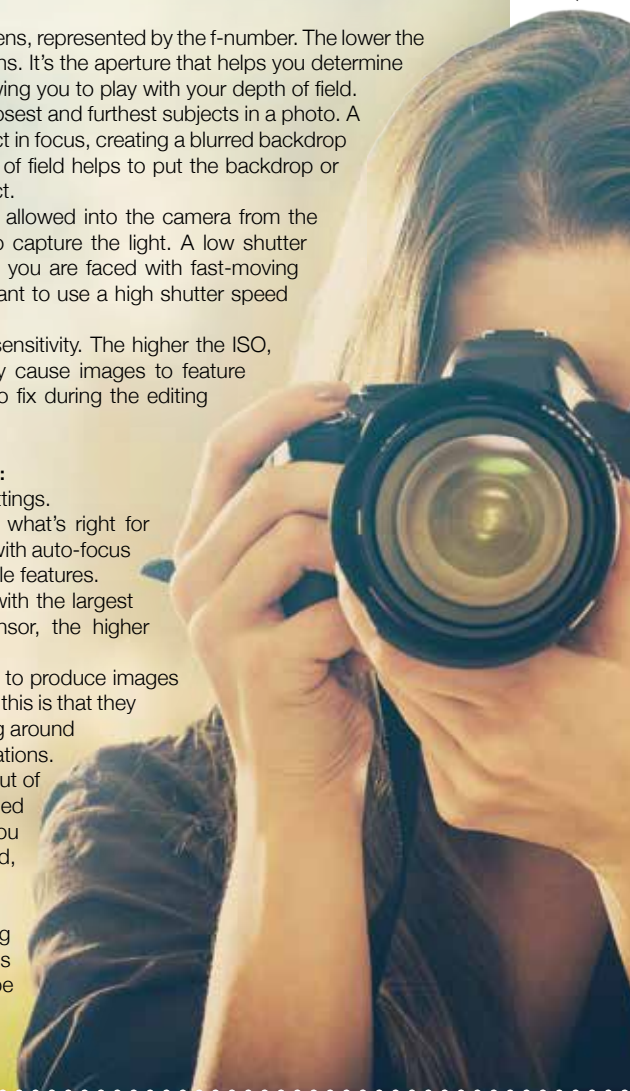
### Points to consider when purchasing a camera:

- Rent or borrow a camera first to trial the settings.
- Consider the size and weight to discover what's right for you. Mirrorless cameras are more portable with auto-focus features, while a DSLR has more changeable features.
- For high-quality photos, look for cameras with the largest sensor size. Generally, the larger the sensor, the higher quality your photos will be.
- A high number of megapixels (MP) will help to produce images that are highly detailed, but the downside to this is that they don't perform as well in low light. Something around the 20MP mark performs well for most situations.
- Invest in a range of lenses to get the most out of your camera. A macro lens is ideal for detailed close-up shots, while a long lens will help you capture high-quality shots from further afield, such as landscapes or wildlife.

Capturing the perfect shot means finding the balance between the three key settings (aperture, shutter speed and ISO). Don't be afraid to experiment and get creative.



TECHNOLOGY



# THE HOT DRINKS *hero*

MEET THE MAN BEHIND THE INVENTION FOR HOT (AND COLD) DRINK LOVERS EVERYWHERE

The next time you unscrew your flask to pour a coffee, spare a thought for Scottish scientist Sir James Dewar. He was the man who made it happen – even though keeping your drinks hot wasn't what he had in mind.

Dewar, who died 100 years ago this month, was best known for his work on the liquefaction of gases. It's not the right place for a chemistry lesson, but when gases are in liquid form, they're much easier to store, so it was important work.

The problem was that Dewar couldn't keep the liquid gases cold enough for long enough to study them. And when they got too hot, they turned into gas again.

To solve the problem, he put his glass flask of liquid gas into a bigger flask. Then he created a vacuum between them and mirrored their outside walls. So the inside flask was almost perfectly insulated, and heat couldn't reach the liquid inside.

Dewar exhibited his creation at London's Royal Institution on Christmas Day 1892. The principle behind his flask is the same one behind the vacuum flasks manufactured today.

Dewar's invention could have made him a wealthy man. The problem was he didn't take out a patent. But the German glassblower who made Dewar's flask had an idea: he realised that the flask could keep liquids warm as well as cold and spotted a gap in the market. He created a flask in a protective metal casing and set up a company called Thermos – Greek for 'hot'. He successfully applied for a patent in 1904 – and the Thermos flask was born.

Dewar sued Thermos for using his invention. Sadly for Dewar, he lost the case. But, refusing to retire, he carried on working as a professor at the Royal Institution until his death at the age of 80 in 1923.



DEWAR'S VACUUM FLASK



## SUPPORT LOCAL BUSINESSES



Please let your local businesses know that you saw them first in... **VISION**

INTERESTED IN TRIATHLON OR MULTI-SPORT DISCIPLINES?



**Havering Tri**

**HAVERINGTRI.CO.UK**



**K.A.S.**

**ADULTS LEARN TO SWIM AND IMPROVER LESSONS**

**KASUK.CO.UK**

**CONTACT KAY HAMILTON**

**07957 567915**

## THE B7 MEDIA GROUP

PRINTING • BUSINESS CARDS • LEAFLETS • DISTRIBUTION  
SIGNAGE • MENUS & BROCHURES • EXHIBITION BOARDS & BANNERS  
RETAIL PACKAGING • WINDOW VINYLs • LOGO DESIGN  
BRAND ALIGNMENT • VEHICLE WRAPPING • CARBON PADS  
WORKWEAR • WEBSITES • SOCIAL MEDIA • I.T. SOLUTIONS



ENQUIRIES@B7MEDIAGROUP.COM



01708 578049



# MAKING AN INSURANCE CLAIM?

Oakleafe  
CLAIMS

Having to make an Insurance Claim can often be a complicated and time consuming process. Once a claim is lodged with an Insurer they will appoint a **LOSS ADJUSTER** to represent them. But did you know you can also appoint your very own Loss Adjuster, known as a **LOSS ASSESSOR**.

Oakleafe Claims **Loss Assessors** are local professionals who specialise in Insurance Claims Management and only represent you-the policyholder. We have extensive experience in all types of claims and values covering the entire U.K. As **Loss Assessors** our mandate is to ensure the policyholder receives their full entitlement after we settle their Insurance Claim.



Storm



Fire & Smoke



Leaks & Floods



Impact



Theft



Business Interruption

Oakleafe Claims **Loss Assessors** are the proud award winning recipients of **Loss Assessor** of the year at the U.K British Claims awards and have been helping people and businesses with Insurance Claims since the Second World War. We operate 24/7 throughout the UK with our head office in Gidea Park and supporting offices in London, Brighton, Manchester, Cardiff & Glasgow.



Email: [Office@Oakleafe.com](mailto:Office@Oakleafe.com) Web: [www.oakleafe.claims](http://www.oakleafe.claims)



## How to get A PATENT

Thinking about applying for a patent to stop others from copying or selling your invention without your permission? Find out everything you need to know about how to get a patent in the UK below.

- ❌ Essentially biological processes such as crossbreeding animals or plants
- ❌ Software that has a non-technical purpose

### HOW MUCH DOES A PATENT COST?

When you apply for a patent, you must pay fees to the Intellectual Property Office (IPO) when you file your application and also for processing your application after you file. This costs at least £310 if you complete the process. You may also want to hire a patent attorney for help and advice.

### HOW TO APPLY FOR A PATENT IN THE UK

Getting a patent in the UK is a fairly complicated process and it can take several years, even with professional help. Therefore, you should only start the application process if you are confident that your invention is new and that a patent meets your needs. If you decide to go ahead, then you need to:

- Prepare detailed documents that describe your invention
- File these documents with the IPO

Typically, around 18 months after you apply, the IPO will publish your application in full. You may then have to amend your application based on its recommendations.

### WHAT CAN YOU PATENT IN THE UK?

To patent an invention in the UK, it must be:

- ✓ New – it must not have been made publicly available anywhere in the world
- ✓ Inventive – it cannot be an obvious change to something that already exists
- ✓ Something that can be made and used, a technical process or a method of doing something

### WHAT CAN YOU NOT PATENT?

There are some things that you are not allowed to patent, including:

- ❌ Literary, dramatic, musical or artistic works
- ❌ A way of doing business, playing a game or thinking
- ❌ A method of medical treatment or diagnosis
- ❌ A discovery, scientific theory or mathematical method
- ❌ The way information is presented

# DON'T JUST TAKE OUR WORD FOR IT...

Dear Brett,

**VISION** magazine has been brilliant for us.

They've helped us increase brand awareness across the whole region and gained us a good few happy customers in the short time we've been with them.

Putting together some brilliant artwork for us, Brett has helped us continue the professional image we're looking for and established us as something of a force locally.

Fulfilling our mission to bring competitively priced home improvements to the local area, realising people's ideal home and helping them achieve their dreams, has been much easier with **VISION** magazine. I foresee our partnership continuing for long into the future.

Many thanks,

Tom & Chris  
New Level Loft Conversions  
01708 578162



Your  
Monthly  
Lifestyle  
Magazine



To advertise call now on

**01708 578049**

or email [hornchurch@visionmag.co.uk](mailto:hornchurch@visionmag.co.uk)

## WE HELP SOLVE PROPERTY ISSUES

- ✓ Repossession
- ✓ Mortgage Arrears
- ✓ Eviction Notice
- ✓ Lease Forfeiture
- ✓ Selling Property
- ✓ CCJ's

**FREE  
ADVICE**



### • TALK TO US

Call now to speak with one of our expert advisors for FREE and Frank Advice. We are ready to Help!



[www.firststeprelief.co.uk](http://www.firststeprelief.co.uk)



**CALL US NOW  
0203 432 6367**

**TTS**



**SOLICITORS**

**YOUR PERSONAL  
CONVEYANCING  
SOLICITORS**

We are on 60 lender panels including most high street banks, building societies and first tier lenders

We are CQS accredited and offer outstanding one-on-one service for

- Sales and Purchases – both leasehold & freehold
- Shared Ownership Right to Buys
- Affordable Housing
- Remortgages & Transfer of Equity
- Auction Sales and Purchases
- Lease extensions

RESIDENTIAL &  
COMMERCIAL  
CONVEYANCING  
CORPORATE  
ACQUISITIONS  
GENERAL LITIGATION  
FAMILY  
WILLS &  
PROBATE



01708 578052 | [www.ttslegal.com](http://www.ttslegal.com) | [info@ttslegal.com](mailto:info@ttslegal.com)

1-4 The Parade, Monarch Way, Ilford, Essex IG2 7HT

CITY OFFICE: 2nd Floor, Mezzanine, 53 New Oxford Street, London, WC1A 1BL

**Family disputes and conflicts can be a difficult and emotionally charged time. You will receive expert, cost-effective guidance which delivers the best possible solution to the issues in your case, if you work with us.**

**With over 75 years of cumulative experience we can offer support and advice on all legal aspects of relationship breakdown.**

**You can seek help on:**

- Child Arrangement Orders
- Child Maintenance
- Injunction Proceedings
- Financial Claims on Divorce
- Financial Provision for Children
- Parental Responsibility Agreements
- Pensions On Divorce
- Divorce
- Prenuptial Agreements
- Separation Agreements

**If your case is suitable we can offer a 40-minute free consultation with one of the team.**



**Sally Ward**  
Head of Family Team  
[sallyward@mplaw.co.uk](mailto:sallyward@mplaw.co.uk)



**Roisin McCorry**  
Consultant  
[roisinmccorry@mplaw.co.uk](mailto:roisinmccorry@mplaw.co.uk)



**Jas Pannu**  
Solicitor  
[jaspreetpannu@mplaw.co.uk](mailto:jaspreetpannu@mplaw.co.uk)



**Yvonne Taiwo**  
Family Law Paralegal  
[yvonnetaiwo@mplaw.co.uk](mailto:yvonnetaiwo@mplaw.co.uk)

**Romford Office:** 8-10 Eastern Road, Romford, Essex RM1 3PJ | **T: 01708 784000**  
**Shenfield Office:** 194 Hutton Road, Shenfield, Essex CM15 8NR | **T: 01277 245015**  
**Email:** [office@mplaw.co.uk](mailto:office@mplaw.co.uk)



UNUSUAL SPORT...

**CHEESE ROLLING**  
A lump of dairy, a hill, an ambulance on standby – it's the Cooper's Hill Cheese Rolling Championship

We've all heard of cheese rolling. Indeed, many of us have seen the frankly terrifying sight of grown men and women hurtling down Cooper's Hill in Gloucestershire on a balmy spring bank holiday in pursuit not just of a 9lb lump of Double Gloucester cheese, but also of the respect of the local community.

The annual event, which takes place on a slightly terrifying 200-yard slope in the town of Brockworth, has become iconic as the go-to cheese rolling event in the UK, yet it attracts competitors from all corners of the world.

While the perception is that anyone who catches the cheese takes the title, in truth this is a 'race to the bottom', with the first person across the finish line claiming the delightful dairy.

Now classed as an extreme sport, there is a series of individual races for have-a-go heroes to compete and contort in, with local legend Chris Anderson the most successful participant in the event's near 200-year history, having won a record 23 races. Ironically, the ex-1st Battalion light infantryman doesn't even like the cheese on offer, insisting on a passion for cheddar instead.

Injuries are commonplace – not just to participants, either. On many occasions, spectators have been struck by the tumbling cheese, which can reach speeds of up to 70mph as it tumbles downhill.

While COVID-19 halted the 2020 and 2021 events, the festival returned in 2022, complete with all manner of sprains, bashes, aches and breaks. Perennial champ Anderson has since announced his retirement, clearing the decks for a new era of southwestern sadist when the event returns this year on Monday, May 29.

While Brockworth hosts the country's most famous competition, there are other cheese rolling events across the UK with their own take on the concept, albeit none quite as flavoursome.



**THE UK'S MOST TRUSTED AND REVIEWED  
AUTO LOCKSMITH & EMERGENCY RESPONSE**

## HOW SAFE IS YOUR CAR?

**Car & Van Security Specialists**

VAN SECURITY LOCKS | ALARM SYSTEMS

VEHICLE TRACKING | THEFT PROTECTION

IMMOBILISERS | CAR KEYS



from  
**ONLY  
£450**



### GHOST CAR IMMOBILISER

**A SMART WAY TO PROTECT YOUR CAR**

Secure your peace of mind and your vehicle  
with the next generation of vehicle security



SCAN ME

**www.carkeyssolutions.co.uk**

Call us on **01708 578071**

Email: [contact@carkeyssolutions.co.uk](mailto:contact@carkeyssolutions.co.uk)

We cover Greater London &  
surrounding M25 areas

**Open 7 days a week  
from 8am to 10pm**

## Improve, Don't Move!

**Maximise the value of your home.**

- **SPACE-SAVING - MAXIMISE YOUR GARAGE HEADROOM**
- **SECURITY-ENABLED AUTO-LOCKING SYSTEM**
- **CHOICE OF 21 COLOURS TO MATCH YOUR HOME**
- **REMOVAL AND RECYCLING OF YOUR OLD DOOR**
- **DEDICATED AFTER-CARE TEAM**

**GAROLLA** 01708 545 657

**ROLLER  
SHUTTER  
DOORS**



**LINES OPEN 7 DAYS A WEEK**

**www.garolla.co.uk**



**BESPOKE ELECTRIC DOORS MANUFACTURED IN THE UK**

**FREE  
FITTING  
PAYMENT ON  
INSTALLATION**



**PRICED  
EXAMPLE £895**  
COMPACT • UP TO 2.4M

**GAROLLA ★ PREMIUM**  
Increased Security • Double Insulation  
One-Touch Close



**PRICED  
EXAMPLE £1,990**  
PREMIUM • 3.4M • ANTHRACITE



MOTORING

**DOUBLES, SINGLES AND MORE... ROAD  
MARKINGS AND HOW TO WORK THEM IN  
YOUR FAVOUR**

**W**e're all familiar with the sight of single and double yellow lines – yet where many of us have fallen foul of road markings, it's because we may not understand what they mean.

This guide to road markings may not make it any easier to find a parking space in your local area, but at least you'll know the risk you're taking when you apply the handbrake.

### SINGLE LINES

Single yellow lines are an indication that waiting restrictions are in place, albeit only at certain times of the day. The intention is to eliminate congestion at busy times.

Always look for the accompanying signs, which will state the times when parking is prohibited. However, you may stop there.

If you see a single red line, stopping is also prohibited at certain times.

### DOUBLE LINES

Parking on double yellow lines is prohibited at all times, unless there is accompanying signage which may indicate an ability to park there on rare or seasonal occasions.

With both single and double yellows, the good news is you get five minutes' grace, and a traffic warden must observe your car for the full duration of those five minutes before writing out a ticket.

If you see a double red line, the message is simple – no stopping (or parking) at any time.

### ZIGZAG LINES

White or yellow zigzag lines offer the same instruction as double red lines, except they are placed near places of high public footfall, such as on level crossings or outside schools and places where emergency services may operate, such as hospitals.

### LOADING OR UNLOADING

To confuse matters, loading and unloading is permitted on double and single yellow lines, but only if it's continuous. You'll get between 20 and 40 minutes, depending on your vehicle.

However, if two yellow stripes are seen emerging from the road and up the curb, even loading and unloading is prohibited. For one yellow stripe, stopping is permitted based on the times shown.

THE GOOD NEWS



# THE VISION LISTINGS

## ACCOUNTANT & TAX ADVISORS

### ALL THINGS ACCOUNTING

Accounting & tax services, we help with self-assessment tax return, corporation tax return, payroll, VAT return, CIS return & bookkeeping. Call 07539 035537 for free initial consultation

## ACUPUNCTURE

### HONG WEI CHINESE MEDICAL

Fully qualified & experienced, specialising in women's health & Fertility. Help with pain relief, emotional disorders, male/female conditions. 01708 454888 | hongweichinesemedicine.co.uk

## AUTO BODY REPAIRS

### SQUIRRELS HEATH AUTOS

Est. Over 30 years taking care of major & minor bumper scuffs, dents, scratches etc. Call for details 01708 437721 | 07745 629957

## BALLOON DECOR

### THE BALLOON SQUAD EVENTS

I offer bespoke decorations for any family celebration or occasion at home or venue. For a no obligation quote contact 07958 586501

## BEAUTY & NAILS

### BEAUTY BY NATASHA KATIE

A local, mobile LVL Technician. Fully qualified level 2 and 3 beauty therapist Babcac insured and approved. 07961 462672

### SPECIAL NAILS

Dedicated to provide the best quality nail care for Men & Women. Walk-ins welcome, appointment bookings & gift vouchers available. 01708 442248

### THE NAIL STUDIO

Nail Studio lets you switch off and pamper with highly skilled technicians providing top treatments and nail products to meet your every need. 07572 526519

## CAR & VAN HIRE

### SCENIC SELF DRIVE

Your self drive hire specialists. Whether you require modern cars, motorhomes, vans or minibuses. Rest assured we will provide you a professional service 01708 753461

## CLEANING SERVICES

### SPOTCLEAN LTD

Commercial & Domestic Services Specialising in Office, Shop, New build, Refurbished & Residential Cleaning. We ensure a Clean & hygienic environment 07940 213394

## CLEARANCE & WASTE

### THE CLEARANCE TEAM

From clearing a room, house or garden to clearing an entire office block. Fast, reliable and affordable. Working 24/7 so you can book us at your convenience 0207 101 3387

## COMPUTER REPAIR & I.T.

### MAPTEC IT

Your local residential & commercial IT specialists. We can fix your computers, configure email accounts & printers. Setup your Wi-Fi, Internet router & network. 0203 865 7174

## DRIVING LESSONS - AUTOMATIC

### NV DRIVE

Lady instructor. Discount available on prepaid courses. Brand new vehicle June 21 - NV Drive school of motoring: call 07554 634183

## ELECTRICAL & WHOLESALE

### CH ELECTRICAL WHOLESALE

Essex & East London's leading electrical wholesalers providing the trade & public a professional service with access to all leading brands. 01708 730591

## ELECTRICIAN

### CAPITAL ELECTRICAL SERVICES LTD

Domestic/Commercial, Repairs/Installation, Vehicle Charging Points, Portable Appliance Testing, Fire Alarms, Emergency Lighting, Installation Condition Reports. Call 01708 578038

**CONTACT [HORNCHURCH@VISIONMAG.CO.UK](mailto:HORNCHURCH@VISIONMAG.CO.UK)**

## FINANCIAL SERVICES

### PARAGON LEGAL SERVICES LTD

We will write your will for only £49.99+Vat subject to T&Cs. Call FREE on 0800 0747 642 or 01206 544919 Call us for a FREE home appointment. [www.paragonlegal.co.uk](http://www.paragonlegal.co.uk)

## FLOORING & RESTORATION

### PARNELL FLOORS

We can provide you with the perfect service from the supply, fitting and finishing of new and reclaimed wooden floors including the restoration of existing floors. 07780 671512

## FLOWERS & FLORISTRY

### THE PLANTIQUE

Our dedicated team of professional florists are able to assist you with floral gifts for any occasion. We offer good quality floral gifts at competitive prices. 01708 477255

## FRENCH POLISHING

### DC POLISHING

20 Years experience in wood restoration i.e. Furniture, doors, staircases, worktops, minor repairs & FLOOR RESTORATION. 07949 204969 | [dcpolishing.church@gmail.com](mailto:dcpolishing.church@gmail.com)

## FURNITURE RESTORATION

### ABBEEY GROUP

Abbey Group are specialist in creating, repairing & restoring quality furniture & wood surfaces to the highest standard. 01708 741135

### KINGS UPHOLSTERY

Handmade sofas & chairs designed especially for you to your required specifications. Also providing in re-upholstery & repair work. 01708 444125

## GARDEN SERVICES

### JOHN HEARNE

We take care of it all Lawn Mowing, Weeding, Planting, General Tidying, Fence/Shed Painting, Driveway/Patio Pressure Washing and more. Call for details 07908 523101

### KINGS CUTS TREE SERVICES

A Huge range of tree services available & offer expert arboricultural advice, ensuring your trees are looked after responsibly. 01708 578030 | 07467 944671

## GIFTS, BALLOONS & ACCESSORIES

### CLASSIC CARDS

Established for 24 years. Specialising in hand made cards, personalised frames, large variations of gifts, jewellery & balloon displays. Gift wrapping available. 01708 620460

## HARDWARE & DIY SUPPLIES

### DISCOUNT DIY & HARDWARE

General Store & Hardware. Full Range Color Gas Bottles Available. 49, Butts Green Road, Emerson Park RM1 2JS. 01708 440151. Open 7 Days

## LAUNDRY & DRY CLEANING

### THE LAUNDRY MAN

From everyday washing, drying & ironing. We can pretty much launder anything & everything. Self service launderette available. 01708 447710

## LOCKSMITHS

### KEYTEK LOCKSMITHS

From Lock outs to security upgrades, our fully trained DBS checked Locksmiths are the experts | Call 01708 202 269 | Quote: 15078

## PLUMBING & HEATING

### CMS PLUMBING HEATING & BATHROOMS

Corgi registered, 20+ years' experience, public liability insurance, offering free quotes. No job too small. Based in Gidea Park. Call Craig 07855 589185

## ROOFING

### JIM BARR ROOFING

Exterior cleaning & maintenance. Gutters, Paving & UPVC; cleaned, repaired & renewed. 01708 874816 | 07833 572459

### SR ROOFERS

Roofing experts with ORIGINAL company name/number. Family run. Confederation of Roofing Contractors approved member. 01708 551714 | 07743 406418

## TILING

### DR BETTS TILING

Large selection of floor & wall tiles, fitting service, porcelain, ceramic, glass & natural stone. Specialist in underfloor heating. 01708 381349

## WINDOWS & GLAZING

### MAJOR GLASS & GLAZING

Specialising in all aspects of glass & glazing for both domestic & commercial. UPVC, Conservatories, Bi-Fold Doors, Double Glazing Repairs, Mirrors. 01708 525996

**JOIN THE LISTINGS...** for just **£15** +VAT per month

**DISCLAIMER:** **VISION** does not represent or endorse the accuracy or reliability of any of the advertisements, nor the quality of any products, information or other materials displayed, purchased or obtained by any customer as a result of an advertisement or any other information or offer in connection with the service or products. The opinions expressed in articles, reviews and stories are strictly those of the individual authors and do not necessarily reflect the views of **VISION**.

**To advertise call VISION on 01708 578049**

PUT YOUR BUSINESS IN THE **VISION** LISTINGS...CALL **01708 578049** TODAY

WORDLADDER: DEER, BEER, BEAR, SEAR, STAR, STAG



# PUZZLES & TRIVIA

## PUZZLES

Answers: see end of The VISION Listings

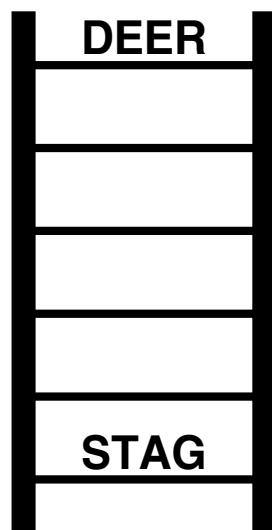
- ▶ BUFFALO
- ▶ CAMEL
- ▶ CHEETAH
- ▶ CROCODILE
- ▶ DONKEY
- ▶ ELEPHANT
- ▶ HEDGEHOG
- ▶ HIPPOPOTAMUS
- ▶ LION
- ▶ LIZARD
- ▶ PANDA
- ▶ REINDEER
- ▶ RHINOCEROS
- ▶ SALAMANDER
- ▶ SNAKE
- ▶ SPRINGBOK
- ▶ TIGER
- ▶ TURTLE
- ▶ WARTHOG
- ▶ WOMBAT

R	H	I	P	P	O	P	O	T	A	M	U	S	D	M
H	E	S	R	R	E	L	I	D	O	C	O	R	C	U
A	O	I	U	Q	E	L	T	R	U	T	T	L	Y	D
M	S	O	N	P	R	E	G	I	T	G	E	E	R	G
D	P	O	R	D	Z	A	E	V	O	M	K	A	Z	O
H	R	C	R	D	E	U	S	H	A	N	Z	E	S	H
A	I	L	E	E	T	E	T	C	O	I	O	L	E	E
B	N	I	D	W	C	R	R	D	L	C	S	E	I	G
U	G	O	N	B	A	O	E	K	A	N	S	P	I	D
F	B	N	A	W	N	U	N	S	D	Z	S	H	D	E
F	O	L	M	A	P	Y	T	I	S	T	L	A	A	H
A	K	E	A	S	F	E	O	N	H	X	C	N	T	T
L	O	A	L	J	K	S	G	B	E	R	M	T	I	J
O	R	L	A	A	D	N	A	P	T	A	B	M	O	W
A	P	T	S	U	T	R	S	H	A	T	E	E	H	C

## DID YOU KNOW?

- ▶ There are 63 million pairs of chopsticks manufactured in China every year – that's 126 million single sticks.
- ▶ In Pakistan, a small city called Sialkot is where 40 per cent of the world's footballs are produced.
- ▶ Covering 2,653 miles, Chile is the world's longest country from north to south.
- ▶ There are more than 2,100 castles stand in Germany.
- ▶ Canada has more lakes than every other country in the world put together.
- ▶ Iceland has no army and is recognised as the world's most peaceful country.
- ▶ Disneyland Paris is the most visited place in Europe.

## WORD LADDER



THE AIM: Change the word at the top of the ladder one letter at a time to make the word at the bottom.

HOW TO: Change one letter on each step to make a new word. By the time you reach the end, you should have created the new word.

DO NOT rearrange the order of the letters.

TIP: There is usually more than one way to solve this puzzle.



You look after them, we look after you.

## Our foster carers receive:

- Extensive training and support package
- Council tax relief for active foster carers inside and outside the borough
- Free parking in selected areas
- Tax free support\*
- Free green bin collections
- Referral bonus of £750
- Free leisure centre access for the family

Find out more today at  
[havering.gov.uk/fostering](http://havering.gov.uk/fostering)  
01708 434574



\*up to £10,000

# küchenhaus

TheGermanKitchen

# German engineering for your home.


## Kutchenhaus Brentwood


6, The Baytree Shopping Centre, Brentwood, Essex CM14 4BX

Tel : 01277 204447

Email: [showroom@brentwood.kutchenhaus.co.uk](mailto:showroom@brentwood.kutchenhaus.co.uk)

 Kutchenhaus Kitchens Brentwood

 [kutchenhaus.brentwood](https://www.instagram.com/kutchenhaus.brentwood)

 Trustpilot

