

FREE

Photo credit: Matt Baron/BEI/Shutterstock

HOW TO
ENJOY
RHUBARB
SEASON

THE BEST SECOND CITIES
to visit across Europe

SWEET AS...
discover the health benefits of honey

LEWIS CAPALDI

On overcoming life's challenges on the road to fame



**We could fill
Wembley Stadium
MORE THAN TWO TIMES
with our monthly
readership...**

**...OVER 207,500 PEOPLE IN ESSEX
READ VISION MAGAZINE'S MONTHLY**

Photo courtesy of PA Images

CONTACT US TODAY TO GET YOUR BUSINESS SEEN BY OUR READERS

Your
Monthly
Lifestyle
Magazine **VISION**

See all our magazines online
at www.visionmagessex.com

Did you know this isn't the only **VISION** magazine in Essex?

Billericay Shenfield Bishop's Cleeve Brentwood Ongar Chelmsford Beaulieu Epping Theydon Harlow Halstead Braintree Hertford
Hornchurch Leigh Thorpe Bay Loughton Maldon Burnham Rayleigh Wickford South Woodford Tending



MAY 2023

Editor's notes...



Brett Shohet, Editor

Hello and welcome to this month's edition of **VISION**Hornchurch. I hoped you enjoyed the Easter break and took the chance to spend time with family and friends. In this fast-paced world, it's easy to forget to relax and chill out, so I hope you remembered to take some time for yourself too. The world is constantly changing, and technology is moving at such a fast pace that it can be difficult to keep up with. AI is a subject on many people's lips at the moment. While some are uncertain about its capabilities, I think it's important not to be afraid of change and to embrace the potential offered to us by such technology.

Our cover star this month is Lewis Capaldi, who is heading out on a UK tour following the release of his new album. I recently watched his Netflix documentary, *How I'm Feeling Now*, and it offered a fascinating insight into his journey on the road to fame, particularly with his struggles with mental health. It drove home the important message about looking after our mental health, and that talking about such issues is the first step to destigmatising them.

I'd encourage everyone to support their local businesses while out and about during the bank holidays coming up this month. Whether that's shopping in an independent boutique or visiting a local restaurant for lunch, they are sure to appreciate your support.

Brett Shohet

This is your town's hyperlocal magazine, delivering to homes and businesses every month.

HOME & DIY | GARDENING | PETS | HEALTH & FITNESS | BEAUTY | FASHION | HISTORY | LOCAL NEWS | FOOD & DRINK | TRAVEL | BUSINESS & PROPERTY | SPORT | PUZZLES | MOTORING | KIDS | WHAT'S ON | TECHNOLOGY | THE LISTINGS

CONTACT US:



hornchurch@visionmag.co.uk | 01708 578049
www.visionmagessex.com | www.visionmagherts.com
@visionmagessex | @visionherts | @visionmagessex | @visionmageastherts
Vision Magazine Essex | Vision Magazine East Herts
CONTRIBUTORS | Tabatha Fabray, Fiona Goble, Holly Bullen

BOOK THIS SPACE

CALL 01708 578049 TO GET YOUR BUSINESS SEEN BY OVER 13,000 READERS MONTHLY

Windows | Doors | Porches | Conservatories | Fascias & Guttering



www.conceptwindows.co.uk
Trading Standards Approved



HIGH SECURITY WINDOWS

96% of customers would **RECOMMEND** **CONCEPT** to friends



HIGH SECURITY DOORS

COMPOSITE DOORS

BI-FOLD DOORS



WHETHER YOU'RE LOOKING FOR A NEW CONSERVATORY OR TO REFURBISH YOUR EXISTING ONE...
FROM START TO FINISH WE TAKE CARE OF EVERYTHING

Concept House,
Billet Lane, (Opposite Sainsbury's)
Hornchurch, Essex RM11 1XP

FREE CUSTOMER PARKING

EVERYTHING ON DISPLAY AT YOUR LOCAL SHOWROOM

For Your **FREE QUOTE** Call **01708 463526**



FROM LILY SAVAGE

The death of Paul O'Grady MBE at the end of March brought a premature end to the life of one of our most respected modern-day entertainers – someone whose own reinvention helped the gradual process of changing attitudes in British society.

Growing up on the sometimes rough, often competitive back streets of Liverpool in the Swinging Sixties required more than a little spark and swagger, so it's probably little surprise that one of its finest exports, Paul O'Grady, created a career built on the foundation of his larger-than-life personality.

"As the saying goes, if you can't beat them, join them – and if you can't join them, become a drag act," laughed Paul O'Grady in one of this final interviews.

He departed from us at 67, seemingly with another decade or two of wit, charm and pzazz still ready to be unleashed, and the tributes have been extensive and heartfelt.

O'Grady had a number of jobs growing up, including working as a clerk, a waiter and a barman. It was only when he moved to London that he managed to create a career out of his passion for entertainment and performance.

The star's main outlet was the dynamic and daring Lily Savage, a drag queen act who became hugely popular on the underground scene, and eventually gained mainstream appeal when Channel 4 took up the option to give him a stint on *The Big Breakfast* after Paula Yates' resignation. The likes of *The Lily Savage Show*, *Blankety Blank* (which the character fronted for five years) and *Lily Live!* followed, showcasing the full mainstream evolution of a character. It was a long way from O'Grady's first TV appearance on *The Bill* back in 1988 as a transvestite prostitute informant named Roxanne (credited to Paul Savage).

While Lily Savage was eventually retired, the legacy of such a dynamic figure lived on. The character had opened doors for a brand of leftfield entertainment, and helped carve a path for LGBTQ+ rights and promotion across mainstream entertainment.

"I had been in that world since the seventies when I began performing in pubs and clubs around London, so it was all very natural for me, and had been for decades," he said.

"That I lived in a country that embraced me and loved me for who I was, I found wonderful, and it compelled me to go on to do other things."

The successful *The Paul O'Grady Show* ran on weekday afternoons for eight years across two spells, and the entertainer also saw huge popularity across extensive theatre, charity and radio work, as well as the likes of *Blind Date* and *For the Love of Dogs* (2012-23). The latter of these popular TV programmes was filmed in late 2022 and is currently showing on ITV1.

In recognition of his contributions to TV, radio and theatre, he was made an honorary Doctor of Arts at De Montfort University Leicester in 2010.

"I always found you can talk about absolutely any subject if you approach it with interest, respect, humility and humour. That's the way I have tried to embrace all the challenges that have come my way," he said.

His funeral, which was held on April 20, featured a significant contribution from Battersea Dogs & Cats Home, who lined the streets with their four-legged residents in honour of the decade O'Grady spent presenting the ITV reality show at Battersea.

"I've always got on better with animals," he joked. "They are much more my type. As I've said before, I am not bothered about sex, money or fame. I just want a mongoose."



TO PAUL O'GRADY

A GUIDE TO THE MOON



Have you ever wondered why the moon appears to change shape each night? These are known as the moon's phases, and it isn't actually the shape of the moon that changes but our view of it.

Find out more about the different phases and names of the moon below.

WHAT ARE THE PHASES OF THE MOON?

- 1. New moon:** You cannot see the moon when it is a new moon.
- 2. Waxing crescent moon:** In the Northern Hemisphere, you see the waxing crescent moon as a thin crescent of light on the right.
- 3. First quarter moon:** The first quarter moon
- 4. Waxing gibbous moon:** This phase is between a half moon and full moon. Waxing means it is getting bigger.
- 5. Full moon:** You can see the moon completely illuminated during full moons.
- 6. Waning gibbous moon:** This phase is between a half moon and full moon. Waning means it is getting smaller.
- 7. Last quarter moon:** This appears as a half moon but with the opposite half illuminated to the first quarter moon.
- 8. Waning crescent moon:** In the Northern Hemisphere, you see the waning crescent moon as a thin crescent of light on the left.



FULL MOON NAMES

Each monthly full moon has a special name, many of which originated from Native American culture:

January: Wolf Moon

February: Snow Moon

March: Worm Moon

April: Pink Moon

May: Flower Moon

June: Strawberry Moon

July: Buck Moon

August: Sturgeon Moon

September: Full Corn Moon

October: Hunter's Moon

November: Beaver Moon

December: Cold Moon

WHAT IS A BLUE MOON?

A blue moon is an additional full moon that appears every once in a while. Typically, a year contains 12 full moons – three in each season – but sometimes a 13th full moon appears, known as a blue moon. Blue moons usually occur once every two to three years but can occur twice in one year. This is next due to happen in 2037.

WHAT IS A HARVEST MOON?

The harvest moon is the full, bright moon that occurs closest to the start of autumn. The term comes from the days before electricity when farmers relied on the moonlight to harvest their crops at night.

ONYX
RESTAURANT & BAR



New SET LUNCH MENU

1 MAIN COURSE + SOFT DRINK £10.99

2 COURSES + SOFT DRINK £13.99

TUESDAY TO THURSDAY

12PM TO 4PM

RESERVE YOUR TABLE TODAY

01708 443 560 | ONYXRESTAURANTANDBAR.COM

Work Opportunities with Prior Care

We are a family run care company who provide care to adults located within the London Borough of Havering. We are currently looking for compassionate people to help us deliver quality care services within our clients' own homes.

We required people who:

- Are a good communicator
- Have a kind & compassionate nature
- Enjoy helping people
- Respect people's rights & differences & ensure they are treated in a dignified manner
- Can be flexible

We can offer you:

- Good rates of pay (Enhanced rate on Bank Holidays)
- Free uniform & PPE
- Refer a friend scheme (subject to conditions)
- Up to 28 days holiday
- Full support 24/7
- Induction course leading into The Care Certificate
- Ongoing development with additional training courses including QCF Diplomas

You NEED to be able to work in the following areas:

UPMINSTER • CRANHAM • HORNCURCH • HAROLD HILL • ELM PARK

Being a car driver is preferred; but if willing to walk or use public transport, candidates can also be considered.

We have all shifts available: Early mornings & lunches - tea & bed calls - weekends. Morning shift starts at around 6am.

Call Karen on 01708 446690 to apply or email your CV to recruitment@priorcare.co.uk

Job Type: Part-Time/ Full Time - zero hour contract
Salary: £9.80 - £10.80 /hour



spine plus.co.uk

- Expert Hands-On Treatment From Head to Toe
- Latest Therapy Equipment

Emerson Park Clinic
128 North Street
RM11 1SU
Call: 01708 578072
www.spineplus.co.uk

A guide to make-up

EXPIRATION DATES

Be honest, how often do you check the expiration date on your make-up? If the answer is hardly ever, then you're not alone. Unfortunately, out-of-date make-up can cause a whole host of problems, including skin irritations and eye infections.

FOUNDATION: Shelf life of six months to one year

You can keep your foundation germ-free for longer by keeping your fingers away from the neck of the bottle and gently dripping the formula onto the back of your hand before applying. If your foundation starts to separate, it definitely needs to be binned.

CONCEALER: Shelf life of six months to one year

Similar to foundation, concealer can last up to one year as long as you keep it out of direct sunlight and avoid touching the applicator with your fingers. Again, if it separates, throw it away.

LIPSTICK: Shelf life of one year

Typically, a lipstick should last for around 12 months. However, if you notice a change in texture, whether it has started to dry out or become gloopy, or if it starts to smell funny, it is no longer usable. Remember to store your lipstick in a cool, dry place.

EYE PENCIL: Shelf life of one year

Pencils tend to last longer than other eye products as they are sharpened regularly. Keep away from steam for enhanced longevity.

MASCARA: Shelf life of three months

If you don't want to get a nasty eye infection, you should be replacing your mascara once every three months or sooner if you notice that the formula has started to become clumpy or smell strange. Never share mascara.

EYESHADOW: Shelf life of three to six months

Although powder eyeshadow can potentially last for up to two years, because it is used around the eyes, you should replace it more often.



BEAUTY

Services Offered

- Cataract surgery with multifocal lens implants for reduced dependence on spectacles
- Lens replacement surgery for removal of glasses
- Glaucoma management
- Minor operations for lumps and bumps around eyes
- Correction of droopy and baggy eyelids
- Watering eyes and blocked tear ducts
- Dry eyes and blepharitis
- YAG and Argon laser treatments of eye conditions
- Botox treatments
- Major surgery undertaken at local private hospitals

For appointments, please contact Phillippa Chambers on 07757 605008



Mr J S Chawla

Mr J S Chawla is available for private consultations in the eye Clinic at Westland Medical Centre.

This Care Quality Commission approved medical facility is equipped with state of the art diagnostic equipment, minor operation room and lasers.



Eye Clinic, Westland Medical Centre,
Westland Avenue, Hornchurch,
Essex, RM11 3SD

www.facebook.com/ClearvisionMedicare



She may only recently have become a recognised TV star, but Esme Young has had a career most budding fashionistas can only dream of.

On first impressions, fashion designers Esme Young and Patrick Grant make unlikely candidates for a sparkling television duo, but that is precisely what they have become as judges on *The Great British Sewing Bee*.

Both have decades of experience in the fashion industry, yet it is Young's effervescent wit and charm that has made her a media darling in her twilight years. She is a natural in front of the camera, but given the Bedfordshire native's illustrious life and career – as revealed in her memoir *Behind the Seams: My Life in Creativity, Friendship and Adventure* – this is hardly surprising.

After graduating from Central Saint Martins in the early 1970s, Young and three of her female friends launched the Camden-based fashion collective Swanky Modes, whose designs appeared in *Vogue*

and were snapped by the likes of David Bailey and Helmut Newton. During these carefree years, Young lived in a squat in Maida Vale, partied with the likes of David Bowie and the Sex Pistols, and saw Swanky Mode dresses worn by superstars of the era such as Grace Jones and Cher.

In the 1990s, Young moved into cinema. Her creations included Leonardo DiCaprio's shirt in *The Beach* and Renée Zellweger's iconic bunny outfit in *Bridget Jones's Diary*.

Alongside her judging role, Young teaches at Central Saint Martins, where she passes down her sartorial wisdom. Musing on how she was taught darning, mending and crocheting by nuns at the all-girl convent school she attended, the talented designer confesses that while seeking perfection in the seams and sleeves she judges, she also wants to be excited and surprised by contestants' creativity.

It seems that, even at 74, Esme Young's best days remain ahead of her.



10 things **YOUR GP** wishes you knew

Do you find yourself Googling questions or symptoms you wish you could discuss with your doctor? Read on to discover 10 things your GP wishes you knew, and save yourself time and worry.

- ♥ **You do not need to clean your ears**
Earwax is needed to protect your ears and should not be removed with a cotton bud or any other small item. This may cause a perforated ear drum.
- ♥ **You do not have to have a period on the pill**
You don't need to have a break from the pill so that you have a period. Taking 21-day contraceptive pills back to back without having the seven-day break will not cause any ill effects.
- ♥ **You don't need to bring down a child's fever**
A fever shows that your body is fighting an infection so, if your child seems well in themselves, you do not need to bring down a high temperature. However, seek medical attention if it is 39.4°C or higher.
- ♥ **Verrucas do not need to be treated**
In most cases, a verruca will go away on its own in a few weeks or a month without the need for

- treatment. However, there are over-the-counter remedies that you can use to treat them.
- ♥ **You do not need to drink eight glasses of water per day**
As long as you stay hydrated, aiming to drink eight glasses of water a day isn't a necessity.
- ♥ **Watching TV in the dark isn't bad for your eyes**
As long as you take regular breaks from watching TV or any other screen, watching TV with the light off is no worse than watching it with the light on.
- ♥ **You can drink alcohol on some antibiotics**
Most antibiotics do not interact with alcohol, so you can safely enjoy a drink if you feel well enough. However, you should always check the attached leaflet to be on the safe side.
- ♥ **Being cold will not give you a cold**
A cold is a virus and is not caused by cold temperatures or being outside.
- ♥ **Cracking joints doesn't cause arthritis**
Cracking of the joints is caused by bubbles of gas and is nothing to be worried about.
- ♥ **The five-second rule isn't real**
If your child eats food that has been dropped on the floor, this is highly unlikely to cause any problems.



MobilityPlus+



The UK's leading provider of affordable electric wheelchairs.

Premium Electric Wheelchairs That Support Independent Living



Includes FREE next day delivery



MobilityPlus+ Ultra-Light Instant Folding Electric Wheelchair
24KG, 4MPH, 2 LITHIUM BATTERIES

Only **£879.99**



MobilityPlus+ Deluxe Ultra-Light FOLDING ROLLATOR WITH SEAT
Only **£114.99**



MobilityPlus+ Upright Rollator WITH FOREARM SUPPORT
Only **£154.99**



MobilityPlus+ Quick-Split Electric LIGHTWEIGHT, COMPACT, 4MPH
Only **£599.99**



MobilityPlus+ Featherlite 18.7KG, 4MPH, LITHIUM BATTERY
Only **£899.99**

Customer Support Team

01992 610 434 | www.mobilitypluswheelchairs.co.uk

OUR SHOWROOM: UNIT 5 VELOCITY, HARLOW BUSINESS PARK, HARLOW, CM19 5QF (APPOINTMENT ONLY)

**You look after
them, we look
after you.**

Our foster carers receive:

- Extensive training and support package
- Council tax relief for active foster carers inside and outside the borough
- Free parking in selected areas
- Tax free support*
- Free green bin collections
- Referral bonus of £750
- Free leisure centre access for the family

Find out more today at
havering.gov.uk/fostering
01708 434574

*up to £10,000



Honey

NOT JUST FOR SPREADING
ON TOAST

On May 20, it's World Bee Day – a time to celebrate those buzzing bugs that make honey.

How do bees make honey?

Using their hollow tongues, bees suck up the nectar from flowers and store it in part of their stomach. Back in the hive, they regurgitate the mixture and spread it through the honeycomb cells. They then fan it with their wings to evaporate the moisture and turn it into honey. There are more than 300 different kinds of honey, depending on the flowers the nectar comes from.

Of course, honey is delicious spread on toast. But did you know it's also a great natural health and beauty aid because it contains micronutrients, including vitamins, minerals and antioxidants? It also has moisturising, antibacterial and anti-inflammatory properties. For maximum benefits, choose raw, organic honey.

Healthy scalp and hair

To treat your scalp, use a tablespoon or two of honey straight from the jar. Leave for a couple of hours before rinsing and shampooing. For a hair mask, mix a tablespoon of honey with the same quantity of olive oil. Leave on for 15 minutes before rinsing and shampooing.

Minor cuts, grazes and insect bites

If you're unlucky enough to suffer a cut or bite, simply dab on some honey to help with the healing process.

Sore throats

To relieve a sore throat, mix a tablespoon of honey with ¼ teaspoon turmeric in a mug of warm water or tea, and sip when you need it. You can also use the mixture as a gargle.

Healthy sleep

A tablespoon or two of honey before bed, eaten or in a drink, can help regulate your blood sugar and make you feel relaxed.

Remember...

Never give honey to children under one year as certain bacteria in honey can produce toxins in a baby's intestines. Also remember that honey is high in sugar and calories. The information here is for guidance only – it is not medical advice.



**Award winning,
personalised
care in your
own home**



- Wellbeing
- Personal care
- Dementia care
- Household tasks
- Outings & activities
- Medication support

**Talk to our team today
01708 609 364**

www.radfieldhomecare.co.uk



Radfield Home Care Havering & Brentwood,
Suite G7, The Old Brick Works
Church Road, Harold Wood
Romford
RM3 0JA



Da Vinci's

ITALIAN RESTAURANT

Taste the Mediterranean through our quality Italian dishes

Antipasti | Starters | Pasta | Pizza | Grills | Wines | Beers | Spirits



**LIVE ENTERTAINMENT
Every Friday**

www.davincishornchurch.co.uk | 01708 474 054 | enquiries@davincishornchurch.co.uk
13-15 Station Lane, Hornchurch, RM12 6JL

RAVISHING Rhubarb

An unusual vegetable owing to its very sour yet slightly sweet taste, rhubarb is instantly recognisable by its deep pink hue. Super simple to grow, rhubarb is popular for both sweet and savoury dishes.

What are the healthy benefits of rhubarb?

- Contains high levels of fibre, which is linked to lower cholesterol levels
- A good source of vitamin K, which is beneficial for your bone and heart health
- Full of antioxidants that protect the body from free radicals
- May help with digestion and to treat digestive disorders

Rhubarb recipes

1 RHUBARB GIN

YOU WILL NEED: 1kg pink rhubarb stalks | 400g white caster sugar | 800ml gin

HOW TO MAKE: Wash the rhubarb, trim the stalks and discard the base and leaves | Cut the stalks into 3cm lengths and place in a sterilised jar with the sugar. (To sterilise jars, wash in soapy water, rinse and then dry in the oven for 20 minutes at a temperature of 140°C/120°C fan/gas mark 1) | Shake and leave overnight | After 24 hours, add the gin, seal and shake again | Leave for four weeks before drinking |

Serve as it is or strain the liquid through a muslin-lined sieve first.

2 RHUBARB CHUTNEY

YOU WILL NEED: 250ml cider vinegar

| 100g golden caster sugar | 300g chopped rhubarb | 4 chopped medjool dates | 1 tsp grated ginger | 1 cardamom pod

HOW TO MAKE: In a pan, heat the cider vinegar and caster sugar until dissolved | Add the chopped rhubarb, ginger, dates and cardamom pod and cook for 15-20 minutes | Once you have a thick chutney consistency, season with salt to taste | Store in sterilised jars for up to two years (unopened).



FOOD & DRINK

STRONG. Small businesses are the heart of the economy. Keep them going **STRONG.** Small businesses are the heart of the economy. Keep them going **STRONG.** Small businesses are the heart of the economy. Keep them going **STRONG.**

Small businesses are the heart of the economy...
use a VISION advertiser today

IT'S TIME FOR A CHANGE OF SCENE

Retire to a dream location
the easy way



Move in ready homes available from £219,500



Do you dream of living on the coast? Relaxed days of fresh air, seaside walks and beach picnics? It's all there for you when you move to a brand-new, fully furnished home at Sandpiper Gardens, Clacton-on-Sea. You could also free up cash, save on bills and have less home maintenance to worry about. Whether you're retiring or semi-retiring, it's time to get more out of life.

- ✓ High-quality, low-maintenance, single-storey homes
- ✓ Safe, secure community of like-minded residents
- ✓ Private garden and parking
- ✓ No stamp duty
- ✓ Part exchange and assisted move options available

Get in touch to find out more or arrange a park visit:

www.tingdene-parks.net | 01933 422471 | info@tingdene.net

Europe's best SECOND CITIES

FIVE EUROPEAN COUNTRIES WHERE THE LESSER-KNOWN SECOND CITIES OFFER, ARGUABLY, MORE THAN THE CAPITAL

1. BERGEN, NORWAY

Many people visiting Scandinavia will instantly migrate towards Oslo for its green spaces, architecture and nightlife, yet for those looking to sample a more stylish, artistic side of Norwegian culture, Bergen is the choice. A seductive port decorated with colourful houses and romantic cobbled streets, it is the gateway to the fjords.

2. KRAKÓW, POLAND

Poland's elevation into a popular location to visit over the past 20 years has been impressive, and this is no better exemplified than in the way Kraków, its second city, welcomes visitors.

A former European Capital of Culture, it is a creative tourist's dream, with arts, crafts, collections and museums, plus a host of theatres for the performing arts.

3. PORTO, PORTUGAL

Located on the Iberian Peninsula, many parts of Porto were built with the aim of luring in foreign investment, so it makes sense that Lisbon's smaller sibling has an abundance of interest and charm.

From bridges to cathedrals, elegant gardens to wine tasting – the city is the birthplace of port wine – it's a smorgasbord of tastes and flavours.

4. CORK, IRELAND

The last port of call for the Titanic before it headed off across the Atlantic, Cork has a lot going for it, with a bustling market, friendly people, and a renowned food and drink scene.

Much more personal than Dublin, it introduces tourists to the rural delights of southern Ireland.

5. KOŠICE, SLOVAKIA

A modern city with an eco edge, Košice combines incredible architecture dating back centuries with a defined approach towards sustainability and the repurposing of old spaces for creative industry.

With a warm welcome and thriving arts scene, this is an inspirational place which transports visitors into a world that reflects the past while embracing the future.



GREAT BRITISH INTERIOR DESIGNER:

HELEN GREEN

DESIGN STUDIO

Who doesn't appreciate a taste of luxury, especially when it comes to home design? One of the most famous names in British luxury interiors is Helen Green Design. Originally founded by the late Helen Green in 2002, the design house describes

itself as "a comprehensive luxury interior design studio synonymous with the creation of beautifully crafted, multi-layered, elegant interiors". And we agree.

Learn more about what makes Helen Green Design one of the best in the business and how you can recreate the look at home.

From stand-out homes in Belgravia to yachts that travel the world, Helen Green Design is behind a wide variety of exquisite home interiors.

Blending both modern and traditional elements, you can expect neutral shades paired with luxury textures to create wonderful designs that are always sure to impress.

How to get the look at home

While Helen Green Design is a design house that oozes sophistication and luxury, it is possible to get the Helen Green look at home. Here are some easy tips to help you make high-end more affordable:

1 Work with the details of your home. From panelling to intricate ceiling patterns, you can keep some of the original features of your home to contrast the modern touches you bring into it.

2 Keep spaces clean and clutter-free to let your statement furniture do the talking. Less is more to create an elegant look.

3 Use textures to add detail. From textured wall art to textured flooring and walls, you can easily add some features to make your interior look and feel more expensive.

Helen Green Design provides the perfect inspiration for any home looking for a high-class upgrade. However, you don't need a luxury budget in order to achieve this look in your own home.



Photo credit: helengreendesign.com



Flooring Centre

- ◆ CARPET ◆ UNDERLAY
- ◆ VINYL ◆ LAMINATE WOOD



- ◆ DOMESTIC & RESIDENTIAL SERVICES
- ◆ ALL FLOORING SUPPLIED & FITTED

Call or visit us – 01708 472331

info@rm2flooringcentre.co.uk

302 Brentwood Road, Hornchurch,
Romford, Essex RM2 5TA

PUT THE SPARKLE BACK INTO YOUR KITCHEN



Domestic Oven Cleaning Specialists

Est. since 2007

Prices

Single oven incl. shelves & grill pan.....	£43.00
Double oven incl. shelves & grill pan.....	£54.00
Range incl. shelves & grill pan.....	From £54.00
AGAs.....	From £90.00
Hobs.....	From £14.00
Extractors.....	From £15.00
Microwaves.....	From £20.00

No VAT to pay



BEFORE



AFTER

PLEASE CALL FOR A FREE QUOTATION

01279 432444 * www.ovenbright.co.uk



**PROPERTY
EXTENSIONS**
ADDSPACE LONDON LTD.



WE COVER ALL ASPECTS
OF BUILDING WORKS

- Property extensions & refurbishments
- Kitchen extensions ■ Loft extensions
- Garage Conversions
- Building contracts & new builds
- Construction services

01708 732 323

www.propertyextensionsessex.co.uk

email: info@addspacelondon.co.uk

EXPERIENCED TRADESMEN TO CARRY OUT
WORKS WITH NO DELAYS OR PROBLEMS



Your guide to SPONGES

A GUIDE TO CHOOSING THE RIGHT SPONGES AND HOW TO KEEP THEM CLEAN

While you may not have given much thought to sponges, if you hate doing the dishes or cleaning kitchen worktops, the right sponge can help to make tiresome tasks a breeze.

sanitise your sponge weekly and throw it away when it shows signs of wear. Ideal for cleaning kitchens, windows, countertops and bathrooms.

WHAT ARE THE MOST COMMON TYPES OF SPONGE?

NON-SCRATCH SPONGES

Sponges that are labelled as non-scratch are safe to use on non-stick pots and pans, as well as real wood surfaces. They also will not scratch the surfaces of ceramic bakeware. Non-scratch sponges are a good choice for cleaning glassware as they effectively remove dirt without causing any damage.

HEAVY-DUTY SPONGES

As the name suggests, heavy-duty sponges are highly abrasive so should be used to remove tough, stuck-on dirt and debris from kitchen items such as stainless steel pans.

Heavy-duty sponges are not suitable for non-stick cookware, as they are likely to scratch their Teflon coating, nor for ceramic cookware or copper pans.

CELLULOSE SPONGES

Cellulose sponges are made from recycled plant fibres, making them a good option for those who want to reduce their carbon footprint and become more sustainable. The main benefits of cellulose sponges are that they are low-cost and very absorbent. However, they are also prone to collecting bits of food over time, so you need to make sure that you

HOW DO I CLEAN REUSABLE SPONGES?

The best way to kill bacteria harbouring in reusable sponges is to clean them in your microwave or dishwasher. If you choose the former, wet the sponge thoroughly and heat on high for one minute. Alternatively, place on the top rack of your dishwasher with the drying cycle on. Do this once a week for best results.

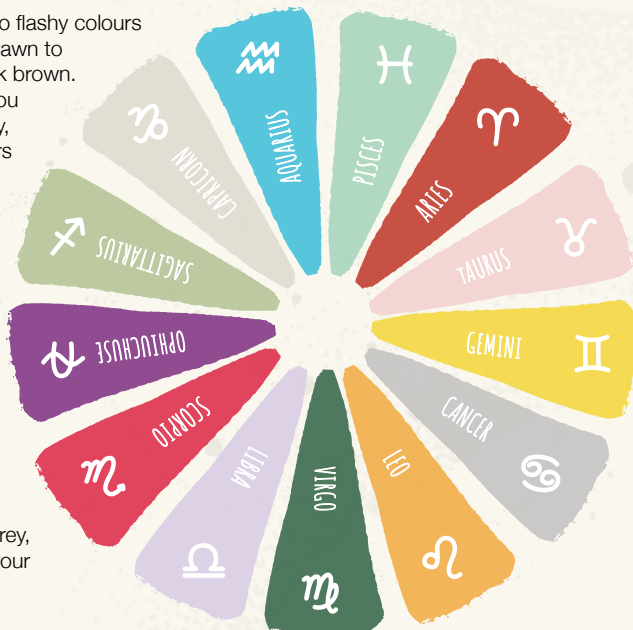


HOME & DIY

DISCOVER YOUR ZODIAC COLOUR PALETTE

Did you know that each zodiac sign has its own bespoke colour palette? Based around the concept of colour psychology, here are the best colours for you and your home, plus why you are drawn to them in the first place.

- > **AQUARIUS:** Elevated primary colours... Not one to stick to the rules, you're drawn to colours that stand out. Choose primary colours with a twist, such as turquoise or deep red.
- > **PISCES:** Soft and dreamy colours... A true romantic, opt for soft hues such as seafoam green and lavender that promise to make you feel open and carefree.
- > **ARIES:** Big and bold colours... Energetic and passionate, you are linked to powerful colours that draw the eye, such as red and deep oranges.
- > **TAURUS:** Playful and bright colours... Light shades of pink and pastel green are perfect for your playful nature.
- > **GEMINI:** Contrasting colours... Geminis are associated with the colour yellow owing to their sunny disposition. Add in some neutral shades for enhanced balance.
- > **CANCER:** Gentle and cool colours... You gravitate towards cooler and lighter tones such as light blue and silver.
- > **LEO:** Striking and statement colours... You command attention, so bold and warm colours such as orange, yellow and gold are ideal for you.
- > **VIRGO:** Grounded and earthy colours... No flashy colours or concepts for Virgos. Instead, you are drawn to earthy tones such as forest green and dark brown.
- > **LIBRA:** Warm and welcoming colours... You have energy that likes to promote harmony, so lavender and pink are both great colours for you.
- > **SCORPIO:** Dark and moody colours... As a sensual and mysterious being, you are inspired by maroon and crimson tones.
- > **OPHIUCHUS:** Deep and mysterious colours... Located between Scorpio and Sagittarius, you are both passionate and unpredictable. Purple should be your go-to colour.
- > **SAGITTARIUS:** Inspiring and intelligent colours... You want a space that makes you feel free, so greens and blues are the colours that draw you in.
- > **CAPRICORN:** Simple and minimalistic colours... Neutral colours such as white, grey, black and ivory are the perfect match for your calm demeanour.



Essex Stairlifts Ltd

Your local stairlift specialist

- Straight Stairlifts
- Curved Stairlifts
- Rental Stairlifts
- New & Used
- Servicing & Repairs
- Home Lifts



For friendly, personal service telephone:

01708 369062

01268 550173

01206 231568



Email: sales@essexstairlifts.co.uk

www.essexstairlifts.co.uk

Capital Clean

NEED A RELIABLE CLEANING COMPANY?

OUR SERVICES INCLUDE:

- Residential Cleans
- Deep Cleans
- Patio/Driveways
- Carpet & Upholstery Cleaning
- Office Cleans
- Commercial Cleans

We provide high quality services, tailored quotes specifically designed for your requirements

Call us on
01708 578087

DOES YOUR KITCHEN NEED AN UPDATE?

SAVE MONEY WITH A MAKEOVER

CHOOSE FROM OUR EXTENSIVE RANGE OF OVER 500 DESIGN AND COLOUR OPTIONS

Doors • Drawers • Panels
Plinths • Trims • Handles • Worktops

CONTACT US TODAY
01268 977950
info@kitchensrenewedessex.co.uk
www.kitchensrenewedessex.co.uk

MOBILE SHOWROOM – WE COME TO YOU
FREE NO-OBLIGATION CONSULTATION & DESIGN
PROFESSIONAL FITTING SERVICE
FULLY QUALIFIED FITTERS



Alf Onnie

Curtains, blinds and plantation shutters

- ✓ Bespoke made to measure curtains
- ✓ Sheers & Voiles
- ✓ Window blinds – manually operated or motorised
- ✓ Plantation shutters
- ✓ Pole and track fitting service

- No obligation quote
- Friendly & enthusiastic family business **Est 1920**
- Experienced consultation & installation team
- Commercial projects also undertaken

Showroom based in Essex/London
 020 8472 4658 07956 818477
 AlfOnnie.co.uk @AlfOnnie1920
 Alf Onnie Curtains and Blinds

On enquiry mention **Vision** for a special offer

Abbey

group

Abbey Group are specialists in creating, repairing and restoring quality furniture and wood surfaces to the highest standard.



From antique to modern we can repair, strip, re-spray, polish, wax, upholster and bring woodwork back to life.

We take great pride in our work and clients appreciate our care and attention to detail.

We think you will too.

01708 741135

Free quotations and no carriage charges with this advert.

abbey-group.net

ADD A

fiddle-leaf fig

PLANT TO YOUR HOME

If you are looking for a new indoor plant for your home, then a fiddle-leaf fig is a great choice. With large, glossy leaves and an impressive trunk, this statuesque tree can act as the focal point in any room.

WHAT ARE THE DIFFERENT TYPES OF FIDDLE-LEAF FIGS?

The most common type of fiddle-leaf fig plant is the *ficus lyrata*, which grows to around 10 feet tall when kept inside.

Other varieties include:

- > ***Ficus lyrata bambino*** – a dwarf variety that grows to only a few feet tall
- > ***Ficus lyrata compacta*** – features smaller leaves and grows to around five feet tall
- > ***Ficus lyrata variegata*** – an uncommon variety with a mix of green and cream leaves

HOW TO CARE FOR A FIDDLE-LEAF FIG

A fiddle-leaf fig needs bright, filtered light to grow, as direct sunlight can burn its leaves. Any quality indoor plant potting mix is fine as long as the soil drains well. This plant needs a moderate amount of moisture to thrive; too much can cause root rot and too little can cause the leaves to wilt. During the growing season (spring to autumn), water when the top inch of the soil feels dry, and then slightly less over winter. Also add a fertiliser specially made for this plant during growing season and remember to regularly clean its leaves.

HOW TO PRUNE A FIDDLE-LEAF FIG

To keep your fiddle-leaf fig in optimal condition, cut back any damaged leaves, overgrowth or crossing branches. Make the cuts about an inch away from the trunk to avoid damage.

WHERE TO BUY A FIDDLE-LEAF FIG

You can buy fiddle-leaf fig trees either online or at some garden centres.



DON'T JUST TAKE OUR WORD FOR IT...

Dear Brett,

VISION magazine has been brilliant for us.

They've helped us increase brand awareness across the whole region and gained us a good few happy customers in the short time we've been with them.

Putting together some brilliant artwork for us, Brett has helped us continue the professional image we're looking for and established us as something of a force locally.

Fulfilling our mission to bring competitively priced home improvements to the local area, realising people's ideal home and helping them achieve their dreams, has been much easier with **VISION** magazine. I foresee our partnership continuing for long into the future.

Many thanks,

Tom & Chris
New Level Loft Conversions
01708 578162



Your
Monthly
Lifestyle
Magazine



To advertise call now on

01708 578049

or email hornchurch@visionmag.co.uk



DISCOUNT DIY & HARDWARE SUPPLIES
Your Local Independent Hardware & DIY Store

FREE LOCAL DELIVERY

THE PRODUCTS WE SELL INCLUDE

- Calor Gas for BBQs & Heaters
- Hand Tools
- Electrical Supplies
- Plumbing Supplies
- Decorating Supplies
- Ladders
- Pest Control
- Gardening Tools & Accessories

COME & SEE US AT
**49, Butts Green Road,
Emerson Park RM11 2JS**

CALL 01708 440151



FULL RANGE OF CALOR GAS BOTTLES AVAILABLE



SOUTH EAST HEATING
DOMESTIC AND COMMERCIAL
HEATING • PLUMBING

Family Run Experienced Service • Est. in 1998

- Boiler repairs & replacements
- Gas installation
- Central heating installation & maintenance
- Gas servicing
- Landlord safety certificates
- Bathroom installation
- Chemical cleaning
- Solar panel installation
- Domestic & commercial plumbing & heating
- General plumbing work
- Gas appliances
- Gas leaks/safety checks

Mobile: 07956 481 819
07539 444413
Office: 01708 221500
southeastheating@btconnect.com



SIDDH GLAZING LTD

QUALITY DESIGN
Manufacturer & Installer
for UPVC & Aluminum
Windows & Doors
Conservatories & Porches
Bi-fold
& Much More...

Tel: 01702969997
Mobile: 07830355172
Email: info@siddhglazing.co.uk
Web: www.siddhglazing.co.uk

TRANSFORM YOUR HOME




LEWIS CAPALDI



Someone We Love...

THE ENDEAVOURS, INSPIRATIONS AND INSECURITIES OF LEWIS CAPALDI

We live in a world where our leading male singer-songwriters no longer have to subscribe to the airbrushed, heavily manufactured, perfectly coiffured boyband façades of the stars of decades gone by.

This has helped to create careers and vast wealth for the likes of Ed Sheeran, James Arthur, Rag'n'Bone Man and, now, Lewis Capaldi.

For the vast majority of us, this is a relief. Not only does it lend hope that any of us can aspire to and reach the most ambitious of heights; more importantly, it dispels the faux perfection that emanates from TV screens, devices and digital radios.

"I grew up in that era where everyone looked like they had just stepped off a catwalk," begins Capaldi, the 26-year-old Scottish singer-songwriter who has captivated the hearts of many with his soulful voice and emotive lyrics.

"We don't have to play those games anymore and I think there is much more allowance for us to be ourselves. It's real progress."

The star, who rose to fame with his chart-topping single *Someone You Loved* in 2019 – a track currently ascending past a colossal three billion streams on Spotify – is reaping the rewards of two decades of soul-searching and hard work... a process that came to light via a recent Netflix documentary, *How I'm Feeling Now*.

The production shone a light on the perseverance that has patterned his rise to the top, as well as giving the artist the opportunity to open up about living with Tourette's syndrome.

The neurological disorder is characterised by involuntary movements and vocalisations, known as tics. "It's something that has always been with me and perhaps always will, but it's so important I use my platform to reassure other people that

Tourette's doesn't need to hold you back from what it is you want to do," he says.

"For years, I felt imprisoned by it, before realising I could use it as a stimulus, because sometimes you need something to rally against in your life, and Tourette's is that thing for me."

Perhaps we shouldn't be surprised at Capaldi's ability to counter life's challenges. A deep thinker, the Scot's emotional attentiveness frequently comes across in his music. From the breakthrough *Someone You Loved*, a poignant ballad, characterised by its raw lyrics and melancholic piano melody, that spent seven weeks at the top of the UK singles chart and reached number one in the US too, to the soulful vocals and introspective lyrics of *Bruises*.

In 2022, both *Forget Me* and *Pointless* made it to the top of the hit parade as well. The former track was Capaldi's first meaningful release in three years, and despite huge previous success, his candid uncertainty was on show in the promotion of the track, when he revealed, "It could be the beginning of a beautiful chapter in my life, or the very public downward spiral that, let's face it, I'm probably due."

Of course, the artist needn't have worried, and he is now embarking on a UK tour to accompany the release of his album, *Broken by Desire to Be Heavenly Sent*, on May 19.

Capaldi is a singer-songwriter of impeccable talent but, almost as important, devastating humility... and he's here to stay.

There's no place like
Home Hub



01992 948 980
essex@homehubgroup.co.uk
137-139 Epping High Street

f @HomeHubGroup

With no pressure sales, transparent pricing and exceptional service levels you'll feel right at home with Home Hub. Come and see us at our beautiful lifestyle showroom in Epping – call 01992 948989 to book an appointment.

homehubgroup.co.uk

Windows • Sliding Doors • Bifold Doors • Roof Lights

Students collect more than 20 bags of litter



A group of students from Hornchurch recently banded together to collect more than 20 bags of rubbish from their local area.

The group of around 50 volunteers from New City College Havering Sixth Form were joined by councillors Gerry O'Sullivan and Paul Middleton.

Together, the group helped clean up rubbish in St Andrew's Park.

Student council president Tymek Rutkowski said: "We need to help save our planet and we need a clean and safe environment for the next generations."

Deputy principal Phil Hall, who joined staff and students in the clean-up, said: "Picking up litter is a quick and instantly gratifying way to make a difference to the environment and our local area. The litter pick was well received by local residents who came out to speak with us and thank us for the initiative."

Lettings agent wins gold at prestigious awards

Lux Homes in Hornchurch has won the British Property Lettings Award at the British Property Awards for 2022-23.

The North Street branch was named as a Gold Winner after performing well throughout the judging process, which focused on customer service levels.

Robert McLean, from The British Property Awards, said: "Our awards have been specifically designed to be attainable to all agents, removing common barriers to entry, such as cost, to ensure that we have the most inclusive awards."

"If an agent has been attributed with one of our awards, it is down to the fantastic customer service

levels that they have demonstrated across a prolonged period of time. Winning agents should be proud that their customer service levels provide a benchmark for their local, regional and national competition."

To find out more about Lux Homes, head to www.luxhomesgroup.co.uk/our-branches/hornchurch

Resident completes wing walk challenge

A Hornchurch resident has raised more than £2,000 in memory of her nephew, who died suddenly of sepsis in 2015.

Lesley Holding took to the skies for a wing walk last month to raise money for the UK Sepsis Trust, a charity aiming to raise awareness of sepsis, a life-threatening condition caused by infection.

The challenge saw her walking across the wings of an aeroplane while it was in flight.

Speaking to **VISION**Hornchurch, Lesley said: "In 2015, my 11-year-old nephew passed away suddenly of sepsis. My sister basically put him to bed and he never woke up."

"A year after he died, I decided to do a sky dive; I'm absolutely petrified of heights."

"Tyler, my nephew, would have been 18 in September last year so I did the wing walk in memory of his 18th birthday. It wasn't as bad as a sky dive, but it was a challenge. I did get quite emotional."

Lesley is still collecting donations for the charity and hopes to continue to raise awareness.

Please visit www.justgiving.com/fundraising/lesley-holdingfortylermorgan to donate to Lesley's fundraiser.



Photo credit: Lesley Holding/justgiving.com

JULIA LOPEZ MP

Conservative MP for Hornchurch and Upminster



Since my last column, I have received a response from new Met Commissioner Sir Mark Rowley to my long-running campaign to stop the sale of Hornchurch Police Station. He has paused the sale while a review of the Met's estate is carried out, and by the time this column is published, I hope to have met Sir Mark in person to present to him a petition opposing the sale that has hundreds of residents' signatures, gathered by Hornchurch and Upminster Conservative Association community campaign teams. New and existing community police officers need to have a base from which to operate in Hornchurch and Upminster and to make sure that our constituency's town centres are not neglected. I am grateful for all of the support we have received and will update everyone on progress.

I visited Thames Chase Community Forest to launch its orchard regeneration project. It is the latest visit in my campaign to create a vast green network of woods, cycleways and walking routes from Havering into Essex as compensation for the Lower Thames Crossing (LTC). Earlier in March, I visited Hole Farm, a huge new community woodland between Brentwood



and Harold Wood of up to 150,000 trees that is being driven by the LTC project team.

Finally, I was delighted to meet recently with Hornchurch resident Greg Mangham, who is founder of Only A Pavement Away. This organisation works to help prison leavers, homeless people, vulnerable military veterans and refugees into the hospitality industry. Its work has so far helped 340 people into secure employment across the country.

News from

COUNCILLOR PAUL MIDDLETON

St Andrews Ward, Hornchurch Residents' Association

The new leisure centre in Rainham, near Tesco, is due to open in July. This is ground-breaking stuff, with the centre being built at a fraction of the cost of a usual centre and many eco, cost-saving measures being employed. We have had visits from many other councils all over the country, including Ireland, to witness the build and quality. This could lead to several other leisure centres being built in areas that would not normally be considered.

The outdoor bowling season starts this month (May to September). There are seven council-owned facilities/clubs in Havering. Several of the clubs are looking for new or additional members. If this is something you would like to try, please locate your local club and ask about a trial membership. If you

can't find your local club, contact me at CouncillorPaul.Middleton@haverling.gov.uk with your address and I will send you the contact details.

The new customer relationship management system is coming online on the Havering Council website at www.haverling.gov.uk

This system will allow residents to report potholes, missed waste collection, damaged or dangerous trees, and more.

The system is being tested and some changes will be released in the coming months. If you have issues that you want to report to the council, give this a go.

Manning and Thurston Family Fun Fair will be coming to Harrow Lodge Park, Hornchurch, from April 28 to May 8. Please help make it a success.

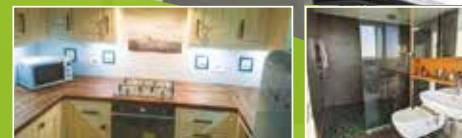


DR BETTS TILING

- ◆ Large selection of wall & floor tiles
- ◆ Fitting service
- ◆ Porcelain, Ceramic, Glass & Natural stone
- ◆ Underfloor heating
- ◆ External porcelain slabs 20mm

Showroom opening times:
Mon - Fri 8am - 5pm Sat 10am - 4pm

The Barn ◆ Church Road ◆ Noak Hill ◆ Romford ◆ RM4 1LD
t: 01708 381349 ◆ e: sales@drbettstiling.co.uk ◆ www.drbettstiling.co.uk



WE CARRY OUT ALL HOME RENOVATIONS

Garage Conversions | Bathrooms | Kitchens | Full Decorating
New Flooring | Plumbing & Heating | Electrical | Glazing
Roofing | Tiling | Handyman & Locksmith Services
Cleaning | Extensions & Loft Conversions | Clearances
Plus much more...

DOMESTIC & COMMERCIAL | NO JOB IS TOO BIG OR TOO SMALL

CHECK OUT OUR GOOGLE REVIEWS

t: 01708 578053 | m: 0794 939 4403
e: info@lillywhitepropertygroup.com
www.lillywhitehomerenovations.com

f [LillywhitePropertyGroup](https://www.facebook.com/LillywhitePropertyGroup) i [LillywhitePropertyGroup](https://www.instagram.com/LillywhitePropertyGroup) t [@LWMaintenance](https://www.twitter.com/LWMaintenance)

LILLYWHITE
LILLYWHITE PROPERTY GROUP LTD



WE OFFER
FREE ESTIMATES

WE NOW OFFER FINANCE
ON ALL REFURBISHMENT
PROJECTS

YOUR LOCAL EVENTS

HARROW LODGE JUNIOR PARKRUN
Harrow Lodge Park, Hornchurch,
RM12 4QU
Every Sunday, 9am – 9.30am



This is a free, fun and friendly weekly 2km event for young people aged four to 14.

Adults can accompany their children, but the course is marshalled and signed, so this isn't strictly necessary.

Register on the website and bring your barcode along to get a time and placing.

Register at www.parkrun.org.uk/harrowlodge

COME AND SING – SOUNDS OF THE 70S
St Peter's Church, Gubbins Lane, Harold Wood,
RM3 0QA

Saturday, May 13, 2pm – 5pm

Come and enjoy an afternoon singing with the Havering Singers under the direction of Jonathan Rathbone.

Tickets cost £5 for adults and students can attend for free. Sheet music is provided. For further details, email contact@haveringsingers.co.uk

THOSE WERE THE DAYS

Brookside Theatre, 21A Eastern Road, Romford,
RM1 3NH

Wednesday, May 17, to Sunday, May 21, various times

This new musical celebrates the ladies who unarguably

left their mark on the music of the swinging sixties: Carole King, Aretha Franklin, Patsy Cline, Dusty Springfield, Diana Ross, Cilla Black, Petula Clark, Tina Turner and many more.

Tickets cost £20-£23. To book tickets, head to brooksidetheatre.ticketsolve.com/ticketbooth/shows/1173634638

CODA – A TRIBUTE TO LED ZEPPELIN
Queen's Theatre, Billet Lane, Hornchurch,
RM11 1QT
Friday, May 19, 7.30pm

CODA is Europe's most authentic tribute to the mighty Led Zeppelin, featuring four musicians who faithfully recreate the excitement, energy, passion and magic of the world's most famous rock band.

The attention to detail is unrivalled. They've got the sound, the look, the hair, incredible reproduction costumes and on-stage mannerisms; you could almost believe you were watching the real thing.

Book tickets at www.queens-theatre.co.uk/whatson/coda-a-tribute-to-led-zeppelin

SUPERSONIC 90S ALTERNATIVE CLUB
MAY 2023

ATIK, 108 South Street, Romford, RM1 1SS
Saturday, May 27, 10.30PM

Supersonic was one of the biggest alternative club nights during the Nineties at the legendary Island, Ilford, and had guest bands such as Oasis, Feeder and Shed Seven play live on the club night. This is a chance to hear all the classic tunes from the past.

Book tickets at www.atikclub.co.uk/club/romford

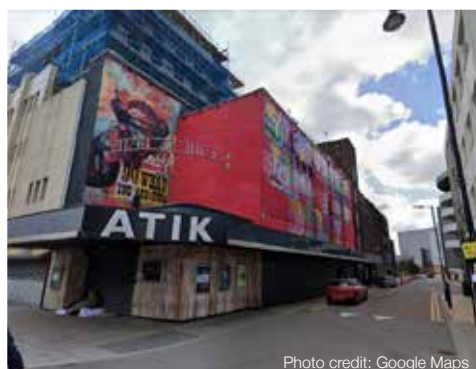


Photo credit: Google Maps



WARDROBES ■ BUILT IN WARDROBES ■ FITTED KITCHENS ■ SLIDING WARDROBES

LUXURY BESPOKE WARDROBES & KITCHENS

Made to order in the UK ■ 10 Year Product Guarantee

Soft Close Doors As Standard ■ We fit wardrobes in less than 2-3 weeks

CONTACT US

01708 756789 ■ 01708 578073

www.bestfittedwardrobe.co.uk

info@bestfittedwardrobe.co.uk



Best Fitted Wardrobe Ltd Unit A3, Seedbed Centre, Davidson Way, RM7 0AZ



BOILR offers comprehensive service plans to homes throughout Essex, Hertfordshire & London.

★	★★	★★★	★★★★★
£7.50 / MONTH	£15.50 / MONTH	£19.50 / MONTH	£23.50 / MONTH
Annual boiler service ✓	Annual boiler service ✓	Annual boiler service ✓	Annual boiler service ✓
Landlord safety record ✓	Landlord safety record ✓	Landlord safety record ✓	Landlord safety record ✓
Heating/Gas/Plumbing ✓	Heating/Gas ✓	Heating/Gas/Plumbing ✓	Heating/Gas/Plumbing ✓
Electrical Faults & Emergencies ✓	Electrical Faults & Emergencies ✓	Electrical Faults & Emergencies ✓	Electrical Faults & Emergencies ✓

Servicing | Installation | Plans

CALL OUR TEAM TODAY FOR MORE INFORMATION

01708 837147

hello@boilrltd.co.uk boilrltd.co.uk



T&C's Apply



WE OFFER VERY
COMPETITIVE PRICES
& WILL BEAT ANY
GENUINE WRITTEN
ESTIMATE

CELEBRATING OVER 46 YEARS OF TRADING WITH
THE ORIGINAL COMPANY NAME & PHONE NUMBER!

- Roof Repair Specialists, All Leaks Cured
- New Tiled Roofs & Velux Windows
- High Performance Felt Flat Roofs
- EPDM Firestone Rubber Flat Roofs
- uPVC Guttering, Fascias & Roofline
- Storm Damage & Insurance Work
- Chimney Stacks Repaired & Removed
- Leadwork, Pointing & Rendering
- Replacement Roof Valleys & Bays
- Roof Overhauls & Maintenance
- Asbestos Removal & Garage Roofs
- Pigeon / solar panel guards
- The Best Quality Materials Used
- 24 Hour Emergency Repairs, 7 Days



A UNIQUE FAMILY RUN BUSINESS BUILT ON REPUTATION, HONESTY & KNOWLEDGE!
OVER 500 GENUINE REVIEWS ON 'TRUSTIST' & OVER 20,000 HAPPY LOCAL CUSTOMERS!
ALL WORK GUARANTEED - FREE ESTIMATES - NO DEPOSITS TAKEN - NO SUB CONTRACTORS USED!

01708 551714 | 07743 406418

www.sr-roofers.co.uk | rosseldridge84@hotmail.co.uk

41a Sunningdale Road, Rainham, Essex, RM13 7BD



We are still open for business and practising safe distancing according to government guidelines.

THE B7 MEDIA GROUP

PRINTING • BUSINESS CARDS • LEAFLETS • DISTRIBUTION
SIGNAGE • MENUS & BROCHURES • EXHIBITION BOARDS & BANNERS
RETAIL PACKAGING • WINDOW VINYLs • LOGO DESIGN
BRAND ALIGNMENT • VEHICLE WRAPPING • CARBON PADS
WORKWEAR • WEBSITES • SOCIAL MEDIA • I.T. SOLUTIONS



ENQUIRIES@B7MEDIAGROUP.COM



01708 578049



Enjoy the delights of the traditional British seaside

For those who crave a bit of nostalgia, and maybe worry that our ability to connect with iconic seaside locations of old is a thing of the past, a trip to Frinton-on-Sea is the perfect remedy.

There is little to rival the natural vibrancy of a sumptuous, sunny, sandy beach, as radiant sun beats down on the coolest, finest Essex sand.

And yet, where Frinton-on-Sea is concerned, serenity and nostalgia come as much from its vibrant rows of beach huts as they do from the wondrous natural environment.

Its architecturally precise promenade sees beach huts painted in a kaleidoscope of bright colours, and these have been an integral part of the town's heritage for more than 100 years. Simple in their form, they retail for upwards of £50,000 – yet if a 12ft square space is adequate for you to relax, change or store beach essentials in, then perhaps the investment is worthwhile? These picturesque huts have become a symbol of traditional British seaside culture and continue to draw visitors from far and wide, yet Frinton is about so much more.

Its unspoiled sandy beaches are award-winning and stretch for miles along the coast, and the gentle slope of the shoreline creates a shallow, safe swimming area that is perfect for families and children. Meanwhile, the absence of amusement arcades, commercial outlets and 'kiss me quick' hats ensures that this part of the Tendring coastline retains a sense of simplicity and class that few other resorts around the UK can rival.

Even the aforementioned promenade, adorned with Victorian-style streetlamps and ornate railings, holds a sense of class about it; while further back, extensive parkland shows the town's custodians are just as adept with grass as they are with sand.

Frinton-on-Sea has a population of fewer than 5,000. Although several times that number swarm into the area on hot summer days, it rarely feels anything other than idyllic. The next time you're looking for an idyllic British seaside escape, Frinton should be top of the list.



LOCAL FEATURE

VDN ELECTRICS

We at VDN Electrics treat your home like our own and take the upmost pride in helping you bring your vision to life.



- ⚡ 24-hour emergency call outs
- ⚡ Full & part rewiring ⚡ Fuse board upgrades
- ⚡ Indoor & outdoor lighting & power
- ⚡ EV charging installations

CALL NOW FOR A FREE SURVEY
07776 906 335
vdnelectrics.co.uk



10% OFF
CODE VDN10M

Offer valid from April 2023 to March 2024.
Can only be used once.

BRENTWOOD SOLAR

Plumbing
& Heating
Repairs &
Installation



Bathroom Suites
Boilers 🔥 Air Conditioning
Air Source Heat Pumps
Safety Certificates



CONTACT US

01708 732 323

info@brentwoodsolar.co.uk

SPECIALIST IN PRE-CAST BUILDINGS

SINGLE GARAGES ■ DOUBLE GARAGES ■ CONSERVATORIES
GARDEN ROOMS ■ SHEDS/WORKSHOPS & MORE



- FAMILY RUN BUSINESS ■ 50 YEARS EXPERIENCE
- 5 YEARS GUARANTEE ■ DESIGNS TAILORED FOR YOU
- HIGH QUALITY, LOW MAINTENANCE CONSTRUCTION

CONTACT US ON 020 8590 3701

www.rpageconcretebuildings.com

f rpageconcretebuildings

951-953 High Road, Chadwell Heath, Romford, Essex RM6 4HB



**R
PAGE
CONCRETE
BUILDINGS LTD**

TO DIG OR
NOT
TO DIG?

Although it may seem strange, no-dig gardening is becoming increasingly popular owing to its ability to save time, banish weeds and ensure plants grow more healthily.

WHAT IS NO-DIG GARDENING?

No-dig gardening is a method of cultivation that aims for minimal disturbance of the soil. Made popular by Charles Dowding, an author and avid gardener, no-dig gardening requires less fertiliser and pesticide, is suitable for any size garden, and can be used to grow flowers, shrubs or vegetables.

WHAT ARE THE BENEFITS?

No-dig gardening is beneficial to your soil, garden and the environment, and can significantly reduce the need to weed. Soil stores a lot of carbon, which means that the more you dig, the more is released into the atmosphere. There is also evidence to suggest that digging upsets the structure of the soil.

A GUIDE TO NO-DIG GARDENING

STEP 1: PREPARE THE AREA

Remove any large weeds and then cover the ground in a layer of light blocking material such as torn-up newspaper. If creating a no-dig area on grass, add a layer of manure and lime first.

STEP 2: ADD LAYERS

Add a layer of kitchen scraps, such as vegetable peelings or fruit waste, and a layer of compost made from leaves and grass cuttings. Then, add a layer of straw, another layer of compost, and finally another layer of straw.

STEP 3: MAKE WELLS FOR PLANTING

Create wells about 10cm deep in the top layer of straw and fill them with compost. Then, plant your seeds or seedlings into the wells. Water well and wait for your no-dig garden to grow.



GOT SOME FRONT

Our front gardens are typically a bit more restrictive than the spaces behind our homes, but that doesn't mean we can't still make them look stunning.

They are the outdoor spaces that typically lack privacy, are exposed to dirtier air, and may even find themselves hosting a car or work vehicle. Therefore, for the added aggro our front gardens have to put up with, it's sensible to keep things simple, saving your energy for the private space at the back.

Beginning with plants and varieties of flowers, it's sensible to limit a front garden to perhaps just five or six variations. If you include too many different styles, it can create a hotchpotch of ideas that will only make your home look untidy.

Also try to prioritise privacy over prettiness. The front of our property is exposed to all and sundry, so carefully positioned hedges, shrubs and trees can keep unwanted eyes away. Just be sure not to

position larger living matter in front of windows to prevent blocking out the light.

When selecting plants, consider varieties that will last all year round, saving you a constant summer/winter change-up. Think summer roses that progress into gorgeous winter blossoms, and evergreens that will grace the changing seasons with constant class.

As far as a lawn goes, while artificial grass has never been better or looked more authentic, a small area of real grass, or perhaps one either side of a path, is low maintenance and can be taken care of with a simple mower. While it's tempting to bring a wild meadow into the equation, that look is always better achieved in a larger garden, where a rugged area is established in a well-tended garden.

Finally, if you're looking to pave or lay down slate or stone in a front garden, remember weeds will still work their way through, so keep an eye on things, particularly in the summer months.

keeping your front garden low maintenance



The first step to a beautiful lawn is to call GreenThumb

Our wonderful customers like our service so much, that over 40% of new customers joined us through their recommendation which, if you think about it, is a recommendation in itself.

So, if you've been thinking about enjoying a great lawn this year – green, lush and weed-free, why not contact us today and let us bring your lawn to life.

We provide four seasonal treatments, as well as beneficial treatments to keep your lawn in tip-top condition – prices start from just £15*.

Ask us about our annual plans, which allow you to both spread the cost and save up to 25%.

Simply call: 01277 227 988 or
visit: greenthumb.co.uk



PRICES FROM
£15*
PER TREATMENT

GreenThumb
LAWN TREATMENT SERVICE

*Based on a lawn size up to 40m²

UPMINSTER FENCING LIMITED

Family Run Business

Trading Since 1994

SUPPLY & FIT

PRESSURE TREATED PANELS • FREE ADVICE & QUOTATIONS



OPENING HOURS: WEEKDAYS 8AM TO 3PM
SHUT WEEKENDS AND BANK HOLIDAYS

01708 225599 – 07831 281 590

www.upminsterfencing.co.uk • admin@upminsterfencing.co.uk

Upminster Fencing, Mardkye Works, St Mary's Lane, Upminster, Essex, RM14 3PA

Improve, Don't Move!

Maximise the value of your home.

- SPACE-SAVING - MAXIMISE YOUR GARAGE HEADROOM
- SECURITY-ENABLED AUTO-LOCKING SYSTEM
- CHOICE OF 21 COLOURS TO MATCH YOUR HOME
- REMOVAL AND RECYCLING OF YOUR OLD DOOR
- DEDICATED AFTER-CARE TEAM

GAROLLA
ROLLER SHUTTER DOORS

01708 545 657

LINES OPEN 7 DAYS A WEEK

www.garolla.co.uk



BESPOKE ELECTRIC DOORS MANUFACTURED IN THE UK

FREE FITTING
PAYMENT ON
INSTALLATION

PRICED
EXAMPLE £895
COMPACT • UP TO 2.4M

GAROLLA ★ PREMIUM
Increased Security • Double Insulation
One-Touch Close

PRICED
EXAMPLE £1,990
PREMIUM • 3.4M • ANTHRACITE

Cloudy2Clear, A Local Service, Saving You Money.

As a leading domestic glass replacement company for more than 16 years, Cloudy2Clear windows are the leading name in the industry. There is no need for you to risk your windows by using the dreaded double glazing cowboy down the street. You can join over 336,000 happy customers and replace your glass ethically and affordably. If you have a failed glass unit, it may not provide you with the protection you need or be as energy-efficient as it once was. Take a minute to check your home to see if any double glazing has failed? Taking action now can prevent future financial problems.

values have been held dear for a number of years. Since starting the business some years ago Cloudy2Clear have remained true to their core values of supporting the local community by providing a service that saves the public money.

The Cloudy2Clear service only requires the glass to be replaced and not the whole window once the unit has failed. Chris commented "Cloudy2Clear were able to assist our community through the last financial crisis in 2008 due to the savings that can be made in using our service. Unfortunately we might be going through something similar again soon and the public can rest assured that we will be there to help once again".

When talking to the Manager of Cloudy2Clear windows Chris Miller it became clear that these

For a free quotation please call 0800 61 21 118 or visit www.cloudy2clear.co.uk.

“Ask me about our fantastic Energy Saving Glass.”



Have Your Windows Steamed Up?

Replace the pane, not the frame!

All glazing backed by our

25
YEAR
GUARANTEE

“I really liked the fact that they were a local community run business”

Janet Beard



We are a Checkatrade Member



Get a FREE Quote

Social distancing in operation

Faulty locks, handles or hinges?



Priority freephone
0800 61 21 118

www.cloudy2clear.co.uk

Love Your Home - Protect Your Windows - Save Money



Full Service for your Dog

We stock: 🐾 Beds 🐾 Bowls 🐾 Leads
Collars 🐾 Harness 🐾 Hygiene wellbeing
Raw food 🐾 Dry food 🐾 Natural deli bar
Toys 🐾 Treats ...and more!

1:1 Dog Grooming Services:

🐾 Full Pamper Groom 🐾 Wash & Tidy
🐾 Ultrasonic Teeth Cleaning
🐾 Puppy Package ...and much more!

To book call us on **01708 534 022**
or visit us at **288 Brentwood Road,**
Hornchurch RM2 5TA



INTERESTED IN TRIATHLON OR MULTI-SPORT DISCIPLINES?



HAVERINGTRI.CO.UK



K.A.S.

**ADULTS LEARN TO SWIM
AND IMPROVER LESSONS**

KASUK.CO.UK

CONTACT KAY HAMILTON
07957 567915



LUX HOMES
ESTATE AGENTS

120 North Street, Hornchurch, RM11 1SU
www.luxhomesgroup.co.uk

01708 208807

HAVERING'S PREMIUM ESTATE AGENT

DOES YOUR DOG HAVE HAY FEVER?

Did you know that dogs can suffer with hay fever? In fact, an estimated 10 per cent of pooches in the UK suffer with this seasonal affliction.

DOES MY DOG HAVE HAY FEVER?

Unlike in humans, who typically experience itchy eyes, sneezing and a runny nose, hay fever in dogs typically manifests itself on their skin. Look out for your dog itching, nibbling or rubbing any of the following spots:

Paws | Eyes, ears and mouth | Armpits | Abdomen | Legs | Around their bottom | Groin

In some cases, their skin may also look red, flaky and sore, or they may experience fur loss as a result of constant scratching.

WHEN IS HAY FEVER SEASON?

When your dog suffers with hay fever will be dependent on where you live in the UK and what strain of pollen your dog is sensitive to. However, that being said:

- > Tree pollen occurs from late March to mid-May
- > Grass pollen occurs from mid-May to July
- > Weed pollen occurs from the end of June to September

HOW TO TREAT HAY FEVER IN DOGS

Although hay fever cannot be treated, there are things that you can do to help manage their symptoms and make your dog feel more comfortable. Some of the available hay fever

treatments for dogs are:

- > Topical treatments, such as medicated shampoos and creams
- > Antihistamines (prescribed by your vet)
- > Essential fatty acid supplements
- > Medication to reduce your dog's immune reaction, such as steroids
- > Immunotherapy – although this is expensive and not always effective

HOW TO MANAGE HAY FEVER IN DOGS

- > Walk your dog early in the morning or later in the evening to avoid high pollen counts
- > Keep your dog's ears clean to prevent irritation
- > Wipe your dog's fur, skin and paws with a damp cloth after a walk
- > Wash their bedding regularly
- > Vacuum your home regularly
- > Use an air filter system in your home
- > Stay up to date with your dog's flea and worming treatments

CAN CATS GET HAY FEVER?

Yes, cats can also get hay fever and tend to experience many of the same symptoms as dogs, such as excessive itching, most commonly on the ears, bottom and paws. Cats may also snore as a result of an inflamed throat.

You can get topical creams and anti-itch wipes to alleviate their symptoms.



Make a splash

Stuck for something to do with the kids on a typically rainy day in the UK? No need to fret; there will be smiles all round if you pay a visit to one of these top indoor waterparks.

Waterworld. Stoke-on-Trent

Frequently listed as one of the top indoor waterparks in the UK, Waterworld is a fantastic day out for all the family. Featuring 30 rides and activities for all ages, some of its most popular attractions include slides for toddlers, white-knuckle rapids and a wave pool.

Splashdown. Dorset

Splashdown offers 13 thrilling indoor and outdoor rides, as well as three splash zones for children under five. Our favourite ride by far is the Mississippi Drifter, where the whole family can ride on one inflatable tyre. The Infinity flume is also great fun, and you can even pick your own music!

Sandcastle Waterpark. Blackpool

The largest indoor waterpark in the UK, Sandcastle features an impressive 18 rides and attractions for you to enjoy. As well as the slides, wave pools and flumes, this waterpark has arcades, snack bars and cafés, so you can easily spend the whole day there.

Alton Towers Waterpark. Staffordshire

If you want to combine theme park rides with water slides, the Alton Towers Waterpark is the ideal choice for you and your family. With high-speed slides, waterfalls, tranquil lagoons and relaxing hot tubs, there's something for everyone at this popular waterpark.

PROBLEMS WITH YOUR DEVICES? CALL THE TECH DOCTOR

WE REPAIR, BUY, SELL & EXCHANGE
MOBILES, LAPTOPS & TABLETS



GADGETS CLINIC

- Repairs & Unlocking
- Data Recovery
- Broken/Cracked Screens
- Water Damage
- Battery Replacement
- Charging Problems

We also stock a wide range of phone, tablet & laptop accessories

**WE CAN
HELP**

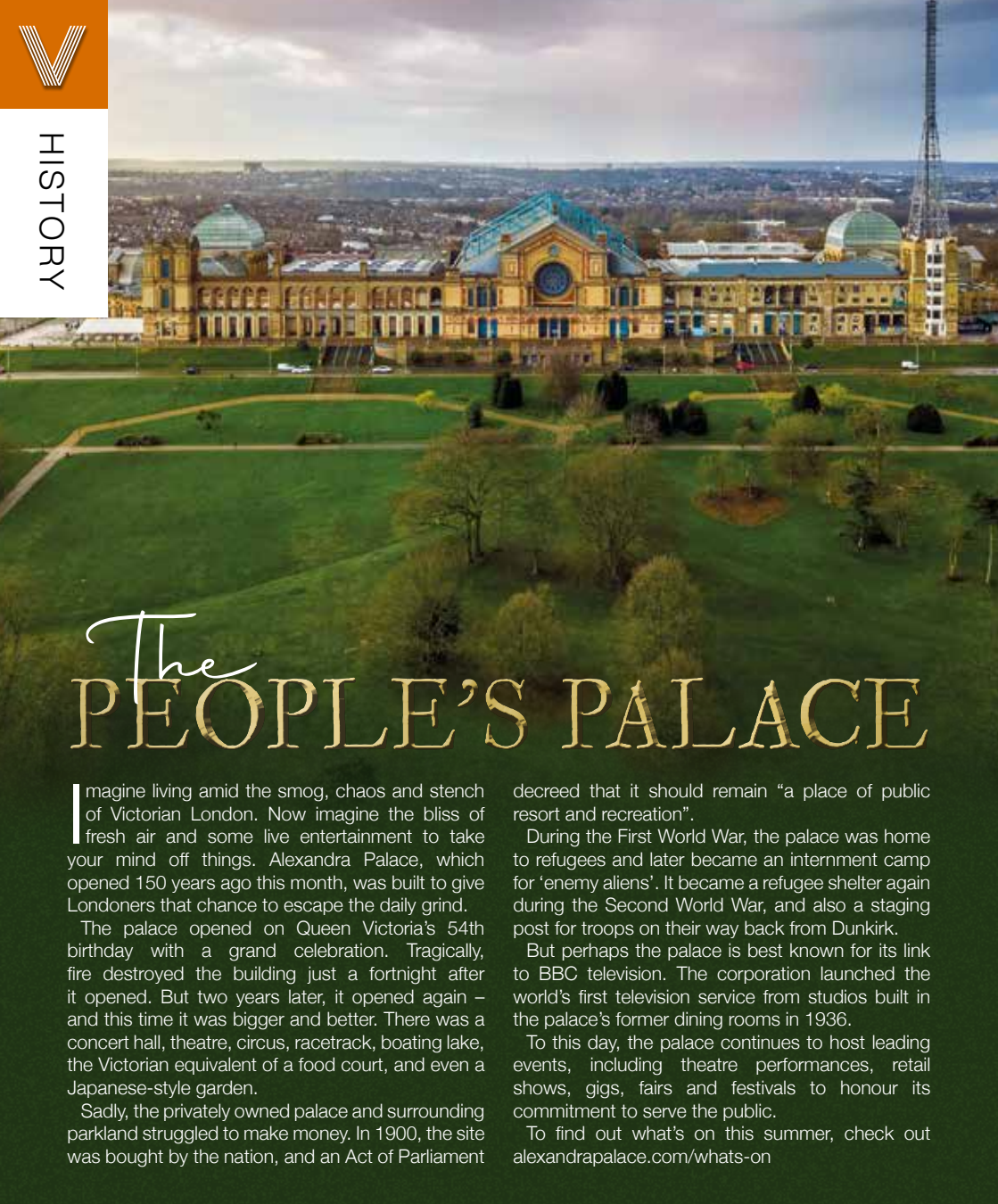
Contact us on **01708 922541**

www.gadgetsclinic.co.uk • gchornchurchltd@gmail.com
or visit 112 High Street, Hornchurch RM12 4UH

SUPPORT LOCAL BUSINESSES



Let your local businesses know that you saw them first in... **VISION**



The PEOPLE'S PALACE

Imagine living amid the smog, chaos and stench of Victorian London. Now imagine the bliss of fresh air and some live entertainment to take your mind off things. Alexandra Palace, which opened 150 years ago this month, was built to give Londoners that chance to escape the daily grind.

The palace opened on Queen Victoria's 54th birthday with a grand celebration. Tragically, fire destroyed the building just a fortnight after it opened. But two years later, it opened again – and this time it was bigger and better. There was a concert hall, theatre, circus, racetrack, boating lake, the Victorian equivalent of a food court, and even a Japanese-style garden.

Sadly, the privately owned palace and surrounding parkland struggled to make money. In 1900, the site was bought by the nation, and an Act of Parliament

decreed that it should remain “a place of public resort and recreation”.

During the First World War, the palace was home to refugees and later became an internment camp for ‘enemy aliens’. It became a refugee shelter again during the Second World War, and also a staging post for troops on their way back from Dunkirk.

But perhaps the palace is best known for its link to BBC television. The corporation launched the world's first television service from studios built in the palace's former dining rooms in 1936.

To this day, the palace continues to host leading events, including theatre performances, retail shows, gigs, fairs and festivals to honour its commitment to serve the public.

To find out what's on this summer, check out alexandrapalace.com/whats-on

Alexandra Palace was built as a north London version of Crystal Palace, which hosted The Great Exhibition in 1851. It was named after the Danish-born Princess Alexandra, who had just married Queen Victoria's eldest son – later to become Edward VII. It was called The People's Palace and soon became widely known as Ally Pally.

TTS SOLICITORS



YOUR PERSONAL CONVEYANCING SOLICITORS

We are on 60 lender panels including most high street banks, building societies and first tier lenders

We are CQS accredited and offer outstanding one-on-one service for

- Sales and Purchases – both leasehold & freehold
- Shared Ownership Right to Buys
- Affordable Housing
- Remortgages & Transfer of Equity
- Auction Sales and Purchases
- Lease extensions

RESIDENTIAL & COMMERCIAL CONVEYANCING
CORPORATE ACQUISITIONS
GENERAL LITIGATION
FAMILY WILLS & PROBATE



01708 578052 | www.ttslegal.com | info@ttslegal.com
1-4 The Parade, Monarch Way, Ilford, Essex IG2 7HT
CITY OFFICE: 2nd Floor, Mezzanine, 53 New Oxford Street, London, WC1A 1BL



BEEWISE

High end solutions for less than you think



At Beewise we use our massive purchasing power and market expertise to get you the best deals on all of your retail merchant services.

Try risk free for **1 month**
50% off the cost of the terminal*
£100 Amazon voucher for the first 200 new customers

Scan the code or call us and we will save you time and money on your business utilities and services

01708 578086

*Offer expires 31st May 2023



MAKING AN INSURANCE CLAIM?

Oakleafe
CLAIMS

Having to make an Insurance Claim can often be a complicated and time consuming process. Once a claim is lodged with an Insurer they will appoint a **LOSS ADJUSTER** to represent them. But did you know you can also appoint your very own Loss Adjuster, known as a **LOSS ASSESSOR**.

Oakleafe Claims **Loss Assessors** are local professionals who specialise in Insurance Claims Management and only represent you-the policyholder. We have extensive experience in all types of claims and values covering the entire U.K. As **Loss Assessors** our mandate is to ensure the policyholder receives their full entitlement after we settle their Insurance Claim.



Storm



Fire & Smoke



Leaks & Floods



Impact



Theft



Business Interruption

Oakleafe Claims **Loss Assessors** are the proud award winning recipients of **Loss Assessor** of the year at the U.K British Claims awards and have been helping people and businesses with Insurance Claims since the Second World War. We operate 24/7 throughout the UK with our head office in Gidea Park and supporting offices in London, Brighton, Manchester, Cardiff & Glasgow.



Email: Office@Oakleafe.com **Web:** www.oakleafe.claims



If you want to start saving, then you may be wondering where to put your hard-earned cash. Two of the most popular options are ISAs and savings accounts, but which one is best for you?

WHAT IS AN ISA?

ISA stands for individual savings account and offers a tax-efficient way to save money. There are four types of ISAs:

- Cash ISAs
- Stocks and shares ISAs
- Innovative finance ISAs
- Lifetime ISAs

The government sets a limit for how much can

be saved each financial year and does not charge any tax on the interest you earn.

WHAT IS A SAVINGS ACCOUNT?

A savings account offers a safe place to put aside your money and allows you to earn varying amounts of interest. Depending on your circumstances, you may have to pay tax on any interest earned.

There are several different types of savings accounts, including:

- Easy-access accounts
- Fixed-term accounts
- Regular savings accounts

ISA	Savings Account
Completely tax-free	Interest is taxed if you earn over £1,000 for basic tax earners and £500 for high tax earners per year
You can deposit up to £20,000 per year	No limits on deposits
Limited to opening one type of ISA per year	No limits on how many accounts you can open
Good for large amounts and long-term saving	Good for large amounts and long-term saving

SHOULD I OPEN AN ISA OR A SAVINGS ACCOUNT?

Before you decide whether to open an ISA or a savings account, you need to determine your needs and savings goals. Typically, you can earn more competitive interest rates on a savings account and, depending on the account, you may be able to both deposit and withdraw money. However, an ISA is a good choice if you want to protect yourself from paying tax on any interest earned.



...SAVINGS ACCOUNTS

Planning together for children

Many parents who are splitting up find it difficult to focus on their children's needs because of ongoing difficulties in their relationship with one another. Feelings and reactions to separation make it difficult to communicate about their children because they are under stress.

With no clear way of resolving this conflict, parents often end up going to Court. Court proceedings can make the conflict worse by making the parents take sides. New government initiatives are being introduced in a move away from this and to support the early resolution of family law matters.



One of those initiatives is the Planning Together for Children course. It replaces the SPIP (Separated Parents Information Programme) which was introduced in 2006. The Planning Together for Children course puts the emphasis on working together rather than separation.

The course is free of charge but parents can only attend if there is a court application. The course will not be suitable for all parents so Cafcass or the Court will need to make a referral. This can be before the first court hearing, at the first hearing or at any later stage in the court case.

There are three stages to the course:

- Self-directed e-learning on topics such as what happens if parents go to court, understanding and managing emotion, how separation affects children, and looking at things from a child's point of view.
- A workshop with other parents for more learning and discussion. These workshops are usually delivered online but can be in person if needed. They cover topics such as understanding the impact of conflict on children, how separation affects children, and communicating in positive ways with each other.
- an interactive online parenting plan. The plan encourages agreement over sharing the care and support of children. Parents are encouraged to share the plan in a way that is understandable to the children.

It encourages parents to think about their children first while working out how they can parent together when separating or living apart. It is aimed at protecting children against some of the harmful effects of parental conflict.

Sally Ward's comment

By the time disputes over children get to court parents are often very entrenched, their emotions spiral out of control and their children's best interests get forgotten. Being able to refer parents to the Planning Together for Children course right at the beginning of a court application should encourage parents to focus on their children and avoid court hearings which will keep their costs down.



Family disputes and conflicts can be a difficult and emotionally charged time. You will receive expert, cost-effective guidance which delivers the best possible solution to the issues in your case, if you work with us.

With over 75 years of cumulative experience we can offer support and advice on all legal aspects of relationship breakdown.

You can seek help on:

- Child Arrangement Orders
- Child Maintenance
- Injunction Proceedings
- Financial Claims on Divorce
- Financial Provision for Children
- Parental Responsibility Agreements
- Pensions On Divorce
- Divorce
- Prenuptial Agreements
- Separation Agreements

If your case is suitable we can offer a 40-minute free consultation with one of the team.



Sally Ward
Head of Family Team
sallyward@mplaw.co.uk



Roisin McCorry
Consultant
roisinmccorry@mplaw.co.uk



Jas Pannu
Solicitor
jaspreetpannu@mplaw.co.uk



Yvonne Taiwo
Solicitor
yvonnetaiwo@mplaw.co.uk

Romford Office: 8-10 Eastern Road, Romford, Essex RM1 3PJ | **T: 01708 784000**
Shenfield Office: 194 Hutton Road, Shenfield, Essex CM15 8NR | **T: 01277 245015**
Email: office@mplaw.co.uk

UNUSUAL SPORT:

Underwater Rugby

HEARING THE RALLYING CRY OF 'SWIM LOW, SWEET CHARIOT', IT CAN ONLY BE AN INVITATION TO PLAY UNDERWATER RUGBY

In 1961 in Cologne, Germany, a new variation on a hybrid sport containing elements of rugby and water polo was invented.

Named underwater rugby, for perhaps rather obvious reasons, the first championships took place some 17 years later, even though the sport's overseers were still unclear as to what the rules should be.

Ultimately, it was decided that there should be six players per side in the pool at any one time, with further substitutes from a total squad of 15 able to be made during the two 15-minute halves.

Most team formations comprise of two forwards, two backs and two goalkeepers or left-wingers, with the aim being to keep possession and score after outwitting the opposition through speed, skill and holding your breath.

The underwater rugby ball is plastic and filled with salt

water and the players have to score in steel goals which are located at the bottom of opposing ends of the pool. The pool dimensions have to be between 12m and 22m in length, 8m and 12m wide, and with a depth of 3.5-5m.

No kicking, hitting or strangling is allowed, but it's a contact sport so, within reason, anything else goes. Officials are present to judge possible offences, resulting in punishments such as warnings, free throws or two-minute penalties.

There were 18 countries involved at the last World Championships in 2019, where Colombia became the first non-Nordic nation to win a gold medal, beating two-time and defending champions Norway in the final in Graz, Austria.

Underwater rugby is said to be the only true 3D sport in the world in the way both the ball and the players can travel in three dimensions and in all directions – imagine, for instance, having a teammate 5m below you in a pool. For this reason, its popularity is exploding.

Photo credit: Arden Flessman/Shutterstock.com

The hidden gem on your doorstep



A LIMITED
NUMBER OF
MEMBERSHIPS
AVAILABLE
**ENQUIRE
NOW**

Essex golfing at it's best!

Romford Golf Club is a private members club, run by the members, for the members.

New Members Enjoy...

- MONTHLY PAYMENT OPTIONS
- FREE RECIPROCAL GOLF AT THREE LOCAL CLUBS
- PLAY WITH FRIENDLY WELCOMING GOLFING GROUPS
- EASY WALKING COURSE
- RECENT MAJOR COURSE INVESTMENT

Also Available

- LADIES "TASTER" GOLF
- SATURDAY JUNIOR ACADEMY
- SOCIAL MEMBERSHIP



ROMFORD GOLF CLUB
EST 1894

For further details contact,
01708 740 986 ext 5
richard.hall@romfordgolfclub.co.uk
www.romfordgolfclub.com

Heath Drive, Gidea Park, Romford RM2 5QB



**THINKING OF A
PARTICULAR CAR TYRE
SIZE THAT NOBODY SELLS?**

**WE GUARANTEE
YOU THAT WE'LL
HAVE IT
IN STORE!**

WE OFFER A WIDE RANGE OF BRANDS

○ MICHELIN ○ PIRELLI ○ CONTINENTAL ○ DUNLOP
○ JOYROAD ○ EVERFORCE ○ KAPSEN ○ HIFLY ○ ROADCRUZA
○ SAFERICH ○ KAPATOS ○ LANVIGATOR ○ ROADMARCH



**MANY PREMIUM BRANDS ARE ALSO AVAILABLE
FROM OUR MAIN WAREHOUSE (HORNCHURCH/ILFORD)**

**VISIT US AT 10-12 RONEO CORNER,
HORNCHURCH RD, RUSH GREEN, RM12 4TN
OR CALL US ON 01708 578141 / 07574 964250**



SUPPLYNFIT



supplynfit_tyres

+ SUPPLY N' FIT TYRES WHOLESALE
The fastest growing tyre wholesalers in the UK last year



**THE UK'S MOST TRUSTED AND REVIEWED
AUTO LOCKSMITH & EMERGENCY RESPONSE**

HOW SAFE IS YOUR CAR?

Car & Van Security Specialists

VAN SECURITY LOCKS | ALARM SYSTEMS
VEHICLE TRACKING | THEFT PROTECTION
IMMOBILISERS | CAR KEYS

**from
ONLY
£450**



GHOST CAR IMMOBILISER

A SMART WAY TO PROTECT YOUR CAR

Secure your peace of mind and your vehicle
with the next generation of vehicle security



www.carkeyssolutions.co.uk
Call us on 01708 578071
Email: contact@carkeyssolutions.co.uk

We cover Greater London &
surrounding M25 areas

**Open 7 days a week
from 8am to 10pm**

GUIDE TO BUYING A

USED SCOOTER



MOTORING

Whether you are a first-time buyer or are seasoned in the world of scooters, a used one can save you a pretty penny.

Below are four questions you need to ask before buying a used scooter.

1 DOES IT RUN?

While this may seem like a no-brainer, before you buy a used scooter, you need to make sure that it actually runs. Once you have established that it does, the next step is to listen to how it sounds. Four-stroke engines should have a smooth hum, whereas two-stroke engines should sound like a gentle chainsaw, so make sure you listen out when you do a test drive.

2 HOW LONG HAS IT BEEN SITTING?

If you are purchasing a used scooter online, take a close look at the pictures. Does the scooter look dusty? If yes, then it may

have been sitting unused for a while. Make sure you check the battery and the tyres as both of these are likely to need replacing.

3 CAN YOU STILL GET SPARE PARTS FOR THE SCOOTER?

While you can still get spare parts for most scooters that have come out in the last decade, it is always worth checking before you sign on the dotted line. Don't forget to also be vigilant of scooters that are missing several body panels, as this can be a sign of a crash or that the scooter has been stolen.

4 WHO IS THE SELLER?

You can choose to buy a used scooter from either a dealership or a private seller. While there are advantages and disadvantages for each option, a dealership is a safer bet as you can find out about their reputation online and they are more likely to provide detailed checks on their scooters.



Photo credit: Martin Charles Hatch/Shutterstock.com

THE VISION LISTINGS

ACCOUNTANT & TAX ADVISORS

ALL THINGS ACCOUNTING

Accounting & tax services, we help with self-assessment tax return, corporation tax return, payroll, VAT return, CIS return & bookkeeping. Call 07539 035537 for free initial consultation

ACUPUNCTURE

HONG WEI CHINESE MEDICAL

Fully qualified & experienced, specialising in women's health & Fertility. Help with pain relief, emotional disorders, male/female conditions. 01708 454888 | hongweichinesemedicine.co.uk

AUTO BODY REPAIRS

SQUIRRELS HEATH AUTOS

Est. Over 30 years taking care of major & minor bumper scuffs, dents, scratches etc. Call for details 01708 437721 | 07745 629957

BALLOON DECOR

THE BALLOON SQUAD EVENTS

I offer bespoke decorations for any family celebration or occasion at home or venue. For a no obligation quote contact 07958 586501

BEAUTY & NAILS

BEAUTY BY NATASHA KATIE

A local, mobile LVL Technician. Fully qualified level 2 and 3 beauty therapist Babcac insured and approved. 07961 462672

SPECIAL NAILS

Dedicated to provide the best quality nail care for Men & Women. Walk-ins welcome, appointment bookings & gift vouchers available. 01708 442248

THE NAIL STUDIO

Nail Studio lets you switch off and pamper with highly skilled technicians providing top treatments and nail products to meet your every need. 07572 526519

CAR & VAN HIRE

SCENIC SELF DRIVE

Your self drive hire specialists. Whether you require modern cars, motorhomes, vans or minibuses. Rest assured we will provide you a professional service 01708 753461

CLEANING SERVICES

SPOTCLEAN LTD

Commercial & Domestic Services Specialising in Office, Shop, New build, Refurbished & Residential Cleaning. We ensure a Clean & hygienic environment 07940 213394

CLEARANCE & WASTE

THE CLEARANCE TEAM

From clearing a room, house or garden to clearing an entire office block. Fast, reliable and affordable. Working 24/7 so you can book us at your convenience 0207 101 3387

COMPUTER REPAIR & I.T.

MAPTEC IT

Your local residential & commercial IT specialists. We can fix your computers, configure email accounts & printers. Setup your Wi-Fi, Internet router & network. 0203 865 7174

DRIVING LESSONS - AUTOMATIC

NV DRIVE

Lady instructor. Discount available on prepaid courses. Brand new vehicle June 21 - NV Drive school of motoring: call 07554 634183

ELECTRICAL & WHOLESALE

CH ELECTRICAL WHOLESALE

Essex & East London's leading electrical wholesalers providing the trade & public a professional service with access to all leading brands. 01708 730591

JOIN THE LISTINGS... for just £180 +VAT per yr

ELECTRICIAN

CAPITAL ELECTRICAL SERVICES LTD

Domestic/Commercial, Repairs/Installation, Vehicle Charging Points, Portable Appliance Testing, Fire Alarms, Emergency Lighting, Installation Condition Reports. Call 01708 578038

VDN ELECTRICS LIMITED

Taking pride in providing a wide range of electrical services for domestic and commercial properties. Call today for your free survey 07776 906335

FINANCIAL SERVICES

PARAGON LEGAL SERVICES LTD

We will write your will for only £49.99+Vat subject to T&Cs. Call FREE on 0800 0747 642 or 01206 544919 Call us for a FREE home appointment. www.paragonlegal.co.uk

FLOORING & RESTORATION

PARNELL FLOORS

We can provide you with the perfect service from the supply, fitting and finishing of new and reclaimed wooden floors including the restoration of existing floors. 07780 671512

FRENCH POLISHING

DC POLISHING

20 Years experience in wood restoration i.e. Furniture, doors, staircases, worktops, minor repairs & FLOOR RESTORATION. 07949 204969 | dcpolishing.church@gmail.com

FURNITURE RESTORATION

ABBEY GROUP

Abbey Group are specialist in creating, repairing & restoring quality furniture & wood surfaces to the highest standard. 01708 741135

KINGS UPHOLSTERY

Handmade sofas & chairs designed especially for you to your required specifications. Also providing in re-upholstery & repair work. 01708 444125

GARDEN SERVICES

JOHN HEARNE

We take care of it all Lawn Mowing, Weeding, Planting, General Tidying, Fence/Shed Painting, Driveway/Patio Pressure Washing and more. Call for details 07908 523101

KINGS CUTS TREE SERVICES

A Huge range of tree services available & offer expert arboricultural advice, ensuring your trees are looked after responsibly. 01708 578030 | 07467 944671

GIFTS, BALLOONS & ACCESSORIES

CLASSIC CARDS

Established for 24 years. Specialising in hand made cards, personalised frames, large variations of gifts, jewellery & balloon displays. Gift wrapping available. 01708 620460

HARDWARE & DIY SUPPLIES

DISCOUNT DIY & HARDWARE

General Store & Hardware. Full Range Color Gas Bottles Available. 49, Butts Green Road, Emerson Park RM11 2JS. 01708 440151. Open 7 Days

LAUNDRY & DRY CLEANING

THE LAUNDRY MAN

From everyday washing, drying & ironing. We can pretty much launder anything & everything. Self service launderette available. 01708 447710

LOCKSMITHS

KEYTEK LOCKSMITHS

From Lock outs to security upgrades, our fully trained DBS checked Locksmiths are the experts | Call 01708 202 269 | Quote: 15078

PLASTERING

ALL WEEKS PLASTERING

Qualified, Experienced Internal/External work, Reliable, Friendly, Trustworthy and Tidy. Call Ryan for Free Quote 07530 818167

PLUMBING & HEATING

CMS PLUMBING HEATING & BATHROOMS

Corgi registered, 20+ years' experience, public liability insurance, offering free quotes. No job too small. Based in Gidea Park. Call Craig 07855 589185

BOILR

BOILR offer servicing, installations, repairs and plans. Local Gas Safe engineers for all your needs. Please call 01708 837147

ROOFING

JIM BARR ROOFING

Exterior cleaning & maintenance. Gutters, Paving & UPVC; cleaned, repaired & renewed. 01708 874816 | 07833 572459

SR ROOFERS

Roofing experts with ORIGINAL company name/number. Family run. Confederation of Roofing Contractors approved member. 01708 551714 | 07743 406418

TILING

DR BETTS TILING

Large selection of floor & wall tiles, fitting service, porcelain, ceramic, glass & natural stone. Specialist in underfloor heating. 01708 381349

WINDOWS & GLAZING

MAJOR GLASS & GLAZING

Specialising in all aspects of glass & glazing for both domestic & commercial. UPVC, Conservatories, Bi-Fold Doors, Double Glazing Repairs, Mirrors. 01708 525996

DISCLAIMER: **VISION** does not represent or endorse the accuracy or reliability of any of the advertisements, nor the quality of any products, information or other materials displayed, purchased or obtained by any customer as a result of an advertisement or any other information or offer in connection with the service or products. The opinions expressed in articles, reviews and stories are strictly those of the individual authors and do not necessarily reflect the views of **VISION**.

To advertise call VISION on 01708 578049

PUT YOUR BUSINESS IN THE **VISION** LISTINGS...CALL **01708 578049** TODAY

WORDLADDER: ROAD, LOAD, LORD, LORE, TORE, TYRE



PUZZLES & TRIVIA

PUZZLES

Answers: see end of The VISION Listings

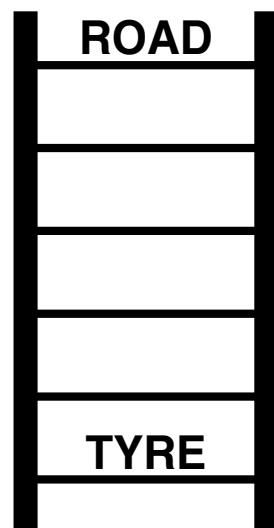
- ▶ ACCRA
- ▶ ADDIS ABABA
- ▶ ALGIERS
- ▶ CAIRO
- ▶ DAKAR
- ▶ FREETOWN
- ▶ GABORONE
- ▶ HARARE
- ▶ KAMPALA
- ▶ KINSHASA
- ▶ LILONGWE
- ▶ LUSAKA
- ▶ MAPUTO
- ▶ MOGADISHU
- ▶ MONROVIA
- ▶ NAIROBI
- ▶ NIAMEY
- ▶ NOUAKCHOTT
- ▶ VICTORIA
- ▶ WINDHOEK



DID YOU KNOW?

- ▶ Members of the Royal Family are not allowed to sign autographs. This is in case somebody tries to forge their signature.
- ▶ During her reign, Her Majesty Queen Elizabeth II sent more than 300,000 congratulatory cards to people celebrating their 100th birthdays, and more than 900,000 messages to couples marking their diamond (60th) wedding anniversary.
- ▶ King Charles III, the former Prince of Wales, has been the heir apparent since he was three years old.
- ▶ In November 1965, while a student at Gordonstoun School, the then-Prince of Wales played the lead in Shakespeare's *Macbeth*.
- ▶ The former Prince of Wales has presented the weather forecast on the BBC.

WORD LADDER



THE AIM: Change the word at the top of the ladder one letter at a time to make the word at the bottom.

HOW TO: Change one letter on each step to make a new word. By the time you reach the end, you should have created the new word.

DO NOT rearrange the order of the letters.

TIP: There is usually more than one way to solve this puzzle.

WHEN YOU BUY FROM A SMALL BUSINESS



YOU'RE **NOT** HELPING A CEO
BUY A THIRD HOLIDAY HOME

YOU'RE HELPING TO PAY FOR...

*a little girls
dance classes*



A YOUNG BOY'S
TEAM JERSEY

**MUM AND DAD TO PUT
FOOD ON THE TABLE**



SUPPORT YOUR LOCAL BUSINESSES
AND LET THEM KNOW YOU SAW THEM FIRST IN... **VISION**

NINETY TWO DEGREES CELSIUS

The perfect medium rare New York Strip is cooked at fifty four degrees Celsius.

A single millimetre is all that is needed for a flawless slice of Jamón Ibérico.

Sixty four degree water gives the most rich, velvety poached eggs you've ever imagined.

When you're in the kitchen, perfection and joy come from precision. And it's the same when we're in the kitchen too — because we love what we do.

This is German Enjoyneering.



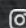
Kutchenhaus Brentwood

6, The Baytree Shopping Centre
Brentwood, Essex CM14 4BX

Tel : 01277 204447

showroom@brentwood.kutchenhaus.co.uk

 Kutchenhaus Kitchens Brentwood

 [kutchenhaus.brentwood](https://www.instagram.com/kutchenhaus.brentwood)

kütchenhaus

The **German** Kitchen