

FREE

Photo credit: Hugo Burnand/Royal Household/Shutterstock

HM King CHARLES III

Monarch ascends the throne in historic ceremony



**We could fill
Wembley Stadium
MORE THAN TWO TIMES
with our monthly
readership...**

**...OVER 207,500 PEOPLE IN ESSEX
READ VISION MAGAZINE'S MONTHLY**

Photo courtesy of PA Images

CONTACT US TODAY TO GET YOUR BUSINESS SEEN BY OUR READERS

Your
Monthly
Lifestyle
Magazine **VISION**

See all our magazines online
at www.visionmagessex.com

Did you know this isn't the only **VISION** magazine in Essex?

Billericay Shenfield Bishop's Cleeve Brentwood Ongar Chelmsford Beaulieu Epping Theydon Halstead Braintree Hertford
Hornchurch Leigh Thorpe Bay Loughton Maldon Burnham Rayleigh Wickford South Woodford Tending



Editor's notes...

JUNE 2023



Brett Shohet, Editor

Hello and welcome to this month's edition of **VISION**Hornchurch. Last month, we celebrated an occasion most of us will never have experienced before - the coronation of a monarch. I visited London the week before King Charles III's coronation and the atmosphere was electric. During my visit, I went to Carnaby Street, where my dad used to own a shop. I stood in the same shop doorway I would have stood in at age seven, and took in all the changes that have taken place in the intervening years. While it can feel as though we live in a world of constant change, the coronation reminded us that we are all united in a country steeped in long-standing tradition and history.

I recently had an interesting conversation about DFS. It's become a running joke that the furniture retailer always has a sale on. For most of us, the adverts have become background noise, so frequently do we hear about the DFS sale. But when people are ready to buy a sofa, guess who they think of first? All this is to say how important it is to put your name out there and ensure as many people as possible are aware of your brand. This way, when the customer is ready, they'll know how to find you.

If you are interested to see how we can do this for your business locally, then please get in touch.

Brett Shohet

This is your town's hyperlocal magazine, delivering to homes and businesses every month.

HOME & DIY | GARDENING | PETS | HEALTH & FITNESS | BEAUTY | FASHION | HISTORY | LOCAL NEWS | FOOD & DRINK | TRAVEL | BUSINESS & PROPERTY | SPORT | PUZZLES | MOTORING | KIDS | WHAT'S ON | TECHNOLOGY | THE LISTINGS

CONTACT US:



hornchurch@visionmag.co.uk | 01708 578049
www.visionmagessex.com | www.visionmagherts.com
@visionmagessex | @visionherts | @visionmagessex | @visionmageastherts
Vision Magazine Essex | Vision Magazine East Herts
CONTRIBUTORS | Tabatha Fabray, Fiona Goble, Holly Bullen

home
hub group

NOW OPEN ON
EPPING HIGH STREET

We supply and
install windows
and doors.

01992 276 046
essex@homehubgroup.co.uk
homehubgroup.co.uk
@HomeHubGroup



Windows | Doors | Porches | Conservatories | Fascias & Guttering

CONCEPT
Windows and
Conservatories

www.conceptwindows.co.uk
Trading Standards Approved



96%
of customers
would
RECOMMEND
CONCEPT
to friends



HIGH SECURITY WINDOWS



HIGH SECURITY DOORS

COMPOSITE DOORS

BI-FOLD DOORS

WHETHER YOU'RE LOOKING FOR A NEW CONSERVATORY OR
TO REFURBISH YOUR EXISTING ONE...
FROM START TO FINISH WE TAKE CARE OF EVERYTHING

Concept House,
Billet Lane, (Opposite Sainsbury's)
Hornchurch, Essex RM11 1XP

FREE CUSTOMER
PARKING

EVERYTHING ON DISPLAY AT YOUR LOCAL SHOWROOM



For Your FREE QUOTE Call **01708 463526**

King Charles' Vision



They claim that patience is rewarded with the finest treasures, and His Majesty King Charles III's lengthy 70-year wait as the heir apparent undoubtedly demonstrates his worthiness for the throne.

Now, after being confirmed in the eyes of God during his coronation in May, His Majesty will finally implement his grand vision, aiming to propel the Windsors into the modern era.

So, what will this mean for the King, those closest to him, and us, his loyal subjects?

A key principle of King Charles III's plan is to streamline the royal family. In recent years, this process has unfolded somewhat naturally, with Prince Harry voluntarily stepping back from his official duties and Prince Andrew being removed from his responsibilities.

However, under the provisions of the Regency Act 1937, in the event of the monarch's incapacity, their spouse and the four eligible adults next in line to the throne can act as substitutes. This means that the Duke of Sussex, Duke of York and Princess Beatrice are authorised to fulfil these roles – yet there is a problem, in that they are not working royals.

King Charles III has already amended this law in Parliament to allow his siblings Prince Edward and the Princess Royal Anne to act as additional councillors, but perhaps he will go further and make it so that such duties and privileges are only fulfilled by working royals.

Having experienced numerous turbulent periods in the monarchy's history, King Charles III possesses a keen awareness of the Republican sentiment prevailing among certain sections of the British population. While the late Her Majesty Queen Elizabeth II enjoyed immense

popularity, there are those who firmly believe that the time has come to dissolve the monarchy and forge ahead into a fully modern and democratic Britain. However, when we consider the substantial contributions of the monarchy to our economy and the profound cultural value of our traditions and illustrious history, it becomes evident that the potential losses outweigh the gains.

According to Forbes, the House of Windsor is estimated to hold a value of £19billion. Moreover, although the annual cost of royal upkeep for UK taxpayers amounts to approximately £500million, Brand Finance estimates that the monarchy's brand contributes £2.5billion to the British economy over the same period.

In essence, His Majesty understands his significance, but he also recognises the importance of connecting more deeply with the everyday people in his kingdom. Addressing challenges such as the recent cost-of-living crisis, and its prevalence in people's minds over the King's own passions, such as the environment, are essential for him to ensure a peaceful reign.

An additional challenge that His Majesty may encounter is the requirement to refrain from taking a stance on partisan matters, including the pressing issue of climate change. He has long been an advocate for a greener planet, having converted his cherished Aston Martin DB6 so that it can run on cheese waste and surplus wine, adopted biomass boilers for heating Birkhall estate, and installed solar panels at Clarence House. Laura Tobin recently stated on *Good Morning Britain* that changes have also been implemented at Buckingham Palace, where the lights have been turned off at night as an energy-saving measure.

As a man who has skirted both sides of the popularity divide over the decades, the opportunity to cement himself as an exemplar for a modern royal family is surely one he won't pass up.



A FINAL FAREWELL TO

SOCCER AM

SOCCER AM'S SATURDAY FUN IS OVER, BUT THE LEGACY REMAINS

While the popularity of football is seemingly unending, not all survive the sport's continued evolution, with *Soccer AM* becoming the latest entity to be consigned to glorious retirement.

For a long while, the Saturday morning Sky show was a ground-breaking, perfectly unrefined piece of footballing irreverence. It set up the weekend's action with a laddish, lager-tinged layabout appeal that original presenters Tim Lovejoy and Helen Chamberlain lapped up.

A show that bolstered the careers of the likes of Andy Goldstein, Max Rushden, John Fendley, Tubes, Rocket and countless 'Soccerettes', its comedic approach saw many of its features permeate modern culture. From 'tekkers' to the Crossbar Challenge, Taxi! to the Save Chip campaign, not to mention the 'easy' chant and associated arm action, and getting the word 'bouncebackability' entered into the Oxford English Dictionary, *Soccer AM* finished up just a year shy of the 30-year mark, with the final show broadcast on May 27, 2023.

The death knell had sounded loudly in the past, though glorious reinvention saved *Soccer AM* from its demise. Yet with ratings continuing to fall, the final whistle has now been blown.

Despite a stellar cast of guests over the years, including Noel Gallagher, Tyson Fury, James Dean Bradfield, Richard E. Grant and Gordon Ramsay OBE, critics have, in the past, pointed to the show's politically incorrect content. Former producer Rocket recently said: "I don't know if that show can exist now because if there's a reason to complain about something, generally someone will."

While the show was always destined to ride the thin line between entertainment and controversy, its cessation became as much to do with the fact that even the biggest and best become tired and staid.

Regardless, *Soccer AM* ran a course longer than a generation of footballers, and for that reason, it will be remembered as one of the sport's greatest cultural success stories.

ONYX
RESTAURANT & BAR

New **SET LUNCH MENU**

1 MAIN COURSE + SOFT DRINK £10.99
2 COURSES + SOFT DRINK £13.99

TUESDAY TO THURSDAY
12PM TO 4PM

RESERVE YOUR TABLE TODAY
01708 443 560 | ONYXRESTAURANTANDBAR.COM

Work Opportunities with Prior Care

We are a family run care company who provide care to adults located within the London Borough of Havering. We are currently looking for compassionate people to help us deliver quality care services within our clients' own homes.

We required people who:

- Are a good communicator
- Have a kind & compassionate nature
- Enjoy helping people
- Respect people's rights & differences & ensure they are treated in a dignified manner
- Can be flexible

We can offer you:

- Good rates of pay (Enhanced rate on Bank Holidays)
- Free uniform & PPE
- Refer a friend scheme (subject to conditions)
- Up to 28 days holiday
- Full support 24/7
- Induction course leading into The Care Certificate
- Ongoing development with additional training courses including QCF Diplomas

You NEED to be able to work in the following areas:

UPMINSTER • CRANHAM • HORNCURCH • HAROLD HILL • ELM PARK

Being a car driver is preferred; but if willing to walk or use public transport, candidates can also be considered.

We have all shifts available: Early mornings & lunches - tea & bed calls - weekends. Morning shift starts at around 6am.

Call Karen on 01708 446690 to apply or email your CV to recruitment@priorcare.co.uk

Job Type: Part-Time/ Full Time - zero hour contract
Salary: £9.80 - £10.80 /hour



Award winning, personalised care in your own home



- Wellbeing
- Personal care
- Dementia care
- Household tasks
- Outings & activities
- Medication support

Talk to our team today
01708 609 364
www.radfieldhomecare.co.uk



Radfield Home Care Havering & Brentwood,
Suite C7, The Old Brick Works
Church Road, Harold Wood
Romford
RM3 0JA



Goodbye GREASE



BEAUTY



If you struggle with greasy hair, then these hairstyles are just what you need to skip a hair wash and still look and feel great.

BABY BRAIDS: If the front of your hair is prone to oil, then baby braids offer the perfect way to conceal this. Start by working a little bit of dry shampoo through your hair and then section out the front strands. Braid them as tightly or loosely as you like and secure with a clear hair band.

A SNATCHED PONY: Delivering a super sleek look, a snapped pony is bang on trend and perfect for days when you don't have time to wash your hair. Separate your hair into two sections (top and bottom half) and apply a smoothing serum. Then brush from roots to ends, making sure that the front is smooth and tight. Join the sections at the crown and secure with a hair band.

WET-LOOK WAVES: Rather than try to hide the natural oils in your hair, embrace them with wet-look waves. To start, dampen your hair and add a liberal amount of heat protectant spray. Then gently blow dry your hair and add waves using a curling iron. Apply hair oil to complete the look.

A ZIGZAG PARTING: Add a playful touch to a low ponytail with a zigzag parting. Perfect for distracting from greasy roots, you need to invest in a tail comb to get a zigzag parting right. Start at the centre of your parting and then use the comb to form a zigzag along the parting line. For best results, keep all the zigzags within the same one-inch margin.

A SILK SCARF: If your curls are looking a little oily, then pile them high on your head and add a silky scarf for added visual interest and to conceal grease at the roots.

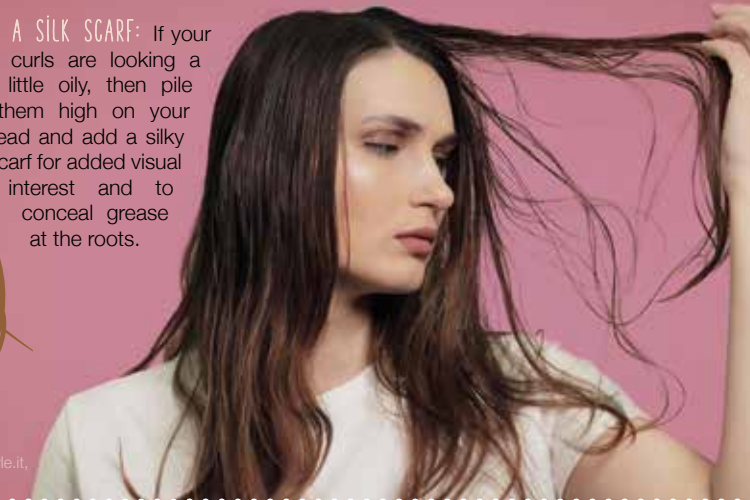


Photo credit: Instagram @justinemarjan, capellistyle.it, Pinterest/goldfishkiss.com, terrificresses, Etsy

Services Offered

- Cataract surgery with multifocal lens implants for reduced dependence on spectacles
- Lens replacement surgery for removal of glasses
- Glaucoma management
- Minor operations for lumps and bumps around eyes
- Correction of droopy and baggy eyelids
- Watering eyes and blocked tear ducts
- Dry eyes and blepharitis
- YAG and Argon laser treatments of eye conditions
- Botox treatments
- Major surgery undertaken at local private hospitals

For appointments, please contact Phillippa Chambers on 07757 605008



Mr J S Chawla

Mr J S Chawla is available for private consultations in the eye Clinic at Westland Medical Centre.

This Care Quality Commission approved medical facility is equipped with state of the art diagnostic equipment, minor operation room and lasers.



Eye Clinic, Westland Medical Centre,
Westland Avenue, Hornchurch,
Essex, RM11 3SD

www.facebook.com/ClearvisionMedicare

flower POWER

V
FASHION



Spotted at Dior, Dries Van Noten, Prada and Lela Rose, florals have dominated the catwalk and are set to be everywhere this summer. Perfect for anyone who loves stand-out fashion, this is one trend that promises to lift your mood and make you smile.

HOW TO WEAR FLORALS THIS SUMMER

Wear with a plain solid colour

Mixing floral prints is very hard to do, so if you are new to wearing florals, it can be a good idea to wear your chosen print with a plain solid colour, preferably in a complementary or matching tone.

Add an edgy twist

If you find florals a bit too girly, then you might want to toughen up your look with something edgy such as a leather jacket or a pair of biker boots. Alternatively, you could add a masculine element with a tailored jacket or boyfriend jeans.



Experiment with accessories

For those who don't want to go full on with the floral trend, why not invest in a few floral accessories, such as a floral handbag, jewellery, scarf or hat?

Rock a floral shirt

A floral shirt is the way to go for style as appropriate for the office as it is for time with friends. Team with a pair of smart jeans for a casual day look, or wear a floral t-shirt with a tailored suit for a more playful take on your standard office attire. Or to test the water, why not invest in a floral tie?



HOW TO PICK THE RIGHT FLORALS FOR YOUR BODY SHAPE

* If you have a fuller figure, avoid oversized prints as these can make you appear wider than you actually are

* If you have a slim build, then a medium floral print works best

* Smaller prints work for most body shapes, including pear-shaped and hourglass

* Use a large floral print on any areas of your body that you want to make look larger

* Use a small floral print on any areas of your body that you want to make look smaller

* Play with different proportions to see what works best for you.



Photo credit: ASOS.com



Stroll YOURSELF SLIM

Finding the time, not to mention the inclination, to exercise after having a baby can be hard. However, what if you could combine taking your baby for a walk with getting fit? Welcome to the world of stroller fitness.

WHAT IS STROLLER FITNESS?

As the name suggests, stroller fitness is a workout where you use your baby's buggy or stroller to get fit. Perfect for parents of all fitness abilities, a stroller workout can be as intense or as gentle as you make it. Plus, no babysitter is needed, as your baby will be with you every step of the way.

WHAT ARE THE BENEFITS OF STROLLER FITNESS?

One of the best things about stroller fitness is that it allows you to get back into exercise without having to leave your baby. Depending on the exercises that you choose to carry out, stroller fitness can provide a full body workout, or it can be used to target specific muscle groups or problem areas.

FOUR STROLLER EXERCISES TO GET YOU STARTED

Walking lunges: If you want to tone and strengthen your lower body, then walking lunges are a great choice. Take long strides as you push your buggy and lower your body until your front thigh is almost parallel to the ground. Continue for one minute, rest for 30 seconds, and repeat.

Jump squats: These burn more calories than standard squats. Use your buggy for balance, engage your core, push up through your heels as you jump up, focusing on soft knees as you land. Continue for 30 seconds, rest for 30 seconds, and repeat.

Pram chest press: Work your chest, arms and core with the pram chest press. Push through your shoulders, tensing your core as you push your buggy away from you and then pull it back towards you. Do 15 reps, rest, and do a further 15.

Pram chest press with lunge: To increase the intensity of your workout and up your heart rate even more, alternate walking lunges with the pram chest press. This exercise will work your whole body. Continue for 30 seconds, rest for 30 seconds, and repeat.



MobilityPlus+



The UK's leading provider of affordable electric wheelchairs.

Premium Electric Wheelchairs That Support Independent Living



Includes FREE next day delivery



MobilityPlus+ Ultra-Light Instant Folding Electric Wheelchair
24KG, 4MPH, 2 LITHIUM BATTERIES

Only **£879.99**



MobilityPlus+ Deluxe Ultra-Light
FOLDING ROLLATOR WITH SEAT

Only **£114.99**



MobilityPlus+ Upright Rollator
WITH FOREARM SUPPORT

Only **£154.99**



MobilityPlus+ Quick-Split Electric
LIGHTWEIGHT, COMPACT, 4MPH

Only **£599.99**



MobilityPlus+ Featherlite
18.7KG, 4MPH, LITHIUM BATTERY

Only **£899.99**

Customer Support Team

01992 610 434 | www.mobilitypluswheelchairs.co.uk

OUR SHOWROOM: UNIT 5 VELOCITY, HARLOW BUSINESS PARK, HARLOW, CM19 5QF (APPOINTMENT ONLY)

**You look after
them, we look
after you.**

Our foster carers receive:

- Extensive training and support package
- Council tax relief for active foster carers inside and outside the borough
- Free parking in selected areas
- Tax free support*
- Free green bin collections
- Referral bonus of £750
- Free leisure centre access for the family

Find out more today at
havering.gov.uk/fostering
01708 434574



Prescriptions

ALL ABOUT

How much does a prescription cost in England?

The prescription charge in England is £9.65 per item. However, you can get an NHS prescription prepayment certificate (PPC), which can help you save money if you need more than three items in three months or 11 items in 12 months.

A PPC costs:

- ✚ £31.25 for three months
- ✚ £111.60 for 12 months

You can purchase a PPC either online or with any registered pharmacy.

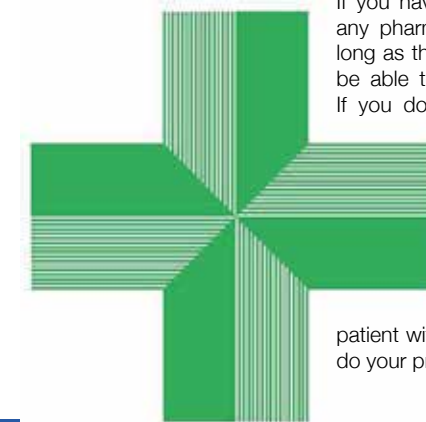
Who is eligible for free prescriptions?

You are eligible for free prescriptions if you are:

- ✓ Aged 60 or over
- ✓ Under 16
- ✓ Aged 16-18 and in full-time education
- ✓ Pregnant or have had a baby in the last 12 months and have a valid maternity exemption certificate
- ✓ Have a specified medical condition and a valid medical exemption certificate
- ✓ Have a continuing disability that prevents you from going out and have a valid medical exemption certificate
- ✓ Hold a valid war pension exemption certificate and the prescription is for your accepted disability
- ✓ An NHS inpatient

You are also entitled to free prescriptions if you or your partner receive certain benefits, or if you are under 20 and the dependent of someone receiving certain benefits, such as income support and income-based Jobseeker's Allowance. Contraception is free for everyone in England.

Is it possible to get an emergency prescription?



If you have a prescription, you can visit any pharmacy to get your medicine as long as they have it in stock, or you may be able to use an NHS walk-in centre.

If you do not have a prescription, you may be able to get an emergency supply from your local pharmacy. Take your old prescription or the medicine's packaging with you if you have it. If you are away from home, you can register as a temporary

patient with another GP and ask them to do your prescription for you.

Can you get your prescription delivered to your door?

If you are unable to leave your home, your local pharmacy may be able to deliver it to your door free of charge. Alternatively, some retailers such as Boots will deliver your prescriptions for a small fee.

King Charles' CORONATION QUICHE

With the coronation still fresh in everyone's minds, why not have a go at making your very own King Charles coronation quiche? This dish was chosen to celebrate British seasonal produce – and also because the King loves eggs and cheese.

YOU WILL NEED: (serves 6)

FOR THE PASTRY: 125g plain flour | 25g cold butter, diced | 25g lard | 2 tbsp milk | Pinch of salt. Or 250g block of readymade shortcrust pastry

FOR THE FILLING: 125ml milk | 175ml double cream | 2 medium eggs | 1 tbsp chopped fresh tarragon | 100g cheese | 180g cooked spinach, lightly chopped | 60g cooked broad beans | Salt and pepper | Pine nuts for garnish, if desired | You will also need a 20cm flat tin and baking beans

HOW TO MAKE:

1. To make the pastry, sieve the flour and salt into a bowl. Add the butter and lard and rub the mixture together using your fingertips until you have a breadcrumb-like texture.
2. Add the milk a little at a time and bring the

ingredients together to form a dough.

3. Cover and leave to rest in the fridge for 30-45 minutes.
4. Lightly flour your work surface and roll out the dough into a circle approximately 5mm thick.
5. Lightly grease the tin with butter and line with the pastry, being careful not to make any holes. Cover and rest for a further 30 minutes in the fridge.
6. Preheat your oven to 190°C/170°C fan/gas mark 5.
7. Line the pastry case with greaseproof paper, add baking beans and bake for 15 minutes.
8. Take the case out of the oven, remove the paper and beans, and leave the pastry case to one side.
9. Reduce the oven temperature to 160°C/140°C fan/gas mark 3.
10. To make the filling, beat together the milk, cream and eggs.
11. Scatter half of the cheese into the blind-baked base and then top with spinach, broad beans, tarragon and seasoning.
12. Season and pour over your liquid mixture of milk, eggs and cream.
13. Sprinkle over the remaining cheese.
14. Place in the oven and bake for 20-25 minutes until set and lightly golden.
15. Garnish with pine nuts if desired.

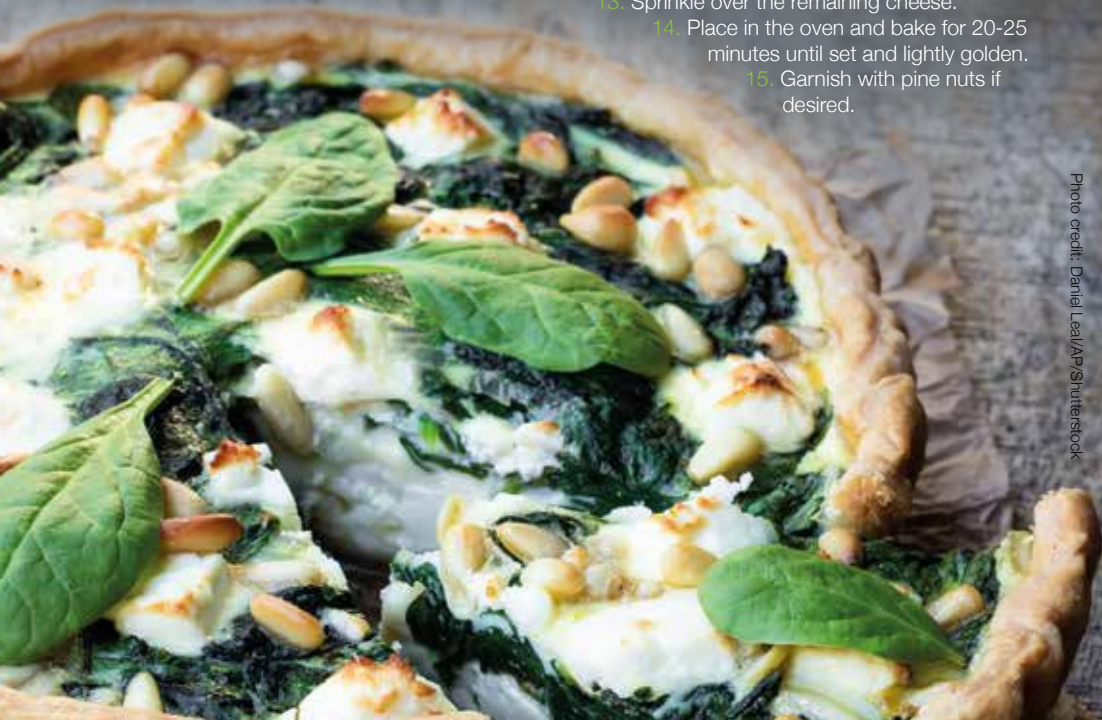


Photo credit: Daniel Lea/AP/Shutterstock



**spine
plus**.co.uk

- Expert Hands-On Treatment From Head to Toe
- Latest Therapy Equipment

Emerson Park Clinic

128 North Street

RM11 1SU

Call: 01708 578072

www.spineplus.co.uk

Da Vinci's

ITALIAN RESTAURANT

Taste the Mediterranean through our quality Italian dishes

Antipasti | Starters | Pasta | Pizza | Grills | Wines | Beers | Spirits



LIVE ENTERTAINMENT

Every Friday

www.davincishornchurch.co.uk | 01708 474 054 | enquiries@davincishornchurch.co.uk

13-15 Station Lane, Hornchurch, RM12 6JL

Enchanting ELDERFLOWER

Elder trees are very common in the UK and, come late May, start to develop masses of tiny white flowers which eventually turn into purple elderberries. The elderflower is known for its light and floral taste and makes a great addition to cordials, cakes and more.

ELDERFLOWER CORDIAL

YOU WILL NEED: 2 ½kg granulated or caster sugar | The zest of 2 unwaxed lemons | 20 fresh elderflower heads | 85g citric acid – you can buy this online or at your local pharmacist

HOW TO MAKE:

- > Gently heat the sugar and 2 ¾ pints of water in a pan until the sugar has dissolved.
- > Bring to the boil and turn off the heat.
- > Add the elderflower heads, the lemon zest and the citric acid to the pan and stir well.
- > Cover the pan and leave to infuse for 24 hours.
- > Line a colander with a clean tea towel and set it over a large pan.
- > Ladle in the syrup and let it slowly drip through.
- > Pour the leftover liquid into a sterilised jar. You can sterilise a glass jar either on a hot rinse cycle in the dishwasher or in the oven for 15 minutes

at 160°C/140°C fan/gas mark 3.

- > The cordial is ready to drink and can be kept in the fridge for up to six weeks.

ELDERFLOWER DRIZZLE CAKE

YOU WILL NEED: 175g softened butter | 175g golden caster sugar | 3 eggs | 140g self-raising flour | 85g ground almonds | ½ tsp baking powder | 100ml milk | 4 tbsp elderflower cordial | 4 tbsp white or golden granulated sugar

HOW TO MAKE:

- > Heat the oven to 160°C/140°C fan/gas mark 3.
- > Grease and line a 900g cake tin.
- > Beat the butter and 175g sugar until light and fluffy.
- > Add the eggs, flour, almonds, baking powder and milk, then whisk until smooth.
- > Pour into the tin and bake for 45-50 minutes until risen and golden.
- > Prick the cake all over with a skewer.
- > Mix the cordial and extra sugar and pour all over the cake.
- > Leave to cool in the tin and drizzle with icing if you wish.



IT'S TIME TO FOCUS ON LIFE NOT THE COST OF LIVING

Retire to a dream location
the easy way



OPEN DAYS

Friday, 14th - Saturday, 15th July | 10:00 - 16:00
Come and take a look around



Move in ready homes available from £219,950



Freedom to live life to the full. Modern comforts and community spirit on the Essex Sunshine Coast.

Do you dream of living on the coast? Relaxed days of fresh air, seaside walks and beach picnics? It's all there for you when you move to a brand new, fully furnished home, exclusively for the over 45s, at Sandpiper Gardens, Clacton on Sea. You could also free up cash, save on bills and have less home maintenance to worry about. Whether you're retiring or semi-retiring, it's time to get more out of life.

- ✓ High-quality, low-maintenance, single-storey homes
- ✓ Safe, secure community of like-minded residents
- ✓ Private garden and parking
- ✓ No stamp duty
- ✓ Part exchange and assisted move options available

Get in touch to find out more or arrange a park visit:

www.tingdene-parks.net | 01933 422471 | info@tingdene.net



Golf and Hainault Forest Hike



London Masonic Mystery Tour

Explore the Best of England from London's Doorstep!

CHIGWELL TOURS and Visits

IN THE UK AND LOOKING TO CREATE LASTING MEMORIES?

Experience the Platinum Jubilee celebration first hand with our selection of tours. Walk on the path of royals at Windsor Castle and experience its full majesty with our steam train guided tour.

We offer:

- Tours in London, Essex, Bristol and Dignified Windsor
- Every 2 years we offer a Winter Escape Tour to Sunny Ghana that will be running in 2022!
- Corporate incentive packages
- Customisable tours

So, join us in seeing the sights of London, visiting the quaint Essex Countryside or taking in the grandeur of the Jubilee celebrations in Windsor.

To book your experience visit www.chigwelltours.co.uk or SCAN the QR Code

Get in touch!

T: 0208 500 9912

E: bookings@chigwelltours.co.uk

Unique Experiences... Unique Memories.



@chigwell_Tours



@chigwell_tours



@chigwelltours



YOU'RE NOT ALONE



OVER 207,500 OTHER PEOPLE IN ESSEX
READ **VISION** MAGAZINE'S MONTHLY

Your Monthly Lifestyle Magazine



CONTACT US TO GET YOUR BUSINESS SEEN BY OUR READERS

See all our magazines at www.visionmagessex.com

BillericaYShenfieldBishop'sStortfordBrentwoodOngarChelmsfordBeaulieuEppingTheydonHalsteadBraintreeHertfordHornchurchLeighThorpeBayLoughtonMaldonBurnhamRayleighWickfordSouthWoodfordTendring

PLANE sailing



TRAVEL

Love family holidays but dread flying with young children? Discover five ways to keep your kids occupied on a plane, with options for all ages.

BOOK A WINDOW SEAT

If your budget allows for it, booking a window seat is a great way to keep your children entertained during take-off and landing. Whether they just gaze at the views below or look for animals in the cloud shapes, children of all ages can enjoy looking out of the window during a flight.

ACTIVITIES TO KEEP THEM OCCUPIED

Remember to pack colouring and puzzle books in your hand luggage to help keep boredom at bay. Alternatively, bring blank paper and pens and ask your children to draw what they can see out of the window, or what they imagine your destination will look like.

You can also bring travel games or even a pack of playing cards; simple games like snap are perfect for little ones, while older children can enjoy more advanced games like solitaire.

DOWNLOAD AN AUDIO BOOK

If you want a bit of peace and quiet but you don't want your kids glued to a screen the entire time, then an audio book is a great alternative. There are so many books to choose from – just make sure you remember to pack headphones.

PACK PLENTY OF SNACKS

Do not underestimate how distracting snacks can be for kids during a flight, especially younger ones. Rather than buying them on the plane, bring a selection of your children's favourite snacks with you in your hand luggage and then give them out sporadically throughout the flight.

TALK ABOUT YOUR TRIP

Chatting about what you are planning to do when you get to your destination and what you are excited about, can be a great way to pass the time and engage with your children. You can also take the opportunity to teach them about the different places you are flying over.



DIRTIEST

CORNERS OF THE KITCHEN

Although the kitchen may be the heart of the home, that doesn't mean it doesn't harbour a whole host of hidden germs and bacteria. Discover the dirtiest areas of your kitchen below.

KNOBES AND HANDLES

Every appliance in your kitchen has some sort of handle or control panel that is often touched with dirty hands or after handling raw food, which can leave bacteria such as salmonella, listeria and E. coli behind. Clean daily using a disinfectant wipe or disinfectant cleaner and a clean cloth.

THE KITCHEN SINK

Even though water frequently runs down your kitchen sink, there are still lots of microbes lurking on the surface and around the drain. Disinfect your sink daily using a sink cleaner, and don't forget the taps and the counter areas surrounding it.

THE FRIDGE

Despite the cold temperature, harmful bacteria can still grow in your fridge. If you store unwashed fruit and vegetables in this appliance, these can be covered in bacteria and pesticides. Raw meat can also leak out of its packaging and fluid can accumulate. Remove fridge drawers and shelves at least once a month and wash all the surfaces with hot water and a mild dish soap.

CUTTING BOARDS

Cutting boards, especially wooden ones, can harbour bacteria in the tiny nooks and crannies that appear after each use. To avoid cross-contamination, you should have one board for fruit and veg and a different one for meat. Wash each board after use with hot, soapy water and dry with a clean tea towel.

COUNTERTOPS

Every time you place something on your kitchen countertops, such as your purse or shopping bag, you are potentially leaving dirt and bacteria where you will later prepare food. Clean with a disinfectant wipe or disinfectant spray and a clean cloth at least once a day.



Flooring Centre

- ◆ CARPET ◆ UNDERLAY
- ◆ VINYL ◆ LAMINATE WOOD



- ◆ DOMESTIC & RESIDENTIAL SERVICES
- ◆ ALL FLOORING SUPPLIED & FITTED

Call or visit us – 01708 472331

info@rm2flooringcentre.co.uk

302 Brentwood Road, Hornchurch,
Romford, Essex RM2 5TA

PUT THE SPARKLE BACK INTO YOUR KITCHEN



Domestic Oven Cleaning Specialists

Est. since 2007

Prices

Single oven incl. shelves & grill pan.....	£43.00
Double oven incl. shelves & grill pan.....	£54.00
Range incl. shelves & grill pan.....	From £54.00
AGAs.....	From £90.00
Hobs.....	From £14.00
Extractors.....	From £15.00
Microwaves.....	From £20.00

No VAT to pay



BEFORE

AFTER

PLEASE CALL FOR A FREE QUOTATION

01279 432444 * www.ovenbright.co.uk



**PROPERTY
EXTENSIONS**
ADDSPACE LONDON LTD.



WE COVER ALL ASPECTS
OF BUILDING WORKS

- Property extensions & refurbishments
- Kitchen extensions ■ Loft extensions
- Garage Conversions
- Building contracts & new builds
- Construction services

01708 732 323

www.propertyextensionsessex.co.uk

email: info@addspacelondon.co.uk

EXPERIENCED TRADESMEN TO CARRY OUT
WORKS WITH NO DELAYS OR PROBLEMS



How organised are you based on your ENNEAGRAM TYPE?

The Enneagram is a system of personality typing that describes patterns in how people interpret the world and manage their emotions. Based on your Enneagram type, you can get a sense of how organised you are in your home and your life.

Type 1: THE REFORMER: You are very organised and believe that there is a place for everything. You need your home to be orderly and you favour a minimalist look.

Type 2: THE HELPER: You are incredibly organised when it comes to other people, but not always for yourself. You want your home to look nice, but you tend to hold on to too many sentimental items.

Type 3: THE ACHIEVER: You have people to impress, yourself included, so your life and your home need to be very organised. You have high standards and the drive to make sure things go exactly to plan.

Type 4: THE INDIVIDUALIST: You don't like to do things by the book, but you aren't opposed to keeping elements of your life organised. You always opt for the most creative solution.

Type 5: THE INVESTIGATOR: Your main priority is information. You don't stress yourself out with the small details of house cleaning, but your bookshelf must be specifically arranged.

Type 6: THE LOYALIST: You need to feel safe and secure in your home, so organisation comes naturally to you. You prefer to keep items out of sight as this makes you feel more at ease.

Type 7: THE ENTHUSIAST: You are not the most organised type, and you tend to take one day at a time. You do have good intentions, but somehow life always gets in the way.

Type 8: THE CHALLENGER: You create a structured plan and stick to it. You thrive off being productive and love nothing more than a handy planner or calendar.

Type 9: THE PEACEMAKER: You may not have the strongest focus on organisation, but that doesn't mean you aren't capable. Though you would like to be more organised, you are content as long as your home is clutter-free.

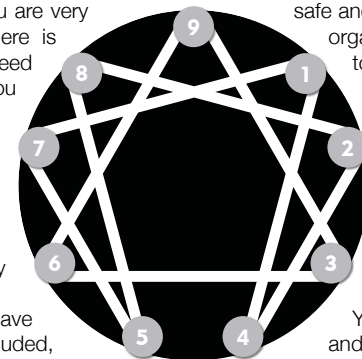


Photo credit: Pinterest - Lauren Kolyn, Federico Paul, Ulrika, Jessica Rapp, Valeria Jacobs, Margaret Stepien, Tamara Gavin



HOME & DIY

INTERIOR DESIGN PROFILE



Echlin is a contemporary interior design house that bases its work on the principles of “wellbeing and craftsmanship”, creating looks that are light and spacious – an oasis of calm that is wonderful to observe.

The designs are understated and beautiful, and are excellent examples of how to blend creative design with modern living to create timeless interiors.

ABOUT ECHLIN

Echlin was founded by Mark O'Callaghan (top left) and Sam McNally (top right) in 2011. Both bring a wealth of design experience to the table, and the result is a design house that creates elegant looks with a clear 20th-century elegance. Using different textures such as wood, stone and metal, Echlin designs are made to stand the test of time.

Their designs are stylish but practical and use neutral canvasses brought to life with different materials, including leather and soft velvets, as well as the occasional pop of colour.

LOVING THE ECHLIN LOOK AND LOOKING FOR INSPIRATION?

Recreate this incredible design style in your home using the following tips:

- ⌚ Keep spaces **LIGHT** to make them feel open and airy. Choose lighter neutral shades for walls and floors, like creams and greys, and add darker contrasts through furniture and accessories.
- ⌚ Look for **UNIQUE** items that will stand out as a focal point for the space. A statement headboard or large piece of art can draw the eye, without taking away from the rest of the room.
- ⌚ Add a refreshing touch with pops of **COLOUR** using cushions, curtains and occasional chairs.
- ⌚ Keep your interior **UNCLUTTERED** and make the most of available storage for a clean space that will promote serenity.



Photo credit: echlinlondon.com

Essex Stairlifts Ltd

Your local stairlift specialist

- Straight Stairlifts
- Curved Stairlifts
- Rental Stairlifts
- New & Used
- Servicing & Repairs
- Home Lifts



For friendly, personal service telephone:

01708 369062

01268 550173

01206 231568



Email: sales@essexstairlifts.co.uk

www.essexstairlifts.co.uk

NEED A RELIABLE CLEANING COMPANY?

OUR SERVICES INCLUDE:

- Residential Cleans
- Deep Cleans
- Patio/Driveways
- Carpet & Upholstery Cleaning
- Office Cleans
- Commercial Cleans

We provide high quality services, tailored quotes specifically designed for your requirements

Call us on
01708 578087

Abbey group

Abbey Group are specialists in creating, repairing and restoring quality furniture and wood surfaces to the highest standard.



From antique to modern we can repair, strip, re-spray, polish, wax, upholster and bring woodwork back to life.

We take great pride in our work and clients appreciate our care and attention to detail.

We think you will too.

01708 741135

Free quotations and no carriage charges with this advert.

abbey-group.net



CREATE A VERTICAL GARDEN INDOORS

Indoor plants will improve the air quality in your home, and could also help reduce stress and increase concentration. Also, if you grow herbs, you can harvest them all year round to perk up your culinary creations. One of the biggest home trends of 2023 is the vertical indoor garden – simply a group of plants arranged on a single wall to save precious floor space. Read on to find out how to get started.

YOU WILL NEED:

- > A selection of shelves, containers and hanging baskets. Although you can buy specially designed containers for your plants, recycled items usually look more interesting and are also kinder to the environment. Wooden boxes, wire baskets, tins and even cut-down plastic drinks bottles all work well. Just remember to add drainage holes to containers if necessary.
- > A selection of plants and herbs. Rubber plants, dragon trees and the good old spider plant are excellent choices – they help remove formaldehyde, one of the main toxins in indoor air. Tarragon, thyme, rosemary, basil and mint all grow well indoors. If you're feeling adventurous, try growing cherry or plum tomatoes. But remember, they'll need somewhere warm and sunny.
- > Suitable compost.
- > DIY tools and materials to fix your containers firmly in place, and a sturdy stepladder.

HOW TO MAKE:

STEP 1: Work out how you're going to arrange your plants and containers. You could make a sketch, or lay out the items on the floor. You don't need to be exact and can change things as you go, but a plan is always handy.

STEP 2: Fix all the containers and shelves in place, ensuring they're secure.

STEP 3: Fill all your containers with compost, then add the plants.

STEP 4: Water your plants and work out a routine to take care of them.

STEP 5: All you need to do now is sit back and watch your garden grow.

Photo credit: Pinterest @samseite






Alf Onnie

Curtains, blinds and plantation shutters

- ✓ Bespoke made to measure curtains
- ✓ Sheers & Voiles
- ✓ Window blinds – manually operated or motorised
- ✓ Plantation shutters
- ✓ Pole and track fitting service
- No obligation quote
- Friendly & enthusiastic family business Est 1920
- Experienced consultation & installation team
- Commercial projects also undertaken

Showroom based in Essex/London
 020 8472 4658 07956 818477
 AlfOnnie.co.uk @AlfOnnie1920
 Alf Onnie Curtains and Blinds

On enquiry mention Vision for a special offer



Est. 1975

WE OFFER VERY COMPETITIVE PRICES & WILL BEAT ANY GENUINE WRITTEN ESTIMATE

CELEBRATING OVER 46 YEARS OF TRADING WITH THE ORIGINAL COMPANY NAME & PHONE NUMBER!

<ul style="list-style-type: none"> • Roof Repair Specialists, All Leaks Cured • New Tiled Roofs & Velux Windows • High Performance Felt Flat Roofs • EPDM Firestone Rubber Flat Roofs • uPVC Guttering, Fascias & Roofline • Storm Damage & Insurance Work • Chimney Stacks Repaired & Removed 	<ul style="list-style-type: none"> • Leadwork, Pointing & Rendering • Replacement Roof Valleys & Bays • Roof Overhauls & Maintenance • Asbestos Removal & Garage Roofs • Pigeon / solar panel guards • The Best Quality Materials Used • 24 Hour Emergency Repairs, 7 Days
---	---

A UNIQUE FAMILY RUN BUSINESS BUILT ON REPUTATION, HONESTY & KNOWLEDGE!
OVER 500 GENUINE REVIEWS ON 'TRUSTIST' & OVER 20,000 HAPPY LOCAL CUSTOMERS!
ALL WORK GUARANTEED - FREE ESTIMATES - NO DEPOSITS TAKEN - NO SUB CONTRACTORS USED!

01708 551714 | 07743 406418
 www.sr-roofers.co.uk | rosseldridge84@hotmail.co.uk
 41a Sunningdale Road, Rainham, Essex, RM13 7BD





• Long Lasting Alternative To Felt
 • Made To Measure With No Joints
 • No Flames, Lasts Up To 50 Years

We are still open for business and practising safe distancing according to government guidelines.

 **DISCOUNT DIY & HARDWARE SUPPLIES**
Your Local Independent Hardware & DIY Store

FREE LOCAL DELIVERY

THE PRODUCTS WE SELL INCLUDE

- Calor Gas for BBQs & Heaters
- Hand Tools
- Electrical Supplies
- Plumbing Supplies
- Decorating Supplies
- Ladders
- Pest Control
- Gardening Tools & Accessories

COME & SEE US AT
**49, Butts Green Road,
Emerson Park RM11 2JS**
CALL 01708 440151

 **FULL RANGE OF CALOR GAS BOTTLES AVAILABLE**

 **SOUTH EAST HEATING**
DOMESTIC AND COMMERCIAL
HEATING • PLUMBING

Family Run Experienced Service • Est. in 1998

- Boiler repairs & replacements
- Gas installation
- Central heating installation & maintenance
- Gas servicing
- Landlord safety certificates
- Bathroom installation
- Chemical cleaning
- Solar panel installation
- Domestic & commercial plumbing & heating
- General plumbing work
- Gas appliances
- Gas leaks/safety checks

Mobile: 07956 481 819
07539 444413
Office: 01708 221500
southeastheating@btconnect.com



TRANSFORM YOUR HOME

 **QUALITY DESIGN**
Manufacturer & Installer
for UPVC & Aluminum
Windows & Doors
Conservatories & Porches
Bi-fold
& Much More...

Tel: 01702969997
Mobile: 07830355172
Email: info@siddhglazing.co.uk
Web: www.siddhglazing.co.uk



GOD SAVE THE KING

Princes, princesses, presidents and pop stars alike crowded into Westminster Abbey to witness the historic coronation of His Majesty King Charles III, and what a marvellous day it turned out to be.

On Saturday, May 6, 2023, the world's gaze turned to Westminster Abbey in London. More than seven months had passed since we said a final farewell to our beloved Her late Majesty Queen Elizabeth II, and what bittersweet joy it was to witness King Charles III's official ascent to the throne.

Naturally, comparisons were not drawn between this event and the Queen's funeral, but instead to her coronation 70 years previously. This was the first televised coronation, broadcast on radio and television around the world. Both ceremonies were watched by millions, though the King's was the first British coronation to be televised in glorious, high-definition technicolour.

Regardless of your feelings about the monarchy, it can't be denied that when it comes to pomp, ceremony and splendour, no one does it like Great Britain.

The journey from Buckingham Palace to Westminster Abbey alone was a thing of wonder, with joyous fans lining the streets as more than 4,000 members of the Army, RAF, Royal Navy and Commonwealth forces in immaculate dress uniforms accompanied the Diamond Jubilee State Coach.

One BBC commentator remarked how the coach – drawn by eight Windsor Grey horses – looked like something from a fairy tale, before admitting that so ancient are ceremonies such as these, that the fairy tales are more likely based on them.

Inside the abbey, proceedings took on an even more timeless quality, with the two-hour ceremony effortlessly fusing the old and the new. One poignant example of this was during the presentation of the orb, sceptre and other regalia – pieces from the Crown Jewels that hold “incalculable cultural, historical, and symbolic value” and date back to the 17th century – by various faith leaders, and the carrying of the Sword of State by a resplendent Penny Mordaunt MP.

Another poignant moment was when the King was screened from the public as he was anointed with holy oils by the Archbishop of Canterbury, because this is an event historically regarded as taking place between the sovereign and God. The anointing was carried out using an ampulla and coronation spoon, which is believed to date back to the 12th century.

Finally came the moment all had been waiting for as His Majesty sat resplendent in the Robe Royal – made for King George IV's coronation in 1821 and one of four robes worn during the service – and was adorned with St Edward's crown. After crowning Charles, the Archbishop boomed, “God Save the King”, a sentiment that was then echoed by all in attendance.

Shortly after, Her Majesty Queen Camilla was also crowned, with Queen Mary's Crown placed on her head. Interestingly, she was granted the title of Queen on the late Queen Elizabeth II's request.

The late His Majesty Prince Philip, on the other hand, was never given the title of king. This is because a ruling queen's husband is called a Prince Consort, as the title of king is only given to a monarch who inherits the throne. If King Charles passes away before Queen Camilla, Prince William, who is the heir to the throne, will become king. Queen Camilla will not become a reigning queen; her title will change to queen dowager, the official term for the widow of a king.

Following the ceremony, the King and Queen were joined by the other senior royals and their children on the balcony at Buckingham Palace for the traditional Royal Air Force flypast which, despite the rain and subsequent need to simplify the air show, drew to a close to a most historic and memorable day for all.

A new King, a new set of values, and a new era for all.





There's no place like
Home Hub



01992 948 980
essex@homehubgroup.co.uk
137-139 Epping High Street

f @HomeHubGroup

With no pressure sales, transparent pricing and exceptional service levels you'll feel right at home with Home Hub. Come and see us at our beautiful lifestyle showroom in Epping – call 01992 948989 to book an appointment.

homehubgroup.co.uk

Windows • Sliding Doors • Bifold Doors • Roof Lights

FROM YOUR AREA



LOCAL NEWS

Businesses triumph at awards ceremony



A number of Hornchurch businesses triumphed in the Havering Small Business Awards on May 17.

Best Sellers was the big winner of the night, being named Best Small or Independent Business as well as winning the Best Shopfront award and being crowned the overall Havering Small Business of the Year. It also received the highest number of votes of all of the finalists.

The Best Beauty or Service Business award went to The Beauty Room in Gidea Park, and Bear with the Hair on Hornchurch High Street won the coveted Best Customer Service award.

The winners were presented with their prizes – a trophy, certificate and vinyl 'winners' sticker for their business premises – at a special ceremony at Premiere Cinemas in The Mercury Mall, Romford, hosted by media sponsor Time 107.5 FM's Mark Dover.

Councillor Ray Morgon, Leader of Havering Council, said: "Congratulations to everyone who was nominated and shortlisted, and especially to our winners. They reflect the positive role that all our businesses play in shaping, improving and supporting our borough's bright future."

This follows an incident at an address in Cowdray Way, Elm Park, on Tuesday, May 2. Officers attended and Maya was found suffering injuries. She was pronounced dead at the scene.

Her next of kin are aware and continue to be supported by specially trained officers.

Singh was remanded into custody and will next appear the Old Bailey for a plea hearing on July 31.

Students come together to celebrate their cultures

Hornchurch students at New City College Havering Sixth Form recently came together to embrace their differences and learn about each other's cultures.

The Culture Day included a fun runway at the college, where traditional clothing and flags from around the world were displayed. Many students were proud to parade in their vibrant outfits representing their cultural identities.

Students had the opportunity to sample a range of international food from stalls offering taster dishes, make tote bags and badges, and celebrate their differences with a DJ accompanying performers of traditional dances.

A map of the world highlighted the different countries from which students identified their cultural heritage.

Deputy principal Phil Hall said: "I am proud to be a part of such an inclusive college community where students feel safe and able to wear their cultural dress with pride. It was a day of unity, diversity and celebration, where so many made an incredible effort and looked absolutely stunning."



Man charged with murdering his wife

A man has been charged with murdering his wife in Hornchurch.

Tarsame Singh, 79, of Cowdray Way, Elm Park, appeared at Barkingside Magistrates' Court on Thursday, May 4, charged with the murder of his wife, Maya Devi, 77.



JULIA LOPEZ MP

Conservative MP for Hornchurch and Upminster



We had great news from the government in April that we hit our manifesto pledge to recruit 20,000 extra police officers. Residents will be aware of my ongoing campaign to keep Hornchurch Police Station open, given the increase in officer numbers.

Since my last column, I have met with the new Met Commissioner, Sir Mark Rowley QPM (pictured left), to share with him our petition of more than 1,100 residents' signatures calling for Hornchurch Police Station to be kept under the Met's ownership. I also highlighted my worries about crime statistics in Outer London. I expressed my concern that boroughs like Havering are paying for policing improvements in inner London and requested additional support for hard-working police officers across the East Area Borough Command Unit.

Many constituents have advised of difficulties in obtaining GP appointments and I therefore welcome the Health Secretary's recent announcement to boost appointments. General practices across England will be provided with £240million this year to roll out technology and replace old telephone systems with modern systems, helping to tackle the 8am rush when many practices' phone lines open. In addition,



£645million will enable pharmacists to treat common conditions like rashes, earache, sore throats, and skin and urinary infections. Pharmacists will also be able to supply some antibiotics and antivirals, helping to free up even more appointments.

GPs are already working incredibly hard, with 10 per cent more GP appointments happening each month compared to pre-COVID. However, these measures will help us reach our target of 50 million extra GP appointments by 2024.

News from

COUNCILLOR PAUL MIDDLETON

St Andrews Ward, Hornchurch Residents' Association

Lidl in Hornchurch has been included in my focus recently. We (councillor Gerry O'Sullivan, councillor Bryan Vincent and I) and several neighbours from properties on the road that runs along the rear of Lidl met with senior management and transport management, etc. The meeting was amicable and there were several items of change agreed to.

One of the changes was that Lidl would raise bollards to stop entry to the car park outside the supermarket opening hours. This is to stop the delivery of goods outside agreed delivery times and stop the car park being used as a racetrack or meeting area for people playing loud music late at night. Other changes were also agreed upon to make the lives of the people living near the supermarket more bearable.

It was noticed post the meeting that the TOWERS sign outside the front of Lidl was worse for wear; Lidl has agreed to repair this.

I am receiving an increasing number of complaints where a penalty charge notice ticket is appealed and the appeal is rejected. If you firmly believe the ticket was incorrectly issued, you have the option to go to a tribunal. If in doubt, contact your local councillor for advice.



DR BETTS TILING

- ◆ Large selection of wall & floor tiles
- ◆ Fitting service
- ◆ Porcelain, Ceramic, Glass & Natural stone
- ◆ Underfloor heating
- ◆ External porcelain slabs 20mm

Showroom opening times:
Mon - Fri 8am - 5pm Sat 10am - 4pm

The Barn ◆ Church Road ◆ Noak Hill ◆ Romford ◆ RM4 1LD
t: 01708 381349 ◆ e: sales@drbettstiling.co.uk ◆ www.drbettstiling.co.uk



WE CARRY OUT ALL HOME RENOVATIONS

Garage Conversions | Bathrooms | Kitchens | Full Decorating
New Flooring | Plumbing & Heating | Electrical | Glazing
Roofing | Tiling | Handyman & Locksmith Services
Cleaning | Extensions & Loft Conversions | Clearances
Plus much more...

DOMESTIC & COMMERCIAL | NO JOB IS TOO BIG OR TOO SMALL

CHECK OUT OUR GOOGLE REVIEWS

t: 01708 578053 | m: 0794 939 4403
e: info@lillywhitepropertygroup.com
www.lillywhitehomerenovations.com

f LillywhitePropertyGroup i LillywhitePropertyGroup t @LWMaintenance

LILLYWHITE
LILLYWHITE PROPERTY GROUP LTD



WE OFFER
FREE ESTIMATES

WE NOW OFFER FINANCE
ON ALL REFURBISHMENT
PROJECTS





YOUR LOCAL EVENTS

SOUTH HORNCURCH LIBRARY CHESS CLUB

South Hornchurch Library,
Rainham Road, Rainham, RM13 7RD
Every Thursday until July 13, 4pm – 6pm

and from India from wounded soldiers in England and the Western Front.

Entrance donation of £3.50.
Email essexwfa@googlemail.com or call 07912 791708 or 07912 791708.

SUPERHERO FAMILY FUN DAY

The Champion School, Wingletye Lane,
Hornchurch, RM11 3BX
Saturday, June 17, 10am – 5pm

This family fun day will feature live music, inflatables, food and drink, funfair and local small businesses.

The event is aiming to raise money for local charity Mitchell's Miracles, supporting families affected by neuroblastoma.

For more information, please contact Jade at jade@mitchellsmiracles.co.uk or 07799 252726.

WHAT'S LOVE GOT TO DO WITH IT?

Queen's Theatre, Billet Lane,
Hornchurch, RM11 1QT
Friday, June 30, 7.30pm

Brought to you by the award-winning producers behind the hugely successful *Whitney – Queen Of The Night*, *What's Love Got To Do With It?* is the ultimate tribute concert paying homage to one of the most iconic and much-loved musical artists of the 20th century, the late Tina Turner.

In this smash-hit touring theatre show, audiences can expect a night of high-energy rock and roll performed by an all-live band. This feel-good show features Tina's greatest hits, performed by the amazing vocal talent of Elesha Paul Moses.

Get tickets at www.queens-theatre.co.uk/whatson/whats-love-got-to-do-with-it



Photo credit: Queen's Theatre



Photo credit: Google Maps

Those aged five to 15 are welcome to join the chess club, whether you are a pro or just starting out.

Sessions run in term time and booking is required. Cost is £1 per session. Please call 01708 434921.

LANGTONS SUMMER CONCERT 2023

Langtons Gardens, Billet Lane,
Hornchurch, RM11 1XJ

Sunday, June 11, 3pm – 5.30pm

Langtons Summer Concert is a popular annual event that attracts around 2,000 attendees who are joined by the Mayor of Havering, mayors of neighbouring boroughs and Havering councillors.

Langtons Gardens will open at 1.30pm, with the performance beginning at 3pm. Event admission will be via the park entrance on Keswick Avenue and Langtons Main House only. You are welcome to bring your own food and drink to the performance.

Tickets cost £5 and will only be available on the day if pre-sales have not sold out. Find out more at www.queens-theatre.co.uk/whatson/langtons-summer-concert-langtons-gardens

WESTERN FRONT ASSOCIATION – A THOUSAND HEROES HAVE ARISEN

The Poppy Lounge, Royal British Legion,
Legion House, 205 High Street,
Hornchurch, RM11 3XT

Wednesday, June 14, 7.45pm – 9.30pm

A talk based on the speaker's book about Sikh soldiers in the First World War, based on correspondence to



WARDROBES ■ BUILT IN WARDROBES ■ FITTED KITCHENS ■ SLIDING WARDROBES

LUXURY BESPOKE WARDROBES & KITCHENS

Made to order in the UK ■ 10 Year Product Guarantee

Soft Close Doors As Standard ■ We fit wardrobes in less than 2-3 weeks

CONTACT US

01708 756789 ■ 01708 578073

www.bestfittedwardrobe.co.uk

info@bestfittedwardrobe.co.uk



Best Fitted Wardrobe Ltd Unit A3, Seedbed Centre, Davidson Way, RM7 0AZ



BOILR offers comprehensive service plans to homes throughout Essex, Hertfordshire & London.

★	★★	★★★	★★★★
£7.50 / MONTH	£15.50 / MONTH	£19.50 / MONTH	£23.50 / MONTH
Annual boiler service ✓	Annual boiler service ✓	Annual boiler service ✓	Annual boiler service ✓
Landlord safety record ✓	Landlord safety record ✓	Landlord safety record ✓	Landlord safety record ✓
Heating/Gas/Plumbing ✓	Heating/Gas ✓	Heating/Gas/Plumbing ✓	Heating/Gas/Plumbing ✓
Electrical Faults & Emergencies ✓	Electrical Faults & Emergencies ✓	Electrical Faults & Emergencies ✓	Electrical Faults & Emergencies ✓

Servicing | Installation | Plans

CALL OUR TEAM TODAY FOR MORE INFORMATION

01708 837147

hello@boilrltd.co.uk boilrltd.co.uk



T&C's Apply



**Chigwell
WINDOW CENTRE**
PART OF THE CHIGWELL GROUP

**Visit our brand new Brentwood &
totally refurbished Collier Row
showrooms - now open!**



**4b Mascalls Lane, Brentwood CM14 5LR
9-11 Chase Cross Rd, Collier Row RM5 3PJ**

**20%
OFF**

**ALL PRODUCTS WHEN YOU
SHOW THIS ADVERT INSTORE.
(VALID DURING MAY ONLY)***

**sales@chigwellwindowcentre.co.uk
020 8500 4900 | chigwellwindowcentre.co.uk**

A piece of wartime history lost to industrialisation

This month, we remember Belmont Castle, an Essex site rich in history, which survived German artillery from above only to succumb to the gradual creep of industry from below ground.

A once-grand architectural gem, Belmont Castle stood majestically atop a hill in Grays. Erected in 1795 by Zachary Philip Lynch, this Grade II listed building was a symbol of wealth and prestige, boasting a rich history that spanned more than two centuries.

The castle was designed in the Gothic Revival style by Samuel Wyatt, and showcased an impressive façade characterised by tall, pointed arches, intricate stone carvings and a symphony of decorative elements. The building was adorned with battlements and turrets, creating an imposing silhouette against the Essex skyline.

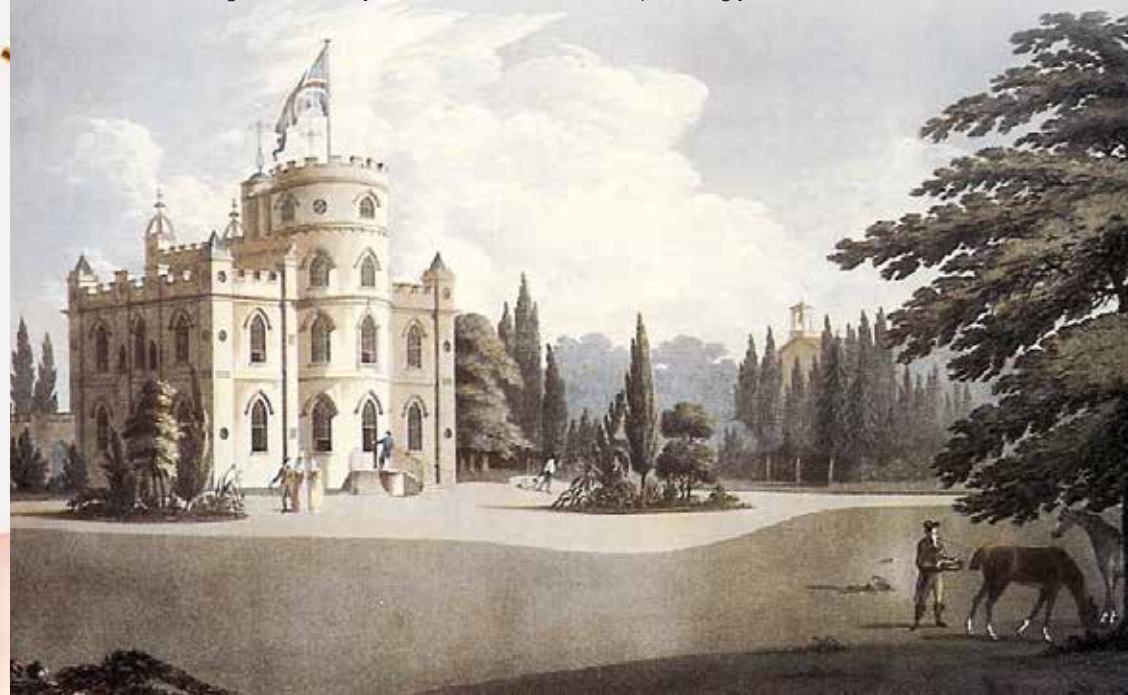
Its grandeur was further accentuated by an expansive estate featuring vast gardens, meandering pathways and lush, verdant landscapes.

The castle played host to various notable figures and events throughout its history. It is rumoured that

the renowned English poet, Lord Byron, once stayed at the castle as a guest of its original owner, Zachary Philip Lynch.

In 1815, it was acquired by James Walker, a prominent civil engineer. He added an observatory, making the castle one of the few private residences in England to feature such an amenity. During the Second World War, Belmont Castle was requisitioned by the British Army and served as the headquarters for the Royal Artillery's Anti-Aircraft Division.

Many may have thought it was in good hands, having been returned to the state, yet in truth the move sounded the building's death knell. This was despite it being an exemplar of grandeur and a reflection of the opulence of a bygone era, and irrespective of its rich history, illustrious guests and unique features. Belmont Castle was forced to make way for the relentless expansion of the huge Grays Chalk Quarry, which had crept unerringly towards it in the preceding years, and was demolished in 1943.



LOCAL FEATURE

VDN ELECTRICS

We at VDN Electrics treat your home like our own and take the upmost pride in helping you bring your vision to life.



- ⚡ 24-hour emergency call outs
- ⚡ Full & part rewiring ⚡ Fuse board upgrades
- ⚡ Indoor & outdoor lighting & power
- ⚡ EV charging installations

CALL NOW FOR A FREE SURVEY
07776 906 335
vdnelectrics.co.uk



10% OFF
CODE VDN10M

Offer valid from April 2023 to March 2024.
Can only be used once.

BRENTWOOD SOLAR

Plumbing
& Heating
Repairs &
Installation



Bathroom Suites
Boilers 🔥 Air Conditioning
Air Source Heat Pumps
Safety Certificates



CONTACT US

01708 732 323

info@brentwoodsolar.co.uk

SPECIALIST IN PRE-CAST BUILDINGS

SINGLE GARAGES ■ DOUBLE GARAGES ■ CONSERVATORIES
GARDEN ROOMS ■ SHEDS/WORKSHOPS & MORE



- FAMILY RUN BUSINESS ■ 50 YEARS EXPERIENCE
- 5 YEARS GUARANTEE ■ DESIGNS TAILORED FOR YOU
- HIGH QUALITY, LOW MAINTENANCE CONSTRUCTION

CONTACT US ON 020 8590 3701

www.rpageconcretebuildings.com

f rpageconcretebuildings

951-953 High Road, Chadwell Heath, Romford, Essex RM6 4HB



**R
PAGE
CONCRETE
BUILDINGS LTD**

STAYING ALIVE!

Unless you have someone looking after your garden while you are on holiday, you may be wondering how you are going to keep your plants alive and well until you return. Discover our top tips below.

WATER BEFORE YOU GO:

Before you leave for your holiday, make sure you give all the plants in your garden a thorough watering. Soak any pots, containers and hanging baskets at the plant base until the water rises above the soil. Allow this water to soak in and then repeat.

MOVE POTTED PLANTS:

Move potted plants into shady areas of your garden to slow the rate at which they dry out and to help them stay hydrated. Avoid using shade cast by the eaves of your home as this can prevent any natural rainwater from reaching them.

MAKE SOME MULCH:

A thick mulch can help to reduce the evaporation of water and lock moisture into the ground. You can

make mulch from woodchips, gravel and decorative stones or even with just a few handfuls of good quality compost. Place around the base of your plants in a doughnut shape.

INVEST IN AN IRRIGATION SYSTEM:

If your budget allows it, an irrigation system will deliver a controlled amount of water to reach your plants at set times during the day. This is a good choice if you are away for a longer period of time, or you go away frequently.

TOP TIPS FOR HOUSEPLANTS:

- > Move any houseplants away from direct sunlight to cooler, darker areas of your home
- > Give them a good, deep soak for around 10 seconds but make sure to drain any excess water
- > Place one end of a damp cloth into a glass of water and the other end in the soil. When the plant becomes thirsty, it will absorb moisture from the cloth
- > Gather your houseplants together to create a humid microclimate.



Belladonna is one plant that you do not want growing in your garden. Belladonna, sometimes referred to as deadly nightshade, is extremely toxic to humans, dogs and cats, and needs to be quickly identified and removed.

WHICH PARTS ARE TOXIC?

All parts of the belladonna plant are toxic to humans and domesticated animals, including the leaves, flowers, fruits and roots. It is not toxic to birds and wildlife, although when honeybees feed on belladonna, the honey they produce can also be toxic.

HOW TO IDENTIFY BELLADONNA

Belladonna is a tall and bushy perennial that grows three to four feet high and wide. It boasts dark green leaves that are oval and unevenly sized. On the bottom part of the plant, the leaves are solitary but on the upper parts, they grow in pairs. Belladonna blooms from June through to early September, with dull purple or lavender flowers that are slightly scented.

The fruit ripens between late August and September and is black and shiny like a cherry.

HOW DOES BELLADONNA SPREAD?

Belladonna spreads very quickly, just like a weed. This plant dies back in winter and then regrows in spring from its thick, fleshy roots. Birds that eat the seeds can spread the plant to other areas via their droppings.

HOW TO REMOVE BELLADONNA FROM YOUR GARDEN

You must protect your skin when handling belladonna, so make sure you wear long sleeves, long trousers, boots and gloves. If the plant is particularly tall and there is a risk of it coming into contact with your face, then you should wear goggles.

- > Dig out the plant with all its roots
- > Dispose of the plant in your garden waste bin
- > Disinfect any tools you have used
- > Wash your work clothes immediately and separately from your other clothing.

The first step to a beautiful lawn is to call GreenThumb



Our wonderful customers like our service so much, that over 40% of new customers joined us through their recommendation which, if you think about it, is a recommendation in itself.

So, if you've been thinking about enjoying a great lawn this year – green, lush and weed-free, why not contact us today and let us bring your lawn to life.

We provide four seasonal treatments, as well as beneficial treatments to keep your lawn in tip-top condition – prices start from just £15*.

Ask us about our annual plans, which allow you to both spread the cost and save up to 25%.

Simply call: 01277 227 988 or visit: greenthumb.co.uk



PRICES FROM
£15*
PER TREATMENT

GreenThumb
LAWN TREATMENT SERVICE

*Based on a lawn size up to 40m²

UPMINSTER FENCING LIMITED

Family Run Business

Trading Since 1994

SUPPLY & FIT

PRESSURE TREATED PANELS • FREE ADVICE & QUOTATIONS



OPENING HOURS: WEEKDAYS 8AM TO 3PM
SHUT WEEKENDS AND BANK HOLIDAYS

01708 225599 – 07831 281 590

www.upminsterfencing.co.uk • admin@upminsterfencing.co.uk

Upminster Fencing, Mardkye Works, St Mary's Lane, Upminster, Essex, RM14 3PA

Improve, Don't Move!

Maximise the value of your home.

- SPACE-SAVING - MAXIMISE YOUR GARAGE HEADROOM
- SECURITY-ENABLED AUTO-LOCKING SYSTEM
- CHOICE OF 21 COLOURS TO MATCH YOUR HOME
- REMOVAL AND RECYCLING OF YOUR OLD DOOR
- DEDICATED AFTER-CARE TEAM

GAROLLA
ROLLER SHUTTER DOORS

01708 545 657

LINES OPEN 7 DAYS A WEEK

www.garolla.co.uk



BESPOKE ELECTRIC DOORS MANUFACTURED IN THE UK

FREE FITTING
PAYMENT ON
INSTALLATION

PRICED
EXAMPLE £895
COMPACT • UP TO 2.4M

GAROLLA ★ PREMIUM
Increased Security • Double Insulation
One-Touch Close

PRICED
EXAMPLE £1,990
PREMIUM • 3.4M • ANTHRACITE

Cloudy2Clear, A Local Service, Saving You Money.

As a leading domestic glass replacement company for more than 16 years, Cloudy2Clear windows are the leading name in the industry. There is no need for you to risk your windows by using the dreaded double glazing cowboy down the street. You can join over 336,000 happy customers and replace your glass ethically and affordably. If you have a failed glass unit, it may not provide you with the protection you need or be as energy-efficient as it once was. Take a minute to check your home to see if any double glazing has failed? Taking action now can prevent future financial problems.

values have been held dear for a number of years. Since starting the business some years ago Cloudy2Clear have remained true to their core values of supporting the local community by providing a service that saves the public money.

The Cloudy2Clear service only requires the glass to be replaced and not the whole window once the unit has failed. Chris commented "Cloudy2Clear were able to assist our community through the last financial crisis in 2008 due to the savings that can be made in using our service. Unfortunately we might be going through something similar again soon and the public can rest assured that we will be there to help once again".

When talking to the Manager of Cloudy2Clear windows Chris Miller it became clear that these

For a free quotation please call 0800 61 21 118 or visit www.cloudy2clear.co.uk.

“Ask me about our fantastic Energy Saving Glass.”



Have Your Windows Steamed Up?

Replace the pane, not the frame!

All glazing backed by our

25
YEAR
GUARANTEE

“I really liked the fact that they were a local community run business”

Janet Beard



We are a Checkatrade Member



Get a FREE Quote

Social distancing in operation

Faulty locks, handles or hinges?



Priority freephone
0800 61 21 118

www.cloudy2clear.co.uk

Love Your Home - Protect Your Windows - Save Money



Full Service for your Dog

We stock: 🐾 Beds 🐾 Bowls 🐾 Leads
Collars 🐾 Harness 🐾 Hygiene wellbeing
Raw food 🐾 Dry food 🐾 Natural deli bar
Toys 🐾 Treats ...and more!

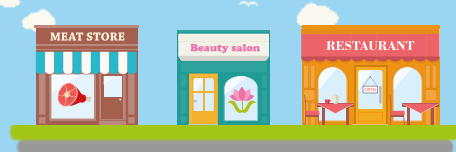
1:1 Dog Grooming Services:

🐾 Full Pamper Groom 🐾 Wash & Tidy
🐾 Ultrasonic Teeth Cleaning
🐾 Puppy Package ...and much more!

To book call us on **01708 534 022**
or visit us at **288 Brentwood Road,**
Hornchurch RM2 5TA



SUPPORT LOCAL BUSINESSES



*Please let your local businesses know
that you saw them first in... VISION*

BEACH SAFETY TIPS FOR DOGS



PETS

Most dogs love the beach. They can run around, play in the sand and cool their paws in the sea. However, if you are planning to take your four-legged friend to the seaside this summer, you need to make sure you know how to keep them safe.

sun cream that is specially formulated for pets. This is especially important for dogs with light skin and short fur.

BE VIGILANT OF DANGEROUS ITEMS

Dangerous items such as broken glass and rocks can easily become buried in the sand and, if trodden on, can injure your dog's paws.

RINSE YOUR DOG

Once you have finished your day at the beach, be sure to rinse off your dog's coat to remove any sand, salt and germs before you head home.

CHECK LOCAL RULES

There are lots of dog-friendly beaches all over the UK, so be sure to check the local rules of your chosen spot before you head out to avoid disappointment. You can find this information at www.thebeachguide.co.uk/dog-friendly

TEACH YOUR DOG TO SWIM

Most dogs are not natural-born swimmers, so it can be a good idea to teach them how to swim before you take them to the beach. There are many guides online on how to teach your dog to swim, such as this one: www.purina.co.uk/articles/dogs/behaviour/training/teach-dog-to-swim

PROVIDE FRESH WATER AND SHADE

If you are planning to spend a long time at the beach with your dog, then you will need to provide fresh water and shade to prevent overheating and dehydration. Also, watch your dog to ensure they don't drink too much seawater.

APPLY SUN CREAM FOR DOGS

Dogs can get sunburn in the same way that you can, so you need to make sure you apply



120 North Street, Hornchurch, RM11 1SU
www.luxhomesgroup.co.uk
01708 208807

HAVERING'S PREMIUM ESTATE AGENT

SLEEP

like a baby?

Are you thinking of co-sleeping but not sure if this is the right choice for you and your baby? Discover five benefits of co-sleeping below. Plus, five factors that mean you should NOT co-sleep.

1 You can meet your baby's immediate needs

Most babies require feeding, changing and soothing throughout the night. If you are close to your baby, then you can meet their needs without having to get out of bed. You can also do this with minimal disruption, which means your baby is more likely to fall quickly back to sleep.

2 You can build up your milk supply

For breastfeeding mums, co-sleeping can help you to maintain a good milk supply for your baby. As breastmilk production works on a supply-and-demand basis, if you are sleeping with your baby, you are in the ideal position for frequent night-time feeds.

3 Your baby can practise self-rousing

Although sending your baby into a deep sleep may sound appealing, babies are not actually meant to sleep in this way. Babies who co-sleep are frequently roused when close to their mothers, which can help them to learn how to use their self-preservation instinct to rouse when there is any danger.

4 Your baby can develop stronger bonds

Research suggests that infants who co-sleep develop stronger emotional relationships both with their parents and with other people. It may also help children to grow up with higher self-esteem and less anxiety, and to become more independent.

When you should NOT co-sleep:

- > You have been drinking alcohol
- > You are a smoker or use e-cigarettes
- > You have taken any drugs that may cause drowsiness
- > Your baby was premature (born earlier than 37 weeks)
- > Your baby had a low birth rate (less than 2.5kg or 5.5lbs).



PROBLEMS WITH YOUR DEVICES? CALL THE TECH DOCTOR

WE REPAIR, BUY, SELL & EXCHANGE
MOBILES, LAPTOPS & TABLETS



GADGETS CLINIC

- Repairs & Unlocking
- Data Recovery
- Broken/Cracked Screens
- Water Damage
- Battery Replacement
- Charging Problems

We also stock a wide range of phone, tablet & laptop accessories

**WE CAN
HELP**

Contact us on **01708 922541**

www.gadgetsclinic.co.uk • gchornchurchltd@gmail.com
or visit 112 High Street, Hornchurch RM12 4UH

YO _ R ADVERT HE _ E...

Q: WHAT'S MISSING HERE?

A: YOU ARE

CONTACT US NOW TO START ADVERTISING

Your
Monthly
Lifestyle
Magazine



t: 01708 578049 m: 07967 079101
e: hornchurch@visionmag.co.uk
w: www.visionmagessex.com

Whatever the reason, users choosing an e-bike look certain to light the path... or road!

STRONG. Small businesses are the heart of the economy. Keep them going **STRONG.** Small businesses are the heart of the economy. Keep them going **STRONG.** Small businesses are the heart of the economy. Keep them going **STRONG.**

Small businesses are the heart of the economy...
use a VISION advertiser today

MAKING AN INSURANCE CLAIM?

Oakleafe
CLAIMS

Having to make an Insurance Claim can often be a complicated and time consuming process. Once a claim is lodged with an Insurer they will appoint a **LOSS ADJUSTER** to represent them. But did you know you can also appoint your very own Loss Adjuster, known as a **LOSS ASSESSOR**.

Oakleafe Claims **Loss Assessors** are local professionals who specialise in Insurance Claims Management and only represent you-the policyholder. We have extensive experience in all types of claims and values covering the entire U.K. As **Loss Assessors** our mandate is to ensure the policyholder receives their full entitlement after we settle their Insurance Claim.



Storm



Fire & Smoke



Leaks & Floods



Impact



Theft



Business Interruption

Oakleafe Claims **Loss Assessors** are the proud award winning recipients of **Loss Assessor** of the year at the U.K British Claims awards and have been helping people and businesses with Insurance Claims since the Second World War. We operate 24/7 throughout the UK with our head office in Gidea Park and supporting offices in London, Brighton, Manchester, Cardiff & Glasgow.



Email: Office@Oakleafe.com **Web:** www.oakleafe.claims

easy Does it

THE SUCCESS OF CHARISMATIC EASYJET FOUNDER, SIR STELIOS HAJI-IOANNOU

When launching a brand, it pays to make sure you have people rooting for you. And easyJet founder Sir Stelios Haji-Ioannou has one big thing on his side – charisma.

The now 55 year old, whose success as the founder of a revolutionary airline concept soon led to him being instantly recognisable by first name only, caused a major stir in the airline business in the mid-1990s when he started running a cheap shuttle air service between Luton and Scotland.

At the time, the concept of cheap air travel was one that had never taken off – literally. However, by putting on a ‘no frills’ service that did away with complementary food, refreshments and even seat reservations, Stelios found a gap in the market that short-haul travellers loved.

Soon, the airline was servicing destinations across Europe. With fares starting at just £1, the marketing took care of itself.

It wasn't Stelios's first venture into transport.

He had previously owned a shipping business, Stelmar Shipping, and had learned the ropes from his father, who was hugely successful in the same space.

Yet nothing quite rivals the serial entrepreneur's achievements with easyJet. He and his family still own one-third of the business, which values his stake at more than £4billion. This is despite the fact that, as a group floated on the stock exchange, he has repeatedly fallen out with the company's senior managers, declaring that shareholders have had no notable return in more than a decade.

Stelios's battles with Ryanair founder Michael O'Leary are also legendary – Stelios was once portrayed as Pinocchio on a Ryanair advert.

He now lives in Monaco, and received a knighthood from Her Late Majesty Queen Elizabeth II for services to entrepreneurship in 2006.



Photo credit: Stuart Clarke/Shutterstock



DON'T JUST TAKE OUR WORD FOR IT...

Dear Brett,

VISION magazine has been brilliant for us.

They've helped us increase brand awareness across the whole region and gained us a good few happy customers in the short time we've been with them.

Putting together some brilliant artwork for us, Brett has helped us continue the professional image we're looking for and established us as something of a force locally.

Fulfilling our mission to bring competitively priced home improvements to the local area, realising people's ideal home and helping them achieve their dreams, has been much easier with **VISION** magazine. I foresee our partnership continuing for long into the future.

Many thanks,

Tom & Chris
New Level Loft Conversions
01708 578162



Your
Monthly
Lifestyle
Magazine



To advertise call now on

01708 578049

or email hornchurch@visionmag.co.uk

Mullis & Peake LLP
Solicitors

www.mplaw.co.uk



Family disputes and conflicts can be a difficult and emotionally charged time. You will receive expert, cost-effective guidance which delivers the best possible solution to the issues in your case, if you work with us.

With over 75 years of cumulative experience we can offer support and advice on all legal aspects of relationship breakdown.

You can seek help on:

- Child Arrangement Orders
- Child Maintenance
- Injunction Proceedings
- Financial Claims on Divorce
- Financial Provision for Children
- Parental Responsibility Agreements
- Pensions On Divorce
- Divorce
- Prenuptial Agreements
- Separation Agreements

If your case is suitable we can offer a 40-minute free consultation with one of the team.



Sally Ward
Head of Family Team
sallyward@mplaw.co.uk



Roisin McCorry
Consultant
roisinmccorry@mplaw.co.uk



Jas Pannu
Solicitor
jaspreetpannu@mplaw.co.uk



Yvonne Taiwo
Solicitor
yvonnetaiwo@mplaw.co.uk

Romford Office: 8-10 Eastern Road, Romford, Essex RM1 3PJ | **T: 01708 784000**
Shenfield Office: 194 Hutton Road, Shenfield, Essex CM15 8NR | **T: 01277 245015**
Email: office@mplaw.co.uk

Photo credit: Meaning March/Shutterstock.com

A Very BRITISH RACKET

Nothing conjures up a British summer better than Wimbledon, the oldest tennis championship in the world. In true British fashion, it's not all about who wins – or even the lovely sound as the racket whacks the ball. Think strawberries and cream, bizarre tennis outfits, celebrity spotting, and an endless obsession with the weather.

To mark this year's contest, which takes place from July 3 to 16, let's look at a few fun facts.

• The first Wimbledon took place in 1877, but only involved men's singles. Ladies weren't allowed to compete until 1884.

• Wimbledon attracts around 500,000 spectators, and millions more from around the globe catch up on TV.

• During an average tournament, players go through around 55,000 balls.

• The grass on the Wimbledon lawns has to be precisely 8mm high.

• There's a strict rule that Wimbledon players must wear white clothes – though a small dash of colour is now allowed. The tradition started in the 1800s to avoid sweaty patches showing up on dark clothing.

• Yellow tennis balls were introduced in 1986 because they were more visible on TV than the white ones.

• At the last Wimbledon tournament, spectators consumed almost 2,000 servings of strawberries and cream, along with a staggering 250,000 glasses of Pimm's.

• The tournament employs around 250 ball boys and girls, selected from 27 nearby schools, who must pass a test to ensure they can stand still for at least three minutes.

• The longest tennis match in history was held at Wimbledon in 2010. It lasted for 11 hours and five minutes over three days between Frenchman Nicolas Pietrangeli and the eventual winner of that year's championship, American John Isner.

• This year's tournament marks Rufus the Harris's Hawk's 16th year as chief pigeon scarer, making sure matches aren't interrupted by unwanted avian guests. Follow him on Twitter or Instagram.

So whether you're lucky enough to attend in person or will be watching the competition from the comfort of your own home, sit back, relax and enjoy this prestigious display of sporting prowess – Pimm's optional.

The hidden gem on your doorstep



A LIMITED
NUMBER OF
MEMBERSHIPS
AVAILABLE
**ENQUIRE
NOW**

Essex golfing at it's best!

Romford Golf Club is a private members club, run by the members, for the members.

New Members Enjoy...

- MONTHLY PAYMENT OPTIONS
- FREE RECIPROCAL GOLF AT THREE LOCAL CLUBS
- PLAY WITH FRIENDLY WELCOMING GOLFING GROUPS
- EASY WALKING COURSE
- RECENT MAJOR COURSE INVESTMENT

**Also
Available**

- LADIES "TASTER" GOLF
- SATURDAY JUNIOR ACADEMY
- SOCIAL MEMBERSHIP



ROMFORD GOLF CLUB
EST 1894

For further details contact,
01708 740 986 ext 5
richard.hall@romfordgolfclub.co.uk
www.romfordgolfclub.com

Heath Drive, Gidea Park, Romford RM2 5QB



**THINKING OF A
PARTICULAR CAR TYRE
SIZE THAT NOBODY SELLS?**

**WE GUARANTEE
YOU THAT WE'LL
HAVE IT
IN STORE!**

WE OFFER A WIDE RANGE OF BRANDS

○ MICHELIN ○ PIRELLI ○ CONTINENTAL ○ DUNLOP
○ JOYROAD ○ EVERFORCE ○ KAPSEN ○ HIFLY ○ ROADCRUZA
○ SAFERICH ○ KAPATOS ○ LANVIGATOR ○ ROADMARCH



**MANY PREMIUM BRANDS ARE ALSO AVAILABLE
FROM OUR MAIN WAREHOUSE (HORNCURCH/ILFORD)**

**VISIT US AT 10-12 RONEO CORNER,
HORNCURCH RD, RUSH GREEN, RM12 4TN
OR CALL US ON 01708 578141 / 07574 964250**



SUPPLYNFIT



supplynfit_tyres

**+ SUPPLY N' FIT TYRES WHOLESALE
The fastest growing tyre wholesalers in the UK last year**



**THE UK'S MOST TRUSTED AND REVIEWED
AUTO LOCKSMITH & EMERGENCY RESPONSE**

HOW SAFE IS YOUR CAR?

Car & Van Security Specialists

VAN SECURITY LOCKS | ALARM SYSTEMS
VEHICLE TRACKING | THEFT PROTECTION
IMMOBILISERS | CAR KEYS



**from
ONLY
£450**



GHOST CAR IMMOBILISER

A SMART WAY TO PROTECT YOUR CAR

Secure your peace of mind and your vehicle
with the next generation of vehicle security



www.carkeyssolutions.co.uk
Call us on 01708 578071
Email: contact@carkeyssolutions.co.uk

We cover Greater London &
surrounding M25 areas

**Open 7 days a week
from 8am to 10pm**

HOW TO PROTECT YOUR CAR IN HOT WEATHER



MOTORING

When temperatures soar, your vehicle requires a little bit of additional TLC. Unless, of course, you don't mind having to fork out for expensive repairs.

PARK IN THE SHADE: Although this may seem obvious, it is really important that you try to park your car in the shade when the sun is at its hottest. This will help to prevent your dashboard from drying out and cracking.

USE A WINDSHIELD PROTECTOR: A windshield protector can help to keep your car cool and prevent sun damage. These are low-cost and easy to use; simply unfold and slide into place on your dashboard.

WAX YOUR CAR: If a heatwave is on its way, it can be a good idea to wax your car as this provides a layer of protection between your car and the sun's powerful ultraviolet rays.

CHECK THE TYRE PRESSURE: Hot pavements and low tyre pressure are a dangerous combination and can lead to a blowout. Therefore, you should make sure that you regularly test your tyre pressure when the warm weather hits.

USE SEAT COVERS: As well as protecting both leather and fabric seats from spillages and stains, seat covers can also help to keep them cool and prevent sun damage.

CHECK YOUR COOLING SYSTEM: To prevent your engine from overheating, you need to make sure that the cooling system is in good working order. Have the belts checked and the antifreeze drained. Also, make sure that you change the belts and fluids on a regular basis.

WASH AND DRY OFTEN: Both sun and heat can cause your car's exterior to crack and fade. However, frequent washing and hand drying can help to remove dirt and dust particles that can cause scratches and dull your car's finish.



Photo credit: Anton Ukolov/Shutterstock.com, motor1.com

THE VISION LISTINGS

ACCOUNTANT & TAX ADVISORS

ALL THINGS ACCOUNTING

Accounting & tax services, we help with self-assessment tax return, corporation tax return, payroll, VAT return, CIS return & bookkeeping. Call 07539 035537 for free initial consultation

ACUPUNCTURE

HONG WEI CHINESE MEDICAL

Fully qualified & experienced, specialising in women's health & Fertility. Help with pain relief, emotional disorders, male/female conditions. 01708 454888 | hongweichinesemedicine.co.uk

AUTO BODY REPAIRS

SQUIRRELS HEATH AUTOS

Est. Over 30 years taking care of major & minor bumper scuffs, dents, scratches etc. Call for details 01708 437721 | 07745 629957

BALLOON DECOR

THE BALLOON SQUAD EVENTS

I offer bespoke decorations for any family celebration or occasion at home or venue. For a no obligation quote contact 07958 586501

BEAUTY & NAILS

BEAUTY BY NATASHA KATIE

A local, mobile LVL Technician. Fully qualified level 2 and 3 beauty therapist Babtac insured and approved. 07961 462672

SPECIAL NAILS

Dedicated to provide the best quality nail care for Men & Women. Walk-ins welcome, appointment bookings & gift vouchers available. 01708 442248

THE NAIL STUDIO

Nail Studio lets you switch off and pamper with highly skilled technicians providing top treatments and nail products to meet your every need. 07572 526519

CAR & VAN HIRE

SCENIC SELF DRIVE

Your self drive hire specialists. Whether you require modern cars, motorhomes, vans or minibuses. Rest assured we will provide you a professional service 01708 753461

CLEANING SERVICES

SPOTCLEAN LTD

Commercial & Domestic Services Specialising in Office, Shop, New build, Refurbished & Residential Cleaning. We ensure a Clean & hygienic environment 07940 213394

CLEARANCE & WASTE

THE CLEARANCE TEAM

From clearing a room, house or garden to clearing an entire office block. Fast, reliable and affordable. Working 24/7 so you can book us at your convenience 0207 101 3387

COMPUTER REPAIR & I.T.

MAPTEC IT

Your local residential & commercial IT specialists. We can fix your computers, configure email accounts & printers. Setup your Wi-Fi, Internet router & network. 0203 865 7174

DRIVING LESSONS - AUTOMATIC

NV DRIVE

Lady instructor. Discount available on prepaid courses. Brand new vehicle June 21 - NV Drive school of motoring: call 07554 634183

ELECTRICAL & WHOLESALE

CH ELECTRICAL WHOLESALE

Essex & East London's leading electrical wholesalers providing the trade & public a professional service with access to all leading brands. 01708 730591

JOIN THE LISTINGS... for just **£180** +VAT per yr

ELECTRICIAN

CAPITAL ELECTRICAL SERVICES LTD

Domestic/Commercial, Repairs/Installation, Vehicle Charging Points, Portable Appliance Testing, Fire Alarms, Emergency Lighting, Installation Condition Reports. Call 01708 578038

VDN ELECTRICS LIMITED

Taking pride in providing a wide range of electrical services for domestic and commercial properties. Call today for your free survey 07776 906335

FINANCIAL SERVICES

PARAGON LEGAL SERVICES LTD

We will write your will for only £49.99+Vat subject to T&Cs. Call FREE on 0800 0747 642 or 01206 544919 Call us for a FREE home appointment. www.paragonlegal.co.uk

FLOORING & RESTORATION

PARNELL FLOORS

We can provide you with the perfect service from the supply, fitting and finishing of new and reclaimed wooden floors including the restoration of existing floors. 07780 671512

FRENCH POLISHING

DC POLISHING

20 Years experience in wood restoration i.e. Furniture, doors, staircases, worktops, minor repairs & FLOOR RESTORATION. 07949 204969 | dcpolishing.church@gmail.com

FURNITURE RESTORATION

ABBEY GROUP

Abbey Group are specialist in creating, repairing & restoring quality furniture & wood surfaces to the highest standard. 01708 741135

KINGS UPHOLSTERY

Handmade sofas & chairs designed especially for you to your required specifications. Also providing in re-upholstery & repair work. 01708 444125

GARDEN SERVICES

JOHN HEARNE

We take care of it all Lawn Mowing, Weeding, Planting, General Tidying, Fence/Shed Painting, Driveway/Patio Pressure Washing and more. Call for details 07908 523101

KINGS CUTS TREE SERVICES

A Huge range of tree services available & offer expert arboricultural advice, ensuring your trees are looked after responsibly. 01708 578030 | 07467 944671

GIFTS, BALLOONS & ACCESSORIES

CLASSIC CARDS

Established for 24 years. Specialising in hand made cards, personalised frames, large variations of gifts, jewellery & balloon displays. Gift wrapping available. 01708 620460

HARDWARE & DIY SUPPLIES

DISCOUNT DIY & HARDWARE

General Store & Hardware. Full Range Color Gas Bottles Available. 49, Butts Green Road, Emerson Park RM11 2JS. 01708 440151. Open 7 Days

LAUNDRY & DRY CLEANING

THE LAUNDRY MAN

From everyday washing, drying & ironing. We can pretty much launder anything & everything. Self service launderette available. 01708 447710

LOCKSMITHS

KEYTEK LOCKSMITHS

From Lock outs to security upgrades, our fully trained DBS checked Locksmiths are the experts | Call 01708 202 269 | Quote: 15078

PLASTERING

ALL WEEKS PLASTERING

Qualified, Experienced Internal/External work, Reliable, Friendly, Trustworthy and Tidy. Call Ryan for Free Quote 07530 818167

PLUMBING & HEATING

CMS PLUMBING HEATING & BATHROOMS

Corgi registered, 20+ years' experience, public liability insurance, offering free quotes. No job too small. Based in Gidea Park. Call Craig 07855 589185

BOILER

BOILER offer servicing, installations, repairs and plans. Local Gas Safe engineers for all your needs. Please call 01708 837147

ROOFING

JIM BARR ROOFING

Exterior cleaning & maintenance. Gutters, Paving & UPVC; cleaned, repaired & renewed. 01708 874816 | 07833 572459

SR ROOFERS

Roofing experts with ORIGINAL company name/number. Family run. Confederation of Roofing Contractors approved member. 01708 551714 | 07743 406418

TILING

DR BETTS TILING

Large selection of floor & wall tiles, fitting service, porcelain, ceramic, glass & natural stone. Specialist in underfloor heating. 01708 381349

WINDOWS & GLAZING

MAJOR GLASS & GLAZING

Specialising in all aspects of glass & glazing for both domestic & commercial. UPVC, Conservatories, Bi-Fold Doors, Double Glazing Repairs, Mirrors. 01708 525996

DISCLAIMER: **VISION** does not represent or endorse the accuracy or reliability of any of the advertisements, nor the quality of any products, information or other materials displayed, purchased or obtained by any customer as a result of an advertisement or any other information or offer in connection with the service or products. The opinions expressed in articles, reviews and stories are strictly those of the individual authors and do not necessarily reflect the views of **VISION**.

PUT YOUR BUSINESS IN THE **VISION** LISTINGS...CALL **01708 578049** TODAY

ACROSS: 1. DEAR, 3. FRACTURE, 9. REGALLY, 10. NECKS, 11. STRAIGHTENED, 13. VIRAGO, 15. STEREO, 17. DISASTROUSLY, 20. BASIC, 21. PLACEBO, 22. THEORIST, 23. TREK
DOWN: 1. DENISVE, 2. ANGER, 4. RHYTHM, 5. CONVENTIONAL, 6. UNCLEAR, 7. ELSE, 8. FLYING SAUCER, 12. BODYWORK, 14. REISSUE, 16. STAPES, 18. SWEAR, 19. ABOUT



PUZZLES & TRIVIA

PUZZLES

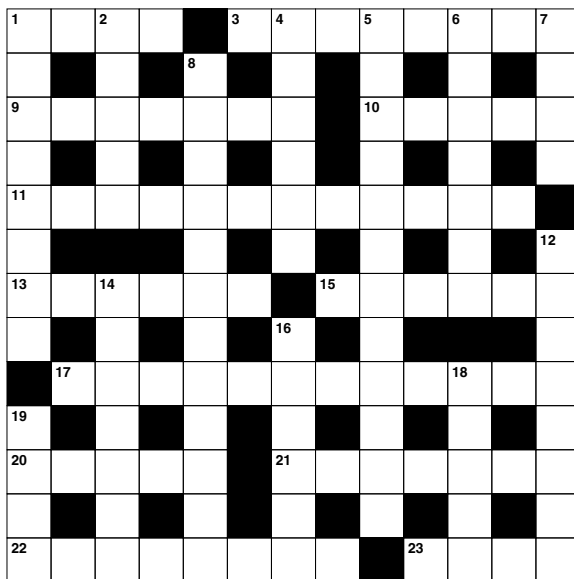
Answers: see end of The VISION Listings

ACROSS

1. Beloved; expensive (4)
3. Break (8)
9. Majestically (7)
10. Giraffes have long ones (5)
11. Uncurled (12)
13. Fierce or domineering woman (6)
15. Dual audio (6)
17. Ruinously (12)
20. Simple (5)
21. Inactive pill (7)
22. Conceptual thinker (8)
23. Arduous journey (4)

DOWN

1. Mocking (8)
2. Ire (5)
4. Sense of musical time (6)
5. In accordance with general custom (12)
6. Uncertain (7)
7. Otherwise (4)
8. UFO (6,6)
12. Exterior of a motor vehicle (8)
14. Print anew (7)
16. Ear bone (6)
18. Give a solemn oath (5)
19. Tuba (anag) (4)



DID YOU KNOW?

- ▶ Your eyes blink an average of 20 times a minute. That's more than 10 million times a year.
- ▶ The entire surface of your skin is replaced every month, which means you have about 1,000 different skins in your life.
- ▶ If you live to age 70, your heart will have beaten around 2.5 billion times.
- ▶ Laid end to end, an adult's blood vessels could circle the Earth's equator four times.
- ▶ Bodies give off a tiny amount of light that's too weak for the eye to see.
- ▶ Your left lung is approximately 20 per cent smaller than your right one.
- ▶ You produce about 40,000 litres of spit in your lifetime. Or to put it another way, enough spit to fill around 500 bathtubs.

SUDOKU

		5				3		
	9						1	6
	6		2					
2			8	7				
3		6				7		1
				9	6			2
					8		6	
1	2						7	
		4				2		

PARK RISE

Homes & Gardens



Computer generated image for indicative purposes only.

LAUNCHING SOON

Write your next chapter at Park Rise

Introducing a beautiful collection of 1 & 2 bedroom apartments for later living exclusively for over 55s. Located adjacent to Harrow Lodge Park, Park Rise is centred around a landscaped garden, with two communal residents' lounges and a guest suite.

Launching this summer

Shared ownership options are also available. Why not take the first steps to find out more.



REGISTER FOR FURTHER INFORMATION
PARKRISE-HORNCHURCH.CO.UK
PARKRISE@PORTERGLENNYNEWHOMES.CO.UK
01708 200 173



ONE HUNDRED & THREE DEGREES

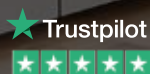
The perfect medium rare New York Strip is cooked at fifty four degrees Celsius.

A single millimetre is all that is needed for a flawless slice of Jamón Ibérico.

Sixty four degree water gives the most rich, velvety poached eggs you've ever imagined.

When you're in the kitchen, perfection and joy come from precision. And it's the same when we're in the kitchen too — because we love what we do.

This is German Enjoyneering.



Kutchenhaus Brentwood

6, The Baytree Shopping Centre
Brentwood, Essex CM14 4BX

Tel : 01277 204447

showroom@brentwood.kutchenhaus.co.uk

 Kutchenhaus Kitchens Brentwood

 [kutchenhaus.brentwood](https://www.instagram.com/kutchenhaus.brentwood)

kutchenhaus

The **German** Kitchen