

**SPOOKY
SPIDER
CRAFTS**

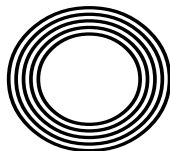
**FIVE
TV SETS
YOU CAN
VISIT**

Beauty treatments
using seasonal veggies

SOUP SEASON
How to build your own recipe

BEN STOKES OBE

Legendary cricketer sets his sights on World Cup victory



FREE

Photo credit: Simon Dael/Shutterstock



THE DIFFERENCE IS CLEAR

WINDOWS
DOORS • PORCHES
SOFFITS • GUTTERING
CONSERVATORIES • FSG
* Solar Batteries now available *

TAKE ADVANTAGE OF OUR
UP TO **50%** OFF
SALE

Uncompromising when it comes to quality

At EE Glazing, we have over 70 years of combined glazing industry experience behind us. During this time, we've learned what sets a top product apart from merely a good one. We have also centred our company ethos around quality, and every product we install is evidence of that commitment.

Take the Kommerling 70mm uPVC window system that we use, for example; it is hands down one of the best uPVC window systems on the market. It's highly durable, very efficient, secure, easy to maintain, and ultra-versatile, making it the perfect window option for every homeowner.



Contact us now for a no-obligation quote

01708 578092



www.eeglazing.co.uk



"The whole experience from initial order to installation and completion was carried out with efficiency, good humour and professionalism"

Mr & Mrs Lambert

CERTASS
Registered Installer





OCTOBER 2023

Editor's notes...



Brett Shohet, Editor

Hello and welcome to this month's edition of **VISION** Hornchurch. The seasons are shifting as we move from summer into autumn. There's no surer sign of this change than when Halloween decorations begin appearing in the shops - though I did notice some as early as July this year. I've even spotted a few festive decorations lurking on the shelves...

This means it's time to dig out our old jumpers and coats - you might find a crumpled £5 note in a pocket if you're lucky - and begin preparing ourselves for the colder months ahead. But even with the darker evenings and chillier weather, there's still a lot to look forward to. Make sure you check out our what's on page to find out some of the top events in your local area.

It's been reassuring to see that our high streets are getting busier once again. I've recently been out and about supporting local networking groups and helping local businesses make valuable new connections. It just goes to show that here at **VISION**, we will always do everything we can to support our advertisers and help them to succeed.

Taking place locally this month is a business exhibition featuring a variety of businesses and welcoming hundreds of visitors. We'll be looking to expand to other areas in the future, so watch this space.

Brett Shohet

This is your town's hyperlocal magazine, delivering to homes and businesses every month.

HOME & DIY | GARDENING | PETS | HEALTH & FITNESS | BEAUTY | FASHION | HISTORY | LOCAL NEWS | FOOD & DRINK | TRAVEL | BUSINESS & PROPERTY | SPORT | PUZZLES | MOTORING | KIDS | WHAT'S ON | TECHNOLOGY | THE LISTINGS

CONTACT US:



hornchurch@visionmag.co.uk | 01708 578049
 www.visionmagessex.com | www.visionmagherts.com
 @visionmagessex | @visionherts | @visionmagessex | @visionmageastherts
 Vision Magazine Essex | Vision Magazine East Herts
 All pages are recyclable
 CONTRIBUTORS | Tabatha Fabray, Fiona Goble, Annabel Stock

BOOK YOUR VISIT TODAY!

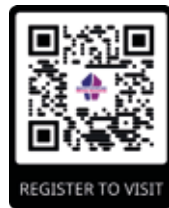
- OVER 60 BUSINESS STANDS ON THE DAY
- OVER 300 ATTENDEES & VISITORS
- SUPPORTING BUSINESSES FOR OVER 20 YEARS

LAST REMAINING STANDS AVAILABLE

www.bsmb.co.uk

@BSMeansBusiness

BSMeansBusiness



REGISTER TO VISIT



BISHOP'S STORTFORD MEANS BUSINESS

WEDS 18 OCT 2023
 SOUTH MILL ARTS
 BISHOP'S STORTFORD

Generously sponsored by MAG London Stansted Airport Media Sponsors VISION - Bishop's Stortford Independent

Windows | Doors | Porches | Conservatories | Fascias & Guttering



www.conceptwindows.co.uk
 Trading Standards Approved



96% of customers would RECOMMEND CONCEPT to friends



HIGH SECURITY WINDOWS



HIGH SECURITY DOORS

COMPOSITE DOORS

BI-FOLD DOORS



WHETHER YOU'RE LOOKING FOR A NEW CONSERVATORY OR TO REFURBISH YOUR EXISTING ONE... FROM START TO FINISH WE TAKE CARE OF EVERYTHING

Concept House, Billet Lane, (Opposite Sainsbury's) Hornchurch, Essex RM11 1XP

FREE CUSTOMER PARKING

EVERYTHING ON DISPLAY AT YOUR LOCAL SHOWROOM



For Your FREE QUOTE Call **01708 463526**

Sooty™

Turns Seventy-Five

In an era where a fad is lucky to last a full five minutes, the enduring magic of hand puppet Sooty must be something of a mystery to young audiences. And yet, when faced with his snuggly yellow fur, button eyes and sweet, shy demeanour, they inevitably melt with adoration as generation upon generation of children before them have done.

Discovered by Harry Corbett OBE in a joke shop on Blackpool North Pier on July 19, 1948, 'Teddy' – as he was then known – was purchased for seven shillings and six pence.

Having long harboured ambitions for the stage, Bradford native Corbett first appeared with the silent bear in a 1952 BBC TV show, *Talent Night*. The act was an instant success and Sooty soon became the star of his very own show featuring magic tricks, slapstick comedy and songs – a nod to Corbett's former ambitions as a concert pianist which were thwarted by his being deaf in one ear. Soon afterwards, he was joined by his pals: there was Sweep, a grey male dog who communicated with a squeak, and Soo, a female panda with a human voice.

After suffering a heart attack in 1975, Corbett's son Peter (stage name Matthew) took over as Sooty's friend and keeper. In the ensuing years, and with the character now a mainstay on *Rainbow*, Corbett Senior would make occasional guest appearances on spin-off *Sooty Show* (by this point now airing on ITV) until his death in 1989.

Under Matthew Corbett, Sooty and co. would enjoy enormous success. He changed the format of the show to one of a sitcom but kept the integral elements. Namely, Sooty's wand, the catchphrase 'izzy, wizzy, let's get busy', and the silent bear's enduring love of water pistols and mayhem in general.

In 1998, Corbett was succeeded by Richard Cadell. Only a few weeks into his new role, he found himself at 10 Downing Street for a special awards ceremony honouring brave children, hosted by then Prime Minister Sir Tony Blair and his wife Cherie – who Sooty dutifully squirted with his water pistol.

Sooty and Sweep were also guests at the birthday party of His Majesty Prince Charles, as he was then, in 2018 (Sooty actually being a few months older than our now King). The pair have courted numerous other politicians, musicians and celebrities and even – on the hand of Harry Corbett – shared a giggle with Her late Majesty Queen Elizabeth II.

So how is it, then, that a premise so simple remains so beloved in an age of CGI and swanky animation?

"I think the great thing with Sooty – and this is a famous Harry Corbett quote – is that he's never really been in fashion, so he's never really been out," laughs Cadell.

"It's not like one of these children's things that spike and then disappear," explains the 54 year old, who will embark on *75th Birthday Spectacular* – a special UK national tour that kicks off on October 21 at Bradford's Alhambra Theatre and runs through until April 2024.

He adds: "Sometimes the things we cherish most as children, and adults, are based in simple entertainment, and I am delighted that fact has held true despite so much else around us changing."



Photo credit: Moviestore/Shutterstock

REFILMED the scenes

Are you a complete TV addict? What would you say if we told you that there are iconic sets all across the UK that you can visit? From *Coronation Street* to *Only Fools and Horses* to *Downtown Abbey*, here are some locations from popular shows that are open for visitors today.

Coronation Street – ITV Studios, Manchester

This walking tour of *Coronation Street*, the UK's longest-running soap, is a must for any Corrie fan. Complete with an expert guide, you can take a closer look at all the iconic shops and businesses on the street, including The Rovers Return, Roy's Rolls café and Webster's Auto Centre.

Only Fools and Horses – Bristol Temple Meads Train Station

One of Britain's most-loved comedies, who wouldn't want to take a closer look behind the scenes at this legendary sitcom? The *Only Fools and Horses* three-and-a-half-hour coach tour takes you to filming spots of more than 10 episodes and includes a look at Nelson Mandela House, Sid's Café and the road where the iconic Batman and Robin scene took place.

Peaky Blinders – Central Liverpool

A gritty masterpiece, *Peaky Blinders* was filmed in Liverpool even though it is set in Birmingham, owing to this city's well-preserved Victorian industrial architecture. Hop on either the half-day or full-day guided coach tour and see the homes of Polly and Field Marshal Russell, Garrison Lane and so much more.

Downtown Abbey – Bampton, Oxfordshire

Become Lord or Lady of Grantham for the day, with the *Downtown Abbey* and Village group tour. Visit the charming village of Bampton, which fans will know as Downtown Village. Then head to Highclere Castle, where you will be able to explore the estate and the rooms within and enjoy a spot of lunch.

Bridgerton – The Abbey Hotel, Bath

Channel your inner Daphne or Duke of Hastings with a guided *Bridgerton* tour. Explore many of this popular show's filming locations during this two-hour tour, including Lady Danbury's mansion, Gunter's Tea Shop and the modiste dress shop.



JA HUCKINS Ltd

the home of quality bathrooms

BATHROOMS & WET ROOMS
SHOWERS & SCREENS
BATHROOM ACCESSORIES



15% OFF
GEBERIT PRODUCTS
WITH THIS ADVERT

■ GEBERIT

PROVIDING HIGH QUALITY BATHS, TAPS, SINKS, SHOWERS,
HEATING & PLUMBING EQUIPMENT SINCE 1976

SHOWROOM: 01708 578089

www.huckins.co.uk | sales@huckins.co.uk

124 - 128 Dagenham Road, Romford, Essex, RM7 0TJ

**Award winning,
personalised
care in your
own home**



- Wellbeing
- Personal care
- Dementia care
- Household tasks
- Outings & activities
- Medication support

**Talk to our team today
01708 609 364**

www.radfieldhomecare.co.uk



Radfield Home Care Havering & Brentwood,
Suite G7, The Old Brick Works
Church Road, Harold Wood
Romford
RM3 0JA



**spine
plus.co.uk**

- Expert Hands-On Treatment
From Head to Toe
- Latest Therapy Equipment

**Emerson Park Clinic
128 North Street
RM11 1SU
Call: 01708 578072
www.spineplus.co.uk**

RAINCOAT *revolution*

**HOW A SCOTTISH CHEMIST DEvised A FABRIC THAT
CHANGED THE COURSE OF FASHION HISTORY**

A TECHNOLOGICAL MARVEL

Back in the early 19th century, there were no synthetic fibres available, and keeping clothing waterproof was a constant challenge. But Glasgow-born Charles Macintosh's innovation changed all that. He created a revolutionary material that was made by rubberising cotton cloth, making it waterproof. Macintosh patented his method, and the first 'Mac' hit the market in October 1823. His Mackintosh coat became an instant sensation, and the brand became synonymous with stylish and functional outerwear loved by workers and aristocrats alike.

STRANGE SMELLS AND MELTING COATS

Early Mackintosh coats faced a few issues – they smelled strange, the fabric was stiff, and they sometimes even melted in hot weather. Thankfully, these problems were largely solved in 1844 with the patenting of another groundbreaking innovation: the vulcanising of rubber. This chemical process made the fabric stronger and less sensitive to temperature changes.

BACK FROM THE BRINK

In the 1980s and 1990s, Mackintosh faced challenges from lightweight synthetic waterproof fabrics like Gore-Tex. However, a management buyout in the mid-1990s breathed new life into the brand. It also reclaimed its status as an upmarket brand, collaborating with prestigious fashion houses like Louis Vuitton.

THE MAKING OF A MACKINTOSH

To this day, the coats are still handmade in Cumbernauld, near Glasgow, using a fabric that's very similar to Macintosh's original. Skilled craftsmen and women cut, sew and seal the material by hand, using special rubber-based glue. Each seam is also taped to ensure the coats are 100 per cent waterproof.

Now owned by Japanese firm Yagi Tsusho, the Mackintosh has weathered the storms of fashion and remains a symbol of British style and innovation. If you want one, you'll need to start saving now; a classic trench coat will set you back almost £1,000.



FASHION

Services Offered

- Cataract surgery with multifocal lens implants for reduced dependence on spectacles
- Lens replacement surgery for removal of glasses
- Glaucoma management
- Minor operations for lumps and bumps around eyes
- Correction of droopy and baggy eyelids
- Watering eyes and blocked tear ducts
- Dry eyes and blepharitis
- YAG and Argon laser treatments of eye conditions
- Botox treatments
- Major surgery undertaken at local private hospitals

For appointments, please contact Phillipa Chambers on 07757 605008



Mr J S Chawla

Mr J S Chawla is available for private consultations in the eye Clinic at Westland Medical Centre.

This Care Quality Commission approved medical facility is equipped with state of the art diagnostic equipment, minor operation room and lasers.



Eye Clinic, Westland Medical Centre,
Westland Avenue, Hornchurch,
Essex, RM11 3SD

www.facebook.com/ClearvisionMedicare



BEAUTY

VEGGIE vision

Most people know that fruits and vegetables are good for your complexion when eaten regularly, but not everyone knows that they can also be applied to the skin and hair to achieve amazing results. Here are four of our favourite veggie-based beauty treatments.

PUMPKIN FOOT MASK – Best for dry, cracked heels

You will need: ½ cup of pumpkin purée | 1 whole egg | 1 tsp honey

How to apply: Combine all of the above ingredients in a bowl | Massage into the feet and ankles | Cover with cling film or put on a pair of old socks | Leave for 15 minutes and then rinse with warm water

BUTTERNUT SQUASH HAIR MASK – Best for dull or dry hair

You will need: ½ large butternut squash | 3 tbsp honey | ¼ cup of plain yogurt

How to make: Peel and cook the squash until soft enough to remove the inner contents | Mash the squash | Combine with the honey and yogurt | Apply the mixture to damp hair and put on a plastic shower cap | Leave on for 20 minutes and then rinse with warm water

BEETROOT FACE MASK – Best for ageing skin

You will need: 2 tsp beetroot juice | 1 tsp yogurt | 1 tsp lime juice | 2 tsp gram flour

How to make: Mix the beetroot juice with the flour and then add the yogurt and lime juice | Mix until you have a smooth paste | Spread the mixture evenly over the face and leave for 15 minutes | Rinse off with warm water | Pat your face dry

POTATO CLEANSER – Best for acne-prone skin

You will need: 1 potato | 1 cucumber | 1 tsp baking soda | 1 tsp water

How to apply: Peel and chop the potato and the cucumber | Blend in a food processor or blender for 20 seconds | Add the water and baking soda | Apply to the face daily to cleanse and remove make-up, dirt and impurities.



Signs you are ADDICTED to CAFFEINE

Do you love an energy drink? Can't get out of bed without your morning cup of coffee? If the answer is yes, then you are far from alone. It is suspected that as many as three out of four regular caffeine consumers are addicted to the substance.

1 You get headaches if you miss your caffeine fix: Caffeine is a vasoconstrictor, which means it makes the blood vessels narrower and restricts blood flow. This in turn relieves headaches, so if you miss your morning fix, you may develop a pounding head as a result.

2 You're bad-tempered before you get your first dose: Not a morning person? This could be because you are too reliant on caffeine. Caffeine stimulates the dopamine receptors in the brain, which makes you feel good. Therefore, if you don't get your morning hit, you are much more likely to experience a bad mood.

3 You struggle to concentrate without being caffeinated: Caffeine is known for helping you feel more alert and focused. However, if you are used to getting that boost every day, you may struggle to concentrate without the help of this popular stimulant.

4 You've built up a tolerance: Do you feel like you need more and more caffeine to enjoy the same effects? This is likely because your body has started to become immune to the effects of this substance.

5 You feel constantly on edge: Do you often get the jitters? High doses of caffeine can cause you to feel jumpy and can even cause anxiety and panic attacks.

How to reduce your caffeine intake:

- ☛ Keep a caffeine diary ☛ Switch to herbal teas
- ☛ Check labels for other sources of caffeine, such as fizzy drinks and chocolate
- ☛ Gradually cut down your daily intake rather than going cold turkey.



MobilityPlus+



The UK's leading provider of affordable electric wheelchairs.

Premium Electric Wheelchairs That Support Independent Living



Includes FREE next day delivery



MobilityPlus+ Ultra-Light Instant Folding Electric Wheelchair
24KG, 4MPH, 2 LITHIUM BATTERIES

Only **£879.99**



MobilityPlus+ Deluxe Ultra-Light
FOLDING ROLLATOR WITH SEAT
Only **£114.99**



MobilityPlus+ Upright Rollator
WITH FOREARM SUPPORT
Only **£154.99**



MobilityPlus+ Quick-Split Electric
LIGHTWEIGHT, COMPACT, 4MPH
Only **£599.99**



MobilityPlus+ Featherlite
18.7KG, 4MPH, LITHIUM BATTERY
Only **£899.99**

Customer Support Team

01992 610 434 | www.mobilitypluswheelchairs.co.uk

OUR SHOWROOM: UNIT 5 VELOCITY, HARLOW BUSINESS PARK, HARLOW, CM19 5QF (APPOINTMENT ONLY)



**epr
services
Ltd**
committed to care

HOME SUPPORT & DOMICILARY CARE

TYPES OF CARE

DOMICILIARY CARE SERVICES

Personal care, Medication, Appointments, Domestic support, help with meal preparation & shopping.

LIVE-IN-CARE

Short & Long term live-in-care, respite care, couples care & post operations care.

SPECIAL AREAS

Dementia Care, Palliative/End of life, Physical & Learning Disabilities, Progressive conditions & Post operations

**You can book your free appointment
by calling us on 01708 578 039**

www.eprservices.co.uk • info@eprbusiness.co.uk



WE VISIT YOU AT HOME

Our carers can provide daily visits
to help you with your daily needs



Work Opportunities with Prior Care

We are a family run care company who provide care to adults located within the London Borough of Havering. We are currently looking for compassionate people to help us deliver quality care services within our clients' own homes.

We required people who:

- Are a good communicator
- Have a kind & compassionate nature
- Enjoy helping people
- Respect people's rights & differences & ensure they are treated in a dignified manner
- Can be flexible

We can offer you:

- Good rates of pay (Enhanced rate on Bank Holidays)
- Free uniform & PPE
- Refer a friend scheme (subject to conditions)
- Up to 28 days holiday
- Full support 24/7
- Induction course leading into The Care Certificate
- Ongoing development with additional training courses including QCF Diplomas

You NEED to be able to work in the following areas:

UPMINSTER • CRANHAM • HORNCHURCH • HAROLD HILL • ELM PARK

Being a car driver is preferred; but if willing to walk or use public transport, candidates can also be considered.

We have all shifts available: Early mornings & lunches - tea & bed calls - weekends. Morning shift starts at around 6am.

**Call Karen on 01708 446690 to apply or
email your CV to recruitment@priorcare.co.uk**

**Job Type: Part-Time/ Full Time - zero hour contract
Salary: £9.80 - £10.80 /hour**



UNDER

pressure!

Did you know that you can help to control high blood pressure with exercise? Here are five of the best physical activities, proven to lower your blood pressure.

BRISK WALKING

If you are overweight and have high blood pressure, you may not be able to undergo a vigorous workout regime.

Fortunately, studies have shown that multiple short sessions of brisk walking can be as effective at lowering blood pressure as high-intensity exercises. Aim for three 10-minute walks each day.

SWIMMING

A great form of aerobic exercise, swimming is a good option for older adults and those who require a low-impact fitness regime. For best results, aim for 45 minutes of continuous swimming four or five times per week. Don't worry if you cannot manage 45 minutes right away, as you can gradually build up your fitness and endurance levels.

DANCING

If you get bored easily and like to have fun when working out, then you will be pleased to hear that dancing is a great form of exercise for people with high blood pressure. Another effective form of aerobic exercise, aim for at least 30 minutes a day, five times per week.

HIKING

For those who like a bit more of a challenge and love the great outdoors, hiking is the physical activity for you. Guaranteed to get your heart rate up and help you lose any excess weight, there are lots of beautiful hiking spots in the UK. This physical pastime has been shown to lower blood pressure by up to 10 points.

RESISTANCE TRAINING

Resistance training can be added to your workout routine to further help with reducing blood pressure. This type of training can be done less frequently than cardio exercises; movements such as squats, push-ups, planks and abdominal crunches should be carried out two or three times a week. For anyone less mobile or who doesn't want to use weights, resistance bands are a good choice as they will not put your body under as much pressure.

AUTUMN COCKTAILS

Just because summer now seems like a distant memory, doesn't mean that you can't still enjoy a delicious cocktail or two after work or when the kids are tucked up in bed. Why not have a go at making one of these recipes below, and warm your cockles on a chilly night?

PUMPKIN WHITE RUSSIAN

You will need: 25ml pumpkin spice Kahlua | 50ml vodka | 25ml double cream
How to make: Pour the ingredients into a glass over ice | Stir lightly and serve.

CARAMEL APPLE MULE

You will need: 50ml vodka | 15ml caramel | 30ml apple cider vinegar | Ginger beer to top | 1 apple | 1 cinnamon stick
How to make: Shake the vodka, caramel and apple cider vinegar with ice | Strain into a mule mug over ice | Top with ginger beer | Garnish with an apple fan and cinnamon stick.

SLOE GIN FIZZ

You will need: 50ml sloe gin | 25ml lemon juice | 2 tsp sugar syrup | Sparkling water | Lemon slice | Fresh or frozen blackberry
How to make: Pour the sloe gin, lemon juice and sugar syrup into a cocktail shaker and top with ice | Shake well | Strain into a tall glass with more ice | Top with sparkling water and stir gently | Garnish with a lemon slice and a blackberry.

CAMPFIRE SLING

You will need: 50ml rye whisky | 7ml maple syrup | 3 dashes of chocolate bitters | Orange peel twist
How to make: Add all the ingredients to an old-fashioned glass with one piece of ice | Stir thoroughly | Scorch a piece of orange peel over the glass to release the oils.

MULLED APPLE JUICE

You will need: 1 litre apple juice | 1 cinnamon stick | 3 cloves | Orange slices | Sugar or honey to taste
How to make: Simmer the apple juice with the orange peel, cinnamon and cloves for 5-10 minutes | Sweeten with sugar or honey | Serve with some orange slices and a cinnamon stick.



Photo credit: bbogoodfood.com, tastingpanelmag.com

At Home Food Intolerance Testing

Enjoy the food you love, that loves you back

Our food intolerance test is the most accurate one on the market, we use blood to test for 134 different foods and drinks, giving you a sensitivity level between 1-5 helping you to discover the root cause of stubborn symptoms.

Intolerance Testing can help with

- IBS
- Crohns
- Diverticulitis
- Skin conditions
- Headaches
- Migraines
- Extreme tiredness
- Fatigue
- Joint ache
- Stomach Cramps
- Bloating

£299.00 for a 3 part package

The package includes the test plus two consultations via zoom or face-to-face



THE FAMILY HEALTH HUB
 A STATE OF PEACEFUL HAPPINESS



THEFAMILYHEALTHHUB.CO.UK

587 Upper Brentwood Road, Gidea Park, Essex, RM12 6LH
 gideapark@thefamilyhealthhub.co.uk Tel: 01708 782 026 · 07702 809 505



Scan the QR code & follow us on Instagram

Buy 2 tests for just £540.00



FUMIKO IS A FUSION JAPANESE RESTAURANT WITH A STYLISH AMBIANCE AND A TALENTED TEAM OF CHEFS

WHERE TRADITION MEETS INNOVATION

📍 High St, Hornchurch RM12 4UN
 Menu: 🌐 fumiko.co.uk ☎ 01708 898886

Unique cocktails with Japanese flavours
 Impeccable service
 Stylish atmosphere

NEW RESTAURANT OPEN NOW

THE AVIARY

CHEFS TASTING MENU AVAILABLE
MONDAY - SUNDAY FROM 12:00PM
PLEASE NOTE WE ARE CLOSED ON TUESDAYS
£55.00pp

AVIARY SHOT

AN ENTRÉE – MAPLE SYRUP, EGG YOLK AND MILK



SEA BREAM

SERVED WITH RADISH AND A GINGER CHAMPAGNE VINEGAR



RISOTTO ZENZERO

A WELL BALANCED RISOTTO WITH FRESH GINGER, ROSEMARY & LIQUORICE



RAVIOLI PECORINO

HOMEMADE PECORINO CHEESE RAVIOLI IN AN ASPARAGUS CREAM WITH BACON & GRANA



SEA BASS

IN A CREAMY SCALLOP VELOUTÉ SERVED WITH SPINACH AND RAZOR CLAM



CHOCOLATE MOUSSE

A HOMEMADE RICH CHOCOLATE MOUSSE WITH FLAVOURINGS OF WHISKEY, SMOKED TOBACCO AND RASPBERRY SAUCE



The Aviary Hornchurch

MEDITERRANEAN RESTAURANT & BAR

LAUNCHING OUR SUNDAY ROASTS

SERVED EVERY SUNDAY FROM 12:00-6:00PM

179 HORNCHURCH HIGH STREET

CALL 01708 578042 FOR RESERVATIONS

for more details see our website @ www.theaviaryltd.co.uk

HOW TO BUILD YOUR *own* soup

Soup is cheap, filling and the perfect antidote to the cold weather. Sadly, supermarket offerings can be both costly and underwhelming. So we thought we'd share with you our foolproof method for prepping the perfect soup every time.

- 1. CHOOSE A FAT:** Butter | Olive oil | Palm oil | Sunflower oil
- 2. SELECT A BASE LIQUID (1 OR 2):** Beef/chicken stock | Vegetable stock | Cream | Tomato purée
- 3. PICK A PROTEIN:** Chicken | Fish | Tofu | Lentils | Beans
- 4. DECIDE ON A GRAIN:** Rice | Noodles | Pasta | Barley
- 5. CHOOSE YOUR VEGGIES (UP TO 3):** Carrots | Onion | Peppers | Sweet potatoes | Parsnips | Spinach | Broccoli | Mushrooms
- 6. ADD SOME FLAVOUR:** Garlic salt | Cayenne pepper | Cumin | Basil | Thyme | Chilli powder

How to make your soup

- STEP 1:** Heat your fat and sauté your aromatic veggies, such as onion and garlic, for 3-5 minutes.
- STEP 2:** Add your chosen protein and cook until browned or softened.
- STEP 3:** Add any other vegetables and allow them to soften for 5-10 minutes.
- STEP 4:** Pour in your base (unless using a cream base; if so save this until step 6), your grain and your selected spices and mix well.
- STEP 5:** Bring to the boil, reduce the heat and allow to simmer for around an hour.
- STEP 6:** Add cream if you are making a cream-based soup.
- STEP 7:** Allow to cool, and blend if you want a fully puréed soup.
- STEP 8:** Garnish with croutons, cheese or a herb-infused oil.

Freezing your soup

You can freeze your soup, ideally on the same day you make it, in an airtight container or freezer bag for 2-3 months. Most soups freeze well, with the exception of cream- or milk-based soups, which tend to separate. Add any fresh herbs or starchy elements such as rice or pasta once thawed and reheated, not before freezing, for optimum results.



Da Vinci's
ITALIAN RESTAURANT

Taste the Mediterranean through our quality Italian dishes

Antipasti | Starters | Pasta | Pizza | Grills | Wines | Beers | Spirits

LIVE ENTERTAINMENT
Every Friday

www.davincishornchurch.co.uk | 01708 474 054 | enquiries@davincishornchurch.co.uk
13-15 Station Lane, Hornchurch, RM12 6JL

PUT THE SPARKLE BACK INTO YOUR KITCHEN

Domestic Oven Cleaning Specialists
Est. since 2007

Prices

Single oven incl. shelves & grill pan.....	£43.00
Double oven incl. shelves & grill pan.....	£54.00
Range incl. shelves & grill pan.....	From £54.00
AGAs.....	From £90.00
Hobs.....	From £14.00
Extractors.....	From £15.00
Microwaves.....	From £20.00

No VAT to pay

PLEASE CALL FOR A FREE QUOTATION
01279 432444 * www.ovenbright.co.uk

BEFORE

AFTER

IT'S TIME TO FOCUS ON LIFE NOT THE COST OF LIVING

Retire to a dream location
the easy way



Move in ready homes available from £219,950



Freedom to live life to the full. Modern comforts and community spirit on the Essex Sunshine Coast.

Do you dream of living on the coast? Relaxed days of fresh air, seaside walks and beach picnics? It's all there for you when you move to a brand new, fully furnished home, exclusively for the over 45s, at Sandpiper Gardens, Clacton on Sea. You could also free up cash, save on bills and have less home maintenance to worry about. Whether you're retiring or semi-retiring, it's time to get more out of life.

- ✓ High-quality, low-maintenance, single-storey homes
- ✓ Safe, secure community of like-minded residents
- ✓ Private garden and parking
- ✓ No stamp duty
- ✓ Part exchange and assisted move options available

Get in touch to find out more or arrange a park visit:

www.tingdene-parks.net | 01933 422471 | info@tingdene.net

The GLOBAL ZOO

Animals unique to one place and how to see them

The ability of animals to explore the world is only bettered by the wanderlust of humans, yet there is still a clutch of species who have never ventured from their home continents and, in some cases, countries. While the Galápagos Islands typically take credit for the planet's most unique array of life, here are some others worth celebrating.

GELADA, ETHIOPIA

A monkey that looks like it's wearing a tuxedo, the gelada is native to the highlands of Ethiopia and has rarely strayed. While other monkey species are known for swinging from trees with reckless abandon, these are happiest on the desert floor, eating grass, seeds, roots and insects.

INACCESSIBLE ISLAND RAIL, INACCESSIBLE ISLAND

Yes, there is a place called Inaccessible Island – it's in the South Atlantic – and it requires little description. To describe the world's smallest flightless bird (which also takes the 'Inaccessible' name) is undoubtedly to make a straightforward link

to how this little creature has never made it to the mainland.

THORNY DEVIL, AUSTRALIA

This lizard looks like something out of a Marvel comic, albeit it's never been exported any further than the Aussie outback. It can drink water through its skin, which is just as well, as there is precious little of the stuff about in the summer heat of the Southern Hemisphere.

TEXAS BLIND SALAMANDER, USA

Without eyes or skin colour, this peculiar amphibian detects prey by virtue of vibrations around it. It has never made it out of US waters and you're highly unlikely to ever see one in the flesh, since it lives deep underwater in cave networks.

MANX CAT, ISLE OF MAN

Lastly, there's the famous Manx cat. Although these have been brought across to the mainland, they stand apart from other cat species owing to a rare genetic mutation that means they are born with no tails.



DON'T JUST TAKE OUR WORD FOR IT...

Dear Brett,

VISION magazine has been brilliant for us.

They've helped us increase brand awareness across the whole region and gained us a good few happy customers in the short time we've been with them.

Putting together some brilliant artwork for us, Brett has helped us continue the professional image we're looking for and established us as something of a force locally.

Fulfilling our mission to bring competitively priced home improvements to the local area, realising people's ideal home and helping them achieve their dreams, has been much easier with **VISION** magazine. I foresee our partnership continuing for long into the future.

Many thanks,

Tom & Chris
New Level Loft Conversions
01708 578162



Your
Monthly
Lifestyle
Magazine



To advertise call now on

01708 578049

or email hornchurch@visionmag.co.uk

Alf Onnie

Curtains, blinds and plantation shutters

- ✓ Bespoke made to measure curtains
- ✓ Sheers & Voiles
- ✓ Window blinds – manually operated or motorised
- ✓ Plantation shutters
- ✓ Pole and track fitting service
- No obligation quote
- Friendly & enthusiastic family business Est 1920
- Experienced consultation & installation team
- Commercial projects also undertaken

01708 578156 07956 818477
AlfOnnie.co.uk @AlfOnnie1920
 Alf Onnie Curtains and Blinds

On enquiry mention **Vision** for a special offer

Est. 1975

WE OFFER VERY COMPETITIVE PRICES & WILL BEAT ANY GENUINE WRITTEN ESTIMATE

CELEBRATING OVER 46 YEARS OF TRADING WITH THE ORIGINAL COMPANY NAME & PHONE NUMBER!

- Roof Repair Specialists, All Leaks Cured
- New Tiled Roofs & Velux Windows
- High Performance Felt Flat Roofs
- EPDM Firestone Rubber Flat Roofs
- uPVC Guttering, Fascias & Roofline
- Storm Damage & Insurance Work
- Chimney Stacks Repaired & Removed
- Leadwork, Pointing & Rendering
- Replacement Roof Valleys & Bays
- Roof Overhauls & Maintenance
- Asbestos Removal & Garage Roofs
- Pigeon / solar panel guards
- The Best Quality Materials Used
- 24 Hour Emergency Repairs, 7 Days

A UNIQUE FAMILY RUN BUSINESS BUILT ON REPUTATION, HONESTY & KNOWLEDGE!
OVER 500 GENUINE REVIEWS ON 'TRUSTIST' & OVER 20,000 HAPPY LOCAL CUSTOMERS!
ALL WORK GUARANTEED - FREE ESTIMATES - NO DEPOSITS TAKEN - NO SUB CONTRACTORS USED!

01708 551714 | 07743 406418
www.sr-roofers.co.uk | rosseldridge84@hotmail.co.uk
 41a Sunningdale Road, Rainham, Essex, RM13 7BD

• Long Lasting Alternative To felt
• Made To Measure With No Joints
• No Flames, Lasts Up To 50 Years

We are still open for business and practising safe distancing according to government guidelines.



SOUTH EAST HEATING

DOMESTIC AND COMMERCIAL
HEATING • PLUMBING

Family Run Experienced Service • Est. in 1998

- Boiler repairs & replacements
- Gas installation
- Central heating installation & maintenance
- Gas servicing
- Landlord safety certificates
- Bathroom installation
- Chemical cleaning
- Solar panel installation
- Domestic & commercial plumbing & heating
- General plumbing work
- Gas appliances
- Gas leaks/safety checks

Mobile: 07956 481 819
07539 444413
Office: 01708 221500
southeastheating@btconnect.com

Gidea Park Dry Cleaning Co.

COMMITTED TO QUALITY

- Collection & Delivery
- Wedding Dresses
- Evening Wear
- Repairs & Alterations
- Stain Guarding
- Specialist in Hand Finishing
- Curtain Cleaning
- Carpets & Upholstery Cleaning

7.30am - 6.00pm — Monday - Saturday



Established 1976

Tel: 01708 578063 • Mob: 07958 142102

Email: gideaparkdrycleaners@hotmail.co.uk

1 & 2 Balgore Square, Gidea Park, Essex, RM2 6AU

HALLWAY to HEAVEN



Is your hallway looking more shabby than stylish? Has it become a place to dump everything and anything that doesn't have a proper home?

Discover five simple ways to transform the entrance to your home, with inspiring ideas to suit all hallways.

1. ADD POPS OF COLOUR

If you have a small hallway, you may be tempted to stick to white paint to make the space appear bigger. However, by adding pops of bright colours such as yellow or green, you can create visual interest and fashion a vibrant space. If you don't want to go all out with colour on the walls, why not add a few bold accessories instead, such as brightly coloured coat hooks, colourful floor tiles or a piece of bold artwork?

2. MAKE THE MOST OF MIRRORS

Dark hallways can make the entrance to your home feel gloomy and unwelcoming. Counteract this by creating the illusion of light with a few well-placed mirrors. Don't be afraid to experiment with different sizes and shapes, as this can help to make more of a style statement.

3. INVEST IN FUNCTIONAL FURNITURE

Most hallways are narrow, which means they offer little in the way of space. Therefore, if you want to add a piece of furniture, then you need to make sure it is both stylish and practical. For example, a seating area that doubles up as a storage unit. It can also be a good idea to make use of any available vertical space, for example by hanging a wall cupboard above your coat hooks.

4. EMBRACE CONSCIOUS STYLING

As a transitional space in your home, it is important that your hallway is clutter free, well lit, and, most importantly, that it is styled in keeping with the rest of your interiors. Take a walk around your home and see what design elements you can incorporate into your hallway.

5. LAYER LIGHTING

You can transform a dark hallway with the right lighting, with layered lights offering a stylish and practical way to illuminate this key space. Try combining multiple pendant lights with directional wall lights for maximum impact.



HOME & DIY

Photo credit: dailymirror.co.uk, idealhome.co.uk, furniture123.co.uk, BTG via housebeautiful.com

Let's get ready to TUMBLE!

Did you know that there are many more uses for tumble dryer sheets than just to reduce static and make your clothes smell nice? Discover five surprising uses for the humble dryer sheet below.

TO REMOVE FOOD RESIDUE FROM POTS AND PANS

If you have forgone the washing up in favour of more enjoyable activities, then you are likely to be left with food residue that simply won't budge. To remove this with minimal effort, simply place a dryer sheet in the middle of the pot or pan, add warm water and some washing-up liquid and allow it to soak. After an hour, remove the sheet, drain the water and wipe away the stains with a sponge.

TO PICK UP PET HAIR FROM CLOTHES AND UPHOLSTERY

Does your pet leave dander all over your clothes and upholstery? When it comes to removing stubborn pet hair, nothing beats a tumble dryer sheet. More effective than a lint roller, all you need to do is rub a fresh sheet against the item and watch the dander disappear.

TO CLEAN YOUR TV AND COMPUTER SCREENS

Out of screen-cleaning wipes? Don't panic, as you can use a tumble dryer sheet with equally impressive results. Designed to reduce static cling, a dryer sheet can effectively remove dust and prevent it from resettling.

TO REMOVE RESIDUE FROM YOUR IRON

Over time, residue will start to build up on your iron, which will make it less effective at removing creases. To clean this appliance, turn it on to a low heat setting and carefully rub a tumble dryer sheet over the surface, making sure not to touch the iron plate with your bare fingers. The heat will soften the residue and make it easy to remove.

TO SHARPEN SCISSORS

About to start a new craft project or wrap a present and realise your trusty scissors are blunt? Carefully run a tumble dryer sheet against the dull blade and enjoy restored sharpness in an instant. Be sure not to touch your finger directly to the blade!



**PROPERTY
EXTENSIONS**
ADDSPACE LONDON LTD.



**WE COVER ALL ASPECTS
OF BUILDING WORKS**

- Property extensions & refurbishments
- Kitchen extensions ■ Loft extensions
- Garage Conversions
- Building contracts & new builds
- Construction services

01708 732 323

www.propertyextensionsessex.co.uk

email: info@addspacelondon.co.uk

EXPERIENCED TRADESMEN TO CARRY OUT
WORKS WITH NO DELAYS OR PROBLEMS



Abbey
group

Abbey Group are specialists in creating, repairing and restoring quality furniture and wood surfaces to the highest standard.



From antique to modern we can repair, strip, re-spray, polish, wax, upholster and bring woodwork back to life.

We take great pride in our work and clients appreciate our care and attention to detail.

We think you will too.

01708 741135

Free quotations and no carriage charges with this advert.

abbey-group.net

Essex Stairlifts Ltd

Your local stairlift specialist

- Straight Stairlifts
- Curved Stairlifts
- Rental Stairlifts
- New & Used
- Servicing & Repairs
- Home Lifts



For friendly, personal service telephone:

01708 369062

01268 550173

01206 231568



Email: sales@essexstairlifts.co.uk

www.essexstairlifts.co.uk

bsplumbing plumbing & heating specialists BOILER INSTALLATION SPECIALISTS



12-24 MONTHS
FINANCE - 0% APR
UP TO 10 YEARS
AT 9.9% APR
NO DEPOSIT

- Bathroom Installation
- Underfloor Heating
- Boiler Supply & Fit
- Power Flushing
- Plumbing Repair
- Boiler Repair & Service
- Landlord certificate CP12

**£100 OFF
BOILERS**
QUOTE BSP100

CONTACT US FOR A FREE QUOTE

0800 1077119 • 01708 578065

info@bsplumbing.co.uk • www.bsplumbing.co.uk



COUNSELLING SERVICES

WE OFFER SPIRITUAL & HOLISTIC
CLASSES | COURSES | SERVICES
THERAPIES & WORKSHOPS

OUR SHOP STOCKS CRYSTALS,
GIFTS & ITEMS OF A SPIRITUAL
& HOLISTIC NATURE

176 High Street, Hornchurch, RM12 6QP

purplereception@outlook.com

www.purple-pyramid.co.uk

@purplepyramid14

01708 607 412

ROOM & SHELF HIRE AVAILABILITY



DOMESTIC & COMMERCIAL ELECTRICIAN

DESIGN • INSTALLATION • MAINTENANCE

- ⚡ 24-hour emergency call outs
- ⚡ Full & part rewiring ⚡ Fuse board upgrades
- ⚡ Indoor & outdoor lighting & power
- ⚡ EV charging installations



**CALL NOW FOR
A FREE SURVEY**
07986 663793



COVERING THE
WHOLE OF ESSEX



Have you TWIGGED?

If you love the current rustic vibe but not the hefty price tags, check out these easy twig projects.

SUNBURST TWIG MIRROR YOU'LL NEED:

- > Lots of straight twigs of roughly the same size
- > A 25cm round frameless mirror
- > A 35cm circle of corrugated cardboard
- > A hot glue gun

HOW TO MAKE:

- > Glue the mirror in place in the centre of the cardboard circle.
- > Glue the twigs on the cardboard so that one end is right against the mirror edge and the other is sticking straight out, overlapping the cardboard. Layer on enough twigs so that the cardboard is completely covered.

For safety reasons, we recommend you prop your mirror on a shelf rather than hang it up.

TWIGGY PHOTO FRAME YOU'LL NEED:

For a 10cm x 15cm (6in x 4in) photo frame:

- > 2x 15cm twigs
- > 2x 20cm twigs
- > Twine
- > PVA glue
- > A piece of baking paper slightly larger than the photo
- > Scissors

HOW TO MAKE:

- > To form the first corner, lay a longer twig on top of a shorter twig, allowing 2.5cm of each twig to stick out where they overlap.

- > Wrap the two together so the twine forms a cross shape on top. Tie to secure.

- > Complete this step on all corners in the same way to create a rectangle.

- > Glue the photo onto the baking paper. Then glue the edges of the baking paper to the back of the frame, with the picture facing out.

JEWELLERY TREE YOU'LL NEED:

- > A strong hardwood branch – approx. 25-30cm tall
- > A log slice about 5cm thick and 13-15cm in diameter
- > Epoxy glue (e.g. Araldite)
- > A drill and drill bits suitable for wood

HOW TO MAKE:

- > Drill a hole in the log slice, the same width as the main stem of the branch.

- > Fasten the branch in the hole with the glue and leave it to dry.

- > Hang up your jewellery!

Happy twigging!



HOME & DIY



Laura Hammett is an award-winning design house, run by Laura and her husband Aaron since 2008. With more than 25 years of experience between them, they are known for creating contemporary interiors with classic touches, resulting in stunning elegance.

Laura Hammett's work spans the globe and even includes a private jet. You can also enjoy the Laura Hammett look with a creative approach.

A CLASSIC STYLE FOR THE MODERN ERA

When you examine Laura Hammett's style, you're instantly transported to modern London. The designs are full of light and detail, creating beautiful looks that would be right at home in any design coffee table book.

Colour palettes include lighter shades of grey and taupe, paired with darker details to add contrast. Light upholstery, rich walnut and subtle marble are some of the styles that have been used in the Laura

Hammett portfolio, adding character and elegance to all kinds of homes.

CREATING THE LOOK

- With these simple tips, you can transform your home with a modern look the Laura Hammett way.
- > Enhance the natural light in your home by keeping walls light. Think greige, off-white and white.
 - > Adding details such as cushions and throws in rich fabrics can make your interior look more upmarket, without designer price tags.
 - > Statement light fittings and abstract wall art in your colour scheme can complete your space, helping you create some interest without filling the room with clutter.
 - > Search antique shops and second-hand stores to find high-quality furniture items you can restore to their former glory.

Laura Hammett's style is on trend and attainable, a look that can you can adapt to your own home to create subtle modern elegance.



Photo credit: laurahammett.com, @laurahammettinteriors via Instagram



Flooring Centre

- ◆ CARPET ◆ UNDERLAY
- ◆ VINYL ◆ LAMINATE WOOD



- ◆ DOMESTIC & RESIDENTIAL SERVICES
- ◆ ALL FLOORING SUPPLIED & FITTED

Call or visit us – 01708 472331

info@rm2flooringcentre.co.uk

302 Brentwood Road, Hornchurch, Romford, Essex RM2 5TA



BIG BEN

BEN STOKES OBE'S INCLUSION IN THE WORLD CUP SQUAD IS GREAT NEWS FOR ENGLAND CRICKET... LESS SO FOR OUR OPPONENTS!

When Durham and England all-rounder Ben Stokes OBE decided that the gruelling cricketing schedule was too much for him and his body to take, a collective sigh of relief from those who cherish the clack of leather on willow must have been heard all around the world in the sport.

It was July 2022. Stokes had spent the previous three months leading his country in Test cricket after succeeding Joe Root MBE as captain, and things in that regard had started perfectly, with four wins in a row.

However, after commenting that he felt playing all three of cricket's formats – Test, ODI and T20 – was “unsustainable”, Stokes’ last 50-over tussle came against South Africa at his home ground, Durham’s Riverside.

Yet a year is a long time in sport, and even longer in the seesaw nature of the Christchurch-born all-rounder’s career. So roll on 12 months, and despite a huge summer Ashes series ahead, Stokes began speaking to his limited overs captain Jos Buttler MBE and coach Matthew Mott about a quickfire return to the ODI circuit.

Stokes says: “The closer this World Cup got, the more I was becoming interested in having those discussions. And when you consider that we are the defending champions, it almost feels right to want to ensure you defend that crown.

“At the same time, I had to remind myself of the original reason for choosing to retire from this format of the game.”

Return he has, with a pledge from the 32-year-old to listen to his body, perhaps better than he has in the past when the almost constant demands of the game have had an impact on not just physical abilities, but the star’s mental wellbeing too.

“Let’s see how this World Cup goes,” he adds, “and I’ll decide then if it’s my last hurrah.”

Had Stokes not chosen to return to the fold, we would have been denied his record-breaking knock against New Zealand in the third ODI at The Kia Oval in September. Coming into bat alongside Dawid Malan with England compromised on 13/2, Stokes was about to rev it up against the Kiwis.

His 15 fours and nine sixes contributed to an almost unimaginable personal total of 182, beating Jason Roy’s 180 against Australia in Melbourne in 2018. His efforts saw England reach a mammoth 368 off 48.1 overs. New Zealand could only muster 187 all out and Stokes took a further leap into the echelons of iconic status.

“I need more time to get used to its rhythm, but I think I managed well this time,” he said, referencing that spectacular knock. “The announcer mentioned my record just before I was done. I didn’t even know about it until then. Jason congratulated me, and I apologised to him,” he laughs.

Does Stokes feel that England can become world champions again, and in the process become only the third side to defend the title since its inception in 1975?

“Everyone recognises our team’s strength, and it’s not boastful to admit we have a talented line-up. We’re optimistic about our chances, but in World Cup matches, it’s all about handling pressure.”

Photo credit: Kieran Mollenius/Shutterstock

ONE HUNDRED & THREE DEGREES

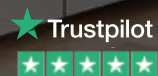
The perfect medium rare New York Strip is cooked at fifty four degrees Celsius.

A single millimetre is all that is needed for a flawless slice of Jamón Ibérico.

Sixty four degree water gives the most rich, velvety poached eggs you've ever imagined.

When you're in the kitchen, perfection and joy come from precision. And it's the same when we're in the kitchen too — because we love what we do.

This is German Enjoyneering.



Kutchenhaus Brentwood

6, The Baytree Shopping Centre
Brentwood, Essex CM14 4BX

Tel : 01277 204447

showroom@brentwood.kutchenhaus.co.uk

Kutchenhaus Kitchens Brentwood

kutchenhaus.brentwood

kutchenhaus

The German Kitchen

FROM YOUR AREA



LOCAL NEWS

Framework of new wellbeing hub completed



Photo credit: NHS Foundation Trust

The framework for a new health hub in Hornchurch was completed on Tuesday, September 5.

Work on delivering St George's Health and Wellbeing Hub is now well underway and the site is due to open by spring 2024.

The hub will give residents from Hornchurch and beyond easy access to a range of health and care services all under one roof. Patients will be able to book appointments and see a range of professionals in one visit, with faster and more convenient access to blood tests, X-rays, ultrasound scans and more.

There will be GP practices on site alongside mental health and prevention services and early diagnostic services for cancer.

The site will also host local voluntary and community groups, with a community café and multi-purpose education and meeting spaces, as well as a communal garden.

Children from five schools in Hornchurch have added a splash of colour to the site with their wildlife-inspired artwork now on display on hoardings surrounding the site.

A spokesperson for the North East London NHS Foundation Trust said: "With the façade in progress, contractors can focus on the next phase of the project, which includes waterproofing the building and internal fit-out."

Lane, Hornchurch.

A 19-year-old man, a 47-year-old man and a 37-year-old woman were arrested at the scene.

A police cordon was put in place next to the Sainsbury's where the fight took place.

First aid was provided by the London Ambulance Service and a 22-year-old man was taken to hospital. His injuries are believed to be non-life-threatening.

Enquires are ongoing.

Any witnesses should contact 101 quoting CAD 8496/18SEP23.

Great start to the season for football club

After signing Steve Morison (pictured below right) as their new manager back in June, Hornchurch FC have made a strong start under his directorship.

Morison was sacked by Championship side Cardiff City a year ago and caused some surprise after he moved to non-league Hornchurch.

So far this season under Morrison's leadership, Hornchurch FC defeated Fakenham Town 5-0 on September 2, followed by a 4-1 win against Wingate & Finchley on September 9. They followed this up with a 5-1 win over Witham Town on September 16 and a 2-1 win against Haringey Borough on September 23.

Colin McBride, co-owner and director of the club, said: "We had discussions with Steve throughout the summer and after coming down and meeting with the directors, he decided to take up the position. We are very delighted that he has come on board. It's unusual for someone that high up the pyramid to come to this level. So far, we haven't lost a single game, so long may it last."



Photo credit: Hornchurch FC

Three people arrested after fight breaks out

A man was rushed to hospital and three people were arrested after a fight broke out in Hornchurch.

At around 10.50pm on Monday, September 18, police were called to a report of a fight on Suttons



JULIA LOPEZ MP

Conservative MP for Hornchurch and Upminster



Readers will be well aware of my support for the new St George's Health and Wellbeing Hub being built on Station Lane. The project passed a major milestone a few weeks ago with the completion of the building's frame. With the hub due to open next year, I hope residents share in my excitement for the completion of this incredible project.

Since my last column, the government has announced a £3million surgical assessment unit for Queen's Hospital. The new unit will be able to see 10 extra patients at a time to prepare for theatre and will mean more people can be treated quickly, speeding up flow through hospitals and reducing long waits for treatment.

The Friends of Upminster Windmill have completed their beautiful restoration of Upminster Windmill, which they officially opened last month. The restoration has been made possible following years of hard work from volunteers and aided by £1.4million in funding from the National Lottery Heritage Fund as well as funding from Veolia Maintenance Trusts. Residents can register to attend open days on October 28 and 29 at the windmill, and I encourage everyone to enjoy this piece of local history. Find out more at www.upminsterwindmill.org



News from

COUNCILLOR PAUL MIDDLETON

St Andrews Ward, Hornchurch Residents' Association

Where have the glass recycling bins gone?

The glass recycling bins were removed by Sainsbury's in Hornchurch some months ago owing to a mixture of issues.

The recycling containers were stolen a few times and the public thought it was okay to fly-tip by leaving their 'empties' around the recycling bin. This caused issues for Sainsbury's and there was a greater cost involved.

There are currently two council-owned recycling stations near Sainsbury's; one set of bins is in the Queens Theatre car park, the other is in Fentiman Way car park.

How long will we have these bins?

With glass collection from residences due to start in the next few months (you will be asked to place glass in the orange recycling bags), I believe the recycling bins at the roadside will be phased out.

Car crime is on the increase

The number of vehicles stolen or broken into in

Havering is high. Please consider what additional measures you can take to avoid adding to the statistics.

Many vehicles now have keyless entry – if you have one of these, please make sure that your keys (both the one you use all the time and the spare) are stored in a RFID bag when not in use.

Many vehicles are stolen using a technique where the thief will use a signal booster to pick up the signal from the key. This is known as relay theft. It is very effective as the thief does not need to enter your home to get the keys. However, the thief can pick up an unprotected key signal several meters away.

Purchase and use a steering wheel lock. The locks that cover the full steering wheel are considered the best. Also consider installing an engine immobiliser.

Always lock your vehicle; many items are stolen from unsecured cars.

Park in a well-lit area where possible and ensure the steering wheel lock is engaged when you leave the vehicle.



DR BETTS TILING

- ◆ Large selection of wall & floor tiles
- ◆ Fitting service
- ◆ Porcelain, Ceramic, Glass & Natural stone
- ◆ Underfloor heating
- ◆ External porcelain slabs 20mm

Showroom opening times:
Mon - Fri 8am - 5pm Sat 10am - 4pm



The Barn ◆ Church Road ◆ Noak Hill ◆ Romford ◆ RM4 1LD
t: 01708 381349 ◆ e: sales@drbettstiling.co.uk ◆ www.drbettstiling.co.uk



HAINAULT
TRADE WINDOWS
TRADE WINDOWS FOR TRADE PEOPLE

At Hainault Trade Windows we are built upon reputation, trust, High-quality items at cost-effective prices and a clear understanding of supply and demand for the trades.

Are you a tradesman in Essex and the surrounding areas? Are you looking for trade products including any the following, then we can help :-

- ✓ FSG
- ✓ Doors
- ✓ Windows
- ✓ Aluminium
- ✓ Conservatories
- ✓ Roof Lights/Lanterns

Get a quote now
0208 088 4153
www.hainaulttradewindows.co.uk



SCAN ME



From rural surroundings to entertainment icon



You wouldn't expect to find a buoyant behemoth of modern primetime entertainment lingering in the leafy, rural, countryside surrounds of Stanford, yet Rylan Clark-Neal's life in Essex is indeed the epitome of serenity, and a world away from the flashbulbs and entertainment excesses that pattern his day job.

Born Ross Clark and raised in Stepney, East London, the presenter we now know as Rylan got his big break when he auditioned for the ninth series of *The X Factor* in 2012. Though his singing skills may not have been the strongest among the contestants, his magnetic personality quickly captured the hearts of both the audience and assembled judges.

Finishing in fifth place, his time on *The X Factor* provided a solid foundation for his future career in television.

Celebrity Big Brother followed, with audiences won over by the star's vibrant personality and natural charm.

Presenting duties proved an obvious route for someone who, while never turning his back on his reality TV roots, was keen to explore other areas. These have included *Big Brother* spin-offs, plus daytime TV (*This Morning*), game shows (*Supermarket Sweep*), panel shows (*Celebrity Juice* and *Would I Lie to You?*) and *Eurovision*.

Rylan is openly gay, and while he uses his influence to good effect in terms of fundraising and providing exposure to minority groups – such as the LGBTQ+ community – the 34-year-old remains grounded and sincere.

The current voice of car retailer Cinch, the presenter is set to embark on a busy schedule of work in the coming months, including a rumoured *Big Brother* return.

Clark-Neal recently swapped Stanford for Brentwood, where his mother Linda lives, and remains loyal to his Essex image.

As he says: "There is no better place on Earth – the people, the places, the vibe. It's always Essex."



**12 MONTHS
INTEREST
FREE**

WARDROBES ■ BUILT IN WARDROBES ■ FITTED KITCHENS ■ SLIDING WARDROBES

LUXURY BESPOKE WARDROBES & KITCHENS

Made to order in the UK ■ 10 Year Product Guarantee

Soft Close Doors As Standard ■ We fit wardrobes in less than 2-3 weeks

CONTACT US

01708 756789 ■ 01708 578073

www.bestfittedwardrobe.co.uk

info@bestfittedwardrobe.co.uk



Best Fitted Wardrobe Ltd Unit A3, Seedbed Centre, Davidson Way, RM7 0AZ  

**Produce
Green Energy
& Make Real
Cost Savings**

**We can beat
any like for
like quote**



**A professional, personal approach
to all our solar installations**

- ☀ Competitive Pricing
- ☀ Bespoke Solar Installations
- ☀ Strong Focus on Customer Service & Aftercare
- ☀ Enjoy Warranty Protection


**Solar Panel Design
& Installation**


Battery Storage


EV Car Charging

Contact Us 01708 578090

hello@bsolarenergy.co.uk

www.bsolarenergy.co.uk



GET A QUOTE

**SCAN ME
FOR A
QUOTE**

FULLY ACCREDITED & INSURED



NAPIT

MCS



TRUSTMARK



HIES



LAST
REMAINING
STANDS
AVAILABLE

BISHOP'S STORTFORD MEANS BUSINESS

Est. 2001

WEDNESDAY 18th OCTOBER 2023

**SOUTH MILL ARTS
BISHOP'S STORTFORD**

Be a part of it!...

**Book
your
stand today!**

www.bsmb.co.uk

@BSMeansBusiness

BSMeansBusiness

*Creating
business
opportunities
since 2001*

Generously Sponsored by:



Media Partners:



YOUR LOCAL EVENTS

AN EVENING OF CLASSICAL INDIAN MUSIC AND DANCE

Queen's Theatre, Billet Lane,
Hornchurch, RM11 1QT
Sunday, October 15, 7.30pm



A demonstration of Indian slide guitar, Indian classical dance history and the tabla. There will also be a pre-show workshop at 5.30pm.

Ticket prices start at £8 and can be purchased via www.queens-theatre.co.uk/whatson/an-evening-of-classical-indian-music-and-dance

GENESIS DANCE PROJECT

Queen's Theatre, Billet Lane,
Hornchurch, RM11 1QT

Thursday, October 19, 2.30pm and 7.30pm

After a hugely successful 2022 season, New English Ballet Theatre (NEBT) returns with a dynamic mixed bill of eight works to music from Baroque to pop, choreographed by six successful choreographers.

These include British choreographer and director Peter Leung and NEBT's assistant director and associate choreographer Daniela Cardim. After achieving international acclaim for her 2022 ballets *Stabat Mater* and *Reset*, she is creating a new work to music by Johann Sebastian Bach.

The programme also features the world premiere of the electrifying *Genesis Dance Project*, a collection of works by four different choreographers, set to six songs by legendary band Genesis.

To buy tickets, visit www.queens-theatre.co.uk/whatson/genesis-project-new-work

OPEN DAY AT LANGTONS HOUSE

Langtons House, Billet Lane,
Hornchurch, RM11 1XJ
Wednesday, October 25, 5pm – 7pm

A chance to come and see the house set for weddings or receptions. Registration staff will be on duty to show you around, answer your queries and book your ceremony. To book an appointment, please call 01708 433 155.

To find out more go to www.langtons-house.co.uk/events

HALLOWEEN POTION PARTY

Ingrebourne Nature Discovery Centre,
Hornchurch Country Park, Hornchurch,
RM12 6TS

Thursday, October 26, 10am – 12pm

Come along for Halloween festivities including potion making, pumpkin carving and wand whittling. The activities are suitable for children aged three to 10 years old.

Tickets cost £7.69 and you can purchase these from www.bitly.ws/VBq5

KILLING JACK

Queen's Theatre, Billet Lane,
Hornchurch, RM11 1QT

Thursday, October 26, to Saturday, November 11, 2.30pm and 7.30pm

Killing Jack, a newly commissioned play from Sadie Hasler, is a darkly thrilling plunge into a world where women return to take back their stories, perhaps even to exact their own bloody revenge...

To find out more visit www.queens-theatre.co.uk/whatson/killing-jack



Photo credit: Queen's Theatre



WHAT'S ON



Capital Clean

NEED A RELIABLE CLEANING COMPANY?

OUR SERVICES INCLUDE:

- Residential Cleans
- Deep Cleans
- Patio/Driveways
- Carpet & Upholstery Cleaning
- Office Cleans
- Commercial Cleans

We provide high quality services, tailored quotes specifically designed for your requirements




SCAN ME

Call us on
01708 578087

THIS MAGAZINE IS

MISSING YOUR ADVERT

CALL 01708 578049
TODAY TO BOOK
YOUR SPACE



SPECIALIST IN PRE-CAST BUILDINGS

SINGLE GARAGES ■ DOUBLE GARAGES ■ CONSERVATORIES
GARDEN ROOMS ■ SHEDS/WORKSHOPS & MORE



- FAMILY RUN BUSINESS ■ 50 YEARS EXPERIENCE
- 5 YEARS GUARANTEE ■ DESIGNS TAILORED FOR YOU
- HIGH QUALITY, LOW MAINTENANCE CONSTRUCTION

CONTACT US ON 020 8590 3701
www.rpageconcretebuildings.com
f [rpageconcretebuildings](https://www.facebook.com/rpageconcretebuildings)
951-953 High Road, Chadwell Heath, Romford, Essex RM6 4HB




WILD WEAR

THE ESSENTIAL WARDROBE FOR THE DEVOTED GARDENER

While gardening is a careful curation of your outdoor space, it's important not to forget the importance of maintaining your own green-fingered style.

TROUSERS

A pair of dedicated garden workwear trousers or dungarees will suit you much better than a simple pair of old jeans.

If you've gardened before, you'll know the perils of pinching waistbands, seams riding up, back-of-the-knee fatigue and general ripping or snagging; so investing in a pair of trousers that is waterproof, strong, flexible and with ample pockets on the front and sides, plus has all-essential knee pads, is a great idea.

HEADWEAR

Hats are a must when the sun comes out, and will also keep you warm when temperatures drop. Most gardeners will showcase a variety of headwear – from a nice woolly beanie hat in winter to a brimmed hat for summertime. Mix it up and keep your head in a good place.

FOOTWEAR

Footwear should be comfortable, as long hours on location can bring about foot pain and sores. From classic Crocs to garden sandals, sturdy boots to full-length wellies, your footwear will most likely match weather conditions.

Don't forget to invest in a few good pairs of socks too – in the winter, they will excel at keeping the cold out, while breathable varieties for the summer will minimise the threat of fungal infections.

GLOVES

While most gardeners are more than happy to get their hands dirty, gloves are essential for protecting your skin from sharp matter, such as rocks, stones and thorns. Switch between thicker and lighter varieties for seasonal versatility.

JACKET

Finally, as the weather changes, keep the cold out if you're committing long hours to the soil with a jacket that's breathable, a hood for sudden inclement weather, and plenty of pockets for essentials.



How to grow SNOWDROPS

Snowdrops are one of the first signs of spring and can make a wonderful addition to any garden. Instantly recognisable by their small, white, bell-shaped flowers, snowdrops are easy to grow and will come back year after year.

WHERE TO PLANT SNOWDROPS

Snowdrops thrive in moist but well-drained soil and in partial shade. If you plant snowdrops in soil that is too dry, you risk the bulbs drying out and failing to flower. Choose to grow snowdrops beneath deciduous shrubs or along the front of borders where herbaceous plants can provide ground cover when these flowers are dormant. They also do well planted in grass, in spring border displays and in rock gardens.

HOW TO PLANT SNOWDROPS

Dry snowdrop bulbs can be planted in autumn, but these are often hard to establish. Instead, opt to plant snowdrops in the green in January or February. Simply lift snowdrop plants just after flowering and before the foliage has turned yellow, and replant somewhere else. You can buy snowdrops in the green from your local garden centre or online.

HOW TO CARE FOR SNOWDROPS

Once snowdrops are established, they require no maintenance. Allow the foliage to die back naturally as this will help to ensure that the nutrients from the leaves are returned to the bulbs. Once every two years, divide any established clumps to avoid overcrowding.

HOW TO PROPAGATE SNOWDROPS

To propagate snowdrops, lift and divide established clumps after flowering in either March or April. Using a fork, carefully lift the bulb with the roots intact and the foliage still in place. Replant in the garden immediately and water well. The foliage may appear a little sorry, but it should look healthy by next winter.

TOP SNOWDROP VARIETIES:

Galanthus nivalis | Galanthus elwesii | Galanthus woronowii | Galanthus Armine | Galanthus Cordelia.

The first step to a beautiful lawn is to call GreenThumb



Our wonderful customers like our service so much, that over 40% of new customers joined us through their recommendation which, if you think about it, is a recommendation in itself.

So, if you've been thinking about enjoying a great lawn this year – green, lush and weed-free, why not contact us today and let us bring your lawn to life.

We provide four seasonal treatments, as well as beneficial treatments to keep your lawn in tip-top condition – prices start from just £15*.

Ask us about our annual plans, which allow you to both spread the cost and save up to 25%.

Simply call: 01277 227 988 or
visit: greenthumb.co.uk



PRICES FROM
£15*
PER TREATMENT

GreenThumb
LAWN TREATMENT SERVICE

*Based on a lawn size up to 40m²



PROVIDING THE BEST SKIP HIRE & GRAB SERVICES IN ESSEX

WE ALSO PROVIDE CAGE LORRY, WAIT & LOAD & GRAB HIRE

 4 yard skips
  6 yard skips
  8 yard skips
  10 yard skips
  12 yard skips
  14 yard skips
  16 yard skips

SKIP SIZES

All at competitive prices

WE COVER ESSEX, HERTS, EAST LONDON & NORTH LONDON



SCAN ME

READY SKIPS, DON'T VISIT THE TIP GET A SKIP!

01708 578082

enquiries@readyskips.co.uk

www.readyskips.co.uk

Cloudy2Clear, A Local Service, Saving You Money.

As a leading domestic glass replacement company for more than 16 years, Cloudy2Clear windows are the leading name in the industry. There is no need for you to risk your windows by using the dreaded double glazing cowboy down the street. You can join over 336,000 happy customers and replace your glass ethically and affordably. If you have a failed glass unit, it may not provide you with the protection you need or be as energy-efficient as it once was. Take a minute to check your home to see if any double glazing has failed? Taking action now can prevent future financial problems.

values have been held dear for a number of years. Since starting the business some years ago Cloudy2Clear have remained true to their core values of supporting the local community by providing a service that saves the public money.

The Cloudy2Clear service only requires the glass to be replaced and not the whole window once the unit has failed. Chris commented "Cloudy2Clear were able to assist our community through the last financial crisis in 2008 due to the savings that can be made in using our service. Unfortunately we might be going through something similar again soon and the public can rest assured that we will be there to help once again".

“
Ask me about our
fantastic Energy
Saving Glass.”



When talking to the Manager of Cloudy2Clear windows Chris Miller it became clear that these

For a free quotation please call 0800 61 21 118 or visit www.cloudy2clear.co.uk.



UPMINSTER FENCING LIMITED



SUPPLY & FIT

PRESSURE TREATED PANELS • FREE ADVICE & QUOTATIONS




OPENING HOURS: WEEKDAYS 8AM TO 3PM
SHUT WEEKENDS AND BANK HOLIDAYS

01708 225599 – 07831 281 590

www.upminsterfencing.co.uk • admin@upminsterfencing.co.uk

Upminster Fencing, Mardkye Works, St Mary's Lane, Upminster, Essex, RM14 3PA

Have Your Windows Steamed Up?

Replace the pane, not the frame!

All glazing backed by our

25 YEAR GUARANTEE

"I really liked the fact that they were a local community run business"

Janet Beard



We are a Checkatrade Member



Get a FREE Quote

Social distancing in operation

Faulty locks, handles or hinges?



REPLACING YOUR FAILED DOUBLE GLAZING

Priority freephone

0800 61 21 118

www.cloudy2clear.co.uk

Love Your Home - Protect Your Windows - Save Money




Incy wincy spider

Halloween provides the perfect opportunity for you to get crafty with your kids, and this spooky spiderweb doesn't disappoint. Suitable for little ones and older children alike, discover how to make your very own salt and glue spiderweb craft below.

WHAT YOU WILL NEED:

Black paper or card | A pencil | A ruler | PVC or Elmer's glue | Table salt | Watercolour paints | A soft brush

HOW TO MAKE:

1 Draw your spiderweb design: Your child can do this by hand themselves, depending on their age and

ability, using a pencil or ruler, or you can help them with this step. Alternatively, you could print out a spiderweb template to use.

2 Trace the shape with glue: The next step is to trace glue along each line of your spiderweb. Again, young children may need help with this if they want to achieve a good spiderweb shape. To make the glue lines as smooth as possible, do not allow the tip of the glue bottle to touch the paper but instead, hover slightly above it.

3 Cover the spiderweb with salt: Fill a ramekin or small bowl with table salt and then use two fingers to pinch the salt and sprinkle it over the glue. Make sure that you cover each line and curve with enough salt. Leave the glue to fully dry, ideally overnight, before moving on to the next step.

4 Paint your spiderweb: Now comes the really exciting part: adding colour to your spiderweb. Watercolour paints are perfect for this as they spread well on dried glue and salt. Using a soft brush, plenty of water and your chosen watercolours, add a drop or two of colour to a salt line. Use a light touch and do not scrub as this may dissolve your spiderweb.

MAKE A HANGING SPIDERWEB

Take your craft to the next level by applying the glue and the paint, minus the salt, to a thin plastic sheet, gently peel it off and then fix it to your preferred surface using sticky glue dots or hang around the room with string. Make sure you allow the glue to fully dry before peeling.

NEBT

NEW ENGLISH BALLET THEATRE

www.nebt.co.uk

GENESIS DANCE PROJECT AND NEW WORKS

A spectacular ballet set to six iconic songs by rock giants GENESIS, and new works by some of today's most exciting choreographers

THU 19th OCTOBER
2:30pm & 7:30pm
TICKETS: £5 - £26*
*+65p QNext fee

Photo:
Andrej Uspenski

QUEEN'S THEATRE HORNCURCH

Billet Lane, Hornchurch RM11 1QT

PHONE: 01708 443333

BOOK ONLINE: www.queens-theatre.co.uk

DOMESTIC CLEANING 4 U

Professional Cleaning Services



WE PROVIDE:

- Regular weekly or fortnightly cleaning service & one-off cleans
- Bespoke service for your requirements
- Professional, fully vetted, friendly, accommodating & trustworthy cleaners

All household cleaning chores undertaken including:

- Inside windows ■ Outside windows (grd floor only)
- General tidying up ■ Hang washing out
- Washing up ■ Ironing and more

TO FIND OUT MORE OR TO BOOK YOUR CLEANER

contact us via 01708 960 714

domesticcleaning4u@outlook.com

www.domesticcleaning4u.com

PROBLEMS WITH YOUR DEVICES? CALL THE TECH DOCTOR

WE REPAIR, BUY, SELL & EXCHANGE
MOBILES, LAPTOPS & TABLETS



GADGETS CLINIC

- Repairs & Unlocking
- Data Recovery
- Broken/Cracked Screens
- Water Damage
- Battery Replacement
- Charging Problems

We also stock a wide range of phone, tablet & laptop accessories

WE CAN HELP

Contact us on **01708 922541**

www.gadgetsclinic.co.uk ● gchornchurchltd@gmail.com
or visit 112 High Street, Hornchurch RM12 4UH

 **DISCOUNT DIY & HARDWARE SUPPLIES**
Your Local Independent Hardware & DIY Store

THE PRODUCTS WE SELL INCLUDE

- Calor Gas for BBQs & Heaters
- Hand Tools
- Electrical Supplies
- Plumbing Supplies
- Decorating Supplies
- Ladders
- Pest Control
- Gardening Tools & Accessories

FULL RANGE OF CALOR GAS BOTTLES AVAILABLE

COME & SEE US AT
49, Butts Green Road,
Emerson Park RM11 2JS
CALL 01708 440151

FREE LOCAL DELIVERY

BRENTWOOD SOLAR

Plumbing & Heating

Repairs & Installation

Bathroom Suites
Boilers  Air Conditioning
Air Source Heat Pumps
Safety Certificates

CONTACT US
01708 732 323
info@brentwoodsolar.co.uk

BNI
PROJEKT

**Are you ready to take
on more business?**

- Increase Business Prospects
- Great Networking Opportunities
- Professional Development



We are seeking the following professions to visit our group:

- | | | | |
|---------------------|----------------|------------------|---------------------|
| • Estate Agents | • Will Writers | • Web Designer | • Digital Marketing |
| • Mortgage Advisors | • Solicitors | • Printer | |
| | • IT Support | • Business Coach | |

We are BNI Projekt - for business professionals looking to explore opportunities!

Find out more at <https://t.ly/fbneD>. Or contact Sharon Hirsch on 07791 260443 or email Sharon@argus-accounting.co.uk.

Keeping your dog SAFE IN AUTUMN



PETS



Autumn is one of the best times of year for long walks with your dog, when the leaves are falling from the trees and the weather has cooled. That being said, there are lots of lurking dangers that you need to be aware of.

ACORNS: Acorns contain a toxic ingredient called tannic acid which can cause damage to your dog's liver and kidneys. When ingested, they can also lead to vomiting, diarrhoea, lethargy and abdominal pain.



CONKERS: Conker seeds boast a spiky green shell that can injure your dog's mouth if picked up and carried around. The shiny brown conker inside can be a choking hazard and, if ingested, can cause vomiting, diarrhoea and sometimes an intestinal blockage.



FALLEN FRUIT: If you take your dog on long country walks, they are highly likely to encounter fallen fruit such as apples and plums. When these fruits fall on the ground, they start to ferment and produce a natural alcoholic substance. If eaten in large quantities, this can cause vomiting and diarrhoea.



HARVEST MITES: Harvest mites are tiny red mites that tend to appear at the end of summer and into autumn. They are often found on a dog's coat, in between their toes and in their ear folds. These mites can cause extreme itching and trauma to the skin.



WILD MUSHROOMS: Wild mushrooms come in all sorts of shapes, colours and sizes, which makes it very hard to distinguish between the edible ones and those that are poisonous. If your dog eats an unknown fungus, it may cause a mild stomach upset, or it could be deadly.



SPRING BULBS: Many people plant spring bulbs in autumn, such as daffodil, tulip and spring crocus bulbs. These are all toxic to dogs and can make them very unwell if ingested.



HALLOWEEN PUMPKIN LANTERNS

An Illuminating and Spooky Tale

The origins of Halloween go back around 2,000 years to a Celtic festival called Samhain (pronounced 'sow-in'). The Celts believed that when the harvest ended and winter took hold, the barrier between our world and the spirit world became blurred – and this meant that dead spirits could come back to haunt us. But why pumpkins?

AN ENCHANTING STORY FROM IRELAND

Stingy Jack is a character from Irish folk tales who liked playing pranks, even on the devil. One day, Jack tricked the devil into turning into a coin, so he could pay for their drinks. Jack then pocketed the coin, and the devil was trapped. Eventually, he set the devil free but made him promise not to claim his soul. So when Jack died, he couldn't go to hell or to heaven. He was stuck roaming the world with a glowing coal inside a turnip to light his way.

LANTERNS FROM TURNIPS

As time passed, Samhain mixed with Christian traditions such as All Saints' Day (or All Hallows' Day)

on November 1 – and All Souls' Day, the day after. By the 16th century, the festival was already known as Halloween, taking its name from All Hallows' Eve. And as part of their Halloween celebrations, people in Ireland carved turnips into lanterns to ward off spooky spirits.

PUMPKINS WORK BETTER

When Irish people moved to America in the 1800s, they took their Halloween tradition with them. But they soon discovered that pumpkins were much easier to carve than turnips. In honour of Stingy Jack, the carved pumpkins became known as Jack-o'-lanterns.

Today, as we carve our pumpkins to light up the night, we continue to honour customs that have journeyed through time, from our Irish neighbours to America – and, in the 1990s, back over the seas to Britain.



5 REASONS TO ADVERTISE

Why do businesses benefit from hyperlocal advertising?

1. Targeted advertising

Hyperlocal advertising allows companies to target customers who are within a specific geographic area, making it easier to reach the right audience and increase the chances of converting them into paying customers.



2. Cost-effective

Hyperlocal advertising can be cost-effective because it is focused on a specific local area, meaning that businesses can reach their target audience without wasting money on broader marketing campaigns that may not be as effective.

3. Increased engagement

Hyperlocal advertising can lead to increased engagement with customers because it is focused on the local community and the interests of the people living in that area. By targeting customers with ads that are relevant to their interests and needs, companies can build a stronger relationship and increase their chances of repeat business.



4. Improved search engine optimization

Hyperlocal advertising can improve a business' search engine optimization because it targets customers who are likely to be searching for businesses and services in their local area. By optimizing their website and other online presence for local search terms, businesses can improve their visibility and attract more customers.

5. Better return on investment (ROI)

Hyperlocal advertising can lead to a better ROI because it is focused on a specific area and customer base. Targeting customers who are likely to be interested in their products or services, can increase conversion rates and revenue.



IS YOUR BUSINESS READY TO BENEFIT FROM HYPERLOCAL ADVERTISING? CONTACT **VISION** TO FIND OUT MORE



BEEWISE

High end solutions for less than you think

At Beewise we use our massive purchasing power and market expertise to get you the best deals on all of your retail merchant services.

Try risk free for **1 month**

50% off the cost of the terminal*

£100 Amazon voucher for the first 200 new customers

Scan the code or call us and we will save you time and money on your business utilities and services

01708 578086

*Offer expires 31st October 2023



SCAN ME



LUX HOMES ESTATE AGENTS

120 North Street, Hornchurch, RM11 1SU
www.luxhomesgroup.co.uk

01708 208807

HAVERING'S PREMIUM ESTATE AGENT

Get BALANCED!

Did you know that National Work/Life Balance Week takes place this month, with the aim of generating awareness of the importance of a healthy balance between your professional and personal life?

If you struggle to switch off after leaving work or you find the lines between your work and home life have blurred, then we are here to help you.

Why is a good work/life balance important?

A good work/life balance involves finding a harmonious relationship between your home life and your working life. This is vital to your overall wellbeing as people need to engage in a wide range of activities, as well as rest, in order to thrive. If you work too hard or work very long hours, you are more likely to experience high levels of stress and suffer from insomnia, depression and/or anxiety.

What is an unhealthy work/life balance?

The most common signs of an unhealthy work/life balance are:

- > Regularly working long hours, including evenings, weekends and holidays
- > Neglecting your personal/family life owing to excessive work demands
- > Experiencing burnout, which causes physical, emotional and mental exhaustion
- > A lack of time for self-care, including sleep and leisure activities
- > Strained relationships owing to work commitments

How to achieve the right balance between work and home life

- 1. SET BOUNDARIES:** Make sure that you establish clear boundaries between your work and personal life by defining specific working hours and sticking to them.
- 2. FOCUS ON TIME MANAGEMENT:** Sometimes people are guilty of working hard rather than smart, which can mean they have to spend longer at the office and less time at home. Instead, prioritise the most important tasks both at home and at work.
- 3. BE FLEXIBLE:** At times, you will need to have to adjust your work schedule to accommodate unforeseen personal circumstances or emergencies, so don't feel guilty about doing this.



WORK CAREER FAMILY LIFE



BUSINESS & PROPERTY

MAKING AN INSURANCE CLAIM?

Oakleafe
CLAIMS

Having to make an Insurance Claim can often be a complicated and time consuming process. Once a claim is lodged with an Insurer they will appoint a **LOSS ADJUSTER** to represent them. But did you know you can also appoint your very own Loss Adjuster, known as a **LOSS ASSESSOR**.

Oakleafe Claims **Loss Assessors** are local professionals who specialise in Insurance Claims Management and only represent you-the policyholder. We have extensive experience in all types of claims and values covering the entire U.K. As **Loss Assessors** our mandate is to ensure the policyholder receives their full entitlement after we settle their Insurance Claim.



Storm



Fire & Smoke



Leaks & Floods



Impact



Theft



Business Interruption

Oakleafe Claims **Loss Assessors** are the proud award winning recipients of **Loss Assessor** of the year at the U.K British Claims awards and have been helping people and businesses with Insurance Claims since the Second World War. We operate 24/7 throughout the UK with our head office in Gidea Park and supporting offices in London, Brighton, Manchester, Cardiff & Glasgow.



Email: Office@Oakleafe.com Web: www.oakleafe.claims

Be a part of it

BSMB – The Next Chapter

VISION editor Brett Shohet has taken over the reins of a prestigious business exhibition in Bishop's Stortford.

Brett, owner of the B7 Media Group, is the new organiser of the Bishop's Stortford Means Business (BSMB) exhibition, which attracts more than 350 participants every year and has the slogan 'Be a part of it'.

Sponsored by London Stanstead Airport, BSMB dates back to 2001 and was founded to provide an opportunity for businesses large and small to present their goods and services to the community.

Speaking about why he decided to take over the exhibition, Brett said he will be continuing the ethos of the exhibition, bringing creative ideas to support both new and loyal exhibitors and encourage even more visitors to attend.



He said: "I am consistently looking for ways to invest in our communities and promote local businesses.

"This exhibition is the next step in expanding and growing the Vision brand and we are hoping to roll out

the exhibition to more areas in the future.

"In turn, this will help give local businesses the chance to promote and showcase their products and services."

Brett also wanted to express his gratitude to former organiser Robert Lee, who has been championing businesses across the community for more than 20 years.

Book Your Stand
Today!



BOOK A STAND



REGISTER TO VISIT

Media Partners



Generously sponsored by



www.bsmb.co.uk

Date
18th October 2023
Doors open from 10am

Venue
**South Mill Arts
Bishops Stortford**

Come Along
FREE TO ATTEND

- OVER 60 LOCAL BUSINESSES
- A ONE DAY EVENT
- FREE SEMINARS
- SPEED NETWORKING

To find out more about the exhibition as a visitor or an exhibitor, contact us on:
exhibition@bsmb.co.uk • 01279 939134
www.bsmb.co.uk

@BSMeansBusiness
BSMeansBusiness
Means_Business_Exhibitions



PUZZLES & TRIVIA

PUZZLES

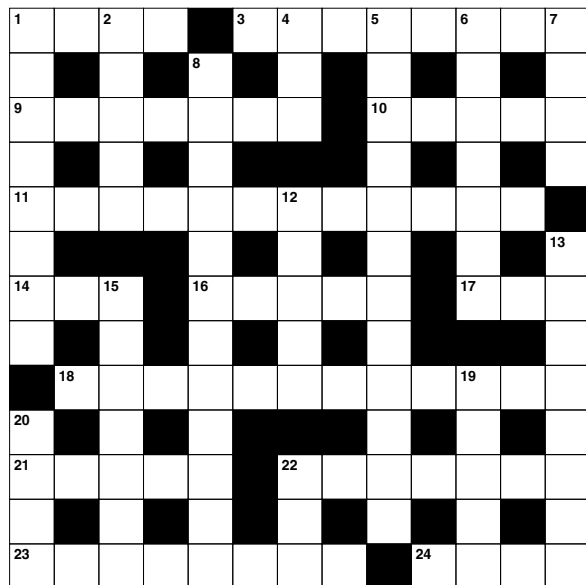
Answers: see end of The VISION Listings

ACROSS

1. Light blast of wind (4)
3. Fast runner (8)
9. Not tense (7)
10. Written agreements (5)
11. Opposite of amateur (12)
14. Decay (3)
16. Lacking meaning (5)
17. Wonder (3)
18. Incessantly (12)
21. Concerning (5)
22. Mound made by insects (7)
23. Shows (8)
24. Snake-like fish (pl.) (4)

DOWN

1. Sweat (8)
2. Leaf of parchment (5)
4. Collection of many sheets of paper (3)
5. Enhancements (12)
6. Musical composition (7)
7. Repose (4)
8. Based on untested ideas (12)
12. Set out (5)

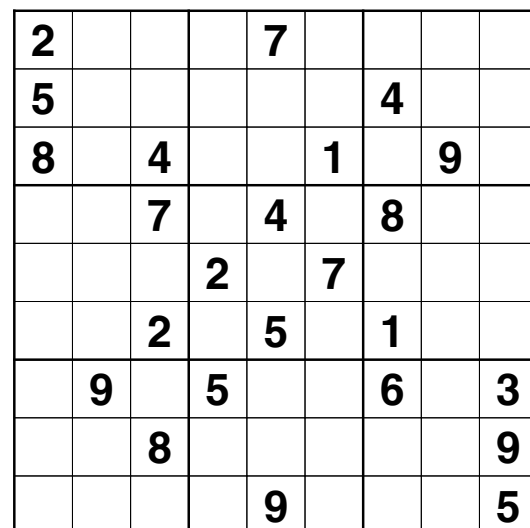


13. Uses again (8)
15. Slight earthquakes (7)
19. Part of a church tower (5)
20. Edible fat (4)
22. Nay (anag) (3)

DID YOU KNOW?

- ▶ A hummingbird beats its wings up to 70 times per second.
- ▶ Hummingbirds are the only birds that can fly backwards.
- ▶ There are reportedly more than 350 known species of hummingbird, from the giant hummingbird weighing around 20g, to the bee hummingbird which measures less than three inches.
- ▶ Hummingbirds use their long, thin tongues like straws to drink nectar from flowers.
- ▶ Rufous hummingbirds migrate 4,000 miles from Mexico to Alaska every spring.
- ▶ Female hummingbirds use spider silk to weave together twigs and leaves for their nests.
- ▶ Hummingbirds have no sense of smell.

SUDOKU



Mullis & Peake LLP
Solicitors

www.mplaw.co.uk



Family disputes and conflicts can be a difficult and emotionally charged time. You will receive expert, cost-effective guidance which delivers the best possible solution to the issues in your case, if you work with us.

With over 75 years of cumulative experience we can offer support and advice on all legal aspects of relationship breakdown.

You can seek help on:

- ▶ Child Arrangement Orders
- ▶ Child Maintenance
- ▶ Injunction Proceedings
- ▶ Financial Claims on Divorce
- ▶ Financial Provision for Children
- ▶ Parental Responsibility Agreements
- ▶ Pensions On Divorce
- ▶ Divorce
- ▶ Prenuptial Agreements
- ▶ Separation Agreements

If your case is suitable we offer a fixed fee initial consultation of up to one hour providing outline advice to new clients



Sally Ward
Head of Family Team
sallyward@mplaw.co.uk



Roisin McCorry
Consultant
roisinmccorry@mplaw.co.uk



Jas Pannu
Solicitor
jaspreetpannu@mplaw.co.uk



Yvonne Taiwo
Solicitor
yvonnetaiwo@mplaw.co.uk



Alison Brotherton
Consultant
alisonbrotherton@mplaw.co.uk

Romford Office:
8-10 Eastern Road,
Romford, Essex RM1 3PJ
T: 01708 784000

Shenfield Office: 194
Hutton Road, Shenfield,
Essex CM15 8NR
T: 01277 245015

Upminster Office:
Suite 5, Essex House,
15 Station Road,
Upminster RM14 2SJ
T: 01708 251560

Email:
office@mplaw.co.uk

BAD SPORTSMANSHIP:

ERIC CANTONA

With true skill, finesse and regular glimpses of genius, when Eric Cantona was good, he was very good. Yet the Frenchman was tainted with a self-destructive element that permeated his game.

Cantona was ever the mercurial talent, and was an iconic figure for Manchester United during the club's early glory years under Sir Alex Ferguson CBE.

From the outset of his career, Cantona's undoubted flair was plainly evident, yet so too was his lack of composure.

During a match in 1988 between his club, Auxerre, and Nantes, the Marseille-born forward kung fu kicked Michel Der Zakarian, landing him a three-month ban which was later reduced after the club threatened to withdraw him from French national team selection.

As it would turn out, this would not be an isolated incident. A string of other disciplinary issues in France prompted a move to England, with Leeds

United the

beneficiaries as they

clinched the final First Division title

before the inception of the Premier League

in 1992. A tempestuous time at Elland Road

then saw him move to hated rivals Manchester

United for a cut price £1.25million.

Talent and turbulence would continue at Old Trafford, but never more so than one night in January 1995 in South East London. After being sent off for his kick at opposition defender Richard Shaw, Cantona was confronted by Palace supporter Matthew Simmons, who had run down 11 rows of the stand to confront and racially abuse the Frenchman. Cantona responded by launching into the crowd with another of his trademark kung fu kicks and followed this with a series of punches.

The sultry, softly spoken Frenchman's reaction to his subsequent eight-month ban went down as one of football's famous quotes. "When the seagulls follow the trawler," he said, taking a sip of water, "it's because they think sardines will be thrown into the sea."

Photo credit: Colorsport/Shutterstock

ROMFORD SNOOKER CLUB

"Probably the most famous Snooker Club in the World"

HALF PRICE TABLES
FOR JUNIORS
aged 14 - 18
10am - 7pm

MEMBERSHIP
Adult £14.50 includes £4.25 in club vouchers
Juniors (14-18) £9.50 includes £3.25 in club vouchers

FREE MEMBERSHIP
FOR SENIOR CITIZENS
plus half price tables
10am - 7pm

SNOOKER - POOL - DARTS

No.1 Arcade Place Romford Essex RM1 1RS
01708 743168 | www.romford-snooker-club.co.uk | enquiries@romford-snooker-club.co.uk

Transform your garage from £895

Garolla electric roller doors, engineered for everyday life.

Garolla's new range is strong, secure and very durable. Revitalise the look, feel and function of your home.

- Unlock 25% more space
- Free five-year warranty
- 100,000+ doors installed
- UK's #1 recommended
- Fitted by a local Garolla engineer
- New SafeGuard Plus pack - more light, detection and deterrence

NEW & IMPROVED PRODUCT RANGE

GAROLLA
ELECTRIC GARAGE DOORS

garolla.co.uk

We survey, manufacture and fit...
0800 468 1027
CALL TO ARRANGE A **FREE SURVEY**

BESPOKE ELECTRIC DOORS
MADE IN THE UK

Checkatrade
Where reputation matters
9.8 out of 10

Trustpilot
 4.7 out of 5 / 6,000+ reviews



**THINKING OF A
PARTICULAR CAR TYRE
SIZE THAT NOBODY SELLS?**

**WE GUARANTEE
YOU THAT WE'LL
HAVE IT
IN STORE!**

WE OFFER A WIDE RANGE OF BRANDS

○ MICHELIN ○ PIRELLI ○ CONTINENTAL ○ DUNLOP
○ JOYROAD ○ EVERFORCE ○ KAPSEN ○ HIFLY ○ ROADCRUZA
○ SAFERICH ○ KAPATOS ○ LANVIGATOR ○ ROADMARCH



**MANY PREMIUM BRANDS ARE ALSO AVAILABLE
FROM OUR MAIN WAREHOUSE (HORNCHURCH/ILFORD)**

**VISIT US AT 10-12 RONEO CORNER,
HORNCHURCH RD, RUSH GREEN, RM12 4TN
OR CALL US ON 01708 578141 / 07574 964250**



SUPPLYNFIT



supplynfit_tyres

**+ SUPPLY N' FIT TYRES WHOLESALE
The fastest growing tyre wholesalers in the UK last year**



**THE UK'S MOST TRUSTED AND REVIEWED
AUTO LOCKSMITH & EMERGENCY RESPONSE**

HOW SAFE IS YOUR CAR?

Car & Van Security Specialists

VAN SECURITY LOCKS | ALARM SYSTEMS
VEHICLE TRACKING | THEFT PROTECTION
IMMOBILISERS | CAR KEYS



**from
ONLY
£450**



GHOST CAR IMMOBILISER

A SMART WAY TO PROTECT YOUR CAR

Secure your peace of mind and your vehicle
with the next generation of vehicle security



www.carkeyssolutions.co.uk
Call us on 01708 578071
Email: contact@carkeyssolutions.co.uk

We cover Greater London &
surrounding M25 areas
**Open 7 days a week
from 8am to 10pm**

GOOD CARS

for
**ULEZ
2023
EXPANSION**



Regardless of your thoughts on the controversial expansion of London's Ultra Low Emission Zone (ULEZ), there is a wide selection of cars out there ready to help you bypass this expensive charge.

The extension of ULEZ to encompass the whole of Greater London became operational at the end of August, and not without considerable objection.

Now, petrol vehicles must meet Euro 4 standards, with even tighter Euro 6 requirements for their diesel cousins.

Entering the ULEZ with a non-conforming vehicle invites a daily charge of £12.50, so Mayor of London Sadiq Khan's £2,000 grant for Greater London residents looking to change to a ULEZ-compliant motor is appealing, as are some of the cars that fit the criteria.

For instance, for those desiring a premium touch, the Mercedes-Benz A-Class hatchback is a worthy contender, boasting advanced technology and a luxurious interior. Models from 2013 hover around the £10,000 mark.

The widely admired Ford Focus has numerous ULEZ-compliant variants. One with fewer than 50,000 miles could be yours for less than £6,000.

Or what about the iconic Mazda MX-5? The Japanese brand is revered for superb driving experience and affordability. However, look out for some older versions, as these may not meet ULEZ requirements.

Lastly, the VW Polo, particularly the 1.2 TDI BlueMotion edition of the Mk5, is famously fuel-efficient, boasting up to 91.1mpg on motorways and 67.3mpg in urban settings. With no emission zone charges and some high-mileage models available at under £4,000, it's a sound option.

While virtually all petrol cars sold after 2005 are ULEZ compliant – along with petrol vans after 2006 and motorbikes registered after July 2007 – it ultimately pays to check your vehicle, as well as the status of a potential new one, online at tfl.gov.uk/modes/driving/check-your-vehicle



MOTORING

Photo credit: mercedes-benz.co.uk, ford.co.uk, mazda.co.uk, volkswagen.co.uk

THE VISION LISTINGS

ACUPUNCTURE

HONG WEI CHINESE MEDICAL

Fully qualified & experienced, specialising in women's health & Fertility. Help with pain relief, emotional disorders, male/female conditions. 01708 454888 | hongweichinesemedicine.co.uk

AUTO BODY REPAIRS

SQUIRRELS HEATH AUTOS

Bumper Scuffs - Dents - Scratches. Gidea Park. Call on 07745 629957

BALLOON DECOR

THE BALLOON SQUAD EVENTS

I offer bespoke decorations for any family celebration or occasion at home or venue. For a no obligation quote contact 07958 586501

BEAUTY & NAILS

BEAUTY BY NATASHA KATIE

A local, mobile LVL Technician. Fully qualified level 2 and 3 beauty therapist Babtac insured and approved. 07961 462672

SPECIAL NAILS

Dedicated to provide the best quality nail care for Men & Women. Walk-ins welcome, appointment bookings & gift vouchers available. 01708 442248

THE NAIL STUDIO

Nail Studio lets you switch off and pamper with highly skilled technicians providing top treatments and nail products to meet your every need. 07572 526519

BOILER & PLUMBING SERVICES

SIMPLY PLUMBING

All work guaranteed. Local plumber. Leaking taps-toilets-overflows-radiators-showers-blockages-boilers repaired & installed. Call this number today 07711 840722

CAR & VAN HIRE

SCENIC SELF DRIVE

Your self drive hire specialists. Whether you require modern cars, motorhomes, vans or minibuses. Rest assured we will provide you a professional service 01708 753461

CLEANING SERVICES

SPOTCLEAN LTD

Commercial & Domestic Services Specialising in Office, Shop, New build, Refurbished & Residential Cleaning. We ensure a Clean & hygienic environment 07940 213394

CLEARANCE & WASTE

THE CLEARANCE TEAM

From clearing a room, house or garden to clearing an entire office block. Fast, reliable and affordable. Working 24/7 so you can book us at your convenience 0207 101 3387

COMPUTER REPAIR & I.T.

MAPTEC IT

Your local residential & commercial IT specialists. We can fix your computers, configure email accounts & printers. Setup your Wi-Fi, Internet router & network. 0203 865 7174

DRIVING LESSONS - AUTOMATIC

NV DRIVE

Lady instructor. Discount available on prepaid courses. Brand new vehicle June 21 - NV Drive school of motoring: call 07554 634183

JOIN THE LISTINGS... for just **£15** +VAT per month

ELECTRICAL & WHOLESALE

CH ELECTRICAL WHOLESALE

Essex & East London's leading electrical wholesalers providing the trade & public a professional service with access to all leading brands. 01708 730591

ELECTRICIAN

CAPITAL ELECTRICAL SERVICES LTD

Domestic/Commercial, Repairs/Installation, Vehicle Charging Points, Portable Appliance Testing, Fire Alarms, Emergency Lighting, Installation Condition Reports. Call 01708 578038

ARCH ELECTRICAL SERVICES LTD

Domestic and Commercial Electrical contracting company covering Essex. Design, installation, maintenance. Contact us on 07986 663793 | @APElectricalEssex

FINANCIAL SERVICES

PARAGON LEGAL SERVICES LTD

We will write your will for only £49.99+Vat subject to T&Cs. Call FREE on 0800 0747 642 or 01206 544919 Call us for a FREE home appointment. www.paragonlegal.co.uk

FLOORING & RESTORATION

PARNELL FLOORS

We can provide you with the perfect service from the supply, fitting and finishing of new and reclaimed wooden floors including the restoration of existing floors. 07780 671512

FRENCH POLISHING

DC POLISHING

20 Years experience in wood restoration i.e. Furniture, doors, staircases, worktops, minor repairs & FLOOR RESTORATION. 07949 204969 | dcpolishing.church@gmail.com

FURNITURE RESTORATION

ABBEY GROUP

Abbey Group are specialist in creating, repairing & restoring quality furniture & wood surfaces to the highest standard. 01708 741135

KINGS UPHOLSTERY

Handmade sofas & chairs designed especially for you to your required specifications. Also providing in re-upholstery & repair work. 01708 444125

GARDEN SERVICES

JOHN HEARNE

We take care of it all Lawn Mowing, Weeding, Planting, General Tidying, Fence/Shed Painting, Driveway/Patio Pressure Washing and more. Call for details 07908 523101

KINGS CUTS TREE SERVICES

A Huge range of tree services available & offer expert arboricultural advice, ensuring your trees are looked after responsibly. 01708 578030 | 07467 944671

GIFTS, BALLOONS & ACCESSORIES

CLASSIC CARDS

Established for 24 years. Specialising in hand made cards, personalised frames, large variations of gifts, jewellery & balloon displays. Gift wrapping available. 01708 620460

HARDWARE & DIY SUPPLIES

DISCOUNT DIY & HARDWARE

General Store & Hardware. Full Range Color Gas Bottles Available. 49, Butts Green Road, Emerson Park RM11 2JS. 01708 440151. Open 7 Days

LAUNDRY & DRY CLEANING

THE LAUNDRY MAN

From everyday washing, drying & ironing. We can pretty much launder anything & everything. Self service launderette available. 01708 447710

LOCKSMITHS

KEYTEK LOCKSMITHS

From Lock outs to security upgrades, our fully trained DBS checked Locksmiths are the experts | Call 01708 202 269 | Quote: 15078

PLASTERING

ALL WEEKS PLASTERING

Qualified, Experienced Internal/External work, Reliable, Friendly, Trustworthy and Tidy. Call Ryan for Free Quote 07530 818167

PLUMBING & HEATING

CMS PLUMBING HEATING & BATHROOMS

Corgi registered, 20+ years' experience, public liability insurance, offering free quotes. No job too small. Based in Gidea Park. Call Craig 07855 589185

BOILR

BOILR offer servicing, installations, repairs and plans. Local Gas Safe engineers for all your needs. Please call 01708 837147

ROOFING

JIM BARR ROOFING

Exterior cleaning & maintenance. Gutters, Paving & UPVC; cleaned, repaired & renewed. 01708 874816 | 07833 572459

SR ROOFERS

Roofing experts with ORIGINAL company name/number. Family run. Confederation of Roofing Contractors approved member. 01708 551714 | 07743 406418

TILING

DR BETTS TILING

Large selection of floor & wall tiles, fitting service, porcelain, ceramic, glass & natural stone. Specialist in underfloor heating. 01708 381349

WINDOWS & GLAZING

MAJOR GLASS & GLAZING

Specialising in all aspects of glass & glazing for both domestic & commercial. UPVC, Conservatories, Bi-Fold Doors, Double Glazing Repairs, Mirrors. 01708 525996

DISCLAIMER: **VISION** does not represent or endorse the accuracy or reliability of any of the advertisements, nor the quality of any products, information or other materials displayed, purchased or obtained by any customer as a result of an advertisement or any other information or offer in connection with the service or products. The opinions expressed in articles, reviews and stories are strictly those of the individual authors and do not necessarily reflect the views of **VISION**.



Computer generated image for indicative purposes only.

PARK RISE

Homes & Gardens

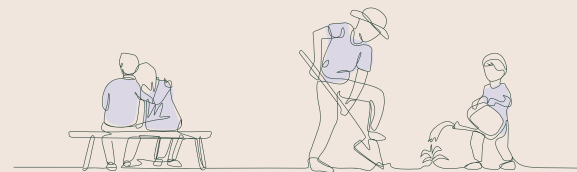
Write your next chapter at Park Rise

Introducing a beautiful collection of 1 & 2 bedroom apartments for later living exclusively for over 55s. Located adjacent to Harrow Lodge Park, Park Rise is centred around a landscaped garden, with two communal residents' lounges and a guest suite.

Shared ownership options are also available.
Why not take the first steps to find out more.

Register for further information

parkrise-hornchurch.co.uk
parkrise@porterglennynewhomes.co.uk
01708 200 173



SHARE A SMILE ORTHODONTICS

63 Eastern Road
Romford
RM1 3PB

01708 380 240

Straighten your teeth without braces!

Book a FREE consultation
with Romford's only private
specialist orthodontist.

We treat adults and children.



shareasmileorthodontics.co.uk
Creating Beautiful Smiles

