

FREE

Photo credit: Shutterstock

HM Queen

ELIZABETH II

1926 - 2022

Thank you, Ma'am, for dedicating 70 years to your people

VISION Leigh Thorpe Bay | Edition 35

UP TO 50% LESS THAN A NEW FITTED KITCHEN

by simply replacing the doors and worktops

DREAM DOORS®
NEW LIFE FOR OLD KITCHENS



BEFORE

AFTER

MODERN

CLASSIC

TRADITIONAL

CONTEMPORARY

- > Replacement kitchen doors
- > Cost effective made to measure solution
- > Worktops and appliances
- > Quick installation in 2-3 days by local professionals

1741 London Road,
Leigh-On-Sea,
Essex, SS9 2SW

Call us now for a free estimate:

07894 714810



UK MANUFACTURED

Checkatrade.com **9.8/10**
Where reputation matters

dreamdoors.co.uk

THE UK'S #1 KITCHEN MAKEOVER COMPANY

DREAM DOORS®
NEW LIFE FOR OLD KITCHENS

Make your kitchen the
heart of your home
with Dream Doors



"The workmen here on time. All their work carried out to high standard. Very polite, installation done on time with kitchen left clean and tidy."
CUSTOMER IN WICKFORD



"The work resulted in a beautiful fitted kitchen, the workmanship was excellent."
CUSTOMER IN WICKFORD



"Excellent and courteous service."
CUSTOMER IN BASILDON



"Excellent quiet and considerate workers"
CUSTOMER IN SOUTHEND-ON-SEA



"The service was excellent and professional."
CUSTOMER IN SOUTHEND-ON-SEA

If you are located in Leigh on Sea, Rayleigh or surrounding areas, speak to our designers and view our stunning collection at your local kitchen showroom.

1741 London Road, Leigh-on-Sea
Essex SS9 2SW

07894 714810

www.dreamdoors.co.uk





Editor's notes...

OCTOBER 2022



Nik Allen, Editor

Hello and welcome to this month's edition of **VISION** LeighThorpeBay.

My own platitudes towards the Queen are not unique, and I'm certain no one related to our sadly departed Her Majesty Queen Elizabeth II is going to be hanging on my every word.

Yet none of that matters, because what Her Majesty stirred in us all was our own individual image of her, as an icon, as a symbol of strength and resilience, as someone who, despite living through decades of the most dramatic change, ended her days as significant and relevant as ever.

You will all have your own memories and anecdotes of the Queen. And to reflect in these weeks after her passing feels so therapeutic and so important. For me personally, as a royalist, the Queen was a reassuring constant in a world of incredible and often terrifying change.

Of course, we will cope, regroup and evolve, just as HM Queen Elizabeth II did throughout her life. She even pre-empted this in her festive message three years ago when she said: "It's worth remembering that it is often the small steps, not the giant leaps, that bring the most lasting change."

Thank you, Your Majesty, for everything, and rest in peace. God Save the King.

Nik Allen

This is your town's hyperlocal magazine, delivering to homes and businesses every month.

HOME & DIY | GARDENING | PETS | HEALTH & FITNESS | BEAUTY | FASHION | HISTORY | LOCAL NEWS | FOOD & DRINK | TRAVEL | BUSINESS & PROPERTY | SPORT | PUZZLES | MOTORING | KIDS | WHAT'S ON | TECHNOLOGY | THE LISTINGS

CONTACT US: www.visionmagessex.com | los@visionmag.co.uk | 01702 898026

[@visionmagessex](https://twitter.com/visionmagessex) | [@visionmagessex](https://www.instagram.com/visionmagessex) | [Vision Magazine Essex](https://www.facebook.com/VisionMagazineEssex)

CONTRIBUTORS | Tabatha Fabray, Jacob Collick

At the time of print all content in **VISION** was relevant and up to date according to COVID-19 government guidelines All pages are recyclable

NEW ELECTRIC FIRE SHOWROOM NOW OPEN



Evonic Linnea 1500 Electric Fire



Vision E-Line Vel 140 Fire with Solana Bench



Vision E-Line Vel 90 Fire with Omnia granite Floating Plinth

WE OFFER THE **HIGH QUALITY** OUR CUSTOMERS EXPECT

Highgate is one of the largest garden furniture and leisure showrooms in Essex and we only work with brands that we trust. We have ample free parking for our customers.

Our New Fireplace showroom opens this October featuring a large selection of Electric Fires on display selected from the top brands in the industry.

Call **01702 904000**

HIGHGATE
HOME • GARDEN • LEISURE

327 Southchurch Road, Unit 8 Southchurch Business Park, Southend-on-Sea, Essex, SS1 2PE
www.highgatefurniture.co.uk | sales@highgatefurniture.co.uk



Sanders

Chalkwell Grange

NEW LUXURY CARE HOME IN LEIGH-ON-SEA

TO REGISTER YOUR INTEREST, CALL OUR FRIENDLY TEAM:
01702 482252

OPENING OCTOBER



HM QUEEN ELIZABETH II

Farewell

While the death of Her Majesty Queen Elizabeth II (London Bridge is down) was unexpected, it was of course true that a plan of action for this sad event had been in place for decades. As such, a strict code of practice and protocol kicked into place as soon as Her Majesty left us – this was called Operation Unicorn as she passed away in Scotland.

September 8: Prime Minister Liz Truss was informed of the Queen's passing at Balmoral Estate at 4.30pm, and the news was announced publicly at 6.30pm. All official flags were set to half-mast. Her Majesty's coffin was laid to rest in the drawing room at Balmoral Castle.

September 10: King Charles III was formally proclaimed as the new Monarch and 21-gun salutes were fired around the country.

September 11: Her Majesty's coffin was draped in the Royal Standard of Scotland and a wreath of flowers from the Balmoral Estate was placed on top. The coffin was then driven from Balmoral Castle to the Palace of Holyroodhouse in Edinburgh, the monarch's official residence in Scotland.

September 12: A procession took Her Majesty's coffin from Holyroodhouse down the Royal Mile to St Giles' Cathedral. Members of the Royal Family attended a service followed by the chance for the public to pay their respects as the coffin lay in state for 24 hours. Her Majesty's children held a vigil at 7.20pm.

September 13: The Queen's coffin, accompanied by Princess Anne, was flown from Edinburgh at 6pm, arriving at RAF Northolt at 6.55pm. During this journey, the Royal Standard of Scotland was changed to the Royal Standard. Her Majesty was then driven to Buckingham Palace in a customised state hearse which she helped design. It was beautifully lit with a glass roof, so the public had a clear view of Her Majesty's coffin. The Royal Family paid their respects in private.

September 14: The Imperial State Crown was placed on the coffin before it was taken on the Gun Carriage of The King's Troop Royal Horse Artillery from Buckingham Palace to Westminster Hall via Queen's Gardens, The Mall, Horse Guards and Horse Guards Arch, Whitehall, Parliament Street, Parliament Square and New Palace Yard to lie in state for four days.

September 16: Her Majesty's four children held a vigil at Westminster Hall at 7.30pm.

September 17: Her Majesty's eight grandchildren held a vigil at Westminster Hall at 6pm.

September 19: The Lying-in-State ended at 6.30am. This day was confirmed as a bank holiday in the form of a Day of National Mourning by King Charles III.

10.44am: Her Majesty's coffin was placed on a 123-year-old, 5,600-pound Royal Navy State Funeral Gun Carriage, followed by the King and members of the Royal Family, which travelled from Westminster Hall to Westminster Abbey for the State Funeral. The Gun Carriage was drawn by 142 Royal Navy service personnel.

11am: The State funeral began, and ended with a two-minute silence. A procession then took place where Her Majesty's coffin was taken to Wellington Arch and transferred to the state hearse, which was then driven to Windsor.

4pm: The committal service took place where the Imperial State Crown, the Orb and the Sceptre were removed from Her Majesty's coffin and placed on the altar. King Charles III placed the Queen's Company Camp Colour of the Grenadier Guards, and The Lord Chamberlain 'broke' his Wand of Office and also placed it on the coffin. The Queen's coffin then descended into the Royal Vault, and the congregation sang 'God Save the King'.

7.30pm: The King and members of the Royal Family attended a private burial service. Her Majesty's final resting place is in the King George VI Memorial Chapel, where her mother and father are buried, along with her sisters' ashes. The coffin of her late husband, Prince Philip, has been moved from the Royal Vault to the Memorial Chapel to join her.



The Heir Apparent

BRILLIANT AND BEAUTIFUL, HER MAJESTY QUEEN ELIZABETH II MAY HAVE BECOME A MONARCH SOONER THAN EXPECTED, BUT IT WAS THE ROLE SHE WAS BORN TO PLAY

When Princess Elizabeth Alexandra Mary Windsor was born on April 21, 1926, she was third in line to the British throne.

Her Uncle Edward, Prince of Wales, the eldest son of King George V, but with no children of his own it was expected that on his death the crown would be passed either to his younger brother Albert, Duke of York, or, should he no longer be with us, Albert's eldest daughter, Elizabeth.

In other words, Elizabeth was always expected to become Queen at some point in her life, but in 1936, after the death of King George V, the process was accelerated when her uncle's love for American divorcee Wallis Simpson proved stronger than his love for the crown.

With her father now the reluctant King, the young princess fully embraced her new role as heir apparent. She joined the Auxiliary Territorial Service during the war – where she learnt to fix engines and drive military vehicles – and on her first overseas visit to South Africa in 1947, gave a speech dedicating herself to the Commonwealth. It turned out to be a promise Her Majesty kept to the very end.

In these early years before she became Queen, Elizabeth was also busy cultivating her private life. On November 20, 1947, she wed her sweetheart, Lt Philip Mountbatten (also her third cousin), in a lavish ceremony at Westminster Abbey. The following year, Prince Charles was born, followed

by Anne in 1950, with the young family settling into a quiet life in Malta where Philip was stationed as a naval commander. But the plans to put her husband's career first until her inevitable accession to the throne were thwarted by the King's faltering health and his untimely death in 1952.

She may have been a young Queen, aged just 25, but she was devoted from the start and wasted no time in winning over the hearts and minds of everyone she encountered. Her coronation at Westminster Abbey was the first to be televised, and on her gruelling first tour of the Commonwealth, alongside Prince Philip, Her Majesty's warm spirit and ceaseless enthusiasm made even the most reluctant among her audiences fall helplessly in love with her. She also became the first reigning monarch to visit Australia on her maiden tour as Queen.

Despite her tender age, Queen Elizabeth II was natural in her role as Head of State. No task was too formidable as she effortlessly won over her fiercest critics, including Prime Minister at the time, Winston Churchill, who declared her to be "only a child". However, the pair soon became fast friends, and remained so until Churchill's death in 1965.

Now, 70 years after those early days of her reign, the legacy of HM Queen Elizabeth II seems even more extraordinary. So devoted, so beloved and so effortlessly full of grace and kindness; Her Majesty was truly one of a kind.

Photo credit: AP/Shutterstock



WILTSHIRE
EST. **FARM** 1991
FOODS

AUTUMN 2022

BRINGING
Sunshine
to your door

Over
330
tasty dishes

EASY ORDERING | **FREE DELIVERY** | **NO CONTRACT**

Easy ordering by phone, online or direct with your driver
Call Basildon on 01268 288 887



CHASE HATTAN
WATCHES

MENS WATCHES WOMENS WATCHES VINTAGE



★ Five Star Service ★ Unbeatable Prices ★ Same Day Payment ★
★ Free Postage ★ Hassle-Free Process ★

BUYING A WATCH

We stock not just the popular modern watches but vintage, collectable and everything in between. This includes watches from the 1960s to the modern day, and professional models from brands including Rolex, Cartier, Omega, Tag Heuer, Breitling and many more.

If we don't have it in stock, let us try and source it for you!

All of our watches pass through our in-house workshop and are presented with a 12 month guarantee, free delivery and 30 day returns.



SELLING A WATCH

We have been buying watches from the public for almost 10 years and always provide a fair price and a smooth, hassle-free selling process for our customers.

Send us over the details of the watch you're looking to sell either via email, WhatsApp or


scan the below QR code for a link to our website and we will come back with a price.


We offer same-day bank transfer payment (ID required) and regular pick-ups in person across London and Essex or send to our Canary Wharf offices.



SCAN THE QR CODE
TO SEE OUR STOCK!

 www.chase-hattan.com

 info@chase-hattan.com

 0203 059 7942

 07719717980

Rated Excellent on  Trustpilot
Chase Hattan

 ChaseHattanLondon

 ChaseHattanWatches

40 Bank Street, 18th Floor, Canary Wharf, E14 5NR

Whipping up a STORM

THE NAME GAME BEHIND OUR TURBULENT WEATHER SYSTEMS

The naming of storms in the United Kingdom is a relatively new phenomenon, with the first, Abigail, being credited on November 10, 2015.

New names have recently been announced for 2022/23. As usual, a cross section is being chosen to reflect the country's diversity, although many of the names never actually get used – the Met Office resets in autumn, meaning the chances of a late-alphabet letter being used are slim.

In addition, Q, U, X, Y and Z are not assigned in the international storm-naming conventions. However, those that are used are assigned by the Dutch weather forecasting service KNMI, the Irish forecaster Met Éireann and the UK Met Office.

The reason for naming storms is so that the public are aware of the possibility of severe weather conditions. The individual process of naming also prevents confusion over other inclement weather systems in different parts of the country or even on the continent.

However, personifying a storm, in a psychological sense, makes it a more real incident to prepare for.

The system clearly works – 98 per cent of people inside a red warning area were aware of the intense Storm Eunice, which hit Europe in February 2022, with 91 per cent of that figure making sure to protect their business, property or themselves.

As for 2023, Met Éireann has picked out the names Cillian, Fleur, Ide and Nelly as its selections; with KNMI choosing Antoni, Hendrika, Johanna and Loes (named after famous scientists in the Netherlands).

Met Office names put forward were Betty, Daisy, Elliott, Glen, Khalid, Mark, Owain, Priya, Ruadhan, Sam, Tobias, Val and Wouter. Of those, Daisy, Glen, Khalid and Owain were suggestions by the public, submitted via email. Betty won out during a public vote on Twitter.

The 2022/23 storm names alphabetically are Antoni, Betty, Cillian, Daisy, Elliot, Fleur, Glen, Hendrika, Ide, Johanna, Khalid, Loes, Mark, Nelly, Owain, Priya, Ruadhan, Sam, Tobias, Val and Wouter.



Spruce up YOUR HOME

If you're after some wallet-friendly home decoration this autumn, get out to your local park or woodland and gather some pine cones.

All conifers produce cones to protect their seeds. But the best ones for autumn decorations are standard pine cones – the ones with thick, woody scales.

Collect your pine cones on a dry day, while they're still fresh. If the scales are closed, don't worry. They'll open in a couple of days.

When you get home, give the cones a quick soak in warm water with a splash of washing-up liquid. Leave them to dry naturally or pop them in an oven at 180°C/160°C fan/gas 4 for half an hour.

Cones look great piled into a bowl, or add some mini fairy lights for a festive look. For scented cones, leave them in a sealed polythene bag for a few days with 10-20 drops each of cinnamon and orange essential oil. You can also make a simple wreath.

YOU WILL NEED

- > Pine cones
- > A glue gun and glue sticks
- > A packet of brown pony beads
- > 1m of thick wire – 12 gauge/2mm diameter aluminium wire is ideal (a wire coat hanger will do but is harder to work with)
- > Jute string or ribbon for hanging
- > Wire cutters
- > Decorations (optional)
- > All extra materials you need can be found at craft stores or online.

INSTRUCTIONS

- > Trim off any stalks at the base of the cones.
- > Glue the side of a pony bead to the base of each cone to form an eyelet.
- > Thread the wire through the eyelets till you can form a circle the size you want. You may need to jiggle the cones to make sure they're tightly packed and stay in place. To secure, twist the wire ends together.
- > Tie on your string or ribbon to form a hanging loop.
- > If you like, add a few decorations.



Photo credit: www.wikihow.com

Carpets Direct

Guaranteed Lowest Prices

- ✓ FREE FITTING
- ✓ FREE home visits
- ✓ SPECIALISES in twist pile

Established 26 years

Carpets • Vinyls • Laminates • Wood Flooring
We come to you in the comfort of your own home

WHY PAY MORE?

WE WILL MOVE YOUR FURNITURE & FREE UPLIFT/REMOVAL OF YOUR OLD CARPET

CALL YOUR LOCAL AREA SPECIALIST
01702 898 029



www.carpets-direct.co.uk

Andrew Miles Design



Kitchens, Bedrooms & Bespoke furniture
for a Free Quotation call
01268 514466
AndrewMilesDesign.com

BESPOKE METAL FABRICATION

GATES • RAILINGS • HANDRAILS
BALCONIES • GATE AUTOMATION AND MORE



- Bespoke designs, traditional or contemporary
- Modern wood and composite infill gates
- Design, manufacture & install
- High quality, hand crafted, metal-work
- Based in Stock, Essex
- Over 20 years' experience

07967 208 875

www.steelboutiquessex.com • info@steelboutiquessex.com



Opening Hours:
Mon-Sat: 8am - 4pm
Free easy parking

ARTIFICIAL GRASS SALE NOW ON AT CANVEY WAREHOUSE



OPEN TO TRADE AND PUBLIC

T: 01268 680762

E: a1astroturf@gmail.com

www.a1astroturf.co.uk

Unit M, Kings Haven, Charfleets Industrial Estate, Canvey Island, SS8 0QW



Unit M, Kings Haven,
Charfleets Industrial Estate,
Canvey Island, SS8 0QW
Tel: 01268 680762

ARTIFICIAL GRASS CLEARANCE



£20,000 of remnants and part rolls
ALL MASSIVELY DISCOUNTED
From 4m² to 110m² to clear



LOCAL NEWS

from your neighbourhood



Photo Credit: Southend on Sea Borough Council

Chewing gum team tackles dirty stations and stops

A new taskforce will be jet washing chewing gum off the floor at train stations and bus stops across Leigh-on-Sea following a £20,000 grant from Keep Britain Tidy.

The six-week trial project will see Veolia workers with specialised equipment cleaning the pavements at busy public areas such as train stations, bus stops and the seafront, including Southend-on-Sea High Street and Leigh Train Station.

Alongside the cleaning, the council will be running a 12-week advertising campaign across train stations and bus stops reminding people to dispose of their chewing gum responsibly.

Councillor Martin Terry, Southend-on-Sea City Council's cabinet member for public protection, said: "We are excited to see the results of the trial so that

we can understand the resources needed in the longer term.

"Once the trial period ends, the equipment will be available for Veolia to use in its street cleansing work and to focus on gum removal in other areas of the city – an opportunity which we are looking forward to making the most of in Southend.

"We are hopeful that this trial project will make a difference in making our city a cleaner and more enticing place for residents and visitors.

"There is no excuse for spitting chewing gum on the floor, as it is unhygienic and poses a threat to wildlife."

Stuart Atkinson, senior contract manager at Veolia, said: "If you see our street cleansing or collection crews out and about, remember to be patient and respectful towards them and always be street kind."



CARE HOMES

Brambles and Adalah care homes are in a quiet residential part of Leigh

- Lift & Stair lifts • Nurse call & fire alarm systems
- Hairdressing • Activities • Daily laundry services
 - Chiropody treatment • Fully Trained Staff
- Close to the station, beach and local shops
- Comfortably furnished rooms with en-suite
 - Balcony views of estuary

Brambles Care Home
22 Cliff Road, Leigh-on-Sea, Essex SS9 1HJ
Tel: 01702 472 417 • www.bramblescarehome.co.uk

Adalah Care Home
20 Cliff Road, Leigh-on-Sea, Essex, SS9 1HJ
Tel: 01702 711162 • www.adalahcarehome.co.uk




MOLLY MAID Benfleet
Keeping your home Healthy

The **HomeSafe** cleaning system puts the health and safety of you, your family and our team of maids at the core of how we work.

In all our cleans we use our specialist disinfectant and anti-microbial **Xtra Protect** cleaner which passed independent laboratory tests proving it's effective against all enveloped viruses including all coronaviruses.



Call us today to learn more about **HomeSafe** and why you can trust MOLLY MAID in your home.

Please call: **01268 442023**
or email: margaret.king@mollymaid.co.uk

See what our customers have to say at uk.trustpilot.com  



Custom-built Garden Rooms

Office, Den, Studio, Workshop, Gym, Playroom, Annex...

What will your garden room be?

- ✓ Add additional space and real value to your home
- ✓ Somewhere to work, play or exercise
- ✓ Bespoke design and highest quality build
- ✓ Meeting all relevant building regulations
- ✓ Industry-leading ground screw piling system

☎ 07739 807 301 ✉ info@gowfh.co.uk



Garden Office Installations
Go Work From Home



APPLIANCE REPAIRS AND SALES

We repair all makes and models

- Washing Machines • Tumble Dryers
- Dishwashers • Ovens • Hobs • Cookers
- Fridge/Freezers • Extractor Hoods

New appliances in stock for same day delivery & installation

Prices listed on our website

Call 01279 310793

Or Book Online

www.spindoctoruk.co.uk

HAMMOND & SONS

GAS ♦ PLUMBING ♦ HEATING

- ♦ All boilers serviced & repaired
- ♦ Condensing boilers & warm-air units
- ♦ All work undertaken including leaks, upgrades & installations
- ♦ No call-out charge
- ♦ OAP discounts available
- ♦ Full public liability insurance
- ♦ Fully qualified engineers



**A PROFESSIONAL FAMILY-RUN BUSINESS
HONEST & RELIABLE
OVER 20 YEARS' EXPERIENCE**

From a tap washer to a full heating system, call

01702 580 577

email: hammondandsons@hotmail.co.uk

www.hammondandsons.co.uk

Counsellor offers workshops for grieving residents



A counsellor from Leigh-on-Sea is offering free bereavement workshops to those in need of help. Katy Acton (pictured above) became a counsellor after struggling with her own unhappiness and being inspired by her counsellor.

She said: "I felt like I could talk to her [the counsellor] about the things I needed to and never felt judged. I worked with her for two years and my life and self-acceptance completely changed as a result."

Katy left her job to enrol in a psychotherapy degree and has been working with her own clients for more than 10 years. She has owned her own private practice for the last seven years.

She has also released a series of journals to help people offload and process their thoughts and feelings, with journalling often more accessible to most than counselling.

The first counselling group was held from 10.30am to 11.30am on October 11, and following sessions will be held on the first Tuesday of every month at the Living Room, Leigh Road Baptist Church.

Katy added: "My hope for the groups is to create a safe, welcoming space where people can be together in their grief, choose to share if they want to, or just observe and reflect."

More information can be found on Katy's website at www.katyactoncounselling.com

Man found with cannabis worth £80k sentenced

A Leigh-on-Sea man who admitted to producing cannabis estimated to be worth £80,000 has been jailed for eight months.

Mujo Docaj, 27, of Gravel Road, was found at his property with a substantial cannabis growth and a large amount of hydroponic equipment.

Docaj was discovered after information was provided to Essex Police, and the South Disruptor Team carried out a drug warrant at the property.

Docaj was arrested and remanded in custody to appear at Southend-on-Sea Magistrates' Court on

Friday, September 16, to answer a charge of cannabis production.

He pleaded guilty to the charge at the first hearing and was sentenced to eight months' imprisonment and fined £187.

PC Scott James said: "Thanks to the public who gave us information about what was happening in Leigh, we were able to quickly arrest Docaj and put a stop to the drugs making their way onto the streets.

"Docaj knew this was illegal and pleaded guilty to producing cannabis at his court hearing.

"But we won't stop there. If anyone knows of anyone producing drugs or drug dealing in their community, please let us know and we will deal with it."

To report information, visit www.essex.police.uk or to stay anonymous, contact Crimestoppers on crimestoppers-uk.org or 0800 555 111.

Council honours annual Merchant Navy Day

Leigh-on-Sea Town Council held a special service to commemorate Merchant Navy Day last month.

Councillors were joined by members of Leigh Sea Scout groups the Royal Naval Association and TS Implacable, as well as Anna Firth, MP for Southend West, for the service on Strand Wharf on September 3.

The service was led by council chairman councillor Keith Evans, with support from his vice chairman councillor Dr David Bowry and Gavin Dixon of Kings Church.

A spokesperson for Leigh-on-Sea Town Council said: "The town council ensured that the often forgotten and invisible naval community was at the forefront, reminding all that the modern-day merchant seafarers are responsible for the UK's imports on a daily basis.

"Merchant Navy Day is observed annually on September 3 in recognition of their sacrifice in the First World War."



Photo credit: Leigh-on-Sea Town Council

Blocked ears?

We can help!

A quick, safe, effective and affordable solution for removing earwax.

Earwax is naturally produced by your ear, but once it starts causing issues, it is time to speak to a specialist.

Apex Hearing Health are your local microsuction earwax removal experts.

Providing mobile microsuction earwax removal appointments in Leigh-on-Sea & the surrounding areas.

Appointment cost is £70 (includes both ears).

Contact us on the following

t 01702 965 525 m 07869 804 271 e info@apexhearinghealth.co.uk





LOCAL NEWS

from your neighbourhood



Photo credit: Stuart Hume



Teacher honoured to take part in Queen's funeral

The head of science at Thorpe Hall School had the honour of accompanying Her Majesty Queen Elizabeth II on her ceremonial journey from Westminster Hall to Westminster Abbey for her funeral.

Stuart Hume (pictured left and bottom right), a piper in the London Scottish Regiment for the past 20 years, was selected to take part in the historic event on September 19 – surprising many of his students and fellow staff members, who didn't even know he could play the bagpipes.

He said: "A few of the kids knew that I played the pipes, a majority didn't know. Obviously, some of the staff knew but I had to take the week off after getting a text on the Friday afternoon that we had been selected."

"The students see us as teachers and don't realise we have a life outside school. Once they notice you're a person, it makes them a bit more responsive – though it took a lot of work to get there."

Mr Hume said that he didn't feel nervous about making a mistake thanks to the lack of a crowd along the route.

He explained: "All the crowds and the general public were elsewhere for security, so when we got to Parliament Square it was like a practice."

"It's a great honour to do something like this – who would think a secondary teacher could be involved in such a worldwide event? It's taken a while to come back to reality, but now you think, 'Phwoar, I actually did it.'"

YOUR BOILER NEEDS US



ATS Services have over 40 years experience in the Plumbing & Heating industry. We offer a friendly, professional service throughout Essex

- Boiler Installations • Boiler Repairs
- Heating Installations • Heating Repairs
- Plumbing Installations • Plumbing Repairs
- Experienced Gas Engineers • Gas Safe Registered
- Commercial & Residential



01702 295495 • 07887 717703

26 High Street, Shoeburyness, SS3 9AP

NEED HOUSE CLEARANCE?

ATS House Clearance, a family-run business, covering Essex and surrounding areas. We provide the following services:

- House clearance
- Room clearance
- Single item removal
- Garage clearance
- Bereavement clearance
- Cleaning and tidying



01702 295495
07887 717703

26 High Street, Shoeburyness, SS3 9AP

PROGRESS

YOUR LOCAL EV CHARGING POINT INSTALLER



CONTACT US FOR A FREE SITE SURVEY 01702-428981

Web: www.progresschargingpoints.com Email: info@progresschargingpoints.co.uk Mob: 07851 889 154

01702 789547

DESIGN
SUPPLY
INSTALL

OPULUX 

BATHROOM & HEATING SHOWROOM

FACEBOOK: OPULUXBATHROOMS
INSTAGRAM: OPULUX_BATHROOMS

Unit 31 Laurence Industrial Estate, Eastwoodbury Lane, SS2 6RH




WS Spray Finishings

ALL ASPECTS OF WET SPRAYING & POWDER COATING FOR DOMESTIC & INDUSTRIAL MARKETS
ITEMS FOR POWDER COATING UP TO 5m x 2m

**Hello to all our customers past and present, we are now back at work
We hope the support we have been shown in the past will return
We can get through this together, local companies employing local people**



Are you tired of the look of your kitchen?
Don't despair instead of paying a fortune for new units and doors why not have your existing doors, drawer fronts cornice, light pelmets, cooker hoods, shelf displays and plinths re-sprayed in any colour & sheen of your choice?
Removal & installation of most work available.
We can spray any type of door solid wood, vinyl/plastic or MDF old or new. All work is fully cleaned and de-greased, repaired if necessary and rubbed down prior to painting. We use a highly tough and durable finish 2 pack polyurethane paint in any colour and sheen to create that new showroom look and feel for fitted bedroom drawers and cabinets, internal room doors and all types of household furniture including brown furniture.
This is a very good economic and environmental way of recycling your worn out kitchen, bedroom cabinets & old furniture, we strive to be as eco friendly as possible.

01268 812414 • 07434 704673 • 07434 704681
www.wssprayfinishings.co.uk • wssprayfinishings@gmail.com

 **Unit 4 Totman Close, Brook Road Ind, Est. Rayleigh SS6 7UZ** 



Beaches found safe despite reports of sewage

Residents in Thorpe Bay have expressed their concern at reports of sewage residue on local beaches – despite them being declared as safe.

Following heavy rain last month, swimmers were told to avoid the waters of much of Southend due to the risk of pollution.

The charity Surfers Against Sewage (SAS), which monitors sewage discharges across rivers and coastlines, said there was no reason for concern.

However, according to the UK Environment Agency (EA), 49 per cent of Anglian Water's monitors are either not installed or are faulty, meaning discharges of raw sewage cannot be properly monitored or regulated.

An SAS spokesperson said: "During the bathing season, Pollution Risk Forecasts (PRFs) are issued by the EA. PRFs use rainfall or other factors to assess the risk of a temporary reduction in bathing water quality. Forecasts are issued around 9am.

"We share this data so that people can make informed decisions about where they swim."

An Anglian Water spokesperson said: "We recognise that storm overflows are no longer the right solution when sewers become overloaded with rainwater. We've been dealing with combined sewer overflows (CSOs) for years, tackling those which pose an environmental risk and working through the rest. Between 2020 and 2025, we're reinvesting £200million to reduce storm spills and we've promised that storm overflows will not be the reason for unhealthy rivers or seas in our region by 2030.

"We currently have almost 75 per cent of our CSOs monitored. Following over £300million of investment, all but three of the places designated for bathing in our region are rated as good or excellent for bathing water quality, and all have monitors installed on them."

Traffic calming consultation angers residents

Thorpe Bay residents have been angered by a consultation asking for feedback on plans for traffic calming features in the area.

The consultation regarding the £400,000 traffic calming scheme provides two options to residents, both introducing 20mph limits. One plan is to have all vehicles in the zone to be within 50 metres of a traffic calming feature, and the other is to control speed predominantly through signage and painted roundels.

The lack of a third option for no action while further consultation and planning takes place has angered residents.

Councillor Steven Wakefield, Southend-on-Sea City Council's cabinet member for highways, transport and parking, said: "Both of the proposed schemes contribute to the council's priorities for the city, particularly in terms of reducing vehicle speeds and improving the safety for pedestrians and ensuring residents and visitors feel safe and secure.

"This could also encourage our residents to use active and more sustainable transport options. I urge all residents and businesses to express their views."

Responses must be submitted by 5pm on Friday, October 21. To take part, visit bit.ly/3Ce0BJL



LOCAL NEWS THORPE BAY



TRAVEL

YOUR GUIDE TO visiting Antarctica

Looking for your next travel destination? Why not make it Antarctica? Here's what you need to know about visiting the world's southernmost continent.

WHY VISIT?

Antarctica is one of the world's last untouched destinations. With its beautiful wilderness, it's a place unlike any other, a real trip of a lifetime.

Away from the tourist traps, busy cities and constant connectivity, it's the perfect getaway from reality.

WHEN TO VISIT

The best time to visit Antarctica is from November to March – the Antarctic summer. You'll get to enjoy 24-hour sunshine, giving you the best chance of seeing the continent's incredible wildlife.

WHAT YOU WILL SEE

Besides the stunning landscapes, Antarctica is home to some of the world's most fascinating

creatures. See penguins, albatrosses, whales and more in their natural habitat – a truly spectacular experience.

WHAT TO PACK

Brace yourself for some cold temperatures on your adventure. Take plenty of thermals and layer up your clothing to help you stay warm.

Remember to take your camera. You won't want to miss out on those amazing photo opportunities.

WHAT TO DO

A trip to Antarctica will give you the chance to discover the history of famous explorers, including Robert Falcon Scott and Sir Edmund Hillary.

While these explorers might have had to survive in difficult conditions, you could enjoy your Antarctic adventure on board a luxury cruise, with all of their modern comforts.

Could a visit to Antarctica be on the cards for you in 2022 or 2023?

Photo credits: auroreexpeditions.co.uk; redseavannah.com



KEEP YOUR **£ LOCAL** SUPPORT YOUR LOCAL BUSINESSES...



Your Monthly Lifestyle Magazine **VISION** Please let your local businesses know that you saw them first in... **VISION**

THE PEST COMPANY **The Pest Company Essex**

YOUR LOCAL RELIABLE PEST COMPANY

Domestic & Commercial Properties Covered

All Work Guaranteed

- ✓ Rats ✓ Mice ✓ Squirrels ✓ Wasps
- ✓ Bees ✓ Cockroaches ✓ Bed bugs
- ✓ Fleas ✓ Moths
- ✓ Bird Proofing.. & much more

CALL US ON
07739 24341
01702 749402
www.thepestcompany.co.uk

PARK HOLIDAYS **Steeple Bay Holiday Park**

The best reason to choose a stay-cation!

Pet Friendly • Private boat slipway • Boat Storage • Fishing Lake • Pools • Shop • Owner Events

Holiday Homes from £19,995!

Please contact Lara for more info and see why everyone is choosing **A STAY-CATION!**

- Free 2022 sites fees
- Reduced fees till 2025 (t&c)

Contact Lara on 07415 239231 • l.wilson@parkholidays.com • Southminster, CM0 7RS

A Lady

TO THE LAST

REFLECTING ON HER MAJESTY QUEEN ELIZABETH II IN HER LATER YEARS AS A SERVANT TO THE PEOPLE

“This is our country’s saddest day. In the hearts of every one of us, there is an ache at the passing of our Queen, a deep and personal sense of loss – far more intense, perhaps, than we expected,” began former Prime Minister Boris Johnson in his moving tribute to Her Majesty Queen Elizabeth II. And while he may not have quite lived up to his expectations as Prime Minister – Her Majesty made sure to ‘see him off’ two days before her passing – his ability to transpose feelings into words remains second to none.

For many of us in Great Britain, life without our Queen is something we have never known, and it is only in her passing that we truly appreciate how extraordinary her feat of 70 years on the throne was. Even her twilight years were spent cementing her legacy through continued work and devotion, and over seven decades she travelled to 117 countries and hosted countless high-profile guests and heads of state, including Robert Mugabe, Nelson Mandela and Donald Trump.

Upholding to the very last one of the cornerstones of the British Constitution – that the monarch ought to always stay out of politics – Her Majesty saw 15 Prime Ministers come and go. No matter how turbulent the political seas became, she always stood steady and calm; a constant port in the storm for the British people to depend on.

As is to be expected, Her Majesty saw her fair share of good and bad times. The year 1992 was particularly dire, with revelations of lusty phone calls between Camilla and Charles, the separation of Andrew and Fergie, and the blaze that almost destroyed Windsor Castle. Her ability to play out such tragedies in the public space was forced upon her, in many ways, yet she took the hits and moved forward.

While she later admitted to being desperately sad at the demise of so many great things around her that she believed were so strong, the humanity displayed during that period – and more recently with the scandal involving Prince Andrew and the Harry/Meghan storm – has served to align the Royal Family with our own families.

Rather than their being regarded as a group of people immune to the disturbances and disappointments that come to us all, the Queen has readily admitted the Windsors’ fallibility.

And while the passing of Prince Philip, just 17 months before her own, may have struck another blow to a lady we believed would always be with us, at least her own departure means the two can be reunited again, wherever that place is.

Certainly, it’s fair to say the truest echoes that remain from Queen Elizabeth’s life are the laughs, the pleasure, the playfulness, and the reinvention of how we view our monarchy.

A job well done, Ma’am.

ESSEX LARGEST SHOWROOM



Motability offers you the ability to enjoy worry-free mobility

Available through weekly lease payments

A new product every **3** years

To find out how Motability can help you, talk to our Specialist today



HARLOW 01279 420600
67-68 HARVEY CENTRE, CM20 1XP

BASILDON 01268 520233
45/49 MARKET SQUARE, SS14 1DE

WELWYN GARDEN CITY 01707 247200
3 MUNDELLS COURT, AL7 1EN

SOUTHEND-ON-SEA 01702 417088
THE VICTORIA SHOPPING CENTRE, SS2 5SP



GIVE US A TWIN!

Or what about a Crunchie, Flake or Curly Wurly? The average Brit puts away a staggering 11kg of chocolate a year – that's three bars a week. And the bar that topped a poll of this year's favourites was Cadbury's Dairy Milk, the firm's best-selling bar since 1914.

So how did it all begin?

George Cadbury, who died 100 years ago this month, was just 21 when he and his brother took over their father's Birmingham-based cocoa business. The family were Quakers and believed hot cocoa drinks were a great alternative to alcohol. But George's father was ill and business was going from bad to worse.

However, the brothers quickly turned things around.

In 1878, they moved to the countryside outside Birmingham and built the Bournville factory.

George wasn't just a good businessman; he strongly believed that all working people had the right to a decent home and a good education, whatever job they did. So on land near the factory and at his own expense, George built Bournville village, which had shops, churches, 300 homes, a Quaker meeting hall, and plenty of open space.

It was at the new factory that George developed the original Dairy Milk bar in 1905. It had the distinctive purple wrapper, even back then. And, of course, it was Bournville village that gave its name to Cadbury's dark chocolate bar, first sold in 1908.

The Cadbury company is now owned by Mondelez International and its chocolate is manufactured in more than 180 countries. But Bournville is still at the centre of its operations and produces almost all its Dairy Milk bars.



Photo credit: Universal History Archive/UIG/Shutterstock, cadbury.co.uk, chrisdornsey/Shutterstock.com, urbanbuzz/Shutterstock.com, DenisVAr/Shutterstock.com



Women's health

at Nuffield Health
Brentwood Hospital

Our experienced gynaecology consultants pride themselves on helping women of all ages overcome a range of health problems. Whether you are suffering from an issue now or are concerned about your future health, we are here to re-assure and help you, offering rapid access to treatment.

- Cervical smear and HPV test
- Colposcopy
- Family planning advice and management
- Gynaecological ultrasound
- Hysterectomy
- Infertility investigation and pre-IVF management
- Laparoscopy
- Menstrual disorders and management
- Ovarian cyst
- Menopause and HRT
- Surgical and medical management of miscarriage
- Urinary frequency and incontinence
- Uterine and vaginal prolapse and reconstructive surgery
- Uterine fibroid.



For more information call **01702 898036** or visit nuffieldhealth.com/hospitals/brentwood



Nuffield Health Brentwood Hospital
Shenfield Road, Brentwood, Essex CM15 8EH



OCTOBER IS BREAST CANCER AWARENESS MONTH, AND WITH 55,000 WOMEN DIAGNOSED WITH THE DISEASE EACH YEAR, IT'S NEVER BEEN MORE IMPORTANT TO BE BREAST AWARE

What is normal?

Every woman's breasts are different, in terms of size, shape and consistency. It is also not uncommon for one breast to be larger than the other. It is a good idea to get used to how your breasts feel at different times of the month so that you can notice any changes.

How to be breast aware:

The NHS Breast Screening Programme has produced a five-point plan for how to be breast aware:

1. Know what's normal
2. Look at your breasts and feel them
3. Know what changes to look for
4. Report any changes to your GP immediately
5. Attend routine screening if you are aged between 50 and 71.

How to check your breasts:

Look at your breasts and feel each one and your armpit, including up to your collarbone. Many women

find this easiest to do in the shower or bath. You can also look at your breasts in the mirror, both with your arms by your side and with them raised.

Breast changes to look out for:

- > A change in size, outline or shape
- > A change in the look or feel of the skin, such as puckering, a rash or redness
- > A new lump, swelling, thickening or bumpy area on the breast or armpit
- > A discharge from the nipples
- > Change in the position of the nipples
- > A rash or crusty or scaly skin around the nipple
- > Any discomfort or pain in the breast.

When is the best time to check your breasts?

You should check your breasts once a month on the same day, ideally a few days after your period. This is because many women notice changes to their breasts during their menstrual cycle and they may become swollen, tender and even lumpy.





**You've popped the cork,
now light the wick!**

Treat yourself to one of our candles,
upcycled from champagne and liquor bottles
to add a bit of luxury to your happy place



Scan the QR code and visit our website or go to
www.wickinc.co.uk

Make sure you use our special **VISION**
discount code for 10% off your first order!

WICKVISION22



BEAUTY



High volume hairstyles

SIX HAIRSTYLES TO BRING MORE VOLUME TO YOUR HAIR

Do you suffer with fine, limp or thin hair? Then these volume-boosting hairstyles are just what you need to add a little oomph to your locks.

Asymmetrical bob

If you are looking for a shorter style that promises to add volume, then the asymmetrical bob is the hairstyle for you. Adding both volume to your hair and definition to your face, this ultra-sleek style suits women of all ages.

Messy lob

For those with shoulder-length fine hair, a messy lob is a great choice. Ask your hairdresser to add choppy layers to your locks and you will instantly see more movement and volume.

Tousled loose waves

Long hair can be prone to looking flat, so why not add some tousled waves to give the appearance of more volume? Simply wash your hair with a volumising shampoo, put in braids and leave overnight. Let your hair down in the morning for gorgeous waves.

Textured pixie

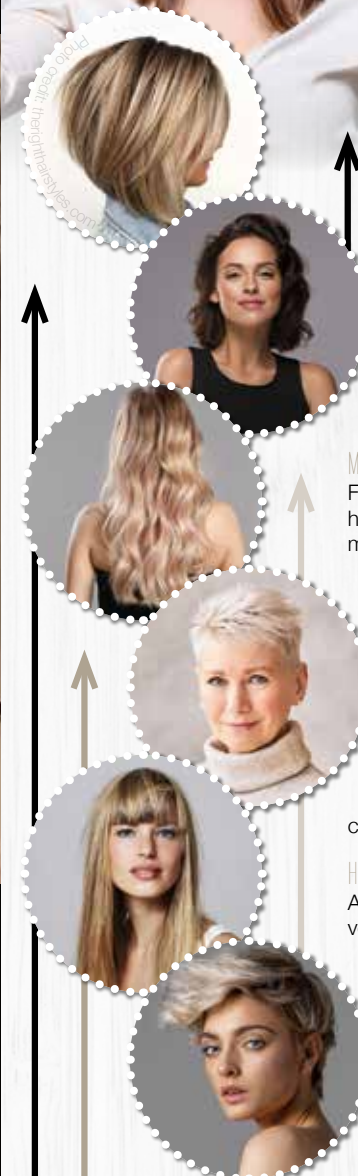
For those who dare to go super-short, the textured pixie is the ideal cut for people with thin hair. This versatile style works with any texture of hair, from curly to straight. To style this look, use a water-based pomade or a matte wax.

Heavy fringe

A full fringe can make your entire head of hair appear thicker and more voluminous. Adding both density and fullness to your locks, this hairstyle works best with no parting. Opt for either a blunt or textured style but be sure to keep it heavy.

Vintage pompadour

The pompadour is making a huge comeback this year and is another short style that is perfect for adding volume and height. Pair short, edgy sides with a curly texture on top for a modern look that demands to be noticed.



To cut or NOT TO CUT?

There are several jobs that need doing in the garden ahead of the colder months, and one of them is trimming back your perennials. However, it is important that you know which ones to cut back and which ones to leave alone.

Cut back

Irises – Irises are vulnerable to infestations of iris borers, which tunnel into the base of the rhizome and lay eggs. To avoid this, trim the fan of their sword-shaped leaves at an angle so that they slope upward into a peak no higher than eight inches.

Chrysanthemums – These autumn-flowering plants should be cut back after they have bloomed or if they have been hit by a hard frost. Trim the plant down to between six and eight inches from the soil.

Lilies – Once their greenery has disappeared and they turn yellow or red, lilies should be cut back for the winter. All it takes is one quick snip of the stalk near the soil line.

Peonies – Peonies are vulnerable to mildew so should be cut back when the first frost hits. Grab the leaves and then cut back the stems to just a few inches above the soil.

Hollyhocks – Growing up to six feet high, hollyhocks can get gangly in autumn. Cut back their sturdy stems to about six inches from the soil to avoid diseases such as leaf rust.

Let be

Hibiscus – As a late-emerging plant, hibiscus does not need trimming back as otherwise it can take too long to show growth in the spring.

Coneflowers – Not only do coneflowers look pretty when covered in frost or snow, but they also offer important sustenance for winter birds.

Russian sage – Russian sage can survive the colder weather and can also add texture and shelter to your winter garden, so leave this ornamental grass alone.



THIS MAGAZINE IS
MISSING YOUR ADVERT

CALL 01702 898026
 TODAY TO BOOK YOUR SPACE

Coulton Tree Services

TAKING CARE OF YOUR TREES

- Tree Surgery
- Stump Removal
- Hedge Cutting
- Site Clearance

WE OFFER FREE NO OBLIGATION QUOTATIONS

PROFESSIONAL, RELIABLE & FULLY INSURED, WE COVER ALL ASPECTS OF TREE WORK IN THE ESSEX AREA

24 HOURS A DAY – 7 DAYS A WEEK

07824 617377 • www.coultontrees.co.uk
 maxwell@coultontrees.co.uk

coultontrees

Essex Cleaning Solutions

Specialist in domestic and commercial cleaning
 Essex Cleaning Solutions are pleased to offer the following services

- Conservatory Exterior & Interior Cleaning
- All Exterior UPVC Cleaning
- Traditional Window Cleaning (No Poles)
- Driveway/Patio Pressure Washing
- Roof Tile Cleaning / Moss Removal
- General Building & Maintenance Available
- Painting and Decorating - Internal & External
- Roofing & Cladding - Installation & Repairs

THE **GUTTER SURGEON**
 For residential & commercial gutters

01702 742164 07828 332051
 www.theguttersurgeon.co.uk
 info@theguttersurgeon.co.uk
 Find us on The Gutter Surgeon

- Gutter leaning at reduced rates
- Gutter Vacuuming up to 40ft
- Gutter repairs at affordable prices
- New gutters/facias & soffits installed
- Down pipes cleared, new down pipes added
- The Gutter Surgeon will to beat any like for like cleaning quote.

ECS will never ask for payment until job completion to the customers satisfaction

FREE, no obligation quotation!

Freephone: 0800 699 0466 or
 Mob: 07749 220949
 Mob: 07462 677211

www.essexcleaningsolutions.co.uk
 essexcleaningsolutionsltd@gmail.com

Find us on

All major credit/debit cards accepted
 Fully Insured



FIRST LOOK
Ground works

BUILDING DREAMS

We pride ourselves on the quality of our building services from ground work to a full renovation we cover all building services.

- Bathrooms ■ Kitchens ■ Windows
- Doors ■ Extensions ■ Garages
- Ground Works ■ Patios ■ Decking
- Roofing ■ Plastering ■ Rendering
- Block Paving



CONTACT US - 07900 012625

firstlookgroundworks@hotmail.com

[firstlookgroundworks](https://www.facebook.com/firstlookgroundworks)



LOOKING FOR DRIVEWAY INSPIRATION?

HAVE YOU THOUGHT ABOUT ADDING DECKING TO YOUR GARDEN?

JD SERVICES

EXPERIENCED IN PROVIDING A FRIENDLY & PROFESSIONAL SERVICE

- Front & Back Garden Landscaping
- Driveways ■ Patios ■ Composite Decking
- Cladding ■ Turf ■ Artificial Grass
- Fascias ■ Soffits & Guttering

CONTACT US FOR A FREE QUOTE
01702 965516

info@jd-services-esssex.co.uk [EssexFasciaDriveways](https://www.facebook.com/EssexFasciaDriveways)



JD SERVICES



MARTIN 'HANDY' HOLMES

- Fencing ■ Patios ■ Paving
- Pergolas and Planters
- Artificial Grass
- Decking & General Jobs

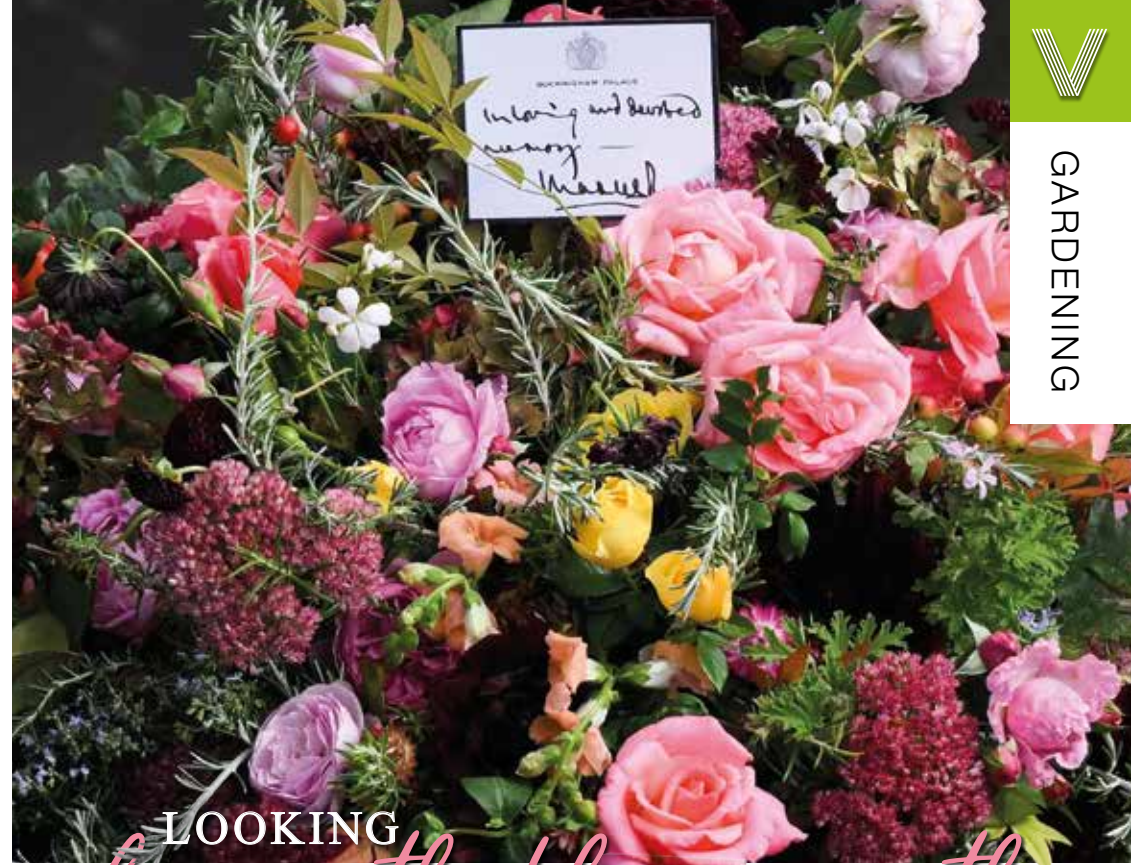
ANY JOB TAKEN ON, BIG OR SMALL

CALL MARTIN ON
01702 898 031 ■ 07796 008198

Visit us on [martinhandyholmes](https://www.facebook.com/martinhandyholmes)



GARDENING



LOOKING

beneath the wreath

Flowers are perennially at the heart of the way we offer our tributes to the departed, and few presentations have been as beautiful, perfect or significant as the floral wreath that adorned the Queen's coffin as she made her final journey on September 19.

The choice of flowers on the wreath is not done by luck – it represents a carefully selected process that uses beautiful sprays of colour to celebrate and commemorate so many of the things that enlightened, amazed and enchanted Queen Elizabeth II during her life.

First, the provenance of the flowers is important – they were picked from the gardens of Buckingham Palace, Clarence House and Highgrove House. It was touching to see the use of the myrtle flower, grown from a sprig of the Queen's wedding bouquet when she married her late husband, Prince Philip, in November 1947.

Also present was English oak, a foliage that represents the strength of love, plus pelargoniums, garden roses, autumnal hydrangea, sedum, dahlias

and scabious. All flowers were sustainable, on King Charles' request.

This was a different wreath from the one that accompanied Her Majesty Queen Elizabeth II on her journey south from Scotland. Using flowers picked from her Balmoral Estate, the wreath featured sweet peas – one of her favourites – dahlias, phlox, white heather and pine fir.

While the wreath flowers have garnered much attention, the large quantity left at Green Park and by the gates at Buckingham Palace represented a huge challenge for the authorities.

There is a set process for the disposal of these flowers, which began seven days after the funeral. Gradually, those flowers wilting first would be removed and taken to Hyde Park nursery for composting. This compost will be used on the flowerbeds at Kensington Gardens.

Cards and labels are put into boxes – some will make it into museums; most will remain stored away forever and are unlikely to see daylight again for decades.

Photo credit: Daniel Leal/AP/Shutterstock



Photo credit: wselim/gamagazine.co.uk

GOING POTTY

Perk up your garden, porch or patio with a unique display of flowers and foliage. Read on to find out how to create a stunning container for late autumn and winter.

- WHICH PLANTS WORK WELL?**
- > Hardy autumn-flowering cyclamen
 - > Pansies and violas
 - > Hebes
 - > Heathers
 - > Evergreen ornamental grasses
 - > Trailing ivy
 - > Heucheras
 - > Ornamental cabbage or kale
 - > Hardy ferns (e.g. hart's-tongue, polypodium)
 - > Evergreen shrubs (e.g. skimmia, sarcococca)
 - > Evergreen euphorbias
 - > Perennial herbs (e.g. rosemary, sage)

WHICH COMBINATIONS WORK BEST?

Choose an eye-catching 'hero plant' that's relatively tall. Ornamental cabbages, spiky grasses or hebes all work well. If your pots are round, put your hero plant off-centre, not right in the middle.

Now choose at least one bushy plant and one trailing plant, like ivy. Then fill the gaps with

complementary plants. Try to include a variety of shapes, textures and shades of green.

Remember, plants don't grow much in late autumn and winter, so fill your pots generously – you don't want to see bare earth.

Finally, cast a critical eye over your selection to make sure you're happy.

WHICH COLOURS LOOK GOOD TOGETHER?

We think harmonious colours work best. These are the ones next to each other on the colour wheel, not opposite – so mauve and pink rather than orange and blue. But of course, it's a matter of personal taste.

WHAT ARE THE BEST CONTAINERS?

Choose containers made from plastic, stone or frost-proof terracotta, with a wide top. For something different, why not repurpose an old tin bucket or watering can? But remember to drill drainage holes.

Raise your container off the ground using special pot feet or bricks. This will help drainage and help prevent the pot from freezing.

Always use new, good-quality multipurpose compost – don't be tempted to use soil or reuse last year's compost.



Photo credit: Joe Giddens/WPA, Pool/Shutterstock

A dish fit for our Queen's coronation

There are a multitude of food dishes that carry with them a certain historical significance that's evident in the name – from beef wellington to eggs benedict. Some point to the person we expect; others are a little more misleading (the Caesar salad is named after an American restaurateur, not the Roman emperor).

In the case of the subtly curried coronation chicken, it's satisfying that the dish was indeed invented in order to mark the Queen's coronation in 1953, even if its origins actually point to a similar chicken recipe conceived for George V's Silver Jubilee in 1935.

The recipe was published as the nation prepared for street parties, although in those post-war years, some ingredients may have been deemed extravagant as it was previously more complex, and

only recently has it evolved into something more sultana-heavy.

The recipe took more than four weeks to create, and was perfected by Angela Wood, now 88, a student at Winkfield Place College, which was preparing the menu for a banquet at nearby Westminster School for more than 350 dignitaries after the coronation.

She said in an interview: "The brief was 'something that had a bit of flavour, but not too much', to appeal to the banquet guests. For a month or more, I was cooking a chicken a day and we had to alter the balance of the spices in the sauce to get it right."

The dish has now gone down in national folklore, used in sandwiches, salads and jacket potatoes.

Coronation chicken recipe

INGREDIENTS: 6 tbsp mayonnaise | 2-3 tsp mild curry powder, to taste | ½ tsp ground cinnamon | 500g shredded cooked chicken | Black pepper | Optionals which can be added are 2 tbsp mango chutney and 1-3 tbsp sultanas, or to taste

STEP ONE: Mix the mayo, curry powder and cinnamon (add the chutney and sultanas if using) together and season with black pepper.

STEP TWO: Add the shredded chicken and stir to coat in the sauce. Stir in 2 tbsp water to loosen if needed, then season and serve as desired.





AN *apple* A *day*

In the UK, you could eat a different variety of apple every day for more than six years. Well, that's the theory, at least – because more than 2,500 types of apples are grown here.

Apple Day, which falls on October 21 every year, celebrates the eponymous fruit and all the ways we use them to create desserts, drinks and even savoury foods. But more than that, the day helps people appreciate where food comes from and live better with nature.

There are hundreds of Apple Day activities taking place throughout the country. To find out what's happening in your neck of the woods, type 'Apple Day events near me' into a search engine.

BEST EVER APPLE CRUMBLE: Serves 4-6

INGREDIENTS:

For the filling: 575g cooking apples, peeled, cored and sliced | 2 tbsp caster sugar

For the crumble: 175g plain flour | 110g caster sugar | 110g cold butter | Pinch of salt

HOW TO MAKE:

Heat the oven to 190°C/170°C fan/gas 5 | Toss the apple slices in 2 tbsp sugar and press into a 23cm round baking dish | Mix the flour with the sugar and salt | Grate the butter into the mixture and rub it in till the mixture looks like fine breadcrumbs | Spread the mixture over the apples and press it down slightly | Bake for 35-40 minutes till golden.

HOT SPICED APPLE CIDER: Serves 8

INGREDIENTS:

6 apples | 2 oranges | 2 cinnamon sticks | 10 cloves | A nutmeg | 2 star anise | 50g brown sugar | 2.5 litres cold water

HOW TO MAKE:

Wash and chop the fruit into 2cm pieces (don't remove seeds or skin) and put in a large saucepan | Add the whole spices, sugar and water | Bring to the boil, cover, then simmer gently for 45 minutes | Remove the whole spices | Mash the mixture with a potato masher | Strain the cider through a fine sieve | Serve warm.



YOU'RE NOT ALONE



OVER 207,500 OTHER PEOPLE IN ESSEX READ **VISION** MAGAZINE'S MONTHLY

CONTACT US TODAY TO GET YOUR BUSINESS SEEN BY OUR READERS

Your Monthly Lifestyle Magazine **VISION**

See all our magazines at www.visionmagessex.com

Billericay Shenfield Bishop's Stortford Brentwood Ongar Chelmsford Beaulieu Epping Theydon Halstead Braintree Hertford Hornchurch Leigh Thorpe Bay Loughton Maldon Burnham Rayleigh Wickford South Woodford Tendring Woodbridge



BRITAIN'S GREATEST SPORTING MOMENTS:

SPORT

DROP-KICK JONNY

Each month, we look at one of the most significant events in British sporting history. This month, it's England's dramatic Rugby World Cup win against Australia in 2003.

The fact that England came into the 2003 World Cup as tournament favourites didn't for one second lead to any sensible suggestion that the Three Lions might actually take the Webb Ellis Cup back to Blighty with them.

Never had a Northern Hemisphere team won the ultimate prize in rugby, and with the formidable force of co-hosts New Zealand and Australia ready to greet them – the latter as defending champions – only the staunchest England fan imagined Clive Woodward OBE's side could emerge victorious.

Yet in captain Martin Johnson CBE, fly-half Jonny Wilkinson CBE, speedster Jason Robinson OBE (fresh from switching codes having grown up playing rugby league) and a batch of other stars coming into their prime, such as Matt Dawson MBE, Mike Tindall MBE, Ben Cohen MBE, Will Greenwood MBE and Steve Thompson MBE, the feeling that we might be witnessing something special heightened as England sauntered through the group stages.

They accumulated more than 250 points in their opening four matches, seeing off Georgia, South Africa, Samoa and Uruguay with little fuss.

In the quarter-final, Wales scored two tries to England's one, but the kicking of Jonny Wilkinson saw the team home 28-17.

And eight three-pointers in the semi-final against France paved the way for a showdown final with Australia.

In a match screened live in the UK as rugby fans were tucking into a liquid breakfast, Lote Tuqiri scored the opening try for the hosts at Stadium Australia in Sydney, before three Wilkinson kicks and a try gave England a 14-5 lead. Gradually pegged back in the second half, Elton Flatley's last-gasp penalty brought Australia level.

In extra time, Flatley again restored parity at 17-17 with only three minutes to spare, but just as sudden death loomed, Wilkinson received Dawson's pull-back and drilled over the winning drop goal that won the trophy and changed English rugby forever.



Photo credit: David Gibson/Fotosport/Shutterstock

PUZZLES & TRIVIA

PUZZLES

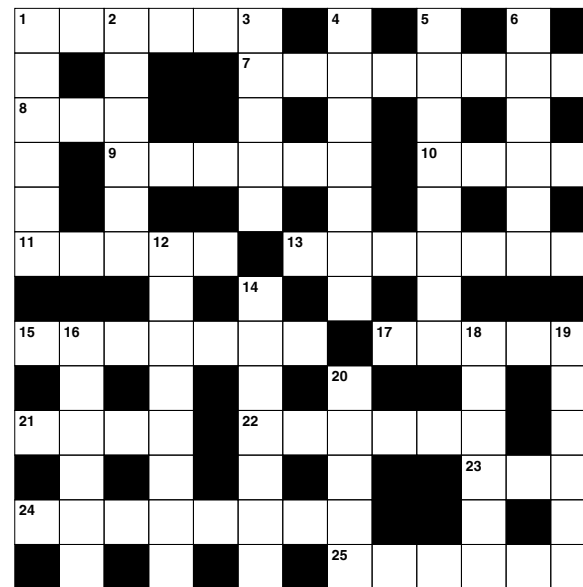
Answers: see end of The VISION Listings

ACROSS

- 1. Stitching (6)
- 7. Restored (8)
- 8. Legume (3)
- 9. Lunatic (6)
- 10. Release; give out (4)
- 11. Purchaser (5)
- 13. Cowboy hat (7)
- 15. Majestic (7)
- 17. Foam (5)
- 21. Ruminant mammal (4)
- 22. Slender (6)
- 23. And not (3)
- 24. Stalemate (5-3)
- 25. Moved back and forth (6)

DOWN

- 1. Majestic; wonderful (6)
- 2. Devastating blow (6)
- 3. Small particle (5)
- 4. Cloudiness (7)
- 5. E.g. Steven Spielberg (8)
- 6. Sheep known for its wool (6)
- 12. Going inside (8)
- 14. Omission of a sound when speaking (7)
- 16. Special rewards (6)
- 17. Frankly (6)
- 19. Intense dislike (6)
- 20. Submerged ridges of rock (5)



DID YOU KNOW?

- ▶ Bananas contain high levels of tryptophan, which converts to serotonin, helping to improve our moods.
- ▶ Frank Epperson is believed to have discovered ice lollies by accidentally leaving a glass of soda water with a mixing stick in it outside during a cold night.
- ▶ Chill peppers contain capsaicin. This tricks your sensory nerves into feeling like your mouth is being burnt.
- ▶ If you put lemons and limes in water, the lemons would float and the limes would sink. Lemons have around the same density as water, whereas limes are denser than water.
- ▶ In 1974, at a supermarket in Ohio, Wrigley's chewing gum became the first-ever product to have its bar code scanned.

SUDOKU

		9						
6			2	5	1			9
2			4					7
					6	9		1
				3				
4		5	1					
	2				4			8
	3		5	2	9			4
						6		



JJ's Tuition

📍 CENTRES IN BENFLEET, SOUTHEND & BASILDON

ONLINE LESSONS ALSO AVAILABLE

**SPECIALIST
ENGLISH,
MATHS &
SCIENCE
TUITION**

PRIMARY, GCSE
& A LEVEL

**FOR A FREE TRIAL
LESSON PLEASE CALL
07932 503 644**

www.jjstuition.co.uk



FAST, EFFECTIVE & PROVEN

ESSEX BASED LEAFLET, PRINTING & DISTRIBUTION SERVICE

Flyer Distribution Essex covers a majority of the CM, SS & CO postcode areas

- One off drops OR regular monthly drops
- Targeted Demographics - delivered direct to homes
- Cost effective Printing service available
- Direct Pick up service available from your Essex based address

CONTACT US

01277 554045 • www.flyerdistributionessex.co.uk



DEAD gorgeous

Remember *Coco*, the award-winning Disney Pixar film? It featured cute skeletons and was inspired by Mexico's Day of the Dead, a festival that is all about honouring the lives of dead relatives and reminding yourself that death is just part of life.

In the lead-up to the day, skull and skeleton decorations can be seen almost everywhere, and streets are festooned with colourful bunting. Marigolds are popular too – their sweet smell is believed to entice the dead back to life.

The day is celebrated on November 2. So get busy now with these Day of the Dead crafts and you'll also be ready in time for Halloween.

SKULL STONES

You will need: A smooth, flat, oval stone (8cm-10cm long) | White acrylic paint | A paintbrush | A set of acrylic marker pens (including black) | PVA glue | Glitter | stick-on gems

How to make: Paint a simple white skull shape on the stone and leave to dry | With the black marker, outline the shape and draw on the features | Decorate with the coloured markers, and stick on the glitter and gems.

TISSUE PAPER MARIGOLDS

For two flowers you will need: A sheet of orange tissue paper (approx. 51cm x 66cm) | 2 x 30cm green chenille stems (pipe cleaners) | Scissors

How to make: Cut the tissue paper sheet into quarters | Then cut each quarter into half so you have eight small sheets | Stack four sheets together | Fold in concertina pleats, starting at the short end | Cut each end into a point | Twist the end of a chenille stem round the middle of the paper | Fan out and gently separate the layers.

BUNTING

You will need: 12-15 round paper doilies (approx. 16cm diameter) | Acrylic paints in red, pink, purple and orange | A paintbrush | Jute string | PVA glue

How to make: Paint each doily with diluted paint | Dry thoroughly | Fold the doilies in half | Run the string inside the half-circles and glue the sides together.

Photo credit: ailsaburke.blogspot.com, iagriffith.com, kitchenlabbedclassroom.com

small BUT
perfectly
FORMED



Photo credit: s1.odn.autoevolution.com

CELEBRATING 50 YEARS OF THE FIAT 126, WHICH WAS INTRODUCED AT THE TURIN AUTO SHOW IN 1972

Fiat has never rushed things. Perhaps it's the Italian confidence and sense of candour that means when the car manufacturer commits to something, it sticks to it.

How else can you explain the fact that the Fiat 126, which is 50 years old this year, was the first new model Italian manufacturer Fiat launched onto the market in almost two decades.

With that in mind, the 126 had quite a reputation to live up to, given that it followed the iconic Fiat 500.

Sure enough, it came with its own personality – for a car hitting the market in 1972, it was a rear-engine city runaround. It was cute, small – just a smidgeon over three metres long – boxy and bold, and almost exactly the same dimensions as the Mini.

What became notable about the Fiat 126 was that the Italians never really took it to heart, yet over in Poland its success was prolific – so

much so that within 18 months of launch, most manufacturing was shifted to the Bielsko-Biala factory, and the car was renamed the Polski Fiat.

In fairness, in Italy more than 1.4 million were produced, though no models ever made it beyond a basic 700cc engine. A total of 4.6 million were produced, most in the Eastern Bloc.

While the 126 wasn't perhaps the natural successor to the 500 that Fiat had imagined, what made the car iconic was the belief it gave other manufacturers in the pursuit of the classic urban runaround.

In an era when cars were getting bigger, bulkier and more expensive, Fiat was steadfast in its belief that not everyone desired the cost or cumbersomeness of a large vehicle. While the 126 wouldn't win kudos points in the same way that the 500 might, it did at least unite a new generation with comfort and convenience – motoring morals we all still stand behind today.

DOMESTIC LOCKSMITH

- Trade Counter Open to All
- Key Cutting
- Domestic Security
- Locks Supplied & Fitted to British Standard
- UPVC Lock Replacement
- Access Control
- Safes & Key Cabinets
- Non Destructive Entry
- MLA Approved Company
- Used by Essex Police
- Fast, Friendly & Reliable Service

AUTOMOTIVE LOCKSMITH

- Keys Not Operating Lock?
- Remote Not Working?
- New Remotes Supplied & Programmed
- Remote Repairs
- Switches - Rubber Buttons - Cases
- Batteries

CHEAPER THAN ALL MAIN DEALERS

10% DISCOUNT WITH THIS AD

Before

After

FAST KEYS

VISIT OUR TRADE COUNTER

NOW OPEN ON SATURDAY 9AM - 1PM

CONTACT US TODAY

01268 562592

sales@fastkeys.co.uk

Units 3 & 4 Pilot Close,
Fulmar Way, Wickford
SS11 8YW

www.fastkeys.co.uk

CE APPROVED

From £895*

for a fully fitted electric garage door.

Gotta get a Garolla.

4.8 out of 5 - Over 2,000 reviews

Garolla garage doors are expertly made to measure in our own UK factories, they're strong and solidly built. The electric Garolla door rolls up vertically, taking up only 8 inches inside your garage, maximising valuable space. Our expert local installers will fit your new door and they'll take away the old one too, so there's no mess.

Give us a call today and we'll come and measure up FREE of charge.

GAROLLA

ROLLER SHUTTER DOORS

www.garolla.co.uk

CALL US TODAY ON:

01702 910 173

MOBILE:

07537 149 128

LINES OPEN 7 DAYS A WEEK

*Offer valid for openings up to 2.4m wide & including 2 remote controls, 55mm white slats, internal manual override.



Crafty

HOW BREWDOG FOUNDER JAMES WATT KICKSTARTED THE CRAFT BEER REVOLUTION

The BBC recently broadcast an exposé on BrewDog founder James Watt, which attempted to highlight a darker side to the craft beer visionary's persona, including working practices at the brewery's Aberdeenshire HQ.

While it dressed up the drama of wrongdoing, the response from the beer-buying public was decidedly lukewarm. The reason? People love IPA more than they love scandal and salacious gossip.

In fairness, BrewDog has always been built on an image that begins and ends in the can or bottle. 'Equity for punks' is a phrase that the brand has long carried around with it – a linking of a drinks revolution with social cohesion and sustainability, fuelled by the momentum of the hipster movement.

It all began in 2007 when twenty-somethings James Watt and Martin Dickie found themselves in Fraserburgh, the foggy, windy, cold Scottish outpost. While frustrated at the lack of real choice in a drinks market populated by imported lagers, they remained sentimental about the role of traditional

alcoholic staples that had fuelled generations of factory workers, miners and engineers.

Sure enough, by feeding new life into old flavours, progressing from their bedrooms and kitchens to their first brewery, they fused creativity with credibility. Punk IPA was born.

"I think a lot of people felt there was a disconnect at the time between a certain demographic and the drinks they were consuming," says Watt. "Lager and fizzy beer had gone the way of the young lads, with football and nightclubs piggybacking and then driving the trend. Ciders and fruit-based drinks had a very summer existence, while spirits, shorts and wines were mostly for women. The market needed something different."

BrewDog's ability to provide that, initially through signature brew Punk IPA, then a raft of variations, expanding into a pub empire that now totals more than 80 locations worldwide, has taken Watt's personal fortune to more than £250million – a self-made punk now living life in the fast lane.

Photo credit Shutterstock



ON THE MOVE

HERE'S A CHECKLIST OF QUESTIONS YOU NEED TO ASK WHEN VIEWING A HOUSE

Buying a house is one of the biggest purchases you'll ever make. And, as with any big purchase, you'll want to do a lot of research before you make an offer.

As you view different properties, be prepared to be nosy. A house may seem perfect on the outside, but asking the right questions will help you decide if it's the right house for you. Keep this checklist of questions in mind when going to viewings.

not the land – which is retained by the freeholder. Understanding which one applies to the property could impact your decision to buy.

✓ HOW LONG HAS IT BEEN ON THE MARKET?

If a house has been on the market for a while, there could be a reason why buyers haven't snapped it up. It could also be a sign that the house is overpriced, putting you in a good position to come in with a lower offer.

✓ IS THERE A CHAIN?

Being stuck in a chain could mean you have to wait a long time before you can move into your house. Find out what the buyer's situation is to help you decide whether to go for the property or to keep searching.

✓ WHY ARE THE SELLERS SELLING?

There are a lot of reasons why someone might sell their house. If someone has only lived in the property for a short while, it could be a red flag that something isn't right with the home or the area.

✓ WHAT IS THE AREA LIKE?

It's important to research the area you're buying in. Feel free to ask about the neighbourhood, shops, pubs, schools and so on.

On the other hand, someone who's been in the house for many years might be more interested in selling to a family or someone who will enjoy the house, rather than someone who's looking for an investment or development opportunity.

✓ WHAT DO THE UTILITIES COST?

With living costs on the rise, it's wise to ask about the property's running costs. Find out what the utilities and council tax are and don't forget to ask for the property's Energy Performance Certificate.

✓ IS THE PROPERTY FREEHOLD OR A LEASEHOLD?

Buying a freehold property means buying the property and the land it is built on. When you buy a leasehold property, you own the property but

✓ WHAT'S INCLUDED IN THE SALE?

Some sellers include items like furniture and white goods as part of the sale. Ask what is included – there may be room for some negotiation to keep some of the property's existing items and save yourself some money.

When you're checking out a property, feel free to ask as many questions as you want to help you feel confident in your decision. You'll be glad you thought of everything when you sign on the dotted line.

THE VISION LISTINGS

THE VISION LISTINGS

BATHROOMS

OPULUX BATHROOMS

Bathing & Heating Showroom. Design, Supply and Install. 01702 789547. Unit 31 Laurence Ind. Estate, Eastwoodbury Lane, SS2 6RH

BEDROOMS

DESIGNER BEDROOMS LTD

Traditional Fitted Wardrobes, Home office/ studies, Sliding Doors, Loft Rooms. Call 01268 571799. 7 Robert Way, Wickford, SS11 8DD

BUILDING

ADDSpace LONDON LTD

We provide a high quality Building service. Extensions, lofts and internal renovations. Members of Federation Master Builders. Call 01702 898047

JOIN THE LISTINGS...

for just **£180** +VAT per year

CLEANER

MOLLY MAID

Domestic cleaning experts, trained staff, 100% guaranteed, fully insured, regular/occasional cleans, materials supplied. 01268 442023 | Margaret.king@mollymaid.co.uk

TIME FOR YOU SOUTHEND

One off cleans now available. Ask for details. 01702 521120 | 01268 947122 | southend@timeforyou.cleaning | www.timeforyou.cleaning

ESSEX CLEANING SOLUTIONS

Specialist in domestic & commercial cleaning. FREE, no obligation quotation. Call 0800 699 0466 | 07749 220949 | 07462 677211

EV CHARGING

PROGRESS CHARGING POINTS

Your local EV charging point installer. Contact us for a FREE site survey. Call 01702 428981 | www.progresschargingpoints.com

FLOORING

CARPETS DIRECT

Carpets, vinyls, laminates, wood flooring. Free fitting, free home visits, 80% wool twist pile specialists. Call us on 01702 898029

FURNITURE

HIGHGATE GARDEN FURNITURE

Highgate is one of the largest garden furniture & leisure showrooms in Essex. Contact us on 01702 904000 | sales@highgatefurniture.co.uk | www.highgatefurniture.co.uk

GARAGE DOORS

GAROLLA ROLLER SHUTTER DOORS

Thermally insulated electric garage doors, Great for space saving, Kerb appeal & easy to use, No deposit, Pay on completion, 18 Colours available. Call today 01702 910173

GARDENING

MPS HOME & GARDEN SERVICES

Garden Maintenance, Patios, Decking, Fencing. Painting & Decorating. Kitchen & Bedroom Installations. Martin Smith 01268 955057

GATES & RAILINGS

STEEL BOUTIQUE ESSEX

Made to measure gates, railings, handrails & more, designing, manufacturing & installing high quality, hand crafted, metal-work. 07967 208875 | info@steelboutiquessex.com

GUTTERS CLEARING

THE GUTTER SURGEON

For residential and commercial gutters. 01702 742164 | 07828 332051 | www.theguttersurgeon.co.uk | info@theguttersurgeon.co.uk

HANDYMAN

MARTIN 'HANDY' HOLMES

Interior/exterior work, patios/driveways, decking, tree work, garden clearance, fencing, carpentry, interior/exterior painting, all aspects of building/gardening work. 01702 898031

CONTACT LOS@VISIONMAG.CO.UK

HEALTH & WELLBEING

NUFFIELD HEALTH BRENTWOOD HOSPITAL

Come and join us at our free hospital events please check our page in the Health section of this edition for more information. Spaces are limited call us on 01702 898036

HEARING HEALTH

APEX HEARING HEALTH

Experienced Audiologist, providing mobile earwax removal. Fully insured and enhanced DBS certified. 01702 965525 | 07869 804271 | www.apexhearinghealth.co.uk

KITCHENS

DREAM DOORS SOUTHEND

The UKs Number 1 kitchen makeover specialists. Est. 1999 Visit our showroom at 1741 London Road, Leigh-on-Sea, SS9 2SW or call us 07894 714810

LEAFLET DISTRIBUTION

FLYER DISTRIBUTION ESSEX

Leaflet, printing & distribution service. Cover a majority of CM, SS, CO postcodes. One off drops or regular monthly drops. Call us on 01277 554045 | www.flyerdistributionessex.co.uk

PLUMBING & HEATING

HAMMOND & SONS

Family run for 20+ yrs. Boilers serviced/repaired, condensing boiler, warm-air units, all work undertaken inc leaks, upgrades, installs, no call out charges, OAPS discounts. 01702 580577

RESIN PAVING

BESPOKE RESIN SURFACES

Resin, Paving, Stone. We specialise in all types of outdoor surfaces including bespoke drives, patios and paths. www.bespoke-surfaces.com | 01702 541514

ROOFING

JIM BARR ROOFING

Exterior Cleaning & Maintenance. Gutters, Paving & UPVC. Cleaned, Repaired & Renewed. 01708 874816 | 07833 572459

SPRAYING & POWDER COATING

WS SPRAY FINISHINGS

All aspects of wet spraying & powder coating for domestic & industrial markets. 01268 812414 | 07434 704673

TUTOR

JJS TUITION

Specialist English, Maths & Science Tuition. Primary, GCSE & A-Level. For a FREE trial lesson please call 07932 503644 - Online Lessons Also Available

JOIN THE LISTINGS...

for just **£15** +VAT per month

WANT TO APPEAR IN NEXT MONTH'S VISION LISTINGS?

SIMPLY FILL OUT THE FORM BELOW AND RETURN IT TO BOOK YOUR SPACE:

Company name:

Description (180 characters max including spaces):.....

.....

Telephone:..... Email:.....

Payment option: Card    Direct Debit

Please return to: Lifestyle Magazine Group Ltd, 55 Crown Street, Brentwood, Essex, CM14 4BD or email los@visionmag.co.uk. *£180 +VAT for a 12 months plus agreement. Payments can be made monthly or upfront

DISCLAIMER: VISION does not represent or endorse the accuracy or reliability of any of the advertisements, nor the quality of any products, information or other materials displayed, purchased or obtained by any customer as a result of an advertisement or any other information or offer in connection with the service or products. The opinions expressed in articles, reviews and stories are strictly those of the individual authors and do not necessarily reflect the views of VISION.

PUT YOUR BUSINESS IN THE VISION LISTINGS...CALL 01702 898026 TODAY

ACROSS: 1. SEWING, 7. REPAIRED, 8. PEA, 9. MANIAC, 10. EMIT, 11. BUYER, 13. STETSON, 15. STALELY, 17. FROTH, 21. DEER, 22. SVELTE, 23. NOR, 24. STAND-OFF, 25. SWAYED
DOWN: 1. SUPERB, 2. WHAMMY, 3. GRAIN, 4. OPAcity, 5. DIRECTOR, 6. MERINO, 12. ENTERING, 14. ELISION, 16. TREATS, 18. OPENLY, 19. HATRED, 20. REEFS



Chalkwell Grange

LUXURY CARE HOME IN LEIGH-ON-SEA

HOME-FROM-HOME
LIVING

WELLBEING-
FOCUSED CARE

COMPASSIONATE
EXPERT TEAM

MAKE NEW FRIENDS, BE PART OF A
COMMUNITY AND LIVE MEANINGFULLY AT
CHALKWELL GRANGE.

TO REGISTER YOUR INTEREST,
CALL OUR FRIENDLY TEAM:

01702 482252

OPENING
OCTOBER

