



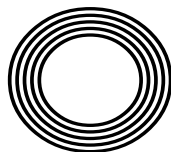
**VIOLET
FEBRUARY
BIRTH
FLOWER**

**MARK WRIGHT MAKING
HIS FOOTBALL COMEBACK**

Valentine's Day traditions
FROM AROUND THE WORLD

Alison
HAMMOND

The TV presenter emerging into the spotlight



FREE

Photo credit: Ken McKay/ITV/Shutterstock



RESIDENTIAL & COMMERCIAL SECURITY SERVICES



APPROACHING A DECADE SERVING LOCAL FAMILIES & BUSINESSES

Triangle Security has a proven track record of improving the security of homes, families and businesses, providing a high visibility presence to deter criminals from choosing to target your area.

For more information, please visit our website www.triangle-security.co.uk to see a full list of the services we provide.

Triangle Security are proud supporters of

- Help for Hero's • Haven House Hospice • Scouts Association
- Lambourne End Centre for Outdoor Learning



Our Key Services are:

- HOME RESIDENTIAL, SITE & AGRICULTURAL SECURITY
- MOBILE PATROLS & DOG UNITS
- ALARM RESPONSE & KEY HOLDING
- PANIC BUTTONS
- SECURITY GUARDING
- SECURITY DRIVERS

SUPPORTING THE COMMUNITY

Triangle Security are always prepared to support and help their local community, and throughout Lockdown they ran extra free patrols to protect local areas, and their trustworthy ex-military personnel assisted the vulnerable with services such as shopping and collecting prescriptions.



Triangle Security personnel provide a wide range of security services

SPECIAL OFFER

ALARM RESPONSE

£59.95 /month

50% discount on admin charges
See our website or call for details




020 3948 7071
www.triangle-security.co.uk

 **TrianglesecUK**

 **Trianglesec**

 **Trianglesecurity**

info@triangle-security.co.uk  Kemp House, 152 City Road, Islington EC1V 2NX



Editor's notes...

FEBRUARY 2021



Brett Shohet, Editor

Hello and welcome to this month's edition of **VISION** Loughton.

I hope everyone is coping with this rather dreary start to the new year. It's not the start to 2021 we had in mind, but with the vaccine roll-out hopefully the end of this lockdown will soon be in sight.

Having said that, we can't just rely on our Fabulous NHS to fix all our problems - the worst thing we can do once the COVID-19 figures begin to fall is live our lives as if the pandemic never happened. We must continue to keep our distance and wear our masks until we are fully in the clear.

In the meantime, it's easy to go stir-crazy. My lockdown philosophy has been that, if I'm going to be living similar days over and over, I want them to be productive ones. That's why setting up a routine and structuring my days has been pivotal, and I suggest that anyone struggling at the moment tries to do this themselves.

I'm having more Zoom meetings than ever before; I've started going for longer walks and I bought a bike from a local business to add something else to the mix. Little things like these can make a huge difference.

I hope you enjoy our latest edition. If you have any queries or contributions you would like to share with us, please get in touch. And as always, stay safe.

Brett Shohet

This is your town's hyper-local magazine, delivering to homes and businesses every month.

HOME & DIY | GARDENING | PETS | HEALTH & FITNESS | BEAUTY | FASHION | HISTORY | LOCAL NEWS | FOOD & DRINK | TRAVEL | BUSINESS & PROPERTY | SPORT | PUZZLES | MOTORING | KIDS | WHAT'S ON | TECHNOLOGY | THE LISTINGS

CONTACT US: www.visionmagessex.com | loughton@visionmag.co.uk | 0208 088 0386

[@visionmagessex](https://twitter.com/visionmagessex) [@visionmagessex](https://www.instagram.com/visionmagessex) [f Vision Magazine Essex](https://www.facebook.com/VisionMagazineEssex)

CONTRIBUTORS | Tabatha Fabray, Kathy Miller, Tim Green

At the time of print all content in **VISION** was relevant and up to date according to COVID-19 government guidelines



The bathroom you have always dreamed of



YOUR DESIGNER BATHROOM

Visit our showroom and see the latest bathroom ranges. Bathworks can offer supply only, or arrange supply & fit.

Opening hours: Monday – Friday 9.30am - 5.30pm Saturdays 10.00am - 4.00pm

198 High Road, Woodford Green, Essex IG8 9EF Tel: 020 8504 1765 www.bath-works.co.uk



home
hub group

NOW OPEN ON
EPPING HIGH STREET

01992 276 046

essex@homehubgroup.co.uk

homehubgroup.co.uk

[f](https://www.facebook.com/HomeHubGroup) [@HomeHubGroup](https://www.instagram.com/HomeHubGroup)



We supply and
install windows
and doors.

A full-page background image of Mark Wright in a red Crawley Town football kit, captured in motion on a green pitch. The kit features a red long-sleeved shirt with white trim and a red shorts with white trim. A crest is visible on the shorts. The word 'Crawley' is partially visible on the shirt. The background is a blurred stadium setting.

The WRIGHT STUFF

HOW ONE OF OUR MOST ADORED REALITY TV STARS WENT BACK TO HIS ROOTS... GRASSROOTS

It's a fantasy that has crossed the mind of every grown man in his late twenties who has a normal, run-of-the-mill, everyday job. It's the thought, 'Perhaps it's not too late to realise every boy's dream and become a professional footballer; perhaps I can still make it.'

That reality TV star and Heart DJ Mark Wright still held those very unfulfilled ambitions is perhaps less of a surprise. He was, after all, on the books of West Ham, Arsenal and Tottenham as a youngster. When released at the age of 18, the left back was picked up by Southend United, but drifted into non-league football as the distractions of nightclub promotion and reality TV came about.

After spells in then Conference with Grays Athletic, Crawley Town and Rushden & Diamonds, the charismatic Essex-born star joined the cast of *TOWIE*. One of the original cast members, he was only with the ITV show a year, but the die was cast, and from *I'm a Celebrity...* *Get Me Out of Here!* to *Take Me Out: The Gossip*, through presenting jobs on *Mark Wright's Hollywood Nights*, *The Bachelor* and *This Morning*, the husband to actress Michelle Keegan has been a permanent fixture on our screens for a decade. And when adding in his Heart radio show duties – a gig he's had since 2012 – it's any wonder he has any spare time...

But what about those football ambitions?

"I've never got over the fact I didn't make it in the game," he says. "And despite everything I achieved elsewhere, being a professional footballer now would top it all."

In October last year, Wright set out to make one final crack at the game he loves, and a call to John Yems, his former manager at Crawley, saw the now 33-year-old invited to West Sussex to train with the club.

The presenter describes the three months that followed as a whirlwind, combining media duties with a punishing physical routine designed to get his fitness up to League Two standards. His every move has been followed by a BBC film crew, whose iPlayer series *Mark Wright: The Last Chance* has proved a huge hit.

"I never had any expectations, but I always knew I'd give it everything I had, and the welcome I got at the club was tremendous from day one."

In December, Wright's dreams moved a step closer – he signed a contract until the end of the season. And being named on the bench for Crawley's FA Cup fourth round clash with Leeds United on January 10, just two days after his brother Josh signed for the club, set up the most impossible of scenarios. Could he make the comeback of all comebacks?

Crawley strode 3–0 up against their star-studded Premier League visitors, on their way to grabbing all the weekend's giant-killing headlines. A perfect day could only be topped by a call to the bench for a substitution. And so it happened... he may have only come on in the 91st minute, he may have only touched the ball

three times, but a dream was realised on that cold Sunday lunchtime at the People's Pension Stadium.

And it doesn't stop there – the Reds are eyeing up promotion from League Two and there will be no resting on his laurels for Mark Wright... a reality star in every sense.



THE WORLD AROUND US

Part 4

In the last part of our environmental series, we look at the final key driver in the health and well-being of the planet: global warming.

The phrase 'climate change denier' has become commonplace in conversations about the gradual warming of the planet and the causes of this. Scientific opinion points to humans and our explosion of population, industry and consumption as the real effects of the Earth increasing in temperature by 1° Celsius since 1880.

It doesn't sound a lot, does it? And yet, a one-to two-degree drop was all it took to plunge the Earth into the Little Ice Age in the Medieval Period.

The platform climate change deniers have generally seen their voices amplified well beyond what they should be. The results of various studies often level out at around the same rate – namely that only two or three people out of 100 will dispute the scientists' theory that humans are the cause of global warming.

With such a large accepting consensus, the drive to combat this gradual warming of Earth has

accelerated in recent years. Equipping ourselves with data, while ensuring we have the ability to interpret it, is vital.

Temperatures across a timespan of a year, five years or even a decade might rise four degrees in one region and drop six in another (which is why anomalies occur, such as Greenland's Jakobshavn Glacier actually increasing in mass since 2016), but overall, there is trouble ahead.

The next, vital step the Earth faces is a willingness of its people to do something about it. For all the UK's action over the past couple of decades, for all the destruction global warming has already contributed, such as coastal erosion, moorlands fires, floods and more, we contribute just 1.2 per cent of the world's total emissions.

It means that, as if it were ever in doubt, a global solution requires a true global investment of action from the planet's inhabitants.



Checkatrade.com



City & Guilds
Qualified

EMPIRE UPVC & ROOFING SPECIALISTS LTD

We guarantee our customers a friendly, reliable & professional service



15
YEAR
Guarantee

The UPVC and Roofing Experts in Hertfordshire

Empire UPVC and Roofing Specialists are an independent business trading throughout Hertfordshire and a surrounding 40-mile radius from our office in Nazeing.

- ✓ Felt, Tile & Slate Roofing
- ✓ Liquid Rubber Roofing
- ✓ ALL Roofing Repairs
- ✓ Roofing Maintenance
- ✓ Roofing Leadwork
- ✓ Gutter Cleaning & Unblocking
- ✓ UPVC Fascias, Soffits & Guttering
- ✓ Roof Moss Removal
- ✓ 15 - 20 Year Guarantee
- ✓ Highest Quality Materials Used

COME AND VISIT OUR SHOWROOM AT HILLGROVE BUSINESS PARK



CALL OUR FRIENDLY TEAM TODAY FOR YOUR FREE QUOTATION

Office: 01992 623 267

Email: chris@empireupvcandroofing.co.uk

Web: www.empireupvcandroofing.co.uk

Unit 50 Hillgrove Business Park
Nazeing New Road
Nazeing EN9 2HB

FULLY INSURED



Photo credit: catwalker/Shutterstock.com

dress to impress pierre cardin

Remembering and reflecting on the life of designer Pierre Cardin, who passed away in December.

Mention the name Pierre Cardin and a modern generation of fashionistas will most likely point you to a range of smart casual shirts and t-shirts adorning the racks of retailers over the UK, from House of Fraser to TK Maxx.

And yet, to think that the French clothing label should end up in such safe, formal surrounds is to besmirch the work of a designer who fairly revolutionised high-street style in the Swinging Sixties.

Cardin passed away at the end of December having cast an artistic pencil over the fashion world for more than seven decades. His passing was met with genuine sadness by a list of admirers and proteges, including designer Jean-Paul Gaultier, but his legacy is one to be admired and celebrated.

For starters, Cardin was one of the first designers to display a logo on garments, and a self-titled brand logo at that. The idea of giving a piece of clothing its own status well beyond the cuts of cotton or cashmere was something the industry had not seen before, and it led to a host of other licensed products emerging from the Paris-based fashion house, from pens to perfumes, sunglasses to food.

Cardin's idea was to bring ready-to-wear, premium-looking clothes to the everyday market, and at a price that meant people could indulge in the image and grandiosity of the catwalk.

Always looking to be different, he revolutionised design with sharp edges, outlandish curves and stylings that border on architecture as much as clothing. Inspiring so many, he dressed everyone from Bardot to The Beatles, all the while satisfying his own desire to be different.

What we see in so much of today's collections is more than a little influenced by a humble Frenchman with big ideas, Pierre Cardin.

We're open as usual for all your dentistry needs



FREE VIRTUAL CONSULTATION

for dental implants, teeth straightening, cosmetic dentistry, teeth whitening and more – why not book your Zoom call now?



020 8504 2704
improveyoursmile.co.uk

162 HIGH ROAD WOODFORD GREEN IG8 9EF

EXPERIENCE YOU CAN TRUST





Mr J S Chawla

Mr J S Chawla is available for private consultations in the eye Clinic at Westland Medical Centre.

This Care Quality Commission approved medical facility is equipped with state of the art diagnostic equipment, minor operation room and lasers.

Eye Clinic, Westland Medical Centre,
Westland Avenue, Hornchurch,
Essex, RM11 3SD

www.facebook.com/ClearvisionMedicare

Services Offered

- Cataract surgery with multifocal lens implants for reduced dependence on spectacles
- Lens replacement surgery for removal of glasses
- Glaucoma management
- Minor operations for lumps and bumps around eyes
- Correction of droopy and baggy eyelids
- Watering eyes and blocked tear ducts
- Dry eyes and blepharitis
- YAG and Argon laser treatments of eye conditions
- Botox treatments
- Major surgery undertaken at local private hospitals

For appointments, please contact Phillipa Chambers on 07757 605008

CLEANSE ME...



Whether you are looking to remove stubborn mascara, thick sun cream or the dirt and impurities that your skin has picked up over the course of the day, a cleansing balm should be your go-to product, providing a delicate, yet effective, way to clean the skin on your face.

WHAT IS A CLEANSING BALM?

Cleansing balms are creamy and rich cleansers that gently remove any make-up, dirt and impurities from your skin without leaving it stripped of its natural oils. Unlike oil cleansers, which can be a bit messy, cleansing balms deliver oils to melt make-up, in a solidified form, meaning portion control is easier.

Furthermore, cleansing balms can be used around the eyes to remove make-up, as they are made with natural ingredients and are therefore suitable for this delicate area.

WHAT ARE THE MAIN BENEFITS?

- > They provide a deep cleanse which can help to prevent breakouts
- > They hydrate your skin
- > They are suitable for sensitive skin

- > They provide quick results
- > Many contain antioxidants
- > They are high in oils, meaning you can skip daily moisturiser if you wish

HOW TO USE CLEANSING BALMS

1. Take a 10p-sized amount of balm and warm it between your fingers
2. Apply to dry skin in circular motions
3. Once the make-up starts to break down, add warm water to your skin
4. Continue to massage
5. Remove with a warm, damp cloth or muslin

WHAT ARE THE BEST CLEANSING BALMS?

- > Clinique Take The Day Off Balm – best all-rounder, suitable for all skin types
- > ESPA Nourishing Cleansing Balm – best for dry skin
- > Pond's Makeup Remover Cleansing Balm – best for sensitive skin
- > Slaai Makeup Melting Butter Cleanser by Drunk Elephant – best for removing waterproof make-up
- > Emma Hardie Moringa Cleansing Balm – best for ageing skin



BEAUTY



NO MEAN FOOT

Why our humble feet may be the lynchpin to overall body health alignment

Never underestimate just how fantastic our feet are – sure, they will get you around the house, to work, or down to the pub, but more than that, they are the lynchpin to overall body health too.

through the body into the knees, hips, spine, neck and other joints.

Balance

Balance in the human body is finely configured so that any imbalances can have negative effects on general health, from wobbliness through to vertigo-type symptoms.

Organs

In the most extreme cases, when the mesh of nerves and touch receptors in our feet are blocked, insufficient messages can send disruptive adjustments through the body, including into our organs.

It is for these reasons that looking after our feet is pivotal to good health. Sure, get the pumice stone out in the bath, but more than that, ensure you are wearing properly fitting shoes. That might mean accepting that narrow styles are not going to work for your wide feet, or that perhaps you will need to buy flip-flops with a little more support.

Also consider a whole variety of foot exercises that can help bring not just your feet back into alignment, but your whole body back into harmony.

Mobility

In the most obvious sense, your feet are the tools that move you around. Essential for almost every form of exercise, health and well-being, which begins at ground level.

Back and joint issues

The way we walk ultimately affects the way the rest of our body functions, and this is no truer than in people who suffer with flat feet. This condition causes a misalignment with the ankle, which can move up





SKN··ESTI

By Parveen

Parveen has over 11 years experience as a medical aesthetician and working in high-end medical clinics. During her years of practice, Parveen has developed her expertise in helping clients to improve their skin health, including ex-cancer patients and clients who suffer from conditions such as pigmentation and Polycystic Ovary Syndrome.

The skin is the largest organ of the human body. Our skin is constantly exposed daily to many free radicals that can damage our skins overall health. So, it is imperative we take care of skin concerns such as: Acne, Pigmentation, Ageing, Post cancer care, psoriasis, excema, or general skin health

Getting a specialised, tailor made skin management programme will ensure that what you are using to gain your goals are right for you.

The range of medical grade skincare at Peauperfect Skin and Laser Clinic is the highest and most effective in the aesthetics industry.



BOOK IN FOR A VIRTUAL SKIN CONSULTATION WITH SKN ESTI BY PARVEEN AT PEAU PERFECT SKIN AND LASER CLINIC AND GET STARTED ON YOUR SKIN CARE JOURNEY.

 peauperfect_clinic  www.peauperfect.co.uk  Contact: 0208 088 0876

SUPPORT LOCAL BUSINESSES



Let your local businesses know that you saw them first in... **VISION**



THE REAL PiLL

Placenta encapsulation: is it gross or full of goodness?

We all know the value of a mother's placenta. A rich, nutritious, nourishing source of life that feeds, grows and sustains a baby in the womb. As the miracles of nature go, it's right up there with the best of them – in fact, we wouldn't be here without the placenta.

It follows, then, that some mothers are loath to let the placenta go, post-birth. From using it to make jewellery or picture frames to donating it to medical science, through to something rather more symbolic such as planting it, there are a number of ways to respect this incredible organ.

Of course, given its goodness, reingesting the placenta makes perfect sense too – welcome to the world of placenta encapsulation.

In this process, the placenta is put into ice then sent off to a lab where it's made into pill form. Many mums feel a physical and emotional boost when consuming their placenta as a daily supplement,

saying that it helps with general well-being, limits the ups and downs associated with those immediate weeks and months after giving birth, gives an energy boost, and helps with breast milk production.

And that all makes sense – the placenta is loaded with vitamins B6 and B12, plus iron and reproductive hormones that drop after birth. To repackage those and put them back into the body makes sense.

However, there are risks. There aren't any standards in place for the process, meaning poorly encapsulated pills may harbour bacteria. There are also environmental toxins such as heavy metals – like lead and arsenic – that accumulate in the placenta, while a theory exists that the progesterone present in the pills may actually slow down milk supply.

Placenta encapsulation remains one for the scientists to unpick, but in the meantime it continues to increase in popularity.



feel
one-to-one
derful
with Janine

THE 1:1 DIET
by CambridgeWeight Plan

**This is me -
I lost
7 stone on
the 1-2-1
Plan!**

**Contact me today
and I will help you
reach your goals**

**The 1:1 Diet by Cambridge
Weight Plan with Janine**

0208 088 0873 : 07496 837873

www.one2onediet.com/Janine

Find me on f

WE CAN HELP YOU
**GET MORE
BUSINESS**

CALL 0208 088 0386
TODAY TO BOOK
THIS SPACE

IL BACIO THEYDON BOIS

The Finest Authentic Sardinian & Italian cuisine

Our unique menu offers innovative & contemporary fresh homemade food prepared using the very finest ingredients

CONTACT US 01992 276063 † www.ilbaciotheydonbois.co.uk
info@ilbaciotheydonbois.co.uk † 19b Forest Drive, Theydon Bois, CM16 7EX

OPENING HOURS Mon-Fri: 5.00pm-10.30pm † Sat-Sun 12.00pm-10.30pm



FREDERICKS FARM BOXES

A WORLD OF DELICIOUS GROCERIES

Fredericks Farm Boxes are all about top quality, ethically sourced groceries delivered straight to your door.

We carefully select the best farms and small artisan businesses in the UK.

Our produce includes free-range meat, sustainably sourced fish, fruit, vegetables, baked goods, dairy, wine, beer, drinks, flowers, and lots more lovely stuff.

To celebrate our launch, we are offering customers half price off their third subscription box and a gift.

No more trips to supermarkets. Enjoy everything from Fredericks Farm Boxes.



£10 OFF
ON ORDERS OVER £50
USING CODE:
VISIONFEB21

NEW, LOCAL, AND RIGHT UP YOUR STREET!

CALL: 0208 0883482

WWW.FREDERICKSFARMBOXES.CO.UK

If you enjoyed an alcohol-free January, here are some alternatives to alcohol to try...

It's that time of year when we reflect on our bad habits and do our best to become healthier, happier and wiser, and if giving up alcohol is your New Year's Resolution, then all is good. Low-booze business is booming, and that means there are plenty of delicious, low-calorie options to help keep you motivated.

BEER

Any designated driver will tell you that the previous offerings from major breweries fell a little flat in the flavour department. But just as burgeoning independent brewers have completely transformed our ale habits, they too have tasked themselves with creating exciting low-alcohol options that don't skimp on that gloriously hoppy flavour. With 'endless session' IPAs, low-alcohol lagers and sobering stouts and sours, craft beer connoisseurs have a raft of options for their refined palates.

SPIRITS

For those lamenting their 5pm gin and tonics or pre-dinner Negronis, there are even more options as teetotallers use distilling alchemy to create potions that offer all the depth and nuance of an expertly concocted spirit with none of the units. There are juniper and bergamot blends that perfectly complement tonic water for that G&T experience, luxurious citrus and herb creations that mimic the dry bitterness of vermouth, and even elegant elixirs containing herbs such as lemon balm and valerian root – ideal as a soporific nightcap for those who would otherwise drink whisky.

WINE

In the past these underwhelming alternatives have often had their alcohol violently removed, leaving an unsatisfying liquid that would barely satisfy as grape juice. Now, canny cultivators have turned to nature in order to create wines that are naturally lower in alcohol by halting the fermenting process earlier. With red wines this can often lend a natural sweetness, whereas whites have a more delicate profile. The best low-alcohol wines, however, are the ones with a natural fizz, such as Pet Nat, which offer all the celebratory joy of champagne without the hangover.

Shish Meze

ABRIDGE

Beauty blossoms from humble beginnings...
Welcome to the home of rich Turkish cuisine,
unbelievable dishes and unforgettable moments

Shish Meze Abridge is blessed with the finest artisanal chefs in the kitchen preparing delicious, fresh food available for dining in and delivery. From mouthwatering, premium meats to delicious homemade desserts – this is a real, unique eating experience.

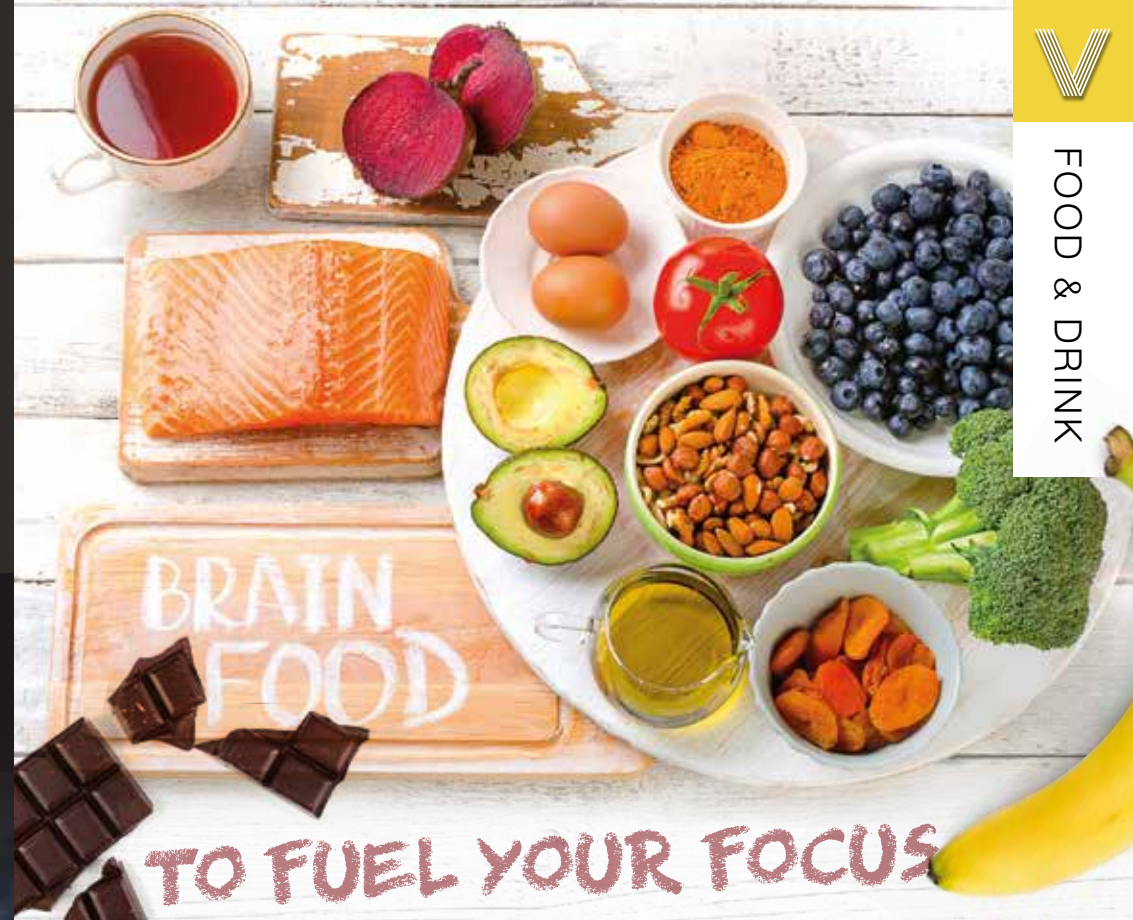


BOOKINGS & TAKEAWAY: 01992 946 704

18, MARKET PLACE, ABRIDGE, RM4 1UA

www.shishmezeabridge.com info@shishmezeabridge.com @shishmezeabridge

MONDAY TO SUNDAY 12PM TO 12AM



If you are still struggling with getting back into a routine and could do with some help improving your concentration levels, these foods will boost your brain power and motivate your memory.

SUPER SALMON: Providing a concentrated source of omega-3 fatty acids, salmon can help to rebuild your brain cells, slow cognitive decline and strengthen the synapses in your brain that are responsible for memory.

BEETROOT: A shockingly underused root vegetable, beetroot contains nitrates that increase blood flow and oxygen to the brain, resulting in improved mental performance.

BANANAS: Cheap, filling and high in potassium, bananas are the ideal afternoon pick-me-up for times when your concentration levels are waning.

SPINACH: Spinach is known as the ultimate brain food and it's not hard to see why. Rich in folate,

lutein and beta-carotene, this leafy green has been linked to the prevention of dementia. Aim to eat three portions a week for optimal results.

AVOCADOS: Avocados are a bit like Marmite – you either love them or you hate them. Fortunately for those who fall into the former category, this fruit can fire up your brain cells and keep hunger pangs at bay.

NUTS: The best thing about nuts is that you only need a very small serving to enjoy all the benefits of this super snack. Both nuts and seeds are great sources of vitamin E, which is associated with a reduction in cognitive decline. Plus, they contain essential oils and amino acids that help you focus.

DARK CHOCOLATE: Because we all deserve a treat from time to time, dark chocolate makes a great alternative to coffee in the morning, having the ability to boost your serotonin and endorphin levels which are both associated with increased concentration.



Supermarket Savings

THE BEST TIMES OF THE DAY TO HEAD TO OUT TO GRAB A BARGAIN

As a percentage of our annual food bill, saving 50p on a carton of fresh soup, or picking up a pack of crumpets for an amount taken care of with just a handful of coppers, doesn't make any real imprint. And yet, that unique feeling of satisfaction that only comes with landing a bargain is something we all crave, and knowing when's best to land sneaky supermarket snips has become a fine art.

While different food retailers have slightly different rules, there are a few general trends you can follow:

The mid-afternoon discount

For items going out of date that day, you can expect a token discount (perhaps between 10 and 20 per cent) around mid-afternoon.

Supermarkets here are attempting to lure shoppers who would have purchased those items anyway into a small saving, in exchange for goods that aren't quite as fresh.

The teatime tease

You can expect up to 50 per cent off as soon as early evening comes around. The target market is people grabbing a bargain for their dinner, or who are happy to consume something later in the week that's past it's best before or use-by date.

Closing time

In the last minutes up until closing time, prices fall like water cascading out the bottom of a sieve. The major supermarkets will discount up to 90 per cent in order to save on the cost of waste disposal.

The final freebie

And for those of you who shop at the more salubrious stores – this is common for Waitrose and M&S – it's not unknown for staff to approach customers at the till to offer free items, usually immediate perishables such as fruit, veg, dairy and cheese. Yum.

QUALITY & EXCELLENCE LTD

AWARD-WINNING
FAMILY BUTCHERS & PIE MAKERS



COOKING AT HOME WITH SHAUN

Restaurant quality meals created by a qualified professional chef for you to cook at home

ORDER YOUR MEAL BOX NOW!

Bringing Restaurant Quality Food to your Home

Free Local Delivery service booked through our website

Grass Fed Beef ■ Free Range Pork ■ Locally Sourced Lamb
Award-Winning Pies & Sausages ■ Fresh Fruit & Seasonal Vegetables
Allergen Free & Gluten Free Products Available ■ Gift Vouchers Available



Call us today for a full list of our range 01992 276049



Redbridge Tuition

What Can We Do For Your Child?

Primary • Secondary • 7+ • 11+ • GCSE • 1-2-1

80%

More than 80% of students passed their selection tests.

1000+

We have nurtured over a thousand young minds. We hope to nurture countless others.



Top Results

Our Higher GCSE students have achieved mainly grades 7 - 9.
Our highest scoring 11+ student achieved 100% in all four of her exams.



0208 088 3083



www.redbridgetuition.co.uk



hello@redbridgetuition.co.uk





KIDS



BRUSH UP

on children's oral health

February is National Children's Dental Health month, so what better time to tackle any tooth-brushing issues your child has?

Discover the top five reasons why your child doesn't want to brush their teeth below. Plus, how you can encourage them to practise good oral hygiene.

WHY DOES MY CHILD HATE BRUSHING THEIR TEETH?

1. They are sensitive to having their teeth brushed

Some children experience a gag reflex when brushing their teeth that can be unpleasant. Others might not like the feel of the brush against their teeth or in their mouth. Sensitivities are more common in children with autism or attention disorders.

2. They are asserting their authority

If you find yourself caught in a battle with your child every morning and evening when it comes to brushing their teeth and there is no physical reason why they won't brush, they could simply be pushing boundaries.

3. They have become anxious

You may not be able to determine the initial reason why your child started to hate brushing their teeth, but if it has become a daily issue in your household, your child may now feel anxiety around this daily activity.

4. They don't like the taste of the toothpaste

It is always a good idea to ask your child if they would like to choose a different flavoured toothpaste if they do not like the one you are currently buying.

5. They are a picky eater

Children who are picky eaters are more likely to not like the texture and taste of a toothbrush and toothpaste in their mouth.

How can I encourage my child to brush their teeth?

- 👉 Stick to a routine
- 👉 Make it fun
- 👉 Provide choice in terms of what products they use
- 👉 Stand behind younger children
- 👉 Allow your child to hold a toy they can squeeze to calm them
- 👉 Offer a reward such as an extra bedtime story



AVON HOUSE PREPARATORY SCHOOL

GIRLS AND BOYS 3-11

We are delighted to invite you to our first ever

Virtual Open Morning

Wednesday 24th February 2021

9.00am – 11.00am

Presentation followed by live Q&A with the Head Teacher



To register for our Virtual Open Morning please email registrar@ahsprep.co.uk

For more information visit www.avonhouseschool.co.uk



490 High Road, Woodford Green, IG8 0PN
Tel: 020 8504 1749 | www.avonhouseschool.co.uk



HELPING CHILDREN BELIEVE THEY CAN DO ANYTHING

KEEP SINGING, DANCING & ACTING THIS YEAR WITH STAGECOACH LOUGHTON CLASSES FOR 4-16 YEAR OLDS, ONLINE UNTIL WE CAN BE BACK IN CLASS

STAGE COACH

Creative Courage For Life

We truly believe that giving our students an outlet to find their Creative Courage for Life in these difficult times is important, and our Zoom classes are fun, safe, secure and will provide your child(ren) with the same fun and positive experiences that they would usually receive in their face-to-face setting. We will be back in person as soon as we can, but until then you can take part in our weekly workshops on a 'pay as you go' basis. Online workshops start back on the 16th January.



These working hours for children's fun given significantly... Couldn't think of a better place for my daughter to go on a Tuesday morning 😊

★★★★★
Current Main Stages parent



Loughton@stagecoach.co.uk quoting "VISION"

Join us for a **FREE** Discovery session and see what all the buzz is about!

Valentine's traditions AROUND THE WORLD

Love is in the air with these beautiful, and in some cases bizarre, Valentine's Day traditions from around the globe.



SOUTH KOREA: In this country in east Asia, lovers celebrate the day of love on the 14th of every month. May 14 is the "day of rose", June 14 is the "day of kisses", and there is even a "black day" in April when couples eat black noodles together.



PHILIPPINES: Young couples in the Philippines are sponsored by the government to get married as a form of public service. Well, there are worse ways to serve your country.



GHANA: Known as National Chocolate Day, February 14 is used to increase tourism in Ghana, one of the largest cocoa-producing countries in the world.



BULGARIA: A simple yet highly enjoyable tradition, in Bulgaria, couples young and old celebrate their love by sharing a glass of local wine.



WALES: Lovers from Wales celebrate Valentine's Day on January 25, and rather than exchange cards and flowers, they



give their partners handcrafted wooden spoons.

SPAIN: The day of love in Spain falls on October 9 and is known as the feast of Saint Dionysius. On this day, men gift their women a "macadora", which is a marzipan figurine.



ESTONIA: Still taking place on February 14 but with a slight twist, Estonians celebrate all relationships on this day rather than just romantic ones.



JAPAN: A country that prides itself on being unique, Valentine's Day in Japan is quite unlike anywhere else in the world. On February 14, women buy gifts for men, but men are not allowed to return the favour until March 14, known as the "white day".

HOW TO SAY "I LOVE YOU":

- > South Korea: Saranghae
- > Philippines: Mahal kita
- > Ghana: Me do wo
- > Bulgaria: Obicham te
- > Wales: Rwy'n dy garu di
- > Spain: Te amo
- > Estonia: Ma armastan sind
- > Japan: Aishiteru



GET COVID-SECURE! WITH THE NO.1 ELECTROSTATIC SPRAYERS

EnviroStat^c



Once sprayed, a surface will stay clean and our disinfectants will **persistently kill** bacteria, fungi and viruses for up to 28 days*

- FAST** decontamination of your business, home or vehicle after a positive COVID test
- PROTECTS** employees, customers and your family from contact transference of viruses
- SAFE** for use everywhere, including schools, care homes, gyms, playgroups, offices, vehicle Interiors
- ELECTROSTATICALLY-CHARGED** disinfectant particles stick around objects, making them safe to use within just 5 minutes
- LABORATORY TESTED:** Uses 100% environmentally-friendly disinfectant tested to EN 14476 (Virucidal) and EN 1276 (Bactericidal).
- CERTIFICATE OF DISINFECTION:** Gives reassurance to employees and customers that they are in a Covid-secure environment.

Decontamination Services

from just **£140.00****

Purchase Sprayers Online

Handheld unit: **£999****
Backpack unit: **£1,999****

NEW: Handheld Starter Pack

Complete with everything you need for just **£1,250.00****



*Under laboratory conditions. ** All prices are plus VAT.

[f](#) [in](#) [ig](#) /envirostatic

EnviroStat^c

Call NOW on: **0208 088 3469**
or visit: **www.envirostatic.co.uk**

YOUR VISION
IS OUR VISION

NOW OPEN ON EPPING HIGH STREET



Home Hub Group is now open on Epping High Street. We supply and install windows, doors, bifold doors, sliding doors and rooflights.

137-139 High St
Epping CM16 4BD
essex@homehubgroup.co.uk
homehubgroup.co.uk

01992 276 046



CALL US FOR A VIRTUAL TOUR OF OUR EPPING SHOWROOM



@HomeHubGroup



DULUX LOOKS TOWARDS SAFE GROUND IN NAMING ITS COLOUR FOR 2021

There's only one contradiction at play as far as Dulux's Colour of the Year goes – namely that in establishing a tone that speaks quietness, calmness, unassuming peace and tranquillity, the paint manufacturer is treading safe ground and not, as the shade's name implies, Brave Ground.

And yet, despite Dulux failing to state what is courageous about this tone, we can at least revel in its ability to encapsulate the mood of the world. It pleads for calm, reflection and philosophical thoughts, and offers a serenity to interiors that is very different from the intention borne out in Pantone's Colour(s) of the Year.

This warm beige shade is one that will work beautifully when matching with light woods, particularly in the bedroom or living room.

Combined with white it reclines elegantly into the

background, and as a flat shade, it can find itself offset by fabrics and furniture that offer depth and detail.

The tones of grey present in Brave Ground are also earthy enough to take interiors away from the overtly beige patterns of the 1970s that often strayed too far in the way of oranges and browns.

Consider also mixing with pastels, or sharpening the edges with blacks and greys, particularly in cushions, throws, curtains or lampshades. Ultimately, Brave Ground is a colour that will bring lightness while offering a knowing nod to dark luxury.

Indeed, perhaps in adopting a shade that is the very epitome of neutrality, perhaps in offering a platform on which we can place our existing belongings as well as bring in new renovations, Dulux is showing itself to be brave after all.



Magic MATERIALS



Tencel bedding

In a world where sustainability is not just desirable, but necessary, these alternative fabrics and leathers are presenting as viable options for global brands who want to do their bit for our planet.

TENCEL

Already a ubiquitous eco-fabric, Tencel is used by several major design brands linked to both interiors and fashion.

Produced by environmentally responsible processes from the sustainably sourced natural raw material wood, Tencel is not only a wonderfully soft and breathable material, it also combines beautifully with other fabrics such as cotton, silk and polyester for maximum versatility.



Econyl chairs

ECONYL

Fabric recycling has come a long way since the days of simple reupholstering that saw tired sofas and chairs less reinvented and more clumsily repurposed into something you could palm off to the kids or into the guest bedroom.

Econyl regenerated nylon is made from, you guessed it... nylon waste, and with an emphasis on closing the loop, this brilliant and innovative brand confesses to having an appetite for creating an infinite quantity of new products, but all using existing resources. In short, we've come a long way since the 1980s.

With 10,000 tonnes of Econyl raw material saving 70,000 barrels of crude oil, this fabulous fabric is being used to create everything from carpets to swimsuits.



Piñatex furniture

PIÑATEX

Piñatex is a leather alternative made from the leaf waste of pineapples. This fluff-like leaf fibre (PALF) gets mixed with a corn-based polylactic acid (PLA), undergoing a mechanical process to create Piñafelt, a non-woven mesh that forms the base of all Piñatex collections.

Coloured using natural pigments and coated with resin to give additional strength, durability and water resistance, this luxurious leather alternative is already doing its bit to lessen the environmental impact of mass leather production and chemical tanning.

Photo credit: westelm.co.uk, econyl.com, 21gstudio.com

IBBco RESIN



01992 276190
office@ibbco.co.uk
www.ibbco.co.uk



Resin Bound Natural Aggregate

Based just outside Epping, IBBco have been providing surfacing solutions to Essex and Hertfordshire for the past 24 years. Resin Bound natural aggregate allows us to create beautiful designs for your drive, patio, paths or even swimming pool surrounds! Please call us to discuss all the options or to request a free survey.

- 46 Bespoke Colours
- Fully Permeable
- No Drainage Required
- Total Flexibility of Design
- Long Lasting Results
- Easy to Maintain
- Tested to BS EN 13892
- UV Colour Stable

Unit 11, Esgors Business Centre, High Road, Thornwood Common, Epping, CM16 6LY

PUT THE SPARKLE BACK INTO YOUR KITCHEN



Domestic Oven Cleaning Specialists

Est. since 2007

Prices

Single oven incl. shelves & grill pan.....	£43.00
Double oven incl. shelves & grill pan.....	£54.00
Range incl. shelves & grill pan.....	From £54.00
AGAs.....	From £90.00
Hobs.....	From £14.00
Extractors.....	From £15.00
Microwaves.....	From £20.00

No VAT to pay



BEFORE



AFTER

PLEASE CALL FOR A FREE QUOTATION

01279 432444 * www.ovenbright.co.uk



0208 088 3453
EMERGENCY SERVICES
& ENQUIRIES



TROUBLE WITH DRAINAGE, HEATING OR PLUMBING?

WE OFFER THE COMBINED SERVICES OF DRAINAGE CONSULTANTS & PLUMBERS
TO DEAL WITH UNEXPECTED LEAKS, BURST PIPES AND BLOCKED DRAINS



DRAINAGE SERVICES ✓ PLUMBING & HEATING SERVICES ✓ TANKER SERVICES ✓ INSURANCE CLAIMS



Contact us: **0208 088 3453**
www.fcdrainagesolutions.co.uk
operations@fcdrainagesolutions.co.uk



HOME & DIY

making MEMORIES

Whether you are looking for a birthday present, graduation gift or unique anniversary offering, a memory quilt is the perfect choice. Allowing you to create a personalised and completely original gift, expect tears of joy when you present one of these to your loved one.

Alternatively, you can make your own personalised fabric by transferring photos onto a piece of white or coloured cotton.

Step 2: Determine the desired size of your squares and quilt. For a large quilt, use 25 t-shirt squares 5x5 – see step 4.

Step 3: Cut your fusible interlining slightly larger than your quilt to allow for cutting back later.

Step 4: Cut off the necks and sides of your t-shirts. You will be left with two squares from each one.

Step 5: Following the manufacturer's instructions, lay the fusible interlining on the back of your squares and fuse using an iron.

Step 6: Once all pieces are fused, cut to size.

Step 7: Decide upon the layout of your squares and pin together before starting to sew.

Step 8: Using your sewing machine, start to sew each row together before attaching the rows to complete your quilt top. Remove pins.

Step 9: Make a quilt sandwich using backing and batting which needs to be 5cm bigger on all sides. Fuse the batting using an iron and then attach your backing with an adhesive spray.

Step 10: Complete your quilt using the stitch-in-the-ditch technique using your sewing machine, or use free-motion quilting.

Congratulations. Your memory quilt is complete.

WHAT YOU WILL NEED:

- > Your chosen clothing or fabric for quilt squares
- > Fusible interlining
- > Batting
- > Backing fabric
- > Adhesive spray, such as Elmer's Multi-Purpose Spray Adhesive
- > An iron
- > Scissors
- > Pins
- > Sewing machine
- > Ruler or tape measure

HOW TO MAKE:

Step 1: Gather the fabrics you want to make your quilt with. This could be t-shirts, blankets or baby clothes.



HOME & DIY

BETTER SAFE than sorry

Whether you are investing in home security for the first time or you want to upgrade your existing set-up, the below guide will ensure you pick the perfect home security system for your property.

Determine the purpose: The first step in choosing a security system for your home is to determine its primary purpose. There are three types of home security systems: home automation, intruder protection and environmental monitoring.

Home automation is the most advanced option, where all your devices are connected to each other via the internet of things. Intruder protection is designed to protect your home from burglars, and environmental monitoring systems detect anomalies like fire and leaks.

Choose the right components: There are many different home security packages on the market and you need to decide which elements you want in yours to make you and your family feel safe and protected. Popular choices include smart

doorbells, motion cameras, burglar alarms, smart lights and window sensors.

Pick a monitoring system: If your budget allows it, you could invest in round-the-clock call centre monitoring for your home. Your chosen provider will call you if they notice anything strange or to alert you of a natural disaster. Alternatively, you could use DIY monitoring and opt to receive notifications to your phone.

Select a network: Every home security system needs a network to function. You can choose either a wired or a wireless one. Wireless networks are becoming increasingly popular as all they need is a Wi-Fi or cellular connection and they are good to go.

Decide about installation: You can either install your home security system yourself or pay a professional to do it for you. Professionally installed systems tend to be more reliable but will obviously cost you more money than doing it yourself.

Just Resin Solutions

Table tops, countertops, kitchen worktops – reinvigorated with resin.

Point and click to explore how I can help your create your beautiful solution today

JustSolutions4u.com

Just Resin solutions@gmail.com

 City & Guilds CITY & GUILDS QUALIFIED RESIN FLOOR INSTALLER

ND BLINDS

FREE NO OBLIGATION QUOTES

MADE TO MEASURE BLINDS & CURTAINS

Rollers Blinds | Venetian | Vertical
Perfect Fit | Velux & more

Call or visit
 0208 088 2791 | 07841 356557
 @ndm2mblinds

10% DISCOUNT FOR KEY WORKERS AND OAPs

Natural style Flower Design & Gifts

Fantastic Service ✿ Beautiful Flowers ✿ Cute Gifts

@constansflowers05 ✿ 0208 088 3475 ✿ constansflowers@gmail.com

WANT MORE BUSINESS?

CALL 0208 088 0386
TODAY TO ADVERTISE



ARE YOU BORED OF LOOKING AT TIRED WALLS AND CEILINGS. IS IT FINALLY TIME TO FRESHEN THINGS UP?

WE OFFER FREE,
NO OBLIGATION
QUOTES, VIA
VIDEO CALLS IF
YOU PREFER

FULLY INSURED.
CHECK OUT OUR
RECENT WORK ON
SOCIAL MEDIA



NO MATTER HOW BIG OR
SMALL THE JOB IS, WE CAN HELP

Painting & Decorating & Tiling | 20 yrs experience
COVID, Health & Safety Compliant

CONTACT TONY ON 07962 371177

Facebook: @topspectrades Instagram: @topspectrades



FEDERATION OF
**BRITISH
CHIMNEY
SWEEPS**

HOME SWEEP HOME

THE LOCAL CHIMNEY SWEEP

Mess free and efficient service.

Call:

07549422465

Or book online at:

www.thelocalchimneysweep.co.uk



HOME & DIY

Understanding

THE DOS AND DON'TS TO ACHIEVING PERFECT UNDERFOOT CONDITIONS

You think splashing the cash on a swanky new length of carpet is the first and last bit of expense you need to worry about, before someone reminds you that carpet without underlay is akin to a new motor without tyres on the wheels.

It's recommended that you change your underlay whenever you change your carpet – after all, years of wear, tear, and no small amount of gravity will have squashed the best life out of it.

New underlay will provide for you a number of things – firmness, bounce, insulation, noise reduction, preservation of your new flooring, as well as reinforcing the feeling that your new piece of carpet is worthy of something you'd find on the way into a film premiere.

Premium underlay will set you back up to £10 per metre square, though perfectly good brands can be picked up for less than half that. It's true to say the higher quality your underlay, the longer it will, in

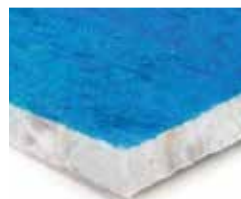
turn, look after your carpet.

Typical depth is around 10–13mm, with a lower grade on the stairs. You'll also have to consider the tog rating – anything higher than 2.5 tog will insulate nicely, though if you have heated floors then switch back down to a lower tog of around 1.0.

As for the fabric, PU foam is the most common underlay on the market. It offers a soft feeling underfoot, is made from recycled materials and is a good insulator. Other types are made from rubber, sponge rubber and crumb rubber, the latter being made from car tyres. Felt and wool carpet underlay also come well recommended.

And if you're fitting wood or laminate flooring, then consult a specialist who can bring forward a range of hardfloor-specific underlays that are lighter and thinner, and respect what is an intentionally solid top layer.

UNDERLAY



PU FOAM



Sponge RUBBER



CRUMB RUBBER



WOOL FELT

Photo credit: www.diydoctor.org.uk



The infectious personality of ALISON HAMMOND

The presenter who has chuckled, chortled and guffawed her way through almost two decades on camera... and we're all better off for it.

The Brummie whose laugh-a-minute approach to presenting has won her admirers across the entertainment world... and we include Harrison Ford and Ryan Gosling in that number.

As if proof were needed that Alison Hammond, while always kind, enthusiastic and respectful, does not subscribe to the idea that celebrities and film stars are unreachable demigods not worthy of our time, in a hilarious 2017 interview for *This Morning*, Hammond charmed and bewildered two of Hollywood's finest in a recording that had more than 12 million YouTube views. You could say she upstaged her two guests by laughing them into submission.

Having first appeared on our screens as a contestant in the *Big Brother* house, Hammond is another example of a reality star who has maximised the possibilities out of what is a very simple and short-lived platform.

She has swept her way through a variety of entertainment shows over the past decade, appearing in *Celebrity Fit Club*, *Celebrities Under Pressure*, *Stars in Their Eyes*, *Celebrity Ready Steady Cook* and many, many more; she has been a panellist on *Loose Women*, and made it to the seventh week of *Strictly Come Dancing* when she partnered Aljaž Škorjanec.

"I've always been someone who wants to grab life by the horns and go for a ride," she laughs. "It's very rare that I'll turn down an opportunity, and if I do it's because it's taking me too far from home and being around the people I love, and those are the ones who must always come first."

And Hammond's reputation as a brilliant reporter on *This Morning* has borne fruit in a way she wouldn't have imagined – in the middle of December 2020 it was announced that she and Dermot O'Leary would take over full presenting duties on Fridays from regular incumbents Eamonn Holmes and Ruth Langsford.

The shake-up is further evidence of a nation embracing those down-to-earth personalities who reflect our own thoughts, ideas and sensibilities.

"A long time ago I realised that to get on in the world you just need to be yourself," she says. "I think in the early days of getting TV work there was a temptation to be the person you thought people wanted to see, and when you do that you lose an edge."

"What people see is what they get, but it is all me – an uplifting, fun, sparky person who treats everyone as equals."

Indeed, geographically, Hammond, 46 in February, has stayed true to herself as well. Despite *This Morning* being filmed at Television Centre in White City, the presenter still lives in 'the second city', commuting to the capital for work. "I couldn't ever leave Birmingham behind – it means everything to me, as do the people."

"It's also my son's home, and I want him to grow up a proud Brummie like me... who likes to laugh."



www.küchenhaus.co.uk
The German Kitchen



Why choose Küchenhaus?

As the largest retailer of quality German engineered kitchens in the UK, we deliver rigid pre-built luxury kitchens manufactured in Germany at direct from the factory prices. View your dream kitchen in the luxurious surroundings of the largest kitchen showrooms in the UK.

- Full installation service or supply only
- 12 months 'buy now' and 'pay later' option
- Kitchens designed and built to order
- Free in-showroom design consultation
- Trade enquiries welcome

nobilia

Miele



SIEMENS

BOSCH

AEG

smeg

CORIAN

SILESTONE

DEKTON

Visit our website or showroom

6, The Baytree Shopping Centre, Brentwood, Essex CM14 4BX

01277 204447

www.küchenhaus.co.uk

DON'T JUST TAKE OUR WORD FOR IT...

Dear Brett,

VISION magazine has been brilliant for us.

They've helped us increase brand awareness across the whole region and gained us a good few happy customers in the short time we've been with them.

Putting together some brilliant artwork for us. Brett has helped us continue the professional image we're looking for and established us as something of a force locally.

Fulfilling our mission to bring competitively priced home improvements to the local area, realising people's ideal home and helping them achieve their dreams, has been much easier with **VISION** magazine. I foresee our partnership continuing for long into the future.

Many thanks,

Tom & Chris
New Level Loft Conversions
0208 088 2805



Your
Monthly
Lifestyle
Magazine



To advertise call now on
0208 088 0386
or email loughton@visionmag.co.uk

LOCAL NEWS

from your neighbourhood

LOCAL NEWS



Driver who killed 12-year-old detained indefinitely

A man has been given an indefinite hospital order after killing a 12-year-old boy by deliberately driving his car at him.

Harley Watson died after he was hit by a car outside Debden Park High School, where he was a pupil, in Willingale Road at 3.20pm on Monday, December 2, 2019.

A number of other people were also injured, including five teenage boys, a teenage girl and a woman in her 20s.

Terence Glover, 52, of Newmans Lane, pleaded guilty to one count of manslaughter on the basis of diminished responsibility and ten counts of attempted murder last November.

On January 8, he was told he will serve his sentence in a secure hospital. He has been sentenced to 15

years for Harley's manslaughter, with a concurrent 10-year sentence for the counts of attempted murder.

Glover will not be released until it is deemed safe to do so. Should he be deemed mentally fit to be discharged from hospital at any point in his sentence, he will be transferred to a prison.

After the hearing, Harley's mum, Jo, paid tribute to her son.

She said: "Harley was a kind, caring, selfless, intelligent and comical young man. He had a very bright future ahead of him which was cruelly cut short through no fault of his own. He was dearly loved and is sorely missed by his family and many friends."

Investigating officer Heather Apen said she hoped the conviction would allow Harley's family to start rebuilding their lives.



Fury as criminals target restaurant in lockdown

The owner of an Indian restaurant in Loughton said he is devastated after criminals targeted his business last month.

Burglars broke into Forest Tandoori near Loughton Police Station on Forest Road in the early hours of January 18 using a concrete block to smash a window.

They made off with tills and the safe, which were believed to contain around £900 cash. Alcohol was also stolen.

Chef/owner Abdul Karin said the incident was not what a small local business needs at the present time, especially during the pandemic.

He added: "We are devastated. In the middle of the pandemic we have stayed open seven nights a week to provide home delivery and takeaway collection for our loyal customers who have stood by us."

Anyone with information is asked to contact police on 101, quoting incident number 42-9353-21.

Residents without water after burst water main

Some Loughton residents had to rely on bottled water and others experienced low pressure when a water main burst on January 4.

Thames Water confirmed that a station for bottled water was set up on Goldings Road, in line with social distancing rules, on January 4 and 5.

A spokeswoman for the water company said: "We also proactively contacted customers who have pre-registered with us as having special requirements, such as being medically reliant on water, so we could

give them the help and support they needed.

"We're sorry to customers on Goldings Road who had no water or lower pressure than normal owing to a burst pipe."

Initially, 137 properties were affected, but this figure was reduced to 70 within a few hours after Thames Water rerouted supplies.

Thames Water engineers were on site very quickly after the burst water main was reported on January 4 and completed their repairs on January 5.



APPLIANCE REPAIRS AND SALES

We repair all makes and models

Washing Machines • Tumble Dryers
Dishwashers • Ovens • Hobs • Cookers
Fridge/Freezers • Extractor Hoods

New appliances in stock for same day delivery & installation

Prices listed on our website

Call 01279 310793
Or Book Online
www.spindoctoruk.co.uk

ESSEX AUCTION HOUSE
FINE ART AUCTIONEERS

House clearances
Free Valuations
Collection Service
Probate Specialists

Call for more information
01992 815 528

Ample Free Parking
Open 7 days
Mon - Fri 9.00 - 17.30
Sat 10.00 - 13.00

Forest Lodge
Commercial Complex
Epping Road CM16 5HW

HOUSE OF ELLA
INTERIORS

Luxury residential interior design

London | Essex

www.houseofellainteriors.com | 0208 088 3496 | info@houseofellainteriors.com



Photo credit: Loughton Town Council

Council to recognise residents who 'go the extra mile'

It is time to recognise those people who showed an outstanding commitment to the community in 2020. Any Loughton resident, employer, educational institution, club or society may nominate someone, of any age, for a Loughton Civic Service and Citizenship Award 2021, but are asked to keep their submission secret from the nominee for the time being.

Mark Squire, Loughton Town Council town clerk, said awards are given for acts of bravery and for long service to a voluntary organisation or charity.

"We are looking to celebrate those special individuals in our town who go the extra mile for their fellow citizens."

Previous awards have been given to people who

have volunteered for organisations as diverse as the Scouts, Loughton Arts Centre, the Royal British Legion, Citizens' Advice and community programmes that help vulnerable residents.

The awards will be presented on March 10 (COVID-19 restrictions permitting).

Winners will receive a silver bowl, a scroll and a cheque for £250 for their favourite local charity.

The closing date for nominations is February 19.

For details, call Loughton Town Council on 0208 508 4200, or visit www.loughton-tc.gov.uk/_VirDir/CoreContents/News/Display.aspx?id=33633

You can download the nomination form from the Documents & Forms & Policies page.

Traffic concerns raised over development

Increased traffic and insufficient parking have been cited by Buckhurst Hill Parish Council (BHPC) as reasons not to pass a planning application.

At a virtual meeting on January 7, the parish council's planning committee voted unanimously against the application, which would see the demolition of a single-storey office unit behind 75-77 Queens Road and the creation of eight one-bed homes on a small plot.

BHPC planning and environment committee chairman councillor Bobby Nagpal said: "The committee welcomes well thought-out, affordable starter homes to the area. However, in this particular

case, the proposed scheme is ill-considered and likely to cause more harm to the community than the benefits it brings."

Cllr Nagpal said that the plans have also been criticised by residents and by the City of London Open Spaces Department for their "lack of amenity space".

He said that the plans do not include enough allocated parking spaces and that the narrow access to the proposed properties means the development could have "a detrimental impact on neighbouring properties in the vicinity".

To see the planning application (ref. EPF/2808/20), go to www.eppingforestdc.gov.uk

RAISING BRITAIN'S CLEANING STANDARDS



Professional, reliable,
affordable cleaning services

ANTIVIRAL
SANITISATION
FOGGING
KILLS 99.9999%
OF ALL BACTERIA

OFFICE CLEANING COMMERCIAL CLEANING
ANTIVIRAL SANITISATION CLEANING CARPET CLEANING

CONTACT US TODAY 0203 733 2165 info@cleango.co.uk

www.cleango.co.uk



MAKING AN INSURANCE CLAIM? WE CAN HELP



Insurance Claims Management

Building Restoration & Repair Specialists



Escape of Water • Fire • Storm • Malicious Damage Claims

CONTACT US ON

0208 088 3418 • 07860 296353

www.conceptpropertyclaims.co.uk • info@concept-solutions.co.uk



**FULLY FITTED
ROLLER
GARAGE
DOORS**

FROM **£895** * WAS **£1,354**
INC. VAT

* Offer Valid For Openings Up To 1.4m Wide & Incl.
2 Remote Controls, Silver White Slats,
Internal Manual Override

WHATS INCLUDED:

- ACOUSTIC & THERMAL INSULATION
- TWO REMOTE CONTROLS
- EXPERT MEASURING & FITTING
- 24 COLOURS AVAILABLE

GAROLLA
ROLLER SHUTTER DOORS
www.garolla.co.uk

Made To Measure...
ROLLER GARAGE DOORS

Garolla can save a lot of space inside your garage. Rolls up vertically into a box. Takes only 8 inches of head-room! Opens vertically so you can park up close to the door. Remotely open/close the garage even from inside your car.

CALL US TODAY
Phone: **01277 800 142**
Mobile: **07537 149 128**

CE Approved

YOU'RE NOT
ALONE

OVER 135,600 OTHER PEOPLE IN ESSEX
READ **VISION** MAGAZINE'S MONTHLY

Your Monthly Lifestyle Magazine **VISION**

CONTACT US TO GET YOUR BUSINESS SEEN BY OUR READERS

See all our magazines at www.visionmagessex.com

Billericay Shenfield Brentwood Ongar Chelmsford Beaulieu Epping Theydon Frinton-on-Sea
Hornchurch Leigh Thorpe Bay Loughton Rayleigh Wickford South Woodford



MP intervenes following concerns over postal problems

NHS envelopes will be prioritised by Debden's sorting office after Dame Eleanor Laing MP intervened on behalf of residents who have not received their post.

A man from Buckhurst Hill is waiting for bank cards and a couple are concerned that their son will miss hospital appointments if their post does not arrive.

Dame Eleanor MP held a virtual meeting on January 15 with the national service delivery director of Royal Mail. He said that he will "respond positively" and that because the blue NHS logo is easily identifiable, such

letters will be a priority.

Dame Eleanor MP said: "People who are awaiting invitations for a vaccination appointment will receive their letters on time."

Priority will also be given to COVID-19 tests.

A spokesman for the Debden sorting office, which serves the IG8 postcode, said that nearly half of staff members are currently off work with the virus or shielding, at a busy time and when social distancing is slowing work down. Temporary Christmas staff have been retained and Sunday deliveries are taking place.

Incredible year for RNLI despite restrictions

The Loughton and Woodford branch of the Royal National Lifeboat Institution (RNLI) raised nearly £5,000 last year.

Chairman and honorary secretary Mike Evans said: "We were astonished to raise this incredible amount during the [Covid] restrictions."

He set up a plant and bric-à-brac stall outside his house on York Hill, with a RNLI 'honesty' box chained to the table.

"Some things walked, but most people round here are honest and extremely supportive," he said.

The branch was unable to take its regular stand at the Loughton Farmers' Market or carry out supermarket collections and also missed out when London Lifeboat Day was cancelled owing to social distancing.

Fortunately, its funds were boosted when an elderly lady supporter made a particularly generous donation.

Mr Evans, 78, has been honorary secretary of the branch since 1977 and chairman for almost as long.

"I plan to continue as long as I can," he said.





Photo credit: Twitter @EppingForest

Building blaze leaves three families homeless

Firefighters raced to Queens Road in Buckhurst Hill last month after a fire broke out in a four-storey building.

Crews were called at around 3.30pm on January 17 and were faced with large amounts of smoke coming from the building. They spent nearly five hours bringing the blaze under control.

Station manager Dave Bond said: "Firefighters entered the building to locate the fire and worked in arduous conditions to stop it from spreading."

"The complex layout of the building made it even more difficult because the fire travelled through voids over four floors."

"Crews from Essex and London worked really hard together to locate, tackle and bring the fire under control and stop this incident from escalating."

The fire was extinguished just before 8pm and relief crews, from Grays, Basildon and Chelmsford, took over the monitor hotspots.

The building is home to a restaurant, offices and a flat, and adjoining homes were also affected by the smoke. In total, three families have had to move out temporarily while the damage to their homes is assessed.

The fire was found to have started accidentally in an extraction system.

COVID-19 fast testing centre opens

As COVID-19 infection rates rise, residents in Loughton will be able to benefit from the opening of a fast testing centre.

The centre has opened in Theydon Bois Village Hall to help identify hidden cases of the virus in the community.

Residents who do not have symptoms will get their test results within 30 minutes. Those testing positive will be asked to self-isolate and await a further test.

On December 31, Epping Forest had the highest case rate in the county and on January 7 was found to have 1,321.9 cases per 100,000 people.

Dr Mike Gogarty, director of public health and well-being for Essex, said: "This additional testing centre will allow us to test even more people in the worst affected areas where we continue to see worryingly high rates."

Epping Forest District Council leader Chris Whitbread described the new testing centre as "great news".

There are three ways to book a test if you have no symptoms. Visit www.eppingforestdc.gov.uk/fast-covid-testing-centre-opens

Alternatively, call 0333 772 6144 or email booking.confirmation@nhs.net

Electrician

www.electrician-in-loughton.co.uk

Do you find it difficult to get someone to come & do a small job?

Extra Lights ♦ Additional Sockets ♦ Fuse Board Upgrades ♦ Rewires
New Installations ♦ Landlord & Homebuyer Inspections
Fault Finding & Repairs

Qualified ♦ Electrician ♦ Fully Insured ♦ Reliable Service ♦ Tidy Work
Free Quote ♦ Flexible Hours ♦ Reasonably Priced
Satisfaction Guaranteed

When you want a local, family firm, who care for your home electrics like their own, and give a personal service

**Call Karl on
0208 0880 775**



From contemporary designs
to traditional styles...
woodburning to gas and electric...
www.ashandembers.com



For current opening times see
www.ashandembers.com

CALL US ON 01992 815972 / 0207 118 3030
VISIT US AT THE COACH HOUSE, MARKET PLACE, ABRIDGE RM4 1UA

Control your security Be **App**solutely connected

Did you know your smartphone
can now control your alarm
system through an app?



CCTV Systems • Alarm Systems
Fire Alarms • Door Entry Systems • Safes
Vehicle Alarms & Tracking • Ghost Immobilizers

020-8529-5710 • www.cobra-ss.co.uk
155 Station Road, Chingford, London, E4 6AG



News from

THE ROTARY CLUB

of Loughton, Buckhurst Hill & Chigwell

LOCAL NEWS



We continually listen to our clients and the communities that we support with our vital service.

The one main feedback is greater accessibility, so we have great pleasure in announcing we will be launching our fifth community surplus hub in Ongar at Zinc Arts, High St, Chipping Ongar, CM5 0AD on Thursday, January 28, from 1pm to 2.30pm and weekly thereafter.

We are still operating a normal timetable in the national lockdown.

If you're still thinking about visiting us, don't hesitate any longer. It will be the best decision you make for your family.

Our community surplus hub in Loughton is open every Tuesday from 11.30am to 1pm at Loughton Club, 8 Station Road, IG10 4NX.

Our fundraising page can be found at www.give.net/3food4u

Please contact Pesh if you would like to get involved with Rotary or 3food4u in any capacity. Email pesh@londonresidential.co.uk or call 07973 166940.

PHONE JUNCTION

MOBILE SALES | REPAIRS
UNLOCKING | ACCESSORIES

LCD Screen Replacement | iPhones | iPads | MacBooks
Computers | Laptops | Gadget Repair Experts | Screen Repairs
Charging Problems | Liquid Damage

FAST FRIENDLY RELIABLE SERVICE | ALL WORK GUARANTEED | OPEN 7 DAYS

WE BUY & SELL PHONES/IPADS FOR CASH

122 HIGH STREET, EPPING CM16 4AJ
T: 01992 568 422
07960 290 204 | 07931 102 896

**COME IN STORE FOR OUR
SPECIAL OPENING OFFERS**

Self-isolating? Help is at hand

People who have to self-isolate can apply for a payment of £500 from Epping Forest District Council (EFDC).

EFDC has received a grant from Essex County Council (ECC) to help residents who have to stay at home but lack the financial means to do so, perhaps because they are ineligible for the government's Test and Trace Support Payment.

A person who stays at home when they or a household member has tested positive for COVID-19 can apply for the £500 per head discretionary grant to

help them through the two-week period.

Councillor Chris Whitbread, leader of EFDC, said he welcomed the grant, which came from the Government's Contain Outbreak Management Fund.

He said: "This one-off grant will go a little way towards helping support them while they cannot work."

"It is intended for those residents who don't qualify for any of the other government grants available."

For more details, visit www.eppingforestdc.gov.uk/benefits/test-and-trace-support-payment or call 01992 564000.

SALE NOW ON

at your local independent electrical retailer

Price Match Guarantee | Super Service | Expert Knowledge | Safe Contact-Free Delivery



BOSCH
Invented for life

1400 Spin 9kg
Washing Machine
WAU28T64GB



- 15 Programmes, Delay Start
- LCD Display, Electronic Touch Controls
- EcoSilence Drive
- Dimensions: H84.8xW59.8xD59cm

2 Year Warranty
A+++ Energy Rating

Now Only
£429.⁰⁰
Was £479.00

**£50
Save**

SALE NOW ON

at your local independent electrical retailer

Price Match Guarantee | Super Service | Expert Knowledge | Safe Contact-Free Delivery

dyson

Cordless Stick Vacuum
Cleaner
V7MOTORHEAD EX



- 3.5 Hour Charge Time
 - 30 Minute Run Time
 - 2 Power Levels
 - Crevice Nozzle, Dusting Brush
- 2 Year Guarantee

Only
£274.⁹⁹



Broadway Music and Vision

8 The Broadway,
Woodford Green, IG8 0HL
0208 504 7500
broadwaymandv@aol.com



Broadway Music and Vision

8 The Broadway,
Woodford Green, IG8 0HL
0208 504 7500
broadwaymandv@aol.com



*Terms & Conditions apply. Some products sold as an agent for Euronics Limited. All rights reserved. All offers are subject to availability while stocks last. Delivery & Installation charges may apply. Exclusions & Radius Apply. Prices correct at the time of print but can be subject to change. See in store for full details. Images for illustration purposes only. Copyright Euronics 2020. Savings compared to a higher price charged for 7 days. Savings on selected models only.

*Terms & Conditions apply. Some products sold as an agent for Euronics Limited. All rights reserved. All offers are subject to availability while stocks last. Delivery & Installation charges may apply. Exclusions & Radius Apply. Prices correct at the time of print but can be subject to change. See in store for full details. Images for illustration purposes only. Copyright Euronics 2020. Savings compared to a higher price charged for 7 days. Savings on selected models only.

Squirrelled Away

PROS AND CONS OF ATTRACTING SQUIRRELS TO YOUR GARDEN

It's one of the cutest and most beautiful sights in nature – a squirrel bounding around the back garden, scaling trees, leaping from branches, and finding any possible hiding place for acorns and hazelnuts.

And yet, opinion is divided over whether or not these immaculate grey creatures are good for our green spaces. Let's look at the evidence:

THE GOOD:

Nature's gardeners... Squirrels are known as 'nature's gardeners', meaning they are chiefly

responsible for shaping plant composition. Their constant removal, replanting and redistribution of nuts means nature flourishes where they live.

Entertainment... squirrels are a constant source of entertainment and they'll let you get relatively close to watch.

Education... there is no better garden dweller for helping kids learn about animal behaviour – from food preservation (including rubbing their nose on an acorn to leave a scent they can come back to) to evading the threat of cats and foxes; from mating to playing, there is so much to savour.

THE BAD:

Bark... squirrels are known to peel bark off trees, resulting in sometimes extensive damage, as well as causing branches to die.

Wires... they are often the culprits of chewed wires or gnawed joists in lofts, although proper insulation and plugging of gaps in buildings can prevent this.

Bad for birds... we often see these hoarders stealing food left out for birds, or hanging from feeders.

What's certain is that attracting squirrels to your garden means you have a friend who will keep coming back. Loyal and dependent, they will return looking for food frequently, all the while leaving a trail of pellet poos that will quickly decorate any immaculately paved area.



FEBRUARY BIRTH FLOWER OF THE MONTH:

Violet

The February birth flower is the vibrant violet. People born in this month tend to be both modest and mild mannered, hence the popular expression "shrinking violet". Sweet violets are regularly found in the UK in woods and hedgerows and are often candied and used to decorate cakes.

WHAT DO VIOLETS SYMBOLISE?

Violets have been around for centuries and were first cultivated by the Greeks around 500BC. According to Greek mythology, violets were created when one of Artemis' nymphs was pursued by her twin brother Apollo. To protect her, Artemis turned her into a violet, which in turn led to this flower being known to represent modesty.

WHAT DOES THIS BIRTH FLOWER SAY ABOUT YOUR PERSONALITY?

If you were born in February, you are said to be wise beyond your years. A private person, you are also prone to being a bit of a dreamer. It can take you a while to warm up to people, but when you do, you are fiercely loyal.

CAN I GROW VIOLETS IN MY GARDEN?

Violets typically grow in the wild, although they are decreasing in numbers owing to habitat loss, which means if you want to grow them in your garden, you need to recreate these conditions. Violets thrive in winter and spring sun but need summer shade, so their ideal spot is under a deciduous tree or shrub.

Violets will self-sow, but growing your own from seed is a challenge as the seeds need to be fresh. Instead, buy plants during the spring and plant immediately in moist but well-drained soil.

WHAT PESTS ARE COMMON TO VIOLETS?

If your violet leaves turn yellow, this could be the result of an attack by red spider mites. This pest strikes when your plant becomes too hot or dry.

The best remedy is to defoliate the plant completely.



GARDEN OF LIFE

FOX IN *the box*

In the first of a four-part series that shows how even the most urban garden can be a haven for the wonders of wildlife and the nurturing of nature, we look at the faithful fox. Whether out at night or hiding in plain sight, this sly urban dweller has adapted better than any other animal to human environments.

Perhaps we shouldn't be so surprised when we spot a fox meandering its way through the park, across a garden, or even on the pavement outside where we live. These beautiful creatures are, after all, past masters in urban environments, even if they are just as accustomed to survival in the rugged wild.

For all its impressive presence, your average fox will rarely approach humans or animals – chickens, rabbits and guinea pigs notwithstanding. This sly old foe simply wants to hunt for scraps, play, mate and return to its den to rest and tend to its offspring. Only when threatened will a fox move into offensive mode.

The fact foxes have become so much a part of our urban and suburban lives has a lot to do with the way they feed. They'll consume almost anything they find – from fruit and veg, raw and cooked meat, cheese, bread and even dog biscuits. Increasingly brave around humans, they'll often take food for storage, burying it for later consumption.

That means there's little risk in leaving food out for foxes if you're hoping to get a glimpse of these fiery nocturnal beauties, who will happily roam around in the late afternoon as well.

There is a downside, however. From fouling the garden to chewing shoes left outside, to trampling lawns and even digging up deceased pets, if you encourage foxes in, you'll have to go along with their inquisitive, playful habits.



LAZYLAWN®

London's Leading
Artificial Grass Installers

BOOK A FREE SITE SURVEY

0208 961 4722
eastlondon@lazylawn.co.uk
www.lazylawn.co.uk



Wonder Yarn

PROFESSIONAL TREE SURGEON SERVICES

TREE PRUNING • TREE REMOVAL • TREE REPORTS
HEDGE TRIMMING • SITE CLEARANCE
STUMP GRINDING • EMERGENCIES
SEASONED HARDWOOD DELIVERY AVAILABLE

WE SERVE ALL OF HAVERING & THROUGHOUT ESSEX

CONCERNED ABOUT YOUR
TREES AFTER HIGH WINDS?
FREE GROUND TREE CHECK
& QUOTATION WITH
THIS ADVERT

We offer
FREE Quotations
& Expert Advice
on ALL aspects of
Tree Work &
Arboriculture



Kings Cuts
Tree Services

We provide a huge range of tree services & offer expert arboricultural advice, ensuring your trees are looked after responsibly

ALL OPERATIVES ARE COVID AWARE AND WILL BE TAKING STEPS TO KEEP SOCIAL DISTANCING AT ALL TIMES AND TRAVELLING TO SITE IN SEPARATE VEHICLES TO SITE. PLEASE DON'T BE OFFENDED BUT WE WILL NOT BE ACCEPTING DRINKS FROM CUSTOMERS AT THIS CURRENT TIME

Call us: 0208 088 8733 • Mobile: 07467 944671
www.kingscutstreeservices.co.uk • info@kingscutstreeservices.co.uk





Perfect Pets FOR SENIORS

Original and perfect pets for those in their rather more senior years

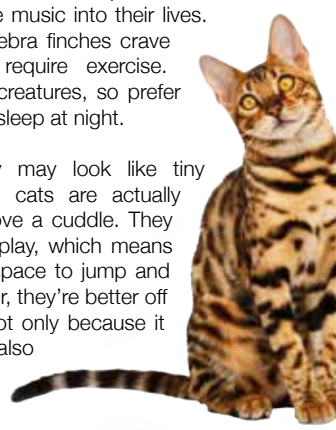
LEOPARD GECKOS: A reptile may not be the first pet you have in mind when considering a companion for your older years, but the leopard gecko is actually a fantastic little friend who's also easy to look after. Requiring little more than a cosy, heated habitat in the form of a tank, insect edibles and a bowl of water, these big-eyed beauties are not only calm and friendly, but also happy to be handled by gentle hands.

TROPICAL FISH: You may not be able to cuddle a koi carp when you're feeling low, but bright-coloured, beautiful tropical fish are clinically proven to have a calming effect on our minds. From gorgeous, fantailed guppies to bright little neons, you can buy tropical fish in an array of dazzling colours, even creating your own underwater paradise with the addition of ornaments and plants. Tropical fish, of course, require a little more in terms of heating and pumping systems, but

they are arguably far more desirable to look at than your common or garden goldfish.

ZEBRA FINCHES: Originating from Australia, these feathery little friends are fantastic pets for those wishing to bring a little music into their lives. Prone to loneliness, zebra finches crave companionship and require exercise. They're also daytime creatures, so prefer to play in the day and sleep at night.

BENGAL CAT: They may look like tiny leopards, but Bengal cats are actually incredibly tame and love a cuddle. They are agile and love to play, which means they do need a little space to jump and run around in. However, they're better off being kept indoors, not only because it is far safer there but also because of their high value.



**MONKEY
PUZZLE
LOUGHTON**



**CHILDRENS DAY-CARE
AND PRE-SCHOOL**

COMING SPRING 2021

- Open 7.30am - 6.00pm
- Exceptional childcare for children aged 3 months - 5 years
- Open 51 weeks of the year
- All Inclusive Service
- Experienced and Qualified Team
- Ofsted Registered Provider

CALL 020 8712 5268

Email info@monkeypuzzledaynurseries.com

Register your interest and subscribe to receive regular updates as well as fun activities to do with your children!

www.monkeypuzzledoughton.co.uk

YO _ R ADVERT HE _ E

Q: WHAT'S MISSING HERE?

A: YOU ARE

CONTACT US NOW TO ADVERTISE

Your
Monthly
Lifestyle
Magazine

t: 0208 086 0386 m: 07967 079101
e: loughton@VISIONmag.co.uk
w: www.VISIONmagessex.com

Plan your finances with precision



We provide a comprehensive wealth management service, offering specialist face-to-face advice tailored to you. Our services include:

- Investment Planning
- Retirement Planning
- Protection Planning
- Inheritance Tax Planning
- Intergenerational Planning
- Mortgage Planning

Your home may be repossessed if you do not keep up repayments on your mortgage.

For further details please contact:

DB | **DAVID BEAN**
WEALTH MANAGEMENT

Tel: 0208 088 0594 | Email: david.bean@sjpg.co.uk
www.davidbeanwealth.co.uk



Construction & Industrial Recruitment Specialists

Established since 2008

- We are a local business and we are looking to work with other local businesses
 - We can supply staff all over Essex & London
- We offer Temporary, Fixed Fee Perm & Temp to Perm (£0 End Fee) options
 - Our core beliefs are Honesty and Transparency

**So if you are looking for staff – look no further
Get in touch with Bluebaring today!**



We are proud to announce that we have been approved by the DWP to work as a Kickstart Gateway meaning you can now take full advantage of the scheme with our full support.

info@bluebaring.com • 01708 524332 • www.bluebaring.com • Follow us on @

We are looking for consultants to join our team. If you are looking for a new role in recruitment, email our Director Scott Hart on scott@bluebaring.com

Are you about to **sell or let your property** but dread having to work with an estate agency?

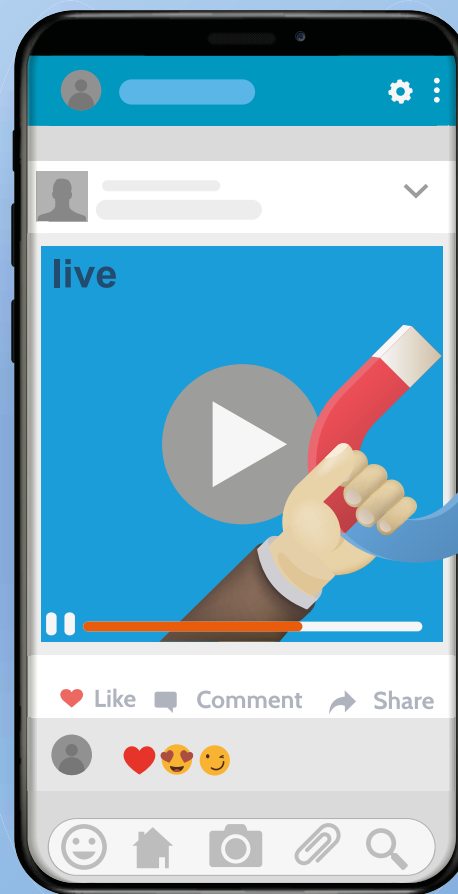
Kingsmarq Real Estate is a new offering in the local community. Focused on a small number of properties to ensure personalised and attentive service.

FOR SALES, LETTINGS OR PROPERTY MANAGEMENT,
SPEAK TO SANDEEP:
0208 088 0796 / 07932 573 276
info@kingsmarq.co.uk



POWERED BY kvv

The Power of Social Media



memes and GIFs. Avoid overly promotional posts.

Increased interaction: Video continues to be one of the strongest social media strategies, with an estimated 78 per cent of users watching video content on a monthly basis. Ideal for grabbing people's attention, conveying your brand personality and showcasing your passion as a business. You could even try live-streaming an event.

Improved customer service: Although social media can be a blessing for your business, it can also cause a lot of damage if you don't keep an eye on it. Remember that, first and foremost, social media is a customer service channel, so you need to monitor your mentions and keep tabs on your reviews. Always respond to comments asap and deal with any problems via private messaging.

If you only implement one digital marketing technique to boost your business and build brand awareness this year, then make sure it involves social media.

Providing you with the chance to improve customer service, drive traffic to your site and even spy on your competitors, the power of social media should never be underestimated.

Enhanced engagement: Social media is the perfect technology for engaging with both your existing customers and potential new ones. Make sure you take full advantage of social capability and encourage interaction through competitions, industry news, tips and advice and humorous

The lowdown on the popular social media platforms:

- > **Facebook.** Best for generating leads and building relationships
- > **Twitter.** Perfect for businesses with a younger audience
- > **Pinterest.** Great for driving sales and for brands with visual appeal
- > **Snapchat.** Ideal for building relationships with influencers and driving brand recognition and loyalty
- > **Instagram.** The best option for e-commerce sites and for telling your brand story
- > **YouTube.** To help you get seen by Google and tap into YouTube traffic

WINDOW dressing

Tricks that will upgrade your home and help you achieve top market price

When it comes to making our homes as presentable as possible for sale, there are a few tips and tricks worth putting into practice, and no, just brewing up some fresh coffee won't suffice.

TIDY HOUSE, TIDY MIND: House viewers need to imagine their own possessions in your house, so the brighter and emptier your rooms are, the easier it will be for them to make that

connection.

It may mean you need to give up a weekend or two to repaint a couple of rooms, and that mass of clutter can find a new home in the loft – or the bin – but the rewards could be huge.

TIGHT IS RIGHT: Your house needs to give off a feeling of quality – it will all add to a sense of your potential purchaser stepping up a level when they move in. With that in mind, tighten and make sparkle door handles, taps and bannister rails. No wobbles, no worries.

A MEAN CLEAN: While it sounds obvious, any appearance of dust is hugely off-putting for those looking around a home. Paying professional cleaners to really give your rooms a spruce may be one of the best investments you make.

(VERY) FIRST IMPRESSIONS: Most people think first impressions are made when someone walks through the front door, but the process begins way before that. Is the lawn mown? Is the front door wiped down? Can you convince your neighbour to move his rusty Ford Mondeo around the corner?

WEATHER WITH YOU: Try to book viewings when the sun is there to light up your home. Open windows to let heat and the breeze in, and consider delaying if torrential rain may see your potential buyers soaked through before they even enter the property.



FULL SUPPORT FOR ALL YOUR OFFICE NEEDS
INDUSTRY LEADING KNOWLEDGE & EXPERIENCE
UNPARALLELED RANGE OF TECHNOLOGY & SOLUTIONS



PLANNING – PROVISION – SERVICE

**FRANKING & HYBRID MAIL SOLUTIONS - OFFICE FURNITURE - PLEXIGLASS DIVIDER SCREENS
PRINT PHOTOCOPIERS - SCANNING DEVICES & SOFTWARE - IT SERVICES & SUPPORT**



0208 088 3067 - enquiries@officefox.co.uk - www.officefox.co.uk



We.Recruit



We.Outsource



We.Consult



KINGSWOOD GROUP

HR SOLUTIONS
RECRUIT • OUTSOURCE • CONSULT

www.kingswoodgroup.org

Providing expert, fully tailored HR Solutions to businesses across Essex

For a confidential discussion, please email us at: enquiries@kingswoodgroup.org, alternatively call us on:

Loughton 0208 088 3126 | London 0203 984 6677



Charles & Diana

40 years on

Looking back to 1981, and the 40th anniversary of the engagement of Prince Charles and Lady Diana.

February 6, 2021, marks the 40th anniversary of when Lady Diana Spencer made a step into the public spotlight from which, inevitably, she would never return.

At just 19 years old, her engagement to Prince Charles, at 32, was celebrated the world over; 40 years on, with the benefit of hindsight, we look back on the union in a rather different way.

The fact the pair met in peculiar circumstances perhaps should have been a sign – Charles originally dated Diana's sister, Sarah. And in later years it was revealed that the pair had only been together on 13 separate occasions, across six months, before becoming engaged.

Of course, peculiarity and the royal family are common bedfellows. In fact, February 2021 marks another interesting anniversary – the 50th anniversary of the first time Charles met Camilla, his now wife.

So while February 6 certainly won't be looked on as a date in history to be cherished, it is at least a mark in the sand. The couple brought two boys into the world who, in their own way, have made significant contributions; and while their marriage – which was confirmed on July 29, 1981, at St Paul's Cathedral – lasted only 15 years, it's appropriate to remind ourselves that time mends most ills.

Diana, up to her death in 1997, did so much to cultivate her own life away from the stranglehold of the royal epicentre, and largely succeeded; while Charles has reinvented his persona across philanthropic, environmental and entrepreneurial projects, and enjoys a higher grade of popularity now in 2021 than he has at any point in the past.

Photo credit: Getty Images, Shutterstock



EPPING CLASSIC CARS

INDEPENDENT JAGUAR & LAND ROVER SPECIALIST



We take pride in offering affordable Jaguar and Land Rover service and repairs.



Our trained Master Technicians, using their vast knowledge and latest manufacturer service and repair diagnostic equipment allows fault finding and repairs to be carried out with accuracy and speed. This helps to keep servicing and maintenance costs to minimum.

CONTACT US TODAY

T: 01992 578555 • www.eppingclassiccars.com • E: mike@eppingclassiccars.co.uk
Eppingdene, Ivy Chimneys Road Epping, Essex CM16 4EL
Plus FREE Jaguar Courtesy Car (subject to availability)

FROM ACCOUNTANTS TO ZUMBA TEACHERS
You'll find them and everything inbetween in...



ADVERTISE NOW
For just
£180
+VAT per year
AND BE SEEN BY OVER 12,000 READERS MONTHLY

THE VISION LISTINGS
CONTACT US TO FIND OUT MORE

Your Monthly Lifestyle Magazine



How To CLEAN AND PROTECT your Car seats

Even with the best will in the world, your car seats will eventually succumb to stains and spillages. Fortunately, if you care for and clean them appropriately, they can be restored to their original glory.

FABRIC CAR SEATS

- > The first step when cleaning your fabric car seats is to vacuum the upholstery to ensure the area is free from dirt and debris. If pet hair is an issue, utilise a pet hairbrush to lift the hair before vacuuming.
- > Next you need to apply your chosen cleaner or shampoo. Try not to make the area too wet – damp is best – and then gently rub in the solution with a soft-bristled brush.
- > Top tip: Concentrate on small areas and an even spread of solution to avoid water stains.

LEATHER CAR SEATS

- > Leather car seats are less prone to stains than fabric ones but they are also more delicate and susceptible to abrasions. Therefore, when vacuuming you need to be extra careful and take your time to avoid any scratches or tears. You also need to purchase a leather-specific upholstery cleaner, which often comes as a cream rather than a spray or shampoo.
- > Apply the product and gently rub the area with a microfibre towel.
- > Top tip: The more matt your leather seats appear, the cleaner they are.

HOW TO DRY YOUR CAR SEATS

It is always advisable to clean your car seats early in the day and when no rain is forecast. If you can keep an eye on your vehicle, leave your windows slightly open to prevent trapped moisture and let your seats dry naturally.

HOW TO PROTECT YOUR CAR SEATS

- > Condition leather seats to prevent cracks
- > Spray fabric seats with a fabric protector



NEW OLYMPIC SPORT:

BREAKDANCING

THE NEW SPORT SET TO DEBUT AT THE 2024 OLYMPICS IN PARIS... BREAKDANCING!

While the postponement of the Olympic Games in Tokyo proved one of 2020's most frustrating episodes, hosting the Games this coming summer has at least given the International Olympic Committee (IOC) the chance to run its eye over prospective new sports that could be showcased.

And fans of breakdancing – a pursuit created and styled on the mean, urban streets of New York in the 1970s before being exported to a truly global audience – will be glad of the extra time, albeit the first we'll see of it will be in 2024 when Paris hosts.

A movement centred as much on music as it is dance, there are distant similarities with other performance events at the Games, such as synchronised swimming and dressage.

In the Olympic format, competitors look likely to go up against each other 1v1, as was

the case at the 2018 Youth Olympics in Argentina. The success of the event there, some significant backing by Red Bull and a desire by organisers for the Olympics to speak to a younger, more urban demographic, means breakdancing – or 'breaking', as it will be called in event terms – sailed through the trial on its way to debuting at the world's biggest sporting tournament.

It's also significant that the IOC has embraced breaking despite some of the activity's leading purveyors insisting that it needs to retain its artistic and cultural edge, and shouldn't be bracketed in with the Olympics' sometimes rather formal take on sport.

Whether breaking will inspire anyone older than the teenage market to take it up is unclear. If it does, expect sales of paracetamol to soar.





Photo credit: Mark Bullimore/Shutterstock

READY, STEADY,



ON THE SNAIL TRAIL IN NUTTY NORFOLK

While Gloucestershire prides itself on its annual cheese-rolling race, and mid-Wales will claim to be the spiritual home of bog snorkelling, both still have a way to go to catch up with Norfolk's take on leisure pursuits. Often with a lingering hint of ale and wine in the air, the flatlands to the east have found themselves chiefly responsible for some bizarre takes on entertainment, with perhaps nothing more peculiar than snail racing.

The 'sport' – the true polar opposite to Lewis Hamilton's record-breaking efforts in a racing car – first came about in the 1960s in the quaint village of Congham, although its true roots lie, predictably, in France. Hosted as part of the annual fete, snails are positioned on a flat, circular table. The first gastropod to make it to the outer boundary is determined the winner.

Times are recorded and recent years have seen more than 200 snails entered into the 'blink and

you'll miss it' tournament.

The popularity of the pursuit even led drinks brand Guinness to depict snail racing in its Bet on Black ad campaign back in the year 2000.

Unfortunately, the 2020 event had to be cancelled owing to COVID-19, leaving the slithery creatures that usually enter the race with very little else to do but, one would imagine, munch on some lettuce.

Rival competitions have emerged – the Grand Championship Snail Race in the appropriately named Snailwell, Cambridgeshire, celebrates its 30th anniversary next year, and regularly attracts 400 people to the village, doubling its population.

What's best about the annual snail trials, wherever they are held, is that there's no monotonous dominance, no Hamiltons or Schumachers on show; for the simple reason that with an average snail lifespan of around nine months, you're guaranteed a new 'gastropod great' each year.

GIANT

AT GIANT LOUGHTON
WE'RE JUST LIKE YOU -
WE'RE RIDERS. WE LOVE
CYCLING AND WE WANT
YOU TO ENJOY IT JUST
AS MUCH AS WE DO.

- 5 YEARS FREE SERVICING FOR ANY BIKE PURCHASED IN 2021 (EXCLUDING MY21 RANGE)
- FREE PUNCTURE REPAIRS FOR LIFE RANGE (Ts&Cs APPLY ORIGINAL OWNER ONLY)
- FREE SAFETY CHECKS FOR LIFE ON ALL NEW ARX AND ATX BIKES
- PRICE MATCH PROMISE - FIND IT CHEAPER ANYWHERE ELSE
- & WE WILL MATCH THE PRICE
- FREE UK DELIVERY ON ANY IN-STORE PURCHASE (CALL US FOR MORE DETAILS)

NEW
STOCK
ARRIVING
WEEKLY

GIANT LOUGHTON, 235 High Road, IG10 1AD

T: 0208 508 1384 W: giant-loughton.co.uk E: info@giant-loughton.co.uk

THE VISION LISTINGS

ACCOUNTANT & TAX ADVISORS

ALL THINGS ACCOUNTING

Accounting & tax services, we help with self-assessment tax return, corporation tax return, payroll, VAT return, CIS return & bookkeeping. Call 07539 035537 for free initial consultation

ACUPUNCTURE

HONG WEI CHINESE MEDICAL

Fully qualified & experienced, specialising in women's health & Fertility. Help with pain relief, emotional disorders, male/female conditions. 01708 454888 | hongweichinesemedicine.co.uk

ARTS, DANCE & FITNESS

STUDIO 1 UK

"Creative space simplified" - Performing arts | Dance | Fitness | Wellbeing | Hire | Adults and kids classes based in loughton Essex 07914 667909

BEAUTY & NAILS

BEAUTY BY NATASHA KATIE

A local, mobile LVL Technician. Fully qualified level 2 and 3 beauty therapist Babtac insured and approved. 07961 462672

SPECIAL NAILS

Dedicated to provide the best quality nail care for Men & Women. Walk-ins welcome, appointment bookings & gift vouchers available. 01708 442248

THE NAIL STUDIO

Nail Studio lets you switch off and pamper with highly skilled technicians providing top treatments and nail products to meet your every need. 07572 526519

BESPOKE TAILORING

ROSS CARRINGTON BESPOKE TAILORING

Bespoke suits, shirts, jackets, wedding attire, evening wear. Alterations undertaken and visiting service available. 07824153880 & 0207 898 0599

BUILDING & CLAIMS

CONCEPT BUILDING SOLUTIONS

We are builders specialising in water & fire-damaged properties. We put your home back to how it should be. 0208 088 3418

CAR & VAN HIRE

SCENIC SELF DRIVE

Your self drive hire specialists. Whether you require modern cars, motorhomes, vans or minibuses. Rest assured we will provide you a professional service 01708 753461

CARPET & UPHOLSTERY

ARWIN CLEANING SERVICES

Over 30 yrs of exp, we can offer a professional, efficient and cost-effective solution for carpet and upholstery, cleaning and maintenance. 07973 417764

CLEANING SERVICES

SPOTCLEAN LTD

Commercial & Domestic Services Specialising in Office, Shop, New build, Refurbished & Residential Cleaning. We ensure a Clean & hygienic environment 07940 213394

COMPUTER REPAIR & I.T.

MAPTEC IT

Your local residential & commercial IT specialists. We can fix your computers, configure email accounts & printers. Setup your Wi-Fi, Internet router & network. 0203 865 7174

DRAINAGE

UNITED DRAINS

A fast and professional plumbing/drainage service you can rely on, providing a 24/7 service. All planned, emergency and reactive works undertaken. Call 020 3637 6688

JOIN THE LISTINGS... for just £180 +VAT per yr

ELECTRICAL & WHOLESALE

CH ELECTRICAL WHOLESALE

Essex & East London's leading electrical wholesalers providing the trade & public a professional service with access to all leading brands. 01708 730591

ELECTRICIAN

CAPITAL ELECTRICAL SERVICES LTD

Domestic/Commercial, Repairs/Installation, Vehicle Charging Points, Portable Appliance Testing, Fire Alarms, Emergency Lighting, Installation Condition Reports. Call 0208 088 2916

TACK ELECTRICAL

When you want a local, family firm, who care for your home electrics like their own, and give personal, professional service. 0208 088 0775

FINANCIAL SERVICES

PARAGON LEGAL SERVICES LTD

We will write your will for only £49.99+Vat subject to T&Cs. Call FREE on 0800 0747642 or 01206 544919 Call us for a FREE home appointment. www.paragonlegal.co.uk

THE VISION LISTINGS

FURNITURE RESTORATION

ABBEEY GROUP

Abbey Group are specialist in creating, repairing & restoring quality furniture & wood surfaces to the highest standard. 01708 741135

KINGS UPHOLSTERY

Handmade sofas & chairs designed especially for you to your required specifications. Also providing in re-upholstery & repair work. 01708 444125

GARDEN SERVICES

JOHN HEARNE

We take care of it all Lawn Mowing, Weeding, Planting, General Tidying, Fence/Shed Painting, Driveway/Patio Pressure Washing and more. Call for details 07908 523101

KINGS CUTS TREE SERVICES

A Huge range of tree services available & offer expert arboricultural advice, ensuring your trees are looked after responsibly. 01708 578030 | 07467 944671

HEALTH & WELLBEING

IMPROVE YOUR SMILE DENTAL PRACTICE

Est. in 1986. Encompassing all needs from basic oral health to advanced dental procedures and high-end cosmetic treatments. New patients welcome. 020 8504 2704

LAUNDRY & DRY CLEANING

THE LAUNDRY MAN

From everyday washing, drying & ironing. We can pretty much launder anything & everything. Self service launderette available. 01708 447710

LOFT CONVERSIONS

HIGH END LOFTS LTD

Beautiful Lofts, Expertly Built. Our "Hand-Holding" service takes you from ideas, through Plans & Building Control, to make your [home alteration] vision a reality 0208 088 2805

MOTORING

BMS CAR PARTS

All motoring requirements inc. parts, number plates, tools, key cutting, engine oil, accessories, servicing. 01708 474187

PAINTING & DECORATING

PGA DECORATING SPECIALIST

Interior - exterior - paper hanging specialists in Window repair care. 07769 646357 | www.pgadecoratingspecialists.co.uk | pgadecorators@yahoo.co.uk

TRADITIONAL DECORATIONS

We are a family run business specialising in turning your house into a home. Giving advice on current decorating trends. 07737 562406

PLUMBING & HEATING

CMS PLUMBING HEATING & BATHROOMS

Corgi registered, 20+ years' experience, public liability insurance, offering free quotes. No job too small. Based in Gidea Park. Call Craig 07855 589185

KINGS PLUMBING & HEATING

All work undertaken: All bathrooms, boiler servicing & gas safe. 07956 343275 | www.kingsplumbingandheating.co.uk

PROPERTY MAINTENANCE

LILLYWHITE PROPERTY SERVICES

For all building works, full refurbishments & property maintenance inc heating, plumbing, electrical, decorating, flooring, tiling & plastering etc. Call today on 07949 394403

STUART GREEN PROPERTY SOLUTIONS

Property maintenance specialist. Carpentry, painting/ decorating, laminate flooring, bath/shower re-siliconing, gutters cleared/repared, insurance work, PLI. 07917 870879

ROOFING

JIM BARR ROOFING

Exterior cleaning/maintenance. Gutters, Paving, UPVC; cleaned, repaired, renewed. 01708 874816 | 07833 572459

WEB DESIGN & PRINTING

SWIVEL CREATIONS

25+ yrs exp, we are specialists in web, print, clothing and embroidery. Professional, affordable, reliable. 01992 570383 | 07736 879233 | www.swivuk.co.uk | info@swivuk.co.uk

JOIN THE LISTINGS... CONTACT LOUGHTON@VISIONMAG.CO.UK

DISCLAIMER: VISION does not represent or endorse the accuracy or reliability of any of the advertisements, nor the quality of any products, information or other materials displayed, purchased or obtained by any customer as a result of an advertisement or any other information or offer in connection with the service or products. The opinions expressed in articles, reviews and stories are strictly those of the individual authors and do not necessarily reflect the views of **VISION**.



PUZZLES & TRIVIA

PUZZLES

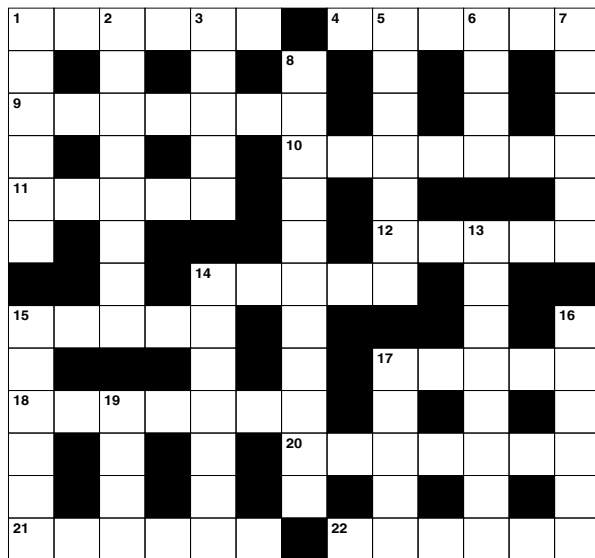
Answers: see end of The VISION Listings

ACROSS

1. Straighten out (6)
4. Vocalist (6)
9. Animal fat (7)
10. Not friendly (7)
11. Oozes (5)
12. Compassion (5)
14. Expect; think that (5)
15. Word of farewell (5)
17. Wedding assistant (5)
18. Supervisory worker (7)
20. Burdensome work (7)
21. Short choral compositions (6)
22. Entertains (6)

DOWN

1. Except when (6)
2. Musical pieces for solo instruments (8)
3. Regulations (5)
5. Annoying (7)
6. Large desert in Asia (4)
7. Make less dense (6)
8. Residents (11)
13. People with auburn hair (8)



14. Furthest away (7)
15. State publicly (6)
16. Tremulous sounds (6)
17. Deprive of weapons (5)
19. Speak in a wild way (4)

DID YOU KNOW?

- ▶ Adélie penguins breed and raise their offspring in Antarctica
- ▶ Puffins can flap their wings up to 400 times a minute. They can fly at around 55 miles an hour
- ▶ The bald eagle, which was once on the brink of extinction, has been the national symbol of the United States of America since 1782
- ▶ Once a flamingo lays an egg, the parents take turns sitting on it to keep it warm. The egg usually hatches in around 30 days
- ▶ The ostrich is the tallest and heaviest of all the birds
- ▶ As a male snowy owl gets older, it turns whiter. Males are often whiter than females
- ▶ Red-tailed hawks can spot a mouse from 30 metres up in the air

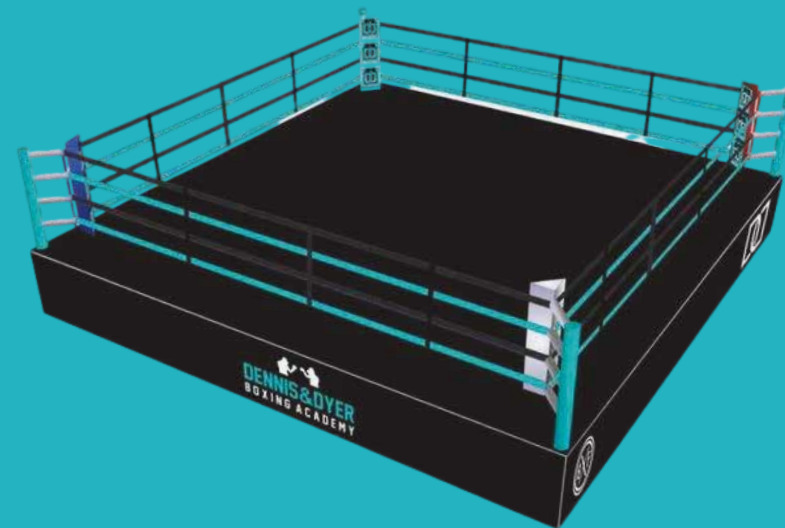
SUDOKU

		8					7	3
1		7		2	3			
		5			4		8	
	8	1		7		5	9	
	4		3			7		
			1	9		2		5
4	6					9		



THE NUMBER ONE BOXING ACADEMY FOR ALL ABILITIES

- 👊 BOXING ACADEMY
- 👊 1-ON-1 SESSIONS
- 👊 KIDS LESSONS
- 👊 LADIES GROUP SESSIONS



Dennis & Dyer Boxing Academy

The Landmark, 30 Barrington Green, Loughton, Essex, IG10 2BA
www.dennisanddyerboxingacademy.co.uk | 0208 088 3491
info@dennisanddyerboxingacademy.co.uk

Follow us on Instagram @dennisanddyerba to stay up to date!



Loft Conversion Specialists

Beautiful Lofts, Expertly Built

Extensions ■ Home Improvements ■ Kitchens ■ Bathrooms



- Over 15 years experience ■ Team of highly qualified experts
- Project handling from ideas to completion
- Fully compliant with Building Controls

www.newlevelloftconversions.co.uk



Call us on:
0208 088 2805

Chingford London E4

