

**FIVE  
HOME  
DÉCOR  
TRENDS**

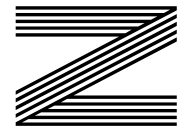
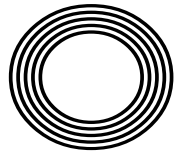
**HOW TO  
MAKE  
POTATO  
MILK**

**LEARN HOW TO**  
become a crypto trader

*A tribute to the iconic actress*  
**JUNE BROWN OBE**

*Denise*  
**VAN OUTEN**

The actress and presenter marking 25 years on our screens



**FREE**

Photo credit: Brett Cove/SOPA Images/  
Shutterstock



**AEG** | Single Cooker Oven  
BES255011M



- Add Steam for Crispier Baking
  - New Convection System 'Hot Air'
  - Additional Heating Ring, Timer Display
  - Dimensions: H59.4xW59.5xD56.7cm
- 2 Year Warranty

Only  
**£439.<sup>99</sup>**

**AEG** | Built In Single Oven  
BPS55IE20M



- Fan Oven with 11 Programmes
  - Programmable Timer
  - Pyrolytic Cleaning Function
  - Dimensions: H59xW56xD55cm
- 2 Year Warranty  
A+ Energy Rating

Now Only  
**£659.<sup>99</sup>**  
Was £689.99

**£30  
Save**



**Broadway Music and Vision**

8 The Broadway,  
Woodford Green, IG8 0HL  
0208 504 7500  
broadwaymandv@aol.com



**Broadway Music and Vision**

8 The Broadway,  
Woodford Green, IG8 0HL  
0208 504 7500  
broadwaymandv@aol.com





# Editor's notes...

MAY 2022



Brett Shohet, Editor

Hello and welcome to this month's edition of **VISION**Loughton.

Last month was the first time our magazines went 100 per cent recyclable. It was great to receive so much positive feedback on this from our readers. It's important we all do our bit to help the environment, and to know that our readers support us in this endeavour makes all the hard work to get to this stage worthwhile.

This month, I've been trying to inform our readers and followers about what goes on behind the scenes at a magazine. Often, people only see the glamorous side of working in publishing - dressing up to attend events, and reading the final polished product. What they don't see is when we're standing in the pouring rain, loading magazines into the back of the car, and working evenings and weekends to meet deadlines. But this is all part of being a business owner, and it's all worth it when the hard work pays off.

Here at **VISION**, we're continuing to go from strength to strength, and alongside this we're looking to grow our team. If you're interested in a sales position and being part of a friendly team, please do get in touch.

I hope you had a wonderful Easter and got to spend time with family and friends. Coming up next month is the Queen's Platinum Jubilee, so keep an eye on our social media for events taking place in your local area.

*Brett Shohet*

This is your town's hyperlocal magazine, delivering to homes and businesses every month.

HOME & DIY | GARDENING | PETS | HEALTH & FITNESS | BEAUTY | FASHION | HISTORY | LOCAL NEWS | FOOD & DRINK | TRAVEL | BUSINESS & PROPERTY | SPORT | PUZZLES | MOTORING | KIDS | WHAT'S ON | TECHNOLOGY | THE LISTINGS

**CONTACT US:** [www.visionmagessex.com](http://www.visionmagessex.com) | [loughton@visionmag.co.uk](mailto:loughton@visionmag.co.uk) | 0208 088 0386

[@visionmagessex](https://twitter.com/visionmagessex) [@visionmagessex](https://www.instagram.com/visionmagessex) [f Vision Magazine Essex](https://www.facebook.com/VisionMagazineEssex)

CONTRIBUTORS | Tabatha Fabray, Bryn Holmes

At the time of print all content in **VISION** was relevant and up to date according to COVID-19 government guidelines All pages are recyclable



The bathroom you have always dreamed of



## YOUR DESIGNER BATHROOM

Visit our showroom and see the latest bathroom ranges. Bathworks can offer supply only, or arrange supply & fit.

**Opening hours:** Monday – Friday 9.30am - 5.30pm Saturday 10.00am - 4.00pm

198 High Road, Woodford Green, Essex IG8 9EF Tel: 020 8504 1765 [www.bath-works.co.uk](http://www.bath-works.co.uk)



home hub group

NOW OPEN ON  
EPPING HIGH STREET



We supply and install windows and doors.

**01992 276 046**  
[essex@homehubgroup.co.uk](mailto:essex@homehubgroup.co.uk)

[homehubgroup.co.uk](http://homehubgroup.co.uk)

[f](https://www.facebook.com/HomeHubGroup) [@HomeHubGroup](https://www.instagram.com/HomeHubGroup)



# Golden BROWN

## BIDDING FAREWELL TO JUNE BROWN OBE, WHO DEPARTED FOR A NEW STAGE IN APRIL

Dot Cotton, played by June Brown OBE, was the cigarette-smoking, crackly voiced hypochondriac who combined a hard edge with sultry soft compassion, enveloping and influencing a bounty of characters who stepped foot onto the hallowed, concrete East London streets of Albert Square.

So synonymous was the actress with the role that few would liken her to anything else on screen. She was *EastEnders*' longest-serving character, having appeared in the opening episodes way back in 1985. And after a four-year break at the start of the 1990s, she returned to the fray for a further two decades.

Alongside the likes of Dame Barbara Windsor DBE (Peggy Mitchell), Wendy Richard MBE (Pauline Fowler), Pam St Clement (Pat Butcher) and Letitia Dean (Sharon Watts), Brown represented a golden era of forceful female characters around the Square – iconic for a girl-power generation that was a world away from the pop stars and film actors the media would have us believe were fuelling the charge for equality.

And yet June Brown was about so much more than just one character. In the years after the cessation of the Second World War, she appeared at the National Theatre, and as recently as 2009 was on the West End stage in *Calendar Girls*, for which she confidently stripped for the role.

What does link Dot Cotton to the actress herself is a strength of purpose and poise.

"I have always believed in saying how I feel," she said in an interview last year. "Life is too short to hold back and I'm not sure I have long left. And I have always been this way.

---

*'I will always celebrate my life... I have been very lucky, but I have tried my hardest, always, and I hope I've made people happy along the way'*

---

"Ultimately, I think people respect you more if you are upfront and honest with them. Of course, you may offend them at the start, but honesty in the end it's admirable, and as human beings we're not cut out to agree with each other all of the time."

Such assuredness clearly enamoured June Brown to a bevy of directors, producers and casting agents. Born in Needham Market, Suffolk, she was evacuated to Leicester during the war, and joined the Old Vic company when peace was restored. Thus began an acting career that took her from Shakespeare to *Dixon of Dock Green*, TV plays through touring theatre productions, fantasy adventure as Nannie Slagg in *Gormenghast* to Lady Eleanor in the Time Warrior series of *Doctor Who*. She even had three episodes as the timid Mrs Parsons in *Coronation Street*.

Brown was awarded an MBE at Buckingham Palace in 2008, followed by an OBE in this year's New Year Honours. She is survived by five children – Chloe, William, Naomi, Sophie and Louise – from her second marriage, to actor Robert Arnold, who died in 2003. She had all her children in her forties – another daughter died in childbirth.

While *EastEnders* was the project that defined the June Brown we will remember, this was ultimately someone who gave so much across seven decades as an actress, and whose efforts touched so many.

"I will always celebrate my life," she said. "I have been very lucky, but I have tried my hardest, always, and I hope I've made people happy along the way."



# Long live THE QUEEN

On February 6 this year, Her Majesty The Queen became the first British monarch to celebrate a Platinum Jubilee, marking 70 years of service. So, what is the secret to her success and her longevity? Let's take a closer look.

## REGULAR MEDICAL SCREENINGS

Of course, The Queen has access to some of the best medical care that the country has to offer, and she takes full advantage of this with regular preventative screenings and check-ups.

## LONG WALKS

The Queen knows the importance of regular exercise, and the royal family are known for their love of long walks in the grounds of Balmoral. The Queen has always been an avid walker, taking after The Queen Mother.

## MENTAL STIMULATION

The mind is just as important as the body when it comes to longevity, and The Queen is very aware of keeping herself mentally astute. Committed to staying abreast of current issues, she has previously visited Google headquarters, showing an interest in the internet and emailing her grandchildren.

## MAINTAINING A CONSTANT WEIGHT

The Queen has never appeared to be overweight and has benefited from freshly prepared meals which include vegetables, game and poultry provided by the estate. Fish is also a staple on the royal menu, and The Prince of Wales is a long-time leader in the organic farming movement.

## DAILY CUPS OF TEA

High tea is enjoyed at precisely 5pm and is a British ritual that is embraced by Her Majesty. Tea has numerous health benefits, including being antioxidant, anti-inflammatory and anti-cancer. The Queen is also said to credit her peachy complexion to barley water flavoured with lemon and other citrus fruits.

## THE OCCASIONAL TIPPLE

Small amounts of alcohol appear to have beneficial effects on the heart and brain, and The Queen has been honest about her enjoyment of German sweet wine, as well as gin and Dubonnet.

# EMPIRE UPVC & ROOFING SPECIALISTS

**WE GUARANTEE OUR CUSTOMERS  
A FRIENDLY, RELIABLE AND  
PROFESSIONAL SERVICE**



Empire UPVC and Roofing Specialists independently trade throughout Hertfordshire and a 40 mile radius from our office in Nazeing.

- ✓ Felt, Tile & Slate Roofing
- ✓ Liquid Rubber Roofing
- ✓ Fibreglass Roofing
- ✓ Roofing Leadwork
- ✓ All Roof Windows
- ✓ All Roofing Repairs & Maintenance
- ✓ Moss Removal
- ✓ Gutter Cleaning & Unblocking
- ✓ UPVC Fascias, Soffits & Guttering
- ✓ UPVC & Hardie Plank Cladding

**Office: 0208 088 3259**  
office@empireupvcandroofing.co.uk  
www.empireupvcandroofing.co.uk

**Visit Our Showroom at:**  
Unit 50 Hillgrove Business Park  
Nazeing New Road, EN9 2HB



Checkatrade.com

FULLY INSURED





FRIDAY • 27 MAY • 11am - 2.30pm

# PLATINUM JUBILEE CHARITY COFFEE MORNING



Raising funds and awareness for **Stroke & Dementia** Association



Raffle tickets on sale in the practice  
**GREAT PRIZES TO BE WON** donated by very generous local businesses - only **£1 per ticket**

COFFEE, TEA AND CAKE FOR £1

LIVE MUSIC FROM  CHOIR



162 High Road • Woodford Green • IG8 9EF  
020 8504 2704 [improveyourmile.co.uk](http://improveyourmile.co.uk)  
EXPERIENCE YOU CAN TRUST



GET READY TO

# ice-roll



The beauty world is currently going crazy for cold, with a massive surge in popularity for treatments such as ice baths, cryotherapy and cool sculpting.

So, what is the latest freezing fashion? Introducing ice-rolling, the new skincare technique that promises to tighten and brighten in an instant.

### WHAT IS ICE-ROLLING?

The process of ice-rolling is actually very simple and involves massaging your face with an ice-roller. This nifty gadget contains a mixture of gel and water which turns to ice once placed in the freezer. However, unlike normal ice, which when placed on the face melts in a matter of seconds, the ice within an ice-roller will stay solid for longer so you have more time to reap the rewards.

### HOW DO I USE AN ICE-ROLLER?

For best results:

1. Roll the device in a zigzag motion up and down your forehead and then from left to right.
2. Move down to beside your nose and lower cheek, working upwards and applying a little pressure.

3. Roll outwards on the sides of your mouth and then down under your chin.
4. Finish with your neck.
5. An ice-roller can also be used on your collarbone and upper chest if desired.

### WHAT ARE THE BENEFITS OF USING AN ICE-ROLLER?

There are multiple benefits to using an ice-roller, both in terms of the massage technique used and the application of cold. These include:

- > Boosts circulation
- > Restores radiance
- > Encourages optimum skin cell function
- > Reduces puffiness and redness
- > Reduces the appearance of broken capillaries
- > Decreases any inflammation
- > Tightens the skin

### DOES ICE-ROLLING HURT?

Although some cold therapies can be a little bit uncomfortable, ice-rolling is not one of them. However, it is recommended that you do not leave the roller on one area for too long as it will get very cold, and this can cause discomfort.





FASHION

# Flip OFF

**A** summer footwear essential for many, you may be surprised to learn just how bad this flimsy footwear can be for your overall foot health.

**RISK OF SPRAINS:** Although flip flops are fine for the occasional trip to the beach, when worn all day, they can cause your feet to start to turn towards the middle of your body instead of staying straight. This can put you at a much greater risk of spraining your ankle.

**LACK OF SUPPORT:** Flip flops provide a distinct lack of arch support, which can cause your plantar (the band of tissue in the arch of your foot) to start to pull. This can lead to a painful condition called plantar fasciitis, which may need a combination of physical therapy, anti-inflammatory medications and possibly even cortisol injections to treat.

**TWISTING OF TOES:** As the name suggests, flip flops tend to be floppy, meaning you will often have to curl your toes down to stop them flying off while you walk. Over time, this can mean the toes stay fixed in this curled position, causing an affliction called hammertoe.

**COULD CAUSE DANGEROUS DRIVING:** Although there is no law in the UK that explicitly bans wearing flip flops while driving, it does put you at higher risk of an accident. Their lightweight design makes them prone

to falling off, which could lead to dangerous driving. It is, however, illegal to ride a motorcycle while wearing flip flops.

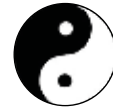
**EXPOSURE TO SHARP OBJECTS:** Flip flops are not known for their sturdiness, and as they become worn down, you may find your feet on the receiving end of a sharp nail or piece of glass.

Footwear styles that are healthier AND more stylish than flip flops: Sandals | Espadrilles | Woven slip-ons | Boat shoes | Penny loafers.



Therapist Specialising in Laser (ND YAG Q-Switched) and IPL (Intense Pulse Light)

- Laser Tattoo Removal** ● **Laser Semi Permanent Make Up Removal** ● **IPL Hair Removal**
- IPL Skin Rejuvenation** ● **IPL Wrinkle Reduction** ● **Laser/IPL Pigmentation**
- (Removal of Birthmarks, Nevus of Ota, Age/Sun Spots, Freckles & Stretch Marks)**
- IPL Acne Clearance** ● **IPL/Laser Acne Scarring** ● **IPL/Laser Thread Vein Removal**
- Hollywood Carbon Facial**
- Hydra Facial Dermabrasion Cleansing & Radio Frequency Face Lift**
- All Natural Face Lift** ● **Bespoke Luxury Facials**
- Thai Foot Massage & Indian Head Massage**



Treatments For All Skin Colours, All Skin Types & Hair Colour



39 The Broadway, Loughton ● 07970 332 517 ● [www.prana.org.uk](http://www.prana.org.uk) @prana.uk  
IPL Hair & Laser Tattoo Removal, Luxury Facials, Skin Rejuvenation + more



NAYA

ROBELL

MOS MOSH

PLUS MANY MORE INTERNATIONAL DESIGNER BRANDS

ROCK@Theydon | 01992 926 495 | 18 Forest Drive, Theyon Bois, CM16 7EY



# Relieve ACID REFLUX without medication

That all too familiar burning sensation in your chest coupled with persistent acid regurgitation? Yes, we are talking about the nightmare that is acid reflux. It affects as many as one in four adults in the UK, but you don't have to turn to shop-bought medications when acid reflux rears its ugly head.

### EAT SLOWLY AND SPARINGLY

If you are prone to grabbing a quick sandwich at lunch or, even worse, not eating all day and then consuming a huge meal in the evening, then you are much more likely to suffer from acid reflux. Instead, aim to eat little and often, and as slowly as you can.

### SIT UPRIGHT AFTER EATING

While lying down on the sofa after a big meal is one of life's little joys, this is not a good idea if you suffer from acid reflux. Instead, remain upright directly after eating and avoid eating anything just before bedtime.

### AVOID CERTAIN FOODS

Some foods are much more likely to trigger acid reflux and should be avoided, including fatty foods, tomatoes, onions, garlic, chocolate and anything spicy. You should also limit your intake of tea, coffee and alcohol.

### DRINK MILK

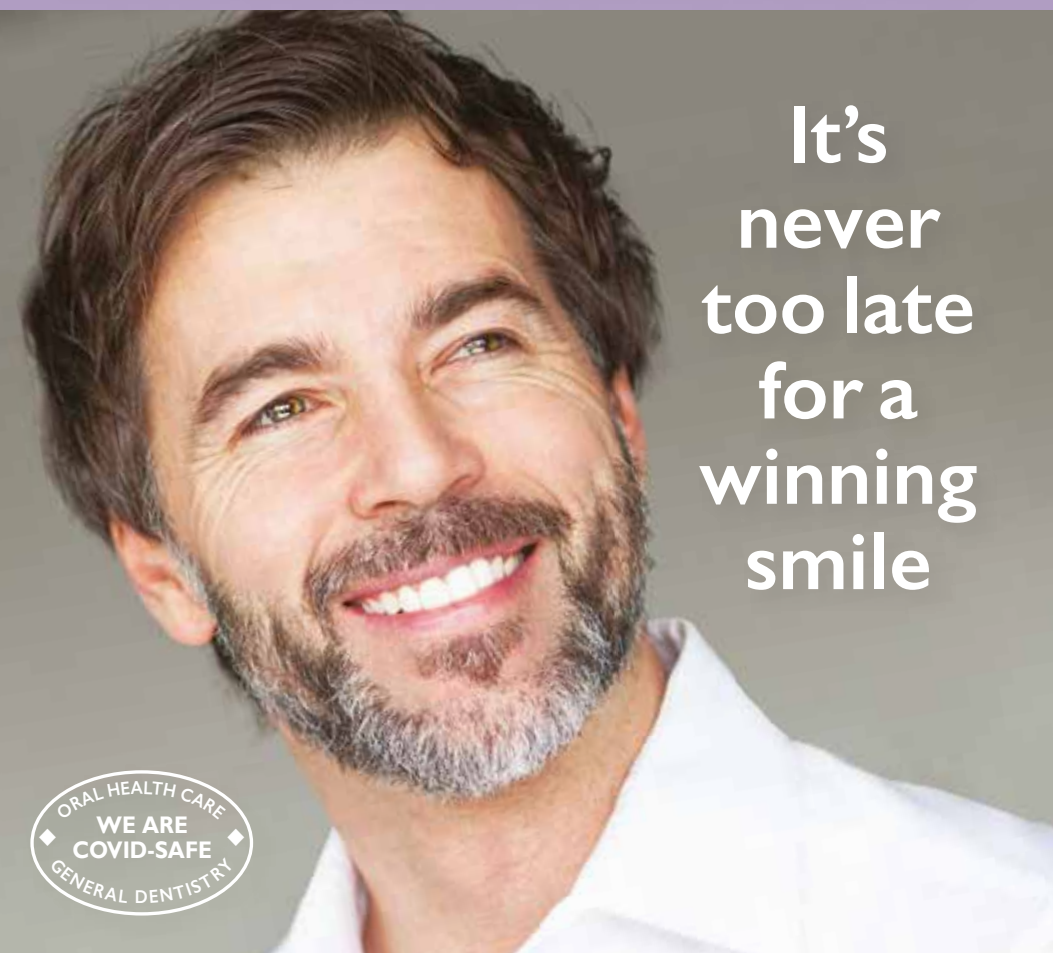
One of the most popular natural remedies for acid reflux, milk is alkaline, which means it can feel soothing to drink. However, it can worsen heartburn once digestion begins. To prevent this, opt for lower-fat milk where possible.

### CHEW GUM

The act of chewing gum stimulates the production of saliva, which is another alkaline substance. This can help reduce the symptoms of acid reflux and help to push your stomach contents back into the stomach.

### SIP GINGER TEA

Ginger root has been used for centuries to cure stomach aches and nausea and can help to reduce acid reflux. Sip ginger tea slowly for best results.



## It's never too late for a winning smile



**BOOK A FREE CONSULTATION**  
Discover the difference our comfortable and discreet clear aligners could make to YOU.



# 020 8504 2704

[improveyoursmile.co.uk](https://www.improveyoursmile.co.uk)

162 HIGH ROAD WOODFORD GREEN IG8 9EF

EXPERIENCE YOU CAN TRUST





The Rotary Club of Loughton Buckhurst Hill & Chigwell  
and The Rotary Club of Roding

# Free Memory Café

SUPPORTED BY

Join us 10am to 12pm every First Friday of the Month at the Loughton Club, 8 Station Rd. Loughton IG10 4NX

Enjoy refreshments, entertainment, memorabilia, informal chats, singing, bingo etc.

for further info call: Pesh or Fran.  
07973 166940 - pesh@londonresidential.co.uk  
07984 100379 - franmaskell@gmail.com

## KEEP YOUR £ LOCAL

SUPPORT YOUR LOCAL BUSINESSES...

Your Monthly Lifestyle Magazine **VISION**

Please let your local businesses know that you saw them first in... **VISION**

## LUXURY LIVING WITH THE HIGHEST QUALITY CARE

**Bespoke Residential, Nursing, Memory & Respite Care**

Offering the highest quality personalised care, with luxury living facilities and the freedom to explore and enjoy a range of hobbies, Woodland Grove care home will give residents the independence and support to continue living life to the fullest.

**Contact us to arrange a visit!**

☎ 0300 303 5445  
✉ clientrelations.wg@oaklandcare.com  
📍 Woodland Grove Care Home, Rectory Lane, Loughton, Essex, IG10 3RU  
🌐 oaklandcare.com/woodland-grove

Meet Our Home Manager Every 1st Wednesday at 2:30 - 4:30pm.

# Sun, Sea and Sand

## THE SECRET TO BETTER HEALTH?

**W**hen the sun's out, there's one place we all want to go – the beach. A trip to the beach gives us those feel-good vibes, reminding us of holidays and childhood outings. But did you know that a visit to the beach can give you a health boost? Discover some of the health benefits of a trip to the beach.

burner. It's harder to walk on sand than on concrete or other surfaces, so you'll burn energy as you move. You could even try running on the sand for an even bigger workout.

*It helps you get your dose of vitamin D*  
Vitamin D is known for boosting your immune system and maintaining strong teeth and bones. And one of the best ways to get it is from the sun. A trip to the beach on a sunny day can help you get a dose of vitamin D that can do wonders for your health.

If you're feeling brave, jump in the sea and enjoy a swim. A lot of people find this invigorating and great for their health. The seawater can also help alleviate symptoms of arthritis and even skin conditions like eczema and psoriasis.

*Sunlight is good for your sleep*  
Getting outdoors during the day is good for regulating your serotonin levels. This can help you sleep easier, enabling you to get into a sleep pattern to make sure you get the rest you need. Spending time outdoors is also good for your mental health, helping to reduce depression and other conditions.

*The sea air could help you relax*  
Breathing in the sea air could be just what you need to help you relax. The negative ions have a calming effect, helping to ease stress and boost your mood. The sea air has also been said to help reduce the symptoms of asthma, improve allergies and alleviate respiratory problems.

*Walking on the sand is great for fitness*  
Taking a walk on sand can be a big calorie

Next time you're feeling down and in need of a quick pick-me-up, head to your nearest beach and take advantage of this natural health booster.



Use 'VISION2022' for 15% off your first online order or instore

## NEW BREED

Visit the shop in Loughton or our website for nationwide delivery  
[newbreedbottleshop.com](http://newbreedbottleshop.com) | @newbreedbottleshop

287 High Road, Loughton, IG10 1AH | 0208 502 1388



Discover the depths of Indian flavours.

New generation masterchefs distill the purest methods of preparing traditional, fine Indian cuisine and fuse with contemporary innovation. Steeped with only the freshest spices, chilli peppers and subtlest of flavourings, favourite menus and classic dishes are redefined to mouth-watering, modern stylish tastes.

**EXCLUSIVE**  
**DINING IN VOUCHER** **£10 OFF**  
\*Excludes drinks and desserts. Not to be used in conjunction with any other offer. Excluding special days and events. One voucher per table. Expires 30<sup>th</sup> November 2022.

TEL: 020 8989 1500 [www.thelanewanstead.co.uk](http://www.thelanewanstead.co.uk)  
 82 Nightingale Lane London E11 2EZ



TRAVEL

# ENJOY A healthier HOLIDAY

Hotels are a place to go to enjoy luxury, comfort and relaxation. But one hotel in Costa Rica is taking things to the next level with a completely holistic experience.

The Hacienda AltaGracia describes itself as “an escape for those seeking total wellbeing and unbridled adventure”.

You’ll find the hotel in the Talamanca Mountains in Costa Rica, a truly tranquil spot that lets guests take things at their own pace and helps them recharge, reconnect and expand their horizons.

### WHAT BENEFITS DOES IT OFFER

A stay at Hacienda AltaGracia is tailored to you, and is inclusive of all meals and non-alcoholic drinks. Throughout your stay, you’ll be able to enjoy a range of adventure, wellness and cultural activities, helping you truly focus on your wellbeing.

### WHAT TO EXPECT AT THE HOTEL

On arrival, guests are given a virtual health coaching consultation, resulting in a tailored plan to aid each individual’s stay.

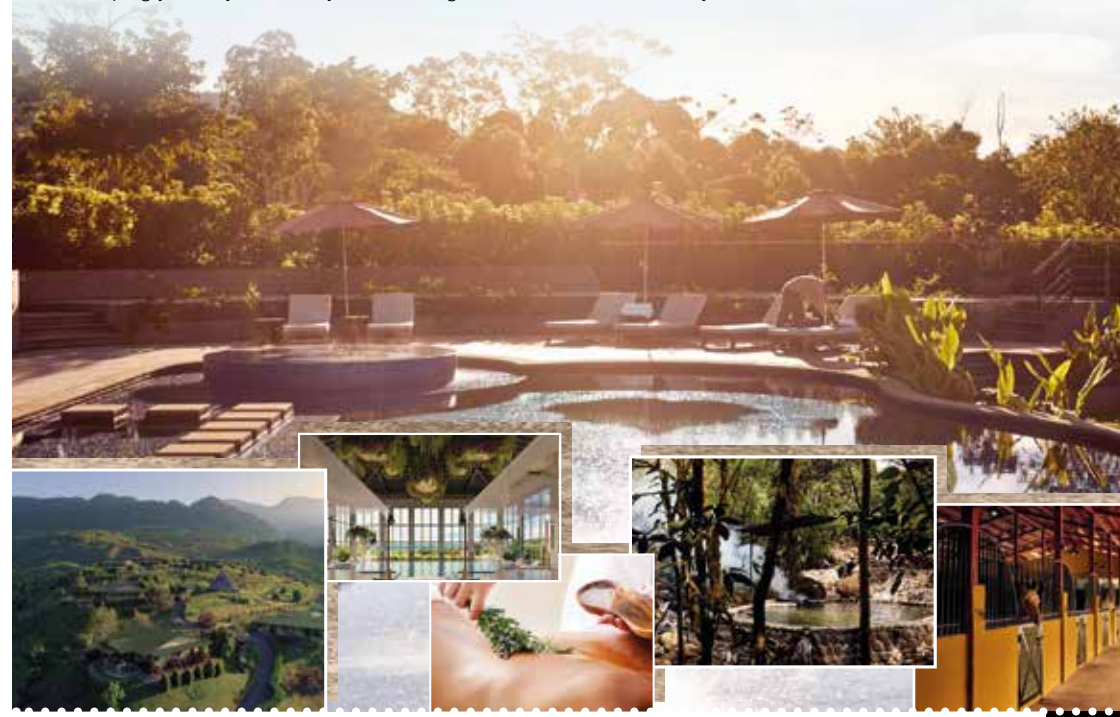
The hotel offers many different activities, including jungle hikes, botanical yoga, horse riding, trips to the bird observatory, river baths, and much more. Your visit is altered to suit you and also includes a range of dining experiences.

### WHY YOU SHOULD VISIT

The hotel has already won a place on *Condé Nast Traveller’s* top 50 resorts in the world and is attracting attention for its unique approach and wide range of experiences.

If you’re looking to get away from it all and focus on getting your life back on track, then this could be the hotel for you.

Photo credit: albergoresorts.com, thefitness.co.uk





# POTATO MILK

THE NEW VEGAN AND DAIRY-FREE ALTERNATIVE

**P**otato milk? As in milk from potatoes? While it may seem weird, potato milk – which is actually just starchy water that resembles milk – is packed full of nutrients and can make a great alternative to dairy milk.

### WHAT IS POTATO MILK AND WHAT DOES IT TASTE LIKE?

Potato milk is a creamy, milk-like liquid that is made from potatoes. You can find potato milk that is sweetened and unsweetened, with the latter tasting slightly salty. In terms of consistency and colour, it is more like soy milk than dairy milk and offers both the creaminess and fattiness you expect from a milk product.

### WHAT ARE THE HEALTH BENEFITS OF POTATO MILK?

- Low in sugar and saturated fat
- Contains vitamin C
- Contains fibre
- Rich in antioxidants
- Can enhance digestion
- Good for vegans and those with dairy allergies or intolerances

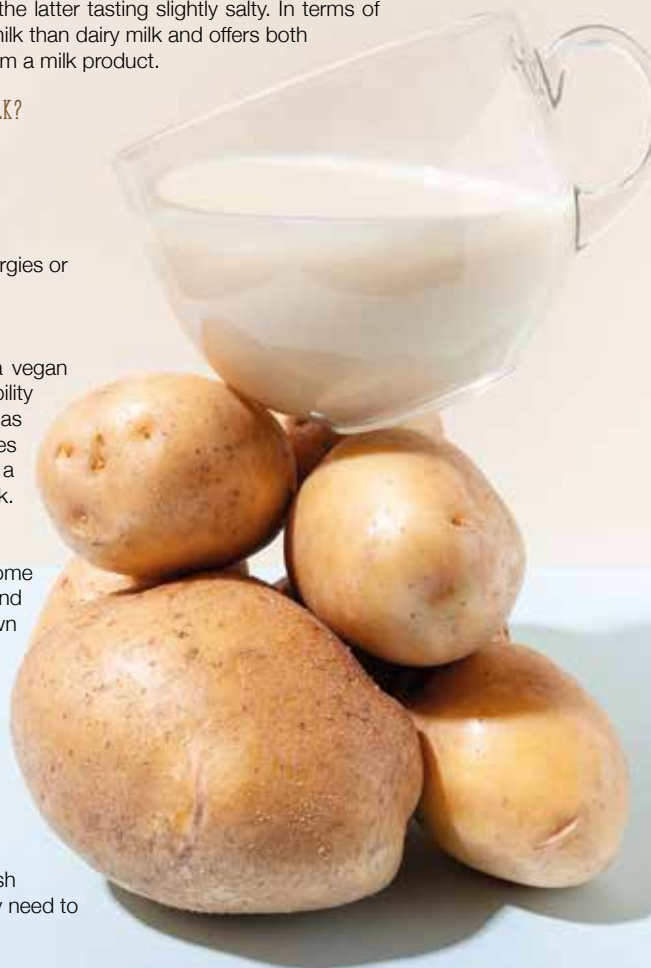
### WHY CHOOSE POTATO MILK?

The main selling point of potato milk as a vegan and dairy-free alternative is its sustainability credentials. Growing potatoes is twice as land-efficient as growing oats, uses 56 times less water than growing almonds, and has a much smaller climate footprint than dairy milk.

### HOW TO MAKE POTATO MILK

You can buy potato milk from some supermarkets (it can be found under the brand name DUG) or you could try making your own with the below recipe:

- Boil 1½ cups of sliced potatoes in 4 cups of water until tender but not falling apart.
- Pour the leftover liquid into a blender.
- Add the cooked potato with 1 tsp vanilla extract, ¼ cup of almonds and 2 tbsp of honey or maple syrup to sweeten, and blend well.
- Strain your potato milk through a fine-mesh sieve, cheesecloth or tea towel – you may need to do this twice.



# Spring Bottomless Brunch On the terrace

## Every Saturday

Sittings anytime between 12pm - 2pm

£29.95 2 courses (starter & main)

£39.95 90 mins bottomless Prosecco

£44.95 90 mins Bottomless Cocktails

DJ playing from (12-4pm)





*Come & enjoy the authentic taste of the Mediterranean*

**Lunch menu**

**£17.00 two course**  
**£20.00 three course**

*Monday to Saturday  
from midday to 5pm*

**Live music  
every Friday**

**Sunday roast**

*We cater for any occasion  
Private room for private parties*

**Contact us to book on 020 8500 1678**

infoatlinguinerestaurant@gmail.com @hainaultgolfclub

Hainault Golf Club, Romford Road, Chigwell, IG7 4QW



# Go Wild

**W**ild garlic can be enjoyed raw or cooked and has one of the longest seasons of all wild plants. The ideal vegetable for first-time foragers, this milder variety of garlic can be added to a whole host of dishes.

**WHAT DOES WILD GARLIC TASTE LIKE?**

All parts of the wild garlic plant are safe to eat, including the bulb, leaves and flowers. Wild garlic is less pungent than standard garlic cloves, delivering a sweeter and more delicate taste. If you pick a wild garlic leaf and gently squeeze it, you will instantly be met with the distinctive garlicky aroma.

**WHERE TO FIND WILD GARLIC**

Wild garlic grows in damp woodlands and forests across the UK and throughout Europe and is often found near rivers or streams where the ground is damp. Wild garlic is recognisable by its long and

pointed green leaves and white clustered flowers. It typically grows in dense clumps.

**WHEN IS WILD GARLIC IN SEASON?**

Wild garlic leaves appear in March and are best picked when young. These leaves are delicious added to soups, sauces and pesto. From April to June, the flowers start to emerge and these make a great addition to salads and sandwiches.

**WHAT TO DO WITH WILD GARLIC**

Wild garlic pesto | Wild garlic and nettle soup | Wild garlic butter | Wild garlic chicken kiev | Wild garlic and watercress tart | Baked new potatoes with wilted wild garlic

**HOW TO STORE WILD GARLIC**

Wild garlic can be stored in an airtight container in the fridge for 1-2 days. If you want to keep your wild garlic fresh for longer, place the stems in a glass of water and place in the fridge. Wild garlic is suitable for freezing, Simply wash and dry, and then place in a freezer bag and freeze.





# Colourwashing

THE INTERIOR DECOR TREND YOU NEED TO TRY

Colourwashing is one of the latest interior trends to explode onto Instagram, Pinterest and other corners of the internet. It's a striking paint trend that creates a rustic, vintage feel, yet looks right at home in even the most modern spaces. Get ready to explore the art of colourwashing and how to try it in your home.

### WHAT IS COLOURWASHING?

Colourwashing, also known as faux glaze painting, is a paint technique in which a layer of diluted paint is applied over a base colour to create a washed look. It's a modern and colourful take on a classic whitewash and is easy to create yourself.

### WHAT YOU NEED TO DO A COLOURWASH

To create a colourwash at home, you will need:

- > Two types of paint, a lighter and a darker shade – one serving as your base, and the other to create the wash effect. It's up to you whether or not to use the light or dark shade as your base.
- > A transparent water-based glaze. You could also use water.
- > A roller or brush to apply your base colour.

- > Either a sponge or a soft brush to paint the wash.

### HOW TO DO A COLOURWASH

- > After prepping your wall by using sugar soap to clean the area, you'll need to paint either one or two coats of your base layer. Allow to dry.
- > Mix the colourwash using four parts glaze to one part paint.
- > Apply your colourwash in small sections using a brush or sponge, spreading quickly once applied. You can either use a swirling motion, a criss-cross pattern or random strokes to create your desired effect.
- > Leave to dry, and apply a second coat if desired.

This is one of the most basic colourwashing methods, but you could try other methods to help you achieve the desired effect. Colourwashing creates an on-trend look and is a stylish take on the classic colour block wall.

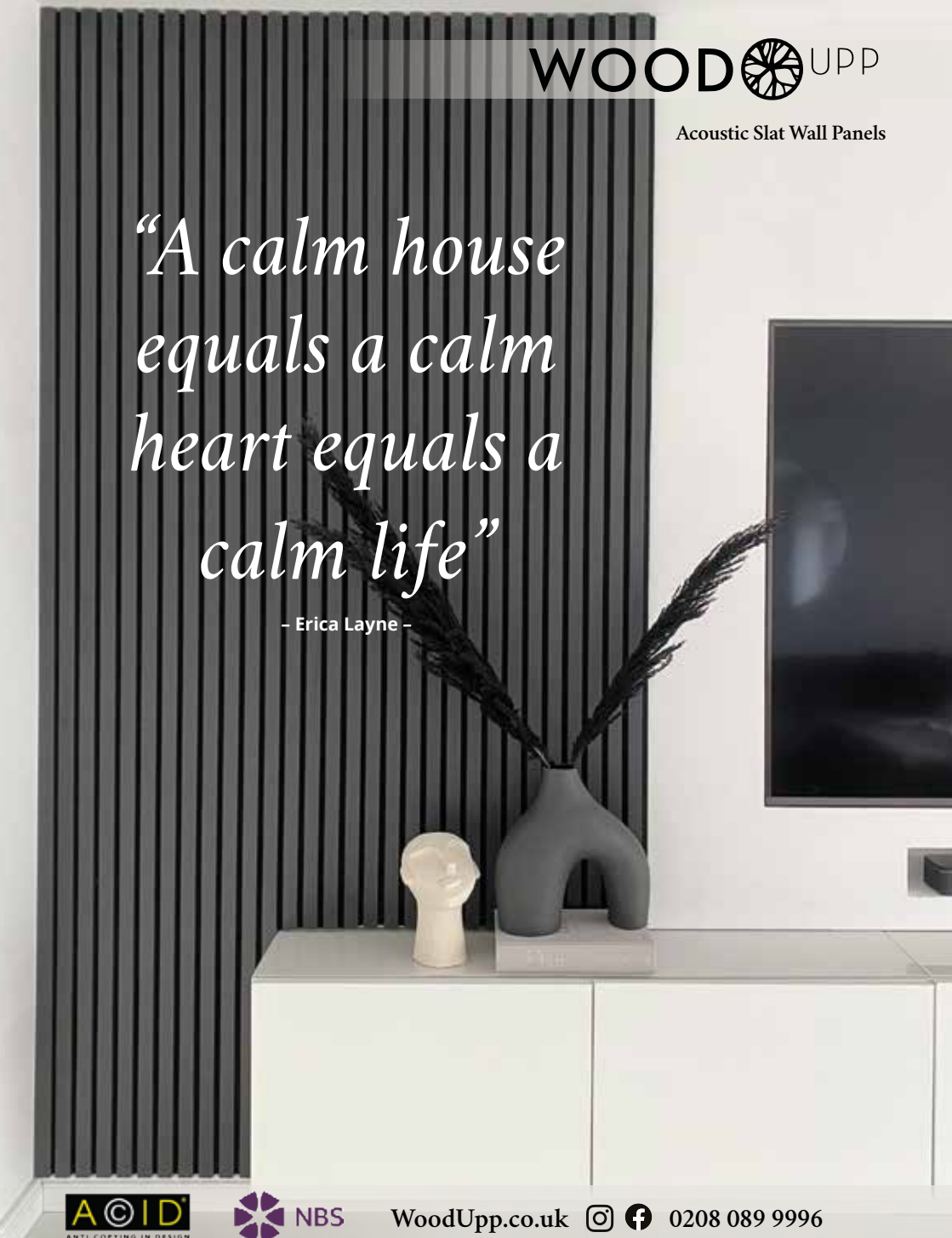


Photo credit: Brand - Zinc Textiles, Stylist - Sarah Harwood, Photographer - Alex J Curtis via www.livingetc.com

Acoustic Slit Wall Panels

## "A calm house equals a calm heart equals a calm life"

- Erica Layne -





## LUXURY BESPOKE WARDROBES & KITCHENS



WARDROBES ■ BUILT IN WARDROBES ■ FITTED KITCHENS ■ SLIDING WARDROBES

Made to order in the UK ■ 10 Year Product Guarantee



Soft Close Doors As Standard ■ We fit wardrobes in less than 2-3 weeks

### CONTACT US

01708 756789 ■ 0208 088 0876

[www.bestfittedwardrobe.co.uk](http://www.bestfittedwardrobe.co.uk)

[info@bestfittedwardrobe.co.uk](mailto:info@bestfittedwardrobe.co.uk)

Best Fitted Wardrobe Ltd, Unit A3, Seedbed Centre, Davidson Way, RM7 0AZ  



BEST FITTED  
WARDROBE



HOME & DIY

# HOME DÉCOR TRENDS 2022



Looking to update your interior design for summer? Discover the top five home décor trends for 2022. Plus, our top tips on how you can incorporate them into your home.



**ARTIFICIAL GREEN WALL:** Going green has never been more on trend, with sales of houseplants surging since the start of the pandemic. Perfect for those who want to bring the outdoors in, you can create a faux foliage wall using affordable, artificial succulents and foliage and a basic box frame.



**VELVET FURNISHINGS:** If you love the style of the 1970s, then you'll be pleased to hear that velvet is making a huge comeback in 2022. Although this opulent material went out of fashion when minimalism dominated the interior design world, it has now returned to favour, and is bolder and brighter than ever before.



**AUTHENTIC DESIGNS:** Handmade home décor items are becoming increasingly sought after, as homeowners look for a more personalised and authentic-looking home. From bespoke furniture to heritage collections, anything made on a smaller scale is in this year. They may be more expensive, but one-of-a-kind items will transcend any trends and last a lifetime.



**ROYALCORE:** Spurred on by the likes of *Bridgerton* and *The Crown*, royalcore embodies everything ornate and aristocratic. Whether you opt for an abundance of gold, intricate detailing or rich colour schemes involving purples, blues and reds, this is one TikTok trend that isn't going away any time soon.



**SOFTER SHAPES:** Say goodbye to straight lines and sharp angles and hello to rounder, more feminine shapes. Referred to as the 'curve comeback', look for rounded chairs, tables and sideboards. Providing a natural feel, softer shapes are both more practical and aesthetically pleasing.



# STEPHANIE BARBA MENDOZA *world*

EXPLORING THE ART OF CONTRASTING STYLES THAT SYNERGISE SEAMLESSLY

As a designer, finding a defined route between contemporary and classic is no mean feat. It requires vision, patience and nerve to throw energy behind contrasting, conflicting styles, before emerging with something precise and exact.

Interior designer Stephanie Barba Mendoza's ability to do this stands her apart from many of her contemporaries.

For more than 40 years, the London-based designer has toyed with vintage and modern, classic tiling and smooth walls, rich sprays of flowers and hard-edged furniture, producing a sumptuous smorgasbord of style that layers material and colour, and completing a look with an abundance of warmth.

Mendoza works with talented craftspeople to create interiors, often bringing antique items into a space to add not just visual interest, but also a feeling of provenance and purpose.

She cites influences as diverse as Freddie Mercury, René Magritte and Serge Roche, and admires others who push their boundaries to the limit.

"It all comes from a rejection of conformity for me," she says, "and when I find clients who share that idea of rebellion, it inspires me as much now as it did the first time I took to styling a space."

"We must appreciate in interior design, in art, in creativity, the fact that escapism and fantasy is as deep and wide as the imagination, and in that respect is endless."

"If we can live in a space, then we can envision anything, and it will always be correct."

The trick to replicating Mendoza's statement style is to individualise on carpets, fabrics, furniture and objects. No matter the style or era, the devil is truly in the detail, and the designer proves the sum total is most definitely greater than the parts.



Photo credit: barbamendoza.com



# APCO

## BATHROOM STUDIO PLUMBING & HEATING SUPPLIES

For Bathroom Inspiration Visit  
**APCO Bathroom Studio**  
52 Victoria Road, Romford,  
Essex, RM1 2LA  
Tel: 01708 578093  
apcoplumbing@gmail.com

For all your Plumbing & Heating Supplies  
Visit **APCO Trade Centre**  
66 Victoria Road, Romford,  
Essex, RM1 2LA  
Tel: 01708 740055  
apcotrade@gmail.com

### BATHROOM CAD DESIGN SERVICE AVAILABLE



crosswater\*



Burlington\*

ROPER RHODES

FLOVA



SHOWROOM 9am - 5pm MON -FRI SAT 9am-4pm | TRADE CENTRE 7am -5pm MON- FRI SAT 8am -12pm



# Bleach NO-NOS

**B**leach is cheap, cheerful and it does the job. However, it is not designed to be a multipurpose cleaner for your home and there are certain things that it should never be used on.



✗ **WOODEN SURFACES:** As a general rule, bleach should not be used to clean wooden surfaces or floors as it can alter the wood's natural finish. Furthermore, it is not very effective at removing mould from wood-based materials such as wallboard, ceiling tiles and wall studs as these are all porous materials.

✗ **MOST METALS:** Bleach contains ingredients that serve as oxidants during the cleaning process, so metals like stainless steel, copper and chrome can become corroded or discoloured when exposed to it. You should also never use bleach to try to remove rust as it can make it more resistant and harder to remove.

✗ **STONE COUNTERTOPS:** Stone is another porous material and can therefore also be damaged by the application of bleach, even when diluted. If you have granite, marble or quartz countertops in your home, clean these surfaces with a simple water and liquid dish soap solution.

✗ **FRESH PRODUCE:** Although bleach is used in commercial food production, you should not use it at home to sanitise fresh foods such as fruits and vegetables. Instead, to remove any germs or bacteria, simply rinse the produce under cold water for 1-2 minutes.

✗ **DRAINS:** While many people pour bleach down their drains to clean and banish odours, this is not recommended as the chemicals in chlorine bleach can kill the beneficial bacteria that the septic system needs to break down solid waste.

Never mix bleach with other chemicals and cleaners, including ammonia, rubbing alcohol and vinegar. This can result in toxic fumes being released into your home which can cause a host of issues, including severe coughing, internal organ damage and even death.

# ONE HUNDRED & THREE DEGREES



At a hundred and three degrees cranberries and sugar blossom into a festive miracle. A single millimetre is all that is needed for a flawless slice of Jamón Ibérico. Sixty four degree water gives the most rich,

velvety poached eggs you've ever imagined. When you're in the kitchen, perfection and joy come from precision. And it's the same when we're in the kitchen too — because we love what we do. **This is German Enjoyneering.**

**Kitchenhaus Brentwood**  
6, The Baytree Shopping Centre  
Brentwood, Essex  
CM14 4BX

Tel : 01277 204447

**kitchenhaus**  
The **German** Kitchen





Keeping your build on track as Home Hub introduces a next day range of bifolds, sliding doors and roof lights.

**The constant challenge of supply-chain issues and stock availability throughout the pandemic looks set to get even worse with the increase of sanctions to Russia and the ensuing squeeze on commodities having an impact on all aspects of the building sector, prolonging build times and pushing costs even higher.**

With such a challenging landscape, it's no wonder that Home Hub Group, a specialist supplier of windows and doors servicing the South East came up with a solution to the problem which enables their customers to manage costs and quality whilst getting the product when they need it.



Bifolds, sliding doors, roof lights & lanterns  
**Next day delivery**

Home Hub has always taken great pride on their ability to provide fast response, quick delivery and price consistency. The pandemic put paid to all of that, with lead times stretching as far as 16 weeks and with no guarantee on prices - it has become so difficult to run a build project, or indeed a business, with so many unknowns. This has made an incredibly challenging environment for Home Hub and their customers.



Home Hub's beautiful  
**Epping Showroom**

But never shy of a challenge, the team at Home Hub went about investigating the feasibility of developing a range of stock products in order to 'beat the system', offer customers peace of mind and avoid long and costly delays in their build projects.

Home Hub investigated how they could get the situation back under control and continue to offer cost effective solutions, on-time, with no compromise on quality.

This led to Home Hub identifying the most popular products and sizes and investing heavily in both product, assembly and storage space to enable customers to take advantage. A next-day selection of the popular 'Serenity' range was developed to fit traditional brick measurements and was launched in February this year and has been welcomed by both builders and home-owners with a hugely positive response.

Home Hub is now stocking bifolds, sliding doors, roof lights and roof lanterns for delivery tomorrow and they'll even provide a former for doors and kerbs for roof lights to help your builder avoid any costly mistakes.

Home Hub has beautiful lifestyle showrooms in Bracknell and Epping where you can browse all products including the next-day range with the team on hand to answer all of your questions. Having been established over 20 years, it's no wonder they are leading the way on how to get things done, on time, on budget whilst looking beautiful.



**Bifold doors, sliding doors and roof-lights available for next day delivery.**



01992 948 980  
essex@homehubgroup.co.uk  
137-139 Epping High Street



@HomeHubGroup

**There's no place like Home Hub**

With no pressure sales, transparent pricing and exceptional service levels you'll feel right at home with Home Hub. Our elegant lifestyle showroom is now open in Epping, call us to book an appointment.

**homehubgroup.co.uk**



# WATCH OUT(EN) *Denise is about*

**CELEBRATING THE STAR QUALITY OF DENISE VAN OUTEN, WHO MARKS 25 YEARS ON OUR SCREENS**

---

**D**enise van Outen is Essex's doyenne of design – a star who has risen up through the soap world and carved a brilliant niche in mainstream entertainment, plus retained a sense of dignity when things have gone against her.

In many ways, she is an exemplary example of someone who has successfully crossed over the changing face of the celebrity world. When she first appeared on our screens, as a presenter on Saturday morning kids' TV show *Massive!*, van Outen instantly caught the eye. She'd progressed through the famous Sylvia Young Theatre School and worked with the Royal Shakespeare Company before landing that debut role. While she was also seen on the mean streets of Sun Hill on *The Bill*, acting roles would quickly take a back seat when the opportunity to host *The Big Breakfast* came about in 1997.

In the post-Chris Evans/Gaby Roslin era, van Outen excelled opposite Johnny Vaughan, and the pair would reunite a decade later on Capital Radio, even if the relationship between the two was eventually to sour.

That disintegration has been one of a number of setbacks the Basildon-born star has recovered from. Her marriage to actor Lee Mead – who was victor of the *Any Dream Will Do* talent show for which van Outen was a judge – ended in 2015, although the couple had split up two years previously. They have a daughter together, named Betsy.

Most recently, the presenter was in a long-term relationship with sparky commodities trader Eddie Boxshall. She has also famously dated Jamiroquai frontman, Jay Kay.

In the interim, though, van Outen has excelled in every way. By her own admission, her autobiography, *A Bit of Me*, released in March, was a candid and poignant reminder of the successes in her life.

She said: "I actually found writing it very therapeutic – it reminded me how much I had done, and at a time when I was perhaps fixating on the things that didn't go to plan, made me think about so much that has gone well.

"I feel we should all take time to look back on positive elements of what we do and who we are. It's good for the soul and it gives us energy to move forward and be positive."

At present, van Outen is on tour with *The Masked Singer*, ITV's hit talent show on which she played Fox. The bravery to put herself in the spotlight and under pressure is at the entertainer's heart – across *Strictly Come Dancing*, *Dancing on Ice* and *Celebrity Gogglebox*, the comfort, charisma and 'girl next door' image is one viewers love.

"On television and in life, I just strive to be myself. You need self-worth and self-respect in what you do, and you need to focus on retaining and celebrating that at all times.

"The point where you feel you are losing that is the point at which you need to adjust and evolve."

While we applaud van Outen's bravery in making change, in many ways we'd like her to stay just the way she is.

floors-2u.co.uk

Bringing the best to you

SPECIALISTS IN

- CARPETS • LAMINATE • VINYL
- LUXURY VINYL • REAL WOOD

Karndean

moduleo<sup>ivc</sup>



amtico



FLOORS-2U ARE A LOCAL FAMILY BUSINESS  
SPECIALISING IN FLOOR COVERINGS

CONTACT US OR BOOK AN APPOINTMENT  
TO VISIT OUR SHOWROOM

1 MAWNEY ROAD, ROMFORD, RM7 7HH  
01708 702494 • www.floors-2u.co.uk

# LOCAL NEWS

*from your neighbourhood*



LOCAL NEWS

Photo credit: Oak View School



## School teacher avoids ban after locking child in room

A teacher at a Loughton school has been spared being barred from the profession permanently after locking a child with special educational needs in a sensory break room after the child became "physically aggressive" towards her.

This was despite the Teaching Regulation Authority (TRA) finding that the conduct of Elisha Emirali, a former teacher at the Oak View School, "fell significantly short of the standards expected of the profession", according to a report.

It was alleged that Ms Emirali, on September 30, 2020, removed all sensory resources and equipment from the sensory room, placed the pupil in the room unsupervised and locked them inside, and also failed to adequately record the behavioural incidents of said pupil and others. These allegations were proved.

Three more allegations – that Ms Emirali used equipment such as plastic drawers to block the pupil inside the room, inappropriately separated pupils in the classroom causing them distress, and used inappropriate behavioural management strategies in lessons – were found to be unproven.

Decision maker, Alan Meyrick, said in the report: "I have concluded that a prohibition order is not proportionate or in the public interest.

"I consider that the publication of the findings would be sufficient to send an appropriate message to the teacher as to the standards of behaviour that were not acceptable and that the publication would meet the public interest requirement of declaring proper standards of the profession."

In a statement, Tina Kearney, headteacher of Oak View School, said: "The incident was unacceptable and went against all the values and practices that underpin everything we do at Oak View School.

"As soon as the incident came to light, our thorough and robust safeguarding policies and procedures were followed. The teacher concerned ceased to be employed by the school with immediate effect.

"Following our own investigations, we duly forwarded the case to the Teaching Regulation Agency.

"We take the safeguarding of our pupils very seriously and nothing is more important to us than the safety and wellbeing of our students."



Photo credit: Let's Sanitise, BBC Studios

# Sanitiser company impresses on Dragons' Den

A Loughton and Hainault-based company that produces hand sanitisers with vegan scents and ingredients has appeared on BBC business investment show, *Dragons' Den*.

On an episode which aired recently, Josh Cummins and Lee Hoppen of Let's Sanitise (pictured above) secured an £80,000 investment from two of the Dragons.

Though entrepreneur Deborah Meaden, retail tycoon Sara Davies and social media master Steven Bartlett declined to put their money behind the company, fashion boss Touker Suleyman and major investor

Peter Jones were charmed by the vegan products.

In exchange for the investment, the pair received a combined 25 per cent equity in the business, which will eventually drop to 20 per cent when their investment is repaid.

Let's Sanitise was born out of the COVID-19 pandemic. The team behind event company, Megabooth, was looking for ways to protect their staff, and so began supplying sanitiser stations to help businesses reopen safely.

To find out more, please visit the website at [www.letssanitise.com](http://www.letssanitise.com)

# Jubilee party organised for the community

Loughton residents can get involved with an event to mark Queen Elizabeth II's upcoming Platinum Jubilee.

The monarch is celebrating 70 years on the throne, with a four-day bank holiday weekend planned for June and people up and down the country organising their own get-togethers for the occasion.

Buckhurst Hill Parish Council, Buckhurst Hill Residents' Society and Buckhurst Hill Football Club are working together to celebrate the Jubilee with a community event on Saturday, June 4, from 2pm to 10pm, at the football club's ground on Roding Lane.

The event will include food and drinks, stalls, a licensed bar, games, various performances and other attractions, as well as a big screen to show the Party at the Palace, a major concert set to be broadcast nationally.

Entry will cost £2 per person and those attending can bring their own picnic and chair.




**Designing Your Home Into Reality**

Virtue Architecure has been providing home owners full design services for over 10 years. With over 200 approved projects we are Loft and Extension Specialists.

Contact us now for a Free Quote or Advice

0208 088 2958  
[bilal@virtuearchitecture.co.uk](mailto:bilal@virtuearchitecture.co.uk)  
[www.virtuearchitecture.co.uk](http://www.virtuearchitecture.co.uk)

[f](#) [in](#) [@](#)

**V I R T U E**  
A R C H I T E C T U R E



**LEADING CONTRACTORS FOR THE DESIGN, INSTALLATION AND MAINTENANCE OF ALL TYPES OF AIR CONDITIONING SYSTEMS FOR:**

**DOMESTIC • OFFICE • RETAIL • LEISURE**

**FOR FRIENDLY CUSTOMER ADVICE OR A FREE SURVEY PLEASE CONTACT**

**01708 732700**  
[www.mastercool.co.uk](http://www.mastercool.co.uk)  
[Nigel@mastercool.co.uk](mailto:Nigel@mastercool.co.uk)

 **MASTERCOOL**  
AIR CONDITIONING LIMITED

Showroom @ 220 Main Road Romford RM2 5HA

**10% VISION DISCOUNT – Code MC/VIS 009**



## Donation helps dancer fulfil her dreams

LOCAL NEWS



A young Loughton dancer was able to represent her country at a major dance festival, thanks to a donation from an Essex charitable trust.

Ella Sofi Zarnadze (pictured right), 10, has been taking part in Latin and ballroom dancing for two years, and her dreams of competing at a national level have moved one step closer thanks to a £1,000 donation from the Essex Community Foundation (ECF).

This grant will allow Ella Sofi and her dance partner, Alexander, to go further in their training.

Ella Sofi's dad, Beka Zarnadze, said: "We give as much support to Ella Sofi as we can, but the cost of travelling to competitions, specialist clothing, coaching and competition fees adds up really quickly.

"We are so grateful that ECF's donor, who has chosen to remain anonymous, was inspired by Ella Sofi's talent and potential and wants to help her achieve her dreams."

Most recently, Ella Sofi and Alexander represented Great Britain on the Juvenile Team at Blackpool's famous Junior Dance Festival.

The pair have previously come second in the UK International Championships, third in the British Nationals, and won the Stars of the Future Dance Championship. They currently sit right at the top of the national league table for competitive junior dancers.

Perry Norton, head of development at ECF, said: "We are pleased to support Ella Sofi and wish her and Alexander good luck."

## Bus route 'most unreliable' in London, according to data

The capital's least reliable bus route is thought to be one going between Loughton and South Woodford, according to new data from Transport for London (TfL).

The 549 route has failed to meet the minimum frequency levels assigned by TfL since at least February 2020.

Between September 2021 and January 2022, one in three buses were late.

Some of this unreliability has been down to various disruptions out of the control of the operators, Stagecoach, such as major roadworks and school traffic.

Owing to these findings, a new operator, Hertfordshire-based Sullivan Buses, introduced a new timetable designed to combat this poor performance. However, services will now only run every 90 minutes.

## Council plants a tree for Queen's Platinum Jubilee

Loughton Town Council (LTC) has planted a tree in the Memorial Rose Garden on Roding Road as part of a special initiative commemorating the Queen's Platinum Jubilee.

At a recent ceremony, town mayor, councillor Rose Brookes (pictured below), assisted with the planting of a field maple tree at the garden as part of the Queen's Green Canopy initiative.

Originally, the new tree was set to be planted at the Murray Hall, but after two trees in the Rose Garden were knocked down during Storm Eunice, it was agreed that the latter was a more suitable location.

At the ceremony, thanks were given to tree surgeon Rod Hunt and Mark Petit of St Michael's Church, who helped clear the post-storm debris, services manager Paul Hoy and services officer Debbie Taylor for their work in arranging the ceremony, and Mark Lovejoy of Gristwood and Toms Arboriculture Service for donating the tree.

The Queen's Green Canopy initiative encourages individuals, schools, councils and other organisations to plant trees to commemorate Queen Elizabeth II's 70-year reign and provide a lasting legacy for future generations.



News from

# THE ROTARY CLUB

of Loughton, Buckhurst Hill & Chigwell



LOCAL NEWS

We were so pleased to be able to offer Easter eggs to our service users during Easter week. Huge thanks to Treats For Kids, Children-First Nurseries,

Daniel Robinson & Sons Epping and the wider community for donating all the Easter eggs.

We were open Good Friday and Easter Monday, with a visit from the Easter Bunny. It was a fantastic atmosphere. We're so grateful to our tireless, amazing volunteers for giving up their bank holiday – no other food bank in the area was open over the weekend.

Our hubs are open:

> Monday, Waltham Abbey 11.30am-1pm

> Tuesday, Loughton 11.30am-1pm

> Wednesday, Chigwell Row 5pm-6.30pm

> Thursday, Ongar 1pm-2.30pm

> Friday, Waltham Abbey 11.30am-1pm

Contact us at [www.3food4u.org](http://www.3food4u.org) or [info.3food4u@gmail.com](mailto:info.3food4u@gmail.com) or 01992 842642.



# Town stands with Ukraine

Various councils in the Loughton area are providing support, solidarity and places to stay for refugees fleeing the conflict in Ukraine.

A Ukrainian flag can now be seen flying from the Loughton Library and Town Hall building on Traps Hill in the town.

Epping Forest District Council is also providing a donation space, with the Ukraine Donations Hub now staying open an extra month owing to the overwhelming response from residents.

Located in Epping, the hub is open from 11am to 7pm from Tuesday to Saturday. The current wish list volunteers are asking for includes clothes and food for babies, sanitary products and first aid kits.

Essex County Council has recently provided an update on what it is doing to support the government's Homes for Ukraine scheme, which invites residents to apply to sponsor a Ukrainian family to come and stay in the UK.

Working with organisations such as the British Red Cross and the NHS, a hub has been set up for families arriving at Stansted Airport, which will provide information and immediate humanitarian support.

To find out more about donations and what you can do to help, visit [www.eppingforestdc.gov.uk/community/ukraine-crisis-how-you-can-help](http://www.eppingforestdc.gov.uk/community/ukraine-crisis-how-you-can-help)



PUT THE SPARKLE BACK INTO YOUR KITCHEN



Domestic Oven Cleaning Specialists

Est. since 2007

Prices

Single oven incl. shelves & grill pan.....	£43.00
Double oven incl. shelves & grill pan.....	£54.00
Range incl. shelves & grill pan.....	From £54.00
AGAs.....	From £90.00
Hobs.....	From £14.00
Extractors.....	From £15.00
Microwaves.....	From £20.00

No VAT to pay



PLEASE CALL FOR A FREE QUOTATION

01279 432444 \* www.ovenbright.co.uk



BEFORE



AFTER

Has Rolls-Royce built the fastest electric aircraft?

The world needs some drastic changes to help combat the effects of global warming. Vehicle manufacturers are working hard to develop electric models that provide great performance, as well as being energy efficient.

While perhaps better known for manufacturing cars, Rolls-Royce also produces aircraft parts. It has recently announced that it has created the fastest all-electric aircraft, reaching a maximum speed of more than 387mph. But has Rolls-Royce truly succeeded with its bold claim? And what will this mean for an energy-efficient future?

Spirit of Innovation

Rolls-Royce has been testing its latest project, an all-electric aircraft known as the Spirit of Innovation. During the tests, the aircraft was able to reach a speed of 345mph over a distance of three kilometres, which it believes has broken the record for the fastest electric aeroplane. It's a part of the Accelerating the Electrification of Flight project, which is being partially funded by the Aerospace Technology Institute, in partnership with the Department for Business, Energy and Industrial

Strategy and Innovate UK. The data has been sent to officials for verification.

Rolls-Royce: Making 'jet zero' a reality?

Spirit of Innovation comes just as world leaders pledged to reduce the impact of global warming at COP26. In a recent press release, Warren East, CEO of Rolls-Royce, said: "Following the world's focus on the need for action at COP26, this is another milestone that will help make 'jet zero' a reality and supports our ambitions to deliver the technology breakthroughs society needs to decarbonise transport across air, land and sea."

Using innovations such as electric aircraft, this could soon become a reality.

What's next?

Rolls-Royce has a long history of breaking records, and it will no doubt seek to improve upon the Spirit of Innovation. As the company looks set to become net zero by 2050, there could be some exciting times ahead in the world of electric vehicle development.



TECHNOLOGY



Photo credit: Rolls-Royce



NOBODY DOES IT BETTER THAN BODYWASH



Visit our showroom which is open Monday to Friday 9am to 5:30pm and Saturday 9am to 5pm. We close on Sunday's.

Bring along your room dimensions and let us help you plan your new luxurious bathroom.

01708 736700

www.bodywash.uk

sales@bodywash.uk

A12 Eastern Avenue, Romford, RM5 3AL



BRITAIN'S GREATEST SPORTING MOMENTS...

SPORT



# CHAMPIONS LEAGUE FINAL 1999

**EACH MONTH, WE LOOK AT ONE OF THE MOST SIGNIFICANT EVENTS IN BRITISH SPORTING HISTORY. THIS MONTH, IT'S MANCHESTER UNITED'S LATE LATE SHOW AT CAMP NOU IN THE 1999 CHAMPIONS LEAGUE FINAL**

The concept of 'Fergie time' was a familiar one throughout the nineties as Manchester United's fast-paced, ruthless, attack-minded side saw off allcomers, even if so many of those wins came in the very dying embers of matches.

And injury time was three minutes in when super-sub Ole Gunnar Solskjaer stabbed in the goal that brought European glory back to Manchester United after a wait of 31 years.

The Reds had scored just moments before to level a match in which they were outplayed by Bayern Munich for long spells, but Teddy Sheringham's 91st-minute leveller set up the most dramatic finale ever seen in a European final, and United's time had come.

Few in red, even now, dispute the fact that the Germans should have been out of sight in the game, but what matters is finding the net, and in a

decade in which so much went right for the Class of 92 and teammates, there was an inevitability that Beckham, Keane, Scholes, Giggs and co. would come good.

These days, in reflection, the stories of that night in Barcelona are muddled in with George Best leaving for a drink 10 minutes before the end. Then there's the famous shot of a United fan with his back to the pitch taking a photo of Reds fans, just as Solskjaer scored. Even Gary Lineker weighed in recently by announcing he lost his wallet in the commotion of the winning goal – another anecdotal pearl of brilliance from the presenter.

Ultimately, though, there were very few who didn't want United to bring English football back to the top table that night. That they grabbed victory from the jaws of defeat made the achievement so much more special.

# Dolly's INTERIORS

Designing Interiors since 1987



We specialise in

Made to Measure Curtains, Blinds & all Soft Furnishings plus

Upholstered Headboards, Pelmetts, Coordinating Bed Dressings & Cushions

Inspiring Range of Curtain Poles & Trimmings • Remote Controlled Track Systems

Fabric & Wallpaper Sampling Service • Curtain Alteration Service

Plantation Shutters

*Special Offer – 10% Discount  
with this advert*

To book a Measure & Design consultation call us on 020 8523 9600 or email us with your requirements at: [sales@dollysinteriors.co.uk](mailto:sales@dollysinteriors.co.uk)

We service East London, Essex and surrounding areas.



No. 14, Crate Business Park, Oakwood Hill, Loughton, IG10 3TZ



# PurrFECT CATNAPS

**C**ats love to sleep – it's one of the things we envy the most about them. But have you ever given much thought to what your cat's sleeping position means?

**BELLY-UP CAT:** A cat that sleeps with its belly exposed and paws splayed is a cat that feels secure and comfortable in its surroundings. It's exposing the most vulnerable part of its body, showing you it feels safe in its home.

**CURLED-UP KITTY:** A curled-up cat with its tail wrapped around its body and head tucked in, means several things. This position helps it stay warm and also helps the cat protect itself from potential threats.

**IN A BOX:** Cats love to sleep in a box or any small space as it makes them feel safer than being in an open space. It's a normal behaviour that helps them feel warm and secure.

**EYES HALF-SHUT:** A cat that sleeps with its eyes half-shut is doing so to enable it to react quickly to any threat or disturbing noise. It's common in noisy

households, or for cats in new surroundings.

**LOAF OF BREAD:** The 'loaf of bread' position is where a cat sleeps with its paws and tail tucked under its body, making it look like it has no legs. Cats choose this position for comfort and to stay warm. This position is also a sign that your cat is happy and relaxed.

**SLEEPING ON YOU:** A cat sleeping on you can be for a couple of reasons. It either wants to feel added protection with a 'safety in numbers' approach, or it wants to feel close to you and benefit from some extra warmth.

**STRETCHED OUT:** A stretched-out cat is a happy and relaxed cat, who's usually in a deep sleep. When a cat is in this position, it's best to let it stay there.

**PAWS ACROSS FACE:** A cute position to witness, paws across the face can mean your cat is trying to keep its nose warm or block out the light. A cat that's hiding its face wants to be left alone, so it's best to let your cat be in this position.



## Create your own DIY BAR

**W**hen it comes to entertaining at home, there's one thing everyone needs – a garden bar. Garden bars have grown in popularity in recent years, and you can easily build your own with a little creativity and determination. Get ready to transform your garden into your new local with these tips for building the perfect garden bar.

**HOW BIG CAN YOU GO?** Garden bars come in all shapes and sizes. From a tiki bar to your own garden pub complete with flat-screen TV and pool table, you can be as ambitious as you like. Decide on your budget and how much space you have to create the perfect outdoor bar.

**TRY DIY OR READY-MADE.** A DIY garden bar is the perfect chance to get creative. You can use recycled materials and design a space that's ideal for your needs. Alternatively, you can find ready-made garden bars in places like Argos or Etsy, or hire someone to custom build your bar.

Using a pre-existing structure, such as a shed or potting bench, your extension or garage, could also help you make the most of your garden space, and give you a good foundation for your garden bar.

**MAKE IT SHELTERED.** Some shelter is a must for any British garden bar. Whether you choose to have your bar enclosed or build a solid weatherproof canopy, having shelter will protect your bar while helping you make the most of it in any weather.

**ADD APPLIANCES AND STORAGE.** From fridges to pumps and spirit dispensers, your garden bar can have it all. Buy your equipment and get it installed by professionals to make sure the job is done safely. Don't forget to add storage.

**BUY SOME ACCESSORIES.** Some of the essentials you'll need for your garden bar include: Glasses (you could create your own labels too) | Bottle holders | Ice bucket | Cocktail shakers | Towel hooks | Bottle openers/corkscrews

**GIVE IT A NAME.** Once your bar is all in place, the last thing to do is give it a name. Name it something unique – it's your bar, after all.

Photo credit: Allan Murdoch/Liberty Games, Future Plc/Doranna Henderson, Future Plc/Simon Whitmore, Future Plc/Oliver Young all via IdealHome.co.uk





Green/Sedum Roofs • Modified Bitumen Roofing • Fibreglass Roofing  
 Single-ply Roofing • New roofs/Re-roofs • Roof Maintenance • Roof extensions/skylights

# Roofing Services

We are a family run company with an established reputation within the roofing and waterproofing industry. Operating with the highest values and dedication, we pride ourselves on:

- Fibreglass (Liquid Applied)
  - Single Ply (Membrane)
    - Torch on Felt
  - Hot Melt (Bitumen)
    - Slate & Tiling
    - Lead Works



0208 088 2890

[www.horizonflatroofing.uk](http://www.horizonflatroofing.uk) • [info@horizonflatroofing.com](mailto:info@horizonflatroofing.com)

# KNOW YOUR *knotweed*

Two little words that spark fear in the hearts of homeowners across the UK – Japanese knotweed. Known for its ability to spread rapidly, this destructive weed sets down strong roots that can cause havoc with the foundations of your property.

### *How to identify Japanese knotweed in your garden*

Japanese knotweed has several distinctive characteristics that can help you identify it in your garden, including:

Zig zag stems | Lush green-coloured leaves | Heart or shovel-shaped leaves with a flat base | Bamboo-style stems | Red-tinged shoots | Often found in dense clumps | In July, look out for creamy white flowers | Between September and November, it will leave brown stems once the leaves have died back

### *How to stop Japanese knotweed from spreading*

Although it is not illegal to have Japanese knotweed in your garden, you are required to take steps to stop it becoming a problem in neighbouring gardens.

### *Spray with chemicals*

If you choose to tackle Japanese knotweed yourself, you need to make sure you are using the right chemicals to carry out the job efficiently and safely. Look for a glyphosate-based product such as Roundup Tree Stump Weedkiller that has a label recommendation for controlling Japanese knotweed. It typically takes three years to treat Japanese knotweed using this method.

### *Bury it*

You are legally allowed to bury Japanese knotweed at the site as long as you bury it at a depth of at least five metres, cover the plant remains with a material that does not allow the plant to grow through it (known as a root barrier) and do not bury any other waste with it. CuTex Copper Root Barrier is ideal, functioning as both a physical and a chemical barrier.

### *Seek professional help*

The Royal Institution of Chartered Surveyors has worked with the Property Care Association to establish a trade body for Japanese knotweed specialists in the UK, where you can find a register of vetted consultants and contractors. Find out more at [www.property-care.org](http://www.property-care.org)



GARDENING





# Planting A PALM TREE

A huge trend this summer, palm trees make a great addition to any garden. Although most palm trees need warmer climates, there are some that are suitable for planting outdoors in the UK.

**CHOOSING A PALM TREE:** You need to choose a hardier variety of palm tree if you want it to be able to survive the cold and frost. There are three types of palms that have a track record of growing well in the UK. These are Chusan Palm (*Trachycarpus*), Dwarf Fan Palm (*Chamaerops*) and Needle Palm (*Rhapidophyllum*).

**PLANTING A PALM TREE:** You can plant palm trees at any time of the year, although during spring or early summer is best as this will give your palm five or six months to grow strong before the first frost. Palm trees love a sunny position so are perfect for patio pots or for areas in your garden that get ample sunlight.

**TO PLANT IN THE GROUND:**  
> Dig a hole twice as

- wide and a few inches deeper than the root ball.
- > Add a handful of slow-release palm fertiliser to the centre of the hole.
- > Remove the root ball from its container and carefully straighten out any coiled roots.
- > Place the top of the root ball in the hole and fill with one-half soil and one-half rotted manure or compost.
- > Make sure that the palm trunk is not deeper than it was in its original container and that the roots are not at all exposed.
- > Water the palm tree – aim for between 10 and 20 per cent of the original container size. The soil should be wet, not soggy.
- > Apply a six-inch layer of mulch over the root zone.
- > Water again.

- CARING FOR A PALM TREE:**
- > Water your newly planted palm daily for the first two months.
  - > After three or four months, apply a slow-release fertiliser for palms.
  - > Wrap the trunk in the winter with water pipe insulation or heat tape.

Photo credit: palmcentre.co.uk



**BESPOKE BARREL  
FURNITURE MADE TO ORDER  
AND ALSO LOTS IN STOCK**



Completely unique and hand made, can have marine vinyl seat covering at an additional cost or plain. Also, epoxy resin finished barrel articles and River Tables available.

**For more details & pictures please call or message for individual prices  
0208 088 8733 • Mobile: 07467 944671**

Local delivery is free within 10 miles of Romford (not across the Thames).  
Delivery can be arranged at an additional costs to what is listed and depending on post code



## DO YOU VALUE NATURE?

### Eco-conscious Bespoke Furniture made from Pre-used Wood



### APPLIANCE REPAIRS AND SALES

We repair all makes and models

Washing Machines • Tumble Dryers  
Dishwashers • Ovens • Hobs • Cookers  
Fridge/Freezers • Extractor Hoods

New appliances in stock for same day delivery & installation

Prices listed on our website

Call 01279 310793

Or Book Online

[www.spindoctoruk.co.uk](http://www.spindoctoruk.co.uk)



CONTACT US FOR A FREE NO OBLIGATION QUOTE 0208 050 4563

Minimise the financial & environmental impacts of your waste



Our reliable & cost-effective general waste collection & disposal service is tailor-made to meet your requirements

You can rely on us to deal with your general waste in the most compliant & environmentally-friendly manner

[contact@clearoffwaste.com](mailto:contact@clearoffwaste.com)

[www.clearoffwaste.com](http://www.clearoffwaste.com)

@clearoffwaste



ASHLYNS GARDEN CENTRE

Come & visit us

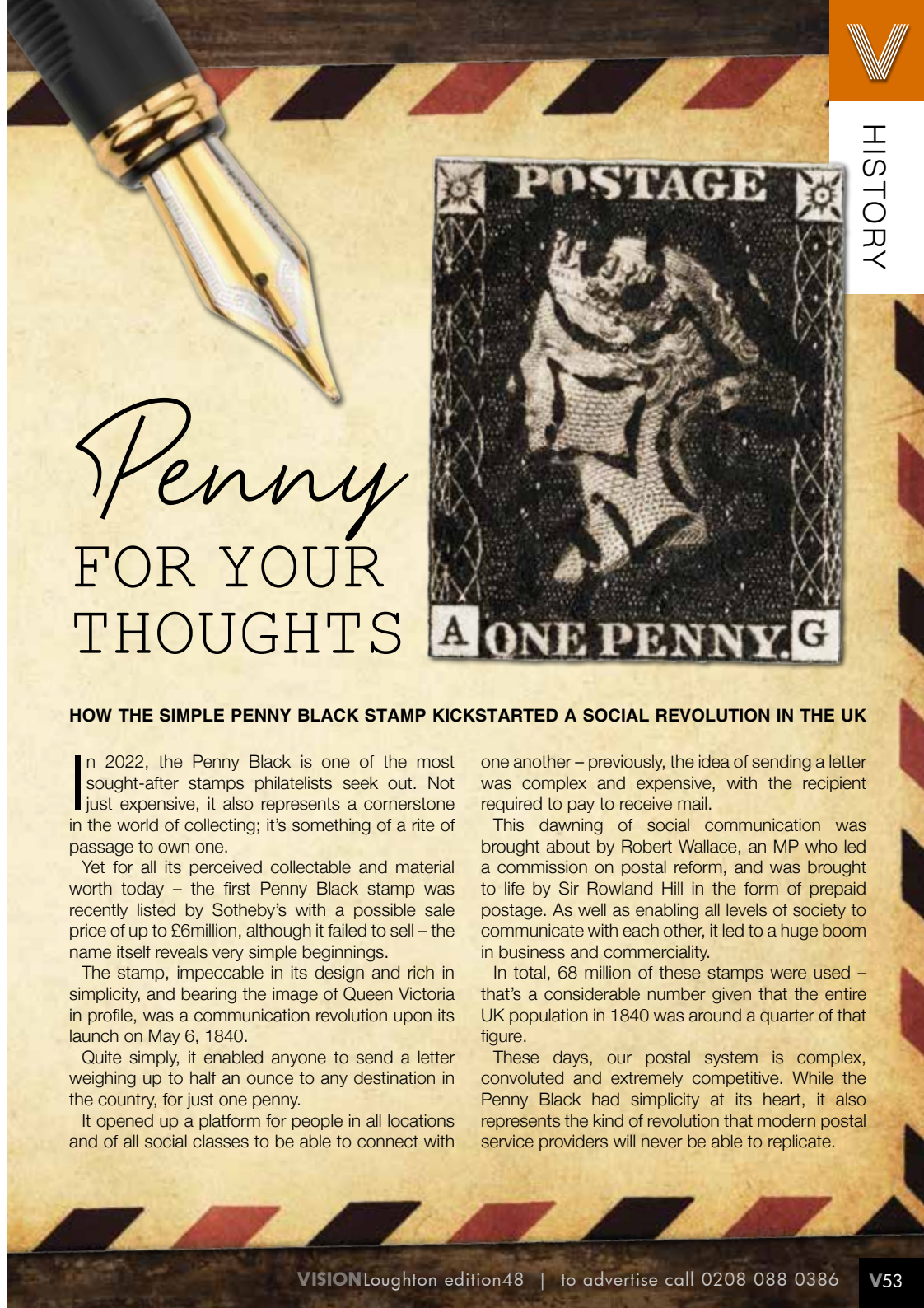
Tel: 01992 276 034 • [www.ukwholesaleplants.co.uk](http://www.ukwholesaleplants.co.uk) @Ashlyns farm garden centre

Ashlyns Farm, North Weald, CM16 6RZ

## Your local plant specialists

BEDDING PLANTS • SHRUBS • TREES

- SEASONAL BEDDING PLANTS
- SPRING BULBS • HANGING BASKETS
- READY-MADE PLANTERS • & MORE...



HISTORY

# Penny FOR YOUR THOUGHTS

## HOW THE SIMPLE PENNY BLACK STAMP KICKSTARTED A SOCIAL REVOLUTION IN THE UK

In 2022, the Penny Black is one of the most sought-after stamps philatelists seek out. Not just expensive, it also represents a cornerstone in the world of collecting; it's something of a rite of passage to own one.

Yet for all its perceived collectable and material worth today – the first Penny Black stamp was recently listed by Sotheby's with a possible sale price of up to £6million, although it failed to sell – the name itself reveals very simple beginnings.

The stamp, impeccable in its design and rich in simplicity, and bearing the image of Queen Victoria in profile, was a communication revolution upon its launch on May 6, 1840.

Quite simply, it enabled anyone to send a letter weighing up to half an ounce to any destination in the country, for just one penny.

It opened up a platform for people in all locations and of all social classes to be able to connect with

one another – previously, the idea of sending a letter was complex and expensive, with the recipient required to pay to receive mail.

This dawning of social communication was brought about by Robert Wallace, an MP who led a commission on postal reform, and was brought to life by Sir Rowland Hill in the form of prepaid postage. As well as enabling all levels of society to communicate with each other, it led to a huge boom in business and commerciality.

In total, 68 million of these stamps were used – that's a considerable number given that the entire UK population in 1840 was around a quarter of that figure.

These days, our postal system is complex, convoluted and extremely competitive. While the Penny Black had simplicity at its heart, it also represents the kind of revolution that modern postal service providers will never be able to replicate.

# The history of **BANK HOLIDAYS**



Who doesn't love a bank holiday? They offer the chance to sit back and relax and spend time with family and friends, and this year, many Brits will enjoy an extra day off to celebrate The Queen's Platinum Jubilee.

But how did bank holidays first come about?

## THE BANK OF ENGLAND AND THE EXCHEQUER STARTED THE TREND

Before public bank holidays were made official, the Bank of England and the Exchequer were known for taking holidays to celebrate Christian festivals and royal events. In fact, they were believed to have taken around 40 days off each year. Unfortunately, this was cut down to just 18 days in 1830 and then down to just four in 1834.

## THE BANK HOLIDAYS ACT IN 1871

In 1871, the Bank Holidays Act was drafted by banker and politician John Lubbock, the first Baron of Avebury. This was when the first official bank holidays became law in

England, Wales and Ireland. These holidays were: Easter Monday, Whit Monday, the first Monday in August and Boxing Day.

Meanwhile, Scotland had New Year's Day, Good Friday, the first Monday in May, the first Monday in August and Christmas Day.

## ADDITIONAL CHANGES TO BANK HOLIDAYS

In the 1971 Act, New Year's Day, Good Friday and Christmas Day became bank holidays in England, Wales and Northern Ireland.

The 1971 Act also made January 2 and Boxing Day a bank holiday in Scotland only.

In 1978, the government made the first Monday in May a bank holiday in England, Wales and Northern Ireland.

A Northern Ireland only bank holiday to mark the anniversary of the Battle of the Boyne was introduced in 1926 and falls on July 12.

In 1965, the first Monday in August bank holiday was changed to the Monday following the last weekend in August in a bid to increase trade. Scotland was exempt from this.



**Control your security**  
Be **App**solutely connected

Did you know your smartphone  
can now control your alarm  
system through an app?

**NEW SYSTEMS SUPPLIED  
& FITTED FROM £450.00**  
(OR WE MAY BE ABLE UPGRADE  
YOUR EXISTING SYSTEM)



**CCTV Systems • Alarm Systems**  
**Fire Alarms • Door Entry Systems • Safes**  
**Vehicle Alarms & Tracking • Ghost Immobilizers**

**020-8529-5710 • www.cobra-ss.co.uk**  
**155 Station Road, Chingford, London, E4 6AG**



**THE B7 MEDIA GROUP**

**PRINTING • BUSINESS CARDS • LEAFLETS • DISTRIBUTION**  
**SIGNAGE • MENUS & BROCHURES • EXHIBITION BOARDS & BANNERS**  
**RETAIL PACKAGING • WINDOW VINYLs • LOGO DESIGN**  
**BRAND ALIGNMENT • VEHICLE WRAPPING • CARBON PADS**  
**WORKWEAR • WEBSITES • SOCIAL MEDIA • I.T. SOLUTIONS**

ENQUIRIES@B7MEDIAGROUP.COM

0208 088 0386





# BITCOIN *for beginners*

The cryptocurrency market has exploded in the last few years, with everyone from Elon Musk to Snoop Dogg enjoying a slice of this highly lucrative pie.

If you think you'd like to test the cryptocurrency waters, then the below beginner's guide is just what you need.

### Choose a cryptocurrency trading programme

When choosing a trading programme, you want one that is regulated so that you feel safe in your investment. You should also look at how easy it is for you to withdraw funds. The most popular cryptocurrency trading programmes in the UK are eToro, CoinMama, PrimeXBT, and BlackBull Markets.

### Pick crypto to invest in

Most active cryptocurrency traders allocate the majority of their investment to either Bitcoin or Ethereum, as these move more predictably than smaller altcoins. That being said, you may also choose to invest in smaller mid-market cap cryptos as, although riskier, this can deliver higher returns.

### Select your strategy

If you google 'crypto-trading strategies', you will be met with nearly 110 million results, which can make the strategy process a little confusing. For those who are completely new to trading, we recommend that you book onto a cryptocurrency trading course such as 'Become a Trader' with TradeCobb or 'Cryptocurrency Fundamentals' by Udemy.

### Consider automated crypto trading

Another option for beginners is to utilise the services of an automated crypto-trading platform such as eToro or Learn2Trade. These work by using trading bots to enact a strategy that is based on your investment goals.

### Our top trading tips for beginners

- Start with a small investment
- Choose a secure wallet to keep your digital assets safe
- Research the market thoroughly first
- Set stop-loss levels and stick to them
- Don't be afraid to diversify your portfolio
- Do not let your emotions dictate your decisions.

## TTS SOLICITORS



## YOUR PERSONAL CONVEYANCING SOLICITORS

We are on 60 lender panels including most high street banks, building societies and first tier lenders  
We are CQS accredited and offer outstanding one-on-one service for

- Sales and Purchases – both leasehold & freehold
- Shared Ownership Right to Buys
- Affordable Housing
- Remortgages & Transfer of Equity
- Auction Sales and Purchases
- Lease extensions

RESIDENTIAL & COMMERCIAL CONVEYANCING  
CORPORATE ACQUISITIONS  
GENERAL LITIGATION  
FAMILY WILLS & PROBATE



0208 088 2941 | [www.ttslegal.com](http://www.ttslegal.com) | [info@ttslegal.com](mailto:info@ttslegal.com)  
1-4 The Parade, Monarch Way, Ilford, Essex IG2 7HT  
CITY OFFICE: 2nd Floor, Mezzanine, 53 New Oxford Street, London, WC1A 1BL

# YOU'RE NOT ALONE



OVER 207,500 OTHER PEOPLE IN ESSEX READ VISION MAGAZINE'S MONTHLY

Your Monthly Lifestyle Magazine



CONTACT US TO GET YOUR BUSINESS SEEN BY OUR READERS  
See all our magazines at [www.visionmagessex.com](http://www.visionmagessex.com)

BillericaYShenfieldBishop'sStortfordBrentwoodOngarChelmsfordBeaulieuEppingTheydonFrinton-on-Sea HalsteadHertfordHornchurchLeighThorpeBayLoughtonMaldonBurnhamManningtreeMistleyRayleighWickford SouthWoodfordWoodbridge



ACE INVESTMENT PROPERTIES  
Investment Management

**Hello Landlords and Investors**



**Would You Like To Get One Year's Rent Paid In Advance?**

Even when your tenant pays monthly!



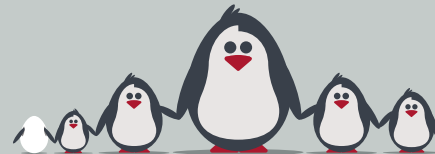
For more information, contact us on:

- 📞 0333 242 3632
- ✉️ [q@aceinvestmentproperties.com](mailto:q@aceinvestmentproperties.com)
- 🌐 [www.aceinvestmentproperties.com](http://www.aceinvestmentproperties.com)

Our Advance Rent Option product (ARO) is changing the way Investors and Landlords are looking at their investments and is a huge game-changer for anyone with a buy-to-let property.

**Specialist family lawyers.**

RAYDENSOLICITORS



**There might be challenging times in your life when a family law solicitor can help:**

- Have you decided your marriage or relationship is over, are you unsure about your family's future?
- Do you need to protect your children, or understand the options to resolve arrangements for your children?
- Do you need a pre nuptial or post nuptial agreement to protect assets?
- Are you moving in with your partner and need a cohabitation agreement?

Choosing the right family lawyer for your circumstances is crucial. Rayden Solicitors are family law specialists with many years' experience; we provide tailored and practical solutions in all areas of family law - divorce, relationship breakdown, child arrangements and financial settlements.

Bespoke advice from Rayden Solicitors in Loughton.

Contact us, [enquiries@raydensolicitors.co.uk](mailto:enquiries@raydensolicitors.co.uk)

Loughton  
127 High Road  
Loughton  
IG10 4LT  
Tel: 0203 773 3919

RAYDENSOLICITORS  
[www.raydensolicitors.co.uk](http://www.raydensolicitors.co.uk)

We are available on



PICTURE  
*Perfect*



BUSINESS & PROPERTY



*Getting your home ready for those seller snaps*

**Y**ou shouldn't judge a book by its cover, but that's exactly what happens when potential buyers explore a house for sale. Those seller images have become increasingly important for putting your home in the best light and generating interest in your property.

Take a look at these tips to get your home ready for those all-important photos:

- > Put away all clutter. If it doesn't need to be there, get rid of it.
- > Clear the worktops and put accessories away; it will help to create a more spacious look.
- > Add flowers and other decorative features to give a more homely feel.
- > Make sure windows and other glass surfaces are fully wiped and dust-free.
- > Hide away unsightly items like bins.
- > Curate your toiletries so they don't appear cluttered – put out your most premium products.
- > Fold any towels neatly, and don't leave wet towels lying around.
- > Make sure curtains are properly hemmed and dust-free.
- > Make all beds and change your bedding regularly.
- > Put away all your shoes and clothes.
- > Create an ambience with a lit fire and candles.
- > Make the front of your house more appealing by keeping the lawn mowed and bins out of sight.
- > Give your garden a once-over to remove any debris.
- > Put the toilet lid down – nobody wants to look inside someone's toilet.
- > Finally, get into the habit of regular cleaning to keep your home dust-free and sparkling.

These easy tips will help your home look its best in seller photos, and will hopefully inspire someone else to make memories there.

Only £895 for a fully fitted electric door.

Gotta get a Garolla.



Garolla garage doors are strong and solidly built. They're made to measure in our own UK factories. The electric Garolla door rolls up vertically taking up only 8 inches inside your garage. Our expert installers will fit your new door and take away the old one so there's no mess.

Give us a call today and we'll come and measure up completely Free.

**GAROLLA**  
ROLLER SHUTTER DOORS  
GOTTA GET A GAROLLA

NOW ONLY  
**£895** WAS £1,354 INC VAT

WHAT'S INCLUDED WITH EVERY DOOR:  
FREE EXPERT MEASURING & FITTING  
TWO REMOTE CONTROLS  
ACOUSTIC & THERMAL INSULATION  
AVAILABLE IN 21 COLOURS  
FREE DISPOSAL OF YOUR OLD DOOR

Offer valid for openings up to 2.6m wide & inc: 2 remote controls, 55mm white slats, internal manual override.

CALL US TODAY ON  
**01992 830 024**  
MOBILE  
**07537 149 128**  
[www.garolla.co.uk](http://www.garolla.co.uk)



MOTORING



# DEATH TRAP

## THE DANGERS POSED BY LOOSE OBJECTS IN YOUR CAR

We all know the dangers represented by cars and, as responsible drivers, invest time and effort in protecting the occupants of our cars from the dangers of the road. Yet what if there were a collection of hazards inside our vehicles – things that account for more than 15,000 injuries every year?

What we're talking about here is the threat posed by everyday items within a car. From a metal tissue box on the back shelf to dashboard air fresheners, from tablets and devices right the way through to cans of drink and snacks. The point is, when a collision occurs, it's not just the things on the outside of the vehicle that can cause harm.

A string of recent awareness campaigns has been designed to make motorists more aware of the risks when our vehicles are decorated with possessions. Securing items or, better still, putting

them away in door or back-of-seat pockets, or the glove compartment, ensures that if impact occurs, those possessions won't come hurtling through the air towards you.

Think carefully about luggage storage, make sure floor mats are secured in the correct positions, and do your best to keep pets secured and still.

Furthermore, if you think the threat of being hit by a loose or unsecured object in your car only comes about in the event of a road traffic accident, think again. Anything from sharp cornering to speed bumps may dislodge an item and send it on a path towards you or your passengers.

In the modern era, cars are more and more becoming extensions of our home. While that gives us the chance to adorn them with small items and luxuries, it's always smart to keep a close eye on the potential danger they might pose.

Small businesses are the heart of the economy...

use a VISION advertiser today

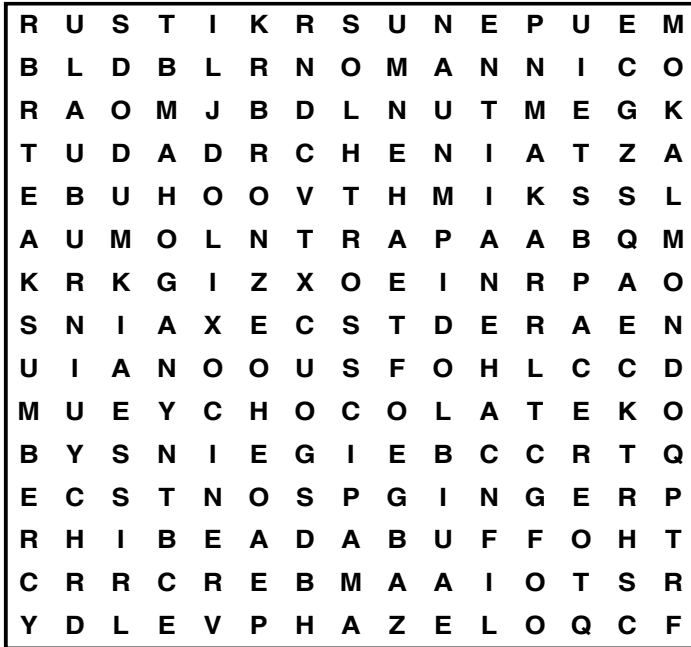


# PUZZLES & TRIVIA

PUZZLES

Answers: see end of The VISION Listings

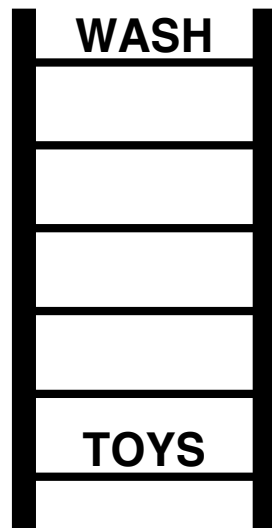
- ▶ ALMOND
- ▶ AMBER
- ▶ AUBURN
- ▶ BEIGE
- ▶ BRONZE
- ▶ BUFF
- ▶ CARAMEL
- ▶ CHOCOLATE
- ▶ CINNAMON
- ▶ COCOA
- ▶ GINGER
- ▶ HAZEL
- ▶ MAHOGANY
- ▶ NUTMEG
- ▶ RUST
- ▶ SAND
- ▶ SEPIA
- ▶ SIENNA
- ▶ TEAK
- ▶ UMBER



## DID YOU KNOW?

- ▶ Venus travels all the way around the sun before it completes a full rotation.
- ▶ All the planets in the solar system rotate anticlockwise, except Venus.
- ▶ The moon has no atmosphere, so it's likely that footprints on it will last forever.
- ▶ The sun makes up more than 99 per cent of the solar system's mass.
- ▶ Dogs, cats, monkeys, frogs and guinea pigs have all been taken into space.
- ▶ Owing to gravity not pulling you down, it's likely you'd be slightly taller if you went to space.
- ▶ Neptune's winds are the fastest in the solar system, reaching approximately 1,600 miles per hour.

## WORD LADDER



THE AIM: Change the word at the top of the ladder one letter at a time to make the word at the bottom.

HOW TO: Change one letter on each step to make a new word. By the time you reach the end, you should have created the new word.

DO NOT rearrange the order of the letters.

TIP: There is usually more than one way to solve this puzzle.

Lifestyle & Mobility [lifestyleandmobility.co.uk](http://lifestyleandmobility.co.uk)

## ESSEX LARGEST SHOWROOM



Motability offers you the ability to enjoy worry-free mobility

Available through weekly lease payments

A new product every 3 years

To find out how Motability can help you, talk to our Specialist today



**HARLOW 01279 420600**  
67-68 HARVEY CENTRE, CM20 1XP

**BASILDON 01268 520233**  
45/49 MARKET SQUARE, SS14 1DE

**WELWYN GARDEN CITY 01707 247200**  
3 MUNDELLS COURT, AL7 1EN

**SOUTHEND-ON-SEA 01702 417088**  
THE VICTORIA SHOPPING CENTRE, SS2 5SP



Checkatrade.com  
Where reputation matters



## ACCOUNTANT & TAX ADVISORS

### ALL THINGS ACCOUNTING

Accounting & tax services, we help with self-assessment tax return, corporation tax return, payroll, VAT return, CIS return & bookkeeping. Call 07539 035537 for free initial consultation

## ACUPUNCTURE

### HONG WEI CHINESE MEDICAL

Fully qualified & experienced, specialising in women's health & Fertility. Help with pain relief, emotional disorders, male/female conditions. 01708 454888 | hongweichinesemedicine.co.uk

## ANXIETY AND SLEEP DISORDERS

### HYPNOTHERAPYDEBONO.COM

Promoting good mental health and well-being, Helping make the change you want in your life for that inner peace. 07504 919721

## ARTS, DANCE & FITNESS

### STUDIO 1 UK

"Creative space simplified" - Performing arts | Dance | Fitness | Wellbeing | Hire | Adults and kids classes based in loughton Essex. 07914 667909

## BEAUTY & NAILS

### BEAUTY BY NATASHA KATIE

A local, mobile LVL Technician. Fully qualified level 2 and 3 beauty therapist Babcac insured and approved. 07961 462672

### SPECIAL NAILS

Dedicated to provide the best quality nail care for Men & Women. Walk-ins welcome, appointment bookings & gift vouchers available. 01708 442248

### THE NAIL STUDIO

Nail Studio lets you switch off and pamper with highly skilled technicians providing top treatments and nail products to meet your every need. 07572 526519

### WICKED WAXING LTD

Male and Female specialist waxing using hot and strip wax. 20 years' experience. Based in Epping with free parking. epping@wickedwaxing.com. 07368 684377

## BESPOKE TAILORING

### ROSS CARRINGTON BESPOKE TAILORING

Bespoke suits, shirts, jackets, wedding attire, evening wear. Alterations undertaken and visiting service available. 07824 153880 | 0207 898 0599

## BUILDING & CLAIMS

### CONCEPT BUILDING SOLUTIONS

We are builders specialising in water & fire-damaged properties. We put your home back to how it should be. 0208 088 3418

## CAR & VAN HIRE

### SCENIC SELF DRIVE

Your self drive hire specialists. Whether you require modern cars, motorhomes, vans or minibuses. Rest assured we will provide you a professional service. 01708 753461

## CARPET & UPHOLSTERY

### ARWIN CLEANING SERVICES

Over 30 yrs of exp, we can offer a professional, efficient and cost-effective solution for carpet and upholstery, cleaning and maintenance. 07973 417764

## CHESS CLUB

### VICKI'S CHESS CLUB

Vicki's chess coaching - teaches and provides games of chess to children and adults in Ilford and Debden. Phone Vicki: 07849 435451 | Website: Vickschessclub.uk

## CLEANING SERVICES

### SPOTCLEAN LTD

Commercial & domestic services specialising in office, shop, new build, refurbished & residential cleaning. 07940 213394

## COMPUTER REPAIR & I.T.

### MAPTEC IT

Your local residential & commercial IT specialists. We can fix your computers, configure email accounts & printers. Setup your Wi-Fi, Internet router & network. 0203 865 7174

## DRAINAGE

### UNITED DRAINS

A fast and professional plumbing/drainage service you can rely on, providing a 24/7 service. All planned, emergency and reactive works undertaken. Call 0203 637 6688

## ELECTRICAL & WHOLESALE

### CH ELECTRICAL WHOLESALE

Essex & East London's leading electrical wholesalers providing the trade & public a professional service with access to all leading brands. 01708 730591

## ELECTRICIAN

### CAPITAL ELECTRICAL SERVICES LTD

Domestic/Commercial, Repairs/Installation, Vehicle Charging Points, Portable Appliance Testing, Fire Alarms, Emergency Lighting, Installation Condition Reports. Call 0208 088 2916

### TACK ELECTRICAL

When you want a local, family firm, who care for your home electrics like their own, and give personal, professional service. 0208 088 0775

## FURNITURE RESTORATION

### ABBEEY GROUP

Abbey Group are specialist in creating, repairing & restoring quality furniture & wood surfaces to the highest standard. 01708 741135

### KINGS UPHOLSTERY

Handmade sofas & chairs designed especially for you to your required specifications. Also providing in re-upholstery & repair work. 01708 444125

## GARDEN SERVICES

### JOHN HEARNE

We take care of it all Lawn Mowing, Weeding, Planting, General Tidying, Fence/Shed Painting, Driveway/Patio Pressure Washing and more. Call for details 07908 523101

### KINGS CUTS TREE SERVICES

A Huge range of tree services available & offer expert arboricultural advice, ensuring your trees are looked after responsibly. 01708 578030 | 07467 944671

## HEALTH & WELLBEING

### IMPROVE YOUR SMILE DENTAL PRACTICE

Est. in 1986. Encompassing all needs from basic oral health to advanced dental procedures and high-end cosmetic treatments. New patients welcome. 0208 504 2704

## LAUNDRY & DRY CLEANING

### THE LAUNDRY MAN

From everyday washing, drying & ironing. We can pretty much launder anything & everything. Self service launderette available. 01708 447710

## MASTICS AND SEALANTS

### QUALITY MASTICS LTD

Bathroom and shower mastic joint sealing. Kitchens, windows, floors, external seals around windows. For information. Call 01245 520981

## PAINTING & DECORATING

### PGA DECORATING SPECIALIST

Interior - exterior - paper hanging specialists in Window repair care. 07769 646357 | www.pgadecoratingspecialists.co.uk | pgadecorators@yahoo.co.uk

### TRADITIONAL DECORATIONS

We are a family run business specialising in turning your house into a home. Giving advice on current decorating trends. 07737 562406

## PLASTERERS

### TF PLASTERING LTD

Professional quality workmanship, over 25 years' experience. Public liability insured. Skimming, coving, dry lining, rendering. Free quotes. 07738 278036 | 01279 416311.

## PROPERTY MAINTENANCE

### LILLYWHITE PROPERTY SERVICES

For all building works, full refurbishments & property maintenance inc heating, plumbing, electrical, decorating, flooring, tiling & plastering etc. Call today on 07949 394403

### STUART GREEN PROPERTY SOLUTIONS

Property maintenance specialist. Carpentry, painting/ decorating, laminate flooring, bath/shower re-siliconing, gutters cleared/repared, insurance work, PLI. 07917 870879

## ROOFING

### JIM BARR ROOFING

Exterior cleaning/maintenance. Gutters, Paving, UPVC; cleaned, repaired, renewed. 01708 874816 | 07833 572459

## WEB DESIGN & PRINTING

### SWIVEL CREATIONS

25+ yrs exp, we are specialists in web, print, clothing and embroidery. Professional, affordable, reliable. 01992 570383 | 07736 879233 | www.swivuk.co.uk | info@swivuk.co.uk

EMAIL [LOUGHTON@VISIONMAG.CO.UK](mailto:LOUGHTON@VISIONMAG.CO.UK) TO JOIN THE LISTINGS FOR £15 PER MONTH (+VAT)

PUT YOUR BUSINESS IN THE **VISION LISTINGS**...CALL **0208 088 0386** TODAY

To advertise call **VISION** on **0208 088 0386**

WORDLADDER: WASH, MASH, MASS, MOSS, TOSS, TOYS

OVER 30 YEARS OF EXCELLENCE



Life is Beautiful

At City Bathrooms we believe everyone deserves a beautiful bathroom, that's why our passion for luxury products, first-class customer service and expert bathroom advice is at the heart of everything we do.

City Bathrooms

11 Raven Road, South Woodford E18 1HB

3-5 Hermon Hill, Wanstead E11 2 AW

Telephone: 020 8504 5152

citybathrooms.com



**BRICKS.**  
ESTATE AGENTS

Would You  
like to Know  
How Much  
**YOUR  
PROPERTY  
IS WORTH?**



**CALL US TODAY:**



**0203 634 9998**

**LET | SALE | LAND**



**0.50% SALE FEE** (£2500 Minimum Fee)

**7% FULL MANAGEMENT LETTINGS FEE**

Offer expires 1 June 2022

rightmove 

ZOOPLA

OnTheMarket 



0203 634 9998



hello@bricksestateagents.co.uk  
bricksestateagents.co.uk



Bricks Estate Agents  
Create 29  
Oakwood Hill Industrial  
Loughton Essex, IG103TZ

