

FREE

Photo credit: Matt Baron/BEI/Shutterstock

HOW TO
ENJOY
RHUBARB
SEASON

THE BEST SECOND CITIES
to visit across Europe

SWEET AS...
discover the health benefits of honey

LEWIS CAPALDI

On overcoming life's challenges on the road to fame

SALE NOW ON

at your local independent electrical retailer

Price Match Guarantee | Super Service | Expert Knowledge | Safe Contact-Free Delivery

AEG

**1400 Spin 8kg
Washing Machine**
L6FBI842N



- 10 Programmes
 - ProSense Technology, Protex Gentle Drum
 - 20hr Delay Start
 - Dimensions: H85xW60xD57cm
- 2 Year Warranty
A+++ Energy Rating

Only
£399.⁰⁰

SALE NOW ON

at your local independent electrical retailer

Price Match Guarantee | Super Service | Expert Knowledge | Safe Contact-Free Delivery



Built In Single Oven
B3ACE4HG0B



- Conventional Fan Oven
 - 7 Programmes
 - Full Width Combination Integral Fixed Grill
 - Dimensions: H59.5xW59.4xD54.8cm
- 2 Year Warranty
A Energy Rating

Now Only
£769.⁰⁰
Was £829.00

**£60
Save**



Broadway Music and Vision

8 The Broadway,
Woodford Green, IG8 0HL
0208 504 7500
broadwaymandv@aol.com



Broadway Music and Vision

8 The Broadway,
Woodford Green, IG8 0HL
0208 504 7500
broadwaymandv@aol.com



*Terms & Conditions apply. Some products sold as an agent for Euroson Limited. All rights reserved. All offers are subject to availability while stocks last. Delivery & Installation charges may apply. Exclusions & Restrictions Apply. Prices correct at the time of print but can be subject to change. See in store for full details. Images for illustration purposes only. Copyright Euroson 2020. Savings compared to a higher price charged for 7 days. Savings on selected models only.

*Terms & Conditions apply. Some products sold as an agent for Euroson Limited. All rights reserved. All offers are subject to availability while stocks last. Delivery & Installation charges may apply. Exclusions & Restrictions Apply. Prices correct at the time of print but can be subject to change. See in store for full details. Images for illustration purposes only. Copyright Euroson 2020. Savings compared to a higher price charged for 7 days. Savings on selected models only.



Editor's notes...

MAY 2023



Brett Shohet, Editor

Hello and welcome to this month's edition of **VISION**Loughton.

I hoped you enjoyed the Easter break and took the chance to spend time with family and friends. In this fast-paced world, it's easy to forget to relax and chill out, so I hope you remembered to take some time for yourself too.

The world is constantly changing, and technology is moving at such a fast pace that it can be difficult to keep up with. AI is a subject on many people's lips at the moment. While some are uncertain about its capabilities, I think it's important not to be afraid of change and to embrace the potential offered to us by such technology.

Our cover star this month is Lewis Capaldi, who is heading out on a UK tour following the release of his new album. I recently watched his Netflix documentary, *How I'm Feeling Now*, and it offered a fascinating insight into his journey on the road to fame, particularly with his struggles with mental health. It drove home the important message about looking after our mental health, and that talking about such issues is the first step to destigmatising them.

I'd encourage everyone to support their local businesses while out and about during the bank holidays coming up this month. Whether that's shopping in an independent boutique or visiting a local restaurant for lunch, they are sure to appreciate your support.

Brett Shohet

This is your town's hyperlocal magazine, delivering to homes and businesses every month.

HOME & DIY | GARDENING | PETS | HEALTH & FITNESS | BEAUTY | FASHION | HISTORY | LOCAL NEWS | FOOD & DRINK | TRAVEL | BUSINESS & PROPERTY | SPORT | PUZZLES | MOTORING | KIDS | WHAT'S ON | TECHNOLOGY | THE LISTINGS

CONTACT US:



loughton@visionmag.co.uk | 0208 088 0386

www.visionmagessex.com | www.visionmagherts.com

[@visionmagessex](https://twitter.com/visionmagessex) | [@visionherts](https://twitter.com/visionherts) | [@visionmagessex](https://www.instagram.com/visionmagessex) | [@visionmageastherts](https://www.instagram.com/visionmageastherts)

[f Vision Magazine Essex](https://www.facebook.com/VisionMagazineEssex) | [Vision Magazine East Herts](https://www.facebook.com/VisionMagazineEastHerts)

All pages are recyclable

CONTRIBUTORS | Tabatha Fabray, Fiona Goble, Darius Morgan



The bathroom you have always dreamed of



YOUR DESIGNER BATHROOM

Visit our showroom and see the latest bathroom ranges
Bathworks can offer supply only, or arrange supply & fit

196 High Road, Woodford Green, Essex IG8 9EF

Tel: 020 8504 1765 Email: info@bath-works.co.uk

www.bath-works.co.uk



home
hub group

NOW OPEN ON
EPPING HIGH STREET



We supply and
install windows
and doors.

01992 276 046
essex@homehubgroup.co.uk

homehubgroup.co.uk

[f](https://www.facebook.com/HomeHubGroup) [@HomeHubGroup](https://www.instagram.com/HomeHubGroup)

FROM LILY SAVAGE

The death of Paul O'Grady MBE at the end of March brought a premature end to the life of one of our most respected modern-day entertainers – someone whose own reinvention helped the gradual process of changing attitudes in British society.

Growing up on the sometimes rough, often competitive back streets of Liverpool in the Swinging Sixties required more than a little spark and swagger, so it's probably little surprise that one of its finest exports, Paul O'Grady, created a career built on the foundation of his larger-than-life personality.

"As the saying goes, if you can't beat them, join them – and if you can't join them, become a drag act," laughed Paul O'Grady in one of this final interviews.

He departed from us at 67, seemingly with another decade or two of wit, charm and pzazz still ready to be unleashed, and the tributes have been extensive and heartfelt.

O'Grady had a number of jobs growing up, including working as a clerk, a waiter and a barman. It was only when he moved to London that he managed to create a career out of his passion for entertainment and performance.

The star's main outlet was the dynamic and daring Lily Savage, a drag queen act who became hugely popular on the underground scene, and eventually gained mainstream appeal when Channel 4 took up the option to give him a stint on *The Big Breakfast* after Paula Yates' resignation. The likes of *The Lily Savage Show*, *Blankety Blank* (which the character fronted for five years) and *Lily Live!* followed, showcasing the full mainstream evolution of a character. It was a long way from O'Grady's first TV appearance on *The Bill* back in 1988 as a transvestite prostitute informant named Roxanne (credited to Paul Savage).

While Lily Savage was eventually retired, the legacy of such a dynamic figure lived on. The character had opened doors for a brand of leftfield entertainment, and helped carve a path for LGBTQ+ rights and promotion across mainstream entertainment.

"I had been in that world since the seventies when I began performing in pubs and clubs around London, so it was all very natural for me, and had been for decades," he said.

"That I lived in a country that embraced me and loved me for who I was, I found wonderful, and it compelled me to go on to do other things."

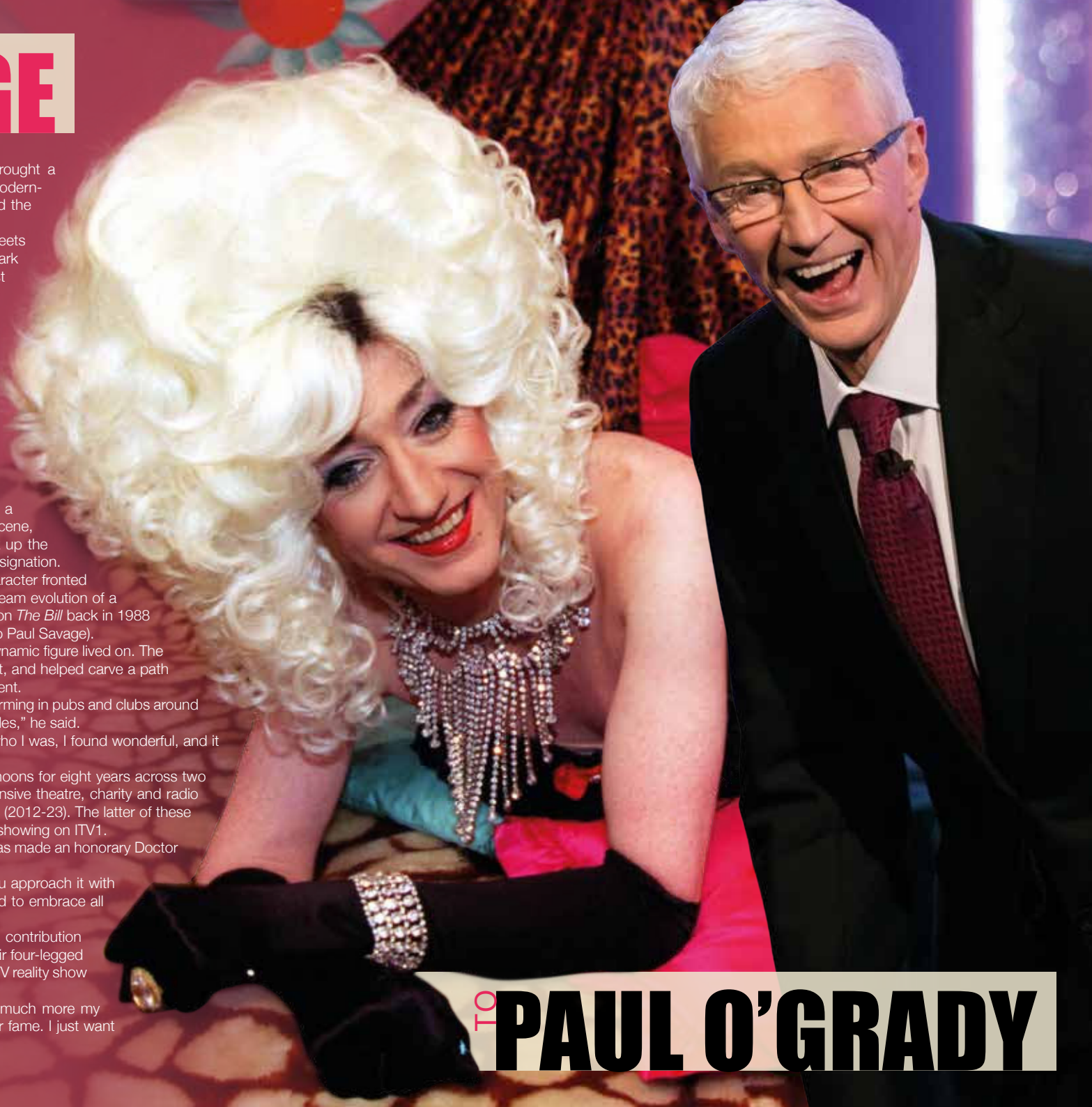
The successful *The Paul O'Grady Show* ran on weekday afternoons for eight years across two spells, and the entertainer also saw huge popularity across extensive theatre, charity and radio work, as well as the likes of *Blind Date* and *For the Love of Dogs* (2012-23). The latter of these popular TV programmes was filmed in late 2022 and is currently showing on ITV1.

In recognition of his contributions to TV, radio and theatre, he was made an honorary Doctor of Arts at De Montfort University Leicester in 2010.

"I always found you can talk about absolutely any subject if you approach it with interest, respect, humility and humour. That's the way I have tried to embrace all the challenges that have come my way," he said.

His funeral, which was held on April 20, featured a significant contribution from Battersea Dogs & Cats Home, who lined the streets with their four-legged residents in honour of the decade O'Grady spent presenting the ITV reality show at Battersea.

"I've always got on better with animals," he joked. "They are much more my type. As I've said before, I am not bothered about sex, money or fame. I just want a mongoose."



TO PAUL O'GRADY

A GUIDE TO THE MOON

Have you ever wondered why the moon appears to change shape each night? These are known as the moon's phases, and it isn't actually the shape of the moon that changes but our view of it.

Find out more about the different phases and names of the moon below.

WHAT ARE THE PHASES OF THE MOON?

- 1. New moon:** You cannot see the moon when it is a new moon.
- 2. Waxing crescent moon:** In the Northern Hemisphere, you see the waxing crescent moon as a thin crescent of light on the right.
- 3. First quarter moon:** The first quarter moon
- 4. Waxing gibbous moon:** This phase is between a half moon and full moon. Waxing means it is getting bigger.
- 5. Full moon:** You can see the moon completely illuminated during full moons.
- 6. Waning gibbous moon:** This phase is between a half moon and full moon. Waning means it is getting smaller.
- 7. Last quarter moon:** This appears as a half moon but with the opposite half illuminated to the first quarter moon.
- 8. Waning crescent moon:** In the Northern Hemisphere, you see the waning crescent moon as a thin crescent of light on the left.



FULL MOON NAMES

Each monthly full moon has a special name, many of which originated from Native American culture:

January: Wolf Moon

February: Snow Moon

March: Worm Moon

April: Pink Moon

May: Flower Moon

June: Strawberry Moon

July: Buck Moon

August: Sturgeon Moon

September: Full Corn Moon

October: Hunter's Moon

November: Beaver Moon

December: Cold Moon

WHAT IS A BLUE MOON?

A blue moon is an additional full moon that appears every once in a while. Typically, a year contains 12 full moons – three in each season – but sometimes a 13th full moon appears, known as a blue moon. Blue moons usually occur once every two to three years but can occur twice in one year. This is next due to happen in 2037.

WHAT IS A HARVEST MOON?

The harvest moon is the full, bright moon that occurs closest to the start of autumn. The term comes from the days before electricity when farmers relied on the moonlight to harvest their crops at night.



**WE GUARANTEE OUR CUSTOMERS
A FRIENDLY, RELIABLE AND
PROFESSIONAL SERVICE**



Empire UPVC and Roofing Specialists independently trade throughout Hertfordshire and a 40 mile radius from our office in Nazeing.

- | | |
|------------------------------|-------------------------------------|
| ✓ Felt, Tile & Slate Roofing | ✓ All Roofing Repairs & Maintenance |
| ✓ Liquid Rubber Roofing | ✓ Moss Removal |
| ✓ Fibreglass Roofing | ✓ Gutter Cleaning & Unblocking |
| ✓ Roofing Leadwork | ✓ UPVC Fascias, Soffits & Guttering |
| ✓ All Roof Windows | ✓ UPVC & Hardie Plank Cladding |

Office: 0208 088 3259

office@empireupvcandroofing.co.uk
www.empireupvcandroofing.co.uk

Visit Our Showroom at:

Unit 50 Hillgrove Business Park
Nazeing New Road, EN9 2HB



Checkatrade.com

FULLY INSURED





She may only recently have become a recognised TV star, but Esme Young has had a career most budding fashionistas can only dream of.

On first impressions, fashion designers Esme Young and Patrick Grant make unlikely candidates for a sparkling television duo, but that is precisely what they have become as judges on *The Great British Sewing Bee*.

Both have decades of experience in the fashion industry, yet it is Young's effervescent wit and charm that has made her a media darling in her twilight years. She is a natural in front of the camera, but given the Bedfordshire native's illustrious life and career – as revealed in her memoir *Behind the Seams: My Life in Creativity, Friendship and Adventure* – this is hardly surprising.

After graduating from Central Saint Martins in the early 1970s, Young and three of her female friends launched the Camden-based fashion collective Swanky Modes, whose designs appeared in *Vogue*

and were snapped by the likes of David Bailey and Helmut Newton. During these carefree years, Young lived in a squat in Maida Vale, partied with the likes of David Bowie and the Sex Pistols, and saw Swanky Mode dresses worn by superstars of the era such as Grace Jones and Cher.

In the 1990s, Young moved into cinema. Her creations included Leonardo DiCaprio's shirt in *The Beach* and Renée Zellweger's iconic bunny outfit in *Bridget Jones's Diary*.

Alongside her judging role, Young teaches at Central Saint Martins, where she passes down her sartorial wisdom. Musing on how she was taught darning, mending and crocheting by nuns at the all-girl convent school she attended, the talented designer confesses that while seeking perfection in the seams and sleeves she judges, she also wants to be excited and surprised by contestants' creativity.

It seems that, even at 74, Esme Young's best days remain ahead of her.

Photo credit: BBC-Love Productions-James Stack

WOODFORD HOUSE DENTAL PRACTICE



**Not all
clear aligners
are the
same.**



Book a FREE CONSULTATION with an experienced dentist for a straighter smile created with discreet, comfortable, clear aligners. We'll include a 3D scan of your teeth to show what we could do for you.

 **invisalign ELITE PLATINUM PROVIDER**

020 8504 2704
improveyourmile.co.uk

162 HIGH ROAD WOODFORD GREEN IG8 9EF

EXPERIENCE YOU CAN TRUST



DANIEL ROBINSON & SONS

INDEPENDENT FAMILY FUNERAL DIRECTORS



The funeral professionals...



Bespoke funerals to meet your wishes, including simple, traditional and green funerals, direct cremation, specialist vehicles and horse-drawn.

Preneed Funeral Plans

Dedicated 24 hour support to the community in our local funeral homes.

*Funerals as unique as
the loved ones remembered*

www.drobinson.co.uk

Because sometimes, only the very best service & care will do



ONE SMALL STEP FOR YOU, ONE GIANT LEAP FOR YOUR BUSINESS



Photo credit: Granger/Shutterstock

Your
Monthly
Lifestyle
Magazine



t: 0208 088 0386 w: www.VISIONmagessex.com
e: loughton@VISIONmag.co.uk

A guide to make-up

EXPIRATION DATES

Be honest, how often do you check the expiration date on your make-up? If the answer is hardly ever, then you're not alone. Unfortunately, out-of-date make-up can cause a whole host of problems, including skin irritations and eye infections.

FOUNDATION: Shelf life of six months to one year

You can keep your foundation germ-free for longer by keeping your fingers away from the neck of the bottle and gently dripping the formula onto the back of your hand before applying. If your foundation starts to separate, it definitely needs to be binned.

CONCEALER: Shelf life of six months to one year

Similar to foundation, concealer can last up to one year as long as you keep it out of direct sunlight and avoid touching the applicator with your fingers. Again, if it separates, throw it away.

LIPSTICK: Shelf life of one year

Typically, a lipstick should last for around 12 months. However, if you notice a change in texture, whether it has started to dry out or become gloopy, or if it starts to smell funny, it is no longer usable. Remember to store your lipstick in a cool, dry place.

EYE PENCIL: Shelf life of one year

Pencils tend to last longer than other eye products as they are sharpened regularly. Keep away from steam for enhanced longevity.

MASCARA: Shelf life of three months

If you don't want to get a nasty eye infection, you should be replacing your mascara once every three months or sooner if you notice that the formula has started to become clumpy or smell strange. Never share mascara.

EYESHADOW: Shelf life of three to six months

Although powder eyeshadow can potentially last for up to two years, because it is used around the eyes, you should replace it more often.



BEAUTY



10 things YOUR GP wishes you knew

Do you find yourself Googling questions or symptoms you wish you could discuss with your doctor? Read on to discover 10 things your GP wishes you knew, and save yourself time and worry.

♥ **You do not need to clean your ears**

Earwax is needed to protect your ears and should not be removed with a cotton bud or any other small item. This may cause a perforated ear drum.

♥ **You do not have to have a period on the pill**

You don't need to have a break from the pill so that you have a period. Taking 21-day contraceptive pills back to back without having the seven-day break will not cause any ill effects.

♥ **You don't need to bring down a child's fever**

A fever shows that your body is fighting an infection so, if your child seems well in themselves, you do not need to bring down a high temperature. However, seek medical attention if it is 39.4°C or higher.

♥ **Verrucas do not need to be treated**

In most cases, a verruca will go away on its own in a few weeks or a month without the need for

treatment. However, there are over-the-counter remedies that you can use to treat them.

♥ **You do not need to drink eight glasses of water per day**

As long as you stay hydrated, aiming to drink eight glasses of water a day isn't a necessity.

♥ **Watching TV in the dark isn't bad for your eyes**

As long as you take regular breaks from watching TV or any other screen, watching TV with the light off is no worse than watching it with the light on.

♥ **You can drink alcohol on some antibiotics**

Most antibiotics do not interact with alcohol, so you can safely enjoy a drink if you feel well enough. However, you should always check the attached leaflet to be on the safe side.

♥ **Being cold will not give you a cold**

A cold is a virus and is not caused by cold temperatures or being outside.

♥ **Cracking joints doesn't cause arthritis**

Cracking of the joints is caused by bubbles of gas and is nothing to be worried about.

♥ **The five-second rule isn't real**

If your child eats food that has been dropped on the floor, this is highly unlikely to cause any problems.



GOLF CLUB

Celebrate at
Woolston Manor Clubhouse

**The Special Venue for all your
Weddings & Parties**

You can celebrate in style in one of our stunning event spaces. The Clubhouse, set in 200 acres of beautiful grounds and lakes, boast a sweeping driveway, high ceilings and elegance.

Enjoy the benefits of
Woolston Manor Golf Club

**With our Individual, Joint &
Corporate Membership options**

Woolston Manor Golf Club membership provides you with access to the superb championship golf course, modern clubhouse, fixtures, competitions, social calendar and top class catering.



Woolston Manor Golf Club, Abridge Road, Chigwell, IG7 6BX

☎ 0208 500 2549 ✉ info@woolstonmanor.co.uk 🌐 woolstonmanor.co.uk



Honey

NOT JUST FOR SPREADING ON TOAST

On May 20, it's World Bee Day – a time to celebrate those buzzing bugs that make honey.

How do bees make honey?

Using their hollow tongues, bees suck up the nectar from flowers and store it in part of their stomach. Back in the hive, they regurgitate the mixture and spread it through the honeycomb cells. They then fan it with their wings to evaporate the moisture and turn it into honey. There are more than 300 different kinds of honey, depending on the flowers the nectar comes from.

Of course, honey is delicious spread on toast. But did you know it's also a great natural health and beauty aid because it contains micronutrients, including vitamins, minerals and antioxidants? It also has moisturising, antibacterial and anti-inflammatory properties. For maximum benefits, choose raw, organic honey.

Healthy scalp and hair

To treat your scalp, use a tablespoon or two of honey straight from the jar. Leave for a couple of hours before rinsing and shampooing. For a hair mask, mix a tablespoon of honey with the same quantity of olive oil. Leave on for 15 minutes before rinsing and shampooing.

Minor cuts, grazes and insect bites

If you're unlucky enough to suffer a cut or bite, simply dab on some honey to help with the healing process.

Sore throats

To relieve a sore throat, mix a tablespoon of honey with ¼ teaspoon turmeric in a mug of warm water or tea, and sip when you need it. You can also use the mixture as a gargle.

Healthy sleep

A tablespoon or two of honey before bed, eaten or in a drink, can help regulate your blood sugar and make you feel relaxed.

Remember...

Never give honey to children under one year as certain bacteria in honey can produce toxins in a baby's intestines. Also remember that honey is high in sugar and calories. The information here is for guidance only – it is not medical advice.



Manjal

SOUTH INDIAN & SRI LANKAN CUISINE

RESTAURANT | BAR | EVENTS

Langston Road, Loughton, IG10 3TQ

Restaurant Hire

Sports Bar | Field Hire | Football & Cricket



Follow Us

@manjalrestaurantuk

visit: manjalrestaurant.com

Email: info.loughton@manjalrestaurant.com

0208 088 2791





RESTAURANT

HOTEL

BAR

LOUNGE

NEW LUNCH MENU & HEATED OUTSIDE SEATING



9 LUXURY HOTEL ROOMS AVAILABLE

GET IN TOUCH FOR MORE
INFORMATION & TO BOOK

01992 276063

www.funkymonkhotel.com

[funkymonkhotel](#)

236 High Street, Epping, CM16 4AP



SCAN ME

KIWILICIOUS!

Although small, kiwis pack a punch when it comes to both health benefits and flavour. They're sweet, easy to eat and highly nutritious, so explore this extremely underrated and underused fruit in more detail below.

WHAT IS A KIWI?

If you are unfamiliar with this fruit, then let us tell you a little more about it. Oval in shape and about the size of a large egg, kiwis boast brown skin, green flesh and tiny black seeds.

WHAT ARE THE HEALTH BENEFITS OF EATING KIWIS?

Excellent source of protective antioxidants | Support heart health | Contain both soluble and insoluble fibre for digestive health | Good source of vitamin C | Alleviate some of the symptoms of asthma | Support immune function | Low in calories | Count as one of your five-a-day

HOW TO ENJOY KIWIS:

KIWI FRUIT SMOOTHIE

You will need: 3 peeled kiwis | 1 peeled, stoned and chopped mango | 500ml pineapple juice | 1 sliced banana

Place all the ingredients into a blender and blitz until smooth. Serve over ice.

KIWI AND AVOCADO SALSA

You will need: 3 ripe chopped kiwis | ½ peeled and chopped avocado | ¼ cup of pomegranate seeds | 1 tbsp thinly sliced onion | 1 tsp chopped chilli peppers | 1 tsp extra virgin olive oil | 1 tbsp chopped fresh coriander | Salt and pepper to taste

Place the kiwi, pomegranate seeds, avocado, onion and olive oil in a bowl. Add the chilli peppers and coriander and gently fold in, then season to taste.

KIWI AND STRAWBERRY LIME FRUIT SALAD

You will need: Handful of strawberries | 1 kiwi | 1 tbsp honey | 1 tbsp lime juice | ¼ cup of mint leaves

Chop the strawberries into small cubes and add to a mixing bowl. Peel the kiwis, chop into small cubes and add to the bowl. Add the honey, chopped mint and lime juice and gently mix together. Be careful not to bruise or mash the fruit.



FOOD & DRINK



RAVISHING Rhubarb

An unusual vegetable owing to its very sour yet slightly sweet taste, rhubarb is instantly recognisable by its deep pink hue. Super simple to grow, rhubarb is popular for both sweet and savoury dishes.

What are the healthy benefits of rhubarb?

- Contains high levels of fibre, which is linked to lower cholesterol levels
- A good source of vitamin K, which is beneficial for your bone and heart health
- Full of antioxidants that protect the body from free radicals
- May help with digestion and to treat digestive disorders

Rhubarb recipes

1 RHUBARB GIN

YOU WILL NEED: 1kg pink rhubarb stalks | 400g white caster sugar | 800ml gin

HOW TO MAKE: Wash the rhubarb, trim the stalks and discard the base and leaves | Cut the stalks into 3cm lengths and place in a sterilised jar with the sugar. (To sterilise jars, wash in soapy water, rinse and then dry in the oven for 20 minutes at a temperature of 140°C/120°C fan/gas mark 1) | Shake and leave overnight | After 24 hours, add the gin, seal and shake again | Leave for four weeks before drinking |

Serve as it is or strain the liquid through a muslin-lined sieve first.

2 RHUBARB CHUTNEY

YOU WILL NEED: 250ml cider vinegar | 100g golden caster sugar | 300g chopped rhubarb | 4 chopped medjool dates | 1 tsp grated ginger | 1 cardamon pod

HOW TO MAKE: In a pan, heat the cider vinegar and caster sugar until dissolved | Add the chopped rhubarb, ginger, dates and cardamon pod and cook for 15-20 minutes | Once you have a thick chutney consistency, season with salt to taste | Store in sterilised jars for up to two years (unopened).



FILIKA






Filika restaurant is a smart, comfortable and cosy restaurant with a relaxing Mediterranean atmosphere.

Welcoming and friendly, we serve modern and the best traditional Turkish cuisine.

We offer a good choice of freshly prepared seasonal food – mezzes, a generous selection of marinated steaks, chicken, vegetarian dishes and lots of fish & seafood dishes.

Opening hours
Monday-Saturday: 12pm - 10pm
Sunday: 12pm - 9pm

FILIKA RESTAURANT THEYDON BOIS
13 Forest Drive, Theydon Bois, CM16 7EX
www.filikarestaurant.co.uk
theydonbois@filikarestaurant.co.uk
Tel: 01992 812000

FILIKA RESTAURANT WANSTEAD
62 High Street Wanstead, E11 2RJ
www.filikarestaurant.co.uk
info@filikarestaurant.co.uk
Tel: 020 8530 1333

FOR RESERVATIONS VISIT:
WWW.GTRRESTAURANT.CO.UK
TEL: 0208 5051965

**WEEKEND
BOTTOMLESS
BRUNCH**

FRIDAY TO SUNDAY
£29.50^{PP}
ADD FREE FLOWING PROSECCO, APEROL OR PIMM'S FOR 90 MINUTES
£17.50^{PP}
TIME: 12.00 TO 2.30PM

**WEEK DAYS
SPECIAL OFFER
FOR DINNER**

SUNDAY TO THURSDAY
**THREE COURSE
DINNER FOR JUST
£30.00^{PP}**
TIME: 5.30PM TO CLOSE








216 HIGH RD,
LONDON E18 2PB







AS MENTIONED IN

THE OAK-TREE GROUP OF SCHOOLS

Providing a strong start to your child's education



BRAESIDE SCHOOL

Buckhurst Hill

020 8504 1133



COOPERSALE HALL SCHOOL

Epping

01992 577133



NORMANHURST SCHOOL

North Chingford

020 8529 4307



OAKLANDS SCHOOL

Loughton

020 8508 3517



Have you considered an Oak-Tree Kindergarten?

Limited places available from 2½

**SMALL CLASS SIZES - QUALIFIED KEYWORKERS - LEARNING THROUGH PLAY -
SPECIALIST SUBJECT TEACHERS - ACCESS TO A HUGE RANGE OF RESOURCES
- WRAP-AROUND CARE - HOLIDAY CLUBS - AUTOMATIC ENTRANCE INTO
RECEPTION - EXTENSIVE GROUNDS AND OPPORTUNITIES**

VISIT OUR WEBSITE OR CONTACT THE SCHOOLS DIRECTLY TO BOOK A TOUR

For more information www.oaktreeschools.co.uk

020 8508 3109

Your guide to SPONGES

A GUIDE TO CHOOSING THE RIGHT SPONGES AND HOW TO KEEP THEM CLEAN

While you may not have given much thought to sponges, if you hate doing the dishes or cleaning kitchen worktops, the right sponge can help to make tiresome tasks a breeze.

sanitise your sponge weekly and throw it away when it shows signs of wear. Ideal for cleaning kitchens, windows, countertops and bathrooms.

WHAT ARE THE MOST COMMON TYPES OF SPONGE?

NON-SCRATCH SPONGES

Sponges that are labelled as non-scratch are safe to use on non-stick pots and pans, as well as real wood surfaces. They also will not scratch the surfaces of ceramic bakeware. Non-scratch sponges are a good choice for cleaning glassware as they effectively remove dirt without causing any damage.

HEAVY-DUTY SPONGES

As the name suggests, heavy-duty sponges are highly abrasive so should be used to remove tough, stuck-on dirt and debris from kitchen items such as stainless steel pans.

Heavy-duty sponges are not suitable for non-stick cookware, as they are likely to scratch their Teflon coating, nor for ceramic cookware or copper pans.

CELLULOSE SPONGES

Cellulose sponges are made from recycled plant fibres, making them a good option for those who want to reduce their carbon footprint and become more sustainable. The main benefits of cellulose sponges are that they are low-cost and very absorbent. However, they are also prone to collecting bits of food over time, so you need to make sure that you

HOW DO I CLEAN REUSABLE SPONGES?

The best way to kill bacteria harbouring in reusable sponges is to clean them in your microwave or dishwasher. If you choose the former, wet the sponge thoroughly and heat on high for one minute. Alternatively, place on the top rack of your dishwasher with the drying cycle on. Do this once a week for best results.





Call to book
a tour today

Designed for luxury living in the heart of Wanstead

Newly built, Chestnut Manor Care Home provides first-class residential and nursing care within luxury surroundings.

Spacious Ensuite Rooms - Hair and Nail Salon - Spa Bathrooms - In-house Cinema Room
Library - Sensory Garden - Onsite Parking - WiFi - Person-Centred Activities



Scan the QR code to learn more about the care we offer or arrange a visit with our friendly team



63 Cambridge Park, Wanstead E11 2PR | 0203 871 6070 | westgatehc.co.uk

 @chestnutmanorcarehome

ADD A

fiddle-leaf fig

PLANT TO YOUR HOME

If you are looking for a new indoor plant for your home, then a fiddle-leaf fig is a great choice. With large, glossy leaves and an impressive trunk, this statuesque tree can act as the focal point in any room.

WHAT ARE THE DIFFERENT TYPES OF FIDDLE-LEAF FIGS?

The most common type of fiddle-leaf fig plant is the *ficus lyrata*, which grows to around 10 feet tall when kept inside.

Other varieties include:

- > ***Ficus lyrata bambino*** – a dwarf variety that grows to only a few feet tall
- > ***Ficus lyrata compacta*** – features smaller leaves and grows to around five feet tall
- > ***Ficus lyrata variegata*** – an uncommon variety with a mix of green and cream leaves

HOW TO CARE FOR A FIDDLE-LEAF FIG

A fiddle-leaf fig needs bright, filtered light to grow, as direct sunlight can burn its leaves. Any quality indoor plant potting mix is fine as long as the soil drains well. This plant needs a moderate amount of moisture to thrive; too much can cause root rot and too little can cause the leaves to wilt. During the growing season (spring to autumn), water when the top inch of the soil feels dry, and then slightly less over winter. Also add a fertiliser specially made for this plant during growing season and remember to regularly clean its leaves.

HOW TO PRUNE A FIDDLE-LEAF FIG

To keep your fiddle-leaf fig in optimal condition, cut back any damaged leaves, overgrowth or crossing branches. Make the cuts about an inch away from the trunk to avoid damage.

WHERE TO BUY A FIDDLE-LEAF FIG

You can buy fiddle-leaf fig trees either online or at some garden centres.



DISCOVER YOUR ZODIAC COLOUR PALETTE

Did you know that each zodiac sign has its own bespoke colour palette? Based around the concept of colour psychology, here are the best colours for you and your home, plus why you are drawn to them in the first place.

- > **AQUARIUS:** Elevated primary colours... Not one to stick to the rules, you're drawn to colours that stand out. Choose primary colours with a twist, such as turquoise or deep red.
- > **PISCES:** Soft and daydreamy colours... A true romantic, opt for soft hues such as seafoam green and lavender that promise to make you feel open and carefree.
- > **ARIES:** Big and bold colours... Energetic and passionate, you are linked to powerful colours that draw the eye, such as red and deep oranges.
- > **TAURUS:** Playful and bright colours... Light shades of pink and pastel green are perfect for your playful nature.
- > **GEMINI:** Contrasting colours... Geminis are associated with the colour yellow owing to their sunny disposition. Add in some neutral shades for enhanced balance.
- > **CANCER:** Gentle and cool colours... You gravitate towards cooler and lighter tones such as light blue and silver.
- > **LEO:** Striking and statement colours... You command attention, so bold and warm colours such as orange, yellow and gold are ideal for you.
- > **VIRGO:** Grounded and earthy colours... No flashy colours or concepts for Virgos. Instead, you are drawn to earthy tones such as forest green and dark brown.
- > **LIBRA:** Warm and welcoming colours... You have energy that likes to promote harmony, so lavender and pink are both great colours for you.
- > **SCORPIO:** Dark and moody colours... As a sensual and mysterious being, you are inspired by maroon and crimson tones.
- > **OPHIUCHUS:** Deep and mysterious colours... Located between Scorpio and Sagittarius, you are both passionate and unpredictable. Purple should be your go-to colour.
- > **SAGITTARIUS:** Inspiring and intelligent colours... You want a space that makes you feel free, so greens and blues are the colours that draw you in.
- > **CAPRICORN:** Simple and minimalistic colours... Neutral colours such as white, grey, black and ivory are the perfect match for your calm demeanour.



WANT MORE BUSINESS?

CALL 0208 088 0386
TODAY TO ADVERTISE

PLATINUM DECORATING

FOR DECORATION AS UNIQUE AS YOU ARE

- PAINTING & DECORATING
- KITCHEN SPRAYING
- WALLPAPERING
- FREE QUOTATIONS

0208 088 2976
info@platinumdecorating.co.uk
platinumdecorating
platinum.decorating

LOFT CARE

LOFT CONVERSION AND REMODELLING SPECIALISTS

PROVIDING BESPOKE CONVERSION SOLUTIONS
DORMER • HIP TO GABLE • MANSARD • ROOF LIGHT
HOME REMODELLING AND INTERIOR DESIGN

LET US DELIVER YOUR DREAM

VISIT OUR WEBSITE: WWW.LOFTCARE.CO.UK
or call 0208 088 3015 • 0800 002 9411



WARDROBES ■ BUILT IN WARDROBES ■ FITTED KITCHENS ■ SLIDING WARDROBES

LUXURY BESPOKE WARDROBES & KITCHENS

Made to order in the UK ■ 10 Year Product Guarantee

Soft Close Doors As Standard ■ We fit wardrobes in less than 2-3 weeks

CONTACT US

01708 756789 ■ 0208 088 0876

www.bestfittedwardrobe.co.uk

info@bestfittedwardrobe.co.uk

Best Fitted Wardrobe Ltd Unit A3, Seedbed Centre, Davidson Way, RM7 0AZ



BEST FITTED
WARDROBE



SCAN ME



BEBOILERSAFE

GAS | HEATING | PLUMBING

WE UNDERTAKE ALL BOILER WORK

SERVICE | REPAIR | INSTALL

UNVENTED INSTALLATION

LANDLORD CERTIFICATION

EPHING & SURROUNDING AREAS



CALL US ON 07581 003 935 TO LEARN MORE

✉ enquiries@beboilersafeuk.co.uk

🌐 www.beboilersafeuk.co.uk



HOME & DIY

BEST WAY TO PAINT A ROOM

When you decide to go down the DIY route with painting, you'll want to make sure you get it right.

Understanding the order to paint a room in will help you achieve the best finish, as well as make your paintwork look professional.

Learn what order to paint a room in, ready for your next interior décor project.

START WITH THE CEILING

Once a ceiling has been prepped, you can get to work with painting.

Start by cutting in the edges with your desired paint. Then you can quickly roller the remainder of the ceiling with the desired number of coats.

TACKLE THE WALLS

Painting the walls requires a little more precision. You'll need to cut in the edges, either freehand or by using some masking or decorators tape. Using a roller, you can paint the remainder of the wall. You may need a smaller roller to get to the hard-to-reach areas.

DO THE DOORS AND WINDOWS

Take your time applying special woodwork paint to your doors and windows. This type of paint dries slowly, so you'll need to give yourself plenty of time between coats. Remember to mask your edges for a clean finish.

FINISH WITH THE SKIRTING BOARDS

When the rest of your paintwork is dry, fill and sand any cracks between your wall and skirting, mask up the edges then apply two coats of your woodwork paint, letting it dry thoroughly between each coat.

And there you have it. Now you know exactly what order to paint a room in to get the best results.





GREAT BRITISH INTERIOR DESIGNER:
HELEN GREEN
DESIGN STUDIO

Who doesn't appreciate a taste of luxury, especially when it comes to home design? One of the most famous names in British luxury interiors is Helen Green Design. Originally founded by the late Helen Green in 2002, the design house describes



itself as "a comprehensive luxury interior design studio synonymous with the creation of beautifully crafted, multi-layered, elegant interiors". And we agree.

Learn more about what makes Helen Green Design one of the best in the business and how you can recreate the look at home.

From stand-out homes in Belgravia to yachts that travel the world, Helen Green Design is behind a wide variety of exquisite home interiors.

Blending both modern and traditional elements, you can expect neutral shades paired with luxury textures to create wonderful designs that are always sure to impress.



How to get the look at home

While Helen Green Design is a design house that oozes sophistication and luxury, it is possible to get the Helen Green look at home. Here are some easy tips to help you make high-end more affordable:

1 Work with the details of your home. From panelling to intricate ceiling patterns, you can keep some of the original features of your home to contrast the modern touches you bring into it.

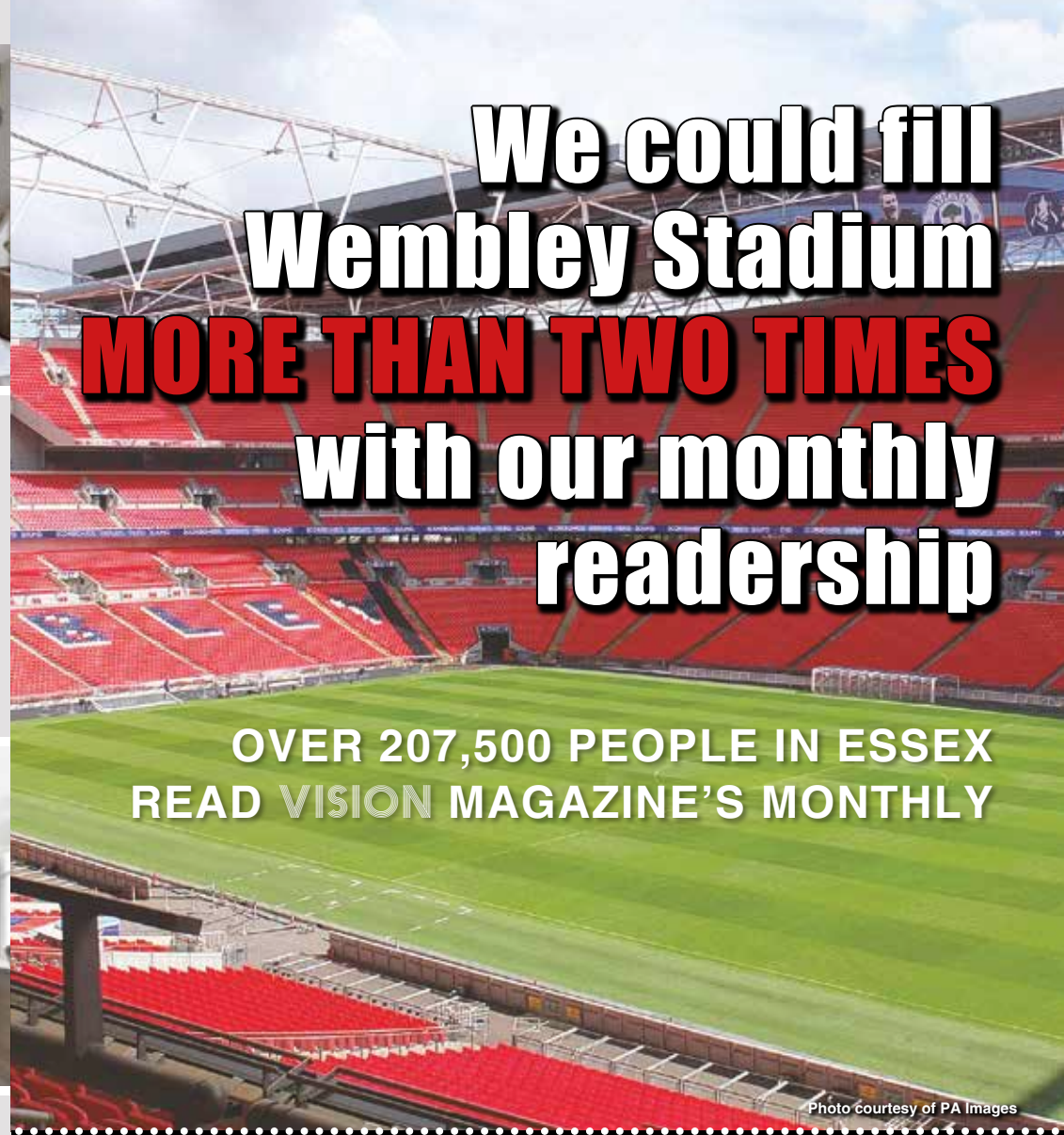
2 Keep spaces clean and clutter-free to let your statement furniture do the talking. Less is more to create an elegant look.

3 Use textures to add detail. From textured wall art to textured flooring and walls, you can easily add some features to make your interior look and feel more expensive.

Helen Green Design provides the perfect inspiration for any home looking for a high-class upgrade. However, you don't need a luxury budget in order to achieve this look in your own home.



Photo credit: helengreendesign.com



**We could fill
Wembley Stadium
MORE THAN TWO TIMES
with our monthly
readership**

**OVER 207,500 PEOPLE IN ESSEX
READ VISION MAGAZINE'S MONTHLY**

Photo courtesy of PA Images

**CONTACT US TODAY TO GET YOUR
BUSINESS SEEN BY OUR READERS**

Your
Monthly
Lifestyle
Magazine



See all our magazines at www.visionmagessex.com

BillericaY Shenfield Bishop's Stortford Brentwood Ongar Chelmsford Beaulieu Epping Theydon
Halstead Braintree Hertford Hornchurch Leigh Thorpe Bay Loughton Maldon Burnham
Rayleigh Wickford South Woodford Tendring



PUZZLES & TRIVIA

PUZZLES

Answers: see end of The VISION Listings

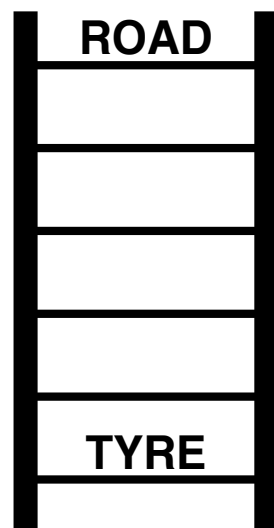
- ▶ ACCRA
- ▶ ADDIS ABABA
- ▶ ALGIERS
- ▶ CAIRO
- ▶ DAKAR
- ▶ FREETOWN
- ▶ GABORONE
- ▶ HARARE
- ▶ KAMPALA
- ▶ KINSHASA
- ▶ LILONGWE
- ▶ LUSAKA
- ▶ MAPUTO
- ▶ MOGADISHU
- ▶ MONROVIA
- ▶ NAIROBI
- ▶ NIAMEY
- ▶ NOUAKCHOTT
- ▶ VICTORIA
- ▶ WINDHOEK



DID YOU KNOW?

- ▶ Members of the Royal Family are not allowed to sign autographs. This is in case somebody tries to forge their signature.
- ▶ During her reign, Her Majesty Queen Elizabeth II sent more than 300,000 congratulatory cards to people celebrating their 100th birthdays, and more than 900,000 messages to couples marking their diamond (60th) wedding anniversary.
- ▶ King Charles III, the former Prince of Wales, has been the heir apparent since he was three years old.
- ▶ In November 1965, while a student at Gordonstoun School, the then-Prince of Wales played the lead in Shakespeare's *Macbeth*.
- ▶ The former Prince of Wales has presented the weather forecast on the BBC.

WORD LADDER



THE AIM: Change the word at the top of the ladder one letter at a time to make the word at the bottom.

HOW TO: Change one letter on each step to make a new word. By the time you reach the end, you should have created the new word.

DO NOT rearrange the order of the letters.

TIP: There is usually more than one way to solve this puzzle.



Alf Onnie

Curtains, blinds and plantation shutters

- ✓ Bespoke made to measure curtains
- ✓ Sheers & Voiles
- ✓ Window blinds – manually operated or motorised
- ✓ Plantation shutters
- ✓ Pole and track fitting service

- No obligation quote
- Friendly & enthusiastic family business Est 1920
- Experienced consultation & installation team
- Commercial projects also undertaken

📍 Showroom based in Essex/London

☎ 020 8472 4658 📞 07956 818477

🌐 AlfOnnie.co.uk 🐦 @AlfOnnie1920

👤 Alf Onnie Curtains and Blinds

On enquiry mention **Vision** for a special offer

LOUGHTON TILING LTD

SUPERIOR... EXPERT... AFFORDABLE...




...ALWAYS HERE TO GIVE ADVICE



- ◆ Family run business ◆ Tiles from £11.50
- ◆ Grouts from £7.00 ◆ Chrome trims cheapest in the area
- ◆ Adhesives from £10.00 ◆ Tools ◆ Cleaners
- ◆ We also know plenty of skilled fitters

JUST POP IN, CALL OR EMAIL FROM OUR WEBSITE WITH THE MEASUREMENTS & TILES YOU REQUIRE, & WE'LL GET A QUOTE BACK TO YOU AS QUICK AS POSSIBLE.

020 8502 1811 ◆ Showroom: 70 The Broadway, Loughton, IG10 3ST



SCAN ME

LEWIS CAPALDI



Someone We Love...

THE ENDEAVOURS, INSPIRATIONS AND INSECURITIES OF LEWIS CAPALDI

We live in a world where our leading male singer-songwriters no longer have to subscribe to the airbrushed, heavily manufactured, perfectly coiffured boyband façades of the stars of decades gone by.

This has helped to create careers and vast wealth for the likes of Ed Sheeran, James Arthur, Rag'n'Bone Man and, now, Lewis Capaldi.

For the vast majority of us, this is a relief. Not only does it lend hope that any of us can aspire to and reach the most ambitious of heights; more importantly, it dispels the faux perfection that emanates from TV screens, devices and digital radios.

"I grew up in that era where everyone looked like they had just stepped off a catwalk," begins Capaldi, the 26-year-old Scottish singer-songwriter who has captivated the hearts of many with his soulful voice and emotive lyrics.

"We don't have to play those games anymore and I think there is much more allowance for us to be ourselves. It's real progress."

The star, who rose to fame with his chart-topping single *Someone You Loved* in 2019 – a track currently ascending past a colossal three billion streams on Spotify – is reaping the rewards of two decades of soul-searching and hard work... a process that came to light via a recent Netflix documentary, *How I'm Feeling Now*.

The production shone a light on the perseverance that has patterned his rise to the top, as well as giving the artist the opportunity to open up about living with Tourette's syndrome.

The neurological disorder is characterised by involuntary movements and vocalisations, known as tics. "It's something that has always been with me and perhaps always will, but it's so important I use my platform to reassure other people that

Tourette's doesn't need to hold you back from what it is you want to do," he says.

"For years, I felt imprisoned by it, before realising I could use it as a stimulus, because sometimes you need something to rally against in your life, and Tourette's is that thing for me."

Perhaps we shouldn't be surprised at Capaldi's ability to counter life's challenges. A deep thinker, the Scot's emotional attentiveness frequently comes across in his music. From the breakthrough *Someone You Loved*, a poignant ballad, characterised by its raw lyrics and melancholic piano melody, that spent seven weeks at the top of the UK singles chart and reached number one in the US too, to the soulful vocals and introspective lyrics of *Bruises*.

In 2022, both *Forget Me* and *Pointless* made it to the top of the hit parade as well. The former track was Capaldi's first meaningful release in three years, and despite huge previous success, his candid uncertainty was on show in the promotion of the track, when he revealed, "It could be the beginning of a beautiful chapter in my life, or the very public downward spiral that, let's face it, I'm probably due."

Of course, the artist needn't have worried, and he is now embarking on a UK tour to accompany the release of his album, *Broken by Desire to Be Heavenly Sent*, on May 19.

Capaldi is a singer-songwriter of impeccable talent but, almost as important, devastating humility... and he's here to stay.

Photo credit: ChrisJamesRyanPhotography/Shutterstock.com



BOILR offers comprehensive service plans to homes throughout Essex, Hertfordshire & London.

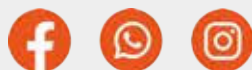
★	★★	★★★	★★★★
£ 7.50 / MONTH	£ 15.50 / MONTH	£ 19.50 / MONTH	£ 23.50 / MONTH
Annual boiler service ✓	Annual boiler service ✓	Annual boiler service ✓	Annual boiler service ✓
Landlord safety record ✓	Landlord safety record ✓	Landlord safety record ✓	Landlord safety record ✓
Heating/Gas/Plumbing ✓	Heating/Gas ✓	Heating/Gas/Plumbing ✓	Heating/Gas/Plumbing ✓
Electrical Faults & Emergencies ✓	Electrical Faults & Emergencies ✓	Electrical Faults & Emergencies ✓	Electrical Faults & Emergencies ✓

Servicing | Installation | Plans

CALL OUR TEAM TODAY FOR MORE INFORMATION

0203 576 2386

hello@boilrltd.co.uk boilrltd.co.uk



T&C's Apply

PUT THE SPARKLE BACK INTO YOUR KITCHEN



Domestic Oven Cleaning Specialists

Est. since 2007

Prices

Single oven incl. shelves & grill pan	£43.00
Double oven incl. shelves & grill pan	£54.00
Range incl. shelves & grill pan	From £54.00
AGAs	From £90.00
Hobs	From £14.00
Extractors	From £15.00
Microwaves	From £20.00

No VAT to pay



PLEASE CALL FOR A FREE QUOTATION

01279 432444 * www.ovenbright.co.uk



BEFORE

AFTER

FROM YOUR AREA



LOCAL NEWS

Development of sport and wellness centre underway



The development of a new sport and wellness centre at New City College (NCC) Epping Forest, which will provide state-of-the-art fitness facilities for students and the local community, is now underway in Loughton.

Designed by architects at Scott Brownrigg and delivered by Neilcott Construction, the new building, located across the road from the college in Borders Lane, has a focus on environmental sustainability.

A laminated timber frame is being used for the building structure instead of a traditional steel frame. As timber is 30 per cent less carbon intensive than steel, the use of a timber frame has saved 90 tonnes of CO₂ equivalent from being emitted into the atmosphere.

Narzny Khan, principal of NCC Epping Forest and Redbridge campuses, said: "It is so exciting to see the construction of the new sport and wellness centre progress. I cannot wait to welcome our students and the community into the new centre at the start of the next academic year.

"It will be a great facility for both students and local residents. Becoming a greener college is one of our strategic priorities, and this new wellness centre is an example of what this means in practice."

the branch also banked using the online app or by phone in 2021. It states that fewer than 10 customers use the branch regularly as the only way to do their banking.

A spokesperson for the bank said: "When we opened this branch, visiting us in person was one of the only ways to do your banking. Now, as there are lots of ways to manage your money without even leaving your home, we're seeing many customers choosing to bank using our app, and online or telephone banking. This has had a big impact on the number of customers coming in to see us."

Those worried about how they will do their banking are encouraged to visit the branch before it closes to receive advice and support.

Victim stabbed in the back at train station

An investigation is underway following a stabbing at Loughton Station.

British Transport Police (BTP) were called to the station shortly after 4.30pm on Sunday, April 9.

A man was airlifted to hospital.

A BTP spokesperson said: "The victim was taken to hospital with a single stab wound to his back.

"This is believed to be an isolated incident and is currently being investigated.

"No arrests have been made at this time."

Anyone with information is asked to contact BTP via text on 61016 or by calling 0800 405040, quoting reference 2300039772.



Photo credit: Steve Dickson

Bank branch to close its doors next month

Barclays bank has announced it will be closing its branch at 207 High Road on June 22.

The bank claims that 93 per cent of people who used

DAME ELEANOR LAING MP

Conservative MP for Epping Forest



People often ask me how we can encourage more young people to become involved in politics and public affairs. Actually, there are far more young people standing for election and serving on democratic bodies than ever before. Here in Epping Forest, for example, several candidates who are standing in the forthcoming local elections are in their twenties. So are some of our existing councillors.

I am really quite proud of the progress that my generation has made in encouraging younger people to stand for election. It is an aspect of our democratic development that is proving successful.

For more than 20 years, I have organised a debating competition for the schools in my constituency to encourage students to discover the challenge, excitement and art of debating. It has been really good to see some of those young debaters go on to achieve great things.

It is my privilege as an MP to visit our local schools and I am always fascinated to be asked challenging questions. I am also very impressed to see that so many sixth formers are studying politics.

I recently met a particular sixth form group who asked me questions about the workings of our democracy.



Their approach filled me with confidence. I do not care which political party these young people support. I do care that they fully appreciate that it is only through protecting and developing our democracy that we can defend the freedoms of our people. In an increasingly dangerous world, that is desperately important.



What a very busy year we've had so far. We have expanded our Social and Memory Cafés to include chair yoga on the second Thursday of the month from 2pm to 4pm. We also launched our first cooking classes.

We are proud to be chosen by Essex County Council to partner with them to roll out the national Multiply maths programme.

We have seen a 50 per cent increase in demand for 3Food4U, but we are working tirelessly to meet the demand. We need your support as we're running very low on some essentials. Please drop off donations to our hubs at Sainsbury's Debden or Balgore Estate Agents in Loughton.

Donate to our fundraising page at www.stewardship.org.uk/partners/20356308

Control your security Be **App**solutely connected

Did you know your smartphone
can now control your alarm
system through an app?



CCTV Systems • Alarm Systems
Fire Alarms • Door Entry Systems • Safes
Vehicle Alarms & Tracking • Ghost Immobilizers

020-8529-5710 • www.cobra-ss.co.uk
155 Station Road, Chingford, London, E4 6AG



ENDLESS POSSIBILITIES



0208 088 0920 info@infiniteglass.co.uk

**Infinite
Glass**

BUILDING TRUST
WITH QUALITY
WORK



EFFECTIVE SOLUTIONS FOR YOUR HOME

- SPECIALISTS IN INTERNAL & EXTERNAL REPAIRS & REFURBISHMENT
- REDECORATION • KITCHEN INSTALLATION
- RENTAL PROPERTY REFRESHMENT
- BUILDING EXTENSIONS
- 20+ YEARS EXPERIENCE • FULLY INSURED



CONTACT US FOR MORE INFORMATION
0208 088 2793 • asgard.hi@hotmail.com
www.asgardhomeimprovements.co.uk

ALL ASPECTS OF ROOFING WORK



NEW ROOFS ■ ROOF REPAIRS ■ TILES & SLATES ■ LEAD WORKS & WELDING
VELUX WINDOWS & SKY LIGHTS ■ CHIMNEY REPAIRS & REMOVALS
GUTTERING ■ FASCIAS & SOFFITS

10 YEAR WARRANTY ■ FULLY INSURED ■ PRICE MATCH GUARANTEED

 **Google Business Review**
5.0 ★★★★★

0208 088 3085

WWW.NIGHTINGALEROOFING.CO.UK

INFO@NIGHTINGALEROOFING.CO.UK



YOUR LOCAL EVENTS



WHAT'S ON

LITTLE SHOP OF HORRORS

Lopping Hall, 189 High Road, Loughton,
IG10 4LF

Wednesday, May 10, to Saturday, May 13, 7.30pm



Loughton Operatic Society presents *Little Shop of Horrors*. This popular musical tells the story of meek flower shop assistant Seymour Krelborn, who one day happens upon a strange plant. Little does he know that this plant will develop a soulful voice, a potty mouth and an unquenchable thirst for human blood.

To buy tickets, visit www.ticketsource.co.uk/los

TAKE NOTE

Zinc Arts, Great Stony, High Street,
Chipping Ongar, CM5 0AD

Saturday, May 20, 7.30pm

Concert band Take Note are hosting an evening of American classics, with all proceeds going to Sense, a charity that helps thousands of people who are deafblind or who have complex disabilities to communicate, experience the world and fulfil their potential.

Purchase tickets at bit.ly/3mCWS1k

LIVING WITH LUKE

Oak View School, Whitehills Road, Loughton,
IG10 1TS

Friday, May 26, 7pm

This critically acclaimed show is based on the blogs of Danson Thunderbolt, a father who journalled his experiences and struggling relationship with his autistic son.

The show is being performed at Oak View School, a specialist provision for pupils with special educational needs.

Purchase tickets at bit.ly/41kQMC8

BLACKSMITH TASTER SESSION

Lambourne End Centre for Outdoor
Learning, Manor Road, RM4 1NB
Saturday May 27, 10am – 1pm

On this course, you will learn the core techniques used by blacksmiths to shape steel. You will learn how to bend and shape steel using a gas forge, hammers and anvils. You will be guided through the steps needed to make a simple object like a fire poker that incorporates many of the fundamental techniques used by blacksmiths.

Tickets can be purchased at bit.ly/40cCH8f

ESCAPE THE CITY

Loughton Underground Station, Roding Road,
Loughton, IG10 4PD

Sunday, May 28, 2.30pm – 3.30pm

Escape The City is an organisation helping people escape their corporate careers and find more purposeful work. Join their nature walk to meet like-minded people and spark great conversations.

The meet will begin at 2.30pm at Loughton Station (to the right as you come out of the station barriers). Everyone will then head off for an hour-long loop around Epping Forest, to talk impact work, make new friends and stretch their legs.

To buy tickets, visit bit.ly/3GZwt1A

DENNIS STRATTON AND DAVE EDWARDS

The Woodbine Pub, Honey Lane,
Waltham Abbey, EN9 3QT

Saturday, June 3, 9pm – 11pm

Ex-Iron Maiden and ex-Manfred Mann's Dennis Stratton and Dave Edwards are performing at the Woodbine Pub. No tickets are required.



Photo credit: Woodbine Pub



Enjoy the delights of the traditional British seaside

For those who crave a bit of nostalgia, and maybe worry that our ability to connect with iconic seaside locations of old is a thing of the past, a trip to Frinton-on-Sea is the perfect remedy.

There is little to rival the natural vibrancy of a sumptuous, sunny, sandy beach, as radiant sun beats down on the coolest, finest Essex sand.

And yet, where Frinton-on-Sea is concerned, serenity and nostalgia come as much from its vibrant rows of beach huts as they do from the wondrous natural environment.

Its architecturally precise promenade sees beach huts painted in a kaleidoscope of bright colours, and these have been an integral part of the town's heritage for more than 100 years. Simple in their form, they retail for upwards of £50,000 – yet if a 12ft square space is adequate for you to relax, change or store beach essentials in, then perhaps the investment is worthwhile? These picturesque huts have become a symbol of traditional British seaside culture and

continue to draw visitors from far and wide, yet Frinton is about so much more.

Its unspoiled sandy beaches are award-winning and stretch for miles along the coast, and the gentle slope of the shoreline creates a shallow, safe swimming area that is perfect for families and children. Meanwhile, the absence of amusement arcades, commercial outlets and 'kiss me quick' hats ensures that this part of the Tendring coastline retains a sense of simplicity and class that few other resorts around the UK can rival.

Even the aforementioned promenade, adorned with Victorian-style streetlamps and ornate railings, holds a sense of class about it; while further back, extensive parkland shows the town's custodians are just as adept with grass as they are with sand.

Frinton-on-Sea has a population of fewer than 5,000. Although several times that number swarm into the area on hot summer days, it rarely feels anything other than idyllic. The next time you're looking for an idyllic British seaside escape, Frinton should be top of the list.



home
hub_{group}



There's no place like
Home Hub



01992 948 980
essex@homehubgroup.co.uk
137-139 Epping High Street

@HomeHubGroup

With no pressure sales, transparent pricing and exceptional service levels you'll feel right at home with Home Hub. Come and see us at our beautiful lifestyle showroom in Epping – call 01992 948989 to book an appointment.

homehubgroup.co.uk

Windows • Sliding Doors • Bifold Doors • Roof Lights

TO DIG OR **NOT** TO DIG?



Although it may seem strange, no-dig gardening is becoming increasingly popular owing to its ability to save time, banish weeds and ensure plants grow more healthily.

WHAT IS NO-DIG GARDENING?

No-dig gardening is a method of cultivation that aims for minimal disturbance of the soil. Made popular by Charles Dowding, an author and avid gardener, no-dig gardening requires less fertiliser and pesticide, is suitable for any size garden, and can be used to grow flowers, shrubs or vegetables.

WHAT ARE THE BENEFITS?

No-dig gardening is beneficial to your soil, garden and the environment, and can significantly reduce the need to weed. Soil stores a lot of carbon, which means that the more you dig, the more is released into the atmosphere. There is also evidence to suggest that digging upsets the structure of the soil.

A GUIDE TO NO-DIG GARDENING

STEP 1: PREPARE THE AREA

Remove any large weeds and then cover the ground in a layer of light blocking material such as torn-up newspaper. If creating a no-dig area on grass, add a layer of manure and lime first.

STEP 2: ADD LAYERS

Add a layer of kitchen scraps, such as vegetable peelings or fruit waste, and a layer of compost made from leaves and grass cuttings. Then, add a layer of straw, another layer of compost, and finally another layer of straw.

STEP 3: MAKE WELLS FOR PLANTING

Create wells about 10cm deep in the top layer of straw and fill them with compost. Then, plant your seeds or seedlings into the wells. Water well and wait for your no-dig garden to grow.

Photo credit: charlesdowding.co.uk



NEED AN ELECTRICIAN?

NO JOB IS TOO BIG OR TOO SMALL

We provide the following electrical services & more across Loughton, Buckhurst Hill & surrounding areas.

- CALL OUTS • CONSUMER UNIT UPGRADES
- EV CHARGER INSTALLATION • FAULT FINDING
- FULL & PARTIAL REWIRES • LANDLORD CERTIFICATES
- LIGHTING INSTALLATIONS

- WHY CHOOSE US? • LOCAL & RELIABLE
- GREAT CUSTOMER SERVICE • QUALITY WORKMANSHIP

CALL NOW FOR OUR FRIENDLY EXPERT
ADVICE, A FREE SURVEY OR QUOTE

0208 088 2970

www.beales-electrical.co.uk

hello@beales-electrical.co.uk



WE CARRY OUT ALL HOME RENOVATIONS

Garage Conversions | Bathrooms | Kitchens | Full Decorating
New Flooring | Plumbing & Heating | Electrical | Glazing
Roofing | Tiling | Handyman & Locksmith Services
Cleaning | Extensions & Loft Conversions | Clearances
Plus much more...

DOMESTIC & COMMERCIAL | NO JOB IS TOO BIG OR TOO SMALL

CHECK OUT OUR GOOGLE REVIEWS

t: 020 4538 3560 | m: 0794 939 4403

e: info@lillywhitepropertygroup.com

www.lillywhitehomerenovations.com

f LillywhitePropertyGroup i LillywhitePropertyGroup @LWMaintenance



WE OFFER
FREE ESTIMATES

WE NOW OFFER FINANCE
ON ALL REFURBISHMENT
PROJECTS



SUPPLIER OF QUALITY CONCRETE



**MOST
TRUSTED
READY-MIX
CONCRETE
SUPPLIER
IN LONDON**

- Collection also available ■ 24/7 service
- Competitive pricing

Let's get in touch 0208 088 3418

info@LondonQualityConcrete.co.uk
www.londonqualityconcrete.co.uk



**Sovereign
Guards UK**

**From home to business security, here at
Sovereign we offer a variety of Security
Services from CCTV and Intruder Alarms**

CONTACT US FOR MORE DETAILS:

Call: 0208 088 3147

Email: info@sovereignguards.co.uk

www.sovereignguards.co.uk



SCAN ME



Select from a package that suits your needs: budget, location and what level of protection you are after



Specialising in fogging systems for high risk asset protection



With remote connectivity this allows you to monitor your home from your phone.



GARDENING

GOT SOME FRONT

Our front gardens are typically a bit more restrictive than the spaces behind our homes, but that doesn't mean we can't still make them look stunning.

They are the outdoor spaces that typically lack privacy, are exposed to dirtier air, and may even find themselves hosting a car or work vehicle. Therefore, for the added aggro our front gardens have to put up with, it's sensible to keep things simple, saving your energy for the private space at the back.

Beginning with plants and varieties of flowers, it's sensible to limit a front garden to perhaps just five or six variations. If you include too many different styles, it can create a hotchpotch of ideas that will only make your home look untidy.

Also try to prioritise privacy over prettiness. The front of our property is exposed to all and sundry, so carefully positioned hedges, shrubs and trees can keep unwanted eyes away. Just be sure not to

position larger living matter in front of windows to prevent blocking out the light.

When selecting plants, consider varieties that will last all year round, saving you a constant summer/winter change-up. Think summer roses that progress into gorgeous winter blossoms, and evergreens that will grace the changing seasons with constant class.

As far as a lawn goes, while artificial grass has never been better or looked more authentic, a small area of real grass, or perhaps one either side of a path, is low maintenance and can be taken care of with a simple mower. While it's tempting to bring a wild meadow into the equation, that look is always better achieved in a larger garden, where a rugged area is established in a well-tended garden.

Finally, if you're looking to pave or lay down slate or stone in a front garden, remember weeds will still work their way through, so keep an eye on things, particularly in the summer months.

keeping your front garden low maintenance

Make a splash

Stuck for something to do with the kids on a typically rainy day in the UK? No need to fret; there will be smiles all round if you pay a visit to one of these top indoor waterparks.

Waterworld, Stoke-on-Trent

Frequently listed as one of the top indoor waterparks in the UK, Waterworld is a fantastic day out for all the family. Featuring 30 rides and activities for all ages, some of its most popular attractions include slides for toddlers, white-knuckle rapids and a wave pool.

Splashdown, Dorset

Splashdown offers 13 thrilling indoor and outdoor rides, as well as three splash zones for children under five. Our favourite ride by far is the Mississippi Drifter, where the whole family can ride on one inflatable tyre. The Infinity flume is also great fun, and you can even pick your own music!

Sandcastle Waterpark, Blackpool

The largest indoor waterpark in the UK, Sandcastle features an impressive 18 rides and attractions for you to enjoy. As well as the slides, wave pools and flumes, this waterpark has arcades, snack bars and cafés, so you can easily spend the whole day there.

Alton Towers Waterpark, Staffordshire

If you want to combine theme park rides with water slides, the Alton Towers Waterpark is the ideal choice for you and your family. With high-speed slides, waterfalls, tranquil lagoons and relaxing hot tubs, there's something for everyone at this popular waterpark.



"Education is not the filling of a pail, but the lighting of a fire."

— William Butler Yeats



Tailored 1:1 Tutoring
All Ages - All Subjects

7 days a week

020 3856 4466

www.tutordocor.co.uk/wlcc

Wanstead Loughton Chingford Chigwell



**NEED A RELIABLE
CLEANING COMPANY?**

OUR SERVICES INCLUDE:

- Residential Cleans
- Deep Cleans
- Patio/Driveways
- Carpet & Upholstery Cleaning
- Office Cleans
- Commercial Cleans

We provide high quality services, tailored quotes specifically designed for your requirements



Call us on

0208 088 3469



Dry Carpets, Upholstery & Hard Floor Cleaners

**Why REPLACE
when you can
RESTORE?**

Already got a cosy sofa with life still in it?


- Save thousands in replacement costs
- Repair minor damage before it gets costly
- Leather looks fresh and revitalised
- Full leather colour match service available

**Have your leather sofa or
furniture cleaned & restored
for a fraction of the price
of new items**

**Contact us today for a
FREE no-obligation quote**
zerodrytime.com

07756 942859

sean.drury@zerodrytime.com



HISTORY

The PEOPLE'S PALACE

Imagine living amid the smog, chaos and stench of Victorian London. Now imagine the bliss of fresh air and some live entertainment to take your mind off things. Alexandra Palace, which opened 150 years ago this month, was built to give Londoners that chance to escape the daily grind.

The palace opened on Queen Victoria's 54th birthday with a grand celebration. Tragically, fire destroyed the building just a fortnight after it opened. But two years later, it opened again – and this time it was bigger and better. There was a concert hall, theatre, circus, racetrack, boating lake, the Victorian equivalent of a food court, and even a Japanese-style garden.

Sadly, the privately owned palace and surrounding parkland struggled to make money. In 1900, the site was bought by the nation, and an Act of Parliament

decreed that it should remain “a place of public resort and recreation”.

During the First World War, the palace was home to refugees and later became an internment camp for ‘enemy aliens’. It became a refugee shelter again during the Second World War, and also a staging post for troops on their way back from Dunkirk.

But perhaps the palace is best known for its link to BBC television. The corporation launched the world's first television service from studios built in the palace's former dining rooms in 1936.

To this day, the palace continues to host leading events, including theatre performances, retail shows, gigs, fairs and festivals to honour its commitment to serve the public.

To find out what's on this summer, check out alexandrapalace.com/whats-on

Alexandra Palace was built as a north London version of Crystal Palace, which hosted The Great Exhibition in 1851. It was named after the Danish-born Princess Alexandra, who had just married Queen Victoria's eldest son – later to become Edward VII. It was called The People's Palace and soon became widely known as Ally Pally.

WE REPAIR ALL APPLIANCES

Fridge Freezers ■ Washing Machine
Tumble Dryer ■ Dishwasher
Cooker & Range Cookers
All Freestanding & Built-in Appliances

CALL OUT £64.99
for Labour & Diagnostics

Family business with over 20 years experience
Fully trained Bosch & Hotpoint engineers

Service Partners with
John Lewis & British Gas

07488 265527

DID YOU KNOW
100,000
PEOPLE DIE EACH YEAR
IN THE UK FROM
SUDDEN CARDIAC ARREST?

YOU CAN LEARN KEY LIFE-SAVING
SKILLS FROM JUST £99

JOIN OUR 1-DAY EMERGENCY FIRST AID COURSE
OR 3-DAY FIRST AID AT WORK COURSE

CONTACT US FOR COURSE DATES &
MORE INFORMATION ON 07508 204656
enquiries@bbirisksolutions.com

BBI Risk Solutions
www.bbirisksolutions.com

ALL-INCLUSIVE LUXURY CARE HOME

Exceptional Residential, Nursing, Memory & Respite Care

Offering the highest quality personalised care, with luxury living facilities and the freedom to explore and enjoy a range of hobbies, Woodland Grove care home will give residents the independence and support to continue living life to the fullest.

Contact us to arrange a visit!

☎ 0300 303 5445

✉ clientrelations.wg@oaklandcare.com

📍 Woodland Grove Care Home,
Rectory Lane, Loughton, Essex, IG10 3RU

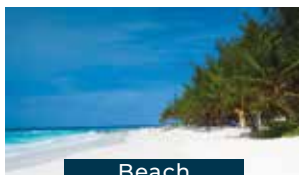
🌐 oaklandcare.com/woodland-grove

YOUR *Perfect* TRAVEL

Look No Further For All Your Holiday Needs!



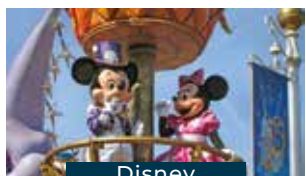
Safari



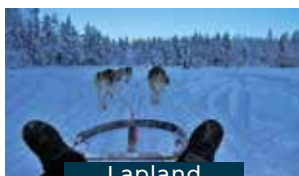
Beach



Cruise



Disney



Lapland



Tailor Made

Contact us now to speak with our friendly travel experts
01279 797189 • www.yourperfecttravel.co.uk



invest in the good life...

Luxury Lodges, great fun and a great return on investment!

Visit our four fantastic locations today....

www.goodlifelodge.com • info@goodlifelodge.com • 0800 564 2266

Europe's best SECOND CITIES

FIVE EUROPEAN COUNTRIES WHERE THE LESSER-KNOWN SECOND CITIES OFFER, ARGUABLY, MORE THAN THE CAPITAL

1. BERGEN, NORWAY

Many people visiting Scandinavia will instantly migrate towards Oslo for its green spaces, architecture and nightlife, yet for those looking to sample a more stylish, artistic side of Norwegian culture, Bergen is the choice. A seductive port decorated with colourful houses and romantic cobbled streets, it is the gateway to the fjords.

2. KRAKÓW, POLAND

Poland's elevation into a popular location to visit over the past 20 years has been impressive, and this is no better exemplified than in the way Kraków, its second city, welcomes visitors.

A former European Capital of Culture, it is a creative tourist's dream, with arts, crafts, collections and museums, plus a host of theatres for the performing arts.

3. PORTO, PORTUGAL

Located on the Iberian Peninsula, many parts of Porto were built with the aim of luring in foreign investment, so it makes sense that Lisbon's smaller sibling has an abundance of interest and charm.

From bridges to cathedrals, elegant gardens to wine tasting – the city is the birthplace of port wine – it's a smorgasbord of tastes and flavours.

4. CORK, IRELAND

The last port of call for the Titanic before it headed off across the Atlantic, Cork has a lot going for it, with a bustling market, friendly people, and a renowned food and drink scene.

Much more personal than Dublin, it introduces tourists to the rural delights of southern Ireland.

5. KOŠICE, SLOVAKIA

A modern city with an eco edge, Košice combines incredible architecture dating back centuries with a defined approach towards sustainability and the repurposing of old spaces for creative industry.

With a warm welcome and thriving arts scene, this is an inspirational place which transports visitors into a world that reflects the past while embracing the future.



DOES YOUR DOG HAVE HAY FEVER?

Did you know that dogs can suffer with hay fever? In fact, an estimated 10 per cent of pooches in the UK suffer with this seasonal affliction.

DOES MY DOG HAVE HAY FEVER?

Unlike in humans, who typically experience itchy eyes, sneezing and a runny nose, hay fever in dogs typically manifests itself on their skin. Look out for your dog itching, nibbling or rubbing any of the following spots:

Paws | Eyes, ears and mouth | Armpits | Abdomen | Legs | Around their bottom | Groin

In some cases, their skin may also look red, flaky and sore, or they may experience fur loss as a result of constant scratching.

WHEN IS HAY FEVER SEASON?

When your dog suffers with hay fever will be dependent on where you live in the UK and what strain of pollen your dog is sensitive to. However, that being said:

- > Tree pollen occurs from late March to mid-May
- > Grass pollen occurs from mid-May to July
- > Weed pollen occurs from the end of June to September

HOW TO TREAT HAY FEVER IN DOGS

Although hay fever cannot be treated, there are things that you can do to help manage their symptoms and make your dog feel more comfortable. Some of the available hay fever

treatments for dogs are:

- > Topical treatments, such as medicated shampoos and creams
- > Antihistamines (prescribed by your vet)
- > Essential fatty acid supplements
- > Medication to reduce your dog's immune reaction, such as steroids
- > Immunotherapy – although this is expensive and not always effective

HOW TO MANAGE HAY FEVER IN DOGS

- > Walk your dog early in the morning or later in the evening to avoid high pollen counts
- > Keep your dog's ears clean to prevent irritation
- > Wipe your dog's fur, skin and paws with a damp cloth after a walk
- > Wash their bedding regularly
- > Vacuum your home regularly
- > Use an air filter system in your home
- > Stay up to date with your dog's flea and worming treatments

CAN CATS GET HAY FEVER?

Yes, cats can also get hay fever and tend to experience many of the same symptoms as dogs, such as excessive itching, most commonly on the ears, bottom and paws. Cats may also snore as a result of an inflamed throat.

You can get topical creams and anti-itch wipes to alleviate their symptoms.



YO _ R ADVERT HE _ E

Q: WHAT'S MISSING HERE?

A: YOU ARE

CONTACT US NOW TO ADVERTISE

Your
Monthly
Lifestyle
Magazine



t: 0208 088 0386 m: 07967 079101
e: loughton@VISIONmag.co.uk
w: www.VISIONmagessex.com

Hints & tips for selling your home this Spring!

- 1 Use plants and flowers for an inviting springtime lift.
- 2 Declutter, tidy the front & rear gardens, jet wash the patio - Character sells homes.
- 3 Ask your agent for advice on what they would do to enhance your property.
- 4 Natural light is one thing buyers look for so make your windows sparkle and open blinds & curtains.
- 5 All your work should pay dividends for the all important photoshoot.



**Request a free
digital valuation
report**

The Rotary Club of Loughton Buckhurst Hill & Chigwell
and The Rotary Club of Roding

Free Memory Café

SUPPORTED BY



Join us 10am to 12pm every First Friday
of the Month at the Loughton Club.
8 Station Rd. Loughton IG10 4NX

Enjoy refreshments, entertainment, memorabilia,
informal chats, singing, bingo etc.

Please contact: Chris or Fran
FRAN - 07903 274398
CHRIS - 07510 297173

**kw DANIEL LEWIS
PROPERTIES**

07951 020200

daniellewisproperties.co.uk



Daniel Lewis



ISAs VS...

If you want to start saving, then you may be wondering where to put your hard-earned cash. Two of the most popular options are ISAs and savings accounts, but which one is best for you?

WHAT IS AN ISA?

ISA stands for individual savings account and offers a tax-efficient way to save money. There are four types of ISAs:

- Cash ISAs
- Stocks and shares ISAs
- Innovative finance ISAs
- Lifetime ISAs

The government sets a limit for how much can be saved each financial year and does not charge any tax on the interest you earn.

WHAT IS A SAVINGS ACCOUNT?

A savings account offers a safe place to put aside your money and allows you to earn varying amounts of interest. Depending on your circumstances, you may have to pay tax on any interest earned.

There are several different types of savings accounts, including:

- Easy-access accounts
- Fixed-term accounts
- Regular savings accounts

ISA	Savings Account
Completely tax-free	Interest is taxed if you earn over £1,000 for basic tax earners and £500 for high tax earners per year
You can deposit up to £20,000 per year	No limits on deposits
Limited to opening one type of ISA per year	No limits on how many accounts you can open
Good for large amounts and long-term saving	Good for large amounts and long-term saving

SHOULD I OPEN AN ISA OR A SAVINGS ACCOUNT?

Before you decide whether to open an ISA or a savings account, you need to determine your needs and savings goals. Typically, you can earn more competitive interest rates on a savings account and, depending on the account, you may be able to both deposit and withdraw money. However, an ISA is a good choice if you want to protect yourself from paying tax on any interest earned.



...SAVINGS ACCOUNTS

**BEEWISE**

High end solutions for less than you think



At Beewise we use our massive purchasing power and market expertise to get you the best deals on all of your retail merchant services.

Try risk free for **1 month**

50% off the cost of the terminal*

£100 Amazon voucher for the first 200 new customers

Scan the code or call us and we will save you time and money on your business utilities and services

0208 088 3086

*Offer expires 31st May 2023

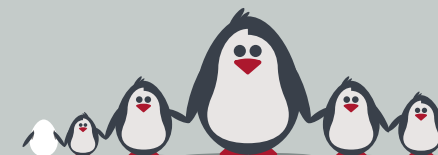


SCAN ME



Specialist family lawyers.

RAYDENSOLICITORS



There might be challenging times in your life when a family law solicitor can help:

- Have you decided your marriage or relationship is over, are you unsure about your family's future?
- Do you need to protect your children, or understand the options to resolve arrangements for your children?
- Do you need a pre nuptial or post nuptial agreement to protect assets?
- Are you moving in with your partner and need a cohabitation agreement?

Choosing the right family lawyer for your circumstances is crucial. Rayden Solicitors are family law specialists with many years' experience; we provide tailored and practical solutions in all areas of family law - divorce, relationship breakdown, child arrangements and financial settlements.

Bespoke advice from Rayden Solicitors in Epping.

Contact us, enquiries@raydensolicitors.co.uk

Epping
323 High Street
Epping
CM16 4BZ
Tel: 0203 773 3919

RAYDENSOLICITORS
www.raydensolicitors.co.uk

We are available on



TTS SOLICITORS

YOUR PERSONAL
CONVEYANCING
SOLICITORS

RESIDENTIAL &
COMMERCIAL
CONVEYANCING
CORPORATE
ACQUISITIONS
GENERAL LITIGATION
FAMILY
WILLS &
PROBATE

We are on 60 lender panels including most high street banks, building societies and first tier lenders
We are CQS accredited and offer outstanding one-on-one service for

- Sales and Purchases – both leasehold & freehold
- Shared Ownership Right to Buys
- Affordable Housing
- Remortgages & Transfer of Equity
- Auction Sales and Purchases
- Lease extensions

0208 088 2941 | www.ttslegal.com | info@ttslegal.com

1-4 The Parade, Monarch Way, Ilford, Essex IG2 7HT

CITY OFFICE: 2nd Floor, Mezzanine, 53 New Oxford Street, London, WC1A 1BL

Improve, Don't Move!

Maximise the value of your home.

- SPACE-SAVING - MAXIMISE YOUR GARAGE HEADROOM
- SECURITY-ENABLED AUTO-LOCKING SYSTEM
- CHOICE OF 21 COLOURS TO MATCH YOUR HOME
- REMOVAL AND RECYCLING OF YOUR OLD DOOR
- DEDICATED AFTER-CARE TEAM

GAROLLA 01992 830 024
ROLLER SHUTTER DOORS
LINES OPEN 7 DAYS A WEEK
www.garolla.co.uk



BESPOKE ELECTRIC DOORS MANUFACTURED IN THE UK

FREE
FITTING
PAYMENT ON
INSTALLATION

PRICED
EXAMPLE
COMPACT • UP TO 2.4M
£895

GAROLLA ★ PREMIUM
Increased Security • Double Insulation
One-Touch Close

PRICED
EXAMPLE
PREMIUM • 3.4M • ANTHRACITE
£1,990

DON'T JUST TAKE OUR WORD FOR IT...

Dear Brett,

VISION magazine has been brilliant for us.

They've helped us increase brand awareness across the whole region and gained us a good few happy customers in the short time we've been with them.

Putting together some brilliant artwork for us. Brett has helped us continue the professional image we're looking for and established us as something of a force locally.

Fulfilling our mission to bring competitively priced home improvements to the local area, realising people's ideal home and helping them achieve their dreams, has been much easier with **VISION** magazine. I foresee our partnership continuing for long into the future.

Many thanks.

Tom & Chris
New Level Loft Conversions
0208 088 2805



Your
Monthly
Lifestyle
Magazine

To advertise call now on

0208 088 0386

or email loughton@visionmag.co.uk

GUIDE TO BUYING A

USED SCOOTER

Whether you are a first-time buyer or are seasoned in the world of scooters, a used one can save you a pretty penny.

Below are four questions you need to ask before buying a used scooter.

1 DOES IT RUN?

While this may seem like a no-brainer, before you buy a used scooter, you need to make sure that it actually runs. Once you have established that it does, the next step is to listen to how it sounds. Four-stroke engines should have a smooth hum, whereas two-stroke engines should sound like a gentle chainsaw, so make sure you listen out when you do a test drive.

2 HOW LONG HAS IT BEEN SITTING?

If you are purchasing a used scooter online, take a close look at the pictures. Does the scooter look

dusty or rusted? If yes, then it may have been sitting unused for a while. Make sure you check the battery and the tyres as both of these are likely to need replacing.

3 CAN YOU STILL GET SPARE PARTS FOR THE SCOOTER?

While you can still get spare parts for most scooters that have come out in the last decade, it is always worth checking before you sign on the dotted line. Don't forget to also be vigilant of scooters that are missing several body panels, as this can be a sign of a crash or that the scooter has been stolen.

4 WHO IS THE SELLER?

You can choose to buy a used scooter from either a dealership or a private seller. While there are advantages and disadvantages for each option, a dealership is a safer bet as you can find out about their reputation online and they are more likely to provide detailed checks on their scooters.



Photo credit: Martin Charles Hatch/Shutterstock.com

SUPPORT LOCAL BUSINESSES



Please let your local businesses know that you saw them first in... **VISION**

TYRO PLATES
Designer Number Plates

CALL US TODAY FOR YOUR BESPOKE PLATE
0208 088 3189

- 2D Printed, 3D Gel, 4D Acrylic Plates
- All Sizes! Shaped, Short, Hex, oversized Plates
- Tinted, Chameleon, Coloured Show Plates
- Exclusive - Vintage Style Number Plates
- Keychains & Accessories
- 1 of the UK's Largest Wholesale & Trade Supplier
- Custom Cut Fit Plates
- Local Same Day & Free Fitting Service
- Nationwide next day shipping
- Over 500 Different Designs to choose from



**THE UK'S MOST TRUSTED AND REVIEWED
AUTO LOCKSMITH & EMERGENCY RESPONSE**

HOW SAFE IS YOUR CAR?

Car & Van Security Specialists

VAN SECURITY LOCKS | ALARM SYSTEMS

VEHICLE TRACKING | THEFT PROTECTION

IMMOBILISERS | CAR KEYS

from
**ONLY
£450**



GHOST CAR IMMOBILISER

A SMART WAY TO PROTECT YOUR CAR

Secure your peace of mind and your vehicle
with the next generation of vehicle security



www.carkeyssolutions.co.uk

Call us on 0208 088 3140

Email: contact@carkeyssolutions.co.uk

We cover Greater London &
surrounding M25 areas

**Open 7 days a week
from 8am to 10pm**



EXPERIENCE GOLFING EXCELLENCE
ALL YEAR ROUND



5 DAY MEMBERSHIP

2 MONTHS FREE & NO JOINING FEE
JOIN NOW

01708 688396

WWW.ABRIDGEGOLF.COM



SUPERB COURSE - LOVELY PEOPLE - A PROPER GOLF CLUB



UNUSUAL SPORT:

Underwater Rugby

HEARING THE RALLYING CRY OF 'SWIM LOW, SWEET CHARIOT', IT CAN ONLY BE AN INVITATION TO PLAY UNDERWATER RUGBY

In 1961 in Cologne, Germany, a new variation on a hybrid sport containing elements of rugby and water polo was invented.

Named underwater rugby, for perhaps rather obvious reasons, the first championships took place some 17 years later, even though the sport's overseers were still unclear as to what the rules should be.

Ultimately, it was decided that there should be six players per side in the pool at any one time, with further substitutes from a total squad of 15 able to be made during the two 15-minute halves.

Most team formations comprise of two forwards, two backs and two goalkeepers or left-wingers, with the aim being to keep possession and score after outwitting the opposition through speed, skill and holding your breath.

The underwater rugby ball is plastic and filled with salt

water and the players have to score in steel goals which are located at the bottom of opposing ends of the pool. The pool dimensions have to be between 12m and 22m in length, 8m and 12m wide, and with a depth of 3.5-5m.

No kicking, hitting or strangling is allowed, but it's a contact sport so, within reason, anything else goes. Officials are present to judge possible offences, resulting in punishments such as warnings, free throws or two-minute penalties.

There were 18 countries involved at the last World Championships in 2019, where Colombia became the first non-Nordic nation to win a gold medal, beating two-time and defending champions Norway in the final in Graz, Austria.

Underwater rugby is said to be the only true 3D sport in the world in the way both the ball and the players can travel in three dimensions and in all directions – imagine, for instance, having a teammate 5m below you in a pool. For this reason, its popularity is exploding.



SPORT

Photo credit: Ardan Flessmann/Shutterstock.com

THE VISION LISTINGS

ACCOUNTANT & TAX ADVISORS

ALL THINGS ACCOUNTING

Accounting & tax services, we help with self-assessment tax return, corporation tax return, payroll, VAT return, CIS return & bookkeeping. Call 07539 035537 for free initial consultation

ACUPUNCTURE

HONG WEI CHINESE MEDICAL

Fully qualified & experienced, specialising in women's health & Fertility. Help with pain relief, emotional disorders, male/female conditions. 01708 454888 | hongweichinesemedicine.co.uk

ANXIETY AND SLEEP DISORDERS

HYPNOTHERAPYDEBONO.COM

Promoting good mental health and well-being, Helping make the change you want in your life for that inner peace. 07504 919721

ARTS, DANCE & FITNESS

STUDIO 1 UK

"Creative space simplified" - Performing arts | Dance | Fitness | Wellbeing | Hire | Adults and kids classes based in Loughton Essex. 07914 667909

BEAUTY & NAILS

BEAUTY BY NATASHA KATIE

A local, mobile LVL Technician. Fully qualified level 2 and 3 beauty therapist Babcac insured and approved. 07961 462672

SPECIAL NAILS

Dedicated to provide the best quality nail care for Men & Women. Walk-ins welcome, appointment bookings & gift vouchers available. 01708 442248

THE NAIL STUDIO

Nail Studio lets you switch off and pamper with highly skilled technicians providing top treatments and nail products to meet your every need. 07572 526519

WICKED WAXING LTD

Male and Female specialist waxing using hot and strip wax. 20 years' experience. Based in Epping with free parking. epping@wickedwaxing.com. 07368 684377

BESPOKE TAILORING

ROSS CARRINGTON BESPOKE TAILORING

Bespoke suits, shirts, jackets, wedding attire, evening wear. Alterations undertaken and visiting service available. 07824 153880 | 020 7898 0599

BUILDING

ADDSpace LONDON LTD

We provide a high quality Building service. Extensions, lofts and internal renovations. Members of Federation Master Builders. Call 020 8088 2870

BUILDING & CLAIMS

CONCEPT BUILDING SOLUTIONS

We are builders specialising in water & fire-damaged properties. We put your home back to how it should be. 020 8088 3418

CAR & VAN HIRE

SCENIC SELF DRIVE

Your self drive hire specialists. Whether you require modern cars, motorhomes, vans or minibuses. Rest assured we will provide you a professional service. 01708 753461

CARPET & UPHOLSTERY

ARWIN CLEANING SERVICES

Over 30 yrs of exp, we can offer a professional, efficient and cost-effective solution for carpet and upholstery, cleaning and maintenance. 07973 417764

CHESS CLUB

VICKI'S CHESS CLUB

Vicki's chess coaching - teaches and provides games of chess to children and adults in Ilford and Debdon. Phone Vicki: 07849 435451 | Website: Vickschessclub.uk

CLEANING SERVICES

SPOTCLEAN LTD

Commercial & domestic services specialising in office, shop, new build, refurbished and residential cleaning. 07940 213394

COMPUTER REPAIR & I.T.

MAPTEC IT

Your local residential & commercial IT specialists. We can fix your computers, configure email accounts & printers. Setup your Wi-Fi, Internet router & network. 020 3865 7174

DRAINAGE

UNITED DRAINS

A fast and professional plumbing/drainage service you can rely on, providing a 24/7 service. All planned, emergency and reactive works undertaken. Call 020 3637 6688

EMAIL LOUGHTON@VISIONMAG.CO.UK TO JOIN THE LISTINGS FOR £15 PER MONTH (+VAT)

PUT YOUR BUSINESS IN THE **VISION** LISTINGS...CALL **0208 088 0386** TODAY

THE VISION LISTINGS

EDUCATION

TUTOR DOCTOR

All primary secondary subjects, 1:1 lessons, online or F2F in-home. Tutor matched to every child's personality, weekly reports. Call 020 3856 4466 | www.tutordoctor.co.uk/wlcc

JOIN THE LISTINGS... for just **£180** +VAT per yr

ELECTRICIAN

GLADE ENERGY SERVICES LTD

We cover all types of electrical work in your home. LED lighting, Fusebox upgrades, CCTV & Home automation. Please call 020 3906 2863

GARDEN SERVICES

JOHN HEARNE

We take care of it all Lawn Mowing, Weeding, Planting, General Tidying, Fence/Shed Painting, Driveway/Patio Pressure Washing and more. Call for details 07908 523101

HANDYMAN SERVICES

CMB PROPERTY GROUP

Handyman, Maintenance & Refurbishments. Decorating, Plastering, Tiling, Re-siliconing etc. Small enough to care, big enough to make a difference! Call 07972 203096

HEALTH & WELLBEING

IMPROVE YOUR SMILE DENTAL PRACTICE

Est. in 1986. Encompassing all needs from basic oral health to advanced dental procedures and high-end cosmetic treatments. New patients welcome. 020 8504 2704

OPTIMUM WELLBEING

Promoting healthy balance at mental/emotional and energetic level. Trauma, Stress, Inner Alignment. 07802 840498 | jay@optimumwellbeing.co.uk

LOCKSMITHS

KEYTEK LOCKSMITHS

From Lock outs to security upgrades, our fully trained DBS checked Locksmiths are the experts | Call 020 3897 2686 | Quote: 15079

MASTICS AND SEALANTS

QUALITY MASTICS LTD

Bathroom and shower mastic joint sealing. Kitchens, windows, floors, external seals around windows. For information. Call 01245 520981

PAINTING & DECORATING

PGA DECORATING SPECIALIST

Interior - exterior - paper hanging specialists in Window repair care. 07769 646357 | www.pgadecoratingspecialists.co.uk | pgadecorators@yahoo.co.uk

PLUMBING & HEATING

BOILR

BOILR offer servicing, installations, repairs and plans. Local Gas Safe engineers for all your needs. Please call today on 020 3576 2386

PROPERTY MAINTENANCE

LILLYWHITE PROPERTY GROUP

For all building works, full refurbishments & property maintenance inc heating, plumbing, electrical, decorating, flooring, tiling & plastering etc. Call today on 07949 394403

STUART GREEN PROPERTY SOLUTIONS

Property maintenance specialist. Carpentry, painting/ decorating, laminate flooring, bath/shower re-siliconing, gutters cleared/repared, insurance work, PLI. 07917 870879

ROOFING

JIM BARR ROOFING

Exterior cleaning/maintenance. Gutters, Paving, UPVC; cleaned, repaired, renewed. 01708 874816 | 07833 572459

WEB DESIGN & PRINTING

SWIVEL CREATIONS

25+ yrs exp, we are specialists in web, print, clothing and embroidery. Professional, affordable, reliable. 01992 570383 | 07736 879233 | www.swivuk.co.uk | info@swivuk.co.uk

PHOENIX ROAD CREATIVE

25+ years Web Design & Marketing to reach your audience. Let's get digital! hello@phoenixroadcreative.com | www.phoenixroadcreative.com | 07462 528494

DISCLAIMER: **VISION** does not represent or endorse the accuracy or reliability of any of the advertisements, nor the quality of any products, information or other materials displayed, purchased or obtained by any customer as a result of an advertisement or any other information or offer in connection with the service or products. The opinions expressed in articles, reviews and stories are strictly those of the individual authors and do not necessarily reflect the views of **VISION**.

To advertise call **VISION** on **0208 088 0386**

WORDLADDER: ROAD, LOAD, LORD, LORE, TORE, TYRE

OVER 30 YEARS OF EXCELLENCE



Life is Beautiful

At City Bathrooms we believe everyone deserves a beautiful bathroom, that's why our passion for luxury products, first-class customer service and expert bathroom advice is at the heart of everything we do.

City Bathrooms

11 Raven Road, South Woodford E18 1HB

Telephone: 020 8504 5152

Email: sales@citybathrooms.com

citybathrooms.com





SHOCKED AT THE COST OF A NEW KITCHEN? ...HAVE A MAKEOVER INSTEAD!



If you're worried about your kitchen budget getting out of control, why not have a makeover instead! You can get a lovely new look simply by replacing your doors, drawer fronts, trims and worktops.

SAVE TIME. SAVE MONEY. SAVE HASSLE.

To book your **FREE**
no pressure, home visit call
Mark: 020 8088 9192

SHOWROOM
36a Church Hill, Loughton, IG10 1LA
www.kitchensandmakeovers.com
info@kitchensandmakeovers.com

