

FREE

Photo credit: Hugo Burnand/Royal Household/Shutterstock

HM King CHARLES III

Monarch ascends the throne in historic ceremony

SALE NOW ON

at your local independent electrical retailer

Price Match Guarantee | Super Service | Expert Knowledge | Safe Contact-Free Delivery



BOSCH

Invented for life

**1400 Spin 9kg
Washing Machine**
WGG04409GB



- 14 Programmes inc: 15 Minute Quick Wash
- Delay Start, Eco Programme
- Pause & Add Function
- Dimensions: H84.8xW59.8xD58.8cm

5 Year Warranty
A Energy Rating

Only
£599.⁰⁰

Free
12 Months
Detergent*



Broadway Music and Vision

8 The Broadway,
Woodford Green, IG8 0HL
0208 504 7500
broadwaymandv@aol.com



*Terms & Conditions apply. Some products sold as an agent for Euronics Limited. All rights reserved. All offers are subject to availability while stocks last. Delivery & Installation charges may apply. Exclusions & Radius Apply. Prices correct at the time of print but can be subject to change. See in store for full details. Images for illustration purposes only. Copyright Euronics 2020. Savings compared to a higher price charged for 7 days. Savings on selected models only.

SALE NOW ON

at your local independent electrical retailer

Price Match Guarantee | Super Service | Expert Knowledge | Safe Contact-Free Delivery



BOSCH

Invented for life

**9kg Heat Pump
Tumble Dryer**
WQG24509GB



- 14 Programmes Inc: 40 Minute Quick Dry
- Freshen Up Function
- Built In Display, Dial Controls, Child Lock
- Dimensions: H84.2xW59.8xD61.3cm

5 Year Warranty
A++ Energy Rating

Only
£769.⁰⁰



Broadway Music and Vision

8 The Broadway,
Woodford Green, IG8 0HL
0208 504 7500
broadwaymandv@aol.com



*Terms & Conditions apply. Some products sold as an agent for Euronics Limited. All rights reserved. All offers are subject to availability while stocks last. Delivery & Installation charges may apply. Exclusions & Radius Apply. Prices correct at the time of print but can be subject to change. See in store for full details. Images for illustration purposes only. Copyright Euronics 2020. Savings compared to a higher price charged for 7 days. Savings on selected models only.



Editor's notes...

JUNE 2023



Brett Shohet, Editor

Hello and welcome to this month's edition of **VISION**Loughton. Last month, we celebrated an occasion most of us will never have experienced before - the coronation of a monarch. I visited London the week before King Charles III's coronation and the atmosphere was electric. During my visit, I went to Carnaby Street, where my dad used to own a shop. I stood in the same shop doorway I would have stood in at age seven, and took in all the changes that have taken place in the intervening years. While it can feel as though we live in a world of constant change, the coronation reminded us that we are all united in a country steeped in long-standing tradition and history.

I recently had an interesting conversation about DFS. It's become a running joke that the furniture retailer always has a sale on. For most of us, the adverts have become background noise, so frequently do we hear about the DFS sale. But when people are ready to buy a sofa, guess who they think of first? All this is to say how important it is to put your name out there and ensure as many people as possible are aware of your brand. This way, when the customer is ready, they'll know how to find you.

If you are interested to see how we can do this for your business locally, then please get in touch.

Brett Shohet

This is your town's hyperlocal magazine, delivering to homes and businesses every month.

HOME & DIY | GARDENING | PETS | HEALTH & FITNESS | BEAUTY | FASHION | HISTORY | LOCAL NEWS | FOOD & DRINK | TRAVEL | BUSINESS & PROPERTY | SPORT | PUZZLES | MOTORING | KIDS | WHAT'S ON | TECHNOLOGY | THE LISTINGS

CONTACT US:



loughton@visionmag.co.uk | 0208 088 0386
www.visionmagessex.com | www.visionmagherts.com
@visionmagessex | @visionherts | @visionmagessex | @visionmageastherts
Vision Magazine Essex | Vision Magazine East Herts
CONTRIBUTORS | Tabatha Fabray, Fiona Goble, Darius Morgan

All pages are recyclable



The bathroom you have always dreamed of



YOUR DESIGNER BATHROOM

Visit our showroom and see the latest bathroom ranges
Bathworks can offer supply only, or arrange supply & fit

196 High Road, Woodford Green, Essex IG8 9EF

Tel: 020 8504 1765 Email: info@bath-works.co.uk

www.bath-works.co.uk



home
hub group

NOW OPEN ON
EPPING HIGH STREET



We supply and
install windows
and doors.

01992 276 046
essex@homehubgroup.co.uk

homehubgroup.co.uk

@HomeHubGroup

King Charles' Vision



They claim that patience is rewarded with the finest treasures, and His Majesty King Charles III's lengthy 70-year wait as the heir apparent undoubtedly demonstrates his worthiness for the throne.

Now, after being confirmed in the eyes of God during his coronation in May, His Majesty will finally implement his grand vision, aiming to propel the Windsors into the modern era.

So, what will this mean for the King, those closest to him, and us, his loyal subjects?

A key principle of King Charles III's plan is to streamline the royal family. In recent years, this process has unfolded somewhat naturally, with Prince Harry voluntarily stepping back from his official duties and Prince Andrew being removed from his responsibilities.

However, under the provisions of the Regency Act 1937, in the event of the monarch's incapacity, their spouse and the four eligible adults next in line to the throne can act as substitutes. This means that the Duke of Sussex, Duke of York and Princess Beatrice are authorised to fulfil these roles – yet there is a problem, in that they are not working royals.

King Charles III has already amended this law in Parliament to allow his siblings Prince Edward and the Princess Royal Anne to act as additional councillors, but perhaps he will go further and make it so that such duties and privileges are only fulfilled by working royals.

Having experienced numerous turbulent periods in the monarchy's history, King Charles III possesses a keen awareness of the Republican sentiment prevailing among certain sections of the British population. While the late Her Majesty Queen Elizabeth II enjoyed immense

popularity, there are those who firmly believe that the time has come to dissolve the monarchy and forge ahead into a fully modern and democratic Britain. However, when we consider the substantial contributions of the monarchy to our economy and the profound cultural value of our traditions and illustrious history, it becomes evident that the potential losses outweigh the gains.

According to Forbes, the House of Windsor is estimated to hold a value of £19billion. Moreover, although the annual cost of royal upkeep for UK taxpayers amounts to approximately £500million, Brand Finance estimates that the monarchy's brand contributes £2.5billion to the British economy over the same period.

In essence, His Majesty understands his significance, but he also recognises the importance of connecting more deeply with the everyday people in his kingdom. Addressing challenges such as the recent cost-of-living crisis, and its prevalence in people's minds over the King's own passions, such as the environment, are essential for him to ensure a peaceful reign.

An additional challenge that His Majesty may encounter is the requirement to refrain from taking a stance on partisan matters, including the pressing issue of climate change. He has long been an advocate for a greener planet, having converted his cherished Aston Martin DB6 so that it can run on cheese waste and surplus wine, adopted biomass boilers for heating Birkhall estate, and installed solar panels at Clarence House. Laura Tobin recently stated on *Good Morning Britain* that changes have also been implemented at Buckingham Palace, where the lights have been turned off at night as an energy-saving measure.

As a man who has skirted both sides of the popularity divide over the decades, the opportunity to cement himself as an exemplar for a modern royal family is surely one he won't pass up.



A FINAL FAREWELL TO

SOCCER AM

SOCCER AM'S SATURDAY FUN IS OVER, BUT THE LEGACY REMAINS

While the popularity of football is seemingly unending, not all survive the sport's continued evolution, with *Soccer AM* becoming the latest entity to be consigned to glorious retirement.

For a long while, the Saturday morning Sky show was a ground-breaking, perfectly unrefined piece of footballing irreverence. It set up the weekend's action with a laddish, lager-tinged layabout appeal that original presenters Tim Lovejoy and Helen Chamberlain lapped up.

A show that bolstered the careers of the likes of Andy Goldstein, Max Rushden, John Fendley, Tubes, Rocket and countless 'Soccerettes', its comedic approach saw many of its features permeate modern culture. From 'tekkers' to the Crossbar Challenge, Taxi! to the Save Chip campaign, not to mention the 'easy' chant and associated arm action, and getting the word 'bouncebackability' entered into the Oxford English Dictionary, *Soccer AM* finished up just a year shy of the 30-year mark, with the final show broadcast on May 27, 2023.

The death knell had sounded loudly in the past, though glorious reinvention saved *Soccer AM* from its demise. Yet with ratings continuing to fall, the final whistle has now been blown.

Despite a stellar cast of guests over the years, including Noel Gallagher, Tyson Fury, James Dean Bradfield, Richard E. Grant and Gordon Ramsay OBE, critics have, in the past, pointed to the show's politically incorrect content. Former producer Rocket recently said: "I don't know if that show can exist now because if there's a reason to complain about something, generally someone will."

While the show was always destined to ride the thin line between entertainment and controversy, its cessation became as much to do with the fact that even the biggest and best become tired and staid.

Regardless, *Soccer AM* ran a course longer than a generation of footballers, and for that reason, it will be remembered as one of the sport's greatest cultural success stories.

EMPIRE UPVC & ROOFING SPECIALISTS

**WE GUARANTEE OUR CUSTOMERS
A FRIENDLY, RELIABLE AND
PROFESSIONAL SERVICE**



Empire UPVC and Roofing Specialists independently trade throughout Hertfordshire and a 40 mile radius from our office in Nazeing.

- ✓ Felt, Tile & Slate Roofing
- ✓ Liquid Rubber Roofing
- ✓ Fibreglass Roofing
- ✓ Roofing Leadwork
- ✓ All Roof Windows
- ✓ All Roofing Repairs & Maintenance
- ✓ Moss Removal
- ✓ Gutter Cleaning & Unblocking
- ✓ UPVC Fascias, Soffits & Guttering
- ✓ UPVC & Hardie Plank Cladding

Office: 0208 088 3259

office@empireupvcandroofing.co.uk
www.empireupvcandroofing.co.uk

Visit Our Showroom at:

Unit 50 Hillgrove Business Park
Nazeing New Road, EN9 2HB



Checkatrade.com

FULLY INSURED





FASHION

flower POWER

Spotting at Dior, Dries Van Noten, Prada and Lela Rose, florals have dominated the catwalk and are set to be everywhere this summer. Perfect for anyone who loves stand-out fashion, this is one trend that promises to lift your mood and make you smile.

HOW TO WEAR FLORALS THIS SUMMER

Wear with a plain solid colour

Mixing floral prints is very hard to do, so if you are new to wearing florals, it can be a good idea to wear your chosen print with a plain solid colour, preferably in a complementary or matching tone.

Add an edgy twist

If you find florals a bit too girly, then you might want to toughen up your look with something edgy such as a leather jacket or a pair of biker boots. Alternatively, you could add a masculine element with a tailored jacket or boyfriend jeans.

Experiment with accessories

For those who don't want to go full on with the floral trend, why not invest in a few floral accessories, such as a floral handbag, jewellery, scarf or hat?

Rock a floral shirt

A floral shirt is the way to go for style as appropriate for the office as it is for time with friends. Team with a pair of smart jeans for a casual day look, or wear a floral t-shirt with a tailored suit for a more playful take on your standard office attire. Or to test the water, why not invest in a floral tie?

HOW TO PICK THE RIGHT FLORALS FOR YOUR BODY SHAPE

- * If you have a fuller figure, avoid oversized prints as these can make you appear wider than you actually are
- * If you have a slim build, then a medium floral print works best
- * Smaller prints work for most body shapes, including pear-shaped and hourglass
- * Use a large floral print on any areas of your body that you want to make look larger
- * Use a small floral print on any areas of your body that you want to make look smaller
- * Play with different proportions to see what works best for you.

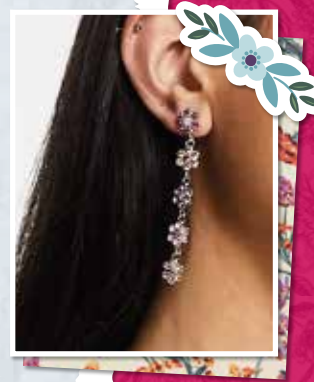
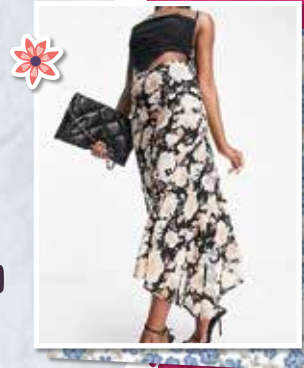


Photo credit: ASOS.com

WOODFORD HOUSE DENTAL PRACTICE



Not all
clear aligners
are the
same.



Book a **FREE CONSULTATION** with an experienced dentist for a straighter smile created with discreet, comfortable, clear aligners. We'll include a 3D scan of your teeth to show what we could do for you.

invisalign ELITE PLATINUM PROVIDER

020 8504 2704
improveyoursmile.co.uk
 162 HIGH ROAD WOODFORD GREEN IG8 9EF
EXPERIENCE YOU CAN TRUST



DANIEL ROBINSON & SONS

INDEPENDENT FAMILY FUNERAL DIRECTORS



The funeral professionals...



Bespoke funerals to meet your wishes, including simple, traditional and green funerals, direct cremation, specialist vehicles and horse-drawn.

Preneed Funeral Plans

Dedicated 24 hour support to the community in our local funeral homes.

*Funerals as unique as
the loved ones remembered*

www.drobinson.co.uk

Because sometimes, only the very best service & care will do



"I'M IN PAIN"
**CAN CHIROPRACTIC
HELP ME?**

YES, IF YOU EXPERIENCE ANY OF THE FOLLOWING:

- Low Back Pain ● Car Accident ● Neck Pain ● Migraine ● Shoulder Pain
- Numbness in Arms & Hands ● Numbness or Pain in Legs

FOR A LIMITED PERIOD WE WILL DO:

- ✓ A full Consultation ✓ Examination
- ✓ X-rays (if necessary) ✓ Full Report of our Findings
- ✓ An explanation of our treatment procedure or a referral to the appropriate specialist if we determine Chiropractic cannot help

**OFFER
PRICE
£50**

Expiry Date
30 June



Terry Chimes,
Chiropractor



**FOR MORE INFORMATION
OR TO BOOK: 0208 508 9377**

www.chimeschiropractic.com

Email: info@chimeschiropractic.com

4 Richmond Park, Loughton IG104PQ



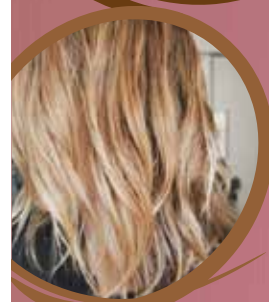
BEAUTY

Goodbye GREASE



If you struggle with greasy hair, then these hairstyles are just what you need to skip a hair wash and still look and feel great.

BABY BRAIDS: If the front of your hair is prone to oil, then baby braids offer the perfect way to conceal this. Start by working a little bit of dry shampoo through your hair and then section out the front strands. Braid them as tightly or loosely as you like and secure with a clear hair band.



A SNATCHED PONY: Delivering a super sleek look, a snapped pony is bang on trend and perfect for days when you don't have time to wash your hair. Separate your hair into two sections (top and bottom half) and apply a smoothing serum. Then brush from roots to ends, making sure that the front is smooth and tight. Join the sections at the crown and secure with a hair band.

WET-LOOK WAVES: Rather than try to hide the natural oils in your hair, embrace them with wet-look waves. To start, dampen your hair and add a liberal amount of heat protectant spray. Then gently blow dry your hair and add waves using a curling iron. Apply hair oil to complete the look.



A ZIGZAG PARTING: Add a playful touch to a low ponytail with a zigzag parting. Perfect for distracting from greasy roots, you need to invest in a tail comb to get a zigzag parting right. Start at the centre of your parting and then use the comb to form a zigzag along the parting line. For best results, keep all the zigzags within the same one-inch margin.



A SILK SCARF: If your curls are looking a little oily, then pile them high on your head and add a silky scarf for added visual interest and to conceal grease at the roots.

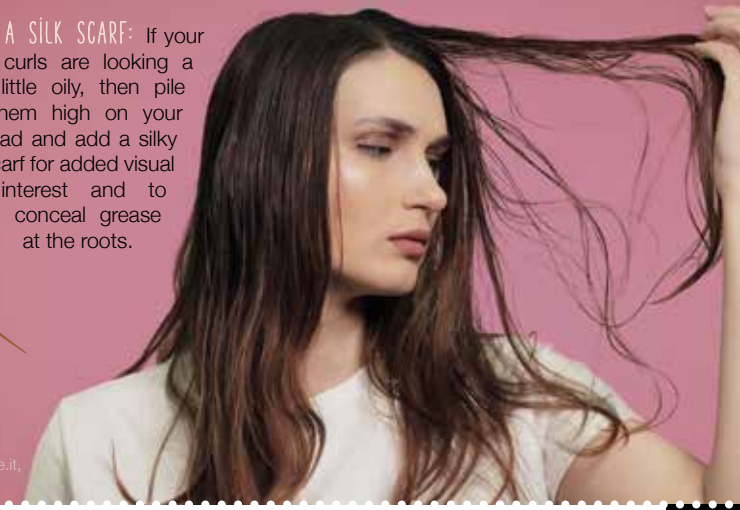


Photo credit: Instagram @justinemarjan, capellistyle.it, Pinterest/goldfishkiss.com, terrificresses, Etsy



Stroll YOURSELF SLIM

Finding the time, not to mention the inclination, to exercise after having a baby can be hard. However, what if you could combine taking your baby for a walk with getting fit? Welcome to the world of stroller fitness.

WHAT IS STROLLER FITNESS?

As the name suggests, stroller fitness is a workout where you use your baby's buggy or stroller to get fit. Perfect for parents of all fitness abilities, a stroller workout can be as intense or as gentle as you make it. Plus, no babysitter is needed, as your baby will be with you every step of the way.

WHAT ARE THE BENEFITS OF STROLLER FITNESS?

One of the best things about stroller fitness is that it allows you to get back into exercise without having to leave your baby. Depending on the exercises that you choose to carry out, stroller fitness can provide a full body workout, or it can be used to target specific muscle groups or problem areas.

FOUR STROLLER EXERCISES TO GET YOU STARTED

Walking lunges: If you want to tone and strengthen your lower body, then walking lunges are a great choice. Take long strides as you push your buggy and lower your body until your front thigh is almost parallel to the ground. Continue for one minute, rest for 30 seconds, and repeat.

Jump squats: These burn more calories than standard squats. Use your buggy for balance, engage your core, push up through your heels as you jump up, focusing on soft knees as you land. Continue for 30 seconds, rest for 30 seconds, and repeat.

Pram chest press: Work your chest, arms and core with the pram chest press. Push through your shoulders, tensing your core as you push your buggy away from you and then pull it back towards you. Do 15 reps, rest, and do a further 15.

Pram chest press with lunge: To increase the intensity of your workout and up your heart rate even more, alternate walking lunges with the pram chest press. This exercise will work your whole body. Continue for 30 seconds, rest for 30 seconds, and repeat.



WOOLSTON MANOR

GOLF CLUB

Celebrate at
Woolston Manor Clubhouse

**The Special Venue for all your
Weddings & Parties**

You can celebrate in style in one of our stunning event spaces. The Clubhouse, set in 200 acres of beautiful grounds and lakes, boast a sweeping driveway, high ceilings and elegance.

Enjoy the benefits of
Woolston Manor Golf Club

**With our Individual, Joint &
Corporate Membership options**

Woolston Manor Golf Club membership provides you with access to the superb championship golf course, modern clubhouse, fixtures, competitions, social calendar and top class catering.



Woolston Manor Golf Club, Abridge Road, Chigwell, IG7 6BX

☎ 0208 500 2549 ✉ info@woolstonmanor.co.uk 🌐 woolstonmanor.co.uk



Prescriptions

ALL ABOUT

How much does a prescription cost in England?

The prescription charge in England is £9.65 per item. However, you can get an NHS prescription prepayment certificate (PPC), which can help you save money if you need more than three items in three months or 11 items in 12 months.

A PPC costs:

- ✚ £31.25 for three months
- ✚ £111.60 for 12 months

You can purchase a PPC either online or with any registered pharmacy.

Who is eligible for free prescriptions?

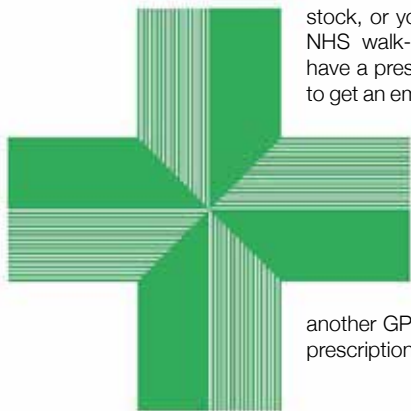
You are eligible for free prescriptions if you are:

- ✓ Aged 60 or over
- ✓ Under 16
- ✓ Aged 16-18 and in full-time education
- ✓ Pregnant or have had a baby in the last 12 months and have a valid maternity exemption certificate
- ✓ Have a specified medical condition and a valid medical exemption certificate
- ✓ Have a continuing disability that prevents you from going out and have a valid medical exemption certificate
- ✓ Hold a valid war pension exemption certificate and the prescription is for your accepted disability
- ✓ An NHS inpatient

You are also entitled to free prescriptions if you or your partner receive certain benefits, or if you are under 20 and the dependent of someone receiving certain benefits, such as income support and income-based Jobseeker's Allowance. Contraception is free for everyone in England.

Is it possible to get an emergency prescription?

If you have a prescription, you can visit any pharmacy to get your medicine as long as they have it in stock, or you may be able to use an NHS walk-in centre. If you do not have a prescription, you may be able to get an emergency supply from your



local pharmacy. Take your old prescription or the medicine's packaging with you if you have it. If you are away from home, you can register as a temporary patient with another GP and ask them to do your prescription for you.

Can you get your prescription delivered to your door?

If you are unable to leave your home, your local pharmacy may be able to deliver it to your door free of charge. Alternatively, some retailers such as Boots will deliver your prescriptions for a small fee.

YOU'RE NOT ALONE



OVER 207,500 OTHER PEOPLE IN ESSEX
READ **VISION** MAGAZINE'S MONTHLY

CONTACT US TODAY TO GET YOUR BUSINESS SEEN BY OUR READERS

Your
Monthly
Lifestyle
Magazine



See all our magazines at www.visionmagessex.com

Billericay Shenfield Bishop's Cleeve Stortford Brentwood Ongar Chelmsford Beaulieu Epping Theydon
Halstead Braintree Hertford Hornchurch Leigh Thorpe Bay Loughton Maldon Burnham
Rayleigh Wickford South Woodford Tending



Manjal

SOUTH INDIAN & SRI LANKAN CUISINE

RESTAURANT | BAR | EVENTS

Langston Road, Loughton, IG10 3TQ

Restaurant Hire

Sports Bar | Field Hire | Football & Cricket



Follow Us

[f](#) [@](#)manjalrestaurantuk

visit: manjalrestaurant.com

Email: info.loughton@manjalrestaurant.com

0208 088 2791



SCAN ME

Enchanting ELDERFLOWER

Elder trees are very common in the UK and, come late May, start to develop masses of tiny white flowers which eventually turn into purple elderberries. The elderflower is known for its light and floral taste and makes a great addition to cordials, cakes and more.

ELDERFLOWER CORDIAL

YOU WILL NEED: 2 ½kg granulated or caster sugar | The zest of 2 unwaxed lemons | 20 fresh elderflower heads | 85g citric acid – you can buy this online or at your local pharmacist

HOW TO MAKE:

- > Gently heat the sugar and 2 ¾ pints of water in a pan until the sugar has dissolved.
- > Bring to the boil and turn off the heat.
- > Add the elderflower heads, the lemon zest and the citric acid to the pan and stir well.
- > Cover the pan and leave to infuse for 24 hours.
- > Line a colander with a clean tea towel and set it over a large pan.
- > Ladle in the syrup and let it slowly drip through.
- > Pour the leftover liquid into a sterilised jar. You can sterilise a glass jar either on a hot rinse cycle in the dishwasher or in the oven for 15 minutes at 160°C/140°C fan/gas mark 3.

> The cordial is ready to drink and can be kept in the fridge for up to six weeks.

ELDERFLOWER DRIZZLE CAKE

YOU WILL NEED: 175g softened butter | 175g golden caster sugar | 3 eggs | 140g self-raising flour | 85g ground almonds | ½ tsp baking powder | 100ml milk | 4 tbs elderflower cordial | 4 tbs white or golden granulated sugar

HOW TO MAKE:

- > Heat the oven to 160°C/140°C fan/gas mark 3.
- > Grease and line a 900g cake tin.
- > Beat the butter and 175g sugar until light and fluffy.
- > Add the eggs, flour, almonds, baking powder and milk, then whisk until smooth.
- > Pour into the tin and bake for 45-50 minutes until risen and golden.
- > Prick the cake all over with a skewer.
- > Mix the cordial and extra sugar and pour all over the cake.
- > Leave to cool in the tin and drizzle with icing if you wish.



FOOD & DRINK

King Charles' CORONATION QUICHE

With the coronation still fresh in everyone's minds, why not have a go at making your very own King Charles coronation quiche? This dish was chosen to celebrate British seasonal produce – and also because the King loves eggs and cheese.

YOU WILL NEED: (serves 6)

FOR THE PASTRY: 125g plain flour | 25g cold butter, diced | 25g lard | 2 tbsp milk | Pinch of salt. Or 250g block of readymade shortcrust pastry

FOR THE FILLING: 125ml milk | 175ml double cream | 2 medium eggs | 1 tbsp chopped fresh tarragon | 100g cheese | 180g cooked spinach, lightly chopped | 60g cooked broad beans | Salt and pepper | Pine nuts for garnish, if desired | You will also need a 20cm flat tin and baking beans

HOW TO MAKE:

1. To make the pastry, sieve the flour and salt into a bowl. Add the butter and lard and rub the mixture together using your fingertips until you have a breadcrumb-like texture.
2. Add the milk a little at a time and bring the

ingredients together to form a dough.

3. Cover and leave to rest in the fridge for 30-45 minutes.
4. Lightly flour your work surface and roll out the dough into a circle approximately 5mm thick.
5. Lightly grease the tin with butter and line with the pastry, being careful not to make any holes. Cover and rest for a further 30 minutes in the fridge.
6. Preheat your oven to 190°C/170°C fan/gas mark 5.
7. Line the pastry case with greaseproof paper, add baking beans and bake for 15 minutes.
8. Take the case out of the oven, remove the paper and beans, and leave the pastry case to one side.
9. Reduce the oven temperature to 160°C/140°C fan/gas mark 3.
10. To make the filling, beat together the milk, cream and eggs.
11. Scatter half of the cheese into the blind-baked base and then top with spinach, broad beans, tarragon and seasoning.
12. Season and pour over your liquid mixture of milk, eggs and cream.
13. Sprinkle over the remaining cheese.
14. Place in the oven and bake for 20-25 minutes until set and lightly golden.
15. Garnish with pine nuts if desired.



Photo credit: Daniel Lea/AP/Shutterstock



FILIKA




Filika restaurant is a smart, comfortable and cosy restaurant with a relaxing Mediterranean atmosphere.

Welcoming and friendly, we serve modern and the best traditional Turkish cuisine.

We offer a good choice of freshly prepared seasonal food – mezzes, a generous selection of marinated steaks, chicken, vegetarian dishes and lots of fish & seafood dishes.

Opening hours
Monday-Saturday: 12pm - 10pm
Sunday: 12pm - 9pm

FILIKA RESTAURANT THEYDON BOIS
13 Forest Drive, Theydon Bois, CM16 7EX
www.filikarestaurant.co.uk
theydonbois@filikarestaurant.co.uk
Tel: 01992 812000

FILIKA RESTAURANT WANSTEAD
62 High Street Wanstead, E11 2RJ
www.filikarestaurant.co.uk
info@filikarestaurant.co.uk
Tel: 020 8530 1333

Do you want that extra clean?

COME TO US FOR A QUALITY RELIABLE IRONING SERVICE

- Dry Cleaning • Repairs & Alterations
- Wedding Dresses • Evening Gowns
- Laundry & Service Washes
- Quilts & Blankets • Bed Linen
- Curtains • Upholstery

FREE COLLECTION & DELIVERY SERVICE

10% DISCOUNT OFF FIRST ORDER
(Minimum order £25)

Call, text or book online
0781 114 8424
0208 989 4484

www.touchofclassdrycleaners.co.uk
FOR ALL OUR SERVICES & PRICES
SCAN THE QR CODE



106 George Ln,
E18 1AD



GET TO KNOW ANIMALS

Indoor Petting Zoo & Animal Experience Centre



OPEN TUESDAY-SUNDAY 10AM-6PM - LAST ENTRY 4:30PM

ADULTS: £10 (UNDER 2'S FREE) UNDER 11 / OVER 65 / DISABLED: £8.50
CARERS FREE WITH PROOF OF DISABILITY FAMILY TICKETS AVAILABLE

MIDWEEK TERM-TIME:

1 ADULT & 1 UNDER 5: £10 (10AM - 3PM) AFTER 3PM: £5 P/P

ANIMAL HANDLING EXPERIENCES FROM £3.50



WWW.GTKA.CO.UK ~ FOREST LODGE COMMERCIAL COMPLEX, EPPING RD, EPPING, CM16 5HW

Home Counties Loft Ladders, Quality You Can Trust!

These days most homeowners suffer from a lack of storage space. So many precious items that need to be kept - but where to store it all? That's where Home Counties Loft Ladders come in.

The company, based locally, offers homeowners the opportunity to maximise their storage space with a loft ladder, 50sqft of boarding and a light - all fully fitted in less than a day from just £444! But it's not just the affordability of the package that makes Home Counties Loft Ladders stand out, as manager Jamie Oakley explains: 'Our

watchwords are Quality, Integrity and Value. Quality in the materials that we use for all our installations and the fact that all our loft packages are fitted by time served tradesmen, so our customers are assured of the best job.

Integrity in that we will turn up at the time we say and make sure the house is spotless when we leave, and value in that we offer our services at a price people can afford.

Our business relies on referrals and we get a huge amount of our calls from people who have been referred to us by our existing customers

- that simply wouldn't happen if we didn't adhere to our overriding principles.

At the end of the day the old adage that happy customers lead to more happy customers is true and we work hard to make that happen for

every installation we carry out!

So, if you want to make use of your loft space, call Jamie free on 0808 301 9551 and he'll be happy to pop round and give you a no obligation quote so you too can make use of your loft!



Need more storage space?
INSTALL A LOFT LADDER AND USE YOUR LOFT!

STARTER PACKAGE: Aluminium loft ladder, light plus 50 sqft boarding, fully fitted in less than a day from £444

- Loft Ladders • Hatches
- Boarding • Insulation
- Lights • Fully Guaranteed



Home Counties — LOFT LADDERS

CALL FREE: 0808 301 9551
homecountiesloftladders.co.uk



BRINGING THE HOME OF THE FUTURE TO YOUR HOME NOW



GLADE ENERGY SERVICES LTD

0208 088 3093 • GLADEENERGYSERVICES.COM



ASSISTED LIVING



ELECTRICS



HOME SECURITY

- Your local Electrician • Highly recommended by many local residents & businesses
- All types of electrical work • CCTV & Alarm systems • Heating controls
- WiFi & Home Internet networks • Smart lighting & Home automation
- Specialists in LED lighting



LOFT CONVERSION AND REMODELLING SPECIALISTS

PROVIDING BESPOKE CONVERSION SOLUTIONS

DORMER • HIP TO GABLE • MANSARD • ROOF LIGHT
HOME REMODELLING AND INTERIOR DESIGN

LET US DELIVER YOUR DREAM

VISIT OUR WEBSITE: WWW.LOFTCARE.CO.UK
or call 0208 088 3015 • 0800 002 9411



INTERIOR DESIGN PROFILE



Echlin is a contemporary interior design house that bases its work on the principles of “wellbeing and craftsmanship”, creating looks that are light and spacious – an oasis of calm that is wonderful to observe.

The designs are understated and beautiful, and are excellent examples of how to blend creative design with modern living to create timeless interiors.

ABOUT ECHLIN

Echlin was founded by Mark O'Callaghan (top left) and Sam McNally (top right) in 2011. Both bring a wealth of design experience to the table, and the result is a design house that creates elegant looks with a clear 20th-century elegance. Using different textures such as wood, stone and metal, Echlin designs are made to stand the test of time.

Their designs are stylish but practical and use neutral canvasses brought to life with different materials, including leather and soft velvets, as well as the occasional pop of colour.

LOVING THE ECHLIN LOOK AND LOOKING FOR INSPIRATION?

Recreate this incredible design style in your home using the following tips:

- ⌚ Keep spaces **LIGHT** to make them feel open and airy. Choose lighter neutral shades for walls and floors, like creams and greys, and add darker contrasts through furniture and accessories.
- ⌚ Look for **UNIQUE** items that will stand out as a focal point for the space. A statement headboard or large piece of art can draw the eye, without taking away from the rest of the room.
- ⌚ Add a refreshing touch with pops of **COLOUR** using cushions, curtains and occasional chairs.
- ⌚ Keep your interior **UNCLUTTERED** and make the most of available storage for a clean space that will promote serenity.



DIRTIEST

CORNERS OF THE KITCHEN

Although the kitchen may be the heart of the home, that doesn't mean it doesn't harbour a whole host of hidden germs and bacteria. Discover the dirtiest areas of your kitchen below.

KNOBS AND HANDLES

Every appliance in your kitchen has some sort of handle or control panel that is often touched with dirty hands or after handling raw food, which can leave bacteria such as salmonella, listeria and E. coli behind. Clean daily using a disinfectant wipe or disinfectant cleaner and a clean cloth.

THE KITCHEN SINK

Even though water frequently runs down your kitchen sink, there are still lots of microbes lurking on the surface and around the drain. Disinfect your sink daily using a sink cleaner, and don't forget the taps and the counter areas surrounding it.

THE FRIDGE

Despite the cold temperature, harmful bacteria can still grow in your fridge. If you store unwashed fruit and vegetables in this appliance, these can be covered in bacteria and pesticides. Raw meat can also leak out of its packaging and fluid can accumulate. Remove fridge drawers and shelves at least once a month and wash all the surfaces with hot water and a mild dish soap.

CUTTING BOARDS

Cutting boards, especially wooden ones, can harbour bacteria in the tiny nooks and crannies that appear after each use. To avoid cross-contamination, you should have one board for fruit and veg and a different one for meat. Wash each board after use with hot, soapy water and dry with a clean tea towel.

COUNTERTOPS

Every time you place something on your kitchen countertops, such as your purse or shopping bag, you are potentially leaving dirt and bacteria where you will later prepare food. Clean with a disinfectant wipe or disinfectant spray and a clean cloth at least once a day.

WANT MORE BUSINESS?

CALL 0208 088 0386
TODAY TO ADVERTISE



**FOR DECORATION AS
UNIQUE AS YOU ARE**

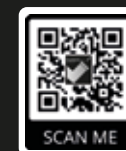
- PAINTING & DECORATING
- KITCHEN SPRAYING
- WALLPAPERING
- FREE QUOTATIONS

0208 088 2976

info@platinumdecorating.co.uk

platinumdecorating

platinum.decorating



What we can do for you

- Wait & Load 24/7
- House Clearance
- Office Clearance
- Junk Removal
- Asbestos Surveys
- Asbestos Removal & Disposal
- Strip Outs & Light Demolition
- Labour Provided
- Same Day Service
- Fully Insured
- Accounts Welcome



Check out our
video to find out
more about
Capital Waste.

Contact Us

T 020 7998 6242
E enquiries@capwaste.co.uk
W capwaste.co.uk

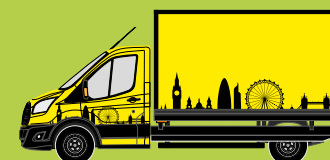
Capital Waste Ltd
Unit 7 | 400 Roding Lane South
Woodford Green | Essex IG8 8EY



**NO JOB IS
TOO BIG
OR SMALL!**

YOU NAME IT, WE'LL TAKE IT

0208 7998 6242 • www.capwaste.co.uk





WARDROBES ■ BUILT IN WARDROBES ■ FITTED KITCHENS ■ SLIDING WARDROBES

LUXURY BESPOKE WARDROBES & KITCHENS

Made to order in the UK ■ 10 Year Product Guarantee

Soft Close Doors As Standard ■ We fit wardrobes in less than 2-3 weeks

CONTACT US

01708 756789 ■ 0208 088 0876

www.bestfittedwardrobe.co.ukinfo@bestfittedwardrobe.co.uk

Best Fitted Wardrobe Ltd Unit A3, Seedbed Centre, Davidson Way, RM7 0AZ



Improve, Don't Move!

Maximise the value of your home.

- SPACE-SAVING - MAXIMISE YOUR GARAGE HEADROOM
- SECURITY-ENABLED AUTO-LOCKING SYSTEM
- CHOICE OF 21 COLOURS TO MATCH YOUR HOME
- REMOVAL AND RECYCLING OF YOUR OLD DOOR
- DEDICATED AFTER-CARE TEAM

GAROLLA
ROLLER
SHUTTER
DOORS

01992 830 024

LINES OPEN 7 DAYS A WEEK

www.garolla.co.uk

BESPOKE ELECTRIC DOORS MANUFACTURED IN THE UK

FREE
FITTING
PAYMENT ON
INSTALLATIONPRICED
EXAMPLE **£895**
COMPACT • UP TO 2.4MGAROLLA ★ PREMIUM
Increased Security • Double Insulation
One-Touch ClosePRICED
EXAMPLE **£1,990**
PREMIUM • 3.4M • ANTHRACITE

Photo credit: Pinterest @samsette

CREATE A VERTICAL GARDEN INDOORS

Indoor plants will improve the air quality in your home, and could also help reduce stress and increase concentration. Also, if you grow herbs, you can harvest them all year round to perk up your culinary creations. One of the biggest home trends of 2023 is the vertical indoor garden – simply a group of plants arranged on a single wall to save precious floor space. Read on to find out how to get started.

YOU WILL NEED:

- > A selection of shelves, containers and hanging baskets. Although you can buy specially designed containers for your plants, recycled items usually look more interesting and are also kinder to the environment. Wooden boxes, wire baskets, tins and even cut-down plastic drinks bottles all work well. Just remember to add drainage holes to containers if necessary.
- > A selection of plants and herbs. Rubber plants, dragon trees and the good old spider plant are excellent choices – they help remove formaldehyde, one of the main toxins in indoor air. Tarragon, thyme, rosemary, basil and mint all grow well indoors. If you're feeling adventurous, try growing cherry or plum tomatoes. But remember, they'll need somewhere warm and sunny.
- > Suitable compost.
- > DIY tools and materials to fix your containers firmly in place, and a sturdy stepladder.

HOW TO MAKE:

STEP 1: Work out how you're going to arrange your plants and containers. You could make a sketch, or lay out the items on the floor. You don't need to be exact and can change things as you go, but a plan is always handy.

STEP 2: Fix all the containers and shelves in place, ensuring they're secure.

STEP 3: Fill all your containers with compost, then add the plants.

STEP 4: Water your plants and work out a routine to take care of them.

STEP 5: Sit back and watch your garden grow.



How organised are you based on your ENNEAGRAM TYPE?

The Enneagram is a system of personality typing that describes patterns in how people interpret the world and manage their emotions. Based on your Enneagram type, you can get a sense of how organised you are in your home and your life.

Type 1: THE REFORMER:

You are very organised and believe that there is a place for everything. You need your home to be orderly and you favour a minimalist look.

Type 2: THE HELPER: You are incredibly organised when it comes to other people, but not always for yourself. You want your home to look nice, but you tend to hold on to too many sentimental items.

Type 3: THE ACHIEVER: You have people to impress, yourself included, so your life and your home need to be very organised. You have high standards and the drive to make sure things go exactly to plan.

Type 4: THE INDIVIDUALIST: You don't like to do things by the book, but you aren't opposed to

keeping elements of your life organised. You always opt for the most creative solution.

Type 5: THE INVESTIGATOR: Your main priority is information. You don't stress yourself out with the small details of house cleaning, but your bookshelf must be specifically arranged.

Type 6: THE LOYALIST: You need to feel safe and secure in your home, so organisation comes naturally to you. You prefer to keep items out of sight as this makes you feel more at ease.

Type 7: THE ENTHUSIAST: You are not the most organised type, and you tend to take one day at a time. You do have good intentions, but somehow life always gets in the way.

Type 8: THE CHALLENGER: You create a structured plan and stick to it. You thrive off being productive and love nothing more than a handy planner or calendar.

Type 9: THE PEACEMAKER: You may not have the strongest focus on organisation, but that doesn't mean you aren't capable. Though you would like to be more organised, you are content as long as your home is clutter-free.

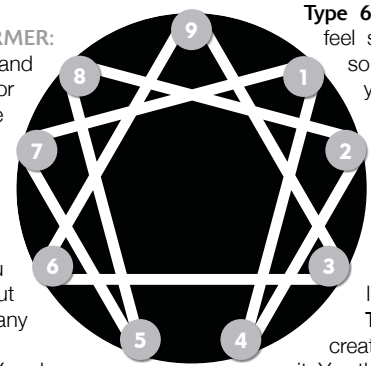


Photo credit: Pinterest - Lauren Kolyn, Federico Paul, Ulrika, Jessica Rapp, Valeria Jacobs, Margaret Stepien, Tamara Gavin



WE REPAIR ALL APPLIANCES

- Fridge Freezers ■ Washing Machine
- Tumble Dryer ■ Dishwasher
- Cooker & Range Cookers
- All Freestanding & Built-in Appliances

CALL OUT £64.99
for Labour & Diagnostics

Family business with over 20 years experience
Fully trained Bosch & Hotpoint engineers

Service Partners with
John Lewis & British Gas

07488 265527



NEED A RELIABLE CLEANING COMPANY?

OUR SERVICES INCLUDE:

- Residential Cleans
- Deep Cleans
- Patio/Driveways
- Carpet & Upholstery Cleaning
- Office Cleans
- Commercial Cleans

We provide high quality services, tailored quotes specifically designed for your requirements

Call us on
0208 088 3469

BEBOILERSAFE

GAS | HEATING | PLUMBING

WE UNDERTAKE ALL BOILER WORK

SERVICE | REPAIR | INSTALL

UNVENTED INSTALLATION

LANDLORD CERTIFICATION

EPHING & SURROUNDING AREAS

CALL US ON 07581 003 935 TO LEARN MORE

✉ enquiries@beboilersafeuk.co.uk

🌐 www.beboilersafeuk.co.uk



Alf Onnie

Curtains, blinds and plantation shutters

- ✓ Bespoke made to measure curtains
- ✓ Sheers & Voiles
- ✓ Window blinds – manually operated or motorised
- ✓ Plantation shutters
- ✓ Pole and track fitting service

- No obligation quote
- Friendly & enthusiastic family business **Est 1920**
- Experienced consultation & installation team
- Commercial projects also undertaken

📍 Showroom based in Essex/London
 ☎ 020 8472 4658 📞 07956 818477
 🌐 AlfOnnie.co.uk 🐦 @AlfOnnie1920
 🏠 Alf Onnie Curtains and Blinds

On enquiry mention Vision for a special offer



Enjoy Brighter, Fresher, Dry Carpets & Upholstery

No soggy carpets or wet dog smell

zero dry time
 Dry Carpet, Upholstery & Hard Floor Cleaners

Dry carpet cleaning
Upholstery cleaning
Leather restoration
Hard floor cleaning

SPECIAL OFFER 3 FOR 2 3 COMPLETED AREAS FOR THE PRICE OF 2

We also clean hard floors including: tiles, Amtico, Karndean, vinyl, wood & stone

zerodrytime.com

Get your free quote
07756 942859
 sean.drury@zerodrytime.com

Photo credit: Anthony Haney/Shutterstock



The coronation of
KING CHARLES III
and his wife Queen Camilla

SATURDAY 6 MAY, 2023

GOD SAVE THE KING

Princes, princesses, presidents and pop stars alike crowded into Westminster Abbey to witness the historic coronation of His Majesty King Charles III, and what a marvellous day it turned out to be.

On Saturday, May 6, 2023, the world's gaze turned to Westminster Abbey in London. More than seven months had passed since we said a final farewell to our beloved Her late Majesty Queen Elizabeth II, and what bittersweet joy it was to witness King Charles III's official ascent to the throne.

Naturally, comparisons were not drawn between this event and the Queen's funeral, but instead to her coronation 70 years previously. This was the first televised coronation, broadcast on radio and television around the world. Both ceremonies were watched by millions, though the King's was the first British coronation to be televised in glorious, high-definition technicolour.

Regardless of your feelings about the monarchy, it can't be denied that when it comes to pomp, ceremony and splendour, no one does it like Great Britain.

The journey from Buckingham Palace to Westminster Abbey alone was a thing of wonder, with joyous fans lining the streets as more than 4,000 members of the Army, RAF, Royal Navy and Commonwealth forces in immaculate dress uniforms accompanied the Diamond Jubilee State Coach.

One BBC commentator remarked how the coach – drawn by eight Windsor Grey horses – looked like something from a fairy tale, before admitting that so ancient are ceremonies such as these, that the fairy tales are more likely based on them.

Inside the abbey, proceedings took on an even more timeless quality, with the two-hour ceremony effortlessly fusing the old and the new. One poignant example of this was during the presentation of the orb, sceptre and other regalia – pieces from the Crown Jewels that hold “incalculable cultural, historical, and symbolic value” and date back to the 17th century – by various faith leaders, and the carrying of the Sword of State by a resplendent Penny Mordaunt MP.

Another poignant moment was when the King was screened from the public as he was anointed with holy oils by the Archbishop of Canterbury, because this is an event historically regarded as taking place between the sovereign and God. The anointing was carried out using an ampulla and coronation spoon, which is believed to date back to the 12th century.

Finally came the moment all had been waiting for as His Majesty sat resplendent in the Robe Royal – made for King George IV's coronation in 1821 and one of four robes worn during the service – and was adorned with St Edward's crown. After crowning Charles, the Archbishop boomed, “God Save the King”, a sentiment that was then echoed by all in attendance.

Shortly after, Her Majesty Queen Camilla was also crowned, with Queen Mary's Crown placed on her head. Interestingly, she was granted the title of Queen on the late Queen Elizabeth II's request.

The late His Majesty Prince Philip, on the other hand, was never given the title of king. This is because a ruling queen's husband is called a Prince Consort, as the title of king is only given to a monarch who inherits the throne. If King Charles passes away before Queen Camilla, Prince William, who is the heir to the throne, will become king. Queen Camilla will not become a reigning queen; her title will change to queen dowager, the official term for the widow of a king.

Following the ceremony, the King and Queen were joined by the other senior royals and their children on the balcony at Buckingham Palace for the traditional Royal Air Force flypast which, despite the rain and subsequent need to simplify the air show, drew to a close to a most historic and memorable day for all.

A new King, a new set of values, and a new era for all.





BOILR offers comprehensive service plans to homes throughout Essex, Hertfordshire & London.

★	★★	★★★	★★★★★
£ 7.50 / MONTH	£ 15.50 / MONTH	£ 19.50 / MONTH	£ 23.50 / MONTH
Annual boiler service ✓	Annual boiler service ✓	Annual boiler service ✓	Annual boiler service ✓
Landlord safety record ✓	Landlord safety record ✓	Landlord safety record ✓	Landlord safety record ✓
Heating/Gas/Plumbing ✓	Heating/Gas ✓	Heating/Gas/Plumbing ✓	Heating/Gas/Plumbing ✓
Electrical Faults & Emergencies ✓	Electrical Faults & Emergencies ✓	Electrical Faults & Emergencies ✓	Electrical Faults & Emergencies ✓

Servicing | Installation | Plans

CALL OUR TEAM TODAY FOR MORE INFORMATION

0203 576 2386

hello@boilrltd.co.uk boilrltd.co.uk



T&C's Apply

PUT THE SPARKLE BACK INTO YOUR KITCHEN



Domestic Oven Cleaning Specialists

Est. since 2007

Prices

Single oven incl. shelves & grill pan.....	£43.00
Double oven incl. shelves & grill pan.....	£54.00
Range incl. shelves & grill pan.....	From £54.00
AGAs.....	From £90.00
Hobs.....	From £14.00
Extractors.....	From £15.00
Microwaves.....	From £20.00

No VAT to pay



PLEASE CALL FOR A FREE QUOTATION

01279 432444 * www.ovenbright.co.uk



BEFORE

AFTER

FROM YOUR AREA



LOCAL NEWS

Vandals target football club after coronation event



Vandals broke into Buckhurst Hill Football Club (BHFC) and caused more than £3,500 in damage following a coronation party last month.

The club hosted the party for Buckhurst Hill Parish Council and Buckhurst Hill Residents' Society on Monday, May 8.

BHFC chairman Simon Cornwell said: "I know everyone had a wonderful day, as there were a range of rides and stalls, plus live music, so a bit of everything for all families to enjoy, irrespective of age."

However, the guests' joy was dampened by vandalism after the celebrations.

Simon said: "Sadly after such a great day, the club was broken into after we had all left. Vandals dug up the centre circle of our first team pitch and smashed our dugouts, so any profit the club made for our charity and for all the boys and girls involved at the club will now be lost in repairing the damage."

"This is just heart-breaking as you can imagine, so if anyone has any information, please contact the club."

Anyone who has any information about the damage and those responsible can contact Mr Cornwell through the club's social media channels.

The club would also welcome any donations to help meet the cost of the repairs.

Contact the club at admin@bhfc.co.uk

Sophia, eight, has spinal muscular atrophy, a life-limiting condition that affects all her muscles.

She recently underwent gene therapy treatment, the side effects of which have left her bedbound in hospital for several months.

Sophia's father Gennadiy Ilyashenko has set up a GoFundMe page to "help get Sophia moving" with private physiotherapy sessions.

On the fundraising page, Gennadiy said: "We are now facing another battle of building up her strength and rehabilitation of her muscles to maximise the positive impact of gene therapy. We do a lot of daily physio, but without regular professional input, we are just stumbling from one problem to the other."

At the time of writing, more than £3,100 has been raised. To donate, please visit bit.ly/41WPkoS

Last orders as pub permanently closes its doors

A Wetherspoon pub in Loughton closed its doors for good on Sunday, May 14.

The Last Post is one of 32 Wetherspoon branches that were announced to be closing in September of last year.

The building itself is steeped in history, having stood as the town post office for many years. It is thought mail was first received at the premises in 1826.

Wetherspoon spokesperson Eddie Gershon stated that all members of staff have been offered jobs at the company's other pubs.

A planning application has been made for a change of use to a flexible planning use comprising a public house and a restaurant.



Photo credit: Google Maps

Family starts fundraiser for girl who defied the odds

A Loughton family is fundraising for their daughter who has defied doctors' assertions that she wouldn't live past her second birthday.

DAME ELEANOR LAING MP

Conservative MP for Epping Forest



Dame Eleanor Laing, MP for Epping Forest, has had a busy month attending events in the community, including coronation festivities.

The MP has praised the ongoing efforts to restore Copped Hall after attending a Shakespearean banquet at the historic venue.

The event was organised by Caroline Haines, a City of London councillor and the Master of the Worshipful Company of Educators.

Dame Eleanor MP said: "The magnificent Copped Hall was a wonderful setting for the event. It was an opportunity to showcase the building, which continues to be painstakingly restored to its former glory by The Copped Hall Trust.

"The trust and the Friends of Copped Hall are, as is the local community, rightly proud of the building and its wonderfully well-kept grounds and the impressive walled garden.

"Copped Hall made a perfect setting for a brilliant performance of *A Midsummer Night's Dream* by the Theydon Bois Players."

Dame Eleanor MP added: "It was a pleasure to see Ben Murphy, an Epping boy and former Epping town mayor, now taking on the vital role of chairman of the Epping Forest and Commons Committee of the City of London Corporation, and an honour to welcome the



Lord Mayor of London, the Right Honorable Nicholas Lyons."

The MP also visited Collop Carpets in Epping, the winner of the recent coronation window display competition.

She said: "I'm delighted that people are proud of our country, proud of our heritage and proud of our town."



Charity no 1192310



We're very pleased to launch our next Food Education Classes at all our hubs – Waltham Abbey, Loughton, Chigwell Row and Ongar – starting at the beginning of June for six weeks. They're practical, with lots of cooking tips and ways of saving money when feeding the family.

Places are very limited.

We're offering the first 10 people to register at each hub a £20 Tesco voucher.

Call Jenn 07342 936378 or email jenn.3food4u@gmail.com

To donate, visit our fundraising page at www.stewardship.org.uk/partners/20356308

Our Community Surplus Hub runs from 11.30am to 1pm every Tuesday at The Loughton Club, 8 Station Road, IG10 4NX.

Control your security Be **App**solutely connected

Did you know your smartphone can now control your alarm system through an app?



CCTV Systems • Alarm Systems
Fire Alarms • Door Entry Systems • Safes
Vehicle Alarms & Tracking • Ghost Immobilizers

020-8529-5710 • www.cobra-ss.co.uk

155 Station Road, Chingford, London, E4 6AG



ENDLESS POSSIBILITIES



0208 088 0920 info@infiniteglass.co.uk

Infinite Glass

BUILDING TRUST
WITH QUALITY
WORK



EFFECTIVE SOLUTIONS FOR YOUR HOME

- SPECIALISTS IN REFURBISHMENTS & RESTORATIONS
- BRICKWORK & REPOINTING • REMEDIAL WALL TIES
- FULLY INSURED • 25 YEAR GUARANTEE

We work with the DOFF system. Developed to clean stonework and masonry using high pressured steam. Will even remove decades old paint without any damage to the surface

CONTACT US FOR MORE INFORMATION

0208 088 2793 • asgard.hi@hotmail.com
www.asgardhomeimprovements.co.uk

Member of the
Wall Tie Installers Federation



SCAN ME

ALL ASPECTS OF ROOFING WORK



NEW ROOFS ■ ROOF REPAIRS ■ TILES & SLATES ■ LEAD WORKS & WELDING
 VELUX WINDOWS & SKY LIGHTS ■ CHIMNEY REPAIRS & REMOVALS
 GUTTERING ■ FASCIAS & SOFFITS

10+ YEAR WARRANTY ■ FULLY INSURED ■ PRICE MATCH GUARANTEED



0208 088 3085

WWW.NIGHTINGALEROOFING.CO.UK

INFO@NIGHTINGALEROOFING.CO.UK



SCAN ME

YOUR LOCAL EVENTS

A BUNCH OF AMATEURS

Lopping Hall, 189 High Road,
Loughton, IG10 4LF
Thursday, June 8, to Saturday, June 10, 8pm



Loughton Amateur Dramatic Society presents *A Bunch of Amateurs* by Ian Hislop and Nick Newman.

Fading Hollywood action hero Jefferson Steele is lured to England to star as King Lear in Stratford and give his flagging career a much-needed boost. What he doesn't realise is this Stratford is not home to the Royal Shakespeare Company, but to a village amateur dramatics group. His co-stars are not the cream of English theatre, but a bunch of amateurs trying to save their village theatre.

Purchase tickets from www.ticketsource.co.uk/lads/a-bunch-of-amateurs-by-ian-hislop-and-nick-newman/e-lgzzqz

THE FEELGOOD BAND

Hemnal Social Club, 50 Hemnal Street,
Epping, CM16 4LS
Tuesday, June 13, 8pm

High-energy rhythm and blues played the Canvey Island way, recreating the unmistakable sounds of 1970s Dr. Feelgood. It's a lively performance of classic Dr. Feelgood, recreating the sounds of the original line-up.

Tickets cost £13.20 and can be purchased from www.wegotickets.com/event/581393

THE NOOK

The Hollybush, 140 High Road,
Loughton, IG10 4BE
Saturday, June 24, 8.30pm – 11.30pm

Local five-piece wedding, party and corporate function band The Nook will be live at The Hollybush,

playing hits all night to dance and sing along to. Entry is free.

JESSEL GREEN COMMUNITY FUN DAY

Jessel Drive, Loughton, IG10 2EQ
Sunday, June 25, 12pm – 4pm

Free entertainment and low-cost activities will be provided throughout the day. In addition to bouncy castles, inflatables and funfair rides, there will be a Punch and Judy show and a children's entertainer.

Essex Kites will be attending with its kite-making workshop, and new this year will be a carnival-themed workshop. There will be the usual free soft play area for under-fives, a tea and cake tent, food outlets and lots more.

Anyone wishing to host a local charity, craft or small business stall at the event should contact Loughton Town Council on 0208 508 4200 or email contact@loughton-tc.gov.uk

CARNABY STRINGS QUARTET

Copped Hall, Epping, CM16 5HS
Saturday, July 1, doors open at 6.30pm for a 7.30pm start

Carnaby Strings is an exciting, professional string quartet with an excellent reputation and a classical repertoire, through movie themes and pop music. They are graduates from a number of musical academies and play regularly at the Royal Opera House, and have also played in many West End shows, including *Mary Poppins*, *Kinky Boots* and *Sweeney Todd*.

Tickets cost £20 per person and can be purchased from www.ticketsource.co.uk/coppedhallevnts



Photo credit: Carnaby Strings

A piece of wartime history lost to industrialisation

This month, we remember Belmont Castle, an Essex site rich in history, which survived German artillery from above only to succumb to the gradual creep of industry from below ground.

A once-grand architectural gem, Belmont Castle stood majestically atop a hill in Grays. Erected in 1795 by Zachary Philip Lynch, this Grade II listed building was a symbol of wealth and prestige, boasting a rich history that spanned more than two centuries.

The castle was designed in the Gothic Revival style by Samuel Wyatt, and showcased an impressive façade characterised by tall, pointed arches, intricate stone carvings and a symphony of decorative elements. The building was adorned with battlements and turrets, creating an imposing silhouette against the Essex skyline.

Its grandeur was further accentuated by an expansive estate featuring vast gardens, meandering pathways and lush, verdant landscapes.

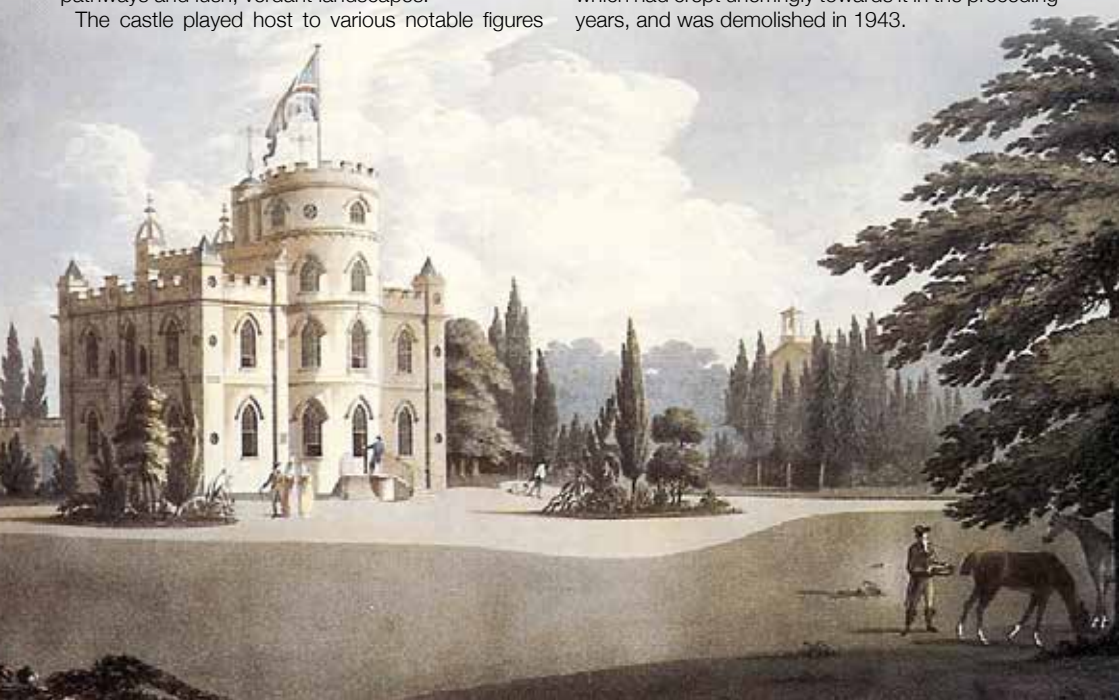
The castle played host to various notable figures

and events throughout its history. It is rumoured that the renowned English poet, Lord Byron, once stayed at the castle as a guest of its original owner, Zachary Philip Lynch.

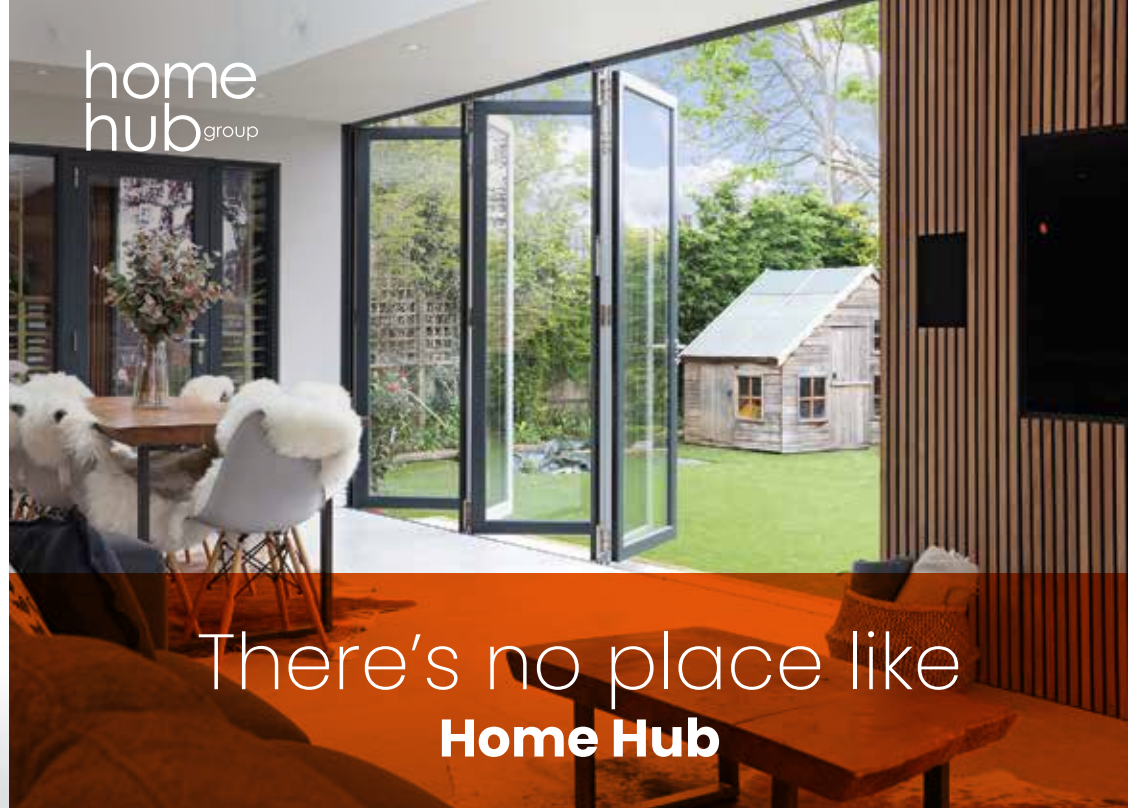
In 1815, it was acquired by James Walker, a prominent civil engineer. He added an observatory, making the castle one of the few private residences in England to feature such an amenity. During the Second World War, Belmont Castle was requisitioned by the British Army and served as the headquarters for the Royal Artillery's Anti-Aircraft Division.

Many may have thought it was in good hands, having been returned to the state, yet in truth the move sounded the building's death knell. This was despite it being an exemplar of grandeur and a reflection of the opulence of a bygone era, and irrespective of its rich history, illustrious guests and unique features.

Belmont Castle was forced to make way for the relentless expansion of the huge Grays Chalk Quarry, which had crept unerringly towards it in the preceding years, and was demolished in 1943.



home
hub_{group}



01992 948 980
essex@homehubgroup.co.uk
137-139 Epping High Street

@HomeHubGroup

With no pressure sales, transparent pricing and exceptional service levels you'll feel right at home with Home Hub. Come and see us at our beautiful lifestyle showroom in Epping – call 01992 948989 to book an appointment.

homehubgroup.co.uk

Windows • Sliding Doors • Bifold Doors • Roof Lights



Belladonna is one plant that you do not want growing in your garden. Belladonna, sometimes referred to as deadly nightshade, is extremely toxic to humans, dogs and cats, and needs to be quickly identified and removed.

WHICH PARTS ARE TOXIC?

All parts of the belladonna plant are toxic to humans and domesticated animals, including the leaves, flowers, fruits and roots. It is not toxic to birds and wildlife, although when honeybees feed on belladonna, the honey they produce can also be toxic.

HOW TO IDENTIFY BELLADONNA

Belladonna is a tall and bushy perennial that grows three to four feet high and wide. It boasts dark green leaves that are oval and unevenly sized. On the bottom part of the plant, the leaves are solitary but on the upper parts, they grow in pairs. Belladonna blooms from June through to early September, with dull purple or lavender flowers that are slightly scented.

The fruit ripens between late August and September and is black and shiny like a cherry.

HOW DOES BELLADONNA SPREAD?

Belladonna spreads very quickly, just like a weed. This plant dies back in winter and then regrows in spring from its thick, fleshy roots. Birds that eat the seeds can spread the plant to other areas via their droppings.

HOW TO REMOVE BELLADONNA FROM YOUR GARDEN

You must protect your skin when handling belladonna, so make sure you wear long sleeves, long trousers, boots and gloves. If the plant is particularly tall and there is a risk of it coming into contact with your face, then you should wear goggles.

- > Dig out the plant with all its roots
- > Dispose of the plant in your garden waste bin
- > Disinfect any tools you have used
- > Wash your work clothes immediately and separately from your other clothing.

BEALES
ELECTRICAL

NEED AN ELECTRICIAN?

NO JOB IS TOO BIG OR TOO SMALL

We provide the following electrical services & more across Loughton, Buckhurst Hill & surrounding areas.

- CALL OUTS • CONSUMER UNIT UPGRADES
- EV CHARGER INSTALLATION • FAULT FINDING
- FULL & PARTIAL REWIRES • LANDLORD CERTIFICATES
- LIGHTING INSTALLATIONS

- WHY CHOOSE US? • LOCAL & RELIABLE
- GREAT CUSTOMER SERVICE • QUALITY WORKMANSHIP

CALL NOW FOR OUR FRIENDLY EXPERT
ADVICE, A FREE SURVEY OR QUOTE

0208 088 2970

www.beales-electrical.co.uk

hello@beales-electrical.co.uk



SCAN ME



NAPIT



Checkatrade.com
Where reputation matters



Google
★★★★★

Specialist
GARDEN COMPANY
MAINTENANCE • TREES
LANDSCAPING

- Garden Maintenance
- Paving • Turfing
- Pressure Washing • Driveways
- Weed Control • Irrigation
- Decking & Fencing
- Ponds & Water features
- Tree & Hedge Care
- Garden Clearing
- Large Area Mowing

0208 088 0873

enquiries@specialistgarden.co.uk

SpecialistGardenCompany
www.specialistgarden.co.uk



WE CARRY OUT ALL HOME RENOVATIONS

Garage Conversions | Bathrooms | Kitchens | Full Decorating
New Flooring | Plumbing & Heating | Electrical | Glazing
Roofing | Tiling | Handyman & Locksmith Services
Cleaning | Extensions & Loft Conversions | Clearances
Plus much more...

DOMESTIC & COMMERCIAL | NO JOB IS TOO BIG OR TOO SMALL

CHECK OUT OUR GOOGLE REVIEWS

t: 020 4538 3560 | m: 0794 939 4403

e: info@lillywhitepropertygroup.com

www.lillywhitehomerenovations.com

f LillywhitePropertyGroup i LillywhitePropertyGroup @LWMaintenance

LILLYWHITE
LILLYWHITE PROPERTY GROUP LTD



WE OFFER
FREE ESTIMATES

WE NOW OFFER FINANCE
ON ALL REFURBISHMENT
PROJECTS



SUPPLIER OF QUALITY CONCRETE



**MOST
TRUSTED
READY-MIX
CONCRETE
SUPPLIER
IN LONDON**

- Collection also available ■ 24/7 service
- Competitive pricing

Let's get in touch 0208 088 3418

info@LondonQualityConcrete.co.uk
www.londonqualityconcrete.co.uk



**Sovereign
Guards UK**

From home to business security, here at Sovereign we offer a variety of Security Services from CCTV and Intruder Alarms

CONTACT US FOR MORE DETAILS:

Call: 0208 088 3147

Email: info@sovereignguards.co.uk

www.sovereignguards.co.uk



SCAN ME



SG Select from a package that suits your needs: budget, location and what level of protection you are after

SG Specialising in fogging systems for high risk asset protection

SG With remote connectivity this allows you to monitor your home from your phone.

PROVIDING YOU WITH 24 HOUR SECURITY



GARDENING



STAYING ALIVE!

Unless you have someone looking after your garden while you are on holiday, you may be wondering how you are going to keep your plants alive and well until you return. Discover our top tips below.

WATER BEFORE YOU GO:

Before you leave for your holiday, make sure you give all the plants in your garden a thorough watering. Soak any pots, containers and hanging baskets at the plant base until the water rises above the soil. Allow this water to soak in and then repeat.

MOVE POTTED PLANTS:

Move potted plants into shady areas of your garden to slow the rate at which they dry out and to help them stay hydrated. Avoid using shade cast by the eaves of your home as this can prevent any natural rainwater from reaching them.

MAKE SOME MULCH:

A thick mulch can help to reduce the evaporation of water and lock moisture into the ground. You can

make mulch from woodchips, gravel and decorative stones or even with just a few handfuls of good quality compost. Place around the base of your plants in a doughnut shape.

INVEST IN AN IRRIGATION SYSTEM:

If your budget allows it, an irrigation system will deliver a controlled amount of water to reach your plants at set times during the day. This is a good choice if you are away for a longer period of time, or you go away frequently.

TOP TIPS FOR HOUSEPLANTS:

- > Move any houseplants away from direct sunlight to cooler, darker areas of your home
- > Give them a good, deep soak for around 10 seconds but make sure to drain any excess water
- > Place one end of a damp cloth into a glass of water and the other end in the soil. When the plant becomes thirsty, it will absorb moisture from the cloth
- > Gather your houseplants together to create a humid microclimate.

SLEEP

like a baby?

Are you thinking of co-sleeping but not sure if this is the right choice for you and your baby? Discover five benefits of co-sleeping below. Plus, five factors that mean you should NOT co-sleep.

1 You can meet your baby's immediate needs

Most babies require feeding, changing and soothing throughout the night. If you are close to your baby, then you can meet their needs without having to get out of bed. You can also do this with minimal disruption, which means your baby is more likely to fall quickly back to sleep.

2 You can build up your milk supply

For breastfeeding mums, co-sleeping can help you to maintain a good milk supply for your baby. As breastmilk production works on a supply-and-demand basis, if you are sleeping with your baby, you are in the ideal position for frequent night-time feeds.

3 Your baby can practise self-rousing

Although sending your baby into a deep sleep may sound appealing, babies are not actually meant to sleep in this way. Babies who co-sleep are frequently roused when close to their mothers, which can help them to learn how to use their self-preservation instinct to rouse when there is any danger.

4 Your baby can develop stronger bonds

Research suggests that infants who co-sleep develop stronger emotional relationships both with their parents and with other people. It may also help children to grow up with higher self-esteem and less anxiety, and to become more independent.

When you should NOT co-sleep:

- > You have been drinking alcohol
- > You are a smoker or use e-cigarettes
- > You have taken any drugs that may cause drowsiness
- > Your baby was premature (born earlier than 37 weeks)
- > Your baby had a low birth rate (less than 2.5kg or 5.5lbs).



15 OPEN-ENDED QUESTIONS TO HELP CHILDREN THINK

Help develop your child's curiosity, reasoning ability, creativity, critical thinking and independence by asking open-ended questions.

① Tell me about what you built, made, created.

② Can you describe what happened?

③ What do you like best about it?

④ Tell me about what you saw.

⑤ How did you feel when you finished it?

⑥ What did you learn?

⑦ How might you do it differently?

⑧ Tell me about how you worked together.

⑨ What did you see happening?

⑩ How do you know that is the right answer?

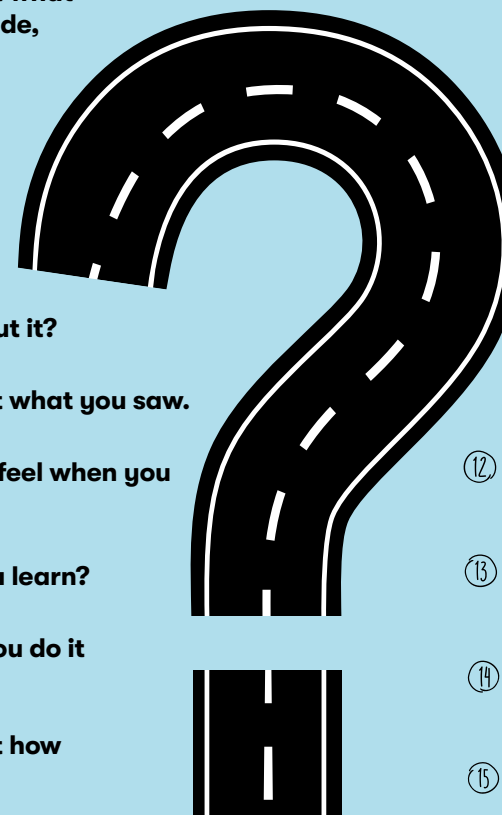
⑪ What do you think will happen next?

⑫ How did you work it out?

⑬ Can you think of a new way to do it?

⑭ What would you do different next time?

⑮ Why did you choose ____ over ____?





Ride ELECTRIC

We see these casual speedsters effortlessly and gracefully gliding their way along the roads, and the realisation is that the days of pumping pedals may be on its way out.

It appears the electric bike revolution is here to stay; yet with the price of these magnificent machines is considerably more than their manual counterparts, handlebar aficionados are instead exploring ways to convert their existing rides into battery-powered versions.

It turns out it's not actually that difficult. Conversion devices can suddenly transform our humble bikes into rapid, resplendent electric vehicles.

These devices work by replacing a normal bike's rear disc-brake rotor with its own drive, which looks and works just like a traditional disc-brake rotor.

A weighty unit housing the battery and a 250-watt-hour motor clips onto the bike frame, with the rotor slotting into the clip-on unit and engaging with the gearing inside. Internal gearing turns the

special brake rotor, spinning the rear wheel and, hey presto, you're away.

You should be able to achieve almost 40 miles of assisted cycling, and be able to propel the vehicle at speeds of almost 20mph.

Recharging takes around two-and-a-half hours, and the unit can be easily unclipped and charged inside.

Pedal bikes have long been an incredibly green way to travel – it's the reason there are 20 million on Britain's roads. While those who use them as part of their job – think food delivery driver or parcel courier – may like the added speed and energy conservation of an e-bike, the stronger target market for this product is those keen to ditch the car for short trips, but who need some kind of propulsion when it comes to embarking on two-wheeled adventures.

Whatever the reason, users choosing an e-bike look certain to light the path... or road!



Chestnut Manor 
CARE HOME

Join Our

Open Day

Bollywood Comes to Wanstead

Wednesday
28th June
12 - 5pm

Chestnut Manor provides superb quality residential, nursing and dementia care.

Join us at our Bollywood Themed Open Day

- Take a guided tour of our home
- Meet the team and residents
- Sample recipes from celebrity Chef Urban Rajah
- Enjoy entertainment from Bollywood dancers and Dhol drummers

Call 0203 871 6070
To book your place

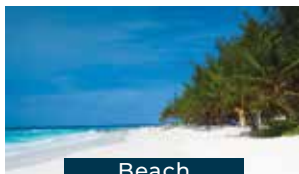
63 Cambridge Park, Wanstead, E11 2PR | www.westgatehc.co.uk |  Chestnutmanorcarehome

YOUR *Perfect* TRAVEL

Look No Further For All Your Holiday Needs!



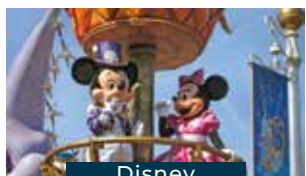
Safari



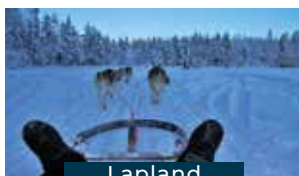
Beach



Cruise



Disney



Lapland



Tailor Made

Contact us now to speak with our friendly travel experts
01279 797189 • www.yourperfecttravel.co.uk



ALL-INCLUSIVE LUXURY CARE HOME



Exceptional Residential, Nursing, Memory & Respite Care

Offering the highest quality personalised care, with luxury living facilities and the freedom to explore and enjoy a range of hobbies, Woodland Grove care home will give residents the independence and support to continue living life to the fullest.

Contact us to arrange a visit!

☎ 0300 303 5445

✉ clientrelations.wg@oaklandcare.com

📍 Woodland Grove Care Home, Rectory Lane, Loughton, Essex, IG10 3RU

🌐 oaklandcare.com/woodland-grove



PLANE *sailing*

Love family holidays but dread flying with young children? Discover five ways to keep your kids occupied on a plane, with options for all ages.

BOOK A WINDOW SEAT

If your budget allows for it, booking a window seat is a great way to keep your children entertained during take-off and landing. Whether they just gaze at the views below or look for animals in the cloud shapes, children of all ages can enjoy looking out of the window during a flight.

ACTIVITIES TO KEEP THEM OCCUPIED

Remember to pack colouring and puzzle books in your hand luggage to help keep boredom at bay. Alternatively, bring blank paper and pens and ask your children to draw what they can see out of the window, or what they imagine your destination will look like.

You can also bring travel games or even a pack of playing cards; simple games like snap are perfect for little ones, while older children can enjoy more advanced games like solitaire.

DOWNLOAD AN AUDIO BOOK

If you want a bit of peace and quiet but you don't want your kids glued to a screen the entire time, then an audio book is a great alternative. There are so many books to choose from – just make sure you remember to pack headphones.

PACK PLENTY OF SNACKS

Do not underestimate how distracting snacks can be for kids during a flight, especially younger ones. Rather than buying them on the plane, bring a selection of your children's favourite snacks with you in your hand luggage and then give them out sporadically throughout the flight.

TALK ABOUT YOUR TRIP

Chatting about what you are planning to do when you get to your destination and what you are excited about, can be a great way to pass the time and engage with your children. You can also take the opportunity to teach them about the different places you are flying over.



BEACH SAFETY TIPS FOR DOGS

Most dogs love the beach. They can run around, play in the sand and cool their paws in the sea. However, if you are planning to take your four-legged friend to the seaside this summer, you need to make sure you know how to keep them safe.

CHECK LOCAL RULES

There are lots of dog-friendly beaches all over the UK, so be sure to check the local rules of your chosen spot before you head out to avoid disappointment. You can find this information at www.thebeachguide.co.uk/dog-friendly

TEACH YOUR DOG TO SWIM

Most dogs are not natural-born swimmers, so it can be a good idea to teach them how to swim before you take them to the beach. There are many guides online on how to teach your dog to swim, such as this one: www.purina.co.uk/articles/dogs/behaviour/training/teach-dog-to-swim

PROVIDE FRESH WATER AND SHADE

If you are planning to spend a long time at the beach with your dog, then you will need to provide fresh water and shade to prevent overheating and dehydration. Also, watch your dog to ensure they don't drink too much seawater.

APPLY SUN CREAM FOR DOGS

Dogs can get sunburn in the same way that you can, so you need to make sure you apply

sun cream that is specially formulated for pets. This is especially important for dogs with light skin and short fur.

BE VIGILANT OF DANGEROUS ITEMS

Dangerous items such as broken glass and rocks can easily become buried in the sand and, if trodden on, can injure your dog's paws.

RINSE YOUR DOG

Once you have finished your day at the beach, be sure to rinse off your dog's coat to remove any sand, salt and germs before you head home.



DID YOU KNOW
100,000
PEOPLE DIE EACH YEAR
IN THE UK FROM
SUDDEN CARDIAC ARREST?

YOU CAN LEARN KEY LIFE-SAVING SKILLS FROM JUST £99

JOIN OUR 1-DAY EMERGENCY FIRST AID COURSE OR 3-DAY FIRST AID AT WORK COURSE

CONTACT US FOR COURSE DATES & MORE INFORMATION ON 07508 204656
enquiries@bbirisksolutions.com

BBi Risk Solutions
www.bbirisksolutions.com

The Rotary Club of Loughton Buckhurst Hill & Chigwell and The Rotary Club of Roding

Free Memory Café

SUPPORTED BY

Relax
EASY HOME
QUEENS COURT

Join us 10am to 12pm every First Friday of the Month at the Loughton Club.
8 Station Rd. Loughton IG10 4NX

Enjoy refreshments, entertainment, memorabilia, informal chats, singing, bingo etc.

Please contact: Chris or Fran
FRAN - 07903 274398
CHRIS - 07510 297173

YOUNGS
— RESIDENTIAL —

RICHARD HARMAN
Associate Partner

Your London and West Essex Property Expert

☎ **020 8226 0071**
🌐 **www.youngsresidential.com**

SALES, LETTINGS, AUCTIONS, MANAGEMENT, LAND

**BEEWISE****High end solutions for
less than you think**

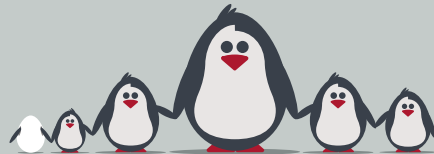
At Beewise we use our massive purchasing power
and market expertise to get you the best deals
on all of your retail merchant services.

Try risk free for 1 month
50% off the cost of the terminal*
**£100 Amazon voucher for
the first 200 new customers**

Scan the code or call us and we will
save you time and money on your
business utilities and services

**0208 088 3086**

*Offer expires 30th June 2023

worldpay**Specialist family lawyers.****RAYDENSOLICITORS**

There might be challenging times in your life when a family law solicitor can help:

- Have you decided your marriage or relationship is over, are you unsure about your family's future?
- Do you need to protect your children, or understand the options to resolve arrangements for your children?
- Do you need a pre nuptial or post nuptial agreement to protect assets?
- Are you moving in with your partner and need a cohabitation agreement?

Choosing the right family lawyer for your circumstances is crucial. Rayden Solicitors are family law specialists with many years' experience; we provide tailored and practical solutions in all areas of family law - divorce, relationship breakdown, child arrangements and financial settlements.

Bespoke advice from Rayden Solicitors in Epping.

Contact us, enquiries@raydensolicitors.co.uk

Epping
323 High Street
Epping
CM16 4BZ
Tel: 0203 773 3919

RAYDENSOLICITORS
www.raydensolicitors.co.uk

We are available on



A silver lining
with every dark cloud.
RAYDENSOLICITORS



easy Does it

THE SUCCESS OF CHARISMATIC EASYJET FOUNDER, SIR STELIOS HAJI-IOANNOU

When launching a brand, it pays to make sure you have people rooting for you. And easyJet founder Sir Stelios Haji-Ioannou has one big thing on his side – charisma.

The now 55 year old, whose success as the founder of a revolutionary airline concept soon led to him being instantly recognisable by first name only, caused a major stir in the airline business in the mid-1990s when he started running a cheap shuttle air service between Luton and Scotland.

At the time, the concept of cheap air travel was one that had never taken off – literally. However, by putting on a 'no frills' service that did away with complementary food, refreshments and even seat reservations, Stelios found a gap in the market that short-haul travellers loved.

Soon, the airline was servicing destinations across Europe. With fares starting at just £1, the marketing took care of itself.

It wasn't Stelios's first venture into transport.

He had previously owned a shipping business, Stelmar Shipping, and had learned the ropes from his father, who was hugely successful in the same space.

Yet nothing quite rivals the serial entrepreneur's achievements with easyJet. He and his family still own one-third of the business, which values his stake at more than £4billion. This is despite the fact that, as a group floated on the stock exchange, he has repeatedly fallen out with the company's senior managers, declaring that shareholders have had no notable return in more than a decade.

Stelios's battles with Ryanair founder Michael O'Leary are also legendary – Stelios was once portrayed as Pinocchio on a Ryanair advert.

He now lives in Monaco, and received a knighthood from Her Late Majesty Queen Elizabeth II for services to entrepreneurship in 2006.



Photo credit: Stuart Clarke/Shutterstock

**BUSINESS & PROPERTY**



**We could fill
Wembley Stadium
MORE THAN TWO TIMES
with our monthly
readership...**

**...OVER 207,500 PEOPLE IN ESSEX
READ VISION MAGAZINE'S MONTHLY**

Photo courtesy of PA Images

CONTACT US TODAY TO GET YOUR BUSINESS SEEN BY OUR READERS

Your
Monthly
Lifestyle
Magazine **VISION**

See all our magazines online
at www.visionmagessex.com

Did you know this isn't the only **VISION** magazine in Essex?

Billericay Shenfield Bishop's Cleeve Brentwood Ongar Chelmsford Beaulieu Epping Theydon Harlow Halstead Braintree Hertford
Hornchurch Leigh Thorpe Bay Loughton Maldon Burnham Rayleigh Wickford South Woodford Tending

HOW TO PROTECT YOUR CAR IN HOT WEATHER

When temperatures soar, your vehicle requires a little bit of additional TLC. Unless, of course, you don't mind having to fork out for expensive repairs.

PARK IN THE SHADE: Although this may seem obvious, it is really important that you try to park your car in the shade when the sun is at its hottest. This will help to prevent your dashboard from drying out and cracking.

USE A WINDSHIELD PROTECTOR: A windshield protector can help to keep your car cool and prevent sun damage. These are low-cost and easy to use; simply unfold and slide into place on your dashboard.

WAX YOUR CAR: If a heatwave is on its way, it can be a good idea to wax your car as this provides a layer of protection between your car and the sun's powerful ultraviolet rays.

CHECK THE TYRE PRESSURE: Hot pavements and low tyre pressure are a dangerous combination and can lead to a blowout. Therefore, you should make sure that you regularly test your tyre pressure when the warm weather hits.

USE SEAT COVERS: As well as protecting both leather and fabric seats from spillages and stains, seat covers can also help to keep them cool and prevent sun damage.

CHECK YOUR COOLING SYSTEM: To prevent your engine from overheating, you need to make sure that the cooling system is in good working order. Have the belts checked and the antifreeze drained. Also, make sure that you change the belts and fluids on a regular basis.

WASH AND DRY OFTEN: Both sun and heat can cause your car's exterior to crack and fade. However, frequent washing and hand drying can help to remove dirt and dust particles that can cause scratches and dull your car's finish.



Photo credit: Anton Ukolov/Shutterstock.com, motor1.com

SUPPORT LOCAL BUSINESSES



Please let your local businesses know
that you saw them first in... **VISION**

TYRO PLATES
Designer Number Plates

**CALL US TODAY FOR YOUR BESPOKE PLATE
0208 088 3189**

- 2D Printed, 3D Gel, 4D Acrylic Plates
- All Sizes! Shaped, Short, Hex, oversized Plates
- Tinted, Chameleon, Coloured Show Plates
- Exclusive - Vintage Style Number Plates
- Keychains & Accessories
- 1 of the UK's Largest Wholesale & Trade Supplier
- Custom Cut Fit Plates
- Local Same Day & Free Fitting Service
- Nationwide next day shipping
- Over 500 Different Designs to choose from



**THE UK'S MOST TRUSTED AND REVIEWED
AUTO LOCKSMITH & EMERGENCY RESPONSE**

HOW SAFE IS YOUR CAR?

Car & Van Security Specialists

VAN SECURITY LOCKS | ALARM SYSTEMS

VEHICLE TRACKING | THEFT PROTECTION

IMMOBILISERS | CAR KEYS

**from
ONLY
£450**



GHOST CAR IMMOBILISER

A SMART WAY TO PROTECT YOUR CAR

Secure your peace of mind and your vehicle
with the next generation of vehicle security



www.carkeyssolutions.co.uk

Call us on 0208 088 3140

Email: contact@carkeyssolutions.co.uk

We cover Greater London &
surrounding M25 areas

**Open 7 days a week
from 8am to 10pm**



EXPERIENCE GOLFING EXCELLENCE
ALL YEAR ROUND



5 DAY MEMBERSHIP

2 MONTHS FREE & NO JOINING FEE
JOIN NOW

01708 688396

WWW.ABRIDGEGOLF.COM



SUPERB COURSE - LOVELY PEOPLE - A PROPER GOLF CLUB



Photo credit: Meaning March/Shutterstock.com



A Very BRITISH RACKET

Nothing conjures up a British summer better than Wimbledon, the oldest tennis championship in the world. In true British fashion, it's not all about who wins – or even the lovely sound as the racket whacks the ball. Think strawberries and cream, bizarre tennis outfits, celebrity spotting, and an endless obsession with the weather.

To mark this year's contest, which takes place from July 3 to 16, let's look at a few fun facts.

- The first Wimbledon took place in 1877, but only involved men's singles. Ladies weren't allowed to compete until 1884.

- Wimbledon attracts around 500,000 spectators, and millions more from around the globe catch up on TV.

- During an average tournament, players go through around 55,000 balls.

- The grass on the Wimbledon lawns has to be precisely 8mm high.

- There's a strict rule that Wimbledon players must wear white clothes – though a small dash of colour is now allowed. The tradition started in the 1800s to avoid sweaty patches showing up on dark clothing.

- Yellow tennis balls were introduced in 1986 because they were more visible on TV than the white ones.

- At the last Wimbledon tournament, spectators consumed almost 2,000 servings of strawberries and cream, along with a staggering 250,000 glasses of Pimm's.

- The tournament employs around 250 ball boys and girls, selected from 27 nearby schools, who must pass a test to ensure they can stand still for at least three minutes.

- The longest tennis match in history was held at Wimbledon in 2010. It lasted for 11 hours and five minutes over three days between Frenchman Nicolas Mahut and the eventual winner of that year's championship, American John Isner.

- This year's tournament marks Rufus the Harris's Hawk's 16th year as chief pigeon scarer, making sure matches aren't interrupted by unwanted avian guests. Follow him on Twitter or Instagram.

So whether you're lucky enough to attend in person or will be watching the competition from the comfort of your own home, sit back, relax and enjoy this prestigious display of sporting prowess – Pimm's optional.



SPORT

THE VISION LISTINGS

ACCOUNTANT & TAX ADVISORS

ALL THINGS ACCOUNTING

Accounting & tax services, we help with self-assessment tax return, corporation tax return, payroll, VAT return, CIS return & bookkeeping. Call 07539 035537 for free initial consultation

ACUPUNCTURE

HONG WEI CHINESE MEDICAL

Fully qualified & experienced, specialising in women's health & Fertility. Help with pain relief, emotional disorders, male/female conditions. 01708 454888 | hongweichinesemedicine.co.uk

ANXIETY AND SLEEP DISORDERS

HYPNOTHERAPYDEBONO.COM

Fully qualified & experienced, specialising in women's health & Fertility. Help with pain relief, emotional disorders, male/female conditions. 01708 454888 | hongweichinesemedicine.co.uk

ARTS, DANCE & FITNESS

STUDIO 1 UK

"Creative space simplified" - Performing arts | Dance | Fitness | Wellbeing | Hire | Adults and kids classes based in Loughton Essex. 07914 667909

BEAUTY & NAILS

BEAUTY BY NATASHA KATIE

A local, mobile LVL Technician. Fully qualified level 2 and 3 beauty therapist Babcac insured and approved. 07961 462672

SPECIAL NAILS

Dedicated to provide the best quality nail care for Men & Women. Walk-ins welcome, appointment bookings & gift vouchers available. 01708 442248

THE NAIL STUDIO

Nail Studio lets you switch off and pamper with highly skilled technicians providing top treatments and nail products to meet your every need. 07572 526519

WICKED WAXING LTD

Male and Female specialist waxing using hot and strip wax. 20 years' experience. Based in Epping with free parking. epping@wickedwaxing.com. 07368 684377

BESPOKE TAILORING

ROSS CARRINGTON BESPOKE TAILORING

Bespoke suits, shirts, jackets, wedding attire, evening wear. Alterations undertaken and visiting service available. 07824 153880 | 020 7898 0599

BUILDING

ADDSPACE LONDON LTD

We provide a high quality Building service. Extensions, lofts and internal renovations. Members of Federation Master Builders. Call 020 8088 2870

BUILDING & CLAIMS

CONCEPT BUILDING SOLUTIONS

We are builders specialising in water & fire-damaged properties. We put your home back to how it should be. 020 8088 3418

CAR & VAN HIRE

SCENIC SELF DRIVE

Your self drive hire specialists. Whether you require modern cars, motorhomes, vans or minibuses. Rest assured we will provide you a professional service. 01708 753461

CARPET & UPHOLSTERY

ARWIN CLEANING SERVICES

Over 30 yrs of exp, we can offer a professional, efficient and cost-effective solution for carpet and upholstery, cleaning and maintenance. 07973 417764

CHESS CLUB

VICKI'S CHESS CLUB

Vicki's chess coaching - teaches and provides games of chess to children and adults in Ilford and Debdon. Phone Vicki: 07849 435451 | Website: Vickschessclub.uk

CLEANING SERVICES

SPOTCLEAN LTD

Commercial & domestic services specialising in office, shop, new build, refurbished and residential cleaning. 07940 213394

COMPUTER REPAIR & I.T.

MAPTEC IT

Your local residential & commercial IT specialists. We can fix your computers, configure email accounts & printers. Setup your Wi-Fi, Internet router & network. 020 3865 7174

DRAINAGE

UNITED DRAINS

A fast and professional plumbing/drainage service you can rely on, providing a 24/7 service. All planned, emergency and reactive works undertaken. Call 020 3637 6688

EDUCATION

TUTOR DOCTOR

All primary secondary subjects, 1:1 lessons, online or F2F in-home. Tutor matched to every child's personality, weekly reports. Call 020 3856 4466 | www.tutordocor.co.uk/wlcc

JOIN THE LISTINGS... for just **£180** +VAT per yr

ELECTRICIAN

GLADE ENERGY SERVICES LTD

We cover all types of electrical work in your home. LED lighting, Fusebox upgrades, CCTV & Home automation. Please call 020 3906 2863

GARDEN SERVICES

JOHN HEARNE

We take care of it all Lawn Mowing, Weeding, Planting, General Tidying, Fence/Shed Painting, Driveway/Patio Pressure Washing and more. Call for details 07908 523101

HANDYMAN SERVICES

CMB PROPERTY GROUP

Handyman, Maintenance & Refurbishments. Decorating, Plastering, Tiling, Re-siliconing etc. Small enough to care, big enough to make a difference! Call 07972 203096

HEALTH & WELLBEING

IMPROVE YOUR SMILE DENTAL PRACTICE

Est. in 1986. Encompassing all needs from basic oral health to advanced dental procedures and high-end cosmetic treatments. New patients welcome. 020 8504 2704

OPTIMUM WELLBEING

Promoting healthy balance at mental/emotional and energetic level. Trauma, Stress, Inner Alignment. 07802 840498 | jay@optimumwellbeing.co.uk

LOCKSMITHS

KEYTEK LOCKSMITHS

From Lock outs to security upgrades, our fully trained DBS checked Locksmiths are the experts | Call 020 3897 2686 | Quote: 15079

PAINTING & DECORATING

PGA DECORATING SPECIALIST

Interior - exterior - paper hanging specialists in Window repair care. 07769 646357 | www.pgadecoratingspecialists.co.uk | pgadecorators@yahoo.co.uk

PHOTOGRAPHY

PHOTOGRAPHY BY ROHINI

Family | Maternity | Newborn | Baby | Milestone | Cake Smash | Portrait | Headshot | Christmas | Event | Engagement | Wedding. Immortalise precious moments. 07740 292383

PLUMBING & HEATING

BOILR

BOILR offer servicing, installations, repairs and plans. Local Gas Safe engineers for all your needs. Please call today on 020 3576 2386

PROPERTY MAINTENANCE

LILLYWHITE PROPERTY GROUP

For all building works, full refurbishments & property maintenance inc heating, plumbing, electrical, decorating, flooring, tiling & plastering etc. Call today on 07949 394403

STUART GREEN PROPERTY SOLUTIONS

Property maintenance specialist. Carpentry, painting/ decorating, laminate flooring, bath/shower re-siliconing, gutters cleared/repared, insurance work, PLI. 07917 870879

ROOFING

JIM BARR ROOFING

Exterior cleaning/maintenance. Gutters, Paving, UPVC; cleaned, repaired, renewed. 01708 874816 | 07833 572459

WEB DESIGN & PRINTING

SWIVEL CREATIONS

25+ yrs exp, we are specialists in web, print, clothing and embroidery. Professional, affordable, reliable. 01992 570383 | 07736 879233 | www.swivuk.co.uk | info@swivuk.co.uk

PHOENIX ROAD CREATIVE

25+ years Web Design & Marketing to reach your audience. Let's get digital! hello@phoenixroadcreative.com | www.phoenixroadcreative.com | 07462 528494

EMAIL LOUGHTON@VISIONMAG.CO.UK TO JOIN THE LISTINGS FOR **£15 PER MONTH** (+VAT)

PUT YOUR BUSINESS IN THE **VISION** LISTINGS...CALL **0208 088 0386** TODAY

THE VISION LISTINGS

DISCLAIMER: VISION does not represent or endorse the accuracy or reliability of any of the advertisements, nor the quality of any products, information or other materials displayed, purchased or obtained by any customer as a result of an advertisement or any other information or offer in connection with the service or products. The opinions expressed in articles, reviews and stories are strictly those of the individual authors and do not necessarily reflect the views of **VISION**.

ACROSS: 1. DEAR, 3. FRACTURE, 9. REGALLY, 10. NECKS, 11. STRAIGHTENED, 13. VIRAGO, 15. STEREO, 17. DISASTROUSLY, 20. BASIC, 21. PLACEBO, 22. THEORIST, 23. TREK
DOWN: 1. DENISIVE, 2. ANGER, 4. RHYTHM, 5. CONVENTIONAL, 6. UNCLEAR, 7. ELSE, 8. FLYING SAUCER, 12. BODYWORK, 14. REISSUE, 16. STAPES, 18. SWEAR, 19. ABUT



PUZZLES & TRIVIA

PUZZLES

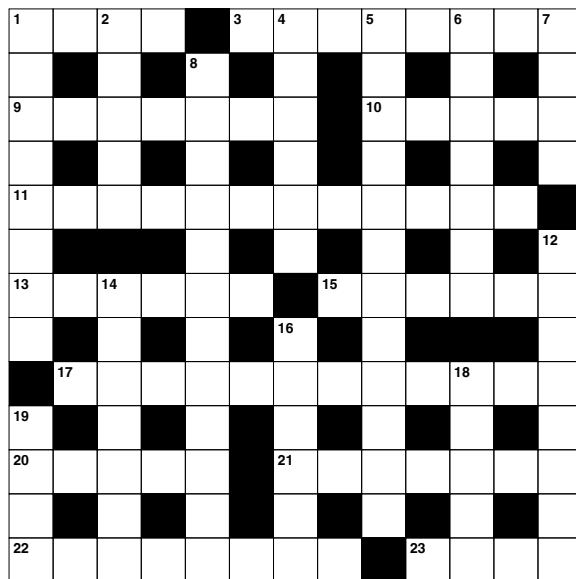
Answers: see end of The VISION Listings

ACROSS

1. Beloved; expensive (4)
3. Break (8)
9. Majestically (7)
10. Giraffes have long ones (5)
11. Uncurled (12)
13. Fierce or domineering woman (6)
15. Dual audio (6)
17. Ruinously (12)
20. Simple (5)
21. Inactive pill (7)
22. Conceptual thinker (8)
23. Arduous journey (4)

DOWN

1. Mocking (8)
2. Ire (5)
4. Sense of musical time (6)
5. In accordance with general custom (12)
6. Uncertain (7)
7. Otherwise (4)
8. UFO (6,6)
12. Exterior of a motor vehicle (8)
14. Print anew (7)
16. Ear bone (6)
18. Give a solemn oath (5)
19. Tuba (anag) (4)



DID YOU KNOW?

- ▶ Your eyes blink an average of 20 times a minute. That's more than 10 million times a year.
- ▶ The entire surface of your skin is replaced every month, which means you have about 1,000 different skins in your life.
- ▶ If you live to age 70, your heart will have beaten around 2.5 billion times.
- ▶ Laid end to end, an adult's blood vessels could circle the Earth's equator four times.
- ▶ Bodies give off a tiny amount of light that's too weak for the eye to see.
- ▶ Your left lung is approximately 20 per cent smaller than your right one.
- ▶ You produce about 40,000 litres of spit in your lifetime. Or to put it another way, enough spit to fill around 500 bathtubs.

SUDOKU

		5				3		
	9						1	6
	6		2					
2			8	7				
3		6				7		1
				9	6			2
					8		6	
1	2						7	
		4				2		

OVER 30 YEARS OF EXCELLENCE



Life is Beautiful

At City Bathrooms we believe everyone deserves a beautiful bathroom, that's why our passion for luxury products, first-class customer service and expert bathroom advice is at the heart of everything we do.

citybathrooms.com



City Bathrooms

11 Raven Road, South Woodford E18 1HB

Telephone: 020 8504 5152

Email: sales@citybathrooms.com





SHOCKED AT THE COST OF A NEW KITCHEN?

...HAVE A MAKEOVER INSTEAD!



If you're worried about your kitchen budget getting out of control, why not have a makeover instead! You can get a lovely new look simply by replacing your doors, drawer fronts, trims and worktops.

SAVE TIME. SAVE MONEY. SAVE HASSLE.

To book your **FREE**
no pressure, home visit call
Mark: 020 8088 9192

SHOWROOM
36a Church Hill, Loughton, IG10 1LA
www.kitchensandmakeovers.com
info@kitchensandmakeovers.com

