



**WHISKY
VERSUS
BOURBON**

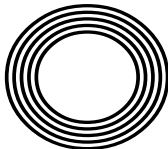
**GET FIT
WITH
FUNCTIONAL
FITNESS**

Glam up your eyes
with crystals this Christmas

MAKE YOUR OWN
cutlery holder for the festive season

Kylie
MINOGUE AO OBE

The singing actress we just can't get out of our heads



FREE

Photo credit: BBC/Guido Mandozzi

THE **B7** MEDIA GROUP

PRINTING • BUSINESS CARDS • LEAFLETS
DISTRIBUTION • SIGNAGE • MENUS & BROCHURES
EXHIBITION BOARDS & BANNERS
RETAIL PACKAGING • WINDOW VINYL
LOGO DESIGN • BRAND ALIGNMENT
VEHICLE WRAPPING • CARBON PADS • WORKWEAR
WEBSITES • SOCIAL MEDIA • I.T. SOLUTIONS



ENQUIRIES@B7MEDIAGROUP.COM



0208 088 0386



ENQUIRIES@B7MEDIAGROUP.COM



0208 088 0386





Editor's notes...

NOVEMBER 2023



Brett Shohet, Editor

Hello and welcome to this month's edition of **VISION**Loughton.

Recently, I helped to organise a business exhibition in the local area, and it brought to my attention how success is all about strengths - both your own and other people's. An efficient business owner will focus on what they do best, while delegating tasks to the other people on their team according to their skills.

The exhibition was a great success, and we're hoping to roll the event out to other areas next year - so watch this space!

One thing many residents are worried about at the moment is the expansion of the Ultra Low Emission Zone (ULEZ). Some people are so outraged at the £12.50 per day charge that they've been cutting down ULEZ cameras. While there is no excuse for such vandalism, I sympathise with those residents who face this charge simply for driving to work, or to visit family or to medical appointments. In these difficult times, it's important to know that you can turn to your community for support. As ever, we here at **VISION** magazine are here to help if you need us.

With Christmas Fast approaching, I'd like to encourage readers to shop local this festive season. Many people have lamented their quiet high streets, but how many of them are actually getting out there and supporting their local businesses? Remember, if you don't use it, you'll lose it!

Brett Shohet

This is your town's hyperlocal magazine, delivering to homes and businesses every month.

HOME & DIY | GARDENING | PETS | HEALTH & FITNESS | BEAUTY | FASHION | HISTORY | LOCAL NEWS | FOOD & DRINK | TRAVEL | BUSINESS & PROPERTY | SPORT | PUZZLES | MOTORING | KIDS | WHAT'S ON | TECHNOLOGY | THE LISTINGS

CONTACT US:



loughton@visionmag.co.uk | 0208 088 0386

www.visionmagessex.com | www.visionmagherts.com

[@visionmagessex](https://twitter.com/visionmagessex) | [@visionherts](https://twitter.com/visionherts) | [@visionmagessex](https://www.instagram.com/visionmagessex) | [@visionmagestherts](https://www.instagram.com/visionmagestherts)

[f Vision Magazine Essex](https://www.facebook.com/visionmagazineessex) | [Vision Magazine East Herts](https://www.facebook.com/visionmagazineeastherts)

CONTRIBUTORS | Tabatha Fabray, Fiona Goble, Sophia Sheera

All pages are recyclable

THE **B7** MEDIA GROUP

PRINTING • BUSINESS CARDS • LEAFLETS • DISTRIBUTION
SIGNAGE • MENUS & BROCHURES • RETAIL PACKAGING
EXHIBITION BOARDS & BANNERS
WINDOW VINYLs • LOGO DESIGN
BRAND ALIGNMENT • VEHICLE WRAPPING
CARBON PADS • WORKWEAR • WEBSITES
SOCIAL MEDIA • I.T. SOLUTIONS

ENQUIRIES@B7MEDIAGROUP.COM

0208 088 0386



The bathroom you have always dreamed of



YOUR DESIGNER BATHROOM

Visit our showroom and see the latest bathroom ranges
Bathworks can offer supply only, or arrange supply & fit

196 High Road, Woodford Green, Essex IG8 9EF

Tel: 020 8504 1765

Email: lloyd@bath-works.co.uk

www.bath-works.co.uk





MARKING THE 60TH ANNIVERSARY OF DOCTOR WHO – THE MAN, THE WOMAN, THE SHOW, THE MOVEMENT

Asking celebrities how they remain so youthful has become par for the course, but none has achieved as much ongoing success and vigorous relevance as the great Doctor, who at 60 is looking pretty fresh.

On Christmas Day, the Doctor's latest regeneration will be revealed, but not before some highly anticipated TV specials for the show's anniversary in November.

Making his grand return as the fourteenth Doctor, fan favourite David Tennant is set to wow once more for three anniversary episodes. The Scottish actor originally starred as the tenth Doctor from 2005 until his final episode aired on New Year's Day in 2010. Catherine Tate will also reprise her role as the Doctor's companion Donna Noble, with Neil Patrick Harris also joining the cast.

Though Patrick Harris is a newcomer to the *Doctor Who* fold, his character, The Toymaker, is not. First appearing in a now classic episode titled *The Celestial Toymaker*, from the show's third season in 1966, he was originally portrayed by actor Michael Gough.

The Toymaker is a memorable antagonist owing



to his whimsical yet sinister demeanour and his ability to create intricate and deadly challenges for the Doctor and his companions. The character's distinctive appearance and personality have made him a notable figure in the show's lore, one that aligns perfectly with Patrick Harris' dramatic and theatrical flair.

One of the greatest success stories for the BBC, *Doctor Who* began in 1963 when Sydney Newman OC, the corporation's head of drama, tasked producer Verity Lambert OBE and writer Anthony Coburn with creating a TV science fiction series. Their vision gave birth to *Doctor Who*, a show that would combine history, adventure and futuristic concepts in a unique way.

William Hartnell portrayed the original incarnation of the Doctor, a mysterious Time Lord with the ability to regenerate. The Doctor, along with his granddaughter Susan and two teachers, Ian and Barbara, travelled in the TARDIS, a time machine that looked like a 1960s British police box on the outside.

The series is listed in the Guinness World Records as the longest-running science fiction television series in the world, with Tom Baker holding the title for starring in the highest number of episodes – a whopping 178.

Despite its popularity, *Doctor Who* faced a significant hurdle in 1989 when it went on an extended hiatus. Aside from a TV film in 1996, the Doctor would not be fully regenerated until 2005.

This was the beginning of the show's modern era, helmed by writer and showrunner Russell T. Davies OBE and starring Christopher Eccleston as the ninth Doctor.

The most recent revamp of the series sees Davies return as the showrunner, taking over from Chris Chibnall who

introduced Jodie Whittaker as the 13th Doctor. Hot on the heels of his 2021 success *It's a Sin*, and with *Sex Education* star Ncuti Gatwa playing the 14th Doctor, Davies is in a fine position to return the show to its noughties glory.

The King's NEW COINS UNVEILED



SHOWCASING HIS PASSION FOR CONSERVATION AND EQUALITY

When His Majesty King Charles III was crowned, he thanked the public for their kindness and encouragement, and vowed that he and Her Majesty Queen Camilla would rededicate their lives “to serving the people of the United Kingdom, the Realms and Commonwealth”. Putting his money where his mouth is, quite literally, the edge inscription of the new £2 coin reads ‘In servitio omnium’, which means ‘In the service of all’. It was taken from the King’s inaugural speech on September 9, 2022, and chosen by him personally.

The coin is one of eight that have been unveiled by The Royal Mint, ranging from 1p to £2. Determined to distinguish his reign from that of his beloved mother, the King has also embossed them with another of his great passions: nature.

Featuring endangered species from across the British Isles, such as the puffin, the red squirrel and the bee, along with flowers and the oak tree leaf, the coins reflect His Majesty’s devotion to conservation and equality.

Here is the full list:

- **1p coin:** Hazel dormouse... which has seen its population halve since 2007
- **2p coin:** Red squirrel... expected to blend into the colour of the copper coin
- **5p coin:** Oak tree leaf... a rich habitat for biodiversity in woodland areas with a long monarchic association
- **10p coin:** Capercaillie... found in a small part of Scotland and threatened with extinction
- **20p coin:** Puffin... 10 per cent of the world population is on the UK’s coastline
- **50p coin:** Atlantic salmon... at threat from river pollution and habitat loss
- **£1 coin:** Bees... 250 species found in the UK
- **£2 coin:** National flowers – a rose (England), a daffodil (Wales), a thistle (Scotland), a shamrock (Northern Ireland)

The coins will replace those designed by Her late Majesty Queen Elizabeth II in 2008 and may be in use by the end of 2023, but The Mint has confirmed that all existing currency remains legal tender.

Photo credit: royalmint.com

Curious about Facial Aesthetics?

We’re taking our commitment to enhancing your natural beauty to a whole new level



With his skill and expertise, GP Dr Shaan will work with you to achieve the look you desire

- Dermal fillers
- Full-facial contouring
- Non-surgical rhinoplasty

Dr Shaan also treats medical conditions such as Temporomandibular Joint Dysfunction in the jaw and excessive sweating

There’s never been a better time to satisfy your curiosity!

LOOKING
GOOD HAS
NEVER BEEN
SO SIMPLE!

Scan the QR code to
take you to our website
for more information



020 8504 2704

162 High Road • Woodford Green • IG8 9EF



EXPERIENCE YOU CAN TRUST



Crystal Craze

According to Pinterest, there has been a 110 per cent increase in searches for crystal eye make-up over the last year, with this beauty trend showing no sign of slowing down. Versatile, flattering, and oh-so-pretty, find out how to rock this statement look below.

What tools do you need to do crystal eye make-up?

To master this trend, you will need a pair of tweezers, lash adhesive, and your chosen crystals. For complete beginners, you can also buy jewels that already have adhesive on them. It is worth noting that the smaller the crystals, the harder they will be to apply.

Where to place your crystals

There is no hard and fast rule when it comes to where to apply crystals around your eyes; you can basically be as creative as you want. However, it can be a good idea to place your crystals in places that you want to draw people's attention to. For example, the inner corner of the eyes, the upper lash line and the lower lash line. Be careful when using adhesive near your eyes.

Crystal eye make-up looks to try

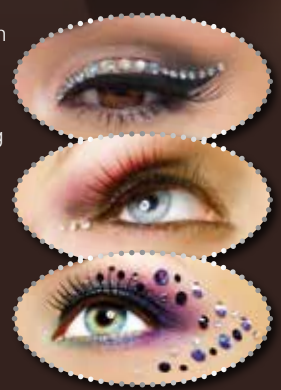
Crystal cat eyes: Create your usual cat eyes using black liquid eyeliner, and then apply gems to the upper lash line along the eyeliner for a mega-bling finish.

Silver gem-encrusted wing liner: Instead of the basic black winged liner, apply five or six tiny silver crystals from the outer corners of your eyes, extending upwards towards your temples.

Colour combinations: Crystals and eyeliner come in a wide variety of colours so don't be afraid to mix it up a bit. We love combining blue and silver, gold and metallic shades, and a full rainbow of crystals with any liner of your choosing.

How to remove crystal eye make-up:

Not a beauty trend for the office, you can easily remove any crystals using a cream or oil-based make-up remover. This will lift the jewels off the face without causing any irritation to the skin.



DID YOU KNOW

100,000

PEOPLE DIE EACH YEAR IN THE UK FROM SUDDEN CARDIAC ARREST?

YOU CAN LEARN KEY LIFE-SAVING SKILLS FROM JUST £99

JOIN OUR 1-DAY EMERGENCY FIRST AID COURSE OR 3-DAY FIRST AID AT WORK COURSE

CONTACT US FOR COURSE DATES & MORE INFORMATION ON 07508 204656

enquiries@bbirisksolutions.com

Risk Solutions

www.bbirisksolutions.com

Forever Marine Collagen

Marine collagen that actually works! Supports your health and well-being, helps you stay fit, flexible, active and looking fabulous too!

- Multi-Award winning
- Hydrolysed liquid collagen
- Vitamin C, plus Biotin & Zinc
- Great taste
- Easily absorbed

Sharon, 55: Days 1-23

Jamie - Incredible product!! ★★★★★ 5.0

Love love love this product, tastes fab too unlike a lot of alternatives. I can feel the health benefits & I'm loving the way my skin looks because of this.

Text 'more info'
Alison 07932 717496
FB/Insta @AliAloeLife

Independent Forever Business Owner

DANIEL ROBINSON & SONS

INDEPENDENT FAMILY FUNERAL DIRECTORS

EST. 1890

The funeral professionals...

Bespoke funerals to meet your wishes, including simple, traditional and green funerals, direct cremation, specialist vehicles and horse-drawn.

Preneed Funeral Plans

Dedicated 24 hour support to the community in our local funeral homes.

Funerals as unique as the loved ones remembered

www.drobinson.co.uk

Because sometimes, only the very best service & care will do

Who are we?

**Ryancare Fostering is diverse
small fostering agency with
big resources**



What is fostering?

Fostering is providing a comfortable, secure home for a vulnerable young person. It's offering patience and understanding, compassion and care to children who need it.

Who can apply to be a foster carer?

We welcome people from all ethnic, cultural and religious backgrounds to join the Ryancare family.

Contact us

☎ **0208 088 3093** or 07551 153 539

📍 5A Wellington Road, Wanstead, London, E11 2AN

✉ info@ryancarefostering.com 🌐 www.nfa.co.uk



ALL-INCLUSIVE LUXURY CARE HOME



Exceptional Residential, Nursing, Memory & Respite Care

Offering the highest quality personalised care, with luxury living facilities and the freedom to explore and enjoy a range of hobbies, Woodland Grove care home will give residents the independence and support to continue living life to the fullest.

Contact us to arrange a visit!

☎ **0300 303 5445**

✉ clientrelations.wg@oaklandcare.com

📍 Woodland Grove Care Home,
Rectory Lane, Loughton, Essex, IG10 3RU

🌐 oaklandcare.com/woodland-grove



Tackle that TARNISH



FASHION

If your bling is looking more dull than dazzling, then these tried and tested DIY cleaning techniques are just what you need.

HOW TO CLEAN STERLING SILVER

1. Try baking soda

For severe tarnish, mix three parts baking soda with one part water. Wet the silver and then apply the paste with a soft, lint-free cloth. Work into the crevices, rinse well and buff.

2. Apply toothpaste

Toothpaste is a mild abrasive and therefore ideal for cleaning silver. Simply apply a dab to your silver jewellery and rub gently with your finger or a soft cloth. Rinse and buff.

HOW TO CLEAN GOLD (WHITE, YELLOW AND ROSE)

1. Use ammonia

Ammonia is a powerful cleaner so is best used for occasional deep cleaning rather than frequent use. Add one part ammonia to six parts water, soak your gold jewellery for one minute, rinse and gently pat dry with a polishing cloth.

2. Soak in warm, soapy water

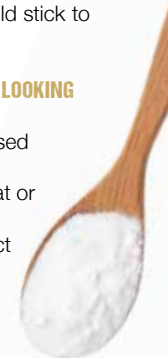
Fill a bowl with warm water, add a few drops of washing-up liquid and leave to soak for 10-15 minutes. Use a soft-bristle toothbrush to dislodge dirt, rinse and dry.

JEWELLERY TO BE CLEANED PROFESSIONALLY

Gold and sterling silver can be safely cleaned at home. However, more delicate metals, such as platinum, should be cleaned by a professional. If your jewellery contains precious stones such as diamonds, sapphires or rubies, you should stick to mild soap and water.

HOW TO KEEP SILVER AND GOLD JEWELLERY LOOKING ITS BEST FOR LONGER

- > Store your jewellery in an acid-free, closed container.
- > Do not leave your jewellery in direct heat or sunlight.
- > Avoid your jewellery coming into contact with chemicals.
- > Remove your jewellery before bathing, swimming and exercising.





The *Sunshine* VITAMIN

Vitamin D makes sure our bones, teeth, and muscles stay healthy. It also helps our immune system. And some studies suggest it might even help fight low mood and fatigue.

From early spring to the end of summer, most of us get all the vitamin D we need from our skin reacting to sunlight. And you only need to be outside for around nine minutes a day if you're light-skinned and 25 minutes or so if your skin's darker.*

But what happens when you're stuck inside and summer sunshine is a distant memory?

SHOULD I TAKE A SUPPLEMENT?

The government recommends that we all take a daily vitamin D supplement in autumn and winter. There's not enough sun around, and you can't get all the vitamin D you need from food.

Some groups are advised to take a supplement all year round. This includes children aged four and under, people who can't get outside, and people who wear clothes that cover most of their skin when they're outdoors.

HOW MUCH SHOULD I TAKE?

The recommended dose for adults and children over one year is 10 micrograms daily. This is equivalent to 400 IU (International Units). Supplements vary, so choose one that contains at least this amount. For babies, ask your health visitor or pharmacist.

WHERE CAN I BUY IT?

You can buy vitamin D in pharmacies and most supermarkets. If you're part of the government's Healthy Start initiative, you can get vitamin D supplements for free.

CAN YOU OVERDOSE ON VITAMIN D?

Adults shouldn't take more than 100 micrograms (4,000 IU) of vitamin D daily, and children aged one to 10 shouldn't have more than 50 micrograms (2,000 IU). However, for some people, vitamin D could still be harmful even when taking less than the maximum recommended dose. Always check with your doctor if you are worried.

*Cancer Research Campaign UK



"My carer is absolutely fantastic. She not only cares but anticipates my every need."

- Sara



Exceptional care in your own home

- Wellbeing.
- Personal care.
- Dementia care.
- Companionship.
- Household tasks.
- Outings & activities.
- Medication support.
- Assistive technology.

Speak with your local care manager

0208 154 1753

chingford@radfieldhomecare.co.uk
www.radfieldhomecare.co.uk



**epr
services
Ltd**
committed to care

HOME SUPPORT & DOMICILIARY CARE

TYPES OF CARE

DOMICILIARY CARE SERVICES

Personal care, Medication, Appointments, Domestic support, help with meal preparation & shopping.

LIVE-IN-CARE

Short & Long term live-in-care, respite care, couples care & post operations care.

SPECIAL AREAS

Dementia Care, Palliative/End of life, Physical & Learning Disabilities, Progressive conditions & Post operations

**You can book your free appointment
by calling us on 0208 088 0934**

www.eprservices.co.uk • info@eprbusiness.co.uk



WE VISIT YOU AT HOME

Our carers can provide daily visits to help you with your daily needs

Redbridge Tuition

We simplify the learning process for busy parents so your child can boost their knowledge and confidence.

- After-school & weekend classes
- Weekly learning packs
- Expert tutors

WHAT OUR PARENTS SAY...



"An excellent tuition centre with amazing tutors, never once did my son feel it was a chore to spend 2 hours each Saturday in the centre. He has enjoyed his learning and was eager to attend."



Find Us At
156 High Road
Loughton



0800 228 9775
redbridgetuition.co.uk



THE B7 MEDIA GROUP

- PRINTING • BUSINESS CARDS • LEAFLETS • DISTRIBUTION
SIGNAGE • MENUS & BROCHURES • EXHIBITION BOARDS & BANNERS
RETAIL PACKAGING • WINDOW VINYLs • LOGO DESIGN
BRAND ALIGNMENT • VEHICLE WRAPPING • CARBON PADS
WORKWEAR • WEBSITES • SOCIAL MEDIA • I.T. SOLUTIONS

ENQUIRIES@B7MEDIAGROUP.COM

0208 088 0386



FUNCTIONAL FITNESS 101



HEALTH & FITNESS

WHAT IS FUNCTIONAL FITNESS?

As the name suggests, functional fitness is a type of physical training that is designed to make your body function better in everyday life. More specifically, functional fitness exercises help to make daily motions such as picking up your children, carrying your shopping and walking around easier and safer.

WHAT ARE THE BENEFITS OF FUNCTIONAL FITNESS?

There are many benefits to practising functional fitness, including: Enhanced strength | More flexibility | Better balance and agility | Better range of motion

THE BEST FUNCTIONAL FITNESS EXERCISES

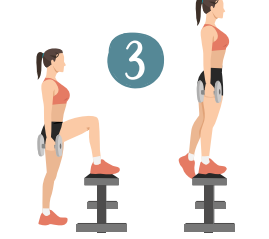
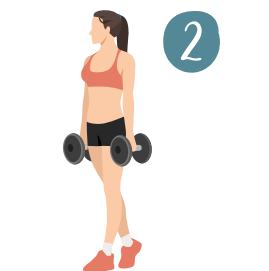
Functional fitness exercises prioritise natural movements over exercises that are carried out on a machine. For example, squats and pull-ups over leg presses and lateral pull-downs or going for a hike rather than using an elliptical trainer. Some of the most effective functional fitness exercises are:

1 BEAR CRAWL: Begin in the tabletop position on the floor | Bring up your knees so they hover above the ground | Using opposing arms and legs, take a small step forward with each limb | Return to the starting position, then repeat on each side for one minute, rest and repeat three times

2 FARMER'S WALK: Pick up a couple of weights (kgs that you feel comfortable walking with) | Keep a tight posture with your shoulders back | Take small, manageable steps back and forth across the room | Rest and repeat for two minutes

3 STEP-UPS: Step up and down from a bench | Continue for one minute, rest and repeat three times | Add weights if you want to challenge yourself | Upgrade to a box jump where you jump up and down with two feet rather than alternate feet

4 PLANK: Adopt the push-up position | Push through your hands and squeeze your body, engaging your abs | Hold for one minute, rest and repeat three times.





WHY DOES MY BACK HURT?

Why is this question asked so frequently? It's because 80% of people get back pain at some time. They normally seek medical advice and the vast majority, after x-rays or scans are told, "It's nothing serious." In other words there is no cancer, infection or fracture. That's all very well but the problem of pain remains, and frequently returns – often worse than before. Patients are sometimes offered surgery, which is very risky and has a poor success rate.

SO WHAT IS THE ANSWER?

When you visit a chiropractor you have a very different experience. Of course we are keen to rule out serious pathology as a first priority but after that we are determined to find out the cause of your problem and make a plan to get your spine back into the best condition possible. With 30 years of experience and thousands of cases the chances are we have many back problems just like yours.

TO HELP FIND THAT CAUSE OF BACK PAIN WE OFFER:

- Private Consultation with the Doctor of Chiropractic at our clinic in Loughton

- A Thorough Examination including Neurological, Orthopaedic & Chiropractic Tests are included as well as Blood pressure, Heart Rate and Muscle Strength Tests
- X-Rays, if necessary are included too
- And most importantly Verbal Report of our Findings and thorough Explanation of the X-Rays at a follow up appointment
- Personalised recommendations will be given, which may include stretching and exercise advice, plan of treatment and relevant postural and lifestyle recommendations.

As a result, you should know more about your body and the problems you are experiencing, more than you ever have before. Whether you go ahead with treatment as always is entirely your decision.

FOR A LIMITED PERIOD WE WILL DO:

- ✓ A full Consultation ✓ Examination
- ✓ X-rays (if necessary) ✓ Full Report of our Findings
- ✓ An explanation of our treatment procedure or a referral to the appropriate specialist if we determine Chiropractic cannot help



FOR MORE INFORMATION OR TO BOOK:

0208 508 9377 ● www.chimeschiropractic.com

Email: info@chimeschiropractic.com ● 4 Richmond Park, Loughton IG104PQ

We could fill Wembley Stadium MORE THAN TWO TIMES with our monthly readership

OVER 207,500 PEOPLE IN ESSEX READ VISION MAGAZINE'S MONTHLY

Photo courtesy of PA Images

CONTACT US TODAY TO GET YOUR BUSINESS SEEN BY OUR READERS

Your Monthly Lifestyle Magazine



See all our magazines at www.visionmagessex.com

Billericay Shenfield Bishop's Cleeve Brentwood Ongar Chelmsford Epping Theydon
Halstead Braintree Hertford Hornchurch Leigh Thorpe Bay Loughton Maldon Burnham
Rayleigh Wickford South Woodford Tendring

Home of Chocolate



Le Mahzen Chocolatier is a small family business that offers lots of delicious chocolate desserts and hot chocolates with seven types of melted Belgian chocolate (dark, milk, white, gold, ruby, dark vegan, milk vegan) and velvety, balanced Italian coffees for every taste and mood.



239 High Road, South Woodford, E18 2PB @lemahzenchocolatier



FILIKA

Filika restaurant is a smart, comfortable and cosy restaurant with a relaxing Mediterranean atmosphere.

Welcoming and friendly, we serve modern and the best traditional Turkish cuisine.

We offer a good choice of freshly prepared seasonal food – mezzes, a generous selection of marinated steaks, chicken, vegetarian dishes and lots of fish & seafood dishes.

Opening hours

Monday-Saturday: 12pm - 10pm

Sunday: 12pm - 9pm



FILIKA RESTAURANT THEYDON BOIS
13 Forest Drive, Theydon Bois, CM16 7EX
www.filikarestaurant.co.uk
theydonbois@filikarestaurant.co.uk
Tel: 01992 812000

FILIKA RESTAURANT WANSTEAD
62 High Street Wanstead, E11 2RJ
www.filikarestaurant.co.uk
info@filikarestaurant.co.uk
Tel: 020 8530 1333



What's the difference between... Whisky & bourbon

Do you like whisky but say you can't stand bourbon? If yes, you may be surprised to hear that bourbon is actually a type of whisky.

Discover the main differences between bourbon and other whiskies below. Plus, some delicious whisky and bourbon cocktails.

WHAT IS WHISKY?

Whisky is a family of distilled liquor that is made by fermenting wheat, rye, barley or corn. It is then aged in wooden barrels that are typically made of oak. This is what gives whisky its distinct brown colour and taste.

There are many different types of whisky, including Scotch (Scottish whisky), Irish Whisky, Rye whisky and Japanese whisky.

WHAT IS BOURBON?

Bourbon is a specific type of American whisky that is made from at least 51 per cent corn and aged in new charred oak barrels rather than reused ones. The name bourbon comes from Bourbon County in Kentucky, which is where this popular spirit originates from. Straight bourbon whisky has to have been aged for at least two years.

WHAT IS THE DIFFERENCE IN FLAVOUR?

Bourbon has a sweeter flavour than other types of whisky, boasting notes of vanilla, oak, and caramel. This is owing to the high concentration of corn. Rye whisky tastes grassy and peppery with a spicy finish, Scottish whisky is malty and buttery, Irish whisky is known for being light and fruity and Japanese whisky has floral notes with hints of oak.

POPULAR WHISKY COCKTAILS:

- > *Whisky Sour* – 50ml whisky, 35ml lemon juice and 12ml simple syrup
- > *Old Fashioned* – 50ml rye whisky, 1 sugar cube, a few dashes of water and angostura bitters
- > *Whisky Highball* – 50ml whisky and 100ml soda water or ginger ale
- > *Whisky Smash* – 50ml whisky, 25ml simple syrup, ¼ lemon wedge and 1 sprig mint

POPULAR BOURBON COCKTAILS:

- > *Bourbon Sour* – 50ml bourbon, 35ml lemon juice and 12ml simple syrup
- > *Kentucky Mule* – 50ml bourbon, 15ml lime juice and ginger beer to top
- > *Bourbon Manhattan* – 50ml bourbon, 25ml sweet red vermouth and 2-3 dashes angostura bitters.

The perfect ROAST CHICKEN

From how to create a classic roast dinner to carving it up to get the most meat out of it, the below will guide you through each step.

TO ROAST THE CHICKEN

You will need:

1 whole chicken | Half a lemon | Butter | Salt and pepper

Method:

- > Pre-heat the oven to 200°C/180°C fan/gas mark 6.
- > Take the chicken and remove any giblets that may be in the cavity. You can, of course, buy whole chickens with the giblets already removed.
- > Put the half lemon into the chicken cavity and smear butter over the whole bird.
- > Season with salt and pepper.
- > Cook the chicken uncovered for 20 minutes per half a kilo, with an extra 30 minutes for good measure.
- > To make sure the chicken is thoroughly cooked, give the legs a prod to see if the juices run clear,

or cut into the breast to see if the meat is white.

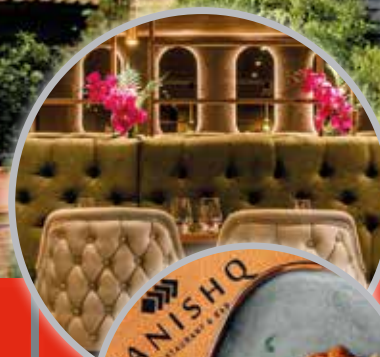
TO CARVE THE CHICKEN

You will need:

A very sharp carving knife | Carving fork | Chopping board (preferably with a well to catch any juices)

Method:

- > **Remove the legs:** Use the carving fork to hold the chicken in place and cut across the skin between the breast and the leg. Pull the leg away from the breast and use your knife to cut through the joint. Repeat on the other side.
- > **Remove the wings:** Repeat the process above – pull the wing away from the breast and cut through the joint. Repeat on the other side.
- > **Remove the breast meat:** Carefully run the knife down the centre of the breastbone to cut through the skin. Run the knife down the breastbone, cutting the meat from the bone.
- > **The rest:** Pick off any remaining meat to use in a pie or soup or freeze in a container for another day.



**MODERN INDIAN
DINING EXPERIENCE**

CELEBRATE CHRISTMAS WITH TANISHQ

**FINE DINING ❄️ MICHELIN STAR EXPERIENCED CHEF
EXPERIENCE MODERN INDIAN CUISINE**

PRIVATE DINING AVAILABLE

RESERVATIONS FOR GROUPS & BUSINESS GUESTS



Visit us
School Road, Toothill, Ongar, CM5 9PU



Contact us
01277 362666



Visit our website
www.tanishqs.co.uk

**NOW OPEN
IN ONGAR**

SEAL PUP SAFARI

Have you ever yearned to see fluffy white seal pups in their natural habitat? If so, a trip to Blakeney Point in north Norfolk could be up your street.

Blakeney Point is home to England's largest grey seal colony – and winter's a great time to visit. From the end of October to mid-January, around 4,000 pups are born – and you can't fail to spot some.

What is Blakeney Point?

Blakeney Point is a four-mile stretch of pebbly beach with a backdrop of dunes, salt marshes and mudflats. It's one of England's 220 National Nature Reserves and is looked after by the National Trust.

Can I walk there?

You can walk to the point from the car park at Cley beach. But it's not for the fainthearted. It's a four-mile walk, mostly on shingle. But if you're fit and love nature, you're in for a treat!

What's the best way to get there?

The most exciting way to get a closer view of the

seals is by boat. Several companies offer seal-watching trips from nearby Morston Quay. You can travel there by car or on the Norfolk CoastHopper bus service from places like Sheringham and Cromer.

The boat trip will take around about an hour. Just remember the boat trip is for viewing only; you can't land there.

Planning ahead

Remember to book your seal trip in advance and get there early. Places on the boats fill up quickly, and the car park can be a challenge. Even on a warm day, the sea can be chilly and might splash you. So pack some warm clothes and some rain gear. And remember your camera and binoculars!

Let's talk seals

- > Grey seals are marine mammals
- > Adult Grey seals can weigh up to a whopping 300kg
- > Grey seals can live for 30-40 years
- > Britain has more than 120,000 grey seals – 40 per cent of the world's total.

Photo credit: Pasma Krasteva/Shutterstock.com



Manjal

SOUTH INDIAN & SRI LANKAN CUISINE

RESTAURANT | BAR | EVENTS

Langston Road, Loughton, IG10 3TQ

Restaurant Hire

Sports Bar | Field Hire | Football & Cricket



Follow Us

Facebook Instagram @manjalrestaurantuk

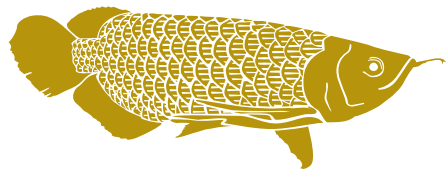
visit: manjalrestaurant.com

Email: info.loughton@manjalrestaurant.com

0208 088 2791



SCAN ME



FUNKY MONK EPPING RESTAURANT & ROOMS



GET IN TOUCH FOR MORE INFORMATION & TO BOOK

01992 276063

www.funkymonkhotel.com

236 High Street, Epping, CM16 4AP



funkymonkhotel



SCAN ME



How to make a Christmas CUTLERY POUCH

Cover your cutlery with Christmas cheer with this simple and stylish craft. All you need are a few materials and some basic sewing skills and you are good to go!

YOU WILL NEED:

A sewing machine or needle and thread | A rotary cutter or pair of sharp scissors | A ruler | Cotton fabric fat quarters in your preferred Christmas colours or patterns | 2 x pieces of festive ribbon or trim (optional)

HOW TO MAKE:

Step 1: Cut your fabric

To create your pouch, you will need two pieces of fabric in contrasting colours or patterns. These need to be cut to 38cm x 12cm.

Step 2: Decide on your layout

One piece of fabric will be used to make the inside of your pouch and the other will be used as the flap. Your cutlery will lie on the inside fabric and be covered by the outside one.

Step 3: Place your fabrics face to face

Next, place your two fabrics face to face. If the flap fabric has a pattern, this needs to be placed upside down. Using a 10mm seam allowance, stitch around the two pieces of fabric using a sewing machine or by hand. Leave a 4cm gap at the bottom for turning.

Step 4: Clip the corners

Clip the corners of the fabrics, making sure not to cut the stitches, then turn the pouch the right way in. Pop out the corners using a pencil and then iron gently to smooth out the fabrics. Sew up the gap.

Step 5: Add ribbon or trim

If you want to add ribbon or a trim, lay out your pouch and sew the pieces of ribbon or trim to the edge that will turn up to make the flap.

Step 6: Complete the pouch

Fold the flap over with a 13cm measurement and iron it in place. Carefully tuck the ends of the trim inside and pin it in place. Sew all the way around the pouch as close to the edge as you can to create a top stitch.



HOME & DIY



Photo credit: hobbycraft.co.uk, thesamanmom.com



CLEAR INSPIRATION – ENDLESS POSSIBILITIES



0208 088 0920 info@infiniteglass.co.uk



BUILDING TRUST
WITH QUALITY
WORK



YOU'RE NOT ALONE



OVER 207,500 OTHER PEOPLE IN ESSEX
READ **VISION** MAGAZINE'S MONTHLY

Your
Monthly
Lifestyle
Magazine



CONTACT US TO GET YOUR BUSINESS SEEN BY OUR READERS

See all our magazines at www.visionmagessex.com

BillericaY Shenfield Bishop's Stortford Brentwood Ongar Chelmsford Epping Theydon Harlow Braintree
Hertford Hornchurch Leigh Thorpe Bay Loughton Maldon Burnham Rayleigh Wickford South Woodford Tendring

HOW TO USE DARK PAINT WHEN DECORATING THIS AUTUMN/WINTER

As we step into autumn, interior design is turning towards the snug and inviting. One of the biggest trends making waves in the world of home décor is the use of paints in all sorts of moody hues. So if you're fed up with all those whites and pale greys, read on and discover how dark paint colours have so many advantages.

1 CREATE A COSY HAVEN

Dramatic colour doesn't have to mean stark charcoals and deep navy blues. For something more alluring, think about using warm, earthy tones like dark beige, deep terracotta or green. These nature-inspired tones will help transform your space into a cocoon-like sanctuary.

2 SEAMLESS EDGES

If you're using dark paints, why not go all in? A dark feature wall won't change the look of your room much or make it look bigger. But if you paint all your walls, woodwork and ceiling the same colour, it can look fabulous. The uniform colour blurs the room's edges, making it appear more spacious. So it's a great idea for small spaces.

3 SOFT AND INVITING

Matt paint and natural pigments will soften the overall look of your walls, making moody colours less imposing and more welcoming. For woodwork, opt for an eggshell finish to blend into your matt walls.

4 AS DEEP AS YOU DARE

Blacks can look great on walls, but many have blue undertones, which will look cool. That's perfect if that's what you're after. But for something warmer, choose a black with brown undertones.

As autumn takes hold, it's time for a paint adventure. Remember, paint can be changed if you don't like it. So unleash your inner decorator, invest in some sample paint pots, and get ready to welcome colourful warmth into your living space.



Photo credit: farrowball.com



HOME & DIY

INTERIOR DESIGN PROFILE

NICOLA
HARDING
& Co.

After five years of working with landscape designer Arne Maynard, Nicola Harding decided to launch her own studio in 2008, a move that has seen her become one of the UK's most respected designers.

Her work has a classic touch, made timeless with the right pieces and colours creating looks that are unique, but work perfectly for the spaces they're in. If you love flashes of colour and quirky features, then Nicola Harding could serve as your perfect designer inspiration.

ABOUT NICOLA HARDING

According to Harding: "Our aim is to create places rich in atmosphere, places people feel enchanted by and connected to, places people quickly feel at home in."

This comes from Harding's background of living on military bases that had a standard design, where the smallest personal touches could make a space feel more like home.

Harding's designs are full of personality, using the history of the property to create designs that work with the features, bringing them to life through the pieces and textures that then make the space feel loved and warm. From antique furniture to bespoke pieces, the result is effortlessly charming, a look that people fall in love with.

BRINGING NICOLA'S STYLE INTO YOUR HOME

What's fantastic about Nicola Harding's portfolio is that every space is unique. This makes it easy to create similar looks in your home, but with your own personality shining through. Some tips for emulating some of Harding's wonderful style include:

- > Use colour in unexpected ways. From doorways to ceilings, you can use colour in different places to add quirky accents. A dusky or pale pink on the walls keeps the space light, while vibrant blue or green furniture will add some interest. Choose a neutral shade to paint skirtings and coving to break things up and bring your colour scheme together.
- > Enhance your home's existing features. If you have archways or beautiful fireplace settings, why not paint them to make them more of a feature?
- > Consider adding furniture that's of the property's time, with antique finds providing a sustainable way to decorate your home. Keep an eye out for dressers, sideboards and lamps that have hand-carved details, as well as metallic hardware to make the look more high-end.
- > Use tonal elements to bring together different colour palettes. Using different shades of a single colour (pink and grey are popular choices), as well as patterned looks for your furniture, such as sofas and accent chairs and textiles (rugs, cushions, curtains), adds layers to the room and can quickly add interest and personality.



Photo credit: nicolaharding.com



SALE NOW ON AT
GRACIOUS LIVING
UP TO 50% OFF

THE BIG
BATHROOM
SALE

30 SEPTEMBER - 12 NOVEMBER

crosswater[®]

Showroom: 440-448 Larkshall Road, Chingford, London E4 9HH

Tel: 020 8523 3103 | Web: www.graciousliving.co.uk

Email: showroom@ncscountersales.co.uk



CLASH of the FABRICS

TOP TIPS FOR COMBINING CONFLICTING FABRICS TO CREATE HARMONIOUS HOME DÉCOR

We're conditioned to think about our home interiors in ways that mean they match, complement and merge in the most perfect of ways.

Yet true innovation often brings about conflicting elements, so why not try these juicy style juxtapositions en route to awesome in-home ambience?

LEATHER AND WOOD

Sumptuous soft leather against solid wood is about as luxurious as you can get in a modern home. From leather cushions on a wooden bench or a walnut wood bedframe with leather panelling, the contrast between hard and soft is impossible to resist.

SUEDE AND COTTON

Both are beautifully soft, and yet the rugged texture of suede almost feuds violently with the plush softness of cotton. Ideal for brightening up bland bedding, suede cushions are the perfect foil to give your bedroom a hotel feel before removing for a restful night of sleep.

WOOL AND SILK

Wool and silk may be the oddest of bedfellows, but together they conspire to make something rather beautiful. From luxurious rugs to coveted curtains and upholstery for almost anything, the colour, quality and sheer beauty combined make this a dream duo.

TWEED AND CORD

Tweed is a very harsh material that has bundles of presence, which is why you should match it with something softer, like cord. Both have a vintage and almost classic feel, which works perfectly for a formal sitting room.

CHROME AND GLASS

Creating an almost retro/futuristic feel, the stunning mirror shine with the transparency of glass transforms an ordinary coffee table into a futuristic centrepiece.



WANT MORE BUSINESS?

CALL 0208 088 0386
TODAY TO ADVERTISE



bsplumbing
plumbing & heating specialists
**BOILER INSTALLATION
SPECIALISTS**



12-24 MONTHS
FINANCE - 0% APR
UP TO 10 YEARS
AT 9.9% APR
NO DEPOSIT

- Bathroom Installation
- Underfloor Heating
- Boiler Supply & Fit
- Power Flushing
- Plumbing Repair
- Boiler Repair & Service
- Landlord certificate CP12

**£100 OFF
BOILERS**
QUOTE BSP100

CONTACT US FOR A FREE QUOTE

0800 1077119 • 0208 088 3126

info@bsplumbing.co.uk • www.bsplumbing.co.uk



TRUSTMARK
Government Endorsed Quality



For a Free No Obligation Quotation CALL today!

**UNIQUE BLINDS
& SHUTTERS**

Quality made to measure Blinds & Shutters

020 3553 5900

www.uniqueblinds.co.uk

All Areas Covered

Tel: 020 3553 5900 Email: sales@uniqueblinds.co.uk

FREE SURVEY – FREE FITTING



Kylie

MINOGUE

After a huge year, Kylie Minogue AO OBE is revving up for the grand finale with an ITV extravaganza, *An Audience with Kylie*.

Few of us can boast of a career of more than three decades; even fewer can achieve such a feat in the cut-throat music industry, and one in a billion can do it with the grace, style and panache of Kylie.

An undisputed queen of reinvention, the 55-year-old Aussie delighted her fans earlier this year with the sizzling floor-filler *Padam Padam*. It was a track that not only launched her back into the charts (the song peaked at number eight, becoming her 52nd Top 40 single in the UK), but also flaunted her spectacular and seemingly ageless appearance in the accompanying music video.

For Kylie – who returned to where it all started this year in the well-received *Neighbours* finale – such moments have become second nature. Bursting onto the music scene in the late 1980s with her debut single, *I Should Be So Lucky*, her angelic voice, combined with a girl-next-door charm, made her an instant sensation.

Kylie continued to release chart-topping hits that solidified her status as a pop sensation. Songs like *Got to Be Certain*, *Je Ne Sais Pas*, *Pourquoi* and *Especially for You*, a duet with

Jason Donovan, became anthems of the era. Her catchy tunes and memorable music videos created a pop culture phenomenon.

By the time the 90s rolled around, however, saccharine pop was on the wane. Rather than fade away,

Kylie retreated into her cocoon and reappeared as an indie princess, even collaborating with the master of melancholy, Nick Cave, on *Where the Wild Roses Grow*.

Another defining moment of Kylie's career came in the early 2000s with the release of *Fever*. The album's lead single, *Can't Get You Out of My Head*, became a global phenomenon. Its hypnotic beat and unforgettable hook catapulted Kylie back to the top of the charts worldwide and solidified her status as an international pop icon.

Though she is adored across the globe, her status here in the UK is one of particular reverence. So much so that Kylie, who was awarded an OBE in 2007, has spent much of the last few decades living in London and now owns an apartment in the highly coveted Hyde Park One building, alongside a house in her home town of Melbourne.

Fortuitously, her abode in Britain's capital is a short walk from the location of her ITV special, the iconic Royal Albert Hall. *An Audience with Kylie* promises to dazzle with an array of floor fillers from both her recent album, *Tension*, and her award-winning back catalogue. She will also field a bevy of questions from the floor posed by specially invited VIP guests, including celebrity Kylie superfans.

Kylie said of the event on December 1: "I'm so excited to announce that I am teaming up with ITV for *An Audience with...* at London's iconic Royal Albert Hall. I'll be performing some of my favourite tracks from throughout my career and no doubt answering some surprising questions from the audience."

The one query she's sure to bat away is talk of retirement. An icon of modern music, the industry – in all its inconsistency and fragility – is indebted to this marvellous mainstay, and her star will surely never be allowed to wane.

FROM YOUR AREA

Five firefighters receive award for saving baby's life



Photo credit: Essex County Fire and Rescue Service

On October 10, five firefighters from Blue Watch in Loughton were awarded Chief Fire Officer Commendations for saving the life of a 16 month old. Watch manager Marc Lemon recalls the incident: "The mother of 16-month-old Max was driving past the fire station when he started fitting and having a seizure in the back of the car. "She was shouting for help outside the fire station when the watch rushed to assist. "Max was struggling to breathe and was unresponsive. The crew quickly got him into the station. "An ambulance was called and fortunately it was able to get there quickly. "The crew of the ambulance came back later and praised the watch. They said we probably saved his life with the actions taken." In addition to watch manager Marc Lemon, the other four firemen lauded as heroes are Andrew Black, Michael Tyrrell Price, Michael Talbot and Steven White.

Wombles help to clear streets of litter

Two teams of Loughton Wombles set out on Saturday, October 21, on their latest mission to rid Loughton's roads of litter. One team from the local litter-picking group headed to the Church Hill area, while the other took on Oakwood Hill. The Wombles were set up by Loughton Town Council in November 2021. As well as bringing together like-minded residents willing to spend their spare time

bettering their local area, Wombling offers locals the chance to socialise and make new friends.

If you'd like to join the Wombles, please get in touch with Loughton Town Council at contract@loughton-tc.gov.uk

Councillor speaks out about new wards

Independent councillor Stephen Murray, who represents the Loughton Roding Ward of Epping Forest District Council (EFDC), has spoken out about the new ward arrangements decided earlier this year.

EFDC announced in March that the political map of Epping Forest would be changed before the 2024 election, with new boundaries to make sure that each councillor represents the same number of electors.

Cllr Murray explained: "1,700 homes on the Buckhurst Hill side have been simply transferred out of the current Roding Ward to form a new Buckhurst Hill East and Whitebridge Ward.

"The other 700 homes become part of a new Loughton Roding Ward one."

Expanding on his personal reaction to this new political map, Cllr Murray said: "Like many others, I am very disappointed.

"The new wards are absolutely massive without any clear local community focus in many of them.

"To me, they seem designed to further encourage the domination of our local politics by national parties as it will be extremely hard for independents to gain any type of profile or traction in such large seats.

"Here in the Loughton Roding Ward our hard-won sense of community has been shattered."



Photo credit: Local Government Boundary Commission

APPLIANCE PROBLEM?

WE'LL FIX IT!

Any make Any model

LOCAL ENGINEERS IN YOUR AREA!

If we can't fix it, we can supply and install new appliances same day

View our sales page for list of machines ready to install today!

SAME DAY CALL OUT AVAILABLE

ALL MAKES ALL MODELS REPAIRS SALES

CALL OR BOOK ONLINE **SPIN DOCTOR**

01279 310793
www.spindoctoruk.co.uk

Fun sports classes for walkers - 7 year olds!

Different class theme each week; exciting games and activities; races and a podium celebration!

Loughton Cheshunt
Chigwell Harlow
North Weald

[@miniathleticsepping](https://www.facebook.com/miniathleticsepping)
epping@miniathletics.com

Would you like an honest, reliable and **AFFORDABLE**, police checked* cleaner to clean your home?

Typically **£17.50** per hour fully inclusive.

TIME FOR YOU™

DOMESTIC CLEANING

***£20 OFF your first clean with this advert**

As Featured on BBC 2's Working Lunch, Ch4's 'House Swap' & preferred cleaning supplier to CH5's Cowboy Builders!

Call **TODAY: 0208 088 6101**

Email: chigwell@uk.timeforyou.cleaning

www.timeforyou.cleaning

HATE CLEANING?

* Police checked cleaners available on request. All discounts or promotions are subject to our terms available on www.timeforyou.cleaning

Control your security Be **App**solutely connected

Did you know your smartphone
can now control your alarm
system through an app?



CCTV Systems • Alarm Systems
Fire Alarms • Door Entry Systems • Safes
Vehicle Alarms & Tracking • Ghost Immobilizers

020-8529-5710 • www.cobra-ss.co.uk
155 Station Road, Chingford, London, E4 6AG



**NEW SYSTEMS SUPPLIED
& FITTED FROM £450.00**
(OR WE MAY BE ABLE UPGRADE
YOUR EXISTING SYSTEM)

DAME ELEANOR LAING MP

Conservative MP for Epping Forest



LOCAL NEWS



It was a great honour to take part in a unique event last month when a tree donated to the people of Essex by His Majesty King Charles III was planted in Epping Forest.

The King has gifted a tree, to mark and celebrate his coronation, to each county in the country. I am so pleased that the decision was taken to plant the Essex tree here on Epping Forest land. It is a small-leaved lime tree, which is likely to grow to some 25 metres in height. I am told that its sweet-smelling summer flowers are a great attraction to insects and pollinators looking for nectar and its leaves are popular with caterpillars. So it is good for the natural environment.



The tree is now firmly in place on The Green at Theydon Bois. Epping Forest is looked after by the City of London so we were privileged to have the Lord Mayor of London (pictured left, second from left) and the Lord Lieutenant of Essex (pictured left, centre) here to perform the planting ceremony.

In 1882, Queen Victoria dedicated the forest "to the enjoyment of my people forever". The tree that she planted then in High Beach is still a great visitor attraction. I am sure that generations to come will visit The Green at Theydon Bois to admire our new tree and to remember the very special occasion which it marks.

PUT THE SPARKLE BACK INTO YOUR KITCHEN



Domestic Oven Cleaning Specialists

Est. since 2007

Prices

Single oven incl. shelves & grill pan.....	£43.00
Double oven incl. shelves & grill pan.....	£54.00
Range incl. shelves & grill pan.....	From £54.00
AGAs.....	From £90.00
Hobs.....	From £14.00
Extractors.....	From £15.00
Microwaves.....	From £20.00

No VAT to pay



PLEASE CALL FOR A FREE QUOTATION
01279 432444 * www.ovenbright.co.uk



We recently celebrated 3Food4U Loughton Hub's third anniversary with our wonderful service users, volunteers, dignitaries and lots of cake.

We were so delighted and grateful for support from Loughton Town Mayor councillor Mick Stubbings (pictured fourth from left) and High Sheriff of Essex Charles Bishop (pictured seventh from right). To top it all, 3Food4U was presented with the High Sheriff Award.

Our Community Surplus Hub runs every Tuesday from 11.30am to 1pm at The Loughton Club, 8 Station Road.

To find out more, visit our website at www.3food4u.org

by no 1192310

5 REASONS TO ADVERTISE

Why do businesses benefit from hyperlocal advertising?

1. Targeted advertising

Hyperlocal advertising allows companies to target customers who are within a specific geographic area, making it easier to reach the right audience and increase the chances of converting them into paying customers.

2. Cost-effective

Hyperlocal advertising can be cost-effective because it is focused on a specific local area, meaning that businesses can reach their target audience without wasting money on broader marketing campaigns that may not be as effective.

3. Increased engagement

Hyperlocal advertising can lead to increased engagement with customers because it is focused on the local community and the interests of the people living in that area. By targeting customers with ads that are relevant to their interests and needs, companies can build a stronger relationship and increase their chances of repeat business.

4. Improved search engine optimization

Hyperlocal advertising can improve a business' search engine optimization because it targets customers who are likely to be searching for businesses and services in their local area. By optimizing their website and other online presence for local search terms, businesses can improve their visibility and attract more customers.

5. Better return on investment (ROI)

Hyperlocal advertising can lead to a better ROI because it is focused on a specific area and customer base. Targeting customers who are likely to be interested in their products or services, can increase conversion rates and revenue.

IS YOUR BUSINESS READY TO BENEFIT FROM HYPERLOCAL ADVERTISING? CONTACT **VISION** TO FIND OUT MORE

euronics
the home of electricals

Floorcare appliances
from your local independent
electrical retailer

Price Match Guarantee | Super Service | Expert Knowledge | Contact-Free Delivery

dyson Cordless Bagless Vacuum Cleaner  <ul style="list-style-type: none"> • 45 Hour Charge Time, 60 Minute Run Time • 2 Power Levels, 14 Cyclones • Multi-Filtration, Combination Tool • Service Tool, Wall Dock Charger • 2 Year Warranty Only £349.99	Shark Upright Vacuum Cleaner  <ul style="list-style-type: none"> • 11 Litre Bagless Dust Collection • Pet Hair Cleaning, Anti Hair Wrap Technology • HEPA Filters • Onboard Tools • 5 Year Warranty Only £299.00	Miele Cylinder Vacuum Cleaner  <ul style="list-style-type: none"> • 5.5 Metre Cord with automatic rewind • 6 Power Levels • 3.5 Litre Dust Capacity • 80db Noise Level • 2 Year Warranty Only £179.99	Shark Cordless Stick Vacuum Cleaner  <ul style="list-style-type: none"> • Anti Hair Wrap • Duo Clean Technology • 3 x Power Levels • Hepa Filter • 5 Year Warranty Only £239.00	dyson Cordless Bagless Vacuum Cleaner  <ul style="list-style-type: none"> • 5 Hour Charge Time, 40 Minute Run Time • 2 Power Levels, 15 Cyclones • Multi-Filtration, Combination Tool Device • Wall Dock Charger • 2 Year Warranty Only £249.99
---	--	---	---	---



Broadway Music and Vision

8 The Broadway,
Woodford Green, IG8 0HL
0208 504 7500
broadwaymandv@aol.com



*Terms and Conditions apply. Sold as an agent of Euronics Limited. All rights reserved. All offers are subject to availability while stocks last. Delivery & Installation charges may apply Exclusions and Radius Apply. See in store for full details. Images for illustration purposes only. Copyright Euronics 2023. E8OE 2023.



**12 MONTHS
INTEREST
FREE**

WARDROBES ■ BUILT IN WARDROBES ■ FITTED KITCHENS ■ SLIDING WARDROBES

LUXURY BESPOKE WARDROBES & KITCHENS

Made to order in the UK ■ 10 Year Product Guarantee

Soft Close Doors As Standard ■ We fit wardrobes in less than 2-3 weeks

CONTACT US

01708 756789 ■ 0208 088 0876

www.bestfittedwardrobe.co.uk

info@bestfittedwardrobe.co.uk

Best Fitted Wardrobe Ltd Unit A3, Seedbed Centre, Davidson Way, RM7 0AZ



**BEST FITTED
WARDROBE**



Exploring the expansive corners of Hatfield Forest

In west Essex on the border of Hertfordshire lies a treasure trove of natural beauty: Hatfield Forest. This enchanting forest, once a royal hunting ground, is a special place where age-old landscapes have been preserved and history echoes through every leaf and branch.

The forest, which spans more than 1,000 acres, features coppiced trees, ancient wood pasture and shimmering lake, making it a paradise for nature lovers, walkers and picnickers alike.

Hatfield Forest isn't just about natural beauty, though. It was preserved as a hunting ground by William the Conqueror and is steeped in centuries of history. It's a living, breathing relic of medieval England, and stories of past royalty and deer hunts are woven into the very fabric of the woodland.

Boundary disputes have dominated much of Hatfield Forest's past, and these dividing lines remain intact to this day, despite the fact that renowned landscape designer Capability Brown was invited to modify elements in the 18th century.

In later times, the Victorians explored agricultural use, and during the Second World War, some parts of the forest even came under military occupation.

These days, the expansive setting is carefully protected by the National Trust, offering accessibility for locals and visitors alike, who are invited to have a picnic in the open grasslands, enjoy the tranquillity of the lake, or take a leisurely walk through the ancient woods. With the latter in mind, there are a number of designated routes that can be traversed through the forest, although some of the trails can become quite muddy during the winter months.

Regardless, Hatfield Forest, which is also marked as a Site of Special Scientific Interest, provides a beautiful escape from the modern world.

To find out more about Hatfield Forest and for visitor information, including opening times, head to www.nationaltrust.org.uk/visit/essex-bedfordshire-hertfordshire/hatfield-forest



Photo credit: National Trust Images/James Dobson

BEBOILERSAFE
GAS | HEATING | PLUMBING

WE UNDERTAKE ALL BOILER WORK

SERVICE | REPAIR | INSTALL

UNVENTED INSTALLATION

LANDLORD CERTIFICATION

EPPING & SURROUNDING AREAS

CALL US ON 07581 003 935 TO LEARN MORE

✉ enquiries@beboilersafeuk.co.uk

🌐 www.beboilersafeuk.co.uk

SCAN ME

Sovereign Guards UK

From home to business security, here at Sovereign we offer a variety of Security Services from CCTV and Intruder Alarms

CONTACT US FOR MORE DETAILS:

Call: 0208 088 3147

Email: info@sovereignguards.co.uk

www.sovereignguards.co.uk

SCAN ME

PROVIDING YOU WITH 24 HOUR SECURITY

Select from a package that suits your needs: budget, location and what level of protection you are after

Specialising in fogging systems for high risk asset protection

With remote connectivity this allows you to monitor your home from your phone.



YOUR LOCAL EVENTS

REMEMBRANCE DAY PARADE

Royal British Legion Headquarters,
118 Church Hill, Loughton, IG10 1LH
Sunday, November 12, 11.50am



Photo credit: Loughton Town Council

The annual parade from Loughton's Royal British Legion Headquarters in Church Hill to the War Memorial will begin at 11.50am. The Remembrance Service and Poppy Wreath ceremony will then commence at 12.15pm.

OLD BANCROFTIANS ASSOCIATION WINE TASTING

8 Rocks Deli & Wine, 238 High Road,
Loughton, IG10 1RB
Thursday, November 16, 7pm

OBA is holding a night of wine tasting, cheese and antipasti for the subsidised prices of £25 for Old Bancroftians and Bancroft's Staff, and £36 for parents and guests.

Tickets are limited and are available to purchase via www.shorturl.at/uDSUZ

A TRUE-SICAL

Lopping Hall, 189 High Road,
Loughton, IG10 4LF

Thursday, November 16, to Saturday, November 19, 7.30pm every day plus a 2pm matinee on Saturday

Loughton Operative Society proudly presents a variety show – A True-sical – featuring songs from hit musicals based on true-life events and people.

Tickets cost £15 and are available to purchase from www.loughtonoperatic.org.uk

LIGHT UP A LIFE

Methodist Church, 260 High Road,
Loughton, IG10 1RB

Saturday, November 25, 4.30pm – 5.30pm

St Clare's Hospice invites you to this year's Light up a Life service at Loughton Methodist Church.

Light up a Life is an annual celebration of everything that St Clare stands for – joining together with families from across the community in honour of their loved ones. Candles are lit as we remember, with every shining light representing the life and memories of a loved one.

The event is free and everyone is welcome to attend, all faiths and none, whether you have experienced St Clare's care or not, and no matter how long ago your loss was.

CRATE LOUGHTON CHRISTMAS MARKET

Crate, 15 Oakwood Hill, Loughton, IG10 3TZ
Saturday, December 9, 11am – 3pm

Crate is hosting its annual Christmas Market filled with street food, soft and alcoholic drinks, a Father Christmas stall, a raffle and more.

For more details, see www.crateloughton.com

CHRISTMAS CRACKERS CONCERT

St Mary's Church, 201 High Road,
Loughton, IG10 1BB

Saturday, December 9, 7pm

The Roding Players Orchestra and Oakdale Junior School Choir are delighted to present their Christmas Concert.

Tickets can be purchased from Susan Austin on 07871 427943 for £10, and under 11s go free.



Photo credit: John Salmon

UK'S MOST TRUSTED AND REVIEWED AUTO
LOCKSMITH WITH EMERGENCY RESPONSE



IS YOUR CAR TRULY SAFE?

Car & Van Security Specialists

VAN SECURITY LOCKS

ALARM SYSTEMS

VEHICLE TRACKING

THEFT PROTECTION

IMMOBILISERS

CAR KEYS

FROM ONLY

£495



SMART CAR PROTECTION WITH GHOST IMMOBILISER

Protect your peace of mind and your vehicle with state-of-the-art security.



We cover Greater London
& surrounding M25 areas



Open 7 days a week
from 8am to 10pm

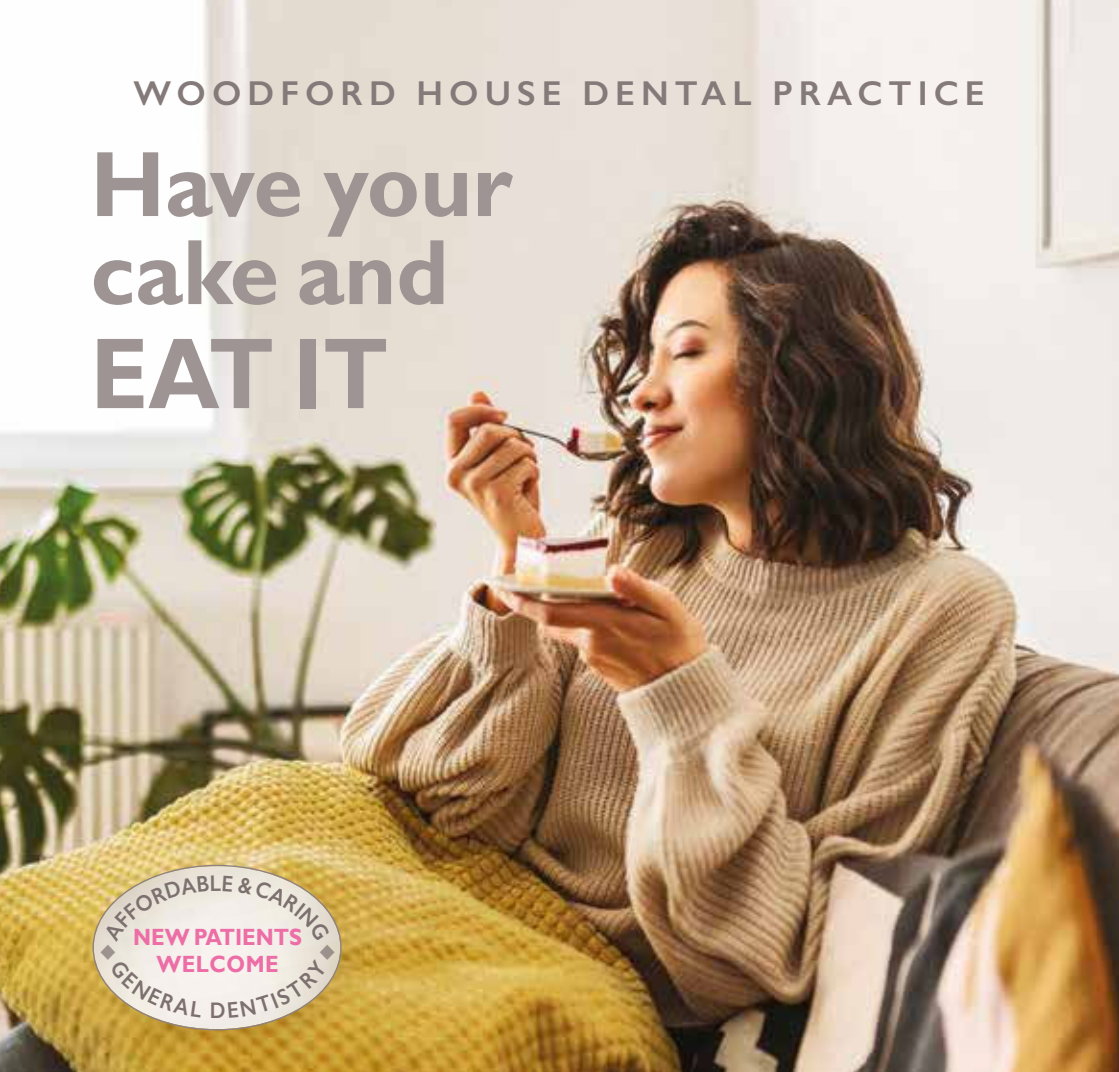


www.carkeyssolutions.co.uk

Call us on 0208 088 3140

Email: contact@carkeyssolutions.co.uk

Have your cake and EAT IT



Keep your mouth healthy and enjoy those precious luxuries. Visit the dentist regularly –
BOOK YOUR APPOINTMENT NOW.

020 8504 2704
improveyoursmile.co.uk

162 HIGH ROAD WOODFORD GREEN IG8 9EF

EXPERIENCE YOU CAN TRUST



PUZZLES & TRIVIA



PUZZLES

Answers: see end of The VISION Listings

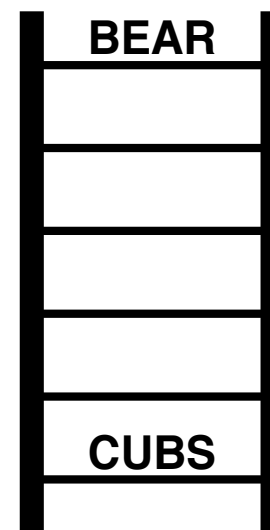
- ▶ ACTING
- ▶ ASTRONOMY
- ▶ BLOGGING
- ▶ BRIDGE
- ▶ CALLIGRAPHY
- ▶ CHESS
- ▶ COOKING
- ▶ DANCING
- ▶ GAMING
- ▶ JUGGLING
- ▶ KARAOKE
- ▶ KNITTING
- ▶ PAINTING
- ▶ PHILATELY
- ▶ PHOTOGRAPHY
- ▶ POETRY
- ▶ POTTERY
- ▶ READING
- ▶ SEWING
- ▶ WRITING

X	E	T	Y	N	B	Y	F	C	H	E	S	S	E	P
K	G	K	U	B	R	T	L	D	A	N	C	I	N	G
T	N	Y	O	U	T	K	P	E	S	E	W	I	N	G
W	I	M	R	A	W	G	N	I	T	N	I	A	P	M
R	D	O	Y	E	R	Q	A	Y	G	A	A	F	J	N
I	A	N	B	H	Q	A	N	H	J	K	L	B	Z	A
T	E	O	R	P	P	B	K	P	U	Q	L	I	R	A
I	R	R	I	O	K	A	E	A	G	O	T	Y	H	T
N	F	T	D	T	S	K	R	R	G	R	A	U	C	P
G	A	S	G	T	W	A	H	G	L	N	X	T	Y	S
D	C	A	E	E	S	H	I	O	I	A	I	R	A	S
B	T	S	S	R	U	N	T	T	N	L	T	M	J	S
E	I	E	K	Y	G	F	U	O	G	E	L	O	A	E
G	N	I	T	T	I	N	K	H	O	Y	L	A	S	G
S	G	N	I	K	O	O	C	P	E	Q	A	K	C	R

DID YOU KNOW?

- ▶ The earliest version of Monopoly was invented by Elizabeth Magie in 1903 and was originally called the Landlord's Game.
- ▶ The longest game of Monopoly lasted for 70 days.
- ▶ There are more than 300 varieties of Monopoly, including *Pokémon*, *Game of Thrones* and *Harry Potter* versions.
- ▶ The Monopoly Man's real name is Rich Uncle Pennybags, and he is said to be based on American investment banker J P Morgan.
- ▶ Monopoly is available in 47 languages and sold in 114 countries.
- ▶ American jeweller Sidney Mobell created a Monopoly set made of 23 carat gold, rubies and sapphires, worth £1.4million.

WORD LADDER



THE AIM: Change the word at the top of the ladder one letter at a time to make the word at the bottom.

HOW TO: Change one letter on each step to make a new word. By the time you reach the end, you should have created the new word.

DO NOT rearrange the order of the letters.

TIP: There is usually more than one way to solve this puzzle.

AUTUMN arrivals

While many might scoff at the idea of the UK being a warm winter getaway with gourmet food, it's a top holiday spot in the bird world! That's right – as temperatures drop elsewhere, large numbers of our feathery friends flock to Britain.

MAJESTIC GEESSE AND SWANS

Leading the parade of bird visitors is the fabulous pink-footed goose. When the temperatures dip in Iceland, and food gets scarce, the geese fly to the Faroe Islands, rest a bit, and then head to the UK. Similarly, Bewick swans head over from Siberia, while whooper swans make their way from Iceland.

VIBRANT COASTAL LIFE

Every autumn, the UK's beaches and wetlands burst into life with a big mix of wading birds from northern Europe, the Arctic, Russia and northern Canada. These include lapwings, dunlin, oystercatchers, bar-tailed godwits, redshanks, and grey plovers from the Arctic.

INLAND VISITORS

Moving inland, colourful Bohemian waxwings, with their distinctive crests, black eyeliner, and peach-tinged plumage, fly in from Scandinavia. You can sometimes spot them in large flocks in berry-laden bushes in towns, car parks and gardens. And it's not uncommon to see large numbers of dainty goldcrests with a radiant yellow stripe along the top of their heads. Despite weighing no more than a ten-pence piece, this remarkable bird journeys across the North Sea to spend its colder months with us.

Other northern European visitors you might spot in your garden include redwing and fieldfare – both types of thrush.

When spring comes, the birds fly back to their homelands to breed. Given the warming world and milder climates in their nesting territories, these winter visitors might one day no longer grace our shores. So let's all appreciate them a bit more – while we still have the opportunity.



The Rotary Club of Loughton Buckhurst Hill & Chigwell and The Rotary Club of Roding

Free Memory Café

SUPPORTED BY

Join us 10am to 12pm every First Friday of the Month at the Loughton Club. 8 Station Rd. Loughton IG10 4NX

Enjoy refreshments, entertainment, memorabilia, informal chats, singing, bingo etc.

Please contact: Chris or Fran
FRAN - 07903 274398
CHRIS - 07510 297173

Specialist GARDEN COMPANY

MAINTENANCE • TREES
LANDSCAPING

- Garden Maintenance
- Paving • Turfing
- Pressure Washing • Driveways
- Weed Control • Irrigation
- Decking & Fencing
- Ponds & Water features
- Tree & Hedge Care
- Garden Clearing
- Large Area Mowing

0208 088 0873
enquiries@specialistgarden.co.uk
SpecialistGardenCompany
www.specialistgarden.co.uk

GUARANTEED RENT 3-5 YEARS

CONTRACT 0% COMMISSION

DISCOVER RESIDENTIAL

NEW LETTINGS INSTRUCTIONS GAIN

- FREE INVENTORY
- FREE GAS CERTIFICATE
- FREE VALUATION
- HIGHEST RENTAL PRICES ACHIEVED
- ARLA QUALIFIED AGENTS

020 3915 2458

1 LOWER ROAD, LOUGHTON, IG10 2RS

karal@discover-residential.co.uk

www.discover-residential.co.uk

TERMS AND CONDITIONS APPLY

ROCK ON

How to create a rock garden

In recent years there has been something of a rock revival going in Britain's gardens.

A trend that came to the fore in the nineties has seen something of a revival, with an increase in sales of rocks and alpine plants. Add in pebble mulches and gravel, and it's clear we are refreshing our garden spaces to add height, texture and, dare we say it, perhaps the odd splash of cascading water.

As for how to style your perfect rock garden, a slope obviously helps. If you don't have one, fear not – you can create a display by banking rocks closely together, filling in gaps with brick, stone or rubble to create a defined ridge.

It's a good idea to look for local stone – this will add character to the garden; and while many varieties may be expensive to buy, searching locally online may well bring about cheap or free sources of stone.

Let rocks develop a patina of age – don't clean them or they won't look authentic – and bury them about a third of the way into the ground, tilting backwards, allowing space for grass and plants to flourish around them.

Now all you need to do is pattern surroundings with what you choose – an evergreen, such as miniature conifers will create vertical interest, while smaller shrubs will keep layers of interest even through the cold winter months.

Drought-tolerant plants such as sedums and sempervivums are also a good idea, while trailers, such as creeping rosemary, creeping thyme or aubretia, will guide the eye across the structure.

Finally, for texture, add some contrasting shapes – spikes, slants, velvety leaves – plus smaller bulbs, such as wild tulips, daffodils, snowdrops and crocus.

With your work done, sit back and admire!

Photo credit: Zia Alway via gardening.co.uk

Home Counties Loft Ladders, Quality You Can Trust!

These days most homeowners suffer from a lack of storage space. So many precious items that need to be kept – but where to store it all? That's where Home Counties Loft Ladders come in.

The company, based locally, offers homeowners the opportunity to maximise their storage space with a loft ladder. 50sqft of boarding and a light – all fully fitted in less than a day from just £444! But it's not just the affordability of the package that makes Home Counties Loft Ladders stand out, as manager Jamie Oakley explains: 'Our

watchwords are Quality, Integrity and Value. Quality in the materials that we use for all our installations and the fact that all our loft packages are fitted by time served tradesmen, so our customers are assured of the best job.

Integrity in that we will turn up at the time we say and make sure the house is spotless when we leave, and value in that we offer our services at a price people can afford.

Our business relies on referrals and we get a huge amount of our calls from people who have been referred to us by our existing customers

– that simply wouldn't happen if we didn't adhere to our overriding principles.

At the end of the day the old adage that happy customers lead to more happy customers is true and we work hard to make that happen for

every installation we carry out!

So, if you want to make use of your loft space, call Jamie free on 0808 301 9551 and he'll be happy to pop round and give you a no obligation quote so you too can make use of your loft!



Need more storage space? INSTALL A LOFT LADDER AND USE YOUR LOFT!

STARTER PACKAGE: Aluminium loft ladder, light plus 50 sqft boarding, fully fitted in less than a day from £444

- Loft Ladders • Hatches
- Boarding • Insulation
- Lights • Fully Guaranteed



— Home Counties —
LOFT LADDERS

CALL FREE: 0808 301 9551
homecountiesloftladders.co.uk



GET TO KNOW ANIMALS

Indoor Petting Zoo & Animal Experience Centre



UK'S MOST UNIQUE INDOOR ZOO!

Set in the heart of Epping Forest, GTKA is an indoor mini zoo and animal experience centre like no other. We have over 300 animals across 60 different species which have all been re-homed or rescued. Our aim is to help people truly get to know the beauty and wonder of some of the incredible animals on our Earth.

OPEN TUESDAY-SUNDAY 10AM-6PM - LAST ENTRY 4:30PM

ADULTS: £10 (UNDER 2'S FREE)
UNDER 11 / OVER 65 / DISABLED: £8.50
(CARERS FREE WITH PROOF OF DISABILITY) FAMILY TICKETS AVAILABLE

MIDWEEK TERM-TIME:
1 ADULT & 1 UNDER 5: £10 (10AM - 3PM)
AFTER 3PM: £5 P/P

ANIMAL HANDLING EXPERIENCES FROM £3.50 - SUITABLE FOR ALL AGES

FOREST LODGE COMMERCIAL COMPLEX, EPPING ROAD, EPPING, ESSEX, CM16 5HW



WWW.GTKA.CO.UK | 020 893 3456 | @GTKANIMALS



NUISANCE NITS

Nits are the bane of every parent's life and can be a nightmare to get rid of. While over-the-counter treatments are effective, they can also dry out your child's scalp and hair. Discover four natural alternatives below.

ESSENTIAL OILS

With the ability to eliminate nits and nourish the hair, there are several essential oils that you can try, including tea tree oil, lavender oil, neem oil, clove oil and eucalyptus oil. For best results, mix 15-20 drops of your chosen oil with 60ml of olive oil, apply to the scalp and comb through with a nit comb.

RAW GARLIC

Raw garlic has antibacterial properties and can be used to suffocate nits. To use garlic on nits, crush a peeled bulb of garlic into a paste and then mix with either olive oil or lime juice. Apply to the head, leave for 30 minutes and then wash the hair as normal. No combing needed.

CONDITIONER

If you are worried about drying out your child's hair, then you may want to try applying a thick conditioner to suffocate the nits before using a fine nit comb to remove them. This also helps to make the combing process less painful for your child.

VINEGAR

Both normal vinegar and apple cider vinegar can be used to effectively kill and get rid of nits. All you need to do is mix one cup of vinegar with one cup of warm water. Distribute the mixture evenly onto the scalp and cover with a hair cap. Leave for 30 minutes and then wash with their usual shampoo. No combing needed.

MORE TOP TIPS FOR NIT REMOVAL:

- ✦ Wash all bedding and any recently worn clothing in hot water.
- ✦ Vacuum upholstered furniture, rugs, soft toys and car seats.
- ✦ Recheck the scalp every day for two weeks.



KIDS



Chestnut Manor 
WANSTEAD CARE HOME

Chestnut Manor provides superb quality residential, nursing and dementia care, promoting independence and choice within a warm, welcoming family community.

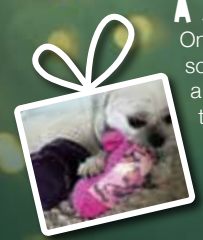


To enquire about care or to visit the home
contact Rosie, Home Manager on 0203 871 6070
or email rosie.monger@westgatehc.co.uk



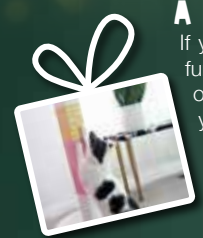
Homemade CHRISTMAS GIFTS for your pet

If your pet is just like another member of your family, then you will want to treat them on Christmas day too. Discover three homemade Christmas gifts for your furry friend that they are guaranteed to love.



A sock and ball toy

One of the easiest and most affordable DIY pet gifts, a sock and ball toy will provide hours of fun for your dog on a shoestring budget. Simply place an old tennis ball or two into a sock and tie in a tight knot. For a festive twist, use a Christmas-themed sock. Once unwrapped, swing the sock around, play tug-of-war or launch it down the garden for a quick game of fetch.



A cat scratcher

If your cat loves to scratch your furniture, then they are long overdue their own scratcher. All you need to do is attach a piece of rope around a piece of wood using a hot glue gun and then hang the wood on the wall within reach of your cat or glue/screw to a wooden base. Rub some catnip on the rope to make this gift even more enticing for your feline companion.



A no-sew pet bed

Stop your pet from sleeping on your bed by making them their own place to sleep with just a few basic supplies, including some anti-pill fleece fabric, a small bag of polyester fibrefill material and a pair of sharp scissors. Simply decide what size bed you want to make and then cut an extra eight inches all the way around two pieces of fleece fabric so that you have enough to cut four-inch strips to tie the bed together. Fill with the polyester fibre material until plump, and tie to finish.



Photo credit: petguide.com, thecottagearket.com, instructables.com

A landlord's guide to improving your EPC RATING

Want to attract more tenants, help the environment, and potentially increase the value of your property? Here are some top tips to boost your EPC rating.

What is an EPC rating?

An EPC rating is a standardised indication of a property's energy efficiency. The minimum EPC rating for landlords of private domestic rented properties is E. However, the government has proposed that all rental properties will need a rating of C or above by 2028.

If your property has effective insulation, underfloor heating can help you to achieve a higher EPC rating. Water-based underfloor heating systems are the most effective.



Triple glazing

Buildings lose most of their heat through their windows, which means that the better your glazing, the less energy your property will waste. Triple glazing is estimated to be around 40 per cent more thermally efficient than double glazing.



Solar panels

The cost of installing solar panels has dropped considerably in recent years, by as much as 82 per cent since 2010. However, they are still just as effective at making homes more efficient and raising your EPC rating.

Help from your energy supplier

If your tenants are receiving benefits such as universal credit, working tax credit or child tax credit, you may be able to get help with the cost of insulation and replacing or repairing the boiler. Your property must have a rating of E, F or G to be eligible.

How to achieve a higher EPC rating

Smart lighting

Your choice of lighting contributes to your property's EPC rating, with energy-efficient light bulbs, aka LEDs, generating less heat and lasting longer. Smart LED lighting can also be automated, which means that there is no need for light switches as all the lighting is controlled via an app.

Underfloor heating

Underfloor heating systems use less energy because they operate at a lower temperature.



BEEWISE

£1 ONLY

CARD MACHINE OFFER

- Free next day settlement
- Low rates
- £1 terminal rental
- 24/7 Helpdesk

MERCHANT SERVICES

Beewise with what your business needs.

Join the Beewise Family

0208 088 3086
www.beewiseld.co.uk

SCAN ME

Specialist family lawyers.

RAYDEN SOLICITORS

There might be challenging times in your life when a family law solicitor can help:

- Have you decided your marriage or relationship is over, are you unsure about your family's future?
- Do you need to protect your children, or understand the options to resolve arrangements for your children?
- Do you need a pre nuptial or post nuptial agreement to protect assets?
- Are you moving in with your partner and need a cohabitation agreement?

Choosing the right family lawyer for you and your circumstances is crucial. Rayden Solicitors are family law specialists with many years' experience; we will give tailored and practical solutions in all areas of family law - divorce, relationship breakdown, child arrangements and financial settlements.

Bespoke advice from Rayden Solicitors Epping
Contact us, enquiries@raydensolicitors.co.uk
Epping Office
The Civic Centre, 323 High Street, Epping, Essex, CM16 4BZ. Tel: 0203 7733919.

RAYDEN SOLICITORS
www.raydensolicitors.co.uk

We are available on

PETROLHEAD PODS

Searching for a motoring podcast that suits your taste? Whether you're into humorous stories, daring adventures or the latest car news, there's something for everyone.

Podcasts are all the rage nowadays, yet navigating a route through the thousands available to download can be exhausting.

Here are six of the best that will further fuel your love of the fast lane.

scribe and TV host, unites celebrities, automobiles and comedians in this captivating podcast that's bound to spark car envy.

Engaging with top-tier car enthusiasts, he delves into their most memorable car tales, the prized vehicles in their collections and their all-time favourite rides.

THE COLLECTING CARS PODCAST: *Top Gear's* Chris Harris invites guests to discuss all facets of the automotive world. With a special emphasis on racing narratives, this podcast is a perfect fit for F1 enthusiasts, tackling the hot topics with colour and humour.

THE SMOKING TIRE: With a sunny Californian edge, car enthusiast and YouTuber Matt Farah treats listeners to interviews spanning the motoring spectrum, showcasing everyone from film stars to industry experts. So plug in and ride the soundwaves!

FULLY CHARGED: Robert Llewellyn presents his renowned Fully Charged brand, which comes in the form of a YouTube series, news platform and live event. The podcast also features exclusive conversations with experts deeply knowledgeable about the complex realm of EVs, renewable energy and sustainability.

GARETH JONES ON SPEED: Gareth collaborates with Richard Porter (known for *Sniff Petrol*, BBC *Top Gear* and *The Grand Tour*) and his tech-savvy buddy Zog as they deep-dive everything car-related, from daily commuter routes to high-end supercars, vintage vehicles to motorsport.

SPIKE'S CAR RADIO: Spike Feresten, comedy



Don't just take our word for it.....

Having always been a bit of a golfer and having reached a point where it was time to downsize, Great Hadham Country Club was perfect.

We were moving from our family home in Hertford and looking to downsize and for an escape.

We met with Dani at Great Hadham who showed us round several homes before we eventually plumped for a Prestige Plantation House

Once the sale of our home went through the actual purchasing was quick and easy, mainly due to the updates we had from the sales team.

We have now lived at Great Hadham for almost 7 months and really couldn't be happier. The wife has even bought some clubs now.

Mr and Mrs S












CALL US TODAY FOR YOUR BESPOKE PLATE

0208 088 3189

- 2D Printed, 3D Gel, 4D Acrylic Plates ● All Sizes! Shaped, Short, Hex, oversized Plates
- Tinted, Chameleon, Coloured Show Plates ● Exclusive - Vintage Style Number Plates
- Keychains & Accessories ● 1 of the UK's Largest Wholesale & Trade Supplier
- Custom Cut Fit Plates ● Local Same Day & Free Fitting Service
- Nationwide next day shipping ● Over 500 Different Designs to choose from

ORDER YOUR BESPOKE PLATE DIRECT

WWW.TYROPLATES.COM

20% OFF ALL PLATES

WITH CODE 'VISION20'







Don't ask the price, IT'S A PENNY

In 1884, a Polish immigrant opened a stall in Kirkgate Market in Leeds, selling household goods, haberdashery and toys for a penny a pop. Back then, who could have guessed the stall would blossom into retail giant Marks & Spencer?

SO HOW DID IT HAPPEN?

Michael Marks was born into a poor Polish Jewish family in what is now Belarus. He emigrated to England when he was 23 years old to escape persecution. He settled in Leeds and got work at John Barran & Sons' garment factory.

Marks soon branched out. He started buying goods from a local wholesaler and selling them door to door. With the profits, he opened his first market stall, known as 'Marks' Penny Bazaar', and branded it with his then-famous slogan, 'Don't ask the price, it's a penny'.

In 1894, Marks teamed up with Thomas Spencer, his wholesaler's bookkeeper. The company continued to grow. But sadly, it soon lost its two founders. Spencer died in 1905 at the age of 53, and Marks died in 1907 at just

48. By then, the company had 145 stalls and shops nationwide and a turnover of £400,000 – which is worth more than £61million today.

MARKS' SON SIMON TRANSFORMED THE BUSINESS...

In 1926, the company was floated on the stock market and moved into clothing and food. It made its reputation by selling only British-made products. And it offered cash refunds for items, however long you'd had them, so long as you had the receipt.

Simon Marks launched the St Michael brand name in honour of his father in 1927. The name was a symbol of quality and appeared on items from ready meals to overcoats till the company rebranded in 2000.

Since the late 1990s, the company's had a rocky ride. Be that as it may, it still has around 1,500 stores and turned over £6.6billion last year.

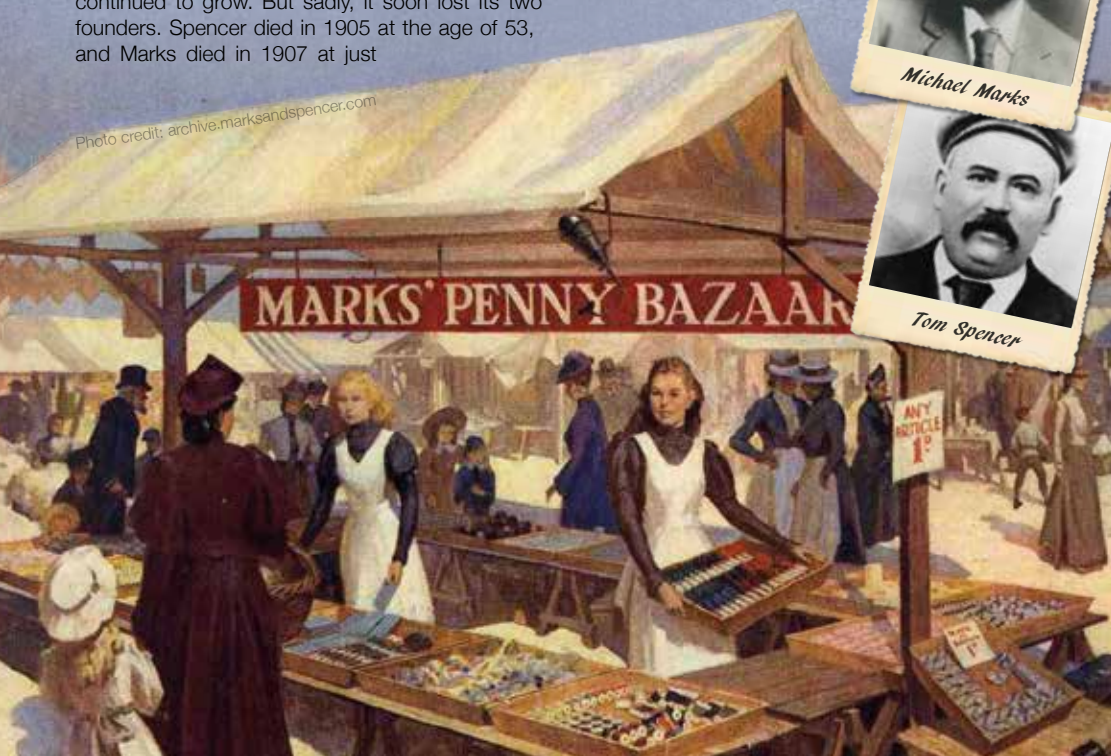


Michael Marks



Tom Spencer

Photo credit: archive.marksandspencer.com



WOOLSTON MANOR

GOLF CLUB

Celebrate at
Woolston Manor Clubhouse

**The Special Venue for all your
Weddings & Parties**

You can celebrate in style in one of our stunning event spaces. The Clubhouse, set in 200 acres of beautiful grounds and lakes, boast a sweeping driveway, high ceilings and elegance.



Enjoy the benefits of
Woolston Manor Golf Club

**With our Individual, Joint &
Corporate Membership options**

Woolston Manor Golf Club membership provides you with access to the superb championship golf course, modern clubhouse, fixtures, competitions, social calendar and top class catering.

Woolston Manor Golf Club, Abridge Road, Chigwell, IG7 6BX

☎ 0208 500 2549 ✉ info@woolstonmanor.co.uk 🌐 woolstonmanor.co.uk

BAD SPORTSMANSHIP:

BUTT & WARNE

on the spot

Cricket undoubtedly has universal popularity. Combine this with its intricacies, its longevity as a game, the ease of online betting and the variety of bookmaker markets, and you have the potential for foul play, on an international scale.

Take Pakistan's 2010 tour of England, for example; a series that became the centre of a sting by the *News of the World* (NoTW) where its reporters secretly filmed Mazhar Majeed, a British bookmaker and agent, giving bribes to visiting players ahead of the Lord's Test.

Money was offered on the proviso that two Pakistan fast-bowlers, Mohammad Asif and Mohammad Amir, would deliberately send no-balls at agreed times – known as spot-fixing. Even the team's captain, Salman Butt, was in on the scam.

The NoTW exposé ended with jail sentences meted out to all four, with the three players also receiving lengthy bans.

While the idea was brazen and reflective of the global gambling market, it was not the first time it had happened. Between 1994 and 1995, an Indian man referred to as 'John the Bookmaker' handed over cash to Australian stars Mark Waugh and Shane Warne in exchange for pre-match weather and pitch information.

'John' soon upped the ante, requesting team selections and tactics, but the duo refused. The Australian Cricket Board became aware of the allegations and the action taken was to fine each player privately.

In the aftermath, the Aussies claimed that Pakistan captain Salim Malik had approached them with bribes in exchange for losing matches. While their own credibility as witnesses had evaporated, the story was pursued, and former captain Malik received a life ban in 2000.

In 2023, cricket's abundant riches implies spot-fixing should be less appealing to players, yet the lure of a payday is always there.

Photo credit: Andrew Foster/Shutterstock, Gill Allen/Shutterstock



EXPERIENCE GOLFING EXCELLENCE
ALL YEAR ROUND



LADIES MEMBERSHIP

7 DAY FULL - £ 1,200

5 DAY FULL - £ 900

01708 688396

WWW.ABRIDGEGOLF.COM



SUPERB COURSE - LOVELY PEOPLE - A PROPER GOLF CLUB



THE VISION LISTINGS

ACCOUNTANT & TAX ADVISORS

ALL THINGS ACCOUNTING

Accounting & tax services, we help with self-assessment tax return, corporation tax return, payroll, VAT return, CIS return & bookkeeping. Call 07539 035537 for free initial consultation

ACUPUNCTURE

HONG WEI CHINESE MEDICAL

Fully qualified & experienced, specialising in women's health & Fertility. Help with pain relief, emotional disorders, male/female conditions. 01708 454888 | hongweichinesemedicine.co.uk

ANXIETY AND SLEEP DISORDERS

HYPNOTHERAPYDEBONO.COM

Promoting good mental health and well-being, Helping make the change you want in your life for that inner peace. 07504 919721

BEAUTY & NAILS

BEAUTY BY NATASHA KATIE

A local, mobile LVL Technician. Fully qualified level 2 and 3 beauty therapist Babtac insured and approved. 07961 462672

SPECIAL NAILS

Dedicated to provide the best quality nail care for Men & Women. Walk-ins welcome, appointment bookings & gift vouchers available. 01708 442248

THE NAIL STUDIO

Nail Studio lets you switch off and pamper with highly skilled technicians providing top treatments and nail products to meet your every need. 07572 526519

WICKED WAXING LTD

Male and Female specialist waxing using hot and strip wax. 20 years' experience. Based in Epping with free parking. epping@wickedwaxing.com. 07368 684377

BESPOKE TAILORING

ROSS CARRINGTON BESPOKE TAILORING

Bespoke suits, shirts, jackets, wedding attire, evening wear. Alterations undertaken and visiting service available. 07824 153880 | 020 7898 0599

BOILER & PLUMBING SERVICES

SIMPLY PLUMBING

All work guaranteed. Local plumber. Leaking taps-toilets-overflows-radiators-showers-blockages-boilers repaired & installed. Call this number today 07711 840722

BUILDING

ADDSPACE LONDON LTD

We provide a high quality Building service. Extensions, lofts and internal renovations. Members of Federation Master Builders. Call 020 8088 2870

BUILDING & CLAIMS

CONCEPT BUILDING SOLUTIONS

We are builders specialising in water & fire-damaged properties. We put your home back to how it should be. 020 8088 3418

CAR & VAN HIRE

SCENIC SELF DRIVE

Your self drive hire specialists. Whether you require modern cars, motorhomes, vans or minibuses. Rest assured we will provide you a professional service. 01708 753461

CARPET & UPHOLSTERY

ARWIN CLEANING SERVICES

Over 30 yrs of exp, we can offer a professional, efficient and cost-effective solution for carpet and upholstery, cleaning and maintenance. 07973 417764

CHESS CLUB

VICKI'S CHESS CLUB

Vicki's chess coaching - teaches and provides games of chess to children and adults in Ilford and Debdon. Phone Vicki: 07849 435451 | Website: Vickschessclub.uk

CLEANING SERVICES

SPOTCLEAN LTD

Commercial & domestic services specialising in office, shop, new build, refurbished and residential cleaning. 07940 213394

COMPUTER REPAIR & I.T.

MAPTEC IT

Your local residential & commercial IT specialists. We can fix your computers, configure email accounts & printers. Setup your Wi-Fi, Internet router & network. 020 3865 7174

DRAINAGE

UNITED DRAINS

A fast and professional plumbing/drainage service you can rely on, providing a 24/7 service. All planned, emergency and reactive works undertaken. Call 020 3637 6688

EMAIL LOUGHTON@VISIONMAG.CO.UK TO JOIN THE LISTINGS FOR £15 PER MONTH (+VAT)

THE VISION LISTINGS

EDUCATION

TUTOR DOCTOR

All primary secondary subjects, 1:1 lessons, online or F2F in-home. Tutor matched to every child's personality, weekly reports. Call 020 3856 4466 | www.tutordocor.co.uk/wlcc

GARDEN SERVICES

JOHN HEARNE

We take care of it all Lawn Mowing, Weeding, Planting, General Tidying, Fence/Shed Painting, Driveway/Patio Pressure Washing and more. Call for details 07908 523101

JOIN THE LISTINGS... for just **£180** +VAT per yr

HANDYMAN SERVICES

CMB PROPERTY GROUP

Handyman, Maintenance & Refurbishments. Decorating, Plastering, Tiling, Re-siliconing etc. Small enough to care, big enough to make a difference! Call 07972 203096

HEALTH & WELLBEING

IMPROVE YOUR SMILE DENTAL PRACTICE

Est. in 1986. Encompassing all needs from basic oral health to advanced dental procedures and high-end cosmetic treatments. New patients welcome. 020 8504 2704

ALI ALOE

Health & wellness company requires help! Flexible hours, work from home, suits busy people, full/part-time. Text or call Alison 07932 717496

HOME CARE

RADFIELD HOME CARE

Award winning, personalised home care. Meal prep, personal care, medication assistance, companionship, dementia care. 0208 154 1753 | chingford@radfieldhomecare.co.uk

LOCKSMITHS

KEYTEK LOCKSMITHS

From Lock outs to security upgrades, our fully trained DBS checked Locksmiths are the experts | Call 020 3897 2686 | Quote: 15079

PAINTING & DECORATING

PGA DECORATING SPECIALIST

Interior - exterior - paper hanging specialists in Window repair care. 07769 646357 | www.pgadecoratingspecialists.co.uk | pgadecorators@yahoo.co.uk

PHOTOGRAPHY

PHOTOGRAPHY BY ROHINI

Family | Maternity | Newborn | Baby | Milestone | Cake Smash | Portrait | Headshot | Christmas | Event | Engagement | Wedding. Immortalise precious moments. 07740 292383

PLUMBING & HEATING

BOILR

BOILR offer servicing, installations, repairs and plans. Local Gas Safe engineers for all your needs. Please call today on 020 3576 2386

PROPERTY MAINTENANCE

LILLYWHITE PROPERTY GROUP

For all building works, full refurbishments & property maintenance inc heating, plumbing, electrical, decorating, flooring, tiling & plastering etc. Call today on 07949 394403

STUART GREEN PROPERTY SOLUTIONS

Property maintenance specialist. Carpentry, painting/ decorating, laminate flooring, bath/shower re-siliconing, gutters cleared/repared, insurance work, PLI. 07917 870879

ROOFING

JIM BARR ROOFING

Exterior cleaning/maintenance. Gutters, Paving, UPVC; cleaned, repaired, renewed. 01708 874816 | 07833 572459

WEB DESIGN & PRINTING

SWIVEL CREATIONS

25+ yrs exp, we are specialists in web, print, clothing and embroidery. Professional, affordable, reliable. 01992 570383 | 07736 879233 | www.swivuk.co.uk | info@swivuk.co.uk

PHOENIX ROAD CREATIVE

25+ years Web Design & Marketing to reach your audience. Let's get digital! hello@phoenixroadcreative.com | www.phoenixroadcreative.com | 07462 528494

DISCLAIMER: **VISION** does not represent or endorse the accuracy or reliability of any of the advertisements, nor the quality of any products, information or other materials displayed, purchased or obtained by any customer as a result of an advertisement or any other information or offer in connection with the service or products. The opinions expressed in articles, reviews and stories are strictly those of the individual authors and do not necessarily reflect the views of **VISION**.

To advertise call **VISION** on **0208 088 0386**

WORDLADDER: BEAR, BOAR, BOAS, BOBS, COBS, CUBS

PUT YOUR BUSINESS IN THE **VISION** LISTINGS...CALL **0208 088 0386** TODAY

OVER 30 YEARS OF EXCELLENCE



Life is Beautiful

At City Bathrooms we believe everyone deserves a beautiful bathroom, that's why our passion for luxury products, first-class customer service and expert bathroom advice is at the heart of everything we do.

City Bathrooms

11 Raven Road, South Woodford E18 1HB

Telephone: 020 8504 5152

Email: sales@citybathrooms.com

citybathrooms.com



Restore The Ambience, Preserve The Character

...with all the charm of wood.



The new window system designed to replicate the 19th Century English Flush Window

It can be considered for use in Conservation Areas due to its authentic appearance and is also appealing to any homeowner who wants a top-end luxury window.

It can accommodate 28mm double or 44mm triple glazing with market-leading thermal and acoustic performance. It is hand finished with the eye of a craftsman.



Residence 9 is manufactured from a modern composite material to give a virtually maintenance-free finish. Only available in heritage colours, the 'easy clean rebates' are also foiled in the same finish, which means that the high, maintenance-free, appearance is maintained when the window is open.

R9

50th Anniversary. Enhancing your home with style and grace

ENQUIRE TODAY : 020 8505 5656

info@ewgraceglass.co.uk | www.ewgraceglass.co.uk
EW Grace Glass, 28 High Road, Buckhurst Hill, Essex IG9 5HP.

 **EW GRACE**
Glass