

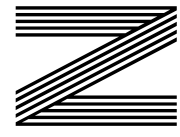
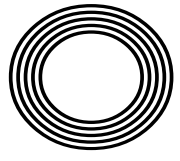
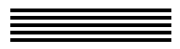


SUN SAFETY FOR YOUR BABY

RSPCA CELEBRATES 200 YEARS

PUMP IT UP
How to rock ballet pumps

STUCK IN A RUT?
Top tips to help improve productivity



FREE

Photo credit: Dave Shopland/Shutterstock

Emma
HAYES OBE

Manager aims to continue winning streak in USA

STEP INSIDE



OVER THE PAST FEW MONTHS, THE OLD HSBC BANK BUILDING ON THE HIGH ROAD HAS UNDERGONE A VERY EXCLUSIVE MAKEOVER. THE HOBO CLUB IS NOW OPEN TO MEMBERS, AND WE CAUGHT UP WITH THE FOUNDERS TO GET A PEEK BEHIND THE PRIVACY CURTAIN.



WHAT IS THE HOBO CLUB?

We are a private members' club. This means different things to different people. Our members have their favourite spaces and facilities at the club. It's a place to do business, unwind, drink great cocktails, catch a movie, attend an event, or meet up with friends.

WHY THE NAME?

In the 1930s, transient workers were not always welcome. When they found a welcoming place, they left a marker that read 'HOBO' for their comrades. To us, Hobo means a place to feel welcome.

WHAT CAN WE EXPECT?

The idea of an office has changed rapidly with remote work becoming the norm. We wanted an inspiring workspace that captures the comfort and ease of working from home, while also offering socialising, networking, and face-to-face meetings.

The Den is a great workspace, professional yet comfortable for client meetings. The Lounge is where we host member events, with music on Friday and Saturday evenings, cocktail masterclasses, and wine tasting. The Cinema will open this summer, offering a luxury local option for films with a 30-seat screen where you can order wine or popcorn.

TELL US ABOUT THE FOOD...

We are proud of our food and drinks menus. Breakfast includes a fresh granola bowl or avocado smash on sourdough. Lunch and dinner feature homemade paninis and pinsa pizzas. We have barista-made coffee and sweet treats throughout the day, and an amazing selection of wines and cocktails in the evening. We support local businesses and our front desk can help with local dinner reservations. We pride ourselves on excellent customer service.

WHY LOUGHTON?

We love Loughton. As locals, we are passionate about our community, bringing people and businesses together. Epping Forest is on our doorstep, yet it's easy to get into the city. Our décor reflects this mix of sophistication and nature.

WHAT'S NEXT?

We aim to be led by our members' desires. We have a programme of events for the summer and are excited for what's to come.

HOW DOES MEMBERSHIP WORK?

Memberships are on a monthly rolling basis with no long-term commitment. Members can bring a plus one and can apply online. Nothing beats a visit, so come have a look around.

WHERE BUSINESS HAPPENS & MEMBERS MATTER



THE HOBO CLUB, 191 HIGH ROAD, LOUGHTON, IG10 4LN
Now open to new members: 8am-11.00pm weekdays, 10.30am-11.00pm weekends.

Sign up to our mailing list at [HOBOSUB.CO.UK](https://www.hoboclub.co.uk)





Editor's notes...

JUNE 2024



Brett Shohet, Editor

Hello and welcome to this month's edition of **VISION**Loughton.

We're busy gearing up for the business exhibition at South Mill Arts in Bishop's Stortford this October. This event is a chance to showcase our fantastic local businesses and for people to find out more about the services available on their doorstep. To find out more, visit bsmb.co.uk

Last month, I joined more than 40 people in my networking group in climbing Mount Snowdon to raise money for a local hospice. Though I realised it would be difficult, I think I underestimated just how challenging it would be! I knew I had a reasonable level of fitness; however, a very steep hill at the start of the route had me questioning this belief!

I did, however, make it to the top - 24,000 steps and two hours and 45 minutes later. It was inspiring to see all the people taking on the challenge. Many of them carried pictures of people they'd lost, or logos of the charities they were supporting. No matter how hard the climb, they refused to give up. I know for me, it was the thought of my close friend Dave, who passed away from cancer, that kept me going.

This is a lesson that can be applied to everyday life, as well as business. The challenge may seem difficult, but all it takes is to focus on one step at a time. By the time you look back, you'll realise you've come a lot farther than you thought. Maybe something for you to think about...

Brett Shohet

This is your town's hyperlocal magazine, delivering to homes and businesses every month.

HOME & DIY | GARDENING | PETS | HEALTH & FITNESS | BEAUTY | FASHION | HISTORY | LOCAL FEATURES | FOOD & DRINK | TRAVEL | BUSINESS & PROPERTY | SPORT | PUZZLES | MOTORING | KIDS | WHAT'S ON | TECHNOLOGY | THE LISTINGS

CONTACT US:



loughton@visionmag.co.uk | 0208 088 0386
www.visionmagessex.com | www.visionmagherts.com
✉ @visionmagessex | @visionherts | @visionmagessex | @visionmageastherts
f Vision Magazine Essex | Vision Magazine East Herts
CONTRIBUTORS | Tabatha Fabray, Fiona Goble, Sophia Sheera

All pages are recyclable

PRINTING • BUSINESS CARDS • LEAFLETS • DISTRIBUTION
SIGNAGE • MENUS & BROCHURES • RETAIL PACKAGING
EXHIBITION BOARDS & BANNERS
WINDOW VINYLs • LOGO DESIGN
BRAND ALIGNMENT • VEHICLE WRAPPING
CARBON PADS • WORKWEAR • WEBSITES
SOCIAL MEDIA • I.T. SOLUTIONS

THE **B7** MEDIA GROUP

ENQUIRIES@B7MEDIAGROUP.COM

0208 088 0386



SOIRÉE



THE TURKISH RESTAURANT FOR FOOD LOVERS

Soiree Turkish restaurant is an evening affair with friends, music and lavish celebration, making it the premier destination for the seeker of sophisticated, care-free nightlife.

Our menu is inspired by the finest Turkish cuisine, accompanied by hand-crafted cocktails made from masterfully blended spirits.

PRIVATE HIRE FOR UP TO 150 GUESTS

Suitable for all occasions such as birthdays, weddings & celebrations

SET MENUS AVAILABLE FOR GROUPS

TO MAKE A RESERVATION

www.soireerestaurant.co.uk

0208 088 4289 | info@soireerestaurant.co.uk

79 Queen's Rd, Buckhurst Hill, Essex, IG9 5BW



SCAN ME

PROTECTING ANIMALS FOR

200 YEARS

The Royal Society for the Prevention of Cruelty to Animals (RSPCA) was founded 200 years ago this month. A small group of dedicated people gathered in a London coffee shop to discuss how to prevent animals from being badly treated. They shared a common goal: to stop cruelty to animals and improve animals' lives. This humble beginning marked the start of a flourishing national movement.

In many ways, animal welfare has improved considerably since the 19th century – partly because of the RSPCA. But new times bring new challenges, and the organisation's work throughout England and Wales remains vital. Despite all the progress, there are still many issues that need attention, and the RSPCA must continue to adapt and respond to these challenges to ensure animals are treated with respect.

THE RSPCA IN HISTORY

The RSPCA has made countless contributions to animal welfare over the years – far too many to list! But here are just a few key milestones – each one representing a significant victory in the fight for

animal rights and welfare.

- **1835** – Cruel sports like bear and bull baiting are banned
- **1870** – The last bullfight in England takes place
- **1914** – A fund for horses wounded in the First World War is set up
- **1998** – Testing cosmetics on animals is banned
- **2019** – Wild animals are banned in circuses

ON THE FRONT LINES

The RSPCA has its own teams dedicated to saving animals in danger, investigating animal crimes and providing advice on animal care. These teams work tirelessly, often in difficult and dangerous situations.

The organisation also runs several hospitals and wildlife centres. These facilities are staffed by skilled veterinary surgeons, nurses and carers who provide treatment and support to help animals recover.

Wherever possible and appropriate, animals are returned to their natural habitats.

SHAPING LAWS AND MINDS

The organisation also campaigns for improved animal welfare laws, educates young people about animal care, and provides expert advice to help ensure animals are well treated. Through its advocacy efforts, the RSPCA has influenced significant changes in legislation, leading to better protection for animals. Meanwhile, education programmes in schools are teaching future generations about the importance of compassion and proper care for pets and wildlife.

BIRTHDAY CELEBRATIONS

To celebrate its 200th year, the RSPCA is launching a year-long campaign to grow its movement to one million supporters, so people can join in creating a better world for animals – and a better world for us all. There will also be special events such as the One Fun Day, the #50MilesForAnimals challenge,

and the RSPCA Young Photographer Awards. These events are designed to engage the public, raise awareness and generate support for the RSPCA's essential work.

For more information on getting involved in the RSPCA's 200th birthday celebrations, please visit www.rspca.org.uk/200th or contact your local RSPCA branch or shop. Whether you choose to volunteer, donate or participate in events, your support can make a difference. Join the RSPCA in celebrating 200 years of compassion and help create a brighter future for animals everywhere.





Watch out for this year's National Bingo Day on Thursday, June 27. Even if you've never played before, now's the time to have fun, meet new people, and maybe even win a prize!

BINGO THROUGH THE AGES

- Bingo began in Italy in the 1500s, when people played a lottery game called Il Giuoco del Lotto d'Italia (The Game of Lotto of Italy).
- A version of the game reached the US in the 1920s, where it was first called Beano. The name Bingo started by mistake when someone called out "Bingo!" instead of "Beano".
- Bingo became popular in the UK in the 1960s, and the first bingo halls and clubs soon appeared.
- The first online bingo sites were established in 1996 – and there are now more than 200.

National Bingo Day is a chance for people of all ages and backgrounds to get together and celebrate the excitement of bingo (although remember that bingo halls are usually for ages 18 and over).

Activities will be held at bingo clubs around the

country, and online events will also be held.

MAKE THE DAY YOUR OWN

You don't have to follow the crowd. There are lots of ways you can put your own twist on the day, and here are just a few ideas:

1. Throw a bingo party with family and friends.
2. Organise a charity bingo game to raise money for your favourite cause.
3. Set up a game of Reverse Bingo – you start with a full card and erase numbers as they're called.
4. Organise a bingo walk or scavenger hunt where participants collect bingo numbers at various checkpoints.

WHY NATIONAL BINGO DAY MATTERS

National Bingo Day is more than just playing games. It's a chance for people to enjoy an entertaining tradition that many of us love – and it's a great way of meeting and making friends.

Remember to mark Thursday, June 27, on your calendar – and get your dabbers ready for a day of bingo joy!

WOODFORD HOUSE DENTAL PRACTICE

Join our extended family



ORAL HEALTH CARE
NEW PATIENTS WELCOME
GENERAL DENTISTRY

FREE CONSULTATIONS for TEETH STRAIGHTENING
DENTAL IMPLANTS ♦ TEETH WHITENING ♦ SLEEP APNOEA
FACIAL AESTHETICS ♦ AND MORE

We've served generations of patients with the highest level of care, and state-of-the-art technology. Try us for yourself!

020 8504 2704
improveyourmile.co.uk

162 HIGH ROAD WOODFORD GREEN IG8 9EF

EXPERIENCE YOU CAN TRUST





J. Share-Bernia
Associates



Joanne Share-Bernia
C.Psychol ASs Fellow
BPS HPC MSc, Founder
Member ABP (Ass Business
Psychologists), Registered
International Coaching
Psychologist

Are you going through a change in your life?

Feel you need someone to support that change, be it your job, someone close to you has passed away, your children have moved out, health issues or relationship struggles?

I am a consultant Chartered Psychologist with over 25 years of experience. I use cognitive behavioural therapy which can be either short term or long term. I help those gain confidence in an approachable and open manner and will help clients to feel comfortable and able to discuss areas they need support in a safe and secure environment. Everything I do is private and confidential and I am able to discuss your concerns either over the phone or face to face at either my practice in Buckhurst Hill or Harley Street.

☎ 07976 539 152

✉ joanne@share-bernia.com

🌐 www.share-bernia.co.uk



SCAN ME



"My carer is absolutely fantastic. She not only cares but anticipates my every need."

- Sara



Speak with your local care manager

0208 154 1753

chingford@radfieldhomecare.co.uk

www.radfieldhomecare.co.uk

Exceptional care in your own home

- Wellbeing.
- Personal care.
- Dementia care.
- Companionship.
- Household tasks.
- Outings & activities.
- Medication support.
- Assistive technology.

HOW TO TACKLE TROUBLESOME

TANLINES

Whether you have a t-shirt tan from working in the sun or swimsuit tan lines from a recent holiday abroad, these noticeable patches of paler skin can wreak havoc with your summer look. Here's how to tackle your tan lines.

1 LEMON SCRUB

Scrubbing can help to get rid of dead skin cells which can make your tan lines a lot less visible, and lemon is the perfect natural exfoliant. Simply mix the juice of one lemon with a little bit of sugar and a tablespoon of honey and work the mixture into your skin. Rinse off and see your tan lines start to fade after applying for only a few days.

2 SELF-TANNER OR BODY BRONZER

If you are struggling to get rid of unwanted tan lines, why not try covering them up instead? A self-tanner or bronzer can help to hide lighter areas and make them blend in better with your tanned skin. Just make sure you choose a shade that matches your tan or you could end up looking even more patchy. Body make-up coupled with setting powder and a setting spray is also effective.

3 BAKING SODA

Baking soda is a natural whitener, making it ideal for reducing the appearance of unwanted tan lines. To treat a single area of skin, create a thick paste using half a cup of baking soda and a few tablespoons of water, or, for a full body fade, add a cup of baking soda to your bath. Leave on the paste or soak in the bath for around 15 minutes and start to see results in one or two days.

4 POTATO SLICES

Potatoes are a rich source of vitamin C which has been proven to help lighten the skin. To use this method, either apply thinly sliced potatoes directly to the skin or make a mask by blending potatoes and applying them to the outer edges of your tan lines. Leave on for 20-30 minutes and then wipe off with a clean cloth. Repeat for two or three days or until you get the desired results.



BEAUTY



5 REASONS TO ADVERTISE

Why do businesses benefit from hyperlocal advertising?

1. Targeted advertising

Hyperlocal advertising allows companies to target customers who are within a specific geographic area, making it easier to reach the right audience and increase the chances of converting them into paying customers.



2. Cost-effective

Hyperlocal advertising can be cost-effective because it is focused on a specific local area, meaning that businesses can reach their target audience without wasting money on broader marketing campaigns that may not be as effective.



3. Increased engagement

Hyperlocal advertising can lead to increased engagement with customers because it is focused on the local community and the interests of the people living in that area. By targeting customers with ads that are relevant to their interests and needs, companies can build a stronger relationship and increase their chances of repeat business.



4. Improved search engine optimisation

Hyperlocal advertising can improve a business' search engine optimisation because it targets customers who are likely to be searching for businesses and services in their local area. By optimising their website and other online presence for local search terms, businesses can improve their visibility and attract more customers.



5. Better return on investment (ROI)

Hyperlocal advertising can lead to a better ROI because it is focused on a specific area and customer base. Targeting customers who are likely to be interested in their products or services, can increase conversion rates and revenue.



IS YOUR BUSINESS READY TO BENEFIT FROM HYPERLOCAL ADVERTISING? CONTACT **V**ISION TO FIND OUT MORE

Jools lost
4st 9lb
and kept it off since 2018

You can too!



Start now
Scan here!



"The constant support from my Mentor has been amazing. Keeping my weight off is an empowering and liberating feeling."

LOSE A STONE A MONTH

Contact your personal Mentor, **Heather**, today for our latest offers!

07817 618821 or heather.williams@lighterlifementor.com

LighterLife[®]

£25 OFF
ALL
SUNGLASSES
FOR A LIMITED
TIME ONLY



SUNGLASSES FOR EVERY OCCASION

Ray-Ban

FROM TOP DESIGNER TO
KIDS & BUDGET SUNGLASSES

Care Optics
Eye Care. We Care.

☎ 0208 088 3496 🌐 www.careoptics.co.uk

✉ woodford@careoptics.co.uk

📍 14 The Broadway, Woodford Green, IG8 0HL



CALL US TODAY TO MAKE AN APPOINTMENT



Transform Your Family Life with Expert Guidance from ParentsHq

Navigating family life can be complex, with challenges that test even the strongest bonds. As a certified NLP practitioner with over a decade of experience and a global client base, Narjeet specialises in working with families and children globally, delivering outstanding results in building solid relationships and overcoming everyday hurdles.

At ParentsHQ, we understand each family's unique dynamics. Our tailored approach empowers parents and children with practical tools and strategies that promote better communication, understanding, and resilience. Whether dealing with behavioural issues or communication barriers or simply striving to create a more positive home atmosphere, Narjeet provides personalised support to meet your specific needs.



Why Choose Narjeet and ParentsHQ?

Expertise: Over ten years of experience in family and child coaching.

Global Reach: Successfully working with families around the world.

Personalised Approach: Customised coaching sessions to fit your family's unique requirements.

Proven Success: Demonstrated history of fostering positive family dynamics and resolving conflicts.

Take the First Step Towards a Stronger Family Today!

Contact Narjeet for a free consultation and discover how you can enhance your family life with expert guidance and support. Don't miss this opportunity to bring harmony and happiness into your home.

Call Now: 0208 0883189

Visit Our Website: parentshq.co.uk

Email: Narjeet@parentshq.co.uk



Book your Appointment: <https://calendly.com/parentshq/30min>

AROMATHERAPY

awareness week

Aromatherapy Awareness Week (June 8-14) is designed to highlight the important role aromatherapy can play in the management of our health, with activities and events taking place all over the UK.

What is aromatherapy?

Aromatherapy is a holistic healing treatment that uses aromatic essential oils to enhance physical and emotional health. Considered to be a science and an art form, aromatherapy is used to treat a variety of different conditions.

What can aromatherapy oils be used for?

- ♥ Peppermint to manage pain
- ♥ Lavender to improve sleep quality and for discomfort during labour
- ♥ Ylang ylang to reduce stress and anxiety
- ♥ Eucalyptus to soothe sore joints and to boost immunity
- ♥ Rosemary to treat headaches and migraines
- ♥ Cardamom to improve digestion
- ♥ Ginger to alleviate the side effects of chemotherapy

How to practise aromatherapy at home

1 Use a diffuser – Diffusing essential oils provides a great way to enjoy their aromatic properties. This works by taking a few drops of concentrated essential oil and disseminating them into the air over an extended period. Good for uplifting your mood, promoting relaxation and aiding sleep.

2 Inhale the steam – Steam inhalation is particularly effective for respiratory issues and sinus congestion, as well as being good for the skin. This involves adding a few drops of essential oil to a bowl of hot water, covering your head with a towel and inhaling the steam deeply for several minutes.

3 Apply topically – Some essential oils can be applied topically to the skin, but these must be diluted with a carrier oil such as coconut oil, almond oil or olive oil. This method is good for massage, making bath oils, and creating soothing balms for pain relief.

Safety precautions

- ♥ If you have any allergies or sensitivities, perform a patch test on the skin before using a new essential oil.
- ♥ Keep essential oils out of reach of children and pets.
- ♥ Pregnant and breastfeeding women should consult their doctor before using essential oils.





Like a HOLE in the HEAD



Do you suffer with headaches in the back of your head? There are several possible causes of this common type of pain.

TENSION HEADACHE: This is the most common type of headache and occurs when the muscles in your scalp and neck tighten, often as a response to stress or anxiety. Typically, this causes pain on the side and back of your head. Tension headaches tend to cause a dull, throbbing pain rather than a sharp one.

POOR POSTURE: If you tend to slouch when you are sitting at your desk or when standing, then this can strain the muscles in the back of your head, upper back, neck and jaw. This also puts pressure on these areas which can result in pain at the back of your head.

ARTHRITIS HEADACHE: The main symptom of an arthritis headache is pain in the back of the head which tends to get worse when you move. This headache occurs as a result of arthritis in

the spine, changes in the bone structure of your neck, or inflamed blood vessels in your head.

LOW-PRESSURE HEADACHE: A low-pressure headache, also known as spontaneous intracranial hypotension, occurs when there is a spinal fluid leak in your neck or back. Low-pressure headaches cause intense pain in the back of the head and neck which tends to get worse when you stand or sit.

OCCIPITAL NEURALGIA: This is a rare type of headache that causes pain in the occipital nerves. These run from your spinal cord up to your scalp. When these nerves become injured or inflamed, you are likely to feel pain in the back of your head or behind your ears. This pain is often described as stabbing and severe.

If you have pain in the back of your head that lasts for several days or that does not go away after taking over-the-counter pain relief, make an appointment with your GP.



THE FACE ALCHEMIST

Aesthetic and beauty practitioner

With summer just around the corner and thoughts of getting our bodies beach ready, The Face Alchemists brand new clinic in the middle of Loughton High street offers all the very best in slimming, firming and toning treatments on the market.

Both Janine and Lydia who together have over 50 years of experience in the beauty and aesthetic industry offer the very best out there.

With a wide range of extensive CE and FDA approved latest technology machines for non evasive treatments Lydia can devise a bespoke program to include cellulsculpt EMS, Hifu or cavitation. These work in breaking down fat, firming the skin and toning the underlying muscle.

Janine also offers the newest fat dissolving treatment lemon bottle, designed for those with smaller areas of stubborn fat.

Lymph drainage massage is another treatment which is excellent for body sculpting, reducing bloating and water retention and flushing toxins.

Janine can also offer clients a wide range of weight loss options. From the very popular choice of weight loss pens to general weight loss advice.

 02081438936 shop
 Thefacealchemist.com - bodyalchemist.co.uk



BIG COUNTRY Views

GREAT HADHAM
COUNTRY CLUB



SCAN ME



SHOW HOMES



NOW OPEN

Don't just take our word
for it.....

Having always been a bit of a golfer and having reached a point where it was time to downsize, Great Hadham Country Club was perfect.

We were moving from our family home in Hertford and looking to downsize and for an escape.

We met with Dani at Great Hadham who showed us round several homes before we eventually plumped for a Prestige Plantation House

Once the sale of our home went through the actual purchasing was quick and easy, mainly due to the updates we had from the sales team.

We have now lived at Great Hadham for almost 7 months and really couldn't be happier. The wife has even bought some clubs now.

Mr and Mrs S



www.goodlifelodge.com



info@goodlifelodge.com



01279 939082

The Gardeners Arms

A GASTROPUB ABOVE THE REST



**De Fuego - Come & enjoy
acoustic Latin & Rumba vibes**

**Friday 28th June
4.30 to 8.00pm**
Paella served from 5 pm
Show starts 7 pm

HOME MADE FOOD ● EVENTS ● LIVE MUSIC ● QUIZ NIGHTS & MORE

- Organic free range produce sourced locally
- In-house smokery
- Situated at one of the highest points of Essex
- Panoramic views of London from the terrace
- Forest walks ● Dog friendly
- Private room available for all life's occasions



103 York Hill, Loughton, IG10 1RX ● 020 8508 1655

Food served: Mon & Tue 12.00 to 4.00 Wed to Sat 12.00 to 8.30 Sun Roast 12.00 to 4.30

STAY COOL

this summer in the Faroe Islands



TRAVEL

If you don't want to risk the sweltering heat of Britain in August, never mind the crowded beaches, why not make a beeline for the enchanting Faroe Islands?

Tucked away in the North Atlantic, the best thing for heat-haters is that summer daytime temperatures average just 12°C. But there's much more to the islands than cool breezes.

WHAT'S IT LIKE?

The 18 islands that make up the group offer rolling green hills dotted with colourful cottages. There are also mountains, waterfalls, rugged coasts, caves and fjords. But there are some lovely towns as well. Many of the 18 islands are now connected by tunnels and bridges.

The Faroes are a self-governing region of Denmark. It has its own language - Faroese, which is closely related to Icelandic. But English is also widely spoken.

WHERE CAN I STAY?

There are plenty of places to stay, from quaint wooden cabins to luxury hotels. Airbnb is an excellent way to explore the main options. Prices aren't rock bottom, but they're generally similar to those in the UK - and public transport is cheap.

IS IT SUITABLE FOR WILDLIFE LOVERS?

Yes, especially birdwatchers. Thousands of puffins fly freely, and there's an astonishing array of other seabirds, including gannets, fulmars, loons and petrels. Summer is the perfect time to visit because it's breeding season. There are also seals, dolphins, and plenty of sheep.

WHAT ELSE CAN I DO?

As well as outdoor activities like fishing, kayaking and surfing, there's a lively music scene and plenty of great restaurants specialising in lamb, fish and seafood.

HOW CAN I GET THERE?

You can fly direct from Edinburgh in around an hour. You can also fly via Denmark from most UK airports. Alternatively, you can get a ferry from Edinburgh, which will take around five hours.

For more information, see visitfaroeislands.com





Newly Opened

MILA RESTAURANT, BAR & GRILL

BREAKFAST, LUNCH & EVENING ♦ A LA CARTE MENU
FAMILY RESTAURANT ♦ 25 YEARS RESTAURANT EXPERIENCE
SPECIAL MENUS ♦ PARTY CELEBRATIONS

Offer*

MILA LUNCH

MON TO FRI
12.00 - 3.00pm
2 COURSE LUNCH
1 STARTER + 1 MAIN
£12.50pp

EXCEPT Saturday & Sunday
Bank Holidays Special Occasions

BOOK NOW

MILA Offer* BOTTOMLESS BRUNCH

SET MENU
5 HOT MEZE + 5 COLD MEZE
UNLIMITED DRINKS
£29.00pp

EVERYDAY
12.00 - 4.00pm

*TIME LIMIT APPLIES - SEE ONLINE FOR DETAILS



0208 418 9926

info@milaloughton.co.uk www.milaloughton.co.uk

House 112, Connaught, 120 High Rd Loughton IG10 4HJ

OPENING HOURS: Monday-Sunday: 08:00am - 11:00pm



Cooking with ARTICHOKEs

Many people shy away from artichokes as they do not know how to prepare or cook them. While it is true that this tasty vegetable does require a little bit of TLC, the result is well worth the effort!

How to choose and buy artichokes

Look for artichokes that feel heavy as these will be more meaty. The leaves should ideally be closed with a little separation, but not wide open.

Which parts of an artichoke are edible?

The most common part of an artichoke that people eat is the heart. Within the heart, you will find the 'choke', which is too fibrous to consume. Surrounding the heart are the petals, which you can eat by pulling the base of the petal through lightly clenched teeth to strip off the petal meat.

How to prepare artichokes

- > Cut off the tips of the leaves.
- > Slice off the top of the artichoke.
- > Remove the small leaves at the base and on the stem of the artichoke.
- > Trim any excess stem, leaving up to 1 inch.
- > Rinse the artichoke in cold water.

How to cook artichokes

Steaming is considered to be the easiest method and also helps the vegetable retain moisture. Boiling is also a popular choice if you prefer a softer texture.

Our favourite artichoke recipe:

Artichokes with parmesan butter sauce

YOU WILL NEED:

- > 1 lemon, halved, and juice of 1 lemon
- > 4 globe artichokes
- > 200g chilled butter or vegan alternative, chopped into cubes
- > 100ml dry white wine
- > 25g parmesan or vegan alternative

HOW TO MAKE:

- > Bring a large pan of salted water to the boil.
- > Add the lemon halves.
- > Cut the stalks off the artichokes and add to the pan of water.
- > Boil for 40-45 minutes until soft and tender.
- > Pour the wine into a pan and reduce by half.
- > Whisk in the butter, one cube at a time.
- > Whisk in the parmesan and lemon juice.
- > To eat, pull off the leaves and dip the broken end into the sauce.
- > When you reach the middle of the artichoke, remove the centre leaves, scrape out the choke and eat the heart.



FOOD & DRINK



Too many TOMATOES!

One of the most popular vegetables for home gardeners, this plant is often responsible for creating an abundance of produce. So, what can you do with your surplus tomatoes?

SUN-DRIED TOMATOES (serves 4)

You will need:

1kg tomatoes | 4 garlic cloves | 20g fresh oregano | Olive oil | Sea salt

How to make:

Quarter the tomatoes and remove the seeds | Place in a colander and sprinkle generously with sea salt | Leave for 20 minutes and rinse with cold water | Make a paste by crushing the garlic, oregano and a drop of olive oil | Mix with the tomatoes until evenly coated | Arrange on greaseproof paper, cut side up | Set your oven to a low temperature (around 90°C/ 70°C fan/gas mark 1) and put in the tomatoes | Dry them in the oven for around 3 hours – do not let them start to brown | Leave to cool before placing in a sterilised, airtight jar and filling to the top with olive oil | Lasts for up to one year | Perfect for adding to salads and pasta dishes

TOMATO CHUTNEY (makes 2 x 300ml/half-pint jars)

You will need:

1kg tomatoes | 500g finely sliced red onion | 4 sliced garlic cloves | 1 chopped red chilli | 4cm piece of fresh ginger, peeled and chopped | 250g brown sugar | 150ml red wine vinegar | 5 cardamom seeds | ½ tsp paprika

How to make:

Tip all the ingredients into a large pan and bring to a gentle simmer, stirring occasionally | Simmer for one hour, then bring to a boil until the mixture turns dark, jammy and shiny | Pour into sterilised jars and allow to cool before covering | Will keep for up to six weeks in the cupboard | Add to Indian-style curries, to elevate a sandwich, or use as a dipping sauce

TOMATO SALSA (serves 4)

You will need:

600g chopped tomatoes | 160g chopped onions | ½ cup green bell pepper | 2 tbsp fresh lime juice | 4 tsp chopped fresh jalapeno pepper (with the seeds) | 4 tbsp minced fresh coriander | ½ tsp ground cumin | ½ tsp kosher salt | ½ tsp ground black pepper

How to make:

Stir all the ingredients in a bowl until combined | Alternatively, for a smoother salsa, blitz in a blender | Add a little lemon juice or vinegar before storing to preserve your salsa for longer | Store in an airtight container in the fridge for up to one week or up to one year in the freezer | Use as a dip for crisps, to cool down fajitas, or as a burger topping.



Calling all brunch lovers!

Oh, Join us this weekend at Café Cassea for an unforgettable brunch experience



From savoury to sweet creations, we've got your brunch cravings covered.

Don't miss out!

0208 088 0940 | info@cafecassea.com
www.cafecassea.com
258 High Road Loughton IG10 1RB



CYPRIOT  HEIGHTS

JOIN US FOR AN UNFORGETTABLE DINING EXPERIENCE AND ENJOY

20% OFF

OUR ENTIRE MENU

BOOK YOUR TABLE NOW AND PREPARE TO EMBARK ON A GASTRONOMIC JOURNEY AS YOU SIP ON HANDCRAFTED COCKTAILS AND SAVOUR THE ESSENCE OF CYPRIOT CUISINE.

WWW.CYPRIOHEIGHTS.CO.UK

- 0208 088 2791 -



Visit our website

170 STATION ROAD, CHINGFORD, LONDON, E4 6AN



LOT 14 @ Theydon

STARTERS | À LA CARTE | WINES | COCKTAILS

At Lot 14, we aim to provide you with an unforgettable experience as you discover the taste of the sea. Indulge in exquisite seafood and sip on stunning cocktails.



PRIVATE ROOM AVAILABLE FOR HIRE

Contact us: 01992 276094 | Email: bookings@lot14.co.uk
www.lot14.co.uk || 14 Forest Drive, Theydon Bois, CM16 7EY

Opening times: Monday: closed Tue – Sun: 12:00 – 22:00 



SCAN ME

SHAPE UP YOUR SPACE

UNLEASH YOUR INNER ARTIST WITH GEOMETRIC WALL ART

HOME & DIY

Geometric art is super fashionable right now. But original artwork is pricey – so why not make your own? You can create something beautiful even if you're a complete beginner. And it won't cost a fortune – you can buy everything you need for less than £20!

What is geometric art? Geometric art involves using basic shapes like triangles to create visually appealing designs.

A mural or a canvas? You can paint directly onto your wall using emulsion paint, whether it's leftovers or sample pots. Alternatively, purchase an artist's canvas and use acrylic paints to create a masterpiece to hang on your wall.

What do I need? For both murals and canvases, you'll need paint, masking tape and appropriately sized paintbrushes.

Decide on your design. First, sketch your design on paper rather than directly onto the wall or canvas. We recommend using straight lines, so choose triangles and squares rather than half moons or circles. Now select paint colours to complement your room's décor. Using three or four colours works best, and a combination of matt and metallic paints can look really cool.

Get it taped. If you're working directly on a

wall, start by outlining the entire area of your mural with masking tape. For both murals and canvases, apply masking tape to the areas that will form the outlines of your shapes, so that they remain your base colour. Ensure the tape is firmly pressed down and the edges are smooth. If you're working on a canvas, extend the tape (and later, the paint) down the sides of the canvas for a polished look.

Get painting. Paint each section from the edge of the tape in to avoid the paint bleeding, rather than brushing from the middle of each space out towards the tape, and don't apply your paint too thickly. Once you've done all the edges, you can fill the shape. When your masterpiece is completely dry, carefully peel off the tape.

Voilà! You now have a stunning piece of geometric art to adorn your wall.

Photo credit: What Walls Want via ebay.com, ighoandme.com

That's CORKSOME!

Have you ever looked at a wine cork and thought, "I wonder what I could make with that?" Well, now you'll find out!

MINIATURE PLANTERS

YOU WILL NEED: 1 wine cork for each planter | A small knife | Soil | Small succulents

HOW TO MAKE: Carefully use the knife to hollow out the centre of the cork, leaving enough space to plant | Add a small amount of soil to the hollowed-out cork | Place your chosen succulent into the soil and water sparingly when needed

A KEYCHAIN

YOU WILL NEED: A wine cork | A small eye screw | A key ring | Decorative beads or charms (optional)

HOW TO MAKE: Screw the eye screw into one end of the cork, twisting gently until secure | Add the key ring to the eye screw | If desired, thread beads or attach charms

A BIRDHOUSE

YOU WILL NEED: Wine corks (50-70, depending on the desired size) | A wooden base | Adhesive glue or a hot glue gun | Wooden shingles or metal sheets (for the roof) | A dowel or small perch

HOW TO MAKE: Glue the corks to the base (standing upwards), creating the walls of the birdhouse | Attach the roofing material to the top, creating a slope to shelter the structure | Glue the dowel or small perch near the entrance of the birdhouse for the birds to land on | Add any desired decorations like moss, twigs, flowers or hand-painted details

A HEAT-PROOF TABLE MAT

YOU WILL NEED: Wine corks (20-30, depending on the desired size) | Strong adhesive glue or a hot glue gun | Some ribbon or twine

HOW TO MAKE: Arrange the corks on their sides into your preferred shape, such as a circle or square | Apply the glue to the sides of the corks, pressing them together according to your chosen pattern | Hold each cork in place briefly to secure them | Wrap the ribbon or twine around the mat and secure with glue | Allow to fully dry.

Photo credit: thesourceoftechie.com, rustic-crafts.com, lpinning.com

WANT MORE BUSINESS?

CALL 0208 088 0386
TODAY TO ADVERTISE

RMC PLASTERING LONDON

TRANSFORM YOUR SPACE WITH EXPERT INTERIOR PLASTERING

- RMC Plastering London have been a part of the plastering trade for over 25 yrs
- We cover all aspects of the trade
- Silicon and traditional renders
- All internal plastering works from new builds to giving older properties a new lease of life
- Customer satisfaction is our upmost priority

FOR A NO OBLIGATION QUOTATION CONTACT ROY COWLEY

0208 088 4261

www.rmclasteringlondon.co.uk

DANIEL ROBINSON & SONS

INDEPENDENT FAMILY FUNERAL DIRECTORS

EST 1890

The funeral professionals...



Bespoke funerals to meet your wishes, including simple, traditional and green funerals, direct cremation, specialist vehicles and horse-drawn.

Preneed Funeral Plans

Dedicated 24 hour support to the community in our local funeral homes.



Epping
01992 560890

Loughton
0208 508 1008

Waltham Abbey
01992 711892

Funerals as unique as the loved ones remembered

www.drobinson.co.uk

Because sometimes, only the very best service & care will do



Elevate your space with exquisite Italian craftsmanship

We Create Custom Made Furniture Tailored To Your Requirements

CONTACT US TO ENHANCE YOUR HOME WITH ITALIAN STYLE



CALL US ON 020 8088 3085
OR EMAIL

Italianbespokefurniture@outlook.com
COVERING WEST ESSEX & EAST HERTS

**ITALIAN
BESPOKE
FURNITURE**

**Find The Perfect
Addition To Your Home**

ALL KINDS OF **BLINDS**
CURTAINS & SHUTTERS



**20% OFF
WITH THIS ADVERT**

*Bring into store with you
Full priced items only

- ♥ Rated 'Excellent on Trustpilot
- ♥ 25 years experience
- ♥ Family-owned business
- ♥ Covering London, Essex, Herts, Surrey & Kent
- ♥ No obligation quotation
- ♥ Book your free survey

WOODFORD SHOWROOM OPENING SOON

459 Woodford High Road, Woodford Green, Essex IG8 OXE
118 High Street, Epping, CM16 4AF

BOOK YOUR FREE SURVEY 0203 011 0700 • www.allkindsofblinds.co.uk

IKEA®

HACKS YOU'LL LOVE!



HOME & DIY



1 Who doesn't love a trip to the wonderful world of Ikea? With so many items for your home and garden to choose from, it is almost impossible to leave this Scandinavian superstore empty-handed. Discover all our favourite and easy Ikea hacks below!

1 FLOATING HALLWAY STORAGE

If you are always losing your keys and other essential items, then you need this Ikea hack in your home. To make this, all you need to do is mount an Ikea floating shelf to your chosen wall and then attach a few Ikea magazine holders underneath.



2 RATTAN PENDANT LIGHT

Designer lighting can be expensive, but it doesn't need to be with this super-stylish and affordable Ikea hack. Simply take a round Ikea rattan basket, remove the lid and attach it to your chosen ceiling light fixture.



3 CONTEMPORARY CAT TREE

Fed up with your feline friend scratching your sofa? Just take four Ikea wall shelves, cover them with Ikea's faux sheepskin fabric, and then mount them on your chosen wall. Hey, presto; a cosy corner for your cats to climb and play.



4 WALL-MOUNTED CHARGING STATION

If you and your family are always losing your phone chargers, or worse, fighting over whose turn it is to use them, then this DIY charging station is just what you need. To create, attach an Ikea Hultarp rail to the wall and then hook on a matching Hultarp basket or container. Add an indoor plant or two to the rail for enhanced visual appeal.



5 DIY DESK

Need somewhere to work but don't have space for a home office? Take two Ikea three-drawer dressers and place an Ikea worktop on the top. For a more upmarket look, cover the drawer fronts in wood-look laminate and replace the knobs with sleek handles.



Photo credit: instructables.com, Minh Ngoc via housebeautiful.com, Aaron Bengtson via housebeautiful.com, hometalk.com, Mike Garten via goodhousekeeping.com



Magic MAYO

Mayonnaise is one of the most popular condiments, boasting a creamy texture and tangy taste. However, did you know that it can also be surprisingly useful around the house?

TO DUST HOUSEPLANTS

If you have any faux houseplants in your home, you will know only too well how dusty these can get. Give them a whole new shine using just a clean cloth and a little bit of mayonnaise. Dust the leaves first, wipe with the mayo and then buff to finish.

TO SHINE STAINLESS STEEL

Stainless steel is susceptible to smudges which can make your surfaces and appliances appear dirtier than they actually are. To remedy this, grab a clean cloth and a small dab of mayo and use them to buff and restore any stainless steel in your home.

TO BANISH SQUEAKY HINGES

If you are driven to distraction by a squeaky hinge in your home, then all you need is a small amount of mayonnaise and 10 seconds of your time. Simply slather the mayo onto the hinge using your finger and then open and shut it several times to get it worked into the hinge. Wipe away any excess mayo using a paper towel or clean cloth.

TO REMOVE CRAYONS FROM WALLS

Have your little darlings let their artistic side run wild? Crayon marks on the walls can be a nightmare to remove, but you will be pleased to hear that mayonnaise offers the perfect solution. Use your finger to apply a layer of the condiment to the crayon marks and leave to sit for 10-15 minutes. Then wipe away with a clean cloth.

TO ERASE WATER STAINS

Erase water stains and rings on wooden furniture using just mayonnaise. Cover the mark completely, leave for 48 hours and then wipe with a clean cloth.

NB: You can use either full-fat or light mayo to achieve the same results.



GRACIOUS LIVING

Bathrooms Tiles Fires Fireplaces
Plaster Mouldings

Showroom: 440-448 Larkshall Road, Chingford, London E4 9HH

Tel: 020 8523 3103 | Email: showroom@ncscountersales.co.uk

Web: www.graciousliving.co.uk

EMMA HAYES
AND HER...

BARCLAYS WOMEN'S SUPER LEAGUE
CHAMPIONS
2023-24



AS SHE DEPARTS FOR THE UNITED STATES WITH A FIFTH SUCCESSIVE WSL CROWN AS CHELSEA BOSS, A NATION OF FOOTBALL LOVERS SALUTES THE ENIGMATIC EMMA HAYES OBE

The spectacular rise of women's football in this country has made household names of the game's best players; yet the likes of Mary Earps MBE, Lauren James and Sam Kerr OAM are not the only stars on show, a fact proven by outgoing Chelsea manager Emma Hayes OBE.

The fiery, firm-talking Blues boss is arguably the most recognisable manager in the game – although England coach Sarina Wiegman OON CBE may disagree! – and someone whose tenure in West London has been nothing short of sensational.

In the Women's Super League's (WSL) most competitive era, Hayes has led Chelsea to 14 major trophies, including five successive Super League titles – the last wrapped up on the final day of the domestic season with a 6-0 demolition of Manchester United.

She now departs to take charge of the US women's team.

The fact that Hayes has chosen to venture to the burgeoning football across the pond shouldn't come as too much of a surprise. Her managerial career actually kicked off Stateside when she took charge of the Long Island Lady Riders in 2002, progressing on to Iona Gaels. A short stint at Arsenal Ladies followed before Hayes found her niche at Chicago Red Stars, where she worked as head coach and director of football operations.

Arguably, this insight, refined on both sides of the Atlantic, has informed the 47 year old's approach to football. She is a master tactician and one of the sport's most resilient characters, as well as a driving force behind mental and physical health in sport.

Her own evolution has run alongside that of

the game, and moving back Stateside in what is perhaps the biggest job in the game will add another layer to an already flourishing career.

"There are some opportunities in football that become just too great to refuse," says Hayes, "and I think this is one of them.

"The US women's team job is massive in every way, and I look forward to reconnecting to life over there, as it gave me some of my happiest memories.

"In my head, it was probably time to look for a new challenge anyway. We have done marvellous things at Chelsea, but I think both myself and the club need a new approach and direction, and I've no doubt we will both find it."

Ever controversial, Hayes has stoked the furnaces in the past with her comments on equal pay, player-to-player relationships, and the use of the tag "male

aggression" in describing a co-manager.

"When I've caused a stir, it's usually been in the heat of the moment," she says. "I am big enough to admit to my mistakes and to own them. I will make more in future, I'm sure!

"If I can supplement those slip-ups with winning trophies and continuing to push forward everything within this brilliant game, I'll take that!"

Hayes's first task is to restore the US women's team to their number one FIFA ranking. They currently sit fourth – their lowest-ever rating – behind world champions Spain, England and France.

"It's a big job, but I can't wait to get started," she says. "Hopefully, my experiences will go on to inspire not just the next generation of footballer, but coaches and managers as well. That really will be my greatest achievement."



WITH COGNATUM

THE CANOPY
 CHIGWELL

Luxury two bedroom
apartments for the over 55s

Move to a
new lifestyle
for free

Stamp duty, legal fees and
removal costs covered*

Apartments
for sale from
£499,950 and
to let from
£2,000pm

**PART
EXCHANGE
AVAILABLE**

*for full T&Cs visit our website



Book a private tour today
cognatum.co.uk/thecanopy
or call **07548 558802**

Helen, Sales Executive
at The Canopy:
helen.durbin@cognatum.co.uk

BUTLER & STAG

Call **01992 667666**

The Canopy, 242 Lambourne Road, Chigwell, Essex IG7 6FA

Unique Art Deco houses encapsulate bygone era

Discover the Oliver Hill Art Deco Houses and their demonstration of architectural excellence and innovative brilliance.

Sitting quaintly in the charming district of Tendring and designed in the 1930s by the renowned architect after whom they are named, the Oliver Hill Art Deco Houses are more than just structures – they are enduring symbols of a bygone era, encapsulating the spirit of Art Deco design.

Out of the original 12 located on the Frinton Park Estate, 10 still proudly exist today, each showcasing the elegance and forward-thinking design typical of the 1930s.

Crafted during a time when the popular style was at its zenith, they reflect an era characterised by optimism, progress and a flair for the dramatic. The clean lines, geometric shapes and occasional opulent detail of these houses speak of an era when design was both an artistic expression and a bold statement.

For visitors and architecture enthusiasts, the properties offer a unique glimpse into the past.

Walking through this neighbourhood is like stepping into a different era, where each house reveals its own story of design evolution and cultural history.

Safeguarding them has been a community effort, underscoring their significance not just as residential spaces but also as historical landmarks, and today they mean different things to different people.

For the residents, they are cherished homes, carefully maintained to preserve their original charm and character. For architecture students and historians, they serve as a real-life textbook of Art Deco design, offering insights into the techniques and trends of the time period.

More than that, though, they are now serving to inspire future generations of designers, calling many students, architects and planners to the area – not to mention the odd ambitious estate agent, with many of the properties estimated to be worth in excess of £1million each.



LOCAL FEATURE



Photo credit: Zoopla





LOCAL FEATURE

The iconic, evocative voice born in Billericay

Alison Moyet MBE has always been a remarkable figure in the music industry, possessing a distinctive voice that resonates through generations and captivating audiences with her soulful sound and profound lyrical depth.

Born in Billericay in June 1961, growing up in a vibrant community exposed Moyet to various musical influences. Adding those to her love of global icons Gladys Knight and Janis Joplin assisted in shaping her own unique style.

In the early 1980s, Moyet rose to prominence as one half of the synth-pop duo Yazoo, alongside former Depeche Mode and future Erasure musician, Vince Clarke.

Their hits *Only You* and *Don't Go* are timeless classics, showcasing Moyet's powerful vocals against the backdrop of Vince Clarke's innovative electronic soundscapes. Following Yazoo's disbandment, Moyet embarked on a successful solo career.

Moyet's debut solo album, *Alf* – named after her punk-era nickname – released in 1984,

was a commercial and critical success. Featuring hits like *All Cried Out* and *Invisible*, it cemented her status as a solo artist.

Her voice – characterised by a deep, rich timbre – set her apart in an era dominated by synth-pop and new wave. However, throughout her career, Moyet has shown a remarkable ability to evolve.

She's successfully navigated through various musical styles, from the synth-pop of Yazoo to blues, jazz and even theatre. Her adaptability and willingness to experiment with different genres demonstrate her versatility and commitment to artistic growth.

The 62 year old's journey is a testament to her enduring talent and versatility. From the streets of Billericay to the global stage, she has left an indelible mark on the music industry.

Moyet now lives in Brighton with her husband, David Ballard, with whom she has a daughter, Caitlin. She also has a daughter, Alex, with her former partner Kim McCarthy and a son, Joe, from her first marriage to Malcolm Lee.



Photo credit: BBC/Shiraine Forrest

Dolly's INTERIORS



- ✦ CURTAINS
- ✦ BLINDS
- ✦ SHUTTERS
- ✦ RE-UPHOLSTERY
- ✦ WALL COVERINGS
- ✦ SOFT FURNISHINGS
- ✦ INTERIOR DESIGN

With 35+ years of industry expertise, we specialize in offering tailored solutions for curtains, blinds, and all other soft furnishings. Our in-house team guarantee excellent quality and personalised service attuned to each client's unique taste and specified budgets.

At Dolly's we are dedicated to bringing your vision to life, with the highest quality design standards. Scan the Qr code to explore our website and social media for inspiration and testimonials, featuring our award-winning services.

10% DISCOUNT

FOR JUNE & JULY QUOTE V2024

Scan for
Dolly's
website



📍 Visit us in store at:

Crate 14, Crate Business Park, Oakwood Hill, Loughton IG10 3FU
For all enquires call 0208 523 9600 or email sales@dollysinteriors.co.uk



YOUR LOCAL EVENTS

WHAT'S ON

THE ALDERTON INFANT SCHOOL STAY & PLAY 2024

Alderton Infant School, Alderton Hall Lane, Loughton, IG10 3HE
Monday, June 17 and Tuesday, June 18, various times



Photo credit: The Alderton Infant School

Parents and children are invited to meet some of the Early Years staff at Alderton School and see the school's building and grounds.

Please book only one ticket per family. Select your preferred date and time at www.shorturl.at/uso8P and book under your child's name.

QUIZ NIGHT

Bancroft Rugby Club,
Buckhurst Way, Buckhurst Hill, IG9 6JD
Friday, June 21, doors open at 6.30pm for a 7.30pm start

Come on down to the clubhouse for a free drink and entry to the quiz for just £5. Teams must be made up of only six people, with an added prize for the best team name.

To find out more, visit www.bit.ly/3wDOyDM

ANCIENT WOODLANDS & LOUGHTON CAMP FOREST GUIDED WALK

Meet at The Stubbles Car Park, Nursery Road, Loughton, IG10 4DZ
Sunday, June 23, 10.30am – 1pm

Join local historian Georgina Green for a walk through the ancient woodland of Epping Forest, and visit one of its two Iron Age earthworks at Loughton Camp. Tickets are free but donations are welcome.

To reserve a space, visit www.shorturl.at/dVajS

CHARITY BARN DANCE

The Loughton Club, 8 Station Road, Loughton, IG10 4NX
Saturday, June 29, 7.30pm

Harlow-based charity CanalAbility is holding a barn dance at Loughton Club to raise funds for a new accessible community boat. Guests can bring their own nibbles and there will be a bar at the club.

All ages are welcome and tickets cost £12.50 plus £1 booking fee from www.shorturl.at/18O2L

FOREST BATHING+ AN INTRODUCTION

Meet at The Hive, Church Road, Loughton, IG10 4AJ
Saturday, July 13, 2pm – 4pm

Join Gary Evans and Olga Terebenina, co-founders of The Forest Bathing Institute, for a two-hour slow mindfulness walk in Epping Forest. Participants will be guided through a series of sensory exercises designed to develop a deeper connection with nature, based on the Japanese art of Shinrin-Yoku, or forest bathing.

This event is for adults aged 18 and over. Tickets cost £25 from www.shorturl.at/AGoIR

WHEELIE SKATE ACADEMY

Roding Valley High School, Alderton Hill, Loughton, IG10 3JA
Monday, July 15, 5pm

Join Wheelie Skate Academy for a skate lesson aimed at beginner-level enthusiasts aged 12 and under. Experienced instructors will guide your child through various skate and balance techniques. Participants will also have the chance to meet fellow skaters and share the thrill of skating in a supportive environment.

Tickets cost £14 from www.shorturl.at/UgnGm



Photo credit: Wheelie Roller Disco UK

The Rotary Club of Loughton Buckhurst Hill & Chigwell and The Rotary Club of Roding

Free Memory Café

SUPPORTED BY

Join us 10am to 12pm every First Friday of the Month at the Loughton Club, 8 Station Rd. Loughton IG10 4NX

Enjoy refreshments, entertainment, memorabilia, informal chats, singing, bingo etc.

Please contact: Chris or Fran
FRAN - 07903 274398
CHRIS - 07510 297173

APPLIANCE PROBLEM? WE'LL FIX IT!

Any make Any model

LOCAL ENGINEERS IN YOUR AREA!

If we can't fix it, we can supply and install new appliances same day

View our sales page for list of machines ready to install today!

ALL MAKES
ALL MODELS
REPAIRS
SALES

CALL OR BOOK ONLINE

01279 310793

www.spindotoruk.co.uk

SAME DAY CALL OUT AVAILABLE

MEMBER OF Checka trade.com

PUT THE SPARKLE BACK INTO YOUR KITCHEN

OVEN BRIGHT

Domestic Oven Cleaning Specialists

Est. since 2007

Prices

Single oven incl. shelves & grill pan.....	£48.00
Double oven incl. shelves & grill pan.....	£59.00
Range incl. shelves & grill pan.....	From £68.00
AGAs.....	From £100.00
Hobs.....	From £17.00
Extractors.....	From £18.00
Microwaves.....	From £20.00

No VAT to pay

PLEASE CALL FOR A FREE QUOTATION

01279 432444 * www.ovenbright.co.uk

BEFORE

AFTER



**DO YOU WANT TO SAVE ENERGY?
DO YOU WANT TO RETAIN HEAT?
DO YOU WANT TO SAVE MONEY?
DO YOU WANT TO PROLONG THE
LIFE OF YOUR EXTERIOR PROPERTY?**



As Properla Approved Installers we offer a range of exterior super hydrophobic waterproof and 100% breathable coatings for your roof or walls, designed to reduce energy costs and protect the exterior of your property and save you money.

CLEANING & COATING SERVICES

**PROPERLA & RENOTEC WALL & ROOF COATINGS
APPROVED INSTALLERS**

**ENERGY SAVING TRUST APPROVED PRODUCTS IN THE RANGE
ALL PRODUCTS COME WITH A 10-20 YEAR
MANUFACTURERS GUARANTEE**

- Roof & Wall Coating
- Driveway Cleaning & Coating
- Wood impregnator
- Damp & Mould Prevention
- Insulation Removals
- Solar Panel Cleaning

Call us: 07810 562 506 or visit: www.ecocoats.co.uk



**CLEAR INSPIRATION –
ENDLESS POSSIBILITIES**



0208 088 0920 info@infiniteglass.co.uk



**BUILDING TRUST
WITH QUALITY
WORK**



Cloudy2Clear, A Local Service, Saving You Money.

As a leading domestic glass replacement company for more than 16 years, Cloudy2Clear windows are the leading name in the industry. There is no need for you to risk your windows by using the dreaded double glazing cowboy down the street. You can join over 336,000 happy customers and replace your glass ethically and affordably. If you have a failed glass unit, it may not provide you with the protection you need or be as energy-efficient as it once was. Take a minute to check your home to see if any double glazing has failed? Taking action now can prevent future financial problems.

values have been held dear for a number of years. Since starting the business some years ago Cloudy2Clear have remained true to their core values of supporting the local community by providing a service that saves the public money.

The Cloudy2Clear service only requires the glass to be replaced and not the whole window once the unit has failed. Chris commented "Cloudy2Clear were able to assist our community through the last financial crisis in 2008 due to the savings that can be made in using our service. Unfortunately we might be going through something similar again soon and the public can rest assured that we will be there to help once again".

“
Ask me about our fantastic Energy Saving Glass.
”



When talking to the Manager of Cloudy2Clear windows Chris Miller it became clear that these

For a free quotation please call 0800 61 21 118 or visit www.cloudy2clear.co.uk.

Have Your Windows Steamed Up?

Replace the pane, not the frame!

All glazing backed by our

**25
YEAR
GUARANTEE**

“I really liked the fact that they were a local community run business”

Janet Beard



We are a Checkatrade Member



Get a FREE Quote

Social distancing in operation

Faulty locks, handles or hinges?



Priority freephone
0800 61 21 118

www.cloudy2clear.co.uk

Love Your Home - Protect Your Windows - Save Money



AERIALBASE.COM

TV • AERIAL • SATELLITE
INSTALL • SERVICE • REPAIR

AERIALS
FULL FITTED
from £59.97

AERIALS
SET UP/REPAIR/TUNING
ONLY £29.97

digital freesat Freeview HD
sky youview TalkTalk

FREE CALLOUTS
SAME DAY SERVICE (where possible)

0203 0219 344 / 01375 460964

FREEPHONE 0800 193 0017

BOOK ONLINE @AERIALBASE.COM

Illusions
DANCE ACADEMY

ENJOY A
FREE TRIAL
LESSON!



MELODY BEAR DANCE CLASSES

OUR CLASSES ARE A FUN INTRODUCTION INTO THE WORLD OF DANCE FOR CHILDREN AGED 2+

CLASSES PROMOTE PHYSICAL FITNESS, AGILITY & EARLY LEARNING

- ★ CLASSES FOR AGE 2+
- ★ BALLET, TAP & GROOVY MOVES
- ★ PROFESSIONAL & QUALIFIED TEACHERS!
- ★ EXCITING SHOWS & WORKSHOPS OFFERED!

CLASSES IN EPPING AND LOUGHTON



07784449231 OR
07849946193

WWW.ILLUSIONSACADEMY.COM

illusionsdanceacademy2010 illusionsdance2010



SCAN ME



KIDS



SUN SAFETY

tips for babies

Whether you are planning to stay in the UK this summer or you are travelling to another country, if you have a baby, you need to make sure you are keeping them safe in the sun.

Keeping your baby protected from the sun

Babies under six months old should be kept out of direct sunlight as their skin does not contain enough melanin to protect them from the sun. Sunscreen is not recommended for babies under six months. Older babies should be kept out of the sun as much as possible, particularly in the summer and between 11am and 3pm when the sun is at its strongest.

Dressing your baby in the sun

Choose fabrics that are made from natural materials such as organic cotton and bamboo as these will feel cool and allow your baby's skin to breathe. Always make sure your baby wears a sun hat with a wide brim or a long flap at the back to protect their head and neck from the sun.

Avoiding dehydration

Babies need to have access to plenty of fluids when they are exposed to hot temperatures, in the same way that adults do. Breastfed babies do not need any water until they have started to consume solids, but they may want to breastfeed more than normal during hot weather. Formula-fed or combi-fed babies under six months can have a little cooled boiled water as well as their usual milk. Once you have started to introduce solids, your baby can have sips of water with their meals.

Keeping your baby cool

There are many ways to keep your baby cool when the sun is shining, such as running them a cool bath before bedtime, keeping their bedroom cool in the day by closing the blinds or curtains, and using a fan to allow air to circulate. In the daytime, babies can play in a paddling pool as long as they are supervised at all times and kept in the shade.

NEED A TENT FOR YOUR EVENT?



Why not take advantage of our event planning service and let us help you plan it all?

We have a tent for every event!!

We can help bring your ideas to life with our event planning services.

UNDER THE CANVAS



FOR HIRE OR PURCHASE

0208 088 2976 • www.underthecanvas.co.uk

underthecanvas.uk under.the.canvas




SCAN ME


THE **B7** MEDIA GROUP

PRINTING • BUSINESS CARDS • LEAFLETS
DISTRIBUTION • SIGNAGE • MENUS & BROCHURES
EXHIBITION BOARDS & BANNERS
RETAIL PACKAGING • WINDOW VINYLs
LOGO DESIGN • BRAND ALIGNMENT
VEHICLE WRAPPING • CARBON PADS • WORKWEAR
WEBSITES • SOCIAL MEDIA • I.T. SOLUTIONS

 ENQUIRIES@B7MEDIAGROUP.COM

 0208 088 0386

 ENQUIRIES@B7MEDIAGROUP.COM

 0208 088 0386





TECHNOLOGY

DECAY DELAY



THE TECHNOLOGY THAT'S TRANSFORMING OUR DENTAL PRACTICES

A trip to the dentist is rarely pleasurable. Often inconvenient, almost always expensive, and if it goes really badly, painful too!

While there is no one better to oversee oral hygiene than your dentist, technology these days is at least allowing you to perform some basic check-ups and maintenance from the comfort of your own home.

From basic apps such as **Brush DJ**, **Mimizaur: Tooth Brushing Timer** and **Teeth4Life**, simply advise you on the length of time you should be brushing your teeth for – these are particularly good for kids, of course. However, there are also almost encyclopaedic bits of tech that guide you through everything from development of a tooth to processes of decay.

Perhaps more useful are apps that serve to connect you with oral hygiene professionals. **MySmile** and **My Dentist** are two such bits of tech. The latter of these can even facilitate you speaking one-to-one to a specialist in the event of pain or discomfort, so that you can get an initial diagnosis and process for calming the tooth down if you're unable to visit your regular dentist straight away.

Naturally, many of us are focused on the preservation or promotion of a good smile, with a number of apps enabling you to upload your face and virtually try out different teeth whitening strengths to see how it might look.

Finally, some apps help you to build your own toothcare profile. **Tooth Fairy** is the UK's first app to be health regulated, with the aim of enabling patients to spend more time getting treatment and less time travelling or waiting to be seen.

Of course, an app is only ever as reliable as the technology behind it and the person operating it, and there is never any substitute for professional guidance when it comes to protecting your teeth and gums.

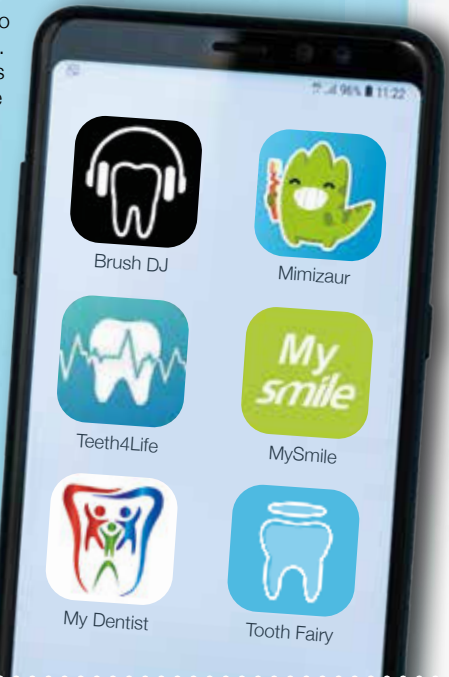


Photo credit: Alastair Ken Shuttlestock.com



BEBOILERSAFE
GAS | HEATING | PLUMBING

WE UNDERTAKE ALL BOILER WORK

SERVICE | REPAIR | INSTALL
UNVENTED INSTALLATION
LANDLORD CERTIFICATION



EPPING & SURROUNDING AREAS

CALL US ON 07581 003 935 TO LEARN MORE

✉ enquiries@beboilersafeuk.co.uk
🌐 www.beboilersafeuk.co.uk






12 MONTHS INTEREST FREE

WARDROBES ■ BUILT IN WARDROBES ■ FITTED KITCHENS ■ SLIDING WARDROBES

LUXURY BESPOKE WARDROBES & KITCHENS

Made to order in the UK ■ 10 Year Product Guarantee

Soft Close Doors As Standard ■ We fit wardrobes in less than 2-3 weeks

CONTACT US
01708 756789 ■ 0208 088 0876
www.bestfittedwardrobe.co.uk
info@bestfittedwardrobe.co.uk



BEST FITTED WARDROBE

Best Fitted Wardrobe Ltd Unit A3, Seedbed Centre, Davidson Way, RM7 0AZ






Need some help in the home? Now in West Essex

Our team of home helpers can assist you
with cleaning, shopping, laundry,
bed change and much more...

All our Home Helpers have passed a thorough
screening and training program including:

- Enhanced Criminal Record Check (DBS Check)
- Provided three excellent references
- Training in Safeguarding & First Aid Awareness

This is a paid for service with a minimum visit of
1.5 hours per week or 2 hours every fortnight.

For more information call:
01462 420911

Age UK Hertfordshire, a name you can trust.

Cleaning for 1000's of clients across Hertfordshire, now in West Essex.

ARTIFICIAL LAWNS & LANDSCAPING

DRIVEWAYS

CLASSY GRASS

PATIOS



MOVE FROM THE PAST

INTO THE FUTURE OF GRASS

THE BENEFITS OF ARTIFICIAL GRASS

- ◆ No Mowing ◆ No Watering ◆ No Feeding ◆ Child Friendly
- ◆ Pet Friendly ◆ Virtually Weed Free ◆ No Muddy Patches
- ◆ Looks Good All Year Round
- ◆ We will help you decide what's best for you and your budget
- ◆ We guarantee our work and materials
- ◆ We are fully insured and covered for liability

GET THE
GARDEN
READY FOR
SUMMER



DROP US A LINE OR GIVE US A RING,
WE'D LOVE TO HEAR FROM YOU

0208 088 4286 | 07968 060627

www.classygrass.co.uk | info@classygrass.co.uk

6 Cedar Park, High Road, Chigwell, IG7 5AL



HIDDEN HAZARDS IN HOSEPIPES

The arrival of the summer sunshine means playing in paddling pools, topping up ponds and watering the plants. But did you know that your humble hosepipe is hiding a whole host of health hazards just waiting to strike?

1 SCALDING WATER: When a garden hose is left in direct sunlight, the water inside it can heat up. In fact, the water can easily reach temperatures that are hot enough to cause burns and scalding injuries.

2 CONTAMINATION WITH CHEMICALS: Hosepipes can release harmful chemicals such as lead, phthalates and BPA into the water, and this is especially true when they are heated up by the sun. These chemicals can pose health risks when ingested or absorbed through the skin.

3 ALGAE AND BACTERIA GROWTH: Warm and stagnant water in your hosepipe can create an environment for algae and bacteria to grow, and this can lead to unpleasant odours. It may also cause health issues if the contaminated water comes into contact with your skin, and severe complications if ingested.

4 LEGIONNAIRES' DISEASE: One of the most dangerous types of bacteria that your hosepipe can breed is Legionella, which thrives in warm, stagnant water. While Legionnaires' disease is rare, it can cause serious illness or even death to the elderly and those with an underlying illness.

How to keep your hosepipe safe:

- > Keep it somewhere cool and make sure it's out of the sun.
- > Drain all of the water out before use by running it over a tall place such as a garden fence where gravity forces the water to exit the hose.
- > Fit an approved double-check valve to prevent any water or contaminants from flowing back into your main drinking supply.
- > Always turn the hosepipe off at the tap and, ideally, fully disconnect it when not in use.
- > Fit a self-closing flow control, such as a trigger spray gun, to prevent it from being used when unattended.
- > Use a watering can when possible to reduce your overall water usage.



FROM LOCKOUTS TO LOCK CHANGES

Lockey Locks are a five-star rated, fully qualified and insured emergency locksmith service, covering Loughton and the surrounding areas.

- Locked Out? ● Lost Keys?
- New Locks Fitted ● Insurance Upgrades
- UPVC Specialists ● Safe Engineers



CALL FOR YOUR FREE QUOTE

☎ 020 0208 088 3126 ● 07532 053 986

✉ info@lockeylocks.co.uk

🌐 www.lockeylocks.co.uk



24 HR ASSISTANCE



LEARN HOW TO BE A LOCKSMITH WITH LOCKEY LOCKS

LEARN ALL THE NECESSARY SKILLS TO START YOUR OWN LOCKSMITH BUSINESS IN JUST 3 DAYS



GARDENING



PRUNING climbing PLANTS

In part 2 of our feature on how to prune climbing plants, we look at how to prune sausage vines, wisteria, clematis and climbing roses.

HOW TO PRUNE CLIMBING ROSES:

- > In the first year after flowering, prune away any stems that are growing away from the structure.
- > In the second year and beyond, repeat this step and, if your roses are getting too vigorous, cut away some of the weaker growth.
- > Cut out any dead, damaged or diseased parts of the plant each time you prune.

HOW TO PRUNE WISTERIA:

- Wisteria can be left unpruned if you have enough space for it to do its own thing. However, for the best blooms, you should prune it twice a year, in late summer and again in winter.
- > In summer, control the size of your plant by pruning any green shoots that have grown during the current year to a length with five or six leaves.
- > In January or February, when the plant is dormant, cut back the same stems to two or three buds from the main stem.

HOW TO PRUNE SAUSAGE VINES:

- During the spring and summer, sausage vines have the potential to put on metres of new growth, which means that you may want to prune them to keep them under control. However, no regular pruning is needed.
- > Wait for any blooming to finish and then remove as much from the longer shoots as necessary.
- > Remove any dead, damaged or diseased leaves.

HOW TO PRUNE CLEMATIS:

- Clematis plants fit into one of three pruning groups and it is vital that you identify which group your one is in so that you can prune it effectively.
- > Group 1 clematis, such as Montana and Alpina varieties, require no pruning at all.
- > Group 2 clematis, such as Niobe, Piliu and Nelly Moser (large flowering varieties), should be pruned lightly in February.
- > Group 3 clematis, including smaller flowered Viticella varieties, need to be thoroughly pruned in spring.



COOL CORALS

Are you a first-time reefer? Corals are easy to care for, inexpensive, colourful, and grow fast. What more could you want for your reef aquarium?

WHAT IS A REEF AQUARIUM?

A reef aquarium is a type of marine aquarium that displays live corals and particular species of fish to mimic the natural environment of a real coral reef.

WHAT ARE THE BEST CORALS FOR A REEF AQUARIUM?

Zoanthids: Zoanthids grow fast and tolerate a wide range of light and water qualities. Available in many different colours, these appear in tight clusters of individual polyps that are all connected together. Best suited to putting on islands (these can be made from aquascaping rocks) that are down in the sand where they can be controlled.

Sinularia Leather: A soft coral that resembles a tree, Sinularia is most commonly found in green but it is also available in pink, purple, yellow and brown. Adding movement to your aquarium, this coral grows fast so you will need to prune regularly.

Weeping Willow Toadstool: Another soft coral, the Weeping Willow is both hardy and tolerant, with fast-growing rates. Adept at soaking up unwanted nutrients in new tanks that develop from overfeeding or poor filtration and maintenance, this coral is perfect for beginners.

Xenia: If you are looking for a coral that demands to be seen, then Xenia is exactly what you need. Not only does this soft coral move from side to side, but it also has the unique ability to open and close its tentacles. Xenia is very prolific, so is best grown close to islands where it can be controlled.

Bubble Corals: As the name suggests, Bubble Corals look just like bubbles or little balloons. Great for adding a bit of fun to your aquarium, these grow reasonably fast and are easily controlled. They are available in yellow, white, light pink and neon green.

Mushrooms: Arguably the easiest and most affordable coral, mushrooms come in a huge variety of colours. The only downside is that they can grow too much and take over your tank if left to their own devices.



**FULLY FITTED
PRICES FROM
£995**

UNBEATABLE VALUE ELECTRIC GARAGE DOORS

- ✓ FREE installation
- ✓ FREE 5 year warranty
- ✓ Manufactured in the UK
- ✓ Fitted by a local Garolla engineer
- ✓ The UK's No.1 recommended

GAROLLA
ELECTRIC GARAGE DOORS

★ Trustpilot
★★★★★
4.7 out of 5

BOOK A FREE SURVEY TODAY
01992 830 024
GAROLLA.CO.UK

EPR SERVICES LTD
COMMITTED TO CARE

Website: www.eprservices.co.uk
Email: info@eprbusiness.co.uk

COMPASSIONATE CARE RIGHT AT YOUR DOORSTEP

Health care practitioners who are dedicated to provide assistance with daily living activities in the comfort of an individual's home.

Our Services:

- ✓ Home Support
- ✓ Domiciliary Care
- ✓ Live-In Care
- ✓ Complex Care
- ✓ Dementia Care
- ✓ Supported Living

Call us on 0208 088 0934
or 07359 201197 | 07914 839319

Working from home comes with a whole host of benefits, such as a better work/life balance and no commute, but that doesn't mean it's without its challenges. If you struggle to maintain productivity levels throughout the day, these products are just what you need.

1 AN ERGONOMIC MOUSE

A standard mouse can cause discomfort to the hand, wrist and forearm over time, whereas an ergonomic mouse is designed to keep them in a more natural position. It also requires less grip and force, which can help to prevent strains and other injuries.

2 AN ADJUSTABLE DESK

If you do not have a good workstation setup, you are at risk of injuries such as carpal tunnel syndrome, mouse shoulder and repetitive strain injury, all of which can harm productivity. An adjustable desk allows you to alternate between sitting and standing to encourage movement and reduce strain.

3 A WELLBEING PLATFORM/APP

Working from home can be stressful, especially when family life starts to overlap with your office hours. To ensure you can work productively without damaging your health, consider downloading a wellness app such as Unmind, Headspace or Happify which can help you de-stress, sleep better and improve your mental wellbeing.

4 A DESK PLANT OR TWO

Indoor plants have been scientifically proven to improve concentration and reduce stress in the workplace. They have also been shown to boost productivity and creativity. Choose low-maintenance plants such as the snake plant, peace lily and aloe vera.

5 A WI-FI RANGE EXTENDER

As a remote worker, you will know only too well how important a good Wi-Fi connection is, and that there's nothing worse than poor signal when you have a deadline looming. A Wi-Fi range extender connects to your Wi-Fi router and works to strengthen its signal to areas it cannot reach on its own.

GET PRODUCTIVE!



Sovereign
Guards UK



From home to business security, here at Sovereign we offer a variety of Security Services from CCTV and Intruder Alarms

CONTACT US FOR MORE DETAILS:

Call: 0208 088 3147

Email: info@sovereignguards.co.uk

www.sovereignguards.co.uk



Select from a package that suits your needs: budget, location and what level of protection you are after

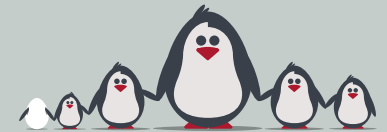
Specialising in fogging systems for high risk asset protection

With remote connectivity this allows you to monitor your home from your phone.

PROVIDING YOU WITH 24 HOUR SECURITY

Specialist family lawyers.

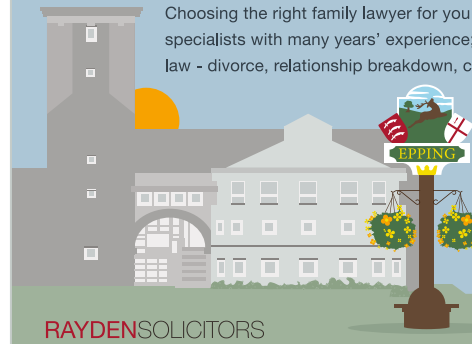
RAYDENSOLICITORS



There might be challenging times in your life when a family law solicitor can help:

- Have you decided your marriage or relationship is over, are you unsure about your family's future?
- Do you need to protect your children, or understand the options to resolve arrangements for your children?
- Do you need a pre nuptial or post nuptial agreement to protect assets?
- Are you moving in with your partner and need a cohabitation agreement?

Choosing the right family lawyer for you and your circumstances is crucial. Rayden Solicitors are family law specialists with many years' experience; we will give tailored and practical solutions in all areas of family law - divorce, relationship breakdown, child arrangements and financial settlements.



Bespoke advice from Rayden Solicitors Epping
Contact us, enquiries@raydensolicitors.co.uk
Epping Office
The Civic Centre, 323 High Street, Epping, Essex,
CM16 4BZ. Tel: 0203 7733919.

RAYDENSOLICITORS
www.raydensolicitors.co.uk

We are available on

CITYBEDS
NO-ONE DOES BEDS BETTER!

Est. 43 Years



**Don't Be An Internet Idiot,
Try Before You Buy**

4'6 Ottoman
Set with 1000
Pocket Matt

**WAS
£959
now**

*** £759**



STACKS of MATTS
£89 to £1,999



*In 35 Colours

Huge Stocks
= Fast Delivery

WE ONLY SELL 100%



**BRITISH MADE
MATTS + BASES**

0208 501 2426 OPEN 7 DAYS

20-22 FOWLER ROAD, opp HAINAULT FOREST PARK, IG6 3UT

IS YOUR CAR TRULY SAFE?

CAR & VAN SECURITY SPECIALISTS



SMART CAR PROTECTION WITH GHOST IMMOBILISER

Greater London
& surrounding
M25 areas

7 days a week
8am to 10pm

0208 088 3140

• carkeysolutions.co.uk • 0208 088 3140
• contact@carkeysolutions.co.uk



FROM ONLY
£450

**UK'S MOST TRUSTED AND REVIEWED AUTO
LOCKSMITH WITH EMERGENCY RESPONSE**



**DON'T
STALL ON FINANCE**



MOTORING

While car finance may seem an exhausting ride, for younger four-wheeled wannabes, it can light up the road to the fulfilment of driving dreams.

The word finance can sometimes bring about a wealth of negative connotations, yet as far as young drivers are concerned, it's a gateway to fast-lane freedom, and finally a way to steer clear of trains, bikes, buses and the repeated blagging of lifts.

While the advantages of buying a car on finance can be enjoyed by anyone, it's particularly helpful for younger drivers.

Finance, as a whole, removes the burden of coughing up the full price for a vehicle in one, with monthly payments to be made over an agreed period.

There are three main routes. Hire purchase offers flexible terms that can facilitate payments over longer

periods, and leads to the ownership of the vehicle at the end of what can be a long road. This is good for someone with an undeveloped or poor credit score (such as a young driver), and imposes no annual mileage limits.

However, the finance company retains ownership until full and final payment, and monthly payments can be higher than other finance options since they cover the car's full value rather than its depreciation.

In addition, failure to keep up with payments risks repossession of the vehicle.

Slightly different is personal contract purchase (PCP). This is formed of a deposit, lower monthly repayments – albeit with mileage terms and fees for excessive damage, wear and tear – and a balloon payment at the end to either purchase the vehicle outright and hand back the keys, or part exchange for a new car.

Personal Contract Hire (PCH) financing eliminates depreciation concerns, includes delivery, breakdown cover, road tax and warranty, and offers lower monthly payments than PCP, allowing frequent car changes. However, you will always hand the car back at the end.

The good news is even drivers with a provisional licence can qualify, meaning the dream of owning a car can soon become a reality.





George Mallory...

‘BECAUSE IT’S THERE’

One hundred years ago this month, on June 8 1924, the 37-year-old mountaineer George Mallory disappeared on Mount Everest. He was presumed dead, leaving a widow and three young children. But his body wasn't discovered till decades later.

Mallory was born in June 1886 in Mobberley in Cheshire. He started climbing while still at school and proved himself a natural.

SCHOLAR, TEACHER AND CLIMBER

When he graduated from Cambridge, he became a teacher, though he also served in France during the First World War. But his heart remained in the mountains. In 1921, he was selected for the first major British expedition to Everest.

Sadly, the 1921 expedition failed because of strong winds. Another try was made in 1922, with three more attempts to reach the top. However, they didn't make it, and tragically, seven Sherpa porters lost their lives.

FAMOUS WORDS

Before the third expedition in 1924, a reporter from

The New York Times asked Mallory why people wanted to climb Mount Everest. In response, Mallory offered the simple yet profound reply: "Because it's there."

THE THIRD AND FINAL EXPEDITION

Mallory and his less-experienced companion, 22-year-old Andrew Irvine, set out for the summit from their last camp on the morning of June 8. It was the expedition's third attempt to reach the summit. They were last spotted about 800 vertical feet (some 240m) below the summit but never returned to camp. Britain was shocked by the news.

THE GRIM DISCOVERY

An expedition dedicated to solving the mountaineers' disappearance was launched in 1999. Mallory's well-preserved body was found – he was identified by his clothing and personal items. Evidence suggests he died from a fall during his descent in darkness. Despite extensive searches, Irvine's body has never been found. And to this day, no one is sure whether either man reached the summit before his death.



WOOLSTON MANOR

GOLF CLUB

Celebrate at
Woolston Manor Clubhouse
**The Special Venue for all your
 Weddings & Parties**

You can celebrate in style in one of our stunning event spaces. The Clubhouse, set in 200 acres of beautiful grounds and lakes, boast a sweeping driveway, high ceilings and elegance.

Enjoy the benefits of
Woolston Manor Golf Club
**With our Individual, Joint &
 Corporate Membership options**

Woolston Manor Golf Club membership provides you with access to the superb championship golf course, modern clubhouse, fixtures, competitions, social calendar and top class catering.



Woolston Manor Golf Club, Abridge Road, Chigwell, IG7 6BX

☎ 0208 500 2549 📧 info@woolstonmanor.co.uk 🌐 woolstonmanor.co.uk



EXPERIENCE GOLFING EXCELLENCE
ALL YEAR ROUND



LADIES MEMBERSHIP

7 DAY FULL - £ 1,200

5 DAY FULL - £ 900

01708 688396

WWW.ABRIDGEGOLF.COM



SUPERB COURSE - LOVELY PEOPLE - A PROPER GOLF CLUB



UNUSUAL SPORT:

WELLY WANGING

On Sunday, June 30, there will be another Welly Wanging World Championship in the small village of Upperthong, West Yorkshire. Welly wanging is a sport where people chuck a rubber welly as far as they can. The champ is the one who lobs it the farthest.

Legend has it that, a long time ago, two farmers were enjoying a drink and a chat when one accidentally spilt his beer down the other's leg and into his boot. In a fit of rage, the beer-soaked farmer chased the other one outside, took off his boot and flung it at his drinking buddy.

categories: men, women, boys and girls.

Players must maintain a cheerful attitude at all times, and the welly has to be a size 9 Dunlop green boot.

Adult winners get a trophy, and the top children get a crisp £5 note that they can spend on whatever they fancy.

You can throw your welly in a choice of styles: one-handed, double-handed, between the legs or, if you're feeling super confident, backwards.

WHO'S THE BEST WELLY WANGER?

The current world record holder for men is Teppo Luoma from Finland, with a throw of almost 64 metres. Sari Tirkkon, also from Finland, holds the women's record with a throw of more than 40 metres.

So there you have it – welly wanging in all its glory. Ready to give it a go? If so, keep a look out for local events. Or why not arrange your own championship to raise money for charity?

YORKSHIRE'S GIFT TO THE WORLD

The villagers thought the spectacle was hilarious and started throwing boots at each other for fun. And that's how welly wanging was born. The 'sport' has now caught on worldwide, with competitions in New Zealand, Russia, Finland, Italy and beyond.

RULES OF THE GAME

This year's world championship will have four

ACCOUNTANT & TAX ADVISORS

ALL THINGS ACCOUNTING

Accounting & tax services, we help with self-assessment tax return, corporation tax return, payroll, VAT return, CIS return & bookkeeping. Call 07539 035537 for free initial consultation

MAKNAS ACCOUNTANTS

ACCA registered experts offering comprehensive services – VAT, Payroll, Bookkeeping, Management Accounts. Contact us at 07828 662697 for tailored solutions for your business

ANXIETY AND SLEEP DISORDERS

HYPNOTHERAPYDEBONO.COM

Promoting good mental health and well-being, Helping make the change you want in your life for that inner peace. 07504 919721

BEAUTY & NAILS

BEAUTY BY NATASHA KATIE

A local, mobile LVL Technician. Fully qualified level 2 and 3 beauty therapist Babcac insured and approved. 07961 462672

SPECIAL NAILS

Dedicated to provide the best quality nail care for Men & Women. Walk-ins welcome, appointment bookings & gift vouchers available. 01708 442248

THE NAIL STUDIO

Nail Studio lets you switch off and pamper with highly skilled technicians providing top treatments and nail products to meet your every need. 07572 526519

WICKED WAXING LTD

Male and Female specialist waxing using hot and strip wax. 20 years' experience. Based in Epping with free parking. epping@wickedwaxing.com. 07368 684377

BESPOKE TAILORING

ROSS CARRINGTON BESPOKE TAILORING

Bespoke suits, shirts, jackets, wedding attire, evening wear. Alterations undertaken and visiting service available. 07824 153880 | 020 7898 0599

BOILER & PLUMBING SERVICES

SIMPLY PLUMBING

All work guaranteed. Local plumber. Leaking taps-toilets-overflows-radiators-showers-blockages-boilers repaired & installed. Call this number today 07711 840722

BUILDING

ADDSPACE LONDON LTD

We provide a high quality Building service. Extensions, lofts and internal renovations. Members of Federation Master Builders. Call 020 8088 2870

BUILDING & CLAIMS

CONCEPT BUILDING SOLUTIONS

We are builders specialising in water & fire-damaged properties. We put your home back to how it should be. 020 8088 3418

CAR & VAN HIRE

SCENIC SELF DRIVE

Your self drive hire specialists. Whether you require modern cars, motorhomes, vans or minibuses. Rest assured we will provide you a professional service. 01708 753461

CARPET & UPHOLSTERY

ARWIN CLEANING SERVICES

Over 30 yrs of exp, we can offer a professional, efficient and cost-effective solution for carpet and upholstery, cleaning and maintenance. 07973 417764

CHESS CLUB

VICKI'S CHESS CLUB

Vicki's chess coaching - teaches and provides games of chess to children and adults in Ilford and Debden. Phone Vicki: 07849 435451 | Website: Vickischessclub.uk

CLEANING SERVICES

SPOTCLEAN LTD

Commercial & domestic services specialising in office, shop, new build, refurbished and residential cleaning. 07940 213394

COMPUTER REPAIR & I.T.

MAPTEC IT

Your local residential & commercial IT specialists. We can fix your computers, configure email accounts & printers. Setup your Wi-Fi, Internet router & network. 020 3865 7174

DRAINAGE

UNITED DRAINS

A fast and professional plumbing/drainage service you can rely on, providing a 24/7 service. All planned, emergency and reactive works undertaken. Call 020 3637 6688

EDUCATION

TUTOR DOCTOR

All primary secondary subjects, 1:1 lessons, online or F2F in-home. Tutor matched to every child's personality, weekly reports. Call 020 3856 4466 | www.tutordoctor.co.uk/wlcc

JOIN THE LISTINGS... for just **£180** +VAT per yr

GARDEN SERVICES

JOHN HEARNE

We take care of it all Lawn Mowing, Weeding, Planting, General Tidying, Fence/Shed Painting, Driveway/Patio Pressure Washing and more. Call for details 07908 523101

HANDYMAN SERVICES

CMB PROPERTY GROUP

Handyman, Maintenance & Refurbishments. Decorating, Plastering, Tiling, Re-siliconing etc. Small enough to care, big enough to make a difference! Call 07972 203096

HEALTH & WELLBEING

IMPROVE YOUR SMILE DENTAL PRACTICE

Est. in 1986. Encompassing all needs from basic oral health to advanced dental procedures and high-end cosmetic treatments. New patients welcome. 020 8504 2704

ALI ALOE

Health & wellness company requires help! Flexible hours, work from home, suits busy people, full/part-time. Text or call Alison 07932 717496

HOME CARE

RADFIELD HOME CARE

Award winning, personalised home care. Meal prep, personal care, medication assistance, companionship, dementia care. 0208 154 1753 | chingford@radfieldhomecare.co.uk

LOCKSMITHS

KEYTEK LOCKSMITHS

From Lock outs to security upgrades, our fully trained DBS checked Locksmiths are the experts | Call 020 3897 2686 | Quote: 15079

PAINTING & DECORATING

PGA DECORATING SPECIALIST

Interior - exterior - paper hanging specialists in Window repair care. 07769 646357 | www.pgadecoratingspecialists.co.uk | pgadecorators@yahoo.co.uk

PHOTOGRAPHY

PHOTOGRAPHY BY ROHINI

Family | Maternity | Newborn | Baby | Milestone | Cake Smash | Portrait | Headshot | Christmas | Event | Engagement | Wedding. Immortalise precious moments. 07740 292383

PLUMBING & HEATING

BOILR

BOILR offer servicing, installations, repairs and plans. Local Gas Safe engineers for all your needs. Please call today on 020 3576 2386

PROPERTY MAINTENANCE

LILLYWHITE PROPERTY GROUP

For all building works, full refurbishments & property maintenance inc heating, plumbing, electrical, decorating, flooring, tiling & plastering etc. Call today on 07949 394403

STUART GREEN PROPERTY SOLUTIONS

Property maintenance specialist. Carpentry, painting/ decorating, laminate flooring, bath/shower re-siliconing, gutters cleared/repared, insurance work, PLI. 07917 870879

ROOFING

JIM BARR ROOFING

Exterior cleaning/maintenance. Gutters, Paving, UPVC; cleaned, repaired, renewed. 01708 874816 | 07833 572459

WEB DESIGN & PRINTING

SWIVEL CREATIONS

25+ yrs exp, we are specialists in web, print, clothing and embroidery. Professional, affordable, reliable. 01992 570383 | 07736 879233 | www.swivuk.co.uk | info@swivuk.co.uk

PHOENIX ROAD CREATIVE

25+ years Web Design & Marketing to reach your audience. Let's get digital! hello@phoenixroadcreative.com | www.phoenixroadcreative.com | 07462 528494

EMAIL LOUGHTON@VISIONMAG.CO.UK TO JOIN THE LISTINGS FOR £15 PER MONTH (+VAT)

PUT YOUR BUSINESS IN THE **VISION LISTINGS...** CALL **0208 088 0386** TODAY

DISCLAIMER: **VISION** does not represent or endorse the accuracy or reliability of any of the advertisements, nor the quality of any products, information or other materials displayed, purchased or obtained by any customer as a result of an advertisement or any other information or offer in connection with the service or products. The opinions expressed in articles, reviews and stories are strictly those of the individual authors and do not necessarily reflect the views of **VISION**.

ACROSS: 1. CONTOURS, 5. ITEM, 9. ROUTE, 10. BADGERS, 11. UKRAINE, 12. AORTA, 13. SOLIDS, 14. STITCH, 17. EXCEL, 19. REGIONS, 20. TEMPEST, 21. OVERT, 22. YEAR, 23. CONSISTS
DOWN: 1. CIRCUMSPECTLY, 2. NEUTRAL, 3. OVERINDULGED, 4. ROBBED, 6. THEIR, 7. MASSACHUSETTS, 8. ADVANTAGEOUS, 15. TROWELS, 16. GROTTO, 18. COMMA



PUZZLES & TRIVIA

PUZZLES

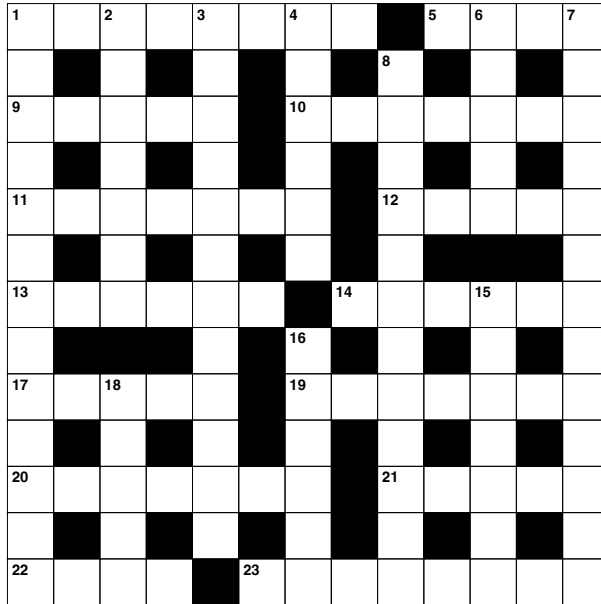
Answers: see end of The VISION Listings

ACROSS

1. Outlines (8)
5. Individual article or unit (4)
9. Path or road (5)
10. Nocturnal burrowing mammals (7)
11. Country whose capital is Kyiv (7)
12. Main artery (5)
13. Food that is not liquid (6)
14. Pain in the side (6)
17. Do extremely well at (5)
19. Ignores (anag) (7)
20. Storm (7)
21. Not concealed (5)
22. 365 days (4)
23. Is composed of (8)

DOWN

1. Warily; cautiously (13)
2. Impartial (7)
3. Ate too much (12)
4. Stole from (6)
6. Belonging to them (5)
7. State of the USA (13)



8. Beneficial (12)
15. Gardening tools (7)
16. Small cave (6)
18. Punctuation mark (5)

DID YOU KNOW?

- ▶ Megalosaurus was the first-ever dinosaur to be described and named. It walked on its two hind legs and could grow up to three metres tall.
- ▶ One of the largest land animals ever found is named Patagotitan; it could grow up to 37.5 metres in length and weighed up to 57,000kg.
- ▶ In contrast, the Microraptor is one of the smallest known dinosaurs, and was only about the size of a crow. It had wings on both its legs and arms.
- ▶ The Tyrannosaurus Rex had 60 teeth and could deliver up to six tons of pressure in one bite.
- ▶ Though the Stegosaurus could grow up to nine metres in length, its brain was only the size of a lime. It had a spiked tail which it used to defend itself.

SUDOKU

4		2	8				6	
		9		3				4
			4		5			
7						6	1	
				8				
	9	4						3
			2		7			
6				5		2		
	2				1	9		8

OVER 30 YEARS OF EXCELLENCE



Life is Beautiful

At City Bathrooms we believe everyone deserves a beautiful bathroom, that's why our passion for luxury products, first-class customer service and expert bathroom advice is at the heart of everything we do.

citybathrooms.com



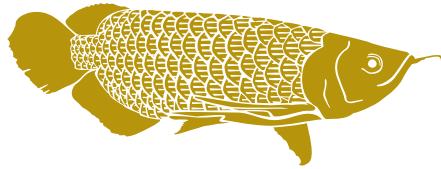
City Bathrooms

11 Raven Road, South Woodford E18 1HB

Telephone: 020 8504 5152

Email: sales@citybathrooms.com





FUNKY MONK
EPPING
RESTAURANT & ROOMS



GET IN TOUCH FOR MORE INFORMATION & TO BOOK

01992 276063

www.funkymonk.co.uk

236 High Street, Epping, CM16 4AP



[funkymonkhotel](https://www.funkymonkhotel.com)



SCAN ME