

**TIPS
FOR
CURLY
HAIR**

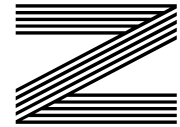
**HOW TO
CREATE AN
OUTDOOR
KITCHEN**

TAKING A DEEP DIVE
into Tom Daley's success

Marking 110 years since
THE RMS TITANIC SANK

Phillip
SCHOFIELD

The TV presenter celebrating 40 years in television



FREE

Photo credit: Shutterstock



Terrence James Construction Group is an Essex based collective of skilled tradesmen with a wealth of knowledge delivering tailor-made projects with a difference. Our in-house team of professionals offer a non confrontational approach with the skill and experience to ensure successful project delivery every time.



TERRENCE JAMES CONSTRUCTION

New Builds, Extensions, Loft Conversions, Renovations, Refurbishments, Garage Conversions.



TERRENCE JAMES LANDSCAPING

Use Our Creative Approach And Premier Service To Help Realise Your Gardens Full Potential



TERRENCE JAMES KITCHENS

From High Gloss Handle-Less To Fitted Shaker Kitchens, Use Our Innovative Approach To Design And Seamless Planning To Create A Kitchen That Captures Your Imagination



TERRENCE JAMES BATHROOMS

Let Our Team Find The Balance Between The Finer Things And The Practicality Of A Useable Space

TERRENCE JAMES GARDEN ROOMS

Utilising A Space In Your Garden To Work Or Play? To Create Or Relax? Let Us Take Care Of It.



BUILDING AMAZING SPACES

CALL ONE OF OUR SPECIALIST TEAM NOW TO ORGANISE YOUR FREE NO OBLIGATION QUOTE.

07570 047527

info@terrencejames.co.uk
www.terrencejames.co.uk
insta terrencejamesconstruction

Editor's notes...

APRIL 2022



Nik Allen, Editor

Hello and welcome to this month's edition of **VISION** Maldon Burnham. It's fair to say we've all been shocked and saddened by events in Ukraine, as Putin's military offensive tears apart the lives of millions of innocent people.

It's difficult to see any silver lining in skies filled with the rain of artillery shelling, yet there is perhaps one, and it is significant in protecting us from the catastrophe of a full-on world war.

The answer is the digital age. In the past, wars were fought with tanks and guns, whereas we now live in an age where disincentives for conflict can be laid by freezing of funds, removal of services and banning of oligarchs.

Russia's army pursued Ukraine through bloody warfare, yet back in Russia, the everyday trades, services and liberties that were afforded their citizens are being squeezed.

It gives me hope that wars these days are about more than who has the biggest weaponry. We are so interconnected by the digital age, that threatening to flick a switch might be the most dynamic deterrent.

I can only hope that Putin realises quickly that while punishing the people of Ukraine, he is doing the very same thing to his own.

Nik Allen

This is your town's hyperlocal magazine, delivering to homes and businesses every month.

HOME & DIY | GARDENING | PETS | HEALTH & FITNESS | BEAUTY | FASHION | HISTORY | LOCAL NEWS | FOOD & DRINK | TRAVEL | BUSINESS & PROPERTY | SPORT | PUZZLES | MOTORING | KIDS | WHAT'S ON | TECHNOLOGY | THE LISTINGS

CONTACT US: www.visionmagessex.com | maldon@visionmag.co.uk | 01621 398040

[@visionmagessex](https://twitter.com/visionmagessex) | [@visionmagessex](https://www.instagram.com/visionmagessex) | [Vision Magazine Essex](https://www.facebook.com/VisionMagazineEssex)

CONTRIBUTORS | Tabatha Fabray, Jake Levison

At the time of print all content in **VISION** was relevant and up to date according to COVID-19 government guidelines All pages are recyclable

SUPPORT LOCAL BUSINESSES



Please let your local businesses know that you saw them first in... **VISION**

WISE

DESIGNS
in GLASS LTD

Maldon: 01621 744 336
Rayleigh: 01268 780 896

Find us on



PVCu • Hardwood • Aluminium

Domestic & Commercial



- Windows • Doors • Conservatories
- Lightweight Tiled Roof Conservatories • Fascias
- Soffits • Guttering • Sliding Sash Windows • Lanterns
- Bi-folding Doors • Composite Doors

Existing Double Glazing Repairs:

- Replace misted / broken double glazed units
- Replace window & door handles / hinges
 - Re-align dropped windows & doors
- Conservatory roof repairs, upgrades & replacements

Free, no obligation estimates

www.wisedesignsinglass.co.uk
email: info@wisedesignsinglass.co.uk



SEWING THE SEEDS OF SUCCESS



Photo credit: BBC and Comic Relief



FROM NOSE CLIPS TO KNITTING NEEDLES, TOM DALEY OBE'S DIVE FOR DELIGHT GOES ON

There is a perennial youth about Tom Daley OBE that sets him apart from so many of our other stars of the pool.

Sure, he possesses all the boyish good looks and charm he had when first making waves – although, as a diver, preferably not too many – back in 2008 with his first of four Olympic appearances.

The shelf life for a competitive diver is usually preciously short, particularly when combined with constant invitations to engage in media duties, campaign work and promotional activity.

Yet Daley has maintained focus, kept an eye on the prize and, in what may well be regarded as the heyday of his career, is arguably more successful than ever, having scooped gold in the Tokyo Olympics last year on the 10m board.

"I love what I do, and while it's great to have a

career in the media, that's never what I set out to achieve," he says. "What I wanted, from day one, was to be successful, and I'm not going to give that up until my body tells me it's time to."

It has been a whirlwind 12 months for Daley, who was named Best Male Diver at the LEN Awards this year and came second in BBC Sports Personality of the Year. Yet it was in partnering Matty Lee on the 10m board at the 2020 Tokyo Games last year – the event being delayed by a year because of COVID-19 – that Daley recounts as his greatest Olympic performance of them all.

He says: "It was a case of eighth time lucky, you might say. It was one of those events where you start well, hold your momentum, then it suddenly comes into focus that you might have a real chance of doing something special.

"It validates everything I have put into the sport."

And while Daley is a public figure with a hugely marketable profile – "I don't really think of myself as anything other than a diver... fashion photoshoots always involve me wearing more clothes than I do for my day job" – much of his desire to keep achieving in the sport he loves has been at the expense of other professional opportunities, as well as a proper home life. He wed American screenwriter, director and producer Dustin Lance Black in 2017, and a year later the couple had a son together, named Robbie.

"There is a huge toll on your private life in a sport such as this, but I try my best to balance things," says the double world and six-time British champion.

Daley, who recently launched knitting website Made With Love, is a passionate philanthropist. Recently,

he completed a gruelling four-day challenge in which he rowed, cycled, ran and, of course, swam the distance between the Olympic Park in Stratford and his home town of Plymouth, to raise money for Comic Relief.

When Tom finally reached the finish line, he said: "If you can, please donate what you can to Red Nose Day because it would make a world of difference to so many families all across the country.

"To come home and see all my family here, as well as so many people, is pretty special, so thank you. I don't really know what else to say other than I just need to go and sleep for about six years. Thank you all so much and love you.

"It was one of my toughest challenges yet, but epitomises how I just want to keep pushing myself forward."



STORM CHAOS

STORM EUNICE MAY HAVE BLOWN ITSELF OUT, BUT THE AFTER-EFFECTS ARE LONGER LASTING

Storm Eunice came, saw and conquered. She may have taken the name of someone your grandmother used to bump into at the local jumble sales, but there was nothing charitable about this confrontational weather system that wreaked havoc over the course of a three-day period, causing damage estimated at more than £350million.

Eunice was one of the most powerful to hit the south coast of England since the Great Storm of 1987. A top wind speed of 122mph whipped round The Needles of the Isle of Wight, while inland trees were felled, roofs damaged – including that of The O2 arena – transport routes closed, and major incident warnings issued by the emergency services.

More than a million homes were left without power at various points across a 72-hour period, beginning on February 17.

Ultimately, Eunice blew herself out, and gradually things have got back to normal; although for the

families of the three fatalities of the UK storm, things will never be the same again.

The naming of storms has always provoked interest, although the practice is relatively new and only dates back to November 2015, when Abigail was the first to be named. The Met Office decided labelling them would do more to alert people to how dangerous they could be, as well as making the reporting and following of them an easier task. There is real science behind the theory too – the human brain attaches a stronger emotional tie to a name than it does to a concept.

What we shouldn't do is confuse a relatively gentle title for something that, at its worst, can be fatal. Dudley, Gladys and Ruby may sound sweet and unassuming, but they're anything but at 3am as tiles are ripped from your roof.

The best news is that the Met Office invites people to send in their own suggestions of names – email nameourstorms@metoffice.gov.uk with your own cute (or totally terrifying) choice.

Photo credit: Dimitris Legakis/Ahena Pictures/Shutterstock

WANT TO EARN EXTRA £ EACH MONTH? DISTRIBUTORS NEEDED!



CONTACT NIK TODAY TO APPLY

Your
Monthly
Lifestyle
Magazine



t: 01621 398040 m: 07860 683239
e: maldon@VISIONmag.co.uk
w: www.VISIONmagessex.com

ONE SMALL STEP FOR YOU, **ONE GIANT LEAP** **FOR YOUR BUSINESS**



Photo credit: Crange/Shutterstock

IT'S NOT ROCKET SCIENCE!

CALL NOW FOR AN OUT OF THIS WORLD DEAL

Your
Monthly
Lifestyle
Magazine



t: 01621 398040 m:07860 683239

e: maldon@VISIONmag.co.uk

w: www.VISIONmagessex.com

NICK OF TIME

NICK KNOWLES CELEBRATES 30 YEARS ON OUR SCREENS

When Nick Knowles said an emotional farewell to his *DIY SOS* show at the end of 2021, it brought the curtain down on an impressive period of renovating, refreshing and reviving people's living spaces.

It's a shame the 59 year old's tenure ended in such acrimonious fashion – the presenter was unceremoniously binned after appearing in an advert for Shreddies. In mimicking his role in *DIY SOS*, he had broken a BBC contract rule, and the axe fell. Comedian Rhod Gilbert replaced Knowles, who has since not been short of offers for new work. So it appears that life – and home improvements – continue.

Knowles got his break in television back in the early 1990s as a reporter on nightly news show *Coast to Coast*, which aired on TVS, the precursor to ITV Meridian.

From 1994, he presented a motorcycle programme called *Ridge Riders* for eight years, before the BBC saw Knowles' potential and

matched him up with Lowri Turner for a new-launch DIY show that would ride on the coattails of the hugely successful *Changing Rooms*.

The format of *DIY SOS* was fast-paced and usually leant on solving property issues for those in need of help, rather than people simply wanting a change of decor.

The success of *DIY SOS* led Knowles into daytime shows such as *Real Rescues*, *Wildest Dreams* and *Last Choir Standing*. However, it was becoming a game show host, notably through the lottery programme, that shaped the charismatic Southall-born frontman. *Who Dares Wins*, *Secret Fortune*, *Perfection* and *Break the Safe* guided him to star presenter status, and the inevitable *I'm A Celebrity* invitation. He subsequently finished sixth in the 2018 show, which was won by Harty Redknapp.

As for what comes next, Knowles's *Heritage Rescue* show on Quest looks at historic buildings in need of restoration – proof that there's always another DIY project lurking just around the corner.

Photo credit: Jake Morley/BAPTA/Shutterstock



HOME & DIY



HOME & DIY

3 REMOVAL REMEDIES FOR BLACK MOULD



Black mould is a common, yet nasty, household problem that no homeowner likes to face. However, there are remedies that promise to eradicate all signs of this troublesome tarnish.

BAKING SODA: If you want a natural remedy to remove black mould from your home, then a little baking soda is all you need. Used for generations to banish black mould, baking soda has a pH level of around 8-8.1, which is too high to allow mould to thrive.

HOW TO MAKE AND APPLY A BAKING SODA SOLUTION:
Add ¼ tsp of baking soda to 2 cups of water | Pour into a spray bottle | Liberally spray the affected area and scrub thoroughly with a brush | Rinse with cold water | Treat again to prevent the mould from returning.

VINEGAR: Another natural remedy, vinegar is acidic, with a pH of around 2.5, which means it can attack the structure of mould and actively break it down.

HOW TO APPLY VINEGAR:
Pour undiluted vinegar into a spray bottle | Spray directly onto the affected area | Leave for 15 minutes | Spray again and wait a further 15 minutes | Wipe clean with a damp rag.

BLEACH: Known for its ability to kill practically everything in its path, bleach is a powerful cleaner that can effectively get rid of black mould on non-porous surfaces such as tiles and sinks. The only problem with using bleach is that you need to be aware of the bleach fumes. Make sure you wear rubber gloves and a faceguard before you start cleaning.

HOW TO MAKE AND APPLY A BLEACH SOLUTION:
Mix one part bleach with four parts water | Pour onto the affected area and gently scrub with a damp cloth | Once finished, dry the area with a soft cloth.

OUR TOP TIPS FOR PREVENTING BLACK MOULD: Invest in a dehumidifier | Keep kitchens and bathrooms well ventilated | Tackle leaks as soon as they appear | Spread out towels and shower curtains to dry.



Carpets Direct

Guaranteed Lowest Prices

- ✓ **FREE FITTING** Established 26 years
- ✓ **FREE home visits**
- ✓ **SPECIALISES** in twist pile

Carpets • Vinyls • Laminates • Wood Flooring
We come to you in the comfort of your own home

WHY PAY MORE?

WE WILL MOVE YOUR FURNITURE & FREE UPLIFT/REMOVAL OF YOUR OLD CARPET

CALL YOUR LOCAL AREA SPECIALIST
01621 398 019



www.carpets-direct.co.uk



THE ONE STOP SOLUTION FOR SHEDS & GARDEN FURNITURE



QUALITY SHEDS
GARDEN FURNITURE
CUSTOM TIMBER BUILDINGS

Tony Turner

MANUFACTURERS OF QUALITY SHEDS

CALL **01621 742184**

EMAIL: TONYTURNER16984@SKY.COM
WWW. TONYTURNERSHEDS.CO.UK

WHITEHOUSE FARM, NEW LANE, MALDON, CM9 6PJ








www.essexwindowshutters.co.uk



CALL US TO CLAIM FREE FITTING WITH THIS ADVERT

- Local small family run business
- Specialising in made to measure shutters & blinds
- 1st floor showroom open Monday-Friday 9am-3pm

T: 01245 426620 • M: 07971 574 958 E: adam@essexwindowshutters.co.uk

Unit 2, 49 Cutlers Road, South Woodham Ferrers, CM3 5WA





30TH
ANNIVERSARY

Celebrate with us!
Buy any of our stylish garden sets
and we'll give you a further

20% OFF

already reduced ticket price

**THE UK'S LARGEST GARDEN
FURNITURE SHOWROOMS
FOR OVER 30 YEARS!**

www.regattafurniture.com

T&Cs apply. Ask in store for details. E&OE.



ESSEX SUPERSTORE
Regatta Garden Furniture

**A127 Hovefields Avenue
(A127 Southend Bound,
nxt to Shell Petrol Station)
Wickford, Essex. SS12 9JA
Sales Hotline: 01268 724959**

CHELMSFORD SHOWROOM:
Regatta Garden Furniture

**Off A12 at Witham,
Junction 21 Co-op Services
London Road,
Witham CM8 1ED
Sales Hotline: 01245 209624**

A. Clarke

Carpets & Flooring

The Flooring Store that
Comes to Your Door

Supply and Fit:

■ Vinyl ■ Laminate ■ Carpets ■ LVT



New
LARGER
Showroom

Very Competitive Prices
Free Home Quotations

All works fully insured and guaranteed

Tel: 01621 928770

Mob: 07718 063942

info@aclarkecarpets.com

www.aclarkecarpets.com

- Options to suit all budgets
- Highly experienced fitters
- Domestic & Contract work
- Any written quotation beaten by at least 10%
- 1000's of samples to choose from
- Many quality remnants in a range of colours and sizes in stock at unbeatable prices
- We stock carpets, vinyls, LVT and laminate at our new warehouse

Unit 1, Red Lion Business Centre, Burnham Road, Latchingdon

YOU'RE NOT

ALONE



OVER 207,500 OTHER PEOPLE IN ESSEX
READ **VISION** MAGAZINE'S MONTHLY

Your
Monthly
Lifestyle
Magazine

VISION

CONTACT US TO GET YOUR BUSINESS SEEN BY OUR READERS

See all our magazines at www.visionmagessex.com

BillericaYShenfieldBishop'sStortfordBrentwoodOngarChelmsfordBeaulieuEppingTheydon
HertfordHornchurchLeighThorpeBayLoughtonMaldonBurnhamRayleighWickfordSouthWoodford

BERBER BASICS



Are you looking to install some new carpet in your home? While some consider it to be outdated, Berber carpet is experiencing something of a revival owing to its durability and the development of new patterns and designs.

Traditionally, Berber carpet is lightly coloured and features dark flecks that are either brown or grey. Essentially, Berber is a looped-style carpet that is designed for use in high-traffic areas of the home, such as the hallway and stairs.

REASONS TO CHOOSE BERBER CARPET

> **Durability:** Berber carpet is one of the most durable types of carpet on the market and should not become torn, even when exposed to heavy footfall. In fact, if installed properly, a Berber carpet should easily last you a decade.

> **Resistant to spills:** One of the main reasons why people choose not to lay carpet in their homes is because this type of flooring is known for absorbing water. However, Berber carpet is considered to be spill-resistant, making it a good option for those with young families.

> **Affordable:** Another big plus point, Berber carpet comes in a variety of different types, with options to suit all budgets. If you don't have much to spend, opt for olefin or polyester Berber carpets, or, for those who don't mind splashing the cash, wool offers a touch of luxury.

REASONS TO AVOID BERBER CARPET

> **Prone to snagging:** Although designed to last, Berber carpets are prone to snagging owing to their looped nature. Even if only one loop becomes snagged, you need to repair this immediately or risk the whole carpet coming apart.

> **Not good for pets:** As Berber carpets are easily snagged, pets can cause havoc with this style of carpet. Cats, in particular, are attracted to the roughness of this carpet and may use it as their new scratching post.



HOME & DIY

Photo credits: Carpetright.co.uk, buycarpet.co.uk, dolphincarpets.com



LOCAL NEWS

from your neighbourhood



Photo credit: Google Maps

Plans set to convert police station into offices

Maldon District Council (MDC) has approved plans to convert a former police station into a block of offices.

TFP Financial Planning submitted a planning application for offices for 28 employees on the site of the town's former police station in West Square.

The outside of the building will not be changed, but the interior will be refurbished to create a "modern working office arrangement" with associated facilities on both the ground and first floors.

Councillors discussed the plans for the police station, which has been unused since 2017, during a meeting on March 16. Although permission was ultimately granted, it wasn't a straightforward decision.

Councillor Kevin Lagan, chairman of MDC's Central

Area Planning Committee, said: "We seem to be very quick to remove a lot of the town's history and it's just a shame that these types of assets that we may take out now won't be there for future generations.

"It's the police station and always will be Maldon's police station, no matter what it becomes. It was a wonderful entrance to the town, giving people surety that the town is a safe place to come to."

Chairman of MDC, Mark Heard, countered: "I'm heartened by the fact it is going to look the same and remain the same. So I think the loss of the cells is lamentable but certainly a price worth paying."

Councillors approved the plans with a condition requiring a record to be made of the historic fabric of the building.

Drama group put up for esteemed national award



Maldon Drama Group (MDG) has been nominated for a prestigious national award after impressing audiences during its latest production.

MDG has been nominated by the National Operatic and Dramatic Association for Best Comedy Award for its recent production of *The LadyKillers*.

The awards were set to be presented as **VISION**MaldonBurnham went to print.

A spokesperson for MDG said: "So pleased for all the cast and crew and our director, Helen Rasmussen."

MDG usually presents three full-length plays a year, ranging from serious dramas, comedies and TV sitcoms to Shakespeare, Terry Pratchett and George Orwell. Its most recent performance was *Treasure Island*.

The group's members are no strangers to awards ceremonies, having been nominated for 11 different awards in 2019.

MDG was originally founded back in 1952 as the All Saints Drama Group, but has existed in its current format and venue – Maldon Town Hall Theatre – since 2002.

Town hardest in UK to get planning permission

A study by Leader Floors has revealed that Maldon is the toughest place in the UK to get planning permission.

The UK flooring retailer looked at eight years of planning application data from the Department for Levelling Up, Housing and Communities, to calculate the percentage of applications that were accepted and rejected.

From this data, the City of London was revealed to be the best place to live for home renovators as it's the easiest area to win planning permission, while Maldon is the hardest. In London, a huge 98.7 per cent of planning permission requests were granted, while 40.4 per cent of applications were denied in Maldon, across an eight-year period.

In total, 12,126 planning applications were submitted

in Maldon, with 7,227 granted and 4,899 rejected.

Leader Floors' project design lead, Marc Husband, said: "With more people spending more time at home than ever before, it's natural we're looking for small ways to improve our surroundings. If you're considering submitting a planning permission application, it's worth checking out how likely it is to be approved, based on your location.

"This new data is also really insightful as it can help guide home enthusiasts on where their next big purchase might be, if they're looking to flip a property."

To read the report, go to www.leaderfloors.co.uk/blog/2022/03/research-reveals-the-hardest-easiest-places-to-get-planning-permission-in-the-uk

Musician to represent Britain at Eurovision

Many Maldon residents will recognise Great Britain's contestant in the Eurovision Song Contest this year: the town's very own Sam Ryder (pictured).

Sam is a singer and songwriter from Essex who has seen his popularity soar over recent years, largely thanks to social media. He now has more than 12 million followers and 100 million likes on TikTok, and is currently the most followed UK music artist on the platform.

As the world went into lockdown in March 2020, Sam uploaded the first of his now famous cover videos, quickly catching the attention of celebrity fans including Justin Bieber, Sia and Alicia Keys, who even posted a video reacting to his cover of her song, *If I Ain't Got You*.

Since then, he's been signed by Parlophone Records and released his debut EP, *The Sun's Gonna Rise*.

Sam co-wrote his Eurovision entry with Max Wolfgang and Grammy Award-winning songwriter, Amy Wadge. He will be performing at Eurovision this year, which begins on May 10.



Photo credit: Sam Ryder/Facebook





LOCAL NEWS

from your neighbourhood



Service of reflection to remember COVID-19 lockdown

Churches Together in Burnham – a group consisting of members of local churches – commemorated the second anniversary of the first national COVID-19 pandemic lockdown with a short service of reflection.

The service, held by the beacon on the quay on March 22, included a one-minute silence at 12pm.

Reverend Anne Sardeson, minister of Maldon, Burnham and Southminster United Reformed Churches, supported by other ministers, led the all-faith service in front of approximately 50 residents.

She asked people to remember how the lockdown had affected them, to think of all those who had suffered during the lockdown, and to give thanks for all those who had supported the community during this difficult time.

Before and after the silence, she asked everyone to join in singing a prayer for Ukraine.

St Mary's Church was also lit up in yellow on March 22 and 23 to commemorate the effects of the pandemic on everyone's lives.

New retirement community to be developed

Planning and development consultancy, Lichfields, has been granted permission for the second phase of Burnham Waters, a retirement community for over-55s just outside Burnham-on-Crouch, following an appeal.

Permission for Phase 1 – comprising a care home, retirement bungalows and flats, key worker accommodation, shops, a GP surgery and leisure/community facilities for the use of residents and the wider community – was granted in 2019.

Phase 2, which will provide additional retirement homes, including affordable housing, as well as additional community facilities, was previously refused by Maldon District Council.

Acting on behalf of the applicant, Think Green Land Ltd, Lichfields successfully appealed the decision.

The government inspector who made the decision found that the benefits were "many and substantial" and concluded that "the proposal should not have been refused in the first place".

A LOCAL COMPANY BUYING FROM LOCAL MANUFACTURERS

“YOUR HOME IN OUR HANDS”

WINDOWS | DOORS
BIFOLDS | GLAZING
REPAIRS

However you want to secure your home we have the Solution to make sure your home is in our safe hands

01268 578 118
sales@atlashomesolutions.co.uk
www.atlashomesolutions.co.uk

CATER
ROOFING CONTRACTORS LTD.
The Traditional Roof Restorers

- All roof repairs
- Re-roofing
- Chimney rebuilds
- Rubber roofing
- Guttering
- Fascias & soffits
- Leadwork
- Peg tiling
- Slating
- Oak, Chestnut & Cedar
- Shingles
- Listed buildings

Tel: 01621 788119
Mob: 07894 506031
Email: cater.roofing@btinternet.com

We specialise in the restoration of Historic and Listed buildings, approved by English Heritage and the National Trust

Sue Campbell

MCFHP MAFHP

Home Visiting
Foot Health
Practitioner

Services provided are:
Routine nail care,
Corn and Callus
Ingrowing toe nails
Hard Skin & Treatment of
common foot problems

01245 917744
or 07583 477846

Paul J King

FUNERAL DIRECTORS



Corinne

Paul

*A family firm offering both
Male and Female
Funeral Directors*

Maldon

01621 855552

Burnham

01621 784884

www.pauljking.com

Come home to a clean house



Our professionally trained team of maids will make your home sparkle with each visit. We know it's not a one-size fits all service, that's why we work to tailor our cleans to your individual needs, schedule and budget.

Call us today to arrange your no obligation in home quote

Emma Brooks

01245 494003

emma.brooks@mollymaid.co.uk

www.mollymaid.co.uk/locations/chelmsford/



See what our customers have to say at uk.trustpilot.com  Trustpilot



Entrepreneur backs forest school financially

A Burnham-based firm has received a business boost from retail entrepreneur, Theo Paphitis (pictured right).

Justine Page (pictured left), owner of Green Earth Learning, recently tweeted Theo about her business during Small Business Sunday (SBS) and was one of six weekly winners to receive a retweet from Theo to his near half-a-million Twitter followers.

The weekly SBS initiative was set up by Theo in 2010 to support small businesses in the UK.

Theo's retweet of Green Earth Learning's message resulted in a greater following for the local business and exclusive networking opportunities with other winners.

Green Earth Learning offers outdoor programmes

for schools and the community, as well as educational resources to support learning through play.

Justine recently travelled to the annual SBS event in Birmingham with her sister, Tasha, who also works at Green Earth Learning, to pick up her certificate from Theo in person.

Justine said: "The opportunities offered at the SBS event are fantastic and it was amazing to receive the certificate in person from Theo."

Small-business champion and chairman of Ryman Stationery, Robert Dyas and Boux Avenue, Theo Paphitis, said: "We are thrilled to welcome new SBS members every week and highlight just how important it is to support our small businesses here in the UK."

Man fined more than £3k for damaging crops

A farmer has thanked Essex Police's Rural Engagement Team for their support after a man from Burnham was fined for damaging his crops.

At Colchester Magistrates' Court, Simon Milton, 33, of Maple Way, Burnham-on-Crouch, was ordered to pay a total of £3,878 including fines and £1,282 compensation to Mr Cowell. He also received six points on his driving licence.

He had previously admitted criminal damage, failing to stop for police officers and driving without due care and attention following an incident on Mr Cowell's farm on October 2 last year.

Simon Cowell (pictured), whose farm in St Lawrence was damaged by Milton, said: "It's good to know we've been able to get a conviction. Farmers have their crops damaged regularly by hare coursers and other people who think it's fun to drive across our fields.

"I'm pleased with the court result because it's a deterrent, and the more people who are caught, the better. As farmers, we take a pride in our farms, and it's quite upsetting when someone has so little respect for your property."

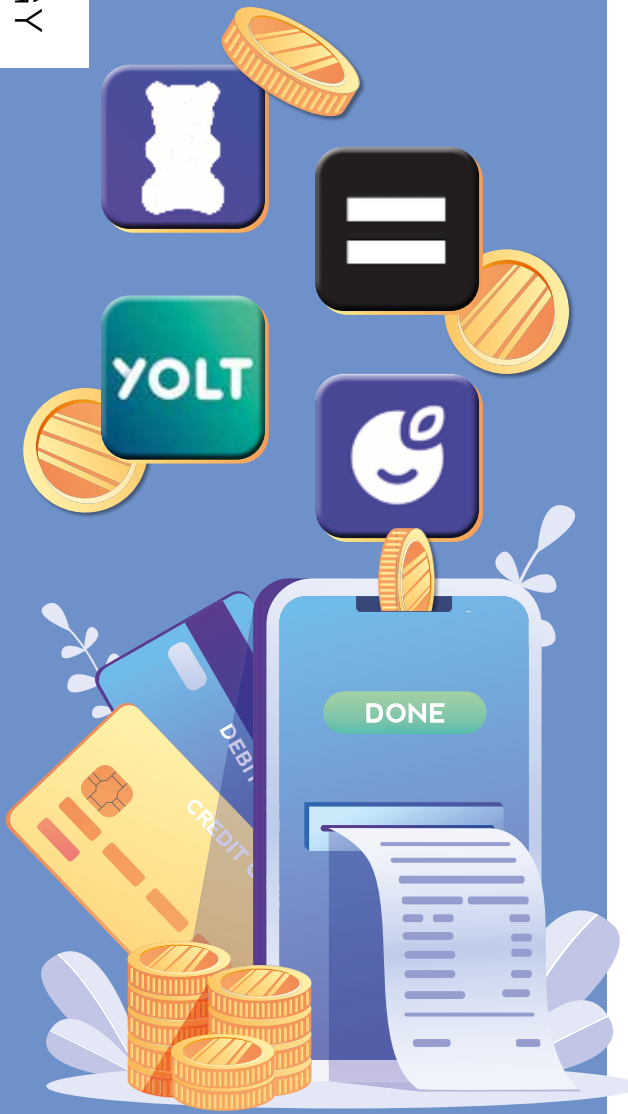


LOCAL NEWS BURNHAM



TECHNOLOGY

CASH WISE



We're living in an uncertain era prompted by a pandemic, lockdowns and insecurity for the future. The result of all this is, more than ever before, a desire in people to take greater responsibility for their own actions – across health, employment and, of course, finances.

So while we can't be totally sure of what's to come, we can at least organise our money and budget according to what's laid out in front of us, and that has made cash management apps really popular. Here is a selection of some of the best on the market:

EMMA (free or £59.99 for enhanced annual subscription)

Emma assesses all spending, including loan and credit card repayments, and works out a full schedule of income and expenditure so that you can restrict or extend depending on where you are at certain points of the month.

Handily, it integrates with the likes of Boots, B&Q and Gousto to offer cashback initiatives. However, the constant pushing to upgrade to the paid product can become annoying.

MONEY DASHBOARD (free)

This app operates in much the same way as Emma, but plots graphical representations to take a deeper dive into personal finances.

YOLT (free)

This app comes with a prepaid debit card as well as a set of money management tools. This gives greater control and enables a 360-degree solution for consumer spending that is reported directly back into the app, meaning no money will mysteriously go missing.

PLUM (free or up to £3 per month for premium)

An app for savers, this tool is great for those who want to know, on a month-by-month basis, how much they can afford to put to one side.

Premium options even offer opportunities by which money can be invested directly from the app.



COMPUTER SERVICES

Don't struggle with IT, call the experts!

- Friendly support direct to your door
- For all your computer needs
- Low rates (no VAT), no call out charge
- Homes and small businesses covered

01621 834992
www.dhcomputing.co.uk
help@dhcomputing.co.uk



CARTY'S MOT CENTRE

01621 784879

Class 4 MOTs
by appointment only

Servicing and repairs
to most light vehicles

Opening times
Monday to Friday
8.30am - 5.00pm

Unit 6 Station Industrial Estate
Burnham on Crouch, Essex CM0 8RW



Only £895 for a fully fitted electric door.
Gotta get a Garolla.

Garolla garage doors are strong and solidly built. They're made to measure in our own UK factories. The electric Garolla door rolls up vertically taking up only 8 inches inside your garage. Our expert installers will fit your new door and take away the old one so there's no mess.

Give us a call today and we'll come and measure up completely Free.

GAROLLA
ROLLER SHUTTER DOORS
GOTTA GET A GAROLLA

CALL US TODAY ON **01621 880 052**

MOBILE **07537 149 128**
www.garolla.co.uk

NOW ONLY £895 WAS £1,354 INC VAT

WHAT'S INCLUDED WITH EVERY DOOR:

- FREE EXPERT MEASURING & FITTING
- TWO REMOTE CONTROLS
- ACOUSTIC & THERMAL INSULATION AVAILABLE IN 21 COLOURS
- FREE DISPOSAL OF YOUR OLD DOOR

Offer valid for openings up to 2.6m wide & inc: 2 remote controls, 55mm white slats, internal manual override.



Photo credit: Ken McKay/ITV/Shutterstock

OUT OF THE BROOM CUPBOARD... *and onto centre stage*

CELEBRATING THE CAREER OF PHILLIP SCHOFIELD

The title 'first in-vision continuity presenter for Children's BBC' perhaps isn't one he'll want as his epitaph, and yet the role that set Phillip Schofield on the path to becoming one of daytime and primetime TV's true modern icons is perhaps one of his most significant.

It's September 1985 and a 23-year-old Schofield has just returned to the UK after four years in New Zealand. Having already worked at the BBC as a bookings clerk and teaboy when he was a teenager, the charismatic, charming, chipper broadcaster was thrust into the not-so-glamorous surrounds of *The Broom Cupboard*, on Children's BBC.

Sitting at a cramped, squalid, cluttered desk, he was accompanied by Gordon the Gopher, and was a kids' TV first as the dull lead-in screens between programmes were replaced by a chatty, sociable presenter who offered personality and no small amount of humour.

The formula was an instant hit and set Schofield on the way to broadcasting brilliance. *Going Live!*, in which he appeared opposite Sarah Greene, came along two years later.

Adult programming followed – from four years hosting the *Smash Hits Poll Winners Party* to *Talking Telephone Numbers* and *Test the Nation*, Schofield's versatility bridged genres of entertainment as effortlessly as it did the range of demographics who would marvel at his calm and charisma.

No better has that been seen than when in full flow with sidekick Holly Willoughby on ITV's leading daytime show, *This Morning*. When the duo first worked together back in 2009, few would have expected such natural chemistry to emerge. From endless innuendos to heartfelt and touching interviews and reports on all manner of issues, the pair have been at the epicentre of *This Morning*'s steely grip on the National Television Award for Best Daytime/Live Show, which it has won every year under their stewardship.

Of course, for someone who has been in front of the camera for so long, controversies will ultimately come along – from an ill-conceived set-up of then-Prime Minister David Cameron live on air, to a more light-hearted revelation from Schofield that he had been dyeing his hair since the age of 16 to ward off grey, something he now embraces.

Then, in February 2020, the personal revelation that the married father-of-two was coming out as gay proved a sensational storyline. In true *This Morning* style, the presenter and Willoughby conducted what amounted to an open counselling session – his heartfelt admission only serving to endear us to him further.

Away from the show, Schofield, who turns 60 this month, continues to pick the prime slots in ITV's entertainment programming, with quiz and challenge shows such as *Dancing on Ice*, *All Star Mr & Mrs*, *5 Gold Rings* and *The Cube*. There has also been a raft of factual programming, including coverage of royal events – The Queen's Diamond Jubilee, the weddings of Princes William and Harry, and a tribute to Prince Philip.

And in February, daytime doyenne Lorraine Kelly dedicated her show to Schofield's 40 years in the business.

In a rapidly changing television industry where personalities come and go, Phillip Schofield has proved himself a man for every occasion. He is someone who can put an arm round a guest one day and laugh at his own failings the next, as well as being arguably the greatest thing to ever emerge from a broom cupboard.

THE VICTORIA INN GOES BACK TO THE 70'S



**SATURDAY
14TH MAY**

**DJ FROM 8PM
TILL 1AM**

**DOORS OPEN 7PM
LAST ENTRY 11PM**



**GREAT BRITISH
PUB FOOD**

**TRADITIONAL
PUB EVENTS &
ENTERTAINMENT**

f thevichoc

ig thevich_o_c

☎ 01621 783585

**The Victoria Inn,
Burnham on Crouch, CM0 8AJ**

*At the heart
of your local
community*



FOOD & DRINK



2022 FOOD festivals in the UK

Do you consider yourself a bit of a foodie? Or perhaps you just love to spend a lazy weekend milling around a market and sampling the local cuisine? Either way, you will be pleased to hear that the UK has some of the best food festivals in the world.

PUB IN THE PARK
All over the UK, May 12-September 18
Created by Tom Kerridge, Pub in the Park tours all over the UK and boasts a top line-up of chefs and music artists. Attracting more than 130,000 visitors in 2021, this popular festival celebrates everything there is to love about the British pub, including delicious food, great music and time spent with family and friends. More information can be found at pubintheparkuk.com

BIGFOOT
Buckinghamshire, June 17-19
A relatively new festival on the foodie scene, Bigfoot is the UK's first-ever craft beer music festival. Taking place in the stunning Claydon Estate, the headliners this year are Caribou and Happy Mondays. Tantalise your tastebuds with beers including Gipsy Hill,

Howling Hops and Signature Brew, and soak up all the booze with fabulous food from Patty & Bun and Club Mexicana. More information can be found at bigfootfestival.co.uk

THE BIG FESTIVAL
The Cotswolds, August 26-28
Taking place on Alex James' farm in the Cotswolds over the August bank holiday weekend, The Big Festival brings together some of the UK's biggest music artists and Michelin-starred chefs. Enjoy an exciting array of street food while rocking out to the likes of The Human League, Stereophonics and the Sugababes. More information can be found at thebigfestival.com

MEATOPIA
Tobacco Dock, London, September 2-4
One of the most popular and well-known London food festivals, Meatopia is a legendary event for fire-cooking enthusiasts. Offering a winning combination of amazing food, thirst-quenching beverages, roaring fire-pits and live music, Meatopia describes itself as the ultimate Bacchanalian party. More information can be found at meatopia.co.uk

Easter Feasts at The Bell Inn

This Easter, come and celebrate at The Bell Inn, a welcoming public house for everyone with salon and public bars as well as a garden with tables to dine outdoors in wamer weather. We are offering a special Easter menu in our restaurant featuring your favourites, including a range of Sunday roasts with all the trimmings, fish and vegetarian dishes plus scrumptious desserts.



Childrens', vegetarian and gluten free options are available on request. Please let us know when booking.

All our delicious freshly prepared meals have been designed to incorporate as much local produce as possible, and our menu changes with the



seasons to ensure we can offer the freshest best food possible.

Our large garden areas are open with 15 tables available to book. Well behaved dogs are welcome in the garden (please keep them on a lead at all times).

And don't forget to pop along to our Farmers Market on the last Sunday of every month!



THE BELL INN SALOON & PUBLIC BAR RESTAURANT SERVING LOCAL FRESH CUISINE

Take Away Available • Events • Farmers Market • Dog Friendly

If you would like to make a booking for our restaurant please call us on 01621 868154 or email info@thebeckinghambell.com www.thebeckinghambell.com



The Bell Inn, Beckingham Street, Tolleshunt Major, Maldon CM9 8LL





Natural MENOPAUSE MANAGEMENT



A NATURAL APPROACH TO MANAGING THE MENOPAUSE

Whether you don't want to take hormone replacement therapy (HRT), you can't for medical reasons or you want to supplement this prescription treatment, there are natural ways that can help you to manage the menopause.

EAT A HEALTHY DIET

Women's bone density reduces during menopause so it is essential that you eat a diet rich in calcium to keep your bones healthy and strong. Reducing your sugar intake and eating low GI foods can help to reduce mood swings, while eating healthy fats can help increase the healthy bacteria in your gut which can diminish after menopause.

REDUCE ALCOHOL INTAKE

Some women find that alcohol exacerbates their symptoms, especially hot flushes. Alcohol can also increase your risk of developing osteoporosis, heart disease and some types of cancer. Plus, it is high in calories, which is not ideal if you are experiencing weight gain as a result of the menopause.

PARTAKE IN REGULAR EXERCISE

Important for both your cardiovascular and bone

health, as well as reducing feelings of stress and anxiety, it is more beneficial to exercise gently and regularly than it is to go all out once in a while. Both yoga and swimming are great options for women undergoing the menopause.

COGNITIVE BEHAVIOURAL THERAPY (CBT)

If you are suffering with low moods and/or anxiety as a result of the menopause, CBT can help you work through these emotions. There is also some evidence that suggests CBT can help to control hot flushes.

TRY HERBS AND SUPPLEMENTS

There are several herbs and supplements that are said to help manage menopause symptoms, including:

- > Black cohosh – to alleviate night sweats and hot flushes
- > Red clover – to slow down bone loss and alleviate hot flushes
- > Dong quai tea – to ease pelvic pain and regulate oestrogen levels
- > Valerian root – to treat joint pain, aid sleep and reduce hot flushes.



Reaching for REPTILES

THE REPTILES THAT MAKE GREAT PETS... AND THOSE THAT DON'T



The lure of sharing time and space with reptiles links us back to a rugged and prehistoric past – after all, these creatures date right the way back to when dinosaurs were roaming the planet. An acquired taste, certainly, reptiles can be great pets, are largely self-sufficient, and act as a constant source of wonder for kids and adults alike.

Bearded dragons

A dragon by name, but in truth more of a lizard, this gentle creature isn't the most sociable of its kind, but enjoys being handled nonetheless. They have a varied diet, including vegetables, crickets and worms, and can live for more than a decade.



Leopard geckos

Leopard geckos can live twice as long as the bearded dragon and are nocturnal, so will stress if not allowed time to relax in dark spaces. You'll need to ensure they have cover in their terrarium, and keeping two males together is a strict no-no as they are known to fight.



Box turtles

Box turtles may look cute, but they are a lifelong commitment and can live for more than 40 years. This pet is not suitable for kids – despite their sluggish demeanour, the turtle has complex care requirements, can suffer from anxiety, and requires cleaning out each week.

Chameleons

We know chameleons are ever-changing, ever-evolving creatures, and that extends right the way through to liking different temperatures at different times of the day, so as maintenance goes, they require more than most.

Factor in a need for good ventilation and natural sunlight, and a preference for living in trees, and it all points to this being a tricky reptile to maintain unless you can ensure plenty of foliage and a clean, non-toxic surrounding.



EZ2OWN

INSULATED CONSERVATORY ROOFS

FIXED PRICES FOR ALL SHAPES & SIZES

UP TO 10M² £1295
UP TO 13M² £1595

UP TO 16M² £1895
UP TO 18M² £1995



3 Bell Victorian 5 Bell Victorian Edwardian



Gable End Lean To P-Shape

INSULATED ROOFS
STARTING FROM
£1295

Usable rooms all year around

Using "Superquilt" technology our roofs are cool in the summer and warm in the winter!

1 day installation

Our highly qualified team of professionals can install most of the roofs within 1 DAY!

Affordable prices

With prices starting from as little as £1295, we have a solution to cater everyone's price range.

Make it your own

Two types of finish, Cladding or Plasterboard, along with extras like downlights!



FULL REPLACEMENT ROOF
STARTING FROM
£650 per m²

Tiled Conservatory Roofs

We also offer a full replacement service, which can completely transform the look of your conservatory.

Using a timber framed roof system including over 150mm of insulation.

There is a stunning selection of tiles, varying between Tapco, Slate or Metrotile.

Our replacement roofs come with 6 downlights, a plastered ceiling, along with full fascias and guttering.



BEFORE



DURING



AFTER



✉ sales@ez2own.co.uk

☎ 01621 781133
01245 835011
07765 343217

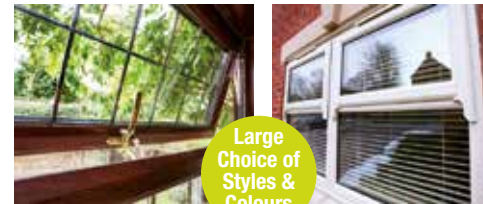
Your local experts for entrance doors, replacement windows, garage doors, patio doors and conservatories



More Styles & Colours Online

Official installers of
doorstop
Solidor
Truedor

Design your door online www.ez2own.uk @ez2own2022



Large Choice of Styles & Colours

Huge choice of uPVC Windows

- ✓ Quality A+ Energy Rated Glazing
- ✓ Choice of Frame & Glazing Styles
- ✓ Range of Frame Colour Options
- ✓ Double or Triple Glazing
- ✓ Choice of Handle Styles

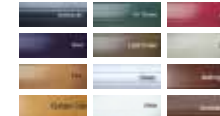
FENSA
Reg. 17593

Need help choosing?
Please call our team of helpful advisors on
01621 781 133

Get instant window quotes online www.ez2own.uk

Electric Roller Garage Doors

- ✓ Security for your Garage
- ✓ Attractive Design
- ✓ Choice of Colour Options
- ✓ Easy to use



From
£1199
Fully installed inc. vat

Online price guide and colours www.ez2own.uk



2-Part White Patio
£999
Fully installed inc. vat

Patio & French Doors

- ✓ Quality A+ Energy Rated Glazing
- ✓ Choice of Styles
- ✓ Range of Frame Colour Options
- ✓ Choice of Handle Styles
- ✓ Improved Home Security



Roof and Glazing Upgrades available

Conservatories

Our range includes Gable Ended, P-shaped, Victorian, Edwardian, Lean-to or Double Hipped. In addition to Garden Rooms and Orangeries.

EZ2OWN
Windows & Doors

Please call for a quote or information pack:

01621 781 133



PUZZLES & TRIVIA

PUZZLES

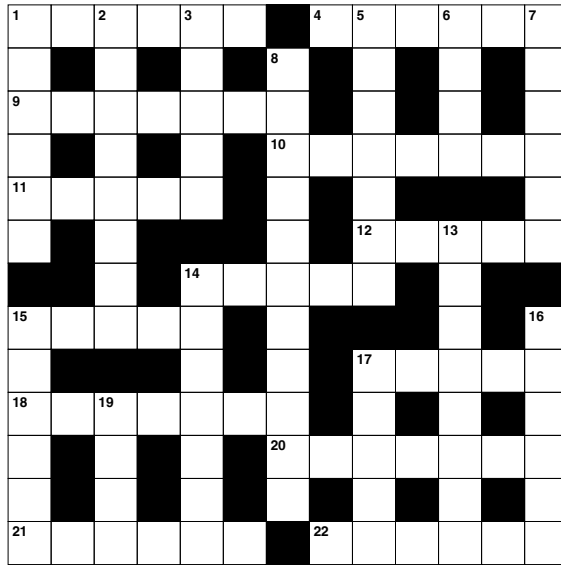
Answers: see end of The VISION Listings

ACROSS

- 1. Creative act (6)
- 4. Pertaining to vinegar (6)
- 9. Nerve impulses (7)
- 10. Not solid or liquid (7)
- 11. Send money in payment (5)
- 12. Country in North East Africa (5)
- 14. Loathe (5)
- 15. Sense of seeing (5)
- 17. Wrong (5)
- 18. Light shoes (7)
- 20. Prior (7)
- 21. Enjoy greatly (6)
- 22. Large eel (6)

DOWN

- 1. Wish for (6)
- 2. Propelling the body through water (8)
- 3. Haggard (5)
- 5. Small mat (7)
- 6. A group of three (4)
- 7. Form-fitting garment (6)
- 8. Sea beacons (11)
- 13. Giving way under pressure (8)



- 14. Reaches (7)
- 15. Female sibling (6)
- 16. Listener (6)
- 17. Refrain from (5)
- 19. Invalid (4)

DID YOU KNOW?

- ▶ The heart of the average blue whale is approximately the size of a car
- ▶ The Chrysopelea snake can leap from trees and 'fly' distances of around 300 feet
- ▶ Dogs can sense human emotion, knowing when people are feeling sad, happy or something else
- ▶ The platypus is one of the few living mammals to produce venom
- ▶ Some spider species try to eat their partners after mating
- ▶ The unicorn is the national animal of Scotland
- ▶ Every tiger and zebra has a unique stripe pattern
- ▶ A flamingo's head has to be upside down when it eats

SUDOKU

		1	7		2		8	
	4							
				8		6	7	
	7		2					1
		2		1		4		
5					9		6	
	2	3		7				
								3
	9		5		4	2		

This magazine is

MISSING YOUR ADVERT

Call 01621 398040 today to book your space

MP

EXECUTIVE TRAVEL

- ✓ Airport Transfers
- ✓ Race Days
- ✓ Group Nights Out
- ✓ Special Events/Functions
- ✓ Festival Bookings

6 SEATER MPV & 8 SEATER MINIBUS

T 07411 502 815

E:mick@mpexecutivetravel.co.uk
www.mpexecutivetravel.co.uk

MAKE YOUR WILL... ...IN THE COMFORT OF YOUR OWN HOME

Do you and your family have the peace of mind of an up-to date Will, or a Power of Attorney for yourself or your parents, or Legal Guardians for your children under 18?

My professional services for arranging personally-tailored Wills, Powers of Attorney, Probate and expert guidance on Inheritance Tax and Care Home Fees, are offered to applicants seven days a week on a fixed fee basis in your own home, regardless of consultation time and number of visits.

MARTIN ENGLEMAN AIPW AFPC
Qualified Member of the Institute of Professional Will Writers – Certificate in Mortgage Practice & Equity Release, Chartered Insurance Institute – Diploma, Personal Finance Society

Please visit www.businessadvisoressex.co.uk for more detailed information, then call me for a fixed fee quotation and free advice

Please note that weekend home visit meetings are offered at no extra cost

Office: 01268 761022
Mobile: 07901 948745
1 Nesbit Close, Wickford, Essex SS12 0PT

ENGLEMAN WILLS

+ POWERS OF ATTORNEY + PROBATE



CONTAIN YOURSELF

Five ways to master container gardening, for maximum effect

Container gardening is pretty much what it sounds like – the display of plants, flowers and herbs in containers.

Gardening this way offers variety, flexibility and a great deal more control than placing plants in flowerbeds or around borders. To get it right, you need to abide by a few simple rules.

ONE:
Location location location

The ability for your plants to flourish will almost certainly depend on location. Around six hours of sunlight a day and a south-facing position will offer them the best chance to make something of themselves.

TWO:
Choose your container wisely

While containers come in all shapes and sizes and cater for various budgets, the golden rule is to allow adequate room for your plants to grow, and to ensure there is adequate drainage in the bottom.

THREE:
Heavily soiled

You can pick up a bag of high-nutrient, moisture-retaining, airy soil at the garden centre for less than the price of a glass of wine, and it will be considerably better for your plants than standard garden soil.

FOUR:
Water lovely plant

Try to water plants every morning to allow them to flourish during the day. Watering in strong sunlight runs the risk of leaves being singed. Positioning containers next to a natural water source will help as well.

FIVE:
Feed greed

Adding nutrients, slow-release fertilisers and liquid feed to your watering can – or even directly to the container – will give your soil and your plant a perfect boost each day, as well as helping it to fend off any nasties.



Photo credit: idealhome.co.uk



Inspiring beautiful landscapes



Inspiring beautiful landscapes for over 40 years, CED Stone Landscape provides the most varied range of quality natural stone and hard landscaping products on the market. Discover the wonders of natural stone, porcelain paving, walling, decking and much more, all showcased at a CED display area near you.

- Natural Stone Paving & Setts
- Walling
- Porcelain Paving
- Cobbles & Pebbles
- CEDEC Footpath Gravels
- Gravels & Aggregates
- Boulders, Rockery & Standing Stones
- Composite Wood Decking

Visit the Depot or Shop Online at www.cedstonelondon.co.uk



01708 867 237 • sales@cedstone.co.uk • www.cedstone.co.uk

CED Stone Landscape West Thurrock • 728 London Road, Grays, Essex • RM20 3LU

SILVERTHORN SKIP HIRE

SKIP HIRE TO YOUR DOOR

**Brand New 4, 6, 8 Yard Skips
Transit Tipper Wait & Load Service**

PRICES BEGIN FROM:

4 Yard: £200 • 6 Yard: £230 • 8 Yard: £250

CONTACT US TODAY

01621 840229 • 07738 110443

 silverthornwaste  silverthornskips



Daniel Landscapes Ltd

All of your Landscaping & Tree Care Needs



- Tree Surgery & Removal
- Pollarding & Pruning
- Hedge Trimming
- Shrub Pruning
- Garden Clearance
- Site Left Tidy

- Driveways & Patios
- Paths & Brickwork
- Gravel Gardens
- Fencing & Turfing
- Drive & Patio Cleaning
- Tarmacadam/Tar & Chip

Tel: 01621 892 659 or Mob: 07495 766 372

info@daniel-landscapesltd.co.uk

www.daniel-landscapesltd.co.uk

WAYSIDE, PLAINS ROAD, LITTLE TOTHAM. NR MALDON. ESSEX. CM9 8JF



Create your own OUTDOOR KITCHEN

The COVID-19 pandemic meant that many of us turned our attention to our gardens to create the perfect outdoor living space. Great for entertaining, hosting in the garden has become the ideal way to entertain family and friends.

Creating an outdoor kitchen gives you a stylish space to cook outside so you can make the most of the warmer weather with your family and friends.

Learn how to create an outdoor kitchen on any budget, ready for summer entertaining.

MEASURE YOUR SPACE: You can design an outdoor kitchen to suit all kinds of spaces. Measure your designated area to establish what you have to work with. A basic kitchen will need space for an appliance, like a barbecue, and some workspace. The larger your space, the more you'll be able to add.

FIND THE RIGHT APPLIANCES: Find cooking appliances that will suit your budget. Pizza ovens are bang on trend and can be used for all cooking. However, if that doesn't take your fancy, barbecues and grills are available in different sizes according to your needs. Some people even add fridges and microwaves to their outdoor spaces.

GET YOUR CONNECTIONS IN PLACE: You may need to bring in professionals to provide electricity, lighting and plumbing to your space. Keep everything secured away for safety and to make sure the space looks neat and organised.

BUILD A SHELTER TO COVER ALL WEATHER: A shelter is a must if you're dealing with electrical equipment, but it will also help you make the most of your space. Having shelter will let you use your outdoor kitchen in any weather, for year-round entertainment.

MAKE SURE YOU'VE GOT ENOUGH STORAGE: Storage is a must for your outdoor kitchen. Shelving, trolleys and cupboards can keep your utensils, tableware and other supplies safe and clean, ready for when you need them.

An outdoor kitchen is a must if you like entertaining at home. Start now to get yours ready in time for summer.



GARDENING

Photo credit: Gilla via housebeautiful.com, Morso/androm Consultants/area via dealhome.co.uk

Joe's Carpets

FAMILY RUN BUSINESS ♦ ESTABLISHED SINCE 1999

WE COME TO YOU

PERSONAL HOME SERVICE

The Mobile Carpet Shop Home Selection Service

- ♦ Supply & Fit
- ♦ Repairs & Refits
- ♦ Free Estimates & Advice
- ♦ Free Gripper Rods

A Friendly & Tidy Service



Will Move Furniture & Uplift Old Carpets

Contact us on 07748 808094

ALL TREE WORK UNDERTAKEN



- FAMILY RUN BUSINESS
- OVER 35 YEARS EXPERIENCE
- PRUNING ○ THINNING ○ REDUCTIONS
- FELLING AND REMOVAL ○ DEAD WOOD REMOVAL
- SITE CLEARANCE ○ HEDGE MAINTENANCE
- FIREWOOD SALES ○ FULLY INSURED

ESSEX TOP RATED TREE SURGERY COMPANY 2017/2018 ON

★★★★★ Checktrade.com
Where reputation matters



City & Guilds
NPTC
Qualified workforce

01277 551170 / 0208 787 5755

www.essex-tree-care-ltd.co.uk

CALL TODAY FOR YOUR NO OBLIGATION QUOTE WITH NO HIDDEN EXTRAS



GARDENING



PLANTS THAT STAVE OFF SLUGS AND SNAILS

Are you being driven to distraction by slugs and snails in your garden? If the answer is yes, then a few well-placed plants are just the solution you have been seeking.

FERNS: Ferns are low-maintenance, hardy, and make an attractive addition to any sized garden. Plus, they are way down on the list of the favourite foods of slugs and snails as their thick leaves are hard to chew. Plant in a moist, well-drained spot for optimum results.

HYDRANGEAS: Instantly recognisable by their pretty pink, blue and white flowers, hydrangeas may appear beautiful to us, but, fortunately, this is not the case for slugs and snails. With the ability to create the ultimate barrier against these slimy creatures, hydrangeas thrive in moist, well-drained spots with some shade.

LAVENDER: While this sweet-smelling herb does attract the attention of bees, its strong fragrance is off-putting for slugs and snails. Place lavender strategically around your garden to help protect your other plants from the destructive habits of gastropods.

GERANIUMS: Geraniums are not an attractive option for slugs and snails as travelling across their hairy stems and leaves is too uncomfortable. There are more than 300 species of geraniums, so you are guaranteed to find one that complements your garden.

FOXGLOVES: Foxgloves can be perennial or biennial and produce stunning bell-shaped flowers that sit on long, swaying stems. Toxic when eaten by slugs and snails, as well as humans, foxgloves look lovely in borders around your garden.

OTHER WAYS TO DISCOURAGE SLUGS AND SNAILS

- > Create barriers with crushed eggshells, pine needles or thorny cuttings
- > Remove slug shelters such as bricks and large logs
- > Lay down copper tape around your plants
- > Sprinkle a little salt on your most valuable plants.



TAME THE

CURLS

*Avoid hair-styling tools*

Although you may be tempted to use your trusty straighteners, blow dryers and hot combs even more when the heat and humidity are ruining your usually sleek curls, this is the worst thing you can do. Instead, let your curly hair dry naturally or use a diffuser and invest in a good air-dry styling cream.

Deep condition frequently

When the weather can't make its mind up, now is the time to embrace conditioning treatments, as these will help your hair to stay in optimal condition. If you usually deep condition once a week, change this to every other day when the weather starts to heat up.

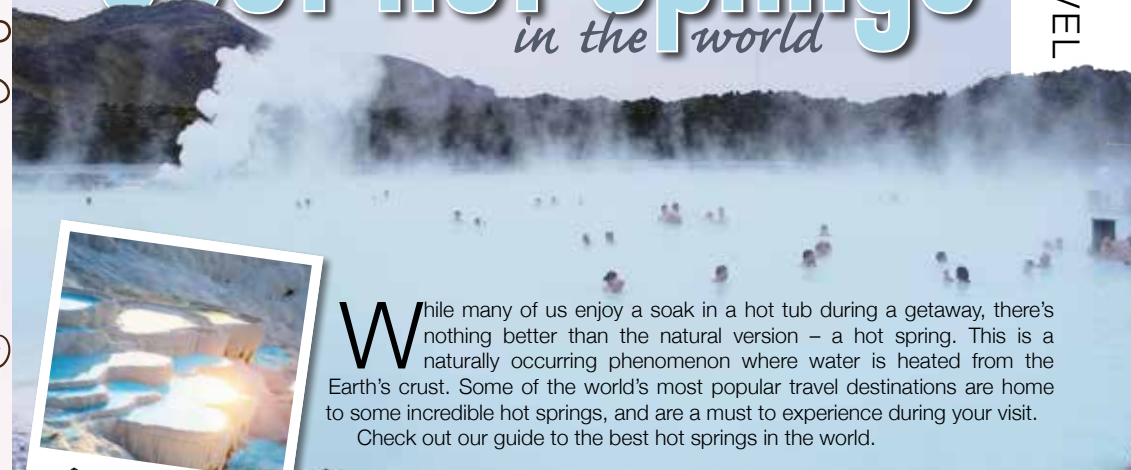
Try the pineapple trick

If the heat and humidity tend to attack your curls while you are sleeping, then the pineapple trick is just what you need. All you need to do is loosely gather your curls at the highest point of your head and secure them with a band. This will guard against frizz.

Layer up products

If the forecast is rain, then you need to be prepared by applying the right products for your type of hair before you leave the house. For medium-textured curls, opt for a water-based mousse, or if your hair is fine, an alcohol-based one is better. Once dry, spray your hair liberally with an anti-humidity product.

Guide to the
best hot springs
in the world



Pamukkale Thermal Pools



Banjar Hot Springs



Kerosene Creek



Cascade del Mulino

While many of us enjoy a soak in a hot tub during a getaway, there's nothing better than the natural version – a hot spring. This is a naturally occurring phenomenon where water is heated from the Earth's crust. Some of the world's most popular travel destinations are home to some incredible hot springs, and are a must to experience during your visit. Check out our guide to the best hot springs in the world.

blue Lagoon geothermal spa, iceland: One of the most famous hot springs in the world, more than 4,000 people visit Blue Lagoon every day. The beautiful blue water, alongside the idyllic mountain scenery, provides the perfect spot for relaxation. With 38°C temperatures and an on-site spa, a visit to Iceland isn't complete without a visit to Blue Lagoon.

pamukkale thermal pools, turkey: Pamukkale Natural Park is a UNESCO World Heritage Site and home to a dozen thermal springs. It's a picture-perfect setting with beautiful blue water set against white limestone – ideal for relaxing in the Turkish sun. The Egyptian Queen Cleopatra is known to have visited the Pamukkale pools.

banjar hot springs, bali: The Banjar Hot Springs provide a stunning setting across two levels and offer complete relaxation. There is even a family pool, providing something for everyone in this wonderful part of Indonesia.

kerosene creek, new zealand: New Zealand provides so many amazing experiences, and Kerosene Creek doesn't disappoint. Set deep within the Rotorua forest, spending time relaxing in this striking hot spring is an experience you won't forget.

cascade del mulino, italy: One of Tuscany's most popular spots, the Cascade del Mulino is open 24 hours a day, allowing guests to experience its beauty at all times of the day and night. The limestone pools are magnificent, and it's a great place to unwind after a day exploring the sights of Tuscany.

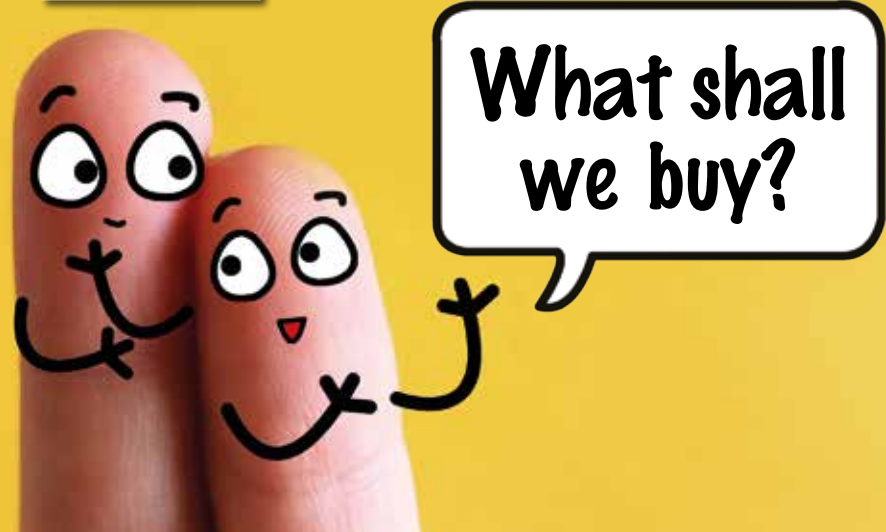
With incredible hot springs located all over the world, will you visit one on your next adventure?

Photo credit: Unsplash under Creative Commons/afsh Sheldon



BRUCE KING

on why people buy



MAGNIFICENT MOTORS

In his final column, sales mentor and personal growth coach, Bruce King, discusses why people buy and how to stop yourself buying things you don't need.

We all buy for emotional, not logical, reasons, although we'll create logical reasons to justify our decisions.

For example, did you buy or were you sold a new pair of shoes when you had plenty already and your favourite pair just needed a good polish? You bought a new pair because you love new shoes and they make you feel good, or the salesperson said you looked great in them.

Maybe you justified your decision with logic on the basis that if someone saw your expensive new shoes, you would create a better impression.

Ever bought a new car when there was nothing wrong with your current model, but the look, feel and smell of a new car makes you feel wonderful, and the salesperson said you looked so impressive in the driving seat?

Perhaps you justified your decision on the basis

that a new, more expensive car would impress your customers and make them more likely to do business with you.

Why do we do this? The answer lies in how the brain works – it has an emotional part and a logical part. All decisions we make start in the emotional part – that's how our brains work.

If the emotion is strong enough, we'll usually ignore the logical part. Love and want are both strong emotional reasons for buying something.

To stop ourselves being sold to, switch on the logical part by asking a question – something as simple as, 'Do I really need this new car or these new shoes?' your brain will probably respond with a resounding 'NO!' and save you a lot of money.

More information:

Bruce King is recognised internationally as a leading sales, marketing and personal growth strategist, addressing audiences and coaching sales teams and managers in 23 countries. For more information, visit bruceking.co.uk

THE MODIFICATIONS BEING MADE AHEAD OF THE 2022 FORMULA 1 CHAMPIONSHIP

The evolving entity that is Formula 1 is undergoing perhaps its most rapid change ever in 2022, with a blueprint for the future (and the new season which began in Bahrain on March 20) based on two principles – greener and more competitive racing.

On the eco side, the fact that the world's exemplars of motoring excess have signed up to increasing bio-components within the fuel system is impressive. The new season has seen this increase from 5.75 per cent of fuel load to 10 per cent, via the new E10 fuel. The E stands for ethanol, which has a near-zero carbon footprint, and sets a precedent for even cleaner fuel in the future. F1 experts are already working hard to formulate a fully sustainable product in the near future.

Combining this eco drive with more competitive, exciting racing – the like of which we saw at the conclusion of the 2021 championship when Lewis Hamilton had an eighth world title snatched from his

grasp – is a win/win for F1. To aid this, the new cars set to be launched are rounder, slicker and more stunning to look at.

Included in their structure are moves to make them more equipped for closer racing (with the removal of excessive downforce), notably through over-wheel winglets and wheel covers. They also have 18-inch low-profile tyres, reducing overheating when they slide, plus entirely new front wings and noses so as to generate consistent downforce when close to a car in front.

Finally, rolled tips on the rear wing will allow clean air for chasing cars to drive through.

Further good news for F1 fans is that the existing power units – the 1.6l turbo-hybrid – remain. These are the most advanced engines on the planet, and are designed so that the unit will separate from the chassis without exposing the fuel tank. This also makes it the safest racing car ever made.

All we need now are the drivers...

Photo credit: Alessio De Marco/Shutterstock.com

THE GREAT *Dame*

Each month, we look at one of the most significant events in British sporting history. This month, it's Dame Kelly Holmes DBE and her double Olympic gold

It's possible to strive for so long for something that you imagine it may never arrive, and that's certainly true in the case of Dame Kelly Holmes DBE.

An athlete who turned professional in 1993, she initially enjoyed a number of successes, including winning the 1,500m title at the Commonwealth Games in 1994.

Injuries – notably stress fractures – marred the years that followed, and while interspersing her time on the sidelines with silver and bronze medals, Holmes believed she may never return to gold medal contention.

"It was always silvers and bronzes," she says. "I was proud to be picking up World Championship medals, and of course my first Olympic medal – the 800m bronze in Sydney in 2000 – was wonderful. But I was never close enough to think I could move myself up."

At the Athens Olympics in 2004, Holmes, by then 34, was in the heyday of her career. Her form

going into the 800m and 1,500m events had been good – she'd scored her first major gold in five years at the Commonwealth Games in 2002, with three silvers the following year.

And, sure enough, everything clicked in Athens. For once injury-free, she powered past rival Maria de Lurdes Mutola on the final bend in the 800m to take a gold medal in a victory celebrated up and down the country. She had only decided to enter the race five days previously.

Her specialist event, the 1,500m, proved another dream race. She ran from the back of the field, advanced, and this time held off World Champion Tatyana Tomashova of Russia on the home straight, setting a new British record in the process.

Holmes had become only the third woman in Olympic history to do 'the double', and, to prove it was no fluke, won gold at the IAAF World Athletics Final later in the year, before hanging up her spikes.

A true people's champion, Dame Kelly now undertakes fantastic work as an athletics and mental health ambassador.

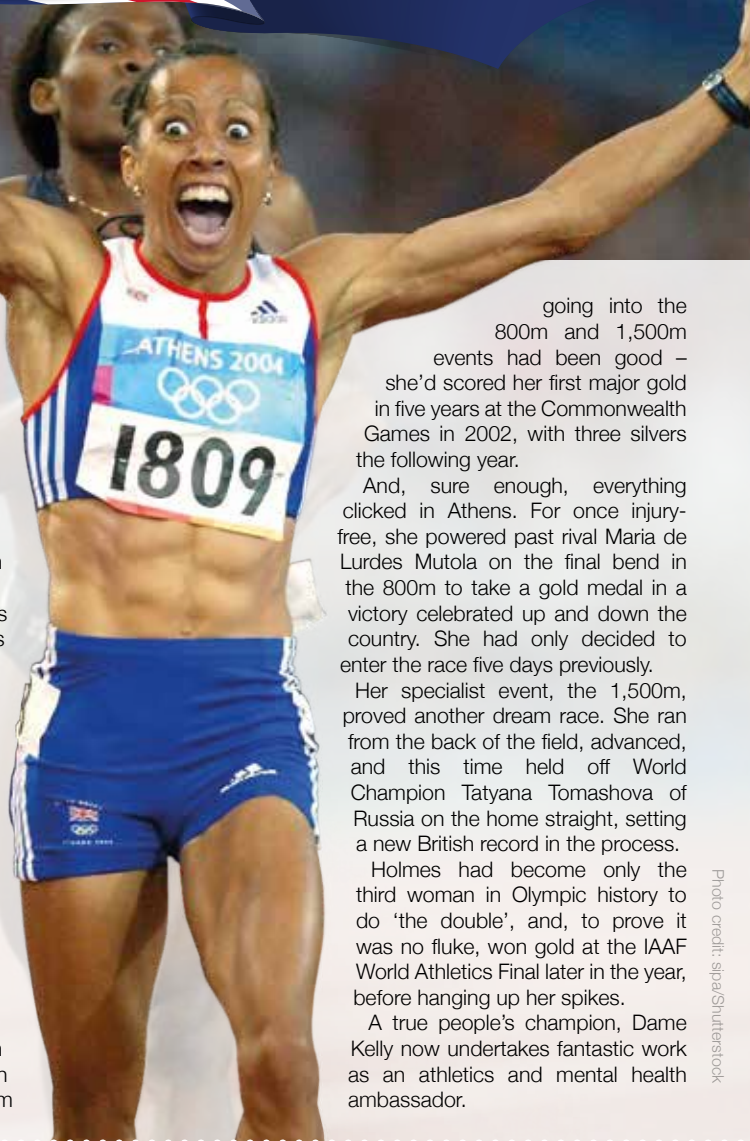


Photo credit: sipa/Shutterstock

TITANIC'S WATERY

Grave Remains

SOME 110 YEARS ON FROM THE SINKING OF THE MOST FAMOUS SHIP IN HISTORY, TITANIC'S WATERY REMAINS ARE STILL VIRTUALLY UNTOUCHED

April 15, 1912, will be a date forever etched in the annals of maritime disaster as, at 2.20am, the RMS Titanic sank into the icy depths on its maiden voyage from Southampton to New York.

It is a ship made famous by its demise, and as another anniversary passes, the sinking of this 'unsinkable' vessel continues to fascinate, terrify and, dare we say it, even entertain the world in every bit the same way as it always has.

This year marks the 110th anniversary since the ship sank to the bottom of the North Atlantic, taking 1,517 poor souls with it.

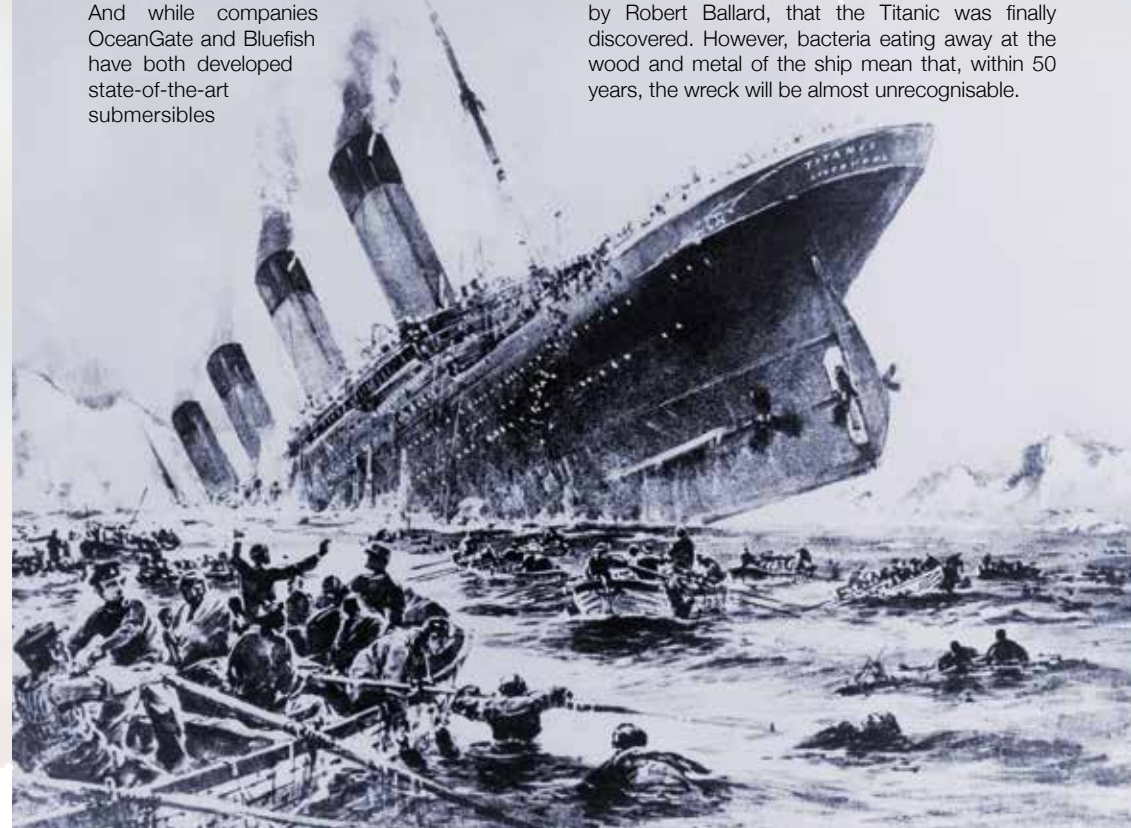
The ship remains 13,000ft beneath the surface, as any attempt to retrieve it would see it break up, while diving to the wreck can only be performed by registered scientists.

And while companies OceanGate and Bluefish have both developed state-of-the-art submersibles

that can take explorers on the 90-minute descent, the price tag of £100,000 per person means this is one disaster best viewed through the eyes of documentary-makers and film directors.

The Titanic sank when it struck an iceberg. Spotted at the last minute, First Officer William Murdoch attempted to turn the ship to avoid it – experts believe if it had hit the iceberg head on, it probably would have survived. Instead, while it could reportedly stay afloat with as many as four of its 16 compartments filled with water, five were breached, with the dipping of the bow causing water from the ruptured spaces to spill over into forward compartments.

It wasn't until 1985, during an expedition led by Robert Ballard, that the Titanic was finally discovered. However, bacteria eating away at the wood and metal of the ship mean that, within 50 years, the wreck will be almost unrecognisable.



THE VISION LISTINGS

THE VISION LISTINGS

APARTMENTS

STAYCATIONS MALDON

Luxury apartments in Maldon. Short term & long term lets. www.staycationsmaldon.co.uk | 07936 532114 | info@staycationsmaldon.co.uk | 15 Kings Head Centre, CM9 5PN

BEDS

ESSEX BEDS

Est. 1976. Maldon address – 2 Market Hill, Maldon, Essex, CM9 4PZ. 01621 854897. Free parking at all stores. Super Fast Delivery. Find us on Facebook.

BESPOKE JOINERY

FURNISH & CO

Fitted & free standing furniture. Bedrooms, dressing rooms, kitchens, utility, home offices, alcove & audio cabinets. 01621 398028 | www.furnishandco.co.uk | info@furnishandco.co.uk

BUSINESS SERVICES

HELEN WATSON COPYWRITER

Content for blogs, product descriptions, website copy & press releases. Book your FREE Chat. 07854 346421 | helen@helenwatsoncopywriter.co.uk | www.helenwatsoncopywriter.co.uk

JOIN THE LISTINGS

For just **£15** +VAT per month

CAR GARAGE

CARTY'S MOT CENTRE

MOT's, servicing, repairs. T: 01621 784879 | Unit 6 Station Ind. Estate, Burnham On Crouch, CM0 8RW

CLEANING

MOLLY MAID

Our professionally trained team will make your home sparkle. We tailor our cleans to your individual needs, schedule and budget. 01245 494003 | emma.brooks@mollymaid.co.uk

COMPUTER REPAIRS

DH COMPUTING

Friendly support direct to your door, all computer needs, low rates (no VAT), no call out charge, homes/small businesses covered. 01621 834992 | help@dhcomputing.co.uk

FLOORING

CARPETS DIRECT

Carpets, vinyl's, laminates, wood flooring, free fitting, free home visits, 80% wool twist pile specialists. Call on 01621 398019

A CLARKE CARPETS & FLOORING

Supply & Fit: Vinyl, Laminate, Carpets, LVT. Competitive Prices. Free Home Quotations. 01621 928770 | 07718 063942 | www.aclarkecarpets.com | info@aclarkecarpets.com

FUNERAL DIRECTORS

PAUL J KING

Family owned and run Funeral Directors. Caring at your time of need. Call us anytime, day or night. www.pauljking.com Maldon 01621 855552 | Burnham-on-Crouch 01621 784884

GARAGE DOORS

GAROLLA GARAGE DOORS

Thermally insulated electric garage doors, great for space saving, kerb appeal & easy to use, no deposit, pay on completion, 18 colours available. Call today 01621 880052

PROPERTY MANAGEMENT

KEYMANN RESIDENTIAL & COMMERCIAL LTD

A specialist agency in lettings and management of properties in and around Essex. 01621 855994 | info@keymann.co.uk | Kings Head Centre, 38 High St, Maldon, CM9 5PN

PUBS & RESTAURANTS

THE VICTORIA INN

Great British pub food. Traditional pub events & entertainment. At the heart of your local community. T: 01621 783585. The Victoria Inn, Burnham On Crouch, CM0 8AJ

SHEDS

TONY TURNER

Sheds & Garden Furniture. Quality sheds, custom timber buildings. Call 01621 742184 | tonyturner16984@sky.com | tonyturnersheds.co.uk | Whitehouse Farm, CM9 6PJ

SHUTTERS & BLINDS

LIFESTYLE SHUTTERS & BLINDS LTD

Local Family Business, specialising in made to measure shutters & blinds, showroom open Mon-Fri, 9am-3pm. 01245 426620 | 07971 574958 | adam@essexwindowshutters.co.uk

BOOK VIA...

MALDON@VISIONMAG.CO.UK

SKIPS

SILVERTHORN SKIP HIRE

Skip hire to your door. Brand new 4, 6, 8 yard skips. Transit tipper wait & load service. Contact us today 01621 840229 | 07738 110443

TRAVEL

STEEPLE BAY HOLIDAY PARK

Best reason to choose a stay-cation! Holiday homes starting from £14,995. FREE 2022 fees, payment options available. 07415 239231 | l.wilson@parkholiday.com | CM0 7RS

TREE SURGEONS

MONTROSE TREES

Trusted Tree Specialists. Tree planting, Crown Reductions, Hedge Trimming, Re-wilding, felling, reports and surveys. 01702 343386 | www.montrosetrees.co.uk

WINDOWS & DOORS

WISE DESIGNS IN GLASS LTD

PVCu, Hardwood, Aluminium. Domestic & Commercial. Free no obligation estimates. 01621 744336 | www.wisedesignsinglass.co.uk | info@wisedesignsinglass.co.uk

ATLAS HOME SOLUTIONS

Windows, Doors, Bifolds, Glazing Repairs. A local company buying from local manufacturers. 01268 578118 | sales@atlashomesolutions.co.uk

EZ 2 OWN

Your local experts for entrance doors, replacement windows, garage doors, patio doors and conservatories. Please call for a free quote or information pack 01621 781133

JOIN THE LISTINGS... for just £180 +VAT per year

WANT TO APPEAR IN NEXT MONTH'S
VISION LISTINGS?

SIMPLY FILL OUT THE FORM BELOW AND RETURN IT TO BOOK YOUR SPACE:

Company name:

Description (180 characters max including spaces):.....

.....

Telephone:..... Email:.....

Payment option: Card   Direct Debit

Please return to:

Lifestyle Magazine Group Ltd, 55 Crown Street, Brentwood, Essex, CM14 4BD or email maldon@visionmag.co.uk

*£180 +VAT for a 12 months plus agreement. Payments can be made monthly or upfront

DISCLAIMER: VISION does not represent or endorse the accuracy or reliability of any of the advertisements, nor the quality of any products, information or other materials displayed, purchased or obtained by any customer as a result of an advertisement or any other information or offer in connection with the service or products. The opinions expressed in articles, reviews and stories are strictly those of the individual authors and do not necessarily reflect the views of **VISION**.

PUT YOUR BUSINESS IN THE **VISION LISTINGS...CALL 01621 398040 TODAY**

ACROSS: 1. DESIGN, 4. ACETIC, 9. STIMULI, 10. GASEOUS, 11. REMIT, 12. EGYPT, 14. ABHOR, 15. SIGHT, 17. FALSE, 18. SANDALS, 20. EARLIER, 21. RELISH, 22. CONGER
DOWN: 1. DESIRE, 2. SWIMMING, 3. GAUNT, 5. COASTER, 6. TRIO, 7. CORSET, 8. LIGHTHOUSE, 13. YIELDING, 14. ATTAINS, 15. SISTER, 16. HEARER, 17. FORGO, 19. NULL



KINGS HEAD CENTRE

Heart of historic Maldon
since 1552



CASA LA NEGRA

Ideal Holiday Accommodation with a difference



WWW.CASALANEGRA.COM

[@CASALANEGRASPAIN](https://www.instagram.com/CASALANEGRASPAIN)

Staycations Maldon

*Brand New Luxury
Apartments for short
& long term lets*



www.staycationsmaldon.co.uk
Tel: 07936 532 114



Carlton Jewellers

*Jewellery and
Watches*



www.carltonjewellers.co.uk
01621 856267



KeyMann

*Residential &
Commercial
Lettings*



www.keymann.co.uk
01621 855994



The Little Shop of Sweets & Treats



www.thelittleshopofsweetsandtreats.co.uk
01621 852776



Visit The Kings Head Centre to see other local businesses



Kings Head Centre, 38 High St, Maldon CM9 5PN
01621 855994

