



FREE

Photo credit: Hugo Burnand/Royal Household/Shutterstock

HM King **CHARLES III**

Monarch ascends the throne in historic ceremony

THE VICTORIA INN HOEDOWN

Saturday 24th June
from 4pm till
midnight

With country
music DJ



**RIDE OUR
RODEO BULL**

Wear your best cowboy or cowgirl outfit
for a free drink on entry





GREAT BRITISH PUB FOOD
TRADITIONAL PUB
EVENTS & ENTERTAINMENT



 thevicboc 01621 783585  thevicb_o_c
The Victoria Inn, Burnham on Crouch, CM0 8AJ

GREAT BRITISH PUB FOOD
TRADITIONAL PUB
EVENTS & ENTERTAINMENT



 thevicboc 01621 783585  thevicb_o_c
The Victoria Inn, Burnham on Crouch, CM0 8AJ



Editor's notes...

JUNE 2023



Nik Allen, Editor

Hello and welcome to this month's edition of **VISION** Maldon Burnham.

In this month's edition, we reflect on the King's coronation. It was a momentous occasion that brought together people from all walks of life to celebrate the rich history and tradition of our great nation.

The coronation was a reminder of the importance of this institution and the values it represents - duty, service and devotion to country.

It was a moment of pride for all of us to witness the pageantry and splendour of the coronation, from the grand processions to the historic venues that hosted the ceremony. The event showcased the best of British culture and tradition, and reminded us of the deep roots that connect us to our past.

Most importantly, I hope you had a chance to use the coronation as a reason to catch up with family and friends and to celebrate together. There were a number of street parties, afternoon teas and community events taking place across the local area, allowing neighbours to get together and commemorate an occasion most had never before witnessed.

As we enter the summer months, it really was a great way to reconnect, reflect and look forward to the rest of the year. I hope you enjoy this month's edition.

Nik Allen

This is your town's hyperlocal magazine, delivering to homes and businesses every month.

HOME & DIY | GARDENING | PETS | HEALTH & FITNESS | BEAUTY | FASHION | HISTORY | LOCAL NEWS | FOOD & DRINK | TRAVEL | BUSINESS & PROPERTY | SPORT | PUZZLES | MOTORING | KIDS | WHAT'S ON | TECHNOLOGY | THE LISTINGS

CONTACT US: www.visionmagessex.com | maldon@visionmag.co.uk | 01621 398040

[@visionmagessex](https://twitter.com/visionmagessex) [@visionmagessex](https://www.instagram.com/visionmagessex) [f Vision Magazine Essex](https://www.facebook.com/VisionMagazineEssex)

CONTRIBUTORS | Tabatha Fabray, Fiona Goble, Megan Milstead

At the time of print all content in **VISION** was relevant and up to date according to COVID-19 government guidelines All pages are recyclable

SUPPORT LOCAL BUSINESSES



Please let your local businesses know that you saw them first in... **VISION**



Checkatrade.com
Where reputation matters

Lifestyle

Shutters & Blinds Ltd

www.essexwindowshutters.co.uk



Save up to £230 with our FREE FITTING on all Shutter ranges

- Local small family run business
- Specialising in made to measure shutters and blinds
- First Floor Showroom open Monday-Friday 9am-3pm

If you bring some rough measurements, we are happy to provide a free quotation

New Lifestyle Blind Range

Wood & Faux Wood Venetian Blinds
Roller Blinds
Day & Night Blinds



Proud to sponsor Maldon & Tiptree FC & Burnham Ramblers FC

Get in touch today for a free no obligation quote

T: 01245 426620 • M: 07971 574 958 • E: adam@essexwindowshutters.co.uk



Unit 2, 49 Cutlers Road, South Woodham Ferrers, CM3 5WA



King Charles' Vision



They claim that patience is rewarded with the finest treasures, and His Majesty King Charles III's lengthy 70-year wait as the heir apparent undoubtedly demonstrates his worthiness for the throne.

Now, after being confirmed in the eyes of God during his coronation in May, His Majesty will finally implement his grand vision, aiming to propel the Windsors into the modern era.

So, what will this mean for the King, those closest to him, and us, his loyal subjects?

A key principle of King Charles III's plan is to streamline the royal family. In recent years, this process has unfolded somewhat naturally, with Prince Harry voluntarily stepping back from his official duties and Prince Andrew being removed from his responsibilities.

However, under the provisions of the Regency Act 1937, in the event of the monarch's incapacity, their spouse and the four eligible adults next in line to the throne can act as substitutes. This means that the Duke of Sussex, Duke of York and Princess Beatrice are authorised to fulfil these roles – yet there is a problem, in that they are not working royals.

King Charles III has already amended this law in Parliament to allow his siblings Prince Edward and the Princess Royal Anne to act as additional councillors, but perhaps he will go further and make it so that such duties and privileges are only fulfilled by working royals.

Having experienced numerous turbulent periods in the monarchy's history, King Charles III possesses a keen awareness of the Republican sentiment prevailing among certain sections of the British population. While the late Her Majesty Queen Elizabeth II enjoyed immense

popularity, there are those who firmly believe that the time has come to dissolve the monarchy and forge ahead into a fully modern and democratic Britain. However, when we consider the substantial contributions of the monarchy to our economy and the profound cultural value of our traditions and illustrious history, it becomes evident that the potential losses outweigh the gains.

According to Forbes, the House of Windsor is estimated to hold a value of £19billion. Moreover, although the annual cost of royal upkeep for UK taxpayers amounts to approximately £500million, Brand Finance estimates that the monarchy's brand contributes £2.5billion to the British economy over the same period.

In essence, His Majesty understands his significance, but he also recognises the importance of connecting more deeply with the everyday people in his kingdom. Addressing challenges such as the recent cost-of-living crisis, and its prevalence in people's minds over the King's own passions, such as the environment, are essential for him to ensure a peaceful reign.

An additional challenge that His Majesty may encounter is the requirement to refrain from taking a stance on partisan matters, including the pressing issue of climate change. He has long been an advocate for a greener planet, having converted his cherished Aston Martin DB6 so that it can run on cheese waste and surplus wine, adopted biomass boilers for heating Birkhall estate, and installed solar panels at Clarence House. Laura Tobin recently stated on *Good Morning Britain* that changes have also been implemented at Buckingham Palace, where the lights have been turned off at night as an energy-saving measure.

As a man who has skirted both sides of the popularity divide over the decades, the opportunity to cement himself as an exemplar for a modern royal family is surely one he won't pass up.



A FINAL FAREWELL TO

SOCCER

AM

SOCCER AM'S SATURDAY FUN IS OVER, BUT THE LEGACY REMAINS

While the popularity of football is seemingly unending, not all survive the sport's continued evolution, with *Soccer AM* becoming the latest entity to be consigned to glorious retirement.

For a long while, the Saturday morning Sky show was a ground-breaking, perfectly unrefined piece of footballing irreverence. It set up the weekend's action with a laddish, lager-tinged layabout appeal that original presenters Tim Lovejoy and Helen Chamberlain lapped up.

A show that bolstered the careers of the likes of Andy Goldstein, Max Rushden, John Fendley, Tubes, Rocket and countless 'Soccerettes', its comedic approach saw many of its features permeate modern culture. From 'tekkers' to the Crossbar Challenge, Taxi! to the Save Chip campaign, not to mention the 'easy' chant and associated arm action, and getting the word 'bouncebackability' entered into the Oxford English Dictionary, *Soccer AM* finished up just a year shy of the 30-year mark, with the final show broadcast on May 27, 2023.

The death knell had sounded loudly in the past, though glorious reinvention saved *Soccer AM* from its demise. Yet with ratings continuing to fall, the final whistle has now been blown.

Despite a stellar cast of guests over the years, including Noel Gallagher, Tyson Fury, James Dean Bradfield, Richard E. Grant and Gordon Ramsay OBE, critics have, in the past, pointed to the show's politically incorrect content. Former producer Rocket recently said: "I don't know if that show can exist now because if there's a reason to complain about something, generally someone will."

While the show was always destined to ride the thin line between entertainment and controversy, its cessation became as much to do with the fact that even the biggest and best become tired and staid.

Regardless, *Soccer AM* ran a course longer than a generation of footballers, and for that reason, it will be remembered as one of the sport's greatest cultural success stories.

WISE

DESIGNS
in GLASS LTD

Maldon: 01621 744 336

Find us on  



PVCu • Hardwood • Aluminium

Domestic & Commercial



• Windows • Doors • Conservatories

- Lightweight Tiled Roof Conservatories • Fascias
- Soffits • Guttering • Sliding Sash Windows • Lanterns
- Bi-folding Doors • Composite Doors

Existing Double Glazing Repairs:

- Replace misted / broken double glazed units
- Replace window & door handles / hinges
- Re-align dropped windows & doors
- Conservatory roof repairs, upgrades & replacements

Free, no obligation estimates

www.wisedesignsinglass.co.uk

email: info@wisedesignsinglass.co.uk



Traditional fitted bedrooms

Designer Bedrooms

7, Robert Way
Wickford, SS11 8DD

01268 571799

sales@designerbedrooms.co.uk

(See website or call us for opening hours)

Fully installed
by our own
professional
fitters.



sliding doors

Whether your taste is traditional or contemporary, with either hinged or sliding doors, we have just the bedroom for you...
...all made to measure in our own factory and installed by our own professional fitters.

Need some inspiration?... then take a look at the many photos of completed work on our website at:

www.designerbedrooms.co.uk

Need a professional design...? then call us to arrange for a free no obligation home visit.

Want a quick quote...? then pop in to see us with your plans or room dimensions.

10 Year
Guarantee!



Odd shaped rooms
are our speciality!



Home Office/Studies

We are a local, family owned business and have been creating & installing bespoke furniture since 1992...

We have a large showroom at our factory in Wickford with easy parking.

No Salesmen - No Gimmicks
Guaranteed...

How organised are you based on your ENNEAGRAM TYPE?

The Enneagram is a system of personality typing that describes patterns in how people interpret the world and manage their emotions. Based on your Enneagram type, you can get a sense of how organised you are in your home and your life.

Type 1: THE REFORMER: You are very organised and believe that there is a place for everything. You need your home to be orderly and you favour a minimalist look.

Type 2: THE HELPER: You are incredibly organised when it comes to other people, but not always for yourself. You want your home to look nice, but you tend to hold on to too many sentimental items.

Type 3: THE ACHIEVER: You have people to impress, yourself included, so your life and your home need to be very organised. You have high standards and the drive to make sure things go exactly to plan.

Type 4: THE INDIVIDUALIST: You don't like to do things by the book, but you aren't opposed to keeping elements of your life organised. You always opt for the most creative solution.

Type 5: THE INVESTIGATOR: Your main priority is information. You don't stress yourself out with the small details of house cleaning, but your bookshelf must be specifically arranged.

Type 6: THE LOYALIST: You need to feel safe and secure in your home, so organisation comes naturally to you. You prefer to keep items out of sight as this makes you feel more at ease.

Type 7: THE ENTHUSIAST: You are not the most organised type, and you tend to take one day at a time. You do have good intentions, but somehow life always gets in the way.

Type 8: THE CHALLENGER: You create a structured plan and stick to it. You thrive off being productive and love nothing more than a handy planner or calendar.

Type 9: THE PEACEMAKER: You may not have the strongest focus on organisation, but that doesn't mean you aren't capable. Though you would like to be more organised, you are content as long as your home is clutter-free.

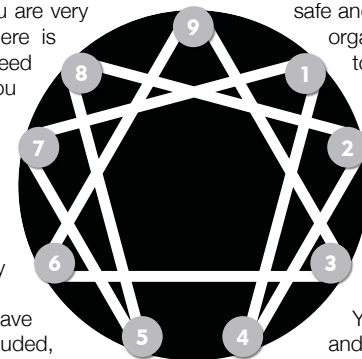


Photo credit: Pinterest - Lauren Kolyn, Federico Paul, Ulrika, Jessica Rapp, Valeria Jacobs, Margaret Stepien, Tamara Gavin





DIRTIEST

CORNERS OF THE KITCHEN

Although the kitchen may be the heart of the home, that doesn't mean it doesn't harbour a whole host of hidden germs and bacteria. Discover the dirtiest areas of your kitchen below.

KNOBS AND HANDLES

Every appliance in your kitchen has some sort of handle or control panel that is often touched with dirty hands or after handling raw food, which can leave bacteria such as salmonella, listeria and E. coli behind. Clean daily using a disinfectant wipe or disinfectant cleaner and a clean cloth.

THE KITCHEN SINK

Even though water frequently runs down your kitchen sink, there are still lots of microbes lurking on the surface and around the drain. Disinfect your sink daily using a sink cleaner, and don't forget the taps and the counter areas surrounding it.

THE FRIDGE

Despite the cold temperature, harmful bacteria can still grow in your fridge. If you store unwashed fruit and vegetables in this appliance, these can be covered in bacteria and pesticides. Raw meat can also leak out of its packaging and fluid can accumulate. Remove fridge drawers and shelves at least once a month and wash all the surfaces with hot water and a mild dish soap.

CUTTING BOARDS

Cutting boards, especially wooden ones, can harbour bacteria in the tiny nooks and crannies that appear after each use. To avoid cross-contamination, you should have one board for fruit and veg and a different one for meat. Wash each board after use with hot, soapy water and dry with a clean tea towel.

COUNTERTOPS

Every time you place something on your kitchen countertops, such as your purse or shopping bag, you are potentially leaving dirt and bacteria where you will later prepare food. Clean with a disinfectant wipe or disinfectant spray and a clean cloth at least once a day.



Apollo
Renewable's

AIR SOURCE HEAT PUMPS

SOLAR BATTERY STORAGE

SOLAR PANELS



Contact us for your free quotation



143 High Street, Maldon,
Essex, CM9 5BS



07534 040 786



Bradley@apollo ltd.com



www.apollo ltd.co.uk



NEED A PLUMBER?

BLOCKED DRAINS, BLOCKED SINKS, BLOCKED TOILETS - CLEARED FAST

- Plumbing, Heating & Drainage
- Drains - Internal & External
- CCTV Surveys
- High Pressure Jetting
- Manual Rodding
- Toilets, Sinks, Bathrooms
- Emergency Plumbing & Drainage
- Insurance Work Undertaken
- Fully Qualified Engineers Covering Your Area

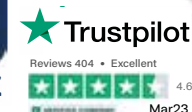
**NO
CALL-OUT
CHARGE**

**We quote
all prices
including VAT
- No Hidden
Extras**

CALL OUR FRIENDLY TEAM 24/7

01621 767816

Nº1 PHD
PLUMBING HEATING & DRAINAGE



No1 PHD Ltd, Company No: 11927404, Reg. in England & Wales.

**SENIOR
CITIZEN
& NHS
DISCOUNTS**





DESIGNING THAT SPECIAL 'YEW' SPACE

SLIDING WARDROBES • BATHROOMS • KITCHENS • HOME OFFICES & MORE

We've always had a passion for something different, something that gives you that 'wow' factor when you walk into the room. We are proud to use some of the best suppliers in the UK offering a great range and quality of tiles, sliding and fitted wardrobes, full Kitchen re-models & frontal changes as well as full Bathroom ranges. Kitchen and Bathroom samples (including sliding wardrobes) are also available and we also offer slab and solid worktops together with other styles and ranges to suit all budgets.

Like many families, we spend a lot of time at home meaning we understand the importance of making your house feel like a home and giving it that extra special feel when it comes to designing a 'Yew' space.

We will look after you from start to finish and ensure you receive the after-care you deserve.

We'd be delighted to hear from you if you need any help, advice or a free quote.

07549 014 855 • YEWINTERIORDESIGNS@GMAIL.COM • @YEWINTERIORDESIGNS



CREATE A

VERTICAL

GARDEN
INDOORS

Indoor plants will improve the air quality in your home, and could also help reduce stress and increase concentration. Also, if you grow herbs, you can harvest them all year round to perk up your culinary creations. One of the biggest home trends of 2023 is the vertical indoor garden – simply a group of plants arranged on a single wall to save precious floor space. Read on to find out how to get started.

YOU WILL NEED:

- > A selection of shelves, containers and hanging baskets. Although you can buy specially designed containers for your plants, recycled items usually look more interesting and are also kinder to the environment. Wooden boxes, wire baskets, tins and even cut-down plastic drinks bottles all work well. Just remember to add drainage holes to containers if necessary.
- > A selection of plants and herbs. Rubber plants, dragon trees and the good old spider plant are excellent choices – they help remove formaldehyde, one of the main toxins in indoor air. Tarragon, thyme, rosemary, basil and mint all grow well indoors. If you're feeling adventurous, try growing cherry or plum tomatoes. But remember, they'll need somewhere warm and sunny.
- > Suitable compost.
- > DIY tools and materials to fix your containers firmly in place, and a sturdy stepladder.

HOW TO MAKE:

STEP 1: Work out how you're going to arrange your plants and containers. You could make a sketch, or lay out the items on the floor. You don't need to be exact and can change things as you go, but a plan is always handy.

STEP 2: Fix all the containers and shelves in place, ensuring they're secure.

STEP 3: Fill all your containers with compost, then add the plants.

STEP 4: Water your plants and work out a routine to take care of them.

STEP 5: Sit back and watch your garden grow.

BEACH SAFETY TIPS FOR DOGS

Most dogs love the beach. They can run around, play in the sand and cool their paws in the sea. However, if you are planning to take your four-legged friend to the seaside this summer, you need to make sure you know how to keep them safe.

CHECK LOCAL RULES

There are lots of dog-friendly beaches all over the UK, so be sure to check the local rules of your chosen spot before you head out to avoid disappointment. You can find this information at www.thebeachguide.co.uk/dog-friendly

TEACH YOUR DOG TO SWIM

Most dogs are not natural-born swimmers, so it can be a good idea to teach them how to swim before you take them to the beach. There are many guides online on how to teach your dog to swim, such as this one: www.purina.co.uk/articles/dogs/behaviour/training/teach-dog-to-swim

PROVIDE FRESH WATER AND SHADE

If you are planning to spend a long time at the beach with your dog, then you will need to provide fresh water and shade to prevent overheating and dehydration. Also, watch your dog to ensure they don't drink too much seawater.

APPLY SUN CREAM FOR DOGS

Dogs can get sunburn in the same way that you can, so you need to make sure you apply

sun cream that is specially formulated for pets. This is especially important for dogs with light skin and short fur.

BE VIGILANT OF DANGEROUS ITEMS

Dangerous items such as broken glass and rocks can easily become buried in the sand and, if trodden on, can injure your dog's paws.

RINSE YOUR DOG

Once you have finished your day at the beach, be sure to rinse off your dog's coat to remove any sand, salt and germs before you head home.



Rafadoodles



We offer natural treats including rabbits ears, pig snouts, chicken feet & more.

We also stock a range of shampoos, flea treatment, leads collars, harnesses

Rafadoodles.com

32 high street Burnham-On-Crouch cm08aa 01621 927171

Come home to a clean house



Our professionally trained team of maids will make your home sparkle with each visit. We know it's not a one-size fits all service, that's why we work to tailor our cleans to your individual needs, schedule and budget.

Call us today to arrange your no obligation in home quote

Emma Brooks

01245 494003

emma.brooks@mollymaid.co.uk

www.mollymaid.co.uk/locations/chelmsford/

See what our customers have to say at uk.trustpilot.com





01376 343455

Open from 7:30-4:30 Mon-Fri
8:00-3:00 Sat

Closed Sundays & Bank Holidays

HUGE STOCKS TO TAKE AWAY TODAY!

With tonnes of tiles kept
on site to take home the
same day, or have them
delivered locally for free



4 Springwood Drive, Springwood Industrial Estate
Braintree Essex CM7 2YN

- ✓ Re-branded showroom for both public and trade
- ✓ New trade accounts welcome
- ✓ Underfloor heating systems in stock
- ✓ Tiles starting from as little as £7.95 m2 + VAT
- ✓ 2cm outdoor porcelain
- ✓ Adhesives, Grouts, Silicones and Trims
- ✓ Tool selection in stock
- ✓ FREE SAMPLES OF ALL TILES
- ✓ Knowledgeable and helpful staff

20% OFF CURRENT STOCK WITH THIS VOUCHER!

Simply cut out and bring this voucher with you to receive a
20% discount on tiles for your next tiling project!

FROM YOUR AREA



LOCAL NEWS

Actor 'so happy' to win prestigious TV award



Photo credit: Lenny Rush Instagram

An actor from Burnham-on-Crouch scooped up the Best Male Comedy Performance award at the BAFTA TV Awards on May 14.

Lenny Rush, a 14-year-old student at Ormiston Rivers Academy, received the award for his role in the BBC's *Am I Being Unreasonable?*

Lenny said: "I just want to say I'm so happy. I can't believe I won alongside so many other great nominees. I want to say a massive thank you to the whole team."

Ormiston Rivers Academy principal Joanne Williams said: "It has been a pleasure to watch Lenny's career flourish and I know there are many more amazing opportunities and achievements ahead of him."

Lenny also starred as Morgan in *Dodger*, a TV series inspired by *Oliver Twist*.

Officers find body of man who went missing in December

Essex Police have confirmed that a body found in Maldon last month was that of a man who had been missing since December.

Officers were called to Cut-A-Thwart Lane at around 5.30pm on Saturday, May 13, after a member of the public reported a suspicious item in the water.

This was confirmed to be a body and, following an extensive investigation including DNA enquiries and a forensic post-mortem, officers have confirmed that this is 69-year-old Timothy Hatcher.

His death is not being treated as suspicious and a file has been prepared for the coroner.

Timothy was reported missing to Essex Police on

December 20 last year, prompting a large-scale missing person investigation.

Detective Superintendent Scott Egerton commented: "This is terribly sad news, but I hope that this confirmation provides some closure to Timothy's loved ones."

"Officers and staff, including search specialists, were involved in the investigation to find Timothy and we carried out around 400 hours of searching."

Roller disco to raise funds for boy's cancer treatment

A family from Maldon is hosting a charity roller disco to raise funds for their son, who was diagnosed with neuroblastoma two years ago.

Five-year-old Ellis is currently fighting the rare and aggressive type of cancer, which affects around 100 children in the UK every year.

The family is raising money to fund potentially life-saving treatment options abroad.

The event will include a DJ and raffle, and is set to take place at Madison Heights Sk8ters Roller Rink in Maldon from 7pm to 10.30pm on Saturday, July 29.

Tickets cost £13.95, including skate hire, and all entry fees will be donated to Ellis.

Ellis' mum Amy Wild said: "The support we have had so far has left us feeling extremely overwhelmed. Neuroblastoma is relentless; he is currently fighting his third relapse. Treatments are wearing thin, and we need help now more than ever before."

To donate, head to www.gofundme.com/f/help-save-our-ellis?utm_campaign=p_cp+share-sheet&utm_medium=copy_link_all&utm_source=customer



**SIR JOHN WHITTINGDALE MP**

Conservative MP for Maldon

**YOUR LOCAL EVENTS****HARRY POTTER AFTERNOON TEA**

The Vintage Rose Tea Room, Unit A,
32 Quest Place, Maldon, CM9 5AG
Mondays to Saturdays until June 24,
9.30am – 4.30pm



Photo credit: The Vintage Rose Tea Room

Become a wizard, put on one of the fabulous wizarding cloaks and use a handmade wand at this extra special afternoon tea. You can even put on the Sorting Hat to find out which house you belong in.

The tearoom will be open as normal for everyone to enjoy the *Harry Potter* decorations, but bookings are also being taken for themed afternoon teas.

Tickets cost £25 for adults and £15 for under-12s.

TIM BURROWS IN CONVERSATION WITH GILLIAN DARLEY

Maldon Books, 23 High Street, Maldon, CM9 5PE
Thursday, June 15, 7pm – 8.30pm

Author Tim Burrows will be discussing his new book, *The Invention of Essex: The Making of an English Country*, at this exclusive event. The talk will be followed by a Q&A session led by writer Gillian Darley.

Tickets cost £5 from www.eventbrite.co.uk/e/tim-burrows-in-conversation-with-gillian-darley-tickets-632679911647

BEELEIGH ABBEY GARDENS OPEN DAY

Beeleigh Abbey Gardens, Abbey Turning,
Maldon, CM9 6LL

Various dates from June 16. 10.30am – 4.30pm

Explore the beautiful gardens and wander through three acres of countryside, surrounded by trees, plants, water features and woodland.

Tickets for the open day cost £7 for adults, £2.50 for children and free for under-fives. For more information, head to www.visitmaldon.co.uk/beeleigh-abbey

WOOF FEST 2023

Parlour Café, Creeksea Place Farm,
Ferry Road, Burnham-on-Crouch, CM0 8PJ
Saturday, June 17, 10am

Dog lovers will want to save the date for this popular dog show. Guests can enjoy watching flyball demonstrations, the annual dog talent show, and a charity raffle, while raising funds for Spirit of the Dog Rescue. There will also be a range of stalls to browse.

Tickets are free. To reserve your spot, please head to www.eventbrite.co.uk/e/woof-fest-tickets-638634181027?aff=erelexpmlt

ALTERNATIVE MARKET

Village Hall, Devonshire Road,
Burnham-on-Crouch, CM0 8EF
Sunday, June 18, 9.30am – 12.30pm

Head to the Village Hall for the monthly alternative market, where you will find a range of food and produce stalls, as well as crafts and locally made artisan goods.

Entrance is free and no booking is required.

BOCKING BRASS BAND OPEN-AIR CONCERT

Promenade Park, Park Drive, Maldon, CM9 5JQ
Sunday, July 2, 2pm – 4pm

Come along and enjoy a free open-air concert in Maldon's Promenade Park. The repertoire includes classical and modern pieces from around the world and will be held near the sea wall between the ornamental lake and the kiosks.



Photo credit: Bocking Brass Band

I know that access to healthcare is a key issue for local residents, both in terms of getting appointments at the GP surgery and the future of St Peter's Hospital. The pressure on GPs has been made worse by the pandemic and we have also struggled to recruit doctors. In January, I held a meeting in Maldon Town Hall, alongside the Mayor of Maldon, to discuss these important issue more widely, which was attended by the leaders of our local NHS, GPs and councillors.

Nationally, demand is growing steadily, in part owing to our ageing population. Recently, the government announced the Primary Care Recovery Plan, which includes funding equivalent to £35,000 per practice for improved technology such as telephone systems and online booking. This will help to end the '8am rush' for appointments and ensure patients can more quickly get the assistance they require. Additionally, some prescriptions will now be available directly through

pharmacies, without the need for a GP appointment. We are also on track to have an extra 26,000 clinicians and 50 million extra appointments by March 2024.

In Maldon, we are working to improve cooperation between the two GP surgeries in the town. A new health centre in Heybridge is due to be built as part of the development there and will be staffed by the two practices. The Longfield Medical Centre is also due to expand on its present site to alleviate the current cramped conditions there. It is intended that the Blackwater Medical Centre will in due course relocate to a new building next to the site of a new health hub which will replace St Peter's.

Maldon is growing fast and pressure on our local infrastructure will only increase. I will continue to work with health providers to ensure that our local NHS delivers the standard of service that patients are entitled to expect.

WWW.JOHNWHITTINGDALE.ORG.UK

A piece of wartime history lost to industrialisation

This month, we remember Belmont Castle, an Essex site rich in history, which survived German artillery from above only to succumb to the gradual creep of industry from below ground.

A once-grand architectural gem, Belmont Castle stood majestically atop a hill in Grays. Erected in 1795 by Zachary Philip Lynch, this Grade II listed building was a symbol of wealth and prestige, boasting a rich history that spanned more than two centuries.

The castle was designed in the Gothic Revival style by Samuel Wyatt, and showcased an impressive façade characterised by tall, pointed arches, intricate stone carvings and a symphony of decorative elements. The building was adorned with battlements and turrets, creating an imposing silhouette against the Essex skyline.

Its grandeur was further accentuated by an expansive estate featuring vast gardens, meandering pathways and lush, verdant landscapes.

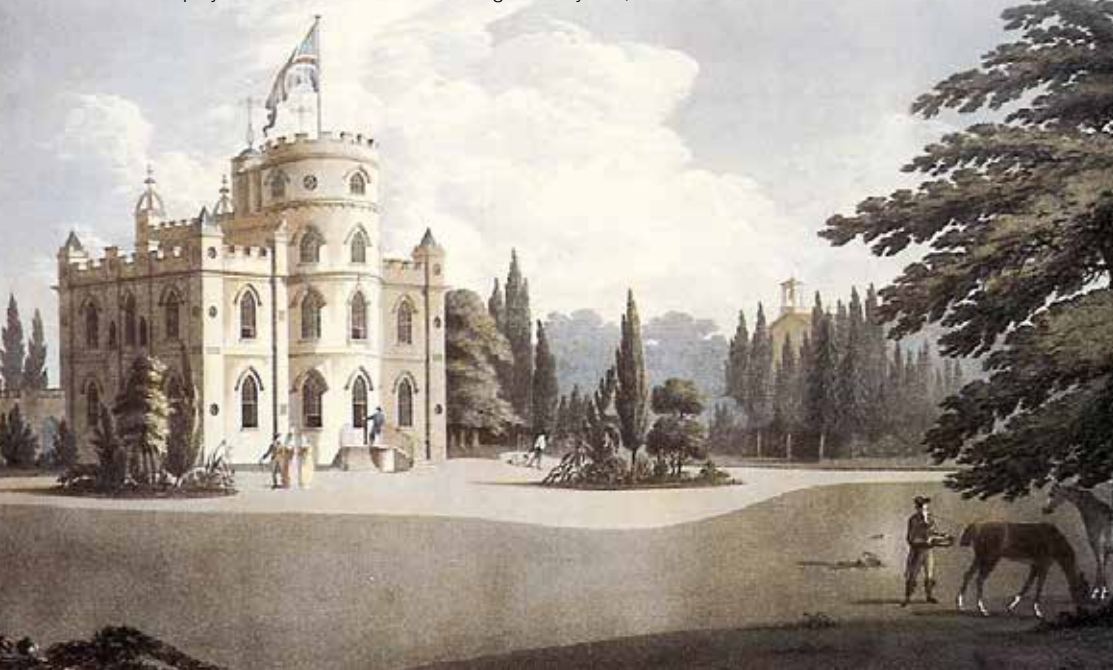
The castle played host to various notable figures

and events throughout its history. It is rumoured that the renowned English poet, Lord Byron, once stayed at the castle as a guest of its original owner, Zachary Philip Lynch.

In 1815, it was acquired by James Walker, a prominent civil engineer. He added an observatory, making the castle one of the few private residences in England to feature such an amenity. During the Second World War, Belmont Castle was requisitioned by the British Army and served as the headquarters for the Royal Artillery's Anti-Aircraft Division.

Many may have thought it was in good hands, having been returned to the state, yet in truth the move sounded the building's death knell. This was despite it being an exemplar of grandeur and a reflection of the opulence of a bygone era, and irrespective of its rich history, illustrious guests and unique features.

Belmont Castle was forced to make way for the relentless expansion of the huge Grays Chalk Quarry, which had crept unerringly towards it in the preceding years, and was demolished in 1943.



Emberton Grange

BURNHAM-ON-CROUCH, ESSEX

3 & 4 BEDROOM HOMES NOW AVAILABLE



Let us help you move up the ladder this summer



We'll help you sell with Easymover*, plus we could pay up to £14,250 stamp duty†

Discover the 3 bedroom Byford and we'll help you move with Easymover*.

Let us take care of it.

Moving home can be a stressful time, so why not choose Easymover* and let us help make the process as simple as possible? Life at this tranquil newly completed development could become a reality with the help of our tailored incentive packages!

**EMBERTON GRANGE,
MARSH ROAD,
ESSEX, CM0 8PY**

#taylorwimpey/emberton-grange
Call 01621 731 654
taylorwimpey.co.uk

**Taylor
Wimpey**

Normal Taylor Wimpey terms and conditions apply. Images used for illustrative purposes only. Please speak to our Sales Executives regarding the tenure of our new homes. *Easymover – Terms and conditions apply. Offer available on selected plots only. It is not offered with any other promotion unless by special arrangement by us. Please speak to a Sales Executive for more details of this scheme. †Stamp Duty Paid – Terms and conditions apply. This offer is subject to status and is only available on selected developments and properties. It is not offered with any other promotion unless by special arrangement by us. Please speak to a Sales Executive for further details. For more information on SDLT and residential property rates please visit <https://www.gov.uk/stamp-duty-land-tax/residential-property-rates>. May 2023.

Overheating or too cold? We can solve your problems

PK Refrigeration Ltd is a family-run business established in 1988, though we have had roots in the refrigeration and air conditioning business since 1948. Since then, we have repaired, installed, and maintained thousands of air conditioning systems. Having a proven track record, we are a name you can trust for all your air conditioning requirements.

We install air conditioning systems in domestic as well as commercial premises – from bedrooms or living areas, to small or large offices and restaurants. Whether it's a sleek wall mounted system in black, white, or silver, or a

4-way-blow cassette system in your office, we will advise and supply the correct air conditioned for your cooling and heating needs.



We carry out emergency breakdown repairs and servicing throughout Essex. Our engineers carry van stock of many common parts, meaning they can repair most breakdowns on the first visit.

We also offer a scheduled maintenance plan, so you can be assured your equipment is running properly for when you really need it.

Making your home or office comfortable all year round

Air conditioning &
Heat Pump Installation
Service and Repairs



Air Conditioning Specialist

*Air conditioning cools in the Summer,
Warms in the Winter*

Established 1988 • Fully Guaranteed • Free Survey & Quotation

Call PK Refrigeration Ltd on 01268 774 623
sales@pkrefrigeration.co.uk
www.pkairconditioning.co.uk



Photo credit: Anthony Haney/Shutterstock



The coronation of
**KING
CHARLES III**
and his wife Queen Camilla

SATURDAY 6 MAY, 2023

GOD SAVE THE KING

Princes, princesses, presidents and pop stars alike crowded into Westminster Abbey to witness the historic coronation of His Majesty King Charles III, and what a marvellous day it turned out to be.

On Saturday, May 6, 2023, the world's gaze turned to Westminster Abbey in London. More than seven months had passed since we said a final farewell to our beloved Her late Majesty Queen Elizabeth II, and what bittersweet joy it was to witness King Charles III's official ascent to the throne.

Naturally, comparisons were not drawn between this event and the Queen's funeral, but instead to her coronation 70 years previously. This was the first televised coronation, broadcast on radio and television around the world. Both ceremonies were watched by millions, though the King's was the first British coronation to be televised in glorious, high-definition technicolour.

Regardless of your feelings about the monarchy, it can't be denied that when it comes to pomp, ceremony and splendour, no one does it like Great Britain.

The journey from Buckingham Palace to Westminster Abbey alone was a thing of wonder, with joyous fans lining the streets as more than 4,000 members of the Army, RAF, Royal Navy and Commonwealth forces in immaculate dress uniforms accompanied the Diamond Jubilee State Coach.

One BBC commentator remarked how the coach – drawn by eight Windsor Grey horses – looked like something from a fairy tale, before admitting that so ancient are ceremonies such as these, that the fairy tales are more likely based on them.

Inside the abbey, proceedings took on an even more timeless quality, with the two-hour ceremony effortlessly fusing the old and the new. One poignant example of this was during the presentation of the orb, sceptre and other regalia – pieces from the Crown Jewels that hold “incalculable cultural, historical, and symbolic value” and date back to the 17th century – by various faith leaders, and the carrying of the Sword of State by a resplendent Penny Mordaunt MP.

Another poignant moment was when the King was screened from the public as he was anointed with holy oils by the Archbishop of Canterbury, because this is an event historically regarded as taking place between the sovereign and God. The anointing was carried out using an ampulla and coronation spoon, which is believed to date back to the 12th century.

Finally came the moment all had been waiting for as His Majesty sat resplendent in the Robe Royal – made for King George IV's coronation in 1821 and one of four robes worn during the service – and was adorned with St Edward's crown. After crowning Charles, the Archbishop boomed, “God Save the King”, a sentiment that was then echoed by all in attendance.

Shortly after, Her Majesty Queen Camilla was also crowned, with Queen Mary's Crown placed on her head. Interestingly, she was granted the title of Queen on the late Queen Elizabeth II's request.

The late His Majesty Prince Philip, on the other hand, was never given the title of king. This is because a ruling queen's husband is called a Prince Consort, as the title of king is only given to a monarch who inherits the throne. If King Charles passes away before Queen Camilla, Prince William, who is the heir to the throne, will become king. Queen Camilla will not become a reigning queen; her title will change to queen dowager, the official term for the widow of a king.

Following the ceremony, the King and Queen were joined by the other senior royals and their children on the balcony at Buckingham Palace for the traditional Royal Air Force flypast which, despite the rain and subsequent need to simplify the air show, drew to a close to a most historic and memorable day for all.

A new King, a new set of values, and a new era for all.



PLANE sailing

Love family holidays but dread flying with young children? Discover five ways to keep your kids occupied on a plane, with options for all ages.

BOOK A WINDOW SEAT

If your budget allows for it, booking a window seat is a great way to keep your children entertained during take-off and landing. Whether they just gaze at the views below or look for animals in the cloud shapes, children of all ages can enjoy looking out of the window during a flight.

ACTIVITIES TO KEEP THEM OCCUPIED

Remember to pack colouring and puzzle books in your hand luggage to help keep boredom at bay. Alternatively, bring blank paper and pens and ask your children to draw what they can see out of the window, or what they imagine your destination will look like.

You can also bring travel games or even a pack of playing cards; simple games like snap are perfect for little ones, while older children can enjoy more advanced games like solitaire.

DOWNLOAD AN AUDIO BOOK

If you want a bit of peace and quiet but you don't want your kids glued to a screen the entire time, then an audio book is a great alternative. There are so many books to choose from – just make sure you remember to pack headphones.

PACK PLENTY OF SNACKS

Do not underestimate how distracting snacks can be for kids during a flight, especially younger ones. Rather than buying them on the plane, bring a selection of your children's favourite snacks with you in your hand luggage and then give them out sporadically throughout the flight.

TALK ABOUT YOUR TRIP

Chatting about what you are planning to do when you get to your destination and what you are excited about, can be a great way to pass the time and engage with your children. You can also take the opportunity to teach them about the different places you are flying over.



Why you'll love this park



Come and discover Steeple Bay and make your escape to a wonderful, waterside retreat with beautiful views of the estuary. Situated on the coast near Southminster,

the park is the hidden treasure of the South East of England, with ready access to the Mayland Creek.

If you're looking for a relaxing getaway for all the family then Steeple Bay is the right place to be. Choose to spend time in our Riverside bar or take a dip in the heated outdoor swimming pool, while the kids have fun around the park with Loopy and his friends. Or take to the nearby



waters; you don't have to be an active boatman to enjoy the location though, just relax and watch the boats and yachts go by.

The park boasts great facilities including a well-stocked fishing lake, an adventure playground and an amusement arcade. Along with our leisure pool, there is also a paddling pool for our very youngest guests.

A visit the clubhouse will round off a perfect day with tasty food and drink available, along with live music and top shows during busier periods.

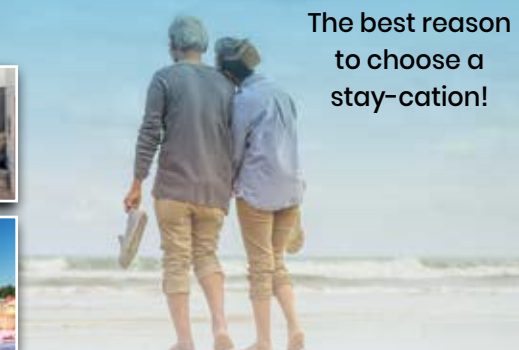
PARK HOLIDAYS
Holidays & Short Breaks



PARK HOLIDAYS

Steeple Bay Holiday Park

The best reason to choose a stay-cation!



Holiday Homes from

Please contact Lara for more info and see why everyone is choosing a STAY-cation!

...we have pre owned lodges from £99,995 including decking

Contact Lara on 07415 239231 • l.wilson@parkholidays.com • Southminster, CM0 7RS

Starting Price
£14,995!

MALDON SKIN CLINIC

Essex's premier boutique private skin clinic that offers a unique & personalised service to our clients

- ☐ Laser Hair removal ☐ Laser Skin treatments
- ☐ Non Invasive Lipo ☐ Microneedling ☐ Tattoo Removal
- ☐ Facial & Body Tightening ☐ FDA Approved Treatments

TO BOOK CALL 01621 493088 (Office hours only)
info@maldonskinclinic.co.uk ☐ www.maldonskinclinic.co.uk

22a West Station Yard, Maldon, CM9 6TS

OPENING HOURS Mon - Thurs 9:30am - 19:30pm

Fri 9:30am - 2:00pm ☐ Sat 08:00am - 2:00pm ☐ Sun - CLOSED



You've popped the cork, now light the wick!



Treat yourself to one of our candles, upcycled from champagne and liquor bottles to add a bit of luxury to your happy place

Scan the QR code and visit our website or go to www.wickinc.co.uk

Make sure you use our special VISION discount code for 10% off your first order - WICKVISION22



BEAUTY

Goodbye GREASE



If you struggle with greasy hair, then these hairstyles are just what you need to skip a hair wash and still look and feel great.

BABY BRAIDS: If the front of your hair is prone to oil, then baby braids offer the perfect way to conceal this. Start by working a little bit of dry shampoo through your hair and then section out the front strands. Braid them as tightly or loosely as you like and secure with a clear hair band.

A SNATCHED PONY: Delivering a super sleek look, a snapped pony is bang on trend and perfect for days when you don't have time to wash your hair. Separate your hair into two sections (top and bottom half) and apply a smoothing serum. Then brush from roots to ends, making sure that the front is smooth and tight. Join the sections at the crown and secure with a hair band.

WET-LOOK WAVES: Rather than try to hide the natural oils in your hair, embrace them with wet-look waves. To start, dampen your hair and add a liberal amount of heat protectant spray. Then gently blow dry your hair and add waves using a curling iron. Apply hair oil to complete the look.

A ZIGZAG PARTING: Add a playful touch to a low ponytail with a zigzag parting. Perfect for distracting from greasy roots, you need to invest in a tail comb to get a zigzag parting right. Start at the centre of your parting and then use the comb to form a zigzag along the parting line. For best results, keep all the zigzags within the same one-inch margin.

A SILK SCARF: If your curls are looking a little oily, then pile them high on your head and add a silky scarf for added visual interest and to conceal grease at the roots.

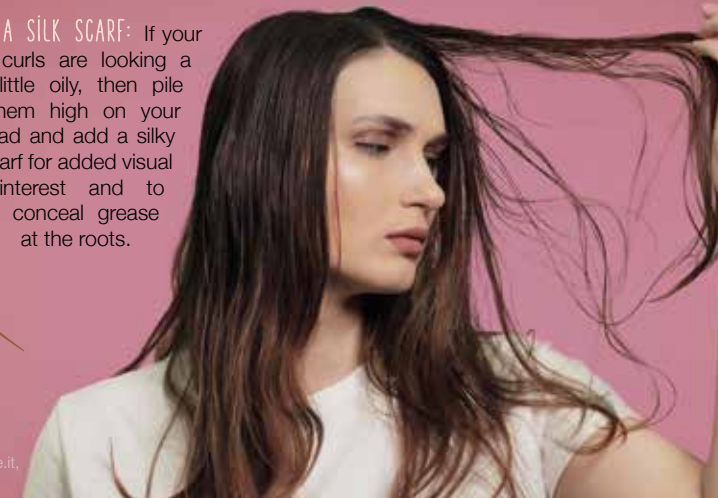
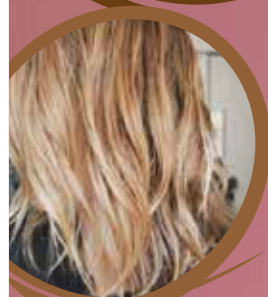


Photo credit: Instagram @justinemarjan, capellistyle.it, Pinterest/goldfishkiss.com, terrificresses, Etsy



Prescriptions

ALL ABOUT

How much does a prescription cost in England?

The prescription charge in England is £9.65 per item. However, you can get an NHS prescription prepayment certificate (PPC), which can help you save money if you need more than three items in three months or 11 items in 12 months.

A PPC costs:

- + £31.25 for three months
- + £111.60 for 12 months

You can purchase a PPC either online or with any registered pharmacy.

Who is eligible for free prescriptions?

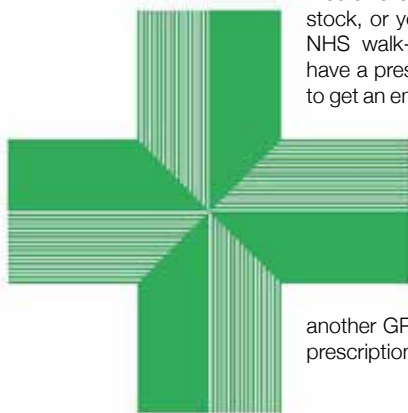
You are eligible for free prescriptions if you are:

- ✓ Aged 60 or over
- ✓ Under 16
- ✓ Aged 16-18 and in full-time education
- ✓ Pregnant or have had a baby in the last 12 months and have a valid maternity exemption certificate
- ✓ Have a specified medical condition and a valid medical exemption certificate
- ✓ Have a continuing disability that prevents you from going out and have a valid medical exemption certificate
- ✓ Hold a valid war pension exemption certificate and the prescription is for your accepted disability
- ✓ An NHS inpatient

You are also entitled to free prescriptions if you or your partner receive certain benefits, or if you are under 20 and the dependent of someone receiving certain benefits, such as income support and income-based Jobseeker's Allowance. Contraception is free for everyone in England.

Is it possible to get an emergency prescription?

If you have a prescription, you can visit any pharmacy to get your medicine as long as they have it in stock, or you may be able to use an NHS walk-in centre. If you do not have a prescription, you may be able to get an emergency supply from your local pharmacy. Take your old prescription or the medicine's packaging with you if you have it. If you are away from home, you can register as a temporary patient with another GP and ask them to do your prescription for you.



Can you get your prescription delivered to your door?

If you are unable to leave your home, your local pharmacy may be able to deliver it to your door free of charge. Alternatively, some retailers such as Boots will deliver your prescriptions for a small fee.



Stroll YOURSELF SLIM

Finding the time, not to mention the inclination, to exercise after having a baby can be hard. However, what if you could combine taking your baby for a walk with getting fit? Welcome to the world of stroller fitness.

WHAT IS STROLLER FITNESS?

As the name suggests, stroller fitness is a workout where you use your baby's buggy or stroller to get fit. Perfect for parents of all fitness abilities, a stroller workout can be as intense or as gentle as you make it. Plus, no babysitter is needed, as your baby will be with you every step of the way.

WHAT ARE THE BENEFITS OF STROLLER FITNESS?

One of the best things about stroller fitness is that it allows you to get back into exercise without having to leave your baby. Depending on the exercises that you choose to carry out, stroller fitness can provide a full body workout, or it can be used to target specific muscle groups or problem areas.

FOUR STROLLER EXERCISES TO GET YOU STARTED

Walking lunges: If you want to tone and strengthen your lower body, then walking lunges are a great choice. Take long strides as you push your buggy and lower your body until your front thigh is almost parallel to the ground. Continue for one minute, rest for 30 seconds, and repeat.

Jump squats: These burn more calories than standard squats. Use your buggy for balance, engage your core, push up through your heels as you jump up, focusing on soft knees as you land. Continue for 30 seconds, rest for 30 seconds, and repeat.

Pram chest press: Work your chest, arms and core with the pram chest press. Push through your shoulders, tensing your core as you push your buggy away from you and then pull it back towards you. Do 15 reps, rest, and do a further 15.

Pram chest press with lunge: To increase the intensity of your workout and up your heart rate even more, alternate walking lunges with the pram chest press. This exercise will work your whole body. Continue for 30 seconds, rest for 30 seconds, and repeat.





Burnham-On-Crouch Carnival

Saturday 30th September 2023

VISION

Vision magazine are pleased to announce they are now the official media sponsors for Burnham Carnival

Over the next four months we will be supporting the carnival and keeping our readers informed of all the events and attractions being organised for the event.

This year's Burnham Carnival was secured thanks to the generosity of headline sponsor Monte Carlo Homes.

The company, which owns Sea End park on the river front in

Burnham, offer a range of park lodges available as 12-month holiday homes.

Paul Skillen, owner of Monte Carlo Homes, said: "We're quite deeply rooted in the community because of the holiday park. Tourism and the UK staycation market has been very prevalent to people, things like this are perfect for the company."

"The carnival committee didn't have enough money to run the carnival this year. When we spoke to the guys, they said we saved the carnival. "It's something that we've been very active in, we like to keep the area flowing as much as we can. It's a seaside resort, so events like this are so important."

The carnival has been taking place since the late 1800s, it's a big part of Burnham."

There are a host more of generous sponsors supporting the carnival this year. Keep your eyes peeled for more in the next edition...

You can email Lorna at
burnhamcarnivalpress@gmail.com



SLEEP

like a baby?



KIDS

Are you thinking of co-sleeping but not sure if this is the right choice for you and your baby? Discover five benefits of co-sleeping below. Plus, five factors that mean you should NOT co-sleep.

1 You can meet your baby's immediate needs

Most babies require feeding, changing and soothing throughout the night. If you are close to your baby, then you can meet their needs without having to get out of bed. You can also do this with minimal disruption, which means your baby is more likely to fall quickly back to sleep.

2 You can build up your milk supply

For breastfeeding mums, co-sleeping can help you to maintain a good milk supply for your baby. As breastmilk production works on a supply-and-demand basis, if you are sleeping with your baby, you are in the ideal position for frequent night-time feeds.

3 Your baby can practise self-rousing

Although sending your baby into a deep sleep may sound appealing, babies are not actually meant to sleep in this way. Babies who co-sleep are frequently roused when close to their mothers, which can help them to learn how to use their self-preservation instinct to rouse when there is any danger.

4 Your baby can develop stronger bonds

Research suggests that infants who co-sleep develop stronger emotional relationships both with their parents and with other people. It may also help children to grow up with higher self-esteem and less anxiety, and to become more independent.

When you should NOT co-sleep:

- > You have been drinking alcohol
- > You are a smoker or use e-cigarettes
- > You have taken any drugs that may cause drowsiness
- > Your baby was premature (born earlier than 37 weeks)
- > Your baby had a low birth rate (less than 2.5kg or 5.5lbs).

King Charles' CORONATION QUICHE

With the coronation still fresh in everyone's minds, why not have a go at making your very own King Charles coronation quiche? This dish was chosen to celebrate British seasonal produce – and also because the King loves eggs and cheese.

YOU WILL NEED: (serves 6)

FOR THE PASTRY: 125g plain flour | 25g cold butter, diced | 25g lard | 2 tbsp milk | Pinch of salt. Or 250g block of readymade shortcrust pastry

FOR THE FILLING: 125ml milk | 175ml double cream | 2 medium eggs | 1 tbsp chopped fresh tarragon | 100g cheese | 180g cooked spinach, lightly chopped | 60g cooked broad beans | Salt and pepper | Pine nuts for garnish, if desired | You will also need a 20cm flat tin and baking beans

HOW TO MAKE:

1. To make the pastry, sieve the flour and salt into a bowl. Add the butter and lard and rub the mixture together using your fingertips until you have a breadcrumb-like texture.
2. Add the milk a little at a time and bring the

ingredients together to form a dough.

3. Cover and leave to rest in the fridge for 30-45 minutes.
4. Lightly flour your work surface and roll out the dough into a circle approximately 5mm thick.
5. Lightly grease the tin with butter and line with the pastry, being careful not to make any holes. Cover and rest for a further 30 minutes in the fridge.
6. Preheat your oven to 190°C/170°C fan/gas mark 5.
7. Line the pastry case with greaseproof paper, add baking beans and bake for 15 minutes.
8. Take the case out of the oven, remove the paper and beans, and leave the pastry case to one side.
9. Reduce the oven temperature to 160°C/140°C fan/gas mark 3.
10. To make the filling, beat together the milk, cream and eggs.
11. Scatter half of the cheese into the blind-baked base and then top with spinach, broad beans, tarragon and seasoning.
12. Season and pour over your liquid mixture of milk, eggs and cream.
13. Sprinkle over the remaining cheese.
14. Place in the oven and bake for 20-25 minutes until set and lightly golden.
15. Garnish with pine nuts if desired.



Photo credit: Daniel Leal/AP/Shutterstock



Award-winning farm shop & produce, supporting local, trusted farmers & small businesses



www.blackwellsfarmproduce.co.uk



Hérons Farm, Colne Road, Coggeshall, Colchester, Essex CO6 1TQ



Mon – Fri: 8:00 AM – 5:30 PM
Sat: 8:00 AM – 4:00 PM
Sun: 10:00 AM – 3:00 PM



ESSEX BASED LEAFLET, PRINTING & DISTRIBUTION SERVICE

Flyer Distribution Essex covers a majority of the CM, SS & CO postcode areas

- One off drops OR regular monthly drops
- Targeted Demographics - delivered direct to homes
- Cost effective Printing service available
- Direct Pick up service available from your Essex based address

CONTACT US

0800 086 2836 • www.flyerdistributionessex.co.uk

IT'S TIME TO FOCUS ON LIFE NOT THE COST OF LIVING

Retire to a dream location
the easy way



Move in ready homes available from £219,950



OPEN DAYS

Friday, 14th - Saturday, 15th July | 10:00 - 16:00
Come and take a look around

Freedom to live life to the full. Modern comforts and community spirit on the Essex Sunshine Coast.

Do you dream of living on the coast? Relaxed days of fresh air, seaside walks and beach picnics? It's all there for you when you move to a brand new, fully furnished home, exclusively for the over 45s, at Sandpiper Gardens, Clacton on Sea. You could also free up cash, save on bills and have less home maintenance to worry about. Whether you're retiring or semi-retiring, it's time to get more out of life.

- ✓ High-quality, low-maintenance, single-storey homes
- ✓ Safe, secure community of like-minded residents
- ✓ Private garden and parking
- ✓ No stamp duty
- ✓ Part exchange and assisted move options available

Get in touch to find out more or arrange a park visit:

www.tingdene-parks.net | 01933 422471 | info@tingdene.net

Enchanting ELDERFLOWER

Elder trees are very common in the UK and, come late May, start to develop masses of tiny white flowers which eventually turn into purple elderberries. The elderflower is known for its light and floral taste and makes a great addition to cordials, cakes and more.

ELDERFLOWER CORDIAL

YOU WILL NEED: 2 ½kg granulated or caster sugar | The zest of 2 unwaxed lemons | 20 fresh elderflower heads | 85g citric acid – you can buy this online or at your local pharmacist

HOW TO MAKE:

- > Gently heat the sugar and 2 ¾ pints of water in a pan until the sugar has dissolved.
- > Bring to the boil and turn off the heat.
- > Add the elderflower heads, the lemon zest and the citric acid to the pan and stir well.
- > Cover the pan and leave to infuse for 24 hours.
- > Line a colander with a clean tea towel and set it over a large pan.
- > Ladle in the syrup and let it slowly drip through.
- > Pour the leftover liquid into a sterilised jar. You can sterilise a glass jar either on a hot rinse cycle in the dishwasher or in the oven for 15 minutes at 160°C/140°C fan/gas mark 3.

> The cordial is ready to drink and can be kept in the fridge for up to six weeks.

ELDERFLOWER DRIZZLE CAKE

YOU WILL NEED: 175g softened butter | 175g golden caster sugar | 3 eggs | 140g self-raising flour | 85g ground almonds | ½ tsp baking powder | 100ml milk | 4 tbsp elderflower cordial | 4 tbsp white or golden granulated sugar

HOW TO MAKE:

- > Heat the oven to 160°C/140°C fan/gas mark 3.
- > Grease and line a 900g cake tin.
- > Beat the butter and 175g sugar until light and fluffy.
- > Add the eggs, flour, almonds, baking powder and milk, then whisk until smooth.
- > Pour into the tin and bake for 45-50 minutes until risen and golden.
- > Prick the cake all over with a skewer.
- > Mix the cordial and extra sugar and pour all over the cake.
- > Leave to cool in the tin and drizzle with icing if you wish.





STAYING ALIVE!

Unless you have someone looking after your garden while you are on holiday, you may be wondering how you are going to keep your plants alive and well until you return. Discover our top tips below.

WATER BEFORE YOU GO:
Before you leave for your holiday, make sure you give all the plants in your garden a thorough watering. Soak any pots, containers and hanging baskets at the plant base until the water rises above the soil. Allow this water to soak in and then repeat.

MOVE POTTED PLANTS:
Move potted plants into shady areas of your garden to slow the rate at which they dry out and to help them stay hydrated. Avoid using shade cast by the eaves of your home as this can prevent any natural rainwater from reaching them.

MAKE SOME MULCH:
A thick mulch can help to reduce the evaporation of water and lock moisture into the ground. You can

make mulch from woodchips, gravel and decorative stones or even with just a few handfuls of good quality compost. Place around the base of your plants in a doughnut shape.

INVEST IN AN IRRIGATION SYSTEM:
If your budget allows it, an irrigation system will deliver a controlled amount of water to reach your plants at set times during the day. This is a good choice if you are away for a longer period of time, or you go away frequently.

TOP TIPS FOR HOUSEPLANTS:

- > Move any houseplants away from direct sunlight to cooler, darker areas of your home
- > Give them a good, deep soak for around 10 seconds but make sure to drain any excess water
- > Place one end of a damp cloth into a glass of water and the other end in the soil. When the plant becomes thirsty, it will absorb moisture from the cloth
- > Gather your houseplants together to create a humid microclimate.



TOLLESHUNT TREE CARE

YOUR LOCAL TREE & HEDGE SPECIALIST



- Sectional Felling - Tree Felling - Tree Reductions - Tree Removal
- Stump Grinding - Stump Removal - Crown Reduction
- Tree Pruning & Crown Raising - Pollarding & Tree Thinning
- Hedge Maintenance - Shaping - Storm Damage - Dead Wooding

CALL NOW FOR A FREE QUOTATION & ADVICE
01621 892619 or 07432 123689

SAFE - RELIABLE - PROFESSIONAL - FULLY INSURED
WWW.TOLLESHUNTTREECARE.CO.UK
tolleshunttreecare@gmail.com





Belladonna is one plant that you do not want growing in your garden. Belladonna, sometimes referred to as deadly nightshade, is extremely toxic to humans, dogs and cats, and needs to be quickly identified and removed.

WHICH PARTS ARE TOXIC?

All parts of the belladonna plant are toxic to humans and domesticated animals, including the leaves, flowers, fruits and roots. It is not toxic to birds and wildlife, although when honeybees feed on belladonna, the honey they produce can also be toxic.

HOW TO IDENTIFY BELLADONNA

Belladonna is a tall and bushy perennial that grows three to four feet high and wide. It boasts dark green leaves that are oval and unevenly sized. On the bottom part of the plant, the leaves are solitary but on the upper parts, they grow in pairs. Belladonna blooms from June through to early September, with dull purple or lavender flowers that are slightly scented.

The fruit ripens between late August and September and is black and shiny like a cherry.

HOW DOES BELLADONNA SPREAD?

Belladonna spreads very quickly, just like a weed. This plant dies back in winter and then regrows in spring from its thick, fleshy roots. Birds that eat the seeds can spread the plant to other areas via their droppings.

HOW TO REMOVE BELLADONNA FROM YOUR GARDEN

You must protect your skin when handling belladonna, so make sure you wear long sleeves, long trousers, boots and gloves. If the plant is particularly tall and there is a risk of it coming into contact with your face, then you should wear goggles.

- > Dig out the plant with all its roots
- > Dispose of the plant in your garden waste bin
- > Disinfect any tools you have used
- > Wash your work clothes immediately and separately from your other clothing.



We see these casual speedsters effortlessly and gracefully gliding their way along the roads, and the realisation is that the days of pumping pedals may be on its way out.

It appears the electric bike revolution is here to stay; yet with the price of these magnificent machines is considerably more than their manual counterparts, handlebar aficionados are instead exploring ways to convert their existing rides into battery-powered versions.

It turns out it's not actually that difficult. Conversion devices can suddenly transform our humble bikes into rapid, resplendent electric vehicles.

These devices work by replacing a normal bike's rear disc-brake rotor with its own drive, which looks and works just like a traditional disc-brake rotor.

A weighty unit housing the battery and a 250-watt-hour motor clips onto the bike frame, with the rotor slotting into the clip-on unit and engaging with the gearing inside. Internal gearing turns the

special brake rotor, spinning the rear wheel and, hey presto, you're away.

You should be able to achieve almost 40 miles of assisted cycling, and be able to propel the vehicle at speeds of almost 20mph.

Recharging takes around two-and-a-half hours, and the unit can be easily unclipped and charged inside.

Pedal bikes have long been an incredibly green way to travel – it's the reason there are 20 million on Britain's roads. While those who use them as part of their job – think food delivery driver or parcel courier – may like the added speed and energy conservation of an e-bike, the stronger target market for this product is those keen to ditch the car for short trips, but who need some kind of propulsion when it comes to embarking on two-wheeled adventures.

Whatever the reason, users choosing an e-bike look certain to light the path... or road!



**THE ONE STOP SOLUTION FOR
SHEDS & GARDEN FURNITURE**



**QUALITY SHEDS
GARDEN FURNITURE
CUSTOM TIMBER BUILDINGS**

Tony Turner

MANUFACTURERS OF QUALITY SHEDS

CALL 01621 742184

EMAIL: TONYTURNER16984@SKY.COM

WWW.TONYTURNERSHEDS.CO.UK

WHITEHOUSE FARM, NEW LANE, MALDON, CM9 6PJ

THIS MAGAZINE IS
**MISSING
YOUR ADVERT**

CALL 01621 398040

TODAY TO BOOK

YOUR SPACE



**Improve,
Don't Move!**

Maximise the value of your home.

- **SPACE-SAVING - MAXIMISE YOUR GARAGE HEADROOM**
- **SECURITY-ENABLED AUTO-LOCKING SYSTEM**
- **CHOICE OF 21 COLOURS TO MATCH YOUR HOME**
- **REMOVAL AND RECYCLING OF YOUR OLD DOOR**
- **DEDICATED AFTER-CARE TEAM**

GAROLLA 01245 830 047

**ROLLER
SHUTTER
DOORS**



LINES OPEN 7 DAYS A WEEK

www.garolla.co.uk



BESPOKE ELECTRIC DOORS MANUFACTURED IN THE UK

**FREE
FITTING
PAYMENT ON
INSTALLATION**

**PRICED
EXAMPLE £895**
COMPACT • UP TO 2.4M

GAROLLA ★ PREMIUM
Increased Security • Double Insulation
One-Touch Close

**PRICED
EXAMPLE £1,990**
PREMIUM • 3.4M • ANTHRACITE



HOW TO PROTECT YOUR CAR IN **HOT WEATHER**



MOTORING

When temperatures soar, your vehicle requires a little bit of additional TLC. Unless, of course, you don't mind having to fork out for expensive repairs.

PARK IN THE SHADE: Although this may seem obvious, it is really important that you try to park your car in the shade when the sun is at its hottest. This will help to prevent your dashboard from drying out and cracking.

USE A WINDSHIELD PROTECTOR: A windshield protector can help to keep your car cool and prevent sun damage. These are low-cost and easy to use; simply unfold and slide into place on your dashboard.

WAX YOUR CAR: If a heatwave is on its way, it can be a good idea to wax your car as this provides a layer of protection between your car and the sun's powerful ultraviolet rays.

CHECK THE TYRE PRESSURE: Hot pavements and low tyre pressure are a dangerous combination and can lead to a blowout. Therefore, you should make sure that you regularly test your tyre pressure when the warm weather hits.

USE SEAT COVERS: As well as protecting both leather and fabric seats from spillages and stains, seat covers can also help to keep them cool and prevent sun damage.

CHECK YOUR COOLING SYSTEM: To prevent your engine from overheating, you need to make sure that the cooling system is in good working order. Have the belts checked and the antifreeze drained. Also, make sure that you change the belts and fluids on a regular basis.

WASH AND DRY OFTEN: Both sun and heat can cause your car's exterior to crack and fade. However, frequent washing and hand drying can help to remove dirt and dust particles that can cause scratches and dull your car's finish.



Photo credit: Anton Ukolov/Shutterstock.com, motor1.com



easy Does it

THE SUCCESS OF CHARISMATIC EASYJET FOUNDER, SIR STELIOS HAJI-IOANNOU

When launching a brand, it pays to make sure you have people rooting for you. And easyJet founder Sir Stelios Haji-Ioannou has one big thing on his side – charisma.

The now 55 year old, whose success as the founder of a revolutionary airline concept soon led to him being instantly recognisable by first name only, caused a major stir in the airline business in the mid-1990s when he started running a cheap shuttle air service between Luton and Scotland.

At the time, the concept of cheap air travel was one that had never taken off – literally. However, by putting on a 'no frills' service that did away with complementary food, refreshments and even seat reservations, Stelios found a gap in the market that short-haul travellers loved.

Soon, the airline was servicing destinations across

Europe. With fares starting at just £1, the marketing took care of itself.

It wasn't Stelios's first venture into transport. He had previously owned a shipping business, Stelmar Shipping, and had learned the ropes from his father, who was hugely successful in the same space.

Yet nothing quite rivals the serial entrepreneur's achievements with easyJet. He and his family still own one-third of the business, which values his stake at more than £4billion. This is despite the fact that, as a group floated on the stock exchange, he has repeatedly fallen out with the company's senior managers, declaring that shareholders have had no notable return in more than a decade.

Stelios's battles with Ryanair founder Michael O'Leary are also legendary – Stelios was once portrayed as Pinocchio on a Ryanair advert.

He now lives in Monaco, and received a knighthood from Her Late Majesty Queen Elizabeth II for services to entrepreneurship in 2006.



Photo credit: Meaning March/Shutterstock.com



A Very BRITISH RACKET

Nothing conjures up a British summer better than Wimbledon, the oldest tennis championship in the world. In true British fashion, it's not all about who wins – or even the lovely sound as the racket whacks the ball. Think strawberries and cream, bizarre tennis outfits, celebrity spotting, and an endless obsession with the weather.

To mark this year's contest, which takes place from July 3 to 16, let's look at a few fun facts.

- The first Wimbledon took place in 1877, but only involved men's singles. Ladies weren't allowed to compete until 1884.

- Wimbledon attracts around 500,000 spectators, and millions more from around the globe catch up on TV.

- During an average tournament, players go through around 55,000 balls.

- The grass on the Wimbledon lawns has to be precisely 8mm high.

- There's a strict rule that Wimbledon players must wear white clothes – though a small dash of colour is now allowed. The tradition started in the 1800s to avoid sweaty patches showing up on dark clothing.

- Yellow tennis balls were introduced in 1986 because they were more visible on TV than the white ones.

- At the last Wimbledon tournament, spectators consumed almost 2,000 servings of strawberries and cream, along with a staggering 250,000 glasses of Pimm's.

- The tournament employs around 250 ball boys and girls, selected from 27 nearby schools, who must pass a test to ensure they can stand still for at least three minutes.

- The longest tennis match in history was held at Wimbledon in 2010. It lasted for 11 hours and five minutes over three days between Frenchman Nicolas Mahut and the eventual winner of that year's championship, American John Isner.

- This year's tournament marks Rufus the Harris's Hawk's 16th year as chief pigeon scarer, making sure matches aren't interrupted by unwanted avian guests. Follow him on Twitter or Instagram.

So whether you're lucky enough to attend in person or will be watching the competition from the comfort of your own home, sit back, relax and enjoy this prestigious display of sporting prowess – Pimm's optional.

Photo credit: Stuart Clarke/Shutterstock

THE VISION LISTINGS

AIR CONDITIONING

P K REFRIGERATION LTD

Domestic/Commercial Air Conditioning & Cool Room Specialists. Installation, Service & Repairs. Call 01268 774623 | sales@pkrefrigeration.co.uk | www.pkairconditioning.co.uk

AIRPORT TRANSFER & CHAUFFEUR

MP EXECUTIVE TRAVEL

Airport Transfers, Night Outs, Events / Functions. Passenger options 4, 6 & 8 capabilities. T: 07411 502815 | www.mpexecutivetravel.co.uk | mick@mpexecutivetravel.co.uk

BLINDS & SHUTTERS

WORTH & CO BLINDS

Essex's leading blind, awning & interior shutter specialists for over 100 years. Call us on 01245 830087

FINANCIAL SERVICES

TRUSTED HOME FINANCE

Mortgage & Equity Release Specialists. Find the right Equity Release solution for you! T: 01621 483437 | E: enquiries@trustedhomefinance.co.uk

GARAGE DOORS

GAROLLA GARAGE DOORS

Thermally insulated electric garage doors, great for space saving, kerb appeal & easy to use, no deposit, pay on completion, 18 colours available. Call today 01621 880052

INTERIOR DESIGN

YEW INTERIOR DESIGN

Designing that special 'YEW' space. Sliding Wardrobes, Bathrooms, Kitchens, Home Offices & More. Tel: 07549 014855 | yewinteriordesigns@gmail.com

JEWELLERS

MITCHELLS JEWELLERS LIMITED

Newly refurbished workshop, On-Site Goldsmiths. Repair Service. 107 High Street, CM9 5EP. 01621 859969 | enquiries@mitchellsjewellers.com | www.mitchellsjewellers.co.uk

KITCHEN, BATHROOMS & BEDROOMS

DESIGNER BEDROOMS

Traditional Fitted Bedrooms, Sliding Doors, Odd shaped rooms are our speciality, home office/studios. 7 Robert Way, SS11 8DD. 01268 571799 | www.designerbedrooms.co.uk

LEAFLET DISTRIBUTION

FLYER DISTRIBUTION ESSEX

Leaflet, printing & distribution service. Cover a majority of CM, SS, CO postcodes. One off drops or regular monthly drops. Call us on 01277 554045 | www.flyerdistributionessex.co.uk

BOOK VIA...

MALDON@VISIONMAG.CO.UK

PUBS & RESTAURANTS

THE VICTORIA INN

Great British pub food. Traditional pub events & entertainment. At the heart of your local community. T: 01621 783585. The Victoria Inn, Burnham On Crouch, CM0 8AJ

THE BELL INN

Saloon & Public Bar. Restaurant serving local fresh cuisine. 01621 868154 | info@thebeckinghambell.com | www.thebeckinghambell.com

THE VISION LISTINGS

RENEWABLE ENERGY

APOLLO RENEWABLES

Air Source Heat Pumps, Solar Battery Storage, Solar Panels. Contact us for your free quotation. 07534 040186 | 143 High Street, Maldon, CM9 5BS | www.apolloitd.co.uk

SHEDS

TONY TURNER

Sheds & Garden Furniture. Quality sheds, custom timber buildings. Call 01621 742184 | tonyturner16984@sky.com | tonyturnersheds.co.uk | Whitehouse Farm, CM9 6PJ

SHUTTERS & BLINDS

LIFESTYLE SHUTTERS & BLINDS LTD

Local Family Business, specialising in made to measure shutters & blinds, showroom open Mon-Fri, 9am-3pm. 01245 426620 | 07971 574958 | adam@essexwindowshutters.co.uk

TREE SPECIALIST

TOLLESHUNT TREE CARE

Your local tree & hedge specialist. Call now for a free quotation & advice 01621 892619 | 07432 123689 | www.tolleshunttreecare.co.uk | tolleshunttreecare@gmail.com

BOOK VIA CALLING... 01621 398040

WINDOWS & DOORS

WISE DESIGNS IN GLASS LTD

PVCu, Hardwood, Aluminium. Domestic & Commercial. Free no obligation estimates. 01621 744336 | www.wisedesignsinglass.co.uk | info@wisedesignsinglass.co.uk

JOIN THE LISTINGS

For just

£15

+VAT per month

BUSINESS SERVICES

HELEN WATSON COPYWRITER

Content for blogs, product descriptions, website copy & press releases. Book your FREE Chat. 07854 346421 | helen@helenwatsoncopywriter.co.uk | www.helenwatsoncopywriter.co.uk

CAR GARAGE

SHAUN BAKER CAR CARE LTD

Garage Service. Vehicle Maintenance, Transmission Repairs, MOT Repairs & Maintenance, Air Con and more services. Please call on 01621 851871 | 120a High Street, CM9 5ET

CLEANING

MOLLY MAID

Our professionally trained team will make your home sparkle. We tailor our cleans to your individual needs, schedule and budget. 01245 494003 | emma.brooks@mollymaid.co.uk

FARM SHOP

BLACKWELLS FARM SHOP

Award Winning Farm Shop & Produce, supporting local, trusted farmers & small businesses. Herons Farm, Colne Road, CO6 1TQ | www.blackwellsfarmproduce.co.uk

JOIN THE LISTINGS... for just £180 +VAT per year

WANT TO APPEAR IN NEXT MONTH'S VISION LISTINGS?

SIMPLY FILL OUT THE FORM BELOW AND RETURN IT TO BOOK YOUR SPACE:

Company name:

Description (180 characters max including spaces):.....

.....

.....

Telephone:..... Email:.....

Payment option: ☐ Card    ☐ Direct Debit

Please return to: Lifestyle Magazine Group Ltd, 55 Crown Street, Brentwood, Essex, CM14 4BD or email maldon@visionmag.co.uk

*£180 +VAT for a 12 months plus agreement. Payments can be made monthly or upfront

DISCLAIMER: **VISION** does not represent or endorse the accuracy or reliability of any of the advertisements, nor the quality of any products, information or other materials displayed, purchased or obtained by any customer as a result of an advertisement or any other information or offer in connection with the service or products. The opinions expressed in articles, reviews and stories are strictly those of the individual authors and do not necessarily reflect the views of **VISION**.

PUT YOUR BUSINESS IN THE **VISION** LISTINGS...CALL 01621 398040 TODAY

ACROSS: 1. DEAR, 3. FRACTURE, 9. REGALLY, 10. NECKS, 11. STRAIGHTENED, 13. VIRAGO, 15. STEREO, 17. DISASTROUSLY, 20. BASIC, 21. PLACEBO, 22. THEORIST, 23. TREK
DOWN: 1. DERISIVE, 2. ANGER, 4. RHYTHM, 5. CONVENTIONAL, 6. UNCLEAR, 7. ELSE, 8. FLYING SAUCER, 12. BODYWORK, 14. REISSUE, 16. STAPES, 18. SWEAR, 19. ABOUT



PUZZLES & TRIVIA

PUZZLES

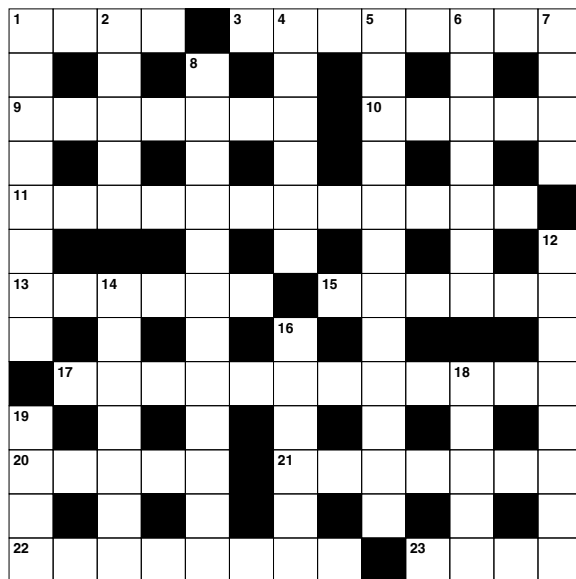
Answers: see end of The VISION Listings

ACROSS

1. Beloved; expensive (4)
3. Break (8)
9. Majestically (7)
10. Giraffes have long ones (5)
11. Uncurled (12)
13. Fierce or domineering woman (6)
15. Dual audio (6)
17. Ruinously (12)
20. Simple (5)
21. Inactive pill (7)
22. Conceptual thinker (8)
23. Arduous journey (4)

DOWN

1. Mocking (8)
2. Ire (5)
4. Sense of musical time (6)
5. In accordance with general custom (12)
6. Uncertain (7)
7. Otherwise (4)
8. UFO (6,6)
12. Exterior of a motor vehicle (8)
14. Print anew (7)
16. Ear bone (6)
18. Give a solemn oath (5)
19. Tuba (anag) (4)



DID YOU KNOW?

- ▶ Your eyes blink an average of 20 times a minute. That's more than 10 million times a year.
- ▶ The entire surface of your skin is replaced every month, which means you have about 1,000 different skins in your life.
- ▶ If you live to age 70, your heart will have beaten around 2.5 billion times.
- ▶ Laid end to end, an adult's blood vessels could circle the Earth's equator four times.
- ▶ Bodies give off a tiny amount of light that's too weak for the eye to see.
- ▶ Your left lung is approximately 20 per cent smaller than your right one.
- ▶ You produce about 40,000 litres of spit in your lifetime. Or to put it another way, enough spit to fill around 500 bathtubs.

SUDOKU

		5				3		
	9						1	6
	6		2					
2			8	7				
3		6				7		1
				9	6			2
					8		6	
1	2						7	
		4				2		

Essex's Leading Blind,
Awning & Interior
Shutter Specialists
for over 100 Years

Worth & Co
Blinds
Established Since 1889

Call us today on 01245 830087 or 01702 467581



- Factory Showroom with Free Parking
- Large Luxaflex Inspiration Display
- Patio Awning Showroom
- All types of Interior Window Blinds
- Custom-Made Window Shutters
- Motorised Internal Blinds
- Roller Garage Doors
- Home & Commercial



As a local company we offer a
wide choice of Blinds, Shutters,
Patio Awnings & Roller Garage
Doors & with competitive
prices all year plus
**FREE NO OBLIGATION
QUOTATIONS**

www.worthblinds.com sales@worthblinds.com

Unit 13 Parkside Centre, Potters Way, Temple Farm Industrial Est, Southend SS2 5SJ

Mitchells

JEWELLERS LIMITED



Perfect Gifts for that special someone...

- The largest independent selection of Diamond & Wedding rings in Maldon
 - Contemporary & elegant designs
 - Platinum, Gold & Silver Jewellery
 - Bespoke design service available on site
 - Jewellery and Watch repairs, Alterations and Valuations for Insurance and Probate

Newly Refurbished Workshop
On-site Goldsmiths

WE BUY GOLD

For all GOLD
(including old or broken)
plus

**SECOND HAND
JEWELLERY & WATCHES**



DID YOU KNOW WE OFFER A JEWELLERY REPAIR SERVICE?

Pop in and see us in store for a free no obligation quote, our repairs are carried out on site by our master goldsmith in our newly refurbished workshop – we offer a same day premium rhodium plating service along with all other repairs

OPENING HOURS: MONDAY - SATURDAY: 9:30am 5-30pm

107 High St, Maldon, Essex CM9 5EP • Tel: 01621 859969

Email: enquiries@mitchellsjewellers.com • Web: www.mitchellsjewellers.co.uk

