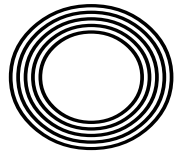




**QUIRKY
COURSES
TO STUDY
AT UNI**

BACK TO SCHOOL
Top tips for reluctant kids

POISON PLANTS
Explore nature's deadly side



FREE

Photo credit: Warner Bros.

Barbie aka
MARGOT ROBBIE

Creating a record-breaking blockbuster with British roots

THE VICTORIA INN PRESENTS

**THE
BURNHAM
CARNIVAL
AFTER**

Party

30
SEPTEMBER
2023

DJ PAUL
TRAVI

8PM -
LATE

£2 PER
PERSON

DOORS
OPEN AT
7:30PM

COCKNEY


COCKNEY SOVERIGN

KNEES UP

AT THE VICTORIA INN
SATURDAY 23rd SEPT

ALL MONEY RAISED WILL GO TO THE
BURNHAM CARNIVAL COMMITTEE

GREAT BRITISH PUB FOOD
TRADITIONAL PUB
EVENTS & ENTERTAINMENT

 thevicboc 01621 783585  thevicb_o_c

The Victoria Inn, Burnham on Crouch, CM0 8AJ





Editor's notes...

SEPTEMBER 2023



Nik Allen, Editor

Hello and welcome to this month's edition of **VISION** Maldon Burnham.

As we turn the page to a new month, I find myself looking at my own life as chapters in a book. Just as characters in a book evolve through the challenges they face, so too are we continually changing in response to everything happening around us.

Currently, my wife is embarking on a new chapter as she returns to the work force full-time. This shift brings its own set of challenges, as the balance between work and family takes on new dimensions.

Our little ones are stepping into their own new chapters as they begin school. I look forward to seeing them mature and grow as they make new friends, encounter challenges and learn invaluable life lessons.

Let us remember that the narrative of our lives is never stagnant. Each chapter brings with it an opportunity to learn, to grow and to deepen our understanding of ourselves and those around us.

Just like the most engrossing novels, our lives are full of anticipation for what lies ahead, reminding us that while change can be scary, it's often one of the most exciting parts of life.

I look forward to these next few months as we head into autumn, and hope you enjoy this September edition.

Nik Allen

This is your town's hyperlocal magazine, delivering to homes and businesses every month.

HOME & DIY | GARDENING | PETS | HEALTH & FITNESS | BEAUTY | FASHION | HISTORY | LOCAL NEWS | FOOD & DRINK | TRAVEL | BUSINESS & PROPERTY | SPORT | PUZZLES | MOTORING | KIDS | WHAT'S ON | TECHNOLOGY | THE LISTINGS

CONTACT US: www.visionmagessex.com | maldon@visionmag.co.uk | 01621 398040

[@visionmagessex](https://twitter.com/visionmagessex) | [@visionmagessex](https://www.instagram.com/visionmagessex) | [Vision Magazine Essex](https://www.facebook.com/VisionMagazineEssex)

CONTRIBUTORS | Tabatha Fabray, Fiona Goble, Bryn Holmes

At the time of print all content in **VISION** was relevant and up to date according to COVID-19 government guidelines All pages are recyclable

SUPPORT LOCAL BUSINESSES



Please let your local businesses know that you saw them first in... **VISION**



Checkatrade.com
Where reputation matters

Lifestyle

Shutters & Blinds Ltd

www.essexwindowshutters.co.uk



Save up to £230 with our FREE FITTING on all Shutter ranges

- Local small family run business
- Specialising in made to measure shutters and blinds
- First Floor Showroom open Monday-Friday 9am-3pm

If you bring some rough measurements, we are happy to provide a free quotation

New Lifestyle Blind Range

Wood & Faux Wood Venetian Blinds
Roller Blinds
Day & Night Blinds



Proud to sponsor Maldon & Tiptree FC & Burnham Ramblers FC

Get in touch today for a free no obligation quote

T: 01245 426620 • M: 07971 574 958 • E: adam@essexwindowshutters.co.uk



Unit 2, 49 Cutlers Road, South Woodham Ferrers, CM3 5WA



THE WORLD AT THEIR FEET



Football may not be coming home after England's women lost to Spain in an eventful World Cup Final, but the fact that they made it to the final stage of the tournament signifies another huge advancement for Sarina Wiegman CBE's team, and the sport as a whole in this country.

As the final whistle sounded in Sydney on Sunday, August 20, and the Lionesses collapsed to the floor, many in tears, their big chance to clinch the Women's World Cup had slipped away... for now, at least.

Before the match, England had

been riding a wave of hope. Euro champs from 2021, and under the guidance of Dutch coach Wiegman – recognised as the world's leading female football coach – they had suffered just one defeat in 38 games, a friendly reverse to one of the co-hosts of this tournament, Australia.

Their journey to the final saw them navigate a mass of injuries, temporary loss of form, a penalty shoot-out, and a two-game ban for Lauren James, who was sent off in the quarter-final. Yet even when not playing at their best, they found ways to win – ultimately the sign of a team who have the strength and resilience to overcome challenges.

However, on this occasion, the project fell one result short. Wiegman's expertise was pushed to its maximum. After the game, the players were quick to admit the better side won on the day, as Spain's Olga Carmona fired in the winning goal in the 29th minute.

With their line-up comprising seven members of Barcelona's Champions League-winning side, the Spaniards' skills were evident from the get-go. Indeed, despite

having Ballon d'Or winner Alexia Putellas on the bench owing to ailing fitness, and a wider rift existing within the Spanish squad pre-tournament, Jorge Vilda's side proved to be a formidable opponent.

Perhaps it was England's victory against them in the quarter-finals during Euro 2021 that gave the Spaniards extra impetus, but they were stronger and more clinical when it mattered.

England, who had won their group phase with victories over Haiti, Denmark and China, had then beaten Colombia and Australia en route to the World Cup. They will likely see the defeat as a missed opportunity, particularly with defending champions USA and European powerhouses Germany both eliminated early.

Wiegman, ever the strategist, made changes at the break and shifted formations, yet while England's play improved, ultimately it was Spain who should have extended the lead after Jennifer Hermoso's penalty was brilliantly saved by Mary Earps.

Even 13 minutes of injury time couldn't save the Lionesses, yet there are positives to take.

First, Mary Earps was named FIFA Best Goalkeeper for the tournament – otherwise known as the Golden Glove Award winner. She conceded just three goals in six matches, keeping three clean sheets. The honour was a tremendous comeback for the 30 year old, who has had to battle for her spot as England number one.

Next, we have a nation that continues to embrace the onward trajectory of women's football in England.

The Lionesses remain a team who have rewritten the script, broken records, confronted societal norms, and continue to advocate for more investment and exposure in women's football.

Consider those elements, and the stylish way in which the team continue to galvanise a nation of girls growing up in the game, and in many ways they are true champions.

FIFA WOMEN'S WORLD CUP 2023™



Photo credit: James Gourley/Shutterstock, Morgan Hancock/Shutterstock

FIFA WOMEN'S WORLD CUP 2023™ THE FINAL

Quirky STUDIES

Are you looking to pursue further education but don't want to choose the same course as everyone else? In that case, these quirky university programmes may grab your attention.

VITICULTURE AND OENOLOGY

Do you love a tippie or two, or want to know more about the science of winemaking? Discover the wonderful world of viticulture and oenology. These courses provide all the skills and knowledge needed to become a vineyard manager, winemaker or winetaster.

HOROLOGY

If you are fascinated by time, then horology could be the course for you. Focusing on the art and science of time management, this is the perfect course for budding entrepreneurs who understand that time is money!

ETHICAL HACKING

Offering a surprisingly high graduate employment rate, ethical hacking focuses on the study of cybersecurity in order to protect businesses from computer hacking. Ideal for computer whizzes.

ETHNOBOTANY

If you have embraced the recent trend for greenery in your home, then you may be interested in a course that looks at how humans respond to and benefit from plants. A great choice for those who want to pursue a career in the field of botany.

CIRCUS PERFORMANCE

Yes, you read that correctly, you can pursue a university degree in circus performance. One of the most exciting courses we found, you can learn a whole host of skills and receive top physical training. Because who didn't dream of running away to join the circus at some point?

SURF SCIENCE

Another degree course that sounds like great fun, surf science, as you may have already guessed, involves the study of surfing. Whether you want to set up your own business or work for one of the big names in surfing, this is one degree course that promises not to be boring!



WISE
DESIGNS
in GLASS
LTD

Maldon: 01621 744 336

Find us on  



PVCu • Hardwood • Aluminium
Domestic & Commercial



- Windows • Doors • Conservatories
- Lightweight Tiled Roof Conservatories • Fascias
- Soffits • Guttering • Sliding Sash Windows • Lanterns
- Bi-folding Doors • Composite Doors

Existing Double Glazing Repairs:

- Replace misted / broken double glazed units
- Replace window & door handles / hinges
 - Re-align dropped windows & doors
- Conservatory roof repairs, upgrades & replacements

Free, no obligation estimates

www.wisedesignsinglass.co.uk

email: info@wisedesignsinglass.co.uk

Grand architectural designs for new and existing builds

Established in 1996, Petro Designs Ltd has a great wealth of experience in providing chartered building surveying and architectural expertise to residential and commercial clients. Over the years, we have gone from strength to strength, creating a long list of happy and satisfied customers across the UK. Whether you need architectural design or a building survey, we've got you covered. As architectural consultants, we handle all aspects of the project, design and maintenance, making it a hassle-free experience for you. Some of our projects include educational projects and hotel projects. We are registered with the RICS.



We provide a complete service from free initial telephone consultations to the completion of projects. The scope with which we operate ranges from new builds to extensions and alterations.



At Petro Designs Ltd, we understand undertaking any building project is a major commitment and our team can help to make your dream home a reality. With the latest technology we offer design solutions for your residential construction project. Working with you every step of the way, we tailor our services to achieve the ideal designs that accommodate your requirements.



Our chartered building surveying services are registered with the RICS on their regulated scheme. Our expertise includes surveying services for a multitude of customers, from homeowners to commercial premises.

"Having worked with Petro Designs over many years on a wide range of projects we have found them to be a very professional company being able to plan and advise on all our diverse applications. They have had the required knowledge of planning and building legislation to be able assist us in dealing with the local planning officers to succeed in the forward planning of our business. Always available and keen to be helpful".

DavidS-1662 (Yell Review)



Designs Ltd

INNOVATION ■ KNOWLEDGE ■ EXPERTISE

ARE YOU LOOKING TO EXTEND YOUR PROPERTY OR CONSTRUCT A NEW BUILD?

Petro Designs Ltd are a company of Chartered Building Surveyors and Architectural Consultants based in Essex and can provide assistance through the Planning and Building Regulations process for Residential and Commercial projects.

OUR SERVICE INCLUDE:

- Measured Surveys
- Feasibility & Planning Drawings
- Detailed Drawings & Specifications
- Planning and Building Regulations Applications
- Project Management
- Contract Administration
- Building/Condition Surveys



Call Petro Designs Ltd for Architectural Design Services and Building Surveyors in the Essex area on 01621 840055

Call us on 01621 840055

or email office@petro-designs.co.uk ■ www.petrodesignsessex.co.uk





Peaceful plants

Did you know that at least one-third of the adult population suffers from some form of insomnia? Furthermore, an estimated 20 per cent of teenagers get less than five hours of sleep a night. Not getting enough sleep can cause a whole host of physical and mental health problems, but there are ways to help you drift off naturally.

How can plants help you to sleep?
If you suffer from insomnia but you don't want to start taking prescribed medications, then indoor plants offer a more natural way to aid sleep. Fragrant plants have been shown to calm nerves and reduce anxiety, whereas other types of plants act as air purifiers and absorb toxins.

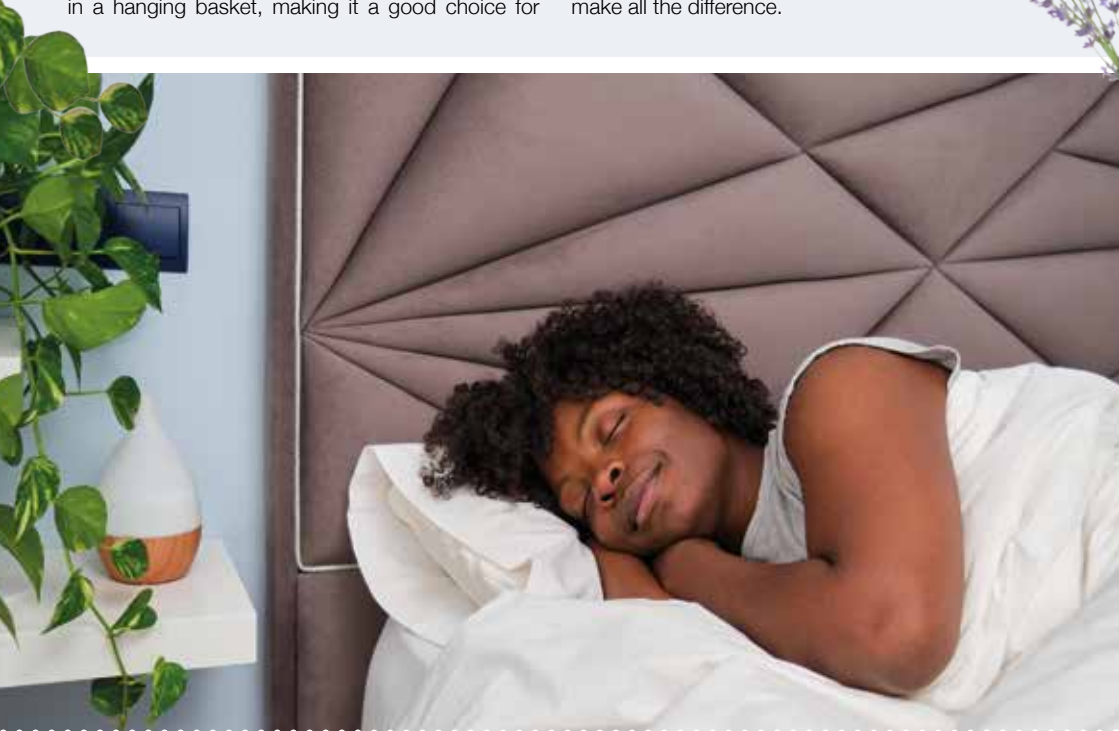
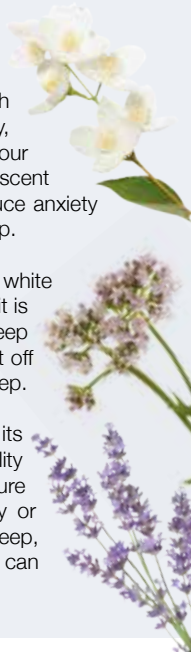
The best indoor plants for insomnia
GOLDEN POTHOS: Golden pothos, also known as devil's ivy, is great for purifying the air, which can help to aid sleep. This plant looks best when placed in a hanging basket, making it a good choice for

homes with children or pets.

JASMINE: If you struggle to switch off and relax at the end of the day, then jasmine is the perfect plant for your bedroom. Studies show that the sweet scent produced by jasmine can help to reduce anxiety and improve your overall quality of sleep.

VALERIAN: Boasting small pink and white flowers, a valerian plant is as pretty as it is practical. Used for centuries to cure sleep problems, valerian can help you to drift off more easily and enjoy better-quality sleep.

LAVENDER: Lavender is known for its sleep-inducing qualities, with the ability to lower your heart rate, blood pressure and stress levels. If you have a baby or young child who struggles to get to sleep, the scent of lavender in their bedroom can make all the difference.



The care you deserve

- Personal care
- Medication Support
- Meal Preparation
- Community support and Shopping
- Overnight Care
- Companionship
- Domestic Tasks
- Hourly Care

01245801401
info@elsieshelppathome.com
www.elsieshelppathome.com



Elsie's Help at Home, Croxtford Mill, Blarford Hill, Little Waltham, Chelmsford, CM3 3PJ

Joe's Carpets

FAMILY RUN BUSINESS ♦ ESTABLISHED SINCE 1999



The Mobile Carpet Shop Home Selection Service

- ♦ Supply & Fit
- ♦ Repairs & Refits
- ♦ Free Estimates & Advice
- ♦ Free Gripper Rods

A Friendly & Tidy Service



**CONTACT US ON 01621 398 019
OR 07748 808094**

From Banking Hall to Curtain Call

Following the closure of Barclays Bank in Tiptree Curtain Call Interiors have taken over the former bank building and transformed the space into an inspirational home interiors showroom and new workroom.

The new space showcases a wide range of designer fabrics, curtain displays as well as home accessories including, a beautiful home fragrance range, cushions, lamps, furniture and tableware.

Curtain Call specialise in making hand finished bespoke curtains, Roman blinds and soft furnishings all made by their experienced team of curtain makers. With their new workroom located adjacent to the Showroom, it allows



owner Natalie and her team of makers and designers to assist customers in finding the right fabric and style for their decoration projects.



Offering a free estimating and consulting service, using the vast library of fabric samples and pattern books, they can help bring your ideas to life with advice in choosing the right fabric and style for your space.

Curtain Call are open Monday to Friday from 9am until 5pm and 9am until 3pm on Saturdays, with free customer parking available at the rear of the building.

Bespoke hand finished soft furnishings

MADE IN OUR TIPTREE WORKROOM

Our Services

- Personal Consultations
- Curtains & Pelmets
- Roman Blinds
- Curtain Tracks & Poles
- Wooden Blinds & Shutters
- Measuring & Fitting Service
- Fabric & Wallpapers
- Home Accessories



Measured by us. Made by us. Fitted by us.

65 Church Road, Tiptree, Essex CO5 0ST | Mon to Fri 9am – 5pm, Sat 9am – 3pm

Telephone: 01621 815422 | www.curtaincallinteriors.co.uk



Measured by us. Made by us. Fitted by us.

65 Church Road, Tiptree, Essex CO5 0ST | Mon to Fri 9am – 5pm, Sat 9am – 3pm

Telephone: 01621 815422 | www.curtaincallinteriors.co.uk



AZTEC

BUILDERS & MAINTENANCE



HardiePlank
Cladding
 Full Range of
 Colours Available

List any job big or small that needs addressing, we will quote them all – then you choose what to get done and when

- Interior & Exterior Work
- Painting & Decorating
- Wallpaper Specialists
- Wall & Floor Tiling
- Plastering & Coving
- All Brickwork
- Patios
- Block Paving
- Driveways
- Extensions
- UPVc Fascias, Soffits, Guttering & Cladding
- Roofing – flat, pitched etc.
- Carpentry
- All General Repairs

FAMILY RUN BUSINESS ESTABLISHED SINCE 1999

Will Beat Any Written Quote • Full Public Liability Insurance

Call us now for a FREE estimate

Tel: 07866 804180 • 01621 502153

email: aztec.pm@hotmail.co.uk



HOME & DIY

Winter HEALTH CHECK

THE FIVE THINGS YOU NEED TO DO NOW TO ENSURE YOUR HOME DOESN'T LET YOU DOWN THIS WINTER

Winter is nearly upon us, and it's the time of year when the prospect of something going awry in our homes can spell disaster. It might be more than just the cold shower resulting from a broken boiler that leaves you shuddering – wait until you see the call-out fee to get it fixed!

That's why giving some essential parts of your home a health check now may save you from some wintry wails of terror.

cause problems when the rainy season really hits.

WICKED WINDOWS AND DOORS

Be sure to go round the house, checking all windows and doors close properly. Now is the time to make small repairs to gaps and draughty grooves where cold air will whistle through.

BRILLIANT BOILER

Ensuring that your boiler is serviced by a registered gas engineer should be a must ahead of the cold season. The good news is a full service is usually affordable and can cost as little as £60, and it's something you should be performing annually.

REMARKABLE RADIATORS

Bleeding radiators is essential to efficient central heating. Not only will it save you money, but it'll help to keep your house warmer too.

The process of bleeding is simple and doesn't require specialist help. By easing out air trapped in the system, you'll return your radiators to their natural efficiency.

PERFECT PIPES

It can also be a good idea to insulate exposed pipes before the winter months. This will reduce heating loss and also help prevent them from freezing and bursting during cold spells.

EXTERIOR EXCELLENCE

Debris such as leaves and twigs can accumulate in gutters, pipes and drains throughout the autumn. It pays to check and clear out these areas if necessary to ensure you don't have any lingering blockages that are going to





FROM YOUR AREA

Market to benefit from council investment



Photo credit: Maldon General Market

Maldon's much-loved market will be revitalised as part of the council's £1million investment plan.

Following the departure of marketplace veteran Terry Frost, there were concerns over the future of the market, which is held at Butts Lane Car Park.

However, Maldon District Council (MDC) has confirmed investment to revitalise the market.

It also confirmed Suffolk Market Events as the new operators, following a procurement process.

Councillor Richard Siddall, Leader of MDC, said: "I am delighted that, as part of MDC's £1million investment plan through the UK Shared Prosperity Fund, support has been agreed to revitalise Maldon Town Centre Market.

"I would like thank Terry Frost and send him good wishes for his well-earned retirement."

The market will be held every Thursday from 9am to 3pm, commencing October 12.

Man stabbed in altercation in residential road

Police in Maldon are appealing for witnesses, CCTV footage and information after a man was violently assaulted.

Officers were called to Wellesley Road at around 4.45am on Saturday, August 12.

Upon arrival, they came across an injured man who stated that he had been stabbed following an altercation with another male individual.

The suspect is described as a white man in his mid-40s, around six feet tall, of muscular build with shaved hair and a beard. He was wearing all black. He was with a woman, who remained inside a white car

parked nearby during the assault, before they left in an unknown direction.

The victim, who is in his 30s, was taken to hospital, where he remains at the time of writing. His injuries are not thought to be life-threatening. Officers have also stated they believe the crime is not a cause for concern for the wider Maldon community.

Anyone with information can submit a report at www.essex.police.uk or call 101 quoting incident 212 of 12 August.

Walking festival to celebrate district's rich history

An upcoming festival will celebrate the history, culture and wildlife of Maldon and Burnham-on-Crouch's coastline.

The Saltmarsh Coast Walking Festival, organised by the Maldon District Tourism Group, will take walkers on an exploration of Maldon, Burnham, Goldhanger, Tollesbury, Bradwell, North Fambridge, Heybridge Basin and the surrounding areas.

More than 20 guided walks are planned for people of all ages and abilities, and there is also a series of self-guided walks. Complimentary evening entertainment will take place on each night.

All walks and talks are free of charge but must be pre-booked to guarantee your place.

Councillor Richard Siddall, Leader of Maldon District Council, said: "I am pleased to see the Saltmarsh Coast Walking Festival come to the district. Walking is a fantastic way to explore the Maldon district and discover its unique history, culture and character.

"I would like to thank the Maldon District Tourism Group for bringing the festival to life."

For full details, visit www.visitmaldondistrict.co.uk/walkingfestival



Photo credit: Visit Maldon



DESIGNING THAT SPECIAL 'YEW' SPACE

SLIDING WARDROBES • BATHROOMS • KITCHENS • HOME OFFICES & MORE

We've always had a passion for something different, something that gives you that 'wow' factor when you walk into the room. We are proud to use some of the best suppliers in the UK offering a great range and quality of tiles, sliding and fitted wardrobes, full Kitchen re-models & frontal changes as well as full Bathroom ranges.

Kitchen and Bathroom samples (including sliding wardrobes) are also available and we offer slab and solid worktops together with other styles and ranges to suit all budgets. We pride ourselves on our competitive prices and are always happy to discuss. Like many families, we spend a lot of time at home meaning we understand the importance

of making your house feel like a home and giving it that extra special feel when it comes to designing a 'Yew' space. We will look after you from start to finish and ensure you receive the after-care you deserve. We'd be delighted to hear from you if you need any help, advice or a free quote.

07549 014 855 • YEWINTERIORDESIGNS@GMAIL.COM • @YEWINTERIORDESIGNS



THE MOBILE CARPET & FLOORING SHOP THAT COMES TO YOU

Family Run We Supply & Fit

CONTACT US FOR A FREE QUOTE

01621 770215 or 07849 593489
www.mbcflimited.co.uk
marc@mbcflimited.co.uk
fb Mbcflimited



EXPERTS IN

CARPETS VINYL LAMINATE
ARTIFICIAL GRASS OAK ENGINEERED WOOD
LUXURY VINYL TILE





SIR JOHN WHITTINGDALE MP

Conservative MP for Maldon



Over the summer holidays, I have seen many families and children out in Maldon and the surrounding area, which highlights the importance of ensuring that residents live in a safe and secure neighbourhood. It is fortunate that our part of the county remains one of the safest places to live, but there is of course still progress that can be made. I recently met with Chief Superintendent Stuart Weaver (pictured right), North Essex Division Commander for Essex Police, to discuss local policing issues.

A strong local police force and a visible police presence in our communities are important both to deter crime and to ensure that it is tackled when it does occur. Following the recruitment of another 900 officers, Essex Police now have 3,750 officers, the largest number in its 182-year history. This has enabled the community police teams covering

Maldon, Southminster and South Woodham Ferrers to be brought up to full strength.

It is welcome news that crime rates are down across the constituency, with significant falls in serious violence as well as burglaries and anti social behaviour. It is also encouraging to see a reduction in domestic abuse.

There are, of course, still policing challenges, particularly in more remote rural areas like the Dengie Peninsula, and I regularly discuss these in my meetings with the local National Farmers' Union as well as with the police.

I would encourage anyone who has information about criminal activity or any crime or antisocial behaviour to report it. I would also like to thank Essex Police and all their officers for the magnificent job they do in keeping us safe.

WWW.JOHNWHITTINGDALE.ORG.UK

W1 WEST ONE WOOD

FLOORING INTERNATIONAL LTD

MANUFACTURING ● INSTALLATION ● RESTORATION

- West One Wood Flooring International Ltd is a specialist in the manufacturing, installation and restoration of antique reclaimed and new timber flooring
- We can supply and fit a variety of stunning timber floors for domestic properties and commercial projects
- Installation is by a skilled friendly professional team who offer high quality service and aftercare
- Our flooring is competitively priced with innovative solutions to suit your needs
- If your existing wooden floor needs restoring, our skilled teams will transform your worn floor back to its former beauty. We are experienced with all types of wooden floor and will carry out the necessary specialist repairs and finishes. Most timber floors are salvageable, our team of expert restorers will point you in the right direction.

www.westonewoodflooring.co.uk



Call us on 01277 630837
01245 204231

Email: info@westonewoodflooring.co.uk
Unit 3 Blackall Industrial Estate, Hamberts Rd,
Sth Woodham Ferrers, Essex CM3 5UW



Award-winning farm shop & produce, supporting local, trusted farmers & small businesses



www.blackwellsfarmproduce.co.uk



Hérons Farm, Colne Road, Coggeshall, Colchester, Essex CO6 1TQ



Mon – Fri: 8:00 AM – 5:30 PM
Sat: 8:00 AM – 4:00 PM
Sun: 10:00 AM – 3:00 PM



THAT PERSONAL TOUCH

Keith, owner of KG Windows set up this business to give quality service to local customers, and prides himself on his workmanship and expertise in window and door installations, offering advice and ideas to improve your home.

WINDOWS: We only install the very best windows and they are "A" rated UPVC products to ensure longevity and best thermal performance. They are available in different colours and styles to compliment your home. We provide free estimates from single window repair to complete window installation. All our products and workmanship carries a Certass certificate with a 10 year guarantee.

DOORS: We have many different styles of door available, whether you want something modern or more traditional. You can select the colour and style from our extensive catalogue of composite, patio and stable doors, as well as the furniture, fixtures and fittings. If you are looking for something specific we are happy to speak to our suppliers.

Contact us for further information:
Phone 01621 335999 or 07866 45493
Visit www.kgwindowsanddoors.co.uk
Find us on [f @KgWindowsDoors](https://www.facebook.com/KgWindowsDoors)

KG WINDOWS & DOORS

property maintenance



Great price. Great service. We were very specific in what we wanted and this wasn't a problem. Really pleased. Thanks

"After spending weeks looking for a window company, getting quotes and reading some worrying reviews online we found KG Windows & Doors and decided to give them a try. We are so glad we did, Keith's work is excellent. The price was really good and the end result is fantastic."

KG WINDOWS & DOORS

property maintenance



WINDOWS INSTALLATION & REPAIR COMPOSITE DOORS | PATIO DOORS | STABLE DOORS

- WE INSTALL UPVC PRODUCTS FOR YOUR PROPERTY
- NO PRESSURE JUST A FRIENDLY POLITE SERVICE
- 10 YEAR GUARANTEE ● CERTASS CERTIFICATED

TEL: 01621 335999 ● MOB: 07866 454293

www.kgwindowsanddoors.co.uk

www.facebook.com/KgWindowsDoors



Iconic annual carnival brings community together



LOCAL FEATURE

The Burnham-on-Crouch Carnival is many things to many different people. Undoubtedly perfectly picturesque, and most certainly brimming with Britishness, it welcomes in thousands of tourists to this attractive part of Essex.

The carnival, which takes place on the last weekend in September, is the culmination of a number of events that decorate the rich community vibe of this special town.

In the preceding month, Quay Day on the bank holiday Monday in August sees the waterfront feature an eclectic mix of music, art, demonstrations and water-based activities, with the successful food and drink festival having appeared earlier in the year.

As for the carnival itself, it is a festival of community life whose origins go back to the early 20th century. Founded as a modest gathering of local musicians and artists, it aimed to showcase the unique blend of talent that flourished in this part of the UK.

The first editions saw poets reciting against

the backdrop of the estuary's waters, with streets lined with performers who drew inspiration from Burnham's idyllic ambience.

These days, the carnival is the centrepiece of a four-day explosion of energy, with the town's age-old High Street transformed into a magical place of discovery, with stalls, rides, music, history and art.

What makes this such an ideal location is its placement – far enough away from the nearest major conurbation (Chelmsford) to have its own personality and style, it's inland from the bluster of the Essex coast, yet served by the River Crouch. The town itself dates back more than 1,000 years and is mentioned in the Domesday Book.

And when darkness descends, the charm of Burnham-on-Crouch only increases, as one of the largest night-time processions in the land is lit up in all its glory.

Photo credit: Daniel Reed Photography





WHAT'S ON

YOUR LOCAL EVENTS

LUNCHTIME CONCERT: EMMANUEL BACH AND JENNY STERN

Maldon United Reformed Church, Market Hill, Maldon, CM9 4PZ
Thursday, September 14, 1pm – 2pm



Photo credit: Stefan Czapski

In this lovely lunchtime performance, Emmanuel will be playing the violin while Jenny will be on piano, and together they'll be performing sonatas by Mozart and Brahms, with coffee and tea served just before.

No entry fee or ticket is required for this event.

DAVE BROWNING'S JAZZ CATS

Wickham Bishops Village Hall, Snows Corner, Wickham Bishops, Witham, CM8 3JZ
Saturday, September 16, doors open at 6.30pm for 7.30pm start

Dave Browning's combo returns to Wickham Bishops after a terrific night last year. Allen Beechey is a hugely respected trumpet player, and Brian Butler recently led a successful Jazz Incorporated night. Richard Exall on clarinet is ex-Chris Barber's big band, Nick Millward was Kenny Ball's regular and Keith Donald has been bassist with many top bands over the years.

To book, please contact wickhambishopsjazzclub@gmail.com or call 07548 775777.

DAPHNE'S FLIGHT

Maldon Town Hall, Market Hill, Maldon, CM9 4RL
Tuesday, September 19, 7.30pm

The iconic all-female folk and blues group bring their tunes to Maldon. After a 21-year hiatus, the ladies returned to touring in 2017, and have barely stopped

since. Expect to hear beautifully sung and beautifully written acoustic music.

Tickets cost £22 per person. To book, please visit www.wegotickets.com/event/568263

LIFEBOAT STATION OPEN DAY

Burnham-on-Crouch Lifeboat Station, Burnham Yacht Harbour, Foundry Lane, Burnham-on-Crouch, CM0 8BL
Saturday, September 23, 11am – 3pm

Come and see the work done by the Royal National Lifeboat Institution, and meet the volunteers for tea, coffee, cake and a chat. Come up close to the station's rescue vessels and donate to the charity to support the great work it does.

To find out more, visit www.bit.ly/45iUl8m

BURNHAM-ON-CROUCH CARNIVAL

High Street, Burnham-on-Crouch, CM0 8AG
Saturday, September 30, 10am onwards

Come along and celebrate with funfair rides, stalls and music, and, of course, the famous illuminated procession through the street.

Entry to the carnival is completely free. To find out more, visit www.bit.ly/3KUQ2x5

BURNHAM & DENGIE 10KM RUN

Riverside Park, Burnham-on-Crouch, CM0 8HS
Sunday, October 8, 10am

Take part in this 10km race and help do some fundraising for the Burnham & Dengie Rotary Club, racing through the village's roads, footpaths, riverside paths and surrounding countryside.

Tickets cost £20 in advance and £25 on the day. To register online, visit www.atwevents.co.uk/e/burnham-on-crouch-10k-9183

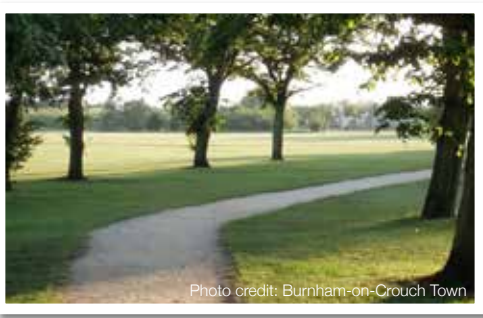
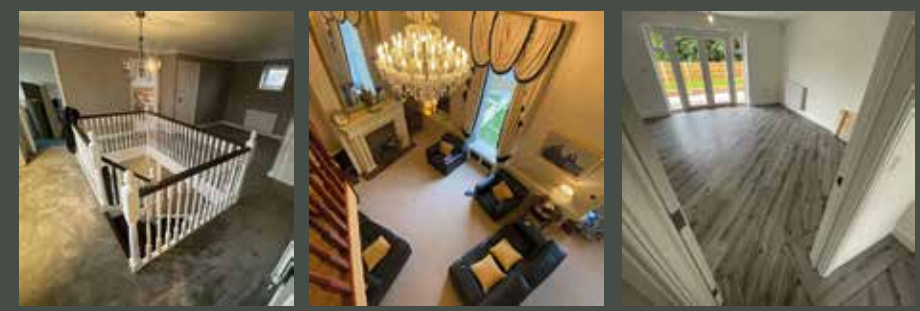


Photo credit: Burnham-on-Crouch Town



MARK JAMES FLOORING LTD



SPECIALISING IN DOMESTIC & COMMERCIAL FLOORING

07951 484108

mark@markjamesflooringltd.co.uk [f](https://www.facebook.com/markjamesflooringltd) [i](https://www.instagram.com/markjamesflooringltd) [in](https://www.linkedin.com/company/markjamesflooringltd) markjamesflooringltd

NEED A PLUMBER?

BLOCKED DRAINS, BLOCKED SINKS, BLOCKED TOILETS - **CLEARED FAST**

- ▶ Plumbing, Heating & Drainage
- ▶ Drains – Internal & External
- ▶ CCTV Surveys
- ▶ High Pressure Jetting
- ▶ Manual Rodding
- ▶ Toilets, Sinks, Bathrooms
- ▶ Emergency Plumbing & Drainage
- ▶ Insurance Work Undertaken
- ▶ Fully Qualified Engineers Covering Your Area

NO CALL-OUT CHARGE

We quote all prices including VAT - No Hidden Extras

CALL OUR FRIENDLY TEAM 24/7
01621 767816

No1 PHD Trustpilot
Reviews 404 • Excellent
4.6
Mar23



No1 PHD Ltd, Company No: 11927404, Reg. in England & Wales.

SENIOR CITIZEN & NHS DISCOUNTS



Barbie

AMBITION



WHY MARGOT ROBBIE HAS THE FORMULA RIGHT

Margot Robbie's elevation to Hollywood heavyweight is one of Tinseltown's true success stories.

The skill of the Aussie, who once lived in Clapham and recently revealed she still has her old Oyster card, is in her groundedness. Sure, she is a stunning multimillionaire, a pioneer for women in film and even a successful businesswoman, as the co-founder of LuckyChap Entertainment with British husband Tom Ackerley. Yet a decade in the spotlight has taught her an important lesson.

"I think humility is so important in this industry," she begins. "It's been a big part of who I am since I was a child, so I have grown up with respect for others as well as the need to present myself in the right way.

"I know very well how stardom can change you, and if you lose sight of that sense of humility, you will be exposed for it because as much as this industry is rewarding, the media spotlight can be extremely unforgiving too."

A case in point is Robbie's courageousness to back away from the powerful, punchy, script-perfect roles that have characterised so much of her success. Few actresses would have the bravery to strip their creativity back to a long blonde wig, a wardrobe of pink and white outfits, and the kooky babe appeal that comes with portraying Barbie, a character that has been entwined in the childhoods of girls for decades.

More than that, though, as executive producer, her commitment to the LuckyChap project – large parts of which were filmed at Warner Bros. Studios Leavesden – has meant she has stayed true to a story that has

inspired so many. Perhaps if Disney had approached its reworking of *Snow White* with quite the same level of respect, it wouldn't be looking at another catastrophic woke failure.

Instead, aided by the brilliant Greta Gerwig, Robbie stuck to a storyline true to Barbie, and had no intention of betraying that narrative. "Greta and I knew just how vital it was that we got this just right," she says. "We're thrilled with the outcome and hope that the audiences are too.

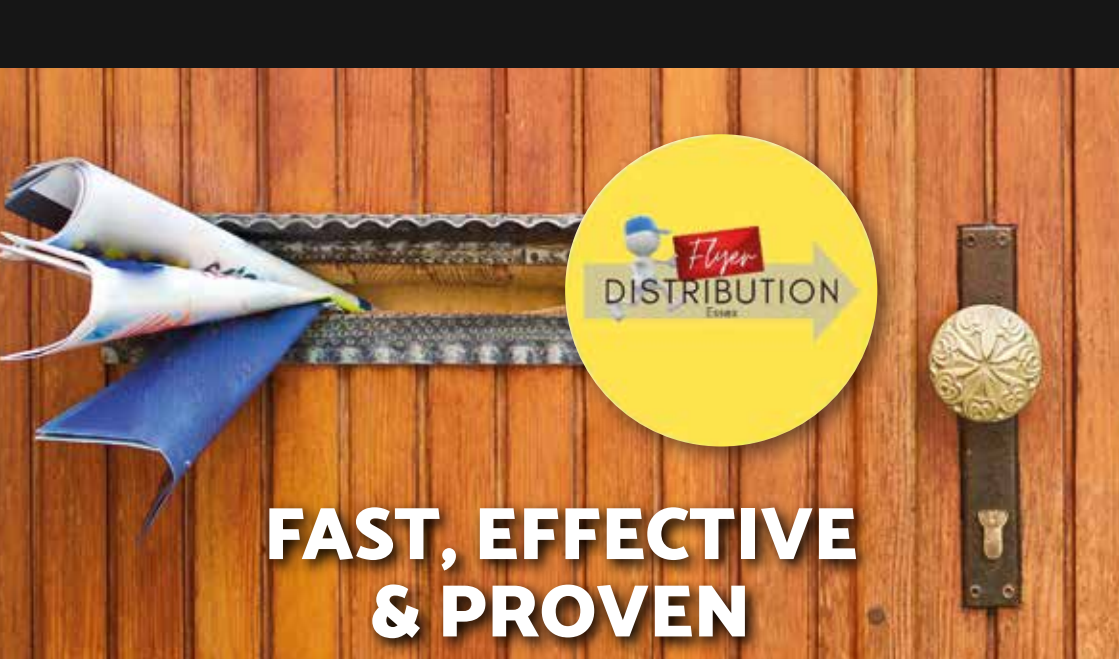
"I think it's every girl's dream to be Barbie, and every adult's dream to make a girl's dream come true, so this always did feel like a very special project."

It is. The movie took more than \$1 billion at the box office in its opening fortnight – an almost unprecedented footfall endorsement that clearly paves the way for the *Bombshell*, *Babylon*, *Suicide Squad*, *The Wolf of Wall Street* and *I, Tonya*, star to reach further into the creative locker for her next storyline.

Queen of the Air is up next – a period drama based on a true story that takes place on the dizzy heights of the trapeze, utilising the script from the 2013 book by Dean Jensen.

Before that, Robbie can delight in her current project setting off a Barbie-core fashion trend that is adding bright colour, innocence and no small amount of fun to the high street, at a time when we need it most.

She adds: "It's a delight when things work out. There's pressure to do everything justice, all the while conquering the self-doubt inside. It's always a battle, but fear has played a big part in where I've got to today, and hopefully I'll always thrive off it."



FAST, EFFECTIVE & PROVEN

ESSEX BASED LEAFLET, PRINTING & DISTRIBUTION SERVICE

Flyer Distribution Essex covers a majority of the CM, SS & CO postcode areas

- One off drops OR regular monthly drops
- Targeted Demographics - delivered direct to homes
- Cost effective Printing service available
- Direct Pick up service available from your Essex based address

CONTACT US

0800 086 2836

www.flyerdistributionessex.co.uk

Surprising foods THAT CAN BE COOKED IN A PIZZA OVEN

Pizza ovens are all the rage, with more and more people embracing this simple and versatile method of outdoor cooking. However, you can cook much more than just pizza in one of these bad boys!

FRESHLY BAKED BREAD: If you love everything about delicious dough, then you will be pleased to hear that you can bake bread in wood-fired pizza ovens. To create the perfect loaf, make sure you regularly turn the bread to ensure even baking. Don't forget that you still need to leave your dough to rise before cooking.

SLOW-COOKED MEATS: For meat lovers, a large pizza oven that features a door will allow you to slow cook meat to perfection. Place your chosen cut in a casserole dish and cover tightly with foil. Then cook for around four hours until the meat is tender and juicy.

FISH DISHES: Whether you love a fish stew or you prefer a piece of lightly grilled fish, a pizza oven is a great alternative to a traditional oven. Simply pop your chosen fish in a roasting tray with herbs and spices or place on a skillet or cast-iron pan to grill.

VEGAN CURRIES: If you have a vegetarian or vegan in the family, then a pizza oven can be used to create a whole host of vegan-friendly dishes such as curries, chilli and stews. Be sure to gently fry your chosen spices first to release their flavour, add your selected liquid and veggies, and then cook in the pizza oven until soft.

DECADENT DESSERTS: Think that a pizza oven is only suitable for preparing savoury dishes? Think again. You can also bake desserts such as pies and pastries in this outdoor cooking device.





CHEAPEST CITIES

Are you looking to get on the property ladder but are struggling to find anything within your budget? Discover the top five most affordable cities for first-time buyers in the UK – as well as the most expensive cities! The average monthly mortgage payments listed below are based on a 10 per cent deposit.

1 BRADFORD: Bradford in West Yorkshire is officially the cheapest city for first-time buyers to purchase a home. Named as the upcoming City of Culture in 2025, the current average asking price for a two-bedroom property in Bradford is £104,643.
Average monthly mortgage payment: £521

2 CARLISLE: If you don't mind moving a bit further north, then the city of Carlisle is the second cheapest city for first-time buyers. With an average asking price of £104,784 for a two-bedroom house, there are some beautiful semi-detached properties on offer in this part of the UK.
Average monthly mortgage payment: £522

3 ABERDEEN: The third most populated city in Scotland, Aberdeen is known for its stunning architecture and closeness to Cairngorms National Park. The average asking price for a two-bed property currently sits at £106,088.
Average monthly mortgage payment: £528

4 HULL: Although this city does not have the best reputation, you can get a lot more for your money if you relocate to Hull. The average asking price for a two-bedroom property currently stands at £106,939.
Average monthly mortgage payment: £532

5 DUNDEE: A vibrant, modern and affordable city, the average asking price for a property with two bedrooms or fewer in Dundee is £111,415.
Average monthly mortgage payment: £532

And, on the other end of the scale, the five most expensive cities for first-time buyers in the UK are:
LONDON • ST ALBANS • BATH • CAMBRIDGE • OXFORD

To put this all into perspective, the average house price for a first-time buyer in the UK is £245,958. This is £55,500 higher than five years ago. According to the Financial Conduct Authority, two-thirds of first-time buyer mortgages have terms that go beyond 25 years.

...across the UK

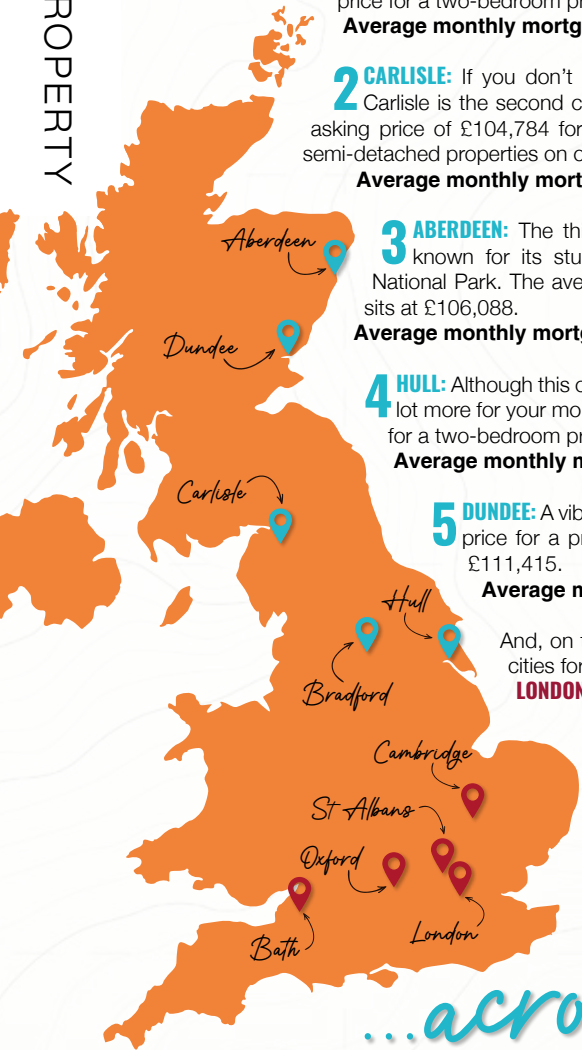


Photo credit: alnwickgarden.com



Home to more than 100 toxic, intoxicating and narcotic plants, the Poison Garden at The Alnwick Garden in Northumberland is not for the faint-hearted. With a sign on the black iron gate emblazoned with the message, 'These plants can kill', do you dare to enter?

See some of the deadliest plants in the garden...

CHERRY LAUREL

Cherry laurel, also known as English laurel, can kill you even if all you're doing is trimming its leaves. This plant contains cyanogenic glycosides and cyanide ions; when these two components are combined, they create cyanide gas which can be deadly in a confined space.



DEADLY NIGHTSHADE

As the name suggests, deadly nightshade is a poisonous plant that can cause a whole host of nasty symptoms including blurred vision, a skin rash, headaches, slurred speech, hallucinations and eventually death. In fact, eating just two to four berries can kill a child.



Other deadly plants on show include:

- ☠️ **THE KHAT PLANT** – contains a carcinogen that causes mouth cancer.
- ☠️ **YEW TREE** – eating a small number of its leaves can be fatal for livestock and humans.
- ☠️ **HOGWEED** – contains toxins that are activated by light, causing pain and skin lesions.

If you dare to enter...

The Poison Garden is open to the general public and entrance is included with a day ticket to The Alnwick Garden. Remember to follow all the guidelines to stay safe.



THE GYMPIE-GYMPIE

A fairly new addition to the Poison Garden, gympie-gympie is known as the world's most venomous plant and is said to deliver a sting similar to being burnt with hot acid and electrocuted simultaneously.



LABURNUM TREE

The second most poisonous tree in the UK, the laburnum tree contains a poison called cytisine. In fact, this tree is so poisonous that if one of its branches fell to the floor, lay for several months and then was picked up by your dog, it is unlikely your dog would survive the hour.



HELLEBORES

The root of this deadly plant contains a cardiotoxin that will stop your heart in an instant. Its sap can also irritate the skin, so this plant should only be handled when wearing gloves.

LAWN AERATION

Why, when and how to do it

Keeping your lawn looking luscious is no easy feat, and you need to make sure you employ essential lawn care practices if you want your grass to glisten in the sun. Find out everything there is to know about lawn aeration and why it's important below.

WHAT IS LAWN AERATION?

The word 'aeration' means to allow air to act on something. In the case of gardening, it is the process of poking small, long holes in the ground in order to provide the soil with good air circulation. Lawn aeration can also help to break through piled-up thatch (a layer of dead and living grass roots) in high-maintenance lawns and to reduce lawn compaction, which is when the soil becomes compressed.

WHY DO YOU NEED TO AERATE YOUR LAWN?

The soil in your garden needs both air and water to ensure its ecosystem remains in optimal condition. Therefore, good drainage conditions and adequate top soil intake are vital. By aerating your lawn, you allow air to enter into the soil. This leads to a gaseous exchange in which the grass roots suck oxygen in and expel carbon dioxide. It also allows water to enter more easily, which is essential during the hotter months of the year.

WHEN IS THE BEST TIME TO AERATE YOUR LAWN?

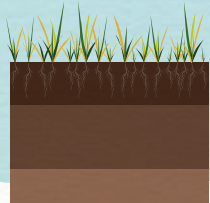
There are two perfect times to aerate your lawn: spring and autumn. This is because, during these months of the year, your soil is typically moist and suitable for holes to be poked in easily.

HOW TO AERATE YOUR LAWN USING A GARDEN FORK:

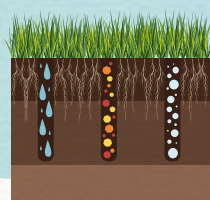
If you have a small- to medium-sized garden, you can aerate your lawn using a garden fork.

- > Water your lawn the day before you plan to aerate it.
- > Firmly spike the surface down to at least 3cm. Repeat this technique every 10cm.
- > Move the fork back and forth a little and then pull out.

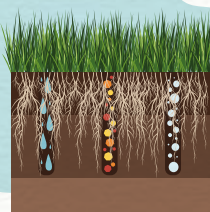
If you have a large garden, you may want to invest in a lawn aerator to save you time and energy.



Before



During



After



THE ONE STOP SOLUTION FOR SHEDS & GARDEN FURNITURE



**QUALITY SHEDS
GARDEN FURNITURE
CUSTOM TIMBER BUILDINGS**

Tony Turner

MANUFACTURERS OF QUALITY SHEDS

CALL 01621 742184

EMAIL: TONYTURNER16984@SKY.COM

WWW. TONYTURNERSHEDS.CO.UK

WHITEHOUSE FARM, NEW LANE, MALDON, CM9 6PJ



OUR FIELD OF EXPERTISE EXTENDS TO:

- DRIVEWAYS · PATIOS · FENCING · ASTRO TURF
- BRICKWORK · GARDEN DESIGN · JET WASHING
- PORCELAIN · DROPPED KERBS
- DIGGER AND DRIVER HIRE



At Storm And Sons our aim is to provide customers with the best possible service. We're a team of professionals with over 25 years of experience who tackle everything from complex large projects to smaller scale jobs. Fuelled by our commitment to excellence, we go the extra mile to make sure clients are completely satisfied with our work. All work is fully insured up to £10 Million. **Contact us today to get your free estimate!**

01245 981 670 07799 628 630
stormandsonspaving@gmail.com
www.stormandsons.co.uk

**Improve,
Don't Move!**

Maximise the value of your home.

- SPACE-SAVING - MAXIMISE YOUR GARAGE HEADROOM
- SECURITY-ENABLED AUTO-LOCKING SYSTEM
- CHOICE OF 21 COLOURS TO MATCH YOUR HOME
- REMOVAL AND RECYCLING OF YOUR OLD DOOR
- DEDICATED AFTER-CARE TEAM

GAROLLA 01245 830 047

ROLLER SHUTTER DOORS

LINES OPEN 7 DAYS A WEEK

www.garolla.co.uk



BESPOKE ELECTRIC DOORS MANUFACTURED IN THE UK

**FREE FITTING
PAYMENT ON
INSTALLATION**

PRICED EXAMPLE **£895**
COMPACT • UP TO 2.4M

GAROLLA ★ PREMIUM
Increased Security • Double Insulation
One-Touch Close

PRICED EXAMPLE **£1,990**
PREMIUM • 3.4M • ANTHRACITE



Home Instead. KEY TO CARE

Bi-monthly events where we are talking about

The Care Conversation

Parkinson's

16th November 2023

21st September 2023

Come along to find out more

- Key connections
- Key support
- Key conversations

Each Home Instead franchise is independently owned and operated. Copyright© Home Instead® 2023.



Please scan the QR-code to **register** to attend these **free** events.

bit.ly/HIC-Key-2-Care-Sessions

If you prefer register by calling us on:

01245 200 780

chelmsford@homeinstead.co.uk

Come home to a clean house



Our professionally trained team of maids will make your home sparkle with each visit. We know it's not a one-size fits all service, that's why we work to tailor our cleans to your individual needs, schedule and budget.

Call us today to arrange your no obligation in home quote

Emma Brooks

01245 494003

emma.brooks@mollymaid.co.uk

www.mollymaid.co.uk/locations/chelmsford/



See what our customers have to say at uk.trustpilot.com **Trustpilot**



HEALTH & FITNESS

BACK PAIN *be gone!*

Banish back pain for good with these three yoga poses that promise to align your body, reduce stress and eliminate any discomfort you are experiencing.

THE CAT-COW

A great yoga pose for beginners, the cat-cow stretches and mobilises your spine whilst also stretching the torso, shoulders and neck.

- > On all fours, place your wrists underneath your shoulders and your knees underneath your hips.
- > Balance your weight evenly between all four points.
- > Inhale as you look up and allow your stomach to drop down towards the mat.
- > Exhale as you tuck your chin into your chest and arch your spine towards the ceiling.
- > Repeat for one minute.

THE DOWNWARD-FACING DOG

This pose helps to relieve back pain and sciatica and also works out any imbalances in the body.

- > Get on all fours and place your hands in alignment with your shoulders and your knees under your hips.
- > Press into your hands, tuck your toes under and lift your knees up.
- > Bring your sitting bones up toward the ceiling.
- > Press firmly into your hands and the soles of your feet.
- > Keep your head in line with your upper arms.
- > Hold this pose for one minute.

THE EXTENDED TRIANGLE

This classic pose is great for alleviating back pain, neck pain and sciatica. It works by stretching the spine, hips and groin, and strengthening the shoulders, chest and legs.

- > Step your feet three to four feet apart.
- > Turn your left toes to face forward and your right toes out at an angle.
- > Lift your arms up to the sides, parallel to the floor and with your palms facing down.
- > Hinge at your right hip to tilt to the side with your arm and torso, keeping your arms straight.
- > Bring your right hand down to your leg or onto the floor
- > Extend your left arm up and turn your head to look at the ceiling.
- > Hold this pose for one minute and repeat on the other side.



THE WAX HUT

Maldon

INTIMATE & BODY WAXING TRAINING

Prices starting from £250

Our courses cover body waxing, intimate waxing and everything in between. They are designed to provide students with the knowledge, confidence and skills necessary to offer professional waxing services for both body and intimate areas.



This comprehensive training program covers various aspects, including Toni Denny's waxing techniques, hygiene and sanitation practices, client consultation, aftercare and much more.

You will learn a number of techniques using hot & strip waxes across the body and hot wax for the intimate areas. You will receive a hugely detailed manual for yours to keep which has everything you will ever need to start your new career.

We have courses available to suit all needs, whether you are a total beginner, a salon looking for group training or a professional... Never stop learning!!



REGISTER YOUR INTEREST

Let's get the ball rolling. Register your details on our website and receive all the information you need to begin.

RECEIVE ACCESS TO TRAINING MANUALS

Receive 30-40 page manuals with untold amounts of educational information and brand new methods to study before your practical

ATTEND AN IN-PERSON COURSE WITH TONI DENNY

The fun part! A day of hands-on practical training with Toni Denny – full of tips and tricks along with amazing methods in waxing. You will leave full of confidence.

RECEIVE YOUR ACCREDITED QUALIFICATION

All being well, you should receive your accreditation & certificate and be able to start your professional wax career.

START YOUR LUCRATIVE NEW CAREER

Do not worry – Your new career starts here but you are far from 'left to it', you will have access to our What'sApp group with fellow trainees for support along the way.

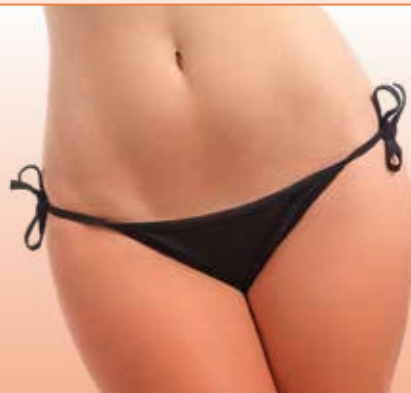
THE WAX HUT

Training Academy

From Brows to Brazilians

We do it all

- Intimate Waxing Specialists
- Accredited Training Academy
- Waxing Specialists
- Ladies Only



BECOME THE BEST TRAINED WAXER IN YOUR AREA

- Fully accredited courses starting from £250
- Day courses available + 1:1 or small group courses
- Become a fully qualified intimate and/or body wax technician – no experience necessary
- Experienced? Why not increase your waxing skills and gain more confidence
- Get Whats App group support from Toni Denny and fellow trainees

VISIT OUR SOCIALS OR WEBSITE FOR MORE INFORMATION

Facebook Instagram thewaxhutmaldon www.thewaxhutmaldon.co.uk 07837 656528 thewaxhutmaldon@gmail.com

CPD The CPD Certification Service



BEAUTY



A relative newcomer to the beauty scene, marula oil is the perfect all-round ingredient. Rich in protein and easily absorbed, use on your skin, hair and nails for unbelievable results.

What is marula oil?

Marula oil is derived from two sources of the African marula tree, either extracted from the marula nut or the soft kernel seeds of the marula fruit. Marula oil has multiple uses, functioning as a cooking oil, massage oil and a beauty ingredient.

What does marula oil contain?

Marula oil contains a range of beneficial components, including:

- Amino acids, such as L-arginine and glutamic acid, which have hydrating and anti-ageing properties
- Fatty acids, including stearic, oleic and palmitic acids, which have emollient and moisturising benefits
- Antioxidants, such as phenolic compounds and vitamins E and C, which can help prevent sun damage

How to use marula oil

FOR YOUR SKIN: Marula oil is lightweight and is absorbed easily, making it ideal for use on the skin. Perfect for dry and/or ageing skin, as well as for stretch mark prevention, apply three or four drops of marula oil to your facial cleanser for enhanced moisturisation or directly to your body. This multitasking ingredient also has antimicrobial properties, making it a good option for treating acne.

FOR YOUR HAIR: Marula oil has hydrating, moisturising and occlusive (preventing water loss) properties, making it ideal for dry, frizzy or brittle hair. Apply to the ends of dry hair or as a scalp treatment before shampooing and conditioning.

FOR YOUR NAILS: Keep your nail beds and cuticles soft and supple by applying marula oil daily or after removing polish, which can be particularly drying for your nails and surrounding skin. It can also be effective at reducing hangnails and cracked skin around the nail bed.



WILLKOMMEN KANE

What will England captain Harry Kane MBE's departure for Germany mean for Spurs, for England, and for the man himself?

It was the most drawn-out transfer saga of the summer, with neutral football fans across the country breathing a collective sigh of relief when Spurs and England forward Harry Kane finally pulled the plug on his Premier League time – for now – by signing for German giants Bayern Munich at the start of August.

While the banal 'will he/won't he' rhetoric from our sports broadcasters is at an end, attention now switches to whether the brilliant frontman can make a success of his time in the Bundesliga.

On the face of it, he should. The German league has the same physical, tactical and technical prowess of the Premier League.

And despite Bayern dominating domestic affairs, it's fiercely competitive, which the 30-year-old will thrive on. Even outside those elements, Kane's ability to affect play from everywhere around the attacking third will surely mean he will shine.

What's more, his exposure to new players, new challenges and new ideas may enhance his already stellar contributions to the England national team.

Currently just 47 goals shy of Alan Shearer OBE's record, Kane, as the second-highest all-time goalscorer in the Premier League, will likely want to return to home shores if he hopes to take the top spot.

Kane made his Bayern debut in a 3-0 defeat to RB Leipzig in the German Super Cup, though things will surely improve.

As for Spurs, chairman Daniel Levy is noted as a shrewd and tough negotiator, yet he was ultimately backed into a corner by the fact Kane only had a year left on his contract at Tottenham. To cash in now, at £86million, is common-sense bean-counting, rather than enduring the financial and emotional pain of losing that same player for nothing in 10 months' time.

Meanwhile, in Richarlison, Kulusevski and Son the Lilywhites have enough firepower to compensate for their talisman's loss.



Photo credit: Xinhua/Shutterstock

5 REASONS TO ADVERTISE

Why do businesses benefit from hyperlocal advertising?

1. Targeted advertising

Hyperlocal advertising allows companies to target customers who are within a specific geographic area, making it easier to reach the right audience and increase the chances of converting them into paying customers.



2. Cost-effective

Hyperlocal advertising can be cost-effective because it is focused on a specific local area, meaning that businesses can reach their target audience without wasting money on broader marketing campaigns that may not be as effective.

3. Increased engagement

Hyperlocal advertising can lead to increased engagement with customers because it is focused on the local community and the interests of the people living in that area. By targeting customers with ads that are relevant to their interests and needs, companies can build a stronger relationship and increase their chances of repeat business.



4. Improved search engine optimization

Hyperlocal advertising can improve a business' search engine optimization because it targets customers who are likely to be searching for businesses and services in their local area. By optimizing their website and other online presence for local search terms, businesses can improve their visibility and attract more customers.

5. Better return on investment (ROI)

Hyperlocal advertising can lead to a better ROI because it is focused on a specific area and customer base. Targeting customers who are likely to be interested in their products or services, can increase conversion rates and revenue.



IS YOUR BUSINESS READY TO BENEFIT FROM HYPERLOCAL ADVERTISING? CONTACT **VISION** TO FIND OUT MORE

IT'S TIME TO FOCUS ON LIFE NOT THE COST OF LIVING

Retire to a dream location
the easy way



Move in ready homes available from £219,950



Freedom to live life to the full. Modern comforts and community spirit on the Essex Sunshine Coast.

Do you dream of living on the coast? Relaxed days of fresh air, seaside walks and beach picnics? It's all there for you when you move to a brand new, fully furnished home, exclusively for the over 45s, at Sandpiper Gardens, Clacton on Sea. You could also free up cash, save on bills and have less home maintenance to worry about. Whether you're retiring or semi-retiring, it's time to get more out of life.

- ✓ High-quality, low-maintenance, single-storey homes
- ✓ Safe, secure community of like-minded residents
- ✓ Private garden and parking
- ✓ No stamp duty
- ✓ Part exchange and assisted move options available

Get in touch to find out more or arrange a park visit:

www.tingdene-parks.net | 01933 422471 | info@tingdene.net



TRAVEL

THE Famous...

A LOOK AT THE PRESTIGE AND THE HISTORY OF FIVE OF THE WORLD'S MOST ICONIC HOTELS



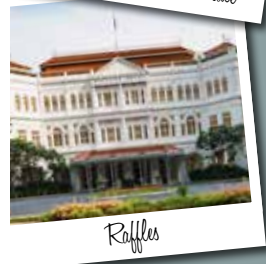
Chateau Marmont



The Plaza



Belmond Copacabana Palace



Raffles

The Savoy, London: Located in the Strand and opened in 1889, The Savoy was the UK's first luxury hotel, and it has lost none of its charm or opulence in attracting the world's richest and most powerful guests.

Hollywood power couple Sir Laurence Olivier and Vivien Leigh met there, while guests have included The Beatles, John Wayne and Marilyn Monroe.

Chateau Marmont, Los Angeles: Los Angeles began to acquire its celebrity popularity in the 60s when the *LA Times* felt obliged to tell its readers that the Chateau Marmont was for those in show business. Its appeal was its combination of 63 rooms, suites, cottages and bungalows, not to mention the fact that it overlooks Sunset Boulevard.

When John Belushi died at the hotel of a drug overdose in 1982, its fame only escalated. Beyoncé, Jay-Z, Britney Spears, Lindsey Lohan are all regular guests.

The Plaza, New York: If you've seen *Home Alone 2* or *The Great Gatsby* (the author of which, F. Scott Fitzgerald, lived at this famous hotel), you've seen The Plaza. Overlooking the vast greenery of Central Park and located on the corner of Fifth Avenue, this hotel is iconic and instantly recognisable.

Royalty and state leaders have all stayed at the legendary Manhattan hotel.

Belmond Copacabana Palace, Rio de Janeiro: Located as the crown jewel of the most famous beach in the world, the Belmond is a masterpiece of art deco architecture and has welcomed everyone from Walt Disney to Princess Diana.

Built over a period of four years at the turn of the 1920s and designed by French architect Joseph Gire, it remains a staple place to visit for the affluent.

Raffles, Singapore: This Singapore hotel has been around since 1887, when it was established by a pair of Armenian brothers, the Sarkies. Its colonial style of architecture has led it to become a national monument for the country, as well as being the birthplace of the Singapore sling cocktail!

5



KIDS



Back to school SHOWDOWN

Is getting your child to go to school a constant battle? While a little reluctance to return to school after the summer holidays is to be expected, if your child is becoming severely distressed at the prospect of going to school, then you need to take action.

TALK TO YOUR CHILD

There are many reasons why your child may be refusing to go to school, such as bullying, anxiety, learning differences or emotional issues, so it is important that you try to get to the root of the problem. Sit down with your child and try to find out what it is that is making them not want to go to school and then take appropriate action.

HAVE A GOOD MORNING ROUTINE

If you do not have a calm and consistent morning routine, then this can make the process of getting ready for school a lot more stressful for you and your child. Make sure they get up at the same time

every day and that they know what they need to do and by what times, i.e. get dressed, brush their teeth, etc. Remember to provide plenty of praise.

INVOLVE THE SCHOOL

If your child is flat-out refusing to go to school, then the sooner you talk to the school about this problem, the better. Arrange a meeting to talk to their teacher or headteacher and see what advice they have. For example, they may suggest a buddy system or bringing in your child slightly earlier to avoid the crowds in the playground.

STAY CALM BUT BE FIRM

Although this can be hard, try to stay as calm as possible when trying to get your child to go to school, as getting angry or upset will only make the situation worse. That being said, you do need to be firm and don't give them the chance to say no. For example, say "Put on your uniform" rather than "Are you going to put on your uniform?".



CAR CARE FROM THE EXPERTS ON YOUR DOORSTEP

Shaun Baker Car Care is an independent family run business based in Maldon, Essex. We have built strong relationships with our customers and have grown our client base through recommendation, providing high quality workmanship at extremely competitive prices.

any make vehicle to a standard equal to, or exceeding that of any main dealership. Whether you require mechanical repairs or car servicing, our mechanics will ensure that your vehicle is back on the road with the minimum of fuss.

Whilst our team of qualified technicians have specialist knowledge of VW, Audi, Seat and Skoda, we are able to repair and service

For a chat or to book in your car please get in touch, we'd be only too happy to help, just call us on 01621 851871, or email enquiries@shaunbakercarcare.co.uk.



Shaun Baker
ESTABLISHED 1989
CarCare Ltd

SERVICE & REPAIR

- Vehicle Maintenance
- MOT Repairs & Maintenance
- Air Conditioning
- Vehicle Diagnostics
- Advice and Support
- Brake Checks
- Vehicle Collection Service



AUDI • VW • SKODA • SEAT SPECIALISTS

Call: 01621 851871 • Email: enquiries@shaunbakercarcare.co.uk
www.shaunbakercarcare.co.uk • 120A High Street, Maldon, CM9 5ET
Open Monday-Friday from 8.00am to 5.00pm





Burnham Carnival

FUN DAY FOR ALL



10.20 - WARM UP A SPIRE BODY TRANSFORMATIONS

10.30 - TUG OF WAR 

ST MARY'S SCHOOL
BURNHAM AIR CADETS
CIRCUS WORKSHOP

11.45 - 999 RACES

ORMISTON ACADEMY - ROCK BAND
BELLY DANCERS
E AND E DANCE

2.00 - KIDS FANCY DRESS 

WITH PIRATES, PRINCESSES AND COSPLAY

2.40 - BAM BAM - KIDS ENTERTAINER

VIBE DANCE COMPANY

STAR STRUCK THEATRE SCHOOL

4.20 - WHEEL 2 WHEEL DISPLAY TEAM

ZUMBA DISPLAY WITH AMANDA

LUNCH

6.00 - CARNIVAL DRAW

SINGER – THOMAS NEWMAN-CLARK

6.35 - SINGER - MICHEAL JOSLIN

PARTY MUSIC

7.30 - PROCESSION



DAYTIME ENTERTAINMENT SPONSORED BY

Kew Law
LLP Solicitors

Saturday 30th September

From 10am with Illuminated Procession from 7.30pm

Get over TO DOVER



HISTORY

For centuries, Dover has been a strategic stronghold guarding the English coast. But beneath the town's castle, perched on the iconic White Cliffs, lies a hidden network of secret wartime tunnels and chambers that stretches back centuries. And the great news is that you can visit these tunnels and discover their mysteries for yourself.

WAY BACK WHEN

The origins of these tunnels date back to the medieval era. They were first constructed after the 1216/17 civil war to connect various parts of the castle, making it difficult for attackers to reach the main gate.

Fast forward to the early 19th century, when the threat of Napoleon invading had everyone on edge. The castle's engineer-in-chief, the brilliant William Twiss, stepped in and turned the existing tunnels into an impressive stronghold that even Napoleon would think twice about attempting to break into.

WAR STORIES

During the Second World War, Dover's tunnels housed a military command centre, where strategists and commanders made crucial decisions for defending the nation.

The tunnels also doubled as an air raid shelter, providing refuge for thousands of locals seeking safety from the relentless bombings. As the air raid sirens wailed, families huddled together, filled with a mix of fear, resilience and hope for a brighter tomorrow.

In addition, a new tunnel complex was built to provide a hospital safe from air attacks and shelling, where the Royal Army Medical Corps, including surgeons, nurses, orderlies and cooks, cared for those injured in the conflict.

SEE IT FOR YOURSELF

If you visit the castle today, you can walk through the secret wartime tunnels and parts of the medieval and Georgian sections. You can also visit the wartime hospital.

Tunnel visits are limited, and access is not suitable for everyone. Please get in touch with Dover Castle before making your visit or go to www.english-heritage.org.uk/visit/places/dover-castle to find out more.

Photo credit: english-heritage.org.uk





MOTORING



Famous MOVIE cars

They say the car is the star, and with these cherished vehicles from the big screen, that's certainly the case.

ASTON MARTIN DB5: Four units of the DB5 were used for the 1964 James Bond classic *Goldfinger* – two during filming and a further two promotional vehicles. The now iconic car was modified by special effects expert John Stears to include a number of spy-worthy gadgets. Although stolen in 1997 from Boca Raton Airport in Florida, the car has since been spotted in a 'private setting' in the Middle East.

DELOREAN DMC-12: The DeLorean is one of the most recognisable cars in the world owing to Steven Spielberg's *Back to the Future* trilogy, yet what should have been a marketer's dream turned out to be anything but. Despite futuristic 'gull wing' doors and stainless steel body panels, the DMC-12 didn't sell well owing to its impracticability and lack of balance, being a rear-engine car.

BATMOBILE: Batman/Bruce Wayne was known to high-powdered supercars since he first appeared in comics in 1939, but it wasn't until 1941 that the title 'Batmobile' was first used. The first on-screen Batmobile appeared in the 1943 serial *Batman* movies and was a 1939 Cadillac Series 75. Since then, the Batmobile has gone through several iterations – from the first completely black version in the 1989 Tim Burton film, to the Christopher Nolan version which was described as a cross between a Lamborghini and a tank.

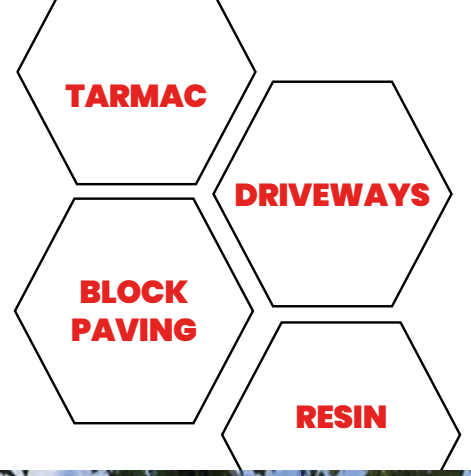
ECTOMOBILE: Ecto-1 from the *Ghostbusters* movies was an original 1959 Cadillac Miller Meteor, and the two models converted for screen use are still owned by Sony Pictures. The film provoked a number of copycat models, one of which sold in 2021 for more than £200,000.

FERRARI MODENA GT: While three Modena GTs were used in the iconic 1980s film *Ferris Bueller's Day Off* starring Matthew Broderick, all were replicas. The one that flies out the window in the movie didn't even run properly – it was a fibreglass shell version built specially for that scene. Though one of the replicas was seriously damaged in the jump scene, it was successfully repaired and sold for £122,000 at auction.

Photo credit: Abdul N. Qureshi - Aps/Shutterstock.com, Alarcon/Shutterstock.com, Divernyar/Shutterstock.com, silidrome.com



Producing Immaculate Finishes for Decades



- ◆ Essex's leading road & surfacing contractor
- ◆ Grab Lorry Hire Essex
- ◆ A family business
- ◆ Established for decades



☎ 01621 772429 ✉ info@ljanderson.co.uk 🌐 www.ljanderson.co.uk

THE VISION LISTINGS

BLINDS & SHUTTERS

WORTH & CO BLINDS

Essex's leading blind, awning & interior shutter specialists for over 100 years. Call us on 01245 830087

BUILDERS & MAINTENANCE

AZTEC

Family run business est. 1999. Will beat any written quote, Full Public liability insurance. Free estimate call us on 01621 502153 | 07866 804180

HANDYMAN

PAUL'S HOME IMPROVEMENTS

Interior & exterior work for all your home improvements please call Paul on 07936 026110

HOME INTERIORS

YEW INTERIOR DESIGN

Designing that special 'YEW' space. Sliding Wardrobes, Bathrooms, Kitchens, Home Offices & More. Tel: 07549 014855 | yewinteriordesigns@gmail.com

CURTAIN CALL INTERIORS

Bespoke hand finished soft furnishings. Measured, made & fitted by us. T: 01621 815422 | www.curtaincallinteriors.co.uk 65 Church Road, Tiptree, Essex, CO5 0ST

JEWELLERS

MITCHELLS JEWELLERS LIMITED

Newly refurbished workshop, On-Site Goldsmiths. Repair Service. 107 High Street, CM9 5EP. 01621 859969 | enquiries@mitchellsjewellers.com | www.mitchellsjewellers.co.uk

KITCHEN, BATHROOMS & BEDROOMS

DESIGNER BEDROOMS

Traditional Fitted Bedrooms, Sliding Doors, Odd shaped rooms are our speciality, home office/studios. 7 Robert Way, SS11 8DD. 01268 571799 | www.designerbedrooms.co.uk

PAVING AND LANDSCAPING

STORM & SONS

Brickwork, Garden Design, Jet Washing, Dropped Kerbs, Digger & Driver Hire. 01245 961670 | 07799 626630 | www.stormandsons.co.uk | stormandsonspaving@gmail.com

BOOK VIA...
MALDON@VISIONMAG.CO.UK

LEAFLET DISTRIBUTION

FLYER DISTRIBUTION ESSEX

Leaflet, printing & distribution service. Cover a majority of CM, SS, CO postcodes. One off drops or regular monthly drops. Call us on 01277 554045 | www.flyerdistributionessex.co.uk

PUBS & RESTAURANTS

THE VICTORIA INN

Great British pub food. Traditional pub events & entertainment. At the heart of your local community. T: 01621 783585. The Victoria Inn, Burnham On Crouch, CM0 8AJ

THE VISION LISTINGS

SHEDS

TONY TURNER

Sheds & Garden Furniture. Quality sheds, custom timber buildings. Call 01621 742184 | tonyturner16984@sky.com | tonyturnersheds.co.uk | Whitehouse Farm, CM9 6PJ

SHUTTERS & BLINDS

LIFESTYLE SHUTTERS & BLINDS LTD

Local Family Business, specialising in made to measure shutters & blinds, showroom open Mon-Fri, 9am-3pm. 01245 426620 | 07971 574958 | adam@essexwindowshutters.co.uk

WINDOWS & DOORS

WISE DESIGNS IN GLASS LTD

PVCu, Hardwood, Aluminium. Domestic & Commercial. Free no obligation estimates. 01621 744336 | www.wisedesignsinglass.co.uk | info@wisedesignsinglass.co.uk

WOOD FLOORING

WEST ONE WOOD FLOORING INTERNATIONAL LTD

Manufacturing, Installation, Restoration. Unit 3 Blackall Industrial Estate, Hamberts Road, South Woodham Ferrers, CM3 5UW. Call 01277 630837 | 01245 204231.

JOIN THE LISTINGS...
for just **£15** +VAT per year

CAR GARAGE

SHAUN BAKER CAR CARE LTD

Garage Service. Vehicle Maintenance, Transmission Repairs, MOT Repairs & Maintenance, Air Con and more services. Please call on 01621 851871 | 120a High Street, CM9 5ET

CLEANING

MOLLY MAID

Our professionally trained team will make your home sparkle. We tailor our cleans to your individual needs, schedule and budget. 01245 494003 | emma.brooks@mollymaid.co.uk

FARM SHOP

BLACKWELLS FARM SHOP

Award Winning Farm Shop & Produce, supporting local, trusted farmers & small businesses. Herons Farm, Colne Road, CO6 1TQ | www.blackwellsfarmproduce.co.uk

FLOORING

MARK JAMES FLOORING LTD

Specialising in Domestic & Commercial Flooring. Call on 07951 484108 | mark@markjamesflooringltd.co.uk

MB CARPETS & FLOORING LTD

The Mobile Carpet & Flooring Shop that comes to you. Family Run. We Supply & Fit. Call 01621 770215 | 07849 593489

GARAGE DOORS

GAROLLA GARAGE DOORS

Thermally insulated electric garage doors, great for space saving, kerb appeal & easy to use, no deposit, pay on completion, 18 colours available. Call today 01621 880052

JOIN THE LISTINGS... for just **£180** +VAT per year

WANT TO APPEAR IN NEXT MONTH'S
VISION LISTINGS?

SIMPLY FILL OUT THE FORM BELOW AND RETURN IT TO BOOK YOUR SPACE:

Company name:

Description (180 characters max including spaces):.....

.....

.....

Telephone:..... Email:.....

Payment option: Card    Direct Debit

Please return to:
Lifestyle Magazine Group Ltd, 55 Crown Street, Brentwood, Essex, CM14 4BD or email maldon@visionmag.co.uk
*£180 +VAT for a 12 months plus agreement. Payments can be made monthly or upfront

DISCLAIMER: VISION does not represent or endorse the accuracy or reliability of any of the advertisements, nor the quality of any products, information or other materials displayed, purchased or obtained by any customer as a result of an advertisement or any other information or offer in connection with the service or products. The opinions expressed in articles, reviews and stories are strictly those of the individual authors and do not necessarily reflect the views of VISION.

To advertise call Nik on 01621 398040

PUT YOUR BUSINESS IN THE VISION LISTINGS...CALL 01621 398040 TODAY

WORDLADDER: RAIN, GAIN, GRIP, DRIP, DROP

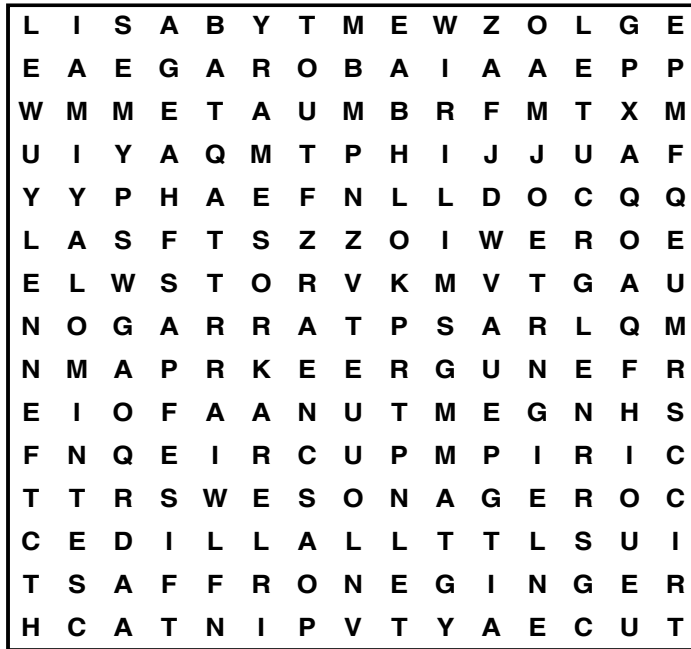


PUZZLES & TRIVIA

PUZZLES

Answers: see end of The VISION Listings

- ▶ BASIL
- ▶ BORAGE
- ▶ CARAWAY
- ▶ CATNIP
- ▶ CHERVIL
- ▶ CINNAMON
- ▶ DILL
- ▶ FENNEL
- ▶ FENUGREEK
- ▶ GINGER
- ▶ MACE
- ▶ MARJORAM
- ▶ MINT
- ▶ NUTMEG
- ▶ OREGANO
- ▶ PARSLEY
- ▶ ROSEMARY
- ▶ SAFFRON
- ▶ TARRAGON
- ▶ THYME



**Essex's Leading Blind,
Awning & Interior
Shutter Specialists
for over 100 Years**

Worth & Co
Blinds
Established Since 1889

Call us today on 01245 830087 or 01702 467581



- Factory Showroom with Free Parking
- Large Luxaflex Inspiration Display
- Patio Awning Showroom
- All types of Interior Window Blinds
- Custom-Made Window Shutters
- Motorised Internal Blinds
- Roller Garage Doors
- Home & Commercial



As a local company we offer a wide choice of Blinds, Shutters, Patio Awnings & Roller Garage Doors & with competitive prices all year plus
FREE NO OBLIGATION QUOTATIONS

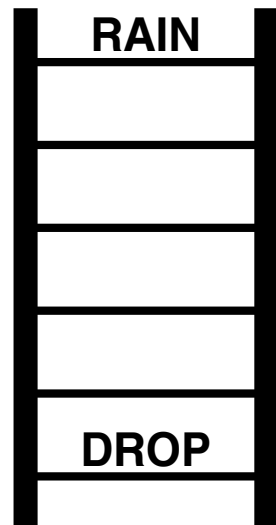
www.worthblinds.com sales@worthblinds.com

Unit 13 Parkside Centre, Potters Way, Temple Farm Industrial Est, Southend SS2 5SJ

DID YOU KNOW?

- ▶ In 1921, women were banned by the FA from playing in Football League grounds. The ban would not be lifted for 50 years.
- ▶ The first women's FA Cup final took place in 1971 and saw Southampton win 4-1 to Stewarton Thistle (now Kilmarnock FC).
- ▶ The England women's team is fourth in the FIFA world rankings. Sweden is in third place, Germany in second place and the USA in first place.
- ▶ Jamaica's women's team was able to compete in the 2019 Women's World Cup thanks to a fundraising initiative spearheaded by Cedella Marley, daughter of Bob Marley.
- ▶ Chelsea FC player Sam Kerr is reportedly the highest-paid women's football player, earning just under £400,000 a year.

WORD LADDER



THE AIM: Change the word at the top of the ladder one letter at a time to make the word at the bottom.

HOW TO: Change one letter on each step to make a new word. By the time you reach the end, you should have created the new word.

DO NOT rearrange the order of the letters.

TIP: There is usually more than one way to solve this puzzle.

Mitchells

JEWELLERS LIMITED



Perfect Gifts for that special someone...

- The largest independent selection of Diamond & Wedding rings in Maldon
 - Contemporary & elegant designs
 - Platinum, Gold & Silver Jewellery
 - Bespoke design service available on site
 - Jewellery and Watch repairs, Alterations and Valuations for Insurance and Probate

Newly Refurbished Workshop
On-site Goldsmiths

WE BUY GOLD

For all **GOLD**
(including old or broken)
plus

**SECOND HAND
JEWELLERY & WATCHES**



DID YOU KNOW WE OFFER A JEWELLERY REPAIR SERVICE?

Pop in and see us in store for a free no obligation quote, our repairs are carried out on site by our master goldsmith in our newly refurbished workshop – we offer a same day premium rhodium plating service along with all other repairs

OPENING HOURS: MONDAY - SATURDAY: 9:30am 5-30pm

107 High St, Maldon, Essex CM9 5EP • Tel: 01621 859969

Email: enquiries@mitchellsjewellers.com • Web: www.mitchellsjewellers.co.uk

