



**WHISKY
VERSUS
BOURBON**

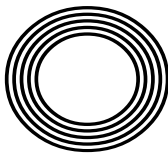
**GET FIT
WITH
FUNCTIONAL
FITNESS**

Glam up your eyes
with crystals this Christmas

MAKE YOUR OWN
cutlery holder for the festive season

Kylie
MINOGUE AO OBE

The singing actress we just can't get out of our heads



FREE

Photo credit: BBC/Guido Mandozzi



BRING A PRESENT INTO THE VIC TO BE
DISTRIBUTED TO THE CHILDREN

Your local pub needs your help to Give a Child a Christmas

The Victoria inn Burnham -on-crouch Give A Child A Christmas Campaign is all about helping local underprivileged families enjoy Christmas. It's a simple but very affective campaign. All they ask is if you can afford

to buy a gift for a child aged new born up to 18 years old, drop it off to them and they will go the rest.

All the toys collected go to local families who are need of some help. Families are identified to them by local schools and social services. Last year the campaign helped over 150 families by supplying gifts for their children.

The campaign runs through November then up to December 18th . Gifts are then distributed to the families in time for Christmas.



JOIN US FOR OUR

Christmas Party Nights

AT THE VICTORIA INN

Saturday 9th December-
DJ Paul Travi 8PM

Saturday 16th December-
Aaron Kelly 8PM



GREAT BRITISH PUB FOOD
TRADITIONAL PUB
EVENTS & ENTERTAINMENT



f thevicboc **01621 783585** **@** thevicb_o_c
The Victoria Inn, Burnham on Crouch, CM0 8AJ

GREAT BRITISH PUB FOOD
TRADITIONAL PUB
EVENTS & ENTERTAINMENT



f thevicboc **01621 783585** **@** thevicb_o_c
The Victoria Inn, Burnham on Crouch, CM0 8AJ



NOVEMBER 2023

Editor's notes...



Nik Allen, Editor

Hello and welcome to this month's edition of **VISION** Maldon Burnham.

I've heard about kids going bonkers over conkers - yet now the schools are getting in on the act too.

I'm not someone who is easily riled up, but even I'm surprised at the dismay caused by an inanimate inch-wide object. The consternation came about when my niece's school banned the seed because one mother claimed her little one had a conker allergy.

Even the NHS states (a) "conkers do not pose any anaphylactic threat" and (b) "there is no prescribed evidence that exists that horse chestnuts cause an allergic reaction".

And if the threat were real, this is not the way society works. Parents and children are very capable of going out there in the world equipped with the knowledge and tools to avoid danger when it arises. If I were this parent, I would be embarrassed. They are not helping their child adapt to real life.

To cancel the fun of hundreds for the debatable protection of one is bad; to do it without even researching the facts is sadly reflective of where we are today, and people are growing tired of it.

Until next month, take care of yourself, each other, and your conkers!

Nik Allen

This is your town's hyperlocal magazine, delivering to homes and businesses every month.

HOME & DIY | GARDENING | PETS | HEALTH & FITNESS | BEAUTY | FASHION | HISTORY | LOCAL NEWS | FOOD & DRINK | TRAVEL | BUSINESS & PROPERTY | SPORT | PUZZLES | MOTORING | KIDS | WHAT'S ON | TECHNOLOGY | THE LISTINGS

CONTACT US: www.visionmagessex.com | maldon@visionmag.co.uk | 01621 398040

[@visionmagessex](https://twitter.com/visionmagessex) [@visionmagessex](https://www.instagram.com/visionmagessex) [f Vision Magazine Essex](https://www.facebook.com/VisionMagazineEssex)

CONTRIBUTORS | Tabatha Fabray, Fiona Goble, Panayiota Demosthenous

All pages are recyclable

Bella's

The only Italian
à la carte
in Burnham & The Dengie

Enjoy our authentic modern Italian cuisine
Antipasti - Primi Piatta - Secondi Paiatti - Dolce

80 Burnham High Street, Burnham on Crouch CM0 8AA
01621 782686 | www.bellas-bistro.com | bellas.bistro@yahoo.co.uk



Lifestyle
Shutters & Blinds Ltd



Checkatrade.com
Where reputation matters

www.essexwindowshutters.co.uk



Save up to £230 with our FREE FITTING on all Shutter ranges

- Local small family run business
- Specialising in made to measure shutters and blinds
- First Floor Showroom open Monday-Friday 9am-3pm

If you bring some rough measurements, we are happy to provide a free quotation

New Lifestyle Blind Range

Wood & Faux Wood Venetian Blinds
Roller Blinds
Day & Night Blinds



Proud to sponsor Maldon & Tiptree FC & Burnham Ramblers FC

Get in touch today for a free no obligation quote

T: 01245 426620 • M: 07971 574 958 • E: adam@essexwindowshutters.co.uk



Unit 2, 49 Cutlers Road, South Woodham Ferrers, CM3 5WA





MARKING THE 60TH ANNIVERSARY OF DOCTOR WHO – THE MAN, THE WOMAN, THE SHOW, THE MOVEMENT

Asking celebrities how they remain so youthful has become par for the course, but none has achieved as much ongoing success and vigorous relevance as the great Doctor, who at 60 is looking pretty fresh.

On Christmas Day, the Doctor's latest regeneration will be revealed, but not before some highly anticipated TV specials for the show's anniversary in November.

Making his grand return as the fourteenth Doctor, fan favourite David Tennant is set to wow once more for three anniversary episodes. The Scottish actor originally starred as the tenth Doctor from 2005 until his final episode aired on New Year's Day in 2010. Catherine Tate will also reprise her role as the Doctor's companion Donna Noble, with Neil Patrick Harris also joining the cast.

Though Patrick Harris is a newcomer to the *Doctor Who* fold, his character, The Toymaker, is not. First appearing in a now classic episode titled *The Celestial Toymaker*, from the show's third season in 1966, he was originally portrayed by actor Michael Gough.

The Toymaker is a memorable antagonist owing



to his whimsical yet sinister demeanour and his ability to create intricate and deadly challenges for the Doctor and his companions. The character's distinctive appearance and personality have made him a notable figure in the show's lore, one that aligns perfectly with Patrick Harris' dramatic and theatrical flair.

One of the greatest success stories for the BBC, *Doctor Who* began in 1963 when Sydney Newman OC, the corporation's head of drama, tasked producer Verity Lambert OBE and writer Anthony Coburn with creating a TV science fiction series. Their vision gave birth to *Doctor Who*, a show that would combine history, adventure and futuristic concepts in a unique way.

William Hartnell portrayed the original incarnation of the Doctor, a mysterious Time Lord with the ability to regenerate. The Doctor, along with his granddaughter Susan and two teachers, Ian and Barbara, travelled in the TARDIS, a time machine that looked like a 1960s British police box on the outside.

The series is listed in the Guinness World Records as the longest-running science fiction television series in the world, with Tom Baker holding the title for starring in the highest number of episodes – a whopping 178.

Despite its popularity, *Doctor Who* faced a significant hurdle in 1989 when it went on an extended hiatus. Aside from a TV film in 1996, the Doctor would not be fully regenerated until 2005.

This was the beginning of the show's modern era, helmed by writer and showrunner Russell T. Davies OBE and starring Christopher Eccleston as the ninth Doctor.

The most recent revamp of the series sees Davies return as the showrunner, taking over from Chris Chibnall who

introduced Jodie Whittaker as the 13th Doctor. Hot on the heels of his 2021 success *It's a Sin*, and with *Sex Education* star Ncuti Gatwa playing the 14th Doctor, Davies is in a fine position to return the show to its noughties glory.

The King's NEW COINS UNVEILED



SHOWCASING HIS PASSION FOR CONSERVATION AND EQUALITY

When His Majesty King Charles III was crowned, he thanked the public for their kindness and encouragement, and vowed that he and Her Majesty Queen Camilla would rededicate their lives "to serving the people of the United Kingdom, the Realms and Commonwealth". Putting his money where his mouth is, quite literally, the edge inscription of the new £2 coin reads 'In servitio omnium', which means 'In the service of all'. It was taken from the King's inaugural speech on September 9, 2022, and chosen by him personally.

The coin is one of eight that have been unveiled by The Royal Mint, ranging from 1p to £2. Determined to distinguish his reign from that of his beloved mother, the King has also embossed them with another of his great passions: nature.

Featuring endangered species from across the British Isles, such as the puffin, the red squirrel and the bee, along with flowers and the oak tree leaf, the coins reflect His Majesty's devotion to conservation and equality.

Here is the full list:

- **1p coin:** Hazel dormouse... which has seen its population halve since 2007
- **2p coin:** Red squirrel... expected to blend into the colour of the copper coin
- **5p coin:** Oak tree leaf... a rich habitat for biodiversity in woodland areas with a long monarchic association
- **10p coin:** Capercaillie... found in a small part of Scotland and threatened with extinction
- **20p coin:** Puffin... 10 per cent of the world population is on the UK's coastline
- **50p coin:** Atlantic salmon... at threat from river pollution and habitat loss
- **£1 coin:** Bees... 250 species found in the UK
- **£2 coin:** National flowers – a rose (England), a daffodil (Wales), a thistle (Scotland), a shamrock (Northern Ireland)

The coins will replace those designed by Her late Majesty Queen Elizabeth II in 2008 and may be in use by the end of 2023, but The Mint has confirmed that all existing currency remains legal tender.

Photo credit: royalmint.com



Aesthetics of ESSEX
body in mind

Established since 2012

ANTI-AGING | LASER | COSMETIC SURGERY CLINIC

We are located on the High Street of Maldon, Essex – 51 High Street, CM9 5PF

offering a range of:

ANTI-AGING | WELLNESS | COSMETIC SURGERY | LASER TREATMENTS

FREE NO OBLIGATION CONSULTATIONS

We also carry out a range of private healthcare minor surgery treatments that are no longer available on the NHS such as:

MOLE REMOVAL | VERRUCA REMOVAL | CYST REMOVAL
SKIN TAG REMOVAL | LYMPHOMAS | EARLOBE CORRECTION

NEW TREATMENTS NOW AVAILABLE

VITAMIN B12 | PRP HAIR RESTORATION
MORPHEUS | 8 FACETITE | ALLERGY TESTING
FAT DISSOLVING INJECTIONS

PLEASE CONTACT THE CLINIC ON 01621 491 036 TO ARRANGE A CONSULTATION
WITH ONE OF OUR TRAINED MEDICAL PROFESSIONALS OR SENIOR AESTHETICIANS

aestheticsofessex.co.uk | info@aestheticsofmaldon.co.uk



**SPECIAL OFFERS –
EXCLUSIVELY WITH THIS AD**
**50% DISCOUNT ON A COURSE OF LASER
HAIR REMOVAL – ANY AREA**
**20% DISCOUNT ON HYRAFACIAL
(only with aesthetician ERIN)**

Struggling to think
of what to get
your loved one
for Christmas?



**GIFT VOUCHERS
AVAILABLE**



Traditional fitted bedrooms

Designer Bedrooms

7, Robert Way
Wickford, SS11 8DD

01268 571799

sales@designerbedrooms.co.uk

(See website or call us for opening hours)

Fully installed
by our own
professional
fitters.



sliding doors

Whether your taste is traditional or contemporary, with either hinged or sliding doors, we have just the bedroom for you...
...all made to measure in our own factory and installed by our own professional fitters.

Need some inspiration?... then take a look at the many photos of completed work on our website at:

www.designerbedrooms.co.uk

Need a professional design...? then call us to arrange for a free no obligation home visit.

Want a quick quote...? then pop in to see us with your plans or room dimensions.

10 Year
Guarantee!



Odd shaped rooms
are our speciality!



Home Office/Studies

CLASH of the FABRICS



HOME & DIY

TOP TIPS FOR COMBINING CONFLICTING FABRICS TO CREATE HARMONIOUS HOME DÉCOR

We're conditioned to think about our home interiors in ways that mean they match, complement and merge in the most perfect of ways.

Yet true innovation often brings about conflicting elements, so why not try these juicy style juxtapositions en route to awesome in-home ambience?

LEATHER AND WOOD

Sumptuous soft leather against solid wood is about as luxurious as you can get in a modern home. From leather cushions on a wooden bench or a walnut wood bedframe with leather panelling, the contrast between hard and soft is impossible to resist.

SUEDE AND COTTON

Both are beautifully soft, and yet the rugged texture of suede almost feuds violently with the plush softness of cotton. Ideal for brightening up bland bedding, suede cushions are the perfect foil to give your bedroom a hotel feel before removing for a restful night of sleep.

WOOL AND SILK

Wool and silk may be the oddest of bedfellows, but together they conspire to make something rather beautiful. From luxurious rugs to coveted curtains and upholstery for almost anything, the colour, quality and sheer beauty combined make this a dream duo.

TWEED AND CORD

Tweed is a very harsh material that has bundles of presence, which is why you should match it with something softer, like cord. Both have a vintage and almost classic feel, which works perfectly for a formal sitting room.

CHROME AND GLASS

Creating an almost retro/futuristic feel, the stunning mirror shine with the transparency of glass transforms an ordinary coffee table into a futuristic centrepiece.

Photo credit: naturalbedcompany.co.uk, swyffhome.com, bakerandstonehouse.co.uk, turnturbobox.co.uk



How to make a Christmas CUTLERY POUCH

Cover your cutlery with Christmas cheer with this simple and stylish craft. All you need are a few materials and some basic sewing skills and you are good to go!

YOU WILL NEED:

A sewing machine or needle and thread | A rotary cutter or pair of sharp scissors | A ruler | Cotton fabric fat quarters in your preferred Christmas colours or patterns | 2 x pieces of festive ribbon or trim (optional)

HOW TO MAKE:

Step 1: Cut your fabric

To create your pouch, you will need two pieces of fabric in contrasting colours or patterns. These need to be cut to 38cm x 12cm.

Step 2: Decide on your layout

One piece of fabric will be used to make the inside of your pouch and the other will be used as the flap. Your cutlery will lie on the inside fabric and be covered by the outside one.

Step 3: Place your fabrics face to face

Next, place your two fabrics face to face. If the flap fabric has a pattern, this needs to be placed upside down. Using a 10mm seam allowance, stitch around the two pieces of fabric using a sewing machine or by hand. Leave a 4cm gap at the bottom for turning.

Step 4: Clip the corners

Clip the corners of the fabrics, making sure not to cut the stitches, then turn the pouch the right way in. Pop out the corners using a pencil and then iron gently to smooth out the fabrics. Sew up the gap.

Step 5: Add ribbon or trim

If you want to add ribbon or a trim, lay out your pouch and sew the pieces of ribbon or trim to the edge that will turn up to make the flap.

Step 6: Complete the pouch

Fold the flap over with a 13cm measurement and iron it in place. Carefully tuck the ends of the trim inside and pin it in place. Sew all the way around the pouch as close to the edge as you can to create a top stitch.

WISE
in DESIGNS
GLASS LTD

Maldon: 01621 744 336

Find us on  



PVCu • Hardwood • Aluminium
Domestic & Commercial



- Windows • Doors • Conservatories
- Lightweight Tiled Roof Conservatories • Fascias
- Soffits • Guttering • Sliding Sash Windows • Lanterns
- Bi-folding Doors • Composite Doors

Existing Double Glazing Repairs:

- Replace misted / broken double glazed units
- Replace window & door handles / hinges
- Re-align dropped windows & doors
- Conservatory roof repairs, upgrades & replacements

Free, no obligation estimates

www.wisedesignsinglass.co.uk
email: info@wisedesignsinglass.co.uk



From Banking Hall to Curtain Call

Following the closure of Barclays Bank in Tiptree Curtain Call Interiors have taken over the former bank building and transformed the space into an inspirational home interiors showroom and new workroom. The new space showcases a wide range of designer fabrics, curtain displays as well as home accessories including, a home fragrance range, cushions, lamps, furniture and tableware.



We specialise in making hand finished bespoke curtains, Roman blinds and soft furnishings all made by our experienced team of curtain makers. With the new workroom located adjacent to the Showroom it allows our team of experienced makers and



designers to assist customers in finding the right fabric and style for their decoration projects. Using the vast library of fabric samples and pattern books we



can help you bring your ideas to life and offer you our help and advice in choosing the right fabric and style for your space.

We are open Monday to Friday from 9am until 5pm and 9am until 3pm on Saturdays. We have free parking available for customers at the rear of the building and offer a free estimating and consulting service.



Bespoke hand finished soft furnishings

Celebrating the new
PT Autumn/Winter 2023
fabric collections

20% Off

all PT fabric orders*

*Until 30/12/2023

Shop Local

Visit our Tiptree Showroom to view the full range or shop our fabulous seasonal gifts and accessories.



Measured by us. Made by us. Fitted by us.



65 Church Road, Tiptree, Essex CO5 0ST | Mon to Fri 9am – 5pm, Sat 9am – 3pm

Telephone: 01621 815422 | www.curtaincallinteriors.co.uk



Curtains & Pelmetts • Roman Blinds • Curtain Tracks & Poles • Wooden Blinds & Shutters • Measuring & Fitting Service

Measured by us. Made by us. Fitted by us.



65 Church Road, Tiptree, Essex CO5 0ST | Mon to Fri 9am – 5pm, Sat 9am – 3pm

Telephone: 01621 815422 | www.curtaincallinteriors.co.uk



Curtains & Pelmetts • Roman Blinds • Curtain Tracks & Poles • Wooden Blinds & Shutters • Measuring & Fitting Service

FROM YOUR AREA

Beloved market reopens after four months



Photo credit: Maldon Market

Maldon's beloved market has now reopened, following a £1million investment plan for the district as part of the UK Shared Prosperity Fund.

The market closed in June owing to a change in shoppers' retail habits and the retirement of long-serving market operator, Terry Frost.

Maldon Town Mayor councillor Andrew Lay (pictured above, third from left) reopened the market on Thursday, October 12. Hundreds braved the rain and enjoyed more than 20 stands from independent and local brands offering a variety of goods.

New market operator Alex Paul said: "Suffolk Market Events is delighted to work with Maldon District Council to relaunch the town centre's weekly market at Butt Lane. We are aware that a successful and popular town market can add real vibrancy to a town centre, and we look forward to working with all the local partners in Maldon to achieve this."

The market team posted on social media: "Thank you to everyone who came out and supported Maldon Market today. The market was really well supported and we've had lots of positive feedback."

Rowing club earns silver and gold at winter competition

Burnham-on-Crouch Coastal Rowing Club (BCCRC) returned from the Harker's Yard Gig Association's Winter Series second race on October 15 with a series of medals.

The race featured teams from across the East Coast, and saw each team take part in time trials starting in 30-second intervals.

The mixed Wren team earned the top spot, while the

men's Willow team came second. The women's race rounded off the day with 2nd place for Wren and 14th for Willow.

However, the men's Wren boat sadly scored as 'did not finish' after missing the mark.

The team posted on social media: "Well done to our BCCRC crews who competed in the second race of the Harker's Yard Gig Association Winter season at Rowhedge, and well done to Georgina who had her first race, stepping in to help out Marconi Sailing Club who were a rower short."

Cricket legend retires from the sport

Cricketing legend and former England captain Sir Alastair Cook CBE, who started his career in Maldon, has retired aged 38.

The former England captain grew up in Maldon and began his career at Maldon Cricket Club, eventually making it into the adult Third XI aged 11.

Since then, Sir Cook has secured three royal honours, including an MBE and CBE, and was knighted by Her Late Majesty Queen Elizabeth II. His knighthood came five months after he retired from international cricket as England's highest test run scorer of all time.

In his farewell message, Sir Cook said: "It is not easy to say goodbye. For more than two decades, cricket has been so much more than my job. It has allowed me to experience places I never dreamed I would go, be part of teams that have achieved things I would never have thought possible and, most importantly, created deep friendships that will last a lifetime."

"I owe a huge debt of gratitude to Essex, the county I joined when I was aged 12."

"I look forward to supporting the team for many years to come."



Photo credit: Sir Alastair Cook CBE via Facebook

AZTEC

BUILDERS & MAINTENANCE



HardiePlank
Cladding
Full Range of
Colours Available

List any job big or small that needs addressing, we will quote them all – then you choose what to get done and when

- Interior & Exterior Work
- Painting & Decorating
- Wallpaper Specialists
- Wall & Floor Tiling
- Plastering & Coving
- All Brickwork
- Patios
- Block Paving
- Driveways
- Extensions
- UPVc Fascias, Soffits, Guttering & Cladding
- Roofing – flat, pitched etc.
- Carpentry
- All General Repairs

FAMILY RUN BUSINESS ESTABLISHED SINCE 1999

Will Beat Any Written Quote • Full Public Liability Insurance

Call us now for a FREE estimate

Tel: 07866 804180 • 01621 502153

email: aztec.pm@hotmail.co.uk



Become

a Care Professional

Join an award-winning company who are doing amazing things to help our clients to live well and happy at home.

Contact us to learn more about the job and the opportunities in working with us.

- ♥ Excellent training
- ♥ Variety of hours
- ♥ Great rates of pay
- ♥ Make a difference
- ♥ Wellbeing benefits
- ♥ Above local pay rates

01245 200 780

Each Home Instead franchise is independently owned and operated. Copyright© Home Instead® 2023.



Enquire
by phone
or scanning
QR-code

Joe's Carpets

FAMILY RUN BUSINESS ♦ ESTABLISHED SINCE 1999

The Mobile Carpet Shop Home Selection Service

- ♦ Supply & Fit
- ♦ Repairs & Refits
- ♦ Free Estimates & Advice
- ♦ Free Gripper Rods

A Friendly & Tidy Service

**CONTACT US ON 01621 398 019
OR 07748 808094**



*Will Move
Furniture &
Uplift Old
Carpets*

*WE COME
TO YOU
PERSONAL
HOME
SERVICE*

SIR JOHN WHITTINGDALE MP

Conservative MP for Maldon



LOCAL NEWS



One of my current jobs as a minister in the government is responsibility for tourism, an industry of enormous importance to our economy, which generated around £240billion last year and supports about 3.6 million jobs. Three years ago, the sector was obviously hit very hard by COVID-19 when non-work travel was impossible. However, since the end of lockdown, it is bouncing back, with international visitor numbers almost back to where they were before the pandemic.

During the summer, I was able to pay ministerial visits to tourist businesses in both Kent and Devon, as well as attend the G20 meeting of tourist ministers in Goa in India. I also spoke at the Tourism Alliance conference and met UKHospitality, Visit Britain and hotel operators.

However, I am also very aware of the significant contribution that tourism makes to our own local economy in the Maldon district and surrounding areas. We are very fortunate to have beautiful countryside, as well as a wide range of attractions which draw many visitors. Each weekend in summer, large numbers come to Promenade Park or enjoy sailing, going for walks or watching the wildlife on the Blackwater and

Crouch estuaries. The growing number of vineyards producing local wine are also now attracting visitors, while military enthusiasts can see the extraordinary collections at the Combined Military Services Museum in Maldon or the displays at Stow Maries Great War Aerodrome, the largest surviving First World War aerodrome in Europe.

Recently, I was able to take my ministerial colleague Lord Parkinson (pictured centre) to visit the aerodrome and I was there again for the moving service on Remembrance Sunday.

We are also lucky to have some wonderful heritage sites locally, including the chapel of St Peter on the Wall at Bradwell, one of the oldest churches in England, as well as the Moot Hall, Thomas Plume's Library, Beeleigh Abbey, and pubs dating back to the 15th century or earlier.

Domestic tourism brings great value to local communities and is often a cheaper and easier alternative for families – especially for those families who are looking for activities to do with children over the school holidays. We are very lucky to have so many great tourist attractions right here on our own doorstep.

WWW.JOHNWHITTINGDALE.ORG.UK



Exploring the expansive corners of Hatfield Forest

In west Essex on the border of Hertfordshire lies a treasure trove of natural beauty: Hatfield Forest. This enchanting forest, once a royal hunting ground, is a special place where age-old landscapes have been preserved and history echoes through every leaf and branch.

The forest, which spans more than 1,000 acres, features coppiced trees, ancient wood pasture and shimmering lake, making it a paradise for nature lovers, walkers and picnickers alike.

Hatfield Forest isn't just about natural beauty, though. It was preserved as a hunting ground by William the Conqueror and is steeped in centuries of history. It's a living, breathing relic of medieval England, and stories of past royalty and deer hunts are woven into the very fabric of the woodland.

Boundary disputes have dominated much of Hatfield Forest's past, and these dividing lines remain intact to this day, despite the fact that renowned

landscape designer Capability Brown was invited to modify elements in the 18th century.

In later times, the Victorians explored agricultural use, and during the Second World War, some parts of the forest even came under military occupation.

These days, the expansive setting is carefully protected by the National Trust, offering accessibility for locals and visitors alike, who are invited to have a picnic in the open grasslands, enjoy the tranquillity of the lake, or take a leisurely walk through the ancient woods. With the latter in mind, there are a number of designated routes that can be traversed through the forest, although some of the trails can become quite muddy during the winter months.

Regardless, Hatfield Forest, which is also marked as a Site of Special Scientific Interest, provides a beautiful escape from the modern world.

To find out more about Hatfield Forest and for visitor information, including opening times, head to www.nationaltrust.org.uk/visit/essex-bedfordshire-hertfordshire/hatfield-forest



Photo credit: National Trust Images/James Dobson



The care you deserve

- Personal care
- Medication Support
- Meal Preparation
- Community support and Shopping
- Overnight Care
- Companionship
- Domestic Tasks
- Hourly Care

01245801401
info@elsieshelphome.com
www.elsieshelphome.com



Elsie's Help at Home, Croxtons Mill, Blarford Hill, Little Waltham, Chelmsford, CM3 3PJ

Come home to a clean house



Our professionally trained team of maids will make your home sparkle with each visit. We know it's not a one-size fits all service, that's why we work to tailor our cleans to your individual needs, schedule and budget.

Call us today to arrange your no obligation in home quote

Emma Brooks
01245 494003
emma.brooks@mollymaid.co.uk
www.mollymaid.co.uk/locations/chelmsford/

See what our customers have to say at uk.trustpilot.com Trustpilot



THAT PERSONAL TOUCH

Keith, owner of KG Windows set up this business to give quality service to local customers, and prides himself on his workmanship and expertise in window and door installations, offering advice and ideas to improve your home.

WINDOWS: We only install the very best windows and they are "A" rated UPVC products to ensure longevity and best thermal performance. They are available in different colours and styles to compliment your home. We provide free estimates from single window repair to complete window installation. All our products and workmanship carries a Certass certificate with a 10 year guarantee.

DOORS: We have many different styles of door available, whether you want something modern or more traditional. You can select the colour and style from our extensive catalogue of composite, patio and stable doors, as well as the furniture, fixtures and fittings. If you are looking for something specific we are happy to speak to our suppliers.

Contact us for further information:
Phone 01621 335999 or 07866 45493
Visit www.kgwindowsanddoors.co.uk
Find us on [@KgWindowsDoors](https://www.facebook.com/KgWindowsDoors)

KG WINDOWS & DOORS

property maintenance



Great price. Great service. We were very specific in what we wanted and this wasn't a problem. Really pleased. Thanks

"After spending weeks looking for a window company, getting quotes and reading some worrying reviews online we found KG Windows & Doors and decided to give them a try. We are so glad we did, Keith's work is excellent. The price was really good and the end result is fantastic."

KG WINDOWS & DOORS

property maintenance



WINDOWS INSTALLATION & REPAIR COMPOSITE DOORS | PATIO DOORS | STABLE DOORS

- WE INSTALL UPVC PRODUCTS FOR YOUR PROPERTY
- NO PRESSURE JUST A FRIENDLY POLITE SERVICE
- 10 YEAR GUARANTEE ● CERTASS CERTIFICATED

TEL: 01621 335999 ● MOB: 07866 454293

www.kgwindowsanddoors.co.uk

www.facebook.com/KgWindowsDoors



YOUR LOCAL EVENTS

MALDON CHRISTMAS FAYRE 2023

High Street, Maldon, CM9 5PN

Thursday, November 30, 4pm – 9pm



Photo credit: Maldon Christmas Fayre

Maldon Town Council is hosting the annual Christmas lights switch on, offering an evening of entertainment and late-night shopping to support local businesses.

Nearly 100 stalls will line the High Street selling crafts, food and drink, and there will be all kinds of entertainment throughout.

To find out more, head to www.maldontowncouncil.gov.uk/town-events/maldons-christmas-fayre

JDS DUO LIVE

The Queen's Head, 26 Providence,

Burnham-on-Crouch, CM0 8JU

Friday, December 1, 8.30pm

Enjoy the acoustic groove and smooth tunes of the JDS Duo for an evening of great vibes and perfect company. The band have been described as "absolutely fantastic, with imagination thrown in too".

The event is free and open to the public.

Find out more information at www.facebook.com/events/2580474375427403

INDOOR ANTIQUES, VINTAGE & COLLECTORS FAIR

Blackwater Leisure Centre, Park Drive,

Maldon, CM9 5UR

Sunday, December 3, 10am – 3pm

Dealers and collectors from around the country will be heading to Blackwater Leisure Centre, selling a huge range of items from collectables to antiques, rare items to strange finds.

Admission costs £2. For more information, head to www.gbnfairs.com/general-8-2

SANTA FUN RUN

Promenade Park, Park Drive,

Maldon, CM9 5JQ

Sunday, December 10, 9am

This year's Santa Fun Run, organised by the David Randall Foundation, is free to enter, which includes your Santa suit! There is a choice of a 5km Fun Run or a 3km Reindeer Run and Treasure Hunt that is also accessible for wheelchair entrants. Runners are invited to raise money for the foundation, which supports those with a terminal or life-limiting illness.

Registration for the fun run starts at 9am and the run starts at 10.30am. Entry is free.

For more information visit www.visitmaldondistrict.co.uk/whats-on/santa-fun-run-2023-p1847481

ST AGNES FOUNTAIN

Maldon Town Hall, Market Hill, Maldon, CM9 4RL

Monday, December 11, 7.30pm

The beloved St Agnes Fountain is ready to tread the tinsel boards once more this December, bringing Christmas to the nation with a festive concert.

Tickets cost £22 and can be purchased from www.wegotickets.com/event/568262

CHRISTMAS HIGH TEA

Creeksea Place Manor House, 826 Ferry Road,

Burnham-on-Crouch, CM0 8PJ

Tuesday, December 12, 1pm – 3pm

Join Creeksea Place Manor House for an elegant high tea, where you can enjoy sandwiches, cakes, unlimited tea and coffee. Enjoy festive sandwiches such as brie and cranberry, turkey and stuffing, and more.

Tickets cost £35 per person, and can be bought at www.creekseaplace.co.uk/event/christmas-high-tea



Photo credit: Creeksea Place Manor House



WHAT'S ON

Don't ask the price, IT'S A PENNY

In 1884, a Polish immigrant opened a stall in Kirkgate Market in Leeds, selling household goods, haberdashery and toys for a penny a pop. Back then, who could have guessed the stall would blossom into retail giant Marks & Spencer?

SO HOW DID IT HAPPEN?

Michael Marks was born into a poor Polish Jewish family in what is now Belarus. He emigrated to England when he was 23 years old to escape persecution. He settled in Leeds and got work at John Barran & Sons' garment factory.

Marks soon branched out. He started buying goods from a local wholesaler and selling them door to door. With the profits, he opened his first market stall, known as 'Marks' Penny Bazaar', and branded it with his then-famous slogan, 'Don't ask the price, it's a penny'.

In 1894, Marks teamed up with Thomas Spencer, his wholesaler's bookkeeper. The company continued to grow. But sadly, it soon lost its two founders. Spencer died in 1905 at the age of 53, and Marks died in 1907 at just

48. By then, the company had 145 stalls and shops nationwide and a turnover of £400,000 – which is worth more than £61million today.

MARKS' SON SIMON TRANSFORMED THE BUSINESS...

In 1926, the company was floated on the stock market and moved into clothing and food. It made its reputation by selling only British-made products. And it offered cash refunds for items, however long you'd had them, so long as you had the receipt.

Simon Marks launched the St Michael brand name in honour of his father in 1927. The name was a symbol of quality and appeared on items from ready meals to overcoats till the company rebranded in 2000.

Since the late 1990s, the company's had a rocky ride. Be that as it may, it still has around 1,500 stores and turned over £6.6billion last year.

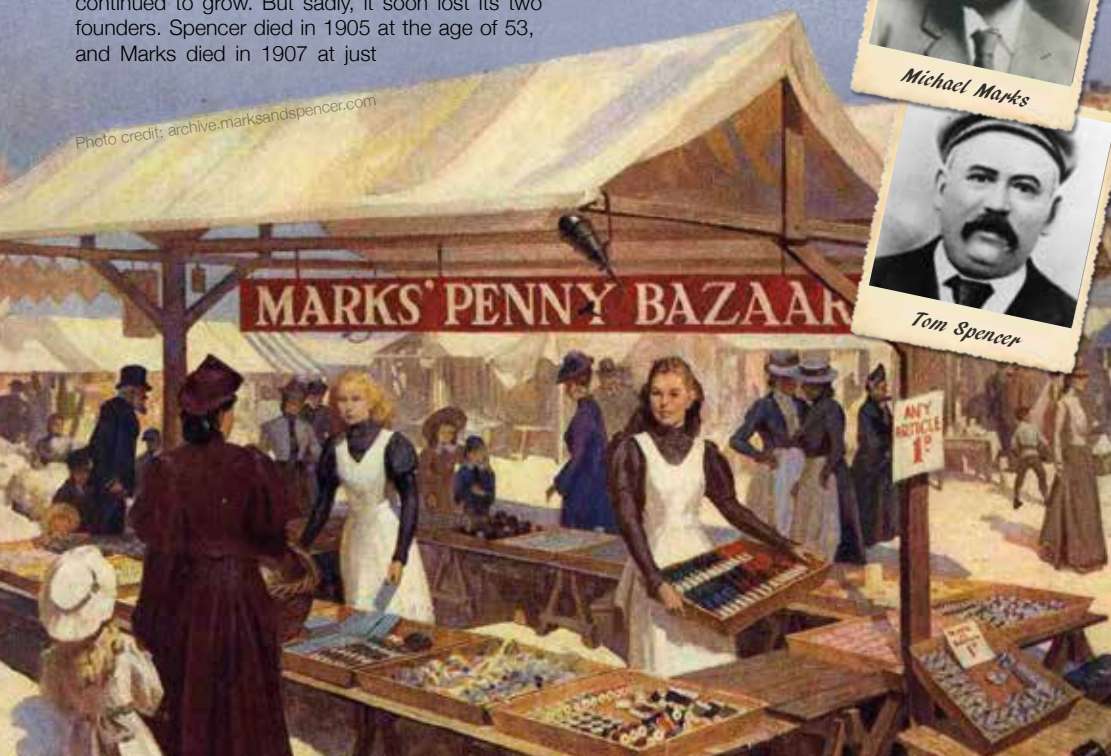


Michael Marks

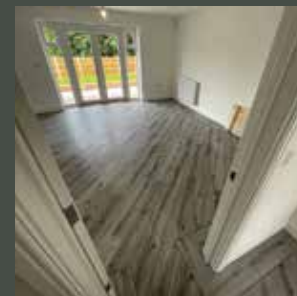


Tom Spencer

Photo credit: archive.marksandspencer.com



MARK JAMES FLOORING LTD



SPECIALISING IN DOMESTIC & COMMERCIAL FLOORING

07951 484108

mark@markjamesflooringltd.co.uk markjamesflooringltd

NEED A PLUMBER?

BLOCKED DRAINS, BLOCKED SINKS, BLOCKED TOILETS - **CLEARED FAST**

- Plumbing, Heating & Drainage
- Drains – Internal & External
- CCTV Surveys
- High Pressure Jetting
- Manual Rodding
- Toilets, Sinks, Bathrooms
- Emergency Plumbing & Drainage
- Insurance Work Undertaken
- Fully Qualified Engineers Covering Your Area

**NO
CALL-OUT
CHARGE**

**We quote
all prices
including VAT
- No Hidden
Extras**

CALL OUR FRIENDLY TEAM 24/7
01621 767816

Nº1 PHD
PLUMBING HEATING & DRAINAGE



AMERICAN EXPRESS
No1 PHD Ltd, Company No: 11927404, Reg. in England & Wales.

**SENIOR
CITIZEN
& NHS
DISCOUNTS**



A full-page photograph of Kylie Minogue performing on stage. She is wearing a shiny, bright blue jacket over a black outfit. She has long blonde hair and is singing into a black microphone held in her right hand. Her left arm is raised, with her hand open. The background is dark with colorful stage lights, including a prominent rainbow light on the left.

Kylie

MINOGUE

After a huge year, Kylie Minogue AO OBE is revving up for the grand finale with an ITV extravaganza, *An Audience with Kylie*.

Few of us can boast of a career of more than three decades; even fewer can achieve such a feat in the cut-throat music industry, and one in a billion can do it with the grace, style and panache of Kylie.

An undisputed queen of reinvention, the 55-year-old Aussie delighted her fans earlier this year with the sizzling floor-filler *Padam Padam*. It was a track that not only launched her back into the charts (the song peaked at number eight, becoming her 52nd Top 40 single in the UK), but also flaunted her spectacular and seemingly ageless appearance in the accompanying music video.

For Kylie – who returned to where it all started this year in the well-received *Neighbours* finale – such moments have become second nature. Bursting onto the music scene in the late 1980s with her debut single, *I Should Be So Lucky*, her angelic voice, combined with a girl-next-door charm, made her an instant sensation.

Kylie continued to release chart-topping hits that solidified her status as a pop sensation. Songs like *Got to Be Certain*, *Je Ne Sais Pas*, *Pourquoi* and *Especially for You*, a duet with

Jason Donovan, became anthems of the era. Her catchy tunes and memorable music videos created a pop culture phenomenon.

By the time the 90s rolled around, however, saccharine pop was on the wane. Rather than fade away,

Kylie retreated into her cocoon and reappeared as an indie princess, even collaborating with the master of melancholy, Nick Cave, on *Where the Wild Roses Grow*.

Another defining moment of Kylie's career came in the early 2000s with the release of *Fever*. The album's lead single, *Can't Get You Out of My Head*, became a global phenomenon. Its hypnotic beat and unforgettable hook catapulted Kylie back to the top of the charts worldwide and solidified her status as an international pop icon.

Though she is adored across the globe, her status here in the UK is one of particular reverence. So much so that Kylie, who was awarded an OBE in 2007, has spent much of the last few decades living in London and now owns an apartment in the highly coveted Hyde Park One building, alongside a house in her home town of Melbourne.

Fortuitously, her abode in Britain's capital is a short walk from the location of her ITV special, the iconic Royal Albert Hall. *An Audience with Kylie* promises to dazzle with an array of floor fillers from both her recent album, *Tension*, and her award-winning back catalogue. She will also field a bevy of questions from the floor posed by specially invited VIP guests, including celebrity Kylie superfans.

Kylie said of the event on December 1: "I'm so excited to announce that I am teaming up with ITV for *An Audience with...* at London's iconic Royal Albert Hall. I'll be performing some of my favourite tracks from throughout my career and no doubt answering some surprising questions from the audience."

The one query she's sure to bat away is talk of retirement. An icon of modern music, the industry – in all its inconsistency and fragility – is indebted to this marvellous mainstay, and her star will surely never be allowed to wane.

- West One Wood Flooring International Ltd is a specialist in the manufacturing, installation and restoration of antique reclaimed and new timber flooring
- We can supply and fit a variety of stunning timber floors for domestic properties and commercial projects
- Installation is by a skilled friendly professional team who offer high quality service and aftercare
- Our flooring is competitively priced with innovative solutions to suit your needs
- If your existing wooden floor needs restoring, our skilled teams will transform your worn floor back to its former beauty. We are experienced with all types of wooden floor and will carry out the necessary specialist repairs and finishes. Most timber floors are salvageable, our team of expert restorers will point you in the right direction.



www.westonewoodflooring.co.uk

Call us on 01277 630837
01245 204231

Email: info@westonewoodflooring.co.uk
Unit 3 Blackall Industrial Estate, Hamberts Rd,
Sth Woodham Ferrers, Essex CM3 5UW



Award-winning farm shop &
produce, supporting local, trusted
farmers & small businesses



www.blackwellsfarmproduce.co.uk



Herons Farm, Colne Road, Coggeshall,
Colchester, Essex CO6 1TQ



Mon – Fri: 8:00 AM – 5:30 PM
Sat: 8:00 AM – 4:00 PM
Sun: 10:00 AM – 3:00 PM



A landlord's guide to improving your EPC RATING

Want to attract more tenants, help the environment, and potentially increase the value of your property? Here are some top tips to boost your EPC rating.

can help you to achieve a higher EPC rating. Water-based underfloor heating systems are the most effective.

What is an EPC rating?

An EPC rating is a standardised indication of a property's energy efficiency. The minimum EPC rating for landlords of private domestic rented properties is E. However, the government has proposed that all rental properties will need a rating of C or above by 2028.



Triple glazing

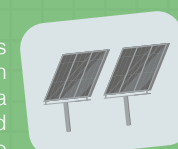
Buildings lose most of their heat through their windows, which means that the better your glazing, the less energy your property will waste. Triple glazing is estimated to be around 40 per cent more thermally efficient than double glazing.

How to achieve a higher EPC rating



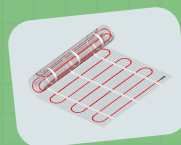
Smart lighting

Your choice of lighting contributes to your property's EPC rating, with energy-efficient light bulbs, aka LEDs, generating less heat and lasting longer. Smart LED lighting can also be automated, which means that there is no need for light switches as all the lighting is controlled via an app.



Solar panels

The cost of installing solar panels has dropped considerably in recent years, by as much as 82 per cent since 2010. However, they are still just as effective at making homes more efficient and raising your EPC rating.

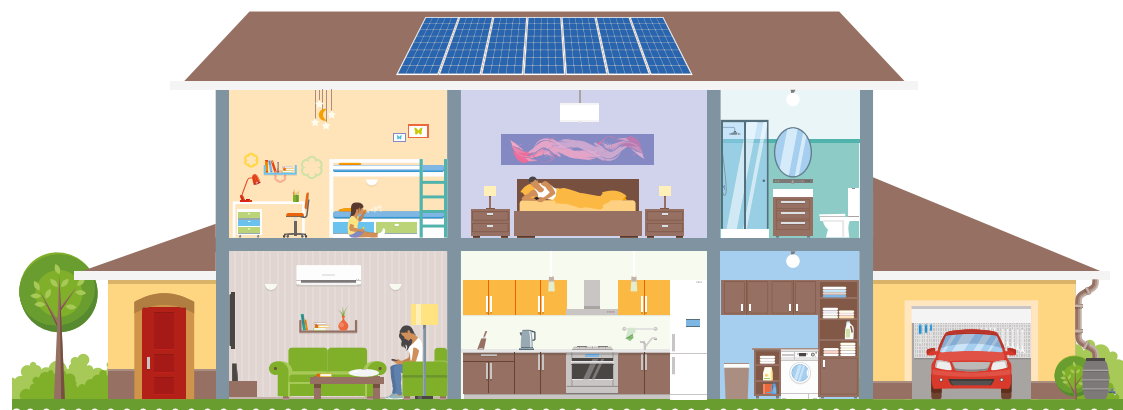


Underfloor heating

Underfloor heating systems use less energy because they operate at a lower temperature. If your property has effective insulation, underfloor heating

Help from your energy supplier

If your tenants are receiving benefits such as universal credit, working tax credit or child tax credit, you may be able to get help with the cost of insulation and replacing or repairing the boiler. Your property must have a rating of E, F or G to be eligible.





**Producing Immaculate
Finishes for Decades**

TARMAC

DRIVEWAYS

**BLOCK
PAVING**

RESIN



- ◆ **Essex's leading road & surfacing contractor**
- ◆ **Grab Lorry Hire Essex**
- ◆ **A family business**
- ◆ **Established for decades**

& MORE

☎ 01621 772429 ✉ info@ljanderson.co.uk 🌐 www.ljanderson.co.uk

ROCK ON

How to create a rock garden

In recent years there has been something of a rock revival going in Britain's gardens, front and back.

A trend that came to the fore in the nineties has seen something of a revival, with an increase in sales of rocks and alpine plants. Add in pebble mulches and gravel, and it's clear we are refreshing our garden spaces to add height, texture and, dare we say it, perhaps the odd splash of cascading water.

As for how to style your perfect rock garden, a slope obviously helps. If you don't have one, fear not – you can create a display by banking rocks closely together, filling in gaps with brick, stone or rubble to create a defined ridge.

It's a good idea to look for local stone – this will add character and provenance to the garden; and while many varieties may be expensive to buy, searching locally online may well bring about cheap or even free sources of stone.

Let rocks develop a patina of age – don't clean them or they won't look authentic – and bury them about a third of the way into the ground, tilting backwards, allowing space for grass and plants to flourish around them.

Now all you need to do is pattern surroundings with what you choose – an evergreen, such as miniature conifers will create vertical interest, while smaller shrubs will keep layers of interest even through the cold winter months.

Drought-tolerant plants such as sedums and sempervivums are also a good idea, while trailers, such as creeping rosemary, creeping thyme or aubretia, will guide the eye across the structure.

Finally, for texture, add some contrasting shapes – spikes, slants, velvety leaves – plus smaller bulbs, such as wild tulips, daffodils, snowdrops and crocus.

With your work done, sit back and admire!

Photo credit: Zia Allaway via gardeningetc.com



GARDENING

AUTUMN arrivals

While many might scoff at the idea of the UK being a warm winter getaway with gourmet food, it's a top holiday spot in the bird world! That's right – as temperatures drop elsewhere, large numbers of our feathery friends flock to Britain.

MAJESTIC GESE AND SWANS

Leading the parade of bird visitors is the fabulous pink-footed goose. When the temperatures dip in Iceland, and food gets scarce, the geese fly to the Faroe Islands, rest a bit, and then head to the UK. Similarly, Bewick swans head over from Siberia, while whooper swans make their way from Iceland.

VIBRANT COASTAL LIFE

Every autumn, the UK's beaches and wetlands burst into life with a big mix of wading birds from northern Europe, the Arctic, Russia and northern Canada. These include lapwings, dunlin, oystercatchers, bar-tailed godwits, redshanks, and grey plovers from the Arctic.

INLAND VISITORS

Moving inland, colourful Bohemian waxwings, with their distinctive crests, black eyeliner, and peach-tinged plumage, fly in from Scandinavia. You can sometimes spot them in large flocks in berry-laden bushes in towns, car parks and gardens. And it's not uncommon to see large numbers of dainty goldcrests with a radiant yellow stripe along the top of their heads. Despite weighing no more than a ten-pence piece, this remarkable bird journeys across the North Sea to spend its colder months with us.

Other northern European visitors you might spot in your garden include redwing and fieldfare – both types of thrush.

When spring comes, the birds fly back to their homelands to breed. Given the warming world and milder climates in their nesting territories, these winter visitors might one day no longer grace our shores. So let's all appreciate them a bit more – while we still have the opportunity.



PAVING & LANDSCAPES

OUR FIELD OF EXPERTISE EXTENDS TO:
 DRIVEWAYS • PATIOS • FENCING • ASTRO TURF
 BRICKWORK • GARDEN DESIGN • JET WASHING
 PORCELAIN • DROPPED KERBS
 DIGGER AND DRIVER HIRE

At Storm And Sons our aim is to provide customers with the best possible service. We're a team of professionals with over 25 years of experience who tackle everything from complex large projects to smaller scale jobs. Fuelled by our commitment to excellence, we go the extra mile to make sure clients are completely satisfied with our work. All work is fully insured up to £10 Million. Contact us today to get your free estimate!

01245 961 670 | 07799 628 630
 stormandsonspaving@gmail.com
 www.stormandsons.co.uk

THE ONE STOP SOLUTION FOR SHEDS & GARDEN FURNITURE

QUALITY SHEDS
 GARDEN FURNITURE
 CUSTOM TIMBER BUILDINGS

Tony Turner

MANUFACTURERS OF QUALITY SHEDS

CALL 01621 742184
 EMAIL: TONYTURNER16984@SKY.COM
 WWW. TONYTURNERSHEDS.CO.UK

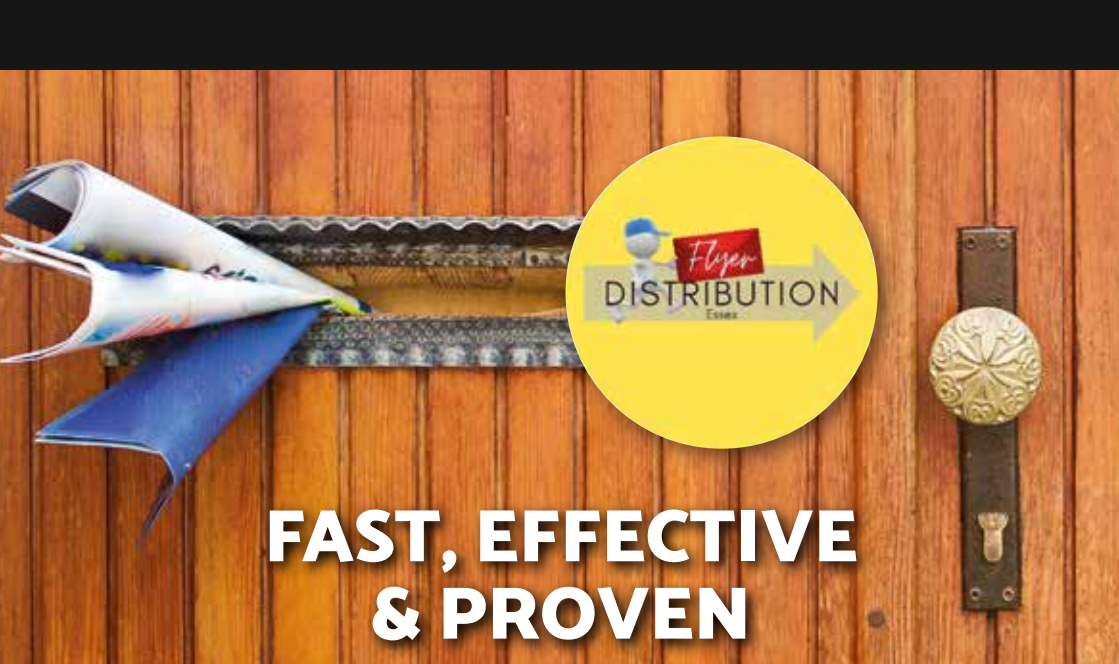
WHITEHOUSE FARM, NEW LANE, MALDON, CM9 6PJ

PAUL'S HOME IMPROVEMENTS

Plastering • Painting

plus all general maintenance & repairs

Please call Paul on 07936 026110



FAST, EFFECTIVE & PROVEN

ESSEX BASED LEAFLET, PRINTING & DISTRIBUTION SERVICE

Flyer Distribution Essex covers a majority of the
CM, SS & CO postcode areas

- One off drops OR regular monthly drops
- Targeted Demographics - delivered direct to homes
- Cost effective Printing service available
- Direct Pick up service available from your Essex based address

CONTACT US

0800 086 2836

www.flyerdistributionessex.co.uk



The perfect ROAST CHICKEN

From how to create a classic roast dinner to carving it up to get the most meat out of it, the below will guide you through each step.

TO ROAST THE CHICKEN

You will need:

1 whole chicken | Half a lemon | Butter | Salt and pepper

Method:

- > Pre-heat the oven to 200°C/180°C fan/gas mark 6.
- > Take the chicken and remove any giblets that may be in the cavity. You can, of course, buy whole chickens with the giblets already removed.
- > Put the half lemon into the chicken cavity and smear butter over the whole bird.
- > Season with salt and pepper.
- > Cook the chicken uncovered for 20 minutes per half a kilo, with an extra 30 minutes for good measure.
- > To make sure the chicken is thoroughly cooked, give the legs a prod to see if the juices run clear,

or cut into the breast to see if the meat is white.

TO CARVE THE CHICKEN

You will need:

A very sharp carving knife | Carving fork | Chopping board (preferably with a well to catch any juices)

Method:

- > **Remove the legs:** Use the carving fork to hold the chicken in place and cut across the skin between the breast and the leg. Pull the leg away from the breast and use your knife to cut through the joint. Repeat on the other side.
- > **Remove the wings:** Repeat the process above – pull the wing away from the breast and cut through the joint. Repeat on the other side.
- > **Remove the breast meat:** Carefully run the knife down the centre of the breastbone to cut through the skin. Run the knife down the breastbone, cutting the meat from the bone.
- > **The rest:** Pick off any remaining meat to use in a pie or soup or freeze in a container for another day.



FOOD & DRINK



What's the difference between...

Whisky & bourbon

Do you like whisky but say you can't stand bourbon? If yes, you may be surprised to hear that bourbon is actually a type of whisky.

Discover the main differences between bourbon and other whiskies below. Plus, some delicious whisky and bourbon cocktails.

WHAT IS WHISKY?

Whisky is a family of distilled liquor that is made by fermenting wheat, rye, barley or corn. It is then aged in wooden barrels that are typically made of oak. This is what gives whisky its distinct brown colour and taste.

There are many different types of whisky, including Scotch (Scottish whisky), Irish Whisky, Rye whisky and Japanese whisky.

WHAT IS BOURBON?

Bourbon is a specific type of American whisky that is made from at least 51 per cent corn and aged in new charred oak barrels rather than reused ones. The name bourbon comes from Bourbon County in Kentucky, which is where this popular spirit originates from. Straight bourbon whisky has to have been aged for at least two years.

WHAT IS THE DIFFERENCE IN FLAVOUR?

Bourbon has a sweeter flavour than other types of whisky, boasting notes of vanilla, oak, and caramel. This is owing to the high concentration of corn. Rye whisky tastes grassy and peppery with a spicy finish, Scottish whisky is malty and buttery, Irish whisky is known for being light and fruity and Japanese whisky has floral notes with hints of oak.

POPULAR WHISKY COCKTAILS:

- > *Whisky Sour* – 50ml whisky, 35ml lemon juice and 12ml simple syrup
- > *Old Fashioned* – 50ml rye whisky, 1 sugar cube, a few dashes of water and angostura bitters
- > *Whisky Highball* – 50ml whisky and 100ml soda water or ginger ale
- > *Whisky Smash* – 50ml whisky, 25ml simple syrup, ¼ lemon wedge and 1 sprig mint

POPULAR BOURBON COCKTAILS:

- > *Bourbon Sour* – 50ml bourbon, 35ml lemon juice and 12ml simple syrup
- > *Kentucky Mule* – 50ml bourbon, 15ml lime juice and ginger beer to top
- > *Bourbon Manhattan* – 50ml bourbon, 25ml sweet red vermouth and 2-3 dashes angostura bitters.

NUISANCE NITS

Nits are the bane of every parent's life and can be a nightmare to get rid of. While over-the-counter treatments are effective, they can also dry out your child's scalp and hair. Discover four natural alternatives below.

ESSENTIAL OILS

With the ability to eliminate nits and nourish the hair, there are several essential oils that you can try, including tea tree oil, lavender oil, neem oil, clove oil and eucalyptus oil. For best results, mix 15-20 drops of your chosen oil with 60ml of olive oil, apply to the scalp and comb through with a nit comb.



RAW GARLIC

Raw garlic has antibacterial properties and can be used to suffocate nits. To use garlic on nits, crush a peeled bulb of garlic into a paste and then mix with either olive oil or lime juice. Apply to the head, leave for 30 minutes and then wash the hair as normal. No combing needed.

CONDITIONER

If you are worried about drying out your child's hair, then you may want to try applying a thick conditioner to suffocate the nits before using a fine nit comb to remove them. This also helps to make the combing process less painful for your child.

VINEGAR

Both normal vinegar and apple cider vinegar can be used to effectively kill and get rid of nits. All you need to do is mix one cup of vinegar with one cup of warm water. Distribute the mixture evenly onto the scalp and cover with a hair cap. Leave for 30 minutes and then wash with their usual shampoo. No combing needed.

MORE TOP TIPS FOR NIT REMOVAL:

- ✦ Wash all bedding and any recently worn clothing in hot water.
- ✦ Vacuum upholstered furniture, rugs, soft toys and car seats.
- ✦ Recheck the scalp every day for two weeks.



SEAL PUP SAFARI

Have you ever yearned to see fluffy white seal pups in their natural habitat? If so, a trip to Blakeney Point in north Norfolk could be up your street.

Blakeney Point is home to England's largest grey seal colony – and winter's a great time to visit. From the end of October to mid-January, around 4,000 pups are born – and you can't fail to spot some.

What is Blakeney Point?

Blakeney Point is a four-mile stretch of pebbly beach with a backdrop of dunes, salt marshes and mudflats. It's one of England's 220 National Nature Reserves and is looked after by the National Trust.

Can I walk there?

You can walk to the point from the car park at Cley beach. But it's not for the fainthearted. It's a four-mile walk, mostly on shingle. But if you're fit and love nature, you're in for a treat!

What's the best way to get there?

The most exciting way to get a closer view of the

seals is by boat. Several companies offer seal-watching trips from nearby Morston Quay. You can travel there by car or on the Norfolk CoastHopper bus service from places like Sheringham and Cromer.

The boat trip will take around about an hour. Just remember the boat trip is for viewing only; you can't land there.

Planning ahead

Remember to book your seal trip in advance and get there early. Places on the boats fill up quickly, and the car park can be a challenge. Even on a warm day, the sea can be chilly and might splash you. So pack some warm clothes and some rain gear. And remember your camera and binoculars!

Let's talk seals

- > Grey seals are marine mammals
- > Adult Grey seals can weigh up to a whopping 300kg
- > Grey seals can live for 30-40 years
- > Britain has more than 120,000 grey seals – 40 per cent of the world's total.

Photo credit: Piusa Krasova/Shutterstock.com



IT'S TIME TO FOCUS ON LIFE NOT THE COST OF LIVING

Retire to a dream location the easy way



Move in ready homes available from £219,950



Freedom to live life to the full. Modern comforts and community spirit on the Essex Sunshine Coast.

Do you dream of living on the coast? Relaxed days of fresh air, seaside walks and beach picnics? It's all there for you when you move to a brand new, fully furnished home, exclusively for the over 45s, at Sandpiper Gardens, Clacton on Sea. You could also free up cash, save on bills and have less home maintenance to worry about. Whether you're retiring or semi-retiring, it's time to get more out of life.

- ✓ High-quality, low-maintenance, single-storey homes
- ✓ Safe, secure community of like-minded residents
- ✓ Private garden and parking
- ✓ No stamp duty
- ✓ Part exchange and assisted move options available

Get in touch to find out more or arrange a park visit:

www.tingdene-parks.net | 01933 422471 | info@tingdene.net



WHAT IS FUNCTIONAL FITNESS?

As the name suggests, functional fitness is a type of physical training that is designed to make your body function better in everyday life. More specifically, functional fitness exercises help to make daily motions such as picking up your children, carrying your shopping and walking around easier and safer.

WHAT ARE THE BENEFITS OF FUNCTIONAL FITNESS?

There are many benefits to practising functional fitness, including: Enhanced strength | More flexibility | Better balance and agility | Better range of motion

THE BEST FUNCTIONAL FITNESS EXERCISES

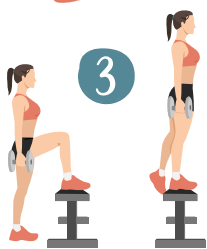
Functional fitness exercises prioritise natural movements over exercises that are carried out on a machine. For example, squats and pull-ups over leg presses and lateral pull-downs or going for a hike rather than using an elliptical trainer. Some of the most effective functional fitness exercises are:

1 BEAR CRAWL: Begin in the tabletop position on the floor | Bring up your knees so they hover above the ground | Using opposing arms and legs, take a small step forward with each limb | Return to the starting position, then repeat on each side for one minute, rest and repeat three times

2 FARMER'S WALK: Pick up a couple of weights (kgs that you feel comfortable walking with) | Keep a tight posture with your shoulders back | Take small, manageable steps back and forth across the room | Rest and repeat for two minutes

3 STEP-UPS: Step up and down from a bench | Continue for one minute, rest and repeat three times | Add weights if you want to challenge yourself | Upgrade to a box jump where you jump up and down with two feet rather than alternate feet

4 PLANK: Adopt the push-up position | Push through your hands and squeeze your body, engaging your abs | Hold for one minute, rest and repeat three times.



The Sunshine VITAMIN

Vitamin D makes sure our bones, teeth, and muscles stay healthy. It also helps our immune system. And some studies suggest it might even help fight low mood and fatigue.

From early spring to the end of summer, most of us get all the vitamin D we need from our skin reacting to sunlight. And you only need to be outside for around nine minutes a day if you're light-skinned and 25 minutes or so if your skin's darker.*

But what happens when you're stuck inside and summer sunshine is a distant memory?

SHOULD I TAKE A SUPPLEMENT?

The government recommends that we all take a daily vitamin D supplement in autumn and winter. There's not enough sun around, and you can't get all the vitamin D you need from food.

Some groups are advised to take a supplement all year round. This includes children aged four and under, people who can't get outside, and people who wear clothes that cover most of their skin when they're outdoors.

HOW MUCH SHOULD I TAKE?

The recommended dose for adults and children over one year is 10 micrograms daily. This is equivalent to 400 IU (International Units). Supplements vary, so choose one that contains at least this amount. For babies, ask your health visitor or pharmacist.

WHERE CAN I BUY IT?

You can buy vitamin D in pharmacies and most supermarkets. If you're part of the government's Healthy Start initiative, you can get vitamin D supplements for free.

CAN YOU OVERDOSE ON VITAMIN D?

Adults shouldn't take more than 100 micrograms (4,000 IU) of vitamin D daily, and children aged one to 10 shouldn't have more than 50 micrograms (2,000 IU). However, for some people, vitamin D could still be harmful even when taking less than the maximum recommended dose. Always check with your doctor if you are worried.

*Cancer Research Campaign UK

YOU'RE NOT ALONE



OVER 207,500 OTHER PEOPLE IN ESSEX
READ **VISION** MAGAZINE'S MONTHLY

CONTACT US TODAY TO GET YOUR BUSINESS SEEN BY OUR READERS

Your
Monthly
Lifestyle
Magazine

VISION

See all our magazines at www.visionmagessex.com

Billerica Shenfield Bishop's Stortford Brentwood Ongar Chelmsford Epping Theydon
Halstead Braintree Hertford Hornchurch Leigh Thorpe Bay Loughton Maldon Burnham
Rayleigh Wickford South Woodford Tendring



BEAUTY

Crystal Craze

According to Pinterest, there has been a 110 per cent increase in searches for crystal eye make-up over the last year, with this beauty trend showing no sign of slowing down. Versatile, flattering, and oh-so-pretty, find out how to rock this statement look with our tips below.

What tools do you need to do crystal eye make-up?

To master this trend, you will need a pair of tweezers, lash adhesive, and your chosen crystals. For complete beginners, you can also buy jewels that already have adhesive on them. It is worth noting that the smaller the crystals, the harder they will be to apply.

Where to place your crystals

There is no hard and fast rule when it comes to where to apply crystals around your eyes; you can basically be as creative as you want. However, it can be a good idea to place your crystals in places that you want to draw people's attention to. For example, the inner corner of the eyes, the upper lash line and the lower lash line. Be careful when using adhesive near your eyes.

Crystal eye make-up looks to try

Crystal cat eyes: Create your usual cat eyes using black liquid eyeliner, and then apply gems to the upper lash line along the eyeliner for a mega-bling finish.

Silver gem-encrusted wing liner: Instead of the basic black winged liner, apply five or six tiny silver crystals from the outer corners of your eyes, extending upwards towards your temples.

Colour combinations: Crystals and eyeliner come in a wide variety of colours so don't be afraid to mix it up a bit. We love combining blue and silver, gold and metallic shades, and a full rainbow of crystals with any liner of your choosing.

How to remove crystal eye make-up:

Not a beauty trend for the office, you can easily remove any crystals using a cream or oil-based make-up remover. This will lift the jewels off the face without causing any irritation to the skin.

Photo credit: Manam Makeup via YouTube.com

Tackle that TARNISH



If your bling is looking more dull than dazzling, then these tried and tested DIY cleaning techniques are just what you need.

HOW TO CLEAN STERLING SILVER

1. Try baking soda

For severe tarnish, mix three parts baking soda with one part water. Wet the silver and then apply the paste with a soft, lint-free cloth. Work into the crevices, rinse well and buff.

2. Apply toothpaste

Toothpaste is a mild abrasive and therefore ideal for cleaning silver. Simply apply a dab to your silver jewellery and rub gently with your finger or a soft cloth. Rinse and buff.

HOW TO CLEAN GOLD (WHITE, YELLOW AND ROSE)

1. Use ammonia

Ammonia is a powerful cleaner so is best used for occasional deep cleaning rather than frequent use. Add one part ammonia to six parts water, soak your gold jewellery for one minute, rinse and gently pat dry with a polishing cloth.

2. Soak in warm, soapy water

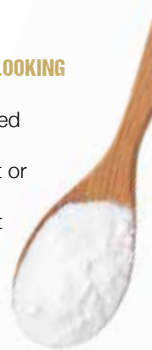
Fill a bowl with warm water, add a few drops of washing-up liquid and leave to soak for 10-15 minutes. Use a soft-bristle toothbrush to dislodge dirt, rinse and dry.

JEWELLERY TO BE CLEANED PROFESSIONALLY

Gold and sterling silver can be safely cleaned at home. However, more delicate metals, such as platinum, should be cleaned by a professional. If your jewellery contains precious stones such as diamonds, sapphires or rubies, you should stick to mild soap and water.

HOW TO KEEP SILVER AND GOLD JEWELLERY LOOKING ITS BEST FOR LONGER

- > Store your jewellery in an acid-free, closed container.
- > Do not leave your jewellery in direct heat or sunlight.
- > Avoid your jewellery coming into contact with chemicals.
- > Remove your jewellery before bathing, swimming and exercising.



BAD SPORTSMANSHIP:

BUTT & WARNE *on the spot*

Cricket undoubtedly has universal popularity. Combine this with its intricacies, its longevity as a game, the ease of online betting and the variety of bookmaker markets, and you have the potential for foul play, on an international scale.

Take Pakistan's 2010 tour of England, for example; a series that became the centre of a sting by the *News of the World* (NoTW) where its reporters secretly filmed Mazhar Majeed, a British bookmaker and agent, giving bribes to visiting players ahead of the Lord's Test.

Money was offered on the proviso that two Pakistan fast-bowlers, Mohammad Asif and Mohammad Amir, would deliberately send no-balls at agreed times – known as spot-fixing. Even the team's captain, Salman Butt, was in on the scam.

The NoTW exposé ended with jail sentences meted out to all four, with the three players also receiving lengthy bans.

While the idea was brazen and reflective of the global gambling market, it was not the first time it had happened. Between 1994 and 1995, an Indian man referred to as 'John the Bookmaker' handed over cash to Australian stars Mark Waugh and Shane Warne in exchange for pre-match weather and pitch information.

'John' soon upped the ante, requesting team selections and tactics, but the duo refused. The Australian Cricket Board became aware of the allegations and the action taken was to fine each player privately.

In the aftermath, the Aussies claimed that Pakistan captain Salim Malik had approached them with bribes in exchange for losing matches. While their own credibility as witnesses had evaporated, the story was pursued, and former captain Malik received a life ban in 2000.

In 2023, cricket's abundant riches implies spot-fixing should be less appealing to players, yet the lure of a payday is always there.



Photo credit: Andrew Foster/Shutterstock, Gill Allen/Shutterstock

PETROLHEAD PODS

Searching for a motoring podcast that suits your taste? Whether you're into humorous stories, daring adventures or the latest car news, there's something for everyone.

Podcasts are all the rage nowadays, yet navigating a route through the thousands available to download can be exhausting.

Here are six of the best that will further fuel your love of the fast lane.

CAR CHAT: British photographer and fervent car aficionado Sam Moores hosts, with a primary focus on high-performance vehicles and racing.

The podcast features diverse guests, from prominent Instagram personalities to experts from within the automotive industry, and broaches all the trending topics from within the motoring universe.

FULLY CHARGED: Robert Llewellyn presents his renowned Fully Charged brand, which comes in the form of a YouTube series, news platform and live event. The podcast also features exclusive conversations with experts deeply knowledgeable about the complex realm of EVs, renewable energy and sustainability.

GARETH JONES ON SPEED: Gareth collaborates with Richard Porter (known for Sniff Petrol, BBC *Top Gear* and *The Grand Tour*) and his tech-savvy buddy Zog as they deep-dive everything car-related, from daily commuter routes to high-end supercars, vintage vehicles to motorsport.

SPIKE'S CAR RADIO: Spike Feresten, comedy scribe and TV host, unites celebrities, automobiles and comedians in this captivating podcast that's bound to spark car envy.

Engaging with top-tier car enthusiasts, he delves into their most memorable car tales, the prized vehicles in their collections and their all-time favourite rides.

THE COLLECTING CARS PODCAST: *Top Gear's* Chris Harris invites guests to discuss all facets of the automotive world. With a special emphasis on racing narratives, this podcast is a perfect fit for F1 enthusiasts, tackling the hot topics with colour and humour.

THE SMOKING TIRE: With a sunny Californian edge, car enthusiast and YouTuber Matt Farah treats listeners to interviews spanning the motoring spectrum, showcasing everyone from film stars to industry experts. So plug in and ride the soundwaves!

5 REASONS TO ADVERTISE

Why do businesses benefit from hyperlocal advertising?

1. Targeted advertising

Hyperlocal advertising allows companies to target customers who are within a specific geographic area, making it easier to reach the right audience and increase the chances of converting them into paying customers.



2. Cost-effective

Hyperlocal advertising can be cost-effective because it is focused on a specific local area, meaning that businesses can reach their target audience without wasting money on broader marketing campaigns that may not be as effective.

3. Increased engagement

Hyperlocal advertising can lead to increased engagement with customers because it is focused on the local community and the interests of the people living in that area. By targeting customers with ads that are relevant to their interests and needs, companies can build a stronger relationship and increase their chances of repeat business.



4. Improved search engine optimization

Hyperlocal advertising can improve a business' search engine optimization because it targets customers who are likely to be searching for businesses and services in their local area. By optimizing their website and other online presence for local search terms, businesses can improve their visibility and attract more customers.

5. Better return on investment (ROI)

Hyperlocal advertising can lead to a better ROI because it is focused on a specific area and customer base. Targeting customers who are likely to be interested in their products or services, can increase conversion rates and revenue.



IS YOUR BUSINESS READY TO BENEFIT FROM HYPERLOCAL ADVERTISING? CONTACT **VISION** TO FIND OUT MORE



THE VISION LISTINGS

BLINDS & SHUTTERS

WORTH & CO BLINDS

Essex's leading blind, awning & interior shutter specialists for over 100 years. Call us on 01245 830087

BUILDERS & MAINTENANCE

AZTEC

Family run business est. 1999. Will beat any written quote, Full Public liability insurance. Free estimate call us on 01621 502153 | 07866 804180

JOIN THE LISTINGS...
for just **£15** +VAT per month

CAR GARAGE

SHAUN BAKER CAR CARE LTD

Garage Service. Vehicle Maintenance, Transmission Repairs, MOT Repairs & Maintenance, Air Con and more services. Please call on 01621 851871 | 120a High Street, CM9 5ET

CLEANING

MOLLY MAID

Our professionally trained team will make your home sparkle. We tailor our cleans to your individual needs, schedule and budget. 01245 494003 | emma.brooks@mollymaid.co.uk

DRIVEWAYS & RESIN

LJ ANDERSON & SONS LTD

Essex's leading road & surfacing contractor. Grab Lorry Hire. A Family Business. Established for decades. 01621 772429 info@ljanderson.co.uk | www.ljanderson.co.uk

FARM SHOP

BLACKWELLS FARM SHOP

Award Winning Farm Shop & Produce, supporting local, trusted farmers & small businesses. Herons Farm, Colne Road, CO6 1TQ | www.blackwellsfarmproduce.co.uk

FLOORING

MARK JAMES FLOORING LTD

Specialising in Domestic & Commercial Flooring. Call on 07951 484108 | mark@markjamesflooringltd.co.uk

JOE'S CARPETS

Family Run Business, Est since 1999. The Mobile Carpet Shop. Supply & Fit. Repairs & Refits. Free Estimates & Advice. Free Gripper Rods. Contact 01621 398019 | 07748 808094

HANDYMAN

PAUL'S HOME IMPROVEMENTS

Interior & exterior work for all your home improvements please call Paul on 07936 026110

HOME INTERIORS

YEW INTERIOR DESIGN

Designing that special 'YEW' space. Sliding Wardrobes, Bathrooms, Kitchens, Home Offices & More. Tel: 07549 014855 | yewinteriordesigns@gmail.com

CURTAIN CALL INTERIORS

Bespoke hand finished soft furnishings. Measured, made & fitted by us. T: 01621 815422 | www.curtaincallinteriors.co.uk 65 Church Road, Tiptree, Essex, CO5 0ST

KITCHEN, BATHROOMS & BEDROOMS

DESIGNER BEDROOMS

Traditional Fitted Bedrooms, Sliding Doors, Odd shaped rooms are our speciality, home office/studios. 7 Robert Way, SS11 8DD. 01268 571799 | www.designerbedrooms.co.uk

PAVING AND LANDSCAPING

STORM & SONS

Brickwork, Garden Design, Jet Washing, Dropped Kerbs, Digger & Driver Hire. 01245 961670 | 07799 626630 | www.stormandsons.co.uk | stormandsonspaving@gmail.com

LEAFLET DISTRIBUTION

FLYER DISTRIBUTION ESSEX

Leaflet, printing & distribution service. Cover a majority of CM, SS, CO postcodes. One off drops or regular monthly drops. Call us on 01277 554045 | www.flyerdistributionessex.co.uk

JOIN THE LISTINGS

For just **£180** +VAT per year

PUBS & RESTAURANTS

THE VICTORIA INN

Great British pub food. Traditional pub events & entertainment. At the heart of your local community. T: 01621 783585. The Victoria Inn, Burnham On Crouch, CM0 8AJ

THE VISION LISTINGS

SHEDS

TONY TURNER

Sheds & Garden Furniture. Quality sheds, custom timber buildings. Call 01621 742184 | tonyturner16984@sky.com | tonyturnersheds.co.uk | Whitehouse Farm, CM9 6PJ

BOOK VIA CALLING... 01621 398040

SHUTTERS & BLINDS

LIFESTYLE SHUTTERS & BLINDS LTD

Local Family Business, specialising in made to measure shutters & blinds, showroom open Mon-Fri, 9am-3pm. 01245 426620 | 07971 574958 | adam@essexwindowshutters.co.uk

WINDOWS & DOORS

WISE DESIGNS IN GLASS LTD

PVCu, Hardwood, Aluminium. Domestic & Commercial. Free no obligation estimates. 01621 744336 | www.wisedesignsinglass.co.uk | info@wisedesignsinglass.co.uk

KG WINDOWS & DOORS PROPERTY MAINTENANCE

Windows Installation & Repair. Telephone: 01621 335999 | 07866 454293 | www.kgwindowsanddoors.co.uk

WOOD FLOORING

WEST ONE WOOD FLOORING INTERNATIONAL LTD

Manufacturing, Installation, Restoration. Unit 3 Blackall Industrial Estate, Hamberts Road, South Woodham Ferrers, CM3 5UW. Call 01277 630837 | 01245 204231

CONTACT US TO BOOK... MALDON@VISIONMAG.CO.UK

**WANT TO APPEAR IN NEXT MONTH'S
VISION LISTINGS?**

SIMPLY FILL OUT THE FORM BELOW AND RETURN IT TO BOOK YOUR SPACE:

Company name:

Description (180 characters max including spaces):.....

.....

.....

.....

Telephone:..... Email:.....

Payment option: ☐ Card    ☐ Direct Debit

Please return to:
Lifestyle Magazine Group Ltd, 55 Crown Street, Brentwood, Essex, CM14 4BD or email maldon@visionmag.co.uk

*£180 +VAT for a 12 months plus agreement. Payments can be made monthly or upfront

DISCLAIMER: **VISION** does not represent or endorse the accuracy or reliability of any of the advertisements, nor the quality of any products, information or other materials displayed, purchased or obtained by any customer as a result of an advertisement or any other information or offer in connection with the service or products. The opinions expressed in articles, reviews and stories are strictly those of the individual authors and do not necessarily reflect the views of **VISION**.

To advertise call Nik on 01621 398040

PUT YOUR BUSINESS IN THE **VISION LISTINGS...CALL 01621 398040 TODAY**

WORDLADDER: BEAR, BOAR, BOAS, BOBS, COBS, CUBS



PUZZLES & TRIVIA

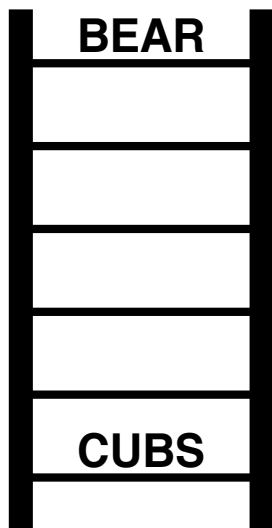
- ▶ ACTING
- ▶ ASTRONOMY
- ▶ BLOGGING
- ▶ BRIDGE
- ▶ CALLIGRAPHY
- ▶ CHESS
- ▶ COOKING
- ▶ DANCING
- ▶ GAMING
- ▶ JUGGLING
- ▶ KARAOKE
- ▶ KNITTING
- ▶ PAINTING
- ▶ PHILATELY
- ▶ PHOTOGRAPHY
- ▶ POETRY
- ▶ POTTERY
- ▶ READING
- ▶ SEWING
- ▶ WRITING



DID YOU KNOW?

- ▶ The earliest version of Monopoly was invented by Elizabeth Magie in 1903 and was originally called the Landlord's Game.
- ▶ The longest game of Monopoly lasted for 70 days.
- ▶ There are more than 300 varieties of Monopoly, including *Pokémon*, *Game of Thrones* and *Harry Potter* versions.
- ▶ The Monopoly Man's real name is Rich Uncle Pennybags, and he is said to be based on American investment banker J P Morgan.
- ▶ Monopoly is available in 47 languages and sold in 114 countries.
- ▶ American jeweller Sidney Mobell created a Monopoly set made of 23 carat gold, rubies and sapphires, worth £1.4million.

WORD LADDER



THE AIM: Change the word at the top of the ladder one letter at a time to make the word at the bottom.

HOW TO: Change one letter on each step to make a new word. By the time you reach the end, you should have created the new word.

DO NOT rearrange the order of the letters.

TIP: There is usually more than one way to solve this puzzle.

Essex's Leading Blind,
Awning & Interior
Shutter Specialists
for over 100 Years

Worth & Co
Blinds
Established Since 1889

Call us today on 01245 830087 or 01702 467581



- Factory Showroom with Free Parking
- Large Luxaflex Inspiration Display
- Patio Awning Showroom
- All types of Interior Window Blinds
- Custom-Made Window Shutters
- Motorised Internal Blinds
- Roller Garage Doors
- Home & Commercial



As a local company we offer a
wide choice of Blinds, Shutters,
Patio Awnings & Roller Garage
Doors & with competitive
prices all year plus
**FREE NO OBLIGATION
QUOTATIONS**

www.worthblinds.com sales@worthblinds.com

Unit 13 Parkside Centre, Potters Way, Temple Farm Industrial Est, Southend SS2 5SJ

Bella's

The only Italian à la carte in
Burnham and The Dengie



SET MENU FOR LUNCH & DINNER | À LA CARTE | SPECIALS EVERY DAY
Open Wednesday to Saturday (lunch from 12pm & dinner from 6pm) | Sunday 12 to 6pm

BELLA'S LUNCH SET MENU (available Wednesday to Sunday lunch time)

To Start (Primi Piatti)

Zuppa del Giorno - Homemade soup of the day served with bread

Funghi Trifolati (VG) - Mixed mushrooms fried with a touch of garlic olive oil on Focaccia bread

Bruschetta al Pomodoro (VG) - Italian bread served with mixed chopped tomato, basil & garlic in olive oil

Melanzane alla Parmigiana (VG) - Sliced aubergine baked with parmesan, mozzarella & tomato

Pate della Casa - Duck and pork pate with orange served with toast, salad and red onion chutney

Any pasta dish can be served as a starter or main course

For Mains (Secondi Piatti)

Salmone alla Sorentina - Pan fried wild salmon fillet in white wine, garlic, cherry tomato & herbs, potatoes & vegetables

Pollo ai Funghi - Breast of free-range chicken cooked in a mushroom and cream sauce served with potatoes and vegetables

Fettucine Bolognese - Thick pasta ribbons served with freshly made beef bolognese sauce

Spaghetti alla Carbonara - Egg pasta in a rich creamy sauce, cheese & smoked pancetta

Penne alla Siciliana (VG) - Pasta cooked with aubergine, mozzarella, parmesan & tomato sauce

To Finish (Dolce)

Panna Cotta - Homemade panna cotta of the day

Torta Limone & Gelato di Vaniglia - Sweet shortcrust pastry filled with lemon egg custard, icing sugar

Tiramisu - Homemade Italian Tiramisu

Trio of Dairy Italian Ice creams

White Chocolate & Baileys cheesecake

£26.95 two courses | £30.95 three courses

£19.95 two courses | £23.95 three courses (for children under 10 years old)

Set Prices are inclusive of VAT | Service at customer's discretion | Please note that the menus do not list all ingredients.
If you have any specific dietary requirements or intolerances, please ask a senior member of staff who will be happy to assist you.
The prices & menu are subject to change

Open Christmas Day



80 Burnham High Street, Burnham on Crouch CM0 8AA
01621 782686 | bellas.bistro@yahoo.co.uk [instagram bellas_restaurant_burnham](https://www.instagram.com/bellas_restaurant_burnham)

Partner of The Vita Bella in East Hanningfield