

**GARDEN
TO-DO
LIST
2024**

**CREATE
MELTING
SNOWMEN
BISCUITS**

SWEET EMBRACE
Dulux Colour of the Year 2024

TOP DESTINATIONS
for adrenaline junkies in the New Year

MERLIN
GRIFFITHS

Master mixologist and First Dates star opens new pub



FREE

Photo credit: Channel 4/Dave King

**FESTIVE PERIOD
OPENING TIMES
& EVENTS**

Sat 9th Dec Xmas Party with DJ Paul Travi from 8pm

Sat 16th Dec Xmas Party with Aaron Kelly from 8pm

Sunday 24th Dec * 12 noon-1am bar service only
Xmas Eve Party from 7:30 PM

Mon 25th Dec 12-3pm bar service only
7:30pm till 11pm bar service only

Tues 26th Dec 12noon - 11pm bar service only

Weds 27th Dec Thursday 28th Closed all day

Fri 29th Dec 12noon - Midnight Bar service only

Sat 30th Dec 12 Noon till Midnight food 12-6pm

Sun 31st* Dec 12 noon till 1am Bar service only
New Year's Eve party from 7:30pm

Mon 1st Jan 12 noon till 11pm Bar service only
Pool and Darts tournament from 3pm

Tues 2nd Jan Closed

Wed 3rd Jan Return to normal hours

*wrist bands essential for
Xmas eve and New Year's Eve

**GREAT BRITISH PUB FOOD
TRADITIONAL PUB
EVENTS & ENTERTAINMENT**



f thevicboc 01621 783585 @ thevicb_o_c
The Victoria Inn, Burnham on Crouch, CM0 8AJ

THE VICTORIA INN

**NEW YEARS EVE
PARTY**

DJ PAUL TRAVI

07:00PM | 01:00AM

WRISTBANDS ARE
ESSENTIAL AND
ARE AVAILABLE
NOW COME AND
ASK A MEMBER
OF STAFF FOR
YOURS



THE VICTORIA INN
**CHRISTMAS EVE
PARTY**

WITH DJ DEAN KAYNE
SUNDAY 24 DECEMBER

07:00PM | 01:00AM

WRISTBANDS ARE ESSENTIAL AND ARE
AVAILABLE NOW COME AND ASK A
MEMBER OF STAFF FOR YOURS





Editor's notes...

DECEMBER 2023



Nik Allen, Editor

Hello and welcome to this month's edition of **VISION** Maldon Burnham.

Recently, I had an eye-opening conversation at a local networking event. As we discussed our respective businesses, it struck me just how impactful our print editions have been over the years.

Since the launch of our very first **VISION** magazine in Brentwood back in June 2016, we've embarked on an incredible journey. Today, we proudly publish 14 monthly editions across Essex and East Herts.

These 14 editions combined boast a monthly print run of more than 91,000 copies.

But, when I reflected on the bigger picture, I couldn't help but be amazed. Since 2016, we've put our heart and soul into this venture, and the numbers tell an incredible story: more than five million copies printed! I'm particularly proud that our magazines are 100 per cent recyclable.

In a world increasingly dominated by digital content, this impressive figure is a testament to the enduring power of high-quality printed media. There's still a place at the table for the tactile, the tangible, and the timeless. I hope you enjoy reading this month's edition... and have a very merry Christmas!

Nik Allen

This is your town's hyperlocal magazine, delivering to homes and businesses every month.

HOME & DIY | GARDENING | PETS | HEALTH & FITNESS | BEAUTY | FASHION | HISTORY | LOCAL NEWS | FOOD & DRINK | TRAVEL | BUSINESS & PROPERTY | SPORT | PUZZLES | MOTORING | KIDS | WHAT'S ON | TECHNOLOGY | THE LISTINGS

CONTACT US: www.visionmagessex.com | maldon@visionmag.co.uk | 01621 398040

[X](#) @visionmagessex [IG](#) @visionmagessex [FB](#) Vision Magazine Essex

CONTRIBUTORS | Tabatha Fabray, Fiona Goble, Panayiota Demosthenous

All pages are recyclable

Bella's

The only Italian
à la carte
in Burnham & The Dengie

Enjoy our authentic modern Italian cuisine

Antipasti – Primi Piatta – Secondi Paiatti – Dolce

80 Burnham High Street, Burnham on Crouch CM0 8AA

01621 782686 | www.bellas-bistro.com | bellas.bistro@yahoo.co.uk



Checkatrade.com
Where reputation matters

Lifestyle

Shutters & Blinds Ltd

www.essexwindowshutters.co.uk



Save up to £230 with our **FREE FITTING** on all Shutter ranges

- Local small family run business
- Specialising in made to measure shutters and blinds
- First Floor Showroom open Monday-Friday 9am-3pm

If you bring some rough measurements, we are happy to provide a free quotation

New Lifestyle Blind Range

Wood & Faux Wood Venetian Blinds
Roller Blinds
Day & Night Blinds



Proud to sponsor Maldon & Tiptree FC & Burnham Ramblers FC

Get in touch today for a free no obligation quote

T: 01245 426620 • M: 07971 574 958 • E: adam@essexwindowshutters.co.uk



Unit 2, 49 Cutlers Road, South Woodham Ferrers, CM3 5WA





The harmonic voice of

ALED JONES

From the almost impossibly angelic beginnings of teenaged Aled Jones MBE's first steps into the limelight, the Welshman has forged a career well beyond *Walking in the Air* and the limitations of chorister melodies.

Now 52, the presenter and actor has presence and popularity... and retains the ability to knock out a chorus or two!

Aled Jones was the 15 year old with the pitch-perfect voice whose icy vocal tones enchanted the public when Raymond Briggs' *The Snowman* was released back in 1982.

Walking in the Air was a track that became a festive anthem every bit as perfect and poignant as *White Christmas* or *Jingle Bells*, sitting as a symbol of childhood enchantment for an entire generation.

While others have confronted fame early, only for it to fade away, this was just the start for Jones. In adulthood, he gained acclaim hosting programmes such as *Songs of Praise*, where his likeable persona and warm, engaging demeanour endeared him to audiences.

In radio, Jones found a different but equally impactful avenue for his talents. As a presenter on Classic FM, he has brought the genre to a broader audience, with a tone that's knowledgeable yet approachable.

The star, who is married to Claire Fossett with whom he has two children, Emilia and Lucas, has also presented *Cash in the Attic*, *The One Show*, *Daybreak* and *Weekend* on terrestrial television.

Despite such a prolific and diverse array of work, Jones still strives to capture new audiences – as well as satisfying his loyal fans – and his latest musical endeavour is arguably his most innovative yet.

The Welsh singer recently released an album, *One Voice – Full Circle*, that transcends mere songs; indeed, it harmonises both his past and the present in that he duets with his younger soprano self.

The result is a hauntingly beautiful collection of tracks that showcases the evolution of an artist, proving beyond doubt that the singer has lost none of his talent along the way. From *Bright Eyes* to *Ave Maria* and *Scarborough Fair*, the mix of innovation and imagination is real.

"This project was like a journey through my own life – revisiting the voice that introduced me to the world, but with the perspective I have now," he explains. "It's a celebration of how far I've come and the enduring love I have for music."

Looking ahead, Jones, who appeared on *The Masked Singer* in 2022, is set to embark on a tour next year to promote the new project.

"Music is a very personal thing to a lot of people, and most of us listen to music by ourselves, and that is a lovely thing because it feeds our own interpretation and imagination in what we hear.

"Ultimately, though," he continues, "when the time comes to share songs and immerse ourselves in the collective celebration of music, we reach much further into our understanding, and from that can draw out very special memories.

"That's the thing that keeps me coming back!"

Photo credit: Ken McKay/TV/Shutterstock

THE ULTIMATE FESTIVE FLICKS

TAKING A LOOK AT THE TOP FIVE HIGHEST-GROSSING CHRISTMAS FILMS OF ALL TIME

Christmas movies have long been a staple of holiday cheer, embodying the spirit of warmth, family and festive joy. Many films have graced the silver screen, but a select few have transcended typical holiday fare to become phenomenal box office successes.

(All figures adjusted for inflation)

ONE: HOME ALONE (1990)

Box office takings: £1.1billion

Kevin McCallister, a mischievous and resourceful eight-year-old, is accidentally left behind by his family during Christmas vacation and turns his home into a fortress to fend off bumbling burglars.

This family comedy, starring Macaulay Culkin, blends slapstick humour and holiday warmth, becoming a perennial favourite and the highest-grossing Christmas film ever.

TWO: HOME ALONE 2: LOST IN NEW YORK (1992)

Box office takings: £915.95million

The sequel to the original hit follows Kevin as he mistakenly boards a flight to New York while his family heads to Florida. In the Big Apple, he again encounters his previous assailants and must outwit them in this hilarious, uplifting adventure.

THREE: DR SEUSS' HOW THE GRINCH STOLE CHRISTMAS (2000)

Box office takings: £587million

This live-action adaptation brings the whimsical world of Dr. Seuss to life. Jim Carrey's portrayal of the Grinch offers a perfect blend of comedy and emotion, exploring the true meaning of Christmas beyond the commercial frenzy.

FOUR: A CHRISTMAS CAROL (2009)

Box office takings: £552million

This animated rendition of Charles Dickens' timeless classic uses state-of-the-art motion capture technology. It narrates the tale of Ebenezer Scrooge's transformation from a miser to a kind-hearted man after being visited by three supernatural beings on Christmas Eve.

FIVE: THE GRINCH (2018)

Box office takings: £544million

Illumination's 2018 adaptation of Dr Seuss' classic tale reimagines the iconic green recluse with a heart two sizes too small. Voiced by Benedict Cumberbatch, the Grinch's journey from a Christmas-hating hermit to a holiday hero has charmed audiences worldwide.



Aesthetics of ESSEX

body in mind

Established since 2012

ANTI-AGING | LASER | COSMETIC SURGERY CLINIC

We are located on the High Street of Maldon, Essex – 51 High Street, CM9 5PF

offering a range of:

ANTI-AGING | WELLNESS | COSMETIC SURGERY | LASER TREATMENTS

FREE NO OBLIGATION CONSULTATIONS

We also carry out a range of private healthcare minor surgery treatments that are no longer available on the NHS such as:

**MOLE REMOVAL | VERRUCA REMOVAL | CYST REMOVAL
SKIN TAG REMOVAL | LYMPHOMAS | EARLOBE CORRECTION**

NEW TREATMENTS NOW AVAILABLE

**VITAMIN B12 | PRP HAIR RESTORATION
MORPHEUS | 8 FACETITE | ALLERGY TESTING
FAT DISSOLVING INJECTIONS**

**PLEASE CONTACT THE CLINIC ON 01621 491 036
TO ARRANGE A CONSULTATION WITH ONE OF
OUR TRAINED MEDICAL PROFESSIONALS
OR SENIOR AESTHETICIANS**

aestheticsofessex.co.uk
info@aestheticsofmaldon.co.uk



**PLEASE CONTACT US ON 01621 491 036
FOR OUR 12 DAYS OF CHRISTMAS OFFERS**





CURTAIN CALL
INTERIORS

From Banking Hall to Curtain Call

Following the closure of Barclays Bank in Tiptree Curtain Call Interiors have taken over the former bank building and transformed the space into an inspirational home interiors showroom and new workroom. The new space showcases a wide range of designer fabrics, curtain displays as well as home accessories including, a home fragrance range, cushions, lamps, furniture and tableware.

We specialise in making hand finished bespoke curtains, Roman blinds and soft furnishings all made by our experienced team of curtain makers. With the new workroom located adjacent to the Showroom it allows our team of experienced makers and



designers to assist customers in finding the right fabric and style for their decoration projects. Using the vast library of fabric samples and pattern books we



can help you bring your ideas to life and offer you our help and advice in choosing the right fabric and style for your space.

We are open Monday to Friday from 9am until 5pm and 9am until 3pm on Saturdays. We have free parking available for customers at the rear of the building and offer a free estimating and consulting service.



CURTAIN CALL
INTERIORS

Bespoke hand finished soft furnishings

WIN!
A Hamper

All shop purchases before 22nd of December 2023 are entered into a prize draw to win a fabulous hamper of goodies.

Shop Local

Visit our Tiptree showroom to view our full range of fabrics or shop our fabulous seasonal gifts and accessories.



Measured by us. Made by us. Fitted by us.

65 Church Road, Tiptree, Essex CO5 0ST | Mon to Fri 9am – 5pm, Sat 9am – 3pm

Telephone: 01621 815422 | www.curtaincallinteriors.co.uk

Curtains & Pelmetts • Roman Blinds • Curtain Tracks & Poles • Wooden Blinds & Shutters • Measuring & Fitting Service

Measured by us. Made by us. Fitted by us.

65 Church Road, Tiptree, Essex CO5 0ST | Mon to Fri 9am – 5pm, Sat 9am – 3pm

Telephone: 01621 815422 | www.curtaincallinteriors.co.uk

Curtains & Pelmetts • Roman Blinds • Curtain Tracks & Poles • Wooden Blinds & Shutters • Measuring & Fitting Service

Dulux Colour of the Year 2024 Sweet Embrace



This is one of the most greatly anticipated announcements in the world of interior design: Dulux Colour of the Year 2024 has been revealed as Sweet Embrace.

What colour is Sweet Embrace?

Sweet Embrace is a delicate pale pink that is both soft and comforting. A metamer colour, meaning it changes tone with the light, in the early morning it appears crisper before turning into a more blush pink as the day goes on. Referred to as a 'modern neutral', Sweet Embrace can help to unite the different elements in a room and create an uplifting atmosphere.

Why was Sweet Embrace chosen?

This colour was chosen by the experts at Dulux as a shade that represents the global mood and a universal need for clarity and joy. Marianne Shillingford, colour expert and creative director at Dulux, said: "While being a beautiful stand-alone colour, it's a hue that matches perfectly with so many other shades, so that decorators can use it as

a backdrop to build a totally individual space upon."

Ways to use Sweet Embrace in your home

1 Paint your window frames

As a metamer colour, Sweet Embrace is a perfect colour choice for painting your window frames, enabling you to capture its light-changing qualities throughout the day.

2 Colour-drench a room

Colour-drenching involves drenching a whole room in one shade to create a sense of calm cohesion. This means painting all the surfaces rather than just the walls, and it can make a room appear more spacious and contemporary.

3 Update your woodwork

This versatile shade is ideal for use as an alternative to white to update the woodwork in a room, such as the skirting boards and door frames.

4 Embrace the ombre paint technique

Ombre is making a big comeback in 2024 and, as a neutral colour, Sweet Embrace has the ability to seamlessly blend into other soft shades to create a stunning sunset effect.

Photo credit: duluxdecoratorcentre.co.uk, ArzonNobel

WISE
DESIGNS
in GLASS
LTD

Maldon: 01621 744 336

Find us on  



PVCu • Hardwood • Aluminium
Domestic & Commercial



- Windows • Doors • Conservatories
- Lightweight Tiled Roof Conservatories • Fascias
- Soffits • Guttering • Sliding Sash Windows • Lanterns
- Bi-folding Doors • Composite Doors

Existing Double Glazing Repairs:

- Replace misted / broken double glazed units
- Replace window & door handles / hinges
- Re-align dropped windows & doors
- Conservatory roof repairs, upgrades & replacements

Free, no obligation estimates

www.wisedesignsinglass.co.uk
email: info@wisedesignsinglass.co.uk

Joe's Carpets

FAMILY RUN BUSINESS ♦ ESTABLISHED SINCE 1999



The Mobile Carpet Shop Home Selection Service

- ♦ Supply & Fit
- ♦ Repairs & Refits
- ♦ Free Estimates & Advice
- ♦ Free Gripper Rods



A Friendly & Tidy Service

**CONTACT US ON 01621 398 019
OR 07748 808094**



Become

a Care Professional

Join an award-winning company who are doing amazing things to help our clients to live well and happy at home.

Contact us to learn more about the job and the opportunities in working with us.

- ♥ Excellent training
- ♥ Variety of hours
- ♥ Great rates of pay
- ♥ Make a difference
- ♥ Wellbeing benefits
- ♥ Above local pay rates

01245 200 780

Each Home Instead franchise is independently owned and operated. Copyright© Home Instead® 2023.



Enquire

by phone
or scanning
QR-code

CARE for your SPARE



HOME & DIY



Having a spare room is a luxury. If you're lucky enough to have one, but it needs some TLC, see our tips below for how you can revive it before your next guests arrive.

A COMFY BED: Sleep for a night on your existing spare room bed to check if it's okay for your guests. If it isn't, but you can't afford a replacement, get a new mattress or mattress topper.



SOMEWHERE TO WRITE: Every guest room needs a work surface of some kind to use as a dressing table or desk. If space is tight, think about a drop-down version or even a thigh-level wide shelf.

THE PERFECT CHAIR: A big armchair is a lovely idea if you've got the space. If you haven't, choose a compact version and add some inviting cushions.



HANG IT UP: Hanging space is more useful than a chest of drawers. If there's no space for a wardrobe, get some coat hooks or a clothes rail. A rail with a shelf is ideal.

SOFT, WARM LIGHTING: A good bedside lamp is essential. A slim, unobtrusive floor lamp is also a great addition.

MIRROR, MIRROR, ON THE WALL: A good-sized mirror, preferably full-length, is a fundamental element for a spare room.



SAVVY SUITCASE STORAGE: Your guests will want somewhere to easily access their bags. Foldable luggage racks are great and can be hidden away when not in use.

FINAL TOUCHES: A rubbish bin is always practical for any guest room – but choose something pretty. And don't forget a carafe of water. Add seasonal decorations such as fairy lights at Christmas; Easter eggs for spring; low-maintenance green plants like snake plants, succulents and orchids in summer; and pumpkins for Halloween.





INTERIOR DESIGN PROFILE

MADDUX CREATIVE



Sophisticated, playful, beautiful. That's how Maddux Creative describes its decorative style. Full of life and colour, each space it creates is unique, with designs that have won acclaim all over the world.

If you love bold colours, patterns and textures, then Maddux Creative will serve as the perfect inspiration to bring your interior aspirations to life.

THE STORY BEHIND MADDUX CREATIVE

Maddux Creative is run by Scott Maddux, originally from Tennessee, and Jo Le Gleud from the UK. They met on a dancefloor in the 1990s, and brought their shared creative experience together in 2011 when they founded their Peckham-based studio.

The pair describe their work as "an alchemy of design: an intricate tapestry of form and texture. A celebration of colour." Throughout their designs it's clear that these elements are central, using the features of the room to create spaces that are striking and unique. They take inspiration from a range of influences, which keeps things wonderfully refreshing.

RECREATING MADDUX CREATIVE'S STYLE

What's great about Maddux Creative's aesthetic is that there are no set rules, allowing you to recreate

their style in your own home. Some tips to give you a dash of inspiration include:

- > Be brave with colours and textures. Mixing and matching styles can add a quirky touch that keeps spaces fun and unique, so choose the pieces that you're drawn to and which reflect your personal style. Popular colour combinations include pinks and greens, blues and yellows, and reds with greys or gold.
- > Tonal looks can make a striking impression. Choose a solid base colour such as blue or green and add lighter/darker accents in the same shade – using furniture and accessories in different shades to create a multilayered look.
- > Plants and flowers add life and can make your space feel more lived-in – an affordable way to transform your decor.
- > Floral patterns add a classic touch that still feels modern in the right setting. From patterned lampshades to tapestries and cushions, you can use florals or stripes to add some individual touches that will bring the different styles in your space together.

Wonderfully unique and making colour popular again, Maddux Creative provides the perfect inspiration to go bold and have fun with your interior design.

Photo credit: madduxcreative.com



THE WINDOW MAN

WINDOWS | DOORS | INSTALLATION | REPAIRS

"Your Friend in the Trade"

Proudly Providing the Complete Service

FAMILY-RUN BUSINESS SERVING THE LOCAL COMMUNITY FOR OVER 25 YEARS

- SUPPLY, REPAIR & REPLACEMENT**
- DOUBLE GLAZING | TRIPLE GLAZING**
- UPVC | ALUMINIUM WINDOWS**
- HARD WOOD WINDOWS**
- FRENCH & PATIO DOORS**
- PORCHES & CONSERVATORIES**
- BI-FOLD DOORS**

- REPAIR SERVICES AVAILABLE 8AM - 8PM**
- CAT FLAPS | KNOCKERS | LETTER BOXES**
- SPYHOLES | CYLINDERS | HANDLES**
- HINGES & LOCKS FOR WINDOWS & DOORS**
- TRICKLE VENTS | SEALED GLASS UNITS**
- LEADED & GEORGIAN GLASS**
- CONSERVATORY ROOF REPAIRS | PANELS**
- EVERYTHING WE DO IS FULLY GUARANTEED & WE PRIDE OURSELVES IN OUR ABSOLUTE ATTENTION TO CUSTOMER CARE**



CONTACT US TODAY FOR YOUR FREE OF CHARGE, NO OBLIGATION QUOTE
01268 527112 | 01245 207225

www.thewindowmanessex.net | [@thewindowmanessex](https://www.facebook.com/thewindowmanessex) [@thewindowmanessex](https://www.instagram.com/thewindowmanessex)

AZTEC

BUILDERS & MAINTENANCE



Before



After

HardiePlank
Cladding
Full Range of
Colours Available

List any job big or small that needs addressing, we will quote them all – then you choose what to get done and when

- Interior & Exterior Work
- Painting & Decorating
- Wallpaper Specialists
- Wall & Floor Tiling
- Plastering & Coving
- All Brickwork
- Patios
- Block Paving
- Driveways
- Extensions
- UPVc Fascias, Soffits, Guttering & Cladding
- Roofing – flat, pitched etc.
- Carpentry
- All General Repairs

FAMILY RUN BUSINESS ESTABLISHED SINCE 1999

Will Beat Any Written Quote • Full Public Liability Insurance

Call us now for a FREE estimate

Tel: 07866 804180 • 01621 502153

email: aztec.pm@hotmail.co.uk

Photo credit: giffenplumfiles.wordpress



Midas Touch

ADDING A TOUCH OF GOLDEN GLAMOUR TO YOUR HOME THE AFFORDABLE WAY

Looking to add a touch of contemporary sparkle and charm to your Christmas decor? You're in for a treat! In this DIY project, we'll show you how to transform plain glass vases, jars and votives into dazzling gold masterpieces. The best part? You don't need any special skills, though a steady hand is useful! And it's an ideal project to do with older children.

Get ready

YOU WILL NEED:

Gold foil sheets | Gold foil adhesive | Adhesive brush | A large brush (like a powder brush) for removing excess gold foil | Small glasses or votives (make sure they're clean and dry – washing-up liquid and a piece of dry kitchen towel should do the trick).

All these items are available online or in most arts and crafts shops.

Apply the adhesive

Carefully apply the gold foil adhesive to the areas on your glasses where you want the gold foil to stick. The adhesive will need some time to become tacky.

The time can vary with different makes, so follow the instructions on the packaging carefully.

Apply the foil

Once the adhesive is tacky, apply the foil directly from the paper it comes on. Press the sheet onto the glass where you've applied the adhesive. Then, carefully remove the paper backing, leaving the gold foil attached to the glass. If necessary, use your fingers to smooth it out.

Brush away excess and leave to dry

Using the large brush, remove any excess gold foil and let your decorated objects dry for a few hours. For extra protection, you can seal them with a suitable clear sealant or varnish specially made for glass and delicate surfaces – following the manufacturer's instructions.

Once complete, fill your glass items with a candle, fairy lights, flowers, winter twigs or pine cones. Sit back, admire your creations, or consider giving them as gifts to help spread the festive feeling.



HOME & DIY



'Essex has always been a part of who I am'



Photo credit: BBC/Jack Barnes/Kieron McCarron

While Adam Woodyatt owes much to his long-standing role as Ian Beale in the BBC soap opera *EastEnders*, we reveal why the actor likes to heap equal praise on the influences of his childhood, and in particular, his time spent in Essex.

Adam Woodyatt was born in Walthamstow in 1968. Although the Victoria Line suburb had renounced its ties with Essex three years previously, the outgoing schoolboy would soak up the influences of Chingford and South Woodford in his early life.

Perhaps it is an appreciation for that simple 1970s suburban upbringing – Woodyatt attended Forest School in Epping Forest, before the family relocated to Wales – that permeated so perfectly into his authentic portrayal of the rugged, pessimistic businessman Ian Beale.

“Essex has always been a part of who I am,” he begins. “It’s in my blood and has significantly shaped my approach to life and acting. I love its honesty!”

The actor, who is half Welsh, frequently travelled to London for castings as an aspiring young actor, and was working as a butcher when the call to join *EastEnders* came. Since 1985, his portrayal of Beale has captivated viewers, and his return to Albert Square this year excited fans.

“Ian is hapless in many ways, though ultimately always trying to do the right thing, and I think there’s a fair amount of that in me too,” says the actor, who recently volunteered to work in a fish and chip shop in Southend-on-Sea to pass the time.

Beyond the confines of Albert Square (and serving up cod), Woodyatt’s versatile talent has illuminated stage and television screen alike. And recently, his stint away from full-time acting has offered the star the chance to tour his native Essex... in a camper van, no less!

He said: “Feeling free, getting on the road, and hunting out all those childhood places of old, has been a magical ride for me, and one I want to continue taking.”



The care you deserve

- Personal care
- Medication Support
- Meal Preparation
- Community support and Shopping
- Overnight Care
- Companionship
- Domestic Tasks
- Hourly Care

01245801401
info@elsieshelphome.com
www.elsieshelphome.com



Elsie's Help at Home, Croxtons Mill, Blarford Hill, Little Waltham, Chelmsford, CM3 3PJ

Come home to a clean house



Our professionally trained team of maids will make your home sparkle with each visit. We know it's not a one-size fits all service, that's why we work to tailor our cleans to your individual needs, schedule and budget.



Call us today to arrange your no obligation in home quote

Emma Brooks
01245 494003
emma.brooks@mollymaid.co.uk
www.mollymaid.co.uk/locations/chelmsford/



See what our customers have to say at uk.trustpilot.com Trustpilot

Chelmsford Property News

As part of our customer service promise, we invest time and energy into helping our clients make informed decisions. Our market reports take an analytical approach in presenting latest insight on the UK property market, with a more detailed focus on the Chelmsford market.

TALK TO US TO LEARN MORE.

Merry Christmas from all at Northwood



SALES

RENTALS



Your local property experts

Zaman & Amina Sheikh
The new owners of Northwood



Chelmsford Sales and prices				Local summary	
Number of sales last 12 months		Houses 2,569	Flats 656	Over the last 12 months the average sales price in Chelmsford was £373,810, which compares to £335,958 across the East of England Region.	
Average price achieved last 12 months		£437,118	£206,918	The highest value recorded by the Land Registry over the past 12 months was £2,200,000 for a flat and £6,850,000 for a house.	
Average price change per square foot		1 year: 1.9% 5 years: 20.6% 10 years: 72.8%	-0.8% 5.7% 56.4%	National market House prices The average price for a property in September was £291,385, down -0.1% year-on-year, and -0.5% on the previous month (ONS).	
% residents who own their home	Population	Average price per square foot	Average house price change	Transactions The HMRC report that 85,610 sales took place in September, 0.6% down on the previous month and significantly down on last years levels (-17.0%).	
71.4%	285,667	£409 Last 12 months	2.5% East of England		

Source: Dataloft, Land Registry, Census 2021, DLUHC

Chelmsford Rental market				Local summary	
% of properties let last 12 months		Houses 45.9%	Flats 54.1%	The average monthly rent paid for all properties across the Chelmsford area in the last 12 months was £1,187. This has changed by 8.5% compared to the previous 12 month period, and by 27.3% in the last five years.	
Average monthly rent last 12 months		£1,372	£1,045	National market At 6.1% in October, annual growth in rental prices in the UK is at its strongest since records began. The Index of Private Rented Housing Prices reports on both new lets and renewals.	
5-year % rent change per square foot		29.3%	24.3%	The average rent on newly agreed rental contracts rose to £1,283 in October, a 9.6% annual increase. This is the first time the annual growth rate has dipped below 10% since April (Homelet).	
% residents who rent privately	Average age of renters	Average rent per square foot	Change in rent		
14.8%	35 years	£21 annually	7% East of England		

Source: Dataloft Rental Market Analytics, DLUHC, Census 2021

Zaman Sheikh LLB (Hons) MSc RICS Registered Valuer
Chelmsford
182 Moulsham Street, Chelmsford, CM2 0LG
01245 505288
chelmsford@northwooduk.com



DATA BASED ON STATISTICS FROM NOVEMBER 2023



We'd love to hear from you at our branch. Get in touch!

Disclaimer: This report is produced for general information only. Whilst every effort has been made to ensure the accuracy of this publication, Dataloft Ltd accepts no liability for any loss or damage of any nature arising from its use. At all times the content remains the property of Dataloft Ltd under copyright and reproduction of all or part of it in any form is prohibited without written permission from Dataloft Ltd. Published on 2023-11-24.



SCAN FOR YOUR FREE VALUATION





An ancient structure of remarkable history

Discover Greensted Church in Ongar, a unique hidden gem with a story that spans more than 1,000 years.

Celebrated as the world's oldest wooden church, its walls have stood for more than a millennium, offering a glimpse into the early periods of English Christian heritage.

Tracing its origins to the ninth century, the church's earliest timbers, dating to around 1060, mark it as a distinguished survivor from before the Norman Conquest. These timbers, visible even today, underscore the church's enduring presence and historical significance.

Originally a modest structure, perhaps built for a Saxon nobleman, Greensted Church has evolved through the centuries. It bears the marks of various architectural styles and religious practices that have influenced its design over time.

The church's walls, crafted from vertically set split oak trunks in a technique known

as 'stave construction', are particularly noteworthy. This method is complemented by the 19th-century brick chancel and Victorian restorations, together presenting a harmonious blend of various historical periods.

Greensted Church's connection to St Edmund, the martyred king of East Anglia, further elevates its historical importance. As the site where his body reputedly rested in 1013 en route to burial, the church has long been a focal point for pilgrimage and reflection.

More than a religious site, Greensted Church stands as a cultural beacon, embodying the continuity of faith and community. It serves as a serene witness to the evolving landscape and societal changes surrounding it.

Venturing into this sacred space, visitors are transported beyond the confines of the present. Each step within its walls is a journey through time, connecting the present to a past that remains vibrantly alive. Greensted Church is not just an architectural marvel; it's a living narrative of faith's resilience and the understated elegance of history.



YOUR LOCAL EVENTS



ELVES 11 TRAIL

The Maldon Saints FC Club House, Park Drive, Maldon, CM9 5JQ
Sunday, December 17, from 9am



Photo credit: Top Day Events

Join the annual Elves 11 Trail where you will be following a circular route of 11 miles between Maldon and Mundon. The route is 95 per cent off-road on a variety of terrain. When you reach the finish line, you will receive a well-earned medal and a cup of tea. The race starts and finishes at The Maldon Saints FC Club House.

Tickets cost £14 for members of clubs affiliated to EA, WA or SA, or £16 standard. To enter and find out more, head to www.runabc.co.uk/elves-11-trail

BURNHAM ALTERNATIVE MARKET

Carnival Hall, Devonshire Road, Burnham-on-Crouch, CM0 8EF
Sunday, December 17, 9.30am

A range of makers and producers will bring their fresh produce directly to the public. Stalls include fresh meat, bread, homemade pies and cakes, honey, fruit and vegetables, fish, and other local produce.

Entrance is free. For more information, please visit www.facebook.com/BurnhamAlternativeMarket

TEA WITH THE ELVES AT MONKEY PUZZLE

Monkey Puzzle, Madison Heights, Park Drive, Maldon, CM9 5JQ
Monday, December 18, to Tuesday, December 19, 3.30pm – 6pm

Children aged up to 12 can enjoy a fun play session in the soft play centre, biscuit decorating and card making, as well as a hot meal.

Tickets cost £15 and can be booked online via www.shorturl.at/ftKSU

MEET SANTA, CINDY LOU AND THE GRINCH

Creeksea Manor House, Ferry Road, Burnham-on-Crouch, CM0 8PJ
Saturday, December 23, 10am

Children of all ages will be entertained by the Grinch and Cindy Lou, enjoy a Christmas-themed brunch, and receive a gift from Santa himself. Enjoy drinks, entertainment, grotto, gifts, and unlimited tea and coffee for the adults.

Tickets cost £30. To find out more, please visit www.creekseaplace.co.uk/event/meet-santa-cindy-lou-and-the-grinch

SAILING BARGE CRUISE – SLOW ROAST CRUISE

Topsail Charters, Cooks Yard, The Hythe, Maldon, CM9 5HN
Wednesday, December 27, 11.45am

Enjoy a leisurely one-and-a-half-hour cruise from Maldon Quay to Mill Beach and back, going past the Victorian Promenade Park; past the statue of Brithnoth guarding Maldon against marauding Vikings; Northey Island, which is a bird reserve owned by the National Trust; Heybridge Basin; the entrance to the Chelmer & Blackwater Canal; and Mill Beach before returning.

Tickets start from £32 and can be purchased from www.top-sail.co.uk/product/slow-roast-cruise-2

DAN FRASER LIVE

The Queens Head, 26 Providence, Burnham-on-Crouch, CM0 8JU
Sunday, January 14, 4pm

Head to The Queens Head and listen to the acoustic jams of Dan Fraser, and enjoy good vibes, a nice drink and socialising with your friends.

No need to book. Find out more at www.facebook.com/events/1891043444612829



Photo credit: Dan J Fraser



The magic of MERLIN

FIRST DATES BARMAN MERLIN GRIFFITHS HAS A RENEWED TASTE FOR LIFE

It's perhaps slightly crass to state that many a romantic liaison has been made comfortable with the aid of an alcoholic loosener, but the evidence is there in pubs, bars and restaurants the length and breadth of the country, every day of every week.

One dining space in particular – that of the *First Dates* restaurant – has used the expertise of a master mixologist to great effect. This responsibility fell to Merlin Griffiths, who this year celebrated a decade on our screens.

“The time has flown by in a haze of romantic splendence,” jokes the 48 year old. “I’ve seen thousands of people pass through, and it’s a thrill to witness a happy ending.”

And many there have been – a recent study found that three per cent of first dates ended in marriage, with the Channel 4 show boasting numerous weddings and even the pitter of tiny footsteps.

As the trusty barman charged with easing the nerves of hopeful romantics, Griffiths – who has a wife, Lucile, and young child – knows his role is significant; though as a pub owner himself, he is used to the responsibility bestowed on a good host.

“It’s an underrated occupation, I think. It’s a job that requires you to be present, engaging, interesting, knowledgeable on a wide range of subjects and, on occasion, firm with how punters are behaving! There are also extreme antisocial hours and it’s a physical job where you’re always on your feet, but I love it.”

Griffiths’ sense of perseverance was put to the test in 2021 when the *First Dates* barman was diagnosed with bowel cancer. He underwent surgery and recently celebrated the milestone of a year ‘all clear’.

“It has been a tough road, but one I am now emerging from. While there have been some very sombre moments in there, what the experience has done is to reinforce in me a desire to appreciate everything around me, to fight, and to achieve.”

Treatment has meant Griffiths has been unable to engage in one of his favourite hobbies. A keen cyclist, he previously completed the John O’Groats to Land’s End cycle ride in nine days. Many years ago, before his big break, he was a cycle courier in London.

“I love cycling” he comments. “It was a great way to stay fit, but you were taking your life in your hands on a daily basis.

“Dealing with a rowdy pub customer or a feuding couple of *First Dates* seems tame in comparison!”

Griffiths’ taste for innovation was played out at Royal Ascot last year when he launched the first no-alcohol bar.

He’s also set his ambitious sights on opening a new pub, The Dog & Gun in Walton, which is expected to open soon.

He says: “It seems to be a time when opportunities are coming along, and for the first time in a couple of years I can fully commit to them.

“I am lucky that I work in an industry that will always be here. We are social creatures – certainly in this country! – and there’s nothing better than watching people converse and interact.”

To keep up to date with everything Merlin is up to and ship his bar kits, visit www.merlingriffiths.com



how to make MELTING SNOWMEN BISCUITS

If you're after a tempting but simple festive cookie to make this Christmas, look no further than these cute melting snowmen biscuits. They taste delicious and are a great way to involve kids in the kitchen – but be prepared to get sticky! The below recipe makes 10 biscuits.

YOU WILL NEED:

For the biscuits: 100g butter | 100g caster sugar | ½ tsp vanilla extract | ½ a beaten egg (about 2 tbsp) | 200g plain flour (and a bit extra)

For decorating: 10 standard white marshmallows (not the mini ones) | 100g icing sugar | A tube of black writing icing | Some ready-to-roll orange fondant icing | Chocolate beans

HOW TO MAKE THE BISCUITS:

- Heat the oven to 200°C/180°C fan/gas mark 6 and line a baking tray with parchment paper.
- In a large bowl, beat the butter and sugar together till smooth using a wooden spoon. Then beat in the vanilla extract, egg and finally the flour to make a dough. Chill in the fridge for 15 minutes.
- On a floured surface, roll out the dough with a rolling pin to roughly 5mm in thickness.
- Using a 9cm biscuit cutter or the rim of a 9cm glass, cut out 10 shapes.
- Bake for 8-10 minutes till golden, then cool.

HOW TO DECORATE:

- Put the icing sugar in a bowl. Add cold water, a teaspoon at a time, till the icing is just runny.
- Spread the icing on the biscuits and pop a marshmallow near the edge of each one.
- Use the black icing pen to draw the arms and eyes.
- Use the orange fondant to create a carrot nose.
- Then add the chocolate beans for the snowmen's buttons.



Photo credit: recipesfromapantry.com

WEST ONE WOOD
FLOORING INTERNATIONAL LTD
MANUFACTURING ● INSTALLATION ● RESTORATION

- West One Wood Flooring International Ltd is a specialist in the manufacturing, installation and restoration of antique reclaimed and new timber flooring
- We can supply and fit a variety of stunning timber floors for domestic properties and commercial projects
- Installation is by a skilled friendly professional team who offer high quality service and aftercare
- Our flooring is competitively priced with innovative solutions to suit your needs
- If your existing wooden floor needs restoring, our skilled teams will transform your worn floor back to its former beauty. We are experienced with all types of wooden floor and will carry out the necessary specialist repairs and finishes. Most timber floors are salvageable, our team of expert restorers will point you in the right direction.

www.westonewoodflooring.co.uk

Call us on **01277 630837**
01245 204231

Email: info@westonewoodflooring.co.uk
Unit 3 Blackall Industrial Estate, Hamberts Rd,
Sth Woodham Ferrers, Essex CM3 5UW

Award-winning farm shop & produce, supporting local, trusted farmers & small businesses

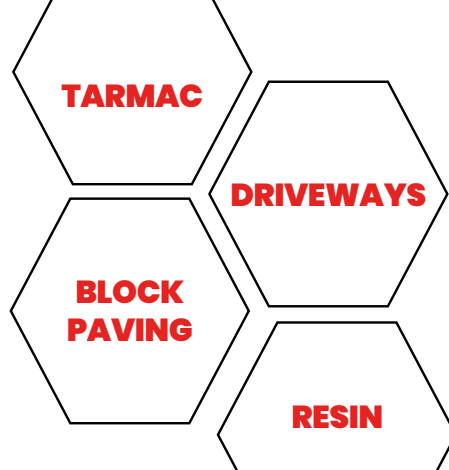
www.blackwellsfarmproduce.co.uk

Hérons Farm, Colne Road, Coggeshall, Colchester, Essex CO6 1TQ

Mon – Fri: 8:00 AM – 5:30 PM
Sat: 8:00 AM – 4:00 PM
Sun: 10:00 AM – 3:00 PM



**Producing Immaculate
Finishes for Decades**



- ◆ **Essex's leading road & surfacing contractor**
- ◆ **Grab Lorry Hire Essex**
- ◆ **A family business**
- ◆ **Established for decades**



☎ 01621 772429 ✉ info@ljanderson.co.uk 🌐 www.ljanderson.co.uk



GARDENING



- January**
 - Plan and prepare for the year ahead.
 - Take stock of inventory (seeds, pots, etc) and assess your garden layout.
 - Put out water and seeds for the birds.
- February**
 - Start sowing seeds indoors, such as tomatoes, peppers and aubergines.
 - Add compost or organic matter to your garden soil.
- March**
 - Sow cool-season crops such as lettuce, spinach, carrots and beetroots directly in your garden.
 - Protect tender plants from late frosts.
 - Clean and tidy your greenhouse.
- April**
 - Transplant seedlings that require a longer growing season, such as tomatoes, peppers and herbs.
 - Plant perennial flowers and pot-grown fruits, such as strawberries.
 - Turn over the soil in your garden to loosen compaction.
- May**
 - Regularly water your garden and apply mulch around your plants to conserve water and stop weeds.
 - Use bedding plants to fill your garden with colour.
- June**
 - Monitor your garden for weeds and remove them.
 - Regularly fertilise your plants with organic fertiliser.
 - Water and mow your lawn frequently.
- July**
 - Water your plants deeply and less frequently.
 - Monitor plants for aphids and spider mites.
 - De-head bedding plants.
- August**
 - Harvest your summer crops, preserving excess produce through canning, freezing or drying.
 - Start planning your autumn garden by removing spent plants and amending the soil.
- September**
 - Directly sow seeds of salad greens, rocket and Swiss chard.
 - Harvest mature summer crops.
- October**
 - Prepare your garden for winter by harvesting the remaining autumn crops, removing any debris and dead plants and adding compost or organic matter to replenish nutrients.
 - Trim and shape your hedges.
- November**
 - Clear up fallen leaves, especially from lawns, ponds and beds.
 - Plant tulip bulbs for a spring display next year.
 - Wrap young plants and trees to protect them from frost.
- December**
 - Reflect on your year's gardening journey and plan for the year ahead.
 - Order seeds and supplies for the year to ensure you have everything you need.



DRAIN ME!

Is your garden flailing rather than flourishing? If yes, this could be because you have not implemented a good drainage system. Essential for preventing waterlogged soil, erosion and unhealthy plant growth, here's how to improve the drainage in your garden.



SPIKE YOUR LAWN

If the soil in your lawn becomes compacted, then this can cause winter waterlogging. To prevent this from happening, spike or aerate the soil so that rainwater can flow down into the ground more easily. This can be carried out with either a garden fork or a lawn aerator tool.



GROW MORE PLANTS

One of the simplest ways to improve the drainage in your garden is by growing more plants. For best results, plant vegetation that is compatible with your soil type. For example, some hydrangea species are great for regulating wet soils, while clay soil benefits from species such as geranium.



BUILD RAISED BEDS

Raised beds that are made from either bricks or timber provide a great solution to poor garden drainage and offer a much better environment than the boggy earth below. Make sure you fill them with lots of quality, free-draining topsoil to help your plants thrive.



CREATE YOUR OWN COMPOST

Soil that has high organic matter content is better for drainage as it allows excess water to easily drain through it. By creating your own compost, you can have unlimited access to organic matter that is perfectly suited to your garden and its soil.



INCORPORATE SLOPING SURFACES

Surface water is a problem in many gardens but can be easily managed with the use of sloping surfaces. For example, you could combine steps and raised beds, create depth with tiered planters, or arrange large slabs of rocks to help direct water.



THE ONE STOP SOLUTION FOR SHEDS & GARDEN FURNITURE



QUALITY SHEDS
GARDEN FURNITURE
CUSTOM TIMBER BUILDINGS

Tony Turner

MANUFACTURERS OF QUALITY SHEDS

CALL 01621 742184

EMAIL: TONYTURNER16984@SKY.COM

WWW. TONYTURNERSHEDS.CO.UK

WHITEHOUSE FARM, NEW LANE, MALDON, CM9 6PJ



Storm & Son's Ltd

PAVING & LANDSCAPES

OUR FIELD OF EXPERTISE EXTENDS TO:
 DRIVEWAYS · PATIOS · FENCING · ASTRO TURF
 BRICKWORK · GARDEN DESIGN · JET WASHING
 PORCELAIN · DROPPED KERBS
 DIGGER AND DRIVER HIRE



At Storm And Sons our aim is to provide customers with the best possible service. We're a team of professionals with over 25 years of experience who tackle everything from complex large projects to smaller scale jobs. Fuelled by our commitment to excellence, we go the extra mile to make sure clients are completely satisfied with our work. All work is fully insured up to £10 Million. **Contact us today to get your free estimate!**

01245 981 670 07799 628 630
 stormandsonspaving@gmail.com
 www.stormandsons.co.uk

NEED A PLUMBER?

BLOCKED DRAINS, BLOCKED SINKS, BLOCKED TOILETS - **CLEARED FAST**

- ▶ Plumbing, Heating & Drainage
- ▶ Drains - Internal & External
- ▶ CCTV Surveys
- ▶ High Pressure Jetting
- ▶ Manual Rodding
- ▶ Toilets, Sinks, Bathrooms
- ▶ Emergency Plumbing & Drainage
- ▶ Insurance Work Undertaken
- ▶ Fully Qualified Engineers Covering Your Area

NO CALL-OUT CHARGE

We quote all prices including VAT - No Hidden Extras

CALL OUR FRIENDLY TEAM 24/7
01621 767816

No1 PHD ★ Trustpilot
 Reviews 404 • Excellent
 4.6
 Mar23

AMERICAN EXPRESS MasterCard Maestro VISA VISA Debit
 No1 PHD Ltd, Company No: 11927404, Reg. in England & Wales.



MINCE PIE

Mania

In the 13th century, Crusaders returned to Britain from the Middle East with a novel pie idea: minced meat, dried fruits, spices and wine. By Victorian times, the meat had vanished, and the modern mince pie emerged. To create your own version of these timeless treats, follow the recipe below. Remember, as well as the ingredients, you'll need a standard 12-hole muffin tin and two round pastry cutters – one measuring 9cm in diameter for the pie bases and one measuring 7.5cm for the lids.

MINCEMEAT

YOU WILL NEED: 225g mixed dried fruits (raisins, currants and sultanas) | 110g Bramley apple (peeled, cored and finely chopped) | 110g shredded vegetable suet | 150g demerara sugar | Zest and juice of 1 orange and 1 lemon | ½ tsp ground cinnamon | ¼ tsp ground nutmeg | ¼ tsp ground cloves | 2 tbsp brandy or rum (optional)

1. Mix dried fruit, apple, suet, sugar and citrus zest in a bowl.
2. Add citrus juice, spices and alcohol (if using) and mix well.
3. Cover and let it sit in a cool place for a day or two to enhance the flavours.

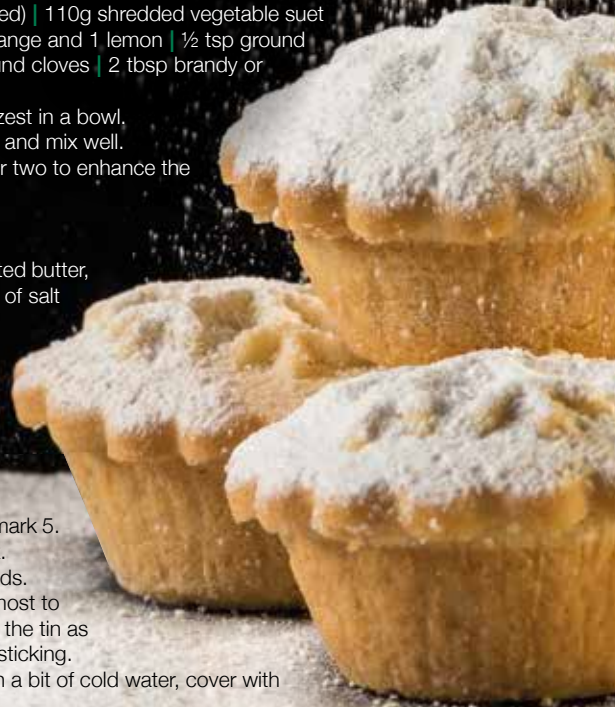
PASTRY

YOU WILL NEED: 175g plain flour | 85g unsalted butter, cold and diced | 2-3 tbsp cold water | A pinch of salt | A little extra flour for rolling

1. Combine the flour and salt in a large bowl.
2. Rub in the butter until the mixture looks like fine breadcrumbs.
3. Gradually add the water, mixing until the dough forms.

ASSEMBLING AND BAKING

1. Preheat your oven to 190°C/180°C fan/ gas mark 5.
2. Roll the pastry out until it is about 3mm thick.
3. Using the cutters, cut out 12 bases and 12 lids.
4. Press the bases into the muffin tin and fill almost to the top with mincemeat – no need to grease the tin as the pastry's high fat content will stop it from sticking.
5. Brush the top edges of the pastry bases with a bit of cold water, cover with the lids and press the edges to seal.
6. Bake for 20-25 minutes until golden.



THE DISCOVERING Cider

England's Pioneering Role

For decades, cider was seen as a mass-market drink that lacked sophistication – knocked back rather than savoured. But the new breed of English cider makers is changing all that.

AN ANCIENT TIPPLE

Cider predates the Roman Empire, and even champagne owes some of its methods to the early days of cider making. Perhaps that's why, years later, cider makers are fighting back.

A NEW TYPE OF CIDER

Cider is now giving wine and champagne a run for their money in a rapidly changing landscape that has seen makers using locally sourced ingredients and experimental methods.

The process mirrors that of wine making, right down to the fact that cider is aged in oak barrels. Indeed, many types of fine cider aren't carbonated at all, but are more similar to white wine.

More attention is also being paid to the land where the apples are grown. Much like grapes determine the profile of wine, so too does the soil, the landscape and the climate influence the apples used to make this new breed of cider.

THE FREEDOM TO EXPERIMENT

Liam Tinston of Tinston Wines & Ciders in Sussex points out that cider making lacks the strict rules found in wine making. This freedom enables producers to experiment and produce drinks that defy consumer expectations, resulting in a staggering variety of ciders on the market to suit most tastes.

CHAMPAGNE'S NEW RIVAL?

Osip, a Michelin-starred restaurant in Bruton, Somerset, has teamed up with well-known local company Pilton Cider to create Osip cider. Together, they've created a tipple that tastes like a high-end

sparkling wine. Restaurateur Merlin Labron-Johnson and cider maker Martin Berkeley selected the apple varieties together, and the blend of juices was then 'keeved'. This traditional artisanal fermentation process carbonates the drink naturally, using the juices' own sugars.

Such is its increasing popularity and the skill required to make the drink, that cider could very well be many people's drink of choice this Christmas.

Like wines, ciders exhibit diverse flavours based on their origin and the apple varieties used. Finding your favourite wines requires tasting and exploration; discovering your preferred ciders demands a similar journey.

To get going, check out local producers or specialised shops near you – and try them with various foods to find your favourite pairings.



START YOUR NEW YEAR WITH A BANG!



IS YOUR NEW YEAR'S RESOLUTION TO GROW YOUR BUSINESS?

START ADVERTISING IN VISION TODAY!

Your Monthly Lifestyle Magazine **VISION**

See all our magazines at www.visionmagessex.com

Billericay Shenfield Bishop's Stortford Brentwood Ongar Chelmsford Epping Theydon Halstead Braintree Hertford Hornchurch Leigh Thorpe Bay Loughton Maldon Burnham Rayleigh Wickford South Woodford Tendring

ASK US ABOUT OUR NEW YEAR DEALS!

Say yes to Yerba mate



Are you looking for a healthier way to get your daily caffeine fix? Yerba mate provides the energy kick of coffee with the healing properties of herbal tea. Plus, it can even help you to lose weight!

- > Reduced risk of heart disease
- > Lowered blood sugar levels

ARE THERE ANY SIDE EFFECTS?

If you are sensitive to caffeine, you may experience some side effects such as an upset stomach, trouble sleeping, feeling nervous or restless or a faster heartbeat if you consume too much yerba mate. However, studies show that most people can safely drink up to 1.5 litres of yerba mate a day.

WHAT IS YERBA MATE?

Yerba mate is a type of herbal tea that originates from South America and is made by steeping dried leaves from the yerba mate plant in hot water. It can be served hot or cold and, like black and green tea, it contains caffeine which can help you to feel more alert and focused. Yerba mate has a very distinctive taste that can be strong, bitter and slightly vegetal. In terms of aroma, it has been described as having a eucalyptus smell.

HOW MUCH CAFFEINE IS IN YERBA MATE?

Depending on how you brew it, the average cup of yerba mate contains 70mg of caffeine. In comparison, the average cup of coffee contains 120mg of caffeine and a cup of green tea contains around 25mg.

WHAT ARE THE HEALTH BENEFITS?

There are so many associated benefits of drinking yerba mate, including:

- > Improved mental focus
- > Enhanced physical performance
- > Protection against infections
- > Weight loss and reduced belly fat

HOW TO PREPARE YERBA MATE

1. Add one or two yerba mate teabags to a mug – these can be bought online and at most health food shops.
2. Moisten the teabags with cool water.
3. Fill the mug with hot water.
4. Steep for five minutes and then remove the teabags.
5. Flavour to taste with honey, sugar or sweetener.
6. You can also add mint, ginger or orange peel if desired.





PROTECT your locks

NINE TOP TIPS TO WINTERPROOF YOUR HAIR THROUGH THIS COLD SEASON

Winter can challenge your haircare routine before you know it, with cold temperatures and harsh conditions transforming your silky tresses into a dry, tangled mess. But it doesn't have to be like that. Follow these tips to keep your hair looking healthy and vibrant all season long.

- 1. Wear a hat:** Cold weather can damage your hair, so when it's chilly, wear a hat with a soft lining.
- 2. Cut back on shampooing:** Daily shampooing removes natural oils, so aim to shampoo your hair no more than two or three times a week.
- 3. Dry your hair before going out:** Wet hair can freeze and break in cold weather, so always make sure your hair is dry before stepping outside.
- 4. Eat a balanced diet:** Foods rich in vitamin C (e.g. citrus and berries) and omega-3 fatty acids (e.g. salmon and walnuts) will help keep your hair healthy.
- 5. Limit heat styling:** Tools like curling tongs and

straighteners can dry out your hair. In winter, try embracing the natural look or, if you've got long hair, experiment with braids and buns. You might be pleasantly surprised by your styling skills!

- 6. Tame the frizz:** Use a laundry dryer sheet to smooth pesky static flyaways.
- 7. Use nourishing products:** Winter is the time to indulge in good-quality moisturising conditioners, hair masks and oils.
- 8. Avoid bleach:** Many hair dyes, particularly blonde shades, can seriously dry out your hair. So think about going natural for the winter – or choose a darker shade.
- 9. Stay hydrated:** Drinking plenty of water will keep your hair hydrated, making it shinier and less prone to breakage.

Winter doesn't have to mean bad hair days. With these straightforward tips, you can keep your hair healthy and glowing all season, whatever the weather.



TORN tights

Tights are a winter staple, keeping your legs warm and protected from the elements. However, they are arguably one of the most frustrating garments to keep in good condition.

HOW TO PREVENT RIPPED TIGHTS

Clip and file your toenails
To prevent holes or rips in the toe section of your tights, make sure that you keep your toenails clipped and filed. Also, consider buying tights with reinforced toes.

Remove any snags
If you notice any thread sticking out from snagged areas on your tights, then these need to be removed as they can easily turn into holes. While wearing your tights, simply pinch the area around the loose thread and use scissors to cut it off as close to the base as possible.

Wash your tights in a mesh bag
Always put your tights in a mesh bag before placing them in the washing machine. Alternatively, handwash your tights and then allow them to air dry. Never wash tights with underwired bras as they can easily become snagged.

Put them on gently
Before putting on tights, remove any jewellery such as rings or bracelets. Then sit down and, holding your tights at the waist, gently gather each leg with your thumbs until you are at the toe of your tights. Next, gently slide your feet in, one at a time, and pull your tights up, keeping your thumbs inside to avoid snagging.

HOW TO STOP A RIP/RUN FROM GETTING WORSE

Nail polish
One of the most popular ways to stop a run from getting any bigger is by applying nail polish. Clear nail polish is best as it won't show as much, but any colour will work.

Hairspray
Hairspray works by temporarily stiffening the fibres of your tights and is a great method if you are in a rush as it dries almost instantly.



V DANGEROUS LIATSONS

TRAVEL

For many, the thrill of going on holiday is enough. For a proportion of others, though, it's only half the attraction, and venturing away from home to push levels of bravery and bravado is much more the ticket. With that in mind, then, here are four all-adventure destinations for dynamic daredevils to tick off their bucket list.

ONE: Patagonia. Split between Argentina and Chile, Patagonia is a huge area that surrounds the Andes mountain range, showcasing everything from National Parks to glaciers, hikes, caves and volcanoes.

Combining staggering natural beauty with all the risk and reward of different landscapes and a very different culture, going off-piste in Patagonia could just be the most daredevil thing you can do.

TWO: Iceland. A country of extremes, Iceland is as beautiful as it is challenging, and many adventurers cannot resist the urge to hike and climb around glaciers, waterfalls, geysers and volcanoes.

While dealing with the ice or diving deep into the Silfra fissure is a thrill a minute, it's also rewarding to hire a car and venture off on the Iceland Ring Road (also known as Route 1) – an 800-mile highway that circles the country.

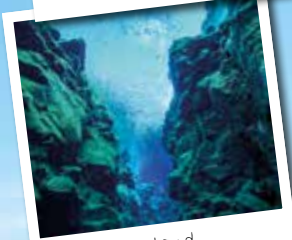
THREE: The Dolomites. We associate Italy with relaxing, restorative experiences around great food and passionate people, yet the Dolomites – and a vast array of climbing, mountain-biking and hiking options – will take you off the beaten track, inviting you to test your mettle against some punishing terrain.

The rewards for adventure seekers are stunning views and crisp-clean air.

FOUR: South Africa. We know Cape Town as a beautiful, cultural city, but it also has a reputation as an adventure junkie hotspot, with surfing, abseiling (off Table Mountain, no less), diving with great white sharks and a prevalence of gyrocopter aircraft flights that can be taken as a way of enjoying the area's stunning coastline.



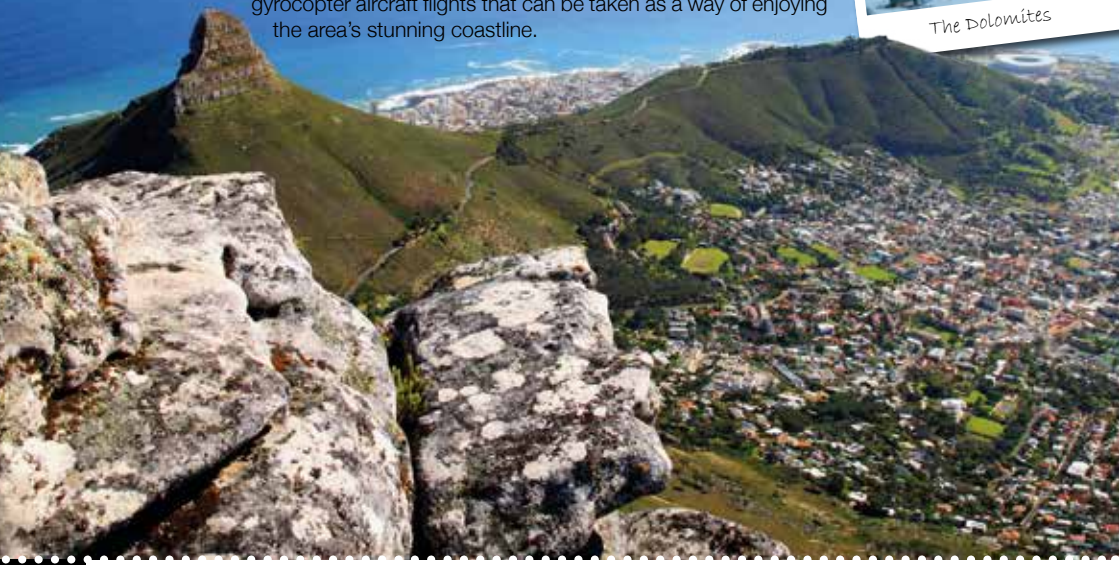
Patagonia



Iceland



The Dolomites



IT'S TIME TO FOCUS ON LIFE NOT THE COST OF LIVING

Retire to a dream location the easy way



Move in ready homes available from £219,950



Freedom to live life to the full. Modern comforts and community spirit on the Essex Sunshine Coast.

Do you dream of living on the coast? Relaxed days of fresh air, seaside walks and beach picnics? It's all there for you when you move to a brand new, fully furnished home, exclusively for the over 45s, at Sandpiper Gardens, Clacton on Sea. You could also free up cash, save on bills and have less home maintenance to worry about. Whether you're retiring or semi-retiring, it's time to get more out of life.

- ✓ High-quality, low-maintenance, single-storey homes
- ✓ Safe, secure community of like-minded residents
- ✓ Private garden and parking
- ✓ No stamp duty
- ✓ Part exchange and assisted move options available

Get in touch to find out more or arrange a park visit:
www.tingdene-parks.net | 01933 422471 | info@tingdene.net

YOUR ESSEX SPECIALISTS FOR QUALITY WINDOWS AND DOORS

As a small family-run business in Essex, our commitment to excellence extends to the security, aesthetics, and customisation of our windows and doors. All our products are internally glazed, preventing intruders from removing beads to gain access. We prioritise security with the highest-grade locking systems, carrying the 'secured by design' approval and backed by an independent security guarantee.

Our UPVC and aluminium windows and doors offer a variety of colour finishes, including white, light oak, rosewood, and black, all featuring a grain for a timber-like impression. Fascias, soffits, and cladding can also be coloured to complement window installations. Frames can be sprayed with a ten-year colour fast guarantee, and various furniture options are available to suit different frame choices.

Entrance and back door options are extensive, ranging from standard UPVC doors to composite doors, French doors, bi-folding doors, and stable doors – all designed with style and endurance while maintaining uncompromised security. Multipoint locking with hooks and bolts is standard across our range.



We take pride in the manufacturing of our sealed units, ensuring quality in both product and service. Our offerings address a wide range of glazing needs, including coloured leads, bevels, single, double, and triple glazing, K-glass, soft coat, warm edge, Georgian, toughened, laminate, and acoustic glass for sound reduction. With our experienced team in the glass shop, we aim to provide swift solutions to glazing problems, even offering a fast turnaround without the need for a costly 24-hour glazier.



*Recently had windows and patio doors installed.
Very please with the end result. Clean and tidy.
Would definitely recommend.*



01268 527112 | 01245 207225

www.thewindowmanessex.net [f @thewindowmanessex](https://www.facebook.com/thewindowmanessex) [i](https://www.instagram.com/thewindowmanessex)

Winter SURVIVAL KIT

YOUR WINTER CHECKLIST TO ENSURE YOU'RE PREPARED FOR THE ROAD AHEAD

If your car broke down or you got stuck in a really bad traffic situation during the winter months, would you be able to keep yourself and your family warm and safe until help arrived or you were able to be on your way again?

What to keep in your car during winter:

- ✓ A torch and batteries – do not think that you can rely on the torchlight on your smartphone
- ✓ Warm clothes such as a coat, hat and gloves, and blankets
- ✓ Ice scraper and de-icer to keep your front and rear windscreen clear
- ✓ In-car phone charger
- ✓ High-visibility clothing
- ✓ Jump leads or jump-start cables
- ✓ An empty fuel can
- ✓ Food and drink, including a hot drink in a flask
- ✓ Shovel in case of a snowstorm or blizzard
- ✓ Two warning triangles
- ✓ A pair of sunglasses to minimise glare from the winter sun

POWDERY checklist

Before each journey during the colder and darker months of the year, it can be a good idea to go through the POWDERY checklist.

P is for petrol (or diesel). Do you have enough petrol/diesel? Do you know where you can fill up?

O is for oil. Check your oil levels before you leave.

W is for water. Check both your radiator and your screen washer.

D is for damage. Check your wipers and lights for signs of wear and tear. Make sure your windscreen and windows are free from snow and ice.

E is for electrics. Check that your lights, indicators and controls are working as they should.

R is for rubber tyres. Make sure that your tyres are well inflated and free from damage.

Y is for you. Are you fit to drive? Have you slept well? Are you taking any medication that could affect your ability to drive safely?



DODGEBOW®

The classic 2004 box office comedy film *Dodgeball* involved what most people thought was a new sport, yet its roots actually go right the way back to the turn of the 20th century.

And yet, there is now a new take on the idea that has emerged in recent years. Utilising foam-tipped arrows that are fired from low-poundage bows, competitors created something of a hybrid between dodgeball and archery – dodgebow.

The sport was invented by three friends from Montreal, Canada. The trio had played combat archery and wanted to develop the idea further. Subsequently, the company Dodgebow was created. The sport sees two teams of up to 12 members battle for 45 minutes in a weapon-laden arena filled with inflatables which can be used as obstacles or objects to hide behind.

The aim is for the teams to gather weapons from the centre of the arena, position themselves strategically, and then eliminate each of the

opposing team's players by shooting them. A player can bring back an eliminated teammate by catching an arrow.

Dodgebow, also known as archery tag, is a rapidly growing sport and is already played in more than 30 countries around the world.

There are also extensions to the game, including Bullseye (all opposing team targets can be hit instead of striking out players), No Loyalty (a 'Blue on Blue' hit means the receiving player must change teams), and Capture the Flag (one of three opposing team flags must be taken back to your own base).

Using safe equipment means dodgebow is fun and exciting to play, with emphasis on both working as a team and individual brilliance.



Photo credit: dodgebow.com

SONIC YOUTH



THE FIVE MOST ICONIC VIDEO GAME CHARACTERS OF ALL TIME

MARIO: The Italian plumber from the titular Nintendo franchise is the Japanese company's flagship character, and actually got his name from the resemblance to the Nintendo Washington warehouse landlord.

The Mario franchise has sold more than 776 million copies worldwide.

SONIC THE HEDGEHOG: It's been more than 30 years since Sega's official mascot came to our screens. The hedgehog character first appeared in his own standalone game on the Mega Drive – later called the Genesis – in 1991.

However, the blue anthropomorphic hedgehog actually made a cameo appearance slightly earlier that year on the arcade driving game *Rad Mobile*, Sega's first 32-bit release.

LARA CROFT: The *Tomb Raider* franchise arrived on the scene in 1996 with Lara Croft, the ultimate feminist hero, about to alter perceptions further in an already fervent era of girl power.

The archaeologist travelled the world in search of ancient artefacts, and did so with such dynamism that she spawned a string of successful movies, played by Angelina Jolie in 2001 and 2003, then reprised by Alicia Vikander in 2018.

DONKEY KONG: Nintendo game director Shigeru Miyamoto, whom we can thank for the creation of the Mario character, also created *Donkey Kong*. With 80 million copies of the game sold since its release in 1981, it also has seven Guinness World Records to its name, including First Use of Visual Storytelling in a Video Game.

Donkey Kong was developed in a bid to beat another arcade classic, *Pac-Man*. Mario features in the original version as 'Jumpman'.

PAC-MAN: Upon its release in Japan in 1980, *Pac-Man* wasn't the hugely successful videogame it has since become. A slow-burner that has become synonymous with arcade machines, alongside Galaxian and Space Invaders, the cute characters weren't an instant hit with users, but are now seen as iconic. The eponymous character tries to eat all of the dots and evade the ghosts in a maze.

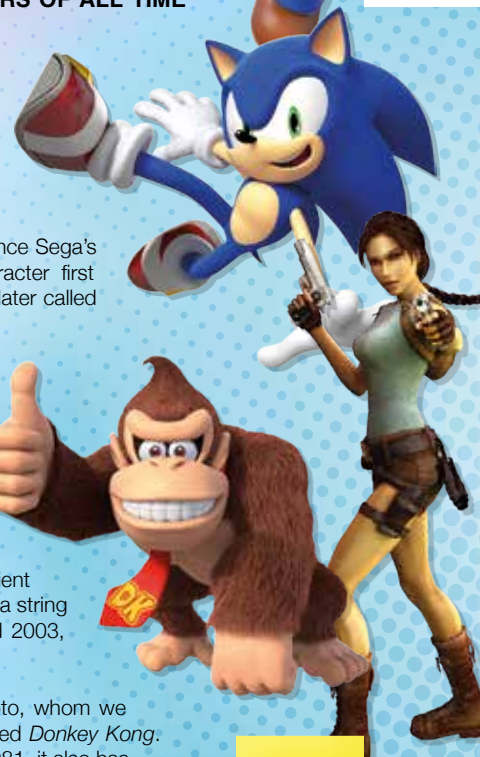


Photo credit: mario.nintendo.com, tombraider.landom.com, playnite.pro.com



youbet!

MEET ONE OF THE UK'S WEALTHIEST BUSINESSWOMEN



The online betting industry has radically changed not just our lifestyle habits, but the way we view competitive sport too.

From an era where betting was only ever the domain of somewhat scruffy men in high street bookmakers, often with the smell of beer and cigarettes lingering in the air, to a modern reworking where the option of placing money on a sporting event can be done from the comfort of one's armchair.

The online betting market is always a topic of much debate and conjecture. Whether or not you believe there is a moral issue at play, the success of those who pioneered the industry is undisputed. When Denise

Coates – who was awarded a CBE in 2012 for her services to community and business – registered the bet365 domain name in the year 2000, neither she nor co-founder John, her brother, could have foreseen the incredible changes to the industry that were to follow.

In fairness, Denise did have some previous knowledge of the industry – her father, Peter Coates, known for his chairmanship of Stoke City Football Club, had run a successful bookmaker firm, Provincial Racing, which she joined after graduating from university with a first-class degree in ergonomics.

Using a £15million loan secured against the company's betting shop estate, bet365 was one of the first to try out the untested online market, at a time when the internet was awash with uncertainty and suspicion over online transactions.

Wind forward 20 years, and bet365 is one of the leading players in the market with annual revenues of more than £2billion, thanks to more than £36billion in betting transactions each year.

Coates rewards herself tidily – her wage in 2020 was said to be £421million, which is higher than all FTSE 100 Index CEOs combined.

It is an amount that reflects perhaps not her workload, but certainly the game-changing element brought about by one of the UK's most powerful female entrepreneurs.

Photo credit: bet365

IT'S ALL ABOUT
VISION
LOCAL LIFESTYLE MAGAZINE

227,500 READERS
KEY DEMOGRAPHICS ARE **EARLY 30s AND 60+**
and around **61%** of our readers are female

91,000
MAGAZINES DELIVERED MONTHLY
TO HOMES AND BUSINESSES IN...

AFFORDABLE
ADVERTISING
PACKAGES
to suit every budget £

14 AREAS
across Essex and
East Herts

76%
CLIENT
RETENTION
RATE

VISION COMBINES...

CURRENT
editorial
CONTENT

LOCAL FEATURES
AND EVENTS

ADVERTISING
SPACE IN A
VARIETY OF SIZES



- HOME & DIY | GARDENING | PETS | HEALTH & FITNESS | BEAUTY | FASHION | HISTORY | LOCAL FEATURES | FOOD & DRINK | TRAVEL | BUSINESS & PROPERTY | SPORT | PUZZLES | MOTORING | KIDS | WHAT'S ON | TECHNOLOGY | THE LISTINGS

OUR MAGAZINES ARE
100%
RECYCLABLE

We're passionate about
SUPPORTING LOCAL BUSINESS



GET IN TOUCH TODAY TO ADVERTISE YOUR BUSINESS

THE VISION LISTINGS

BEAUTY

AESTHETICS OF ESSEX

Anti-Aging, Laser, Cosmetic Surgery Clinic. Free no obligation consultations. New treatments now available. 51 High Street, Maldon, CM9 5PF. T: 01621 491 036

BLINDS & SHUTTERS

WORTH & CO BLINDS

Essex's leading blind, awning & interior shutter specialists for over 100 years. Call us on 01245 830087

BOOK VIA... MALDON@VISIONMAG.CO.UK

BUILDERS & MAINTENANCE

AZTEC

Family run business est. 1999. Will beat any written quote, Full Public liability insurance. Free estimate call us on 01621 502153 | 07866 804180

CAR GARAGE

SHAUN BAKER CAR CARE LTD

Garage Service. Vehicle Maintenance, Transmission Repairs, MOT Repairs & Maintenance, Air Con and more services. Please call on 01621 851871 | 120a High Street, CM9 5ET

CARE SERVICES

ELSIE'S HELP AT HOME

Personal Care, Medication Support, Meal Preparation, Community Support & Shopping, Overnight Care & much more. Call 01245 801401 | info@elsieshelpathome.com

CLEANING

MOLLY MAID

Our professionally trained team will make your home sparkle. We tailor our cleans to your individual needs, schedule and budget. 01245 494003 | emma.brooks@mollymaid.co.uk

DRIVEWAYS & RESIN

LJ ANDERSON & SONS LTD

Essex's leading road & surfacing contractor. Grab Lorry Hire. A Family Business. Established for decades. 01621 772429 info@ljanderson.co.uk | www.ljanderson.co.uk

FARM SHOP

BLACKWELLS FARM SHOP

Award Winning Farm Shop & Produce, supporting local, trusted farmers & small businesses. Herons Farm, Colne Road, CO6 1TQ | www.blackwellsfarmproduce.co.uk

FLOORING

JOE'S CARPETS

Family Run Business, Est since 1999. The Mobile Carpet Shop. Supply & Fit. Repairs & Refits. Free Estimates & Advice. Free Gripper Rods. Contact 01621 398019 | 07748 808094

HOME INTERIORS

CURTAIN CALL INTERIORS

Bespoke hand finished soft furnishings. Measured, made & fitted by us. T: 01621 815422 | www.curtaincallinteriors.co.uk 65 Church Road, Tiptree, Essex, CO5 0ST

KITCHEN, BATHROOMS & BEDROOMS

DESIGNER BEDROOMS

Traditional Fitted Bedrooms, Sliding Doors, Odd shaped rooms are our speciality, home office/studios. 7 Robert Way, SS11 8DD. 01268 571799 | www.designerbedrooms.co.uk

PAVING AND LANDSCAPING

STORM & SONS

Brickwork, Garden Design, Jet Washing, Dropped Kerbs, Digger & Driver Hire. 01245 961670 | 07799 626630 | www.stormandsons.co.uk | stormandsonspaving@gmail.com

LEAFLET DISTRIBUTION

FLYER DISTRIBUTION ESSEX

Leaflet, printing & distribution service. Cover a majority of CM, SS, CO postcodes. One off drops or regular monthly drops. Call us on 01277 554045 | www.flyerdistributionessex.co.uk

PUBS & RESTAURANTS

THE VICTORIA INN

Great British pub food. Traditional pub events & entertainment. At the heart of your local community. T: 01621 783585. The Victoria Inn, Burnham On Crouch, CM0 8AJ

JOIN THE LISTINGS... for just £180 +VAT per year

THE VISION LISTINGS

SHEDS

TONY TURNER

Sheds & Garden Furniture. Quality sheds, custom timber buildings. Call 01621 742184 | tonyturner16984@sky.com | tonyturnersheds.co.uk | Whitehouse Farm, CM9 6PJ

JOIN THE LISTINGS
For just **£15** +VAT per month

SHUTTERS & BLINDS

LIFESTYLE SHUTTERS & BLINDS LTD

Local Family Business, specialising in made to measure shutters & blinds, showroom open Mon-Fri, 9am-3pm. 01245 426620 | 07971 574958 | adam@essexwindowshutters.co.uk

WINDOWS & DOORS

WISE DESIGNS IN GLASS LTD

PVCu, Hardwood, Aluminium. Domestic & Commercial. Free no obligation estimates. 01621 744336 | www.wisedesignsinglass.co.uk | info@wisedesignsinglass.co.uk

KG WINDOWS & DOORS PROPERTY MAINTENANCE

Windows Installation & Repair. Telephone: 01621 335999 | 07866 454293 | www.kgwindowsanddoors.co.uk

WINDOW MAN

Family run over 25 years. Windows, doors, installation, repairs. Call us today on 01268 527112 | 01245 207225

WOOD FLOORING

WEST ONE WOOD FLOORING INTERNATIONAL LTD

Manufacturing, Installation, Restoration. Unit 3 Blackall Industrial Estate, Hamberts Road, South Woodham Ferrers, CM3 5UW. Call 01277 630837 | 01245 204231

WANT TO APPEAR IN NEXT MONTH'S VISION LISTINGS?

SIMPLY FILL OUT THE FORM BELOW AND RETURN IT TO BOOK YOUR SPACE:

Company name:

Description (180 characters max including spaces):.....

.....

.....

Telephone:..... Email:.....

Payment option: Card    Direct Debit

Please return to:
Lifestyle Magazine Group Ltd, 55 Crown Street, Brentwood, Essex, CM14 4BD or email maldon@visionmag.co.uk
*£180 +VAT for a 12 months plus agreement. Payments can be made monthly or upfront

DISCLAIMER: VISION does not represent or endorse the accuracy or reliability of any of the advertisements, nor the quality of any products, information or other materials displayed, purchased or obtained by any customer as a result of an advertisement or any other information or offer in connection with the service or products. The opinions expressed in articles, reviews and stories are strictly those of the individual authors and do not necessarily reflect the views of VISION.

PUT YOUR BUSINESS IN THE VISION LISTINGS...CALL 01621 398040 TODAY

ACROSS: 1. RADIATOR, 5. OSLO, 9. FACET, 10. CULPRIT, 11. INHOSPITABLE, 13. ANYHOW, 14. ASKING, 17. SIGNIFICANCE, 20. GYMNAST, 21. EXULT, 22. SNAG, 23. ANATHEMA
DOWN: 1. RIFT, 2. DECEIT, 3. ASTROLOGICAL, 4. OCCUPY, 6. SHRUB, 7. OUTWEIGH, 8. OLD TESTAMENT, 12. PASSAGES, 15. INCLUDE, 16. LISTEN, 18. GAMMA, 19. ETNA



PUZZLES & TRIVIA

PUZZLES

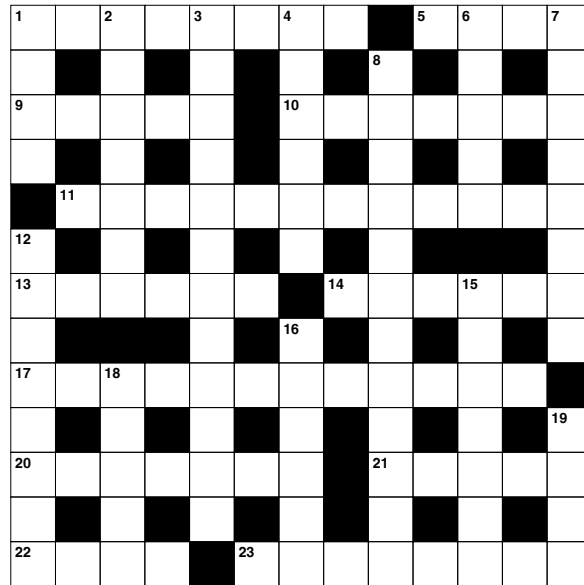
Answers: see end of The VISION Listings

ACROSS

- 1. Object that gives out heat (8)
- 5. Capital of Norway (4)
- 9. One side of a gem (5)
- 10. Guilty person (7)
- 11. Unfriendly (12)
- 13. In a careless manner (6)
- 14. Requesting (6)
- 17. Importance (12)
- 20. Flexible athlete (7)
- 21. Show triumphant joy (5)
- 22. Obstacle (4)
- 23. Formal curse by a pope (8)

DOWN

- 1. Crack (4)
- 2. Propriety and modesty (7)
- 3. Relating to horoscopes (12)
- 4. Hold a position or job (6)
- 6. Small woody plant (5)
- 7. Be heavier than (8)
- 8. First part of the Bible (3,9)
- 12. Corridors (8)
- 15. Have as a part (7)
- 16. Heed (6)



- 18. Third Greek letter (5)
- 19. Volcano in Sicily (4)

DID YOU KNOW?

- ▶ Reindeer hooves are specifically adapted for their environment. The cloven shape spreads their weight more evenly, helping them to walk across snow and soft ground, while their sharp edges provide traction in icy conditions.
- ▶ Some types of reindeer do actually have red noses as a result of densely packed blood vessels, which help to regulate their body temperature.
- ▶ In spring, reindeer sometimes form super-herds of 50,000 to 500,000.
- ▶ Reindeer fur is hollow, helping to trap air and providing insulation to stay warm. This also makes them excellent swimmers.
- ▶ Reindeer migrate an average of 12 to 34 miles per day, travelling as much as 3,100 miles each year in their search for food.

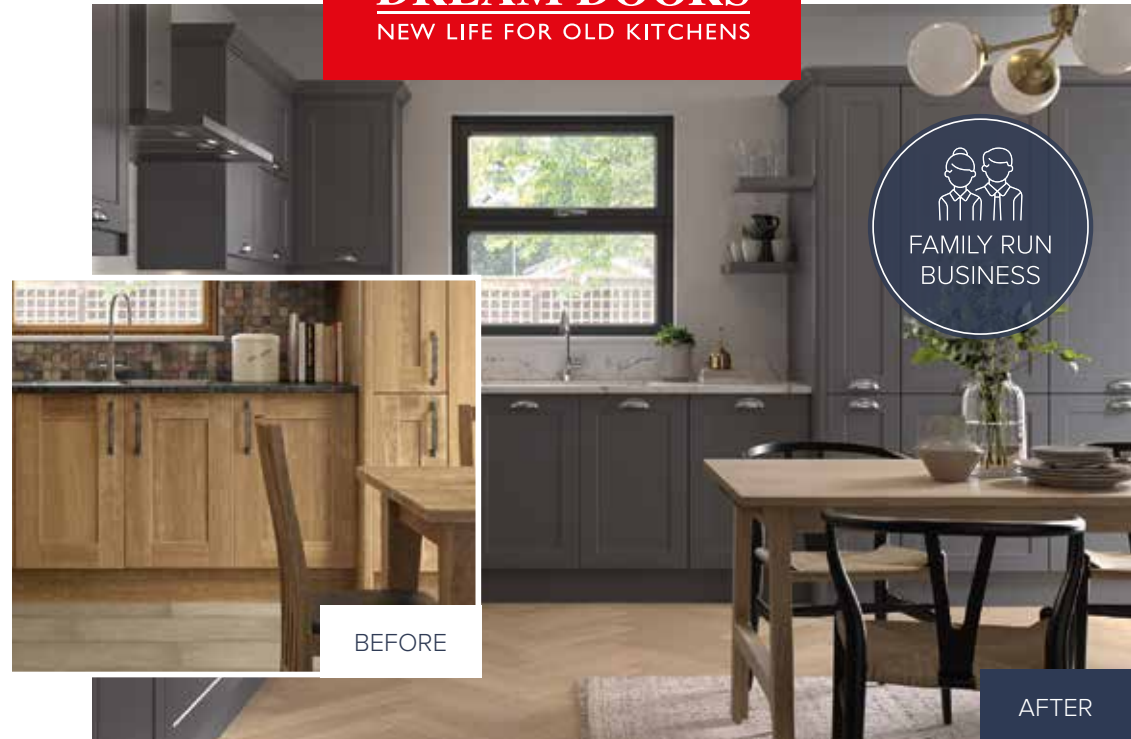
SUDOKU

	3			9				7
1		9	2					4
					6		8	
						4		
9	6		1			2		5
		1						
	7		6					
6					4	8		1
4				5			7	

QUALITY KITCHEN MAKEOVERS

by simply replacing the doors and worktops

DREAM DOORS®
NEW LIFE FOR OLD KITCHENS



- MODERN
- CLASSIC
- TRADITIONAL
- CONTEMPORARY

- ▶ Up to 50% less than a new fully fitted kitchen
- ▶ Replacement kitchen doors
- ▶ Cost effective made to measure solution
- ▶ Worktops and appliances
- ▶ Quick installation in 2-3 days by local professionals

2A Victoria Court,
New Street,
Chelmsford, CM1 1GP
Call us now for a free estimate:
01245 358 990
Email: chelmsford@dreamdoors.co.uk

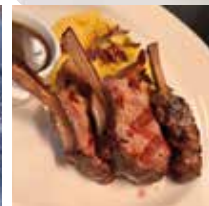
Checkatrade.com 9.8/10
Where reputation matters

dreamdoors.co.uk

THE UK'S #1 KITCHEN MAKEOVER COMPANY

Bella's

The only Italian à la carte in
Burnham and The Dengie



SET MENU FOR LUNCH & DINNER | À LA CARTE | SPECIALS EVERY DAY

Open Wednesday to Saturday (lunch from 12pm & dinner from 6pm) | Sunday 12 to 6pm

BELLA'S LUNCH SET MENU *(available Wednesday to Sunday lunch time)*

To Start (Primi Piatti)

Zuppa del Giorno - Homemade soup of the day served with bread

Funghi Trifolati (VG) - Mixed mushrooms fried with a touch of garlic olive oil on Focaccia bread

Bruschetta al Pomodoro (VG) - Italian bread served with mixed chopped tomato, basil & garlic in olive oil

Melanzane alla Parmigiana (VG) - Sliced aubergine baked with parmesan, mozzarella & tomato

Pate della Casa - Duck and pork pate with orange served with toast, salad and red onion chutney

Any pasta dish can be served as a starter or main course

For Mains (Secondi Piatti)

Salmone alla Sorentina - Pan fried wild salmon fillet in white wine, garlic, cherry tomato & herbs, potatoes & vegetables

Pollo ai Funghi - Breast of free-range chicken cooked in a mushroom and cream sauce served with potatoes and vegetables

Fettucine Bolognese - Thick pasta ribbons served with freshly made beef bolognese sauce

Spaghetti alla Carbonara - Egg pasta in a rich creamy sauce, cheese & smoked pancetta

Penne alla Siciliana (VG) - Pasta cooked with aubergine, mozzarella, parmesan & tomato sauce

To Finish (Dolce)

Panna Cotta - Homemade panna cotta of the day

Torta Limone & Gelato di Vaniglia - Sweet shortcrust pastry filled with lemon egg custard, icing sugar

Tiramisu - Homemade Italian Tiramisu

Trio of Dairy Italian Ice creams

White Chocolate & Baileys cheesecake

£26.95 two courses | £30.95 three courses

£19.95 two courses | £23.95 three courses (for children under 10 years old)

Set Prices are inclusive of VAT | Service at customer's discretion | Please note that the menus do not list all ingredients.
If you have any specific dietary requirements or intolerances, please ask a senior member of staff who will be happy to assist you.
The prices & menu are subject to change

Open Christmas Day

80 Burnham High Street, Burnham on Crouch CM0 8AA

01621 782686 | bellas.bistro@yahoo.co.uk | [instagram bellas_restaurant_burnham](https://www.instagram.com/bellas_restaurant_burnham)

Partner of The Vita Bella in East Hanningfield

