

HOW TO
ENJOY
RHUBARB
SEASON

THE BEST SECOND CITIES
to visit across Europe

SWEET AS...
discover the health benefits of honey

FREE

Photo credit: Matt Baron/BE/Shutterstock

LEWIS CAPALDI

On overcoming life's challenges on the road to fame



Southend-on-Sea

The Lounge Radio DAB

playing the finest in Jazz, Soul and Soulful House in Essex.

Book Now

Call or Visit our website for all booking details including different packages for dining, seating and more.

 www.theloungedab.co.uk

 The Lounge Dab

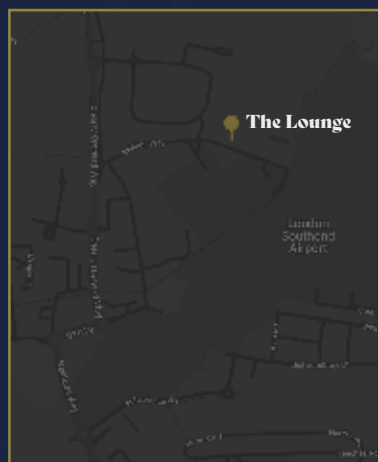
Contact Us



The Lounge Club, 18-19 Aviation Way, Southend-on-Sea, SS2 6UN

 01702 411 983

 www.theloungeclubsos.co.uk

 info@theloungeclubsos.co.uk



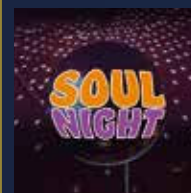
 @Theloungesos
 @TheLoungeClubVenue



 www.theloungejazzbar.co.uk
 info@theloungeclubsos.co.uk
 01702 411 983

The Lounge Club

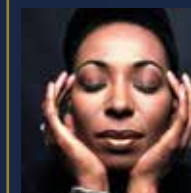
S O U T H E N D - O N - S E A



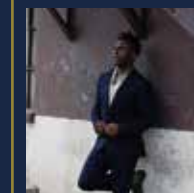
5th May
Soul Party Night



6th May
Vivid



7th May
Carroll Thompson



12th May
Omar



13th May
Party Night



19th May
80s & 90s Party



20th May
Acid Lounge



26th May
Soul Party Night

18-19 Aviation Way, SS2 6UN, Southend-on-Sea



Editor's notes...

MAY 2023



Nik Allen, Editor

Hello and welcome to this month's edition of **VISION** Rayleigh Wickford.

This month, we witnessed a unique event in most of our lives: the royal ceremony in which a monarch is crowned.

The coronation of King Charles III, which took place on Saturday, May 6, was a momentous occasion that was celebrated with great pride and enthusiasm by all of us. It marked the first coronation since that of the late Queen in 1953, which was the first time the royal occasion had been televised. Millions of people tuned in to watch the ceremony, and the same was true this year. It was a time to come together as a nation and rejoice in the rich culture and history that make our country unique.

I had a significant event in my life take place at the end of April. I was lucky enough to be invited to 10 Downing Street to a Local Media Champions Reception with the Secretary of State for Culture, Media and Sport, RT Hon Lucy Frazer KC MP.

I felt honoured to attend and connect with other local media peers throughout the UK. With regional editors across the country invited to the event, it was good to see how far our publications have come to be in such esteemed company.

Nik Allen

This is your town's hyperlocal magazine, delivering to homes and businesses every month.

HOME & DIY | GARDENING | PETS | HEALTH & FITNESS | BEAUTY | FASHION | HISTORY | LOCAL NEWS | FOOD & DRINK | TRAVEL | BUSINESS & PROPERTY | SPORT | PUZZLES | MOTORING | KIDS | WHAT'S ON | TECHNOLOGY | THE LISTINGS

CONTACT US: www.visionmagessex.com | rayleigh@visionmag.co.uk | 01268 955027

[@visionmagessex](https://twitter.com/visionmagessex) [@visionmagessex](https://www.instagram.com/visionmagessex) [Vision Magazine Essex](https://www.facebook.com/VisionMagazineEssex)

CONTRIBUTORS | Tabatha Fabray, Fiona Goble, Darius Morgan

At the time of print all content in **VISION** was relevant and up to date according to COVID-19 government guidelines All pages are recyclable



The best home to be in is your own

Tailor made care to your individual requirements

South Woodham Ferrers

Office Unit 16c, Tabrums Farm, Battlebridge, SS11 7QX Tel: 01245 979579 | www.homeinstead.co.uk/south-woodham-ferrers

Each Home Instead Senior Care® franchise office is independently owned & operated.

Copyright © Home Instead 2023. *Smith & Henderson 2020 PEAQ survey



DON'T LET BACK PAIN HOLD YOU BACK.

Restore Your Body's Natural Alignment with Chiropractic Treatment. **Book your consultation today!**



Consultation & X-Rays* Plus Your 1st Treatment

£48

We can help treat: Back Pain • Headaches • Sciatica • Neck Pain • Arthritis • Hip Pain • Fibromyalgia • Knee Pain • Shoulder Pain

HOW TO BOOK YOUR CONSULTATION

To book online simply scan this code or call one of our clinics direct:

Rayleigh - 01268 774 008 Wickford - 01268 66 99 85

Basildon - 01268 556 008 Southend - 01702 616 880



SCAN TO BOOK



CHIROPRACTIC
CLINICS

LIFE CHIROPRACTIC CLINICS

Basildon • Wickford • Rayleigh • Southend

www.lifechiropractic.co.uk

*X-Rays taken if medically required.

FROM LILY SAVAGE

The death of Paul O'Grady MBE at the end of March brought a premature end to the life of one of our most respected modern-day entertainers – someone whose own reinvention helped the gradual process of changing attitudes in British society.

Growing up on the sometimes rough, often competitive back streets of Liverpool in the Swinging Sixties required more than a little spark and swagger, so it's probably little surprise that one of its finest exports, Paul O'Grady, created a career built on the foundation of his larger-than-life personality.

"As the saying goes, if you can't beat them, join them – and if you can't join them, become a drag act," laughed Paul O'Grady in one of this final interviews.

He departed from us at 67, seemingly with another decade or two of wit, charm and pzazz still ready to be unleashed, and the tributes have been extensive and heartfelt.

O'Grady had a number of jobs growing up, including working as a clerk, a waiter and a barman. It was only when he moved to London that he managed to create a career out of his passion for entertainment and performance.

The star's main outlet was the dynamic and daring Lily Savage, a drag queen act who became hugely popular on the underground scene, and eventually gained mainstream appeal when Channel 4 took up the option to give him a stint on *The Big Breakfast* after Paula Yates' resignation. The likes of *The Lily Savage Show*, *Blankety Blank* (which the character fronted for five years) and *Lily Live!* followed, showcasing the full mainstream evolution of a character. It was a long way from O'Grady's first TV appearance on *The Bill* back in 1988 as a transvestite prostitute informant named Roxanne (credited to Paul Savage).

While Lily Savage was eventually retired, the legacy of such a dynamic figure lived on. The character had opened doors for a brand of leftfield entertainment, and helped carve a path for LGBTQ+ rights and promotion across mainstream entertainment.

"I had been in that world since the seventies when I began performing in pubs and clubs around London, so it was all very natural for me, and had been for decades," he said.

"That I lived in a country that embraced me and loved me for who I was, I found wonderful, and it compelled me to go on to do other things."

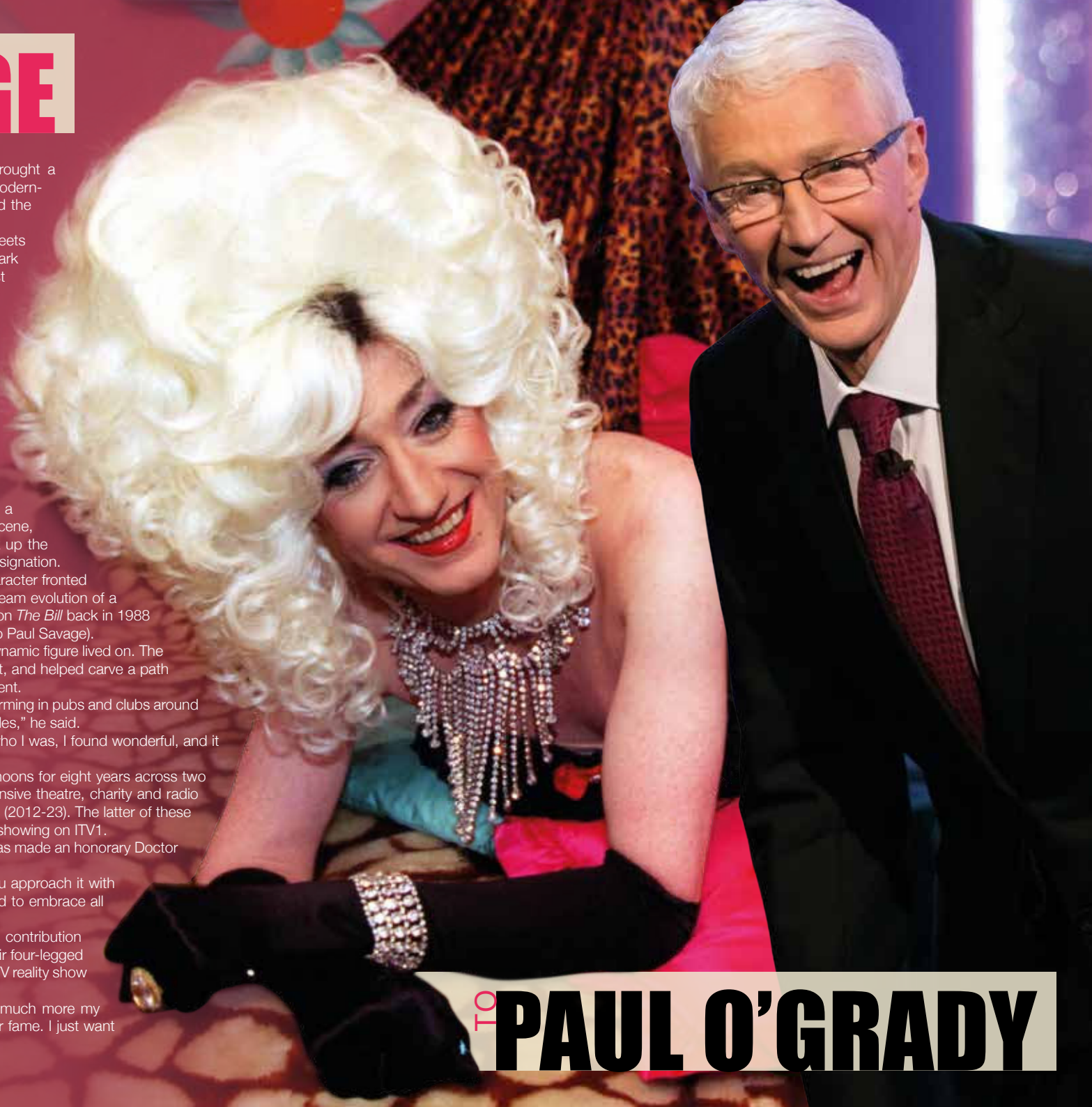
The successful *The Paul O'Grady Show* ran on weekday afternoons for eight years across two spells, and the entertainer also saw huge popularity across extensive theatre, charity and radio work, as well as the likes of *Blind Date* and *For the Love of Dogs* (2012-23). The latter of these popular TV programmes was filmed in late 2022 and is currently showing on ITV1.

In recognition of his contributions to TV, radio and theatre, he was made an honorary Doctor of Arts at De Montfort University Leicester in 2010.

"I always found you can talk about absolutely any subject if you approach it with interest, respect, humility and humour. That's the way I have tried to embrace all the challenges that have come my way," he said.

His funeral, which was held on April 20, featured a significant contribution from Battersea Dogs & Cats Home, who lined the streets with their four-legged residents in honour of the decade O'Grady spent presenting the ITV reality show at Battersea.

"I've always got on better with animals," he joked. "They are much more my type. As I've said before, I am not bothered about sex, money or fame. I just want a mongoose."



TO PAUL O'GRADY

A GUIDE TO THE MOON

Have you ever wondered why the moon appears to change shape each night? These are known as the moon's phases, and it isn't actually the shape of the moon that changes but our view of it.

Find out more about the different phases and names of the moon below.

WHAT ARE THE PHASES OF THE MOON?

- 1. New moon:** You cannot see the moon when it is a new moon.
- 2. Waxing crescent moon:** In the Northern Hemisphere, you see the waxing crescent moon as a thin crescent of light on the right.
- 3. First quarter moon:** The first quarter moon
- 4. Waxing gibbous moon:** This phase is between a half moon and full moon. Waxing means it is getting bigger.
- 5. Full moon:** You can see the moon completely illuminated during full moons.
- 6. Waning gibbous moon:** This phase is between a half moon and full moon. Waning means it is getting smaller.
- 7. Last quarter moon:** This appears as a half moon but with the opposite half illuminated to the first quarter moon.
- 8. Waning crescent moon:** In the Northern Hemisphere, you see the waning crescent moon as a thin crescent of light on the left.



FULL MOON NAMES

Each monthly full moon has a special name, many of which originated from Native American culture:

January: Wolf Moon
February: Snow Moon
March: Worm Moon
April: Pink Moon
May: Flower Moon
June: Strawberry Moon
July: Buck Moon
August: Sturgeon Moon
September: Full Corn Moon
October: Hunter's Moon
November: Beaver Moon
December: Cold Moon

WHAT IS A BLUE MOON?

A blue moon is an additional full moon that appears every once in a while. Typically, a year contains 12 full moons – three in each season – but sometimes a 13th full moon appears, known as a blue moon. Blue moons usually occur once every two to three years but can occur twice in one year. This is next due to happen in 2037.

WHAT IS A HARVEST MOON?

The harvest moon is the full, bright moon that occurs closest to the start of autumn. The term comes from the days before electricity when farmers relied on the moonlight to harvest their crops at night.



COOK'S COACHES TRAVEL IN LUXURY

Cooks Coaches offer good value for money short breaks and holidays, a comprehensive day excursion programme, and private and contract coach hire.

We are a family business having been operating in the Southend-on-Sea area of Essex (40 miles east of London) for over 100 years during which time we have built up a reputation for reliability, honesty and courtesy.

If you are arranging a group outing or theatre trip we can help by looking after the transport,

and if you like we will advise, plan and make the arrangements for you.

We can also help if you are organising a wedding, if you want to hire a coach to get all your guests to the reception, we will be pleased to quote for coach hire, driver included, for any private function.

We have a fleet of modern, well equipped luxury coaches with experienced drivers dedicated to making your day trips and holiday tours with Cooks the best and most enjoyable.

COOK'S COACHES

Booking line 01702 344702 or 349215



Visit CooksCoaches.co.uk for all excursions & holidays. Please ring for a free brochure

HOLIDAYS 2023

5 th June Somerset - 5 days	£550.00
26 th June Babbacombe - 5 days	£490.00
26 th June Tenby - 7 - 5 days	£515.00
3 rd July Bournemouth - 5 days	£455.00
17 th July Yorkshire - 5 days	£495.00
17 th July Torquay - 5 days	£450.00
24 th July Eastbourne - 5 days	£495.00
24 th July Weston Super Mare - 5 days	£415.00
31 st July Whitby - 5 days	£520.00
7 th Aug Norfolk - 5 days	£595.00
7 th Aug Argyll & Bute - 5 days	£560.00
14 th Aug Northumbria - 5 days	£580.00
19 th Aug Llandudno - 5 days	£475.00
28 th Aug Lancashire - 5 days	£560.00
1 st Sept Blackpool - 4 days	£395.00

3 rd Sept Beaulieu & Compton Acres - 2 days	£180.00
4 th Sept Bideford - 5 days	£460.00
4 th Sept Summer Gardens of the Cotswolds - 5 days	£545.00
11 th Sept St Ives - 5 days	£500.00
9 th Oct Bournemouth - 5 days	£390.00
20 th Oct West End Weekend - 2 days	£175.00
30 th Oct Newquay - 5 days	£465.00
6 th Nov Eastbourne - 5 days	£465.00
18 th Dec Potters Resort, Hopton - 5 days	£550.00

FUTURE DAY TRIPS

25 th June Duxford Air Show	£65.00
29 th June London Postal Museum	£54.00
6 th - 9 th July Hampton Court Flower Show	£50.00

13 th July Kent Lavender	£32.00
23 rd July Diamond League Athletics	£53.00
26 th July Sandringham Flower Show	£44.00
3 rd Aug Hyde Hall Flower Show	£28.00
15 th Aug BBC Earth Experience	£52.00
17 th Aug Buckingham Palace	£60.00
11 th Aug Newmarket Races with McFly in concert	£65.00
18 th Aug Newmarket Races with Olly Murs in concert	£60.00
23 rd Aug Epping & Ongar Railway	£47.00
14 th Sept Romford Dogs	£34.00
15 th Sept Behind the Scenes of Strictly Costumes	£53.00

PLUS MANY MANY MORE

Please contact us for a brochure

Tel: 01702 344702

www.cookscoaches.co.uk

Many more excursions to come. Please visit our website. New trips added daily. Correct at time of printing.

96%*

OF CLIENTS*
RECOMMEND

The best home to
be in is **your own**



Tailor made to your individual requirements

- ✓ Award winning care
- ✓ Companionship services
- ✓ Home help services
- ✓ Personal care services
- ✓ Live-in care
- ✓ Highly trained CAREGivers

South Woodham Ferrers, Office Unit 16c, Tabrums Farm,
Battlebridge, Essex SS11 7QX | Tel: 01245 979579
www.homeinstead.co.uk/south-woodham-ferrers

Each Home Instead Senior Care® franchise office is independently owned and operated.
Copyright © Home Instead 2023. *Smith & Henderson 2020 PEAQ survey



ADD A

fiddle-leaf fig

PLANT TO YOUR HOME

If you are looking for a new indoor plant for your home, then a fiddle-leaf fig is a great choice. With large, glossy leaves and an impressive trunk, this statuesque tree can act as the focal point in any room.

WHAT ARE THE DIFFERENT TYPES OF FIDDLE-LEAF FIGS?

The most common type of fiddle-leaf fig plant is the *Ficus lyrata*, which grows to around 10 feet tall when kept inside.

Other varieties include:

- > ***Ficus lyrata bambino*** – a dwarf variety that grows to only a few feet tall
- > ***Ficus lyrata compacta*** – features smaller leaves and grows to around five feet tall
- > ***Ficus lyrata variegata*** – an uncommon variety with a mix of green and cream leaves

HOW TO CARE FOR A FIDDLE-LEAF FIG

A fiddle-leaf fig needs bright, filtered light to grow, as direct sunlight can burn its leaves. Any quality indoor plant potting mix is fine as long as the soil drains well. This plant needs a moderate amount of moisture to thrive; too much can cause root rot and too little can cause the leaves to wilt. During the growing season (spring to autumn), water when the top inch of the soil feels dry, and then slightly less over winter. Also add a fertiliser specially made for this plant during growing season and remember to regularly clean its leaves.

HOW TO PRUNE A FIDDLE-LEAF FIG

To keep your fiddle-leaf fig in optimal condition, cut back any damaged leaves, overgrowth or crossing branches. Make the cuts about an inch away from the trunk to avoid damage.

WHERE TO BUY A FIDDLE-LEAF FIG

You can buy fiddle-leaf fig trees either online or at some garden centres.





**SPRING
OFFER**
SAVE UP TO
15%*

*T&Cs apply

Maximise your natural light with a beautiful skylight

- ✓ Free survey for flat roof and room design
- ✓ Wide range of lanterns and skylights available
- ✓ All our skylights are compliant with Building Regulation
- ✓ A complete extension or conservatory thermally efficient transformation
- ✓ All waterproofing products will have our **LIFETIME** guarantee as standard



Roof lanterns look great inside and out

Brochure and free sample available on request



**For FREE advice and pricing please call
01268 859602 or visit www.flatroofs.net**

*T&C's apply. Please see our website for details. Head Office: Linden House, 30 Linden Road, Benfleet, Essex SS7 4BA

Advertisement Feature

Do you struggle to make the most of your conservatory all year round?

Too warm in summer and too cold in the winter. Does this sound familiar?

As the British weather becomes increasingly hotter a popular and cost-effective solution is to upgrade to a High-Tech thermally efficient Advance Conservatory Roof System. This creates a more contemporary, orangery style appearance whilst adding value at the same time.



High-Tech offer:

- ✓ **FREE** site survey and quotation
- ✓ **FREE** Room design and roof design
- ✓ **Ideal for extensions, garages, kitchens or conservatories**
- ✓ **Extensive choice of lantern styles**
- ✓ **Aluminium, timber or UPVC frame options and colours**
- ✓ **Clear or lightly coloured Pilkington glass as standard**
- ✓ **Dual action self-cleaning tempered glass**

At High-Tech, we assure you of a professional service using premier quality products with all materials meeting current Building Regulations. We will remove your existing roof and undertake any required structural works including reinforcing all joists to support the glass lanterns or flat roof.

A new UPVC roof line, thermal insulation and guttering are then fitted and made watertight with our lifetime guaranteed flat roof system. Once the glass lantern is installed we turn our attention to the interior finish including new electrics and lighting, finishing with plastered walls ready to be painted.

High-Tech have installed nearly 11,000 roofing projects. Every roof installed comes with a **LIFETIME** guarantee. Let us, a company built on trust transform your extension or conservatory.



The Problem



The Solution

**Contact our friendly team today or pop into our showroom at
850 London Road, Leigh-on-Sea,
Essex, SS9 3NQ**

**Scan the QR
code to book
your FREE
site survey**



See the quality of our products first-hand and buy with confidence.



Your guide to SPONGES

A GUIDE TO CHOOSING THE RIGHT SPONGES AND HOW TO KEEP THEM CLEAN

While you may not have given much thought to sponges, if you hate doing the dishes or cleaning kitchen worktops, the right sponge can help to make tiresome tasks a breeze.

WHAT ARE THE MOST COMMON TYPES OF SPONGE?

NON-SCRATCH SPONGES

Sponges that are labelled as non-scratch are safe to use on non-stick pots and pans, as well as real wood surfaces. They also will not scratch the surfaces of ceramic bakeware. Non-scratch sponges are a good choice for cleaning glassware as they effectively remove dirt without causing any damage.

HEAVY-DUTY SPONGES

As the name suggests, heavy-duty sponges are highly abrasive so should be used to remove tough, stuck-on dirt and debris from kitchen items such as stainless steel pans. Heavy-duty sponges are not suitable for non-stick cookware, as they are likely to scratch their Teflon coating, nor for ceramic cookware or copper pans.

CELLULOSE SPONGES

Cellulose sponges are made from recycled plant fibres, making them a good option for those who want to reduce their carbon footprint and become more sustainable. The main benefits of cellulose sponges are that they are low-cost and very absorbent. However, they are also prone to collecting bits of food over time, so you need to make sure that you

sanitise your sponge weekly and throw it away when it shows signs of wear. Ideal for cleaning kitchens, windows, countertops and bathrooms.

HOW DO I CLEAN REUSABLE SPONGES?

The best way to kill bacteria harbouring in reusable sponges is to clean them in your microwave or dishwasher. If you choose the former, wet the sponge thoroughly and heat on high for one minute. Alternatively, place on the top rack of your dishwasher with the drying cycle on. Do this once a week for best results.



Traditional fitted bedrooms

Designer Bedrooms

7, Robert Way
Wickford, SS11 8DD

01268 571799

sales@designerbedrooms.co.uk

(See website or call us for opening hours)

Fully installed
by our own
professional
fitters.

Whether your taste is traditional or contemporary, with either hinged or sliding doors, we have just the bedroom for you...
...all made to measure in our own factory and installed by our own professional fitters.

Need some inspiration?... then take a look at the many photos of completed work on our website at:

www.designerbedrooms.co.uk

Need a professional design...? then call us to arrange for a free no obligation home visit.

Want a quick quote...? then pop in to see us with your plans or room dimensions.



sliding doors

We are a local, family owned business and have been creating & installing bespoke furniture since 1992...

We have a large showroom at our factory in Wickford with easy parking.

No Salesmen - No Gimmicks Guaranteed...



Odd shaped rooms
are our speciality!



Home Office/Studies



GREAT BRITISH INTERIOR DESIGNER:

HELEN GREEN

DESIGN STUDIO

Who doesn't appreciate a taste of luxury, especially when it comes to home design? One of the most famous names in British luxury interiors is Helen Green Design. Originally founded by the late Helen Green in 2002, the design house describes

itself as "a comprehensive luxury interior design studio synonymous with the creation of beautifully crafted, multi-layered, elegant interiors". And we agree.

Learn more about what makes Helen Green Design one of the best in the business and how you can recreate the look at home.

From stand-out homes in Belgravia to yachts that travel the world, Helen Green Design is behind a wide variety of exquisite home interiors.

Blending both modern and traditional elements, you can expect neutral shades paired with luxury textures to create wonderful designs that are always sure to impress.

How to get the look at home

While Helen Green Design is a design house that oozes sophistication and luxury, it is possible to get the Helen Green look at home. Here are some easy tips to help you make high-end more affordable:

1 Work with the details of your home. From panelling to intricate ceiling patterns, you can keep some of the original features of your home to contrast the modern touches you bring into it.

2 Keep spaces clean and clutter-free to let your statement furniture do the talking. Less is more to create an elegant look.

3 Use textures to add detail. From textured wall art to textured flooring and walls, you can easily add some features to make your interior look and feel more expensive.

Helen Green Design provides the perfect inspiration for any home looking for a high-class upgrade. However, you don't need a luxury budget in order to achieve this look in your own home.



Photo credit: helengreendesign.com



DISCOVER YOUR ZODIAC COLOUR PALETTE

Did you know that each zodiac sign has its own bespoke colour palette? Based around the concept of colour psychology, here are the best colours for you and your home, plus why you are drawn to them in the first place.

- > **AQUARIUS:** Elevated primary colours... Not one to stick to the rules, you're drawn to colours that stand out. Choose primary colours with a twist, such as turquoise or deep red.
- > **PISCES:** Soft and dreamy colours... A true romantic, opt for soft hues such as seafoam green and lavender that promise to make you feel open and carefree.
- > **ARIES:** Big and bold colours... Energetic and passionate, you are linked to powerful colours that draw the eye, such as red and deep oranges.
- > **TAURUS:** Playful and bright colours... Light shades of pink and pastel green are perfect for your playful nature.
- > **GEMINI:** Contrasting colours... Geminis are associated with the colour yellow owing to their sunny disposition. Add in some neutral shades for enhanced balance.
- > **CANCER:** Gentle and cool colours... You gravitate towards cooler and lighter tones such as light blue and silver.
- > **LEO:** Striking and statement colours... You command attention, so bold and warm colours such as orange, yellow and gold are ideal for you.
- > **VIRGO:** Grounded and earthy colours... No flashy colours or concepts for Virgos. Instead, you are drawn to earthy tones such as forest green and dark brown.
- > **LIBRA:** Warm and welcoming colours... You have energy that likes to promote harmony, so lavender and pink are both great colours for you.
- > **SCORPIO:** Dark and moody colours... As a sensual and mysterious being, you are inspired by maroon and crimson tones.
- > **OPHIUCHUS:** Deep and mysterious colours... Located between Scorpio and Sagittarius, you are both passionate and unpredictable. Purple should be your go-to colour.
- > **SAGITTARIUS:** Inspiring and intelligent colours... You want a space that makes you feel free, so greens and blues are the colours that draw you in.
- > **CAPRICORN:** Simple and minimalistic colours... Neutral colours such as white, grey, black and ivory are the perfect match for your calm demeanour.





MOLLY MAID Benfleet Keeping your home Healthy

The **HomeSafe** cleaning system puts the health and safety of you, your family and our team of maids at the core of how we work.

In all our cleans we use our specialist disinfectant and anti-microbial **Xtra Protect** cleaner which passed independent laboratory tests proving it's effective against all enveloped viruses including all coronaviruses.



Call us today to learn more about **HomeSafe** and why you can trust MOLLY MAID in your home.

Please call: **01268 442023**

or email: margaret.king@mollymaid.co.uk



See what our customers have to say at [uk.trustpilot.com](https://www.trustpilot.com)



★ Trustpilot



Ashingdon Landscapes

HOCKLEY BASED

**ALL TYPES OF
LANDSCAPING
& GARDEN
MAINTENANCE
UNDERTAKEN**

• Tree Work • Patios • Turfing
• Driveway & Patio Cleaning

**Ask about our Lawn Mowing Service
from £20**

No Job Too Big or Too Small

**FREE ESTIMATES & ADVICE
01702 206 378
07415 911 060**

Making your home or office comfortable all year round

**Air conditioning &
Heat Pump Installation
Service and Repairs**



PK
Refrigeration

Air Conditioning Specialist

*Air conditioning cools in the Summer,
Warms in the Winter*

Established 1988 • Fully Guaranteed • Free Survey & Quotation

Call PK Refrigeration Ltd on 01268 774 623
sales@pkrefrigeration.co.uk
www.pkairconditioning.co.uk

Checkatrade.com
Where reputation matters



FROM YOUR AREA



LOCAL NEWS

Cancer survivor to take on epic fundraising hike



A Wickford man is taking on an epic fundraising challenge just nine months after undergoing life-saving surgery.

Bill Wilson (pictured inset) will attempt to scale Ben Nevis, Scafell Pike and Snowdon in just 24 hours for the infamous Three Peaks Challenge on Saturday, June 10.

This comes nine months after Bill underwent laryngectomy surgery to treat throat cancer. This was the day when he decided he would prove to his young children that "no matter what life gives you to endure and navigate, with a positive attitude nothing can stop you from being the best you can be".

Bill is raising money for Macmillan Cancer Support and South Essex Laryngectomy Club.

He said: "These associations deserve all the credit and support they receive. They have been instrumental in my recovery and for those in similar situations."

At the time of writing, Bill has raised more than £4,400 of his £5,000 target.

To support the fundraiser, visit bit.ly/3oH6x80

boy have been charged with grievous bodily harm (GBH) with intent and possession of a knife or sharp pointed article in a public place.

A 17-year-old boy has been charged with GBH with intent.

They appeared at Chelmsford Magistrates' Court on April 8 and have been remanded in custody. They were due to appear at Basildon Crown Court on May 6 as **VISION** Rayleigh Wickford went to print.

School rated as Requires Improvement in inspection

A school in Rayleigh has lost its previous Outstanding rating following a recent Ofsted inspection.

The last time The Swayne Park School was inspected was in 2010 before its conversion into an academy. Thirteen years later, the school has slipped from Outstanding to Requires Improvement.

An Ofsted inspector found that behaviour at breaktimes is sometimes not as calm as it ought to be, and a minority of pupils behave poorly.

The report, published on April 27, said: "In some year groups, pupils do not attend as often as they should, and too many pupils are persistently absent."

Despite behavioural issues, the report does state that leaders and teachers have worked to improve the curriculum and the quality of teaching.

The report stated: "Teachers know their subjects well and use this knowledge to make what they teach interesting."

The Swayne Park School has been contacted for comment.



Teenager charged following serious assault

A teenager from Rayleigh has been charged following a serious assault in Southend.

A man was found with a serious injury in Chichester Road at around 4.15pm on Wednesday, April 5.

Three people were subsequently arrested.

Oliver Stepney, 18, of High Road, and a 15-year-old



MARK FRANCOIS MP

Conservative MP Rayleigh and Wickford



The expansion of London's Ultra Low Emission Zone (ULEZ) across London, to its outer boroughs, is becoming one of the liveliest political debates of the moment. Many constituents have raised concerns surrounding the expansion and the financial impact on those who commute and travel into London by car or van, alongside its detrimental effect on businesses and tradesmen.

Under current proposals, Mayor of London Sadiq Khan wants ULEZ to be expanded to cover all 32 London boroughs by the end of August 2023. After that, drivers in outer London whose vehicles do not meet specified emissions standards will have to pay £12.50 for every day they use their car within the London boundary. Nearly 700,000 cars will face daily ULEZ charges when the scheme is expanded, according to RAC data.

Many of those who are opposed to the policy see it for what it really is: a cash grab to help fill the black hole of Transport for London (TfL) finances.

TfL is virtually broke. Indeed, it would be effectively bankrupt had it not been for several years of subsidies

by central government. That's not to mention Mayor Khan's infamous promise of "zero days of strikes"; we have seen more than 130 strike days on his watch, triple the number under Boris Johnson.

A 'one-size-fits-all solution' like the ULEZ expansion is a sledgehammer that will hurt working people and businesses. Mayor Khan does not seem to understand who will pick up the bill for his policies. It is not wealthy Londoners; it is ordinary working people who are less likely to be able to upgrade their car and more likely to own an older vehicle. The same applies to the many people who live in Essex, too.

Interestingly, even some London Labour MPs are growing uneasy about these proposals, although most Labour and Lib Dem politicians still support them.

The truth is that it is unlikely Mayor Khan will pause his ULEZ plan, and, unless it is stopped by the courts, it will go ahead in August. However, rest assured that I, alongside many of my fellow Conservative MPs and councillors, will continue to fight against these expansion proposals and Sadiq Khan's remorseless crusade against motorists.

WWW.MARKFRANCOIS.COM

YOUR AWARD WINNING WICKFORD & RAYLEIGH ESTATE AGENT



We've won 3 awards at the UK's biggest agency event making EweMove The Best National Estate Agent.

This is a huge achievement for us, as the Estate Agent Masters assesses over 15,000 agents nationwide.



We were judged on our property marketing, customer service and results during a data analysis project and a mystery shopping exercise. EweMove proudly excelled in all areas.

Iain McCoo
Branch Director



Book your **FREE** valuation appointment. Select a date and time online at:
Ewemove.com/WickfordRayleigh
 or call (24/7): **01268 437525**

Scan Me



EweMove respects any existing sole agency agreement already in place with another agent.

YOUR LOCAL EVENTS

SHEER LUCK HOLMES

The Mill Arts & Events Centre, Bellingham Lane, Rayleigh, SS6 7ED
Thursday, May 18, 7.30pm; Friday, May 19, 7.30pm; and Saturday, May 20, 1pm and 6.30pm



After an absence of three and a half years, Rayleigh Operatic and Dramatic Society is returning to the stage for a family-friendly production originally scheduled for May 2020 and postponed by both COVID-19 and the closure of the Mill Arts & Events Centre.

This feel-good pantomime parodies Sherlock Holmes and stars the great detective, his housekeeper and a panto dog called Baskerville.

Tickets can be purchased from www.ticketsource.co.uk/whats-on/rayleigh/the-mill-arts-events-centre/sheer-luck-holmes/e-myjmdr

SPECIAL CHARACTER BREAKFAST

Meadow Croft Garden Centre, Woodham Road, Wickford, SS11 7QU
Tuesday May 30, 9am – 10am

Disney characters will be at the Meadow Croft Garden Centre during half term. Each child will get breakfast and a drink, and the characters will walk around to meet and greet each table.

Tickets are available from www.ticketsource.co.uk/whats-on/wickford/meadow-croft-garden-centre/special-character-breakfast/e-ppbove

REAL ALE AND CIDER FESTIVAL

South Benfleet Social Club Ltd, 8 Vicarage Hill, South Benfleet, Benfleet, SS7 1PB
Thursday, June 1, 5pm – 11pm; Friday, June 2, and Saturday, June 3, 12pm – 12am; Sunday, June 4, 12pm – 11pm
More than 20 ales and ciders will be available to try at

the festival, plus live entertainment Medicine will be performing on June 3. A variety of hot and cold food will be available all day. Members and non-members are welcome and disabled access is available. Seating and outside drinking are also available.

BRING THE HOUSE DOWN FIESTAVAL

The Chichester Hotel, Old London Road, Wickford, SS11 8UE
Saturday, June 3, 1pm – 1am

The Chichester Hotel and its grounds are being turned into a carnival of colour with a festival atmosphere for 12 hours of the best house music on the planet.

To find out more information and to buy tickets, visit bit.ly/41GL9hr

RAYLEIGH TRINITY FAIR

High Street, Rayleigh, SS6 7EB
Sunday, June 11, 11am – 4pm

Following the tremendous success of the previous four years, Rayleigh Trinity Fair returns again in 2023. This event is run in association with Rayleigh Town Council.

The High Street will be closed to traffic and will be filled with stalls, live music on stage, dancing and other entertainment. This is a free event for the whole community to come and enjoy.

At the site of Rayleigh Windmill, there will also be a vintage fair and classic car show, bar and refreshments, retro DJ and dancing. Rayleigh Windmill will be open from 10.30am until 4.30pm and the staff and volunteers will be dressed in period costume.



Photo credit: The Mill Arts & Events Centre

GLOW WORM - BAXI - VAILLANT - POTTERTON - WORCESTER - IDEAL - BIASA - FEROLLI - MAIN

- BAXI - VAILLANT - POTTERTON - WORCESTER - IDEAL - BIASA - FEROLLI - MAIN - GLOW WORM - BAXI - VAILLANT -

JOHN HUNTER HEATING

FULL BATHROOM INSTALLATIONS

Complete bathroom suites including tiling. Bathroom to shower room conversions.

PLUMBING HEATING & GAS ENGINEERS

All central heating carried out including boilers serviced, repaired and replaced.

CALL NOW ON
01702 528 487
07850 010 990

DISCOUNTS FOR SENIOR CITIZENS AND LOCAL RESIDENTS

GLOW WORM - BAXI - VAILLANT - POTTERTON

- MAIN

info@johnhunterheating.com
www.johnhunterheating.com



Enjoy the delights of the traditional British seaside

For those who crave a bit of nostalgia, and maybe worry that our ability to connect with iconic seaside locations of old is a thing of the past, a trip to Frinton-on-Sea is the perfect remedy.

There is little to rival the natural vibrancy of a sumptuous, sunny, sandy beach, as radiant sun beats down on the coolest, finest Essex sand.

And yet, where Frinton-on-Sea is concerned, serenity and nostalgia come as much from its vibrant rows of beach huts as they do from the wondrous natural environment.

Its architecturally precise promenade sees beach huts painted in a kaleidoscope of bright colours, and these have been an integral part of the town's heritage for more than 100 years. Simple in their form, they retail for upwards of £50,000 – yet if a 12ft square space is adequate for you to relax, change or store beach essentials in, then perhaps the investment is worthwhile? These picturesque huts have become a symbol of traditional British seaside culture and

continue to draw visitors from far and wide, yet Frinton is about so much more.

Its unspoiled sandy beaches are award-winning and stretch for miles along the coast, and the gentle slope of the shoreline creates a shallow, safe swimming area that is perfect for families and children. Meanwhile, the absence of amusement arcades, commercial outlets and 'kiss me quick' hats ensures that this part of the Tendring coastline retains a sense of simplicity and class that few other resorts around the UK can rival.

Even the aforementioned promenade, adorned with Victorian-style streetlamps and ornate railings, holds a sense of class about it; while further back, extensive parkland shows the town's custodians are just as adept with grass as they are with sand.

Frinton-on-Sea has a population of fewer than 5,000. Although several times that number swarm into the area on hot summer days, it rarely feels anything other than idyllic. The next time you're looking for an idyllic British seaside escape, Frinton should be top of the list.





PROFESSIONAL OVEN CLEANING SERVICE

**WE ALSO CLEAN
BBQ'S, EXTRACTORS,
AGAS, RANGE COOKERS
AND MICROWAVES**

CONTACT US 24/7
07394 766085
mrbrightsideessex@yahoo.com
www.we-clean-ovens.co.uk
Mrbrightsideessex

**FULLY INSURED
5 STAR RATINGS**

**RESIDENTIAL &
COMMERCIAL**



DOES YOUR KITCHEN NEED AN UPDATE?

SAVE MONEY WITH A MAKEOVER

CHOOSE FROM OUR EXTENSIVE RANGE OF OVER 500 DESIGN AND COLOUR OPTIONS

Doors • Drawers • Panels
Plinths • Trims • Handles • Worktops

CONTACT US TODAY
01268 977950
info@kitchensrenewedessex.co.uk
www.kitchensrenewedessex.co.uk

MOBILE SHOWROOM – WE COME TO YOU
FREE NO-OBLIGATION CONSULTATION & DESIGN
PROFESSIONAL FITTING SERVICE
FULLY QUALIFIED FITTERS

LEWIS CAPALDI



Someone We Love...

THE ENDEAVOURS, INSPIRATIONS AND INSECURITIES OF LEWIS CAPALDI

We live in a world where our leading male singer-songwriters no longer have to subscribe to the airbrushed, heavily manufactured, perfectly coiffured boyband façades of the stars of decades gone by.

This has helped to create careers and vast wealth for the likes of Ed Sheeran, James Arthur, Rag'n'Bone Man and, now, Lewis Capaldi.

For the vast majority of us, this is a relief. Not only does it lend hope that any of us can aspire to and reach the most ambitious of heights; more importantly, it dispels the faux perfection that emanates from TV screens, devices and digital radios.

"I grew up in that era where everyone looked like they had just stepped off a catwalk," begins Capaldi, the 26-year-old Scottish singer-songwriter who has captivated the hearts of many with his soulful voice and emotive lyrics.

"We don't have to play those games anymore and I think there is much more allowance for us to be ourselves. It's real progress."

The star, who rose to fame with his chart-topping single *Someone You Loved* in 2019 – a track currently ascending past a colossal three billion streams on Spotify – is reaping the rewards of two decades of soul-searching and hard work... a process that came to light via a recent Netflix documentary, *How I'm Feeling Now*.

The production shone a light on the perseverance that has patterned his rise to the top, as well as giving the artist the opportunity to open up about living with Tourette's syndrome.

The neurological disorder is characterised by involuntary movements and vocalisations, known as tics. "It's something that has always been with me and perhaps always will, but it's so important I use my platform to reassure other people that

Tourette's doesn't need to hold you back from what it is you want to do," he says.

"For years, I felt imprisoned by it, before realising I could use it as a stimulus, because sometimes you need something to rally against in your life, and Tourette's is that thing for me."

Perhaps we shouldn't be surprised at Capaldi's ability to counter life's challenges. A deep thinker, the Scot's emotional attentiveness frequently comes across in his music. From the breakthrough *Someone You Loved*, a poignant ballad, characterised by its raw lyrics and melancholic piano melody, that spent seven weeks at the top of the UK singles chart and reached number one in the US too, to the soulful vocals and introspective lyrics of *Bruises*.

In 2022, both *Forget Me* and *Pointless* made it to the top of the hit parade as well. The former track was Capaldi's first meaningful release in three years, and despite huge previous success, his candid uncertainty was on show in the promotion of the track, when he revealed, "It could be the beginning of a beautiful chapter in my life, or the very public downward spiral that, let's face it, I'm probably due."

Of course, the artist needn't have worried, and he is now embarking on a UK tour to accompany the release of his album, *Broken by Desire to Be Heavenly Sent*, on May 19.

Capaldi is a singer-songwriter of impeccable talent but, almost as important, devastating humility... and he's here to stay.

Photo credit: ChrisJamesRyanPhotography/Shutterstock.com

HAMMOND — & SONS —

GAS ♦ PLUMBING ♦ HEATING

- ♦ All boilers serviced & repaired
- ♦ Condensing boilers & warm-air units
- ♦ All work undertaken including leaks, upgrades & installations
- ♦ No call-out charge
- ♦ OAP discounts available
- ♦ Full public liability insurance
- ♦ Fully qualified engineers



**A PROFESSIONAL FAMILY-RUN BUSINESS
HONEST & RELIABLE
OVER 20 YEARS' EXPERIENCE**

From a tap washer to a full heating system, call

01268 286 805

email: hammondandsons@hotmail.co.uk
www.hammondandsons.co.uk

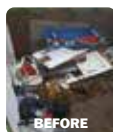


NEXT LEVEL CLEARANCES

• Professional • Quick • Domestic • Commercial

COMMERCIAL & DOMESTIC

House Clearance
Garden Clearance
Garage Clearance
...and more



FOR YOUR FREE QUOTE CALL
07713 689127

contact@nextlevelclearances.co.uk

VISIT:
NEXTLEVELCLEARANCES.CO.UK

White Tail Studios

You Dream. We Create.

KITCHEN - DESIGN - RAYLEIGH

British made kitchen furniture to suit everyone's needs

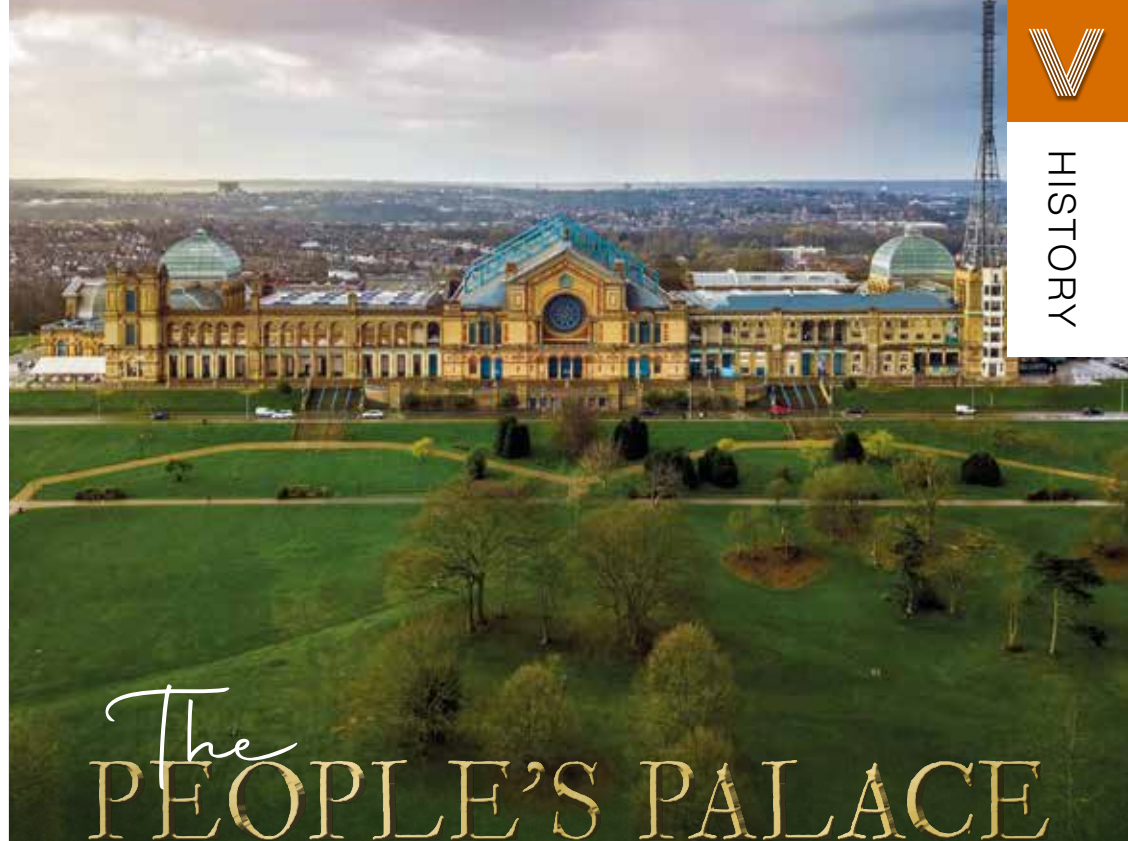
CALL NOW OR BOOK ONLINE FOR YOUR FREE CONSULTATION



01268 906630 | www.whitetailstudios.co.uk | info@whitetailstudios.co.uk
157 High Street, Rayleigh, Essex, SS6 7QA



HISTORY



The PEOPLE'S PALACE

Imagine living amid the smog, chaos and stench of Victorian London. Now imagine the bliss of fresh air and some live entertainment to take your mind off things. Alexandra Palace, which opened 150 years ago this month, was built to give Londoners that chance to escape the daily grind.

The palace opened on Queen Victoria's 54th birthday with a grand celebration. Tragically, fire destroyed the building just a fortnight after it opened. But two years later, it opened again – and this time it was bigger and better. There was a concert hall, theatre, circus, racetrack, boating lake, the Victorian equivalent of a food court, and even a Japanese-style garden.

Sadly, the privately owned palace and surrounding parkland struggled to make money. In 1900, the site was bought by the nation, and an Act of Parliament

decreed that it should remain “a place of public resort and recreation”.

During the First World War, the palace was home to refugees and later became an internment camp for ‘enemy aliens’. It became a refugee shelter again during the Second World War, and also a staging post for troops on their way back from Dunkirk.

But perhaps the palace is best known for its link to BBC television. The corporation launched the world's first television service from studios built in the palace's former dining rooms in 1936.

To this day, the palace continues to host leading events, including theatre performances, retail shows, gigs, fairs and festivals to honour its commitment to serve the public.

To find out what's on this summer, check out alexandrapalace.com/whats-on

Alexandra Palace was built as a north London version of Crystal Palace, which hosted The Great Exhibition in 1851. It was named after the Danish-born Princess Alexandra, who had just married Queen Victoria's eldest son – later to become Edward VII. It was called The People's Palace and soon became widely known as Ally Pally.

RAVISHING Rhubarb

An unusual vegetable owing to its very sour yet slightly sweet taste, rhubarb is instantly recognisable by its deep pink hue. Super simple to grow, rhubarb is popular for both sweet and savoury dishes.

What are the healthy benefits of rhubarb?

- Contains high levels of fibre, which is linked to lower cholesterol levels
- A good source of vitamin K, which is beneficial for your bone and heart health
- Full of antioxidants that protect the body from free radicals
- May help with digestion and to treat digestive disorders

Rhubarb recipes

1 RHUBARB GIN

YOU WILL NEED: 1kg pink rhubarb stalks | 400g white caster sugar | 800ml gin

HOW TO MAKE: Wash the rhubarb, trim the stalks and discard the base and leaves | Cut the stalks into 3cm lengths and place in a sterilised jar with the sugar. (To sterilise jars, wash in soapy water, rinse and then dry in the oven for 20 minutes at a temperature of 140°C/120°C fan/gas mark 1) | Shake and leave overnight | After 24 hours, add the gin, seal and shake again | Leave for four weeks before drinking |

Serve as it is or strain the liquid through a muslin-lined sieve first.

2 RHUBARB CHUTNEY

YOU WILL NEED: 250ml cider vinegar | 100g golden caster sugar | 300g chopped rhubarb | 4 chopped medjool dates | 1 tsp grated ginger | 1 cardamon pod

HOW TO MAKE: In a pan, heat the cider vinegar and caster sugar until dissolved | Add the chopped rhubarb, ginger, dates and cardamon pod and cook for 15-20 minutes | Once you have a thick chutney consistency, season with salt to taste | Store in sterilised jars for up to two years (unopened).




FAST, EFFECTIVE & PROVEN

ESSEX BASED LEAFLET, PRINTING & DISTRIBUTION SERVICE

Flyer Distribution Essex covers a majority of the
CM, SS & CO postcode areas

- One off drops OR regular monthly drops
- Targeted Demographics - delivered direct to homes
- Cost effective Printing service available
- Direct Pick up service available from your Essex based address

CONTACT US

0800 086 2836

www.flyerdistributionessex.co.uk



ISAs VS...

If you want to start saving, then you may be wondering where to put your hard-earned cash. Two of the most popular options are ISAs and savings accounts, but which one is best for you?

WHAT IS AN ISA?

ISA stands for individual savings account and offers a tax-efficient way to save money. There are four types of ISAs:

- Cash ISAs
- Stocks and shares ISAs
- Innovative finance ISAs
- Lifetime ISAs

The government sets a limit for how much can be saved each financial year and does not charge any tax on the interest you earn.

WHAT IS A SAVINGS ACCOUNT?

A savings account offers a safe place to put aside your money and allows you to earn varying amounts of interest. Depending on your circumstances, you may have to pay tax on any interest earned.

There are several different types of savings accounts, including:

- Easy-access accounts
- Fixed-term accounts
- Regular savings accounts

ISA	Savings Account
Completely tax-free	Interest is taxed if you earn over £1,000 for basic tax earners and £500 for high tax earners per year
You can deposit up to £20,000 per year	No limits on deposits
Limited to opening one type of ISA per year	No limits on how many accounts you can open
Good for large amounts and long-term saving	Good for large amounts and long-term saving

SHOULD I OPEN AN ISA OR A SAVINGS ACCOUNT?

Before you decide whether to open an ISA or a savings account, you need to determine your needs and savings goals. Typically, you can earn more competitive interest rates on a savings account and, depending on the account, you may be able to both deposit and withdraw money. However, an ISA is a good choice if you want to protect yourself from paying tax on any interest earned.



...SAVINGS ACCOUNTS

YOU'RE LOCAL, WE'RE LOCAL



BTMK
ALAN SIMPSON

Mill Court, 19 London Hill
Rayleigh, Essex SS6 7HW
☎ 01268 745 406

BTMK
TODMANS

Barringtons, Hockley Road,
Rayleigh SS6 8EH
☎ 01268 774 073



For you & your business

- Business Law
- Commercial Property
- Employment Law
- Debt Recovery
- Insolvency
- Commercial Litigation
- Intellectual Property

For you & your family

- Divorce & Separation
- Child Issues
- Wills, Trusts, Probate & Tax Planning
- Litigation & Dispute Resolution
- Property
- Employment
- Personal Injury Claims

BTMK **BTMK** **BTMK** **BTMK** **BTMK**
SOLICITORS GOODSON MARCUS BAUM TODMANS ALAN SIMPSON

☎ 03300 585 222 (24/7 all offices) ✉ info@btmk.co.uk

🌐 www.btmk.co.uk (live chat 24/7) *Lawyers for life...*



Offices in Southend-on-Sea, Leigh-on-Sea & Rayleigh. Meeting space available by appointment in London.



MARTIN HOLMES

Fencing ■ Patios ■ Paving
Pergolas and Planters
Artificial Grass
Decking & General Jobs

**ANY JOB TAKEN ON,
BIG OR SMALL**

**CALL MARTIN ON
01268 955048 ■ 07796 008198**

Visit us on martinhandyholmes

Essex Cleaning Solutions

Specialist in domestic and commercial cleaning
Essex Cleaning Solutions are pleased to offer the following services

- Conservatory Exterior & Interior Cleaning
- All Exterior UPVC Cleaning
- Traditional Window Cleaning (No Poles)
- Driveway/Patio Pressure Washing
- Roof Tile Cleaning / Moss Removal
- General Building & Maintenance Available
- Painting and Decorating - Internal & External
- Roofing & Cladding - Installation & Repairs



For residential & commercial gutters

01702 742164 07828 332051

www.theguttersurgeon.co.uk

info@theguttersurgeon.co.uk

Find us on The Gutter Surgeon

- Gutter leaning at reduced rates • Gutter Vacuuming up to 40ft
- Gutter repairs at affordable prices • New gutters/facias & soffits installed
- Down pipes cleared, new down pipes added
- The Gutter Surgeon will to beat any like for like cleaning quote.



**ECS will never ask for payment
until job completion to the
customers satisfaction**

FREE, no obligation quotation!

**Freephone: 0800 699 0466 or
Mob: 07749 220949
Mob: 07462 677211**

www.essexcleaningsolutions.co.uk
essexcleaningsolutionsltd@gmail.com

Find us on

All major credit/debit cards accepted
Fully Insured



TO DIG OR **NOT** TO DIG?



GARDENING

Although it may seem strange, no-dig gardening is becoming increasingly popular owing to its ability to save time, banish weeds and ensure plants grow more healthily.

WHAT IS NO-DIG GARDENING?

No-dig gardening is a method of cultivation that aims for minimal disturbance of the soil. Made popular by Charles Dowding, an author and avid gardener, no-dig gardening requires less fertiliser and pesticide, is suitable for any size garden, and can be used to grow flowers, shrubs or vegetables.

WHAT ARE THE BENEFITS?

No-dig gardening is beneficial to your soil, garden and the environment, and can significantly reduce the need to weed. Soil stores a lot of carbon, which means that the more you dig, the more is released into the atmosphere. There is also evidence to suggest that digging upsets the structure of the soil.

A GUIDE TO NO-DIG GARDENING

STEP 1: PREPARE THE AREA

Remove any large weeds and then cover the ground in a layer of light blocking material such as torn-up newspaper. If creating a no-dig area on grass, add a layer of manure and lime first.

STEP 2: ADD LAYERS

Add a layer of kitchen scraps, such as vegetable peelings or fruit waste, and a layer of compost made from leaves and grass cuttings. Then, add a layer of straw, another layer of compost, and finally another layer of straw.

STEP 3: MAKE WELLS FOR PLANTING

Create wells about 10cm deep in the top layer of straw and fill them with compost. Then, plant your seeds or seedlings into the wells. Water well and wait for your no-dig garden to grow.

Photo credit: charlesdowding.co.uk

UNUSUAL SPORT:

Underwater Rugby

HEARING THE RALLYING CRY OF 'SWIM LOW, SWEET CHARIOT', IT CAN ONLY BE AN INVITATION TO PLAY UNDERWATER RUGBY

In 1961 in Cologne, Germany, a new variation on a hybrid sport containing elements of rugby and water polo was invented.

Named underwater rugby, for perhaps rather obvious reasons, the first championships took place some 17 years later, even though the sport's overseers were still unclear as to what the rules should be.

Ultimately, it was decided that there should be six players per side in the pool at any one time, with further substitutes from a total squad of 15 able to be made during the two 15-minute halves.

Most team formations comprise of two forwards, two backs and two goalkeepers or left-wingers, with the aim being to keep possession and score after outwitting the opposition through speed, skill and holding your breath.

The underwater rugby ball is plastic and filled with salt

water and the players have to score in steel goals which are located at the bottom of opposing ends of the pool. The pool dimensions have to be between 12m and 22m in length, 8m and 12m wide, and with a depth of 3.5-5m.

No kicking, hitting or strangling is allowed, but it's a contact sport so, within reason, anything else goes. Officials are present to judge possible offences, resulting in punishments such as warnings, free throws or two-minute penalties.

There were 18 countries involved at the last World Championships in 2019, where Colombia became the first non-Nordic nation to win a gold medal, beating two-time and defending champions Norway in the final in Graz, Austria.

Underwater rugby is said to be the only true 3D sport in the world in the way both the ball and the players can travel in three dimensions and in all directions – imagine, for instance, having a teammate 5m below you in a pool. For this reason, its popularity is exploding.

Photo credit: Arden Flessman/Shutterstock.com

**You've popped the cork,
now light the wick!**



Treat yourself to one of our candles, upcycled from champagne and liquor bottles to add a bit of luxury to your happy place



**Scan the QR code & visit our website
or go to www.wickinc.co.uk**

*Make sure you use our special
VISION discount code for
10% off your first order!*

WICKVISION22



DOWN HALL GARDEN SERVICES

**For all local garden
maintenance – friendly
& professional**

Tim Poulter

01268 785101

07761 958072

poplarvista@btinternet.com



**BASILDON
ROOFING COMPANY**



WE GO THAT EXTRA MILE

We offer a wide range of services including:

- New Roofs ● Flat Roofs ● Roof Repairs (Tile & Slate) ● Fiberglass Roofs
- Windows & Doors ● Rendering ● Chimney Work ● Damp Work
- Upvc Fascias, Soffits & Gutters ● Weather Pointing ● Lead Work
- All Types Of Building Work Undertaken ● Int/Ext Painting & Decorating
- Textured Wall Coating ● Damp Proofing & Mould Repair Specialists

Our highly skilled & customer-focused professional team liaise with customers at every step to ensure they are 100% satisfied with our workmanship



● Freephone: 01268 855636 ● Landline: 01702 668696 ● Mobile: 07916945904
Web: www.basildonroofingcompany.co.uk ● Email: info@basildonroofingcompany.co.uk



GLADWELLS PET AND COUNTRY STORE

Where pets are more than companions ... they're family!

**LUBARDS LODGE FARM,
HULLBRIDGE ROAD, RAYLEIGH,
ESSEX, SS6 9QG**



Open 7 Days
A Week



Free Harness
Fitting



Call &
Collect

Plus many more services available in store!

For more info visit www.gladwellspet.co.uk or call 01268 642601

£5 Off

A £30 or more spend in store!

For readers of Vision. Offer ends 31/08/23.
Hand this voucher to the cashier at the start
of your purchase to get £5 off a £30 or
more spend. Valid at GP&CS Rayleigh only.
Retail only. No cash alternative.

One voucher per transaction. Copies will
not be accepted.



Southernhay Garden Services

All your Outdoor and Gardening needs



■ Garden Maintenance ■ Jet Washing

■ Patios, Decking & Fencing

Martin Smith Find me on

■ 07967 986802

■ 01268 955057

DOES YOUR DOG HAVE HAY FEVER?



PETS

Did you know that dogs can suffer with hay fever? In fact, an estimated 10 per cent of pooches in the UK suffer with this seasonal affliction.

DOES MY DOG HAVE HAY FEVER?

Unlike in humans, who typically experience itchy eyes, sneezing and a runny nose, hay fever in dogs typically manifests itself on their skin. Look out for your dog itching, nibbling or rubbing any of the following spots:

Paws | Eyes, ears and mouth | Armpits | Abdomen | Legs | Around their bottom | Groin

In some cases, their skin may also look red, flaky and sore, or they may experience fur loss as a result of constant scratching.

WHEN IS HAY FEVER SEASON?

When your dog suffers with hay fever will be dependent on where you live in the UK and what strain of pollen your dog is sensitive to. However, that being said:

- > Tree pollen occurs from late March to mid-May
- > Grass pollen occurs from mid-May to July
- > Weed pollen occurs from the end of June to September

HOW TO TREAT HAY FEVER IN DOGS

Although hay fever cannot be treated, there are things that you can do to help manage their symptoms and make your dog feel more comfortable. Some of the available hay fever

treatments for dogs are:

- > Topical treatments, such as medicated shampoos and creams
- > Antihistamines (prescribed by your vet)
- > Essential fatty acid supplements
- > Medication to reduce your dog's immune reaction, such as steroids
- > Immunotherapy – although this is expensive and not always effective

HOW TO MANAGE HAY FEVER IN DOGS

- > Walk your dog early in the morning or later in the evening to avoid high pollen counts
- > Keep your dog's ears clean to prevent irritation
- > Wipe your dog's fur, skin and paws with a damp cloth after a walk
- > Wash their bedding regularly
- > Vacuum your home regularly
- > Use an air filter system in your home
- > Stay up to date with your dog's flea and worming treatments

CAN CATS GET HAY FEVER?

Yes, cats can also get hay fever and tend to experience many of the same symptoms as dogs, such as excessive itching, most commonly on the ears, bottom and paws. Cats may also snore as a result of an inflamed throat. You can get topical creams and anti-itch wipes to alleviate their symptoms.



Europe's best SECOND CITIES

FIVE EUROPEAN COUNTRIES WHERE THE LESSER-KNOWN SECOND CITIES OFFER, ARGUABLY, MORE THAN THE CAPITAL

1. BERGEN, NORWAY

Many people visiting Scandinavia will instantly migrate towards Oslo for its green spaces, architecture and nightlife, yet for those looking to sample a more stylish, artistic side of Norwegian culture, Bergen is the choice. A seductive port decorated with colourful houses and romantic cobbled streets, it is the gateway to the fjords.

2. KRAKÓW, POLAND

Poland's elevation into a popular location to visit over the past 20 years has been impressive, and this is no better exemplified than in the way Kraków, its second city, welcomes visitors.

A former European Capital of Culture, it is a creative tourist's dream, with arts, crafts, collections and museums, plus a host of theatres for the performing arts.

3. PORTO, PORTUGAL

Located on the Iberian Peninsula, many parts of Porto were built with the aim of luring in foreign investment, so it makes sense that Lisbon's smaller sibling has an abundance of interest and charm.

From bridges to cathedrals, elegant gardens to wine tasting – the city is the birthplace of port wine – it's a smorgasbord of tastes and flavours.

4. CORK, IRELAND

The last port of call for the Titanic before it headed off across the Atlantic, Cork has a lot going for it, with a bustling market, friendly people, and a renowned food and drink scene.

Much more personal than Dublin, it introduces tourists to the rural delights of southern Ireland.

5. KOŠICE, SLOVAKIA

A modern city with an eco edge, Košice combines incredible architecture dating back centuries with a defined approach towards sustainability and the repurposing of old spaces for creative industry.

With a warm welcome and thriving arts scene, this is an inspirational place which transports visitors into a world that reflects the past while embracing the future.



Why you'll love this park

Come and discover Steeple Bay and make your escape to a wonderful, waterside retreat with beautiful views of the estuary. Situated on the coast near Southminster,

the park is the hidden treasure of the South East of England, with ready access to the Mayland Creek.

If you're looking for a relaxing getaway for all the family then Steeple Bay is the right place to be. Choose to spend time in our Riverside bar or take a dip in the heated outdoor swimming pool, while the kids have fun around the park with Loopy and his friends. Or take to the nearby



waters; you don't have to be an active boatman to enjoy the location though, just relax and watch the boats and yachts go by.

The park boasts great facilities including a well-stocked fishing lake, an adventure playground and an amusement arcade. Along with our leisure pool, there is also a paddling pool for our very youngest guests.

A visit to the clubhouse will round off a perfect day with tasty food and drink available, along with live music and top shows during busier periods.

PARK HOLIDAYS
Holidays & Short Breaks



PARK HOLIDAYS

Steeple Bay Holiday Park

The best reason
to choose a
stay-cation!



Holiday Homes from

Please contact Lara for more info and see why everyone is choosing a STAY-cation!

...we have pre owned lodges from £99,995 including decking

Contact Lara on 07415 239231 • l.wilson@parkholidays.com • Southminster, CM0 7RS

Starting Price
£14,995!





Eve Belle NOW OPEN

HOME-FROM-HOME
LIVING

WELLBEING-
FOCUSED CARE

COMPASSIONATE
EXPERT TEAM

MAKE NEW FRIENDS, BE PART OF A COMMUNITY
AND LIVE MEANINGFULLY AT EVE BELLE.



Book Your Personalised Tour Today:
01268 435389
Eve Belle, Nevendon Road, Wickford, SS12 0QH

Honey

NOT JUST FOR SPREADING
ON TOAST

On May 20, it's World Bee Day – a time to celebrate those buzzing bugs that make honey.

How do bees make honey?

Using their hollow tongues, bees suck up the nectar from flowers and store it in part of their stomach. Back in the hive, they regurgitate the mixture and spread it through the honeycomb cells. They then fan it with their wings to evaporate the moisture and turn it into honey. There are more than 300 different kinds of honey, depending on the flowers the nectar comes from.

Of course, honey is delicious spread on toast. But did you know it's also a great natural health and beauty aid because it contains micronutrients, including vitamins, minerals and antioxidants? It also has moisturising, antibacterial and anti-inflammatory properties. For maximum benefits, choose raw, organic honey.

Healthy scalp and hair

To treat your scalp, use a tablespoon or two of honey straight from the jar. Leave for a couple of hours before rinsing and shampooing. For a hair mask, mix a tablespoon of honey with the same quantity of olive oil. Leave on for 15 minutes before rinsing and shampooing.

Minor cuts, grazes and insect bites

If you're unlucky enough to suffer a cut or bite, simply dab on some honey to help with the healing process.

Sore throats

To relieve a sore throat, mix a tablespoon of honey with ¼ teaspoon turmeric in a mug of warm water or tea, and sip when you need it. You can also use the mixture as a gargle.

Healthy sleep

A tablespoon or two of honey before bed, eaten or in a drink, can help regulate your blood sugar and make you feel relaxed.

Remember...

Never give honey to children under one year as certain bacteria in honey can produce toxins in a baby's intestines. Also remember that honey is high in sugar and calories. The information here is for guidance only – it is not medical advice.



HEALTH & FITNESS

A guide to make-up

EXPIRATION DATES

Be honest, how often do you check the expiration date on your make-up? If the answer is hardly ever, then you're not alone. Unfortunately, out-of-date make-up can cause a whole host of problems, including skin irritations and eye infections.

FOUNDATION: Shelf life of six months to one year

You can keep your foundation germ-free for longer by keeping your fingers away from the neck of the bottle and gently dripping the formula onto the back of your hand before applying. If your foundation starts to separate, it definitely needs to be binned.

CONCEALER: Shelf life of six months to one year

Similar to foundation, concealer can last up to one year as long as you keep it out of direct sunlight and avoid touching the applicator with your fingers. Again, if it separates, throw it away.

LIPSTICK: Shelf life of one year

Typically, a lipstick should last for around 12 months. However, if you notice a change in texture, whether it has started to dry out or become gloopy, or if it starts to smell funny, it is no longer usable. Remember to store your lipstick in a cool, dry place.

EYE PENCIL: Shelf life of one year

Pencils tend to last longer than other eye products as they are sharpened regularly. Keep away from steam for enhanced longevity.

MASCARA: Shelf life of three months

If you don't want to get a nasty eye infection, you should be replacing your mascara once every three months or sooner if you notice that the formula has started to become clumpy or smell strange. Never share mascara.

EYESHADOW: Shelf life of three to six months

Although powder eyeshadow can potentially last for up to two years, because it is used around the eyes, you should replace it more often.



WANT YOUR ADVERT HERE?

CALL TODAY ON
01268 955027
TO BOOK

Essex Stairlifts Ltd

Your local stairlift specialist

- Straight Stairlifts
- Curved Stairlifts
- Rental Stairlifts
- New & Used
- Servicing & Repairs
- Home Lifts

Find us on: facebook.

For friendly, personal service telephone:

01268 550173
01708 369062
01206 231568

Email: sales@essexstairlifts.co.uk
www.essexstairlifts.co.uk

Your hair needs us

Wash, Cut & Blow Dry
Wet Cut | Dry Cut
Clipper Cut
Hair Up | Highlighting
Re-growth & Re-fresh
Colour Bath | Perming
Hair Extensions

NOW OPEN SUNDAYS

TOPPERS HAIR STUDIO

01268 772575
70a High Street, Rayleigh, SS6 7EA
 @toppershairstudiorayleigh @toppers_hair

HAVE YOU MADE YOUR WILL?

Do you and your family have the peace of mind of an up-to date Will, or a Power of Attorney for yourself or your parents, or Legal Guardians for your children under 18?

My professional services for arranging personally-tailored Wills, Powers of Attorney, Probate and expert guidance on Inheritance Tax and Care Home Fees, are offered to applicants on a fixed fee basis, regardless of consultation time and number of visits.



MARTIN ENGLEMAN AIPW AFPC
Qualified Member of the Institute of Professional Will Writers ~ Certificate in Mortgage Practice & Equity Release, Chartered Insurance Institute ~ Diploma, Personal Finance Society

Please visit www.businessadvisoressex.co.uk for more detailed information, then call me for a fixed fee quotation and free advice

Please note that weekend meetings are offered at no extra cost

Office: 01268 761022
Mobile: 07901 948745
1 Nesbit Close, Wickford,
Essex SS12 0PT

ENGLEMAN WILLS
+ POWERS OF ATTORNEY + PROBATE

Improve, Don't Move!

Maximise the value of your home.

- SPACE-SAVING - MAXIMISE YOUR GARAGE HEADROOM
- SECURITY-ENABLED AUTO-LOCKING SYSTEM
- CHOICE OF 21 COLOURS TO MATCH YOUR HOME
- REMOVAL AND RECYCLING OF YOUR OLD DOOR
- DEDICATED AFTER-CARE TEAM

GAROLLA 01708 545 657
ROLLER SHUTTER DOORS
LINES OPEN 7 DAYS A WEEK
www.garolla.co.uk



BESPOKE ELECTRIC DOORS MANUFACTURED IN THE UK

FREE FITTING
PAYMENT ON INSTALLATION

PRICED EXAMPLE £895
COMPACT • UP TO 2.4M

GAROLLA ★ PREMIUM
Increased Security • Double Insulation
One-Touch Close

PRICED EXAMPLE £1,990
PREMIUM • 3.4M • ANTHRACITE

PUZZLES & TRIVIA

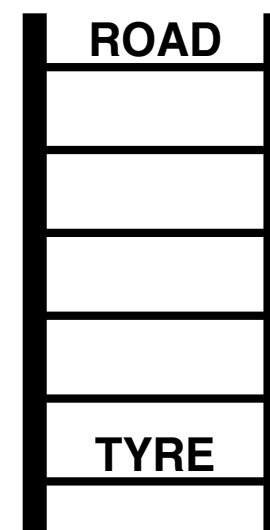
- ▶ ACCRA
- ▶ ADDIS ABABA
- ▶ ALGIERS
- ▶ CAIRO
- ▶ DAKAR
- ▶ FREETOWN
- ▶ GABORONE
- ▶ HARARE
- ▶ KAMPALA
- ▶ KINSHASA
- ▶ LILONGWE
- ▶ LUSAKA
- ▶ MAPUTO
- ▶ MOGADISHU
- ▶ MONROVIA
- ▶ NAIROBI
- ▶ NIAMEY
- ▶ NOUAKCHOTT
- ▶ VICTORIA
- ▶ WINDHOEK

U	R	U	A	N	A	S	A	H	S	N	I	K	V	F
H	Z	L	C	N	O	S	A	K	A	O	F	A	S	N
S	O	F	A	R	I	U	R	I	A	H	R	Q	O	L
I	Z	R	B	R	W	A	A	E	R	M	J	I	C	U
D	F	E	A	T	I	P	M	K	I	O	P	I	A	O
A	E	E	B	O	N	N	W	E	C	G	T	A	M	C
G	R	T	A	T	D	I	U	N	Y	H	L	C	L	B
O	A	O	S	U	H	B	L	O	L	Q	O	A	I	A
M	R	W	I	P	O	R	Z	R	U	U	I	T	W	V
H	A	N	D	A	E	T	O	O	F	D	S	R	T	N
W	H	B	D	M	K	Y	I	B	L	U	S	A	K	A
R	A	K	A	D	T	P	H	A	E	A	R	C	C	A
D	I	B	O	R	I	A	N	G	L	P	W	Q	F	V
M	S	S	E	M	O	N	R	O	V	I	A	T	V	L
R	A	R	T	P	A	E	W	G	N	O	L	I	L	Y

DID YOU KNOW?

- ▶ Members of the Royal Family are not allowed to sign autographs. This is in case somebody tries to forge their signature.
- ▶ During her reign, Her Majesty Queen Elizabeth II sent more than 300,000 congratulatory cards to people celebrating their 100th birthdays, and more than 900,000 messages to couples marking their diamond (60th) wedding anniversary.
- ▶ King Charles III, the former Prince of Wales, has been the heir apparent since he was three years old.
- ▶ In November 1965, while a student at Gordonstoun School, the then-Prince of Wales played the lead in Shakespeare's *Macbeth*.
- ▶ The former Prince of Wales has presented the weather forecast on the BBC.

WORD LADDER



THE AIM: Change the word at the top of the ladder one letter at a time to make the word at the bottom.

HOW TO: Change one letter on each step to make a new word. By the time you reach the end, you should have created the new word.

DO NOT rearrange the order of the letters.

TIP: There is usually more than one way to solve this puzzle.



GUIDE TO BUYING A

USED SCOOTER

Whether you are a first-time buyer or are seasoned in the world of scooters, a used one can save you a pretty penny.

Below are four questions you need to ask before buying a used scooter.

1 DOES IT RUN?

While this may seem like a no-brainer, before you buy a used scooter, you need to make sure that it actually runs. Once you have established that it does, the next step is to listen to how it sounds. Four-stroke engines should have a smooth hum, whereas two-stroke engines should sound like a gentle chainsaw, so make sure you listen out when you do a test drive.

2 HOW LONG HAS IT BEEN SITTING?

If you are purchasing a used scooter online, take a close look at the pictures. Does the scooter look

dusty or rusted? If yes, then it may have been sitting unused for a while. Make sure you check the battery and the tyres as both of these are likely to need replacing.

3 CAN YOU STILL GET SPARE PARTS FOR THE SCOOTER?

While you can still get spare parts for most scooters that have come out in the last decade, it is always worth checking before you sign on the dotted line. Don't forget to also be vigilant of scooters that are missing several body panels, as this can be a sign of a crash or that the scooter has been stolen.

4 WHO IS THE SELLER?

You can choose to buy a used scooter from either a dealership or a private seller. While there are advantages and disadvantages for each option, a dealership is a safer bet as you can find out about their reputation online and they are more likely to provide detailed checks on their scooters.



Photo credit: Martin Charles Hatch/Shutterstock.com



Quick Fix

FAMILY GARAGE

MOT Centre, Wickford, Essex



4 WHEEL LASER ALIGNMENT

LOOKING AFTER WICKFORD'S MOTORISTS FOR 30 YEARS

MoTs • Tyres • Servicing • All Repairs Large or Small
All Main Dealer Trained Mechanics inc. Citroen Specialist
Free Collection if needed • Free Estimates • Honest Advice

Absolutely no connection with the company in Shotgate

www.quickfixgarage.com

(online prices & ordering)

01268 767 300

69 Runwell Road, Wickford, Essex SS11 7HL

£20 OFF
4 NEW TYRES

on production of this advert

£20 OFF FULL SERVICE
£10 OFF INTERMEDIATE
SERVICE inc. MOT

on production of this advert

DOMESTIC LOCKSMITH

- Trade Counter Open to All
- Key Cutting
- Domestic Security
- Locks Supplied & Fitted to British Standard
- UPVC Lock Replacement
- Access Control
- Safes & Key Cabinets
- Non Destructive Entry
- MLA Approved Company
- Used by Essex Police
- Fast, Friendly & Reliable Service

AUTOMOTIVE LOCKSMITH

- Keys Not Operating Lock?
- Remote Not Working?
- New Remotes Supplied & Programmed
- Remote Repairs
- Switches - Rubber Buttons - Cases
- Batteries

CHEAPER THAN ALL MAIN DEALERS

10% DISCOUNT
WITH THIS AD

FAST KEYS

VISIT OUR TRADE COUNTER



CONTACT US TODAY

01268 562592

sales@fastkeys.co.uk

Units 3 & 4 Pilot Close,
Fulmar Way, Wickford
SS11 8YW

www.fastkeys.co.uk

THE VISION LISTINGS

AIR CONDITIONING

P K REFRIGERATION LTD

Domestic/Commercial Air Conditioning & Cool Room Specialists. Installation, Service & Repairs. Call 01268 774623 | sales@pkrefrigeration.co.uk | www.pkairconditioning.co.uk

BEAUTY

TOPPERS HAIR STUDIO

Wash, Cut & Blow Dry. Highlighting, Perming, Hair Extensions, Colour Bath, Re-Growth, Re-Fresh. Call to book 01268 772575 | visit us at 70a High Street, Rayleigh, SS6 7EA

THE AMESTHYST ROOM

Skincare & Aesthetics. Providing a range of skincare & aesthetic treatments. Home Based Studio In Rayleigh. 07756 602715 | www.the-amethyst-room.co.uk

BUSINESS SERVICES

HELEN WATSON COPYWRITER

Ideal for small businesses, content for blogs, product descriptions, website copy & press releases. Book your FREE Chat. 07854 346421 | www.helenwatsoncopywriter.co.uk

CAR GARAGE

QUICK FIX FAMILY GARAGE

Mots, Tyres, Servicing, All repairs large or small, All main dealer trained mechanics inc. Citroen Specialist, Free Collection. 01268 767300, 69 Runwell Road, Wickford, SS11 7HL

CARE & SUPPORT

HOME INSTEAD

Award Winning Care, Companionship Services, Home Help Services, Personal Care Services, Live-in Care, Highly Trained Care Givers. Tel: 01245 979579

CHIROPRACTIC CLINIC

LIFE CHIROPRACTIC CLINICS

Book your consultation today! One of the best ways to keep your body, posture & spine healthy, in a totally natural way! Book online or call: 01268 774008 | www.lifechiropractic.co.uk

CLEANER

MOLLY MAID

Domestic cleaning experts, trained staff, 100% guaranteed, fully insured, regular/occasional cleans, materials supplied. 01268 442023 | Margaret.king@mollymaid.co.uk

ESSEX CLEANING SOLUTIONS

Specialist in domestic & commercial cleaning. FREE, no obligation quotation. Call 0800 699 0466 | 07749 220949 | 07462 677211

DOMESTIC APPLIANCES

RAYLEIGH DOMESTIC APPLIANCES

Brand New Appliances in Stock. Connection Services, Repair & Disposal. 01268 745455. Free Local Delivery within 5 mile radius. www.rayleighdomesticappliances.co.uk | SS6 8RW

ESTATE AGENTS

ST GEORGE HOMES

Online and high street estate agency. Over 30 years of experience in the local market. Call us on 01268 770728 | visit us at Berry's Arcade, High Street, Rayleigh, SS6 7EQ

EWEMOVE

Award-winning Wickford & Rayleigh Estate Agent. Book your free valuation. Select a date & time online at: Evemove.com/ WickfordRayleigh or call 24/7 on 01268 437525

FINANCIAL SERVICES

ENGLEMAN WILLS

Personally tailored wills, powers of attorney, probate, guidance on inheritance tax & care home fees. 01268 761022 | Mobile: 07901 948745 | www.businessadvisoressex.co.uk

FLAT ROOFING

HIGH-TECH

Lifetime Guaranteed Flat Roofing. Contact our friendly team or pop into our showroom at 850 London Road, SS9 3NQ. Free advice & pricing, call 01268 859602 | www.flatroofs.net

GARAGE DOORS

GAROLLA ROLLER SHUTTER DOORS

Thermally insulated electric garage doors, Great for space saving, Kerb appeal & easy to use, No deposit, Pay on completion, 18 Colours available. Call today 01268 350816

BOOK VIA RAYLEIGH@VISIONMAG.CO.UK

GARDENING

MPS HOME & GARDEN SERVICES

Garden Maintenance, Patios, Decking, Fencing. Painting & Decorating. Kitchen & Bedroom Installations. Martin Smith 01268 955057

DOWNHALL GARDEN SERVICES

For all your garden maintenance, friendly & professional. Call Tim Poulter 01268 785101 | 07761 958072

SEALING TECHNIQUE

No More Weeds, Work Guaranteed, Matt Finish, Call Lionel 01268 449771 | 07834 897654. www.sealingtechnique.com | 10% off with this advert.

GENERAL BUILDING

MARTIN HOLMES

Interior/exterior work, patios/driveways, decking, tree work, garden clearance, fencing, carpentry, interior/exterior painting, all aspects of building/gardening work. 01268 955048

GUTTERS CLEARING

THE GUTTER SURGEON

For residential and commercial gutters. 01702 742164 | 07828 332051 | www.theguttersurgeon.co.uk | info@theguttersurgeon.co.uk

HEALTH & WELLBEING

NUFFIELD HEALTH BRENTWOOD HOSPITAL

Come and join us at our free hospital events please check our page in the Health section of this edition for more information. Spaces are limited call us on 01268 955035

KITCHEN, BATHROOMS & BEDROOMS

DESIGNER BEDROOMS

Traditional Fitted Bedrooms, Sliding Doors, Odd shaped rooms are our speciality, home office/studios. 7 Robert Way, SS11 8DD. 01268 571799 | www.designerbedrooms.co.uk

JOIN THE LISTINGS...

for just **£15** +VAT per month

KITCHENS

DREAM DOORS SOUTHELD

The UKs Number 1 kitchen makeover specialists. Est. 1999 Visit our showroom at 1741 London Road, Leigh-on-Sea, SS9 2SW or call us 07894 714810

WHITE TAIL STUDIOS

You Dream, We Create. British made kitchen furniture. Call or book online for free consultation. 01268 906630 | www.whitetailstudios.co.uk | info@whitetailstudios.co.uk

LEAFLET DISTRIBUTION

FLYER DISTRIBUTION ESSEX

Leaflet, printing & distribution service. Cover a majority of CM, SS, CO postcodes. One off drops or regular monthly drops. Call us on 01277 554045 | www.flyerdistributionessex.co.uk

LOCKSMITH

FAST KEYS

Domestic & Automotive Locksmith. Cheaper than all main dealers. Visit trade counter, Units 3 & 4 Pilot Close, SS11 8YW. 01268 562592 | sales@fastkeys.co.uk | www.fastkeys.co.uk

OVEN CLEANER

MR BRIGHTSIDE

Oven Cleaning Service. Fully Insured. 5 Star Ratings. Residential & Commercial. Contact us 24/7 07394 766085 | mrbrightsideessex@yahoo.com | www.we-clean-ovens.co.uk

PLUMBING & HEATING

JOHN HUNTER HEATING

Plumbing, heating, gas engineers, inc. full bathroom installations. All central heating work inc boiler service, repairs and replaced. Call now on 01702 528487 | 07850 010990

HAMMOND & SONS

Family run for 20+ yrs. Boilers serviced/repaired, condensing boiler, warm-air units, all work undertaken inc leaks, upgrades, installs, no call out charges, OAPS discounts. 01268 286805

PLUMBARIUS PLUMBING

Experienced tradespersons with a knowledge of all domestic aspects of plumbing. All plumbing & heating maintenance works undertaken | Contact Oliver 07969 101452

ROOFING

JIM BARR ROOFING

Exterior Cleaning & Maintenance. Gutters, Paving & UPVC. Cleaned, Repaired & Renewed. 01708 874816 | 07833 572459

SMITH'S ASPHALT & FLAT ROOFING LTD

Specialising in all aspects of asphalt, felt & flat roofing, balconies, terraces, dormers etc. Call 07533 126761 or email tommy-smith@hotmail.co.uk for a free inspection & quote

STAIRLIFTS

ESSEX STAIRLIFTS

Straight Stairlifts, Curved Stairlifts, Rental Stairlifts, New & Used, Servicing & Repairs, Home Lifts. Call 01268 550173 | sales@essexstairlifts.co.uk

DISCLAIMER: **VISION** does not represent or endorse the accuracy or reliability of any of the advertisements, nor the quality of any products, information or other materials displayed, purchased or obtained by any customer as a result of an advertisement or any other information or offer in connection with the service or products. The opinions expressed in articles, reviews and stories are strictly those of the individual authors and do not necessarily reflect the views of **VISION**.

To advertise call Nik on 01268 955027

WORDLADDER: ROAD, LOAD, LORD, LORE, TORE, TYRE

PUT YOUR BUSINESS IN THE **VISION** LISTINGS...CALL **01268 955027** TODAY



ST GEORGE

Online and High Street Estate Agency

SOLD_{STC}

01268 770728

www.stgeorgehomes.co.uk