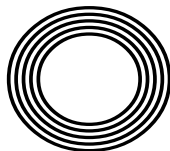


**SPOOKY  
SPIDER  
CRAFTS**

**FIVE  
TV SETS  
YOU CAN  
VISIT**

*Beauty treatments*  
using seasonal veggies

**SOUP SEASON**  
How to build your own recipe



**FREE**

Photo credit: Simon Dael/Shutterstock

# BEN STOKES OBE

Legendary cricketer sets his sights on World Cup victory



**AMAZING  
AUTUMN  
OFFERS**

Contact for more info

# Is your roof ready for winter? Lifetime Guaranteed Flat Roofing

- ✓ 100% resistant to algae & moss
- ✓ Manufactured never to blister or crack
- ✓ 100% maintenance free
- ✓ Proven in all climates & storm resistant
- ✓ Durable enough to be walked on
- ✓ Installed never to leak



For free advice, request a brochure, pricing or free sample, please get in touch on;

01268 859602 [www.flatroofs.net](http://www.flatroofs.net)

\*T&Cs apply  
Please see our website for details

Head Office: Linden House,  
30 Linden Road, Benfleet, Essex SS7 4BA

Advertisement Feature

## Will your flat roof keep you warm and dry this winter?

### Are you concerned about potential leaks or costly water damage?

More than 70% of UK homeowners still have a traditional mineral felt flat roof. Over time extremes of temperature can result in this cracking and leaking. Once the felt starts to fail, water damage often goes unnoticed resulting in severe damage and inconvenience.

### What to look out for:

If you see blisters on the roof surface or cracking around the roof edge, pipes, upstands and roof lights you need to act fast.

Insurance companies will no longer accept liability for external or internal damage caused by leaking flat roofs that are more than ten years old.

High-Tech offer professional roof replacement services using only the highest quality materials along with some of the most advanced flat roof technology available.



All flat roofs installed by us adhere to building regulations, are dimensionally stable and incorporate an anti-slip membrane strong enough to walk on. We recommend Protan, an architect-specified, award-winning single ply PVC flat roofing system which has a proven track record of excellence.

- ✓ Maintenance free
- ✓ Will not blister or crack
- ✓ Fully resistant to moss and algae
- ✓ Solar reflective
- ✓ Aesthetically pleasing



Contact our friendly team today or pop into our showroom at  
850 London Road, Leigh-on-Sea,  
Essex, SS9 3NQ

Scan the QR code to book your  
**FREE** site survey



See the quality of our products first-hand and buy with confidence.







OCTOBER 2023

# Editor's notes...



Nik Allen, Editor

Hello and welcome to this month's edition of **VISION** Rayleigh Wickford.

I'm excited to share my recent customer service encounters that have left an indelible mark on me. As the saying goes: "You don't truly appreciate good customer service until you've experienced the opposite."

On the brighter side, a recent visit to a local bookstore demonstrated the magic of outstanding service. The staff's knowledge, willingness to assist and genuine enthusiasm made my visit not just enjoyable but also memorable. It's a powerful reminder of how good service can elevate a mundane task into a delightful experience.

However, not all tales are as sunny. A frustrating experience with a telecom provider left me grappling with automated phone systems and impersonal support. It's a stark reminder that poor customer service not only erodes trust but also tests our patience.

Customer service is the cornerstone of our consumer experience. It's our privilege to bring you stories that shed light on the importance of striving for excellence. As we navigate the customer service spectrum, let's remember the impact it has on our daily lives and the potential for change it holds.

We at **VISION** strive for excellent customer service when working with local businesses.

*Nik Allen*

This is your town's hyperlocal magazine, delivering to homes and businesses every month.

HOME & DIY | GARDENING | PETS | HEALTH & FITNESS | BEAUTY | FASHION | HISTORY | LOCAL NEWS | FOOD & DRINK | TRAVEL | BUSINESS & PROPERTY | SPORT | PUZZLES | MOTORING | KIDS | WHAT'S ON | TECHNOLOGY | THE LISTINGS

**CONTACT US:** [www.visionmagessex.com](http://www.visionmagessex.com) | [rayleigh@visionmag.co.uk](mailto:rayleigh@visionmag.co.uk) | 01268 955027

[@visionmagessex](https://twitter.com/visionmagessex) [@visionmagessex](https://www.instagram.com/visionmagessex) [f Vision Magazine Essex](https://www.facebook.com/VisionMagazineEssex)

CONTRIBUTORS | Tabatha Fabray, Fiona Goble, Bryn Holmes

All pages are recyclable

## SUPPORT LOCAL BUSINESSES



Please let your local businesses know that you saw them first in... **VISION**

## YOU'RE LOCAL, WE'RE LOCAL



**BTMK**  
ALAN SIMPSON

Mill Court, 19 London Hill  
Rayleigh, Essex SS6 7HW  
☎ 01268 745 406

**BTMK**  
TODMANS

Barringtons, Hockley Road,  
Rayleigh SS6 8EH  
☎ 01268 774 073



### For you & your business

- Business Law
- Commercial Property
- Employment Law
- Debt Recovery
- Insolvency
- Commercial Litigation
- Intellectual Property

### For you & your family

- Divorce & Separation
- Child Issues
- Wills, Trusts, Probate & Tax Planning
- Litigation & Dispute Resolution
- Property
- Employment
- Personal Injury Claims

**BTMK** **BTMK** **BTMK** **BTMK** **BTMK**  
SOLICITORS GOODSON MARCUS BAUM TODMANS ALAN SIMPSON

☎ 03300 585 222 (24/7 all offices) [info@btmk.co.uk](mailto:info@btmk.co.uk)

[www.btmk.co.uk](http://www.btmk.co.uk) (live chat 24/7) *Lawyers for life...*

PARTNER OF  
**HERD IN THE CITY**

Offices in Southend-on-Sea, Leigh-on-Sea & Rayleigh. Meeting space available by appointment in London.



# Sooty™

Turns Seventy-Five

In an era where a fad is lucky to last a full five minutes, the enduring magic of hand puppet Sooty must be something of a mystery to young audiences. And yet, when faced with his snuggly yellow fur, button eyes and sweet, shy demeanour, they inevitably melt with adoration as generation upon generation of children before them have done.

Discovered by Harry Corbett OBE in a joke shop on Blackpool North Pier on July 19, 1948, 'Teddy' – as he was then known – was purchased for seven shillings and six pence.

Having long harboured ambitions for the stage, Bradford native Corbett first appeared with the silent bear in a 1952 BBC TV show, *Talent Night*. The act was an instant success and Sooty soon became the star of his very own show featuring magic tricks, slapstick comedy and songs – a nod to Corbett's former ambitions as a concert pianist which were thwarted by his being deaf in one ear. Soon afterwards, he was joined by his pals: there was Sweep, a grey male dog who communicated with a squeak, and Soo, a female panda with a human voice.

After suffering a heart attack in 1975, Corbett's son Peter (stage name Matthew) took over as Sooty's friend and keeper. In the ensuing years, and with the character now a mainstay on *Rainbow*, Corbett Senior would make occasional guest appearances on spin-off *Sooty Show* (by this point now airing on ITV) until his death in 1989.

Under Matthew Corbett, Sooty and co. would enjoy enormous success. He changed the format of the show to one of a sitcom but kept the integral elements. Namely, Sooty's wand, the catchphrase 'izzy, wizzy, let's get busy', and the silent bear's enduring love of water pistols and mayhem in general.

In 1998, Corbett was succeeded by Richard Cadell. Only a few weeks into his new role, he found himself at 10 Downing Street for a special awards ceremony honouring brave children, hosted by then Prime Minister Sir Tony Blair and his wife Cherie – who Sooty dutifully squirted with his water pistol.

Sooty and Sweep were also guests at the birthday party of His Majesty Prince Charles, as he was then, in 2018 (Sooty actually being a few months older than our now King). The pair have courted numerous other politicians, musicians and celebrities and even – on the hand of Harry Corbett – shared a giggle with Her late Majesty Queen Elizabeth II.

So how is it, then, that a premise so simple remains so beloved in an age of CGI and swanky animation?

"I think the great thing with Sooty – and this is a famous Harry Corbett quote – is that he's never really been in fashion, so he's never really been out," laughs Cadell.

"It's not like one of these children's things that spike and then disappear," explains the 54 year old, who will embark on *75th Birthday Spectacular* – a special UK national tour that kicks off on October 21 at Bradford's Alhambra Theatre and runs through until April 2024.

He adds: "Sometimes the things we cherish most as children, and adults, are based in simple entertainment, and I am delighted that fact has held true despite so much else around us changing."



Photo credit: Moviestore/Shutterstock



# BEHIND the scenes

Are you a complete TV addict? What would you say if we told you that there are iconic sets all across the UK that you can visit? From *Coronation Street* to *Only Fools and Horses* to *Downtown Abbey*, here are some locations from popular shows that are open for visitors today.

## *Coronation Street* – ITV Studios, Manchester

This walking tour of *Coronation Street*, the UK's longest-running soap, is a must for any Corrie fan. Complete with an expert guide, you can take a closer look at all the iconic shops and businesses on the street, including The Rovers Return, Roy's Rolls café and Webster's Auto Centre.

## *Only Fools and Horses* – Bristol Temple Meads Train Station

One of Britain's most-loved comedies, who wouldn't want to take a closer look behind the scenes at this legendary sitcom? The *Only Fools and Horses* three-and-a-half-hour coach tour takes you to filming spots of more than 10 episodes and includes a look at Nelson Mandela House, Sid's Café and the road where the iconic Batman and Robin scene took place.

## *Peaky Blinders* – Central Liverpool

A gritty masterpiece, *Peaky Blinders* was filmed in Liverpool even though it is set in Birmingham, owing to this city's well-preserved Victorian industrial architecture. Hop on either the half-day or full-day guided coach tour and see the homes of Polly and Field Marshal Russell, Garrison Lane and so much more.

## *Downtown Abbey* – Bampton, Oxfordshire

Become Lord or Lady of Grantham for the day, with the *Downtown Abbey* and Village group tour. Visit the charming village of Bampton, which fans will know as Downtown Village. Then head to Highclere Castle, where you will be able to explore the estate and the rooms within and enjoy a spot of lunch.

## *Bridgerton* – The Abbey Hotel, Bath

Channel your inner Daphne or Duke of Hastings with a guided *Bridgerton* tour. Explore many of this popular show's filming locations during this two-hour tour, including Lady Danbury's mansion, Gunter's Tea Shop and the modiste dress shop.



**küchenhaus**  
The German Kitchen



# German engineering for your home.

## Kutchenhaus Southend-on-Sea

313 London Road, Westcliff-on-Sea, Southend-on-Sea, SS0 7BX

Tel :01702 345 302

Email: Paul@southend.kutchenhaus.co.uk

Kutchenhaus KitchensSouthendonSea

kutchenhaus.southendonsea





# Let's get ready to TUMBLE!

**D**id you know that there are many more uses for tumble dryer sheets than just to reduce static and make your clothes smell nice? Discover five surprising uses for the humble dryer sheet below.

## TO REMOVE FOOD RESIDUE FROM POTS AND PANS

If you have forgone the washing up in favour of more enjoyable activities, then you are likely to be left with food residue that simply won't budge. To remove this with minimal effort, simply place a dryer sheet in the middle of the pot or pan, add warm water and some washing-up liquid and allow it to soak. After an hour, remove the sheet, drain the water and wipe away the stains with a sponge.

## TO PICK UP PET HAIR FROM CLOTHES AND UPHOLSTERY

Does your pet leave dander all over your clothes and upholstery? When it comes to removing stubborn pet hair, nothing beats a tumble dryer sheet. More effective than a lint roller, all you need to do is rub a fresh sheet against the item and watch the dander disappear.

## TO CLEAN YOUR TV AND COMPUTER SCREENS

Out of screen-cleaning wipes? Don't panic, as you can use a tumble dryer sheet with equally impressive results. Designed to reduce static cling, a dryer sheet can effectively remove dust and prevent it from resettling.

## TO REMOVE RESIDUE FROM YOUR IRON

Over time, residue will start to build up on your iron, which will make it less effective at removing creases. To clean this appliance, turn it on to a low heat setting and carefully rub a tumble dryer sheet over the surface, making sure not to touch the iron plate with your bare fingers. The heat will soften the residue and make it easy to remove.

## TO SHARPEN SCISSORS

About to start a new craft project or wrap a present and realise your trusty scissors are blunt? Carefully run a tumble dryer sheet against the dull blade and enjoy restored sharpness in an instant. Be sure not to touch your finger directly to the blade!



## Essex Stairlifts Ltd

Your local stairlift specialist

- Straight Stairlifts
- Curved Stairlifts
- Rental Stairlifts
- New & Used
- Servicing & Repairs
- Home Lifts



For friendly, personal service telephone:

**01268 550173**

**01708 369062**

**01206 231568**



Email: [sales@essexstairlifts.co.uk](mailto:sales@essexstairlifts.co.uk)

[www.essexstairlifts.co.uk](http://www.essexstairlifts.co.uk)



**Ashingdon  
Landscapes**

**HOCKLEY BASED**

**ALL TYPES OF  
LANDSCAPING  
& GARDEN  
MAINTENANCE  
UNDERTAKEN**

- Tree Work • Patios • Turfing
- Driveway & Patio Cleaning

**Ask about our Lawn Mowing Service  
from £20**

No Job Too Big or Too Small

**FREE ESTIMATES & ADVICE**

**01702 206 378**

**07415 911 060**

# Joe's Carpets

FAMILY RUN BUSINESS ♦ ESTABLISHED SINCE 1999

## The Mobile Carpet Shop Home Selection Service

- ♦ Supply & Fit
- ♦ Repairs & Refits
- ♦ Free Estimates & Advice
- ♦ Free Gripper Rods

**A Friendly & Tidy Service**



**Will Move  
Furniture &  
Uplift Old  
Carpets**

**CONTACT US ON 01268 955 061  
OR 07748 808094**





Head Office: **20 Benfleet Road,  
Hadleigh, Essex SS7 1QB**  
Email: [enquiries@mrwindow.co.uk](mailto:enquiries@mrwindow.co.uk)  
Web: [www.mrwindow.co.uk](http://www.mrwindow.co.uk)  
Tel: **01702 555553**



Head Office: **20 Benfleet Road,  
Hadleigh, Essex SS7 1QB**  
Email: [enquiries@mrwindow.co.uk](mailto:enquiries@mrwindow.co.uk)  
Web: [www.mrwindow.co.uk](http://www.mrwindow.co.uk)  
Tel: **01702 555553**



## ALUMINIUM & UPVC DOUBLE GLAZING SPECIALISTS

- WINDOWS ● DOORS
- BI-FOLDING DOORS
- CONSERVATORIES
- ORANGERIES
- ROOFING SYSTEMS
- VERANDAS
- MAINTENANCE



**NO  
DEPOSIT**  
OPTIONS TO  
SUIT EVERY  
POCKET

## 0% FINANCE OFFER BUY NOW PAY LATER

or choose **UP TO 3 YEARS  
INTEREST FREE CREDIT**

Mr Window works with Novuna Personal Finance which means we can offer you a range of Finance Packages that allow you to improve your home on a payment plan that suits you.

**Buy Now Pay in 12 months  
14.9% APR Representative  
Minimum Order Value £1000**

If you repay the agreement in full during the 12 month deferral period the lender will not charge you any Interest (an Early Settlement fee may apply) or you will commence 48 monthly repayments at 14.9%. Example: Order Value £2000 Deposit £200 Amount borrowed £1800 If not settled Before deferred Period Repaid over 48 months, 14.9 % Representative APR Interest Payable £559.68 Total Payable £2559.68. Monthly Repayment £49.16

**Interest Free Credit - 0% APR Representative**  
Example Order Value £6000 Deposit £1200 Amount borrowed £4800 Duration of agreement 36 months Rate of interest 0% p.a 36 monthly payments of £133.33 Total payable £6000.  
Applicants must own the Installation address, be 18 years or older at the time of application, have been in permanent UK residence for a minimum of 3 years, have a UK bank account and fulfil one of the following employment criteria: In permanent employment (min 16 hours per week), Be self employed, Retired or not working through disability. Credit is subject to status, application and borrowing history.





Composite Doors  
Windows  
French Doors  
BiFold Doors  
Internal  
Aluminium  
Doors



## GET A QUICK QUOTE

WhatsApp us a picture of your existing door & your area, along with an idea of the new door you like, and we'll send a supply & fit price. Pick your style & colour online at [www.front-door.co.uk](http://www.front-door.co.uk) or call 07481 904071

**COMPOSITE FRONT DOORS, WINDOWS & BIFOLDS SUPPLIED & FITTED AT AFFORDABLE PRICES**

Office: 01268 382252 • Mobile: 07481 904071

[www.front-door.co.uk](http://www.front-door.co.uk) • [info@front-door.co.uk](mailto:info@front-door.co.uk)



## Free Measure & No Obligation Quotes In the comfort of your own home



Conservatory Blinds  
Day & Night ~ Perfect Fits  
Rollers ~ Romans ~ Shutters  
Venetians ~ Faux Venetians ~ Verticals  
Wooden ~ Motorised Blinds



# Arterial Blinds

01702 512391 ~ 07748 043357

E: [arterialblinds@hotmail.co.uk](mailto:arterialblinds@hotmail.co.uk)



HOME & DIY

# Have you TWIGGED?

If you love the current rustic vibe but not the hefty price tags, check out these easy twig projects.

## SUNBURST TWIG MIRROR YOU'LL NEED:

- > Lots of straight twigs of roughly the same size
- > A 25cm round frameless mirror
- > A 35cm circle of corrugated cardboard
- > A hot glue gun

## HOW TO MAKE:

- > Glue the mirror in place in the centre of the cardboard circle.
- > Glue the twigs on the cardboard so that one end is right against the mirror edge and the other is sticking straight out, overlapping the cardboard. Layer on enough twigs so that the cardboard is completely covered.

For safety reasons, we recommend you prop your mirror on a shelf rather than hang it up.

## TWIGGY PHOTO FRAME YOU'LL NEED:

For a 10cm x 15cm (6in x 4in) photo frame:

- > 2x 15cm twigs
- > 2x 20cm twigs
- > Twine
- > PVA glue
- > A piece of baking paper slightly larger than the photo
- > Scissors

## HOW TO MAKE:

- > To form the first corner, lay a longer twig on top of a shorter twig, allowing 2.5cm of each twig to stick out where they overlap.

- > Wrap the two together so the twine forms a cross shape on top. Tie to secure.

- > Complete this step on all corners in the same way to create a rectangle.

- > Glue the photo onto the baking paper. Then glue the edges of the baking paper to the back of the frame, with the picture facing out.

## JEWELLERY TREE YOU'LL NEED:

- > A strong hardwood branch – approx. 25-30cm tall
- > A log slice about 5cm thick and 13-15cm in diameter
- > Epoxy glue (e.g. Araldite)
- > A drill and drill bits suitable for wood

## HOW TO MAKE:

- > Drill a hole in the log slice, the same width as the main stem of the branch.

- > Fasten the branch in the hole with the glue and leave it to dry.

- > Hang up your jewellery!

*Happy twigging!*

Photo credit: saltygirlandtheliondog.com, doodlecraftblog.com





Laura Hammett is an award-winning design house, run by Laura and her husband Aaron since 2008. With more than 25 years of experience between them, they are known for creating contemporary interiors with classic touches, resulting in stunning elegance.

Laura Hammett's work spans the globe and even includes a private jet. You can also enjoy the Laura Hammett look with a creative approach.

A CLASSIC STYLE FOR THE MODERN ERA

When you examine Laura Hammett's style, you're instantly transported to modern London. The designs are full of light and detail, creating beautiful looks that would be right at home in any design coffee table book.

Colour palettes include lighter shades of grey and taupe, paired with darker details to add contrast. Light upholstery, rich walnut and subtle marble are some of the styles that have been used in the Laura

Hammett portfolio, adding character and elegance to all kinds of homes.

CREATING THE LOOK

- With these simple tips, you can transform your home with a modern look the Laura Hammett way.
- > Enhance the natural light in your home by keeping walls light. Think greige, off-white and white.
  - > Adding details such as cushions and throws in rich fabrics can make your interior look more upmarket, without designer price tags.
  - > Statement light fittings and abstract wall art in your colour scheme can complete your space, helping you create some interest without filling the room with clutter.
  - > Search antique shops and second-hand stores to find high-quality furniture items you can restore to their former glory.

Laura Hammett's style is on trend and attainable, a look that can you can adapt to your own home to create subtle modern elegance.



Photo credit: laurahammett.com, @laurahammettinteriors via Instagram



Traditional fitted bedrooms

Fully installed by our own professional fitters.



sliding doors

Whether your taste is traditional or contemporary, with either hinged or sliding doors, we have just the bedroom for you...  
...all made to measure in our own factory and installed by our own professional fitters.

Need some inspiration?... then take a look at the many photos of completed work on our website at:

[www.designerbedrooms.co.uk](http://www.designerbedrooms.co.uk)

Need a professional design...? then call us to arrange for a free no obligation home visit.

Want a quick quote...? then pop in to see us with your plans or room dimensions.

10 Year Guarantee!



We are a local, family owned business and have been creating & installing bespoke furniture since 1992...

We have a large showroom at our factory in Wickford with easy parking.

No Salesmen - No Gimmicks Guaranteed...



Odd shaped rooms are our speciality!



Home Office/Studies



## MOLLY MAID Benfleet

### Keeping your home Healthy

The **HomeSafe** cleaning system puts the health and safety of you, your family and our team of maids at the core of how we work.

In all our cleans we use our specialist disinfectant and anti-microbial **Xtra Protect** cleaner which passed independent laboratory tests proving it's effective against all enveloped viruses including all coronaviruses.



Call us today to learn more about **HomeSafe** and why you can trust MOLLY MAID in your home.

Please call: **01268 442023**

or email: [margaret.king@mollymaid.co.uk](mailto:margaret.king@mollymaid.co.uk)



See what our customers have to say at [uk.trustpilot.com](https://www.trustpilot.com)



## FAST, EFFECTIVE & PROVEN

### ESSEX BASED LEAFLET, PRINTING & DISTRIBUTION SERVICE

Flyer Distribution Essex covers a majority of the CM, SS & CO postcode areas

## CONTACT US

### 0800 086 2836

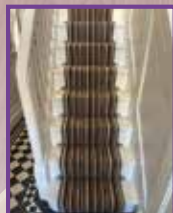
[www.flyerdistributionessex.co.uk](http://www.flyerdistributionessex.co.uk)



# DISCOVER YOUR NEW SPACE

## EXPERTS IN LUXURY VINYL FLOORING

- ◆ Discovery Floors is a family run flooring business
- ◆ We supply and install a range of carpets and flooring
- ◆ If you're looking for a specialist flooring company, contact us today -



**07890 792442**

[www.discoveryfloors.co.uk](http://www.discoveryfloors.co.uk)

[info@discoveryfloors.co.uk](mailto:info@discoveryfloors.co.uk)

Uniquely **amtic**



# HALLWAY to HEAVEN



Is your hallway looking more shabby than stylish? Has it become a place to dump everything and anything that doesn't have a proper home?

Discover five simple ways to transform the entrance to your home, with inspiring ideas to suit all hallways.

## 1. ADD POPS OF COLOUR

If you have a small hallway, you may be tempted to stick to white paint to make the space appear bigger. However, by adding pops of bright colours such as yellow or green, you can create visual interest and fashion a vibrant space. If you don't want to go all out with colour on the walls, why not add a few bold accessories instead, such as brightly coloured coat hooks, colourful floor tiles or a piece of bold artwork?

## 2. MAKE THE MOST OF MIRRORS

Dark hallways can make the entrance to your home feel gloomy and unwelcoming. Counteract this by creating the illusion of light with a few well-placed mirrors. Don't be afraid to experiment with different sizes and shapes, as this can help to make more of a style statement.

## 3. INVEST IN FUNCTIONAL FURNITURE

Most hallways are narrow, which means they offer little in the way of space. Therefore, if you want to add a piece of furniture, then you need to make sure it is both stylish and practical. For example, a seating area that doubles up as a storage unit. It can also be a good idea to make use of any available vertical space, for example by hanging a wall cupboard above your coat hooks.

## 4. EMBRACE CONSCIOUS STYLING

As a transitional space in your home, it is important that your hallway is clutter free, well lit, and, most importantly, that it is styled in keeping with the rest of your interiors. Take a walk around your home and see what design elements you can incorporate into your hallway.

## 5. LAYER LIGHTING

You can transform a dark hallway with the right lighting, with layered lights offering a stylish and practical way to illuminate this key space. Try combining multiple pendant lights with directional wall lights for maximum impact.



HOME & DIY

Photo credit: [dailymail.co.uk](https://www.dailymail.co.uk), [idealhome.co.uk](https://www.idealhome.co.uk), [furniture123.co.uk](https://www.furniture123.co.uk), [BTC via housebeautiful.com](https://www.btc.co.uk)





Checkatrade.com  
Where reputation matters

# Lifestyle

## Shutters & Blinds Ltd

www.essexwindowshutters.co.uk



**Save up to £230 with our FREE FITTING on all Shutter ranges**

- Local small family run business
- Specialising in made to measure shutters and blinds
- First Floor Showroom open Monday-Friday 9am-3pm

*If you bring some rough measurements, we are happy to provide a free quotation*

### New Lifestyle Blind Range

Wood & Faux Wood Venetian Blinds  
Roller Blinds  
Day & Night Blinds



Proud to sponsor Maldon & Tiptree FC &  
Burnham Ramblers FC

**Get in touch today for a free no obligation quote**

T: 01245 426620 • M: 07971 574 958 • E: adam@essexwindowshutters.co.uk

Unit 2, 49 Cutlers Road, South Woodham Ferrers, CM3 5WA



# FROM YOUR AREA



LOCAL NEWS

## New bleed kits installed in multiple pubs



Photo credit: Rochford Council

New bleed kits have been installed in pubs across Rayleigh in a move to enhance community safety. Members of the Rayleigh Pub Watch (RPW) scheme recently requested the kits, which contain items for controlling severe bleeding, such as a tourniquet.

The 10 new kits are now installed inside The Paul Pry, The Travellers Joy, The Roebuck, the Rayleigh Lanes Snooker Club, Ye Olde Crown, The Spread Eagle, Oyster Wharf, Crafty Casks, The Pink Toothbrush and The Rayleigh Lodge.

The installation has been funded by the Essex County Council Locality Fund after being nominated by Rayleigh North councillor James Newport.

Tony Lord, chairperson of RPW and manager of The Pink Toothbrush, said: "These bleed kits are an essential piece of equipment for any venue. Many thanks to the council for issuing these."

Cllr Newport said: "These life-saving kits equip users with the equipment and instructions to save a life."

## Resident charged with class A drug offences

A Wickford woman is one of five individuals who have been charged with major drug offences.

Six search warrants were executed by Essex Police on Friday, September 15, targeting crime in the south of the county. This included addresses in Wickford, St Osyth, Maldon and Basildon.

Two women and three men were arrested, and a number of significant items were seized in the search.

Rebecca Ingledew, 27, of Southend Road, Wickford, has been charged with conspiracy to supply class A drugs.

Sergeant Adam Jarvis said: "My thanks go to colleagues from all teams who supported the investigation."

"We are determined to drive down drug supply and ensure our communities remain safe and those who are intent on committing crime are dealt with robustly."

## Three schools affected by concrete crisis

Three schools in Rayleigh and Wickford have been affected by the ongoing reinforced autoclaved aerated concrete (RAAC) crisis.

The material has been found in parts of The FitzWimarc School (pictured below) and Wyburns Primary School (WPS) in Rayleigh, as well as The Bromfords School in Wickford. RAAC has been declared by the government to be unsafe as it has the potential to crumble.

While all pupils at The FitzWimarc School are able to continue full face-to-face education, those at the other two schools are currently experiencing a mix of both face-to-face and from-home learning.

In a statement on September 15, The Bromfords School announced it was refitting some parts of the school into teaching spaces. It also said that temporary classrooms have been secured.

Meanwhile, Rochford District Council has offered WPS the use of its civic building, as well as Rayleigh Methodist Church and Rayleigh Primary School.

Kath Sansom and Jen Milner, headteachers at WPS, said: "Our school community are always resilient and motivated. The swift actions of our relocation network have enabled a swift transition to three locations."

The Bromfords School and The FitzWimarc School have been contacted for comment.



Photo credit: Google Maps





# MARK FRANCOIS MP

Conservative MP Rayleigh and Wickford



The summer recess provided me with a great opportunity to visit many local businesses, organisations and charities across our community.

At the start of September, I was shown a new NHS outreach service for elderly patients, during a visit to Swayne Court Care Home in Rayleigh. The idea behind the new service is to try to 'nip problems in the bud' by identifying medical needs at an early stage, before they become more acute and perhaps require hospital treatment.

On a similar note, I also visited King George's Court on Eastwood Road in Rayleigh. It has suffered multiple breakdowns of its lift over a period of nearly a year, causing misery for residents, one of whom even had to be carried down the stairs into an ambulance because the lift was repeatedly out of action.

The lift has thankfully now been repaired, but I think Firstport might be better to eventually install a new one to save us from having to go through the ups and downs of this all over again in the future.

I was also thrilled to join local civic dignitaries recently at a special concert performed by the Rayleigh-based Mushroom Theatre Company. Mushroom is a brilliant organisation that provides opportunities for young people, including those with additional needs, to participate in dance, drama and the related arts. It is a thriving local group that does great work and, along with our local councillors, I was very pleased to support its amazing show.

Finally, most recently, I have been dealing with the rapidly evolving situation caused by the discovery of reinforced autoclaved aerated concrete affecting schools nationwide. Having already experienced this issue at both King Edmund and Hockley Primary Schools, I very much understand how worrying this is for staff, parents and pupils alike. In these situations, it is very important to separate fact from rumour, so I have been urgently contacting the heads of the several schools in my constituency that are actually or potentially affected by this issue, to establish the details in each case and in the hearings of the Public Accounts Committee on which I now serve. I will continue working on this with local headteachers, for as long as needs be.



WWW.MARKFRANCOIS.COM

# CHANDLERS

Celebrate life's special occasions with the language of flowers

At Chandlers Florist, we take pride in being your trusted local florist. Ordering from us online is a seamless and convenient experience.

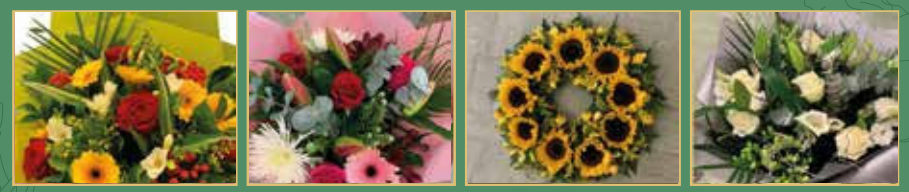
You can visit our website or social media pages to explore our extensive collection of floral arrangements, conveniently categorized for various occasions. Our user-friendly interface allows you to browse through different options and choose the perfect bouquet that resonates with your vision or for something more specific call us 01268 931419.

If you have any specific questions or need assistance, our friendly and knowledgeable team is always ready to help. You can contact us directly to discuss your requirements, seek advice, or clarify any doubts you may have. We are passionate about providing exceptional customer service and ensuring that every interaction with Chandlers Florist is a delightful experience.



Visit Chandlers Florist today or order online to experience the beauty and elegance of our floral masterpieces. Let us help you create unforgettable moments and celebrate life's special occasions with the language of flowers.

# CHANDLERS



Your Go-To Local Florist for Stunning Flower Delivery in Wickford

Beautifully designed flower arrangements for Birthdays | Anniversaries | New Baby | Romance | Congratulations | Get Well Soon Florist Choice | Christmas | Valentines Day | Mothers Day| Funerals

01268 931419

@chandlerflorist

info@chandlerscorporateflowers.com

167 Southend Rd, Wickford, SS11 8EE



# From rural surroundings to entertainment icon



You wouldn't expect to find a buoyant behemoth of modern primetime entertainment lingering in the leafy, rural, countryside surrounds of Stanford, yet Rylan Clark-Neal's life in Essex is indeed the epitome of serenity, and a world away from the flashbulbs and entertainment excesses that pattern his day job.

Born Ross Clark and raised in Stepney, East London, the presenter we now know as Rylan got his big break when he auditioned for the ninth series of *The X Factor* in 2012. Though his singing skills may not have been the strongest among the contestants, his magnetic personality quickly captured the hearts of both the audience and assembled judges. Finishing in fifth place, his time on *The X Factor* provided a solid foundation for his future career in television.

*Celebrity Big Brother* followed, with audiences won over by the star's vibrant personality and natural charm. Presenting duties proved an obvious route for someone who, while never turning his back on his reality TV roots, was keen to explore other areas. These have included *Big Brother* spin-offs, plus daytime TV (*This Morning*), game shows (*Supermarket Sweep*), panel shows (*Celebrity Juice* and *Would I Lie to You?*) and *Eurovision*.

Rylan is openly gay, and while he uses his influence to good effect in terms of fundraising and providing exposure to minority groups – such as the LGBTQ+ community – the 34-year-old remains grounded and sincere.

The current voice of car retailer Cinch, the presenter is set to embark on a busy schedule of work in the coming months, including a rumoured *Big Brother* return.

Clark-Neal recently swapped Stanford for Brentwood, where his mother Linda lives, and remains loyal to his Essex image. As he says: "There is no better place on Earth – the people, the places, the vibe. It's always Essex."

## HAMMOND & SONS

### GAS ♦ PLUMBING ♦ HEATING

- ♦ All boilers serviced & repaired
- ♦ Condensing boilers & warm-air units
- ♦ All work undertaken including leaks, upgrades & installations
- ♦ No call-out charge
- ♦ OAP discounts available
- ♦ Full public liability insurance
- ♦ Fully qualified engineers



**A PROFESSIONAL FAMILY-RUN BUSINESS**  
**HONEST & RELIABLE**  
**OVER 20 YEARS' EXPERIENCE**

From a tap washer to a full heating system, call

**01268 286 805**

email: [hammondandsons@hotmail.co.uk](mailto:hammondandsons@hotmail.co.uk)  
[www.hammondandsons.co.uk](http://www.hammondandsons.co.uk)

## W1 WEST ONE WOOD

FLOORING INTERNATIONAL LTD

MANUFACTURING • INSTALLATION • RESTORATION

- West One Wood Flooring International Ltd is a specialist in the manufacturing, installation and restoration of antique reclaimed and new timber flooring
- We can supply and fit a variety of stunning timber floors for domestic properties and commercial projects
- Installation is by a skilled friendly professional team who offer high quality service and aftercare
- Our flooring is competitively priced with innovative solutions to suit your needs
- If your existing wooden floor needs restoring, our skilled teams will transform your worn floor back to its former beauty. We are experienced with all types of wooden floor and will carry out the necessary specialist repairs and finishes. Most timber floors are salvageable, our team of expert restorers will point you in the right direction.

[www.westonewoodflooring.co.uk](http://www.westonewoodflooring.co.uk)



Call us on **01277 630837**  
**01245 204231**

Email: [info@westonewoodflooring.co.uk](mailto:info@westonewoodflooring.co.uk)  
Unit 3 Blackall Industrial Estate, Hamberts Rd,  
Sth Woodham Ferrers, Essex CM3 5UW

# YOUR LOCAL EVENTS

## WALK AND TALK SEND PARENT/ CARER SUPPORT GROUP

Memorial Park, Rettendon View,  
Wickford, SS11 8JE  
Thursday, October 19, 10am – 12pm



Photo credit: Terry Joyce

A perfect way for parents and carers of children with special educational needs and disabilities to take a break and socialise with others. There will be a walk around the park, finishing with free refreshments at the café.

Meet at Hutton's Café in the park. Entry is free, but booking is advised via [www.ticketsource.co.uk/whats-on/essex/memorial-park-wickford/walk-and-talk-send-parent-carer-support-group/e-dbmzrg](http://www.ticketsource.co.uk/whats-on/essex/memorial-park-wickford/walk-and-talk-send-parent-carer-support-group/e-dbmzrg)

## LIVE WRESTLING

The Mill Arts & Events Centre, Mill Hall,  
Bellingham Lane, Rayleigh, SS6 7ED  
Saturday, October 21, 7pm – 9pm

Come to The Mill and see the superstars of Wrestle Force, one of the UK's biggest professional tour groups. There'll be thrills and spills for all the family to enjoy.

Tickets cost £16.75 for adults, £14.55 for children and the elderly, and £27.75 for front-row seats. To book, visit [www.bit.ly/3Rtogvl](http://www.bit.ly/3Rtogvl)

## SPOOKY FEST

Crouch Valley Showground, Rayleigh, SS6 7FQ  
Tuesday, October 24, to Sunday, October 29,  
11am – 4pm

Children can come along to the newly refurbished Halloween Marquee for a scarily good time this Halloween. There'll be tricks, treats, craft activities, creepy crawlies, a disco and a spooky story to enjoy.

Tickets cost £15 for children and £4 for adults. To book, visit [bit.ly/3RxxPyG](http://bit.ly/3RxxPyG)

## KNIT AND NATTER

Wickford Library, Unit 8, The Willows,  
Market Road, Wickford, SS12 0RA  
Thursday, October 26, 10am

Come along to the library and have a great knitting session while socialising. It doesn't matter what skill level you are; anyone is welcome. Bring your own crafting materials.

No booking is required for this event and it's free, just come to Wickford Library at the allotted time.

## FOLK AND BESPOKE ARTISAN CRAFT FAIR

The Mill Arts & Events Centre, Mill Hall,  
Bellingham Lane, Rayleigh, SS6 7ED  
Saturday, October 28, 10am – 3pm

This market is the perfect place to get handmade local products. There are more than 40 stalls with a wide variety of items to choose from.

There is a pay and display car park next to the venue. No booking is required.

## MINDFUL CRAFTS FOR SOCIALLY ANXIOUS CHILDREN/TEENS

Rose Court, Russell Gardens,  
Wickford, SS11 8QG  
Monday, November 6, 4.30pm

These relaxing craft sessions are a perfect way for young people aged between 10 and 16 to relax, make some lovely new things and meet like-minded friends.

Tickets cost £6.50 each, and a parent/carer is expected to stay for the duration of the event. To book, visit [www.bit.ly/3EQpxFP](http://www.bit.ly/3EQpxFP)



Photo credit: Gweniem

# CKB

## WASTE CLEARANCE LTD

### FULLY LICENSED WASTE REMOVAL

### PROFESSIONAL WASTE CLEARANCE IN ESSEX & LONDON

FULLY  
INSURED

NO SKIP  
REQUIRED

0800 464 7320

07551 805 035

[ckb.wasteltd@gmail.com](mailto:ckb.wasteltd@gmail.com)

[@ckbwasteclearanceltd.co.uk](http://@ckbwasteclearanceltd.co.uk)



If you're thinking your driveway needs doing, those fence panels need replacing, your patio needs updating or your back garden needs a makeover –

**PLEASE THINK OF US,  
ALWAYS HAPPY TO HELP &  
FREE ESTIMATES GIVEN**

Local Independent  
Family Run Business  
40+ Years Experience



**07856 024917 / 07752 2866709**

[jflandscapes1@hotmail.com](mailto:jflandscapes1@hotmail.com)

[@juniperfencingandlandscapes](https://www.facebook.com/juniperfencingandlandscapes)



White Tail Studios

# You Dream. We Create.

## KITCHEN - DESIGN - RAYLEIGH

*British made kitchen furniture to suit everyone's needs*

**CALL NOW OR BOOK ONLINE FOR YOUR FREE CONSULTATION**



01268 906630 | [www.whitetailstudios.co.uk](http://www.whitetailstudios.co.uk) | [info@whitetailstudios.co.uk](mailto:info@whitetailstudios.co.uk)

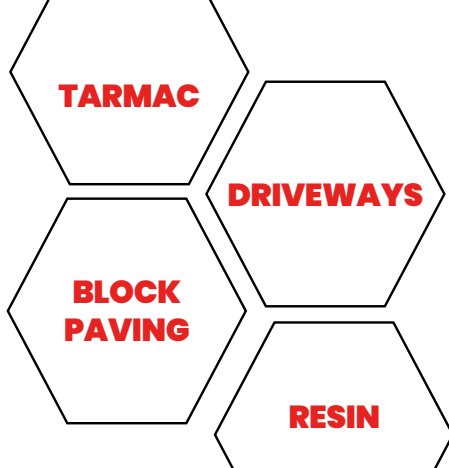
157 High Street, Rayleigh, Essex, SS6 7QA







**Producing Immaculate  
Finishes for Decades**



- ◆ **Essex's leading road & surfacing contractor**
- ◆ **Grab Lorry Hire Essex**
- ◆ **A family business**
- ◆ **Established for decades**



☎ 01621 772429    ✉ [info@ljanderson.co.uk](mailto:info@ljanderson.co.uk)    🌐 [www.ljanderson.co.uk](http://www.ljanderson.co.uk)

# HALLOWEEN PUMPKIN LANTERNS

*An Illuminating and Spooky Tale*

The origins of Halloween go back around 2,000 years to a Celtic festival called Samhain (pronounced 'sow-in'). The Celts believed that when the harvest ended and winter took hold, the barrier between our world and the spirit world became blurred – and this meant that dead spirits could come back to haunt us. But why pumpkins?

## AN ENCHANTING STORY FROM IRELAND

Stingy Jack is a character from Irish folk tales who liked playing pranks, even on the devil. One day, Jack tricked the devil into turning into a coin, so he could pay for their drinks. Jack then pocketed the coin, and the devil was trapped. Eventually, he set the devil free but made him promise not to claim his soul. So when Jack died, he couldn't go to hell or to heaven. He was stuck roaming the world with a glowing coal inside a turnip to light his way.

## LANTERNS FROM TURNIPS

As time passed, Samhain mixed with Christian traditions such as All Saints' Day (or All Hallows' Day) on November 1 – and All Souls' Day, the day after. By the 16th century, the festival was already known as Halloween, taking its name from All Hallows' Eve. And as part of their Halloween celebrations, people in Ireland carved turnips into lanterns to ward off spooky spirits.

## PUMPKINS WORK BETTER

When Irish people moved to America in the 1800s, they took their Halloween tradition with them. But they soon discovered that pumpkins were much easier to carve than turnips. In honour of Stingy Jack, the carved pumpkins became known as Jack-o'-lanterns.

Today, as we carve our pumpkins to light up the night, we continue to honour customs that have journeyed through time, from our Irish neighbours to America – and, in the 1990s, back over the seas to Britain.





# Incy wincy spider

Halloween provides the perfect opportunity for you to get crafty with your kids, and this spooky spiderweb doesn't disappoint. Suitable for little ones and older children alike, discover how to make your very own salt and glue spiderweb craft below.

## WHAT YOU WILL NEED:

- Black paper or card | A pencil | A ruler | PVC or Elmer's glue | Table salt | Watercolour paints | A soft brush

## HOW TO MAKE:

**1 Draw your spiderweb design:** Your child can do this by hand themselves, depending on their age and ability, using a pencil or ruler, or you can help them with this step. Alternatively, you could print out a spiderweb template to use.

**2 Trace the shape with glue:** The next step is to trace glue along each line of your spiderweb. Again, young children may need help with this if they want to achieve a good spiderweb shape. To make the glue lines as smooth as possible, do not allow the tip of the glue bottle to touch the paper but instead, hover slightly above it.

**3 Cover the spiderweb with salt:** Fill a ramekin or small bowl with table salt and then use two fingers to pinch the salt and sprinkle it over the glue. Make sure that you cover each line and curve with enough salt. Leave the glue to fully dry, ideally overnight, before moving on to the next step.

**4 Paint your spiderweb:** Now comes the really exciting part: adding colour to your spiderweb. Watercolour paints are perfect for this as they spread well on dried glue and salt. Using a soft brush, plenty of water and your chosen watercolours, add a drop or two of colour to a salt line. Use a light touch and do not scrub as this may dissolve your spiderweb.

## MAKE A HANGING SPIDERWEB

Take your craft to the next level by applying the glue and the paint, minus the salt, to a thin plastic sheet, gently peel it off and then fix it to your preferred surface using sticky glue dots or hang around the room with string. Make sure you allow the glue to fully dry before peeling.

GLOW WORM - BAXI - VAILLANT - POTTERTON - WORCESTER - IDEAL - BIASA - FEROLLI - MAIN

- BAXI - VAILLANT - POTTERTON - WORCESTER - IDEAL - BIASA - FEROLLI - MAIN - GLOW WORM - BAXI - VAILLANT -

- BAXI - VAILLANT - POTTERTON - WORCESTER - IDEAL - BIASA - FEROLLI - MAIN - GLOW WORM - BAXI - VAILLANT -

- BAXI - VAILLANT - POTTERTON - WORCESTER - IDEAL - BIASA - FEROLLI - MAIN - GLOW WORM - BAXI - VAILLANT -

## JOHN HUNTER HEATING

### FULL BATHROOM INSTALLATIONS

Complete bathroom suites including tiling. Bathroom to shower room conversions.

### PLUMBING HEATING & GAS ENGINEERS

All central heating carried out including boilers serviced, repaired and replaced.

## CALL NOW ON

# 01702 528 487

# 07850 010 990

DISCOUNTS FOR SENIOR CITIZENS AND LOCAL RESIDENTS

info@johnhunterheating.com  
www.johnhunterheating.com





FAST ■ EFFICIENT ■ AFFORDABLE



Are you looking for a reliable and professional roof repair company in Essex? Look no further than our experienced team at BB Roofing Contractors. With years of experience in the industry, we specialise in providing top-quality roof repair services for both residential and commercial properties.

Our team of skilled and certified technicians is equipped with the latest tools and techniques to deliver fast, efficient, and cost-effective roof repairs. Whether you need minor repairs or major restorations, we've got you covered.

We are a family business with vast experience in all types of roofing. As professional roofers operating in and around Essex and London, we pride ourselves on giving good, honest advice and strive for perfection on every job.

At BB roofing contractors we believe our customers deserve the utmost respect and care. We also believe that working with any trades professional should be



a positive experience, not a painful one. If you share these values, then you can trust us to take care of your roof.

At our company, we understand that customers want to know the cost of a project upfront. That's why we offer a free, no-obligation quotation for all of our services. Our customers love this

approach because it allows them to see the full cost of a project, and take informed decisions based on the quote before making any commitments.

Our competitive prices, timely service and excellent workmanship have made us the go-to choice for roof repair services in Essex and London. Contact us today to schedule a consultation or request a free quote.



## AN EXCEPTIONAL ROOFING COMPANY

- GREAT ROOFING PRICES
- FULLY GUARANTEED WORK
- OUR SERVICES INCLUDE:
  - FLAT ROOFING ■ PITCHED ROOFING
  - NEW ROOFS ■ REPAIRS & MAINTENANCE
  - SLATING & TILING ■ LEAD WORK
  - RUBBER ROOFING ■ FELT ROOFING
  - ROOF FURNITURE (SKYLIGHTS, ETC.)
  - ALL ASPECTS OF GUTTER WORK



**FREE NO-OBLIGATION QUOTES**



**CONTACT US TODAY**

■ **01702 278474**

■ [info@bbroofingcontractors.co.uk](mailto:info@bbroofingcontractors.co.uk)  
 ■ [www.bbroofingcontractors.co.uk](http://www.bbroofingcontractors.co.uk)

**Checkatrade.com**  
Where reputation matters



**BAD SPORTSMANSHIP:**

# ERIC CANTONA

With true skill, finesse and regular glimpses of genius, when Eric Cantona was good, he was very good. Yet the Frenchman was tainted with a self-destructive element that permeated his game.

Cantona was ever the mercurial talent, and was an iconic figure for Manchester United during the club's early glory years under Sir Alex Ferguson CBE.

From the outset of his career, Cantona's undoubted flair was plainly evident, yet so too was his lack of composure.

During a match in 1988 between his club, Auxerre, and Nantes, the Marseille-born forward kung fu kicked Michel Der Zakarian, landing him a three-month ban which was later reduced after the club threatened to withdraw him from French national team selection.

As it would turn out, this would not be an isolated incident. A string of other disciplinary issues in France prompted a move to England, with Leeds United the beneficiaries as they clinched the final First

Division title before the inception of the Premier League in 1992. A tempestuous time at Elland Road then saw him move to hated rivals Manchester United for a cut price £1.25million.

Talent and turbulence would continue at Old Trafford, but never more so than one night in January 1995 in South East London. After being sent off for his kick at opposition defender Richard Shaw, Cantona was confronted by Palace supporter Matthew Simmons, who had run down 11 rows of the stand to confront and racially abuse the Frenchman. Cantona responded by launching into the crowd with another of his trademark kung fu kicks and followed this with a series of punches.

The sultry, softly spoken Frenchman's reaction to his subsequent eight-month ban went down as one of football's famous quotes. "When the seagulls follow the trawler," he said, taking a sip of water, "it's because they think sardines will be thrown into the sea."



Photo credit: Colorsport/Shutterstock



SPORT





# BIG BEN

**BEN STOKES OBE'S INCLUSION IN THE WORLD CUP SQUAD IS GREAT NEWS FOR ENGLAND CRICKET... LESS SO FOR OUR OPPONENTS!**

When Durham and England all-rounder Ben Stokes OBE decided that the gruelling cricketing schedule was too much for him and his body to take, a collective sigh of relief from those who cherish the clack of leather on willow must have been heard all around the world in the sport.

It was July 2022. Stokes had spent the previous three months leading his country in Test cricket after succeeding Joe Root MBE as captain, and things in that regard had started perfectly, with four wins in a row.

However, after commenting that he felt playing all three of cricket's formats – Test, ODI and T20 – was “unsustainable”, Stokes' last 50-over tussle came against South Africa at his home ground, Durham's Riverside.

Yet a year is a long time in sport, and even longer in the seesaw nature of the Christchurch-born all-rounder's career. So roll on 12 months, and despite a huge summer Ashes series ahead, Stokes began speaking to his limited overs captain Jos Buttler MBE and coach Matthew Mott about a quickfire return to the ODI circuit.

Stokes says: “The closer this World Cup got, the more I was becoming interested in having those discussions. And when you consider that we are the defending champions, it almost feels right to want to ensure you defend that crown.

“At the same time, I had to remind myself of the original reason for choosing to retire from this format of the game.”

Return he has, with a pledge from the 32-year-old to listen to his body, perhaps better than he has in the past when the almost constant demands of the game have had an impact on not just physical abilities, but the star's mental wellbeing too.

“Let's see how this World Cup goes,” he adds, “and I'll decide then if it's my last hurrah.”

Had Stokes not chosen to return to the fold, we would have been denied his record-breaking knock against New Zealand in the third ODI at The Kia Oval in September. Coming into bat alongside Dawid Malan with England compromised on 13/2, Stokes was about to rev it up against the Kiwis.

His 15 fours and nine sixes contributed to an almost unimaginable personal total of 182, beating Jason Roy's 180 against Australia in Melbourne in 2018. His efforts saw England reach a mammoth 368 off 48.1 overs. New Zealand could only muster 187 all out and Stokes took a further leap into the echelons of iconic status.

“I need more time to get used to its rhythm, but I think I managed well this time,” he said, referencing that spectacular knock. “The announcer mentioned my record just before I was done. I didn't even know about it until then. Jason congratulated me, and I apologised to him,” he laughs.

Does Stokes feel that England can become world champions again, and in the process become only the third side to defend the title since its inception in 1975?

“Everyone recognises our team's strength, and it's not boastful to admit we have a talented line-up. We're optimistic about our chances, but in World Cup matches, it's all about handling pressure.”

Photo credit: Kieran McManus/Shutterstock



# How to grow SNOWDROPS

**S**nowdrops are one of the first signs of spring and can make a wonderful addition to any garden. Instantly recognisable by their small, white, bell-shaped flowers, snowdrops are easy to grow and will come back year after year.

## WHERE TO PLANT SNOWDROPS

Snowdrops thrive in moist but well-drained soil and in partial shade. If you plant snowdrops in soil that is too dry, you risk the bulbs drying out and failing to flower. Choose to grow snowdrops beneath deciduous shrubs or along the front of borders where herbaceous plants can provide ground cover when these flowers are dormant. They also do well planted in grass, in spring border displays and in rock gardens.

## HOW TO PLANT SNOWDROPS

Dry snowdrop bulbs can be planted in autumn, but these are often hard to establish. Instead, opt to plant snowdrops in the green in January or February. Simply lift snowdrop plants just after flowering and before the foliage has turned yellow, and replant somewhere else. You can buy snowdrops in the green from your local garden centre or online.

## HOW TO CARE FOR SNOWDROPS

Once snowdrops are established, they require no maintenance. Allow the foliage to die back naturally as this will help to ensure that the nutrients from the leaves are returned to the bulbs. Once every two years, divide any established clumps to avoid overcrowding.

## HOW TO PROPAGATE SNOWDROPS

To propagate snowdrops, lift and divide established clumps after flowering in either March or April. Using a fork, carefully lift the bulb with the roots intact and the foliage still in place. Replant in the garden immediately and water well. The foliage may appear a little sorry, but it should look healthy by next winter.

## TOP SNOWDROP VARIETIES:

Galanthus nivalis | Galanthus elwesii | Galanthus woronowii | Galanthus Armine | Galanthus Cordelia.



**MARTIN HOLMES**

Fencing ■ Patios ■ Paving  
Pergolas and Planters  
Artificial Grass  
Decking & General Jobs

**ANY JOB TAKEN ON,  
BIG OR SMALL**

**CALL MARTIN ON  
01268 955048 ■ 07796 008198**

Visit us on martinhandyholmes

## Essex Cleaning Solutions

Specialist in domestic and commercial cleaning

Essex Cleaning Solutions are pleased to offer the following services



- Conservatory Exterior & Interior Cleaning
- All Exterior UPVC Cleaning
- Traditional Window Cleaning (No Poles)
- Driveway/Patio Pressure Washing
- Roof Tile Cleaning / Moss Removal
- General Building & Maintenance Available
- Painting and Decorating - Internal & External
- Roofing & Cladding - Installation & Repairs

ECS will never ask for payment until job completion to the customers satisfaction

**FREE, no obligation quotation!**

**Freephone: 0800 699 0466 or  
Mob: 07749 220949  
Mob: 07462 677211**

[www.essexcleaningsolutions.co.uk](http://www.essexcleaningsolutions.co.uk)  
[essexcleaningsolutionsltd@gmail.com](mailto:essexcleaningsolutionsltd@gmail.com)

Find us on

All major credit/debit cards accepted  
Fully Insured



For residential & commercial gutters

01702 742164 07828 332051  
[www.theguttersurgeon.co.uk](http://www.theguttersurgeon.co.uk)  
[info@theguttersurgeon.co.uk](mailto:info@theguttersurgeon.co.uk)  
Find us on The Gutter Surgeon

- Gutter leaning at reduced rates • Gutter Vacuuming up to 40ft
- Gutter repairs at affordable prices • New gutters/facias & soffits installed
- Down pipes cleared, new down pipes added
- The Gutter Surgeon will to beat any like for like cleaning quote.





# WILD WEAR

THE ESSENTIAL WARDROBE FOR THE DEVOTED GARDENER

While gardening is a careful curation of your outdoor space, it's important not to forget the importance of maintaining your own green-fingered style.

## TROUSERS

A pair of dedicated garden workwear trousers or dungarees will suit you much better than a simple pair of old jeans.

If you've gardened before, you'll know the perils of pinching waistbands, seams riding up, back-of-the-knee fatigue and general ripping or snagging; so investing in a pair of trousers that is waterproof, strong, flexible and with ample pockets on the front and sides, plus has all-essential knee pads, is a great idea.

## HEADWEAR

Hats are a must when the sun comes out, and will also keep you warm when temperatures drop. Most gardeners will showcase a variety of headwear – from a nice woolly beanie hat in winter to a brimmed hat for summertime. Mix it up and keep your head in a good place.

## FOOTWEAR

Footwear should be comfortable, as long hours on location can bring about foot pain and sores. From classic Crocs to garden sandals, sturdy boots to full-length wellies, your footwear will most likely match weather conditions.

Don't forget to invest in a few good pairs of socks too – in the winter, they will excel at keeping the cold out, while breathable varieties for the summer will minimise the threat of fungal infections.

## GLOVES

While most gardeners are more than happy to get their hands dirty, gloves are essential for protecting your skin from sharp matter, such as rocks, stones and thorns. Switch between thicker and lighter varieties for seasonal versatility.

## JACKET

Finally, as the weather changes, keep the cold out if you're committing long hours to the soil with a jacket that's breathable, a hood for sudden inclement weather, and plenty of pockets for essentials.



# WHEN YOU BUY FROM A SMALL BUSINESS



YOU'RE **NOT** HELPING A CEO **BUY A THIRD HOLIDAY HOME**

## YOU'RE HELPING TO PAY FOR...

*a little girls*  
**dance classes**



A YOUNG BOY'S  
**TEAM JERSEY**

MUM AND DAD TO PUT  
**FOOD ON THE TABLE**



SUPPORT YOUR LOCAL BUSINESSES  
AND LET THEM KNOW YOU SAW THEM FIRST IN... **VISION**







# Woof n wag doggy daycare

Where pets are family!



Day Care



Home Boarding



Walkies

## Your Furry Friend's Home Away from Home

### We cover the following areas:

Rayleigh & Wickford which is included in the price.  
Any areas outside of this will be charged an additional fee to cover petrol.

**Hours:** Monday - Friday: 9am - 6pm

Saturday - Sunday: Home boarding only

### Woof n Wag Doggy Day Care

**Telephone:** 07342 382003

**Email:** [info@woofnwagdoggydaycare.co.uk](mailto:info@woofnwagdoggydaycare.co.uk)

**Web:** [www.woofnwagdoggydaycare.co.uk](http://www.woofnwagdoggydaycare.co.uk)



# £5 Off

A £30+ spend in store!

For readers of Vision Rayleigh.  
Offer ends 31/01/24. Hand this voucher to the cashier at the start of your purchase to get £5 off a £30 or more spend. Valid at GP&CS Rayleigh only. Retail only. No cash alternative. One voucher per transaction. Copies will not be accepted. Not redeemable online. Excludes Blue Light discount & delivery service.

## GLADWELLS PET AND COUNTRY STORE

Where pets are more than companions...they're family!



Home Delivery Service



Free Harness Fitting



Open 7 Days A Week

Plus many more services available in store!

Lubards Lodge Farm,  
Hullbridge Road, Rayleigh,  
Essex, SS6 9QG



Tel: 01268 642601  
[www.gladwellspet.co.uk](http://www.gladwellspet.co.uk)

# Keeping your dog SAFE IN AUTUMN



PETS



**A**utumn is one of the best times of year for long walks with your dog, when the leaves are falling from the trees and the weather has cooled. That being said, there are lots of lurking dangers that you need to be aware of.

**ACORNS:** Acorns contain a toxic ingredient called tannic acid which can cause damage to your dog's liver and kidneys. When ingested, they can also lead to vomiting, diarrhoea, lethargy and abdominal pain.



**CONKERS:** Conker seeds boast a spiky green shell that can injure your dog's mouth if picked up and carried around. The shiny brown conker inside can be a choking hazard and, if ingested, can cause vomiting, diarrhoea and sometimes an intestinal blockage.



**FALLEN FRUIT:** If you take your dog on long country walks, they are highly likely to encounter fallen fruit such as apples and plums. When these fruits fall on the ground, they start to ferment and produce a natural alcoholic substance. If eaten in large quantities, this can cause vomiting and diarrhoea.



**HARVEST MITES:** Harvest mites are tiny red mites that tend to appear at the end of summer and into autumn. They are often found on a dog's coat, in between their toes and in their ear folds. These mites can cause extreme itching and trauma to the skin.



**WILD MUSHROOMS:** Wild mushrooms come in all sorts of shapes, colours and sizes, which makes it very hard to distinguish between the edible ones and those that are poisonous. If your dog eats an unknown fungus, it may cause a mild stomach upset, or it could be deadly.



**SPRING BULBS:** Many people plant spring bulbs in autumn, such as daffodil, tulip and spring crocus bulbs. These are all toxic to dogs and can make them very unwell if ingested.





# Get BALANCED!

Did you know that National Work/Life Balance Week takes place this month, with the aim of generating awareness of the importance of a healthy balance between your professional and personal life?

If you struggle to switch off after leaving work or you find the lines between your work and home life have blurred, then we are here to help you.

## Why is a good work/life balance important?

A good work/life balance involves finding a harmonious relationship between your home life and your working life. This is vital to your overall wellbeing as people need to engage in a wide range of activities, as well as rest, in order to thrive. If you work too hard or work very long hours, you are more likely to experience high levels of stress and suffer from insomnia, depression and/or anxiety.

## What is an unhealthy work/life balance?

The most common signs of an unhealthy work/life balance are:

- > Regularly working long hours, including evenings, weekends and holidays
- > Neglecting your personal/family life owing to excessive work demands
- > Experiencing burnout, which causes physical, emotional and mental exhaustion
- > A lack of time for self-care, including sleep and leisure activities
- > Strained relationships owing to work commitments

## How to achieve the right balance between work and home life

**1. SET BOUNDARIES:** Make sure that you establish clear boundaries between your work and personal life by defining specific working hours and sticking to them.

**2. FOCUS ON TIME MANAGEMENT:** Sometimes people are guilty of working hard rather than smart, which can mean they have to spend longer at the office and less time at home. Instead, prioritise the most important tasks both at home and at work.

**3. BE FLEXIBLE:** At times, you will need to have to adjust your work schedule to accommodate unforeseen personal circumstances or emergencies, so don't feel guilty about doing this.



# WORK CAREER

# FAMILY LIFE



PATRICK STEPHEN



WEB DESIGN



LOGO DESIGN



LEAFLET DESIGN



BUSINESS CARDS



SOCIAL MEDIA



[sales@patrickstephen.co.uk](mailto:sales@patrickstephen.co.uk)



[www.patrickstephen.co.uk](http://www.patrickstephen.co.uk)



07832109419



# ONE SMALL STEP FOR YOU, ONE GIANT LEAP FOR YOUR BUSINESS



Photo credit: Granger/Shutterstock

## IT'S NOT ROCKET SCIENCE!

CALL NOW FOR AN OUT OF THIS WORLD DEAL

Your  
Monthly  
Lifestyle  
Magazine



t: 01268 955027 m:07860 683239  
e: rayleigh@VISIONmag.co.uk  
w: www.VISIONmagessex.com

## A WILL WRITER'S WORDS OF WISDOM

### WORRYING PROBLEMS

If a married couple dies together, and where there is no Will, the eldest is deemed to have died first, so only the family members of the surviving spouse will inherit

Unless it has a Contemplation of Marriage clause, marriage or re-marriage invalidates a Will, requiring a new arrangement

Without a Will, spouses and civil partners are NOT automatically entitled to all of the estate assets on death, and the Government could inherit your estate if

you die with no surviving traceable relatives

Without a Will, even grandparents have NO automatic Legal Guardianship of their orphaned grandchildren

A beneficiary or their spouse should not be a witness to a Will, or they will disinherit themselves

If you have no surviving parents, siblings, grandparents, uncles or aunts, then under the Intestacy Rules, the whole estate goes to the Crown or the Duchy of Lancaster or the Duke of Cornwall

### PEACE OF MIND SOLUTIONS

Always appoint charities as your final beneficiaries, to avoid your estate being claimed by the Government

By the use of a Property Protection Trust, you can ensure that if you pre-decease and your spouse remarries and has more children, your own children benefit from your share of your home, and not the new spouse. BUT if Probate is not completed, the Trust Deed will not be set up and notified at the Land Registry

A Grant of Probate confirms to Executors that they have the authority to act and carry out the wishes of the deceased

If a Named Beneficiary, Executor, Trustee or Legal Guardian changes their name, e.g., on marriage or by Deed Poll, it is not necessary to amend the Will:

documentary evidence, eg Decree Absolute, is sufficient

The estates of current or retired members of the Armed Forces, fire police and ambulance services, and most rescue organisations are entitled to exemption from Inheritance Tax if they die on active service, or if their later death was caused by an injury or disease that was received or aggravated while they were on active service

A properly worded Will could ensure that half the value of your home is potentially protected against Local Authority care home fees

There is no Inheritance Tax liability if the deceased spouse has left their entire estate to their surviving spouse or registered civil partner

## HAVE YOU MADE YOUR WILL?

**Do you and your family have the peace of mind of an up-to date Will,  
or a Power of Attorney for yourself or your parents,  
or Legal Guardians for your children under 18?**

My professional services for arranging personally-tailored Wills, Powers of Attorney, Probate and expert guidance on Inheritance Tax and Care Home Fees, are offered to applicants on a fixed fee basis, regardless of consultation time and number of meetings.

**Please note that weekend meetings  
are offered at no extra cost**



**MARTIN ENGLEMAN AIPW AFPC**  
Qualified Member of the Institute of Professional Will Writers ~ Certificate in Mortgage Practice & Equity Release, Chartered Insurance Institute ~ Diploma, Personal Finance Society

Please visit [www.businessadvisoressex.co.uk](http://www.businessadvisoressex.co.uk) for more detailed information, then call me for a fixed fee quotation and free advice

Office: 01268 761022  
Mobile: 07901 948745  
1 Nesbit Close, Wickford,  
Essex SS12 0PT

**ENGLEMAN WILLS**  
+ POWERS OF ATTORNEY + PROBATE



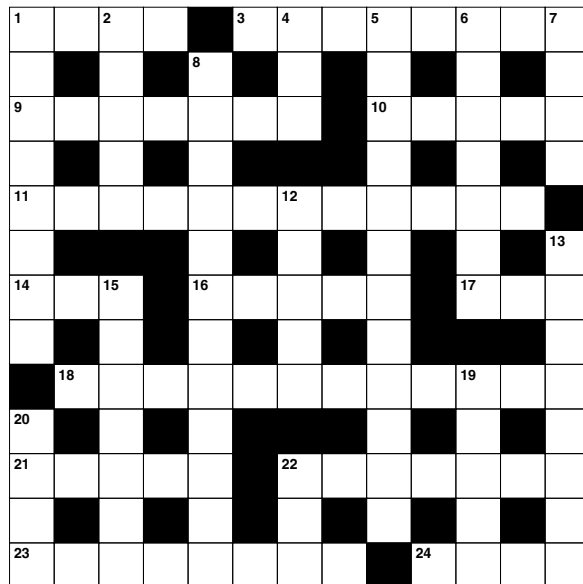
# PUZZLES & TRIVIA

## ACROSS

1. Light blast of wind (4)
3. Fast runner (8)
9. Not tense (7)
10. Written agreements (5)
11. Opposite of amateur (12)
14. Decay (3)
16. Lacking meaning (5)
17. Wonder (3)
18. Incessantly (12)
21. Concerning (5)
22. Mound made by insects (7)
23. Shows (8)
24. Snake-like fish (pl.) (4)

## DOWN

1. Sweat (8)
2. Leaf of parchment (5)
4. Collection of many sheets of paper (3)
5. Enhancements (12)
6. Musical composition (7)
7. Repose (4)
8. Based on untested ideas (12)
12. Set out (5)

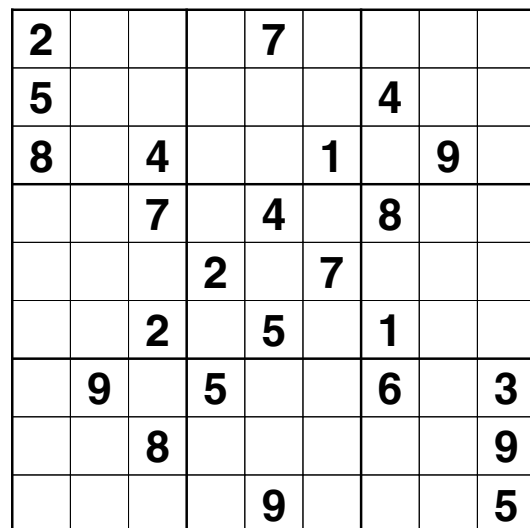


13. Uses again (8)
15. Slight earthquakes (7)
19. Part of a church tower (5)
20. Edible fat (4)
22. Nay (anag) (3)

## DID YOU KNOW?

- ▶ A hummingbird beats its wings up to 70 times per second.
- ▶ Hummingbirds are the only birds that can fly backwards.
- ▶ There are reportedly more than 350 known species of hummingbird, from the giant hummingbird weighing around 20g, to the bee hummingbird which measures less than three inches.
- ▶ Hummingbirds use their long, thin tongues like straws to drink nectar from flowers.
- ▶ Rufous hummingbirds migrate 4,000 miles from Mexico to Alaska every spring.
- ▶ Female hummingbirds use spider silk to weave together twigs and leaves for their nests.
- ▶ Hummingbirds have no sense of smell.

## SUDOKU



## TREAT FOR MOTOWN FANS AS CONCERT SHOW COMES TO TOWN MAGIC OF MOTOWN IS COMING TO THE CLIFFS PAVILION

Seen by more than a million concertgoers, The Magic of Motown is coming to town as part of its extensive UK tour.

Now in its 18th year, the show's producers describe the live concert spectacular as "one of

the biggest success stories in British theatre history".

"Prepare for 40, back-to-back classic Motown hits," says show producer Michael Taylor, "plus glittering costume changes, dazzling dance moves and

outstanding musicianship in this explosive concert experience.

Music fans are invited to celebrate the sound of a generation as the timeless music of Marvin Gaye, Diana Ross, Stevie Wonder, The Temptations, The Supremes, The Four Tops, Martha Reeves,

Jackson 5, Smokey Robinson and more, are recreated by a talented cast and band.

This breath-taking concert spectacular takes the audience on a musical journey through Motown Records' famed back catalogue of hit songs, including: Ain't No Mountain, Signed Sealed Delivered, Grapevine, Get Ready, Dancing In The Streets, My Girl, Blame It On The Boogie, Uptight, Endless Love, My Cherie Amor, All Night Long, Heatwave and many, many more.

"Music fans are invited to the biggest party of the year," says Michael, "as the unstoppable Magic of Motown show steams into town."



## WIN A PAIR OF TICKETS TO SEE THE MAGIC OF MOTOWN

### FOR A CHANCE TO WIN A PAIR OF TICKETS - ANSWER THIS QUESTION:

For a chance to win a pair of tickets - answer this question: The Magic of Motown features hits made famous by: a. Stevie Wonder b. Stevie Wander c. Golden Wonder

Send your answer by email to: rayleigh@visionmag.co.uk, with Magic of Motown Competition, Cliffs Pavilion, Southend-on-Sea in the subject line.

The winner will be drawn at random. Editor's decision is final and there is no cash alternative.

**TO BUY TICKETS CONTACT THE BOX OFFICE:**  
**0343 310 0030 / www.southendtheatres.org.uk**

This is a tribute show and is no way affiliated with any original artists/estates/management companies or similar shows.





## LUXURY VW KAMPER VAN HIRE

A FAMILY RUN BUSINESS BASED ON OUR LOVE FOR THE GREAT OUTDOORS. PASSIONATE SURFERS, HORSE RIDERS AND OUR FAMILY TRAVELS HAS ALLOWED US TO EXPLORE WHAT THE UK HAS TO OFFER

WHERE WILL YOUR ADVENTURE TAKE YOU...

Our luxury VW campers have everything you need and are fully equipped with all your cooking and dining utensils. Comfortably sleeping 4 with some of the optional extras to include... A bike rack, portaloo with privacy tent, sup packages, special occasion campers and drive away awning.



07968 447346

| [www.Kickbackcampers.co.uk](http://www.Kickbackcampers.co.uk) |



### DOMESTIC LOCKSMITH

- Trade Counter Open to All
- Key Cutting
- Domestic Security
- Locks Supplied & Fitted to British Standard
- UPVC Lock Replacement
- Access Control
- Safes & Key Cabinets
- Non Destructive Entry
- MLA Approved Company
- Used by Essex Police
- Fast, Friendly & Reliable Service

### AUTOMOTIVE LOCKSMITH

- Keys Not Operating Lock?
- Remote Not Working?
- New Remotes Supplied & Programmed
- Remote Repairs
- Switches - Rubber Buttons - Cases
- Batteries

CHEAPER THAN ALL MAIN DEALERS

**10% DISCOUNT  
WITH THIS AD**

## FAST KEYS



VISIT OUR TRADE COUNTER



CONTACT US TODAY

**01268 562592**

[sales@fastkeys.co.uk](mailto:sales@fastkeys.co.uk)

Units 3 & 4 Pilot Close,  
Fulmar Way, Wickford  
SS11 8YW

[www.fastkeys.co.uk](http://www.fastkeys.co.uk)



# The GLOBAL ZOO

Animals unique to one place and how to see them

The ability of animals to explore the world is only bettered by the wanderlust of humans, yet there is still a clutch of species who have never ventured from their home continents and, in some cases, countries. While the Galápagos Islands typically take credit for the planet's most unique array of life, here are some others worth celebrating.

### GELADA, ETHIOPIA

A monkey that looks like it's wearing a tuxedo, the gelada is native to the highlands of Ethiopia and has rarely strayed. While other monkey species are known for swinging from trees with reckless abandon, these are happiest on the desert floor, eating grass, seeds, roots and insects.

### INACCESSIBLE ISLAND RAIL, INACCESSIBLE ISLAND

Yes, there is a place called Inaccessible Island – it's in the South Atlantic – and it requires little description. To describe the world's smallest flightless bird (which also takes the 'Inaccessible' name) is undoubtedly to make a straightforward link

to how this little creature has never made it to the mainland.

### THORNY DEVIL, AUSTRALIA

This lizard looks like something out of a Marvel comic, albeit it's never been exported any further than the Aussie outback. It can drink water through its skin, which is just as well, as there is precious little of the stuff about in the summer heat of the Southern Hemisphere.

### TEXAS BLIND SALAMANDER, USA

Without eyes or skin colour, this peculiar amphibian detects prey by virtue of vibrations around it. It has never made it out of US waters and you're highly unlikely to ever see one in the flesh, since it lives deep underwater in cave networks.

### MANX CAT, ISLE OF MAN

Lastly, there's the famous Manx cat. Although these have been brought across to the mainland, they stand apart from other cat species owing to a rare genetic mutation that means they are born with no tails.



TRAVEL



# Signs you are ADDICTED to CAFFEINE

**D**o you love an energy drink? Can't get out of bed without your morning cup of coffee? If the answer is yes, then you are far from alone. It is suspected that as many as three out of four regular caffeine consumers are addicted to the substance.

**1 You get headaches if you miss your caffeine fix:** Caffeine is a vasoconstrictor, which means it makes the blood vessels narrower and restricts blood flow. This in turn relieves headaches, so if you miss your morning fix, you may develop a pounding head as a result.

**2 You're bad-tempered before you get your first dose:** Not a morning person? This could be because you are too reliant on caffeine. Caffeine stimulates the dopamine receptors in the brain, which makes you feel good. Therefore, if you don't get your morning hit, you are much more likely to experience a bad mood.

**3 You struggle to concentrate without being caffeinated:** Caffeine is known for helping you feel more alert and focused. However, if you are used to getting that boost every day, you may struggle to concentrate without the help of this popular stimulant.

**4 You've built up a tolerance:** Do you feel like you need more and more caffeine to enjoy the same effects? This is likely because your body has started to become immune to the effects of this substance.

**5 You feel constantly on edge:** Do you often get the jitters? High doses of caffeine can cause you to feel jumpy and can even cause anxiety and panic attacks.

## How to reduce your caffeine intake:

- ☛ Keep a caffeine diary ☛ Switch to herbal teas ☛ Check labels for other sources of caffeine, such as fizzy drinks and chocolate ☛ Gradually cut down your daily intake rather than going cold turkey.



# ENGLEMAN EQUITY RELEASE SERVICES



## EXPLORE THE BENEFITS OF EQUITY RELEASE...

- E**njoy the wealth in your property without having to move home
- Q**uash your credit card debts and loans \* See note below
- U**pgade your home with an extension / new kitchen / bathroom / central heating
- I**ncrease your monthly income by repaying your borrowings and loan repayments
- T**ravel abroad more frequently to family and friends
- Y**ou require care assistance at home
- R**educe Inheritance Tax on your estate
- E**njoy more frequent holidays and leisure breaks or a cruise
- L**eave an early inheritance to your children
- E**nhance your savings or monthly income by deferring mortgage repayments
- A**ssist your children with their wedding, buying property or eliminating debt
- S**ave for your grandchildren's education
- E**xchange your car for a newer model

**IF YOU ARE OVER 55, PLEASE CALL ME TO FIND OUT HOW MUCH CASH YOU COULD RELEASE FROM YOUR HOME AND THE LIKELY SUCCESS OF AN APPLICATION**

*Martin Engleman*

**MARTIN ENGLEMAN**

AIPW AFPC DipPFS Certs CII (MP & ER) (Mortgage Practice & Equity Release)  
 Certificates in Mortgage Practice & Equity Release - Chartered Insurance Institute  
 Diploma - Personal Finance Society  
 Approved Referral Partner - Age Partnership Equity Release \*\*  
 Qualified Member of the Institute of Professional Will Writers



**Office: 01268 761022 / Mobile 07901 948745**

**1 Nesbit Close, Wickford SS12 0PT**

*\* Think carefully before securing other debts against your home: by extending the terms of the debts, you will be increasing the overall cost; Equity Release may involve a lifetime mortgage or home reversion plan: to understand the features and risks, ask for a personalised illustration*

*\*\* Age Partnership Limited is a Company registered in England No. 05265969, and authorized and regulated by the Financial Conduct Authority. FCA registered number 425432*

**For more detailed information, go to the two Equity Release pages at**

**[www.businessadvisoressex.co.uk](http://www.businessadvisoressex.co.uk)**



# Are women suffering in silence?

Ms Seema Bagtharia, Consultant Gynaecologist at Nuffield Health Brentwood Hospital, explains.

The menopause is when a woman stops having periods. It happens when your ovaries stop releasing eggs or have been removed. Women in the UK have their menopause between the ages of 45 and 55 years, with the average age being 51 years. The time before your last period, when your oestrogen levels are falling, is called the perimenopause ("the change"), which can last from a few months to several years. Around half of all women notice physical and/or emotional symptoms during this time.

Every woman experiences the menopause differently. The most common issues are:

- periods can become erratic/ heavy
- hot flushes
- night sweats
- vaginal dryness
- low mood and/or feeling anxious
- joint and muscle pain
- loss of interest in having sex.

Some women choose to go through the menopause without treatment, while others prefer some form of treatment to manage their symptoms, by using either hormone replacement therapy (HRT) or an alternative treatment.

**We offer treatment to make the menopause easier.**

Hormone replacement therapy (HRT). HRT is the most common form of prescribed treatment for menopausal symptoms. It helps to replace the hormone oestrogen in your body, which decreases around your menopause. You may sometimes also need other hormones (such as progestogen and testosterone) that your body is no longer producing.

HRT (hormone replacement therapy) replaces your lost hormones

to counteract the effects of the menopause. Your consultant can discuss and recommend the right type of HRT for you. This discussion should cover both the short-term (over the next five years) and the longer term (beyond the next five years) benefits and risks for you.

There are different ways to have HRT:

- a daily tablet
- A skin patch applied to the skin
- Gel medication applied to the skin

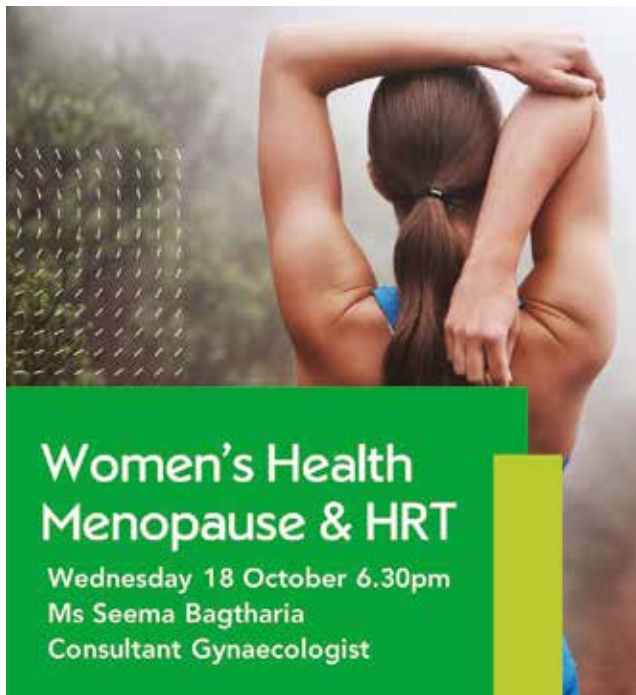
#### Benefits of HRT:

It is an effective treatment for:

- Hot flushes and low mood associated with the menopause.

- It can improve sexual desire and reduce vaginal dryness.
- It helps keep your bones strong by preventing osteoporosis.

*Ms Seema Bagtharia is a Consultant Gynaecologist at Nuffield Health Brentwood Hospital who specialises in general gynaecology including heavy menstrual bleeding, infertility, endometriosis, prolapse, minimal access/invasive surgery, with a special interest in recurrent miscarriage, perimenopausal problems (including post-menopausal bleeding and menopausal symptoms). She also performs early pregnancy and gynaecological ultrasound scanning.*



**Women's Health  
Menopause & HRT**

Wednesday 18 October 6.30pm  
Ms Seema Bagtharia  
Consultant Gynaecologist

For any enquiries, to book an initial consultation or to request more information, please contact our dedicated hospital enquiry team at Nuffield Health Brentwood Hospital on 01268 955 035.

Website: [www.nuffieldhealth.com/hospitals/brentwood](http://www.nuffieldhealth.com/hospitals/brentwood)



## Come and meet our experts

Join us at our free hospital open events.

Meet our experts on:

#### Menopause and HRT

Wednesday 18 October 2023 at 6:30pm

with Ms Seema Bagtharia, Consultant Gynaecologist

#### Varicose veins

Thursday 19 October 2023 at 6:30pm

with Mr V Gadvi, Consultant Vascular Surgeon

#### Breast reduction surgery

Tuesday 24 October 2023 at 6:30pm

with Ms Sascha Dua, Consultant Breast Surgeon

#### Cosmetic surgery

Thursday 9 November 2023 at 6:30pm

with Mr V Ramakrishnan and Miss M Morgan, Consultant Plastic Surgeons



Find out more about our free events and book your space today, visit [nuffieldhealth.com/hospitals/brentwood/events](http://nuffieldhealth.com/hospitals/brentwood/events) or call 01268 955035



Nuffield Health Brentwood Hospital  
Shenfield Road, Brentwood, Essex, CM15 8EH



# UNDER

## pressure!

Did you know that you can help to control high blood pressure with exercise? Here are five of the best physical activities, proven to lower your blood pressure.

### BRISK WALKING

If you are overweight and have high blood pressure, you may not be able to undergo a vigorous workout regime. Fortunately, studies have shown that

multiple short sessions of brisk walking can be as effective at lowering blood pressure as high-intensity exercises. Aim for three 10-minute walks each day.

### SWIMMING

A great form of aerobic exercise, swimming is a good option for older adults and those who require a low-impact fitness regime. For best results, aim for 45 minutes of continuous swimming four or five times per week. Don't worry if you cannot manage 45 minutes right away, as you can gradually build up your fitness and endurance levels.

### DANCING

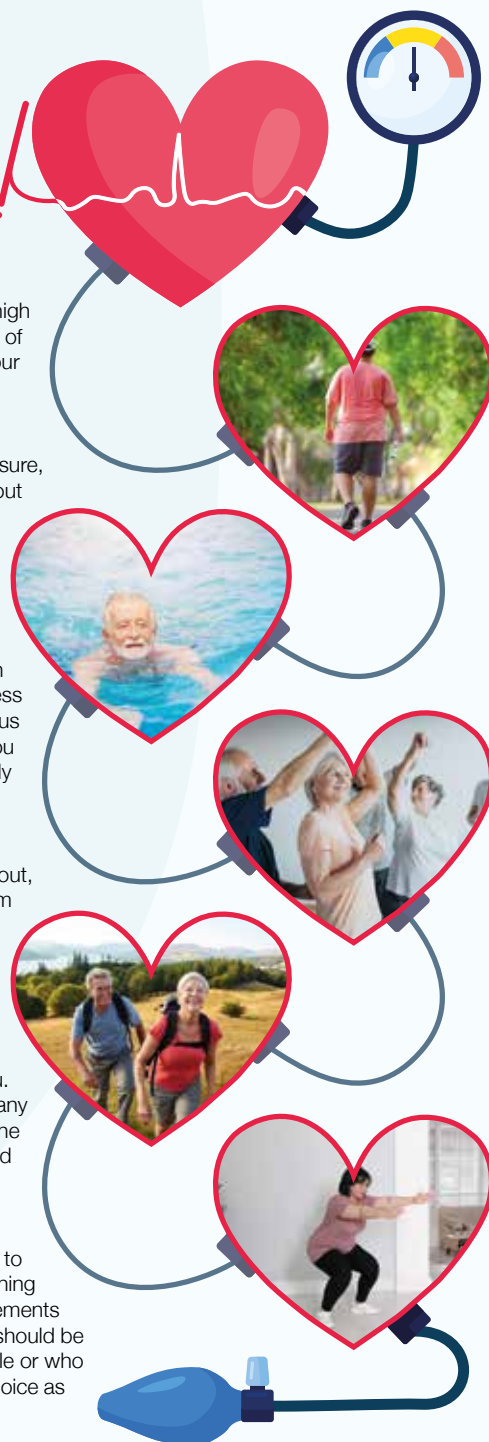
If you get bored easily and like to have fun when working out, then you will be pleased to hear that dancing is a great form of exercise for people with high blood pressure. Another effective form of aerobic exercise, aim for at least 30 minutes a day, five times per week.

### HIKING

For those who like a bit more of a challenge and love the great outdoors, hiking is the physical activity for you. Guaranteed to get your heart rate up and help you lose any excess weight, there are lots of beautiful hiking spots in the UK. This physical pastime has been shown to lower blood pressure by up to 10 points.

### RESISTANCE TRAINING

Resistance training can be added to your workout routine to further help with reducing blood pressure. This type of training can be done less frequently than cardio exercises; movements such as squats, push-ups, planks and abdominal crunches should be carried out two or three times a week. For anyone less mobile or who doesn't want to use weights, resistance bands are a good choice as they will not put your body under as much pressure.



# VEGGIE

## vision

Most people know that fruits and vegetables are good for your complexion when eaten regularly, but not everyone knows that they can also be applied to the skin and hair to achieve amazing results. Here are four of our favourite veggie-based beauty treatments.

### PUMPKIN FOOT MASK – Best for dry, cracked heels

**You will need:** ½ cup of pumpkin purée | 1 whole egg | 1 tsp honey

**How to apply:** Combine all of the above ingredients in a bowl | Massage into the feet and ankles | Cover with cling film or put on a pair of old socks | Leave for 15 minutes and then rinse with warm water

### BUTTERNUT SQUASH HAIR MASK – Best for dull or dry hair

**You will need:** ½ large butternut squash | 3 tbsp honey | ¼ cup of plain yogurt

**How to make:** Peel and cook the squash until soft enough to remove the inner contents | Mash the squash | Combine with the honey and yogurt | Apply the mixture to damp hair and put on a plastic shower cap | Leave on for 20 minutes and then rinse with warm water

### BEETROOT FACE MASK – Best for ageing skin

**You will need:** 2 tsp beetroot juice | 1 tsp yogurt | 1 tsp lime juice | 2 tsp gram flour

**How to make:** Mix the beetroot juice with the flour and then add the yogurt and lime juice | Mix until you have a smooth paste | Spread the mixture evenly over the face and leave for 15 minutes | Rinse off with warm water | Pat your face dry

### POTATO CLEANSER – Best for acne-prone skin

**You will need:** 1 potato | 1 cucumber | 1 tsp baking soda | 1 tsp water

**How to apply:** Peel and chop the potato and the cucumber | Blend in a food processor or blender for 20 seconds | Add the water and baking soda | Apply to the face daily to cleanse and remove make-up, dirt and impurities.





# UROCK JEWELLERY

## FASHION JEWELLERY, GIFTS & ACCESSORIES

HANDMADE UNIQUE DESIGNED ITEMS FOR ADULTS & CHILDREN

EARRINGS  
RINGS  
NECKLACES  
BRACELETS  
HAIR ACCESSORIES  
STERLING SILVER JEWELLERY  
BOXED ART



OPEN  
WEDNESDAY - SATURDAY  
9am-5pm

SUNDAY  
10am-4pm

Closed Monday & Tuesday



STUDIO 30, BARLEYLANDS CRAFT VILLAGE



*Your hair  
needs us*

**Wash, Cut & Blow Dry**  
**Wet Cut | Dry Cut**  
**Clipper Cut**  
**Hair Up | Highlighting**  
**Re-growth & Re-fresh**  
**Colour Bath | Perming**  
**Hair Extensions**

**NOW OPEN SUNDAYS**

**TOPPERS  
HAIR STUDIO**

01268 772575

70a High Street, Rayleigh, SS6 7EA

@toppershairstudiorayleigh @toppers\_hair

# RAINCOAT *revolution*

## HOW A SCOTTISH CHEMIST DEvised A FABRIC THAT CHANGED THE COURSE OF FASHION HISTORY

### A TECHNOLOGICAL MARVEL

Back in the early 19th century, there were no synthetic fibres available, and keeping clothing waterproof was a constant challenge. But Glasgow-born Charles Macintosh's innovation changed all that. He created a revolutionary material that was made by rubberising cotton cloth, making it waterproof. Macintosh patented his method, and the first 'Mac' hit the market in October 1823. His Mackintosh coat became an instant sensation, and the brand became synonymous with stylish and functional outerwear loved by workers and aristocrats alike.

### STRANGE SMELLS AND MELTING COATS

Early Mackintosh coats faced a few issues – they smelled strange, the fabric was stiff, and they sometimes even melted in hot weather. Thankfully, these problems were largely solved in 1844 with the patenting of another groundbreaking innovation: the vulcanising of rubber. This chemical process made the fabric stronger and less sensitive to temperature changes.

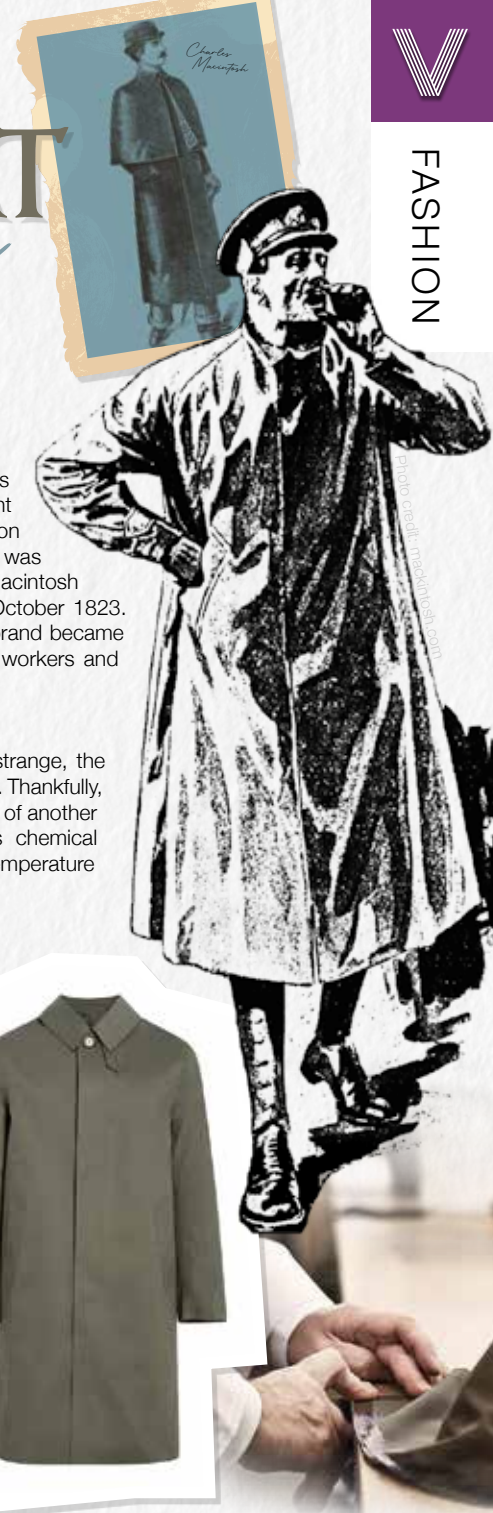
### BACK FROM THE BRINK

In the 1980s and 1990s, Mackintosh faced challenges from lightweight synthetic waterproof fabrics like Gore-Tex. However, a management buyout in the mid-1990s breathed new life into the brand. It also reclaimed its status as an upmarket brand, collaborating with prestigious fashion houses like Louis Vuitton.

### THE MAKING OF A MACKINTOSH

To this day, the coats are still handmade in Cumbernauld, near Glasgow, using a fabric that's very similar to Macintosh's original. Skilled craftsmen and women cut, sew and seal the material by hand, using special rubber-based glue. Each seam is also taped to ensure the coats are 100 per cent waterproof.

Now owned by Japanese firm Yagi Tsusho, the Mackintosh has weathered the storms of fashion and remains a symbol of British style and innovation. If you want one, you'll need to start saving now; a classic trench coat will set you back almost £1,000.



FASHION



# AUTUMN COCKTAILS

Just because summer now seems like a distant memory, doesn't mean that you can't still enjoy a delicious cocktail or two after work or when the kids are tucked up in bed.

Why not have a go at making one of these recipes below, and warm your cockles on a chilly night?

## PUMPKIN WHITE RUSSIAN

**You will need:** 25ml pumpkin spice Kahlua | 50ml vodka | 25ml double cream

**How to make:** Pour the ingredients into a glass over ice | Stir lightly and serve.

## CARAMEL APPLE MULE

**You will need:** 50ml vodka | 15ml caramel | 30ml apple cider vinegar | Ginger beer to top | 1 apple | 1 cinnamon stick

**How to make:** Shake the vodka, caramel and apple cider vinegar with ice | Strain into a mule mug over ice | Top with ginger beer | Garnish with an apple fan and cinnamon stick.

## SLOE GIN FIZZ

**You will need:** 50ml sloe gin | 25ml lemon juice | 2 tsp sugar syrup | Sparkling water | Lemon slice | Fresh or frozen blackberry

**How to make:** Pour the sloe gin, lemon juice and sugar syrup into a cocktail shaker and top with ice | Shake well | Strain into a tall glass with more ice | Top with sparkling water and stir gently | Garnish with a lemon slice and a blackberry.

## CAMPFIRE SLING

**You will need:** 50ml rye whisky | 7ml maple syrup | 3 dashes of chocolate bitters | Orange peel twist

**How to make:** Add all the ingredients to an old-fashioned glass with one piece of ice | Stir thoroughly | Scorch a piece of orange peel over the glass to release the oils.

## MULLED APPLE JUICE

**You will need:** 1 litre apple juice | 1 cinnamon stick | 3 cloves | Orange slices | Sugar or honey to taste

**How to make:** Simmer the apple juice with the orange peel, cinnamon and cloves for 5-10 minutes | Sweeten with sugar or honey | Serve with some orange slices and a cinnamon stick.

Photo credit: bbogoodfood.com, tastingpanelmag.com

# 5 REASONS TO ADVERTISE

Why do businesses benefit from hyperlocal advertising?

## 1. Targeted advertising

Hyperlocal advertising allows companies to target customers who are within a specific geographic area, making it easier to reach the right audience and increase the chances of converting them into paying customers.



## 2. Cost-effective

Hyperlocal advertising can be cost-effective because it is focused on a specific local area, meaning that businesses can reach their target audience without wasting money on broader marketing campaigns that may not be as effective.

## 3. Increased engagement

Hyperlocal advertising can lead to increased engagement with customers because it is focused on the local community and the interests of the people living in that area. By targeting customers with ads that are relevant to their interests and needs, companies can build a stronger relationship and increase their chances of repeat business.



## 4. Improved search engine optimization

Hyperlocal advertising can improve a business' search engine optimization because it targets customers who are likely to be searching for businesses and services in their local area. By optimizing their website and other online presence for local search terms, businesses can improve their visibility and attract more customers.

## 5. Better return on investment (ROI)

Hyperlocal advertising can lead to a better ROI because it is focused on a specific area and customer base. Targeting customers who are likely to be interested in their products or services, can increase conversion rates and revenue.



IS YOUR BUSINESS READY TO BENEFIT FROM HYPERLOCAL ADVERTISING? CONTACT **VISION** TO FIND OUT MORE

LAST  
REMAINING  
STANDS  
AVAILABLE

## BISHOP'S STORTFORD MEANS BUSINESS

Est. 2001

# WEDNESDAY 18th OCTOBER 2023

**SOUTH MILL ARTS  
BISHOP'S STORTFORD**

Be a part of it!...

**Book  
your  
stand today!**

**[www.bsmb.co.uk](http://www.bsmb.co.uk)**

**@BSMeansBusiness**

**BSMeansBusiness**

*Creating  
business  
opportunities  
since 2001*

Generously Sponsored by:



Media Partners:



## HOW TO BUILD YOUR *own soup*

Soup is cheap, filling and the perfect antidote to the cold weather. Sadly, supermarket offerings can be both costly and underwhelming. So we thought we'd share with you our foolproof method for prepping the perfect soup every time.

1. **CHOOSE A FAT:** Butter | Olive oil | Palm oil | Sunflower oil
2. **SELECT A BASE LIQUID (1 OR 2):** Beef/chicken stock | Vegetable stock | Cream | Tomato purée
3. **PICK A PROTEIN:** Chicken | Fish | Tofu | Lentils | Beans
4. **DECIDE ON A GRAIN:** Rice | Noodles | Pasta | Barley
5. **CHOOSE YOUR VEGGIES (UP TO 3):** Carrots | Onion | Peppers | Sweet potatoes | Parsnips | Spinach | Broccoli | Mushrooms
6. **ADD SOME FLAVOUR:** Garlic salt | Cayenne pepper | Cumin | Basil | Thyme | Chilli powder

### How to make your soup

**STEP 1:** Heat your fat and sauté your aromatic veggies, such as onion and garlic, for 3-5 minutes.

**STEP 2:** Add your chosen protein and cook until browned or softened.

**STEP 3:** Add any other vegetables and allow them to soften for 5-10 minutes.

**STEP 4:** Pour in your base (unless using a cream base; if so save this until step 6), your grain and your selected spices and mix well.

**STEP 5:** Bring to the boil, reduce the heat and allow to simmer for around an hour.

**STEP 6:** Add cream if you are making a cream-based soup.

**STEP 7:** Allow to cool, and blend if you want a fully puréed soup.

**STEP 8:** Garnish with croutons, cheese or a herb-infused oil.

### Freezing your soup

You can freeze your soup, ideally on the same day you make it, in an airtight container or freezer bag for 2-3 months. Most soups freeze well, with the exception of cream- or milk-based soups, which tend to separate. Add any fresh herbs or starchy elements such as rice or pasta once thawed and reheated, not before freezing, for optimum results.



FOOD & DRINK





**We could fill  
Wembley Stadium  
MORE THAN TWO TIMES  
with our monthly  
readership...**

**...OVER 207,500 PEOPLE IN ESSEX  
READ VISION MAGAZINE'S MONTHLY**

Photo courtesy of PA Images

**CONTACT US TODAY TO GET YOUR BUSINESS SEEN BY OUR READERS**

Your  
Monthly  
Lifestyle  
Magazine **VISION**

See all our magazines online  
at [www.visionmagessex.com](http://www.visionmagessex.com)

Did you know this isn't the only **VISION** magazine in Essex?

Billericay Shenfield Bishop's Cleeve Brentwood Ongar Chelmsford Epping Theydon Harlow Halstead Braintree Hertford  
Hornchurch Leigh Thorpe Bay Loughton Maldon Burnham Rayleigh Wickford South Woodford Tending





# Quick Fix

FAMILY GARAGE

MOT Centre, Wickford, Essex



4 WHEEL LASER  
ALIGNMENT

## LOOKING AFTER WICKFORD'S MOTORISTS FOR 30 YEARS

MoTs • Tyres • Servicing • All Repairs Large or Small  
All Main Dealer Trained Mechanics inc. Citroen Specialist  
Free Collection if needed • Free Estimates • Honest Advice

Absolutely no connection with the company in Shotgate

[www.quickfixgarage.com](http://www.quickfixgarage.com)

(online prices & ordering)

**01268 767 300**

69 Runwell Road, Wickford, Essex SS11 7HL

**£20 OFF  
4 NEW TYRES**

on production of this advert

**£20 OFF FULL SERVICE  
£10 OFF INTERMEDIATE  
SERVICE inc. MOT**

on production of this advert

## Transform your garage from £895

Garolla electric roller doors, engineered for everyday life.

Garolla's new range is strong, secure and very durable. Revitalise the look, feel and function of your home.

- Unlock 25% more space
- Free five-year warranty
- 100,000+ doors installed
- UK's #1 recommended
- Fitted by a local Garolla engineer
- New SafeGuard Plus pack – more light, detection and deterrence

NEW & IMPROVED PRODUCT RANGE

**GAROLLA**  
ELECTRIC GARAGE DOORS

[garolla.co.uk](http://garolla.co.uk)

We survey, manufacture and fit...

**0800 468 1027**

CALL TO ARRANGE A FREE SURVEY

BESPOKE ELECTRIC DOORS  
MADE IN THE UK



**Checkatrade**  
Where reputation matters  
9.8 out of 10

**Trustpilot**  
4.7 out of 5 / 6,000+ reviews

## GOOD CARS

for  
**ULEZ  
2023  
EXPANSION**



Photo credit: mercedes-benz.co.uk, ford.co.uk, mazda.co.uk, volkswagen.co.uk

Regardless of your thoughts on the controversial expansion of London's Ultra Low Emission Zone (ULEZ), there is a wide selection of cars out there ready to help you bypass this expensive charge.

The extension of ULEZ to encompass the whole of Greater London became operational at the end of August, and not without considerable objection.

Now, petrol vehicles must meet Euro 4 standards, with even tighter Euro 6 requirements for their diesel cousins.

Entering the ULEZ with a non-conforming vehicle invites a daily charge of £12.50, so Mayor of London Sadiq Khan's £2,000 grant for Greater London residents looking to change to a ULEZ-compliant motor is appealing, as are some of the cars that fit the criteria.

For instance, for those desiring a premium touch, the Mercedes-Benz A-Class hatchback is a worthy contender, boasting advanced technology and a luxurious interior. Models from 2013 hover around the £10,000 mark.

The widely admired Ford Focus has numerous ULEZ-compliant variants. One with fewer than 50,000 miles could be yours for less than £6,000.

Or what about the iconic Mazda MX-5? The Japanese brand is revered for superb driving experience and affordability. However, look out for some older versions, as these may not meet ULEZ requirements.

Lastly, the VW Polo, particularly the 1.2 TDI BlueMotion edition of the Mk5, is famously fuel-efficient, boasting up to 91.1mpg on motorways and 67.3mpg in urban settings. With no emission zone charges and some high-mileage models available at under £4,000, it's a sound option.

While virtually all petrol cars sold after 2005 are ULEZ compliant – along with petrol vans after 2006 and motorbikes registered after July 2007 – it ultimately pays to check your vehicle, as well as the status of a potential new one, online at [tfl.gov.uk/modes/driving/check-your-vehicle](http://tfl.gov.uk/modes/driving/check-your-vehicle)



MOTORING



# THE VISION LISTINGS

## BEAUTY

### TOPPERS HAIR STUDIO

Wash, Cut & Blow Dry. Highlighting, Perm, Hair Extensions, Colour Bath, Re-Growth, Re-Fresh. Call to book 01268 772575 | visit us at 70a High Street, Rayleigh, SS6 7EA

## CAR GARAGE

### QUICK FIX FAMILY GARAGE

Mots, Tyres, Servicing, All repairs large or small, All main dealer trained mechanics inc. Citroen Specialist, Free Collection. 01268 767300, 69 Runwell Road, Wickford, SS11 7HL

## CARE & SUPPORT

### HOME INSTEAD

Award Winning Care, Companionship Services, Home Help Services, Personal Care Services, Live-in Care, Highly Trained Care Givers. Tel: 01245 979579

## CHIROPRACTIC CLINIC

### LIFE CHIROPRACTIC CLINICS

Book your consultation today! One of the best ways to keep your body, posture & spine healthy, in a totally natural way! Book online or call: 01268 774008 | www.lifechiropractic.co.uk

## CLEANER

### MOLLY MAID

Domestic cleaning experts, trained staff, 100% guaranteed, fully insured, regular/occasional cleans, materials supplied. 01268 442023 | Margaret.king@mollymaid.co.uk

### ESSEX CLEANING SOLUTIONS

Specialist in domestic & commercial cleaning. FREE, no obligation quotation. Call 0800 699 0466 | 07749 220949 | 07462 677211

### TIME FOR YOU SOUTHEND

Domestic Cleaning. Honest, Dependable & Affordable. Police Checked Cleaners. Contact 01702 780122 | southend@timeforyou.co.uk | www.timeforyou.cleaning

## ESTATE AGENTS

### EWEMOVE

Award-winning Wickford & Rayleigh Estate Agent. Book your free valuation. Select a date & time online at: Ewemove.com/ WickfordRayleigh or call 24/7 on 01268 437525

## FINANCIAL SERVICES

### ENGLEMAN WILLS

Personally tailored wills, powers of attorney, probate, guidance on inheritance tax & care home fees. 01268 761022 | Mobile: 07901 948745 | www.businessadvissorex.co.uk

## FLAT ROOFING

### HIGH-TECH

Lifetime Guaranteed Flat Roofing. Contact our friendly team or pop into our showroom at 850 London Road, SS9 3NQ. Free advice & pricing, call 01268 859602 | www.flatroofs.net

## FLOORING

### DISCOVERY FLOORS

Experts in Luxury Vinyl Flooring. Family Run Business. Supply & Install. T: 07890 792442 | www.discoveryfloors.co.uk

## GARAGE DOORS

### GAROLLA ROLLER SHUTTER DOORS

Thermally insulated electric garage doors, Great for space saving, Kerb appeal & easy to use, No deposit, Pay on completion, 18 Colours available. Call today 01268 350816

## GARDENING

### ASHINGDON LANDSCAPES

All types of landscaping & garden maintenance undertaken. Tree Work, Patios, Turfing, Driveway & Patio Cleaning. Free estimates & advice. 01702 206378 | 07415 911060

### HEAVENLY GREEN

Artificial Grass Supply & Fit. Family Run Business. Competitive Prices. Samples Provided. Free Quotes. Est. 10 years. Call Martin on 01268 955057 | 07796 008198

## GENERAL BUILDING

### MARTIN HOLMES

Interior/exterior work, patios/driveways, decking, tree work, garden clearance, fencing, carpentry, interior/exterior painting, all aspects of building/gardening work. 01268 955048

## GUTTERS CLEARING

### THE GUTTER SURGEON

For residential and commercial gutters. 01702 742164 | 07828 332051 | www.theguttersurgeon.co.uk | info@theguttersurgeon.co.uk

## HEALTH & WELLBEING

### NUFFIELD HEALTH BRENTWOOD HOSPITAL

Come and join us at our free hospital events please check our page in the Health section of this edition for more information. Spaces are limited call us on 01268 955035

## KITCHEN, BATHROOMS & BEDROOMS

### DESIGNER BEDROOMS

Traditional Fitted Bedrooms, Sliding Doors, Odd shaped rooms are our speciality, home office/studios. 7 Robert Way, SS11 8DD. 01268 571799 | www.designerbedrooms.co.uk

## KITCHENS

### WHITE TAIL STUDIOS

You Dream, We Create. British made kitchen furniture. Call or book online for free consultation. 01268 906630 | www.whitetailstudios.co.uk | info@whitetailstudios.co.uk

### KUTCHENHAUS SOUTHEND

Outstanding service & quality all at a surprisingly affordable price. Visit our showroom today! 313 London Road, Westcliff-on-Sea, SS0 7BX. 01702 345302

## LEAFLET DISTRIBUTION

### FLYER DISTRIBUTION ESSEX

Leaflet, printing & distribution service. Cover a majority of CM, SS, CO postcodes. One off drops or regular monthly drops. Call us on 01277 554045 | www.flyerdistributionessex.co.uk

**JOIN THE LISTINGS...**  
for just **£180** +VAT per year

## LOCKSMITH

### FAST KEYS

Domestic & Automotive Locksmith. Cheaper than all main dealers. Visit trade counter, Units 3 & 4 Pilot Close, SS11 8YW. 01268 562592 | sales@fastkeys.co.uk | www.fastkeys.co.uk

## PETS SERVICES

### WOOF N WAG DOGGY DAYCARE

Day Care, Home Boarding, Walkies. Where pets are family. T: 07342 382003 | www.woofnwagdoggydaycare.co.uk

### GLADWELLS PET & COUNTRY STORE

Where pets are more than companions, they're family. Lubards Lodge Farm, Hullbridge Road, Rayleigh, SS6 9QG. Call us on 01268 642601 | www.gladwells.pet.co.uk

## PLASTERING

### SPREADIES PLASTERING

All aspects of plastering work undertaken. Fully insured, no job too small, competitive rates. Please call Steve Robertson for a free estimate 07970 335437

## PLUMBING & HEATING

### JOHN HUNTER HEATING

Plumbing, heating, gas engineers, inc. full bathroom installations. All central heating work inc boiler service, repairs and replaced. Call now on 01702 528487 | 07850 010990

### HAMMOND & SONS

Family run for 20+ yrs. Boilers serviced/repaired, condensing boiler, warm-air units, all work undertaken inc leaks, upgrades, installs, no call out charges, OAPS discounts. 01268 286805

### PETER ASHTON

Specialising in small repairs, W.C's, valves, taps, leaks. Fully Insured. Contact by email pca1971@yahoo.co.uk or call 07595 826576

## ROOFING

### JIM BARR ROOFING

Exterior Cleaning & Maintenance. Gutters, Paving & UPVC. Cleaned, Repaired & Renewed. 01708 874816 | 07833 572459

### SMITH'S ASPHALT & FLAT ROOFING LTD

Specialising in all aspects of asphalt, felt & flat roofing, balconies, terraces, dormers etc. Call 07533 126761 or email tommy-smith@hotmail.co.uk for a free inspection & quote

## STAIRLIFTS

### ESSEX STAIRLIFTS

Straight Stairlifts, Curved Stairlifts, Rental Stairlifts, New & Used, Servicing & Repairs, Home Lifts. Call 01268 550173 | sales@essexstairlifts.co.uk

## WINDOWS & DOORS

### FRONT DOORS ONLINE LTD

Composite Front Doors, Windows & Bi-Folds, Supplied & Fitted at affordable prices. 01268 382252 | 07481 904071

## WOOD FLOORING

### WEST ONE WOOD FLOORING INTERNATIONAL LTD

Manufacturing, Installation, Restoration. Unit 3 Blackall Industrial Estate, Hamberts Road, South Woodham Ferrers, CM3 5UW. Call 01277 630837 | 01245 204231.

**DISCLAIMER:** **VISION** does not represent or endorse the accuracy or reliability of any of the advertisements, nor the quality of any products, information or other materials displayed, purchased or obtained by any customer as a result of an advertisement or any other information or offer in connection with the service or products. The opinions expressed in articles, reviews and stories are strictly those of the individual authors and do not necessarily reflect the views of **VISION**.

# CLIFFS PAVILION

SOUTHEND

BOOK NOW:

[thecliffspavilion.co.uk](http://thecliffspavilion.co.uk)



SAT 21 OCT



SAT 18 NOV



SUN 14 JAN



For **entertainers** shows appearing  
at The Cliffs please scan the  
left QR code or visit  
[entertainers.co.uk/southend](http://entertainers.co.uk/southend)

For **entertainers** shows appearing  
at the Towngate Basildon, please  
scan the right QR code or visit  
[entertainers.co.uk/basildon-towngate](http://entertainers.co.uk/basildon-towngate)



19 OCT



20 OCT



28 OCT



2 NOV



19 JAN



27 JAN

Towngate  
Theatre

6 Fantastic **entertainers** Shows Coming To Basildon!  
[towngatetheatre.co.uk](http://towngatetheatre.co.uk) 01268 205 300