



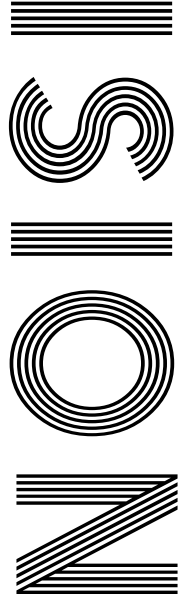
**BEAUTY
HACKS FOR
LEFTOVER
PUMPKIN**

A guide to
ROOT VEGETABLES

Has political correctness
GONE TOO FAR?

Robert
PATTINSON

From teenage heart-throb to The Batman action hero



FREE

Photo credit: NINA PROMMER/EPA-EFE/
Shutterstock



RESIDENTIAL & COMMERCIAL SECURITY SERVICES



APPROACHING A DECADE SERVING LOCAL FAMILIES & BUSINESSES

Triangle Security has a proven track record of improving the security of homes, families and businesses, providing a high visibility presence to deter criminals from choosing to target your area.

For more information, please visit our website www.triangle-security.co.uk to see a full list of the services we provide.

Triangle Security are proud supporters of

- Help for Hero's
- Haven House Hospice
- Scouts Association
- Lambourne End Centre for Outdoor Learning



Our Key Services are:

- HOME RESIDENTIAL, SITE & AGRICULTURAL SECURITY
- MOBILE PATROLS & DOG UNITS
- ALARM RESPONSE & KEY HOLDING
- PANIC BUTTONS
- SECURITY GUARDING
- SECURITY DRIVERS

SUPPORTING THE COMMUNITY

Triangle Security are always prepared to support and help their local community, and throughout Lockdown they ran extra free patrols to protect local areas, and their trustworthy ex-military personnel assisted the vulnerable with services such as shopping and collecting prescriptions.



Triangle Security personnel provide a wide range of security services

SPECIAL OFFER
ALARM RESPONSE
£59.95 /month

50% discount on admin charges
See our website or call for details



020 3948 7071
www.triangle-security.co.uk



info@triangle-security.co.uk  Kemp House, 152 City Road, Islington EC1V 2NX



- 6 HISTORY
- 8 MANKIND VS HUMANKIND
- 10 FASHION
- 11 BEAUTY
- 14 HEALTH & FITNESS
- 17 FOOD & DRINK
- 23 KIDS
- 24 GARDENING
- 28 TRAVEL
- 29 PETS
- 30 ROBERT PATTINSON
- 35 LOCAL NEWS
- 43 HOME & DIY
- 48 BUSINESS & PROPERTY
- 52 MOTORING
- 55 SPORT
- 56 THE **VISION** LISTINGS
- 58 PUZZLES

Editor's notes...



Brett Shohet, Editor

Hello and welcome to this month's edition of **VISION**SouthWoodFord.

I hope everyone is doing well. As I sat down to write this column, I felt somewhat taken aback by the fact that it's already our October

edition. The year has truly flown by, no doubt owing to the once unimaginable challenges we've faced since January. Many will view the swift changing of seasons as a good thing. However, I would imagine there are some whose businesses have thrived in lockdown (sanitising and media streaming companies come to mind), and perhaps they aren't so keen to leave behind what could be their best year ever.

For me, it's been a mixed bag. In fact, my COVID-19 experience can be perfectly summed up by the birth of my girlfriend's new nephew, baby Brooks. We're both delighted - however, owing to COVID-19 restrictions, we're still waiting for the opportunity to meet him. Brooks is a great example of how, while wonderful things have continued to happen despite the pandemic, they have often been somewhat tainted.

As always, I'm trying to stay busy with business - and with **VISION**Bishop'sStortford launching in November, that's not been a challenge! When I find myself with a bit of free time, I'm loving my visits to Topgolf in Chigwell, and walks with the dog.

If you have any queries or contributions you'd like to share with us, please get in touch. Stay safe.

Brett

CONTACT US

www.visionmagessex.com
woodford@visionmag.co.uk | 0208 088 0386

@visionmagessex @visionmagessex

Vision Magazine Essex

FOUNDER | Nik Allen CREATIVE DIRECTOR | Misha Mistry

CO-ORDINATORS | Rebecka Fryer, Amy Pollard

CONTRIBUTORS | Tabatha Fabray, Tim Green

At the time of print all content in **VISION** was relevant and up to date according to COVID-19 government guidelines

ACROSS: 1. DRINKERS, 5. SNIP, 8. PATIO, 9. MERITED, 10. NOTIONS, 12. SKEWERS, 14. NARWHAL, 16. CONVENE, 18. MORDANT, 19. PUPAE, 20. NOSY, 21. MEANING
DOWN: 1. DIPS, 2. INTONE, 3. KNOWLEDGE, 4. ROMANS, 6. NATION, 7. PEDESTAL, 11. THEREUPON, 12. SPACEMAN, 13. SNARES, 14. NESTLE, 15. HAPPEN, 17. LESS

It is no news that a kitchen should not be just another room

-it should be an experience"



EDEN KITCHENS

EDEN KITCHENS

60 STATION WAY BUCKHURST HILL IG9 6LL

WHATSAPP OR CALL US DIRECTLY ON: 0203 332 0042

WWW.EDENKITCHENS.COM

affordable payment options available





HOW ADMIRAL LORD NELSON MADE THE ULTIMATE SACRIFICE FOR HIS COUNTRY

He is a revered icon from a bygone era, where the forces of continents went head-to-head in battle.

In October 1805 no force was greater than the British, though a fearful fleet of French and Spanish combined enemies, spotted off Cape Trafalgar, between Cádiz and the Strait of Gibraltar, threatened that reputation.

Led by Napoleon Bonaparte, the French had already exerted their authority on the European mainland, and further moves to creep north came in the form of 33 battleships.

Nelson was outnumbered, but by dividing his 27 vessels he was able to position the fleet perfectly so that the enemy front could be sunk. And sunk it was – 19 enemy ships plummeted to the murky depths, with every one of Nelson’s staying afloat.

Even before the Battle of Trafalgar, Admiral Lord Nelson had long been regarded a great leader of men and an expert tactician. He had bravery and fortitude and was shown to shoulder the burden of battle himself. Indeed, as the British forces sprang into life to repel the threat, in a famous battle cry he stepped to the edge of his ship, *Victory*, and declared, “England expects that every man will do his duty,” and they did.

It is imagined that simply looking at Nelson would have summoned in any seafarer the will to battle for the preservation of the nation. At 47 years old, he had already lost the sight in his right eye at the Siege of Calvi, in 1793, in which his fleet captured Corsica. Then, four years later, doctors were unable to save his right arm after he came under attack at the failed Battle of Santa Cruz de Tenerife.

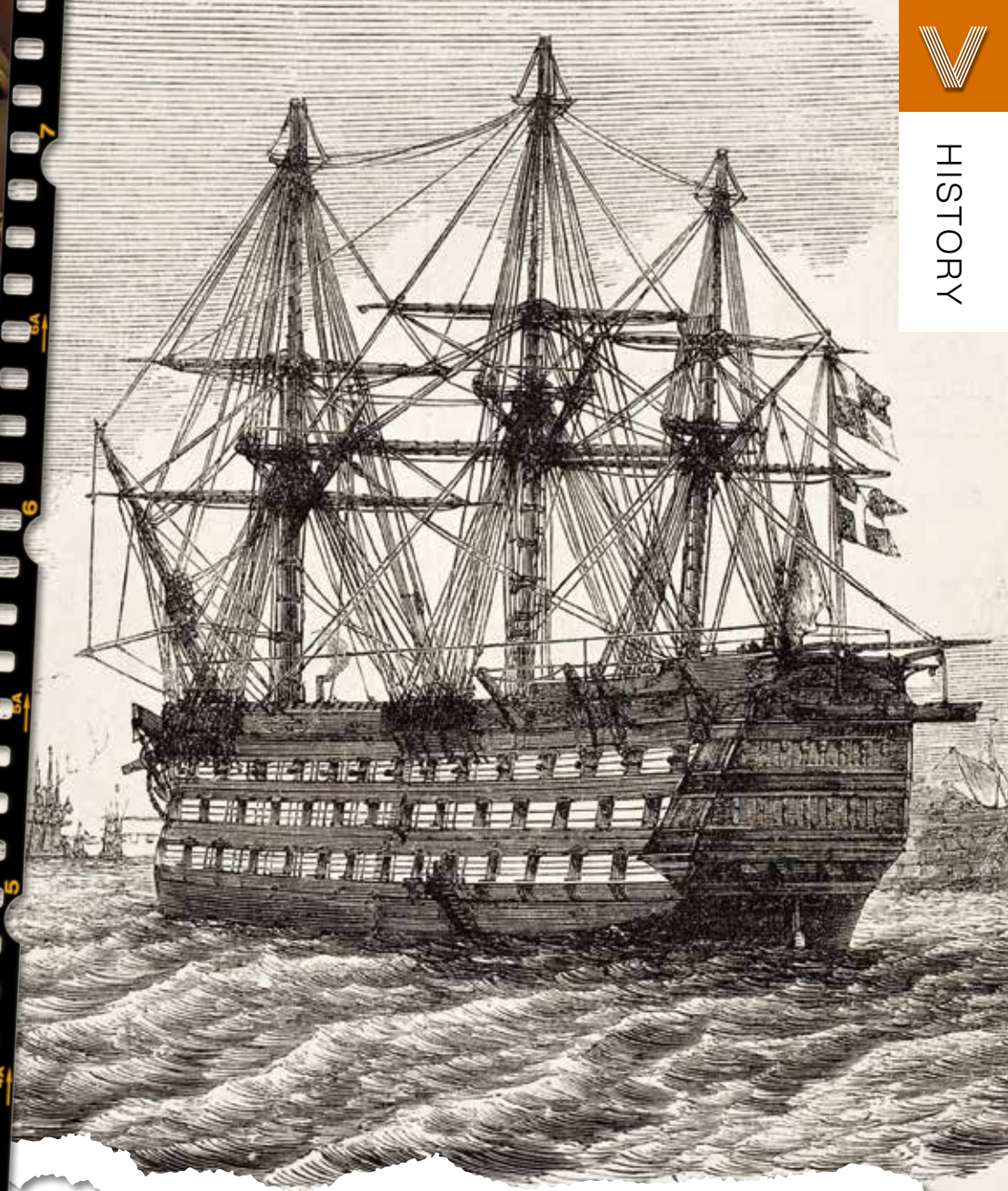
And yet, duty continued. Hardened and seemingly unfeared of death, at Trafalgar the leader was, ultimately, the truest exemplar of his word. On the afternoon of October 21, at 4.30pm, Nelson succumbed to the targeted enemy fire that rained in around his own ship, and was killed. As a leader of men he led the ultimate sacrifice – his own life.

The Battle of Trafalgar lasted only for a further 30 minutes, though its imminent conclusion was reported to Nelson as he lay on his deathbed. The Admiral, holding on to the last few embers of life, uttered the immortal words, “Now I am satisfied. Thank God I have done my duty.”

So great was the shock at the loss of such an imperious leader that, in the time that passed, many have come to consider Nelson’s death as the central point of the Battle of Trafalgar. While 1,500 of his British allies also lost their lives, his passing is always ubiquitous with the battle and the greater Napoleonic wars which it symbolises.

In reality, Nelson’s sacrifice enabled the British to fend off the combined forces of the French and Spanish, preserving our reputation as the best and most powerful seafaring force in the world for the next 100 years, while, of course, ensuring Napoleon steered clear of the British mainland.

Nelson had a glorious funeral procession at St Paul’s Cathedral in London, with Nelson’s Column erected in his memory in the newly named Trafalgar Square. In 2020, Trafalgar Day, October 21, sees his historical efforts live on very much in the present.



Nelson's LAST BATTLE

AGENDA NEUTRAL

~~man~~kind humankind

~~chair~~man chair

~~congress~~man legislator

~~business~~man representative

~~police~~man police officer

~~land~~lord owner

~~boy~~friend/~~girl~~friend partner

~~sales~~man salesperson

~~man~~power workforce

~~maiden~~ name family name

~~fire~~man firefighter

~~husband~~/~~wife~~ spouse

TAKING A TOKE OF 'WOKE' AND WHY POLITICAL CORRECTNESS MAY HAVE GONE TOO FAR... AGAIN

It's common knowledge in life that when making efforts to please everyone, it becomes very easy to, in actual fact, please no one; and it seems the United Nations' (UN) efforts to broach gender neutrality, social differentiation and race relations have done just that.

When, in the middle of May, the UN released a set of guidelines designed to help people address others in modern, all-encompassing ways that wouldn't offend, it seems they succeed only in... offending people.

As examples, their recommendation was to hide away the supposed evils of capitalism and sexism by referring to businessmen as representatives. Mankind, meanwhile, should be termed humankind, while the cult of the evil of 'maiden names' was to be extinguished by labelling them 'family names'.

For all the good intentions of those who oversee peaceful and respectful action in our society, critics believe these sorts of moves tend to pander mostly to the whims of the minority. What's more, in forcing people to divert away from sensible, rational, everyday terms, the result is the creation of a splintering of and bitterness between groups – something that wasn't present in the first place.

The US Twitter storm around apparent offence at the term 'female' – the inference being it should be 'woman' or 'girl', because 'female' is apparently used in a derogatory fashion – blew itself out a few days later when the very same 'woke' authorities suggested 'woman' was no longer appropriate owing to the inference it categorised the fairer sex as the 'woe of man'.

Clearly, we have gone too far. The hope is that Twitter, the virus that has caused this political correctness storm, is also the antidote, because there is a concerted uprising of those who just want to get on with their daily lives without constantly checking over their shoulders... But for goodness sake, don't tell the UN.

Checkatrade.com



City & Guilds
Qualified

EMPIRE UPVC & ROOFING SPECIALISTS LTD

We guarantee our customers a friendly, reliable & professional service



15
YEAR
Guarantee

The UPVC and Roofing Experts in Hertfordshire

Empire UPVC and Roofing Specialists are an independent business trading throughout Hertfordshire and a surrounding 40-mile radius from our office in Nazeing.

- ✓ Felt, Tile & Slate Roofing
- ✓ Liquid Rubber Roofing
- ✓ ALL Roofing Repairs
- ✓ Roofing Maintenance
- ✓ Roofing Leadwork
- ✓ Gutter Cleaning & Unblocking
- ✓ UPVC Fascias, Soffits & Guttering
- ✓ Roof Moss Removal
- ✓ 15 - 20 Year Guarantee
- ✓ Highest Quality Materials Used

COME AND VISIT OUR SHOWROOM AT HILLGROVE BUSINESS PARK



CALL OUR FRIENDLY TEAM TODAY FOR YOUR FREE QUOTATION

Office: 01992 623 267

Email: chris@empireupvcandroofing.co.uk
Web: www.empireupvcandroofing.co.uk

Unit 50 Hillgrove Business Park
Nazeing New Road
Nazeing EN9 2HB

FULLY INSURED

CHECK mate!

If you are looking for a fashion trend that checks all the boxes, then look no further. The traditional checked pattern was seen across multiple AW20 collections including Saint Lauren, Miu Miu, Versace and Michael Kors.

Not sure how to make this print work for you? Don't worry, everyone and anyone can rock this form of plaid.

CHECKED SHIRTS

A checked shirt should be a key staple in everyone's wardrobe, never going out of style and providing a quick and simple way to look effortlessly stylish. Ideal for layering when the evenings turn colder; try adding an open-buttoned checked shirt over a plain tee for a chic and comfortable look.

CHECKED COATS

With the ability to suit both men and women, an oversized checked coat is a must-have this winter. Wear over layered knitwear, a tailored suit or even a party dress; this style of outerwear is incredibly versatile. For those who love to stand out from the crowd, choose a bold and colourful check such as red, yellow or green. Alternatively, monochrome check will always look classy.

CHECKED ACCESSORIES

If you are a little worried about trying out this trend, you may want to try starting with one checkerboard item such as a pair of black-and-white checked heels or a checked scarf. But make sure you don't sync the checks of your accessories with the checks of your clothes – this is never a good look!

CHECKED TROUSERS

You don't often see women wearing checked trousers, but when you do they nearly always look fabulous. So, why not give this daring look a go yourself? Pair with a hoody for a sporty touch, with a chunky sweater for a casual daytime look or with a silk shirt and leather jacket for instant edginess.

Photo credit: asos.com

Are you BLUSHING yet?

With summer over, you are probably ready to banish the bronzer and bring on the blush. But do you know what type of blush is best for you?

Powder Blush

If you are not quite ready to give up that natural, sun-kissed glow that you have enjoyed over the last few months, then powder blush is the ideal choice for you. Available in a variety of colours, including red, pink, orange and peach, powder blush is long-lasting, easy to blend and offers a matte finish. Ideal for acne-prone and oily skin types.

Cream Blush

If you are looking for a dewy, fresh-faced finish, then cream blush can help you to achieve this. Arguably the best choice for those with dry skin, this type of blush lasts for around five to six hours and can be seamlessly blended into your skin. Be sure not to overapply or you risk a greasy-looking finish.

Shimmer Blush

Available in soft shine or a glittery formula, shimmer blush can set you up for the day and prepare you to party. It's great for highlighting your cheekbones. Make sure you build this blush up gradually to avoid a major make-up mishap. Shimmer blush can be used on any skin type.

Gel Blush

Although this type of blush is mostly recommended for the summer, it can be used to softly transition into autumn, allowing you to enjoy a healthy colour for longer. Best for light to medium skin tones, gel blushes can be easily blended with just your fingertips.

Tinted Blush

Otherwise known as cheek stain, tinted blush has become increasingly popular in recent years owing to its extreme long-lastingness and quick-drying formula. Plus, it can double up as a lip stain. Remember, less is more with this product.



Love your LEFTOVER PUMPKIN

Don't throw away any leftover pumpkin from Halloween. Instead, pump up your beauty routine with these four DIY pumpkin beauty recipes that are guaranteed to give your skin and hair an autumnal glow.

BEAUTY BENEFITS OF PUMPKIN

Healthy skin: Pumpkin is full of vitamin A, zinc and antioxidants that are essential for healthy-looking skin.

Healthy hair: Pumpkin seed oil is antibacterial and antifungal, helping to maintain a healthy scalp and strong hair follicles.

PUMPKIN MOISTURISING FACE MASK

You will need: 200g pumpkin purée | 1 tbsp honey | 2 tbsp brown sugar | ½ cup yoghurt

How to apply: Stir all ingredients together | Evenly coat your face with the mixture | Leave for 10–15 minutes | Rinse with warm water

PUMPKIN LIP SCRUB

You will need: 1 tsp pumpkin purée | 2 tsp sugar

How to apply: Mix ingredients together | Massage onto clean lips | Wipe off | Finish with a coat of hydrating lip balm

PUMPKIN HAND CREAM

You will need: 50g pumpkin purée | 1 tsp olive oil | 1 tsp honey

How to apply: Mix all ingredients together | Spoon a generous blob into your palm and rub into your hands | Rinse with warm water

PUMPKIN DEEP CONDITIONING TREATMENT

You will need: 50g pumpkin pulp without seeds | 50g raw coconut oil (liquefied) | 50g raw shea butter (solidified) | 25g vegetable oil or olive oil | 1 tbsp oatmeal powder

How to apply: Separate seeds from pumpkin pulp | Add oils, butter, oatmeal powder and pulp to a bowl | Mix well and then blend in a blender until a smooth consistency is achieved | Apply to damp, clean hair and massage into scalp | Leave for a minimum of 10 minutes | Rinse with warm water

Don't throw away the leftover pumpkin seeds; instead, roast them for a tasty snack. They are great for encouraging hair growth, as they contain iron and L-lysine which both help to prevent excessive hair shedding.



IM
Isabel Moreno
HAIR & BEAUTY SALON

L'ORÉAL PARIS
MIZANI

WE LOVE HAIR

WE WORK WITH ALL HAIR TYPE ★ Mix Race ★ Afro ★ European
HAIR TREATMENTS ★ Keratin ★ Fitagem (Curly hair) ★ Thermasmooth ★ Dry Scalp
SERVICES ★ Wash/blow dry ★ Colour ★ Cut ★ Lightening

Instagram: imhairsalon14 Facebook: IM Hair&Beauty Salon

PHONE 020 3581 8727 ★ EMAIL hello@imhairandbeauty.com ★ WEB www.imhairandbeauty.com
ADDRESS 92 Snakes Lane East, Woodford, Woodford Green IG8 7HX

BY APPOINTMENT ONLY **10% off your first appointment**

CBD INFUSED EDIBLE GUMMIES & OILS

Kind to you, kind to the earth

Check us out at
www.promarvelcbd.co.uk

0208 088 3429
promarvelcbd@gmail.com



STOP TOBER

How to help someone with an addiction

With Stoptober already under way, we thought it would be a good time to offer a few words of wisdom for those supporting a loved one with an addiction.

DON'T BE AN ENABLER

There is a very fine line between supporting someone with an addiction and actively enabling them. While you may want to help your loved one by carrying out household tasks, lending them money or apologising for their actions, this can actually stop them from making positive changes in their lives. Sometimes you need to let someone reach rock bottom for them to start their own personal recovery journey.

BE COMPASSIONATE

Although you don't want to stray into enabler territory, that doesn't mean that you can't treat your loved one with compassion as they struggle with addiction. In fact, studies have shown that negative social support is one of the biggest barriers for entry to treatment.

ENCOURAGE HEALTHY HABITS

Addiction is linked to not only poor physical health, but also mental well-being, with common mental health issues such as anxiety and depression being greatly amplified by alcohol or substance dependency. Ways in which you can promote overall good health and well-being include encouraging healthy eating habits and regular exercise, as well as establishing a positive daily routine.

DON'T FORGET YOURSELF

Supporting an addict can be an exhausting and often fruitless process, so it is vital that you take the time for self-care. Think of this not as an act of selfishness but as a means of self-preservation. Focus on doing something you love and make sure you take care of your own physical and emotional needs.

DO... Focus on building trust • Be honest • Respect their privacy

DON'T... Threaten with ultimatums • Criticise or name-call • Expect too much too soon



THINK POSITIVE

We could all be forgiven for feeling a little less than motivated right now. That being said, there comes a time when we need to stop languishing and start flourishing. Now is that time...

SET THE TONE FOR THE DAY

How often do you wake up on the wrong side of the bed and let that negativity continue throughout the day? Why not instead start your morning with a few enthusiastic affirmations? Even a simple, "Today will be a good day", can work wonders.

FOCUS ON THE GOOD

Although you may find it difficult at the moment to find joy in everyday life, by focusing on the good things, however small they may be, you will start to find yourself feeling more motivated and less eager to hide away from any of life's challenges.

LAUGHTER REALLY IS THE BEST MEDICINE

When you laugh, the body releases two types of

chemicals: endorphins and dopamine. Endorphins help you feel happy and diminish pain, whereas dopamine, known as the reward hormone, contributes to feelings of pleasure and satisfaction. Finding humour in even the darkest or lowest of moments can help you get through a particularly bad day.

EMBRACE FAILURE

Whether you are struggling to home-school, are completely messing up your latest DIY project or you simply feel that nothing you do at the moment is right, try to focus on what you can learn from your mistakes.

BE PRESENT

If you are struggling with the current lack of routine and worry about not being able to set any short-term goals, other than getting out of bed each day, try focusing on the immediate present. What are you doing at this precise moment that is making you or someone close to you happy?

new mindset → new result

POSITIVE



Manorcourt Homecare
Part of the Healthcare Homes Group



Live In Care Services

Homchurch Branch, 58 Station Lane, Homchurch, Essex RM12 6NB. Tel: 01708 472911

If you or a loved-one are currently receiving visits from carers but feel further help or support may be needed throughout the day, the team at Manorcourt Homecare provides a Live-In Care service that enables you to continue living as comfortably and safely as possible in your own home, but with expert and friendly support at any time of the day.

Provided on a short or long term basis, the service promotes independent living and ensures you or a loved one can remain in the comfort of familiar surroundings, with no need for relocation into a care home setting.

Live In Care may be particularly suitable for those with high dependency needs, complex care needs, recovering from a stay in hospital or perhaps following a serious illness. Our clients love that they can stay living at home, but have the help they need personally, as well as managing household or domestic tasks, pet's needs and enabling them to continue enjoying hobbies, leisure pursuits and even go on holidays.

To find out more about contact our friendly team for an initial assessment on 01708 472911

Together we respect, with compassion we care, through commitment we achieve

LIVE IN CARE £995 per week

...for new customers, for the first 3 months.



YOU CAN NOW ENJOY THE FULL PIE & MASH EXPERIENCE WITH

ROBINS Vegan Pie and Mash



Firstly, this is not about changing the Great Pie and Mash we have been serving for Five Generations.

At Robins we wanted to make a pie that is as delicious as our original pies with a savoury meat free mince (soya) and rich savoury gravy encased in our hot flaky pastry, also our mash and liquor is already suitable for vegans and vegetarians.

ROBINS
Pie & Mash
www.robinspieandmash.co.uk
@robinspiemash

WANSTEAD BRANCH AT 14 HIGH STREET, LONDON E11 2AJ
CALL TO ORDER ON 020 8989 1988

WANSTEAD • CHINGFORD • BASILDON • ROMFORD • SOUTHEND



FOOD & DRINK

THREE HAUNTING HALLOWEEN COCKTAILS

Put the boo in booze with these creepy cocktails that will make your hair stand on end. Literally. From a spooky smoking potion to a colour-changing creation, these Halloween drinks provide both a trick and a treat.

TEQUILA TERROR

You will need:
2 oz 100% agave silver tequila • 1 oz lemon juice • 8 blackberries • 5 sage leaves • 1 tsp maple syrup • 1 dash orange bitters • Dry ice

How to make:
Bash the blackberries and sage in a cocktail shaker until broken down and fragrant • Pour in the tequila, lemon juice, bitters and maple syrup • Give it a good shake • Pour over a cube of dry ice

Safety tip: Do not drink the cocktail until the dry ice has completely dissolved



Photo credit: wickedspatula.com

BLACK MAGIC

You will need:
2.5 oz black vodka • ¼ oz lime juice (freshly squeezed) • ¼ oz simple syrup • Ice • Pearl white edible dust (can be found online or at craft shops in baking aisle)

How to make:
Add syrup, lime juice and vodka to a cocktail shaker • Fill with ice to the liquid line • Vigorously shake for 30 seconds • Add a dash of pearl dust to the bottom of a martini glass • Pour and serve



Photo credit: elietalk.com

PURPLE RAIN

You will need:
Blue butterfly pea flowers • 3 oz cranberry juice • 1/3 cup gin • 1.5 oz elderflower liqueur (rose or violet also work well) • Juice of half a lemon • Ice

How to make:
Make a pot of blue pea flower tea and allow to steep • Leave to cool and freeze into ice cubes • When frozen, crush in a blender • Add the cranberry juice, gin, liqueur and lemon juice into a cocktail shaker half filled with ice • Shake vigorously • Fill two glasses with ice and divide liquid between them • Top with blue crushed ice and watch as it turns purple



Photo credit: supergoldenbakes.com



Return

TO YOUR ROOTS *part 1*

With the weather turning colder, now is the time to shift away from salads and, instead, embrace more robust and hearty vegetables. Whether you are harvesting the veg yourself or you have opted for shop-bought, the below guide will help you make the most of your roots this autumn.

TURNIPS

A member of the brassica plant family, turnips are high in fibre, making them great for gut health. They also contain antioxidant and anti-cancer properties.

HOW TO STORE: Always cut off the greens of turnips before storing in the fridge. Lifespan: two to three weeks.

HOW TO COOK: With their delicate, sweet flavour, turnips make a great mash. Alternatively, use as a substitute for potatoes in dauphinoise.



CARROTS

These much-loved staples are cheap, versatile and contain carotenoids that are known for their ability to boost your immune system and protect your skin from sunburn.

HOW TO STORE: Cut their tops off and store them in a cool place such as the lowest shelf in your fridge. Wrap in a damp towel for prolonged crispiness. Lifespan: four weeks.

HOW TO COOK: Avoid boiling carrots; instead, look to roasting them with honey, grating them raw into a salad or stir-frying them.



PARSNIPS

Parsnips are incredibly high in fibre and are also a great source of folate that is needed for a healthy brain and nervous system.

HOW TO STORE: Store in the same way as carrots but avoid placing near apples or pears, as this gives them a bitter taste. Lifespan: three to four weeks.

HOW TO COOK: You can roast parsnips in the same way you would potatoes. They also work well in a gratin, to bulk out stews or grated into hash browns.



Look out for *part 2* in next month's edition where we will explore the beautiful beetroot, amazing artichoke and the super versatile sweet potato.

Shish Meze

ABRIDGE

Beauty blossoms from humble beginnings...
Welcome to the home of rich Turkish cuisine,
unbelievable dishes and unforgettable moments

Shish Meze Abridge is blessed with the finest artisanal chefs in the kitchen preparing delicious, fresh food available for dining in and delivery. From mouthwatering, premium meats to delicious homemade desserts – this is a real, unique eating experience.



BOOKINGS & TAKEAWAY: 01992 946 704

18, MARKET PLACE, ABRIDGE, RM4 1UA

www.shishmezeabridge.com info@shishmezeabridge.com [@shishmezeabridge](https://www.instagram.com/shishmezeabridge)

MONDAY TO SUNDAY 12PM TO 12AM

Spice UP YOUR life

A QUICK-FIRE GUIDE TO KNOWING YOUR HERBS AND SPICES

Spices and herbs are about so much more than heat. They provide colour, texture, flavour, aroma and more hidden pizzazz than you would expect.

The trick, when it comes to adding them to your food, is to choose those that complement your dish.

BITTER

Think of coffee, chocolate and beer, and you'll know we have a love/hate relationship with bitterness. From bay leaf to clove, horseradish to marjoram, peppercorns to turmeric, a bitter flavour is great for hearty foods such as roasts and stews, where spices creep in without overpowering the dish.

SALTY

Salty herbs and spices actually provide a sensible and health-focused alternative to sodium chloride. Consider paprika, cumin, onion powder and oregano as the perfect seasoners, and revel in spicy goodness without the negative side effects.

SOUR

The ability for sour spices to make our mouths water works perfectly when we match them with sweet

foods. Limited in quantity – the key sour spices are amchur, sumac and tamarind – they are powerful and purposeful with desserts and sauces especially.

SWEET

From caraway to fennel, nutmeg to sesame seeds, our love of sweet spices is something that means firm meats such as pork and poultry can be softened, while sour flavours in cheese can really be brought out with a dash of sugar-like life.

And one for luck – **UMAMI**, the cool younger brother of the spice world, boasting a savoury, meaty, seaweed flavour that bucks all the negative connotations of MSG despite using the same molecule, an amino acid called glutamate.

Of course, true aficionados will point out that limiting the range to just four or five varieties is doing spices a disservice. They will note a number of cooling, floral, earthy, pungent, nutty and woody variations, but as a starting point for understanding these most excellent essences, you've got more than enough umming, ahing, wincing and reaching for water to be getting on with.

SmartRaspberry cookery school

Cookery Classes, Workshops, Parties & DofE

DUKE OF EDINBURGH SKILL AWARD COOKERY WORKSHOPS



Our Food Tech online classes are ideal for any young person interested in learning to cook or as part of the DofE award



FREE TRIAL AVAILABLE

for dates and details www.smartraspberry.com

Facebook: SmartRaspberryEppingWoodford Instagram: smartraspberry_ew

0208 088 3439 • 07725 221384 • geangelo@smartraspberry.com

SUPPORT LOCAL BUSINESSES



Let your local businesses know that you saw them first in... **VISION**

THE OAK-TREE GROUP OF SCHOOLS



Braeside, Buckhurst Hill



Coopersale Hall, Epping



Normanhurst, North Chingford



Oaklands, Loughton



OUTSTANDING TEACHING AND EXCELLENT PASTORAL CARE

Four privately-owned local independent schools make up the Oak-Tree Group: Oaklands in Loughton, Braeside in Buckhurst Hill, Coopersale Hall in Epping and Normanhurst in North Chingford.

EARLY YEARS | INFANTS | JUNIORS | SENIORS

For more information www.oaktreeschools.co.uk

@OakTreeSchools



KIDS



HOW TO ENJOY A

SOCIALLY DISTANCED HALLOWEEN

As traditional trick or treating may be cancelled this year, unless you want some seriously disappointed children, you may want to look into alternative ideas for celebrating Halloween as a family.

Don't worry, there will still be lots of sweet treats to be enjoyed!

HOST A VIRTUAL PARTY

If you normally host a massive Halloween party for all your family and friends, why not use your new-found knowledge of Zoom to host a virtual party instead? Adults can enjoy some spooky cocktails and a chat, whereas the kids can show off their costumes and even play Halloween games such as bobbing for apples via the app. Alternatively, you could host a virtual scary movie night or virtual Halloween sleepover.

ORGANISE A NEIGHBOURHOOD DECORATION PARTY

In the same way that neighbours got together to decorate the outside of their homes and the local streets for VE Day, you could bring the local community together to put up some creepy decorations. That way, instead of trick or treating, children can enjoy a spooky walk on Halloween.

SET UP A HALLOWEEN PHOTO BACKDROP

A great way to make dressing up for Halloween fun despite restrictions, one or more local families could host a Halloween photo backdrop at the end of their driveway or in their front garden. Children can then take turns coming up to get their photo taken, creating long-lasting memories of Halloween 2020.

DECORATE A FACE MASK

A fun Halloween activity for children of all ages. Either buy some plain disposable face masks or make your own and then get your children to decorate them. Some great Halloween-themed decorative ideas include creepy grins, animal faces or pumpkin patterns.

OTHER IDEAS INCLUDE:

- Bake some sweet treats
- Visit a pumpkin patch
- Carve a pumpkin face



OCTOBER BIRTH FLOWER OF THE MONTH

Marigold

GARDENING

If you were born in October, your birth flower is the vibrant marigold. Native to the Mediterranean, this plant is also known as the 'herb of the sun' owing to the fact that its flowers open when the sun is shining. Incredibly versatile flowers, marigolds can be used as bedding plants or grown in containers.

What does the marigold symbolise?

With its intense orange colour, it's hardly surprising that the marigold symbolises both passion and creativity. In medieval England, the leaves and flowers of the marigold were combined with ground egg shells and added to heated ale as a treatment for the plague. Whereas, in Mexico, they are the official flower for the *Día de los Muertos* – the Day of the Dead – as their scent is believed to help guide the spirits from the cemetery to the altars.

What does this birth flower say about you?

If your birth flower is the marigold, you are said to be a warm and inviting person who has the ability to brighten any day. You are full of drive and are often the one that others turn to for advice or help. Personal growth is also important to you.

How to grow marigolds

Marigolds enjoy full sun and grow well in both dry and moist soil. You can plant marigold seeds directly outdoors in spring once the threat of frost has gone, or start seeds inside for up to eight weeks before planting outside. These flowers require little maintenance and only need watering if the weather has been dry for more than two weeks.

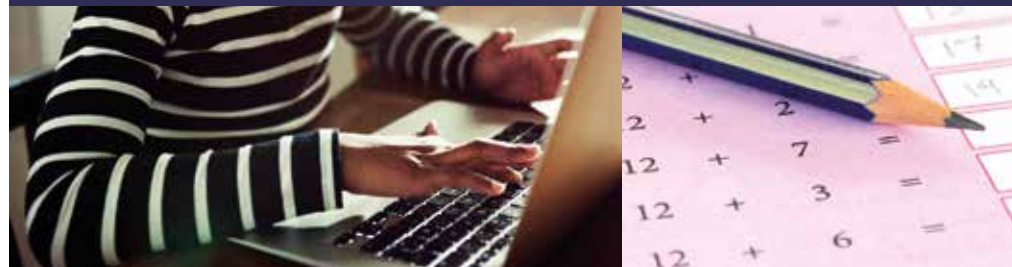
Fun facts about marigolds

- Marigold flowers are edible
- Marigolds are a natural insect repellent
- They contain carotenoids that can lower your risk of heart disease and some cancers



**Redbridge
Tuition**

Our tutor-led classes are currently running online



Primary • Secondary • 7+ • 11+ • GCSE • 1-2-1

Ofsted
Registered

0208 088 3083
www.redbridgetuition.co.uk
skings@redbridgetuition.co.uk



**Think beyond
Act beyond
Be beyond.**

LAZYLAWN®

London's Leading

Artificial Grass Installers

BOOK A FREE SITE SURVEY

☎ 0208 961 4722
✉ eastlondon@lazylawn.co.uk
🌐 www.lazylawn.co.uk



Wonder Yarn

Gardening Services in South Woodford & Surrounding Areas

Lawn Mowing & Care 🌻 Weeding 🌻 Watering
Planting 🌻 Pruning 🌻 Garden DIY

Value For Money Free Quotes No Job Too Small

FOR MORE INFO PLEASE VISIT
www.naturefamilygardening.com 🌻 Socials: @naturefamilygardening

ALL TREE WORK UNDERTAKEN

- FAMILY RUN BUSINESS
- OVER 35 YEARS EXPERIENCE
- PRUNING ○ THINNING ○ REDUCTIONS
- FELLING AND REMOVAL ○ DEAD WOOD REMOVAL
- SITE CLEARANCE ○ HEDGE MAINTENANCE
- FIREWOOD SALES FULLY INSURED

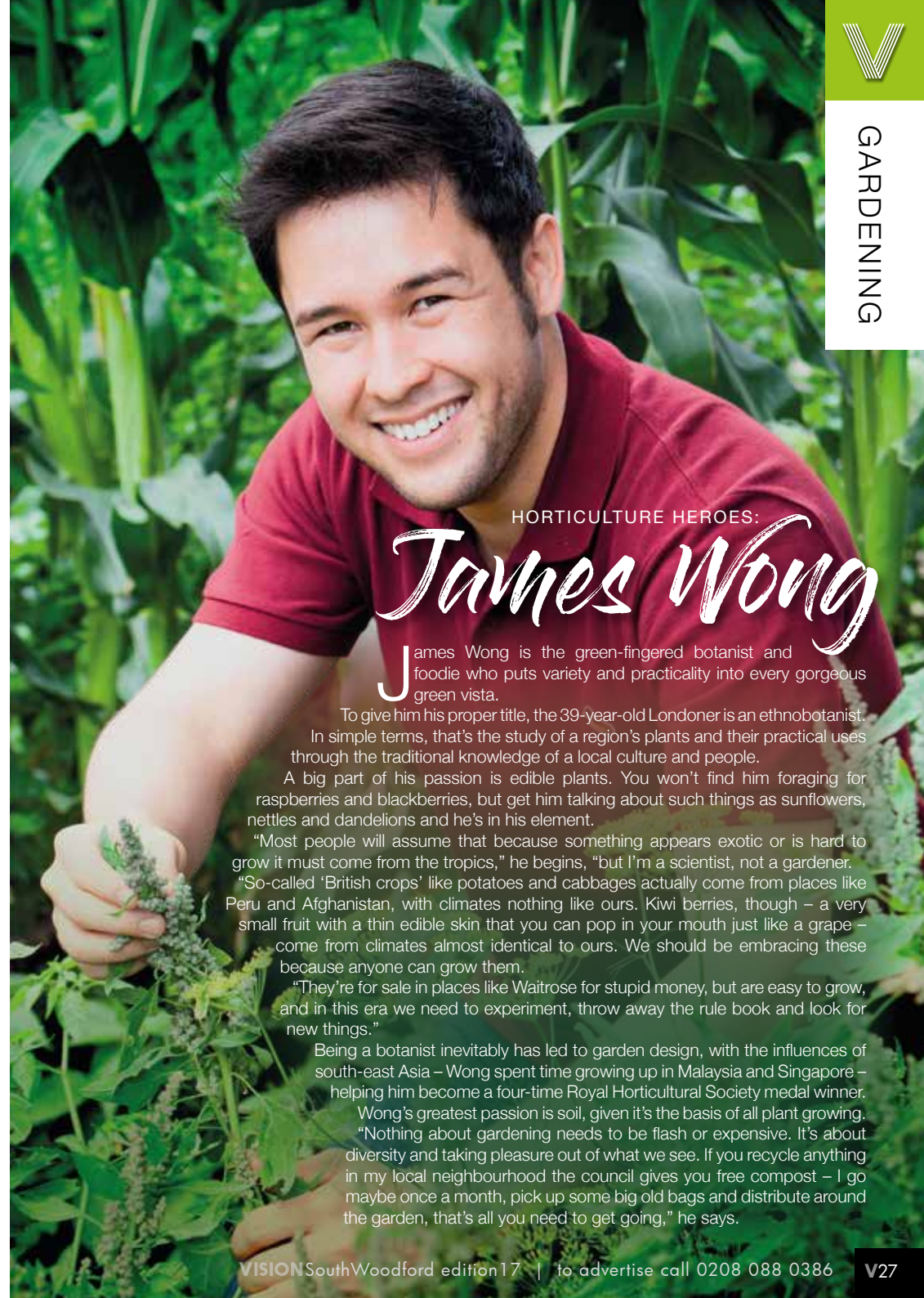
ESSEX TOP RATED TREE SURGERY COMPANY 2017/2018 ON

★★★★★ **Checkatrade.com**
Where reputation matters

City & Guilds
NPTC
Qualified workforce

CALL TODAY FOR YOUR NO OBLIGATION QUOTE WITH NO HIDDEN EXTRAS

07500 870 309
www.essexrecareltd.co.uk



HORTICULTURE HEROES:

James Wong

James Wong is the green-fingered botanist and foodie who puts variety and practicality into every gorgeous green vista.

To give him his proper title, the 39-year-old Londoner is an ethnobotanist. In simple terms, that's the study of a region's plants and their practical uses through the traditional knowledge of a local culture and people.

A big part of his passion is edible plants. You won't find him foraging for raspberries and blackberries, but get him talking about such things as sunflowers, nettles and dandelions and he's in his element.

"Most people will assume that because something appears exotic or is hard to grow it must come from the tropics," he begins. "but I'm a scientist, not a gardener.

"So-called 'British crops' like potatoes and cabbages actually come from places like Peru and Afghanistan, with climates nothing like ours. Kiwi berries, though – a very small fruit with a thin edible skin that you can pop in your mouth just like a grape – come from climates almost identical to ours. We should be embracing these because anyone can grow them.

"They're for sale in places like Waitrose for stupid money, but are easy to grow, and in this era we need to experiment, throw away the rule book and look for new things."

Being a botanist inevitably has led to garden design, with the influences of south-east Asia – Wong spent time growing up in Malaysia and Singapore – helping him become a four-time Royal Horticultural Society medal winner.

Wong's greatest passion is soil, given it's the basis of all plant growing.

"Nothing about gardening needs to be flash or expensive. It's about diversity and taking pleasure out of what we see. If you recycle anything in my local neighbourhood the council gives you free compost – I go maybe once a month, pick up some big old bags and distribute around the garden, that's all you need to get going," he says.



The isle of Wight

Forget long slogs to foreign lands – holiday utopia could be much closer to home, because it's alright on the Isle of Wight.

With so many holidays abroad having restrictions and a quarantine period once you return to the UK, a good, less-stressful option could be to look for a break closer to home.

A short hop on the ferry across to the Isle of Wight could be just the ticket, and here's why:

Tube train: Speaking of tickets, the Isle of Wight's first unique tourist attraction is the former underground train that connects those arriving on the mainland at Ryde Pier Head to Shanklin, some eight and a half miles away. The British Rail Class 483 rolling stock dates back to 1938.

Alum Bay: While Alum Bay gets most of the publicity, from Colwell to Compton, Sandown to Shanklin, so many of the island's sumptuous, sandy beaches are a delight to behold.

The Needles: These iconic chalk stalks and resplendent lighthouse have always been a major tourist draw, as well as sparing the lives of countless sailors.

Blackgang Chine: A piece of the Wild West, a voyage into a fairy wonderland, or perhaps something else... Located in the south of the island, the amusement park is the oldest in the UK, having first opened in the 1840s, and will transport kids and adults alike back to a simpler age.

Freshwater Bay: So typical of the history hiding behind the island, Freshwater Bay's serenity disguises the caves pirates used to hide their wares in, situated at the foot of the cliffs.

Osborne House: For those who like their history to be rather more regal, sample Queen Victoria's favourite retreat, which remains almost untouched from when it used to welcome dignitaries over 100 years ago.

Photo credit: Dinko G. Kyuchukov/Shutterstock.com, J. M. Ritchie/Shutterstock.com



Vetting process

Things to consider...

when choosing a good vet for your pet

Word of mouth

Whether your passion is a dog, cat, budgerigar or Burmese python, pet owners are a social community and rarely shy away from sharing opinions, both positive and negative. The pet parents among us will always be the best source of reviews, so jump on social media and see who is well rated locally.

Read the paw print

Pet healthcare is often pricey, so transparency is key when it comes to vets and finances. It is always wise to have pet insurance, but you also need to check that your vet is willing to cooperate with your policy provider to provide a seamless, stress-free service. In the event of having no insurance, make sure you're happy with the potential fees.

Listen to your animal instinct

The best care often means feeling comfortable and happy from the minute you walk in the door, so visit your prospective surgery and make sure it

suits you and your pet. Perhaps you have a place that specialises in care for gregarious guinea pigs, or maybe it's the welcome that wins you over. Clean bowls of water, blankets and toys for anxious animals are all good signs your pet will be in good hands.

Follow the pack

A busy veterinary practice is generally a good sign that it offers decent care for reasonable prices. So as long it isn't so oversubscribed that you can't get an appointment, don't be put off by a little paw traffic.

Stay on your turf

We all know that medical emergencies rarely fit a sociable timetable, and is vital to know that you can get your pet the help it needs any time, day or night. This means not only choosing a practice that you can get to easily, but also one that can facilitate emergency care without you having to venture too far afield.

A photograph of Robert Pattinson in a dark tactical vest with a walkie-talkie, looking off to the side. The background is a blurred outdoor setting.

THE RISE OF

ROBERT BAT-TINSON

It's taken eight years, 19 movie roles and a complete revision of his status as the teenage heartthrob of his era, but in landing the role of Batman in the latest incarnation of DC Comics' ultimate action hero, Robert Pattinson has emerged from the gloomy, seedy shadow of *The Twilight Saga* into the dazzling, dangerous surrounds of, well... his local gym.

We've always known him best for his vampiric swagger and lofty presence, and for being followed around by a posse of adoring young teens, but since the Sky series in which he made his name, Robert Pattinson has dabbled in everything from serious drama, horror, crime, action and even biopics.

And while excelling on screen in the likes of *The Lost City of Z*, *Good Time*, *The Rover*, *The Lighthouse* and *Tenet*, as the latest ripped and action-ready Batman, this is surely his biggest project yet.

The big-budget Warner Bros movie represents for him a defining moment, both physically and mentally – it's the final piece of the jigsaw in the ascent of the accomplished Londoner to true movie icon status, and by his own admission, the removal of self-doubt that accompanies it is a relief.

"Doubt is in the genetic make-up of any actor," he begins. "You are always wondering what's around the corner and whether you can live up to your best role, your last role, your future potential... whatever it will be."

Taking on Batman represents the same mental challenge, but RPatz sounds more secure in himself than ever before.

"I think any actor will go through periods where they will question whether they can live up to a character in a script, or even the expectations that go with it.

"Batman, for me, means pushing boundaries and building up to a point where I know, in the flesh, I can do justice to the physicality required.

"You look at the true warriors of the superhero genre – Hemsworth, The Rock, Downey Jr – and wonder if you're putting yourself in the wrong place. And yet, having spoken to a few I know, everyone is nervous when the opportunity comes about."

Of course, the legacy of those to have played Batman goes back right to the early days of movie-making. People were still awaiting the conclusion of the Second World War when actor Lewis G Wilson first stepped up to play the caped hero in 1943. Wilson's physique saw critics perhaps unfairly deride him as "thick about the middle", and actors who assumed the role thereafter were toned in a way rather more fitting for a character adept at taking down a range of enemies without, in fact, the use of any superhero powers at all.

From Robert Lowery and Adam West – who played Batman for two decades – through to Michael Keaton, Val Kilmer, George Clooney, Christian Bale and Ben Affleck in the modern era, style and stamina has often gone forward before age – something that stands Pattinson in good stead.

"This feels like the start of a new era for me, and I hope fans come along for the ride."

In 2020, Pattinson talks, behaves and interacts like a very different person from when he was only known as Edward Cullen from *The Twilight Saga*. His evolution into an accomplished actor of variety, veracity and vigour is now surely complete.



www.küchenhaus.co.uk
The German Kitchen



Why choose Küchenhaus?

As the largest retailer of quality German engineered kitchens in the UK, we deliver rigid pre-built luxury kitchens manufactured in Germany at direct from the factory prices. View your dream kitchen in the luxurious surroundings of the largest kitchen showrooms in the UK.

- Full installation service or supply only
- 12 months 'buy now' and 'pay later' option
- Kitchens designed and built to order
- Free in-showroom design consultation
- Trade enquiries welcome

**BUY NOW
PAY 2021**

10% Deposit Only

*Terms & Conditions apply

nobilid

Miele



SIEMENS

BOSCH

AEG

smeg

CORIAN

SILESTONE

DEKTON

Visit our website or showroom

6, The Baytree Shopping Centre, Brentwood, Essex CM14 4BX

01277 204447

www.küchenhaus.co.uk



Natural style

Flower Design & Gifts



Fantastic Service ❁ Beautiful Flowers ❁ Cute Gifts

📞 @constansflowers05 ❁ 0208 088 3475 ❁ constansflowers@gmail.com



CRANE HIRE | CONTRACT LIFT
TRAINING | TRANSPORT



0203 637 0242
info@emersoncranes.co.uk
www.emersoncranes.co.uk

LOCAL NEWS

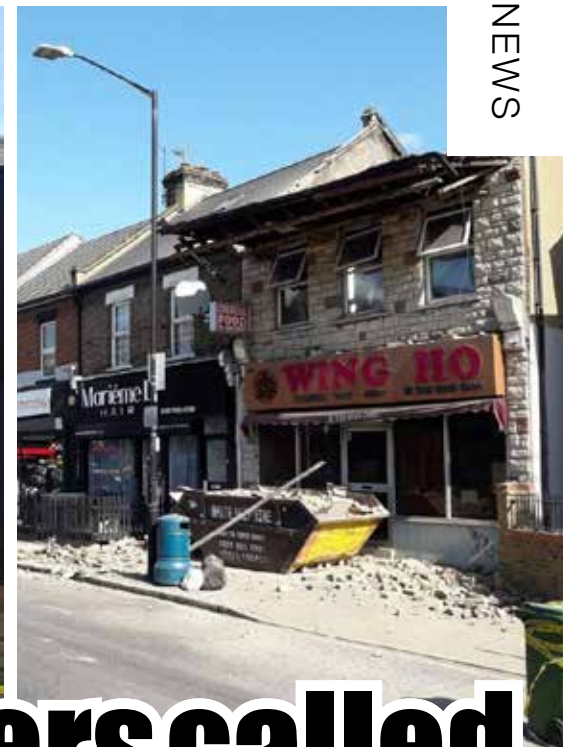
from your neighbourhood



LOCAL NEWS



Photo credit: London Fire Brigade



Firefighters called after roof of shop collapses

Firefighters were called to a building collapse on George Lane in South Woodford on September 10. The roof of a shop with flats above, which was under renovation, collapsed onto the first floor of the building. Two people left the building before the brigade arrived and firefighters evacuated 11 people from neighbouring properties as a precaution. There were no reports of any injuries, but one woman was treated by the ambulance service for shock. Station commander Shaun Fox, who was at the scene, said: "The roof of the building collapsed into

the first floor. "Our Urban Search and Rescue crews were on the scene and a 25m cordon was put in place as a precaution. "A police search dog carried out an external search of the building and we are satisfied that there were no people in the building." The brigade was called at 9.25am and the incident was over for firefighters just after midday. Three fire engines and three fire rescue units attended the scene.



Restaurant warned after flouting COVID-19 rules

LOCAL NEWS



The owners of a restaurant and bar in Woodford Bridge have been warned about their future conduct after they were found to be flouting COVID-19 rules.

Redbridge Council has notified the owners of Melin that the first floor must only be used for customers who need to use the toilet. It has also instructed the owners not to provide live or recorded music, including a DJ, and lighting equipment.

On August 28, officers from the council visited the premises to carry out a compliance inspection. They observed a restaurant with little to no compliance with COVID-19 social distancing guidelines.

Groups of people were seated and standing within the premises. On the first floor, where there is a second bar, open dance area and disco lights, more than 40 people were standing with fewer than ten people seated. The open floor area was congested, while a DJ was also playing music.

The officers paid a follow-up visit to the premises two days later. When they arrived, they could hear loud music and see flashing disco lights from the first-floor DJ booth.

When they left the premises, large groups of people were found gathered in the car park with no social distancing being observed. There was also no management of people leaving the venue.

The venue owner admitted to council officers that he had failed to adhere to the legislative guidelines to keep people safe during the COVID-19 pandemic.

Councillor Mark Santos, cabinet member for health, social care, mental health and the ageing, said: "This should serve as a warning to other businesses that think they can defy the rules without consequences."

Fire brigade called to blaze at factory

More than 60 firefighters and eight fire engines attended a factory fire on Raven Road in South Woodford.

Firefighters tackled a fire at the factory of a loft room staircase company, where a significant part of the two-storey building was damaged by the fire.

The brigade was called at 1.30am on September 10 and the fire was under control by 3am.

The brigade believes the cause of fire was hot embers from the incinerator igniting the paladin bins containing timber and sawdust.

Appeal for witnesses after fatal motorcycle collision

Detectives are appealing for witnesses and anyone with dashcam footage to come forward following a fatal collision in South Woodford.

Police were called at 5.09am on Tuesday, September 15 to Woodford New Road, following reports of a collision involving a motorbike.

Officers attended with London Ambulance Service. Despite the efforts of paramedics, the motorcyclist, a 35-year-old man, was sadly pronounced dead at the scene.

His next of kin have been informed and are being supported by officers. A post-mortem will take place in due course.

Enquiries to establish the circumstances of the incident are ongoing.

Detective Constable Dustin Iribarren, from the Serious Collision Investigation Unit, who leads the investigation, said: "Our thoughts are with the man's family at this very sad time. I would like to thank the members of the public who tried to help the victim and who have spoken to us."

"I am urging anyone who was in the vicinity of the incident at that time to please check your dashcam footage. If you have any footage of this incident, or saw what happened, please get in touch and help us piece together what happened."

Anyone with footage or information is asked to call 0208 597 4874 or 101 or tweet @MetCC quoting ref CAD 983/15 Sept.



RAISING BRITAIN'S CLEANING STANDARDS



Professional, reliable, affordable cleaning services

ANTIVIRAL SANITATION FOGGING KILLS 99.9999% OF ALL BACTERIA

- OFFICE CLEANING
 - COMMERCIAL CLEANING
 - ANTIVIRAL SANITISATION CLEANING
 - CARPET CLEANING
- CONTACT US TODAY 0203 733 2165 info@cleango.co.uk
www.cleango.co.uk





NEWS FROM

THE 100 CLUB

LOCAL BUSINESSES SUPPORTING HAVEN HOUSE



Join #TeamHavenHouse in the iconic London Marathon 2021.

The euphoric crowd, an electric atmosphere and a grandstand finish in The Mall give this iconic race its status as one of the best marathons in the world.

Haven House Children's Hospice has a limited number of charity places available for 2021 and you can apply now.

The Virgin Money London Marathon is one of the hospice's major annual challenge events. Haven House is delighted to have charity places up for grabs and would love to welcome you to its team of runners.

Sophie Bragg, events fundraising manager at Haven House, said: "The Virgin Money London Marathon is the one challenge everyone wants to do. For many, running a marathon is a lifetime ambition. Offering unforgettable surroundings and incredibly supportive crowds, the London Marathon boasts the best possible backdrop for an inspiring event. By teaming up with Haven House, runners have the joint satisfaction of fulfilling their marathon dream while raising vital sponsorship money for a really worthy



cause that supports children and families in the local community."

The Virgin Money London Marathon will take place on Sunday October 3, 2021.

Apply today by visiting www.havenhouse.org.uk/londonmarathon2021 or call Sophie on 07715 990101.

'Act now to avoid local lockdown'

People in South Woodford have been urged to act to avoid a local lockdown after figures from Public Health England revealed the borough had the highest COVID-19 infection rates in London.

At the start of September, the infection rate in the borough was 11.2 per 100,000 people, but it increased to 31.9 per 100,000 by September 11.

Gladys Xavier, director of public health at Redbridge Council, commented: "We have to take these figures seriously and ensure that we don't end up in lockdown as we've seen in other regions in the country.

"Please remember the importance of maintaining distance, washing or sanitising hands regularly, wearing a face mask where needed, and getting a test if you have symptoms. Please also avoid visiting elderly or vulnerable relatives if you're feeling unwell."

Councillor Jas Athwal, leader of Redbridge Council, said: "This is worrying news; the infection rate is going up in our borough, putting local people at risk. We must act now and do everything we can to avoid a local lockdown and keep our friends, family members and neighbours safe.

"We're working with the government and our partners to bring down the number of cases of this deadly virus. The best way to do that is to limit the number of contacts people have, follow the latest government guidelines and not mix in groups of more than six people."



STYLISH COOLING SOLUTIONS FOR YOUR HOME

We provide the highest quality of service from concept through to final handover

- Installers of Air Conditioning for over 30 years
- Wide Range of Leading Brands
- Approved Daikin & Mitsubishi Installer



Tel: 0208 088 3506
 Mob: 07903 104549
 Email: services@pumabuilding.com
 Web: www.pumabuilding.com
 @pumabuilding



ESTABLISHED 1985
AIR CONDITIONING SERVICES

PUT THE SPARKLE BACK INTO YOUR KITCHEN



Domestic Oven Cleaning Specialists
Est. since 2007

Prices

Single oven incl. shelves & grill pan.....	£43.00
Double oven incl. shelves & grill pan.....	£54.00
Range incl. shelves & grill pan.....	From £54.00
AGAs.....	From £90.00
Hobs.....	From £14.00
Extractors.....	From £15.00
Microwaves.....	From £20.00

No VAT to pay



PLEASE CALL FOR A FREE QUOTATION
01279 432444 * www.ovenbright.co.uk



BEFORE



AFTER



Resin Bound Natural Aggregate

Based just outside Epping, IBBco have been providing surfacing solutions to Essex and Hertfordshire for the past 24 years. Resin Bound natural aggregate allows us to create beautiful designs for your drive, patio, paths or even swimming pool surrounds! Please call us to discuss all the options or to request a free survey.

- 46 Bespoke Colours
- Fully Permeable
- No Drainage Required
- Total Flexibility of Design
- Long Lasting Results
- Easy to Maintain
- Tested to BS EN 13892
- UV Colour Stable

Unit 11, Esgors Business Centre, High Road, Thornwood Common, Epping, CM16 6LY

Woodford and District National Trust



The Woodford and District branch of the National Trust has issued an apology as the group's recently announced new programme of talks, meetings and visits has been put on hold.

It seems unlikely that any of our meetings will go ahead as hoped, as our venues have not been available. Indeed, the Memorial Hall is now open for

30 to meet, but the All Saints rooms are still closed, and we know that only six people can gather together now. It seems the pandemic will not be allowing us to meet for the time being.

We would like to say we are missing you all – as much as we hope you are missing us.

Photo credit: British Athletics - Handout
British Athletics via Getty Images



Golden boys lead the field

A pair of athletes from Woodford Green are celebrating after winning gold medals at the Müller British Athletics Championships last month.

Phil Norman won his first British title in the 3,000 metres steeplechase, setting a new stadium record of 8.32.51 minutes in the process. He was pushed all the way by Mark Pearce, who improved his personal best by ten seconds after a powerful bit of front-running for 2,500m.

Norman said: "It's an amazing feeling to come out here and get the win today to be British champion. I was hoping the race would be taken out at a fairly good lick. The last thing you want is to be jogging around with people getting in each other's way because in the steeplechase it can get pretty messy."

Daniel Rowden also took his first British title in the 800 metres, winning the race in 1.45.94 minutes,

which was also the performance of the day.

In the 800 metres, Jake Wightman took to the front with Rowden behind. Off the last bend, Rowden made his move, reeling in Wightman with 50m to go before showcasing his strength and speed, crossing the line in a stadium record 1.45.94 minutes.

Rowden said he was delighted with his performance. He said: "This has been very special. It has been such a weird year with not knowing what is going to happen, if any events will take place. It was great to come here in front of a big TV crowd – it is very special."

"I am very happy after a difficult year with surgery in April 2019, so it has been a tough road back. To take the British title for the first time is incredible. The strength in depth at 800m in the UK is amazing."

Both athletes are members of the Woodford Green Athletic Club with Essex Ladies.

SAMSUNG

euronics

the home of electricals

Claim up to £300* Cashback & give a little back

take home a selected Samsung appliance and claim your full Cashback value or donate some to one of our chosen charities

Member of

NHS CHARITIES TOGETHER



Price Match Guarantee* | Super Service | Expert Knowledge | Contact-Free Delivery



Broadway Music and Vision

8 The Broadway,
Woodford Green, IG8 0HL
0208 504 7500
broadwaymandv@aol.com



*Terms and conditions apply. Participating retailers only. Purchase between 14.09.20 - 03.11.20. To claim, and for full terms and conditions, visit www.samsung.com/uk/claim-cashback-2020. Sold as an agent of Euronics Limited. All rights reserved. All offers are subject to availability while stocks last. Delivery & Installation charges may apply Exclusions and Radius Apply. See in store for full details. Images for illustration purposes only. Copyright Euronics 2020. E&OE September 2020.



BRUSH

HOME & DIY

UP ON DIY



Be honest. When you purchase a paintbrush from your local supermarket or DIY store, do you actually have any idea how to choose the right one for your particular project?

Don't worry, you are not alone. Fortunately, we are here to show you how, plus how to care for your brushes so that they last for the duration.

CHOOSE THE RIGHT BRISTLE

Paintbrushes are available in two different bristle types: synthetic bristles, or natural bristles that are made from animal hair. If you are using paint that can be cleaned off with water, you should choose a brush with synthetic bristles. However, if you are using an oil-based paint or varnish, a natural bristle brush is better.

CHOOSE THE RIGHT SIZE

This may seem obvious, but if you are painting a small area such as a skirting board, then you should choose a smaller brush for more precise control. If you are painting a wall, you will most likely be using a brush for cutting in and should opt for a 2-3-inch brush; any bigger and you will struggle.

CHOOSE THE RIGHT SHAPE

If you look at paintbrushes closely, you will notice that the bristles are either cut at an angle or they have square ends. As a general rule, angled-tip brushes are best for painting trim or cutting in, and square ends are ideal for wider, flatter surfaces.

HOW TO CLEAN YOUR PAINTBRUSH

> WATER-BASED PAINT

Scrape off any excess paint | Wash the brush in soapy water | Rinse the bristles in clean, cold water | Wrap the brush in heavy paper and fasten loosely with string

> SOLVENT-BASED PAINT

Wipe the brush clean of excess paint or gloss | Swirl the brush in a jar of white spirit | Leave to soak for 2 hours or longer | Wipe the brush clean with newspaper



HOME & DIY



Radiate SOPHISTICATION...

...with these DIY radiator covers



Undoubtedly, radiators serve a purpose in your home, but why do they have to be such unattractive space wasters?

Thankfully, a well-placed radiator cover can work wonders for hiding your heater without withholding the warmth.

THE 'PERFECT PALLET' RADIATOR COVER

If you are looking for a raw style that will cost you virtually nothing, then this is the DIY radiator cover for you. The wide slats allow for maximum heat transmission, and you can choose to paint your pallet or simply leave it in all its rustic glory.

Top tip: Be sure to thoroughly remove any spills to avoid unpleasant smells when your radiator heats up.

THE 'CLEVER CANE' RADIATOR COVER

Cane is the ideal material for building a radiator cover as it will effectively hide your radiator while at the same time allowing heat to easily pass through its fibres. You can find cane webbing in sheets or rolls, either of

which can be simply stretched across the front of your radiator cover frame.

Top tip: Soak the cane in water first to make it softer and more malleable.

THE 'SPACE-SAVING SEAT' RADIATOR COVER

If you are lacking seating options in your home, then this multipurpose radiator cover can help you. All you need are 15-20 vertical hardwood slats to create an L-shaped radiator cover that doubles up as a bench.

Top tip: Add a few pillows across the top for added comfort.

THE 'IKEA SLAT BED BASE' RADIATOR COVER

You can purchase an IKEA slat bed base for as little as £20 and repurpose it to create a stylish and multifunctional radiator cover.

Top tip: Use the additional table surface as a pop-up bar and you'll never have to go to the pub again.

Photo credit: Lantiv via theprice.com, rhythmofthehome.com, erikestenbaum.com, projectophile.hiles.wordpress.com



0208 088 3453
EMERGENCY SERVICES
& ENQUIRIES



TROUBLE WITH DRAINAGE, HEATING OR PLUMBING?

WE OFFER THE COMBINED SERVICES OF DRAINAGE CONSULTANTS & PLUMBERS TO DEAL WITH UNEXPECTED LEAKS, BURST PIPES AND BLOCKED DRAINS



DRAINAGE SERVICES ✓ PLUMBING & HEATING SERVICES ✓ TANKER SERVICES ✓ INSURANCE CLAIMS



Contact us: 0208 088 3453
www.fcdrainagesolutions.co.uk
operations@fcdrainagesolutions.co.uk



From contemporary designs to traditional styles... woodburning to gas and electric...

www.ashandembers.com



For current opening times see www.ashandembers.com



CALL US ON 01992 815972 / 0207 118 3030
VISIT US AT THE COACH HOUSE, MARKET PLACE, ABRIDGE RM4 1UA



APPLIANCE REPAIRS AND SALES

We repair all makes and models

Washing Machines • Tumble Dryers
Dishwashers • Ovens • Hobs • Cookers
Fridge/Freezers • Extractor Hoods

New appliances in stock for same day delivery & installation

Prices listed on our website

Call 01279 310793

Or Book Online

www.spindoctoruk.co.uk



London Contract Distribution

100% GUARANTEED LEAFLET DISTRIBUTION

- ▶ Portfolio of Prestigious Clients
- ▶ GPS Tracked Distribution
- ▶ Reprint & Redistribution Guarantee

CONTACT US: 020 7183 5206
www.leafletsdistribution.london
 robertdelegacz@yahoo.co.uk
 19 Biggerstaff Road, Stratford, E15 2JR

f londondisto t



WHO SAID NOSTALGIA WAS DEAD? NOT THE MILLENNIALS, THAT'S FOR SURE

Electrician

www.electrician-in-loughton.co.uk

Do you find it difficult to get someone to come & do a small job?

Extra Lights ♦ Additional Sockets ♦ Fuse Board Upgrades ♦ Rewires

New Installations ♦ Landlord & Homebuyer Inspections

Fault Finding & Repairs

Qualified ♦ Electrician ♦ Fully Insured ♦ Reliable Service ♦ Tidy Work

Free Quote ♦ Flexible Hours ♦ Reasonably Priced

Satisfaction Guaranteed

When you want a local, family firm, who care for your home electrics like their own, and give a personal service

Call Karl on
0208 0880 775



If there's one thing we should know by now about interior design, it's that nothing is ever off limits, and that certainly applies to the mixing of styles, trends and ideas.

Across styles such as Japandi and mid-century modern, interiors take the best from supposedly contrasting looks to produce colour and texture, while stimulating the mind.

Millennials have been unfairly labelled as adopting only modern, run-of-the-mill design, yet the grandmillennial look turns that concept on its head, with modern, contemporary elements enriched with chintz, crochery, ornate patterns and antique furniture you'd expect to see at your grandparents' house... hence the name.

The idea is that we take up-to-date walls, floors, furniture and fabrics and drop in elements that scream sentimentality, respect the tastes of our elders and take us back to times of simpler design.

To pull off this look, think about ornate lampshades, consider select pieces of antique furniture and even throw in a Toby Jug. Perhaps even lay out a doily or two, if you dare.

There are no rules, no exceptions, and only the power of your imagination can hold you back when it comes to pulling off the look.

Embrace worn-out upholstery, floral prints, draped covers and a splash of patterned wallpaper.

And try to tell a story in what you do – of people, places, eras and fashions. Heck, even pop in for a cup of tea with a local octogenarian in the hope of inspiration.

There is perhaps one warning, though – don't go overboard. The idea is to retain a modern feel while patterning your living space with a sensible number of well-selected additions. Go too far and your front room, bedroom or hallway may look like something out of a 1950s episode of *Coronation Street*, and nobody wants that.

Photo credit: livingetc.com



YOUR HOME under the hammer

The pros and cons of auction properties

Daytime reality TV shows have given us a unique insight into the workings of the auction room, but where buying a home is concerned, the stakes are considerably higher than when bidding on a Nissan Micra, or perhaps an antique teapot.

The plus side is that buying a home at auction can save you tens of thousands of pounds. You can also find yourself unearthing some unusual properties that high-street estate agents wouldn't look to market, and as far as renovation projects go, auctions tend to attract every brand of dilapidated property going.

It's also a fast process – when the bidding ends the process kicks off... There's no hanging around for estate agents, and within weeks the property can be yours.

And yet, when buying under the hammer, the

phrase 'buyer beware' certainly rings true. Firstly, the time in between the catalogue being published and the auction itself – typically about three weeks – is all you have to arrange a survey on the property and get a solicitor to check over the legal pack. If you don't take these steps, you're buying blind and that could be costly.

Auctions also require finance to be in place – if you're the highest bidder, you are contractually bound to go through with the process, and on day one that will mean a deposit of 10 per cent.

The other downside is it's easy to get swept along with the cut and thrust of the auction room. Setting a spend limit is sensible, but sticking to it is vital, and can be easier said than done when you sense you are only one bid away from clinching something that will become a home or an investment.

GET COVID-SECURE! WITH:



- Viruses are **continually eliminated** on contact with treated surfaces for up to 28 days*
- Electrostatically charged disinfectant particles stick around objects, making them safe to use within **just 5 minutes**
- Quick & effective removal of bacteria and viruses including **CORONAVIRUSES**
- Safe for use everywhere, including **schools, nurseries, care homes, offices, gyms, workplaces and vehicle interiors**

NOW AVAILABLE: Purchase a handheld unit for **£999+VAT** or a backpack unit for **£1,999+VAT**



*Under laboratory conditions.

To book a disinfectant clean or purchase a unit call **0208 088 3469** or visit: **envirostatic.co.uk**



Are you about to **sell or let your property** but dread having to work with an estate agency?

Kingsmarq Real Estate is a new offering in the local community. Focused on a small number of properties to ensure personalised and attentive service.

FOR SALES, LETTINGS OR PROPERTY MANAGEMENT,
SPEAK TO SANDEEP:
0208 088 0796 / 07932 573 276
info@kingsmarq.co.uk



POWERED BY kw





LLOYDS
RESIDENTIAL

www.lloydsres.com



BUSINESS & PROPERTY



Is the four-day week a commercial and social experiment that's here to stay?

While none of us needs reminding of the devastation COVID-19 has brought to society, an unexpected upside has been the way we've all been encouraged to reset, recalibrate and readjust.

Businesses and individuals have stripped back processes and preconceptions, but if you think this all begins and ends with Zoom, think again.

While many corporations will insist staff return to a central place of work rather than work from home and lose the valuable mechanics of 'the team', it could be that retaining the sort of four-day week many businesses have trialled has a bit more longevity.

Advantages for the employer:

- > Research shows staff embed processes better on longer shifts (perhaps 10 hours) over four days than they would do across five. This so-called 'super-efficient' mode can be up to 40 per cent more productive.
- > Work needing to be completed in a shorter time frame brings about urgency and removes an

employee's tendency to be distracted (such as checking social media or news sites).

- > The modern nature of the four-day week is great for the image of a business, and staff can still field calls and enquiries on the fifth day.
- > A 'three-day weekend' removes Friday afternoons from the work schedule, notoriously the most inefficient segment of the working week anyway.
- > Overheads are reduced.

Advantages for the employee:

- > 'Four on, three off' means extended breaks.
- > The perception is staff will make the most of their additional day by taking up new pursuits and hobbies, meaning better mental health and greater efficiencies when back in the workplace.
- > A reduction in the cost of travelling to and from work.

The success of a concept widely embraced on mainland Europe is dependent on the business sector and employee buy-in, but the idea of a three-day weekend is a prospect many will relish... even those in charge.

Plan your finances with precision

We provide a comprehensive wealth management service, offering specialist face-to-face advice tailored to you. Our services include:

- Investment Planning
- Retirement Planning
- Protection Planning
- Inheritance Tax Planning
- Intergenerational Planning
- Mortgage Planning

Your home may be repossessed if you do not keep up repayments on your mortgage.

For further details please contact:



Tel: 01708 208885 | Email: david.bean@sjpgp.co.uk
www.davidbeanwealth.co.uk

14SP1578 01/19

From naff to NEAT



CARS WE MOCKED IN THE 1980s THAT NOW HAVE ICONIC STATUS



When the shapely, streamlined, smooth curves of car manufacturing in the 1990s came about, the cars we'd been driving over the previous decade suddenly seemed lazy, lumbering, clumsy things that were headed to one place only – the breaker's yard.

Yet those motors that survived the cull are now being brought back to their former glory, with many of us asking if we were perhaps a bit hasty in dismissing these bold, booming examples of classic engineering. These vehicles' price tags – all more than £10,000 – certainly suggest we may have put the handbrake on a little too readily.

TOYOTA COROLLA

Famously uncool in every car showroom the length and breadth of the country when Kylie and Jason were number one, this motor now screams 1980s chic, with its pointing bonnet, nodding headlamps and completely useless sidestep that only served to graze knees upon entry and exit.

FORD CAPRI 2.8

A classic Ford, with a frontage that had Essex written all over it. And if you think the bonnet was big on one of these premium vehicles from a classic era, check out how the Capri tapers into an exhaustive abyss at the rear. A beauty.

ROVER SD1 VITESSE

The Rover was a brand your dad loved as he toured around the south-east flogging double-glazing. A bold, ballsy, impossibly solid motor that said 'family' and 'midlife crisis' in the same breath, the Rover was always sleek and has aged incredibly well, and offers a little peek into the UK's fine motoring magnificence of the era.

RENAULT 5 GT TURBO

For a car that appealed to young drivers while still retaining a small amount of Gallic flair from those famously French roots, the Renault 5 had the lot. A nippy thing that looked ready-pimped on the forecourt and had the engine power to match.

GAROLLA
ROLLER SHUTTER DOORS



Great For:
Space Saving
Kerb Appeal
Ease of Use
0800 468 1982

THERMALLY INSULATED ELECTRIC GARAGE DOORS

- CE Approved
- Acoustic & Thermal Insulation
- Brush Sealed Rails
- Pay on Completion
- Two Remote Controls
- 18 Colours Available



Garolla saves you space inside your garage as the Garage Door rolls vertically into a box. This design requires just 8 inches of headroom and allows you to park closer to the door. Remotely control the Door from the comfort of your car with a hold to run remote.

LIMITED OFFER - was £1354

NOW ONLY £895
INC. VAT & FULL FITTING

Save £459

MADE TO MEASURE, CALL US TODAY

01277 800 142

07537 149 128

Phone Lines Open 7 Days a Week

- Offer valid for openings up to 2.6m wide & inc: 2 Remote Keys, 55mm White slats, Internal manual Override -



IMPERIALS
ESSEX

Celebrating over 35 years in prestige car retail

www.imperials.co.uk

WE WANT TO BUY YOUR CARS

WE ARE CURRENTLY LOOKING FOR STOCK

ROLLS ROYCE | BENTLEY | MCLAREN, AMG | M, ETC...

IF YOU ARE LOOKING TO RELEASE SOME EQUITY PLEASE CONTACT US

For more information contact

email: mason@imperials.co.uk | Tel/WhatsApp: 0208 548 7830





GIANT

AT GIANT LOUGHTON
WE'RE JUST LIKE YOU -
WE'RE RIDERS. WE LOVE
CYCLING AND WE WANT
YOU TO ENJOY IT JUST
AS MUCH AS WE DO.

- 5 YEARS FREE SERVICING FOR ANY BIKE PURCHASED IN 2020 (EXCLUDING MY21 RANGE)
 - FREE PUNCTURE REPAIRS FOR LIFE RANGE (Ts&Cs APPLY ORIGINAL OWNER ONLY)
 - FREE SAFETY CHECKS FOR LIFE ON ALL NEW ARX AND ATX BIKES
 - PRICE MATCH PROMISE - FIND IT CHEAPER ANYWHERE ELSE
- & WE WILL MATCH THE PRICE**
- FREE UK DELIVERY ON ANY IN-STORE PURCHASE (CALL US FOR MORE DETAILS)

NEW STOCK
ARRIVING
WEEKLY

GIANT LOUGHTON, 235 High Road, IG10 1AD

T: 0208 508 1384 W: giant-loughton.co.uk E: info@giant-loughton.co.uk

KING OF THE KOP

JÜRGEN KLOPP: THE WORLD'S BEST MANAGER?

Liverpool's narrow opening-day Premier League victory over newly promoted Leeds United provided an interesting array of feedback from pundits suggesting the Reds' profligacy in defence would see them struggle to repeat last season's saunter to a first league championship in three decades.

Perhaps those naysayers have forgotten the fact that Liverpool possess Jürgen Klopp, possibly the world's best manager when it comes to drawing every last ounce out of his squad.

The way he does this is through charisma and unity, and that's obvious to anyone who has witnessed the German in press conference mode – he is charming, charismatic, funny, reflective... yet fiercely competitive at all times.

Klopp's playing career saw him a decent footballer with Mainz who, by his own admission, exceeded the limitations of his talent. That type of personal elevation is what he now expects of his players, and all those at the club. It is a philosophy of unity that begins right at the top and ends with programme sellers and stewards.

The ethos of self-improvement has decorated his own life – he worked multiple jobs through university and his early playing career; then returned to higher education aged 28 while a professional footballer, to gain a diploma in Sports Science.

The simple psychology he emits has transformed 'eight of out 10' footballers such as Salah, Milner, Robertson and Wijnaldum into truly global stars, and the confidence he has in both himself and his troops means the 53-year-old has resisted the urge to splash the cash this summer.

While the doubters will circle, hopeful of a slip from the world's best side, anyone who truly believes Liverpool will sink back again into the also-ran abyss should probably take another look at the talismanic German at the helm, and think again.



Photo credit: Paul Ellis/AP/Shutterstock

THE VISION LISTINGS

THE VISION LISTINGS

ACCOUNTANT & TAX ADVISORS

ALL THINGS ACCOUNTING

Accounting & tax services, we help with self-assessment tax return, corporation tax return, payroll, VAT return, CIS return & bookkeeping. Call 07539 035537 for free initial consultation.

ACUPUNCTURE

HONG WEI CHINESE MEDICAL

Fully qualified & experienced, specialising in women's health & Fertility. Help with pain relief, emotional disorders, male/female conditions. 01708 454888 | hongweichinesemedicine.co.uk

AUDIO & VISUAL

ULTIMATE AV

We create bespoke systems designed and built especially for you. Small projects to complete home cinema environments. Based in Essex call us on 07531 214339

BEAUTY & NAILS

BEAUTY BY NATASHA KATIE

A local, mobile LVL Technician. Fully qualified level 2 and 3 beauty therapist Babtac insured and approved. 07961 462672

SPECIAL NAILS

Dedicated to provide the best quality nail care for Men & Women. Walk-ins welcome, appointment bookings & gift vouchers available. 01708 442248

THE NAIL STUDIO

Nail Studio lets you switch off and pamper with highly skilled technicians providing top treatments and nail products to meet your every need. 07572 526519

CARPET & UPHOLSTERY

ARWIN CLEANING SERVICES

Over 30 yrs of exp, we can offer a professional, efficient and cost-effective solution for carpet and upholstery, cleaning and maintenance. 07973 417764

CAR & VAN HIRE

SCENIC SELF DRIVE

Your self drive hire specialists. Whether you require modern cars, motorhomes, vans or minibuses. Rest assured we will provide you a professional service 01708 753461

CLEARANCE & WASTE

THE CLEARANCE TEAM

From clearing a room, house or garden to clearing an entire office block. Fast, reliable and affordable. Working 24/7 so you can book us at your convenience 0207 101 3387

COMPUTER REPAIR & I.T.

MAPTEC IT

Your local residential & commercial IT specialists. We can fix your computers, configure email accounts & printers. Setup your Wi-Fi, Internet router & network. 0203 865 7174

ELECTRICAL & WHOLESALERS

CH ELECTRICAL WHOLESALERS

Essex & East London's leading electrical wholesalers providing the trade & public a professional service with access to all leading brands. 01708 730591

ELECTRICIAN

CAPITAL ELECTRICAL SERVICES LTD

Domestic/Commercial, Repairs/Installation, Vehicle Charging Points, Portable Appliance Testing, Fire Alarms, Emergency Lighting, Installation Condition Reports. Call 0208 088 2916

TACK ELECTRICAL

Local experts. Specialising in domestic alterations, fuseboard, additional sockets, Lights, Rewires, Installations and reports for homeowners. No job too small, 0208 088 0779

FINANCIAL SERVICES

PARAGON LEGAL SERVICES LTD

We will write your will for only £49.99+Vat subject to T&Cs. Call FREE on 0800 0747 642 or 01206 544 919 Call us for a FREE home appointment. www.paragonlegal.co.uk

FRENCH POLISHING

DC POLISHING

20 Years experience in wood restoration i.e. Furniture, doors, staircases, worktops, minor repairs & FLOOR RESTORATION. 07949 204969 | dcpolishing.church@gmail.com

FURNITURE ASSEMBLY

FLAT PAC KING

Assembly of all flat pack items. London and Essex areas covered Collection and delivery service is available call Jo on 0208 088 2976

FURNITURE RESTORATION

ABBEEY GROUP

Abbey Group are specialist in creating, repairing & restoring quality furniture & wood surfaces to the highest standard. 01708 741135

KINGS UPHOLSTERY

Handmade sofas & chairs designed especially for you to your required specifications. Also providing in re-upholstery & repair work. 01708 444125

GARDEN SERVICES

JOHN HEARNE

We take care of it all Lawn Mowing, Weeding, Planting, General Tidying, Fence/Shed Painting, Driveway/Patio Pressure Washing and more. Call for details 07908 523101

KINGS CUTS TREE SERVICES

A Huge range of tree services available & offer expert arboricultural advice, ensuring your trees are looked after responsibly. 01708 578030 | 07467 944671

HEALTH & WELLBEING

IMPROVE YOUR SMILE DENTAL PRACTICE

Est. in 1986. Encompassing all needs from basic oral health to advanced dental procedures and high-end cosmetic treatments. New patients welcome. 020 8504 2704

HOME IMPROVEMENTS

TOTAL HOME UK

Let our highly skilled professional team plan & carry out all your home improvements inside & out. Plumbing, Electrical Decorating & more 07958 585623

LAUNDRY & DRY CLEANING

THE LAUNDRY MAN

From everyday washing, drying & ironing. We can pretty much launder anything & everything. Self service launderette available. 01708 447710

LOFT CONVERSIONS

HIGH END LOFTS LTD

Beautiful Lofts, Expertly Built. Our "Hand-Holding" service takes you from ideas, through Plans & Building Control, to make your [home alteration] vision a reality 0208 088 2805

MOBILE PHONES & ACCESSORIES

HORNCHURCH MOBILE PHONES & ACCESSORIES

For all your motoring requirements inc. Car parts, number plates, key cutting, engine oil, tools, car accessories & servicing. 01708 469103

MOTORING

BMS CAR PARTS

For all your motoring requirements inc. Car parts, number plates, key cutting, engine oil, tools, car accessories & servicing. 01708 474187

PAINTING & DECORATING

PGA DECORATING SPECIALIST

Interior - exterior - paper hanging specialists in Window repair care. 07769 646357 | www.pgadecoratingspecialists.co.uk | pgadecorators@yahoo.co.uk

TRADITIONAL DECORATIONS

We are a family run business specialising in turning your house into a home. Giving advice on current decorating trends. 07737 562406

PLUMBING & HEATING

CMS PLUMBING HEATING & BATHROOMS

Corgi registered, 20+ years' experience, public liability insurance, offering free quotes. No job too small. Based in Gidea Park. Call Craig 07855 589185

KINGS PLUMBING & HEATING

All work undertaken: All bathrooms, boiler servicing & gas safe. 07956 343275 | www.kingsplumbingandheating.co.uk

JOIN THE LISTINGS... for just **£180** +VAT per yr

PROPERTY MAINTENANCE

LILLYWHITE PROPERTY SERVICES

For all building works, full refurbishments & property maintenance inc heating, plumbing, electrical, decorating, flooring, tiling & plastering etc. Call today on 07949 394403

STUART GREEN PROPERTY SOLUTIONS

Property maintenance specialist. Carpentry, painting/ decorating, laminate flooring, bath/shower re-siliconing, gutters cleared/repared, insurance work, PLI. 07917 870879

ROOFING

JIM BARR ROOFING

Exterior cleaning/maintenance. Gutters, Paving, UPVC; cleaned, repaired, renewed. 01708 874816 | 07833 572459

WHITE GOODS & APPLIANCES

T.E.J. DOMESTIC APPLIANCES

Stockists of all major brands. Installation available, FREE local delivery. Free standing & Built In Appliances. Extensive stock. 01708 447752

DISCLAIMER: VISION does not represent or endorse the accuracy or reliability of any of the advertisements, nor the quality of any products, information or other materials displayed, purchased or obtained by any customer as a result of an advertisement or any other information or offer in connection with the service or products. The opinions expressed in articles, reviews and stories are strictly those of the individual authors and do not necessarily reflect the views of **VISION**.



PUZZLES & TRIVIA

PUZZLES

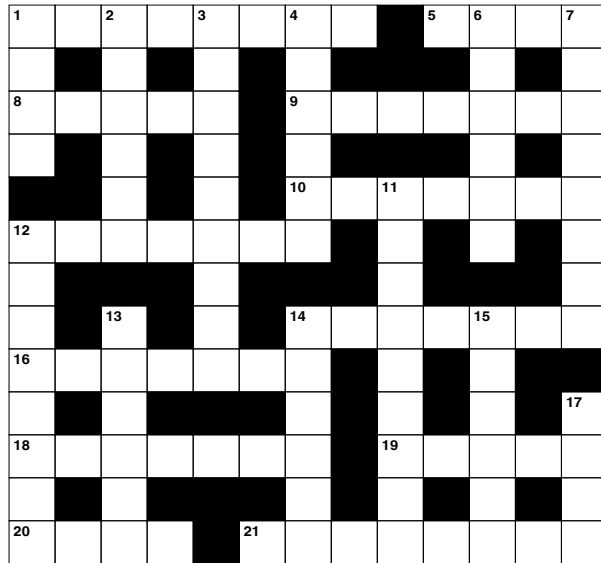
Answers can be found on the Contents Page 4

ACROSS

- 1. People who consume a particular beverage (8)
- 5. Cut (4)
- 8. Paved area (5)
- 9. Deserved (7)
- 10. Ideas (7)
- 12. Long pins (7)
- 14. Small Arctic whale (7)
- 16. Gather (7)
- 18. Biting (7)
- 19. Immature insects (5)
- 20. Overly curious (4)
- 21. Definitions (8)

DOWN

- 1. Depressions (4)
- 2. Chant; speak solemnly (6)
- 3. General erudition (9)
- 4. Manors (anag) (6)
- 6. Country (6)
- 7. Base of a statue (8)
- 11. Immediately following that (9)
- 12. Astronaut (8)



- 13. Entraps (6)
- 14. Hold close (6)
- 15. Occur (6)
- 17. Not as much (4)

DID YOU KNOW?

- ▶ The name Big Ben only refers to the bell inside the Elizabeth Tower, not the Tower itself, as commonly thought
- ▶ In 1952, a double-decker bus, driven by Albert Gunter, jumped a gap across Tower Bridge after it started to rise to allow a boat to pass
- ▶ The London Eye pods are numbered one to 33, missing 13 with superstitious passengers in mind. Each pod weighs 10 tonnes, the equivalent of one million pound coins
- ▶ From the 1200s to 1835, the Tower of London was home to a zoo of exotic wild animals that were given as royal gifts, including lions and a polar bear
- ▶ Buckingham Palace was originally known as Buckingham House and was built as a private townhouse for the Duke of Buckingham

SUDOKU

	3			4				
8		9		5	4			
		4	1			7	3	
						1	9	
			3	4	1			
7		1						
2	4			6	7			
		5	4		9		1	
			5			6		



Loft Conversion Specialists

Beautiful Lofts, Expertly Built

Extensions ■ Home Improvements ■ Kitchens ■ Bathrooms



- Over 15 years experience ■ Team of highly qualified experts
- Project handling from ideas to completion
- Fully compliant with Building Controls

www.newlevelloftconversions.co.uk



Call us on:
0208 088 2805

Chingford London E4



NOT ALL CLEAR ALIGNERS ARE THE SAME



The results above were achieved using clear adult braces – and below, with a combination of clear adult braces, composite bonding and teeth whitening



Book your **free virtual consultation** for a straighter smile with comfortable, discreet clear aligners.

SPECIAL OFFER The first 20 people to have Teeth Straightening with us will be given Teeth Whitening worth £325 with compliments of Improve Your Smile.



020 8504 2704
improveyoursmile.co.uk

162 HIGH ROAD WOODFORD GREEN IG8 9EF

EXPERIENCE YOU CAN TRUST

