

**GET
THOSE
TEETH
FLOTTED**

MIND MATTERS

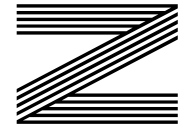
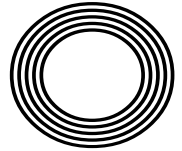
*Dr Alex George named Youth
Mental Health Ambassador*

TORVILL AND DEAN

Their greatest sporting moments

**ANT
MIDDLETON**

From Army and Royal Marines veteran to TV hardman



FREE

Photo credit: David Fisher/Shutterstock



RESIDENTIAL & COMMERCIAL SECURITY SERVICES



APPROACHING A DECADE SERVING LOCAL FAMILIES & BUSINESSES

Triangle Security has a proven track record of improving the security of homes, families and businesses, providing a high visibility presence to deter criminals from choosing to target your area.

For more information, please visit our website www.triangle-security.co.uk to see a full list of the services we provide.

Triangle Security are proud supporters of

- Help for Hero's
- Haven House Hospice
- Scouts Association
- Lambourne End Centre for Outdoor Learning



Our Key Services are:

- HOME RESIDENTIAL, SITE & AGRICULTURAL SECURITY
- MOBILE PATROLS & DOG UNITS
- ALARM RESPONSE & KEY HOLDING
- PANIC BUTTONS
- SECURITY GUARDING
- SECURITY DRIVERS

SUPPORTING THE COMMUNITY

Triangle Security are always prepared to support and help their local community, and throughout Lockdown they ran extra free patrols to protect local areas, and their trustworthy ex-military personnel assisted the vulnerable with services such as shopping and collecting prescriptions.



Triangle Security personnel provide a wide range of security services

SPECIAL OFFER
ALARM RESPONSE
£59.95 /month

50% discount on admin charges
See our website or call for details



020 3948 7071
www.triangle-security.co.uk



info@triangle-security.co.uk  Kemp House, 152 City Road, Islington EC1V 2NX



Editor's notes...

MARCH 2021



Brett Shohet, Editor

Hello and welcome to this month's edition of **VISION** SouthWoodFord. I know we've all said it to ourselves before, but it really does feel like we are coming out the other side of this pandemic now. The Prime Minister has given us a rough plan, the COVID-19 figures are looking better and, vitally, the vaccine continues to be rolled out at a rapid pace.

Everything's starting to look more positive. Another small component to that, for me, is the weather. It hasn't helped that our darkest time as a nation came during winter - literally during short, drab, rainy days. Here we are, with light at the end of the coronavirus tunnel and our days are getting longer, brighter and warmer - it's a welcome change.

As you'll see in this edition, our news team have massively stepped up to the challenge of having no face-to-face contact with residents. They've embraced social media and Zoom interviewing to ensure that our magazines are as in-depth and localised as ever. Their attitude is one I encourage everyone to try to adopt - lockdown has created new challenges, but I assure you, business can still be done. Opportunities are still rife - we just have to be creative and driven enough to find them.

I hope you enjoy our latest edition. As always, stay safe.

Brett Shohet

This is your town's hyper-local magazine, delivering to homes and businesses every month.

- HOME & DIY | GARDENING | PETS | HEALTH & FITNESS | BEAUTY | FASHION | HISTORY | LOCAL NEWS | FOOD & DRINK | TRAVEL | BUSINESS & PROPERTY | SPORT | PUZZLES | MOTORING | KIDS | WHAT'S ON | TECHNOLOGY | THE LISTINGS

CONTACT US: www.visionmagessex.com | woodford@visionmag.co.uk | 0208 088 0386

[@visionmagessex](https://twitter.com/visionmagessex) | [@visionmagessex](https://www.instagram.com/visionmagessex) | [Vision Magazine Essex](https://www.facebook.com/VisionMagazineEssex)

CONTRIBUTORS | Tabatha Fabray, Tim Green

At the time of print all content in **VISION** was relevant and up to date according to COVID-19 government guidelines Inside pages recyclable



*Affordable
Luxury*



NOW OPEN ON
EPPING HIGH STREET

01992 276 046

essex@homehubgroup.co.uk

homehubgroup.co.uk

@HomeHubGroup

We supply and install windows and doors.

WWW.EDENKITCHENS.COM

60 STATION WAY BUCKHURST HILL IG9 6LL

CALL US ON 0208 088 0903



Contact us for up to 40% discount on Kitchens, Appliances and Tiles



MORNING GLORY

Good Morning Britain

HOW PIERS MORGAN AND SUSANNA REID ARE PUTTING THE 'GET UP AND GO' BACK INTO BREAKFAST TV

In many ways, the Piers Morgan/Susanna Reid combo shouldn't work. The former is an ex-red-top editor decorated in a history of salacious headlines, controversial tabloid practices and a puffed-up sense of self-importance that flits between entertaining and aggravating.

The latter is a vastly experienced journalist who, while she possesses a chipper, jagged edge, is a calming weekday morning influencer, a sympathiser and an empathiser whose delivery is effortlessly measured and reassuringly sensible.

Put mildly, Piers Morgan and Susanna Reid are poles apart.

Yet as far as breakfast television goes, there is a chaotic chemistry that links the two and, in the process, knits together perfectly two and a half

hours of early-morning chat, debate and news delivery. Perhaps not since the days of Anne Diamond and Nick Owen has there been a duo who seem so comfortable, calm and considered as our breakfast companions; and their ability to spar, speak up and fire off each other is completely borne out in viewing figures which show *Good Morning Britain (GMB)* to be making impressive moves in the breakfast TV battle.

In the latest round of figures, the ITV show has been narrowing the gap on *BBC Breakfast*, although still remains about a million viewers behind its rival.

Piers and Susanna first worked together back in 2014. It was a strange time for Morgan, the former editor of the *News of the World* and *Daily Mirror*, who was looking to revitalise a career that had

enjoyed a surprising leg-up through reality TV shows and his partnership with Simon Cowell. The 55-year-old has perhaps never looked the epitome of cutting edge, but his breathless honesty – be that in front of a Whitney wannabe on *Britain's Got Talent* or a politician crumbling under his indomitable journalistic scrutiny – wicked turn of humour and fearlessness to voice an opinion – both on TV and across social media – have earned our respect. Certainly, it all provided the perfect tonic to Reid's punchy, spiky, slightly girl-next-door approach to topical news.

Fifty-year-old Reid first came to our attention in the early Noughties when she worked for Radio 5 Live, before moving to *BBC News 24* and, latterly, *BBC Breakfast News*. The broadcaster made a controversial switch to ITV in February 2014 as *GMB*

replaced the outgoing *Daybreak*.

As a combination, you sense there is a 'good cop, bad cop' approach to getting sunrise answers the news headlines demand. There's little of the stuffy formality that decorates the styles of Dan Walker, Louise Minchin and others over on the Beeb; instead, issues are tackled using a tried and tested approach which delivers debates without holding back.

Perhaps what's best about the pair is they know how to push each other's buttons. *GMB* feels like a news programme, a lifestyle show and an episode of *Coronation Street* rolled into one. If the dynamic duo can get anywhere near to the longevity of Jack and Vera, they'll have done well, and we'll have been treated to perhaps the best wake-up call of a generation.



Photo credit: 10 Downing Street

DOCTOR'S ORDERS

THE *LOVE ISLAND* DOC HELPING US FIND A HAPPIER REALITY

Doctor Alex George is the *Love Island* contestant who wowed viewers with an altogether different take on what constitutes 'national health'. For an army of admirers, his great looks, impeccable shape, well-spoken manner and charm added up to a dream combination. He's also rumoured to be particularly good with a stethoscope. Moving away from the reality show, the doc has carved for himself an impressive career in the spotlight. And yet, unlike so many other names who have built their brand through reality TV, there is real substance behind the style.

The 30-year-old was announced Youth Mental Health Ambassador by Prime Minister Boris Johnson in February and is a passionate advocate of well-being initiatives, not least because he sees a nation struggling to come to terms with the various effects of the COVID-19 pandemic.

Indeed, the death of his brother, Llyr, who took his own life having suffered with depression, only reinforces a desire in the popular doc to open up channels of communication and encourage people to talk.

Alex's five top tips to boost mental health and well-being:

> ONE: Get outside

"Getting natural light and filling our lungs with air is crucial for well-being. It's uplifting and can instantly make us feel better."

> TWO: Exercise

"We've all had those times when we just can't be bothered to get out and exercise, but be it a run, a walk or a bike ride, just 20 minutes per day will boost blood flow and increase endorphins."

> THREE: Call a friend

"Lockdown has been very frustrating and a lonely experience, but staying in touch with friends is essential."

> FOUR: Eat well

"What we consume affects the way we feel, so fuel and replenish your system, and eat as much green stuff as possible."

> FIVE: Sleep routine

"Sleep is very important, but so is resting at regular times, so monitor your sleep habits and ensure you're getting what you need."

Checkatrade.com



City & Guilds
Qualified

EMPIRE UPVC & ROOFING SPECIALISTS LTD

We guarantee our customers a friendly, reliable & professional service



The UPVC and Roofing Experts in Hertfordshire

15
YEAR
Guarantee

Empire UPVC and Roofing Specialists are an independent business trading throughout Hertfordshire and a surrounding 40-mile radius from our office in Nazeing.

- ✓ Felt, Tile & Slate Roofing
- ✓ Liquid Rubber Roofing
- ✓ ALL Roofing Repairs
- ✓ Roofing Maintenance
- ✓ Roofing Leadwork
- ✓ Gutter Cleaning & Unblocking
- ✓ UPVC Fascias, Soffits & Guttering
- ✓ Roof Moss Removal
- ✓ 15 - 20 Year Guarantee
- ✓ Highest Quality Materials Used

COME AND VISIT OUR SHOWROOM AT HILLGROVE BUSINESS PARK



CALL OUR FRIENDLY TEAM TODAY FOR YOUR FREE QUOTATION

Office: 0208 088 3259

FULLY INSURED

Email: chris@empireupvcandroofing.co.uk • Web: www.empireupvcandroofing.co.uk

to floss

or not to floss?



No, we are not talking about the dance craze that swept the nation in 2018, but the act of cleaning in between your teeth using dental floss. Sadly, only an estimated 31 per cent of people clean between their teeth on a daily basis. This is despite the fact that the NHS recommends that from the age of 12 people should include flossing in their daily oral health routine.

HOW TO FLOSS: A STEP-BY-STEP GUIDE

1. Break off between 18 and 25 inches of dental floss
2. Wind the floss around both of your middle fingers, leaving between one and two inches for your teeth
3. Hold the floss taut with your thumbs and index fingers
4. Place the dental floss between two teeth
5. Gently glide the floss up and down, making sure to rub against both sides of each tooth
6. When the floss reaches your gum, curve the floss

7. at the base of your tooth, creating a C shape
7. Be careful not to scratch or bruise your gums
8. Repeat as you move from tooth to tooth
9. Always use a clean piece of floss for each tooth section
10. Do not recycle or reuse dental floss as this can redistribute bacteria around your mouth, even if you wash it first

WHEN SHOULD YOU FLOSS?

For optimal oral health, you should always floss first and brush your teeth afterwards. It is recommended that you brush your teeth twice a day and floss once, preferably in the evening.

WHY SHOULD YOU FLOSS?

Flossing helps to remove food and plaque from in between your teeth. Brushing alone cannot do this as the bristles are not able to reach deep enough. Regular flossing can result in less dental plaque in your mouth and therefore a lower risk of developing gum disease.

WANT YOUR ADVERT HERE?

CALL TODAY ON
0208 088 0386
TO BOOK

Rose Dek

COSMETICS

Lashes - Nails - Make up

5% OFF
WHEN YOU SIGN WITH MY ID
440-805-065-242 ON
FOREVERLIVING.COM

f /BeautySalonLondonLTD/
i rosedek.healthandbeauty

SKN ESTI *By Parveen*

Parveen has over 11 years experience as a medical aesthetician and working in high-end medical clinics. During her years of practice, Parveen has developed her expertise in helping clients to improve their skin health, including ex-cancer patients and clients who suffer from conditions such as pigmentation and Polycystic Ovary Syndrome.

The skin is the largest organ of the human body. Our skin is constantly exposed daily to many free radicals that can damage our skins overall health. So, it is imperative we take care of skin concerns such as: Acne, Pigmentation, Ageing, Post cancer care, psoriasis, excema, or general skin health

Getting a specialised, tailor made skin management programme will ensure that what you are using to gain your goals are right for you.

The range of medical grade skincare at Peauperfect Skin and Laser Clinic is the highest and most effective in the aesthetics industry.

BOOK IN FOR A VIRTUAL SKIN CONSULTATION WITH SKN ESTI BY PARVEEN AT PEAU PERFECT SKIN AND LASER CLINIC AND GET STARTED ON YOUR SKIN CARE JOURNEY.

i peauperfect_clinic S www.peauperfect.co.uk S Contact: 0208 088 0876



“Care experience of Mother has been outstanding in every regard.”

Son of resident, January 2021
Source: carehome.co.uk

Harts House Care Home Here for you

We're welcoming new residents for short and long term stays. Whether you need to find a local care home now, or are just starting to look into options, you can consider Harts House in Woodford Green for a range of care needs including nursing, residential and dementia. Residents are welcome to join us for as long as they need – a week, month or a more permanent stay.



Call us for advice on care today
020 3504 4212

Lines are open 8am to 6.30pm Monday to Friday, 9am to 12.30pm Saturday. Closed Sunday and bank holidays. We may record or monitor our calls.



carehome.co.uk
Review Score
35 reviews†

Safety comes first, so we make sure our team always have PPE, regular testing takes place, we participate in available vaccine programmes and that we follow strict UK infection control standards.

- All types of funding welcome
- No health insurance needed

†The Review Score is based on the quality and number of independent reviews this home has received on carehome.co.uk in the last two years, at the time of going to print.

Do you need a DECHOX?

Calling all chocoholics. Now is the time to tackle your addiction once and for all. The British Heart Foundation is petitioning for chocolate lovers up and down the country to give up chocolate for 31 days this March.

Why do we love chocolate so much?

There are several reasons why we can easily stop at eating just one apple but could quite happily munch our way through a whole box of chocolates. These include:

- > Eating chocolate stimulates the brain's reward centres, triggering the release of feel-good chemicals such as dopamine and serotonin.
- > Chocolate contains theobromine, which increases the heart rate and brings about feelings of arousal.
- > Chocolate contains caffeine, which enhances our ability to work and focus.
- > It is high in fat and sugar, which are traditionally preferred food sources as they are calorie dense.
- > It smells good, it tastes good and it melts on our tongues in the most irresistible way.

How can I combat my chocolate cravings?

- > Drink more water. Sometimes when you think you are hungry, you are actually dehydrated.
- > Focus on eating good fats such as avocados and nuts, as these are known for banishing sweet cravings.
- > Set boundaries. If you know you can't resist chocolate, don't have it in the house.
 - > Manage your stress levels. You may find that you reach for chocolate when you feel stressed, so try to find other ways to cope when you feel emotional or under pressure.
- > If you desperately need a chocolate fix, opt for a low-calorie hot chocolate drink instead.
- > Eat one piece of very dark chocolate before each meal. This has been proven to help banish cravings and promote weight loss.





EMBRACE YOUR

SHAPE



HOW TO DRESS FOR SPRING FOR ALL BODY SHAPES AND SIZES

Spring is on the way, so it's goodbye to oversized jumpers, and hello to skin-exposing, spring-ready pieces.

This might sound scary if you have a certain part of your body that you don't like drawing attention to, but it doesn't mean you should spend the spring/summer season covered up. Instead of focusing on a part you're conscious of, accentuate what you love with some easy styling hacks. Here are a few examples...

I'M CONSCIOUS OF MY SMALL CHEST... Adding things that draw attention to your chest is not counterintuitive, so bulk the area out with some accessories such as chokers, necklaces, and tops with intricate collar detailing | Doing all of the above will steal the show, so no one will focus on your chest if you don't want them to.

I DON'T LIKE SHOWING MY ARMS... It seems obvious, but keep the area you are conscious of covered | In warmer temperatures, avoid strapless pieces and choose three-quarter-length sleeves in a light, breathable fabric instead | If you want to brave a shorter length in the height of summer or at a formal event, don't let your insecurities stop you, but carry a bolero or jacket in case you change your mind.

HOW CAN I HIDE MY BELLY? Many dresses now come with ruched detailing around the stomach area for this very reason, so stock up on a few staples | Stick to darker colours and patterns | Prints are also another great distraction | Stay away from baggy, shapeless silhouettes, and opt for high-waisted trousers and loose-fitting blouses to pull focus from your stomach | Wear leggings or skinny jeans with longer tops that sit on or bellow your hips | Curvier shapes look great in A-line dresses | Add a belt to nip in the waist, and say goodbye to added shapewear.

HOW DO I GIVE THE ILLUSION OF CURVES? To break up the straight silhouette, try a belt on the waist or hip area | Alternatively, tuck your top inside your trousers to add some definition | Go one step further and try the French tuck, whereby the front is tucked in and the back is loose | Peplum tops and dresses add volume and drama, perfect for less-curved shapes.

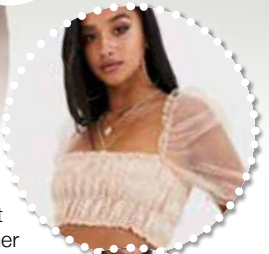
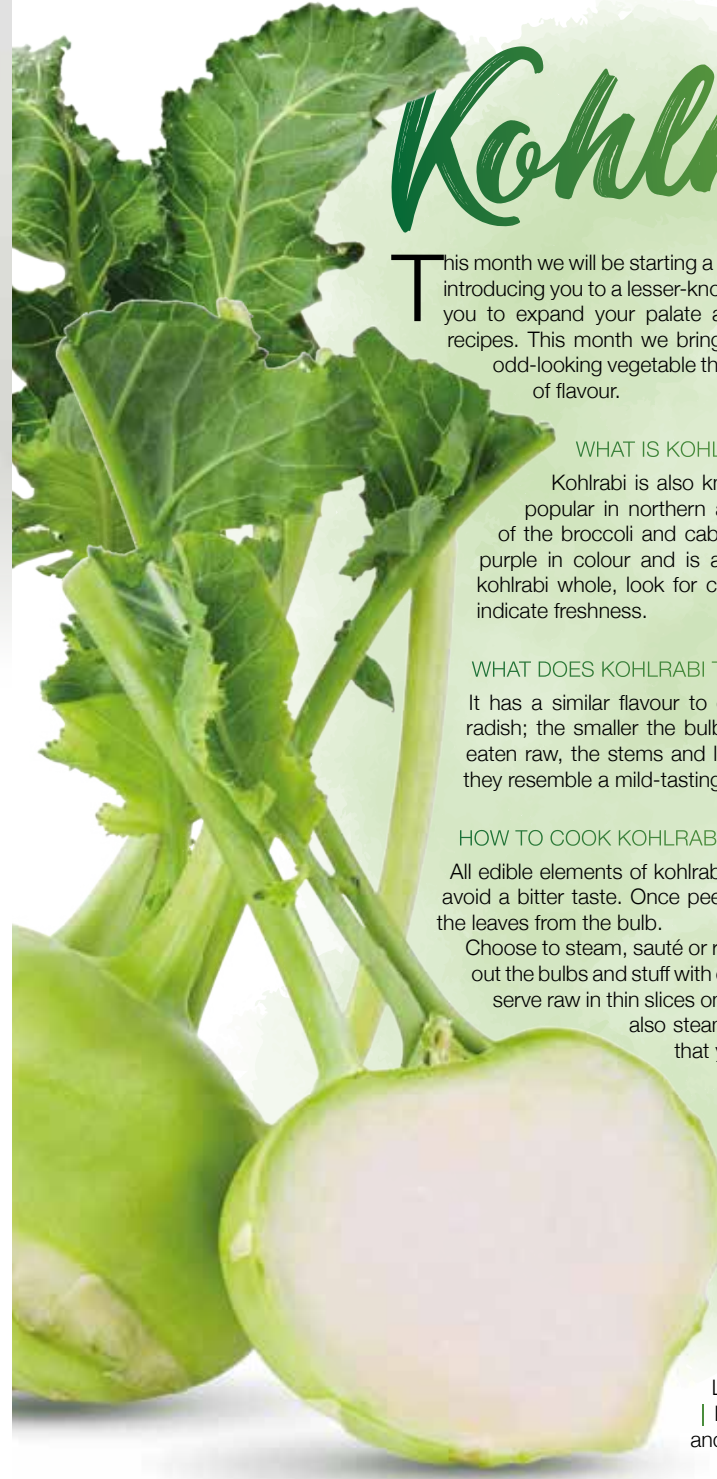


Photo credit: asos.com



Kohlrabi



This month we will be starting a new regular feature: we will be introducing you to a lesser-known fruit or vegetable, allowing you to expand your palate and widen your repertoire of recipes. This month we bring you kohlrabi, an undeniably odd-looking vegetable that packs a real punch in terms of flavour.

WHAT IS KOHLRABI?

Kohlrabi is also known as a cabbage turnip and is very popular in northern and eastern European countries. Part of the broccoli and cabbage family, it can be green, white or purple in colour and is available all year round. When buying kohlrabi whole, look for crisp-looking and vibrant leaves, which indicate freshness.

WHAT DOES KOHLRABI TASTE LIKE?

It has a similar flavour to cabbage but with the spicy kick of a radish; the smaller the bulb, the milder the taste. Crunchy when eaten raw, the stems and leaves can also be cooked and eaten; they resemble a mild-tasting Swiss chard.

HOW TO COOK KOHLRABI

All edible elements of kohlrabi need to be peeled before cooking to avoid a bitter taste. Once peeled, trim the brown end and separate the leaves from the bulb.

Choose to steam, sauté or roast kohlrabi, or you could even hollow out the bulbs and stuff with other vegetables or grains. Alternatively, serve raw in thin slices on a salad or added to coleslaw. You can also steam or sauté the leaves in the same way that you would fresh kale or spinach.

HOW TO STORE KOHLRABI

A kohlrabi bulb can be kept uncovered in the fridge for up to one month. The stems and leaves should be cooked as soon as possible as they wilt within a day or two.

WHAT ARE THE NUTRITIONAL BENEFITS OF KOHLRABI?

Low in fat | High in fibre | High in calcium | Low in calories | Contains anti-cancer and anti-ageing properties

Shish Meze

ABRIDGE

Beauty blossoms from humble beginnings...
Welcome to the home of rich Turkish cuisine,
unbelievable dishes and unforgettable moments

Shish Meze Abridge is blessed with the finest artisanal chefs in the kitchen preparing delicious, fresh food available for dining in and delivery. From mouthwatering, premium meats to delicious homemade desserts – this is a real, unique eating experience.



BOOKINGS & TAKEAWAY: 01992 946 704

18, MARKET PLACE, ABRIDGE, RM4 1UA

www.shishmezeabridge.com info@shishmezeabridge.com [@shishmezeabridge](https://www.instagram.com/shishmezeabridge)

MONDAY TO SUNDAY 12PM TO 12AM

Icing on the cake



FOOD & DRINK

HOW TO SUCCESSFULLY ICE A BIRTHDAY CAKE (NO MATTER YOUR SKILL LEVEL!)

Step One: Fake it or bake it

If you aren't much of a baker, there really is no harm in buying a pre-made sponge. The benefit of this is that the layers will be perfectly proportioned, making icing easier. On the other hand, a homemade cake is hard to beat, though you will need to trim the top of your cake with a bread knife if it has domed so the surface is perfectly flat and even.

Step Two: Filling fun

Everyone loves the first peek inside a birthday cake, which is why you need to get the filling as even as possible. If you're using jam, spread that first (heat gently in a bowl sat in boiling water to make it more spreadable), before piling your buttercream in the centre of your bottom layer. Now, add your top layer and gently twist with a little pressure to spread the filling across your cakes, removing any excess icing that spills out with a palette knife.

Step Three: Oh, crumbs

Ever wondered how professional bakers achieve that flawless finish? The answer is the crumb layer – a light layer of icing to catch stray crumbs before the second layer is applied. Place a third of your remaining icing in a separate bowl and move your cake onto a turntable or cake stand. Put a large dollop of buttercream in the centre of the cake and smooth it across the top, repeating the process until it looks even. Then, do the same with the side of the cake, turning it gently to distribute the icing and using your palette knife to flatten. Place your cake in the fridge for two hours to set.

Step Four: Final touches

Repeat the icing process for your final layer, being sure to fully cover the crumb layer beneath, and finish your masterpiece with some decorations. And a final top tip: hundreds and thousands look very impressive when applied liberally.



Above the rest



Are you guilty of buying the same cuts of meat week in and week out? If yes, surely it's time to try something different?

To celebrate National Butchers' Week, we have found the tastiest, not to mention most cost-effective, meat cuts which we guarantee you and your family will love.

Beef Onglet

Also known as hanger steak, this forgotten choice is a flat cut from the diaphragm or lower belly of the cow. Great value and with an intense flavour, this meat cut is best served medium rare.

HOW TO COOK: Fry in a hot pan for 3-4 minutes on each side and then leave on a warm plate to rest for 10 minutes.

Pork Cheeks

Incredibly cheap, pork cheeks offer a leaner alternative to pork belly, plus they are mouth-wateringly moist.

HOW TO COOK: Brine in sugar and water before braising until tender. Once cooked, cut into small pieces, breadcrumb and fry.



Lamb Sweetbreads

Classified as offal, lamb sweetbreads are the pancreas and thymus glands and considered to be a delicacy in the culinary world. Providing all the B vitamins, lamb sweetbreads are creamy and tender with a delicate flavour.

HOW TO COOK: Soak in cold water for a few hours before simmering quickly. Allow to cool before trimming away any sinew or gristle. Sauté as they are or lightly breadcrumb first.



Venison Rib

Low in fat, relatively cheap and full of flavour, venison ribs make a great alternative to pork ones. Like all wild game, deer ribs are very lean so need to be prepared with moist methods of cooking.

HOW TO COOK: Trim the ribs of fat and cut into strips. Cover the venison in brine or your chosen marinade. Bake, grill or slow cook for optimum tenderness.



SMALL-BATCH
LAVA SPIRITS Co
HANDCRAFTED

*Savour a moment and make a memory...
Decidedly decadent and definitely different...*

Discover our award-winning Coffee Gins...

Visit our website: www.lavaspirits.co.uk Get in touch: info@lavaspirits.co.uk

Tel: 0208 088 3513

YOU CAN NOW ENJOY THE FULL PIE & MASH EXPERIENCE WITH

ROBINS
Vegan Pie and Mash

Firstly, this is not about changing the Great Pie and Mash we have been serving for Five Generations.

At Robins we wanted to make a pie that is as delicious as our original pies with a savoury meat free mince (soya) and rich savoury gravy encased in our hot flaky pastry, also our mash and liquor is already suitable for vegans and vegetarians.

ROBINS
Pie & Mash
www.robinspieandmash.co.uk

WANSTEAD BRANCH AT 14 HIGH STREET, LONDON E11 2AJ
CALL TO ORDER ON 020 8989 1988

WANSTEAD • CHINGFORD • BASILDON • ROMFORD • SOUTHEND

London Contract Distribution

100% GUARANTEED LEAFLET DISTRIBUTION

- ▶ Portfolio of Prestigious Clients
- ▶ GPS Tracked Distribution
- ▶ Reprint & Redistribution Guarantee

CONTACT US: 020 7183 5206
www.leafletsdistribution.london
robertdelegacz@yahoo.co.uk
 19 Biggerstaff Road, Stratford, E15 2JR

f londondisto

MONKEY PUZZLE LOUGHTON

CHILDRENS DAY-CARE AND PRE-SCHOOL

COMING SPRING 2021

- Open 7.30am - 6.00pm
- Exceptional childcare for children aged 3 months - 5 years
- Open 51 weeks of the year
- All Inclusive Service
- Experienced and Qualified Team
- Ofsted Registered Provider

CALL 020 8712 5268

Email info@monkeypuzzledaynurseries.com

Register your interest and subscribe to receive regular updates as well as fun activities to do with your children!

www.monkeypuzzleloughton.co.uk

AVON HOUSE PREPARATORY SCHOOL

GIRLS AND BOYS 3-11

7+ Entrance Exam & Scholarship Applications now open

For further information and to request an application form please email our Registrar at registrar@ahsprep.co.uk

490 High Road, Woodford Green, IG8 0PN
 Tel: 020 8504 1749 | www.avonhouseschool.co.uk



SOLVE A PUZZLE

If you are struggling to keep your kids occupied indoors, then look no further than a good old-fashioned jigsaw puzzle. With the ability to not only provide educational benefits, this calming activity also helps to promote good mental health...

ENHANCED COGNITIVE FUNCTION

When you are doing a jigsaw puzzle, you use both the left and right sides of your brain. The right is in charge of creativity and your emotions, whereas the left is the logical and methodical side. Using both sides helps to increase cognitive function, a crucial part of your child's development.

IMPROVED PROBLEM-SOLVING ABILITIES

At its simplest level, a jigsaw puzzle is an activity of trial and error. Your child is required to try out different pieces in different places in order to find the right fit. This helps to improve their problem-solving abilities and helps them to see things from varying perspectives.

DECREASED STRESS LEVELS

If you have been worried about your child's mental health during this challenging year, you will be pleased to hear that jigsaw puzzles are a great stress-buster. In fact, when your child is doing a puzzle, there is a distinct shift in their consciousness, with their brains changing from a state of 'Beta' to 'Alpha'. The 'Alpha' state is similar to when they are dreaming and can lead to an improvement in mood, relief of stress and a lower heart rate.

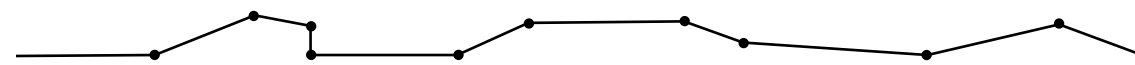
INCREASED IQ

Certain studies have shown that just 25 minutes a day spent doing a puzzle can raise a person's IQ by four points. Furthermore, this activity will help improve your child's memory, concentration and reasoning skills.

OTHER BRAIN-BOOSTING PUZZLES FOR KIDS:

Word searches | Rubik's cube | Mazes | Riddles | Connect the dots

Photo credit: gdl_project/Shutterstock.com





INTERIOR *traveller*



Embrace the global influence trend to cure your wanderlust

Have you tried catching a flight out to Zambia recently in order to sample the breathtaking, unique wonder of an African safari? Let's just say, your luck is out.

Of course, so much of interior design is about taking ideas and influences from around the world and incorporating those into our living spaces. With that in mind, and ignoring the fact all our planes are grounded, the trend of 'global influence' aims to embrace the charm and beauty of the world, while we remain resolutely stationed at 29 Acacia Avenue.

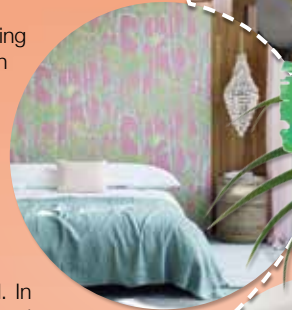
While 'global influence', as a term, suggests embracing interior design influences from all corners of the globe, in reality its focus is on the colours, textures and ideas you might commonly associate with African savanna safari expeditions – nature's most expansive showcase of wildlife.

Global influence takes on board woven fabrics; it focuses on earthy colour palettes, shows off cooling stone patterns and embraces natural textiles and all manner of woods, rattan and bamboo. The styles are uncomplicated, uncluttered and unpretentious.

Furniture and objects are wholesome, earthy and rugged. In matched a leather sofa, linen and perhaps some animal-themed art prints, you can truly bring the breathless elegance and simplicity of nature into your living space.

Of course, the individuality of interior design ultimately means global influence can represent whatever you may want it to. So if tropical flavours and flourishes are more your thing, why not embrace bright colours, wicker items, a beach vibe and miniature palm trees? Similarly, a Scandinavian vibe is easily put together with hardwoods, light colours and a style vision that's stripped back and simplistic.

Ultimately, whatever your individual taste, global influence is there to compensate for the fact that while we may not be able to visit these enchanting places, we can at least still sample their uniqueness.



Lookout Windows and Doors Ltd

Bi Fold Doors

Composite Doors

FREE FITTING

10 YEAR GUARANTEE



Windows



Conservatories

- BIFOLDING DOORS
- FLUSH SASH WINDOWS
- CONSERVATORIES
- CLADDING
- 40+ YEARS EXPERIENCE
- COMPOSITE DOORS
- CASEMENT WINDOWS
- PORCHES
- SOFFITS & FASCIAS
- FREE QUOTES

We offer free advice with a relaxed sales approach, which means NO high pressure salesmen.

0800 448 8021



Photo credit: nordroom.tumblr.com, myamazingthings.com, Simon Whittemore via idealhome.co.uk, Jake Curitts via idealhome.co.uk, Maria Vitale via apartmenttherapy.com



CUTLERY

care guide

Whether you use stainless steel, silver-plated or silver cutlery, or a combination of all three, if you want your silverware to last and looks its best for longer, you need to take care of it.

STAINLESS STEEL CUTLERY: The most popular material choice for cutlery, stainless steel is both durable and versatile, but that doesn't mean it is completely stain-resistant.

- HOW TO CLEAN: > Rinse before placing in dishwasher
- > Never leave to soak or in damp conditions as this can lead to corrosion
 - > Remove stubborn stains using stainless steel polish and a soft cloth

- HOW TO STORE: > Store in its original canteen to prevent pieces rubbing together
- > Can be stored in kitchen drawer but may reduce lifespan

SILVER-PLATED CUTLERY: A more decadent choice, silver-plated cutlery is relatively easy to care for but does require some special care.

- HOW TO CLEAN: > Keep away from stainless steel cutlery, as contact can cause corrosion
- > Place in dishwasher, but turn off the drying cycle and dry each piece by hand to avoid staining
 - > Polish to maintain shine

HOW TO STORE: > Store in a tarnish-proof cutlery roll and then in an airtight container

SILVER CUTLERY: Ideal for use at dinner parties and other special occasions, silver cutlery is both lavish and luxurious.

- HOW TO CLEAN: > Clean as soon as possible after use
- > Wash separately from stainless steel and silver-plated cutlery to avoid corrosion
 - > Do not put in dishwasher; instead, clean by hand
 - > Do not polish too often as this can wear down the finish

- HOW TO STORE: > When not in use, roll each piece of silver cutlery in acid-free tissue paper or unbleached cotton muslin and then place in a resealable plastic bag.
- > Add a piece of chalk wrapped in cheesecloth to the bag to absorb moisture and prevent tarnishing.

home
hub group



YOUR VISION IS OUR VISION

NOW OPEN ON EPPING HIGH STREET



Home Hub Group is now open on Epping High Street. We supply and install windows, doors, bifold doors, sliding doors and rooflights.

137-139 High St
Epping CM16 4BD
essex@homehubgroup.co.uk
homehubgroup.co.uk

01992 276 046



CALL US FOR A VIRTUAL TOUR OF OUR EPPING SHOWROOM



@HomeHubGroup



Loft Conversion Specialists

Beautiful Lofts, Expertly Built

Extensions ■ Home Improvements ■ Kitchens ■ Bathrooms

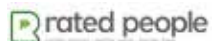


- Over 15 years experience ■ Team of highly qualified experts
- Project handling from ideas to completion
- Fully compliant with Building Controls

www.newlevelloftconversions.co.uk



Call us on:
0208 088 2805
Chingford London E4



DIY reed diffuser

If you want to enjoy an aromatherapy experience at home, then a scented reed diffuser is the ideal choice. However, you don't need to spend your hard-earned cash on shop-bought varieties when you can make them at home with a few simple ingredients and supplies.

WHAT YOU NEED: Small bottle or vase | 20–25 drops of your preferred essential oil | ¼ cup of baby oil | 3 tbsp of vodka or rubbing alcohol | Bamboo skewers or ideally diffuser reeds | Zest peels and herbs are optional

HOW TO MAKE: Pour the baby oil into a bowl | Add the rubbing alcohol or vodka | Carefully add the drops of essential oil and zest peels and herbs if preferred | Pour the mixture into your vase or glass bottle using a funnel until it is ¾ filled | Place five skewers into the vase | Cut the skewers to size if necessary so that they stick out roughly 4–6 inches

Top tips for your DIY diffuser

1. Check the liquid quantity monthly and top up if needed
2. Rotate the diffuser reeds once a month
3. Replace diffuser reeds after 4–6 months
4. Recycle a perfume bottle if you don't have a suitable vase
5. Cut your skewers carefully to avoid splinters

How to choose essential oils for each season

Spring: Choose fresh floral notes, such as a mix of citrus, lavender, geranium and jasmine.

Summer: Uplift your home with magnolia, bergamot and lemon.

Autumn: Embrace the cooler weather with a combination of juniper berry, cedarwood, cardamon and cinnamon.

Winter: Cosy up with a warming blend of spruce, patchouli and Douglas fir.

An alternative to reed diffusers

You can purchase an electronic oil diffuser, but make sure to do your research first as they come in different sizes. These diffusers produce a more concentrated fragrance and add moisture to the air, albeit in quite small amounts.



O, Easter tree!

Who says that decorative trees are just for Christmas? We think everyone could do with a bit of extra cheer this year, so why not have a go at creating your own Easter centrepiece tree, complete with ornamental eggs?

How to create your Easter tree:

For the tree itself, simply gather a selection of branches and place in a vase. The best tree branches to look out for include:
Cherry blossom | Magnolia | Willow | Forsythia | Dogwood

How to hollow out your eggs:

Poke a small hole in the pointier side of an egg and then another, slightly larger, hole on the opposite side. Place your mouth over the smaller hole and blow out the egg. Wash the shell and leave to dry.

Marbled eggs:

Mix 1 cup of hot water with 10 drops of liquid food colouring and 1 tsp of vinegar. Submerge the eggshell in the water for two minutes and leave to cool. This is your base colour.

Next, fill a bowl with fresh hot water and add a darker food colouring and 1 tbsp of olive oil. Roll your egg around to allow it to absorb the second colour.

Egg nests:

If you favour a more natural look, these miniature nests, complete with tiny Easter egg treats, are the perfect decoration for your tree. Gently break away some of the egg shell on the front of your egg, fill with straw and then add a single mini egg to each one.

Glitter eggs:

Create a pattern across your egg using tape, apply PVA glue to the rest of the egg and sprinkle generously with glitter. Leave to dry and remove tape. Choose to paint your eggs first for more a more vibrant end result.

How to hang your eggs:

To finish, simply thread a ribbon or piece of cotton through the top hole of each egg, wiggle it until it pokes out the other side and tie a knot to secure.

Photo credit: designimprovise.com, Pinterest, hobbycraft.co.uk



0208 088 3453
EMERGENCY SERVICES
& ENQUIRIES



TROUBLE WITH DRAINAGE, HEATING OR PLUMBING?

WE OFFER THE COMBINED SERVICES OF DRAINAGE CONSULTANTS & PLUMBERS TO DEAL WITH UNEXPECTED LEAKS, BURST PIPES AND BLOCKED DRAINS



DRAINAGE SERVICES ✓ PLUMBING & HEATING SERVICES ✓ TANKER SERVICES ✓ INSURANCE CLAIMS



Contact us: **0208 088 3453**
www.fcdrainagesolutions.co.uk
operations@fcdrainagesolutions.co.uk



From contemporary designs to traditional styles...
woodburning to gas and electric...

www.ashandembers.com



For current opening times see
www.ashandembers.com

CALL US ON 01992 815972 / 0207 118 3030
VISIT US AT THE COACH HOUSE, MARKET PLACE, ABRIDGE RM4 1UA

Positivity of the MIDDLE MAN

ANT MIDDLETON'S CLIMB TO PHYSICAL AND MENTAL MAGNIFICENCE

Anyone who has watched his SAS series knows Ant Middleton isn't a guy to be messed with. Grit, steel, determination, power and a large dose of bloody-mindedness have propelled the former military man into the mainstream; and while a new career in the lens suits the 40-year-old Army and Royal Marines veteran nicely, the impact he is having on everyday folk is profound.

For a long time the various fitness, health, strength and well-being trends that have taken up countless column inches and patterned our social media feeds have needed a confident, high-energy figure to take them forward. Yes, we have various reality stars putting out fitness tutorials, and Joe Wicks is always there to advise on the best way to pull off the perfect burpee, but can they do it on a cold Tuesday night in Stoke? The answer, undoubtedly, is no.

Ant Middleton, however... let's just say he makes The Potteries look like a beach holiday in the Maldives.

So much of what this inspirational tour de force has done up to now has been about physical determination. His Channel 4 SAS: *Who Dares Wins* series is a military training show of brutal extremes, with an adventure/reality crossover that pushes participants to the absolute limits of body endurance.

While this type of programming has seen the Portsmouth-born hardman make his mark, in truth it represents only one half of what it takes to truly ascend to the next level. Thus, squaring the circle in his new project, which centres on a series of talks on the subject of positive mindset, seems the natural progression.

"We all know that physical toughness can only take you so far," says the author of the best-selling book *Zero Negativity*. "You need to have the mental strength to keep pushing on when the body says no.

"The brain can outlast and outpace anything the body can do, so training our minds to interpret, recycle, repair and renew the messages flowing through us means we can achieve things way beyond what our muscles tell us is possible."

Middleton's emergence as a mainstream player is no better exemplified than in the fact he was joined on a recent project by terrestrial TV poster boy Ben Shephard. "Ben's a good guy who has absolute determination in his career. He's a great example of someone who is a winner – we all come in different shapes and sizes."

In a streamed live event that took place at the start of February, Middleton's *Be Prepared for 2021* did exactly what the title suggested, with an unscripted, unrehearsed and unfiltered conversation designed to unpick the various roadblocks that 2020 had put in the way of so many of us.

"The past year felt like such a crushing low for a lot of people, but rather than dwell on the negativity, as a nation we need to look at the things we learned, and appreciate the positives we took out of the year," he says.

"We need to appreciate how we grew and developed strengths many of us never knew we had.

"This is the road to ensuring 2021 is a better year. We cannot change the world around us, but we can alter the way we decide to tackle its challenges."



LOCAL NEWS

from your neighbourhood



Drug dealer begins eight years behind bars

A man from South Woodford was jailed last month for his part in supplying more than £6million worth of cocaine.

Joe Sawyer (pictured), 26, of Fieldhouse Close, appeared at Snaresbrook Crown Court on February 4 along with Lazarus John Loizides, 27, from Chelmsford, who was sentenced to 11 years' imprisonment, and Robert Beckley, 31, from West Malling, who was jailed for four years and four months.

The court heard that after a series of exchanges between the trio on Fieldhouse Close on October 6 last year, Beckley was followed by officers onto the M25 where he was stopped. Officers found five kilograms of cocaine.

Officers also followed and arrested Loizides in North London. They searched his home address, where they found three kilograms of cocaine, cash totalling over £55,000, a number of expensive watches and a number of receipts for high value purchases at Harrods.

Sawyer was arrested around 45 minutes after Loizides. Officers found the keys to a white van the trio were using. Inside the van they found two holdalls. Inside one of the bags was 24 1kg bricks of cocaine. The second bag was empty. In the rear of the van was a concealed hide which contained a further 17 1kg bricks of cocaine.

Overall 41kg of cocaine was found in the rear of the white van.

In total, 49kg of cocaine was seized with an estimated street value of almost £6million.

All three men were charged with conspiracy to supply Class A drugs (cocaine) and all three pleaded guilty in November 2020.

Detective Chief Inspector Driss Hayoukane, from the Met's Specialist Crime Command, said: "We've said it before and we'll say it again, we are committed to putting handcuffs on those involved in drugs supply offences and making sure that they spend a significant amount of time in prison."

Electrician

electrician-in-woodford.co.uk

Do you find it difficult to get someone to come & do a small job?

Extra Lights ♦ Additional Sockets ♦ Rewires
Fuse Boards Upgrades ♦ New Installations
Landlord & Homebuyer Inspections
Fault Finding & Repairs

Qualified Electrician ♦ Fully Insured
Reliable Service ♦ Tidy Work ♦ Free Quote
Flexible Hours ♦ Reasonably Priced
Satisfaction Guaranteed

We are your local experts. We specialise in domestic alterations, fuseboard, additional sockets, lights, rewires, installations and reports for homeowners

Call 0208 088 0779

No job too small



APPLIANCE REPAIRS AND SALES

We repair all makes and models

Washing Machines • Tumble Dryers
Dishwashers • Ovens • Hobs • Cookers
Fridge/Freezers • Extractor Hoods

New appliances in stock for same day delivery & installation

Prices listed on our website

Call 01279 310793

Or Book Online

www.spindoctoruk.co.uk



Natural style

Flower Design & Gifts



Fantastic Service ♦ Beautiful Flowers ♦ Cute Gifts

[f @constansflowers05](https://www.facebook.com/constansflowers05) ♦ 0208 088 3475 ♦ constansflowers@gmail.com



Anger after post office closure announced

LOCAL NEWS



Community leaders in South Woodford are calling on the Post Office to reverse its decision to close the town branch.

The landlord of the branch on George Lane has given the Post Office notice to vacate the premises as there are plans for redevelopment. The branch has eight members of staff. The closure is expected to take place in April or May.

Councillor Jas Athwal is the leader of Redbridge Council and has written to Post Office Ltd chief executive Nick Read, urging him to reconsider.

Clr Athwal tweeted: "South Woodford Post Office provides vital services for local people.

"Closing the post office would be devastating for South Woodford and would drive traffic to the already overwhelmed Wanstead branch."

In his letter, he said the Post Office is widely used by local residents and said the proposed closure would have a negative impact on the area, depriving some residents, especially older residents, of an essential amenity close to where they live. He said he wanted to see the Post Office relocated nearby.

Meanwhile, Redbridge Labour has launched a petition, saying there has been no consultation and adding that the nearest alternative in Wanstead is an hour's walk away.

To add your signature, go to redbridgelabour.org.uk/savesouthwoodfordpostoffice

School set to get cooking for charity

Woodbridge High School is set to produce its own cookbook to raise money for charity.

Parents, carers, staff, students and people in the community are being asked to come together to create the Woodbridge Community Cookbook.

Organisers want to include recipes for starters, mains, sides and desserts, dishes from a wide variety

of cultures and the story behind each dish.

A school spokesman said: "The aim of this project is to unite our community and to raise funds for our House Charities – Clowns in the Sky, Lennox CCF, Haven House, ELHAP and Boxing 4 Life – who now, more than ever, need our support."

The intention is to organise, edit and publish the cookbook ready to be sold in July 2021.

Everyone who provides a recipe will have their name included in the acknowledgements and will be a part of Woodbridge history.

Please send in your recipes and any queries to Zakiyah Rawat at zrawat@woodbridgehigh.co.uk or Rebecca Gleeson at rgleeson@woodbridgehigh.co.uk

Anger as burst water pipe takes days to repair

People in South Woodford hit out at Thames Water last month after water poured from an overhead pipe onto tracks at South Woodford station.

Some residents reported that they did not have any running water over the weekend of February 13 and 14, although it's unclear whether the two incidents were linked.

One resident tweeted: "Hundreds of gallons of water pouring from overhead pipe onto rail tracks at South Woodford. Apparently it was reported over the weekend and it's still gushing @thameswater."

Another local added: "@TfL The temporary traffic lights outside the Odeon cinema in South Woodford are not working causing traffic chaos in the area. @thameswater these are in place to fix a burst pipe. Water has been spewing out for days now."

A Thames Water spokesman said: "We sent a team of engineers to assess the situation on Sunday morning. Because the damaged pipe is in a gantry over a railway line, one of our specialist repair teams is needed and we're working with London Underground to make that happen.

"This is a complex job but we're hoping to stop the flow of water tonight (February 15) so we can safely get in and fix it."

VISION South Woodford understands rail services were not affected.



SHUTTER BAY

Easy self fit, stylish, made to measure shutters.

Covid safe - no fitters needed.

Delivered straight to your home.

www.shutterbay.co.uk

Steamed Up Double Glazing?

Are Your Windows Steamed Up, Misted or Broken?

Why Replace The Frames?

We can carry out the repairs to any Timber, Aluminium or uPVC Window, Door or Conservatory

Handles • Hinges • Locks • Cylinders • Rubber Seals
Silicone • Letter Boxes • Cat Flaps • Dropped Doors
Conservatory Roofs • Soffits, Fascias & Guttering

We also supply & fit new energy rated windows & doors

Elite uPVC Repairs

0800 0830 428 or 07412 76665

Find us on [f](https://www.facebook.com/Elite-UPVC-Repairs) Elite-UPVC-Repairs

RAISING BRITAIN'S CLEANING STANDARDS

CG CLEANGO

Professional, reliable, affordable cleaning services

OFFICE CLEANING **COMMERCIAL CLEANING**
ANTIVIRAL SANITISATION CLEANING **CARPET CLEANING**

CONTACT US TODAY 0203 733 2165 info@cleango.co.uk

www.cleango.co.uk

[f](https://www.facebook.com/cleango) [i](https://www.instagram.com/cleango) [You Tube](https://www.youtube.com/cleango) [p](https://www.pinterest.com/cleango) [in](https://www.linkedin.com/cleango)

ANTIVIRAL SANITISATION FOGGING
KILLS 99.9999% OF ALL BACTERIA



Woodford and District National Trust



Like so many local and indeed national voluntary organisations, the Woodford and District Centre of the National Trust has had to suspend all of its activities for nearly a year owing to the pandemic.

The centre has well over two hundred members, most of whom are also members of the National Trust centrally.

We endeavour to keep in touch with them regularly by email to assure them of our continued existence, but it has to be accepted that, owing to the demographic nature of the membership, many do not have internet connection.

In February we started a series of virtual talks, which commenced with one given by chairman Richard Speller on 'War Memorials'. It is our intention to continue these monthly, or even more frequently, until

the lockdown is ended and meetings are once again permitted.

It is worth remembering that the centre has a varied programme of events, including monthly talks September to April, autumn/winter London visits to places of interest, summer outings to houses and gardens – both National Trust and others – and an annual summer holiday. It is most certainly our intention to rearrange all of these activities as soon as possible. Anybody interested in joining the centre should contact Richard Speller by emailing speller643@btinternet.com

The Woodford and District Centre will, we hope, like many of our fellow voluntary bodies, re-energise, take up from where it was before and provide an educational, social and worthwhile service to the people of Woodford and surrounding areas.

Man jailed for indecent images

A man has been jailed after he was found to have downloaded more than 200 indecent images of children – despite being subject to a suspended sentence for the same offence.

Martin Sparks, 47, of Woodford Green, was sentenced at Snaresbrook Crown Court last month to two years and four months' imprisonment. He was also handed an indefinite Sexual Harm Prevention Order (SHPO) and was placed on the Sex Offenders Register indefinitely.

He pleaded guilty at the same court on Friday, June 26, 2020, to five counts of breaching a SHPO, making indecent category A images of children and making indecent category B images of children.

In June 2020, officers from the Met's Specialist Crime Command searched Sparks' home following intelligence that indecent images of children had been downloaded.

Sparks initially denied any knowledge of illegal online activity, but when he was questioned further he admitted breaches of his SHPO and having downloaded and viewed child abuse images. Sparks committed five SHPO breaches.

Officers seized a computer tower. They also found an electronic tablet, which was a breach owing to it not having been declared.



The remaining breach was for connecting to the home's router to use the internet when he downloaded the images.

When he was searched in custody, two USB digital storage devices were found in Sparks' shoes.

A total of 233 category A, the most serious, child abuse videos and 17 category B images were found on the USBs.

Sparks admitted all the offences.

Control your security Be **App**solutely connected



Did you know your smartphone can now control your alarm system through an app?

NEW SYSTEMS SUPPLIED & FITTED FROM £450.00
(OR WE MAY BE ABLE UPGRADE YOUR EXISTING SYSTEM)



- CCTV Systems ● Alarm Systems
- Fire Alarms ● Door Entry Systems ● Safes
- Vehicle Alarms & Tracking ● Ghost Immobilizers

020-8529-5710 ● www.cobra-ss.co.uk
155 Station Road, Chingford, London, E4 6AG



HOUSE OF ELLA INTERIORS



Luxury residential interior design

London | Essex

www.houseofellainteriors.com | 0208 088 3496 | info@houseofellainteriors.com

PUT THE SPARKLE BACK INTO YOUR KITCHEN



Domestic Oven Cleaning Specialists

Est. since 2007

Prices

Single oven incl. shelves & grill pan.....	£43.00
Double oven incl. shelves & grill pan.....	£54.00
Range incl. shelves & grill pan.....	From £54.00
AGAs.....	From £90.00
Hobs.....	From £14.00
Extractors.....	From £15.00
Microwaves.....	From £20.00

No VAT to pay



PLEASE CALL FOR A FREE QUOTATION

01279 432444 * www.ovenbright.co.uk



SUPPORT LOCAL BUSINESSES



Let your local businesses know that you saw them first in... VISION

NEWS FROM

THE 100 CLUB

LOCAL BUSINESSES SUPPORTING HAVEN HOUSE



LOCAL NEWS



If you have been lucky enough to secure a place in the Virgin Money London Marathon 2021 ballot, we would love for you to use your own place to run for Haven House. There is no minimum fundraising target, just raise as much as you can.

Imagine yourself standing on the start line of the iconic Virgin Money London Marathon, getting that chance to tick something off your bucket list. Make it happen while running for a great cause and wearing a Haven House running vest. If you've secured your own place in the ballot, make this vision a reality by choosing to join our team of #HavenHouseHeroes.

As a local children's hospice, we know that every runner who chooses to support us really does make a difference to seriously ill children and their families. It's been a tough year for everyone, so knowing you can help us be there for them is brilliant. All our Haven House runners receive:

- > A Welcome Pack with full fundraising support
- > A dedicated contact at Haven House sending you team emails and one-to-one support
- > A Pre-Marathon Training Event with running, injury and nutrition specialists
- > A Haven House running vest
- > An amazing Haven House cheer squad en route with a choir

To join Team Haven House contact Sophie Bragg at sophiebragg@havenhouse.org.uk or call 0208 506 3630. Visit www.havenhouse.org.uk/Event/londonmarathon2021 for more information.

Popular hangout stripped of licence

The owner of a restaurant popular with celebrity TV stars and Premier League footballers has been stripped of its licence for not complying with licensing conditions.

In addition, Melin Restaurant continually ignored COVID-19 guidelines and put its patrons' and staff members' safety at risk. It has now had its licence revoked by Redbridge Council's licensing committee.

A recent offence took place on November 3, when police were called following a complaint from residents. They found the doors locked and the windows blacked out.

Officers could see that people inside were not wearing face coverings while standing at the bar. The police were denied entry, and the access and fire doors remained locked for 10 minutes.

Later, Mr Melin posted a clip showing up to 100 people inside with 50 people dancing and a DJ playing



loud music.

The Leader of Redbridge Council, councillor Jas Athwal, said: "This should send out a strong message to those who think they can flout licensing conditions and COVID-19 guidelines. We have many licensed premises in the borough, the large majority of which have worked hard to follow the pandemic guidelines."



Resin Bound Natural Aggregate

Based just outside Epping, IBBco have been providing surfacing solutions to Essex and Hertfordshire for the past 24 years. Resin Bound natural aggregate allows us to create beautiful designs for your drive, patio, paths or even swimming pool surrounds! Please call us to discuss all the options or to request a free survey.

- 46 Bespoke Colours
- Fully Permeable
- No Drainage Required
- Total Flexibility of Design
- Long Lasting Results
- Easy to Maintain
- Tested to BS EN 13892
- UV Colour Stable

Unit 11, Esgors Business Centre, High Road, Thornwood Common, Epping, CM16 6LY



GARDEN OF LIFE

TREES AND SOIL *socialism*

In the second of a four-part series that shows how even the most urban garden can be a haven for the wonders of wildlife and the nurturing of nature, we look at the role of trees and fungi below the surface.

We view our trees with respect and admiration – a fluttering, swaying mass of potency and life that evolves with every passing season, presenting a haven for all manner of wildlife, from insects to birds, plant-life to rodents, as well as being a valuable source of oxygen for all living things.

And yet, the true strength of a tree is not what we see above ground, but its rooted, tangled masses beneath it. At the heart of this are microbes called mycorrhizal fungi.

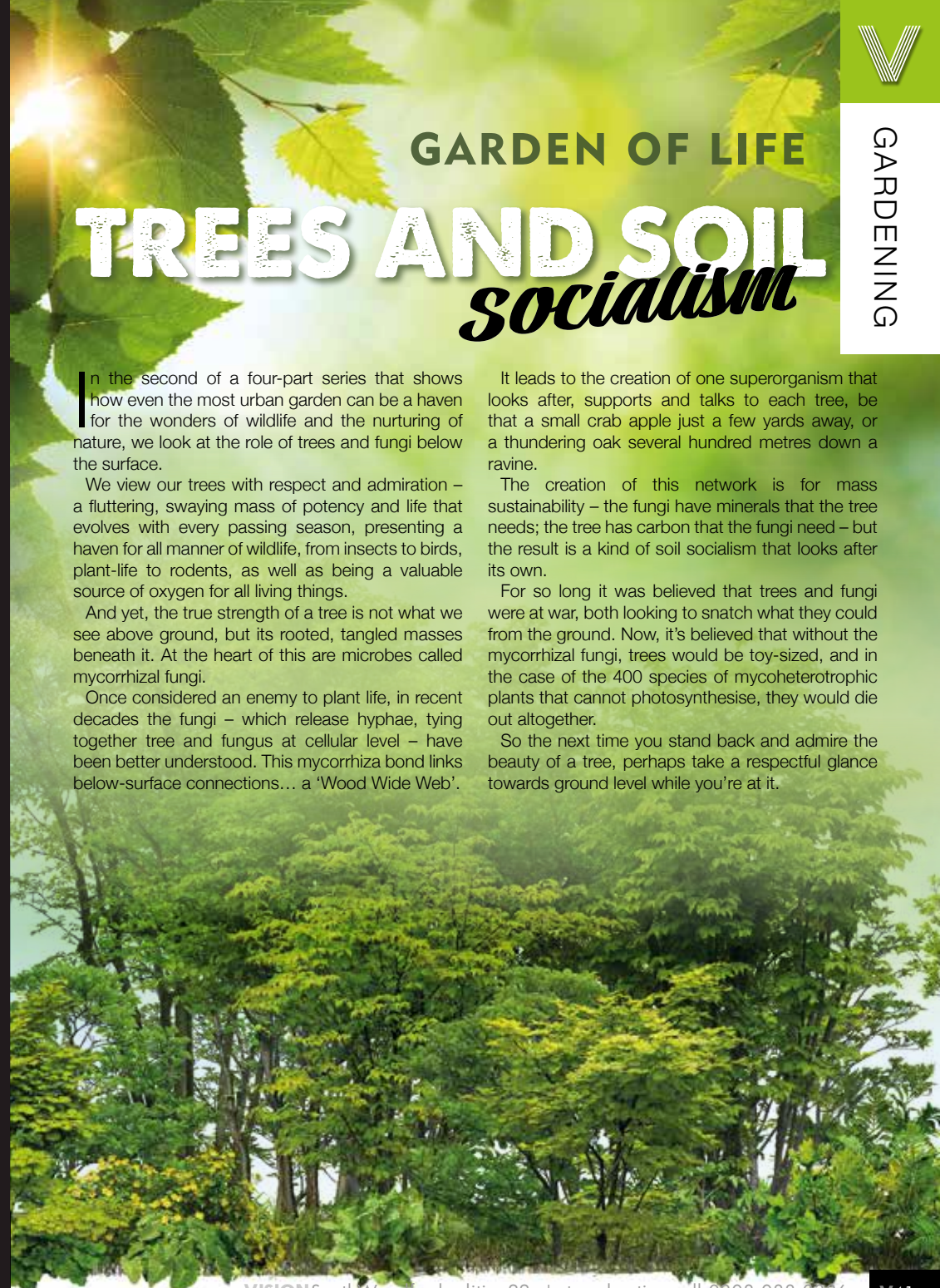
Once considered an enemy to plant life, in recent decades the fungi – which release hyphae, tying together tree and fungus at cellular level – have been better understood. This mycorrhiza bond links below-surface connections... a 'Wood Wide Web'.

It leads to the creation of one superorganism that looks after, supports and talks to each tree, be that a small crab apple just a few yards away, or a thundering oak several hundred metres down a ravine.

The creation of this network is for mass sustainability – the fungi have minerals that the tree needs; the tree has carbon that the fungi need – but the result is a kind of soil socialism that looks after its own.

For so long it was believed that trees and fungi were at war, both looking to snatch what they could from the ground. Now, it's believed that without the mycorrhizal fungi, trees would be toy-sized, and in the case of the 400 species of mycoheterotrophic plants that cannot photosynthesise, they would die out altogether.

So the next time you stand back and admire the beauty of a tree, perhaps take a respectful glance towards ground level while you're at it.





GARDENING



Why your garden NEEDS A GREENHOUSE

If you are considering getting a greenhouse installed in your garden but are not entirely convinced it's the right decision for your property, check out these seven benefits of greenhouse ownership.

1. GROW FRESH, ORGANIC PRODUCE

Arguably the best aspect of having your own greenhouse is that you can grow a wide variety of fresh fruit and vegetables, as well as plants, from the comfort of your own garden. Plus, you can change what you want to grow in it each year.

2. STORE GARDENING TOOLS

If you struggle to find somewhere to store all your gardening tools, supplies and equipment, a greenhouse can double up as a garden shed, offering quick and easy access to everything you need, all in one designated spot.

3. ENJOY CONSISTENT CONDITIONS

By growing your plants within the safety of a greenhouse, you can avoid any problems caused by extreme weather conditions and seasonal changes.

This offers you more flexibility when it comes to the plants you can grow.

4. PROTECT YOUR PLANTS FROM PESTS

As well as protecting your plants from the elements, a greenhouse can help to keep them safe from pests such as caterpillars, spider mites and locust swarms.

5. OFFER AN OPTIMUM ENVIRONMENT

Plants love warm and humid environments, which is why they thrive when grown in a greenhouse.

6. SAVE MONEY

If you spend a fortune every spring in your local garden centre, then a greenhouse can save you a lot of money. You can grow as many seeds as you want and you may even find you have plenty of plants left over to give to friends and family.

7. ENHANCE THE LOOK OF YOUR GARDEN

Greenhouses comes in many different designs and you can pick the perfect one to complement your garden.

euronics
the home of electricals

Price match guarantee



Price Match Guarantee | Super Service | Expert Knowledge | Contact-Free Delivery

FISHER & PAYKEL
American Style Fridge Freezer
RF605QDVX1



- Fridge 375 Litres, Freezer 230 Litres Capacity
- Frost Free
- Stainless Steel
- Dimensiona: H179xW90.5xD68.8cm
- 5 Year Warranty

Only
£1,999.⁰⁰



Broadway Music and Vision

8 The Broadway,
Woodford Green, IG8 0HL
0208 504 7500
broadwaymandv@aol.com



*Terms and Conditions apply. Sold as an agent of Euronics Limited. All rights reserved. All offers are subject to availability while stocks last. Delivery & installation charges may apply. Exclusions and Restrictions Apply. See in store for full details. Images for illustration purposes only. Copyright Euronics 2020. E606 2020.

HEPWORTH TIMBER WORK

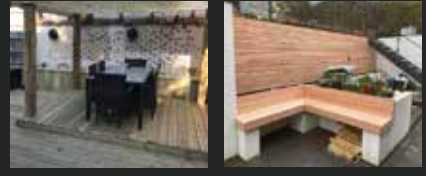
BESPOKE HOME OFFICES, GARDEN ROOMS & ENTERTAINING AREAS

DO YOU NEED SPACE TO...

- ◆ WORK ◆ CREATE
- ◆ PLAY ◆ ENTERTAIN
- ◆ SOCIALISE ◆ EXERCISE

Contact us for advice & to discuss your requirements
T: 01992 619169 ◆ M: 07971 609332
www.hepworthtimberwork.co.uk
info@hepworthtimberwork.co.uk

[hepworthtimberwork](#) **Checkatrade.com**
Where reputation matters



MARCH BIRTH FLOWER OF THE MONTH:

Daffodil



If you were born in the month of March, your birth flower is narcissus, also known as the daffodil. The quintessential flower of spring, the daffodil is instantly recognisable by its bright yellow petals. Perfect placed in beds and borders, daffodils will brighten up your garden every year.

WHAT DOES THE DAFFODIL REPRESENT?

Named after Narcissus, a character from Greek mythology who was so in love with himself he drowned in a pool of water while admiring his own reflection, this flower is said to be a symbol of vanity. It is also known to represent new beginnings, rebirth and rejuvenation. The daffodil is also:

- > The national flower of Wales
- > The official 10th wedding anniversary flower
- > The official emblem of cancer charities
- > A symbol of luck and prosperity during Chinese New Year

WHAT DOES THIS BIRTH FLOWER SAY ABOUT YOUR PERSONALITY?

If your birth flower is the daffodil, you are said to be extremely creative. You are also known for being kind and welcoming to everyone you meet and dedicated to living a life of peace and happiness.

ARE DAFFODILS EASY TO GROW?

Anyone can grow daffodils in their garden and you can choose to plant your bulbs in beds, borders, grass verges, lawn edges, hedgerows and banks. Plant your bulbs between September and November in well-drained soil and aim to keep your bulbs 4-8 inches apart, as overcrowding can cause daffodil blindness – when daffodils shoot up with foliage but no flower.

HOW TO LOOK AFTER DAFFODIL BULBS FOR ANNUAL GROWTH

- > Allow the leaves to die back naturally before cutting off
- > You can lift bulbs between June and August and store in a cool, dry place ready for replanting
- > Apply a rich fertiliser to the soil once you have removed bulbs

**FULLY FITTED
 ROLLER
 GARAGE
 DOORS**

FROM **£895** WAS £1,054 INC VAT



WHATS INCLUDED:

- ACOUSTIC & THERMAL INSULATION
- TWO REMOTE CONTROLS
- EXPERT MEASURING & FITTING
- 24 COLOURS AVAILABLE



Made To Measure...
ROLLER GARAGE DOORS

Garolla can save a lot of space inside your garage. Rolls up vertically into a box. Takes only 8 inches of headroom! Opens vertically so you can park up close to the door. Remotely open/close the garage even from inside your car.

CALL US TODAY
 Phone: **01277 800 142**
 Mobile: **07537 149 128**





PETS



PEDIGREE CHUMS

HOW TO ENSURE YOU BUY A PUPPY FROM A TRUSTED BREEDER

Just as you would only buy your electrical appliances from a trusted vendor, the same ought to be true of a puppy. Unless you are getting an older dog from a shelter, it is imperative you seek a registered dog breeder, or you risk buying from a puppy farm. Puppy farms put profits over the welfare of the animals. Cramped and unsanitary, these businesses often facilitate inbreeding and overbreeding, which leads to poor health for both mum and pups. Furthermore, the babies are often separated from their mother before the recommended 10 weeks.

Remember, too, these criminal enterprises go to great lengths to appear as legitimate breeders, which is why it's important to know the signs of a farm. This will save both your pet and your family a lot of heartache in the long run.

HOW TO SPOT A PUPPY FARM:

✿ It's too good to be true – The dogs look perfect in their advert photo, both parents are

thoroughbreds and the price is so reasonable, but your gut instinct is telling you otherwise, so investigate further.

- ✿ They have multiple ads – A legitimate breeder will often only have one litter and breed available at a time, so if there are several ads with similar wording, styles or even phone numbers, there's every chance it's a farm.
- ✿ They only take cash – Legit breeders want to make sure their pups go to good homes which means offering refunds if the buyer changes their mind. In short, they don't do 'cash and dash'.
- ✿ They want to meet at a public place – Always see your new pet in their natural habitat and meet its mother to ensure reliable provenance.
- ✿ They are already vaccinated – No dogs ought to be vaccinated until they are at least eight weeks old, so if an ad tells you otherwise, it's a scam.

LAZYLAWN®

London's Leading Artificial Grass Installers

BOOK A FREE SITE SURVEY

☎ 0208 961 4722
✉ eastlondon@lazylawn.co.uk
🌐 www.lazylawn.co.uk

Best Buy Which? Artificial Grass June 2018
Which? Trusted trader
Wonder Yarn

ALL TREE WORK UNDERTAKEN

ESSEX TREE CARE LTD

- FAMILY RUN BUSINESS
- OVER 35 YEARS EXPERIENCE
- PRUNING ○ THINNING ○ REDUCTIONS
- FELLING AND REMOVAL ○ DEAD WOOD REMOVAL
- SITE CLEARANCE ○ HEDGE MAINTENANCE
- FIREWOOD SALES FULLY INSURED

ESSEX TOP RATED TREE SURGERY COMPANY 2017/2018 ON

★★★★★ Checkatrade.com Where reputation matters

CALL TODAY FOR YOUR NO OBLIGATION QUOTE WITH NO HIDDEN EXTRAS

📞 07500 870 309
🌐 www.essextreecareltd.co.uk

City & Guilds NPTC Qualified workforce



Special Service Agents



As estate agents encounter fierce competition from faceless online facilities, **Kingsmarq Real Estate** are taking the opposite approach, providing friendly, personal service to a limited number of clients

The days when those looking for an estate agent to sell their house had only one local option to choose are long gone. Today's sellers, buyers and landlords have a wide range of choices, from high street chains to local stalwarts, and an increasing number of online agencies. Launching into the Essex area, Kingsmarq Real Estate was created to offer a fresh way of handling properties with a boutique level of service.

Kingsmarq saw how often homeowners were passed between team members who did not know their property and how this left them feeling unsupported, without experienced advice when they needed it most. There was a gap to launch an agency who could offer a bespoke service level and consistent contact.

Too many houses are on the market for much longer than they should be, owing to a lack of focus on each property that can leave them incorrectly priced and no longer front-of-mind when an agent meets a potential buyer. In response, Kingsmarq founder Sandeep Chana, sought to create an offering with lower client numbers to ensure faster transactions, with greater care and attention.

By limiting the number of properties on their books, Kingsmarq can ensure every client gets focused, boutique-style service in a friendly and knowledgeable style. Working across Essex, Kingsmarq offers a tailored service, taking the time to understand the needs of landlords, the motivations for sellers and the desires of buyers and renters. The aim is to move a small portfolio of properties along at a quick pace, while creating an experience all clients will remember and share with others.

"I truly care for my clients and am driven to achieve the best outcome." Says Kingsmarq founder Sandeep, "Whether you are buying your first home, selling a house you have lived in and loved, letting your property for the first time, or looking for a smooth transition when your previous tenant moves on, it can be daunting. I don't just handle the sales and paperwork; I offer guidance and support through the process."

With excellent customer service at the heart of Kingsmarq Real Estate's ethos, you can be assured of a warm welcome from the very first call to discuss your property needs.



Buy, Sell or Let, **Kingsmarq is your best bet**



WHAT TO CONSIDER WHEN BUYING A HOLIDAY HOME IN EUROPE POST-BREXIT

It's a piece of escapism almost all of us love and crave – even just the thought of having a holiday home we might slip away to is enough to keep us going through those long, cold, monotonous months of work.

Of course, for those of us who will at some point be lucky enough to own an overseas abode, the question of how accessible and affordable that place in the sun will be has arisen recently in light of the UK departing the European Union.

Within that, perhaps the most profound impact of Brexit will be that UK residents are only permitted to stay in the EU for a total of 90 days in every 180-day period.

As far as purchasing a home goes, British nationals will now need to undertake the same procedures as non-European residents, and while this doesn't prohibit us from investing in a holiday hideaway, it does mean an extra layer of paperwork, and in future may require applicants to apply for a visa in order to claim residency.

In time to come it may also be seen that Brexit leads to an increase in stamp duty for British buyers, while changes in the currency markets could mean that mortgage availability becomes more limited.

As it stands, though, the subsequent transition period – and with it, a large

amount of uncertainty – hasn't led to any profound changes. Indeed, people who already own property in an EU country are protected by the United Nations Universal Declaration of Human Rights and the European Convention on Human Rights – the longwinded premise being a simple one, namely that whether a member of the European Union or not, individual property rights must be respected.

So if you do move forward in retaining or investing in property abroad, your little piece of homely heaven is assured.

Plan your finances with precision

We provide a comprehensive wealth management service, offering specialist face-to-face advice tailored to you. Our services include:

- Investment Planning
- Retirement Planning
- Protection Planning
- Inheritance Tax Planning
- Intergenerational Planning
- Mortgage Planning

Your home may be repossessed if you do not keep up repayments on your mortgage.

For further details please contact:

DB | **DAVID BEAN**
WEALTH MANAGEMENT

Tel: 0208 088 0594 | Email: david.bean@sjpp.co.uk
www.davidbeanwealth.co.uk

H2SJ31578 03/19

BE INSURANCE

sure!



TRAVEL

THE COVER YOU'LL NEED IN PLACE WHEN TRAVELLING TO EUROPE POST-BREXIT

The very notion of overseas travel seems slightly optimistic at the moment, but as 2021 rolls on there is hope we may be able to stretch our legs on foreign shores before long. And if that's the case, it pays to know how to insure against travel pitfalls as we prepare for jaunts and journeys to EU countries in this post-Brexit world.

The first thing to ensure is that you have six months left on your passport, or you may not be going anywhere, with travel restrictions having tightened post-Brexit.

Next, there's the relinquishing of the European Health Insurance Card (EHIC). You cannot replace this – we're no longer in the EU – but it is still effective until the expiry date listed. If yours has timed out, you will need to apply for a Global Health Insurance Card (GHIC). This, like the EHIC, will cover you for pre-existing conditions, maternity and emergency care. Go without one and you run the

risk of incurring expensive healthcare treatment.

Remember, though, the GHIC is not an alternative to purchasing travel insurance, as it doesn't cover any private medical healthcare, such as being flown back to the UK in the event of serious injury.

And as part of your own private insurance, you should still take out cover for unexpected events, such as cancellations or lost luggage, just as you would have done previously.

As for other matters, you are permitted to stay in the EU for 90 days in any 180-day period (see slightly differing rules for Croatia, Bulgaria, Cyprus and Romania), with a visa required if you're hanging about for longer. Mostly, though, EU countries are keen to make the transition period as smooth as possible. It doesn't suit nationals travelling in either direction to find themselves held up or, worse still, turned away at customs; but it does pay to double-check on everything in these uncertain times.



Fan belt failure

HOW TO DIAGNOSE ONE OF THE MOST COMMON MOTORING ISSUES

The serpentine belt, alternator belt, or fan belt as it is better known, is a peculiar piece of rather essential kit as far as your car engine goes. We all know our car has one, a few of us can locate it, yet very few know what it does.

What's important is that when it does malfunction – usually through being worn out – we can get it fixed cheaply and easily.

THE SIGNS

Most people become aware of fan belt failure when they begin to hear a loud screeching or squealing sound coming from the engine. You may also discover the power steering or air conditioning isn't working, and in really bad cases the engine may overheat.

All of these effects result from the fan belt's faulty function, and that function is working with the idler, tensioner and pulleys inside the accessory drive

belt system – essentially, it provides power to key components in the engine.

A dodgy fan belt is bad news, and although the car may be driveable, you're risking a breakdown.

THE DIAGNOSIS

Fan belts can become cracked, split, grazed, misaligned or might fall off completely. Unless your amateur mechanic skills are really up to Henry Ford levels, it's probably best to take your motor to the nearest garage.

THE COST

Thankfully, a faulty fan belt won't see you off the road for too long; nor should it set you back any significant amount. Typically, a new one will cost somewhere in the region of £100–£200. It's a relatively quick job and your garage should be able to turn it around in a couple of hours.



CRISTIANO RONALDO

CRISTIANO RONALDO AND THE COMPLETION OF A UNIQUE GOAL FEAT

When Cristiano Ronaldo signed for Manchester United at the age of just 19, football knew it had a real talent in its midst. Yet it's still unfathomable that the Portuguese striker would go on to create a new goalscoring world record – something the 36-year-old achieved in January when he notched up his 760th senior goal (even if his strike for Juventus versus Napoli was from just a yard out).

The feat was celebrated all over the world, and rightly so, even if there's still some conjecture regarding exactly how many goals some of his net-busting rivals have clocked up over the years.

The problem is not with CR7's total, more the tally of his contemporaries. Brazilians Pelé and Romário, for instance, both claim to have scored more than 1,000 goals, yet these totals appear to include amateur and reserve games.

Even the man whose total Ron bettered, Austrian-Czech footballer Josef Bican, who clocked up 759 strikes across a career surpassing two decades, has a claim for more goals, with the Rec.Sport.Soccer Statistics Foundation (RSSSF) claiming more than 800, in part because of missing records from the Czech second division in 1952.

Ronaldo's total is unquestionable, though – five goals for Sporting Lisbon, 118 for Manchester United, 450 for Real Madrid, 90 for Juventus (at the time of going to print), and an incredible 102 for Portugal.

Knowing Ron, the status of being the world's most successful goalscorer of all time will mean a lot to him. Though while he won't be able to completely silence the doubters who may quote other players and their respective tallies, what we can all agree on is that, over the years, he's been a handy little striker who, more often than not, has chipped in with a useful goal or two.

Photo credit: Action Press/Shutterstock

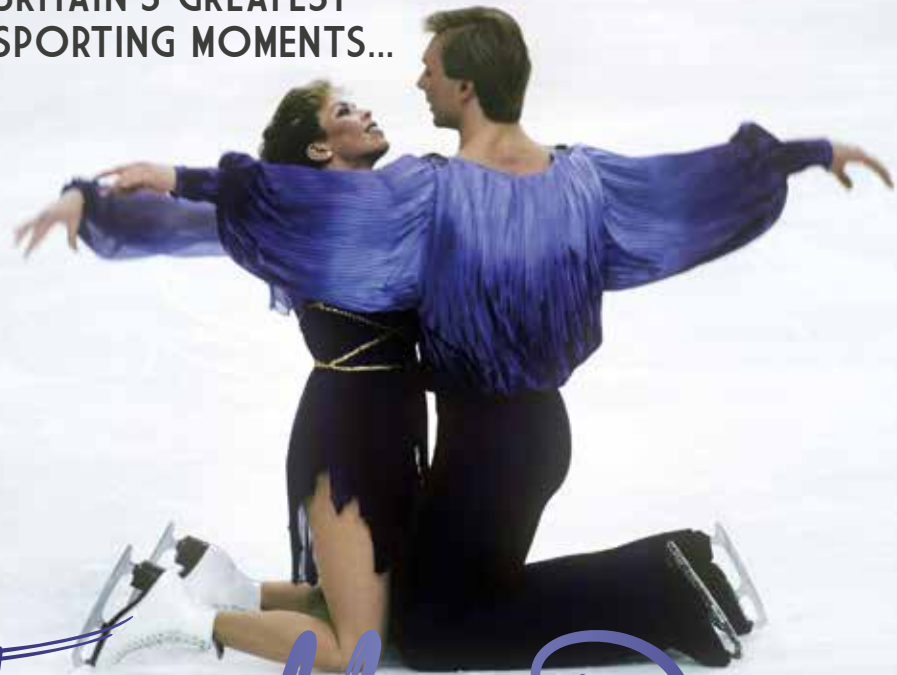


Goal-den great



SPORT

BRITAIN'S GREATEST SPORTING MOMENTS...



Torvill & Dean

Each month we look at significant events in British sporting history. This month, it's 40 years since ice skaters Torvill and Dean were awarded MBEs, but their greatest moment was yet to come.

To an entire generation of terrestrial TV watchers, the mere sound of Ravel's *Bolero* will instantly bring about memories of Jayne Torvill OBE and Christopher Dean OBE's incredible gold-medal-winning routines at both the Olympics and the World Championships in 1984.

At both events, the duo performed a modern artistic masterpiece that captivated a generation of fans. The routine had emotion, precision and drama packed into four and a half minutes of twists, turns, lifts and pirouettes.

At the World Championships, in Ottawa, the couple received a standing ovation from the entire crowd as flowers rained down onto the ice. It was the last amateur performance of the greatest ice dancers the world had ever known, performed with such ease that it belied the incredible technicality of a routine coached by Betty Callaway.

Their score of 13 perfect 6.0s was the most ever

scored by any skaters in competition, as the couple, who had been performing together since 1975, truly went out on top of the world, having taken 11 6.0s at the Olympics two months previously.

While 1984 was ultimately the pinnacle, it's easy to forget how respected and regarded they were before then. Already prolific World and European champions, they had been awarded MBEs previously, with the 40th anniversary of their trip to Buckingham Palace being marked this year.

That these iconic skaters could still push for perfection as amateurs was the ultimate endorsement of their decision to turn professional and begin to earn a living for their art beyond grants and sponsorship. And that has been borne out in the fact that their dedication to ice skating in all its forms rolls on even today, with the pair regulars on our television screens, notably in ITV's *Dancing on Ice*.

Photo credit: Colorsport/Shutterstock

GIANT



AT GIANT LOUGHTON
WE'RE JUST LIKE YOU -
WE'RE RIDERS. WE LOVE
CYCLING AND WE WANT
YOU TO ENJOY IT JUST
AS MUCH AS WE DO.

NEW STOCK ARRIVING WEEKLY

- 5 YEARS FREE SERVICING FOR ANY BIKE PURCHASED IN 2021 (EXCLUDING MY21 RANGE)
- FREE PUNCTURE REPAIRS FOR LIFE RANGE (T&Cs APPLY ORIGINAL OWNER ONLY)
- FREE SAFETY CHECKS FOR LIFE ON ALL NEW ARX AND ATX BIKES
- PRICE MATCH PROMISE - FIND IT CHEAPER ANYWHERE ELSE & WE WILL MATCH THE PRICE
- FREE UK DELIVERY ON ANY IN-STORE PURCHASE (CALL US FOR MORE DETAILS)

GIANT LOUGHTON, 235 High Road, IG10 1AD

T: 0208 508 1384 W: giant-loughton.co.uk E: info@giant-loughton.co.uk

ACCOUNTANT & TAX ADVISORS

ALL THINGS ACCOUNTING

Accounting & tax services, we help with self-assessment tax return, corporation tax return, payroll, VAT return, CIS return & bookkeeping. Call 07539 035537 for free initial consultation.

ACUPUNCTURE

HONG WEI CHINESE MEDICAL

Fully qualified & experienced, specialising in women's health & Fertility. Help with pain relief, emotional disorders, male/female conditions. 01708 454888 | hongweichinesemedicine.co.uk

AUDIO & VISUAL

ULTIMATE AV

We create bespoke systems designed and built especially for you. Small projects to complete home cinema environments. Based in Essex call us on 07531 214339

BEAUTY & NAILS

BEAUTY BY NATASHA KATIE

A local, mobile LVL Technician. Fully qualified level 2 and 3 beauty therapist Babtac insured and approved. 07961 462672

SPECIAL NAILS

Dedicated to provide the best quality nail care for Men & Women. Walk-ins welcome, appointment bookings & gift vouchers available. 01708 442248

THE NAIL STUDIO

Nail Studio lets you switch off and pamper with highly skilled technicians providing top treatments and nail products to meet your every need. 07572 526519

CARPET & UPHOLSTERY

ARWIN CLEANING SERVICES

Over 30 yrs of exp, we can offer a professional, efficient and cost-effective solution for carpet and upholstery, cleaning and maintenance. 07973 417764

CAR & VAN HIRE

SCENIC SELF DRIVE

Your self drive hire specialists. Whether you require modern cars, motorhomes, vans or minibuses. Rest assured we will provide you a professional service 01708 753461

CLEARANCE & WASTE

THE CLEARANCE TEAM

From clearing a room, house or garden to clearing an entire office block. Fast, reliable and affordable. Working 24/7 so you can book us at your convenience 0207 101 3387

COMPUTER REPAIR & I.T.

MAPTEC IT

Your local residential & commercial IT specialists. We can fix your computers, configure email accounts & printers. Setup your Wi-Fi, Internet router & network. 0203 865 7174

ELECTRICAL & WHOLESALERS

CH ELECTRICAL WHOLESALERS

Essex & East London's leading electrical wholesalers providing the trade & public a professional service with access to all leading brands. 01708 730591

ELECTRICIAN

CAPITAL ELECTRICAL SERVICES LTD

Domestic/Commercial, Repairs/Installation, Vehicle Charging Points, Portable Appliance Testing, Fire Alarms, Emergency Lighting, Installation Condition Reports. Call 0208 088 2916

TACK ELECTRICAL

Local experts. Specialising in domestic alterations, fuseboard, additional sockets, Lights, Rewires, Installations and reports for homeowners. No job too small, 0208 088 0779

FINANCIAL SERVICES

PARAGON LEGAL SERVICES LTD

We will write your will for only £49.99+Vat subject to T&Cs. Call FREE on 0800 0747 642 or 01206 544919 Call us for a FREE home appointment. www.paragonlegal.co.uk

FRENCH POLISHING

DC POLISHING

20 Years experience in wood restoration i.e. Furniture, doors, staircases, worktops, minor repairs & FLOOR RESTORATION. 07949 204969 | dcpolishing.church@gmail.com

FURNITURE ASSEMBLY

FLAT PAC KING

Assembly of all flat pack items. London and Essex areas covered Collection and delivery service is available call Jo on 0208 088 2976

FURNITURE RESTORATION

ABBEEY GROUP

Abbeey Group are specialist in creating, repairing & restoring quality furniture & wood surfaces to the highest standard. 01708 741135

KINGS UPHOLSTERY

Handmade sofas & chairs designed especially for you to your required specifications. Also providing in re-upholstery & repair work. 01708 444125

GARDEN SERVICES

JOHN HEARNE

We take care of it all Lawn Mowing, Weeding, Planting, General Tidying, Fence/Shed Painting, Driveway/Patio Pressure Washing and more. Call for details 07908 523101

KINGS CUTS TREE SERVICES

A Huge range of tree services available & offer expert arboricultural advice, ensuring your trees are looked after responsibly. 01708 578030 | 07467 944671

HEALTH & WELLBEING

IMPROVE YOUR SMILE DENTAL PRACTICE

Est. in 1986. Encompassing all needs from basic oral health to advanced dental procedures and high-end cosmetic treatments. New patients welcome. 020 8504 2704

LAUNDRY & DRY CLEANING

THE LAUNDRY MAN

From everyday washing, drying & ironing. We can pretty much launder anything & everything. Self service launderette available. 01708 447710

LOFT CONVERSIONS

HIGH END LOFTS LTD

Beautiful Lofts, Expertly Built. Our "Hand-Holding" service takes you from ideas, through Plans & Building Control, to make your [home alteration] vision a reality 0208 088 2805

MASTICS AND SEALANTS

QUALITY MASTICS LTD

Bathroom and shower mastic joint sealing. Kitchens, windows, floors, external seals around windows. For information. Call 01245 520981

MOBILE PHONES & ACCESSORIES

HORNCHURCH MOBILE PHONES & ACCESSORIES

Support with the latest models of phones & tablets. Screen Repair. Competitive pricing, fast turnaround & satisfaction guaranteed. 01708 469103

PAINTING & DECORATING

PGA DECORATING SPECIALIST

Interior - exterior - paper hanging specialists in Window repair care. 07769 646357 | www.pgadecoratingspecialists.co.uk | pgadecorators@yahoo.co.uk

TRADITIONAL DECORATIONS

We are a family run business specialising in turning your house into a home. Giving advice on current decorating trends. 07737 562406

PLUMBING & HEATING

CMS PLUMBING HEATING & BATHROOMS

Corgi registered, 20+ years' experience, public liability insurance, offering free quotes. No job too small. Based in Gidea Park. Call Craig 07855 589185

KINGS PLUMBING & HEATING

All work undertaken: All bathrooms, boiler servicing & gas safe. 07956 343275 | www.kingsplumbingandheating.co.uk

PROPERTY MAINTENANCE

LILLYWHITE PROPERTY SERVICES

For all building works, full refurbishments & property maintenance inc heating, plumbing, electrical, decorating, flooring, tiling & plastering etc. Call today on 07949 394403

STUART GREEN PROPERTY SOLUTIONS

Property maintenance specialist. Carpentry, painting/ decorating, laminate flooring, bath/shower re-siliconing, gutters cleared/repared, insurance work, PLI. 07917 870879

ROOFING

JIM BARR ROOFING

Exterior cleaning/maintenance. Gutters, Paving, UPVC; cleaned, repaired, renewed. 01708 874816 | 07833 572459

WHITE GOODS & APPLIANCES

T.E.J. DOMESTIC APPLIANCES

Stockists of all major brands. Installation available, FREE local delivery. Free standing & Built In Appliances. Extensive stock. 01708 447752

JOIN THE LISTINGS...

for just **£180** +VAT per year

DISCLAIMER: VISION does not represent or endorse the accuracy or reliability of any of the advertisements, nor the quality of any products, information or other materials displayed, purchased or obtained by any customer as a result of an advertisement or any other information or offer in connection with the service or products. The opinions expressed in articles, reviews and stories are strictly those of the individual authors and do not necessarily reflect the views of VISION.

To advertise call VISION on 0208 088 0386

PUT YOUR BUSINESS IN THE VISION LISTINGS...CALL 0208 088 0386 TODAY

WORDLADDER:SNOW'SLOW,SLOT, PLOT, PLOY, PLAY



PUZZLES & TRIVIA

PUZZLES

Answers: see end of The VISION Listings

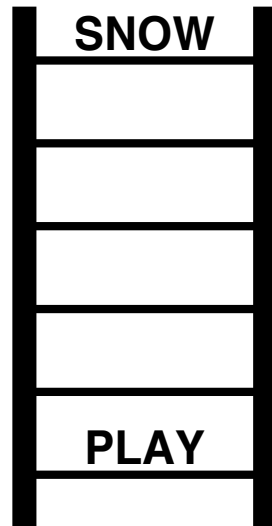
- ▶ AEROPLANE
- ▶ AIRLINE
- ▶ ALTITUDE
- ▶ BAG DROP
- ▶ CHECK-IN
- ▶ DELAY
- ▶ DUTY-FREE
- ▶ FILMS
- ▶ HAND LUGGAGE
- ▶ JET LAG
- ▶ LANDING
- ▶ REFRESHMENTS
- ▶ RUNWAY
- ▶ SEAT BELT
- ▶ SECURITY
- ▶ SHOPS
- ▶ SLEEP
- ▶ SUITCASE
- ▶ TAKE OFF
- ▶ TURBULENCE

N	D	D	T	I	E	C	N	E	L	U	B	R	U	T
N	S	S	E	A	T	B	E	L	T	A	Y	Z	U	O
R	I	Q	A	F	G	K	A	U	R	R	R	P	K	O
E	S	K	U	U	J	E	T	L	A	G	P	W	C	F
T	G	P	C	K	S	S	D	E	L	A	Y	Z	I	T
S	G	A	R	E	F	R	E	S	H	M	E	N	T	S
D	E	D	G	Z	H	T	C	F	F	O	E	K	A	T
A	U	C	P	G	S	C	L	P	E	E	L	S	I	D
L	I	T	U	O	U	E	N	A	L	P	O	R	E	A
T	F	R	Y	R	R	L	S	R	N	U	Z	J	I	A
I	E	I	L	F	I	D	D	S	U	D	T	E	T	F
T	L	E	L	I	R	T	G	N	H	N	I	T	J	D
U	R	J	Q	M	N	E	Y	A	A	O	W	N	A	I
D	J	L	Z	U	S	E	E	E	B	H	P	A	G	A
E	S	U	I	T	C	A	S	E	O	I	X	S	Y	I

DID YOU KNOW?

- ▶ Central Park in New York is one of the world's largest urban parks, covering 843 acres
- ▶ Paris has few skyscraper buildings compared to other cities owing to building height restrictions
- ▶ The Flavian Amphitheatre in Rome became known as the Colosseum because of a colossal statue that is situated nearby
- ▶ Istanbul lies in two continents – part in Europe and part in Asia
- ▶ The world's first electric traffic signal was put into place in Cleveland, Ohio, in 1914
- ▶ It's thought that Amsterdam has more bikes than people
- ▶ More chocolate is bought at Brussels Airport than anywhere else in the world

WORD LADDER



THE AIM: Change the word at the top of the ladder one letter at a time to make the word at the bottom.

HOW TO: Change one letter on each step to make a new word. By the time you reach the end, you should have created the new word.

DO NOT rearrange the order of the letters.

TIP: There is usually more than one way to solve this puzzle.



THE NUMBER ONE BOXING ACADEMY FOR ALL ABILITIES

- ▶ BOXING ACADEMY
- ▶ 1-ON-1 SESSIONS
- ▶ KIDS LESSONS
- ▶ LADIES GROUP SESSIONS



Dennis & Dyer Boxing Academy

The Landmark, 30 Barrington Green, Loughton, Essex, IG10 2BA
www.dennisanddyerboxingacademy.co.uk | 0208 088 3491
info@dennisanddyerboxingacademy.co.uk

Follow us on Instagram @dennisanddyerba to stay up to date!



WOODFORD HOUSE DENTAL PRACTICE

If any of these are
YOU

- Uncomfortable mouth
- Afraid to smile and laugh openly
- Avoiding foods you used to enjoy
- Loose dentures or missing teeth
- Worried how you look

...we can help!



Let Dr Malik bring those good times back for you with the latest technology, the best care and more than 30 years' experience. Book a **FREE VIRTUAL CONSULTATION** now.

020 8504 2704
improveyourmile.co.uk

162 HIGH ROAD WOODFORD GREEN IG8 9EF

EXPERIENCE YOU CAN TRUST

