

**FIVE
HOME
DÉCOR
TRENDS**

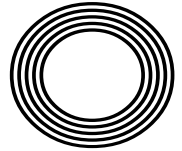
**HOW TO
MAKE
POTATO
MILK**

LEARN HOW TO
become a crypto trader

A tribute to the iconic actress
JUNE BROWN OBE

Denise
VAN OUTEN

The actress and presenter marking 25 years on our screens



FREE

Photo credit: Brett Cove/SOPA Images/
Shutterstock



AEG | Single Cooker Oven
BES255011M



- Add Steam for Crispier Baking
 - New Convection System 'Hot Air'
 - Additional Heating Ring, Timer Display
 - Dimensions: H59.4xW59.5xD56.7cm
- 2 Year Warranty

Only
£439.⁹⁹

AEG | Built In Single Oven
BPS55IE20M



- Fan Oven with 11 Programmes
 - Programmable Timer
 - Pyrolytic Cleaning Function
 - Dimensions: H59xW56xD55cm
- 2 Year Warranty
A+ Energy Rating

Now Only
£659.⁹⁹
Was £689.99

**£30
Save**



Editor's notes...

MAY 2022



Brett Shohet, Editor

Hello and welcome to this month's edition of **VISION** SouthWoodFord. Last month was the first time our magazines went 100 per cent recyclable. It was great to receive so much positive feedback on this from our readers. It's important we all do our bit to help the environment, and to know that our readers support us in this endeavour makes all the hard work to get to this stage worthwhile.

This month, I've been trying to inform our readers and followers about what goes on behind the scenes at a magazine. Often, people only see the glamorous side of working in publishing - dressing up to attend events, and reading the final polished product. What they don't see is when we're standing in the pouring rain, loading magazines into the back of the car, and working evenings and weekends to meet deadlines. But this is all part of being a business owner, and it's all worth it when the hard work pays off.

Here at **VISION**, we're continuing to go from strength to strength, and alongside this we're looking to grow our team. If you're interested in a sales position and being part of a friendly team, please do get in touch.

I hope you had a wonderful Easter and got to spend time with family and friends. Coming up next month is the Queen's Platinum Jubilee, so keep an eye on our social media for events taking place in your local area.

Brett Shohet

This is your town's hyperlocal magazine, delivering to homes and businesses every month.

HOME & DIY | GARDENING | PETS | HEALTH & FITNESS | BEAUTY | FASHION | HISTORY | LOCAL NEWS | FOOD & DRINK | TRAVEL | BUSINESS & PROPERTY | SPORT | PUZZLES | MOTORING | KIDS | WHAT'S ON | TECHNOLOGY | THE LISTINGS

CONTACT US: www.visionmagessex.com | woodford@visionmag.co.uk | 0208 088 0386

[@visionmagessex](https://twitter.com/visionmagessex) | [@visionmagessex](https://www.instagram.com/visionmagessex) | [Vision Magazine Essex](https://www.facebook.com/VisionMagazineEssex)

CONTRIBUTORS | Tabatha Fabray, Christina Pantelly

At the time of print all content in **VISION** was relevant and up to date according to COVID-19 government guidelines All pages are recyclable



NOW OPEN ON
EPPING HIGH STREET



We supply and install windows and doors.

01992 276 046
essex@homehubgroup.co.uk

homehubgroup.co.uk
 @HomeHubGroup



The Lane

Fine Indian Cuisine

New generation masterchefs distill the purest methods of preparing traditional, fine Indian cuisine and fuse with contemporary innovation.

Steeped with only the freshest spices, chilli peppers and subtlest of flavourings, favourite menus and classic dishes are redefined to mouth-watering, modern stylish tastes.

Stepping into a sensuous play of interior styling where cool elegant lines meet warm natural surfaces, The Lane offers an intriguing dining space, airy and light, yet also satisfyingly intimate.

EXCLUSIVE FOOD BANQUET NIGHT

(Tuesday's only)

5 course meal, any dish from the menu ONLY £14.95

Any starter | Any main course | Any side dish

Rice or Naan | Filtered coffee

(Some fish dishes extra £3.50, Duck & King Prawn extra £3.50, Lamb shank £3.50. (Excluding Shahin and Sayed)

EXCLUSIVE **£10 OFF**
DINING IN VOUCHER

*Excludes drinks and desserts. Not to be used in conjunction with any other offer. Excluding special days and events. One voucher per table. Expires 30th November 2022.

EXCLUSIVE **10% OFF 15% OFF**
TAKEAWAY VOUCHER DELIVERIES COLLECTIONS

*Excludes drinks and desserts. Not to be used in conjunction with any other offer. Excluding special days and events. Expires 30th November 2022.

DUE TO AN OVERWHELMING RESPONSE TO OUR REOPENING, PLEASE KINDLY BOOK IN ADVANCE TO AVOID ANY DISAPPOINTMENT.



TEL: **020 8989 1500**
www.thelanevanstead.co.uk
82 Nightingale Lane London E11 2EZ



Golden BROWN

BIDDING FAREWELL TO JUNE BROWN OBE, WHO DEPARTED FOR A NEW STAGE IN APRIL

Dot Cotton, played by June Brown OBE, was the cigarette-smoking, crackly voiced hypochondriac who combined a hard edge with sultry soft compassion, enveloping and influencing a bounty of characters who stepped foot onto the hallowed, concrete East London streets of Albert Square.

So synonymous was the actress with the role that few would liken her to anything else on screen. She was *EastEnders*' longest-serving character, having appeared in the opening episodes way back in 1985. And after a four-year break at the start of the 1990s, she returned to the fray for a further two decades.

Alongside the likes of Dame Barbara Windsor DBE (Peggy Mitchell), Wendy Richard MBE (Pauline Fowler), Pam St Clement (Pat Butcher) and Letitia Dean (Sharon Watts), Brown represented a golden era of forceful female characters around the Square – iconic for a girl-power generation that was a world away from the pop stars and film actors the media would have us believe were fuelling the charge for equality.

And yet June Brown was about so much more than just one character. In the years after the cessation of the Second World War, she appeared at the National Theatre, and as recently as 2009 was on the West End stage in *Calendar Girls*, for which she confidently stripped for the role.

What does link Dot Cotton to the actress herself is a strength of purpose and poise.

"I have always believed in saying how I feel," she said in an interview last year. "Life is too short to hold back and I'm not sure I have long left. And I have always been this way.

'I will always celebrate my life... I have been very lucky, but I have tried my hardest, always, and I hope I've made people happy along the way'

"Ultimately, I think people respect you more if you are upfront and honest with them. Of course, you may offend them at the start, but honesty in the end it's admirable, and as human beings we're not cut out to agree with each other all of the time."

Such assuredness clearly enamoured June Brown to a bevy of directors, producers and casting agents. Born in Needham Market, Suffolk, she was evacuated to Leicester during the war, and joined the Old Vic company when peace was restored. Thus began an acting career that took her from Shakespeare to *Dixon of Dock Green*, TV plays through touring theatre productions, fantasy adventure as Nannie Slagg in *Gormenghast* to Lady Eleanor in the Time Warrior series of *Doctor Who*. She even had three episodes as the timid Mrs Parsons in *Coronation Street*.

Brown was awarded an MBE at Buckingham Palace in 2008, followed by an OBE in this year's New Year Honours. She is survived by five children – Chloe, William, Naomi, Sophie and Louise – from her second marriage, to actor Robert Arnold, who died in 2003. She had all her children in her forties – another daughter died in childbirth.

While *EastEnders* was the project that defined the June Brown we will remember, this was ultimately someone who gave so much across seven decades as an actress, and whose efforts touched so many.

"I will always celebrate my life," she said. "I have been very lucky, but I have tried my hardest, always, and I hope I've made people happy along the way."



Long live THE QUEEN

On February 6 this year, Her Majesty The Queen became the first British monarch to celebrate a Platinum Jubilee, marking 70 years of service.

So, what is the secret to her success and her longevity? Let's take a closer look.

REGULAR MEDICAL SCREENINGS

Of course, The Queen has access to some of the best medical care that the country has to offer, and she takes full advantage of this with regular preventative screenings and check-ups.

LONG WALKS

The Queen knows the importance of regular exercise, and the royal family are known for their love of long walks in the grounds of Balmoral. The Queen has always been an avid walker, taking after The Queen Mother.

MENTAL STIMULATION

The mind is just as important as the body when it comes to longevity, and The Queen is very aware of keeping herself mentally astute. Committed to staying abreast of current issues, she has previously visited Google headquarters, showing an interest in the internet and emailing her grandchildren.

MAINTAINING A CONSTANT WEIGHT

The Queen has never appeared to be overweight and has benefited from freshly prepared meals which include vegetables, game and poultry provided by the estate. Fish is also a staple on the royal menu, and The Prince of Wales is a long-time leader in the organic farming movement.

DAILY CUPS OF TEA

High tea is enjoyed at precisely 5pm and is a British ritual that is embraced by Her Majesty. Tea has numerous health benefits, including being antioxidant, anti-inflammatory and anti-cancer. The Queen is also said to credit her peachy complexion to barley water flavoured with lemon and other citrus fruits.

THE OCCASIONAL TIPPLE

Small amounts of alcohol appear to have beneficial effects on the heart and brain, and The Queen has been honest about her enjoyment of German sweet wine, as well as gin and Dubonnet.



**WE GUARANTEE OUR CUSTOMERS
A FRIENDLY, RELIABLE AND
PROFESSIONAL SERVICE**



Empire UPVC and Roofing Specialists independently trade throughout Hertfordshire and a 40 mile radius from our office in Nazeing.

- ✓ Felt, Tile & Slate Roofing
- ✓ Liquid Rubber Roofing
- ✓ Fibreglass Roofing
- ✓ Roofing Leadwork
- ✓ All Roof Windows
- ✓ All Roofing Repairs & Maintenance
- ✓ Moss Removal
- ✓ Gutter Cleaning & Unblocking
- ✓ UPVC Fascias, Soffits & Guttering
- ✓ UPVC & Hardie Plank Cladding

Office: 0208 088 3259
office@empireupvcandroofing.co.uk
www.empireupvcandroofing.co.uk

Visit Our Showroom at:
Unit 50 Hillgrove Business Park
Nazeing New Road, EN9 2HB



Checkatrade.com

FULLY INSURED





GET READY TO

ice-roll



The beauty world is currently going crazy for cold, with a massive surge in popularity for treatments such as ice baths, cryotherapy and cool sculpting.

So, what is the latest freezing fashion? Introducing ice-rolling, the new skincare technique that promises to tighten and brighten in an instant.

WHAT IS ICE-ROLLING?

The process of ice-rolling is actually very simple and involves massaging your face with an ice-roller. This nifty gadget contains a mixture of gel and water which turns to ice once placed in the freezer. However, unlike normal ice, which when placed on the face melts in a matter of seconds, the ice within an ice-roller will stay solid for longer so you have more time to reap the rewards.

HOW DO I USE AN ICE-ROLLER?

- For best results:
1. Roll the device in a zigzag motion up and down your forehead and then from left to right.
 2. Move down to beside your nose and lower cheek, working upwards and applying a little pressure.

3. Roll outwards on the sides of your mouth and then down under your chin.
4. Finish with your neck.
5. An ice-roller can also be used on your collarbone and upper chest if desired.

WHAT ARE THE BENEFITS OF USING AN ICE-ROLLER?

There are multiple benefits to using an ice-roller, both in terms of the massage technique used and the application of cold. These include:

- > Boosts circulation
- > Restores radiance
- > Encourages optimum skin cell function
- > Reduces puffiness and redness
- > Reduces the appearance of broken capillaries
- > Decreases any inflammation
- > Tightens the skin

DOES ICE-ROLLING HURT?

Although some cold therapies can be a little bit uncomfortable, ice-rolling is not one of them. However, it is recommended that you do not leave the roller on one area for too long as it will get very cold, and this can cause discomfort.



Flip OFF

A summer footwear essential for many, you may be surprised to learn just how bad this flimsy footwear can be for your overall foot health.

falling off, which could lead to dangerous driving. It is, however, illegal to ride a motorcycle while wearing flip flops.

RISK OF SPRAINS: Although flip flops are fine for the occasional trip to the beach, when worn all day, they can cause your feet to start to turn towards the middle of your body instead of staying straight. This can put you at a much greater risk of spraining your ankle.

EXPOSURE TO SHARP OBJECTS: Flip flops are not known for their sturdiness, and as they become worn down, you may find your feet on the receiving end of a sharp nail or piece of glass.

LACK OF SUPPORT: Flip flops provide a distinct lack of arch support, which can cause your plantar (the band of tissue in the arch of your foot) to start to pull. This can lead to a painful condition called plantar fasciitis, which may need a combination of physical therapy, anti-inflammatory medications and possibly even cortisol injections to treat.

Footwear styles that are healthier AND more stylish than flip flops: Sandals | Espadrilles | Woven slip-ons | Boat shoes | Penny loafers.

TWISTING OF TOES: As the name suggests, flip flops tend to be floppy, meaning you will often have to curl your toes down to stop them flying off while you walk. Over time, this can mean the toes stay fixed in this curled position, causing an affliction called hammertoe.

COULD CAUSE DANGEROUS DRIVING: Although there is no law in the UK that explicitly bans wearing flip flops while driving, it does put you at higher risk of an accident. Their lightweight design makes them prone to





Sun, Sea and Sand

THE SECRET TO BETTER HEALTH?

When the sun's out, there's one place we all want to go – the beach. A trip to the beach gives us those feel-good vibes, reminding us of holidays and childhood outings. But did you know that a visit to the beach can give you a health boost? Discover some of the health benefits of a trip to the beach.

It helps you get your dose of vitamin D
Vitamin D is known for boosting your immune system and maintaining strong teeth and bones. And one of the best ways to get it is from the sun. A trip to the beach on a sunny day can help you get a dose of vitamin D that can do wonders for your health.

Sunlight is good for your sleep
Getting outdoors during the day is good for regulating your serotonin levels. This can help you sleep easier, enabling you to get into a sleep pattern to make sure you get the rest you need. Spending time outdoors is also good for your mental health, helping to reduce depression and other conditions.

Walking on the sand is great for fitness
Taking a walk on sand can be a big calorie

burner. It's harder to walk on sand than on concrete or other surfaces, so you'll burn energy as you move. You could even try running on the sand for an even bigger workout.

If you're feeling brave, jump in the sea and enjoy a swim. A lot of people find this invigorating and great for their health. The seawater can also help alleviate symptoms of arthritis and even skin conditions like eczema and psoriasis.

The sea air could help you relax
Breathing in the sea air could be just what you need to help you relax. The negative ions have a calming effect, helping to ease stress and boost your mood. The sea air has also been said to help reduce the symptoms of asthma, improve allergies and alleviate respiratory problems.

Next time you're feeling down and in need of a quick pick-me-up, head to your nearest beach and take advantage of this natural health booster.



FRIDAY • 27 MAY • 11am - 2.30pm

PLATINUM JUBILEE CHARITY COFFEE MORNING



Raising funds and awareness for **Stroke & SEN** Association 



Raffle tickets on sale in the practice
GREAT PRIZES TO BE WON donated by very generous local businesses - only **£1 per ticket**

COFFEE, TEA AND CAKE FOR £1

LIVE MUSIC FROM  CHOIR



162 High Road • Woodford Green • IG8 9EF
020 8504 2704 improveyoursmile.co.uk



EXPERIENCE YOU CAN TRUST

PHYSIO AT YOURS

OUR AIM IS TO GET YOU AS INDEPENDENT AS POSSIBLE, AS QUICKLY AS POSSIBLE

We are specialist Physiotherapists with years of experience, skilled at delivering an excellent quality service in the comfort of your own home, as soon as you need it.

Our Physiotherapists specialise in a range of areas so please do not hesitate to contact us to organise an assessment.

- During & after Cancer ● Pre & Post Surgery ● Over Sixties
- Neurological Conditions ● Pain Management
- Orthopaedic Conditions ● Amputees

For more information contact us on:
 m: 07821 597 071 | e: info@physioatyours.co.uk
www.physioatyours.co.uk



CRAFT BEER ORGANIC & NATURAL WINE FINE CIDERS ARTISAN SPIRITS COCKTAILS PRIVATE TASTINGS VENUE HIRE

Use 'VISION2022' for 15% off your first online order or instore

NEW BREED

Visit the shop in Loughton or our website for nationwide delivery
newbreedbottleshop.com | @newbreedbottleshop

287 High Road, Loughton, IG10 1AH | 0208 502 1388



HEALTH & FITNESS

Relieve ACID REFLUX without medication

That all too familiar burning sensation in your chest coupled with persistent acid regurgitation? Yes, we are talking about the nightmare that is acid reflux. It affects as many as one in four adults in the UK, but you don't have to turn to shop-bought medications when acid reflux rears its ugly head.

EAT SLOWLY AND SPARINGLY

If you are prone to grabbing a quick sandwich at lunch or, even worse, not eating all day and then consuming a huge meal in the evening, then you are much more likely to suffer from acid reflux. Instead, aim to eat little and often, and as slowly as you can.

SIT UPRIGHT AFTER EATING

While lying down on the sofa after a big meal is one of life's little joys, this is not a good idea if you suffer from acid reflux. Instead, remain upright directly after eating and avoid eating anything just before bedtime.

AVOID CERTAIN FOODS

Some foods are much more likely to trigger acid reflux and should be avoided, including fatty foods, tomatoes, onions, garlic, chocolate and anything spicy. You should also limit your intake of tea, coffee and alcohol.

DRINK MILK

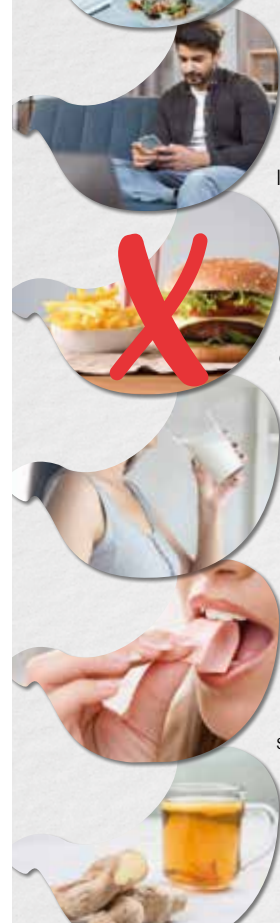
One of the most popular natural remedies for acid reflux, milk is alkaline, which means it can feel soothing to drink. However, it can worsen heartburn once digestion begins. To prevent this, opt for lower-fat milk where possible.

CHEW GUM

The act of chewing gum stimulates the production of saliva, which is another alkaline substance. This can help reduce the symptoms of acid reflux and help to push your stomach contents back into the stomach.

SIP GINGER TEA

Ginger root has been used for centuries to cure stomach aches and nausea and can help to reduce acid reflux. Sip ginger tea slowly for best results.





POTATO MILK

THE NEW VEGAN AND DAIRY-FREE ALTERNATIVE

Potato milk? As in milk from potatoes? While it may seem weird, potato milk – which is actually just starchy water that resembles milk – is packed full of nutrients and can make a great alternative to dairy milk.

WHAT IS POTATO MILK AND WHAT DOES IT TASTE LIKE?

Potato milk is a creamy, milk-like liquid that is made from potatoes. You can find potato milk that is sweetened and unsweetened, with the latter tasting slightly salty. In terms of consistency and colour, it is more like soy milk than dairy milk and offers both the creaminess and fattiness you expect from a milk product.

WHAT ARE THE HEALTH BENEFITS OF POTATO MILK?

- Low in sugar and saturated fat
- Contains vitamin C
- Contains fibre
- Rich in antioxidants
- Can enhance digestion
- Good for vegans and those with dairy allergies or intolerances

WHY CHOOSE POTATO MILK?

The main selling point of potato milk as a vegan and dairy-free alternative is its sustainability credentials. Growing potatoes is twice as land-efficient as growing oats, uses 56 times less water than growing almonds, and has a much smaller climate footprint than dairy milk.

HOW TO MAKE POTATO MILK

You can buy potato milk from some supermarkets (it can be found under the brand name DUG) or you could try making your own with the below recipe:

- Boil 1½ cups of sliced potatoes in 4 cups of water until tender but not falling apart.
- Pour the leftover liquid into a blender.
- Add the cooked potato with 1 tsp vanilla extract, ¼ cup of almonds and 2 tbsp of honey or maple syrup to sweeten, and blend well.
- Strain your potato milk through a fine-mesh sieve, cheesecloth or tea towel – you may need to do this twice.



Spring Bottomless Brunch On the terrace

Every Saturday

Sittings anytime between 12pm - 2pm

£29.95 2 courses (starter & main)

£39.95 90 mins bottomless Prosecco

£44.95 90 mins Bottomless Cocktails

DJ playing from (12-4pm)





Come & enjoy the authentic taste of the Mediterranean

Lunch menu

£17.00 two course

£20.00 three course

*Monday to Saturday
from midday to 5pm*

**Live music
every Friday**

Sunday roast

*We cater for any occasion
Private room for private parties*

Contact us to book on 020 8500 1678

infoatlinguinerestaurant@gmail.com @hainaultgolfclub

Hainault Golf Club, Romford Road, Chigwell, IG7 4QW



Go Wild

Wild garlic can be enjoyed raw or cooked and has one of the longest seasons of all wild plants. The ideal vegetable for first-time foragers, this milder variety of garlic can be added to a whole host of dishes.

WHAT DOES WILD GARLIC TASTE LIKE?

All parts of the wild garlic plant are safe to eat, including the bulb, leaves and flowers. Wild garlic is less pungent than standard garlic cloves, delivering a sweeter and more delicate taste. If you pick a wild garlic leaf and gently squeeze it, you will instantly be met with the distinctive garlicky aroma.

WHERE TO FIND WILD GARLIC

Wild garlic grows in damp woodlands and forests across the UK and throughout Europe and is often found near rivers or streams where the ground is damp. Wild garlic is recognisable by its long and

pointed green leaves and white clustered flowers. It typically grows in dense clumps.

WHEN IS WILD GARLIC IN SEASON?

Wild garlic leaves appear in March and are best picked when young. These leaves are delicious added to soups, sauces and pesto. From April to June, the flowers start to emerge and these make a great addition to salads and sandwiches.

WHAT TO DO WITH WILD GARLIC

Wild garlic pesto | Wild garlic and nettle soup | Wild garlic butter | Wild garlic chicken kiev | Wild garlic and watercress tart | Baked new potatoes with wilted wild garlic

HOW TO STORE WILD GARLIC

Wild garlic can be stored in an airtight container in the fridge for 1-2 days. If you want to keep your wild garlic fresh for longer, place the stems in a glass of water and place in the fridge. Wild garlic is suitable for freezing, Simply wash and dry, and then place in a freezer bag and freeze.



FOOD & DRINK



If you are a dog lover, who enjoys learning something new, then this volunteer role could be a perfect fit for you.

Start your puppy raising journey today at guidedogs.org.uk/puppyraiser

WANT MORE BUSINESS?

Call **0208 088 0386** today to advertise



LIBAN
CAFE

SUNNY SIDE UP NEW BRUNCH MENU NOW AVAILABLE



WEDNESDAY - SUNDAY 9AM - 4PM
JOIN US AND TRY OUR ALL NEW BRUNCH MENU
WALK IN ONLY/ SUBJECT TO AVAILABILITY

Like Life

190 GEORGE LANE, SOUTH WOODFORD LONDON E18 1AY
WWW.LIBANTAPAS.COM

HOME DÉCOR TRENDS 2022



HOME & DIY



Looking to update your interior design for summer? Discover the top five home décor trends for 2022. Plus, our top tips on how you can incorporate them into your home.



ARTIFICIAL GREEN WALL: Going green has never been more on trend, with sales of houseplants surging since the start of the pandemic. Perfect for those who want to bring the outdoors in, you can create a faux foliage wall using affordable, artificial succulents and foliage and a basic box frame.



VELVET FURNISHINGS: If you love the style of the 1970s, then you'll be pleased to hear that velvet is making a huge comeback in 2022. Although this opulent material went out of fashion when minimalism dominated the interior design world, it has now returned to favour, and is bolder and brighter than ever before.



AUTHENTIC DESIGNS: Handmade home décor items are becoming increasingly sought after, as homeowners look for a more personalised and authentic-looking home. From bespoke furniture to heritage collections, anything made on a smaller scale is in this year. They may be more expensive, but one-of-a-kind items will transcend any trends and last a lifetime.



ROYALCORE: Spurred on by the likes of *Bridgerton* and *The Crown*, royalcore embodies everything ornate and aristocratic. Whether you opt for an abundance of gold, intricate detailing or rich colour schemes involving purples, blues and reds, this is one TikTok trend that isn't going away any time soon.



SOFTER SHAPES: Say goodbye to straight lines and sharp angles and hello to rounder, more feminine shapes. Referred to as the 'curve comeback', look for rounded chairs, tables and sideboards. Providing a natural feel, softer shapes are both more practical and aesthetically pleasing.



Colourwashing

THE INTERIOR DECOR TREND YOU NEED TO TRY

Colourwashing is one of the latest interior trends to explode onto Instagram, Pinterest and other corners of the internet. It's a striking paint trend that creates a rustic, vintage feel, yet looks right at home in even the most modern spaces. Get ready to explore the art of colourwashing and how to try it in your home.

WHAT IS COLOURWASHING?

Colourwashing, also known as faux glaze painting, is a paint technique in which a layer of diluted paint is applied over a base colour to create a washed look. It's a modern and colourful take on a classic whitewash and is easy to create yourself.

WHAT YOU NEED TO DO A COLOURWASH

To create a colourwash at home, you will need:

- > Two types of paint, a lighter and a darker shade – one serving as your base, and the other to create the wash effect. It's up to you whether or not to use the light or dark shade as your base.
- > A transparent water-based glaze. You could also use water.
- > A roller or brush to apply your base colour.

- > Either a sponge or a soft brush to paint the wash.

HOW TO DO A COLOURWASH

- > After prepping your wall by using sugar soap to clean the area, you'll need to paint either one or two coats of your base layer. Allow to dry.
- > Mix the colourwash using four parts glaze to one part paint.
- > Apply your colourwash in small sections using a brush or sponge, spreading quickly once applied. You can either use a swirling motion, a criss-cross pattern or random strokes to create your desired effect.
- > Leave to dry, and apply a second coat if desired.

This is one of the most basic colourwashing methods, but you could try other methods to help you achieve the desired effect. Colourwashing creates an on-trend look and is a stylish take on the classic colour block wall.

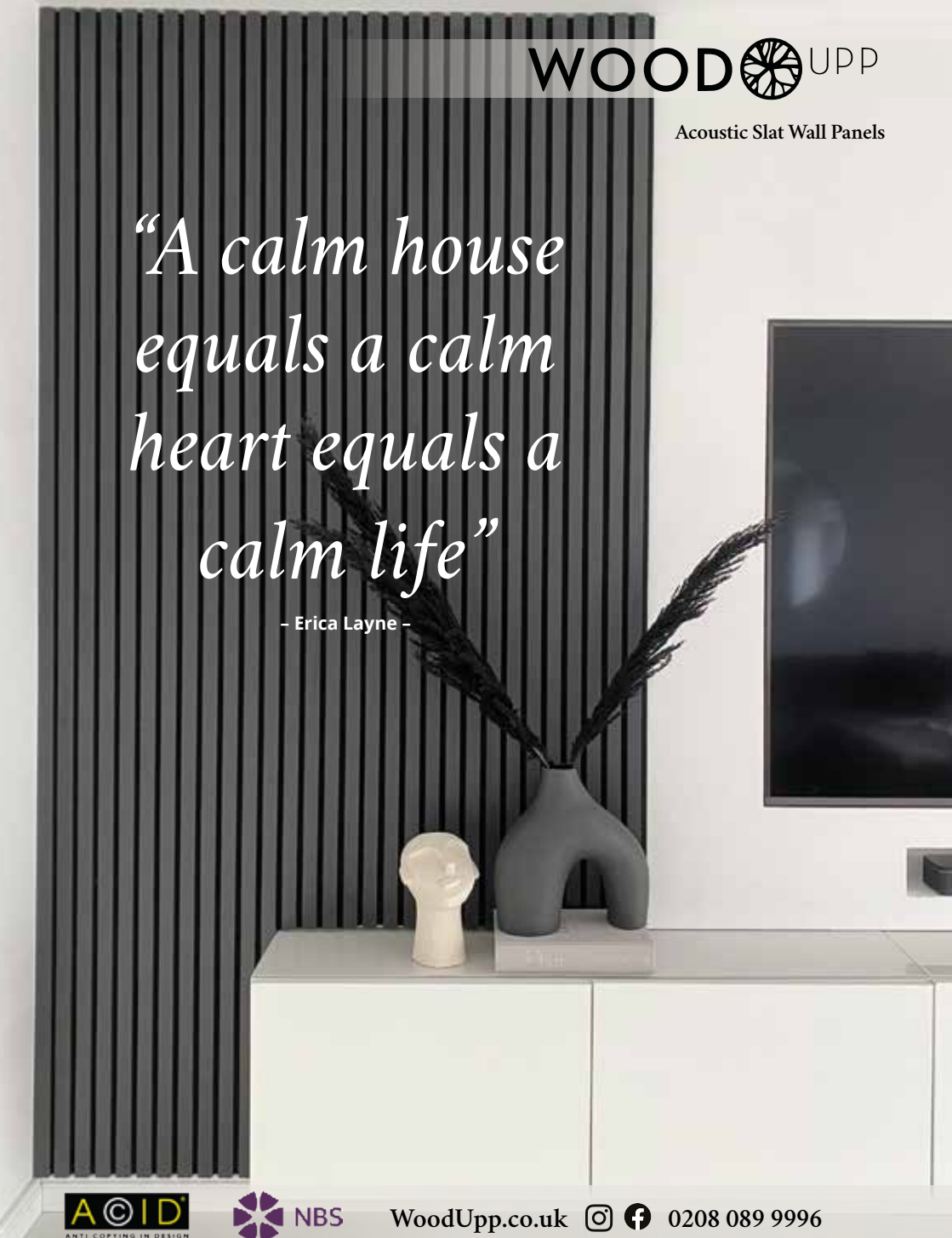


Photo credit: Brand - Zinc Textiles, Stylist - Sarah Harwood, Photographer - Alex J Curtis via www.livingetc.com

Acoustic Slat Wall Panels

"A calm house equals a calm heart equals a calm life"

- Erica Layne -





Penny FOR YOUR THOUGHTS

HOW THE SIMPLE PENNY BLACK STAMP KICKSTARTED A SOCIAL REVOLUTION IN THE UK

In 2022, the Penny Black is one of the most sought-after stamps philatelists seek out. Not just expensive, it also represents a cornerstone in the world of collecting; it's something of a rite of passage to own one.

Yet for all its perceived collectable and material worth today – the first Penny Black stamp was recently listed by Sotheby's with a possible sale price of up to £6million, although it failed to sell – the name itself reveals very simple beginnings.

The stamp, impeccable in its design and rich in simplicity, and bearing the image of Queen Victoria in profile, was a communication revolution upon its launch on May 6, 1840.

Quite simply, it enabled anyone to send a letter weighing up to half an ounce to any destination in the country, for just one penny.

It opened up a platform for people in all locations and of all social classes to be able to connect with

one another – previously, the idea of sending a letter was complex and expensive, with the recipient required to pay to receive mail.

This dawning of social communication was brought about by Robert Wallace, an MP who led a commission on postal reform, and was brought to life by Sir Rowland Hill in the form of prepaid postage. As well as enabling all levels of society to communicate with each other, it led to a huge boom in business and commerciality.

In total, 68 million of these stamps were used – that's a considerable number given that the entire UK population in 1840 was around a quarter of that figure.

These days, our postal system is complex, convoluted and extremely competitive. While the Penny Black had simplicity at its heart, it also represents the kind of revolution that modern postal service providers will never be able to replicate.

AIR CONDITIONING | VENTILATION | HEAT RECOVERY
AIR SOURCE HEAT PUMP TECHNOLOGY



KEEP COOL THIS SUMMER

Life is a breeze with Ecofactors bespoke air conditioning.

Design | Installation | Repair

Low emission air conditioning

Government grants available



BOOK YOUR **FREE CONSULTATION** VIA OUR WEBSITE [ECOFACTOR.CO.UK](http://ecofactor.co.uk)



WATCH OUT(EN) *Denise is about*

CELEBRATING THE STAR QUALITY OF DENISE VAN OUTEN, WHO MARKS 25 YEARS ON OUR SCREENS

Denise van Outen is Essex's doyenne of design – a star who has risen up through the soap world and carved a brilliant niche in mainstream entertainment, plus retained a sense of dignity when things have gone against her.

In many ways, she is an exemplary example of someone who has successfully crossed over the changing face of the celebrity world. When she first appeared on our screens, as a presenter on Saturday morning kids' TV show *Massive!*, van Outen instantly caught the eye. She'd progressed through the famous Sylvia Young Theatre School and worked with the Royal Shakespeare Company before landing that debut role. While she was also seen on the mean streets of Sun Hill on *The Bill*, acting roles would quickly take a back seat when the opportunity to host *The Big Breakfast* came about in 1997.

In the post-Chris Evans/Gaby Roslin era, van Outen excelled opposite Johnny Vaughan, and the pair would reunite a decade later on Capital Radio, even if the relationship between the two was eventually to sour.

That disintegration has been one of a number of setbacks the Basildon-born star has recovered from. Her marriage to actor Lee Mead – who was victor of the *Any Dream Will Do* talent show for which van Outen was a judge – ended in 2015, although the couple had split up two years previously. They have a daughter together, named Betsy.

Most recently, the presenter was in a long-term relationship with sparky commodities trader Eddie Boxshall. She has also famously dated Jamiroquai frontman, Jay Kay.

In the interim, though, van Outen has excelled in every way. By her own admission, her autobiography, *A Bit of Me*, released in March, was a candid and poignant reminder of the successes in her life.

She said: "I actually found writing it very therapeutic – it reminded me how much I had done, and at a time when I was perhaps fixating on the things that didn't go to plan, made me think about so much that has gone well.

"I feel we should all take time to look back on positive elements of what we do and who we are. It's good for the soul and it gives us energy to move forward and be positive."

At present, van Outen is on tour with *The Masked Singer*, ITV's hit talent show on which she played Fox. The bravery to put herself in the spotlight and under pressure is at the entertainer's heart – across *Strictly Come Dancing*, *Dancing on Ice* and *Celebrity Gogglebox*, the comfort, charisma and 'girl next door' image is one viewers love.

"On television and in life, I just strive to be myself. You need self-worth and self-respect in what you do, and you need to focus on retaining and celebrating that at all times.

"The point where you feel you are losing that is the point at which you need to adjust and evolve."

While we applaud van Outen's bravery in making change, in many ways we'd like her to stay just the way she is.



LOCAL NEWS

from your neighbourhood



Photo credit: Google Maps

Resident fined after illegally dumping rubbish

A Woodford Green resident who failed to provide information explaining how her rubbish ended up illegally dumped in a car park in Redbridge has been handed a hefty fine.

The case was brought before Barkingside Magistrates' Court by Redbridge Council after its enforcement officers traced a fly-tip containing bags of waste, cardboard boxes and parts of an artificial Christmas tree back to Sara Adadha Qattouch from Woodford Green.

The illegally discarded rubbish had been dumped in the car park at Sir James Hawkey Hall, Broomhill Road, Woodford Green (pictured).

Despite repeated council requests, Qattouch failed

to respond to a legal notice requiring her to account for her waste being found at the site.

She was successfully prosecuted in court under the Environmental Protection Act 1990 for failing to provide information to the council in relation to the fly-tip and was handed a fine, as well as court and council costs totalling nearly £1,200.

The prosecution is part of a range of initiatives being deployed by the council to tackle fly-tipping in Redbridge, including the recent launch of Redbridge Wall of Shame – a new microsite dedicated to identifying culprits caught on camera dumping their rubbish on the borough's streets.

To view the clips, visit wallofshame.redbridge.gov.uk



Designing Your Home Into Reality

Virtue Architecture has been providing home owners full design services for over 10 years. With over 200 approved projects we are Loft and Extension Specialists.

Contact us now for a Free Quote or Advice

0208 088 2958
 bilal@virtuearchitecture.co.uk
 www.virtuearchitecture.co.uk

[f](#) [in](#) [@](#)

VIRTUE
ARCHITECTURE



WARDROBES ■ BUILT IN WARDROBES ■ FITTED KITCHENS ■ SLIDING WARDROBES

LUXURY BESPOKE WARDROBES & KITCHENS

Made to order in the UK ■ 10 Year Product Guarantee

Soft Close Doors As Standard ■ We fit wardrobes in less than 2-3 weeks

CONTACT US
 01708 756789 ■ 0208 088 0876
 www.bestfittedwardrobe.co.uk
 info@bestfittedwardrobe.co.uk



BEST FITTED WARDROBE

Best Fitted Wardrobe Ltd Unit A3, Seedbed Centre, Davidson Way, RM7 0AZ [f](#) [@](#)



Photo credit: Met Police, Google Maps

Plans for new police centre being considered

A definitive decision on establishing a new police centre in Woodford has yet to be taken, according to the Met Police.

Detective Superintendent Paul Trevers (pictured left), who is in charge of local policing in East London, says police are continuing to assess creating a new centre.

Woodford Police Station ceased operations in 2013 but continued to serve as a site for Safer Neighbourhood Teams until January of this year.

Det Supt Trevers said: "We continue to listen for feedback from our local partners, the council and MPs on ways to improve access to officers in the borough. One option we are considering is a shared policing hub in Woodford. We continue to assess this option and a final decision is yet to be made."

A spokesperson for Redbridge Council said: "Following the closure of Woodford Police Station,

local people have voiced their concerns over reduced police presence in the Wanstead, Woodford, South Woodford and Monkams area.

"As a council, we have been exploring innovative ways to bring back community policing through ground-breaking Enforcement Hubs, Police Pop-Up sessions at local libraries and our new Mobile Enforcement Hub.

"We have been working closely with the police to deliver a hub to base police officers to reduce their commuting time to their wards across the west of the borough and increase their visibility. The new proposed hub will be based on the Orchard Estate (pictured right) in Woodford, serving residents in Wanstead, Woodford, South Woodford and Monkams.

"We have organised several site visits with the police and continue to work together to finalise plans for the new police hub."

More children given their first choice school

Almost 3,300 children, including many who live in South Woodford, got into their first choice of primary school in Redbridge this year.

This is the highest number in the past five years, according to figures published on National Primary Offer Day last month.

A total of 94 per cent were offered their first or second preference for primary school, while 87 per

cent of applicants were offered their first preference for reception.

A spokesperson for Redbridge Council said: "Starting primary school is an important time for our young people. Even though places at our primary schools are in high demand, we're pleased we've seen a significant increase in the number of first preferences met."



Green/Sedum Roofs • Modified Bitumen Roofing • Fibreglass Roofing
Single-ply Roofing • New roofs/Re-roofs • Roof Maintenance • Roof extensions/skylights

Roofing Services



We are a family run company with an established reputation within the roofing and waterproofing industry. Operating with the highest values and dedication, we pride ourselves on:

- Fibreglass (Liquid Applied)
- Single Ply (Membrane)
 - Torch on Felt
- Hot Melt (Bitumen)
 - Slate & Tiling
 - Lead Works

0208 088 2890

www.horizonflatroofing.uk • info@horizonflatroofing.com



LILLYWHITE
LILLYWHITE PROPERTY GROUP LTD

WE CARRY OUT ALL HOME RENOVATIONS

Garage Conversions | Bathrooms | Kitchens | Full Decorating
New Flooring | Plumbing & Heating | Electrical | Glazing
Roofing | Tiling | Handyman & Locksmith Services
Cleaning | Extensions & Loft Conversions | Clearances
Plus much more...

DOMESTIC & COMMERCIAL | NO JOB IS TOO BIG OR TOO SMALL

CHECK OUT OUR GOOGLE REVIEWS

t: 0208 088 2969 | m: 0794 939 4403
e: info@lillywhitepropertygroup.com
www.lillywhitehomerenovations.com
f LillywhitePropertyGroup i LillywhitePropertyGroup @LWMaintenance

WE OFFER FREE ESTIMATES
WE NOW OFFER FINANCE ON ALL REFURBISHMENT PROJECTS

Inquest hears man died after hit and run



An elderly man from South Woodford died after being hit by a vehicle that did not stop at the scene, according to an inquest.

The record of inquest showed that George Smith, 78, was crossing Woodford Road in South Woodford at about 6.20pm on November 5, 2017, when a Volkswagen Golf being driven at "extreme speed" collided with him.

George, a retired corporate director, died at the scene.

The hearing was held recently at Barking and Dagenham Adult College. Assistant coroner Ian Wade QC ruled that George's death was caused by a road traffic incident.

The driver "failed to stop and shortly thereafter abandoned the significantly damaged vehicle and fled from the scene", according to the inquiry report.

Delivery drivers fined for dumping sofa

A South Woodford contracted delivery driver has been fined after being found guilty of dumping a sofa in Epping Forest.

The City of London Corporation, which protects the site as a charitable trust, prosecuted two men at Chelmsford Magistrates' Court under the Environmental Protection Act 1990.

Tony Nunes, 36, of Cheyne Avenue, South Woodford, and Andrei Jureschi, 26, of Monks Park, Wembley, both pleaded guilty to fly-tipping at Wake Road, Epping Forest, which they carried out in October 2021.

The two defendants delivered a new sofa and took £80 to dispose of an old sofa from a customer in Leytonstone.

They later illegally dumped the unwanted sofa (pictured below) in Epping Forest, which is a protected Site of Special Scientific Interest and a Special Area of Conservation.

City of London Corporation officers tracked down the fly-tippers using local intelligence sources.

Nunes and Jureschi received a criminal record and fines totalling £2,160.

Last month, another man was found guilty of two offences of fly-tipping in Epping Forest.

He dumped large amounts of rubbish, including cardboard, plastic and wood, at Alexandra Lake car park in June last year.

Azancout Menezes De Ceita, 38, of King Street, Canning Town, East London, was prosecuted at Barking Magistrates' Court.

He received a sentence of six months' imprisonment, suspended for two years, and was given 220 hours unpaid work and fined £1,941.

The City of London Corporation has prosecuted 17 people for fly-tipping over the last year.

Chairman of the City of London Corporation's Epping Forest and Commons Committee, Graeme Doshi-Smith, said: "Clearing dumped rubbish forces us to divert nearly half a million pounds a year away from wildlife and conservation projects to simply disposing of waste."



Photo credit: City of London Corporation

PUT THE SPARKLE BACK INTO YOUR KITCHEN

Domestic Oven Cleaning Specialists
Est. since 2007

Prices

Single oven incl. shelves & grill pan.....	£43.00
Double oven incl. shelves & grill pan.....	£54.00
Range incl. shelves & grill pan.....	From £54.00
AGAs.....	From £90.00
Hobs.....	From £14.00
Extractors.....	From £15.00
Microwaves.....	From £20.00

No VAT to pay

PLEASE CALL FOR A FREE QUOTATION
01279 432444 * www.ovenbright.co.uk



Data reveals least reliable bus route across network

The 549 bus route between South Woodford and Loughton is the least dependable in the Transport for London network, according to recent statistics.

Between September 2021 and January 2022, one in every three buses arrived late. Only 65.1 per cent of buses arrived on schedule, while 15 per cent never arrived at all.

Since February 2020, the route has not met its 86 per cent "minimum performance" objective for on-time buses.

To tackle this issue, a solution has now been implemented. Recently a new £181,950 contract was awarded to operator Sullivan Buses of Hertfordshire, with a revised schedule for route 549.

For more information on the bus routes, please visit tfl.gov.uk



NEWS FROM

THE 100 CLUB

LOCAL BUSINESSES SUPPORTING HAVEN HOUSE



Come along to the Haven House Jubilee Tea Party this month.

Haven House Children's Hospice is marking the celebrations of Her Majesty's Platinum Jubilee with a tea party at the hospice's beautiful grounds in Woodford Green on Saturday, May 21, from 12pm to 4pm.

local live bands and a slice of cake, along with a super raffle.

You can register for free and join the tea party, where you can also hear about the work of Haven House and the specialist care it provides to local seriously ill children.

To find out more and to register your attendance, please visit havenhouse.org.uk/jubilee-tea-party or contact events@havenhouse.org.uk

Guests can register and join the event in a lovely setting on the lawn with a marquee, and enjoy



Photo credit: Mums for Lungs Redbridge

Air pollution monitor installed

A new air quality monitor has been installed at Elmhurst Gardens in South Woodford after a year-long campaign run by a local mum.

Lydia Fraser-Ward, 40 (pictured left), who lives in Woodford Green, was one of a handful of successful applicants to receive an air quality monitor after dozens of community groups and individuals across the capital applied to the Breathe London Community Programme, run by Imperial College London and the Mayor of London.

Lydia is an environmental campaigner and mum of three-year-old Ripley. She became concerned about levels of air pollution in the playground after spending many hours in the park with Ripley during lockdown.

Lydia said: "Considering the close proximity of the playground to the motorway, I decided that monitoring needed to be done, and when I heard about the Breathe London opportunity, I had to try to get hold of an air monitor for our community."

Unlike diffusion tubes, which just monitor nitrogen

dioxide, the Breathe London air quality monitor uses the latest technology to monitor levels of this toxic gas, as well as ultra-fine dust and dirt known as particulate matter, which is especially dangerous to human health.

Among those supporting Lydia's campaign was Redbridge councillor Rosa Gomez, who represents the Churchfields Ward where Elmhurst Gardens is located.

Cllr Gomez said: "I am deeply concerned by the effects of air pollution on health and that is why I was so keen to support this campaign."

Since starting her campaign for the monitor, Lydia has become a clean air campaigner and has set up a local branch of Mums for Lungs in Redbridge, which organises free webinars and information on air pollution as well as supporting schools who want to set up School Streets, a scheme that places temporary restrictions on roads outside schools.

For more information, visit www.mumsforlungs.org



APPLIANCE REPAIRS AND SALES

We repair all makes and models

- Washing Machines • Tumble Dryers
- Dishwashers • Ovens • Hobs • Cookers
- Fridge/Freezers • Extractor Hoods

New appliances in stock for same day delivery & installation

Prices listed on our website

Call 01279 310793

Or Book Online

www.spindoctoruk.co.uk

Jason's DECORATING

Add colour to your life

Interiors & Exteriors

Full Decorating Services

Contact Jason on

07943 848437

Jasonlukwago@gmail.com

62 Hatch Lane London E4 6LQ

Control your security Be **App**solutely connected

Did you know your smartphone can now control your alarm system through an app?

NEW SYSTEMS SUPPLIED & FITTED FROM £450.00
(OR WE MAY BE ABLE UPGRADE YOUR EXISTING SYSTEM)



- CCTV Systems • Alarm Systems
- Fire Alarms • Door Entry Systems • Safes
- Vehicle Alarms & Tracking • Ghost Immobilizers

020-8529-5710 • www.cobra-ss.co.uk

155 Station Road, Chingford, London, E4 6AG





MADE IN BRITAIN

Keeping your build on track as Home Hub introduces a next day range of bifolds, sliding doors and roof lights.

The constant challenge of supply-chain issues and stock availability throughout the pandemic looks set to get even worse with the increase of sanctions to Russia and the ensuing squeeze on commodities having an impact on all aspects of the building sector, prolonging build times and pushing costs even higher.

With such a challenging landscape, it's no wonder that Home Hub Group, a specialist supplier of windows and doors servicing the South East came up with a solution to the problem which enables their customers to manage costs and quality whilst getting the product when they need it.



Bifolds, sliding doors, roof lights & lanterns
Next day delivery

Home Hub has always taken great pride on their ability to provide fast response, quick delivery and price consistency. The pandemic put paid to all of that, with lead times stretching as far as 16 weeks and with no guarantee on prices - it has become so difficult to run a build project, or indeed a business, with so many unknowns. This has made an incredibly challenging environment for Home Hub and their customers.



Home Hub's beautiful
Epping Showroom

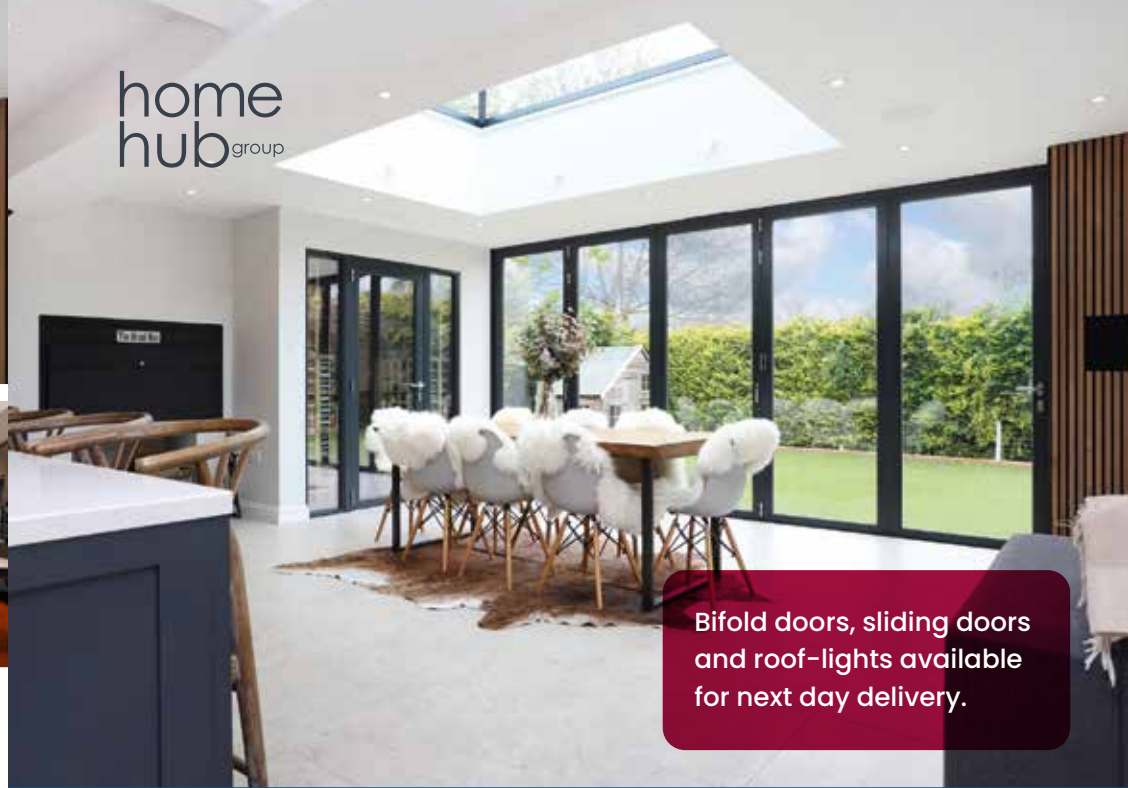
But never shy of a challenge, the team at Home Hub went about investigating the feasibility of developing a range of stock products in order to 'beat the system', offer customers peace of mind and avoid long and costly delays in their build projects.

Home Hub investigated how they could get the situation back under control and continue to offer cost effective solutions, on-time, with no compromise on quality.

This led to Home Hub identifying the most popular products and sizes and investing heavily in both product, assembly and storage space to enable customers to take advantage. A next-day selection of the popular 'Serenity' range was developed to fit traditional brick measurements and was launched in February this year and has been welcomed by both builders and home-owners with a hugely positive response.

Home Hub is now stocking bifolds, sliding doors, roof lights and roof lanterns for delivery tomorrow and they'll even provide a former for doors and kerbs for roof lights to help your builder avoid any costly mistakes.

Home Hub has beautiful lifestyle showrooms in Bracknell and Epping where you can browse all products including the next-day range with the team on hand to answer all of your questions. Having been established over 20 years, it's no wonder they are leading the way on how to get things done, on time, on budget whilst looking beautiful.



Bifold doors, sliding doors
and roof-lights available
for next day delivery.



MADE IN BRITAIN

01992 948 980
essex@homehubgroup.co.uk
137-139 Epping High Street



@HomeHubGroup

There's no place like Home Hub

With no pressure sales, transparent pricing and exceptional service levels you'll feel right at home with Home Hub. Our elegant lifestyle showroom is now open in Epping, call us to book an appointment.

[homehubgroup.co.uk](https://www.homehubgroup.co.uk)



**NOBODY DOES IT
BETTER THAN
BODYWASH**



Visit our showroom which is open Monday to Friday 9am to 5:30pm and Saturday 9am to 5pm. We close on Sunday's.

Bring along your room dimensions and let us help you plan your new luxurious bathroom.

01708 736700

www.bodywash.uk

sales@bodywash.uk

A12 Eastern Avenue, Romford, RM5 3AL



ALL TREE WORK UNDERTAKEN



- FAMILY RUN BUSINESS
- OVER 35 YEARS EXPERIENCE
- PRUNING ○ THINNING ○ REDUCTIONS
- FELLING AND REMOVAL ○ DEAD WOOD REMOVAL
- SITE CLEARANCE ○ HEDGE MAINTENANCE
- FIREWOOD SALES FULLY INSURED

ESSEX TOP RATED TREE SURGERY COMPANY 2017/2018 ON



07500 870 309

www.essexrecareltd.co.uk



Create your own DIY BAR



GARDENING

When it comes to entertaining at home, there's one thing everyone needs – a garden bar. Garden bars have grown in popularity in recent years, and you can easily build your own with a little creativity and determination.

Get ready to transform your garden into your new local with these tips for building the perfect garden bar.

HOW BIG CAN YOU GO? Garden bars come in all shapes and sizes. From a tiki bar to your own garden pub complete with flat-screen TV and pool table, you can be as ambitious as you like. Decide on your budget and how much space you have to create the perfect outdoor bar.

TRY DIY OR READY-MADE. A DIY garden bar is the perfect chance to get creative. You can use recycled materials and design a space that's ideal for your needs. Alternatively, you can find ready-made garden bars in places like Argos or Etsy, or hire someone to custom build your bar.

Using a pre-existing structure, such as a shed or potting bench, your extension or garage, could also help you make the most of your garden space, and give you a good foundation for your garden bar.

MAKE IT SHELTERED. Some shelter is a must for any British garden bar. Whether you choose to have your bar enclosed or build a solid weatherproof canopy, having shelter will protect your bar while helping you make the most of it in any weather.

ADD APPLIANCES AND STORAGE. From fridges to pumps and spirit dispensers, your garden bar can have it all. Buy your equipment and get it installed by professionals to make sure the job is done safely. Don't forget to add storage.

BUY SOME ACCESSORIES. Some of the essentials you'll need for your garden bar include: Glasses (you could create your own labels too) | Bottle holders | Ice bucket | Cocktail shakers | Towel hooks | Bottle openers/corkscrews

GIVE IT A NAME. Once your bar is all in place, the last thing to do is give it a name. Name it something unique – it's your bar, after all.

Photo credit: Allen Muntough/Liberty Games, Future Plc/Doranna Henderson, Future Plc/Simon Whitmore, Future Plc/Tim Young all via idealhome.co.uk



BITCOIN *for beginners*

The cryptocurrency market has exploded in the last few years, with everyone from Elon Musk to Snoop Dogg enjoying a slice of this highly lucrative pie.

If you think you'd like to test the cryptocurrency waters, then the below beginner's guide is just what you need.

Choose a cryptocurrency trading programme

When choosing a trading programme, you want one that is regulated so that you feel safe in your investment. You should also look at how easy it is for you to withdraw funds. The most popular cryptocurrency trading programmes in the UK are eToro, CoinMama, PrimeXBT, and BlackBull Markets.

Pick crypto to invest in

Most active cryptocurrency traders allocate the majority of their investment to either Bitcoin or Ethereum, as these move more predictably than smaller altcoins. That being said, you may also choose to invest in smaller mid-market cap cryptos as, although riskier, this can deliver higher returns.

Select your strategy

If you google 'crypto-trading strategies', you will be met with nearly 110 million results, which can make the strategy process a little confusing. For those who are completely new to trading, we recommend that you book onto a cryptocurrency trading course such as 'Become a Trader' with TradeCobb or 'Cryptocurrency Fundamentals' by Udemy.

Consider automated crypto trading

Another option for beginners is to utilise the services of an automated crypto-trading platform such as eToro or Learn2Trade. These work by using trading bots to enact a strategy that is based on your investment goals.

Our top trading tips for beginners

- Start with a small investment
- Choose a secure wallet to keep your digital assets safe
- Research the market thoroughly first
- Set stop-loss levels and stick to them
- Don't be afraid to diversify your portfolio
- Do not let your emotions dictate your decisions.

"IT'S BEEN A TOUGH YEAR AND WE COULDN'T HAVE SURVIVED IT WITHOUT YOU"

Calvin Gomes, Bronze Age

WHAT ARE YOUR BUSINESS GOALS?

DO YOU HAVE THE PLANS IN PLACE TO ACHIEVE THEM?

WHAT COULD A PROFESSIONAL HELPING HAND DO FOR YOU?

When it comes to the day to day tasks like tax returns and book keeping, Argus Accounting can certainly help. However, those tasks are just the starting point of what we can do for you and your business.

LET US:

- Analyse your figures to show you gaps in the market, and growth opportunities.
- Tell you how to spend more efficiently.
- Show you a clear path toward the successful growth of your business.

Argus Accounting
ULTIMATE BUSINESS SUPPORT

020 3026 1251 | 07791 260 443
sharon@argus-accounting.co.uk
f ArgusAccountingUK

FINANCIAL EXPERTS WHO ARE PASSIONATE ABOUT YOUR SUCCESS

kw
KELLERWILLIAMS

kw RICHARD HARMAN



SALES / LETTINGS

PROPERTY MANAGEMENT

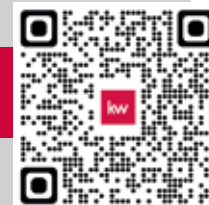
AUCTIONS

LAND

YOUR LOCAL PROPERTY PROFESSIONAL

richardharmanproperty.com

T: 07921 809321 ■ E: richard.harman@kwuk.com



FREE PROPERTY MARKET APPRAISALS, WITH VALUATION REPORT

rightmove
find your happy

ZOOPLA

Boomin

SDL Property Auctions
National auctioneers, personal service



PICTURE Perfect



Getting your home ready for those seller snaps

You shouldn't judge a book by its cover, but that's exactly what happens when potential buyers explore a house for sale. Those seller images have become increasingly important for putting your home in the best light and generating interest in your property.

Take a look at these tips to get your home ready for those all-important photos:

- > Put away all clutter. If it doesn't need to be there, get rid of it.
- > Clear the worktops and put accessories away; it will help to create a more spacious look.
- > Add flowers and other decorative features to give a more homely feel.
- > Make sure windows and other glass surfaces are fully wiped and dust-free.
- > Hide away unsightly items like bins.
- > Curate your toiletries so they don't appear cluttered – put out your most premium products.
- > Fold any towels neatly, and don't leave wet towels lying around.
- > Make sure curtains are properly hemmed and dust-free.
- > Make all beds and change your bedding regularly.
- > Put away all your shoes and clothes.
- > Create an ambience with a lit fire and candles.
- > Make the front of your house more appealing by keeping the lawn mowed and bins out of sight.
- > Give your garden a once-over to remove any debris.
- > Put the toilet lid down – nobody wants to look inside someone's toilet.
- > Finally, get into the habit of regular cleaning to keep your home dust-free and sparkling.

These easy tips will help your home look its best in seller photos, and will hopefully inspire someone else to make memories there.



Only £895 for a fully fitted electric door.

Gotta get a Garolla.



GAROLLA
ROLLER SHUTTER DOORS
GOTTA GET A GAROLLA

Garolla garage doors are strong and solidly built. They're made to measure in our own UK factories. The electric Garolla door rolls up vertically taking up only 8 inches inside your garage. Our expert installers will fit your new door and take away the old one so there's no mess.

Give us a call today and we'll come and measure up completely Free.

NOW ONLY

£895 WAS £1,354 INC VAT

WHAT'S INCLUDED WITH EVERY DOOR:

FREE EXPERT MEASURING & FITTING
TWO REMOTE CONTROLS
ACOUSTIC & THERMAL INSULATION
AVAILABLE IN 21 COLOURS
FREE DISPOSAL OF YOUR OLD DOOR

CALL US TODAY ON

01992 830 024

MOBILE

07537 149 128

www.garolla.co.uk

Offer valid for openings up to 2.6m wide & inc: 2 remote controls, 55mm white slats, internal manual override.

TTS



SOLICITORS

YOUR PERSONAL CONVEYANCING SOLICITORS

RESIDENTIAL & COMMERCIAL CONVEYANCING

CORPORATE ACQUISITIONS

GENERAL LITIGATION

FAMILY WILLS & PROBATE

We are on 60 lender panels including most high street banks, building societies and first tier lenders

We are CQS accredited and offer outstanding one-on-one service for

- Sales and Purchases – both leasehold & freehold
- Shared Ownership Right to Buys
- Affordable Housing
- Remortgages & Transfer of Equity
- Auction Sales and Purchases
- Lease extensions

0208 088 2941 | www.ttslegal.com | info@ttslegal.com

1-4 The Parade, Monarch Way, Ilford, Essex IG2 7HT

CITY OFFICE: 2nd Floor, Mezzanine, 53 New Oxford Street, London, WC1A 1BL



DEATH TRAP

THE DANGERS POSED BY LOOSE OBJECTS IN YOUR CAR

We all know the dangers represented by cars and, as responsible drivers, invest time and effort in protecting the occupants of our cars from the dangers of the road. Yet what if there were a collection of hazards inside our vehicles – things that account for more than 15,000 injuries every year?

What we're talking about here is the threat posed by everyday items within a car. From a metal tissue box on the back shelf to dashboard air fresheners, from tablets and devices right the way through to cans of drink and snacks. The point is, when a collision occurs, it's not just the things on the outside of the vehicle that can cause harm.

A string of recent awareness campaigns has been designed to make motorists more aware of the risks when our vehicles are decorated with possessions. Securing items or, better still, putting

them away in door or back-of-seat pockets, or the glove compartment, ensures that if impact occurs, those possessions won't come hurtling through the air towards you.

Think carefully about luggage storage, make sure floor mats are secured in the correct positions, and do your best to keep pets secured and still.

Furthermore, if you think the threat of being hit by a loose or unsecured object in your car only comes about in the event of a road traffic accident, think again. Anything from sharp cornering to speed bumps may dislodge an item and send it on a path towards you or your passengers.

In the modern era, cars are more and more becoming extensions of our home. While that gives us the chance to adorn them with small items and luxuries, it's always smart to keep a close eye on the potential danger they might pose.

PurrFECT CATNAPS

Information provided by Purrfect Cats. For more cat facts visit www.purrfectcats.com

Cats love to sleep – it's one of the things we envy the most about them. But have you ever given much thought to what your cat's sleeping position means?

households, or for cats in new surroundings.

BELLY-UP CAT: A cat that sleeps with its belly exposed and paws splayed is a cat that feels secure and comfortable in its surroundings. It's exposing the most vulnerable part of its body, showing you it feels safe in its home.

LOAF OF BREAD: The 'loaf of bread' position is where a cat sleeps with its paws and tail tucked under its body, making it look like it has no legs. Cats choose this position for comfort and to stay warm. This position is also a sign that your cat is happy and relaxed.

CURLED-UP KITTY: A curled-up cat with its tail wrapped around its body and head tucked in, means several things. This position helps it stay warm and also helps the cat protect itself from potential threats.

SLEEPING ON YOU: A cat sleeping on you can be for a couple of reasons. It either wants to feel added protection with a 'safety in numbers' approach, or it wants to feel close to you and benefit from some extra warmth.

IN A BOX: Cats love to sleep in a box or any small space as it makes them feel safer than being in an open space. It's a normal behaviour that helps them feel warm and secure.

STRETCHED OUT: A stretched-out cat is a happy and relaxed cat, who's usually in a deep sleep. When a cat is in this position, it's best to let it stay there.

EYES HALF-SHUT: A cat that sleeps with its eyes half-shut is doing so to enable it to react quickly to any threat or disturbing noise. It's common in noisy

PAWS ACROSS FACE: A cute position to witness, paws across the face can mean your cat is trying to keep its nose warm or block out the light. A cat that's hiding its face wants to be left alone, so it's best to let your cat be in this position.





SPORT

BRITAIN'S GREATEST SPORTING MOMENTS...



CHAMPIONS LEAGUE FINAL 1999

EACH MONTH, WE LOOK AT ONE OF THE MOST SIGNIFICANT EVENTS IN BRITISH SPORTING HISTORY. THIS MONTH, IT'S MANCHESTER UNITED'S LATE LATE SHOW AT CAMP NOU IN THE 1999 CHAMPIONS LEAGUE FINAL

The concept of 'Fergie time' was a familiar one throughout the nineties as Manchester United's fast-paced, ruthless, attack-minded side saw off allcomers, even if so many of those wins came in the very dying embers of matches.

And injury time was three minutes in when super-sub Ole Gunnar Solskjaer stabbed in the goal that brought European glory back to Manchester United after a wait of 31 years.

The Reds had scored just moments before to level a match in which they were outplayed by Bayern Munich for long spells, but Teddy Sheringham's 91st-minute leveller set up the most dramatic finale ever seen in a European final, and United's time had come.

Few in red, even now, dispute the fact that the Germans should have been out of sight in the game, but what matters is finding the net, and in a

decade in which so much went right for the Class of 92 and teammates, there was an inevitability that Beckham, Keane, Scholes, Giggs and co. would come good.

These days, in reflection, the stories of that night in Barcelona are muddled in with George Best leaving for a drink 10 minutes before the end. Then there's the famous shot of a United fan with his back to the pitch taking a photo of Reds fans, just as Solskjaer scored. Even Gary Lineker weighed in recently by announcing he lost his wallet in the commotion of the winning goal – another anecdotal pearl of brilliance from the presenter.

Ultimately, though, there were very few who didn't want United to bring English football back to the top table that night. That they grabbed victory from the jaws of defeat made the achievement so much more special.

MobilityPlus+



The UK's leading provider of affordable electric wheelchairs.

Premium Electric Wheelchairs That Support Independent Living



Includes FREE next day delivery



MobilityPlus+ Ultra-Light Instant Folding Electric Wheelchair
24KG, 4MPH, 2 LITHIUM BATTERIES

Only **£879.99**



MobilityPlus+ Deluxe Ultra-Light FOLDING ROLLATOR WITH SEAT

Only **£114.99**



MobilityPlus+ Upright Rollator WITH FOREARM SUPPORT

Only **£154.99**



MobilityPlus+ Quick-Split Electric LIGHTWEIGHT, COMPACT, 4MPH

Only **£599.99**



MobilityPlus+ Featherlite 18.7KG, 4MPH, LITHIUM BATTERY

Only **£899.99**

Customer Support Team

01992 610 434 | www.mobilitypluswheelchairs.co.uk

OUR SHOWROOM: 26-27 WOODSIDE TRADING ESTATE, EPPING, ESSEX, CM16 6LJ (APPOINTMENT ONLY)

ACCOUNTANT & TAX ADVISORS

ALL THINGS ACCOUNTING

Accounting & tax services, we help with self-assessment tax return, corporation tax return, payroll, VAT return, CIS return & bookkeeping. Call 07539 035537 for free initial consultation.

ACUPUNCTURE

HONG WEI CHINESE MEDICAL

Fully qualified & experienced, specialising in women's health & Fertility. Help with pain relief, emotional disorders, male/female conditions. 01708 454888 | hongweichinesemedicine.co.uk

AUDIO & VISUAL

ULTIMATE AV

We create bespoke systems designed and built especially for you. Small projects to complete home cinema environments. Based in Essex call us on 07531 214339

BEAUTY & NAILS

BEAUTY BY NATASHA KATIE

A local, mobile LVL Technician. Fully qualified level 2 and 3 beauty therapist Babtac insured and approved. 07961 462672

SPECIAL NAILS

Dedicated to provide the best quality nail care for Men & Women. Walk-ins welcome, appointment bookings & gift vouchers available. 01708 442248

THE NAIL STUDIO

Nail Studio lets you switch off and pamper with highly skilled technicians providing top treatments and nail products to meet your every need. 07572 526519

BUILDING

ADDSpace LONDON LTD

We provide a high quality Building service. Extensions, lofts and internal renovations. Members of Federation Master Builders. Call 0208 088 2870

CARPET & UPHOLSTERY

ARWIN CLEANING SERVICES

Over 30 yrs of exp, we can offer a professional, efficient and cost-effective solution for carpet and upholstery, cleaning and maintenance. 07973 417764

CAR & VAN HIRE

SCENIC SELF DRIVE

Your self drive hire specialists. Whether you require modern cars, motorhomes, vans or minibuses. Rest assured we will provide you a professional service 01708 753461

CHESS CLUB

VICKI'S CHESS CLUB

Vicki's chess coaching - teaches and provides games of chess to children and adults in Ilford and Debden. Phone Vicki: 07849 435451 | Website: Vickischessclub.uk

CLEARANCE & WASTE

THE CLEARANCE TEAM

From clearing a room, house or garden to clearing an entire office block. Fast, reliable and affordable. Working 24/7 so you can book us at your convenience 0207 101 3387

COMPUTER REPAIR & I.T.

MAPTEC IT

Your local residential & commercial IT specialists. We can fix your computers, configure email accounts & printers. Setup your Wi-Fi, Internet router & network. 0203 865 7174

ELECTRICAL & WHOLESALERS

CH ELECTRICAL WHOLESALERS

Essex & East London's leading electrical wholesalers providing the trade & public a professional service with access to all leading brands. 01708 730591

JOIN THE LISTINGS... for just £180 +VAT per yr

ELECTRICIAN

CAPITAL ELECTRICAL SERVICES LTD

Domestic/Commercial, Repairs/Installation, Vehicle Charging Points, Portable Appliance Testing, Fire Alarms, Emergency Lighting, Installation Condition Reports. Call 0208 088 2916

TACK ELECTRICAL

Local experts. Specialising in domestic alterations, fuseboard, additional sockets, Lights, Rewires, Installations and reports for homeowners. No job too small, 0208 088 0779

FACIALS & SKINCARE

VIRGINIA WILLIAMS STUDIO

Providing specialised treatments for common skin concerns: sensitive, acne, pigmentation, ageing. Use code VIS10 to get 10% off first treatment. www.virginia-williams.co.uk

FINANCIAL SERVICES

PARAGON LEGAL SERVICES LTD

We will write your will for only £49.99+VAT subject to T&Cs. Call FREE on 0800 0747 642 or 01206 544919 Call us for a FREE home appointment. www.paragonlegal.co.uk

FURNITURE RESTORATION

ABBEEY GROUP

Abbey Group are specialist in creating, repairing & restoring quality furniture & wood surfaces to the highest standard. 01708 741135

KINGS UPHOLSTERY

Handmade sofas & chairs designed especially for you to your required specifications. Also providing in re-upholstery & repair work. 01708 444125

GARDEN SERVICES

JOHN HEARNE

We take care of it all Lawn Mowing, Weeding, Planting, General Tidying, Fence/Shed Painting, Driveway/Patio Pressure Washing and more. Call for details 07908 523101

KINGS CUTS TREE SERVICES

A Huge range of tree services available & offer expert arboricultural advice, ensuring your trees are looked after responsibly. 01708 578030 | 07467 944671

HEALTH & WELLBEING

IMPROVE YOUR SMILE DENTAL PRACTICE

Est. in 1986. Encompassing all needs from basic oral health to advanced dental procedures and high-end cosmetic treatments. New patients welcome. 0208 504 2704

LAUNDRY & DRY CLEANING

THE LAUNDRY MAN

From everyday washing, drying & ironing. We can pretty much launder anything & everything. Self service launderette available. 01708 447710

LOFT CONVERSIONS

HIGH END LOFTS LTD

Beautiful Lofts, Expertly Built. Our "Hand-Holding" service takes you from ideas, through Plans & Building Control, to make your [home alteration] vision a reality 0208 088 2805

MASTICS AND SEALANTS

QUALITY MASTICS LTD

Bathroom and shower mastic joint sealing. Kitchens, windows, floors, external seals around windows. For information. Call 01245 520981

PAINTING & DECORATING

PGA DECORATING SPECIALIST

Interior - exterior - paper hanging specialists in Window repair care. 07769 646357 | www.pgadecoratingspecialists.co.uk | pgadecorators@yahoo.co.uk

TRADITIONAL DECORATIONS

We are a family run business specialising in turning your house into a home. Giving advice on current decorating trends. 07737 562406

PLASTERERS

TF PLASTERING LTD

Professional quality workmanship, over 25 years' experience. Public liability insured. Skimming, coving, dry lining, rendering. Free quotes 07738 278036 | 01279 416311.

PLUMBING & HEATING

KINGS PLUMBING & HEATING

All work undertaken: All bathrooms, boiler servicing & gas safe. 07956 343275 | www.kingsplumbingandheating.co.uk

PROPERTY MAINTENANCE

LILLYWHITE PROPERTY SERVICES

For all building works, full refurbishments & property maintenance inc heating, plumbing, electrical, decorating, flooring, tiling & plastering etc. Call today on 07949 394403

STUART GREEN PROPERTY SOLUTIONS

Property maintenance specialist. Carpentry, painting/ decorating, laminate flooring, bath/shower re-siliconing, gutters cleared/repared, insurance work, PLI. 07917 870879

ROOFING

JIM BARR ROOFING

Exterior cleaning/maintenance. Gutters, Paving, UPVC; cleaned, repaired, renewed. 01708 874816 | 07833 572459

WHITE GOODS & APPLIANCES

T.E.J. DOMESTIC APPLIANCES

Stockists of all major brands. Installation available, FREE local delivery. Free standing & Built In Appliances. Extensive stock. 01708 447752

DISCLAIMER: VISION does not represent or endorse the accuracy or reliability of any of the advertisements, nor the quality of any products, information or other materials displayed, purchased or obtained by any customer as a result of an advertisement or any other information or offer in connection with the service or products. The opinions expressed in articles, reviews and stories are strictly those of the individual authors and do not necessarily reflect the views of **VISION**.

To advertise call **VISION** on **0208 088 0386**

PUT YOUR BUSINESS IN THE **VISION LISTINGS...CALL 0208 088 0386** TODAY

WORDLADDER: WASH, MASH, MASS, MOSS, TOSS, TOYS



PUZZLES & TRIVIA

PUZZLES

Answers: see end of The VISION Listings

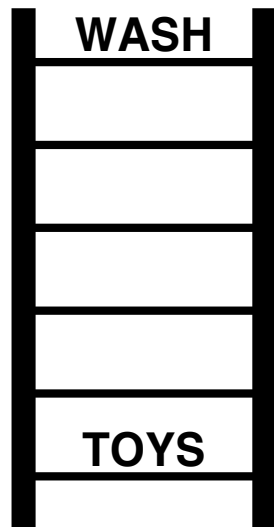
- ▶ ALMOND
- ▶ AMBER
- ▶ AUBURN
- ▶ BEIGE
- ▶ BRONZE
- ▶ BUFF
- ▶ CARAMEL
- ▶ CHOCOLATE
- ▶ CINNAMON
- ▶ COCOA
- ▶ GINGER
- ▶ HAZEL
- ▶ MAHOGANY
- ▶ NUTMEG
- ▶ RUST
- ▶ SAND
- ▶ SEPIA
- ▶ SIENNA
- ▶ TEAK
- ▶ UMBER

R	U	S	T	I	K	R	S	U	N	E	P	U	E	M
B	L	D	B	L	R	N	O	M	A	N	N	I	C	O
R	A	O	M	J	B	D	L	N	U	T	M	E	G	K
T	U	D	A	D	R	C	H	E	N	I	A	T	Z	A
E	B	U	H	O	O	V	T	H	M	I	K	S	S	L
A	U	M	O	L	N	T	R	A	P	A	A	B	Q	M
K	R	K	G	I	Z	X	O	E	I	N	R	P	A	O
S	N	I	A	X	E	C	S	T	D	E	R	A	E	N
U	I	A	N	O	O	U	S	F	O	H	L	C	C	D
M	U	E	Y	C	H	O	C	O	L	A	T	E	K	O
B	Y	S	N	I	E	G	I	E	B	C	C	R	T	Q
E	C	S	T	N	O	S	P	G	I	N	G	E	R	P
R	H	I	B	E	A	D	A	B	U	F	F	O	H	T
C	R	R	C	R	E	B	M	A	A	I	O	T	S	R
Y	D	L	E	V	P	H	A	Z	E	L	O	Q	C	F

DID YOU KNOW?

- ▶ Venus travels all the way around the sun before it completes a full rotation.
- ▶ All the planets in the solar system rotate anticlockwise, except Venus.
- ▶ The moon has no atmosphere, so it's likely that footprints on it will last forever.
- ▶ The sun makes up more than 99 per cent of the solar system's mass.
- ▶ Dogs, cats, monkeys, frogs and guinea pigs have all been taken into space.
- ▶ Owing to gravity not pulling you down, it's likely you'd be slightly taller if you went to space.
- ▶ Neptune's winds are the fastest in the solar system, reaching approximately 1,600 miles per hour.

WORD LADDER



THE AIM: Change the word at the top of the ladder one letter at a time to make the word at the bottom.

HOW TO: Change one letter on each step to make a new word. By the time you reach the end, you should have created the new word.

DO NOT rearrange the order of the letters.

TIP: There is usually more than one way to solve this puzzle.

OVER 30 YEARS OF EXCELLENCE



Life is Beautiful

At City Bathrooms we believe everyone deserves a beautiful bathroom that's why our passion for luxury products, first-class customer service and expert bathroom advice is at the heart of everything we do.

citybathrooms.com



City Bathrooms

11 Raven Road, South Woodford E18 1HB
3-5 Hermon Hill, Wanstead E11 2AW

Telephone: 020 8504 5152





It's
never
too late
for a
winning
smile



BOOK A FREE CONSULTATION

Discover the difference our comfortable and discreet clear aligners could make to YOU.



020 8504 2704
improveyourmile.co.uk

162 HIGH ROAD WOODFORD GREEN IG8 9EF

EXPERIENCE YOU CAN TRUST

