

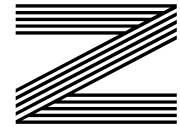
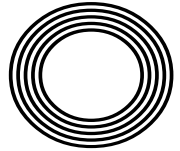


**IT'S  
BROAD  
BEAN  
SEASON**

*TOP TIPS*  
For cleaning Converse

**10,000 STEPS**  
*How to reach that magic number*

**COLOUR DRENCHING**  
*The latest interiors trend*



**FREE**

Photo credit: David Fisher/Shutterstock

**JODIE COMER**

One-woman winning machine celebrates her latest award



**BOSCH**

Invented for life

**1400 Spin 9kg  
Washing Machine**  
WGG2449RGB



- 21 Programmes Inc: Quick Wash
- Delay Start, EcoSilence Drive
- Reload Function, Electronic Controls
- Dimensions: H84.8xW59.8xD59cm

**5** Year Warranty  
**A** Energy Rating

Only  
**£629.<sup>00</sup>**

**Free**  
Installation  
and  
Recycling



**FISHER & PAYKEL**

**American Style Fridge  
Freezer**

RF523GD XI



- Fridge 289 Litres, Freezer 147 Litres  
Capacity
- Frost Free
- Stainless Steel
- Dimensions: H179xW79xD68.8cm

**5** Year Warranty  
**F** Energy Rating

Only  
**£2,900.<sup>00</sup>**





JULY 2023

# Editor's notes...



Brett Shohet, Editor

Hello and welcome to this month's edition of **VISION** SouthWoodford. There's no denying that the world is rapidly changing, but whether those changes are for the better remains up for debate. I recently looked into buying a new vehicle ahead of the expansion of the Ultra Low Emission Zone in August. I went to a local dealership and, when I struggled to find it, gave them a call. They told me they hold their vehicles in a warehouse; you choose the car online and they deliver it to you.

While the convenience of this is undeniable, I'd much rather see the car in person, have the chance to play with the gadgets and take it for a test drive. After all, it's one of people's top purchases, so attention to detail is important.

Sometimes change is necessary, but that doesn't mean we have to completely reinvent the market. There's still space to do things the old-fashioned way. Consider print, for example. While many say digital is the way forward, that doesn't mean print doesn't still have its place.

With prices continuing to rise, we are all looking to cut back on unnecessary spending. Many businesses will reduce their advertising, but I'd argue that now is the time to continue investing to make sure you stand out from the crowd. Get in touch today to find out more about our current advertising deals.

*Brett Shohet*

This is your town's hyperlocal magazine, delivering to homes and businesses every month.

HOME & DIY | GARDENING | PETS | HEALTH & FITNESS | BEAUTY | FASHION | HISTORY | LOCAL NEWS | FOOD & DRINK | TRAVEL | BUSINESS & PROPERTY | SPORT | PUZZLES | MOTORING | KIDS | WHAT'S ON | TECHNOLOGY | THE LISTINGS

CONTACT US:



woodford@visionmag.co.uk | 0208 088 0386  
www.visionmagessex.com | www.visionmagherts.com  
@visionmagessex | @visionherts | @visionmagessex | @visionmageastherts  
Vision Magazine Essex | Vision Magazine East Herts  
CONTRIBUTORS | Tabatha Fabray, Fiona Goble, Bryn Holmes

home  
hub group

NOW OPEN ON  
EPPING HIGH STREET

01992 276 046  
essex@homehubgroup.co.uk  
homehubgroup.co.uk  
@HomeHubGroup



We supply and  
install windows  
and doors.

# MobilityPlus+

★ Trustpilot  
★★★★★  
Excellent 4.9

The UK's leading provider of  
affordable electric wheelchairs.

## Premium Electric Wheelchairs That Support Independent Living



Includes FREE next day delivery



MobilityPlus+ Ultra-Light  
Instant Folding Electric  
Wheelchair  
24KG, 4MPH, 2 LITHIUM BATTERIES

Only **£879.99**



MobilityPlus+  
Deluxe  
Ultra-Light  
FOLDING  
ROLLATOR  
WITH SEAT

Only  
**£114.99**



MobilityPlus+  
Upright  
Rollator  
WITH FOREARM  
SUPPORT

Only  
**£154.99**



MobilityPlus+  
Quick-Split  
Electric  
LIGHTWEIGHT,  
COMPACT,  
4MPH

Only  
**£599.99**



MobilityPlus+  
Featherlite  
18.7KG, 4MPH,  
LITHIUM  
BATTERY

Only  
**£899.99**

Customer Support Team

01992 610 434 | www.mobilitypluswheelchairs.co.uk

OUR SHOWROOM: UNIT 5 VELOCITY, HARLOW BUSINESS PARK, HARLOW, CM19 5QF (APPOINTMENT ONLY)



# MARTIN TYLER'S fantastic finish

**Celebrating both the career and the caressing tones of Martin Tyler, one of the most revered and celebrated football commentators of the modern era, who has left Sky Sports after 33 years of service.**

"Manchester City are still alive here... Balotelli... AGUERROOOO! I swear you'll never see anything like this again. So, watch it. Drink it in."

Martin Tyler's almost indelible words that accompanied Manchester City's first Premier League title in 2011/12 came more than two decades into his service as lead commentator for Sky Sports, the leading UK broadcaster of the English top-flight since its inception in 1992.

To link the Chester-born wordsmith with the pioneering, game-changing nature of Rupert Murdoch's pay TV revolution is an appropriate fit. Both supported each other in the growth of a football product that, rightfully, was to present our domestic league as the very best in the world.

That piece of iconic commentary came on a day when the blue half of Manchester scored two injury-time goals against QPR to wrestle the title away from their city rivals United. Many regard it as being right up there with the sport's other legendary narratives – from Kenneth Wolstenholme's "They think it's all over... it is now" in the 1966 World Cup Final, to Brian Moore's "It's up for grabs now" as Arsenal won the league title with virtually the last kick of the 1988/89 season at Anfield.

Indeed, that spine-tingling commentary is held so dear by the club's fans that many have it painted on walls, or inscribed on body parts – a goal and a string of words that kicked off a football revolution that now sees Manchester City as truly the dominant side in this country.

Tyler has always seen his vocal variations matched with awards – included in these are multiple gongs for Football Supporters' Federation Commentator of the Year Award, plus the much-cherished Premier League Commentator of the Decade.

Away from the satellite giant, he has voiced for Fox SBS (Australia), was the default commentator on the FIFA video game franchise between 2005 and 2022, and has also worked at the Euros and World Cup, having started out at ITV.

While the broadcaster is associated with the very top rung of the professional game, his inherent football passion comes much further down the ladder, given he is a supporter of National League side Woking.

Upon hanging up his microphone, Tyler said: "It's been a privilege to play a small part in the broadcasting history of the greatest league in the world.

"Working alongside wonderful professionals, I thank them for their support and expertise. It's been an honour as a member of a very gifted team."

Tyler, with his mannerisms, his turn of phrase and his presence that could fill the emptiest of front rooms on a Sunday afternoon, will be a hard act to follow, yet Sky Sports commentary is in good hands as Peter Drury takes the hot seat for the new season, starting in August 2023.



Photo credit: Mike Hewitt



# Weird and Wonderful

*festivals around the world*

Summer is the time when crowds flock to music festivals, but did you know there are also a host of weird and wonderful festivals and events that take place throughout the year?

**INTERNATIONAL HAIR FREEZING CONTEST:** In the cold province of Yukon, Canada, the International Hair Freezing Contest takes place every February at the Takhini Hot Springs. With temperatures that reach below -30 degrees Celsius, participants dunk their heads in the hot water of the pools and then create frosty hairdos by shaping their locks as they freeze in the cold air.

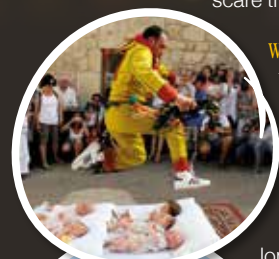
**BABY JUMPING FESTIVAL:** Known to the locals as El Colacho, this unusual event takes place in Spain 60 days after Easter during the feast of Corpus Christi. It involves men dressing in traditional 'devilish' clothing to scare the crowd before running down the street and jumping over carefully placed babies.

**WIFE CARRYING WORLD CHAMPIONSHIP:** Fancy carrying your wife around a 253.5-metre track that is riddled with obstacles? Then you need to head to the two-day Wife Carrying World Championship in Finland. A hugely popular annual event that takes place in late June/early July, the winning team is awarded a prize of their wife's weight in beer.

**LA TOMATINA:** You may have heard of this popular Spanish festival that involves A LOT of tomatoes being thrown about the streets of Valencia. Essentially an hour-long tomato fight for the chosen 20,000 participants, this event is held on the last Wednesday in August each year.

**MONKEY BUFFET FESTIVAL:** The Monkey Buffet Festival in Lopburi, Thailand, is, as the name suggests, a buffet for monkeys that takes place annually among the ruins of a temple on the last Sunday of November. The local monkey population in Lopburi is around 2,000-3,000, and all are welcome to the annual feast of fruits, cakes, vegetables and candies.

Photo credit: alissascuria.com, nationalgeographic.com, wife-carrying.org, dominicofr/Shutterstock



**WE GUARANTEE OUR CUSTOMERS  
A FRIENDLY, RELIABLE AND  
PROFESSIONAL SERVICE**



Empire UPVC and Roofing Specialists independently trade throughout Hertfordshire and a 40 mile radius from our office in Nazeing.

- |                              |                                     |
|------------------------------|-------------------------------------|
| ✓ Felt, Tile & Slate Roofing | ✓ All Roofing Repairs & Maintenance |
| ✓ Liquid Rubber Roofing      | ✓ Moss Removal                      |
| ✓ Fibreglass Roofing         | ✓ Gutter Cleaning & Unblocking      |
| ✓ Roofing Leadwork           | ✓ UPVC Fascias, Soffits & Guttering |
| ✓ All Roof Windows           | ✓ UPVC & Hardie Plank Cladding      |

**Office: 0208 088 3259**

office@empireupvcandroofing.co.uk  
www.empireupvcandroofing.co.uk

**Visit Our Showroom at:**

Unit 50 Hillgrove Business Park  
Nazeing New Road, EN9 2HB



Checkatrade.com

FULLY INSURED





**LOLA'S  
SALON**

## EXCEPTIONAL HAIR & BEAUTY

Bridal Makeup | Nails  
Hair Styling | Colour | Blow Dry  
Hair Treatments

To see more of our styles & to book an appointment

0208 088 0940 • lolafiku@hotmail.co.uk

138 Hermon Hill, South Woodford


 lolas.salon\_hermonhill



mon-sat  
9am-7pm  
sun  
10am-4pm

129 George Lane  
South Woodford  
E18 1AN



 the\_london\_lodge

WITH THIS ADVERT

**BOOKINGS & WALK-INS AVAILABLE**

www.thelondon-lodge.co.uk | 129 George Lane, South Woodford E18 1AN

# Never-ending NAIL POLISH



BEAUTY



## TOP TIPS TO STOP YOUR NAIL POLISH CHIPPING AND TO MAKE IT LAST LONGER

**D**o you wish your nails would stay chip-free for longer? Or maybe your favourite nail polishes start to become tacky before you've even used half the bottle? Either way, these tips are just what you need.

### HOW TO MAKE YOUR NAIL POLISH LAST LONGER

**Keep your nails short:** Although you may covet long nails, the sad truth is that these are much more likely to break, chip and peel.

**Buff your nails:** Before applying nail polish, buff your nails using a glass or crystal file. Avoid harsh emery files which can damage the nails.

**Choose the right top coat:** Look for a top coat nail polish that boasts chip-resistance, protection and strengthening properties.

**Always apply a base coat:** The base coat is equally as important as the top coat, although this is a step that many skip. Use a strong base coat for best results.

**Reapply the top coat:** A top coat is not a set-and-forget type of application and needs to be reapplied once every two to three days to ensure the preservation of your manicure.

**Wear gloves:** Always wear gloves to protect your hands from water, chemical cleaners and any heavy-duty work.

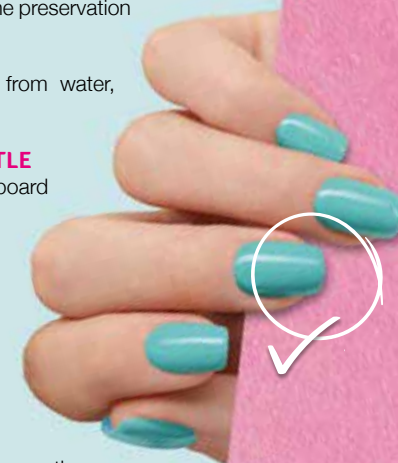
### HOW TO MAKE NAIL POLISH LAST LONGER IN THE BOTTLE

**Store it in a cool place:** Store your nail polishes in a dark cupboard or drawer. You can even keep them in the fridge.

**Invest in nail thinning lacquer:** A good-quality nail thinning lacquer can be added to nail polish that has started to thicken in consistency or dry out.

**Keep the cap on tight:** Every time you use a nail polish, make sure you screw the cap back on tightly as this will ensure that no air gets in and dries it out.

**Keep out of direct sunlight:** Extreme warmth on the bottle can cause the polish to thicken or dry out, as well as lead to discolouration.







# CONVERSE *cleaning*

If your Converse trainers are looking more grimy than gleaming, then you will be pleased to hear that this type of footwear is relatively easy to clean.

All you need is a few simple ingredients and a little bit of elbow grease.

## WHAT YOU WILL NEED:

Baking soda | Toothpaste | Washing-up liquid | Stain remover | Water | A sponge | A nail brush and toothbrush | Cloths | Newspaper

## HOW TO CLEAN:

### STEP 1: Cleaning the laces

Remove the laces from your Converse and then create a cleaning solution using 50ml of washing-up liquid, 1 tbsp toothpaste, 1tbsp baking soda and 200ml of warm water. Soak the laces for two to three hours and then hang to dry.

### STEP 2: Cleaning the shoe

Stuff each shoe with newspaper and generously apply toothpaste to the shoe using a toothbrush. Leave for 15 minutes. Wash off all the toothpaste using a nail brush and warm water, then leave to dry

in a warm place. Never apply direct heat to your Converse trainers.

### STEP 3: Removing tough stains

For any stubborn stains, apply stain remover directly to the affected area. Leave for five to 10 minutes and then wash off using a nail brush. Leave in a warm place to dry. It can be a good idea to test your stain remover on a section of the shoe that is not visible first, such as the outer edge of the tongue.

NB: You should never machine wash or dry Converse trainers as this can damage the shoes.

### How to keep white Converse white

If you have recently purchased a pair of white Converse trainers, spray them with a water and stain repellent spray before you wear them. When a stain occurs, spot clean immediately with an equal mix of warm water and washing-up liquid.

## DID YOU KNOW

# 100,000

## PEOPLE DIE EACH YEAR IN THE UK FROM SUDDEN CARDIAC ARREST?

### YOU CAN LEARN KEY LIFE-SAVING SKILLS FROM JUST £99

JOIN OUR 1-DAY EMERGENCY FIRST AID COURSE OR 3-DAY FIRST AID AT WORK COURSE

CONTACT US FOR COURSE DATES & MORE INFORMATION ON 07508 204656  
enquiries@bbirisksolutions.com

**BBI** Risk Solutions  
www.bbirisksolutions.com

"My carer is absolutely fantastic. She not only cares but anticipates my every need."

- Sara

Living Wage 20% above minimum wage

Approved by Care Quality Commission

Speak with your local care manager

# 0208 154 1753

chingford@radfieldhomecare.co.uk  
www.radfieldhomecare.co.uk





# FEEL THE FOAM



If you are into fitness, then you need to know about foam rollers and how to use them. Predominantly designed to help with the recovery of injured muscles, they can also be used as part of your warm-up and cool-down routines to great effect.

## WHY USE A FOAM ROLLER?

- To alleviate muscle soreness
- To reduce inflammation
- To aid muscle repair and recovery
- To help prevent injuries
- To increase blood flow
- To improve mobility
- To smooth the appearance of the skin
- To promote relaxation

## WHERE ON THE BODY CAN YOU USE A FOAM ROLLER?

You can use a foam roller on your quads, hip flexors,

calves, lats, hamstrings, IT band (the connective tissues that run along your outer thigh from the hip to the knee), the upper back and shoulders, as well as the neck area.

## WHEN SHOULD YOU USE A FOAM ROLLER?

You can use a foam roller either before or after a workout. Using a foam roller before working out can help to loosen up your muscles and allow for more efficient movement. Applying a foam roller after a workout can help to reduce muscle soreness and reduce recovery time.

## HOW SHOULD YOU USE A FOAM ROLLER?

If you are new to using a foam roller, then be warned that foam rolling can be slightly painful. This is particularly true if you are using it on an area where the muscle or tissue is tight and in need of some TLC.

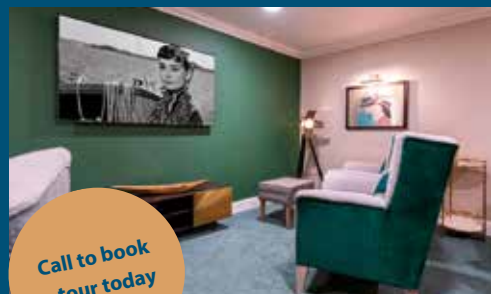
To use a foam roller for the first time:

- Pinpoint the sore or tight area of your muscle.
- Control your body as you slowly lower the targeted area, so it is centred above the roller.
- Lower your body onto the roller until you reach a point of discomfort.
  - Hold it there for 20-30 seconds.
  - You can roll the foam roller slowly back and forth to further stimulate the area.



# Chestnut Manor

CARE HOME



Call to book  
a tour today

## Designed for luxury living in the heart of Wanstead

Newly built, Chestnut Manor Care Home provides first-class residential and nursing care within luxury surroundings.

Spacious Ensuite Rooms - Hair and Nail Salon - Spa Bathrooms - In-house Cinema Room  
Library - Sensory Garden - Onsite Parking - WiFi - Person-Centred Activities



Scan the QR code to learn more about the care we offer or arrange a visit with our friendly team



63 Cambridge Park, Wanstead E11 2PR | 0203 871 6070 | westgatehc.co.uk

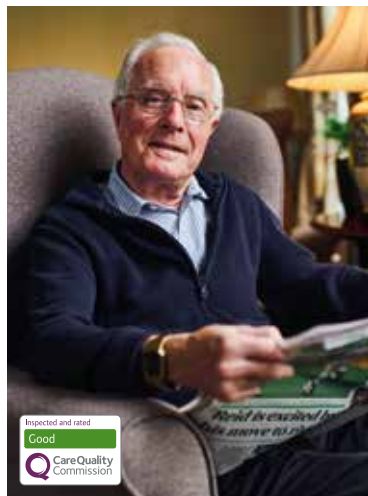
@chestnutmanorcarehome



**"The level of care and compassion shown from the wonderful staff was outstanding. I hope you realise what a huge impact your care and kindness has."**

**Daughter of resident, August 2022**

Source: carehome.co.uk



## Harts House Care Home, welcoming new residents

Whether you need to find a local care home now, or are just starting to look into options, we can help. We're welcoming new residents to join us for as long as they need - a few weeks, a month or a permanent stay.

**Nursing | Residential | Dementia**

**We're here to support loved ones with a range of needs. Talk to us about how we can help.**



**Call for advice on care today**  
**020 3504 4212**

Lines are open 8am to 6.30pm Monday to Friday, 9am to 12.30pm Saturday. Closed Sundays and bank holidays. Calls are charged at no more than local rate and count towards any inclusive minutes from mobiles. We may record or monitor our calls.



**carehome.co.uk**  
**Review Score**  
45 reviews<sup>1</sup>

**Harts House Care Home, Harts Grove, Woodford Green IG8 0BF**

☒ **All types of funding welcome** ☒ **No health insurance needed**

<sup>1</sup>The Review Score is based on the quality and number of independent reviews this home has received on carehome.co.uk in the last two years, at the time of going to print.

APR23 CS 02894

# HAROLD WHITE

INDEPENDENT FUNERAL DIRECTORS

## Family funeral directors serving East London since 1888.

### OUR LOCATIONS:

Chingford 0208 529 1530  
Walthamstow 0208 520 4166  
Buckhurst Hill 0208 505 7051

### 24 HOUR SUPPORT

For out-of-hours enquiries, call 0208 529 1530 and speak to one of the team at Harold White.

**haroldwhitefunerals.co.uk**



HEALTH & FITNESS

# 10,000 a day!



**N**o, not 10k in money but 10k in steps! According to a 2017 study, completing 10,000 steps a day is just as effective as doing five 30-minute workouts a week.

Here are a few more reasons why you should be clocking up some serious mileage.

### **To strengthen your heart**

If you walk 10,000 steps per day, you will have a larger stroke volume than someone who only walks 1,000 steps a day. Your stroke volume refers to how much blood the heart beats per minute, with a larger stroke volume being a sign of greater aerobic capacity and better heart health.

### **To lose weight**

Walking is a great form of aerobic exercise, especially if you walk briskly. This can help you to lose weight when combined with a healthy and balanced diet. Furthermore, you will store less fat than an inactive person and be better able to handle periods of excess, such as Christmas, without gaining too much weight.

### **To stabilise your blood sugar**

People who walk 10,000 steps per day will have a much lower glucose and insulin response in their blood after eating a meal than someone who is inactive. This means that you are less likely to develop type 2 diabetes in the future.

### **To improve cognitive function**

Daily moderate exercise such as walking has been shown to improve one's ability to learn new tasks, grow new brain cells and stave off cognitive decline. Aerobic exercise may also be able to stimulate new cell growth in the hippocampus, which is the part of the brain responsible for emotion and memory.

### **To reinforce healthy habits**

It takes time to develop new habits, but sometimes all it takes is one small commitment to act as a catalyst for change. Start with small increases to your overall step count, before gradually increasing to 10,000 steps per day.





Discover the depths of Indian flavours.

New generation masterchefs distill the purest methods of preparing traditional, fine Indian cuisine and fuse with contemporary innovation. Steeped with only the freshest spices, chilli peppers and subtlest of flavourings, favourite menus and classic dishes are redefined to mouth-watering, modern stylish tastes.

EXCLUSIVE  
DINING IN VOUCHER

£10 OFF

\*Excludes drinks and desserts. Not to be used in conjunction with any other offer.  
Excluding special days and events. One voucher per table. Expires 31st July 2023.

TEL: 020 8989 1500    [www.thelanevanstead.co.uk](http://www.thelanevanstead.co.uk)  
82 Nightingale Lane London E11 2EZ



FILIKA

Filika restaurant is a smart, comfortable and cosy restaurant with a relaxing Mediterranean atmosphere.

Welcoming and friendly, we serve modern and the best traditional Turkish cuisine.

We offer a good choice of freshly prepared seasonal food – mezzes, a generous selection of marinated steaks, chicken, vegetarian dishes and lots of fish & seafood dishes.

Opening hours

Monday-Saturday: 12pm - 10pm

Sunday: 12pm - 9pm



FILIKA RESTAURANT THEYDON BOIS  
13 Forest Drive, Theydon Bois, CM16 7EX  
[www.filikarestaurant.co.uk](http://www.filikarestaurant.co.uk)  
[theydonbois@filikarestaurant.co.uk](mailto:theydonbois@filikarestaurant.co.uk)  
Tel: 01992 812000

FILIKA RESTAURANT WANSTEAD  
62 High Street Wanstead, E11 2RJ  
[www.filikarestaurant.co.uk](http://www.filikarestaurant.co.uk)  
[info@filikarestaurant.co.uk](mailto:info@filikarestaurant.co.uk)  
Tel: 020 8530 1333

# STAY HYDRATED

Water plays a crucial role in our daily wellbeing. From quenching our thirst to fuelling essential bodily functions, staying hydrated is vital. But many of us find it hard to drink enough water or don't know how much we need. If that's you, here are some practical ways to keep hydrated.

## HOW MUCH IS ENOUGH?

According to the government's Eatwell Guide, we should consume 1.5 to 2 litres of fluid per day – more if we're exercising or when the weather's hot. Some experts say we should drink more than that, but it's a helpful starting point.

## DOES IT HAVE TO BE WATER?

No, it doesn't. Lower-fat milk and sugar-free drinks, including tea and coffee, all count. But caffeinated drinks can have a diuretic effect (increasing urine output), and sugar-free drinks can harm tooth enamel. So only rely on these drinks for some of your fluid intake.

## TOP TIPS:

- ✦ Kickstart your hydration by drinking a glass of water first thing in the morning after you've woken up.
- ✦ If you don't like plain water, try infusing it with citrus fruit slices, berries or cucumber – or opt for herbal teas.
- ✦ Carry a bottle of water around with you so you can sip water on the go, whatever you're doing.
- ✦ Make drinking water a habit throughout the day – for example, before each meal or after you've been to the loo.
- ✦ Treat yourself to a smart water bottle or one with times and measurements written on it. Alternatively, download a reminder app, or set alarms or calendar alerts on your phone, to remind yourself to drink.
- ✦ Choose a water bottle, cup or glass that you like – it's easier to drink out of something you find visually appealing.
- ✦ Eat plenty of water-filled foods like fresh fruit and vegetables – they're hydrating as well as being nutritious. Watermelon, cucumber and oranges are all excellent choices.



FOOD & DRINK

7AM/2PM

9AM/4PM

11AM/6PM

1PM/8PM



Beautiful

# BROAD BEANS

If you want to try to eat more seasonally, then now is the time of year to embrace the humble broad bean. They're delicious, nutritious and guaranteed to brighten up your day. Discover two of our favourite broad bean recipes below.

## TOMATO, MOZZARELLA AND BROAD BEAN SALAD

### You will need:

500g tomatoes | 150g podded broad beans | ½ tsp salt | ½ tsp caster sugar | Handful of fresh basil and chives | 1 tbsp fresh tarragon | 1 tbsp mint leaves | 3 tbsp olive oil | 2 tsp Dijon mustard | 1 lemon, zested | 1 tbsp red wine vinegar | 250g mozzarella balls | 50g toasted and chopped hazelnuts

### How to make:

- Cut the tomatoes into slices and place in a bowl.
- Add the salt and sugar and leave to marinate for 30 minutes.
- Bring a pan of water to the boil and add the broad beans.
- Boil for two minutes, drain and allow to cool.
- Remove the beans from their shells.
- Finely chop all the herbs and tip into a bowl.
- Whisk in the olive oil, mustard, lemon zest and red wine vinegar.
- Season and stir in the broad beans.
- Tip the tomatoes onto a serving platter, then top

with the mozzarella and spoon over the broad bean salsa.

- Scatter over the toasted hazelnuts.

## BROAD BEAN DIP

### You will need:

300g podded broad beans | 3 tbsp crème fraîche | ½ a lemon | 1 tbsp fresh dill | Flatbreads or pitta bread to serve

### How to make:

- Bring a pan of water to the boil.
- Add the broad beans and cook until tender.
- Drain and refresh in iced water.
- Blitz the beans, crème fraîche and a little seasoning together in a food processor.
- Tip into a bowl and squeeze in the juice of the lemon.
- Finely chop the fresh dill and stir through.
- Serve with warm bread.
- You can store this dip in a tightly sealed container for up to four days in the fridge.



LIVE MUSIC  
EVERY FRIDAY  
& SATURDAY



PARTY'S  
CATERED  
FOR

EIGHTEEN

DRINK DINE DANCE

AN EXCEPTIONAL  
EXPERIENCE  
EVERY DAY

A family run contemporary dining experience, serving up the best in British cuisine with a European twist – a place you can come for a casual bite, or a special occasion.

TO BOOK A TABLE 020 3062 4197

Email: [bookings@e-eighteen.co.uk](mailto:bookings@e-eighteen.co.uk)

Online: [www.e-eighteen.co.uk](http://www.e-eighteen.co.uk)

159 - 161, High Road, South Woodford, E18 2PA



PRIVATE  
DINING &  
A CHEFS TABLE



zero dry time

Dry Carpets, Upholstery & Hard Floor Cleaners

Why REPLACE  
when you can  
RESTORE?

Already got a cosy sofa with life still in it?

- Save thousands in replacement costs
- Repair minor damage before it gets costly
- Leather looks fresh and revitalised
- Full leather colour match service available

Have your leather sofa or  
furniture cleaned & restored  
for a fraction of the price  
of new items

Contact us today for a  
FREE no-obligation quote  
[zerodrytime.com](http://zerodrytime.com)

07756 942859

[sean.drury@zerodrytime.com](mailto:sean.drury@zerodrytime.com)



HOME & DIY

GREAT BRITISH INTERIOR DESIGNER

LOUISE BRADLEY

Interior designer Louise Bradley has impeccable taste, and it's no wonder she's sought after all over the world to create stunning designs in properties that range from country houses to overseas villas. Louise started her business in 1991, and is a self-confessed perfectionist with an eye for detail.

#### CLASSIC, CONTEMPORARY BEAUTY

While her styles are striking and timeless, Louise's spaces are designed to be functional too.

Her designs typically feature neutral colours enhanced with darker tones and blacks, with plush fabrics, statement lights and carefully chosen accessories completing the look. Louise's spaces represent a new modern classic style that works in different types of homes, including more traditional homes where the property's original features become elevated with Louise's designs.

#### RECREATING LOUISE BRADLEY'S LOOK

Some useful tips for recreating this look in your own home include:

- > Keep your layout simple, deciding carefully where furniture should go to help you make the most of the space you have.
- > Choose a muted colour palette that can be enhanced with darker shades to add depth.
- > Dress up the space with cushions and textiles in luxury fabrics. A rug can be a simple way to give a new look to an existing space.
- > Ornate mirrors and statement light fixtures add elegance, and can be an affordable way to dress up your interior if you're willing to shop around.

With looks that are simple yet timeless, Louise Bradley is the ultimate inspiration for contemporary décor that can work in any home.



Photo credit: louisebradley.co.uk

- ✓ Bespoke made to measure curtains
- ✓ Sheers & Voiles
- ✓ Window blinds – manually operated or motorised
- ✓ Plantation shutters
- ✓ Pole and track fitting service
- No obligation quote
- Friendly & enthusiastic family business Est 1920
- Experienced consultation & installation team
- Commercial projects also undertaken

0208 088 3496 07956 818477

AlfOnnie.co.uk @AlfOnnie1920

Alf Onnie Curtains and Blinds

On enquiry mention Vision for a special offer

BOILR offers comprehensive service plans to homes throughout Essex, Hertfordshire & London.

★	★★	★★★	★★★★★
£7.50 / MONTH	£15.50 / MONTH	£19.50 / MONTH	£23.50 / MONTH
Annual boiler service ✓	Annual boiler service ✓	Annual boiler service ✓	Annual boiler service ✓
Landlord safety record ✓	Landlord safety record ✓	Landlord safety record ✓	Landlord safety record ✓
Heating/Gas/Plumbing ✓	Heating/Gas ✓	Heating/Gas/Plumbing ✓	Heating/Gas/Plumbing ✓
Electrical Faults & Emergencies ✓	Electrical Faults & Emergencies ✓	Electrical Faults & Emergencies ✓	Electrical Faults & Emergencies ✓

Servicing | Installation | Plans

CALL OUR TEAM TODAY FOR MORE INFORMATION

0203 576 2386

hello@boilrltd.co.uk boilrltd.co.uk

T&C's Apply





## WE CARRY OUT ALL HOME RENOVATIONS

Garage Conversions | Bathrooms | Kitchens | Full Decorating  
New Flooring | Plumbing & Heating | Electrical | Glazing  
Roofing | Tiling | Handyman & Locksmith Services  
Cleaning | Extensions & Loft Conversions | Clearances  
*Plus much more...*

DOMESTIC & COMMERCIAL | NO JOB IS TOO BIG OR TOO SMALL

CHECK OUT OUR GOOGLE REVIEWS

t: 0208 088 2969 | m: 0794 939 4403

e: info@lillywhitepropertygroup.com

www.lillywhitehomerenovations.com

f LillywhitePropertyGroup i LillywhitePropertyGroup @LWMaintenance



WE OFFER  
FREE ESTIMATES

WE NOW OFFER FINANCE  
ON ALL REFURBISHMENT  
PROJECTS

## PUT THE SPARKLE BACK INTO YOUR KITCHEN



### Domestic Oven Cleaning Specialists

Est. since 2007

#### Prices

Single oven incl. shelves & grill pan.....	£43.00
Double oven incl. shelves & grill pan.....	£54.00
Range incl. shelves & grill pan.....	From £54.00
AGAs.....	From £90.00
Hobs.....	From £14.00
Extractors.....	From £15.00
Microwaves.....	From £20.00

No VAT to pay



BEFORE



AFTER

PLEASE CALL FOR A FREE QUOTATION

01279 432444 \* www.ovenbright.co.uk

# Drenched IN COLOUR

YOUR GUIDE TO THE DRENCHING TREND

If you love a little colour, then you're going to love colour drenching. This latest interior craze is helping people utilise their favourite shades and transform spaces to give them a coordinated, striking finish. Check out our simple guide to colour drenching and how to nail the look in your home.

#### WHAT IS COLOUR DRENCHING?

Colour drenching means taking one colour and using it in various shades throughout a space. From your walls to ceilings and even your woodwork, using the same colour in a room can be super stylish. It's a bold look – one that can make a big impression.

#### HOW TO ACHIEVE THE LOOK

To achieve a colour-drenched look in your home, choose a colour that can be applied to your walls, ceiling, doors and window frames. You can then play around with accessories in the same or similar shades to help you fill out the space.

This is a fantastic way to make the most of any statement furniture items you have. A contrasting piece or artwork can really shine in a colour-drenched room, with the space creating the perfect backdrop.

#### WHICH ROOMS WORK BEST?

Colour drenching looks great in spaces like living rooms or dining areas. The less clutter you have, the more effective colour drenching can be. If you have a small space to work with, this can be a good way to create the illusion of a bigger room.

You can opt for light, dark or bold colours with colour drenching, helping to create a range of different effects within your home.

#### CHOOSING THE RIGHT COLOURS

When it comes to colour drenching, choosing the right colour is important – you're going to be seeing a lot of it, after all.

Some of the colours that work well for colour drenching include rich shades of navy and green, pink and burgundy. White and neutral shades can also work well, especially when paired with wooden details.

You may want to avoid using pastels like yellow, green and pale blue – the room may look too light without any contrasting features.

#### AN EXTRA TIP

Start with a feature wall in your chosen colour to see how it feels. If you like it and like the way the light hits the space, you can start adding to it until your room is sufficiently drenched.



HOME & DIY

Photo credit: Little Greene via homessandgardens.com, colourtrend.co.uk, sorbd.com



# Why is my ORCHID dying?

Growing orchids can be a daunting prospect, even for the most experienced gardener. That being said, when cared for correctly, this beautiful bloom can last between 15 and 20 years.

## Six signs that your orchid is dying

**1** The leaves turn yellow and drop  
While the shedding of leaves is a natural process for almost all plants, if new leaves start to turn yellow or drop off, this indicates that your orchid is getting too much light or water.

**2** The leaves have brown tips  
When the leaves on an orchid turn brown, this means that they are not getting enough moisture and you need to adjust your watering schedule to water your plant more frequently.

**3** The leaves become wrinkled  
Wrinkled leaves are a sure sign of underwatering and, in some cases, the leaves may start to fold in on themselves.

**4** The aerial roots dry up  
If your orchid is not getting enough humidity, its aerial roots may shrivel, become dry and turn brown. If the root is dead, you will need to remove it with a sterilised cutting tool.

**5** The leaves have black or brown spots  
Black or brown spots on leaves are usually caused by sunburn from too much bright light. If this occurs, move your orchid to a more shaded spot.

**6** Your orchid does not bloom  
If your orchid is not blooming, then this is almost definitely owing to poor growing conditions or conditions that are not suited to your particular orchid.

## How to make your orchid live longer

- > Position your orchid in bright but indirect light
- > Water your orchid once a week with room temperature water
- > Keep them in a room where the temperature is between 18 and 29°C
- > Cut away any blooms that have died
- > When not in bloom, give your orchid a 20-20-20 fertiliser which contains 20 per cent nitrogen, 20 per cent phosphorous and 20 per cent potassium.



**Produce  
Green Energy  
& Make Real  
Cost Savings**

**We can beat  
any like for  
like quote**



**Contact Us 0208 088 2890**

hello@bsolarenergy.co.uk

www.bsolarenergy.co.uk



GET A QUOTE

**SCAN ME FOR A QUOTE**

**FULLY ACCREDITED & INSURED**



NAPIT

MCS



TRUSTMARK  
Government Endorsed Quality



Google  
★★★★★

Trustpilot  
★★★★★



**A professional, personal approach  
to all our solar installations**



## Solar Panel Design & Installation

Our tailor made Solar PV systems are made up of several panels, with each panel generating energy during daylight hours.



## Battery Storage

When your solar panels generate electricity, batteries can store excess electricity from your system.



## EV Car Charging

Own or thinking about buying an electric vehicle? Charge your car for free using solar power.

☀ **Competitive Pricing** ☀ **Bespoke Solar Installations**

☀ **Strong Focus on Customer Service & Aftercare**

☀ **Enjoy Warranty Protection**







## SHOCKED AT THE COST OF A NEW KITCHEN? ...HAVE A MAKEOVER INSTEAD!



If you're worried about your kitchen budget getting out of control, why not have a makeover instead! You can get a lovely new look simply by replacing your doors, drawer fronts, trims and worktops.

**SAVE TIME. SAVE MONEY. SAVE HASSLE.**

To book your **FREE**  
no pressure, home visit call  
**Mark: 020 8088 9192**

SHOWROOM  
36a Church Hill, Loughton, IG10 1LA  
[www.kitchensandmakeovers.com](http://www.kitchensandmakeovers.com)  
[info@kitchensandmakeovers.com](mailto:info@kitchensandmakeovers.com)

**KITCHEN  
& MAKEOVER**  
COMPANY

ALTERNATIVE USES FOR

## TOILET PAPER ROLLS



**D**id you know that the average person uses 100 toilet rolls per year? That's more than 20,000 sheets of paper!

Rather than just throw away the empty rolls, why not put them to better use?

### TO STORE CORDS

Most households have a whole host of unused cords that are taking up too much space, either in a drawer or, worse, on the floor. Create a simple storage solution by folding a phone charger or other type of cord into a neat stack and then placing it inside a toilet roll tube.

### TO STORE IMPORTANT DOCUMENTS

Are you always misplacing your birth certificate or car

insurance documents? Keep important documents safe and crease-free by rolling them up and placing them inside a toilet paper tube. You can also store your child's artwork.

### TO MAKE A FIRE STARTER

Whether you have a wood-burning fire in your home, love to go camping, or like to throw impromptu barbecues, a toilet paper roll makes the process of lighting a fire much easier. Simply stuff a tube with dryer lint, wrap in newspaper and twist at the ends.

### TO MAKE A DIY PHONE SPEAKER

Like your music loud but don't want to have to buy an expensive speaker? Why not make your own with just a toilet roll? Start by cutting a long, rectangular hole in the tube which is big enough to slip your phone into. Then use drawing pins as feet to stabilise the speaker.

### TO PREVENT CREASES

If your trousers tend to crease where the fabric folds over the hanger, then you can easily remedy this by cutting a slit lengthwise into two toilet rolls and then sliding them onto a hanger.





# COMER CHAMELEON



**The changing mode of Jodie Comer, and why, in the face of her recent Tony Award win, the British actress's career will surely only continue to ascend.**

In the pantheon of British acting royalty, Jodie Comer's journey has been gradual, yet dramatic. The 30-year-old actress has worked her way up through the slightly clichéd ranks, with the usual spread of appearances in TV staples such as *Holby City*, *Waterloo Road* and *Doctors*. Lead-character presence in *Thirteen* and *The White Princess* saw the Liverpoolian build on her early success, with widespread attention on both sides of the Atlantic finally arriving as a result of her portrayal of assassin Villanelle in the BBC drama *Killing Eve*.

Comer's appeal is obvious; she possesses distinctive flair and undeniable talent, with an ability to switch between comedy and drama, romantic segments and thriller sequences.

And nowhere better has that versatility been shown than in her recent triumph at the 2023 Tony Awards, where she garnered the Best Leading Actress accolade for her tour-de-force performance in the Broadway show *Prima Facie*.

"I've never been one to pin everything I do on the idea of winning awards," she begins, "as I believe there is so much good stuff that goes unnoticed. And really, the success or failure of a project is something that only really I can decide upon."

"That said, when recognition comes along, especially with something this big, and in an environment on stage that is a diversion from what I have been doing, it does mean so much to me and I am so grateful."

Comer wouldn't be able to achieve what she has without the eclectic blend of strength, charm and emotional vulnerability that she brings to every role. She is visually striking and phonetically exacting, and with these tools, she manages to engage an audience in a way that few actresses of her age can.

"Drama is about sharing an emotion," she says. "It's not a one-way street – the task is to envelop everyone around you in a character and a feeling."

Comer's journey to the top, while impressive, has been linear. That's what makes the Tony Award her biggest achievement yet – for the fact she stepped out, alone, looking to impress not just those at home, but the fiercely demanding New York Broadway crowd too.

The show, a one-woman play, tells the story of a lawyer who defends men in sexual assault cases, though finds the script flipped when she herself becomes the victim of a sexual assault. The play was also a hit in the West End, with a successful run at the Harold Pinter Theatre.

Beyond the stage, Comer's cinematic work is equally noteworthy. Her role in the upcoming survival film *The End We Start From*, co-starring Benedict Cumberbatch CBE, is eagerly anticipated.

"For me, it's about continuing to move forward – to try new things and to work with new people. I am flattered when I get cast alongside some real heavyweights of the industry, and it is a struggle to feel worthy, at times."

Perhaps that's what makes Comer so popular – a sense of humility and down-to-earth persona. Despite her fame, she remains a humble Liverpoolian who loves her craft and respects her audience.

Photo credit: Jon Sugg





# PUZZLES & TRIVIA

PUZZLES

Answers: see end of The VISION Listings

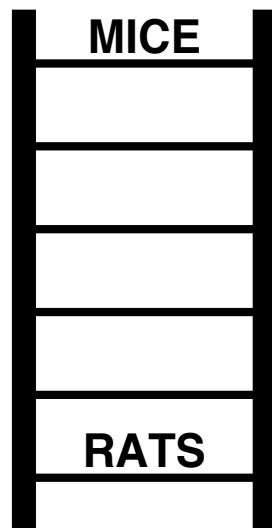
- ▶ AEGEAN
- ▶ BALINESE
- ▶ BENGAL
- ▶ BIRMAN
- ▶ BOMBAY
- ▶ BURMESE
- ▶ CORNISH REX
- ▶ EGYPTIAN MAU
- ▶ HAVANA
- ▶ JAVANESE
- ▶ KORAT
- ▶ OCICAT
- ▶ PERSIAN
- ▶ RAGDOLL
- ▶ RUSSIAN BLUE
- ▶ SIAMESE
- ▶ SIBERIAN
- ▶ SOMALI
- ▶ SPOTTED
- ▶ TURKISH

A	N	S	N	U	W	K	A	L	H	A	V	A	N	A
P	S	R	A	D	A	Q	W	T	L	F	F	A	A	R
B	G	O	E	Z	E	M	E	S	P	O	T	T	E	D
S	M	U	G	P	U	A	N	C	N	P	D	P	G	S
T	I	J	E	F	L	R	W	A	E	A	R	G	S	F
S	U	B	A	S	B	S	O	S	I	Z	M	V	A	F
Y	L	R	E	V	N	P	E	N	B	T	E	R	O	R
B	A	L	K	R	A	N	B	O	A	Z	P	W	I	O
T	G	L	A	I	I	N	B	O	M	B	A	Y	N	B
A	N	R	T	L	S	A	E	T	V	R	O	W	G	L
C	E	T	A	U	S	H	N	S	O	M	A	L	I	E
I	B	B	P	W	U	A	A	A	E	T	A	R	O	K
C	G	G	P	E	R	S	I	A	N	H	A	A	B	K
O	X	E	X	E	C	O	R	N	I	S	H	R	E	X
S	I	A	M	E	S	E	C	B	U	R	M	E	S	E

## DID YOU KNOW?

- ▶ Earth isn't actually perfectly round. Earth's rotation causes the planet to bulge at the equator and flatten at the poles.
- ▶ Coral reefs are Planet Earth's largest living structure. These underwater ecosystems are made up of colonies of tiny animals called coral polyps, which build calcium carbonate skeletons that accumulate over time and form the complex structures we know as coral reefs.
- ▶ The Earth's interior is not solid, but rather has a semi-solid or 'squishy' consistency owing to the extremely high temperatures and pressures.
- ▶ The Earth's diameter (the distance straight through the middle) measures a massive 12,800 kilometres, which makes it the fifth largest planet in the solar system.

## WORD LADDER



THE AIM: Change the word at the top of the ladder one letter at a time to make the word at the bottom.

HOW TO: Change one letter on each step to make a new word. By the time you reach the end, you should have created the new word.

DO NOT rearrange the order of the letters.

TIP: There is usually more than one way to solve this puzzle.

## LET US ADD SPACE & STYLE TO YOUR HOME

Loft Care was created by two professional directors. One from a corporate background, the other with construction and design experience. These two different backgrounds have forged a great partnership which we pride ourselves on.

Evident from our wide client base, providing a valued tailored service. Our clients choose

us because of our professional, committed, and reliable manner, supplying advice and delivering high quality of work is what we strive ourselves upon.

Conversions are the ideal way to add space, value and unlock your potential in your home. We fully understand the impact building work can

have. We guarantee to treat your property with respect and create minimum disruption. From the outset, we work closely with you, perform in-depth inspections, and identify your personal needs, whilst involving you in every step of the journey.

Our design team can introduce a wide variety of professional services to include, interior designers, fabric and upholstery consultants, furniture manufacturers, kitchen and bathroom suppliers, therefore benefitting from our commercially discounted prices.

Behind the scenes our directors conduct regular meetings to ensure high standards are achieved and your expectations exceeded. Regular site visits are also conducted by a dedicated contracts manager.

Each job is documented from start to finish, therefore providing the client with a tailored

process for their project leaving no room for ambiguity. All work is undertaken with Building Regulation Approval and Certificate of Completion from your local authority and all works covered by a 10-year Loft Care guarantee.



## LOFT CONVERSION AND REMODELLING SPECIALISTS

### PROVIDING BESPOKE CONVERSION SOLUTIONS

DORMER • HIP TO GABLE • MANSARD • ROOF LIGHT  
HOME REMODELLING AND INTERIOR DESIGN

### LET US DELIVER YOUR DREAM

VISIT OUR WEBSITE: [WWW.LOFTCARE.CO.UK](http://WWW.LOFTCARE.CO.UK)  
or call 0208 088 3015 • 0800 002 9411



SCAN ME





There's no place like  
**Home Hub**



01992 948 980  
essex@homehubgroup.co.uk  
137-139 Epping High Street

@HomeHubGroup

With no pressure sales, transparent pricing and exceptional service levels you'll feel right at home with Home Hub. Come and see us at our beautiful lifestyle showroom in Epping – call 01992 948989 to book an appointment.

**homehubgroup.co.uk**

Windows • Sliding Doors • Bifold Doors • Roof Lights

# FROM YOUR AREA



LOCAL NEWS

## School pays tribute to student killed in stabbing



Photo credit: Bancroft's School

A Woodford Green school has paid tribute to a former student who was one of the victims of a recent attack in Nottingham.

Grace O'Malley-Kumar, 19, left Bancroft's School in 2022 and went on to study medicine at the University of Nottingham.

Along with fellow student Barnaby Webber and caretaker Ian Coates, Grace was stabbed to death in the early hours of Tuesday, June 13.

A tribute posted on the Bancroft's School website reads: "We are desperately shocked and saddened by Grace's sudden death in these terrible circumstances.

"An immensely gifted and dedicated scholar and sportswoman, she was hugely loved and greatly respected by all. She will be missed terribly.

"Our thoughts are with Grace's family and friends at this difficult time."

A 31-year-old man has been arrested on suspicion of murder and is in police custody at the time of writing.

This comes after several reports from local residents of repeated instances of both antisocial behaviour and drug use.

Officers conducted three stop and searches, one of which resulted in a Community Resolution Order after someone was discovered to be in possession of cannabis.

On Saturday, June 10, the Churchfields team conducted several stop and searches while patrolling the Woodford Green area.

One individual was found to be in possession of a quantity of a Class B substance.

Both teams would unite later on that same Saturday, to represent the police at a summer fete held by Oakdale Primary School.

## Resident's new film released in cinemas

A South Woodford resident has directed a major feature film that was also filmed in the area.

Jane Gull's newest film, *Love Without Walls*, is the first that she's ever written, and tells the story of a young couple who find themselves on the streets after being unable to afford their rent.

Though the majority of the film was shot in Camden and Southend, where it is set, some scenes were filmed in South Woodford.

It was released in cinemas on Wednesday, June 14.

Jane said: "The film is powerful and character-driven, putting faces to the statistics. The film's tone is pretty dark, but it is peppered with moments of light relief."

The movie has already won Best UK Feature at the Manchester Film Festival and Best UK Feature at the London Independent Film Festival.

## Police conduct stop and searches in drugs crackdown

Police teams in South Woodford and nearby Churchfields have been helping to reduce the number of drugs used in the area.

On Friday, June 9, the South Woodford team conducted patrols and watches in Torrington Road and other nearby streets.



Photo credit: Love Without Walls



NEWS FROM  
**THE 100 CLUB**  
LOCAL BUSINESSES SUPPORTING HAVEN HOUSE



**Tea party raises more than £10,000 for hospice**

Hundreds of scrumptious cakes, a sprinkle of community spirit, and a staggering £10,166 was raised for Haven House at a community tea party.

The sun shone and the Pimm's flowed at the garden party on Friday, June 16. The event, organised by Haven House volunteer Michelle Vanlint (pictured top, centre), is now in its 17th year and is a much-loved event in our hospice calendar and of the local community.

Michelle said: "Thank you to everybody who supported, including all the cake makers, dishwashers, raffle prize donators, online donators, cake eaters, Pimm's drinkers, fruit choppers, gazebo builders, furniture collectors and hamper makers, plus so many more people who contributed to the success of the event."

Reiko Murray, senior community and events manager at Haven House, added: "Michelle's tea party is an abundance of laughter, delectable treats and a warm sense of community coming together for a truly unforgettable experience. Well done Michelle and friends on another fantastic event."

Thanks to event sponsors Venture Studios, Pimm's sponsors Emma Charles, Steve Thorn and TWC Financial, and Precision Printing and Pariena Charalambous for the poster design and printing.



**Haven House marks 20 years with time capsule planting**

Haven House Children's Hospice has marked its 20th anniversary by burying a time capsule in its grounds.

Children, families, staff and supporters gathered to bury the capsule near a hazel tree in the Woodford Green-based hospice's arboretum.

The time capsule was full of mementoes from 2023, including artwork made with a child's fingerprints, photographs, a poem written by two hospice siblings, a handwritten message from hospice ambassador Harry Kane, a video showcasing the hospice, and a special edition newsletter containing 20 inspiring stories.

Chief executive Gary Seager said: "What a momentous achievement it is for us to stand here today celebrating 20 years of supporting our community – the very community that is at the heart of our hospice."

"Our hope is that one day in the future, perhaps in another 20 years, when the time capsule is discovered, people will get a wonderful insight into what an extraordinary and much-loved place Haven House was in 2023."



**WWW.HAVENHOUSE.ORG.UK**

**bsplumbing**  
plumbing & heating specialists  
**BOILER INSTALLATION SPECIALISTS**

**12-24 MONTHS FINANCE - 0% APR**  
**UP TO 10 YEARS AT 9.9% APR**  
**NO DEPOSIT**

**£100 OFF BOILERS**  
**QUOTE BSP100**

- Bathroom Installation
- Underfloor Heating
- Boiler Supply & Fit
- Power Flushing
- Plumbing Repair
- Boiler Repair & Service
- Landlord certificate CP12

**CONTACT US FOR A FREE QUOTE**  
**0800 107 7119 • 0208 088 3126**  
info@bsplumbing.co.uk • www.bsplumbing.co.uk

**WE REPAIR ALL APPLIANCES**

Fridge Freezers ■ Washing Machine  
 Tumble Dryer ■ Dishwasher  
 Cooker & Range Cookers  
 All Freestanding & Built-in Appliances

**CALL OUT £64.99**  
for Labour & Diagnostics

Family business with over 20 years experience  
Fully trained Bosch & Hotpoint engineers

Service Partners with  
John Lewis & British Gas

**07488 265527**

SCAN ME

**SIDDH**  
GLAZING LTD

**QUALITY DESIGN**

**Manufacturer & Installer**  
**for UPVC & Aluminum**  
**Windows & Doors**  
**Conservatories & Porches**  
**Bi-fold**  
**& Much More...**

Tel: 01702969997  
 Mobile: 07830355172  
 Email: info@siddhglazing.co.uk  
 Web: www.siddhglazing.co.uk





**WE COVER ALL ASPECTS  
OF BUILDING WORKS**

- Property extensions & refurbishments
- Kitchen extensions ■ Loft extensions
- Garage Conversions
- Building contracts & new builds
- Construction services

**0208 088 2870**

[www.propertyextensionsessex.co.uk](http://www.propertyextensionsessex.co.uk)

email: [info@addspacelondon.co.uk](mailto:info@addspacelondon.co.uk)

EXPERIENCED TRADESMEN TO CARRY OUT  
WORKS WITH NO DELAYS OR PROBLEMS



**Control your security**  
**Be **App**solutely connected**

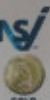
**Did you know your smartphone  
can now control your alarm  
system through an app?**



**CCTV Systems ● Alarm Systems**  
**Fire Alarms ● Door Entry Systems ● Safes**  
**Vehicle Alarms & Tracking ● Ghost Immobilizers**

**NEW SYSTEMS SUPPLIED  
& FITTED FROM £450.00**  
**(OR WE MAY BE ABLE UPGRADE  
YOUR EXISTING SYSTEM)**

**020-8529-5710 ● [www.cobra-ss.co.uk](http://www.cobra-ss.co.uk)**  
**155 Station Road, Chingford, London, E4 6AG**



# Heavyweight promoter stays true to his roots



LOCAL FEATURE



Photo credit: Gary Carr/INPHO/Shutterstock

The man who runs rings around the world's best boxers, Eddie Hearn is undoubtedly one of Brentwood's finest sporting exports, even if his activities, primarily across boxing, rarely see him break into a sweat.

Hearn, who attended the private Brentwood School before heading to Havering College in Hornchurch, is the son of Barry Hearn and therefore comes from solid boxing promoter stock. Yet over the past decade, Eddie has truly stepped out of his father's shadow.

Hearn's first foray into boxing promotion came in 2004, when he used Brentwood as the base for his first sporting event. The showcase featured a number of up-and-coming boxers, and enabled him to begin to build his reputation.

He has gone on to work with some of the biggest names in the sport, including Anthony Joshua OBE, Dillian Whyte and Kell Brook. He has also promoted numerous world champions, including Carl Froch MBE, Tony Bellew and Katie Taylor, as well as dabbling in management for poker, snooker and darts.

Hearn, who now lives in Billericay with his wife Chloe and their two daughters, is known for his flamboyant personality and an ability to promote fights in a way that generates excitement and interest from fans. He is a master of social media, using Twitter and Instagram to engage with fans and promote his fighters, both male and female.

Despite his success, Hearn is not without his critics. Some boxing fans accuse him of having too much control over the sport, and have questioned his decision to work with streaming service DAZN. This is despite the fact that the multi-million-pound deal disrupted the traditional pay-per-view model, making elite boxing more accessible to fans around the world.

The promoter's biggest fight was the heavyweight rematch between Anthony Joshua OBE and Andy Ruiz Jr, which was held in Saudi Arabia in 2019; yet more recently he brilliantly traded verbal punches with Simon Jordan on talkSPORT.

Hearn's success in boxing has given him an estimated worth of more than £100million, yet he remains fiercely loyal to his Essex roots.





## SUPPLIER OF QUALITY CONCRETE



**MOST  
TRUSTED  
READY-MIX  
CONCRETE  
SUPPLIER  
IN LONDON**

- Collection also available ■ 24/7 service
- Competitive pricing

Let's get in touch 0208 088 3418

info@LondonQualityConcrete.co.uk  
www.londonqualityconcrete.co.uk



## ALL ASPECTS OF ROOFING WORK



**NEW ROOFS ■ ROOF REPAIRS ■ TILES & SLATES ■ LEAD WORKS & WELDING  
VELUX WINDOWS & SKY LIGHTS ■ CHIMNEY REPAIRS & REMOVALS  
GUTTERING ■ FASCIAS & SOFFITS**

**10+ YEAR WARRANTY ■ FULLY INSURED ■ PRICE MATCH GUARANTEED**



**0208 088 3085**

**WWW.NIGHTINGALEROOFING.CO.UK**

**INFO@NIGHTINGALEROOFING.CO.UK**



# YOUR LOCAL EVENTS



WHAT'S ON

### THE BEST WORST DAY EVER – BABY STORY BUILDER

South Woodford Library & Gym, 116 High Road,  
South Woodford, E18 2QS

Tuesday, July 11, 2pm – 2.30pm



Photo credit: Sophy Henn

Young children can come to this event and build a fun story together, based on the picture book *The Best Worst Day Ever* by Sophy Henn.

There is no need to book for this free event, just arrive at the library on time.

### FAIRLOP OPEN DAY

Fairlop Waters Country Park, Forest Road,  
Ilford, IG6 3HN

Saturday, July 15, 12pm – 6pm

Families can enjoy a fun day of outdoor activities on this special day, with high ropes courses, water sports and aqua bounce available to take part in.

The event is free and there is no need to book, just come along between the times above.

### ROMEO AND JULIET

Wanstead Park, Warren Road,  
Wanstead, E11 2LT

Saturday, July 15, 3pm and 7.30pm, and Sunday,  
July 16, 3pm

Shakespeare's most famous romantic tragedy comes to Wanstead Park, as presented by East London Shakespeare Festival. Gates open an hour before the show, with a festival vibe and special activities before the curtains go up.

Book via [www.visionrcl.org.uk/event/east-london-shakespeare-festival-presents-romeo-juliet](http://www.visionrcl.org.uk/event/east-london-shakespeare-festival-presents-romeo-juliet)

### EDINBURGH FRINGE COMEDY PREVIEWS

Redbridge Drama Centre, Churchfields,  
South Woodford, E18 2RB

Sunday, July 23, 7.30pm – 9pm

See two of the UK's newest stand-up voices ahead of their appearances at the Edinburgh Fringe comedy festival later this year. Sara Barron and Bella Hull are both award-winning new talents, so come along if you fancy a chuckle.

Tickets cost £11.50. To book, visit [www.visionrcl.org.uk/event/sara-barron-bella-hull](http://www.visionrcl.org.uk/event/sara-barron-bella-hull)

### BUILD YOUR OWN BUG HOTEL

Wanstead Library, Spratt Hall Road,  
Wanstead, E11 2RQ

Wednesday, July 26, 2.30pm – 3.30pm

Children can come along to this creative event and, using recyclable materials, they can work together to create a safe hideaway for various minibeasts and bugs to stay inside.

The event is free and booking is not required.

### PRIDE AND PREJUDICE AT THE TEMPLE

Wanstead Park, Warren Road,  
Wanstead, E11 2LT

Friday, July 28, 7pm – 9.20pm

This production of the Jane Austen classic novel toured Europe for six years and earned critical acclaim. Now, it comes to Wanstead Park, in the open-air Temple Theatre.

Please bring your own seating/rug, suitable clothing and a picnic. Only assistance dogs are permitted. The venue is wheelchair accessible on a grassy slope.

Tickets can be booked at [bit.ly/3N6VIEF](http://bit.ly/3N6VIEF)



Photo credit: Mark Percy





# Camilla

## THE QUEEN UNVEILED

**F**ifty years ago this month, Camilla Shand married Andrew Parker Bowles OBE and embarked on what seemed like a conventional life. However, fate had different plans in store.

Her Majesty Queen Camilla first met His Majesty King Charles III in the early 1970s. After a period of dating, they separated. Charles joined the Royal Navy. Camilla married Andrew – her on-off boyfriend of several years – and in 1981, Charles married Lady Diana Spencer.

It's believed that Charles and Camilla rekindled their romance in the late 1980s, though the exact timeline isn't certain. There were rumours, of course, but their affair only became public in 1993, when the press leaked transcripts of the couple's intimate phone conversations. Now more than ever, people blamed Camilla for the breakdown of Charles' marriage.

In the aftermath of the revelations, Camilla shut herself away to avoid the press. Charles admitted their affair on television, and Camilla's husband asked for a divorce.

But despite the challenges, Charles was already paving the way for a future with the woman he loved. In 1996, he and Diana divorced. But a year later, tragedy struck with Diana's untimely death in a car accident. For months afterwards, Camilla kept a low profile. But gradually, Charles introduced her to the public. Despite ongoing criticism, Camilla's positive impact on Charles soon became evident, and more people began to accept their relationship.

The pivotal moment happened in June 2000 when Camilla had a private lunch with Her late Majesty Queen Elizabeth II. In 2003, Camilla moved into Charles' home. In 2005, they announced their engagement and they married later that year. Camilla immersed herself in charity work, gaining admiration from various sources, including the Queen.

Last September, shortly before her passing, the late HM Queen Elizabeth II endorsed Camilla as Queen Consort rather than Princess Consort. And in May this year, King Charles III and Queen Camilla were officially crowned, side by side at Westminster Abbey.

Photo credit: Hugo Burriand/Royal Household/Shutterstock



**Jason's**  
DECORATING

*Add colour to  
your life*

Interiors & Exteriors  
Full Decorating  
Services

Contact Jason on  
07943 848437  
jasonlukwago@gmail.com  
62 Hatch Lane London E4 6LQ

**keytek**  
LOCKSMITHS

Ref: 68102

**LOCAL LOCKSMITH**

**CALL: 020 3897 6009**

Woodford & Surrounding Areas  
**Emergency Locksmith**

- No Call Out Charge! • 1/2 Hour Service!\*
- Free Home Security Check!\*

uPVC Door & Windows Specialists.

Fully Assessed & Accredited Locksmiths.

All Locks Supplied and Fitted.

\*where possible  
\*\*once a job has been completed

**BEALES**  
ELECTRICAL

**NEED AN ELECTRICIAN?**

**NO JOB IS TOO BIG OR TOO SMALL**

We provide the following electrical services & more across South Woodford, Wanstead & surrounding areas.

- CALL OUTS • CONSUMER UNIT UPGRADES • EV CHARGER INSTALLATION
- FAULT FINDING • FULL & PARTIAL REWIRES • LANDLORD CERTIFICATES
- LIGHTING INSTALLATIONS

**WHY CHOOSE US? • LOCAL & RELIABLE**

- GREAT CUSTOMER SERVICE • QUALITY WORKMANSHIP

**CALL NOW FOR OUR FRIENDLY EXPERT ADVICE, A FREE SURVEY OR QUOTE**

0208 088 2970  
www.beales-electrical.co.uk hello@beales-electrical.co.uk

**NAPIT** Proud members of **Checkatrade.com** Where reputation matters **Google** ★★★★★

**SCAN ME**



# Specialist

GARDEN COMPANY  
MAINTENANCE • TREES  
LANDSCAPING

- Garden Maintenance
- Paving • Turfing
- Pressure Washing • Driveways
- Weed Control • Irrigation
- Decking & Fencing
- Ponds & Water features
- Tree & Hedge Care
- Garden Clearing
- Large Area Mowing

0208 088 0873

enquiries@specialistgarden.co.uk

SpecialistGardenCompany  
www.specialistgarden.co.uk



## NEED A RELIABLE CLEANING COMPANY?

**OUR SERVICES INCLUDE:**

- Residential Cleans
- Deep Cleans
- Patio/Driveways
- Carpet & Upholstery Cleaning
- Office Cleans
- Commercial Cleans

We provide high quality services, tailored quotes specifically designed for your requirements



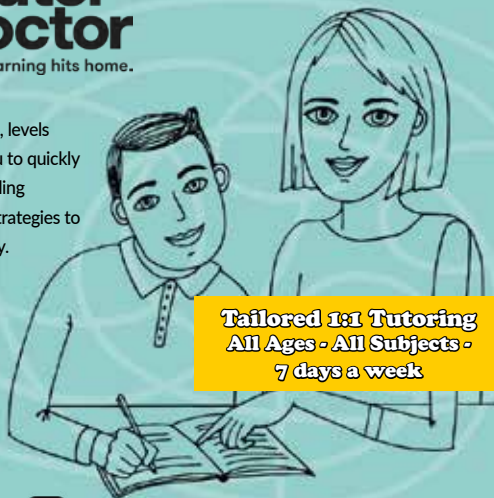
Call us on  
**0208 088 3469**



## EVERYONE CAN LEARN WITH THE RIGHT APPROACH



Tutor Doctor provides 1:1 tutoring services to students of all ages, levels and subjects. We come to your home at a convenient time for you to quickly identify where your child is struggling, help build confidence by filling missing building blocks, and provide the right tools and learning strategies to enable them to catch up with their studies and thrive academically.  
**At their pace. On their terms. This is how learning hits home.**



**Tailored 1:1 Tutoring  
All Ages - All Subjects -  
7 days a week**



020 3856 4466

www.tutordocor.co.uk/wlcc

Wanstead Loughton Chingford Chigwell

**No-Obligation Free 1 Hour Consultation**  
Complimentary Assessments

# PETAL PERFECTION

Are you planning to throw confetti at your wedding? Then you need to know about petal confetti, also known as biodegradable confetti, and how it can help make your big day both stylish and sustainable.

## WHY IS CONFETTI THROWN AT WEDDINGS?

The tradition of throwing confetti at weddings dates back to the Middle Ages, and is used to say congratulations to the happy couple and wish them a lifetime of luck and happiness.

## WHAT IS PETAL CONFETTI?

Petal confetti, as the name suggests, is confetti that is made out of real flowers rather than plastic, metal or paper. It is 100 per cent biodegradable, affordable and makes a stunning addition to any style of wedding. You can create bespoke petal confetti mixes or you can order pre-mixed bags online from companies such as Shropshire Petals and Pretty Petals. There is also a confetti field in Pershore, Worcestershire, where you can

carry out pre-wedding photoshoots and purchase petals.

## WHAT ARE THE BEST FLOWERS FOR PETAL CONFETTI?

There are many different flowers to choose from for your eco-friendly wedding confetti, with some of the most popular options including delphiniums, wildflowers, roses and hydrangeas. In particular, delphinium petals make wonderful confetti as they are small and delicate. It is worth noting that delphiniums and hydrangeas are harmful to dogs, so if you have any four-legged friends attending your wedding, then rose petals and lavender make a fragrant alternative.

## OTHER WAYS TO USE PETAL CONFETTI

As well as being used for beautiful confetti, there are other ways in which you can use petals to make your big day just that bit more special:

- > Create a petal aisle for the bride to walk down
- > Flower girls and boys can scatter petals down the aisle
- > Place piles of petals around other decorations
- > Decorate your wedding tables.





MONDAY:

KNOW  
YOUR

## CHORES

**W**ould you like your children to start helping out around the house, but are unsure of what they should be doing? Use this guide to age-appropriate chores and create the ultimate chore calendar for your family.

**AGES 2 AND 3:** Most toddlers love to help their parents with chores, although their help may not actually be that helpful! Although you will be needed every step of the way, the below chores are a good place to start with this age group:  
Making their bed | Picking up their toys | Helping to feed pets | Helping to wipe up spills

**AGES 4 AND 5:** Preschool-aged children should still be fairly motivated to help and love one-on-one time with adults. Suitable chores include:  
Clearing and setting the table | Dusting | Making

their beds independently | Helping to tidy their room

**AGES 6 TO 8:** School-aged children are more independent and can keep track of their responsibilities. Chores you may want to entrust to them include:

Washing small plates and bowls | Helping to care for pets | Taking out the rubbish | Sweeping or mopping | Making their own breakfast or snacks | Tidying their room

**AGES 9 TO 12:** At this age, you can set a schedule and expectations when it comes to help in the home. Chores they are able to take on include:  
Helping to wash the car | Learning to load and unload the dishwasher | Cleaning the bathroom | Operating the washing machine | Helping to prepare simple meals

**AGES 13 TO 18:** Most teenagers are capable of handling any household chore as long as they have been taught how to do it properly. Depending on their school commitments and schedule, tasks you may like to delegate include:

Vacuuming | Doing their own laundry | Cleaning out the fridge | Preparing family meals | Ironing clothes | Mowing the lawn | Caring for pets.



## GET TO KNOW ANIMALS

Indoor Petting Zoo &amp; Animal Experience Centre



OPEN TUESDAY-SUNDAY 10AM-6PM - LAST ENTRY 4:30PM

ADULTS: £10 (UNDER 2'S FREE) UNDER 11 / OVER 65 / DISABLED: £8.50  
CARERS FREE WITH PROOF OF DISABILITY FAMILY TICKETS AVAILABLE

MIDWEEK TERM-TIME:

1 ADULT &amp; 1 UNDER 5: £10 (10AM - 3PM) AFTER 3PM: £5 P/P

ANIMAL HANDLING EXPERIENCES FROM £3.50



WWW.GTKA.CO.UK ~ FOREST LODGE COMMERCIAL COMPLEX, EPPING RD, EPPING, CM16 5HW





# AROUND THE WORLD IN 29 DAYS

For children aged 5 to 12-years-old. Open from 8:30am - 5:30pm daily (with optional breakfast club and late pick up)

**ARE YOU READY FOR AN EXTREME HOLIDAY EXPERIENCE?**

**24TH JULY - 1ST SEPTEMBER 2023**



Join Silver Kidz Camps this summer for the chance to explore the world! Our campers will be engaging in fun activities, games, and crafts that relate to each country we visit. We will also have our staple Silver Kidz activities from our giant water slide, roller disco, axe throwing and more!

**REGISTER HERE**

**Location:**  
Roding Valley High School,  
Loughton IG10 3JA

**SILVERKIDZCAMPS.CO.UK**   **OFFICE@SILVERKIDZCAMPS.CO.UK**   **TEL: 07700 160751**

We accept child care vouchers and tax free child care at Silver Kidz Camps. Contact us for more information.



## BEEWISE

### High end solutions for less than you think

At Beewise we use our massive purchasing power and market expertise to get you the best deals on all of your retail merchant services.

**Try risk free for 1 month**

**50% off the cost of the terminal\***

**£100 Amazon voucher for the first 200 new customers**

Scan the code or call us and we will save you time and money on your business utilities and services

**0208 088 3086**

\*Offer expires 31st July 2023




SCAN ME



TRAVEL

# LOVE PARKS

## Week

Love Parks Week is an annual event that gives people across the country the chance to shout about their favourite green spaces. It takes place between July 28 and August 4 this year. Here are some of the best national parks the UK has to offer.

### NEW FOREST: *Best for nature lovers*

One of the largest areas of woodlands in southern England, the New Forest is a great park to visit all year round. In spring, head to Clayhill Heath to stroll through a sea of bluebells, and in summer, look out for forest pony foals outside Beaulieu and Brockenhurst. Later in the year, don't miss the free-roaming pigs that are let loose to scavenge acorns.

### SOUTH DOWNS: *Best for long-distance walks*

The newest UK national park, South Downs boasts rolling hills and stunning views down to the Weald and out to the Channel. The impressive 100-mile South Downs Way covers the entire park from Winchester Cathedral to the beach at Eastbourne, making it a must-do experience for hiking enthusiasts.

### EXMOOR: *Best for isolation*

One of the least visited national parks in the UK, Exmoor is the perfect place for those who want to seek solace. Offering wild moorlands, rocky ravines and breath-taking coastal cliffs, Exmoor is also home to a population of wild ponies who wander around its expansive landscape.

### DARTMOOR: *Best for camping*

If you fancy experiencing the freedom of wild camping, then this is the national park for you. You can just pitch up and explore Devon's wondrous moorlands – the only national park in the UK where this is permitted. Ideal for families, some of the most popular spots are Haytor and Hound Tor or, for adventure seekers, head out to the remote Fur Tor.







# What is a RESIDENT LANDLORD?

**H**ave you ever thought about renting out a room in your home to bring in some extra income? Find out everything there is to know about becoming a resident landlord below.

## WHAT IS A RESIDENT LANDLORD?

A resident landlord, sometimes referred to as a live-in landlord, is someone who rents out a room or a proportion of their accommodation in a property that they also live in. You are not a resident landlord if the property is split into purpose-built flats, with yourself in a separate flat, or if you are not considered by law to be a resident at the property.

## WHAT ARE THE BENEFITS OF BECOMING A RESIDENT LANDLORD?

The main reason that people choose to rent out a room in their home is to earn some extra money which can be used to help pay the mortgage, pay

off other debts, or be put aside for retirement.

## ARE THERE ANY TAX BENEFITS TO RENTING OUT A ROOM IN YOUR HOME?

Yes, the government's Rent a Room Scheme allows you to earn up to £7,500 per year tax-free from letting out furnished accommodation in your home. If you earn less than £7,500, then your tax exemption will kick in immediately, otherwise you will need to complete a tax return or opt into the scheme.

## CAN I RENT TO MORE THAN ONE LODGER?

Yes, you can. If you have more than one spare room in your home, then you can rent to more than one lodger. However, if you rent to three or more tenants who are not from the same family, this becomes a house in multiple occupation, which has very strict licensing rules.

## DO I NEED TO TELL MY MORTGAGE LENDER?

Most mortgage agreements allow you to take in a lodger as long as you live in the property. However, it is worth checking with them first to make sure.

# LUXE

PROPERTY & FINANCIAL SERVICES

[www.luxeresidential.co.uk](http://www.luxeresidential.co.uk)

[info@luxeresidential.co.uk](mailto:info@luxeresidential.co.uk)

020 3551 6141



## Daisy Road, South Woodford E18 - £370,000 SOF

Luxe are pleased to present this two-bedroom ground floor flat which is ideally situated in a popular area of South Woodford. The property is in good condition and offers a fitted kitchen, fully tiled bathroom and a newly landscaped garden. The property comes with a share of the freehold.



## The Paddocks, Stapleford Abbots, RM4 - £1,425,000 Freehold

Stunning family home set in a small quiet development with views onto rolling fields. This home offers five bedrooms and great space for any new family looking to purchase their forever home. The property has been carefully looked after over many years and with some potential to extend this could be a dream home for the growing family.



Luxe Residential Property & Services, 72b George Lane, South Woodford, London, E18 1JJ



CALL US TODAY FOR YOUR BESPOKE PLATE  
**0208 088 3189**

- 2D Printed, 3D Gel, 4D Acrylic Plates
- All Sizes! Shaped, Short, Hex, oversized Plates
- Tinted, Chameleon, Coloured Show Plates
- Exclusive - Vintage Style Number Plates
- Keychains & Accessories
- 1 of the UK's Largest Wholesale & Trade Supplier
- Custom Cut Fit Plates
- Local Same Day & Free Fitting Service
- Nationwide next day shipping
- Over 500 Different Designs to choose from



# SUPPORT LOCAL BUSINESSES



Please let your local businesses know that you saw them first in... **VISION**



**THE UK'S MOST TRUSTED AND REVIEWED  
AUTO LOCKSMITH & EMERGENCY RESPONSE**

## HOW SAFE IS YOUR CAR?

**Car & Van Security Specialists**

VAN SECURITY LOCKS | ALARM SYSTEMS

VEHICLE TRACKING | THEFT PROTECTION

IMMOBILISERS | CAR KEYS

from  
**ONLY  
£450**



## GHOST CAR IMMOBILISER

**A SMART WAY TO PROTECT YOUR CAR**

Secure your peace of mind and your vehicle with the next generation of vehicle security



**www.carkeyssolutions.co.uk**  
Call us on **0208 088 3140**  
Email: [contact@carkeyssolutions.co.uk](mailto:contact@carkeyssolutions.co.uk)

We cover Greater London & surrounding M25 areas

**Open 7 days a week  
from 8am to 10pm**



# DROP IT

*like it's hot*

**THE PERILS OF BIRD DROPPINGS ON OUR CAR EXTERIORS, AND WHY YOU NEED TO REMOVE THEM QUICKLY**

When a bird decides to lighten its load your head, it's said to be a sign of good luck.

Well, tell that to motor aficionados and they may well disagree, because unequivocally, bird poo is bad for your car's paintwork and should be removed immediately.

The acid in bird poo begins to corrode the shiny coat that sits atop your cherished four wheels within 48 hours. This acid kicks off a rusting process, which can be difficult and expensive to fix.

The fact that birds consume a large amount of gravel in their diet means that not only do you need to be quick in removing deposits, but careful as well, or you'll find that despite being prompt in ridding your paintwork of the mess, it's left behind a horror show of scratch marks too.

Preventing the deposit of bird poo on your car is a near-impossible task, though ensuring you don't park under trees or roofed overhangs will reduce the chance of your car resembling a painter and decorator's radio.

The best and easiest method to get rid of

the mess is simply to spray it with WD-40. This will serve to loosen the droppings. You should then use a sponge or microfibre cloth to pinch them up from the surface of the car.

Baking soda mixed with dish soap and dispensed from a spray bottle can be just as good, while pre-prepared over-the-counter formulas are expensive, but equally effective.

The real trick to ensuring no long-lasting marks on your vehicle where bird poo is concerned is rapid detection, so keep your eyes peeled and leap into action at the first sign of air attack.



# Improve, Don't Move!

Maximise the value of your home.

- SPACE-SAVING - MAXIMISE YOUR GARAGE HEADROOM
- SECURITY-ENABLED AUTO-LOCKING SYSTEM
- CHOICE OF 21 COLOURS TO MATCH YOUR HOME
- REMOVAL AND RECYCLING OF YOUR OLD DOOR
- DEDICATED AFTER-CARE TEAM

**GAROLLA** 01992 830 024

**ROLLER  
SHUTTER  
DOORS**



LINES OPEN 7 DAYS A WEEK

[www.garolla.co.uk](http://www.garolla.co.uk)



BESPOKE ELECTRIC DOORS MANUFACTURED IN THE UK



PRICED  
EXAMPLE **£895**  
COMPACT • UP TO 2.4M

**GAROLLA ★ PREMIUM**  
Increased Security • Double Insulation  
One-Touch Close



PRICED  
EXAMPLE **£1,990**  
PREMIUM • 3.4M • ANTHRACITE



WOOLSTON MANOR

GOLF CLUB

Celebrate at  
**Woolston Manor Clubhouse**

**The Special Venue for all your  
Weddings & Parties**

Enjoy the benefits of  
**Woolston Manor Golf Club**

**With our Individual, Joint &  
Corporate Membership options**



Woolston Manor Golf Club, Abridge Road, Chigwell, IG7 6BX

☎ 0208 500 2549 ✉ [info@woolstonmanor.co.uk](mailto:info@woolstonmanor.co.uk) 🌐 [woolstonmanor.co.uk](http://woolstonmanor.co.uk)

BRITAIN'S GREATEST  
SPORTING MOMENTS...

# BOTHAM'S ASHES



This month, we look back at one of the most significant events in British sporting history, when Lord Ian Botham OBE single-handedly derailed the Australian Ashes machine.

It's rare to find a sporting event named after one person, let alone a whole series, yet July sees the celebration of more than four decades of the term Botham's Ashes – a tribute to a one-man masterclass that turned a dramatic series of matches on its head.

Australia came to England in the summer of 1981 keen to win back the urn, and in a low-scoring first Test at Trent Bridge, they bowled the hosts out for 185 and 125 to seize the initiative.

The second Test was drawn, and the Aussies looked to be coasting to success in the third, at Headingley, as they clocked up 401/9, before skittling England out for just 174. Lord Botham's half-century appeared little more than a consolation, and while a follow-on total of 356 (with the talismanic former footballer 149 not out) had the hosts ahead, it

seemed inevitable that Australia would put away the chase target of 129 very easily.

Only once previously in Test history had a team won after following on, yet the Aussies reckoned without Bob Willis MBE's devastating eight wickets for just 43 runs with the ball, and collapsed to 111 all out, allowing England to level the series.

Past that point, it was a Lord Botham masterclass – he took five wickets in the second innings in the fourth Test at Edgbaston with the Aussies requiring just 150 to win; then bagged a century at Old Trafford as England went 2-1 up. It was his third successive Man of the Match performance.

And in a sixth Test at The Oval, another century from 'Beefy' wrapped up a 3-1 Ashes victory.

From a position of apparent hopelessness, Lord Botham's courage, bullshness, power and fortitude guided England to a sensational series win.



SPORT

Photo credit: Colorsport/Shutterstock



# THE VISION LISTINGS

## ACCOUNTANT & TAX ADVISORS

### ALL THINGS ACCOUNTING

Accounting & tax services, we help with self-assessment tax return, corporation tax return, payroll, VAT return, CIS return & bookkeeping. Call 07539 035537 for free initial consultation.

## ACUPUNCTURE

### HONG WEI CHINESE MEDICAL

Fully qualified & experienced, specialising in women's health & Fertility. Help with pain relief, emotional disorders, male/female conditions. 01708 454888 | hongweichinesemedicine.co.uk

## AUDIO & VISUAL

### ULTIMATE AV

We create bespoke systems designed and built especially for you. Small projects to complete home cinema environments. Based in Essex call us on 07531 214339

## BEAUTY & NAILS

### BEAUTY BY NATASHA KATIE

A local, mobile LVL Technician. Fully qualified level 2 and 3 beauty therapist Babtac insured and approved. 07961 462672

### SPECIAL NAILS

Dedicated to provide the best quality nail care for Men & Women. Walk-ins welcome, appointment bookings & gift vouchers available. 01708 442248

### THE NAIL STUDIO

Nail Studio lets you switch off and pamper with highly skilled technicians providing top treatments and nail products to meet your every need. 07572 526519

## BUILDING

### ADDSpace LONDON LTD

We provide a high quality Building service. Extensions, lofts and internal renovations. Members of Federation Master Builders. Call 0208 088 2870

## CARPET & UPHOLSTERY

### ARWIN CLEANING SERVICES

Over 30 yrs of exp, we can offer a professional, efficient and cost-effective solution for carpet and upholstery, cleaning and maintenance. 07973 417764

## CAR & VAN HIRE

### SCENIC SELF DRIVE

Your self drive hire specialists. Whether you require modern cars, motorhomes, vans or minibuses. Rest assured we will provide you a professional service 01708 753461

## CHESS CLUB

### VICKI'S CHESS CLUB

Vicki's chess coaching - teaches and provides games of chess to children and adults in Ilford and Debden. Phone Vicki: 07849 435451 | Website: Vickischessclub.uk

## CLEARANCE & WASTE

### THE CLEARANCE TEAM

From clearing a room, house or garden to clearing an entire office block. Fast, reliable and affordable. Working 24/7 so you can book us at your convenience 0207 101 3387

## COMPUTER REPAIR & I.T.

### MAPTEC IT

Your local residential & commercial IT specialists. We can fix your computers, configure email accounts & printers. Setup your Wi-Fi, Internet router & network. 0203 865 7174

## EDUCATION

### TUTOR DOCTOR

All primary secondary subjects, 1:1 lessons, online or F2F in-home. Tutor matched to every child's personality, weekly reports. Call 020 3856 4466 | www.tutordoctor.co.uk/wlcc

## ELECTRICAL & WHOLESALE

### CH ELECTRICAL WHOLESALE

Essex & East London's leading electrical wholesalers providing the trade & public a professional service with access to all leading brands. 01708 730591

## ELECTRICIAN

### CAPITAL ELECTRICAL SERVICES LTD

Domestic/Commercial, Repairs/Installation, Vehicle Charging Points, Portable Appliance Testing, Fire Alarms, Emergency Lighting, Installation Condition Reports. Call 0208 088 2916

### TACK ELECTRICAL

Local experts. Specialising in domestic alterations, fuseboard, additional sockets, Lights, Rewires, Installations and reports for homeowners. No job too small, 0208 088 0779

### GLADE ENERGY SERVICES LTD

We cover all types of electrical work in your home. LED lighting, Fusebox upgrades, CCTV & Home automation. Please call 020 3906 2863

## FACIALS & SKINCARE

### VIRGINIA WILLIAMS STUDIO

Providing specialised treatments for common skin concerns: sensitive, acne, pigmentation, ageing. Use code VIS10 to get 10% off first treatment. www.virginia-williams.co.uk

## FURNITURE RESTORATION

### ABBEEY GROUP

Abbey Group are specialist in creating, repairing & restoring quality furniture & wood surfaces to the highest standard. 01708 741135

## GARDEN SERVICES

### JOHN HEARNE

We take care of it all Lawn Mowing, Weeding, Planting, General Tidying, Fence/Shed Painting, Driveway/Patio Pressure Washing and more. Call for details 07908 523101

### KINGS CUTS TREE SERVICES

A Huge range of tree services available & offer expert arboricultural advice, ensuring your trees are looked after responsibly. 01708 578030 | 07467 944671

## HEALTH & WELLBEING

### IMPROVE YOUR SMILE DENTAL PRACTICE

Est. in 1986. Encompassing all needs from basic oral health to advanced dental procedures and high-end cosmetic treatments. New patients welcome. 0208 504 2704

## HOME CARE

### RADFIELD HOME CARE

Award winning, personalised home care. Meal prep, personal care, medication assistance, companionship, dementia care. 0208 154 1753 | chingford@radfieldhomecare.co.uk

## LOCKSMITHS

### KEYTEK LOCKSMITHS

From Lock outs to security upgrades, our fully trained DBS checked Locksmiths are the experts | Call 020 3897 2686 | Quote: 15080

## MASTICS AND SEALANTS

### QUALITY MASTICS LTD

Bathroom and shower mastic joint sealing. Kitchens, windows, floors, external seals around windows. For information. Call 01245 520981

## PAINTING & DECORATING

### TRADITIONAL DECORATIONS

We are a family run business specialising in turning your house into a home. Giving advice on current decorating trends. 07737 562406

### JAMIE'S PAINTING & DECORATING

High quality work at reasonable prices. I can also create artwork for your walls, to enhance your home décor. Call 07526 682903

## PLUMBING & HEATING

### KINGS PLUMBING & HEATING

All work undertaken: All bathrooms, boiler servicing & gas safe. 07956 343275 | www.kingsplumbingandheating.co.uk

### BOILR

BOILR offer servicing, installations, repairs and plans. Local Gas Safe engineers for all your needs. Please call 0203 576 2386

## PROPERTY MAINTENANCE

### LILLYWHITE PROPERTY GROUP

For all building works, full refurbishments & property maintenance inc heating, plumbing, electrical, decorating, flooring, tiling & plastering etc. Call today on 07949 394403

### STUART GREEN PROPERTY SOLUTIONS

Property maintenance specialist. Carpentry, painting/ decorating, laminate flooring, bath/shower re-siliconing, gutters cleared/repared, insurance work, PLI. 07917 870879

## ROOFING

### JIM BARR ROOFING

Exterior cleaning/maintenance. Gutters, Paving, UPVC; cleaned, repaired, renewed. 01708 874816 | 07833 572459

## WHITE GOODS & APPLIANCES

### T.E.J. DOMESTIC APPLIANCES

Stockists of all major brands. Installation available, FREE local delivery. Free standing & Built In Appliances. Extensive stock. 01708 447752

**JOIN THE LISTINGS...**

for just **£180** +VAT per year

**DISCLAIMER:** **VISION** does not represent or endorse the accuracy or reliability of any of the advertisements, nor the quality of any products, information or other materials displayed, purchased or obtained by any customer as a result of an advertisement or any other information or offer in connection with the service or products. The opinions expressed in articles, reviews and stories are strictly those of the individual authors and do not necessarily reflect the views of **VISION**.

**To advertise call VISION on 0208 088 0386**

WORDPLADDER: MICE, MINE, MANE, MATE, RATE, RATS

PUT YOUR BUSINESS IN THE **VISION** LISTINGS...CALL **0208 088 0386** TODAY



OVER 30 YEARS OF EXCELLENCE



# Life is Beautiful

At City Bathrooms we believe everyone deserves a beautiful bathroom, that's why our passion for luxury products, first-class customer service and expert bathroom advice is at the heart of everything we do.

**City Bathrooms**

11 Raven Road, South Woodford E18 1HB

3-5 Hermon Hill, Wanstead E11 2AW

Telephone: 020 8504 5152

[citybathrooms.com](http://citybathrooms.com)





WOODFORD HOUSE DENTAL PRACTICE

# Tired of waiting in pain for an appointment for an extraction?

Our visiting Consultant Oral and Maxillofacial Surgeon could see you soon and get you out of that pain fast! He also sees patients with oral and facial lesions, lumps and bumps.

Mr Thiruchelvam has worked with our practice for over 10 years, putting patients at ease with his kind, friendly manner. (But if you're still a little anxious we can provide a sedation service.)

Mr Thiruchelvam is happy to see you with a referral from your own dentist or you can just call us to make an appointment.



## Let's get you out of pain fast.

**020 8504 2704**  
**improveyoursmile.co.uk**

162 HIGH ROAD WOODFORD GREEN IG8 9EF

**EXPERIENCE YOU CAN TRUST**

