

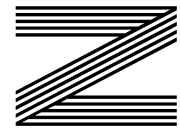
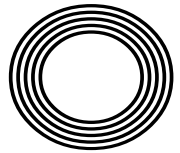
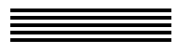


SUN SAFETY FOR YOUR BABY

RSPCA CELEBRATES 200 YEARS

PUMP IT UP
How to rock ballet pumps

STUCK IN A RUT?
Top tips to help improve productivity



FREE

Photo credit: Dave Shopland/Shutterstock

Emma
HAYES OBE

Manager aims to continue winning streak in USA



THE DIFFERENCE IS CLEAR

WINDOWS
DOORS • PORCHES
SOFFITS • GUTTERING
CONSERVATORIES • FSG

* Solar Batteries now available *

TAKE ADVANTAGE OF OUR
UP TO **50%** OFF
SALE

Uncompromising when it comes to quality

At EE Glazing, we have over 70 years of combined glazing industry experience behind us. During this time, we've learned what sets a top product apart from merely a good one. We have also centred our company ethos around quality, and every product we install is evidence of that commitment.

Take the Kommerling 70mm uPVC window system that we use, for example; it is hands down one of the best uPVC window systems on the market. It's highly durable, very efficient, secure, easy to maintain, and ultra-versatile, making it the perfect window option for every homeowner.



SCAN ME

Contact us now for a no-obligation quote

0208 088 4146



www.eeglazing.co.uk



“ The whole experience from initial order to installation and completion was carried out with efficiency, good humour and professionalism ”

Mr & Mrs Lambert





Editor's notes...

JUNE 2024



Brett Shohet, Editor

Hello and welcome to this month's edition of **VISION**SouthWoodford. We're busy gearing up for the business exhibition at South Mill Arts in Bishop's Stortford this October. This event is a chance to showcase our fantastic local businesses and for people to find out more about the services available on their doorstep. To find out more, visit bsmb.co.uk

Last month, I joined more than 40 people in my networking group in climbing Mount Snowdon to raise money for a local hospice. Though I realised it would be difficult, I think I underestimated just how challenging it would be! I knew I had a reasonable level of fitness; however, a very steep hill at the start of the route had me questioning this belief!

I did, however, make it to the top - 24,000 steps and two hours and 45 minutes later. It was inspiring to see all the people taking on the challenge. Many of them carried pictures of people they'd lost, or logos of the charities they were supporting. No matter how hard the climb, they refused to give up. I know for me, it was the thought of my close friend Dave, who passed away from cancer, that kept me going.

This is a lesson that can be applied to everyday life, as well as business. The challenge may seem difficult, but all it takes is to focus on one step at a time. By the time you look back, you'll realise you've come a lot farther than you thought. Maybe something for you to think about...

Brett Shohet

This is your town's hyperlocal magazine, delivering to homes and businesses every month.

HOME & DIY | GARDENING | PETS | HEALTH & FITNESS | BEAUTY | FASHION | HISTORY | LOCAL FEATURES | FOOD & DRINK | TRAVEL | BUSINESS & PROPERTY | SPORT | PUZZLES | MOTORING | KIDS | WHAT'S ON | TECHNOLOGY | THE LISTINGS

CONTACT US:



woodford@visionmag.co.uk | 0208 088 0386
 www.visionmagessex.com | www.visionmagherts.com
 X @visionmagessex | @visionherts | @visionmagessex | @visionmageastherts
 f Vision Magazine Essex | Vision Magazine East Herts
 CONTRIBUTORS | Tabatha Fabray, Fiona Goble, Annabel Stock

All pages are recyclable



The bathroom you have always dreamed of



YOUR DESIGNER BATHROOM

Visit our showroom and see the latest bathroom ranges Bathworks can offer supply only, or arrange supply & fit

196 High Road, Woodford Green, Essex IG8 9EF

Tel: 020 8504 1765 Email: lloyd@bath-works.co.uk

www.bath-works.co.uk



THE B7 MEDIA GROUP

PRINTING • BUSINESS CARDS • LEAFLETS • DISTRIBUTION
 SIGNAGE • MENUS & BROCHURES • RETAIL PACKAGING
 EXHIBITION BOARDS & BANNERS
 WINDOW VINYLs • LOGO DESIGN
 BRAND ALIGNMENT • VEHICLE WRAPPING
 CARBON PADS • WORKWEAR • WEBSITES
 SOCIAL MEDIA • I.T. SOLUTIONS

ENQUIRIES@B7MEDIAGROUP.COM

0208 088 0386



PROTECTING ANIMALS FOR

200 YEARS

The Royal Society for the Prevention of Cruelty to Animals (RSPCA) was founded 200 years ago this month. A small group of dedicated people gathered in a London coffee shop to discuss how to prevent animals from being badly treated. They shared a common goal: to stop cruelty to animals and improve animals' lives. This humble beginning marked the start of a flourishing national movement.

In many ways, animal welfare has improved considerably since the 19th century – partly because of the RSPCA. But new times bring new challenges, and the organisation's work throughout England and Wales remains vital. Despite all the progress, there are still many issues that need attention, and the RSPCA must continue to adapt and respond to these challenges to ensure animals are treated with respect.

THE RSPCA IN HISTORY

The RSPCA has made countless contributions to animal welfare over the years – far too many to list! But here are just a few key milestones – each one representing a significant victory in the fight for

animal rights and welfare.

- **1835** – Cruel sports like bear and bull baiting are banned
- **1870** – The last bullfight in England takes place
- **1914** – A fund for horses wounded in the First World War is set up
- **1998** – Testing cosmetics on animals is banned
- **2019** – Wild animals are banned in circuses

ON THE FRONT LINES

The RSPCA has its own teams dedicated to saving animals in danger, investigating animal crimes and providing advice on animal care. These teams work tirelessly, often in difficult and dangerous situations.

The organisation also runs several hospitals and wildlife centres. These facilities are staffed by skilled veterinary surgeons, nurses and carers who provide treatment and support to help animals recover.

Wherever possible and appropriate, animals are returned to their natural habitats.

SHAPING LAWS AND MINDS

The organisation also campaigns for improved animal welfare laws, educates young people about animal care, and provides expert advice to help ensure animals are well treated. Through its advocacy efforts, the RSPCA has influenced significant changes in legislation, leading to better protection for animals. Meanwhile, education programmes in schools are teaching future generations about the importance of compassion and proper care for pets and wildlife.

BIRTHDAY CELEBRATIONS

To celebrate its 200th year, the RSPCA is launching a year-long campaign to grow its movement to one million supporters, so people can join in creating a better world for animals – and a better world for us all. There will also be special events such as the One Fun Day, the #50MilesForAnimals challenge,

and the RSPCA Young Photographer Awards. These events are designed to engage the public, raise awareness and generate support for the RSPCA's essential work.

For more information on getting involved in the RSPCA's 200th birthday celebrations, please visit www.rspca.org.uk/200th or contact your local RSPCA branch or shop. Whether you choose to volunteer, donate or participate in events, your support can make a difference. Join the RSPCA in celebrating 200 years of compassion and help create a brighter future for animals everywhere.





Watch out for this year's National Bingo Day on Thursday, June 27. Even if you've never played before, now's the time to have fun, meet new people, and maybe even win a prize!

BINGO THROUGH THE AGES

- Bingo began in Italy in the 1500s, when people played a lottery game called Il Giuoco del Lotto d'Italia (The Game of Lotto of Italy).
- A version of the game reached the US in the 1920s, where it was first called Beano. The name Bingo started by mistake when someone called out "Bingo!" instead of "Beano".
- Bingo became popular in the UK in the 1960s, and the first bingo halls and clubs soon appeared.
- The first online bingo sites were established in 1996 – and there are now more than 200.

National Bingo Day is a chance for people of all ages and backgrounds to get together and celebrate the excitement of bingo (although remember that bingo halls are usually for ages 18 and over).

Activities will be held at bingo clubs around the

country, and online events will also be held.

MAKE THE DAY YOUR OWN

You don't have to follow the crowd. There are lots of ways you can put your own twist on the day, and here are just a few ideas:

1. Throw a bingo party with family and friends.
2. Organise a charity bingo game to raise money for your favourite cause.
3. Set up a game of Reverse Bingo – you start with a full card and erase numbers as they're called.
4. Organise a bingo walk or scavenger hunt where participants collect bingo numbers at various checkpoints.

WHY NATIONAL BINGO DAY MATTERS

National Bingo Day is more than just playing games. It's a chance for people to enjoy an entertaining tradition that many of us love – and it's a great way of meeting and making friends.

Remember to mark Thursday, June 27, on your calendar – and get your dabbers ready for a day of bingo joy!

EST. 1888

HAROLD WHITE

INDEPENDENT FUNERAL DIRECTORS



Independent family funeral directors since 1888. We can help with everything from low-impact sustainable services to traditional funerals.

OUR LOCATIONS:

- Buckhurst Hill 0208 505 7051
- Chingford 0208 529 1530
- Walthamstow 0208 520 4166

24 HOUR SUPPORT

For out-of-hours enquiries, please call 0208 529 1530 and speak to one of the team at Harold White.

haroldwhitefunerals.co.uk

STEP INSIDE



OVER THE PAST FEW MONTHS, THE OLD HSBC BANK BUILDING ON THE HIGH ROAD HAS UNDERGONE A VERY EXCLUSIVE MAKEOVER. THE HOBO CLUB IS NOW OPEN TO MEMBERS, AND WE CAUGHT UP WITH THE FOUNDERS TO GET A PEEK BEHIND THE PRIVACY CURTAIN.



WHAT IS THE HOBO CLUB?

We are a private members' club. This means different things to different people. Our members have their favourite spaces and facilities at the club. It's a place to do business, unwind, drink great cocktails, catch a movie, attend an event, or meet up with friends.

WHY THE NAME?

In the 1930s, transient workers were not always welcome. When they found a welcoming place, they left a marker that read 'HOBO' for their comrades. To us, Hobo means a place to feel welcome.

WHAT CAN WE EXPECT?

The idea of an office has changed rapidly with remote work becoming the norm. We wanted an inspiring workspace that captures the comfort and ease of working from home, while also offering socialising, networking, and face-to-face meetings.

The Den is a great workspace, professional yet comfortable for client meetings. The Lounge is where we host member events, with music on Friday and Saturday evenings, cocktail masterclasses, and wine tasting. The Cinema will open this summer, offering a luxury local option for films with a 30-seat screen where you can order wine or popcorn.

TELL US ABOUT THE FOOD...

We are proud of our food and drinks menus. Breakfast includes a fresh granola bowl or avocado smash on sourdough. Lunch and dinner feature homemade paninis and pinsa pizzas. We have barista-made coffee and sweet treats throughout the day, and an amazing selection of wines and cocktails in the evening. We support local businesses and our front desk can help with local dinner reservations. We pride ourselves on excellent customer service.

WHY LOUGHTON?

We love Loughton. As locals, we are passionate about our community, bringing people and businesses together. Epping Forest is on our doorstep, yet it's easy to get into the city. Our décor reflects this mix of sophistication and nature.

WHAT'S NEXT?

We aim to be led by our members' desires. We have a programme of events for the summer and are excited for what's to come.

HOW DOES MEMBERSHIP WORK?

Memberships are on a monthly rolling basis with no long-term commitment. Members can bring a plus one and can apply online. Nothing beats a visit, so come have a look around.



WHERE BUSINESS HAPPENS & MEMBERS MATTER



THE HOBO CLUB, 191 HIGH ROAD, LOUGHTON, IG10 4LN
Now open to new members: 8am-11.00pm weekdays, 10.30am-11.00pm weekends.

Sign up to our mailing list at [HOBACLUB.CO.UK](https://www.hoboclub.co.uk)



HOW TO TACKLE TROUBLESOME TANLINES

Whether you have a t-shirt tan from working in the sun or swimsuit tan lines from a recent holiday abroad, these noticeable patches of paler skin can wreak havoc with your summer look. Here's how to tackle your tan lines.

1 LEMON SCRUB
 Scrubbing can help to get rid of dead skin cells which can make your tan lines a lot less visible, and lemon is the perfect natural exfoliant. Simply mix the juice of one lemon with a little bit of sugar and a tablespoon of honey and work the mixture into your skin. Rinse off and see your tan lines start to fade after applying for only a few days.

2 SELF-TANNER OR BODY BRONZER
 If you are struggling to get rid of unwanted tan lines, why not try covering them up instead? A self-tanner or bronzer can help to hide lighter areas and make them blend in better with your tanned skin. Just make sure you choose a shade that matches your tan or you could end up looking even more patchy. Body make-up coupled with setting powder and a setting spray is also effective.

3 BAKING SODA
 Baking soda is a natural whitener, making it ideal for reducing the appearance of unwanted tan lines. To treat a single area of skin, create a thick paste using half a cup of baking soda and a few tablespoons of water, or, for a full body fade, add a cup of baking soda to your bath. Leave on the paste or soak in the bath for around 15 minutes and start to see results in one or two days.

4 POTATO SLICES
 Potatoes are a rich source of vitamin C which has been proven to help lighten the skin. To use this method, either apply thinly sliced potatoes directly to the skin or make a mask by blending potatoes and applying them to the outer edges of your tan lines. Leave on for 20-30 minutes and then wipe off with a clean cloth. Repeat for two or three days or until you get the desired results.



£25 OFF ALL SUNGLASSES
 FOR A LIMITED TIME ONLY

SUNGLASSES FOR EVERY OCCASION



Ray-Ban FROM TOP DESIGNER TO KIDS & BUDGET SUNGLASSES



☎ 0208 088 3496 🌐 www.careoptics.co.uk
 ✉ woodford@careoptics.co.uk
 📍 14 The Broadway, Woodford Green, IG8 OHL



CALL US TODAY TO MAKE AN APPOINTMENT



Website: www.eprservices.co.uk
 Email: info@eprbusiness.co.uk

COMPASSIONATE CARE
RIGHT AT YOUR DOORSTEP



Health care practitioners who are dedicated to provide assistance with daily living activities in the comfort of an individual's home.

Our Services:

- ✓ Home Support
- ✓ Live-In Care
- ✓ Dementia Care
- ✓ Domiciliary Care
- ✓ Complex Care
- ✓ Supported Living

Call us on 0208 088 0934
 or 07359 201197 | 07914 839319





PUMP *it up*



Ballet pumps are one of the biggest shoe trends of the summer, having dominated the catwalks earlier this year. Versatile, comfortable and super stylish, these can be worn for all occasions and with many different outfits.

What are ballet pumps

Ballet pumps are a type of flat-heeled, round-toed shoe that are typically lightweight and look similar to the shoes worn by ballet dancers. They are often made from soft leather, but you can also find them in materials such as canvas, PVC and nylon.

Where to wear ballet pumps

To the office: Simple, soft leather ballet pumps are perfect for the office owing to their neat design and flat soles. Avoid embellishments and pair with a smart skirt, dress or formal trousers.

To a party: If you don't like wearing heels, embellished ballet pumps are a great alternative for parties and nights out. Wear with your favourite dress, jumpsuit or midi skirt.

To a wedding: Elegant and graceful, ballet pumps are the ideal match for a wedding guest outfit. Opt for pale pastel colours such as cream, pink or powder blue.

For every day: Ballet pumps are comfortable and stylish, making them the obvious choice for everyday casual outfits. Great with straight-legged jeans and a shirt or vest top.

How to wear ballet pumps

- > Avoid wearing tights, stockings or socks with ballet pumps as these can cause unsightly creases and wrinkles around the ankles.
- > Different strap styles can make your legs look either shorter or longer. Thick ankle straps can take length off your leg, whereas thinner straps can help to elongate them.
- > Show some skin. Ballet flats look most flattering when the lower leg or ankles are showing, so keep dresses and skirts above ankle length or pair them with cropped trousers.
- > Complement your ballet pumps with statement accessories such as a chunky necklace, a large clutch bag or a bold belt.



Photo credit: ASOS.com



J. Share-Bernia
Associates



Joanne Share-Bernia
C.Psychol ASs Fellow
BPS HPC MSc, Founder
Member ABP (Ass Business
Psychologists), Registered
International Coaching
Psychologist

Are you going through a change in your life?

Feel you need someone to support that change, be it your job, someone close to you has passed away, your children have moved out, health issues or relationship struggles?

I am a consultant Chartered Psychologist with over 25 years of experience. I use cognitive behavioural therapy which can be either short term or long term. I help those gain confidence in an approachable and open manner and will help clients to feel comfortable and able to discuss areas they need support in a safe and secure environment. Everything I do is private and confidential and I am able to discuss your concerns either over the phone or face to face at either my practice in Buckhurst Hill or Harley Street.

☎ 07976 539 152

✉ joanne@share-bernia.com

🌐 www.share-bernia.co.uk



SCAN ME



At Flawless we specialise on:



- PRP for joint pain, hair loss, menopausal vaginal dryness and O/G-shot improvement.
- Laser hair removal & fractional laser.
- Acne and pigmentation treatments
- Prohilo, Polynucleotides and Skinboosters for collagen and firmness of the skin.
- Male & Female facial contouring with dermal fillers and anti-wrinkle injections.
- Removal of skin tags
- Electrolysis
- Microneedling *Microdermabrasion
- Facials & skin peels
- Fat dissolving & weight management
- Massages
- Hifu - high intensity focus ultrasound
- B12 and vitamin injects
- Manicure & Pedicure care

www.fabsb.com | @flawlessaestheticsbysb | 02082201235 | 455 High Road, Woodford Green, IG80XE

WE ARE TOUCH HAIR SALON CHIGWELL




A beautiful salon filled with four stylists all with 15+ years experience and two fantastic apprentices who have a keen eye for hairdressing.

We love all things hair, we have a good time being creative and making our clients feel like they are getting the VIP care they deserve.

TOUCH@193

Tel: 020 8500 0022

 @touchhairsalon.co.uk

193 Manford Way, Redbridge, Chigwell, IG7 4DJ,

15% OFF ALL YEAR
When you buy the V.I.P Card

COLOUR TUESDAYS
15% OFF
when you have a cut

BLOW DRY BAR MONDAY & FRIDAYS
£20 short hair
£25 long hair

Half head foils, cut & blow £99
Full head foils, cut & blow £119
T&C's, new clients only, discuss with stylist

HIITBEAT.

SHAPE YOUR BODY

MINDSET TRAINING ▲ **HABIT COACHING**
NUTRITION TRAINING ▲ **FOOD PLANING**

121 TRAINING ▲ **SMALL GROUP TRAINING**
LARGE GROUP TRAINING

CONTACT US: 0208 088 8733

INFO@HIITBEAT.CO.UK @HIITBEATSTUDIO

BRANCHES

WALTHAM ABBEY

112 BROOKER RD, EN9 1JH

WOODFORD GREEN

425B HIGH RD, IG8 OXG



HEALTH & FITNESS

Like a

HOLE



Do you suffer with headaches in the back of your head? There are several possible causes of this common type of pain.

TENSION HEADACHE: This is the most common type of headache and occurs when the muscles in your scalp and neck tighten, often as a response to stress or anxiety. Typically, this causes pain on the side and back of your head. Tension headaches tend to cause a dull, throbbing pain rather than a sharp one.

POOR POSTURE: If you tend to slouch when you are sitting at your desk or when standing, then this can strain the muscles in the back of your head, upper back, neck and jaw. This also puts pressure on these areas which can result in pain at the back of your head.

ARTHRITIS HEADACHE: The main symptom of an arthritis headache is pain in the back of the head which tends to get worse when you move. This headache occurs as a result of arthritis in

the spine, changes in the bone structure of your neck, or inflamed blood vessels in your head.

LOW-PRESSURE HEADACHE: A low-pressure headache, also known as spontaneous intracranial hypotension, occurs when there is a spinal fluid leak in your neck or back. Low-pressure headaches cause intense pain in the back of the head and neck which tends to get worse when you stand or sit.

OCCIPITAL NEURALGIA: This is a rare type of headache that causes pain in the occipital nerves. These run from your spinal cord up to your scalp. When these nerves become injured or inflamed, you are likely to feel pain in the back of your head or behind your ears. This pain is often described as stabbing and severe.

If you have pain in the back of your head that lasts for several days or that does not go away after taking over-the-counter pain relief, make an appointment with your GP.



AROMATHERAPY

awareness week

Aromatherapy Awareness Week (June 8-14) is designed to highlight the important role aromatherapy can play in the management of our health, with activities and events taking place all over the UK.

What is aromatherapy?

Aromatherapy is a holistic healing treatment that uses aromatic essential oils to enhance physical and emotional health. Considered to be a science and an art form, aromatherapy is used to treat a variety of different conditions.

What can aromatherapy oils be used for?

- Peppermint to manage pain
- Lavender to improve sleep quality and for discomfort during labour
- Ylang ylang to reduce stress and anxiety
- Eucalyptus to soothe sore joints and to boost immunity
- Rosemary to treat headaches and migraines
- Cardamom to improve digestion
- Ginger to alleviate the side effects of chemotherapy

How to practise aromatherapy at home

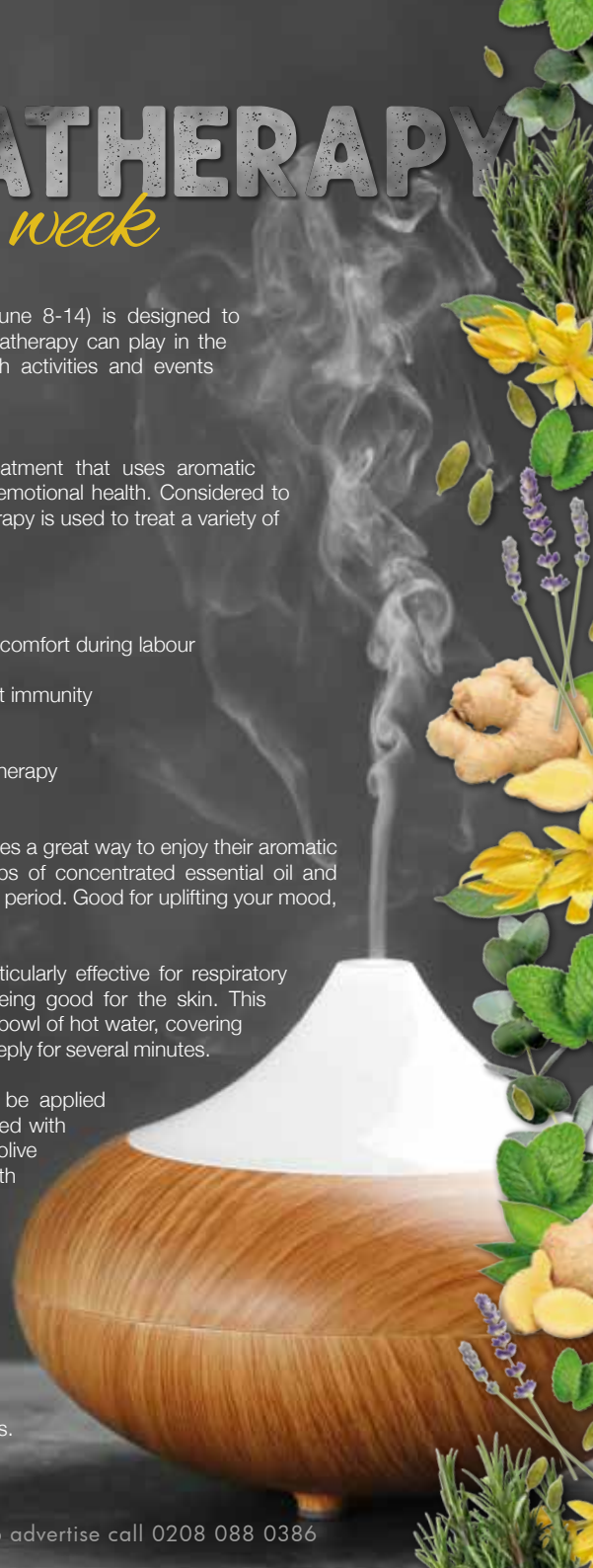
1 Use a diffuser – Diffusing essential oils provides a great way to enjoy their aromatic properties. This works by taking a few drops of concentrated essential oil and disseminating them into the air over an extended period. Good for uplifting your mood, promoting relaxation and aiding sleep.

2 Inhale the steam – Steam inhalation is particularly effective for respiratory issues and sinus congestion, as well as being good for the skin. This involves adding a few drops of essential oil to a bowl of hot water, covering your head with a towel and inhaling the steam deeply for several minutes.

3 Apply topically – Some essential oils can be applied topically to the skin, but these must be diluted with a carrier oil such as coconut oil, almond oil or olive oil. This method is good for massage, making bath oils, and creating soothing balms for pain relief.

Safety precautions

- If you have any allergies or sensitivities, perform a patch test on the skin before using a new essential oil.
- Keep essential oils out of reach of children and pets.
- Pregnant and breastfeeding women should consult their doctor before using essential oils.



Transform Your Family Life with Expert Guidance from ParentsHq

Navigating family life can be complex, with challenges that test even the strongest bonds. As a certified NLP practitioner with over a decade of experience and a global client base, Narjeet specialises in working with families and children globally, delivering outstanding results in building solid relationships and overcoming everyday hurdles.



At ParentsHQ, we understand each family's unique dynamics. Our tailored approach empowers parents and children with practical tools and strategies that promote better communication, understanding, and resilience. Whether dealing with behavioural issues or communication barriers or simply striving to create a more positive home atmosphere, Narjeet provides personalised support to meet your specific needs.

Why Choose Narjeet and ParentsHQ?

Expertise: Over ten years of experience in family and child coaching.

Global Reach: Successfully working with families around the world.

Personalised Approach: Customised coaching sessions to fit your family's unique requirements.

Proven Success: Demonstrated history of fostering positive family dynamics and resolving conflicts.

Take the First Step Towards a Stronger Family Today!

Contact Narjeet for a free consultation and discover how you can enhance your family life with expert guidance and support. Don't miss this opportunity to bring harmony and happiness into your home.

Call Now: 0208 0883189

Visit Our Website: [Parents-hq.co.uk](https://www.parents-hq.co.uk)

Email: Narjeet@parents-hq.co.uk



ParentsHQ



Book your Appointment: <https://calendly.com/parents-hq/30min>



SOIRÉE



THE TURKISH RESTAURANT FOR FOOD LOVERS

Soirée Turkish restaurant is an evening affair with friends, music and lavish celebration, making it the premier destination for the seeker of sophisticated, care-free nightlife.

Our menu is inspired by the finest Turkish cuisine, accompanied by hand-crafted cocktails made from masterfully blended spirits.



PRIVATE HIRE FOR UP TO 150 GUESTS


Suitable for all occasions such as birthdays, weddings & celebrations

SET MENUS AVAILABLE FOR GROUPS

TO MAKE A RESERVATION

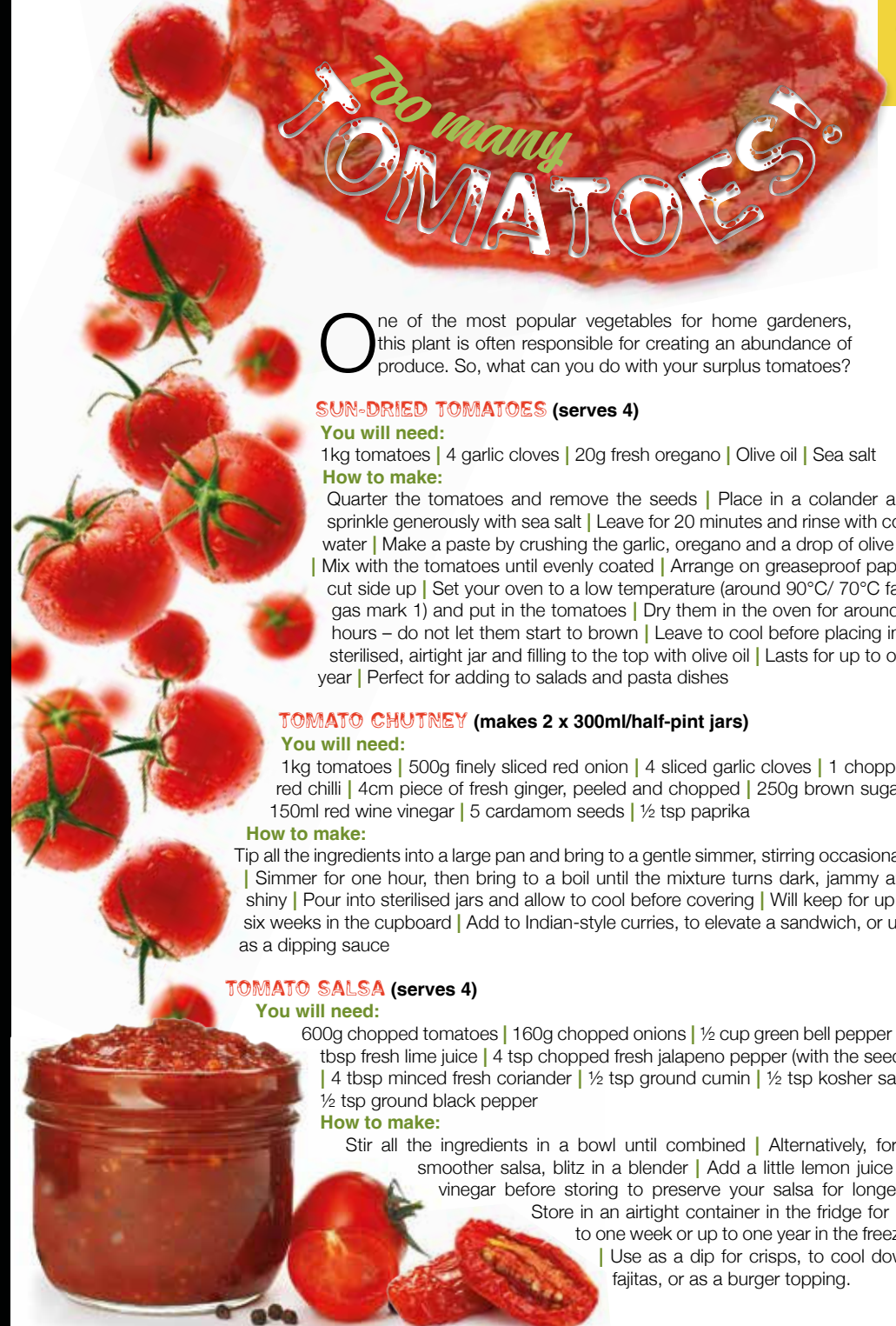
 www.soireerestaurant.co.uk

 0208 088 4289  info@soireerestaurant.co.uk

 79 Queen's Rd, Buckhurst Hill, Essex, IG9 5BW



FOOD & DRINK



Too many TOMATOES!

One of the most popular vegetables for home gardeners, this plant is often responsible for creating an abundance of produce. So, what can you do with your surplus tomatoes?

SUN-DRIED TOMATOES (serves 4)

You will need:

1kg tomatoes | 4 garlic cloves | 20g fresh oregano | Olive oil | Sea salt

How to make:

Quarter the tomatoes and remove the seeds | Place in a colander and sprinkle generously with sea salt | Leave for 20 minutes and rinse with cold water | Make a paste by crushing the garlic, oregano and a drop of olive oil | Mix with the tomatoes until evenly coated | Arrange on greaseproof paper, cut side up | Set your oven to a low temperature (around 90°C/ 70°C fan/ gas mark 1) and put in the tomatoes | Dry them in the oven for around 3 hours – do not let them start to brown | Leave to cool before placing in a sterilised, airtight jar and filling to the top with olive oil | Lasts for up to one year | Perfect for adding to salads and pasta dishes

TOMATO CHUTNEY (makes 2 x 300ml/half-pint jars)

You will need:

1kg tomatoes | 500g finely sliced red onion | 4 sliced garlic cloves | 1 chopped red chilli | 4cm piece of fresh ginger, peeled and chopped | 250g brown sugar | 150ml red wine vinegar | 5 cardamom seeds | ½ tsp paprika

How to make:

Tip all the ingredients into a large pan and bring to a gentle simmer, stirring occasionally | Simmer for one hour, then bring to a boil until the mixture turns dark, jammy and shiny | Pour into sterilised jars and allow to cool before covering | Will keep for up to six weeks in the cupboard | Add to Indian-style curries, to elevate a sandwich, or use as a dipping sauce

TOMATO SALSA (serves 4)

You will need:

600g chopped tomatoes | 160g chopped onions | ½ cup green bell pepper | 2 tbsp fresh lime juice | 4 tsp chopped fresh jalapeno pepper (with the seeds) | 4 tbsp minced fresh coriander | ½ tsp ground cumin | ½ tsp kosher salt | ½ tsp ground black pepper

How to make:

Stir all the ingredients in a bowl until combined | Alternatively, for a smoother salsa, blitz in a blender | Add a little lemon juice or vinegar before storing to preserve your salsa for longer |

Store in an airtight container in the fridge for up to one week or up to one year in the freezer

Use as a dip for crisps, to cool down fajitas, or as a burger topping.

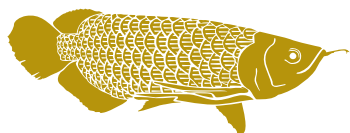
Discover the depths of Indian flavours.

New generation masterchefs distill the purest methods of preparing traditional, fine Indian cuisine and fuse with contemporary innovation. Steeped with only the freshest spices, chilli peppers and subtlest of flavourings, favourite menus and classic dishes are redefined to mouth-watering, modern stylish tastes.

EXCLUSIVE DINING IN VOUCHER £10 OFF

*Excludes drinks and desserts. Not to be used in conjunction with any other offer. Excluding special days and events. One voucher per table. Expires 30th June 2024.

TEL: 020 8989 1500    www.thelaneinstead.co.uk
82 Nightingale Lane London E11 2EZ



FUNKY MONK
EPPING
RESTAURANT & ROOMS

GET IN TOUCH FOR MORE INFORMATION & TO BOOK



01992 276063
www.funkymonk.co.uk
236 High Street,
Epping, CM16 4AP
  [funkymonkhotel](https://www.facebook.com/funkymonkhotel)



Cooking with ARTICHOKES

Many people shy away from artichokes as they do not know how to prepare or cook them. While it is true that this tasty vegetable does require a little bit of TLC, the result is well worth the effort!

How to choose and buy artichokes

Look for artichokes that feel heavy as these will be more meaty. The leaves should ideally be closed with a little separation, but not wide open.

Which parts of an artichoke are edible?

The most common part of an artichoke that people eat is the heart. Within the heart, you will find the 'choke', which is too fibrous to consume. Surrounding the heart are the petals, which you can eat by pulling the base of the petal through lightly clenched teeth to strip off the petal meat.

How to prepare artichokes

- > Cut off the tips of the leaves.
- > Slice off the top of the artichoke.
- > Remove the small leaves at the base and on the stem of the artichoke.
- > Trim any excess stem, leaving up to 1 inch.
- > Rinse the artichoke in cold water.

How to cook artichokes

Steaming is considered to be the easiest method and also helps the vegetable retain moisture. Boiling is also a popular choice if you prefer a softer texture.

Our favourite artichoke recipe:

Artichokes with parmesan butter sauce YOU WILL NEED:

- > 1 lemon, halved, and juice of 1 lemon
- > 4 globe artichokes
- > 200g chilled butter or vegan alternative, chopped into cubes
- > 100ml dry white wine
- > 25g parmesan or vegan alternative

HOW TO MAKE:

- > Bring a large pan of salted water to the boil.
- > Add the lemon halves.
- > Cut the stalks off the artichokes and add to the pan of water.
- > Boil for 40-45 minutes until soft and tender.
- > Pour the wine into a pan and reduce by half.
- > Whisk in the butter, one cube at a time.
- > Whisk in the parmesan and lemon juice.
- > To eat, pull off the leaves and dip the broken end into the sauce.
- > When you reach the middle of the artichoke, remove the centre leaves, scrape out the choke and eat the heart.





Magic MAYO

Mayonnaise is one of the most popular condiments, boasting a creamy texture and tangy taste. However, did you know that it can also be surprisingly useful around the house?

TO DUST HOUSEPLANTS

If you have any faux houseplants in your home, you will know only too well how dusty these can get. Give them a whole new shine using just a clean cloth and a little bit of mayonnaise. Dust the leaves first, wipe with the mayo and then buff to finish.

TO SHINE STAINLESS STEEL

Stainless steel is susceptible to smudges which can make your surfaces and appliances appear dirtier than they actually are. To remedy this, grab a clean cloth and a small dab of mayo and use them to buff and restore any stainless steel in your home.

TO BANISH SQUEAKY HINGES

If you are driven to distraction by a squeaky hinge in your home, then all you need is a small amount of mayonnaise and 10 seconds of your time. Simply slather the mayo onto the hinge using your finger and then open and shut it several times to get it worked into the hinge. Wipe away any excess mayo using a paper towel or clean cloth.

TO REMOVE CRAYONS FROM WALLS

Have your little darlings let their artistic side run wild? Crayon marks on the walls can be a nightmare to remove, but you will be pleased to hear that mayonnaise offers the perfect solution. Use your finger to apply a layer of the condiment to the crayon marks and leave to sit for 10-15 minutes. Then wipe away with a clean cloth.

TO ERASE WATER STAINS

Erase water stains and rings on wooden furniture using just mayonnaise. Cover the mark completely, leave for 48 hours and then wipe with a clean cloth.

NB: You can use either full-fat or light mayo to achieve the same results.



GRACIOUS LIVING

Bathrooms Tiles Fires Fireplaces
Plaster Mouldings

Showroom: 440-448 Larkshall Road, Chingford, London E4 9HH

Tel: 020 8523 3103 | Email: showroom@ncscountersales.co.uk

Web: www.graciousliving.co.uk



**DO YOU WANT TO SAVE ENERGY?
DO YOU WANT TO RETAIN HEAT?
DO YOU WANT TO SAVE MONEY?
DO YOU WANT TO PROLONG THE
LIFE OF YOUR EXTERIOR PROPERTY?**



As Properla Approved Installers we offer a range of exterior super hydrophobic waterproof and 100% breathable coatings for your roof or walls, designed to reduce energy costs and protect the exterior of your property and save you money.

CLEANING & COATING SERVICES

**PROPERLA & RENOTEC WALL & ROOF COATINGS
APPROVED INSTALLERS**

**ENERGY SAVING TRUST APPROVED PRODUCTS IN THE RANGE
ALL PRODUCTS COME WITH A 10-20 YEAR
MANUFACTURERS GUARANTEE**

- Roof & Wall Coating
- Driveway Cleaning & Coating
- Wood impregnator
- Damp & Mould Prevention
- Insulation Removals
- Solar Panel Cleaning

Call us: 07810 562 506 or visit: www.ecocoats.co.uk



**Find The Perfect
Addition To Your Home**

**ALL KINDS OF BLINDS
CURTAINS & SHUTTERS**



**20% OFF
WITH THIS ADVERT**

*Bring into store with you
Full priced items only

- ♥ Rated 'Excellent on Trustpilot
- ♥ 25 years experience
- ♥ Family-owned business
- ♥ Covering London, Essex, Herts, Surrey & Kent
- ♥ No obligation quotation
- ♥ Book your free survey

WOODFORD SHOWROOM OPENING SOON

459 Woodford High Road, Woodford Green, Essex IG8 OXE
118 High Street, Epping, CM16 4AF

BOOK YOUR FREE SURVEY 0203 011 0700 • www.allkindsofblinds.co.uk



HOME & DIY

That's
CORKSOME!

Have you ever looked at a wine cork and thought, "I wonder what I could make with that?" Well, now you'll find out!

MINIATURE PLANTERS

YOU WILL NEED: 1 wine cork for each planter | A small knife | Soil | Small succulents

HOW TO MAKE: Carefully use the knife to hollow out the centre of the cork, leaving enough space to plant | Add a small amount of soil to the hollowed-out cork | Place your chosen succulent into the soil and water sparingly when needed

A KEYCHAIN

YOU WILL NEED: A wine cork | A small eye screw | A key ring | Decorative beads or charms (optional)

HOW TO MAKE: Screw the eye screw into one end of the cork, twisting gently until secure | Add the key ring to the eye screw | If desired, thread beads or attach charms

A BIRDHOUSE

YOU WILL NEED: Wine corks (50-70, depending on the desired size) | A wooden base | Adhesive glue or a hot glue gun | Wooden shingles or metal sheets (for the roof) | A dowel or small perch

HOW TO MAKE: Glue the corks to the base (standing upwards), creating the walls of the birdhouse | Attach the roofing material to the top, creating a slope to shelter the structure | Glue the dowel or small perch near the entrance of the birdhouse for the birds to land on | Add any desired decorations like moss, twigs, flowers or hand-painted details

A HEAT-PROOF TABLE MAT

YOU WILL NEED: Wine corks (20-30, depending on the desired size) | Strong adhesive glue or a hot glue gun | Some ribbon or twine

HOW TO MAKE: Arrange the corks on their sides into your preferred shape, such as a circle or square | Apply the glue to the sides of the corks, pressing them together according to your chosen pattern | Hold each cork in place briefly to secure them | Wrap the ribbon or twine around the mat and secure with glue | Allow to fully dry.

Photo credit: thesourceofhomedecor.com, rustic-creats.com, 1upliving.com



EMMA HAYES
AND HER...

BARCLAYS WOMEN'S SUPER LEAGUE
CHAMPIONS
2023-24



AS SHE DEPARTS FOR THE UNITED STATES WITH A FIFTH SUCCESSIVE WSL CROWN AS CHELSEA BOSS, A NATION OF FOOTBALL LOVERS SALUTES THE ENIGMATIC EMMA HAYES OBE

The spectacular rise of women's football in this country has made household names of the game's best players; yet the likes of Mary Earps MBE, Lauren James and Sam Kerr OAM are not the only stars on show, a fact proven by outgoing Chelsea manager Emma Hayes OBE.

The fiery, firm-talking Blues boss is arguably the most recognisable manager in the game – although England coach Sarina Wiegman OON CBE may disagree! – and someone whose tenure in West London has been nothing short of sensational.

In the Women's Super League's (WSL) most competitive era, Hayes has led Chelsea to 14 major trophies, including five successive Super League titles – the last wrapped up on the final day of the domestic season with a 6-0 demolition of Manchester United.

She now departs to take charge of the US women's team.

The fact that Hayes has chosen to venture to the burgeoning football across the pond shouldn't come as too much of a surprise. Her managerial career actually kicked off Stateside when she took charge of the Long Island Lady Riders in 2002, progressing on to Iona Gaels. A short stint at Arsenal Ladies followed before Hayes found her niche at Chicago Red Stars, where she worked as head coach and director of football operations.

Arguably, this insight, refined on both sides of the Atlantic, has informed the 47 year old's approach to football. She is a master tactician and one of the sport's most resilient characters, as well as a driving force behind mental and physical health in sport.

Her own evolution has run alongside that of

the game, and moving back Stateside in what is perhaps the biggest job in the game will add another layer to an already flourishing career.

"There are some opportunities in football that become just too great to refuse," says Hayes, "and I think this is one of them.

"The US women's team job is massive in every way, and I look forward to reconnecting to life over there, as it gave me some of my happiest memories.

"In my head, it was probably time to look for a new challenge anyway. We have done marvellous things at Chelsea, but I think both myself and the club need a new approach and direction, and I've no doubt we will both find it."

Ever controversial, Hayes has stoked the furnaces in the past with her comments on equal pay, player-to-player relationships, and the use of the tag "male

aggression" in describing a co-manager.

"When I've caused a stir, it's usually been in the heat of the moment," she says. "I am big enough to admit to my mistakes and to own them. I will make more in future, I'm sure!

"If I can supplement those slip-ups with winning trophies and continuing to push forward everything within this brilliant game, I'll take that!"

Hayes's first task is to restore the US women's team to their number one FIFA ranking. They currently sit fourth – their lowest-ever rating – behind world champions Spain, England and France.

"It's a big job, but I can't wait to get started," she says. "Hopefully, my experiences will go on to inspire not just the next generation of footballer, but coaches and managers as well. That really will be my greatest achievement."



LOCAL FEATURE

Unique Art Deco houses encapsulate bygone era

Discover the Oliver Hill Art Deco Houses and their demonstration of architectural excellence and innovative brilliance.

Sitting quaintly in the charming district of Tendring and designed in the 1930s by the renowned architect after whom they are named, the Oliver Hill Art Deco Houses are more than just structures – they are enduring symbols of a bygone era, encapsulating the spirit of Art Deco design.

Out of the original 12 located on the Frinton Park Estate, 10 still proudly exist today, each showcasing the elegance and forward-thinking design typical of the 1930s.

Crafted during a time when the popular style was at its zenith, they reflect an era characterised by optimism, progress and a flair for the dramatic. The clean lines, geometric shapes and occasional opulent detail of these houses speak of an era when design was both an artistic expression and a bold statement.

For visitors and architecture enthusiasts, the properties offer a unique glimpse into the past. Walking through this neighbourhood is like stepping into a different era, where each house reveals its own story of design evolution and cultural history.

Safeguarding them has been a community effort, underscoring their significance not just as residential spaces but also as historical landmarks, and today they mean different things to different people.

For the residents, they are cherished homes, carefully maintained to preserve their original charm and character. For architecture students and historians, they serve as a real-life textbook of Art Deco design, offering insights into the techniques and trends of the time period.

More than that, though, they are now serving to inspire future generations of designers, calling many students, architects and planners to the area – not to mention the odd ambitious estate agent, with many of the properties estimated to be worth in excess of £1million each.



Photo credit: Zoopla



HAINAULT TRADE WINDOWS
TRADE WINDOWS FOR TRADE PEOPLE

At Hainault Trade Windows we are built upon reputation, trust, High-quality items at cost-effective prices and a clear understanding of supply and demand for the trades.

Are you a tradesman in Essex and the surrounding areas? Are you looking for trade products including any the following, then we can help :-

- ✓ FSG
- ✓ Doors
- ✓ Windows
- ✓ Aluminium
- ✓ Conservatories
- ✓ Roof Lights/Lanterns

Get a quote now
0208 088 4153
www.hainaulttradewindows.co.uk

REHAU
Kömmering
smart architectural aluminium
CORTIZO

PUT THE SPARKLE BACK INTO YOUR KITCHEN

OVEN BRIGHT

Domestic Oven Cleaning Specialists
Est. since 2007

Prices

Single oven incl. shelves & grill pan.....	£48.00
Double oven incl. shelves & grill pan.....	£59.00
Range incl. shelves & grill pan.....	From £100.00
AGAs.....	From £100.00
Hobs.....	From £17.00
Extractors.....	From £18.00
Microwaves.....	From £20.00

No VAT to pay

PLEASE CALL FOR A FREE QUOTATION
01279 432444 * www.ovenbright.co.uk

BEFORE

AFTER

Jason's
DECORATING

Add colour to your life

Interiors & Exteriors
Full Decorating Services

Contact Jason on
07943 848437
jasonlukwago@gmail.com
62 Hatch Lane London E4 6LQ

**YO _ R
ADVERT
HE _ E**

Q: WHAT'S MISSING HERE?
A: YOU ARE

CONTACT US NOW TO ADVERTISE

Your Monthly Lifestyle Magazine **VISION**
t: 0208 088 0386 m: 07967 079101
e: woodford@VISIONmag.co.uk
w: www.VISIONmagessex.com

The iconic, evocative voice born in Billericay

Alison Moyet MBE has always been a remarkable figure in the music industry, possessing a distinctive voice that resonates through generations and captivating audiences with her soulful sound and profound lyrical depth.

Born in Billericay in June 1961, growing up in a vibrant community exposed Moyet to various musical influences. Adding those to her love of global icons Gladys Knight and Janis Joplin assisted in shaping her own unique style.

In the early 1980s, Moyet rose to prominence as one half of the synth-pop duo Yazoo, alongside former Depeche Mode and future Erasure musician, Vince Clarke.

Their hits *Only You* and *Don't Go* are timeless classics, showcasing Moyet's powerful vocals against the backdrop of Vince Clarke's innovative electronic soundscapes. Following Yazoo's disbandment, Moyet embarked on a successful solo career.

Moyet's debut solo album, *Alf* – named after her punk-era nickname – released in 1984, was a commercial and critical success. Featuring

hits like *All Cried Out* and *Invisible*, it cemented her status as a solo artist.

Her voice – characterised by a deep, rich timbre – set her apart in an era dominated by synth-pop and new wave. However, throughout her career, Moyet has shown a remarkable ability to evolve.

She's successfully navigated through various musical styles, from the synth-pop of Yazoo to blues, jazz and even theatre. Her adaptability and willingness to experiment with different genres demonstrate her versatility and commitment to artistic growth.

The 62 year old's journey is a testament to her enduring talent and versatility. From the streets of Billericay to the global stage, she has left an indelible mark on the music industry.

Moyet now lives in Brighton with her husband, David Ballard, with whom she has a daughter, Caitlin. She also has a daughter, Alex, with her former partner Kim McCarthy and a son, Joe, from her first marriage to Malcolm Lee.

HEXAGON
PLUMBING & ELECTRICAL

- ◆ BATHROOM SHOWROOM
- ◆ BOILERS
- ◆ UNDERFLOOR HEATING
- ◆ COMPLETE INSTALL OF BATHROOMS
- ◆ MINOR WORKS & REPAIRS
- ◆ ESTABLISHED FOR OVER 10 YEARS

PROVIDING ALL YOUR PLUMBING & HEATING SOLUTIONS

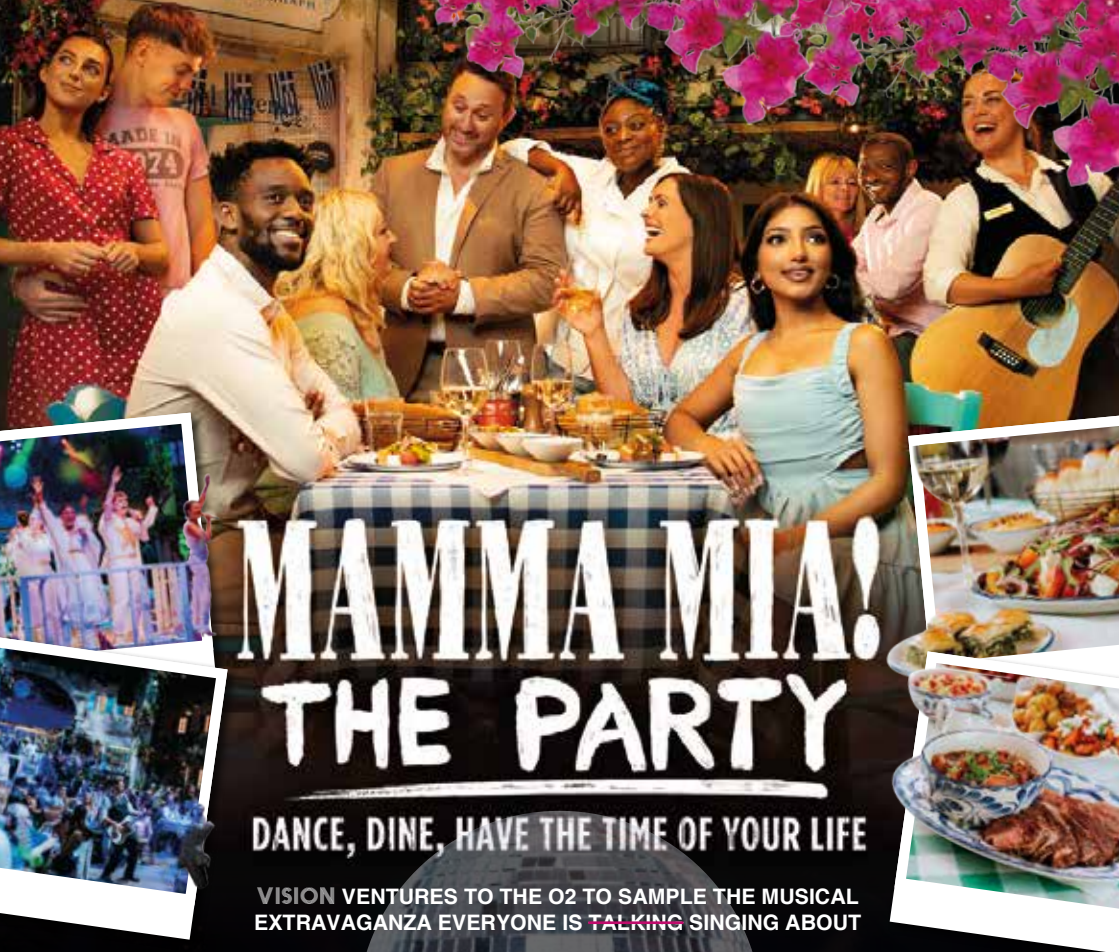
GROHE | GEBERIT | Jtp | DURAVIT
LAUFEN | crosswater^x

CONTACT US TODAY
0208 088 2970
hexagonplumbing@gmail.com

Vaillant | EIC APPROVED CONTRACTOR | safe



Photo credit: BBC/Shiraine Forrest



MAMMA MIA! THE PARTY

DANCE, DINE, HAVE THE TIME OF YOUR LIFE

VISION VENTURES TO THE O2 TO SAMPLE THE MUSICAL
EXTRAVAGANZA EVERYONE IS TALKING SINGING ABOUT

At the point of being invited along to perhaps the ultimate immersive theatre experience – *Mamma Mia! The Party* at the O2 in London – there was, admittedly, a small sense of trepidation.

We've all been to and sampled the splendour of musicals; and sometimes we've found ourselves woven into the performance in terms of, perhaps, our seat being a little too close to the action!

To combine that accidental participation with knocking back a four-course meal and expensive bottle of plonk... well, it's enough to pique the interest of even the most reluctant theatre-goer!

Mamma Mia! The Party, which has a year-plus run at the O2 Arena booking through to June 2025, follows the main characters' love story in Greece, while celebrating the influence ABBA has had on modern music.

Make no mistake, this is no bargain basement night out – what the creators have put on is a premium, all-encompassing experience.

The fun theatrical dining experience starts with

a free welcome drink, and is set in a taverna in Skopelos with the audience seated as if they are in a restaurant.

As the story begins with foot-tapping brilliance, so too does a marvellous celebration of the Mediterranean food landing on each table. Guests can enjoy a wide selection of hot and cold Greek delicacies, from fluffy mezzes to succulent lamb shanks, delicious tabbouleh to sweet loukoumades (doughnuts).

The actors, band, set design, atmosphere and hospitality are all second to none, and at no point do you feel the need to rush the process... a key factor in the show's duration of more than four hours. Performers buzz around, firing up songs and interacting with the audience at any opportunity.

By the end, you're left wondering if you really have been taken back a few decades to a sun-trapped corner of Greece. On departure, the sight of North Greenwich Tube station will confirm that, sadly, you have not; but until then, transport your imagination, your mind, and your perception of musicals to a whole new place.

Photo credit: Grant Walker

THE **B7** MEDIA
GROUP

PRINTING • BUSINESS CARDS • LEAFLETS • DISTRIBUTION

SIGNAGE • MENUS & BROCHURES • EXHIBITION BOARDS & BANNERS

RETAIL PACKAGING • WINDOW VINYLs • LOGO DESIGN

BRAND ALIGNMENT • VEHICLE WRAPPING • CARBON PADS

WORKWEAR • WEBSITES • SOCIAL MEDIA • I.T. SOLUTIONS

 ENQUIRIES@B7MEDIAGROUP.COM

 0208 088 0386





YOUR LOCAL EVENTS

BEREAVEMENT CAFÉ MORNING SESSION

Christ Church, Wanstead Place, E11 2SW
Tuesday, June 18, 10.30am



Photo credit: Wanstead Parish Facebook

This session is being held to support people struggling with feelings of loss, to meet with others in a similar situation and speak about their experiences.

This event is free to attend. For more information, head to www.shorturl.at/oakB3

ACTIVE PLAY

Orchard Children's Centre, Liston Way, South Woodford, IG8 7BJ
Thursday, June 20, 2pm

Support your child's healthy development through play and movement with lots of activities in an outdoor environment. You'll also get lots of ideas on things you can do at home to give your child the best start in life.

This session is open only to families living in the London Borough of Redbridge with children up to four, or under eight if the child has special educational needs and disabilities.

Book your free ticket at www.shorturl.at/3yE7n

WANSTEAD WILDLIFE WEEKEND ITINERARY

Wanstead Park and Wanstead Flats, Capel Road, E11 2LT
Saturday, June 22 and Sunday, June 23

A variety of free nature-themed events will take place in Wanstead Park and on Wanstead Flats for the annual

Wanstead Wildlife Weekend. These include a butterfly trail for children, a live display of British wildlife, a bees workshop, and much more.

For further information, please get in touch via email at wrenconservationgroup@gmail.com

CRICKET WEEK LUNCH

Woodford Wells Club, Monkams Lane, Woodford Green, IG8 ONL
Friday, June 28, 1pm - 4pm

A lunch for members of Woodford Wells Cricket Club and guests. The delicious menu includes roast chicken, beef stroganoff, Thai green vegetable curry, strawberry cheesecake, and more.

Tickets cost £30, with tables of 10 or individual bookings.

Members can book via www.shorturl.at/jYg7x

MUCH ADO ABOUT NOTHING

Woodford County High School for Girls, High Road, Woodford Green, IG8 9LA
Friday, July 5, 7pm

Audiences are invited to Sicily for the intrigue, drama, wit and wisdom of *Much Ado About Nothing*. Thoroughly modern heroine Beatrice is determined not to be 'overmastered'. With original music inspired by everything from Sicilian Tarantella to Italian 1960s pop, this bold production of one of Shakespeare's best-loved comedies is not to be missed.

Tickets start from £21.84 and are available from www.shorturl.at/AZKhX



Photo credit: Google Street View



HIDDEN HAZARDS IN HOSEPIPES

The arrival of the summer sunshine means playing in paddling pools, topping up ponds and watering the plants. But did you know that your humble hosepipe is hiding a whole host of health hazards just waiting to strike?

1 SCALDING WATER: When a garden hose is left in direct sunlight, the water inside it can heat up. In fact, the water can easily reach temperatures that are hot enough to cause burns and scalding injuries.

2 CONTAMINATION WITH CHEMICALS: Hosepipes can release harmful chemicals such as lead, phthalates and BPA into the water, and this is especially true when they are heated up by the sun. These chemicals can pose health risks when ingested or absorbed through the skin.

3 ALGAE AND BACTERIA GROWTH: Warm and stagnant water in your hosepipe can create an environment for algae and bacteria to grow, and this can lead to unpleasant odours. It may also cause health issues if the contaminated water comes into contact with your skin, and severe complications if ingested.

4 LEGIONNAIRES' DISEASE: One of the most dangerous types of bacteria that your hosepipe can breed is Legionella, which thrives in warm, stagnant water. While Legionnaires' disease is rare, it can cause serious illness or even death to the elderly and those with an underlying illness.

How to keep your hosepipe safe:

- > Keep it somewhere cool and make sure it's out of the sun.
- > Drain all of the water out before use by running it over a tall place such as a garden fence where gravity forces the water to exit the hose.
- > Fit an approved double-check valve to prevent any water or contaminants from flowing back into your main drinking supply.
- > Always turn the hosepipe off at the tap and, ideally, fully disconnect it when not in use.
- > Fit a self-closing flow control, such as a trigger spray gun, to prevent it from being used when unattended.
- > Use a watering can when possible to reduce your overall water usage.



Put the Cleaning of Your Home in Our Expert Hands

Imagine if you no longer had to find the time to clean during your evenings or weekends.

BRIGHT & BEAUTIFUL

A BEAUTIFULLY CLEAN HOME AND A BRIGHTER YOU

Call or email today to find out more

walthamstow@brightandbeautifulhome.com

0203 131 4668



SCAN ME

brightandbeautifulhome.com

APPLIANCE PROBLEM? WE'LL FIX IT!

Any make Any model

LOCAL ENGINEERS IN YOUR AREA!

If we can't fix it, we can supply and install new appliances same day

PRO MEMBER OF **Checka trade.com**

View our sales page for list of machines ready to install today!

SAME DAY CALL OUT AVAILABLE

WASHING MACHINE DISH WASHER WASHER DRYER FRYING PAN

ALL MAKES ALL MODELS REPAIRS SALES

CALL OR BOOK ONLINE **SPIN DOCTOR**

01279 310793

www.spindoctoruk.co.uk



PRUNING climbing PLANTS



GARDENING

Following on from our guide on how to choose the right climbing plants for your garden, we are exploring how to prune these varieties, with simple steps that are easy to follow.

HOW TO PRUNE IVY: Ivy does not need to be pruned for its health, but as a vigorous plant, you will probably need to prune it at some point to prevent it from outgrowing your space. For best results, prune English ivy in spring.

- > Trim back any excess growth.
- > Remove any leaves that feature dark spots as these may have a bacterial or fungal infection.

HOW TO PRUNE JASMINE: Some jasmine varieties flower in summer and others in winter – both need to be pruned after they have finished blooming to avoid damaging any flower buds.

- > Start by pruning out any dead, diseased or damaged stems.
- > Next, trim out any long, straggling shoots that are growing away from the plant's support.
- > Finally, shorten the stems to the nearest strong side shoot to keep your plant's shape.

HOW TO PRUNE VIRGINIA CREEPER: Virginia creeper should be pruned annually (in winter) to

- keep growth in check. This is especially important if you are growing this plant up the side of your home.
- > To start, cut back older or overcrowded stems.
- > Trim back any growth from the gutter, windows and downpipes.
- > Remove dead or diseased vines that have been affected by pests or caused by overwatering.

HOW TO PRUNE JAPANESE QUINCE: Ideally, you should prune this plant in late April or early May, right after spring blossoming. If you prune any earlier than this, you risk losing many of its flowers.

- > Examine the shape of the plant and then select approximately one-third of the branches for removal (make sure these are divided evenly over the shrub).
- > At the same time, remove any dead, diseased or damaged branches.

ARTIFICIAL LAWNS & LANDSCAPING

CLASSY GRASS

DRIVEWAYS PATIOS

MOVE FROM THE PAST INTO THE FUTURE OF GRASS

★★★★★

THE BENEFITS OF ARTIFICIAL GRASS

- ◆ No Mowing ◆ No Watering ◆ No Feeding ◆ Child Friendly
- ◆ Pet Friendly ◆ Virtually Weed Free ◆ No Muddy Patches
- ◆ Looks Good All Year Round
- ◆ We will help you decide what's best for you and your budget
- ◆ We guarantee our work and materials
- ◆ We are fully insured and covered for liability

GET THE GARDEN READY FOR SUMMER

DROP US A LINE OR GIVE US A RING, WE'D LOVE TO HEAR FROM YOU

0208 088 4286 | 07968 060627

www.classygrass.co.uk | info@classygrass.co.uk

6 Cedar Park, High Road, Chigwell, IG7 5AL



KIDS



SUN SAFETY

tips for babies

Whether you are planning to stay in the UK this summer or you are travelling to another country, if you have a baby, you need to make sure you are keeping them safe in the sun.

Keeping your baby protected from the sun

Babies under six months old should be kept out of direct sunlight as their skin does not contain enough melanin to protect them from the sun. Sunscreen is not recommended for babies under six months. Older babies should be kept out of the sun as much as possible, particularly in the summer and between 11am and 3pm when the sun is at its strongest.

Dressing your baby in the sun

Choose fabrics that are made from natural materials such as organic cotton and bamboo as these will feel cool and allow your baby's skin to breathe. Always make sure your baby wears a sun hat with a wide brim or a long flap at the back to protect their head and neck from the sun.

Avoiding dehydration

Babies need to have access to plenty of fluids when they are exposed to hot temperatures, in the same way that adults do. Breastfed babies do not need any water until they have started to consume solids, but they may want to breastfeed more than normal during hot weather. Formula-fed or combi-fed babies under six months can have a little cooled boiled water as well as their usual milk. Once you have started to introduce solids, your baby can have sips of water with their meals.

Keeping your baby cool

There are many ways to keep your baby cool when the sun is shining, such as running them a cool bath before bedtime, keeping their bedroom cool in the day by closing the blinds or curtains, and using a fan to allow air to circulate. In the daytime, babies can play in a paddling pool as long as they are supervised at all times and kept in the shade.




Mathnasium Transforms Lives Every Day

- The Mathnasium Method™ is based on 40+ years of research and testing.
- Comprehensive assessments pinpoint strengths and weaknesses.
- Helps children catch up or get ahead.
- Boosts marks and test scores.
- Compatible with, and complementary to, school education.
- Homework help available each session. We never set homework.
- Independent studies prove our results.



Mathnasium of South Woodford
 0208 088 3093 | mathnasium.com.uk/southwoodford
 23 Electric Parade
 George Lane, E182LY



THE B7 MEDIA GROUP

PRINTING • BUSINESS CARDS • LEAFLETS • DISTRIBUTION
 SIGNAGE • MENUS & BROCHURES • EXHIBITION BOARDS & BANNERS
 RETAIL PACKAGING • WINDOW VINYLs • LOGO DESIGN
 BRAND ALIGNMENT • VEHICLE WRAPPING • CARBON PADS
 WORKWEAR • WEBSITES • SOCIAL MEDIA • I.T. SOLUTIONS

ENQUIRIES@B7MEDIAGROUP.COM 0208 088 0386



THE CANOPY CHIGWELL

Luxury two bedroom
apartments for the over 55s

Move to a new lifestyle for free

Stamp duty, legal fees and
removal costs covered*

Apartments
for sale from
£499,950 and
to let from
£2,000pm



*for full T&Cs visit our website



Book a private tour today
cognatum.co.uk/thecanopy
or call **07548 558802**

Helen, Sales Executive
at The Canopy:
helen.durbin@cognatum.co.uk



Call **01992 667666**

The Canopy, 242 Lambourne Road, Chigwell, Essex IG7 6FA



HISTORY



George Mallory...

‘BECAUSE IT’S THERE’

One hundred years ago this month, on June 8 1924, the 37-year-old mountaineer George Mallory disappeared on Mount Everest. He was presumed dead, leaving a widow and three young children. But his body wasn't discovered till decades later.

Mallory was born in June 1886 in Mobberley in Cheshire. He started climbing while still at school and proved himself a natural.

SCHOLAR, TEACHER AND CLIMBER

When he graduated from Cambridge, he became a teacher, though he also served in France during the First World War. But his heart remained in the mountains. In 1921, he was selected for the first major British expedition to Everest.

Sadly, the 1921 expedition failed because of strong winds. Another try was made in 1922, with three more attempts to reach the top. However, they didn't make it, and tragically, seven Sherpa porters lost their lives.

FAMOUS WORDS

Before the third expedition in 1924, a reporter from

The New York Times asked Mallory why people wanted to climb Mount Everest. In response, Mallory offered the simple yet profound reply: "Because it's there."

THE THIRD AND FINAL EXPEDITION

Mallory and his less-experienced companion, 22-year-old Andrew Irvine, set out for the summit from their last camp on the morning of June 8. It was the expedition's third attempt to reach the summit. They were last spotted about 800 vertical feet (some 240m) below the summit but never returned to camp. Britain was shocked by the news.

THE GRIM DISCOVERY

An expedition dedicated to solving the mountaineers' disappearance was launched in 1999. Mallory's well-preserved body was found – he was identified by his clothing and personal items. Evidence suggests he died from a fall during his descent in darkness. Despite extensive searches, Irvine's body has never been found. And to this day, no one is sure whether either man reached the summit before his death.

Working from home comes with a whole host of benefits, such as a better work/life balance and no commute, but that doesn't mean it's without its challenges. If you struggle to maintain productivity levels throughout the day, these products are just what you need.

1 AN ERGONOMIC MOUSE

A standard mouse can cause discomfort to the hand, wrist and forearm over time, whereas an ergonomic mouse is designed to keep them in a more natural position. It also requires less grip and force, which can help to prevent strains and other injuries.

2 AN ADJUSTABLE DESK

If you do not have a good workstation setup, you are at risk of injuries such as carpal tunnel syndrome, mouse shoulder and repetitive strain injury, all of which can harm productivity. An adjustable desk allows you to alternate between sitting and standing to encourage movement and reduce strain.

3 A WELLBEING PLATFORM/APP

Working from home can be stressful, especially when family life starts to overlap with your office hours. To ensure you can work productively without damaging your health, consider downloading a wellness app such as Unmind, Headspace or Happify which can help you de-stress, sleep better and improve your mental wellbeing.

4 A DESK PLANT OR TWO

Indoor plants have been scientifically proven to improve concentration and reduce stress in the workplace. They have also been shown to boost productivity and creativity. Choose low-maintenance plants such as the snake plant, peace lily and aloe vera.

5 A WI-FI RANGE EXTENDER

As a remote worker, you will know only too well how important a good Wi-Fi connection is, and that there's nothing worse than poor signal when you have a deadline looming. A Wi-Fi range extender connects to your Wi-Fi router and works to strengthen its signal to areas it cannot reach on its own.

GET PRODUCTIVE!



CARD MACHINE OFFER

- Free next day settlement
- Low rates
- £1 terminal rental
- 24/7 Helpdesk

MERCHANT SERVICES
Beewise with what your business needs.

Join the Beewise Family

0208 088 3086
www.beewiseltltd.co.uk

SCAN ME

MARLBOROUGH HOMES

BRITISH PROPERTY AWARDS 2020 - 2021 GOLD WINNER

SPRING OFFER!

FREE RENT INSURANCE*

*(all new managed lets April 2024 CODE FRG24)

PROPERTY TOUR & FLOOR PLANS INCLUDED

LANDLORD & TENANT PORTAL

020 8989 8796 | matthew@mbhomes.co.uk

www.mbhomes.co.uk

9 MBC, 96 George Lane, London E18 1AD

Photo credit: FellowNeko/Shutterstock

The UK's leading provider of affordable electric wheelchairs.

Premium Electric Wheelchairs That Support Independent Living



Includes FREE next day delivery



MobilityPlus+ Ultra-Light Instant Folding Electric Wheelchair
24KG, 4MPH, 2 LITHIUM BATTERIES

Only **£879.99**



MobilityPlus+ Deluxe Ultra-Light FOLDING ROLLATOR WITH SEAT

Only **£114.99**



MobilityPlus+ Upright Rollator WITH FOREARM SUPPORT

Only **£154.99**



MobilityPlus+ Quick-Split Electric LIGHTWEIGHT, COMPACT, 4MPH

Only **£599.99**



MobilityPlus+ Featherlite 18.7KG, 4MPH, LITHIUM BATTERY

Only **£899.99**

Customer Support Team

01992 610 434 | www.mobilitypluswheelchairs.co.uk

OUR SHOWROOM: UNIT 5 VELOCITY, HARLOW BUSINESS PARK, HARLOW, CM19 5QF (APPOINTMENT ONLY)

STAY COOL

this summer in the Faroe Islands



TRAVEL

If you don't want to risk the sweltering heat of Britain in August, never mind the crowded beaches, why not make a beeline for the enchanting Faroe Islands?

Tucked away in the North Atlantic, the best thing for heat-haters is that summer daytime temperatures average just 12°C. But there's much more to the islands than cool breezes.

WHAT'S IT LIKE?

The 18 islands that make up the group offer rolling green hills dotted with colourful cottages. There are also mountains, waterfalls, rugged coasts, caves and fjords. But there are some lovely towns as well. Many of the 18 islands are now connected by tunnels and bridges.

The Faroes are a self-governing region of Denmark. It has its own language – Faroese, which is closely related to Icelandic. But English is also widely spoken.

WHERE CAN I STAY?

There are plenty of places to stay, from quaint wooden cabins to luxury hotels. Airbnb is an excellent way to explore the main options. Prices aren't rock bottom, but they're generally similar to those in the UK – and public transport is cheap.

IS IT SUITABLE FOR WILDLIFE LOVERS?

Yes, especially birdwatchers. Thousands of puffins fly freely, and there's an astonishing array of other seabirds, including gannets, fulmars, loons and petrels. Summer is the perfect time to visit because it's breeding season. There are also seals, dolphins, and plenty of sheep.

WHAT ELSE CAN I DO?

As well as outdoor activities like fishing, kayaking and surfing, there's a lively music scene and plenty of great restaurants specialising in lamb, fish and seafood.

HOW CAN I GET THERE?

You can fly direct from Edinburgh in around an hour. You can also fly via Denmark from most UK airports. Alternatively, you can get a ferry from Edinburgh, which will take around five hours.

For more information, see visitfaroeislands.com





Photo credit: worldrecordacademy.com

UNUSUAL SPORT:

WELLY WANGING

On Sunday, June 30, there will be another Welly Wanging World Championship in the small village of Upperthong, West Yorkshire. Welly wanging is a sport where people chuck a rubber welly as far as they can. The champ is the one who lobs it the farthest.

Legend has it that, a long time ago, two farmers were enjoying a drink and a chat when one accidentally spilt his beer down the other's leg and into his boot. In a fit of rage, the beer-soaked farmer chased the other one outside, took off his boot and flung it at his drinking buddy.

YORKSHIRE'S GIFT TO THE WORLD

The villagers thought the spectacle was hilarious and started throwing boots at each other for fun. And that's how welly wanging was born. The 'sport' has now caught on worldwide, with competitions in New Zealand, Russia, Finland, Italy and beyond.

RULES OF THE GAME

This year's world championship will have four

categories: men, women, boys and girls. Players must maintain a cheerful attitude at all times, and the welly has to be a size 9 Dunlop green boot. Adult winners get a trophy, and the top children get a crisp £5 note that they can spend on whatever they fancy. You can throw your welly in a choice of styles: one-handed, double-handed, between the legs or, if you're feeling super confident, backwards.

WHO'S THE BEST WELLY WANGER?

The current world record holder for men is Teppo Luoma from Finland, with a throw of almost 64 metres. Sari Tirkkon, also from Finland, holds the women's record with a throw of more than 40 metres.

So there you have it – welly wanging in all its glory. Ready to give it a go? If so, keep a look out for local events. Or why not arrange your own championship to raise money for charity?



GOLF CLUB

Celebrate at
Woolston Manor Clubhouse
**The Special Venue for all your
Weddings & Parties**

Enjoy the benefits of
Woolston Manor Golf Club
**With our Individual, Joint &
Corporate Membership options**



Woolston Manor Golf Club, Abridge Road, Chigwell, IG7 6BX
 ☎ 0208 500 2549 ✉ info@woolstonmanor.co.uk 🌐 woolstonmanor.co.uk

SUPPORT LOCAL BUSINESSES



Let your local businesses know that you saw them first in... **VISION**

**FULLY FITTED
PRICES FROM**
£995



UNBEATABLE VALUE ELECTRIC GARAGE DOORS

- ✓ FREE installation
- ✓ FREE 5 year warranty
- ✓ Manufactured in the UK
- ✓ Fitted by a local Garolla engineer
- ✓ The UK's No.1 recommended



GAROLLA
ELECTRIC GARAGE DOORS



Trustpilot
★★★★★
4.7 out of 5

BOOK A FREE SURVEY TODAY
01992 830 024
GAROLLA.CO.UK

IS YOUR CAR TRULY SAFE?

CAR & VAN SECURITY SPECIALISTS

SMART CAR PROTECTION WITH GHOST IMMOBILISER

📍 Greater London & surrounding M25 areas

🕒 7 days a week
8am to 10pm

☎️ **0208 088 3140**

• carkeyssolutions.co.uk • 0208 088 3140
• contact@carkeyssolutions.co.uk

UK'S MOST TRUSTED AND REVIEWED AUTO LOCKSMITH WITH EMERGENCY RESPONSE



SCAN ME




FROM ONLY
£450



DON'T STALL ON FINANCE

While car finance may seem an exhausting ride, for younger four-wheeled wannabes, it can light up the road to the fulfilment of driving dreams.

The word finance can sometimes bring about a wealth of negative connotations, yet as far as young drivers are concerned, it's a gateway to fast-lane freedom, and finally a way to steer clear of trains, bikes, buses and the repeated blagging of lifts.

While the advantages of buying a car on finance can be enjoyed by anyone, it's particularly helpful for younger drivers.

Finance, as a whole, removes the burden of coughing up the full price for a vehicle in one, with monthly payments to be made over an agreed period.

There are three main routes. Hire purchase offers flexible terms that can facilitate payments over longer

periods, and leads to the ownership of the vehicle at the end of what can be a long road. This is good for someone with an undeveloped or poor credit score (such as a young driver), and imposes no annual mileage limits.

However, the finance company retains ownership until full and final payment, and monthly payments can be higher than other finance options since they cover the car's full value rather than its depreciation.

In addition, failure to keep up with payments risks repossession of the vehicle.

Slightly different is personal contract purchase (PCP). This is formed of a deposit, lower monthly repayments – albeit with mileage terms and fees for excessive damage, wear and tear – and a balloon payment at the end to either purchase the vehicle outright and hand back the keys, or part exchange for a new car.

Personal Contract Hire (PCH) financing eliminates depreciation concerns, includes delivery, breakdown cover, road tax and warranty, and offers lower monthly payments than PCP, allowing frequent car changes. However, you will always hand the car back at the end.

The good news is even drivers with a provisional licence can qualify, meaning the dream of owning a car can soon become a reality.



ACCOUNTANT & TAX ADVISORS

ALL THINGS ACCOUNTING

Accounting & tax services, we help with self-assessment tax return, corporation tax return, payroll, VAT return, CIS return & bookkeeping. Call 07539 035537 for free initial consultation.

ACUPUNCTURE

HONG WEI CHINESE MEDICAL

Fully qualified & experienced, specialising in women's health & Fertility. Help with pain relief, emotional disorders, male/female conditions. 01708 454888 | hongweichinesemedicine.co.uk

AUDIO & VISUAL

ULTIMATE AV

We create bespoke systems designed and built especially for you. Small projects to complete home cinema environments. Based in Essex call us on 07531 214339

BEAUTY & NAILS

BEAUTY BY NATASHA KATIE

A local, mobile LVL Technician. Fully qualified level 2 and 3 beauty therapist Babcac insured and approved. 07961 462672

SPECIAL NAILS

Dedicated to provide the best quality nail care for Men & Women. Walk-ins welcome, appointment bookings & gift vouchers available. 01708 442248

THE NAIL STUDIO

Nail Studio lets you switch off and pamper with highly skilled technicians providing top treatments and nail products to meet your every need. 07572 526519

BUILDING

ADDSPACE LONDON LTD

We provide a high quality Building service. Extensions, lofts and internal renovations. Members of Federation Master Builders. Call 0208 088 2870

CARPET & UPHOLSTERY

ARWIN CLEANING SERVICES

Over 30 yrs of exp, we can offer a professional, efficient and cost-effective solution for carpet and upholstery, cleaning and maintenance. 07973 417764

CAR & VAN HIRE

SCENIC SELF DRIVE

Your self drive hire specialists. Whether you require modern cars, motorhomes, vans or minibuses. Rest assured we will provide you a professional service 01708 753461

CHESS CLUB

VICKI'S CHESS CLUB

Vicki's chess coaching - teaches and provides games of chess to children and adults in Ilford and Debden. Phone Vicki: 07849 435451 | Website: Vickischessclub.uk

CLEARANCE & WASTE

THE CLEARANCE TEAM

From clearing a room, house or garden to clearing an entire office block. Fast, reliable and affordable. Working 24/7 so you can book us at your convenience 0207 101 3387

COMPUTER REPAIR & I.T.

MAPTEC IT

Your local residential & commercial IT specialists. We can fix your computers, configure email accounts & printers. Setup your Wi-Fi, Internet router & network. 0203 865 7174

EDUCATION

TUTOR DOCTOR

All primary secondary subjects, 1:1 lessons, online or F2F in-home. Tutor matched to every child's personality, weekly reports. Call 0203 856 4466 | www.tutordoctor.co.uk/wlcc

ELECTRICAL & WHOLESALE

CH ELECTRICAL WHOLESALE

Essex & East London's leading electrical wholesalers providing the trade & public a professional service with access to all leading brands. 01708 730591

ELECTRICIAN

CAPITAL ELECTRICAL SERVICES LTD

Domestic/Commercial, Repairs/Installation, Vehicle Charging Points, Portable Appliance Testing, Fire Alarms, Emergency Lighting, Installation Condition Reports. Call 0208 088 2916

ARCH ELECTRICAL SERVICES LTD

Domestic and Commercial Electrical contracting company covering Essex. Design, installation, maintenance. Contact us on 07986 663793 | @APElectricalssex

GLADE ENERGY SERVICES LTD

We cover all types of electrical work in your home. LED lighting, Fusebox upgrades, CCTV & Home automation. Please call 0203 906 2863

FACIALS & SKINCARE

VIRGINIA WILLIAMS STUDIO

Providing specialised treatments for common skin concerns: sensitive, acne, pigmentation, ageing. Use code VIS10 to get 10% off first treatment. www.virginia-williams.co.uk

FURNITURE RESTORATION

ABBEY GROUP

Abbey Group are specialist in creating, repairing & restoring quality furniture & wood surfaces to the highest standard. 01708 741135

GARDEN SERVICES

JOHN HEARNE

We take care of it all Lawn Mowing, Weeding, Planting, General Tidying, Fence/Shed Painting, Driveway/Patio Pressure Washing and more. Call for details 07908 523101

KINGS CUTS TREE SERVICES

A Huge range of tree services available & offer expert arboricultural advice, ensuring your trees are looked after responsibly. 01708 578030 | 07467 944671

HEALTH & WELLBEING

IMPROVE YOUR SMILE DENTAL PRACTICE

Est. in 1986. Encompassing all needs from basic oral health to advanced dental procedures and high-end cosmetic treatments. New patients welcome. 0208 504 2704

JOIN THE LISTINGS... for just **£180** +VAT per yr

HOME CARE

RADFIELD HOME CARE

Award winning, personalised home care. Meal prep, personal care, medication assistance, companionship, dementia care. 0208 154 1753 | chingford@radfieldhomecare.co.uk

LOCKSMITHS

KEYTEK LOCKSMITHS

From Lock out to security upgrades, our fully trained DBS checked Locksmiths are the experts | Call 0203 897 2686 | Quote: 15080

MASTICS AND SEALANTS

QUALITY MASTICS LTD

Bathroom and shower mastic joint sealing. Kitchens, windows, floors, external seals around windows. For information. Call 01245 520981

PAINTING & DECORATING

TRADITIONAL DECORATIONS

We are a family run business specialising in turning your house into a home. Giving advice on current decorating trends. 07737 562406

JAMIE'S PAINTING & DECORATING

High quality work at reasonable prices. I can also create artwork for your walls, to enhance your home décor. Call 07526 682903

DECORATING SPACES

Transform your space with colour, our decorating services bring vibrancy to your home and business, competitive prices with quality. 07743 494614 | www.decoratingspaces.co.uk

PLUMBING & HEATING

KINGS PLUMBING & HEATING

All work undertaken: All bathrooms, boiler servicing & gas safe. 07956 343275 | www.kingsplumbingandheating.co.uk

BOILER

BOILER offer servicing, installations, repairs and plans. Local Gas Safe engineers for all your needs. Call 0203 576 2386

PROPERTY MAINTENANCE

LILLYWHITE PROPERTY GROUP

For all building works, full refurbishments & property maintenance inc heating, plumbing, electrical, decorating, flooring, tiling & plastering etc. Call today on 07949 394403

STUART GREEN PROPERTY SOLUTIONS

Property maintenance specialist. Carpentry, painting/ decorating, laminate flooring, bath/shower re-siliconing, gutters cleared/repared, insurance work, PLI. 07917 870879

ROOFING

JIM BARR ROOFING

Exterior cleaning/maintenance. Gutters, Paving, UPVC; cleaned, repaired, renewed. 01708 874816 | 07833 572459

WHITE GOODS & APPLIANCES

T.E.J. DOMESTIC APPLIANCES

Stockists of major brands. Installation available, FREE local delivery. Free standing & built in appliances. 01708 447752

DISCLAIMER: **VISION** does not represent or endorse the accuracy or reliability of any of the advertisements, nor the quality of any products, information or other materials displayed, purchased or obtained by any customer as a result of an advertisement or any other information or offer in connection with the service or products. The opinions expressed in articles, reviews and stories are strictly those of the individual authors and do not necessarily reflect the views of **VISION**.

ACROSS: 1. CONTOURS, 5. ITEM, 9. ROUTE, 10. BADGERS, 11. UKRAINE, 12. AORTA, 13. SOLIDS, 14. STTCH, 17. EXCEL, 19. REGIONS, 20. TEMPEST, 21. OVERT, 22. YEAR, 23. CONSISTS
DOWN: 1. CIRCUMSPECTLY, 2. NEUTRAL, 3. OVERINDULGED, 4. ROBBED, 6. THEIR, 7. MASSACHUSETTS, 8. ADVANTAGEOUS, 15. TROWELS, 16. GROTTO, 18. COMMA



PUZZLES & TRIVIA

PUZZLES

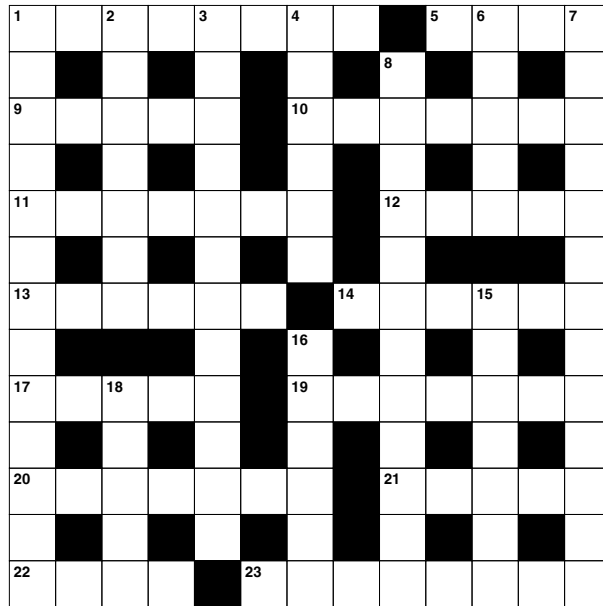
Answers: see end of The VISION Listings

ACROSS

- 1. Outlines (8)
- 5. Individual article or unit (4)
- 9. Path or road (5)
- 10. Nocturnal burrowing mammals (7)
- 11. Country whose capital is Kyiv (7)
- 12. Main artery (5)
- 13. Food that is not liquid (6)
- 14. Pain in the side (6)
- 17. Do extremely well at (5)
- 19. Ignores (anag) (7)
- 20. Storm (7)
- 21. Not concealed (5)
- 22. 365 days (4)
- 23. Is composed of (8)

DOWN

- 1. Warily; cautiously (13)
- 2. Impartial (7)
- 3. Ate too much (12)
- 4. Stole from (6)
- 6. Belonging to them (5)
- 7. State of the USA (13)

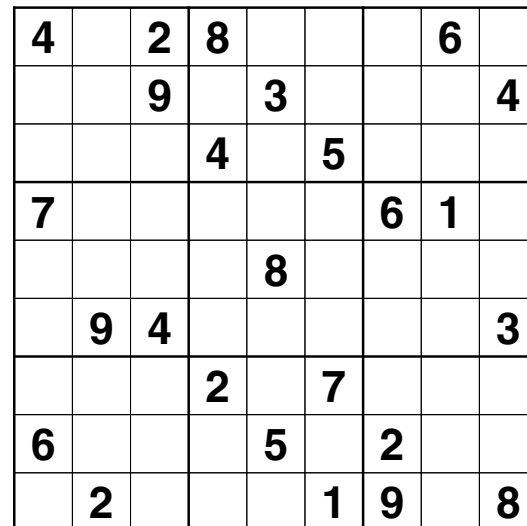


- 8. Beneficial (12)
- 15. Gardening tools (7)
- 16. Small cave (6)
- 18. Punctuation mark (5)

DID YOU KNOW?

- ▶ Megalosaurus was the first-ever dinosaur to be described and named. It walked on its two hind legs and could grow up to three metres tall.
- ▶ One of the largest land animals ever found is named Patagotitan; it could grow up to 37.5 metres in length and weighed up to 57,000kg.
- ▶ In contrast, the Microraptor is one of the smallest known dinosaurs, and was only about the size of a crow. It had wings on both its legs and arms.
- ▶ The Tyrannosaurus Rex had 60 teeth and could deliver up to six tons of pressure in one bite.
- ▶ Though the Stegosaurus could grow up to nine metres in length, its brain was only the size of a lime. It had a spiked tail which it used to defend itself.

SUDOKU



OVER 30 YEARS OF EXCELLENCE



Life is Beautiful

At City Bathrooms we believe everyone deserves a beautiful bathroom, that's why our passion for luxury products, first-class customer service and expert bathroom advice is at the heart of everything we do.

citybathrooms.com  

City Bathrooms

11 Raven Road, South Woodford E18 1HB

Telephone: 020 8504 5152

Email: sales@citybathrooms.com



WOODFORD HOUSE DENTAL PRACTICE

Join our
extended family



ORAL HEALTH CARE
NEW PATIENTS
WELCOME
GENERAL DENTISTRY

FREE CONSULTATIONS for TEETH STRAIGHTENING
DENTAL IMPLANTS ♦ TEETH WHITENING ♦ SLEEP APNOEA
FACIAL AESTHETICS ♦ AND MORE

We've served generations of patients with the highest level of care, and state-of-the-art technology. Try us for yourself!

020 8504 2704
improveyoursmile.co.uk

162 HIGH ROAD WOODFORD GREEN IG8 9EF

EXPERIENCE YOU CAN TRUST



improve
your smile

WOODFORD HOUSE
DENTAL PRACTICE