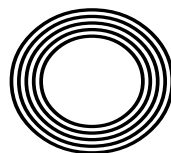


2020  
V

BEAUTY  
HACKS FOR  
LEFTOVER  
PUMPKIN

*A guide to*  
ROOT VEGETABLES

Has political correctness  
GONE TOO FAR?



FREE

Photo credit: NINA PROMMER/EPA-EFE/  
Shutterstock

Robert  
PATTINSON

From teenage heart-throb to The Batman action hero

# SEELEYBUILD LTD

EVER  
DREAMED OF  
LIVING IN A  
HOME BUILT  
JUST FOR  
YOU?

CELEBRATING  
10 YEARS IN  
BUSINESS!

BASED IN THE HEART  
OF SUFFOLK...



Call **Seeley Build** today  
on **01394 432028** or visit:  
**[www.seeleybuild.com](http://www.seeleybuild.com)**

## NEW BUILD CONSTRUCTION

Working with our  
trusted architects and  
tradespeople, we can take  
your home from concept  
to reality.

## EXTENSIONS & CONVERSIONS

We can transform  
older and delapidated  
properties into the  
home of your dreams by  
extending or converting.

## INTERNAL RENOVATIONS

Whether as part of a  
whole build, or just a  
refurbishment of an  
existing home, we can  
bring your interiors to life.







October 2020

CONTENTS

- 6 HISTORY
- 8 MANKIND VS HUMANKIND
- 11 LOCAL NEWS
- 22 HOME & DIY
- 34 GARDENING
- 40 ROBERT PATTINSON
- 43 PETS
- 44 TRAVEL
- 47 FOOD & DRINK
- 51 KIDS
- 53 FASHION
- 54 BEAUTY
- 59 HEALTH & FITNESS
- 64 BUSINESS & PROPERTY
- 70 TECHNOLOGY
- 73 MOTORING
- 75 SPORT
- 76 THE **VISION** LISTINGS
- 78 PUZZLES

## CONTACT US

www.visionmag.co.uk/woodbridge  
woodbridge@visionmag.co.uk  
01394 432938 | 07940 834629

@WoodbridgeVMag @WoodbridgeVMag

FOUNDER | Nik Allen | CREATIVE DIRECTOR | Misha Mistry  
CO-ORDINATORS | Rebecca Fryer, Amy Pollard  
CONTRIBUTORS | Tabatha Fabray, Tim Green

At the time of print all content in **VISION** was relevant and up to date according to COVID-19 government guidelines

# Editor's notes...



William Taylor, Editor

Hello and welcome to this month's edition of **VISION** Woodbridge.

In late September I took a walk through the aisles of Home Bargains looking for a new packet of face masks. You know, the

big 50 packs with ear straps that keep snapping? Thankfully, Clare Perkins of Silk Rose has now sorted me out with a handmade reusable one. See their advert on page 52 to find out how to get your own.

Anyway, as I perambulated, I couldn't help but notice the seasonal aisle that had popped up. In any other year, I'm sure you'd have heard an audible sigh of, "Oh dear, surely not already?"

Yet, this year, it brought a smile to my face. For, this year of all years, I think we all deserve more than just a touch of Christmas spirit.

Something else that might bring a smile to your face is the wonderful opportunity to win your very own classic car this month.

We've partnered with Bridge Classic Cars to offer you the chance to win your very own, with competition tickets available at a discounted price exclusively to **VISION** readers. Head to page 72 for more on this.

We also have some fantastic tips for anyone who might fancy a trip to the Isle of Wight next year on page 44, along with all your usual local news, local businesses and fabulous lifestyle content.

Have a great month.

*Will*

**R.W. CURLE**  
ELECTRICAL CONTRACTORS  
Established 1959



- ✓ Domestic, Commercial, Industrial
- ✓ Portable Appliance Testing (PAT)
- ✓ Agricultural & Horticultural
- ✓ Church Installs/Periodic Inspections
- ✓ Periodic Testing & Inspection
- ✓ Temporary Power for Events
- ✓ Electric Vehicle Charging Points
- ✓ Solar Photo Voltaic Installations



For a **SPECIAL PRICE** on your electrical test & inspection  
**Call us on 01728 688444**

With over 60 years experience, we are a family run business providing high-quality customer service at competitive prices to both new and long-standing customers across Suffolk and East Anglia.



Portable Appliance Testing (PAT)



Periodic Testing/ Inspection



Electric Vehicle Charging Points

**01728 688444**

info@curle.co.uk  
www.curle.co.uk

Wadd Lane  
Snape  
Suffolk  
IP17 1ON

ACROSS: 1. DRINKERS, 5. SNIP, 8. PATIO, 9. MERITED, 10. NOTIONS, 12. SKEWERS, 14. NARWHAL, 16. CONVEY, 18. MORDANT, 19. PUPAE, 20. NOSY, 21. MEANING  
DOWN: 1. DIPS, 2. INTONE, 3. KNOWLEDGE, 4. ROMANS, 6. NATION, 7. PEDESTAL, 11. THEREUPON, 12. SPACEMAN, 13. SNARES, 14. NESTLE, 15. HAPPEN, 17. LESS



## HOW ADMIRAL LORD NELSON MADE THE ULTIMATE SACRIFICE FOR HIS COUNTRY

He is a revered icon from a bygone era, where the forces of continents went head-to-head in battle.

In October 1805 no force was greater than the British, though a fearful fleet of French and Spanish combined enemies, spotted off Cape Trafalgar, between Cádiz and the Strait of Gibraltar, threatened that reputation.

Led by Napoleon Bonaparte, the French had already exerted their authority on the European mainland, and further moves to creep north came in the form of 33 battleships.

Nelson was outnumbered, but by dividing his 27 vessels he was able to position the fleet perfectly so that the enemy front could be sunk. And sunk it was – 19 enemy ships plummeted to the murky depths, with every one of Nelson's staying afloat.

Even before the Battle of Trafalgar, Admiral Lord Nelson had long been regarded a great leader of men and an expert tactician. He had bravery and fortitude and was shown to shoulder the burden of battle himself. Indeed, as the British forces sprang into life to repel the threat, in a famous battle cry he stepped to the edge of his ship, *Victory*, and declared, "England expects that every man will do his duty," and they did.

It is imagined that simply looking at Nelson would have summoned in any seafarer the will to battle for the preservation of the nation. At 47 years old, he had already lost the sight in his right eye at the Siege of Calvi, in 1793, in which his fleet captured Corsica. Then, four years later, doctors were unable to save his right arm after he came under attack at the failed Battle of Santa Cruz de Tenerife.

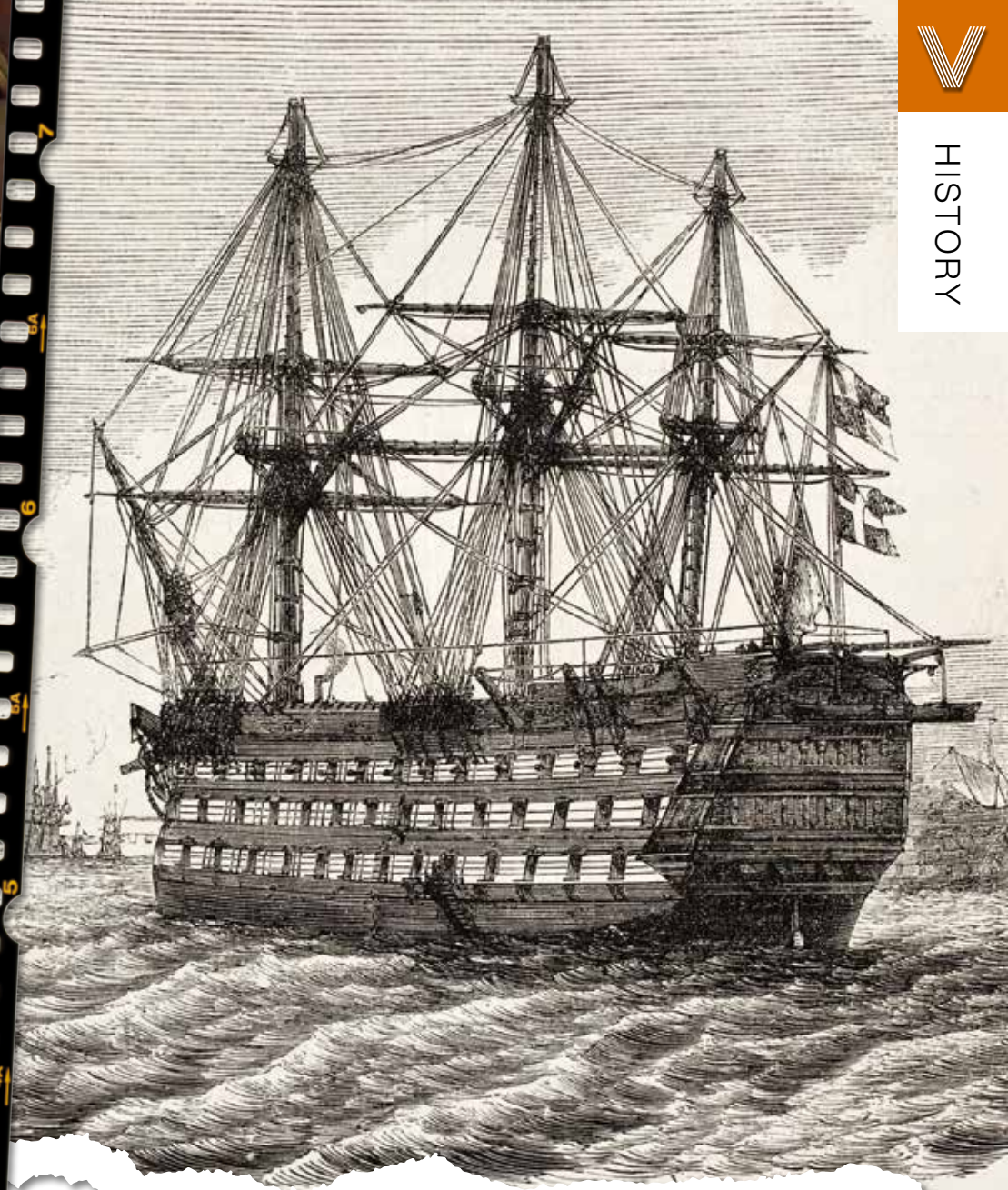
And yet, duty continued. Hardened and seemingly unfearing of death, at Trafalgar the leader was, ultimately, the truest exemplar of his word. On the afternoon of October 21, at 4.30pm, Nelson succumbed to the targeted enemy fire that rained in around his own ship, and was killed. As a leader of men he led the ultimate sacrifice – his own life.

The Battle of Trafalgar lasted only for a further 30 minutes, though its imminent conclusion was reported to Nelson as he lay on his deathbed. The Admiral, holding on to the last few embers of life, uttered the immortal words, "Now I am satisfied. Thank God I have done my duty."

So great was the shock at the loss of such an imperious leader that, in the time that passed, many have come to consider Nelson's death as the central point of the Battle of Trafalgar. While 1,500 of his British allies also lost their lives, his passing is always ubiquitous with the battle and the greater Napoleonic wars which it symbolises.

In reality, Nelson's sacrifice enabled the British to fend off the combined forces of the French and Spanish, preserving our reputation as the best and most powerful seafaring force in the world for the next 100 years, while, of course, ensuring Napoleon steered clear of the British mainland.

Nelson had a glorious funeral procession at St Paul's Cathedral in London, with Nelson's Column erected in his memory in the newly named Trafalgar Square. In 2020, Trafalgar Day, October 21, sees his historical efforts live on very much in the present.



## Nelson's LAST BATTLE



# AGENDA NEUTRAL

~~mankind~~ humankind

~~chairman~~ chair

~~congressman~~ legislator

~~businessman~~ representative

~~policeman~~ police officer

~~landlord~~ owner

~~boyfriend/girlfriend~~ partner

~~salesman~~ salesperson

~~manpower~~ workforce

~~maiden name~~ family name

~~fireman~~ firefighter

~~husband/wife~~ spouse

## TAKING A TOKE OF 'WOKE' AND WHY POLITICAL CORRECTNESS MAY HAVE GONE TOO FAR... AGAIN

It's common knowledge in life that when making efforts to please everyone, it becomes very easy to, in actual fact, please no one; and it seems the United Nations' (UN) efforts to broach gender neutrality, social differentiation and race relations have done just that.

When, in the middle of May, the UN released a set of guidelines designed to help people address others in modern, all-encompassing ways that wouldn't offend, it seems they succeed only in... offending people.

As examples, their recommendation was to hide away the supposed evils of capitalism and sexism by referring to businessmen as representatives. Mankind, meanwhile, should be termed humankind, while the cult of the evil of 'maiden names' was to be extinguished by labelling them 'family names'.

For all the good intentions of those who oversee peaceful and respectful action in our society, critics believe these sorts of moves tend to pander mostly to the whims of the minority. What's more, in forcing people to divert away from sensible, rational, everyday terms, the result is the creation of a splintering of and bitterness between groups – something that wasn't present in the first place.

The US Twitter storm around apparent offence at the term 'female' – the inference being it should be 'woman' or 'girl', because 'female' is apparently used in a derogatory fashion – blew itself out a few days later when the very same 'woke' authorities suggested 'woman' was no longer appropriate owing to the inference it categorised the fairer sex as the 'woe of man'.

Clearly, we have gone too far. The hope is that Twitter, the virus that has caused this political correctness storm, is also the antidote, because there is a concerted uprising of those who just want to get on with their daily lives without constantly checking over their shoulders... But for goodness sake, don't tell the UN.

Written by James Evans



**SOLE BAY**  
INSURANCE BROKERS

## YOUR LOCAL INSURANCE BROKERS

If you would like a more face-to-face, service-focused approach to your insurance then with over 25 years of experience working in individual, agricultural, marine and business insurance, we have a wealth of expertise and are here to help.

### SERVICES INCLUDE:

Individual  
Business  
Agricultural  
Marine



Vehicles  
Buildings  
Business  
Liabilities



Fair Pricing  
Advice  
Claims Support  
Transparency



[www.solebay.co.uk](http://www.solebay.co.uk)

01394 447 557

[info@solebay.co.uk](mailto:info@solebay.co.uk)

Sole Bay Insurance Brokers is an Appointed Representative of Scrutton Bland Insurance Brokers Ltd. Registered with the FCA number 828934

## VACUUM SERVICE & REPAIR



# ALLVAC

Kirby & Dyson Specialists

Have your vacuum collected, serviced and returned at your convenience for just

## £35

All makes and models

Call Paul Layton on  
**01379 871095**  
or 07866549642



## Plumbing & Heating

- All domestic plumbing & heating
- Bathrooms • Leaks & Repairs
- Central Heating Systems
- Gas Appliances Fitted & Serviced
- Renewables • Landlord Certificates

Call us for a FREE quote today!

## 01728 748446

info@cnplumbingandheating.com



Unit 2A, Clopton Business Park, Woodbridge, IP13 6QT

# LOCAL NEWS

*from your neighbourhood*



LOCAL NEWS



Photo credit: James Parkinson Facebook

## James puts his best foot forward for Air Ambulance

A man from Woodbridge went on a 50-mile charity walk last month in aid of the East Anglian Air Ambulance (EAAA).

James Parkinson, who is a keen cyclist, was forced to spend 12 weeks off his bike after a major crash earlier this year. While he was recovering, he started walking, exploring the network of footpaths out of Woodbridge.

In late summer, he half-jokingly discussed walking from Woodbridge to Norwich with a close friend.

He said: "After that first conversation, the more I started thinking about it, the more seriously I took it and it grew into a serious plan. Having spent time pondering over maps, I started piecing together a route. Initially I was going to walk it just to challenge myself, but decided I wanted to use it as an opportunity

to raise funds for the East Anglian Air Ambulance."

James said he chose to raise money for EAAA because he enjoys exploring rural back lanes, bridleways and byways. He said if accidents happen in these locations, vehicular access is limited or not possible.

He said: "Additionally, coming from a farming family, I occasionally hear about agricultural accidents. These sometimes happen in inaccessible locations, and having access to East Anglian Air Ambulance could make all the difference."

Complete with kit, James managed to raise £3,210 for EAAA and said he was incredibly grateful for all the support and donations received.

You can still show your support and donate. Visit [eaaa.org.uk/sponsor-our-kit](http://eaaa.org.uk/sponsor-our-kit)

## A Swedish Home



A family run company based in Suffolk specialising in eco-friendly Scandi-inspired rugs for the home and Nordic gifts.

For local shoppers, Inspirations gift shop in Wickham Market stocks a selection of our products where you can also order any of our rugs.

[www.aswedishhome.co.uk](http://www.aswedishhome.co.uk)

Make us your

## FIRST CHOICE FOR FLOORING

A local business with local values

Come and visit our large two storey showroom to see all that we have to offer. All types and styles of flooring, not just carpets.

ANY ROOM, ANYWHERE.

We cater for all budgets and all the latest ranges are available as well as traditional and bespoke options.

VISIT OUR WEBSITE -  
[www.suffolkcarpetweavers.com](http://www.suffolkcarpetweavers.com)

@Suffolk Carpet Weavers Ltd  
@suffolkcarpet



## 01394 610202

[www.suffolkcarpetweavers.com](http://www.suffolkcarpetweavers.com)

Unit 5 Bridge Business Park,  
Top Street, Martlesham, IP12 4RB





# School celebrates launch of new Astro Pitch

Hockey players at Woodbridge School can now benefit from a state-of-the-art, all-weather Astro Pitch which was unveiled last month.

The school celebrated with a ceremony attended by Shona Norman, headteacher, Clive Schlee, chair of governors, and the school's head of hockey, Mariette Rix, South African field hockey player and double Olympian in 2008 and 2012.

Senior pupils took to the new Astro for the very first time and were joined by Miss Norman, who opened the pitch officially by passing the first ball.

Miss Norman said: "We consider it essential to provide first-class sporting facilities and opportunities

for our pupils and the local community, too."

Rix, head of hockey at the school, said: "Anticipation built over the last few days, as pupils could see the work quickly reaching an end; excitement grew to get to use the new surface for the first time... and it lived up to what we hoped it would be.

"It was a special moment for senior pupils to be the first out on the pitch and to enjoy playing so much. Smiles, speed, skills and lots of tricks were to be seen everywhere. We are lucky with the young people we get to work with every day, and yesterday they showed me again why we are so proud of them all."

The pitch will also be available for private hire.



## Tough start for Woodpeckers

Woodbridge Town FC started the season with three tough away games.

They narrowly lost all, with scores of 1-2 at Kirkley & Pakefield, 1-2 to Norwich United and 3-4 at Haverhill Rovers.

Upcoming home fixtures include:

- > October 17 vs Thetford
- > October 24 vs Kirkley & Pakefield

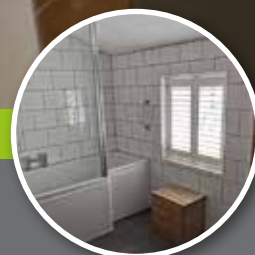
> November 4 vs Whitton

Supporters are reminded, as the COVID-19 situation develops, to please check the club website and social media pages for any updates.

Tickets are available to purchase in advance via the website to avoid queuing at the cash turnstile and to guarantee entry as capacity is limited owing to COVID-19 restrictions.

Photo credit: Paul Leach

**SBC.**  
SERVICES



### SUFFOLK BUILDING & CONSTRUCTION SERVICES

A professional construction company near Woodbridge. Our team of skilled tradesmen work alongside trusted local contractors to offer a complete building, renovation and property maintenance service to a very high standard.

- |                     |                          |
|---------------------|--------------------------|
| ✓ Extensions        | ✓ Structural alterations |
| ✓ New builds        | ✓ Windows and doors      |
| ✓ Period properties | ✓ Roofing                |
| ✓ Carpentry         | ✓ Driveways              |
| ✓ Bathrooms         | ✓ Drainage               |

Get in touch on **01394 432063**

[info@sydneybalesconstruction.com](mailto:info@sydneybalesconstruction.com) | [www.sydneybalesconstruction.com](http://www.sydneybalesconstruction.com)

Unit H1, Base Business Park, Rendlesham, Suffolk, IP12 2TZ



LOCAL FAMILY BUSINESS

# WOODBIDGE REMOVALS

MOVING HOUSE  
CLEARANCE  
STORAGE  
SUFFOLK  
LONDON

TELEPHONE: 07590 458451

ENQUIRIES@WOODBIDGEREMOVALS.COM

WWW.WOODBRIDGEREMOVALS.COM

## FOR ALL YOUR PLUMBING & HEATING NEEDS

With over 25 years experience, we take pride in our friendly and professional service, covering **Woodbridge** and the surrounding areas.

- ✓ Oil & Gas Servicing
- ✓ Repairs & Replacements
- ✓ Full Heating Installations
- ✓ Bathroom Installations
- ✓ Landlord Safety Checks



**ABBS PLUMBING & HEATING SPECIALISTS**

**07791 033532**

abbs1977@gmail.com

ABBS



## Eco-Friendly Gift Wrap & Greetings Cards

~ Inspired By Suffolk ~



Individually designed, hand printed textile art including **lavender cards** which can be placed in a drawer after being displayed and **fabric gift wrap** that can be re-used.



www.rachelfearnleytextiledesigns.co.uk

## Popular restaurant to remain closed



Photo credit: Charmaine Berry

A popular restaurant in Woodbridge, which was due to reopen this month, is to remain closed.

Staff from Prezzo on Church Street shared their disappointment with customers last month on Facebook.

A post on the Woodbridge Community Group read: "We're really sorry but we have decided to postpone re-opening our Prezzo due to the unknown effects of the new government regulations, which will mean we will no longer proceed with the opening that we had hoped in October."

"Obviously, we are disappointed, and I cannot give you a future opening date at present. Thank you for your patience, thank you for your understanding and your support."

## Man facing drugs charges after police raids

A man from Woodbridge has been charged with conspiracy to supply class A drugs after police raids in seven locations, including Melton, last month.

Police raided separate addresses in Essex, five premises in Ipswich and one in Melton on Wednesday, September 16.

Four men were arrested on suspicion of conspiracy to supply class A and B drugs and money laundering. A 29-year-old woman was also arrested at the Melton address on suspicion of possession with intent to supply. She was taken to Martlesham Police Investigation Centre and subsequently released under investigation.

The other four males were taken to Martlesham Police Investigation Centre for questioning. Marley Bagley, 24, of Beadon Way in Woodbridge and the three other men were all charged with conspiracy to supply class A drugs from July 10, 2019, to September 16, 2020.

Bagley and two others were also charged with conspiracy to supply class B drugs from July 10, 2019, to September 16, 2020. All four appeared before Ipswich Magistrates' Court on September 18 and were remanded to appear before Ipswich Crown Court on October 16 for a second hearing.

Officers seized a number of items including three vehicles – a Range Rover, Audi and Mercedes – around £65,000 in cash, a quantity of suspected class A drugs and a large amount of cannabis.

## Artists set to brighten up autumn

Art lovers in Woodbridge and beyond are being invited to Woodbridge Art Club's autumn exhibition at its clubhouse on the Woodbridge river front near the Tide Mill.

Those who prefer to view at home can log into the art club's website at woodbridgeartclub.org.uk

The exhibition is open from 10.30am until 3.30pm on Saturdays and Sundays from October 17 until November 1 and includes paintings, art photography, pottery and lacework. COVID-19 security measures are in place and the club accepts payment by card.

The online exhibition will feature the same artworks and the opportunity to arrange purchase of them.

You can find updates on the exhibition, club news and lots of pictures on the Woodbridge Art Club's website as well as its Facebook page.



Photo credit: Joan Moore

## TCS REMOVALS & CLEARANCE

RECYCLE - REUSE - REPURPOSE



- ✓ Waste Licence
- ✓ Fully Insured
- ✓ FREE Quotes
- ✓ FREE Advice
- ✓ Domestic
- ✓ Commercial
- ✓ Reliable
- ✓ Family Run

**CALL US TODAY FOR A FREE QUOTE!**

**01394 432065 | 07872 608534**

info@theclearancesolution.co.uk

www.theclearancesolution.co.uk

**Checkatrade.com**  
Where reputation matters



**WHAT'S ON...**



## Acrylic Pouring Quick Start for Beginners

Learn how to express yourself through Acrylic Pouring – it is a simple, fun, and absolutely beautiful form of art!

- 3 live painting sessions via Zoom app
- Hands on from the first workshop with step by step guidance
- E-book after each workshop with all the basics about paint pouring, how to choose colour combinations, avoiding muddy pours and more
- 3 weeks of 24/7 support
- Lifetime support from free Facebook group
- Certificate on completion, verified by Agora Gallery in New York, signed by Kristina Tonev

Sign up at [www.artgallerysirk.com](http://www.artgallerysirk.com)  
or [www.articlass.com/courses/acrylic-pouring-kristina-tonev](http://www.articlass.com/courses/acrylic-pouring-kristina-tonev)

## B&G DECORATORS

PERIOD PROPERTY MAINTENANCE

PAINTING  
WALLPAPERING  
DECORATING  
CARPENTRY  
SASH WINDOW REPAIR  
GENERAL PLUMBING

**DEBENHAM**  
☎ 07889 258880  
[www.suffolkdecorators.co.uk](http://www.suffolkdecorators.co.uk)

📍 BG-DECORATORS    B&G DECORATORS 📍

## New antique shop set to make past the present



The owner of a new antiques shop coming to Woodbridge later this year says she hopes the shop opening will bring some positivity to the town. Teresa Potts will be opening Theatre Street Antiques in the British Red Cross building after she was granted planning permission in August.

She and her husband Jamie have already been trading online for a number of years and Teresa said she can't wait to open for business.

She explained: "Antiques are booming at the moment as people want to reuse and recycle. Hopefully people will view the shop opening as uplifting – it's not all doom and gloom out there. People are more cautious and don't necessarily want to go to major retailers at the moment.

"The older stuff is better quality and people want to buy something like it. They don't make it like they used to any more. We've had a lot of positivity from other local businesses. We're a stone's throw from the town centre so if we can bring some extra footfall, that's all well and good. My husband's a fisherman and we have three small children, so this is a real labour of love for us."

For more information, go to @pottsvintagetraders on Instagram.

The letter read: "The relatively small number of children who have been in direct prolonged contact with the confirmed case will have received an individual letter and phone call and will be staying at home for 14 days."

As a response to the case, the school introduced general use of face coverings for staff and students in communal areas, including school corridors and breakout areas.



Photo credit: Charmaine Berry

## Teen to stand trial in the New Year

A teenager from the Woodbridge area who was charged with attempted murder after a 15-year-old boy was shot on his way to school in Kesgrave last month will stand trial in January.

The boy, 15, was arrested by armed police in Ipswich on September 7, just hours after the shooting. He was also charged with possession of a firearm with intent to endanger life and possession of a firearm with intent to cause injury.

The teen has already appeared in court and is next due to appear on December 7.

Meanwhile, the victim, who was shot in the head, has regained consciousness in hospital.

He remains in intensive care at Addenbrooke's Hospital.



## COVID-19 case confirmed at local school

A "relatively small" number of students at Farlingaye High School in Woodbridge were told to stay at home for 14 days last month after a confirmed case of COVID-19.

Headteacher Andrew Sievwright sent a letter to parents in late September offering an update. Staff are monitoring the situation and working closely with Public Health England.



**AES**  
Est 1989

**Family Run Business**

**No Inflated Prices**

## BUSINESS OPERATIONAL

Our small works division is still operating for essential works, breakdowns, leaks, boiler & cylinder replacements for customers in their time of need.

Since 1989 AES have looked after your Gas, LPG, Oil and Heat Pump breakdowns and installations.

**COMMERCIAL - DOMESTIC - RESIDENTIAL**

Please call **01473 320350** or email [services@aesnational.co.uk](mailto:services@aesnational.co.uk)  
IPSWICH - WOODBRIDGE - MELTON - ALDEBURGH  
109 Newton Road Ipswich, Suffolk IP3 8HQ



News from  
**Councillor Caroline Page**  
*The County Councillor for Woodbridge*

Walking a daily route around Kyson Point really highlights the changing seasons. Here I watched the bare branches grow green, spring arrive step by step – and now autumn is well advanced, the leaves falling. We locked down just before the spring equinox with the days getting ever longer. We're now well past the autumnal equinox, the days are getting shorter and soon British Summer Time will be over.

I've already seen the martins swooping and twittering, gathering to go back to their winter home. I was so excited when I saw them in April – and it seems so recently. Yet most martins live less than five years. A whole summer, two broods of chicks, must seem an enormous time to them. And how much longer one summer must seem to a butterfly. There have been so many in this extraordinary year: peacocks, painted ladies, commas, ringlets... Yet some butterflies have life spans of days, this summer their lifetime. Lucky to

have a nice one, if there's only one.

However, some things live so much longer than we do. When they have no leaves you really notice the size of tree trunks, and soon, leafless, they will come into their own again. In March, before the nesting birds beguiled me, I'd take a string to measure and age particularly big ones. It really made me think. Trees that were saplings at the time of Trafalgar or Charles I's execution or when Shakespeare was a lad.

Looking down over Martlesham Creek is a lone gnarled oak which thrust from its acorn when Richard III fell off his horse. It's 550 years old – and still alive. Imagine the people who have passed beneath it, their thoughts and actions, domestic, political, philosophical, plain dull. Those in doublets, those in smocks – and all like us.

Let's measure our lives by experience – enjoying each year as if it were our only one and learning from it as if we had 500 years to play with.

## Bid backed for charging points

The CEO of a company that provides electric vehicle charging points for homes and workplaces has welcomed an investment of £300,000 in rural Suffolk.

Suffolk County Council announced last month that it will be installing 100 fast charging points across the county.

Linda Grave of EV Driver at the Deben Mills Business Centre built the first accessible pay as you go electric vehicle (EV) charging network in Suffolk and offers consultancy services.

She said: "It's great to see the government and local councils getting behind the EV revolution. We need more publicly accessible EV charging to go alongside home and workplace chargers, where 80 per cent of all charging will take place. It's imperative that we have the right charge units in the right places and they can be easily accessed by all.

"We need to educate and build confidence, so that drivers can switch to EVs safe in the knowledge that they can charge at all destinations. Suffolk is a great place to live and breathe and the switch to EVs will help us keep it that way."

There have already been expressions of interest for charging points from around 20 suitable sites.

For further information on Plug In Suffolk or to apply to join the network, visit [www.greensuffolk.org/plug-in-suffolk](http://www.greensuffolk.org/plug-in-suffolk)



### Domestic Heating & Gas Engineers

- Boiler installation & servicing
- Natural Gas & LPG appliance repairs
- Landlord Gas Safety Certification
- System Power Flushing

**BROKEN BOILER? EMERGENCY CALL OUT 0843 89 69 765**

## Peace of mind with year round boiler cover

### MarshallCare

from just **£12 per month**



	Service £12 Monthly	Boiler £16 Monthly	System £20 Monthly
Gas Safe Engineer	✓	✓	✓
Emergency Call Out	✓	✓	✓
24/7 Answering Service	✓	✓	✓
Discounted Labour Rates (for uncovered items)	✓	✓	✓
Annual Boiler Service*	✓	✓	✓
New CO alarm supply & installation	✓	✓	✓
Central Heating Boiler		✓	✓
Temperature & Time Control		✓	✓
Central Heating Pump			✓
Motorised Valve			✓
Radiators & Valves			✓
Hot Water Cylinder			✓
System Pipework			✓
1 Free Callout per year	✓	Unlimited	Unlimited

To find out more about the services we offer

**Call 07595 904 513**

or email [info@marshallgas.co.uk](mailto:info@marshallgas.co.uk)



[www.marshallgas.co.uk](http://www.marshallgas.co.uk)





News from

## Councillor Geoff Holdcroft

Town Councillor for Woodbridge Riverside

As I sit down to write this month's column, I hear the news that next year's Suffolk Show has been cancelled. This really does demonstrate how much our lives will still be affected by the COVID-19 crisis well into 2021 and possibly beyond. As chairman of the Woodbridge Regatta Association I will have to start thinking about whether next year's Regatta can go ahead as we all hoped, to be bigger and better, or should we start to plan for a scaled-down version, or not at all?

Woodbridge Town Council has made the decision to relocate this year's Remembrance Day from the Cenotaph on Market Hill to the Bandstand in Elmhurst Park, where hopefully we can remember all those who made the greatest sacrifice, without putting anyone else at risk.

We are now well into the budget-setting season at the council and are carefully considering all the work we are currently undertaking as well as new projects we would like to do to improve the town. As ever, there are some hard choices to make, but of course that's what we were elected to do. No doubt as the budget gets refined I will be able to say more about what decisions have been taken, but of course you can always join one of our finance meetings or full council meetings using Zoom to see the decision-making process in action.

And just a reminder that the work of Woodbridge Town Council's Emergency Response Group still continues; if you need help just call 01394 383599 or email [emergency@woodbridge-suffolk.gov.uk](mailto:emergency@woodbridge-suffolk.gov.uk)

## Alternative therapy comes to town

Scientifically proven to aid healing and boost performance, red light therapy is already being used by top athletes and the rich and famous, but now is affordable and available in Woodbridge.

From injury recovery to clinical depression, there are more than 4,000 published papers on the effects of light therapy. None of them has shown detrimental effects; most show remarkable benefits.

Thrive Light, based at the Woodbridge Complementary Health Centre, is the first centre in Suffolk to offer the revolutionary red light therapy.

Steve Peck is a coach, physiotherapist and owner of Mental Health and Training and is looking forward to welcoming clients.

He said: "It's been a goal of mine to make this therapy available to everyone rather than the few. I have seen the benefits a series of sessions under this specific red light can make, not only in terms of accelerated healing but also to relieve stress and improve mental health."

For more information or to book an appointment, visit [thrivelight.co.uk](http://thrivelight.co.uk)

Photo credit: Wendy Aiken Photography

THE  
SUFFOLK SHUTTER  
COMPANY



Suffolk's leading independent Plantation Shutter company.  
UK manufactured, made to measure,  
fast delivery and installation.

FREE SURVEY & QUOTE  
CALL 01473 276117

[enquiries@suffolkshuttercompany.co.uk](mailto:enquiries@suffolkshuttercompany.co.uk)  
[www.suffolkshuttercompany.co.uk](http://www.suffolkshuttercompany.co.uk)

TITCHMARSH & GOODWIN



Tailored British furniture

01473 252158

[www.titchmarsh-goodwin.co.uk](http://www.titchmarsh-goodwin.co.uk)

 **BARRETTS**  
ELECTRICAL LTD



Electrician based in Woodbridge, Suffolk,  
offering domestic, commercial and industrial  
installations, testing and maintenance.



**NICEIC**  
DOMESTIC  
INSTALLER

07931 986601

[kyle.barrettselectrical@gmail.com](mailto:kyle.barrettselectrical@gmail.com)

PROFESSIONAL  
CARPET  
*Cleaning*

Infection  
Control Services



Domestic  
Commercial  
Upholstery  
Carpets  
Rugs  
End of Tenancy  
Fully Insured

10%  
off with  
this ad

**TILLY'S**  
CARPET  
CLEANING  
A SERVICE

07983 125533

[info@tillyscarpetcleaning.co.uk](mailto:info@tillyscarpetcleaning.co.uk)  
[www.tillyscarpetcleaning.co.uk](http://www.tillyscarpetcleaning.co.uk)

# BRUSH

## UP ON DIY

**B**e honest. When you purchase a paintbrush from your local supermarket or DIY store, do you actually have any idea how to choose the right one for your particular project?

Don't worry, you are not alone. Fortunately, we are here to show you how, plus how to care for your brushes so that they last for the duration.

### CHOOSE THE RIGHT BRISTLE

Paintbrushes are available in two different bristle types: synthetic bristles, or natural bristles that are made from animal hair. If you are using paint that can be cleaned off with water, you should choose a brush with synthetic bristles. However, if you are using an oil-based paint or varnish, a natural bristle brush is better.

### CHOOSE THE RIGHT SIZE

This may seem obvious, but if you are painting a small area such as a skirting board, then you should choose a smaller brush for more precise control. If you are painting a wall, you will most likely be using a brush for cutting in and should opt for a 2-3-inch brush; any bigger and you will struggle.

### CHOOSE THE RIGHT SHAPE

If you look at paintbrushes closely, you will notice that the bristles are either cut at an angle or they have square ends. As a general rule, angled-tip brushes are best for painting trim or cutting in, and square ends are ideal for wider, flatter surfaces.

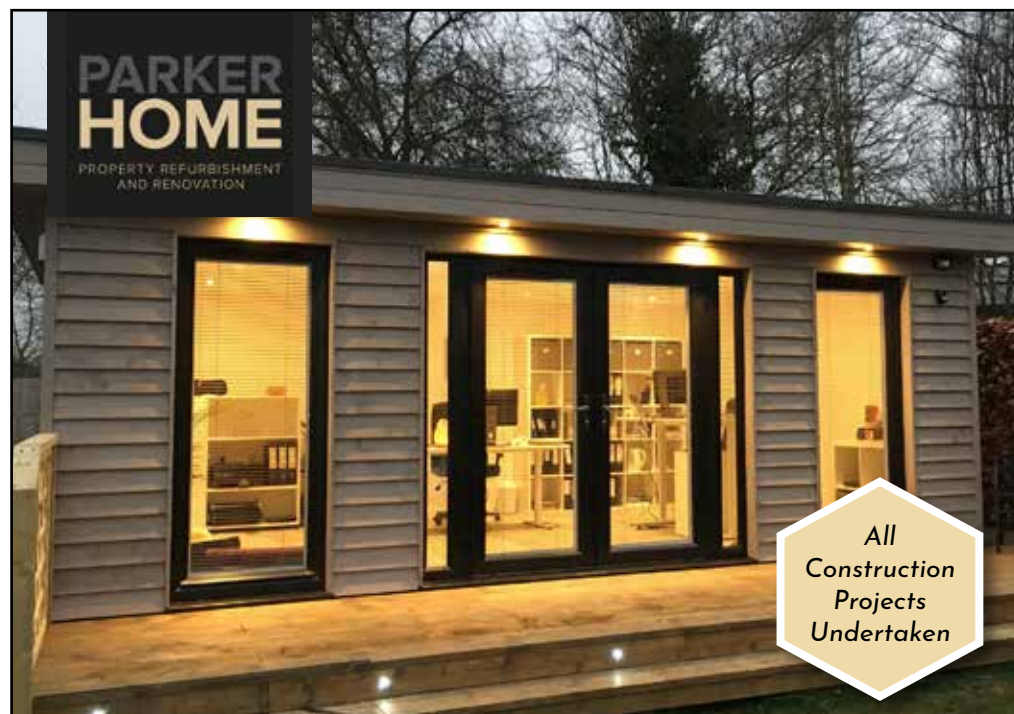
### HOW TO CLEAN YOUR PAINTBRUSH

#### > WATER-BASED PAINT

Scrape off any excess paint | Wash the brush in soapy water | Rinse the bristles in clean, cold water | Wrap the brush in heavy paper and fasten loosely with string

#### > SOLVENT-BASED PAINT

Wipe the brush clean of excess paint or gloss | Swirl the brush in a jar of white spirit | Leave to soak for 2 hours or longer | Wipe the brush clean with newspaper



**GARAGE CONVERSIONS • HOME OFFICES • RENOVATIONS • RESTORATIONS**

## Over 30 years' experience in property renovation

Parker Home is a family run business, headed by Steve Parker and Debbie Lamond. We have over 30 years' experience in property renovation on behalf of a wide range of domestic and commercial clients, including English Heritage, interior designers and architects.



CALL US TODAY ON:

**01473 708210**

or 01284 386899



[www.phihome.co.uk](http://www.phihome.co.uk)  
[info@phihome.co.uk](mailto:info@phihome.co.uk)



## FÖRE WÖÖD FLÖÖRS *Naturally Unique*



BARNARD & LYDFORD



LUXURY VINYL TILE



KARNDEAN

Contact us today for your very own high quality wood flooring.  
**01473 281775 • info@forewoodfloors.co.uk**

## Haxley and Ruffles Roofing Contractors

**CHIMNEY REPAIRS  
NEW ROOFING  
ROOF REPAIRS  
LEAD WORKS**



**0800 025 7367**  
**07850 230234 - haxleyandruffles@gmail.com**



HOME & DIY

## Radiate SOPHISTICATION...

...with these DIY radiator covers



Undoubtedly, radiators serve a purpose in your home, but why do they have to be such unattractive space wasters?

Thankfully, a well-placed radiator cover can work wonders for hiding your heater without withholding the warmth.

### THE 'PERFECT PALLET' RADIATOR COVER

If you are looking for a raw style that will cost you virtually nothing, then this is the DIY radiator cover for you. The wide slats allow for maximum heat transmission, and you can choose to paint your pallet or simply leave it in all its rustic glory.

**Top tip:** Be sure to thoroughly remove any spills to avoid unpleasant smells when your radiator heats up.

### THE 'CLEVER CANE' RADIATOR COVER

Cane is the ideal material for building a radiator cover as it will effectively hide your radiator while at the same time allowing heat to easily pass through its fibres. You can find cane webbing in sheets or rolls, either of

which can be simply stretched across the front of your radiator cover frame.

**Top tip:** Soak the cane in water first to make it softer and more malleable.

### THE 'SPACE-SAVING SEAT' RADIATOR COVER

If you are lacking seating options in your home, then this multipurpose radiator cover can help you. All you need are 15-20 vertical hardwood slats to create an L-shaped radiator cover that doubles up as a bench.

**Top tip:** Add a few pillows across the top for added comfort.

### THE 'IKEA SLAT BED BASE' RADIATOR COVER

You can purchase an IKEA slat bed base for as little as £20 and repurpose it to create a stylish and multifunctional radiator cover.

**Top tip:** Use the additional table surface as a pop-up bar and you'll never have to go to the pub again.

Photo credit: Lantiv via thespruce.com, rhythmoftthehome.com, erikstenbaum.com, projectophile.hiles.wordpress.com



# THE Grandmillennial GRAB



WHO SAID NOSTALGIA WAS DEAD? NOT THE MILLENNIALS, THAT'S FOR SURE

If there's one thing we should know by now about interior design, it's that nothing is ever off limits, and that certainly applies to the mixing of styles, trends and ideas.

Across styles such as Japandi and mid-century modern, interiors take the best from supposedly contrasting looks to produce colour and texture, while stimulating the mind.

Millennials have been unfairly labelled as adopting only modern, run-of-the-mill design, yet the grandmillennial look turns that concept on its head, with modern, contemporary elements enriched with chintz, crochery, ornate patterns and antique furniture you'd expect to see at your grandparents' house... hence the name.

The idea is that we take up-to-date walls, floors, furniture and fabrics and drop in elements that scream sentimentality, respect the tastes of our elders and take us back to times of simpler design.

To pull off this look, think about ornate lampshades, consider select pieces of antique furniture and even throw in a Toby Jug. Perhaps even lay out a doily or two, if you dare.

There are no rules, no exceptions, and only the power of your imagination can hold you back when it comes to pulling off the look.

Embrace worn-out upholstery, floral prints, draped covers and a splash of patterned wallpaper.

And try to tell a story in what you do – of people, places, eras and fashions. Heck, even pop in for a cup of tea with a local octogenarian in the hope of inspiration.

There is perhaps one warning, though – don't go overboard. The idea is to retain a modern feel while patterning your living space with a sensible number of well-selected additions. Go too far and your front room, bedroom or hallway may look like something out of a 1950s episode of *Coronation Street*, and nobody wants that.



Photo credit: livingator.com

# CHRISTMAS

AT GLASSWELLS

WE HAVE  
THOUSANDS  
OF CHOICES  
TO MAKE ANY  
HOME SPARKLE!



**GLASSWELLS**

WHAT YOUR HOME'S BEEN WAITING FOR

**Discover a Huge Selection of Amazing Gifts, Designer Cookware  
and Stylish Home Accessories in Store and Online today.**

Bury St. Edmunds 01284 752804 | Ipswich 01473 253164 | [glasswells.co.uk](http://glasswells.co.uk)



# GAROLLA

## ROLLER SHUTTER DOORS



**Great For:**  
Space Saving  
Kerb Appeal  
Ease of Use

**0800 468 1982**

### THERMALLY INSULATED ELECTRIC GARAGE DOORS



**Garolla** saves you space inside your garage as the Garage Door rolls vertically into a box. This design requires just 8 inches of headroom and allows you to park closer to the door. Remotely control the Door from the comfort of your car with a hold to run remote.

**LIMITED OFFER - was £1354**  
**NOW ONLY £895**  
**INC. VAT & FULL FITTING**

**Save £459**

**MADE TO MEASURE, CALL US TODAY**

CE Approved

Acoustic & Thermal Insulation

Brush Sealed Rails

Pay on Completion

Two Remote Controls

18 Colours Available

Free Disposal of your Old Door!

**01277 800 142** **07537 149 128**

Phone Lines Open 7 Days a Week

- Offer valid for openings up to 2.6m wide & inc: 2 Remote Keys, 55mm White slats, Internal manual Override -




# Touchwood UK

kitchens, bedrooms, furniture & interiors

**DEAL WITH MANUFACTURER DIRECTLY — CALL TODAY!**

907 Woodbridge Rd,  
Ipswich, Suffolk, IP4 4NX

**01473 716100**

www.touchwooduk.biz

**DESIGN | PLANNING | INSTALLATION**  
*Come and visit our showroom!*

# GO GREEN

*How to make your home more efficient and save on your monthly bills*

Whether you are planning to take advantage of the Green Homes Grant Scheme announced in July or not, it can be a good idea to look into ways in which you can improve the energy efficiency of your home, both for the environment and for your bank balance.

## What is the Green Homes Grant Scheme?

The aim of this scheme is to enable homeowners and landlords to upgrade their homes or properties with energy-saving features. You can apply online from September for vouchers worth up to two-thirds of the total cost, although those with low incomes will be eligible for 100 per cent funding.

## Solid wall insulation

If your home was built before 1920, it might have solid walls, rather than cavity walls, which are highly unlikely to be insulated. You can choose to have either internal or external insulation completed, with the latter helping to warm colder rooms in your home and alleviate damp.

**Savings per year = £225\***

## LED and CFL lights

Lighting accounts for roughly 15 per cent of an average household's electricity bill, so making the decision to install energy-efficient bulbs can save you a decent amount of money.

**Savings per year = £100**

## Triple glazing

Most homes in the UK are now double glazed, but if you want to save even more money on your energy bills, you may want to consider investing in triple glazing, which has the added benefit of noise reduction.

**Savings per year = £105\***

## Install a water meter

If you find your water bill creeps up every year, you may want to think about installing a water meter, as this will encourage all members of your family to reduce their water usage.

**Savings per year = £55\***

\*based on an average semi-detached house



HOME & DIY



# How to spider-proof your home

Whether you suffer with arachnophobia or you simply don't like the thought of lots of hairy eight-legged creatures scuttling around your home, you should aim to both repel and remove spiders as humanely as possible.

## Make a natural spider-repellent spray

There are several herbs and essential oils that are said to ward off spiders, including lavender, citrus and cinnamon. However, the aromas that spiders hate the most are eucalyptus, tea tree and peppermint. Fill a bottle with five drops of your preferred oil, add a shot of dish soap and top up with water. Spray around your windows, doors and any dark corners where spiders may be lurking.

## Use a spider catcher

Although you can, of course, use the tried and tested glass-and-piece-of-card technique, there are other humane ways in which you can safely catch and

release spiders from your home. A vacuum spider catcher is simple to use and traps any spiders safely in a long tube. Alternatively, you could try a window catcher, which is great for reaching spiders in tricky corners or on the ceiling.

## Clean regularly

Spiders do not like to be disturbed, so the best way to encourage them to vacate the premises is to clean and tidy up as often as possible. Although they are not attracted to food, they are to dead insects, so remove these quickly, as well as any old spider webs or egg sacs.

## Block any cracks

Spiders love to build their webs in any nooks and crannies that they can find in your home, so it's a good idea to block holes and cracks in your walls.

**Myth:** Conkers keep out spiders. In fact, you would need to fill your whole home with these nuts to make any difference!

# Transform

YOUR KITCHEN

RENOVATE OR SIMPLY UPDATE  
IN AS LITTLE AS A DAY

Give your kitchen a stylish new look without going through all the disruption of ripping out your old one. Our bespoke worktops and replacement doors are made to cover existing surfaces precisely, leaving a hardwearing and luxurious finish. Known as 'The Top That Fits On Top', it's a winning combination of strength and slimline dimensions that has made us a household success around the world.



*Fitted in one day*

Professionally fitted,  
no debris, no dust, no disruption



*Worktops*

Granite, quartz, recycled  
glass & porcelain worktops



*Doors*

Over 100 combinations of  
Made-to-Measure doors

For a free consultation contact your nearest showroom or visit [granitetransformations.co.uk](http://granitetransformations.co.uk)

IPSWICH SHOWROOM: 01473 851 360

Unit 3, Alstons Court, Leslie Rd, Ipswich, Suffolk IP3 9PL

COLCHESTER SHOWROOM: 01206 807 347

Hatfields Home Furnishers, Peartree Rd, Stanway, Essex CO3 0LA



KITCHEN & BATHROOM MAKEOVERS





## INTERIORS BY JINNIE



**FREE**  
no obligation  
quotation

### BESPOKE HANDMADE FURNISHINGS FOR YOUR HOME AND WORKPLACE

Interior Design | Redecoration  
Curtains/Blinds | Loose Covers | Upholstery

**01986 805022**

[www.interiorsbyjinnie.com](http://www.interiorsbyjinnie.com)

## Quality Fireplaces at Affordable Prices



**Come and visit us at  
Suffolk's Largest Fireplace Showroom**



**01473 211337 | 07983 535844**

[sales@ipswichfireplacecentre.co.uk](mailto:sales@ipswichfireplacecentre.co.uk)

# OIL TANKS SUPPLIED AND INSTALLED



Enjoy professional installation from TRS - a trusted family business most often rated 10/10 for quality, service & value.



- Oil tanks in stock now
- Choice of plastic or steel
- Professional installation
- Existing oil transferred
- Your old tank removed



We are the region's leading oil tank supplier and have a proud reputation for customer service.

99% recommend us  
**referenceline**

**01362 687144**

**We remove your old tank for recycling**



MADE IN BRITAIN STEEL TANKS CUSTOM MADE [WWW.TANKREPLACEMENTSERVICES.CO.UK](http://WWW.TANKREPLACEMENTSERVICES.CO.UK)

## 5 unusual USES FOR...

**D**id you know that an estimated 14.2 million people enjoy Coca-Cola in the UK? Offering an irresistible combination of sugar and caffeine, it's not hard to see why this carbonated soft drink is one of our favourite brands. But flavour and effect aside, it also has several other handy uses in your home.

### 1. CLEAN YOUR TOILET

If you have any stubborn stains in your toilet that you just can't shift, simply pour in some Coca-Cola, leave to sit for one hour and wait for the fizzy drink to work its magic. When you return you will find that the phosphoric acid has dissolved the stains, leaving you with a gleaming toilet.

### 2. LOOSEN RUST

Whether you have some rusty bolts in your home or your tools have seen better days, Coca-Cola can bring them back to their original glory. Simply submerge in a small bowl of Coke, leave for 24 hours and scrub with a non-metal pad.

### 3. DE-ICE YOUR WINDSCREEN

Is there anything more frustrating than having to wait for the ice to melt off your windscreen on a winter's morning? Fortunately, you will no longer have to. Just pour a can of Coke over the affected area and immediately the ice will turn to slush.

### 4. CLEAN YOUR WINDOWS

Do you yearn for streak-free windows? Coca-Cola contains citric acid, meaning that it is a great alternative to lemon-based cleaning products. All you need to do is pour the fizzy beverage into a spray bottle and then get wiping.

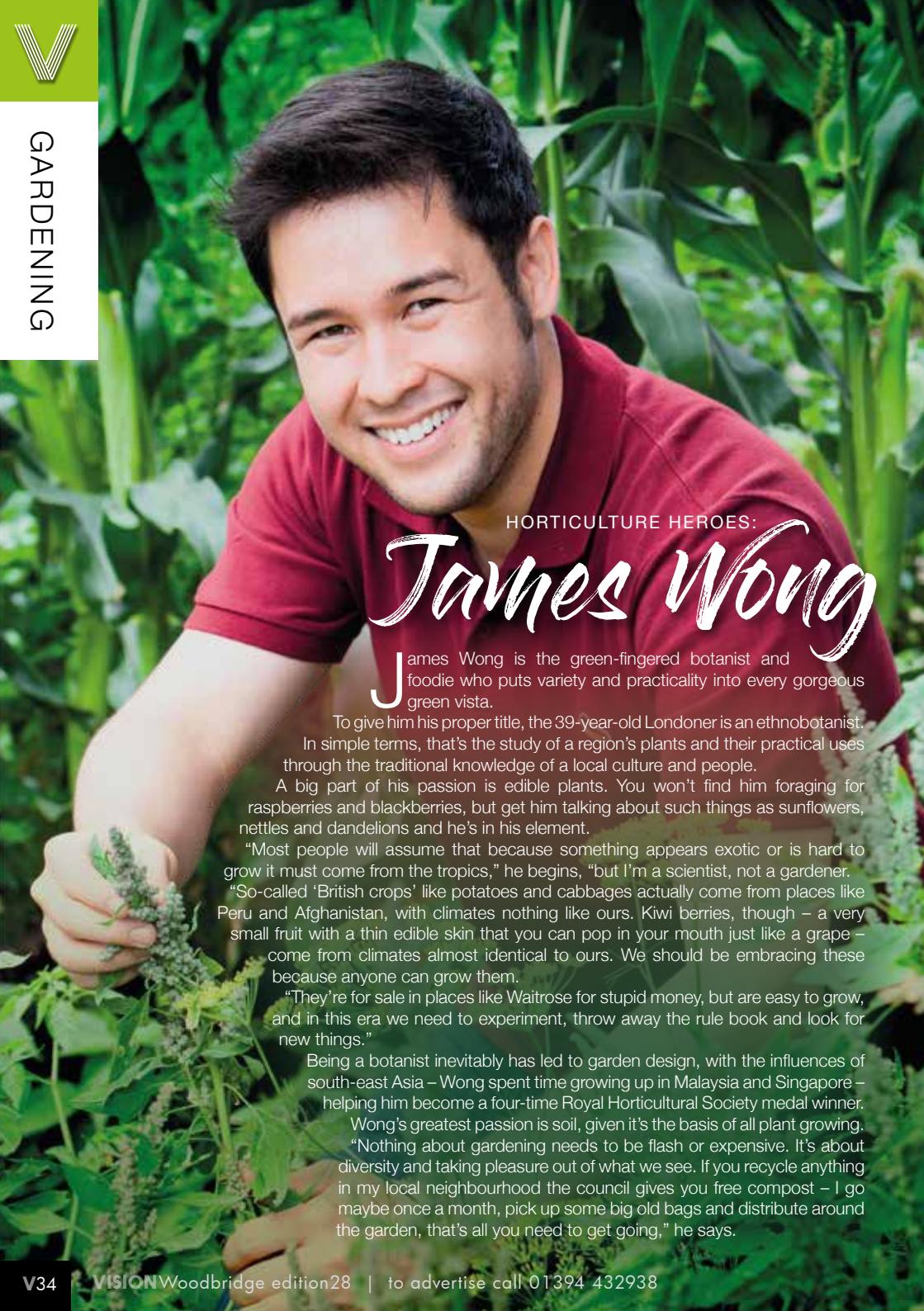
### 5. REMOVE MILK STAINS

Milk can be a nightmare to get out of clothing, but thankfully, by saturating the item in Coca-Cola for five minutes before washing it, you will find the stain lifts easily.



HOME & DIY





HORTICULTURE HEROES:

# James Wong

James Wong is the green-fingered botanist and foodie who puts variety and practicality into every gorgeous green vista.

To give him his proper title, the 39-year-old Londoner is an ethnobotanist. In simple terms, that's the study of a region's plants and their practical uses through the traditional knowledge of a local culture and people.

A big part of his passion is edible plants. You won't find him foraging for raspberries and blackberries, but get him talking about such things as sunflowers, nettles and dandelions and he's in his element.

"Most people will assume that because something appears exotic or is hard to grow it must come from the tropics," he begins, "but I'm a scientist, not a gardener.

"So-called 'British crops' like potatoes and cabbages actually come from places like Peru and Afghanistan, with climates nothing like ours. Kiwi berries, though – a very small fruit with a thin edible skin that you can pop in your mouth just like a grape – come from climates almost identical to ours. We should be embracing these because anyone can grow them.

"They're for sale in places like Waitrose for stupid money, but are easy to grow, and in this era we need to experiment, throw away the rule book and look for new things."

Being a botanist inevitably has led to garden design, with the influences of south-east Asia – Wong spent time growing up in Malaysia and Singapore – helping him become a four-time Royal Horticultural Society medal winner.

Wong's greatest passion is soil, given it's the basis of all plant growing.

"Nothing about gardening needs to be flash or expensive. It's about diversity and taking pleasure out of what we see. If you recycle anything in my local neighbourhood the council gives you free compost – I go maybe once a month, pick up some big old bags and distribute around the garden, that's all you need to get going," he says.



**CHIMNEY SWEEP**  
TL CHIMNEYS

MARCUS WEBB

**01473 712703**  
**07733 420611**  
[marcus@tlchimneys.co.uk](mailto:marcus@tlchimneys.co.uk)

SUFFOLK  
NORFOLK | ESSEX



**RIVERVIEW GARDENING**

**Garden & Grounds Maintenance**

Providing all aspects of garden and grounds maintenance to both domestic and commercial customers.

*Ride-on Mower Available*  
*Green Waste Removed*

Experienced | Qualified | Insured

**07779 152936 • 01394 823798**  
[riverviewgardening@gmail.com](mailto:riverviewgardening@gmail.com)



**EVOLUTION TREES LTD**

Crown Reductions, Lifting and Thinning  
Pollarding  
Felling and Sectional Dismantle  
Stump Grinding  
Hedge Trimming and Reduction

**Emergency Tree Work**

Qualified, Experienced and Insured

**Darren Parratt**  
**01473 487888**  
[darren@evolution-trees.co.uk](mailto:darren@evolution-trees.co.uk)  
[www.evolution-trees.co.uk](http://www.evolution-trees.co.uk)





OCTOBER BIRTH FLOWER OF THE MONTH

# Marigold

GARDENING

If you were born in October, your birth flower is the vibrant marigold.

Native to the Mediterranean, this plant is also known as the 'herb of the sun' owing to the fact that its flowers open when the sun is shining. Incredibly versatile flowers, marigolds can be used as bedding plants or grown in containers.

## What does the marigold symbolise?

With its intense orange colour, it's hardly surprising that the marigold symbolises both passion and creativity. In medieval England, the leaves and flowers of the marigold were combined with ground egg shells and added to heated ale as a treatment for the plague. Whereas, in Mexico, they are the official flower for the *Día de los Muertos* – the Day of the Dead – as their scent is believed to help guide the spirits from the cemetery to the altars.

## What does this birth flower say about you?

If your birth flower is the marigold, you are said to be a warm and inviting person who has the ability to brighten any day. You are full of drive and are often the one that others turn to for advice or help. Personal growth is also important to you.

## How to grow marigolds

Marigolds enjoy full sun and grow well in both dry and moist soil. You can plant marigold seeds directly outdoors in spring once the threat of frost has gone, or start seeds inside for up to eight weeks before planting outside. These flowers require little maintenance and only need watering if the weather has been dry for more than two weeks.

## Fun facts about marigolds

- Marigold flowers are edible
- Marigolds are a natural insect repellent
- They contain carotenoids that can lower your risk of heart disease and some cancers



## Make 2020 a *Christmas to Remember!*

The Christmas Decorators specialise in the design and installation of interior and exterior festive lighting and Christmas decorations for businesses and residential properties. We also specialise in creating perfect winter wonderland weddings and fabulous themed Christmas parties.

### RESIDENTIAL



We can light your home from top to bottom with tasteful options in roofline contours, bushes, shrubs and trees, driveways, entrances and more.

### COMMERCIAL



Let your business be the talking point of the high street and impress customers with our bespoke lighting and branded displays.

### EVENTS



No matter the size of your function, we can create a unique theme to wow guests and have the cameras clicking away all night long.

Call us for more information:

**07958 612727**

or email

**[maxine@thexchristmasdecorators.com](mailto:maxine@thexchristmasdecorators.com)**





# Greenfuture

## SOLUTIONS

Construction, Building Maintenance &  
Independent Living Adaptions

Tel: 01728 666264 [info@greenfuturesolutions.co.uk](mailto:info@greenfuturesolutions.co.uk)

[www.greenfuturesolutions.co.uk](http://www.greenfuturesolutions.co.uk)



# Greenfuture

## ELECTRICAL AND PLUMBING

Electrical, Plumbing &  
Renewable Energy Specialists

Tel: 01728 604368 [info@greenfutureenergy.co.uk](mailto:info@greenfutureenergy.co.uk)

[www.greenfutureenergy.co.uk](http://www.greenfutureenergy.co.uk)

Unit 3, Farnham Industrial Estate, Farnham, Saxmundham, Suffolk IP17 1JZ

## Made in Japan

### CREATE A JAPANESE GARDEN

**GO GREEN** – Bewildering arrays of colour don't sit well with Japanese garden design. Instead, focus on the blend of greens; explore texture over colour, and appreciate the shape of plants rather than obsessing over size.

**PERFECT PRUNING** – So much of the art behind this unique horticultural mood is in constant styling, reshaping and pruning. Gracious curves and sharp edges intertwine, with plants bending around rocks and guiding the eye around.

**WATER WONDER** – Whether it's a simple trickle of a small stream or a pond decorated with lily pads, the sight and sound of water is a key part of the equation.

**NATURE'S KNACK** – The Japanese have a strong respect for Mother Nature, and will encourage the build-up of moss and other elements that weather and climate bring about. While not letting the garden be reclaimed, you should certainly allow a natural imprint to work its way in.

**OPEN SPACES** – Detail is everything, and nothing focuses the eye on this better than open space with a focal point, such as a small statue, collection of rocks or even a bonsai tree.

**STONE COLD SOBER** – The use of stone is a big thing in garden design, and never more so than in south-east Asia, with large rocks and the smallest pebbles complementing perfectly green spaces and water.



GARDENING



A photograph of Robert Pattinson in a tactical vest, holding a handgun and a walkie-talkie. The background is a blurred city street.

# THE RISE OF

# ROBERT BAT-TINSON

It's taken eight years, 19 movie roles and a complete revision of his status as the teenage heartthrob of his era, but in landing the role of Batman in the latest incarnation of DC Comics' ultimate action hero, Robert Pattinson has emerged from the gloomy, seedy shadow of *The Twilight Saga* into the dazzling, dangerous surrounds of, well... his local gym.

We've always known him best for his vampiric swagger and lofty presence, and for being followed around by a posse of adoring young teens, but since the Sky series in which he made his name, Robert Pattinson has dabbled in everything from serious drama, horror, crime, action and even biopics.

And while excelling on screen in the likes of *The Lost City of Z*, *Good Time*, *The Rover*, *The Lighthouse* and *Tenet*, as the latest ripped and action-ready Batman, this is surely his biggest project yet.

The big-budget Warner Bros movie represents for him a defining moment, both physically and mentally – it's the final piece of the jigsaw in the ascent of the accomplished Londoner to true movie icon status, and by his own admission, the removal of self-doubt that accompanies it is a relief.

"Doubt is in the genetic make-up of any actor," he begins. "You are always wondering what's around the corner and whether you can live up to your best role, your last role, your future potential... whatever it will be."

Taking on Batman represents the same mental challenge, but RPatz sounds more secure in himself than ever before.

"I think any actor will go through periods where they will question whether they can live up to a character in a script, or even the expectations that go with it.

"Batman, for me, means pushing boundaries and building up to a point where I know, in the flesh, I can do justice to the physicality required.

"You look at the true warriors of the superhero genre – Hemsworth, The Rock, Downey Jr – and wonder if you're putting yourself in the wrong place. And yet, having spoken to a few I know, everyone is nervous when the opportunity comes about."

Of course, the legacy of those to have played Batman goes back right to the early days of movie-making. People were still awaiting the conclusion of the Second World War when actor Lewis G Wilson first stepped up to play the caped hero in 1943. Wilson's physique saw critics perhaps unfairly deride him as "thick about the middle", and actors who assumed the role thereafter were toned in a way rather more fitting for a character adept at taking down a range of enemies without, in fact, the use of any superhero powers at all.

From Robert Lowery and Adam West – who played Batman for two decades – through to Michael Keaton, Val Kilmer, George Clooney, Christian Bale and Ben Affleck in the modern era, style and stamina has often gone forward before age – something that stands Pattinson in good stead.

"This feels like the start of a new era for me, and I hope fans come along for the ride."

In 2020, Pattinson talks, behaves and interacts like a very different person from when he was only known as Edward Cullen from *The Twilight Saga*. His evolution into an accomplished actor of variety, veracity and vigour is now surely complete.





**RYDER-DAVIES  
& PARTNERS**  
Veterinary Practice

- 24 hour care provided by our own vets and nurses
- Pay monthly Health Care Plans available for all animals

<b>Woodbridge</b> 01394 380083	<b>Rendlesham</b> 01394 420964
<b>Ipswich</b> 01473 274040	<b>Felixstowe</b> 01394 284554

[www.ryder-daviesvets.co.uk](http://www.ryder-daviesvets.co.uk)  
[info@ryder-daviesvets.co.uk](mailto:info@ryder-daviesvets.co.uk)

**DIAMOND PAWS  
DOG GROOMING**  
Taking bookings for dogs under 20kg



I offer baths and clips for dogs as well as nail trimming, ear cleaning and de-shedding. Based in Framlingham. For more information please call, text or visit the website.

**07517 991044**  
[www.diamondpawsgrooming.co.uk](http://www.diamondpawsgrooming.co.uk)



**WOODBRIDGE**  
**Pet Care**  
— & EQUINE SERVICES —

**WE'RE THERE WHEN YOU CAN'T BE...**

FROM JUST  
**£10**  
PER HOUR

- ✓ DBS Checked
- ✓ Full Insured
- ✓ Animal First Aid Trained
- ✓ Years of Experience
- ✓ Covering Woodbridge & a 15 mile radius

Follow us on Facebook or call  
**07928 660534**

**PET SITTING | HOUSE SITTING | SMALL PET BOARDING | EQUINE CARE**



# Vetlin process

Things to consider... when choosing a good vet for your pet

## Word of mouth

Whether your passion is a dog, cat, budgerigar or Burmese python, pet owners are a social community and rarely shy away from sharing opinions, both positive and negative. The pet parents among us will always be the best source of reviews, so jump on social media and see who is well rated locally.

## Read the paw print

Pet healthcare is often pricey, so transparency is key when it comes to vets and finances. It is always wise to have pet insurance, but you also need to check that your vet is willing to cooperate with your policy provider to provide a seamless, stress-free service. In the event of having no insurance, make sure you're happy with the potential fees.

## Listen to your animal instinct

The best care often means feeling comfortable and happy from the minute you walk in the door, so visit your prospective surgery and make sure it

suits you and your pet. Perhaps you have a place that specialises in care for gregarious guinea pigs, or maybe it's the welcome that wins you over. Clean bowls of water, blankets and toys for anxious animals are all good signs your pet will be in good hands.

## Follow the pack

A busy veterinary practice is generally a good sign that it offers decent care for reasonable prices. So as long it isn't so oversubscribed that you can't get an appointment, don't be put off by a little paw traffic.

## Stay on your turf

We all know that medical emergencies rarely fit a sociable timetable, and is vital to know that you can get your pet the help it needs any time, day or night. This means not only choosing a practice that you can get to easily, but also one that can facilitate emergency care without you having to venture too far afield.





# the isle of Wight

Forget long slogs to foreign lands – holiday utopia could be much closer to home, because it's alright on the Isle of Wight.

With so many holidays abroad having restrictions and a quarantine period once you return to the UK, a good, less-stressful option could be to look for a break closer to home.

A short hop on the ferry across to the Isle of Wight could be just the ticket, and here's why:

**Tube Train:** Speaking of tickets, the Isle of Wight's first unique tourist attraction is the former underground train that connects those arriving on the mainland at Ryde Pier Head to Shanklin, some eight and a half miles away. The British Rail Class 483 rolling stock dates back to 1938.

**Alum Bay:** While Alum Bay gets most of the publicity, from Colwell to Compton, Sandown to Shanklin, so many of the island's sumptuous, sandy beaches are a delight to behold.

**The Needles:** These iconic chalk stalks and resplendent lighthouse have always been a major tourist draw, as well as sparing the lives of countless sailors.

**Blackgang Chine:** A piece of the Wild West, a voyage into a fairy wonderland, or perhaps something else... Located in the south of the island, the amusement park is the oldest in the UK, having first opened in the 1840s, and will transport kids and adults alike back to a simpler age.

**Freshwater Bay:** So typical of the history hiding behind the island, Freshwater Bay's serenity disguises the caves pirates used to hide their wares in, situated at the foot of the cliffs.

**Osborne House:** For those who like their history to be rather more regal, sample Queen Victoria's favourite retreat, which remains almost untouched from when it used to welcome dignitaries over 100 years ago.




**YOUR ISLE OF WIGHT HOME FROM HOME**

Stay in one of our luxurious spaces at prices you won't find on the internet.

**01983 506 806**  
info@islestay.co.uk




**With hassle free car rental, it couldn't be easier to say yes to a last minute adventure!**

**Get an extra 10% off when booking, quote VWFS10**

VWFS Rent-A-Car Bury St Edmunds | 01284 545754  
marriottmotorgroup.co.uk/rent-a-car

T&Cs apply

## VISITING THE ISLE OF WIGHT?

Enjoy a drink at

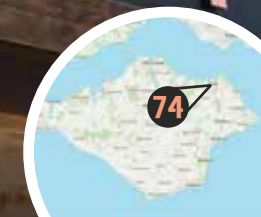
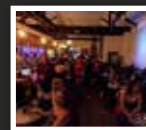
# BAR 74

We are a trendy and inclusive venue situated in the heart of Ryde.

Find us on Facebook or call

**01983 616479**

for more information





# BRINGING THE COFFEE SHOP TO YOU



[www.angliacoffeesolutions.co.uk](http://www.angliacoffeesolutions.co.uk)

Quote  
"VISIONFREE"  
in the checkout  
comments for  
a free sachet  
of Dolchenza  
filter coffee

  
Anglia Coffee Solutions

## Enjoy Our Work From Home Pack...

Due to the current climate, people have missed out on great tasting coffee. Treat yourself to our range of coffees, teas, filters and cafetieres. Our work from home pack includes a stylish 8 cup cafetiere, stainless steel measuring spoon, 5 sachets of Dolchenza and 10% off your next order.

**Order the "Work From Home Pack" now on:**

<https://trackeat.co.uk/anglia-coffee-solutions-bury-st-edmunds/>



# THREE HAUNTING HALLOWEEN COCKTAILS

Put the boo in booze with these creepy cocktails that will make your hair stand on end. Literally. From a spooky smoking potion to a colour-changing creation, these Halloween drinks provide both a trick and a treat.

## TEQUILA TERROR

### You will need:

2 oz 100% agave silver tequila • 1 oz lemon juice • 8 blackberries • 5 sage leaves • 1 tsp maple syrup • 1 dash orange bitters • Dry ice

### How to make:

Bash the blackberries and sage in a cocktail shaker until broken down and fragrant • Pour in the tequila, lemon juice, bitters and maple syrup • Give it a good shake • Pour over a cube of dry ice

**Safety tip:** Do not drink the cocktail until the dry ice has completely dissolved



Photo credit: wickedspatula.com

## BLACK MAGIC

### You will need:

2.5 oz black vodka • ¼ oz lime juice (freshly squeezed) • ¼ oz simple syrup • Ice • Pearl white edible dust (can be found online or at craft shops in baking aisle)

### How to make:

Add syrup, lime juice and vodka to a cocktail shaker • Fill with ice to the liquid line • Vigorously shake for 30 seconds • Add a dash of pearl dust to the bottom of a martini glass • Pour and serve



Photo credit: elliealk.com

## PURPLE RAIN

### You will need:

Blue butterfly pea flowers • 3 oz cranberry juice • 1/3 cup gin • 1.5 oz elderflower liqueur (rose or violet also work well) • Juice of half a lemon • Ice

### How to make:

Make a pot of blue pea flower tea and allow to steep • Leave to cool and freeze into ice cubes • When frozen, crush in a blender • Add the cranberry juice, gin, liqueur and lemon juice into a cocktail shaker half filled with ice • Shake vigorously • Fill two glasses with ice and divide liquid between them • Top with blue crushed ice and watch as it turns purple



Photo credit: supergoldenbakes.com







# Return TO YOUR ROOTS part 1

With the weather turning colder, now is the time to shift away from salads and, instead, embrace more robust and hearty vegetables. Whether you are harvesting the veg yourself or you have opted for shop-bought, the below guide will help you make the most of your roots this autumn.

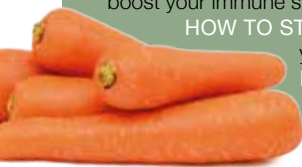
## TURNIPS

A member of the brassica plant family, turnips are high in fibre, making them great for gut health. They also contain antioxidant and anti-cancer properties.  
**HOW TO STORE:** Always cut off the greens of turnips before storing in the fridge. Lifespan: two to three weeks.  
**HOW TO COOK:** With their delicate, sweet flavour, turnips make a great mash. Alternatively, use as a substitute for potatoes in dauphinoise.



## CARROTS

These much-loved staples are cheap, versatile and contain carotenoids that are known for their ability to boost your immune system and protect your skin from sunburn.  
**HOW TO STORE:** Cut their tops off and store them in a cool place such as the lowest shelf in your fridge. Wrap in a damp towel for prolonged crispiness. Lifespan: four weeks.  
**HOW TO COOK:** Avoid boiling carrots; instead, look to roasting them with honey, grating them raw into a salad or stir-frying them.



## PARSNIPS

Parsnips are incredibly high in fibre and are also a great source of folate that is needed for a healthy brain and nervous system.  
**HOW TO STORE:** Store in the same way as carrots but avoid placing near apples or pears, as this gives them a bitter taste. Lifespan: three to four weeks.  
**HOW TO COOK:** You can roast parsnips in the same way you would potatoes. They also work well in a gratin, to bulk out stews or grated into hash browns.



Look out for *part 2* in next month's edition where we will explore the beautiful beetroot, amazing artichoke and the super versatile sweet potato.

Your Quality Local Butcher.

**PRE-ORDER YOUR CHRISTMAS TURKEY TODAY!**

Hutton's of Earl Soham,  
The Street, IP13 7SA  
**01728 685259**  
johnhuttonbutchers@live.co.uk

**FRAMLINGHAM FISH BAR**

Traditional Fish & Chips

Now Under New Management

College Rd,  
Framlingham  
IP13 9EJ

**01728 723643**

Planning an event that needs catering?

Hand over to us and feel the stress lift off you as we take care of everything.

**Ruth Leigh**

01728 746599  
07961 025352  
ruth@leighcatering.co.uk  
www.leighcatering.co.uk



**E.W. REVETT**

& SON of WICKHAM MARKET



• **FAMILY BUTCHERS** •

*Continuing to Serve  
Our Community*

Locally Sourced Meat | Stir-Frys  
Ready Meals | Delicatessen | Cheese  
Vegetables | Fresh Bread | Cakes

**01728 746263**  
**www.revett.co.uk**

**THE  
RED LION**  
WOODBIDGE



**GREAT FOOD. GREAT DRINK. GREAT ATMOSPHERE**

Richard and Sarah welcome you to this  
recently refurbished public house in the heart of  
Woodbridge. Open all day, 7 days a week for  
great food and drink.

**01394 548327**

PUBLICAN@REDLIONWOODBIDGE.CO.UK  
90 THOROUGHFARE, WOODBRIDGE, IP12 1AL

Crafty Coffee

**PAINT YOUR  
OWN POTTERY**

**BIRTHDAY PARTIES  
TODDLER TIME  
GIFT MAKING  
VOUCHERS**

f /craftycoffee  
1b Hamilton Rd,  
Felixstowe  
**01394 270224**



**SPECIALISTS IN  
STERLING SILVER**

**Silver Sun Jewellery**



**NEW STORE NOW OPEN!**

53a Thoroughfare, Woodbridge, IP12 1AH

T: 01394 382114  
E: silversunjewellery@gmail.com

**Open:** Mon-Sat 10am-5pm  
Sundays by Appointment

HOW TO ENJOY A

**SOCIALLY  
DISTANCED  
HALLOWEEN**

KIDS



As traditional trick or treating may be cancelled this year, unless you want some seriously disappointed children, you may want to look into alternative ideas for celebrating Halloween as a family.

Don't worry, there will still be lots of sweet treats to be enjoyed!

**HOST A VIRTUAL PARTY**

If you normally host a massive Halloween party for all your family and friends, why not use your new-found knowledge of Zoom to host a virtual party instead? Adults can enjoy some spooky cocktails and a chat, whereas the kids can show off their costumes and even play Halloween games such as bobbing for apples via the app. Alternatively, you could host a virtual scary movie night or virtual Halloween sleepover.

**ORGANISE A NEIGHBOURHOOD DECORATION PARTY**

In the same way that neighbours got together to decorate the outside of their homes and the local streets for VE Day, you could bring the local community together to put up some creepy decorations. That way, instead of trick or treating, children can enjoy a spooky walk on Halloween.

**SET UP A HALLOWEEN PHOTO BACKDROP**

A great way to make dressing up for Halloween fun despite restrictions, one or more local families could host a Halloween photo backdrop at the end of their driveway or in their front garden. Children can then take turns coming up to get their photo taken, creating long-lasting memories of Halloween 2020.

**DECORATE A FACE MASK**

A fun Halloween activity for children of all ages. Either buy some plain disposable face masks or make your own and then get your children to decorate them. Some great Halloween-themed decorative ideas include creepy grins, animal faces or pumpkin patterns.

**OTHER IDEAS INCLUDE:**

- Bake some sweet treats
- Visit a pumpkin patch
- Carve a pumpkin face



# Bespoke Handmade FACECOVERS

Made in Woodbridge



- » Reusable and Washable
- » 3 Layers 100% cotton/ 100% silk
- » Harris Tweed with Silk Linings
- » Non-Chafing Adjustable Ear Loops
- » Comfortable Integral Nose Clip
- » Optional Filter Pocket

Prices from  
**£10**

Find Us on  
**Etsy**

Voted in  
Top 30 British  
Face Cover  
Makers

Call Clare or Text: **07812 997467**  
or email: **clare@silkrose.co.uk**

# Holly Blue Boutique



**See it. Love it. Want it.**

sue@hollyblueboutique.com

55 Thoroughfare, IP12 1AH • 01394 382300



ACROSS the ROOM

Meet · Date · Love

## Personal Introductions The Original Dating Agency

- Find Love through a trusted source, est. 1991
- Age Group 45 - 80s
- Guaranteed Introductions
- Free Information Pack
- High Success Rate in Suffolk

Call for a friendly chat and a  
free brochure. Visit us in  
Needham Market, Suffolk

**01449 722800**  
**www.acrosstheroom.co.uk**



# CHECK mate!

If you are looking for a fashion trend that checks all the boxes, then look no further. The traditional checked pattern was seen across multiple AW20 collections including Saint Lauren, Miu Miu, Versace and Michael Kors.

Not sure how to make this print work for you? Don't worry, everyone and anyone can rock this form of plaid.

## CHECKED SHIRTS

A checked shirt should be a key staple in everyone's wardrobe, never going out of style and providing a quick and simple way to look effortlessly stylish. Ideal for layering when the evenings turn colder; try adding an open-buttoned checked shirt over a plain tee for a chic and comfortable look.

## CHECKED COATS

With the ability to suit both men and women, an oversized checked coat is a must-have this winter. Wear over layered knitwear, a tailored suit or even a party dress; this style of outerwear is incredibly versatile. For those who love to stand out from the crowd, choose a bold and colourful check such as red, yellow or green. Alternatively, monochrome check will always look classy.

## CHECKED ACCESSORIES

If you are a little worried about trying out this trend, you may want to try starting with one checkerboard item such as a pair of black-and-white checked heels or a checked scarf. But make sure you don't sync the checks of your accessories with the checks of your clothes – this is never a good look!

## CHECKED TROUSERS

You don't often see women wearing checked trousers, but when you do they nearly always look fabulous. So, why not give this daring look a go yourself? Pair with a hoody for a sporty touch, with a chunky sweater for a casual daytime look or with a silk shirt and leather jacket for instant edginess.

Photo credit: asos.com



FASHION



# Are you BLUSHING yet?

**W**ith summer over, you are probably ready to banish the bronzer and bring on the blush. But do you know what type of blush is best for you?

## Powder Blush

If you are not quite ready to give up that natural, sun-kissed glow that you have enjoyed over the last few months, then powder blush is the ideal choice for you. Available in a variety of colours, including red, pink, orange and peach, powder blush is long-lasting, easy to blend and offers a matte finish. Ideal for acne-prone and oily skin types.

## Cream Blush

If you are looking for a dewy, fresh-faced finish, then cream blush can help you to achieve this. Arguably the best choice for those with dry skin, this type of blush lasts for around five to six hours and can be seamlessly blended into your skin. Be sure not to overapply or you risk a greasy-looking finish.

## Shimmer Blush

Available in soft shine or a glittery formula, shimmer blush can set you up for the day and prepare you to party. It's great for highlighting your cheekbones. Make sure you build this blush up gradually to avoid a major make-up mishap. Shimmer blush can be used on any skin type.

## Gel Blush

Although this type of blush is mostly recommended for the summer, it can be used to softly transition into autumn, allowing you to enjoy a healthy colour for longer. Best for light to medium skin tones, gel blushes can be easily blended with just your fingertips.

## Tinted Blush

Otherwise known as cheek stain, tinted blush has become increasingly popular in recent years owing to its extreme long-lastingness and quick-drying formula. Plus, it can double up as a lip stain. Remember, less is more with this product.

## Planet Conscious Gift Boxes

from the best small producers in Suffolk



Packed with love,  
for you to share your love.

All of our products are handmade in  
Suffolk, plastic free and come in recyclable  
or compostable packaging



Follow Us:

@from.suffolkwithlove  
@fromsuffolkwithlove

GENTLEMEN'S CORNER  
FRAMLINGHAM

Traditional | Fades | Beards

20% OFF YOUR  
FIRST HAIRCUT  
when presenting  
this voucher

FROM  
£11  
PER CUT

Call Us Today:

01728 574967

Mon-Fri - 9am-6pm, Sat 8am-6pm

Bookings & Walk-Ins Welcome

DISCOVER YOUR  
PERFECT SMILE.  
with Invisalign SmileView



- IMPLANTS ● COSMETIC DENTISTRY
- HOME & IN SURGERY WHITENING
- SMILE MAKEOVERS ● INVISALIGN
- DENPLAN ● SAME DAY CROWNS
- CBCT SCANNING JUST £99

Initial Consultations FREE!

A&L CLINICS

01473 287762  
enquiries@aandlclinics.com

FREE Sonic  
Toothbrush  
worth £69.99  
with in-surgery  
whitening

5% off  
with this  
advert





# Love your LEFTOVER PUMPKIN

Don't throw away any leftover pumpkin from Halloween. Instead, pump up your beauty routine with these four DIY pumpkin beauty recipes that are guaranteed to give your skin and hair an autumnal glow.

## BEAUTY BENEFITS OF PUMPKIN

**Healthy skin:** Pumpkin is full of vitamin A, zinc and antioxidants that are essential for healthy-looking skin.

**Healthy hair:** Pumpkin seed oil is antibacterial and antifungal, helping to maintain a healthy scalp and strong hair follicles.

## PUMPKIN MOISTURISING FACE MASK

You will need: 200g pumpkin purée | 1 tbsp honey | 2 tbsp brown sugar | ½ cup yoghurt

How to apply: Stir all ingredients together | Evenly coat your face with the mixture | Leave for 10–15 minutes | Rinse with warm water

## PUMPKIN LIP SCRUB

You will need: 1 tsp pumpkin purée | 2 tsp sugar

How to apply: Mix ingredients together | Massage onto clean lips | Wipe off | Finish with a coat of hydrating lip balm

## PUMPKIN HAND CREAM

You will need: 50g pumpkin purée | 1 tsp olive oil | 1 tsp honey

How to apply: Mix all ingredients together | Spoon a generous blob into your palm and rub into your hands | Rinse with warm water

## PUMPKIN DEEP CONDITIONING TREATMENT

You will need: 50g pumpkin pulp without seeds | 50g raw coconut oil (liquefied) | 50g raw shea butter (solidified) | 25g vegetable oil or olive oil | 1 tbsp oatmeal powder

How to apply: Separate seeds from pumpkin pulp | Add oils, butter, oatmeal powder and pulp to a bowl | Mix well and then blend in a blender until a smooth consistency is achieved | Apply to damp, clean hair and massage into scalp | Leave for a minimum of 10 minutes | Rinse with warm water

Don't throw away the leftover pumpkin seeds; instead, roast them for a tasty snack. They are great for encouraging hair growth, as they contain iron and L-lysine which both help to prevent excessive hair shedding.



Robert Douglas  
Hair Workshop

## Look and feel fabulous with The Robert Douglas Hair Workshop

### Our services include...

- Advanced hair cutting
- Creative hair colouring
- Highlights and lowlights
- Perms
- Men's and children's hair
- Bridal hair
- L'Oreal steampod straightening

10%  
DISCOUNT  
with this  
ad



01394 387 436

rdhws86@hotmail.com

86 Thoroughfare, IP12 1AL





**QUAY  
STREET**  
COLLECTIVE  
★ HAIRDRESSING ★

## NEW SALON NOW OPEN!

GET **30% OFF** YOUR FIRST  
CUT WHEN YOU QUOTE  
**VISIONAUG**

Introducing a new *luxury hair salon* in central Woodbridge. Our ethos is centred on providing cuts, colours, and bespoke treatments **sustainably and ethically**. The salon offers a full range of hair treatments and will satisfy the increasing requests for innovative products, treatments and styles.

**01394 386960**  
info@quaystreetcollective.com  
12 Quay Street, Woodbridge, IP12 1BX



**Peace of Mind**  
Neuro-Linguistic Programming

INITIAL  
CONSULTATION  
FREE

*Specialists in mental health for all ages.*

- |              |                 |                |
|--------------|-----------------|----------------|
| ✓ ADHD       | ✓ Behaviour     | ✓ Anger Issues |
| ✓ Stress     | ✓ Family Upsets | ✓ Confidence   |
| ✓ Anxiety    | ✓ Relationships | ✓ Fears        |
| ✓ Depression | ✓ Self-Esteem   | ✓ Phobias      |

Contact:

**Moir Green**

**07780991400**

moigreen12@yahoo.com



# STOP TOBER

*How to help someone with an addiction*

**W**ith Stoptober already under way, we thought it would be a good time to offer a few words of wisdom for those supporting a loved one with an addiction.

### DON'T BE AN ENABLER

There is a very fine line between supporting someone with an addiction and actively enabling them. While you may want to help your loved one by carrying out household tasks, lending them money or apologising for their actions, this can actually stop them from making positive changes in their lives. Sometimes you need to let someone reach rock bottom for them to start their own personal recovery journey.

### BE COMPASSIONATE

Although you don't want to stray into enabler territory, that doesn't mean that you can't treat your loved one with compassion as they struggle with addiction. In fact, studies have shown that negative social support is one of the biggest barriers for entry to treatment.

### ENCOURAGE HEALTHY HABITS

Addiction is linked to not only poor physical health, but also mental well-being, with common mental health issues such as anxiety and depression being greatly amplified by alcohol or substance dependency. Ways in which you can promote overall good health and well-being include encouraging healthy eating habits and regular exercise, as well as establishing a positive daily routine.

### DON'T FORGET YOURSELF

Supporting an addict can be an exhausting and often fruitless process, so it is vital that you take the time for self-care. Think of this not as an act of selfishness but as a means of self-preservation. Focus on doing something you love and make sure you take care of your own physical and emotional needs.

### DO...

Focus on building trust • Be honest • Respect their privacy

### DON'T...

Threaten with ultimatums • Criticise or name-call • Expect too much too soon



HEALTH & FITNESS





# PARK VIEW

— CARE HOME —

**Are you taking steps to look for care  
for your loved one?**

Take the next step to Park View Care Home

Park View is a state of the art, luxurious care home overlooking the magnificent gardens and grounds of Chantry Park near Ipswich.

Our philosophy is quite simple; to provide the very highest standard of care and quality of life to each person at Park View.

We provide residential, nursing and specialist dementia care to elderly ladies and gentlemen, this full complement of services means that elderly residents changing needs can be met throughout their stay with us.

- State of the Art Development
- Residential, Nursing & Dementia Care
- Private Dining/Hospitality Services
- Short & Long Term Care
- Beautiful Accommodation Throughout
- Individualised Care Plans
- Specialist Care Design Features
- Internet Wifi
- Activities, Hobbies and Clubs
- Stunning Landscaped Gardens

Please contact Sharon Bowen  
Customer Relations



FIRST CARE HOMES  
WHERE CARE COMES FIRST

**Telephone 01473 228 890**

1 CHANTRY CLOSE, LONDON ROAD, IPSWICH IP2 0QR  
CUSTOMERRELATIONS@PARKVIEWCAREHOME.CO.UK



**W**e could all be forgiven for feeling a little less than motivated right now. That being said, there comes a time when we need to stop languishing and start flourishing. Now is that time...

## SET THE TONE FOR THE DAY

How often do you wake up on the wrong side of the bed and let that negativity continue throughout the day? Why not instead start your morning with a few enthusiastic affirmations? Even a simple, "Today will be a good day", can work wonders.

## FOCUS ON THE GOOD

Although you may find it difficult at the moment to find joy in everyday life, by focusing on the good things, however small they may be, you will start to find yourself feeling more motivated and less eager to hide away from any of life's challenges.

## LAUGHTER REALLY IS THE BEST MEDICINE

When you laugh, the body releases two types of

chemicals: endorphins and dopamine. Endorphins help you feel happy and diminish pain, whereas dopamine, known as the reward hormone, contributes to feelings of pleasure and satisfaction. Finding humour in even the darkest or lowest of moments can help you get through a particularly bad day.

## EMBRACE FAILURE

Whether you are struggling to home-school, are completely messing up your latest DIY project or you simply feel that nothing you do at the moment is right, try to focus on what you can learn from your mistakes.

## BE PRESENT

If you are struggling with the current lack of routine and worry about not being able to set any short-term goals, other than getting out of bed each day, try focusing on the immediate present. What are you doing at this precise moment that is making you or someone close to you happy?

new mindset → new result





# WHAT A racket



Why squash,  
pound for pound,  
is a good sport to play

**F**orget football, turn aside tennis, and golf can get lost – the proven best sport you can play for a total body workout... is squash.

It's a simple game, played in singles or doubles, and involves smashing a rubber ball against a wall in the hope your opponent won't be able to return it within one bounce. Its popularity has continued to grow, despite the fact that television coverage is almost non-existent.

The reason people love squash is because it tests every element of the human body:

- > **Reactions:** Players must respond to opponents' attacks in split seconds, often moving into position as soon as their own shots are taken in expectation of where the ball might go.
- > **Agility and speed:** From returns on the floor to left and right stretches; from frantic back-peddalling to tearing towards a concrete wall before needing to urgently apply the brakes, squash uses every muscle group.



- > **Power:** While some plays can be tickled into winning areas, squash thrives on the idea of smashing the ball into areas an opponent cannot get to.
- > **Precision and intelligence:** At the heart of it, the placement of shots will win you the game, and in such a confined space you're testing hand-eye coordination in a way that's measured, intelligent and so much more intense than on a ranging tennis court.
- > **Stamina:** Unrelenting and in many cases played in what can resemble a concrete oven, squash demands high stamina for anyone who wants to stay in the game.

There's only one downside to squash, and it's something that any vocal sportsperson will have experienced – notably, if you're prone to letting out the odd expletive after a bad shot or missed return, the echoing nature of a boxed in 10-metre x 6-metre squash court will ensure everyone within a half-mile radius can hear you.

**NEW PILATES AND WELLNESS STUDIO NOW OPEN**  
RIDUNA PARK, MELTON

**25% DISCOUNT** on taster classes

Book Classes and Appointments at [larapepper.com](http://larapepper.com)

**CLAIM TOWARDS 130% OF YOUR TAX RELIEF**

95% of small businesses do not realise they are eligible to claim for their **Research & Development** spending.

**WE ARE HERE TO CHANGE THAT**

NO WIN - NO FEE

Call now for your **FREE** qualifying consultation

**07387 998798**

[raven-rose@bestrdclaims.co.uk](mailto:raven-rose@bestrdclaims.co.uk)

**FREE FINANCIAL HEALTHCHECK**  
Free of charge, without obligation

Are you ready for what the future holds?

We're your local, Independent Financial Advisors, and can help you prepare for whatever life throws at you. Our services include:

<input checked="" type="checkbox"/> Pensions	<input checked="" type="checkbox"/> Inheritance Tax
<input checked="" type="checkbox"/> Retirement Planning	<input checked="" type="checkbox"/> Investments/Savings
<input checked="" type="checkbox"/> Retirement Advice	<input checked="" type="checkbox"/> Health/Protection

Tom Crowther BA (Hons) FPFs  
Your Local Advisor - Woodbridge

Contact Tom directly on:  
01473 408425 / 07395796800  
e: [crowther@wmibl.co.uk](mailto:crowther@wmibl.co.uk)

**Are You Getting The Best From Your Staff?**

- INCREASE EMPLOYEE SATISFACTION
- REDUCE STAFF TURNOVER
- IMPROVE BUSINESS PERFORMANCE

**CALL JACQUI FROST, THE LEADERS' COACH, TODAY:**

**07879 491093**

[jacqfrost257@gmail.com](mailto:jacqfrost257@gmail.com)





# YOUR HOME under the hammer

## The pros and cons of auction properties

Daytime reality TV shows have given us a unique insight into the workings of the auction room, but where buying a home is concerned, the stakes are considerably higher than when bidding on a Nissan Micra, or perhaps an antique teapot.

The plus side is that buying a home at auction can save you tens of thousands of pounds. You can also find yourself unearthing some unusual properties that high-street estate agents wouldn't look to market, and as far as renovation projects go, auctions tend to attract every brand of dilapidated property going.

It's also a fast process – when the bidding ends the process kicks off... There's no hanging around for estate agents, and within weeks the property can be yours.

And yet, when buying under the hammer, the

phrase 'buyer beware' certainly rings true. Firstly, the time in between the catalogue being published and the auction itself – typically about three weeks – is all you have to arrange a survey on the property and get a solicitor to check over the legal pack. If you don't take these steps, you're buying blind and that could be costly.

Auctions also require finance to be in place – if you're the highest bidder, you are contractually bound to go through with the process, and on day one that will mean a deposit of 10 per cent.

The other downside is it's easy to get swept along with the cut and thrust of the auction room. Setting a spend limit is sensible, but sticking to it is vital, and can be easier said than done when you sense you are only one bid away from clinching something that will become a home or an investment.



## Coronavirus and your retirement income...

Stock market volatility can be unsettling for investors of all ages, however much they have invested and whatever their objectives may be.

However, the market fluctuations triggered by the coronavirus outbreak and its impact on the global economy have particular implications for investors taking income from their retirement pots.

There are two related concepts – or risks – at work in retirement investing.

The first is 'pound-cost averaging'. This is the result of buying smaller amount of stocks at different times, perhaps regularly, when building your pension pot; rather than risking making a big investment only to find the market falls.

But when you're withdrawing retirement income in a declining market you have to cash in more of your pot to maintain the same level of income as before. This is known as 'pound-cost ravaging'.

The other is "sequencing risk". This is the risk that a market downturn will happen at a bad time in your drawdown cycle. In a period of prolonged volatility, you may end up taking an unsustainably high amount of cash out of a pot that's dwindling.

When this downturn coincides with the beginning of your retirement, it's when you're most vulnerable because you are no longer working and you have all your retirement years yet to fund.

The good news, however, is there are several ways to help minimise the impacts of these risks.

They include having a cash fund to draw down from in times of volatility, so that equity investments are allowed to fluctuate and weather the storm. While this provides stability, any money held in cash will lose its value in real terms due to inflation.

Another option is to take only 'natural income' – such as dividends – rather than drawing from capital. This will mean what you have to spend is variable and will be less when markets are depressed.

You need to be flexible and have several income strategies. The art of managing downturns in retirement is knowing exactly what to do and when – that's where financial advisers earn their stripes.

If you're worried about the effects of market volatility on your retirement income, or you want to understand more about making withdrawals during this period of uncertainty, just ask a financial adviser.



## Financial advice made personal

We recognise that talking about money and finances is personal – sometimes sensitive. So it's reassuring to know that there's someone on hand who can help you address your needs, understand your goals and realise your dreams.

We offer a friendly and approachable service, backed by the strength and security of FTSE 100 company, St. James's Place Wealth Management; and being local means we're here to help whenever you need us.

Let's start a conversation.

### COLDFAIR WEALTH MANAGEMENT

Associate Partner Practice of St. James's Place Wealth Management

Chris May DipPFS

Principal

Tel: 01728 768912 | 07562 708273

Email: [chris.may@sjpp.co.uk](mailto:chris.may@sjpp.co.uk)

[www.coldfairwealthmanagement.co.uk](http://www.coldfairwealthmanagement.co.uk)



ST. JAMES'S PLACE  
WEALTH MANAGEMENT

The Partner Practice is an Appointed Representative of and represents only St. James's Place Wealth Management plc (which is authorised and regulated by the Financial Conduct Authority) for the purpose of advising solely on the group's wealth management products and services, more details of which are set out on the group's website [www.sjp.co.uk/products](http://www.sjp.co.uk/products). The 'St. James's Place Partnership' and the titles 'Partner' and 'Partner Practice' are marketing terms used to describe St. James's Place representatives.

SJ.P11693e V1 (12/19)





# WHEN IS THE RIGHT TIME FOR A NEW WILL?

That's a difficult question to answer. Unfortunately, we are very aware when it is the wrong time to think about it!

Whether it is the purchase of a new house, the arrival of your first child, a marriage, inheritance or any other moment when life changes you should protect your family with a will.

We offer you fixed, competitive prices and expert advice that will give you Peace of Mind. Call today to discuss.

Call us on **01473 232121** or email at **enquiry@prettys.co.uk**  
**Elm House, 25 Elm Street, Ipswich, Suffolk, IP1 2AD**

- |                     |                      |                      |
|---------------------|----------------------|----------------------|
| • Family Law        | • Property Law       | • Mediation Services |
| • Corporate Law     | • Conveyancing       | • Commercial Law     |
| • Wills and Estates | • Dispute resolution | • Personal Injury    |

@Prettys\_Law @PrettysSolicitors Prettys [www.prettys.co.uk](http://www.prettys.co.uk)

## MJB Avanti; Accountancy Is More Than Just Numbers



We have recently taken on a client who has taken over a High Street retail unit as a going concern which had been run as a newsagent, selling magazines, stationery, some toys, groceries and other convenience goods.

We were able to assist our client with aspects of transferring the employees under the TUPE regulations. We also advised about the general contractual terms related to amounts payable under the contract including the valuation of stock, fixtures and fittings, and the relevance of VAT on the various elements of the consideration.

**We worked with our client in advance of the purchase to produce a financial systems operating document setting out the procedures to be followed following completion.**

Our client needed to carry out some immediate work on the store prior to starting to trade.

This included deep cleaning the store, the purchase of new shelving units, investment in a new till system, a new CCTV system, and arranging new signage. There were numerous other aspects for them to manage that included the transfer of the alcohol premises licence, staff training and uniforms.

No matter what the spend on these initial costs, consideration will be given to the availability of tax relief on the capital expenditure. A general rule that can be applied is that expenditure on the fabric of the building may often not attract tax relief, unless related to repairs, whereas the purchase of equipment, fittings, and other functional elements of the building, for example the electrical and plumbing systems, will often attract tax relief.

**The nature of this client's business has required**

**timely bookkeeping and management accounts via approved software, and back office support to maintain their books.**

Their expense invoices are sent via Receipt bank, allowing automatic processing through to Xero. The till system links directly to Xero so that daily sales are posted to the client's bookkeeping system. This fits in with the new MTD VAT regulations that were introduced last year.

With any form of retailing operation, it is imperative that a robust financial operating system is put into place – remember cash is king!

MJB Avanti supported the client with up to date management accounts which have been vital in supporting a loan application. The client is now looking at store number two and beyond. We continue to assist the client with funding applications as they aim to replicate their achievements in store two.

### How can MJB Avanti help you?

This case study illustrates the various aspects that are brought into focus. MJB Avanti can assist our clients with these aspects including tax planning and advice relating to the fitting out or purchase of a commercial building and advising about the VAT impact of business transfers. In advance of that, we can assist with the due diligence process before you sign the contracts. From a bookkeeping and accounts perspective, we will advise on and set-up cloud bookkeeping systems and ensure timely management accounts.

**In these very difficult times, we are offering all new clients a free financial review of their business to include a consideration of forecasting and cash flow management.**



**Contact MJB Avanti now on: 01473 55 88 66  
or email: [enquiries@avantigroup.uk.com](mailto:enquiries@avantigroup.uk.com)**





## Sub-Contractor Opportunities

We operate a number of sites throughout East Anglia, and have some fantastic opportunities available for contractors:

Groundworkers  
Bricklayers  
Cladding and Roofing Contractors  
Carpenters – First and Second Fix  
Roofers -tile, slate and flat  
Plumbers  
Floorlayers – carpet and vinyl  
Plasterers  
Dry Liners  
Decorators  
Fire Protection  
Silicone and mastic sealant contractors

To register your interest, please contact [enquiries@colnesett.co.uk](mailto:enquiries@colnesett.co.uk) or call 01473 810230



Is the four-day week a commercial and social experiment that's here to stay?

While none of us needs reminding of the devastation COVID-19 has brought to society, an unexpected upside has been the way we've all been encouraged to reset, recalibrate and readjust.

Businesses and individuals have stripped back processes and preconceptions, but if you think this all begins and ends with Zoom, think again.

While many corporations will insist staff return to a central place of work rather than work from home and lose the valuable mechanics of 'the team', it could be that retaining the sort of four-day week many businesses have trialled has a bit more longevity.

Advantages for the employer:

- Research shows staff embed processes better on longer shifts (perhaps 10 hours) over four days than they would do across five. This so-called 'super-efficient' mode can be up to 40 per cent more productive.
- Work needing to be completed in a shorter time frame brings about urgency and removes an

employee's tendency to be distracted (such as checking social media or news sites).

- The modern nature of the four-day week is great for the image of a business, and staff can still field calls and enquiries on the fifth day.
- A 'three-day weekend' removes Friday afternoons from the work schedule, notoriously the most inefficient segment of the working week anyway.
- Overheads are reduced.

Advantages for the employee:

- 'Four on, three off' means extended breaks.
- The perception is staff will make the most of their additional day by taking up new pursuits and hobbies, meaning better mental health and greater efficiencies when back in the workplace.
- A reduction in the cost of travelling to and from work.

The success of a concept widely embraced on mainland Europe is dependent on the business sector and employee buy-in, but the idea of a three-day weekend is a prospect many will relish... even those in charge.



Viroklean provides a specialist decontamination service that kills 99.99% of all pathogens; eliminating any viruses, bacteria, yeasts and fungi.

**We work to decontaminate infection across a diverse array of sites including:**

- Homes, offices, salons, restaurants, pubs and shared working spaces
- Hospitals, clinics & care homes
- Schools, colleges, universities & nurseries
- Shopping centres & high street stores
- Vehicles & transport networks
- Hotels, gyms & places of worship

Call us for a FREE site assessment:

**01394 432032**

[info@viroklean.co.uk](mailto:info@viroklean.co.uk)

**20%  
DISCOUNT  
FOR NHS  
WORKERS**





# MOBILE MADNESS

Some 35 years on from the first mobile phone call being made in the UK, we look at the limitations of the first available models.

It was a man named Michael Harrison, the son of former Vodafone chairman Sir Ernest Harrison, who made the UK's first ever mobile phone call. It happened on January 1, 1985, and it's fair to say that, in the 35 years since, we have come quite some distance in telecommunication technology.

Phones these days are powerful computers, with a bewildering array of functions, laser-sharp connectivity and a clarity that can enable you to FaceTime someone on another continent. Suffice to say, in 1985 things were a little more basic:

## TALK TIME

The first mobile phones had a talk time of 30 minutes. At that point the battery would die and it would need to be recharged... for 10 hours. And no, it didn't work while charging.

## WEIGHT

The latest iPhone weighs in at 188g; compare that to the Vodafone VT1, the first mobile phone, which totalled 4.7kg... that's the equivalent of 25 iPhone 11 Pros.

## COST

The first mobile phone cost £1,650 – that's more like £6,000 today when factoring in inflation. And even up to the Millennium, call costs were hugely prohibitive in the UK, with fees of more than 50p per minute for mobile-to-mobile calls. And as for dialling numbers abroad... well, probably better to send a letter.

## FEATURES

The first mobile phone was just that – a phone. It offered no additional features. Indeed, not until Nokia's rapid advancement into the market in the late 1990s did phones start incorporating text messaging and games (and yes, by games, we mean snake, and not a lot else).



Photo credit: mashable.com





# MINI WINNERS

Two Suffolk residents have won classic Mini's just a few short months apart. Chris Allitt, of Isleham and Courtney Barker from East Ipswich, both entered the classic car competitions to offer themselves some light relief in the midst of the pandemic.

Chris, 62, who works in the automotive trade himself, entered the competition after a friend hadshared the advert with him.

"Believe it or not, I worked on that exact Mini's engine back in 2015," Chris explained, "I couldn't believe it was now in a competition!"

Chris bought just two tickets at £9 each after seeing that there were only 200 tickets left.

"I don't have a great track record, I never win anything!" Chris said, "I wasn't even watching the live draw, but my friend text me calling me a lucky so-and-so and it was only then I realised I had won!"

The second Mini winner, car-obsessed Courtney Barker, 27, said "I came across the advert on Facebook. I've always wanted a classic Mini."

Courtney bought just two tickets for the 1990 Austin Mini 30 competition not expecting to win.

"I had a missed call and recognised the voice on the message" she said "I rushed back onto Facebook but as they were still filming live I couldn't rewind. When I read the comments and saw everyone saying 'well done Courtney', the penny dropped!"

Bridge Classic Cars who run these competitions have been restoring classic cars since 2004.

"We introduced the competitions this year" explained Craig Ranson, founding Director. "We wanted to give people the opportunity to win their own classic car for just a few pounds."

The competitions started in March this year and so far, 14 people have won classic cars and motorcycles including a 1966 Ford Mustang, a 1988 Porsche 942S, a 1964 MGB Roadster and a 1985 Lotus Esprit Turbo amongst others.

**For more information, or to enter, visit:**  
**[www.bridgeclassiccars.co.uk](http://www.bridgeclassiccars.co.uk)**

Would you like to  
**WIN**  
your very own classic car?

Use Code **"VIS2020"**  
for £1 off each ticket



Visit our website:  
**[www.bridgeclassiccars.co.uk](http://www.bridgeclassiccars.co.uk)**



**CARS WE MOCKED IN  
THE 1980s THAT NOW  
HAVE ICONIC STATUS**

When the shapely, streamlined, smooth curves of car manufacturing in the 1990s came about, the cars we'd been driving over the previous decade suddenly seemed lazy, lumbering, clumsy things that were headed to one place only – the breaker's yard.

Yet those motors that survived the cull are now being brought back to their former glory, with many of us asking if we were perhaps a bit hasty in dismissing these bold, booming examples of classic engineering. These vehicles' price tags – all more than £10,000 – certainly suggest we may have put the handbrake on a little too readily.

## TOYOTA COROLLA

Famously uncool in every car showroom the length and breadth of the country when Kylie and Jason were number one, this motor now screams 1980s chic, with its pointing bonnet, nodding headlamps and completely useless sidestep that only served to graze knees upon entry and exit.

## FORD CAPRI 2.8

A classic Ford, with a frontage that had Essex written all over it. And if you think the bonnet was big on one of these premium vehicles from a classic era, check out how the Capri tapers into an exhaustive abyss at the rear. A beauty.

## ROVER SDI VITESSE

The Rover was a brand your dad loved as he toured around the south-east flogging double-glazing. A bold, ballsy, impossibly solid motor that said 'family' and 'midlife crisis' in the same breath, the Rover was always sleek and has aged incredibly well, and offers a little peek into the UK's fine motoring magnificence of the era.

## RENAULT 5 GT TURBO

For a car that appealed to young drivers while still retaining a small amount of Gallic flair from those famously French roots, the Renault 5 had the lot. A nippy thing that looked ready-pimped on the forecourt and had the engine power to match.



*Toyota Corolla*

Photo credit: betta rodrigues/  
Shutterstock.com



*Ford Capri 2.8*

Photo credit: Gaschwald/  
Shutterstock.com



*Rover SDI Vitesse*

Photo credit: ergey kofir/  
Shutterstock.com



*Renault 5 GT Turbo*

Photo credit: emness/  
Shutterstock.com



# M & R CARS WOODBRIDGE



- Local Taxis • Fixed Price Fares
- 24hr Airport & Long Distance Specialists
- Sporting Events • Nightclubs
- Corporate Accounts Welcomed
- 6 seater people carriers • 8 seater minibuses
- Wedding Car Service • Courier Service

**01394 386661**  
**info@mandrcars.co.uk**



## Evo's Chauffeurs

Travel in comfort and style with a personal chauffeur service for all occasions

- Weddings
- Birthdays
- Anniversaries
- Airport & Seaport Transfers

Contact Us to arrange transport:  
**07883300524**  
**info@evoschauffeurs.co.uk**

# ChipsAway Car Care Centre

*Supagard* your car from just £199!

Call us on **01394 432019** to book your repair



**Professional quality automotive paint and bodywork repairs that are quick convenient and guaranteed**

### Professional Quality

- Fully qualified to repair hybrid and electric vehicles

### Convenient

- Same day repairs
- Collection and return service from home or work
- Courtesy car available
- Mobile service available

### Value for Money

- We specialise in repairing everyday car paint and bodywork damage and because we don't deal with major crash repairs, we don't have the expensive overheads that a traditional bodyshop might have - saving up to 50% on conventional repair costs.

**10% OFF**  
with code:  
"VIS-10"

For a FREE no obligation estimate, pop into our CarCare Centre  
16 Anson Road, Martlesham Heath, IP5 3RG, or call **01394 432019**.

**www.chipsawayipswich.co.uk**

# KING OF THE KOP



SPORT

## JÜRGEN KLOPP: THE WORLD'S BEST MANAGER?

Liverpool's narrow opening-day Premier League victory over newly promoted Leeds United provided an interesting array of feedback from pundits suggesting the Reds' profligacy in defence would see them struggle to repeat last season's saunter to a first league championship in three decades.

Perhaps those naysayers have forgotten the fact that Liverpool possess Jürgen Klopp, possibly the world's best manager when it comes to drawing every last ounce out of his squad.

The way he does this is through charisma and unity, and that's obvious to anyone who has witnessed the German in press conference mode – he is charming, charismatic, funny, reflective... yet fiercely competitive at all times.

Klopp's playing career saw him a decent footballer with Mainz who, by his own admission, exceeded the limitations of his talent. That type of personal elevation is what he now expects of his players, and all those at the club. It is a philosophy of unity that begins right at the top and ends with programme sellers and stewards.

The ethos of self-improvement has decorated his own life – he worked multiple jobs through university and his early playing career; then returned to higher education aged 28 while a professional footballer, to gain a diploma in Sports Science.

The simple psychology he emits has transformed 'eight of out 10' footballers such as Salah, Milner, Robertson and Wijnaldum into truly global stars, and the confidence he has in both himself and his troops means the 53-year-old has resisted the urge to splash the cash this summer.

While the doubters will circle, hopeful of a slip from the world's best side, anyone who truly believes Liverpool will sink back again into the also-ran abyss should probably take another look at the talismanic German at the helm, and think again.



Photo credit: Paul Ellis/AP/Shutterstock



# THE VISION LISTINGS

## ACCOUNTANTS

### AVANTI GROUP UK LTD

With robust systems and friendly proactive approach, we are your local accountancy solution providing services, support, and advice. 01473 558866 | enquiries@avantigroup.uk.com

## ARCHITECT

### STEPHEN HART ARCHITECT

Feasibility, design, conversions, refurbishments, extensions, planning. Our Principle RIBA Architect Stephen Hart has over 40 years' exp. stephen.jc.hart@gmail.com | 07980 899153

## BUILDERS

### G. CULF BUILDING & ROOFING

Offering the full range of building services, including roofing and groundworks. Over 40 years' experience. Call for free quote. 07778 650147 or 01986 875550

## CARPENTRY & JOINERY

### DEBEN INTERIORS

Over 30 yrs' exp in kitchen fitting. High-quality paints/materials for all furniture refurbs, building work, kitchen construction projects. 07774 287420 | dventiors@sky.com

## CARPETS/FLOORING

### UK CARPET CARE LTD

Specialist cleaning of carpets, upholstery, curtains, rugs, hard floor. Woofsafe, NCCA, IICRC & Suffolk Trading Standards Approved. www.ukcarpetcareltd.co.uk | 01473 396706

**JOIN THE LISTINGS...** for just **£180** +VAT per yr

## CLEANERS

### KAREN'S CLEANING SERVICES

Full house cleaning service, weekly/fortnightly, spring cleans, end of tenancy, dusting, hoovering, bathrooms, mopping, insides of windows. 07592 816218 | keeble22@sky.com

### MAID2CLEAN (SUFFOLK) LTD

Need some help with your cleaning, ironing or both? Would you like a vetted and insured maid to clean your home? From just £13ph. 0800 878 6388 | suffolk@maid2clean.co.uk

## DRAINAGE

### BUDGE IT DRAINS

Reliable and professional – blocked drains cleared; jetting & CCTV; domestic & commercial work undertaken; drain surveys; free call outs. 01502 574553 | 07849 312004

## ELECTRICIANS

### BARRETT'S ELECTRICAL

NICEIC registered electrician with over 15 years' experience. Domestic, industrial, commercial. Based in Woodbridge. 07931 986601 | kyle.barrettselectrical@gmail.com

### WRIGHT ELECTRICAL SERVICES

All types of electrical work undertaken. No job too big or small. NICEIC registered. Contact Stuart Wright. 07880 707010 | 01473 431882 | wrightelectricalservices@hotmail.co.uk

## FUNERALS

### E.B. BUTTON & SONS

Independent, family run funeral directors since 1875, providing the highest standards of service and care to families in times of grief. info@ebbutton.co.uk | 01394 382160

## GARDENERS/LANDSCAPERS

### RIVERVIEW GARDENING

All aspects of commercial/domestic garden/grounds maintenance, one-off or regular work. Experience, qualified, insured. riverviewgardening@gmail.com | 07779 152936

## MEMORIALS

### LETTERING ARTS TRUST

Commemorate a life lost. Whether a gravestone or garden sculpture, we guide you to artists in the UK to help create a memorial. info@letteringartstrust.org.uk | 01728 688393

## OVEN CLEANING

### WILLIAMS OVEN CLEANING

Independent professional oven cleaning for domestic ovens. Highly experienced. www.williamsovencleaning.co.uk | 07923 897705 | info@williamsovencleaning.co.uk

## PAINTER & DECORATOR

### IAN PRICE PAINTER & DECORATOR

Over 18 years' experience. Interior/exterior decorating, City & Guilds (level 3) qualified. Free estimates and advice. 07805 003123 | 01728 668994 | www.ipdecorating.co.uk

### KARL WHIGHT

Specialist in modern and period properties. More than 30 years' experience. 07967 802762 | 01728 688300 | k.whight258@btinternet.com

## PEST CONTROL

### COMMAND PEST CONTROL

Commercial, agricultural, domestic pest control throughout the eastern counties and beyond. Service you can depend on. 01787 248049 | sales@commandpestcontrol.co.uk

## PET CARE

### WOODBIDGE PET CARE & EQUINE SERVICES

Family run business. We provide all pet care including dog walking, pet sitting, small animal boarding, house sitting and all equine care, including holiday care. 07928 660534

## PRE-SCHOOLS/PLAYGROUPS

### ST MARY'S PLAYGROUP

Offering various sessions for 2-5 year olds from 8am to 6pm. Burkitt Road, Woodbridge, IP12 4JJ. 01394 610220 | stmarysplaygroupwoodbridge@gmail.com

## RECRUITMENT

### SUMMER FIELD WORK

We require field worker staff from now until the Autumn. 50 hrs per week. Full training provided. Apply on online www.summerfieldwork.com

## RESTAURANTS/PUBS

### RED LION (WOODBIDGE)

Newly renovated, stunning Grade II listed pub and restaurant right in the heart of Woodbridge, offering a wide and varied menu. 01394 548327 | publican@redlionwoodbridge.co.uk

## ROOFING

### SPF FELT ROOFING

Roofing contractor with over 30 yrs' experience. Call for a free roof check and no obligation estimate. All work is guaranteed. New roofing and repairs. 01473 716559 | 07868 261719

### HAXLEY & RUFFLES

New roofing, roof repairs, lead works, chimney repairs. All work carried out with 10-year guarantee (terms apply). 0800 025 7367 | 07850 230234 | haxleyandruffles@gmail.com

## SECURITY/FIRE

### TA SECURITY

Intruder alarms, CCTV, fire systems, fire extinguishers, etc. FSA and BAFF accredited. Domestic and commercial work undertaken. 01473 621641 | info@tasecurity.co.uk

## SHUTTERS/BLINDS

### COUNTRY BLINDS & SHUTTERCRAFT

Locally based specialists in high quality window shutters and blinds. Call us to arrange a free site visit on 01728 633129

## SOLICITORS

### PRETTYS

Experienced personal injury lawyers, handle accident claims; incidents at work, home, on the roads, on holiday, public place in the UK/abroad. 01473 232121 | enquiry@prettys.co.uk

## SPORTS/LEISURE

### FRAM FOOTY

Play football and get fit every Fri and Sun from 7:30pm at Thomas Mills Sports Centre, Framlingham. All ages/abilities welcome. Book your place now at www.framfooty.club

## TANKS/FUEL STORAGE

### TANK REPLACEMENT SERVICES

Oil tanks supplied/installed, choice of plastic or steel. Region's leading tank supplier, a proud reputation for customer service. 01362 687144 | www.tankreplacementservices.co.uk

## TAXIS

### M&R CARS

Local taxis, fixed price fares, 24hr airport & long distance specialists, 6 seater and 8 seater cars available. 01394 386661 | info@mandrcars.co.uk

## THERAPISTS

### PEACE OF MIND

Mental health specialist for all ages. Anxiety, depression, ADHD, anger, phobias, behaviour, family upsets, and more. Contact Moira 07780 991400 | moigreen12@yahoo.com

## TRAVEL

### ROBERT BLAKE HOLIDAYS

Luxury self-catering cottages. Five personally managed quality holiday homes, fully self-contained, private garden, patio, parking. 01394 382565 | www.robert-blake-holidays.co.uk

## VACUUM CLEANERS

### ALLVAC

All makes/models of vacuum cleaners serviced and repaired. Collection and return service. Prices from just £29.95! 01379 871095 | 07866 549642 | paullyayton1971@gmail.com

**JOIN THE LISTINGS...** for just **£15** +VAT per month

**DISCLAIMER: VISION** does not represent or endorse the accuracy or reliability of any of the advertisements, nor the quality of any products, information or other materials displayed, purchased or obtained by any customer as a result of an advertisement or any other information or offer in connection with the service or products. The opinions expressed in articles, reviews and stories are strictly those of the individual authors and do not necessarily reflect the views of **VISION**.





# PUZZLES & TRIVIA

PUZZLES

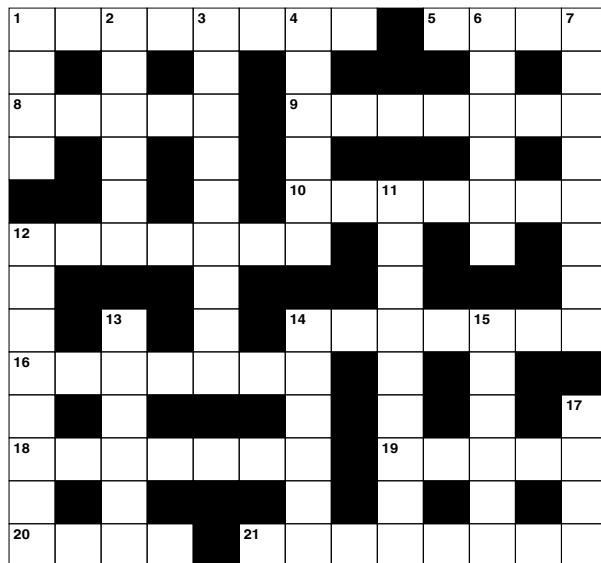
Answers can be found on the Contents Page 4

## ACROSS

1. People who consume a particular beverage (8)
5. Cut (4)
8. Paved area (5)
9. Deserved (7)
10. Ideas (7)
12. Long pins (7)
14. Small Arctic whale (7)
16. Gather (7)
18. Biting (7)
19. Immature insects (5)
20. Overly curious (4)
21. Definitions (8)

## DOWN

1. Depressions (4)
2. Chant; speak solemnly (6)
3. General erudition (9)
4. Manors (anag) (6)
6. Country (6)
7. Base of a statue (8)
11. Immediately following that (9)
12. Astronaut (8)



13. Entraps (6)

14. Hold close (6)

15. Occur (6)

17. Not as much (4)

## DID YOU KNOW?

- The name Big Ben only refers to the bell inside the Elizabeth Tower, not the Tower itself, as commonly thought
- In 1952, a double-decker bus, driven by Albert Gunter, jumped a gap across Tower Bridge after it started to rise to allow a boat to pass
- The London Eye pods are numbered one to 33, missing 13 with superstitious passengers in mind. Each pod weighs 10 tonnes, the equivalent of one million pound coins
- From the 1200s to 1835, the Tower of London was home to a zoo of exotic wild animals that were given as royal gifts, including lions and a polar bear
- Buckingham Palace was originally known as Buckingham House and was built as a private townhouse for the Duke of Buckingham

## SUDOKU

	3				4			
8		9			5	4		
		4	1				7	3
						1		9
			3	4	1			
7		1						
2	4				6	7		
		5	4			9		1
			5				6	

**FREE\***  
Georgia toilet  
& basin with  
every bathroom  
order

**ahm**  
installations

★★★★★ | 9.19/10  
**Checkatrade.com**

## Bathing a problem? – we can help

- Wet rooms
- Walk in showers and baths
- Waterproof wall panelling
- Slip resistant safety flooring
- Grab rails, shower seats & raised toilets
- Automatic bidet loos

- Established family business
- Disabled Facilities Grants
- Zero VAT on disabled bathrooms
- Discounts for over 60s, SSAFA and EX Service personnel

### COVID-19 - SAFEGUARDING CUSTOMERS & COLLEAGUES

Call for friendly advice and free  
survey and quote

**01473 206918**

info@ahminstallations.co.uk  
www.ahminstallations.co.uk

\*Terms and conditions apply, visit our website for  
more information.



Now taking orders for  
pre-Christmas fittings



In aid of

Quick.Easy.Simple.

# Click, Buy & Collect with Marriott Motor Group

Now it's even easier to  
buy your next vehicle,  
without leaving the  
comfort of your own home.

